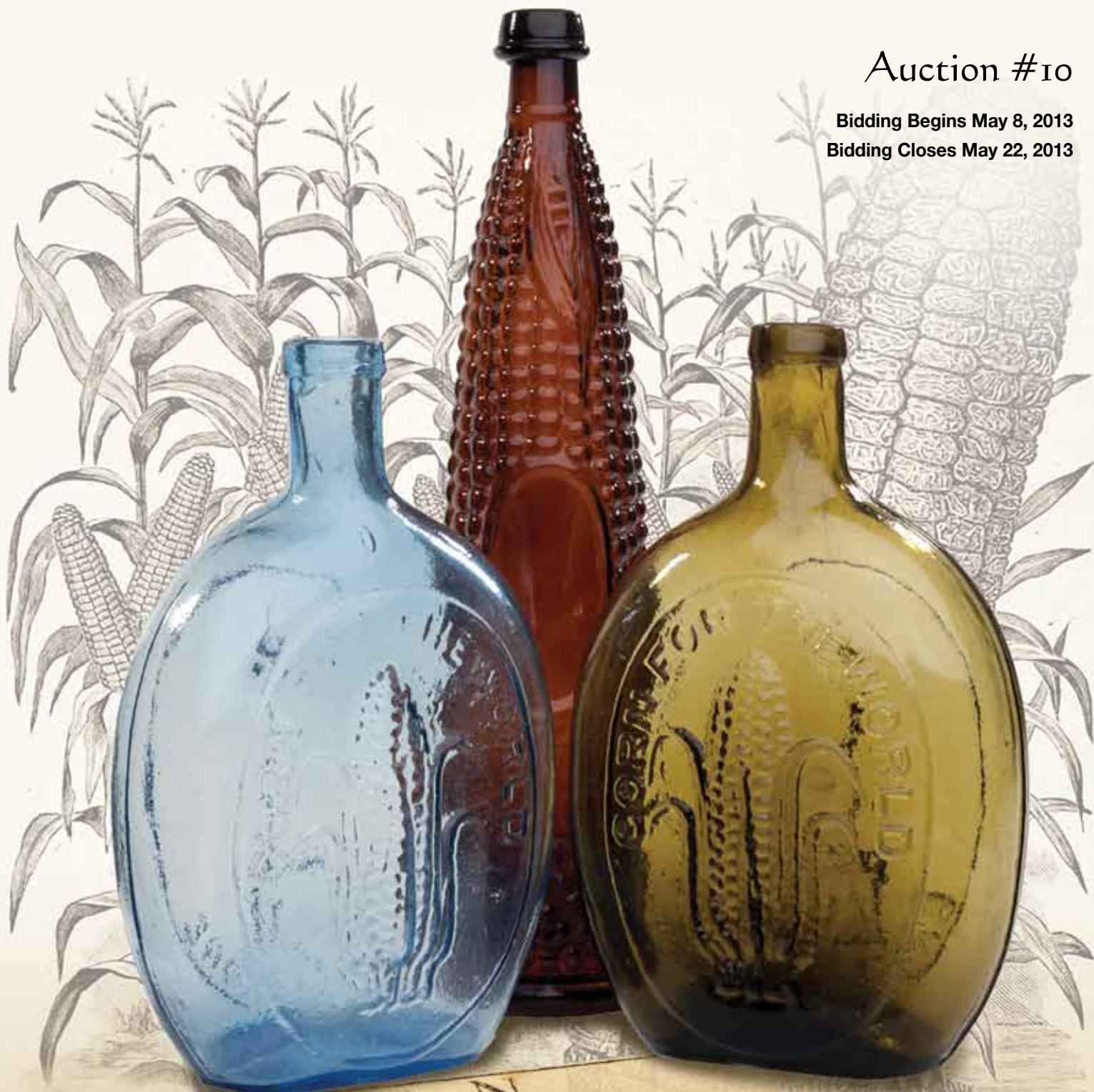


American Glass Gallery™

Auction #10

Bidding Begins May 8, 2013

Bidding Closes May 22, 2013



C O R N .

FOR SALE,

1500 bush. Southern CORN, afloat,

By John Cushing,

EAST of MARKET HOUSE.

COPYRIGHTED BY
W.C. ALCHES

Conditions of Sale

1. Absentee Auction

The items in this sale will be sold via absentee auction, closing date:
May 22, 2013, 11:00 p.m., EST.

2. Our Guarantee Regarding Descriptions

American Glass Gallery has made every attempt to describe correctly the property being sold. Descriptions are guaranteed to be accurate as regards authenticity, age, condition, and measurements to within one-fourth inch, as represented in this catalog. In describing damage, exterior wear or manufacturer's flaws that in our opinion, do not significantly detract visually or monetarily from the value of the item are not listed and will not be considered for refund. The Auctioneers reserve the right to make verbal corrections and provide additional information at any time during the sale.

3. Preview

Items may be viewed by appointment from May 8, 2013 through May 20, 2013.

4. Bidding Procedure

You may submit your bids by mail, phone, FAX, email or through our on-line auction site. If bidding by mail or FAX, please fill out the absentee form and return it to us. Your bid, either written or oral, grants American Glass Gallery the authority to protect you up to the amount of your stated bid. Your bid will not be removed once executed.

Bidding Times: You can submit your bids anytime after receiving your catalog. Bids may be made by phone, daily, until closing day, May 22, 2013, from 9 A.M. - 7 P.M. Eastern Time. Incoming phone bids will be accepted on the closing day (May 22, 2013) until 11 P.M. Eastern Time. Phone calls and Fax bids after this time will not be honored. No exceptions. You may also place your bids through our on-line auction service 24-hours a day once the site has opened for bidding, on or about May 8, 2013, continuing until 11:00 P.M. Eastern Time, May 22, 2013.

Please do not wait until the last day or two of the sale to place your bids! Because many collectors wait until the final few days of the sale to place their bids, we anticipate the telephone and internet bidding to be very busy during that period, so please plan accordingly. In the event of a tie bid, the earliest received bid on the lot will take precedent. We would welcome your bids by phone so that we can answer any questions and assist you in your bidding.

You may also telephone us at any time during the auction, prior to the closing of the sale, to check the status of your bids, to find the current bidding level, to open a bid, or to raise a bid on an auction lot.

Bidding Increments are as follows:

Up to \$250.00.....increments of \$10.00
\$250.00 - \$500.00increments of \$25.00
\$500.00 - \$1,000.00increments of \$50.00
\$1,000.00 - \$2,500.00increments of \$100.00
\$2,500.00 - \$5,000.00increments of \$250.00
\$5,000.00 - \$10,000.00increments of \$500.00
\$10,000 & Up.....increments of \$1,000.00

Bids submitted between the above increments, whether by mail, FAX, email or on-line via the internet, will automatically be lowered to the closest lower increment.

This is a minimum bid auction. Bids below the printed minimum will not be accepted.

An example of how our absentee bidding system works: You bid \$600.00 on a lot which is the highest bid received to date. The second highest bid is \$450.00. The current high bid level would be yours at \$475.00, one bid increment higher than the other collector's bid. Any additional bids submitted by others below \$600.00 will automatically be topped on your behalf by a representative of American Glass Gallery, up to your stipulated high bid amount. If no further bids on this lot are received beyond the \$450.00, and the under bidder has not requested a "Call Back", then you would have won the lot at \$475.00, not the \$600.00 that you were prepared to pay.

American Glass Gallery will at NO TIME disclose bids pledged by others; only the current "High Bid" level of a lot will be stated upon request. The highest bidder as determined by American Glass Gallery shall be the purchaser. It is the sole right of the auctioneer to settle any dispute between bidders and to regulate the bidding procedure. The auctioneer reserves the right to refuse any bid he believes not to have been made in good faith.

5. "Call Back" Process

If requested, the three top bidders of an item at the time of closing will be given a "Call Back" over the next number of days in order to resolve the final sale of an item. You can request this service by "checking" the appropriate box on your absentee bid form or verbal agreement by phone. It is the responsibility of the bidder to insure he has qualified for this service.

Please note: No "Call Backs" will be executed for bids under \$400.00. In the event of tie bids, the earliest bid received will be the winning bid.

An example of how the "Call Back" process works: As an example, you have bid \$600.00 on a particular lot. Another bidder has submitted a bid of \$900.00 on the same lot. Assuming that as of the auction closing date you are among the top three bidders on this lot and you have requested a "Call Back", you would receive a call informing you that you have been "Out Bid" and the current "High Bid" is now at \$650.00. If you choose to continue bidding on this lot, you may now do so. Assuming that you now increase your bid to \$700.00, we would accept your bid but also inform you that we have a higher bid on this lot and must bid \$750.00. At this time, an auction between you and American Glass Gallery, representing the collector who submitted the bid of \$900.00, takes place. This bidding would continue until you drop out, or top the other bidders high bid of \$900.00. If the other bidder has not requested a "Call Back" service, you would be awarded the lot. If however, the other bidder also requested a Call Back, we must now call them. If they elect to increase their bid over your high bid, we would in turn call you back. This back and fourth process would continue until one of the bidders declines to go any farther.

If you have requested a "Call Back", the auctioneers will need to contact you on the days immediately following the auction closing between the hours of 8 A.M. and 9 P.M. Eastern Time. Please supply us with all appropriate contact phone numbers including, home, mobile and work numbers. Bidders must provide the appropriate telephone numbers where they can be contacted. If you will be traveling or otherwise unavailable, bidders with "Call Back" privileges will have the responsibility to contact American Glass Gallery twice daily during the Call Back period.

Please note, every effort will be made to contact you during the "Call Back" period. However, the bidder will forfeit their rights to a "Call Back" if the auctioneers are unable to reach them. American Glass Gallery reserves the right to discontinue Call Backs on any item in the sale (2) two days after the closing date of the sale. At that time, the current "High Bidder" may be awarded the item even if Call Backs are still outstanding.

6. Terms

Successful Bidders, Prompt and full payment is due immediately upon receipt of our invoice. Absolutely no exceptions. Anyone failing to pay for items won will forfeit all rights to bid in any future American Glass Gallery sales. *Any late or delayed payments may result in loss of return privileges for items purchased in the sale.*

No Items Will Be Mailed Before Full Payment Is Received.

Buyer Premium: A 15% buyer's premium will be added to the hammer price (18% if paying by Credit Card or PayPal), to be paid by the buyer as part of the purchase price. For example, if you purchase a lot for \$100.00, you will receive an invoice for \$115.00 if paying by cash, check or money order, plus any applicable sales tax or shipping charges.

Taxes: If you are a Michigan resident, a 6% sales tax will be added to your bill unless you have a valid resale number registered with us.

Shipping: Shipping, handling and insurance are extra. We ship insured via U.S. Mail. These charges will be added to your bill unless the lots are picked up in person. Our charges for shipping (excluding foreign shipments and oversized lots) are \$18.00 for the first item, \$9.00 for each additional item together with extra insurance costs (we use current U.S. Postal Service insurance rates).

Please allow two to four weeks for delivery after receipt of your check.

Payment: American Glass Gallery accepts Cash, Money Orders, Personal Checks, Visa, MasterCard, American Express and PayPal. *If paying by Credit Card or PayPal, an additional 3% will be added to the invoice total.*



7. Refunds

Refunds will be given at the discretion of the Auctioneers. Items purchased must be examined and request for refund made immediately upon receipt of the item or items. Since opinions can differ, particularly in the matter of condition, the Auctioneers will be the sole judge in the consideration of refunds. Refunds requested on the grounds of authenticity must be made within 15 days of the date of the auction, and such refund requests must be accompanied by at least one supporting statement in writing from an authority recognized by the Auctioneers. It is the Auctioneers sincere intention to consider any reasonable request for a refund. *Absolutely no returns for any reason after 30 days following the closing of the sale.*

8. Bidding on any item indicates your acceptance of these terms.



American Glass Gallery™

John R. Pastor
P.O. Box 227
New Hudson, Michigan 48165
Phone: 248.486.0530
Fax: 248.486.0538
www.americanglassgallery.com
email: jpastor@americanglassgallery.com

PLEASE NOTE:

The lots offered in this printed catalog are identical to the lots offered in the on-line catalog. However, due to space constraints of the printed catalog, there may be some further information available regarding some of the lots in the on-line auction descriptions.

Please visit us at

www.americanglassgallery.com

and follow the link to the on-line auction.

The link and on-line auction will be available May 8, 2013.

A post-auction price list will be available on our website, in printable form, by June 1.

We encourage you to contact us by phone or email with any questions, for assistance with bidding, or further details or clarification on any of the lots in this sale. Your complete satisfaction and confidence is our goal!

We look forward to having you participate in our next sale, either as a buyer or a consignor. Our next absentee auction is scheduled for Fall, 2013. We already have some wonderful items consigned to this sale and look forward to discussing with you any quality items you wish to consign!

THANK YOU AND GOOD LUCK WITH YOUR BIDS!

ON THE COVER (from left to right): Lot 25, Lot 127, Lot 24.

This auction photographed and cataloged by John R. Pastor • ©2013, American Glass Gallery. All rights reserved. • Catalog design & layout by Owen Neils • Printed by Spartan Printing, Lansing, MI

Reference Key

Reference initials and numbers used in the description of this catalog refer to the following publications:

AHG	<i>American Historical Glass</i> , Bessie M. Lindsey, 1967
AM	<i>The Decanter - An Illustrated History of Glass from 1650</i> , Andy McConnell, 2004
AP	<i>Glass in Early America</i> , Arlene Palmer, 1993.
BA1	<i>Collecting The Cures</i> , Bill Agee, 1969
BA2	<i>Collecting All Cures</i> , Bill Agee, 1973.
BB	<i>A Bit About Balsams</i> , Betty Blasi, 1974
BH	<i>Classification and Documentation of Sunburst and Similar Scent Bottles</i> , Bill Ham, AB&GC, 5/87
B/K	<i>The Glass Industry in Sandwich</i> , Raymond Barlow and Joan Kaiser, 1989.
C	<i>Ink Bottles and Inkwells</i> , William Covill, 1971.
DeG	<i>American Sarsaparilla Bottles</i> , John DeGrafft, 1980.
DeGII	<i>Supplement to American Sarsaparilla Bottles</i> , John DeGrafft, 2004.
DF	<i>Hair Raising Stories</i> , Don Fadely, 1992.
DM	<i>Wistarburgh, Window Tiles, Bottles and More</i> , Dale L. Murscell, 2007.
F	<i>Inks, 150 Years of Bottles and Companies</i> , Ed and Lucy Faulkner.
FB	<i>A.S.C.R. The wine bottles of All Souls College</i> , Oxford, 1750 – 1850, Fay Banks.
G	(Flasks) <i>American Bottles & Flasks and Their Ancestry</i> , McKearin & Wilson, 1978.
G	(Blown Three Mold) <i>American Glass</i> (Chapter VI), George S. and Helen McKearin, 1941.
GBH	<i>English Glass For The Collector, 1660-1860</i> , G. Bernard Hughes, 1958.
H	<i>American Bottles in the Charles B. Gardner Collection</i> , Norman C. Heckler, 1975.
JB	<i>Patent and Proprietary Medicine Bottles</i> , Joseph K. Baldwin, 1973
JEB	<i>Glasshouse Whimsies</i> , Joyce E. Blake, 1984.
JH	<i>Glasshouses & Glass Manufacturers of the Pittsburgh Region, 1795 – 1910</i> , Jay W. Hawkins, 2009.
JS	<i>In glas verpakt – European Bottles, Their history and production</i> , Johan Soetens, 2001.
K	<i>Poison Bottle Workbook</i> , Rudy Kuhn, 1988.
KW	<i>New England Glass & Glassmaking</i> , Kenneth M. Wilson, 1972.
L	<i>The Red Book of Fruit Jars, No. 9</i> , Douglas M Leybourne, Jr., 2001.
LI	<i>Pittsburgh Glass, 1797 – 1891</i> , Lowell Innes, 1976.
Mc	<i>Two Hundred Years of American Blown Glass</i> , Helen and George McKearin, 1950.
McK	<i>American Glass</i> , George S. and Helen McKearin, 1941.
MW	<i>American Bottles & Flasks and Their Ancestry</i> , McKearin & Wilson, 1978.
N	<i>Great American Pontiled Medicines</i> , Frederick Nielson, 1978.
NCH	<i>The Blaske Collection of American Flasks</i> , Norman C. Heckler, 1983.
NCH II	<i>The Blaske Collection: Part II</i> , Norman C. Heckler, 1983.
Odell I	<i>Indian Bottles and Brands</i> , John Odell, 1977
Odell II	<i>Pontiled Medicine Encyclopdia</i> , John Odell, 2000
O&S	<i>Warner's Reference Guide</i> , Ed Ojea and Jack Stecher, 1998.
P	<i>The Glass Gaffers of New Jersey</i> , Adeline Pepper, 1971.
RD	<i>Understanding Antique Wine Bottles</i> , Roger Dumbrell, 1983.
RF	<i>The Bottle Book: A Comprehensive Guide to Historic, Embossed Medicine Bottles</i> , Richard Fike, 1987
RH	<i>Collecting Barber Bottles</i> , Richard Holiner, 1986.
R/H	<i>Bitters Bottles</i> , Carlyn Ring and W. C. Ham, 1998.
RWL	<i>Antique Fakes & Reproductions</i> , Ruth Webb Lee, 1950
T	<i>Collectors Guide to Saratoga Type Mineral Water Bottles</i> , Donald Tucker, 2005.
U	<i>Collectible Character Bottles</i> , Authur Umberger, 1969.
V	<i>Nailsea Glass</i> , Keith Vincent, 1975
VdB	<i>Antique Glass Bottles; Their History and Evolution</i> , Willy Van den Bossche, 2001.
WL	<i>A Wine-Lover's Glasses, The A.C. Hubbard, Jr. Collection</i> , Ward Lloyd, 2000.
Z	<i>Ketchup, Pickles, Sauces</i> , Betty Zumwalt, 1980.
ZW	<i>Color Hutchinsons</i> , Zang Wood, 1999.

- The dash is generally used to indicate that the descriptions are on opposite sides of the bottle or flask.

/ The slash is used to indicate that the descriptions are on different lines or surfaces of the bottle.



Lot 201 (Detail, one of two.)

Lot 4: Rare GI-93 LaFayette /Eagle

This beautiful figured flask was likely blown in 1824 or 1825 in honor of the much-anticipated revisit by the Revolutionary War hero from France, Marquis ("General") de Lafayette. It is one of 18 different flasks produced during the period to commemorate this historic event and is among the rarest.

It is believed that the GI-93 flasks were blown at the Virginia Green Glass Works of Knox &

McKee of Wheeling, (West) Virginia located along the Ohio River. This belief is founded on the fact that the nearly identical GI-92 flask is embossed on the reverse with "Knox & McKee – Wheeling", whereas the GI-93 lacks this embossing.

To many, the Knox & McKee attribution of the GI-93 seems only logical, however there is a fascinating, if complicated, account of these two flasks in *American Bottles & Flasks*,

where authors Helen McKearin and Kenneth Wilson carry on for more than four pages describing various theories that have been put forth over the years as to exactly when and where they were made (one of them possibly at Pugh & Teeter, Moscow, Ohio) and how and when the mold, or molds, for them may have been altered.

To learn more about these two rare historical flasks, please refer to the publication cited



Choice Louisville Eagle/Eagle Flasks

The Louisville molds, attractive and historical, have long been favorites of flask collectors. The GII-22 through GII-28 molds in particular are beautifully detailed. With their corrugated sides, they are reminiscent of many of the early New England flasks including a majority of Sunburst molds, as well as a number of the Lafayette flasks, all blown during the 1820s or earlier.

In addition, the Wheeling glassworks of Wheat, Price & Co. (1833–34), also produced a couple of interesting molds with corrugated sides, (GI-115 and 116). These were blown 15 to 20 years prior to the formation of the Kentucky Glass Works, in 1850

To our knowledge, there is but a single mold having corrugated edges that can be definitively attributed to an Ohio glasshouse. That flask is the extremely rare, “A. Jackson / Ohio” – Masonic flask attributed to the Mantua Glass Works, again blown at a much earlier time, 1822–1829.

Given the number of surviving examples of the GII-24 mold, it is certainly plausible that these flasks were made over a number of years and the mold may even have traveled between different glasshouses. One interesting comparison may be made looking at a side view of the two GII-24 examples in this sale. The aquamarine example has a very narrow (almost the absence of a) medial rib; the light golden amber example has

what amounts to a heavy or wide medial rib, obviously being blown from a very different mold.

For additional information on these and other Louisville flasks, see Mark Vuono’s informative article, “Louisville Sluggers,” *Antique Bottle & Glass Collector*, September, 2012.

Also see, *American Glass from the Pages of Antiques*, “The Kentucky Glass Works” by Harry Hall White, 1926.



Colorful "Tree" Bottles and Flask



Lot 145



Lot 30



Lot 146



Lot 129:
The Rare
and Iconic
Travellers
Bitters





Lot 1

“Baltimore Glass Works” / Bust of Washington – Classical Bust Historical Flask. Baltimore Glass Works, Baltimore, MD, 1830 – 1845. Greenish aqua, sheared mouth – blowpipe pontil scar, quart, near mint; (a shallow, 1/8” paper-thin open bubble at the side and just a couple of small spots of very faint interior milkiness that are not distracting, otherwise perfect). GI-22. A rare mold and a crisp, beautiful example, nicely whittled, having virtually no high point wear.

Est.: \$800 - \$1,200 • Min. bid: \$500



Lot 2

Washington – Eagle Historical Flask, probably Bridgeton, possibly Baltimore Glass Works, 1836 – 1850. Amethystine, sheared mouth – blowpipe pontil scar, quart; (some minor roughness with a shallow 1/8” bruise at edge of sheared mouth, some expected high point wear). GI-26a. A big, heavy attractive flask, bold impression, beautiful color!

Est.: \$1,800 - \$2,600 • Min. bid: \$1,000



Lot 3

“The Father Of His Country” / Bust of Washington – “Dyottville Glass Works Philada.A / Gen. Taylor Never Surrenders” / Bust of Taylor Historical Flask, 1855-1860. Medium to deep plum amethyst, sheared mouth – smooth base, pint, near mint; (a small area of pin-prick roughness on the inside edge of the sheared mouth). GI-38. Beautiful condition, gorgeous color, light enough along the sides to show plenty of color, even in normal daylight.

Est.: \$2,500 - \$4,500 • Min. bid: \$1,500



Lot 4

“Genl. Lafayette” / Bust of Lafayette – Eagle Historical Flask, probably Knox & McKee, Wheeling, WV, 1824 – 1830. Blue green, sheared mouth – blowpipe pontil scar, pint, near mint; (a touch of very light haze or dullness near the shoulder area, pontil flake on the narrow base extends to the base edge, otherwise perfect!) GI-93. An early, rare and desirable mold, this example is fresh to the market from a small estate auction in Indiana.

Est.: \$4,000 - \$6,000 • Min. bid: \$2,500



Lot 5

Eagle – Cornucopia Historical Flask, an early Monongahela or Pittsburgh district glasshouse, 1825 – 1835. Deep bluish aquamarine, sheared mouth – blowpipe pontil scar, ½ pt; (an 1/8” spot of minor roughness at the edge of the lip and a couple of shallow flakes, one 1/8”, the other pinhead size, on top of the crudely sheared mouth, a little light interior haze, primarily in the shoulder area). GII-11. A heavy, crude example with good color and an exceptionally strong mold impression.

Est.: \$300 - \$500 • Min. bid: \$200



Lot 6

Eagle – Eagle Historical Flask, probably Kentucky Glass Works, Louisville, Kentucky, 1850 – 1855. Brilliant yellowish golden, sheared mouth – blowpipe pontil scar, pint, perfect! GII-24. An exceptional example, very rare color, light, bright and beautiful. In addition, this particular example is very delicate and light in weight, adding to its attractiveness and appeal.

Est.: \$4,000 - \$8,000 • Min. bid: \$2,500



Lot 7

Eagle – Eagle Historical Flask, Kentucky, or possibly Louisville Glass Works, Louisville, Kentucky, 1850 – 1860. Deep aquamarine, sheared mouth – iron pontil scar, pint, attic mint! GII-24. If you are looking for a “finest possible example” of this mold in aqua, this could be it with an exceptionally strong mold impression, deep color, and pristine condition. Also, a little less common with the iron pontil scar vs. the blowpipe pontil scar.

Est.: \$150 - \$300 • Min. bid: \$100



Lot 8

Eagle – Eagle Historical Flask, probably Kentucky Glass Works, Louisville, Kentucky, 1850 – 1855. Brilliant medium to deep yellowish green, crudely sheared mouth – large iron pontil scar, quart; (some scattered exterior wear and a little spotty faint interior film or residue, some of which may wash out). GII-26. A beautiful, scarce color for this mold and a big, bright attractive flask, one that will definitely stand out.

Est.: \$2,500 - \$4,500 • Min. bid: \$1,500



Lot 9

Eagle – Eagle Historical Flask, probably Kentucky Glass Works, Louisville, Kentucky, 1850 – 1855. Deep aquamarine, sheared mouth – blowpipe pontil scar, quart, near perfect; (there is just a very faint trace of a light content haze ring near the center, on one side of the flask only, it is very minor, otherwise sparkling attic mint!). GII-26. A big, bright flask with no high point wear, and in a good strong depth of color.

Est.: \$250 - \$450 • Min. bid: \$150



Lot 13

Eagle / “Granite. / Glass. Co” – Eagle / “Stoddard / NH” Historical Flask, Granite Glass Co, Stoddard, New Hampshire, 1846 – 1862. Yellowish olive amber, sheared mouth – blowpipe pontil scar, pint, very near mint; (the lettering in the cartouche is a little light and just a slight touch of very light exterior wear, otherwise pristine). GII-81. A very nice example of this flask, clean, bright, beautiful and with good character!

Est.: \$300 - \$500 • Min. bid: \$200



Lot 10

Eagle – “Coffin & Hay” / Stag / “Hammonton” Historical Flask, Coffin & Hay Glassworks, 1838 – 1847. Aquamarine, sheared mouth – blowpipe pontil scar, pint; (some high point wear, primarily on the stag on the reverse, a narrow ring of light interior haze at mid-body). GII-49. Provenance: Ex. Tom McCandless collection. A scarce mold, and with a good strong impression!

Est.: \$250 - \$450 • Min. bid: \$150



Lot 14

Eagle – Eagle / “Stoddard / N.H.” Historical Flask, probably Granite Glass Co, Stoddard, NH, 1846 – 1862. Medium olive amber, sheared mouth – blowpipe pontil scar, pint; (a 1/8” flake at the vertical rib, a deep, 3/8” open bubble on the base with a shallow sliver-type flake extending about 1”, along the edge of the base). GII-82. A comparatively scarce mold, and a good clean example with a strong impression that lacks virtually any of the typical high point wear so often found on these flasks

Est.: \$150 - \$250 • Min. bid: \$80



Lot 11

Eagle – Cornucopia Historical Flask, Keene Marlboro Street Glassworks, Keene, New Hampshire, 1830 – 1842. Yellowish olive amber, sheared mouth – blowpipe pontil scar (on keyed base), pint; (just a touch of minor high point wear, otherwise sparkling mint). GII-72b. As noted by McKearin, the “72b” is considered a very scarce mold. In addition, this is a particularly nice example, bright, crisp, with a very strong impression, great character, and nice color.

Est.: \$175 - \$350 • Min. bid: \$100



Lot 15

Eagle / (large bead in oval frame) – Eagle / (bead in oval frame) Historical Flask, probably Granite Glass Co, Stoddard, New Hampshire, 1846 – 1860. Golden amber with a slight olive tone, sheared mouth – blowpipe pontil scar, half pint; (some light to moderate exterior high point wear, a little faint interior residue that would likely wash out). GII-88. Although not noted by McKearin, the GII-88 is a bit harder to find than its GII-86 counterpart.

Est.: \$150 - \$250 • Min. bid: \$80



Lot 12

Eagle – Cornucopia Historical Flask, Keene Marlboro Street Glassworks, Keene, New Hampshire, 1830 – 1842. Olive amber, sheared mouth – blowpipe pontil scar, pint; (some light exterior wear and fine scratches on two of the rounded sides, near the medial rib, some light high point wear, a little interior residue that would almost certainly wash out). GII-73. A good early flask that displays very well, the noted condition issues are relatively minor.

Est.: \$125 - \$225 • Min. bid: \$80



Lot 16

Eagle / “Pittsburgh / PA” – Eagle Historical Flask, a Pittsburgh glass-house, 1860 – 1870. Yellowish golden amber, crude applied collared mouth with flat band – smooth base, pint, near mint; (a tiny, 3/16” sliver-type flake and a small 1/8” iridescent bruise, both at the edge of the base). Similar to GII-107. A beautiful example with a strong mold impression, filled with tiny seed bubbles. A scarce color for this flask.

Est.: \$400 - \$600 • Min. bid: \$250



Lot 17

Eagle and Monument – Indian shooting Bird, Historical Flask, probably Cunningham & Co., Pittsburgh, Pennsylvania, 1860 – 1870. Aquamarine, applied mouth with flat band – smooth base, quart, near mint; (just a touch of minor, light high point wear, a bit of faint interior residue, otherwise perfect). GIL-141. Listed by McKearin as “very rare”, this mold does not come around often. A very nice example with a good, strong impression.

Est.: \$250 - \$400 • Min. bid: \$150



Lot 21

“Success To The Railroad” / Locomotive – (Reverse Same) Historical Flask, Lancaster Glass Works, Lancaster, New York, 1849 – 1860. Medium to deep aquamarine, sheared mouth – blowpipe pontil scar, pint, very near mint; (a weakened impression in the upper shoulder area as is common for this mold, otherwise virtually perfect!). GV-1. A bright, clean example of this comparatively scarce mold.

Est.: \$300 - \$600 • Min bid: \$200



Lot 18

Masonic – “Zanesville” / Eagle / “Ohio / J. Shepard & Co.” (backwards “S”), Historical Flask, Zanesville Glassworks, Zanesville, OH, 1822 – 1832. Yellow with an olive tone shading to a chartreuse green near the base, below “Ohio”, sheared mouth – pontil scar, pint; (a touch of very light high point wear and a little residue or faint haze in the neck, otherwise perfect!) GIV-32. An extremely rare and desirable color, one that is probably unique with the variegated tone.

Est.: \$4,000 - \$8,000 • Min. bid: \$2,500



Lot 22

“Success To The Railroad” / Horse Pulling Cart – (Reverse Same) Historical Flask, probably Mt. Vernon Glass Works, Vernon, New York, 1830 – 1844. Clear medium forest green, sheared mouth – blowpipe pontil scar, pint, near mint; (a touch of expected light high point wear and a slightly weakened impression in the shoulder as is often the case). GV-5. A beautiful, scarce, pure green coloration that is quite different than the typical shades of olive so often encountered.

Est.: \$400 - \$800 • Min. bid: \$250



Lot 19

Masonic – “Zanesville” / Eagle / “Ohio / J. Shepard & Co.” (backwards “S”), Historical Flask, Zanesville Glassworks, Zanesville, Ohio, 1822 – 1832. Yellowish golden amber, sheared mouth – pontil scar, pint, mint. GIV-32. An attractive, lighter color than most, and with a good impression (often times weak in the shoulders on this mold), excellent condition! Note; there is an interesting, in-manufacture fold of glass near the shoulder on the reverse.

Est.: \$1,400 - \$2,200 • Min. bid: \$800



Lot 23

Horse Pulling Cart – Eagle Historical Flask, Coventry Glass Works, Coventry, Connecticut, 1830 – 1849. Medium to deep olive amber, sheared mouth – blowpipe pontil scar, pint; (very crude glass with several open surface bubbles, the largest being approx. 1/8” x 1/4”, otherwise very near mint). GV-9. Nice character and with almost no high point wear as is often found on these flasks, strong impression on the Eagle side.

Est.: \$300 - \$500 • Min. bid: \$200



Lot 20

(All Seeing Eye inside six-pointed star) / “A D” – (Raised Arm inside six-pointed star) / “G R J A”, Historical Flask, probably a Stoddard, NH Glasshouse, 1842 – 1855. Bright olive amber, applied short sloping collared mouth with ring – smooth base, pint; (a little light exterior wear as is often the case with these high-relief molds, otherwise very near mint). GIV-43. A good clean example, lighter in tone, and a little harder to find with the applied mouth.

Est.: \$250 - \$450 • Min. bid: \$150



Lot 24

Corn For The World” / Ear of Corn – “Baltimore” / Monument Historical Flask, Baltimore Glass Works, Baltimore, MD, 1855 – 1865. Olive yellow with a slight topaz tone, applied square collared mouth – smooth base, Qt., perfect! GVI-4. A great example, gorgeous eye-appealing color, crisp, clean and with a very strong mold impression!

Est.: \$3,000 - \$5,000 • Min. bid: \$1,800



Lot 25

“Corn For The World” / Ear of Corn – “Baltimore” / Monument Historical Flask, Baltimore Glass Works, Baltimore, MD, 1855 – 1865. Medium cornflower blue, applied square collared mouth – smooth base, Qt.; (a ¼” flake on the side of the collar, a small 1/8” base edge flake with a hard-to-see ¼” hairline fissure extending from the flake). GVI-4. A rare and desirable color for this mold. The damage is relatively minor and the flask displays as mint.

Est.: \$800 - \$1,200 • Min. bid: \$500



Lot 29

“Summer” / Tree in Foliage – “Winter” / Bare Tree Pictorial Flask, America, possibly Baltimore Glass Works, Baltimore, Maryland, 1850 – 1860. Aquamarine, applied round double collared mouth – blowpipe pontil scar, pint, near mint; (some short, in-manufacture annealing lines around the inside of the neck, just below the applied collar, otherwise excellent). GX-15. A nice example with a good strong mold impression.

Est.: \$75 - \$150 • Min. bid: \$50



Lot 26

“Keen” – “P&W” Sunburst Flask, Keene Marlboro Street Glassworks, Keene, New Hampshire, 1820 – 1830. Medium olive amber shading to a lighter yellowish olive amber near the shoulders, sheared mouth – blowpipe pontil scar, pint; (a little weakening in the impression of the lettering and in the shoulder area, otherwise very near mint)! GVIII-8. A classic, early Keene Sunburst flask

Est.: \$400 - \$800 • Min. bid: \$250



Lot 30

“Summer” / Tree in Foliage – “Winter” / Bare Tree Pictorial Flask, America, possibly Baltimore Glass Works, Baltimore, Maryland, 1850 – 1860. Bright yellowish citron, applied round double collared mouth – blowpipe pontil scar, pint; (lightly cleaned to original luster and near mint condition with a couple of small areas of light wear remaining). GX-15. Beautiful, attractive color, also a considerably harder mold to find with the pontiled scarred base!

Est.: \$2,500 - \$3,500 • Min. bid: \$1,500



Lot 27

“Keen” – “P&W” Sunburst Flask, Keene Marlboro Street Glassworks, Keene, NH, 1820 – 1830. Clear, light yellowish olive amber, almost an olive yellow, sheared mouth – blowpipe pontil scar, ½ pint, near mint; (some slight weakening to the lettering as is normal for this mold, and a ¼” bit of roughness at the edge of the lip that appears to be a tooling mark, and likely occurred at the time of manufacture). GVIII-10. Ex. Roger Long collection. Beautiful, light color.

Est.: \$600 - \$900 • Min. bid: \$400



Lot 31

“For Pike’s Peak” / Prospector / “Old Rye” – Eagle / “Pittsburgh / PA” Historical Flask, (with cork, sealing wax and partial contents), a Pittsburgh district glasshouse, 1860 – 1870. Aquamarine, applied collared mouth with flat band – smooth base, ½ pt; (a ¼” shallow flake on the base at edge of flask, a small bubble on the reverse has a pinhead opening in the cover glass, otherwise excellent). GXI-10. A neat little flask, especially with the well preserved contents!

Est.: \$150 - \$250 • Min. bid: \$80



Lot 28

Scroll Flask, Midwest America, 1845 – 1860. Medium blue green, almost a teal coloration, applied round double collared mouth – blowpipe pontil scar (on keyed base), pint, perfect. Similar to GIX-10, but appears to have 6-pointed upper stars, ill-defined, on both obverse and reverse. Beautiful color and one that will stand out in a run of scrolls. Rare with the applied double collared mouth. Ex. Mark Legare collection; Ex. Fred Weck collection.

Est.: \$1,500 - \$2,500 • Min. bid: \$800



Lot 32

“For Pike’s Peak” / Prospector – Hunter Historical Flask, probably Ravenna Glass Works, Ravenna, Ohio, 1857 – 1864. Bubbly aqua, applied collared mouth with flat band – early smooth base, 27 oz, perfect. GXI-47a. An extremely rare mold, believed to be one of only three examples known. This may be the most attractive example having outstanding character, the glass being absolutely filled with tiny seed bubbles. Ex. John Eatwell collection.

Est.: \$600 - \$900 • Min. bid: \$400



Lot 33

“For Pike’s Peak” / Prospector – Hunter Historical Flask, Ravenna Glass Works, Ravenna, Ohio, 1857 – 1864. Dense tobacco amber, virtually black, applied collared mouth with narrow ring – early smooth base, pint, very near mint; (a touch of very light exterior wear, otherwise perfect!) GXI-50. A rare color and a striking flask, virtually black in reflected light, and with a very strong mold impression! Ex. John Eatwell collection.

Est.: \$1,500 - \$2,500 • Min. bid: \$1,000



Lot 37

Clasped Hands / “Union” – Eagle Historical Calabash Flask, probably A.R. Samuels, Philadelphia, Pennsylvania, 1860 – 1865. Aquamarine, applied round double collared mouth – iron pontil scar, quart; (a little residue or dried contents in one base corner, otherwise perfect). GXII-43. A good, bright sparkling example with virtually no high point wear, and attic mint condition.

Est.: \$100 - \$150 • Min. bid: \$60



Lot 34

“Union” / Clasped Hands / “Old Rye” – Eagle / “A & D H C” (within banner) / “Pittsburgh” Historical Flask, A. & D.H. Chambers, Pittsburgh, PA, 1860 – 1870. Brilliant yellow with a very slight hint of olive, applied mouth with flat band – smooth base, Qt.; (professionally cleaned to near mint condition with a couple of light scratches remaining and a shallow pinhead open bubble at base edge). GXII-9. A vibrant, eye-appealing color, unlisted for this mold.

Est.: \$1,500 - \$2,500 • Min. bid: \$800



Lot 38

Sailor – Banjo Player Pictorial Flask, probably John Chapman, Maryland Glass Works, Baltimore, MD, 1855 – 1862. Bright, yellowish honey with a slight topaz tone, applied round double collared mouth – smooth base, ½ pint, virtually attic mint! GXIII-8. A comparatively scarce mold and a great example with a very strong impression, sparkling clean, and in a beautiful color that shades from a rich honey tone, to an almost pure yellow coloration in one of the shoulders.

Est.: \$600 - \$1,200 • Min. bid: \$400



Lot 35

“Union” / Clasped Hands / “L F & Co” – Eagle / “Pittsburgh. PA” Historical Flask, Lippincott, Fry & Company, Pittsburgh, PA, 1866 – 1867. Golden amber shading to a lighter golden yellow in the shoulders, applied mouth with flat band – smooth base, pint, perfect. GXII-19. A comparatively scarce mold, this company was believed to be in business for only two years. Excellent, very strong mold impression, nice color, great condition!

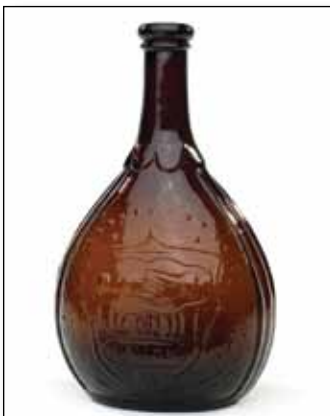
Est.: \$400 - \$600 • Min. bid: \$250



Lot 39

Soldier / “Balt. MD” – Dancer / “Chapman” Pictorial Flask, John Chapman, Maryland Glass Works, Baltimore, Maryland, 1850 – 1860. Rich, yellowish golden with an olive tone, sheared mouth – blowpipe pontil scar, pint, mint. GXIII-11. A great example with outstanding character having very crude, seedy, bubbly and whittled glass, and virtually no high point wear which is unusual for this flask!

Est.: \$1,200 - \$1,800 • Min. bid: \$700



Lot 36

Clasped Hands / “Union” – Eagle Historical Calabash Flask, probably A.R. Samuels, Philadelphia, Pennsylvania, 1860 – 1865. Medium to deep amber, applied round double collared mouth – iron pontil scar, quart, near mint; (some typical minor exterior high point wear, otherwise excellent). GXII-43.

Est.: \$200 - \$400 • Min. bid: \$140



Lot 40

Sheaf of Grain – Star, Pictorial Calabash Flask, probably Sheets & Duffy, Kensington Vial and Bottle Works, Philadelphia, Pennsylvania, 1850 – 1860. Aquamarine, applied sloping collared mouth – blowpipe pontil scar, quart, perfect. GXIII-43. A good, clean example.

Est.: \$100 - \$150 • Min. bid: \$60

**Lot 41**

Pattern Molded Globular Bottle, 24 ribs swirled to the right, probably Zanesville Glass Works, Zanesville, Ohio, 1820 – 1835. Light to medium citron with an olive tone, outward rolled mouth – pontil scar, ht. 7 3/8"; (some moderate fine exterior wear and light scratches around the mid-body, otherwise excellent). An outstanding and rare color, one that few advanced collectors of Midwestern glass are likely to have. Virtually identical to Lot #9, in the Ballentine collection.

Est.: \$2,000 - \$4,000 • Min. bid: \$1,200

**Lot 42**

Pattern Molded Globular Bottle, 24 ribs swirled to the left, Midwest, probably Zanesville Glass Works, Zanesville, Ohio, 1820 – 1835. Brilliant light honey coloration shading to a golden yellow through the mid-body, outward rolled mouth – pontil scar, ht. 7 1/2", near mint; (a couple of light scratches near the base and just a touch of very minor exterior wear, otherwise perfect). A beautiful piece, light, bright, with a good strong impression.

Est.: \$800 - \$1,200 • Min. bid: \$500

**Lot 43**

Pattern Molded Globular Bottle, 24 ribs swirled to the right, Midwest, probably Zanesville Glass Works, Zanesville, Ohio, 1820 – 1835. Rich medium amber with a slightly lighter golden tone through the mid-body, outward rolled mouth – pontil scar, ht. 7 1/4", near mint; (some light exterior wear around mid-body). Nice, near perfect spherical form, A classic example of the iconic Zanesville pattern molded "Swirl" bottle.

Est.: \$400 - \$600 • Min. bid: \$250

**Lot 44**

Pattern Molded Globular Bottle, 24 ribs swirled to the right, Midwest, probably Zanesville Glass Works, Zanesville, Ohio, 1820 – 1835. Yellow with a very slight olive tone, outward rolled mouth – pontil scar, ht. 8"; (a small potstone near the mid-body has three radiating "legs", each 1/4" or less in length, some expected light exterior wear). Very nice color, slightly large size, good form. A very attractive piece with relatively minor damage.

Est.: \$350 - \$700 • Min. bid: \$250

**Lot 45**

Pattern Molded Globular Bottle, 25 vertical ribs, Midwest, possibly Moscow or Cincinnati Glass Works, Cincinnati, Ohio, 1815 – 1830. Bright, medium yellow green, spherical body with an elongated neck, outward rolled collar – blowpipe pontil scar, ht. 7 5/8"; (three spider or "star" type cracks in the body, the largest being approx. 3/4" in length, the other two are very fine and difficult to see). Despite the damage, an exceptional piece having a rare color, and rib count. Ex. Yaeger collection.

Est.: \$1,000 - \$2,000 • Min. bid: \$600

**Lot 46**

Pattern Molded Club Bottle, 24-rib swirled to the right, Midwest, 1820 – 1840. Medium sapphire blue, club or "beehive" form, sheared mouth with applied ring type collar – blowpipe pontil scar, ht. 8 1/8", near mint; (a couple of light surface scratches and expected very minor exterior wear). Similar to MW, color plate V, #3. A true sapphire blue pattern club bottle is considered by most collectors to be one of the "holy grails" of Midwestern glass. Outstanding color, clarity, form and condition!

Est.: \$8,000 - \$12,000 • Min. bid: \$5,000

**Lot 47**

Pattern Molded Club Bottle, 16 widely spaced, near vertical ribs, Midwest, possibly Mantua Glass Works, Mantua, OH 1822 – 1829. Aqua, transitional club or "beehive" form, sheared mouth with ring type collar – blowpipe pontil scar, ht. 7 5/8", very near mint; (just a very slight touch of light exterior wear, otherwise pristine!). An interesting piece sharing some characteristics of both the globular, as well as the club form. The 16 rib count is also a bit scarcer than the 24 rib pattern.

Est.: \$175 - \$275 • Min. bid: \$100

**Lot 48**

Pitkin Type Flask, pattern molded with 24 vertical ribs over 24 ribs swirled to the right, probably Midwest, 1810 – 1830. Clear medium forest green, flattened horseshoe form, sheared mouth – blowpipe pontil scar, ht. 6 3/8"; (a few relatively minor open bubbles, two are approx. 1/8", and near the base, one approx. 1/16" x 1/4", near the side; some expected high point wear, otherwise excellent). A beautiful color, plenty of bubbles, crude and early.

Est.: \$400 - \$600 • Min. bid: \$250



Lot 49

Pattern Molded Pocket Flask, horizontal rows of 33 small diamonds, probably Continental, possibly Germany, Belgium, Norway, 1820 – 1850. Vivid cobalt blue, flattened pear form body, applied banded collar – pontil scarred base, ht. 5 ¼"; (some light exterior wear, otherwise perfect). A rare pattern, beautiful color, and very unusual with the banded, almost square collared mouth. Bob Sax collection.

Est.: \$400 - \$800 • Min. bid: \$250



Lot 53

Early Freeblown Chestnut Bottle, South Jersey type, probably Wistarburgh Glass Works, 1739 – 1780. Medium emerald green with a very slight yellowish tone, chestnut form, heavy outward rolled mouth – glass tipped pontil scar, ht. 8 ½"; (some light to moderate exterior wear as is typical for these flasks). Great color, beautiful seedy, bubbly glass, and a classic South Jersey form. In addition, there is a whitish substance, likely glass gall, evident at the pontil scar.

Est.: \$800 - \$1,600 • Min. bid: \$500



Lot 50

Pattern Molded Half-Post Pocket Flask, horizontal rows of 13 large honeycomb or pearl like dots, probably Continental, possibly Germany or Austria, 1810 – 1840. Cobalt, flattened circular body, blown in the half-post method, sheared mouth – pontil scarred base, ht. 4 ¾", near mint; (an 1/8", minor spot of roughness on the edge of the lip, a touch of very light high point wear, a sliver-type pontil flake extends to the base edge, but does not impact display). Bob Sax collection.

Est.: \$300 - \$600 • Min. bid: \$200



Lot 54

Early Freeblown Chestnut Bottle, New England, 1785 – 1820. Clear olive yellow, plump chestnut form, sheared mouth with an applied ring collar – blowpipe pontil scar, ht. 7 3/8", virtually perfect; (just the slightest touch of very light exterior wear, otherwise pristine). A good one! This example is a little larger in size, very delicate, has excellent clarity and some nice swirl lines trailing through the body.

Est.: \$300 - \$500 • Min. bid: \$200



Lot 51

Fluted Back Bar Decanter, probably Boston and Sandwich Glass Works, 1840 – 1860. Medium to deep sapphire blue, ovoid body with eight fluted panels, two heavy neck rings, heavy round bar lip with lower ring – polished pontil scarred base – ht. 10 ¼"; (some light exterior wear including a tiny pinhead flake, and an 1/8" flake on one of the panel edges). Similar to BK, Vol.1, plate 1256. Bob Sax collection. Scarce with the double neck rings, beautiful color!

Est.: \$600 - \$900 • Min. bid: \$400



Lot 55

Unembossed Pocket Flask, New England, probably a Stoddard glass-house, 1850 – 1860. Bright yellowish olive amber, horseshoe form, colloquially referred to by some collectors as "seam-sided", sheared mouth – blowpipe pontil scar, ½ pint, very near mint; (a tiny pinhead bit of roughness on top of the sheared mouth and the slightest touch of faint exterior wear, otherwise perfect). A great example with beautiful color, exceptional character, and crude seedy glass.

Est.: \$300 - \$600 • Min. bid: \$180



Lot 52

Pillar Molded Decanter, England, 1860 – 1880. Medium to deep plum amethyst with some lighter lavender tones, cylindrical with eight heavy vertical pillar molded ribs through the body twisting tightly through the neck, sheared and fire polished mouth – polished pontil scar, ht. 11 ½", very near mint; (just a touch of expected light exterior wear, otherwise perfect). Affectionately called "twisted neck wines" by some of the Brits, their beauty is virtually unexcelled.

Est.: \$200 - \$400 • Min. bid: \$140



Lot 56

Large Unembossed Spirits Flask, America, possibly Lynborough, New Hampshire, 1867 – 1875. Yellow, with just the slightest hint of olive, horseshoe form, crudely applied double collared mouth – smooth base, Qt., virtually attic mint; (just the slightest touch of faint exterior wear, otherwise pristine). A large flask in a beautiful, vibrant color and one that would add a big splash to almost any collection.

Est.: \$200 - \$400 • Min. bid: \$140



Lot 57

Large Cathedral Pickle Jar, America, 1850 – 1860. Medium blue green, square with beveled corners, gothic arched panels, three with fancy pendant trefoil design, applied ring collar – large iron pontil scar, ht. 11 3/4"; (perfect, except... the base had previously been drilled to make a lamp and has since been professionally repaired). The restoration is well done and hard to detect, the bottle displays as "out of the mold" perfect. A large, impressive size, good color, a real eye catcher!

Est.: \$300 - \$600 • Min. bid: \$200



Lot 58

Large, Fancy Pickle Jar, America, 1860 – 1870. Light apple green, cylindrical with 8 large rounded panels, 16 rounded panels forming the domed shoulder, applied ring collar – smooth base, ht. 11 3/8", near mint; (an area of fine roughness and a couple of minor flakes extends for a little more than 1" around the inside edge of the mouth that likely occurred when the cork was pried out, otherwise excellent). A very scarce, and likely rare mold, impressive large size, nice color.

Est.: \$225 - \$450 • Min. bid: \$150



Lot 59

Cathedral Type Pickle Jar, America, 1850 – 1860. Aquamarine, square with beveled corners, large indented Gothic type panels with narrow raised label panels, trefoil designs at shoulder, applied ring collar – iron pontil scar, ht. 11 7/8"; (two, tiny, 1/8" little flash or annealing lines near the beveled corners that do not appear to go through the thickness of the glass, otherwise very near mint!). Z. p.455, #2. A scarce mold, the tiny flash lines are very minor and hard to see!

Est.: \$200 - \$400 • Min. bid: \$120



Lot 60

Cathedral Type Pickle Jar, America, 1845 – 1860. Brilliant aquamarine, square with beveled corners, four indented gothic arched panels, applied ring type collar – blowpipe pontil scar, ht. 9 1/8", virtually attic mint. MW, plate 74, #11. A good clean bright example, nicely whittled. Also, a little more scarce with the blowpipe (open), pontil scar.

Est.: \$175 - \$275 • Min. bid: \$100



Lot 61

"W.D.S. / N.Y." Fancy Pickle Jar, America, 1850 – 1860. Medium blue green, square with narrow columned corners, flared neck with 12 lobed panels, sheared mouth with small ring type collar – iron pontil scar, ht. 7 5/8"; (professionally cleaned to original luster and near mint condition with just a touch of light exterior wear remaining). Z p.386. A very attractive and scarce mold, great color, whittled with nice character, excellent condition, a beautiful pickle jar!

Est.: \$300 - \$600 • Min. bid: \$200



Lot 62

Squatty, Cathedral Type Pickle Jar, America, 1845 – 1855. Deep aquamarine, square with outward curved or bowed sides, four indented gothic panels below an indented trefoil design on three of the shoulder panels, sheared and inward rolled mouth – blowpipe pontil scar, ht. 6 7/8"; (professionally cleaned to original luster, a tissue-paper thin 1/4" open bubble, otherwise appears as virtually attic mint). A bright, clean, attractive pickle jar in a rare mold and attractive form

Est.: \$250 - \$400 • Min. bid: \$150



Lot 63

Early Blown, Storage or Preserving Jar, probably Austria or Germany, 1830 – 1850. Light sea green, blown in the German half post method, cylindrical with an expanded neck and outward flared mouth with an applied ring collar – glass tipped pontil scarred base, ht. 8 7/8", near mint; (just a touch of expected light wear, otherwise perfect). Similar in construction and color to VdB, plate 213, #2 (utility bottle). An interesting and attractive jar.

Est.: \$150 - \$250 • Min. bid: \$100



Lot 64

Lot of (2) Blown Cologne Bottles, America, 1850 – 1860. Fiery opalescent robyn's-egg blue and opaque lavender blue, cylindrical, tooled outward folded mouth and small ring type collar mouths – pontil scarred and smooth bases, ht. 8 1/4" and 10 3/4" respectively, both are perfect! Similar to plate 189, *The Glass Industry in South Boston*, Kaiser. A beautiful pair of early cologne bottles, the colors compliment one another nicely.

Est.: \$150 - \$300 • Min. bid: \$100



Lot 65

“Bay Rum” / Motif of Grist Mill Barber Bottle, America, 1885 – 1920. Amethyst with Mary Gregory style white enameled decoration, pear form body, bulbous neck, small tooled ring type collar – pontil scarred base, ht. 7 ¾”, very near mint; (a little contents residue that would almost certainly wash out, otherwise perfect!). Nicely executed decoration, excellent condition with virtually all of the enameling complete.

Est.: \$175 - \$350 • Min. bid: \$100



Lot 69

Cologne Bottle, America, Boston and Sandwich Glass Works, Sandwich, Massachusetts, 1860 – 1888. Brilliant cobalt blue, octagonal hourglass form, applied and tooled, thin flanged lip – smooth base, ht. 5 ¾”, perfect. Similar to B/K, photo #5199; MW, plate 114, #7. A vivid color, also a little larger size than typically encountered.

Est.: \$300 - \$600 • Min. bid: \$180



Lot 66

“Scalp / Food / CraniTonic / Hair / Food / CraniTonic / Hair Food Co / Paris / London / New York” (with original labels, stopper and box), America, 1890 – 1900. Pale aqua, square with tooled sloping collared mouth, original crown stopper – smooth base, ht. 9 3/8” (including stopper), bottle and labels are virtually perfect; (box has damage at top and missing flaps). Colorful graphic labels including neck label and banded collar label. Rare with labels and box.

Est.: \$75 - \$125 • Min. bid: \$40



Lot 70

Cologne Bottle, America, Boston and Sandwich Glass Works, Sandwich, Massachusetts, 1855 – 1865. Aquamarine, octagonal hourglass form, sheared and inward rolled mouth – blowpipe pontil scar, ht. 4 3/8”, perfect. Similar to B/K, photo #5199; MW, plate 114, #7. A very scarce color and base treatment (pontiled). A brilliant, clean, sparkling example and with good character. This one will really stand out in a grouping of Sandwich colognes!

Est.: \$250 - \$450 • Min. bid: \$150



Lot 67

“Guerlain – Lustrale”, probably French, 1845 – 1860. Clear, bright olive, rectangular “tombstone” form, applied sloping collared mouth – glass tipped pontil scar, ht. 6 ¼”; (professionally cleaned to original luster with just a little light exterior wear remaining). The product was introduced to the United States by E. Roussel, of Philadelphia, around 1845. This example was recently dug behind the old Atlantic Coastline Depot in Wilmington, NC. A scarce bottle, beautiful color!

Est.: \$400 - \$600 • Min. bid: \$250



Lot 71

Cologne Bottle, America, Boston and Sandwich Glass Works, Sandwich, Massachusetts, 1860 – 1888. Medium to deep plum amethyst, octagonal hourglass form, thin tooled flanged lip – smooth base, ht. 4 ½”, very near mint; (just a touch of very fine high point wear, otherwise perfect). See B/K, photo #5199; MW, plate 114, #7. A beautiful color, nice example. Note; this form is believed to be unique to the Sandwich Glass Works.

Est.: \$300 - \$600 • Min. bid: \$180



Lot 68

Cologne Bottle, America, probably Boston and Sandwich Glass Works, Sandwich, Massachusetts, 1860 – 1888. Deep grape amethyst, 12-panel, straight sided form with domed shoulders, a short neck and tooled flanged collar – smooth base, ht. 4 3/8”, perfect. A rare form, beautiful color, great condition. Ex. Sandwich Glass Museum collection, formerly deaccessioned to benefit the acquisition fund; Dr. Daniel Bennett collection.

Est.: \$400 - \$600 • Min. bid: \$250



Lot 72

Cologne Bottle, America, probably blown at a South Boston glasshouse, 1860 – 1888. Medium to deep cobalt blue, 10-panel, corseted form, tooled, flanged mouth – smooth base, ht. 4 7/8”, perfect. A very rare and attractive form with beautiful color and some nice swirls to the glass, shading from cobalt to almost violet near the center of the bottle. Provenance: Bob Sax collection.

Est.: \$400 - \$600 • Min. bid: \$250



Lot 73

Rare Figural Bear Cologne Bottle, probably America, 1840 – 1860. Medium blue green, well detailed figural bear seated on its hind legs, blown in a 2-piece mold, sheared, tooled and inward rolled mouth – pontil scarred base, ht. 4", perfect. A rare mold, good color, outstanding condition! Occasionally seen in clear, but extremely rare, possibly unique in color. An attractive and rare piece for both the collector of cologne bottles, or the figural bottle collector.

Est.: \$600 - \$1,200 • Min. bid: \$400



Lot 74

Cologne Bottle, blown at a South Boston glasshouse, probably Boston and Sandwich Glass Works, Sandwich, Massachusetts, 1860 – 1888. Beautiful, clear medium sapphire blue, flattened octagonal form with corseted body, tooled, flanged mouth – smooth base, ht. 4 1/2", perfect! MW, plate 113, #6; B/K, Vol.5, plate 5200. A gorgeous example with great clarity to the glass. Bob Sax collection.

Est.: \$250 - \$450 • Min. bid: \$150



Lot 75

Cologne Bottle, blown at a South Boston glasshouse, probably Boston and Sandwich Glass Works, Sandwich, Massachusetts, 1860 – 1888. Medium to deep cobalt with a slight violet tone, flattened octagonal form with corseted body, tooled, flanged mouth – smooth base, ht. 4", near mint; (some light interior residue in the shoulders, a touch of very fine high point wear). MW, plate 113, #6; B/K, Vol.5, plate 5200. A little smaller size than normal. Bob Sax collection.

Est.: \$200 - \$400 • Min. bid: \$120



Lot 76

Fancy Cologne Bottle (motif of dancing Indian), America, 1830 – 1850. Aquamarine, diamond form, two panels with high relief image of a dancing Indian – reverse with oval label panels and bow like ornament, sheared and inward rolled mouth – blowpipe pontil scar, ht. 4 3/4", very near mint; (some very faint interior haze or residue, primarily near the shoulder, otherwise perfect). MW, plate 108, #10. Ex. Tom McCandless collection.

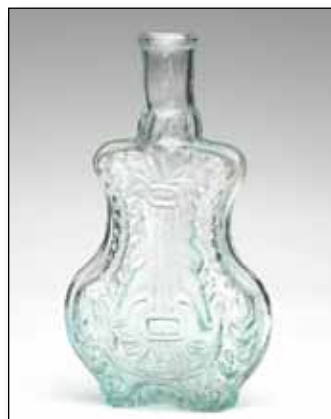
Est.: \$150 - \$250 • Min. bid: \$100



Lot 77

Fancy Cologne Bottle (motif of Lion), America, 1830 – 1850. Pale aquamarine, rectangular, center panel with high relief image of a lion, fancy scrolls above and below label panel, sheared and inward rolled mouth – blowpipe pontil scar, ht. 4 3/8"; (some light interior haze and residue, primarily along the corners and shoulders, some of which may wash out, otherwise very near mint). MW, plate 111, #5

Est.: \$125 - \$225 • Min. bid: \$80



Lot 78

Figural Lyre Cologne Bottle, America, 1830 – 1850. Pale aquamarine, in the form of a corseted Lyre, sheared and inward rolled mouth – blowpipe pontil scar, ht. 5 1/4"; near mint; (a pontil chip, likely in-manufacture, extends to the edge of the base on the reverse, otherwise perfect!). MW, plate 111, #1. A scarce mold, and a bright, clean, sparkling example. Ex. Tom McCandless collection.

Est.: \$150 - \$250 • Min. bid: \$100



Lot 79

Motif of a Crown / "VR" – Large Flower, Scent Bottle, England, 1835 – 1845. Light sapphire blue, elliptical form blown in an early 2-piece mold with corrugated edges, an extended neck, sheared, tooled, and inward rolled lip – pontil scarred base, ht. 3", very near mint; (a small, shallow open bubble and a little light interior residue, the kind that should easily wash out, otherwise perfect). A very rare, early scent bottle, decorative, ornate and very attractive!

Est.: \$300 - \$600 • Min. bid: \$200



Lot 80

Sunburst Scent Bottle, America, probably New England, 1815 – 1835. Deep cobalt with some violet tones, shield form with 12-ray sunburst motif, side panels with 13, 14, 13 and 15 small beads respectively, sheared mouth – pontil scar, ht. 2 3/4", near mint; (some minor exterior high point wear). Similar to MW, plate 105, #5, BH# HIII-5. A very scarce, early decorative scent bottle, deep vivid color.

Est.: \$400 - \$600 • Min. bid: \$250



Lot 81

Rare Teakettle Inkwell, America or possibly France, 1865 – 1885. Pinkish plum amethyst, ornate teakettle form with eight rounded flat body panels, corseted shoulders with a high domed top, sheared and polished mouth, ht. 2 5/8"; (a 3/16" flake at the top and inside edge of the mouth, the bottle may have been very lightly cleaned, but certainly presents itself as near attic mint). An extremely rare, unlisted form, exceptional color, overall excellent condition!

Est.: \$800 - \$1,600 • Min. bid: \$500



Lot 82

Early Freeblown Inkwell, New England, 1785 – 1820. Medium to deep olive amber, compressed spherical "mellon form" body, sheared mouth – blowpipe pontil scar, ht. 1 7/8", dia. 3 1/8", near mint; (just a touch of expected faint exterior wear and a light film of dried contents). Similar to C#1030. This particular example has a great deal of character having ribbons of slag, elongated bubbles and threads of glass swirled throughout the bottle. A rare, crude and early inkwell.

Est.: \$1,800 - \$2,800 • Min. bid: \$1,000



Lot 83

Umbrella Ink, America, 1840 – 1860. Medium to deep olive with a slight amber tone, 8-sided umbrella form, sheared and fire polished mouth – blowpipe pontil scar, 2 1/2" ht. x 2 1/4" wide; (the bottle may have been lightly cleaned, but certainly presents itself as very near mint with just a touch of light exterior wear). C#141. A crude example, probably from an early New England glasshouse.

Est.: \$175 - \$275 • Min. bid: \$100



Lot 84

Umbrella Ink, America, 1840 – 1860. Medium blue green, 8-sided umbrella form, sheared and inward rolled mouth – blowpipe pontil scar, 2 3/8" ht. x 2 1/4" wide, attic mint! Similar to C#129. Beautiful color, clarity, and pristine condition – a great example!

Est.: \$200 - \$400 • Min. bid: \$120



Lot 85

"S.O. Dunbar / Taunton" Ink Bottle, America, 1845 – 1855. Aquamarine, 8-sided umbrella form, sheared and inward rolled mouth – blowpipe pontil scar, ht. 2 3/8"; (professionally cleaned to original luster, slightly weakened mold impression). C#115. One of numerous products put up by Samuel Dunbar.

Est.: \$150 - \$250 • Min. bid: \$80



Lot 86

"J.J. Butler / Cin." Ink Bottle, America, 1854 – 1860. Aquamarine, cone form, sheared, tooled and inward rolled mouth – blowpipe pontil scar, ht. 2 3/8", perfect. A very scarce bottle, certainly one of the more difficult of the various Butler molds to acquire. A thin, delicate, attractive little bottle nicely whittled.

Est.: \$250 - \$350 • Min. bid: \$150



Lot 87

"J.J. Butler / Cin." Ink Bottle, America, 1854 – 1860. Brilliant, deep aquamarine, square with narrow beveled corners, beveled shoulders, sheared, tooled and inward rolled mouth – blowpipe pontil scar, ht. 2 3/8", very near mint; (lightly cleaned to original luster and appears as virtually attic mint). C#478. A good looking bottle, attractive form, deep color, strongly embossed.

Est.: \$175 - \$275 • Min. bid: \$100



Lot 88

"Harrison's / Columbian / Ink", America, 1847 – 1860. Aquamarine, octagonal with eight flat roof panels, sheared and inward rolled mouth – blowpipe pontil scar, ht. 1 7/8", perfect. C#531, MW, plate 76, #12. A bright, clean, crisp, heavily whittled example.

Est.: \$175 - \$275 • Min. bid: \$100



Lot 89

Figural Cabin Ink Bottle, America, 1875 – 1885. Colorless, log cabin form with vertical roof panels, tooled, possibly applied square collared mouth – smooth base, ht. 2 ¼"; (a 3/16" wide by ½" long, sliver-type flake on the side of the neck, below the square collared mouth, a shallow, hard to see 1/8" flake or open bubble on one of the roof corners, a little light, very minor interior haze in the upper body). C#679. Rare mold, other than the neck flake, the bottle displays near mint.

Est.: \$200 - \$400 • Min. bid: \$120



Lot 90

Figural Cabin Ink Bottle, America, possibly Whittall, Tatum & Co, Millville, New Jersey, 1880 – 1890. Colorless, elongated cabin form, tooled square collared mouth – smooth base, ht. 2 ½"; (two small flakes at the side of the mouth, 1/8" and 1/16", some light milkiness on the interior of the roof). C#680, Faulkner, p.180. A very scarce and desirable, highly detailed, attractive ink.

Est.: \$400 - \$600 • Min. bid: \$250



Lot 91

B. Heller & Co. Labeled Master Ink Bottle (with original seal, contents and box), America, 1890 – 1900. Colorless, cylindrical, tooled square collared mouth with pour spout – smooth base, ht. 6 1/8", perfect! Original, multicolored, highly detailed, graphic label depicts a jungle scene with trees, monkeys, thatch covered huts and natives. Label is for "Zanzibar-Carbon Indelible Ink". Original box with complete labels. Very rare in this complete, virtually pristine condition.

Est.: \$125 - \$250 • Min. bid: \$80



Lot 92

"Nigger Blacking" Blacking Bottle, England, 1885 – 1895. Yellowish grass green, rectangular with rounded sides and indented front panel, tooled square collared mouth – smooth base, ht. 4 ¾", near mint; (the bottle may have been lightly cleaned, but presents itself as very near mint). A very scarce, to rare bottle. Bright, clean, beautiful color.

Est.: \$300 - \$500 • Min. bid: \$200



Lot 93

Lot of (2) Early Blacking Bottles, America, probably New England, 1830 – 1850. Olive and olive with an amber tone, blown in 2-pc. molds, both are square with flattened shoulders, sheared and fire polished mouths – blowpipe pontil scarred bases, ht. 4 3/8" and 4 7/8" respectively, both are very near mint; (a small, pinhead open bubble on one of the corners of the olive example). Similar to MW, plate 75, #3. Both very nice examples having crude, seedy, pebbly glass.

Est.: \$175 - \$350 • Min. bid: \$100



Lot 94

Lot of (2) Early Utility Bottles, America, 1830 – 1850. Forest green and yellowish olive with an amber tone, both are cylindrical, blown in 2-pc. molds, sheared and fire polished mouths – blowpipe pontil scarred bases, ht. 3 ¾" and 3 7/8" respectively, both are virtually attic mint! Beautiful color on the forest green example which is also nicely whittled; the yellow olive example has nice character with plenty of tiny seed bubbles and impurities. A very eye-appealing pair!

Est.: \$300 - \$500 • Min. bid: \$180



Lot 95

Early Utility Bottle, New England or possibly New York State, 1830 – 1850. Forest green, cylindrical, 2-piece mold, applied sloping collared mouth – heavy blowpipe pontil scar, ht. 6", perfect; (some dried content residue in the base that should easily soak out). An attractive example, pleasing color, nicely whittled and with a very crude "drippy" applied collar. These types of commercial containers were used for a variety of products, most commonly, medicines and inks.

Est.: \$100 - \$175 • Min. bid: \$60



Lot 96

Early Freeblown Utility Bottle, probably New England, 1800 – 1830. Light yellow olive, cylindrical with sloping cone type shoulders, a short neck, sheared mouth with a crudely applied narrow band – blowpipe pontil scar, ht. 5 ¼", very near mint; (some expected very light exterior wear, otherwise perfect). Similar to MW, plate 75, #7. A cut above the typical utility bottles being freeblown, having nice light color and clarity, and in a slightly different form.

Est.: \$175 - \$350 • Min. bid: \$100



Lot 97

Early Dip Mold Snuff Jar, New England, 1790 – 1825. Clear medium olive, square with beveled corners, rounded domed shoulders, sheared and outward flared mouth – blowpipe pontil scar, ht. 4 7/8"; (a very slight touch of faint exterior wear, otherwise perfect). A classic, early snuff jar, similar to MW, plate 75, #13.

Est.: \$200 - \$400 • Min. bid: \$150



Lot 101

Bennington Type Pottery Book Flask, America, 1850 – 1870. Bennington type mottled tan and brown glaze, figural book with banded spine, 4 3/4" high, 3 3/4" long, 2" wide, near mint; (some expected light exterior wear, otherwise perfect). Book flasks were a popular novelty item at Bennington, as well as other contemporary Rockingham type potters of the day, most being purposeful for containing various distilled spirits

Est.: \$200 - \$400 • Min. bid: \$150



Lot 98

Early Dip Mold Snuff Jar, probably New England, 1780 – 1820. Yellow with a very slight hint of olive shading to a clear straw yellow near the shoulders, rectangular with wide beveled corners, a crudely sheared mouth – delicate blowpipe pontil scar, ht. 4 1/8", perfect. Note, there is an interesting and distinctive circular depression, likely from the mold, on the base of the jar. A very attractive, gorgeous color, light and delicate, one that you will not find every day.

Est.: \$400 - \$600 • Min. bid: \$250



Lot 102

"Coming Thro' / The Rye" Pottery Book Flask, America, 1860 – 1880. Cobalt blue glaze with an attractive tooled design on the banded spine and front and back covers, 5" high, 3 5/8" long, 1 5/8" wide, near mint; (a small pinhead flake at top edge of spine, an 1/8" flake at the top and bottom corner tip of the back cover). A classic pottery flask, the title based on the famous poem by poet Robert Burns.

Est.: \$225 - \$450 • Min. bid: \$160



Lot 99

Large Snuff Jar, probably Continental, 1840 – 1870. Medium to deep olive with a strong amber tone, appears to have been blown in an unusual 3-pc. mold with the top 2-pc. hinge forming the shoulders and top inch, or so, of the body, rectangular with wide beveled corners – sheared and outward flared mouth – smooth base, ht. 7 1/8", virtually attic mint. A very attractive jar, outstanding condition, with nice proportions, almost a "square-ish" form.

Est.: \$200 - \$400 • Min. bid: \$120



Lot 103

Bennington Type Pottery Flask, America, 1850 – 1870. Bennington type tan and brown glaze, horseshoe form with an ornamental floral, leaf and scroll design in high relief on both obverse and reverse, pint, ht. 6 3/4", pint; (a 1/8" flake off the inside edge of the mouth, otherwise very near mint). Similar in form to a pint Cornucopia – Urn flask and likely was influenced by the contemporary historical flasks of the period.

Est.: \$200 - \$400 • Min. bid: \$150



Lot 100

Target Ball, "Glashutten Dr. A. Frank – Charlottenburg", Germany, 1880 – 1895. Yellow with an olive tone, quilted diamond pattern with a center band, rough sheared mouth, dia. 2 5/8"; (a 3/8" flake at the mouth that may have occurred at manufacture; a piece of raised glass on the shoulder, next to a 1/4" "divot" in the glass, likely occurred when it was touched by another object during the annealing process). A crude ball, beautiful color.

Est.: \$175 - \$350 • Min. bid: \$100



Lot 104

"Casper's Whiskey / Made By Honest / North / Carolina People", America, 1885 – 1900. Brilliant medium cobalt blue, cylindrical with fluted shoulders, tooled sloping collared mouth with ring – smooth base, ht. 12", near attic mint; (just a touch of typical, very light exterior wear, otherwise perfect). An always popular, classic, colorful early whiskey bottle.

Est.: \$400 - \$600 • Min. bid: \$250



Lot 105

"A.M. Bininger & Co. / No, 17 Broad St – Old London Dock – Gin", America, 1860 – 1870. Medium to deep olive green, square with beveled corners, applied sloping collared mouth – smooth base, ht. 9 3/4", perfect. A beautiful example in a pure olive coloration, and as collectors of Bininger bottles will recognize, the "17 Broad St." address is much more scarce than the 19, or even 338 Broad St. addresses.

Est.: \$300 - \$500 • Min. bid: \$200



Lot 106

"Rudolph's – Schiedam – Aromatic / Schnapps", America, 1865 – 1875. Medium to deep yellowish olive, square with beveled corners, applied sloping collared mouth with lower bevel – smooth base, ht. 10", perfect. Quite a rare mold, one that was obviously intended to copycat the much more ubiquitous, Udolpho Wolfes bottle. A beautiful example, one that does not come around often!

Est.: \$200 - \$400 • Min. bid: \$150



Lot 107

"Charles' – London – Cordial Gin", New England, 1860 – 1870. Yellowish olive with an amber tone, square with beveled corners, applied sloping collared mouth with lower bevel – smooth base, ht. 9 7/8"; (a few open surface bubbles, the largest being approx. 1/4" wide x 1" long, some expected light exterior wear). Nice color and outstanding character with rich, bubbly, wavy glass that is absolutely filled with tiny seed bubbles and some larger bubbles.

Est.: \$150 - \$250 • Min. bid: \$100



Lot 108

"Turner Brothers / New York" Figural Whiskey Bottle, America, 1860 – 1870. Clear, yellow olive, barrel form, applied square collared mouth – smooth base, ht. 9 7/8", near mint; (a little light exterior wear and a couple of light scratches above the "W" in "New", a pinpoint bit of roughness at edge of collar on the reverse). Typically found in various shades of amber and occasionally puce, this is a scarce and attractive shade of olive, and one that passes plenty of light.

Est.: \$600 - \$900 • Min. bid: \$400



Lot 109

Figural Barrel, Bitters or Whiskey type Bottle, unembossed, America, 1860 – 1875. Cobalt blue, barrel form, applied square collared mouth – smooth base, ht. 9 3/4"; (the bottle displays as virtually attic mint, but it appears that the side of the square collar may have been very lightly buffed, likely to remove a couple of pinpoint flakes; a touch of light exterior wear). A stunning barrel, the noted light polish of the lip is very easy to miss, and appears as near mint. Dr. Daniel Bennett collection.

Est.: \$1,500 - \$2,500 • Min. bid: \$1,000



Lot 110

Figural Barrel, Bitters or Whiskey type Bottle, unembossed, America, 1860 – 1875. Bright medium to deep yellowish olive, barrel form, applied square collared mouth – smooth base, ht. 9 1/2"; (a 1/16" flake at edge of lip, a 1/2" iridescent bruise at the edge of the base, a 1/8" flake at base edge with a hard-to-see, 1/4" fissure). A beautiful and rare color that passes plenty of light. In addition, a very crude example with plenty of bubbles and outstanding character to the glass.

Est.: \$400 - \$600 • Min. bid: \$250



Lot 111

Figural Barrel, Bitters or Whiskey type Bottle, unembossed, probably Continental, possibly America, 1875 – 1885. Yellowish grass green, barrel form, applied sloping collared mouth – smooth base, ht. 8 1/4"; (some scattered light exterior wear including a 1/8" flake on the shoulder, a couple of streaks of interior haze or stain). A nice color to include in a run of barrels. Dr. Daniel Bennett collection.

Est.: \$100 - \$200 • Min. bid: \$50



Lot 112

Figural Barrel, Bitters or Whiskey type Bottle, unembossed, America, 1860 – 1875. Bright golden yellow, barrel form, applied square collared mouth – smooth base, ht. 9 3/8"; (a couple of areas, approximately 1/4" to 3/8" each, of very fine lip edge roughness, and just the slightest touch of very faint exterior wear, otherwise, bright, clean and virtually attic mint). Beautiful, light color. Dr. Daniel Bennett collection.

Est.: \$150 - \$250 • Min. bid: \$80



Lot 113

Figural Barrel, Bitters or Whiskey type Bottle, unembossed, America, 1860 – 1875. Light honey amber, barrel form, applied square collared mouth – smooth base, ht. 9 ¼"; (this example may have been lightly cleaned, there is an ever-so-faint "sheen" of soft luster to the glass, and just a little light scattered exterior wear). The bottle displays near mint and is also nicely whittled. Dr. Daniel Bennett collection.

Est.: \$100 - \$200 • Min. bid: \$60



Lot 117

Figural Barrel, Bitters or Whiskey type Bottle, unembossed, America, 1860 – 1875. Medium apricot, barrel form, applied square collared mouth – smooth base, ht. 9 5/8"; (a couple of chips on top of the mouth, one approx. ¼", the other 1/8", and very minor, some additional light roughness on the edge of the lip that you can feel, but is not easy to see, a little light exterior wear). Beautiful color, nicely whittled, the condition issues are not terribly significant. Dr. Daniel Bennett collection.

Est.: \$200 - \$400 • Min. bid: \$120



Lot 114

Figural Barrel, Bitters or Whiskey type Bottle, unembossed, America, 1860 – 1875. Bright orange amber with some lighter yellowish and honey tones, barrel form, applied square collared mouth – smooth base, ht. 9 ½", virtually attic mint; (a tissue paper thin, 1/8" x ¼", open surface bubble on one of the rings, otherwise perfect). A nice rich color with the orange or tangerine tones, especially in natural daylight. Dr. Daniel Bennett collection.

Est.: \$175 - \$275 • Min. bid: \$100



Lot 118

Figural Barrel, Bitters or Whiskey type Bottle, unembossed, America, 1860 – 1875. Deep strawberry with some pinkish tones in bright daylight, barrel form, applied square collared mouth – smooth base, ht. 9 ¾"; (a few small spots of minor lip edge roughness, again the type that you can feel, but are not very noticeable, a 1/8" open surface bubble, a touch of very light exterior wear, otherwise perfect). Beautiful, gorgeous color! Dr. Daniel Bennett collection.

Est.: \$250 - \$500 • Min. bid: \$150



Lot 115

Figural Barrel, Bitters or Whiskey type Bottle, unembossed, America, 1860 – 1875. Yellowish tobacco or "old amber", barrel form, applied square collared mouth – smooth base, ht. 9 7/8"; very near mint; (a tiny pinhead area of roughness on the edge of the lip, a very minor touch of light exterior wear, otherwise perfect). A little different color and also a slightly different mold than most of the other barrels, being a little larger in size. Dr. Daniel Bennett collection.

Est.: \$150 - \$250 • Min. bid: \$80



Lot 119

Figural Barrel, Bitters or Whiskey type Bottle, unembossed, America, 1860 – 1875. Deep strawberry puce, barrel form, applied square collared mouth – smooth base, ht. 9 7/8"; (a ¼" iridescent bruise on top of the square collared mouth, a little light exterior wear). Another attractive, scarce color! Dr. Daniel Bennett collection.

Est.: \$175 - \$350 • Min. bid: \$100



Lot 116

Figural Barrel, Bitters or Whiskey type Bottle, unembossed, America, 1855 – 1860. Medium to deep amber near the base with some lighter golden tones through the shoulder, barrel form, applied square collared mouth – iron pontil scar, ht. 9 1/8", virtually attic mint; (a 1/8" tissue-paper thin open surface bubble on one of the rings, otherwise perfect). Very scarce with the iron pontiled base, also the glass is nice and bubbly, with plenty of character. Dr. Daniel Bennett collection.

Est.: \$200 - \$400 • Min. bid: \$120



Lot 120

"S T / Drake's / 1860 / Plantation / X / Bitters – Patented / 1862", America, 1862 – 1880. Medium to deep peachy amber, cabin form with 6 logs above the label panel, applied sloping collared mouth – smooth base, ht. 10"; (two small pinhead flakes at edge of roof panels, an 1/8" iridescent bruise on the inside edge of the mouth, a slightly weakened impression in the shoulder). R/H #D105. A scarce color, different from the typical golden amber toned examples.

Est.: \$175 - \$275 • Min. bid: \$100



Lot 121

“S T / Drake’s / 1860 / Plantation / X / Bitters – Patented / 1862”, America, 1862 – 1880. Medium to deep strawberry puce, cabin form with 6 logs above the label panel, applied sloping collared mouth – smooth base, ht. 10”, perfect! R/H #D108. An attractive color lacking any trace of amber, and a little lighter in shade than many of the other puce toned examples. With this one, the color can be enjoyed in a normal daylight setting.

Est.: \$225 - \$450 • Min. bid: \$150



Lot 125

“National / Bitters” – “Patent / 1867” (on base), America, 1867 – 1875. Light golden amber, figural ear of corn, applied short tapered collar with ring – smooth base, ht. 12 3/8”, perfect. R/H #N8. Just a little deeper in color than the previous lot, this example is also nicely whittled. A classic figural bitters, every collection should have one!

Est.: \$300 - \$500 • Min. bid: \$200



Lot 122

“S T / Drake’s / 1860 / Plantation / X / Bitters – Patented / 1862”, America, 1862 – 1880. Medium to deep olive yellow, cabin form with 6 logs above the label panel, applied sloping collared mouth – smooth base, ht. 10”, near mint; (a weakened impression in the upper shoulder area as is common, but no other form of damage). R/H #D105. This example has plenty of the scarce olive tone, a very attractive and desirable color.

Est.: \$1,200 - \$2,200 • Min. bid: \$700



Lot 126

“National / Bitters” – “Patent / 1867” (on base), with 98% original label, America, 1867 – 1875. Medium golden amber, figural ear of corn, applied short tapered collar with ring – smooth base, ht. 12 1/4”, perfect. R/H #N8. Extremely rare with original bright maroon label with gold lettering, which reads in part: “THE / National Bitters / Cures Fever, Ague, Liver / Complaints ... / SCHLICHTER & Zug / PROPRIETORS / 9 North 7th St / PHILAD’A.” Relatively few examples remain with a virtually complete label.

Est.: \$600 - \$1,200 • Min. bid: \$400



Lot 123

“National / Bitters” – “Patent / 1867” (on base), America, 1867 – 1875. Bright yellowish honey with a slight olive tone, figural ear of corn, applied short tapered collar with ring – smooth base, ht. 12 1/4”, near mint; (a tiny pot-stone on the surface of the glass at the side of the neck has a small 1/8” flash, otherwise perfect). R/H #N8. Note; a large clump of unmelted sand at the side of the neck but with no associated damage. Scarce color, beautiful example. Mark Legare collection.

Est.: \$600 - \$800 • Min. bid: \$300



Lot 127

“National / Bitters” – “Patent / 1867” (on base), America, 1867 – 1875. Medium apricot puce, figural ear of corn, applied short tapered collar with ring – smooth base, ht. 12 3/8”, near attic mint; (a couple of small areas of light interior residue, the type that would likely wash out, otherwise perfect). R/H #N8. A good strong impression and a gorgeous rare color that passes plenty of light with ease.

Est.: \$2,000 - \$4,000 • Min. bid: \$1,400



Lot 124

“National / Bitters” – “Patent / 1867” (on base), America, 1867 – 1875. Brilliant light honey with some yellowish tones in the upper body above the label panel, figural ear of corn, applied short tapered collar with ring – smooth base, ht. 12 3/8”, perfect. R/H #N8. A clean, light, bright example with strong embossing.

Est.: \$400 - \$600 • Min. bid: \$250



Lot 128

“Brown’s / Celebrated / Indian Herb Bitters – Patented / Feb 11. / 1868”, America, 1868 – 1875. Gorgeous yellow with deeper honey tones through the apron, shading to a light straw yellow through the arms, figural Indian maiden, sheared and inward rolled mouth – smooth base, ht. 12 1/8”, virtually attic mint; (a small piece inside the mouth of the rolled lip is incomplete or missing, otherwise perfect!). R/H #B226. Great color, bright, clean, excellent condition.

Est.: \$1,800 - \$2,800 • Min. bid: \$1,000



Lot 129

“Travellers” – Motif of Robert E. Lee – “Bitters” – “1834 / 1870”, America, 1870 – 1875. Medium golden amber, rectangular with rounded corners, fluted shoulders, applied sloping collared mouth – smooth base, ht. 10 3/8”, virtually attic mint; (a minuscule pinprick bit of roughness on the edge of lip on the reverse, otherwise pristine perfect!). R/H #T54. Very rare and desirable and considered one of the iconic bitters bottles, and certainly one of the most historic.

Est.: \$7,500 - \$12,500 • Min. bid: \$4,000



Lot 130

“OK / Plantation / 1840 – Patented / 1863”, America, 1863 – 1875. Honey amber with lighter olive yellow tones along the edges, triangular, applied sloping collared mouth with ring – smooth base, ht. 11 1/4”; (a little spotty light “bloom” or very faint dullness, primarily in the shoulder area, a couple of light streaks of interior residue or faint haze, a shallow 1/8” flake near base corner). R/H page 408. A great bottle, attractive and rare mold, nice color, the condition issues are all minor.

Est.: \$2,000 - \$4,000 • Min. bid: \$1,200



Lot 131

“Greeley’s Bourbon / Bitters”, America, 1860 – 1875. Light to medium copper with a slight apricot tone, barrel form, applied square collared mouth – smooth base, ht. 9”, near attic mint; (a tiny, barely pinprick flake and a small area of very fine lip-edge roughness, otherwise perfect!). R/H #G101. Ex. McCandless collection. A very pretty color, definitely lighter than most, this one lacks the “smokiness” so often present, and has excellent clarity to the glass!

Est.: \$800 - \$1,200 • Min. bid: \$500



Lot 132

“Greeley’s – Bourbon Whiskey / Bitters – Greeley’s”, America, 1860 – 1875. Medium to deep grape amethyst, barrel form, applied square collared mouth – smooth base, ht. 9 1/4”, near mint; (a small crease on the edge of the lip that very likely occurred in-manufacture mentioned only for complete accuracy; an onion-skin-thin small open bubble on the reverse, otherwise perfect!). R/H #G102. Great color, almost identical to the Burton Spiller example.

\$1,800 - \$3,600 • Min. bid: \$1,000



Lot 133

“Dr Wheeler’s / Tonic / Sherry Wine Bitters” – “Established / 1849” (within shield) – “Boston”, America, 1860 – 1870. Aqua, square with fancy roped corners, applied sloping collared mouth – smooth base, ht. 9 1/2”, perfect. R/H #W87. Ex. Carlyn Ring collection. An extremely rare and desirable mold with only a couple of other undamaged examples being offered at auction in the past dozen years. A rare, attractive mold with good depth of color and outstanding condition.

Est.: \$2,500 - \$4,500 • Min. bid: \$1,500



Lot 134

“Dr A. W. Coleman’s – Anti Dyspeptic / And / Tonic Bitters”, America, 1845 – 1855. Medium emerald, rectangular “tombstone” form, beveled corners, applied sloping collared mouth – iron pontil scar, ht. 8 7/8”; (professionally cleaned but retains its reddish iron pontil scar). R/H #C194. Note; an in-manufacture “mold repair” or crescent fold of glass on the side. Most of the known examples of this bottle have been dug, but they remain a great pontiled bitters with impressive size and color.

Est.: \$2,000 - \$4,000 • Min. bid: \$1,200



Lot 135

“Dr J. Hostetter’s / Stomach Bitters”, Wm. McCully & Co., Pittsburgh, PA, 1865 – 1875. Brilliant yellow with an olive tone, square with beveled corners, applied sloping collared mouth – **“McC & Co / 2”** (on smooth base), ht. 8 7/8”; (professionally cleaned to original luster and near mint condition with just a touch of light exterior wear remaining; a hard to see, 1/4” shallow bruise on the inside edge of the mouth). R/H #H195. Exceptional color, beautiful, crisp, displays as virtually attic mint.

Est.: \$225 - \$450 • Min. bid: \$150



Lot 136

“Dr J. Hostetter’s / Stomach Bitters”, probably a Pittsburgh district glasshouse, 1860 – 1870. Medium to deep olive amber, square with beveled corners, applied sloping collared mouth – smooth base, ht. 9 1/2”, near mint; (a touch of expected light exterior wear and a couple of tiny pinhead open surface bubbles). R/H #H194. Crude glass with plenty of small bubbles. One of the earlier examples of the many Hostetter variants.

Est.: \$300 - \$500 • Min. bid: \$180



Lot 137

“Swiss / Stomach Bitters – Arnold Koch / Birmingham. Pa”, America, 1865 – 1872. Amber, a distinctive form, generally rectangular with “V” or wedge shaped side panels, applied sloping collared mouth – smooth base, ht. 9 3/8”, near mint; (a little light exterior high point wear, otherwise excellent). R/H #S242. A very scarce mold, interesting and distinctive shape. Note: Birmingham, PA, ceased to exist after 1871, and became a part of Pittsburgh.

Est.: \$250 - \$450 • Min. bid: \$150



Lot 138

“Big / Bill / Best / Bitters – Big / Bill / Best / Bitters”, America, 1890 – 1905. Light orange amber near the base shading to a light yellowish honey near the shoulders, tall pyramid form, tooled sloping collared mouth with ring – smooth base, ht. 12”, virtually attic mint; (a small, pinhead open bubble on a side panel, otherwise perfect). R/H #B95. A beautiful example of this classic bitters, with the distinctive pyramid form.

Est.: \$200 - \$400 • Min. bid: \$120



Lot 139

“Royal / Italian Bitters / Registered / (motif of crown, shield, spears and drapery) / Trade Mark / A.M.F. Gianelli / Genova”, Canada, 1880 – 1890. Beautiful, light to medium pink amethyst, tall tapered cylinder form, applied square collared mouth – smooth base, ht. 13 3/8”, near mint; (professionally cleaned to original luster, a 3/8” onion-skin-thin open bubble at the mold seam). R/H #R111. Outstanding color, a very light, pretty example!

Est.: \$800 - \$1,200 • Min. bid: \$500



Lot 140

“Herkules Bitter” / “GA” monogram / “1 Quart”, America, 1885 – 1895. Bright emerald green, spherical with flattened front and rear panels, tooled mouth with flat band – smooth base, ht. 7 3/8”; (a couple of light patches of interior haze, some light scattered exterior wear, a manufacturer's imperfection with a thin fold of glass on the collar has some discoloration and iridescence primarily on the side or reverse). R/H #H98. A rare mold, vivid color!

Est.: \$400 - \$600 • Min. bid: \$250



Lot 141

“Whitwell's Temperance – Bitters, Boston”, America, 1845 – 1855. Greenish aqua, almost a light apple green, rectangular with wide beveled corners, applied sloping collared mouth – blowpipe pontil scar, ht. 7 1/8”, near attic mint; (a very minor, tissue-paper thin open bubble on one panel, otherwise perfect). R/H #W105. A very scarce bitters, one has not sold through public auction in more than five years. Although the color is subtle, it definitely stands out as compared to a normal aqua.

Est.: \$300 - \$500 • Min. bid: \$180



Lot 142

“Dr Guysott's – Compound / Extract Of – Yellow Dock & / Sarsaparilla” (with 85 – 90% original label), America, 1845 – 1860. Medium blue green, square with beveled corners, applied sloping collared mouth – iron pontil scar, ht. 9 1/4”, perfect; (the label is darkened from age, but still very legible). DeG #90. Very scarce color, absolutely outstanding character, loaded with swirl lines, impurities, and waviness to the glass. A great example! Mark Legare collection.

Est.: \$2,500 - \$4,500 • Min. bid: \$1,500



Lot 143

“Hyatt's – Infalible – Life Balsam / N – Y.”, America, 1850 – 1860. Clear, medium grass green, rectangular with beveled corners, applied sloping collared mouth with ring – iron pontil, ht. 10 1/4”, near attic mint; (just a very faint touch of expected light exterior wear). N#322. A scarce pontiled medicine, one that you do not find as often as you use to, good color, and an attractive, eye-appealing example with plenty of waviness and character to the glass. Mark Legare collection.

Est.: \$800 - \$1,400 • Min. bid: \$500



Lot 144

“J.&C. Maguire / Chemists & Druggists / St. Louis. Mo.”, America, 1852 – 1860. Medium sapphire blue, rectangular with concave corners, applied round double collared mouth – iron pontil scar, ht. 7 7/8”, near mint; (the bottle may have been lightly cleaned, but certainly presents itself as very near mint with a slight touch of faint residue or light haze near the shoulder, on the interior). Odell, p. 155. Bob Sax collection. A very scarce bottle, beautiful color.

Est.: \$600 - \$900 • Min. bid: \$400

The Many Forms of

An interesting and wide array of forms are available to the collector of black glass, as evidenced by the variety of forms offered in this sale. The term black glass has become synonymous with early wine and utility bottles of the 19th century and earlier.

Black glass was undoubtedly blown in Colonial America at Wistarburgh (Salem County, New Jersey, 1738–1782), as well as New Amsterdam (present day New York City), and other colonial glasshouses. It is noted that an attempt was made around 1819 by Thomas Pears (nephew-in-law of Benjamin Bakewell), to establish a works near Pittsburgh, in what is believed to be the first venture specifically for the manufacture of “black bottles” in America (see MW, pages 113-114). In 1837, a second attempt to establish a “black bottle factory, the only one of its kind in the western country”*

near Pittsburgh was made. Unfortunately, very little is known about this venture.

Black glass bottles, typically associated as containers for wine, porter, ale, cider and similar “wet goods,” were also termed “junk bottles” during the 18th century. In fact, they are so noted in a 1769–1770 account book of the Manheim glassworks of Henry William Stiegel.

Eventually, certain distinctive forms arose depending on the intended contents. In addition, forms evolved over time based on function (binning, storage, shipping, etc).

Together, along with other telltale clues such as the pontil scar, mouth treatment, quality of the metal and color, a reasonable guess can be made as to origin and what the bottle may have contained. Regardless, these early, often simple-yet-classic containers have been increasing in popularity, and, rightly so!

*Joseph D. Weeks, *Report on the Manufacture of Glass, including a History of Glassmaking in the United States, 10th Census.*



Lot 215

Lot 196

Lot 202

Lot 207

Black Glass



Lot 217



Lot 221



Lot 223

**Lot 145**

“L.Q.C. Wishart’s – Pine Tree / Tar Cordial. / Phila” – (Motif of Pine Tree), America, 1855 – 1858. Medium yellow olive, square with beveled corners, applied sloping collared mouth – iron pontil scar, ht. 7 ½”; (likely “dug”, but does not appear to have been cleaned with just a little faint dullness. Would likely respond well to a light professional cleaning). There are no chips, cracks, or other forms of damage. Extremely rare with only a handful known to exist.

Est.: \$3,000 - \$5,000 • Min. bid: \$1,500

**Lot 146**

“L.Q.C. Wishart’s – Pine Tree / Tar Cordial / Phila.” – “Patent” / (Pine Tree) / “1859”, America, 1865 – 1875. Clear, light to medium blue green, rectangular with beveled corners, applied sloping collared mouth – smooth base, ht. 9 ½”, pristine perfect! A subtle, but somewhat different color than normally encountered for this mold, clean, crisp, beautiful, and in outstanding condition.

Est.: \$200 - \$400 • Min. bid: \$150

**Lot 147**

“Old Dr / J. Townsends – Sarsaparilla – New. York.”, America, 1850 – 1860. Blue green, square with beveled corners, applied sloping collared mouth – deep domed base with heavy iron pontil scar, ht. 9 ¾”, near mint; (a touch of expected light exterior wear, a tiny pinhead flake at base edge). DeG #206. Attractive and crude with whittled, wavy glass.

Est.: \$300 - \$500 • Min. bid: \$200

**Lot 148**

“Dr. Leroy’s / Mixture”, America, 1850 – 1860. Clear blue green, almost a teal blue, cylindrical, applied mouth with a ring-type collar – iron pontil, ht. 6 7/8”; (professionally cleaned to original luster and near mint condition). A very rare pontiled medicine believed to be from New Orleans, and advertised to cure gonorrhea and gleet (Odell, p.147). One of two examples known in color. An unusual form for a medicine, attractive and very rare!

Est.: \$600 - \$1,200 • Min. bid: \$400

**Lot 149**

“Mexican / Mustang – Liniment”, America, 1845 – 1860. Light to medium blue green, cylindrical, sheared and inward rolled mouth – blowpipe pontil scar, ht. 4 1/8”; (a little residue or contents stain inside the rolled lip, otherwise virtually attic mint). N #444. A crude, early example, heavily whittled. A relatively common mold, but extremely rare in color, believed to be only one of two examples known in blue green.

Est.: \$300 - \$600 • Min. bid: \$180

**Lot 150**

“Mc Leans – Volcanic – Oil – Liniment”, America, 1845 – 1855. A frothy, bright yellow green neck with some deeper streaks of olive, light olive yellow in the shoulder swirling through the body, shading to aquamarine at the base, square with narrow beveled corners and indented panels, crudely sheared and inward rolled mouth – blowpipe pontil scar, ht. 3 7/8”, perfect! N #432. A scarce to rare mold, believed unique in this color. An eye-appealing, wild little bottle.

Est.: \$1,000 - \$2,000 • Min. bid: \$600

**Lot 151**

“Chinese / Liniment – Price 30. Cts”, America, 1845 – 1855. Yellowish golden amber, oval, sheared and inward rolled mouth – blowpipe pontil scar, ht. 4”; (professionally cleaned with some light exterior wear remaining). Ex. Samuel J. Greer collection. Believed to be one of the products put up by Geo. Coffeen of Blue Ball, Ohio (near Cincinnati). It was reported to be the only colored example known at the time of the Greer sale, and almost 25 years later, remains unique in color today!

Est.: \$1,500 - \$3,000 • Min. bid: \$800

**Lot 152**

“Avery’s / Eye Cure – Chapman / Beach & Co / Hudson / Mich”, America, 1845 – 1855. Aquamarine, oval, sheared and inward rolled mouth – blowpipe pontil scar, ht. 3 ¼”, near mint; (the bottle has been professionally cleaned to original luster and near mint condition). Unlisted by Agee, this little cure bottle is an extreme rarity with only one other intact example known, which is owned by a Michigan collector. Strong embossing, clean, bright, heavily embossed.

Est.: \$800 - \$1,200 • Min. bid: \$500



Lot 153

“Bowmans – Vegetable / Compound – Newcastle Pa”, America, 1850 – 1860. Deep aqua, rectangular with narrow beveled corners, applied round double collared mouth – iron pontil scar, ht. 7 3/8”, very near mint; (a tiny bit of light residue on the interior that should easily wash out, a small, 1/8” flake on the lower bevel, otherwise perfect). A very rare pontiled medicine from western, PA, believed to be one of two known examples, very strong color, a great looking bottle!

Est.: \$600 - \$1,200 • Min. bid: \$400



Lot 157

“Almond / Hair Wash / W. Heard.” Hair Bottle, America or possibly England, 1865 – 1875. Medium to deep sapphire blue, rectangular with wide beveled corners, applied square collared mouth – smooth base, ht. 7 1/4”; (professionally cleaned to original luster with some light exterior wear and a tiny pinhead flake remaining). Originally discovered in New England and unlisted by Don Fadely, this is the only known example to be offered at auction. An attractive, extremely rare hair bottle.

Est.: \$3,000 - \$5,000 • Min. bid: \$1,500



Lot 154

“Holman’s / Nature’s Grand / Restorative – J. B. Holman, Prop. – Boston Mass.”, America, 1845 – 1855. Aquamarine, rectangular with wide beveled corners, applied square collared mouth – blowpipe pontil scar, ht. 6 3/4”, virtually attic mint; (just a wisp of very faint wear on the reverse, otherwise pristine perfect). N #301. A beautiful example, strongly embossed, bright, clean, sparkling and whittled.

Est.: \$225 - \$450 • Min. bid: \$150



Lot 158

“Dr. J.L. Van Doren’s / Dyspepsia Antidote. / N.Y.”, America, 1859 – 1865. Medium blue green, square with beveled corners, domed shoulders, applied square collared mouth – early smooth base, ht. 7 1/2”, very near mint; (a tiny, pinprick spot of roughness on the edge of the mouth that you can feel, but is difficult to see, otherwise perfect!). Baldwin, #4043. A distinctive, whittled, and very eye-appealing bottle that is extremely rare and possibly unique, this being the only example known to exist.

Est.: \$1,500 - \$2,500 • Min. bid: \$800



Lot 155

“Zollickoffer’s – Anti Rheumatic / Cordial – Philad.a”, America, 1845 – 1860. Light yellowish olive in the shoulders shading to a rich, deep yellow olive in the base, rectangular with beveled corners, applied sloping collared mouth – blowpipe pontil scar, ht. 6”, near perfect; (a small bubble on the inside of the shoulder on the reverse is missing its cover glass). N#714. Definitely one of the finest examples of this scarce bottle that we have seen, clean, crisp, attractive and virtually attic mint.

Est.: \$1,600 - \$3,200 • Min. bid: \$1,000



Lot 159

“Shepherd’s / Sarsaparilla – Genuine – Preparation – Baltimore”, America, 1845 – 1855. Aquamarine, rectangular with beveled corners, applied sloping collared mouth – blowpipe pontil scar, ht. 5 3/4”, virtually attic mint! DeG #194. A very rare pontiled medicine and sarsaparilla from Baltimore, with only one other example being offered at public auction in more than 20 years. Clean, crisp, a beautiful example.

Est.: \$800 - \$1,200 • Min. bid: \$500



Lot 156

“Zollickoffer’s – Anti Rheumatic / Cordial – Philad.a”, America, 1870 – 1880. Orange amber shading to light honey and almost yellow coloration along one side, rectangular with beveled corners, applied sloping collared mouth – smooth base, ht. 6 5/8”; (just a slight touch of light exterior wear, otherwise, excellent). A clean, bright, attractive bottle. The amber Zollickoffer’s are actually very scarce and not easy to obtain.

Est.: \$125 - \$250 • Min. bid: \$80



Lot 160

“Davis & Miller / Druggists / Baltimore”, America, 1850 – 1860. Aqua, cylindrical, applied square collared mouth – blowpipe pontil scar, ht. 11 5/8”, near mint; (some expected light exterior wear, some light scratches on the reverse, otherwise perfect, the bottle appears to be an “attic” find and has not been dug or cleaned). Rare size, a large, impressive druggist bottle, nicely whittled. Note; the embossing is within a crude, large rectangular slugplate.

Est.: \$400 - \$600 • Min. bid: \$250



Lot 161

“London - Medicated - Health Restorer - S. A. Foutz / Baltimore MD”, America, probably Baltimore Glass Works, 1860 – 1870. Medium strawberry puce, hexagonal with indented panels, three horizontal rings forming a cone type shoulder, applied sloping collared mouth with ring – smooth base, ht. 9 3/8”, perfect. A scarce, attractive mold in amber or topaz, and possibly unique in this beautiful shade of puce. Great form, stunning color, outstanding condition!

Est.: \$4,000 - \$8,000 • Min. bid: \$2,500



Lot 162

“Hampton’s / V.Tincture / Mortimer / & Mowbray / Balto.”, America, probably Baltimore Glass Works, Baltimore, MD, 1860 – 1870. Beautiful medium to deep strawberry puce, oval, applied disk mouth – early smooth base, ht. 6 1/4”; (some fine lip edge roughness and two, 1/8” flakes, all on the back edge of the mouth, otherwise the bottle displays as virtually attic mint). An absolutely gorgeous color, and with plenty of fine seed bubbles throughout.

Est.: \$250 - \$450 • Min. bid: \$150



Lot 163

“Dr Alain” Medicine or Ointment Type Bottle, America or England, 1845 – 1855. Deep cobalt, cylindrical, wide neck, outward rolled mouth – disk type pontil scar, ht. 2 7/8”; (a dug bottle with some patchy dullness and overall light exterior wear). Odell, p.1. Harmer Rooke, Feb. 94, Lot 196. Extremely rare, possibly the only known example. The bottle would likely respond well to a light professional cleaning. If you are looking for something unique, this could be it. Bob Sax collection.

Est.: \$300 - \$600 • Min. bid: \$200



Lot 164

“Dr Gusotts / Yellow Dock & / Sarsaparilla / John. D. Park / Cincinnati. O”, America, 1850 – 1860. Deep bluish aquamarine, oval, applied sloping collared mouth – iron pontil scar, ht. 10”, virtually attic mint! DeG #90. Probably one of the nicest examples that you could hope to find with good deep color, sparkling clean, heavily whittled, and very strong embossing.

Est.: \$225 - \$450 • Min. bid: \$150



Lot 165

“Rhodes’ – Antidote / To / Malaria – Fever & Ague Cure”, America, 1850 – 1860. Aquamarine, rectangular with beveled corners, applied sloping collared mouth – blowpipe pontil scar, ht. 8 1/4”, very near mint; (a bubble on one of the beveled corners on the reverse has a small, pinhead opening in the cover glass, otherwise pristine perfect). N #515, BA1 #145. A very scarce cure with most examples having been dug and cleaned. Clean, crisp, and virtually “attic found” condition.

Est.: \$300 - \$500 • Min. bid: \$180



Lot 166

“Louden & Co’s / Indian / Expectorant – Philad.a”, America, 1845 – 1860. Aquamarine, oval, applied sloping collared mouth – blowpipe pontil scar, ht. 7 1/4”; (the bottle may have been lightly cleaned, there is a spotty, light matte-type texture, primarily on the lower portion on the reverse, a narrow vertical band of light haze down one side on the interior). N#399. This example has great character, is nicely whittled, and the glass is absolutely filled with tiny seed bubbles.

Est.: \$100 - \$200 • Min. bid: \$60



Lot 167

“Dr John Roakes’ – Iodine Linctiment / Prepared By / S. Ingersoll – New York.”, America, 1845 – 1855. Aquamarine, rectangular with beveled corners, applied sloping collared mouth – blowpipe pontil scar, ht. 7 1/8”; (a dug bottle with a little light overall dullness or mild haze, but no other form of damage). A rare pontiled medicine with very strong embossing, believed to be one of only four known examples. Would likely respond well to a light professional cleaning, if desired.

Est.: \$200 - \$400 • Min. bid: \$120



Lot 168

“Genuine – Swaim’s / Panacea – Philadelphia”, America, 1840 – 1850. Aqua, rectangular with concave corners, applied sloping collared mouth – blowpipe pontil scar, ht. 7 5/8”; (some overall very light interior haze, the type that would likely respond well to just a couple of days in the tumbler, if desired, otherwise excellent). Nice character with crude, wavy glass. N #610. A scarce mold, believed to be one of the earliest from the Swaim’s medicine company.

Est.: \$300 - \$600 • Min. bid: \$200



Lot 169

“Universal / Cough Remedy – J.W. Hunnewell / & Co. / Boston, Mass.”, America, 1845 – 1860. Aquamarine, rectangular with beveled corners, applied thin flanged lip – blowpipe pontil scar, ht. 6 1/8”; (may have been lightly cleaned, there is a very faint, light, milkiness, primarily on the interior, however, the bottle presents itself as near mint). N#315, Odell, p.120. A relatively scarce bottle, the very light haze is not terribly distracting, the thin flanged lip is perfect.

Est.: \$100 - \$200 • Min. bid: \$60



Lot 173

“Dr. Carter’s / Compound – Pulmonary / Balsam”, America, 1840 – 1850. Pale aquamarine, cylindrical, applied and tooled, thin flanged lip – blowpipe pontil scar, ht. 5 1/8”, sparkling attic mint! BB#93, N#107. A very scarce, to rare, early balsam. According to Blasi, Dr. Wm. Carter of Newbury, Vermont, put this medicine on the market in July, 1840. A slightly weakened impression near the shoulder, but an absolutely pristine perfect example!

Est.: \$175 - \$275 • Min. bid: \$100



Lot 170

“Universal / Cough Remedy – J.W. Hunnewell / & Co / Boston Mass”, America, 1845 – 1860. Aquamarine, rectangular with beveled corners, applied thin flanged lip – blowpipe pontil scar, ht. 4 1/8”, very near mint; (a touch of very light exterior wear, otherwise near attic mint). N#315, Odell, p.120. A more difficult size to acquire, overall excellent condition. Dr. Daniel Bennett collection.

Est.: \$125 - \$225 • Min. bid: \$80



Lot 174

“Dr Sanford’s – Invigorator / Or / Liver Remedy – New York”, America, 1845 – 1860. Aquamarine, rectangular with beveled corners, applied sloping collared mouth – blowpipe pontil scar, ht. 7 5/8”, sparking attic mint! N#543. A bright, clean example in absolutely pristine condition! Dr. Daniel Bennett collection.

Est.: \$125 - \$225 • Min. bid: \$80



Lot 171

“Dr Hoofland’s / Balsmaic Cordial – C M Jackson / Philadelphia”, America, 1850 – 1860. Aquamarine, rectangular with beveled corners, applied square collared mouth – blowpipe pontil scar, ht. 6 5/8”, perfect. BB #241. Dr. Hoofland put out several different products and is probably best known for his famous German Bitters. A scarce balsam, listed as a four star (rare), by Blasi.

Est.: \$175 - \$275 • Min. bid: \$100



Lot 175

“Trade Mark / Sparks / Perfect Health / (bust of man) / For / Kidney & Liver / Diseases / Camden, N.J.”, America, 1885 – 1895. Golden amber, rectangular with beveled corners, tooled sloping collared mouth – smooth base, ht. 9 1/2”; (professionally cleaned to original luster; two, 1/8” surface bruises or spots of abrasion, one on the “E” in “Kidney”, the other near the bottom of the bust, a small pinhead nick at one of the shoulder corners). The bottle displays well, the damage relatively minor.

Est.: \$300 - \$500 • Min. bid: \$200



Lot 172

Lot of (2), “Dr. Ebeling’s / Herb Medicine / 910 Race St Phila” Bottles, America, 1855 – 1870. Colorless and aqua, both are oval, applied and tooled square collared mouths – blowpipe pontil and smooth bases, ht. 6 1/8” and 6 1/4” respectively; (clear example has been professionally cleaned and has a 1/4” flat flake at base edge; aqua example is near mint with just a pinprick flake and faint interior residue.) The clear example is heavily whittled. Ex. Sam Greer collection.

Est.: \$100 - \$150 • Min. bid: \$60



Lot 176

“Log Cabin / Extract / Rochester, N.Y.” (with original label and box), America, 1887 – 1895. Golden amber, irregular hex form with three indented panels, tooled round collared mouth – smooth base, ht. 8”; (the bottle has some dried content residue and is otherwise perfect, the label is 95% complete, the box has some damage near the top and is missing the top flaps). O&S #28. This is the larger size.

Est.: \$250 - \$450 • Min. bid: \$150



Lot 177

“Radium / Radia”, with original label, partial contents, and box (directions, advertising circular and testimonials in box), America, 1905 – 1907. Clear, rectangular, tooled prescription type mouth with cork and sealing wax – smooth base, ht. 5 3/8”, bottle is perfect (label is complete but has some minor foxing spots, box is complete but one of top flaps is disconnected from box and inside). A recent attic find from Holmes, NY. A scarce, great quack medicine!

Est.: \$125 - \$250 • Min. bid: \$80



Lot 178

“Oldridge’s / Balm / Of Columbia – For Restoring / Hair / Philadelphia” – “ENLARG’D – 1826” (around perimeter of sides, near base), England, 1875 – 1885. Sapphire blue, rectangular with concave corners, tooled double collared mouth – smooth base, ht. 5 7/8”; (a little scattered light exterior wear, otherwise, near mint). An attractive bottle with strong embossing, typically found in aquamarine, scarce in this beautiful shade of sapphire blue. Bob Sax collection.

Est.: \$100 - \$200 • Min. bid: \$60



Lot 179

“Prices / Patent / Candle / Company / Limited” (diamond registration mark), (with original stopper, partial contents, and labels), England, 1900 – 1910. Vivid cobalt blue, wedge form, tooled square collared mouth – smooth base, ht. 7 1/2” (incl. stopper), perfect! Label is somewhat darkened, but legible and reads in part, *Price’s / Glycerin / Gold Medals, Paris, 1855, 1867, & 1878, And Grand Prize, Paris, 1889 & 1900.* A great bottle, rare with the original labels and contents.

Est.: \$175 - \$350 • Min. bid: \$100



Lot 180

“Prices / Patent / Candle / Company” (diamond registration mark), England, 1875 – 1890. Bluish aquamarine, wedge form, applied sloping double collared mouth – smooth base, ht. 7”; (professionally cleaned to original luster on the exterior, the interior has a matte-type appearance due to some glass degradation, and would likely benefit from a further interior cleaning). A very scarce color and certainly one of the earlier variants.

Est.: \$200 - \$400 • Min. bid: \$150



Lot 181

“Dutchers – Dead Shot / For / Bed Bugs – St. Albans VT”, America, 1860 – 1870. Aquamarine, rectangular with narrow beveled corners, applied square collared mouth – early smooth base, ht. 4 3/4”; (there is the appearance of a very faint, light haze or dullness, some of which is likely the result of some frothy milkiness in the glass batch itself). A scarce bottle, strongly embossed, whittled and with nice character, one that looks as though it just missed the pontil rod!

Est.: \$75 - \$150 • Min. bid: \$40



Lot 182

“Poison – Poison”, America, 1890 – 1905. Clear, light to medium amber with a slight peach or apricot tone, rectangular, BIM with a ring type collared mouth – smooth (plain) base, ht. 7 7/8”; (a very light, 1/4 surface scratch near the shoulder on one corner, otherwise pristine perfect). KR-9. Extremely rare size, the largest known for this mold. In addition, certainly an unusual color with the light peach tone, distinctively different when compared to a normal amber example.

Est.: \$250 - \$450 • Min. bid: \$150



Lot 183

“Poison – The Owl Drug Co” – (Motif of Owl) / “TODCo” monogram (within mortar and pestle), America, 1892 – 1905. Brilliant cobalt blue, triangular, tooled prescription type lip – smooth base, ht. 9 5/8”, (32oz); (a very slight touch of expected faint exterior wear, otherwise this one is virtually “out-of-the-mold”, sparkling mint). KT-1. This is the largest size known in this mold, very scarce, and especially hard to find in this pristine condition. An impressive bottle, great color, beautiful!

Est.: \$700 - \$1,200 • Min. bid: \$400



Lot 184

Early, Mellon-Ribbed Leech Bowl, probably England, possibly America, 1855 – 1870. Delicate straw coloration, globular form, probably blown in a patterned dip mold, 16 wide, melon type vertical ribs, delicate thin flanged lip – polished, pontil scarred base, ht. 2 3/8”, perfect. Beautiful, delicate color. Note; the “traveling”, or small size, leech bowls are generally considered somewhat scarce, the patterned, or ribbed leech bowls are considered fairly rare.

Est.: \$300 - \$600 • Min. bid: \$180



Lot 185

Fancy Ribbed Leech Bowl, probably England, possibly America, 1860 – 1880. Rich medium to deep emerald green, compressed globular body blown in a 3-part mold with ribbing swirled to the left, tooled wide flared rim – rayed pattern (on smooth base), ht 2 1/8", perfect. A beautiful color and a great companion to Lot #204, in our November, 2012 sale.

Est.: \$300 - \$600 • Min. bid: \$180



Lot 189

"Lynch & Clarke / New York", probably Mt. Vernon Glass Works, Vernon, New York, 1823 – 1833. Medium to deep olive amber, cylindrical, applied sloping collared mouth with lower bevel – sand type pontil scar, pint, near mint; (just a touch of light exterior wear and a tissue-paper thin, 1/8" open bubble on the reverse). T# C-2:B, Type 1. A very crude example with excellent character, bubbly, seedy, and with plenty of impurities throughout.

Est.: \$300 - \$500 • Min. bid: \$200



Lot 186

"A.C. Evans / Supr / Mineral Water / Wilmington, NC", America, 1850 – 1860. Medium yellowish green, cylindrical, applied sloping collared mouth – iron pontil scar, ht. 7 5/8"; (professionally cleaned with just a couple of spots of light exterior wear remaining). An extremely rare Wilmington soda with only one example known prior to the "The Bottle Find of the Century," (see, AB&GC, March, 2011). This is likely the last example to be offered sale.

Est.: \$3,000 - \$5,000 • Min. bid: \$1,800



Lot 190

"Highrock Congress Spring / (motif of rock) / C&W / Saratoga N.Y.", America, 1865 – 1872. Bright yellow olive, cylindrical, applied sloping double collared mouth – smooth base, pint; (a little light exterior wear and a tiny surface flake or bruise near the top of the rock). T #S-37B. A beautiful color and a good looking pictorial mold with the large rock, - a lot of bottle for the money.

Est.: \$150 - \$250 • Min. bid: \$80



Lot 187

"G. VanBenschoten / Premium Soda Water / Union Glass Works Phila", Union Glass Works (Kensington), Philadelphia, 1846 – 1858. Medium blue green, cylindrical, applied blob collared mouth – iron pontil scar, ht. 7 1/4"; (a touch of very light haze in the neck, otherwise mint). A rare soda, beautiful condition! George VanBenschoten, was listed as a "confectioner", in Bridgeport, CT, in the 1850s. (see Bill Beckett's article, AB&GC, Dec, 2012).

Est.: \$300 - \$500 • Min. bid: \$180



Lot 191

"Highrock Congress Spring / (motif of rock) / C&W / Saratoga N.Y.", America, 1865 – 1872.

Brilliant medium green, cylindrical, applied sloping double collared mouth – smooth base, Qt; (a 1/8" flake at the top edge of the mouth and a very minor pin-head size bit of roughness on the inside edge of the lip, otherwise virtually attic mint). T #S-37:A. Dr. Daniel Bennett collection. A bright, clean, example, beautiful color.

Est.: \$250 - \$450 • Min. bid: \$150



Lot 188

"T.W. Gillett – New Haven" – (motif of star), America, 1850 – 1856. Medium sapphire blue, octagonal, applied round blob collared mouth – iron pontil scar, ht. 7 3/8", near mint; (a little light, expected exterior wear, otherwise perfect). A scarce soda, Thomas Gillett was in business for a relatively short period of time (see Bill Beckett's article, AB&GC, July, 2012). Beautiful example and the 1st sapphire example to be auctioned in almost 10 years.

Est.: \$500 - \$800 • Min. bid: \$300



Lot 192

Excelsior / Spring / Saratoga N.Y.", America, 1875 – 1889. Brilliant, bubbly deep apple green, almost a lime green, cylindrical, tooled sloping collared mouth with ring – smooth base, Qt., sparkling attic mint! T #S-26C. Probably one of the most attractive, eye-appealing bottles in the current sale. Absolutely loaded with bubbles, together with the scarce, brilliant color and outstanding condition really make this example stand out! Ex. Jim Whetzel collection.

Est.: \$250 - \$450 • Min. bid: \$150



Lot 193

"Triton Spouting Spring / T / Saratoga N.Y. – Triton Water", America, 1872 – 1889. Aqua, cylindrical, applied sloping double collared mouth – smooth base, Pt.; (just a little very light interior residue that should wash out, a shallow pinhead open bubble on the reverse, otherwise attic mint)! T #S-55. Discovered in an old barn in Saratoga City, NY in the summer of 2012. A very rare bottle with only a handful known, one that even many of the advanced collectors do not have.

Est.: \$2,500 - \$4,500 • Min. bid: \$1,500



Lot 194

Lot of (2) Saratoga Type Mineral Water Bottles, probably New York State, 1860 – 1875. Lockport blue green and "Congressville green", 3-pc. and 2-pc. molds, applied sloping collar with ring and applied sloping double collared mouths – smooth bases, both Qt., both near mint; (both have a small, 1/8" flake on top of their mouth, otherwise are clean, bright, and near attic mint). The blue green example is similar in form to the rare, Byron Acid bottles. Dr. Daniel Bennett collection.

Est.: \$100 - \$200 • Min. bid: \$60



Lot 195

Lot of (2) Early Porter-Style Bottles, Stoddard, NH, and probably New England or NY, 1850 – 1865. Olive amber and medium green, both are 3-pc. mold, applied blob collar and applied sloping collar with ring – smooth and iron pontiled bases, ht. 6 1/2" and 7 1/8"; (the "Stoddard Stubby" is near mint with a just a touch of light exterior wear; the green example has a slender 1/4" open bubble and some exterior wear and light scratches). Dr. Daniel Bennett collection.

Est.: \$100 - \$200 • Min. bid: \$60



Lot 196

Black Glass Wine Bottle, England, or possibly America, ca. 1742 – 1743. **"Peter / Statts / 1742"** (on applied glass seal), deep yellowish olive, mallet form, applied string rim – deep domed base with sand type pontil scar, ht. 8 3/4"; (a 3/8" chip at the top of the lip at the side; a couple of minor 1/8" flakes on the underside of the string rim, some moderate high point wear and light scratches, primarily on the reverse). Unlisted by Dumbrell. Rare with virtually full original body luster.

Est.: \$2,000 - \$4,000 • Min. bid: \$1,200



Lot 197

Black Glass Wine Bottle, England, 1780 – 1800. **"M" / (Motif of Stag)**, possibly with flora background (on applied glass seal), medium to deep yellowish olive amber, cylinder form, dip mold, short applied tapered collar with an applied string band – deep domed kick-up base with a sand type pontil scar, ht. 10 1/8"; (a 1/8" bit of minor roughness on the edge of the string rim, otherwise, absolutely perfect). Unlisted by Dumbrell, and likely a very scarce seal.

Est.: \$300 - \$600 • Min. bid: \$200



Lot 198

Black Glass Wine Bottle, England, 1825 – 1835. **"J.W.C."** (on applied glass seal), dense olive green, cylinder form, 3-pc. mold, **"Patent"** (on shoulder), applied sloping collared mouth with lower bevel – **"H. Ricketts & Co Glass Works Bristol"** (on base), sand pontil scar, ht. 10 3/4"; (an 1/8" flake at the edge of the lip, at the side, otherwise "cellar found" condition with full original body luster). Blown for John Were Clarke (1784 – 1847), Dumbrell, page 246.

Est.: \$150 - \$250 • Min. bid: \$100



Lot 199

199. Black Glass Wine Bottle, England, 1821 – 1835. **"Doneraile" / (eight pointed star) / "House"** (on applied glass seal), deep yellowish olive, cylinder form, 3-pc mold, **"Patent"** (on shoulder), applied sloping collared mouth with lower bevel – **"H. Ricketts & Co Glass Works Bristol"** (on base), sand pontil scar, ht. 10 3/4", beautiful, "cellar found" condition. Dumbrell, p.254. Nice detailing to the lettering which has been painted white to enhance the appearance.

Est.: \$125 - \$250 • Min. bid: \$70



Lot 200

Black Glass Wine Bottle, England, 1825 – 1845. **"Middle" / (motif of Holy Lamb) / "Temple"** (on applied glass seal), deep yellowish olive amber, cylinder form, 3-pc. mold, applied double ring collar – light sand type pontil scar, ht. 11 1/2", virtually attic mint. The Holy Lamb with flag represents the Middle Temple crest. Many of these bottles were believed to have held port wine. Dumbrell, p. 311.

Est.: \$75 - \$125 • Min. bid: \$50



Lot 201

Lot of (2), Black Glass Painted Wine Bottles (with painted fox hunting scenes), probably England, 1800 – 1820. Both are deep olive, magnum size squat cylinder form, applied sloping collared mouths with lower bevel or string rim – sand type pontil scarred bases, both approx. 11 1/4" ht., bottles are perfect, paint on both is excellent and approx. 95% complete! Both bottles with beautifully executed, colorful, oil painted scenes of a fox hunt. From an early Short Hills, NJ estate.

Est.: \$1,000 - \$2,000 • Min. bid: \$600



Lot 205

Black Glass Mallet Form Wine Bottle, Continental, probably Belgium, 1740 – 1760. Yellowish olive amber, mallet form, sheared mouth with an applied thin string rim – deep domed base with a blowpipe pontil scar, ht. 8 1/4"; (a touch of light exterior wear, some light surface scratching, primarily on one side only, otherwise an outstanding example with full original body luster!) See VdB, plate 126 & 127. A beautiful example, somewhat of a bell form, great overall condition.

Est.: \$300 - \$600 • Min. bid: \$200



Lot 202

(Masonic Square & Compass motif) / "J*S / 1847" (stippled on body), probably Alloa Glassworks, Alloa, Scotland, ca. 1847 – 1848. Olive green, cylindrical, 3-pc. mold, applied "snake" threading around the neck, applied sloping double collared mouth – light sand type pontil scar, ht. 9", very near mint; (some light content residue that should wash out, otherwise "cellar found" condition). Rare and desirable with the applied neck decoration and Masonic motif.

Est.: \$400 - \$800 • Min. bid: \$250



Lot 206

Black Glass Mallet Form Wine Bottle, probably Netherlands, 1735 – 1750. Medium olive, mallet form, sheared mouth with applied string rim – domed base with blowpipe pontil scar, ht. 7 7/8"; (two very minor flakes, both 1/8", or less, on the edge of the sheared lip, a couple of light surface scratches on the neck, some scattered overall light exterior wear). This appears to be a dug bottle, but retains the majority of its original luster. A very attractive form, good color.

Est.: \$300 - \$600 • Min. bid: \$200



Lot 203

Black Glass Onion Form Wine Bottle, probably Belgium or Germany, possibly Netherlands, 1720 – 1750. Beautiful yellowish olive, classic "onion form", applied wide string rim – domed base with blowpipe pontil scar, ht. 7 5/8"; (just a bit of faint exterior wear, a tiny area of roughness at the edge of the sheared lip, probably from manufacture, and a very light patch of interior milkiness on one side). VdB, plate 71 & 72. A beautiful example in both color and character.

Est.: \$150 - \$250 • Min. bid: \$80



Lot 207

Half Size Black Glass Long Neck Utility Bottle, Belgium or Netherlands, 1750 – 1770. Yellowish olive, compressed body with an extended neck and applied string rim – domed base with a blowpipe pontil scar, ht. 8 1/8"; (a pinhead spot of roughness on the edge of the rim and sheared lip; some overall light wear with a soft sheen or patina to the glass). VdB, plate 79, #1. Plenty of bubbles and impurities swirled throughout. Discovered in the Berbice River, near Fort Nassau, Guyana.

Est.: \$250 - \$500 • Min. bid: \$150



Lot 204

Black Glass Onion Form Wine Bottle, probably Belgium or Germany, 1720 – 1750. Olive green, transitional, nearly straight-sided onion form, applied string rim – domed base with blowpipe pontil scar, ht. 6 5/8"; (some light, to moderate exterior wear and scattered, spotty interior haze). Similar to VdB, plate 71, #4. Although there is a fair amount of light wear, the bottle retains much of its original luster and with no damage to the string rim.

Est.: \$150 - \$250 • Min. bid: \$80



Lot 208

Black Glass "Flower pot" form Utility Bottle, probably Belgium or Netherlands, possibly France, 1740 – 1770. Olive amber, flower pot form with sides tapering inward toward base, extended neck with an applied string rim – deep base with blowpipe pontil scar, ht. 11 1/4"; (some typical light exterior wear and scratches, overall light interior residue or haze, some of which may wash out). VdB, plate 79 & 145. Retains the majority of its original surface gloss!

Est.: \$200 - \$400 • Min. bid: \$120



Lot 209

Large, Black Glass “Flower pot” form Utility Bottle, probably Belgium or France, 1750 – 1770. Medium olive, magnum size flower pot form with sides tapering inward toward base, applied string rim – domed base with blowpipe pontil scar, ht. 11 ¾”; (some overall etching and stain from glass degradation, interior dirt and stain, a few flakes at the side of the mouth that may have occurred when the lip was sheared). A scarce size and form with an early, “earthy” look!

Est.: \$200 - \$400 • Min. bid: \$120



Lot 213

Lot of (3) Black Glass Wine Bottles, England, and possibly America, 1770 – 1830. Yellowish olive, olive amber and dense olive, all are dip mold construction, squat cylinder form, applied string rim and beveled collared mouths – all with sand type pontil scarred bases, ht. 8 ¼”, 8 ¾”, and 8 ½”, all are in very good to excellent condition; (the olive amber example has a ¼” flake on the underside of the collar, otherwise all with just normal light exterior wear, and near full original body luster).

Est.: \$150 - \$250 • Min. bid: \$100



Lot 210

Early Black Glass Utility or Lime Juice Bottle, 1815 – 1835. Olive with an amber tone, cylindrical, dip mold, applied string rim with lower bevel – sand type pontil scar, ht. 9 5/8”, near mint; (just a very minor bit of light wear, a small 1/8, paper-thin open surface bubble, otherwise perfect with full original surface gloss). See VdB, plate 268, #2. These distinctive bottles are best known to have carried lime juice on early sailing ships to help ward off scurvy. A wonderful example!

Est.: \$150 - \$300 • Min. bid: \$100



Lot 214

Lot of (3) Early Black Glass Utility Bottles, Continental, probably Germany, 1820 – 1850. Olive green and olive amber, all three blown in a dip mold, cylindrical with short necks, sheared, tooled and outward flared mouths – blowpipe pontil scarred bases, ht. 8 3/8”, 5 ½”, and 5”; (all three with overall light exterior wear and dullness, interior stain, but no chips, cracks, or other form of damage). VdB, plate 212. The neck and lip treatments are very characteristic of early German utility bottles.

Est.: \$300 - \$500 • Min. bid: \$180



Lot 211

Early Black Glass Utility or Lime Juice Bottle, England, 1815 – 1835. Medium, shading to deep olive green, cylindrical, dip mold, applied short tapered rim with applied lower bevel – sand type pontil scar, ht. 9 3/8”; (some scattered minor exterior wear and light scratches, a little dullness in one area where it may have laid on its side, some light interior haze and contents stain). More of a pure olive coloration. Retains much of its original gloss.

Est.: \$100 - \$200 • Min. bid: \$60



Lot 215

Early Black Glass Boot Bottle, probably Germany, 1740 – 1770. Medium to deep tobacco amber, side flattened kidney form, sheared mouth with an applied string rim – blowpipe pontil scar, ht. 7”, length 7 ¾”, width 3 ¼”; (some overall exterior wear and light scratches, an open bubble on the interior of the neck). See Dumbrell, p.146; VdB, plate 216 & 278. Colloquially referred to as a “boot bottle,” the majority of these were produced in Germany for the English market.

Est.: \$500 - \$700 • Min. bid: \$300



Lot 212

Early Black Glass Utility or Lime Juice Bottle, England, 1815 – 1835. Clear, yellowish olive, cylindrical, dip mold, applied string rim – sand type pontil scar, ht. 9 ½”; (a couple of areas of scratches and exterior wear on the shoulder, primarily on one side only, and a light scratch down the same side, a ring of very light haze on the interior of one side of the shoulder). A little lighter in color and with good clarity to the glass.

Est.: \$150 - \$250 • Min. bid: \$100



Lot 216

Freeblown “Bocksbeutel”, probably Germany, 1830 – 1860. Medium to deep yellowish olive, plump circular form with flattened sides, sheared mouth with an applied flat band – blowpipe pontil scar, ht. 8 7/8”; (some light exterior wear and scratches, primarily on the flattened sides, otherwise excellent). Similar to VdB, plate 218. This example is both larger than typically encountered and is in a scarce, attractive color.

Est.: \$150 - \$250 • Min. bid: \$80

**Lot 217**

Early, Wide Mouth Case Bottle, Europe or possibly England or America, 1780 – 1810. Yellowish olive, dip mold, tapered form with a wide, flared mouth – sand type pontil scar, ht. 11 ¼”, near mint; (a little light exterior wear). A crude example with plenty of bubbles, streaks and impurities. See MW, plate 47, #13; VdB plate 286. Mr. Van den Bossche notes that these wide mouth utility bottles were used for storing and preserving liquids, powders, vegetables and fruits. Rare and desirable.

Est.: \$1,200 - \$1,800 • Min. bid: \$800

**Lot 221**

Early Black Glass Case Bottle, probably Holland, possibly Belgium or Germany, 1760 – 1790. Bright, clear medium olive, early dip mold, tapered case form, sheared mouth with a crude, applied flanged mouth – blowpipe pontil scar, ht. 9 ½”, near mint; (a little typical light exterior wear, otherwise perfect). A beautiful, pure green color in a lighter tone, having no trace of amber. Also, nice character with plenty of small seed bubbles.

Est.: \$150 - \$250 • Min. bid: \$80

**Lot 218**

Early, Wide Mouth Case Bottle, probably Holland, possibly Belgium, 1770 – 1810. Deep olive amber, dip mold, tapered case form with a wide, thin flanged mouth – large blowpipe pontil scar, ht. 10 ½”, near mint; (just a touch of expected, very light exterior wear). Very similar to VdB, plate 286, #1. Another great example, very thin-walled in the corners. Interesting to note that in the Zumwalt book, p.445, she indicates examples were found with brandied fruit.

Est.: \$1,200 - \$1,800 • Min. bid: \$800

**Lot 222**

Loaf of Bread Demijohn, probably Continental, 1870 – 1890. Clear medium green with a yellowish tone, “loaf of bread” form, applied sloping collared mouth – smooth base, ht. 8 5/8”, length 10 ¼”, width 6 ¼”; (a small potstone with a ¼” crack, a 2nd potstone on the interior with a 1/8” flash that does not appear to go through the thickness of the glass, a small area of light dullness near the shoulder). A beautiful example with tremendous character and eye appeal, absolutely loaded with bubbles!

Est.: \$200 - \$400 • Min. bid: \$120

**Lot 219**

“The Olive Tree” / (Olive Tree) / “John. L. Linnenbrink / Schiedam”, Holland, 1865 – 1878. Medium to deep yellowish olive, square tapered gin form, applied sloping collared mouth – smooth base, ht. 9 5/8”, near perfect; (a very small spot of roughness at the edge of the crude applied mouth, a tiny little pinhead surface scratch or abrasion next to the “L” in “Olive”, otherwise attic mint). VdB, plate 87. A great example of this scarce and desirable pictorial gin.

Est.: \$400 - \$800 • Min. bid: \$250

**Lot 223**

Demijohn, probably America, possibly Continental, 1845 – 1865. Medium to deep yellowish olive amber, kidney form, blown in a crude 2-pc. mold, applied sloping collared mouth – blowpipe pontil scar, ht. 17 ¾”; (some spotty interior residue, a hard to see, 1/8” flake on top of the crudely formed lip, some light streaks of dullness or wear, some of which were likely caused by the wicker). A heavy, crude, “earthy” demijohn with plenty of impurities and waviness.

Est.: \$300 - \$600 • Min. bid: \$200

**Lot 220**

Black Glass Case Bottle, probably Continental, possibly England, 1845 – 1865. **“J & W.P.”** (on applied seal). Deep olive amber, dip mold, tapered case form, applied square collared mouth – early smooth base, ht. 8 ¼”; (some light scratches on several of the side panels, a ¼” area of roughness on the inside edge of the mouth, a couple of streaks of interior dirt or residue that may soak out). A scarce seal case bottle.

Est.: \$100 - \$150 • Min. bid: \$60

**Lot 224**

Jeroboam Black Glass Wine or Storage Bottle, probably France, 1800 – 1820. Yellowish olive shading to a deep olive amber through the neck and in the lower body, dip mold, sheared mouth with an applied string rim – large blowpipe pontil scar, ht. 21 ¾”, very near mint; (just a touch of light wear and a small, 3/16” x 1/4”, onion-skin-thin open surface bubble, otherwise original, “cellar found” condition!). VdB, plate 153. Very scarce size.

Est.: \$250 - \$450 • Min. bid: \$150

Lot 46: Pattern-Molded Club in... Sapphire



Long considered one of the “holy grails” by collectors of early Mid-western pattern-molded bottles, these 24-rib “clubs” in sapphire blue are as scarce as hen’s teeth with only a handful known. Though the depth of color varies somewhat among the known examples, all are remarkably similar and are likely the product of a single glasshouse and probably the work of a single master gaffer. Most scholars and collectors agree that Zanesville, Ohio is the most likely source of these blue beauties.

Zanesville Pattern-Molded Globular Bottles

While it is generally accepted that the finest early American pattern-molded glass was blown in the Mid-western states of Pennsylvania, Ohio, West Virginia, and possibly Kentucky, we might wonder how that came to be.

Perhaps the best explanation comes from the pages of *American Glass*, by George and Helen McKearin where they write: “Generally

speaking, this Midwestern glass in the Stiegel tradition indicates a craftsmanship in blowing and manipulating glass seemingly superior to that revealed by a large percentage of the South Jersey type glass and lends weight to the conclusion that more blowers in the Midwestern than in the Eastern bottle and window-glass houses had been trained in factories producing commercial tablewares

or apprenticed to master blowers who had such experience.”

Of this “superior” pattern-molded glass, the graceful, brilliant, and lively globular bottles blown at Zanesville, Ohio glasshouses certainly are without peer as can clearly be seen in the three fine examples below.



Exceptional Saratoga Mineral Water Bottles



Lot 192

Lot 193

Lot 191



THE TRITON SPOUTING SPRING

Is beautifully located about one mile south of the village of Saratoga Springs, on the Ballston avenue. It was discovered in the month of January, 1872, by experimental drilling in the solid rock; the mineral vein being struck at the depth of 192 feet. This Spring presents the very

Beautiful and Remarkable Phenomenon of Spouting!

A jet of water being continually thrown up to the height of from twenty to thirty feet by the force of its own carbonic acid gas!

The water is very cold, being from 6 to 12 degrees colder than any of the other mineral waters at Saratoga, and possesses in an eminent degree *Cathartic, Diuretic, Alterative and Tonic Properties*. As a Solvent, it is particularly useful in rapidly causing the disintegration of the stone or calculi, and thereby affording immediate relief.

The water is put up in PINT and QUART bottles, and packed in good order for shipping to any part of the country. Pints, in boxes of four dozen each, \$8.00. Quarts, in boxes of two dozen each, \$8.00. Re-filling—pint bottles, 75 cents; quart bottles, \$1.00. Metallic-lined barrels, 20 cts. per gallon.

Address TRITON SPRING,

SARATOGA SPRINGS, N. Y.

(OVER)

(Historical photo and document from Triton Spouting Springs not included in auction.)

Choice Patented Medicines in Greens



Lot 148

Lot 142

Lot 143

Lot 158

Lot 150



Colorful
& Fancy
Colognes
& Scents



Rare Color Zanesville Masonic Eagle Flask

Lot 18 (in natural light)

Masonic – “Zanesville” / Eagle / “Ohio / J. Shepard & Co.” (backwards “S”), Historical Flask, Zanesville Glassworks, Zanesville, OH, 1822 – 1832. Yellow with an olive tone shading to a chartreuse green near the base, below “Ohio”, sheared mouth – pontil scar, pint; (a touch of very light high point wear and a little residue or faint haze in the neck, otherwise perfect!) GIV-32. An extremely rare and desirable color, one that is probably unique with the variegated tone.

Est.: \$4,000 - \$8,000 • Min. bid: \$2,500



Rare Color London Medicated Health Restorer

Lot 161 (in natural light)

“London - Medicated - Health Restorer - S. A. Foutz / Baltimore MD”, America, probably Baltimore Glass Works, 1860 – 1870. Medium strawberry puce, hexagonal with indented panels, three horizontal rings forming a cone type shoulder, applied sloping collared mouth with ring – smooth base, ht. 9 3/8”, perfect. A scarce, attractive mold in amber or topaz, and possibly unique in this beautiful shade of puce. Great form, stunning color, outstanding condition!

Est.: \$4,000 - \$8,000 • Min. bid: \$2,500





American Glass Gallery™



CELEBRATING OUR TENTH AUCTION!

*Thank you for
participating
in our tenth
American Glass
Gallery auction!*

Seeking quality consignments for our upcoming auction schedule.

As a consignor, please consider the following benefits that will help to ensure your valued items reach their highest potential:

- Competitive consignor rates
- Broad based and extensive advertising for your valued items
- Highly detailed, thorough descriptions of all lots
- Experience, knowledge, honesty and integrity
- Attention to detail and customer service

For more information, please give us a call at:

248.486.0530 or visit our website at www.americanglassgallery.com



Are you receiving America's premier bottle and glass collecting magazine?

A monthly magazine featuring a great line up of columnists including:

Mark Vuono (American historical flasks), Mike George (New England glass), Richard Cannon, M.D. (medicines), Tom Caniff (fruit jars), Donald Tucker (Spouting off on Mineral Waters), Tom Haunton (Jerseyana Corner), "Digger McDir" (bottle identifier), Ralph Finch, and many others! Every issue includes feature articles on various topics related to antique bottles and their history plus lots of great digging stories throughout the year!

Buy-Sell-Trade

Thousands of dollars in bottles, relics and related items bought, sold and traded each month in our classified pages, plus the most up to date show calendar.

AB&GC also goes where the action is! We attend and report on many bottle shows yearly as well as important bottle and glass auctions.

12 colorful and informative monthly issues are still only \$32.00 postpaid!*

*\$47.00 for U.S. 1st Class and \$54.00 for Canada.



For more information, visit antiquebottleandglasscollector.com or call 248.486.0530