

American Glass Gallery™

Auction #13 Bidding Opens October 15, 2014 • Closes October 28, 2014

Important
Washington/
Tree Calabash
- Lot 9



ACGG

Conditions of Sale

1. Absentee Auction

The items in this sale will be sold via absentee auction, closing date:
October 28, 2014, 11:00 p.m., EST.

2. Our Guarantee Regarding Descriptions

American Glass Gallery has made every attempt to describe correctly the property being sold. Descriptions are guaranteed to be accurate as regards authenticity, age, condition, and measurements to within one-fourth inch, as represented in this catalog. In describing damage, exterior wear or manufacturer's flaws that in our opinion, do not significantly detract visually or monetarily from the value of the item are not listed and will not be considered for refund. The Auctioneers reserve the right to make verbal corrections and provide additional information at any time during the sale.

3. Preview

Items may be viewed by appointment from October 15, 2014 through October 25, 2014.

4. Bidding Procedure

You may submit your bids by mail, phone, FAX, email or through our on-line auction site. If bidding by mail or FAX, please fill out the absentee form and return it to us. Your bid, either written or oral, grants American Glass Gallery the authority to protect you up to the amount of your stated bid. Your bid will not be removed once executed.

Bidding Times: You can submit your bids anytime after receiving your catalog. Bids may be made by phone, daily, until closing day, October 28, 2014, from 9 A.M. - 7 P.M. Eastern Time. Incoming phone bids will be accepted on the closing day (October 28, 2014) until 11 P.M. Eastern Time. Phone calls and Fax bids after this time will not be honored. No exceptions. You may also place your bids through our on-line auction service 24-hours a day once the site has opened for bidding, on or about October 15, 2014, continuing until 11:00 P.M. Eastern Time, October 28, 2014.

Please do not wait until the last day or two of the sale to place your bids! Because many collectors wait until the final few days of the sale to place their bids, we anticipate the telephone and internet bidding to be very busy during that period, so please plan accordingly. In the event of a tie bid, the earliest received bid on the lot will take precedent. We would welcome your bids by phone so that we can answer any questions and assist you in your bidding.

You may also telephone us at any time during the auction, prior to the closing of the sale, to check the status of your bids, to find the current bidding level, to open a bid, or to raise a bid on an auction lot.

Bidding Increments are as follows:

Up to \$250.00.....increments of \$10.00
\$250.00 - \$500.00increments of \$25.00
\$500.00 - \$1,000.00increments of \$50.00
\$1,000.00 - \$2,500.00increments of \$100.00
\$2,500.00 - \$5,000.00increments of \$250.00
\$5,000.00 - \$10,000.00increments of \$500.00
\$10,000 & Up.....increments of \$1,000.00

Bids submitted between the above increments, whether by mail, FAX, email or on-line via the internet, will automatically be lowered to the closest lower increment.

This is a minimum bid auction. Bids below the printed minimum will not be accepted.

An example of how our absentee bidding system works: You bid \$600.00 on a lot which is the highest bid received to date. The second highest bid is \$450.00. The current high bid level would be yours at \$475.00, one bid increment higher than the other collector's bid. Any additional bids submitted by others below \$600.00 will automatically be topped on your behalf by a representative of American Glass Gallery, up to your stipulated high bid amount. If no further bids on this lot are received beyond the \$450.00, and the under bidder has not requested a "Call Back", then you would have won the lot at \$475.00, not the \$600.00 that you were prepared to pay.

American Glass Gallery will at NO TIME disclose bids pledged by others; only the current "High Bid" level of a lot will be stated upon request. The highest bidder as determined by American Glass Gallery shall be the purchaser. It is the sole right of the auctioneer to settle any dispute between bidders and to regulate the bidding procedure. The auctioneer reserves the right to refuse any bid he believes not to have been made in good faith.

5. "Call Back" Process

If requested, the three top bidders of an item at the time of closing will be given a "Call Back" over the next number of days in order to resolve the final sale of an item. You can request this service by "checking" the appropriate box on your absentee bid form or verbal agreement by phone. It is the responsibility of the bidder to insure he has qualified for this service.

Please note: No "Call Backs" will be executed for bids under \$400.00. In the event of tie bids, the earliest bid received will be the winning bid.

An example of how the "Call Back" process works: As an example, you have bid \$600.00 on a particular lot. Another bidder has submitted a bid of \$900.00 on the same lot. Assuming that as of the auction closing date you are among the top three bidders on this lot and you have requested a "Call Back", you would receive a call informing you that you have been "Out Bid" and the current "High Bid" is now at \$650.00. If you choose to continue bidding on this lot, you may now do so. Assuming that you now increase your bid to \$700.00, we would accept your bid but also inform you that we have a higher bid on this lot and must bid \$750.00. At this time, an auction between you and American Glass Gallery, representing the collector who submitted the bid of \$900.00, takes place. This bidding would continue until you drop out, or top the other bidders high bid of \$900.00. If the other bidder has not requested a "Call Back" service, you would be awarded the lot. If however, the other bidder also requested a Call Back, we must now call them. If they elect to increase their bid over your high bid, we would in turn call you back. This back and fourth process would continue until one of the bidders declines to go any farther.

If you have requested a "Call Back", the auctioneers will need to contact you on the days immediately following the auction closing between the hours of 8 A.M. and 9 P.M. Eastern Time. Please supply us with all appropriate contact phone numbers including, home, mobile and work numbers. Bidders must provide the appropriate telephone numbers where they can be contacted. If you will be traveling or otherwise unavailable, bidders with "Call Back" privileges will have the responsibility to contact American Glass Gallery twice daily during the Call Back period.

Please note, every effort will be made to contact you during the "Call Back" period. However, the bidder will forfeit their rights to a "Call Back" if the auctioneers are unable to reach them. American Glass Gallery reserves the right to discontinue Call Backs on any item in the sale (2) two days after the closing date of the sale. At that time, the current "High Bidder" may be awarded the item even if Call Backs are still outstanding.

6. Terms

Successful Bidders, Prompt and full payment is due immediately upon receipt of our invoice. Absolutely no exceptions. Anyone failing to pay for items won will forfeit all rights to bid in any future American Glass Gallery sales. *Any late or delayed payments may result in loss of return privileges for items purchased in the sale.*

No Items Will Be Mailed Before Full Payment Is Received.

Buyer Premium: A 15% buyer's premium will be added to the hammer price (18% if paying by Credit Card or PayPal), to be paid by the buyer as part of the purchase price. For example, if you purchase a lot for \$100.00, you will receive an invoice for \$115.00 if paying by cash, check or money order, plus any applicable sales tax or shipping charges.

Taxes: If you are a Michigan resident, a 6% sales tax will be added to your bill unless you have a valid resale number registered with us.

Shipping: Shipping, handling and insurance are extra. We ship insured via U.S. Mail. These charges will be added to your bill unless the lots are picked up in person. Our charges for shipping (excluding foreign shipments and oversized lots) are \$18.00 for the first item, \$9.00 for each additional item together with extra insurance costs (we use current U.S. Postal Service insurance rates).

Please allow two to four weeks for delivery after receipt of your check.

Payment: American Glass Gallery accepts Cash, Money Orders, Personal Checks, Visa, MasterCard, American Express and PayPal. *If paying by Credit Card or PayPal, an additional 3% will be added to the invoice total.*



7. Refunds

Refunds will be given at the discretion of the Auctioneers. Items purchased must be examined and request for refund made immediately upon receipt of the item or items. Since opinions can differ, particularly in the matter of condition, the Auctioneers will be the sole judge in the consideration of refunds. Refunds requested on the grounds of authenticity must be made within 15 days of the date of the auction, and such refund requests must be accompanied by at least one supporting statement in writing from an authority recognized by the Auctioneers. It is the Auctioneers sincere intention to consider any reasonable request for a refund. *Absolutely no returns for any reason after 30 days following the closing of the sale.*

8. Bidding on any item indicates your acceptance of these terms.



American Glass Gallery™

John R. Pastor
P.O. Box 227
New Hudson, Michigan 48165
Phone: 248.486.0530
Fax: 248.486.0538
www.americanglassgallery.com
email: jpastor@americanglassgallery.com

PLEASE NOTE:

The lots offered in this printed catalog are identical to the lots offered in the on-line catalog. However, due to space constraints of the printed catalog, there may be some further information available regarding some of the lots in the on-line auction descriptions.

Please visit us at

www.americanglassgallery.com

and follow the link to the on-line auction.

The link and on-line auction will be available October 15, 2014.

A post-auction price list will be available on our website, in printable form, by November 8.

We encourage you to contact us by phone or email with any questions, for assistance with bidding, or further details or clarification on any of the lots in this sale. Your complete satisfaction and confidence is our goal!

We look forward to having you participate in our next sale, either as a buyer or a consignor. Our next absentee auction is scheduled for Spring, 2015. We already have some wonderful items consigned to this sale and look forward to discussing with you any quality items you wish to consign!

THANK YOU AND GOOD LUCK WITH YOUR BIDS!

Reference Key

Reference initials and numbers used in the description of this catalog refer to the following publications:

AHG	<i>American Historical Glass</i> , Bessie M. Lindsey, 1967
AM	<i>The Decanter - An Illustrated History of Glass from 1650</i> , Andy McConnell, 2004
AP	<i>Glass in Early America</i> , Arlene Palmer, 1993.
BA1	<i>Collecting The Cures</i> , Bill Agee, 1969
BA2	<i>Collecting All Cures</i> , Bill Agee, 1973.
BB	<i>A Bit About Balsams</i> , Betty Blasi, 1974
BH	<i>Classification and Documentation of Sunburst and Similar Scent Bottles</i> , Bill Ham, AB&GC, 5/87
B/K	<i>The Glass Industry in Sandwich</i> , Raymond Barlow and Joan Kaiser, 1989.
C	<i>Ink Bottles and Inkwells</i> , William Covill, 1971.
DeG	<i>American Sarsaparilla Bottles</i> , John DeGrafft, 1980.
DeGII	<i>Supplement to American Sarsaparilla Bottles</i> , John DeGrafft, 2004.
DF	<i>Hair Raising Stories</i> , Don Fadely, 1992.
DM	<i>Wistarburgh, Window Tiles, Bottles and More</i> , Dale L. Murscell, 2007.
F	<i>Inks, 150 Years of Bottles and Companies</i> , Ed and Lucy Faulkner.
FA	<i>John Frederick Amelung, Early American Glassmaker</i> , Lanmon, Palmer, Hume, Brill, Hanson, 1990.
FB	<i>A.S.C.R. The wine bottles of All Souls College</i> , Oxford, 1750 – 1850, Fay Banks.
G	(Flasks) <i>American Bottles & Flasks and Their Ancestry</i> , McKearin & Wilson, 1978.
G	(Blown Three Mold) <i>American Glass</i> (Chapter VI), George S. and Helen McKearin, 1941.
GBH	<i>English Glass For The Collector, 1660-1860</i> , G. Bernard Hughes, 1958.
H	<i>American Bottles in the Charles B. Gardner Collection</i> , Norman C. Heckler, 1975.
JB	<i>Patent and Proprietary Medicine Bottles</i> , Joseph K. Baldwin, 1973
JEB	<i>Glasshouse Whimsies</i> , Joyce E. Blake, 1984.
JH	<i>Glasshouses & Glass Manufacturers of the Pittsburgh Region, 1795 – 1910</i> , Jay W. Hawkins, 2009.
JS	<i>In glas verpakt – European Bottles, Their history and production</i> , Johan Soetens, 2001.
K	<i>Poison Bottle Workbook</i> , Rudy Kuhn, 1988.
KW	<i>New England Glass & Glassmaking</i> , Kenneth M. Wilson, 1972.
L	<i>The Red Book of Fruit Jars, No. 9</i> , Douglas M Leybourne, Jr., 2001.
LI	<i>Pittsburgh Glass, 1797 – 1891</i> , Lowell Innes, 1976.
Mc	<i>Two Hundred Years of American Blown Glass</i> , Helen and George McKearin, 1950.
McK	<i>American Glass</i> , George S. and Helen McKearin, 1941.
MW	<i>American Bottles & Flasks and Their Ancestry</i> , McKearin & Wilson, 1978.
N	<i>Great American Pontiled Medicines</i> , Frederick Nielson, 1978.
NCH	<i>The Blaske Collection of American Flasks</i> , Norman C. Heckler, 1983.
NCH II	<i>The Blaske Collection: Part II</i> , Norman C. Heckler, 1983.
Odell I	<i>Indian Bottles and Brands</i> , John Odell, 1977
Odell II	<i>Pontiled Medicine Encyclopdia</i> , John Odell, 2000
O&S	<i>Warner's Reference Guide</i> , Ed Ojea and Jack Stecher, 1998.
P	<i>The Glass Gaffers of New Jersey</i> , Adeline Pepper, 1971.
RD	<i>Understanding Antique Wine Bottles</i> , Roger Dumbrell, 1983.
RF	<i>The Bottle Book: A Comprehensive Guide to Historic, Embossed Medicine Bottles</i> , Richard Fike, 1987
RH	<i>Collecting Barber Bottles</i> , Richard Holiner, 1986.
R/H	<i>Bitters Bottles</i> , Carlyn Ring and W. C. Ham, 1998.
RWL	<i>Antique Fakes & Reproductions</i> , Ruth Webb Lee, 1950
T	<i>Collectors Guide to Saratoga Type Mineral Water Bottles</i> , Donald Tucker, 2005.
U	<i>Collectible Character Bottles</i> , Authur Umberger, 1969.
V	<i>Nailsea Glass</i> , Keith Vincent, 1975
VdB	<i>Antique Glass Bottles; Their History and Evolution</i> , Willy Van den Bossche, 2001.
WL	<i>A Wine-Lover's Glasses, The A.C. Hubbard, Jr. Collection</i> , Ward Lloyd, 2000.
Z	<i>Ketchup, Pickles, Sauces</i> , Betty Zumwalt, 1980.
ZW	<i>Color Hutchinsons</i> , Zang Wood, 1999.

- The dash is generally used to indicate that the descriptions are on opposite sides of the bottle or flask.

/ The slash is used to indicate that the descriptions are on different lines or surfaces of the bottle.



Lot 48 (Detail)

Rare Masonic Flasks



Lot 34



Lot 40



Lot 16



Wisharts Pine Tree Cordial Bottles

L.Q.C. Wishart, (Lucius Quintus Cincinnatus Wishart), was a grocer in Philadelphia in the 1840s and 1850s. At some point in this period he became a pharmacist/chemist and began making his famous "Pine Tree Tar Cordial." The cordial was purported to cure "Consumption of the lungs, Cough, Sore throat and breast, Bronchitis, Liver complaints, Blind and bleeding piles, Asthma, Whooping cough, and Diphtheria."

Around 1870, his son, Henry R. Wishart, took over the company. It was at this time that the bottles changed from the "PATENT 1859" to "TRADE MARK." Henry later sold the company to Harry

Campion & Sons. Campion continued to make the Cordial into the early 1900s.

The Wishart bottles have become one of the most beloved and collectible of all the early medicines. Over the span of more than 40 years, Wishart bottles were produced in three different sizes (not including the oddball variants), a rainbow of colors, with numerous pine tree motifs, and can be found in both pontiled and smooth-base variations. It is easy to see why Wisharts are so popular with collectors today.

We would like to thank Larry Marshall, long-time collector and authority on Wishart bottles, for contributing information on the history of L.Q.C. Wishart, his company, and their bottles.



Lot 208

Lot 211

Lot 210

Lot 212

Lot 209

Choice Pattern-Molded “Pitkin” Flasks

To the collector of early American glass, pattern-molded pocket flasks blown in the German half-post method—commonly known as “Pitkin” flasks—have few if any rivals when it comes to craftsmanship, beauty, individuality, as well as variety of color, form and pattern.

In addition, these lovely vessels were made in virtually every region of the eastern United States that engaged in the manufacture of glass in a period spanning roughly 1750 to about 1830. After that, time-saving

molds of various kinds became commonplace and the sturdy but labor-intensive half-post method soon faded away.

Among the fine group of pitkin-type flasks in this auction, there are examples from all regions including New England, the Mid-Atlantic as well as the Midwestern regions of Ohio and western Pennsylvania.

While the majority of the New England examples tend to be blown in a more slender

and delicate fashion and in shades of olive greens and olive ambers, those from the mid-atlantic and midwest are typically a bit heavier and more rounded and come in a wider range of colors including greens of many shades, aquamarine and true ambers from root beer to honey.

As with most fine Americana, these flask are becoming more and more difficult to find but it is still possible to assemble a representative collection for a reasonable amount of money.



Rare Midwestern Globular Bottles, 1815-1840

These Midwestern globular bottles were a continuation of the early globs blown in New England, and prior to that, across the pond, in England and Europe. Midwestern globs (those blown in the Ohio River Valley), are very graceful in form and can typically be distinguished from their New England counterparts having several somewhat unique characteristics. Midwest globs tend to have very symmetrical, spherical, bodies, they are usually lighter in weight and have different lip characteristics, generally delicate outward folded collars.

Colors also differ with the Midwest globs favoring the more brilliant glass, golden tones, aquamarines, light greens, and on rare occasion, in the bright greens or olive toned examples such as Lot #66.

Lots 66 & 67 in the current sale are also interesting from the standpoint of their size. As the image clearly demonstrates, they are both significantly larger than lot 68 (shown in the center), which at 8 ¼", is typical of the size normally encountered.

Although blown contemporaneously with their better known, 24-rib patterned cousins, the unpatterned "globs" are, generally speaking, much more difficult to acquire. However, putting together a small grouping of these early spherical bottles can still be accomplished without breaking the bank. They are beautiful, early, and very impressive when displayed as a collection.





Lot 1

"GENERAL WASHINGTON." / BUST OF WASHINGTON - EAGLE Historical Flask, probably an early Pittsburgh district glasshouse, 1825 - 1835. Aquamarine, sheared mouth - blowpipe pontil scar, Pt; (just a faint touch of light high point wear, otherwise virtually attic mint). GI-2. A great example of one of the early, "Beaded Washingtons".

Est.: \$400 - \$600 • Min. bid: \$250



Lot 5

"GENERAL WASHINGTON" / BUST OF WASHINGTON - EAGLE / "T.W.D" Historical Flask, Kensington Glass Works, 1826 - 1835. Light aquamarine, sheared mouth - blowpipe pontil scar, Pt; (a little light exterior high point wear and some faint, primarily interior, milky stain along the sides and shoulder, otherwise very near mint). GI-15. A relatively scarce mold, and with a good strong impression.

Est.: \$400 - \$600 • Min. bid: \$250



Lot 2

"G. WASHINGTON." / BUST OF WASHINGTON - EAGLE Historical Flask, an early Pittsburgh glasshouse, 1825 - 1835. Deep aquamarine, sheared mouth - blowpipe pontil scar, Pt; (a little light high point wear on Washington's cheek and forehead; a 3/8" open bubble on medial rib near edge of base). GI-10 A beautiful example, bright, crisp, and with a bold impression! Ex. David Goad, Tom McCandless collections.

Est.: \$700 - \$1,200 • Min. bid: \$400



Lot 6

WASHINGTON - EAGLE Historical Flask, probably Bridgeton Glass Works, Bridgeton, NJ, 1845 - 1855. Deep aquamarine, sheared mouth - blowpipe pontil scar, Qt; (just a slight touch of very light high point wear, and a minor, faint light haze in the lower half, otherwise perfect). GI-26. A bold, attractive flask, nice rich color, and without the usual high point wear so often encountered on this mold.

Est.: \$175 - \$350 • Min. bid: \$100



Lot 3

"GENERAL WASHINGTON" / BUST OF WASHINGTON - "E PLURIBUS UNUM" / EAGLE / "T.W.D - ADAMS & JEFFERSON / JULY 4 A.D. 1776 - KENSINGTON GLASS / WORKS PHILADELPHIA" Historical Flask, Kensington Glass Works, 1826 - 1835. Aquamarine, sheared mouth - blowpipe pontil, Pt., perfect. GI-14. A crisp, sparkling example with a bold impression!

Est.: \$400 - \$600 • Min. bid: \$250



Lot 7

"ALBANY GLASS WORKS" / BUST OF WASHINGTON / "ALBANY / NY" - SAILING SHIP Historical Flask, Albany Glass Works, 1847 - 1850. Blue green, large, applied round double collared mouth - blowpipe pontil scar, Pt., very near mint; (minor 1/8" open bubble at medial rib, near base). GI-28. A comparatively scarce flask, great lip finish, virtually no high point wear, and rare in this attractive blue green color!

Est.: \$2,000 - \$4,000 • Min. bid: \$1,200



Lot 4

"GENERAL WASHINGTON" / BUST OF WASHINGTON - "E PLURIBUS UNUM" / EAGLE / "T.W.D - ADAMS & JEFFERSON / JULY 4 A.D. 1776 - KENSINGTON GLASS / WORKS PHILADELPHIA" Historical Flask, Kensington Glass Works, 1826 - 1835. Medium emerald, sheared mouth - blowpipe pontil, Pt., virtually attic mint; (a slightly weak impression in the shoulder as is typical for this mold). GI-14. Beautiful.

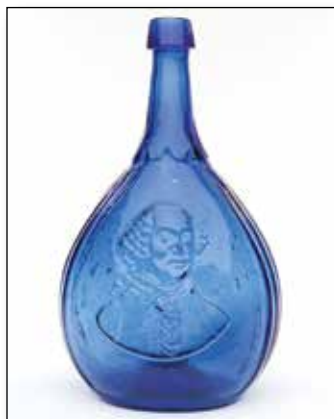
Est.: \$5,000 - \$8,000 • Min. bid: \$3,000



Lot 8

"WASHINGTON" / BUST OF WASHINGTON - "JACKSON" / BUST OF JACKSON Historical Flask, Coventry Glass Works, Coventry, Connecticut, 1830 - 1840. Medium olive amber, sheared mouth - blowpipe pontil scar, 1/2 Pt; (a minor pinhead bit of roughness on the top of the sheared mouth that likely occurred at manufacture, and a little light exterior high point wear). GI-34.

Est.: \$250 - \$350 • Min. bid: \$150



Lot 9

BUST OF WASHINGTON - TREE, Historical Calabash. America, 1850 - 1860. Brilliant cobalt blue, applied sloping collar - blowpipe pontil scar, Qt., virtually attic mint; (tiny pinprick spot of roughness along the bottom edge of the sloping collar, just the slightest trace of light exterior wear, a touch of very light residue on the interior that would almost certainly wash out). GI-35. A stunning Calabash, very deep color, outstanding condition, strong impression.

Est.: \$15,000 - \$30,000 • Min. bid: \$8,000



Lot 10

“THE FATHER OF HIS COUNTRY” / BUST OF WASHINGTON - “A LITTLE MORE GRAPE CAPTAIN BRAGG” / BUST OF TAYLOR, Historical Flask, Dyottville Glass Works, 1848 - 1860. Light emerald coloration, applied round double collar - blowpipe pontil scar, Qt; (some minor high point wear and a couple of light scratches, otherwise perfect). GI-42. Good strong embossing, scarce in the pure green color.

Est.: \$500 - \$800 • Min. bid: \$300



Lot 11

“THE FATHER OF HIS COUNTRY” / BUST OF WASHINGTON - (Reverse Plain) Historical Flask, probably Lockport Glass Works, Lockport, NY, 1850 - 1860. Medium blue green, applied round double collared mouth - blowpipe pontil scar, Qt; (a touch of light exterior wear and just a little bit of spotty, very faint interior haze in the shoulder, otherwise excellent). GI-47.

Est.: \$400 - \$600 • Min. bid: \$250



Lot 12

WASHINGTON - TAYLOR PORTRAIT FLASK, probably Dyottville Glass Works, 1848 - 1860. Clear light emerald green, sheared mouth - blowpipe pontil scar, Qt; (a narrow ring of very light haze in the shoulder, and a touch of light exterior wear, otherwise very near mint). GI-54. A good looking example and fresh to the market from a 50+ year old collection in eastern Maryland.

Est.: \$500 - \$800 • Min. bid: \$300



Lot 13

WASHINGTON - TAYLOR PORTRAIT FLASK, probably Dyottville Glass Works, Philadelphia, PA, 1855 - 1860. Rich medium emerald coloration, applied sloping collar with ring - smooth base, Qt, near mint; (just a touch of minor high point wear and a small pinhead bit of roughness, possibly in-manufacture, on the edge of the applied mouth, otherwise perfect). GI-54. A beautiful, rich, scarce color that does not wash out, also nicely whittled!

Est.: \$800 - \$1,600 • Min. bid: \$500



Lot 14

“GENL TAYLOR” / BUST OF TAYLOR - “FELLS POINT” / MONUMENT / “BALTo” Historical Flask, probably Baltimore Glass Works, 1825 - 1835. Very pale aquamarine, almost colorless, sheared mouth - blowpipe pontil scar, Pt; (a small area of light spotty interior haze, primarily along one of the sides, and a very faint band across the reverse, otherwise excellent). GI-73.

Est.: \$175 - \$350 • Min. bid: \$100



Lot 15

“LAFAYETTE” / BUST OF LAFAYETTE / “T.S.” - “DE WITT CLINTON” / BUST OF CLINTON / “CONVENTRY / C-T” Historical Flask, Coventry Glass Works, 1824 - 1830. Olive amber, sheared mouth - pontil scar, Pt; (a little high point wear and some light interior residue or film, some of which may wash out, some exterior “grunge” or soot between the corrugated ribbing). GI-80. A very crude example that looks like it was just pulled from an attic.

Est.: \$1,000 - \$1,500 • Min. bid: \$600



Lot 16

“LAFAYETTE” / BUST OF LAFAYETTE / “T.S.” - MASONIC Historical Flask, Coventry Glass Works, 1824 - 1826. Bright yellowish olive with a slight amber tone, almost an olive yellow through the shoulders, sheared mouth - blowpipe pontil scar, Pt, virtually pristine! (a tiny, pinhead open bubble near base). GI-83. An outstanding example of this very rare and desirable mold. Fresh discovery from a 50+ year old collection in eastern Maryland.

Est.: \$5,000 - \$10,000 • Min. bid: \$2,500



Lot 17

"LAFAYETTE" / BUST OF LAFAYETTE / "COVENTRY / C-T" - STARS AND LIBERTY CAP / "S&S" Historical Flask, Coventry Glass Works, 1825 - 1830. Yellowish amber with an olive tone, sheared mouth - pontil scar, ½ Pt., near mint; (a tiny, pinprick bit of roughness on one of the medial ribs and just a slight hint of high point wear, otherwise perfect). GI-86. Another nice example, excellent condition, with a bit more of an amber tone.

Est.: \$700 - \$1,200 • Min. bid: \$400



Lot 18

"LAFAYETTE" / BUST OF LAFAYETTE / "COVENTRY / C-T" - STARS AND LIBERTY CAP / "S&S" Historical Flask, Coventry Glass Works, Coventry, CT, 1825 - 1830. Bright yellowish olive amber in the shoulders shading to a deep olive amber near the base, sheared mouth - pontil scar, ½ Pt., near mint; (a pinhead flake at edge of sheared mouth). GI-86. A pretty example with a crisp, very strong impression. Ex. Robert White collection.

Est.: \$700 - \$1,400 • Min. bid: \$400



Lot 19

"GENERAL LA FAYETTE" / BUST OF LAFAYETTE - "REPUBLICAN GRATITUDE - KENSINGTON GLASS WORKS PHILADELPHIA - E. PLURIBUS UNUM" / EAGLE / "T.W.D." Historical Flask, Kensington Glass Works, 1825 - 1830. Aquamarine, sheared mouth - pontil scar, Pt, near mint; (a small area of spotty, very faint interior stain that is not terribly noticeable). GI-90. Good impression.

Est.: \$300 - \$500 • Min. bid: \$180



Lot 20

"GENERAL LA FAYETTE" / BUST OF LAFAYETTE - "REPUBLICAN GRATITUDE - KENSINGTON GLASS WORKS PHILADELPHIA - E. PLURIBUS UNUM" / EAGLE / "T.W.D." Historical Flask, Kensington Glass Works, 1825 - 1830. Aquamarine, sheared mouth - pontil scar, Pt; (a shallow 1/8" flake on inside edge of lip; a little high point wear, a little very light interior shoulder haze). GI-90.

Est.: \$200 - \$400 • Min. bid: \$120



Lot 21

BUST OF FRANKLIN - BUST OF FRANKLIN Historical Flask, probably Kensington Glass Works, Philadelphia, PA, 1830 - 1838. Aquamarine, sheared mouth - blowpipe pontil scar, Qt, near mint; (just a little relatively light exterior high point wear, otherwise virtually attic mint). GI-97. A scarce mold, nice condition, and a good looking early flask.

Est.: \$250 - \$450 • Min. bid: \$150



Lot 22

EAGLE - CORNUCOPIA Historical Flask, an early Pittsburgh district glasshouse, 1825 - 1835. Greenish aquamarine, sheared mouth - blowpipe pontil scar, Pt, virtually attic mint; (extremely minor trace of light high point wear, otherwise pristine perfect). GI-6. Note; there is a fold of glass along the side of the neck created during the blowing process. A comparatively scarce flask, outstanding condition.

Est.: \$400 - \$600 • Min. bid: \$250



Lot 23

EAGLE - CORNUCOPIA Historical Flask, an early Pittsburgh - Monongahela district glasshouse, 1825 - 1835. Bluish aquamarine, sheared mouth - blowpipe pontil scar, ½ Pt; (a shallow, paper-thin pontil flake extends to the edge of the base, otherwise, attic mint!) GI-11. A bright, crisp example with a very bold impression. Note; there is a small, reddish ring along the inside edge of the sheared mouth that appears to be an oxide deposit, likely from a bare iron blowpipe. A scarce little flask.

Est.: \$300 - \$500 • Min. bid: 180



Lot 24

EAGLE - CORNUCOPIA Historical Flask, probably an early Pittsburgh district glasshouse, 1825 - 1840. Aquamarine, sheared mouth - blowpipe pontil scar, ½ Pt, near mint; (a small area of very fine lip edge roughness, and a horizontal crazing line along the base of the neck on one side that occurred in-manufacture, and is not considered damage, otherwise virtually attic mint). GI-15a. An extremely rare mold, and very early.

Est.: \$400 - \$800 • Min. bid: \$250



Lot 25

EAGLE - CORNUCOPIA Historical Flask, America, possibly Kensington Glass Works, Philadelphia, Pennsylvania, 1830 - 1838. Light aquamarine, sheared mouth - blowpipe pontil scar, ½ Pt; (just the slightest trace of very minor high point wear on the reverse, otherwise pristine perfect!) GII-46. A scarce mold, and a sparkling gem of an example.

Est.: \$200 - \$400 • Min. bid: \$120



Lot 29

EAGLE - CORNUCOPIA Historical Flask, probably Keene Marlboro Street Glassworks, Keene, New Hampshire, 1830 - 1842. Bright yellowish olive amber, sheared mouth - blowpipe pontil scar, Pt, perfect. GII-72b. A great example, pretty, with nice glass character and virtually no high point wear. A scarce mold, listed as "Rare" by McKearin.

Est.: \$200 - \$400 • Min. bid: \$120



Lot 26

EAGLE - "LIBERTY" / OAK TREE Historical Flask, possibly an early Pittsburgh district glasshouse, 1825 - 1835. Rich medium to deep golden amber shading to a lighter yellowish golden along the sides, sheared mouth - blowpipe pontil scar, ½ Pt, near mint; (a little high point wear and a small pinhead open bubble). GII-60. Many of these can be so dark as to appear almost black. This one is a little lighter, attractive, and easily passes light in a window or back-lit shelf.

Est.: \$1,400 - \$2,200 • Min. bid: \$700



Lot 30

EAGLE - CORNUCOPIA Historical Flask, probably Keene Marlboro Street Glassworks, Keene, New Hampshire, 1830 - 1842. Yellowish olive amber, sheared mouth - blowpipe pontil scar, Pt, very near mint; (just a pinhead open bubble and a wisp of very light wear, otherwise perfect). GII-73. From an old collection in eastern Maryland. A nice example, better than most, having very little wear, and nice clarity to the glass.

Est.: \$175 - \$275 • Min. bid: \$100



Lot 27

"LIBERTY" / Eagle - "WILLINGTON / GLASS, Co / WEST WILLINGTON / CONN" Historical Flask, Willington Glass Works, 1860 - 1872. Medium to deep olive shading to a beautiful light olive along the sides and in the shoulders, applied sloping collar - smooth base, Pt, virtually attic mint! Note; a slightly weak impression, primarily on the reverse, as is often found on this mold. GII-64. A nice example of this classic New England flask.

Est.: \$300 - \$500 • Min. bid: \$180



Lot 31

EAGLE / "GRANITE. / GLASS. CO" - EAGLE / "STODDARD / N H" Historical Flask, Granite Glass Co, Stoddard, NH, 1846 - 1860. Bright yellowish amber with a slight olive tone, sheared mouth - blowpipe pontil scar, Pt, attic mint. GII-81. A beautiful, very attractive example, light and bright through the shoulders, with a good impression and virtually no wear, as is common on these flasks.

Est.: \$225 - \$450 • Min. bid: \$150



Lot 28

EAGLE - EAGLE Historical Flask, Coventry Glass Works, Coventry, Connecticut, 1835 - 1845. Clear medium yellowish olive in the shoulders, shading to a deeper olive near the base, sheared mouth - blowpipe pontil scar, ½ Pt, very near mint; (just a slight touch of light high point wear, otherwise perfect). GII-71. A very good example of this early Eagle Flask, having nice character, and very little wear.

Est.: \$250 - \$450 • Min. bid: \$150



Lot 32

EAGLE / "PITTSBURGH / PA" - EAGLE Historical Flask, a Pittsburgh district glasshouse, 1860 - 1870. Rich, medium to deep forest green with a slight yellowish tone, applied mouth with ring - smooth base, Pt; (a little fine high point wear and a few light scratches in the lower right corner above the base, on the reverse). GII-108. A nice rich, deep color.

Est.: \$300 - \$500 • Min. bid: \$180



Lot 33

CORNUCOPIA - CORNUCOPIA Pictorial Flask, probably Kensington Glass Works, Philadelphia, PA, 1830 - 1838. Aquamarine, sheared mouth - blowpipe pontil scar, ½ Pt, near mint; (a 1/8" spot of very minor lip edge roughness and an in-manufacture pontil flake that extends to edge of base). GIII-2. A comparatively scarce little flask, bright, crisp and clean. Fresh to the market from an old time eastern Maryland collection.

Est.: \$200 - \$400 • Min. bid: \$120



Lot 37

MASONIC ARCH - EAGLE / "KCCNE" Historical Flask, Keene Marlboro Street Glassworks, Keene, NH, 1820 - 1830. Bright, light yellowish olive amber, almost an olive yellow, sheared mouth - blowpipe pontil scar, Pt, very near mint; (just a very minor touch of faint high point wear, otherwise perfect). GIV-20. A comparatively scarce mold, and in a beautiful, light color!

Est.: \$225 - \$450 • Min. bid: \$150



Lot 34

MASONIC - EAGLE Historical Flask, probably Keene Marlboro Street Glassworks, Keene, NH, 1817 - 1825. Medium to deep greenish aquamarine, sheared mouth with tooled ring type collar - blowpipe pontil scar, ½ Pt, near mint; (just a slight touch of very minor wear, a pinprick bit of roughness on the inside edge of the sheared mouth). GIV-14. A rare mold, very early, nice glass clarity, and with a strong mold impression!

Est.: \$800 - \$1,600 • Min. bid: \$400



Lot 38

MASONIC ARCH - EAGLE Historical Flask, Keene Marlboro Street Glassworks, Keene, NH, 1820 - 1830. Clear yellowish olive green in the shoulders shading to a deep olive in the neck and base, sheared mouth - blowpipe pontil scar, Pt; (a little exterior high point wear, otherwise very near mint). GIV-21. Listed as "Comparatively scarce", and not an easy mold to acquire. Nice color.

Est.: \$300 - \$500 • Min. bid: \$180



Lot 35

MASONIC ARCH - EAGLE / "KCCNE" Historical Flask, Keene Marlboro Street Glassworks, Keene, NH, 1820 - 1830. Yellowish olive amber, sheared mouth - blowpipe pontil scar, Pt, near mint; (a touch of minor high point wear, and a tiny, barely pinhead flake on the inside edge of the sheared mouth). GIV-18.

Est.: \$200 - \$400 • Min. bid: \$120



Lot 39

MASONIC - "ZANESVILLE" / EAGLE / "OHIO / J. SHEPARD & CO", Historical Flask, Zanesville Glassworks, Zanesville, Ohio, 1822 - 1832. Medium to deep orange amber, sheared mouth - blowpipe pontil scar, Pt; (some fine exterior high point wear and a couple of shallow, very minor pinhead flakes off top of sheared lip; slightly weak impression as is typical on this mold). GIV-32. A desirable mold, attractive "orangy" color.

Est.: \$600 - \$900 • Min. bid: \$400



Lot 36

MASONIC ARCH - EAGLE / "KCCNE" Historical Flask, Keene Marlboro Street Glassworks, Keene, NH, 1820 - 1830. Yellowish olive amber, sheared mouth - blowpipe pontil scar, Pt, very near mint; (a very minor bit of light high point wear, otherwise perfect). GIV-19. A good, clean example.

Est.: \$200 - \$400 • Min. bid: \$120



Lot 40

MASONIC - "ZANESVILLE" / EAGLE / "OHIO / J. SHEPARD & CO", Historical Flask, Zanesville Glassworks, Zanesville, Ohio, 1822 - 1832. Brilliant medium to deep aquamarine, sheared mouth - blowpipe pontil scar, Pt; near mint; (just a slight touch of very minor high point wear and a shallow, pinhead open bubble that is not easy to see). GIV-32. A very nice example, clean, rich color, good mold impression.

Est.: \$400 - \$800 • Min. bid: \$250

**Lot 41**

MASONIC - EAGLE / "T.W.D"
Historical Flask, Kensington Glass Works, Philadelphia, Pennsylvania, 1825 - 1838. Light greenish aquamarine, sheared mouth - blowpipe pontil scar, pint, crisp, sparkling, virtually attic mint. GIV-37. If you have been looking for a top example of this scarce, early Masonic mold, this might be the one.

Est.: \$200 - \$400 • Min. bid: \$120

**Lot 45**

SCROLL FLASK, Midwest America, 1845 - 1860. Clear medium apple green, almost a grass green, sheared mouth - blowpipe pontil scar, Pt, near mint; (shallow 1/8" flake and a very minor pinhead bit of roughness on the edge of the sheared mouth). Unlisted, - similar to GIX-11 (with defined space between scrolls at center, but having an ill-defined 9-pointed upper star). Nice color and clarity

Est.: \$500 - \$800 • Min. bid: \$300

**Lot 42**

"SUCCESS TO THE RAILROAD" / HORSE PULLING CART - (REVERSE SAME) Historical Flask, possibly Mt. Vernon Glass Works, Vernon, NY, 1830 - 1844. Clear medium olive, sheared mouth - blowpipe pontil scar, Pt; (a 1/8" shallow open bubble and a little high point wear, primarily on the reverse, a minor 1/4" paper-thin flake at edge of base). GV-5. A nice example, scarce in this pure green coloration.

Est.: \$400 - \$800 • Min. bid: \$250

**Lot 46**

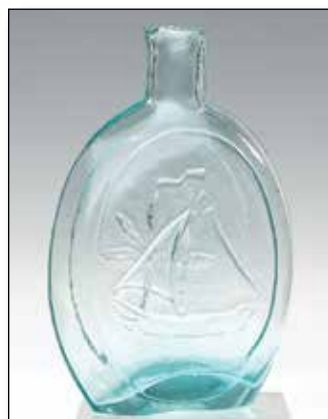
SCROLL FLASK, Midwest America, 1850 - 1860. Medium amber shading to a lighter yellowish golden near the sides, crudely applied short tapered collar - red iron pontil scar, Pt; (a 1/8" flake and a couple of very minor, pinhead bits of roughness on top of the mouth; some very light interior residue or haze in the lower portion of the flask that may wash out). GIX-11. An attractive flask, scarce having the applied collar. Ex. David Beadle collection.

Est.: \$500 - \$1,000 • Min. bid: \$300

**Lot 43**

"SUCCESS TO THE RAILROAD" / HORSE PULLING CART - (REVERSE SAME) Historical Flask, possibly Mt. Vernon Glass Works, 1830 - 1844. Dense olive amber, almost a tobacco coloration, sheared mouth - blowpipe pontil scar, Pt; (a weakened impression in the shoulder as is often the case, a 1/8" open surface bubble, and a tiny 1/8" bit of roughness at edge of base). GV-5. A good crude example, and with almost no high point wear.

Est.: \$400 - \$600 • Min. bid: \$250

**Lot 47**

SLOOP - STAR Pictorial Flask, probably Bridgeton Glass Works, Bridgeton, New Jersey, 1846 - 1855. Aquamarine, sheared tooled mouth - blowpipe pontil scar, 1/2 Pt, very near mint; (just a little light high point wear, otherwise perfect!) GX-8. A nice example, and a comparatively scarce little flask.

Est.: \$175 - \$350 • Min. bid: \$100

**Lot 44**

SUNBURST FLASK, New England, probably Coventry Glass Works, Coventry, Connecticut, 1815 - 1830. Bright, light yellowish olive amber, sheared mouth - blowpipe pontil scar, 1/2 Pt, very near mint; (just a slight touch of very minor high point wear, otherwise perfect!) GVIII-16. A very nice example, lighter in tone than most.

Est.: \$600 - \$900 • Min. bid: \$300

**Lot 48**

"SUMMER" / TREE IN FOLIAGE - "WINTER" / BARE TREE Pictorial Flask, America, possibly Baltimore Glass Works, Baltimore, MD, 1855 - 1865. Gorgeous, almost pure yellow coloration with a hint of honey or topaz, applied round double collar - smooth base, Pt; (a tiny bit of light residue or haze in the neck, otherwise near attic mint). GX-15. Outstanding color and one of the most vibrant, deepest yellow examples that we have seen.

Est.: \$1,500 - \$2,500 • Min. bid: \$800



Lot 49

CLASPED HANDS / "UNION" - EAGLE Historical Calabash, America, possibly A.R. Samuels, Philadelphia, PA, 1858 - 1866. Medium to deep amber, applied round double collar - iron pontil scar, Qt., near attic mint; (just a slight touch of light high point wear, otherwise perfect!) GXII-43. A very nice example from an early eastern Maryland collection assembled in the 1950's.

Est.: \$225 - \$450 • Min. bid: \$120



Lot 53

"BALTIMORE" / ANCHOR / "GLASS WORKS" - PHOENIX / "RESURGAM" Historical Flask, Baltimore Glass Works, Baltimore, MD, 1855 - 1865. Medium to deep yellowish green with an olive tone, applied square collar - smooth base, Pt, near mint; (just a small area, 1/4", of very fine, minor lip edge roughness, and a touch of faint light high point wear, otherwise perfect). GXIII-53. A very rare color, beautiful, and in excellent condition.

Est.: \$3,000 - \$6,000 • Min. bid: \$1,500



Lot 50

CLASPED HANDS / "UNION" - EAGLE Historical Calabash, America, possibly A.R. Samuels, Philadelphia, PA, 1858 - 1866. Bright yellowish (citron), green, applied round double collar - sand type pontil scar, Qt; (just a narrow ring of light residue in the shoulder that would almost certainly wash out; a little in-manufacture crazing in the neck, otherwise perfect). GXII-43. A great example, beautiful color, whittled, and with a strong impression.

Est.: \$400 - \$600 • Min. bid: \$250



Lot 54

"SPRING GARDEN" / ANCHOR / "GLASSWORKS" - LOG CABIN Historical Flask, Spring Garden Glass Works, Baltimore, MD, 1851 - 1856. Aquamarine, applied round collar with lower bevel - smooth base, 1/2 Pt, attic mint. GXIII-61. A very clean example with brilliant glass. Fresh from an early eastern Maryland collection assembled in the 1950's.

Est.: \$175 - \$350 • Min. bid: \$100



Lot 51

HUNTER - FISHERMAN Pictorial Calabash, probably Whitney Glass Works, Glassboro, NJ, 1857 - 1865. Bright golden amber, applied sloping collar - iron pontil scar, Qt, virtually attic mint; (just a very slight bit of light residue on the interior that would likely wash out and a tiny, barely pinhead open surface bubble, otherwise perfect). GXIII-4. A nice clean example, void of the high point wear often encountered on these.

Est.: \$250 - \$450 • Min. bid: \$150



Lot 55

"SPRING GARDEN" / ANCHOR / "GLASSWORKS" - LOG CABIN Historical Flask, Spring Garden Glass Works, Baltimore, MD, 1851 - 1856. Light citron green, applied round collar with lower bevel - smooth base, 1/2 Pt, virtually attic mint; (tiny area of very minor roughness on inside edge of mouth, likely in-manufacture, and a tiny pinprick bit of roughness at base edge). GXIII-61. Attractive, unlisted color, finest possible mold impression.

Est.: \$600 - \$1,200 • Min. bid: \$300



Lot 52

SHEAF OF GRAIN - TREE Pictorial Calabash, probably Sheets & Duffy Glass Manufacturers, Philadelphia, PA, 1850 - 1860. Clear, medium blue green, applied round collar with lower bevel - heavy blowpipe pontil scar, Qt, very near mint; (just the slightest touch of typical, very minor light exterior wear, a little residue near base that would likely wash out). GXIII-46. Not easy to find in this color and condition.

Est.: \$400 - \$800 • Min. bid: \$250



Lot 56

"SPRING GARDEN" / ANCHOR / "GLASSWORKS" - LOG CABIN Historical Flask, Spring Garden Glass Works, Baltimore, MD, 1851 - 1856. Brilliant yellowish golden amber, applied round collar with lower bevel - smooth base, 1/2 Pt, very near mint; (just a touch of very faint interior residue or light haze near shoulder that may wash out and a slightly weak impression near shoulder). GXIII-61. Another nice example, good color.

Est.: \$1,800 - \$2,400 • Min. bid: \$1,000



Lot 57

WREATH - (Reverse Plain) Pictorial Flask, America, 1875 - 1885.

Bright yellowish (citron) green, tooled, threaded, factory ground mouth with period, likely original metal cap - smooth base, Pt, virtually attic mint; (just a slight trace of very light wear, otherwise pristine). GXIII-81. McKearin notes this mold as "Comparatively scarce". However, it is unlisted in this color! Beautiful, eye-appealing flask.

Est.: \$200 - \$400 • Min. bid: \$120



Lot 61

Freeblown Chestnut Flask, New England, 1785 - 1820. Bright medium olive amber shading to a deeper olive amber through the neck, chestnut form, sheared mouth with an applied string lip - blowpipe pontil scar, ht. 8 ¼", near attic mint; (a slight bit of very light exterior wear, otherwise perfect). Good color and clarity, nice larger size!

Est.: \$300 - \$450 • Min. bid: \$180



Lot 58

LAUREL WREATH / KEYSTONE - (Reverse Plain) Pictorial Flask,

probably a Pittsburgh area glasshouse, possibly Fahnestock, Fortune & Co, Keystone Glass Works, 1866 - 1873. Beautiful yellowish honey, tooled, threaded and ground mouth with original metal cap - (embossed keystone design on smooth base), ½ Pt, perfect. Unlisted by McKearin, and likely a very rare little flask. An Eagle and "PATENT / SCREW" are lightly debossed on metal cap.

Est.: \$200 - \$400 • Min. bid: \$120



Lot 62

Freeblown Decanter or Table Serving Bottle, Eastern US, probably Mid-Atlantic, 1780 - 1820. Clear, medium golden, decanter form with slightly flattened sides tapering to a nearly cylindrical base, tooled, heavy outward rolled collar - blowpipe pontil scar, ht. 9 ½"; (just a touch of minor exterior wear, otherwise perfect). A scarce, attractive form, beautiful, scarce color (typically found in deep amber tones), and full of tiny seed bubbles.

Est.: \$700 - \$1,200 • Min. bid: \$400



Lot 59

"P. CAMPBELL / WHOLESALE / LIQUOR DEALER / 18 SPRING ST / N.Y." - "WHITNEY / GLASS WORKS" (on base), Whiskey Flask, 1870 - 1880. Beautiful yellowish honey coloration, applied round double collar - smooth base, Pt, virtually attic mint. A very rare private mold flask. A quart, amber, example (without the glasshouse marking on base), was sold in 2003, this being the only pint known.

Est.: \$200 - \$400 • Min. bid: \$120



Lot 63

Early Freeblown Chestnut Bottle, South Jersey Type, possibly Wistarburgh, 1750 - 1780. Clear light to medium bubbly yellowish green, plump high-shoulder chestnut form, heavy outward rolled collar - blowpipe pontil scar, ht. 8 5/8"; (some exterior wear and scratches around the mid-body, typical of these very early Chestnuts, otherwise excellent). A classic example, this one having plenty of attractive small bubbles throughout.

Est.: \$600 - \$900 • Min. bid: \$300



Lot 60

"HAGERTY / GLASS WORKS / N.Y." (on base), Whiskey Flask, Hagerty Bros. Glass Manufacturers, Brooklyn, New York, 1861 - 1875. Yellowish honey amber, "union oval" form, applied round double collar - smooth base, Qt, virtually attic mint; (just a touch of very minor wear, otherwise pristine perfect). An extremely rare flask, believed to be one of only two, or possibly three examples known.

Est.: \$250 - \$450 • Min. bid: \$150



Lot 64

Early Freeblown Chestnut Bottle, South Jersey Type, possibly Wistarburgh, 1750 - 1780. Clear medium green with an emerald tone, plump high-shoulder chestnut form, heavy outward rolled collar - blowpipe pontil scar, ht. 8 ½"; (some typical light scratches and wear; a faint, spotty light band of residue or haze in the shoulder, otherwise excellent). A very early, Colonial period Chestnut bottle, also with some light paddle marks visible on the sides.

Est.: \$600 - \$900 • Min. bid: \$300



Lot 65

Large, Freeblown Globular Bottle, New England, 1785 - 1820. Medium olive green shading to a deeper olive through the neck, globular body rounding to a slightly flattened base, applied heavy collared mouth - blowpipe pontil scar, ht. 10 ½", virtually attic mint; (a bit of minor interior residue in the neck and upper shoulder, much of which would likely wash out and just a trace of faint wear). McK, plate 224, #9. A great example, full of swirls, bubbles and impurities.

Est.: \$500 - \$800 • Min. bid: \$300



Lot 66

Oversize, Freeblown Globular Bottle, America, probably Midwest, 1810 - 1830. Bright yellow olive, almost an olive yellow through the center, globular form, outward rolled mouth - solid glass pontil scar, ht. 12 ½"; (5/8" iridescent bruise along the bottom edge of the rolled collar, a very minor spot of light haze on the interior, some typical light exterior wear). A very rare color, and a very rare size. An outstanding early Globular bottle.

Est.: \$500 - \$800 • Min. bid: \$300



Lot 67

Oversize, Freeblown Globular Bottle, Midwest, possibly Zanesville Glass Works, Zanesville, Ohio, 1815 - 1830. Rich golden amber, classic Midwest globular form, outward rolled mouth - light blowpipe pontil scar, ht. 12", near mint; (a little scattered light exterior wear around the mid-body and a shallow, minor open bubble on the interior, otherwise perfect). An impressive and very rare size, near perfect form, a great early Ohio Glob!

Est.: \$500 - \$800 • Min. bid: \$300



Lot 68

Freeblown Globular Bottle, Midwest, probably Ohio or Western Pennsylvania, 1815 - 1830. Beautiful medium golden amber with a yellowish tone, gracefully sloping shoulders, globular body, outward rolled mouth - blowpipe pontil scar, ht. 8 ¾", virtually attic mint; (just a trace of expected light exterior wear). Note; an old cork remains in the neck of the bottle. Outstanding condition, very early, and with a slightly different form.

Est.: \$200 - \$400 • Min. bid: \$120



Lot 69

Pattern Molded Globular Bottle, 24 ribs swirled to the left, probably Zanesville Glass Works, Zanesville, Ohio, 1820 - 1835. Bright, light yellowish honey coloration, outward rolled mouth - pontil scar, ht. 8 1/8"; (a 1" band of light haze in the neck and some patchy light interior residue or haze, some of which might wash out, otherwise very near mint). Beautiful, bright light color, the noted interior haze is not terribly distracting and could likely be professionally cleaned.

Est.: \$500 - \$800 • Min. bid: \$300



Lot 70

Pattern Molded Club or "Beehive" Bottle, 24 ribs swirled to the left, Midwest, 1820 - 1840. Aquamarine, a transitional form with sides rounding in toward base, applied ring type collar - slightly pushed up base with blowpipe pontil scar, ht. 7 ¼"; (some typical very light exterior wear, otherwise perfect!) Good strong pattern, clean, a nice example. Note, this example also has 24 faint (ghosted), vertical ribs.

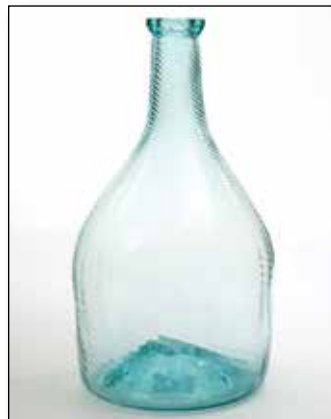
Est.: \$175 - \$350 • Min. bid: \$100



Lot 71

Pattern Molded Club, or "Beehive" Bottle, 24 vertical ribs swirled slightly to the right, Ohio or Western Pennsylvania, 1815 - 1830. Aquamarine, high-shouldered club form, applied ring type collar - blowpipe pontil scar, ht. 8", attic mint! A bright, clean example with nice clarity, a strong impression, and attractive squatty form. One of the nicer examples.

Est.: \$200 - \$400 • Min. bid: \$120



Lot 72

Pattern Molded Club or "Beehive" Bottle, 24 faint vertical ribs over 24 fine ribs swirled to the left, Midwest, possibly Zanesville Glass Works, Zanesville, Ohio, 1820 - 1835. Aquamarine, beehive form, applied heavy flaring lip - blowpipe pontil scar, ht. 8 3/8", very near mint; (touch of very faint wear, a bit of spotty light residue or haze in base). Similar to MW, plate 94, #5. Ex. Darl Fifer collection.

Est.: \$200 - \$400 • Min. bid: \$120

**Lot 73**

Pattern Molded Decanter or Table Serving Bottle, 24 wide vertical ribs over 24 ribs swirled to the right, Midwest, 1820 - 1835. Aquamarine, in the form of an elongated club, or decanter, with a longer neck and more slender body, applied ring collar - blowpipe pontil scar, ht. 8 5/8", near mint; (a wisp of typical light wear, otherwise perfect). A scarce form. In addition, the ribbing on this example creates a mild broken swirl effect in the shoulders.

Est.: \$200 - \$400 • Min. bid: \$120

**Lot 77**

Pitkin Type Flask, patterned with 36 vertical ribs over 36 ribs swirled to the right, New England, 1785 - 1820. Clear light to medium olive with a very slight yellowish tone, flattened ovoid body, sheared mouth - blowpipe pontil scar, ht. 5 3/8"; (a touch of typical, very light exterior wear and a couple of tiny, pinhead size, or smaller, spots of roughness on the inside edge of the lip, otherwise excellent!) Nice clarity, delicate, somewhat lighter color.

Est.: \$500 - \$1,000 • Min. bid: \$300

**Lot 74**

Pitkin Type Flask, pattern molded with 36 vertical ribs over 36 ribs swirled to the left, Midwest, or possibly Mid-Atlantic region, 1790 - 1820. Beautiful yellowish golden through the mid-body, shading to a deeper golden tobacco color in the shoulders, flattened "clock-face" form, sheared mouth - blowpipe pontil scar, ht. 6", near mint; (just the slightest touch of typical light wear and a trace of very faint, spotty interior haze, otherwise perfect!)

Est.: \$500 - \$1,000 • Min. bid: \$300

**Lot 78**

Pitkin Type Flask, patterned with 26 vertical ribs over 26 ribs swirled to the left, Mid-Atlantic or possibly Midwest, 1800 - 1830. Light sea foam green, horseshoe form body, sheared mouth - blowpipe pontil scar, ht. 5 1/2"; (some scattered exterior wear and a slightly weak impression). A crude little flask, likely quite early, and with a very scarce to rare, rib count.

Est.: \$300 - \$500 • Min. bid: \$180

**Lot 75**

Pitkin Type Flask, pattern molded with 30 vertical ribs over 30 ribs swirled to the right, Midwest, or possibly Mid-Atlantic region, 1790 - 1820. Olive yellow with a hint of topaz, flattened circular, slight elliptical body, sheared and inward rolled mouth - blowpipe pontil scar, ht. 6 5/8", near mint; (some typical, light exterior wear, otherwise perfect). A rare and spectacular color for a Pitkin type flask.

Est.: \$1,500 - \$2,500 • Min. bid: \$800

**Lot 79**

Pitkin Type Flask, pattern molded with 30 vertical ribs over 30 ribs swirled slightly to the left, probably Midwest, 1800 - 1830. Bluish aquamarine, flattened horseshoe form, sheared mouth - blowpipe pontil scar, ht. 6 3/8", virtually attic mint. A very attractive example, nice clarity, and with a very strong impression through the shoulders.

Est.: \$400 - \$600 • Min. bid: \$250

**Lot 76**

Rare Pitkin Type Flask, patterned with 38 vertical ribs over 36 ribs swirled to the right, New England, 1785 - 1820. Medium olive, flattened ovoid body, sheared mouth - blowpipe pontil scar, ht. 6 5/8", near mint; (a little fine, light exterior wear, primarily on one side, otherwise mint). A rare rib count, the gaffer using both a 38 rib mold and a 36 rib mold to create the flask. Most broken swirl Pitkins have the same number of ribs for each.

Est.: \$800 - \$1,400 • Min. bid: \$500

**Lot 80**

Early Freeblown Pocket Flask, probably Midwest America, 1800 - 1830. Medium golden amber, ovoid form, sheared mouth - blowpipe pontil scar, ht. 7 7/8"; (some typical minor exterior wear, otherwise very near mint). This form, whether patterned, or unpatterned, is not easy to find in colors other than aqua or light green. A good early flask. See Innes, *Pittsburgh Glass, 1797 - 1891*. Very similar to plate 25, #2.

Est.: \$150 - \$300 • Min. bid: \$80



Lot 81

Early Freeblown Striated Pocket Flask, America or possibly Continental, 1790 - 1830. Light, smoky straw yellow with profuse deep amber striations throughout, elongated ovoid form, sheared, tooled and flared mouth - blowpipe pontil scar, ht. 7 3/8"; (some exterior high point wear and some light, spotty interior stain, but no other form of damage). A wild, beautiful, early flask.

Est.: \$400 - \$800 • Min. bid: \$250



Lot 85

Freeblown Hat Whimsey, America, probably New York State, 1840 - 1860. Clear medium green, blown in a small utility bottle mold and expanded with a wide brim and upturned sides, sheared tooled rim - blowpipe pontil scar, ht. 1 1/4"; (a little very faint exterior bloom, otherwise perfect). Note, retains

an early collection sticker on the inside. A fantastic little hat, scarce, nice color, and early!

Est.: \$200 - \$400 • Min. bid: \$120



Lot 82

Early Stiegel-Type Engraved Spirits Bottle, probably Germany or Continental, possibly America, 1770 - 1820. Colorless, rectangular with rounded corner panels, engraved floral designs on front, back and sides, blown in the half post method, sheared mouth with applied pewter collar and threaded cap - solid glass punty scar, ht. 6 1/2", mint. Although typical of early German production, these types of engraved decorated flasks were also made here in America.

Est.: \$175 - \$350 • Min. bid: \$100



Lot 86

Blown Three Mold Hat Whimsey, probably Boston and Sandwich Glass Works, Sandwich, MA, 1825 - 1840. Cobalt, in the form of a beaver hat with an upturned and inward folded brim, blown in a small cup or drinking glass mold for pattern, geometric design with sunburst motif, blowpipe pontil scar, ht. 2 1/8", virtually attic mint. GIII-24. Excellent form, wonderful condition. Fresh to the market from an early Lancaster, Pa, family estate.

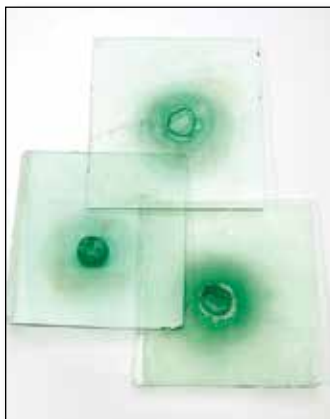
Est.: \$400 - \$800 • Min. bid: \$250



Lot 83

Early Blown, Engraved Compote, America, possibly a Pittsburgh district glasshouse, 1850 - 1870. Colorless, blown bowl with engraved fern and leaf design, applied hollow corseted stem with broad circular foot, polished pontil scar, ht. 7 1/4", dia. 9 7/8"; (some typical, minor usage wear, otherwise perfect). A wonderful, early blown compote, hard to find with the engraving. See *Pittsburgh Glass*, Innes, plate 361, for similar form and design.

Est.: \$200 - \$400 • Min. bid: \$120



Lot 87

Lot of (3), Early "Bull's-eye" Window Panes, America, 1800 - 1840. Greenish aqua, approx. 6 1/4" x 6 3/4"; 6 1/4" x 6 5/8", and 6 1/4" x 6 7/8"; (each with some oxidation or light haze, primarily on one side only, and some fine scratches). Early Bull's eye panes are getting difficult to find. These panes were formed from the center gather of crown glass, and typically used in doors and transom windows in early American homes.

Est.: \$300 - \$400 • Min. bid: \$150

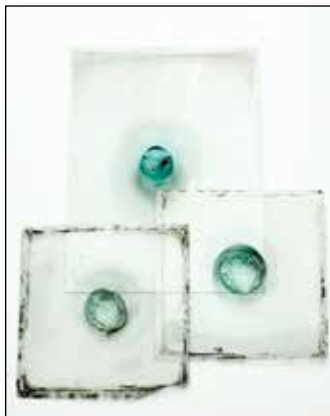


Lot 84

"J. ANDREWS / J - J ANDREWS / PHILA" Figural Hat Whimsey, America, probably Philadelphia area, 1850 - 1860. Medium to deep aqua, patterned in a "J. ANDREWS" soda bottle mold and fashioned into a tall beaver hat with a wide, outward folded brim, heavy blowpipe pontil scar, ht. 3 1/8", rim. dia. 5 3/8" (at widest

point), perfect; (note, an early collector tag remains on the hat). An extremely rare hat whimsey, beautiful, and in a rare soda mold to boot!

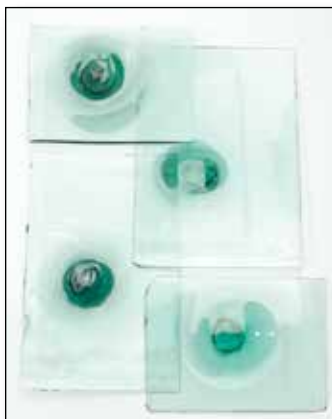
Est.: \$1,200 - \$2,200 • Min. bid: \$700



Lot 88

Lot of (3), Early "Bull's-eye" Window Panes, America, 1800 - 1840. All three are light aquamarine, (2) are approximately 5 7/8" square, the third pane is rectangular and approximately 7" x 9"; (the two square panes are near mint with a 1 3/4" sliver off one corner; the rectangular pane has some light oxidation). A very nice group, wonderful overall condition.

Est.: \$300 - \$400 • Min. bid: \$150



Lot 89

Lot of (4), Early "Bull's-eye" Window Panes, America, 1800 - 1840. All four are medium to deep greenish aquamarine. Approx. sizes are: 8 3/4" x 6"; 8 3/4" x 5 1/2", 6 1/4" x 4 5/8", and 6" x 4 1/2". All four generally near mint condition with only typical minor flaking around the edges. Great colors, outstanding condition. All of the Bull's-eye panes in this auction came from an old collection of the Society of American Architectural Historians.

Est.: \$400 - \$600 • Min. bid: \$200



Lot 90

Lot of (4) Early Freeblown Window Rondels, Continental, probably Holland or Germany, 1740 - 1780. All (4) are bright medium green, cylindrical with ground edges, pontil scars, 4" diameter, and perfect. Popular as decorative motifs in stained glass windows during the 17th through the 19th centuries. Beautiful color, excellent condition.

Est.: \$100 - \$200 • Min. bid: \$60



Lot 91

"PAT. GLASS PAIL / JUNE / 24 84 / BOSTON MASS", Spice Jar (with original label), probably a Pittsburgh district glasshouse, possibly Atterbury & Company, 1884 - 1895. Sapphire blue, in the form of a small pail with domed shoulders, ground mouth with metal band, lid and wire bail - smooth base, ht. 4 1/2"; (jar is perfect; metal band and lid with spotty light surface rust, lid is sealed shut). Scarce, beautiful color, very scarce with label.

Est.: \$400 - \$600 • Min. bid: \$250



Lot 92

"PAT. GLASS PAIL / JUNE / 24 84 / BOSTON MASS", Spice Jar, probably a Pittsburgh district glasshouse, possibly Atterbury & Company, 1884 - 1895. Vaseline coloration, in the form of a small pail with domed shoulders, ground mouth with metal band, lid and wire bail - smooth base, ht. 4 3/8"; (jar is perfect, metal band and lid have some very minor surface rust, otherwise perfect). A very scarce, attractive color.

Est.: \$400 - \$600 • Min. bid: \$250



Lot 93

"PAT. GLASS PAIL / JUNE / 24 84 / BOSTON MASS", Spice Jar, probably a Pittsburgh district glasshouse, possibly Atterbury & Company, 1884 - 1895. Attractive straw yellow coloration, in the form of a small pail with domed shoulders, ground mouth with metal band, lid and wire bail - smooth base, ht. 4 3/8", virtually attic mint! Beautiful, delicate color, outstanding condition.

Est.: \$250 - \$450 • Min. bid: \$150



Lot 94

"R & F. ATMORE" Large Pickle Jar, America, 1855 - 1865. Aquamarine, square with beveled corners and large cathedral windows on three panels, wide neck with applied square collar - indented base with early smooth, or possibly very light sand type pontil scar, ht. 11 1/4", mint. Zumwalt, p. 32. As noted above, there appears to be remnants of a very light sand type pontil scar, but is impossible to say with certainty. A scarce, impressive looking pickle jar.

Est.: \$225 - \$450 • Min. bid: \$150



Lot 95

Figural Monument Cologne Bottle, probably Boston and Sandwich Glass Works, 1860 - 1888. Vivid, medium to deep cobalt blue, obelisk form fashioned after the Bunker Hill Monument, tooled ring collar ground internally for stopper, period cut stopper - smooth base, ht. 9" (not including stopper), perfect. MW, plate 114, #3. Note; it is interesting that the stopper and bottle were found together, fit perfectly, colors match, and may be original to the cologne.

Est.: \$800 - \$1,200 • Min. bid: \$400



Lot 96

Fancy Figural Cologne Bottle (with complete original label), America, 1835 - 1855. Aquamarine, figural building with standing Knight embossed on front, columned corners, Gothic arches, and latticed sides, tooled thin flanged mouth - blowpipe pontil scar, ht. 4 1/4", very near mint; (a little faint light residue or haze, some of which would likely wash out). Colorful label depicts soldier in full dress uniform, *Double extract / d'Eau / de Cologne*. Rare with original label!

Est.: \$175 - \$350 • Min. bid: \$100



Lot 97

Fancy Figural Cologne Bottle, America, 1835 - 1855. Sapphire blue, rectangular figural building with a standing Knight embossed on front panel, columned corners, Gothic arches, and latticed sides, sheared and inward rolled mouth - blowpipe pontil scar, ht. 3 7/8"; (just a little faint light haze, primarily on the interior and on base, otherwise excellent and displays near mint). MW, plate 109, #10. The fancy early colognes are getting harder to find, especially in color.

Est.: \$1,000 - \$1,800 • Min. bid: \$600



Lot 101

Umbrella Ink, America, 1840 - 1860. Brilliant sapphire blue, 8-sided, sheared and inward rolled mouth blowpipe pontil scar, 2 3/8" ht, 2 1/8" wide; (lightly cleaned to original luster with some light residue remaining on the inside of the rolled lip; a hard-to-see, 3/8" hairline crack along the top of the rolled lip; a 1/4" flake or "divot" on one of the panels that almost certainly occurred when another piece of glass touched it during the annealing process). Outstanding color and clarity.

Est.: \$400 - \$800 • Min. bid: \$250



Lot 98

Fancy Cologne Bottle (Motif of Lion), America, 1835 - 1855. Aquamarine, rectangular, front panel with embossed scroll designs above and below lion, reverse with scroll design above and below label panel, sides with embossed leaf ornaments, sheared and inward rolled mouth - blowpipe pontil scar, ht. 4 1/4", virtually attic mint. Similar to MW, plate 111, #5. A bright, clean example, very attractive with high-relief designs.

Est.: \$100 - \$200 • Min. bid: \$60



Lot 102

Umbrella Ink, America, 1840 - 1860. Beautiful medium to deep puce with a pinkish rose tone, 8-sided umbrella form, sheared and inward rolled mouth - blowpipe pontil scar, 1 7/8" ht, 2 1/8" wide, virtually attic mint! Beautiful, very scarce color, and light enough in tone to allow some nice color to show through in backlighting or normal daylight.

Est.: \$1,200 - \$1,800 • Min. bid: \$700



Lot 99

Cologne Bottle, probably Boston and Sandwich Glass Works, Sandwich, Massachusetts, 1860 - 1888. Purple, almost a grape amethyst, octagonal hourglass form, tooled small ring lip - smooth base, ht. 4 1/2", very near mint; (a shallow, minor open bubble in neck, otherwise perfect!). B/K, photo #5199; MW, plate 114, #7. Gorgeous color! Note; this form is believe to be unique to the Sandwich Glass Works. Provenance: Ex. Paul Richards collection.

Est.: \$300 - \$600 • Min. bid: \$180



Lot 103

Umbrella Ink, America, 1840 - 1860. Rich medium golden amber shading to a lighter honey color near the base along one of the sides, 8-sided umbrella form, sheared and inward rolled mouth - blowpipe pontil scar, 2 1/4" ht. x 2 1/4" wide, very near mint; (a touch of faint, spotty residue on one side, near the base, most of which would likely wash out). Similar to C# 131. Beautiful color, nice clarity and whittling, does not appear to be a dug bottle.

Est.: \$200 - \$400 • Min. bid: \$120



Lot 100

Teakettle Inkwell, probably England, 1860 - 1880. Medium to deep plum amethyst, square pyramid form with beveled corners, sheared mouth with original hinged brass cover - smooth base, ht. 1 5/8", virtually attic mint; (just a touch of fine high point wear and a minor compression or dent to the brass cap, otherwise perfect!) Similar to C# 1231, also see Faulkner, p. 170. Wonderful, complete, beautiful example.

Est.: \$250 - \$500 • Min. bid: \$150



Lot 104

Umbrella Ink, probably New England, possibly a Stoddard, NH glasshouse, 1842 - 1860. Medium to deep olive amber, 8-sided umbrella form, sheared mouth - blowpipe pontil scar, 2 1/2" ht. x 2 1/4" wide; (some minor, light exterior wear, a tiny, less-than-pinhead flake at edge of sheared mouth, otherwise very near mint). Similar to C# 145.

Est.: \$200 - \$400 • Min. bid: \$120



Lot 105

Umbrella Ink, America, 1840 - 1860. Light to medium blue green, 12-sided umbrella form, sheared and inward rolled mouth - blowpipe pontil scar, 2 1/8" ht, 1 7/8" wide, sparkling, virtually attic mint; (tiny bit of faint exterior wear, otherwise perfect). Similar to C#149. A bright, clean example, good glass character.

Est.: \$175 - \$350 • Min. bid: \$100



Lot 106

Cone Ink, America, 1840 - 1860. Medium green, almost a teal green, conical form, sheared and inward rolled mouth - heavy blowpipe pontil scar, ht. 2 1/4"; (a couple of tiny pinhead spots of minor roughness on the rolled lip, a bit of light exterior wear, and a little barely noticeable, faint interior haze). Similar to C# 22. Whittled, and in a somewhat different, scarce color for a pontiled cone ink.

Est.: \$225 - \$450 • Min. bid: \$120



Lot 107

Drape Pattern Inkwell, probably Baltimore Glass Works, Baltimore, MD, 1845 - 1860. Medium to deep sapphire blue, cone form with large drape pattern, applied round double collared mouth - blowpipe pontil scar, ht. 2 3/8"; (a little spotty faint haze on the interior; a touch of light exterior wear along with a small pinhead bit of roughness on edge of collar and at base). C# 27. The ink displays fairly well but might benefit from a light interior cleaning. A rare and desirable ink!

Est.: \$1,200 - \$1,800 • Min. bid: \$700



Lot 108

"HARRISON'S / COLUMBIAN / INK", America, 1845 - 1855. Medium to deep sapphire blue, cylindrical, sheared and inward rolled mouth - blowpipe pontil scar, ht. 2", perfect. C #194. Nice color and clarity, whittled, strong embossing, a terrific example.

Est.: \$600 - \$900 • Min. bid: \$400



Lot 109

"HARRISON'S - COLUMBIAN - INK" Master Ink Bottle, (with 95% original label), America, 1851 - 1855. Aquamarine, 8-sided, applied flanged mouth - blowpipe pontil scar, ht. 3"; (a hard to see, 1/4" hairline crack along the top edge of one of the panels; a shallow, paper-thin pontil flake extends to the edge of the base, and some in-manufacture crazing lines in the neck). Unlisted, similar to C# 535, but without "PATENT" on the shoulder. Bright, clean, and rare with original label.

Est.: \$200 - \$400 • Min. bid: \$120



Lot 110

Early 12-Sided Ink or Utility Bottle, America, probably New England, 1840 - 1855. Brilliant yellowish green, cylindrical with 12 flat panels, tooled and outward flared mouth - blowpipe pontil scar, ht. 2 1/2", very near mint; (tiny, pinprick bit of roughness on the edge of the flared lip and just a trace of fine high point wear, otherwise mint). Beautiful and scarce color, bubbly glass, a very attractive little bottle.

Est.: \$250 - \$450 • Min. bid: \$150



Lot 111

"OSBORN'S / LIQUID POLISH." Blacking Bottle, America, probably a New England glasshouse, 1845 - 1855. Bright yellowish olive amber, almost an olive yellow, cylindrical, sheared wide mouth with an inward rolled lip - blowpipe pontil scar, ht. 3 5/8"; (tiny, barely pinprick bit of roughness on back of sheared mouth; a tiny potstone on the base has a 1/4' iridescent bruise, otherwise very near mint). Nicely whittled glass, beautiful color.

Est.: \$300 - \$500 • Min. bid: \$180



Lot 112

Labeled Elisha Waters Blacking Bottle, America, 1855 - 1865. Medium olive, original graphic label depicting a horse race with men riding atop bottles of blacking with the "E. Waters" bottle leading the way. Label reads in part, "Liquid Mirror Blacking / Manufactured / Only by / Elisha Waters", ht. 5 7/8"; (the bottle is mint, the label is 85-90% complete with some scattered staining). Rare—one of a handful found in a hardware store in Hoosick Falls, NY. 35-40 years ago.

Est.: \$800 - \$1,600 • Min. bid: \$500



Lot 113

Early Freeblown, or Dip Mold Snuff Jar (with original label), probably a Connecticut glasshouse, Coventry, or possibly Willington, 1820 - 1835. Olive yellow, tall rectangular form with beveled corners, offset neck, sheared mouth - blowpipe pontil scar, ht. 5"; (some highpoint wear on the reverse and a tiny, hard to see, iridescent bruise near the shoulder). Scarce taller form, approx. 85% complete label, nice color. Ex. Dr. Stanley Sarnacki collection.

Est.: \$400 - \$600 • Min. bid: \$250



Lot 114

Early Freeblown, or Dip Mold Snuff Jar, probably an early Connecticut glasshouse, 1800 - 1830. Beautiful olive yellow, rectangular with wide beveled corners, crude drawn-up shoulders creating the appearance of an offset neck, sheared mouth - delicate blowpipe pontil scar, ht. 4 5/8", virtually attic mint! A gorgeous example, and with great character loaded with tiny bubbles, impurities, and some frothy streaks of glass.

Est.: \$400 - \$600 • Min. bid: \$250



Lot 115

Rare Color Snuff Jar, America, possibly Baltimore Glass Works, 1830 - 1850. Beautiful medium to deep strawberry puce, rectangular with wide beveled corners, sheared, tooled and outward flared mouth - blowpipe pontil scar, ht. 4 1/4"; (some high point wear on the front and back panels, otherwise perfect!) Ex. Norman C. Heckler collection. Beautiful, whittled, and extremely rare, possibly unique in this exceptional color.

Est.: \$1,500 - \$2,500 • Min. bid: \$800



Lot 116

Early Dip Mold Snuff Jar, America, probably New England, 1815 - 1835. Medium to deep olive, square with domed shoulders, sheared and tooled mouth - blowpipe pontil scar, ht. 5 3/4"; (some scattered light scratches and exterior wear; a shallow, paper-thin 1/8" flake at corner of base, a streak of light residue or haze on one side, on the interior, some of which might wash out). A crude, heavy, bubbly example.

Est.: \$250 - \$450 • Min. bid: \$150



Lot 117

"WHITWELL - SNUFF" Bottle, America, 1825 - 1835. Aquamarine, rectangular with a wide neck and sheared, thin outward folded lip - blowpipe pontil scar, ht. 2 3/4", near mint; (a little spotty faint interior residue or haze, but no other form of damage and otherwise perfect). A very early, rare little snuff bottle.

Est.: \$250 - \$450 • Min. bid: \$150



Lot 118

"CASPER'S WHISKEY / MADE BY HONEST / NORTH / CAROLINA PEOPLE", 1885 - 1900. Brilliant cobalt blue, cylindrical with fluted shoulders, tooled sloping collar with ring - smooth base, ht. 12 1/4"; (just a little light exterior wear, otherwise excellent). Beautiful vivid color. One of the all-time classic whiskey bottles, one that every collection should have.

Est.: \$400 - \$600 • Min. bid: \$250



Lot 119

"FROM / THE CASPER CO. INC. / WINSTON - SALEM, N.C. / NEW YORK / CHICAGO, ST. LOUIS", 1890 - 1905. Cobalt blue, cylindrical, tooled sloping collar - smooth base, ht. 11 3/4"; (a little light exterior haze near the shoulders; a touch of minor exterior wear, and just a minor bit of interior haze). The bottle should easily clean to near mint with a couple of days in the tumbler, if desired. A very scarce "4-City" mold!

Est.: \$600 - \$900 • Min. bid: \$400



Lot 120

Large Applied Handle Spirits Jug, America, 1850 - 1860. Medium to deep strawberry puce, ovoid form likely blown in a shallow cup or dip mold, applied solid ear-shaped handle, applied sloping collar - blowpipe pontil scar, ht. 8 1/2", near attic mint; (just a touch of expected very light exterior wear, otherwise pristine perfect!) Gorgeous color, and light enough through the center of the body to be appreciated in normal daylight.

Est.: \$200 - \$400 • Min. bid: \$120

**Lot 121**

"LANCASTER / GLASS WORKS / LANCASTER N.Y." (on base), America, 1860 - 1870. Medium to deep amber with an apricot tone, barrel form with wooden staves around center, crudely applied round double collared mouth - smooth base, ht. 9 3/8"; (some exterior wear, particularly around the mid-body, a pinhead flake at edge of base). A fairly scarce barrel with good strong embossing.

Est.: \$300 - \$500 • Min. bid: \$180

**Lot 125**

"LONDON - ROYAL - IMPERIAL GIN" (with remnants of original label), America, 1870 - 1880. Beautiful, bright sapphire blue, square with beveled corners, applied sloping collar - smooth base, ht. 9 3/4", near mint; (just a touch of typical light exterior wear, and a tiny pinhead flake at edge of lip, otherwise perfect). A great color for a gin, and this example has never been dug and cleaned with a small portion of the original label remaining.

Est.: \$800 - \$1,400 • Min. bid: \$500

**Lot 122**

"DISTILLED IN 1848. / OLD KENTUCKY / 1849 / RESERVE / BOURBON / A.M. BININGER & Co. / 19 BROAD ST N.Y.", America, 1850 - 1860. Bright golden amber, barrel form, applied round double collar - blowpipe pontil scar, ht. 9 1/4", perfect! A great example of this popular Bininger, lighter than many, and this being the larger of two available sizes.

Est.: \$400 - \$600 • Min. bid: \$250

**Lot 126**

"LONDON" (backwards N's) / "JOCKEY - CLUB HOUSE / GIN" - (Horse and Rider), America, 1858 - 1865. Deep olive green, square with beveled corners, applied sloping collar with ring - smooth base, ht. 9 3/4"; (a 3/8" bruise on the shoulder near the panel edge; some scattered minor exterior wear and light scratches, some overall light interior haze and dirt, some of which would likely wash out).

Est.: \$600 - \$900 • Min. bid: \$300

**Lot 123**

"DISTILLED IN 1848. / OLD KENTUCKY / 1849 / RESERVE / BOURBON / A.M. BININGER & Co. / 338 BROADWAY, N.Y.", America, 1850 - 1860. Medium amber, barrel form, applied round double collar - blowpipe pontil scar, ht. 8", near attic mint; (just a trace of typical, very faint exterior wear, otherwise perfect). Another nice example, this one being the smaller size, and with the 338 Broadway address.

Est.: \$250 - \$450 • Min. bid: \$150

**Lot 127**

"UDOLPHO WOLFE'S - SCHIEDAM - AROMATIC / SCHNAPPS", America, 1855 - 1865. Medium to deep yellowish olive with a slight amber tone, square with beveled corners, applied sloping collar - iron pontil scar, ht. 9 3/4", virtually attic mint; (just a trace of very faint exterior wear, otherwise perfect). A clean, sparkling example. Many of these have been dug, but this example appears to be an attic type find.

Est.: \$100 - \$200 • Min. bid: \$60

**Lot 124**

"BININGER'S / OLD DOMINION - WHEAT TONIC - A.M. BININGER & Co. / No. 19 BROAD ST. N. Y.", America, 1865 - 1875. Bright yellowish green with an olive tone, square with beveled corners, applied sloping collar - smooth base, ht. 9 1/4"; (a 3/16" area of roughness on the edge of the lip; a 1/8" flake below "S" in "Bininger's", a little typical minor exterior wear). The condition notes are all fairly minor. Beautiful color.

Est.: \$300 - \$500 • Min. bid: \$180

**Lot 128**

"FOERSTER'S / TEUTONIC / BITTERS / CHICAGO", America, 1858 - 1861. Bright golden amber, plump chestnut form with an applied left handle, applied mouth with square band - iron pontil scar, ht. 6 5/8", near mint; (a touch of typical light exterior wear). R/H #F63. An iconic bitters bottle, this being one of only four known. Also one of only two bitters produced in the handled chestnut form. Beautiful, heavily whittled glass, outstanding condition.

Est.: \$12,000 - \$24,000 • Min. bid: \$6,000



Lot 129

Mc KEEVER'S ARMY BITTERS, America, 1865 - 1875. Medium amber, figural Civil War drum below cluster of stacked cannonballs forming conical shoulders, applied sloping collar - smooth base, ht. 10 1/2", perfect! R/H #M58. A great figural bitters, historical, and obviously uniquely designed to appeal to veterans and families tied to the Great War Between the States.

Est.: \$4,000 - \$6,000 • Min. bid: \$2,500



Lot 133

"NATIONAL / BITTERS" - "PATENT / 1867" (on base), America, 1867 - 1875. Bright, light yellowish honey coloration, figural ear of corn, applied tapered collar with ring - smooth base, ht. 12 1/2", near attic mint; (just a slight trace of faint light wear at the side, on one of the leaves, otherwise pristine perfect). R/H #N8. Beautiful, whittled, and plenty of yellow in this one!

Est.: \$500 - \$1,000 • Min. bid: \$300



Lot 130

"DOCTOR / FISCH'S BITTERS - W.H. WARE / PATENTED 1866", America, 1866 - 1875. Light golden through the center shading to honey and yellow along the sides, fish form, applied ring collar - smooth base, 11 3/8", virtually attic mint; (just a touch of light high point wear near the base, otherwise perfect). R/H #F44. Outstanding, beautiful color with plenty of yellow!

Est.: \$400 - \$600 • Min. bid: \$250



Lot 134

"NATIONAL / BITTERS" - "PATENT / 1867" (on base), America, 1867 - 1875. Beautiful medium apricot with a slight amber tone, shading to a rich deep apricot tone in the shoulders, figural ear of corn, applied short tapered collar with ring - smooth base, ht. 12 1/4", near attic mint; (tiny pinprick speck of roughness on the edge of the mouth and a tiny open bubble on one of the leaves). R/H #N8. Scarce, beautiful color, nicely whittled.

Est.: \$600 - \$1,200 • Min. bid: \$350



Lot 131

"DOCTOR / FISCH'S BITTERS - W.H. WARE / PATENTED 1866", America, 1866 - 1875. Medium to deep golden amber, figural fish, applied ring collar - smooth base, ht. 11 1/2"; (several in-manufacture annealing lines in the neck; a 1/8" iridescent flake on one of the fine ribs about an inch up from the base, and a tiny pinhead open surface bubble). R/H #F44. Exceptionally strong embossing, the noted condition issues are relatively minor.

Est.: \$200 - \$400 • Min. bid: \$120



Lot 135

"NATIONAL / BITTERS" - "PATENT / 1867" (on base), with 98% original label, America, 1867 - 1875. Medium golden amber, figural ear of corn, applied short tapered collar with ring - smooth base, ht. 12 1/4", perfect. R/H #N8. Bright maroon label with gold lettering reads in part: *"THE / National Bitters / Cures Fever, Ague, Liver / Complaints ... / SCHLICHTER & Zug / PROPRIETORS / 9 North 7th St / PHILAD'A."* Extremely rare with original label.

Est.: \$600 - \$1,200 • Min. bid: \$350



Lot 132

"THE / FISH BITTERS - W.H. WARE / PATENTED 1866", America, 1866 - 1875. Beautiful variegated amber shading from a rich, deep amber in the head to tones of yellowish honey through the middle, and back to a deep amber near the base, fish form, applied ring collar - **"W.H. WARE / PATENTED"** (on smooth base), ht. 11 3/4", perfect; (slightly weak embossing). R/H #F46. Beautiful with the differing tones of color.

Est.: \$400 - \$600 • Min. bid: \$250



Lot 136

"NATIONAL / BITTERS" - "PATENT / 1867" (on base), America, 1867 - 1875. Medium golden amber, figural ear of corn, applied short tapered collar with ring - smooth base, ht. 12 1/2", mint. R/H #N8. Clean, whittled, attractive - one of the great classics in figural bitters.

Est.: \$300 - \$500 • Min. bid: \$180



Lot 137

"BROWN'S / CELEBRATED / INDIAN HERB BITTERS - PATENTED / FEB 11 / 1868", America, 1868 - 1880. Medium to deep golden amber shading to a slightly lighter tone in the arms, figural Indian maiden, sheared and inward rolled lip - smooth base, ht. 12 ¼", perfect! R/H #B226. A good clean example, excellent condition, and with a perfect rolled lip.

Est.: \$500 - \$800 • Min. bid: \$300



Lot 141

"S T / DRAKE'S / 1860 / PLANTATION / X / BITTERS - PATENTED / 1862", America, 1862 - 1880. Beautiful golden yellow, cabin form with 6 logs above the label panel, applied sloping collar - smooth base, ht. 9 7/8", pristine perfect! R/H #D105. Outstanding clarity, nice and light all the way to the base with plenty of yellow, especially along the roof and down the edges.

Est.: \$400 - \$800 • Min. bid: \$250



Lot 138

Arabesque motif / "DRAKES" / Arabesque motif / "PLANTATION / BITTERS - PATENTED / 1862", America, 1862 - 1880. Gorgeous medium to deep raspberry-grape coloration, cabin form, applied sloping collar - smooth base, ht. 9 7/8", virtually attic mint; (just a trace of extremely minor wear, otherwise pristine!) R/H #D102. Ex. Judge MacKenzie collection; Scarce and desirable "Arabesque" mold; rare, beautiful, outstanding color!

Est.: \$1,200 - \$1,800 • Min. bid: \$700



Lot 142

"S T / DRAKE'S / 1860 / PLANTATION / X / BITTERS - PATENTED / 1862", America, 1862 - 1880. Medium to deep apricot with some rich reddish puce tones in the lower body, cabin form with 6 logs above the label panel, applied sloping collar - smooth base, ht. 9 7/8", attic mint! R/H #D105. Nice color, outstanding condition, brilliant glass.

Est.: \$200 - \$400 • Min. bid: \$120



Lot 139

"DRAKES / PLANTATION / BITTERS - PATENTED / 1869.", America, 1869 - 1875. Brilliant yellow shading to a slightly richer honey yellow in the label panels, cabin form with 5 logs above the label panel, applied sloping collar - smooth base, ht. 9 ¾", "out of the mold", pristine perfect! R/H #D109. Strong mold impression, gorgeous, stunning color, likely one of the choicest, lightest, yellow 5-Log Drake's that you could hope to find.

Est.: \$1,500 - \$2,500 • Min. bid: \$800



Lot 143

"S T / DRAKE'S / 1860 / PLANTATION / X / BITTERS - PATENTED / 1862", America, 1862 - 1880. Light yellowish honey with a little topaz and some beautiful rich apricot tones through the middle and lower half, cabin form with 6 logs above the label panel, applied sloping collar - smooth base, ht. 9 7/8", near mint; (small trace of light wear, otherwise perfect). R/H #D105. A bright, pretty example, one that changes color according to the light.

Est.: \$200 - \$400 • Min. bid: \$120



Lot 140

"DRAKES / PLANTATION / BITTERS - PATENTED / 1869.", America, 1869 - 1875. Very deep "old amber", cabin form with 5 logs above the label panel, applied sloping collar - smooth base, ht. 9 ¾", near mint; (a little dried spotty residue that would likely wash out; a tiny pinhead flake at edge of lip, and a very minor open bubble near base, otherwise perfect). R/H #D109. One of the deeper examples and a nice contrast to the golden toned examples.

Est.: \$400 - \$600 • Min. bid: \$250



Lot 144

"S T / DRAKE'S / 1860 / PLANTATION / X / BITTERS - PATENTED / 1862", America, 1862 - 1880. Golden honey coloration shading to near yellow along the edges, cabin form with 6 logs above the label panel, applied sloping collar - smooth base, ht. 9 ¾", perfect! R/H #D108. A pretty example, strong mold impression, attic-found condition.

Est.: \$175 - \$275 • Min. bid: \$100

ACG Fine, Fancy

Lot 129

Lot 130



Lot 153



Lot 133



Figural Bitters

Lot 139



Lot 137



Lot 151



Lot 136



Lot 150



Lot 132





Lot 145

“S T / DRAKE’S / 1860 / PLANTATION / X / BITTERS - PATENTED / 1862”, America, 1862 - 1880.

Medium to deep golden amber with a slight orange tone, cabin form with 6 logs above the label panel, applied sloping collar - smooth base, ht. 9 ¾”, perfect! R/H #D108. Another clean, nice solid example.

Est.: \$100 - \$150 • Min. bid: \$60



Lot 149

“JOHN ROOT’S BITTERS / 1834 - BUFFALO, N.Y. / 1834”, America, 1865 - 1875. Yellowish honey amber, rectangular semi-cabin, applied sloping collar with flat band - smooth base, ht. 10 1/8”, very near mint; (some in-manufacture crazing lines in the neck and some dried interior contents or residue, most of which would almost certainly soak out). R/H #R90.4. Very rare in amber, and this example has plenty of yellow in it!

Est.: \$1,500 - \$2,500 • Min. bid: \$800



Lot 146

“S T / DRAKE’S / 1860 / PLANTATION / X / BITTERS - PATENTED / 1862”, America, 1862 - 1880.

Medium to deep “old amber”, cabin form with 6 logs above the label panel, applied sloping collar - smooth base, ht. 10 1/8”, perfect! R/H #D105.

Est.: \$100 - \$150 • Min. bid: \$60



Lot 150

“OLD / HOMESTEAD / WILD CHERRY / BITTERS - PATENT”, America, 1865 - 1875. Brilliant yellow with an olive tone, cabin form, applied sloping collar - smooth base, ht. 9 ¾”, perfect! R/H #O37. Stunning, eye-appealing, rare color with not even a trace of amber. Note; this is the same bottle featured in the Glass Works, “Madness in Manchester” auction, July, 2013 (Lot 91). If you missed it then, don’t miss it this time!

Est.: \$4,000 - \$8,000 • Min. bid: \$2,500



Lot 147

“S T / DRAKE’S / 1860 / PLANTATION / X / BITTERS - PATENTED / 1862”, America, 1862 - 1880.

Deep strawberry puce, cabin form with 6 logs above the label panel, applied sloping collar - smooth base, ht. 9 ¾”, perfect; (note, the bottle has a slightly weak impression in the upper shoulders as is fairly common on this mold). R/H #D105. Very dense, almost black through the lower half.

Est.: \$175 - \$275 • Min. bid: \$100



Lot 151

“B.T. 1865. S. C. / SMITHS / DRUID BITTERS”, probably Baltimore Glass Works, Baltimore, MD, 1865 - 1875. Brilliant yellowish olive green, barrel form, applied square collar - smooth base, ht. 9 3/8”; (a 1 ¼” hairline crack on the side at mid-body; a small 3/8” hairline crack on the reverse). R/H #S124. Believed to be perhaps the greenest example known! A clean, bright example in a stunning, exceptional color. The bottle displays as attic mint.

Est.: \$6,000 - \$10,000 • Min. bid: \$3,000



Lot 148

“S T / DRAKE’S / 1860 / PLANTATION / X / BITTERS - PATENTED / 1862”, America, 1862 - 1880.

Medium to deep golden with an orange tone, cabin form with 4 logs above the label panel, applied sloping collar - smooth base, ht. 10 ¼”; (tiny, pinprick speck of roughness on the edge of the lip, otherwise “attic found” condition). R/H #D110. Nice and clean, with exceptionally strong embossing.

Est.: \$100 - \$150 • Min. bid: \$60



Lot 152

“OLD SACHEM / BITTERS / AND / WIGWAM TONIC”, America, 1860 - 1870. Medium to deep strawberry puce, barrel form, applied square collar - smooth base, ht. 9 ½”, near attic mint; (a couple of minor, superficial open surface bubbles). R/H #O46. An outstanding example, strongly embossed, and in a very beautiful color having virtually no trace of amber. In addition, a perfect lip with no flaws, which is so hard to find on these bottles.

Est.: \$800 - \$1,600 • Min. bid: \$500



Lot 153

"GREELEY'S - BOURBON WHISKEY / BITTERS - GREELEY'S", America, 1860 - 1875. Clear, medium apricot puce, barrel form, applied square collar - smooth base, ht. 9 3/8"; (a tiny pinprick, and a 1/8" area of very fine lip-edge roughness, otherwise pristine perfect). R/H #G102. Heavily whittled, almost no trace of wear, and in a lighter shade than most vertical Greeley's. The color is gorgeous, one that changes according to the lighting, and can exhibit a bit of a pinkish tone.

Est.: \$1,000 - \$2,000 • Min. bid: \$600



Lot 157

"GREELEY'S BOURBON / BITTERS", America, 1860 - 1875. Copper topaz with some warmer apricot tones, barrel form, applied square collar - smooth base, ht. 9 1/4", near mint; (a 3/8" area of minor, very fine lip edge roughness, and just a trace of typical very light exterior wear, otherwise perfect). R/H #G101. Another nice example, great color, wonderful overall condition.

Est.: \$600 - \$1,200 • Min. bid: \$400



Lot 154

"BOURBON WHISKEY / BITTERS", America, 1860 - 1875. Medium apricot with some slightly warmer orange tones, barrel form, applied square collar - smooth base, ht. 9 3/8"; (some light exterior wear and a little, very minor, fine lip edge roughness, the type that you can feel, but is not easy to see, otherwise excellent!) R/H #B171. Beautiful, whittled, and in a somewhat different color. Also in a lighter tone that allows plenty of light to pass through.

Est.: \$500 - \$1,000 • Min. bid: \$300



Lot 158

"DR C. W. ROBACKS / STOMACH BITTERS / CINCINNATI. O", America, 1865 - 1875. Bright, light yellowish honey, barrel form, applied sloping collar - smooth base, ht. 9 3/8", virtually attic mint; (a tiny, pinprick speck of roughness on the edge of the lip, otherwise pristine perfect). R/H #R75. A beautiful example, nice light color, lots of tiny seed bubbles, strong embossing.

Est.: \$300 - \$600 • Min. bid: \$180



Lot 155

"GREELEY'S BOURBON / BITTERS" (with partial original label), America, 1860 - 1875. Light to medium smoky topaz, barrel form, applied square collar - smooth base, ht. 9 3/8", near attic mint; (just a slight trace of very minor wear including a tiny pinhead open bubble on one of the rings, otherwise pristine!) R/H #G101. An outstanding example, beautiful, very scarce color, especially with the gradations, light enough to almost read through in the shoulders.

Est.: \$1,500 - \$2,500 • Min. bid: \$900



Lot 159

"KIMBALL'S / JAUNDICE - BITTERS - TROY. N.H.", a Stoddard, New Hampshire glasshouse, 1850 - 1860. Beautiful yellowish olive amber near the base shading to an olive yellow in the shoulders, rectangular with beveled corners, applied sloping collar - iron pontil scar, ht. 6 7/8", virtually attic mint! R/H #K42. A much better than average example with excellent color, character, and condition.

Est.: \$800 - \$1,400 • Min. bid: \$500



Lot 156

"GREELEY'S BOURBON / BITTERS", America, 1860 - 1875. Medium smoky topaz, just a shade deeper in color than the previous lot, barrel form, applied square collar - smooth base, ht. 9 1/4"; (a 3/8" area of minor, very fine lip-edge roughness and a tiny, less than pinhead size flake on the back of the square collar; a tiny pinprick bit of roughness on one of the rings, otherwise excellent). R/H #G101. The condition notes are minor, scarce color, nicely whittled.

Est.: \$600 - \$1,200 • Min. bid: \$400



Lot 160

"JOHN MOFFAT - PHOENIX / BITTERS - PRICE 1 DOLLAR - NEW YORK", America, 1840 - 1855. Rich yellowish golden amber, rectangular with beveled corners, sheared and outward rolled mouth - blowpipe pontil scar, ht. 5 1/2", mint. R/H #M113. Provenance: Ex. Don Keating collection. This is almost certainly the finest possible example having outstanding character and eye appeal with whittled, seedy, crude glass, and in a rare, beautiful pure amber coloration.

Est.: \$3,000 - \$5,000 • Min. bid: \$1,500



Lot 161

"JNO MOFFAT - PHOENIX / BITTERS - PRICE 1 \$ - NEW YORK", America, 1840 - 1855. Medium pure olive coloration, rectangular with beveled corners, applied round collar - blowpipe pontil scar, ht. 5 3/4", perfect! R/H #M111. Provenance: Ex. Don Keating collection. An extremely rare mold, believed to be the rarest of all the Phoenix molds! In addition, a pristine example with strong embossing, outstanding color and character!

Est.: \$3,000 - \$5,000 • Min. bid: \$1,500



Lot 165

"J.W. HUTCHINSONS - TONIC BITTERS - MOBILE ALA", America, 1860 - 1870. Rich yellowish olive amber, square with beveled corners, applied sloping collar - smooth base, ht. 8 5/8"; (a little light exterior wear and a little faint "bloom" or dullness on a couple of the shoulders that is minor, otherwise excellent!) R/H #H220. A very rare southern bitters, great color, outstanding condition!

Est.: \$2,000 - \$4,000 • Min. bid: \$1,200



Lot 162

"JOHN / MOFFAT - PHOENIX / BITTERS - PRICE \$1,00 - NEW YORK", a New England glasshouse, 1840 - 1855. Yellowish olive with an amber tone, rectangular with beveled corners, applied ring collar - sand type pontil scar, ht. 5 3/8", attic mint. R/H #M112. A great example of this early mold. Note; the pontiled Phoenix Bitters are believed to be among the earliest of the bitters bottles.

Est.: \$800 - \$1,200 • Min. bid: \$500



Lot 166

"LIPPMAN'S / GREAT / GERMAN BITTERS - SAVANNAH / GEORGIA", America, 1870 - 1875. Light to medium yellowish topaz coloration, rectangular with beveled corners, applied straight collar with ring - smooth base, ht. 9 3/4"; (professionally cleaned with some overall light scratches and wear remaining, a shallow 1/8" bruise on reverse panel edge). R/H #L99. A rare southern bitters in a very rare color!

Est.: \$800 - \$1,600 • Min. bid: \$500



Lot 163

"DR. BALL'S - VEGETABLE / STOMACHIC / BITTERS - NORTHBORO MASS.", America, 1845 - 1855. Aquamarine, rectangular with wide beveled corners, applied square collar - blowpipe pontil scar, ht. 6 5/8", near attic mint; (a shallow, paper-thin pontil flake extends toward edge of base, but is not visible from side, otherwise perfect). R/H #B14. A bright, clean, scarce pontiled bitters.

Est.: \$225 - \$450 • Min. bid: \$120



Lot 167

"DEUTENHOFFS / SWISS BITTERS - G. M. HEIDT / SAVANNAH GA", America, 1865 - 1875. Medium to deep amber, square with beveled corners, applied sloping collar - smooth base, ht. 9 1/4"; (a 1/4" x 3/8" open bubble at edge of base appears to have been partially filled; some overall light to moderate fine scratches and wear, some interior dullness). R/H #D55. An extremely rare bitters. Ex. Carlyn Ring collection.

Est.: \$1,000 - \$1,500 • Min. bid: \$600



Lot 164

"DR PLANETT'S / BITTERS", America, 1850 - 1860. Aquamarine, square with beveled corners, applied tapered blob collar - iron pontil scar, ht. 9 5/8", near mint; (a very minor, shallow 1/8" flake at edge of mouth and just the slightest trace of typical light wear, otherwise attic mint). R/H #P107. A very rare pontiled bitters, heavily whittled, with a great name! Believed to be the 1st example offered via a bottle auction since 2001.

Est.: \$800 - \$1,200 • Min. bid: \$500



Lot 168

"GRIFFITH'S / OPERA BITTERS - A. R. GRIFFITH", Lorenz & Wightman Glass Manufacturers, Pittsburgh, Pennsylvania, 1863 - 1872. yellowish honey amber, square with beveled corners, applied sloping collar - "L & W / 13" (on smooth base), ht. 8 7/8"; (professionally cleaned to original luster with a little light wear remaining; a shallow 3/16" bruise on shoulder). R/H #G116. Very rare. Ex. Carlyn Ring collection.

Est.: \$300 - \$600 • Min. bid: \$180



Lot 169

“HOME BITTERS - JAs A JACKSON & Co / PROPRIETORS - SAINT LOUIS Mo”, America, 1871 - 1880. Medium golden amber, square with beveled corners, applied sloping collar - smooth base, ht. 9 1/8”; (a touch of very minor, faint interior content residue and small, pinhead open surface bubble, otherwise attic mint!) R/H #H157. A great example, not easy to find in this condition.

Est.: \$100 - \$200 • Min. bid: \$60



Lot 173

“D.R. / CLARK / N. YORK” (motif of 3 links), America, 1850 - 1860. Rich deep emerald, almost a forest green, square with beveled corners, applied sloping collar - iron pontil scar, ht. 9 1/8”; (the bottle displays as near mint, but has a hard-to-see, 1 3/8” crack extending from the lip into the neck, and a little light exterior wear). Note; the glass is very dark in the lip and neck, therefore, the crack is not apparent under normal display conditions. Gorgeous rich color, beautiful!

Est.: \$400 - \$800 • Min. bid: \$250



Lot 170

“DR VON HOPF'S / CURACO BITTERS - CHAMBERLAIN & CO / DES MOINES IOWA”, America, 1882 - 1892. Yellowish honey amber, square with beveled corners, applied sloping collar - smooth base, ht. 9 1/4”, near mint; (a little minor exterior wear and a small area of very faint light interior milkiness, otherwise excellent!) R/H #V27.

Est.: \$125 - \$250 • Min. bid: \$70



Lot 174

“MYERS' - ROCK ROSE - NEW HAVEN”, America, 1850 - 1860. Clear medium emerald green, square with beveled corners, applied sloping collar - iron pontil scar, ht. 9 3/8”, virtually attic mint! (just a trace of typical light exterior wear, otherwise pristine perfect). A very hard to find bottle, especially one this clean and nice. Great color, clarity and condition!

Est.: \$4,000 - \$6,000 • Min. bid: \$2,000



Lot 171

“PHELPS'S - ARCANUM - WORCESTER - MASS.”, probably an early Stoddard glasshouse, Stoddard, NH, 1842 - 1855. Yellowish olive amber, cylindrical with eight indented panels, applied sloping double collar - sand type pontil scar, ht. 8 5/8”, attic mint. A good impression, and a nice example of this rare and desirable pontiled medicine.

Est.: \$3,000 - \$6,000 • Min. bid: \$1,800



Lot 175

“OLD DR. - TOWNSEND'S / UNITED STATES / SARSAPARILLA - NEW YORK.”, America, 1850 - 1860. Light emerald green, rectangular with beveled corners, applied sloping double collar - blowpipe pontil scar, ht. 8 3/8”; (a little scattered light wear and minor dullness; a small 1/8” flake on back edge of base, likely a dug bottle, but does not appear to have been cleaned). Pictured, p.348, Odell, 2nd edit. A unique example, the only one known in color, or with a pontil scar!

Est.: \$1,500 - \$2,500 • Min. bid: \$800



Lot 172

“THE / INDIANS / PANACEA”, America, 1837 - 1849. Clear medium olive shading to deep olive near the base, cylindrical, applied sloping double collar - heavy sand type pontil scar, ht. 8”; (professionally cleaned with scattered scratches and ground wear remaining, a little stain on the inside of the lip). N #324, Odell, p.125. An extremely rare and desirable pontiled medicine with only this example, and two others being offered at auction in more than 15 years.

Est.: \$3,000 - \$6,000 • Min. bid: \$1,800



Lot 176

“OLD DR / J. TOWNSENDS - SARSAPARILLA - NEW YORK”, America, 1850 - 1860. Teal green, square with beveled corners, applied sloping collar - deep domed base with a heavy iron pontil scar, ht. 9 1/2”; (a little minor exterior wear and a 1/4” open bubble on one of the base corners, otherwise perfect). Strongly embossed, beautiful, scarce color, and excellent clarity from the shoulders to the base.

Est.: \$400 - \$800 • Min. bid: \$250

**Lot 177**

"OLD / DR TOWNSEND'S - SARSAPARILLA - NEW YORK.", America, 1855 - 1865. Medium to deep yellowish tobacco amber, square with beveled corners, applied sloping collar - smooth base, ht. 9 3/4", near mint; (a little scattered light exterior wear, otherwise perfect). DeG #206, variant #3. A scarce mold, very rare pure amber color! In addition, nice crude glass filled with tiny seed bubbles

Est.: \$1,500 - \$2,500 • Min. bid: \$800

**Lot 181**

"DR TOWNSEND'S - SARSAPARILLA - NEW YORK.", America, 1850 - 1860. Light to medium blue green, square with beveled corners, applied sloping collar - iron pontil scar, ht. 9 7/8", near mint; (some extremely faint interior haze that is not terribly distracting and very minor, otherwise perfect). A pretty example, heavily whittled, nice strong pontil.

Est.: \$300 - \$500 • Min. bid: \$180

**Lot 178**

"DR TOWNSEND'S - SARSAPARILLA - ALBANY / N.Y. No1", probably a New England glasshouse, 1845 - 1855. Medium olive green, square with beveled corners, applied sloping collar - sand type pontil scar, ht. 9 5/8", near mint; (just a touch of typical minor exterior wear, otherwise perfect). Strong embossing, nice clarity to the glass, excellent condition, and a very scarce mold variant having the "No1".

Est.: \$500 - \$800 • Min. bid: \$300

**Lot 182**

"DR TOWNSEND'S - SARSAPARILLA - ALBANY / N.Y.", America, 1850 - 1860. Light to medium blue green, square with beveled corners, applied sloping collar - iron pontil, ht. 9 5/8"; (lightly cleaned to original luster and a small, pinhead flake at the edge of the lip). If you like crude glass and character, you will love this bottle! It has streaks of frothiness, whittling, ribbons of bubbles, and also being a little under-blown giving the shoulders an unusual, almost cone type look.

Est.: \$700 - \$1,200 • Min. bid: \$400

**Lot 179**

"DR TOWNSEND'S - SARSAPARILLA - ALBANY / N.Y. - III", America, 1850 - 1860. Bright blue green, square with beveled corners, applied sloping collar - iron pontil scar, ht. 9 3/8", near mint; (just a slight touch of faint wear and a small potstone with a couple of tiny, 1/8", or less, legs). Ex. Sam Greer collection #1297. The condition issue are minor and were not even noted in the Greer sale. Good color, rare with the three slash marks on the 4th panel.

Est.: \$500 - \$800 • Min. bid: \$300

**Lot 183**

"S. M. KIER - PETROLEUM - PITTSBURGH. PA", a Pittsburgh district glasshouse, 1850 - 1860. Medium sapphire, rectangular with beveled corners, applied sloping collar - blowpipe pontil scar, ht. 6 1/4", near mint; (a small, pinhead flake at edge of base, a little in-manufacture glass extrusion from the mold seam at one of the corners). Beautiful, and about as deep of a color as we have seen for this bottle.

Est.: \$1,500 - \$2,500 • Min. bid: \$800

**Lot 180**

"DR TOWNSEND'S - SARSAPARILLA - ALBANY / N.Y.", America, 1850 - 1860. Yellowish emerald green, square with beveled corners, applied sloping collar - iron pontil scar, ht. 9 3/8", virtually attic mint; (just a trace of faint, light exterior wear, otherwise pristine perfect). A great example, nice color, outstanding condition.

Est.: \$400 - \$800 • Min. bid: \$250

**Lot 184**

"Dr. STERNBERG'S / MIRAMEDELA", America, 1850 - 1860. Ice blue, hexagonal, applied square collar with flange - blowpipe pontil scar, ht. 4 3/8"; (a shallow 1/4" flake and two small 1/8" flakes on base, at edge of reverse; a touch of exterior wear and a couple of minor spots of very faint light haze). Extremely rare, one of two known examples. Provenance: Ex. Sam Greer collection #1610.

Est.: \$300 - \$600 • Min. bid: \$180



Lot 185

"DALBY'S - CARMINATIVE", America, or possibly England, 1815 - 1830. Yellow with some deeper amber tones and a hint of olive, conical form, sheared, tooled and inward rolled mouth - blowpipe pontil scar, ht. 3 5/8", near mint; (some spotty interior residue or light haze, some of which may wash out; a minor 1/8" scratch or surface blemish on the reverse). A very early medicine, crude glass, strong embossing, exceptional and unique color for this mold.

Est.: \$1,500 - \$2,500 • Min. bid: \$800



Lot 189

"COULEY'S FOUNTAIN / OF HEALTH / No (image of fountain) 38 / BALTIMORE ST / BALTIMORE", probably Baltimore Glass Works, 1850 - 1860. Aquamarine, cylindrical, applied sloping collar - red iron pontil scar, ht. 9 7/8", virtually attic mint. N#141. A great example of this very scarce, whittled, and heavily embossed pontiled medicine.

Est.: \$500 - \$800 • Min. bid: \$300



Lot 186

"ORIENTAL / LIFE ELIXIR - OR" - (motif of hieroglyphics) - "GREAT EGYPTIAN / REMEDY" (motif of hieroglyphics), America, 1845 - 1855. Aquamarine, rectangular with beveled corners, applied sloping collar - blowpipe pontil scar, ht. 6 7/8", very near mint; (a little faint interior haze, primarily near the shoulders, otherwise perfect). Extremely rare. Provenance: Ex. Sam Greer collection #1349.

Est.: \$2,000 - \$4,000 • Min. bid: \$1,000



Lot 190

"BUSH'S / SMILAX / SARSAPARILLA", America, 1850 - 1860. Aquamarine, rectangular with beveled corners, applied square collar - blowpipe pontil scar, ht. 9 1/2", very near mint; (a wisp of typical, very minor exterior wear and just the slightest trace of extremely minor, faint spotty interior haze near the shoulders, on the reverse, otherwise pristine). DeG #33. Listed as "EX RARE", a big, impressive sarsaparilla.

Est.: \$250 - \$450 • Min. bid: \$150



Lot 187

"MACKENZIE'S / FEBRIFUGE" (with original pill box insert), America, 1845 - 1855. Aquamarine, rectangular with beveled corner, applied sloping collar - blowpipe pontil scar, ht. 6 1/4", bottle is perfect! (original pill box, "MACKENZIE'S COMPOUND LIVER PILLS" is darkened from age and has some wear around the edges, otherwise excellent). Believed to be one of three known examples. Ex. Sam Green collection #1096.

Est.: \$1,000 - \$2,000 • Min. bid: \$600



Lot 191

"DR. D. JAYNE'S / LIFE PRESERVATIVE - PHILADA.", America, 1840 - 1850. Aquamarine, rectangular with beveled corners, applied sloping collar - blowpipe pontil scar, ht. 6 1/8", very near mint; (just a trace of fine high point wear, otherwise perfect). N#338. Extremely rare, believed to be one of eight known, and one of only two having the tapered collar. Likely the hardest of all the Jayne's bottles to find, and certainly the most sought-after. A clean, sparkling example!

Est.: \$1,000 - \$1,500 • Min. bid: \$600



Lot 188

"UNIVERSITY / FREE MEDICINE / PHILADA" (with 95% original label), America, 1853 - 1860. Aquamarine, hexagonal, applied square collar - blowpipe pontil scar, ht. 5 3/4"; (bottle has a tiny pinprick spot of roughness at edge of collar, otherwise pristine; label is excellent with just a little darkening from age). Label reads in part, "University of Free Medicine / And / Popular Knowledge / Chartered / The 29th of April / 1853". A unique example with label. Ex. Sam Greer collection.

Est.: \$400 - \$800 • Min. bid: \$250



Lot 192

"DR. D. JAYNE' / LINIMENT OR - COUNTER IRRITANT / PHILADA", America, 1840 - 1855. Aquamarine, rectangular with wide beveled corners, sheared and inward rolled lip - blowpipe pontil scar, ht. 5", near mint; (a shallow iridescent pontil flake extends to the edge of the base; the bottle may have been lightly cleaned, but presents itself as virtually attic mint). N #339. A nice example, good strong embossing.

Est.: \$150 - \$300 • Min. bid: \$80



Lot 193

"DR. D. JAYNE" / INDIAN - EXPECTORANT / PHILADA",

America, 1840 - 1850. Aquamarine, rectangular with wide beveled corners, tooled, thin flanged lip - blowpipe pontil scar, ht. 5", attic mint! N #340. A very scarce Indian medicine and a great little bottle with nice crude glass, and a perfect thin flanged lip.

Est.: \$200 - \$400 • Min. bid: \$120



Lot 197

"GERMAN - MAGNETIC / LINIMENT / MADE BY - A C. GRANT - ALBANY / NEW YORK",

America, 1845 - 1855. Aquamarine, rectangular with beveled corners, sheared and inward rolled mouth - blowpipe pontil scar, ht. 4 7/8", sparkling attic mint; (Note; there is a tiny bit of very minor, in-manufacture, roughness on the inside of the rolled lip). N #243. A bright, clean, scarce capital district pontiled medicine.

Est.: \$175 - \$350 • Min. bid: \$100



Lot 194

"TALORS - INDIAN - OINTMENT",

America, 1845 - 1855. Aquamarine, hexagonal, sheared, inward rolled mouth - blowpipe pontil scar, ht. 3 1/4"; (lightly cleaned to original luster and near mint condition; some very faint surface crazing on the inside of the neck, and a paper-thin scalloped pontil flake that extends to the edge of the base). N #624. This is the larger, and scarcer, of the two available sizes. A difficult little bottle to acquire, expertly cleaned, displays near mint.

Est.: \$350 - \$450 • Min. bid: \$180



Lot 198

"Dr TOBIAS - VENETIAN HORSE / LINIMENT - NEW YORK",

America, 1850 - 1860. Aquamarine, rectangular with beveled corners, applied sloping collar - blowpipe pontil scar, ht. 8", beautifully whittled, and "out of the mold", pristine perfect! Advertised for the cure of "dysentery, croup, cholera, colic, rheumatism & c." A clean, sparkling, great example of this bottle.

Est.: \$100 - \$200 • Min. bid: \$60



Lot 195

"MASTA'S / INDIAN - PULMONIC - BALSAM - LOWELL / MASS.",

America, 1855 - 1864. Aquamarine, rectangular with beveled corners, applied round collar with lower bevel - blowpipe pontil scar, ht. 5 3/4", "out of the mold" attic mint! N#420; Odell, p.160, Blasi #318. A clean, sparkling example of this desirable Indian medicine. It is noted in the Odell book that Joseph Masta was part Indian himself.

Est.: \$200 - \$400 • Min. bid: \$120



Lot 199

"POTTS LINN & HARRIS / PHILAD.A - WHOLESALE - DRUGGISTS",

America, 1840 - 1850. Aquamarine, rectangular with beveled corners and indented panels, sheared and tooled thin flanged lip - blowpipe pontil scar, ht. 4 5/8", attic mint! A real sparkler and a great example of this early, extremely rare Philadelphia druggist bottle.

Est.: \$100 - \$200 • Min. bid: \$60



Lot 196

"PEOPLE'S / MAGNETIC / LINIMENT - A.H. PALMER & Co - NEW YORK",

America, 1855 - 1860. Aquamarine, rectangular with beveled corners - applied sloping collar - blowpipe pontil scar, - ht. 6 3/8", near mint; (a light interior sheen or faint haze, otherwise perfect). The light haze is not terribly distracting, and would likely clean with a couple of days in the tumbler, if desired). A very scarce pontiled medicine.

Est.: \$200 - \$400 • Min. bid: \$120



Lot 200

"DR. M.G. KERR / & / BERTOLET - COMPOUND / ASIATIC BALSAM - NORRISTOWN PA",

America, 1840 - 1850. Aquamarine, rectangular with beveled corners and indented panels, sheared and tooled thin flanged lip - blowpipe pontil scar, ht. 4 1/2", attic mint! N #360, Odell p. 138, BB (Blasi), #109. A crisp, sparkling example, strongly embossed, early and scarce.

Est.: \$175 - \$350 • Min. bid: \$100



Lot 201

"MERRICK'S - VERMIFUGE - MILTON. PA", (with partial label), America, 1845 - 1855. Aquamarine, 12-sided, tooled thin flanged mouth - blowpipe pontil scar, ht. 3 ½", pristine perfect! N#441 (5-star); Odell, p.168. A choice example of this very scarce bottle, having a perfect, thin flanged lip, and remnants of the original label remaining.

Est.: \$300 - \$600 • Min. bid: \$180



Lot 205

"OLDRIDGE'S / BALM / OF COLUMBIA - FOR RESTORING / HAIR / PHILADELPHIA", America, 1835 - 1850. Aquamarine, rectangular with concave corners, applied sloping collar - blowpipe pontil scar, ht. 5 ½", near attic mint; (just a couple of small, very faint patches of light interior residue of haze, otherwise perfect). DF, p.116. Strong embossing, rare with the tapered collar.

Est.: \$400 - \$800 • Min. bid: \$250



Lot 202

"DYER'S - HEALING, - EMBROCATION - PROV. R.I.", America, 1841 - 1855. Aquamarine, 12-sided, sheared and inward rolled mouth - blowpipe pontil scar, ht. 4 ¼", perfect! N #186. Provenance: Ex. Don Pickett collection. "Out of the mold" pristine condition, good strong embossing.

Est.: \$175 - \$275 • Min. bid: \$100



Lot 206

"WHITE'S / HAIR / RESTORATIVE", America, 1850 - 1860. Aquamarine, oval, applied sloping collar - blowpipe pontil scar, ht. 6 ¼", virtually attic mint; (a little in-manufacture crazing on the inside of the neck; a tiny, pinprick bit of roughness on the edge of the lip, otherwise perfect). DF, page 163. A clean, sparkling example!

Est.: \$150 - \$300 • Min. bid: \$80



Lot 203

"ROWAND'S - TONIC - MIXTURE - OR / VEGETABLE - FEBRIFUGE - PHILADA", America, 1845 - 1860. Aquamarine, hexagonal, applied sloping collar - blowpipe pontil scar, ht. 5 ¾"; (lightly cleaned to original luster and near mint condition with just a very faint, slight bit of interior haze remaining). The bottle has been cleaned but certainly presents itself as very near mint. N #536.

Est.: \$125 - \$250 • Min. bid: \$70



Lot 207

"Dr CAMPBELLS - HAIR / INVIGORATOR - AURORA - NEW YORK", America, 1855 - 1865.

Aquamarine, rectangular with beveled corners, applied round collar with lower bevel - blowpipe pontil scar, ht. 5 7/8", near mint; (a bit of light spotty interior residue in the shoulders that looks like it would clean out, otherwise perfect). DF, page 29. Nice crude glass, this one looks like it was just pulled from an attic.

Est.: \$150 - \$300 • Min. bid: \$80



Lot 204

"PORTERS - CURE OF PAIN - BUNDYSBURG. O", America, 1850 - 1860. Aquamarine, rectangular with beveled corners, applied round double collared mouth - blowpipe pontil scar, ht. 4 7/8"; (a little spotty light interior haze, primarily in one shoulder and the type that should easily clean with a day or two in the tumbler, if desired, otherwise perfect). Odell, p.193. A scarce little pontiled cure.

Est.: \$150 - \$250 • Min. bid: \$80



Lot 208

"L.Q.C. WISHART'S - PINE TREE / TAR CORDIAL / PHILA" - (PINE TREE), America, 1855 - 1858. Bright medium yellowish olive amber, almost an olive yellow, square with beveled corners, applied sloping collar - iron pontil, ht. 7 ½"; (professionally cleaned with some minor ground wear remaining; also some dullness remaining inside the collar). Extremely rare with the pontil, this one is also a little lighter in color with plenty of yellow!

Est.: \$2,500 - \$4,500 • Min. bid: \$1,500



Lot 209

"L.Q.C. WISHART'S - PINE TREE / TAR CORDIAL. / PHILA - PAT-ENT" / (PINE TREE), America, 1858 - 1860. Medium olive, square with beveled corners, applied sloping collar - smooth base, ht. 7 1/2"; (professionally cleaned with some light ground wear and swirl lines remaining; also some in-manufacture superficial annealing lines at edge of lip). This mold, without the "1859" patent date, is the 2nd earliest mold, after the pontiled example.

Est.: \$600 - \$900 • Min. bid: \$300



Lot 213

"DR. HARTSHORNS / MEDICINE" (with complete original label), a Stoddard New Hampshire glasshouse, 1855 - 1865. Syrupy yellowish tobacco amber, oval, wide disk type collar with bevel - smooth base, ht. 6 1/8", attic mint! (Note; label is a little darkened from age, but virtually 100% complete). One of the nicest examples that we have seen in quite a while. Label reads in part, **"DR. HARTSHORN'S / ARO-MATIC / SYRUP OF / RHUBARB"**.

Est.: \$1,000 - \$1,500 • Min. bid: \$600



Lot 210

"L.Q.C. WISHART'S - PINE TREE / TAR CORDIAL. / PHILA - PAT-ENT" / (PINE TREE) / "1859", America, 1865 - 1875. Medium emerald, square with beveled corners, applied sloping collar - smooth base, ht. 9 1/2", near mint; (just a touch of typical faint light wear, otherwise perfect). A nice example, attractive color, excellent condition.

Est.: \$225 - \$400 • Min. bid: \$120



Lot 214

"FROM THE / LABORATORY. - OF / G.W. MERCHANT / CHEMIST - LOCKPORT / N.Y.", probably Lockport Glass Works, 1845 - 1860. Light to medium blue green, rectangular with beveled corners, applied sloping collar - heavy blowpipe (open) pontil, ht. 5 5/8", near mint; (a touch of light high point wear and a slightly weak impression). Whittled, crude glass, very scarce with the blowpipe pontil, most being iron pontil or smooth base.

Est.: \$200 - \$400 • Min. bid: \$120



Lot 211

"L.Q.C. WISHART'S - PINE TREE / TAR CORDIAL. / PHILA - PATENT" / (PINE TREE) / "1859", America, 1865 - 1875. Medium to deep blue green, square with beveled corners, applied sloping collar - smooth base, ht. 9 5/8"; (a pinprick bit of roughness along with a shallow 1/8" flake on the edge of the lip; a little dullness around the top edge of the lip, otherwise excellent). A scarce color for this mold, excellent clarity, strong embossing.

Est.: \$175 - \$350 • Min. bid: \$100



Lot 215

"G.W. MERCHANT / CHEMIST / LOCKPORT / N.Y.", probably Lockport Glass Works, Lockport, New York, 1860 - 1870. Medium to deep "Lockport" blue green, cylindrical, applied sloping collar - early smooth base, ht. 7 1/8", virtually attic mint; (just a small area of extremely faint, light interior milkiness, that is not distracting, and mentioned for complete accuracy, otherwise pristine!) Good rich color, strongly embossed.

Est.: \$175 - \$275 • Min. bid: \$100



Lot 212

"L.Q.C. WISHART'S - PINE TREE / TAR CORDIAL / PHILA - TRADE" / (PINE TREE) / "MARK" (with 95% original label), America, 1875 - 1885. Clear medium blue green, square with beveled corners, applied sloping collar - smooth base, ht. 10 1/8", pristine perfect; (label has a little darkening from age). A bright, crisp example, very hard to find in this condition, and with this nice of a label.

Est.: \$400 - \$600 • Min. bid: \$250



Lot 216

"VANCES / ELIXIPPON / PATD JULY 5 - 65 / HAVANA / N.Y.", America, 1866 - 1870. Deep apple green, almost a light emerald, conical form, applied ring type collar - smooth base, ht. 11 1/8", very near mint; (a tiny spot of residue or very faint haze in the upper neck, a small pinhead bit of roughness on the lip, otherwise perfect). Apparently marketed as a medicine for horses. Extremely rare, nice color, and a very unusual form for a medicine type bottle.

Est.: \$200 - \$400 • Min. bid: \$120



Lot 217

“RHEUMATIC” / (motif of tree with fruit) / “TRADE MARK / SYRUP / 1882 - R.S. Co / ROCHESTER. N.Y.”, America, 1875 - 1885. Medium golden amber, square with beveled corners - applied sloping collar with ring - smooth base, ht. 9 1/2”, pristine perfect! A nice pictorial medicine, outstanding condition.

Est.: \$150 - \$250 • Min. bid: \$80



Lot 221

“MELVIN & BADGER / APOTHECARIES / BOSTON, MASS.” (with 98% complete original labels), Carr-Lowrey Glass Co, Baltimore, MD, 1889 - 1900. Deep cobalt blue, irregular “hex” form, tooled square collar - **“C L G CO / PATENT APPLIED FOR”** (on smooth base), ht. 7 1/2”, attic mint! “Scalp Wash” is hand written on the original label, and printed below, **“MELVIN & BADGER CO. / APOTHECARIES / 43 Temple Pl. Boston”**. Scarce size, rare with original labels.

Est.: \$300 - \$500 • Min. bid: \$180



Lot 218

“SWIFT’S / SYPHILITIC SPECIFIC”, America, 1875 - 1885. Sapphire blue, oval with strap-sides, applied round double collar - smooth base, ht. 9 3/8”; (professionally cleaned to original luster with some fine light scratches or exterior wear remaining). Most of these bottles have been dug in the south, as the company was located in Atlanta. It was listed as being good for many diseases, including syphilis. A big, colorful patent medicine.

Est.: \$500 - \$800 • Min. bid: \$300



Lot 222

“LYNCH & CLARKE / NEW YORK”, New England, possibly New England Glass Bottle Company, Cambridge, MA, 1823 - 1833. Medium to deep olive green, cylindrical, applied sloping double collared mouth - sand type pontil scar, Pt, virtually attic mint; (minuscule, barely pinhead size, or less, flake off edge of collar, on reverse, otherwise pristine!) T# C-2:B, type 1. A choice example in condition and clarity, of this very early mineral water bottle.

Est.: \$400 - \$600 • Min. bid: \$250



Lot 219

Early Painted Apothecary Storage Bottle, England, 1830 - 1850. Medium to deep plum amethyst, original gold paint with black lettering, **“MIST: CAMPH.”**, cylindrical, sheared and outward rolled mouth with correct period domed tin cap - ground pontil scar, ht. 12” (not including cap), very near mint; (jar and paint are virtually perfect, the metal lid has some overall rust, but is otherwise solid). Beautiful color, extremely hard to find with original paint is this condition.

Est.: \$400 - \$600 • Min. bid: \$200



Lot 223

“WASHINGTON SPRING CO” / (BUST OF WASHINGTON) / “BALLSTON SPA / N.Y. - C”, America, 1868 - 1880. Medium to deep emerald green, cylindrical, applied sloping double collared mouth - smooth base, Pt, very near mint; (very slight touch of typical faint exterior wear, otherwise perfect!) T# S-61. One of the classics, and a very desirable pictorial mineral water with an excellent impression and condition.

Est.: \$600 - \$1,200 • Min. bid: \$300



Lot 220

Lot of (2), Early Painted Apothecary Bottles, England, 1820 - 1830. Vivid cobalt blue, original gold paint with black lettering, **“SYR: RHAM”** and **“SYR: PAPA: A”**, cylindrical, tooled outward flared mouths with original Tam o’ Shanter stoppers - glass tipped pontil scar, ht. 10 1/8” (incl. stoppers); bottles are perfect, paint has some minor age-related crizzling. See VdB, plate 292, #1. Early, beautiful, good size, excellent overall condition.

Est.: \$400 - \$600 • Min. bid: \$200



Lot 224

“CONGRESS & EMPIRE SPRING CO / HOTCHKISS’ SONS / C / NEW YORK / SARATOGA. N.Y.”, America, 1866 - 1870. Medium yellowish olive, cylindrical, applied sloping double collar - smooth base, Pt; (a little exterior wear including a tiny flake on the letter “R” in “YORK”, some light interior haze in the shoulder and reverse that, with just a day or two in the tumbler, would likely clean to near mint, if desired). T# C-15:B, type 1.

Est.: \$125 - \$175 • Min. bid: \$80



Lot 225

"HANBURY SMITH / N.Y. / CONGRESS WATER", America, 1870 - 1880. Bright yellowish green, almost a lime green, cylindrical, applied sloping collar - smooth base, Pt, near mint; (a tiny potstone on the reverse has a couple of minor 1/8" radiations or "legs", and a shallow, barely pinhead flake at edge of base, otherwise sparkling attic mint!) A rare mold, beautiful color and clarity, filled with tiny seed bubbles.

Est.: \$300 - \$600 • Min. bid: \$180



Lot 229

"USE AT 52* FAR / MAGNETIC / MINERAL WATER / SPRING LAKE / MICH", William Frank & Sons, Pittsburgh, 1870 - 1876. Rich, deep bluish aquamarine, cylindrical, applied sloping collar - **"WM F & SONS. PITTS"** (on smooth base), Qt; (a shallow 1/8" flake at edge of lip and a touch of light exterior wear, otherwise perfect). T #M-30. A very scarce, desirable bottle, beautiful, heavily whittled, and near-attic condition!

Est.: \$800 - \$1,200 • Min. bid: \$500



Lot 226

"EXCELSIOR / SPRING / SARATOGA. N.Y.", probably Congressville Glass Works, Saratoga Springs, NY, 1880 - 1889. Emerald green, cylindrical, applied sloping collar with lower bevel - smooth base, Pt, near mint; (small, pinhead size flake on the side of the lip, otherwise excellent). T# S-26:B. A good clean example in a nice rich color.

Est.: \$150 - \$250 • Min. bid: \$80



Lot 230

"GKW" (monogram) - "WHITNEY GLASSWORKS GLASSBORO. N.J." (on base), 1865 - 1882. Rich, bubbly medium to deep emerald, cylindrical with cone type shoulders, applied sloping collar with ring - smooth base, Qt; (professionally cleaned with a tiny, pinhead size iridescent potstone on the shoulder, a 3" scrape on the reverse, and a couple of scattered open surface bubbles). T# M-19:A. Rich, beautiful color.

Est.: \$75 - \$125 • Min. bid: \$40



Lot 227

"D.A. KNOWLTON / SARATOGA. / N.Y.", a Stoddard New Hampshire glassworks, possibly Weeks & Gilson or New Granite Glass Works, 1861 - 1863. Yellowish golden amber, cylindrical, applied sloping double collar - **"3"** (on smooth base), Qt, virtually attic mint; (a tiny, miniscule pinprick bit of lip edge roughness, otherwise perfect). T# E-5:B. A rare color for this mold, beautiful, with nice clarity, whittled, and outstanding condition.

Est.: \$400 - \$600 • Min. bid: \$250



Lot 231

"GKW" (monogram) - "WHITNEY GLASSWORKS GLASSBORO. N.J." (on base), 1865 - 1882. Clear light blue green, cylindrical with cone type shoulders, applied sloping collar with ring - smooth base, Qt; (the bottle may have been lightly cleaned, but presents itself as near mint; a light scrape or group of light scratches on the reverse). T# M-19:A. Nice clarity and delicate light color, the bottle displays near mint.

Est.: \$100 - \$150 • Min. bid: \$60



Lot 228

"FROM THE / MOSHER / MAGNETIC MINERAL / SPRING Co / EATON RAPIDS / MICH", probably a Pittsburgh glasshouse, 1870 - 1875. Golden honey coloration, cylindrical, applied sloping collar with ring - smooth base, Qt, virtually attic mint; (touch of minor high point wear, otherwise perfect!) Recently discovered in the cellar of a home in Western New York State. One of only four known, and the second example of this mold variant.

Est.: \$1,500 - \$2,500 • Min. bid: \$800



Lot 232

"GKW" (monogram) - "WHITNEY GLASSWORKS GLASSBORO. N.J." (on base), 1865 - 1882. Beautiful, seedy yellowish green, cylindrical with cone type shoulders, applied sloping collar with ring - smooth base, Pt, near mint; (a couple of shallow open surface bubbles and a touch of very minor wear). T# M-19:B. Rare size, beautiful and unlisted in this color, excellent condition.

Est.: \$200 - \$400 • Min. bid: \$120



Lot 233

“GKW” (monogram) - “WHITNEY GLASSWORKS GLASSBORO. N.J.” (on base), 1865 - 1882. Bright medium blue green, cylindrical with cone type shoulders, applied sloping collar with ring - smooth base, Pt; (a little faint exterior dullness or sheen; two, very minor pinprick flakes on the edge of the lip, and a touch of light exterior wear). T# M-19:B. This is the hard to find, rare pint mold, whittled, and in a nice rich color.

Est.: \$175 - \$350 • Min. bid: \$100



Lot 237

“VARENNES SELTZER / VARENNES / NEAR MONTREAL”, Canada, 1865 - 1875. Brilliant sapphire blue, 4-pc. mold, round bottom, applied blob collar - smooth base, Qt., ht. 9 7/8”; (professionally cleaned to original luster with a touch of minor ground wear remaining; a couple of minor, 1/4”, surface crazing lines near the shoulder). Beautiful, impressive, historical, and extremely rare; believed to be one of only two, or possibly three, known in the quart size.

Est.: \$1,000 - \$2,000 • Min. bid: \$600



Lot 234

“G.D. COGGESHALL / NO. 421 PEARL ST. / NEW-YORK / SODA WATER”, America, 1839 - 1841. Deep olive, virtually black near the base, early tenpin form, applied ring type collar - crude base with a sand type pontil scar, ht. 7”; (professionally cleaned with some scattered areas of fine scratches and ground wear remaining, but no other form of damage). An extremely rare, early soda, the first to be offer at auction in more than 20 years!

Est.: \$5,000 - \$8,000 • Min. bid: \$2,500



Lot 238

Lot of (3), marked “LANCASTER GLASSWORKS” Soda Bottles, Lancaster, NY, 1850 - 1860. Sapphire blue, **“LANCASTER / X / GLASSWORKS / N.Y. - XX”**; medium green with a teal tone, **“LANCASTER / XXX / GLASSWORKS”**, and aquamarine, **“LANCASTER / X / GLASSWORKS / N.Y. - XX”**, all with applied blob collars - iron pontil scars, ht. 7”, 6 1/2”, and 6 7/8” respectively. All are virtually attic with only very minor wear.

Est.: \$300 - \$500 • Min. bid: \$180



Lot 235

Early Torpedo Bottle (with period label), America, 1845 - 1860. Rich, medium to deep emerald, almost a forest green, 2-pc. mold, crudely sheared mouth with an applied ring collar - smooth base, ht. 7 5/8”, virtually attic mint! Early medicinal label is approx. 80% complete, and reads in part; **“INSTANT CURE OF PAIN - AT THE FAR EAST MEDICAL LABORATORY - Establishment Maumee City, Ohio”**. Whittled, crude, early, a beautiful bottle, the period label is fascinating.

Est.: \$300 - \$500 • Min. bid: \$180



Lot 239

“J. & A. DEARBORN / NEW YORK - MINERAL WATER / D / THIS BOTTLE IS / NEVER SOLD”, America, 1850 - 1860. Cobalt, cylindrical, applied blob style collar - iron pontil scar, ht. 7 3/8”; (just a touch of minor exterior wear including a tiny, barely pinhead, flake on the neck, otherwise attic mint!) Of the numerous Dearborn molds, this one is in a good deep color, and very hard to find in this un-dug, virtually attic condition.

Est.: \$400 - \$800 • Min. bid: \$250



Lot 236

“J.T. BROWN / CHEMIST / BOSTON - DOUBLE / SODA / WATER”, (with period stand), America, 1855 - 1865. Clear medium emerald, torpedo form, applied sloping collar - blowpipe pontil scar, ht. 8 1/2”, very near mint; (a slight trace of interior residue and a tiny pinprick bit of roughness on the edge of the collar, otherwise attic mint). Heavily whittled, rare in this condition, and extremely rare with the pontiled base!

Est.: \$800 - \$1,400 • Min. bid: \$500



Lot 240

“J. & A. DEARBORN / NEW YORK.”, America, 1850 - 1860. Medium to deep blue green, almost a teal coloration, squat cylinder form, applied sloping double collar - iron pontil scar, ht. 6 1/2”; (just a wisp of very minor, light exterior wear, otherwise perfect!) Beautiful color, outstanding, virtually “attic condition” with a fully intact iron pontil. Not an easy soda to find, especially in this nice condition.

Est.: \$300 - \$500 • Min. bid: \$180



Lot 241

"R.C. WORTENDYKE - AGENT. - SUPERIOR - MINERAL WATER", America, 1845 - 1860. Cobalt, 8-sided, applied blob collar - iron pontil scar, ht. 6 7/8"; (a 1/4" flake on the top edge of the lip; a 3/8" area of minor roughness on the edge of the mouth, and a touch of typical light wear, otherwise an attic type find). A great example, strong embossing, has not been dug and cleaned. Note; this is the mold variant without the "XX".

Est.: \$800 - \$1,200 • Min. bid: \$500



Lot 245

"W. HEISS JR'S / SUPERIOR / MINERAL WATERS / No. 213 N. 2d. St. / PHILAD.A" - (Eagle and Shield with Crossed Flags), probably Union Glass Works, Philadelphia, 1849 - 1855. Cobalt, cylindrical, applied blob collar - iron pontil, ht. 7 1/4", attic mint! Ex. Roger Long collection. A very rare and desirable Philadelphia soda, virtually "out of the mold" pristine, and with a strong impression.

Est.: \$4,000 - \$6,000 • Min. bid: \$2,000



Lot 242

"NEWTON & CO. / BOTTLERS / NEW YORK - PREMIUM / N", America, 1850 - 1860. Yellowish emerald green, cylindrical, applied sloping collar - iron pontil scar, ht. 7 1/4"; (a couple of light scratches and relatively minor exterior wear; a couple of tiny pinhead flakes at edge of base, otherwise near mint). Note; a great example, heavily whittled, that does not appear to have been cleaned, and with a fully intact iron pontil!

Est.: \$400 - \$800 • Min. bid: \$250



Lot 246

"I.G. / VREELAND / NEWARK / N.J. - SUPr SODA WATER / UNION GLASS WORKS / PHILA", 1850 - 1860. Medium to deep blue green, almost a teal, cylindrical, applied blob style collar - iron pontil scar, ht. 7 3/8"; (professionally cleaned to original luster with some light overall exterior ground wear and fine scratches remaining).

Est.: \$175 - \$350 • Min. bid: \$100



Lot 243

"TWEDDLES' / CELEBRATED / SODA OR MINERAL / WATERS - COURTLAND STREET / 38 / NEW YORK", America, 1850 - 1860. Medium emerald green, cylindrical, applied sloping collar - heavy iron pontil scar, ht. 7 1/4"; (professionally cleaned to original luster with a little scattered light ground wear remaining, but no other form of damage). Some nice character with several bubbles through the neck.

Est.: \$200 - \$350 • Min. bid: \$120



Lot 247

"FIELDS - SUPERIOR - SODA WATER - CHARLESTON - S.C.", America, 1845 - 1860. Cobalt, 8-sided, applied sloping collar - iron pontil scar, ht. 7 1/2"; (professionally cleaned to original luster with a little light exterior wear remaining; a shallow, 1/2" sliver-type flake along the top edge of the lip). A very scarce soda, and believed to be one of the nicer examples available.

Est.: \$500 - \$800 • Min. bid: \$300



Lot 244

"B.W. & Co. / NEW YORK - SODA WATER", America, 1850 - 1860. Medium teal blue, almost a peacock blue, cylindrical, applied blob style collar - iron pontil scar, ht. 7 1/8"; (professionally cleaned to original luster with just a little minor wear remaining and a small, 1/8" flake at corner of base has been lightly polished, otherwise displays very near mint). Beautiful, scarce, and eye-appealing color and one that will definitely stand out.

Est.: \$300 - \$600 • Min. bid: \$180



Lot 248

"SUPERIOR / SODA WATER" (Eagle and Shield with Crossed Flags), America, 1850 - 1860. Deep olive green, cylindrical, applied blob collar - iron pontil scar, ht. 7 3/4"; (a 3/8" area of small chips along the top of the lip including some iridescence on the inside of the lip; a 1/4" chip on the outer edge with an iridescent bruise on the inside, some overall fine wear and light scratches). A rare color, displays well, would respond well to a light cleaning.

Est.: \$600 - \$900 • Min. bid: \$300



Lot 249

"F BRUTSCHE / NEWPORT / KY", America, 1850 - 1860. Aquamarine, cylindrical, applied blob collar - red iron pontil scar, ht. 7 1/4", near mint; (a small, barely pinhead size flake at edge of blob collar, and a tiny sand-grain on the shoulder of reverse with a couple of minor 1/8" "legs", otherwise attic mint!) A bright, clean, sparkling example of this scarce Kentucky soda that has not been dug or cleaned.

Est.: \$100 - \$200 • Min. bid: \$60



Lot 253

Original Wooden Crate with (12), "CHELMSFORD SPRING CO. / OLD ENGLISH / GINGER BEER / CHELMSFORD. MASS." Bottles, America, 1875 - 1885. Stoneware bottles with tan and oatmeal color glaze and black stenciling, all with porcelain stoppers and wire bails, ht. 9"; (bottles are "sooty", but otherwise attic mint; box is darkened from age and has a 6" x 1/2" strip of wood missing from lip, but otherwise excellent with original hardware.

Est.: \$400 - \$800 • Min. bid: \$250



Lot 250

"T. BURKHARDT / BRADDOCK, PA." - "D.C. CO. 1." (around heel of base on reverse), America, 1885 - 1895. Bright yellow olive with a citron tone, cylindrical, tooled "Hutchinson style" closure - smooth base, Pt, ht. 6 5/8"; (probably a dug bottle with a couple of light scratches and some scattered light exterior wear, but with most of its luster and no other form of damage). Beautiful color, nice with the original, or period, wire closure.

Est.: \$300 - \$500 • Min. bid: \$180



Lot 254

Mammoth Size Case Bottle, probably Continental, possibly Holland or Belgium, 1770 - 1800. Clear, medium yellowish olive, square with nearly straight sides, large applied string lip - blowpipe pontil scar, ht. 17 7/8"; (a few scattered minor scratches and typical age-appropriate light exterior wear, otherwise perfect). See VdB, plate 83 & 84. Overall excellent condition, rare, impressive size, nice color.

Est.: \$1,000 - \$1,500 • Min. bid: \$600



Lot 251

"W. I & P / PITTSBURGH. PA", (on base), Whitehead, Ihmsen & Phillips, Pennsylvania Black Glass Works, Pittsburgh, 1836 - 1837. Medium to deep olive, cylindrical, 3-piece mold, porter style, applied sloping double collar - sand type pontil scar, ht. 7 7/8"; (professionally cleaned to original luster with a touch of wear remaining). Extremely rare, one of four known, and only the 2nd example in a pint. Believed to be the earliest of the base-embossed bottles from Pittsburgh.

Est.: \$500 - \$1,000 • Min. bid: \$300



Lot 255

Mammoth Size Case Bottle, probably Continental, possibly Holland or Belgium, 1770 - 1800. Clear, medium yellowish olive, square with virtually straight sides, large applied string lip - solid glass-tipped punty scar, ht. 18"; (a small potstone near the shoulder on the inside surface of the glass with a couple of tiny legs, approximately 1/8", or less; some typical minor wear, otherwise excellent!) Nice clarity and color, great size, an eye-appealing, impressive bottle.

Est.: \$800 - \$1,400 • Min. bid: \$500



Lot 252

"A. NICHOLSON / PITTSBURGH - NOSLOHCIN .A / HGRUBST-TIP", a Pittsburgh district glasshouse, 1850 - 1860. Aquamarine, cylindrical, applied inverted tapered collar - iron pontil scar, ht. 8 5/8"; (just a touch of light wear, otherwise attic mint). An extremely rare, early porter bottle, one of perhaps 4 or 5 known. Yes, the embossing is backwards on one of the mold halves! If you like oddities this might be for you!

Est.: \$600 - \$1,200 • Min. bid: \$400



Lot 256

Early, Freeblown Demijohn, a New England glasshouse, possibly Stoddard New Hampshire, 1850 - 1870. Yellowish olive amber through the mid-section shading to a deep olive amber near the base, and virtually black through the neck, flattened apple form, applied sloping collar - large sand type pontil scar, ht. 19 3/8", attic mint! Beautiful color, exceptional condition, outstanding character being filled with tiny bubbles.

Est.: \$600 - \$900 • Min. bid: \$400

Ink Bottles of Rare Colors and Molds



Rare Round-Bottom Soda Bottles



Fine & Colorful Pontiled Medicine Bottles



Rare & Choice Phoenix Bitters



Lot 161

Lot 160

Lot 162

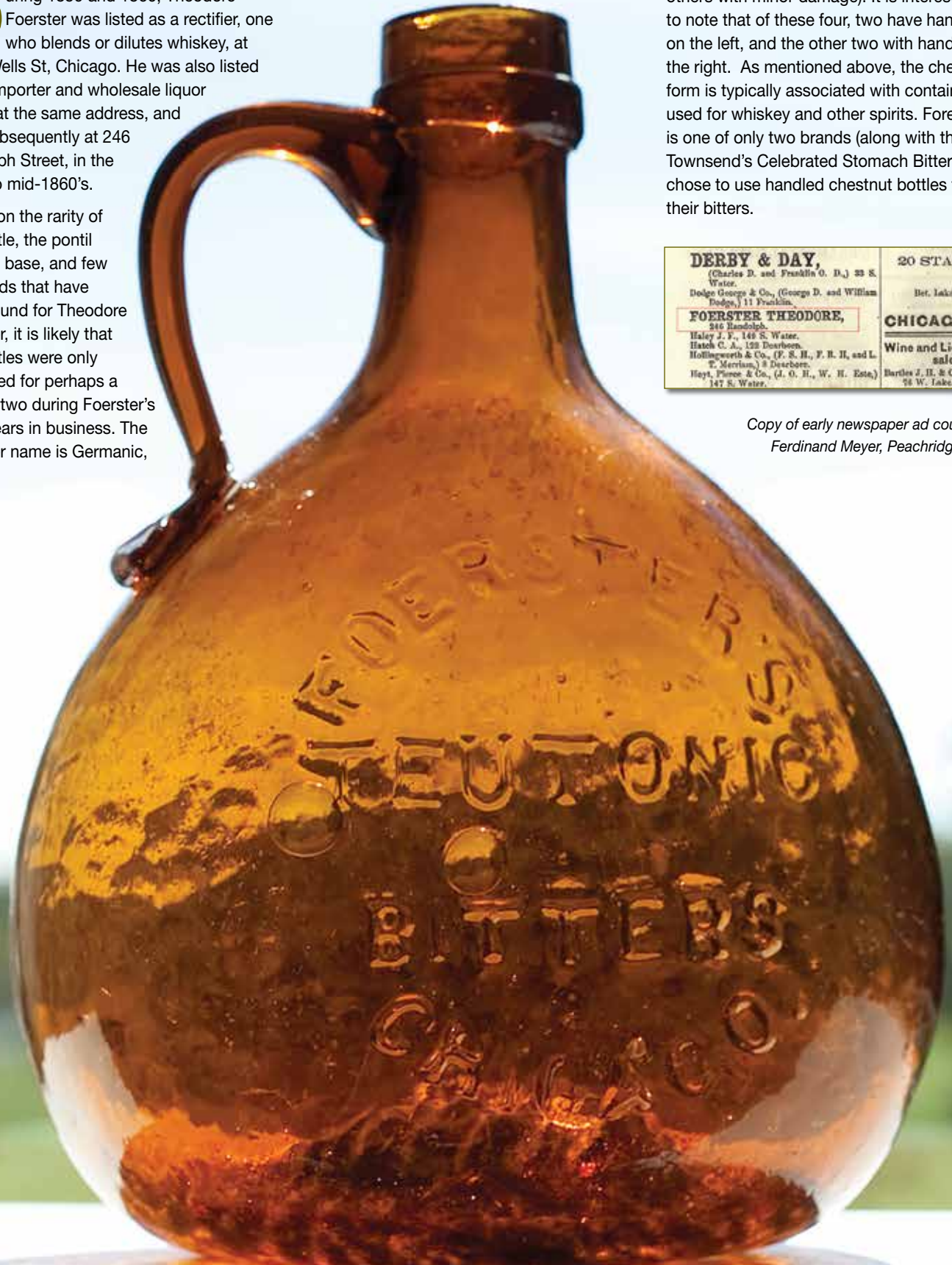
Lot 128: Foerster's Teutonic Bitters

During 1859 and 1860, Theodore Foerster was listed as a rectifier, one who blends or dilutes whiskey, at 54 S. Wells St, Chicago. He was also listed as an importer and wholesale liquor dealer at the same address, and then subsequently at 246 Randolph Street, in the early, to mid-1860's.

Based on the rarity of the bottle, the pontil scarred base, and few scant ads that have been found for Theodore Foerster, it is likely that the bottles were only produced for perhaps a year or two during Foerster's early years in business. The Foerster name is Germanic,

which origin provides a clue as to the unusual name "Teutonic" that he chose for his bitters. According to the Merriam-Webster dictionary, "Teutonic" is thought to be "typical of German people, Germans, or relating to an ancient people who lived in northern Europe".

Perhaps based on competition, a limited market, or the unusual chestnut form that was typically associated with whiskey, it was apparently not a very successful venture. Prior to this bottle coming to light, there were only three other examples known (one of the others with minor damage). It is interesting to note that of these four, two have handles on the left, and the other two with handles on the right. As mentioned above, the chestnut form is typically associated with containers used for whiskey and other spirits. Foerster's is one of only two brands (along with the Townsend's Celebrated Stomach Bitters), that chose to use handled chestnut bottles to hold their bitters.



DERBY & DAY, (Charles D. and Franklin O. D.) 33 S. Water. Dodge George & Co., (George D. and William Dodge,) 11 Franklin.	20 STATE STREET, Bet. Lake and South Water Sts.
FOERSTER THEODORE, 246 Randolph. Haley J. F., 148 S. Water. Hatch C. A., 123 Dearborn. Hollingsworth & Co., (F. S. H., F. R. H., and L. T. Merriman,) 8 Dearborn. Hoyt, Pierce & Co., (J. O. H., W. H. Estey,) 147 S. Water.	CHICAGO, ILLINOIS. Wine and Liquor Dealers, Wholesale and Retail. Bartles J. H. & Co., (J. H. H. and C. F. Koch,) 56 W. Lake.

Copy of early newspaper ad courtesy of Ferdinand Meyer, Peachridge Glass.

\$4.00

January 2014

ANTIQUE BOTTLE & GLASS COLLECTOR

Dig Into the Bottle & Glass Hobby's #1 Periodical

**When you subscribe
to Antique Bottle & Glass
Collector magazine,
you'll be getting:**

- ▶ The premier monthly publication for the antique bottle and glass community
- ▶ Great articles each month on antique bottles, flasks and jars by some of the leading authorities in the hobby
- ▶ Timely and important information about current events in the world of antique bottles
- ▶ Show and auction reports
- ▶ Buy-sell-trade opportunities
- ▶ Up-to-date calendar of trade shows and conventions
- ▶ And much, much more!

**For subscription
information, please call
us at 248.486.0530 or visit
antiquebottlemagazine.com**



**12 great
issues a year
for only \$35
postpaid!**

The Magazine That Keeps You Informed!