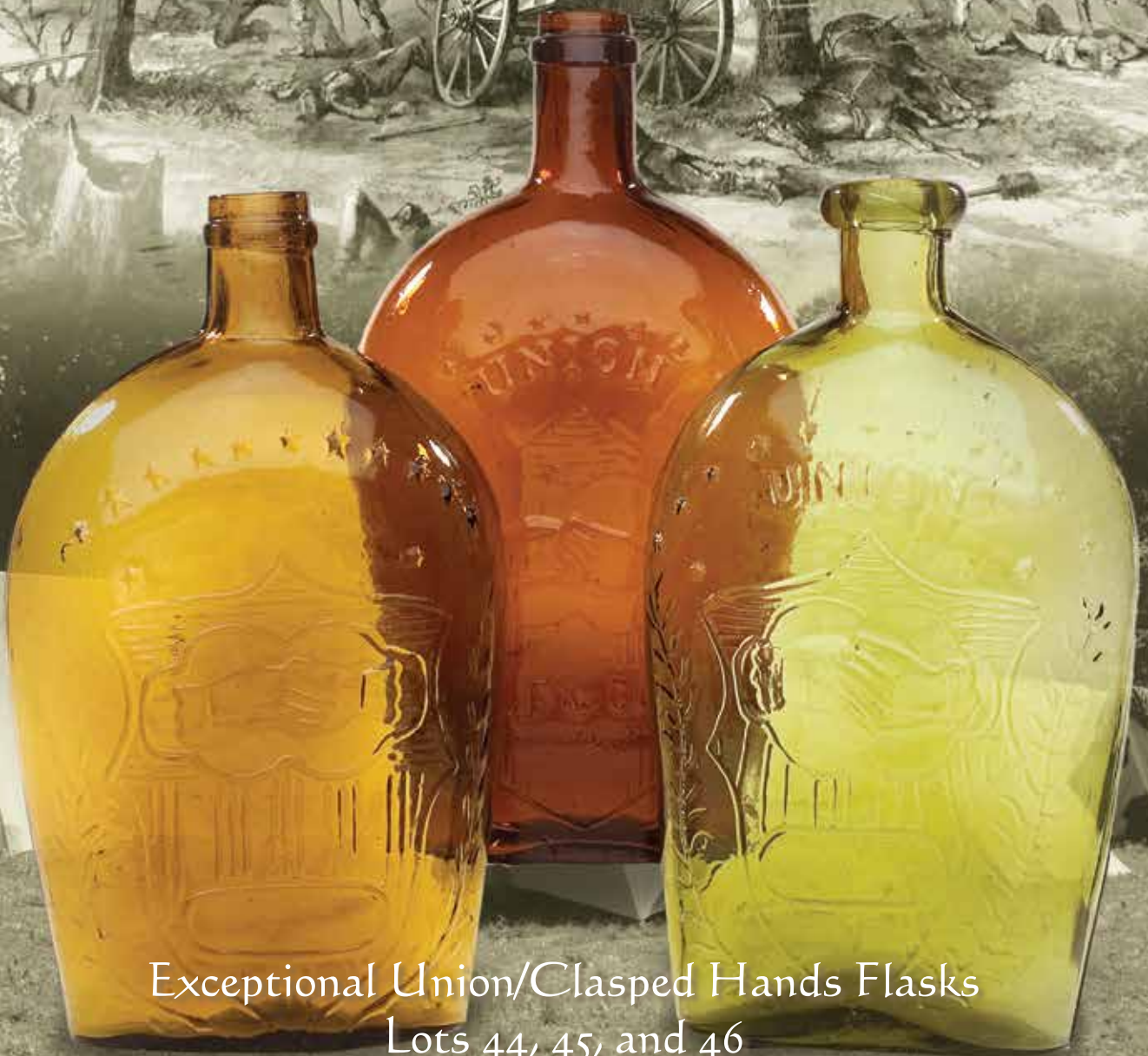


# American Glass Gallery™

Auction #12

Bidding Opens May 14, 2014 • Closes May 28, 2014



Exceptional Union/Clasped Hands Flasks  
Lots 44, 45, and 46

# Conditions of Sale

## 1. Absentee Auction

The items in this sale will be sold via absentee auction, closing date:  
**May 28, 2014, 11:00 p.m., EST.**

## 2. Our Guarantee Regarding Descriptions

American Glass Gallery has made every attempt to describe correctly the property being sold. Descriptions are guaranteed to be accurate as regards authenticity, age, condition, and measurements to within one-fourth inch, as represented in this catalog. In describing damage, exterior wear or manufacturer's flaws that in our opinion, do not significantly detract visually or monetarily from the value of the item are not listed and will not be considered for refund. The Auctioneers reserve the right to make verbal corrections and provide additional information at any time during the sale.

## 3. Preview

Items may be viewed by appointment from May 12, 2014 through May 26, 2014.

## 4. Bidding Procedure

You may submit your bids by mail, phone, FAX, email or through our on-line auction site. If bidding by mail or FAX, please fill out the absentee form and return it to us. Your bid, either written or oral, grants American Glass Gallery the authority to protect you up to the amount of your stated bid. Your bid will not be removed once executed.

**Bidding Times:** You can submit your bids anytime after receiving your catalog. Bids may be made by phone, daily, until closing day, May 28, 2014, from 9 A.M. - 7 P.M. Eastern Time. Incoming phone bids will be accepted on the closing day (May 28, 2014) until 11 P.M. Eastern Time. Phone calls and Fax bids after this time will not be honored. No exceptions. You may also place your bids through our on-line auction service 24-hours a day once the site has opened for bidding, on or about May 14, 2014, continuing until 11:00 P.M. Eastern Time, May 28, 2014.

**Please do not wait until the last day or two of the sale to place your bids!** Because many collectors wait until the final few days of the sale to place their bids, we anticipate the telephone and internet bidding to be very busy during that period, so please plan accordingly. In the event of a tie bid, the earliest received bid on the lot will take precedent. We would welcome your bids by phone so that we can answer any questions and assist you in your bidding.

You may also telephone us at any time during the auction, prior to the closing of the sale, to check the status of your bids, to find the current bidding level, to open a bid, or to raise a bid on an auction lot.

### Bidding Increments are as follows:

Up to \$250.00.....increments of \$10.00  
\$250.00 - \$500.00 .....increments of \$25.00  
\$500.00 - \$1,000.00 .....increments of \$50.00  
\$1,000.00 - \$2,500.00 .....increments of \$100.00  
\$2,500.00 - \$5,000.00 .....increments of \$250.00  
\$5,000.00 - \$10,000.00 .....increments of \$500.00  
\$10,000 & Up.....increments of \$1,000.00

Bids submitted between the above increments, whether by mail, FAX, email or on-line via the internet, will automatically be lowered to the closest lower increment.

This is a minimum bid auction. Bids below the printed minimum will not be accepted.

**An example of how our absentee bidding system works:** You bid \$600.00 on a lot which is the highest bid received to date. The second highest bid is \$450.00. The current high bid level would be yours at \$475.00, one bid increment higher than the other collector's bid. Any additional bids submitted by others below \$600.00 will automatically be topped on your behalf by a representative of American Glass Gallery, up to your stipulated high bid amount. If no further bids on this lot are received beyond the \$450.00, and the under bidder has not requested a "Call Back", then you would have won the lot at \$475.00, not the \$600.00 that you were prepared to pay.

American Glass Gallery will at NO TIME disclose bids pledged by others; only the current "High Bid" level of a lot will be stated upon request. The highest bidder as determined by American Glass Gallery shall be the purchaser. It is the sole right of the auctioneer to settle any dispute between bidders and to regulate the bidding procedure. The auctioneer reserves the right to refuse any bid he believes not to have been made in good faith.

## 5. "Call Back" Process

If requested, the three top bidders of an item at the time of closing will be given a "Call Back" over the next number of days in order to resolve the final sale of an item. You can request this service by "checking" the appropriate box on your absentee bid form or verbal agreement by phone. It is the responsibility of the bidder to insure he has qualified for this service.

**Please note: No "Call Backs" will be executed for bids under \$400.00. In the event of tie bids, the earliest bid received will be the winning bid.**

An example of how the "Call Back" process works: As an example, you have bid \$600.00 on a particular lot. Another bidder has submitted a bid of \$900.00 on the same lot. Assuming that as of the auction closing date you are among the top three bidders on this lot and you have requested a "Call Back", you would receive a call informing you that you have been "Out Bid" and the current "High Bid" is now at \$650.00. If you choose to continue bidding on this lot, you may now do so. Assuming that you now increase your bid to \$700.00, we would accept your bid but also inform you that we have a higher bid on this lot and must bid \$750.00. At this time, an auction between you and American Glass Gallery, representing the collector who submitted the bid of \$900.00, takes place. This bidding would continue until you drop out, or top the other bidders high bid of \$900.00. If the other bidder has not requested a "Call Back" service, you would be awarded the lot. If however, the other bidder also requested a Call Back, we must now call them. If they elect to increase their bid over your high bid, we would in turn call you back. This back and fourth process would continue until one of the bidders declines to go any farther.

If you have requested a "Call Back", the auctioneers will need to contact you on the days immediately following the auction closing between the hours of 8 A.M. and 9 P.M. Eastern Time. Please supply us with all appropriate contact phone numbers including, home, mobile and work numbers. Bidders must provide the appropriate telephone numbers where they can be contacted. If you will be traveling or otherwise unavailable, bidders with "Call Back" privileges will have the responsibility to contact American Glass Gallery twice daily during the Call Back period.

**Please note,** every effort will be made to contact you during the "Call Back" period. However, the bidder will forfeit their rights to a "Call Back" if the auctioneers are unable to reach them. American Glass Gallery reserves the right to discontinue Call Backs on any item in the sale (2) two days after the closing date of the sale. At that time, the current "High Bidder" may be awarded the item even if Call Backs are still outstanding.



## 6. Terms

**Successful Bidders,** Prompt and full payment is due immediately upon receipt of our invoice. Absolutely no exceptions. Anyone failing to pay for items won will forfeit all rights to bid in any future American Glass Gallery sales. *Any late or delayed payments may result in loss of return privileges for items purchased in the sale.*

**No Items Will Be Mailed Before Full Payment Is Received.**

**Buyer Premium:** A 15% buyer's premium will be added to the hammer price (18% if paying by Credit Card or PayPal), to be paid by the buyer as part of the purchase price. For example, if you purchase a lot for \$100.00, you will receive an invoice for \$115.00 if paying by cash, check or money order, plus any applicable sales tax or shipping charges.

**Taxes:** If you are a Michigan resident, a 6% sales tax will be added to your bill unless you have a valid resale number registered with us.

**Shipping:** Shipping, handling and insurance are extra. We ship insured via U.S. Mail. These charges will be added to your bill unless the lots are picked up in person. Our charges for shipping (excluding foreign shipments and oversized lots) are \$18.00 for the first item, \$9.00 for each additional item together with extra insurance costs (we use current U.S. Postal Service insurance rates).

*Please allow two to three weeks for delivery after receipt of your check.*

**Payment:** American Glass Gallery accepts Cash, Money Orders, Personal Checks, Visa, MasterCard, American Express and PayPal. *If paying by Credit Card or PayPal, an additional 3% will be added to the invoice total.*



## 7. Refunds

Refunds will be given at the discretion of the Auctioneers. Items purchased must be examined and request for refund made immediately upon receipt of the item or items. Since opinions can differ, particularly in the matter of condition, the Auctioneers will be the sole judge in the consideration of refunds. Refunds requested on the grounds of authenticity must be made within 15 days of the date of the auction, and such refund requests must be accompanied by at least one supporting statement in writing from an authority recognized by the Auctioneers. It is the Auctioneers sincere intention to consider any reasonable request for a refund. *Absolutely no returns for any reason after 30 days following the closing of the sale.*

## 8. Bidding on any item indicates your acceptance of these terms.



American Glass Gallery™

**John R. Pastor**  
P.O. Box 227  
New Hudson, Michigan 48165  
Phone: 248.486.0530  
Fax: 248.486.0538  
www.americanglassgallery.com  
email: jpastor@americanglassgallery.com

### **PLEASE NOTE:**

*The lots offered in this printed catalog are identical to the lots offered in the on-line catalog. However, due to space constraints of the printed catalog, there may be some further information available regarding some of the lots in the on-line auction descriptions.*

*Please visit us at*

**[www.americanglassgallery.com](http://www.americanglassgallery.com)**

*and follow the link to the on-line auction.*

*The link and on-line auction will be available May 14, 2014.*

*A post-auction price list will be available on our website, in printable form, by November 8.*

*We encourage you to contact us by phone or email with any questions, for assistance with bidding, or further details or clarification on any of the lots in this sale. Your complete satisfaction and confidence is our goal!*

*We look forward to having you participate in our next sale, either as a buyer or a consignor. Our next absentee auction is scheduled for Fall, 2014. We already have some wonderful items consigned to this sale and look forward to discussing with you any quality items you wish to consign!*

**THANK YOU AND GOOD LUCK WITH YOUR BIDS!**

# Reference Key

Reference initials and numbers used in the description of this catalog refer to the following publications:

AHG	<i>American Historical Glass</i> , Bessie M. Lindsey, 1967
AM	<i>The Decanter - An Illustrated History of Glass from 1650</i> , Andy McConnell, 2004
AP	<i>Glass in Early America</i> , Arlene Palmer, 1993.
BA1	<i>Collecting The Cures</i> , Bill Agee, 1969
BA2	<i>Collecting All Cures</i> , Bill Agee, 1973.
BB	<i>A Bit About Balsams</i> , Betty Blasi, 1974
BH	<i>Classification and Documentation of Sunburst and Similar Scent Bottles</i> , Bill Ham, AB&GC, 5/87
B/K	<i>The Glass Industry in Sandwich</i> , Raymond Barlow and Joan Kaiser, 1989.
C	<i>Ink Bottles and Inkwells</i> , William Covill, 1971.
DeG	<i>American Sarsaparilla Bottles</i> , John DeGrafft, 1980.
DeGII	<i>Supplement to American Sarsaparilla Bottles</i> , John DeGrafft, 2004.
DF	<i>Hair Raising Stories</i> , Don Fadely, 1992.
DM	<i>Wistarburgh, Window Tiles, Bottles and More</i> , Dale L. Murscell, 2007.
F	<i>Inks, 150 Years of Bottles and Companies</i> , Ed and Lucy Faulkner.
FA	<i>John Frederick Amelung, Early American Glassmaker</i> , Lanmon, Palmer, Hume, Brill, Hanson, 1990.
FB	<i>A.S.C.R. The wine bottles of All Souls College</i> , Oxford, 1750 – 1850, Fay Banks.
G	(Flasks) <i>American Bottles &amp; Flasks and Their Ancestry</i> , McKearin & Wilson, 1978.
G	(Blown Three Mold) <i>American Glass</i> (Chapter VI), George S. and Helen McKearin, 1941.
GBH	<i>English Glass For The Collector, 1660-1860</i> , G. Bernard Hughes, 1958.
H	<i>American Bottles in the Charles B. Gardner Collection</i> , Norman C. Heckler, 1975.
JB	<i>Patent and Proprietary Medicine Bottles</i> , Joseph K. Baldwin, 1973
JEB	<i>Glasshouse Whimsies</i> , Joyce E. Blake, 1984.
JH	<i>Glasshouses &amp; Glass Manufacturers of the Pittsburgh Region, 1795 – 1910</i> , Jay W. Hawkins, 2009.
JS	<i>In glas verpakt – European Bottles, Their history and production</i> , Johan Soetens, 2001.
K	<i>Poison Bottle Workbook</i> , Rudy Kuhn, 1988.
KW	<i>New England Glass &amp; Glassmaking</i> , Kenneth M. Wilson, 1972.
L	<i>The Red Book of Fruit Jars, No. 9</i> , Douglas M Leybourne, Jr., 2001.
LI	<i>Pittsburgh Glass, 1797 – 1891</i> , Lowell Innes, 1976.
Mc	<i>Two Hundred Years of American Blown Glass</i> , Helen and George McKearin, 1950.
McK	<i>American Glass</i> , George S. and Helen McKearin, 1941.
MW	<i>American Bottles &amp; Flasks and Their Ancestry</i> , McKearin & Wilson, 1978.
N	<i>Great American Pontiled Medicines</i> , Frederick Nielson, 1978.
NCH	<i>The Blaske Collection of American Flasks</i> , Norman C. Heckler, 1983.
NCH II	<i>The Blaske Collection: Part II</i> , Norman C. Heckler, 1983.
Odell I	<i>Indian Bottles and Brands</i> , John Odell, 1977
Odell II	<i>Pontiled Medicine Encyclopdia</i> , John Odell, 2000
O&S	<i>Warner's Reference Guide</i> , Ed Ojea and Jack Stecher, 1998.
P	<i>The Glass Gaffers of New Jersey</i> , Adeline Pepper, 1971.
RD	<i>Understanding Antique Wine Bottles</i> , Roger Dumbrell, 1983.
RF	<i>The Bottle Book: A Comprehensive Guide to Historic, Embossed Medicine Bottles</i> , Richard Fike, 1987
RH	<i>Collecting Barber Bottles</i> , Richard Holiner, 1986.
R/H	<i>Bitters Bottles</i> , Carlyn Ring and W. C. Ham, 1998.
RWL	<i>Antique Fakes &amp; Reproductions</i> , Ruth Webb Lee, 1950
T	<i>Collectors Guide to Saratoga Type Mineral Water Bottles</i> , Donald Tucker, 2005.
U	<i>Collectible Character Bottles</i> , Authur Umberger, 1969.
V	<i>Nailsea Glass</i> , Keith Vincent, 1975
VdB	<i>Antique Glass Bottles; Their History and Evolution</i> , Willy Van den Bossche, 2001.
WL	<i>A Wine-Lover's Glasses, The A.C. Hubbard, Jr. Collection</i> , Ward Lloyd, 2000.
Z	<i>Ketchup, Pickles, Sauces</i> , Betty Zumwalt, 1980.
ZW	<i>Color Hutchinsons</i> , Zang Wood, 1999.

- The dash is generally used to indicate that the descriptions are on opposite sides of the bottle or flask.

/ The slash is used to indicate that the descriptions are on different lines or surfaces of the bottle.





Lot 137 (Detail)



# LaFayette Flasks

We have the distinct honor of offering an outstanding and diverse group of LaFayette flasks in this auction, many of which are shown below. From the extremely rare GI-85a, to the relatively common GI-90, there's a LaFayette here for every collector of American historical flasks.

celebrated return visit to the young United States.

In addition to flasks, LaFayette's bust appeared on all manner of things from badges and buttons to parasols and cast iron stoves and his name was often appropriated for newborn boys, ships, towns and theaters.

Of the 18 different molds used for these flasks, eight have a Masonic theme on the reverse. All of them were likely made between 1824 and 1830, during, or just after General Lafayette's much-

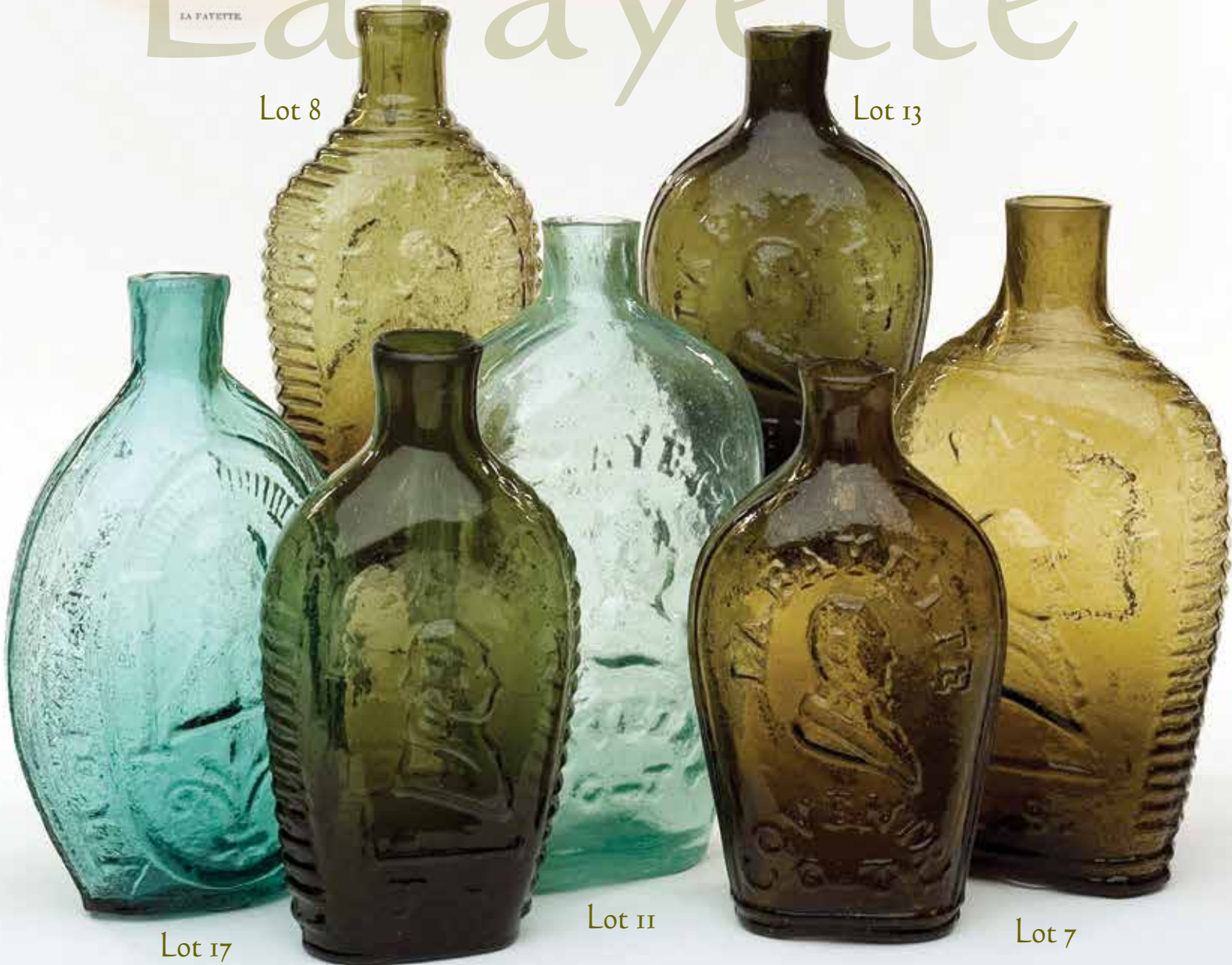
For further reading on these historic and beautiful flasks, see *Antique Bottles & Flasks and Their Ancestry* by Helen McKearin & Kenneth Wilson.



# LaFayette

Lot 8

Lot 13



Lot 17

Lot 11

Lot 7

Lot 9

Lot 12

Pontiled  
Medicines:  
"Rare Squares"

Lot 188

Lot 185

Lot 184



Lot 187



# Exceptional Master Ink Bottles

# Master Inks

Lot 109



Lot 112



Lot 110



Lot 117



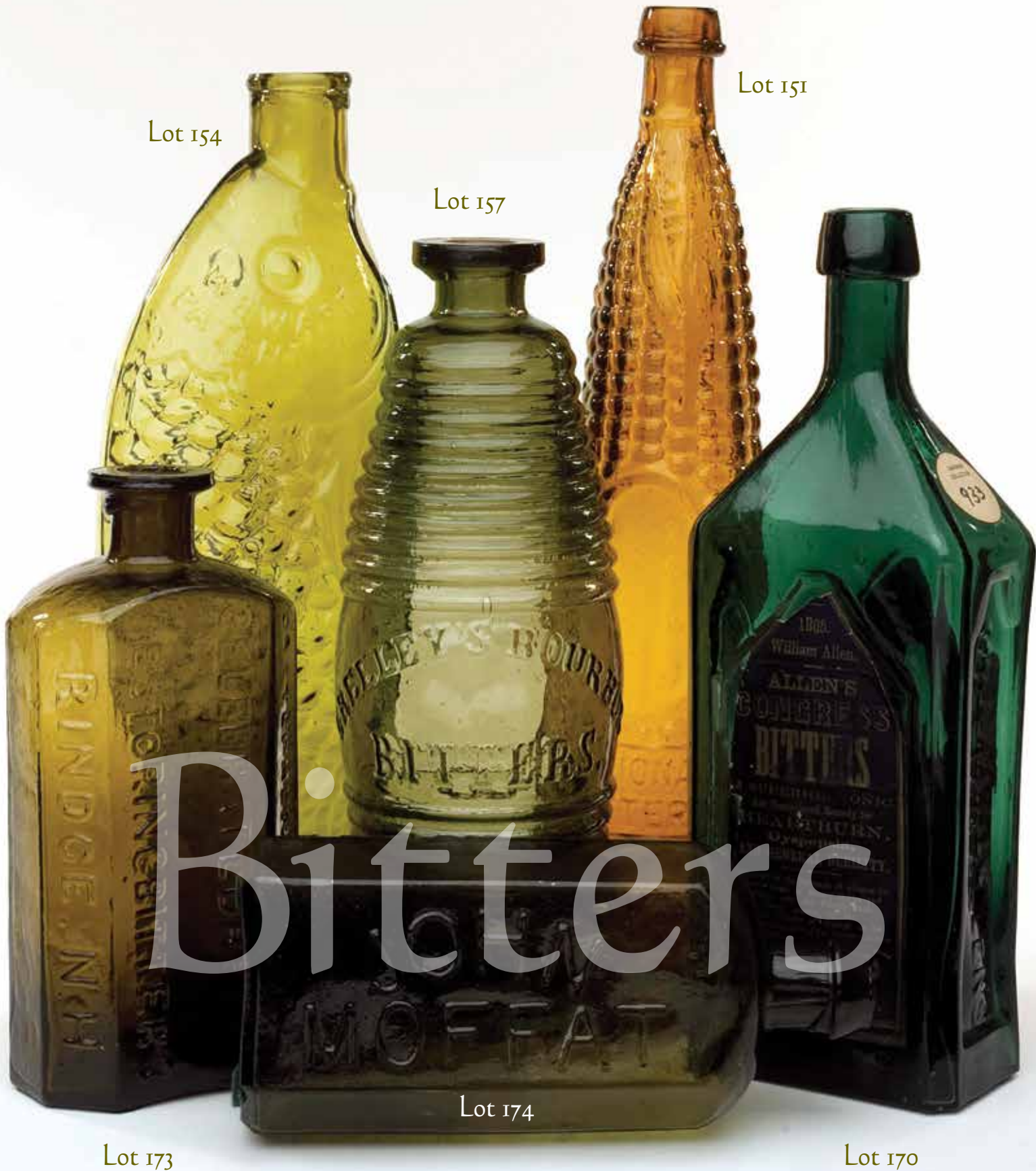
Lot 113



Lot 116 (lot of 2)



# Bold & Beautiful Bitters...



**Lot 1**

**"G. GEO. WASHINGTON" / BUST OF WASHINGTON - EAGLE / "FL"** Historical Flask, Frederick R. Lorenz & Company, Pittsburgh, Pennsylvania, 1825 - 1830. Greenish aquamarine, sheared mouth - blowpipe pontil scar, Pt., near mint; (just a little fine high point wear and a slightly weakened impression in the shoulder area, otherwise perfect). GI-7. A rare and desirable mold, excellent condition, and with a stronger impression than most.

**Est.: \$2,000 - \$4,000 • Min. bid: \$1,000**

**Lot 5**

**"THE FATHER OF HIS COUNTRY" / BUST OF WASHINGTON - "DYOTVILLE GLASS WORKS PHILADA / GEN. TAYLOR NEVER SURRENDERS"** / BUST OF TAYLOR, Dyottville Glass Works, Philadelphia, PA, 1848 - 1860. Medium blue green, sheared mouth - blowpipe pontil scar, Qt, near mint; (a very slight touch of exterior wear and a couple of flakes, 1/4" and 1/8", that appear to be refired, and almost certainly occurred during manufacture). GI-37. Beautiful color.

**Est.: \$300 - \$600 • Min. bid: \$150**

**Lot 2**

**"GENERAL WASHINGTON" / BUST OF WASHINGTON - "E PLURIBUS UNUM" / EAGLE / "T.W.D - ADAMS & JEFFERSON / JULY 4 A.D. 1776 - KENSINGTON GLASS / WORKS PHILADELPHIA"** Historical Flask, Kensington Glass Works, 1825 - 1835. Aqua, sheared mouth - blowpipe pontil scar, Pt; (a tiny, pinhead bit of roughness on the edge of the lip, on the reverse, and a couple of minor 1/8" flakes at edge of base). GI-14. A bright, clean example.

**Est.: \$300 - \$500 • Min. bid: \$150**

**Lot 6**

**"GENERAL JACKSON" / BUST OF JACKSON - LARGE FLORAL MOTIF** Historical Flask, an early Pittsburgh district glasshouse, 1825 - 1835. Medium to deep aquamarine, sheared mouth - blowpipe pontil scar, pint, near mint; (just a very slight touch of high point wear and some spotty light interior haze near the shoulder, otherwise perfect). GI-68. A rare early Pittsburgh flask with a very strong impression, and one that does not come around often!

**Est.: \$3,000 - \$5,000 • Min. bid: \$1,500**

**Lot 3**

**"ALBANY GLASS WORKS" / BUST OF WASHINGTON / "ALBANY / NY" - SAILING SHIP** Historical Flask, Albany Glass Works, 1847 - 1850. Aquamarine, sheared mouth - blowpipe pontil scar, Pt., attic mint! GI-28. A comparatively scarce flask, excellent condition, and a bright clean example with strong embossing. Also, a little harder to find with the sheared mouth.

**Est.: \$400 - \$600 • Min. bid: \$200**

**Lot 7**

**"LAFAYETTE" / BUST OF LAFAYETTE / "T.S" - "DE WITT CLINTON" / BUST OF CLINTON / "CONVENTRY / C-T"** Historical Flask, Coventry Glass Works, Coventry, CT, 1824 - 1830. Beautiful light olive yellow, sheared mouth - pontil scar, Qt; (a fine hairline spider crack with 1/2" legs near the "E" in "Lafayette", and just a slight touch of light high point wear, otherwise pristine). GI-80. Beautiful with gorgeous light color, strong embossing.

**Est.: \$400 - \$800 • Min. bid: \$250**

**Lot 4**

**BUST OF WASHINGTON - "ALBANY GLASS WORKS" / N Y** Historical Flask, Albany Glass Works, Albany, 1847 - 1850. Aquamarine, sheared mouth - blowpipe pontil scar, 1/2 pint, very near mint; (a tiny, minor area of high point wear on reverse, otherwise pristine perfect!) GI-30. Bright, clean, and with strong embossing. A very scarce little flask, especially in this fine condition. A great example! Ex. Jerry Strubel collection.

**Est.: \$400 - \$600 • Min. bid: \$200**

**Lot 8**

**"LAFAYETTE" / BUST OF LAFAYETTE / "S & C" - "DEWITT CLINTON" / BUST OF CLINTON / "C-T"**, Coventry Glass Works, 1824 - 1830. Clear light olive with a yellowish tone, sheared mouth - pontil scar, 1/2 pint, very near mint; (a partially open bubble on the inside of the neck, a very slight touch of high point wear, and a little light content residue that should easily wash out, otherwise pristine). GI-81. Strong embossing, almost no high point wear. A great example!

**Est.: \$2,000 - \$4,000 • Min. bid: \$1,200**





### Lot 9

**"LAFAYETTE" / BUST OF LAFAYETTE / "T.S." - MASONIC Historical Flask**, Coventry Glass Works, Coventry, CT, 1824 - 1830. Clear medium olive green, sheared mouth - pontil scar, ½ pint, near mint; (a little light high point wear and a slightly weak impression in the shoulder). GI-84. A very rare and desirable flask (listed as "Extremely rare" by McKearin), and with good color; one that does not come around often.

*Est.: \$4,000 - \$8,000 • Min. bid: \$2,000*



### Lot 13

**"LAFAYETTE" / BUST OF LAFAYETTE / "COVENTRY / C-T" - STARS AND LIBERTY CAP / "S&S" Historical Flask**, Coventry Glass Works, Coventry, CT, 1825 - 1830. Medium olive green shading to a deep olive near the base and through the neck, sheared mouth - pontil scar, ½ pint, very near mint; (just the slightest bit of faint high point wear and a small open bubble on the interior of the neck) GI-86. A good impression, great character, and in a very scarce, almost pure green color.

*Est.: \$800 - \$1,600 • Min. bid: \$500*



### Lot 10

**"LAFAYETTE" / BUST OF LAFAYETTE / "COVENTRY / C-T" - STARS AND LIBERTY CAP / "S&S" Historical Flask**, Coventry Glass Works, Coventry, CT, 1825 - 1830. Yellowish olive amber shading to lighter yellow tone below the shoulders, sheared mouth - pontil scar, Pt; (a little light exterior wear, a tiny pinhead flake and ¼" area of very minor roughness on the edge of the mouth). GI-85. Beautiful in natural daylight with the lighter yellow tones through the body.

*Est.: \$800 - \$1,600 • Min. bid: \$500*



### Lot 14

**"GENERAL LA FAYETTE" / BUST OF LAFAYETTE - "REPUBLICAN GRATITUDE - KENSINGTON GLASS WORKS PHILADELPHIA - E. PLURIBUS UNUM" / EAGLE / "T.W.D" Historical Flask**, Kensington Glass Works, 1825 - 1830. Aqua, sheared mouth - pontil scar, Pt, very near mint; (just a touch of very minor high point wear and a couple of faint scratches near base) GI-90. A bright, clean example with an outstanding, bold, crisp mold impression.

*Est.: \$300 - \$500 • Min. bid: \$180*



### Lot 11

**"LAFAYETTE" / BUST OF LAFAYETTE / "COVENTRY / C-T" - STARS AND LIBERTY CAP / "S&S"**, Coventry Glass Works, 1825 - 1830. Aqua, sheared mouth - pontil, Pt; (professionally cleaned to original luster and near mint, but retains a little light oxidation, or fine graininess, between the ribs and a little on the reverse). GI-85a. Extremely rare, only three known in aquamarine, and with one of the other two being damaged. Variant with two rivet impressions in the shoulder.

*Est.: \$10,000 - \$15,000 • Min. bid: \$5,000*



### Lot 15

**"GENERAL LA FAYETTE" / BUST OF LAFAYETTE - "REPUBLICAN GRATITUDE - KENSINGTON GLASS WORKS PHILADELPHIA - E. PLURIBUS UNUM" / EAGLE / "T.W.D" Historical Flask**, Kensington Glass Works, 1825 - 1830. Aqua, sheared mouth - pontil scar, Pt; (a ¼" flake on the inside edge of the lip, a touch of very light high point wear, and a minor 1/8" open surface bubble). GI-90. A beautiful, very attractive, bubbly example!

*Est.: \$300 - \$500 • Min. bid: \$180*



### Lot 12

**"LAFAYETTE" / BUST OF LAFAYETTE / "COVENTRY / C-T" - STARS AND LIBERTY CAP / "S&S" Historical Flask**, Coventry Glass Works, Coventry, CT, 1825 - 1830. Yellowish olive amber, sheared mouth - pontil scar, ½ pint., near mint; (just a touch of very minor high point wear and a couple of minor open bubbles on the interior of the neck, otherwise perfect!) GI-86. A great example with an outstanding impression and crude, seedy glass.

*Est.: \$700 - \$1,400 • Min. bid: \$400*



### Lot 16

**"GENERAL LA FAYETTE" / BUST OF LAFAYETTE - EAGLE / "T.W.D" Historical Flask**, Kensington Glass Works, 1825 - 1830. Aquamarine, sheared mouth - blowpipe pontil scar, Pt, near mint; (a small pinhead flake on the inside edge of the mouth and a very minor, faint line of milkiness near one of the medial ribs, otherwise perfect). GI-91. A great example of this scarce flask with a very strong mold impression.

*Est.: \$400 - \$600 • Min. bid: \$250*



### Lot 17

**BUST OF LAFAYETTE - "GENL LA FAYETTE" - STARS AND EAGLE Historical Flask**, probably Knox & McKee, Wheeling, West Virginia, 1824 - 1830. Blue green, sheared mouth - blowpipe pontil scar, Pt, sparkling attic mint. GI-93. A beautiful example of this rare flask having good strong color, outstanding character, condition and eye appeal. If you have been waiting for great example, this might be the one.

*Est.: \$4,000 - \$6,000 • Min. bid: \$2,500*



### Lot 21

**BUST OF BYRON - BUST OF SCOTT Portrait Flask**, probably an early Stoddard glasshouse, Stoddard, New Hampshire, 1842 - 1850. Yellowish olive amber, sheared mouth - blowpipe pontil scar, ½ pint; (a tiny, very minor pinhead bruise at edge of base and a little light interior residue that would almost certainly wash out). GI-114. A nice example of this classic little Stoddard flask.

*Est.: \$175 - \$275 • Min. bid: \$100*



### Lot 18

**"JENNY LIND" / BUST OF JENNY LIND - "GLASS WORK'S" / GLASSHOUSE / "S. HUFFSEY" Historical Calabash Flask**, probably Isabella Glass Works, Brooklyn, New Jersey, 1850 - 1860. Rich, medium to deep emerald, applied sloping collared mouth with lower bevel - blowpipe pontil scar, Qt, perfect. GI-99. Beautiful, rich gorgeous color, excellent mold impression and condition.

*Est.: \$2,500 - \$4,500 • Min. bid: \$1,500*



### Lot 22

**EAGLE - EAGLE Historical Flask**, probably Kentucky Glass Works, Louisville, KY, 1850 - 1855. Beautiful medium sapphire blue, sheared mouth - blowpipe pontil scar, pint; (the flask may have been lightly cleaned, but certainly appears as near attic mint; an 1/8" flake at side of sheared mouth that may have occurred at time of manufacture). GI-24. Beautiful color, good mold impression, one of the classics and still a lot of flask for the money in this very desirable color.

*Est.: \$2,500 - \$4,000 • Min. bid: \$1,500*



### Lot 19

**"JENNY LIND" / BUST OF JENNY LIND - "GLASS WORK'S" / GLASSHOUSE / "S. HUFFSEY" Historical Calabash**, probably Isabella Glass Works, 1850 - 1860. Bubbly yellow green or citron, applied sloping double collared mouth - blowpipe pontil scar, Qt, near mint; (small potstone on the base with a couple of tiny, 1/8" radiations, and a small area of extremely faint interior residue or haze). GI-99. Exceptional character and eye appeal being filled with tiny seed bubbles.

*Est.: \$1,800 - \$2,800 • Min. bid: \$1,000*



### Lot 23

**EAGLE - EAGLE Historical Flask**, probably Kentucky Glass Works, Louisville, KY, 1850 - 1855. Dense, virtually black, "old" amber, sheared mouth - blowpipe pontil scar, pint; (a shallow 1/8" flake at edge of the sheared mouth and two, very shallow, minor, flat flakes at edge of base, otherwise appears as virtually attic mint). GI-24. An extreme rarity in color. McKearin notes a "Dark amber (black)" in the charts, but this is believed to be the 1st example to be offered at public auction.

*Est.: \$4,000 - \$8,000 • Min. bid: \$2,500*



### Lot 20

**"LOUIS KOSSUTH" / BUST OF KOSSUTH - STEAM FRIGATE / "U.S. STEAM FRIGATE / MISSISSIPPI / S. HUFFSEY" Historical Calabash**, probably a South Jersey glasshouse, 1850 - 1860. Clear medium emerald green, applied sloping collared mouth - "PH. DOFLEIN / MOULD MAKER / NTH 5! ST 84" (on base), iron pontil scar, Qt, sparking attic mint! GI-112. Exceptional example, rare color, outstanding condition!

*Est.: \$3,000 - \$6,000 • Min. bid: \$1,800*



### Lot 24

**EAGLE - EAGLE / "LOUISVILLE / KY / GLASSWORKS" Historical Flask**, Louisville Glassworks, Louisville, KY, 1855 - 1865. Deep aquamarine, very crudely applied mouth with flat band - smooth base, ½ pint; (lightly cleaned to original luster and near mint condition; a partially open bubble in the neck with some light milky residue). GI-33. A comparatively scarce mold, attractive, bright, clean, and in a good deep color.

*Est.: \$300 - \$500 • Min. bid: \$150*





### Lot 25

**EAGLE - "LIBERTY" / OAK TREE Historical Flask**, possibly an early Pittsburgh district glasshouse, 1825 - 1835. Clambroth coloration, sheared mouth - blowpipe pontil scar, ½ pint, perfect. GII-60. A very rare color (unlisted by McKearin), with only one or two other examples having been offered at auction in more than 20 years.

**Est.: \$1,500 - \$3,000 • Min. bid: \$800**



### Lot 29

**"LIBERTY" / EAGLE - "WESTFORD / GLASS / Co / WESTFORD / CONN" Historical Flask**, Westford Glass Works, 1857 - 1873. Bubbly olive amber, crudely applied round collared mouth with bevel - smooth base, ½ pint, near attic mint; (very minor typical light exterior wear, otherwise perfect). GII-65. Nice character with plenty of tiny bubbles throughout.

**Est.: \$175 - \$275 • Min. bid: \$100**



### Lot 26

**EAGLE - "LIBERTY" / OAK TREE Historical Flask**, possibly an early Pittsburgh district glasshouse, 1825 - 1835. Rich, deep amber, sheared mouth - blowpipe pontil scar, ½ pint, sparkling mint. GII-60. These little flasks are very historical, but often times are troubled by high point wear, a weak impression, or other issues. This example is much better than average with virtually no high point wear, flakes, or other issues, - a good one!

**Est.: \$2,000 - \$4,000 • Min. bid: \$1,200**



### Lot 30

**EAGLE - CORNUCOPIA Historical Flask**, probably Keene Marlboro Street Glassworks, Keene, New Hampshire, 1830 - 1842. Yellowish olive amber, sheared mouth - blowpipe pontil scar, pint, near mint; (some very minor high point wear, otherwise perfect). GII-73. A crude example having nice character with numerous sand grains and small potstones (no radiations).

**Est.: \$175 - \$275 • Min. bid: \$100**



### Lot 27

**"LIBERTY" / EAGLE - "WILLINGTON / GLASS, CO / WEST WILLINGTON / CONN" Historical Flask**, Willington Glass Works, 1860 - 1872. Beautiful golden amber with some warmer orange tones near the base, applied round double collared mouth - smooth base, Qt.; (just a slight touch of some very light exterior wear, otherwise attic mint). GII-61. A big, beautiful flask, attractive color, and with whittled, seedy, bubbly glass.

**Est.: \$600 - \$900 • Min. bid: \$400**



### Lot 31

**EAGLE - EAGLE Historical Flask**, probably a Pittsburgh district glasshouse, 1860 - 1870. Light sapphire blue, applied collared mouth with flat band - smooth base, pint; (some minor high point wear and a very light, superficial 1" scratch within one of the oval frames). GII-92. A scarce and very pretty color for this mold.

**Est.: \$800 - \$1,200 • Min. bid: \$400**



### Lot 28

**"LIBERTY" / EAGLE - "WILLINGTON / GLASS / Co / WEST WILLINGTON / CONN" Historical Flask**, Willington Glass Works, 1855 - 1860. Clear, medium to deep olive green, sheared mouth - blowpipe pontil scar, ½ pint, very near mint; (a very minor wisp of light wear near the shoulder on the reverse, otherwise perfect!) GII-63. A bright, clean example with nice color, and a very bold impression. Very scarce with the pontil scarred base.

**Est.: \$500 - \$800 • Min. bid: \$300**



### Lot 32

**EAGLE - EAGLE Historical Flask**, a Pittsburgh district glasshouse, 1860 - 1870. Yellowish lime green, applied ring type collared mouth - smooth base, ½ pint, perfect. GII-95. A rare and outstanding color for this mold that does not wash out in daylight. In addition, a very strong impression and no high point wear. Probably one of the choicest examples that you could hope to find in this mold.

**Est.: \$800 - \$1,200 • Min. bid: \$400**



### Lot 33

**EAGLE / "PITTSBURGH / PA" - EAGLE Historical Flask**, a Pittsburgh district glasshouse, 1860 - 1870. Light to medium sapphire blue, applied colored mouth with flat band - smooth base, Qt, sparkling attic mint. GII-103. A great example, bright, clean, in an outstanding and rare color for this mold, and also having a good mold impression. Note; found at an estate sale in the upper peninsula of Michigan, still having partial contents.

*Est.: \$1,200 - \$2,200 • Min. bid: \$600*



### Lot 37

**"SUCCESS TO THE RAILROAD" / HORSE PULLING CART - (REVERSE SAME) Historical Flask**, probably Mt. Vernon Glass Works, Vernon, NY, 1830 - 1844. Yellowish olive amber, sheared mouth - blowpipe pontil scar, pint; virtually attic mint; (a slightly weakened impression in the shoulder area, as is typical for this mold). GV-5. A very nice example having virtually none of the high point wear so often found on these flasks.

*Est.: \$400 - \$600 • Min. bid: \$200*



### Lot 34

**MASONIC - "ZANESVILLE" / EAGLE / "OHIO / J. SHEPARD & CO", Historical Flask**, Zanesville Glassworks, Zanesville, Ohio, 1822 - 1832. Rich medium to deep amber with a slight orange tone, sheared mouth - blowpipe pontil scar, pint, near mint; (just a slight touch of light high point wear and an extremely shallow, tiny pinhead bit of roughness on the sheared mouth that likely occurred at manufacture). GIV-32. An excellent example with a very strong mold impression!

*Est.: \$800 - \$1,200 • Min. bid: \$400*



### Lot 38

**SUNBURST FLASK**, New England, probably Coventry Glass Works, Coventry, Connecticut, 1815 - 1830. Clear olive green, sheared mouth - blowpipe pontil scar, ½ pint, attic mint. GVIII-16. A great example, scarce in this beautiful clear, pure olive color (no trace of amber is this one), and in outstanding condition!

*Est.: \$600 - \$1,200 • Min. bid: \$400*



### Lot 35

**MASONIC - "ZANESVILLE" / EAGLE / "OHIO" / "MURDOCK & CASSEL" Historical Flask**, Muskingum Green Glass Works, Zanesville, OH, 1832 - 1835. Deep blue green, sheared mouth - blowpipe pontil scar, pint; (a weak impression which is believed to be the case with every known example of this mold; a little fine high point wear). GIV-33. An extremely rare and important flask, this example believed to be the deepest in color. Ex. Beverly Burbage collection.

*Est.: \$6,000 - \$12,000 • Min. bid: \$3,000*



### Lot 39

**SUNBURST FLASK**, New England, probably Coventry Glass Works, Coventry, Connecticut, 1815 - 1830. Yellowish olive amber, sheared mouth - blowpipe pontil scar, ½ pint, virtually attic mint; (just a faint touch of very minor high point wear, otherwise perfect). GVIII-18. A comparatively scarce flask, excellent condition.

*Est.: \$600 - \$1,200 • Min. bid: \$400*



### Lot 36

**ALL SEEING EYE INSIDE 6-POINTED STAR / "A D" - RAISED ARM AND 6-POINTED STAR / "G R J A" Historical Flask**, probably a Stoddard, NH glasshouse, 1842 - 1850. Beautiful yellowish olive amber, sheared mouth - blowpipe pontil scar, pint, near mint; (a few superficial light scratches near base on reverse). GIV-43. A very beautiful example, almost olive yellow through mid-body, shading to a deeper olive amber near the base and shoulder.

*Est.: \$300 - \$500 • Min. bid: \$180*



### Lot 40

**SCROLL FLASK**, Midwest America, 1850 - 1860. Medium sage green, sheared mouth - red iron pontil scar, pint; (a 1/8" flake at the side of the sheared mouth and a little roughness from glass extrusion at the mold seam, otherwise perfect). GIX-10a. Listed as a comparatively scarce mold, but perhaps more interesting is the color, aptly described by McKearin as "sage". Definitely a pleasing shade of green, seldom seen in a Scroll flask.

*Est.: \$600 - \$900 • Min. bid: \$300*





### Lot 41

**SUMMER TREE - SUMMER TREE Pictorial Flask**, America, 1850 - 1860. Brilliant golden yellow, applied round double collared mouth - blowpipe pontil scar, Qt, virtually attic mint; (a couple of tiny, tissue-paper-thin open surface bubbles, otherwise "out of the mold" pristine perfect!) GX-18. A brilliant, scarce, outstanding color for this mold with plenty of eye appeal. The vast majority are in shades of green, it has been 10 years or more since a similar color has been offered at auction.

*Est.: \$2,000 - \$4,000 • Min. bid: \$1,000*



### Lot 45

**"UNION" / CLASPED HANDS / "L.F. & CO" - EAGLE / "PITTSBURGH PA" Historical Flask**, Lippincott, Fry & Company, Pittsburgh, 1866 - 1867. Medium golden amber, applied collared mouth with band - smooth base, Qt, near mint; (a couple of light, superficial scratches and minor wear near one of the mold seams; a tiny flake at base edge). GXII-13. Bright, clean, great condition, strong impression. Note; a scarce flask, the glassmaker being in business for only two short years!

*Est.: \$600 - \$900 • Min. bid: \$300*



### Lot 42

**"FOR PIKE'S PEAK" / PROSPECTOR - HUNTER Historical Flask**, Ravenna Glass Works, Ravenna, Ohio, 1857 - 1864. Medium yellow olive, applied collared mouth with flat band - smooth base, Qt, near attic mint; (a couple of tissue-paper-thin open bubbles and a pinhead bit of roughness on top of the mouth, otherwise mint). GXI-50. A touch lighter in shade, and with a bit more of a yellowish tone to the olive than some.

*Est.: \$1,500 - \$2,500 • Min. bid: \$800*



### Lot 46

**"UNION" / CLASPED HANDS - EAGLE / "E. WORMSER & Co / PITTSBURGH PA" Historical Flask**, E. Wormser & Co, Pittsburgh, 1860 - 1866. Olive yellow with a citron tone, large applied round collared mouth - smooth base, Qt, near mint; (a very minor bit of high point wear and a tiny, pinhead flake at edge of base). GXII-15. Beautiful, rare and stunning color, one that will definitely stand out in a grouping of flasks.

*Est.: \$2,000 - \$3,500 • Min. bid: \$1,000*



### Lot 43

**"FOR PIKE'S PEAK" / PROSPECTOR - HUNTER Historical Flask**, Ravenna Glass Works, Ravenna, OH, 1857 - 1864. Medium to deep aquamarine, applied collared mouth with ring - smooth base, ½ pint, mint; (note, the flask has a very crude lip and some unevenness along the edge that almost certainly occurred during manufacture). GXI-52. An attractive, comparatively scarce little flask, heavily whittled and with an excellent mold impression.

*Est.: \$200 - \$400 • Min. bid: \$120*



### Lot 47

**"UNION" / CLASPED HANDS / "FA & Co" - CANNON Historical Flask**, Fahnestock, Albree & Co, Pittsburgh, PA, 1862 - 1872. Aquamarine, applied collared mouth with flat band - smooth base, pint, very near mint; (a slight bit of faint interior residue, primarily near the base, that should easily wash out). GXII-40.

*Est.: \$125 - \$175 • Min. bid: \$70*



### Lot 44

**CLASPED HANDS - EAGLE Historical Flask**, a Pittsburgh glasshouse, 1860 - 1870. Bright, light yellowish golden, applied collared mouth with flat band - smooth base, Qt; (just the slightest touch of faint high point wear, otherwise attic mint). An unlisted mold, similar to GXII-6 (24 leaves on left branch, 20 on right; 4 distinct arrows in thunderbolt, pennant rippled and with slightly different curvature). Outstanding condition, beautiful color, scarce mold.

*Est.: \$1,000 - \$1,500 • Min. bid: \$500*



### Lot 48

**GIRL RIDING BICYCLE - EAGLE / "A&D.H.C" Pictorial Flask**, A. & D.H. Chambers Co, Pittsburgh, PA, 1865 - 1875. Aquamarine, applied collared mouth with flat band - smooth base, pint, very near mint; (a small, 1/8", onionskin thin open surface bubble and a little faint interior residue that should easily wash out). GXIII-3. A scarce mold. Provenance: Ex. Roger Sweetland collection.

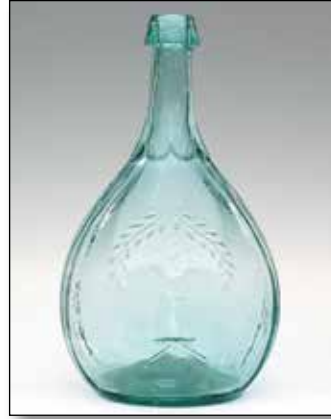
*Est.: \$150 - \$250 • Min. bid: \$80*



### Lot 49

**SAILOR - BANJO PLAYER Pictorial Flask**, probably John Chapman, Maryland Glass Works, Baltimore, MD, 1855 - 1862. Aquamarine, applied round double collared mouth - smooth base, ½ pint, near mint; (a touch of expected very light exterior wear). GXIII-8. Provenance: Ex. Roger Sweetland collection.

**Est.: \$125 - \$175 • Min. bid: \$70**



### Lot 53

**SHEAF OF GRAIN BELOW LAUREL WREATH - STAR Pictorial Flask**, possibly Sheets & Duffy Glass Manufacturers, Philadelphia, PA, 1850 - 1860. Aquamarine, applied sloping collared mouth - blowpipe pontil scar, Qt, mint. GXIII-43.

**Est.: \$125 - \$175 • Min. bid: \$70**



### Lot 50

**"WILL YOU TAKE / A DRINK / WILL A" / (DUCK) / "SWIM?" Pictorial Flask**, possibly Lockport Glassworks, Lockport, NY, 1870 - 1880. Aquamarine, tooled sloping collared mouth with ring - smooth base, ½ pint, near mint; (a touch of typical, very faint exterior wear on the reverse; the bottle displays as near attic mint, but may have been lightly cleaned). GXIII-29a. Listed by McKearin as extremely rare, a good clean example that does not come around often.

**Est.: \$400 - \$800 • Min. bid: \$250**



### Lot 54

**Pattern Molded Globular Bottle**, 24 ribs swirled to the left, probably Zanesville Glass Works, Zanesville, Ohio, 1820 - 1835. Clear, medium citron green, outward rolled mouth - pontil scar, ht. 7 ¾"; (some typical light exterior wear around the mid-body, otherwise perfect!) A rare and exceptional color for a Midwest Glob, nice tight ribbing through the neck, good form, a gorgeous early piece! Ex. Darl Fifer collection.

**Est.: \$3,000 - \$6,000 • Min. bid: \$1,500**



### Lot 51

**SHEAF OF GRAIN - STAR Pictorial Flask**, probably Bulltown Glass Works, Bulltown, NJ, 1858 - 1865. Vivid medium to deep emerald green, applied round double collared mouth - iron pontil, Qt, attic mint. GXIII-38. A scarce mold in a spectacular color. Strong, beautiful, and with a crisp mold impression. Another flask that will certainly stand out in a crowd. Although McKearin lists this color in the charts, we cannot find reference to another example being sold at auction.

**Est.: \$3,000 - \$5,000 • Min. bid: \$1,800**



### Lot 55

**Pattern Molded Globular Bottle**, 24 ribs swirled to the right, probably Zanesville Glass Works, Zanesville, Ohio, 1820 - 1835. Clear medium olive yellow, outward rolled mouth - pontil scar, ht. 8 1/8"; (just a touch of light exterior wear around the mid-body, otherwise attic mint). Another fantastic example, outstanding color having virtually no trace of amber, and also with good form.

**Est.: \$1,500 - \$2,500 • Min. bid: \$800**



### Lot 52

**SHEAF OF GRAIN - STAR Pictorial Flask**, probably Bulltown Glass Works, Bulltown, NJ, 1858 - 1865. Light to medium grass green, crudely applied ring type collared mouth - blowpipe pontil scar, Pt, near attic mint; (a shallow pontil flake that does not extend to the edge, otherwise pristine perfect). GXIII-39. A scarce flask, pretty color, delicate thin whittled glass.

**Est.: \$600 - \$900 • Min. bid: \$300**



### Lot 56

**Large, Pattern Molded Globular Bottle**, 24 ribs swirled to the right, probably Zanesville, Ohio, 1820 - 1835. Medium golden amber, outward rolled mouth - pontil scar, ht. 8 7/8"; (a couple of very light patches of faint interior residue or haze, most of which would likely wash out; a touch of very light exterior wear, otherwise perfect). A scarce size being both a little larger in height, as well as in body proportions. Also, nice clarity, color, and strength of pattern.

**Est.: \$600 - \$900 • Min. bid: \$300**





### Lot 57

**Freeblown, Un-patterned Globular Bottle**, Midwest, probably Zanesville Glass Works, Zanesville, Ohio, 1815 - 1830. Light yellowish golden amber, almost a golden yellow through the center, outward rolled mouth - pontil scar, ht. 8"; (a 1/4" flake on the underside of the of the turned over collar, an 1/8" open surface bubble, a touch of typical light exterior wear). A fairly scarce and difficult bottle to find, the un-patterned Ohio globs being much more rare than the ribbed examples.

*Est.: \$200 - \$400 • Min. bid: \$120*



### Lot 61

**Blown Three Mold Decanter**, New England, probably Keene Marlboro Street Glassworks, Keene, New Hampshire, 1820 - 1840. Medium yellowish forest green, barrel form, geometric pattern with diamond quilting and fluted shoulders - applied sloping collared mouth with lower bevel - pontil scar, pint; (just the slightest trace of very light exterior wear, otherwise sparkling attic mint!) GII-7. A bright, clean, beautiful example. Ex. Robert Morin collection.

*Est.: \$2,500 - \$4,500 • Min. bid: \$1,500*



### Lot 58

**Freeblown Globular Bottle**, probably Midwest America, 1810 - 1830. Medium apple green, globular body, sheared mouth with a crudely applied large string or ring type collar - blowpipe pontil scar, ht. 9 1/2"; (a little faint interior milkiness, primarily on one side, less than a third of the body; a 3/16" chip along with a 1/4" area of minor roughness on the edge of the sheared mouth). Probably a very early production piece from a small glasshouse. Bubbly and with nice color.

*Est.: \$200 - \$400 • Min. bid: \$120*



### Lot 62

**Blown Three Mold Decanter**, Keene Marlboro Street Glassworks, Keene, New Hampshire, 1820 - 1830. Medium olive green, tapered club form, geometric sunburst pattern, sheared and tooled mouth - pontil scar, Qt, very near mint; (tiny, hard to see, pinhead flake at edge of base, otherwise pristine perfect). GIII-19. Strong pattern, good color, an excellent example. Recent find from a New Hampshire estate.

*Est.: \$1,500 - \$2,500 • Min. bid: \$800*



### Lot 59

**Freeblown Globular Bottle**, probably Midwest America, 1810 - 1830. Light aquamarine, globular body with slightly drawn up shoulders, sheared mouth with a very crudely applied band of glass - blowpipe pontil scar, ht. 7", near mint; (a shallow open bubble on the interior with a tiny bit of residue; a touch of typical light exterior wear). Another early, very nice glob with a large thread of glass swooping through the body. Ex. Norman C. Heckler collection.

*Est.: \$150 - \$250 • Min. bid: \$80*



### Lot 63

**Blown Three Mold Decanter**, Keene Marlboro Street Glassworks, 1820 - 1835. Yellowish olive with an amber tone, ovoid or semi-barrel form, geometric sunburst pattern, sheared and tooled mouth - pontil scar, pint, virtually attic mint; (just an extremely minor wisp of expected faint usage wear, otherwise perfect). GIII-16. Typically found with more of an amber tone, this is a very attractive example.

*Est.: \$500 - \$800 • Min. bid: \$300*



### Lot 60

**Early, Rare Size Freeblown Globular Bottle**, Eastern U.S., or possibly Continental, 1750 - 1780. Clear medium green with a yellowish tone, small globular body, sheared and slightly flared mouth - glass tipped pontil scar, ht. 5 3/4"; (some spotty light interior stain, a shallow open interior bubble). These bottles, being fairly heavy, often have significant wear. This one is in overall excellent condition. An early glob in a rare miniature or half-size.

*Est.: \$600 - \$1,200 • Min. bid: \$300*



### Lot 64

**Blown Three Mold Decanter**, Keene Marlboro Street Glassworks, 1820 - 1835. Colorless, ovoid or semi-barrel form, geometric sunburst pattern, sheared, tooled and outward flared mouth, ground neck with period 3-mold stopper similar to type II - pontil scar, Qt, near mint; (an 1/8" partially open bubble on the top of the wide flared rim). GIII-15. The quart (GIII-15) mold is considerable scarcer and more difficult to find than the pint (GIII-16) mold.

*Est.: \$100 - \$200 • Min. bid: \$60*



### Lot 65

**Rare Blown Three Mold Flask**, probably Boston and Sandwich Glassworks, 1825 - 1835. Light apple green, chestnut form, sheared mouth - pontil scar, ht. 6 1/4", virtually attic mint; (miniscule pinprick bit of roughness at edge of sheared lip). GI-3, Type 2. An extremely rare and important flask, one of four known. See MCK, plate 238, #4; MW, plate 122, #4, B/K, #1276 (for bottle). Because of the workmanship, it may also be included in the pattern-molded family or even a whimsey.

*Est.: \$2,500 - \$4,500 • Min. bid: \$1,500*



### Lot 66

**Rare Blown Three Mold Flask**, probably Boston and Sandwich Glassworks, 1825 - 1835. Light yellowish apple green, elongated horseshoe form, sheared mouth - pontil scar, ht. 5 3/4"; (appears to have one, possibly two, finely buffed lip chips, the larger one being approx. 1/4" wide by 1/8" in depth). GI-3, Type 2. A rare and possibly unique form for this flask, a close cousin to Lot #65. Another great rarity in BTM, as well as Pattern Molding.

*Est.: \$750 - \$1,500 • Min. bid: \$400*



### Lot 67

**Pattern Molded Pocket Flask**, 24 vertical ribs, Midwest America, possibly Zanesville Glass Works, Zanesville, Ohio, 1815 - 1830. Beautiful light honey coloration, flattened circular body, sheared mouth - pontil scar, ht. 4 7/8", near mint; (some typical scattered light exterior wear). A very pretty example, particularly in natural daylight. Good color, lighter than most!

*Est.: \$250 - \$450 • Min. bid: \$150*



### Lot 68

**Pattern Molded Pocket Flask**, 24 vertical ribs, Midwest, probably Zanesville, 1815 - 1830. Bright golden amber shading to a lighter yellowish honey through the mid-body, flattened circular form, sheared mouth - pontil scar, ht. 4 7/8", very near mint; (just a trace of expected very light wear). A clean, bright, example. Classic, light golden tone and high quality metal so characteristic of early Ohio glass. Ex. Warren C. Lane collection.

*Est.: \$250 - \$450 • Min. bid: \$150*



### Lot 69

**Pattern Molded Pocket Flask**, 20 vertical ribs, probably America, possibly Midwest, 1810 - 1830. Light blue green, flattened circular body, sheared and slightly flared mouth - blowpipe pontil scar, ht. 4 1/8", very near mint; (a little interior residue that would almost certainly wash out). An unusual and interesting little flask, very scarce color, and with wide, melon type ribs. Ex. Warren C. Lane collection.

*Est.: \$300 - \$500 • Min. bid: \$150*



### Lot 70

**Pattern Molded Pocket Flask**, 16 vertical ribs, Midwest America, 1820 - 1835. Deep aquamarine, plump chestnut form, sheared mouth - blowpipe pontil scar, ht. 5 5/8"; (some typical light exterior wear and a 1/2" area of dull metallic roughness on top of the sheared mouth that may have occurred at the time of manufacture when an object touched the mouth of the flask). The 16 rib count is certainly a little harder to find than the 24 rib examples.

*Est.: \$150 - \$250 • Min. bid: \$80*



### Lot 71

**Pattern Molded Pocket Flask**, 20 fine ribs swirled to the right, probably Continental, possibly Norwegian, 1815 - 1835. Colorless with a very faint aquamarine hue though the base, flattened circular body, sheared and tooled, delicate outward flared mouth - glass tipped pontil scar, ht. 4", perfect. Colorless pattern molded flasks are relatively scarce, particularly as compared to their aquamarine counterparts.

*Est.: \$100 - \$200 • Min. bid: \$60*



### Lot 72

**Pattern Molded Spirits Flask**, honeycomb pattern with three large floral type medallions, Continental, probably Austria, 1760 - 1790. Colorless, plump spherical body blown in the German half post method, sheared with an applied ring type collared mouth - glass tipped pontil scar, ht. 4", very near mint; (a very slight interior haze or "bloom" in the shoulder area, otherwise perfect). See MCK, plate 239, # 10 & 11 for other examples of early Austrian flasks.

*Est.: \$175 - \$275 • Min. bid: \$100*





### Lot 73

**Freeblown Chestnut Flask**, New England, 1785 - 1820. Delicate clear yellowish straw olive, chestnut form, applied ring type collared mouth - blowpipe pontil scar, ht. 5 3/4", near mint; (some typical light exterior wear and fine scratches). Beautiful light color and clarity, and with plenty of tiny seed bubbles and impurities.

**Est.: \$250 - \$400 • Min. bid: \$150**



### Lot 77

**Early, Diminutive Freeblown Flask**, Northern Europe, probably Latvian, 1820 - 1840. Light apple green, flattened circular body, sheared mouth with a crudely applied ring collar - blowpipe pontil scar, ht. 4", perfect. VdB plate 237 - 238. A very interesting little flask with a distinctive form and mouth, reportedly used to for containing Riga Balsam, an aromatic oil used as a stomach bitter. These flasks are well documented in Mr. Van den Bossche's book, *Antique Glass Bottles*.

**Est.: \$100 - \$200 • Min. bid: \$60**



### Lot 74

**Freeblown Chestnut Flask**, New England, 1785 - 1820. Bright yellowish olive, almost an olive yellow, chestnut form, crudely applied gloppy string lip - blowpipe pontil scar, ht. 5 1/2", near mint; (some typical fine, light exterior wear, otherwise perfect). A pretty color, attractive example, nice crude collar.

**Est.: \$250 - \$400 • Min. bid: \$150**



### Lot 78

**Nailsea Type Flask**, probably England, 1840 - 1860. Colorless glass with dark blue and light pink loopings, cased with opaque milkglass, teardrop form, sheared mouth - glass tipped pontil scar, ht. 6 7/8", perfect. You can find these ornate looped Nailsea type flasks in a great variety of color combinations. Together, they can create quite a beautiful collection that is still very affordable.

**Est.: \$175 - \$350 • Min. bid: \$100**



### Lot 75

**Early Freeblown Chestnut Bottle**, Eastern U.S., possibly South Jersey, 1740 - 1780. Yellowish olive green, plump chestnut form with gracefully tapering shoulders, outward rolled mouth - blowpipe pontil scar, ht. 9 1/2"; (a number of shallow open surface bubbles, a band of moderate to fairly heavy exterior wear around the mid-body). Absolutely filled with bubbles. If you like crude, bubbly glass, you will love this bottle. A scarce color for this type of Chestnut.

**Est.: \$600 - \$1,200 • Min. bid: \$300**



### Lot 79

**Nailsea Type Flask**, probably England, 1850 - 1880. Colorless with opaque white loopings accented with four wide cranberry-colored bands of glass extending from the pontil to the sheared mouth, flattened ovoid form, sheared and fire polished mouth - glass tipped pontil scar, ht. 8 1/2"; (some typical light exterior high point wear on the flattened sides, otherwise very near mint). A pretty flask, different with the added vertical bands of color.

**Est.: \$150 - \$250 • Min. bid: \$100**



### Lot 76

**Freeblown "Bocksbeutel"**, Germany, 1830 - 1860. Rich, medium to deep reddish amber, squatty plump chestnut form, sheared mouth with an applied flat narrow string rim - blowpipe pontil scar, ht. 5 3/8"; (a couple of light scratches and some minor exterior wear). This example is a little smaller than normal and also in a very attractive reddish tone. See VdB, plate 218. Ex. Charles B. Gardner collection, # 2911.

**Est.: \$100 - \$200 • Min. bid: \$60**



### Lot 80

**Early Pattern Molded Leech Bowl**, probably England, 1860 - 1875. Translucent light to medium Robin's-egg-blue, compressed globular form with 18 wide, melon type vertical ribs, sheared and outward flared thin flanged lip - glass tipped pontil scar, ht. 2 3/8", near mint; (a little faint interior milkiness near the base, otherwise perfect). A beautiful little (traveling) leech bowl, delicate scarce color, and particularly nice with the pattern molding.

**Est.: \$250 - \$450 • Min. bid: \$150**

**Lot 81****Freeblown Glass Cane Whimsey,**

America, 1880 - 1920. Colorless with bands of blue, blood red, and yellow swirled throughout, hollow shaft with a bulbous handle, sheared and open tip, length 57", perfect! This example, and the next three lots, were a recent find from an estate in Maryland. A beautiful cane, outstanding condition.

**Est.: \$150 - \$250**  
**Min. bid: \$100**

**Lot 82****Freeblown Glass Cane Whimsey,**

America, 1880 - 1920. Opaque milkglass with red, blue and green candy stripe threads of glass swirled throughout, hollow shaft with a bulbous handle, sheared and open tip, length 49 1/2", perfect. A striking and different example.

**Est.: \$150 - \$250 • Min. bid: \$100**

**Lot 83****Lot of (2) Freeblown Glass Cane**

**Whimsies,** America, 1880 - 1920. 1st cane is very pale aqua with dark blue and red strips swirled throughout; 2nd example is colorless with yellow, tangerine and pale pinkish milkglass stripes; both with hollow shafts and handles, sheared and tips, lengths: 48 3/4" & 42 1/4" respectively; 1st cane is perfect; 2nd has a 1/4" crack and a little flaking at the tip.

**Est.: \$150 - \$250 • Min. bid: \$100**

**Lot 84****Lot of (3) Freeblown Glass Cane Whimsies,**

America, 1880 - 1920. (2) Pale aqua, (1) colorless example. Both aqua examples with hollow twisted shafts; clear example has a hollow shaft with tight twisting below handle, square shaft to midsection, followed by twisting to the tip; all with bulbous handles, sheared tips, lengths, clear: 42 1/4"; aqua examples: 54" and 55 3/8"; (tip on clear cane is missing, tip on one aqua cane may be incomplete; the other is perfect).

**Est.: \$100 - \$200 • Min. bid: \$60**

(NOTE: canes are not shown to scale)

**Lot 85**

**Lot of (3) Turtle Whimsies,** America, Bridgeton or possibly Millville, NJ, 1890 - 1920's. All are cobalt blue with drawn, crimped feet, tooled heads, domed shells, 5 3/8", 6 1/2", and 6 7/8"; (one example is near mint with a tiny flake on foot and minor wear; 2nd example with missing front feet; 3rd example with a missing rear foot and tail and a 3/8" flake at side of neck). A great lot of cobalt turtles. It is very unusual to find even a single cobalt example. Found in the Bridgeton, NJ area.

**Est.: \$300 - \$500 • Min. bid: \$150**

**Lot 86**

**Freeblown Turtle Whimsey,** probably a South Jersey glasshouse, 1890 - 1920. Greenish aquamarine, figural turtle with drawn, crimped feet, tooled head, domed shell with crude, pebbly texture, length, 6 3/8", near mint; (tiny bit of expected light wear, otherwise perfect).

A good, clean example. These turtles were typically offhand

pieces made at numerous glasshouses as early as the mid-1800's, and often utilized as doorstops or paperweights.

**Est.: \$100 - \$200 • Min. bid: \$60**

**Lot 87**

**Early Freeblown Milkbowl,** America, possibly Midwest, 1820 - 1840. Beautiful golden honey color, deep cylindrical bowl with nearly straight sides flaring slightly to a solid tooled and outward folded rim - blowpipe pontil scar, ht. 5 1/2", rim dia. also 5 1/2", near mint; (some light exterior "bloom" and exterior usage wear and light scratches around perimeter of sides near base). A beautiful bowl with some subtle streaks of amber swirling through the body. Also, plenty of "earthy" honest wear.

**Est.: \$500 - \$800 • Min. bid: \$300**

**Lot 88**

**Small Freeblown Jar,** America or possibly Continental, 1815 - 1835. Light to medium sea green, cylindrical bowl with straight sides, wide neck with a thin, outward flared lip - glass tipped pontil scar, ht. 4 1/8", rim diameter 3 7/8", very near mint; (some age-appropriate base and light exterior wear, otherwise perfect). A scarce, eye-appealing, diminutive size, wonderful condition. Also, very nice color, much scarcer than it's aquamarine counterparts.

**Est.: \$400 - \$700 • Min. bid: \$250**





### Lot 89

**Large Cream Jug or Pitcher**, America or England, 1820 - 1850. Deep, violet cobalt blue, compressed barrel form with two, three-thread hoops encircling the body, applied solid ear-shaped handle - polished pontil scarred base, ht. 6 5/8" near mint; (some expected light exterior usage wear). See, *The Glass Industry in South Boston*, Kaiser, pl.35 for similar example. A beautiful, early blown pitcher. Ex. Jayne DuPont Lunger collection.

*Est.: \$600 - \$900 • Min. bid: \$300*



### Lot 93

**"SKILTON FOOTE & CO'S / TRADE MARK" / (Monument, Trees, Fence & Barrels) / "BUNKER HILL PICKLES"**, America, 1880 - 1895. Aquamarine, in the form of the famous Cape May, NJ lighthouse, tooled sloping collared mouth - smooth base, ht. 7 7/8", near attic mint; (a tiny, pinprick bit of roughness on the edge of the lip, otherwise perfect). Z p.376. Scarce size, and with very crisp, strong embossing.

*Est.: \$400 - \$600 • Min. bid: \$200*



### Lot 90

**Pair of Small Blown Cognes or Vinegar Bottles**, America, probably a South Boston area glassworks, 1840 - 1870. Both are colorless, tapered cylinder form with nine flat panels, applied round heavy bar lips - polished pontil scarred bases, ht. 6 1/4", near mint; (one example has a small pinhead flake on a panel edge, second example has a light ring of haze on the interior of the shoulder). A recent find from a Massachusetts attic.

*Est.: \$100 - \$200 • Min. bid: \$60*



### Lot 94

**Cathedral Peppersauce Bottle**, America, 1845 - 1855. Deep aquamarine, square with gothic arched panels (two with embossed windows), below trefoil designs on neck, applied round collared mouth with lower bevel - blowpipe pontil scar, ht. 8 7/8", perfect. A great example of this bottle with good strong color, outstanding condition.

*Est.: \$175 - \$275 • Min. bid: \$90*



### Lot 91

**"SHRIVER'S / OYSTER / KETCHUP / BALTIMORE"**, probably Baltimore Glass Works, Baltimore, MD, 1855 - 1865. Beautiful apricot amber, cylindrical, applied sloping collared mouth - iron pontil scar, ht. 7 1/4"; (lightly cleaned to original luster and near mint condition with a little light exterior wear remaining; a small pinhead bit of roughness on the edge of the lip, very likely in-manufacture). A very scarce bottle, bright, sparking, beautiful color, and heavily whittled!

*Est.: \$1,500 - \$2,500 • Min. bid: \$800*



### Lot 95

**Large Cathedral Pickle Jar**, America, 1860 - 1875. Aquamarine, square with beveled corners, gothic arched panels, three with scalloped designs around edge, applied ring type collared mouth - early smooth base, ht. 13 7/8", near mint; (just a little spotty faint interior milkiness in one of the corners and lower third of one panel). The noted light haze area is minor. Very large size, almost 14 inches!

*Est.: \$200 - \$400 • Min. bid: \$120*



### Lot 92

**"SHRIVER'S / OYSTER / KETCHUP / BALTIMORE"**, probably Baltimore Glass Works, Baltimore, MD, 1855 - 1865. Citron green with a slight olive tone, cylindrical, applied sloping collared mouth - iron pontil scar, ht. 7 3/8"; (a dug bottle that does not appear to have been cleaned, with a little light exterior wear and minor interior stain, but with virtually all of it's original luster). Another eye-appealing, very scarce color, highly whittled.

*Est.: \$1,500 - \$2,500 • Min. bid: \$800*



### Lot 96

**Large Cathedral Pickle Jar**, America, 1860 - 1875. Aquamarine, square with beveled corners, gothic arched panels, three with quatrefoil design and beaded trefoil motif, applied ring type collared mouth - smooth base, ht. 11 5/8", near mint; (a minor, 3/16" shallow flake on the edge of the rolled collar, otherwise pristine). Similar to MW, plate 74, #12. A bright, clean, sparkling example.

*Est.: \$125 - \$225 • Min. bid: \$70*



### Lot 97

**Set of (4), "MILLVILLE / ATMOSPHERIC / FRUIT JAR - WHITALL'S PATENT / JUNE 18TH 1861" Jars,**

America, probably Whitall-Tatum & Co, Millville, NJ, 1862 - 1880. All are aqua with "WHITALL'S PATENT / JUNE 18TH 1861" on glass lids, original iron yoke clamps, PT, QT, 56 & 72 OZ; (PT, QT & 56 OZ jars are mint with a couple of minor flakes on edge of lids; the 72 OZ jar with 1/4" bruise on edge of inner lip, 1/8" flake on outer edge of lip). RB #2181.

**Est.: \$200 - \$400 • Min. bid: \$120**



### Lot 98

**Set of (3), "MILLVILLE / ATMOSPHERIC / FRUIT JAR - WHITALL'S PATENT / JUNE 18TH 1861" Jars,**

Whitall-Tatum & Co, Millville, NJ, 1862 - 1875. All are aqua with "WHITALL'S PATENT / JUNE 18TH 1861" on domed glass lids, original iron yoke clamps, PT, QT and 72 OZ; (PT has a sliver and 1/8" chip on inside edge of lip; QT has a 1/4" flake on outer edge of lip; 72 OZ has an 1/8" flake on outside edge of lip, a few spots of minor roughness on inner lip ring). RB #2183.

**Est.: \$500 - \$700 • Min. bid: \$300**



### Lot 99

**"MILLVILLE - HITALL'S PATEN" Jar,** America, probably Whitall-Tatum & Co, Millville, NJ, 1862 - 1875. Aquamarine, "WHITALL'S PATENT / JUNE 18TH 1861" on domed glass lid - smooth unmarked base, 1/2 pint; (the jar and glass lip are perfect, the metal thumbscrew and hardware is likely a reproduction). RB #2185.

**Est.: \$175 - \$350 • Min. bid: \$100**



### Lot 100

**"WW GREENER ST MARYS WORKS / BIRMM & HAYMARKET LONDON" Target Ball,** England, 1880 - 1895.

Cobalt blue, quilted diamond pattern with a center band, rough sheared mouth, dia. 2 5/8", perfect. A very nice example of this ball, a little deeper in color, and with strong, crisp embossing! Provenance: Ex. Alex Kerr collection.

**Est.: \$175 - \$275 • Min. bid: \$100**



### Lot 101

**Target Ball,** England, 1880 - 1895. Cobalt blue, patterned in rows of small blocks or squares and with a blank center band, rough sheared mouth, dia. 2 5/8", perfect. A pretty ball with plenty of tiny bubbles. Provenance: Ex. Alex Kerr collection.

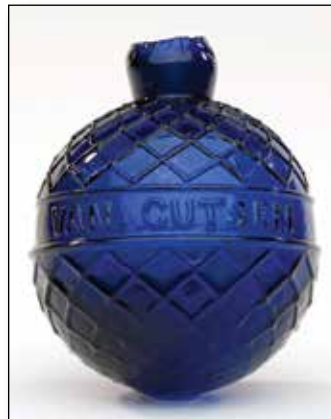
**Est.: \$125 - \$250 • Min. bid: \$80**



### Lot 102

**Target Ball,** France, 1880 - 1895. Cobalt blue, patterned with rows of large blocks or squares and a blank center band, outward flared rough sheared mouth, dia. 2 5/8", perfect. Provenance: Ex. Alex Kerr collection.

**Est.: \$100 - \$175 • Min. bid: \$60**



### Lot 103

**"VAN CUTSEM - A ST QUENTIN" Target Ball,** France, 1880 - 1895. Deep vivid cobalt blue, quilted diamond pattern with center band, rough sheared mouth, dia. 2 5/8", perfect. Provenance: Ex. Alex Kerr collection.

**Est.: \$100 - \$175 • Min. bid: \$60**



### Lot 104

**Lot of (2), 3-Piece Mold Target Balls,** America, 1880 - 1895. Sapphire blue and bright, light golden amber, both are unembossed with rough sheared mouths, 2 5/8" dia, very near mint; (both balls have just the slightest touch of extremely light interior spottiness or residue, most of which would likely wash out, otherwise perfect). The amber ball has nice character with some whitling and unevenness to the glass. Ex. Alex Kerr collection.

**Est.: \$175 - \$350 • Min. bid: \$100**





### Lot 105

**"HAYWARD HAND GRENADE FIRE EXTINGUISHER / NEW YORK"**, America, 1875 - 1895. Aquamarine, cylindrical with a diamond design around the shoulders above heavy "V" shaped vertical ribbing, tooled ring type collar - **"DESIGN PATD"** (on smooth base), ht. 7 5/8", perfect, with original contents; (crimped metal closure is corroded). Note; scarce larger size for this grenade!

*Est.: \$125 - \$225 • Min. bid: \$70*



### Lot 109

**Large, Sided, Fluted Master Ink Bottle**, America, 1850 - 1860. Beautiful, deep yellowish olive green, 12-sided, large fluted shoulders, applied sloping collar with tooled pour spout - large iron pontil, ht. 12" (gallon), near mint; (a shallow 1/4" x 3/8" flake at the edge of the base on one of the side panels, otherwise perfect). C #781. Ex. William Covill collection. Believed to be a unique example and perhaps one of the most impressive and eye-appealing of all the master ink bottles.

*Est.: \$7,500 - \$12,500 • Min. bid: \$4,000*



### Lot 106

**"STAR" (inside 5-pointed star) / "HARDEN HAND GRENADE - FIRE EXTINGUISHER"**, America, 1884 - 1895. Brilliant turquoise blue, ribbed melon body with wide center ring, sheared and ground mouth - **"MAY 27 84"** (on smooth base), ht. 7 7/8", perfect with original contents, neck wire, and small remnants of neck label remaining. Scarce larger size, outstanding condition.

*Est.: \$100 - \$200 • Min. bid: \$60*



### Lot 110

**Sided, Fluted Master Ink Bottle**, America, 1845 - 1860. Bright, yellow green with an olive tone, 12-sided, fluted shoulders, applied sloping collared mouth with tooled pour spout - blowpipe pontil scar, ht. 5 3/4"; (professionally cleaned to original luster with some light exterior wear scratches remaining). A very rare master ink bottle and little "cousin" to Lot #109, this one having the blowpipe pontil scar. Beautiful color.

*Est.: \$800 - \$1,200 • Min. bid: \$500*



### Lot 107

**"STAR" (inside 5-pointed star) / "HARDEN HAND GRENADE - FIRE EXTINGUISHER"**, America, 1884 - 1895. Brilliant, deep grass green, ribbed melon body with wide center ring, sheared and ground mouth - **"MAY 27 84"** (on smooth base), ht. 7 7/8", perfect with original contents, neck wire, and small remnants of neck label remaining. Scarce larger size, very scarce, beautiful color.

*Est.: \$250 - \$450 • Min. bid: \$150*



### Lot 111

**"HOENTHAL / BROTHERS & CO / INDELIBLE / WRITING INK / N.Y."** Master Ink, New England, 1845 - 1855. Medium olive amber, cylindrical, applied sloping collared mouth with tooled pour spout - sand type pontil scar, ht. 8 7/8", near mint; (a touch of typical light exterior wear; slightly weak impression, mainly towards the base as is common, otherwise mint). A rare, early New England master ink with beautiful, seedy, bubbly glass.

*Est.: \$1,200 - \$1,800 • Min. bid: \$700*



### Lot 108

**"STAR" (inside 5-pointed star) / "HARDEN HAND GRENADE - FIRE EXTINGUISHER"**, America, 1884 - 1895. Medium amber, ribbed melon body with wide center ring, sheared and tooled mouth - **"MAY 27 84"** (on smooth base), ht. 8", virtually attic mint and with original contents; (a few, tissue-paper-thin, small open surface bubbles and faint wear, otherwise, perfect!) Scarce larger size, rare color!

*Est.: \$400 - \$600 • Min. bid: \$250*



### Lot 112

**"HOENTHAL / BROTHERS & CO / INDELIBLE / WRITING INK / N.Y."** Master Ink, New England, 1845 - 1855. Medium olive green, cylindrical, applied sloping collared mouth with tooled pour spout - sand type pontil scar, ht. 7", near mint; (just a trace of light exterior wear and a couple of faint, superficial light scratches on the reverse, otherwise perfect). C #766. A very nice example, good strength of embossing, crude, whittled glass.

*Est.: \$1,200 - \$1,800 • Min. bid: \$700*



### Lot 113

**"HARRISON / COLUMBIAN / INK" Master Ink Bottle**, America, 1845 - 1855. Cobalt blue, cylindrical, applied wide flanged mouth - heavy blowpipe pontil scar, ht. 7 1/8", mint. C #765. Rare size, good strong embossing, beautiful color, outstanding condition. Not an easy one to find in this size and condition.

**Est.: \$1,800 - \$3,200 • Min. bid: \$1,000**



### Lot 117

**"I.L. ST - JOHN - & CO'S - BLACK - INK" Master Ink Bottle**, America, 1845 - 1855. Aquamarine, 10-sided, sheared and inward rolled mouth - blowpipe pontil scar, ht. 3 1/8", very near mint; (the bottle may have been lightly cleaned, but certainly presents itself as virtually attic mint). A very rare bottle with strong, crisp embossing, outstanding condition.

**Est.: \$500 - \$800 • Min. bid: \$250**



### Lot 114

**"HARRISON / COLUMBIAN / INK" Master Ink Bottle**, America, 1845 - 1855. Deep, vivid cobalt blue, cylindrical, applied wide flanged mouth - heavy blowpipe pontil scar, ht. 5 1/2", very near mint; (a little interior residue or light haze on the sides near the base, some of which may wash out, otherwise perfect). Another scarce size, this one being nicely whittled, and in about as deep of color as they come.

**Est.: \$1,400 - \$2,800 • Min. bid: \$800**



### Lot 118

**"B-U-T-L-E-R" Ink Bottle**, America, 1840 - 1854. Light yellowish apple green, octagonal, sheared and inward rolled mouth - blowpipe pontil scar, ht. 1 3/4"; (lightly cleaned to original luster and near mint condition). A crudely little ink from Cincinnati, very early, in a rare mold and rare color. In the book, *Inks - 150 Years of Bottles and Companies*, by Ed and Lucy Faulkner, an extremely rare yellow green example is noted on p.17.

**Est.: \$300 - \$500 • Min. bid: \$170**



### Lot 115

**"HARRISON / COLUMBIAN / INK" Master Ink Bottle**, America, 1845 - 1855. Cobalt blue, cylindrical, applied wide flanged mouth - blowpipe pontil scar, ht. 3 7/8", perfect! C #195. An outstanding example, strong embossing, strong color, nicely whittled.

**Est.: \$800 - \$1,200 • Min. bid: \$500**



### Lot 119

**"HARRISON'S / COLUMBIAN / INK"**, America, 1847 - 1860. Medium to deep aquamarine, octagonal, eight flat shoulder panels, sheared and inward rolled mouth - blowpipe pontil scar, ht. 1 7/8"; (lightly cleaned to original luster and virtually attic mint condition). C#531, MW, plate 76, #12. A very attractive example, brilliant glass, good deep color.

**Est.: \$120 - \$240 • Min. bid: \$70**



### Lot 116

**Lot of (2), "STAFFORD'S / INK" Master Ink Bottles** (both with original labels), America, 1880 - 1895. Bright, yellowish lime green and deep blue green, almost a teal blue, both are cylindrical with applied collared mouths and pinched pour spouts - smooth bases, ht. 7 3/4" and 9 3/4" respectively, both attic mint. Pretty colors, both with 98% complete, original labels. An eye-appealing pair of master inks, about as original and nice as you can find.

**Est.: \$175 - \$350 • Min. bid: \$100**



### Lot 120

**Umbrella Ink**, America, 1840 - 1860. Light to medium blue green, 8-sided umbrella form, sheared and inward rolled mouth - delicate blowpipe pontil scar, 2 1/4" ht. x 2 1/8" wide, mint. Similar to C #135. A nice clean example.

**Est.: \$150 - \$250 • Min. bid: \$80**





### Lot 121

**Teakettle Inkwell**, England or America, 1860 - 1880. Bubbly lime green, teakettle form with seven wide concave panels, each separated by a deep vertical groove, rough sheared lip - smooth base, ht. 1 5/8", near mint; (natural roughness and a small 1/8" sliver flake on the sheared lip that almost certainly occurred during manufacture, tiny bit of light high point wear, otherwise perfect). C #1252. A scarce little teakettle, nice and bubbly, beautiful color.

*Est.: \$300 - \$500 • Min. bid: \$150*



### Lot 122

**Freeblown Covered Inkwell**, probably America, possibly Philadelphia or Kensington Glassworks, 1810 - 1840. Deep, vivid cobalt blue, compressed cylindrical body with a short neck, sheared and fire polished mouth - matching domed cover with an applied, delicate, solid knob finial - both cover and base of inkwell with glass tipped punty scar, ht. 1 7/8" (including cover), near mint; (a minor 1/8" flake on the shoulder of the cover, otherwise perfect). C #1064.

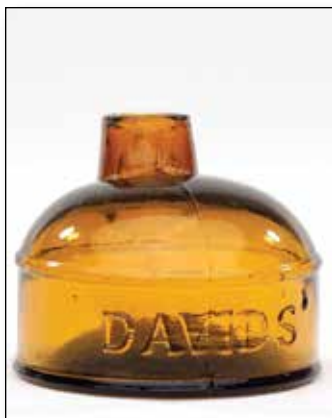
*Est.: \$200 - \$400 • Min. bid: \$120*



### Lot 123

**"J - & - I - E - M" Turtle Ink**, America, 1865 - 1890. Golden amber, cylindrical with six square panels around body, domed shoulders and offset neck, sheared and ground mouth - smooth base, ht. 1 5/8", very near perfect; (a couple of tiny, shallow pinhead open surface bubbles, otherwise attic mint). C #628. A very scarce color, beautiful example!

*Est.: \$400 - \$600 • Min. bid: \$250*



### Lot 124

**"DAVID'S" Turtle Ink**, America, 1865 - 1885. Light yellowish golden amber, cylindrical with domed shoulders and offset neck, sheared and fire polished mouth - smooth base, ht. 1 3/4", sparkling attic mint. C #617. A very scarce turtle, especially in this color and condition. Provenance: Ex. Howard Crowe collection.

*Est.: \$400 - \$600 • Min. bid: \$250*



### Lot 125

**Lot of (2), Early Labeled Blacking Bottles**, America, 1830 - 1840. Both are shades of light seafoam or bluish green, square with tooled thin flanged lips - blowpipe pontil scars, ht. 4 5/8"; (one with 1/8" chip, 2nd example with 1/4" chip off edge of flanged mouth; both with dried contents on interior, minor spots and stains on both labels). See MW, pl. 75, #4. Both labels read, "BLACK / LEATHER / VARNISH". An exceptional pair, outstanding original labels.

*Est.: \$600 - \$900 • Min. bid: \$300*



### Lot 126

**"ADR / ALBANY" Blacking Bottle**, probably a New York State glasshouse, possibly Albany Glassworks, 1845 - 1855. Light blue green, oval, sheared, tooled and inward rolled mouth - blowpipe pontil scar, ht. 4 3/4", near mint; (a small area of very light dullness or faint haze on the reverse, a minor trace of exterior wear). A thin, delicate example, strongly embossed. Blown for Abraham D. Rosekrans, ink and blacking manufacturers, Albany, New York.

*Est.: \$150 - \$300 • Min. bid: \$80*



### Lot 127

**Exceptional Freeblown Snuff Jar** (with original label, cork and partial contents), possibly an early Connecticut glasshouse, 1820 - 1835. Beautiful olive yellow, square with domed shoulders, drawn-up neck with sheared mouth - blowpipe pontil scar, ht. 4 1/2", perfect. Original label (approx. 80 - 85% complete), has standing Indian, "BEST / VIRGI / NIA" (on barrel) / "LORIL-LARD'S / MACCOBOY SNUFF", below. Outstanding character, crudity, color and condition!

*Est.: \$800 - \$1,200 • Min. bid: \$400*



### Lot 128

**Early Dip Mold Snuff Jar** (with original label), probably New England, 1840 - 1850. Medium olive green, square with beveled corners, sheared and tooled mouth - blowpipe pontil scar, ht. 4 7/8", virtually attic mint; (original label is approximately 90% complete, a little darkened, and may have at some point, been coated with a material to help preserve it). A slightly different Indian, barrel, and street address on this label.

*Est.: \$200 - \$400 • Min. bid: \$120*



### Lot 129

**Early Freeblown Snuff Jar** (with original label), probably an early Connecticut glasshouse, 1820 - 1835. Clear olive yellow, rectangular with wide beveled corners, rounded shoulders with slightly offset neck and sheared mouth - blowpipe pontil scar, ht. 4 1/4", very near mint; (tiny pinhead flake on sheared lip, otherwise perfect). Original label approx. 85% complete, very similar to lot #127, with Indian, barrel, and address. Glass is loaded with impurities and tiny seed bubbles.

*Est.: \$500 - \$800 • Min. bid: \$250*



### Lot 130

**Early Dip Mold Snuff Jar** (with original label), probably New England, 1840 - 1850. Medium olive green, rectangular with beveled corners, sheared and tooled mouth - blowpipe pontil scar, ht. 4 1/8", very near mint; (tiny pinhead flake on edge of sheared mouth). Although the label is somewhat darkened, it remains very readable and with excellent graphics, this example of the Maccaboy Snuff having the 110 Water Street, N.Y. address.

*Est.: \$250 - \$450 • Min. bid: \$150*



### Lot 131

**Early Dip Mold Snuff Jar**, America, probably New England, 1820 - 1835. Medium olive with a slight yellowish tone, square with domed shoulders, an extended neck, sheared, tooled, and slightly flared mouth - light sand type pontil scar, ht. 6 1/8", near mint; (a touch of light exterior wear, otherwise perfect). Similar to MW, plate 75, #11, but this example having a somewhat unusual "neck" for a snuff jar. It is possible that it may be a bit earlier than indicated.

*Est.: \$500 - \$800 • Min. bid: \$250*



### Lot 132

**Small, Early Dip Mold Snuff Jar**, America, probably New England, 1825 - 1840. Bubbly, pure olive, almost a forest green, square with wide beveled corners, sheared, tooled and slightly flared mouth - blowpipe pontil scar, ht. 4 1/8", near mint; (a few minor open surface bubbles, otherwise virtually attic mint). Similar to McK, plate 228, #12. A scarce form, small size, beautiful color, and absolutely full of bubbles!

*Est.: \$225 - \$450 • Min. bid: \$120*



### Lot 133

**"WHARTON'S / WHISKEY / 1850 / CHESTNUT GROVE"**, America, 1857 - 1870. Medium amber, flattened ewer form, applied solid handle, tooled and flared mouth with pour spout - **"WHITNEY GLASS WORKS / GLASSBORO NJ"** (on smooth base), ht. 10", near mint; (just a slight trace of typical light exterior wear; a very minor patch of "bloom" or faint dullness near the base, otherwise perfect). MW, plate 48, #6. Ex. Charles B. Gardner collection.

*Est.: \$600 - \$900 • Min. bid: \$400*



### Lot 134

**"R.B. CUTTER'S / PURE / BOURBON"** Handled Whiskey Jug, America, 1855 - 1865. Beautiful coppery-apricot amber, ovoid form, applied solid ear-shaped handle, applied blob collar - sand type pontil scar, ht. 8 1/2", near mint; (some typical very light exterior wear; a 1" area of minor roughness along the edge of the handle that is not uncommon, most of which likely occurred during manufacture). A beautiful example, heavily whittled, gorgeous scarce color!

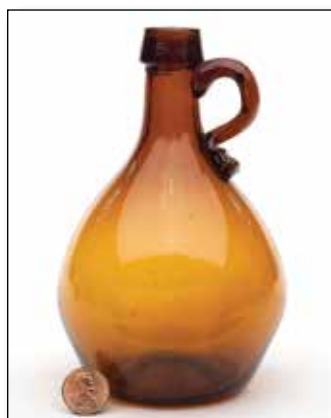
*Est.: \$400 - \$700 • Min. bid: \$250*



### Lot 135

**Large Applied Handle Spirits Jug**, America, 1850 - 1860. Medium to deep dusty rose coloration with some puce and apricot tones, 2-pc. mold, pear form, applied solid ear-shaped handle curled at lower attachment, applied blob collar - iron pontil scar, ht. 7 3/8", very near mint; (a 1/4" surface bubble near the side mold seam has a slight opening in the cove glass, and just the slightest trace of light exterior wear, otherwise perfect). Fantastic color, excellent condition.

*Est.: \$300 - \$600 • Min. bid: \$180*



### Lot 136

**Freeblown Applied Handle Spirits Jug**, America, 1845 - 1855. Bright honey amber, bulbous ovoid body, applied solid ear-shaped handle curled at lower attachment, applied sloping collared mouth - blowpipe pontil scar, ht. 5 7/8", virtually attic mint; (a small spot of very minor roughness on the edge of curl attachment, which is typical, and almost certainly occurred at manufacture). A clean, bright example, outstanding condition.

*Est.: \$150 - \$250 • Min. bid: \$80*





### Lot 137

**"IMPERIAL / LEVEE. / J. NOYES. / HOLLYWOOD / MISS."** Figural Cluster of Grapes and Tree, America, 1855 - 1865. Beautiful yellowish amber, cylindrical, applied collared mouth with flat band - red iron pontil scar, ht. 9 5/8", near mint; (a little light interior content residue, primarily near the base). This is the same yellowish example that sold in 2005, and believed to one of the lightest examples known. A scarce bottle, rare color, great example!

*Est.: \$3,500 - \$5,500 • Min. bid: \$1,800*



### Lot 138

**Figural Cluster of Grapes and Tree**, America, 1855 - 1865. Medium to deep amber, cylindrical, applied collared mouth with flat band - red iron pontil scar, ht. 9 3/8", near mint; (a touch of very faint interior residue and light exterior high point wear, otherwise perfect). An impressive bottle. This mold is believed to be every bit as scarce as the embossed, "Imperial Levee" bottle, and just as attractive. Provenance: Ex. John April collection.

*Est.: \$1,200 - \$2,200 • Min. bid: \$800*



### Lot 139

**"DISTILLED IN 1848 / OLD KENTUCKY / 1849 / RESERVE / BOURBON / A.M. BININGER & Co. / 19 BROAD ST. N.Y."**, America, 1850 - 1860. Medium amber, barrel form, applied round double collared mouth - blowpipe pontil scar, ht. 8"; (some very light interior residue or haze, a few shallow pinhead bits of roughness on the top edge of the lip). A good looking barrel, one of two address variants that you can find in this mold.

*Est.: \$200 - \$400 • Min. bid: \$120*



### Lot 140

**"DUFFY" / (Rooster Perched on Crescent Moon) / "CRESCENT" (inside moon) "SALOON / 214 / JEFFERSON / STREET / LOUISVILLE / KY."** Figural Pig, America, 1865 - 1875. Bright, light golden yellow shading to a rich, deep yellowish amber in the head, rough sheared mouth, length

7 5/8", near mint; (a 1/4" flake off edge of rough sheared mouth; some minor high point wear on reverse). Beautiful light color with plenty of yellow!

*Est.: \$800 - \$1,600 • Min. bid: \$500*



### Lot 141

**"LONDON" (backwards N's) / "JOCKEY - CLUB HOUSE / GIN"** - (Horse and Rider), America, 1858 - 1865. Deep olive green, square with beveled corners, applied sloping collared mouth - iron pontil scar, ht. 9 3/4"; (some scattered light exterior wear and a small shallow area on the top edge of the lip that may have been lightly buffed, otherwise excellent and displays as near attic mint). A scarce bottle, primarily distributed in the West during the gold rush era.

*Est.: \$1,800 - \$2,800 • Min. bid: \$1,000*



### Lot 142

**"LONDON / JOCKEY - CLUB HOUSE / GIN"** - (Horse and Rider), America, 1858 - 1865. Brilliant grass green, square with beveled corners, applied sloping collared mouth - iron pontil scar, ht. 9 1/8", pristine perfect. A beautiful and very scarce color, outstanding condition, a great example of this very popular Western gin!

*Est.: \$2,000 - \$4,000 • Min. bid: \$1,200*



### Lot 143

**"W. S. C / CLUB HOUSE GIN"** (with original label), America, 1865 - 1875. Pure olive, almost a forest green, tapered gin form, applied ring type mouth - smooth base, ht. 9 1/8"; (a small "fish-eye" type bruise on one of the corners and just a slight trace of wear, otherwise perfect). Found in an attic in Savannah, Georgia. Label reads in part: *FINE OLD / CLUB HOUSE / GIN. / W.S.C. / ROTTERDAM, / HOLLAND. / WM.S. CORWIN & CO...*. A great example, nice color, extremely rare with label.

*Est.: \$200 - \$400 • Min. bid: \$120*



### Lot 144

**"J & D. DUNCAN - OLD BOURBON"**, America, 1865 - 1875. Medium to deep olive green, tapered gin form, applied sloping collared mouth - smooth base, ht. 10", very near mint; (a light 1" scratch on a side panel and 1/8", onionskin-thin open surface bubble, otherwise pristine perfect). A rare, possibly unique American gin (whiskey) bottle. Note, **"WORMWOOD"** is peened out and remains barely legible on one of the side panels. Found in the Denver, CO area.

*Est.: \$300 - \$500 • Min. bid: \$200*

# Colorful Pontiled Medicines . . .

Wynkoops Sarsaparilla

Monk's Old Bourbon Whiskey For Medicinal Purposes

Woodman's Sarsaparilla Carters

Dr Robbins Tecumseh Rheumatic Drops

Dr Robertsons Family Medicine

Morse's Celebrated Syrup

SEA OTTER OIL



Lot 181

Lot 70

Lot 179

Lot 213

Lot 190

Lot 196

Lot 189

Lot 193

Lot 68

Lot 209



Dalby's Carminativ

# Ayers Rock Rose

Mexican Mustang Liniment

Spanish Mixture

Swaim's Panacea

Rushton & Aspinwall

Mackenzie's' Ague & Fever Mixture

DIE KEISER LIGEPRIVILE GIRT

Lot 183

Lot 191

Lot 182

Lot 180



Lot 197

Lot 217

Lot 198



### Lot 145

“H.H.S. & Co - IMPERIAL GIN”, Lorenz & Wightman, Penn Glass Works, Pittsburgh, PA, 1863-1872. Yellowish honey amber, square tapered gin form, narrow beveled corners, applied sloping collared mouth - “L & W” (on smooth base), ht. 9 5/8”; (a very faint, 1” scratch on one of the panels that is barely noticeable, otherwise sparkling mint). A scarce American gin bottle normally found in deeper shades of amber, this being one of the lightest.

Est.: \$200 - \$400 • Min. bid: \$120



### Lot 149

“ROYAL / ITALIAN BITTERS / REGISTERED” / (motif of crown, shield and flags) “TRADE MARK / A.M.F. GIANELLI / GENOVA” (with original neck and back labels), Canada, 1870 - 1880. Gorgeous medium pink amethyst, tapered cylinder form, applied square collar - smooth base, ht. 13 3/8”; (two, tiny, pinhead bits of roughness on edge of the mouth, otherwise pristine perfect!) R/H #R111. Found in a Vermont farmhouse attic. Exceptional and rare with original labels.

Est.: \$1,500 - \$2,500 • Min. bid: \$800



### Lot 146

Lot of (5) base embossed, “S.S.P.” Flasks and (2) “S.S. PIERCE CO.” Stoneware Jugs, America, 1885 - 1900. Flasks are bright yellowish olive, (2) 7-Up or “grass-green” examples, olive yellow, and lime green, all with strap sides, tooled mouths - “S.S.P.” (on smooth bases), (1) ½ pt, (3) pts,

(1) qt. flask; (a minor 1/8” flake on lip of one example, otherwise all are attic mint!) Three of the flasks have mostly intact, original labels. Stenciled jugs, ½ gal. and 2-gal, are both near mint.

Est.: \$200 - \$400 • Min. bid: \$120



### Lot 150

“BIG / BILL / BEST / BITTERS - “BIG / BILL / BEST / BITTERS”, America, 1890 - 1905. Medium orange amber near the base shading to a pretty light yellowish honey in the shoulders, tall pyramid form, tooled sloping collared mouth with ring - smooth base, ht. 12”, perfect. R/H #B95. Another attractive example, historical, believed to named for President (Big Bill) Taft. See Bob Strickhart’s article in *Antique Bottle & Glass Collector*, August, 2013 for related article.

Est.: \$175 - \$350 • Min. bid: \$100



### Lot 147

“BROWN’S / CELEBRATED / INDIAN HERB BITTERS - PATENTED / FEB 11 / 1868”, America, 1868 - 1875. Gorgeous light lemon yellow with a strong greenish tone, sheared and ground mouth - smooth base, ht. 12 1/8”; (a few chips, ½” to 1/8” on back edge of lip; partially open bubbles on dress and back of arm). R/H #B222. A scarce mold (“CELEBRATED” misspelled), in a rare color. One of the most beautiful, eye-appealing examples offered in a very long time.

Est.: \$1,800 - \$3,600 • Min. bid: \$1,000



### Lot 151

“NATIONAL / BITTERS” - “PATENT / 1867” (on base), America, 1867 - 1875. Beautiful light honey coloration shading to near yellow in the label panel, figural ear of corn, applied short tapered collar with ring - smooth base, ht. 12 ½”, perfect. R/H #N8. A nice light, pretty corn, one that will definitely stand out when compared to most.

Est.: \$500 - \$800 • Min. bid: \$300



### Lot 148

“BROWN’S / CELEBRATED / INDIAN HERB BITTERS - PATENTED / 1868”, America, 1868 - 1880. Brilliant light honey amber with plenty of yellow through the arms and upper torso, figural Indian maiden, sheared and inward rolled lip - smooth base, ht. 12 ¼”, perfect. R/H #B225. A very attractive example, light and bright with plenty of yellow in this one.

Est.: \$600 - \$900 • Min. bid: \$300



### Lot 152

“W & Co / N.Y.” Figural Pineapple Bitters, America, 1855 - 1865. Medium to deep olive green, applied round double collared mouth - blowpipe pontil scar, ht. 8 3/8”; (a few minor onion-skin-thin open surface bubbles, some high point wear on the diamond points, a touch of very faint dullness or exterior “bloom”). R/H #P100. A rare, very desirable mold, beautiful rich color, nice crude glass! A recent lucky find at a Texas estate sale.

Est.: \$3,000 - \$5,000 • Min. bid: \$1,800





### Lot 153

**"THE / FISH BITTERS - W.H. WARE / PATENTED 1866"**, America, 1866 - 1875. Colorless, figural fish, tooled ring collar - **"W.H. WARE / PATENT 1866"** (on smooth base), ht. 11 1/2", near mint; (a 1/4" flake on edge of base, an onion-skin-thin open surface bubble). R/H #F46. Extremely rare. This is the same example that sold thru GW, March, 2012, and the only clear example to be offered at auction since the famous Dr. Burton Spiller sale, May, 2000.

*Est.: \$6,000 - \$8,000 • Min. bid: \$3,000*



### Lot 154

**"THE / FISH BITTERS - W.H. WARE / PATENTED 1866"**, America, 1866 - 1875. Stunning, gorgeous olive yellow coloration, figural fish form, applied ring type collar - **"W.H. WARE / PATENT 1866"** (on smooth base), ht. 11 3/4", mint! R/H #F46. Exceptional and rare color, plenty of olive, and very similar, if not virtually identical to the Dr. Burton Spiller example that sold in May, 2000.

*Est.: \$8,000 - \$14,000 • Min. bid: \$5,000*



### Lot 155

**"THE / FISH BITTERS - W.H. WARE / PATENTED 1866"**, America, 1866 - 1875. Light to medium citron green, figural fish form, applied ring collar - **"W.H. WARE / PATENT 1866"** (on smooth base), ht. 11 3/4"; (a 3/8" hole drilled in base and a 3/16" flake on edge of ring collar, a touch of light interior residue that should easily wash out). R/H #F46. A rare, possibly unique color, the same example that sold in May, 2011, ABA, Lot 182.

*Est.: \$2,500 - \$4,500 • Min. bid: \$1,500*



### Lot 156

**"DOCTOR / FISCHS BITTERS - W.H. WARE / PATENTED 1866"**, America, 1866 - 1880. Brilliant yellowish golden, figural fish form, applied ring type collar - smooth base, ht. 11 1/2"; (a 1/4" x 1/2" surface bubble is missing its cover glass, otherwise near attic mint). R/H #F44. A pretty, bright example, lighter and with more yellow and honey tone than most (this mold typically being found in more of a medium amber color).

*Est.: \$300 - \$500 • Min. bid: \$180*



### Lot 157

**"GREELEY'S BOURBON / BITTERS."**, America, 1860 - 1875. Clear light olive with a mossy tone, barrel form, applied square collared mouth - smooth base, ht. 9 1/8", virtually attic mint; (tiny, barely noticeable, pinprick speck of roughness on the edge of the collar, otherwise pristine). R/H #G101. Outstanding and rare color, lighter in tone that most of the other "green" Greeley's. In addition, nicely whittled, clean, and excellent condition.

*Est.: \$4,000 - \$6,000 • Min. bid: \$2,500*



### Lot 158

**"GREELEY'S BOURBON / BITTERS."**, America, 1860 - 1875. Pure light to medium copper coloration, barrel form, applied square collared mouth - smooth base, ht. 9 1/8", near mint; (a touch of typical light exterior wear; a small area of minor roughness on the edge of the square collar that is common on these bottles, the type that you can feel, but is not easy to see). R/H #G101. Good color, nicely whittled, and more of a pure copper than most.

*Est.: \$500 - \$800 • Min. bid: \$300*



### Lot 159

**"GREELEY'S BOURBON / BITTERS"**, America, 1860 - 1875. Medium puce with a strawberry tone, barrel form, applied square collared mouth - smooth base, ht. 9 1/8", near attic mint; (a tiny, barely pinprick spot of roughness on the edge of the square collared mouth; just a minor trace of very light exterior wear, otherwise perfect). R/H #G101. A good clean example, outstanding condition, nice color.

*Est.: \$500 - \$800 • Min. bid: \$300*



### Lot 160

**"ST / DRAKE'S / 1860 / PLANTATION / X / BITTERS - PATENTED / 1862"**, America, 1862 - 1880. Medium to deep olive yellow, cabin form with 6 logs above the label panel, applied sloping collared mouth - smooth base, ht. 10", very near mint; (a tiny pinhead spot of roughness on the back edge of the lip, otherwise virtually attic mint). R/H #D108. A very beautiful, scarce color, plenty of olive tone, nice density and excellent clarity to the glass.

*Est.: \$1,400 - \$2,400 • Min. bid: \$800*



### Lot 161

“ST / DRAKE’S / 1860 / PLANTATION / X / BITTERS - PATENTED / 1862”, America, 1862 - 1880. Gorgeous light honey yellow shading to a clear yellow along the edges, cabin form with 6 logs above the label panel, applied sloping collared mouth - smooth base, ht. 9 ¾”, sparkling mint! R/H #D108. A brilliant, bright, beautiful color, nice and light all the way to the base.

**Est.: \$1,000 - \$1,500 • Min. bid: \$800**



### Lot 165

“ST / DRAKE’S / 1860 / PLANTATION / BITTERS - PATENTED / 1862”, America, 1862 - 1880. Bright golden with some lighter yellowish tones in the corners and reddish apricot tones near the base, 6 logs above label panel, applied sloping collar - smooth base, ht. 9 7/8”, near attic mint; (a bit of light residue that should easily wash out; a slightly weak impression in the shoulder). R/H #D103. Nice color. This is the scarcer variant that lacks the “X” over “BITTERS”.

**Est.: \$175 - \$350 • Min. bid: \$100**



### Lot 162

“ST / DRAKE’S / 1860 / PLANTATION / X / BITTERS - PATENTED / 1862”, America, 1862 - 1880. Beautiful honey yellow, just a bit deeper honey tone than the previous lot, cabin form with 4 logs above label panel, applied sloping collar - smooth base, ht. 10”, near mint; (a touch of interior residue, most of which would likely wash out). R/H #D110. Strong embossing, good color! An attic find from a 4-generation family home near Harvard, Mass.

**Est.: \$400 - \$700 • Min. bid: \$250**



### Lot 166

“DRAKES / PLANTATION / BITTERS - PATENTED / 1869”, America, 1869 - 1875. Golden amber, cabin form with 5 logs above the label panel, applied sloping collar - smooth base, ht. 9 ¾”; (some high point wear along the roof panels; a ¼” x 5/8” open bubble near the base on reverse that appears to have been smoothed over with a resin). R/H #D109. The noted bubble is on the reverse, and not terribly distracting, the bottle displays very near mint.

**Est.: \$250 - \$400 • Min. bid: \$125**



### Lot 163

“ST / DRAKE’S / 1860 / PLANTATION / X / BITTERS - PATENTED / 1862” (with complete, front and back labels), America, 1862 - 1880. Yellowish golden amber, cabin form with 4 logs above the label panel, applied sloping collar - smooth base, ht. 10”, perfect. R/H #D110. Original labels are darkened a bit, but completely legible and read in part; “DRAKE’S / PLANTATION BITTERS / OR OLD / HOMESTEAD TONIC” / (image of plantation and workers).

**Est.: \$175 - \$350 • Min. bid: \$100**



### Lot 167

“M. G. LANDSBERG / CHICAGO” / (motif of eagle) - “1776” (inside sunburst) - (motif of shield) - “1876”, America, 1876 - 1880. Bright honey amber, square with diamond patterned corners, figural bell shaped shoulders, applied sloping collar - smooth base, ht. 11”; (a tiny pinhead flake and a ½”, barely visible, iridescent bruise on edge lip that is very difficult to see). R/H, p.339. One of the most beautiful and ornately embossed bitters molds.

**Est.: \$500 - \$1,000 • Min. bid: \$300**



### Lot 164

“ST / DRAKE’S / 1860 / PLANTATION / X / BITTERS - PATENTED / 1862” (with original front and back labels), America, 1862 - 1880. Amber, cabin form with 6 logs above the label panel, applied sloping collar - smooth base, ht. 9 7/8”, perfect. R/H #D105. Labels are darkened a bit, but completely legible with excellent graphics of an old plantation and workers. Labeled 6-Log variants are scarce. Bottle looks like it was just pulled from a dusty attic!

**Est.: \$250 - \$450 • Min. bid: \$150**



### Lot 168

“DR A. H. SMITH’S / CELEBRATED / OLD STYLE BITTERS - O S / 2781 - THE STANDARD TONIC / AND / BLOOD PURIFIER”, America, 1870 - 1880. Medium to deep amber, square with beveled corners, applied sloping collar - smooth base, ht. 8 7/8”; (a little light spotty haze and residue in the shoulders, a couple of light scratches on one of the side panels, otherwise very near mint). R/H #S122. A fairly rare bottle, very crude glass.

**Est.: \$250 - \$450 • Min. bid: \$150**





### Lot 169

**"JOHN. W. STEELE'S / NIAGARA"** (star) **"BITTERS"** - (13 stars and eagle) - **"JOHN. W. STEELE'S / NIAGARA STAR BITTERS"** - **"1864"** - (star) - (star) - (star), America, 1864 - 1875. Beautiful yellowish golden amber, semi-cabin form, applied sloping collar - smooth base, ht. 10 1/8", near mint; (shallow, 3/16" bruise on the inside edge of the mouth, otherwise perfect). R/H #S182. A beautiful, sparking example.

*Est.: \$500 - \$700 • Min. bid: \$300*



### Lot 173

**"DR STEPHEN JEWETT'S - CELEBRATED HEALTH / RESTORING BITTERS - RINDGE. N.H."**, a Stoddard glasshouse, 1850 - 1860. Bright yellowish olive amber, rectangular with beveled corners, applied square collar - iron pontil, ht. 7 1/8", near mint; (a few faint scratches and some light high point wear on the back shoulder; a tiny area of very minor lip roughness that you can feel, but is hard to see). R/H #J38. Outstanding character, beautiful color.

*Est.: \$4,000 - \$6,000 • Min. bid: \$2,500*



### Lot 170

**"WILLIAM ALLEN'S - CONGRESS BITTERS"** (with original labels), America, 1865 - 1875. Emerald green, rectangular semi-cabin, applied sloping collar - smooth base, ht. 10 1/8", mint. R/H #A29. 95% complete front label, 85-90% complete rear label. **"WILLIAM ALLEN / MANUFACTURER & PROPRIETOR, / FORT EDWARD, N.Y."** (on label). Beautiful color, extremely rare with original labels. Ex. William Osgood, Ex. Charles B. Gardner collections.

*Est.: \$3,000 - \$5,000 • Min. bid: \$1,800*



### Lot 174

**"JOHN / MOFFAT - NEW YORK - PHOENIX / BITTERS - PRICE \$2.00"**, a New England glasshouse, 1840 - 1855. Light to medium yellowish olive, rectangular with beveled corners, applied sloping collared mouth - sand type pontil scar, ht. 7", virtually attic mint; (just a very minor touch of faint exterior wear near the base, otherwise perfect). R/H #M108. A very rare and difficult mold to obtain, and in exceptional condition.

*Est.: \$3,000 - \$5,000 • Min. bid: \$1,800*



### Lot 171

**"LEDIARD'S - CELEBRATED - STOMACH BITTERS"**, America, 1855 - 1865. Beautiful teal green, square with beveled corners, applied sloping collar with bevel - iron pontil scar, ht. 10", very near mint; (a 1/4", shallow open bubble on a corner edge). R/H #L60. The bottle may have been lightly cleaned, but if so, certainly presents itself as virtually attic mint. A beautiful color, nice clarity, excellent example! A popular bottle that is generally found on the west coast.

*Est.: \$1,500 - \$2,500 • Min. bid: \$1,000*



### Lot 175

**"JOHN MOFFAT - NEW YORK - PHOENIX / BITTERS - PRICE 1 DOLLAR"**, a New England glasshouse, 1840 - 1855. Light to medium yellowish olive with a slight amber tone, shading to almost black in one of the base corners, rectangular with beveled corners, crudely applied ring type collared mouth - light sand type pontil scar, ht. 5 1/4", virtually pristine perfect. R/H #M113. A crude example, scarce mold, great color! Ex. Carlyn Ring collection.

*Est.: \$1,200 - \$2,200 • Min. bid: \$700*



### Lot 172

**"DR A. W. COLEMAN'S - ANTI DYSPEPTIC / AND / TONIC BITTERS"**, 1850 - 1860. Yellowish emerald, tombstone form, applied sloping collar - iron pontil, ht. 9 1/4"; (a trace of light wear and faint spotty stain on the reverse, otherwise perfect). R/H #C194. Previously sold thru. GW, in 2010, and as noted then, one of the nicest examples of this rare bitters, not "Southern dug" like most, with a fully intact iron pontil, whittled, strong embossing, and great color.

*Est.: \$4,000 - \$6,000 • Min. bid: \$2,500*



### Lot 176

**"MRS. D.L. MARTIN'S / FAMILY MEDICINES / PAT. OCT. 25. 81"** (with complete original label and revenue stamps), Whittall-Tatum Co., Millville, NJ, 1882 - 1890. Aquamarine, oval, tooled square collar - **"W T. & Co"** (on smooth base), ht. 6 5/8"; (bottle is perfect, label has some stains). Label reads in part, **"BITTERS, / FOR FEMALE WEAKNESS"... "DOROTHY L. MARTIN, / OXFORD, / WARREN COUNTY, / NEW JERSEY"**. A very rare bottle, believed to be unique with label.

*Est.: \$175 - \$350 • Min. bid: \$100*



### Lot 177

**"POOR MAN'S / FAMILY BITTERS"** (with original label, contents, cork and stamp), America, c. 1870 (hand cancel date on proprietary stamp). Aquamarine, rectangular with beveled corners, tooled square collar - smooth base, ht. 6 1/4", perfect! R/H #P123. Original label reads in part, "JUDGE ME BY MY WORKS: / POOR MAN'S / (Trade Mark) / FAMILY BITTERS, / ... / OSWEGO, N.Y." Remarkable condition, rare with the original label and contents.

**Est.: \$150 - \$250 • Min. bid: \$80**



### Lot 181

**"WOODMAN'S - SARSAPARILLA."**, America, 1845 - 1855. Deep olive amber in the shoulders shading to black near the base, cylindrical with four narrow indented panels, applied sloping collar with bevel - sand type pontil, ht. 8", very near mint; (just a trace of faint haze; a tiny, pinhead flake on the inside edge of the mouth, otherwise perfect!) Provenance: Ex. Sam Greer collection. Possibly from New Orleans and exceedingly rare, one of only two known. A top Sarsaparilla bottle!

**Est.: \$5,000 - \$10,000 • Min. bid: \$3,000**



### Lot 178

**Label only Bitters, "481 / BRAND / STOMACH BITTERS"** / (image of man holding bottle of bitters) / "AT / LAST / THE / BEST / PREPARED BY THE / ARROW DISTILLERIES CO. / PEORIA, ILL. / BUFFALO CO-OPERATIVE LIQUOR CO., / 481 WASHINGTON St. BUFFALO, N. Y.". 1916 - 1920. Amber, square, ABM sloping collar - "1" (within diamond) on base, ht. 9 5/8"; (a 1/4" wide flake down side of lip, beneath the original neck foil). Original label, contents, neck foil & seal.

**Est.: \$100 - \$150 • Min. bid: \$50**



### Lot 182

**"SWAIM'S - PANACEA - PHILADA"**, America, 1845 - 1860. Medium sage green, cylindrical with 12 indented panels, large applied sloping collared mouth - sand type pontil, ht. 8 1/2", sparkling attic mint! This is the scarce mold lacking the label panel, with an unusually long neck, oversized tapered collar, great color, and filled with tiny seed bubbles and impurities. Likely one of the most eye-appealing examples of a Swaim's that you could hope to find.

**Est.: \$1,200 - \$2,200 • Min. bid: \$700**



### Lot 179

**"Dr ROBERTSONS - FAMILY / MEDICINE - PREPARED - ONLY BY / T.W. DYOTT"**, Kensington (Philadelphia) Glassworks, 1809 - 1815. Light green, rectangular with beveled corners, flanged mouth - blowpipe pontil, ht. 5 3/8"; (two 1/2" chips off mouth, also a 1/4" and 1/8" chip on lip; a tiny flake at base edge). See MW, p.80. Very rare and historical, credited as being one of the earliest embossed American medicines. Very strong color and embossing, an exceptional piece.

**Est.: \$2,000 - \$3,500 • Min. bid: \$1,200**



### Lot 183

**"CARTERS / SPANISH / MIXTURE"**, America, 1850 - 1860. Yellowish olive amber, almost a yellowish tobacco color, cylindrical, applied sloping collar with bevel - iron pontil, ht. 8 1/8", perfect! Provenance: Ex. Roger Sweetland, Ex. Cary Adelman collections. We sold this example back in Nov. 2009, as part of the Cary Adelman collection. A great example in a scarce color (most examples being predominately green in color), beautifully whittled, and in outstanding condition.

**Est.: \$700 - \$900 • Min. bid: \$400**



### Lot 180

**"RUSHTON & / ASPINWALL - No 86 WILLIAM ST / & 110 BROADWAY - NEW -YORK"**, New England, 1835 - 1850. Medium to deep yellow green, rectangular with beveled corners, applied sloping collar - blowpipe pontil, ht. 6 1/2"; near mint; (just a touch of faint wear, primarily near the base, a tiny open bubble on the shoulder, the bottle may have been lightly cleaned, but presents itself as very near mint). Rare, outstanding color and character!

**Est.: \$3,000 - \$6,000 • Min. bid: \$1,800**



### Lot 184

**"D.R. / CLARK / N. YORK"** (three oval links), America, 1850 - 1860. Rich, deep emerald, almost a forest green, square with beveled corners, applied sloping collared mouth - iron pontil scar, ht. 9 1/4", attic mint! A very scarce and desirable pontiled medicine, most examples having some form of damage, but not this one. Crude glass texture, great character, gorgeous color, fully intact iron pontil scar, a great example!

**Est.: \$2,500 - \$4,500 • Min. bid: \$1,500**





### Lot 185

**"DR. WILCOX'S - COMPOUND EXTRACT - OF / SARSAPARILLA"**, America, 1850 - 1860. Clear, medium blue green, square with beveled corners, applied sloping collar - large iron pontil scar, ht. 9 1/4", virtually attic mint; (small, tissue-paper-thin open surface bubble on side, a tiny, pinhead open bubble on edge of lip, otherwise perfect). Odell p.255. A rare sarsaparilla from Albany, NY, with nice crude glass texture and beautiful color.

**Est.: \$3,000 - \$5,000 • Min. bid: \$1,800**



### Lot 189

**"MONK'S / OLD BOURBON / WHISKEY - FOR, / MEDICINAL / PURPOSES. - WILSON, FAIRBANK & Co, / SOLE AGENTS."**, America, 1850 - 1860. Bright yellowish olive amber, almost a deep olive yellow, square with beveled corners, applied sloping collar - heavy iron pontil scar, ht. 8", virtually attic mint; (tiny, pinhead open bubble, otherwise pristine perfect). Another gorgeous, eye-appealing color, exceptional condition.

**Est.: \$1,000 - \$1,500 • Min. bid: \$600**



### Lot 186

**"DR GUYSOTT'S - COMPOUND EXTRACT / OF YELLOW DOCK - & SARSAPARILLA"** (with 75% original label), America, 1850 - 1860. Deep, bubbly aquamarine, square with beveled corners, applied sloping collar - sand type pontil scar, ht. 9 1/4", attic mint; (some glass extrusion from mold at the side of the neck). Blown for the S.F. Bennett & Co., Herkimer County, NY. Seedy, frothy glass, with exceptional character and eye-appeal!

**Est.: \$600 - \$1,200 • Min. bid: \$400**



### Lot 190

**"MORSE'S / CELEBRATED SYRUP / PROV. R. I."**, America, 1850 - 1860. Clear medium green approaching a light emerald coloration, oval, applied sloping collar - iron pontil, ht. 9", very near mint; (a touch of typical light exterior wear, primarily on the reverse, otherwise perfect). N #459. Most examples have been dug and cleaned. This example is an exception and appears to be an attic find, and with its fully intact iron pontil. A big, impressive, scarce medicine.

**Est.: \$1,500 - \$2,500 • Min. bid: \$800**



### Lot 187

**"DR GUYSOTT'S - COMPOUND EXTRACT / OF YELLOW DOCK - & SARSAPARILLA"**, America, 1855 - 1865. Emerald green, square with beveled corners, applied round double collared mouth - early smooth base, ht. 9 1/4", perfect. Ex. Dr. Burton Spiller collection, #440. A very rare and desirable medicine, heavily whittled, gorgeous color, lots of eye-appeal. This choice example was pictured in the book, *A Treasury of American Bottles*, by Ketchum, p.88.

**Est.: \$3,000 - \$5,000 • Min. bid: \$1,800**



### Lot 191

**"MYERS' - ROCK ROSE - NEW HAVEN"**, America, 1850 - 1860. Light apple green, rectangular with beveled corners, applied sloping collared mouth - heavy iron pontil scar, ht. 8 7/8", sparkling attic mint! Odell p.175; N #466. A scarce color, beautiful whittled, wavy glass, pristine condition, a top example of this bottle.

**Est.: \$1,000 - \$2,000 • Min. bid: \$600**



### Lot 188

**"DR GUYSOTT'S - COMPOUND EXTRACT / OF YELLOW DOCK - & SARSAPARILLA"**, New England, 1845 - 1855. Brilliant yellowish olive, square with beveled corners, applied sloping collared mouth - sand type pontil scar, ht. 9 3/8", attic mint! Extremely rare in this color, believed to be one of only three known. Gorgeous color with excellent clarity, crude glass texture, outstanding condition, a top example!

**Est.: \$4,000 - \$8,000 • Min. bid: \$2,200**



### Lot 192

**"Wm S. DUNHAM - MANUFACTURER - NEW YORK"**, America, possibly a New York glasshouse, 1845 - 1860. Deep greenish aqua, almost a light blue green, rectangular with beveled corners, applied sloping collar - blowpipe pontil scar, ht. 9 3/4"; (a 3/8" cooling or annealing crack below collar, on the side of the neck, otherwise perfect). Provenance: Ex. Sam Greer collection, #64. Extremely rare, believed to be a unique example.

**Est.: \$250 - \$450 • Min. bid: \$150**



### Lot 193

**"DR WYNKOOP'S / KATHARISMIC HONDURAS / SARSAPARILLA - NEW - YORK"**, America, 1850 - 1860. Cobalt blue, rectangular, applied sloping collar - blowpipe pontil, ht. 10 1/4"; (found about 5 years ago in a crawl space under a porch, the label panel had a little stain and ground wear and was subsequently cleaned to near mint condition with a little light wear remaining and a couple of tiny, 1/8", superficial stress lines along the panel edge). Strong, deep color.

*Est.: \$4,000 - \$8,000 • Min. bid: \$2,500*



### Lot 194

**"DR. H. ANDERS" - (motif of sun) / "HAURIEXHAC / FONTEVITALE - W. FOSDICK - DR. HENRY ANDERS / IODINE WATER / NEW YORK / 1855"**, America, 1855 - 1860. Beautiful, bright citron or yellow green, rectangular, tooled thin flanged lip, neck ground for stopper - blowpipe pontil, ht. 8 1/8"; (a 1/2" chip off the edge and underside of the flared lip, otherwise pristine perfect). An extremely rare pontiled medicine, possibly unique in this color.

*Est.: \$2,000 - \$4,000 • Min. bid: \$1,200*



### Lot 195

**"COSTER & COXE / CHEMIST'S / MONTGOMERY. ALA"** (backwards "N" in MONTGOMERY), America, 1845 - 1860. Deep olive, rectangular with beveled corners, applied sloping collar - sand type pontil, ht. 6 1/2"; (a dug bottle that has not been cleaned and retains some light overall haze; light scratches and wear on reverse, a 1/2" chip on the top and inside edge of the mouth on the reverse). One of only three or four known, and the first to be offered in more than 20 years.

*Est.: \$1,800 - \$3,600 • Min. bid: \$1,000*



### Lot 196

**"Dr ROBBINS' - TECUMSEH / RHEUMATIC / DROPS - BOSTON MASS"**, America, 1850 - 1860. Sapphire blue, rectangular with beveled corners, tooled thin flanged lip - blowpipe pontil scar, ht. 4 5/8", near attic mint; (a touch of very light exterior wear). N #522; Odell p.202. A great example with strong embossing, beautiful color, and a perfect thin flanged lip. Very rare, especially in this nice condition.

*Est.: \$2,500 - \$4,500 • Min. bid: \$1,500*



### Lot 197

**"DALBY'S - CARMINATIV"**, America, or possibly England. 1815 - 1835. Deep blue green with an emerald tone, conical form, applied thin flanged lip - pontil scar, ht. 3 1/2", perfect! MW, plate 79, #4; Odell, p.65. An extremely rare, very early pontiled medicine, believed to be unique in this color. Crude glass with strong embossing, exceptional condition. Provenance: Ex. Sam Greer collection #51.

*Est.: \$1,500 - \$2,500 • Min. bid: \$800*



### Lot 198

**"DIE KEISER LIGEPRIIVILE GIRT ALTONA DICHEWKRON ESSENTS"** (embossing spiraling around the bottle), probably America, 1820 - 1835. Olive yellow, cylindrical, thin flanged lip - blowpipe pontil scar, ht. 3 3/8", near mint; (the bottle may have been lightly cleaned). Likely an American bottle blown for the German community. Translated embossing: "THE KEISER USES AND RECOMMENDS ESSENCE OF ALTONA". Extremely rare, one of two known.

*Est.: \$500 - \$1,000 • Min. bid: \$250*



### Lot 199

**"DR TOWNSEND'S - SARSAPARILLA - ALBANY / N Y"** (no periods after the "N" or "Y"), America, 1850 - 1860. Dense tobacco amber in the shoulders, virtually black (amber), through the remainder of the body, rectangular with beveled corners, applied sloping collar - round iron pontil scar, ht. 9 1/8"; (just a touch of typical light exterior wear and a minor, 1/8" bit of roughness or surface bruise on the inside edge of the lip). Rare in color, and with the iron pontil.

*Est.: \$700 - \$1,200 • Min. bid: \$400*



### Lot 200

**"DR TOWNSEND'S - SARSAPARILLA - ALBANY / N.Y."** (cross or "X" on plain panel), America, 1845 - 1860. Rich, yellowish tobacco amber, square with beveled corners, applied sloping collar - sand type pontil scar, ht. 9 1/2", virtually attic mint; (a trace of light exterior wear, otherwise perfect). A scarce mold, scarce color, very pretty yellowish tone in the shoulders, and great character - the glass being absolutely filled with impurities and seed bubbles.

*Est.: \$700 - \$1,200 • Min. bid: \$400*





### Lot 201

**“DR TOWNSEND’S - SARSAPARILLA - ALBANY / N Y”** (4 rivet marks on each of the 4 flat panels), probably an early Stoddard, NH glasshouse, 1845 - 1855. Yellowish olive with a very slight amber tone, square with beveled corners, applied sloping collar - sand type pontil, ht. 9 3/8”, near mint; (an 1/8” cooling or stress line in the top of the lip that almost certainly occurred during manufacture). Nicknamed the “nailhead” mold, and identified as “DT3” by Rick Ciralli.

*Est.: \$300 - \$500 • Min. bid: \$180*



### Lot 205

**“DR TOWNSEND’S - SARSAPARILLA - ALBANY / N.Y.”**, America, 1850 - 1860. Medium green, almost an emerald tone, square with beveled corners, applied sloping collar - “cloverleaf” iron pontil, ht. 9 3/8”; (some scattered light exterior wear and fine scratches, otherwise excellent). A heavy, crude example that appears to be almost identical in mold to the previous lot (204), but in a slightly different color (and also having the “cloverleaf” iron pontil.

*Est.: \$300 - \$500 • Min. bid: \$180*



### Lot 202

**“DR TOWNSEND’S - SARSAPARILLA - ALBANY / N Y”**, a New England glasshouse, 1850 - 1860. Yellowish emerald, square with beveled corners, applied sloping collar - round iron pontil scar, ht. 9 5/8”, very near mint; (just a small touch of very light wear, otherwise pristine perfect). Mold identified by Rick Ciralli as DT2, this example has beautiful color and clarity, and also excellent character loaded with tiny bubbles and specks of impurities.

*Est.: \$500 - \$800 • Min. bid: \$300*



### Lot 206

**“OLD DR / J. TOWNSENDS - SARPAPARILLA - NEW YORK.”**, America, 1850 - 1860. Medium ice blue coloration, square with beveled corners, applied sloping collar - heavy iron pontil scar, ht. 9 5/8”; (some scattered light haze, a small partially open interior bubble, some typical light wear, but no other form of damage). A scarce color, heavily whittled, nice glass texture. With just a day or two in the tumbler, the bottle would almost certainly clean to near attic mint.

*Est.: \$250 - \$450 • Min. bid: \$150*



### Lot 203

**“DR TOWNSEND’S - SARSAPARILLA - ALBANY / N Y”**, possibly Saratoga Mountain Glassworks, Mt. Pleasant, NY, 1846 - 1856. Medium to deep blue green, almost a teal, square with beveled corners, applied sloping collar - round iron pontil, ht. 9 1/2”; (some scattered minor high point wear and a few light scratches, otherwise excellent). Similar to DT2, but size of lettering and spacing slightly different, a period under the “R” in “DR”. Rich color and excellent character.

*Est.: \$500 - \$800 • Min. bid: \$300*



### Lot 207

**“OLD DR / J. TOWNSENDS - SARPAPARILLA - NEW YORK.”**, America, 1860 - 1870. Deep bluish aquamarine, almost a light blue green, square with beveled corners, applied sloping collar - early smooth base, ht. 9 3/4”, attic mint! This is the mold variant with the chamfered base edges and two rivet marks on one of the beveled corners. A clean, sparkling example.

*Est.: \$150 - \$250 • Min. bid: \$80*



### Lot 204

**“DR TOWNSEND’S - SARSAPARILLA - ALBANY / N.Y.”**, America, 1850 - 1860. Yellowish green (a touch more yellow than Lot 202), square with beveled corners, applied sloping collar - “cloverleaf” iron pontil, ht. 9 1/4”; (some scattered exterior wear and fine scratches; a very minor 3/16” flake at base edge, and a tiny, barely pinhead flake at edge of mouth). A heavy, crude example with a short stubby neck, nice color and the distinct “cloverleaf” pontil.

*Est.: \$300 - \$500 • Min. bid: \$180*



### Lot 208

**“THOMSON’S - COMPOUND / SYRUP OF TAR - FOR CONSUMPTION - PHILADA”**, America, 1845 - 1855. Greenish aquamarine, rectangular with beveled corners, applied sloping collar - blowpipe pontil scar, ht. 5 5/8”, attic mint! Odell, p.237. An exceptional example of this mold, almost “paperweight” heavy, clean and sparkling with a large bubble swirling around the shoulder and a little ribbon of tiny bubbles zig-zagging through the body.

*Est.: \$175 - \$275 • Min. bid: \$100*



### Lot 209

**"MACKENZIE'S - AGUE & FEVER / MIXTURE - CLEVELAND OHIO"** (with original label), America, probably an early Ohio glasshouse, 1840 - 1850. Aquamarine, rectangular with wide beveled corners, outward rolled mouth - blowpipe pontil scar, ht. 6 1/2", virtually pristine perfect; (tiny, pinpoint spot of roughness on the lower rim of the rolled collar). Odell, p.155. Virtually 100% complete label. A very rare pontiled medicine, believed to be unique with the label!

*Est.: \$800 - \$1,200 • Min. bid: \$400*



### Lot 210

**"J.H. CURRIE / NEW YORK"** Sarsaparilla Bottle (with 95% original, complete label), America, 1845 - 1860. Aquamarine, oval, applied ring collar - blowpipe pontil scar, ht. 5 7/8", perfect. An extremely rare, possibly unique example recently found in the wall of an old house in Walton, New York, during its demolition. Label is darkened a bit, but clearly legible and reads in part, "CURRIE'S / COMPOUND FLUID EXTRACT OF / SARSAPARILLA."

*Est.: \$175 - \$275 • Min. bid: \$100*



### Lot 211

**"BONPLAND'S - FEVER & AGUE / REMEDY - NEW YORK."** (with 98% original, complete label), America, 1850 - 1860. Aqua, rectangular with beveled corners, applied sloping collar - blowpipe pontil, ht. 5 1/8", perfect. Label is darkened a bit, but very legible. Interesting that the label is in Spanish and the medicine was likely marketed to the Spanish community. "AGENTE, / EL SENOR D. T. LANMAN, / NO. 69 WATER STREET, / NUEVA YORK" (printed on label).

*Est.: \$100 - \$200 • Min. bid: \$60*



### Lot 212

**"DR. W.S. LUNT'S - AGUE KILLER / FINDLAY. O"**, America, 1850 - 1860. Brilliant, deep aquamarine, rectangular with beveled corners, applied sloping collared mouth - blowpipe pontil scar, ht. 6 7/8", sparkling attic mint. Odell, p.152. A rare pontiled medicine with nice whittling and character to the glass. Provenance: Ex. Sam Greer collection #1081.

*Est.: \$400 - \$800 • Min. bid: \$200*



### Lot 213

**"SEA / OTTER / OIL - F. BROWN / BOSTON"**, America, 1840 - 1850. Pale aquamarine, rectangular, tooled thin flanged mouth - blowpipe pontil scar, ht. 3 3/8", perfect. One of the early products put up by Frederick Brown (who also produced the Sarsaparilla & Tomato Bitters). Provenance: Ex. Sam Greer collection #1521, and believed to be a unique example.

*Est.: \$500 - \$1,000 • Min. bid: \$300*



### Lot 214

**"PRATT & BUTCHER / MAGIC OIL / BROOKLYN N.Y."**, America, 1855 - 1860. Aquamarine, oval, sheared and inward rolled mouth - blowpipe pontil scar, ht. 3 7/8", sparkling attic mint. Odell, p.194. A very scarce little bottle, this example being about as nice as you could hope to find with attractive, pebbly glass, bubbles, sparkling clean, and with strong embossing.

*Est.: \$125 - \$250 • Min. bid: \$80*



### Lot 215

**"MORSE & Co'S / MAGNOLIA COMPOUND / CHARLESTOWN, MASS - IT RECOMMENDS / ITSELF."**, America, 1850 - 1860. Aquamarine, oval, applied narrow disk type collar - blowpipe pontil scar, ht. 6 3/4"; (professionally cleaned with just a little light wear remaining, primarily on the reverse, and a very faint interior haze). Very rare, only four known examples, all but one have some form of damage. Slogans on pontiled medicines are very rare.

*Est.: \$700 - \$900 • Min. bid: \$400*



### Lot 216

**"AYER'S - CONCENTRATED - COMPOUND / EXTRACT OF / SARSAPARILLA - LOWELL MASS"**, America, 1850 - 1860. Aquamarine, rectangular with beveled corners, applied round collared mouth with bevel - blowpipe pontil scar, ht. 7 3/4", near mint; (a couple of small patches of very light interior haze, primarily in a base corner and in the shoulder area on the reverse). Odell, p.11.

*Est.: \$100 - \$200 • Min. bid: \$60*





### Lot 217

**"MEXICAN / MUSTANG / LINIMENT"**, America, 1845 - 1860. Light blue green or teal, cylindrical, sheared and inward rolled mouth - blowpipe pontil scar, ht. 4 1/8"; (professionally cleaned to original luster with just a very faint, barely visible haze remaining on the interior, a couple of minor ground lines near side mold seam). N #444, Odell, p.168. A scarce color, very strong embossing, displays near mint.

**Est.: \$200 - \$300 • Min. bid: \$120**



### Lot 221

**Lot of (2) Pontiled Medicines, "DR ARMSTRONG'S - PURE HERB - MEDICINE"**, and, **"DR CLARKE'S - HERB SYRUP"**, America, 1845 - 1860. Both are aqua, rectangular, sheared rolled lip and applied round double collars - blowpipe pontil scarred bases, ht. 4 3/4" and 5" respectively; (both appear to be dug with some overall stain; the Armstrong's has a 3/8" hairline crack on reverse). Both are Ex. Sam Greer collection. The Armstrong's is very rare.

**Est.: \$100 - \$200 • Min. bid: \$60**



### Lot 218

**"GORDAK'S / DROPS"**, America, 1830 - 1840. Pale aquamarine, cylindrical, tooled, thin flanged lip - blowpipe pontil scar, ht. 4 1/2", very near mint; (a couple of extremely faint, light scratches, otherwise pristine). Odell, p.97. Considered an early, very rare little medicine, almost eggshell thin, and with a perfect flanged lip. Ex. Sam Greer collection #671.

**Est.: \$175 - \$350 • Min. bid: \$100**



### Lot 222

**"HAYWOOD'S BALM / OF SAVANNAH OR THE / EXTERMINATOR OF / DANDRUFF"**, America, 1850 - 1860. Aquamarine, oval, applied sloping collar - blowpipe pontil scar, ht. 7 3/4"; (professionally cleaned with a little light exterior wear remaining, and a very faint, light interior haze). Odell, p.108; DF, p.75. An extremely rare pontiled hair bottle. Two examples of this bottle were in the Greer collection, both had haze, only one was damage free.

**Est.: \$200 - \$400 • Min. bid: \$120**



### Lot 219

**"DR. CARTER'S / COMPOUND / PULMONARY / BALSAM"**, America, 1840 - 1850. Aquamarine, cylindrical, tooled thin flanged lip - blowpipe pontil scar, ht. 5 1/8"; (a partially open narrow vertical bubble on the inside of the neck, otherwise attic mint). Odell, p.47. A clean, bright, scarce bottle from Newbury, Vermont.

**Est.: \$125 - \$225 • Min. bid: \$70**



### Lot 223

**"JEROME'S - HAIR COLOR - RESTORER"**, America, 1855 - 1865. Bright yellow olive, rectangular with beveled corners, tooled thin flanged lip - blowpipe pontil scar, ht. 6 3/8"; near mint; (lightly cleaned to original luster and excellent, near mint condition). Odell, p.132; DF, p.84. Outstanding color, plenty of green, heavily whittled, and with a perfect thin flanged lip. Not an easy one of find in this condition and color.

**Est.: \$2,500 - \$4,000 • Min. bid: \$1,500**



### Lot 220

**"ROWAND'S - IMPROVED / TONIC - MIXTURE - OR / VEGETABLE - FEBRIFUGE - PHILADA"**, America, 1845 - 1860. Aqua, hexagonal applied sloping collar - blowpipe pontil, ht. 5 3/4", very near mint; (just a slight trace of spotty very faint interior haze near the shoulder on a couple of panels, otherwise perfect). Odell, p.207. A bright, clean, attractive example. This is the variant with the word, "IMPROVED". Very scarce.

**Est.: \$175 - \$350 • Min. bid: \$100**



### Lot 224

**"JEROME'S - HAIR COLOR - RESTORER"**, America, 1860 - 1870. Cobalt blue, rectangular, tooled thin flanged lip - smooth base, ht. 6 3/8"; (lightly cleaned on the exterior to original luster; a little light interior haze that would likely clean with just a day or two in the tumbler, but no other form of damage). Odell, p.132; DF, p.84. Beautiful color, nice character with a thread of glass on the interior that partially loops around a side and back panel.

**Est.: \$800 - \$1,200 • Min. bid: \$500**



### Lot 225

**"DR. HARTSHORNS / MEDICINE."**, a Stoddard, NH glasshouse, 1855 - 1865. Beautiful, yellowish olive amber shading to a deeper yellowish tobacco color in the neck and near the base, oval, narrow disk type collared mouth - early smooth base, ht. 6", near mint; (a little faint exterior wear, primarily on the reverse, otherwise excellent). A classic Stoddard medicine, nice character with some impurities and frothiness to the glass.

**Est.: \$1,000 - \$1,600 • Min. bid: \$600**



### Lot 229

**"LOG CABIN / EXTRACT / ROCHESTER, N.Y."**, America, 1887 - 1895. Amber, rectangular with indented panels, tooled round collar - **"PATD SEPT 6 / 1887"** (on smooth base), ht. 8 1/8", mint. Outstanding, virtually perfect condition with 100% original label, contents, cork and neck seal, pamphlet, box, and Log Cabin advertising corkscrew (original to the package, one came in every box) - just as it would have been found in an early drugstore. O/S #28.

**Est.: \$500 - \$800 • Min. bid: \$250**



### Lot 226

**"U.S.A. / HOSP. DEPT"**, America, probably a Pittsburgh district glasshouse, 1862 - 1870. Bright yellowish green with an olive tone, cylindrical, 4-piece mold, applied round double collared mouth - smooth base, ht. 9 1/4"; (lightly cleaned to original luster and near mint condition). A scarce, desirable color, very difficult to find. In addition, this example is filled with tiny seed bubbles.

**Est.: \$1,500 - \$2,500 • Min. bid: \$800**



### Lot 230

**"WARNER'S / SAFE / NERVINE"** / (mottif of safe) / **"ROCHESTER N.Y. / U.S.A. / LONDON - ENGLAND / TORONTO - CANADA"**, America, 1890 - 1900. Light honey amber with some orange tones near the base, oval, tooled round double collar - smooth base, 1/2 pint, ht. 7"; (professionally cleaned to original luster with just a touch of ground wear remaining). O&S #78. A nice light example of the scarce and desirable "3-City" Nervine.

**Est.: \$300 - \$500 • Min. bid: \$180**



### Lot 227

**"MRS. M. COX'S / INDIAN VEGETABLE / DECOCTION / BALTo."**, America, 1880 - 1890. Aquamarine, cylindrical, applied sloping collared mouth - smooth base, ht. 8", perfect. A scarce Indian medicine that is not easy to find. See, *Indian Bottles and Brands*, Odell, p.18. A bright, clean example, virtually attic mint condition.

**Est.: \$200 - \$400 • Min. bid: \$100**



### Lot 231

**"WOODWARD & CO. / LAWRENCE, KAN."**, Whitall-Tatum & Company, Millville, NJ, 1885 - 1895. Cobalt blue, square with beveled corners, tooled square collar - **"W T. CO. / U.S.A."** (on smooth base), ht. 8", near mint; (some very light interior haze or residue, some of which may wash out, otherwise perfect). An extremely rare druggist type bottle from Lawrence, with good size, color and embossing, that looks like it could have just come out of an attic.

**Est.: \$700 - \$1,200 • Min. bid: \$400**



### Lot 228

**"H.W. WARNER DRUG CO. / 3 / STORES / ALBANY, N.Y."**, America, 1890 - 1910. Bright medium lime green, cylindrical, tooled blob style closure with original wire bail and porcelain stopper - smooth base, ht. 7 7/8" (including stopper), attic mint. A beautiful "citrate" druggist bottle, excellent with original closure.

**Est.: \$200 - \$400 • Min. bid: \$100**



### Lot 232

**"DR. S.O. HIMOE & CO. / LAWRENCE KANS. - MANUFACTURERS OF / PATENT MEDICINES"**, America, 1875 - 1885. Aquamarine, square with beveled corners, applied sloping collar - smooth base, ht. 8 3/4"; (a little light interior residue or haze, otherwise perfect). This bottle also appears to be an "attic" find, with all of its original luster remaining. Another very rare Lawrence bottle, virtually identical in size and form to the Dr. Hostetter's bitters mold of the period.

**Est.: \$250 - \$500 • Min. bid: \$150**





### Lot 233

**"LYNCH & CLARKE / NEW YORK"**, possibly New England Glass Bottle Company, Cambridge, MA, 1823 - 1833. Bright olive amber, cylindrical, applied sloping double collared mouth - sand type pontil scar, pint; (just a little light exterior wear and some fine, light scratches, primarily on the reverse, otherwise very near mint). T# C-2:B, type 1. A very pretty example that passes plenty of light, and with excellent character having plenty of bubbles.

*Est.: \$400 - \$600 • Min. bid: \$250*



### Lot 237

**"CLARKE & WHITE / C / NEW YORK. / N II"**, probably Saratoga Mountain Glassworks, Mt. Pleasant, NY, 1846 - 1856. Rich, dense olive green, cylindrical, applied sloping double collared mouth - smooth base, pint; (a couple of light scratches, a 1/2" or less, and minor exterior wear). T #C-11:B, type 4 (and "TE" not doubled, as noted in book). Noted as "Rare", and not an easy mold to find.

*Est.: \$400 - \$600 • Min. bid: \$250*



### Lot 234

**"JOHN CLARKE - NEW YORK"**, probably Mt. Vernon Glass Works, 1835 - 1844. Dense olive amber, cylindrical, 3-piece mold, applied sloping double collar - smooth base, quart, near mint; (a couple of minor, 1/8" open surface bubbles and a touch of very light wear). T# C-4:B. Note; there is an extremely faint circular area of haze on base that some might suggest is evidence of an "improved" pontil, but it is indiscernible as such.

*Est.: \$175 - \$275 • Min. bid: \$100*



### Lot 238

**"Moriarity & Carroll / Registered 'VICHY WATER / CULLUMS SPRING / CHOCTAW Co / ALA'"**, America, 1860 - 1870. Dense olive amber, cylindrical, applied sloping collar with bevel - smooth base, pint; (a dug bottle with some typical light wear; a little natural roughness and small flakes on the top edge of mouth, a hard-to-see iridescent bruise on the inside edge of the mouth). T #M-72:B. Extremely rare, believed to be one of two known, the other example having noted repairs.

*Est.: \$2,000 - \$4,000 • Min. bid: \$1,200*



### Lot 235

**"CLARKE & CO - NEW-YORK"**, probably a New York glasshouse, possibly Mt. Pleasant, 1846 - 1856. Beautiful medium to deep blue green, cylindrical, 3-piece mold, applied sloping double collared mouth - iron pontil scar, quart; (a slight trace of expected faint exterior wear, otherwise attic mint). T #C-8:A (no periods after "CO" or NY). A scarce mold, beautiful color, outstanding condition, nicely whittled.

*Est.: \$250 - \$450 • Min. bid: \$150*



### Lot 239

**"MISSISSQUOI / A / SPRINGS" - (Indian woman with papoose)**, probably Lyndeborough Glass Works, NH, 1867 - 1875. Brilliant yellowish, almost a grass green, cylindrical, applied sloping double collar - smooth base, Qt; (just a wisp of light wear and a very minor, 1/4" iridescent bruise at the heel of the base on reverse, otherwise attic mint). T #V-17:B. A scarce mold, beautiful color, sparkling, and absolutely filled with small seed bubbles.

*Est.: \$400 - \$600 • Min. bid: \$250*



### Lot 236

**"CLARKE & Co / NEW-YORK"**, probably Saratoga Mountain Glassworks, Mt. Pleasant, NY, 1846 - 1856. Light green, cylindrical, applied sloping collar with ring - large, heavy iron pontil scar, pint; (a little light exterior wear and some faint minor scratches, primarily on the reverse, otherwise excellent). T #C-9:A, type 1. Another scarce example, great pontil, heavily whittled.

*Est.: \$300 - \$500 • Min. bid: \$180*



### Lot 240

**"MIDDLETOWN MINERAL SPRING CO / NATURES / REMEDY / MIDDLETOWN VT"**, possibly Lyndeborough Glass Works, NH, 1867 - 1875. Emerald green, cylindrical, applied sloping double collared mouth - smooth base, quart, very near mint; (a couple of tiny, pinhead open surface bubbles and a slight trace of very light exterior wear, otherwise perfect). T #V-15. A great example, heavily whittled appearance, nice color.

*Est.: \$300 - \$450 • Min. bid: \$180*



### Lot 241

“MIDDLETOWN HEALING SPRINGS / GRAYS & CLARK / MIDDLE-TOWN VT”, probably a Stoddard, NH glasshouse, 1860 - 1873. Bright, light honey amber, cylindrical, applied sloping double collared mouth - smooth base, quart, very near mint; (a small bruise or disturbance in the cover glass of a bubble at the base edge on reverse, otherwise perfect). T #V-13. Gorgeous, very pretty color, outstanding condition, and heavily whittled.

*Est.: \$500 - \$800 • Min. bid: \$300*



### Lot 245

“SARATOGA / A / SPRING Co. / N.Y.”, America, 1866 - 1889. Olive yellow (just an ever-so-slight bit more of a greenish tone than Lot 224), cylindrical, applied sloping double collared mouth - smooth base, pint, perfect. T #S-1:B. A scarce mold in a beautiful, outstanding color and excellent condition.

*Est.: \$600 - \$900 • Min. bid: \$400*



### Lot 242

“HIGHROCK CONGRESS SPRING / 1767” / (motif of rock) / “C&W / SARATOGA N.Y.”, a Stoddard, NH glasshouse, possibly Weeks & Gilson, 1860 - 1873. Beautiful, rich golden amber with some orange and reddish tones, cylindrical, applied sloping double collared mouth - smooth base, quart, mint. T #S-36:A. Nice glass character, beautiful rich, “Stoddard” color.

*Est.: \$250 - \$450 • Min. bid: \$150*



### Lot 246

“CHAMPLAIN SPRING / ALKALINE CHALYBEATE / HIGHGATE, VT.”, America, 1865 - 1875. Rich emerald green, cylindrical, applied sloping double collar - smooth base, quart, near mint; (a shallow, 3/16” area of roughness on top of the lip that extends down inside the mouth and may have been a series of small surface bubbles that never fully formed, or opened during the annealing process, otherwise perfect). T #V-5. A beautiful example.

*Est.: \$300 - \$600 • Min. bid: \$180*



### Lot 243

“HIGHROCK CONGRESS SPRING” / (motif of rock) / “C&W / SARATOGA. N.Y.”, America, 1860 - 1873. Emerald green, cylindrical, applied sloping double collared mouth - smooth base, pint, near mint; (a small pinhead size blemish to the left of the rock where it appears another piece of glass touched the bottle during the annealing process, as it is raised, or protrudes from the surface of the bottle, otherwise perfect). T #S-37:B.

*Est.: \$175 - \$350 • Min. bid: \$100*



### Lot 247

“OAK ORCHARD / ACID SPRINGS - ADDRESS / G.W. MERCHANT / LOCKPORT. N.Y.”, America, possibly Lockport Glassworks, 1865 - 1875. “Lockport” blue-green, cylindrical, 3-piece mold, applied sloping double collared mouth - smooth base, quart, perfect. T #N-24. A nice example, heavily whittled. Provenance: Ex. Dr. Stanley Sarnacki collection.

*Est.: \$100 - \$200 • Min. bid: \$60*



### Lot 244

“CONGRESS & EMPIRE SPRING CO / HOTCHKISS' SONS / C / NEW YORK / SARATOGA. N.Y.”, America, 1866 - 1870. Beautiful medium olive yellow, cylindrical, applied sloping double collared mouth - smooth base, pint, sparkling mint. T #C-15:B, type1. A great example in a scarce, gorgeous color, with excellent clarity, and outstanding condition.

*Est.: \$300 - \$600 • Min. bid: \$180*



### Lot 248

Lot of (2), “D.J. WHELAN / TROY, N.Y.” Mineral Water Bottles, America, 1870 - 1885. Bright honey amber, almost yellow in the shoulders, and aquamarine, applied sloping double collar and blob collared mouths - smooth bases, quarts; (both with a little minor wear; amber example has a small faint patch of dullness near the base, aqua example has two, partially open bubbles near shoulder, otherwise both are excellent). T #M-58:A. Scarce bottles.

*Est.: \$200 - \$400 • Min. bid: \$120*





### Lot 249

Rare, "C. HEIMSTREET / TROY, NY - SODA WATER", probably Albany Glassworks, 1847 - 1850. Light to medium teal green, cylindrical, applied sloping collar - iron pontil, ht. 7", near mint; (two, tiny, pinhead flakes on the edge of the lip; a touch of light residue on the interior, otherwise attic mint). Extremely rare, believed to be one of only three or four examples known, and the only one in this color. A great soda, attractive form, good color, whittled, and in excellent condition.

*Est.: \$2,000 - \$4,000 • Min. bid: \$1,200*



### Lot 250

"C. CLEMINSHAW / SODA & / MINERAL WATER / TROY, N.Y.", America, 1850 - 1860. Medium sapphire blue, cylindrical, applied blob collar - iron pontil scar, ht. 6 3/4", virtually attic mint; (a 3/16" bit of very minor roughness on the inside edge of the mouth that you can feel, but is not easy to see and just a touch of very light exterior wear, otherwise like the day it came from the factory). A sparkling clean, crisp, nicely whittled example.

*Est.: \$300 - \$500 • Min. bid: \$180*



### Lot 251

"HOXSIE JEFFERS & Co / ALBANY", a New York State glasshouse, 1864 - 1867. Rich, medium to deep blue green, applied sloping collar with ring ("hat-top") - smooth base, ht. 7"; (just the slightest trace of light exterior wear, otherwise pristine!) According to the book on Albany bottles by Harold Schneidmuller, Jr., George Hoxsie bought out the soda water business of Jeffers and Co. in 1864, and used the Hoxsie Jeffers & Co. name until around 1867. Scarce.

*Est.: \$175 - \$275 • Min. bid: \$100*



### Lot 252

"ANDERSON & Co / HOME BREWED ALE / ALBANY N.Y.", probably a Stoddard, or Lyndeborough, NH glassworks, 1860 - 1872. Rich, brilliant golden coloration, squat ale form, applied sloping collar with ring - smooth base, ht. 7 3/8", pristine perfect. Daniel Anderson was in business from 1857 to 1872, but his bottles are all considered very scarce to rare. A gorgeous color and rare in this attic-found condition.

*Est.: \$800 - \$1,200 • Min. bid: \$500*



### Lot 253

"CLAPP" Ale or Porter Type Bottle, probably a New England glasshouse, possibly Westford Glass Works, Westford, CT, 1864 - 1867. Deep reddish amber, squat ale form, applied blob collar - smooth base, ht. 6 1/4", attic mint! Clapp was a brewer, in business with Daniel Anderson in Albany, from 1862 - 1864. Charles Clapp subsequently went into business on his own from 1864 - 1867. Pieces of this bottle have been excavated at Westford. A rare bottle, outstanding condition.

*Est.: \$300 - \$500 • Min. bid: \$180*



### Lot 254

"GEO.W. HOXSIE'S / PREMIUM / BEER", probably a New England glasshouse, 1860 - 1872. Dense olive, almost black, with a slight amber tone, cylindrical ginger-beer form, applied blob collar - smooth base, ht. 7 1/8"; (a tiny, pinhead flake on the edge of the lip; a little relatively minor usage or case wear, otherwise excellent and does not appear to be dug). This is the same Hoxsie from Albany, NY, as Lot 251, and in business from 1860 - 1872. A very heavy bottle, rich deep color.

*Est.: \$175 - \$275 • Min. bid: \$100*



### Lot 255

"KINSELLA & HENNESSY / ALBANY N.Y.", America, 1861 - 1869. Medium green, almost a "Lockport" blue green, high shoulder soda form, applied sloping collar - smooth base, ht. 6 5/8"; (appears to be a dug bottle that may have been lightly cleaned with a little minor ground wear remaining; interior has a little light dirt or residue that would likely wash out, but no other form of damage). Listed as bottlers of rootbeer, soda and mineral water, from 1861 - 1869.

*Est.: \$125 - \$225 • Min. bid: \$60*



### Lot 256

"CREAM / SODA / S - J.J. SOLOMON / 631 / N. FRONT ST / PHILA", America, 1875 - 1885. Aquamarine, cylindrical, applied blob style collar - smooth base, ht. 6 1/2"; (a dug bottle with some overall light exterior haze and minor wear; a little scattered light interior haze, but no other form of damage). A scarce little bottle and one that would respond well to light professional cleaning, if desired.

*Est.: \$100 - \$150 • Min. bid: \$60*



### Lot 257

**"McKEON - WASHINGTON. D.C."**, possibly Baltimore Glassworks, 1855 - 1865. Medium emerald, torpedo form, applied blob collar - smooth base, 8 7/8"; (professionally cleaned to original luster with some areas of scratches and ground wear remaining; a small potstone near the surface of the glass with a little iridescence and a 3/16" line). An extremely rare "DC" torpedo soda. It has been eight years since the last recorded example sold at auction.

*Est.: \$2,000 - \$4,000 • Min. bid: \$1,200*



### Lot 261

**"S.S. - KNICKER - BOCKER - SODA - WATER"**, America, 1845 - 1860. Medium sapphire blue, 10-sided, applied blob collared mouth - iron pontil scar, ht. 7 7/8", near mint; (some typical light exterior usage wear, otherwise perfect). Beautiful condition, nice color and clarity, and with a fully intact iron pontil, not an easy one to find in this nice condition.

*Est.: \$400 - \$700 • Min. bid: \$250*



### Lot 258

**"SUPERIOR / SODA WATER" (Eagle and Shield with Crossed Flags)**, America, 1850 - 1860. Deep cobalt blue, cylindrical, applied sloping collar - iron pontil scar, ht. 8"; (two small flakes on the edge of the lip, 1/8" and a tiny, barely pinhead size; a 1/4" flake on the heel of the base). A bright, sparkling example with strong embossing and, beyond the few minor flakes, it is almost like it was put away in a cupboard for the last 150 years.

*Est.: \$1,000 - \$2,000 • Min. bid: \$500*



### Lot 262

**"W.P. - KNICKER - BOCKER - SODA WATER - 164.18th St. N.Y. 1848"**, America, 1848 - 1860. Deep cobalt blue, 10-sided, applied sloping collar mouth - iron pontil scar, ht. 7 1/8", near mint; (some scattered light exterior usage wear, otherwise perfect). Another outstanding, "attic found" condition example. This one being in a color that is deeper than most, and hard-to-find, un-dug, "attic" condition.

*Est.: \$500 - \$800 • Min. bid: \$300*



### Lot 259

**"GEO EAGLE" Soda Water Bottle**, America, 1850 - 1860. Medium green, similar to a "Lockport" blue green, cylindrical with diagonal ribbing, applied sloping collared mouth - iron pontil, ht. 6 7/8"; (two tiny, barely pinhead size flakes on the edge of the mouth; some scattered fine scratches and light exterior wear, otherwise excellent condition). A scarce and desirable soda with a very distinctive, eye-appealing look.

*Est.: \$1,200 - \$1,800 • Min. bid: \$800*



### Lot 263

**"S.S. - KNICKER - BOCKER - SODA WATER - 164.18th St. N.Y. 1848"**, America, 1848 - 1860. Sapphire blue, 10-sided, applied sloping collar - iron pontil scar, ht. 7 1/4"; (there is some light to moderate exterior high point wear and light scratches, but the bottle does not appear to have been cleaned; a small, pinhead surface bruise on one of the panels, but no other form of damage). A scarce mold, a little harder to find than the "W.P." variant.

*Est.: 400 - \$700 • Min. bid: \$250*



### Lot 260

**"A.W. MEYER / 1885 / SAVANNAH / GA"**, America, 1880 - 1890. Clear medium green, similar to the previous lot, but with a slight teal tone, cylindrical "ginger ale" form, round blob collar - smooth base, ht. 7 3/8", virtually attic mint; (a very minor bit of wear below the blob collar where the wire closure was fastened and a faint wisp of residue in the shoulder). A beautiful example. Most have been dug and cleaned, but not this one!

*Est.: \$175 - \$275 • Min. bid: \$100*



### Lot 264

**"J.P. PLUMMER / BOSTON / BOTTLE NOT SOLD"**, America, 1850 - 1860. Sapphire blue, large blob collared mouth - iron pontil scar, ht. 6 3/4"; (some light exterior high point and usage wear, otherwise near mint). A scarce bottle, nicely whittled, and with a fully intact iron pontil.

*Est.: \$250 - \$450 • Min. bid: \$150*





### Lot 265

**“U & I.D. CLINTON / WOODBRIDGE / CONN. - PREMIUM / SODA WATER”**, America, 1848 - 1860. Medium to deep blue green, cylindrical, applied blob collar - iron pontil scar, ht. 7 ¼”, pristine, virtually attic mint condition. This example was likely used very little, and then stowed away. Also, see Bill Beckett’s informative article on Connecticut’s Iron Pontiled Sodas: Woodbridge and Canton, *Antique Bottle & Glass Collector*, Oct. 2013.

**Est.: \$200 - \$400 • Min. bid: \$120**



### Lot 269

**“KORTS & WICKARD / CUMBERLAND / MD”**, America, 1850 - 1860. Medium teal, or deep sea green, cylindrical, squatty porter or ale form, applied sloping collar - iron pontil scar, ht. 6 7/8”; (lightly cleaned to original luster and near mint condition; an 1/8” flake on the edge of the lip and a small iridescent bruise on the inside edge of mouth). A scarce bottle that we sold about four years ago, that displays very near mint with a fully intact, heavy iron pontil.

**Est.: \$250 - \$450 • Min. bid: \$150**



### Lot 266

**“ADNA - H - SOUTHWICK - NEW YORK”**, America, 1845 - 1860. Sapphire blue, 10-sided, applied sloping collar - iron pontil scar, ht. 7 3/8”; (a pinhead flake on the edge of the lip and two tiny ones on the bottom edge of the tapered collar; a shallow ¼” flake on the heel of the base, and just a trace of light usage wear, otherwise near attic mint). The flakes are minor, the bottle appears to be an attic find with its original luster. A scarce mold, especially in this condition.

**Est.: \$500 - \$700 • Min. bid: \$300**



### Lot 270

**“S & C / ELKTON / M.D.”**, America, 1850 - 1860. Deep blue green with an emerald tone, cylindrical, squatty porter or ale form, applied sloping collar - heavy iron pontil scar, ht. 6 ¾”, near mint; (the bottle has just a touch of light usage wear, but otherwise displays as near attic mint). This appears to be the same example that sold in 2011, and one of only two that have been offered at auction in the last 20 years. A very rare and desirable Maryland soda.

**Est.: \$700 - \$900 • Min. bid: \$400**



### Lot 267

**“ADNA - H - SOUTHWICK - & G.O. TUPPER - NEW YORK”**, America, 1845 - 1860. Cobalt blue, 10-sided, applied sloping collared mouth - iron pontil scar, ht. 7 ¼”; (professionally cleaned with a little scattered light ground wear remaining, but no other form of damage). Good color, heavy iron pontil scar.

**Est.: \$400 - \$600 • Min. bid: \$250**



### Lot 271

**“Wm HEISS JR - MANUFACTURER OF - SUPERIOR MINERAL - AND SODA WATERS - No. 213 NOR’ 2d St - PHILAD.A - THIS BOTTLE - TO BE RETURNED.”**, America, 1845 - 1860. Sapphire blue, 8-sided, applied sloping collar - iron pontil scar, ht. 7 3/8”; (professionally cleaned with some typical light ground wear remaining, but no other form of damage and with a fully intact iron pontil scar). A rare soda, heavily embossed.

**Est.: \$700 - \$900 • Min. bid: \$400**



### Lot 268

**“SOUTHWICK - & - TUPPER - NEW YORK”**, America, 1845 - 1860. Sapphire blue, 10-sided, applied sloping collared mouth - iron pontil scar, ht. 7 ½”; (lightly cleaned to original luster and near mint condition with just a touch of light ground wear remaining).

**Est.: \$400 - \$600 • Min. bid: \$250**



### Lot 272

**“PHIL A / PORTER & ALE”**, America, 1850 - 1860. Rich, very deep blue green, almost a teal, cylindrical, stubby porter or ale form, crudely applied sloping collar with ring - iron pontil scar, ht. 6 ¾”; (just a wisp of expected light exterior wear and faint residue, otherwise sparkling attic mint). A beautiful example, rich deep color, pleasing form.

**Est.: \$175 - \$350 • Min. bid: \$100**



### Lot 273

**"H. NASH & Co / CINCINNATI - S. P. / THIS BOTTLE / TO BE RETURNED"**, America, 1845 - 1855. Cobalt blue, cylindrical, applied sloping collar - iron pontil, ht. 7"; (a dug bottle with some overall light stain and a little ground wear, but no other form of damage). Unlisted and extremely rare. Apparently a small handful of these were dug in Cincinnati years ago, most had damage. This is believed to be the best of the lot, and with a light cleaning, would likely appear as near mint.

*Est.: \$1,200 - \$1,800 • Min. bid: \$700*



### Lot 274

**"JOHN SHRINK'S / SUPERIOR / MINERAL WATER / CLEVELAND. - THIS BOTTLE / TO BE RETURNED"**, America, 1850 - 1860. Cobalt blue, cylindrical, applied blob collar - iron pontil scar, ht. 7 1/4", near mint; (a little light exterior usage wear and a pot-stone at the base ring with a shallow, 1/4" bruise, otherwise attic mint). A rare soda, good color, strong embossing, and one that has never been cleaned or in the ground.

*Est.: \$600 - \$900 • Min. bid: \$300*



### Lot 275

**"BRAND'S / MINERAL WATER / TOLEDO.O. - B"**, America, 1850 - 1860. Deep cornflower, or light sapphire blue, cylindrical, applied blob collar - red iron pontil scar, ht. 7 1/2"; (cleaned with some light haze and ground wear remaining, but no other form of damage). A very scarce bottle, believed to be a rare, earlier variant with crude stick-figure type lettering. The cleaning could likely be improved upon, if desired.

*Est.: \$300 - \$600 • Min. bid: \$180*



### Lot 276

**Black Glass Wine Bottle**, England, 1752. **"W.R / 1752"** (on applied glass seal). Deep yellow olive, mallet form, applied string rim - disc type pontil scar, ht. 7 3/4", about perfect; (3/8" and tiny 1/8" flake on the underside of the string rim). Pictured in *English Bottles & Decanters, 1659 - 1900*, Derek Davis, p.28, #7. Beautiful condition, full original gloss, strong impression on the seal. Ex. Norman C. Heckler, Cary Adelman collections.

*st.: \$2,500 - \$4,500 • Min. bid: \$1,500*



### Lot 277

**Black Glass Wine Bottle**, probably England, 1755. **"Robt / Fulton / 1755"** (on applied glass seal). Deep yellow olive with a slight amber tone, mallet form, applied string rim - disc type pontil scar, ht. 9 5/8"; (some expected light exterior usage wear, otherwise with a perfect string rim, full original gloss, and "cellar found" condition). An unlisted and possibly unique early seal bottle. Provenance: Ex. Gary Hatstat collection.

*Est.: \$3,000 - \$5,000 • Min. bid: \$2,000*



### Lot 278

**Black Glass Wine Bottle**, England, 1850 - 1870. **"INNER / TEMPLE"** (on applied glass seal), deep olive amber, cylinder form, applied sloping collar with bevel - early smooth base, ht. 9 3/8", near mint; (just a very slight touch of exterior wear, otherwise perfect "cellar found" condition).

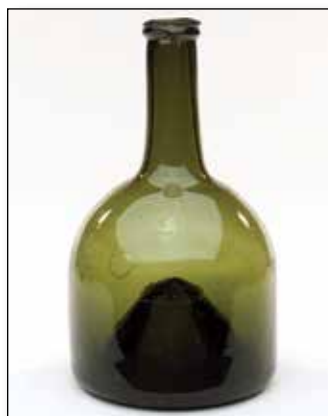
*Est.: \$100 - \$200 • Min. bid: \$60*



### Lot 279

**Black Glass Wine Bottle**, probably Continental, possibly America, 1780 - 1810. Medium to deep amber with some slight reddish tones, cylinder form, freeblown or possibly dip mold, heavy applied ring collar - sand type pontil scar, ht. 10 1/4", outstanding, perfect cellar found condition. A rare, attractive color for one of these early cylinders, the vast majority being shades of olive green.

*Est.: \$200 - \$300 • Min. bid: \$120*



### Lot 280

**Black Glass Mallet Form Wine Bottle**, Continental, probably Germany, possibly Belgium, 1740 - 1770. Clear medium olive green, bell-shaped mallet form, sheared mouth with an applied string rim - deep domed base with a blow-pipe pontil scar, ht. 8 1/8", near mint; (a touch of typical light exterior wear; just a very small area of light residue or haze on the interior). See VdB, plate 260, #3. Outstanding condition, eye-appealing "bell" form, nice color.

*Est.: \$200 - \$300 • Min. bid: \$120*





### Lot 281

**Exceptional Mammoth Size Case Bottle**, probably Australia, possibly Continental, 1770 - 1800. Brilliant emerald coloration, square with nearly straight sides, ring type string lip - blowpipe pontil scar, ht. 17"; (two annealing fissures or cracks extend from the pontil, to the edge of the base; just a touch of typical light usage wear, otherwise perfect). The pontil cracks are almost certainly the result of manufacture, and are not easy to see. Exceptional, stunning and rare color.

*Est.: \$1,500 - \$3,000 • Min. bid: \$1,000*



### Lot 285

**Early Half-Size Rectangular Case Bottle**, probably North Germany, Denmark, or one of the other Scandinavian countries, 1740 - 1770. (**motif of crown / "LONDFN / A C"**), on applied seal, clear light yellowish green, rectangular case form, applied thin string rim - blowpipe pontil scar, ht. 6 3/8"; (faint bit of interior residue or light haze in shoulder, otherwise perfect). See VdB, plate 208, #4. A rare, early sealed case bottle, possibly containing London gin.

*Est.: \$300 - \$500 • Min. bid: \$180*



### Lot 282

**Mammoth Size Case Bottle**, probably Holland or Belgium, 1770 - 1800. Yellowish olive, square with nearly straight sides, large string lip - jagged blowpipe pontil scar, ht. 18"; (some high point wear along the shoulders as well as a couple of rows of light scratches or wear on one of the sides; some small in-manufacture crazing lines along the corners that were a result of, and a natural condition of, manufacture). The largest example in the group at an impressive 18".

*Est.: \$1,000 - \$1,500 • Min. bid: \$600*



### Lot 286

**Early Freeblown Case Bottle**, probably North Germany, 1730 - 1760. Clear light olive with a yellowish tone, square with straight sides, crudely formed neck with a sheared lip and applied string rim - blowpipe pontil scar, ht. 11 1/4"; (just a little light exterior wear and a tiny pot-stone on the inside surface of the glass, near the shoulder, with a barely visible, 1/8" line, otherwise perfect). See VdB, plate 84, #2. A very early utility, nice color and clarity, excellent overall condition.

*Est.: \$250 - \$450 • Min. bid: \$150*



### Lot 283

**Mammoth Size Case Bottle**, probably Holland or Belgium, 1770 - 1800. Clear medium olive green, square with nearly straight sides, large string lip - blowpipe pontil scar, ht. 16 3/4"; (some scattered, age-appropriate light exterior wear and scratches, very typical for these heavy, massive early storage bottles, otherwise perfect). See VdB, plate 83 and 84. Beautiful color and clarity.

*Est.: \$1,000 - \$1,500 • Min. bid: \$600*



### Lot 287

**Early Black Glass Case Bottle**, probably Holland, possibly Belgium or Germany, 1770 - 1800. Clear medium olive green, blown in a dip mold with sides tapering slightly from shoulder to the base, sheared mouth with a crudely applied string rim - blowpipe pontil scar, ht. 10 1/8", near mint; (some typical very minor exterior wear; a little light content residue in the lower 1/3 of the bottle that would likely wash out). A good early case bottle, excellent condition.

*Est.: \$100 - \$200 • Min. bid: \$60*



### Lot 284

**Mammoth Size Case Bottle**, Continental, or possibly America, 1790 - 1820. Medium to deep olive amber, square with nearly straight sides, wide beveled mouth - blowpipe pontil scar, ht. 17 1/4"; (some typical usage wear and an open surface bubble on one panel; a small, hard to see, 3/8" iridescent bruise on inside edge of the mouth). A rare and unusual lip treatment for a mammoth gin, scarce color, and also with an unusual, very large ring type pontil.

*Est.: \$1,000 - \$1,500 • Min. bid: \$600*



### Lot 288

**Early Black Glass Case Bottle**, Continental, probably Holland, 1780 - 1820. Yellowish olive, dip mold, square tapered gin form, sheared mouth with a crudely applied string rim - heavy blowpipe pontil scar, ht. 9 1/2"; (a little light interior residue that would likely wash out, otherwise virtually attic mint). See VdB, plate 84 and 85. A jagged heavy pontil that you could easily cut a finger on. A clean example with full original surface gloss.

*Est.: \$100 - \$150 • Min. bid: \$60*



### Lot 289

**Early Black Glass Case Bottle**, probably Continental, possibly Germany or Belgium, 1780 - 1820. Medium "tobacco" amber, dip mold, square tapered gin form, sheared mouth with a crudely applied string rim - blowpipe pontil scar, ht. 9 3/8"; (just a minor trace of light usage wear, otherwise perfect "cellar found" condition). A scarce color for an early gin, much more so than the olive toned examples.

*Est.: \$125 - \$225 • Min. bid: \$70*



### Lot 293

**Freeblown Demijohn**, America, 1840 - 1860. Bubbly aquamarine, squatly cylinder form, applied sloping collar - blowpipe pontil scar, ht. 9 7/8"; (an elongated open bubble on the interior of the neck, otherwise virtually attic mint). Exceptional character. If you like crude glass with lots of character, this might be the piece for you. The glass is absolutely filled with microscopic bubbles creating a very attractive frothy appearance and uneven, grainy texture to the glass.

*Est.: \$200 - \$400 • Min. bid: \$120*



### Lot 290

**Black Glass "Bladder-Form" Utility Bottle**, probably England, 1770 - 1790. Dense olive amber, flattened bladder form, sheared mouth with applied flattened string rim - sand type pontil, ht. 13 1/8", near mint; (a potstone near the surface of the glass, on the side of the bottle has a faint iridescence; a touch of very minor wear, otherwise perfect). See VdB, plates 276 and 277. These large "Bladder" utility bottles often have heavy wear, this one is an exception!

*Est.: \$400 - \$700 • Min. bid: \$250*



### Lot 294

**Early Freeblown Globular Bottle**, probably England, possibly America, 1790 - 1820. Beautiful medium to deep olive green, globular form, large applied string rim mouth - blowpipe pontil scar, ht. 11 1/2", near mint; (some typical light usage wear, otherwise, perfect "cellar found" condition). A wonderful example with full original surface gloss, near perfect globular form, and excellent character as the bottle is loaded with strings of bubbles, slag and impurities.

*Est.: \$500 - \$800 • Min. bid: \$300*



### Lot 291

**Large, Black Glass "Bladder-Form" Utility Bottle**, probably England, 1780 - 1790. Medium to deep olive with an amber tone, bladder form, sheared mouth with applied tapered collar - sand type pontil scar, ht. 15"; (some scattered interior residue and light stain, some of which may wash out, otherwise excellent and with full original surface gloss). See VdB, plates 276 and 277. These early "Bladder" bottles are not easy to find. Great example, in a nice large size.

*Est.: \$500 - \$800 • Min. bid: \$300*



### Lot 295

**Demijohn**, America, 1850 - 1880. Beautiful, bright yellowish honey with a slight olive tone through the neck and a couple of subtle amber striations swirling through the body, flattened apple form blown in a 3-pc. mold (2-part body mold and a dished base piece), applied sloping collar - blowpipe pontil scar, ht. 18", near mint; (a 1/4" flake at the side of the mouth; a small patch of light bloom or dullness on the shoulder, otherwise perfect). Heavily dimpled glass texture, beautiful color!

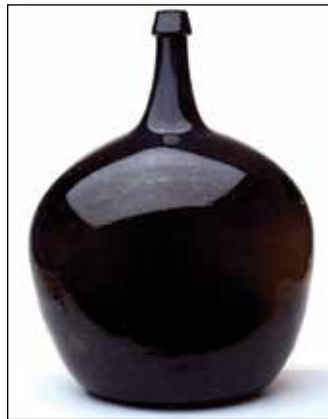
*Est.: \$400 - \$700 • Min. bid: \$250*



### Lot 292

**Jeroboam Black Glass Wine or Storage Bottle**, probably France, 1790 - 1820. Medium to deep yellowish olive amber, freeblown or possibly dip mold, sheared mouth with an applied string rim - blowpipe pontil scar, ht. 21 3/8", near mint; (some typical light wear and a couple of small shallow flat 1/8" flakes off the rough sheared mouth). See VdB, plate 153, #3. Nice color, almost yellow in the shoulders, shading to a deep olive amber in base and neck.

*Est.: \$175 - \$350 • Min. bid: \$100*



### Lot 296

**Freeblown Demijohn**, America, probably New England, 1840 - 1870. Rich, medium to deep olive amber, transitional flattened apple form, applied sloping collar - large blowpipe pontil scar, ht. 19 1/4", near mint; (just a touch of typical, minor light wear and some tiny, tissue-paper-thin open surface bubbles, otherwise excellent). The glass is rather crude being absolutely filled with tiny seed bubbles.

*Est.: \$500 - \$800 • Min. bid: \$300*



## Colorful Soda Bottles



## Fine Mineral Water Bottles



# Case Gins— Big, Bigger, Biggest!

Lot 281

Lot 282



Lot 287

Lot 286

Lot 285



# Fine Early Black Glass Bottles

Lot 277



Lot 279



Lot 276



RIGHT: Advertisement from the *Columbian Centinel*, Boston, April 8, 1795

# Rare & Choice Early Snuff Bottles with Original Labels

ACGC



**LAWS OF THE UNITED STATES.**  
PUBLISHED  
**By Authority.**  
The CONGRESS of the UNITED STATES :  
AT THE SECOND SESSION,  
Began, and held at the city of PHILADELPHIA, in the  
State of PENNSYLVANIA, on Monday, the third of No-  
vember, one thousand seven hundred and ninety-four.

AN Act to alter and amend the act,  
intituled " An act laying certain  
duties upon snuff and refined su-  
gar."

Sec. 1. **B**E it enacted by the Senate and House  
of Representatives of the United States  
of America, in Congress assembled, That the du-  
ty of eight cents per pound on snuff laid by the  
act of the last session, intituled " An act laying  
certain duties upon snuff and refined sugar," shall  
cease on the last day of March, in the present year,  
and shall not thereafter be collected: but in lieu  
thereof, there shall be levied and collected on all



Lot 127



Lot 128



Lot 129



Lot 130