

American Glass Gallery™

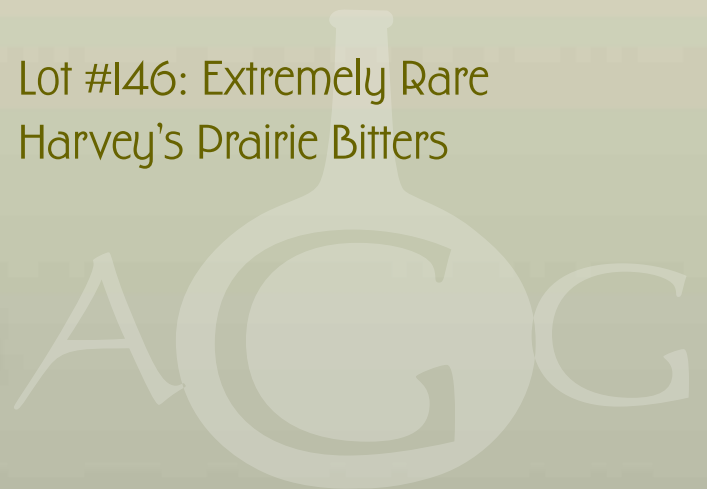
Presents Auction #20:

Opens May 2, 2018 • Closes May 15, 2018



THE WESTERN PRAIRIE FARMER DURING THE "FIRE GUARD"

Lot #146: Extremely Rare
Harvey's Prairie Bitters



Conditions of Sale: Auction #20, including Part II of The Ralph Finch Collection

1. Absentee Auction

The items in this sale will be sold via absentee auction. Closing date: **May 15, 2018, 11:00 p.m., EST.**

2. Our Guarantee Regarding Descriptions

American Glass Gallery has made every attempt to describe correctly the property being sold. Descriptions are guaranteed to be accurate as regards authenticity, age, condition, and measurements to within one-fourth inch, as represented in this catalog. Items in this catalog are not shown to scale. In describing damage, exterior wear or manufacturer's flaws that in our opinion, do not significantly detract visually or monetarily from the value of the item are not listed and will not be considered for refund. The Auctioneers reserve the right to make verbal corrections and provide additional information at any time during the sale.

3. Preview

Items may be viewed by appointment from May 3, 2018 through May 14, 2018.

4. Bidding Procedure

You may submit your bids by mail, phone, FAX, email or through our on-line auction site. If bidding by mail or FAX, please fill out the absentee form and return it to us. Your bid, either written or oral, grants American Glass Gallery the authority to protect you up to the amount of your stated bid. Your bid will not be removed once executed.

Bidding Times: You can submit your bids anytime after receiving your catalog. Bids may be made by phone, daily, until closing day, May 15, 2018, from 9 A.M. - 6 P.M. Eastern Time. Incoming phone bids will be accepted on the closing day (May 15, 2018) until 11 P.M. Eastern Time. Phone calls and Fax bids after this time will not be honored. No exceptions. You may also place your bids through our on-line auction service 24-hours a day once the site has opened for bidding, on or about May 2, 2018, continuing until 11:00 P.M. Eastern Time, May 15, 2018.

Please do not wait until the last day or two of the sale to place your bids!

Because many collectors wait until the final few days of the sale to place their bids, we anticipate the telephone and internet bidding to be very busy during that period, so please plan accordingly. In the event of a tie bid, the earliest received bid on the lot will take precedent. We would welcome your bids by phone so that we can answer any questions and assist you in your bidding.

You may also telephone us at any time during the auction, prior to the closing of the sale, to check the status of your bids, to find the current bidding level, to open a bid, or to raise a bid on an auction lot.

Bidding Increments are as follows:

Up to \$250.00..... increments of \$10.00
\$250.00 - \$500.00 increments of \$25.00
\$500.00 - \$1,000.00 increments of \$50.00
\$1,000.00 - \$2,500.00 increments of \$100.00
\$2,500.00 - \$5,000.00 increments of \$250.00
\$5,000.00 - \$10,000.00 increments of \$500.00
\$10,000 & Up..... increments of \$1,000.00

Bids submitted between the above increments, whether by mail, FAX, email or on-line via the internet, will automatically be lowered to the closest lower increment.

This is a minimum bid auction. Bids below the printed minimum will not be accepted.

An example of how our absentee bidding system works: You bid \$600.00 on a lot which is the highest bid received to date. The second highest bid is \$450.00. The current high bid level would be yours at \$475.00, one bid increment higher than the other collector's bid. Any additional bids submitted by others below \$600.00 will automatically be topped on your behalf by a representative of American Glass Gallery, up to your stipulated high bid amount. If no further bids on this lot are received beyond the \$450.00, and the under bidder has not requested a "Call Back", then you would have won the lot at \$475.00, not the \$600.00 that you were prepared to pay.

American Glass Gallery will at NO TIME disclose bids pledged by others; only the current "High Bid" level of a lot will be stated upon request. The highest bidder as determined by American Glass Gallery shall be the purchaser. It is the sole right of the auctioneer to settle any dispute between bidders and to regulate the bidding procedure. The auctioneer reserves the right to refuse any bid he believes not to have been made in good faith.

5. "Call Back" Process

If requested, the three top bidders of an item at the time of closing will be given a "Call Back" over the next number of days in order to resolve the final sale of an item. You can request this service by "checking" the appropriate box on your absentee bid form or verbal agreement by phone. It is the responsibility of the bidder to insure he has qualified for this service.

Please note: No "Call Backs" will be executed for bids under \$400.00. In the event of tie bids, the earliest bid received will be the winning bid.

An example of how the "Call Back" process works: As an example, you have bid \$600.00 on a particular lot. Another bidder has submitted a bid of \$900.00 on the same lot. Assuming that as of the auction closing date you are among the top three bidders on this lot and you have requested a "Call Back", you would receive a call informing you that you have been "Out Bid" and the current "High Bid" is now at \$650.00. If you choose to continue bidding on this lot, you may now do so. Assuming that you now increase your bid to \$700.00, we would accept your bid but also inform you that we have a higher bid on this lot and must bid \$750.00. At this time, an auction between you and American Glass Gallery, representing the collector who submitted the bid of \$900.00, takes place. This bidding would continue until you drop out, or top the other bidders high bid of \$900.00. If the other bidder has not requested a "Call Back" service, you would be awarded the lot. If however, the other bidder also requested a Call Back, we must now call them. If they elect to increase their bid over your high bid, we would in turn call you back. This back and fourth process would continue until one of the bidders declines to go any farther.

If you have requested a "Call Back", the auctioneers will need to contact you on the days immediately following the auction closing between the hours of 8 A.M. and 9 P.M. Eastern Time. Please supply us with all appropriate contact phone numbers including, home, mobile and work numbers. Bidders must provide the appropriate telephone numbers where they can be contacted. If you will be traveling or otherwise unavailable, bidders with "Call Back" privileges will have the responsibility to contact American Glass Gallery twice daily during the Call Back period.

Please note, every effort will be made to contact you during the "Call Back" period. However, the bidder will forfeit their rights to a "Call Back" if the auctioneers are unable to reach them. American Glass Gallery reserves the right to discontinue Call Backs on any item in the sale (2) two days after the closing date of the sale. At that time, the current "High Bidder" may be awarded the item even if Call Backs are still outstanding.

Conditions of Sale: Auction #20, including Part II of The Ralph Finch Collection

6. Terms

Successful Bidders, Prompt and full payment is due immediately upon receipt of our invoice. Absolutely no exceptions. Anyone failing to pay for items won will forfeit all rights to bid in any future American Glass Gallery sales. *Any late or delayed payments may result in loss of return privileges for items purchased in the sale.*

No Items Will Be Mailed Before Full Payment Is Received.

Buyer Premium: A 15% buyer's premium will be added to the hammer price (18% if paying by Credit Card or PayPal), to be paid by the buyer as part of the purchase price. For example, if you purchase a lot for \$100.00, you will receive an invoice for \$115.00 if paying by cash, check or money order, plus any applicable sales tax or shipping charges.

Taxes: If you are a Michigan resident, a 6% sales tax will be added to your bill unless you have a valid resale number registered with us.

Shipping: Shipping, handling and insurance are extra. With the exception of oversize items or excessive weight, we ship insured via U.S. Postal Service. Our charges for shipping (excluding foreign shipments and oversized lots) are \$18.00 for the first item, \$9.00 for each additional item together with extra insurance costs (we use current U.S. Postal Service insurance rates). Additional charges will apply for oversize items and/or certain postal zones where USPS surcharges are in effect. *If shipping and insurance charges are not included on your invoice, and you do not intend to pick up your items at our office, please contact us to discuss shipping options and charges.*

Please allow two to three weeks for delivery after receipt of your check.

Payment: American Glass Gallery accepts Cash, Money Orders, Personal Checks, Visa, MasterCard, American Express and PayPal. *If paying by Credit Card or PayPal, an additional 3% will be added to the invoice total.*



7. Refunds

Refunds will be given at the discretion of the Auctioneers. Items purchased must be examined and request for refund made immediately upon receipt of the item or items. Since opinions can differ, particularly in the matter of condition, the Auctioneers will be the sole judge in the consideration of refunds. Refunds requested on the grounds of authenticity must be made within 15 days of the date of the auction, and such refund requests must be accompanied by at least one supporting statement in writing from an authority recognized by the Auctioneers. It is the Auctioneers sincere intention to consider any reasonable request for a refund. *Absolutely no returns for any reason after 30 days following the closing of the sale.*

PLEASE NOTE:

The lots offered in this printed catalog are identical to the lots offered in the on-line catalog. However, due to space constraints of the printed catalog, there may be some further information available regarding some of the lots in the on-line auction descriptions.

Please visit us at

www.americanglassgallery.com

and follow the link to the on-line auction.

The link and on-line auction will be available May 2, 2018. A post-auction price list will be available on our website, in printable form, approximately 30 days after the close of the auction.

We encourage you to contact us by phone or email with any questions, for assistance with bidding, or further details or clarification on any of the lots in this sale. Your complete satisfaction and confidence is our goal!

**THANK YOU AND GOOD LUCK
WITH YOUR BIDS!**

Reference Key

Reference initials and numbers used in the description of this catalog refer to the following publications:

AHG	<i>American Historical Glass</i> , Bessie M. Lindsey, 1967
AM	<i>The Decanter - An Illustrated History of Glass from 1650</i> , Andy McConnell, 2004
AP	<i>Glass in Early America</i> , Arlene Palmer, 1993.
BA1	<i>Collecting The Cures</i> , Bill Agee, 1969
BA2	<i>Collecting All Cures</i> , Bill Agee, 1973.
BB	<i>A Bit About Balsams</i> , Betty Blasi, 1974
BH	<i>Classification and Documentation of Sunburst and Similar Scent Bottles</i> , Bill Ham, AB&GC, 5/87
B/K	<i>The Glass Industry in Sandwich</i> , Raymond Barlow and Joan Kaiser, 1989.
BPK	<i>A.M. BININGER Bottles</i> , Jim Bender, 2017
C	<i>Ink Bottles and Inkwells</i> , William Covill, 1971.
DeG	<i>American Sarsaparilla Bottles</i> , John DeGrafft, 1980.
DeGII	<i>Supplement to American Sarsaparilla Bottles</i> , John DeGrafft, 2004.
DF	<i>Hair Raising Stories</i> , Don Fadely, 1992.
DM	<i>Wistarburgh, Window Tiles, Bottles and More</i> , Dale L. Murscell, 2007.
F	<i>Inks, 150 Years of Bottles and Companies</i> , Ed and Lucy Faulkner.
FA	<i>John Frederick Amelung, Early American Glassmaker</i> , Lanmon, Palmer, Hume, Brill, Hanson, 1990.
FB	<i>A.S.C.R. The wine bottles of All Souls College</i> , Oxford, 1750 – 1850, Fay Banks.
G	(Flasks) <i>American Bottles & Flasks and Their Ancestry</i> , McKearin & Wilson, 1978.
G	(Blown Three Mold) <i>American Glass</i> (Chapter VI), George S. and Helen McKearin, 1941.
GBH	<i>English Glass For The Collector, 1660-1860</i> , G. Bernard Hughes, 1958.
H	<i>American Bottles in the Charles B. Gardner Collection</i> , Norman C. Heckler, 1975.
JB	<i>Patent and Proprietary Medicine Bottles</i> , Joseph K. Baldwin, 1973
JEB	<i>Glasshouse Whimsies</i> , Joyce E. Blake, 1984.
JH	<i>Glasshouses & Glass Manufacturers of the Pittsburgh Region, 1795 – 1910</i> , Jay W. Hawkins, 2009.
JS	<i>In glas verpakt – European Bottles, Their history and production</i> , Johan Soetens, 2001.
K	<i>Poison Bottle Workbook</i> , Rudy Kuhn, 1988.
KW	<i>New England Glass & Glassmaking</i> , Kenneth M. Wilson, 1972.
L	<i>The Red Book of Fruit Jars, No. 11</i> , Douglas M Leybourne, Jr., 2014.
LI	<i>Pittsburgh Glass, 1797 – 1891</i> , Lowell Innes, 1976.
Mc	<i>Two Hundred Years of American Blown Glass</i> , Helen and George McKearin, 1950.
McK	<i>American Glass</i> , George S. and Helen McKearin, 1941.
MW	<i>American Bottles & Flasks and Their Ancestry</i> , McKearin & Wilson, 1978.
N	<i>Great American Pontiled Medicines</i> , Frederick Nielson, 1978.
NCH	<i>The Blaske Collection of American Flasks</i> , Norman C. Heckler, 1983.
NCH II	<i>The Blaske Collection: Part II</i> , Norman C. Heckler, 1983.
Odell I	<i>Indian Bottles and Brands</i> , John Odell, 1977
Odell II	<i>Pontiled Medicine Encyclopdia</i> , John Odell, 2000
O&S	<i>Warner's Reference Guide</i> , Ed Ojea and Jack Stecher, 1998.
P	<i>The Glass Gaffers of New Jersey</i> , Adeline Pepper, 1971.
RD	<i>Understanding Antique Wine Bottles</i> , Roger Dumbrell, 1983.
RF	<i>The Bottle Book: A Comprehensive Guide to Historic, Embossed Medicine Bottles</i> , Richard Fike, 1987
RH	<i>Collecting Barber Bottles</i> , Richard Holiner, 1986.
R/H	<i>Bitters Bottles</i> , Carlyn Ring and W. C. Ham, 1998.
RWL	<i>Antique Fakes & Reproductions</i> , Ruth Webb Lee, 1950
T	<i>Collectors Guide to Saratoga Type Mineral Water Bottles</i> , Donald Tucker, 2005.
U	<i>Collectible Character Bottles</i> , Authur Umberger, 1969.
V	<i>Nailsea Glass</i> , Keith Vincent, 1975
VdB	<i>Antique Glass Bottles; Their History and Evolution</i> , Willy Van den Bossche, 2001.
WL	<i>A Wine-Lover's Glasses, The A.C. Hubbard, Jr. Collection</i> , Ward Lloyd, 2000.
Z	<i>Ketchup, Pickles, Sauces</i> , Betty Zumwalt, 1980.
ZW	<i>Color Hutchinsons</i> , Zang Wood, 1999.

- The dash is generally used to indicate that the descriptions are on opposite sides of the bottle or flask.



Detail from Lot 4

Rare & Choice Embossed American Snuff Jars

Lot 123



Lot 124



Lot 122



XVI. Tabak (*Nicotiana tabacum*), 1/2

Lot 150: Extremely Rare 'Chinaman' Bitters

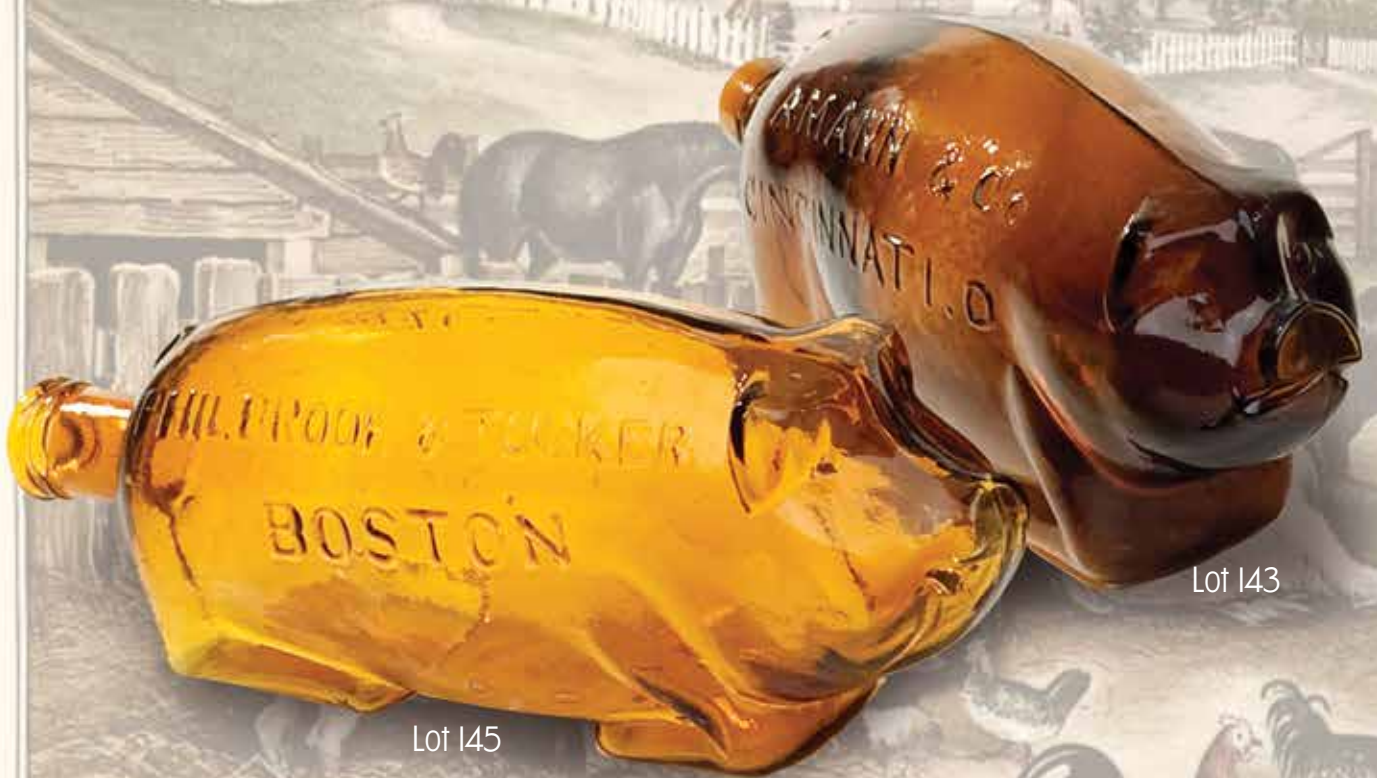


Copy of patent drawing courtesy of William C. Ham.

This rare and desirable figural bitters was discovered at a small estate auction in Somerset County, Pennsylvania about 12 years ago. Embossed "R.S. GARDNER & Co / PROPRIETORS - CLARKSBURG. W.Va", this is a beautiful, near-mint example.

A rare opportunity to acquire this unique and charismatic figural bitters.

Figural Pig Whiskeys



Lot 145

Lot 143

F. S. FALMER, DEL.

ENTERED, ACCORDING TO ACT OF CONGRESS IN THE YEAR 1845, BY CURRIE & IVES, IN THE

AMERICAN FARM

y & Bitters Bottles



Lot 142



Lot 144



Lot 141

CLERK'S OFFICE OF THE DISTRICT COURT OF THE ROYALTY

ESTD BY ALMOND & SONS

YARD-EVENING.



Lot 1

“GENERAL WASHINGTON.” / BUST OF WASHINGTON - EAGLE Historical Flask, an early Pittsburgh district glasshouse, 1825 - 1835. Greenish aquamarine, sheared mouth - blowpipe pontil scar, Pt, near mint; (a ¼” area of very minor, light roughness on the edge of the sheared mouth, otherwise virtually attic mint). GI-2. A great example of this early beaded Washington flask with crisp, bold embossing and a much better than average impression.

Est.: \$300 - \$500 • Min. bid: \$180



Lot 2

“WASHINGTON” / BUST OF WASHINGTON - “BRIDGETON” (STAR) “NEW JERSEY” / BUST OF TAYLOR Historical Flask, Bridgeton Glass Works, 1845 - 1855. Dense tobacco amber, sheared mouth - blowpipe pontil scar, Pt; (a couple of light scratches and some minor exterior wear, otherwise near mint). GI-24. A very scarce-to-rare color. Not an easy flask to find in any color, this example is certainly one of the deepest in tone that we have seen.

Est.: \$4,000 - \$6,000 • Min. bid: \$2,000



Lot 3

“ALBANY GLASS WORKS” / BUST OF WASHINGTON / “ALBANY / N Y” - SAILING SHIP Historical Flask, 1847 - 1850. Aqua, sheared mouth - pontil scar, Pt, near mint; (just a trace of light high point wear and a bit of minor lip roughness including a pinhead flake and a shallow iridescent flake on the inside edge that occurred when the cork was pried out). GI-28. Comparatively scarce. A bright, clean, example having nice character with some whittling and waviness to the glass.

Est.: \$250 - \$450 • Min. bid: \$150



Lot 4

BUST OF WASHINGTON - TREE Historical Calabash, America, 1850 - 1860. Cobalt, applied sloping collar - blowpipe pontil scar, Qt; (a potstone in the medial rib with a couple of hairline cracks, 1 ½”, or less; some light interior milkiness in lower third of flask). GI-35. An eye-appealing and impressive Calabash, very rare color. Note; the crack has been professionally stabilized with a museum-grade, 3-part adhesive. Provenance: Ex. Crawford Wetlauffer, Judge Blaske collections.

Est.: \$2,500 - \$4,500 • Min. bid: \$1,400



Lot 5

“THE FATHER OF HIS COUNTRY” / BUST OF WASHINGTON - “DYOTTVILLE GLASS WORKS PHILAD.A / GEN. TAYLOR NEVER SURRENDERS” / BUST OF TAYLOR Historical Flask, Dyottville Glass Works, 1848 - 1855. Clear, medium emerald coloration, sheared mouth - blowpipe pontil scar, Pt; (lightly cleaned to original luster with a 3/16” open surface bubble at base edge, slightly weak impression in the shoulders, otherwise excellent). GI-38. Beautiful and scarce color for this mold.

Est.: \$800 - \$1,600 • Min. bid: \$400



Lot 6

“THE FATHER OF HIS COUNTRY” / BUST OF WASHINGTON - (Reverse plain), Historical Flask, probably Lockport Glass Works, Lockport, NY, 1848 - 1855. Light-to-medium blue green, applied round collar - blowpipe pontil scar, Qt, virtually attic mint! GI-47. Pleasing color, crisp, strong embossing, a clean, sparkling example.

Est.: \$400 - \$600 • Min. bid: \$200



Lot 7

“THE FATHER OF HIS COUNTRY” / BUST OF WASHINGTON - (Reverse plain), Historical Flask, probably Lockport Glass Works, Lockport, NY, 1848 - 1855. Medium blue green, applied round collar with lower bevel - blowpipe pontil scar, Qt, near mint; (just a trace of typical, very minor exterior wear, and a 1 ¼” shallow in-making pontil flake that extends to the edge of the base, otherwise perfect). GI-47. A good example, nice color.

Est.: \$400 - \$600 • Min. bid: \$200



Lot 8

“THE FATHER OF HIS COUNTRY” / BUST OF WASHINGTON - (Reverse plain), Historical Flask, probably Lockport Glass Works, Lockport, NY, 1848 - 1855. Brilliant yellowish lime green, sheared mouth - blowpipe pontil scar, Qt, virtually attic mint; (just a faint trace of very minor wear on the reverse, otherwise pristine perfect). GI-47. A gorgeous, unlisted, and likely unique color for this mold, heavily whittled, strong, crisp impression. A ‘finest possible example’.

Est.: \$4,000 - \$8,000 • Min. bid: \$2,000



Lot 9

“THE FATHER OF HIS COUNTRY” / BUST OF WASHINGTON - (Reverse plain), **Historical Flask**, probably Lockport Glass Works, NY, 1848 - 1855. Bright, medium teal blue, sheared and tooled lip - blowpipe pontil scar, Pt, very near mint; (3/16” open surface bubble and only a trace of minor wear). GI-48. Gorgeous rare color, strong mold impression, excellent condition. We have not seen another as nice since the McCandless example that sold in 2012. Ex. Mike Roberts collection.

Est.: \$1,500 - \$2,500 • Min. bid: \$800



Lot 13

“JENY LIND” / BUST OF JENY LIND - GLASS FACTORY Historical Calabash, Ravenna Glass Works, Ravenna, OH, 1857 - 1865. Medium grass green with a yellowish tone, applied round collar, red iron pontil scar, Qt; (a fine hairline spider crack with a few 1/4” to 1/2” legs on one of the side ribs; a trace of minor high point wear, a bit of residue, otherwise excellent). GI-104. A beautiful and very rare color for this Calabash, much more difficult to find that the cornflower and sapphire toned examples.

Est.: \$600 - \$900 • Min. bid: \$300



Lot 10

WASHINGTON - TAYLOR Portrait Flask, probably Dyottville Glass Works, 1850 - 1860. GI-54. Medium emerald coloration, large applied blob collar - smooth base, Qt, near mint; (a little minor high point wear and some faint scratches, primarily on the reverse, otherwise excellent). GI-54. Good depth of color and a particularly nice example having excellent character with plenty of unevenness and crudity to the glass.

Est.: \$600 - \$1,200 • Min. bid: \$300



Lot 14

“LOUIS KOSSUTH” / BUST OF KOS-SUTH - STEAM FRIGATE / “U.S. STEAM FRIGATE / MISSISSIPPI / S. HUFFSEY” Historical Calabash, probably Millford Glass Works, Millford, NJ, 1852 - 1860. Medium-to-deep blue green, applied sloping collar - **“PH. DOFLEIN / MOULD MAKER / NTH 5! ST 84”** (on base), iron pontil scar, Qt, very near mint; (a shallow, 3/16” flake on the shoulder, otherwise perfect). GI-112. Great color, tremendous character, the glass is absolutely filled with bubbles!

Est.: \$2,000 - \$4,000 • Min. bid: \$1,000



Lot 11

“LAFAYETTE” / BUST OF LAFAYETTE / “T.S.” - “DE WITT CLINTON” / BUST OF CLINTON / “CONVENTRY / C-T” Historical Flask, Coventry Glass Works, 1824 - 1830. Light yellowish olive amber shading to a slightly deeper olive amber near the base, sheared mouth - pontil scar, Pt; (a little high point wear and a small potstone on the surface of one of the corrugated edges with some flaking around it; a couple of 1/16” minor flat flakes on the sheared lip). GI-80.

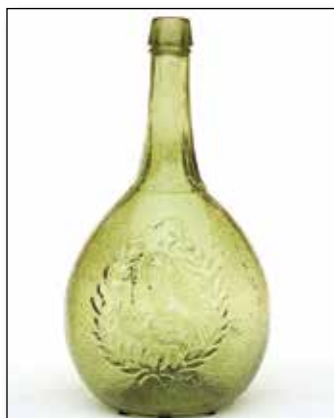
Est.: \$600 - \$900 • Min. bid: \$300



Lot 15

“LOUIS KOSSUTH” / BUST OF KOS-SUTH - STEAM FRIGATE / “U.S. STEAM FRIGATE / MISSISSIPPI / S. HUFFSEY” Historical Calabash, probably Millford Glass Works, Millford, NJ, 1852 - 1860. Deep yellowish green with an olive tone, applied sloping collar - **“PH. DOFLEIN / MOULD MAKER / NTH 5! ST 84”** (on base), blowpipe pontil scar, Qt; (a 4” crack on the reverse). GI-112. Extremely rare and beautiful color, it's twin, without damage, sold in June, 2017, for \$21,000.00!

Est.: \$1,000 - \$2,000 • Min. bid: \$500



Lot 12

“JENNY LIND” / BUST OF JENNY LIND - “GLASS WORKS” / GLASS FACTORY / “S. HUFFSEY” Historical Calabash, Isabella Glass Works, Brooklyn, NJ, 1850 - 1860. Bright citron with a slight olive tone, applied sloping collar with bevel - blowpipe pontil scar, Qt; (just a trace of spotty light interior milkiness, and a potstone on the interior of the base with a few minor 1/8” legs, otherwise near mint). GI-99. Rare color and the glass is filled with tiny seed bubbles.

Est.: \$1,500 - \$2,500 • Min. bid: \$800



Lot 16

“LOUIS KOSSUTH” / BUST OF KOS-SUTH - STEAM FRIGATE / “U.S. STEAM FRIGATE / MISSISSIPPI / S. HUFFSEY” Historical Calabash, probably Millford Glass Works, Millford, NJ, 1852 - 1860. Golden amber, applied sloping collar - **“PH. DOFLEIN / MOULD MAKER / NTH 5! ST 84”** (on base), blowpipe pontil scar, Qt; (1/4” chip at edge of collar, a touch of light high point wear, otherwise perfect). GI-112. A very desirable Calabash, in a very rare color!

Est.: \$4,000 - \$8,000 • Min. bid: \$2,000



Lot 17

"KOSSUTH" / BUST OF KOSSUTH - TREE Historical Calabash, America, 1852 - 1860. Teal blue with a slight greenish tone, applied sloping collar with bevel - blowpipe pontil scar, Qt; (some overall light interior cloudiness, and an in-manufacture pontil chip, otherwise excellent). GI-113. A most unusual and rare color for this mold. With just a light interior cleaning, it would likely present as virtually attic mint!

Est.: \$800 - \$1,200 • Min. bid: \$400



Lot 21

EAGLE - EAGLE Historical Flask, a Pittsburgh district glasshouse, 1855 - 1865. Brilliant, yellowish citron coloration, large applied ring-type collar - light iron pontil scar, Pt; (professionally cleaned to original luster and near mint condition). GII-89. Gorgeous, eye-appealing color, and although the iron pontil scar is very light, it is an added plus as many of the GII-89's are smooth base). A big splash of color for your flask collection.

Est.: \$800 - \$1,200 • Min. bid: \$400



Lot 18

EAGLE / "F. L." - CORNUCOPIA Historical Flask, Frederick R. Lorenz & Co., Pittsburgh, PA, 1825 - 1830. Bright aquamarine, sheared mouth - blowpipe pontil scar, ½ Pt, near mint; (a 1/8" minor flake on the edge of the sheared lip, and a 5/8" pontil chip from the edge of the base, otherwise clean, sparkling, and near attic mint). GII-15. A very rare flask with a crisp, strong mold impression, and virtually no high point wear!

Est.: \$800 - \$1,600 • Min. bid: \$400



Lot 22

EAGLE - EAGLE Historical Flask, a Pittsburgh district glasshouse, 1860 - 1875. Light-to-medium cornflower, approaching a light sapphire coloration, applied collar with flat band - smooth base, Pt, virtually attic mint; (just a small trace of faint interior milkiness, and a paper-thin tiny pinhead open surface bubble). GII-92. A beautiful flask, and a very attractive, rare color, for this mold.

Est.: \$800 - \$1,200 • Min. bid: \$400



Lot 19

EAGLE - "LIBERTY" / OAK TREE Historical Flask, America, possibly an early Pittsburgh district glasshouse, 1825 - 1835. Aquamarine, sheared mouth - blowpipe pontil scar, ½ Pt, sparkling attic mint! GII-60. A comparatively scarce, early beaded flask, and about as nice of an example as you could hope to find! Clean and sparkling, with a good mold impression, and virtually no high point wear as is often found on these flasks.

Est.: \$600 - \$900 • Min. bid: \$300



Lot 23

CORNUCOPIA - URN Pictorial Flask, probably Coventry Glass Works, Coventry, CT, 1835 - 1849. Clear medium green with a slight emerald tone, sheared, tooled and inward rolled mouth - blowpipe pontil scar, Pt, virtually attic mint! (just the slightest trace of faint wear, otherwise pristine). GIII-4. A beautiful, and very scarce color for this mold, outstanding condition.

Est.: \$600 - \$900 • Min. bid: \$300



Lot 20

"LIBERTY" / EAGLE - "WILLINGTON / GLASS, Co / WEST WILLINGTON / CONN" Historical Flask, 1860 - 1872. Medium shading to deep golden amber, applied round collar with lower bevel - smooth base, Pt; (some scattered light scratches and minor exterior wear). GII-64. A very scarce color for this mold, most examples being in shades of blue green and olive green. In addition, nice character to the glass.

Est.: \$400 - \$800 • Min. bid: \$200



Lot 24

Lot of (2), CORNUCOPIA - URN Pictorial Flasks, probably Coventry Glass Works, Coventry, CT, 1835 - 1849. Shades of olive amber, both with sheared mouths - blowpipe pontil scarred bases, Pts, both near mint; (one has a little high point wear and a trace of washable interior residue; 2nd example has a ¼" sliver flake from the median rib at the corner of the base, and a couple of minor open surface bubbles, otherwise excellent). Both GIII-4. A nice pair of early flasks.

Est.: \$150 - \$250 • Min. bid: \$80



Lot 25

CORNUCOPIA - URN Pictorial Flask, New England, 1835 - 1850. Medium olive amber, sheared mouth - blowpipe pontil scar, ½ Pt; (a few small spots of minor exterior wear including a ¼" patch on the shoulder of the reverse, otherwise a bright, clean, very nice example). GIII-12. Noted by McKearin as "Comparatively scarce", and a nice example with a good strong mold impression.

Est.: \$125 - \$225 • Min. bid: \$70



Lot 29

MASONIC - "ZANESVILLE" / EAGLE / "OHIO / J. SHEPARD & CO", Historical Flask, Zanesville Glassworks, Zanesville, OH, 1822 - 1832. Golden amber with a slight orange tone, sheared mouth - blowpipe pontil scar, Pt; (a little scattered exterior wear as is common on this mold, and a little faint interior haze in the upper half of the body). GIV-32. A classic early Ohio Masonic flask.

Est.: \$500 - \$800 • Min. bid: \$250



Lot 26

MASONIC ARCH - EAGLE / "KCCNC" Historical Flask, Keene Marlboro Street Glassworks, Keene, NH, 1820 - 1830. Medium yellowish olive amber, sheared mouth - blowpipe pontil scar, Pt, attic mint! GIV-20a. Note, this is the "20a" mold with the faint dots on the shoulder above the curved ribbon. Listed as "Rare" by McKearin, this is almost certainly the most difficult mold of the #17 thru. #21 Keene Masonics. Outstanding condition having virtually no high point wear.

Est.: \$250 - \$450 • Min. bid: \$150



Lot 30

"CORN FOR THE WORLD" / EAR OF CORN - MONUMENT / "BALTIMORE" Historical Flask, Baltimore Glass Works, 1845 - 1855. Yellowish 'old amber' with a honey or butterscotch tone, sheared mouth - blowpipe pontil scar, Qt; (a touch of high point wear as is common on this mold, and a bit of minor roughness, 1/8" or less, on the inside edge of the sheared lip). GVI-4. Nice color, scarce with the blowpipe pontil scar, the majority being either smooth base or iron pontil.

Est.: \$2,000 - \$4,000 • Min. bid: \$1,000



Lot 27

MASONIC ARCH - EAGLE Historical Flask, Keene Marlboro Street Glassworks, Keene, NH, 1820 - 1830. Medium-to-deep olive amber, sheared, tooled and inward rolled mouth - blowpipe pontil scar, ½ Pt; (some light exterior wear; a little scattered washable interior residue). GIV-24. A classic, early New England flask.

Est.: \$250 - \$400 • Min. bid: \$140



Lot 31

"KEEN" - "P&W" SUNBURST FLASK, Keene Marlboro Street Glassworks, Keene, NH, 1815 - 1830. Light yellowish olive amber, almost an olive yellow in the shoulders, shading to a deeper olive amber in the neck and base, sheared mouth - blowpipe pontil scar, Pt, near attic mint; (a trace of light wear; the embossing is a little weak, more so on the reverse, otherwise perfect). GVIII-8. Attractive light color, there are also a couple of nice threads of glass swirled through the body.

Est.: \$400 - \$600 • Min. bid: \$200



Lot 28

MASONIC - "ZANESVILLE" / EAGLE / "OHIO / J. SHEPARD & CO", Historical Flask, Zanesville Glassworks, Zanesville, OH, 1822 - 1832. Aquamarine, sheared mouth - blowpipe pontil scar, Pt, attic mint! GIV-32. A nice delicate example, a little lighter in weight and color than most. In addition, a bright, clean, sparkling example!

Est.: \$500 - \$800 • Min. bid: \$250



Lot 32

"KEEN" - "P&W" SUNBURST FLASK, Keene Marlboro Street Glassworks, Keene, NH, 1815 - 1830. Yellowish olive amber, sheared mouth - blowpipe pontil scar, ½ Pt, near mint; (just the slightest trace of wear including a pinhead open surface bubble). GVIII-9. A nice light example of this early New England Sunburst Flask.

Est.: \$400 - \$600 • Min. bid: \$200



Lot 33

SUNBURST FLASK, New England, probably an early Connecticut glass-house, Coventry or possibly Pitkin, 1815 - 1830. Clear light-to-medium olive with a slight yellowish tone, sheared mouth - blowpipe pontil scar, ½ Pt, virtually attic mint; (a little roughness or flaking from the glass extrusion at the side mold seam). GVIII-16. A beautiful example, scarce color in a pure green coloration, nice clarity and brightness to the glass.

Est.: \$800 - \$1,200 • Min. bid: \$400



Lot 34

SUNBURST FLASK, Coventry Glass Works, Coventry, CT, 1815 - 1830. Medium olive amber, sheared mouth - blowpipe pontil scar, ½ Pt; (a little light exterior wear, trace of interior residue). GVIII-18. Another good early Sunburst, this mold being noted by McKearin as "Comparatively scarce".

Est.: \$500 - \$800 • Min. bid: \$250



Lot 37

SCROLL FLASK, Midwest, 1850 - 1860. Brilliant, medium yellow with just a very slight hint of olive, almost a lemon-yellow coloration, sheared and slightly flared mouth - iron pontil scar, Pt, attic mint! (Note, there is a tiny bit of roughness on the sheared mouth, but it is in-making, and not post-manufacture damage). GIX-11. A gorgeous flask that will definitely stand out in a crowd, and very difficult to find in this virtually pure yellow coloration. John Apple collection.

Est.: \$2,000 - \$4,000 • Min. bid: \$1,000



Lot 38

SCROLL FLASK, Midwest, 1850 - 1860. Medium amber shading to a lighter yellowish golden near the sides, crudely applied short tapered collar - red iron pontil scar, Pt; (an 1/8" flake and a couple of very minor, pinhead bits of roughness on top of the mouth; some faint interior residue or haze in the lower portion of the flask that would likely was out). GIX-11. An eye-appealing flask, scarce having the applied collar. John Apple collection, Ex. David Beadle collection.

Est.: \$500 - \$1,000 • Min. bid: \$300



Lot 35

SCROLL FLASK, Midwest, 1850 - 1860. Beautiful, medium forest green, applied collar with flat band - iron pontil scar, Qt, near mint; (minor, 1/8" flake on medial rib, and just the slightest trace of faint wear, otherwise perfect). GIX-3. Excellent character, great eye-appeal, a beautiful and rare color for a Scroll Flask. Provenance: John Apple collection, Ex. Judge Blaske, Mike Roberts collections.

Est.: \$1,500 - \$2,500 • Min. bid: \$800



Lot 39

SCROLL FLASK, Midwest, 1845 - 1860. Brilliant citron, almost a lime green, sheared mouth - blowpipe pontil scar, Pt, mint. Similar to GIX-11 (over-blown in shoulders so stars not clearly defined). Beautiful, bright color, nice clarity and condition. This color stands out, or "pops", in a run of Scrolls. Note; a slightly different mold variant having a short pedestal-type base. Provenance: John Apple collection.

Est.: \$800 - \$1,600 • Min. bid: \$400



Lot 36

SCROLL FLASK, Midwest, 1845 - 1860. Medium cornflower blue, almost a light sapphire coloration, sheared mouth - blowpipe pontil scar, Pt, near mint; (just a touch of minor roughness on the inside edge of the lip). GIX-10. A beautiful example, scarce eye-appealing color, excellent condition! Provenance: Ex. Sam Laidacker, Merritt Vanderbilt collections.

Est.: \$1,000 - \$2,000 • Min. bid: \$600



Lot 40

Lot of (2) Scroll Flasks, Midwest, 1850 - 1860. Shades of aquamarine, both with sheared mouths - iron pontil scarred bases, ½ Pts; (the GIX-31 has a touch of very minor high point wear, otherwise perfect; the GIX-32 has a ¼" iridescent bruise and an open bubble on the inside of the lip; a bit of in-manufacture roughness on the edge of the lip). GIX-31 & GIX-32. The GIX-31 has a good deep bluish color and a strong mold impression, the GIX-32 is a scarce mold. Provenance: John Apple collection.

Est.: \$150 - \$250 • Min. bid: \$80



Lot 41

SCROLL FLASK, Midwest, 1845 - 1855. Medium sea green, sheared mouth - blowpipe pontil scar, ½ Pt, perfect! GIX-36. A rare little flask, attractive color, and almost eggshell thin, with excellent character having a subtle band of tiny little bubbles through the midsection. Provenance: John Apple collection, Ex. Judge Blaske collection.

Est.: \$700 - \$900 • Min. bid: \$350



Lot 45

HUNTER - FISHERMAN Pictorial Calabash, probably Whitney Glass Works, Glassboro, NJ, 1857 - 1865. Bright golden amber, applied sloping collar - iron pontil scar, Qt, virtually attic mint; (just a trace of faint exterior wear, otherwise perfect). GXIII-4. A solid, bright, clean example!

Est.: \$200 - \$400 • Min. bid: \$120



Lot 42

SCROLL FLASK, probably John Robinson & Son Glass Manufacturers, Pittsburgh, PA, 1830 - 1834. Aquamarine, sheared mouth - blowpipe pontil scar, ½ Pt, attic mint; (a little light, almost certainly, washable interior content residue). GIX-41. A scarce, early Scroll Flask, especially in this fine condition. Interesting note; this little flask was found in the attic of a house in Meredith, New Hampshire. A true "attic" find. Provenance: John Apple collection.

Est.: \$300 - \$500 • Min. bid: \$180



Lot 46

HUNTER - FISHERMAN Pictorial Calabash, probably Whitney Glass Works, Glassboro, NJ, 1857 - 1865. Light-to-medium apricot coloration, applied sloping collar - iron pontil scar, Qt, very near mint; (just a slight trace of faint exterior wear including a barely noticeable pinprick bit of roughness on the edge of the lip, otherwise perfect). GXIII-4. Beautiful peachy-apricot tones, nice light color, excellent condition, and with some nice bubbles and stretch lines through the neck!

Est.: \$600 - \$900 • Min. bid: \$300



Lot 43

"GENL TAYLOR NEVER SURRENDERS" (Cannon) - "A / LITTLE / MORE / GRAPE / CAPT BRAGG" / (Grapes and vine) Historical Flask, probably Baltimore Glass Works, 1848 - 1855. Aqua, sheared mouth - blowpipe pontil scar, Pt; (just a trace of faint interior residue, and a very slight touch of wear, otherwise attic mint). GX-4. A scarce flask, and a much better than average example having a bold, strong mold impression, and very little high point wear. A good one!

Est.: \$400 - \$800 • Min. bid: \$200



Lot 47

HUNTER - FISHERMAN Pictorial Calabash, probably Whitney Glass Works, Glassboro, NJ, 1857 - 1865. Beautiful strawberry puce with a slight apricot tone, shading to a deep reddish tone in the upper shoulders, applied sloping collar - iron pontil scar, Qt, virtually attic mint; (slight trace of light interior content residue in the side, almost certainly washable). GXIII-4. Gorgeous and rare color, outstanding condition.

Est.: \$700 - \$1,200 • Min. bid: \$350



Lot 44

CLASPED HANDS / "UNION" - EAGLE Historical Calabash, possibly A.R. Samuels, Philadelphia, PA, 1858 - 1866. Medium-to-deep amber, applied round collar with bevel - large rectangular red iron pontil scar, Qt, near mint; (a light scratch near a fluted edge, and a 3/16" flake at base edge). GXII-43. A nicer than average example of this Calabash, clean, having a good impression, and virtually no high point wear which is unusual for this bottle.

Est.: \$225 - \$450 • Min. bid: \$150



Lot 48

"WILL YOU TAKE / A DRINK ? / WILL A / (Duck) / SWIM ?" Pictorial Flask, probably Lockport Glass Work, Lockport, NY, 1870 - 1880. Bright aquamarine, applied mouth with band - smooth base, Pt.; (just a little very light wear on the reverse, otherwise sparkling, virtually attic mint). GXIII-28. A much better than average example of this scarce flask, clean, bright, highly whittled, and with a very strong mold impression!

Est.: \$400 - \$600 • Min. bid: \$200



Lot 49

"WILL YOU TAKE / A DRINK ? / WILL A / (Duck) / SWIM ?" Pictorial Flask, probably Lockport Glass Work, Lockport, NY, 1875 - 1885. Rich, bluish aquamarine, tooled sloping collar with ring - smooth base, ½ Pt, virtually attic mint. GXIII-29a. Another great example, good rich color, good mold impression, nice character. Noted by McKearin as "Extremely rare", and certainly more difficult to find than the pints.

Est.: \$400 - \$600 • Min. bid: \$200



Lot 53

"BALTIMORE" / ANCHOR / "GLASS WORKS" - PHOENIX / "RESURGAM" Historical Flask, Baltimore Glass Works, 1860 - 1870. Yellow with a slight olive tone, applied round collar with bevel - smooth base, Pt; (a little faint dullness or haze, mostly on the interior, some of which may wash out, otherwise would easily clean with a couple of days in the tumbler, if desired; a touch of faint exterior wear). GXIII-54. A very scarce and beautiful color, heavily whittled.

Est.: \$1,500 - \$2,500 • Min. bid: \$750



Lot 50

SHEAF OF GRAIN - TREE Pictorial Calabash, probably Sheets & Duffy Glass Manufacturers, Philadelphia, PA, 1850 - 1860. Medium blue green with a teal tone, almost a teal blue coloration, applied round collar with bevel - iron pontil scar, Qt; (just a touch of typical light wear including a very minor pinhead flake at side rib; some faint interior haze, some of which would almost certainly wash out). GXIII-47.

Est.: \$400 - \$800 • Min. bid: \$200



Lot 54

"GRANITE / GLASS / CO - STODDARD / N H", 1855 - 1862. Medium-to-deep amber, applied double ring collar - smooth base, Pt; (a little high point wear, mainly on the reverse, and an open interior bubble, otherwise very near mint). GXV-7. A nice clean example with strong, crisp embossing. In addition, a very heavy example having what appears to be some extra glass near the base.

Est.: \$400 - \$600 • Min. bid: \$200



Lot 51

"BALTIMORE" / ANCHOR / "GLASS WORKS" - PHOENIX / "RESURGAM" Historical Flask, Baltimore Glass Works, 1860 - 1870. Light honey amber with some golden tones, applied round collar with bevel - smooth base, Pt; (small pinhead bit of roughness on the edge of the collar; a ¼" open bubble on the shoulder of the reverse). GXIII-53. A nice bright example, scarce color, and with some nice character to the glass.

Est.: \$400 - \$800 • Min. bid: \$200



Lot 55

"ALDERNEY" / (Steers Head) / "OLD RYE / WHISKEY. / CHRIS GALLAGHER / 806 LOMBARD, ST. / PHILA.", America, 1885 - 1895. Yellowish honey amber, strap-side flask, tooled double collar - smooth base, Qt.; (some high point wear, primarily on the reverse, also a little on the steer's head, otherwise excellent). A very scarce-to-rare pictorial whiskey, nice light color. The last recorded example offered at auction was more than 25 years ago!

Est.: \$200 - \$400 • Min. bid: \$100



Lot 52

"BALTIMORE" / ANCHOR / "GLASS WORKS" - PHOENIX / "RESURGAM" Historical Flask, Baltimore Glass Works, 1860 - 1870. Bright, light golden amber with some honey tones along the sides, applied round collar with lower band - smooth base, Pt, virtually attic mint; (just a slight trace of minor exterior wear, otherwise perfect). GXIII-54. A clean, bright, crisp example, heavily whittled, and with a strong mold impression.

Est.: \$800 - \$1,200 • Min. bid: \$400



Lot 56

Lot of (3), "JOHN HAY" NEW YORK, Strap-Sided Flasks, America, 1885 - 1895. Shades of honey and golden amber, tooled double ring collars - smooth bases, Qt, Pt, and ½ Pt; (½ pint is near mint; Qt. & Pt. have been professionally cleaned with a little ground wear and light scratches remaining). Qt. embossed, **"JOHN HAY / 152 & 154 WASHINGTON ST. / COR. LIBERTY ST. / NEW YORK"**. A nice set. The Qt. is a private mold and rare; Pt. & ½ Pt are embossed in a slugplate and scarce.

Est.: \$200 - \$400 • Min. bid: \$100



Lot 57

Pottery Gemel Flask with Floral Motif, probably America, possibly East Liverpool, Ohio, 1840 - 1860. Dark brown "Rockingham-type" glaze, flask with ovoid body, ornate floral and vine motif on both sides, curved necks with ring-type collared mouths, ht. 7 1/4", perfect. A rare and unusual gemel flask as most examples were typically blown using colorless glass. Provenance: Ex. Judge Blaske Collection.

Est.: \$200 - \$300 • Min. bid: \$100



Lot 61

Early, Freeblown Chestnut Bottle, probably South Jersey, possibly Wistarburgh Glass Works, 1760 - 1790. Clear, medium olive with a strong yellowish tone, high-shouldered chestnut form, sheared mouth with an applied string rim - blowpipe pontil scar, ht. 9 1/4"; (a few light scratches near the shoulder and some expected typical exterior wear). Some light paddle marks remain on the flattened sides. A nice example of an early Mid-Atlantic type chestnut bottle.

Est.: \$500 - \$1,000 • Min. bid: \$250



Lot 58

Lot of (2) Fancy Pottery Flasks, probably America, possibly East Liverpool, Ohio, 1840 - 1860. Both with dark brown "Rockingham-type" glaze, ovoid bodies, curved necks with ring-type collar, one example with a shamrock and thistle motif, the second example with floral and vine motif, both 7"; (the shamrock and thistle example is perfect; second example with floral and vine motif has a shallow 1/4 flake from base edge, otherwise perfect). Scarce.

Est.: \$200 - \$300 • Min. bid: \$100



Lot 62

Freeblown Chestnut Flask, probably New England, 1790 - 1820. Bright, yellowish olive amber, almost a deep olive yellow, chestnut form, crudely sheared mouth with an applied ring collar - blowpipe pontil scar, ht. 8 1/4"; (a touch of typical minor exterior wear; a small ring of light interior content haze, otherwise very near mint). Nice size, and a very crudely applied ring collar.

Est.: \$250 - \$400 • Min. bid: \$140



Lot 59

Early, Ribbed Melon-Type Flask, probably Keene Marlboro Street Glassworks, Keene, NH, 1815 - 1830. Brilliant yellow olive, 20 wide, heavy melon-type vertical ribs, sheared mouth with an applied ring collar - sand type pontil scar, Pt, virtually attic mint; (tiny pinhead bit of roughness on the top edge of the lip, and only the slightest trace of faint wear, otherwise pristine). Attributed to Keene, and likely an earlier products. Scarce mold, rare color, outstanding condition.

Est.: \$1,200 - \$1,800 • Min. bid: \$600



Lot 63

Freeblown Chestnut Flask, probably America, possibly Mid-Atlantic region, 1770 - 1810. Bright medium yellow green, large flattened chestnut form, sheared mouth, crudely applied string lip with a trailing thread of glass wrapping around the neck - blowpipe pontil scar, ht. 9 3/4", near mint; (a few faint scratches and typical light exterior wear, otherwise perfect). A beautiful early Chestnut bottle, scarce size, unusual and rare color. Note, some faint paddle marks are visible on the flattened sides.

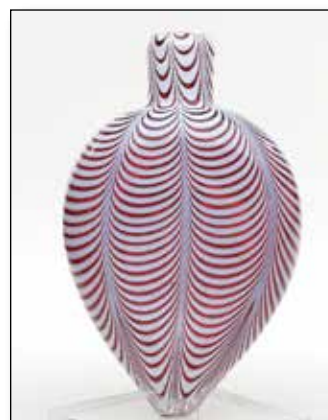
Est.: \$400 - \$600 • Min. bid: \$200



Lot 60

Early, Ribbed Melon-Type Flask, probably Keene Marlboro Street Glassworks, Keene, NH, 1815 - 1830. Medium shading to deep olive amber, 20 wide, heavy melon-type vertical ribs, sheared mouth with a crudely applied flat banded collar - sand type pontil scar, Pt, near mint; (minor 1/8" flake from the top of the crudely sheared mouth, otherwise perfect). Another great example of an early melon ribbed flask, very scarce color.

Est.: \$800 - \$1,200 • Min. bid: \$400



Lot 64

Freeblown, Nailsea-Type Flask, probably England, possibly America, 1850 - 1880. Colorless and cranberry cased glass with opaque white loopings combed throughout, teardrop form, sheared and firepolished mouth - pontil scar, ht. 6", near mint; (a 3/8" flake from the edge of the pontiled base, possibly in-manufacture, otherwise perfect). A beautiful flask, a great deal of workmanship, and scarce with the cased glass construction.

Est.: \$150 - \$300 • Min. bid: \$80



Lot 65

Pattern Molded Pocket Flask, probably Continental, 1815 - 1830. Clear medium-to-deep cobalt, 12 widely spaced vertical ribs, flattened circular body, sheared mouth with an applied thin flange collar - blowpipe pontil scar, ht. 6 3/4", virtually attic mint; (trace of expected faint wear). Similar to McK, plate 239, #4. A big, impressive, early flask. At almost 7", it is considered a "grandmother" size flask. A very beautiful flask, the wide melon ribs provide a variegated appearance to the color.

Est.: \$400 - \$600 • Min. bid: \$200



Lot 66

Pitkin Type Flask, probably Eastern Pennsylvania, or Mid-Atlantic, 1810 - 1830. Clear, medium green with an emerald tone, 24 broken rib pattern swirled to the left, flattened horseshoe form body, sheared mouth - blowpipe pontil scar, ht. 5 1/8"; (some typical scattered light exterior wear, and a little roughness or minor pitting on the top edge of the lip, possibly in-making, otherwise near mint). See MW, plate 89, #5. Nice color, good character, and a smaller, more diminutive size.

Est.: \$400 - \$800 • Min. bid: \$200



Lot 67

Pitkin Type Flask, New England, 1790 - 1820. Light yellowish olive, almost an olive yellow, 36 ribs swirled to the left, flattened ovoid body, sheared mouth - blowpipe pontil scar, ht. 5 1/4", perfect! Similar to MW, plate 88, #6. A much better than average example with crisp, very strong, tight ribbing all the way to the base, and with virtually no high point wear. A great example!

Est.: \$800 - \$1,200 • Min. bid: \$400



Lot 68

Rare Pitkin Type Flask, New England, 1785 - 1820. Bright medium olive, patterned with 38 vertical ribs over 36 ribs swirled to the right, flattened ovoid form, sheared mouth - blowpipe pontil scar, ht. 6 3/4", near mint; (just a little minor light high point wear, primarily on one side only, otherwise excellent). A very rare rib count, the gaffer using both a 38 rib mold, and a 36 rib mold to create this flask. The great majority of broken swirl Pitkins have the same number of ribs for each.

Est.: \$800 - \$1,200 • Min. bid: \$400



Lot 69

Pattern Molded Pocket Flask, Zanesville Glass Works, Zanesville, OH, 1820 - 1830. Rich, medium amber, 10 diamond pattern, flattened chestnut form, sheared mouth - pontil scar, ht. 5 1/8", near mint; (just a touch of typical, light exterior wear, otherwise excellent). Similar to MW, plate 97, #4. From an old time Ohio collection, a great example, excellent overall condition.

Est.: \$1,200 - \$1,800 • Min. bid: \$600



Lot 70

Pattern Molded Globular Bottle, Midwest, 1820 - 1840. Greenish aquamarine, globular form with 18 ribs swirled to the left, sheared mouth with crudely applied band - blowpipe pontil scar, ht. 7 1/4", near mint; (a little minor lip-edge roughness or pitting, possibly in-making, and just a trace of light interior milkiness). An interesting and rare pattern molded glob. 18 rib is very rare in globes, almost all are 24, occasionally 28 or 30. The lip application is also different. Very strong pattern, a nice example.

Est.: \$500 - \$800 • Min. bid: \$250



Lot 71

Pattern Molded Globular Bottle, probably Zanesville Glass Works, Zanesville, OH, 1820 - 1835. Aquamarine, globular form with 24 ribs swirled to the left, sheared, tooled, and outward folded mouth - pontil scar, ht. 7 3/4", virtually attic mint; (just a trace of typical, faint light wear, otherwise perfect!) A great example having the classical, almost perfect, globular form; bright, clean, and in excellent condition. Aqua "Globes" are much more scarce than their amber counterparts.

Est.: \$500 - \$800 • Min. bid: \$250



Lot 72

Early, Pattern Molded Pan, Midwest, probably a Pittsburgh district glasshouse, 1820 - 1840. Aquamarine, patterned in a 15-rib dip mold, cylindrical with wide flaring sides, outward folded rim

- base with terminal ring and pontil scar, ht. approximate 1 7/8"; rim dia. 8 1/8", base dia. approx. 3 5/8", near mint; (heavy base wear, some minor interior wear and scratches, otherwise perfect). A delicate, beautiful and rare piece of Midwest pattern molded tableware.

Est.: \$400 - \$800 • Min. bid: \$250



Lot 73

Pattern Molded Open Sugar Bowl, probably England, possibly America, 1770 - 1820. Medium-to-deep cobalt blue lead glass, hemispherical bowl patterned with 20 ribs swirled to the left, applied tall pedestal foot with pontil scar flaring outward to a sheared and inward folded rim, ht. 3 3/4", rim diameter, 4 1/4", near mint; (a little light exterior wear and faint iridescent bloom, otherwise perfect). See AP, page 196, #155. A beautiful, early sugar bowl.

Est.: \$250 - \$450 • Min. bid: \$140



Lot 74

Blown Three Mold Toilet Water Bottle, probably Boston and Sandwich Glass Company, Sandwich, MA, 1825 - 1840. Medium to deep cobalt blue, tapered ovoid form, geometric pattern with vertical ribbing, sheared, tooled and outward flared mouth with correct "tam-o'-shanter" type stopper - blowpipe pontil scar, ht. 6 1/2" (including stopper), virtually attic mint; (just a trace bit of wear). GI-7, type 2. McK, plate 105.

Est.: \$150 - \$250 • Min. bid: \$80



Lot 75

Blown Three Mold Creamer, America, possibly Mantua, Ohio, 1822 - 1829. Colorless, globular body with geometric pattern, wide neck flaring outward to a sheared rim with a tooled, crimped pour spout - solid looped handle crimped and curled at lower attachment, blowpipe pontil scar, ht. 3 1/2", perfect! GI-33. The GI-33 pattern is an extremely rare mold attributed to the Mantua Glass Works. These early BTM creamers are scarce and this one is certainly rare!

Est.: \$400 - \$600 • Min. bid: \$200



Lot 76

Lot of (2), Scarce Blown Three Mold Hats, America, 1820 - 1840. Both are colorless, blown and formed into miniature 'beaver' form toy hats, sheared and flared brims with inward folded rim - blowpipe pontil scarred bases, ht. 2 1/8" and 3/4", both perfect. 1st example is from a GI-13 (blown in a castor bottle mold for pattern), and second example is similar to GI-17 (with two horizontal rings above vertical ribbing, and below diamond pattern). Rare, as hats are unlisted in this mold.

Est.: \$175 - \$350 • Min. bid: \$100



Lot 77

Lot of (2), Stiegel-Type Engraved Flip Glasses, probably America, 1770 - 1800. Both are colorless, smaller example with engraved crosshatch pattern within elliptical band above 12 sunken panels; large example with engraved floral and leaf motif on one side, and smaller floral motif on reverse, ht. 5 3/4", and 7 3/4" respectively, both are virtually perfect. Forms, construction, and engraving very similar to McK, plate 7, #4, and plate 22, Nos. 2 & 3. An outstanding pair of Colonial period flips.

Est.: \$200 - \$400 • Min. bid: \$120



Lot 78

Early Blown Wine Glass, or Small Chalice, Ohio, or possibly NY State, 1830 - 1860. Greenish aqua, non-lead bottle glass, straight-sided bowl flaring outward to a sheared rim, applied stem with knop, applied circular foot, ht. 4", perfect. Very similar to McK, plate 80, #13. A beautiful, well executed piece of American blown glass. Note; there is a primitive handwritten collector tag on the base, "N Y State Redford or Redwood ? G.S. McK". Perhaps this piece may have been an early purchase from Geo. McKearin.

Est.: \$400 - \$800 • Min. bid: \$200



Lot 79

Large Freeblown Vase, America, probably an early South Boston glasshouse, possibly Pittsburgh, PA, 1815 - 1840. Colorless, blown from a heavy gather of lead glass, compressed globular body with wide neck and outward flared rim, applied baluster stem, conical foot with polished pontil scar, ht. 8 3/4"; (expected typical light usage wear, otherwise perfect). See AP, pages 271 - 287. An unusually large and handsome early blown vase. Purchased at an estate sale in Portsmouth, NH.

Est.: \$200 - \$400 • Min. bid: \$100



Lot 80

Freeblown Witchball and Stand, America, possibly Western NY State, 1850 - 1870. Medium sapphire blue freeblown witchball with some subtle deeper striations, dia. 5 3/8". Freeblown teal blue vase with nearly straight sides flaring outward to a tooled, sheared rim; tooled knopf stem with pontil scarred pedestal foot flaring outward to a sheared and inward folded rim, ht. 7 7/8". Both near mint. The ball and stand are likely a "married" set from the period, beautiful colors and well executed.

Est.: \$300 - \$600 • Min. bid: \$150



Lot 81

Freeblown Footed Fishbowl, probably New York State, possibly Continental, 1850 - 1870. Emerald green, non-lead bottle glass, globular body with tooled, round heavy ring-type collar - applied pedestal base flaring outward to a sheared, tooled, and inward rolled rim, ht. 9 3/8", perfect. The majority of freeblown fishbowls were made from colorless glass, rarely aqua, this is the first example we have seen in emerald. May also have been made for apothecary use.

Est.: \$200 - \$400 • Min. bid: \$100



Lot 82

Heavy, Freeblown Tumbler, America, probably Congressville Glass Works, Saratoga Springs, NY, 1860 - 1880. Rich, medium-to-deep emerald green non-lead bottle glass, barrel form with sides curving inward toward base, sheared and fire polished rim - blowpipe pontil scar, ht. 3 1/2"; (some expected minor usage wear, otherwise excellent). A very heavy, attractive tumbler, filled with tiny seed bubbles, blown from the same metal as the spring water bottles of the period.

Est.: \$100 - \$200 • Min. bid: \$50



Lot 83

Large, Early, Freeblown Bowl, Ohio, or Western PA, 1830 - 1850. Honey amber, cylindrical with nearly straight sides, heavy outward folded rim - blowpipe pontil scarred base, ht. 5 1/8", dia. 7 3/4"; (some scattered moderate usage wear; a 3/8" partially open bubble on the exterior, and a 1/2" open interior bubble). A beautiful, unquestionably period, Midwest bowl similar in color to many of the Midwest globs. Old sticker of side of bowl, "#628 / Mon River / McKearin Coll./ \$375.00"

Est.: \$400 - \$600 • Min. bid: \$200



Lot 84

Early, Freeblown Preserve Jar, America, probably New England, 1840 - 1860. Golden amber, cylindrical with nearly straight sides, shoulders with a slight inward curve to a sheared and outward flared rim - blowpipe pontil scar, ht. 9 1/2"; (some scattered light exterior scratches and usage wear, a couple of thin rings of faint interior content haze, otherwise excellent). A great early New England jar with age-appropriate wear. Very similar to McK, plate 72A, #4.

Est.: \$400 - \$600 • Min. bid: \$200



Lot 85

Early, Freeblown Utility or Storage Jar, America, 1840 - 1860. Clear, medium green with an emerald tone, cylindrical, short narrow neck with an applied ring-type collar - blowpipe pontil scar, ht. 7"; (trace of faint exterior usage wear, otherwise perfect). A beautiful, very attractive jar, good color. Ex. George McKearin collection. An early hand written collector tag remains on the base, "Collection / Geo McKearin / P.P. Lot 102". Regardless of provenance, or region blown, a nice early jar.

Est.: \$250 - \$450 • Min. bid: \$150



Lot 86

"A. STONE & Co / PHILA" FRUIT JAR, possibly a Pittsburgh district glasshouse, 1865 - 1875. Aquamarine, cylindrical, large applied collar with internal threading, "A. STONE & Co / 3 / PHILADA." (on lugged threaded stopper) - early smooth base, Qt, near mint; (a 3/8" shallow chip on the underside of the threaded stopper; a 3/8" chip and a 3/8" area of iridescence on the internal neck threads of the jar). RB #2748.

Est.: \$500 - \$800 • Min. bid: \$250



Lot 87

"THE VALVE JAR Co / PHILADELPHIA / PATENT MARCH 10TH / 1868", America, probably 1870 - 1871. Aquamarine, cylindrical, ground lip, heavy wire coil clamp and original glass lid "I I" (on inside of lid), Qt., virtually attic mint! RB# 2874. A crude, bubbly, eye-appealing jar.

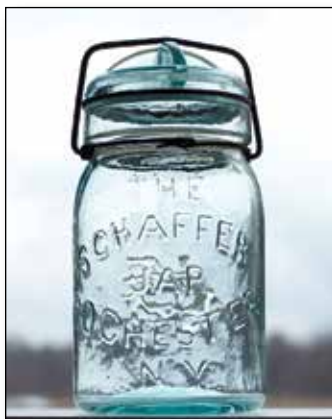
Est.: \$500 - \$800 • Min. bid: \$250



Lot 88

"WHITMORE'S / PATENT. / ROCHESTER / N.Y." - "3" (on reverse), America, probably Rochester Glass Works, Rochester, NY, 1868 - 1875. Aquamarine, cylindrical, ground lip, original brass wire bail and glass lid with raised cross fins, "PATENTED / JANUARY 14TH 68" (around perimeter of lid), Qt., near mint; (shallow, paper-thin a 3/16" flake from top edge of ground mouth, otherwise perfect!) RB# 2964. A clean, bright, beautifully whittled example.

Est.: \$400 - \$600 • Min. bid: \$200



Lot 89

"THE / SCHAEFFER / JAR / ROCHESTER / N. Y." - "JSC" monogram, probably a Western New York State glasshouse, possibly Rochester Glass Works, Rochester, NY, 1879 - 1890. Aquamarine, cylindrical with ground lip, glass lid with raised cross fins - smooth base, Pt., both jar and lid are attic mint! RB# 2562.

Est.: \$800 - \$1,200 • Min. bid: \$400



Lot 93

Lot of (3), "SKILTON FOOTE & CO'S / BUNKER HILL PICKLES" Jars, America, 1885 - 1895. Yellow, aquamarine, and honey amber, all are cylindrical with tooled square collars - smooth bases, ht. 7 1/2", 5 1/4", and 8" respectively; (the yellow and aqua examples are pristine perfect; the large honey-amber jar has been lightly cleaned with some light interior haze remaining). The embossing is extremely bold and crisp on the yellow example; aqua example is bright and sparkling.

Est.: \$100 - \$150 • Min. bid: \$50



Lot 90

(Beaver Chewing Log) / "BEAVER", Canada, probably Ontario Glass Co., Kingsville, Ontario, 1900 - 1910. Beautiful light golden, or honey coloration, cylindrical, ground lip with zinc band and dark amber glass insert - "10" on base, Qt, perfect! RB# 424. A beautiful example, nice detail on the beaver.

Est.: \$1,000 - \$1,500 • Min. bid: \$500



Lot 94

Lot of (3), "SKILTON FOOTE & CO'S / BUNKER HILL PICKLES" Jars (one with 85% original label), America, 1885 - 1895. Bright yellow, almost a lemon yellow, with a very slight olive tone, aquamarine, and honey amber, all are cylindrical with tooled square collars - smooth bases, ht. 7 1/2"; (the yellow example has a shallow 1/8" flake at the edge of the base, and a trace of wear; the other two examples are virtually perfect). The aqua example is scarce with the label.

Est.: \$100 - \$150 • Min. bid: \$50



Lot 91

(Beaver Chewing Log) / "BEAVER", Canada, probably Ontario Glass Co., Kingsville, Ontario, 1900 - 1910. Pale light green, cylindrical, ground lip with zinc band and aquamarine glass insert - "2" on base, midget; (jar is perfect, glass lid has 1/8" flake on inside edge of rim). RB# 424. Good strong mold impression on beaver.

Est.: \$200 - \$300 • Min. bid: \$100



Lot 95

Lot of (2), "SKILTON FOOTE & CO'S / BUNKER HILL PICKLES" Jars, America, 1880 - 1890. Aquamarine and light honey coloration, square and cylindrical, both with early applied square collars - smooth bases, ht. 6 3/4" & 7 1/2" respectively, both are sparkling attic mint! **"BUNKER HILL / BRAND"** (on reverse of aqua jar). The square aqua jar is scarce, especially in this condition, bright clean and whittled; the honey amber example is boldly embossed, bright, clean and beautiful.

Est.: \$75 - \$150 • Min. bid: \$40



Lot 92

Lot of (2), (Beaver Chewing Log) / "BEAVER" Jars, probably Ontario Glass Co., Kingsville, Ontario, 1900 - 1910. Shades of pale light green, cylindrical, ground lips with zinc band and aqua glass inserts - "8", and "5" on bases, Qt., and 1/2 Gal.; (the 1/2 Gal. is perfect; the Pt. has a 1/4" shallow iridescent bruise on the outer edge of the lip, and the zinc band does not tighten down on the jar, otherwise perfect). RB# 424. Strong impression for the beaver on the pint jar.

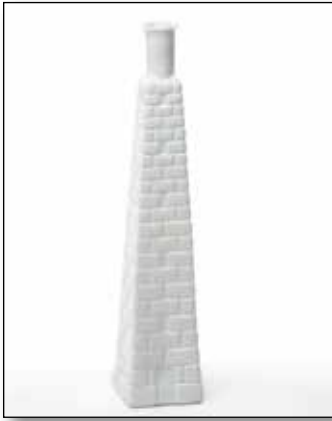
Est.: \$100 - \$150 • Min. bid: \$50



Lot 96

"SKILTON FOOTE & COS / BUNKER HILL PICKLES / TRADE MARK" (Motif of Monument, Fence & Barrels), America, 1890 - 1900. Colorless, in the form of the Cape May, NJ lighthouse, tooled sloping collar - smooth base, ht. 11 1/2"; (a little spotty faint interior haze, and a 1/8" paper-thin open surface bubble at edge of base, otherwise excellent). Z p.376. A very rare and desirable figural peppersauce.

Est.: \$400 - \$600 • Min. bid: \$200



Lot 97

Figural Monument Cologne Bottle, probably one of the South Boston glasshouses, possibly Boston and Sandwich Glass Works, 1860 - 1888. Opaque milkglass, obelisk form fashioned after the Bunker Hill Monument, tooled ring type collar - smooth base, ht. 11 7/8", perfect. See MW, plate 114, #3. Scarce size. This is the largest of several known sizes, in addition to various recorded colors.

Est.: \$175 - \$350 • Min. bid: \$100



Lot 98

Large, Fancy Peppersauce Bottle, America, 1850 - 1860. Aquamarine, unusual pyramid form with heavy roped corners, applied sloping collar - sand type pontil scar, ht. 11", virtually attic mint; (faint trace of milkiness near the base, in one side, otherwise mint). A very scarce to rare mold. Note, there is a tall narrow panel on two of the sides, likely where something was peened out of the mold.

Est.: \$175 - \$350 • Min. bid: \$100



Lot 99

Cathedral Pickle Jar, America, 1850 - 1860. Light blue green coloration, square with beveled corners, arched Gothic panels, three with quatrefoil design and beaded trefoil motif, applied ring collar - large iron pontil scar, ht. 11 3/4", attic mint. A beautiful example, this mold can be found in both smooth base and with iron pontil. This one has a great pontil and nice clarity to the glass. In addition, plenty of eye-appeal for the money having crude, heavily whittled, wavy glass.

Est.: \$400 - \$600 • Min. bid: \$200



Lot 100

Large, Cathedral Pickle Jar, Willington Glass Works, Willington, CT, 1850 - 1860. Aquamarine with a bit of an ice-blue tone, square with beveled corners, arched Gothic panels with ribbed columns, sheared mouth with an applied ring collar - sand type pontil scar, ht. 11", near mint; (a little faint haze below one of the shoulders, a slight trace of light exterior wear). Zumwalt, p.456. These early 'Willington Pickles' are always popular and it is easy to see why. A great looking jar.

Est.: \$800 - \$1,200 • Min. bid: \$400



Lot 101

"PATENT / CHAMPION TRAP" (stenciled in black), **Early Glass Ball Launcher**, Continental, 1880 - 1900. Retains original paper label inscribed, "A.D JANSEN / AQUEBUSIER DU ROI / Rue de la Madeleine / BRUXELLES", linking it to

the early Belgian gun manufacturing trade of Adolphe Jansen. Heavy spring coil and throwing arm, swivel wooden base, length 24 1/2". Remarkable state of preservation! Discovered on an early Tuscan, Italy shooting estate.

Est.: \$2,000 - \$3,000 • Min. bid: \$1,200



Lot 102

"MORESON'S GLASS BALL - PATD JUNE 15 1876" Target Ball, probably England, possibly America, 1876 - 1890. Smoky grey-blue coloration, quilted diamond pattern above and below center band, 3-piece mold, rough sheared mouth, dia. 2 5/8", perfect! Extremely rare, only a handful of these "MORESON'S" balls are known to exist. This particular example was found along with the above trap, and the following two lots of target balls, on an early estate in Tuscany, Italy.

Est.: \$800 - \$1,200 • Min. bid: \$400



Lot 103

Rare, Pattern Molded Target Ball (with remnants of original feathers), probably Continental, possibly Italy, 1875 - 1900. Pale green, pattern molded with 20 ribs swirled to the right, rough sheared mouth, dia. 2 1/2", perfect. An extremely rare, important, and interesting target ball. To our knowledge, prior to the discovery of this ball, along with the colorless ribbed and swirled example in Lot #104, there were no confirmed pattern molded target balls known.

Est.: \$400 - \$800 • Min. bid: \$200



Lot 104

Rare, Pattern Molded Target Ball, probably Continental, possibly Italy, 1875 - 1900. Colorless, pattern molded with 15 vertical ribs over 20 faint ribs swirled to the right, rough sheared mouth, dia. 2 1/2", perfect. Prior to the discovery of these balls along with the thrower in Lot #101 on an early Tuscan, Italy estate, pattern molded target balls were unknown. Colorless target balls in general are very rare. These balls may have been a special order. Extremely rare, interesting, and possibly unique.

Est.: \$400 - \$800 • Min. bid: \$200



Lot 105

Early, Threadless Insulator, probably New England, 1865 - 1870. Deep olive amber (blackglass), 2-piece mold, 3 1/2" ht. x 3 1/4" dia.; (a couple of minor iridescent bruises on the dome, 1/4" or less, a little roughness and a few shallow flakes, 3/8" or less, around the edge of the base, as is common on these early crude pieces). CD 740. A good early example, and in overall nice condition.

Est.: \$400 - \$600 • Min. bid: \$200



Lot 109

"PAT. OCT. 1874 - TRADE MARK" Figural Inkwell, America, 1874 - 1880. Aquamarine, in the form of an early locomotive, sheared and factory ground mouth - smooth base, ht. 1 7/8", near mint; (a slight trace of minor interior residue or faint haze; a 3/16" flake from edge of ground mouth, likely in-manufacture, otherwise excellent). MW, plate 76, #6, Covill #715, Faulkner, p.180. Note, this is the more rare and smaller of the two known locomotive inkwell molds.

Est.: \$800 - \$1,200 • Min. bid: \$400



Lot 106

"SWINTON'S / ENGLISH PRIMROSE / 1 / TOOTHPASTE / LONDON." Pot Lid & Pot, England, 1870 - 1890. Lid with decorated with dark blue lettering over light blue primrose pattern; pot, or base of jar, decorated with an attractive dark blue transfer pattern of English primrose, ht. 1 1/2", dia. 2 5/8"; (minor 1/8" flake from top edge of rim of pot, other excellent). Scarce original matching pot and lid, excellent condition.

Est.: \$150 - \$250 • Min. bid: \$80



Lot 110

Rare Cone Ink Bottle, America, 1840 - 1860. Rich, medium sapphire blue, early conical form, sheared, tooled and inward rolled mouth - blowpipe pontil scar, ht. 2 1/2", perfect! Similar to C #23. A gorgeous ink bottle, rare and outstanding color, nice clarity, beautifully whittled. A top-shelf example and undoubtedly one of the choicest cone inks to be offered at auction.

Est.: \$1,200 - \$1,800 • Min. bid: \$700



Lot 107

Pattern Molded Inkwell with Matching Cover, America, or possibly Continental, 1820 - 1840. Deep cobalt blue, 12 widely spaced vertical ribs, compressed cylindrical body with short neck, sheared wide mouth - correct matching pattern molded cover with an applied solid knob finial - both base and cover with glass tipped punty scar, ht. 2" (including cover), very near mint; (a little faint exterior 'bloom'). Covill #1066.

Est.: \$125 - \$250 • Min. bid: \$70



Lot 111

Cone Ink Bottle, America, possibly a Midwest glasshouse, 1840 - 1860. Beautiful medium emerald coloration with a slight mossy tone, conical form with squared shoulders, sheared and outward rolled mouth - blowpipe pontil scar, ht. 2 1/2"; (a couple of shallow open bubbles on the top edge of the lip and inside the neck; a couple of flakes on the underside of the outward folded mouth, otherwise excellent). Beautiful, whittled, nice color, and with a scarce lip treatment.

Est.: \$250 - \$450 • Min. bid: \$140



Lot 108

"S. I. / COMP." Figural House Inkwell, America, 1880 - 1890. Aquamarine, figural house with a 'mansard style' roof, tooled square collar - smooth base, ht. 2 5/8", near mint; (lightly cleaned to original luster and near mint condition). C #681, Faulkner, p.117, MW, plate 76, #8. Blown for the Senate Ink Co. of Philadelphia, a classic, popular figural ink.

Est.: \$150 - \$250 • Min. bid: \$80



Lot 112

Umbrella Ink, America, 1840 - 1860. Medium bluish-green with an emerald tone, 8-sided umbrella form, sheared, tooled and inward rolled mouth - blowpipe pontil scar, ht. 2 3/8"; (professionally cleaned to original luster with a just a little typical light exterior wear remaining). Similar to C#143.

Est.: \$100 - \$200 • Min. bid: \$50



Lot 113

Umbrella Ink, America, 1840 - 1860. Beautiful, medium sapphire blue, 8-sided umbrella form, sheared, tooled and inward rolled mouth - heavy blowpipe pontil scar, ht. 2 1/4", sparkling attic mint! Similar in form to C#131. A fantastic example with excellent color and clarity. It is a very pleasing depth of color, not too light, and not too dark. In addition, some nice waviness and character to the glass. The heavy blowpipe pontil adds as nice touch as well. A top example.

Est.: \$1,200 - \$1,800 • Min. bid: \$700



Lot 114

Umbrella Ink, America, 1860 - 1870. Deep, vivid cobalt blue with a slight violet tone, almost an electric blue, 8-sided umbrella form, sheared mouth with an applied square collar - smooth base, ht. 2 3/8"; (lightly cleaned to original luster and near mint condition with just a touch of light wear remaining, but no other form of damage). This piece is about as deep and vivid of color as you could hope to find in a cobalt example

Est.: \$600 - \$900 • Min. bid: \$300



Lot 115

Umbrella Ink, America, 1855 - 1865. Rich, medium-to-deep plum amethyst, 8-sided umbrella form, sheared and inward rolled mouth - early smooth base, ht. 2 3/8"; (tiny, pinhead open surface bubble at base edge, otherwise perfect). Gorgeous color, lighter than most, and also having excellent character to the glass. This exceptional example is a true amethyst tone, and much scarcer than the puce colors normally encountered. Ex. Ed & Kathy Gray collection.

Est.: \$1,200 - \$1,800 • Min. bid: \$800



Lot 116

Umbrella Ink, a Stoddard, New Hampshire glasshouse, probably Granite Glass Co., 1842 - 1860. Medium olive amber, 16-sided umbrella form, sheared and tooled mouth - blowpipe pontil scar, ht. 2 1/8", attic mint. C#153. A scarce little New England inkwell and one of three sizes known in this form.

Est.: \$400 - \$600 • Min. bid: \$200



Lot 117

Umbrella Ink, America, possibly an early New Hampshire glasshouse, 1840 - 1860. Light-to-medium yellowish olive amber, 8-sided umbrella form, sheared mouth - blowpipe pontil scar, ht. 2 1/2", virtually attic mint; (just a very minor trace of wear, otherwise perfect). Similar to C#141. An attractive example with crude wavy glass and in a lighter tone than most. These colors tend to be deeper and sometimes have a "muddy" appearance. This example easily passes light.

Est.: \$250 - \$400 • Min. bid: \$140



Lot 118

Umbrella Ink, America, probably an early New England glasshouse, 1840 - 1860. Yellowish olive amber, 8-sided umbrella form, sheared and inward rolled mouth - blowpipe pontil scar, ht. 2 3/8"; (lightly cleaned to original luster and virtually attic mint condition!) Similar to C#143, with a more distinctive shoulder, and octagonal mold indentation on the base. Heavily whittled, beautiful color and clarity, excellent condition.

Est.: \$275 - \$450 • Min. bid: \$150



Lot 119

Umbrella Ink, America, 1840 - 1860. Medium-to-deep yellowish olive, 8-sided umbrella form, sheared and inward rolled mouth - blowpipe pontil scar, ht. 2 3/8", near mint; (just a slight trace of faint wear, and a touch of very light interior residue or faint stain in one side, otherwise perfect). An attractive example in a pure green coloration, having no trace of amber.

Est.: \$250 - \$400 • Min. bid: \$140



Lot 120

"**FARLEYS / INK**", an early Stoddard glasshouse, 1842 - 1855. Yellowish olive, 8-sided, domed shoulders, sheared mouth - blowpipe pontil scar, ht. 1 7/8", very near mint; (just a tiny pinprick bit of roughness on the edge of the sheared mouth, and a faint touch of light wear, otherwise perfect). C#526, Faulkner, p.63-64. A very nice example, good color, character, and embossing.

Est.: \$300 - \$500 • Min. bid: \$180



Lot 121

“**FARLEYS / INK**”, an early Stoddard glasshouse, 1842 - 1855. Olive amber, 8-sided, domed shoulders, sheared mouth - blowpipe pontil scar, ht. 1 ¾”, mint. C#526, Faulkner, p.63-64. Another good example, this one in more of an amber tone.

Est.: \$300 - \$500 • Min. bid: \$180



Lot 125

ALLEN WOGA / 1/2. ST.” (on applied seal), **Early Case Bottle**, probably Continental, possibly blown for a New Orleans merchant, 1770 - 1800. Light yellowish green, rectangular case form, sheared mouth with applied string rim - blowpipe pontil scar, ht. 7 ¼”; (trace bit of faint interior haze, otherwise perfect). Purchased in the 1960’s from an elderly woman in east Texas, Charlotte Woga. The bottle had been in her family and belonged to one of her ancestors, an early New Orleans merchant.

Est.: \$800 - \$1,600 • Min. bid: \$400



Lot 122

“**J.J. MAPES / No 61 FRONT ST / N - YORK**”, 1824 - 1835. Light yellowish olive with a slight amber tone, rectangular with concave corners, sheared wide mouth - blowpipe pontil scar, ht. 4 3/8”, near mint; (a minor 1/8” shallow flake on a panel edge near the base, and a trace bit of interior residue, likely washable, otherwise perfect). MW, plate 75, #15. A rare snuff jar, and a great example, with crude seedy glass and in a much lighter color than normal.

Est.: \$2,000 - \$4,000 • Min. bid: \$1,000



Lot 126

“**J. T. DALY / CLUB HOUSE**”, America, 1860 - 1870. Clear, medium olive green, square tapered gin form, applied rounded disk mouth - early smooth base, ht. 9”; (a little typical minor exterior wear, and a little light haze or dullness near the base on the lower third of the body, otherwise excellent). A great looking early American gin, and one of three companies that marketed a “Club House” gin to the early pioneers in California, and the West.

Est.: \$200 - \$400 • Min. bid: \$100



Lot 123

“**A. DELPIT / NO 16 / ST LOUIS ST / NEW ORLEANS**”, America, possibly Pittsburgh, 1845 - 1858. Bright yellowish-green with an olive tone, rectangular with wide beveled corners, sheared, tooled and outward flared mouth - iron pontil scar, ht. 4 5/8”; (professionally cleaned with a little faint dullness and minor light wear remaining, but no other form of damage). Extremely rare color, beautifully whittled and with good strong embossing. A top early snuff jar!

Est.: \$4,000 - \$6,000 • Min. bid: \$2,000



Lot 127

“**OLD LONDON DOCK - GIN. - A.M. BININGER & CO. / NO. 19 BROAD ST N.Y.**”, America, 1860 - 1875. Bright medium olive, square with beveled corners, applied sloping collar - smooth base, ht. 9 ½”; (some high point wear near the base on a couple of the side panels, and a 1/8” flake on the side of the lip). BPK-9 (See *Bininger Bottles*, by Jim Bender). A good clean, bright example. Note, a small early hand-written label near the base on one side with a 1924 date (likely when the bottle was found).

Est.: \$150 - \$250 • Min. bid: \$80



Lot 124

“**A. DELPIT / NO 16 / ST LOUIS ST / NEW ORLEANS**”, America, possibly Pittsburgh, 1845 - 1858. Yellow, with a very slight olive tone, rectangular with wide beveled corners, sheared, tooled and outward flared mouth - iron pontil scar, ht. 4 ½”; (professionally cleaned with a slight bit of light dullness and faint wear remaining, but no other form of damage). Another great example, these don’t come around often. Excellent overall condition, strong embossing as compared to most.

Est.: \$1,200 - \$2,400 • Min. bid: \$700



Lot 128

“**OLD LONDON DOCK - GIN - A.M. BININGER & CO. / NO. 338 BROADWAY.**”, America, 1860 - 1875. Medium yellowish olive, square with beveled corners, applied sloping collar - smooth base, ht. 9 ½”, near mint; (just a touch of minor exterior wear including a tiny bit of roughness at one of the base corners, otherwise perfect). BPK-10 (See *Bininger Bottles*, by Jim Bender). Another nice example, good clarity.

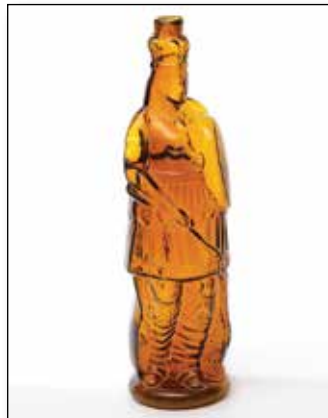
Est.: \$175 - \$350 • Min. bid: \$100



Lot 129

"A.M. BININGER & Co / No 375 BROADWAY N.Y." (including an early Bininger & Co. advertising envelope), America, 1863 - 1875. Medium strawberry puce with apricot tones, square with beveled corners, applied sloping collar - smooth base, ht. 9 3/4"; (a couple of tiny pinhead open surface bubbles, otherwise virtually attic mint). BPK-15. Beautiful color, fantastic character - the glass is absolutely filled with tiny seed bubbles. Envelope is rare and shows a man in colonial dress.

Est.: \$1,000 - \$1,500 • Min. bid: \$500



Lot 133

"H. PHARAZYN / PHILA / RIGHT SECURED", America, 1865 - 1875. Beautiful, bright honey amber with some nice yellowish tones through the shoulders and upper shield, figural Indian maiden, sheared and inward rolled mouth - smooth base, ht. 12 1/4"; (approx. 1/2" of the inner rolled lip is missing, or has some chipping, as is often the case with these bottles, and likely occurred when the cork was pried out). A very scarce and desirable ornate figural whiskey.

Est.: \$1,400 - \$1,800 • Min. bid: \$700



Lot 130

"A.M. BININGER & Co. / No. 19 BROAD ST / NEW -YORK" Handled Whiskey, America, 1860 - 1870. Medium-to-deep olive green, cylindrical with conical shoulders, applied solid handle crimped at lower terminal, applied round double collar, smooth base, ht. 7 3/4", virtually pristine; (just the slightest trace of faint wear including a tiny pinhead open bubble on the reverse, otherwise sparking attic mint). BPK-31. Whittled, rare color, outstanding condition.

Est.: \$4,000 - \$6,000 • Min. bid: \$2,000



Lot 134

"TURNER BROTHERS / NEW YORK", America, 1860 - 1870. Gorgeous, light-to-medium copper-apricot coloration, barrel form, applied square collar - smooth base, ht. 9 3/4"; (just a slight trace of very minor wear, otherwise attic mint!) A terrific example that passes plenty of light, beautifully whittled, in a scarce color, almost a cinnamon tone in the lower third of the body.

Est.: \$800 - \$1,200 • Min. bid: \$400



Lot 131

"A. M. BININGER & CO. / 19 BROAD ST. / N. Y." Figural Cannon Barrel, America, 1865 - 1875. Light golden, almost a honey coloration, figural cannon barrel, sheared mouth - smooth base, ht. 12 3/8", near mint; (trace bit of faint wear and a minor area of iridescence on the inside edge of the rough sheared lip as is often encountered, and possibly in-making, otherwise excellent). BPK-30. A nice example. Labels indicate they held either gin, or cognac.

Est.: \$800 - \$1,200 • Min. bid: \$400



Lot 135

"BENNETT & CARROL / 120 WOOD ST. / PITTSBURG", probably a Pittsburgh district glasshouse, 1860 - 1870. Medium-to-deep amber, barrel form, applied square collar - early smooth base, ht. 9 3/8", virtually attic mint; (tiny pinhead flake at base edge, otherwise pristine). A very scarce barrel, and a great example with strong bold embossing, having virtually no high point wear, and with a perfect square collar which is not easy to find!

Est.: \$800 - \$1,200 • Min. bid: \$400



Lot 132

"J. T. GAYEN / ALTONA" Figural Cannon Barrel, probably America, 1865 - 1875. Medium amber with a slight orange tone, figural cannon barrel, crudely applied blob collar - smooth base, ht. 13 3/8", virtually attic mint; (slight trace of faint exterior wear, otherwise perfect!) J.T. Gayen is believed to be one of the earliest distilleries from Altoona, Hamburg, Germany. A great example, excellent character, very heavily whittled!

Est.: \$1,000 - \$1,500 • Min. bid: \$600



Lot 136

"LANCASTER / GLASS WORKS / LANCASTER, N Y" (on base), Figural Barrel, Lancaster Glass Works, 1865 - 1875. Medium topaz with some warmer honey tones, barrel form with embossed bung hole and wooden staves around midsection, applied round double collar - smooth base, ht. 9 5/8", near mint; (a spot on minor roughness on the inside edge of the lip, possibly in-making, and a thin 1/4" shallow open bubble on the side, otherwise excellent). A scarce mold, beautiful color.

Est.: \$800 - \$1,200 • Min. bid: \$400



Lot 137

“WEEKS & GILSON. SO. STODDARD N.H.” (on base) **Glasshouse Whiskey Cylinder**, South Stoddard Glass Co., 1860 - 1873. Yellowish olive amber, cylindrical, 3-pc. mold, applied sloping collar with ring - smooth base, ht. 12”, near mint; (a little typical light exterior wear, a couple of tiny pinhead bits of roughness on the edge of the lip). A beautiful example, heavily whittled. The neck is a little longer than most and with a slightly offset mouth, giving it a bit of a ‘stovepipe’ look.

Est.: \$500 - \$800 • Min. bid: \$250



Lot 138

“CHESTNUT GROVE / WHISKEY / C.W.” **Handled Chestnut Flask**, America, probably Whitney Glassworks, Glassboro, NJ, 1850 - 1860. Medium-to-deep golden amber, large chestnut form body with an applied solid handle tooled and crimped at lower terminal, applied mouth with small ring collar - blowpipe pontil scar, ht. 8 ¾”, near mint; (just a slight trace of typical faint exterior wear, otherwise attic mint). See MW, page 229. A classic from the Whitney Glassworks.

Est.: \$150 - \$250 • Min. bid: \$80



Lot 139

“DJM / 1841 / MOUNTAIN DEW” **(Grapes & Leaves Floral Pattern), Engraved Back Bar Bottle**, possibly Alcoa Glass Works, Edinburgh, Scotland, c.1841. Deep cobalt, almost a violet coloration, cylindrical with ornate engraving of grapes and vines around the entire bottle, applied double ring collar - polished pontil scar, ht. 12 ¾”, perfect. An exceptional back-bar piece exhibiting tremendous skill and workmanship. Possibly blown as a presentation piece and likely unique.

Est.: \$800 - \$1,600 • Min. bid: \$400



Lot 140

Figural, Applied Face Seated Bear, Russia, 1880 - 1910. Bright aquamarine, figural seated bear with collar and oval pendent for label, applied face, sheared and fire polished mouth - smooth base, ht. 10 1/8”, perfect. This is the large of two sizes that the applied face bears can be found in (in addition to the small pomade jars).

Est.: \$125 - \$250 • Min. bid: \$70



Lot 141

“good Old Bourbon / in a hogs” (line pointing to pigs rear-end), America, 1880 - 1890. Golden amber in the head shading to a beautiful light honey coloration through the body, figural pig, tooled ring collar - smooth base, length 6 5/8”, sparkling attic mint! Scarce. A great example of this classic figural pig whiskey. Whomever the bottle was blown for certainly had a sense of humor.

Est.: \$400 - \$600 • Min. bid: \$200



Lot 142

“BERKSHIRE . BITTERS - AMANN & Co / CINCINNATI . O”, America, 1873 - 1880. Medium amber shading to deep amber through the head, figural pig, ground mouth - smooth base, length 10 3/8”, girth 11 1/2”, attic mint! R/H

#B81.4. A top example with great character, strong, bold embossing, and virtually no high point wear which is so often an issue with these bottles. A very scarce mold, and almost impossible to find in this virtually pristine condition. Provenance: Joe Kray collection.

Est.: \$2,000 - \$4,000 • Min. bid: \$1,000



Lot 143

“BERKSHIRE . BITTERS - AMANN & Co / CINCINNATI . O”, America, 1873 - 1880. Light-to-medium golden amber, figural pig, applied square collar - smooth base, length 9 1/2”, girth 11 1/4”, near mint; (some minor traces of

content residue, and just a bit of light exterior wear, otherwise perfect). R/H #B81.2. Scarce. A nice clean example with good clarity, excellent condition. Note, this is the “short fat” mold. Provenance: Joe Kray collection.

Est.: \$1,600 - \$3,200 • Min. bid: \$800



Lot 144

“BERKSHIRE . BITTERS - AMANN. & Co / CINCINNATI . O.”, America, 1873 - 1880. Medium-to-deep golden amber, figural pig, applied square collar - smooth base, length 9 5/8”, girth 10 3/8”, virtually attic mint;

(slight trace of very faint wear, otherwise perfect). R/H #B81. This example is the “short thin” mold. Scarce, especially in this fine condition. Provenance: Joe Kray collection, Ex. Mary Ballentine collection.

Est.: \$1,600 - \$3,200 • Min. bid: \$800

Colorful Historical



Lot 36

Lot 8

Lot 14

& Figured Flasks

ACGC



Lot 35



Lot 37



Lot 30



Lot 33



Lot 145

"SUFFOLK BITTERS - PHILBROOK & TUCKER / BOSTON", America, 1870 - 1880. Bright, yellowish honey amber, figural pig, applied double ring collar - smooth base, length 10", mint. R/H #S217. A great

example, nice and light, and with virtually no high point wear that is often an issue with these molds. Provenance: Joe Kray collection, Ex. Howard Crowe collection.

Est.: \$800 - \$1,600 • Min. bid: \$400



Lot 149

"WHEELER'S - BERLIN - BITTERS - BALTIMORE", Baltimore Glass Works, 1850 - 1860. Beautiful yellow-olive coloration, 6-sided, applied sloping collar with bevel - iron pontil scar, ht. 9 1/2"; (professionally cleaned with some minor ground wear remaining, as well as a little roughness along a mold seam where the glass extruded out during manufacture). R/H #W83. A rare, very desirable pontiled bitters - beautiful color and character with some surface lines swirled throughout.

Est.: \$2,500 - \$4,500 • Min. bid: \$1,500



Lot 146

"HARVEY'S - PRAIRIE - BITTERS", America, 1870 - 1880. Yellowish "old" amber with a honey tone, square with stacked barrels forming the corners and edges, domed block pattern shoulders, applied sloping collar - smooth base, ht. 9 1/4", near mint; (a 1/2" cooling line, likely occurring in manufacture, in the applied lip, otherwise perfect). R/H #H67. Exceedingly rare, beautiful condition. Among the Top 10 most desirable bitters! Joe Kray collection, Ex. Chris Batdorff collection.

Est.: \$8,000 - \$12,000 • Min. bid: \$4,000



Lot 150

"R.S. GARDNER & Co / PROPRIETORS - CLARKSBURG. W.Va" Figural Chinaman Bitters, 1868 - 1873. Deep, almost a chocolate amber, figural Chinaman with long ponytail, applied sloping collar with bevel - smooth base, ht. 11 3/8", near mint; (a little light wear on the label panel, and a 1/8" flake at the edge of the base on the reverse). R/H #T4-L. Extremely rare and desirable, only the 2nd example offered for sale in more than 15 years. A local find from an estate auction, Somerset County, PA.

Est.: \$7,000 - \$12,000 • Min. bid: \$4,000



Lot 147

"NATIONAL / BITTERS" - "PATENT / 1867" (on base), America, 1867 - 1875. Gorgeous, clear, bright medium yellow coloration, figural ear of corn, applied short tapered collar with ring - smooth base, ht. 12 1/2", attic mint! R/H #N8. A beautiful example, and a lucky find from a house sale in the town of North East, PA, near the southern shore of Lake Erie. Fantastic color, clarity, and condition!

Est.: \$1,500 - \$2,500 • Min. bid: \$800



Lot 151

"THE / FISH BITTERS - W.H. WARE / PATENTED 1866", America, 1866 - 1875. Bright, light yellowish honey amber, figural fish form, applied ring collar - smooth base, ht. 11 1/2", near mint; (a minor pinhead flake on the shoulder, and two open bubbles along the sides on the reverse, 1/4" or less, otherwise excellent). R/H #F45. A bright, attractive, light example with plenty of yellowish-tones. Bold embossing which is unusual for this mold, and with virtually no high point wear.

Est.: \$400 - \$600 • Min. bid: \$200



Lot 148

"NATIONAL / BITTERS" - "PATENT / 1867" (on base), America, 1867 - 1875. Aquamarine, figural ear of corn, applied short tapered collar with ring - smooth base, ht. 12 1/2", virtually attic mint; (just a trace of very faint interior content haze, otherwise perfect!) R/H #N8. One of the great classics of American figural bitters, and a "must-have" for a serious run of "Corns". Provenance: Joe Kray collection, Ex. Howard Crowe collection.

Est.: \$5,000 - \$10,000 • Min. bid: \$2,500



Lot 152

"THE / FISH BITTERS - W.H. WARE / PATENTED 1866", America, 1866 - 1875. Medium amber with shading to a lighter honey coloration along the side, figural fish form, applied ring collar - **W. H. WARE / PATENT 1866** (on smooth base), ht. 11 1/2"; (some light scratches and high point wear; a tiny pinprick of roughness on the lip, and some light interior residue or faint haze). R/H #F46. A scarce mold with the offset neck. This example would benefit greatly from a little soap and water, or light cleaning.

Est.: \$250 - \$400 • Min. bid: \$140



Lot 153

“ORIGINAL / POCAHONTAS / BITTERS / Y. FERGUSON.”, America, 1860 - 1870. Aqua, barrel form, applied square collar - smooth base, ht. 9 ¼”, near mint; (a little minor roughness on the edge of the square collar including a couple of shallow flakes, 1/8”, or less, otherwise very near mint). R/H #O86. A rare and very desirable bitters that is definitely not getting any easier to find. A beautiful, bright, clean and attractive example, one that will stand out in any run of barrels!

Est.: \$4,000 - \$6,000 • Min. bid: \$2,000



Lot 157

“BOURBON WHISKEY / BITTERS”, America, 1860 - 1875. Beautiful apricot puce with some strawberry tones, barrel form, applied square collar - smooth base, ht. 9 ¼”; (just a slight trace of faint minor wear, otherwise attic mint). R/H #B171. Beautifully whittled, great color, excellent condition. A little more of the apricot coloration comes through in this one.

Est.: \$400 - \$600 • Min. bid: \$200



Lot 154

“B. T. 1865. S. C. / SMITHS / DRUID BITTERS”, America, 1865 - 1875. Medium-to-deep amber, barrel form, applied square collar - smooth base, ht. 9 3/8”; (a slight touch of light exterior wear, and a ¼” open bubble on the inside edge of the lip, otherwise very near mint). R/H #S124. A fresh find from an estate sale in Fullerton, CA. And, as noted by Ring / Ham, a rare barrel! Boldly embossed, and with nice character and crudity to the glass.

Est.: \$1,800 - \$3,200 • Min. bid: \$1,000



Lot 158

“GREELEY'S - BOURBON WHISKEY / BITTERS - GREELEY'S”, America, 1860 - 1875. Apricot puce with rich strawberry tones, barrel form, applied square collar - smooth base, ht. 9 3/8”; (a 5/8” area of fine roughness on the back edge of the collar; a touch of typical very minor wear, otherwise excellent). R/H #G102. A little deeper, richer strawberry tones in this example.

Est.: \$400 - \$600 • Min. bid: \$200



Lot 155

“OLD SACHEM / BITTERS / AND / WIGWAM TONIC”, America, 1860 - 1875. Beautiful light copper topaz, barrel form, applied square collar - smooth base, ht. 9 ¼”, perfect! R/H #O46. Fantastic color, excellent character, heavily whittled, and in attic mint condition with a perfect square collar. And, in addition to the scarce and eye-appealing color, it is nice and light virtually all the way to the base. A choice example!

Est.: \$1,200 - \$2,200 • Min. bid: \$700



Lot 159

“GREELEY'S - BOURBON WHISKEY / BITTERS - GREELEY'S”, America, 1860 - 1875. Medium-to-deep pinkish puce, barrel form, applied square collar - smooth base, ht. 9 ¼”, virtually attic mint; (just the slightest bit of faint exterior wear, otherwise perfect!) R/H #G102. A great example, whittled, excellent condition, color, and with no issues to the square collar.

Est.: \$600 - \$900 • Min. bid: \$300



Lot 156

“OLD SACHEM / BITTERS / AND / WIGWAM TONIC”, America, 1860 - 1875. Brilliant light golden or honey coloration, barrel form, applied square collar - smooth base, ht. 9 ¼”, virtually attic mint; (just a trace bit of minor wear, as well as a couple of tiny pinprick bits of roughness on the edge of the square collar, otherwise pristine). R/H #O46. A great example in a very attractive lighter color with plenty of yellow, nice clarity, bold embossing, and excellent condition.

Est.: \$400 - \$600 • Min. bid: \$200



Lot 160

“GREELEY'S BOURBON / BITTERS”, America, 1860 - 1875. Medium copper apricot coloration, barrel form, applied square collar - smooth base, ht. 9 ¼”, perfect! R/H #G101. A great example, one that passed plenty of light, nice color, and in attic-mint condition with a perfect square collar, which is not easy to find in these early barrels.

Est.: \$500 - \$700 • Min. bid: \$250



Lot 161

"HOLTZERMANN'S - PATENT / STOMACH / BITTERS", America, 1865 - 1875. Bright, light, yellowish honey coloration, rectangular cabin form, applied sloping collar - smooth base, ht. 9 1/2", virtually attic mint; (a tiny sliver of roughness along the bottom edge of the applied collar on the reverse, otherwise, 'out-of-the-mold' pristine perfect). R/H #H155. Strong embossing, and certainly one of the lightest, prettiest examples, that we have seen in some time. A choice, top example!

Est.: \$1,400 - \$2,200 • Min. bid: \$800



Lot 165

"S T / DRAKE'S / 1860 / PLANTATION / X / BITTERS - PATENTED / 1862", (with original labels), America, 1862 - 1885. Gorgeous, virtually pure yellow coloration, cabin form with 4 logs above the label panel, applied sloping collar - smooth base, ht. 10", pristine perfect; (bottle is sparkling attic mint; front label is 100% complete; rear label more than 90% complete). R/H #D110. A choice, top-shelf, example with great color and eye-appeal.

Est.: \$1,000 - \$2,000 • Min. bid: \$500



Lot 162

"HOLTZERMANN'S / PATENT / STOMACH / BITTERS", America, 1880 - 1895. Medium to deep golden amber, rectangular cabin form, tooled sloping collared mouth - smooth base, ht. 9 5/8", perfect. R/H #H154. A barn find from the Defiance, Ohio area, this example has one of the strongest mold impressions that you could hope to find.

Est.: \$200 - \$350 • Min. bid: \$120



Lot 166

"S T / DRAKE'S / 1860 / PLANTATION / X / BITTERS - PATENTED / 1862.", America, 1862 - 1885. Beautiful, olive yellow coloration, cabin form with 6 logs above the label panel, applied sloping collar - smooth base, ht. 9 3/4"; (a 1/2" fissure and associated minor repair, likely from an impact bruise, on one of the roof corners, otherwise bright, clean, and attic mint). R/H #D105. The noted issue with the roof corner is not easy to see. The color is spectacular, nice and light, with plenty of olive!

Est.: \$200 - \$400 • Min. bid: \$100



Lot 163

"THE BEST BITTERS / IN AMERICA - B. DESENBURG & Co / KALAMAZOO MICH", 1865 - 1870. Amber, cabin form with a three-tiered thatched roof, roped corners, applied sloping collar - smooth base, ht. 9 3/4"; (lightly cleaned to original luster; a 1/2" hairline in one of the base corners, otherwise excellent). R/H #B92. Ex. Judge MacKenzie collection. Since the MacKenzie sale, the bottle has been lightly cleaned, and the crack professionally stabilized. Displays as virtually mint!

Est.: \$1,200 - \$2,400 • Min. bid: \$600



Lot 167

"S T / DRAKE'S / 1860 / PLANTATION / X / BITTERS - PATENTED / 1862.", America, 1862 - 1885. Bright honey amber with some lighter yellowish tones, cabin form with 6 logs above the label panel, applied sloping collar - 6 dots on smooth base, ht. 10", virtually attic mint; (a tiny, pinhead bit of roughness at base edge, otherwise pristine perfect). R/H #D105. Here is a great example with a crisp, bold mold impression, in a pretty color, slightly lighter than most, that won't break the bank!

Est.: \$150 - \$250 • Min. bid: \$80



Lot 164

"OK / PLANTATION / 1840 - PATENTED / 1863", America, 1863 - 1875. Brilliant, yellowish honey amber, triangular with beveled corners, applied sloping collar - smooth base, ht. 11 1/4", attic mint! R/H p.408. A scarce and desirable mold, these don't come around often, especially in this fine condition, bright, clean and sparkling! Triangular bitters are few and far between, and the "OK Plantation" is considered by many to be among the choicest molds in the group.

Est.: \$1,500 - \$2,500 • Min. bid: \$800



Lot 168

Arabesque motif / "DRAKES" / Arabesque motif / "PLANTATION / BITTERS - PATENTED / 1862", 1862 - 1880. Apricot amber with some nice rich reddish-strawberry tones through the lower third of the bottle, cabin form, applied sloping collar - smooth base, ht. 9 3/4"; (just a trace bit of faint wear along the roof edge, otherwise very near mint). R/H #D102. Scarce mold, nice color, excellent condition. Provenance: Ex. Rodger Sweetland collection #32.

Est.: \$400 - \$600 • Min. bid: \$200



Lot 169

“DRAKES / PLANTATION / BITTERS - PATENTED / 1869.”, America, 1869 - 1875. Bright honey amber, cabin form with 5 logs above the label panel, applied sloping collar - smooth base, ht. 9 ¾”, near mint; (just a slight touch of faint wear, and a slightly weak mold impression, otherwise excellent). R/H #D109. An interesting crude example with heavier glass through the lower portion of the bottle.

Est.: \$400 - \$600 • Min. bid: \$200



Lot 173

“WEBBS / OLD RYE BITTERS - JACKSON. MICH.”, America, 1870 - 1880. Bright honey amber, square with beveled corners, applied sloping collar - smooth base, ht. 8 7/8”, overall very good condition; (a couple of pinhead flakes on one of the beveled corners; a tiny 1/8” flake on the edge of the lip, some spotty minor exterior wear, faint dullness, and interior content stain). R/H #W61. Extremely rare. The bottle looks like it could have been found under a porch or in a crawlspace.

Est.: \$800 - \$1,200 • Min. bid: \$400



Lot 170

“S T / DRAKE'S / 1860 / PLANTATION / X / BITTERS - PATENTED / 1862.”, America, 1862 - 1885. Deep cherry puce, virtually black in reflected light, cabin form with 6 logs above the label panel, applied sloping collar - smooth base, ht. 9 ¾”; (a touch of minor wear including a light surface scratch and a ¼” onionskin thin open surface bubble, otherwise excellent). R/H #D105.

Est.: \$200 - \$400 • Min. bid: \$120



Lot 174

“GERMAN HOP / BITTERS - DR. C.D. WARNER / READING, MICH. - WARNER - 1880 - WARNER - 1880”, America, 1880 - 1890. Golden amber, square with domed shoulders, tooled sloping collar with ring - smooth base, ht. 9 ¾”, near mint; (just a touch of minor wear including a 3/8” scratch on the side of the neck; a trace of faint interior milkiness, otherwise excellent). R/H #G25. A rare bitters, this being the larger and scarcer size.

Est.: \$400 - \$600 • Min. bid: \$200



Lot 171

“JOHN / MOFFAT - PHOENIX / BITTERS - PRICE \$2,00 - NEW YORK”, America, 1845 - 1855. Clear, medium olive with an amber tone, rectangular with beveled corners, applied sloping collar - sand type pontil scar, ht. 7”, very near mint; (the bottle appears as virtually attic mint, but may have been very lightly cleaned). R/H #M108. Very rare as noted by Ring / Ham. A great example, nice character, one of the most desirable of all the Phoenix molds. Ex. David Ellis collection.

Est.: \$4,000 - \$6,000 • Min. bid: \$2,500



Lot 175

“A. R. THAYER'S - IRON BITTERS / THE GREAT TONIC - LANSING MICH.”, America, 1875 - 1885. Aquamarine, rectangular with beveled corners, applied square collar - smooth base, ht. 7”, sparkling attic mint! R/H #T15. An extremely rare bitters, seldom offered for sale, and even more so in this absolutely pristine condition.

Est.: \$800 - \$1,600 • Min. bid: \$400



Lot 172

“JNo. MOFFAT - PHOENIX / BITTERS - PRICE \$1 - NEW YORK”, America, 1840 - 1850. Medium olive with an amber tone, rectangular with beveled corners, applied ring collar - blowpipe pontil scar, ht. 5 ¾”, near mint; (a little, likely washable, interior residue in the shoulders, and a little minor wear near the base on one side). R/H #M110. Outstanding character having a drawn-up neck with a crude ring collar! Dug in Zanesville, OH back in the 70's and only washed with soap!

Est.: \$800 - \$1,200 • Min. bid: \$400



Lot 176

“DR F. FLESCHHUT'S - CELEBRATED / STOMACH BITTERS - LAPORTE. PA”, America, 1870 - 1880. Rich, bluish aquamarine, square with beveled corners, applied sloping collar - smooth base, ht. 8 ¾”, sparkling attic mint! R/H #F54. A scarce bitters, and a great looking bottle, from a small town in northeastern Pennsylvania. This particular example is as nice as you could hope to find in “out-of-the-mold” pristine condition! If you collect “condition”, this would be one for you!

Est.: \$500 - \$800 • Min. bid: \$300



Lot 177

"SOLOMONS' / STRENGTHENING & / INVIGORATING BITTERS - SAVANNAH / GEORGIA.", America, 1875 - 1885. Rich, medium to deep cobalt, square with beveled corners, applied sloping collar - smooth base, ht. 9 5/8", very near mint; (the bottle appears to have been lightly cleaned, and there are some very fine swirl lines to the glass, but it certainly presents itself as virtually attic mint). R/H #S140. A choice example of this desirable southern bitters.

Est.: \$1,200 - \$1,800 • Min. bid: \$700



Lot 178

"ARGYLE BITTERS / E.B. WHEELLOCK / N.O.", probably a Pittsburgh glasshouse, 1870 - 1875. Deep olive green, square with beveled corners, applied sloping collar - smooth base, ht. 9 5/8"; (a dug bottle with just a bit of minor haze, some light scratches, primarily along the top edge of the front panel, and a little light wear including a shallow open bubble and tiny flake on back edge). R/H #A83.5. The condition issues are minor, with a light cleaning the bottle would display near mint!

Est.: \$1,200 - \$2,400 • Min. bid: \$700



Lot 179

"GREER'S ECLIPSE / BITTERS - LOUISVILLE, KY.", Midwest, possibly Louisville Glass Works, 1870 - 1880. Honey amber, square with beveled corners, applied sloping collar - smooth base, ht. 9 1/4"; (professionally cleaned with a little minor wear remaining, and a tiny pinprick bit of roughness on the edge of the lip). R/H #G110. These don't come around often. As noted by Ring / Ham, a rare bitters.

Est.: \$200 - \$400 • Min. bid: \$100



Lot 180

"E. BULL'S - LUXURY / BITTERS - LOUISVILLE / KY.", a Midwest glasshouse, 1870 - 1880. Golden amber, square with rounded corners, "Lady's Leg" neck, applied collar with flat band - smooth base, ht. 9"; (the bottle has been lightly cleaned, and has a minor 3/16" open bubble on a side shoulder and just a trace of wear). R/H #B256. Extremely rare, believed to one of only a few known to exist. A great name for a bitters, and likely marketed to the "well heeled" early Kentuckians.

Est.: \$500 - \$1,000 • Min. bid: \$300



Lot 181

"STAR. ANCHOR BITTERS - PORTSMOUTH OHIO - W. L. B. JACK", America, probably 1870 - 1875. Golden amber, square with beveled corners, applied sloping collar - smooth base, ht. 8 7/8", very near mint; (just a trace of scattered very minor wear, and a little faint interior content haze, some of which may wash out, otherwise perfect). R/H #S176. An extremely rare bitters, super hard to find, especially in this fine condition.

Est.: \$400 - \$800 • Min. bid: \$200



Lot 182

"RISING SUN - BITTERS - JOHN C HURST / PHILADA", America, 1875 - 1885. Beautiful, light honey amber, square with beveled corners, applied sloping collar - smooth base, ht. 9 3/8", very near mint; (a shallow, very minor, 1/8" flake off one of the beveled corners, otherwise perfect!) R/H #R66. A good, clean, light example.

Est.: \$100 - \$200 • Min. bid: \$60



Lot 183

"DEMUTH'S - STOMACH BITTERS - PHILADA", America, 1870 - 1880. Golden amber, square with beveled corners, applied sloping collar - smooth base, ht. 9 1/2"; (professionally cleaned to original luster with some ground wear and a few small scuffs or areas of abrasion remaining; a little roughness and a 1/8" stress line in the top of the lip). R/H #D46. A very rare Philadelphia bitters, it has been more than 20 years since one has been offered at auction.

Est.: \$300 - \$600 • Min. bid: \$180



Lot 184

"TYLER'S / STANDARD / AMERICAN / BITTERS", America, 1870 - 1880. Beautiful, bright honey amber, square with beveled corners, applied sloping collar - smooth base, ht. 9 1/8", sparkling attic mint. R/H #T72. A rare bitters, especially in this light color and virtually pristine condition. Only the 2nd example offered at auction in more than 15 years. And what a great name! Who would not want a Standard American Bitters?

Est.: \$400 - \$800 • Min. bid: \$200



Lot 185

“WINTER’S / STOMACH BITTERS”, probably American Bottle Co., Streator, ILL, 1905 - 1910. Medium amber, square with beveled corners, tooled sloping collar - “A B Co” (on smooth base), ht. 9 5/8”, near mint; (trace of very minor wear including a pinhead flake at beveled corner, otherwise excellent). R/H #W141. A scarce mold listed as “Very Rare” by Ring / Ham. Provenance: Ex. Carlyn Ring collection.

Est.: \$100 - \$200 • Min. bid: \$60



Lot 189

“DR. LAWRENCE’S / WILD CHERRY FAMILY BITTERS - NEWARK, N.J. U.S.A”, America, 1890 - 1900. Brilliant honey amber, square with beveled corners, tooled sloping collar - smooth base, ht. 5 1/2”, virtually attic mint. R/H #L51. A very rare and attractive sample bitters, bright, clean and sparking.

Est.: \$300 - \$600 • Min. bid: \$150



Lot 186

“DR J. HOSTETTER’S / STOMACH BITTERS” (with 70% complete original label), America, probably a Pittsburgh district glasshouse, 1860 - 1870. Deep olive green, square with beveled corners, applied sloping collar - smooth base, ht. 9 1/2” x 3” dia; (bottle is virtually perfect - just an onionskin-thin open bubble on back corner; label darkened from age, but mostly legible). R/H #H194. A very crude example, the embossing also is different running almost to the base edge.

Est.: \$300 - \$500 • Min. bid: \$150



Lot 190

“AUGAUER BITTERS - AUGAUE4 BITTERS Co / CHICAGO”, America, 1890 - 1900. Medium-to-deep teal green, rectangular with wide beveled corners, tooled sloping collar - smooth base, ht. 4 1/8”, perfect. R/H #A134.5. Extremely rare in this sample size with only one, or possibly two, being offered at auction in the past 15 years.

Est.: \$250 - \$450 • Min. bid: \$140



Lot 187

“DR J. HOSTETTER’S / STOMACH BITTERS”, America, probably a Pittsburgh district glasshouse, 1860 - 1870. Deep olive amber, square with beveled corners, applied sloping collar - smooth base, ht. 9 1/2” x 3” dia, virtually attic mint! R/H #H194. This is the variant with the underscore line below the “R” in “DR”. A great example of this large, early mold, Hostetter’s.

Est.: \$200 - \$400 • Min. bid: \$120



Lot 191

“DR CAMPBELLS / SCOTCH BITTERS”, America, 1885 - 1895. Beautiful light golden, or honey coloration, strap-sided flask form, tooled double ring collar - smooth base, 1/2 Pt, near mint; (lightly cleaned to original luster and virtually attic mint condition). R/H #C31. A scarce form for a bitters, there are very few whiskey, or flask shaped bitters.

Est.: \$200 - \$400 • Min. bid: \$120



Lot 188

“DR J. HOSTETTER’S / STOMACH BITTERS” (with 80 - 98% original labels), Lorenz & Wightman, Pittsburgh, PA, 1863 - 1872. Gorgeous, light-to-medium yellow with a slight olive tone, square with beveled corners, applied sloping collar - “L & W” (on smooth base), ht. 8 3/4”; (bottle has a very minor, 1/8” or less, pinhead flake on the edge of the lip, otherwise sparkling attic mint; original labels darkened a bit but legible). R/H #H195. Fantastic color, condition, and eye-appeal!

Est.: \$500 - \$800 • Min. bid: \$250



Lot 192

“GILBERT’S - SARSAPARILLA - BITTERS - N.A. GILBERT & CO. - ENOSBURGH FALLS VT.”, America, 1880 - 1890. Light golden or honey amber, octagonal, tooled square collar - smooth base, ht. 8 5/8”; (a little light patchy interior haze or content stain, otherwise very near mint). R/H #G42. A rare bitters, the noted light stain could easily be removed, if desired, with just a couple of days in the tumbler. This example also has a little whittling to the back label panel.

Est.: \$300 - \$600 • Min. bid: \$150



Lot 193

Lot of (2), "COLE BROS. / VEG-ETABLE BITTERS - BINGHAMTON N.Y. - G. L. COLE PROP'R", America, 1885 - 1895. Aquamarine and amber, both rectangular with beveled corners, tooled round collars with small bevel - smooth base, ht. 7 3/4"; (amber example near mint with just a trace of light interior residue; aqua example has a bit of faint haze and a 1/2" chip from edge of base). R/H #C189. The amber example is noted as "Rare" by Ring / Ham.

Est.: \$100 - \$200 • Min. bid: \$50



Lot 194

"ROOS'S / MANHATTEN / BITTERS. / Manufactured by / A. M. ROOS, Kingston, N.Y." (painted label with white background, black lettering, and gold trim), America, 1885 - 1895. Colorless, decanter form, tooled double ring collar - smooth base, ht. 8 1/4", attic mint. R/H p.473. Extremely rare, believed to be one of two, or possibly three known examples. In addition to manufacturing his bitters concoction, A. M. Roos was apparently a hotel proprietor.

Est.: \$200 - \$400 • Min. bid: \$100



Lot 195

"RED JACKET / BITTERS - MON-HEIMER & Co" (with original colorful, graphic labels), America, 1890 - 1900. Golden amber, square with beveled corners, tooled sloping collar - smooth base, ht. 9 3/4"; (bottle is perfect; 90% complete front and back labels). R/H #R20. A very scarce Chicago bitters, and certainly rare with original colorful and graphic labels depicting a full-length Indian chief holding a rifle.

Est.: \$200 - \$400 • Min. bid: \$100



Lot 196

"BERLINER MAGEN / BITTERS CO." (with original labels), America, 1890 - 1900. Amber, square with beveled corners, tooled sloping collar - smooth base, ht. 8 3/4"; (bottle is perfect; original wrap-around label on three sides of the bottle is 98% complete). R/H #B86. A scarce bitters put out by the Zien Bros, Metropolitan Block, Milwaukee, Wis. Label touts the bitters as a panacea for among other things, sea sickness, "hysteric hypochondriacal", and pains of labor.

Est.: \$100 - \$200 • Min. bid: \$50



Lot 197

"HERKULES BITTER" / (GA monogram) / "1 PINT", America, 1880 - 1890. Deep grass-green, or "7-Up" green, globular body with flattened sides, tooled mouth with flat band - smooth base, ht. 6"; (the top of the lip has been lightly polished, otherwise near mint). R/H Supplement 2, #H98.5. Extremely rare, believed to be only the third example discovered in this small size. Recently found with a period brass sprinkler spigot in the mouth, it was likely used as a makeshift watering can.

Est.: \$600 - \$900 • Min. bid: \$300



Lot 198

"THE P. L. ABBEY Co / KALAMAZOO / MICH." (on base), Bitters Bottle, (complete with original label, contents, and neck foil), America, 1890 - 1900. Colorless, square with a "Lady's Leg" neck, tooled square collar - smooth base, ht. 7 5/8", virtually pristine perfect. R/H #K6L. Colorful, 98% complete original label, KALAMAZOO / CELERY PEPSIN / BITTERS / (stalk of celery) / P.L. ABBEY Co. / KAMAMAZOO, MICH. Rare! Kalamazoo was once known as, "The Celery City"

Est.: \$300 - \$600 • Min. bid: \$150



Lot 199

"KALAMAZOO / CELERY PEPSIN / BITTERS / CELERY MEDICINE CO / KALAMAZOO, MICH." Store Counter Advertising Clock, 1890 - 1900. Ornate metal clock in the figure of a celery peppin bottle on a pedestal above an eagle, flag, leaves, and produce. The pot-metal or iron clock appears to have a painted or lacquered finish, ht. 13 1/2"; (clock not original to the piece). Ex. Rare, possibly unique. Joe Kray collection, Ex. Chris Batdorff, Elvin Moody collections.

Est.: \$300 - \$600 • Min. bid: \$150



Lot 200

Lot of (2), Label-Only Bitters Bottles, America, 1885 - 1900. "DR. BARNARD'S EXTRACT DANDELION, YELLOW DOCK AND Wild Cherry Bitters.", "C. E. HOLMES, M.D., NEWARK, N.J.", and, "Dr. BRADY'S MANDRAKE BITTERS", "Prepared by Dr. R.W. BRADY, Honesdale, PA.". Colorless and aquamarine, both are oval with tooled mouths - smooth bases, ht. 8" and 8 3/4"; (both bottles and label on Barnard's are near mint; label on Brady's is 80% complete). R/H #B23L & #B195 Both are rare.

Est.: \$100 - \$200 • Min. bid: \$50



Lot 201

"DR WYNKOOP'S / KATHARISMIC HONDURAS / SARSAPARILLA - NEW - YORK", America, 1850 - 1860. Cobalt, rectangular with beveled corners, applied sloping collar - blowpipe pontil scar, ht. 10 1/8"; (lightly cleaned to original luster with a little scattered fine wear and faint scratches remaining, primarily on the reverse). A great example, nice embossing, some of the letters are also ghosted on the front. Dewey Heetderks collection, purchased from Sam Greer in 1976.

Est.: \$5,000 - \$10,000 • Min. bid: \$2,500



Lot 205

"AMERICAN - MEDICINAL / OIL - BURKESVILLE KY", America, 1845 - 1855. Sapphire, almost an 'electric' blue, rectangular with beveled corners, applied sloping collar - blowpipe pontil scar, ht. 6 3/8"; (a touch of faint dullness or light haze on the back label panel, otherwise excellent). Odell, p.5. Ex. Sam Greer collection #3, also illustrated in their color plates. Rare in aqua, and believed to be unique in this sapphire coloration. Per Greer catalog, "One of the best colored medicines".

Est.: \$4,000 - \$8,000 • Min. bid: \$2,000



Lot 202

"ARTHURS - RENOVATING - SYRUP. A & A", America, 1850 - 1860. Medium bluish green, square with beveled corners, applied sloping collar - iron pontil scar, ht. 9 1/4", virtually attic mint; (just the slightest trace of typical faint wear, otherwise perfect). Odell, p.11. A rare, very desirable colored pontiled medicine. This is large size variant. Excellent character with heavily whittled, glass. It has been more than 20 years since this bottle has been offered at auction. Ex. George Waddy collection.

Est.: \$4,000 - \$7,000 • Min. bid: \$2,500



Lot 206

"O NEIL'S / VEGETABLE / LOTION.", America, 1845 - 1855. Medium cornflower blue, rectangular with beveled corners, rough sheared mouth - glass-tipped pontil scar, ht. 5", near attic mint; (an in-manufacture cooling line in the neck, as mentioned in the Greer catalog, otherwise perfect). Odell, p.269. Provenance: Ex. Sam Greer collection #1239, also illustrated in their color plates. It was believed to possibly be a unique example in 1989, and remains so today. Beautiful color!

Est.: \$2,000 - \$4,000 • Min. bid: \$1,000



Lot 203

"SMITH'S - GREEN MOUNTAIN - RENOVATOR - EAST. GEORGIA. VT", Granite Glass Company, Stoddard, NH, 1850 - 1860. Yellowish olive amber in the shoulders shading to a deeper olive amber near the base, rectangular with beveled corners, applied ring collar with bevel - iron pontil scar, ht. 7", attic mint. Odell, p.324. Outstanding color, character, and condition! Also included, a **"Smith's Green Mountain Renovator"** Dose Glass, c. 1900. Dewey Heetderks collection.

Est.: \$3,000 - \$5,000 • Min. bid: \$1,500



Lot 207

"G.W. MERCHANT / CHEMIST / LOCKPORT / N.Y.", probably Lockport Glass Works, Lockport, NY, 1850 - 1860. Beautiful, deep cornflower, or medium peacock blue (Greer), cylindrical, applied sloping collar - iron pontil, ht. 7", attic mint! Outstanding color that shades from a deep cornflower, to almost a light sapphire. It was catalogued as "Medium peacock blue", in the Greer sale. Regardless, a very rare color for a Merchant cylinder (or any Merchant bottle). Ex. Sam Greer collection, #748.

Est.: \$2,000 - \$4,000 • Min. bid: \$1,000



Lot 204

"C. BRINCKERHOFFS - HEALTH RESTORATIVE - PRICE \$ 1.00 - NEW YORK", probably an early Stoddard, NH glasshouse, 1845 - 1851. Medium olive coloration, rectangular with beveled corners, applied sloping collar - sand type pontil scar, ht. 7 3/8"; (tiny trace of lip edge roughness, otherwise pristine perfect). Odell, p.47. Strong, very bold embossing, virtually "out-of-the-mold" pristine condition with no high point wear, about as nice of an example as you could hope to find!

Est.: \$1,500 - \$2,500 • Min. bid: \$800



Lot 208

"FROM THE / LABORATORY - OF / G.W. MERCHANT / CHEMIST - LOCKPORT / N.Y.", probably Lockport Glass Works, Lockport, NY, 1845 - 1855. Medium-to-deep yellowish green, rectangular with concave corners, applied sloping collar - blowpipe pontil scar, ht. 5 1/2", virtually attic mint! Rare and desirable color, excellent character with some crudity and waviness to the glass, outstanding condition. A great example!

Est.: \$1,000 - \$1,500 • Min. bid: \$500



Lot 209

"FROM THE / LABORATORY - OF / G.W. MERCHANT / CHEMIST - LOCKPORT / N.Y.", probably Lockport Glass Works, Lockport, NY, 1845 - 1855. Medium-to-deep "Lockport" green, rectangular with concave corners, applied sloping collar - blowpipe pontil scar, ht. 5 1/2"; (a 1/8" flake on the inside edge of the mouth, and just a touch of faint exterior wear, otherwise excellent). Scarce color, most are in shades of blue-green, this one has more of a greenish or emerald tone.

Est.: \$300 - \$500 • Min. bid: \$150



Lot 210

"FROM THE / LABORATORY - OF / G.W. MERCHANT / CHEMIST - LOCKPORT / N.Y.", probably Lockport Glass Works, 1845 - 1855. Medium-to-deep "Lockport" blue-green, rectangular with concave corners, applied sloping collar - blowpipe pontil scar, ht. 5 1/2"; (a little light exterior wear, mainly on the back label panel, and a little minor interior residue that would likely wash out). Scarce with the blowpipe pontil, most examples in this mold are smooth base, or iron pontil.

Est.: \$200 - \$400 • Min. bid: \$120



Lot 211

"FROM THE / LABORATORY - OF / G.W. MERCHANT / CHEMIST - LOCKPORT / N.Y.", probably Lockport Glass Works, 1845 - 1855. Light "Lockport" blue-green, rectangular with concave corners, applied sloping collar - iron pontil scar, ht. 5 1/4", near mint; (a 3/16" area of minor lip edge roughness; a little in-making glass extrusion at the mold seam, otherwise perfect). This example has the peened out, "L O" mold repair on side panel. Believed to have held sarsaparilla.

Est.: \$175 - \$350 • Min. bid: \$100



Lot 212

"G.W. MERCHANT / LOCKPORT. N.Y.", America, 1850 - 1860. Light-to-medium "Lockport" blue-green, rectangular with narrow beveled corners, applied sloping collar - blowpipe pontil scar, ht. 5 1/2"; (a shallow 1/8" flake on side panel, otherwise sparkling attic mint). One of the scarcer "Merchant" molds, this having the narrow rectangular body with curved shoulders, and long neck. Sparkling clean with nice character. Ex. Sam Greer collection #744.

Est.: \$300 - \$500 • Min. bid: \$150



Lot 213

"DR TOWNSEND'S - SARSAPARILLA - ALBANY / NY", America, 1850 - 1860. Medium emerald with a slight yellowish tone, rectangular with beveled corners - large round iron pontil scar, ht. 9 5/8", near mint; (just a touch of faint light wear, and a slight trace of interior residue). A great example, nice condition, color, and clarity, and with an impressive pontil! Note; this is scarce mold variant with "N Y" centered below "ALBANY", and not offset as the majority are.

Est.: \$400 - \$800 • Min. bid: \$250



Lot 214

"OLD DR / J. TOWNSENDS - SARSAPARILLA - NEW YORK .", America, 1850 - 1860. Clear, medium bluish green, square with beveled corners, applied sloping collar - deep domed base with iron pontil scar, ht. 9 5/8"; (some fine light scratches and minor exterior wear; a shallow pinhead flake on base, at one of the beveled corners, otherwise excellent). A little less blue, and a bit more of a greenish tone than some. Good character with some whittling and waviness to the glass.

Est.: \$300 - \$600 • Min. bid: \$180



Lot 215

"MASURY'S / SARSAPARILLA / COMPOUND", America, 1850 - 1860. Aquamarine, rectangular with beveled corners, applied square collar - blowpipe pontil scar, ht. 8 1/4", near mint; (just a trace of very light wear including a minor pinhead bit of roughness on the back edge of the square collar, otherwise perfect). Odell, p.241. A big, beautiful, impressive medicine, bright clean and whittled.

Est.: \$400 - \$600 • Min. bid: \$200



Lot 216

"B.O. & G.C. WILSON / BOTANIC DRUGGIST / BOSTON", America, 1850 - 1860. Aquamarine, rectangular with beveled corners, large applied disk collar - blowpipe pontil scar, ht. 9 3/4"; (the bottle may have been lightly cleaned, but certainly appears as very near mint; a tiny flake at base corner and touch of light wear, otherwise perfect). Odell, p.374. A big, bright, clean example with some nice waviness and character to the glass. A lot of bottle for the money.

Est.: \$250 - \$450 • Min. bid: \$150



Lot 217

"DR. WILLIAM CLARK - 654 WASHINGTON ST. - BOSTON", America, 1850 - 1860. Aquamarine, rectangular beveled corners, applied sloping collar - blowpipe pontil scar, ht. 9 3/4", near mint; (the bottle has been lightly cleaned, but is in virtually "attic" condition, a trace bit of minor wear on the back shoulder, otherwise perfect). Odell, p.77. A rare Boston pontiled medicine, large impressive size, whittled, and in excellent condition. Provenance: Gary Enters collection.

Est.: \$200 - \$400 • Min. bid: \$100



Lot 221

"Wm W. HUFF'S / CHYMICAL - MIXTURE", 1845 - 1855. Aqua, square with beveled corners, sunken indentation for pill box on side panel, applied narrow disc collar with streaks of olive-yellow - blowpipe pontil scar, ht. 6 3/4"; (a shallow 1/8" flake on the top of the lip; a 1/4" chip on the underside of the lip, a pinhead flake on a panel edge, tiny star crack in shoulder). Odell, p.183. Believed to be a unique example, previously sold in 1999. Crude, whittled, and filled with tiny seed bubbles.

Est.: \$1,200 - \$2,400 • Min. bid: \$600



Lot 218

"DANDELION & TOMATO / PANACEA - RANSOM & STEVENS - DRUGGISTS BOSTON", America, 1843 - 1850. Aquamarine, rectangular with wide beveled corners, applied sloping collar - blowpipe pontil scar, ht. 8 3/4", near mint; (as noted in the Greer catalog, some light interior content haze, otherwise perfect). N#512; Odell, p.289. A rare medicine, nicely whittled. Provenance: Ex. Sam Greer collection, #1436.

Est.: \$300 - \$600 • Min. bid: \$180



Lot 222

"HADLOCKS - VEGETABLE - SYRUP", America, 1840 - 1850. Deep aquamarine, 6-sided, applied sloping collar with bevel - large, sand type pontil scar, ht. 8 1/8", virtually attic mint; (slight touch of faint light exterior wear, otherwise pristine!) Odell, p.157. A great rarity, outstanding condition, filled with tiny bubbles, beautiful with the large arched panels, a pleasing and eye-catching bottle.

Est.: \$1,500 - \$2,500 • Min. bid: \$800



Lot 219

"HALL'S - PALINGENESIA - OR / REGENERATOR - BOSTON", America, 1850 - 1860. Aquamarine, octagonal, applied sloping collar - iron pontil scar, ht. 9"; (lightly cleaned to original luster and near mint condition with just a touch of typical, very minor wear remaining, otherwise excellent). Odell, p.157. Extremely rare, believed to be one of only two, or possibly three examples extant. A large, impressive early medicine, bright, clean and attractive.

Est.: \$800 - \$1,600 • Min. bid: \$400



Lot 223

"HADLOCKS - VEGETABLE - SYRUP", America, 1840 - 1850. Aquamarine, 6-sided, applied sloping collar - blowpipe pontil scar, ht. 6 3/8"; (professionally cleaned, some scattered etching and ground wear remaining). Odell, p.157. Extremely rare. This is the smaller of two sizes, and only the 2nd example of this size offered in more than 25 years.

Est.: \$800 - \$1,200 • Min. bid: \$400



Lot 220

"COOPER'S ALTERANT / BOSTON", America, 1845 - 1860. Aquamarine, square with narrow beveled corners, applied disc mouth - blowpipe pontil scar, ht. 7 1/4", sparkling mint! Unlisted, and believed to be a unique example! A great rarity, very heavily whittled, bright, clean and sparkling, a choice early Boston medicine.

Est.: \$1,200 - \$2,400 • Min. bid: \$600



Lot 224

"DR ROSE'S - PROPHYLACTIC /SYRUP - FOR - CONSUMPTION / BRONCHITIS - ABSCESS, S / & SCROFULA. - PHILAD.A", America, 1845 - 1855. Aquamarine, cylindrical with 8 indented panels, applied sloping collar - blowpipe pontil scar, ht. 6 7/8"; (professionally cleaned; a 1/8" flake or bit of roughness at edge of lip). Extremely rare, believed to be one of only two or three known examples, and only the 2nd offered for sale in the past 20 years.

Est.: \$800 - \$1,200 • Min. bid: \$400



Lot 225

"CLARK & BALDWIN / ERIE / PA", America, 1840 - 1855. Aquamarine, oval with indented front panel, sheared and inward rolled lip - blowpipe pontil scar, ht. 5 3/8", near mint; (the bottle has been lightly cleaned, but displays as virtually attic mint). Bright, clean, and whittled, a very nice example of this scarce, to rare, Erie pontiled medicine. The glass is quite thin and delicate. It is amazing the lip is perfect and the bottle survived.

Est.: \$175 - \$350 • Min. bid: \$100



Lot 229

"INDIAN / CLEMENS" (Standing Indian) **"TONIC / PREPARED BY / GEO. W. HOUSE"**, 1845 - 1855. Aquamarine, oval, sheared and outward folded mouth - blowpipe pontil scar, ht. 5 1/2", perfect. Odell, p.53. A great pictorial pontiled medicine, beautifully whittled, and always popular with the large standing Indian figure.

Est.: \$300 - \$500 • Min. bid: \$180



Lot 226

"FONTAINES CREAM / OF / WILD FLOWERS - WASHING CHILDREN - REMOVING ERUPTIONS / CLEANING THE TEETH / PERFUMING THE BREATH - NEW YORK", America, 1850 - 1860. Aqua, rectangular with concave corners, applied square collar - blowpipe pontil scar, ht. 5", virtually attic mint! Odell, p.131. An outstanding early medicine, extremely rare, likely a unique example! Heavily embossed and also most unusual for what it purports to treat.

Est.: \$800 - \$1,200 • Min. bid: \$400



Lot 230

"H. LAKE'S / INDIAN / SPECIFIC.", America, 1849 - 1855. Aquamarine, rectangular with concave corners, bulbous neck with an applied round collar - blowpipe pontil scar, ht. 8 1/4", near mint; (just a slight trace of faint interior milkiness near the shoulders, and a touch of minor wear including a pinhead flake at base edge, otherwise perfect). Odell, p.218. The "H. Lake's" are not easy to find in this nice of condition. In addition, this is the rare variant with the larger square lettering.

Est.: \$800 - \$1,200 • Min. bid: \$400



Lot 227

"WHEATON'S - SICK HEAD + / ACHE REMEDY / PREPARED BY - DR. WM. PRICE", America, 1850 - 1860. Deep aqua, rectangular with beveled corners, applied sloping collar - iron pontil scar, ht. 6 1/4", sparkling attic mint! Odell, p.369. Extremely rare, and possibly unique. A great looking early medicine with strong, bold embossing, good deep color, and outstanding condition. Pontiled remedy bottles are scarce, and this one may be unique!

Est.: \$1,800 - \$3,600 • Min. bid: \$1,000



Lot 231

"BARRELL'S / INDIAN / LINIMENT - H.G.O. CARY", Zanesville Glass Works, Zanesville, OH, 1850 - 1855. Deep, bluish aqua, oval with indented panels, applied square collar - iron pontil scar, ht. 8 1/8"; (professionally cleaned to original luster; an impact bruise at the edge of the base on the reverse with a few radiating cracks, 1/4" to 5/8"). An extremely rare, probably unique, pontiled Indian medicine Tremendous eye-appeal with large lettering, bold embossing, whittled, and rich color.

Est.: \$600 - \$1,200 • Min. bid: \$300



Lot 228

"E.A. BUCKHOUT'S / DUTCH / LINIMENT" / (Man with pipe and cane) - **"PREPARED AT / MECHANICVILLE / SARATOGA CO N.Y."**, America, 1850 - 1860. Aquamarine, rectangular with narrow paneled sides, sheared and inward rolled mouth - blowpipe pontil scar, ht. 4 5/8", attic mint! Odell, p.55. A top example of this scarce pictorial medicine, excellent condition and with good strong embossing.

Est.: \$400 - \$600 • Min. bid: \$200



Lot 232

"DURNO'S / THE / MOUNTAIN / INDIAN / LINIMENT", America, 1853 - 1859. Aquamarine, cylindrical, sheared and inward rolled mouth - blowpipe pontil scar, ht. 5 3/4"; (professionally cleaned to original luster with just a little faint haze remaining on the interior of the neck, otherwise excellent). Odell, p.116. An extremely rare pontiled Indian medicine from Albany, NY, and only the 2nd example to be offer at public auction in almost 30 years.

Est.: \$400 - \$800 • Min. bid: \$200



Lot 233

"TROUP & FICKARDT / DRUGGISTS / CIRCLEVILLE, O.", Midwest, probably Zanesville Glass Works, Zanesville, OH, 1850 - 1860. Aquamarine, cylindrical, applied square collar - blowpipe pontil scar, ht. 7"; (professionally cleaned to original luster, otherwise excellent). Odell, p.351. An extremely rare, heavily embossed, early pontiled druggist, believed to be one of only two, or possibly three, known examples.

Est.: \$250 - \$450 • Min. bid: \$150



Lot 237

"J. STARKWEATHER'S / HEPATIC ELIXIR", America, 1845 - 1855. Aquamarine, hexagonal, applied sloping collar - blowpipe pontil scar, ht. 6 3/8", attic mint. Note, there are some minor cooling lines in the neck that occurred at the time of manufacture, but are not considered damage, and mentioned for completeness. Odell, p.226. A very scarce pontiled medicine having nice character, bright, crisp, and sparkling.

Est.: \$400 - \$700 • Min. bid: \$200



Lot 234

"DR. - BLOCKSOM'S - CHEMICAL WAREHOUSE - ZANESVILLE", Zanesville Glass Works, Zanesville, OH, 1845 - 1860. Brilliant aquamarine, 12-sided, applied square collar - blowpipe pontil scar, ht. 4 1/8", bright, clean, and virtually attic mint. Odell, p.36. A scarce, desirable druggist, especially in this fine condition, and the smallest of several sizes known in this mold. Read J. William Barrett's article, "The Brothers Blocksom", *Antique Bottle & Glass Collector*, May, 2018.

Est.: \$400 - \$600 • Min. bid: \$200



Lot 238

"DR. / GORDAK'S - ICELAND / JELLY", America, 1840 - 1845. Aquamarine, rectangular with beveled corners, sheared and outward folded lip - blowpipe pontil scar, ht. 6 5/8", sparkling attic mint! Odell, p.148. A top example of this rare, early, Boston medicine having excellent character with crude wavy glass and patches of minute bubbles swirled through the body. These don't come around often, especially in this fine condition.

Est.: \$600 - \$900 • Min. bid: \$300



Lot 235

"BLOCKSOM / BROTHERS", Zanesville Glass Works, Zanesville, OH, probably 1845 - 1855. Aquamarine, rectangular, sheared and inward rolled mouth - blowpipe pontil scar, ht. 2 1/4"; (the bottle appears to have been dug, and has just a little faint dullness, or iridescence, to the glass, but no other form of damage). Rare, possibly one of their earlier bottles.

Est.: \$200 - \$400 • Min. bid: \$100



Lot 239

"YODER'S - GERMAN - LINIMENT", America, 1845 - 1860. Aquamarine, rectangular with wide beveled corners, applied square collar - blowpipe pontil scar, ht. 5 1/8", near mint; (just a faint touch of wear including a narrow open bubble on the inside of the neck, otherwise virtually attic mint). Odell, p.384. Bright, clean, and strongly embossed. An extremely rare liniment. This is the only example that we can find that has been offered at auction in more than 20 years!

Est.: \$400 - \$700 • Min. bid: \$200



Lot 236

"ANDERSON'S / DERMADOR", America, probably Lockport or Lancaster glassworks, New York, 1850 - 1860. Light-to-medium cornflower blue, cylindrical, applied sloping collar - blowpipe pontil scar, ht. 4"; (a 1/8" flake at edge of base at the mold seam, and a little light overall interior haze). N #18; Odell, p.7. A nice Western, NY pontiled medicine, in a delicate, but pleasing color.

Est.: \$200 - \$400 • Min. bid: \$100



Lot 240

"Dr. PINKHAM'S / EMMENAGOGUE", probably an early Ohio glasshouse, 1845 - 1860. Deep aquamarine, square with beveled corners, applied sloping collar - blowpipe pontil scar, ht. 5 5/8", sparkling mint! Odell, p.280. A beautiful example, bright, clean, and with some nice whittling and waviness adding character to the glass. The squatty square body is distinctive and helps to set it apart from many of the other early medicines.

Est.: \$175 - \$275 • Min. bid: \$100



Lot 241

"T. H. TAYLOR / BRATTLEBORO / VT", America, 1850 - 1860. Aquamarine, rectangular with beveled corners, applied disk mouth - blowpipe pontil scar, ht. 8 1/4", near mint; (a little light interior residue or spotty faint haze, some of which might wash out, otherwise perfect). Extremely rare. Unlisted by Odell, and rated "Exceptional" by Holst, it has been more than 20 years since another example has been offered at public auction. A large and impressive bottle. Gary Enters collection.

Est.: \$300 - \$600 • Min. bid: \$180



Lot 245

"R. M. BURWELL / NEW HAVEN Ct.", America, 1845 - 1860. Aquamarine, oval, applied ring collar with small bevel - blowpipe pontil scar, ht. 6 1/8", perfect. A very rare medicine, not listed by Odell, and considered "Exceptional" by Holst. Bright, clean, whittled, and sparkling, a fantastic example! Provenance: Gary Enters collection.

Est.: \$175 - \$350 • Min. bid: \$100



Lot 242

"DR. WOOD'S / AROMATIC SPIRIT - BELLOWS FALLS V.T.", America, 1850 - 1860. Aquamarine, oval, applied sloping collar - iron pontil scar, ht. 7 1/2"; (just a slight trace of very faint interior residue, otherwise virtually attic mint). Odell, p.379, N #699. A scarce bottle, nicely whittled, excellent condition. Provenance: Gary Enters collection.

Est.: \$250 - \$450 • Min. bid: \$150



Lot 246

"J. & J. REAKIRT / PHILAD.A - WHOLE-SALE - DRUGGISTS", America, 1845 - 1860. Aquamarine, rectangular with beveled corners, applied sloping collar - blowpipe pontil scar, ht. 5 1/4", attic mint. A rare pontiled druggist, and likely the same firm that put out "Reakirt's Medicated Breast Julip". Strongly embossed, brilliant and sparkling, with some nice character and waviness to the glass. In addition, virtually "out-of-the-mold" pristine condition. Provenance: Gary Enters collection.

Est.: \$150 - \$250 • Min. bid: \$80



Lot 243

"WM A. BACON / LUDLOW. VT.", America, probably 1856 - 1858. Aquamarine, oval, applied sloping collar - blowpipe pontil scar, ht. 5", near mint; (slight trace of minor wear, otherwise excellent). Odell, p.15. Advertised Essence of Jamaica Ginger, as well as Excelsior Hair Oil. Scarce. Provenance: Gary Enters collection.

Est.: \$125 - \$225 • Min. bid: \$70



Lot 247

"Dr. H. KELSEY / LOWELL MASS", America, 1845 - 1855. Aquamarine, oval, applied sloping collar - blowpipe pontil scar, ht. 6 1/2", perfect! Odell, p.209. According to Odell, Hugh Kelsey advertised as a botanic physician, 1846 - 1849, and later patented a pain extractor. Very scarce. Provenance: Gary Enters collection.

Est.: \$125 - \$225 • Min. bid: \$70



Lot 244

"COMSTOCK / AND BROTHER, / NEW YORK", probably 1850 - 1855. Aquamarine, oval, sheared, tooled and inward rolled mouth - blowpipe pontil scar, ht. 4 3/8", attic mint! The Comstock company put out several products and had an interesting history. See Odell, pgs. 85-87. Scarce, particularly so in this sparkling condition. Gary Enters collection.

Est.: \$100 - \$200 • Min. bid: \$60



Lot 248

"JOHN J. SMITH / LOUISVILLE KY.", America, 1850 - 1860. Bright, rich aquamarine, cylindrical, applied sloping collar - blowpipe pontil scar, ht. 5 7/8", near attic mint. Odell, p.325. Probably for Smith's Tonic Syrup. Rated as "Exceptional" by Holst. Provenance: Gary Enters collection.

Est.: \$125 - \$225 • Min. bid: \$70



Lot 249

"AMERICAN / OIL - CUMBERLAND RIVER - KENTUCKY", America, 1845 -1855. Light aquamarine, rectangular with beveled corners, sheared, tooled and outward rolled mouth - blowpipe pontil scar, ht. 6 3/4", near mint; (a little faint dullness in the neck, and minor exterior wear, otherwise excellent). Odell, p.5. A rare medicine, this example also having nice character with a whittled, pebbly appearance to the glass. Provenance: Ex. Sam Greer collection #122.

Est.: \$400 - \$600 • Min. bid: \$200



Lot 253

"ROWAND & / WALTON'S - PANACEA - PHILAD.A", America, probably 1845 - 1850. Aquamarine, rectangular with narrow beveled corners, applied sloping collar - blowpipe pontil scar, ht. 6 3/8", sparkling, virtually attic mint! Odell, p.304. Extremely rare. Bright, clean, and with a pleasing plump form. Provenance: Ex. Sam Greer collection #1489.

Est.: \$400 - \$800 • Min. bid: \$200



Lot 250

"B. F. WILLIAMS - SYRUP OF SARSAPARILLA / & / IODID OF POTASS - NASHVILLE TENN", America, probably 1854 - 1859. Aquamarine, rectangular with beveled corners, applied sloping collar - iron pontil scar, ht. 9 3/8"; (a tiny bit of roughness along with a minor, paper-thin, 1/8" flake on the back of the lip; professionally cleaned to original luster and near mint condition). Odell, p.373; DeG #223, listed as Extremely Rare. A bright, clean, example.

Est.: \$800 - \$1,600 • Min. bid: \$400



Lot 254

"MEAD & / CARRINGTON'S - FEVER & AGUE / CURE", America, probably 1848 - 1857. Aquamarine, rectangular with beveled corners, applied sloping collar - blowpipe pontil scar, ht. 6 1/2", virtually attic mint; (trace bit of very faint interior haze, primarily in the shoulders, otherwise perfect). Odell, p.249. Extremely rare, not listed by Agee, bright, clean, and with crisp, strong embossing. From Oswego, NY. Provenance: Ex. Sam Greer collection #1152.

Est.: \$800 - \$1,200 • Min. bid: \$400



Lot 251

"GENUINE - SWAIM'S / PANACEA - PHILADELPHIA", America, 1824 - 1830. Aqua, rectangular with beveled corners, sheared, tooled, outward rolled mouth - blowpipe pontil scar, ht. 7 3/4"; (a trace of minor wear, mainly on the back label panel, otherwise attic mint). Odell, p.335. Rare. One of the choicest examples that we have seen, very bold embossing, crude, whittled, and great condition. These were Wm. Swaim's first bottles, replaced by the round bottles in 1830.

Est.: \$500 - \$800 • Min. bid: \$300



Lot 255

"JOHN M. WINSLOW / ROCHESTER. N.Y - COLDS COUGHS / AND / CONSUMPTION - COMPOUND / BALSAM OF / HOARHOUND", America, 1845 - 1860. Aquamarine, rectangular with narrow beveled corners, sheared and inward rolled mouth - blowpipe pontil scar, ht. 5 1/8", sparkling mint. N#693. Very rare. A great bottle, with a great deal of embossing, that is also very crude.

Est.: \$500 - \$800 • Min. bid: \$250



Lot 252

"LOPER'S / Panacea / Phila.", America, 1850 - 1860. Deep aquamarine, oval, applied sloping collar - blowpipe pontil scar with iron residue, ht. 8 1/8"; (some faint light haze, but no other form of damage, and otherwise very near mint). Odell, p.228. Extremely rare, whittled, and with very bold embossing. Believed to be the 1st example offered at auction in the past 25 years. Provenance: Ex. Sam Greer collection #1065.

Est.: \$400 - \$800 • Min. bid: \$200



Lot 256

"GUERNSEY'S BALM - NEW YORK - PATENT", America, 1845 - 1860. Colorless, square with narrow beveled corners, sheared, tooled, and outward flared mouth - blowpipe pontil scar, ht. 4 5/8", near mint; (slight trace of light interior content haze, otherwise perfect). Odell, p.155. Very rare, good strong embossing, and attractive with the colorless glass.

Est.: \$300 - \$500 • Min. bid: \$150



Lot 257

"J. MARSH'S / HIVE SYRUP / NEW YORK", America, 1840 - 1855. Aquamarine, oval, sheared and inward rolled mouth - blowpipe pontil scar, ht. 4 5/8"; (slight trace of faint haze, but no other form of damage, and otherwise perfect). Odell, p.197. Very rare. Strong, crisp embossing. Provenance: Ex. Sam Greer collection #921.

Est.: \$400 - \$600 • Min. bid: \$200



Lot 261

"D. B. WHITE & Co. SOUTH EASTON. / MASS.", America, 1845 - 1860. Aquamarine, oval, applied square collar - blowpipe pontil scar, ht. 7", near mint; (a couple of tiny pinprick flakes on the edge of the square collar, otherwise perfect). Rare, heavily whittled, and in excellent condition.

Est.: \$200 - \$400 • Min. bid: \$120



Lot 258

"DR. JACKSON'S - PILE - EMBROCATION - PHILA.", America, probably 1845 - 1855. Aquamarine, cylindrical, sheared, tooled, and outward flared thin flanged lip - blowpipe pontil scar, ht. 3 3/4", perfect. Odell, p.196. Another very rare medicine, and only the third example to be offered at auction in the past 15 years. A great example, strong embossing, and amazing that the thin flanged lip has survived in perfect condition. Provenance: Ex. Sam Greer collection #913.

Est.: \$500 - \$800 • Min. bid: \$250



Lot 262

"DR J.B. HENION'S - SURE CURE / FOR / MALARIA.", probably 1885 - 1886. Vibrant cobalt blue, square with beveled corners, applied large mushroom "Tippecanoe"-style mouth - smooth base, ht. 5 5/8", very near mint; (just the slightest trace of faint wear including a 1/4", onionskin-thin open surface bubble on a beveled corner, otherwise virtually attic mint). Great depth of color, extremely rare and desirable, one of the all-time classic "greats" in cure bottles!

Est.: \$5,000 - \$8,000 • Min. bid: \$2,500



Lot 259

Label only, "COXE'S HIVE SYRUP, / PREPARED AND SOLD BY / A. F. WHITTEMORE, / Druggist and Apothecary, / ESSEX, CONN.", America, 1830 - 1850. Pale aquamarine, cylindrical, sheared and outward flared thin flanged lip - blowpipe pontil scar, ht. 3 1/8"; (bottle is perfect; original label is 95% complete, darkened a bit from age, but completely legible). Bottles from this period are very rare with original labels. Ex. Sam Greer collection #426.

Est.: \$200 - \$400 • Min. bid: \$100



Lot 263

Motif of Castle / "TRADE / MARK / EST 1842 / DUFFY'S / TOWER / MINT / CURE", America, 1875 - 1885. Golden amber, figural pyramid-form building with four large windows and a door on two sides, applied square collar - smooth base, ht. 9"; near mint; (just a trace of very faint interior content stain, and a pinhead flake at panel edge, otherwise perfect!) A very rare and desirable figural cure bottle, believed to be 1st example offered at public auction in the past 15 years!

Est.: \$1,500 - \$2,500 • Min. bid: \$800



Lot 260

"DR LEROY'S / MIXTURE", America, 1850 - 1860. Bluish aquamarine, cylindrical, applied sloping collar - iron pontil scar, ht. 7 3/8"; (lightly cleaned to original luster; a couple of faint patches of light interior stain or residue, otherwise very near mint!) Odell, p.224. A very scarce, to rare, New Orleans medicine advertised for gonorrhea, gleet, gravel, neuralgia of the bladder, incontinence of the urine, price \$3.00 per bottle.

Est.: \$200 - \$400 • Min. bid: \$120



Lot 264

"HERMANUS / GERMANY'S INFALLIBLE / DYSPEPSIA CURE" - (motif of Roman Soldier with Sword) - **"PREPARED FOR THE U. S. / BY L. AND N. ADLER MEDICINE CO. / READING PA. U.S.A."**, America, 1880 - 1890. Golden amber, rectangular with beveled corners, tooled sloping collar with ring - smooth base, ht. 8 7/8"; (lightly cleaned to original luster and near mint condition). BA2, #120. A great looking, extremely rare, pictorial cure listed as "Super Great" by Agee.

Est.: \$1,400 - \$2,200 • Min. bid: \$700



Lot 265

"SWEDISH / DYSPEPSIA CURE - FRED SANDELIN - OAKLAND, CAL.", America, 1880 - 1890. Aquamarine, rectangular with beveled corners, tooled sloping collar - smooth base, ht. 8 7/8", perfect. An extremely rare cure, unlisted by Agee, and about as nice of an example as you could hope to find! We've been told that this bottle, especially in this condition, comes around about "once in a lifetime". Ads touting the marvels of this cure can be found as early as 1883.

Est.: \$500 - \$800 • Min. bid: \$250



Lot 269

"DODGE BROTHERS - MELANINE - HAIR TONIC", America, 1860 - 1870. Pink amethyst with some reddish strawberry tones, rectangular with beveled corners, applied ring collar with bevel - smooth base, ht. 7 3/8", virtually attic mint; (just the slightest trace of faint wear including a couple of tiny pinhead open surface bubbles, otherwise perfect!) DF, p.48. A great example fantastic color. Many of these early hair bottles have been dug and cleaned, but not this one!

Est.: \$800 - \$1,200 • Min. bid: \$400



Lot 266

"WAYNE'S / DIURETIC ELIXIR - F. E. SUIRE & Co / CINCINNATI" (with partial original labels and proprietary tax stamp on base), America, 1875 - 1880. Medium cobalt blue, square with beveled corners, applied sloping collar - smooth base, ht. 7 3/4", virtually attic mint; (pinhead open bubble on shoulder, otherwise pristine). A scarce, desirable elixir, and very rare in this attic-found condition with partial original labels.

Est.: \$200 - \$400 • Min. bid: \$120



Lot 270

"DR TEBBETTS' - PHYSIOLOGICAL / HAIR - REGENERATOR", America, 1865 - 1875. Light-to-medium pinkish puce with an amethyst tone, rectangular with beveled corners, applied double ring collar - smooth base, ht. 7 3/8"; (very slight trace of faint wear, otherwise pristine!) A scarce, lighter-than-normal color for this mold with excellent clarity, beautiful condition. Both this, and the following Lot in the golden yellow coloration, are choice, top-shelf examples!

Est.: \$500 - \$800 • Min. bid: \$250



Lot 267

"PURCELL & LITTLEJOHN / PHARMACISTS" / (P&L monogram) / "LEESBURG / VA.", America, 1890 - 1900. Medium -to- deep cobalt blue, oval with flattened front panel, tooled prescription-type collar - smooth base, ht. 8 1/8", near attic mint; (just a slight trace of minor wear, and a little faint interior content haze that would likely wash out, otherwise perfect). An attic-type bottle that has not been dug. A rare and very desirable colored druggist, impressive size.

Est.: \$800 - \$1,200 • Min. bid: \$400



Lot 271

"DR TEBBETTS' - PHYSIOLOGICAL / HAIR - REGENERATOR", America, 1865 - 1875. Brilliant golden yellow, rectangular with beveled corners, applied double ring collar - smooth base, ht. 7 3/8", 'out-of-the-mold' pristine perfect! An extremely rare and desirable color for a Dr. Tebbett's. You will find 50 or more examples in shades of puce or amethyst, before you will find one in this coloration. Note, Dr. Tebbett's was from Manchester, NH.

Est.: \$800 - \$1,200 • Min. bid: \$400



Lot 268

(Owl perched on Motar) / "TODCo" (monogram) / "TRADE MARK", Wide Mouth Salt Jar, Whitall-Tatum Co, Millville, NJ, 1890 - 1910. Medium-to-deep cobalt, square with beveled corners, tooled ring-type collar - **"W T.CO. / U.S.A"** (on smooth base), ht. 9 5/8"; (professionally cleaned to original luster with a little light matte-type finish remaining, primarily on the lower part of the front panel). Scarce large size, considered the 'grand-pappy' of the owl druggists.

Est.: \$250 - \$450 • Min. bid: \$150



Lot 272

"MRS S. A. ALLEN'S - WORLD'S HAIR / RESTORER - NEW YORK.", America, 1865 - 1875. Medium-to-deep plum amethyst, rectangular with beveled corners, tooled, likely applied ring collar - smooth base, ht. 7 1/8"; (professionally cleaned to original luster and otherwise near mint condition). See DF, pgs. 7-8. Beautiful, rich color through the shoulders shading to a deep, dense amethyst, through the lower half of the body.

Est.: \$250 - \$400 • Min. bid: \$140



Lot 273

"GORDON'S HOOF OINTMENT", America, 1880 - 1890. Colorless, figural horse hoof, sheared, threaded, and factory ground mouth with original screw-on zinc lid - **"PATENTED JULY 20TH 1880"** (on smooth base), ht. 5 3/8", near attic mint; (a 3/4" sliver type flake from the top and inside edge of the ground mouth, otherwise both bottle and threaded lid perfect!) A rare veterinary bottle, also a choice item for collectors of figural bottles.

Est.: \$200 - \$400 • Min. bid: \$120



Lot 277

"AVON / SPRING WATER", America, probably Saratoga Mountain Glassworks, Mt. Pleasant, NY, 1860 - 1866. Medium olive green, cylindrical, applied sloping collar with bevel - smooth base, Qt, near mint; (just a couple of onion-skin-thin open surface bubbles and a little minor exterior wear). T# N-3:A. A beautiful example, bubbly glass, excellent condition. A rare and desirable mold that does not come around often. The Avon Spring was known as the "Saratoga of Western New York".

Est.: \$1,400 - \$2,200 • Min. bid: \$700



Lot 274

"LYNCH & CLARKE / NEW YORK", probably New England Glass Bottle Company, Cambridge, MA, 1825 - 1833. Beautiful yellowish olive with a slight amber tone, cylindrical, applied sloping collar with bevel - sand type pontil scar, Qt, virtually attic mint; (slight trace of faint exterior wear, otherwise perfect). T# C-1:C. A rare early mineral water. The quarts are certainly much harder to find than the pints, and this one is a fantastic example in character and condition!

Est.: \$1,500 - \$2,500 • Min. bid: \$800



Lot 278

"CONGRESS & EMPIRE SPRING CO / C / SARATOGA. N.Y.", America, 1865 - 1875. Brilliant yellowish olive, cylindrical, applied sloping collar with bevel - smooth base, Qt, near mint; (a few partially open surface bubbles, otherwise attic mint). T# C-14:A, variant 3. Beautiful, eye-appealing color, and as noted by Tucker, rare in the yellow-olive tones.

Est.: \$300 - \$500 • Min. bid: \$150



Lot 275

"LYNCH & CLARKE / NEW YORK", probably New England Glass Bottle Company, Cambridge, MA, 1825 - 1833. Yellowish olive amber, cylindrical, applied sloping collar with bevel - sand type pontil scar, Pt, perfect! T# C-2:B, type 2. Another great example of an early Lynch & Clarke. Outstanding color, lighter than most, excellent clarity, whittled. About as nice of an example as you could hope to find.

Est.: \$400 - \$800 • Min. bid: \$200



Lot 279

"TRITON SPOUTING SPRING / T / SARATOGA N.Y. - TRITON WATER", America, 1872 - 1889. Aquamarine, cylindrical, applied sloping collar with bevel - smooth base, Pt, perfect! T# S-55. Outstanding condition, beautifully whittled, and very rare. Believed to be only a handful known to exist, and one that very few of even the advanced collector will have. A great Saratoga bottle.

Est.: \$3,000 - \$5,000 • Min. bid: \$1,500



Lot 276

"IODINE SPRING WATER / L / SOUTH HERO. VT.", probably a South Stoddard glasshouse, 1865 - 1873. Clear, medium olive amber, cylindrical, applied sloping collar with bevel - smooth base, Qt, pristine perfect. T# V-8. A rare mineral water, beautiful color, nice character, outstanding condition. A great example!

Est.: \$1,000 - \$1,500 • Min. bid: \$500



Lot 280

"HIGHROCK CONGRESS SPRING" / (Motif of Rock) / "C&W / SARATOGA N.Y.", America, 1865 - 1872. Beautiful, deep teal blue, cylindrical, applied sloping collar with bevel - smooth base, Pt, sparkling attic mint! T# S-37:B. This bottle was originally found on historic Mackinaw Island, Michigan. As noted by Tucker, a scarce mold, rare color! We originally sold this bottle about eight years ago. The owner has consigned a portion of his collection to us, including this outstanding example.

Est.: \$800 - \$1,200 • Min. bid: \$400



Lot 281

“QUAKER SPRINGS / I.W. MEADER & Co / SARATOGA Co N.Y. - OLD SARATOGA / SPRING / WATER”, America, 1868 - 1880. Medium blue green, almost a teal tone, cylindrical, applied sloping collar with bevel - smooth base, Qt.; (a little minor light haze, primarily around the shoulders; a ¼” chip along the bottom edge of the beveled collar). T# S-43:A. A scarce bottle in a pleasing scarce color. Provenance: Ex. Howard Dean collection.

Est.: \$800 - \$1,200 • Min. bid: \$400



Lot 285

“P. D. F / CINCINNATI”, probably an Ohio, or Midwest glasshouse, 1850 - 1860. Very deep, rich aquamarine, almost a blue-green, cylindrical, applied sloping collar - iron pontil scar, ht. 7 ¼”; (lightly cleaned with just a trace of faint wear remaining, and otherwise appears as very near mint). A very scarce-to-rare soda. Initials “P.D.F” represented Peter D. Ferguson, an early Cincinnati bottler. Bubbly glass, heavily whittled, rich deep color, a great looking example.

Est.: \$175 - \$350 • Min. bid: \$100



Lot 282

“HANBURY SMITH'S / KISSINGEN WATER”, America, probably 1855 - 1859. Deep, rich aqua, oval, large applied blob collar - iron pontil scar, ht. 7 ¾”; (two small potstones on the reverse, with small radiations, otherwise excellent). T# M-21:E, Variant with iron pontil. Extremely rare, possibly one of the first Hanbury Smith's bottles prior to moving his operation from Ohio, to New York. See *“Hanbury Smith, Dr. Noseberry and Jeny Lind”*, by Donald Tucker, AB&GC, January 2018.

Est.: \$500 - \$800 • Min. bid: \$250



Lot 286

“J. LAMPPIN / MINERAL WATER / UTICA. - UTICA BOTTLING / ESTABLISHMENT”, probably a western New York State glasshouse, 1850 - 1860. Light-to-medium blue green with a slight teal tone, cylindrical, applied blob collar - iron pontil scar, ht. 6 ¾”; (just a trace of very minor wear, otherwise attic mint). A great example with some nice whittling, good color, and excellent condition. It appears to be an “attic-type” example that has not been dug and cleaned.

Est.: \$200 - \$400 • Min. bid: \$120



Lot 283

“KISSINGEN WATER / HANBURY SMITH”, America, 1865 - 1875. Medium-to-deep olive yellow, cylindrical, applied sloping collar - smooth base, Pt, attic mint! T# M-21:B. Beautiful, attractive color, outstanding condition, the glass is filled with plenty of tiny seed bubbles. Not an easy one to find, especially in this color and condition. Provenance: Ex. Ronnie Landry collection.

Est.: \$100 - \$200 • Min. bid: \$60



Lot 287

“JNO. WILLIAMS / KALAMAZOO / MICH - MANUFACTURER / OF / MINERAL & / SODA WATER” (soda misspelled), 1852 - 1860. Sapphire blue, cylindrical, applied blob collar - iron pontil, ht. 7; (professionally cleaned to original luster with a little minor light wear remaining, including a 7/16” open bubble on the reverse that has some depth to it, otherwise excellent). John Williams produced both lemon water and soda pop. A rare Michigan colored squat soda.

Est.: \$400 - \$800 • Min. bid: \$200



Lot 284

“KISSINGEN WATER / HANBURY SMITH”, America, 1865 - 1875. Medium olive coloration, cylindrical, applied sloping collar - smooth base, Pt, near attic mint; (just a slight trace of very minor wear, primarily on the reverse, otherwise perfect). T# M-21:B. A great example, crude glass having plenty of character, and also in outstanding overall condition. Provenance: Ex. Ronnie Landry collection.

Est.: \$100 - \$200 • Min. bid: \$60



Lot 288

“A P SMITH / CHARLESTON” (in rectangular slugplate), America, 1845 - 1855. Light sapphire blue, cylindrical, applied sloping collar - iron pontil scar, ht. 7 3/8”; (professionally cleaned with some overall light etching and ground wear remaining; a partially open bubble with residue on the collar). Scarce color. This mold is likely the earlier of the A.P. Smith's, and comes in a variety of colors. These bottles are almost impossible to find in mint, or near mint condition.

Est.: \$200 - \$400 • Min. bid: \$100



Lot 289

"HEADMAN / PHILADA - F. W. H.", America, probably 1849 - 1850. Clear, medium blue green, cylindrical, applied blob collar - iron pontil scar, ht. 7 1/4"; (professionally cleaned to original luster with some scattered light ground wear remaining). A scarce soda, believed to have been blown approx. 1849 - 1850 (see Tod von Mechow's comprehensive website, *Soda & Beer Bottles of North America*).

Est.: \$150 - \$250 • Min. bid: \$80



Lot 293

Lot of (2) Sodas, "B. PIETZ / PIQUA. O.", and "B. PIETZ & Co. / PIQUA. O.", America, 1870 - 1880. Aquamarine and blue green, both cylindrical with "THIS BOTTLE / NEVER SOLD" on reverse, applied blob collars - smooth bases, ht. 7 1/2" each, both examples are virtually attic mint; (aqua example has a 1/4" chip at edge of base, otherwise both excellent). Scarce sodas, the aqua example retains its original wire closure.

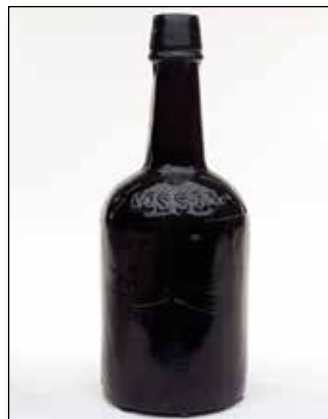
Est.: \$200 - \$400 • Min. bid: \$100



Lot 290

Lot of (2), Scarce New Jersey Sodas, America, 1850 - 1865. "G.A. KOHL / LAMBERT / N.J. - IMPROVED / K / PATENT", and "KEHOE & PURCELL / TRENTON / N.J. - K & P". Shades of medium-to-deep bluish green, applied blob collars - iron pontil and smooth base, ht. 7 3/8" and 7" respectively; (the G.A. KOHL has minor exterior wear, and a little light haze in the shoulders, otherwise excellent, and with a fully intact iron pontil; the PURCELL has some light wear and scratches).

Est.: \$150 - \$250 • Min. bid: \$80



Lot 294

"BOSS & Co", Pastorius, Schulz & Co. Iron City Glass Works, c. 1864. Deep olive green in the shoulders shading to a dense (black glass), in the lower body, 3-pc. mold, porter form, applied sloping collar with ring - "PASTORIUS SCHULZ & CO PITTS PA" (on early smooth base), Qt, perfect! Pastorius, Schulz & Co. was only in business for the one year. A very rare Cincinnati porter. Excellent character having crude, wavy, heavy glass.

Est.: \$1,800 - \$3,200 • Min. bid: \$1,000



Lot 291

"J. X LAUBE" / (Cross) / "AKRON, O." Soda Water Bottle, America, possibly Middletown Glass Works, Middletown, NY, 1890 - 1900. Light-to-medium sapphire blue, cylindrical, Hutchinson-style blob collar - "M G W / 2" (on smooth base), Pt, ht. 7"; (appears to be a dug bottle that has not been cleaned, with a just a little minor exterior wear, and a small patch of light interior milkiness, otherwise excellent). A scarce and desirable colored 'Hutch'.

Est.: \$300 - \$600 • Min. bid: \$150



Lot 295

"HARRIS / BREWERY / DAYTON. / O.", Wm. McCully & Co., Pittsburgh Glass Works, 1860 - 1870. Deep olive amber, cylindrical, 2-piece mold, applied sloping collar with bevel - "W. McCULLY & Co PITTSBURGH PA" (on smooth base), ht. 9 3/4"; (trace bit of faint wear, otherwise pristine perfect). A very scarce, to rare, early porter bottle, especially in this outstanding, 'attic' found condition! Note; the Pittsburgh Glass Works advertised making 'black bottles, carboys, demijohns, & c'.

Est.: \$1,500 - \$2,500 • Min. bid: \$800



Lot 292

"CITY BOTTLING WORKS / TOLEDO. OHIO.", probably a Midwest glasshouse, 1870 - 1880. Deep cornflower blue, almost a sapphire coloration, cylindrical, applied elongated large blob collar - smooth base, ht. 6 3/8"; (lightly cleaned with a little minor wear remaining including a shallow 1/8" flake on the base, and another on the inside edge of the lip). Very rare, with only a few known. This most unusual closure was patented in 1862 by Albert Albertson, of NYC.

Est.: \$200 - \$400 • Min. bid: \$100



Lot 296

Demijohn, America, 1875 - 1885. Light sapphire with a lavender hue, almost a "periwinkle blue" coloration, cylindrical, 4-piece mold, applied sloping collar with bevel - smooth base, ht. 11 1/2", attic mint! A subtle, but very pretty color that is definitely a little more unusual. Note, there is a horizontal mold seam near the base of the neck, and the texture of the glass on the neck above the line is more crude, suggesting a mold repair or change in the neck of the bottle. A beautiful example.

Est.: \$300 - \$600 • Min. bid: \$180

Lot 262: Henion's Sure Cure for Malaria



The Henion's Sure Cure For Malaria bottle is unquestionably attractive, colorful and extremely rare. But beyond that, it is one of the most widely recognized patent medicine bottles known and the only other example to share the distinctive, perhaps iconic "Tippecanoe"-type mouth of H. H. Warner's figural log with canoe bottle (patent date of 1883 on it's base).

This fine example was originally discovered by the consignor around 1965 on his family farm in Webster, NY, near Rochester. At the time, he was just a boy and a budding archeologist and treasure hunter. He discovered the bottle along with several other patent medicines in a trash pile on the farm. In addition, the home was still filled with old furniture and other antiques. The consignor has held on to the bottle for more than 50 years. This is the first time that this great bottle is being offered at public auction.

As a further point of interest, the consignor tells us that *"...the entire property was bordered with a stone fence. The family that built the farm used the larger boulders as the outsides of the stone fence and filled the center with trash and smaller rocks. I wonder what treasures are within those walls. Just a random removal found among other things, a jewelry box with civil war veteran medals, glass perfumes and mason jars filled with canned goods....some still sealed."*

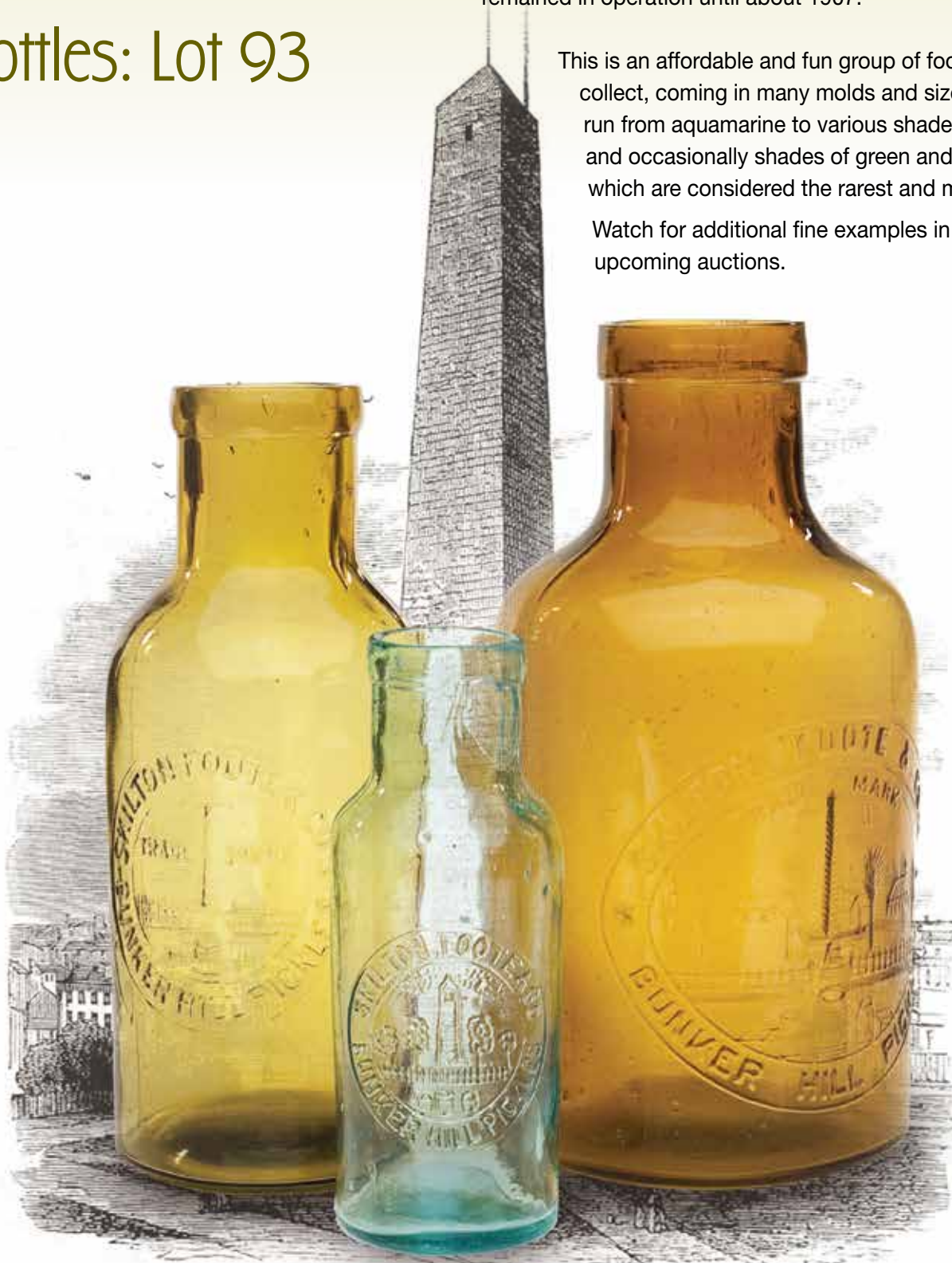


Skilton & Foote Bunker Hill Pickle Bottles: Lot 93

These beautifully embossed food bottles were used for a variety of pickles and sauces produced by The Skilton & Foote Company of Somerville, Mass. which was founded by George C. Skilton in 1860. The firm remained in operation until about 1907.

This is an affordable and fun group of food bottles to collect, coming in many molds and sizes. Colors run from aquamarine to various shades of amber, and occasionally shades of green and citron, which are considered the rarest and most prized.

Watch for additional fine examples in our upcoming auctions.



THE MONUMENT ON BUNKER'S HILL.

Rare and Beautiful, Embossed Pontilled Medicine Bottles



Lot 201

Lot 222

Lot 207

Lot 221

Lot 206

American Glass Gallery

Also opening May 2, 2018 —

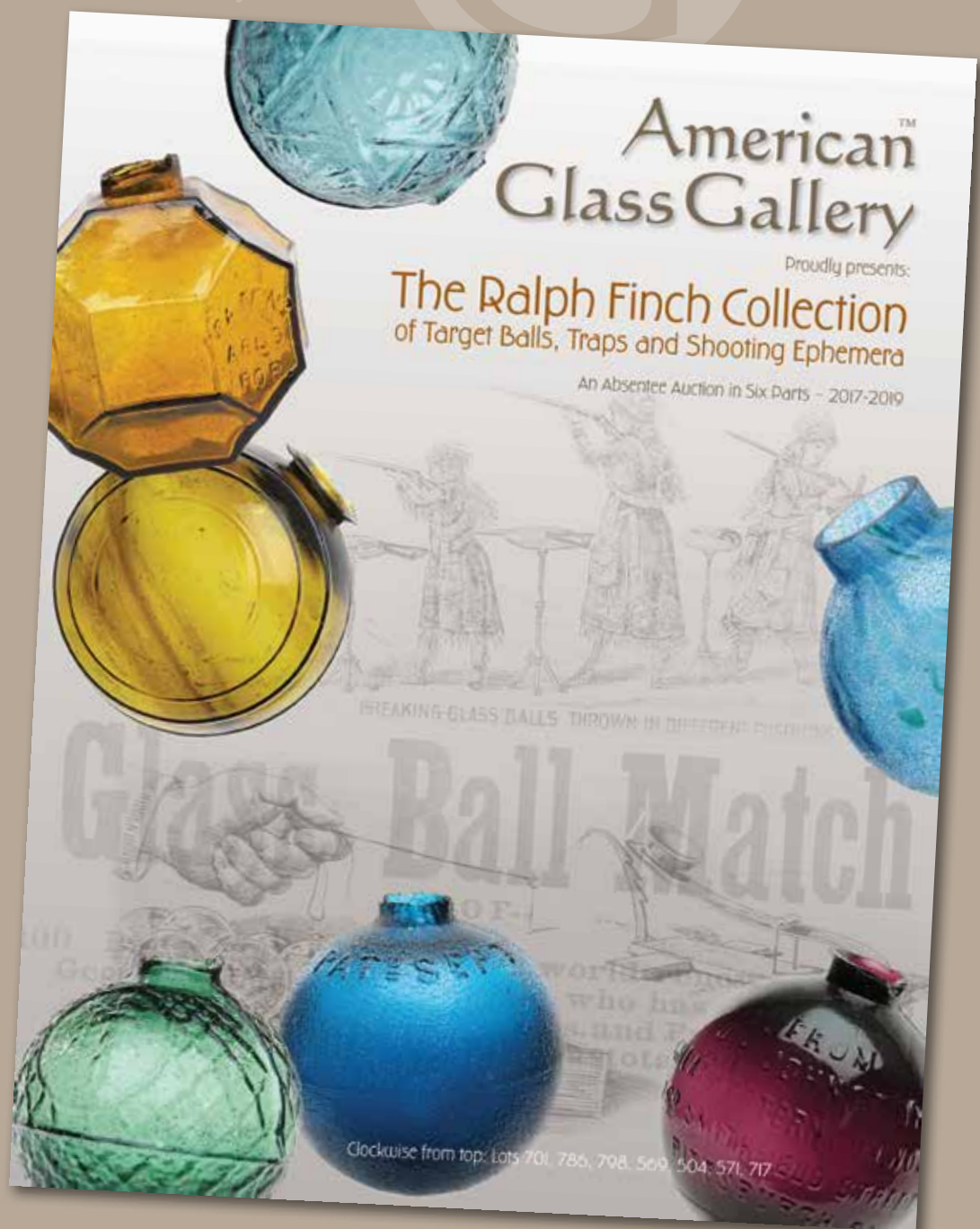
Part 2 of the Ralph Finch Collection of Target Balls, Traps and Shooting Ephemera.

This is the most important and comprehensive collection of Target Balls, Traps, and Shooting Ephemera ever assembled.

The 80-page full-color catalog includes the entire Finch collection and is filled with history and information about target balls, traps, and related objects.

The Finch Collection will be Auctioned in six parts with Part 2 to be sold May 2, 2018 in conjunction with our Spring Bottle Auction. Parts 3 through 6 to be auctioned in 2018 and 2019 (dates to be announced).

For more information, please visit our website: americanglassgallery.com.



Order your Ralph Finch Collection catalog today as copies are limited!