

American Glass Gallery™

Auction #18

Opens May 17, 2017 • Closes May 30, 2017



Lot #170: Rare & Important
Mason's 1858 Fruit Jar in Cobalt Blue

Conditions of Sale

1. Absentee Auction

The items in this sale will be sold via absentee auction, closing date:
May 30, 2017, 11:00 p.m., EST.

2. Our Guarantee Regarding Descriptions

American Glass Gallery has made every attempt to describe correctly the property being sold. Descriptions are guaranteed to be accurate as regards authenticity, age, condition, and measurements to within one-fourth inch, as represented in this catalog. In describing damage, exterior wear or manufacturer's flaws that in our opinion, do not significantly detract visually or monetarily from the value of the item are not listed and will not be considered for refund. The Auctioneers reserve the right to make verbal corrections and provide additional information at any time during the sale.

3. Preview

Items may be viewed by appointment from May 17, 2017 through May 27, 2017.

4. Bidding Procedure

You may submit your bids by mail, phone, FAX, email or through our on-line auction site. If bidding by mail or FAX, please fill out the absentee form and return it to us. Your bid, either written or oral, grants American Glass Gallery the authority to protect you up to the amount of your stated bid. Your bid will not be removed once executed.

Bidding Times: You can submit your bids anytime after receiving your catalog. Bids may be made by phone, daily, until closing day, May 30, 2017, from 9 A.M. - 7 P.M. Eastern Time. Incoming phone bids will be accepted on the closing day (May 30, 2017) until 11 P.M. Eastern Time. Phone calls and Fax bids after this time will not be honored. No exceptions. You may also place your bids through our on-line auction service 24-hours a day once the site has opened for bidding, on or about May 17, 2017, continuing until 11:00 P.M. Eastern Time, May 30, 2017.

Please do not wait until the last day or two of the sale to place your bids! Because many collectors wait until the final few days of the sale to place their bids, we anticipate the telephone and internet bidding to be very busy during that period, so please plan accordingly. In the event of a tie bid, the earliest received bid on the lot will take precedent. We would welcome your bids by phone so that we can answer any questions and assist you in your bidding.

You may also telephone us at any time during the auction, prior to the closing of the sale, to check the status of your bids, to find the current bidding level, to open a bid, or to raise a bid on an auction lot.

Bidding Increments are as follows:

Up to \$250.00.....increments of \$10.00
\$250.00 - \$500.00increments of \$25.00
\$500.00 - \$1,000.00increments of \$50.00
\$1,000.00 - \$2,500.00increments of \$100.00
\$2,500.00 - \$5,000.00increments of \$250.00
\$5,000.00 - \$10,000.00increments of \$500.00
\$10,000 & Up.....increments of \$1,000.00

Bids submitted between the above increments, whether by mail, FAX, email or on-line via the internet, will automatically be lowered to the closest lower increment.

This is a minimum bid auction. Bids below the printed minimum will not be accepted.

An example of how our absentee bidding system works: You bid \$600.00 on a lot which is the highest bid received to date. The second highest bid is \$450.00. The current high bid level would be yours at \$475.00, one bid increment higher than the other collector's bid. Any additional bids submitted by others below \$600.00 will automatically be topped on your behalf by a representative of American Glass Gallery, up to your stipulated high bid amount. If no further bids on this lot are received beyond the \$450.00, and the under bidder has not requested a "Call Back", then you would have won the lot at \$475.00, not the \$600.00 that you were prepared to pay.

American Glass Gallery will at NO TIME disclose bids pledged by others; only the current "High Bid" level of a lot will be stated upon request. The highest bidder as determined by American Glass Gallery shall be the purchaser. It is the sole right of the auctioneer to settle any dispute between bidders and to regulate the bidding procedure. The auctioneer reserves the right to refuse any bid he believes not to have been made in good faith.

5. "Call Back" Process

If requested, the three top bidders of an item at the time of closing will be given a "Call Back" over the next number of days in order to resolve the final sale of an item. You can request this service by "checking" the appropriate box on your absentee bid form or verbal agreement by phone. It is the responsibility of the bidder to insure he has qualified for this service.

Please note: No "Call Backs" will be executed for bids under \$400.00. In the event of tie bids, the earliest bid received will be the winning bid.

An example of how the "Call Back" process works: As an example, you have bid \$600.00 on a particular lot. Another bidder has submitted a bid of \$900.00 on the same lot. Assuming that as of the auction closing date you are among the top three bidders on this lot and you have requested a "Call Back", you would receive a call informing you that you have been "Out Bid" and the current "High Bid" is now at \$650.00. If you choose to continue bidding on this lot, you may now do so. Assuming that you now increase your bid to \$700.00, we would accept your bid but also inform you that we have a higher bid on this lot and must bid \$750.00. At this time, an auction between you and American Glass Gallery, representing the collector who submitted the bid of \$900.00, takes place. This bidding would continue until you drop out, or top the other bidders high bid of \$900.00. If the other bidder has not requested a "Call Back" service, you would be awarded the lot. If however, the other bidder also requested a Call Back, we must now call them. If they elect to increase their bid over your high bid, we would in turn call you back. This back and fourth process would continue until one of the bidders declines to go any farther.

If you have requested a "Call Back", the auctioneers will need to contact you on the days immediately following the auction closing between the hours of 8 A.M. and 9 P.M. Eastern Time. Please supply us with all appropriate contact phone numbers including, home, mobile and work numbers. Bidders must provide the appropriate telephone numbers where they can be contacted. If you will be traveling or otherwise unavailable, bidders with "Call Back" privileges will have the responsibility to contact American Glass Gallery twice daily during the Call Back period.

Please note, every effort will be made to contact you during the "Call Back" period. However, the bidder will forfeit their rights to a "Call Back" if the auctioneers are unable to reach them. American Glass Gallery reserves the right to discontinue Call Backs on any item in the sale (2) two days after the closing date of the sale. At that time, the current "High Bidder" may be awarded the item even if Call Backs are still outstanding.

6. Terms

Successful Bidders, Prompt and full payment is due immediately upon receipt of our invoice. Absolutely no exceptions. Anyone failing to pay for items won will forfeit all rights to bid in any future American Glass Gallery sales. *Any late or delayed payments may result in loss of return privileges for items purchased in the sale.*

No Items Will Be Mailed Before Full Payment Is Received.

Buyer Premium: A 15% buyer's premium will be added to the hammer price (18% if paying by Credit Card or PayPal), to be paid by the buyer as part of the purchase price. For example, if you purchase a lot for \$100.00, you will receive an invoice for \$115.00 if paying by cash, check or money order, plus any applicable sales tax or shipping charges.

Taxes: If you are a Michigan resident, a 6% sales tax will be added to your bill unless you have a valid resale number registered with us.

Shipping: Shipping, handling and insurance are extra. We ship insured via U.S. Mail. These charges will be added to your bill unless the lots are picked up in person. Our charges for shipping (excluding foreign shipments and oversized lots) are \$18.00 for the first item, \$9.00 for each additional item together with extra insurance costs (we use current U.S. Postal Service insurance rates).

Please allow two to three weeks for delivery after receipt of your check.

Payment: American Glass Gallery accepts Cash, Money Orders, Personal Checks, Visa, MasterCard, American Express and PayPal. *If paying by Credit Card or PayPal, an additional 3% will be added to the invoice total.*



7. Refunds

Refunds will be given at the discretion of the Auctioneers. Items purchased must be examined and request for refund made immediately upon receipt of the item or items. Since opinions can differ, particularly in the matter of condition, the Auctioneers will be the sole judge in the consideration of refunds. Refunds requested on the grounds of authenticity must be made within 15 days of the date of the auction, and such refund requests must be accompanied by at least one supporting statement in writing from an authority recognized by the Auctioneers. It is the Auctioneers sincere intention to consider any reasonable request for a refund. *Absolutely no returns for any reason after 30 days following the closing of the sale.*

8. Bidding on any item indicates your acceptance of these terms.



American Glass Gallery™

John R. Pastor
P.O. Box 227
New Hudson, Michigan 48165
Phone: 248.486.0530
Fax: 248.486.0538
www.americanglassgallery.com
email: jpastor@americanglassgallery.com

PLEASE NOTE:

The lots offered in this printed catalog are identical to the lots offered in the on-line catalog. However, due to space constraints of the printed catalog, there may be some further information available regarding some of the lots in the on-line auction descriptions.

Please visit us at

www.americanglassgallery.com

and follow the link to the on-line auction.

The link and on-line auction will be available May 17, 2017.

A post-auction price list will be available on our website, in printable form, by June 16.

We encourage you to contact us by phone or email with any questions, for assistance with bidding, or further details or clarification on any of the lots in this sale. Your complete satisfaction and confidence is our goal!

We look forward to having you participate in our next sale, either as a buyer or a consignor. Our next absentee auction is scheduled for Fall, 2017. We already have some wonderful items consigned to this sale and look forward to discussing with you any quality items you wish to consign!

**THANK YOU AND GOOD LUCK
WITH YOUR BIDS!**

Reference Key

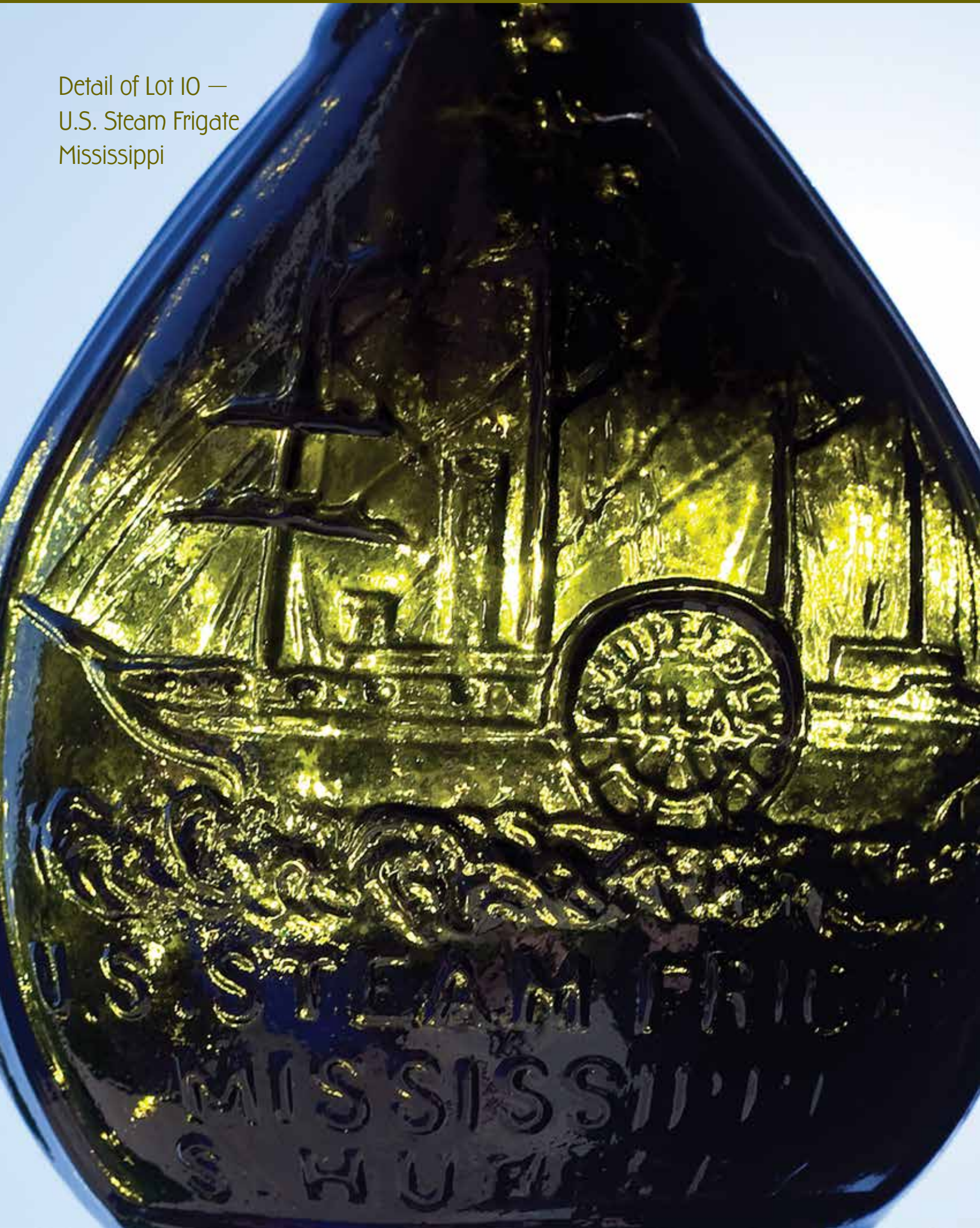
Reference initials and numbers used in the description of this catalog refer to the following publications:

AHG	<i>American Historical Glass</i> , Bessie M. Lindsey, 1967
AM	<i>The Decanter - An Illustrated History of Glass from 1650</i> , Andy McConnell, 2004
AP	<i>Glass in Early America</i> , Arlene Palmer, 1993.
BA1	<i>Collecting The Cures</i> , Bill Agee, 1969
BA2	<i>Collecting All Cures</i> , Bill Agee, 1973.
BB	<i>A Bit About Balsams</i> , Betty Blasi, 1974
BH	<i>Classification and Documentation of Sunburst and Similar Scent Bottles</i> , Bill Ham, AB&GC, 5/87
B/K	<i>The Glass Industry in Sandwich</i> , Raymond Barlow and Joan Kaiser, 1989.
C	<i>Ink Bottles and Inkwells</i> , William Covill, 1971.
DeG	<i>American Sarsaparilla Bottles</i> , John DeGrafft, 1980.
DeGII	<i>Supplement to American Sarsaparilla Bottles</i> , John DeGrafft, 2004.
DF	<i>Hair Raising Stories</i> , Don Fadely, 1992.
DM	<i>Wistarburgh, Window Tiles, Bottles and More</i> , Dale L. Murscell, 2007.
F	<i>Inks, 150 Years of Bottles and Companies</i> , Ed and Lucy Faulkner.
FA	<i>John Frederick Amelung, Early American Glassmaker</i> , Lanmon, Palmer, Hume, Brill, Hanson, 1990.
FB	<i>A.S.C.R. The wine bottles of All Souls College</i> , Oxford, 1750 – 1850, Fay Banks.
G	(Flasks) <i>American Bottles & Flasks and Their Ancestry</i> , McKearin & Wilson, 1978.
G	(Blown Three Mold) <i>American Glass</i> (Chapter VI), George S. and Helen McKearin, 1941.
GBH	<i>English Glass For The Collector, 1660-1860</i> , G. Bernard Hughes, 1958.
H	<i>American Bottles in the Charles B. Gardner Collection</i> , Norman C. Heckler, 1975.
JB	<i>Patent and Proprietary Medicine Bottles</i> , Joseph K. Baldwin, 1973
JEB	<i>Glasshouse Whimsies</i> , Joyce E. Blake, 1984.
JH	<i>Glasshouses & Glass Manufacturers of the Pittsburgh Region, 1795 – 1910</i> , Jay W. Hawkins, 2009.
JS	<i>In glas verpakt – European Bottles, Their history and production</i> , Johan Soetens, 2001.
K	<i>Poison Bottle Workbook</i> , Rudy Kuhn, 1988.
KW	<i>New England Glass & Glassmaking</i> , Kenneth M. Wilson, 1972.
L	<i>The Red Book of Fruit Jars, No. 11</i> , Douglas M Leybourne, Jr., 2014.
LI	<i>Pittsburgh Glass, 1797 – 1891</i> , Lowell Innes, 1976.
Mc	<i>Two Hundred Years of American Blown Glass</i> , Helen and George McKearin, 1950.
McK	<i>American Glass</i> , George S. and Helen McKearin, 1941.
MW	<i>American Bottles & Flasks and Their Ancestry</i> , McKearin & Wilson, 1978.
N	<i>Great American Pontiled Medicines</i> , Frederick Nielson, 1978.
NCH	<i>The Blaske Collection of American Flasks</i> , Norman C. Heckler, 1983.
NCH II	<i>The Blaske Collection: Part II</i> , Norman C. Heckler, 1983.
Odell I	<i>Indian Bottles and Brands</i> , John Odell, 1977
Odell II	<i>Pontiled Medicine Encyclopdia</i> , John Odell, 2007
O&S	<i>Warner's Reference Guide</i> , Ed Ojea and Jack Stecher, 1998.
P	<i>The Glass Gaffers of New Jersey</i> , Adeline Pepper, 1971.
RD	<i>Understanding Antique Wine Bottles</i> , Roger Dumbrell, 1983.
RF	<i>The Bottle Book: A Comprehensive Guide to Historic, Embossed Medicine Bottles</i> , Richard Fike, 1987
RH	<i>Collecting Barber Bottles</i> , Richard Holiner, 1986.
R/H	<i>Bitters Bottles</i> , Carlyn Ring and W. C. Ham, 1998.
RWL	<i>Antique Fakes & Reproductions</i> , Ruth Webb Lee, 1950
T	<i>Collectors Guide to Saratoga Type Mineral Water Bottles</i> , Donald Tucker, 2005.
U	<i>Collectible Character Bottles</i> , Authur Umberger, 1969.
V	<i>Nailsea Glass</i> , Keith Vincent, 1975
VdB	<i>Antique Glass Bottles; Their History and Evolution</i> , Willy Van den Bossche, 2001.
WL	<i>A Wine-Lover's Glasses, The A.C. Hubbard, Jr. Collection</i> , Ward Lloyd, 2000.
Z	<i>Ketchup, Pickles, Sauces</i> , Betty Zumwalt, 1980.
ZW	<i>Color Hutchinsons</i> , Zang Wood, 1999.

- The dash is generally used to indicate that the descriptions are on opposite sides of the bottle or flask.

/ The slash is used to indicate that the descriptions are on different lines or surfaces of the bottle.

Detail of Lot 10 —
U.S. Steam Frigate
Mississippi



Rare and Colorful 1858 Mason Jars

In the mid 19th century, the United States was rapidly expanding and moving west. Large families were common on the farms. It became even more important to successfully preserve food. During this time, many patents were issued regarding the proper sealing of jars and other containers.

On November 30 1858, John Mason, a sheet metal fabricator from New York, was granted the patent for a metal lid that would seal on the shoulder of the jar. This patent proved to be the most successful and is utilized to this day.

The rights to John Mason's patent expired in 1870. Prior to that date, only a limited number of closures and jars were made. After 1870, over 500 companies eventually became involved in manufacturing jars using Mason's

patent lids thus creating a wide variety of examples that are very collectible today.

Known sizes range from half pint to a 5 gallon example. Pint, quarts and half gallons were most common due to ease of handling while canning. Larger specimens were used mainly for promotion and the half pint was considered a salesman's sample which make them highly sought after at present. Scarce examples and colors of the common sizes are also very collectible.

Doug Leyboune, Jr.
Author, *Red Book of Fruit Jars*

Auctioneer's Note: All of the quart Mason Jars in this sale are from the collection of Charles Compton. Charles had a great eye for beautiful jars, which is evident in the selection of fine colors and rare molds that are included in this sale.

Lot 172



Lot 171



Lot 173

Pontiled Medicines — For What Ails You...



Lot 266

Lot 265

Lot 268

Lot 269

Lot 267

Lot 272

Fancy Rare Bitters Bottles

Bitters

Lot 225



Lot 223

Lot 214

Lot 240

Lot 208

Colorful & Historical Calabash Bottles

Calabash



Lot 6

Lot 7

Lot 13



Lot 1

"G. GEO. WASHINGTON" / BUST OF WASHINGTON - EAGLE / "FL" Historical Flask, Frederick R. Lorenz & Company, Pittsburgh, PA, 1825 - 1835. Rich, deep aquamarine, sheared mouth - blowpipe pontil scar, Pt, near mint; (just a little fine light high point wear on the bust, as is often the case, otherwise virtually attic mint). GI-7. A rare and desirable mold, beautiful overall condition with a nice impression.

Est.: \$1,800 - \$3,200 • Min. bid: \$1,000



Lot 5

"JENNY LIND" / BUST OF JENNY LIND - "GLASS WORKS" / GLASS FACTORY / "S. HUFFSEY" Historical Calabash, probably Isabella Glass Works, Brooklyn, NJ, 1850 - 1860. Beautiful, light blue green, applied sloping collar with bevel - blowpipe pontil scar, Qt, attic mint!. GI-99. Beautiful condition, attractive delicate color, a lot of bottle for the money.

Est.: \$250 - \$400 • Min. bid: \$150



Lot 2

"G. WASHINGTON." / BUST OF WASHINGTON - EAGLE Historical Flask, an early Pittsburgh glasshouse, 1825 - 1835. Aquamarine, sheared mouth - blowpipe pontil scar, Pt, very near mint; (just the slightest touch of fine high point wear; a small 1/8" open bubble on the inside of the neck, and a trace of minor washable residue). GI-10. A scarce mold, excellent condition, very strong impression through the shoulders.

Est.: \$600 - \$900 • Min. bid: \$300



Lot 6

"JENNY LIND" / BUST OF JENNY LIND - "GLASS WORKS" / GLASS FACTORY / "S. HUFFSEY" Historical Calabash, Isabella Glass Works, Brooklyn, NJ, 1850 - 1860. Brilliant citron with an olive tone, applied sloping collar with bevel - blowpipe pontil scar, Qt; (a few pinhead open bubbles; a tiny potstone in the base with a couple of 1/8" "legs", a trace of very faint interior haze). GI-99. A gorgeous, rare color, outstanding character, the glass is absolutely filled with seed bubbles! Ex. Chris Hartz collection.

Est.: \$1,800 - \$3,200 • Min. bid: \$1,000



Lot 3

"WASHINGTON" / BUST OF WASHINGTON - "JACKSON" / BUST OF JACKSON Historical Flask, Keene Marlboro Street Glassworks, Keene, NH, 1825 - 1842. Yellowish golden amber, sheared mouth - blowpipe pontil scar, Pt; (a little scattered high point wear; a shallow 1/8" flake on the medial rib and tiny pinhead flake on the sheared mouth, a little light washable residue, otherwise excellent). GI-31. A nice bright example in a pure amber color, and with a great impression!

Est.: \$300 - \$500 • Min. bid: \$150



Lot 7

"JENNY LIND" / BUST OF JENNY LIND - GLASS FACTORY Historical Calabash, Ravenna Glass Works, Ravenna, OH, 1857 - 1865. Medium to deep sapphire blue, applied round collar - red iron pontil scar, Qt; (a small potstone in the shoulder has a couple of tiny 1/16" "legs", and a 1/4 iridescent bruise near the edge of the base, otherwise excellent!) GI-104. A beautiful example, displays as near attic mint. Fantastic color, deeper than most, the noted condition issues are both fairly minor.

Est.: \$2,000 - \$4,000 • Min. bid: \$1,000



Lot 4

"WASHINGTON" / BUST OF WASHINGTON - "JACKSON" / BUST OF JACKSON Historical Flask, probably Keene Marlboro Street Glassworks, Keene, NH, 1825 - 1842. Bright, medium green, almost a forest green, sheared mouth - blowpipe pontil scar, Pt; (some moderate high point wear, primarily on the reverse, and a couple of light scratches on the obverse, otherwise excellent). GI-31. An outstanding and rare color for this mold in a pure green color with a forest tone.

Est.: \$400 - \$800 • Min. bid: \$200



Lot 8

"JENNY LIND" / BUST OF JENNY LIND - GLASS FACTORY Historical Calabash, Ravenna Glass Works, Ravenna, OH, 1857 - 1860. Deep aqua, applied round collar - heavy iron pontil scar, Qt, virtually attic mint! GI-105. Often referred to as the "smoke up" Jenny Lind. A rare and desirable mold with only one other example being offered at auction in more than 10 years. This particular example is "fresh to the market" and was found in a barn in western Pennsylvania near the Ohio boarder.

Est.: \$800 - \$1,200 • Min. bid: \$400



Lot 9

BUST OF JENY LIND / LYRE - (Reverse same), Historical Flask, probably McCarty & Torreyson Glass Works, Wellsburg, West Virginia, 1850 - 1855. Aquamarine, sheared mouth - blowpipe pontil scar, Pt, virtually attic mint; (a tiny, pinprick bit of roughness at the edge of the sheared mouth). GI-108. A clean, bright, sparkling example. Scarce mold. Provenance: James Becker collection.

Est.: \$700 - \$1,200 • Min. bid: \$400



Lot 13

"KOSSUTH" / BUST OF KOSSUTH - TREE Historical Calabash, America, 1852 - 1860. Medium green with a lime tone, applied sloping collar - blowpipe pontil scar, Qt, very near mint; (1/4" flake at base edge, otherwise perfect). GI-113. A very scarce and attractive color for this mold, one that you are not likely to see again for a while!

Est.: \$600 - \$900 • Min. bid: \$300



Lot 10

"LOUIS KOSSUTH" / BUST OF KOSSUTH - STEAM FRIGATE / "U.S. STEAM FRIGATE / MISSISSIPPI / S. HUFFSEY" Historical Calabash, probably Milford Glass Works, Milford, NJ, 1852 - 1860. Dark olive green, applied sloping collar - **"PH. DOFLEIN / MOULD MAKER / NTH 5! ST 84"** (on base), large, heavy blowpipe pontil scar, Qt, attic mint! GI-112. An exceptional example, in a very rare color! Provenance: Ex. Fred Weck collection.

Est.: \$8,000 - \$16,000 • Min. bid: \$4,000



Lot 14

"KOSSUTH" / BUST OF KOSSUTH - TREE Historical Calabash, America, 1852 - 1860. Brilliant yellow with an olive tone, applied sloping collar with bevel - blowpipe pontil scar, Qt, virtually attic mint; (just a slight trace of typical very minor wear and an open bubble on the interior of the neck, otherwise perfect). GI-113. Beautiful color that will stand out on a shelf. Provenance: Ex. Judge Blaske collection #256.

Est.: \$600 - \$900 • Min. bid: \$300



Lot 11

"KOSSUTH" / BUST OF KOSSUTH - TREE Historical Calabash, America, 1852 - 1860. Bluish aquamarine, applied sloping collar with bevel - iron pontil scar, Qt, near mint; (a couple of flakes, approximately 1/8", on the underside of the beveled collar; a touch of very minor wear including a pinprick bit of roughness on the edge of the lip). GI-113. A nice example and a little harder to find with the iron pontil scar.

Est.: \$100 - \$200 • Min. bid: \$60



Lot 15

BUST OF BYRON - BUST OF SCOTT Portrait Flask, probably an early Stoddard glasshouse, Stoddard, NH, 1842 - 1850. Yellowish golden amber, sheared mouth - blowpipe pontil scar, 1/2 Pt, virtually attic mint; (a touch of typical, faint minor wear, otherwise perfect). GI-114. Nice with an elongated neck and large blob of extra glass on the interior of the shoulder (with no associated issues). A somewhat unusual color for this mold, more often found with strong olive tones.

Est.: \$200 - \$400 • Min. bid: \$120



Lot 12

"KOSSUTH" / BUST OF KOSSUTH - TREE Historical Calabash, America, 1852 - 1860. Light to medium apple-green, applied sloping collar - blowpipe pontil scar, Qt; (just a trace of typical, very light exterior wear, otherwise attic mint!) GI-113. McKearin does list a light green for this mold which was reported by flask collector Richard H. Wood. A scarce color, this one being a bit lighter in tone than Lot #13, but worlds apart from aquamarine!

Est.: \$300 - \$600 • Min. bid: \$180



Lot 16

BUST OF COLUMBIA - EAGLE / "B&W" Historical Flask, probably Kensington Glass Works, 1825 - 1835. Bright aquamarine, sheared mouth - blowpipe pontil scar, Pt, near mint; (a minor 3/16" flake on the inside edge of the sheared mouth; a shallow, paper-thin pontil flake extends to the edge of the base, but cannot be seen from the side, otherwise perfect!) GI-121. A bright, clean, crisp example of this scarce flask.

Est.: \$250 - \$450 • Min. bid: \$150



Lot 17

EAGLE - SUNBURST Historical Flask, an early Pittsburgh district glasshouse, 1820 - 1835. Colorless with a pale vaseline tint through the base, sheared mouth - interesting glass-tipped pontil scar with an iron oxide deposit in the center, Pt, near mint; (some minor exterior high point wear). GII-7. A rare and desirable mold, scarce color. These plump, early Pittsburgh 'Beaded Eagles' have always been held in high esteem. Ex. Jack Whistance collection.

Est.: \$5,000 - \$10,000 • Min. bid: \$2,500



Lot 18

EAGLE - CORNUCOPIA Historical Flask, an early Pittsburgh district glasshouse, 1825 - 1835. Brilliant, deep aquamarine, sheared mouth - blowpipe pontil scar, ½ Pt; (just a touch of typical, very minor light wear, and an in-manufacture pontil flake that extends to the edge of the narrow base, otherwise near attic mint). GII-11. A bright, clean little flask, scarce early beaded mold, and having a nice "look" with the extended neck.

Est.: \$500 - \$1,000 • Min. bid: \$300



Lot 19

"LIBERTY" / EAGLE - "WILLINGTON / GLASS / Co / WEST WIL-LINGTON / CONN" Historical Flask, Willington Glass Works, 1860 - 1872. Medium olive, applied double round collar - smooth base, ½ Pt; (a little light exterior wear; a ¼" area of minor roughness on the top edge of the lip, and some scattered light interior haze or residue, some of which would likely wash out). GII-63. Crude glass, nicely whittled.

Est.: \$200 - \$400 • Min. bid: \$120



Lot 20

EAGLE - CORNUCOPIA Historical Flask, Keene Marlboro Street Glassworks, Keene, NH, 1830 - 1842. Yellowish golden amber, sheared mouth - blowpipe pontil scar, Pt, virtually attic mint. GII-73. A great example in a pure amber coloration, nice character, and with virtually no high point wear as is often found on these flasks.

Est.: \$175 - \$350 • Min. bid: \$100



Lot 21

EAGLE - CORNUCOPIA Historical Flask, Keene Marlboro Street Glassworks, Keene, NH, 1830 - 1842. Medium olive green, sheared mouth - blowpipe pontil scar, Pt, virtually attic mint. GII-73. Another great example, this one in an olive coloration contrasting nicely with the previous lot. Nice character, and again, with virtually no high point wear.

Est.: \$175 - \$350 • Min. bid: \$100



Lot 22

EAGLE - CORNUCOPIA Historical Flask, New England, possibly Keene Marlboro Street Glassworks, 1830 - 1842. Rich, brilliant aquamarine, sheared and inward rolled mouth - blowpipe pontil scar, Pt; (just the slightest trace of faint wear, otherwise perfect!) GII-74. A very bright, clean, eye-appealing example with plenty of nice bubbles and impurities throughout.

Est.: \$250 - \$450 • Min. bid: \$150



Lot 23

EAGLE - EAGLE Historical Flask, probably Granite Glass Works, Stoddard, NH, 1846 - 1862. Yellowish olive amber, sheared mouth - blowpipe pontil scar, Qt; (some relatively minor high point wear as is common on this mold, and a 3/16" open bubble on the base, otherwise very near mint). GII-78. A very nice example, beautiful glass, the quarts are attractive, scarce, and much harder to find than the pints.

Est.: \$400 - \$800 • Min. bid: \$250



Lot 24

EAGLE / "GRANITE. / GLASS. CO" - EAGLE / "STODDARD / NH" Historical Flask, Granite Glass Works, 1846 - 1862. Yellowish olive amber, sheared mouth - blowpipe pontil scar, Pt; (a little exterior wear including some scratches within the oval frame on the obverse; an 1/8" flake on the edge of the sheared mouth may have been lightly polished, a shallow in-making pontil flake extends to the edge of the base). GII-81. Nice clarity and character to the glass.

Est.: \$150 - \$250 • Min. bid: \$80



Lot 25

EAGLE - EAGLE / "STODDARD / N.H." Historical Flask, probably Granite Glass Works, Stoddard, 1846 - 1862. Olive amber, sheared mouth - blowpipe pontil scar, Pt; (just a touch of minor wear including a tiny, pinprick flake at the edge of the sheared lip; a little spotty, light interior residue or haze, much of which would likely wash out). Gll-82. Noted as "Scarce" by McKearin.

Est.: \$175 - \$350 • Min. bid: \$100



Lot 29

EAGLE / "PITTSBURGH / PA" - EAGLE Historical Flask, a Pittsburgh district glasshouse, 1860 - 1870. Dense olive, virtually black, applied mouth with flat band - smooth base, Pt; (some high point wear on the pennant as well as the shield on the reverse, and a little scattered exterior wear, otherwise excellent). Gll-107. A very scarce mold, one that does not come around often! Provenance: Ex. Charles Gardner collection.

Est.: \$400 - \$600 • Min. bid: \$200



Lot 26

EAGLE / "X" - EAGLE Historical Flask, a Stoddard, New Hampshire glasshouse, possibly Granite Glass Works, 1846 - 1862. Yellowish olive amber, sheared mouth - blowpipe pontil scar, 1/2 Pt, attic mint! Gll-87. A great example of this flask having a good strong mold impression and nice texture to the glass.

Est.: \$150 - \$250 • Min. bid: \$80



Lot 30

EAGLE / "PITTSBURGH / PA" - EAGLE Historical Flask, a Pittsburgh district glasshouse, 1860 - 1870. Rich, medium to deep olive green, applied mouth with flat band - smooth base, Pt, near mint; (a tiny, barely pinhead bit of roughness on the edge of the applied mouth and a little minor exterior wear, primarily on the reverse). Gll-108. A nice example, good rich color.

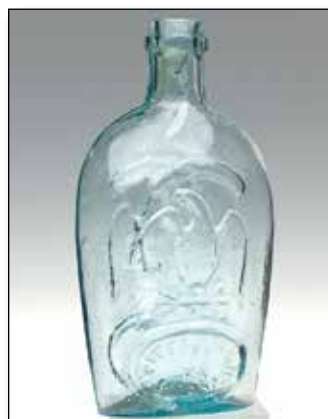
Est.: \$300 - \$500 • Min. bid: \$180



Lot 27

EAGLE - EAGLE Historical Flask, a Pittsburgh district glasshouse, 1860 - 1870. Medium grass green, almost a yellowish lime color, applied ring-type collar - smooth base, 1/2 Pt, virtually attic mint. Gll-95. A great example and a rare color for this mold, much stronger than normally encountered, similar to the example we sold in our May, 2014 Auction.

Est.: \$800 - \$1,200 • Min. bid: \$400



Lot 31

EAGLE / "PITTSBURGH / PA / McC&Co." - EAGLE Historical Flask, Wm. McCully & Co., Pittsburgh, 1860 - 1870. Aquamarine, applied collar with flat band - smooth base, Pt, near mint; (just a trace of minor wear including a couple of pinhead open surface bubbles, and a shallow 1/8" flake on the flat collar band). Gll-113. For you mold collectors, here is a very nice example that is listed by McKearin as "Scarce".

Est.: \$175 - \$275 • Min. bid: \$100



Lot 28

EAGLE / "PITTSBURGH / PA" - EAGLE Historical Flask, a Pittsburgh district glasshouse, 1860 - 1870. Bright medium yellowish-olive, crudely applied mouth with flat band - smooth base, Pt, virtually attic mint; (a few minor in-manufacture crazing lines in the applied mouth; a couple of tiny pinhead open surface bubbles, otherwise perfect!) Gll-105. A beautiful example, attractive color, and the glass is full of tiny seed bubbles!

Est.: \$400 - \$600 • Min. bid: \$200



Lot 32

EAGLE / MONUMENT & FLAG - INDIAN SHOOTING BIRD Historical Flask, probably Cuninghams & Co., Pittsburgh, 1865 - 1875. Aquamarine, applied mouth with flat band - smooth base, Qt; (just a slight trace of faint wear, otherwise "out of the mold", sparking attic mint). Gll-141. Listed by McKearin as "Very rare" and included in Group C, "Rare flasks". It is also rare to find this flask with this nice of an impression, clean, bright, and sparking. A top example of this rare mold.

Est.: \$250 - \$400 • Min. bid: \$140



Lot 33

Lot of (2), CORNUCOPIA - URN Pictorial Flasks, New England, probably Keene, NH, or Coventry, CT, 1835 - 1850. Yellowish golden amber with an olive tone and light to medium yellowish-olive, both with sheared mouths - blowpipe pontil scarred bases, ½ Pts; (the amber example has a couple of 1/8" flakes along edge of sheared lip and a little minor wear; the light yellowish-olive example is virtually attic mint). Gill-7 & Gill-10. Beautiful, scarce color on the yellow olive flask.

Est.: \$175 - \$350 • Min. bid: \$100



Lot 34

Lot of (2), CORNUCOPIA - URN Pictorial Flasks, New England, probably Keene, NH, or Coventry, CT Glassworks, 1835 - 1850. Bright yellowish olive amber and clear, medium olive green, both with sheared mouths - blowpipe pontil scarred bases, ½ Pts; (some high point wear on cornucopia of the yellowish olive amber example, both are otherwise near mint). Both examples, Gill-10. Both examples are beautiful, bubbly, and with nice character and clarity.

Est.: \$175 - \$350 • Min. bid: \$100



Lot 35

CORNUCOPIA - URN Pictorial Flask, probably Mt. Vernon Glass Works, Vernon, New York, 1830 - 1844. Rich, medium to deep olive with a forest green tone, sheared mouth - blowpipe pontil scar, ½ Pt; (a ¾" long by ¼" wide in-manufacture pontil chip at edge of base, otherwise virtually attic mint). Gill-11. A very heavy flask, crude glass, shards of which have been excavated at the Mt. Vernon Glass Works.

Est.: \$200 - \$400 • Min. bid: \$100



Lot 36

CORNUCOPIA - URN Pictorial Flask, Lancaster Glass Works, Lancaster, NY, 1849 - 1855. Beautiful, medium blue green, heavy applied ring-type collar - blowpipe pontil scar, Pt, near mint; (a minor, 1/8", paper-thin little scuff or flake on the edge of the collar, and a shallow flat pontil flake that extends to the edge of the base on the reverse, otherwise excellent!) Gill-17. A very attractive example, nice character and clarity with crude, wavy, bubbly glass.

Est.: \$700 - \$1,200 • Min. bid: \$400



Lot 37

MASONIC ARCH - EAGLE / "IP" Historical Flask, Keene Marlboro Street Glassworks, Keene, NH, 1815 - 1830. Medium blue-green, sheared mouth with small tooled ring collar - blowpipe pontil scar, Pt; (just a trace of light wear, primarily on the reverse, otherwise sparkling attic mint!) GIV-1. A beautiful example, good impression, nice condition, plenty of eye-appeal.

Est.: \$300 - \$500 • Min. bid: \$180



Lot 38

MASONIC ARCH - EAGLE Historical Flask, probably Keene Marlboro Street Glassworks, Keene, NH, 1815 - 1830. Deep aquamarine approaching a blue-green, sheared mouth - blowpipe pontil scar, Pt; (a little patchy light interior residue or faint haze; a bubble near the base on one of the medial ribs has a 3/16" opening). GIV-10a. A very scarce mold, believed to be one of only two examples offered at auction in more than 10 years. A crude example, strong mold impression.

Est.: \$600 - \$900 • Min. bid: \$300



Lot 39

MASONIC ARCH - EAGLE Historical Flask, New England, possibly Keene Marlboro Street Glassworks, Keene, NH, 1820 - 1830. Clear, light blue green, applied sloping collar with bevel - likely a very delicate sand type pontil, Pt, virtually attic mint; (just a trace of faint wear and a couple of minor, paper-thin flat flakes at edge of base, otherwise perfect). GIV-16. A very rare, desirable flask, especially with the attractive medicine-type collar. Bright, clean, with excellent clarity, condition and eye-appeal.

Est.: \$6,000 - \$12,000 • Min. bid: \$3,000



Lot 40

MASONIC ARCH - EAGLE / "KEENE" Historical Flask, Keene Marlboro Street Glassworks, Keene, NH, 1820 - 1830. Medium to deep olive coloration, sheared mouth - blowpipe pontil scar, Pt; (some scattered high point wear). GIV-17. A scarce color for this flask in a pure green coloration, having no trace of amber. Provenance: Ex. Judge E.S. MacKenzie collection.

Est.: \$250 - \$450 • Min. bid: \$150



Lot 41

MASONIC ARCH - EAGLE / "KCC-NE" Historical Flask, Keene Marlboro Street Glassworks, Keene, NH, 1820 - 1830. Bright yellowish olive amber, sheared mouth - blowpipe pontil scar, Pt, attic mint. GIV-19. A beautiful example with plenty of yellowish tones and nice character with crude, seedy glass.

Est.: \$250 - \$450 • Min. bid: \$150



Lot 45

MASONIC - "ZANESVILLE" / EAGLE / "OHIO / J. SHEPARD & CO", Historical Flask, Zanesville Glassworks, 1822 - 1832. Brilliant yellow through the shoulders shading to a warmer yellowish-honey coloration in the lower half, sheared mouth - blowpipe pontil scar, Pt, near mint; (a couple of tiny open surface bubbles). GIV-32. Gorgeous, outstanding color, nice impression, beautiful!

Est.: \$1,800 - \$3,600 • Min. bid: \$1,000



Lot 42

MASONIC ARCH - EAGLE Historical Flask, Keene Marlboro Street Glassworks, Keene, NH, 1820 - 1830. Medium olive amber with some deeper olive tones through the shoulders and neck, sheared mouth - blowpipe pontil scar, Pt; (a little exterior wear including a 1/4" area of minor roughness at the edge of the base; a couple of patches of minor interior stain). GIV-21. Noted by McKearin as "Comparatively scarce", and not an easy mold to acquire.

Est.: \$250 - \$450 • Min. bid: \$150



Lot 46

MASONIC - "ZANESVILLE" / EAGLE / "OHIO / J. SHEPARD & CO", Historical Flask, Zanesville Glassworks, Zanesville, OH, 1822 - 1832. Golden amber with a rich orange tone through the lower third of the flask, shear mouth - blowpipe pontil scar, Pt; (a minor, pinhead flake on the top edge of the lip and some scattered light high point wear as is common on this mold, otherwise, near mint). GIV-32. Very good impression, clarity and color.

Est.: \$600 - \$900 • Min. bid: \$300



Lot 43

MASONIC ARCH - EAGLE Historical Flask, Keene Marlboro Street Glassworks, Keene, NH, 1820 - 1830. Clear, medium olive amber, sheared mouth - blowpipe pontil scar, 1/2 Pt; (just a slight trace of very minor wear, otherwise sparkling attic mint). GIV-24. A great example with a crisp, strong, mold impression and crude pebbly glass, outstanding condition.

Est.: \$300 - \$500 • Min. bid: \$150



Lot 47

MASONIC - "ZANESVILLE" / EAGLE / "OHIO / J. SHEPARD & CO", Historical Flask, Zanesville Glassworks, Zanesville, OH, 1822 - 1832. Deep bluish aquamarine, sheared mouth - blowpipe pontil scar, Pt, attic mint! GIV-32. A great example in every way - strong color, crisp, bold, much better-than-average mold impression, and nice crude glass with excellent character.

Est.: \$500 - \$800 • Min. bid: \$250



Lot 44

MASONIC ARCH - EAGLE / "NEG Co" Historical Flask, New England Glass Co, Cambridge, MA, 1818 - 1830. Brilliant aquamarine, sheared mouth - blowpipe pontil scar, Pt; (an onionskin-thin open surface bubble; a shallow, in-manufacture pontil flake that extends to the edge of the base, otherwise perfect). GIV-27. A comparatively scarce mold, bright, clean, and with virtually no high point wear as is common on these early Masonics. Ex. Seagram Glass Museum collection.

Est.: \$400 - \$800 • Min. bid: \$200



Lot 48

MASONIC ARCH / FARMERS ARMS - FRIGATE / "FRANKLIN" Historical Flask, probably an early Pittsburgh - Monongahela area glasshouse, 1820 - 1830. Greenish aquamarine, sheared mouth - blowpipe pontil scar, Pt; (just a touch of minor, light exterior wear and a trace of very faint interior haze, otherwise excellent). GIV-36. Good depth of color and strength of impression. As noted by McKearin, a rare, early mold.

Est.: \$500 - \$800 • Min. bid: \$250



Lot 49

CLASPED HANDS / SQUARE & COMPASS / "UNION" - EAGLE / "A.R.S." Historical Calabash, A.R. Samuels, Keystone Glass Works, Philadelphia, PA, 1866 - 1874. Light apple green, applied sloping collar - blowpipe pontil scar, Qt; (some scattered light wear and a 1/2" by approximately 1/8" sliver-type flake along with a hard-to-see 1/8" flash below the applied collar that may have occurred in manufacture). GIV-42.

Est.: \$100 - \$150 • Min. bid: \$60



Lot 53

SUNBURST FLASK, probably Keene Marlboro Street Glassworks, Keene, NH, 1815 - 1830. Pale, clear green, sheared mouth - blowpipe pontil scar, Pt, near mint; (some minor roughness including a couple of small flakes, 1/8", or less, on the edge of the sheared lip; a couple of tiny, paper-thin open surface bubbles, a shallow, in-manufacture pontil chip that extends to the edge of the base, otherwise sparkling mint). GVIII-1. A scarce color, excellent clarity and condition.

Est.: \$800 - \$1,600 • Min. bid: \$400



Lot 50

ALL SEEING EYE (INSIDE 6-POINTED STAR) / "A D" - RAISED ARM AND 6-POINTED STAR / "G R J A" Historical Flask, probably an early Stoddard, NH glasshouse, 1842 - 1850. Medium olive amber, applied sloping collar - smooth base, Pt; (a little in-manufacture roughness and small pinhead flake on the edge of the lip; a little high point wear, otherwise excellent). GIV-43. Nice example, scarce with the applied sloping collar.

Est.: \$300 - \$500 • Min. bid: \$180



Lot 54

"KEEN" - "P&W" SUNBURST FLASK, Keene Marlboro Street Glassworks, Keene, NH, 1815 - 1830. Yellowish olive, sheared mouth - blowpipe pontil scar, Pt; (a tiny potstone near the corrugated edge has a little iridescence surrounding it; a little high point wear, and a 1/4" area of roughness on the inside edge of the lip, likely caused when the cork was pried out). GVIII-8. A crude, early flask, good character, and particularly strong embossing on the "KEEN" side.

Est.: \$400 - \$600 • Min. bid: \$200



Lot 51

"SUCCESS TO THE RAILROAD" / HORSE PULLING CART - (Reverse same) Historical Flask, Keene Marlboro Street Glassworks, Keene, NH, 1830 - 1842. Bright, light yellowish olive amber, sheared mouth - blowpipe pontil scar, Pt, virtually attic mint; (just the slightest trace of faint wear, otherwise perfect). GV-4. A fantastic example, nice and light, excellent clarity, a good strong impression for this mold, and with plenty of nice yellow tones throughout.

Est.: \$400 - \$600 • Min. bid: \$200



Lot 55

"KEEN" - "P&W" SUNBURST FLASK, Keene Marlboro Street Glassworks, Keene, NH, 1815 - 1830. Yellowish olive amber, sheared mouth - blowpipe pontil scar, 1/2 Pt, very near mint; (a small, hard-to-see, 1/8" flake on one of the corrugated edges, otherwise perfect). GVIII-9. A very good example, excellent overall condition, and full of tiny seed bubbles.

Est.: \$500 - \$800 • Min. bid: \$300



Lot 52

"SUCCESS TO THE RAILROAD" / HORSE PULLING CART - (Reverse same) Historical Flask, possibly Mt. Vernon, or Mt. Pleasant Glass Works, 1830 - 1850. Medium olive green, sheared mouth - blowpipe pontil scar, Pt; (a couple of very minor, 1/8" paper-thin open surface bubbles, some high point wear as is common on this mold). GV-5. Nice pure green coloration with no trace of amber.

Est.: \$300 - \$500 • Min. bid: \$180



Lot 56

SUNBURST FLASK, Coventry Glass Works, Coventry, CT, 1815 - 1830. Delicate, clear straw yellow near the shoulders shading to a slightly deeper yellowish olive amber in the neck and near the base, sheared mouth - blowpipe pontil scar, 1/2 Pt; (some light high point wear, primarily on one side only; a 3/16" annealing line in the neck, almost certainly in-manufacture, and a small flake on the top of the roughly sheared mouth). GVIII-18. Beautiful color, more yellow and lighter than most!

Est.: \$500 - \$800 • Min. bid: \$300



Lot 57

SCROLL FLASK, Midwest, 1840 - 1860. Golden amber, sheared mouth - blowpipe pontil scar, ½ Pt, near mint; (some scattered light high point wear and a touch of very minor interior residue, otherwise excellent). GIX-31. A scarce little flask in color. This particular example has been tucked away for many years. Provenance: Ex. Charles B. Gardner collection # 2420; Ex. George McKearin collection.

Est.: \$1,000 - \$1,500 • Min. bid: \$500



Lot 61

SUMMER TREE - SUMMER TREE Pictorial Flask, America, 1855 - 1865. Bluish green with a very slight emerald tone, applied sloping collar with ring - blowpipe pontil scar, Qt, virtually attic mint; (just a trace of faint interior milkiness and a very minor onionskin- thin 1/8" open surface bubble, otherwise perfect). GX-18. A great example, good glass texture, no high point wear as is often an issue, and with a nice large bubble through the shoulder.

Est.: \$500 - \$700 • Min. bid: \$300



Lot 58

"J R & Son" SCROLL FLASK, John Robinson & Son Glass Manufacturers, Pittsburgh, 1830 - 1834. Aquamarine, corseted scroll form, sheared mouth - iron pontil scar, Pt, virtually attic mint; (tiny, pinhead flake on top of the sheared mouth, otherwise pristine!) GIX-43. A top example, bright, clean, sparkling condition with no high point wear as is often the case. A scarce, early Scroll and the only example we can recall seeing with an iron pontil. Ex. Robert Heath, Roy Brown collections.

Est.: \$800 - \$1,200 • Min. bid: \$400



Lot 62

SUMMER TREE - WINTER TREE Pictorial Flask, America, 1855 - 1865. Aquamarine, sheared mouth - blowpipe pontil scar, Qt, attic mint! GX-19. A fantastic example. Very strong mold impression, no high point wear as is often found on these flasks, and bright sparkling condition. Provenance: James Becker collection.

Est.: \$175 - \$275 • Min. bid: \$100



Lot 59

SCROLL FLASK, probably John Robinson & Son Glass Manufacturers, Pittsburgh, 1830 - 1834. Aquamarine, corseted scroll form, sheared mouth - blowpipe pontil scar, Pt, pristine! GIX-44. The mold listed as "Very rare" by McKearin, and obviously similar in form and design to the marked John Robinson flask in the preceding Lot. Another beautiful example, clean, bright and sparkling. Provenance: James Becker collection.

Est.: \$600 - \$900 • Min. bid: \$300



Lot 63

SUMMER TREE - WINTER TREE Pictorial Flask, America, 1860 - 1870. Dense golden, virtually black in reflected light, applied double round collar - smooth base, Qt; (a little high point wear and a minor 1/8" flake on the edge of the base). GX-19. A rare, eye-appealing color for this mold, and one that will definitely stand out on a shelf. It is believed to be the only example that has been offered at auction in this, or a similar color, in more than 10 years.

Est.: \$1,200 - \$2,400 • Min. bid: \$600



Lot 60

SCROLL FLASK, probably an early Pittsburgh district glasshouse, 1835 - 1845. Bright aquamarine, corseted scroll form, sheared mouth - blowpipe pontil scar, Pt, virtually attic mint; (tiny, barely pinhead bit of roughness on the edge of the crudely sheared mouth, otherwise perfect). GIX-45. A scarce flask and without a doubt, one of the most ornate molds in the Scroll category. Bright, clean, and sparkling. Provenance: James Becker collection.

Est.: \$600 - \$900 • Min. bid: \$300



Lot 64

PROSPECTOR - EAGLE / "ARSENAL / GLASS WORKS / PITTS PA" Historical Flask, Arsenal Glass Works, Pittsburgh, 1865 - 1867. Deep, bluish aquamarine, applied collar with flat band - smooth base, Qt, very near mint; (just a trace of very light wear, otherwise perfect!) GXI-13. Good color, good impression, outstanding condition. A scarce mold, the Arsenal Glass Works was only in business for two years.

Est.: \$200 - \$400 • Min. bid: \$100



Lot 65

"FOR PIKE'S PEAK" / PROSPECTOR - EAGLE Historical Flask, Midwest, probably a Pittsburgh district glasshouse, 1860 - 1870. Aquamarine, applied mouth with flat band - smooth base, Pt; (a couple of small, tissue-paper thin open surface bubbles, otherwise, clean, sparkling, and virtually attic mint). GXI-37. A beautiful example of this comparatively scarce flask.

Est.: \$100 - \$150 • Min. bid: \$60



Lot 69

"UNION" / CLASPED HANDS - EAGLE / "E. WORMSER & Co / PITTSBURGH / PA." Historical Flask, probably Frankstown Glass Works, 1861 - 1866. Beautiful yellowish honey coloration, large applied ring-type collar - smooth base, Qt; (a few light scratches; some high point wear primarily on the clasped hand side, as is fairly common). GXII-15. A desirable marked glasshouse flask with gorgeous color and plenty of yellowish tones.

Est.: \$800 - \$1,200 • Min. bid: \$400



Lot 66

"UNION" / CLASPED HANDS - EAGLE / "A & CO" Historical Flask, Adams & Company Glass Manufacturers, Pittsburgh, PA, 1861 - 1870. Medium to deep amber, applied double collar with flat band - smooth base, Qt, virtually attic mint! GXII-1. A great example, very scarce mold in amber, particularly in this fine condition! Strong, crisp mold impression, good color, excellent condition.

Est.: \$800 - \$1,600 • Min. bid: \$400



Lot 70

"UNION" / CLASPED HANDS - EAGLE / "CI & SONS" Historical Flask, C. Ihmsen & Sons Glass Manufacturers, Pittsburgh, PA, 1861 - 1875. Medium to deep amber, applied collar with band - smooth base, Pt, virtually attic mint. GXII-20. This mold is noted as "Scarce" by McKearin, and in color should be considered very scarce to rare. This same example sold thru. ABA, June, 2010, and is the only example in color to be offered at auction in almost 15 years!

Est.: \$1,000 - \$2,000 • Min. bid: \$500



Lot 67

"UNION" / CLASPED HANDS - EAGLE Historical Flask, a Pittsburgh district glasshouse, 1860 - 1870. Clear, medium yellow-green, or citron coloration, applied mouth with flat band - smooth base, Qt, attic mint! GXII-11. A great example, beautiful color, nice clarity, strong mold impression (with no high point wear as is often the case), and outstanding condition. A top example! Provenance: Ex. Bill Borchert collection.

Est.: \$1,500 - \$2,500 • Min. bid: \$800



Lot 71

"UNION" / CLASPED HANDS / "WM FRANK & SONS / PITTS" - CANNON Historical Flask, Frankstown Glass Works, Pittsburgh, PA, 1870 - 1876. Medium to deep amber with a slight reddish tone, applied mouth with flat band - smooth base, Pt, near mint; (a couple of tiny, pinprick bits of roughness on the edge of the lip; some minor faint wear on the reverse, otherwise perfect). GXII-39. A great example, heavily whittled, very strong impression, scarce mold.

Est.: \$800 - \$1,200 • Min. bid: \$400



Lot 68

"UNION" / CLASPED HANDS / "L.F. & CO" - EAGLE / "PITTSBURGH PA" Historical Flask, Lippincott, Fry & Company, Pittsburgh, 1866 - 1867. Bright golden amber with a slight orange tone, applied collared mouth with band - smooth base, Qt, near mint; (just a couple of faint light scratches on the reverse and a trace of typical minor exterior wear, otherwise excellent!) GXII-13. A scarce flask, the glassmaker being in business for only two short years!

Est.: \$600 - \$900 • Min. bid: \$300



Lot 72

HUNTER - FISHERMAN Pictorial Calabash, probably Whitney Glass Works, Glassboro, NJ, 1857 - 1865. Deep bluish aquamarine, applied sloping collar - blowpipe pontil scar, Qt, attic mint! GXIII-4. A great example, nice rich color and good character with plenty of tiny seed bubbles throughout.

Est.: \$125 - \$250 • Min. bid: \$70



Lot 73

ARMY OFFICER - DAISY Pictorial Calabash, America, 1855 - 1865. Deep bluish aquamarine, applied sloping collar - iron pontil scar, Qt, near attic mint; (just a slight touch of very minor wear and a trace of washable interior residue, otherwise perfect). GXIII-15. A comparatively scarce mold, excellent condition.

Est.: \$150 - \$300 • Min. bid: \$80



Lot 77

"BALTIMORE" / ANCHOR / "GLASS WORKS" - SHEAF OF GRAIN Historical Flask, Baltimore Glass Works, 1860 - 1870. Light to medium yellowish-topaz with an olive tone, applied round double collar - smooth base, ½ Pt, attic mint! GXIII-49. A scarce mold in a very rare and beautiful color, "out of the mold" pristine condition, with a crisp, strong impression. The glass is also filled with tiny seed bubbles. A little sweetheart of a flask, it would be hard to imagine a nicer example.

Est.: \$2,500 - \$4,500 • Min. bid: \$1,500



Lot 74

SHEAF OF GRAIN - 8-POINTED STAR Pictorial Calabash, probably Sheets & Duffy Glass Manufacturers, Philadelphia, PA, 1850 - 1860. Medium golden amber, applied handle with rigaree, applied collar with flat band - iron pontil scar, Qt; (tip of the rigaree is missing as is common on this flask, otherwise just a trace of wear and excellent!) GXIII-45. Great character, nice bubbly glass, rich color. Note; two early collector tags remain on the neck and base.

Est.: \$300 - \$500 • Min. bid: \$150



Lot 78

"TRAVELER'S" / STAR / "COMPANION" - SHEAF OF GRAIN Pictorial Flask, Westford Glass Works, Westford, CT, 1857 - 1873. Yellowish tobacco or "old amber", applied sloping collar - smooth base, Qt, near mint; (a very tiny flake and a little minor roughness on the top edge of the lip due to in-manufacture crazing lines; a few small pin-head open surface bubbles, otherwise excellent). GXIV-1. Nice character, whittled and filled with tiny seed bubbles.

Est.: \$200 - \$400 • Min. bid: \$120



Lot 75

SHEAF OF GRAIN - TREE Pictorial Calabash, probably Sheets & Duffy Glass Manufacturers, Philadelphia, PA, 1850 - 1860. Deep wine, or burgundy coloration, applied ring collar with lower bevel - blowpipe pontil scar, Qt; (a couple of light scratches and some scattered minor wear, otherwise excellent!) GXIII-46. A very deep, rich beautiful color.

Est.: \$600 - \$900 • Min. bid: \$350



Lot 79

"GRANITE / GLASS / CO - STODDARD / N H", 1855 - 1862. Bright yellowish olive amber, sheared mouth - blowpipe pontil scar, Pt; (some light high point wear, otherwise virtually attic mint). GXV-7. A very attractive example with tiny seed bubbles throughout, whittled, nice clarity and light color, plenty of yellow through the shoulders. Provenance: James Becker collection.

Est.: \$800 - \$1,200 • Min. bid: \$400



Lot 76

SHEAF OF GRAIN - TREE Pictorial Calabash, probably Sheets & Duffy Glass Manufacturers, Philadelphia, PA, 1850 - 1860. Medium emerald coloration, crudely applied ring-type collar - blowpipe pontil scar, Qt; (just a touch of typical very minor wear including an 1/8" bit of roughness on the top of the applied mouth, otherwise near mint!) GXIII-47. Beautiful, scarce, color.

Est.: \$500 - \$800 • Min. bid: \$300



Lot 80

"P. CAMPBELL / WHOLESALE / LIQUOR DEALER / 18 SPRING ST / N.Y" - "WHITNEY / GLASS WORKS" (on base), 1870 - 1880. Beautiful yellowish honey coloration, applied round double collar - smooth base, Pt, virtually attic mint. A very rare private mold flask which we originally sold several years ago. A quart amber example (without the glasshouse markings on base), was sold in 2003. This is the only known example that exists in a pint.

Est.: \$400 - \$800 • Min. bid: \$200



Lot 81

"PATENT" Lettered Flask (with private label on reverse), a Stoddard, NH glasshouse, probably New Granite Glass Works, 1860 - 1871. Reddish amber, applied double round collar - smooth base, 1/2 Pt; (some moderate high point wear and fine scratches, primarily on the "PATENT" side; a bit of interior residue). Early druggist label on reverse: *ALCOHOL. / O. F. SUMNER, / Druggist, / Mast Street, / GOFFSTOWN, N.H.* Nice color, crude wavy glass, rare with early label.

Est.: \$75 - \$150 • Min. bid: \$50



Lot 82

Whiskey Flask, America, 1865 - 1875. Deep reddish strawberry puce, seam-sided "Union Oval" form, applied double round collar, smooth base, Qt; (professionally cleaned with a little light exterior wear remaining, but no other form of damage). Gorgeous color, and although deep, can still be appreciated when back-lit or in normal daylight.

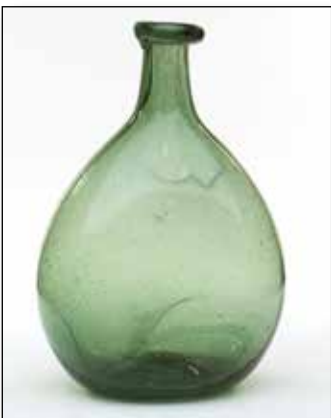
Est.: \$100 - \$200 • Min. bid: \$60



Lot 83

Freeblown Chestnut Flask, America probably New England, 1790 - 1820. Beautiful, light to medium sea-green coloration, chestnut form, crudely applied ring-type collar - delicate blowpipe pontil scar, ht. 5 5/8", virtually attic mint; (just a trace of faint wear, otherwise perfect). A very delicate, attractive little flask with excellent clarity, nice color.

Est.: \$250 - \$450 • Min. bid: \$150



Lot 84

Freeblown Chestnut Flask, America probably New England, 1790 - 1820. Clear medium green, almost a moss green, chestnut form, crude ring-type collar - blowpipe pontil scar, ht. 5 3/8", attic mint. Beautiful, scarce color for a 'New England type' chestnut flask. In addition, excellent character with some ribbons of tiny microscopic bubbles swirled through the flask. A little sweetheart of an example.

Est.: \$300 - \$500 • Min. bid: \$180



Lot 85

Freeblown Chestnut Flask, New England, 1810 - 1830. Medium yellowish olive, chestnut form, applied short sloping collar - blowpipe pontil scar, ht. 6 3/4"; (a trace of typical, minor exterior wear, otherwise attic mint). A beautiful example, excellent character, the glass being absolutely filled with tiny seed bubbles.

Est.: \$250 - \$450 • Min. bid: \$150



Lot 86

Large Freeblown Chestnut Flask, New England, 1785 - 1820. Medium yellowish olive, large plump chestnut form, sheared mouth with an applied ring collar - blowpipe pontil scar, ht. 10", near mint; (a couple of scratches or light scuff marks on the side of the bottle near the shoulder and a little typical faint exterior wear, otherwise perfect). A beautiful example, nice form, scarce and desirable larger size!

Est.: \$500 - \$700 • Min. bid: \$250



Lot 87

Early, Bladder-Form Utility Bottle, probably France, 1790 - 1820. Deep yellowish olive amber (black glass), large flattened chestnut or bladder form, sheared mouth with a crudely applied blob collar - heavy blowpipe pontil scar, ht. 9 5/8", near mint; (just a little scattered, minor exterior wear, otherwise perfect). See VdB, plate 148, #2, and 277A, #2. A very early and interesting piece, outstanding condition, great size, an impressive bottle.

Est.: \$300 - \$500 • Min. bid: \$180



Lot 88

Early, Diminutive Freeblown Flask, Northern Europe, probably Latvian, 1820 - 1840. Clear, medium green, flattened circular or coin-shaped body, applied inverted tapering collar - blowpipe pontil scar, ht. 4 1/8"; (just a slight trace of very faint wear, otherwise perfect!) VdB, plate 237 & 238. A very attractive little flask filled with tiny bubbles. As noted by Mr. Van den Bossche, these little bottles typically held Riga Balsam, an aromatic oil, and were often reused for smelling salts.

Est.: \$120 - \$240 • Min. bid: \$60



Lot 89

Pattern Molded Globular Bottle, 24 ribs swirled to the right, Midwest, probably Zanesville Glass Works, Zanesville, Ohio, 1820 - 1835. Rich, bluish aquamarine, globular form, outward rolled mouth - pontil scar, ht. 7 1/4"; (a couple of light scratches and some scattered exterior wear around the mid-body, otherwise excellent). Excellent form and symmetry, scarce color.

Est.: \$600 - \$900 • Min. bid: \$300



Lot 93

Pattern Molded Pocket Flask, 18 vertical ribs, Midwest, 1820 - 1835. Rich, medium golden coloration, chestnut form, sheared mouth - base with terminal ring and blowpipe pontil scar, ht. 6 1/2"; (a very minor 1/16" flake on the inside edge of the lip, otherwise virtually attic mint). A great early Midwestern flask having beautiful color and clarity, good size, form, and in outstanding condition. Also, a very scarce-to-rare mold having the terminal ring.

Est.: \$800 - \$1,200 • Min. bid: \$400



Lot 90

Pattern Molded Globular Bottle, 24 ribs swirled to the right, Midwest, probably Zanesville Glass Works, Zanesville, Ohio, 1820 - 1835. Bright, light golden or honey amber, globular form, small outward rolled mouth - pontil scar, ht. 7 7/8"; (some scattered exterior wear and light scratches around the mid-body, otherwise about mint). A clean bright example, good form, and with nice tight ribbing through the neck.

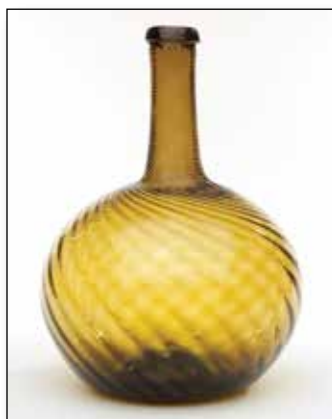
Est.: \$600 - \$900 • Min. bid: \$300



Lot 94

Pitkin Type Flask, 30 vertical ribs over 30 ribs swirled to the right, probably Midwest (Pennsylvania), or possibly Mid-Atlantic region, 1800 - 1830. Brilliant honey, almost a golden yellow through the body shading to a deeper golden coloration in the shoulders and neck, flattened horseshoe body, sheared mouth - blowpipe pontil scar, ht. 6 1/2", attic mint. Very similar to AP, *Glass in Early America*, #375. Gorgeous, very scarce color, good impression, outstanding condition.

Est.: \$1,000 - \$2,000 • Min. bid: \$500



Lot 91

Pattern Molded Globular Bottle, 24 ribs swirled to the left, Midwest, probably Zanesville Glass Works, Zanesville, Ohio, 1820 - 1835. Brilliant honey yellow coloration, globular form, outward rolled mouth - pontil scar, ht. 7 5/8", near mint; (just a touch of light exterior wear and a very minor, onionskin-thin open surface bubble on the shoulder, otherwise perfect). Gorgeous color having that brilliance and high quality 'metal' that is so indicative of patterned wares blown in Zanesville.

Est.: \$1,500 - \$2,500 • Min. bid: \$800



Lot 95

Pitkin Type Flask, 36 vertical ribs over 36 ribs swirled to the left, New England, 1785 - 1825. Medium olive green, flattened ovoid body, sheared mouth - pushed-up or domed base with blowpipe pontil scar, ht. 6 1/4", near mint; (just a slight trace of typical light wear). A very nice example in a pure olive coloration having no trace of amber, with good sharp, well-defined ribbing through the shoulders, excellent condition.

Est.: \$800 - \$1,200 • Min. bid: \$400



Lot 92

Pattern Molded Pocket Flask, 20 vertical ribs, probably Midwest, possibly a Pittsburgh district glasshouse, 1815 - 1830. Clear, medium amethyst, elongated chestnut form, sheared mouth - pontil scar, ht. 5 1/2"; (typical, scattered, very light exterior wear, otherwise perfect). A wonderful, early, pattern molded flask having an American form and lip treatment in a beautiful, scarce color. Provenance: Ex. Alberta Rodgers Patterson collection.

Est.: \$1,000 - \$2,000 • Min. bid: \$500



Lot 96

Pitkin Type Flask, 32 ribs over 32 ribs swirled to the left, probably Eastern U.S., Mid-Atlantic region, 1810 - 1830. Bright, medium blue green, flattened ovoid body, sheared mouth - blowpipe pontil scar, ht. 6 5/8", near mint; (just a bit of very faint interior haze that is not terribly noticeable, otherwise excellent). Similar in form and pattern to MW, plate 89, #5. Good strong ribbing through the shoulders, nice scattered bubbles throughout the body.

Est.: \$400 - \$600 • Min. bid: \$250



Lot 97

Unusual, Half-Post Nailsea-Type Flask, 20 faint ribs swirled to the left, Continental or America, 1790 - 1820. Colorless with horizontal rows of opaque white threads of glass combed throughout, flattened circular body, sheared mouth with large, heavy blob collar - blowpipe pontil, ht. 6 1/4"; (some minor exterior wear, otherwise perfect). An early, most unusual flask that combines half-post pattern-molding with a Nailsea-type decoration. Rare and unique — we have never seen another.

Est.: \$200 - \$400 • Min. bid: \$120



Lot 98

Blown Three Mold Decanter, Keene Marlboro Street Glassworks, Keene, NH, 1820 - 1835. Medium yellowish olive amber, ovoid form, geometric sunburst and diamond diapering pattern, sheared and tooled mouth - blowpipe pontil scar, Pt, attic mint. Gill-16. An attractive, very nice example of this early, classic, Keene decanter. A lot of bottle for the money.

Est.: \$500 - \$700 • Min. bid: \$250



Lot 99

Blown Three Mold Decanter, Keene Marlboro Street Glassworks, Keene, NH, 1820 - 1835. Medium to deep olive green, tapered club form, geometric waffle-sunburst and diamond diapering pattern, sheared and tooled mouth - blowpipe pontil scar, Qt; (a small potstone in the shoulder and one in the base have a couple of tiny 'legs' that are very minor, and not easy to see; a little washable residue, otherwise perfect). Gill-19. Good color, in a pure olive coloration, with no amber.

Est.: \$800 - \$1,200 • Min. bid: \$400



Lot 100

Lot of (2), Blown Three Mold Decanters, Keene Marlboro Street Glassworks, Keene, NH, 1820 - 1842. Colorless and pale green, both with semi-barrel form bodies, geometric pattern of diamond diapering and sunburst, tooled flared mouths - pontil scarred rayed bases, Qts, both near mint; (typical, very light exterior wear). Both, Gill-15 pattern. Beautiful examples that compliment one another. The pale green decanter is rare.

Est.: \$250 - \$450 • Min. bid: \$140



Lot 101

Lot of (2), Blown Three Mold Decanters, Boston and Sandwich Glassworks, Sandwich, MA, 1825 - 1840. Both are colorless, semi-barrel form, shell and ribbing pattern, tooled wide flared mouths with correct blown and ribbed stoppers - pontil scarred bases, Pt, and Qt, both virtually attic mint; (Qt. example has a very minor, 1/4" flat flake at base edge). Both GV-8. Similar to McK, plate 116, #2, BK #1334. A beautiful pair of early decanters.

Est.: \$175 - \$350 • Min. bid: \$100



Lot 102

Blown Three Mold Dish, probably Keene Marlboro Street Glassworks, Keene, NH, 1815 - 1830. Colorless glass, geometric pattern with waffle and sunburst designs, cylindrical with sides curving up to a sheared and outward folded rim - rayed base with blowpipe pontil scar, 1 5/8" ht. x 6 1/4" dia, perfect. Gill-20. A scarce piece of early tableware. See McK, plate 126.

Est.: \$200 - \$400 • Min. bid: \$120



Lot 103

Blown Three Mold Tumbler, Keene Marlboro Street Glassworks, Keene, NH, 1820 - 1840. Colorless, barrel-form tumbler with center panels of diamond diapering and bull's-eye sunburst motif, sheared rim - rayed base with blowpipe pontil scar, ht. 3 1/4", perfect. Gill-14. A scarce tumbler, desirable form, wonderful condition.

Est.: \$175 - \$350 • Min. bid: \$100



Lot 104

Miniature, Blown Three Mold Hat, Boston and Sandwich Glass Co., Sandwich, MA, 1825 - 1840. Colorless, miniature "beaver" form toy hat blown in a small whiskey glass mold for pattern, sheared outward folded tooled rim - concentric ring base with blowpipe pontil scar, ht. 1 3/4", perfect! Gill-16. BK, plate 1293. Barlow and Kaiser note these small Gill-16 hats were referred to as a toy hat salt in the Sandwich Glass Company sloar (sic) books. Very scarce.

Est.: \$200 - \$400 • Min. bid: \$120



Lot 105

Blown Three Mold Toilet Water Bottle, probably Boston and Sandwich Glass Co, Sandwich, MA, 1825 - 1840. Black amethyst, geometric pattern with vertical ribbing below a plain neck and molded neck ring, applied thin flanged lip with period "tam-o-shanter" stopper - blowpipe pontil scar, ht. 6 5/8" (including stopper), near mint; (a touch of light wear). GI-7, Type 2. The stopper is a very deep cobalt, the bottle is virtually black.

Est.: \$300 - \$600 • Min. bid: \$150



Lot 109

Freeblown Covered Sugar Bowl, America, probably an early Pittsburgh district glasshouse, 1815 - 1840. Colorless lead glass, globular body curved inward to a galleried rim - freeblown domed cover flared at base with inward folded rim, drawn wafer finial with pontil scar - solid applied disk foot with pontil scar, overall ht. 6" (including cover), perfect! See Innes, plate 37. A classical early Pittsburgh sugar bowl. Outstanding condition, the top fits perfectly, a beautiful example!

Est.: \$400 - \$600 • Min. bid: \$200



Lot 106

Blown Three Mold Creamer, probably Boston and Sandwich Glass Co, Sandwich, MA, 1825 - 1840. Colorless, barrel-form body, geometric pattern with center panels of diamond diapering and sunburst, wide neck flaring to a tooled rim with pinched pour spout - applied solid handle with center rib crimped and curled at lower attachment - blowpipe pontil scar, ht. 4", perfect. Gill-6. Note: An early Abraham & May Antiques sticker remains on the base. A scarce creamer.

Est.: \$400 - \$600 • Min. bid: \$200



Lot 110

Freeblown Handled 'Coin' Goblet, probably England, 1859 - 1865. Colorless with hemispherical bowl, applied ring of threading at base of wide neck, sheared and slightly flared rim with fine cranberry threading, applied solid ear-shaped handle curled at lower terminal, applied bulbous hollow stem with 1859 English 3 pence coin, circular disk foot with polished pontil scar, ht. 6 7/8"; (3/4" light scratch on bowl, otherwise perfect). A rare, beautiful, piece of glass

Est.: \$400 - \$600 • Min. bid: \$200



Lot 107

Blown Three Mold Creamer, Boston and Sandwich Glass Co, Sandwich, MA, 1825 - 1840. Rich, deep cobalt blue, ovoid body with "fluted and hooped" pattern, neck flaring outward to a sheared, tooled and inward folded rim with broad pour spout - applied solid handle crimped and curled at lower attachment - ringed base with blowpipe pontil scar, ht. 4 1/2", perfect! GI-29. McK, plate 121, #1; AP, plate 125. A classic, rare and desirable, colored 3-Mold Creamer, outstanding condition.

Est.: \$1,500 - \$3,000 • Min. bid: \$800



Lot 111

Large, Freeblown & Engraved, Presentation Tankard, probably Germany, possibly, America, 1770 - 1800. Colorless, non-lead glass with a grayish-amethyst cast through the base, tankard form with applied strap handle - slightly flared base with blowpipe pontil scar, ht. 6 3/4"; (minor usage wear, heavy base wear, otherwise perfect). Copper-wheel engraving with fern and floral motif, and "JAJ" initials in center. Found in a cellar in Rhode Island. An impressive, early piece.

Est.: \$200 - \$400 • Min. bid: \$100



Lot 108

Early, Pattern-Molded Creamer, 18 widely spaced melon-type ribs, probably Eastern U.S., possibly South Jersey, 1810 - 1840. Reddish amber, bulbous body with a wide neck flaring slightly to sheared rim with pour spout - applied solid handle curled at lower terminal - applied, tooled and crimped disk foot, blowpipe pontil scar, ht. 5"; (some minor wear including a faint 3" scratch; a little "bloom" near the sheared lip). An outstanding early pitcher, rare with the pattern molded body.

Est.: \$1,200 - \$2,400 • Min. bid: \$600



Lot 112

"George / W. Simmons - Saratoga / 1892" Engraved Blown-Molded Pitcher, America, 1892. Colorless, tall, nearly straight-sided body with high arched lip and pour spout, applied solid ear-form handle - molded cylindrical foot with ball-design, ht. 9 3/4"; (a little light usage wear, otherwise perfect). These engraved tableware pieces were popular in the 1890's, and produced for the tourists who visited Saratoga and the surrounding Springs. Pitchers in this type glassware are rare.

Est.: \$175 - \$350 • Min. bid: \$100



Lot 113

Lot of (2), Engraved Tableware items, "Katie / Endries - Saratoga / 1892" Creamer, and, "Brown - Saratoga / 1893" Covered Bowl, America, 1892 - 1893. Both are colorless, bodies with heavy molded ribs swirled right, bowl with correct matching pressed cover, creamer with applied solid handle, hts: bowl, 6 ½" (including cover), creamer, 7"; (some minor roughness and tiny flakes to ribs of bowl, otherwise both excellent).

Est.: \$175 - \$350 • Min. bid: \$100



Lot 117

Fancy Cognogne Bottle, America, 1835 - 1855. Sapphire blue, corseted body with lattice and palmette designs on front panel, scrolled Acanthus leaves forming the shoulders, sheared and inward rolled mouth - pedestal-type base with blowpipe pontil scar, ht. 5 ½", virtually attic mint; (a trace of faint exterior wear, otherwise perfect). MW, plate 111, #3. A beautiful example, great color, excellent condition!

Est.: \$1,000 - \$2,000 • Min. bid: \$600



Lot 114

Freeblown Utility Jar, probably New England, 1810 - 1840. Yellowish olive amber, cylindrical, short neck flaring slightly to a sheared, wide mouth - blowpipe pontil scar, ht. 7"; (some minor exterior wear, otherwise perfect). A good early jar, excellent condition. Similar to McK, plate 230, #11.

Est.: \$250 - \$450 • Min. bid: \$150



Lot 118

Lot of (3), Early Labeled Cognogne Bottles, America, 1850 - 1875. Colorless, amethyst, and bright emerald green. Colorless example is square with fancy corners, (5) Stars embossed on each of three panels, tooled square collar - smooth base, ht. 5 ¾". Other two examples are cylindrical with tooled flared mouths - pontil scarred bases, ht. 7 7/8" and 11 ½", bottles are all mint, near mint; (clear ex. has a little lip-edge roughness). Original labels are 80 - 100% complete with some staining.

Est.: \$200 - \$400 • Min. bid: \$120



Lot 115

Large, Freeblown Storage Jar, probably New England, 1810 - 1840. Olive amber, cylindrical with wide neck flaring slightly to a tooled, sheared mouth - blowpipe pontil scar, ht. 11 ¾"; (some typical minor exterior wear; two hard-to-see annealing fissures, ½" to ¾", near the base edge, otherwise excellent). A large, impressive early jar, scarce size. Provenance: Ex. Gary Hatstat collection.

Est.: \$400 - \$800 • Min. bid: \$200



Lot 119

Miniature, Freeblown Bottle Decanter or Cruet, Midwest, possibly Zanesville Glass Works, Zanesville, OH, 1820 - 1840. Medium amber, semi-globular body, tooled thin flared lip - pontil scar, ht. 5 ¼"; (just a trace of typical, light exterior wear and a bit of light interior residue, otherwise perfect). Similar to an example we sold in Auction #5 (Lot 112). Un-patterned globs in color are scarce. Nice small size, the base and pontil are indicative of what you would expect to find on the larger, pattern-molded globs.

Est.: \$400 - \$600 • Min. bid: \$200



Lot 116

Diminutive-size, Freeblown Utility Jar, probably North Germany, 1800 - 1820. Light yellowish olive, cylindrical, 'flowerpot form' with sides flaring slightly outward to a sheared, tooled, and outward folded lip - blowpipe pontil scar, ht. 2 ½", near mint; (a few scattered open surface bubbles and a 3/8" pontil flake). Similar to VdB, plate 288, #2 and plate 290, #1. A crude, very early jar, attractive, wonderful small size, beautiful condition.

Est.: \$200 - \$400 • Min. bid: \$120



Lot 120

Early, Freeblown Druggist or Utility Bottle, probably Midwest, possibly Zanesville, OH, 1820 - 1840. Medium shading to deep amber near the base, cylindrical, sheared and outward rolled mouth - slightly domed, pontil scarred base, ht. 6 3/8"; (a couple of light scratches and some minor exterior wear; a little scattered interior residue). A crude, early utility, scarce size being a bit larger than typically encountered.

Est.: \$175 - \$350 • Min. bid: \$100



Lot 121

Lot of (2), Early Utility Bottles, America, 1820 - 1850. Olive amber and medium yellowish green, cylindrical and square with concave corners, both with sheared and flared mouths - blowpipe pontil scarred bases, ht. 3 3/4" and 5 3/8" respectively; (cylindrical example with just a touch of minor wear; square example has some scattered light wear and scratches; a trace of faint haze). The square example is scarce and likely very early. Provenance: James Becker collection.

Est.: \$150 - \$300 • Min. bid: \$80



Lot 125

"GLASHUTTEN Dr. A. FRANK - CHARLOTTENBURG" Target Ball, Germany, 1880 - 1895. Yellowish with a slight olive tone, quilted diamond pattern above and below center band, rough sheared mouth, dia. 2 5/8", virtually attic mint; (some typical flakes and chipping often encountered with the crude sheared lip). Note: "Glashutten" in German is the plural for glasshouse. A very attractive, historical ball.

Est.: \$175 - \$350 • Min. bid: \$100



Lot 122

Lot of (2) Early Blacking Bottles, New England, 1830 - 1850. Medium to deep yellowish 'old' amber, and olive green, both blown in 2-pc. molds, square with flattened shoulders, sheared and fire polished mouths - blowpipe pontil scarred bases, ht. 4 3/8" and 4 7/8" respectively, both near mint; (a little typical, very minor wear; the amber example has a bit light interior residue, otherwise excellent). Both examples have seedy, crude glass and nice character.

Est.: \$175 - \$350 • Min. bid: \$100



Lot 126

Target Ball, Germany, 1880 - 1900. Beautiful, bright yellowish lime green, almost a chartreuse coloration, quilted pattern formed by horizontal rows of 14 diamonds, rough sheared mouth, dia. 2 5/8", perfect. Termed the "Gablonz" ball, and without question, one of the brightest and most colorful of all the target balls.

Est.: \$175 - \$350 • Min. bid: \$100



Lot 123

Freeblown Mortar & Pestle, probably American, possibly South Jersey or Pittsburgh, 1850 - 1870. Brilliant light golden, or honey amber, bowl with applied flared foot, polished pontil scar; freeblown pestle with applied ring and polished pontil scar, bowl ht. 3 1/2", pestle length, 5 3/4", both virtually perfect. A great druggist or pharmacy "go-with". Beautiful color, outstanding condition.

Est.: \$150 - \$300 • Min. bid: \$80



Lot 127

"WW GREENER ST MARYS WORKS - BIRMM & 68 HAYMARKET LONDON" Target Ball, England, 1880 - 1895. Medium cobalt blue, quilted diamond pattern above and below center band, rough sheared mouth, dia. 2 5/8", perfect! A very nice example having good clarity and with strong, crisp, embossing.

Est.: \$150 - \$250 • Min. bid: \$80



Lot 124

"HAYWARD'S / HAND / FIRE / GRENADE - PATENTED / AUG / 8 / 1871 - S.F. HAYWARD / 407 / BROADWAY / N.Y.," America, 1875 - 1895. Bright yellow with some deeper honey tones through the neck, bulbous body with four indented diamond-shaped panels, tooled ring type collar - "2" on smooth base, ht. 6"; (a shallow 1/8" flake on the collar; a little wear and minor dullness on the back panel). Attractive color.

Est.: \$125 - \$225 • Min. bid: \$70

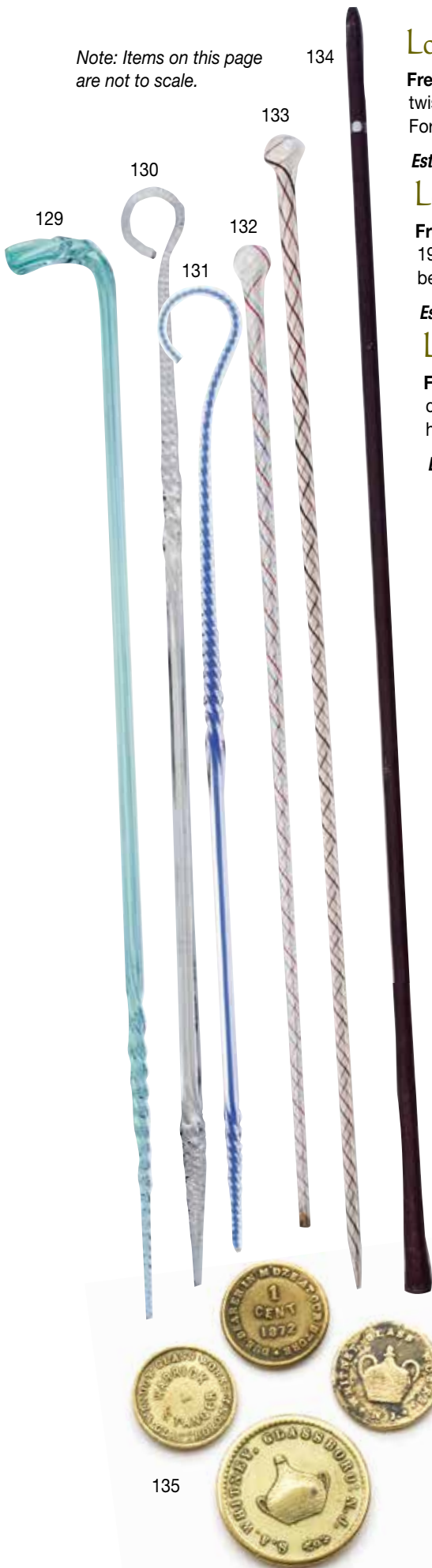


Lot 128

"BOGARDUS' GLASS BALL PATD. APRIL 10 1877." Target Ball, America, 1877 - 1895. Medium steel-blue coloration, quilted diamond pattern above and below center band, rough sheared mouth, dia. 2 5/8", perfect. A scarce, different shade of blue, excellent character with crude, pebbly glass. If you are putting together a color run of the Bogardus balls, this is a good one.

Est.: \$400 - \$700 • Min. bid: \$200

Note: Items on this page are not to scale.



Lot 129

Freeblown Glass Cane Whimsey, America, 1880 - 1920. Aquamarine, solid glass cane with square shaft, twisted "L" style handle, and twisted lower 14 inches of shaft, overall length 46", near perfect condition. For an interesting article on glass canes, see AB&GC, December, 2016.

Est.: \$100 - \$200 • Min. bid: \$50

Lot 130

Freeblown Glass Cane Whimsey, America, probably Mid-Atlantic region, possibly Maryland, 1880 - 1900. Colorless, solid glass cane with square shaft tightly twisted above tip, and 12" of tight spiraling below "C" style closed handle, overall length 45 1/2", virtually perfect condition.

Est.: \$200 - \$400 • Min. bid: \$100

Lot 131

Freeblown Glass Cane Whimsey, America, probably Mid-Atlantic, 1880 - 1900. Colorless with blue center band, solid square shaft tightly twisted above tip, and 16" of tight spiraling below "C" style handle, overall length 39 1/2", near mint; (a 3/4" long sliver-type chip from tip).

Est.: \$400 - \$600 • Min. bid: \$200

Lot 132

Freeblown Glass Cane Whimsey, America, 1880 - 1920. Colorless with red, white, blue, and green swirled threads, hollow shaft with bulbous handle, overall length 38 1/4"; (tip of cane has been squared off, possibly whetted off from the blowpipe during manufacture, otherwise excellent).

Est.: \$150 - \$250 • Min. bid: \$80

Lot 133

Freeblown Glass Cane Whimsey, America, 1880 - 1920. Colorless with alternating bands of red and deep blood-red threads of glass swirled throughout, hollow shaft with bulbous handle, overall length 52 1/4", perfect. A scarce color combination, nice longer length cane.

Est.: \$200 - \$400 • Min. bid: \$100

Lot 134

Henry Schoolcraft, "H S" blowpipe, America, probably 1813 - 1817. Early iron blowpipe with initials, "H S" stamped into the metal, length 57 1/4", believed to have been made for Henry Schoolcraft, skilled glassblower and early proprietor of the Keene Marlboro Street Glassworks, Keene, NH. Ex. Rowland Solada collection. A very interesting and important glasshouse item.

Est.: \$400 - \$600 • Min. bid: \$200

Lot 135

Lot of (4), Early, Glasshouse Coins. Two, "ONE CENT" coins, 1852 and 1869, from the Whitney Glass Works, Glassboro, N.J. both depicting a demijohn on one side; and two, "1 / CENT / 1872" coins from the Warrick & Stanger Window Glass Works, Glassboro, N.J. These early glasshouse tokens were generally issued to workers, and "DUE BEARER", at the company store. Condition varies from about good, to fine. The Warrick & Stanger tokens are very scarce.

Est.: \$100 - \$150 • Min. bid: \$50

Lot 136

Early Wade Insulator (with original pin, wood cover, and wire), 1855 - 1868. CD723, or 723.3. Aquamarine insulator with original wood covering, (6 1/4" x 3 1/2" dia.), treated with a preservative, pin and side bracket, all in excellent condition. This outstanding piece was discovered by a diver more than 25 year ago, while diving the St. Clair River near Detroit. A great historical item in a remarkable state of preservation! Remnants of a burlap-type cloth remain within the insulator. Very rare with original wood cover and pin.

Est.: \$1,800 - \$3,200 • Min. bid: \$1,000



Lot 137

Early Freeblown, or Dip Mold Snuff Jar, an early New England glasshouse, 1790 - 1830. Yellowish olive, square with domed shoulders, short neck with sheared and outward flared mouth - pontil scar, ht. 6"; (some scattered light exterior wear, an interior open bubble in shoulder, otherwise excellent). Form similar to MW, plate 75, #11. A very early New England snuff jar with a crude, "earthy" feel. Provenance: Ex. Kris Kernozicky collection.

Est.: \$600 - \$900 • Min. bid: \$300



Lot 141

Umbrella Ink, America, 1840 - 1860. Gorgeous yellowish citron coloration, 8-sided umbrella form, sheared and inward rolled mouth - blowpipe pontil scar, 2 1/8" ht. x 2 1/8" wide, near mint; (just a slight trace of interior residue or very faint haze, otherwise perfect). Exceptional, eye-appealing color, good character, and with a bit of a kick-up to the base. An outstanding umbrella ink.

Est.: \$1,200 - \$2,200 • Min. bid: \$600



Lot 138

Early Dip Mold Snuff Jar, New England, 1790 - 1830. Clear medium olive, square with beveled corners, rounded domed shoulders, sheared and outward flared mouth - blowpipe pontil scar, ht. 4 7/8"; (a very slight touch of faint exterior wear, otherwise perfect). Nice clarity, beautiful pure green coloration, almost a slight forest, or emerald, tone. A very attractive, early snuff jar, similar to MW, plate 75, #13.

Est.: \$400 - \$600 • Min. bid: \$200



Lot 142

Umbrella Ink, America, 1840 - 1860. Medium cobalt blue, 8-sided umbrella form, sheared and inward rolled mouth - blowpipe pontil scar, 2 1/4" ht. x 2 1/4" wide; (the bottle may have been lightly cleaned, but certainly presents itself as virtually attic mint). Similar in form to C#131. Good rich color, outstanding character. The glass is a little heavier than normal and very crude with plenty of bubbles and impurities throughout!

Est.: \$1,200 - \$2,200 • Min. bid: \$600



Lot 139

Snuff Jar, New England, probably a Stoddard, NH, glasshouse, 1842 - 1860. Yellowish olive amber, rectangular with beveled corners, sheared, tooled, thin flared mouth - blowpipe pontil scar, ht. 4 1/4"; (a couple of light scratches and typical minor exterior wear, otherwise excellent). Some nice character and crudity to the glass.

Est.: \$100 - \$150 • Min. bid: \$50



Lot 143

Umbrella Ink, America, 1840 - 1860. Brilliant sapphire blue, 8-sided umbrella form, sheared and inward rolled mouth - blowpipe pontil scar, ht. 2 7/16" ht. x 2 5/16" wide, near mint; (a minor, 1/4", iridescent bruise on the edge of the rolled lip that is not easy to see, otherwise excellent). Similar to C#143. A beautiful example, whittled, and with excellent clarity. Provenance: Ex. Jim Whetzel collection.

Est.: \$800 - \$1,600 • Min. bid: \$400



Lot 140

William E. Covill Jr. Automatic Pencil & Umbrella Ink Lot. Twist-type mechanical pencil used by the author while drafting the manuscript for the his landmark book, *Ink bottles and inkwells*, c. 1971. Pencil is engraved in gold on the barrel: WILLIAM E. COVILL JR. Also included in the lot: Umbrella Ink, 1840 - 1860, beautiful, pale light green, 8-sided, sheared and inward rolled mouth - blowpipe pontil scar, ht. 2 3/8", perfect. The pen is a great "go-with" for the ink collector.

Est.: \$175 - \$350 • Min. bid: \$100



Lot 144

Umbrella Ink, New England, probably an early New Hampshire glasshouse, 1840 - 1860. Medium-to-deep olive coloration, 8-sided umbrella form, sheared mouth - blowpipe pontil scar, 2 1/2" ht. x 2 1/4" wide, near mint; (a touch of faint wear and a bit of interior residue near the base, on one side). Some nice waviness and character to the glass.

Est.: \$200 - \$400 • Min. bid: \$120

Fine Historical &



Lot 39

Lot 69

Lot 77

Lot 57



Pictorial Flasks

What could be better than a great investment that offers history, beauty and years of pleasure? If you had deep enough pockets, Old Master's paintings might fit the bill but for folks with lesser means, historical/pictorial flasks continue to be just such an investment.

Flasks that were once relatively common at many bottle shows 20 years ago, are now getting tough to acquire anywhere, and the same will likely be true of today's more common flasks 20 years hence.

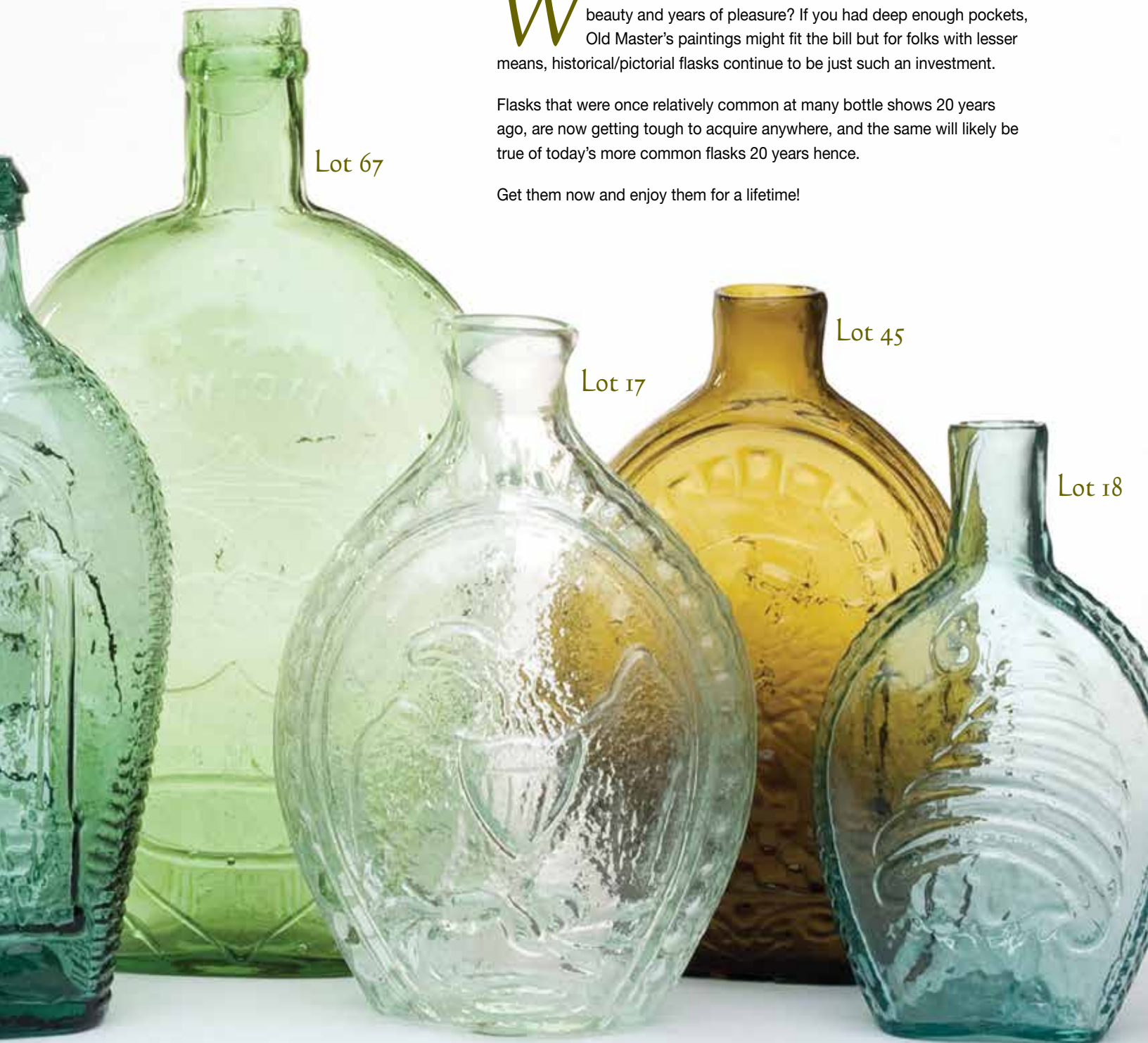
Get them now and enjoy them for a lifetime!

Lot 67

Lot 17

Lot 45

Lot 18





Lot 145

Umbrella Ink, America, 1840 - 1860. Rich golden amber with an orange tone, 8-sided umbrella form, sheared, tooled mouth with a wide flat band - blowpipe pontil scar, 2 3/8" ht. x 2 1/4" wide, near mint; (tiny, barely pinhead flake on the edge of the lip, otherwise excellent). Similar to C#134. A nice crude example, and most unusual with the tooled top. The top is angled a bit raising the question, were they were trying to fashion a lip? From an old-time collection, purchased in 1998.

Est.: \$300 - \$500 • Min. bid: \$180



Lot 146

Cone Ink, New England, probably a New Hampshire glasshouse, 1840 - 1860. Yellowish olive, almost an olive yellow near the base, conical form, sheared and inward rolled mouth - blowpipe pontil scar, ht. 2 1/8", near mint; (lightly cleaned to original luster with a touch of typical light wear remaining). A beautiful, bubbly little inkwell, nice color, character, and condition.

Est.: \$300 - \$500 • Min. bid: \$180



Lot 147

"TIPPECANOE / EXTRACT - HARD / CIDER" Figural Ink Bottle, America, 1840 - 1850. Colorless, barrel form, sheared, tooled, and inward rolled mouth - polished pontil scarred base, ht. 1 7/8", near mint; (a little very faint interior milkiness). C#667. A very rare and historical ink, the first, or possibly second example being offered at auction in more than 15 years. Likely the earliest of the barrel inks, blown during, or shortly after, the 1840 William Henry Harrison presidential campaign.

Est.: \$800 - \$1,200 • Min. bid: \$400



Lot 148

"WARRENS - CONGRESS - INK", America, 1845 - 1855. Yellowish olive, octagonal, sheared mouth with applied collar - blowpipe pontil scar, ht. 3"; (just a faint spot of haze on one panel, and the bottle may have been lightly cleaned, otherwise very near mint). Similar to C#542; also see Faulkner p.143. A very rare bottle, the company is believed to be from Wheeling, VA. Provenance: Ex. Jim Whetzel collection.

Est.: \$1,800 - \$3,200 • Min. bid: \$1,000



Lot 149

Pitkin-Type Inkwell, 36 ribs swirled to the left, New England, 1785 - 1830. Yellowish olive coloration, inverted conical form, sheared, flared mouth - blowpipe pontil scar, 1 3/4" ht. x 2 1/2" dia; (just a slight trace of very faint wear, otherwise sparkling attic mint). Similar to C#1134. A great example in color, condition, and with nice tight well-defined ribbing that extends to the pontil.

Est.: \$1,200 - \$1,800 • Min. bid: \$600



Lot 150

Blown Three Mold Inkwell, Keene Marlboro Street Glassworks, Keene, NH, 1820 - 1840. Deep olive amber, cylindrical, disk-type mouth - pontil scarred base with diamond pattern, 1 5/8" ht. x 1 7/8" dia; (some high point wear and a bit of minor dullness). GII-18. Scarce small size.

Est.: \$150 - \$250 • Min. bid: \$80



Lot 151

Blown Three Mold Inkwell, Keene Marlboro Street Glassworks, Keene, NH, 1820 - 1840. Deep olive green, cylindrical, disk-type mouth - pontil scarred base with diamond pattern, 1 7/8" ht. x 2 5/8" dia; (some scattered exterior wear). GII-18. Typically found in shades of olive amber, the pure olive green examples are certainly more difficult to acquire.

Est.: \$150 - \$250 • Min. bid: \$80



Lot 152

Blown Three Mold Inkwell, Keene Marlboro Street Glassworks, Keene, NH, 1820 - 1840. Deep olive amber, cylindrical, disk-type mouth - plain base with blowpipe pontil scar, 1 1/2" ht. x 2 1/8" dia; (a little scattered light exterior wear including a pinhead flake at base edge). GIII-29; C#1221.

Est.: \$150 - \$250 • Min. bid: \$80



Lot 153

Teakettle Inkwell, America or England, 1860 - 1880. Vivid cobalt blue, teakettle form with eight concave panels, sheared mouth complete with original brass neck ring and cap - smooth base, ht. 2"; (the bottle is perfect; the original brass cap has a minor dent and is unhinged, but fits snugly on top of the collar). Similar to C#1255. An excellent example, beautiful color and condition.

Est.: \$400 - \$600 • Min. bid: \$200



Lot 157

Cathedral Pickle Jar, Mid-Atlantic, possibly Crowleytown Glass Works, Crowleytown, NJ, 1851 - 1866. Rich, deep greenish aquamarine, almost a light blue-green, square with beveled corners, fancy gothic double arch design with lattice pattern on inner frame, tooled ring collar - iron pontil scar, ht. 11 7/8"; (trace of faint wear, otherwise perfect). MW, plate 73, #6. Fragments of this mold have been found at the site of the Crowleytown Glass Works. A scarce pickle jar, beautiful condition.

Est.: \$400 - \$600 • Min. bid: \$200



Lot 154

"HARRISON'S / COLUMBIAN / INK", America, 1847 - 1860. Aquamarine, octagonal body with eight panels forming domed shoulders, sheared and inward rolled mouth - blowpipe pontil scar, ht. 2", virtually attic mint. C#531, MW, plate 76, #12. A bright, sparkling example that does not appear to have been dug and cleaned.

Est.: \$100 - \$200 • Min. bid: \$60



Lot 158

Cathedral Pickle Jar, America, 1850 - 1860. Rich, medium-to-deep blue green, square with beveled corners, arched gothic panels with quatrefoil design and beaded trefoil motif, applied ring collar - iron pontil scar, ht. 11 1/2"; (some faint, light interior haze; a 1/8" flake on the collar, and a couple of paper-thin open surface bubbles, 1/2" and 1/4", on the beveled corners, otherwise excellent). See Zumwalt, p.456. A beautiful example, strong impression, nice pontil, great color!

Est.: \$600 - \$1,200 • Min. bid: \$300



Lot 155

"HARRISON'S - COLUMBIAN - INK" - "PATENT" (on shoulder), **Master Ink Bottle**, America, 1847 - 1860. Aquamarine, octagonal, applied flanged mouth - blowpipe pontil scar, ht. 3 3/4", mint. C#536; similar to MW, plate 76, #7. A bright, clean, sparkling example!

Est.: \$175 - \$275 • Min. bid: \$100



Lot 159

Large, Cathedral Pickle Jar, America, probably mid-Atlantic, 1860 - 1870. Brilliant, rich, deep blue green, square with beveled corners, arched gothic panels with quatrefoil design and beaded trefoil motif, applied ring collar - smooth base, ht. 13 1/2", virtually attic mint; (just a touch of light wear on beveled corners and a partially open bubble on the interior of the neck, otherwise pristine!) Impressive size, gorgeous deep eye-appealing color, very bold impression, a fantastic example.

Est.: \$800 - \$1,600 • Min. bid: \$400



Lot 156

"HARRISON'S - COLUMBIAN - INK" - "PATENT" (on shoulder), **Master Ink Bottle**, America, 1847 - 1860. Aquamarine, octagonal, applied flanged mouth - blowpipe pontil scar, ht. 7"; (trace bit of very faint wear, otherwise sparkling attic mint). Similar to C#761. A clean, sparkling example, strongly embossed, with nice character.

Est.: \$250 - \$400 • Min. bid: \$150



Lot 160

Large, Fancy Pickle Jar, probably New Jersey or Connecticut, 1860 - 1870. Medium blue-green, a little less bluish tone, and slightly more of a greenish hue than the preceding two lots, square with beveled corners, gothic arch panels with ornamental scrolls and palmette at top, sheared mouth with applied ring collar - smooth base, ht. 13 1/4"; (some faint, light interior haze through the shoulders and upper body, otherwise excellent!) MW, color plate VIII, #3. Good color, impressive size.

Est.: \$400 - \$600 • Min. bid: \$200



Lot 161

“S J G” Cathedral Pickle Jar, America, 1860 - 1870. Aquamarine, square with beveled corners, arched gothic panels with quatrefoil design and beaded trefoil motif, applied ring-type collar - early smooth base, ht. 9 1/8”, near mint; (some very minor haze, primarily on the interior that is not terribly noticeable, otherwise excellent). Zumwalt, p.162. A scarce mold, very few pickle jars are actually embossed.

Est.: \$200 - \$400 • Min. bid: \$120



Lot 165

Petal-Type Preserve Jar, Willington Glass Works, West Willington, CT, 1860-1872. Medium “old amber”, almost a tobacco coloration with some brighter golden tones, cylindrical with fluted shoulders, applied round collar with ring, smooth base, ht. 11 3/8”; (a potstone near the base with a few small, 1/8” “legs”, otherwise very near mint). MW, plate 73, #3. Beautiful glass, heavily whittled, full of bubbles and character. Ex. Ralph Fletcher collection.

Est.: \$400 - \$800 • Min. bid: \$200



Lot 162

Cathedral Pickle Jar, America, probably mid-Atlantic region, 1850 - 1860. Brilliant aquamarine, square with beveled corners, arched gothic panels with quatrefoil design and beaded trefoil motif, tooled, ring-type collared mouth - blowpipe pontil scar, ht. 9 1/4”, virtually attic mint; (a couple of minor scratches on one of the beveled corners, otherwise pristine). Sparkling glass, and much more scarce with the blowpipe pontil scar, most examples either smooth base, or iron pontil.

Est.: \$200 - \$400 • Min. bid: \$120



Lot 166

Petal-Type Preserve Jar, Midwest, probably a Pittsburgh district glasshouse, 1850 - 1860. Bright olive with a slight yellowish or chartreuse tone, cylindrical with fluted shoulders, 4-pc. mold, applied mouth - red iron pontil scar, Qt; (a couple of minor flakes, 1/8” or less, and a hard-to-see small 1/8” iridescent bruise on the edge of the applied mouth, otherwise attic mint). L#3067. Nice color, clarity, a little lighter than most.

Est.: \$800 - \$1,200 • Min. bid: \$400



Lot 163

Cloverleaf Pickle Jar, New England, 1850 - 1860. Clear, light to medium green, octofoil form, applied ring-type collar - iron pontil scar, ht. 7 1/2”; (just a little minor exterior wear and a 1/4”, onionskin-thin open surface bubble, otherwise near attic mint). A beautiful example, nice clarity, scarce color for a “Cloverleaf” jar, and with a nice heavy iron pontil.

Est.: \$400 - \$800 • Min. bid: \$200



Lot 167

Petal-Type Preserve Jar, Midwest, probably a Pittsburgh district glasshouse, 1850 - 1860. Medium to deep olive, cylindrical with fluted shoulders, 3-pc. mold, applied mouth - red iron pontil scar, 1/2 gallon; (a little exterior wear including a small iridescent flake on one of the fluted edges, a 1/2” x 1/8” open bubble on the shoulder, and a minor bit of roughness on the edge of the lip). L#3067. An impressive looking jar with some nice whittling through shoulders.

Est.: \$1,200 - \$1,800 • Min. bid: \$600



Lot 164

Cloverleaf Pickle Jar, a Stoddard, NH glasshouse, probably New Granite Glass Works, Mill Village, 1860 - 1871. Beautiful, rich golden amber with a slight reddish tone, octofoil form, applied ring-type collar - smooth domed base, ht. 8 1/8”; (a little light exterior high point wear and a narrow, 1/4”, open surface bubble on the neck, otherwise very near mint!) MW, plate 73, #2; also, *On the Trail of Stoddard Glass*, Field, p.82. A classic, beautiful Stoddard Jar.

Est.: \$400 - \$800 • Min. bid: \$200



Lot 168

“SKILTON FOOTE & CO'S / BUNKER HILL PICKLES / TRADE MARK” (Motif of Monument, Trees, Fence and Barrels), America, 1880 - 1895. Aquamarine, in the form of the famous Cape May, NJ lighthouse, applied sloping collar - smooth base, ht. 7 3/4”; (lightly cleaned to original luster and virtually attic mint condition). Z p.376. A desirable figural, and one of the more difficult of all the Skilton Foote bottles to acquire. Bright, clean, and with crisp strong embossing.

Est.: \$300 - \$600 • Min. bid: \$150



Lot 169

Lot of (2), "SKILTON FOOTE & CO'S / BUNKER HILL PICKLES" Jars, America, 1880 - 1895. 1st jar: Aquamarine, cylindrical, wide-mouth product jar, ground mouth - smooth base, ht. 5", 2nd jar: Honey amber, square with beveled corners, wide-neck with tooled square collar - smooth base, ht. 6 1/2". Both jars are very near mint. The aquamarine product jar is very rare, and certainly one of the most difficult of the Bunker Hill molds to acquire.

Est.: \$150 - \$300 • Min. bid: \$80



Lot 173

"MASON'S / PATENT / NOV 30TH / 1858", America, 1880 - 1895. Golden amber, cylindrical, threaded neck with ground lip, zinc lid - "0" on smooth base, Qt, perfect, pristine condition! RB# 1787. This one definitely stands out on a shelf. Exceptional eye-appeal, crude, bubbly, the glass is absolutely filled with tiny seed bubbles.

Est.: \$600 - \$900 • Min. bid: \$300



Lot 170

"MASON'S / PATENT / NOV. 30TH / 1858", Clayton Bros Glass Works, Clayton, NJ, 1880 - 1995. Medium to deep cobalt blue, cylindrical, threaded neck with ground lip, zinc lid with moon, star, and rays - "P 13" on smooth base, Qt; (only a trace of very minor wear, otherwise mint). RB# 1787. A great rarity and outstanding jar. Deep color, strongly embossed, virtually perfect! Ex. Alex Kerr collection; Charles Compton collection.

Est.: \$20,000 - \$30,000 • Min. bid: \$10,000



Lot 174

"MASON'S" / (Keystone in Circle) / "PATENT / NOV. 30TH / 1858", America, 1880 - 1895. Gorgeous, pure yellow coloration, cylindrical, threaded neck with ground lip, correct "MASON FRUIT JAR CO. / PHILAD'A" zinc lid with keystone and rays - "89" on smooth base, Qt, near mint. RB# 1964. A beautiful jar, extremely rare color, nicely whittled. Provenance: Ex. Skip Henderson collection.

Est.: \$3,000 - \$5,000 • Min. bid: \$1,500



Lot 171

"MASON'S / PATENT / NOV 30TH / 1858", America, 1880 - 1895. Beautiful straw-yellow with a very slight olive tone, cylindrical, threaded neck with ground lip, zinc lid with moon, star, and rays - "188" on smooth base, Qt, virtually perfect; (slight trace of faint residue or milkiness on the interior). RB# 1787. Outstanding character, heavily whittled, great eye-appeal with the strongly embossed, 'large-lettering' mold!

Est.: \$500 - \$800 • Min. bid: \$250



Lot 175

"MASON'S" / (Keystone in Circle) / "PATENT / NOV. 30TH / 1858", America, 1880 - 1895. Honey amber, cylindrical, threaded neck with ground lip, correct "MASON FRUIT JAR CO. / PHILAD'A" zinc lid with keystone and rays - "101" on smooth base, Qt, near mint; (minor, approx. 3/16" flake from edge of ground lip, otherwise perfect). RB# 1964. Rare color, excellent clarity and condition.

Est.: \$900 - \$1,200 • Min. bid: \$500



Lot 172

"MASON'S / PATENT / NOV 30TH / 1858", America, 1880 - 1895. Bright, medium to deep green, cylindrical, threaded neck with ground lip, zinc lid - flower, or cloverleaf design, on smooth base, Qt; (a little very minor flaking, possibly in-manufacture, from ground lip, otherwise virtually attic mint). RB# 1905. Heavily whittled, bold, large-lettered embossing, another jar with fantastic eye-appeal. A magnificent color, a true green.

Est.: \$1,000 - \$2,000 • Min. bid: \$500



Lot 176

"MASON'S / PATENT / NOV 30TH / 1858", Hemingray Glass Co., Covington, KY, 1877 - 1885. Black, cylindrical, threaded neck with ground lip, Marion zinc lid - "14" on base, Qt; (a hard-to-see, thin hairline fissure, approx. 2 1/2", along one of the side mold seams; light embossing, and some flaking to the ground mouth). RB# 1787. The hairline does not show on display, and cannot be seen without a very bright light. A rare and desirable jar, even more so having the high mold # on the base.

Est.: \$2,000 - \$4,000 • Min. bid: \$1,000



Lot 177

(Cross) / "MASON'S / PATENT / NOV. 30TH / 1858", America, 1875 - 1895. Cornflower blue, cylindrical, threaded neck with ground lip, zinc lid with "HFJ CO" Cross - "PAT NOV 26 67 / 220" on base, Qt, near mint; (just a trace of faint interior milkiness, a minor interior open bubble, otherwise perfect). RB# 1938. Strong embossing, whittled, and a beautiful, extremely rare color for this jar.

Est.: \$1,200 - \$1,600 • Min. bid: \$600



Lot 181

(Cross) / "MASONS / CFJCo / PATENT / NOV 30TH / 1858", America, 1885 - 1900. Light amethyst, cylindrical, threaded neck with ground lip, zinc lid - plain base, Qt, perfect. RB# 1946. A scarce jar. Attractive with the faint amethystine tint.

Est.: \$125 - \$250 • Min. bid: \$70



Lot 178

(Cross) / "MASON'S / PATENT / NOV. 30TH / 1858", America, 1875 - 1895. Beautiful straw yellow, cylindrical, threaded neck with ground lip, zinc lid - "PAT NOV 26 67 / 140" on base, Qt; (some minor flaking on the ground mouth along with a 1/4" chip from the top inside edge that slivers along the inner rim a bit, otherwise perfect). RB# 1938. Outstanding color!

Est.: \$500 - \$800 • Min. bid: \$250



Lot 182

(Cross) / "MASONS / CFJCo / PATENT / NOV 30TH / 1858", America, 1885 - 1900. Light aquamarine, cylindrical, threaded neck with ground lip, zinc lid - "7" on base, Qt, mint; (normal flaking of the ground mouth). RB# 1946. A good, clean example.

Est.: \$125 - \$250 • Min. bid: \$70



Lot 179

(Cross) / "MASON'S / PATENT / NOV. 30TH / 1858", America, 1875 - 1895. Light honey amber, cylindrical, threaded neck with ground lip, zinc lid - "PAT NOV 26 67 / 585" on base, Qt, attic mint; (the embossing is a little on the light side, but absolutely no form of damage). RB# 1938. This mold has the larger cross. A very attractive, light color.

Est.: \$400 - \$700 • Min. bid: \$200



Lot 183

"MASON'S / PATENT / NOV 30TH / 1858.", America, 1885 - 1900. Gorgeous light straw yellow with a very slight greenish hue, cylindrical, ground lip, glass insert and zinc screw band - "4" on base, Qt, near mint; (a 1/4" shallow flake from the top of the ground mouth; glass insert is correct for the jar, but probably not original, and is a deeper honey tone with a minor flake on the rim). RB# 1784. A beautiful jar, whittled and strongly embossed. Extremely rare in this coloration.

Est.: \$600 - \$900 • Min. bid: \$300



Lot 180

(Cross) / "MASON'S / PATENT / NOV. 30TH / 1858", America, 1875 - 1895. Honey amber, cylindrical, threaded neck with ground lip, zinc lid - "PAT NOV 26 67 / 201" on base, Qt, near mint; (a couple of minor, paper-thin, open surface bubbles, otherwise excellent). RB# 1938. This mold has the smaller cross. Strong embossing and nice character with a wide streak of frothiness that swirls from the back shoulder through the body.

Est.: \$400 - \$700 • Min. bid: \$200



Lot 184

"MASON'S / CJFCo / PATENT / NOV 30TH / 1858", America, 1885 - 1900. Cornflower blue, cylindrical, threaded neck with ground lip, zinc lid with "CJF-Co" - "F. 59" on base, Qt, pristine condition; (a 3/8" area of iridescence on the inside of the neck below the lip that does not affect the lip, and likely occurred in-manufacture, mentioned for complete accuracy). RB# 1920. Crisp, very bold embossing, beautiful rare color.

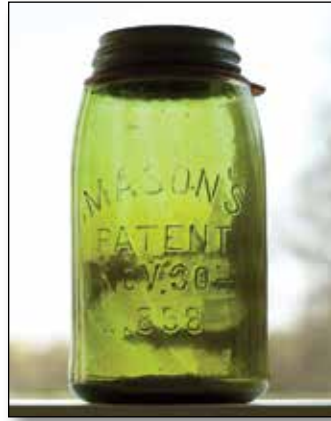
Est.: \$500 - \$700 • Min. bid: \$250



Lot 185

"MASON'S / CJFCo / PATENT / NOV 30TH / 1858", America, 1885 - 1900. Medium to deep amber, cylindrical, threaded neck with ground lip, zinc lid with "CJFCo" - "D-269" on base, Qt, virtually perfect; (a 1/4" flake from edge of lip, but still retains a perfect ground seal, mentioned for complete accuracy). RB# 1920. A great example, deep, rich color, very boldly embossed, outstanding condition.

Est.: \$300 - \$600 • Min. bid: \$180



Lot 189

"MASON'S / PATENT / NOV. 30TH / 1858", America, 1900 - 1910. Bright yellow-green with strong olive tones and subtle amber striations swirled through the glass, cylindrical, threaded neck with smooth lip, zinc lid - base with three dots, Qt, perfect! RB# 1787. Some nice waviness and tiny bubbles to the glass. Gorgeous rich color with some subtle streaks of amber mixed through the glass.

Est.: \$750 - \$1,500 • Min. bid: \$400



Lot 186

"MASON'S / (Cross) / PATENT / NOV. 30TH / 1858", America, 1885 - 1900. Golden amber, cylindrical, threaded neck with ground lip, zinc lid with faint keystone logo - "PAT NOV 26 67 / 616" on base, Qt, attic mint! RB# 1940. Another beautiful example, excellent condition.

Est.: \$200 - \$400 • Min. bid: \$100



Lot 190

"MASON'S / CFJCo / PATENT / NOV 30TH / 1858", America, 1885 - 1900. Amber, cylindrical, threaded neck with ground lip, zinc lid - "E450" on base, half-gallon; (in "as-found" condition with light interior content haze; a little minor dullness around the embossing, and some normal roughness to the ground mouth including a 1/4" flake on the edge). RB# 1920. Heavily whittled and with crisp, strong embossing. A fresh discovery from a small farm auction in Ohio.

Est.: \$600 - \$900 • Min. bid: \$300



Lot 187

Lot of (2), "MASON'S / (Cross) / PATENT / NOV. 30TH / 1858" Jars, America, 1885 - 1900. Straw yellow and light to medium yellowish-green, both cylindrical with threaded necks and ground lips, zinc lids - "PAT NOV 26 67 / 631" on bases, Qts; (the yellow example has a 3/8" area of flaking on the top of the ground mouth and a little normal flaking around the edge; green example has a little very light, fine wear, otherwise both near mint). Both, RB# 1939. A beautiful pair.

Est.: \$250 - \$500 • Min. bid: \$140



Lot 191

"NEW ENG. GLASS BOTTLE CO" (on base), **Black Glass Bottle**, New England Glass Bottle Company, Cambridge, MA, 1827 - 1845. Dense olive amber (black glass), squatty 3-pc. mold porter-style cylinder, applied sloping collar with bevel - sand type pontil scar, ht. 8 1/4"; (some scattered light exterior wear; a minor 1/8" bruise at edge of base, embossing on base is indistinct, as is common on these early heavy bottles). MW, plate 45, #8; KW, Fig. 147. A rare, early bottle.

Est.: \$400 - \$600 • Min. bid: \$200



Lot 188

"MASON'S / LGCo / PATENT / NOV 30TH / 1858", America, 1885 - 1900. Light cornflower blue, cylindrical, threaded neck with ground lip, zinc lid with moon, star, and rays - "8" on base, Qt; (small, minor open bubble on interior, otherwise excellent). RB# 1970. A delicate, attractive color.

Est.: \$200 - \$400 • Min. bid: \$100



Lot 192

"CONSTITUTION" Wine Bottle, America, 1835 - 1845. Deep olive, cylindrical, 3-pc. mold, applied sloping collar with bevel - sand type pontil scar, ht. 11"; (some faint interior milkiness in the shoulders, otherwise "cellar found", virtually perfect condition. See AB&GC, May, 2016, for an article on the history of related Constitution bottles. A very rare, historical bottle, blown to contain the wine imported to the US, aboard the USS Constitution, nicknamed, "Old Ironsides".

Est.: \$600 - \$1,200 • Min. bid: \$300



Lot 193

"A.M. BININGER & CO. / 19 BROAD ST. / N.Y." Figural Cannon Barrel Whiskey, America, 1865 - 1875. Beautiful, bright honey coloration, figural cannon, sheared mouth - smooth base, ht. 12 3/8", perfect. A choice example, beautiful condition, and in a lighter, prettier color than most. One of the classics in figural whiskeys.

Est.: \$800 - \$1,200 • Min. bid: \$400



Lot 197

"A.M. BININGER & Co / No 375 BROADWAY N.Y.", America, 1863 - 1870. Light topaz, almost a ginger-ale coloration, square with beveled corners, applied sloping collar - smooth base, ht. 9 5/8", attic mint! Another scarce, outstanding color, and excellent character with crude, wavy glass. This mold, with the 375 Broadway St, comes in some very attractive colors. The three in this sale are definitely some of the nicer ones.

Est.: \$700 - \$1,200 • Min. bid: \$400



Lot 194

"A.M. BININGER & CO / No 19 BROAD ST NEW YORK." Figural Urn Whiskey, America, 1860 - 1865. Golden amber shading to a deeper amber in the neck and base, figural urn form, applied solid handle crimped at lower attachment, wide funnel-shaped mouth with tooled inner rim - smooth base, ht. 8 7/8", near mint; (some very faint interior haze; a dime-size patch of dullness on the shoulder, and a 1/4" onion-skin thin open bubble). A rare mold, heavily whittled with strong embossing!

Est.: \$3,000 - \$5,000 • Min. bid: \$1,500



Lot 198

"A.M. BININGER & Co / No 375 BROADWAY N.Y.", America, 1863 - 1870. Beautiful, straw-yellow with some warmer honey tones in the base and lip, square with beveled corners, applied sloping collar - smooth base, ht. 9 3/4"; (the bottle may have been lightly cleaned, but certainly appears as virtually attic mint; a small 1/8" open bubble on back panel, otherwise perfect). Beautiful color and clarity. Some nice elongated bubbles in the side panel.

Est.: \$700 - \$1,200 • Min. bid: \$400



Lot 195

"A.M. BININGER & Co. / No. 19 BROAD ST / NEW YORK" Handled Whiskey, America, 1860 - 1870. Medium amber, cylindrical with conical shoulders, applied solid handle crimped at lower terminal, applied round double collar, smooth base, ht. 7 7/8", perfect. A good example, whittled, no issues with the handle attachment, nice and clean.

Est.: \$300 - \$500 • Min. bid: \$180



Lot 199

"BININGER'S / OLD KENTUCKY BOURBON, - 1849. RESERVE; / DISTILLED IN 1848. - A.M. BININGER & Co, / No. 19, BROAD ST, N.Y.", America, 1860 - 1870. Light golden amber, square with beveled corners, applied sloping collar - smooth base, ht. 9 3/4"; (some patches of light interior haze or stain, but no other form of damage and otherwise very near mint). Should respond well to just a day or two in the tumbler, if desired.

Est.: \$250 - \$450 • Min. bid: \$150



Lot 196

"A.M. BININGER & Co / No 375 BROADWAY N.Y.", America, 1863 - 1870. Gorgeous, pinkish strawberry puce, square with beveled corners, applied sloping collar - smooth base, ht. 9 5/8", virtually attic mint! A fantastic example. In addition to the rare and eye-appealing color, this example has outstanding character with crude, wavy glass that is absolutely filled with tiny seed bubbles.

Est.: \$1,000 - \$1,500 • Min. bid: \$500



Lot 200

"WHARTON'S / WHISKEY / 1850. / CHESTNUT GROVE", America, 1857 - 1870. Medium amber, flattened ewer form, applied solid handle, tooled and flared mouth with pour spout - **"WHITNEY GLASS WORKS / GLASSBORO NJ"** (on smooth base), ht. 9 7/8", virtually attic mint; (just a trace of minor light wear). MW, plate 48, #6. A good clean example.

Est.: \$600 - \$900 • Min. bid: \$300



Lot 201

"TURNER BROTHERS / NEW YORK", America, 1865 - 1875. Yellow with a slight topaz tone, barrel form, applied square collar - smooth base, ht. 9 3/4"; (a 3/4" area on the back side of the square collar has been professionally repaired, and a little minor lip edge roughness as is common on these square collars). A scarce mold in an attractive, beautiful color. The repair is on the back side of the mouth and the bottle displays as near mint.

Est.: \$250 - \$450 • Min. bid: \$140



Lot 205

"UDOLPHO WOLFE'S - SCHIEDAM NI" (reverse "N") - **"AROMATIC / SCHNAPPS"**, America, 1860 - 1875. Bright yellowish-olive, almost an olive yellow through the shoulders, square with beveled corners, applied sloping collar - smooth base, ht. 7 5/8"; (a bit of roughness on the top inside edge of the lip; a trace of interior residue, otherwise near mint). Beautiful glass, heavily whittled, crude lettering. A rare mold. There is also a large dot between "Aromatic" and "Schiedam".

Est.: \$250 - \$450 • Min. bid: \$140



Lot 202

"C A RICHARDS & CO / 99 WASHINGTON ST / BOSTON" (with 95% complete front and back labels, original box), probably a Stoddard, NH glasshouse, 1865 - 1873. Yellowish "old amber", square with beveled corners, applied sloping collar - smooth base, ht. 9 1/2"; (the bottle is perfect, box missing top and bottom). Label reads in part, *"concentrated EXTRACT OF RYE....made from the best selected Rye grown in the Cumberland Valley, Penn"*, Beautiful glass.

Est.: \$200 - \$400 • Min. bid: \$100



Lot 206

"LONDON / JOCKEY - CLUB HOUSE / GIN" - (**Horse and Rider**), (backwards "N"s in "LONDON"), America, 1858 - 1865. Rich, brilliant emerald coloration, square with beveled corners, applied sloping collar - iron pontil scar, ht. 9 5/8"; (just a slight trace of faint exterior wear, otherwise virtually attic mint). A great example in color, mold, (with the backwards "N"s"), iron pontiled base, and condition! A scarce bottle that was distributed in the West during the gold rush era.

Est.: \$2,000 - \$4,000 • Min. bid: \$1,200



Lot 203

"UDOLPHO WOLFE'S - SCHIEDAM - AROMATIC / SCHNAPPS" (with 85% complete, original label), America, 1865 - 1880. Medium apricot coloration, square with beveled corners, applied sloping collar - smooth base, ht. 8 1/4", attic mint; (label darkened from age, but still legible). Scarce color, no amber in this one! Interesting, the label was applied upside down on the bottle, and reads in part; *"A Superlative Tonic, Diuretic, Antidyspeptic, and Invigorating Cordial"*.

Est.: \$250 - \$450 • Min. bid: \$140



Lot 207

"TURNER BROTHERS / NEW YORK, BUFFALO, NY / & SAN FRANCISCO. CAL", America, 1858 - 1865. Medium to deep tobacco amber, square with beveled corners, applied sloping collar - smooth base, ht. 9 1/2", near mint; (just a minor pinhead flake on the edge of the applied collar and an 1/8" paper-thin open surface bubble). R/H #T70.5L. A rare and desirable Western bitters, excellent condition, crude glass, nice character!

Est.: \$1,000 - \$2,000 • Min. bid: \$500



Lot 204

Lot of (2), **"UDOLPHO WOLFE'S - SCHIEDAM - AROMATIC / SCHNAPPS"** Bottles, America, 1865 - 1880. Both are shades of yellow, the small example has some light peach or ginger-ale tones, square with beveled corners, applied sloping collars - smooth bases, ht. 8 1/8" and 9 1/2"; (both have been lightly cleaned, but appear as near mint; the small example has a potstone near the base with a couple of 1/8" "legs"). Bubbly examples, beautiful colors.

Est.: \$175 - \$350 • Min. bid: \$100



Lot 208

"BRYANT'S - STOMACH - BITTERS", America, 1859 - 1863. Medium olive, tall "Lady's Leg" form with (8) panels, applied sloping collar with bevel - sand type pontil scar, ht. 12 1/8"; (professionally cleaned to original luster with some imperfections or minor wear remaining; a 3/8" open bubble near base). R/H #B243. This Bryant's does not have the severe etching and pitting typical of many of the shipwreck examples. A beautiful example with some bubbles and waviness to the glass.

Est.: \$2,000 - \$3,500 • Min. bid: \$1,000



Lot 209

“WORMSER BROS” / (Motif of bung hole) / “SAN FRANCISCO.”, America, 1869 - 1875. Light honey amber, barrel form, crudely applied drippy top - smooth base, ht. 9 ½”; (a little light haze or dullness; a touch of light wear including a 1/8” flake at edge of base, but no other form of damage). This example has not been cleaned and is otherwise in excellent condition! R/H #W162.5. A very scarce barrel that was found in Eureka, Nevada, under some floorboards of an old house.

Est.: \$1,500 - \$2,500 • Min. bid: \$800



Lot 213

“HALL’S / BITTERS - E.E. HALL NEW HAVEN / ESTABLISHED 1842”, America, 1865 - 1875. Golden amber with an orange tone, barrel form, applied square collar - smooth base, ht. 9 ¼”, attic mint. R/H #H10. A good solid example, no edge-of-lip issues and virtually no high point wear.

Est.: \$200 - \$300 • Min. bid: \$100



Lot 210

“OLD SACHEM / BITTERS / AND / WIGWAM TONIC”, America, 1860 - 1875. Golden amber, barrel form, applied square collar - smooth base, ht. 9 ¼”; (professionally cleaned to original luster with some light scratches and ground wear remaining, primarily near one of the side mold seams, and a 1/8” flake at the edge of the square collar). R/H #O46.

Est.: \$200 - \$400 • Min. bid: \$100



Lot 214

“S T / DRAKE’S / 1860 / PLANTATION / X / BITTERS - PATENTED / 1862”, America, 1862 - 1880. Bright lemon yellow, cabin form with 6 logs above the label panel, applied sloping collar - smooth base (with three large dots), ht. 10”, attic mint! R/H #D105. Brilliant, gorgeous, eye-appealing color, about as yellow as you could hope to find in a 6-log mold. This one looks as nice as if it came out of an attic after being tucked away for 100+ years.

Est.: \$2,000 - \$4,000 • Min. bid: \$1,000



Lot 211

“OLD SACHEM / BITTERS / AND / WIGWAM TONIC”, America, 1860 - 1875. Light copper-topaz, barrel form, applied square collar - smooth base, ht. 9 ¼”, near mint; (some very fine lip-edge roughness, approx. ¾”, that you can feel, but is not easy to see, and a pinhead flake from the side of the lip, otherwise sparkling mint). R/H #O46. Beautiful, scarce to rare color, light in tone and with excellent clarity from the base to the neck! James Becker collection.

Est.: \$1,000 - \$1,500 • Min. bid: \$500



Lot 215

“S T / DRAKE’S / 1860 / PLANTATION / X / BITTERS - PATENTED / 1862”, America, 1862 - 1880. Light to medium apricot - topaz, cabin form with 6 logs above the label panel, applied sloping collar - smooth base, ht. 10”, virtually attic mint; (a little spot of roughness, approx. ¼”, on the side of the neck, possibly in-manufacture, otherwise perfect). R/H #D105. Strong embossing, nice clarity, beautiful, scarce color with some subtle, slightly deeper striations swirled through the label panel.

Est.: \$1,200 - \$2,400 • Min. bid: \$600



Lot 212

“GREELEY’S - BOURBON WHISKEY / BITTERS - GREELEY’S”, America, 1860 - 1875. Deep raspberry coloration, barrel form, applied square collar - smooth base, ht. 9 ¼”; (a minor, 1/8” flake on the back edge of the collar, and just the slightest trace of very light wear, otherwise virtually attic mint!) R/H #G102. Gorgeous color, and although it is deep in tone, it can still be enjoyed in normal daylight or a lighted display case. James Becker collection.

Est.: \$800 - \$1,200 • Min. bid: \$400



Lot 216

“S T / DRAKE’S / 1860 / PLANTATION / X / BITTERS - PATENTED / 1862”, America, 1862 - 1880. Clear, medium apricot, cabin form with 6 logs above the label panel, applied sloping collar - smooth base, ht. 9 7/8”, sparkling attic mint. R/H #D105. Beautiful color, nice clarity, outstanding condition. Another very nice example, pretty color.

Est.: \$800 - \$1,200 • Min. bid: \$400



Lot 217

“S T / DRAKE’S / 1860 / PLANTATION / X / BITTERS - PATENTED / 1862”, America, 1862 - 1880. Beautiful, strawberry puce, cabin form with 6 logs above the label panel, applied sloping collar - smooth base, ht. 10”; (just a very slight trace of wear along the roof edge, otherwise perfect!) R/H #D108. A great example, and light enough so that the fantastic color can be appreciated in normal daylight, or on a shelf.

Est.: \$400 - \$600 • Min. bid: \$200



Lot 221

Unembossed, pontiled, Cabin-Form Bitters, America, 1858 - 1862. Medium to deep golden amber, cabin form with two corners having a wide, flat bevel, applied double collar - iron pontil scar, ht. 10”, perfect! This particular mold is very rare. It is believed by some to be an early prototype for the Drake’s Plantation Bitters while others believe it to be an early copycat. Regardless, a great bottle, and adding to the rarity is the large iron pontil scar!

Est.: \$1,800 - \$3,200 • Min. bid: \$900



Lot 218

“S T / DRAKE’S / 1860 / PLANTATION / X / BITTERS - PATENTED / 1862”, America, 1862 - 1880. Gorgeous, deep raspberry-grape coloration, cabin form with 6 logs above the label panel, applied sloping collar - smooth base, ht. 10”, attic mint! R/H #D105. A gorgeous, rare color for a Drake’s. Although it is deep in tone, you can still appreciate some of the outstanding color in normal daylight. An early Harmer Rooke Galleries sticker remains on the base.

Est.: \$800 - \$1,200 • Min. bid: \$400



Lot 222

Unembossed, pontiled, Cabin-Form Holtzermann Bitters, America, 1860 - 1865. Golden amber, square with beveled corners, one full-length label panel having large dots along the edge, applied sloping collar with lightning-type closure added at a later point - red iron pontil scar, ht. 9 7/8”, attic mint! An extremely rare mold, believed to be one of only a handful known to exist. Very distinctive and different from the preceding lot with evidence suggesting it was blown for the Holtzermann Bitters Co.

Est.: \$1,800 - \$3,200 • Min. bid: \$900



Lot 219

“S T / DRAKE’S / 1860 / PLANTATION / X / BITTERS - PATENTED / 1862”, America, 1862 - 1880. Deep cherry puce, cabin form with 6 logs above the label panel, applied sloping collar - smooth base, ht. 9 3/4”; (a touch of typical minor wear; a 1/8” flake on one of the base corners has been lightly buffed, otherwise excellent). R/H #D105.

Est.: \$175 - \$275 • Min. bid: \$100



Lot 223

“AMERICAN LIFE BITTERS - P.E. ILLER / MANUFACTURER / TIFFIN, OHIO - AMERICAN LIFE BITTERS”, America, 1860 - 1870. Light golden amber, rectangular cabin form with curved roof, applied sloping collar - smooth base, ht. 9”; (professionally cleaned on the exterior; some interior haze along one of the corners, and a 3/16” flake on one of the base corners). R/H #A49. A very rare and desirable cabin, most examples having some form of damage.

Est.: \$2,000 - \$4,000 • Min. bid: \$1,000



Lot 220

“S T / DRAKE’S / 1860 / PLANTATION / X / BITTERS - PATENTED / 1862”, America, 1862 - 1880. Bright, light yellowish-honey coloration, cabin form with 6 logs above the label panel, applied sloping collar - smooth base, ht. 9 3/4”; (trace of light milkiness in one of the base corners, otherwise sparkling attic mint!) R/H #D108. It may not be the rarest color, but it is a brilliant, beautiful, and strongly embossed example with some nice character to the glass.

Est.: \$175 - \$350 • Min. bid: \$100



Lot 224

“OLD CABIN / BITTERS - PATENTED / 1863 - OLD CABIN / BITTERS - PATENTED / 1863”, America, 1870 - 1875. Medium amber with an orange tone, cabin form, applied sloping collar - smooth base, ht. 9 1/4”; (some interior content haze; a pinhead flake on the edge of the lip, and a little minor patch of dullness on one of the side panels). R/H #O19. A rare cabin bitters that is seldom offered for sale. Provenance: Ex. Judge E.S. MacKenzie collection.

Est.: \$2,500 - \$4,500 • Min. bid: \$1,500



Lot 225

"NATIONAL / BITTERS" - "PATENT / 1867" (on base), America, 1867 - 1875. Aquamarine, figural ear of corn, applied short tapered collar with ring - smooth base, ht. 12 3/8", near mint; (some very light interior dullness, or faint haze, otherwise perfect). R/H #N8. A very rare, desirable color for this mold, and one that does not come around often. The faint interior haze is not terribly distracting and would respond well to a light professional cleaning, if desired.

Est.: \$5,000 - \$8,000 • Min. bid: \$2,500



Lot 226

"NATIONAL / BITTERS" - "PATENT / 1867" (on base), America, 1867 - 1875. Bright, light golden amber, figural ear of corn, applied short tapered collar with ring - smooth base, ht. 12 1/2", near mint; (small, 1/8" flake towards the back edge of the collar ring, otherwise excellent). R/H #N8. Nice light, clean example.

Est.: \$400 - \$600 • Min. bid: \$200



Lot 227

"THE / FISH BITTERS - W.H. WARE / PATENTED 1866", America, 1866 - 1875. Clear, medium to deep olive yellow, figural fish, applied ring collar - **"W.H. WARE / PATENT 1866"** (on smooth base), ht. 11 1/2", virtually attic mint; (a couple of tiny, barely noticeable, specks of lip-edge roughness, otherwise mint). R/H #F46. Exceptional, rare, and eye-appealing color with deep olive tones, strong, much better than average embossing, virtually perfect, "attic found" condition.

Est.: \$8,000 - \$12,000 • Min. bid: \$4,000



Lot 228

"THE / FISH BITTERS - W.H. WARE / PATENTED 1866", America, 1866 - 1875. Bright golden shading to a light honey coloration along the side, figural fish, applied ring collar - **"W.H. WARE / PATENT 1866"** (on smooth base), ht. 11 1/2"; (a small potstone near the base has a couple of tiny, 1/8" or less, "legs", and is well hidden in the tail area, otherwise very near mint). R/H #F46. A clean, bright, example, the condition issue is minor. James Becker collection.

Est.: \$200 - \$300 • Min. bid: \$100



Lot 229

"THE / FISH BITTERS - W.H. WARE / PATENTED 1866", America, 1866 - 1875. Amber near the side shading to a very deep chocolate amber through the head, tail, and belly, figural fish form, applied ring collar - **"W.H. WARE / PATENT 1866"** (on smooth base), ht. 11 5/8"; (some minor roughness around the edge of the lip, scattered high point wear, and a slightly weak impression as is common on this mold). R/H #F46. A scarce mold, and a very scarce color for this mold!

Est.: \$400 - \$600 • Min. bid: \$200



Lot 230

"BROWN'S / CELEBRATED / INDIAN HERB BITTERS - PATENTED / FEB 11 / 1868", America, 1868 - 1880. Medium golden amber shading to a lighter honey amber through the arms, figural Indian maiden, sheared and inward rolled lip - smooth base, ht. 12 1/4", perfect. R/H #B226. A nice example, and one of the classics of the figural bitters.

Est.: \$700 - \$900 • Min. bid: \$400



Lot 231

"BROWN'S / CELEBRATED / INDIAN HERB BITTERS - PATENTED / 1867", America, 1867 - 1880. Amber through the upper torso shading to a deep amber, almost chocolate coloration below the waist, figural Indian maiden, sheared and inward rolled lip - smooth base, ht. 12 1/4", near mint; (a little roughness on the inside edge of the lip, due in part to the inward roll of the glass not being complete, which is relatively common; a patch of minor interior residue or haze). R/H #B223. Nice deep color.

Est.: \$600 - \$800 • Min. bid: \$300



Lot 232

"THE GREAT TONIC / CALDWELLS / HERB BITTERS", America, 1855 - 1865. Golden amber, triangular form, applied sloping collar - iron pontil scar, ht. 12 1/4"; (professionally cleaned, although the iron pontil scar is fully intact). R/H #C8.

Est.: \$200 - \$300 • Min. bid: \$100



Lot 233

"SIMON'S CENTENNIAL BITTERS - TRADE MARK", 1876 - 1880. Bright aquamarine, figural bust of George Washington, applied ring-type collar - smooth base, ht. 10", near mint; (a small potstone on the base ring has a tiny area of iridescence around it, otherwise virtually attic mint). R/H #S110. A clean, bright example of this historical bitters patented Dec. 14, 1875, by Bernard Simon, of Scranton, PA, and initially blown to commemorate the nations Centennial in 1876.

Est.: \$500 - \$800 • Min. bid: \$300



Lot 237

Holtzermann's Stomach Bitters (label-only), **Miniature Figural Log Cabin** (with original label and partial contents), America, 1906 - 1910. Golden amber, rectangular cabin form, tooled sloping collar - smooth base, ht. 4"; (bottle is perfect, some fading to the label, but otherwise complete and original!) R/H #H153-L. A beautiful example, rare with complete label and partial contents. Found in an old home near Saginaw, Mich.

Est.: \$700 - \$900 • Min. bid: \$350



Lot 234

"ROYAL / ITALIAN BITTERS / REGISTERED" / (motif of crown, shield and flags) "TRADE MARK / A.M.F. GIANELLI / GENOVA", Canada, 1870 - 1880. Gorgeous medium pink amethyst, tapered cylinder form, applied square collar - smooth base, ht. 13 5/8"; (a little light exterior wear and a tiny, pinhead bit of in-manufacture roughness at the edge of the lip, otherwise near mint). R/H #R111. Beautiful color, one that will stand out on a shelf.

Est.: \$800 - \$1,200 • Min. bid: \$400



Lot 238

"HOLTZERMANN'S / PATENT STOMACH BITTERS - J.D. HOLTZERMANN & CO. / PIQUA, O.", America, 1885 - 1895. Medium amber, square with beveled corners, tooled sloping collar - smooth base, ht. 9 1/4", attic mint. R/H #H155.5. As noted by Ring-Ham, an extremely rare mold. This one is in "attic" found condition!

Est.: \$400 - \$700 • Min. bid: \$250



Lot 235

Bitters Bottle - Anchor motif on two sides and all four roof panels, America, 1880 - 1885. Light golden honey coloration, semi-cabin form, square with beveled corners, applied sloping collar - smooth base, ht. 10 1/4", attic mint! R/H #D122L. The bottle held Dr. Dunlap's Anchor Bitters. The company originated in Grand Rapids, Mich, and later relocated to Minnesota. A very scarce bitters, attractive with the embossed anchors and semi-cabin form.

Est.: \$250 - \$450 • Min. bid: \$140



Lot 239

"KIMBALL'S / JAUNDICE - BITTERS - TROY. N.H.", a Stoddard, NH glass-house, 1850 - 1860. Beautiful yellowish olive amber, shading to an olive yellow near the shoulders, rectangular with beveled corners, applied sloping collar - iron pontil scar, ht. 6 7/8", near attic mint; (just a touch of light high point wear near the base). R/H #K42. Nice character and crudity, the glass is filled with tiny seed bubbles. A classic, early, New England colored, pontiled, bitters.

Est.: \$800 - \$1,200 • Min. bid: \$500



Lot 236

"HOLTZERMANN'S / PATENT / STOMACH / BITTERS" (with 90% complete original label), America, 1890 - 1910. Golden amber, rectangular cabin form, tooled sloping collar - smooth base, ht. 9 5/8"; (bottle is perfect, original label is faded and darkened a bit from age). R/H #H154. Strong embossing on the bottle. Label reads in part, "ESTABLISHED 1836. / RECOMMENDED AS A GREAT A GREAT APPETIZER / AND STOMACH TONIC, 65% PROOF".

Est.: \$300 - \$600 • Min. bid: \$180



Lot 240

"LORIMER'S - JUNIPER TAR - BITTERS / ELMIRA N.Y." (with 75% complete, original label), America, 1870 - 1880. Bright, medium blue green, square with beveled corners, applied sloping collar - smooth base, ht. 9 1/2", sparkling attic mint! R/H #L121. A very rare bitters, the last example offered at auction was more than 10 years ago. A beautiful bottle, outstanding condition, especially nice with the original label.

Est.: \$2,500 - \$4,500 • Min. bid: \$1,500



Lot 241

"DR F. FLESCHHUT'S - CELEBRATED / STOMACH BITTERS - LA-PORTE. PA", America, 1870 - 1880. Aquamarine, square with beveled corners, applied sloping collar - smooth base, ht. 8 5/8", near mint; (some very faint interior residue or haze, some of which may wash out, otherwise excellent). R/H #F54. The bottle may have been used to hold bluing as traces remain around the neck. A rare bitters from a very small town in northeastern Pennsylvania.

Est.: \$500 - \$800 • Min. bid: \$300



Lot 242

"DR. MICHAEL COX'S BITTERS" / (Motif of Three Gamecock Birds) - "H. OBERNAUER & CO. PITTSBURG" (on base), a Pittsburgh glasshouse, 1885 - 1895. Golden amber, square with beveled corners, tooled sloping collar - smooth base, ht. 10 1/8"; (lightly cleaned to near mint condition with a little wear and a couple of light scratches on a side panel; a potstone with a bit of iridescence on the back edge of the lip). R/H #C242. Extremely rare and desirable.

Est.: \$800 - \$1,200 • Min. bid: \$400



Lot 243

"BELMONT / TONIC HERB BITTERS - ESTABLISHED / 1840 - BENJAMIN LABE & Co / PHILADELPHIA", America, probably 1873 - 1875. Bright, light golden amber, square with beveled corners, applied sloping collar - smooth base, ht. 9 1/2"; (just a little spotty light interior residue or faint haze, otherwise very near mint). R/H #B63. Extremely rare. Only two recorded sales in the past 25 years. Benjamin Labe was a tobacco dealer in Philadelphia.

Est.: \$600 - \$1,200 • Min. bid: \$300



Lot 244

"DR. FOREST'S / TONIC BITTERS - BACON AND MILLER / HARRISBURG, PENNA.", America, 1878 - 1885. Golden amber, square with beveled corners, applied sloping collar with ring - smooth base, ht. 9 3/8"; (tiny, 3/16" bruise with a little iridescence around it, on the edge of shoulder panel of the reverse, otherwise sparkling attic mint!) R/H #F68. An extremely rare bottle, excellent condition.

Est.: \$400 - \$600 • Min. bid: \$200



Lot 245

"J.W. HUTCHINSONS - TONIC BITTERS - MOBILE ALA", America, 1860 - 1870. Yellowish honey amber, square with beveled corners, applied sloping collar - smooth base, ht. 8 3/4"; (professionally cleaned to original luster with a little minor wear and a light "matte-type" finish remaining on a couple of the panels). R/H #H220. A very rare southern bitters that does not come around often. Beautiful color!

Est.: \$1,500 - \$2,500 • Min. bid: \$800



Lot 246

"W.M. WARD'S / EUREKA - TONIC BITTERS", America, 1868 - 1870. Colorless, square with beveled corners, tooled sloping collar - smooth base, ht. 8 3/4", near mint; (a shallow, 1/4" flake at the edge of the beveled base has been lightly polished, otherwise attic condition). R/H #W28. An extremely rare bitters from Covington, KY, believed to be one of only two or possibly three examples known. Note; the glass is very heavy, although it does not appear to be lead glass.

Est.: \$400 - \$600 • Min. bid: \$200



Lot 247

"DR A. H. SMITH'S / CELEBRATED / OLD STYLE BITTERS - O S / 2781 - THE STANDARD TONIC / AND / BLOOD PURIFIER", America, 1870 - 1880. Medium to deep amber, square with beveled corners, applied sloping collar - smooth base, ht. 8 7/8", virtually attic mint; (a couple of very minor, 1/8" or less, onionskin-thin open surface bubbles, otherwise pristine!) R/H #S122. A great looking, very scarce bitters, heavily embossed, crude, outstanding condition.

Est.: \$300 - \$500 • Min. bid: \$150



Lot 248

"DR A. H. SMITHS / OLD STYLE BITTERS - O. S / 2781", America, 1870 - 1880. Light golden amber, square with beveled corners, applied sloping collar - smooth base, ht. 8 3/4", attic mint. R/H #S127. A scarce bitters, believed to be from St. Louis, that is seldom offered for sale. Provenance: Ex. Carlyn Ring collection.

Est.: \$250 - \$450 • Min. bid: \$140



Lot 249

"CLOTWORTHY'S - ORIENTAL / TONIC BITTERS", America, 1875 - 1885. Honey amber, square with beveled corners, applied sloping collar with ring - smooth base, ht. 9 7/8", perfect. R/H #C176. Noted by Ring-Ham as "Very rare", this example is nice and light in color, and attic mint!

Est.: \$300 - \$600 • Min. bid: \$150



Lot 253

"CARMELITER / STOMACH BITTERS CO. / NEW YORK - SJ (monogram) / REGISTERED", America, 1880 - 1890. Medium yellow-olive, almost a deep olive yellow, square with beveled corners, applied sloping collar - **"WB"** on smooth base, ht. 9 3/4", near mint; (just a little minor exterior wear, otherwise excellent!) R/H #C54. A great example of this scarce bitters, one that does not appear to have been dug and cleaned.

Est.: \$300 - \$500 • Min. bid: \$150



Lot 250

"HUNKI DORI / BITTERS - H.B. MATTHEWS / CHICAGO", America, 1875 - 1885. Medium to deep amber, square with beveled corners, applied sloping collar - smooth base, ht. 8 7/8"; (a 1/4" sliver flake at corner of base; a couple of minor, 1/8" or less, flakes at edge of lip, a bit of light interior residue, otherwise excellent). R/H #H210. The noted condition issues are all fairly minor. A rare bitters with a great name!

Est.: \$300 - \$600 • Min. bid: \$150



Lot 254

"CONGRESS - BITTERS", America, 1880 - 1890. Amber with an orange tone near the center shading to an attractive honey amber along the edges, rectangular with beveled corners, applied sloping collar - smooth base, ht. 9 1/4"; (the bottle displays as very near mint, but has been lightly cleaned). R/H #C216. A scarce mold, nice example.

Est.: \$200 - \$400 • Min. bid: \$120



Lot 251

"DR J. HOSTETTER'S / STOMACH BITTERS", probably a Pittsburgh district glasshouse, 1860 - 1870. Deep olive amber, square with beveled corners, applied sloping collar - smooth base, ht. 9 1/2", near mint; (a little scattered minor wear; an area at the top of the lip that was crudely finished with some unevenness during manufacture, but with no damage). R/H #H194. A very nice example that does not appear to have been dug and cleaned.

Est.: \$300 - \$500 • Min. bid: \$180



Lot 255

"DROMGOOLE - ENGLISH / FEMALE / BITTERS - LOUISVILLE, KY.", America, 1890 - 1900. Colorless, rectangular with beveled corners, tooled sloping collar - smooth base, ht. 8 1/4"; (it appears to be a dug bottle with a little minor exterior wear and a little light haze primarily on the interior, a tiny bit of roughness on the back edge of the lip, but no other form of damage). R/H #E45. A rare bitters that would benefit from just a light professional cleaning, if desired.

Est.: \$150 - \$300 • Min. bid: \$80



Lot 252

"DR J. HOSTETTER'S / STOMACH BITTERS" (with 98% complete, original label), probably a Pittsburgh district glasshouse, 1860 - 1870. Deep olive amber, square with beveled corners, applied sloping collar - smooth base, ht. 9 1/8"; (bottle near mint, the label is a little faded around the edges). R/H #H194. A very crude example with plenty of bubbles and nice wavy glass. Scarce with the original label. Provenance: James Becker collection.

Est.: \$500 - \$800 • Min. bid: \$300



Lot 256

(rectangular slugplate) / **"CLARKE'S / VEGETABLE / SHERRY / WINE / BITTERS / SHARON MASS"**, America, 1860 - 1875. Aquamarine, rectangular with beveled corners, applied sloping collar - smooth base, ht. 11 3/8"; (a little dullness on the interior of the neck, some scattered light exterior wear). R/H #C160. A big, impressive bitters, heavily whittled.

Est.: \$200 - \$400 • Min. bid: \$120



Lot 257

"DR TOWNSEND'S - SARSAPARILLA - ALBANY / NY" (with 90% complete, original label), probably Willington Glass Works, West Willington, CT, 1845 - 1860. Medium olive, square with beveled corners, applied sloping collar - sand type pontil scar, ht. 9 1/8"; (just a trace of light wear including a few pinhead open surface bubbles, otherwise perfect). The glass is absolutely filled with bubbles. Original label shows the "Sarsaparilla Manufactory". James Becker collection.

Est.: \$1,000 - \$2,000 • Min. bid: \$600



Lot 261

"DR TOWNSEND'S - SARSAPARILLA - ALBANY / NY", probably New England, 1845 - 1860. Medium blue green, square with beveled corners, high sloping shoulders with a crudely applied tapered collar - blowpipe pontil scar, ht. 9 7/8", attic mint! A top example having excellent clarity, beautiful color, character, and condition. A rare mold with the sloped shoulders, especially in this fine condition.

Est.: \$800 - \$1,200 • Min. bid: \$400



Lot 258

"DR TOWNSEND'S - SARSAPARILLA - ALBANY / NY", probably Willington Glass Works, West Willington, CT, 1845 - 1860. Yellowish tobacco, or "old amber", square with beveled corners, applied sloping collar - sand type pontil scar, ht. 9 3/8", near mint; (a 1/8" area of lip edge roughness, otherwise attic mint!) A scarce, desirable color for a Townsend's, and in addition, great character with crude, seedy, bubbly glass. Provenance: James Becker collection.

Est.: \$800 - \$1,600 • Min. bid: \$400



Lot 262

"OLD DR / J. TOWNSENDS - SARPAPARILLA - NEW YORK.", America, 1850 - 1860. Light to medium emerald coloration, square with beveled corners, applied sloping collar - iron pontil scar, ht. 9 1/2"; (lightly cleaned to original luster with a trace of typical, minor light wear remaining; a tiny pinprick bit of roughness on the edge of the lip, otherwise excellent). A scarce mold, and a nice example, with whittled, wavy glass.

Est.: \$400 - \$600 • Min. bid: \$250



Lot 259

"DR TOWNSEND'S - SARSAPARILLA - ALBANY / NY" (four rivet marks on each panel), probably an early Stoddard, NH glasshouse, 1845 - 1855. Yellowish olive with an amber tone, square with beveled corners, applied sloping collar - sand type pontil scar, ht. 9 3/4", near mint; (trace of faint wear; a bit of in-manufacture glass extrusion at mold seam, otherwise perfect). Beautiful example, excellent character. Scarce "nailhead" mold, identified by Rick Ciralli as "DT3".

Est.: \$500 - \$700 • Min. bid: \$250



Lot 263

"HENSHAW & EDMANDS / DRUGGIST / BOSTON", America, 1850 - 1860. Medium blue green, cylindrical, applied flanged mouth - heavy blowpipe pontil scar, ht. 10 3/4"; (lightly cleaned with a little scattered minor wear including a couple of small little pick marks, or specks of abrasion, on the shoulder, otherwise near mint). A virgin find, discovered at an antique show covered with paint! A big, beautiful, very scarce pontiled medicine, nice whittled!

Est.: \$1,000 - \$2,000 • Min. bid: \$500



Lot 260

"DR TOWNSEND'S - SARSAPARILLA - ALBANY / N.Y. - IIII", New England or possibly a New York State glasshouse, 1845 - 1855. Medium, shading to deep olive amber near the base, square with beveled corners, applied sloping collar - sand type pontil scar, ht. 9 1/4"; (just a touch of typical faint wear, otherwise attic mint). Heavy, crude glass, plenty of seed bubbles and character. Another nice example, this being the scarce four-slash variant.

Est.: \$500 - \$700 • Min. bid: \$250



Lot 264

"MORSE'S / CELEBRATED SYRUP / PROV. R.I.", America, 1850 - 1860. Clear medium emerald coloration, oval, applied sloping collar - blowpipe pontil scar, ht. 9 1/2"; (a couple of minor flakes; one less-than 1/8" on the back edge of the lip, a paper-thin 3/16" flake on the base, and a 1/4" area along the edge of the base may have been lightly polished to remove some roughness, otherwise excellent). The noted condition items are all minor, the bottle displays very near mint!

Est.: \$800 - \$1,200 • Min. bid: \$400



Lot 265

"A. MORSE / DRUGGIST / PROV. R.I." (with period "LEE & OSGOOD" label on reverse), America, 1850 - 1860. Deep aqua, rectangular with beveled corners, applied square collar - deep base with unusual diamond-shaped iron pontil, ht. 9 1/2", virtually attic mint; (a little faint interior milky haze near base; a little in-manufacture glass extrusion at the mold seam). An impressive, eye-appealing bottle, heavily whittled, extremely rare. Ex. Charles B. Gardner; Dr. Sam Greer collections.

Est.: \$1,500 - \$2,500 • Min. bid: \$800



Lot 269

"DR. WILSON'S - HORSE OINTMENT", America, 1845 - 1855. Medium blue green, cylindrical, 3-pc. mold wide-mouth jar, sheared and inward rolled mouth - blowpipe pontil scar, ht. 4 1/4", sparkling attic mint. Odell, p.375. An outstanding veterinary medicine, beautiful, heavily whittled, excellent condition. In addition, an extremely rare jar, the first example offered at auction in 15 years.

Est.: \$2,000 - \$4,000 • Min. bid: \$1,000



Lot 266

"SCHENCK'S - PULMONIC - SYRUP", America, 1850 - 1860. Deep cornflower blue, almost a steel-blue coloration, octagonal, applied sloping collar - blowpipe pontil scar, ht. 7 1/4", pristine perfect. Odell, p.312. Beautiful color and exceptionally rare. Believed to be the only example known in blue. In addition, great eye-appeal with good glass texture, strong embossing, and outstanding condition!

Est.: \$2,000 - \$3,000 • Min. bid: \$1,000



Lot 270

"WYNKOOP & Co's / TONIC MIXTURE / NEW YORK. - WARRANTED TO CURE - FEVER & AGUE", 1845 - 1855. Sapphire blue, rectangular with beveled corners, applied sloping collar - blowpipe pontil scar, ht. 6 3/8"; (professionally cleaned with some light interior haze remaining; a 1/4" flake on the top of the lip, and a hard-to-see, 3/16" annealing line in the shoulder on the reverse). A very scarce, desirable pontiled cure that could probably be improved with a bit more cleaning.

Est.: \$1,500 - \$2,500 • Min. bid: \$800



Lot 267

"MRS. E. KIDDER' / DYSENTERY / CORDIAL / BOSTON", New England, 1840 - 1850. Olive green, cylindrical, applied sloping collar with bevel - sand type pontil scar, ht. 8 1/8", near mint; (a slight touch of minor wear including a 1" faint scratch on the reverse, otherwise perfect). Odell, p.213. An outstanding, early pontiled medicine, extremely rare, one of only two known examples in olive! Good color, character, and condition.

Est.: \$6,000 - \$9,000 • Min. bid: \$3,000



Lot 271

"DR. DUNCAN'S - EXPECTORANT / REMEDY", America, 1845 - 1855. Beautiful, light to medium emerald coloration, rectangular with beveled corners, sheared and outward rolled mouth - blowpipe pontil scar, ht. 6 1/8"; (tiny, barely pinhead flake at base edge, otherwise pristine perfect!) Odell, p.116. Beautiful and rare color, heavily whittled sparkling glass. This, and the labeled example in this sale, are both top-shelf pieces!

Est.: \$1,500 - \$2,500 • Min. bid: \$800



Lot 268

"SPOONERS - HYGEIAN - TONIC - NEW_YORK - PRICE \$1.00", a New England glasshouse, 1840 - 1850. Yellowish olive, octagonal, applied sloping collar with bevel - sand type pontil scar, ht. 6"; (a 1/2" by 3/4" iridescent bruise on the reverse, on the panel edge to the right of "NEW_YORK", and a touch of typical light wear). Odell, p.328. A very rare and desirable pontiled medicine with excellent character, and seedy, crude glass. Ex. Kris Kernozicky collection.

Est.: \$2,000 - \$4,000 • Min. bid: \$1,000



Lot 272

"DR. DUNCAN'S - EXPECTORANT / REMEDY" (with complete, original label), America, 1845 - 1855. Greenish aquamarine, rectangular with beveled corners, very crudely applied square collar - blowpipe pontil scar, ht. 6 1/8", sparkling attic mint! Label reads in part, "FOR / CONSUMPTION, / Colds, Coughs, Spitting of Blood, Bronchitis, Difficulty of Breathing". Exceptional character, fantastic eye-appeal, the glass is absolutely filled with bubbles! Ex. Dr. Sam Greer collection.

Est.: \$1,200 - \$2,200 • Min. bid: \$600



Lot 273

"LONGLEY'S - PANACEA", a New England glasshouse, 1850 - 1860. Medium to deep olive coloration, rectangular with beveled corners, applied sloping collar with bevel - oval sand-type pontil scar, ht. 6 7/8", near mint; (just a touch of faint exterior wear, otherwise mint). Odell, p.228. A scarce pontiled medicine, one that does not appear to have been dug and cleaned. From an old time collection, excellent example, beautiful condition.

Est.: \$1,200 - \$1,800 • Min. bid: \$600



Lot 277

"FROM THE / LABORATORY - OF / G.W. MERCHANT / CHEMIST - LOCKPORT / N.Y.", probably Lockport Glass Works, 1845 - 1855. Medium yellowish "Lockport" green, rectangular with concave corners, applied sloping collar - blowpipe pontil scar, ht. 5 5/8"; (a tiny potstone on the inside surface of the glass on the reverse has a couple of miniscule radiations, 1/16" or less, and a shallow iridescent flake from the pontil extends to the edge of the base, otherwise near mint).

Est.: \$400 - \$800 • Min. bid: \$200



Lot 274

"N. WOOD / PORTLAND / ME", an early Stoddard, NH glasshouse, 1845 - 1855. Yellowish olive amber, rectangular with wide beveled corners, crudely applied sloping collar - sand type pontil scar, ht. 7 1/4"; (a shallow, 1/2" "sliver-type" flake on the side of the beveled collar, otherwise sparkling, virtually attic mint!) Odell, p.380. The flake on the lip is there, but it is shallow and narrow. A beautiful example, nice clarity to the glass, and strongly embossed.

Est.: \$1,000 - \$1,500 • Min. bid: \$600



Lot 278

"ROHRER'S - EXPECTORAL / WILD / CHERRY / TONIC - LANCASTER PA", America, 1855 - 1865. Golden amber, rectangular pyramid form with roped corners, applied sloping collar with ring - iron pontil scar, ht. 10 5/8"; (just a bit of dried light residue in the shoulder, otherwise attic mint!) A beautiful example, great condition.

Est.: \$300 - \$500 • Min. bid: \$180



Lot 275

Early Medicinal Utility Bottle, an early New Hampshire glasshouse, probably Stoddard, NH, 1842 - 1860. Olive amber, rectangular with wide beveled corners, crudely applied sloping collar - iron pontil scar, ht. 7 3/4"; (a touch of typical faint exterior wear; a shallow 1/4" flake on the base at one of the beveled edges, but is barely visible on display). A very attractive, early utility, with good character and color, similar to the example we sold in Auction #9 (lot 169).

Est.: \$300 - \$500 • Min. bid: \$180



Lot 279

"JOHN BULL - EXTRACT OF / SAR-SAPARILLA - LOUISVILLE KY", a Midwest glasshouse, 1850 - 1860. Brilliant aquamarine, rectangular with beveled corners, applied sloping collar - rectangular red iron pontil scar, ht. 9 1/8", virtually attic mint; (a couple of minor, 1/8", paper-thin, open surface bubbles, otherwise perfect!) Odell, p.58, 59. A clean, sparkling, great looking example!

Est.: \$300 - \$500 • Min. bid: \$180



Lot 276

Early Medicinal Utility Bottle, America, 1850 - 1860. Rich, deep blue green, rectangular with beveled corners, applied sloping collar - rectangular iron pontil, ht. 9 1/8"; (a couple of minor open surface bubbles, approx. 3/8", a tiny 1/8" on base edge, otherwise very near mint!) A scarce utility, good large size, beautiful color, nice with the square iron pontil.

Est.: \$300 - \$500 • Min. bid: \$180



Lot 280

"J. RUSSELL SPALDING - GENUINE. - BOSTON. MASS." (with 98% complete, original label), America, 1850 - 1860. Colorless, rectangular with beveled corners, applied sloping collar - blowpipe pontil scar, ht. 7 1/2", near mint; (a little roughness, possibly in-making, on the edge of the lip; some dried contents, label darkened a bit from age, but still legible). Odell, p.327, DF, p.144. A great looking bottle with crude glass. The colorless examples are very scarce.

Est.: \$400 - \$600 • Min. bid: \$200

**Lot 281**

“DR STEPH. JEWETT’S - CELEBRATED / PULMONARY ELIXIR - RINDGE. N.H.”, America, 1850 - 1860. Deep aquamarine, almost a blue-green coloration, rectangular with wide beveled corners, applied sloping collar - blowpipe pontil scar, ht. 5 5/8”, virtually attic mint; (trace bit of faint residue or haze near shoulder, otherwise perfect). Odell, p.202, 203. An outstanding example, rare, possibly unique in this blue green coloration. Ex. Dr. Sam Greer collection.

Est.: \$500 - \$800 • Min. bid: \$250

**Lot 285**

“DR JAMES YOUMAN’S / AMERICAN - AGUE KILLER”, America, 1860 - 1865. Rich, deep aquamarine, rectangular with beveled corners, applied sloping collar - blowpipe pontil scar, ht. 6 3/8”; (a 1/4” x 1/8” chip at the edge of the base, near the back corner; professionally cleaned to original luster with a bit of faint interior haze remaining). A rare pontiled medicine from Davenport, Iowa. See, *Antique Bottles of Iowa*, Burggraaf & Southard, p.217.

Est.: \$300 - \$500 • Min. bid: \$150

**Lot 282**

“H. LAKE’S / INDIAN / SPECIFIC”, America, 1849 - 1855. Aquamarine, rectangular with concave corners, bulbous neck ring, large applied ring collared mouth - blowpipe pontil scar, ht. 8 1/8”; (some overall light dullness or faint haze, primarily on the interior, but no other form of damage). Odell, p.218. A classic, desirable, pontiled Indian medicine. This example would likely respond well to a professional cleaning, if desired.

Est.: \$500 - \$800 • Min. bid: \$250

**Lot 286**

Lot of (2), Philadelphia Medicines, America, 1845 - 1860. “BEATES / AND MILLER - WHOLESALE DRUGGISTS - PHILA”, colorless, rectangular with beveled corners, sheared and inward rolled mouth - blowpipe pontil scar, ht. 4 7/8”, perfect! **“ALLEN’S - DYSPEPTIC / MEDICINE - PHILAD.A”**, aquamarine, rectangular with beveled corners, applied sloping collar - blowpipe pontil scar, ht. 6”; (professionally cleaned, a bit of faint milkiness remaining).

Est.: \$200 - \$400 • Min. bid: \$100

**Lot 283**

“INDIAN / CLEMENS” (Standing Indian) “TONIC / PREPARED BY / GEO. W. HOUSE”, 1845 - 1855. Aquamarine, oval, sheared and outward folded mouth - blowpipe pontil scar, ht. 5 1/2”, perfect. Odell, p.53. A classic pontiled medicine with a great embossed pictorial image of a full-length standing Indian. Nice crude glass, heavily whittled. Provenance: James Becker collection.

Est.: \$400 - \$700 • Min. bid: \$200

**Lot 287**

“S.M. KIER - PETROLEUM - PITTSBURG PA”, a Pittsburgh district glasshouse, 1850 - 1860. Deep aquamarine, rectangular with beveled corners - blowpipe pontil scar, ht. 6 1/2”, near mint; (a little minor roughness on the edge of the lip, probably in-making, otherwise perfect). A scarce mold. This is the variant with the “H” in “PITTSBURGH” omitted, as well as a large rivet mark in the back panel.

Est.: \$125 - \$250 • Min. bid: \$70

**Lot 284**

“REES / REMEDY / FOR / PILES”, America, 1855 - 1860. Light greenish aquamarine, oval, applied square collar - blowpipe pontil scar, ht. 7 3/8”; (a 3/16” area of very minor roughness on the edge of the square collar that you can feel, but is not easy to see; a trace of faint interior haze just below the neck, otherwise perfect). A rare Philadelphia medicine, whittled, with crude, almost folksy lettering inside a tombstone slugplate or frame. Provenance: Ex. Dr. Sam Greer collection.

Est.: \$600 - \$900 • Min. bid: \$300

**Lot 288**

“I. L. ST. JOHNS - COUGH SYPUP”, a Midwest glasshouse, 1850 - 1860. Aquamarine, octagonal, applied sloping collar - blowpipe pontil scar, ht. 5 1/8”; (professionally cleaned to original luster with a touch of light wear remaining). Odell, p.329. Scarce. Note misspelling of “SYRUP”. One of the many products put out by St. John, a druggist and patent medicine dealer from Tiffin, Ohio.

Est.: \$100 - \$200 • Min. bid: \$60



Lot 289

“DR S. FELLERS - ECLECTIC - LINIMENT”, American, probably a Midwest glasshouse, 1855 - 1860. Rich aquamarine, octagonal, sheared and inward rolled mouth - blowpipe pontil scar, ht. 4 ¼”, attic mint; (a bit of washable residue). Odell, p.126. A rare medicine from Washington Courthouse, Ohio.

Est.: \$150 - \$250 • Min. bid: \$80



Lot 293

Large, Blown Apothecary Bottle, “P-CURRIE.” (painted gold banner), with original tin lid, England, 1830 - 1850. Medium to deep grape amethyst, cylindrical, wide mouth with outward rolled collar - glass-tipped pontil scar, ht. 10 ¾”; (a light 3” scratch and a bit of minor wear, some open surface bubbles on the heavy rolled collar, otherwise excellent). The paint is a little faded, but 85% complete. A big, attractive jar, beautiful color! Found in an old drug-store in Yale, Mich.

Est.: \$250 - \$450 • Min. bid: \$140



Lot 290

“ROWLER’S / RHEUMATISM MEDICINE / PREPARED BY / DR J. R. BOYCE / SACRAMENTO”, America, possibly San Francisco Glass Works, 1865 - 1875. Light green, cylindrical, applied short sloping collar - smooth base, ht. 7 ½”; (just a little spotty faint haze or light bloom, and a slight trace of light wear, but otherwise no other form of damage, and outstanding condition). A scarce, early, historical western medicine.

Est.: \$800 - \$1,600 • Min. bid: \$400



Lot 294

“Mykrantz / COLUMBUS, / O.” (Monogram), Carr-Lowrey Glass Co, Baltimore, MD, 1889 - 1900. Bright emerald green, rectangular with beveled corners, large tooled prescription-type collar - **“C.L.G.”** on smooth base, ht. 11” (32 oz), attic mint condition! Retains period label on reverse, **“THE KAUFFMAN - LATTIMER Co.”**. Note, 32oz druggists are rare in clear, and almost unheard of in color! An impressive bottle, very rare, possibly a unique example in this size.

Est.: \$400 - \$800 • Min. bid: \$200



Lot 291

“L.Q.C. WISHART’S - PINE TREE / TAR CORDIAL. / PHILA - PATENT” / (PINE TREE), 1858 - 1860. Medium olive, square with beveled corners, applied sloping collar - early smooth base, ht. 7 ½”; (lightly cleaned on the exterior with a just a bit of minor wear remaining including a couple of pin-head flakes on a panel edge; a little faint interior haze, primarily on one side only). Excellent character with whittled, wavy glass. Rare mold, and earliest after the pontiled example.

Est.: \$1,000 - \$2,000 • Min. bid: \$500



Lot 295

“M.E. McHENRY’S / LEG & BODY / LINIMENT” (in slugplate) - **“THIS / BOTTLE / NOT TO BE / SOLD”**, America, 1885 - 1895. Medium amber shading to a deeper reddish amber in the neck, cylindrical, tooled sloping collar - smooth base, Qt, virtually attic mint; (just a pinprick bit of roughness on the edge of the collar and a trace of light interior residue). M.E. McHenry was a horse race buggy driver from Freeport, IL. A rare medicine basically put up in a quart beer bottle!

Est.: \$175 - \$350 • Min. bid: \$100



Lot 292

“POISON - POISON” Figural Poison Bottle, America, 1890 - 1900. Amber, coffin form, tooled ring collar - **“NORWICH / 16A”** on smooth base, ht. 7 ½”; (some spotty light stain and minor interior residue; a paper-thin 3/16” open bubble, and a tiny pinprick speck of roughness on the back edge of the lip). KU-18. An extremely rare and desirable poison in “as found” condition. A light professional cleaning would likely make this example appear virtually mint.

Est.: \$6,000 - \$12,000 • Min. bid: \$3,000



Lot 296

Lot of (2) Warner's Safe Bottles, America, 1880 - 1890. **“WARNER’S / SAFE / DIABETES / CURE”**, and **“WARNER’S / SAFE RHEUMATIC / CURE”**, both shades of golden amber, oval, applied double collars - smooth bases, Pts, both near mint; (Diabetes Cure has a couple of minor open bubbles on the reverse, otherwise excellent). O&S #12 & #16. A nice pair of cures. Provenance: James Becker collection.

Est.: \$200 - \$300 • Min. bid: \$100



Lot 297

"DR / L.E. KEELEY'S / DOUBLE / CHLORIDE / OF / GOLD CURE / FOR / DRUNKENNESS / A / TESTED / AND / INFALLIBLE / REMEDY / DISCOVERED BY / DR. L.E. KEELEY / DWIGHT, ILLS." - "K. G. C", America, 1890 - 1900. Colorless, rectangular with rounded back panel, tooled prescription-type collar with pour lip - **"PATENTED / MARCH 15 / 1881"** on smooth base, ht. 5 1/2"; (a little minor wear and light interior haze). Very scarce.

Est.: \$250 - \$450 • Min. bid: \$140



Lot 301

"BRYON ACID / SPRING WATER", probably Lockport Glass Works, Lockport, NY, 1850 - 1860. Brilliant Lockport blue-green, cylindrical, applied sloping collar with bevel - iron pontil scar, ht. 8"; (an ice-pick type flake on the edge of the lip with a 3/8" rainbow iridescence that likely occurred when the cork was pried out, otherwise attic mint!) T# N-5. A rare and desirable mineral water with great eye-appeal! Gorgeous color, beautifully whittled. Ex. Jack Stecher, Roger Sweetland collections.

Est.: \$3,000 - \$5,000 • Min. bid: \$1,500



Lot 298

"PERRINE'S" / (APPLE) / "GINGER" - **"DEPOT / No 37, NTH FRONT ST / PHILADA"** - **"PERRINE'S - APPLE - GINGER - PHILA"**, America, 1880 - 1890. Golden amber, cabin form with roped corners, thatched roof, tooled sloping collar - smooth base, ht. 9 7/8"; (a little light wear along the roof edges and a couple of pick marks, or shallow 1/4" flakes on the inside edge of the lip, otherwise excellent). This is the scarcer variant with the street address on the reverse.

Est.: \$175 - \$350 • Min. bid: \$100



Lot 302

"AVON / SPRING WATER", America, possibly Lockport Glass Works, Lockport, NY, 1860 - 1870. Medium-to-deep amber, cylindrical, applied sloping collar with bevel - smooth base, Qt; (professionally cleaned to original luster with a little minor wear remaining, a 1/8" chip on the back edge of the lip). T# N-3:A. A rare mold in a rare color! Most examples that have been offered for sale have been in shades of aqua, or green. A nice example, the chip is on the back and it displays as near mint.

Est.: \$600 - \$1,200 • Min. bid: \$300



Lot 299

"EDWARD WILDERS / SARSAPARILLA & POTASH" - (Five story Building) - **"EDWARD WILDER & CO / WHOLESALE DRUGGISTS / LOUISVILLE. KY - PATENTED"**, America, 1885 - 1895. Colorless, square semi-cabin form, tooled sloping collar with ring - smooth base, ht. 8 1/4"; (professionally cleaned with just a touch of minor wear remaining). DeG #222. A scarce sarsaparilla, better than average impression.

Est.: \$125 - \$250 • Min. bid: \$70



Lot 303

"AVON / SPRING WATER", America, probably Saratoga Mountain Glassworks, Mt. Pleasant, NY, 1860 - 1866. Medium olive green, cylindrical, applied sloping collar with bevel - smooth base, Qt, near mint; (just a couple of onion-skin-thin open surface bubbles and a little minor exterior wear). T# N-3:A. A beautiful example, bubbly glass, excellent condition. As noted in Lot #302, a rare and desirable mold seldom offered for sale. Avon Spring was known as the "Saratoga of Western NY".

Est.: \$1,200 - \$1,800 • Min. bid: \$600



Lot 300

"SARATOGA. N.Y" Wide Mouth Salt Jar, probably NY State, possibly Saratoga Mountain Glassworks, Mt. Pleasant, 1855 - 1861. Medium to deep olive green, cylindrical, 3-pc. mold, sheared mouth with large applied ring-type collar - smooth base, Qt, ht. 8 1/4", virtually attic mint; (a couple of tiny, pinhead open surface bubbles, otherwise pristine perfect). T# E-1:B. A rare and desirable early salt jar, beautiful, and great character and tiny seed bubbles throughout.

Est.: \$3,000 - \$5,000 • Min. bid: \$1,500



Lot 304

"GARDNER & LANDON / SHARON / SULPHUR WATER", probably a New York state glasshouse, 1850 - 1860. Clear, medium yellowish-olive, cylindrical, applied sloping collar with bevel - sand type pontil scar, Qt, attic mint! T# N-29:A. A rare mineral water, and a fantastic example with whittled, bubbly glass, and outstanding condition. Don't miss this opportunity to add a good one to your collection.

Est.: \$1,800 - \$3,600 • Min. bid: \$900



Lot 305

"HASKINS' SPRING CO. / H / SHUTESBURY, / MASS. - H.S. CO.", America, 1865 - 1880. Rich, deep emerald coloration, cylindrical, applied sloping collar with bevel - smooth base, Pt, near mint; (a little typical minor exterior wear; a touch of faint interior milkiness or residue, some of which would likely wash out, otherwise excellent!) T# M-24:B. A very scarce bottle, nice rich color.

Est.: \$600 - \$1,200 • Min. bid: \$300



Lot 309

"ELMER'S - MEDICATED - SODA.", America, 1850 - 1860. Sapphire blue (with an olive striation), 8-sided, applied mouth with an unusual double banded collar - iron pontil, ht. 6 7/8"; (professionally cleaned to original luster and near mint condition; a 3/16" area of the lip lightly polished to remove a flake, and a deformity or unevenness, possibly in-making, near the base by the "D" in "MEDICATED". Extremely rare and desirable with appeal to both soda and pontiled medicine collectors.

Est.: \$5,000 - \$8,000 • Min. bid: \$2,500



Lot 306

"ROCK BRIDGE / VIRGINIA / ALUM WATER", America, 1880 - 1890. Bright, medium blue green, cylindrical, applied square collar - smooth base, half-gallon, ht. 9 1/2"; (lightly cleaned to original luster and near mint condition with a 1/2" area at the side of the lip with some minor flakes or roughness, otherwise perfect). A big, scarce, beautiful bottle.

Est.: \$500 - \$800 • Min. bid: \$250



Lot 310

"Wm. W. LAPPEUS - PREMIUM - SODA OR - MINERAL - WATERS - ALBANY", probably a New York State glasshouse, possibly Lancaster Glass Works, Lancaster, NY, 1850 - 1860. Medium sapphire blue, 10-sided, applied blob collar - heavy iron pontil scar, 7 1/4"; (just a slight trace of faint wear, otherwise sparkling attic mint). A scarce soda and a beautiful example with bubbly, crude glass. Provenance: Ex. Charles B. Gardner collection; James Becker collection.

Est.: \$600 - \$1,200 • Min. bid: \$300



Lot 307

"D. DAVIS" Flavored Beer, America, 1860 - 1870. Cobalt blue, 12-sided, cone shoulders, heavy applied sloping collar - smooth base, ht. 9 7/8"; (a couple of chips approximately 1/4" and 1/2" on the edge of the collar have been professionally repaired, and a little minor exterior wear). The professional repair was expertly done and not easy to detect except with a blacklight. An impressive, eye-appealing bottle that displays as near mint.

Est.: \$600 - \$900 • Min. bid: \$300



Lot 311

"CRYSTAL PALACE / PREMIUM / SODA WATER / W. EAGLE / NEW YORK - (Crystal Palace) / UNION GLASS WORKS / PHILA", Kensington, 1853 - 1858. Rich, medium to deep blue green, almost a teal blue, cylindrical, applied blob collar - iron pontil scar, ht. 7"; (lightly cleaned to original luster and near mint condition with a bit of wear remaining; a 1/4" area of iridescence on the inside edge of lip, otherwise excellent). A beautiful example, crisp embossing.

Est.: \$1,200 - \$1,800 • Min. bid: \$600



Lot 308

"I. SUTTON & Co. - COVINGTON - KY." Flavored Beer, America, 1855 - 1865. Medium-to-deep sapphire blue, 12-sided, heavy applied blob collar - iron pontil scar, ht. 8 1/4"; (professionally cleaned to original luster with some scattered minor ground wear remaining). The vast majority of these heavy flavored beer bottles have been dug. This one is otherwise in overall very nice condition. Another scarce, impressive, flavored beer.

Est.: \$700 - \$1,200 • Min. bid: \$400



Lot 312

"GEO EAGLE" Soda Water Bottle, America, 1850 - 1860. Medium green, similar to a "Lockport" blue green, cylindrical with diagonal ribbing, applied sloping collar - iron pontil, ht. 6 7/8"; (two tiny, barely pinhead size flakes on the edge of the mouth; some scattered fine scratches and light exterior wear). The noted condition issues are fairly minor. A scarce, very desirable soda, and certainly one of the more eye-appealing sodas.

Est.: \$1,200 - \$1,800 • Min. bid: \$600

**Lot 313**

"WM D. ENGLISH.", America, 1850 - 1860. Sapphire with a teal, or peacock-blue tone, cylindrical, applied blob collar - heavy iron pontil scar, ht. 7 1/4"; (a partially open bubble on the interior of the neck, otherwise virtually pristine perfect). A very scarce soda, attractive, eye-appealing color, strong embossing, outstanding "attic" condition. A rare Pittsburgh soda.

Est.: \$400 - \$800 • Min. bid: \$200

**Lot 317**

"W. EAGLE'S / SUPERIOR / SODA OR MINERAL / WATERS - W. E.", America, 1850 - 1860. Medium-to-deep sapphire blue, cylindrical, applied blob collar - iron pontil scar, ht. 6 7/8"; (lightly cleaned to original luster and near mint condition). A beautiful example, much nicer than most, with good color, clarity and condition.

Est.: \$300 - \$500 • Min. bid: \$150

**Lot 314**

"B. W. & Co. / NEW YORK - SODA WATER", America, 1850 - 1860. Cobalt, cylindrical, applied blob collar - iron pontil scar, ht. 7 1/8", near mint; (a couple of light scratches; a minor wisp of faint internal milkiness, otherwise attic mint!) A beautiful example, rich color, nice clarity, outstanding condition. A scarce New York soda, and about as nice of an example as you could hope to find.

Est.: \$500 - \$800 • Min. bid: \$250

**Lot 318**

"J & A DEARBORN" - (Star) - "MINERAL WATERS - NEW YORK", America, 1850 - 1860. Medium to deep cobalt blue, 8-sided, applied blob collar - iron pontil scar, ht. 6 7/8", virtually attic mint; (a minor 3/16" bit of roughness at edge of base, and only the slightest trace of light wear, otherwise mint). A great example, much better-than-average, that does not appear to have been dug and cleaned.

Est.: \$400 - \$600 • Min. bid: \$200

**Lot 315**

"J. BOARDMAN & Co. / NEW YORK", America, 1850 - 1860. Bright, medium-to-deep yellowish green, cylindrical, applied sloping collar - iron pontil scar, ht. 7"; (lightly cleaned to original luster with a couple of minor scratches remaining, and a 1/4" chip on the underside of the collar, on the reverse, otherwise excellent). Whittled, attractive, and in a very scarce-to-rare color for this soda.

Est.: \$400 - \$600 • Min. bid: \$200

**Lot 319**

"J.W. HARRIS - (Star) / SODA - NEW-HAVEN - CONN.", America, 1850 - 1860. Light-to-medium sapphire, 8-sided, applied blob collar - iron pontil scar, ht. 7 3/8"; (a couple of light scratches and a little minor exterior wear, a dip in the lip on the reverse where a chip may have been polished, but may also have been in-making, otherwise excellent). A very scarce, desirable soda that does not appear to have been cleaned.

Est.: \$400 - \$800 • Min. bid: \$200

**Lot 316**

"S. SMITH'S / KNICKERBOCKER / MINERAL & SODA / WATERS / NEW YORK", America, 1850 - 1860. Medium blue green, cylindrical, applied sloping collar - iron pontil scar, ht. 6 3/4", near mint; (a 1/4" iridescent bruise on the inside edge of the lip and a couple of minor scratches on the reverse). A great example, clean, whittled, and with crisp embossing. A scarce soda and certainly rare in this un-dug, attic condition. Discovered in an attic in Little Falls, NY.

Est.: \$500 - \$800 • Min. bid: \$250

**Lot 320**

"LYNDE & PUTNAM / MINERAL WATERS / SAN FRANCISCO / CAL. A - UNION GLASS WORKS / PHILAD.A", probably 1850 - 1852. Cobalt blue, cylindrical, applied blob collar - iron pontil, ht. 7"; (professionally cleaned with some scattered light ground wear remaining; some in-manufacture annealing, or cooling lines, on the inside of the neck below collar). A scarce western soda whose company was believed to be in business for only two years.

Est.: \$250 - \$400 • Min. bid: \$150



Lot 321

“HOWELL & SMITH / BUFFALO”, America, probably a western New York glasshouse, 1850 - 1860. Aquamarine, cylindrical, applied blob collar - iron pontil scar, ht. 6 5/8”; (professionally cleaned or original luster with a few scratches and some light ground wear remaining; a 1/2” area of flaking on the back inside edge of the lip). A very scarce soda.

Est.: \$175 - \$275 • Min. bid: \$100



Lot 325

“T. BURKHARDT / BRADDOCK, PA.” - “D.G. CO. I.” (around heel of base on reverse), America, probably a Pittsburgh district glasshouse, 1885 - 1895. Bright yellowish citron with a slight olive tone, cylindrical, tooled “Hutchinson” type closure - smooth base, ht. 6 5/8”; (professionally cleaned with a bit of minor wear remaining; a paper-thin 3/16” flake at edge of lip, a bubble with a 3/16” opening in the cover glass). Nice example, beautiful color.

Est.: \$300 - \$500 • Min. bid: \$150



Lot 322

“GEO. H. TOBEY / BOTTLER / CINCINNATI - T”, a Midwest glasshouse, 1849 - 1851. Aquamarine, cylindrical, applied sloping collar - heavy iron pontil scar, ht. 7 1/4”, near mint; (some light exterior wear and a faint scratch on the shoulder, otherwise excellent). A very scarce soda, and almost certainly rare, in this attic-type, un-dug condition.

Est.: \$250 - \$450 • Min. bid: \$150



Lot 326

“MEDICATED / AERATED / WATERS / J.A. LOMAX / 14 TO 18 CHARLES PLACE / CHICAGO / THIS BOTTLE / MUST BE RETURNED”, America, 1875 - 1885. Bright yellowish citron with a slight olive tone, cylindrical, applied blob collar - smooth round bottom, ht. 9”; (professionally cleaned with some scattered wear remaining, a 1/8” chip on the edge of the lip). A rare Lomax mold, and one of the very few sodas that use the word, “MEDICATED”.

Est.: \$200 - \$400 • Min. bid: \$100



Lot 323

“HORN & BRO / ZANESVILLE”, probably G.W. Kearns & Co, Zanesville City Glassworks, 1855 - 1860. Deep bluish aquamarine, cylindrical, applied blob-style collar - iron pontil scar, ht. 7 1/4”, virtually attic mint; (just a slight trace of very minor wear). A rare and attractive soda that is extremely rare, and possibly unique, in this un-dug attic-type condition.

Est.: \$400 - \$600 • Min. bid: \$200



Lot 327

“SWEDISH BREWING CO. / E. MARINETTE. WIS.”, a Midwest glasshouse, 1897 - 1899. Golden amber, cylindrical, tooled blob collar - smooth base, Qt; (some minor interior residue, some scattered light exterior wear including a couple of minor scuffs, otherwise excellent). An extremely rare and desirable beer. It is believed to be one of only two or three examples known to exist. According to the *American Breweries II*, the Swedish Brewing Co. was only in business for two years.

Est.: \$800 - \$1,200 • Min. bid: \$400



Lot 324

“BOONVILLE / MINERAL SPRING CO. / BOONVILLE, N.Y.”, America, 1885 - 1900. Golden amber, cylindrical “Hutch” style soda, transitional blob collar with internal groove for stopper - smooth base, ht. 7”; (a couple of light scratches and minor exterior wear, but with full original body luster). A nice example, and a very scarce colored “Hutch” soda with only a small handful coming to market since the Burt Spiller example in 2000.

Est.: \$400 - \$600 • Min. bid: \$200



Lot 328

“WM J. FINKE / & CO. / BURLINGTON / WIS.”, Midwest, 1884 - 1897. Medium amber with a slight orange tone, cylindrical, applied blob collar with original lightning-style wire closure - smooth base, Qt, near mint; (just a trace of typical light exterior wear; a little iridescence and hard-to-see minor bruise on the inside edge of the lip, otherwise perfect). A house bottle and private mold. Extremely rare, wonderful condition, a great example.

Est.: \$300 - \$500 • Min. bid: \$150



Lot 329

“J. GLATZ & SON / OSHKOSH / WIS. - NOT TO BE / SOLD / OR / TRADED”, Midwest, probably 1886 - 1894. Medium to deep amber, cylindrical, applied blob collar with original lightning-style closure - smooth base, Qt, virtually attic mint; (very minor, 1/8” small shallow flake from edge of blob collar; a little light interior residue). A very scarce beer. Beautiful condition, attractive with the large embossing.

Est.: \$200 - \$400 • Min. bid: \$100



Lot 333

“OLD VALLEY / WHISKEY / THIS BOTTLE IS THE PROPERTY OF / THE COOK & BERNHEIMER CO. / NEW YORK. U.S.A. / GOLD LYON (Motif of Lion) / COCKTAILS” Display Advertising Bottle, Edward H. Everett Co, Newark, OH, 1886 - 1904. Amber, cylindrical, applied collar with ring - smooth base, ht. 25 7/8”; (some scratches on the reverse, a 1” area on the edge of the lip with some roughness and chipping). Rare and impressive, we are only aware of one other example.

Est.: \$500 - \$1,000 • Min. bid: \$250



Lot 330

“J. OBERMANN / & Co / MILWAUKEE”, D.O. Cunningham Glass Co, Pittsburgh, 1882 - 1896. Bright golden amber, cylindrical, applied blob collar - “D.O.C” on smooth base, Qt, near mint; (just a couple of light scratches near shoulder, otherwise excellent!) Another nice example, rare mold, nice color, beautiful condition.

Est.: \$100 - \$150 • Min. bid: \$50



Lot 334

Lot of (2) Utility Bottles, America, 1850 - 1865. Olive yellow and clear medium emerald coloration, both cylindrical, applied sloping collars - iron pontiled bases “DYOTTVILLE GLASS WORKS PHILA” (on base of olive-yellow whiskey cylinder), ht. 11 1/2” and 11 7/8” respectively, both sparkling attic mint! A scarce color on the Dyottville bottle, the small emerald-toned Demijohn is beautiful. Great colors that compliment one another nicely.

Est.: \$200 - \$400 • Min. bid: \$120



Lot 331

Lot of (2), Miller Brewing Co. Bottles, 1890 - 1905. “PROPERTY OF / MILLER BR’G CO. / REGISTERED / MILWAUKEE”, and, “THIS BOTTLE IS NEVER SOLD / FRED. MILLER / BREW. CO / MILWAUKEE” - “M. B & G. CO.” (Massillon Bottle & Glass Co, Massillon, Ohio), on base. Shades of amber, tooled blob collars (fall-through and Baltimore loop seal), Qts; (both with a couple of scuffs and minor interior stain, otherwise clean). Scarce molds!

Est.: \$150 - \$250 • Min. bid: \$80



Lot 335

Early Demijohn, probably Continental, possibly America, 1840 - 1870. Bright yellowish green with an olive tone, oval or “kidney” form, 2-pc. mold, sheared mouth with a crudely applied wide banded collar - smooth base, ht. 17”, near mint; (a couple of light scratches and typical minor wear; a narrow band of faint interior residue on one side, otherwise perfect). A beautiful example, nice clarity, and with a perfect lip (in many instances these have chipping or other issues).

Est.: \$250 - \$450 • Min. bid: \$140



Lot 332

Lot of (2) Scarce Brewing Bottles, 1890 - 1910. “PABST / BREWING CO. / OF / MILWAUKEE”, and, “THIS BOTTLE NEVER SOLD / J. LEINENKUGEL / BREWING CO. / CHIPPEWA FALLS / WIS.” Shades of amber, applied Baltimore loop seal and tooled crown closures, Qts, both near mint! The Pabst bottle is a private mold house bottle (no slug-plate), and scarce. The Leinenkugel bottle is rare!

Est.: \$150 - \$250 • Min. bid: \$80



Lot 336

Early, Freeblown Demijohn, America, possibly New England, 1845 - 1865. Beautiful, olive yellow through the mid-body, shading to a dense olive amber through the neck, freeblown or possibly blown in a “starter” dip mold, applied sloping collar - large sand type pontil scar, ht. 18 1/2”, near mint; (just a little typical, light exterior wear including a couple of open surface bubbles; a little minor roughness along the top, possibly in-making). See MW, p.258, plate 64. Fantastic color, great condition.

Est.: \$400 - \$600 • Min. bid: \$200

Pattern-Molded Flasks

Lot 95



Lot 92



Lot 93



Lot 94



Fine Blown Tableware

Lot 110



Lot 111



Lot 108



Lot 103



Lot 106



Lot 104



Lot 107

Beautiful & Choice Inkwells



Exceptional Soda Water Bottles





What the Heck Is This Strange Thing?

(You'd know if you subscribed to AB&GC!)

Dig Into the Bottle & Glass Hobby's #1 Periodical!

You'll be getting:

- ▶ The premier monthly publication for the antique bottle and glass community
- ▶ Great articles each month on antique bottles, flasks and jars by some of the leading authorities in the hobby
- ▶ Timely and important information about current events in the world of antique bottles
- ▶ Show and auction reports
- ▶ Buy-sell-trade opportunities
- ▶ Up-to-date calendar of trade shows and conventions
- ▶ And much, much more!

**12 great issues
a year for only
\$35 postpaid!**

For subscription information, please call us at 248.486.0530 or visit antiquebottlemagazine.com

The Magazine That Keeps You Informed!



Hint:

It shares a common origin with this extremely rare and iconic historical flask!