

American Glass Gallery™

Auction #17

Opens October 20, 2016

Closes November 2, 2016



Lot #21:
Exceptional
and Important,
GII-1a, Eagle-Eagle
Historical Flask

Conditions of Sale

1. Absentee Auction

The items in this sale will be sold via absentee auction, closing date: **November 2, 2016, 11:00 p.m., EST.**

2. Our Guarantee Regarding Descriptions

American Glass Gallery has made every attempt to describe correctly the property being sold. Descriptions are guaranteed to be accurate as regards authenticity, age, condition, and measurements to within one-fourth inch, as represented in this catalog. In describing damage, exterior wear or manufacturer's flaws that in our opinion, do not significantly detract visually or monetarily from the value of the item are not listed and will not be considered for refund. The Auctioneers reserve the right to make verbal corrections and provide additional information at any time during the sale.

3. Preview

Items may be viewed by appointment from October 20, 2016 through November 1, 2016.

4. Bidding Procedure

You may submit your bids by mail, phone, FAX, email or through our on-line auction site. If bidding by mail or FAX, please fill out the absentee form and return it to us. Your bid, either written or oral, grants American Glass Gallery the authority to protect you up to the amount of your stated bid. Your bid will not be removed once executed.

Bidding Times: You can submit your bids anytime after receiving your catalog. Bids may be made by phone, daily, until closing day, November 2, 2016, from 9 A.M. - 7 P.M. Eastern Time. Incoming phone bids will be accepted on the closing day (November 2, 2016) until 11 P.M. Eastern Time. Phone calls and Fax bids after this time will not be honored. No exceptions. You may also place your bids through our on-line auction service 24-hours a day once the site has opened for bidding, on or about October 20, 2016, continuing until 11:00 P.M. Eastern Time, November 2, 2016.

Please do not wait until the last day or two of the sale to place your bids! Because many collectors wait until the final few days of the sale to place their bids, we anticipate the telephone and internet bidding to be very busy during that period, so please plan accordingly. In the event of a tie bid, the earliest received bid on the lot will take precedent. We would welcome your bids by phone so that we can answer any questions and assist you in your bidding.

You may also telephone us at any time during the auction, prior to the closing of the sale, to check the status of your bids, to find the current bidding level, to open a bid, or to raise a bid on an auction lot.

Bidding Increments are as follows:

Up to \$250.00.....increments of \$10.00
\$250.00 - \$500.00increments of \$25.00
\$500.00 - \$1,000.00increments of \$50.00
\$1,000.00 - \$2,500.00increments of \$100.00
\$2,500.00 - \$5,000.00increments of \$250.00
\$5,000.00 - \$10,000.00increments of \$500.00
\$10,000 & Up.....increments of \$1,000.00

Bids submitted between the above increments, whether by mail, FAX, email or on-line via the internet, will automatically be lowered to the closest lower increment.

This is a minimum bid auction. Bids below the printed minimum will not be accepted.

An example of how our absentee bidding system works: You bid \$600.00 on a lot which is the highest bid received to date. The second highest bid is \$450.00. The current high bid level would be yours at \$475.00, one bid increment higher than the other collector's bid. Any additional bids submitted by others below \$600.00 will automatically be topped on your behalf by a representative of American Glass Gallery, up to your stipulated high bid amount. If no further bids on this lot are received beyond the \$450.00, and the under bidder has not requested a "Call Back", then you would have won the lot at \$475.00, not the \$600.00 that you were prepared to pay.

American Glass Gallery will at NO TIME disclose bids pledged by others; only the current "High Bid" level of a lot will be stated upon request. The highest bidder as determined by American Glass Gallery shall be the purchaser. It is the sole right of the auctioneer to settle any dispute between bidders and to regulate the bidding procedure. The auctioneer reserves the right to refuse any bid he believes not to have been made in good faith.

5. "Call Back" Process

If requested, the three top bidders of an item at the time of closing will be given a "Call Back" over the next number of days in order to resolve the final sale of an item. You can request this service by "checking" the appropriate box on your absentee bid form or verbal agreement by phone. It is the responsibility of the bidder to insure he has qualified for this service.

Please note: No "Call Backs" will be executed for bids under \$400.00. In the event of tie bids, the earliest bid received will be the winning bid.

An example of how the "Call Back" process works: As an example, you have bid \$600.00 on a particular lot. Another bidder has submitted a bid of \$900.00 on the same lot. Assuming that as of the auction closing date you are among the top three bidders on this lot and you have requested a "Call Back", you would receive a call informing you that you have been "Out Bid" and the current "High Bid" is now at \$650.00. If you choose to continue bidding on this lot, you may now do so. Assuming that you now increase your bid to \$700.00, we would accept your bid but also inform you that we have a higher bid on this lot and must bid \$750.00. At this time, an auction between you and American Glass Gallery, representing the collector who submitted the bid of \$900.00, takes place. This bidding would continue until you drop out, or top the other bidders high bid of \$900.00. If the other bidder has not requested a "Call Back" service, you would be awarded the lot. If however, the other bidder also requested a Call Back, we must now call them. If they elect to increase their bid over your high bid, we would in turn call you back. This back and fourth process would continue until one of the bidders declines to go any farther.

If you have requested a "Call Back", the auctioneers will need to contact you on the days immediately following the auction closing between the hours of 8 A.M. and 9 P.M. Eastern Time. Please supply us with all appropriate contact phone numbers including, home, mobile and work numbers. Bidders must provide the appropriate telephone numbers where they can be contacted. If you will be traveling or otherwise unavailable, bidders with "Call Back" privileges will have the responsibility to contact American Glass Gallery twice daily during the Call Back period.

Please note, every effort will be made to contact you during the "Call Back" period. However, the bidder will forfeit their rights to a "Call Back" if the auctioneers are unable to reach them. American Glass Gallery reserves the right to discontinue Call Backs on any item in the sale (2) two days after the closing date of the sale. At that time, the current "High Bidder" may be awarded the item even if Call Backs are still outstanding.

6. Terms

Successful Bidders, Prompt and full payment is due immediately upon receipt of our invoice. Absolutely no exceptions. Anyone failing to pay for items won will forfeit all rights to bid in any future American Glass Gallery sales. *Any late or delayed payments may result in loss of return privileges for items purchased in the sale.*

No Items Will Be Mailed Before Full Payment Is Received.

Buyer Premium: A 15% buyer's premium will be added to the hammer price (18% if paying by Credit Card or PayPal), to be paid by the buyer as part of the purchase price. For example, if you purchase a lot for \$100.00, you will receive an invoice for \$115.00 if paying by cash, check or money order, plus any applicable sales tax or shipping charges.

Taxes: If you are a Michigan resident, a 6% sales tax will be added to your bill unless you have a valid resale number registered with us.

Shipping: Shipping, handling and insurance are extra. We ship insured via U.S. Mail. These charges will be added to your bill unless the lots are picked up in person. Our charges for shipping (excluding foreign shipments and oversized lots) are \$18.00 for the first item, \$9.00 for each additional item together with extra insurance costs (we use current U.S. Postal Service insurance rates).

Please allow two to three weeks for delivery after receipt of your check.

Payment: American Glass Gallery accepts Cash, Money Orders, Personal Checks, Visa, MasterCard, American Express and PayPal. *If paying by Credit Card or PayPal, an additional 3% will be added to the invoice total.*



7. Refunds

Refunds will be given at the discretion of the Auctioneers. Items purchased must be examined and request for refund made immediately upon receipt of the item or items. Since opinions can differ, particularly in the matter of condition, the Auctioneers will be the sole judge in the consideration of refunds. Refunds requested on the grounds of authenticity must be made within 15 days of the date of the auction, and such refund requests must be accompanied by at least one supporting statement in writing from an authority recognized by the Auctioneers. It is the Auctioneers sincere intention to consider any reasonable request for a refund. *Absolutely no returns for any reason after 30 days following the closing of the sale.*

8. Bidding on any item indicates your acceptance of these terms.



American Glass Gallery™

John R. Pastor
P.O. Box 227
New Hudson, Michigan 48165
Phone: 248.486.0530
Fax: 248.486.0538
www.americanglassgallery.com
email: jpastor@americanglassgallery.com

PLEASE NOTE:

The lots offered in this printed catalog are identical to the lots offered in the on-line catalog. However, due to space constraints of the printed catalog, there may be some further information available regarding some of the lots in the on-line auction descriptions.

Please visit us at

www.americanglassgallery.com

and follow the link to the on-line auction.

The link and on-line auction will be available October 20, 2016.

A post-auction price list will be available on our website, in printable form, by November 15.

We encourage you to contact us by phone or email with any questions, for assistance with bidding, or further details or clarification on any of the lots in this sale. Your complete satisfaction and confidence is our goal!

We look forward to having you participate in our next sale, either as a buyer or a consignor. Our next absentee auction is scheduled for Spring, 2017. We already have some wonderful items consigned to this sale and look forward to discussing with you any quality items you wish to consign!

**THANK YOU AND GOOD LUCK
WITH YOUR BIDS!**

Reference Key

Reference initials and numbers used in the description of this catalog refer to the following publications:

AHG	<i>American Historical Glass</i> , Bessie M. Lindsey, 1967
AM	<i>The Decanter - An Illustrated History of Glass from 1650</i> , Andy McConnell, 2004
AP	<i>Glass in Early America</i> , Arlene Palmer, 1993.
BA1	<i>Collecting The Cures</i> , Bill Agee, 1969
BA2	<i>Collecting All Cures</i> , Bill Agee, 1973.
BB	<i>A Bit About Balsams</i> , Betty Blasi, 1974
BH	<i>Classification and Documentation of Sunburst and Similar Scent Bottles</i> , Bill Ham, AB&GC, 5/87
B/K	<i>The Glass Industry in Sandwich</i> , Raymond Barlow and Joan Kaiser, 1989.
C	<i>Ink Bottles and Inkwells</i> , William Covill, 1971.
DeG	<i>American Sarsaparilla Bottles</i> , John DeGrafft, 1980.
DeGII	<i>Supplement to American Sarsaparilla Bottles</i> , John DeGrafft, 2004.
DF	<i>Hair Raising Stories</i> , Don Fadely, 1992.
DM	<i>Wistarburgh, Window Tiles, Bottles and More</i> , Dale L. Murscell, 2007.
F	<i>Inks, 150 Years of Bottles and Companies</i> , Ed and Lucy Faulkner.
FA	<i>John Frederick Amelung, Early American Glassmaker</i> , Lanmon, Palmer, Hume, Brill, Hanson, 1990.
FB	<i>A.S.C.R. The wine bottles of All Souls College</i> , Oxford, 1750 – 1850, Fay Banks.
G	(Flasks) <i>American Bottles & Flasks and Their Ancestry</i> , McKearin & Wilson, 1978.
G	(Blown Three Mold) <i>American Glass</i> (Chapter VI), George S. and Helen McKearin, 1941.
GBH	<i>English Glass For The Collector, 1660-1860</i> , G. Bernard Hughes, 1958.
H	<i>American Bottles in the Charles B. Gardner Collection</i> , Norman C. Heckler, 1975.
JB	<i>Patent and Proprietary Medicine Bottles</i> , Joseph K. Baldwin, 1973
JEB	<i>Glasshouse Whimsies</i> , Joyce E. Blake, 1984.
JH	<i>Glasshouses & Glass Manufacturers of the Pittsburgh Region, 1795 – 1910</i> , Jay W. Hawkins, 2009.
JS	<i>In glas verpakt – European Bottles, Their history and production</i> , Johan Soetens, 2001.
K	<i>Poison Bottle Workbook</i> , Rudy Kuhn, 1988.
KW	<i>New England Glass & Glassmaking</i> , Kenneth M. Wilson, 1972.
L	<i>The Red Book of Fruit Jars, No. 11</i> , Douglas M Leybourne, Jr., 2014.
LI	<i>Pittsburgh Glass, 1797 – 1891</i> , Lowell Innes, 1976.
Mc	<i>Two Hundred Years of American Blown Glass</i> , Helen and George McKearin, 1950.
McK	<i>American Glass</i> , George S. and Helen McKearin, 1941.
MW	<i>American Bottles & Flasks and Their Ancestry</i> , McKearin & Wilson, 1978.
N	<i>Great American Pontiled Medicines</i> , Frederick Nielson, 1978.
NCH	<i>The Blaske Collection of American Flasks</i> , Norman C. Heckler, 1983.
NCH II	<i>The Blaske Collection: Part II</i> , Norman C. Heckler, 1983.
Odell I	<i>Indian Bottles and Brands</i> , John Odell, 1977
Odell II	<i>Pontiled Medicine Encyclopdia</i> , John Odell, 2000
O&S	<i>Warner's Reference Guide</i> , Ed Ojea and Jack Stecher, 1998.
P	<i>The Glass Gaffers of New Jersey</i> , Adeline Pepper, 1971.
RD	<i>Understanding Antique Wine Bottles</i> , Roger Dumbrell, 1983.
RF	<i>The Bottle Book: A Comprehensive Guide to Historic, Embossed Medicine Bottles</i> , Richard Fike, 1987
RH	<i>Collecting Barber Bottles</i> , Richard Holiner, 1986.
R/H	<i>Bitters Bottles</i> , Carlyn Ring and W. C. Ham, 1998.
RWL	<i>Antique Fakes & Reproductions</i> , Ruth Webb Lee, 1950
T	<i>Collectors Guide to Saratoga Type Mineral Water Bottles</i> , Donald Tucker, 2005.
U	<i>Collectible Character Bottles</i> , Authur Umberger, 1969.
V	<i>Nailsea Glass</i> , Keith Vincent, 1975
VdB	<i>Antique Glass Bottles; Their History and Evolution</i> , Willy Van den Bossche, 2001.
WL	<i>A Wine-Lover's Glasses, The A.C. Hubbard, Jr. Collection</i> , Ward Lloyd, 2000.
Z	<i>Ketchup, Pickles, Sauces</i> , Betty Zumwalt, 1980.
ZW	<i>Color Hutchinsons</i> , Zang Wood, 1999.

- The dash is generally used to indicate that the descriptions are on opposite sides of the bottle or flask.

/ The slash is used to indicate that the descriptions are on different lines or surfaces of the bottle.



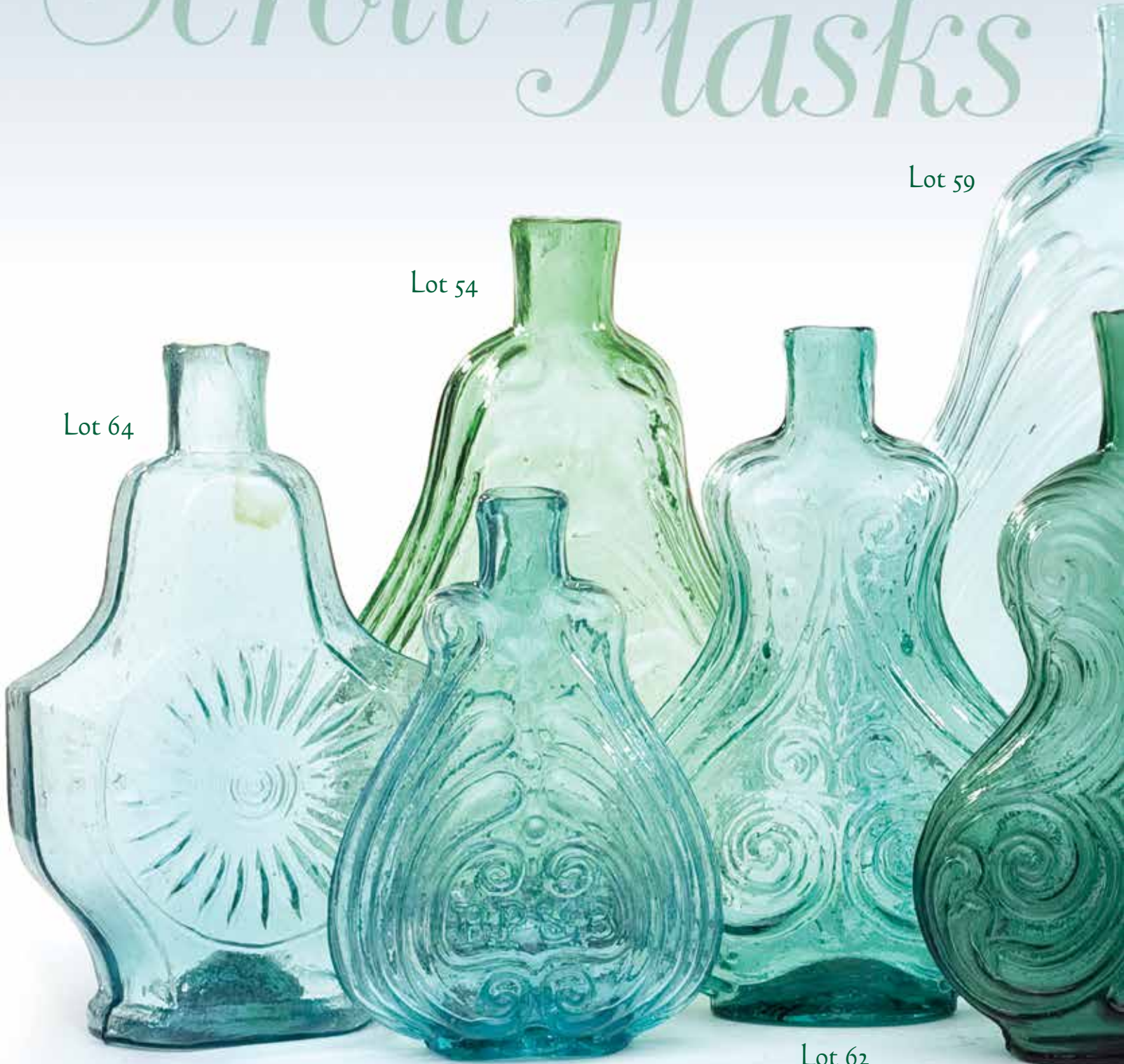
Detail from Lot 29

Scroll Flasks

Lot 59

Lot 54

Lot 64



Lot 60

Lot 62

The American Greek Revival Influence on Scroll Flask Design

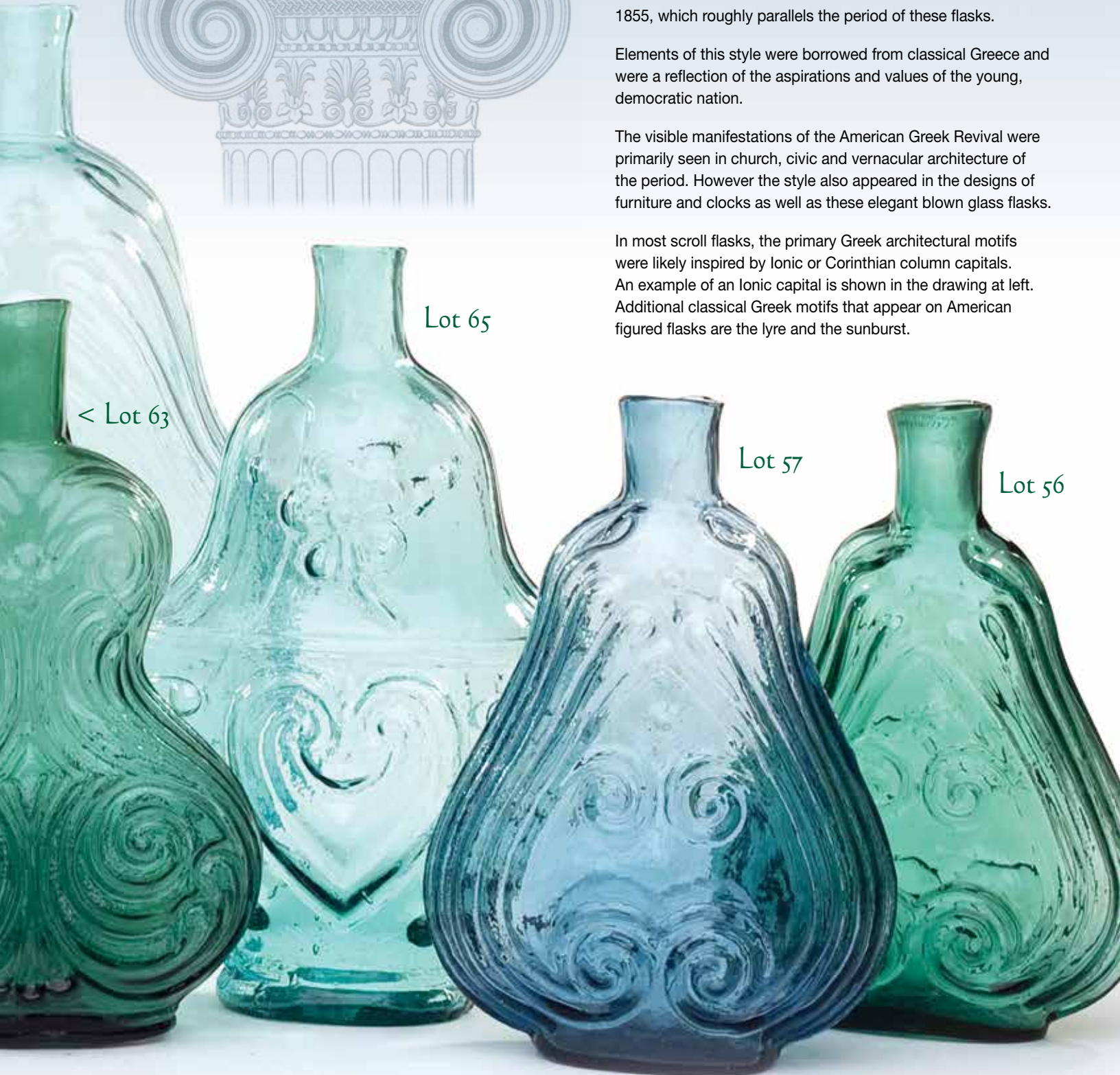


The ever-popular scroll flask was a product of its time and, as with all American figured flasks, was designed to reflect and celebrate popular heroes, events and styles of the day. With scroll flasks, that style was unmistakably the American Greek Revival that flourished from about 1825 to 1855, which roughly parallels the period of these flasks.

Elements of this style were borrowed from classical Greece and were a reflection of the aspirations and values of the young, democratic nation.

The visible manifestations of the American Greek Revival were primarily seen in church, civic and vernacular architecture of the period. However the style also appeared in the designs of furniture and clocks as well as these elegant blown glass flasks.

In most scroll flasks, the primary Greek architectural motifs were likely inspired by Ionic or Corinthian column capitals. An example of an Ionic capital is shown in the drawing at left. Additional classical Greek motifs that appear on American figured flasks are the lyre and the sunburst.



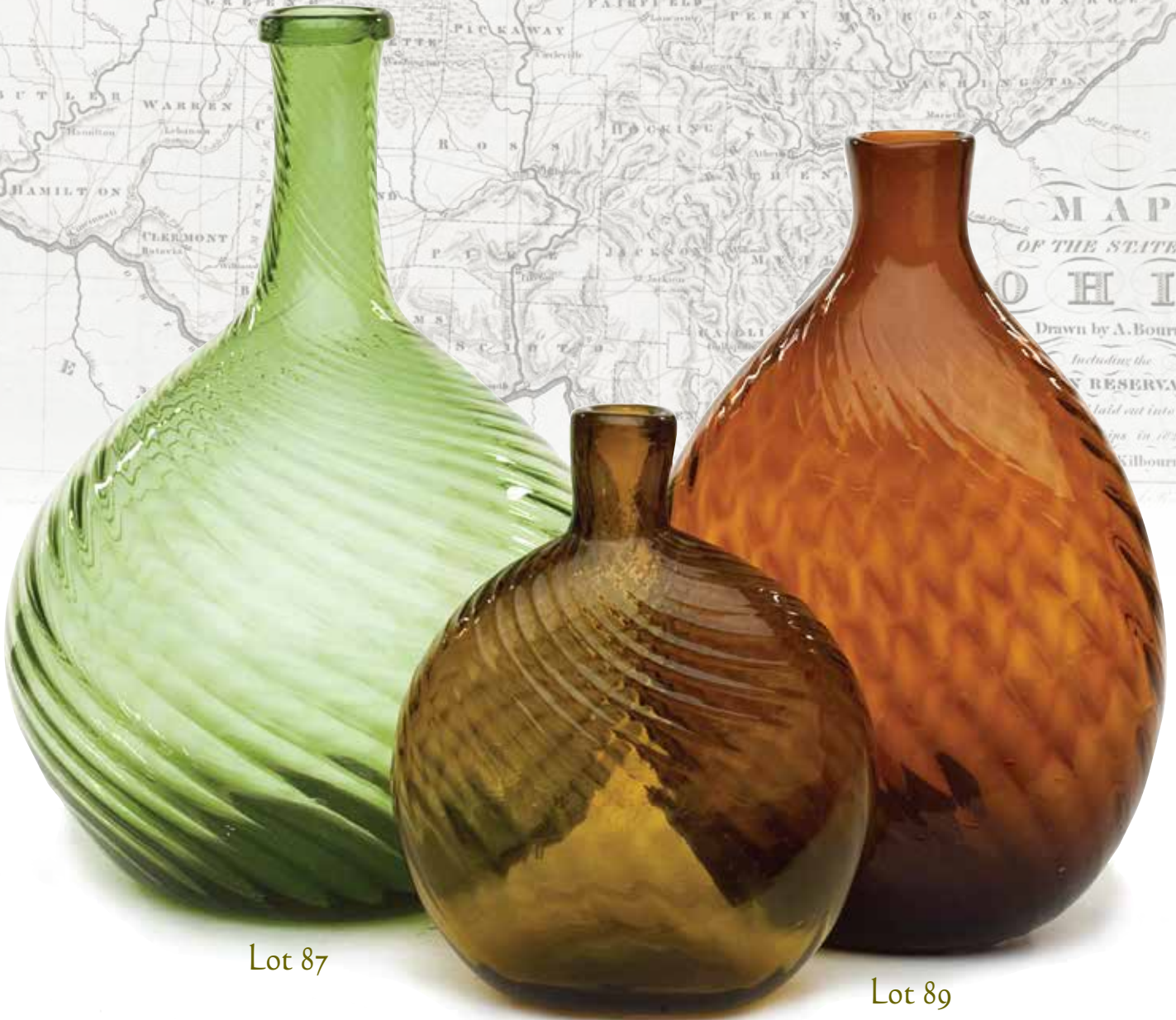
< Lot 63

Lot 65

Lot 57

Lot 56

Choice Ohio Pattern-Molded Bottles



Lot 87

Lot 90

Lot 89

Rare & Colorful American Ink Bottles

*The following bottles for you were...
 me last fall for the Roberts Bone...
 etc.), and to thank you for the same. But
 the books were received during absence from
 Washington, and since my return I have been
 so necessarily engaged...
 I have been...
 Answer...
 I send...
 report...*

Lot 122

Lot 120



Lot 111

Lot 121

Lot 114

Lot 118

Lot 116



Lot 1

"WASHINGTON" / BUST OF WASHINGTON - "BRIDGETON" (STAR) "NEW JERSEY" / BUST OF TAYLOR Historical Flask, Bridgeton Glass Works, 1845 - 1855. Yellowish to-bacco, or "old amber", sheared mouth - blowpipe pontil scar, Pt, virtually attic mint; (just the slightest trace of very minor exterior wear, otherwise perfect!) GI-24. A great example, strong mold impression, very scarce, beautiful color!

Est.: \$6,000 - \$12,000 • Min. bid: \$3,000



Lot 5

WASHINGTON - TAYLOR Portrait Flask, probably Dyottville Glass Works, Philadelphia, 1855 - 1860. Beautiful honey yellow with a slight apricot or topaz tone, crudely applied sloping collar - smooth base, Qt; (a potstone to the left of Washington's bust has a 1" hairline crack through it, otherwise excellent). GI-54. Outstanding character, heavily whittled and filled with bubbles, in a scarce, gorgeous color. This would definitely stand out in a color run of Washingtons.

Est.: \$600 - \$900 • Min. bid: \$300



Lot 2

"THE FATHER OF HIS COUNTRY" / BUST OF WASHINGTON - "DYOTVILLE GLASS WORKS PHILADELPHIA / GEN. TAYLOR NEVER SURRENDERS" / BUST OF TAYLOR Historical Flask, Dyottville Glass Works, Philadelphia, 1848 - 1860. Light to medium ice blue, sheared mouth - blowpipe pontil scar, Qt, near mint; (a very minor touch of light exterior wear, otherwise pristine). GI-37. A delicate, scarce and attractive color for this mold.

Est.: \$600 - \$1,200 • Min. bid: \$300



Lot 6

WASHINGTON - TAYLOR Portrait Flask, probably Dyottville Glass Works, Philadelphia, 1850 - 1860. Brilliant golden yellow, sheared mouth - blowpipe pontil scar, Pt; (just a little typical light exterior wear, otherwise perfect!) GI-55. Provenance: Ex. Charles B. Gardner collection. A fantastic example filled with tiny bubbles in a gorgeous, vibrant color, and having great eye-appeal.

Est.: \$3,000 - \$6,000 • Min. bid: \$1,500



Lot 3

"THE FATHER OF HIS COUNTRY" / BUST OF WASHINGTON - "GEN. TAYLOR NEVER SURRENDERS" / BUST OF TAYLOR Historical Flask, Dyottville Glass Works, 1848 - 1855. Rich, deep blue-green, almost a teal coloration, sheared mouth - blowpipe pontil scar, Qt, near mint; (just a touch of minor exterior wear; a 1/2" band of light dullness on bust of Washington, and a bit of faint interior residue that may wash out). GI-39. A rich, deep, beautiful color, excellent character.

Est.: \$1,000 - \$2,000 • Min. bid: \$600



Lot 7

"GENERAL JACKSON" / BUST OF JACKSON - EAGLE / "J.T & Co" Historical Flask, probably John Taylor & Co, Brownsville, PA, 1829 - 1831. Greenish aquamarine, sheared mouth - blowpipe pontil scar, Pt; (a 1/8" flake on the top edge of the sheared mouth; some scattered light exterior wear, and a somewhat weakened impression in the shoulder area as is common for this mold). GI-65. A good early flask, and as noted by McKearin, a scarce mold as well.

Est.: \$600 - \$900 • Min. bid: \$350



Lot 4

"THE FATHER OF HIS COUNTRY" / BUST OF WASHINGTON - (Reverse Plain) Historical Flask, probably Lockport Glass Works, Lockport, NY, 1850 - 1860. Light to medium blue green, applied round collar - blowpipe pontil scar, Qt, near mint; (a slight trace of typical light exterior wear including a bit of high point wear on Washington's cheek, and a tiny, barely noticeable, bit of roughness on the edge of the collar). GI-47. A nice clean example.

Est.: \$400 - \$600 • Min. bid: \$250



Lot 8

"LAFAYETTE" / BUST OF LAFAYETTE / "T.S." - "DE WITT CLINTON" / BUST OF CLINTON / "CONVENTRY / C-T" Historical Flask, Coventry Glass Works, 1824 - 1830. Yellowish olive amber, almost an olive yellow near the shoulders, sheared mouth - pontil scar, Pt; (a small potstone near the base on the reverse has a 1/4" iridescent 'moon' around it, and a couple of open bubbles on the interior of the neck). GI-80. A clean example having virtually no high point wear.

Est.: \$750 - \$1,250 • Min. bid: \$400



Lot 9

“LAFAYETTE” / BUST OF LAFAYETTE - MASONIC Historical Flask, probably Mt. Vernon Glass Works, Vernon, NY, 1824 - 1826. Olive amber, sheared mouth - blowpipe pontil scar, Pt; (slight trace of faint wear, and a 3/8" minor bruise along edge of base on the reverse). GI-88. Provenance: Ex. Charles B. Gardner collection. A very rare flask, outstanding character, the glass is filled with bubbles and impurities.

Est.: \$6,000 - \$12,000 • Min. bid: \$3,000



Lot 13

“JENNY LIND” / BUST OF JENNY LIND - “FISLERVILLE GLASS WORKS” / GLASS FACTORY Historical Calabash, 1850 - 1860. Light to medium bluish green, applied sloping collar with lower bevel - two, blowpipe pontil scars on base, Qt, virtually attic mint; (just a slight trace of interior residue or very faint haze, otherwise pristine). GI-107. A rare color for this Calabash, outstanding condition and the base is very unusual, having two, distinctive, blowpipe pontil scars.

Est.: \$700 - \$1,200 • Min. bid: \$350



Lot 10

“JENNY LIND” / BUST OF JENNY LIND - “GLASS WORKS” / GLASS FACTORY / “S. HUFFSEY” Historical Calabash, probably Isabella Glass Works, Brooklyn, NJ, 1850 - 1860. Beautiful, light bluish green, applied sloping collar with bevel - blowpipe pontil scar, Qt; (just the slightest trace of light exterior wear, otherwise sparkling attic mint). GI-99. Attractive color, very boldly embossed, excellent condition. Jim Becker collection.

Est.: \$300 - \$600 • Min. bid: \$180



Lot 14

BUST OF JENY LIND / LYRE - (Reverse same), Historical Flask, probably McCarty & Torreyson Glass Works, Wellsburg, West Virginia, 1850 - 1855. Aquamarine, sheared mouth - blowpipe pontil scar, Pt, virtually attic mint; (just a faint trace of exterior wear and a tiny, barely pinprick, speck of roughness on the edge of the sheared mouth, otherwise pristine perfect). GI-108. A bright, clean example of this scarce, desirable mold.

Est.: \$700 - \$1,200 • Min. bid: \$350



Lot 11

“JENY LIND” / BUST OF JENY LIND - GLASS FACTORY Historical Calabash, Ravenna Glass Works, Ravenna, OH, 1857 - 1865. Bluish aquamarine, applied round collar with bevel - red iron pontil scar, Qt, near mint; (a few faint rings of very light interior residue or haze, barely noticeable, and just a trace of minor exterior wear). GI-104. Nice color through the base, almost a light ice blue tone.

Est.: \$175 - \$350 • Min. bid: \$100



Lot 15

“LOUIS KOSSUTH” / BUST OF KOSSUTH - STEAM FRIGATE / “U.S. STEAM FRIGATE / MISSISSIPPI / S. HUFFSEY” Historical Calabash, probably Milford Glass Works, Milford, NJ, 1852 - 1860. Medium emerald coloration, applied sloping collar - **“PH. DOFLEIN / MOULD MAKER / NTH 5! ST 84”** (on base), iron pontil, Qt; (a hairline crack, approx. 1", along the edge of the paddlewheel on the reverse; a couple of minor flakes, 1/8", or less, at edge of lip). GI-112. Beautiful, rare color.

Est.: \$500 - \$1,000 • Min. bid: \$250



Lot 12

“JENY LIND” / BUST OF JENY LIND - GLASS FACTORY Historical Calabash, Ravenna Glass Works, Ravenna, OH, 1857 - 1865. Medium to deep sapphire blue, applied round collar - red iron pontil scar, Qt, perfect! GI-104. An outstanding example, hard to find in this depth of sapphire blue. A bright, clean example with nice clarity, beautiful color, great condition.

Est.: \$4,000 - \$6,000 • Min. bid: \$2,000



Lot 16

“LOUIS KOSSUTH” / BUST OF KOSSUTH - STEAM FRIGATE / “U.S. STEAM FRIGATE / MISSISSIPPI / S. HUFFSEY” Historical Calabash, probably Milford Glass Works, Milford, NJ, 1852 - 1860. Golden yellow, applied blob collar - **“PH. DOFLEIN / MOULD MAKER / NTH 5! ST 84”** (on base), iron pontil, Qt; (an open bubble, approx. 1/4" x 1", near the side of the flask, and a touch of light exterior wear, otherwise excellent). GI-112. Gorgeous color!

Est.: \$3,000 - \$5,000 • Min. bid: \$1,500



Lot 17

“KOSSUTH” / BUST OF KOSSUTH - TREE Historical Calabash, America, 1852 - 1860. Beautiful straw yellow with some deeper honey tones, applied sloping collar with bevel - blowpipe pontil scar, Qt; (just a very slight trace of faint exterior wear, otherwise attic mint!) GI-113. Nice color and condition.

Est.: \$600 - \$900 • Min. bid: \$350



Lot 21

EAGLE - EAGLE Historical Flask, an early Monongahela or Pittsburgh district glasshouse, 1825 - 1835. Deep yellowish olive amber, sheared mouth - oversize blowpipe pontil scar, Pt, near mint; (a touch of minor, light exterior wear, otherwise perfect). GI-1a (Eagle's beak wider open; no dot below stars at Eagle's left, but appears to have all 5-pointed stars). Extremely rare, believed to be one of only two known examples. An exceptional and important, early flask.

Est.: \$30,000 - \$50,000 • Min. bid: \$15,000



Lot 18

BUST OF BYRON - BUST OF SCOTT Portrait Flask, probably an early Stoddard glasshouse, 1842 - 1850. Yellowish olive amber, almost an olive yellow, sheared mouth - blowpipe pontil scar, ½ Pt, attic mint! GI-114. A great example of this classic early New England flask, filled with tiny seed bubbles, excellent condition, and nice clarity all the way to the base. Provenance: Jim Becker collection.

Est.: \$200 - \$400 • Min. bid: \$120



Lot 22

EAGLE - CORNUCOPIA Historical Flask, an early Pittsburgh district glasshouse, 1825 - 1835. Medium citron green, sheared mouth - blowpipe pontil scar, ½ Pt; (only a trace of extremely minor high point wear, otherwise pristine perfect!) GI-11. A beautiful, vibrant little flask; seedy, bubbly, and full of character. Also with a crisp, strong mold impression. A very rare color, it is believed to be only the 1st, or possibly 2nd, example to be offered in this, or any similar color, in the past 15 years! A little gem of a flask.

Est.: \$4,000 - \$8,000 • Min. bid: \$2,000



Lot 19

“WHEAT * PRICE & Co WHEELING, VA” / (LONG HAIR BUST) - “FAIRVIEW” / (GLASSHOUSE) / “WORKS” Historical Flask, Wheat, Price & Co, East Wheeling (W.) Virginia, 1833 - 1834. Medium blue green, sheared mouth - blowpipe pontil scar, Pt; (a 5” crack extends from the “W” in “WORKS”, across the base, to the “E” in “WHEAT”; a bit of minor high point wear). GI-116. A very rare, desirable flask, with a crisp mold impression and great color.

Est.: \$750 - \$1,500 • Min. bid: \$400



Lot 23

EAGLE - CORNUCOPIA Historical Flask, an early Monongahela or Pittsburgh district glasshouse, 1825 - 1840. Deep aquamarine, almost a light blue green, sheared mouth - blowpipe pontil scar, ½ pint, near mint; (just a tiny pinprick bit of roughness on the edge of the sheared lip and a trace of minor high point wear). GI-15a. Extremely rare. A great example which we first sold about six years ago, November, 2010. In addition, good character with plenty of tiny seed bubbles and nice frothy glass.

Est.: \$700 - \$1,200 • Min. bid: \$350



Lot 20

BUST OF COLUMBIA - EAGLE / “B & W” Historical Flask, probably Kensington Glass Works, 1825 - 1835. Aquamarine, sheared mouth - blowpipe pontil scar, Pt; (a minor 1/8” flake on the inside edge of the lip, and a bit of exterior wear including a light 5/8” scratch on the reverse, and a little high point wear on the bust, otherwise excellent). GI-121. A scarce and desirable flask, clean, bright and with a crisp, strong mold impression.

Est.: \$250 - \$450 • Min. bid: \$150



Lot 24

EAGLE - MORNING GLORY Historical Flask, probably Midwest, 1840 - 1860. Pottery flask with a mottled “Bennington - type” tan and brown glaze, Pt, near mint; (a bit of minor exterior wear on the reverse). GI-19. A very scarce flask, whether in glass, or pottery! McKearin notes this mold in both glass and pottery as being “Rare”.

Est.: \$200 - \$400 • Min. bid: \$120



Lot 25

EAGLE - EAGLE Historical Flask, probably Kentucky Glass Works, Louisville, KY, 1850 - 1855. Aquamarine, sheared mouth - blowpipe pontil scar, Pt, near mint; (a small area of light exterior wear along the left edges of the front and back oval panels, otherwise virtually attic mint!) GII-24. A great example with a very strong, bold impression, and almost no high point wear.

Est.: \$175 - \$350 • Min. bid: \$100



Lot 29

"LIBERTY" / EAGLE - "WILLINGTON / GLASS, Co / WEST, WILLINGTON / CONN" Historical Flask, Willington Glass Works, 1860 - 1872. Medium to deep emerald with an olive tone, applied sloping collar - smooth base, Pt, near mint; (a little light exterior wear including some minor, open surface bubbles). GII-62. Great color, exceptional character, and absolutely filled with tiny seed bubbles! James Becker collection. Jim said this was one of his favorite bottles and it is easy to see why!

Est.: \$600 - \$1,200 • Min. bid: \$300



Lot 26

EAGLE - EAGLE Historical Flask, probably Louisville Glass Works, Louisville, KY, 1855 - 1860. Brilliant medium blue green, applied mouth with flat band - iron pontil scar, Qt; (a potstone at the side of the flask, about 1" from the base, has a few 1/8", or less, radiations, otherwise sparkling attic mint). GII-26. The noted condition issue is fairly minor, the flask displays as attic mint. Great color, exceptional eye-appeal, full of bubbles, impurities, and character.

Est.: \$500 - \$1,000 • Min. bid: \$250



Lot 30

EAGLE - "NEW LONDON" / ANCHOR / "GLASS WORKS" Historical Flask, New London Glass Works, New London, CT, 1856 - 1860. Light to medium blue green, sheared mouth - blowpipe pontil scar, Pt, near mint; (a tiny trace of roughness on the side of the sheared lip that you can feel, but is not easy to see, and a slightly weak impression as is not uncommon with this mold). GII-68. A comparatively scarce mold, nicely whittled.

Est.: \$800 - \$1,600 • Min. bid: \$400



Lot 27

EAGLE - "LOUISVILLE / KY / GLASSWORK" Historical Flask, Louisville Glass Works, Louisville, Kentucky, 1856 - 1865. Beautiful root beer amber, applied mouth with flat band - early smooth base, 1/2 Pt, sparkling mint! GII-33. A scarce and desirable flask and extremely difficult to find in this outstanding condition. Great color, strong embossing, and no high point wear as is common on this mold.

Est.: \$3,000 - \$6,000 • Min. bid: \$1,500



Lot 31

EAGLE - CORNUCOPIA Historical Flask, Keene Marlboro Street Glassworks, Keene, NH, 1830 - 1842. Yellowish olive amber in the body shading to a deeper olive amber in the neck and near the base, sheared mouth - blowpipe pontil scar, Pt, virtually attic mint; (just the slightest trace of light wear and a tissue-paper thin, partially open bubble on the interior of the shoulder, otherwise perfect). GII-72.

Est.: \$175 - \$350 • Min. bid: \$100



Lot 28

"LIBERTY" / EAGLE - "WILLINGTON / GLASS, Co / WEST WILLINGTON / CONN" Historical Flask, Willington Glass Works, 1860 - 1872. Yellowish tobacco, or "old amber", applied double round collar - smooth base, Qt, near mint; (just a little scattered light exterior wear, primarily near the base on the reverse, and a trace of extremely minor roughness on the edge of the lip that you can feel, but is difficult to see). GII-61. Beautiful, seedy and whittled! James Becker collection.

Est.: \$500 - \$800 • Min. bid: \$300



Lot 32

Lot of (2), EAGLE - CORNUCOPIA Historical Flasks, Keene Marlboro Street Glassworks, 1830 - 1842. Olive amber and medium olive green, sheared mouths - blowpipe pontil scarred bases, Pts; (the olive-amber example has a 1" hairline crack extending from an interior bubble, possibly in-manufacture, and a touch of light wear; the green example has a 1/4" flake on the edge of lip that has been fire-polished and occurred at manufacture; and a tiny sandgrain with a 1/16" "leg"). GII-72 & GII-73 respectively.

Est.: \$175 - \$350 • Min. bid: \$100



Lot 33

EAGLE - CORNUCOPIA Historical Flask, New England, possibly Keene Marlboro Street Glassworks, 1830 - 1842. Bright aqua, sheared, tooled mouth - blowpipe pontil scar, Pt, very near mint; (a tiny, pinhead flake near side mold seam and a shallow, paper-thin open bubble on the interior of the shoulder, otherwise perfect). GII-74. A great example, virtually no high point wear, and nice crude pebbly glass. Note; a bit of yellow and blackish color from the glass mix near the top of the lip.

Est.: \$250 - \$450 • Min. bid: \$140



Lot 34

EAGLE / "PITTSBURGH / PA" - EAGLE Historical Flask, a Pittsburgh district glasshouse, 1860 - 1870. Yellowish olive amber shading to a very deep, almost blackish olive amber near the mouth and base, applied mouth with flat band - smooth base, Pt; (a little high point wear, otherwise very near mint!) GII-105. An attractive example, nice color, plenty of whittling, short neck with a very crudely applied collar.

Est.: \$300 - \$500 • Min. bid: \$180



Lot 35

EAGLE / MONUMENT / "CONTINENTAL" - INDIAN SHOOTING BIRD / "CUNINGHAMS & Co / PITTSBURGH PA" Historical Flask, Cuninghams & Co., Pittsburgh, 1865 - 1875. Aquamarine, applied collar with flat band - smooth base, Qt; (a minor, pinhead flake on the inside edge of the lip; a 3/4" narrow open bubble on the shoulder, and just a couple of small patches of very faint interior milkiness). GII-142. A good strong impression on this flask, which is not easy to find.

Est.: \$150 - \$250 • Min. bid: \$80



Lot 36

CORNUCOPIA - CORNUCOPIA Pictorial Flask, probably Kensington Glass Works, Philadelphia, PA, 1830 - 1838. Aquamarine, sheared mouth - blowpipe pontil scar, 1/2 Pt, near mint; (just a touch of very light high point wear and a pontil flake extends to the edge of the narrow base). GIII-2. A clean, bright, sparkling example. Noted as "Comparatively scarce" by McKearin. Provenance: James Becker collection.

Est.: \$175 - \$275 • Min. bid: \$100



Lot 37

Lot of (2), CORNUCOPIA - URN Pictorial Flasks, New England, possibly Coventry Glass Works, Coventry, CT, 1835 - 1849. Olive amber and olive green, sheared mouths - blowpipe pontil scarred bases, Pts; (the amber example is very near mint with just a touch of typical, minor light wear; the green example has some light to moderate high point wear, but otherwise very nice!) Both examples GIII-4.

Est.: \$175 - \$275 • Min. bid: \$100



Lot 38

Lot of (2), CORNUCOPIA - URN Pictorial Flasks, New England, probably Keene, NH, or Coventry, CT Glassworks, 1835 - 1850. Olive amber and medium to deep olive green, sheared mouths - blowpipe pontil scarred bases, 1/2 Pts; (olive green example has a little minor roughness with a pinhead flake on the edge of the lip; the olive amber example has a little high point wear and a 3/16" in-manufacture tooling mark on the side of the neck). Both examples GIII-7.

Est.: \$175 - \$275 • Min. bid: \$100



Lot 39

CORNUCOPIA - URN Pictorial Flask, New England, probably Keene, NH, or Coventry, CT Glassworks, 1835 - 1850. Deep greenish aquamarine, almost a light apple green, sheared mouth - blowpipe pontil scar, 1/2 Pt; (just a minor 1/8" area of fine lip-edge roughness and only a trace of faint high point wear, otherwise excellent). GIII-7. A nice little flask, scarce color for this mold.

Est.: \$200 - \$400 • Min. bid: \$120



Lot 40

CORNUCOPIA - URN Pictorial Flask, New England, probably a Connecticut or New Hampshire glasshouse, 1835 - 1850. Medium olive amber, sheared mouth - blowpipe pontil scar, 1/2 Pt, near mint; (a little scattered light high point wear). GIII-8. Note; McKearin lists this mold as common. However, the GIII-8 having the large pearl to the left of the cornucopia, we would argue, could certainly be considered as comparatively scarce.

Est.: \$100 - \$200 • Min. bid: \$60



Lot 41

CORNUCOPIA - URN Pictorial Flask, probably Mt. Vernon Glass Works, Vernon, New York, 1830 - 1844. Bright medium olive, almost a forest green, sheared mouth - blowpipe pontil scar, ½ Pt, near mint; (a little typical light exterior high point wear and a very minor pinhead bit of roughness on one of the medial ribs). GIII-11. Nice color, in a pure shade of green, having no trace of amber. A scarce mold, shards of which have been dug at the site of the Mt. Vernon Glass Works.

Est.: \$250 - \$450 • Min. bid: \$140



Lot 42

CORNUCOPIA - URN Pictorial Flask, Lancaster Glass Works, Lancaster, NY, 1849 - 1855. Clear, medium blue-green, sheared, tooled lip - blowpipe pontil scar, ½ Pt, very near mint; (just a slight trace of minor wear and a 1/8" bit of roughness on one of the mold seams that may be in-manufacture, otherwise perfect!) GIII-14a. A very scarce mold, very nice color. A little sweetheart of a flask.

Est.: \$400 - \$800 • Min. bid: \$250



Lot 43

CORNUCOPIA - URN Pictorial Flask, Lancaster Glass Works, Lancaster, NY, 1849 - 1855. Medium emerald, heavy applied ring-type collar - blowpipe pontil scar, Pt, near mint; (a couple of minor, 1/8" or less, bits of roughness along the top edge of the collar, and a tiny, less-than-pinhead size, open bubble on the cornucopia, otherwise virtually attic mint). GIII-17. A nice example with the desirable "donut style" lip, good color, and virtually no high point wear as is common on this mold.

Est.: \$1,000 - \$2,000 • Min. bid: \$500



Lot 44

MASONIC ARCH - EAGLE / "KEENE" Historical Flask, Keene Marlboro Street Glassworks, Keene, NH, 1820 - 1830. Medium olive amber, sheared mouth - blowpipe pontil scar, Pt, near mint; (a little scattered light high point wear). GIV-17. A crude example having a somewhat pebbly glass texture.

Est.: \$225 - \$450 • Min. bid: \$140



Lot 45

MASONIC ARCH - EAGLE Historical Flask, Keene Marlboro Street Glassworks, Keene, NH, 1820 - 1830. Aquamarine, sheared mouth - blowpipe pontil scar, ½ Pt, attic mint! GIV-24. Extremely rare, believed to be one of only two, or possibly three, known examples in aqua. An exceptional little flask, bright, crisp, sparkling, and with virtually no high point wear. Provenance: Ex. Charles B. Gardner collection (#753; color plate VII); Osgood collection, James Becker collection.

Est.: \$4,000 - \$6,000 • Min. bid: \$2,000



Lot 46

MASONIC - "ZANESVILLE" / EAGLE / "OHIO / J. SHEPARD & CO", Historical Flask, Zanesville Glassworks, Zanesville, OH, 1822 - 1832. Golden amber below the shoulders shading to a deep golden with a slight orange tone near the base, sheared mouth - blowpipe pontil scar, Pt, virtually attic mint; (just a touch of very light exterior wear, otherwise perfect). GIV-32. A great example with a very bold, crisp impression, which is hard to find with this mold.

Est.: \$600 - \$900 • Min. bid: \$300



Lot 47

MASONIC ARCH / FARMERS ARMS - FRIGATE / "FRANKLIN" Historical Flask, probably an early Pittsburgh - Monongahela area glasshouse, 1820 - 1830. Greenish aquamarine, sheared mouth - blowpipe pontil scar, Pt; (some high point wear, primarily on the frigate sails, on the reverse). GIV-36. A good strong impression. As noted by McKearin, a rare mold, seldom offered for sale.

Est.: \$300 - \$500 • Min. bid: \$180



Lot 48

ALL SEEING EYE (INSIDE 6-POINTED STAR) / "A D" - RAISED ARM AND 6-POINTED STAR / "G R J A" Historical Flask, probably an early Stoddard, NH glasshouse, 1842 - 1850. Clear, medium olive amber, sheared mouth - blowpipe pontil scar, Pt, near mint; (just a touch of minor high point wear and a shallow, 1/8" wide, partially open bubble on the interior of the neck). GIV-43. A good example, nice color and clarity.

Est.: \$300 - \$500 • Min. bid: \$180



Lot 49

“SUCCESS TO THE RAILROAD” / LOCOMOTIVE - (Reverse same) Historical Flask, Lancaster Glass Works, NY, 1849 - 1860. Bright, yellowish citron green, sheared mouth - blowpipe pontil scar, Pt, near mint; (a shallow, hard-to-see, 9/16” sliver flake along the medial rib at edge of base; a shallow pontil flake extends to the edge of the base, otherwise perfect). GV-2. Extremely rare color. The last recorded example at auction in a similar color was almost 25 years ago.

Est.: \$6,000 - \$12,000 • Min. bid: \$3,000



Lot 53

SUNBURST FLASK, New England, probably Coventry Glass Works, Coventry, CT, 1815 - 1830. Light olive, almost an olive yellow, sheared mouth - blowpipe pontil scar, ½ Pt, virtually attic mint; (extremely minor, small patch of interior haze near one of the sides, otherwise pristine!) GVIII-16. A great example, virtually no high point wear, and a nice light color (very similar, almost identical to the early, dip-mold snuff jar in Lot 128). Ex. Darl Fifer collection.

Est.: \$500 - \$800 • Min. bid: \$300



Lot 50

“SUCCESS TO THE RAILROAD” / HORSE PULLING CART - (Reverse same) Historical Flask, possibly Mt. Vernon Glass Works, Vernon, NY, 1830 - 1844. Medium to deep olive green, sheared mouth - blowpipe pontil scar, Pt; (a little light exterior high point wear and a somewhat weakened impression in the shoulder area as is common on this mold). GV-5.

Est.: \$300 - \$500 • Min. bid: \$180



Lot 54

SCROLL FLASK, Midwest America, 1850 - 1860. Light to medium apple green, sheared mouth - iron pontil scar, Qt, very near mint; (a minor, 1/8” wide, partially open bubble on the inside of the neck, and a couple of faint small patches of interior milkiness near the base, otherwise perfect!) GIX-1. A big, attractive flask, and a fresh discovery from an estate sale near Flint, Mich.

Est.: \$400 - \$600 • Min. bid: \$200



Lot 51

HORSE PULLING CART - EAGLE Historical Flask, probably Coventry Glass Works, Coventry, Connecticut, 1830 - 1845. Clear, medium yellowish olive green, sheared mouth - blowpipe pontil scar, Pt, near mint; (just a touch of typical, light exterior wear, and an 1/8” bit of roughness at base edge, probably in-making, otherwise perfect). GV-9. A very nice example, good color and clarity.

Est.: \$300 - \$600 • Min. bid: \$180



Lot 55

“LOUISVILLE, KY - GLASS WORKS” SCROLL FLASK, Louisville Glassworks, 1855 - 1860. Bright, yellowish apple green, sheared mouth - large, oval, red iron pontil scar, Pt, virtually attic mint; (a slight trace of light residue, or very faint interior haze, near the base; a ¼” bit of minor lip-edge roughness that is in-manufacture, mentioned for accuracy, otherwise perfect). GIX-9. A very scarce, marked, Louisville Scroll Flask that does not come around often. Nice color, excellent character, great pontil!

Est.: \$800 - \$1,200 • Min. bid: \$400



Lot 52

“CORN FOR THE WORLD” / EAR OF CORN - MONUMENT / “BALTIMORE” Historical Flask, Baltimore Glass Works, 1845 - 1855. Deep claret coloration, sheared mouth - blowpipe pontil scar, ½ Pt; (some exterior high point wear and light scratches). GVI-7. A very rare mold, and unique in this color. In 50 years of auction records, there have only been 10 or less offered in any color. Ex. Crawford Wetlaufer, Charles B. Gardner, Bill Pollard collections.

Est.: \$10,000 - \$20,000 • Min. bid: \$5,000



Lot 56

SCROLL FLASK, Midwest America, 1850 - 1860. Clear, medium to deep blue green, sheared mouth - blowpipe pontil scar, Pt, virtually attic mint; (a tiny, barely pinhead size flake on the edge of the sheared mouth and just the slightest trace of faint exterior wear, otherwise pristine!) Frame and stars similar to GIX-10c, but with well defined space between center scrolls as on the GIX-11. A very scarce, attractive color. Provenance: James Becker collection.

Est.: \$600 - \$1,200 • Min. bid: \$300



Lot 57

SCROLL FLASK, Midwest America, 1850 - 1860. Light to medium sapphire blue, sheared mouth - blowpipe pontil scar (on keyed base), Pt, near mint; (a tiny, pinhead flake on the edge of the sheared lip; a slight trace of interior residue, or very faint haze in the shoulders that may wash out, and just a touch of typical light exterior wear). GIX-11. Beautiful, very attractive and desirable color. Provenance: James Becker collection.

Est.: \$1,500 - \$2,500 • Min. bid: \$750



Lot 61

"J R & Son" SCROLL FLASK, John Robinson & Son Glass Manufacturers, Pittsburgh, PA, 1830 - 1834. Aquamarine, corseted scroll form, sheared mouth - blowpipe pontil scar, - Pt; (some scattered light interior haze). GIX-43. A scarce, desirable, glasshouse marked scroll. The patchy light interior haze would respond well to just a couple of days in the tumbler, if desired, and the flask is otherwise in near attic mint condition.

Est.: \$500 - \$800 • Min. bid: \$250



Lot 58

"C" SCROLL FLASK, Midwest America, 1845 - 1860. Aquamarine, sheared mouth - blowpipe pontil scar, Pt, attic mint. GIX-25. A comparatively scarce flask, and aptly noted as such by McKearin. In fact, we would suggest that it is a very scarce mold with only about a half dozen or fewer examples having been offered at public auction in the past 20 years. A bright, clean, bubbly, sparkling example.

Est.: \$200 - \$400 • Min. bid: \$120



Lot 62

SCROLL FLASK, an early Pittsburgh district glasshouse, possibly John Robinson & Son Glass Manufacturers, 1830 - 1834. Aquamarine, corseted scroll form, sheared mouth - blowpipe pontil scar, Pt; (a little minor, light interior haze, and a bit of scattered light exterior wear, otherwise excellent). GIX-44. A bright example with some nice bubbles scattered throughout. Listed as "Very rare" by McKearin.

Est.: \$500 - \$800 • Min. bid: \$250



Lot 59

Giant SCROLL FLASK, Midwest America, 1845 - 1860. Aquamarine, sheared mouth - blowpipe pontil scar, 2 Qts, near attic mint; (a tiny potstone in the base with a minuscule, barely 1/8" leg that likely occurred during manufacture, and a paper-thin 1/8" open bubble, otherwise pristine!) GIX-29. List as "Rare" by McKearin, and deservedly so. For more info., see "The Gallon Scrolls", by Mark Vuono, AB&GC, June, 2014. James Becker collection; Ex. Jim Whetzel collection.

Est.: \$800 - \$1,200 • Min. bid: \$400



Lot 63

SCROLL FLASK, probably an early Pittsburgh district glasshouse, 1835 - 1845. Clear, medium blue green, sheared mouth - blowpipe pontil scar, Pt, very near mint; (a shallow, 1/8" or less, minor flake on the inside edge of the sheared mouth, otherwise virtually attic mint). GIX-45. Provenance: Ex Paul Richards collection. This example has not been offered at auction since the iconic Richards Sale, Sept, 1993. A desirable, ornate mold, in a beautiful, rare color.

Est.: \$2,000 - \$4,000 • Min. bid: \$1,200



Lot 60

"BP & B" SCROLL FLASK, Bakewell, Page & Bakewell, Pittsburgh, PA, 1825 - 1832. Aquamarine, sheared mouth - blowpipe pontil scar, 1/2 Pt; (some scattered light interior haze, and a little minor high point wear). GIX-38. A scarce, early marked scroll flask. The noted spotty interior haze would likely respond well to a light interior professional cleaning.

Est.: \$200 - \$400 • Min. bid: \$120



Lot 64

"M'CARTY & TORREYSON" / STAR / "MANUFACTURERS / WELLSBURG, VA." - CONCENTRIC RINGS AND SUNBURST, SCROLL FLASK, McCarty & Torreyson Glass Works, Wellsburg, VA, 1842 - 1855. Aquamarine, sheared mouth - iron pontil scar, Pt; (a couple of 1/8" flakes on the top of the rough sheared mouth; a little roughness and minor flaking on the inside edge of the mouth, possibly in-making, otherwise very near mint!) GIX-48. A scarce, desirable mold!

Est.: \$1,000 - \$1,500 • Min. bid: \$600



Lot 65

HEARTS AND FLOWERS SCROLL FLASK, Midwest, 1840 - 1855. Deep aqua, sheared mouth - blowpipe pontil scar, Qt; (the top of the sheared mouth has been polished to remove some flakes, otherwise pristine perfect). GIX-51. Noted by McKearin as "Very rare", and considered by many collectors to be the most desirable of all the Scroll molds. A bright, sparkling example with a large, attractive bubble (undamaged), down one side. James Becker collection; Ex. Fred Salisbury collection

Est.: \$3,000 - \$6,000 • Min. bid: \$1,500



Lot 66

"MURDOCK / & / CASSEL - ZANESVILLE / OHIO" Historical Flask, Muskingum Green Glass Works, Zanesville, OH, 1826 - 1836. Aqua, sheared mouth - blowpipe pontil scar, Pt; (a touch of minor roughness and 1/8" flake at the edge of the sheared mouth; some scattered minor exterior wear along with some light haze or dullness, but no other form of damage). GX-14. A rare mold with a better-than-average impression. Would likely respond well to a light professional cleaning.

Est.: \$800 - \$1,600 • Min. bid: \$400



Lot 67

"THE GREAT WESTERN" / TRAPPER WITH RIFLE - BUCK WITH ANTLERS Pictorial Flask, Midwest, possibly a Pittsburgh district glasshouse, 1865 - 1875. Aquamarine, applied collar with ring - "C" on smooth base, Pt; (a little light exterior wear and a couple of small patches, approximately "dime-size" or less, of minor interior haze, otherwise excellent). GX-30. A rare flask, likely blown to appeal to pioneers and the expansion of frontiers to the west.

Est.: \$400 - \$800 • Min. bid: \$200



Lot 68

Unlisted, "UNION" / CLASPED HANDS - EAGLE Historical Flask, probably a Pittsburgh glasshouse, 1860 - 1870. Golden amber with a slight orange tone shading to a honey amber in the shoulders, applied mouth with ring - smooth base, Pt; (a touch of minor exterior wear, and a small patch of light interior haze, otherwise excellent). Unlisted and very different than any of the charted molds. 15 leaves on left branch; 16 on right; eagle, shield, and pennant different.

Est.: \$400 - \$600 • Min. bid: \$200



Lot 69

"UNION" / CLASPED HANDS / "FA & Co" - CANNON Historical Flask, Fahnestock, Albree & Company, Pittsburgh, 1865 - 1872. Colorless, tooled sloping collar with ring - smooth base, 1/2 Pt; (a 5/8" area of chipping on top of the mouth, and a 1/4 flake at edge of base). GXII-42. A great rarity being colorless, and with the tapered collar, it is believed there are less than six examples known. The condition issues are fairly minor, this is one that very few other collectors are likely to have.

Est.: \$200 - \$400 • Min. bid: \$100



Lot 70

"WILL YOU TAKE / A DRINK ? / WILL A / (Duck) / SWIM ?" Pictorial Flask, Lockport Glass Work, Lockport, NY, 1870 - 1880. Aquamarine, applied mouth with band - smooth base, Qt; (some light overall haze that appears to be mostly on the interior; some scattered light exterior wear and a bit of dullness, but no other form of damage). GXIII-27. It appears to be a dug bottle and would likely respond well to a light professional cleaning. A very scarce flask.

Est.: \$300 - \$600 • Min. bid: \$180



Lot 71

"TRAVELER'S" / STAR / "COMPANION" - SHEAF OF GRAIN Pictorial Flask, Westford Glass Works, Westford, CT, 1860 - 1873. Medium to deep amber with some beautiful golden and orange tones, applied sloping collar - smooth base, Qt, virtually attic mint; (just the slightest trace of faint exterior wear, otherwise pristine!) GXIV-1. A great example, heavily whittled, beautiful color, outstanding condition. James Becker collection; Ex. Tom McCandless collection.

Est.: \$250 - \$400 • Min. bid: \$140



Lot 72

"TRAVELERS / COMPANION" (Reverse plain), Historical Flask, probably Lancaster Glass Works, or possibly Lockport Glass Works, NY, 1855 - 1860. Aquamarine, applied ring collar with bevel - blowpipe pontil scar, 1/2 Pt, attic mint! GXIV-8. A rare little flask, especially with the pontil scarred base. Listed by McKearin in Group C, Rare flasks, #18. A crisp, sparkling example, boldly embossed.

Est.: \$200 - \$400 • Min. bid: \$120



Lot 73

"CLYDE GLASS WORKS / N.Y."
Lettered Flask, Clyde Glass Works, Clyde, New York, 1864 - 1873. Medium yellowish green, almost a citron coloration, applied sloping collar with flat band - smooth base, Qt, near mint; (a little scattered exterior wear including a $\frac{3}{4}$ " minor scratch below the "SS" in "GLASS". GXV-1. A scarce, desirable mold in a very scarce, hard-to-find color!

Est.: \$500 - \$1,000 • Min. bid: \$250



Lot 77

Freeblown Chestnut Flask, New England, 1790 - 1820. Delicate, light sea green, chestnut form, applied crude ring-type collar - blowpipe pontil scar, ht. 5 $\frac{1}{2}$ ", near mint; (some scattered light exterior wear and fine scratches). A scarce color for an early Chestnut flask, plenty of tiny seed bubbles, a delicate little flask.

Est.: \$250 - \$450 • Min. bid: \$150



Lot 74

Large, Freeblown Globular Bottle, New England, 1790 - 1820. Beautiful medium yellowish olive, globular body, heavy applied string rim - blowpipe pontil scar, ht. 9 $\frac{3}{4}$ ", near mint; (a small potstone on the inside surface of the glass, near the base, has a couple of tiny radiations, barely visible without a loop, and just a trace of faint wear). A great example in virtually "attic mint" condition, very little exterior wear, and better than average form. James Becker collection

Est.: \$500 - \$800 • Min. bid: \$300



Lot 78

Freeblown Chestnut Flask, New England, 1790 - 1820. Clear, light yellow olive, almost an olive yellow, chestnut form, crudely applied collar - blowpipe pontil scar, ht. 5 $\frac{3}{4}$ "; (a few interior bubbles that are open, or partially open, and a little typical light exterior wear, otherwise excellent). Nice color and clarity.

Est.: \$200 - \$400 • Min. bid: \$120



Lot 75

Miniature, Freeblown Globular Bottle, America, probably Midwest, possibly Mid-Atlantic region, 1815 - 1835. Aquamarine, globular form, sheared and outward rolled mouth - blowpipe pontil scar with trace bits of iron residue, ht. 3 $\frac{1}{2}$ ", virtually attic mint; (just a touch of light interior residue, or faint haze, otherwise perfect). A little "sweetheart" of a glob, nicely executed, scarce diminutive size, outstanding condition.

Est.: \$300 - \$600 • Min. bid: \$180



Lot 79

Freeblown Chestnut Flask, New England, 1810 - 1830. Medium yellowish olive, chestnut form, crudely applied short tapered collar - blowpipe pontil scar, ht. 7 $\frac{3}{4}$ ", near mint; (just a touch of typical, light exterior wear). There is a large, un-melted potstone in the neck, but with absolutely no associated radiations or issues). Nice slightly larger size, plenty of tiny seed bubbles throughout.

Est.: \$250 - \$450 • Min. bid: \$150



Lot 76

Early, Freeblown Chestnut Flask, probably Mid-Atlantic, possibly South Jersey, 1770 - 1800. Clear, medium green with a slight olive tone, chestnut form, sheared mouth with a crudely applied flat band - blowpipe pontil scar, ht. 8"; (some typical minor scratches and light exterior wear; a few open surface bubbles, otherwise excellent). Scarce, pure green coloration with no hint of amber, nice clarity and plenty of bubbles. Some very faint paddle marks on the sides.

Est.: \$600 - \$900 • Min. bid: \$300



Lot 80

Freeblown Chestnut Flask, New England, 1810 - 1830. Medium shading to deep olive amber, chestnut form, applied sloping collar - blowpipe pontil scar, ht. 8 $\frac{3}{8}$ "; (some typical light exterior wear and scratches, otherwise excellent). Nice larger size, rich color.

Est.: \$300 - \$500 • Min. bid: \$180



Lot 81

Large, Freeblown Chestnut Flask, probably Mid-Atlantic region, possibly South Jersey, 1760 - 1800. Medium olive, plump chestnut form, tooled, outward rolled mouth - heavy blowpipe pontil scar, ht. 10 3/4"; (some scattered exterior wear and light scratches, heavy base wear). An interesting, large, early Chestnut Flask, very scarce size.

Est.: \$500 - \$800 • Min. bid: \$300



Lot 82

Early, Freeblown Pocket Flask, probably Continental, possibly America, 1740 - 1780. Yellowish olive, flattened circular body, sheared mouth with an applied string rim - solid, glass-tipped pontil scar, ht. 4 1/4"; (some scattered, relatively minor exterior wear and a tiny, barely pinhead-size flake on the applied string rim, otherwise excellent). Without question, a very interesting, and very early little flask.

Est.: \$250 - \$450 • Min. bid: \$140



Lot 83

Early, Diminutive Freeblown Flask, probably Alloa Glass Works, Scotland, 1780 - 1820. Deep amber with a reddish tone, flattened spherical body with an applied ribbon of rigaree on each side, sheared, flared, and inward rolled mouth - blowpipe pontil scar, ht. 3 1/2"; (a few missing "fins" at lower part of rigaree, some minor surface wear). A rare little gem of a flask. See MW, plate 51, #5, for similar South Jersey example. Ex. Neil Wilcox, John Moore collections.

Est.: \$400 - \$600 • Min. bid: \$250



Lot 84

Early Patterned Utility Bottle, Mediterranean, or Middle East region, 1680 - 1720. Bright, yellowish grass green with subtle, straw and light puce colored striations swirled through the body, octagonal, eight panels embossed with a diamond, or lattice design, and double rectangular outline, crudely sheared mouth with an applied, crimped ring collar - smooth base, ht. 9 1/4", near attic mint; (a little light interior residue). A crude, and very early, blown bottle.

Est.: \$400 - \$600 • Min. bid: \$250



Lot 85

Blown Three Mold Decanter, Keene Marlboro Street Glassworks, Keene, NH, 1820 - 1835. Medium olive green shading to a dense olive through the neck, ovoid form, geometric sunburst pattern, sheared mouth - blowpipe pontil scar, Pt; (a tiny, pinhead flake and a little natural roughness on the top of the sheared mouth that likely occurred in-manufacture; a little exterior high point wear). Gill-16. There is an interesting ribbon of extra glass on the interior of the neck that creates the deep color.

Est.: \$500 - \$700 • Min. bid: \$300



Lot 86

Lot of (2), Blown Three Mold Hat Whimsies, New England, or possibly a South Boston area glasshouse, 1825 - 1840. Both are colorless, blown in small drinking glass molds for pattern, and in the form of a beaver hat with a narrow upturned brim on the sides, geometric designs, blowpipe pontil scarred bases, ht. both approx. 2 1/4", both are virtually attic mint! Gill-18, and similar to Gill-4. Good clean examples.

Est.: \$175 - \$350 • Min. bid: \$100



Lot 87

Pattern Molded Globular Bottle, 24 ribs swirled to the left, probably Zanesville Glass Works, Zanesville, OH, 1820 - 1835. Brilliant citron green with a slight yellowish tone, globular form, outward rolled mouth - pontil scar, ht. 7 5/8", near attic mint; (a 3/16" flake on the underside of the folded over collar and just a touch of typical, very light, exterior wear, otherwise perfect!) A fantastic example, outstanding color and clarity, excellent condition, and plenty of eye-appeal.

Est.: \$4,000 - \$6,000 • Min. bid: \$2,000



Lot 88

Pattern Molded Globular Bottle, 24 ribs swirled to the right, probably Zanesville Glass Works, Zanesville, OH, 1820 - 1835. Bright golden amber, globular form, outward rolled mouth - pontil scar, ht. 7 1/8", near mint; (a trace of typical, expected light exterior wear, otherwise perfect). A great example with nice tight ribbing through the neck, classical globular form, good color, and a slightly smaller size than most!

Est.: \$600 - \$900 • Min. bid: \$350



Lot 89

Pattern Molded Chestnut Flask, 24-rib broke swirl pattern, probably Zanesville, or possibly Kent Glass Works, OH, 1824 - 1835. Medium golden amber, large "grandmother size" chestnut form with 24 vertical ribs over 24 ribs swirled to the left, sheared mouth - pontil scar, ht. 6 3/4", near mint; (just a touch of very minor, light exterior wear, otherwise perfect). An exceptional Midwest flask, rare size, nice form, pattern, color, and condition. Ex. Darl Fifer collection.

Est.: \$1,200 - \$2,400 • Min. bid: \$600



Lot 90

Pattern Molded Pocket Flask, 24 ribs swirled to the left, Midwest, possibly Zanesville Glass Works, Zanesville, OH, 1820 - 1835. Honey coloration near the shoulders shading to a lighter yellowish honey near the base, flattened circular body, sheared mouth - pontil scar, ht. 4 3/4"; (just a little minor high point wear, otherwise perfect). The color is nice and light so the pattern shows through from both sides creating the attractive lattice appearance below the shoulders.

Est.: \$300 - \$600 • Min. bid: \$180



Lot 91

Pattern Molded Chestnut Flask, 18 ribs swirled to the right, Midwest, probably western Pennsylvania, 1820 - 1840. Aquamarine, large, "grandmother size" chestnut form, sheared mouth - blowpipe pontil scar, ht. 7"; (some scattered exterior wear, primarily on one side, and just a touch of minor residue, likely washable, on the interior). A scarce size, not easy to find in a Midwest chestnut; also a more scarce rib count than the 24-rib mold typically encountered.

Est.: \$300 - \$600 • Min. bid: \$180



Lot 92

Pitkin Type Flask, patterned with 36 fine ribs swirled to the right, New England, 1785 - 1825. Clear, light to medium yellowish olive, ovoid form, sheared mouth - blowpipe pontil scar, ht. 5 3/8", near mint; (a trace of faint light wear and a slightly weakened impression, otherwise excellent!) Nice diminutive size, good tight ribbing. Similar to MW, plate 88, #6. Provenance: Ex. Don Vink collection.

Est.: \$600 - \$900 • Min. bid: \$350



Lot 93

Pitkin Type Flask, 16 wide vertical ribs over 16 ribs swirled to the right, probably Pennsylvania or Mid-Atlantic region, 1800 - 1830. Bright, yellowish grass green, flattened circular body, sheared mouth - blowpipe pontil scar, ht. 6 1/2", perfect. Similar to MW, plate 89, #8. Beautiful color, very bold pattern, outstanding condition, devoid of the high point wear so often encountered on these flasks. A bright, clean, excellent example.

Est.: \$800 - \$1,200 • Min. bid: \$400



Lot 94

Pitkin Type Flask, 30 vertical ribs over 30 ribs swirled to the left, probably Mid-Atlantic region, 1800 - 1830. Medium sea-green, flattened ovoid body, sheared mouth - blowpipe pontil scar, ht. 6 7/8", near mint; (just a touch of typical light exterior wear, otherwise excellent). Very similar to MW, plate 89, #5.

Est.: \$400 - \$600 • Min. bid: \$250



Lot 95

Poison Type Flask, Germany or America, 1830 - 1860. Deep amethyst with a violet tone, flattened horseshoe form, 2-piece mold, hobnail pattern with corrugated sides, sheared mouth - blowpipe pontil scar, Pt, ht. 6 3/4"; (some scattered light exterior wear, otherwise perfect!) KU-27. This is the scarcer of the two sizes, and in a very scarce, to rare color for this flask! Note; some washable, "attic-type" soot between the corrugated ribs. From an old time New England collection!

Est.: \$800 - \$1,200 • Min. bid: \$400



Lot 96

"X. BAZIN - 114 CHESNUT ST - PHILADELPHIA" Product Jar, America, 1855 - 1870. Beautiful plum amethyst, 8-sided tapered body with a pedestal-type base; base appears to have a sand-type pontil, ht. 2 3/4", near mint; (just a little minor exterior wear). A very rare jar that likely held some type of cream, or pomade, and could be used as a wine glass, when empty. Around 1850, E. Roussel sold his very successful perfumery business to X. Bazin. Note the misspelling of "Chestnut St."

Est.: \$250 - \$450 • Min. bid: \$140



Lot 97

Cologne Bottle, Boston and Sandwich Glass Works, Sandwich, MA, 1860 – 1888. Medium to deep plum amethyst, octagonal hourglass form, thin tooled flanged lip – smooth base, ht. 4 ½”, very near mint; (a little minor high point wear, otherwise perfect). See B/K, photo #5199; MW, plate 114, #7. A very nice example, beautiful color! Note; this particular form is believed to be unique to the Sandwich Glass Works.

Est.: \$300 - \$500 • Min. bid: \$150



Lot 98

Fancy Cologne Bottle, America, 1835 - 1855. Medium to deep sapphire blue, rectangular with narrow beveled corners, fancy floral spray on front, beaded boarder label panel on reverse, applied thin flanged collar - blowpipe pontil scar, ht. 5 1/8”; (approx. 25% of the thin flanged lip is missing, and a bit of minor high point wear near the base on the reverse, otherwise perfect). MW, plate 107, #5. Very rare in aquamarine, Extremely rare in sapphire; the 1st example that we can recall seeing.

Est.: \$500 - \$1,000 • Min. bid: \$250



Lot 99

Fancy Cologne Bottle, Embossed Cluster of Grapes and Leaves (with period medicinal label on side panel), America, 1840 - 1850. Brilliant aquamarine, rectangular with ribbed side panels, floral spray above and below label panel on reverse, tooled thin flared lip - blowpipe pontil scar, ht. 6 ¼”, virtually “out of the mold” pristine perfect. Label slightly darkened, but mostly legible, gives directions for use for Dysentery, Fever and Ague. Beautiful, rare, and possibly unique!

Est.: \$300 - \$600 • Min. bid: \$180



Lot 100

“N.S.P” Early Cologne Bottle, America, 1825 - 1840. Aquamarine, rectangular with fancy ‘framed’ front and back panels, bulbous neck, sheared and outward rolled mouth - blowpipe pontil scar, ht. 7 ½”, virtually attic mint; (tiny open surface bubble on top of rolled lip, otherwise perfect!) “N.S.P”, initials for Nathan Smith Prentiss, early New York City perfumery merchant. See MW, pgs. 386, 380, 382. A clean, bright, sparkling, example. Extremely rare.

Est.: \$300 - \$600 • Min. bid: \$180



Lot 101

“N. PRENTISS / & Co / 28 / JOHN ST”, America, 1825 - 1840. Aquamarine, rectangular with fancy ‘framed’ front and back panels, bulbous neck, applied ring collar - blowpipe pontil scar, ht. 7 ¼”; (1/8” bruise on corner of back panel, a tiny potstone with a couple of 1/16” “legs”, some light interior milkiness). N. Prentice was an early, prominent, New York City merchant and perfumer. See, MW, p.386. A very rare cologne bottle with crude, wavy glass. James Becker collection.

Est.: \$200 - \$400 • Min. bid: \$120



Lot 102

“BOGARDUS GLASS BALL PATD. APRIL 10 1877.” Target Ball, America, 1877 - 1895. Medium to deep cobalt blue, quilted diamond pattern above and below center band, rough sheared mouth, dia. 2 5/8”, perfect. Scarce color for a Bogardus target ball. Excellent character with a crude, pebbly glass texture, and a couple of subtle amber striations swirled through the glass.

Est.: \$500 - \$800 • Min. bid: \$300



Lot 103

“GLASHUTTEN Dr. A. FRANK - CHARLOTTEBURG” Target Ball, Germany, 1880 - 1895. Yellowish with a slight olive tone, quilted diamond pattern above and below center band, rough sheared mouth, dia. 2 5/8”, virtually attic mint; (some typical flakes and chipping often encountered with the crude sheared lip). Note; “Glashutten” in German is the plural for glasshouse.

Est.: \$175 - \$350 • Min. bid: \$100



Lot 104

“VAN CUTSEM - A ST QUENTIN” Target Ball, France, 1880 - 1895. Medium sapphire blue, quilted diamond pattern above and below center band, rough sheared mouth, dia. 2 5/8”, perfect. A nice example, much lighter in tone, that passes plenty of light. Most examples being a deep, dense shade of cobalt.

Est.: \$100 - \$175 • Min. bid: \$60



Lot 105

Target Ball, Germany, 1880 - 1900. Beautiful, bright yellowish lime green, almost a chartreuse color, quilted pattern formed by horizontal rows of 14 diamonds, rough sheared mouth, dia. 2 5/8", perfect. Termed the "Gablonz" ball, and without question, one brightest, and most colorful, of all the target balls.

Est.: \$175 - \$350 • Min. bid: \$100



Lot 109

Blown Three Mold Inkwell, Keene Marlboro Street Glassworks, Keene, NH, 1820 - 1840. Medium to deep olive amber, cylindrical, disk-type mouth - plain base with blowpipe pontil scar, 1 1/2" ht. x 2 1/8" wide, virtually attic mint; (just a very slight trace of faint exterior wear, otherwise perfect). GIII-29; C# 1221. A very nice example, excellent condition, and good color and tone.

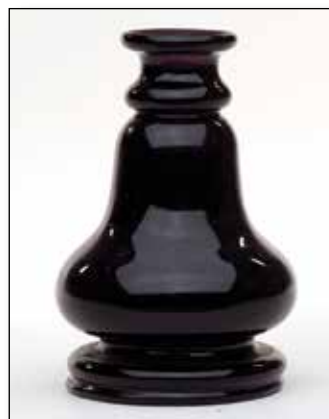
Est.: \$175 - \$275 • Min. bid: \$100



Lot 106

"HEMINGRAY - No 19" Insulator, Hemingray Glass Co, Muncie, IN, 1915 - 1930. Bright cobalt, almost an electric, or peacock blue, sharp drip points, overall very good condition; (a shallow, 1/4" flake along the top of the wire ridge; a 1/2" chip at base of skirt including a chip on one of the drips, otherwise excellent). CD 162. Beautiful, vivid color!

Est.: \$150 - \$300 • Min. bid: \$80



Lot 110

Early Blown Inkwell, probably Continental, possibly France, 1840 - 1860. Very deep amethyst, cylindrical with a bell-shaped top, crimped, tooled, double ring foot, tooled ring neck, sheared, flared and inward rolled mouth - blowpipe pontil scar, ht. 3", attic mint. A very interesting piece, likely not a production item, or at least blown in very limited numbers. A lot of workmanship, beautifully done, very scarce.

Est.: \$250 - \$450 • Min. bid: \$140



Lot 107

"J-&-I-E-M" Ink Bottle, America, 1865 - 1890. Medium to deep "old amber", cylindrical with six block panels around sides, domed shoulders, offset neck with sheared mouth - "6" (on smooth base), ht. 1 5/8"; (a little minor exterior dullness and faint wear; a bit of light interior haze, but no other form of damage). Similar to C #628. A good solid example, and nothing that a light cleaning, with just a day or two in the tumbler, would not clear-up.

Est.: \$200 - \$400 • Min. bid: \$120



Lot 111

"M & P - NEW YORK" Ink Bottle, America, 1840 - 1855. Medium blue-green, 8-sided umbrella form, sheared and inward rolled mouth - blowpipe pontil scar, 2 3/8" ht. x 2 1/8" wide, near mint; (the bottle may have been lightly cleaned as there is a faint bit of dullness on the inside of the neck, but otherwise appears as virtually attic mint). A very rare ink, and a great example, with good strong color and crisp, bold, embossing.

Est.: \$600 - \$1,200 • Min. bid: \$300



Lot 108

"BERTINGUIOT" Inkwell, probably New England, possibly a Connecticut glasshouse, 1830 - 1850. Beautiful, light yellowish olive amber, cylindrical, sheared mouth - blowpipe pontil scar, ht. 2 1/8", near mint; (a couple of 1/8", or less, flakes at the rough sheared mouth; a 3/16" chip on the inside edge of the lip noted for accuracy, that occurred in-manufacture as it has been fire-polished). C# 575. A scarce color for this ink, and one of the lightest, prettiest examples that we have seen.

Est.: \$200 - \$400 • Min. bid: \$120



Lot 112

"JAMES.S - MASON & co" Ink Bottle, America, 1840 - 1860. Aquamarine, 8-sided umbrella form, sheared and inward rolled mouth - blowpipe pontil scar, 2 3/8" ht. x 2 1/4" wide, near mint; (lightly cleaned to original luster and near mint condition with just a very light, faint, milkiness remaining). A scarce inkwell, Jas. S. Mason & Co. manufactured both blacking, and writing ink, and were located in Philadelphia.

Est.: \$200 - \$300 • Min. bid: \$120



Lot 113

Umbrella Ink, America, 1840 - 1860. Clear, light to medium bluish green, 8-sided umbrella form, sheared and inward rolled mouth - blowpipe pontil scar, 2 1/2" ht. x 2 1/8" wide, sparkling attic mint. Form similar to C# 129. A beautiful example in a subtle, but nice shade of green, heavily whittled, and with excellent clarity.

Est.: \$175 - \$350 • Min. bid: \$100



Lot 117

Umbrella Ink, New England, probably a Stoddard, New Hampshire glass-house, 1842 - 1860. Yellowish "old amber" with a very slight olive tone, 8-sided umbrella form, sheared and tooled lip - blowpipe pontil scar, 2" ht. x 2 1/4" wide, near mint; (just a little minor roughness along the top edge of the lip, likely in-manufacture). Form similar to C#131. A classic early New England ink, likely Stoddard, in a nice attractive color, with good character and crudeness to the glass.

Est.: \$250 - \$450 • Min. bid: \$140



Lot 114

Umbrella Ink, America, 1840 - 1860. Medium yellowish emerald, 8-sided umbrella form, sheared and inward rolled mouth - blowpipe pontil scar, 2 1/2" ht. x 2 1/4" wide; (just the slightest trace of faint, light wear, otherwise sparking attic mint). Form similar to C# 129. Beautiful, very scarce color.

Est.: \$400 - \$600 • Min. bid: \$200



Lot 118

Umbrella Ink, America, 1840 - 1860. Medium to deep reddish amber with a puce tone, 8-sided umbrella form, sheared and inward rolled mouth - blowpipe pontil scar, 2 3/8" ht. x 2 1/2" wide; (some scattered light exterior wear and a tiny, pinhead flake on one of the panel edges). Similar in size and form to C# 129. A very scarce, attractive, color for an umbrella ink. This example has been hidden away in a collection since the 1990s.

Est.: \$500 - \$1,000 • Min. bid: \$250



Lot 115

Umbrella Ink, New England, or possibly New York State, 1840 - 1860. Deep forest green, 8-sided umbrella form, sheared and tooled mouth - keyed base with blowpipe pontil scar, 2 3/8" ht. x 2 1/4" wide, virtually attic mint; (just a tiny, pinhead open bubble near edge of base, otherwise perfect). Excellent character and crudity, lots of seed bubbles, great color, and in a slightly different form with very narrow shoulders. Provenance: Ex. Watt White collection.

Est.: \$400 - \$600 • Min. bid: \$200



Lot 119

"G. A. MILLER / QUINCY ILL" Ink Bottle, America, 1860 - 1865. Aquamarine, 8-sided, applied square collar - early hinge-mold smooth base, 2 1/2" ht. x 2" wide; (just a bit of very faint interior haze, barely noticeable, otherwise excellent and displays near mint). A very rare, hard-to-find ink in excellent condition, which does not come around often! This one looks like it just missed the pontil rod.

Est.: \$250 - \$450 • Min. bid: \$140



Lot 116

Umbrella Ink, America, 1840 - 1860. Beautiful yellowish honey coloration, 8-sided umbrella form, sheared and inward rolled mouth - blowpipe pontil scar, 2 1/4" ht. x 2 1/8" wide; (a trace of light interior residue and a 1/8" flake on one of the panel edges). Form similar to C# 129, and very similar to lot 109, in our November, 2015 Auction. Gorgeous color, this example also having some nice character to the glass.

Est.: \$300 - \$500 • Min. bid: \$180



Lot 120

"E. WATERS / TROY. NY" Master Ink Bottle, America, 1845 - 1855. Aquamarine, cylindrical with fluted shoulders, applied disk mouth - blowpipe pontil scar, ht. 5 1/8", sparkling attic mint! C# 773; Faulker, p.146. A fresh find, and an outstanding example. The bottle is strongly embossed, has exceptional character; the glass being absolutely filled with tiny seed bubbles. Note, the cork, likely original, has red sealing wax on the top with the letters, "F W S" embossed in the wax.

Est.: \$300 - \$600 • Min. bid: \$180



Lot 121

"ZIEBER & Co'S - EXCELSIOR - INK" Master Ink Bottle, America, 1850 - 1860. Medium to deep emerald green, 12-sided, crudely applied square collar - iron pontil scar, ht. 5 3/4", virtually attic mint; (slight trace of faint exterior wear). Similar to C# 775 (example pictured on cover of *Ink Bottles and Inkwells*, by William Covill, Jr.). From an early Harmer Rooke Gallery Auction. An extremely rare and desirable ink, having great eye-appeal, color, and clarity.

Est.: \$4,000 - \$6,000 • Min. bid: \$2,000



Lot 125

Large, Wide-Mouth Snuff or Utility Jar, probably England, 1830 - 1850. Clear, light green with a slight emerald tone, square with a wide mouth and thin flared lip - large sand type pontil scar, ht. 6 3/8", virtually attic mint; (a trace of light interior residue that would likely wash out, and just a touch of typical, faint exterior wear). A great looking jar, scarce wide mouth, and with a perfect, thin flared lip.

Est.: \$400 - \$600 • Min. bid: \$200



Lot 122

Large, Fluted-Shoulder Master Ink Bottle, America, 1850 - 1860. Medium blue-green with a teal tone, 12-sided, fluted shoulders, large applied disk mouth - red iron pontil scar, ht. 8 1/8"; (a tiny, hard-to-see, hairline spider crack near the shoulder with a few 1/8" to 3/16" "legs", otherwise virtually attic mint!) A beautiful piece of glass with exceptional character. The glass is absolutely filled with tiny seed bubbles, large bubbles, and impurities. Outstanding eye-appeal!

Est.: \$1,500 - \$2,500 • Min. bid: \$800



Lot 126

Early Dip Mold Snuff Jar, probably England, possibly New England, 1800 - 1830. Clear, bright yellowish green, rectangular with concave corners, drawn-up shoulders, sheared mouth with a crudely applied ring-type collar - sand type pontil scar, ht. 5 7/8"; (just the slightest trace of typical faint exterior wear, otherwise sparking attic mint). A crude, early snuff jar in a delicate, very pretty color. Provenance: James Becker collection.

Est.: \$300 - \$500 • Min. bid: \$150



Lot 123

B. HELLER & CO, CHICAGO, Labeled Master Ink Bottle, with original label, contents, and box, America, 1905 - 1915. Cobalt, cylindrical, early machine lip with pour spout, ht. 5 7/8"; (bottle is mint; label very near mint with just a small, 1" x 1/4" thin spot near side, box is complete but top flap detached, some tears near top of box). Multicolored, highly detailed, graphic label depicts a jungle scene with trees, monkeys, thatch-covered huts and natives. See AGG, Auction #10, Lot 91.

Est.: \$150 - \$250 • Min. bid: \$80



Lot 127

Early Dip Mold Snuff Jar, probably an early New England glasshouse, 1800 - 1830. Clear medium green with a slight olive tone, rectangular with wide beveled corners, sheared and slightly flared mouth - blowpipe pontil scar, ht. 5 1/8"; (some minor light exterior wear and a tiny, 3/16", hard-to-see hairline flash in the side that does not appear to go through the thickness of the glass, otherwise excellent). A beautiful, scarce color for a snuff jar. Provenance: James Becker collection.

Est.: \$250 - \$450 • Min. bid: \$140



Lot 124

"WHITWELL'S / PATENT - VOLATILE - AROMATIC / & / HEAD-ACHE - SNUFF", America, 1835 - 1845. Colorless, rectangular, sheared and inward rolled wide mouth - blowpipe pontil scar, ht. 3 1/2"; (a touch of very light interior haze, otherwise perfect). A very rare, early, flint-glass snuff, overall excellent condition. This snuff, as do a handful of others, blurs the lines between snuff and medicine. Believed to be one of only two examples offered at auction in the past 20 years.

Est.: \$400 - \$600 • Min. bid: \$200



Lot 128

Early Dip Mold Snuff Jar, New England, 1790 - 1820. Light olive yellow, rectangular with beveled corners, sheared, fire polished mouth - delicate blowpipe pontil scar, ht. 4 1/8", near mint; (a touch of minor interior residue, or very faint haze, primarily in the shoulder area that may wash out and a little typical minor exterior wear). A very crude example with nice frothy glass, full of seed bubbles and impurities, the same type of "metal" so often found in the early New England chestnut flasks.

Est.: \$300 - \$500 • Min. bid: \$150



Lot 129

Early Blacking or Utility Bottle, probably Mt. Pleasant (Saratoga Mountain Glass Works), Mt. Pleasant, NY, 1855 - 1866. Rich, deep olive green, cylindrical, crudely applied round collar - early hinge-mold smooth base, ht. 5 5/8", very near mint; (just a trace of typical, very light exterior wear and a tiny, barely pinhead size flake at edge of base, otherwise perfect!) This mold was used by Elisha Waters for their blacking bottles. Attractive gutsy form, crude, bubbly, seedy glass.

Est.: \$300 - \$500 • Min. bid: \$150



Lot 130

Early Blacking or Utility Bottle, probably Mt. Pleasant Glass Works, Mt. Pleasant, NY, 1855 - 1866. Rich, deep olive green, cylindrical, crudely applied round collar - early hinge-mold smooth base, ht. 5 3/4", virtually attic mint; (a touch of typical, expected light exterior wear, otherwise perfect). Obviously a different mold than the preceding lot having the rounded shoulders, but otherwise the glass color, character, crude hinge mold base, lip treatment, etc, are virtually identical!

Est.: \$300 - \$500 • Min. bid: \$150



Lot 131

Petal-Type Preserve Jar, Midwest, probably a Pittsburgh district glass-house, 1850 - 1860. Clear, bright medium emerald green, cylindrical with fluted shoulders, 4-pc. mold, heavy applied mouth - red iron pontil scar, Qt, virtually attic mint; (just the slightest trace of typical, very faint exterior wear, otherwise perfect!) A great example, good clarity, and rich, excellent color, much scarcer than the olive toned examples.

Est.: \$1,200 - \$2,400 • Min. bid: \$700



Lot 132

Petal-Type Preserve Jar, probably Willington Glass Works, CT, 1860 - 1872. Yellowish tobacco amber, cylindrical with 10 petals around shoulders, applied round collar with bevel - smooth base, ht. 11 1/4"; (just a tiny open bubble and pinhead bit of roughness on the round collar, otherwise attic mint). MW, plate 73, #3. Known as the "Willington blueberry jar", and according to McKearin, attributed by family history to the Glass Works. Scarce, nice color, and excellent character.

Est.: \$800 - \$1,200 • Min. bid: \$500



Lot 133

Large, Cathedral Pickle Jar, Willington Glass Works, Willington, CT, 1850 - 1860. Light-to-medium, "Willington" green, square with beveled corners, arched gothic panels with ribbed columns, sheared mouth with an applied short beveled collar - sand type pontil scar, ht. 11 1/8", virtually attic mint; (a tiny, pinhead opening on a couple of surface bubbles). Zumwalt, p.456. Excellent clarity, color, and condition. A big, beautiful, pickle jar that will definitely stand out on a shelf!

Est.: \$1,600 - \$3,200 • Min. bid: \$800



Lot 134

Fancy Peppersauce Bottle with embossed stars, possibly Midwest, 1850 - 1860. Aquamarine, square with roped corners, three panels, each with five embossed stars, applied round collar with bevel - heavy iron pontil scar, ht. 8 3/4"; (lightly cleaned to original luster and near mint condition). Zumwalt p.456; MW, plate 74, #5. A very rare, desirable peppersauce bottle. McKearin states that, "The few recorded examples were found in Ohio, suggesting a probably midwestern origin".

Est.: \$400 - \$600 • Min. bid: \$200



Lot 135

Early Pickle or Utility Bottle, possibly Midwest, 1850 - 1860. Aquamarine, cylindrical with twelve flat panels around the body, and six ornamental petals around the both the shoulders, and base; applied narrow square collar - iron pontil scar, ht. 8 1/4"; (lightly cleaned to original luster with a little dullness remaining on the base, and just a trace of faint haze on a few of the panels, otherwise near mint). MW, plate 73, #7. A very scarce to rare jar.

Est.: \$300 - \$500 • Min. bid: \$180



Lot 136

Early Pickle or Utility Bottle, America, 1850 - 1860. Deep bluish aquamarine, approaching a light blue-green, cylindrical with seven indented flutes, applied ring-type collar - heavy iron pontil scar, ht. 8 1/8"; (a little scattered minor exterior wear; and a tiny, likely in-manufacture, 1/8" annealing line in the body, otherwise excellent). A very attractive, and very scarce jar. This example is nicely whittled, with rich color.

Est.: \$200 - \$400 • Min. bid: \$120



Lot 137

Early, Freeblown Utility Jar, probably New York State, or possibly Midwest America, 1820 - 1840. Bluish aquamarine, cylindrical with a short squat body, sides tapering slightly from the shoulders to the base, wide mouth with a heavy outward rolled collar - blowpipe pontil scar, ht. 5", perfect. A very interesting piece with an attractive, scarce, form. The glass is of a high quality 'metal', with excellent clarity, and could have been blown at an early window glasshouse.

Est.: \$200 - \$400 • Min. bid: \$120



Lot 138

"GRIFFITH HYATT & Co. / BALTIMORE" Handled Whiskey Jug, America, probably Baltimore Glass Works, 1850 - 1860. Bright golden with an ever-so-slight apricot tone, bulbous pear-form body with an applied (left-hand), handle curled at lower attachment, applied square collar - blowpipe pontil scar, ht. 7 1/4", near mint; (a touch of light exterior wear, primarily on the reverse; a tiny pinhead flake at edge of square collar, otherwise excellent). Nice color, heavily whittled!

Est.: \$500 - \$800 • Min. bid: \$250



Lot 139

"STAR WHISKEY / NEW YORK / W.B. CROWELL JR" Handled Whiskey, America, 1850 - 1860. Beautiful yellowish honey coloration, conical form with molded rib pattern, applied handle with rigaree, applied double collar with tooled pour spout - blowpipe pontil scar, ht. 8 1/8", virtually attic mint. A beautiful example, far lighter and brighter than most!

Est.: \$700 - \$1,200 • Min. bid: \$350



Lot 140

"C. LEDIARD / ST LOUIS" Whiskey or Bitters Type bottle, America, 1865 - 1875. Medium to deep amber, 6-sided, extended neck with two rings, applied sloping collar with bevel - smooth base, ht. 10 7/8"; (professionally cleaned to original luster; a bubble on the interior, below the shoulder, is partially open, but no other form of damage). A very scarce, to rare bottle with good eye-appeal.

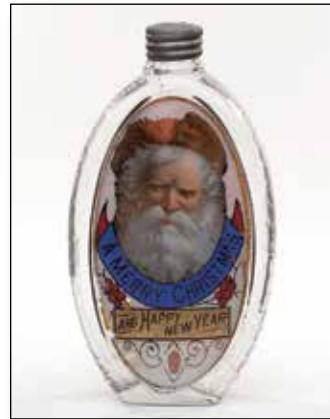
Est.: \$400 - \$800 • Min. bid: \$200



Lot 141

Whiskey Flask, America, 1865 - 1880. Medium shading to deep apricot with some reddish tones near the shoulders, seam-sided "Union Oval" form, applied double round collar - smooth base, Qt; (some overall light, spotty, interior haze that appears to be content-type stain, and a little typical light exterior wear including a paper-thin, 1/8", open surface bubble, otherwise excellent). The flask would benefit from just a light interior cleaning, if desired. Beautiful, scarce color, nicely whittled!

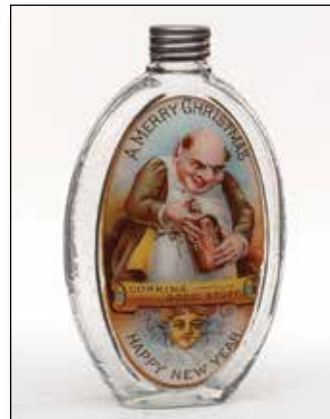
Est.: \$150 - \$250 • Min. bid: \$80



Lot 142

"A MERRY CHRISTMAS / AND HAPPY / NEW YEAR" / (Bearded Santa with Hat) Label-Under-Glass Flask, America, 1890 - 1905. Colorless, oval, threaded and ground mouth with original metal closure - smooth base, ht. 5 7/8"; (a 7/8" hairline crack in the cover glass; some label separation and flaking in the lower left area of the label). Colorful, outstanding image of an early bearded Santa Claus. Very rare. One of the choicest, and most desirable, of all the Christmas flasks.

Est.: \$400 - \$600 • Min. bid: \$200



Lot 143

"A MERRY CHRISTMAS" / (Bartender with Bottle "1891 RYE") / "CORKING / GOOD STUFF" / (Face of Cherub) / "HAPPY NEW YEAR" Label-Under-Glass Flask, America, 1891 - 1901. Colorless, oval, threaded and ground mouth with original metal closure - smooth base, ht. 6", beautiful, virtually perfect condition! A very rare flask, exceptional condition, great subject matter.

Est.: \$500 - \$1,000 • Min. bid: \$250



Lot 144

"BININGER'S" / (Clockface) / "REGULATOR" - "19 BROAD ST - NEW YORK.", America, 1855 - 1860. Amber, figural clock, applied round double collar - blowpipe pontil scar, ht. 5 7/8"; (some light exterior wear and faint scratches, primarily on the reverse; some overall interior haze or dullness, but no other form of damage). GXIII-87. A popular and desirable Binger, this example is a prime candidate for a light professional cleaning, and would otherwise present as near mint.

Est.: \$300 - \$500 • Min. bid: \$180

Bold, Beautiful,



Lot 175

Lot 190

Lot 164

Lot 177

Lot 191

< Lot 179

Bitters Bottles...

ACGC

Lot 165

Lot 170

Lot 182

Lot 181

Lot 183

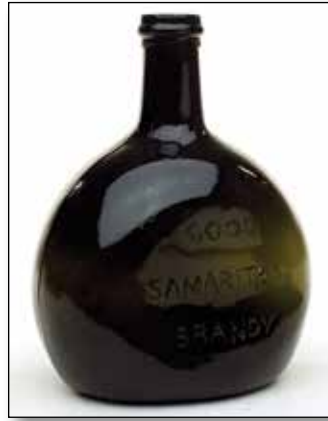




Lot 145

"A.M. BININGER & CO. / 19 BROAD ST. / N.Y." Figural Cannon Barrel Whiskey, America, 1865 - 1875. Bright golden amber, almost a honey coloration, figural cannon, sheared mouth - smooth base, ht. 12 3/8", near mint; (a touch of minor exterior wear and some typical, minor lip roughness, almost certainly in-manufacture. A good, clean, solid example. One of the classics!

Est.: \$1,000 - \$1,500 • Min. bid: \$600



Lot 149

"GOOD / SAMARITAN / BRANDY - GENTRY, SLOTE & Co / NEW YORK.", America, 1850 - 1860. Deep yellowish olive, plump chestnut form, applied mouth with ring - large, red iron pontil scar, ht. 6 5/8", very near mint; (just a trace of light exterior wear, otherwise perfect!) GXV-21. A private mold, pontiled, whiskey, noted by McKearin as "Very rare". Believed to be the first, or possibly second example, to be offered at auction in more than 20 years! James Becker collection.

Est.: \$1,600 - \$3,200 • Min. bid: \$800



Lot 146

"DISTILLED IN 1848. / OLD KENTUCKY / 1849 / RESERVE / BOURBON / A.M. BININGER & Co. / 19 BROAD ST N.Y.", America, 1850 - 1860. Golden amber, barrel form, applied round double collar - light iron pontil scar, ht. 9 3/8", near mint; (some very light interior haze, otherwise perfect). Nice golden color, excellent overall condition. The light interior haze is fairly minor, and should easily clean with a day or two in the tumbler. This is the larger of two sizes for this mold.

Est.: \$250 - \$450 • Min. bid: \$150



Lot 150

"LANCASTER / GLASS WORKS / LANCASTER, N.Y" (on base), **Figural Barrel**, Lancaster Glass Works, 1865 - 1875. Yellow, with just a slight hint of topaz, barrel form with embossed bung hole and wooden staves around midsection, applied round double collar - smooth base, ht. 9 1/2", perfect! A very scarce mold, and in an outstanding, possibly unique, color for this mold. Beautiful and rare.

Est.: \$1,200 - \$2,400 • Min. bid: \$600



Lot 147

"DISTILLED IN 1848. / OLD KENTUCKY / 1849 / RESERVE / BOURBON / A.M. BININGER & Co. / 338 BROADWAY, N.Y.", America, 1850 - 1860. Medium amber, barrel form, applied round double collar - blowpipe pontil scar, ht. 7 7/8"; (a little scattered, light, exterior wear, otherwise very near mint). This example is the smaller size, and with the 338 Broadway address. Nicely whittled, and a lot of bottle for the money!

Est.: \$200 - \$400 • Min. bid: \$120



Lot 151

"GIN" / (COCK) / "TAIL" - "T. J. DUNBAR & CO. - BOSTON", America, 1865 - 1875. Bright yellowish green, square with beveled corners, applied sloping collar with bevel - smooth base, ht. 9 1/8", near perfect; (just a trace of typical, faint exterior wear including a small bruise, or disturbance, in the cover glass of a bubble at edge of base, otherwise an "attic bottle"). An extremely rare and desirable whiskey bottle, this example having crude, bubbly, whittled, glass. Beautiful color, great eye-appeal!

Est.: \$1,600 - \$3,200 • Min. bid: \$800



Lot 148

"OLD LONDON DOCK - GIN - A. M. BININGER & Co. / No. 338 BROADWAY.", America, 1860 - 1875. Beautiful olive yellow, square with beveled corners, applied sloping collar - smooth base, ht. 9 5/8", near attic mint; (just a trace of minor, light exterior wear, otherwise perfect). Nice character with plenty of tiny bubbles and impurities; beautiful, attractive light color, excellent clarity throughout.

Est.: \$300 - \$500 • Min. bid: \$180



Lot 152

"UDOLPHO WOLFE' - SCHIEDAM. - AROMATIC / SCHNAPPS.", America, 1850 - 1860. Rich, deep aquamarine, almost a light blue-green, square with beveled corners, applied sloping collar with bevel - iron pontil scar, ht. 7 3/4", attic mint! A gorgeous example, heavily whittled, nice color and clarity, and extremely rare! Believed to be one of only two, or three, examples in this color having all uppercase embossing! See AGG Auction 14, Lot 106, for similar example.

Est.: \$600 - \$900 • Min. bid: \$300



Lot 153

"CAMPBELL & SEAMAN / NEW YORK", America, 1859 - 1870. Yellowish olive amber, squat square form with beveled corners, applied sloping collar - early smooth base, ht. 8 1/2", near mint; (a shallow, 1/16" flake at edge of applied collar and a couple of superficial, onion-skin-thin open bubbles). An extremely rare whiskey, believed to be only a few known to exist; this being the same example we sold back in Auction #8, May, 2012. Heavily whittled, great eye-appeal!

Est.: \$1,200 - \$2,200 • Min. bid: \$600



Lot 157

Figural Applied Face Bear, Russia, 1880 - 1910. Deep aquamarine with a slight greenish tone, figural sitting bear with collar and pendent, applied face, sheared and fire-polished mouth - smooth base, ht. 8 1/8"; (tiny, pinprick bit of roughness on the edge of the sheared mouth, otherwise attic mint). Nice example, good rich color and mold detail.

Est.: \$250 - \$450 • Min. bid: \$140



Lot 154

"PAUL MANCIET / WILL HAND / YOU ONE" Figural Lemon, America, 1890 - 1910. Colorless, interior cased with a gold paint or powder, figural lemon with pebbly skin, sheared mouth - smooth base, length 4", perfect! A very rare, unusual, figural. It is up to the buyer to determine if

the embossed phrase is referring to a politician, a merchant, or grocer! Interesting and unique.

Est.: \$100 - \$200 • Min. bid: \$60



Lot 158

Figural Applied Face Bear, Russia, 1880 - 1910. Deep aquamarine with an ice blue tone, figural sitting bear with collar and pendent, applied face, sheared and fire-polished mouth - smooth base, ht. 10 1/4", near mint; (minor, pinhead flake, possibly in-manufacture, at edge of the sheared mouth, otherwise perfect). Another nice example, excellent condition.

Est.: \$300 - \$500 • Min. bid: \$150



Lot 155

Figural Applied Face Bear, Russia, 1890 - 1910. Deep olive green, figural sitting bear with collar and pendent, applied face, sheared and fire-polished mouth - **"A A T 1890"** (on side, near edge of smooth base), ht. 8 1/8"; near mint; (a hard to see, 1/8" iridescent bruise on back edge of sheared mouth, otherwise perfect). Scarce color, and size. These early, applied-face, figural bears are actually very rare, both in Russia, as well as America.

Est.: \$300 - \$500 • Min. bid: \$150



Lot 159

"VAN DUNCK'S / GENEVER / TRADE MARK" Figural Coachman, America, 1875 - 1885. Dense olive amber, virtually black glass, figural coachman, applied ring type collar - smooth base, ht. 8 1/2"; (just a trace of very minor wear, otherwise perfect). This is believed to be one of the earliest molds for the figural coachman. Stephen Van Rensselaer, in his book, *Early American Bottles and Flasks*, pictures a Figural Coachman bottle in plate XII. James Becker collection.

Est.: \$150 - \$300 • Min. bid: \$80



Lot 156

Figural Applied Face Bear, Russia, 1880 - 1910. Black glass, figural sitting bear, applied face, sheared and fire-polished mouth - smooth base, ht. 11 1/4", perfect. There are numerous mold variants of the figural "Kummel Bears", even among the earlier applied face examples. This mold is known as the shaggy hair bear!

Est.: \$300 - \$500 • Min. bid: \$150



Lot 160

Figural Coachman, America, 1870 - 1885. Opaque milkglass, figural coachman with pipe and shot glass, rough "burst-type" mouth finish - smooth base, ht. 10 1/4", near mint; (a little flaking, or minor chips along the edge of the lip that are almost certainly in-manufacture, and mentioned for completeness). A very rare mold that does not come around often, and considerably harder to find than the Van Dunck's, especially in this opaque milkglass.

Est.: \$700 - \$1,000 • Min. bid: \$400



Lot 161

"BITTERS" (Label-Under-Glass), Figural Duck Back Bar Bottle, Atterbury & Co. Glass Works, Pittsburgh, PA, 1871 - 1880. Opaque milk glass figural duck with gold, red, and black lettering on label-under-glass, factory ground mouth - **"PATD APRIL 11TH 1871"** (on smooth base), ht. 11 1/2"; (1/8" flake off side of ground mouth, possibly in-manufacture, otherwise absolutely attic mint!) A choice, desirable figural, especially rare with the virtually pristine, "BITTERS" label.

Est.: \$600 - \$900 • Min. bid: \$300



Lot 165

"NATIONAL / BITTERS - PATENT / 1867", America, 1867 - 1875. Gorgeous medium yellow, almost a lemon yellow coloration, figural ear of corn, applied short tapered collar with ring - smooth base, ht. 12 1/2"; (a small, hard-to-see, pinhead flake on the reverse, at the edge of the cornhusk, otherwise virtually attic mint!) R/H #N8. Beautiful light color from top to bottom, outstanding condition. Provenance: James Becker collection.

Est.: \$1,500 - \$2,500 • Min. bid: \$750



Lot 162

"W & Co / N.Y." Figural Pineapple Bitters, America, 1855 - 1865. Medium to deep amber, pineapple form, applied round double collar - large, blowpipe pontil scar, ht. 8 3/8"; (a 3/16", partially open, surface bubble and a trace of minor exterior wear, otherwise excellent). R/H #P100. A popular classic, figural bitters-type bottle.

Est.: \$300 - \$500 • Min. bid: \$180



Lot 166

"SAZERAC AROMATIC BITTERS" (on base) - **"PHD & Co."** Monogram, America, 1870 - 1880. Opaque milkglass, cylindrical, elongated "lady's leg" neck, applied collar with flat band - smooth base, ht. 12 1/8"; (a slightly weak impression in the shoulder area as is common on this mold, otherwise excellent!) R/H #S47. One of the classics in the bitters world!

Est.: \$200 - \$300 • Min. bid: \$120



Lot 163

"BROWN'S / CELEBRATED / INDIAN HERB BITTERS - PATENTED / FEB 11 / 1868", America, 1868 - 1880. Two-tone coloration with a bright, honey color from the waist to the headdress, and a rich orange-amber color from the waist to the base, figural Indian maiden, sheared and tooled lip - smooth base, ht. 12 1/8", attic mint; (note: a shallow, 1/8" flake at edge of lip that is fire-polished and occurred in-making). R/H #B226. Beautiful, with a marked "dividing line of color".

Est.: \$1,000 - \$2,000 • Min. bid: \$600



Lot 167

"SCHROEDER'S / BITTERS / LOUISVILLE. KY.", America, 1865 - 1875. Golden amber, cylindrical, elongated "lady's leg" neck, applied collar with flat band - smooth base, ht. 12 1/8"; (professionally cleaned to original luster with a little light exterior wear remaining; a 3/8" flake at edge of base, and a little very faint interior milkiness). R/H #S62. Listed as "Extremely rare", this example is very attractive, and the condition issues are fairly minor.

Est.: \$300 - \$600 • Min. bid: \$180



Lot 164

"BROWN'S / CELEBRATED / INDIAN HERB BITTERS - PATENTED / FEB 11. / 1868" (with original paint, cork, and contents). America, 1868 - 1880. Golden amber, figural Indian maiden, sheared and factory ground mouth - smooth base, ht. 12 1/4", perfect! R/H #B226. An exceptional piece. Extremely rare in this state of preservation, having the original paint, cork, and contents. You are not likely to see another one for a very long time! James Becker collection.

Est.: \$1,000 - \$2,000 • Min. bid: \$600



Lot 168

"SCHROEDER'S / BITTERS / LOUISVILLE. KY.", America, 1865 - 1875. Golden amber, cylindrical, "lady's leg" neck, applied collar with flat band - smooth base, ht. 8 3/4"; (professionally cleaned to original luster; some light haze remaining on the base, otherwise excellent). R/H #S70. A very rare mold!

Est.: \$300 - \$600 • Min. bid: \$180



Lot 169

“OLD SACHEM / BITTERS / AND / WIGWAM TONIC”, America, 1860 - 1875. Brilliant, light yellowish honey, barrel form, applied square collar - smooth base, ht. 9 ¼”, virtually attic mint; (just the slightest trace of faint wear where the label would be on the reverse, otherwise pristine!) R/H #O46. A great example, bright, light color, outstanding condition, perfect square collar with no issues, which is not easy to find!

Est.: \$600 - \$900 • Min. bid: \$300



Lot 173

“GREELEY’S - BOURBON WHISKEY / BITTERS. - GREELEY’S”, America, 1860 - 1875. Gorgeous raspberry coloration with some amethyst and plum tones, barrel form, applied square collar - smooth base, ht. 9 ¼”, attic mint. R/H #G102. Heavily whittled and in a very beautiful, eye-appealing color. The color is light enough to enjoy in either normal daylight, or in a back-lighted case. Another great example that will stand out in a crowd!

Est.: \$1,800 - \$3,200 • Min. bid: \$1,000



Lot 170

“OLD SACHEM / BITTERS / AND / WIGWAM TONIC”, America, 1860 - 1875. Bright copper coloration with a slight apricot tone, barrel form, applied square collar - smooth base, ht. 9 3/8”; (a tiny, pinprick spot of roughness on the edge of the square collar, otherwise pristine perfect!) R/H #O46. A bright, beautiful example. Outstanding, rare color, heavily whittled. This example is also a little lighter, more delicate in weight, which probably contributes to the nice lighter tone of color.

Est.: \$1,800 - \$3,200 • Min. bid: \$1,000



Lot 174

“S T / DRAKE’S / 1860 / PLANTATION / X / BITTERS - PATENTED / 1862”, America, 1862 - 1880. Beautiful light peach with rich salmon tones, cabin form with 6 logs above the label panel, applied sloping collar - smooth base, ht. 10”, attic mint! R/H #D105. Exceptional color and light tone, excellent character, filled with tiny bubbles, outstanding mold impression and condition. A top-shelf example that we were privileged to sell back in May, 2012.

Est.: \$5,000 - \$8,000 • Min. bid: \$2,500



Lot 171

“OLD SACHEM / BITTERS / AND / WIGWAM TONIC”, America, 1860 - 1875. Medium amber through the upper half of the barrel, shading to a puce coloration with some reddish tones, through the center and lower half, barrel form, applied square collar - smooth base, ht. 9 ¼”, near mint; (a trace of typical, very minor exterior wear, otherwise perfect). R/H #O46. A very nice example, interesting gradation of color, excellent condition.

Est.: \$400 - \$600 • Min. bid: \$250



Lot 175

“S T / DRAKE’S / 1860 / PLANTATION / X / BITTERS - PATENTED / 1862”, America, 1862 - 1880. Gorgeous lemon yellow, cabin form with 4 logs above the label panel, applied sloping collar - smooth base, ht. 10 1/8”, virtually attic mint; (a minor, very light ½” scratch on the reverse label panel noted for completeness, and a just a trace of interior residue or very faint haze, primarily in base, otherwise attic mint! R/H #D110. Beautiful color and clarity, very light throughout.

Est.: \$800 - \$1,200 • Min. bid: \$400



Lot 172

“GREELEY’S - BOURBON WHISKEY / BITTERS. - GREELEY’S”, America, 1860 - 1875. Clear, light apricot with a slight salmon tone, barrel form, applied square collar - smooth base, ht. 9 ¼”; (a couple of barely pinhead size, tiny flakes, on the edge of the square collar, and a ¼”, onionskin-thin, open surface bubble, otherwise perfect! R/H #G102. Nicely whittled, great color, and considerably lighter than most of the other Greeley’s.

Est.: \$1,200 - \$2,400 • Min. bid: \$700



Lot 176

“S T / DRAKE’S / 1860 / PLANTATION / X / BITTERS - PATENTED / 1862”, 1862 - 1880. Deep cherry puce, cabin form with 6 logs above the label panel, applied sloping collar - smooth base, ht. 9 7/8”; (just a tiny, pinhead open bubble at edge of roof, otherwise perfect). R/H #D105. A nice example, light enough to see color in natural daylight. There is a dip in the top of the mouth where there was not enough glass to fully form the lip, the top of which is connected by a string of glass.

Est.: \$200 - \$400 • Min. bid: \$120



Lot 177

"BAKER'S / ORANGE GROVE - BITTERS", America, 1870 - 1880. Light, ginger-ale topaz, square with roped corners, applied sloping collar - smooth base, ht. 9 3/8", near mint; (a touch of minor high point wear in the shoulder area, otherwise attic mint). R/H #B9. A stunning color, very similar to the example we sold in Auction #4, May, 2010, except this example is near attic mint! A rare color, excellent condition. Provenance: FOHBC National Auction, Cherry Hill, NJ, June, 1994.

Est.: \$1,800 - \$3,200 • Min. bid: \$1,000



Lot 178

"DR WONSER'S / U.S.A. / INDIAN ROOT / BITTERS", America, 1871 - 1873. Golden amber, almost a butterscotch coloration, cylindrical with fluted shoulders, applied sloping collar with ring - smooth base, ht. 11"; (a nice example with a little minor exterior wear, and a 3/4" horizontal hairline fissure or annealing line in the shoulder ring, otherwise excellent). R/H #W146. A classic, desirable Western Bitters, heavily embossed, whittled, beautiful, and rare!

Est.: \$4,000 - \$6,000 • Min. bid: \$2,000



Lot 179

Holtzermann's Stomach Bitters (label-only), **Miniature Figural Log Cabin** (with original label and partial contents), America, 1906 - 1910. Golden amber, rectangular cabin form, tooled sloping collar - smooth base, ht. 4"; (bottle is perfect, label near perfect, just darkened slightly and a touch of wear). R/H #H153-L. An exceptional example, extremely rare with virtually complete, colorful, original label, contents, and in pristine condition.

Est.: \$800 - \$1,200 • Min. bid: \$400



Lot 180

"HOLTZERMANNS / PATENT / STOMACH / BITTERS" (with virtually complete original label, contents, and neck foil), America, 1890 - 1910. Golden amber, rectangular cabin form, tooled sloping collar - smooth base, ht. 9 3/8"; (bottle is in perfect, attic-found condition; 99% complete, original label darkened a bit from age). R/H #H154. Good strong embossing, and very scarce with complete label, contents, and embossed neck seal.

Est.: \$400 - \$600 • Min. bid: \$250



Lot 181

"DR SOULES - HOP - BITTERS - 1872 - (HOP LEAF AND HOPS)", America, 1875 - 1885. Yellowish honey color with a slight olive tone, semi-cabin form, applied sloping collar with bevel - smooth base, ht. 9 3/4", sparkling, virtually attic mint condition. R/H #S145. Note; a rare mold variant with a large, detailed, and unusual, leaf design that does not resemble any of the hop leaves currently documented. Beautiful and scarce color, boldly embossed.

Est.: \$200 - \$400 • Min. bid: \$100



Lot 182

"DR SOULES - HOP - BITTERS - 1872 - (HOP LEAF AND HOPS)", America, 1875 - 1885. Copper-peach near the shoulders, shading to a beautiful rich apricot tone through the lower half of the body, semi-cabin form, applied sloping collar with ring - smooth base, ht. 8 1/8"; (a 1/2", very light scratch on the front panel near the base, otherwise, absolutely "out-of-the-mold", pristine perfect!) Similar to R/H #S147. Scarce mold, gorgeous color, a little sweetheart of a bottle.

Est.: \$250 - \$450 • Min. bid: \$150



Lot 183

"DR SOULES - HOP - BITTERS - 1872 - (HOP LEAF AND HOPS)", America, 1875 - 1885. Olive yellow, semi-cabin form, applied sloping collar with ring - smooth base, ht. 9 5/8"; (trace of extremely minor, faint exterior wear, other "out-of-the mold", pristine condition). R/H #S145. Beautiful, scare-to-rare color, outstanding character, the glass is absolutely filled with tiny little seed bubbles. A very eye-appealing bottle!

Est.: \$200 - \$400 • Min. bid: \$100



Lot 184

"WAHOO / & / CALISAYA / BITTERS - JACOB PINKERTON - JACOB PINKERTON - I. M. - O.K - Y !! - Y !!!", America, 1865 - 1875. Golden amber, square, semi-cabin form with columned corners, applied sloping collar with band - smooth base, ht. 9 3/4", near mint; (just a touch of minor exterior wear, and a trace of faint interior residue including a bit of dried contents in the base). R/H #W3. A great example, excellent condition, crisp embossing.

Est.: \$700 - \$1,200 • Min. bid: \$400



Lot 185

"H.P. HERB / WILD / CHERRY / BITTERS / READING / PA" - "WILD CHERRY" / (Cherry Tree) / "BITTERS" - "BITTERS - BITTERS - BITTERS - BITTERS", America, 1875 - 1885. Light golden amber shading to yellowish honey coloration in the shoulders, cabin form with roped corners, applied sloping collar with ring - smooth base, ht. 10", near mint; (a touch of minor wear; a 1/8" opening in a surface bubble). R/H #H93. A nice example, plenty of yellow in the shoulders.

Est.: \$300 - \$500 • Min. bid: \$180



Lot 186

"OLD / HOMESTEAD / WILD CHERRY / BITTERS - PATENT", America, 1865 - 1875. Golden amber with some lighter honey tones along the sides, cabin form, applied sloping collar - smooth base, ht. 9 1/2", very near mint; (a couple of tiny, pinpoint spots of roughness along the inside edge of the lip, and a little patchy, light content residue, primarily in the roof area that would likely wash out). R/H #O37. A clean, bright example, nice color.

Est.: \$300 - \$450 • Min. bid: \$180



Lot 187

"EDW WILDER'S / STOMACH BITTERS" - (Five Story Building) - "EDW WILDER & Co / WHOLESALE DRUGGISTS / LOUISVILLE. KY" - "PATENTED", America, 1890 - 1900. Colorless, square semi-cabin with beaded edges, tooled sloping collar - smooth base, ht. 10 1/4"; (a touch of faint interior haze, primarily in the base and shoulder area, otherwise excellent). R/H #W116. A good clean example with a strong, better than average impression.

Est.: \$125 - \$250 • Min. bid: \$80



Lot 188

"SIMON'S CENTENNIAL BITTERS - TRADE MARK", America, 1876 -1880. Aquamarine, figural bust of George Washington, applied ring collar - smooth base, ht. 10", attic mint. R/H #S110. A very historical bitters, patented December 14, 1875, by Bernard Simon, of Scranton, Pa, and initially blown the following year to commemorate the nations Centennial.

Est.: \$600 - \$900 • Min. bid: \$300



Lot 189

"SOLOMONS' / STRENGTHENING & / INVIGORATING BITTERS - SAVANNAH / GEORGIA.", America, 1875 - 1885. Rich, medium to deep cobalt, square with beveled corners, applied sloping collar - smooth base, ht. 9 5/8"; (professionally cleaned to original luster with a little typical light exterior wear remaining, otherwise excellent). R/H #S140. A nice example of this always popular, big-splash-of-color, southern bitters.

Est.: \$1,200 - \$1,600 • Min. bid: \$700



Lot 190

"LEDIARD'S - CELEBRATED - STOMACH BITTERS", America, 1860 - 1870. Rich, medium blue green, square with beveled corners, applied sloping collar with bevel - smooth base, ht. 10"; (professionally cleaned to original luster with a little minor exterior wear remaining; a couple of open surface bubbles, and a 1/4" open bubble on the inside of the lip with a little depth). R/H #L60. A beautiful example with excellent character, filled with tiny seed bubbles. A scarce bitters produced for the west coast.

Est.: \$1,000 - \$1,500 • Min. bid: \$600



Lot 191

"DR J. HOSTETTER'S / STOMACH BITTERS", Lorenz & Wightman Glass Manufacturers, Pittsburgh, 1863 - 1872. Light yellowish green with a citron tone, square with beveled corners, applied sloping collar - "L&W / 1" on smooth base, ht. 9"; (professionally cleaned to original luster, and a minor, pinhead-size flake on the beveled corner, near the base edge, otherwise excellent). R/H #H195. Very nice color, and lighter than most.

Est.: \$800 - \$1,200 • Min. bid: \$400



Lot 192

"DR J" (Reverse "J") "HOSTETTER'S / STOMACH BITTERS" (with partial original label), Lorenz & Wightman Glass Manufacturers, Pittsburgh, 1863 - 1872. Honey amber, square with beveled corners, applied sloping collar - "L&W / 15" (reverse "L"), on smooth base, ht. 8 7/8", virtually attic mint; (lip has a 3/16" flaw, or flake, that almost certainly is in-making, has been firepolished, and is not considered damage; label approx. 60% complete, but darkened and not legible). R/H #H196. A very rare, desirable, mold!

Est.: \$300 - \$500 • Min. bid: \$180



Lot 193

“DR J. HOSTETTER’S / STOMACH BITTERS”, probably a Pittsburgh district glasshouse, 1860 - 1870. Deep olive green, square with beveled corners, applied sloping collar - smooth base, ht. 9 ½”, near mint; (just a touch of typical, light exterior wear, and a little in-manufacture glass extrusion at the corner mold seam, mentioned for accuracy, and not considered a “condition flaw”). RH #H194. A very nice example of this early Hostetter’s bitters.

Est.: \$300 - \$500 • Min. bid: \$180



Lot 194

“MISHLER’S HERB BITTERS” - (Ruled Marker) / “TABLE SPOON GRADUATION” - “MISHLER / HERB BITTER. Co”, America, 1870 - 1880. Beautiful, lemon yellow coloration, square with beveled corners, applied sloping collar with ring - **“STOECKELS GRAD PAT FEB 6 ‘66 / No 2”** (on smooth base), ht. 9”, virtually attic mint; (a tiny, pinprick speck of roughness on edge of mouth, otherwise pristine condition). R/H #M100. Excellent clarity, gorgeous color!

Est.: \$200 - \$400 • Min. bid: \$120



Lot 195

“GENUINE / AMERICAN STOMACH BITTERS - PREPARED BY THE / AMERICAN STOMACH BITTERS / MAN’FG Co PITTSBURGH”, a Pittsburgh district glasshouse, 1870 - 1880. Medium amber, square with beveled corners, applied sloping collar - smooth base, ht. 8 7/8”; (exterior professionally cleaned to original luster; interior with a just a little scattered light haze, a lightly buffed ¼” flake at edge of base). R/H #A53.5. Extremely rare, one of only two known examples!

Est.: \$400 - \$800 • Min. bid: \$250



Lot 196

“ZOELLER’S / STOMACH BITTERS - THE ZOELLER / MEDICAL CO. / PITTSBURGH, PA.” (with more than 90% complete, original front and back labels, contents and neck seal), America, 1905 - 1910. Medium amber, rectangular with wedge, or “V” shaped side panels, tooled sloping collar - smooth base, ht. 9 ½”; (bottle is perfect; label darkened a bit from age, otherwise excellent). R/H #Z7. A rare bitters, and extremely rare with original labels, contents, and neck seal.

Est.: \$400 - \$800 • Min. bid: \$250



Lot 197

“DR HARDMAN’S - GOOD SAMARITAN / STOMACH. BITTERS” (all “N” and “S” letters reversed), America, 1865 - 1875. Beautiful, light yellowish honey coloration, square with beveled corners, applied sloping collar - early hinge-mold smooth base, ht. 9 ¼”; (a touch of light exterior wear including a couple of minor open surface bubbles, otherwise very near mint). R/H #G66.5. Extremely rare! A crude, bubbly, beautiful example, very attractive color.

Est.: \$500 - \$1,000 • Min. bid: \$300



Lot 198

“DR JOHN BULL’S / COMPOUND / CEDRON BITTERS / LOUISVILLE. KY.”, America, 1865 - 1875. Golden amber, square with beveled corners, applied sloping collar - smooth base, ht. 9 ½”, near mint; (just a touch of very minor light wear, and a ¼”, onionskin-thin open surface bubble). Unlisted, similar to R/H #B254, but with period after “KY”, and no underline under “R” in “DR”. Extremely rare, beautiful example, excellent condition. Ex. Carlyn Ring collection.

Est.: \$400 - \$800 • Min. bid: \$250



Lot 199

“C. H. SWAINS - BOURBON / BITTERS”, America, 1865 - 1875. Bright honey amber, square with slightly tapering sides, beveled corners, applied sloping collar - smooth base, ht. 9 1/8”; (some scattered minor high point, and light exterior wear; a touch of light interior residue along the corners, some of which would likely wash out, otherwise excellent). R/H #S228. A scarce Chicago bitters. Per R/H, a newspaper ad read, “Prepared in ripe old bourbon whiskey”.

Est.: \$250 - \$450 • Min. bid: \$150



Lot 200

“BISSELL’S / TONIC BITTERS / PATENTED. JAN. 21. 1868 - O.P. BISSELL / PEORIA ILL.”, Lorenz & Wightman Glass Manufacturers, Pittsburgh, 1868 - 1872. Golden amber with an orange tone, square with beveled corners, applied sloping collar - **“L&W”** on smooth base, ht. 9”; (traces of minor spotty residue, or very faint haze in the shoulder area, and just the slightest trace of wear, otherwise attic mint!) R/H #B109. Crude, with extremely bold embossing, listed as “Very rare”.

Est.: \$250 - \$450 • Min. bid: \$150



Lot 201

"LIPPMAN'S / GREAT / GERMAN BITTERS - NEW YORK / AND / SAVANNAH. GEO", America, 1870 - 1875. Bright golden amber with some yellowish honey tones, square with beveled corners, applied sloping collar with ring - smooth base, ht. 9 7/8"; (professionally cleaned to original luster with just a couple of spots of minor exterior wear remaining; a shallow, minor 1/8" flake on base edge). R/H #L98. A bright, clean, example of this rare southern bitters.

Est.: \$400 - \$800 • Min. bid: \$250



Lot 205

"DR. WALKINSHAW'S - CURATIVE BITTERS - BATAVIA N.Y.", America, 1875 - 1885. Golden honey amber, rectangular with beveled corners, applied sloping collar - smooth base, ht. 9 7/8"; (just the slightest trace of minor, very faint, interior haze along one of the beveled corners, otherwise sparkling, clean, and virtually attic mint). R/H #W14. A desirable bottle for both the bitters and the cure collectors.

Est.: \$300 - \$500 • Min. bid: \$150



Lot 202

"DR. DE LONGS / PLANTATION BITTERS", America, 1885 - 1895. Golden amber with some nice lighter honey tones, square with beveled corners, tooled sloping collar - smooth base, ht. 9"; (a small area of very faint dullness on one of the side label panels; a trace of light residue on the interior, and a touch of minor, light exterior wear, otherwise near mint). R/H #D44.5. Noted by R/H as "Extremely rare", we could find only one other auction listing for this bottle in the past 20 years!

Est.: \$300 - \$600 • Min. bid: \$180



Lot 206

"BIG / BILL / BEST / BITTERS - BIG / BILL / BEST / BITTERS" (with 95% complete, original front and back labels, neck foil), America, 1905 - 1910. Beautiful honey color in the shoulders shading to an orange amber near the base, pyramid form, tooled sloping collar with ring - smooth base, ht. 12"; (bottle is perfect; label is darkened a bit and has a little minor staining). R/H #B95. The bitters is believed to be named for President Howard (Big Bill) Taft. See AB&GC, August, 2013.

Est.: \$400 - \$600 • Min. bid: \$200



Lot 203

"DR STOEVER'S / BITTERS - ESTABLISHED 1837 - KRYDER & Co / PHILADELPHIA", America, 1875 - 1885. Brilliant honey amber, square with beveled corners, applied sloping collar - smooth base, ht. 9 1/4", sparkling, virtually attic mint. R/H #S199. A rare bitters that does not come around often, this one having nice color and clarity, and excellent condition.

Est.: \$300 - \$500 • Min. bid: \$180



Lot 207

"BIG / BILL / BEST / BITTERS - BIG / BILL / BEST / BITTERS", America, 1905 - 1910. Honey amber near the shoulders shading to a golden amber with an orange tone in the lower half of the bottle, pyramid form, tooled sloping collar with ring - smooth base, ht. 12", perfect. R/H #B95. A nice looking example and as noted in the previous lot, the bitters is believed to be named for President Howard (Big Bill) Taft. See AB&GC, August, 2013.

Est.: \$150 - \$250 • Min. bid: \$80



Lot 204

"THE GLOBE / TONIC - BITTERS", America, 1870 - 1880. Medium golden amber with a slight orange tone, square with rounded corners, applied sloping collar - smooth base, ht. 9 3/4"; (just a slight trace of typical, minor exterior wear, otherwise sparkling mint). R/H #G49. A nice, bright, clean example.

Est.: \$100 - \$200 • Min. bid: \$60



Lot 208

Lot 208 "MOULTON'S OLOROSO BITTERS / TRADE MARK" / (motif of PINEAPPLE), America, 1870 - 1880. Deep aquamarine, cylindrical with paneled base and fluted shoulders, applied sloping collar with ring - smooth base, ht. 11 1/4"; (professionally cleaned on the exterior, the interior may have been cleaned, however there remains some overall very light haze, but no other form of damage). R/H #M146. Nice strong color, and always popular with the pineapple motif.

Est.: \$175 - \$275 • Min. bid: \$100



Lot 209

"DR. BELL'S - BLOOD / PURIFYING - BITTERS - THE GREAT / ENGLISH / REMEDY" (with 85% original label), America, 1875 - 1885. Golden amber with some nice honey tones, rectangular with beveled corners, applied square collar - smooth base, ht. 9 5/8"; (bottle with just a trace of very faint exterior wear, otherwise attic mint; label is darkened a bit from age, but still very legible). R/H #B56. A very scarce bitters, and rare with original label!

Est.: \$300 - \$600 • Min. bid: \$180



Lot 213

"JOHN / MOFFAT - PHOENIX / BITTERS - PRICE \$1,00 - NEW YORK", America, 1840 - 1855. Yellowish olive amber, rectangular with beveled corners, sheared mouth with crudely applied ring-type collar - blowpipe pontil scar, ht. 5 1/4", virtually attic mint! R/H #M112. A great example, crude, early, virtually no high point wear, excellent condition!

Est.: \$500 - \$800 • Min. bid: \$300



Lot 210

"STEWART BROS. / SWAMP = ROOT / AND / WILD CHERRY / BITTERS / COLUMBUS, O.", America, 1885 - 1895. Orange-amber shading to golden, and light honey coloration near the corners, rectangular, tooled sloping collar - smooth base, ht. 7 5/8"; (just a bit of light exterior dullness; some light interior stain or residue, but no other form of damage, and otherwise near mint). Extremely rare, one of two known. There is no listing that is even close in R/H, or the Supplement.

Est.: \$500 - \$1,000 • Min. bid: \$300



Lot 214

"DR. BLAKES - AROMATIC / BITTERS - NEW YORK", America, 1845 - 1860. Aquamarine, rectangular with beveled corners, applied sloping collar - blowpipe pontil scar, ht. 7 1/8"; (professionally cleaned to original luster and near mint condition with just a touch of minor exterior wear remaining, otherwise excellent). R/H #B120. A clean, bright, example noted as "Scarce" in the Ring / Ham book.

Est.: \$150 - \$250 • Min. bid: \$80



Lot 211

"PRUNE BITTERS - GIVES STRENGTH QUICKLY", Pacific Coast Glass Works, San Francisco, CA, 1902 - 1906. Golden amber, rectangular with rounded corners, tooled sloping collar with ring - "PCGW" on smooth base, ht. 9 1/8", near mint; (tiny, pinhead flake on the corner of one of the shoulders, otherwise virtually attic mint!) R/H #P150. Extremely rare! The R/H book states that the company may have started in 1905, and ruined a year later in the 1906 earthquake.

Est.: \$400 - \$800 • Min. bid: \$250



Lot 215

"HUTCHINGS - DYSPEPSIA / BITTERS - NEW YORK", America, 1850 - 1860. Aquamarine, rectangular with beveled corners, applied sloping collar - blowpipe pontil scar, ht. 8 1/4"; (just a trace of very minor, light exterior wear, otherwise near mint). R/H #H218. An attractive bitters with large embossing, scarce mold, and especially scarce with the blowpipe pontil scar. The vast majority of examples are iron pontiled.

Est.: \$175 - \$350 • Min. bid: \$100



Lot 212

"WARNER'S / SAFE / TONIC BITTERS" / (SAFE) / "TRADE / MARK / ROCHESTER, N.Y.", America, 1883 - 1890. Yellowish honey coloration, oval, tooled double ring collar - smooth base, ht. 7 1/4", half pint; (lightly cleaned to original luster and near mint condition). R/H #W39; O&S #4. A rare Warner's, nice light color, beautiful condition!

Est.: \$500 - \$800 • Min. bid: \$300



Lot 216

"DR. LYFORD'S BITTERS / C.P. HERRICK / TILTON, N.H.", Whitall-Tatum & Co, Millville, NJ, 1890 - 1900. Aquamarine, oval with flat panel, tooled prescription-type collar - "W.T. & Co." on smooth base, ht. 8 1/4"; (just a trace of very minor, faint interior haze, mainly along the rounded side panels, otherwise very near mint!) R/H #L136. Listed as "Extremely rare", here is one that does not come around often!

Est.: \$150 - \$250 • Min. bid: \$80



Lot 217

"DR SHEPARD'S / COMPOUND / WAHOO BITTERS / GRAND RAPIDS MICH", America, 1870 - 1882. Brilliant aquamarine, oval, applied round collar with bevel - smooth base, ht. 7 3/8", near mint; (a touch of minor exterior wear, otherwise sparkling attic mint!) R/H #S99. Dr. Charles Shepard was a pharmacist in Grand Rapids from 1865 to 1882. He packaged many of his own preparations including this rare bitters. Bright, clean, with nice stretch marks and bubbles through the neck.

Est.: \$200 - \$400 • Min. bid: \$120



Lot 218

"BARBER'S - INDIAN VEGETABLE - JAUNDICE BITTERS - OLIVER JOHNSON & Co. - PROVIDENCE R.I.", America, 1880 - 1890. Aquamarine, 12-sided, tooled square collar - smooth base, ht. 6"; (a little scattered, minor light haze, mostly on the interior; a touch of light exterior wear, otherwise excellent). R/H #B19. With just a light professional cleaning, the bottle would likely appear as virtually attic mint. Extremely rare!

Est.: \$175 - \$350 • Min. bid: \$100



Lot 219

"DR LOEW CELEBRATED / STOMACH BITTERS & / NERVE TONIC - THE / LOEW & SONS CO / CLEVELAND, O" Miniature Bitters Bottle, America, 1895 - 1905. Light yellowish lime green, square with swirled fluting on the neck tooled sloping collar with ring - smooth base, ht. 3 3/4"; (lightly cleaned to original luster and near mint condition; a pinhead bit of minor lip edge roughness). R/H #L112.5. A classic little mini bitters bottle.

Est.: \$175 - \$350 • Min. bid: \$100



Lot 220

"ABL MYERS AM - ROCK ROSE - NEW_HAVEN" (with 99% complete, original label), America, 1852 - 1856. Deep bluish green with an emerald tone, rectangular with beveled corners, applied blob collar - blowpipe pontil scar, ht. 9 3/8"; (trace of faint wear; minor flake from pontil, does not extend to edge, otherwise perfect). A beautiful example, outstanding character, nice bubbly glass. Possibly unique with the original label, and one of two known with open pontil base.

Est.: \$4,000 - \$8,000 • Min. bid: \$2,000



Lot 221

"A. MOSHER" Medicine Bottle, Probably Albany Glass Works, 1847 - 1850. Beautiful, bright, medium-to-deep blue green, oval, applied sloping collar - heavy sand-type pontil scar, ht. 8 3/4"; (some very minor surface scratches, primarily near base on the reverse, otherwise pristine!) A big, beautiful sarsaparilla bottle from Albany, NY, heavily whittled, rich color, virtually "attic-mint". This one has it all, and about as nice of an example as you could hope to find. Provenance: James Becker collection.

Est.: \$3,000 - \$5,000 • Min. bid: \$1,500



Lot 222

"CARTER'S / SPANISH / MIXTURE", America, 1850 - 1860. Bright yellowish grass green with a slight olive tone, cylindrical, applied sloping collar with ring - iron pontil scar, ht. 7 7/8"; (two, small, barely pinhead size flakes, one on the back edge of the lip, the other at the base edge; and just a little minor exterior wear, otherwise excellent). A scarce, pure green coloration having far less of an olive tone than most.

Est.: \$500 - \$800 • Min. bid: \$250



Lot 223

"CARTER'S / SPANISH / MIXTURE", America, 1850 - 1860. Yellowish olive amber, almost a yellowish tobacco amber, cylindrical, applied sloping collar with bevel - iron pontil scar, ht. 8 1/8", near mint; (a touch of light exterior wear, otherwise perfect). Another scarce color, this one having more of an amber tone than most, beautifully whittled, a great example.

Est.: \$600 - \$900 • Min. bid: \$300



Lot 224

"CARTER'S / SPANISH / MIXTURE", America, 1850 - 1860. Deep olive amber, virtually black through the shoulders, neck, and base, cylindrical, applied sloping collar with bevel - iron pontil scar, ht. 8 1/8", virtually attic mint; (just the slightest trace of light wear, otherwise perfect). Very scarce color, perhaps the darkest example that we call recall seeing, nicely whittled, outstanding condition. A great pontiled medicine from Richmond, Virginia.

Est.: \$600 - \$900 • Min. bid: \$300



Lot 225

"DR TOWNSEND'S - SARSAPARILLA - ALBANY / N Y", possibly Mt. Vernon Glass Works, Vernon, NY, 1840 - 1845. Yellowish olive amber near the shoulders, shading to a dense olive amber near the base, square with beveled corners, applied sloping collar - sand-type pontil scar, ht. 9 3/8", virtually attic mint; (a trace of typical, minor exterior wear). A very scarce color, beautiful, and the glass is absolutely filled with tiny seed bubbles and impurities. James Becker collection.

Est.: \$1,000 - \$2,000 • Min. bid: \$600



Lot 226

"DR TOWNSEND'S - SARSAPARILLA - ALBANY / N.Y.", America, 1850 - 1860. Light to medium blue green, square with beveled corners, applied sloping collar - iron pontil scar, ht. 9 5/8"; (lightly cleaned to original luster; a small pinhead flake at edge of lip). A unique, outstanding example that excels in character. The bottle has streaks of frothiness, whittling, ribbons of bubbles, and also being a little under-blown, giving the shoulders an unusual, almost cone-like appearance.

Est.: \$800 - \$1,200 • Min. bid: \$400



Lot 227

"OLD / DR TOWNSENDS - SARSAPARILLA - NEW YORK.", America, 1850 - 1860. Light to medium emerald coloration, almost a teal tone, square with beveled corners, applied sloping collar - heavy iron pontil scar, ht. 9 5/8"; (professionally cleaned to original luster; some exterior wear remaining including a little minor abrasion on one of the beveled corners). A scarce mold, nice color with crude, wavy glass and some faint ribbons of glass swirled though the body.

Est.: \$400 - \$800 • Min. bid: \$250



Lot 228

"SWAIM'S - PANACEA - PHILADA", America, 1845 - 1855. Clear, medium grass green, cylindrical with 12 indented panels, applied sloping collar with bevel - sand type pontil scar, ht. 7 7/8"; (just a couple of faint, minor light scratches near the shoulder, otherwise attic mint!) These heavy, early bottles often have lip flakes or other issues. This one is a great example having nice color, excellent clarity, some whittling through the shoulders, and overall outstanding condition.

Est.: \$400 - \$600 • Min. bid: \$250



Lot 229

"SWAIM'S - PANACEA - PHILADA", America, 1845 - 1855. Medium blue green, cylindrical with 9 indented panels, applied sloping collar with bevel - early smooth base, ht. 7 3/4"; (just the slightest trace of extremely faint, light exterior wear, otherwise pristine perfect). Another great example, and a lot of bottle for the money!

Est.: \$120 - \$240 • Min. bid: \$80



Lot 230

"GIBB'S / BONE LINIMENT", a New England glasshouse, 1840 - 1855. Bright yellowish olive in the shoulders, shading to a deep yellowish olive near the base, hexagonal, crudely applied short sloping collar with bevel - blowpipe pontil scar, ht. 6 1/4", virtually attic mint; (just a slight trace of faint exterior wear, otherwise perfect!) A beautiful example, nice and light through the shoulders, rich deep color through the base, good strong embossing, excellent condition.

Est.: \$1,500 - \$2,500 • Min. bid: \$800



Lot 231

"C. BRINCKERHOFFS - HEALTH RESTORATIVE - PRICE \$ 1.00 - NEW YORK", probably an early Stoddard, NH glasshouse, 1842 - 1851. Yellowish olive with a slight amber tone, rectangular with beveled corners, applied sloping collar - sand type pontil, ht. 7", attic mint! An outstanding example, strongest possible impression, no high point wear, beautiful color, not muddy, and whittled! Provenance: James Becker collection.

Est.: \$1,500 - \$2,500 • Min. bid: \$800



Lot 232

"HOWARDs / VEGETABLE - CANCER AND / CANKER. SYRUP", a Stoddard New Hampshire glasshouse, 1855 - 1865. Yellowish old-amber with some golden and orange tones, rectangular with beveled corners, applied square collar - early hinge-mold smooth base, ht. 7 1/4"; (a few faint scratches and a little typical, minor exterior wear, otherwise attic mint). Boldly embossed, excellent character, crude, with nice glass texture, and full of tiny seed bubbles. A rare, desirable Stoddard medicine.

Est.: \$2,500 - \$4,500 • Min. bid: \$1,400



Lot 233

"Dr. ROBERTSONS - FAMILY / MEDICINE - PREPARED - ONLY BY / T. W. DYOTT", Kensington Glassworks, 1809 - 1815. Aquamarine, rectangular with beveled corners, tooled flared mouth - blowpipe pontil scar, ht. 5 1/4", virtually attic mint; (some extremely minor, in-manufacture, crazing lines in the neck, otherwise pristine!) MW, p.80. Very rare and historical, especially in this "attic" type condition. Credited as being one of the 1st embossed American medicine bottles.

Est.: \$3,000 - \$5,000 • Min. bid: \$1,500



Lot 237

"G.W. MERCHANT / LOCKPORT / N.Y.", probably Lockport Glass Works, Lockport, NY, 1845 - 1860. Medium to deep, "Lockport" blue green, rectangular, applied sloping collar - blowpipe pontil scar, ht. 5"; (a little minor exterior wear and very faint dullness; some interior residue and faint haze, otherwise excellent). The noted faint dullness and light interior haze should be easily cleanable. Nice, crude, wavy glass, and good strength of embossing.

Est.: \$150 - \$250 • Min. bid: \$80



Lot 234

"RUSHTON & ASPINWALL - No 86 WILLIAM S-T - NEW _YORK", 1835 - 1840. Aquamarine, rectangular with beveled corners, applied sloping collar - blowpipe pontil scar, ht. 6 1/2"; (lightly cleaned to original luster with just a bit of minor haze around the pontil). Clean and sparkling, excellent character with waviness, whittling, and tiny bubbles throughout the glass. An extremely rare, probably unique mold. The only known example having only the 86 William St. address.

Est.: \$1,500 - \$2,500 • Min. bid: \$800



Lot 238

"Dr MITCHELL'S - IPECAC SYRUP - PERRY. N.Y", America, 1845 - 1860. Deep greenish aquamarine, rectangular with beveled corners, applied sloping collar - blowpipe pontil scar, ht. 4 7/8"; (a hard-to-see, small potstone in the side of the applied collar has a little iridescence and a couple of tiny "legs"; a minor trace of faint haze in the neck and shoulder, otherwise excellent). The condition issues are minor, a very rare pontiled medicine, nice color.

Est.: \$200 - \$400 • Min. bid: \$100



Lot 235

"DR S HART'S / CROUP SYRUP - HARMER / OHIO", a Midwest glasshouse, 1850 - 1860. Light blue green, rectangular with beveled corners, tooled, thin flanged lip - blowpipe pontil scar, ht. 5"; (lightly cleaned to original luster and near mint condition; tiny, 1/16" flash, or cooling line in the flanged lip, otherwise perfect). An extremely rare pontiled medicine with only two known examples in aqua, and unique in this light blue green color. Strong embossing, excellent condition.

Est.: \$1,000 - \$2,000 • Min. bid: \$500



Lot 239

"DR. MITCHELL / Ox GALL & / ARNICA / LINIMENT", America, 1845 - 1860. Aquamarine, cylindrical, sheared and inward rolled mouth - blowpipe pontil scar, ht. 4 1/2", virtually attic mint; (a flake from the pontil, but it does not extend to the edge of the base). Odell, p,169. A nicely whittled, extremely rare little pontiled medicine from Rochester, New York, outstanding condition.

Est.: \$500 - \$800 • Min. bid: \$250



Lot 236

"DR MANN'S - CELEBRATED / AGUE. BALSAM - GALION. OHIO" (with perfect, virtually complete original label), probably a Midwest glasshouse, 1855 - 1860. Beautiful, deep bluish aquamarine, rectangular with beveled corners, applied ring collar with lower bevel - red iron pontil scar, ht. 6 3/4", sparkling attic mint! Label gives directions for mixing in a wine glass of water. Rich, deep color, about as nice as you could hope to find. Provenance: Ex. Dr. Sam Greer collection.

Est.: \$800 - \$1,600 • Min. bid: \$400



Lot 240

"WHITWELL'S - LIQUID - IMPROVED - OPODELDOC", America, 1830 - 1840. Colorless, cylindrical, tooled and outward flared mouth with slight bevel - blowpipe pontil scar, ht. 4 1/2", sparkling attic mint. A superb example. Brilliant flint glass, crude, very early, and extremely rare! Believed to be only a couple examples known in the colorless flint glass. Provenance: Ex. Dr. Bertal Bruun collection; James Becker collection.

Est.: \$400 - \$800 • Min. bid: \$200



Lot 241

"MONRO'S - RHEUMATIC / MIXTURE", America, 1835 - 1850. Aquamarine, cylindrical, tooled, thin flared lip - blowpipe pontil scar, ht. 5 1/2", near mint; (some light interior haze, primarily in the neck and shoulder area, otherwise perfect). Extremely rare, and possibly unique! A very early medicine, heavily whittled, and with a perfect, thin flared lip. Provenance: Ex. Sam Greer collection, #1184.

Est.: \$400 - \$600 • Min. bid: \$200



Lot 245

"E W / WILLIAMS' - INDIAN / VEGETABLE / PURGATIVE - PILLS", America, 1845 - 1855. Aquamarine, rectangular with oval panels, sheared and inward rolled mouth - blowpipe pontil scar, ht. 2 3/8", very near mint; (a trace of light interior residue that would very likely wash out, otherwise perfect). Odell, p.256, 257. A very rare Indian medicine from Salem, Ohio.

Est.: \$200 - \$400 • Min. bid: \$120



Lot 242

"COULEY'S FOUNTAIN / OF HEALTH / No. (Image of Fountain) 38 / BALTIMORE ST / BALTIMORE", probably Baltimore Glass Works, 1850 - 1860. Aqua, cylindrical, applied sloping collar - blowpipe pontil, ht. 9 1/2"; (a paper-thin, 1/8" open bubble at edge of base, otherwise sparkling attic mint!) Note: there is some unevenness in the top of the lip from manufacturing, the result of not having enough glass to completely finish the lip. Beautifully whittled, scarce with the open pontil.

Est.: \$700 - \$900 • Min. bid: \$350



Lot 246

"HEYL'S / EMBROCATION", America, 1845 - 1860. Aquamarine, rectangular with beveled corners, applied sloping collar - blowpipe pontil scar, ht. 5 5/8"; (professionally cleaned to original luster with a little very faint interior haze remaining, but no other form of damage). Odell, p.111. A very rare pontiled veterinary medicine from Philadelphia.

Est.: \$400 - \$800 • Min. bid: \$200



Lot 243

"W. O CONNER'S - PURELY VEGETABLE / AGUE & FEVER - NOSTRUM", America, 1845 - 1860. Aquamarine, rectangular with beveled corners, applied sloping collar - blowpipe pontil scar, ht. 6 1/2"; (professionally cleaned to original luster with some scattered areas of light matte-type finish, and exterior wear remaining, but no other form of damage). Crude, whittled, and extremely rare! One of three known examples.

Est.: \$800 - \$1,200 • Min. bid: \$400



Lot 247

"TILDEN & CO - NEW YORK", America, 1845 - 1855. Brilliant aquamarine, rectangular with beveled corners, applied square collar - blowpipe pontil scar, ht. 5 5/8", virtually attic mint; (just a trace of faint haze on the interior of the back label panel, and a tiny pinhead bit of roughness at edge of base, otherwise pristine). A sparkling, clean, whittled example. This mold is believed to be the earliest of the various Tilden bottles. Provenance: James Becker collection.

Est.: \$150 - \$250 • Min. bid: \$80



Lot 244

"INDIAN / CLEMENS" (Standing Indian) "TONIC / PREPARED BY / GEO. W. HOUSE" (with original label, cork, and partial contents), 1845 - 1855. Aquamarine, oval, sheared and outward folded mouth - blowpipe pontil scar, ht. 5 1/2", virtually attic mint; (bottle is perfect; original label 98% complete). Odell, p.53. A beautiful example of this always-popular, pictorial, pontiled medicine, heavily whittled.

Est.: \$500 - \$800 • Min. bid: \$300



Lot 248

"POST'S - SARSAPARILLA", America, 1860 - 1870. Aquamarine, rectangular with beveled corners, applied round double collar - early smooth base, ht. 8 1/4"; (just a trace of very faint interior haze in the shoulder, and a minor, 1/8" flake on the back panel edge, otherwise perfect). DeG #170. Extremely rare. This example sold back in 2006, and is the only recorded example to be offered in more than 30 years! A large, early sarsaparilla with a squatty, very eye-appealing form.

Est.: \$400 - \$600 • Min. bid: \$200



Lot 249

"DR. TOWNSEND'S - SARSAPARILLA - ALBANY / N.Y.", America, 1885 - 1895. Aquamarine, square with beveled corners, tooled sloping collar - smooth base, 4 3/8"; (two small pin-head flakes at edge of base; a couple of small patches of faint, light haze, otherwise excellent). DeG #207. Noted as "Rare", the sample Dr. Townsend's bottles don't come around often. Overall, a bright, clean example.

Est.: \$150 - \$250 • Min. bid: \$80



Lot 253

"SWIFT'S / SYPHILITIC SPECIFIC", America, 1875 - 1885. Medium to deep sapphire blue, oval with strap sides, applied square collar - smooth base, ht. 9", near mint; (just a slight touch of minor exterior wear and a 1/4" open surface bubble, on the strap side, at edge of base, otherwise perfect). Good character with nice pebbly glass and plenty of small seed bubbles. A much better-than-average example that has not been dug and cleaned. James Becker collection.

Est.: \$800 - \$1,200 • Min. bid: \$400



Lot 250

"FARRAND WILLIAMS & Co - FARRAND WILLIAMS & Co / PURE SWEET NORWEGIAN / COD LIVER OIL - DETROIT. MICH", America, 1870 - 1880. Aquamarine, rectangular with beveled corners, applied sloping collar - smooth base, ht. 10 5/8"; (lightly cleaned to original luster and near mint condition). A very rare and attractive bottle with heavily whittled, wavy glass, dug in Marquette, Mich. Believed to be one of only three, or possibly four known examples.

Est.: \$150 - \$250 • Min. bid: \$80



Lot 254

"S.S.S. / FOR THE / BLOOD" (Reverse same), Medicinal Advertising Pot, 1890 - 1910. Cast Iron, 3-leg pot cauldron with hole in base for use as a drugstore string dispenser, 4 1/2" ht. x 4 3/4" dia. It is believed that "S.S.S." stood for "Swift's Southern Specific", and from the same company, that much earlier, produced the famous "Swifts / Syphilitic Specific". An interesting "go-with" for the collector of patent medicine, or drugstore items.

Est.: \$150 - \$250 • Min. bid: \$80



Lot 251

"L.Q.C. WISHART'S - PINE TREE / TAR CORDIAL. / PHILA." - "PATENT" / (PINE TREE) / "1859", America, 1860 - 1870. Light yellowish olive, square with beveled corners, applied sloping collar - early smooth base, ht. 7 1/2"; (some scattered light exterior wear and minor dullness; a little interior haze, but no other form of damage). Found in the crawl space of an old building in Philadelphia. An early, scarce, square-shoulder variant that just missed the pontil rod.

Est.: \$600 - \$900 • Min. bid: \$300



Lot 255

"L.E.K. / THE KEELEY / TREATMENT / INEBRIETY / DISCOVERED / BY / DR. L.E. KEELEY / DWIGHT, ILL. - D - K.C. / Leslie E Keeley MD - I, T, F,", America, 1890 - 1900. Colorless, rectangular with rounded back panel, tooled prescription-type collar - smooth base, ht. 5 3/4"; (lightly cleaned to original luster and near mint condition; a minor pinhead bruise on the side of the bottle). A bright, clean, sparkling example, very scarce!

Est.: \$200 - \$400 • Min. bid: \$100



Lot 252

"U.S.A / HOSP. DEPT", America, probably a Pittsburgh district glasshouse, 1862 - 1870. Beautiful olive yellow near the shoulders shading to rich, yellowish olive amber near the base, cylindrical, 4-piece mold, applied round collar with bevel - smooth base, ht. 9 1/4"; virtually attic mint; (slight trace of extremely minor wear, otherwise pristine). Beautiful, attractive color, a couple of nice large bubbles along the side, outstanding condition.

Est.: \$600 - \$900 • Min. bid: \$300



Lot 256

"WARNER'S / SAFE / KIDNEY & LIVER / CURE" / (LEFT- HAND SAFE) / "TRADE / MARK / ROCHESTER, N.Y.", America, 1885 - 1900. Medium amber, oval, large tooled blob collar - smooth base, 9 1/4", Pt; (a couple of very faint, light surface scratches, and a tiny opening in the cover glass of a 1/8" bubble on the reverse, otherwise virtually attic mint!) These scarce "left-hand" safe molds are getting harder to find. A great example with crisp, very bold embossing.

Est.: \$150 - \$250 • Min. bid: \$80



Lot 257

"TIPPECANOE" / (CANOE) / "H.H. WARNER & Co", America, 1883 - 1890. Beautiful, light yellowish-honey coloration, figural log, large applied "mushroom" type mouth - **"ROCHESTER N.Y. / 4"** (on smooth base), ht. 9 1/8", sparkling attic mint! Beautiful light honey color with some nice yellowish tones, and with excellent clarity from the shoulders to the base. A prettier example than most!

Est.: \$200 - \$400 • Min. bid: \$120



Lot 261

"MRS S. A. ALLEN'S - WORLDS HAIR / RESTORER - NEW YORK", America, 1865 - 1875. Beautiful, yellowish coloration with some slightly deeper honey tones, rectangular with beveled corners, applied round collar with bevel - smooth base, ht. 7 1/8", virtually attic mint! DF, pgs. 7-8. A nice bright, clean example, beautiful color!

Est.: \$175 - \$350 • Min. bid: \$100



Lot 258

"TIPPECANOE" / (CANOE) / "H.H. WARNER & Co", America, 1883 - 1890. Olive amber, figural log, large applied "mushroom" type mouth - **"PAT NOV. 20. 83 / ROCHESTER N.Y."** (on smooth base), ht. 8 7/8", perfect! A scarce, desirable color, difficult to find with the olive tone!

Est.: \$300 - \$500 • Min. bid: \$180



Lot 262

"C. HEIMSTREET & CO, / TROY N.Y.", America, 1850 - 1860. Medium sapphire blue, octagonal, applied double round collar - blowpipe pontil scar, ht. 7"; (a little very faint exterior dullness or "bloom", and a bit of scattered light interior haze, but no other form of damage). DF, p.75. Contained hair coloring put out by Charles Heimstreet. A nice example that would respond well to just a light professional cleaning, if desired. Beautiful color, pontiled, a lot of bottle for the money!

Est.: \$175 - \$275 • Min. bid: \$100



Lot 259

"W.M. JOHNSON'S / PURE HERB TONIC / SURE CURE / FOR ALL MALARIAL DISEASES", America, 1885 - 1895. Light golden amber, almost a honey coloration, square with beveled corners, tooled sloping collar - smooth base, ht. 8 5/8"; (just a slight trace of washable interior residue, otherwise pristine perfect). A scarce "Malarial Cure", sparkling attic condition, nice color and clarity.

Est.: \$100 - \$200 • Min. bid: \$70



Lot 263

Lot of (2), "E. ANTHONY / NEW YORK" Bottles, America, 1850 - 1880. Sapphire blue and cobalt, both are oval, applied and tooled square collars - blowpipe pontil scarred and smooth base, ht. 6" and 5 5/8" respectively; (pontiled sapphire example is attic mint; cobalt example has some scattered light exterior wear and a potstone near the base, on the reverse, with a 1 1/4" crack). Odell, p.7. Both are rare and held photographic chemicals. James Becker collection.

Est.: \$800 - \$1,200 • Min. bid: \$400



Lot 260

"FROG POND / CHILL & FEVER CURE", America, 1885 - 1895. Light golden through the center, shading to a honey-yellow coloration along the sides, rectangular, tooled square collar - **"440"** on smooth base, ht. 6 7/8"; (lightly cleaned to original luster with just a tiny, pinhead flake on beveled corner, and a trace of roughness at edge of base, otherwise near attic mint!) A beautiful example, rare light color, excellent condition! A great southern malarial cure from Augusta, GA.

Est.: \$300 - \$500 • Min. bid: \$180



Lot 264

"E. ANTHONY, - 308, BROADWAY / NEW YORK", America, 1850 - 1860. Aqua, square with beveled corners, applied round collar with bevel - blowpipe pontil scar, ht. 7 3/8"; (lightly cleaned to original luster with a just a little minor exterior wear remaining, otherwise excellent). Note; a small, arabesque-type fish motif is embossed on each side of "NEW YORK". A very rare bottle, beautifully whittled, that held photographic chemicals. James Becker collection.

Est.: \$120 - \$240 • Min. bid: \$60



Lot 265

"BILLINGS CLAPP & Co. / CHEMISTS - PHOSPHOROLE", America, 1880 - 1890. Deep, vivid cobalt blue, square with beveled corners, applied square collar - smooth base, ht. 7 1/2"; (lightly cleaned to original luster; otherwise near mint). Billings Clapp & Co. was a druggist / chemist, from Boston. A beautiful example, scarce bottle, deep vivid color, dug in Marquette, Mich.

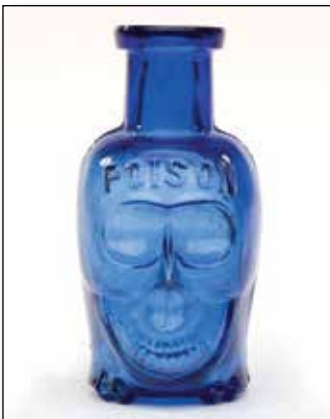
Est.: \$100 - \$200 • Min. bid: \$50



Lot 269

"EUREKA SPRING Co / SARATOGA N.Y." (with period stand), probably Congress & Empire Spring Glass Works, Saratoga, NY, 1870 - 1880. Aquamarine, torpedo form, applied sloping collar with ring - smooth base, Pt, ht. 9", virtually attic mint; (slight trace of very minor exterior wear, otherwise perfect). T #S-20. A great example, complete with period stand. Eureka is believed to be the only spring in Saratoga to use round bottom bottles.

Est.: \$300 - \$600 • Min. bid: \$180



Lot 266

"POISON" - "PAT APPL'D FOR" FIGURAL SKULL, America, 1894 - 1905. Medium cobalt, figural skull on crossbones, tooled prescription-type lip - **"PAT JUNE 26TH 1894"** on smooth base, ht. 2 3/4"; (a tiny, barely noticeable, pinprick flake on the back edge of the lip; a couple of minor flakes on the tip of the crossbones at edge of base, a little faint interior haze, otherwise excellent). KU-10. Rare and extremely desirable; not easy to find in this nice of condition.

Est.: \$1,500 - \$3,000 • Min. bid: \$800



Lot 270

"GEYSER SPRING / SARATOGA SPRINGS / NEW YORK - AVERY. N. LORD / 66 BROAD ST / UTICA. N.Y.", A. & D.H. Chambers, Pittsburgh, 1873 - 1885. Aquamarine, cylindrical, applied sloping collar with bevel - **"A&DHC"** on base, Qt; (a tiny 1/8" flake on the lower bevel, and some light content stain or haze, in the interior, on the reverse, otherwise perfect). A rare, hard-to-find mold. This example retains a period, Putnam-style, wire closure.

Est.: \$800 - \$1,400 • Min. bid: \$400



Lot 267

"POISON - POISON", probably England, 1895 - 1910. Deep, vivid cobalt blue with a slight violet tone, cylindrical, tooled sloping collar with ring - **"80"** on smooth base, ht. 12 1/8", virtually attic mint. Similar to KC-87. A mammoth-size poison bottle, scarce size, outstanding condition.

Est.: \$150 - \$300 • Min. bid: \$80



Lot 271

"CHAMPION SPOUTING SPRING Co / SARATOGA / SPRINGS N.Y." - "C S S" (monogram), probably Congress & Empire Spring Glass Works, Saratoga, NY, 1876 - 1881. Aquamarine, cylindrical, tooled sloping collar with ring - smooth base, Pt; (lightly cleaned to original luster; a faint, very minor milkiness on the interior remains, and a shallow, 1/8" flake on the side of the lip has been polished). T #S-13:B. A rare, desirable mold!

Est.: \$400 - \$700 • Min. bid: \$200



Lot 268

"EUREKA SPRING Co / SARATOGA N.Y." (with period stand), probably Congress & Empire Spring Glass Works, Saratoga, NY, 1870 - 1880. Medium olive green, torpedo form, applied sloping collar with ring - smooth base, Pt, ht. 8 7/8"; (just a little typical light exterior wear and a couple of areas of minor light scratches on the side of the bottle, otherwise very near mint!) T #S-20. A scarce mold, beautiful color and heavily whittled!

Est.: \$800 - \$1,600 • Min. bid: \$500



Lot 272

"SARATOGA" / (STAR) / "SPRING", probably a New York State glasshouse, 1862 - 1889. Medium to deep blue green, cylindrical, applied sloping collar with bevel - smooth base, Qt, very near mint; (a pinhead open surface bubble; slight trace of wear, otherwise perfect). T #S-53:A. A beautiful example, scarce bluish green color, more blue than green, excellent condition!

Est.: \$300 - \$600 • Min. bid: \$180



Lot 273

"CONGRESS & EMPIRE SPRING CO / HOTCHKISS' SONS / C / NEW YORK / SARATOGA. N.Y.", probably a New England glasshouse, 1866 - 1875. "Old amber", cylindrical, applied sloping collar with bevel - smooth base, Pt, near mint; (lightly cleaned to original luster; some in-manufacture natural roughness and crazing lines on the top of the lip). T #C-15:B, Type 1. A nice rich color, scarce amber coloration.

Est.: \$200 - \$400 • Min. bid: \$100



Lot 277

"SODA WATER" Bottle, probably Lockport Glass Works, Lockport, NY, 1845 - 1855. Beautiful medium to deep emerald coloration, torpedo form, crudely applied ring-type collar - smooth base, ht. 7 3/4"; (some exterior wear and light scratches exist, primarily near the mold seam on one of the sides, otherwise a clean, sparkling example). A beautiful example, the bottles appear to have its original luster, in a good rich color, with some nice bubbles and character to the glass.

Est.: \$600 - \$900 • Min. bid: \$300



Lot 274

"HANBURY SMITH / N.Y. / CONGRESS WATER", America, 1865 - 1875. Medium yellowish green with an emerald tone, cylindrical, applied sloping collar - smooth base, Pt; (a 1/2" chip and a 3/8" open bubble at edge of base; a thin, hairline crack on the reverse with several 1/4" to 3/4" legs, and a little interior milky and light residue, some of which would likely wash out). T #M-20:A. A very rare mineral water. Yes, it is not perfect, but still displays very nicely.

Est.: \$200 - \$400 • Min. bid: \$100



Lot 278

Soda Water Bottle, America, probably 1847 - 1849. Medium yellowish emerald coloration, teepee form, applied sloping collar - blowpipe pontil scar, ht. 7 3/8"; (lightly cleaned to original luster and near mint condition with just a touch of light wear remaining). Almost certainly produced for Ira Harvey, soda and beer manufacturer, 1847 - 1848, Providence, RI, (later listed as beer manufacturer only, beginning in 1853). Extremely rare, beautiful color, heavily whittled, fantastic eye-appeal!

Est.: \$750 - \$1,500 • Min. bid: \$400



Lot 275

"ALBANY GLASS WORKS", Albany Glass Works, Albany, NY, 1847 - 1850. Medium to deep blue green, cylindrical, 3-piece mold, applied sloping collar with ring - iron pontil scar, Qt; (professionally cleaned to original luster with a little scattered minor exterior wear remaining; a very weak impression as is common on this mold). T #M-84. Extremely rare. Beautiful glass, excellent character, whittled, and filled with tiny seed bubbles. James Becker collection.

Est.: \$800 - \$1,600 • Min. bid: \$400



Lot 279

"J. BOARDMAN & Co - NEW YORK - MINERAL WATERS - THIS BOTTLE / TO BE RETURNED", America, 1850 - 1860. Medium cobalt blue, 8-sided, applied sloping collar - iron pontil scar, ht. 7 1/8"; (professionally cleaned with a little typically light wear remaining; a couple of minor, 1/8" or less, flakes at the bottle edge of the applied collar). A scarce mold, nice color.

Est.: \$300 - \$600 • Min. bid: \$150



Lot 276

"RUSHTON & ASPINWALL" Soda Water Bottle, probably New England, possibly New York State, 1836 - 1838. Greenish aquamarine, oval "egg" form, crudely applied ring-type collar - smooth base, ht. 7 1/2"; (professionally cleaned to original luster with a little minor wear remaining; a potstone with a couple of 1/8" legs on the shoulder; a tiny one below the collar). A very crude, early, soda water bottle. Extremely rare, believed to be a unique example in this color!

Est.: \$1,800 - \$3,600 • Min. bid: \$1,000



Lot 280

"J & A DEARBORN" - (Star) - "MINERAL WATERS - NEW YORK", America, 1850 - 1860. Medium to deep cobalt blue, 8-sided, applied blob collar - iron pontil scar, ht. 6 3/4"; (professionally cleaned to original luster with just a trace of typical light wear remaining). A nice example, beautiful deep color!

Est.: \$400 - \$800 • Min. bid: \$200



Lot 281

"J. LAMPPIN'S / MINERAL WATER / UTICA. - UTICA BOTTLING / ESTABLISHMENT", probably a New York state glasshouse, 1850 - 1860. Aquamarine, cylindrical, applied sloping collar - iron pontil scar, ht. 6 7/8"; (a 3/8" chip on the underside of the applied collar, and a little faint interior milkiness in the shoulder, otherwise near attic mint). Crude, nicely whittled, a very scarce upstate New York mineral water. Found in an old home in Fulton, New York.

Est.: \$175 - \$350 • Min. bid: \$100



Lot 285

"ROBINSON, WILSON & LEGALLEE / 102 / SUDBURY ST. / BOSTON", America, 1850 - 1860. Medium to deep emerald, cylindrical, porter form, applied sloping collar with bevel - heavy iron pontil scar, ht. 6 5/8"; (a couple of small flakes and minor roughness on the top edge of the lip, and bottom edge of the lower bevel; a touch of minor wear including a 1/4" open bubble on the shoulder and base, otherwise excellent). A scarce porter, minor condition issues, the bottle displays near mint.

Est.: \$200 - \$400 • Min. bid: \$120



Lot 282

"H" / "HARRIS & SONS / ALBANY / MINERAL WATERS - REGISTERED / ACCORDING / TO LAW", America, 1845 - 1853. Aquamarine, cylindrical, applied sloping collar - iron pontil scar, ht. 7 3/8"; (professionally cleaned to original luster; just a touch of very minor exterior wear, otherwise excellent). A rare Albany soda with nice crude, whittled, glass. According to the book, *Old Albany Bottles*, Harris & Sons bottlers were in business from 1845 - 1853.

Est.: \$400 - \$600 • Min. bid: \$200



Lot 286

"DEUELL BROTHERS / 94 / POWERS ST / L. I. - PHILADELPHIA / PORTER & ALE", America, 1865 - 1875. Medium bluish green, cylindrical, porter form, applied blob collar - smooth base, ht. 6 5/8", virtually attic mint; (the bottle may have been lightly cleaned, but certainly presents itself as virtually attic mint!) A scarce porter, beautiful condition.

Est.: \$175 - \$275 • Min. bid: \$100



Lot 283

"MYERS' / CELEBRATED / CHAMPAGNE / MEAD / PHILADA - THIS BOTTLE / IS NEVER SOLD / G. H. MYERS / PROPRIETOR." - "M E A D." (around shoulder), 1844 - 1845. Medium green, cylindrical, applied sloping collar - iron pontil scar, ht. 7 1/4"; (lightly cleaned to original luster, some overall light exterior wear remaining; some roughness and a few minor flakes along top edge of lip). An extremely rare soda, the 1st time offered at public auction!

Est.: \$1,000 - \$2,000 • Min. bid: \$500



Lot 287

EAGLE / "E.W. & CO / WORKS" Early Soda Bottle, America, 1865 - 1875. Rich, deep aquamarine, cylindrical squat soda form, applied blob collar - early smooth base, ht. 7 1/4"; (professionally cleaned to original luster and near mint condition with a little area of minor abrasion and surface scratches remaining, but no other form of damage). A very rare mold with a large eagle boldly embossed, and good deep color!

Est.: \$150 - \$250 • Min. bid: \$80



Lot 284

"IMPROVED / MINERAL WATER", America, 1850 - 1860. Beautiful, medium to deep teal blue, almost a peacock blue, cylindrical, applied large blob collar - heavy iron pontil scar, ht. 7 1/4", near mint; (a little scattered minor exterior wear and a shallow, paper-thin, 1/8" flake at edge of base, otherwise excellent). This soda appears to be a true, "attic-type" find, and was probably never in the ground. A scarce, beautiful soda. James Becker collection.

Est.: \$300 - \$600 • Min. bid: \$180



Lot 288

"J. A. LOMAX / 14 & 16 / CHARLES PLACE / CHICAGO. - THIS BOTTLE / MUST BE RETURNED" - "A & D.H.C" (around heel of base), A. & D.H. Chambers, Pittsburgh, 1873 - 1885. Bluish-green almost a teal coloration, cylindrical squat soda form, applied blob collar - "J.L." on smooth base, ht. 7"; (a dug bottle with some relatively minor exterior wear and light scratches; some light interior haze, but no other form of damage). A very scarce, to rare, color for this soda!

Est.: \$200 - \$400 • Min. bid: \$120



Lot 289

"F.W. MULLER / ARLINGTON / HEIGHTS / ILL", possibly Cunningshams & Co., Pittsburgh, PA, 1890 - 1900. Cobalt blue, "Hutchinson-style" soda with a transitional blob-type collar - **"C & Co"** around heel of smooth base, Qt; (professionally cleaned with some scratches and ground wear remaining; some chipping on approx. 1/3 of the inside edge of the mouth). Similar to ZW, p.70. A very rare "transitional" hutch, with only a handful of examples known.

Est.: \$300 - \$600 • Min. bid: \$180



Lot 290

"C. W. WILKINSON / WALLINGFORD / CONN. / ROOT BEER - THIS / BOTTLE / NOT TO BE / SOLD", America, 1885 - 1995. Medium shading to a deep honey amber, cylindrical, tooled blob collar - **"89"** on smooth base, ht. 7 1/8"; (a little minor exterior wear including a small scrape on the side near the base, and a bit of faint exterior dullness near the shoulder, otherwise excellent). A very rare, early, root beer. Beautiful color, nice character to the glass.

Est.: \$200 - \$300 • Min. bid: \$100



Lot 291

"T. L. NEFF'S / POP / & / PREMIUM / ROOT BEER / 105 MAUJER ST / BROOKLYN E.D. - TRADE / (TLN monogram) / MARK / 1876", America, 1880 - 1890. Golden amber, cylindrical, large, applied round blob collar - smooth base, Qt, ht. 10 1/4"; (professionally cleaned to original luster with just a touch of minor wear remaining). A big, impressive, private-mold root beer, typically found in aqua, and very scarce-to-rare in golden amber!

Est.: \$200 - \$300 • Min. bid: \$100



Lot 292

"GEO. W. HOXSIE'S / PREMIUM / BEER", New England, probably Westford Glass Works, Westford, CT, 1860 - 1872. Dense olive amber, cylindrical "ginger-beer" form, applied blob collar - early smooth base, ht. 7 1/8"; (a shallow, 1/8" flake, or surface bruise, above the "S" in "HOXSIE", and the bottle may have been lightly cleaned, but appears as very near mint). A clean, good looking example with plenty of little seed bubbles.

Est.: \$120 - \$240 • Min. bid: \$70



Lot 293

Black Glass Wine Bottle, probably America, 1825 - 1830. **"P. J. MUNRO"** (on applied seal). Deep olive amber, cylindrical, applied sloping collar with bevel - sand pontil scar, ht. 9 3/4"; (a 3/16" area of minor roughness on the edge of the lip, and a 3/16" chip on the underside of the beveled collar, otherwise virtually attic mint). P.J. Munro was an attorney in lower Manhattan in the 1820's. His brother, in 1826, was in the wine business. The bottle was found near Manhattan and is believed to be unique!

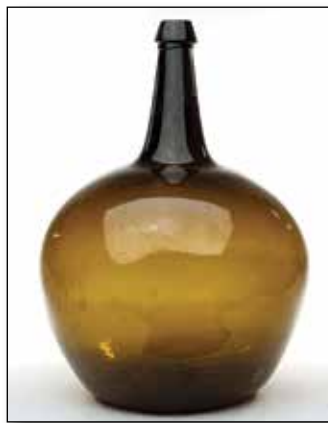
Est.: \$1,000 - \$2,000 • Min. bid: \$500



Lot 294

Demijohn, New England, probably Westford Glass Works, Westford, CT, 1857 - 1865. Beautiful, yellowish-honey coloration with some deeper golden tones through the neck and shoulder, cylindrical, 3-piece mold, applied sloping collar - base with beveled edge and sand-type pontil scar, ht. 11 3/8", perfect. Great color, outstanding character with beautiful syrupy glass filled with impurities and tiny, microscopic bubbles. This demijohn excels with crudeness and character.

Est.: \$150 - \$300 • Min. bid: \$80



Lot 295

Early, Freeblown Demijohn, New England, probably a Connecticut, or possibly New Hampshire glasshouse, 1845 - 1860. Yellowish honey coloration through the body shading to a rich reddish-golden, virtually black, through the neck, globular form, applied sloping collar - blowpipe pontil scar, ht. 19 1/8"; (just a little typical, very minor exterior wear, otherwise attic mint!) A great example with good form, beautiful color, excellent character, the glass being absolutely filled with tiny seed bubbles.

Est.: \$700 - \$1,200 • Min. bid: \$400



Lot 296

"ANTIQUE" (on banner) - **"OLD / BOTTLE / STORE"** (on silhouette of old bottle), 2-sided, **metal advertising sign**, 1950 - 1975. Metal, (possibly wrought iron), hand-painted folk art advertising sign, white letters, outlined in red, on black background, approximately 40" high x 28" wide; overall very good condition with typical weathering and age-appropriate wear. A great looking, folksy sign, 2-sided with a lot of workmanship.

Est.: \$200 - \$400 • Min. bid: \$100

Lot 174: Outstanding Drake's Bitters

**"S T / DRAKE'S / 1860 / PLANTATION
/ X / BITTERS - PATENTED / 1862",**
America, 1862 - 1880. Beautiful light
peach with rich salmon tones, cabin
form with 6 logs above the label panel,
applied sloping collar - smooth base, ht.
10", attic mint! R/H #D105. Exceptional
color and light tone, excellent character,
filled with tiny bubbles, outstanding mold
impression and condition. A top-shelf
example that we were privileged to sell
back in May, 2012.

Est.: \$5,000 - \$8,000 • Min. bid: \$2,500



Fine & Colorful Historical Flasks



Choice Sodas & Mineral Waters



Exceptional Pontiled Medicine Bottles

Lot 220

Lot 221

Lot 222



Lot 230

Lot 236

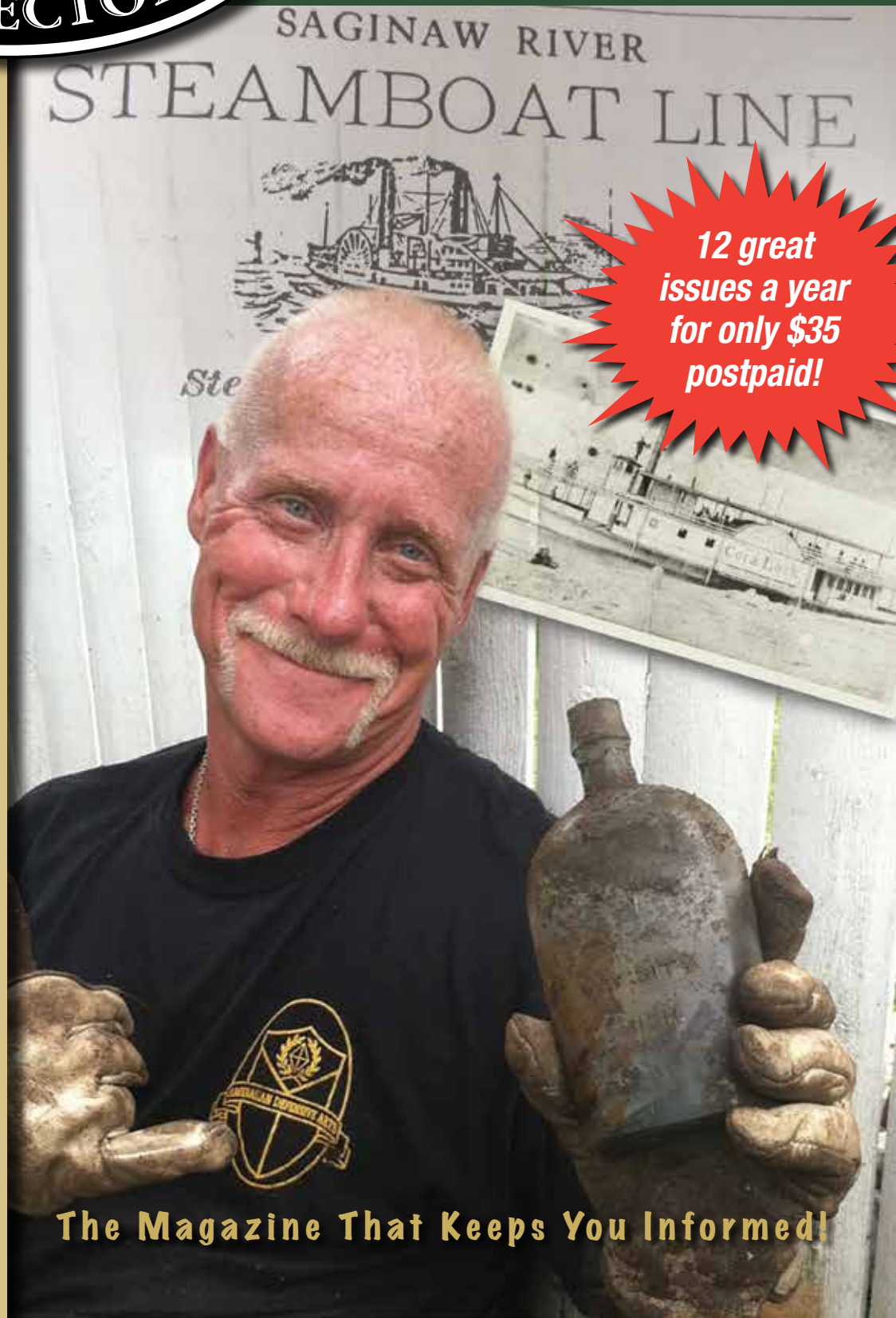
ANTIQUE BOTTLE & GLASS COLLECTOR

**Dig Into the
Bottle & Glass Hobby's
#1 Periodical**

**When you subscribe
to Antique Bottle & Glass
Collector magazine,
you'll be getting:**

- ▶ The premier monthly publication for the antique bottle and glass community
- ▶ Great articles each month on antique bottles, flasks and jars by some of the leading authorities in the hobby
- ▶ Timely and important information about current events in the world of antique bottles
- ▶ Show and auction reports
- ▶ Buy-sell-trade opportunities
- ▶ Up-to-date calendar of trade shows and conventions
- ▶ And much, much more!

**For subscription
information, please call
us at 248.486.0530 or visit
antiquebottlemagazine.com**



**12 great
issues a year
for only \$35
postpaid!**

The Magazine That Keeps You Informed!