

American Glass Gallery™

Auction #16

Opens May 18, 2016

Closes June 1, 2016



Lot #172: Rare & Important Duffy's Crescent Saloon figural bottle in cobalt blue

Conditions of Sale

1. Absentee Auction

The items in this sale will be sold via absentee auction, closing date:
June 1, 2016, 11:00 p.m., EST.

2. Our Guarantee Regarding Descriptions

American Glass Gallery has made every attempt to describe correctly the property being sold. Descriptions are guaranteed to be accurate as regards authenticity, age, condition, and measurements to within one-fourth inch, as represented in this catalog. In describing damage, exterior wear or manufacturer's flaws that in our opinion, do not significantly detract visually or monetarily from the value of the item are not listed and will not be considered for refund. The Auctioneers reserve the right to make verbal corrections and provide additional information at any time during the sale.

3. Preview

Items may be viewed by appointment from May 18, 2016 through May 31, 2016.

4. Bidding Procedure

You may submit your bids by mail, phone, FAX, email or through our on-line auction site. If bidding by mail or FAX, please fill out the absentee form and return it to us. Your bid, either written or oral, grants American Glass Gallery the authority to protect you up to the amount of your stated bid. Your bid will not be removed once executed.

Bidding Times: You can submit your bids anytime after receiving your catalog. Bids may be made by phone, daily, until closing day, June 1, 2016, from 9 A.M. - 7 P.M. Eastern Time. Incoming phone bids will be accepted on the closing day (June 1, 2016) until 11 P.M. Eastern Time. Phone calls and Fax bids after this time will not be honored. No exceptions. You may also place your bids through our on-line auction service 24-hours a day once the site has opened for bidding, on or about May 18, 2016, continuing until 11:00 P.M. Eastern Time, June 1, 2016.

Please do not wait until the last day or two of the sale to place your bids! Because many collectors wait until the final few days of the sale to place their bids, we anticipate the telephone and internet bidding to be very busy during that period, so please plan accordingly. In the event of a tie bid, the earliest received bid on the lot will take precedent. We would welcome your bids by phone so that we can answer any questions and assist you in your bidding.

You may also telephone us at any time during the auction, prior to the closing of the sale, to check the status of your bids, to find the current bidding level, to open a bid, or to raise a bid on an auction lot.

Bidding Increments are as follows:

Up to \$250.00.....increments of \$10.00
\$250.00 - \$500.00increments of \$25.00
\$500.00 - \$1,000.00increments of \$50.00
\$1,000.00 - \$2,500.00increments of \$100.00
\$2,500.00 - \$5,000.00increments of \$250.00
\$5,000.00 - \$10,000.00increments of \$500.00
\$10,000 & Up.....increments of \$1,000.00

Bids submitted between the above increments, whether by mail, FAX, email or on-line via the internet, will automatically be lowered to the closest lower increment.

This is a minimum bid auction. Bids below the printed minimum will not be accepted.

An example of how our absentee bidding system works: You bid \$600.00 on a lot which is the highest bid received to date. The second highest bid is \$450.00. The current high bid level would be yours at \$475.00, one bid increment higher than the other collector's bid. Any additional bids submitted by others below \$600.00 will automatically be topped on your behalf by a representative of American Glass Gallery, up to your stipulated high bid amount. If no further bids on this lot are received beyond the \$450.00, and the under bidder has not requested a "Call Back", then you would have won the lot at \$475.00, not the \$600.00 that you were prepared to pay.

American Glass Gallery will at NO TIME disclose bids pledged by others; only the current "High Bid" level of a lot will be stated upon request. The highest bidder as determined by American Glass Gallery shall be the purchaser. It is the sole right of the auctioneer to settle any dispute between bidders and to regulate the bidding procedure. The auctioneer reserves the right to refuse any bid he believes not to have been made in good faith.

5. "Call Back" Process

If requested, the three top bidders of an item at the time of closing will be given a "Call Back" over the next number of days in order to resolve the final sale of an item. You can request this service by "checking" the appropriate box on your absentee bid form or verbal agreement by phone. It is the responsibility of the bidder to insure he has qualified for this service.

Please note: No "Call Backs" will be executed for bids under \$400.00. In the event of tie bids, the earliest bid received will be the winning bid.

An example of how the "Call Back" process works: As an example, you have bid \$600.00 on a particular lot. Another bidder has submitted a bid of \$900.00 on the same lot. Assuming that as of the auction closing date you are among the top three bidders on this lot and you have requested a "Call Back", you would receive a call informing you that you have been "Out Bid" and the current "High Bid" is now at \$650.00. If you choose to continue bidding on this lot, you may now do so. Assuming that you now increase your bid to \$700.00, we would accept your bid but also inform you that we have a higher bid on this lot and must bid \$750.00. At this time, an auction between you and American Glass Gallery, representing the collector who submitted the bid of \$900.00, takes place. This bidding would continue until you drop out, or top the other bidders high bid of \$900.00. If the other bidder has not requested a "Call Back" service, you would be awarded the lot. If however, the other bidder also requested a Call Back, we must now call them. If they elect to increase their bid over your high bid, we would in turn call you back. This back and fourth process would continue until one of the bidders declines to go any farther.

If you have requested a "Call Back", the auctioneers will need to contact you on the days immediately following the auction closing between the hours of 8 A.M. and 9 P.M. Eastern Time. Please supply us with all appropriate contact phone numbers including, home, mobile and work numbers. Bidders must provide the appropriate telephone numbers where they can be contacted. If you will be traveling or otherwise unavailable, bidders with "Call Back" privileges will have the responsibility to contact American Glass Gallery twice daily during the Call Back period.

Please note, every effort will be made to contact you during the "Call Back" period. However, the bidder will forfeit their rights to a "Call Back" if the auctioneers are unable to reach them. American Glass Gallery reserves the right to discontinue Call Backs on any item in the sale (2) two days after the closing date of the sale. At that time, the current "High Bidder" may be awarded the item even if Call Backs are still outstanding.

6. Terms

Successful Bidders, Prompt and full payment is due immediately upon receipt of our invoice. Absolutely no exceptions. Anyone failing to pay for items won will forfeit all rights to bid in any future American Glass Gallery sales. *Any late or delayed payments may result in loss of return privileges for items purchased in the sale.*

No Items Will Be Mailed Before Full Payment Is Received.

Buyer Premium: A 15% buyer's premium will be added to the hammer price (18% if paying by Credit Card or PayPal), to be paid by the buyer as part of the purchase price. For example, if you purchase a lot for \$100.00, you will receive an invoice for \$115.00 if paying by cash, check or money order, plus any applicable sales tax or shipping charges.

Taxes: If you are a Michigan resident, a 6% sales tax will be added to your bill unless you have a valid resale number registered with us.

Shipping: Shipping, handling and insurance are extra. We ship insured via U.S. Mail. These charges will be added to your bill unless the lots are picked up in person. Our charges for shipping (excluding foreign shipments and oversized lots) are \$18.00 for the first item, \$9.00 for each additional item together with extra insurance costs (we use current U.S. Postal Service insurance rates).

Please allow two to three weeks for delivery after receipt of your check.

Payment: American Glass Gallery accepts Cash, Money Orders, Personal Checks, Visa, MasterCard, American Express and PayPal. *If paying by Credit Card or PayPal, an additional 3% will be added to the invoice total.*



7. Refunds

Refunds will be given at the discretion of the Auctioneers. Items purchased must be examined and request for refund made immediately upon receipt of the item or items. Since opinions can differ, particularly in the matter of condition, the Auctioneers will be the sole judge in the consideration of refunds. Refunds requested on the grounds of authenticity must be made within 15 days of the date of the auction, and such refund requests must be accompanied by at least one supporting statement in writing from an authority recognized by the Auctioneers. It is the Auctioneers sincere intention to consider any reasonable request for a refund. *Absolutely no returns for any reason after 30 days following the closing of the sale.*

8. Bidding on any item indicates your acceptance of these terms.



American Glass Gallery™

John R. Pastor
P.O. Box 227
New Hudson, Michigan 48165
Phone: 248.486.0530
Fax: 248.486.0538
www.americanglassgallery.com
email: jpastor@americanglassgallery.com

PLEASE NOTE:

The lots offered in this printed catalog are identical to the lots offered in the on-line catalog. However, due to space constraints of the printed catalog, there may be some further information available regarding some of the lots in the on-line auction descriptions.

Please visit us at

www.americanglassgallery.com

and follow the link to the on-line auction.

The link and on-line auction will be available May 18, 2016.

A post-auction price list will be available on our website, in printable form, by June 10.

We encourage you to contact us by phone or email with any questions, for assistance with bidding, or further details or clarification on any of the lots in this sale. Your complete satisfaction and confidence is our goal!

We look forward to having you participate in our next sale, either as a buyer or a consignor. Our next absentee auction is scheduled for Fall, 2016. We already have some wonderful items consigned to this sale and look forward to discussing with you any quality items you wish to consign!

**THANK YOU AND GOOD LUCK
WITH YOUR BIDS!**

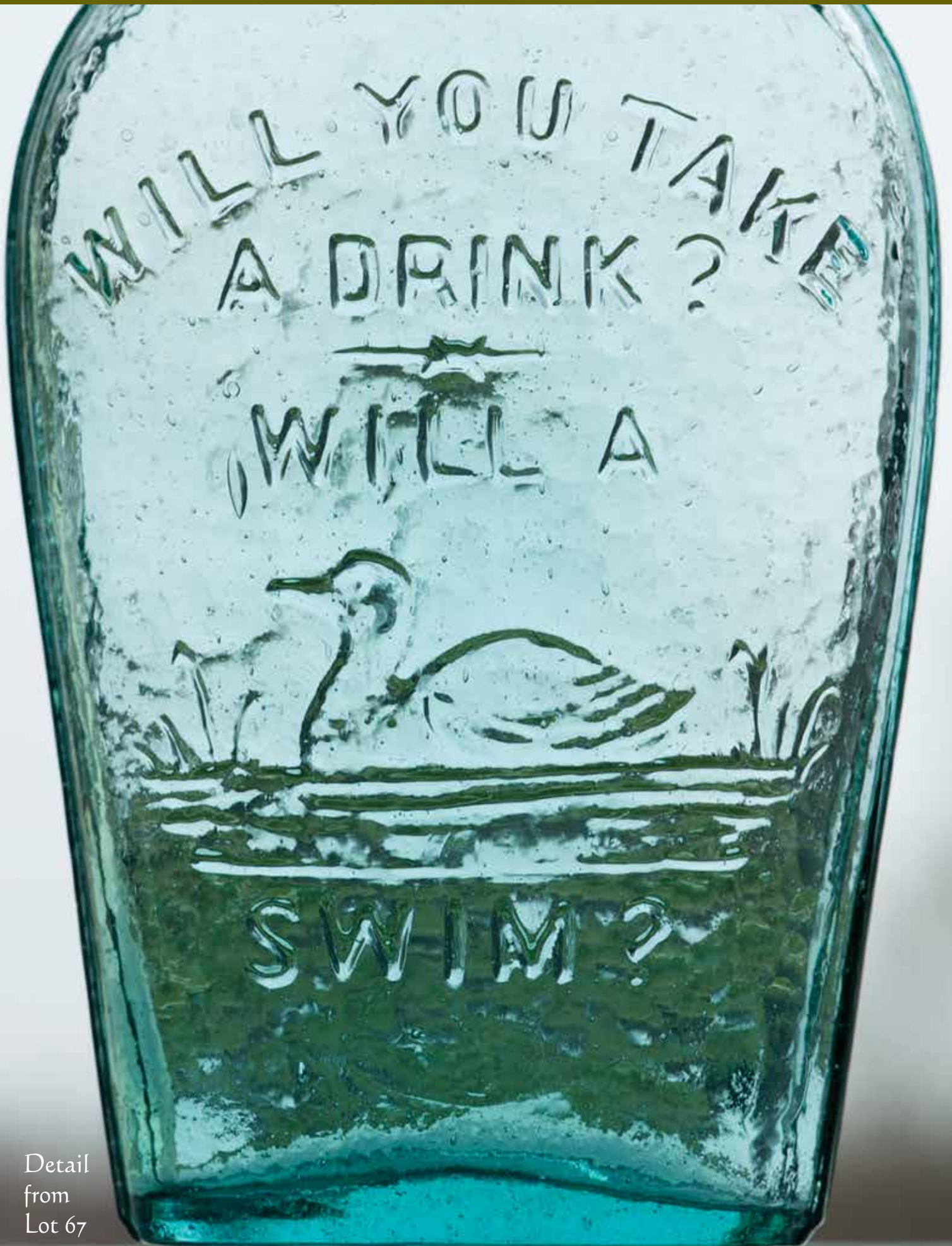
Reference Key

Reference initials and numbers used in the description of this catalog refer to the following publications:

AHG	<i>American Historical Glass</i> , Bessie M. Lindsey, 1967
AM	<i>The Decanter - An Illustrated History of Glass from 1650</i> , Andy McConnell, 2004
AP	<i>Glass in Early America</i> , Arlene Palmer, 1993.
BA1	<i>Collecting The Cures</i> , Bill Agee, 1969
BA2	<i>Collecting All Cures</i> , Bill Agee, 1973.
BB	<i>A Bit About Balsams</i> , Betty Blasi, 1974
BH	<i>Classification and Documentation of Sunburst and Similar Scent Bottles</i> , Bill Ham, AB&GC, 5/87
B/K	<i>The Glass Industry in Sandwich</i> , Raymond Barlow and Joan Kaiser, 1989.
C	<i>Ink Bottles and Inkwells</i> , William Covill, 1971.
DeG	<i>American Sarsaparilla Bottles</i> , John DeGrafft, 1980.
DeGII	<i>Supplement to American Sarsaparilla Bottles</i> , John DeGrafft, 2004.
DF	<i>Hair Raising Stories</i> , Don Fadely, 1992.
DM	<i>Wistarburgh, Window Tiles, Bottles and More</i> , Dale L. Murscell, 2007.
F	<i>Inks, 150 Years of Bottles and Companies</i> , Ed and Lucy Faulkner.
FA	<i>John Frederick Amelung, Early American Glassmaker</i> , Lanmon, Palmer, Hume, Brill, Hanson, 1990.
FB	<i>A.S.C.R. The wine bottles of All Souls College</i> , Oxford, 1750 – 1850, Fay Banks.
G	(Flasks) <i>American Bottles & Flasks and Their Ancestry</i> , McKearin & Wilson, 1978.
G	(Blown Three Mold) <i>American Glass</i> (Chapter VI), George S. and Helen McKearin, 1941.
GBH	<i>English Glass For The Collector, 1660-1860</i> , G. Bernard Hughes, 1958.
H	<i>American Bottles in the Charles B. Gardner Collection</i> , Norman C. Heckler, 1975.
JB	<i>Patent and Proprietary Medicine Bottles</i> , Joseph K. Baldwin, 1973
JEB	<i>Glasshouse Whimsies</i> , Joyce E. Blake, 1984.
JH	<i>Glasshouses & Glass Manufacturers of the Pittsburgh Region, 1795 – 1910</i> , Jay W. Hawkins, 2009.
JS	<i>In glas verpakt – European Bottles, Their history and production</i> , Johan Soetens, 2001.
K	<i>Poison Bottle Workbook</i> , Rudy Kuhn, 1988.
KW	<i>New England Glass & Glassmaking</i> , Kenneth M. Wilson, 1972.
L	<i>The Red Book of Fruit Jars, No. 11</i> , Douglas M Leybourne, Jr., 2014.
LI	<i>Pittsburgh Glass, 1797 – 1891</i> , Lowell Innes, 1976.
Mc	<i>Two Hundred Years of American Blown Glass</i> , Helen and George McKearin, 1950.
McK	<i>American Glass</i> , George S. and Helen McKearin, 1941.
MW	<i>American Bottles & Flasks and Their Ancestry</i> , McKearin & Wilson, 1978.
N	<i>Great American Pontiled Medicines</i> , Frederick Nielson, 1978.
NCH	<i>The Blaske Collection of American Flasks</i> , Norman C. Heckler, 1983.
NCH II	<i>The Blaske Collection: Part II</i> , Norman C. Heckler, 1983.
Odell I	<i>Indian Bottles and Brands</i> , John Odell, 1977
Odell II	<i>Pontiled Medicine Encyclopdia</i> , John Odell, 2000
O&S	<i>Warner's Reference Guide</i> , Ed Ojea and Jack Stecher, 1998.
P	<i>The Glass Gaffers of New Jersey</i> , Adeline Pepper, 1971.
RD	<i>Understanding Antique Wine Bottles</i> , Roger Dumbrell, 1983.
RF	<i>The Bottle Book: A Comprehensive Guide to Historic, Embossed Medicine Bottles</i> , Richard Fike, 1987
RH	<i>Collecting Barber Bottles</i> , Richard Holiner, 1986.
R/H	<i>Bitters Bottles</i> , Carlyn Ring and W. C. Ham, 1998.
RWL	<i>Antique Fakes & Reproductions</i> , Ruth Webb Lee, 1950
T	<i>Collectors Guide to Saratoga Type Mineral Water Bottles</i> , Donald Tucker, 2005.
U	<i>Collectible Character Bottles</i> , Authur Umberger, 1969.
V	<i>Nailsea Glass</i> , Keith Vincent, 1975
VdB	<i>Antique Glass Bottles; Their History and Evolution</i> , Willy Van den Bossche, 2001.
WL	<i>A Wine-Lover's Glasses, The A.C. Hubbard, Jr. Collection</i> , Ward Lloyd, 2000.
Z	<i>Ketchup, Pickles, Sauces</i> , Betty Zumwalt, 1980.
ZW	<i>Color Hutchinsons</i> , Zang Wood, 1999.

- The dash is generally used to indicate that the descriptions are on opposite sides of the bottle or flask.

/ The slash is used to indicate that the descriptions are on different lines or surfaces of the bottle.



Detail
from
Lot 67

Lot 15: Extremely Rare G1-76 Rough & Ready Historical Flask



Zachary Taylor became a national hero and a household name in 1847 when he and his forces inflicted a humiliating defeat upon Mexican troops at the battle of Buena Vista during the Mexican War.

Popular nicknames for General Taylor included "Old Zac" and "Old Buena Vista" but it was "Rough and Ready" that really caught on and became part of the American consciousness of the era. The source of this nickname apparently came from the General's preference for plain, serviceable clothes and his tireless efforts to have his men always at the ready for battle.

The following song, probably published during Taylor's presidential campaign of 1848, gives us some idea of the sentiments of the time:

*"I knew him first," the soldier said
"Among the Everglades,
When we gave the savage red skins
Our bayonets and our blades.
I think I hear his cheerful voice.
—! On column! Steady Steady
So hard and so prompt was he
We called him Rough and Ready"*

Choice Pickle, Food & Milk Bottles

Lot 146

Lot 149

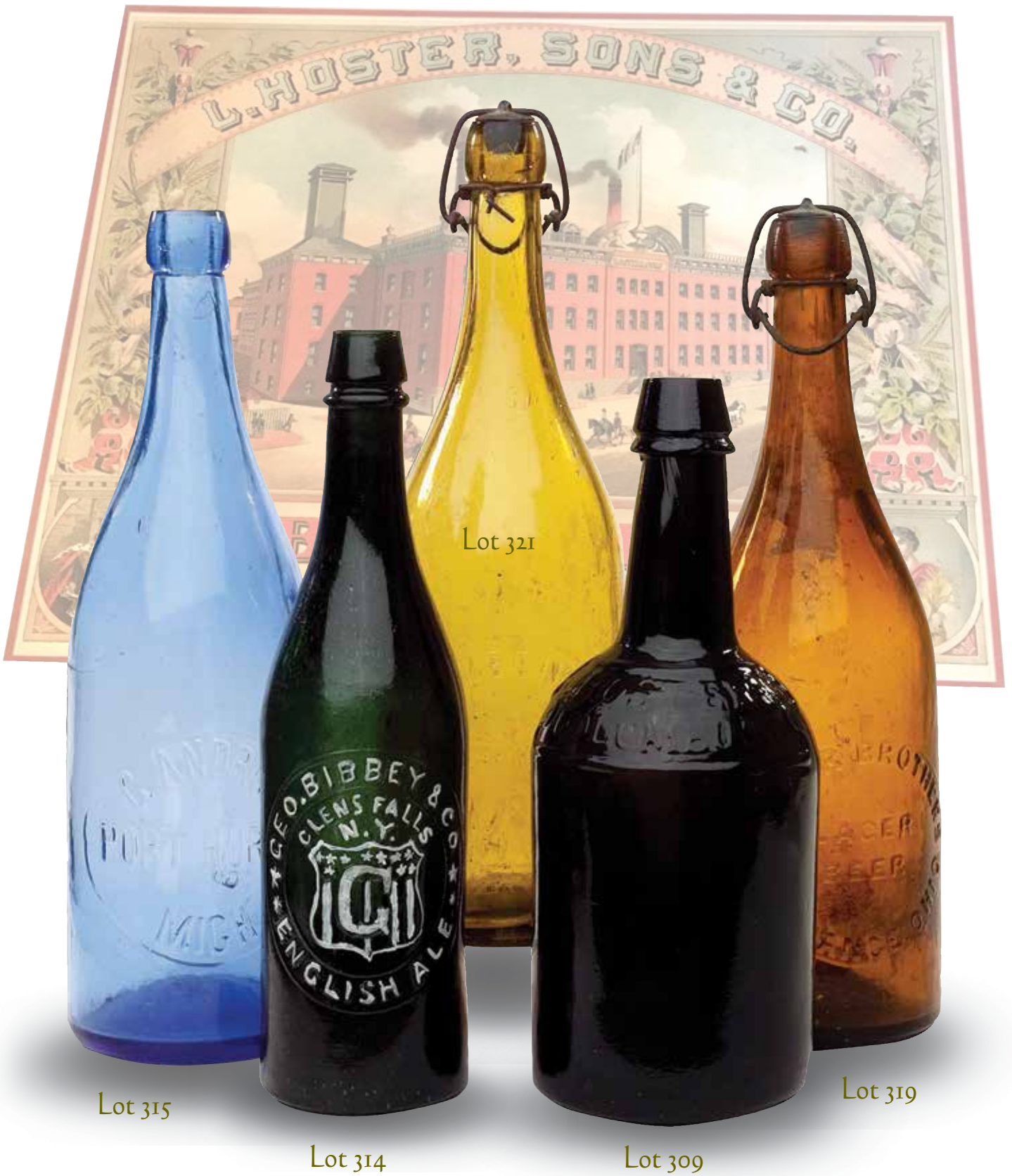


Lot 145

Lot 140

Lot 141

Rare and Exceptional Beer & Porter Bottles



Lot 315

Lot 314

Lot 321

Lot 309

Lot 319

Colorful, Rare & Choice Historical Flasks



Lot 46

Lot 3

Lot 63

Lot 47

Lot 37



Lot 1

"GENERAL WASHINGTON" / BUST OF WASHINGTON - EAGLE Historical Flask, an early Pittsburgh district glasshouse, 1825 - 1835. Bluish aquamarine, sheared mouth - blowpipe pontil scar, Pt; (a 3/16" chip, and a 1/8" flake on the top edge of the sheared mouth; a 3/8" chip along the edge of base that may have occurred when the pontil rod was whetted off). GI-3. A crisp, bright example. The mold is noted by McKearin as "Extremely rare" and does not come around often.

Est.: \$1,000 - \$1,500 • Min. bid: \$600



Lot 2

"GENERAL WASHINGTON" / BUST OF WASHINGTON - EAGLE / "J.R. / LAIRD. SC. PITT" Historical Flask, John Robinson's Sturbridge Flint Glassworks, Pittsburgh, 1825 - 1830. Aqua, sheared mouth - pontil scar, Pt, near mint; (a touch of light high point wear; somewhat weak impression in the shoulder, and a 1/4" area of minor in-manufacture lip edge roughness likely due to some slag or oxide from the glass batch). GI-6. A very rare flask. Ex. Bob Mebane; Bud Lane collections.

Est.: \$2,500 - \$4,500 • Min. bid: \$1,400



Lot 3

"GENERAL WASHINGTON" / BUST OF WASHINGTON - "E PLURIBUS UNUM" / EAGLE / "T.W.D - ADAMS & JEFFERSON / JULY 4 A.D. 1776 - KENSINGTON GLASS / WORKS PHILADELPHIA" Historical Flask, Kensington Glass Works, 1826 - 1835. Rich, medium emerald, sheared mouth - blowpipe pontil, Pt, near mint; (just a touch of very minor wear, primarily at edge of base, and a slightly weak impression in the shoulder). GI-14. An outstanding example, strong color!

Est.: \$5,000 - \$8,000 • Min. bid: \$2,500



Lot 4

WASHINGTON - EAGLE Historical Flask, probably Bridgeton Glass Works, Bridgeton, NJ, 1845 - 1855. Bluish aquamarine, almost an ice blue, sheared mouth - blowpipe pontil scar, Qt, near mint; (some extremely light interior residue or faint haze, some of which may wash out; a touch of light wear near edge of base, otherwise perfect). GI-27. This mold is listed as "Comparatively scarce" but in our view, should be listed as very scarce to rare! A large, attractive flask.

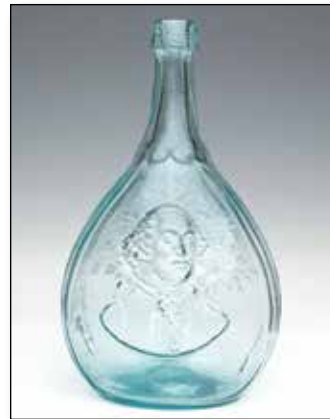
Est.: \$300 - \$500 • Min. bid: \$180



Lot 5

"WASHINGTON" / BUST OF WASHINGTON - "JACKSON" / BUST OF JACKSON Historical Flask, probably Keene Marlboro Street Glassworks, Keene, NH, 1825 - 1842. Yellowish golden amber with an olive tone, sheared mouth - blowpipe pontil scar, Pt; (a little scattered, minor light wear and a somewhat weak impression as is fairly common on this mold). GI-31.

Est.: \$200 - \$400 • Min. bid: \$120



Lot 6

BUST OF WASHINGTON - TREE Historical Calabash, America, 1850 - 1860. Aquamarine, applied sloping collar - blowpipe pontil scar, Qt, pristine perfect! GI-35. Note, there are some annealing lines on the inside of the neck that occurred during manufacture, and are not considered damage, but mentioned for completeness. A spectacular example, crisp, bright, exceptionally clean, no high point wear, and filled with tiny bubbles. A great example! Jim Becker collection.

Est.: \$175 - \$275 • Min. bid: \$100



Lot 7

"THE FATHER OF HIS COUNTRY" / BUST OF WASHINGTON - "DYOTVILLE GLASS WORKS PHILAD.A / GEN. TAYLOR NEVER SURRENDERS" / BUST OF TAYLOR Historical Flask, Dyottville Glass Works, 1848 - 1855. Medium to deep yellow olive, sheared mouth - blowpipe pontil scar, Pt, near mint; (a touch of minor light wear, a tiny 1/8" paper-thin open bubble at side, and a 1/4" pontil flake extends to edge of narrow base). GI-38. Scarce color, good impression.

Est.: \$2,000 - \$4,000 • Min. bid: \$1,200



Lot 8

"THE FATHER OF HIS COUNTRY" / BUST OF WASHINGTON - "GEN. TAYLOR NEVER SURRENDERS" / BUST OF TAYLOR Historical Flask, Dyottville Glass Works, 1848 - 1855. Medium to deep bluish green, sheared mouth - blowpipe pontil scar, Qt; (some scattered light wear, primarily on the reverse and one of the rounded sides, otherwise very near mint). GI-39 variant. Differs from GI-39 in curvature of sides near the base, oval frame 1/2" from base, vs. 1/8". Beautiful color.

Est.: \$700 - \$1,200 • Min. bid: \$400



Lot 9

“THE FATHER OF HIS COUNTRY” / BUST OF WASHINGTON - (Reverse Plain) Historical Flask, possibly Lockport Glass Works, NY, 1845 - 1855. Rich, medium to deep emerald coloration, applied mouth with flat band - blowpipe pontil scar, Pt; (a 4” crack on the reverse; some fine wear around the band of the applied mouth). GI-48. Heavily whittled, rare, outstanding color, displays very near mint. Provenance: Ex. Tom McCandless collection.

Est.: \$500 - \$1,000 • Min. bid: \$250



Lot 13

WASHINGTON - TAYLOR Portrait Flask, probably Doytville Glass Works, Philadelphia, 1850 - 1860. Medium to deep yellowish green with an emerald tone, sheared mouth - blowpipe pontil scar, Qt; (some light exterior wear, primarily on the reverse, otherwise very near mint). GI-54. A beautiful example; bright, clean, nice color.

Est.: \$500 - \$800 • Min. bid: \$300



Lot 10

“THE FATHER OF HIS COUNTRY” / BUST OF WASHINGTON - “GEN. TAYLOR NEVER SURRENDERS” / BUST OF TAYLOR Historical Flask, Doytville Glass Works, 1848 - 1855. Bright, medium to deep blue green, sheared mouth - blowpipe pontil scar, Pt, near mint; (a touch of very minor wear; a couple of shallow open surface bubbles). GI-40c. A rare mold with only a few examples offered at auction in the past 15 years. Good impression, excellent character, strong color!

Est.: \$1,200 - \$2,400 • Min. bid: \$600



Lot 14

WASHINGTON - WASHINGTON Portrait Flask, Lockport Glass Works, Lockport, NY, 1850 - 1860. Aquamarine, sheared mouth - blowpipe pontil scar, Qt, virtually attic mint; (just a minor, ¼” paper-thin sliver-type flake along the edge of the base, otherwise perfect!) GI-61. A scarce flask, wonderful condition, and with virtually no high point wear, as is often encountered.

Est.: \$400 - \$800 • Min. bid: \$250



Lot 11

“THE FATHER OF HIS COUNTRY” / BUST OF WASHINGTON - (Reverse Plain) Historical Flask, probably Lockport Glass Works, NY, 1850 - 1860. Light to medium blue green, applied round collar - blowpipe pontil scar, Qt, very near mint; (just a slight trace of light exterior wear and a wisp of barely noticeable, faint, spotty haze on the interior of the shoulder that may wash out). GI-47. Whittled, and with nice strong embossing.

Est.: \$400 - \$600 • Min. bid: \$250



Lot 15

“ROUGH & READY” / BUST OF TAYLOR - EAGLE Historical Flask, a Pittsburgh glasshouse, 1845 - 1850. Aqua, sheared mouth - blowpipe pontil scar, Pt, near attic mint; (just a slight trace of faint interior haze near the shoulder, otherwise perfect!) GI-76. An extremely rare and desirable flask, exceptional condition! Only one other example has been offered at auction in more than 20 years. This example was found in an old home southern IL, many years ago and has never been in circulation.

Est.: \$8,000 - \$16,000 • Min. bid: \$4,000



Lot 12

“THE FATHER OF HIS COUNTRY” / BUST OF WASHINGTON - (Reverse Plain) Historical Flask, probably Lockport Glass Works, NY, 1850 - 1860. Medium to deep blue green, applied round double collar - large blowpipe pontil scar, Qt, near attic mint; (a ¾” faint light surface scratch near base, and a ¼” in-manufacture stress line extends from the pontil, but does not go through the thickness of the glass). GI-47. A great example, nice clarity, and good strong color.

Est.: \$400 - \$600 • Min. bid: \$250



Lot 16

“LAFAYETTE” / BUST OF LAFAYETTE / “COVENTRY / C-T” – STARS AND LIBERTY CAP / “S & S” Historical Flask, Coventry Glass Works, Coventry, CT, 1825 - 1835. Yellowish olive amber, sheared mouth - pontil scar, ½ Pt, very near mint; (a tiny sliver of roughness on the edge of the crudely sheared mouth, possibly occurred during manufacture, and only the slightest touch of high point wear, otherwise perfect). GI-86. A crude, bubbly, seedy example with an excellent impression.

Est.: \$800 - \$1,600 • Min. bid: \$500



Lot 17

BENJAMIN FRANKLIN / BUST OF FRANKLIN - "T. W. DYOTT, M.D." / BUST OF DYOTT Historical Flask, Kensington Glass Works, Philadelphia, 1825 - 1835. Aquamarine, sheared mouth - blowpipe pontil scar, Pt; (some minor high point wear; some light interior haze or "bloom", primarily along the sides, but no other form of damage). GI-95. A comparatively scarce flask.

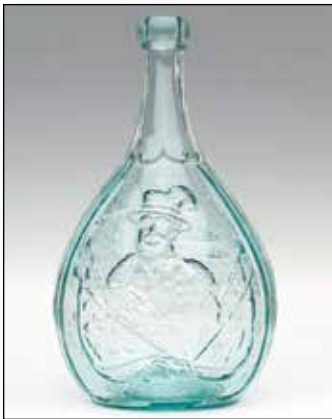
Est.: \$300 - \$500 • Min. bid: \$180



Lot 21

EAGLE - EAGLE Historical Flask, probably Kentucky Glass Works, Louisville, KY, 1850 - 1855. Citron, sheared mouth - blowpipe pontil scar, Pt, virtually attic mint! GI-24. A fantastic example, nice color, a very bold impression - even through the shoulders, and having almost no high point wear. Ex. Alan Spear collection.

Est.: \$1,200 - \$2,400 • Min. bid: \$600



Lot 18

"LOUIS KOSSUTH" / BUST OF KOSSUTH - STEAM FRIGATE / "U.S. STEAM FRIGATE / MISSISSIPPI" Historical Calabash, probably Millford Glass Works, Millford, NJ, 1852 - 1860. Aqua, applied blob collar with bevel - "PH. DOFLEIN / MOULD MAKER / NTH 5! ST 84" (on base), blowpipe pontil scar, Qt; (a small patch of very faint interior haze on the reverse, otherwise perfect). GI-112a. Extremely rare, this variant lacking the "S. HUFFSEY" on reverse. Ex. Roy Brown collection.

Est.: \$800 - \$1,600 • Min. bid: \$400



Lot 22

EAGLE - EAGLE Historical Flask, probably Kentucky Glass Works, Louisville, KY, 1850 - 1855. Rich, deep aquamarine, sheared mouth - blowpipe pontil scar, Qt, another great example, virtually attic mint. GI-26. Bright and clean, a great looking, impressive flask. It is easy to see why these early Louisville molds are so popular.

Est.: \$250 - \$450 • Min. bid: \$150



Lot 19

BUST OF COLUMBIA - EAGLE / "B & W" Historical Flask, probably Kensington Glass Works, 1825 - 1835. Aquamarine, sheared mouth - blowpipe pontil scar, Pt; (just a trace of minor high point wear, otherwise, sparking attic mint). GI-121. A crisp, clean, bright example. A desirable mold noted as "Comparatively scarce" by McKearin.

Est.: \$400 - \$600 • Min. bid: \$250



Lot 23

EAGLE AND SHIELD - "LOUISVILLE / KY / GLASSWORKS" Historical Flask, Louisville Glass Works, Louisville, KY, 1860 - 1870. Aquamarine, applied round collar with bevel - smooth base, 1/2 Pt; (a 3/4" band of minor, faint, interior haze near the base, otherwise attic mint!) GI-33, Comparatively scarce. A great example, bright and clean, virtually no wear, and with particularly bold embossing. Provenance: James Becker collection.

Est.: \$175 - \$350 • Min. bid: \$100



Lot 20

EAGLE - CORNUCOPIA Historical Flask, an early Monongahela or Pittsburgh district glasshouse, 1825 - 1840. Deep bluish aqua, almost a blue-green coloration, sheared mouth - blowpipe pontil scar, 1/2 pint; (an 1/8" area of minor lip edge roughness; a less-than-pinhead size sandgrain on the interior with a tiny 1/16" line, a small pinhead open surface bubble). GI-15a. All the condition issues are very minor. An extremely rare little flask, nice rich color.

Est.: \$400 - \$800 • Min. bid: \$250



Lot 24

EAGLE - "LIBERTY" / OAK TREE Historical Flask, possibly an early Pittsburgh district glasshouse, 1825 - 1835. Aquamarine, sheared mouth - blowpipe pontil scar, 1/2 Pt; (a couple of minor areas of light interior haze; a slightly weakened impression in the shoulder area as is typical for this mold, otherwise virtually attic mint). GI-60. A bright, clean example with excellent clarity and character, having a thick bead of extra glass running down the neck and into the shoulder.

Est.: \$400 - \$800 • Min. bid: \$250



Lot 25

"LIBERTY" / EAGLE - "WILLINGTON / GLASS, Co / WEST, WILLINGTON / CONN" Historical Flask, Willington Glass Works, 1860 - 1872. Yellowish olive through the center shading to a deep olive near the base, sheared mouth - smooth base, Pt, near mint; (just a touch of minor light wear, primarily on the reverse, otherwise perfect). GII-62. A nice bubbly, seedy, example.

Est.: \$300 - \$500 • Min. bid: \$180



Lot 29

EAGLE - CORNUCOPIA Historical Flask, Keene Marlboro Street Glassworks, Keene, NH, 1830 - 1842. Brilliant yellowish olive amber, almost an olive yellow, sheared mouth - blowpipe pontil scar, Pt; (a tiny sandgrain at the medial rib has a couple 1/16" legs, otherwise an "out-of-the-mold", absolutely finest possible example!). GII-72b, listed as "Rare" by McKearin. Extremely strong impression, absolutely filled with seed bubbles, great color and condition. James Becker collection.

Est.: \$250 - \$450 • Min. bid: \$150



Lot 26

"LIBERTY" / EAGLE - "WESTFORD / GLASS / Co / WESTFORD / CONN", Historical Flask, 1857 - 1873. Deep golden amber shading to a dense amber through the neck and near the base, crudely applied round collar with bevel - smooth base, 1/2 Pt, near mint; (some light scratches and minor wear on the reverse, otherwise perfect). GII-65. Outstanding character, the glass being filled with tiny seed bubbles, and there is virtually no wear on the eagle! James Becker collection.

Est.: \$200 - \$400 • Min. bid: \$120



Lot 30

EAGLE / "GRANITE. / GLASS. CO" - EAGLE / "STODDARD / NH" Historical Flask, Granite Glass Company, Mill Village, Stoddard, 1846 - 1862. Medium olive amber, sheared mouth - blowpipe pontil scar, Pt; (just a bit of minor high point wear, primarily on the reverse, and a shallow 1/4" sliver flake on the edge of the sheared mouth, also on the reverse). GII-81. A nice clean example.

Est.: \$225 - \$450 • Min. bid: \$140



Lot 27

EAGLE - EAGLE Historical Flask, Coventry Glass Works, Coventry, CT, 1835 - 1845. Yellowish olive amber, sheared mouth - blowpipe pontil scar, 1/2 Pt; (a little light high point wear as is common on this mold, and some spotty interior residue that would almost certainly wash out, otherwise perfect). GII-71. A nice light color below the shoulders, beautiful seedy glass.

Est.: \$250 - \$450 • Min. bid: \$150



Lot 31

EAGLE - EAGLE / "STODDARD / N.H." Historical Flask, probably Granite Glass Company, Mill Village, Stoddard, 1846 - 1862. Yellowish golden amber with a slight olive tone, sheared mouth - blowpipe pontil scar, Pt, pristine perfect! GII-82. A finest possible example with crude pebbly glass, an outstanding mold impression, and virtually no wear. Perhaps one of the choicest examples of this classic Stoddard Double Eagle flask that we have seen. James Becker collection.

Est.: \$250 - \$450 • Min. bid: \$150



Lot 28

EAGLE - CORNUCOPIA Historical Flask, probably Keene Marlboro Street Glassworks, Keene, NH, 1830 - 1842. Brilliant yellowish olive amber, almost an olive yellow, sheared mouth - blowpipe pontil scar, Pt, mint. GII-72. A strong impression, beautiful color, and with no high point wear as is often the case. A great example!

Est.: \$200 - \$400 • Min. bid: \$120



Lot 32

EAGLE WITH BANNER - (Reverse plain) Historical Calabash, America, 1855 - 1865. Bright, medium "7-UP" green, applied sloping collar - blowpipe pontil scar, Qt; (a 1/4" area of minor roughness on the edge of one of the side flutes, and just the slightest trace of typical light wear, otherwise virtually attic mint). GII-143. A very bright, clean, sparkling example. James Becker collection.

Est.: \$200 - \$400 • Min. bid: \$120



Lot 33

CORNUCOPIA - URN Pictorial Flask, probably Coventry Glass Works, Coventry, CT, 1835 - 1849. Clear, light-to-medium emerald coloration, sheared mouth - blowpipe pontil scar, Pt, attic mint. GIII-4. Note, there is some very light interior residue. The cork is stuck in the neck but could of course be removed to clean the interior, if desired. A very beautiful, and a very rare color for this mold. James Becker collection.

Est.: \$700 - \$1,200 • Min. bid: \$400



Lot 34

CORNUCOPIA - URN Pictorial Flask, Lancaster Glass Works, Lancaster, NY, 1849 - 1855. Light-to-medium bluish green, almost a sea-green coloration, sheared mouth - blowpipe pontil scar, ½ Pt, virtually attic mint! (just a bit of light washable interior residue, primarily in the base). GIII-14a. A very scarce mold having the dime-size depression in the fruit above the urn, good color, impression, beautiful condition.

Est.: \$500 - \$1,000 • Min. bid: \$300



Lot 35

CORNUCOPIA - URN Pictorial Flask, Lancaster Glass Works, Lancaster, NY, 1849 - 1855. Rich, deep blue green, sheared mouth - blowpipe pontil scar, Pt, virtually attic mint; (a 3/16" and a 1/2" narrow open bubble on the inside of the neck; a paper-thin pontil flake extends to the edge of the base, but cannot be seen on display, and only a minor trace of wear, otherwise perfect). GIII-17. An outstanding example, strong impression, clean, sparking, and in a much deeper color than most.

Est.: \$500 - \$1,000 • Min. bid: \$300



Lot 36

CORNUCOPIA - URN Pictorial Flask, Lancaster Glass Works, Lancaster, NY, 1849 - 1855. Rich, medium to deep emerald, crudely applied round collared mouth - blowpipe pontil scar, Pt; (a 3/4" area of minor wear along the lower edge of the oval panel; a touch of minor high point wear, and some interior residue that would very likely soak out, otherwise excellent). GIII-17. A very crude, bubbly example. Scarce and gorgeous emerald coloration.

Est.: \$600 - \$1,200 • Min. bid: \$400



Lot 37

MASONIC - EAGLE / "J. K / B." Historical Flask, Keene Marlboro Street Glassworks, Keene, NH, 1815 - 1825. Olive yellow in the neck, upper shoulders, and lower half of the body, shading to light greenish aqua near the sides below the shoulders, heavy outward rolled mouth - pontil scar, Pt, very near mint; (just a touch of very minor, faint exterior wear, otherwise perfect). GIV-3. Gorgeous, spectacular color, outstanding condition, strong impression! Ex. Paul Richards collection.

Est.: \$10,000 - \$20,000 • Min. bid: \$6,000



Lot 38

MASONIC - EAGLE Historical Flask, Keene Marlboro Street Glassworks, Keene, NH, 1815 - 1825. Greenish aquamarine, sheared and toothed mouth - pontil scar, Pt, near mint; (a small area of minor wear near the side rib; a faint band of interior haze, barely noticeable, near the center, and just a touch of minor high point wear). GIV-10a. A rare early Masonic flask with a strong mold impression, excellent character and condition. Note; some light attic soot or "grunge" remains in some of the crevices.

Est.: \$1,000 - \$2,000 • Min. bid: \$600



Lot 39

MASONIC ARCH - EAGLE / "KCCNC" Historical Flask, Keene Marlboro Street Glassworks, Keene, NH, 1820 - 1830. Light-to-medium olive amber, sheared mouth - blowpipe pontil scar, Pt, virtually attic mint; (a slightly weak impression in the shoulders, but a nice clean example, having virtually no high point wear or other issues). GIV-20. Listed by McKearin as a comparatively scarce mold.

Est.: \$225 - \$450 • Min. bid: \$140



Lot 40

MASONIC - "ZANESVILLE" / EAGLE / "OHIO / J. SHEPARD & CO", Historical Flask, Zanesville Glassworks, Zanesville, Ohio, 1822 - 1832. Gorgeous light yellow, almost a straw color, below the shoulders, shading to a deeper yellow with some beautiful olive and honey tones in the lower half of the body, sheared mouth - pontil scar, Pt, perfect. GIV-32. Outstanding variegated color, excellent condition, a great example!

Est.: \$2,500 - \$4,500 • Min. bid: \$1,400



Lot 41

CLASPED HANDS / MASONIC EMBLEM / "UNION" - EAGLE / "A.R.S." Historical Calabash, A.R. Samuels, Philadelphia, PA, 1858 - 1866. Light-to-medium citron green, applied sloping collar - blowpipe pontil scar, Qt, perfect! GIV-42. Crisp, excellent impression, nice color, outstanding condition.

Est.: \$400 - \$600 • Min. bid: \$250



Lot 45

HORSE PULLING CART - EAGLE Historical Flask, probably Coventry Glass Works, Coventry, Connecticut, 1830 - 1845. Clear, medium olive green, sheared mouth - blowpipe pontil scar, Pt, near mint; (a little typical high point wear and a couple of tiny, pinhead open surface bubbles, otherwise perfect). GV-9. An outstanding example with a very strong mold impression, good color, and overall excellent condition. A much better than average example!

Est.: \$300 - \$600 • Min. bid: \$180



Lot 42

"SUCCESS TO THE RAILROAD" / LOCOMOTIVE - (Reverse same) Historical Flask, Lancaster Glass Works, Lancaster, NY, 1849 - 1860. Beautiful, medium to deep apricot coloration, sheared and tooled mouth - blowpipe pontil scar, Pt; (a hard to see, 1 1/4" crack in the neck along with a 5/8" wide x 5/8" deep neck repair). GV-1. A very rare and desirable color for this mold. The repair is exceptionally well done and displays as virtually attic mint. Fantastic color having no trace of amber.

Est.: \$400 - \$800 • Min. bid: \$250



Lot 46

"CORN FOR THE WORLD" / EAR OF CORN - MONUMENT / "BALTIMORE" Historical Flask, Baltimore Glass Works, 1850 - 1860. Yellow with a slight topaz tone, applied double collar - iron pontil scar, Qt; (a little fairly minor high point wear and a small, 1/8" flake on one of the corn leaves; a very faint 1/4" band of light haze on the interior). GVI-4. Beautiful color, strong impression, very scarce with the iron pontil scar.

Est.: \$2,000 - \$4,000 • Min. bid: \$1,200



Lot 43

"SUCCESS TO THE RAILROAD" / HORSE PULLING CART - (Reverse same) Historical Flask, possibly Mt. Vernon Glass Works, Vernon, NY, 1830 - 1844. Deep olive with an amber tone, sheared mouth - blowpipe pontil scar, Pt; (a touch of typical light exterior wear; a very minor 1/8" bit of roughness on the inside edge of the sheared mouth, and a somewhat weakened impression in the shoulder area as is common on this mold). GV-5.

Est.: \$300 - \$500 • Min. bid: \$180



Lot 47

"CORN FOR THE WORLD" / EAR OF CORN - MONUMENT / "BALTIMORE" Historical Flask, Baltimore Glass Works, 1845 - 1855. Light to medium golden with a very slight apricot tone, sheared and tooled lip - blowpipe pontil scar, Pt; (very shallow 1/8" flake on the top edge of the lip with a 3/16" area of iridescence on the inside of the lip). GVI-6. Extremely rare, believed to be one of two, or possibly three known in this color. Ex. George McKearin, George Austin, Bill Pollard collections.

Est.: \$8,000 - \$12,000 • Min. bid: \$4,000



Lot 44

HORSE PULLING CART - EAGLE Historical Flask, probably Coventry Glass Works, Coventry, Connecticut, 1830 - 1845. Medium olive amber, sheared mouth - blowpipe pontil scar, Pt; (some exterior high point wear and a somewhat weakened impression, but no other form of damage). GV-9.

Est.: \$200 - \$400 • Min. bid: \$120



Lot 48

SUNBURST FLASK, New England, probably Keene Marlboro Street Glassworks, Keene, NH, 1815 - 1830. Clear, medium green, sheared mouth - glass tipped pontil scar, Pt; (a 1/4" flake on the inside of the mouth that likely occurred when the cork was pried out, and a couple of minor, 1/4 light scratches, otherwise virtually attic mint). GVIII-2. A clean, bright example with nice clarity.

Est.: \$400 - \$600 • Min. bid: \$250



Lot 49

SUNBURST FLASK, New England, possibly Keene Marlboro Street Glassworks, Keene, NH, 1815 - 1830. Clear, medium blue green, sheared mouth - glass-tipped pontil scar, ¾ Pt, virtually attic mint; (just a touch of high point wear, otherwise perfect). GVIII-29. A great example, bright, clean, outstanding clarity and condition. Sunburst flasks are believed to be among the earliest of the figured flasks blown by the New England glasshouses. James Becker collection.

Est.: \$300 - \$500 • Min. bid: \$180



Lot 50

SCROLL FLASK, Midwest America, 1845 - 1860. Clear medium apple green, almost a grass green, sheared mouth - blowpipe pontil scar, Pt, near mint; (shallow 1/8" flake and a very minor pinhead bit of roughness on the edge of the sheared mouth). Unlisted, - similar to GIX-11 (with defined space between scrolls at center, but appears to have an ill-defined 9-pointed upper star). An attractive Scroll Flask, nice color and clarity.

Est.: \$500 - \$800 • Min. bid: \$300



Lot 51

Unlisted, Giant SCROLL FLASK, probably Midwestern, 1840 - 1860. Greenish aquamarine, plump pear form with large fleur-de-lis design, sheared mouth - polished pontil scar, 2 ¼ Qts, perfect. An uncharted mold, similar to the GIX-29a, but the only known example having two large pearl shaped beads on one side, and a single large bead on the opposite side. This was confirmed with noted flask expert, Mark Vuono. See his article, June, 2014, AB&GC, "The Gallon Scrolls".

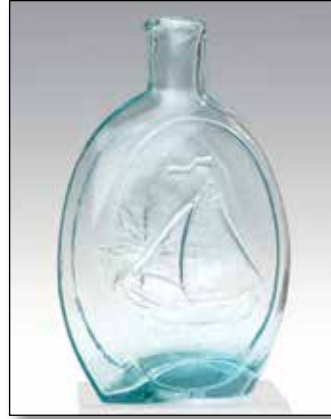
Est.: \$1,500 - \$2,500 • Min. bid: \$800



Lot 52

"M'CARTY & TORREYSON" / (Star) / "MANUFACTURERS / WELLSBURG, VA." - CONCENTRIC RINGS & SUNBURST Scroll Flask, 1842 - 1850. Aqua, sheared mouth - iron pontil scar, Pt, virtually attic mint; (a minor, 1/8" flake at the edge of the sheared mouth, otherwise perfect). GIX-48. An outstanding example, bright and clean, having no high point wear, and crisp embossing. These flasks do not come around often, especially in this nice condition. James Becker collection.

Est.: \$1,400 - \$2,400 • Min. bid: \$800



Lot 53

SLOOP - STAR Pictorial Flask, probably Bridgeton Glass Works, Bridgeton, New Jersey, 1846 - 1855. Aquamarine, sheared and tooled mouth - blowpipe pontil scar, ½ Pt, very near mint; (just a little light high point wear, otherwise perfect!) GX-8. A nice example of this comparatively scarce little flask.

Est.: \$175 - \$350 • Min. bid: \$100



Lot 54

"FOR PIKE'S PEAK" / PROSPECTOR - EAGLE Historical Flask, probably a Pittsburgh district glasshouse, 1860 - 1870. Yellow with a strong olive tone, ground mouth - smooth base, Qt; (the mouth has been ground down but is otherwise a clean, sparkling example). GXI-30. Gorgeous, rare color that is unlisted by McKearin (this mold is only listed in shades of aquamarine). Would make a good candidate for a professional repair. Ex. Robert Morin collection, NCH Auction 75.

Est.: \$500 - \$800 • Min. bid: \$250



Lot 55

"FOR PIKE'S PEAK" / PROSPECTOR - EAGLE / "CEREDO" Historical Flask, Ceredo Glass Works, Ceredo, West Virginia, 1861 - 1865. Medium to deep yellow olive, crudely applied mouth with flat band - smooth base, Qt, near mint; (some spotty light interior residue and faint haze, some of which would likely wash out). GXI-34. A great example having a very bold impression, virtually no high point wear, and in a very rare color!

Est.: \$1,800 - \$3,600 • Min. bid: \$1,000



Lot 56

"FOR PIKE'S PEAK" / PROSPECTOR - HUNTER Historical Flask, Ravenna Glass Works, Ravenna, OH, 1860 - 1870. Medium to deep aquamarine, applied mouth with flat band - smooth base, Qt, very near mint; (just a very slight trace of faint wear, otherwise perfect). GXI-47. A great example of this comparatively scarce flask, having virtually no high point wear, heavily whittled, and boldly embossed. Provenance: James Becker collection.

Est.: \$250 - \$400 • Min. bid: \$150



Lot 57

"UNION" / CLASPED HANDS - EAGLE / "A & CO" (in banner) Historical Flask, Adams & Co, Pittsburgh, 1861 - 1870. Light apple green, applied collar with flat band - smooth base, Qt, virtually attic mint; (tiny, pinprick spot of roughness at edge of mouth, otherwise pristine perfect). GXII-1. Almost identical to the example we sold in our sale last year, this example has a very nice impression, and some tiny black specs and impurities in the shoulder area.

Est.: \$200 - \$400 • Min. bid: \$120



Lot 61

"UNION" / CLASPED HANDS - CANNON Historical Flask, probably a Pittsburgh district glasshouse, 1865 - 1875. Aquamarine, applied ring collar - smooth base, Pt, near attic mint; (a trace of faint interior residue that would likely wash out). GXII-41. Some nice whittling and waviness to the glass. Note, unusual with the ring-type collar.

Est.: \$100 - \$200 • Min. bid: \$50



Lot 58

Unlisted, "UNION" / CLASPED HANDS - EAGLE Historical Flask, probably a Pittsburgh district glasshouse, 1860 - 1870. Golden amber with an orange tone, shading to a yellowish honey near the sides, applied ring collar - smooth base, Pt, near mint; (a touch of very minor exterior wear, otherwise perfect). An unlisted mold, similar to GXII-28, but with marked differences including 22 leaves on each of the branches. Great color and impression. James Becker collection.

Est.: \$400 - \$600 • Min. bid: \$250



Lot 62

"UNION" / CLASPED HANDS / "FA & Co" - CANNON Historical Flask, Fahnestock, Albree & Company, Pittsburgh, PA, 1860 - 1872. Aquamarine, applied collar with flat band - smooth base, ½ Pt; (a 1 ½" band of faint interior haze around the center of the flask, otherwise virtually attic mint). GXII-42. A scarce little flask with a nice crisp impression.

Est.: \$100 - \$200 • Min. bid: \$50



Lot 59

"UNION" / CLASPED HANDS / "WM FRANK & SONS / PITTS" - CANNON Historical Flask, William Frank & Sons, Frankstown Glass Works, 1870 - 1876. Aquamarine, applied collar with flat band - smooth base, Qt, near mint; (a touch of scattered light wear and a slightly weakened impression, otherwise excellent). GXII-38a. A comparatively scarce mold.

Est.: \$175 - \$275 • Min. bid: \$100



Lot 63

SAILOR - BANJO PLAYER Pictorial Flask, probably John Chapman, Maryland Glass Works, Baltimore, MD, 1849 - 1862. Clear, medium-to-deep yellowish olive, sheared mouth - blowpipe pontil scar, ½ Pt, virtually attic mint! GXIII-8. A comparatively scarce little flask, heavily whittled, beautiful, in a rare color, and with nice clarity.

Est.: \$1,500 - \$3,000 • Min. bid: \$800



Lot 60

"UNION" / CLASPED HANDS / "WM FRANK & SONS / PITTS" - CANNON Historical Flask, William Frank & Sons, Frankstown Glass Works, 1870 - 1876. Aquamarine, applied collar with flat band - smooth base, Pt; (just a couple of faint, minor light scratches on the reverse, and a tiny, pinhead open bubble at edge of base, otherwise sparkling attic mint!). GXII-39. A beautiful example, clean, sparkling, some nice bubbles and character, and with a great impression.

Est.: \$125 - \$225 • Min. bid: \$70



Lot 64

"FLORA TEMPLE" / Standing Horse / "HARNESSTROT 2.19 ¾ / OCT.15. 1859" Pictorial Flask, Whitney Glass Works, Glassboro, NJ, 1859 - 1865. Medium shading to deep apricot puce, applied handle, applied tapered collar with bevel - smooth base, Qt; (a 3/16" chip on the back edge of the lip along with a couple of tiny, pinprick bits of roughness, and some light scratches and wear, primarily on the reverse). GXIII-19.

Est.: \$400 - \$600 • Min. bid: \$250



Lot 65

"FLORA TEMPLE" / Standing Horse / "HARNESSTROT 2.19 3/4" - Pictorial Flask, possibly Lancaster Glass Works, Lancaster, NY, 1860 - 1865. Smoky topaz with a slight olive tone, applied collar with band - smooth base, Pt; (a 1/4" bruise along top edge of beveled frame; a little relatively minor high point wear including some fine wear around the applied collar). GXIII-23. A scarce and unusual color for this mold.

Est.: \$300 - \$600 • Min. bid: \$180



Lot 69

SHEAF OF GRAIN - TREE Pictorial Calabash, probably Sheets & Duffy Glass Manufacturers, Philadelphia, PA, 1850 - 1860. Beautiful, medium blue green, applied round collar with bevel - iron pontil scar, Qt, near mint; (a small, less than 1/8", iridescent surface bruise near one of the side ribs; some light interior residue and faint haze, most of which would likely wash out). GXIII-47. Scarce color, a bit more of a bluish tone than most, and rare with the iron pontil scar.

Est.: \$600 - \$900 • Min. bid: \$350



Lot 66

"FLORA TEMPLE" / Standing Horse / "HARNESSTROT 2.19 3/4" - Pictorial Flask, probably Lancaster Glass Works, Lancaster, NY, 1860 - 1865. Medium blue green, applied collar with flat band - smooth base, Pt; (a 3/8" x 1/8" open bubble at edge of base; some moderate high point wear and some interior residue that may wash out). GXIII-23. A good color for this mold, one that passes plenty of light.

Est.: \$400 - \$600 • Min. bid: \$250



Lot 70

"BALTIMORE" / ANCHOR / "GLASSWORKS" - PHOENIX / "REGURGAM" Historical Flask, Baltimore Glass Works, 1860 - 1870. Bright golden amber with a slight orange tone, shading to a lighter honey coloration along one of the sides, applied double round collar - smooth base, Pt; (just a tiny, pinprick bit of roughness on the edge of the applied lip and a faint ring of very light interior haze below the shoulder). GXIII-53. A nice example having good color, condition, and almost no high point wear.

Est.: \$500 - \$800 • Min. bid: \$300



Lot 67

"WILL YOU TAKE / A DRINK ? / WILL A / (Duck) / SWIM ?" Pictorial Flask, probably Lockport Glass Work, Lockport, NY, 1870 - 1880. Brilliant aquamarine, applied mouth with band - smooth base, Pt, pristine perfect! GXIII-28. A spectacular flask. If there was ever a "finest possible example", this would probably be it! Outstanding whittling, bright, clean, crisp, virtually no wear, and very boldly embossed. Provenance: James Becker collection.

Est.: \$500 - \$1,000 • Min. bid: \$300



Lot 71

"SPRING GARDEN" / ANCHOR / "GLASSWORKS" - LOG CABIN Historical Flask, Spring Garden Glass Works, Baltimore, MD, 1851 - 1856. Aquamarine, applied round collar with lower bevel - smooth base, 1/2 Pt; (a small spot of light residue or faint interior haze near the base that may wash out; a slight trace of minor exterior wear, otherwise virtually attic mint!) GXIII-61. A good strong impression and nice character with some scattered bubbles and frothiness to the glass.

Est.: \$175 - \$350 • Min. bid: \$100



Lot 68

SHEAF OF GRAIN - "WESTFORD GLASS Co / WESTFORD / CONN" Pictorial Flask, Westford Glass Works, 1857 - 1873. Yellowish olive amber near the shoulders shading to a deep olive amber near the base, applied round collar with bevel - smooth base, Pt, near mint; (just a touch of light exterior wear, otherwise perfect). GXIII-35. A good clean example filled with tiny seed bubbles.

Est.: \$175 - \$350 • Min. bid: \$100



Lot 72

"TRAVELER'S" / STYLIZED DUCK / "COMPANION" - "LOCKPORT" / STAR / "GLASS / WORKS" Pictorial Flask, Lockport Glass Works, NY, 1850 - 1860. Rich, medium-to-deep blue green, crudely applied round collar - blowpipe pontil scar, Pt; (a little scattered high point wear on the duck and shoulder of the reverse; an in-making sliver of glass protrudes from below the applied collar on the reverse). GXIV-6. Listed Group C, Rare flasks #1, by McKearin. Beautiful color.

Est.: \$2,000 - \$4,000 • Min. bid: \$1,200



Lot 73

"GRANITE / GLASS / CO - STODDARD / N H", 1855 - 1862. Beautiful medium olive amber with some yellowish tones along one of the sides, applied double round collar - smooth base, Pt; (just a trace of faint wear, otherwise perfect). GXV-7. Nice crude glass, good color, a strong impression. Often, these flasks have some distracting high point wear or other issues, but not this one. A classic Stoddard flask, and much nicer than most! James Becker collection.

Est.: \$500 - \$800 • Min. bid: \$250



Lot 77

Pattern Molded Globular Bottle, 24 ribs swirled to the left, probably Zanesville Glass Works, Zanesville, OH, 1820 - 1835. Beautiful yellowish honey coloration, globular form, outward rolled mouth - pontil scar, ht. 8", sparkling mint! A fantastic example, beautiful light color, a good strong impression all the way to the base, and pristine condition!

Est.: \$800 - \$1,600 • Min. bid: \$500



Lot 74

"INDIANAPOLIS GLASS WORKS" Lettered Flask, Indianapolis Glass Works Co, 1870 - 1877. Deep aqua, almost a blue green coloration, applied mouth with ring - smooth base, Qt; (some scattered light interior haze in the lower half; a 1/4" chip on the back side of the applied ring collar, otherwise virtually attic mint). GXV-9. A beautiful example, great depth of color. McKearin notes this mold as "Rare". However, there are less than six known, most having damage.

Est.: \$800 - \$1,600 • Min. bid: \$400



Lot 78

Oversized, Pattern Molded Globular Bottle, 24 ribs swirled to the right, probably Zanesville Glass Works, Zanesville, OH, 1820 - 1835. Brilliant light to medium golden amber, globular form, outward rolled mouth - pontil scar, ht. 9 1/4"; (just a trace of typical light exterior wear, otherwise virtually attic mint!) A scarce, desirable size having excellent near-perfect form, a good impression, great condition. Ex. Elvin Moody collection.

Est.: \$1,000 - \$2,000 • Min. Bid: \$600



Lot 75

"WESLEY. HAWKINS & Co / BAY CITY / MICH" Lettered Flask, America, 1873 - 1878. Aqua, applied tapered collar with flat band - smooth base, Pt; (professionally cleaned to original luster with a bit of faint interior haze remaining; a 2 1/2" hairline crack along the mold seam, and a 3/4" area of chipping along the top of the mouth). Extremely rare and historical, believed to be the only known intact example. To read about Wesley Hawkins and the bottle, see *AB&GC*, 4/16.

Est.: \$500 - \$1,000 • Min. bid: \$250



Lot 79

Pattern Molded 'Grandfather' Flask, 24 rib broken swirl design, Zanesville Glass Works, Zanesville, OH, 1820 - 1835. Rich golden amber with a slight orange tone, flatten circular body, sheared mouth - pontil scar, ht. 8 1/8", very near mint; (just a touch of minor, light exterior wear and couple of small patches of faint interior residue, otherwise perfect). Similar to MW, color plate XVII, bottom row, #4. Excellent form, with the desirable 'popcorn' effect. Ex. Robert Chaudion collection.

Est.: \$2,000 - \$4,000 • Min. bid: \$1,200



Lot 76

Pattern Molded Globular Bottle, 24 ribs swirled to the right, probably Zanesville Glass Works, 1820 - 1835. Greenish aquamarine, globular form, outward rolled mouth - pontil scar, ht. 6 7/8"; (just some typical faint exterior wear and a surface bubble on the interior of the neck is partially open, otherwise perfect!) These patterned globes are very scarce in shades of aqua. This is a good one, being in a smaller size, with near perfect form, and nice brilliant glass.

Est.: \$800 - \$1,600 • Min. bid: \$500



Lot 80

Pattern Molded Pocket Flask, 12 "nipt" Diamond pattern, Henry William Stiegel's American Flint Glass Manufactory, Manheim, PA, 1769 - 1774. Amethyst, compressed horseshoe form, sheared mouth - pontil scar, ht. 5"; (some light exterior bloom and typical light exterior wear). A very scarce flask, outstanding form, beautiful color. See Palmer, *Glass in Early America*, #351. These early Stiegel "pocket bottles" are some of the great "classics" of American blown glass.

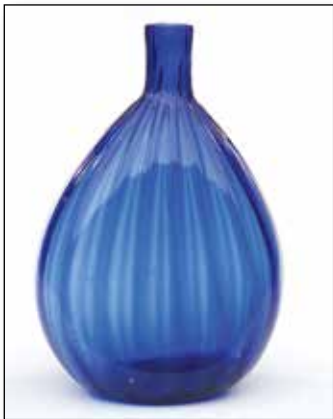
Est.: \$3,000 - \$6,000 • Min. bid: \$1,800



Lot 81

Pattern Molded Pocket Flask, 24 vertical ribs, probably America, Pittsburgh district, or possibly a Mid-Atlantic, or Philadelphia area glasshouse, 1815 - 1835. Medium cobalt with some deeper cobalt striations swirling through the upper half of the flask, elongated horseshoe form, sheared mouth - pontil scar, ht. 6 3/4"; (a 1/4" chip on the edge of the sheared mouth; some scattered exterior wear). Scarce, beautiful color, especially with the deeper striations.

Est.: \$600 - \$1,200 • Min. bid: \$400



Lot 82

Pattern Molded Pocket Flask, 18 pronounced vertical ribs, Continental, or possibly America, 1815 - 1835. Beautiful, rich cobalt blue, elongated horseshoe form, sheared mouth - solid glass-tipped pontil scar, ht. 6 7/8", perfect! Very similar to MW, plate 97, #5. A lot of flask for the money, beautiful, early, and having great character, the glass being filled with small bubbles.

Est.: \$600 - \$1,200 • Min. bid: \$400



Lot 83

Miniature, Pattern Molded Pocket Flask, 30 vertical ribs, probably Eastern United States, possibly South Jersey, 1800 - 1830. Pale aquamarine, flattened broad circular body, sheared mouth - blowpipe pontil scar, ht. 2 5/8"; (some high point wear and a somewhat weakened impression, but no other form of damage). Miniature pattern molded flasks are quite rare. An interesting little flask that was possibly blown as a whimsey, or child's toy.

Est.: \$300 - \$500 • Min. bid: \$180



Lot 84

Oversized, Pattern Molded Chestnut Flask, 24 ribs swirled to the right, possibly Zanesville, OH, 1820 - 1840. Aqua, large chestnut form, sheared mouth - blowpipe pontil scar, ht. 7 1/4"; (some light spotty interior haze, primarily on one side only; some scattered minor scratches and exterior wear, but no other form of damage). A rare size for a Midwest chestnut, similar to MW, plate 91, #10 (the ribs on this example also converge at off-center point on the base).

Est.: \$300 - \$600 • Min. bid: \$180



Lot 85

Pitkin Type Flask, patterned with 31 vertical ribs over 31 ribs swirled to the right, probably Mid-Atlantic region, 1800 - 1830. Pale aquamarine, flattened circular body, sheared mouth - blowpipe pontil scar, ht. 6 1/8", near mint; (a touch of very faint exterior wear, otherwise excellent). Form and rib pattern similar to MW, plate 89, #9. A scarce color for a early Pitkin flask, clean and attractive with nice tight, fine ribbing.

Est.: \$500 - \$1,000 • Min. bid: \$300



Lot 86

Pitkin Type Flask, patterned with 32 vertical ribs over 32 ribs swirled to the right, probably Mid-Atlantic region, 1800 - 1830. Aquamarine, flattened broad ovoid body, sheared mouth - blowpipe pontil scar, ht. 6 1/2"; (a touch of light high point wear near the base; a small patch of minor interior milkiness near the base, and a bit of faint interior residue near the shoulders that would likely wash out). See MW, plate 89, #10. Another nice example, this one with a nice bluish aqua tone.

Est.: \$400 - \$800 • Min. bid: \$250



Lot 87

Pitkin Type Flask, patterned with 30 vertical ribs over 30 ribs swirled to the left, probably Mid-Atlantic region, 1800 - 1830. Clear, medium sea green, flattened oval body, sheared mouth - blowpipe pontil scar, ht. 6 3/4", virtually attic mint; (just the slightest trace of light exterior wear, otherwise perfect). Similar in form and color to MW, plate 89, #5. A great example, bright, clean, and with excellent clarity. Provenance: James Becker collection.

Est.: \$500 - \$1,000 • Min. bid: \$300



Lot 88

Pitkin Type Flask, patterned with 16 vertical ribs over 16 ribs swirled to the right, probably Mid-Atlantic region, 1800 - 1830. Bright yellowish green, flattened circular body, sheared mouth - heavy glass tipped pontil scar, ht. 6 1/8", virtually attic mint; (just a touch of very faint wear). Similar to MW, plate 89, #8. Good impression, very nice color!

Est.: \$600 - \$1,200 • Min. bid: \$400



Lot 89

Pitkin Type Flask, patterned with 36 vertical ribs over 36 ribs swirled to the right, New England, 1785 - 1825. Delicate, light to medium yellowish olive, ovoid form, sheared mouth - blowpipe pontil scar, ht. 5 3/8", near mint; (just a touch of very light exterior wear and a slightly weakened impression, otherwise perfect). See MW, plate 88, #2. Attractive light color.

Est.: \$600 - \$1,200 • Min. bid: \$400



Lot 93

Nailsea Type Flask, probably England, 1850 - 1870. Beautiful teal coloration with opaque white ribbons of glass combed throughout, tall flattened ovoid form, sheared mouth with small tooled ring-type collar - glass tipped pontil scar, ht. 7 3/8", perfect. Beautiful, scarce color.

Est.: \$300 - \$500 • Min. bid: \$180



Lot 90

Pitkin Type Flask, patterned with 31 vertical ribs over 31 ribs swirled to the right, New England, 1785 - 1825. Clear medium olive, ovoid form, sheared mouth - blowpipe pontil scar, ht. 5 1/8", very near mint; (a couple of tiny, pinhead size, or smaller, flakes on the rough sheared lip, otherwise perfect! Nice clarity, good strong impression, scarce rib count. Provenance: Ex. George Austin collection.

Est.: \$600 - \$1,200 • Min. bid: \$400



Lot 94

Poison Type Flask, Germany or possibly America, 1830 - 1850. Colorless, flattened horseshoe form, 2-piece mold with an overall hobnail or crosshatch pattern, and corrugated sides, sheared and inward rolled mouth - pontil scar, 1/2 Pt, near mint; (a shallow, 1/4" flake at base edge, otherwise excellent). KU-27. See MW, plate 123, #8.

Est.: \$175 - \$350 • Min. bid: \$100



Lot 91

Early, Ribbed Melon Flask, Keene Marlboro Street Glassworks, Keene, NH, 1820 - 1835. Bright medium apple green, 20 wide, heavy, melon-type ribs, sheared and tooled mouth - blowpipe pontil scar, Pt, virtually attic mint; (a hard-to-see 1/8" flake on one of the side ribs near the base, otherwise pristine). Attributed to the Keene Glassworks, and likely one of their earlier products. This one has that little extra "eye-appeal". Ex. Mike George collection.

Est.: \$300 - \$500 • Min. bid: \$180



Lot 95

Lot of (2), Blown Three Mold, GII-27 Decanters, New England, 1820 - 1840. Both are colorless, semi-barrel form with tooled wide flared mouths - pontil scarred bases. 1st example is a pint with (2), applied triple rings on the neck and period pressed stopper; 2nd example is a quart with "BRANDY" embossed on the shoulder, 16-petal base. Both are near mint with a touch of typical minor exterior wear; a 1/8" flake on the edge of the pressed stopper. The embossed "BRANDY" decanter is very scarce.

Est.: \$200 - \$400 • Min. bid: \$100



Lot 92

Early, Ribbed Melon Flask, Keene Marlboro Street Glassworks, Keene, NH, 1820 - 1835. Bright medium apple green, 16 wide, heavy, melon-type ribs, sheared and tooled mouth - blowpipe pontil scar, 1/2 Pt, virtually attic mint; (just a light ring of faint interior residue or light haze around the center, otherwise perfect). A scarce little flask, and a little sweetheart of an example. James Becker collection.

Est.: \$300 - \$500 • Min. bid: \$180



Lot 96

Blown Three-Mold Pitcher, New England, possibly Boston and Sandwich, Sandwich, MA, 1825 - 1840. Colorless, bulbous body with beaded arch baroque pattern, applied blown hollow handle, crimped and curled, sheared and tooled pour spout - circular foot with rayed base and solid glass tipped pontil scar, Qt, ht. 7"; (a minor 3/16" area of roughness at edge of base, otherwise perfect). GV-6. Per McKearin, fragment of this mold was found at Sandwich. A very rare, early pitcher.

Est.: \$1,500 - \$2,500 • Min. bid: \$800



Lot 97

Large, Freeblown Storage Jar, New England, probably blown at the New Hampshire Glass Factory (Keene Window Glass Factory), Washington Street, Keene, NH, 1825 - 1840. Aquamarine, deep cylindrical jar with nearly straight sides, outward folded rim - blowpipe pontil scar, ht. 11"; (a little light exterior wear, otherwise perfect). Ex. Joan Pappas collection, jar is pictured in her book, *A Rare Collection of Keene & Stoddard Glass*, plate 1, 2nd row. (Book is also included in the Lot).

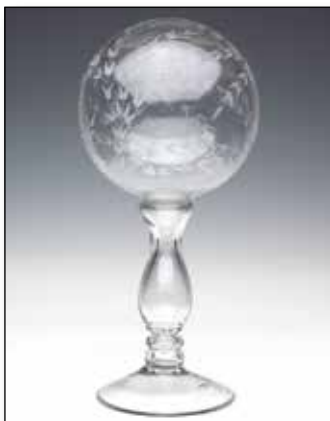
Est.: \$600 - \$900 • Min. bid: \$300



Lot 98

Early Freeblown Milk bowl, probably Midwest, possibly Pittsburgh, 1810 - 1840. Medium cobalt blue, deep cylindrical bowl with nearly straight sides flaring slightly to a solid, outward rolled rim - blowpipe pontil scar, ht. 4 7/8", rim. dia. 6 1/4", base dia. approximately 4 1/2", near mint; (some typical light usage wear). Scarce, beautiful color. Provenance: Ex. Darl Fifer collection.

Est.: \$400 - \$800 • Min. bid: \$250



Lot 99

Engraved Witch Ball on Stand, America, possibly New England Glass Company, Cambridge, MA, 1840 - 1860. Colorless non-lead glass blown in three parts and fused together, hollow corseted pedestal stand, applied foot with polished base - applied ball with copper-wheel engraved stem and floral motif, ht. 12 3/8"; (a bit of faint spotty interior bloom in the ball cover, otherwise perfect). See *New England Glass Making*, Wilson, Fig. 193. Great skill was required to create this piece.

Est.: \$200 - \$300 • Min. bid: \$120



Lot 100

Blown Witch Ball with Matching Stand, America, probably Pittsburgh, 1840 - 1860. Both are colorless with opaque white loopings, vase with compressed bulbous body, solid applied stem and flat circular foot with pontil scar; neck flares outward to a sheared, tooled rim having a 5 7/8" dia. ball cover, overall ht. 14 1/4", near mint; (stand has a bit of faint interior milkiness). An in-making tooling mark exists on the side of the bowl. See *Pittsburgh Glass*, plate 49.

Est.: \$700 - \$1,200 • Min. bid: \$400



Lot 101

Freeblown Witch Ball with Matching Stand, America, possibly a New Hampshire or Connecticut glasshouse, 1840 - 1860. Amber with a slight reddish tone, trumpet form stand and pontil scarred funnel foot blown from a single gather - tooled rim having a 4" dia; freeblown matching ball approx. 5 1/4" dia; overall ht. 11 7/8", both are near mint; (stand has a very faint exterior bloom, ball has some light interior residue and a minor 1/2" interior open bubble). Discovered in Southern Maine.

Est.: \$250 - \$450 • Min. bid: \$150



Lot 102

Early, Freeblown Bell Cover, America, probably South Jersey, 1820 - 1840. Beautiful, clear yellowish green, bell form with nearly straight sides flaring outward at base, tooled and outward folded rim - applied solid round knopf with pontil scar, 8 1/4" ht. x 7 1/2" dia., perfect with only some faint stain around the folded rim. These types of covers were utilitarian and used for a variety of purposes. A beautiful example with some large bubbles scattered throughout. Discovered in Salem County, NJ, and likely blown there.

Est.: \$300 - \$600 • Min. bid: \$180



Lot 103

Large, Freeblown Globular Bottle, New England, 1785 - 1825. Medium-to-deep yellowish olive, globular body, sheared mouth with heavy applied string rim - blowpipe pontil scar, ht. 10 1/2"; (some typical exterior wear and light scratches; a 1/4" x 3/4" open bubble on the interior of the shoulder, and an area approx. 2" in dia. where the surface has a rough texture and some streaks to the glass, that occurred during manufacture). A nice early "Glob" with good form.

Est.: \$500 - \$800 • Min. bid: \$300



Lot 104

Freeblown Decanter or Table Serving Bottle, New England, probably a Connecticut glasshouse, 1790 - 1820. Clear medium olive, decanter form with an elongated neck and graceful tapering shoulders, sheared and slightly flared mouth - relatively flat base with a delicate blowpipe pontil scar, ht. 9 7/8"; (a few faint light scratches and a touch of typical light wear, otherwise perfect). A classic early serving bottle, with nice form and character. These are known to come in several sizes.

Est.: \$600 - \$900 • Min. bid: \$300



Lot 105

Freeblown Chestnut Flask, New England, 1785 - 1820. Clear, light olive yellow, chestnut form, sheared mouth with a crudely applied ring collar - delicate blowpipe pontil scar, ht. 7 7/8", virtually perfect; (just the slightest trace of faint wear, otherwise pristine). Nice, slightly larger size; beautiful condition, color, and character, the "metal" being loaded with tiny seed bubbles.

Est.: \$300 - \$500 • Min. bid: \$180



Lot 109

Fancy Cologne Bottle, American, possibly Mt. Vernon Glass Works, Vernon, NY, 1830 - 1845. Deep tobacco amber, tombstone form with arched panels, scroll and leaf pattern on the front - large flower petal above oval label panel on reverse, sides with narrow ribs and tiny beading, tooled and inward rolled mouth - blowpipe pontil scar, ht. 3 7/8", near mint; (a touch of faint exterior wear, otherwise perfect). MW, plate 109, #12. Very rare in aqua, this is the only known example in amber.

Est.: \$2,000 - \$4,000 • Min. bid: \$1,000



Lot 106

Early, Freeblown Half-Size Decanter, Continental, probably French or Belgian, 1770 - 1800. Clear medium olive with yellowish tone, squatty decanter form with gracefully sloping shoulders, sheared mouth with a crudely applied wide flat band - misshapen oval base with a high kick-up and blowpipe pontil scar, ht. 7"; (just a wisp of faint exterior wear, otherwise attic mint!) Beautiful glass, nice character being filled with tiny seed bubbles, an interesting base, scarce size.

Est.: \$600 - \$900 • Min. bid: \$300



Lot 110

Fancy Cologne Bottle, America, 1835 - 1855. Medium to deep sapphire blue, tall slender rectangular form with concave corners, fancy plume or fern design on front, caduceus motif and floral designs on side panels, applied thin flanged collar - blowpipe pontil scar, ht. 6 3/8"; (approx. 40% of the thin flanged lip is missing and a touch of light interior residue, otherwise perfect). MW, plate 107, #11. Rare in aqua, this is believed to be unique as the only known example in color!

Est.: \$200 - \$400 • Min. bid: \$100



Lot 107

Early Patterned Utility Bottle, Mediterranean, or Middle East region, 1680 - 1720. Clear, medium-to-deep sea-green with an emerald tone, profuse pinkish and strawberry puce striations swirled throughout, octagonal, each of the eight panels embossed with a double rectangular outline and two large "X" designs, crudely sheared mouth with applied and crimped ring collar - smooth base, ht. 9 3/8", virtually attic mint. A rare, very early, and eye-appealing bottle, fantastic color.

Est.: \$500 - \$1,000 • Min. bid: \$300



Lot 111

Blown Molded Oval Panel Cologne, Boston and Sandwich Glass Works, 1845 - 1870. Bright lime green with gilding on each of the panels, neck and shoulders, hexagonal body with six oval panels, wide flanged mouth with original lily stopper - polished pontil, ht. 6 5/8", incl. stopper; (some minor loss to the gilding otherwise perfect). Stopper is numbered 43, with a matching 43 inscribed on the polished pontil. Identical mold pictured, BK, plate 3110. Scarce mold, rare color.

Est.: \$300 - \$600 • Min. bid: \$150



Lot 108

Early Blown Glass Roman Feeder, Mediterranean region, 200 - 400 A.D. Greenish aquamarine, almost a light sea-green, in the form of a bird with a tooled flared head and pinched beak forming spout, ht. 3", length 3 3/4"; (some typical glass degradation; minor chipping at tip of tail as is normal with these objects). This shape is often considered a baby feeding vessel and is also known as a "dropping bottle". Beautiful patina, attractive frothy glass, overall excellent condition.

Est.: \$200 - \$400 • Min. bid: \$100



Lot 112

Cut Overlay Panel and Star Cologne, Boston and Sandwich Glass Works, Sandwich, MA, 1850 - 1870. Cobalt cut to clear, cylindrical with alternating rows of stars and blocks, flanged mouth with original matching stopper - large star pattern cut to clear on the base, ht. 4" including stopper, perfect. Pattern similar to BK, plate 3290 (puff box), but in the cologne mold.

Est.: \$250 - \$450 • Min. bid: \$140



Lot 113

Rare, Pattern-Molded Seahorse Scent Bottle, probably Eastern US, possibly South Jersey, 1780 - 1830. Amethyst, ovoid body with tightly curled tail, ribs swirled to the right, applied quilled ribbons of glass along sides, sheared and polished mouth - applied footed and polished base, ht. 3 1/8", mint. See McK, pl.240, #21 for footed example. A unique scent bottle possibly blown as an offhand piece or whimsey, or to showcase the gaffer's skills. Exceptional, one of the most ornate known.

Est.: \$500 - \$1,000 • Min. bid: \$250



Lot 114

Cologne Bottle, probably a South Boston area glasshouse, possibly Boston and Sandwich Glass Works, Sandwich, MA, 1860 - 1880. Fiery opalescent Robin's-egg blue, obelisk form with two vertical ribs forming columns on all four sides, tooled ring type collar - smooth base, ht. 8 7/8"; (just a bit of light interior residue, otherwise perfect!) See MW, plate 112, #12. Beautiful, scarce color and mold.

Est.: \$400 - \$800 • Min. bid: \$200



Lot 115

Lot of (2), Sandwich-Type Cologne Bottles, probably Boston and Sandwich Glass Works 1860 - 1888. Medium to deep cobalt and plum amethyst, both are a flattened octagonal form with a corseted bodies, tooled flanged mouths - smooth bases, ht. 4" each; (amethyst example is near mint with a touch of light high point wear and a bit of minor residue in shoulder; cobalt example has a 3/8" strip of light dullness from the lip to the base on one side and interior residue in shoulder).

Est.: \$175 - \$350 • Min. bid: \$100



Lot 116

Bell / "TEISSIER - PREVOST / A PARIS", America, 1850 - 1860. Medium to deep blue green with a slight emerald tone, rectangular with wide beveled corners, applied sloping collar - large rectangular iron pontil scar, ht. 7 3/8"; (a little interior stain, primarily down one of the beveled corners on the reverse, and a little light high point wear near the base on the reverse, otherwise near mint). A crude example, strongly embossed, and with a great looking pontil!

Est.: \$300 - \$500 • Min. bid: \$150



Lot 117

Bell / "TELSSIER - PREVOST / A PARIS", America, 1860 - 1875. Light-to-medium blue green, rectangular with wide beveled corners, applied sloping collar - early hinge-mold smooth base, ht. 7 3/8"; (professionally cleaned with a little scattered minor exterior wear remaining). A nice crude, seedy, bubbly, example. Most of these bottles are believed to be American, and held double lavender water from France. They are very popular because of the embossed bell and range of colors.

Est.: \$175 - \$350 • Min. bid: \$100



Lot 118

Bell / "TELSSIER - PREVOST / A PARIS", America, 1860 - 1875. Medium-to-deep blue green, rectangular with wide beveled corners, applied sloping collar - early smooth base, ht. 7 1/4", near mint; (just a touch of typical light exterior wear, otherwise attic mint). Nice rich color, strong embossing, this example also being filled with tiny seed bubbles.

Est.: \$200 - \$400 • Min. bid: \$120



Lot 119

Bell / "TELSSIER - PREVOST / A PARIS", America, 1860 - 1875. Medium-to-deep blue green, slightly more greenish tone than the previous lot, rectangular with wide beveled corners, applied sloping collar - early smooth base, ht. 7 3/8", near mint; (a shallow 1/8" open bubble at one of the base corners, and a couple of tiny, less-than-pinhead size open surface bubbles, otherwise perfect). Another nice example, clean and attractive.

Est.: \$200 - \$400 • Min. bid: \$120



Lot 120

Bell / "TELSSIER - PREVOST / A PARIS" (with 95% complete original label), 1865 - 1875. Beautiful medium teal blue, rectangular with wide beveled corners, applied sloping collar - smooth base, ht. 7 3/8", near mint; (a 1/8" flake off the back edge of the lip, otherwise perfect). The graphic label depicting a large bell has some staining and is somewhat darkened from age, but is generally very legible. Gorgeous color, very rare with the original label.

Est.: \$300 - \$500 • Min. bid: \$150



Lot 121

Blown, Striped Inkwell, probably Boston, possibly Boston and Sandwich Glass Works, Sandwich, MA, 1870 - 1880. Colorless with alternating pink and white stripes swirled to the right, domed form, ground mouth with original pewter closure and hinged cap - polished pontil scarred base, 2 3/8" ht; x 3 1/2" dia, perfect! C #1381. Also, pattern and colors similar to tumbler illustrate in BK, plate 3401. A rare, fantastic early inkwell, beautiful colors, excellent condition.

Est.: \$750 - \$1,250 • Min. bid: \$400



Lot 122

Rare, Figural Tree Trunk Inkwell, probably eastern United States, possibly south Boston area, 1871 -1880. Clear medium green with an emerald tone and some interesting pigeon blood red striations scattered through the body, figural log form with bark and branches on the sides, "PAT. JAN / 17. 1871." embossed on interior of the shoulder - improved pontil scarred base, 1 7/8" ht. x 3" dia; (a touch of minor exterior wear, otherwise perfect). C #1422. An unusual and rare ink.

Est.: \$500 - \$1,000 • Min. bid: \$300



Lot 123

"J-&-I-E-M" Ink Bottle, America, 1865 - 1890. Deep cornflower blue, almost a light sapphire, cylindrical with six block panels around sides, domed shoulders, offset neck with sheared mouth - "L" (on smooth base), ht. 1 5/8"; (lightly cleaned to original luster and near mint condition). Similar to C #628. A beautiful, scarce and desirable color, excellent overall condition.

Est.: \$1,000 - \$2,000 • Min. bid: \$600



Lot 124

"J-&-I-E-M" Ink Bottle, America, 1865 - 1890. Beautiful citron coloration, cylindrical with six block panels around sides, domed shoulders, offset neck with sheared mouth - smooth base, ht. 1 3/4"; (a hard to see, shallow, 1/8" flake along the top edge of one of the block panels, a trace of interior residue, otherwise very near mint). C #628. A scarce, attractive color for this mold.

Est.: \$700 - \$900 • Min. bid: \$400



Lot 125

"J-&-I-E-M" Ink Bottle, America, 1865 - 1890. Medium to deep chocolate amber, cylindrical with six block panels around sides, domed shoulders, offset neck with sheared mouth - "5" (on smooth base), ht. 1 3/4", very near mint; (just a bit of light residue on the interior of the dome, and a partially open bubble on the interior). Similar to C #628. A nice clean example.

Est.: \$250 - \$450 • Min. bid: \$140



Lot 126

Umbrella Ink, America, 1840 - 1860. Medium blue green, 8-sided umbrella form, sheared and inward rolled mouth - blowpipe pontil scar, 2 3/8" ht. x 2 1/8" wide, virtually attic mint! A very attractive example, heavily whittled, clean and sparkling.

Est.: \$125 - \$250 • Min. bid: \$70



Lot 127

"J. - S. - D - U - N - H - A - M", America, 1845 - 1860. Aquamarine, 8-sided umbrella form, sheared and inward rolled mouth - blowpipe pontil scar, 2 1/2" ht. x 2 1/4" wide, sparkling attic mint! C #116. A scarce St. Louis ink, having nice character, brilliant glass, outstanding condition.

Est.: \$250 - \$400 • Min. bid: \$140



Lot 128

"SHEETS - WRITING - FLUID - DAYTON / O.", America, probably an early Ohio glasshouse, 1850 - 1860. Aquamarine, hexagonal with a corseted body and unusual mushroom-type shoulders, sheared and inward rolled mouth - blowpipe pontil scar, ht. 2 1/2", near mint; (just a trace of faint exterior wear and a bit of trapped residue inside the rolled lip, otherwise perfect). An extremely rare ink, beautifully whittled, outstanding condition, one that does not come around often.

Est.: \$500 - \$800 • Min. bid: \$300



Lot 129

Multi-Sided Inkwell, America, 1840 - 1860. Medium emerald coloration, 12-sided cylindrical form, sheared and inward rolled mouth - blowpipe pontil scar, 1 3/4" ht. x 1 5/8" wide, perfect! Similar to C #550. A crude, whittled, beautiful example in a somewhat scarce color that is typically found in more of a blue-green tone.

Est.: \$200 - \$400 • Min. bid: \$120



Lot 133

"GOODWIN & LEONARD" (label only), **Master Ink Bottle**, New England, 1855 - 1865. Medium to deep olive green, cylindrical, applied sloping collar - early smooth base, ht. 5 1/4"; (the bottle is virtually attic mint, the original label is 99% complete with some expected very minor wear, otherwise perfect). A rare little master ink, outstanding condition, and character, filled with tiny seed bubbles.

Est.: \$300 - \$600 • Min. bid: \$180



Lot 130

Early, Domed Inkwell, Granite Glass Co, Stoddard, NH, 1846 - 1862. Yellowish olive amber, almost an olive yellow, cylindrical with domed shoulders, sheared mouth - blowpipe pontil scar, 2" ht. x 2 1/2" diameter, perfect! (a little light content residue that should easily wash out). C #573. A fantastic piece, nice color, character, outstanding condition. An identical inkwell, as well as shards of this mold, have been found on the Granite Glass Company site.

Est.: \$700 - \$1,200 • Min. bid: \$400



Lot 134

Half-Size, Early Dip Mold Snuff Jar, New England, or possibly England, 1800 - 1830. Clear, light to medium olive, square with domed shoulders, sheared and tooled slightly flared mouth - sand type pontil scar, ht. 4", near attic mint; (just a touch of very minor exterior wear and a bit of faint interior residue that would probably wash out). See MW, plate 75, #12. Beautiful color, excellent clarity, scarce, attractive size.

Est.: \$500 - \$800 • Min. bid: \$300



Lot 131

Blown Three Mold Inkwell, Coventry Glass Works, Coventry, CT, 1820 - 1840. Deep olive amber, cylindrical, heavy disk mouth - plain base with blowpipe pontil scar, 1 3/8" ht. x 2 1/4" wide; (just a touch of very light exterior wear, otherwise perfect). G11-16. Similar to C #1182. These little inkwells are very early, often heavy, and used over a period of many years. They often have moderate, to heavy usage wear. Although not a great rarity, this one is certainly a little nicer than most.

Est.: \$150 - \$250 • Min. bid: \$80



Lot 135

Early Dip Mold Snuff Jar, probably an early New England glasshouse, 1810 - 1830. Deep olive green, square with drawn-up shoulders, sheared and tooled mouth - blowpipe pontil scar, ht. 6 1/8"; (a little light exterior bloom on two of the sides, and in the shoulder area, some minor scratches and light exterior wear). A very crude example with irregular shoulders and a slightly off-center neck. Very crude with some potstones (no associated damage), and frit through the shoulder area.

Est.: \$400 - \$600 • Min. bid: \$200



Lot 132

Labeled Umbrella Ink, America, 1840 - 1860. Medium olive with a slight yellowish tone, 8-sided umbrella form, sheared and inward rolled mouth - blowpipe pontil scar, 2 1/4" ht. x 2 1/8" octagonal, attic mint! Similar to C#133. Complete and original label reads, "Superior / Black Ink. / Prepared By / E.S. Curtis, Boston." A great little ink, beautiful and rare with the original label!

Est.: \$400 - \$600 • Min. bid: \$200



Lot 136

Early Dip Mold Snuff Jar, probably England, possibly New England, 1800 - 1830. Medium olive with a slight yellowish tone, square high-shoulder form, domed shoulders, sheared, tooled, and slightly flared mouth - sand type pontil scar, ht. 6 1/8"; (some narrow rings of faint interior haze, a touch of exterior "bloom", and a small potstone on one of the sides with a little iridescent "moon" around it). A nice early snuff jar, the noted condition issues are all fairly minor.

Est.: \$200 - \$400 • Min. bid: \$100



Lot 137

Lot of (2), Early Snuff Jars, America, probably New England, 1840 - 1860. Yellowish olive amber and olive amber, both were blown in a dip mold, rectangular with beveled corners, sheared and tooled lips - blowpipe pontil scarred bases, ht. 3 7/8" and 4" respectively; (both are near mint with just typical light exterior wear). A nice clear pair of early snuff jars.

Est.: \$150 - \$250 • Min. bid: \$70



Lot 141

Petal-Type Preserve Jar, Midwest, probably a Pittsburgh district glasshouse, 1850 - 1860. Bright yellowish-olive green, cylindrical, 4-pc. mold with 10 large petals around shoulder, applied mouth - red iron pontil scar, Qt, near mint; (a couple of tiny, pinhead size areas of roughness at the edge of the collar; a very shallow 1/8" flake at the collar, and one on the body, otherwise attic mint!) L#3067. A beautiful jar, nice color, clean and sparkling.

Est.: \$1,200 - \$1,800 • Min. bid: \$600



Lot 138

Large Snuff or Utility Jar, probably England, possibly Continental, 1850 - 1870. Medium yellowish olive, 3-pc. mold, rectangular with beveled corners, sheared and tooled mouth - early smooth base, ht. 9 1/2"; (just a trace of very faint exterior wear, otherwise perfect). A nice jar, excellent condition, scarce size.

Est.: \$175 - \$275 • Min. bid: \$100



Lot 142

Petal-Type Preserve Jar, Midwest, probably a Pittsburgh district glasshouse, 1850 - 1860. Aquamarine, cylindrical, 3-pc. mold with 10 large petals around shoulder, applied mouth - iron pontil scar, Qt, near mint; (a couple of tiny, pinprick spots of roughness on the edge of the collar; a small trace of very light interior milkiness in the shoulder and light exterior wear). L#3067. An attractive jar, nicely whittled.

Est.: \$100 - \$150 • Min. bid: \$50



Lot 139

"FISCHER'S - OIL - DAN. T. FISCHER / JEWELER & OPTICIAN / FLEMINGSBURG KY", America, 1890 - 1910. Colorless, figural fish, tooled ring collar - smooth base, ht. 5", perfect. A rare figural bottle that likely held some type of watch lubricant, either sold, or perhaps given, as an advertising gift to their better customers. A lot of workmanship in the mold. Interesting and very unusual.

Est.: \$175 - \$275 • Min. bid: \$100



Lot 143

"POTTER & BODINE'S / AIR - TIGHT FRUIT JAR / PHILADA - PATENTED / APRIL 13th 1858", a South Jersey glasshouse, probably Potter & Bodine, Bridgeton, NJ, 1858 - 1863. Aquamarine, barrel form, tooled wax seal mouth - large sand type pontil scar, Qt, virtually attic mint; (a trace of residue trapped in the grooved wax seal). L#2388. A classic, attractive early jar, outstanding overall condition.

Est.: \$800 - \$1,200 • Min. bid: \$500



Lot 140

"ABSOLUTELY / PURE MILK" / (MAN MILKING A COW) / "THE MILK PROTECTOR" - "TO BE USED ONLY AS DESIGNATED / MILK / & / CREAM / JAR", Thatcher Mfg. Co., Potsdam, N.Y., 1886 - 1892. Colorless, cylindrical, tooled square collar mouth with original, correct quart Thatcher glass lid and wire bail - **"THATCHER MFG. CO / POTSDAM, N.Y."** (on smooth base), Qt, near mint; (some faint scratches behind the cow, on the interior, otherwise perfect).

Est.: \$800 - \$1,200 • Min. bid: \$400



Lot 144

"A. STONE & Co / PHILA" FRUIT JAR, possibly a Pittsburgh district glasshouse, 1865 - 1875. Aquamarine, cylindrical, large applied collar with internal threading, **"A. STONE & Co / 3 / PHILADA."** (on lugged threaded stopper) - early smooth base, Qt, near mint; (a 3/8" shallow chip on the underside of the threaded stopple; a 3/8" chip and a minor 3/8" area of iridescence on the internal neck threads). RB #2748.

Est.: \$600 - \$900 • Min. bid: \$300

An Amazing Time Capsule:

Represented on these two pages are
Lot numbers 262, 263 & 264.



WHEATLEY'S

H



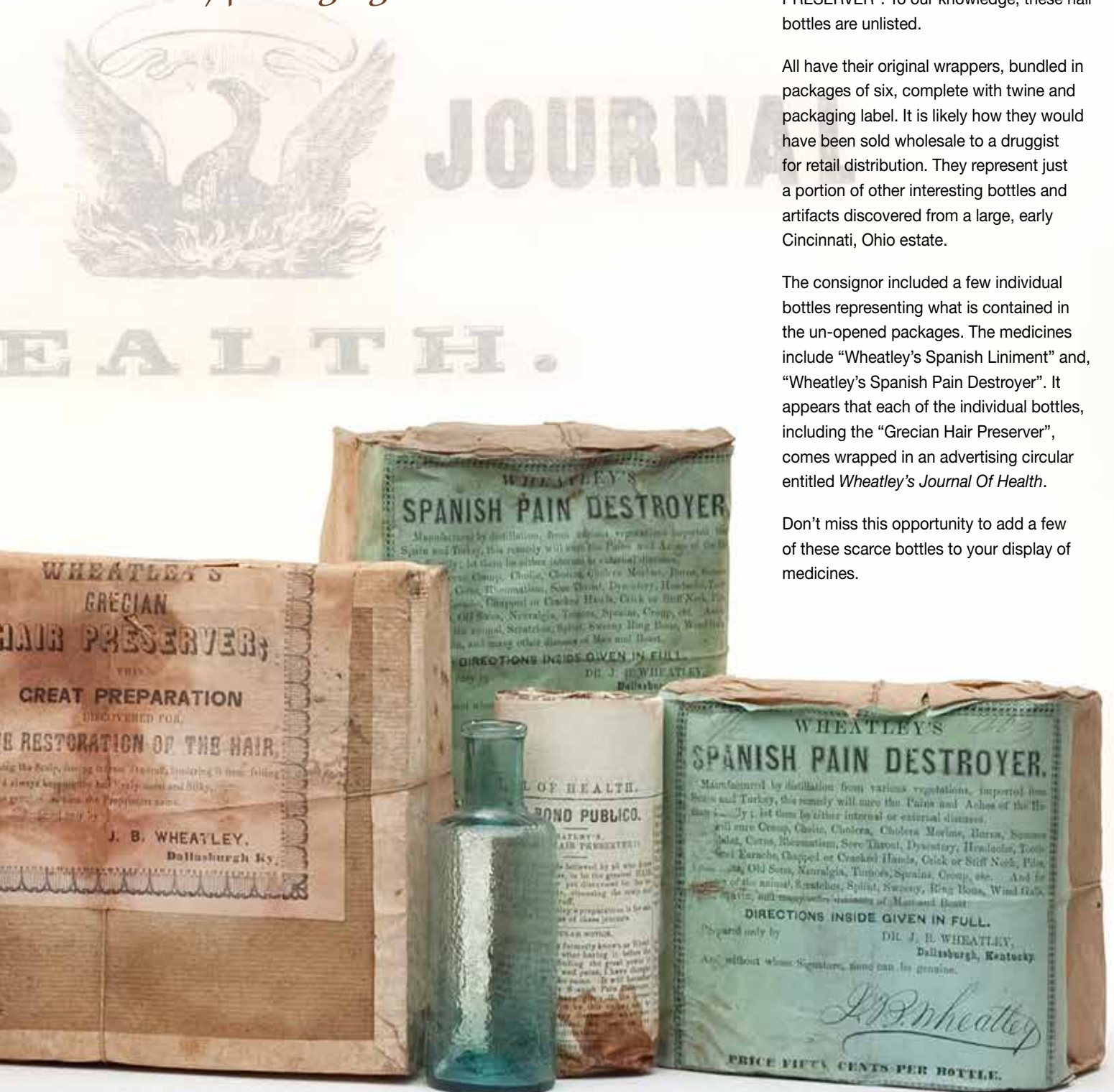
Pontiled medicines and rare, unlisted, hair bottles from the Dr. J. B. Wheatley Company, Dallasburgh, Kentucky with contents, packaging and labels!

Pictured here is an exciting, recently discovered cache of bottles from the Dr. J. B. Wheatley Company. Examples include pontiled, unembossed cylindrical medicines with original wrappers and packaging, and early, smooth-base, fancy hair bottles embossed, "DR J.B. WHEATLEYS / GRECIAN - HAIR PRESERVER". To our knowledge, these hair bottles are unlisted.

All have their original wrappers, bundled in packages of six, complete with twine and packaging label. It is likely how they would have been sold wholesale to a druggist for retail distribution. They represent just a portion of other interesting bottles and artifacts discovered from a large, early Cincinnati, Ohio estate.

The consignor included a few individual bottles representing what is contained in the un-opened packages. The medicines include "Wheatley's Spanish Liniment" and "Wheatley's Spanish Pain Destroyer". It appears that each of the individual bottles, including the "Grecian Hair Preserver", comes wrapped in an advertising circular entitled *Wheatley's Journal Of Health*.

Don't miss this opportunity to add a few of these scarce bottles to your display of medicines.





Lot 145

"ACKER'S / SELECT / TEA / FINLEY ACKER & Co / TEA SPECIALISTS / PHILADELPHIA / U.S.A. - (Man Riding an Elephant) - "FINLEY ACKER & CO / A / HG / REGISTERED" - (Tea Leaves), America, 1894 - 1900. Bright yellowish green, square with a short neck, factory ground collar and original gold painted ornate crown stopper, overall ht. 11"; (some faint interior haze near the shoulders, otherwise near mint). Extremely rare. See Zumwalt, p.15, also pictured on the cover.

Est.: \$500 - \$1,000 • Min. bid: \$250



Lot 146

Large, Cathedral Pickle Jar, America, 1860 - 1870. Rich, medium-to-deep bluish green, square with beveled corners, arched gothic panels, three with quatrefoil design and beaded trefoil motif, applied ring collar - smooth base, ht. 13 5/8", very near mint; (a few light scratches on the label panel, otherwise attic mint!) See Zumwalt, p. 456. A great example with nice character and crudeness, excellent deep color, large impressive size.

Est.: \$1,400 - \$2,200 • Min. bid: \$700



Lot 147

Large, Cathedral Pickle Jar, Willington Glass Works, Willington, CT, 1850 - 1860. Pale ice blue, square with beveled corners, arched gothic panels with ribbed columns, sheared and outward rolled mouth - sand type pontil scar, ht. 11", very near mint; (just a minor patch of extremely faint haze on one of the sides, near the shoulder, otherwise perfect). Zumwalt, p.456. The middle of three sizes, a classic, early "Willington" Pickle Jar.

Est.: \$800 - \$1,600 • Min. bid: \$500



Lot 148

Cloverleaf Pickle Jar, New England, possibly Keene Marlboro Street Glassworks, 1835 - 1842. Light to medium blue green, octofoil form, sheared, tooled, and outward rolled mouth -blowpipe pontil scar, ht. 6 1/2", near mint; (a touch of light exterior wear and very faint, minor interior haze, primarily near the shoulders). A scarce size, scarce color, for a "Cloverleaf" jar. Provenance: James Becker collection.

Est.: \$400 - \$600 • Min. bid: \$200



Lot 149

"W. K. LEWIS & Co. - BOSTON"

Pickle Jar, America, 1850 - 1860. Aquamarine, cylindrical with five rounded body panels, horizontal rings above and below the shoulders, applied square collar - heavy iron pontil scar, ht. 10 3/4", virtually attic mint; (just a trace of faint exterior wear and an onionskin-thin open surface bubble that likely occurred during manufacture). Zumwalt, p.277. Nice crude glass, sparkling clean, a "finest possible example" of this scarce jar.

Est.: \$400 - \$600 • Min. bid: \$200



Lot 150

"W. K. L & Co" Cathedral Ketchup Bottle (with 90% complete original label), America, 1850 - 1860. Aquamarine, square with rounded corners, arched gothic panels, three with quatrefoil design and beaded trefoil motif, applied double round collar - blowpipe pontil scar, ht. 10", near mint; (a little faint minor haze or "bloom" in the shoulder area; a touch of light exterior wear on one of the rounded corners). Zumwalt, p. 277. A scarce mold and extremely rare, possibly unique, with the original label.

Est.: \$400 - \$600 • Min. bid: \$200



Lot 151

Lot of (2), "W. K. LEWIS & Co" Bottles, America, 1860 - 1875. **"W. K. / LEWIS & Co" Peppersauce Bottle**, and an extremely rare, **"W.K. LEWIS & Co" Extract Bottle**. Both are aqua, peppersauce is round with 8-lobed panels and fluted shoulders, the extract is rectangular with beveled corners, both with applied double collar and smooth base, ht. 8 1/4" and 5 3/8" respectively; (peppersauce is near mint with a 1" band of very faint interior haze; the extract has some light stain and two, 1/2" fissures in base).

Est.: \$100 - \$200 • Min. bid: \$50



Lot 152

"MILWAUKEE PICKLE Co / WAUWATOSA, WIS." Large Pickle Jar, probably De Steiger Glass Company, La Salle, IL, 1879 - 1895. Medium golden amber, cylindrical, applied large square collar - **"D. S. G. Co."** (on smooth base), ht. 12 1/2"; (just a slight touch of minor, light exterior wear, otherwise attic mint). See Zumwalt, p. 305. A large, impressive pickle jar; the largest of three known sizes. A scarce jar, nicely whittled, excellent condition.

Est.: \$300 - \$500 • Min. bid: \$180



Lot 153

Lot of (3), "C.D. BROOKS / BOSTON" Pickle Jars, America, 1880 - 1895. Medium amber and yellowish honey amber, all are cylindrical with applied square collars - smooth bases, ht. 7 1/2"; 9 3/8", and 11 5/8"; (the large and medium examples are very near mint with just a bit typical very light exterior wear; the small example has a little minor exterior dullness and a few light scratches and wear, but no other form of damage). Zumwalt, p. 60. A very nice grouping.

Est.: \$250 - \$450 • Min. bid: \$140



Lot 157

"A.M. BININGER & Co / No 375 BROADWAY N.Y.", America, 1863 - 1870. Beautiful topaz coloration with some subtle deeper apricot striations swirled through the body, rectangular with beveled corners, applied sloping collar - smooth base, ht. 9 7/8", near mint; (just a touch of light exterior wear and a little, very faint, interior haze). This mold comes in an array of beautiful colors. This one is particularly attractive, especially with the subtle striations. Ex. Diane Wheaton collection.

Est.: \$500 - \$1,000 • Min. bid: \$300



Lot 154

"BININGER" / CLUSTER OF GRAPES / "NEW YORK" (on applied seal), Rickett's Glass Works, Bristol, England, 1830 - 1840. Olive green, cylindrical, applied sloping double collar - **"RICKETT'S & Co GLASS WORKS BRISTOL"** (on base), sand type pontil scar, ht. 10 1/4"; (a 1" x 1 1/2" hole in the shoulder with two cracks, 2" and 4", extending from it). Extremely rare, this bottle was blown in England for Abraham Bininger in New York, and believed to be the earliest of the Bininger bottles.

Est.: \$200 - \$400 • Min. bid: \$100



Lot 158

"A.M. BININGER & Co / No 375 BROADWAY N.Y.", America, 1863 - 1870. Gorgeous, bright yellow green with a citron tone, rectangular with beveled corners, applied sloping collar - smooth base, ht. 9 3/4"; (it is difficult to tell, but the bottle has been lightly cleaned, and certainly appears as virtually attic mint!). A scarce mold, brilliant, beautiful eye-appealing color, outstanding condition. Provenance: Ex. Diane Wheaton collection.

Est.: \$400 - \$800 • Min. bid: \$250



Lot 155

Rare Bininger Whimsey, "DISTILLED IN 1848. / OLD KENTUCKY / 1849 / RESERVE / BOURBON / A.M. BININGER & Co. / 338 BROADWAY, N.Y.", America, 1850 - 1860. Amber, barrel form with an 1/8" opening in center of barrel, likely to accommodate a spigot, tooled and sealed at shoulders to form 2nd barrel end, blowpipe pontil scar, ht. 6 1/2"; (3/4" crack at base edge; some overall light interior residue and stain). Ex. Diane Wheaton collection.

Est.: \$400 - \$800 • Min. bid: \$250



Lot 159

"OLD LONDON DOCK - GIN - A.M. BININGER & Co. / No, 17 BROAD ST" (Crown motif on shoulder), America, 1860 - 1875. Medium to deep olive with a slight amber tone, square with beveled corners, applied sloping collar - smooth base, ht. 9 3/4", near mint; (just the slightest trace of minor exterior wear and a paper-thin, pinhead open bubble on the label panel, otherwise excellent). A good clean example! Ex. Diane Wheaton collection.

Est.: \$200 - \$400 • Min. bid: \$120



Lot 156

"BININGER'S / TRAVELERS / GUIDE / A.M. BININGER & CO / No 19 BROAD ST N.Y.", America, 1860 - 1870. Light golden amber through the center, shading to a yellowish honey coloration near the sides, flattened teardrop form, applied double collar - smooth base, ht. 6 5/8", near mint; (just a touch of faint exterior wear, primarily on the reverse, otherwise perfect). A great example, clean, good color, no lip issues, and very little wear, as is often an issue with these flasks.

Est.: \$500 - \$800 • Min. bid: \$250



Lot 160

"OLD LONDON DOCK - GIN - A.M. BININGER & CO. / No. 19 BROAD ST N.Y.", America, 1860 - 1875. Medium olive, square with beveled corners, applied sloping collar - smooth base, ht. 8"; (a couple of 1/8" spots of minor roughness, or tiny bruises, on the edge of the lip, otherwise clean, sparkling, virtually attic mint). Scarce, small size. Provenance: Ex. Diane Wheaton collection.

Est.: \$200 - \$400 • Min. bid: \$120



Lot 161

“OLD LONDON DOCK - GIN - A.M. BININGER & Co. / No. 338 BROADWAY.”, America, 1860 - 1875. Medium olive yellow, square with beveled corners, applied sloping collar - smooth base, ht. 9 3/4”; (a couple minor scratches and typical light exterior wear, otherwise near attic mint). Beautiful, attractive color with some nice bubbles and character to the glass. Ex. Diane Wheaton collection.

Est.: \$200 - \$400 • Min. bid: \$120



Lot 165

Lot of (2), “BININGER’S / OLD DOMINION - WHEAT TONIC, - A.M. BININGER & Co: / No. 19 BROAD ST, N.Y.”

Bottles, America, 1860 - 1875. Golden amber and medium olive with a slight yellowish tone, both are square with beveled corners, applied sloping collars - smooth bases, ht. 9 3/4”; (olive example is near mint with a touch of typical light wear; amber example has several iridescent bruises, 3/8” to 5/8”, on the collar, and some exterior wear and dullness). Ex. Diane Wheaton collection.

Est.: \$500 - \$800 • Min. bid: \$300



Lot 162

“OLD LONDON DOCK - GIN - A.M. BININGER & Co. / No. 338 BROADWAY.”, America, 1860 - 1875. Medium olive with a yellowish tone, square with beveled corners, applied sloping collar - smooth base, ht. 9 5/8”; (some light interior residue and stain through the body, otherwise excellent). Some of the light stain may wash out, but otherwise should easily clean with just a day or two in the tumbler, if desired). Ex. Diane Wheaton collection.

Est.: \$175 - \$350 • Min. bid: \$100



Lot 166

Lot of (2), Bininger Bottles, 1860 - 1875. “A.M. BININGER & CO: / NEW YORK.” (rectangular slug plate on two panels), amber, square, applied tapered collar - smooth base, ht. 10”; (lightly cleaned to original luster; a 1 1/2” annealing line at base corner). And, “DISTILLED IN 1848 / OLD KENTUCKY / BOURBON / A.M. BININGER & Co. 338 BROADWAY”, figural barrel, applied double collar - smooth base, ht. 8”; (some exterior wear, interior haze, and small potstone with tiny 1/16” legs).

Est.: \$175 - \$350 • Min. bid: \$100



Lot 163

“BININGER’S / OLD DOMINION - WHEAT TONIC, - A.M. BININGER & Co: / No. 338 BROADWAY, N.Y.”, America, 1860 - 1875. Bright yellowish olive, square with beveled corners, applied sloping collar - smooth base, ht. 9 1/2”; (a couple of minor pinhead open bubbles and a shallow, 1/4” open bubble on the “H” in “WHEAT”, otherwise virtually attic mint). A clean, bright example, nice character with plenty of bubbles. Ex. Diane Wheaton collection.

Est.: \$400 - \$600 • Min. bid: \$250



Lot 167

“AMBROSIAL / B.M.&E.A.W & Co” (on applied seal), America, 1850 - 1860. Medium amber, flattened chestnut form with an applied handle curled at lower terminal, applied mouth with flat band - blowpipe pontil scar, ht. 8 7/8”; (just a bit of very minor spotty haze on the interior, near the shoulder; some overall fine scratches on the reverse). Nice strong impression on the applied seal.

Est.: \$175 - \$275 • Min. bid: \$100



Lot 164

“BININGER’S / OLD DOMINION - WHEAT TONIC, - A.M. BININGER & Co: / No. 19 BROAD ST, N.Y.”, America, 1860 - 1875. Clear, medium olive green, square with beveled corners, applied sloping collar - smooth base, ht. 9 7/8”; (a little light exterior wear and faint, scratches, primarily on the label panel, an 1/8” paper-thin open bubble, otherwise, bright, clean, and near mint!) Crisp, strong embossing, nice clarity and color, - no trace of yellow or amber in this one.

Est.: \$400 - \$600 • Min. bid: \$250



Lot 168

Freeblown Applied Handle Chestnut Flask, America, or Continental, 1840 - 1855. Golden amber through the midsection, shading to a deeper reddish amber near the shoulders and base, plump chestnut form with an applied handle curled at lower attachment, crudely applied flattened ring collar below sheared lip - blowpipe pontil scar, ht. 6 3/8”; (a very light 3” scratch near corner, otherwise near attic mint). See MW, plate 48, #1. This example appears to be a bit earlier than most.

Est.: \$120 - \$180 • Min. bid: \$60



Lot 169

“**STRICKLAND’S**” (with 95% original label), America, 1874 - 1877. Golden amber, flattened teardrop form, applied mouth with flat band - smooth base, ht. 6 7/8”; (a shallow, 3/16” sliver flake on the applied ring; a paper-thin ¼” open bubble near the mold seam, label has some staining and darkening from age). Very scarce with the original label! The Strickland Co. was established in 1873 on Adams St, Chicago and listed as rectifiers and wholesale liquor distributors in 1874.

Est.: \$125 - \$250 • Min. bid: \$70



Lot 173

“**SUFFOLK BITTERS - PHIL-BROOK & TUCKER / BOSTON**”, America, 1865 - 1875. Gorgeous medium yellow coloration through the body shading to rich honey yellow in the head, and a clear straw yellow in the hind feet, figural pig, applied double round

collar, length 10”, near mint; (just a slight trace of very light exterior wear; a pinhead bit of minor roughness on the tail that you can feel, but is barely noticeable, otherwise perfect!) R/H #S217. Beautiful example, fantastic, eye-appealing color.

Est.: \$3,000 - \$6,000 • Min. bid: \$1,600



Lot 170

“**J. T. GAYEN / ALTONA**”, probably America, 1865 - 1875. Medium amber, figural cannon barrel, crudely applied round collar - smooth base, ht. 13 ½”; virtually attic mint; (just the slightest trace of faint exterior wear, otherwise pristine!) J. T. Gayen is believed to be one of the earliest distilleries from Altoona, Hamburg, Germany. Likely a copycat of the successful Bininger cannon bottle. Finest possible example, heavily whittled, outstanding condition. James Becker collection.

Est.: \$1,200 - \$1,800 • Min. bid: \$600



Lot 174

“**Mc KEEVER’S ARMY BITTERS**”, America, 1865 - 1875. Medium amber, figural Civil War drum below cluster of stacked cannonballs forming conical shoulders, applied sloping collar - smooth base, ht. 10 ½”, virtually attic mint! R/H #M58. One of the great classics of the figural bitters category and obviously a very historical mold pertaining to the War between the States. Excellent condition, a great example!

Est.: \$3,500 - \$5,500 • Min. bid: \$1,800



Lot 171

“**CAMPBELL & SEAMAN / NEW YORK**” Whiskey Bottle, America, 1859 - 1870. Brilliant yellow olive, squatty square form with beveled corners, applied sloping collar - early smooth base, ht. 8 ¼”, near mint; (just a trace of very faint exterior wear). An extremely rare whiskey with great eye-appeal! One of only a few known examples. Beautiful color, outstanding character, excellent condition! From the same company that put out the Old Continental Whiskey.

Est.: \$1,200 - \$2,200 • Min. bid: \$600



Lot 175

“**BROWN’S / CELEBRATED / INDIAN HERB BITTERS - PATENTED / FEB 11. / 1868**” (with remnants of original gold paint), America, 1868 - 1880. Bright golden amber shading to a light yellowish honey coloration above the waist and through the arms, figural Indian maiden, sheared and inward rolled lip - smooth base, ht. 12 3/8”, virtually attic mint; (a small tissue-paper-thin open bubble on one of the arms, otherwise pristine). R/H #B226. Beautiful, outstanding condition, nice color.

Est.: \$600 - \$1,200 • Min. bid: \$400



Lot 172

“**DUFFY**” / (Rooster Perched on Crescent Moon) / “**CRESCENT**” (inside moon) “**SALOON / 204 / JEFFERSON / STREET / LOUISVILLE / KY.**”, America, 1865 - 1875. Cobalt blue, figural pig, rough sheared mouth, length 7 ½”, near mint; (a 3/8” area of

iridescence on the inside edge of the sheared mouth that likely occurred when the cork was pried out). Exceptional color and rarity. A great example, strong embossing, virtually no high point wear. Considered by many to be the top “eastern” whiskey.

Est.: \$15,000 - \$25,000 • Min. bid: \$8,000



Lot 176

“**S T / DRAKE’S / 1860 / PLANTATION / X / BITTERS - PATENTED / 1862**”, America, 1862 - 1880. Deep yellowish olive amber, cabin form with 6 logs above the label panel, applied sloping collar - smooth base, ht. 9 7/8”, near mint; (some high point wear and a little faint exterior bloom in the shoulder area, primarily on the reverse). R/H #D108. A heavy, crude example in a scarce, desirable color with plenty of olive tone.

Est.: \$1,000 - \$1,500 • Min. bid: \$600



Lot 177

“S T / DRAKE’S / 1860 / PLANTATION / X / BITTERS - PATENTED / 1862”, America, 1862 - 1880. Light to medium apricot with some beautiful salmon tones in natural daylight, cabin form with 6 logs above the label panel, applied sloping collar - smooth base, ht. 9 3/4”; (just a 1/8” onion-skin thin open bubble on one of the roof panels and some very faint interior residue, otherwise perfect). R/H #D106. Slightly weak embossing as is common on this mold. A scarce color with no amber in this one!

Est.: \$1,500 - \$2,500 • Min. bid: \$800



Lot 178

“S T / DRAKE’S / 1860 / PLANTATION / X / BITTERS - PATENTED / 1862”, America, 1862 - 1880. Medium peach apricot with some lighter topaz tones through the corners, cabin form with 6 logs above the label panel, applied sloping collar - smooth base, ht. 9 3/4”; (just a minor touch of light exterior wear and a tiny, pinprick little flake on the edge of the lip, otherwise excellent!) R/H #D106. Slightly weak embossing as is common on the D-106 mold. Another scarce, beautiful color.

Est.: \$1,500 - \$2,500 • Min. bid: \$800



Lot 179

“S T / DRAKE’S / 1860 / PLANTATION / X / BITTERS - PATENTED / 1862” (with original front and back labels), America, 1862 - 1880. Medium golden amber shading to a dense amber through the roof, and honey yellow through the corners, cabin form with 6 logs above the label panel, applied sloping collar - smooth base, ht. 9 5/8”; (just the slightest trace of faint wear, otherwise attic mint; labels 98% complete and darkened some from age). R/H #D108. Unusually bold embossing!

Est.: \$200 - \$400 • Min. bid: \$120



Lot 180

“S T / DRAKE’S / 1860 / PLANTATION / X / BITTERS - PATENTED / 1862” (with original front and back labels), America, 1862 - 1880. Yellowish golden amber with an orange tone, cabin form with 4 logs above the label panel, applied sloping collar - smooth base, ht. 10”, perfect; (front label is 99% complete; rear label approx. 90% complete, both are darkened a bit from age, but otherwise legible). R/H #D110. Nice strong embossing, clean, wonderful with the original labels.

Est.: \$200 - \$400 • Min. bid: \$120



Lot 181

“S T / DRAKE’S / 1860 / PLANTATION / X / BITTERS - PATENTED / 1862”, America, 1862 - 1880. Golden amber, cabin form with 6 logs above label panels on all four sides, applied sloping collar - smooth base, ht. 10 1/8”; (professionally cleaned to original luster and near mint condition with just a touch of minor wear remaining). R/H #D104. As noted in the R/H book, a very rare mold variant having 6 logs over a label panel on all four sides (and rivet marks on two of the label panels).

Est.: \$400 - \$600 • Min. bid: \$200



Lot 182

DRAKES / PLANTATION / BITTERS - PATENTED / 1869.”, America, 1869 - 1875. Beautiful light to medium yellowish honey coloration, cabin form with 5 logs above the label panel, applied sloping collar, ht. 9 7/8”, virtually attic mint; (a tiny, pinprick speck of roughness on the edge of the lip, otherwise pristine perfect). R/H #D109. A great example! Strong embossing, no high point wear as is common on these bottles, beautiful, bright, clean, nice color.

Est.: \$400 - \$800 • Min. bid: \$250



Lot 183

“S T / DRAKE’S / 1860 / PLANTATION / X / BITTERS - PATENTED / 1862”, America, 1862 - 1880. Rich, reddish apricot, cabin form with 6 logs above the label panel, applied sloping collar - smooth base, ht. 9 3/4”, near mint; (a very minor trace of wear and a 1/8” paper-thin open bubble at edge of roof, otherwise excellent). R/H #D106. Note; the embossing is a little weak in the upper shoulder as is fairly common on these molds. A bright, clean example, nice color.

Est.: \$300 - \$500 • Min. bid: \$180



Lot 184

“S T / DRAKE’S / 1860 / PLANTATION / X / BITTERS - PATENTED / 1862”, America, 1862 - 1880. Deep strawberry puce, cabin form with 6 logs above the label panel, applied sloping collar - smooth base, ht. 9 3/4”; (some light exterior wear, otherwise very near mint). R/H #D105. Beautiful color in sunlight.

Est.: \$250 - \$450 • Min. bid: \$150



Lot 185

“THE / FISH BITTERS - W.H. WARE / PATENTED 1866”, America, 1866 - 1875. Beautiful, yellowish honey coloration, figural fish form, applied ring collar - “W.H. WARE / PATENT 1866” (on smooth base), ht. 11 5/8”; (just the slightest trace of faint exterior wear, otherwise perfect!). R/H #F46. As noted by Ring / Ham, the “F-46” mold with the offset neck is a scarce, and this example also has plenty of beautiful yellowish tones! Ex. James Becker collection.

Est.: \$800 - \$1,600 • Min. bid: \$400



Lot 189

“REED’S / BITTERS - REED’S / BITTERS”, America, 1870 - 1880. Light golden amber, almost a honey coloration, cylindrical, elongated “ladies-leg” neck, applied sloping collar with ring - smooth base, ht. 12 1/4”; (just a touch of minor, light exterior wear and a bit of very faint dullness, or exterior “bloom”, otherwise excellent). R/H #R28.

Est.: \$175 - \$350 • Min. bid: \$100



Lot 186

“DOCTOR / FISCH’S BITTERS - W.H. WARE / PATENTED 1866”, America, 1866 - 1875. Bright, light golden amber shading to a lighter honey coloration along the sides, figural fish form, applied ring collar - smooth base, ht. 11 1/2”; (a minor, 1/16” x 1/4” paper-thin open surface bubble on one of the scales, otherwise attic mint!). R/H #F44. A great example, beautiful color, nice and clean, and virtually no high point wear as is often an issue on this mold.

Est.: \$300 - \$500 • Min. bid: \$180



Lot 190

“OLD SACHEM / BITTERS / AND / WIGWAM TONIC”, America, 1860 - 1870. Gorgeous raspberry puce coloration, barrel form, applied square collar - smooth base, ht. 9 1/2”; (virtually attic mint; (a potstone on the inside surface of the glass, near the side of the bottle, has a couple of tiny, minuscule, barely visible lines, less than 1/16”, otherwise pristine perfect). R/H #O46. A great example, scarce beautiful color with a perfect, flawless lip, and virtually attic mint condition.

Est.: \$800 - \$1,600 • Min. bid: \$500



Lot 187

“THE / FISH BITTERS - W.H. WARE / PATENTED 1866”, America, 1866 - 1875. Medium amber, figural fish form, applied ring collar - smooth base, ht. 11 5/8”; (just a touch of minor, light exterior wear, otherwise perfect). R/H #F45. Another nice solid example with good embossing and much less wear than typically encountered.

Est.: \$250 - \$400 • Min. bid: \$150



Lot 191

“BOURBON WHISKEY / BITTERS” (with 85% complete original labels), America, 1860 - 1875. Apricot with some beautiful strawberry and pinkish tones in natural daylight, barrel form, applied square collar - smooth base, ht. 9 3/8”; (a 1/4” area of roughness, or small flakes, on the edge of the square collar, at the side, and touch of typical, minor exterior wear, otherwise perfect). R/H #B171. A beautiful color having no trace of amber, and wonderful with the original labels.

Est.: \$400 - \$800 • Min. bid: \$250



Lot 188

“ROYAL / ITALIAN BITTERS / REGISTERED” / (Crown with Coat of Arms) “TRADE MARK / A.M.F. GIANELLI / GENOVA”, Canada, 1870 - 1880. Gorgeous medium pink amethyst, tapered cylinder form, applied square collar - smooth base, ht. 13 1/4”; (just a little light exterior wear, otherwise very near mint!) R/H #R111. Excellent color, clarity and condition, a fantastic example. Provenance: Jim Becker collection.

Est.: \$800 - \$1,200 • Min. bid: \$400



Lot 192

“GREELEY’S BOURBON / BITTERS”, America, 1860 - 1875. Medium to deep apricot with a slight copper tone in natural daylight, barrel form, applied square collar - smooth base, ht. 9 1/4”; (a couple of light scratches and a little minor exterior wear; a couple of tiny areas of roughness on the square collar that you can feel, but are not easy to see). R/H #G101.

Est.: \$300 - \$500 • Min. bid: \$180



Lot 193

"WILLIAM ALLEN'S - CONGRESS BITTERS", America, 1865 - 1875. Beautiful medium emerald coloration, rectangular semi-cabin form, applied sloping collar - smooth base, ht. 10 1/4", near mint; (just a touch of minor light wear and a little faint "bloom" on one of the label panels, otherwise perfect!) R/H #A29. A great example having nice character and crudeness to the glass, and in a scarce color having more of a pure emerald coloration than most.

Est.: \$3,000 - \$5,000 • Min. bid: \$1,500



Lot 194

"JOHN. W. STEELE'S / NIAGARA" (star) "BITTERS" - (13 stars and eagle) - "JOHN. W. STEELE'S / NIAGARA STAR BITTERS" - "1864" - (star) - (star) - (star), (with 75% complete, original labels), 1864 - 1875. Yellowish golden amber, semi-cabin, applied sloping collar - smooth base, ht. 10 1/8", near mint; (an 1/8" open bubble on the inside edge, and a pinhead spot of roughness on the outside edge of the lip; dried content in the base, labels mostly illegible). R/H #S182.

Est.: \$600 - \$900 • Min. bid: \$300



Lot 195

"DR SOULE'S / HOP BITTERINE / 1872 - (Hop Leaf and Flowers), America, 1875 - 1885. Beautiful, light-to-medium ginger ale coloration with some warmer topaz tones, square semi-cabin, applied sloping collar with ring - smooth base, ht. 9 1/2"; (a little light wear and a couple of small patches of very faint dullness near the base; a little faint, very light interior haze, otherwise excellent). R/H #S144.5. A scarce mold, rare and outstanding color!

Est.: \$1,500 - \$3,000 • Min. bid: \$800



Lot 196

"NATIONAL - TONIC BITTERS", America, 1870 - 1880. Aquamarine, square with fancy roped corners, indented shoulder panels with dots, applied sloping collar - smooth base, ht. 9 1/2", near mint; (just a touch of minor, very faint, light interior milkiness, primarily in the shoulder area, and a couple of tiny, pinhead flakes at edge of base, otherwise perfect!) R/H #N13. A beautiful example of this scarce, attractive bitters.

Est.: \$3,000 - \$5,000 • Min. bid: \$1,800



Lot 197

"KELLY'S / OLD CABIN / BITTERS - PATD / MARCH / 1870 - KELLY'S / OLD CABIN / BITTERS", America, 1870 - 1875. Medium amber, cabin form, applied sloping collar - smooth base, ht. 9 3/8"; (a pinhead bit of minor roughness on the inside edge of the lip; a shallow, hard-to-see 1/8" flake along the lower roof edge, otherwise very near mint). R/H #K22. This is the very scarce, to rare, 1870 variant blown for the St. Louis company, Garnhart & Kelly. Much rarer than the 1863 example.

Est.: \$1,800 - \$3,200 • Min. bid: \$1,000



Lot 198

"HOLTZERMANN'S - PATENT / STOMACH / BITTERS", America, 1865 - 1875. Golden honey through the center shading to a light yellowish honey in the roof corners and along the sides, rectangular cabin form, applied sloping collar - smooth base, ht. 9 3/8", virtually attic mint; (just the slightest trace of extremely faint wear, otherwise pristine perfect!) R/H #H155. A great example, very nice color, outstanding condition.

Est.: \$1,400 - \$1,800 • Min. bid: \$800



Lot 199

"HOLTZERMANN'S / PATENT / STOMACH / BITTERS", America, 1885 - 1900. Medium golden amber with a slight reddish tone in the lower half of the body, rectangular cabin form, tooled sloping collar - smooth base, ht. 9 5/8"; (a hard-to-see, tiny 1/8" flake along the bottom edge of one of the roof panels and a tiny, pinprick bit of roughness at the edge of the lip, otherwise sparking attic mint). R/H #H154. Very crisp, bold embossing - unusual for this mold.

Est.: \$200 - \$350 • Min. bid: \$120



Lot 200

"HOLTZERMANN'S / PATENT STOMACH BITTERS - J.D. HOLTZERMANN & CO. / PIQUA, O.", America, 1885 - 1895. Golden amber, square with beveled corners, tooled sloping collar - smooth base, ht. 9 1/4", virtually attic mint; (a tiny, pinprick speck of roughness on the edge of the lip; a small trace of faint interior residue in the shoulder that would almost certainly wash out, otherwise pristine perfect). R/H #H155.5. An extremely rare mold, outstanding condition.

Est.: \$400 - \$600 • Min. bid: \$250



Lot 201

"DR J. HOSTETTER'S / STOMACH BITTERS", William McCully & Co., Pittsburgh, 1865 - 1875. Yellow with a slight honey tone, square with beveled corners, applied sloping collar - **"W. McC & Co."** (on smooth base), ht. 8 7/8"; (professionally cleaned with a little light ground wear remaining, primarily on the reverse). R/H #H195. Plenty of yellow in this one, and very crude embossing.

Est.: \$100 - \$200 • Min. bid: \$50



Lot 205

"DR J. HOSTETTER'S / STOMACH BITTERS", probably Pittsburgh, PA, 1860 - 1870. Very deep yellowish olive (black glass), square with beveled corners, applied sloping collar - early smooth base, ht. 9 3/4", near mint; (some fine high point wear, primarily on the back panel only, and a couple of tiny less-than-pinhead size open surface bubbles). R/H #H194. Another nice example, this one being boldly embossed, large letters, and a defined space between "DR" and "J".

Est.: \$300 - \$500 • Min. bid: \$180



Lot 202

"DR J. HOSTETTER'S / STOMACH BITTERS", Lorenz & Wightman, Pittsburgh, 1863 - 1872. Yellowish citron coloration, square with beveled corners, applied sloping collar - **"L & W"** (on smooth base), ht. 8 3/4"; (professionally cleaned to original luster and near mint condition, with just a bit of minor wear along a panel edge, and a tiny, 1/8" flake at base edge). R/H #H195. Beautiful color, excellent condition. This example has (8), small 1/8" rivet marks scattered by the beveled edges.

Est.: \$200 - \$400 • Min. bid: \$120



Lot 206

"HORSE SHOE BITTERS / PATENTED", America, 1885 - 1895. Golden amber, square with beveled corners, tooled sloping collar - smooth base, ht. 8 7/8"; (just a little very minor interior haze, primarily along a couple of corners and near the shoulders, otherwise pristine perfect!) R/H #H190. This bottle was never dug, or cleaned, and appears to be an attic-type find. The mold is almost identical to the later Hostetter molds. A very rare bitters from Collinsville, Illinois.

Est.: \$250 - \$450 • Min. bid: \$140



Lot 203

"DR J. HOSTETTER'S / STOMACH BITTERS", probably Pittsburgh, PA 1860 - 1870. Clear medium pure olive green, square with beveled corners, applied sloping collar - early smooth base with six-pointed star design, ht. 9 3/8"; (a 1/4" flake at the bottom edge of the crudely applied mouth, on the side, that is easy to miss, otherwise sparkling attic mint). R/H #H194. A beautiful example, excellent overall condition, and great color, much lighter than most of the other olive examples.

Est.: \$400 - \$600 • Min. bid: \$200



Lot 207

"DR RATTINGER'S / HERB & ROOT BITTERS / ST LOUIS MO.", probably Modes Glass Co., Cicero, IN, 1885 - 1895. Golden amber with a slight orange tone, square with beveled corners, applied sloping collar - **"M.G.Co"** (on smooth base), ht. 8 7/8", virtually attic mint; (a pinhead open bubble at base edge). R/H #R12. A scarce bitters, sparkling clean attic condition.

Est.: \$250 - \$450 • Min. bid: \$140



Lot 204

"DR J. HOSTETTER'S / STOMACH BITTERS", probably a Pittsburgh district glasshouse, 1860 - 1870. Very deep olive with a slight amber tone, square with beveled corners, applied sloping collar - early smooth base, ht. 9 1/2", near mint; (a minor 3/16" and 3/8" 'blemish' on one of the side panels where the glass is a little rough, or very finely pitted, otherwise virtually attic mint). R/H #H194. Another early example.

Est.: \$300 - \$500 • Min. bid: \$180



Lot 208

"Wm. RITMEIER'S - CALIFORNIA / WINE BITTERS", Thomas Wightman & Company, Pittsburgh, 1872 - 1883. Light yellowish honey coloration, square with beveled corners, applied sloping collar - **"TW&Co"** (on smooth base), ht. 9 1/8"; (a couple of very light scratches on one of the side panels and a couple of small patches of very faint interior milkiness, otherwise pristine perfect). R/H #R67. A great example of this fairly scarce bitters having crude, wavy, glass and nice color.

Est.: \$300 - \$500 • Min. bid: \$180



Lot 209

“**SAINT JACOB’S BITTERS**”, Kentucky Glass Works Co, Louisville, KY, 1870 - 1880. Medium amber, square with beveled corners, applied sloping collar - “**KYG.W.CO.**” (on smooth base), ht. 8 ½”, near mint; (a few faint, very light scratches, otherwise perfect). R/H #S13. A very scarce bitters, particularly with the Kentucky Glass Work Co. on base.

Est.: \$200 - \$400 • Min. bid: \$120



Lot 213

“**DR YOUNGS / WILD CHERRY / BITTERS / BROOKLYN, / N.Y.**”, America, 1885 - 1895. Medium amber shading to a lighter honey color in the shoulders, rectangular with rounded corners, tooled round collar with bevel - smooth base, ht. 8 ¼”; (some fine light streaks of dullness are swirled around the body; some faint interior milkiness, primarily in the shoulders, and a trace of very light wear). R/H #Y11. A rare bitters that does not come around often, the noted condition issues are relatively minor.

Est.: \$200 - \$400 • Min. bid: \$120



Lot 210

“**DR SAWEN’S / LIFE / INVIGORATING BITTERS - UTICA / N.Y.**”, America, 1875 - 1885. Beautiful medium yellow with a slight honey tone, square with beveled corners, applied sloping collar - smooth base, ht. 10”; (a paper-thin, ¼” open surface bubble on the shoulder, otherwise virtually attic mint). R/H #S41. A very pretty example with plenty of yellow, much lighter than most, and overall excellent condition.

Est.: \$175 - \$350 • Min. bid: \$100



Lot 214

“**DR McTAGGART’S / TRADE (MT Monogram) MARK / LIVER BITTERS / BRIDGETON N.J.**”, probably New Jersey, 1890 - 1900. Bright, yellowish honey amber, rectangular with beveled corners, tooled square collar - smooth base, ht. 9”, attic mint. R/H Supplement, #M63.5. Extremely rare, one of only two or three known. Per R/H, the only known example was found in the home of a glassblower from the Wheaton Glass Works, around 1900.

Est.: \$750 - \$1,500 • Min. bid: \$400



Lot 211

“**COCA BITTERS - THE BEST TONIC**”, America, 1875 - 1885. Honey amber, square with beveled corners, applied sloping collar - smooth base, ht. 9 1/8”; (a couple of 1/8” spots of minor abrasion, one located on a beveled edge; a 3/16” flake on one of the base corners, and some light spotty interior haze primarily along the corners and in the shoulder). R/H #C180. A rare bitters with only a few examples being offered at auction in the past 15 years.

Est.: \$250 - \$450 • Min. bid: \$150



Lot 215

“**CENTENNIAL - 1776 - TONIC BITTERS**”, America, probably 1776 - 1780. Aquamarine, six wide flat panels and a rounded label panel on the reverse, domed shoulders, applied mouth with ring - smooth base, ht. 8 ¾”; (professionally cleaned to original luster, otherwise perfect!) R/H #C115. Extremely rare, one of only two known examples (this example previously sold by Jeff Wichmann, and has now been cleaned). An outstanding bottle, unique in form, and exceedingly rare.

Est.: \$1,200 - \$2,400 • Min. bid: \$600



Lot 212

“**DR. LAMOT’S - BOTANIC BITTERS**”, America, 1875 - 1885. Golden amber, square with beveled corners and three indented panels, applied sloping collar - smooth base, ht. 8 5/8”, perfect. R/H #L9. Another rare bitters, great example, bright and clean.

Est.: \$200 - \$400 • Min. bid: \$120



Lot 216

“**DR STEPHEN JEWETT’S - CELEBRATED HEALTH / RESTORING BITTERS - RINDGE, N.H.**”, probably a New England glasshouse, 1850 - 1860. Aquamarine, rectangular with wide beveled corners, applied square collar - blowpipe pontil scar, ht. 7 ¼”, attic mint! R/H #J37. A clean, sparkling example, heavily whittled, and with some nice bubbles scattered throughout.

Est.: \$250 - \$450 • Min. bid: \$150



Lot 217

"DR STEPHEN JEWETT'S - CELEBRATED HEALTH / RESTORING BITTERS - RINDGE, N.H.", America, 1850 - 1860. Aquamarine, rectangular with wide beveled corners, applied square collar - iron pontil scar, ht. 7 1/8", near attic mint; (just a trace of faint wear including a tiny, pinprick bit of roughness on the edge of the square; a pinhead open bubble at edge of base). R/H #J37. A beautiful example, strongly embossed, heavily whittled.

Est.: \$250 - \$450 • Min. bid: \$150



Lot 221

"DR LANGLEY'S / ROOT & HERB / BITTERS / 99 UNION St / BOSTON", America, 1865 - 1875. Medium golden amber, cylindrical, applied square collar - smooth base, ht. 8 5/8", perfect. R/H #L21. A beautiful example, nicely whittled, and with good color and clarity.

Est.: \$200 - \$400 • Min. bid: \$120



Lot 218

"DR. / MANLY HARDY'S - GENUINE - JAUNDICE / BITTERS - BANGOR ME.", America, 1845 - 1860. Aquamarine, rectangular with wide beveled corners, applied square collar - blow-pipe pontil scar, ht. 7", attic mint. R/H #H35. Noted as "Scarce" by Ring / Ham, this example is perfect with some beautiful waviness and whittling to the glass.

Est.: \$200 - \$400 • Min. bid: \$120



Lot 222

"AMERICAN STOMACH / BITTERS Co. / BUFFALO, N.Y. U.S.A." (with original neck, seal, and front labels; partial contents), America, 1890 - 1900. Golden amber, cylindrical, tooled sloping collar with ring - smooth base, ht. 10 7/8"; (bottle is perfect; 90% complete, original labels are darkened from age, but mostly legible). R/H #A55. Listed as "Extremely rare". Label reads in part, "AMERICAN STOMACH / BITTERS. / KING OF ALL MEDICINES". An early Harmer Rooke label on base.

Est.: \$150 - \$250 • Min. bid: \$80



Lot 219

"CLARKE'S / VEGETABLE / SHERRY / WINE / BITTERS / SHARON MASS", America, 1865 - 1875. Aquamarine, large tombstone form with beveled corners, applied sloping collar - smooth base, ht. 11 3/8", near mint; (just a touch of minor wear and a faint band of light haze near the base). R/H #C160. A bright, heavily whittled, clean example having excellent character. For an in-depth look at all the Dr. Clarke's molds, see Bob Strickhart's article in *AB&GC*, December, 2012.

Est.: \$250 - \$450 • Min. bid: \$150



Lot 223

"MYERS' - ROCK ROSE - NEW HAVEN", America, 1850 - 1860. Medium emerald, square with beveled corners, applied sloping collar - iron pontil scar, ht. 9 1/4" x 3 1/8" square; (a couple of minor, paper-thin, 1/4" open surface bubbles, otherwise virtually attic mint!) A top example, nice deep color, excellent clarity. A very rare bottle, believed to be one of only about four examples known in this size or mold.

Est.: \$3,000 - \$5,000 • Min. bid: \$1,800



Lot 220

"DANDELION / AND / WILD CHERRY BITTERS / PRICE 50c", America, 1860 - 1870. Aqua, cylindrical, applied round collar with bevel - early smooth base, ht. 8 7/8"; (some patchy light interior stain, primarily in the shoulder on the reverse and in the base; a touch of very light exterior wear, otherwise excellent). Extremely rare, - similar to R/H #D15, but slightly shorter, and with a smooth base. With an interior tumbling, it would likely present as virtually attic mint.

Est.: \$300 - \$600 • Min. bid: \$180



Lot 224

"MORSE'S / CELEBRATED SYRUP / PROV. R.I.", America, 1850 - 1860. Beautiful, clear medium emerald coloration, oval, applied sloping collar - iron pontil scar, ht. 9", near mint; (just some typical, minor, light exterior wear, otherwise perfect). Odell, p.173. A big, beautiful pontiled medicine, great color, character, and condition with a nice pebbly, whittled, glass texture. If you have been waiting for a great example, this could be it!

Est.: \$1,800 - \$3,200 • Min. bid: \$1,000



Lot 225

"DR TOWNSEND'S - SARSAPARILLA - ALBANY / N.Y." (no periods after the "N" or "Y"), America, probably a New York State glasshouse, 1850 - 1860. Deep tobacco amber in the shoulders shading to almost black in the lower body, square with beveled corners, applied sloping collar - round iron pontil scar, ht. 9 1/8"; (a touch of typical light exterior wear and a minor 3/16" bruise on the inside edge of the lip). A rare and desirable color for a Townsend's.

Est.: \$1,000 - \$1,500 • Min. bid: \$600



Lot 229

"OLD DR / J. TOWNSENDS - SARSA-PARILLA - NEW YORK", America, 1850 - 1860. Rich, medium-to-deep blue green with a slight teal tone, square with beveled corners, applied sloping collar - heavy iron pontil scar, ht. 9 3/8"; (a very crude lip with a 1/4" wide x 1/4" deep, open bubble on the top, and inside edge of the lip, otherwise virtually attic mint). A bright, clean example, outstanding character, heavily whittled, strong color. Provenance: James Becker collection.

Est.: \$400 - \$600 • Min. bid: \$250



Lot 226

"DR TOWNSEND'S - SARSAPARILLA - ALBANY / N.Y. - IIII", America, 1850 - 1860. Bright blue green, square with beveled corners, applied sloping collar - very heavy, crude iron pontil scar, ht. 9 3/8", very near mint; (just a slight touch of light exterior wear and a minor, 1/4" fissure, or cooling line, on the base close to the pontil, otherwise perfect). Scarce, 4-slash mark variant, rich, beautiful color, strong, very bold embossing, and if you like crudity and great pontils, this one is for you.

Est.: \$800 - \$1,200 • Min. bid: \$500



Lot 230

"SWAIM'S - PANACEA - PHILADA", America, 1845 - 1855. Medium-to-deep yellowish green with a slight olive tone, cylindrical with 12 indented panels, applied sloping collar - sand type pontil scar, ht. 7 7/8", near mint; (just a touch of typical minor exterior wear and a bit of very light residue, or faint haze, otherwise excellent). A nice example, crude, early, one of the classics. Provenance: James Becker collection.

Est.: \$400 - \$600 • Min. bid: \$250



Lot 227

"DR TOWNSEND'S - SARSAPARILLA - ALBANY / N.Y.", America, 1850 - 1860. Rich, medium to deep emerald, square with beveled corners, applied sloping collar - deep squared base with a heavy "cloverleaf" iron pontil, ht. 9 1/4"; (some typical, scattered light exterior wear and some faint dullness, or 'bloom' on the shoulders, otherwise excellent). Another nice color, great pontil, a "beefy" example.

Est.: \$500 - \$1,000 • Min. bid: \$300



Lot 231

"M. B. ROBERTS'S / VEGETABLE / EMBROCATION", America, 1850 - 1860. Light bluish green, cylindrical, applied sloping collar - blowpipe pontil scar, ht. 5 3/8"; (professionally cleaned to original luster with just a touch of very faint haze remaining, but no other form of damage). Odell, p.202. Very bold embossing, nice color.

Est.: \$175 - \$275 • Min. bid: \$100



Lot 228

"DR TOWNSEND'S - SARSAPARILLA - ALBANY / N.Y.", probably a New England glasshouse, 1845 - 1855. Medium-to-deep olive green, square with beveled corner, applied sloping collar - sand type pontil scar, ht. 9 1/4"; (just a touch of very minor exterior wear, otherwise perfect!) Excellent condition, crude wavy glass, filled with minute tiny seed bubbles.

Est.: \$400 - \$800 • Min. bid: \$250



Lot 232

"SEEVER'S / JOINT & - NERVE / LINIMENT", A New England glasshouse, possibly Stoddard, NH, 1845 - 1855. Light honey yellow with a hint of olive, cylindrical, tooled thin flanged lip - blowpipe pontil scar, ht. 4"; (professionally cleaned to original luster with just a few light scratches and minor exterior wear remaining; slightly weak embossing in the shoulder area). A very scarce pontiled medicine in a fantastic, eye-appealing, color.

Est.: \$1,000 - \$2,000 • Min. bid: \$600



Lot 233

"J. GROUT" Medicine Bottle, New England, probably New London Glass Works, New London, CT, 1856 - 1860. Medium emerald coloration, cylindrical, sheared wide mouth with an inward rolled lip - blowpipe pontil scar, ht. 3", sparkling attic mint. Odell, p.102. A labeled example indicates it was a 'pain extractor' for internal or external use, from Monson, Mass. A scarce little bottle, outstanding condition, good color.

Est.: \$250 - \$450 • Min. bid: \$150



Lot 237

"PELLETIER'S - EXTRACT OF / SARSAPARILLA - HARTFORD CON.", America, 1850 - 1860. Aquamarine, rectangular with beveled corners, applied double ring collar - blowpipe pontil scar, ht. 10 5/8"; (a little exterior high point wear along the edges of the front panel and some minor, light, interior haze, otherwise excellent, otherwise very near mint). DeG. #163. A rare sarsaparilla bottle, impressive, eye-appealing size, having nice character with crude, wavy glass.

Est.: \$1,200 - \$1,800 • Min. bid: \$600



Lot 234

"ZOLLICKOFFER'S - ANTI RHEUMATIC / CORDIAL - PHILADA", America, 1845 - 1860. Medium yellowish olive in the shoulders shading to a deep yellowish olive near the base, rectangular with beveled corners, applied sloping collar - blowpipe pontil scar, ht. 6 1/8"; near mint; (a patch of light haze, primarily on the interior of the back panel and inside one of the shoulders only, otherwise perfect!) Some nice character to the glass, the bottle displays virtually mint.

Est.: \$1,800 - \$3,200 • Min. bid: \$1,000



Lot 238

"M' CONNELL'S (backwards "s") - SARSAPARILLA / CINCINNATI - OHIO", Midwest, Ohio, or possibly a Pittsburgh district glasshouse, 1855 - 1860. Aquamarine, rectangular with beveled corners, applied large rounded collar - iron pontil scar, ht. 9 3/4", attic mint! DeG. #145, Odell, p.162. A big, impressive, and extremely rare sarsaparilla, one of only two known examples without damage and believed unique with this lip treatment.

Est.: \$1,500 - \$2,500 • Min. bid: \$800



Lot 235

"FROM THE / LABORATORY - OF / G.W. MERCHANT / CHEMIST - LOCKPORT / N.Y.", probably Lockport Glass Works, 1845 - 1855. Bright, medium to deep yellowish green, rectangular with concave corners, applied sloping collar - blowpipe pontil scar, ht. 5 1/2", near mint; (just a touch of light exterior wear). Beautiful, scarce color, heavily whittled, excellent condition! These bottles are believed to have held sarsaparilla! See, AB&GC, Dec. 2015, *From the Laboratory of*, by R. Ciralli.

Est.: \$400 - \$600 • Min. bid: \$250



Lot 239

"DR GUYSOTTS - YELLOW DOCK & / SARSAPARILLA / JOHN. D. PARK - CINCINNATI. O", possibly a Pittsburgh glasshouse, 1855 - 1860. Deep, rich aquamarine, rectangular with beveled corners, applied, inverted sloping collar - iron pontil scar, ht. 9 3/4"; (a shallow, 1/8" surface bubble on a base corner was very lightly buffed, otherwise sparkling mint). DeG.#90. The surface bubble is barely noticeable. A big, brilliant, eye-appealing sarsaparilla with bold, large embossing, in a rare mold!

Est.: \$800 - \$1,200 • Min. bid: \$400



Lot 236

"FROM THE / LABORATORY - OF / G.W. MERCHANT / CHEMIST - LOCKPORT / N.Y.", probably Lockport Glass Works, 1845 - 1855. Aquamarine, rectangular with concave corners, applied sloping collar - blowpipe pontil scar, ht. 5 5/8"; (a tiny, pinprick bit of roughness on the back edge of the lip, otherwise virtually attic mint). A fantastic example, bright, clean, and with outstanding character, the glass is absolutely filled with frothy, tiny seed bubbles! Scarce color for this mold.

Est.: \$400 - \$600 • Min. bid: \$250



Lot 240

"THOS. A. HURLEY'S - COMPOUND SYRUP / OF SARSAPARILLA - LOUISVILLE KY", America, 1850 - 1860. Aquamarine, rectangular with beveled corners, applied sloping collar - iron pontil scar, ht. 9 1/2", near mint; (a touch of very minor, typical light exterior wear, otherwise excellent!) Odell, p.123; DeG #106. Extremely rare! A great example having outstanding character, with a nice pebbly texture, and absolutely filled with tiny seed bubbles.

Est.: \$800 - \$1,200 • Min. bid: \$400



Lot 241

"DR. MARKLEY'S - FAMILY / MEDICINES, - LANCASTER, PA.", America, 1850 - 1860. Aquamarine, rectangular with beveled corners, applied round collar with bevel - blowpipe pontil scar, ht. 8 1/4"; (just a trace of very light wear on the reverse, near the base, and a light ring of extremely minor interior haze, otherwise virtually attic mint). A big, attractive bottle with large, bold embossing, rare, and believed to be unique in this large, unlisted size.

Est.: \$1,200 - \$2,400 • Min. bid: \$600



Lot 245

"BARCLAYS / AMERICAN / BALSAM", America, 1845 - 1855. Aquamarine, rectangular with narrow beveled corners, applied sloping collar with bevel - blowpipe pontil scar, ht. 5 3/4", perfect. Odell, p. 15. Extremely rare, believed to be one of four known examples. This one is filled with tiny, minute seed bubbles. Provenance: Ex. Dr. Sam Greer collection, #196.

Est.: \$400 - \$800 • Min. bid: \$250



Lot 242

"SCHENCK'S - SEAWEED - TONIC" (4th panel with oval indentation for pill box), America, 1855 - 1860. Aquamarine, square with beveled corners, applied sloping collar with bevel - deep circular indentation on base with heavy iron pontil scar, ht. 8 3/4"; (just a little light, patchy, interior haze near the shoulder, primarily on two panels, otherwise pristine perfect!) Extremely rare! Believed to be one of only 3, or possibly 4, known examples with the indentation for the pill box.

Est.: \$800 - \$1,200 • Min. bid: \$400



Lot 246

"DR WISTAR'S - BALSAM OF - WILD CHERRY - PHILADA - I B." (with 98% complete, original label), America, 1850 - 1860. Aquamarine, octagonal, applied sloping collar - blowpipe pontil scar, ht. 6 3/8", perfect! (label is darkened a bit from age, but otherwise excellent). A great example, very crude embossing, extremely rare, believed to be one of only 3, or possibly 4, examples known with the original label. Label indicates for Consumption of the Lungs. Provenance: Ex. Dr. Sam Greer collection, #1783.

Est.: \$300 - \$600 • Min. bid: \$150



Lot 243

"HAMILTON'S / VEGETABLE / CATHARTIC - COUGH SYRUP - AND LUNG / PRESERVATIVE - PITTSBURGH.", America, 1835 - 1845. Aquamarine, rectangular with concave corners, crudely applied square collar - blowpipe pontil scar, ht. 5 7/8"; (professionally cleaned with just a very slight interior haze remaining). Odell, p.104. A very crude mold, boldly embossed. Extremely rare, believed to be one of only two examples known!

Est.: \$600 - \$1,200 • Min. bid: \$300



Lot 247

"BARTINE'S / LOTION", America, 1850 - 1860. Aquamarine, rectangular with narrow beveled corners, applied sloping collar - blowpipe pontil scar, ht. 6 1/4", near attic mint; (a couple of tiny, pinprick bits of roughness on the edge of the lip that you can feel, but are not easy to see; a minor wisp of faint interior milkiness, otherwise perfect!) A great looking bottle, and a beautiful, sparkling example, very scarce. Provenance: Ex. Dr. Sam Greer collection #206.

Est.: \$300 - \$600 • Min. bid: \$150



Lot 244

"TURNER'S / GONYZA & / STYLLINGIA", America, 1845 - 1860. Aquamarine, oval, applied sloping collar - blowpipe pontil scar, ht. 6"; (professionally cleaned with some scattered light exterior wear remaining, primarily on the reverse; a little light interior haze in the neck). Odell, p.242. An extremely rare pontiled medicine from Buffalo, NY, believed to be one of only three known. Crude, whittled glass.

Est.: \$400 - \$800 • Min. bid: \$250



Lot 248

"LYON'S - ESSENCE OF / JAMAICA / GINGER - NEW YORK" (with 85% complete, period label), America, 1850 - 1860. Aquamarine, rectangular with beveled corners, applied round collar with bevel - blowpipe pontil scar, ht. 6", attic mint! Label indicates, *"PURE / Bi-Carbonate of Soda / Warranted. - Enough, when / combined with the / Acid, for / 25 lbs."* An extremely rare, possibly unique example having great eye-appeal. Provenance: Ex. Dr. Sam Greer collection.

Est.: \$1,000 - \$2,000 • Min. bid: \$500



Lot 249

"SELDENS. / WIGWAM / LINIMENT, / N.Y.", America, 1850 - 1860. Aquamarine, oval, applied sloping collar - blowpipe pontil scar, ht. 7 5/8"; (professionally cleaned to original luster with just a few minor light scratches, primarily on the reverse, and a touch of very faint haze remaining in the shoulder, but no other form of damage). A heavily whittled, rare Indian bottle that does not come around often!

Est.: \$400 - \$600 • Min. bid: \$250



Lot 253

"INDIAN / CLEMENS" (Standing Indian) "TONIC / PREPARED BY / GEO. W. HOUSE", 1845 - 1855. Aquamarine, oval, sheared and outward folded mouth - heavy blowpipe pontil scar, ht. 5 1/2", perfect. Odell, p.53. This is the variant with the keyed mold on the base. A beautiful, top example, heavily whittled, filled with tiny seed bubbles, and brilliant sparking glass.

Est.: \$400 - \$600 • Min. bid: \$250



Lot 250

"L.A. PAGE'S - HORSE / LINIMENT - BUFFALO. N.Y.", America, 1845 - 1860. Rich, deep aquamarine, rectangular with beveled corners, applied sloping collar - blowpipe pontil scar, ht. 6 1/8"; (a tiny, less-than-pinhead size, minuscule flake on the edge of the collar, otherwise, "out of the mold", pristine perfect). Very scarce. A bright, clean, sparkling crisp example, strongly embossed.

Est.: \$300 - \$600 • Min. bid: \$180



Lot 254

"R.E. WOODWARD'S - VEGETABLE - TINCTURE - SOUTH READING - MASS.", America, 1845 - 1855. Aquamarine, squatty rectangular form with wide beveled corners, applied square collar - blowpipe pontil scar, ht. 5 1/2", near mint; (a little minor, very faint interior milkiness near the shoulders and a paper-thin, 1/8" open bubble on a beveled corner). Odell, p.263. Excellent condition, and character, with crude whittled glass.

Est.: \$175 - \$350 • Min. bid: \$100



Lot 251

"TOMS. - RUSSIAN - LINIMENT", America, 1845 - 1860. Aquamarine, square with beveled corners, applied sloping collar - blowpipe pontil scar, ht. 4 3/8", perfect. Odell, p.238. A scarce, attractive little pontiled medicine. Not easy to find, especially in this attic-type condition.

Est.: \$150 - \$250 • Min. bid: \$80



Lot 255

"LOUDEN & Co'S / VERMIFUGE - PHILAD.A", America, 1845 - 1855. Aquamarine, oval, sheared and inward rolled mouth - blowpipe pontil scar, ht. 4 5/8"; (professionally cleaned to original luster and near mint condition with just a little faint interior haze remaining). N #400. One of the numerous early products put out by this company, one could spend many years trying to acquire all of their various molds.

Est.: \$100 - \$200 • Min. bid: \$60



Lot 252

"J.S. SEABURY'S - REFINED / CASTOR OIL - JAMAICA L.I.", America, 1845 - 1857. Aquamarine, rectangular with beveled corners, sheared and inward rolled mouth - blowpipe pontil scar, ht. 4 7/8"; (a tiny, pinhead bit of roughness at edge of base, otherwise sparkling mint). See Odell, p.215. Nice character, crisp embossing. A rare pontiled medicine from Long Island, New York.

Est.: \$200 - \$400 • Min. bid: \$120



Lot 256

"DUTCHERS - DEAD SHOT / FOR / BED BUGS - ST. ALBANS VT.", America, 1855 - 1860. Aquamarine, rectangular with narrow beveled corners, applied square collar - blowpipe pontil scar, ht. 4 7/8"; (a touch of light interior residue, otherwise attic mint). A scarce bottle, boldly embossed, and having nice character with crude, wavy glass.

Est.: \$125 - \$250 • Min. bid: \$70



Lot 257

"LEE & OSGOOD / 127 MAIN ST / NORWICH CONN" (within rectangular slugplate), America, 1845 - 1859. Aqua, cylindrical, applied square collar - blowpipe pontil scar, ht. 8 1/8", virtually attic mint; (two, tiny pinhead flakes, one at edge of collar, one at edge of base, otherwise pristine!) A very scarce bottle, larger size, clean, heavily whittled, outstanding condition. Note; the bottle was re-purposed by another druggist and retains their label for ALCOHOL. on the reverse.

Est.: \$200 - \$400 • Min. bid: \$120



Lot 258

"A. LEITCH & CO / APOTHECARIES / ST. LOUIS", probably Midwest, possibly an Ohio glasshouse, 1850 - 1860. Deep bluish aquamarine, almost a light blue-green, cylindrical, applied square collar - blowpipe pontil scar, ht. 5 7/8"; (professionally cleaned to original luster and near mint condition). A very scarce bottle, bright, sparkling, and beautifully whittled.

Est.: \$200 - \$400 • Min. bid: \$120



Lot 259

"DR CAVANAUGH'S / PILE SALVE / ST. LOUIS M.O.", America, 1850 - 1860. Aquamarine, cylindrical, sheared wide mouth with inward rolled lip - blowpipe pontil scar, ht. 2 1/4", perfect; (note, there is a bit of roughness and a couple of pinhead divots in the body, on the reverse, that almost certainly occurred during manufacture when another piece of glass, or tool, came in contact with it, and is not considered damage). Odell, p.48. A scarce little bottle.

Est.: \$200 - \$400 • Min. bid: \$120



Lot 260

"DR. KENNEDY'S / SALT / RHEUM / OINTMENT", America, 1850 - 1860. Aquamarine, cylindrical, sheared wide mouth with inward rolled lip - blowpipe pontil scar, ht. 3 1/2", perfect. A great looking little jar, sparkling clean, strongly embossed, whittled, and attic mint.

Est.: \$200 - \$400 • Min. bid: \$120



Lot 261

"MRS. E. KIDDER / DYSENTERY / CORDIAL / BOSTON", America, 1845 - 1860. Aquamarine, cylindrical, applied sloping collar with bevel - blowpipe pontil scar, ht. 8", sparkling attic mint! Odell, p.139. A fantastic example, bright and clean, strongly embossed, and having outstanding character with whittled, pebbly, glass that is absolutely filled with tiny seed bubbles.

Est.: \$150 - \$250 • Min. bid: \$80



Lot 262

Lot of (24) Bottles of Wheatley's Spanish Pain Destroyer (in original, "as found" packaging), America, 1850 - 1860. Bottles (unembossed), are aquamarine, cylindrical with sheared and inward rolled mouths - blowpipe pontil scarred bases, ht. 4 1/4", each with original wrapper and

advertising broadside. Four, unopened bundles, each with six bottles in "as found" condition wrapped with original string and package label. See Greer, #1743, for single bottle example. Interesting and extremely rare.

Est.: \$400 - \$600 • Min. bid: \$250



Lot 263

Lot of (18) Bottles of Wheatley's Spanish Liniment (in original, "as found" packaging), America, 1850 - 1860. Bottles (unembossed), are aquamarine and light green, cylindrical with sheared and inward rolled mouths - blowpipe pontil scarred bases, ht. 4 1/4", each with original

wrapper and advertising broadside. Three, unopened bundles, each with six bottles in "as found" condition wrapped with original string and package label. Prior to this discovery, the Liniment bottles were unlisted.

Est.: \$400 - \$600 • Min. bid: \$250



Lot 264

Lot of (6) Bottles, "DR. J.B. WEATLYS / GRECIAN - HAIR PRESERVER" (with original labels, content, packaging box, and advertising circulars), America, 1855 - 1865. Bottles are colorless, rectangular with applied thin flared lips - early smooth base, ht. 5"; (some

staining to the outer box; some content may have leaked). Extremely rare! The fancy embossed bottles are unlisted, and believed unique. Note the misspelled embossing of "WHEATLEY"

Est.: \$500 - \$800 • Min. bid: \$300



Lot 265

"C.S. EMERSON'S / AMERICAN HAIR / RESTORATIVE / CLEVELAND / OHIO. PRICE \$1.50" (with complete original label, handbill, wrapper, and partial contents), America, 1856 - 1860. Colorless, oval, applied thin flanged lip - early smooth base, ht. 6"; (bottle, label, and handbill are perfect; wrapper is darkened from age, and some minor tears). DF, p.52. Scarce, early flint glass variant, outstanding graphics of Indian on colorful red and blue label.

Est.: \$300 - \$600 • Min. bid: \$150



Lot 266

"C.S. EMERSON'S / AMERICAN HAIR / RESTORATIVE / CLEVELAND / OHIO. PRICE \$1.50" (with original label, handbill, and wrapper), America, 1856 - 1860. Colorless, oval, applied thin flanged lip - early smooth base, ht. 6 3/8"; (bottle, label, and handbill are perfect; top of wrapper is missing). DF, p.52. Very scarce, outstanding graphics on original label that is virtually identical to the previous lot, but with colors reversed!

Est.: \$250 - \$500 • Min. bid: \$140



Lot 267

"MRS S. A. ALLEN'S - WORLD'S HAIR / RESTORER - 355 BROOME ST / NEW YORK", America, 1865 - 1875. Clear medium to deep plum amethyst, rectangular with beveled corners, tooled square collar - smooth base, ht. 7", attic mint. A scarce mold having the street address. This example is also a little lighter in tone than most, with good clarity, and beautiful "see-through" color, almost to the base!

Est.: \$250 - \$450 • Min. bid: \$150



Lot 268

"MRS S. A. ALLEN'S - WORLD'S HAIR / RESTORER - NEW YORK", America, 1865 - 1875. Bright yellow with a slight honey tone, rectangular with beveled corners, applied round collar with bevel - smooth base, ht. 7 1/8"; (a couple of areas of light, patchy, interior milkiness, otherwise perfect). See DF, pgs. 7-8. A scarce, very attractive, eye-appealing color.

Est.: \$200 - \$400 • Min. bid: \$120



Lot 269

"LORRIMER'S / EXCELSIOR / HAIR TONIC / FOR ALL SCALP / AND HAIR TROUBLE / LORRIMER INSTITUTE / BALTIMORE, MD. / U.S.A.", America, 1900 - 1910. Light golden amber with a slight orange tone, almost a honey yellow below the shoulders, oval, tooled prescription-type collar - smooth base, ht. 8 1/8", "out-of-the-mold", pristine condition. Certainly a scarce hair bottle, listed as "Rare" in the Baltimore Bottle Book.

Est.: \$75 - \$125 • Min. bid: \$40



Lot 270

Lot of (3), Early Pontiled Hair Bottles, 1840 - 1860. "BOGLE'S / HYPERION / FLUID / FOR THE HAIR", a, "PHALON'S - MAGIC / HAIR DYE - No 1 - 197 / BROADWAY / N.Y.", and "RADWAY & CoS - CIRCASSIAN / BALM - 161 FULTON St. N.Y.". Aqua, oval, square and rectangular forms, flanged, inward rolled, and applied sloping collars - blowpipe pontils; ht. 5 3/8"; 3 3/8", and 4 1/2" respectively; (Bogle's & Phalon's with faint interior haze; Radway's cleaned with minor dullness remaining).

Est.: \$150 - \$300 • Min. bid: \$80



Lot 271

"VAUGHN'S - VEGETABLE / LITH-ONTRIPTIC / MIXTURE - BUFFALO", America, 1860 - 1870. Aquamarine, square with beveled corners and domed shoulders, applied sloping collar - early smooth base, ht. 8"; (a couple of tiny, pinhead-size, open surface bubbles, and a touch of very minor, faint interior haze, otherwise very near mint). A fantastic example in terms of character, the glass being absolutely filled with tiny seed bubbles.

Est.: \$200 - \$400 • Min. bid: \$120



Lot 272

"W.C. SWEET & Co - CHLORIDE / CALCIUM - ST. CATHARINES - CANADA", probably blown at a Western New York State glasshouse, 1855 - 1865. Brilliant aquamarine, rectangular with beveled corners, applied round collar with bevel - early smooth base, ht. 8", pristine perfect! An extremely rare bottle produced by William Sweet, of Rochester, NY, for the Canadian market. Outstanding character, very heavily whittled, pebbly glass, brilliant, clean and sparkling.

Est.: \$750 - \$1,500 • Min. bid: \$400



Lot 273

"DR KEYSER'S - BLOOD + / SEARCHER - PITTSBURGH PA", probably a Pittsburgh district glass-house, 1865 - 1875. Bright, bluish aquamarine, rectangular with beveled corners, applied round collar with bevel - smooth base, ht. 9 1/8", virtually attic mint; (just a touch of very minor high point wear near the shoulder, otherwise "out of the mold" pristine condition). Interesting to note, Dr. Keyser bought out Lindsey's, also from Pittsburgh. A rare, desirable mold.

Est.: \$400 - \$800 • Min. bid: \$250



Lot 274

"J. W. POLAND'S / HEADACHE KILLER", New England, possibly Lyndeborough Glass Works, Lyndeborough, NH, 1867 - 1875. Greenish aquamarine, oval, large applied square collar - smooth base, ht. 7 1/4", near mint; (just a touch of typical very minor exterior wear, otherwise perfect). A very interesting, and scarce, medicine bottle. See Mike George's article, *AB&GC*, July, 2011, *Dr. J.W. Poland: The Headache Killer!* The good Doctor put out a number of early medicines.

Est.: \$150 - \$300 • Min. bid: \$80



Lot 275

"SWIFTS / SYPHILITIC SPECIFIC", America, 1875 - 1885. deep, vivid cobalt blue, oval with strap sides, applied square collar - smooth base, ht. 8 3/4"; (a little scattered light exterior wear and faint scratches, otherwise "attic" mint). The majority of these bottles were dug in the south, as the company was located in Atlanta. An exceptional example. Very few are in this un-dug, "attic-type" condition, and even fewer in this deep of color!

Est.: \$800 - \$1,200 • Min. bid: \$400



Lot 276

"SANFORD'S - EXTRACT OF - HAMAMELIS / OR WITCH HAZEL", America, 1870 - 1880. Light to medium sapphire blue, rectangular with beveled corners, applied square collar - smooth base, ht. 11 1/4", virtually attic mint; (just the slightest trace of faint exterior wear and a less-than-pinhead bit of roughness on the edge of the square collar, otherwise perfect!) A very scarce, desirable bottle, particularly in this fine condition. Big, impressive, great color.

Est.: \$800 - \$1,200 • Min. bid: \$400



Lot 277

"ROUTT'S EMULSION / COD - LIVER OIL / WITH THE EXTRACTS OF / MALT, WILD CHERRY, AND THE / HYPOPHOSPHITES / L.P. ROUTT, RICHMOND, VA.", Whitall-Tatum Co., Millville, NJ, 1888 - 1891. Teal blue, rectangular with beveled corners, tooled square collar - **"W T & CO / U.S.A."** (on smooth base), ht. 8"; (a 5/8" chip from the side of the lip; a few shallow 1/8" flakes at base edge, a little minor interior haze). An exceptionally rare and desirable bottle, and unique in this size.

Est.: \$750 - \$1,500 • Min. bid: \$400



Lot 278

"DR BIRMINGHAM'S / ANTI BILLIOUS / BLOOD PURIFIER", America, 1865 - 1875. Beautiful, rich deep bluish green, almost a teal coloration, cylindrical with eight indented panels, applied square collar - smooth base, ht. 8 1/2", virtually attic mint; (a very minor, tissue-paper-thin, 1/8" open surface bubble, or minuscule bit of roughness on the inside edge of the lip, otherwise flawless, pristine condition). An attic bottle and "finest possible example" with strong embossing, outstanding color and condition.

Est.: \$1,500 - \$2,500 • Min. bid: \$800



Lot 279

"DR. McCABE'S - CALIFORNIA - (Cluster of Grapes) - TONIC.", probably Kearns, Herdman and Gorsuch, Zanesville, OH, 1871 - 1880. Golden amber, hexagonal with a tapered panel neck, applied tapered collar - **"KH&G ZO"** (on smooth base), ht. 11 1/4"; (approximately 1 3/4", "u"-shaped crack at one of the base corners, and a pinhead flake at edge of lip, otherwise displays as attic mint). A very rare bottle with an unusual form, great eye-appeal, and beautiful, whittled, wavy glass.

Est.: \$200 - \$400 • Min. bid: \$100



Lot 280

"GUN WA'S / CHINESE REMEDY - WARRANTED / ENTIRELY VEG- ETABLE / AND HARMLESS", America, 1870 - 1880. Clear, brilliant yellow with a topaz tone, square with beveled corners, applied sloping collar with ring - smooth base, ht. 8 1/8", virtually attic mint; (a tiny, barely 1/8" sliver flake on one of the beveled corners). A bright, clean, brilliant example with fantastic color, clarity, and character having some nice bubbles and stretch marks though the neck.

Est.: \$700 - \$1,200 • Min. bid: \$400



Lot 281

"L.Q.C. WISHART'S - PINE TREE / TAR CORDIAL / PHILA - TRADE" / (PINE TREE) / "MARK" (with 85% complete, original label), America, 1885 - 1895. Medium golden amber, rectangular with beveled corners, tooled sloping collar - smooth base, ht. 9 3/4", attic mint; (85% complete, original, label is slightly darkened from age, otherwise excellent!) A beautiful example, excellent condition, very scarce with the original label.

Est.: \$175 - \$350 • Min. bid: \$100



Lot 285

"WASHINGTON SPRING CO" / BUST OF WASHINGTON / "BALLSTON SPA / N.Y. - C", America, 1868 - 1880. Medium emerald, cylindrical, applied sloping collar with bevel - smooth base, Pt, virtually perfect; (just a couple of tiny pinhead open surface bubbles). T# S-61. A great example having virtually no high point wear that is sometimes a distraction on this mold, and beautifully whittled. A great pictorial mineral water bottle. James Becker collection.

Est.: \$600 - \$1,200 • Min. bid: \$300



Lot 282

"L.Q.C. WISHART'S - PINE TREE / TAR CORDIAL / PHILA - TRADE" / (PINE TREE) / "MARK", America, 1885 - 1895. Rich, medium to deep blue green, square with beveled corners, tooled sloping collar - smooth base, ht. 9 7/8", sparkling mint! Beautiful rich color, a little deeper than many of the other blue-green toned examples, and with some character and waviness to the glass.

Est.: \$200 - \$400 • Min. bid: \$120



Lot 286

"MISSISQUOI / A SPRINGS", probably Lyndeborough Glass Works, Lyndeborough, NH, 1867 - 1875. Emerald green, cylindrical, applied sloping collar with lower bevel - smooth base, Qt, very near mint; (just a trace of light interior residue, or very faint haze, in the shoulder area, otherwise perfect). T# V-16:B. A good clean example, beautiful color.

Est.: \$125 - \$250 • Min. bid: \$70



Lot 283

"GERM, BACTERIA, OR / FUNGUS DESTROYER / WM RADAM'S / MICROBE KILLER" / (motif of man beating a skeleton) / "REGISTERED TRADE-MARK DEC. 13. 1887 / CURES / ALL / DISEASES", America, 1890 - 1910. Honey amber, square, tooled sheared mouth - smooth base, ht. 10 1/8"; (a bit of faint wear on the side panels, otherwise excellent!) A great example, nice light color, exceptionally strong embossing.

Est.: \$175 - \$275 • Min. bid: \$100



Lot 287

"MISSISQUOI / A SPRINGS", probably a south Stoddard glasshouse, Stoddard, NH, 1867 - 1873. Beautiful golden honey coloration, cylindrical, applied sloping collar with lower bevel - smooth base, Qt; (a minor trace of very faint interior residue, otherwise attic mint!) T# V-16:B. Whittled, beautiful rich color, a great example!

Est.: \$150 - \$275 • Min. bid: \$80



Lot 284

"SASSAFRAS" / (Image of Eye-cup below Eye) / "EYE LOTION / SASSAFRAS / EYE LOTION CO. / MAUCH CHUNK, PA.", Whitall-Tatum Co., Millville, NJ, 1890 - 1900. Cobalt, rectangular with beveled corners, tooled prescription-type collar - **"W T CO. / U.S.A."** (on smooth base), ht. 5"; (professionally cleaned with just a touch of minor wear remaining). A scarce, pictorial, colored druggist-type bottle, excellent condition, and a different mold.

Est.: \$250 - \$450 • Min. bid: \$150



Lot 288

"CONGRESS & EMPIRE SPRING CO / HOTCHKISS' SONS / C / NEW YORK / SARATOGA. N.Y.", 1866 - 1875. Yellow with some deeper honey tones, cylindrical, applied sloping collar with bevel - smooth base, Pt, near mint; (a small raised ridge of glass approx. 5/8" in length on the reverse, with a corresponding crevasse below, that occurred during manufacture; an 1/8" flake at edge of base). T# C-15:B, Type 1. Gorgeous color with plenty of bubbles. James Becker collection.

Est.: \$300 - \$600 • Min. bid: \$180



Lot 289

“CONGRESS & EMPIRE SPRING CO / HOTCHKISS’ SONS / CW / NEW YORK / SARATOGA. N.Y.”, America, 1866 - 1875. Medium olive, cylindrical, applied sloping collar with bevel - smooth base, ½ Pt, near mint; (just a touch of typical, very light exterior wear). T# S-14:C. Scarce, attractive ½ Pt, size. Nice character and crudity with whittling and several pieces of slag mixed into the glass.

Est.: \$250 - \$400 • Min. bid: \$150



Lot 293

“ST. LEON SPRING WATER / EARL W. JOHNSON BOSTON / J (in diamond) / TRADE MARK +++”, probably a New England glasshouse, possibly Lyndeborough Glass Works, 1870 - 1880. Rich bluish-green with an emerald tone, cylindrical, applied sloping collar with ring - smooth base, Qt, near mint; (lightly cleaned to original luster and virtually attic mint condition). T# M-41:A. A rare mineral water bottle, outstanding condition and clarity.

Est.: \$500 - \$1,000 • Min. bid: \$300



Lot 290

“BOLEN WAACK & CO. NEW YORK / MINERAL / SPRING/ WATER”, America, 1870 - 1880. Yellowish emerald, cylindrical, applied sloping collar - smooth base, ½ Pt; (some scattered light exterior wear and scratches, primarily on the reverse and a little on the “W” and “Y” in “NEW YORK”; a touch of faint dullness on one side). T# M-8:B. It appears to be a dug bottle and would certainly respond well to a light cleaning, if desired. A rare little mineral water.

Est.: \$175 - \$275 • Min. bid: \$100



Lot 294

“IRON MAGNETIC SPRINGS / FRUITPORT MICH”, America, 1872 - 1875. Medium to deep amber, cylindrical, applied sloping collar with bevel - smooth base, Qt; (a touch of very minor exterior wear; some crizzling to the surface of the glass on the interior of the shoulder, otherwise perfect). This was a recent barn find in Massachusetts and is not a dug bottle. The crizzling may have occurred from the glass batch. An extremely rare, desirable, mineral water bottle.

Est.: \$1,200 - \$1,800 • Min. bid: \$600



Lot 291

“EXCELSIOR / SPRING / SARATOGA. N.Y.” - (blank slugplate on reverse), probably Congressville Glass Works, Saratoga Springs, NY, 1880-1889. Rich emerald coloration, cylindrical, applied sloping collar with bevel - smooth base, Pt, perfect. T# S-25. Listed as “Rare”, a nice clean, whittled, example.

Est.: \$175 - \$275 • Min. bid: \$100



Lot 295

Lot of (2), “FROST’S / MAGNETIC SPRING / EATON RAPIDS MICH” Bottles, both blown at Pittsburgh glasshouse, 1871 - 1875. Golden amber and aquamarine, applied sloping collars with bevel - smooth bases, “L&W” (Lorenz & Wightman), on base of amber example, Pt. & Qt; (both professionally cleaned, the amber example is otherwise excellent with a touch of minor wear; aqua example has an interior potstone with a 3/8” iridescent moon and tiny radiations, otherwise mint). Both are rare!

Est.: \$800 - \$1,200 • Min. bid: \$400



Lot 292

“ADIRONDACK SPRING / WHITE-HALL / N.Y.”, America, 1871- 1883. Medium to deep emerald, cylindrical, applied sloping collar with bevel - smooth base, Pt; (a little scattered light exterior wear, otherwise excellent). T# N-2:B. A scarce mold, heavily whittled.

Est.: \$175 - \$275 • Min. bid: \$100



Lot 296

“CRYSTAL PALACE / PREMIUM / SODA WATER / W. EAGLE / NEW YORK - (Crystal Palace) / UNION GLASS WORKS / PHILA”, Kensington, 1853 - 1858. Teal blue, cylindrical, applied blob collar - iron pontil scar, ht. 7 ¼”; (professionally cleaned to original luster with some scattered light ground wear remaining). A very scarce and desirable mold, fantastic color. One of the great classics in pictorial sodas!

Est.: \$1,200 - \$1,800 • Min. bid: \$600



Lot 297

“Wm. W. LAPPEUS - PREMIUM - SODA OR - MINERAL - WATERS - ALBANY”, probably a New York State glasshouse, possibly Lancaster Glass Works, Lancaster, NY, 1850 - 1860. Medium sapphire blue, 10-sided, applied blob collar - iron pontil scar, 7 ¼”; (a tiny, pinhead flake on the inside edge of the mouth and just a touch of very minor exterior wear, otherwise perfect). A very scarce soda that is definitely an “attic” type bottle.

Est.: \$600 - \$1,200 • Min. bid: \$300



Lot 301

“BERLIN / MINERAL / WATER Co / REGD. 1873 / SODA / TRADE (Eagle within Maltese Cross) MARK / BOSTON / U. S. A.”, America, 1873 - 1875. Clear, medium blue green, squat tenpin form, applied round blob collar - smooth base, ht. 6 ¾”, virtually attic mint. An extremely rare pictorial soda bottle, the company was only in business for two years. A great looking soda, strong embossing, excellent condition.

Est.: \$400 - \$800 • Min. bid: \$200



Lot 298

“J. & A. DEARBORN - NEW YORK - MINERAL WATERS - (STAR) UNION GLASS WORKS”, probably a Philadelphia area glasshouse, 1850 - 1860. Medium sapphire blue, 8-sided, applied sloping collar - heavy iron pontil scar, 7 3/8”; (just a trace of minor exterior wear, otherwise attic mint!) A bright, sparkling, clean example that is about as nice as you could hope to find. And, a scarce mold variant with the glasshouse embossing. Outstanding in condition, beautiful example.

Est.: \$600 - \$1,200 • Min. bid: \$300



Lot 302

“M.T. CRAWFORD / HARTFORD CT. - BROWN STOUT”, America, 1850 - 1857. Rich, deep blue green, cylindrical porter form, applied blob collar - iron pontil scar, ht. 6 ¾”; (some typical light exterior wear; a tiny bit of minor roughness on the inner edge of the lip, otherwise excellent). A good example, one that does not appear to be a dug bottle, and with a nice heavy iron pontil scar. In 1850 Morrison T. Crawford was also listed as running a boarding house at 116 Main St. in Hartford.

Est.: \$300 - \$500 • Min. bid: \$180



Lot 299

“M.T. CRAWFORD / HARTFORD CT. - UNION GLASS WORKS PHILAD. / SUPERIOR / MINERAL WATER”, Union Glass Works, Kensington, 1850 - 1860. Medium cobalt blue, cylindrical, “mug-base”, applied blob collar - iron pontil scar, 7 ¼”; (just a trace of typical, very light exterior wear, otherwise sparkling attic mint). Another great “attic” soda, this one was reportedly found at a yard sale in Suffield, CT.

Est.: \$500 - \$800 • Min. bid: \$300



Lot 303

“H. L. & J. W. BROWN / HARTFORD CT.”, America, 1854 - 1860. Medium to deep olive green, cylindrical, porter form, applied blob collar - iron pontil scar, ht. 6 ¾”; (a shallow, 1/8” flake and minor bruise at edge of lip; a 3/16” chip at edge of base, and some light exterior wear and fine scratches). Retains full iron pontil and does not appear to have been cleaned. See Bill Beckett's article on Connecticut Sodas, AB&GC, Sept. 2012.

Est.: \$150 - \$300 • Min. bid: \$80



Lot 300

“CARBUTT & HAMILTON / MANUFACTURERS / CINCINNATI”, America, 1860 - 1870. Aqua with an ice blue tone in the base, tenpin form, applied round blob collar - smooth base, ht. 7 ¾”; (two, shallow, approximately 3/16” faint iridescent bruises on the inside edge of the mouth, otherwise virtually attic mint!) An extremely rare and desirable Cincinnati soda, beautifully whittled, and with virtually no exterior wear. Believed to be one of only four known examples!

Est.: \$500 - \$1,000 • Min. bid: \$300



Lot 304

“GEO. W. HOXSIE'S / PREMIUM / BEER”, New England, 1860 - 1872. Dense olive with an amber tone, virtually black below the shoulders, cylindrical, applied blob collar - early smooth base, ht. 7”; (a little light exterior wear including a tiny, pinprick bit of roughness on the edge of the collar; a shallow 1/8” flake on the back edge of the base appears to have been lightly buffed). The noted condition issues are all fairly minor. A nice example of this early, crude, ginger-beer style bottle.

Est.: \$125 - \$225 • Min. bid: \$70



Lot 305

"J. WILLIAMS. / YELLOW DOCK SARSAPARILLA" Stoneware Bottle, America, 1860 - 1870. Light tan glaze, cone shoulders with large blob-style collar, body tapering from the shoulders to the base, ht. 8 3/4", attic mint! An extremely rare sarsaparilla, not listed in the DeGrafft book, outstanding condition.

Est.: \$300 - \$600 • Min. bid: \$150



Lot 309

"L. HOSTER & Co / COLUMBUS O" (within shield) - "L H", possibly Hemingray Glass Co, Covington, KY, 1865 - 1875. Deep tobacco amber, cylindrical, 3-pc. mold, applied sloping collar with bevel - smooth base, Qt, ht. 9 3/8", near mint; (some interior residue in the shoulder of the reverse; a paper-thin 1/8" flake on the top of the lip, and some typical light exterior wear). An extremely rare early porter, believe to be only a few known. An early bottle from one of the oldest breweries in Columbus.

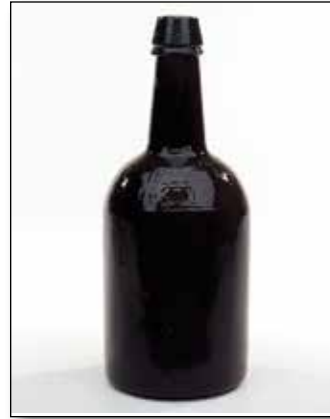
Est.: \$1,200 - \$2,200 • Min. bid: \$600



Lot 306

"B. WHITCOMB'S / SARSAPARILLA / BEER" Stoneware Bottle, America, 1865 - 1875. Mottled oatmeal-tone saltglaze with an attractive heavy cobalt 'blue-wash' over the debossed lettering, cone shoulders with large blob-style collar, body tapering slightly from the shoulders to the base, ht. 9 3/4", perfect. A great example, and a very rare sarsaparilla from Portsmouth, NH, listed as "Extremely rare" in John DeGrafft's Sarsaparilla book.

Est.: \$400 - \$800 • Min. bid: \$200



Lot 310

"GEO SCHLEGEL & Co / COLUMBUS O" (within shield), possibly Hemingray Glass Co, Covington, KY, 1875 - 1878. Dense tobacco amber, 3-pc. mold, applied sloping collar with bevel - smooth base, Qt; (appears to be a dug bottles with some scattered exterior wear, and a 3/4" scratch on the shoulder; the embossing is fairly weak, but legible). Another very rare bottle. Geo. Schlegel was only in business for about two, or possibly three years, the same time frame as Charles Say.

Est.: \$600 - \$1,200 • Min. bid: \$300



Lot 307

"W.C. & J. & G. WILLSON / SANSAPARILLA MEAD" Stoneware Bottle, America, 1865 - 1875. Light grey saltglaze with light cobalt 'blue-wash' over lettering and mouth, cone shoulders with large mushroom style mouth, nearly straight-sided body tapering slightly from the shoulders to the base, ht. 9 1/2"; (a couple of 1/4" chips on the underside of the collar and one at the edge of the base on the reverse). An extremely rare sarsaparilla, unlisted in the DeGrafft book.

Est.: \$300 - \$600 • Min. bid: \$150



Lot 311

"C. SAY & BRO / COLUMBUS", a Pittsburgh glasshouse, or possibly Hemingray Glass Co, 1875 - 1877. Dense olive amber, 3-pc. mold, applied sloping collar with bevel - smooth base, Qt; (an 1/8" body flake and some scattered exterior wear; a couple of patches of light exterior haze). A very rare bottle, the condition issues are fairly minor. A light professional cleaning would likely restore it to a near-mint appearance. Charles Say was located at 50 E. 3rd Ave, and in business for only two short years.

Est.: \$800 - \$1,400 • Min. bid: \$400



Lot 308

"HARRIES BREWERY / DAYTON O", Midwest, possibly Hemingray Glass Co, Covington, KY, 1850 - 1860. Very deep tobacco amber, cylindrical, 3-pc. mold, crudely applied sloping collar with bevel - early smooth base, Qt, ht. 9 1/2"; (a touch of washable residue, a bit of typical light wear, and two, minor, 1/8" flakes on the edge of the applied collar, otherwise perfect). This appears to be an attic find. The bottle likely pre-dates the Civil War. Rare, and in excellent condition.

Est.: \$1,200 - \$1,800 • Min. bid: \$600



Lot 312

"WALKER / CINA", Midwest, possibly Hemingray Glass Co, Covington, KY, 1865 - 1875. Dense tobacco amber, 3-pc. mold, applied sloping collar with bevel - smooth base, Qt; (some scattered minor exterior wear including a pinhead open bubble on the edge of the lip, and an onion-skin-thin, 3/4" open surface bubble on the reverse, otherwise very near mint). Bubbly crude glass, bold embossing, excellent condition. A rare early Cincinnati porter.

Est.: \$400 - \$600 • Min. bid: \$200



Lot 313

"P. JONTE", Midwest, possibly Hemingray Glass Co, Covington, KY, 1850 - 1855. Very deep olive green, 3-pc. mold, applied sloping collar with bevel - smooth base, Qt; (a 5/8" area of chipping on the back side of the beveled edge of the collar; a dug bottle with some overall exterior wear and light swirl lines in the glass, but no other form of damage). A scarce, very early porter bottle from Cincinnati.

Est.: \$400 - \$600 • Min. bid: \$200



Lot 317

"CHRIST DIEHL / BREWER & / BOTTLER / DEFIANCE, O. - THIS BOTTLE / NOT TO / BE SOLD", probably D.O. Cunningham Glass Co., Pittsburgh, PA, 1885 - 1891. Beautiful honey coloration, cylindrical, applied blob collar with the original "Lightning-type" wire bail - "DOC. / X" (on smooth base), Qt; (a trace of typical, expected light exterior wear, otherwise perfect). A rare, desirable, hard-to-fine beer from Defiance.

Est.: \$175 - \$275 • Min. bid: \$100



Lot 314

"GEO. BIBBEY & CO / GLEN FALLS / N.Y." / Shield (with large "G") / "ENGLISH ALE", America, 1870 - 1880. Medium to deep emerald, almost a forest green, cylindrical, applied sloping collar with ring - smooth base, Pt; (some exterior wear and fine scratches, primarily on the reverse, otherwise near mint). An extremely rare beer, believed to be only a few known in any condition. Fantastic color and character, the glass is absolutely filled with tiny seed bubbles.

Est.: \$500 - \$1,000 • Min. bid: \$300



Lot 318

"A. BAUER / LAGER BEER / CITY BOTTLING / WORKS / DEFIANCE, OHIO", Cunningham & Co., Pittsburgh, PA, 1878 - 1885. Amber, cylindrical, applied blob collar with original "Lightning-type" wire bail - "C & Co." (on smooth base), Qt; (a barn-type find in "as found" condition with some light interior content residue or stain, much of which would likely wash out; a bit of typical light exterior wear, otherwise perfect). An extremely rare, hard-to-find, early beer.

Est.: \$250 - \$450 • Min. bid: \$140



Lot 315

"G. ANDRAE / PORT HURON / MICH", probably Cunningham & Co., Limited, Pittsburgh, PA, 1886 - 1895. Light to medium sapphire, cylindrical, applied blob collar - "C&" (very faint) and "LI M" (on smooth base), Qt, near mint; (some typical light exterior wear and a 3/8" open bubble on the reverse, near the base). In "as found" condition, an attic or "barn-type" bottle that has not been dug and cleaned. Great color, bold embossing, nicely whittled, excellent condition.

Est.: \$600 - \$900 • Min. bid: \$300



Lot 319

"WIDMER BROTHERS / LAGER / BEER / DEFIANCE. OHIO. - THIS / BOTTLE / NOT TO BE / SOLD", a Midwest glasshouse, 1880 - 1885. Light honey amber, cylindrical, applied blob collar with original "Lightning-type" wire bail - smooth base, Qt; (another wonderful example in "as found" condition with just some spotty light interior content residue that would likely wash out, otherwise perfect). Nice color, whittled, and rare, - especially with the original bail.

Est.: \$175 - \$275 • Min. bid: \$100



Lot 316

"EMIL MINCK / BREWER / RICHMOND, IND", probably Cunningham & Co., Limited, Pittsburgh, PA, 1886 - 1895. Light yellowish honey coloration, cylindrical, applied blob collar with the original "Lightning-type" wire bail - "C&CO LIM" (on smooth base), Qt; (a touch of typical, extremely minor exterior wear, otherwise sparkling attic mint). A scarce quart beer, beautiful color, outstanding condition.

Est.: \$150 - \$250 • Min. bid: \$80



Lot 320

"DEFIANCE BOTTLING / WORKS / DAN. WIDMER / PROP.", a Midwest glasshouse, 1880 - 1885. Honey amber, cylindrical, applied blob collar with original "Lightning-type" wire bail - smooth base, Qt; ("as found" condition with a film of light interior content residue, much of which would likely wash out; otherwise attic mint). Another extremely rare bottle, wonderful condition, especially with the original closure.

Est.: \$250 - \$450 • Min. bid: \$140



Lot 321

“**J. SCHLEENBAKER / BRYAN / OHIO - THIS / BOTTLE / NOT TO BE / SOLD**”, a Midwest glasshouse, 1885 - 1895. Yellow, cylindrical, applied blob collar with original “Lightning-type” wire bail - smooth base, Qt, near mint; (a touch of light interior residue; a 3/8” flake at the edge of the base on the reverse). A scarce beer with gorgeous, eye-appealing color, excellent overall condition.

Est.: \$150 - \$250 • Min. bid: \$80



Lot 325

Early, Black Glass Wine Bottle, England, 1720 - 1730. Clear, medium to deep pure olive green, transitional straight sided onion form, applied string rim - sand type pontil scar, ht. 6 3/8”, body dia. 5 1/2”; (two flakes, approximate 1/4”, and 1/8”, on the underside of the string rim; some expected light exterior wear). See VdB, plates 17 & 18 for similar forms. A great example, wonderful form, nice color, excellent overall condition with virtually full original body luster!

Est.: \$300 - \$500 • Min. bid: \$150



Lot 322

“**JOS. NIEHAUS & Co / CINCINNATI. O.**”, probably D.O. Cunningham Glass Co., Pittsburgh, PA, 1880 - 1890. Honey coloration, cylindrical with a “whiskey-type” neck, applied blob collar with original “Lightning-type” wire bail - “D.O.C” (on smooth base), ht. 11 3/4”; (a touch of very minor, typical light exterior wear, otherwise attic mint). A scarce bottle, excellent condition.

Est.: \$150 - \$250 • Min. bid: \$80



Lot 326

Early, Black Glass Wine, probably Belgian, 1730 - 1750. Medium olive with a slight yellowish tone, tapered mallet form, sheared mouth with applied string rim - sand type pontil scar, ht. 7 5/8”; (likely a dug bottle, some scattered overall light exterior wear, a few scratches; patena with a little minor dullness, but no other form of damage, and a perfect, undamaged string rim). See VdB, plate 121. A scarce, early mallet, typical of those used for beer, wine, liqueur, and other “wet” wares.

Est.: \$200 - \$400 • Min. bid: \$100



Lot 323

“**THE E. BECKER / BREWING CO. / BOTTLED / BEER / LANCASTER, O.**”, a Midwest glasshouse, 1884 - 1895. Yellow with a slight honey tone, cylindrical, applied blob collar with original “Lightning-type” wire bail - smooth base, ht. 11 3/8”, virtually attic mint; (just a slight trace of faint interior milkiness in the shoulder, otherwise pristine perfect). Great eye-appeal, heavily embossed, nice color and character. The E. Becker Brewing Co. was incorporated in 1884.

Est.: \$150 - \$250 • Min. bid: \$80



Lot 327

Early, Wide Mouth Storage Bottle, probably France, 1790 - 1810. Olive amber, freeblown, cylindrical “flowerpot” form with a wide neck flaring outward to a sheared and tooled rim - pushed up base with a sand type pontil scar, ht. 11 7/8”, exceptional condition with just a trace of light usage wear. See VdB, plate 147. Note; this example is very unusual from the standpoint of not having an applied string rim.

Est.: \$175 - \$275 • Min. bid: \$100



Lot 324

Black Glass Wine Bottle, England, 1780 - 1790. “**1 / WATSON / Efq / BILTON PARK**” (on applied glass seal), Yellowish olive, squat cylinder form, sheared tooled mouth with applied string rim - sand type pontil scar, ht. 8 7/8”; (some interior haze around the center, below the shoulders; a little minor exterior wear and faint dullness, or “bloom”, primarily on the reverse, but otherwise with almost full original body luster.

Est.: \$300 - \$500 • Min. bid: \$150



Lot 328

Early, Wide Mouth Storage Bottle, probably France, 1790 - 1810. Olive amber, freeblown, cylindrical “flowerpot” form with gracefully tapering shoulders, extended wide neck, sheared and tooled mouth with an applied string rim - pushed up base with a sand type pontil scar, ht. 14 1/4”, virtually attic mint; (tiny, pinhead flake at the edge of the sheared mouth; a touch of very minor expected light wear, otherwise attic mint! Another outstanding example, nice clarity, fantastic condition.

Est.: \$175 - \$275 • Min. bid: \$100



Lot 329

Early, Wide Mouth Storage Bottle, probably France, 1790 - 1810. Medium olive amber shading to a dense olive amber near the base, freeblown, cylindrical "flowerpot" form, wide neck, sheared, tooled, and slightly flared mouth with an applied string rim - pushed up base with a sand type pontil scar, ht. 14 3/4"; (a bit of exterior wear including some short scratches on the shoulder and mid-body, and a couple of shallow open bubbles). A larger than normal example.

Est.: \$175 - \$275 • Min. bid: \$100



Lot 330

Large, Early Storage Jar, probably Continental, possibly Germany or France, 1800 - 1830. Olive amber with an attractive light blue opalescence in certain lighting conditions, cylindrical, nearly straight sided body tapering slightly near base, outward flared neck with a sheared and tooled rim - blowpipe pontil scar, ht. 12 1/2"; (some typical, minor exterior wear; a 1 1/2" x 3/4" open bubble near the base, on the interior, otherwise excellent!) See VdB, plate 291. A very attractive jar.

Est.: \$175 - \$275 • Min. bid: \$100



Lot 331

Mammoth, Early Case Bottle, probably Continental, possibly Netherlands or Belgium, 1790 - 1820. Olive amber, square with nearly straight sides, sheared mouth with large, applied string lip - blowpipe pontil scar, ht. 13 1/8", near mint; (just a few light scratches and minor light exterior wear, otherwise perfect). VdB, plate 83. A beautiful example, scarce size, outstanding overall condition.

Est.: \$500 - \$800 • Min. bid: \$300



Lot 332

Loaf of Bread Demijohn, America, 1860 - 1880. Bright golden amber shading to a honey color near the sides, "bread-loaf" form, blown in a 2-piece mold, applied sloping collar - smooth base, ht. 8 3/4", near mint; (just a bit of faint, spotty, light interior

haze, primarily near a couple of the corners and base; a superficial, paper-thin 3/8" open surface bubble). A scarce, desirable form, rare color, and beautifully whittled glass.

Est.: \$500 - \$1,000 • Min. bid: \$250



Lot 333

Demijohn, America, 1850 - 1870. Gorgeous bright yellow olive, almost an olive yellow, flattened apple form, freeblown or possibly blown in a "starter" dip mold, applied sloping collar - sand or disc type pontil scar, ht. 17 1/8"; (just a slight trace of minor wear, otherwise perfect). Beautiful, eye-appealing color, nice character, outstanding condition.

Est.: \$500 - \$800 • Min. bid: \$250



Lot 334

Demijohn, America, 1860 - 1880. Clear, light to medium emerald coloration, flattened apple form, blown in a 2-piece mold, applied sloping collar - sand or disc type pontil scar, ht. 18 1/4", near mint; (a very light ring of interior residue, or minor faint haze in the shoulder, barely noticeable, otherwise attic mint). Another great looking Demijohn, scarce color, excellent character with an attractive, whittled, "dimpled" surface.

Est.: \$250 - \$450 • Min. bid: \$150



Lot 335

Demijohn, America, possibly a Midwest glasshouse, 1850 - 1880. Beautiful golden honey coloration through the mid-body, shading to a rich orange amber through the neck and shoulders, globular form, applied sloping collar - sand or disc type pontil scar, ht. 17 1/8", very near mint; (just a touch of light exterior wear, otherwise perfect). A scarce color for this form, outstanding condition.

Est.: \$400 - \$600 • Min. bid: \$250



Lot 336

Early, Freeblown Demijohn, a New England glasshouse, 1830 - 1850. Beautiful, yellowish olive amber through the mid-body, shading to rich, deep olive amber, virtually black, through the neck, globular form, crudely applied irregular sloping collar - sand type pontil scar, ht. 18 7/8", near attic mint; (a few light scratches and touch of minor wear, otherwise perfect!) A fantastic, early New England globular demijohn having great form, nice color, and excellent character, full of tiny seed bubbles.

Est.: \$800 - \$1,200 • Min. bid: \$400

Exceptional Zanesville Glass

These fine Zanesville, Ohio pattern-molded vessels all have attributes that set them apart from most similar examples.

The larger 24-rib globular bottle was blown from a brilliant, honey-gold glass rather than the more typical reddish-amber shades, while the aquamarine example is considerably smaller than most at just 6 ⁷/₈ inches high. Both are also of

the “ideal,” classic Zanesville form and have very strong mold impressions.

The stunning amber grandfather flask is exceptional not only for having the rare 24-broken-rib pattern but for the depth of the impression resulting in the much-sought-after “popcorn” effect.

Don't miss this opportunity to add one of these gems to your collection!



Lot 76

Lot 79

Lot 77

Fancy & Colorful Colognes Bottles



Rare and Unusual Inkwells



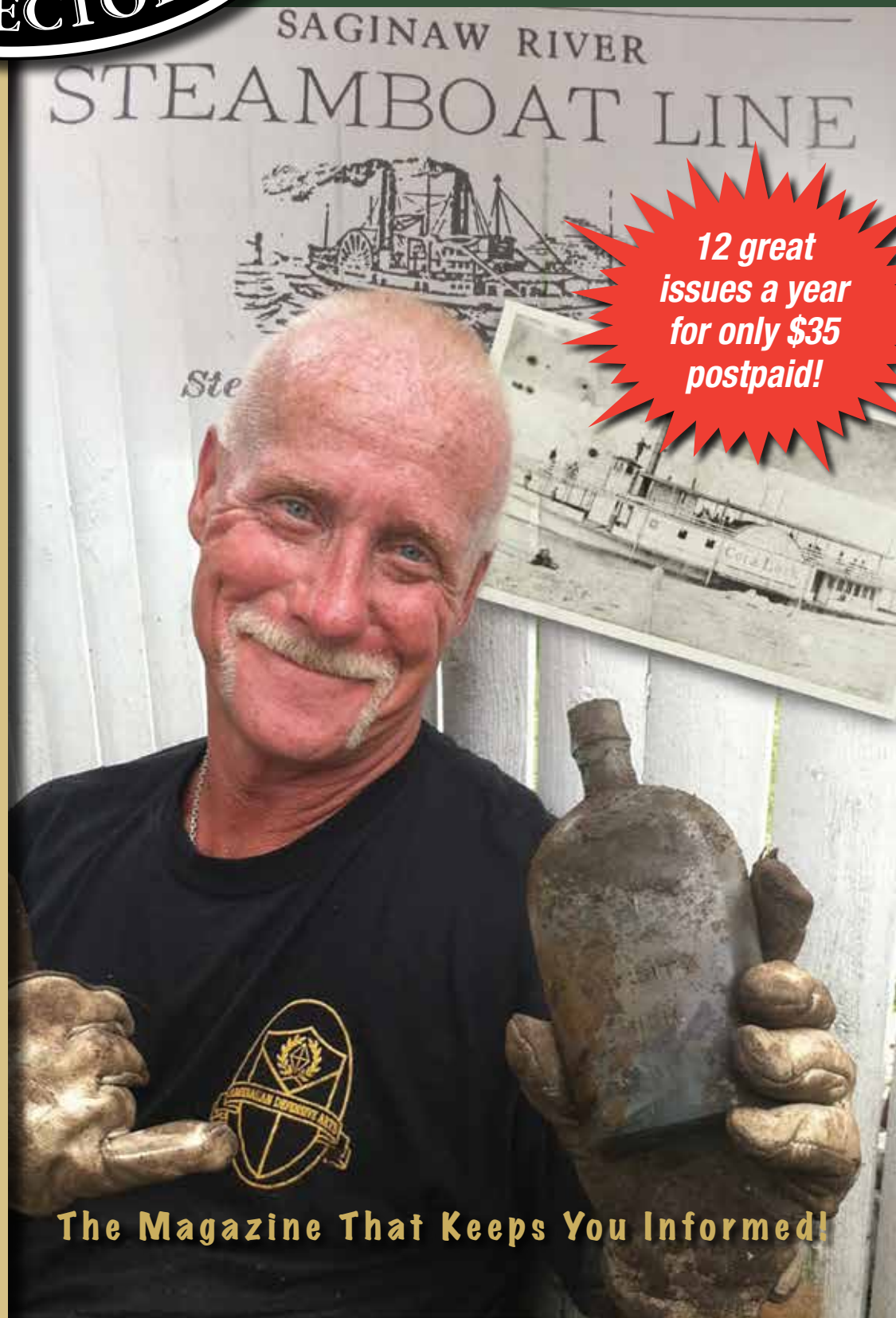
ANTIQUE BOTTLE & GLASS COLLECTOR

**Dig Into the
Bottle & Glass Hobby's
#1 Periodical**

**When you subscribe
to Antique Bottle & Glass
Collector magazine,
you'll be getting:**

- ▶ The premier monthly publication for the antique bottle and glass community
- ▶ Great articles each month on antique bottles, flasks and jars by some of the leading authorities in the hobby
- ▶ Timely and important information about current events in the world of antique bottles
- ▶ Show and auction reports
- ▶ Buy-sell-trade opportunities
- ▶ Up-to-date calendar of trade shows and conventions
- ▶ And much, much more!

**For subscription
information, please call
us at 248.486.0530 or visit
antiquebottlemagazine.com**



**12 great
issues a year
for only \$35
postpaid!**

The Magazine That Keeps You Informed!