

American Glass Gallery™

Auction #15 • Bidding Opens November 4, 2015 • Closes November 17, 2015



A GALLANT COLOR-BANDIER

Lot #51: Extremely Rare, GX-28
Flag - "New Granite Glass Works
/Stoddard / N.H." Flask

Conditions of Sale

1. Absentee Auction

The items in this sale will be sold via absentee auction, closing date:
November 17, 2015, 11:00 p.m., EST.

2. Our Guarantee Regarding Descriptions

American Glass Gallery has made every attempt to describe correctly the property being sold. Descriptions are guaranteed to be accurate as regards authenticity, age, condition, and measurements to within one-fourth inch, as represented in this catalog. In describing damage, exterior wear or manufacturer's flaws that in our opinion, do not significantly detract visually or monetarily from the value of the item are not listed and will not be considered for refund. The Auctioneers reserve the right to make verbal corrections and provide additional information at any time during the sale.

3. Preview

Items may be viewed by appointment from November 5, 2015 through November 16, 2015.

4. Bidding Procedure

You may submit your bids by mail, phone, FAX, email or through our on-line auction site. If bidding by mail or FAX, please fill out the absentee form and return it to us. Your bid, either written or oral, grants American Glass Gallery the authority to protect you up to the amount of your stated bid. Your bid will not be removed once executed.

Bidding Times: You can submit your bids anytime after receiving your catalog. Bids may be made by phone, daily, until closing day, November 17, 2015, from 9 A.M. - 7 P.M. Eastern Time. Incoming phone bids will be accepted on the closing day November 17, 2015) until 11 P.M. Eastern Time. Phone calls and Fax bids after this time will not be honored. No exceptions. You may also place your bids through our on-line auction service 24-hours a day once the site has opened for bidding, on or about November 4, 2015, continuing until 11:00 P.M. Eastern Time, November 17, 2015.

Please do not wait until the last day or two of the sale to place your bids! Because many collectors wait until the final few days of the sale to place their bids, we anticipate the telephone and internet bidding to be very busy during that period, so please plan accordingly. In the event of a tie bid, the earliest received bid on the lot will take precedent. We would welcome your bids by phone so that we can answer any questions and assist you in your bidding.

You may also telephone us at any time during the auction, prior to the closing of the sale, to check the status of your bids, to find the current bidding level, to open a bid, or to raise a bid on an auction lot.

Bidding Increments are as follows:

Up to \$250.00.....increments of \$10.00
\$250.00 - \$500.00increments of \$25.00
\$500.00 - \$1,000.00increments of \$50.00
\$1,000.00 - \$2,500.00increments of \$100.00
\$2,500.00 - \$5,000.00increments of \$250.00
\$5,000.00 - \$10,000.00increments of \$500.00
\$10,000 & Up.....increments of \$1,000.00

Bids submitted between the above increments, whether by mail, FAX, email or on-line via the internet, will automatically be lowered to the closest lower increment.

This is a minimum bid auction. Bids below the printed minimum will not be accepted.

An example of how our absentee bidding system works: You bid \$600.00 on a lot which is the highest bid received to date. The second highest bid is \$450.00. The current high bid level would be yours at \$475.00, one bid increment higher than the other collector's bid. Any additional bids submitted by others below \$600.00 will automatically be topped on your behalf by a representative of American Glass Gallery, up to your stipulated high bid amount. If no further bids on this lot are received beyond the \$450.00, and the under bidder has not requested a "Call Back", then you would have won the lot at \$475.00, not the \$600.00 that you were prepared to pay.

American Glass Gallery will at NO TIME disclose bids pledged by others; only the current "High Bid" level of a lot will be stated upon request. The highest bidder as determined by American Glass Gallery shall be the purchaser. It is the sole right of the auctioneer to settle any dispute between bidders and to regulate the bidding procedure. The auctioneer reserves the right to refuse any bid he believes not to have been made in good faith.

5. "Call Back" Process

If requested, the three top bidders of an item at the time of closing will be given a "Call Back" over the next number of days in order to resolve the final sale of an item. You can request this service by "checking" the appropriate box on your absentee bid form or verbal agreement by phone. It is the responsibility of the bidder to insure he has qualified for this service.

Please note: No "Call Backs" will be executed for bids under \$400.00. In the event of tie bids, the earliest bid received will be the winning bid.

An example of how the "Call Back" process works: As an example, you have bid \$600.00 on a particular lot. Another bidder has submitted a bid of \$900.00 on the same lot. Assuming that as of the auction closing date you are among the top three bidders on this lot and you have requested a "Call Back", you would receive a call informing you that you have been "Out Bid" and the current "High Bid" is now at \$650.00. If you choose to continue bidding on this lot, you may now do so. Assuming that you now increase your bid to \$700.00, we would accept your bid but also inform you that we have a higher bid on this lot and must bid \$750.00. At this time, an auction between you and American Glass Gallery, representing the collector who submitted the bid of \$900.00, takes place. This bidding would continue until you drop out, or top the other bidders high bid of \$900.00. If the other bidder has not requested a "Call Back" service, you would be awarded the lot. If however, the other bidder also requested a Call Back, we must now call them. If they elect to increase their bid over your high bid, we would in turn call you back. This back and fourth process would continue until one of the bidders declines to go any farther.

If you have requested a "Call Back", the auctioneers will need to contact you on the days immediately following the auction closing between the hours of 8 A.M. and 9 P.M. Eastern Time. Please supply us with all appropriate contact phone numbers including, home, mobile and work numbers. Bidders must provide the appropriate telephone numbers where they can be contacted. If you will be traveling or otherwise unavailable, bidders with "Call Back" privileges will have the responsibility to contact American Glass Gallery twice daily during the Call Back period.

Please note, every effort will be made to contact you during the "Call Back" period. However, the bidder will forfeit their rights to a "Call Back" if the auctioneers are unable to reach them. American Glass Gallery reserves the right to discontinue Call Backs on any item in the sale (2) two days after the closing date of the sale. At that time, the current "High Bidder" may be awarded the item even if Call Backs are still outstanding.

6. Terms

Successful Bidders, Prompt and full payment is due immediately upon receipt of our invoice. Absolutely no exceptions. Anyone failing to pay for items won will forfeit all rights to bid in any future American Glass Gallery sales. *Any late or delayed payments may result in loss of return privileges for items purchased in the sale.*

No Items Will Be Mailed Before Full Payment Is Received.

Buyer Premium: A 15% buyer's premium will be added to the hammer price (18% if paying by Credit Card or PayPal), to be paid by the buyer as part of the purchase price. For example, if you purchase a lot for \$100.00, you will receive an invoice for \$115.00 if paying by cash, check or money order, plus any applicable sales tax or shipping charges.

Taxes: If you are a Michigan resident, a 6% sales tax will be added to your bill unless you have a valid resale number registered with us.

Shipping: Shipping, handling and insurance are extra. We ship insured via U.S. Mail. These charges will be added to your bill unless the lots are picked up in person. Our charges for shipping (excluding foreign shipments and oversized lots) are \$18.00 for the first item, \$9.00 for each additional item together with extra insurance costs (we use current U.S. Postal Service insurance rates).

Please allow two to three weeks for delivery after receipt of your check.

Payment: American Glass Gallery accepts Cash, Money Orders, Personal Checks, Visa, MasterCard, American Express and PayPal. *If paying by Credit Card or PayPal, an additional 3% will be added to the invoice total.*



7. Refunds

Refunds will be given at the discretion of the Auctioneers. Items purchased must be examined and request for refund made immediately upon receipt of the item or items. Since opinions can differ, particularly in the matter of condition, the Auctioneers will be the sole judge in the consideration of refunds. Refunds requested on the grounds of authenticity must be made within 15 days of the date of the auction, and such refund requests must be accompanied by at least one supporting statement in writing from an authority recognized by the Auctioneers. It is the Auctioneers sincere intention to consider any reasonable request for a refund. *Absolutely no returns for any reason after 30 days following the closing of the sale.*

8. Bidding on any item indicates your acceptance of these terms.



American Glass Gallery™

John R. Pastor
P.O. Box 227
New Hudson, Michigan 48165
Phone: 248.486.0530
Fax: 248.486.0538
www.americanglassgallery.com
email: jpastor@americanglassgallery.com

PLEASE NOTE:

The lots offered in this printed catalog are identical to the lots offered in the on-line catalog. However, due to space constraints of the printed catalog, there may be some further information available regarding some of the lots in the on-line auction descriptions.

Please visit us at

www.americanglassgallery.com

and follow the link to the on-line auction.

The link and on-line auction will be available November 4, 2015.

A post-auction price list will be available on our website, in printable form, by November 27.

We encourage you to contact us by phone or email with any questions, for assistance with bidding, or further details or clarification on any of the lots in this sale. Your complete satisfaction and confidence is our goal!

We look forward to having you participate in our next sale, either as a buyer or a consignor. Our next absentee auction is scheduled for Spring, 2016. We already have some wonderful items consigned to this sale and look forward to discussing with you any quality items you wish to consign!

**THANK YOU AND GOOD LUCK
WITH YOUR BIDS!**

Reference Key

Reference initials and numbers used in the description of this catalog refer to the following publications:

AHG	<i>American Historical Glass</i> , Bessie M. Lindsey, 1967
AM	<i>The Decanter - An Illustrated History of Glass from 1650</i> , Andy McConnell, 2004
AP	<i>Glass in Early America</i> , Arlene Palmer, 1993.
BA1	<i>Collecting The Cures</i> , Bill Agee, 1969
BA2	<i>Collecting All Cures</i> , Bill Agee, 1973.
BB	<i>A Bit About Balsams</i> , Betty Blasi, 1974
BH	<i>Classification and Documentation of Sunburst and Similar Scent Bottles</i> , Bill Ham, AB&GC, 5/87
B/K	<i>The Glass Industry in Sandwich</i> , Raymond Barlow and Joan Kaiser, 1989.
C	<i>Ink Bottles and Inkwells</i> , William Covill, 1971.
DeG	<i>American Sarsaparilla Bottles</i> , John DeGrafft, 1980.
DeGII	<i>Supplement to American Sarsaparilla Bottles</i> , John DeGrafft, 2004.
DF	<i>Hair Raising Stories</i> , Don Fadely, 1992.
DM	<i>Wistarburgh, Window Tiles, Bottles and More</i> , Dale L. Murscell, 2007.
F	<i>Inks, 150 Years of Bottles and Companies</i> , Ed and Lucy Faulkner.
FA	<i>John Frederick Amelung, Early American Glassmaker</i> , Lanmon, Palmer, Hume, Brill, Hanson, 1990.
FB	<i>A.S.C.R. The wine bottles of All Souls College</i> , Oxford, 1750 – 1850, Fay Banks.
G	(Flasks) <i>American Bottles & Flasks and Their Ancestry</i> , McKearin & Wilson, 1978.
G	(Blown Three Mold) <i>American Glass</i> (Chapter VI), George S. and Helen McKearin, 1941.
GBH	<i>English Glass For The Collector, 1660-1860</i> , G. Bernard Hughes, 1958.
H	<i>American Bottles in the Charles B. Gardner Collection</i> , Norman C. Heckler, 1975.
JB	<i>Patent and Proprietary Medicine Bottles</i> , Joseph K. Baldwin, 1973
JEB	<i>Glasshouse Whimsies</i> , Joyce E. Blake, 1984.
JH	<i>Glasshouses & Glass Manufacturers of the Pittsburgh Region, 1795 – 1910</i> , Jay W. Hawkins, 2009.
JS	<i>In glas verpakt – European Bottles, Their history and production</i> , Johan Soetens, 2001.
K	<i>Poison Bottle Workbook</i> , Rudy Kuhn, 1988.
KW	<i>New England Glass & Glassmaking</i> , Kenneth M. Wilson, 1972.
L	<i>The Red Book of Fruit Jars, No. 9</i> , Douglas M Leybourne, Jr., 2001.
LI	<i>Pittsburgh Glass, 1797 – 1891</i> , Lowell Innes, 1976.
Mc	<i>Two Hundred Years of American Blown Glass</i> , Helen and George McKearin, 1950.
McK	<i>American Glass</i> , George S. and Helen McKearin, 1941.
MW	<i>American Bottles & Flasks and Their Ancestry</i> , McKearin & Wilson, 1978.
N	<i>Great American Pontiled Medicines</i> , Frederick Nielson, 1978.
NCH	<i>The Blaske Collection of American Flasks</i> , Norman C. Heckler, 1983.
NCH II	<i>The Blaske Collection: Part II</i> , Norman C. Heckler, 1983.
Odell I	<i>Indian Bottles and Brands</i> , John Odell, 1977
Odell II	<i>Pontiled Medicine Encyclopdia</i> , John Odell, 2000
O&S	<i>Warner's Reference Guide</i> , Ed Ojea and Jack Stecher, 1998.
P	<i>The Glass Gaffers of New Jersey</i> , Adeline Pepper, 1971.
RD	<i>Understanding Antique Wine Bottles</i> , Roger Dumbrell, 1983.
RF	<i>The Bottle Book: A Comprehensive Guide to Historic, Embossed Medicine Bottles</i> , Richard Fike, 1987
RH	<i>Collecting Barber Bottles</i> , Richard Holiner, 1986.
R/H	<i>Bitters Bottles</i> , Carlyn Ring and W. C. Ham, 1998.
RWL	<i>Antique Fakes & Reproductions</i> , Ruth Webb Lee, 1950
T	<i>Collectors Guide to Saratoga Type Mineral Water Bottles</i> , Donald Tucker, 2005.
U	<i>Collectible Character Bottles</i> , Authur Umberger, 1969.
V	<i>Nailsea Glass</i> , Keith Vincent, 1975
VdB	<i>Antique Glass Bottles; Their History and Evolution</i> , Willy Van den Bossche, 2001.
WL	<i>A Wine-Lover's Glasses, The A.C. Hubbard, Jr. Collection</i> , Ward Lloyd, 2000.
Z	<i>Ketchup, Pickles, Sauces</i> , Betty Zumwalt, 1980.
ZW	<i>Color Hutchinsons</i> , Zang Wood, 1999.

- The dash is generally used to indicate that the descriptions are on opposite sides of the bottle or flask.

/ The slash is used to indicate that the descriptions are on different lines or surfaces of the bottle.



Detail
from
Lot 196

Lot 50: Rare Log Cabin/Flag Historical Flask



ABOVE: An early ship's manifest depicting General Harrison and the Log Cabin & Hard Cider campaign. (Not part of this auction lot.)

Rare & Fine Wahoo Bitters



Lot 181

Lot 183

Lot 182

Exceptional Dayton, Ohio, Porter Bottles

This grouping of early Dayton, Ohio, porter-type bottles represents a collection more than 30 years in the making. This collection is likely unequalled and would be extremely challenging to duplicate.

Many of the examples share outstanding characteristics including oversized, tapered "whiskey" type collars, three-piece molds, primitive molds and lettering, and heavy, crude glass. Don't miss this unique opportunity to pick up some very rare, and choice porter bottles.



Lot 330

Lot 329

Lot 331

Lot 327

Lot 328



Antique “hair” bottles such as these contained various concoctions and dyes that were sold to “renew” and “restore” the hair and were marketed to both men and women.

Some, such as the highly successful Hall’s Hair Renewer, made even more extravagant claims as evident in this excerpt used in promoting their product: *“...brings the hair back; no more faded or gray hair. Makes growth more rapid; short hair become long hair. Completely removes dandruff; baldness is prevented. Feeds the hair bulbs; new hair grows on bald heads.”* (Who could ask for more!)

While a few of these products were sold in embossed glass bottles as early as the first half of the nineteenth century, the vast majority date from 1860 to about 1910. The earliest examples are almost always aqua while the later ones come in virtually every color of the rainbow and in hundreds of different molds.

In any case, hair bottles make for a very interesting and colorful collecting category for just about any pocketbook.

Rare & Choice Hair Bottles



Lot 279

Lot 269

Lot 273

Lot 272

Lot 275

Lot 278



Lot 1

"GENERAL WASHINGTON" / BUST OF WASHINGTON - "E PLURIBUS UNUM" / EAGLE / "T.W.D - ADAMS & JEFFERSON / JULY 4 A.D. 1776 - KENSINGTON GLASS / WORKS PHILADELPHIA" Historical Flask, Kensington Glass Works, 1826 - 1835. Aqua, sheared mouth - blowpipe pontil, Pt., near mint; (a 1/2" pontil flake extends to the edge of the base; a little minor high point wear). GI-14. A crisp, clean example with an unusually bold impression, which is rare on this flask!

Est.: \$400 - \$600 • Min. bid: \$200



Lot 2

"FELLS" / BUST OF WASHINGTON / "POINT" - MONUMENT / "BALTO" Historical Flask, Baltimore Glass Works, Baltimore, MD, 1825 - 1835. Light aquamarine, sheared mouth - blowpipe pontil scar, Pt, near mint; (just a touch of light high point wear and a couple of extremely minor traces of interior milkiness, otherwise perfect). GI-20. Nice clarity, character, and a strong impression. The embossing is often weak on this mold, but not in this case!

Est.: \$200 - \$400 • Min. bid: \$120



Lot 3

BUST OF WASHINGTON - TREE Historical Calabash, America, 1850 - 1860. Cobalt, applied sloping collar - blowpipe pontil scar, Qt; (a potstone in the medial rib with a couple of hairline cracks, 1 1/2", or less; some light interior milkiness in lower third of flask). GI-35. A gorgeous, impressive, Calabash, outstanding color. Note; the crack has been professionally stabilized with a museum-grade, 3-part adhesive. Provenance: Ex. Crawford Wetlauffer, Judge Blaske collections.

Est.: \$3,000 - \$6,000 • Min. bid: \$1,800



Lot 4

"THE FATHER OF HIS COUNTRY" / BUST OF WASHINGTON - "GEN. TAYLOR NEVER SURRENDERS" / BUST OF TAYLOR Historical Flask, Dyottville Glass Works, 1848 - 1855. Light green with olive yellow striations throughout, sheared mouth - blowpipe pontil scar, Qt, near mint; (a little scattered light exterior wear). GI-39. A very attractive flask, one that will definitely stand out! (See "Striated Beauties", AB&GC, August, 2013.)

Est.: \$800 - \$1,200 • Min. bid: \$400



Lot 5

"THE FATHER OF HIS COUNTRY" / BUST OF WASHINGTON - "GEN. TAYLOR NEVER SURRENDERS" / BUST OF TAYLOR Historical Flask, Dyottville Glass Works, 1848 - 1855. Rich, medium blue green, sheared mouth - blowpipe pontil scar, Qt, near mint; (a tiny, shallow pinhead flake at edge of lip, some typical exterior high point wear on bust, otherwise excellent). GI-39. A nice color for this mold, strong impression, a pretty flask.

Est.: \$800 - \$1,200 • Min. bid: \$400



Lot 6

WASHINGTON - TAYLOR Portrait Flask, probably Dyottville Glass Works, Philadelphia, 1855 - 1860. Medium emerald, large, applied blob collar - smooth base, Qt; (some moderate high point wear does exist on the Washington side, and to a lesser extent on the reverse; a shallow 1/8" open bubble on the reverse, and a minor 1/8" flake at base edge). GI-54. Very nice color, excellent character with very crude glass.

Est.: \$400 - \$600 • Min. bid: \$250



Lot 7

"GENL LA FAYETTE" / BUST OF LAFAYETTE - EAGLE Historical Flask, probably Knox & McKee, Wheeling, WV, 1824 - 1830. Blue green, sheared mouth - blowpipe pontil scar, Pt, very near mint; (pontil flake extends to edge of base, otherwise pristine). GI-93. A fantastic example, strong mold impression, virtually no high point wear, and nice color! McKearin notes this flask as rare, but in addition, a very historical piece commemorating Lafayette's 1824 - 1825 visit to America.

Est.: \$4,000 - \$6,000 • Min. bid: \$2,500



Lot 8

"BENJAMIN FRANKLIN" / BUST OF FRANKLIN / "ERIPUIT COELO FULMEN. SCEPTRUMQUE TYRANNIS" - "T.W. DYOTT M.D." / BUST OF DYOTT / "KENSINGTON GLASS WORKS, PHILADELPHIA" Historical Flask, Kensington Glass Works, 1825 - 1835. Aquamarine, sheared mouth - blowpipe pontil scar, Qt, virtually attic mint; (a paper-thin pontil flake extends to the edge of base, otherwise pristine). GI-96. A clean, crisp, sparking example!

Est.: \$300 - \$500 • Min. bid: \$180



Lot 9

“JENY LIND” / BUST OF JENY LIND - STAR / “GLASS FACTORY” / GLASS FACTORY Historical Calabash, probably Whitney Glass Works, Glassboro, NJ, 1857 - 1862. Vibrant, medium blue green, almost a teal coloration, applied sloping collar - blowpipe pontil scar, Qt, very near mint; (just a touch of very light exterior wear, otherwise attic mint!) GI-102. A scarce mold, strongly embossed, in an exceptional, eye-appealing color and outstanding condition.

Est.: \$4,000 - \$6,000 • Min. bid: \$2,000



Lot 10

“JENY LIND” / BUST OF JENY LIND - GLASS FACTORY Historical Calabash, probably Whitney Glass Works, Glassboro, NJ, 1857 - 1862. Medium yellow olive, applied sloping collar - blowpipe pontil scar, Qt; (a crack travels across the base and approx. 3” up one side, and 1” on the opposite side; a little very minor exterior haze, a ¼” annealing line in the lip). GI-103. An unlisted, exceptional color for this mold that, despite the damage, displays very near mint!

Est.: \$1,000 - \$2,000 • Min. bid: \$600



Lot 11

“JENY LIND” / BUST OF JENY LIND - GLASS FACTORY Historical Calabash, Ravenna Glass Works, Ravenna, OH, 1857 - 1865. Brilliant cobalt blue, applied blob collar - red iron pontil scar, Qt, pristine; (onionskin-thin ¼” piece of extra glass next to pontil, mentioned for accuracy, not considered damage) GI-104. An exceptional example, outstanding deep color, excellent impression, and great character, being absolutely filled with clear and whitish little seed bubbles.

Est.: \$6,000 - \$9,000 • Min. bid: \$3,000



Lot 12

“LOUIS KOSSUTH” / BUST OF KOSSUTH - STEAM FRIGATE / “U.S. STEAM FRIGATE / MISSISSIPPI / S. HUFFSEY” Historical Calabash, probably Millford Glass Works, Millford, NJ, 1852 - 1860. Golden amber, applied sloping collar - **“PH. DOFLEIN / MOULD MAKER / NTH 5! ST 84”** (on base), blowpipe pontil scar, Qt; (1/4” chip at edge of collar, a touch of light high point wear, otherwise perfect). GI-112. A very desirable Calabash, extremely rare color for this mold!

Est.: \$4,000 - \$8,000 • Min. bid: \$2,000



Lot 13

“KOSSUTH” / BUST OF KOSSUTH - TREE Historical Calabash, America, 1852 - 1860. Yellow with a slight olive tone, applied sloping collar with bevel - blowpipe pontil scar, Qt, near mint; (a tiny, barely pinprick bit of roughness at edge of lip; a little spotty light interior residue or faint haze, some of which may wash out, otherwise perfect). GI-113. Beautiful, bright color.

Est.: \$600 - \$900 • Min. bid: \$350



Lot 14

BUST OF BYRON - BUST OF SCOTT Portrait Flask, probably an early Stoddard glasshouse, 1842 - 1850. Medium to deep olive amber, sheared mouth - heavy blowpipe pontil scar, ½ Pt; (a little exterior high point wear, some very minor interior residue that will almost certainly wash out, an 1/8” flake at edge of base). GI-114. A classic little New England flask.

Est.: \$150 - \$250 • Min. bid: \$80



Lot 15

BUST OF COLUMBIA - EAGLE / “B & W” Historical Flask, probably Kensington Glass Works, 1825 - 1835. Aquamarine, sheared mouth - blowpipe pontil scar, Pt, virtually attic mint; (a tiny, pinprick spot of roughness on the edge of the sheared lip, otherwise “out of the mold”, pristine condition). GI-121. A bright, sparking example of this comparatively scarce, early flask.

Est.: \$400 - \$600 • Min. bid: \$250



Lot 16

EAGLE - CORNUCOPIA Historical Flask, an early Pittsburgh district glasshouse, 1825 - 1835. Aquamarine, sheared mouth - blowpipe pontil scar, Pt, attic mint. GI-6. An outstanding example of this highly detailed early flask; bright, crisp, and with a good strong impression.

Est.: \$300 - \$500 • Min. bid: \$180



Lot 17

EAGLE - CORNUCOPIA Historical Flask, an early Pittsburgh district glasshouse, 1825 - 1835. Rich bluish aquamarine, sheared mouth - blowpipe pontil scar, ½ Pt; (some fine high point wear, otherwise virtually attic mint). GII-11. A very early little flask, nice strong color, better than most, and with a good mold impression! Ex. NCH Auction 105, #193.

Est.: \$500 - \$1,000 • Min. bid: \$250



Lot 21

EAGLE - EAGLE Historical Flask, probably Kensington Glass Works, Philadelphia, PA, 1825 - 1840. Rich, medium to deep blue green with an emerald tone, crudely sheared mouth - large blowpipe pontil scar, Pt; (a ¼" chip at the edge of the lip, some in-manufacture roughness along the edge of the sheared lip, and a tiny, shallow pinhead flake on top edge of lip, otherwise perfect). GII-40. Great color and clarity, clean with a bold impression, and virtually no high point wear!

Est.: \$2,500 - \$5,000 • Min. bid: \$1,250



Lot 18

EAGLE - EAGLE Historical Flask, probably Kentucky Glass Works, Louisville, KY, 1850 - 1855. Light citron, sheared mouth - blowpipe pontil scar, Pt, near mint; (just a tiny pinprick spot of roughness at edge of the sheared lip; some light interior haze in the upper half of the flask, primarily on one side only). GII-24. A seedy, bubbly, attractive example, scarce color. A fresh find to the market that looks like it just came out of a barn!

Est.: \$1,000 - \$2,000 • Min. bid: \$600



Lot 22

EAGLE - "LIBERTY" / OAK TREE Historical Flask, possibly an early Pittsburgh district glasshouse, 1825 - 1835. Aquamarine, sheared mouth - blowpipe pontil scar, ½ Pt; (some high point wear, primarily on the eagle side, but no other form of damage). GII-60. A comparatively scarce flask, the noted wear is not terribly distracting, this example also having a good mold impression.

Est.: \$400 - \$800 • Min. bid: \$250



Lot 19

EAGLE - EAGLE Historical Flask, probably Louisville Glass Works, Louisville, KY, 1855 - 1865. Aquamarine, crudely applied round double collar - smooth base, Qt; (a shallow 3/8" x 1/8" flake off side of collar, otherwise virtually attic mint!). GII-26. Note, this mold is very rare, almost unheard of, having a smooth base. A great looking example with a long neck, large collar, and overall excellent condition.

Est.: \$300 - \$500 • Min. bid: \$180



Lot 23

EAGLE - "LIBERTY" / OAK TREE Historical Flask, possibly an early Pittsburgh district glasshouse, 1825 - 1835. Brilliant, light apple green, sheared mouth - blowpipe pontil scar, ½ Pt; (note; the base of the flask has been polished towards the narrow ends, to allow the flask to better stand up, otherwise pristine, perfect!) GII-60. A beautiful, bright, crisp example, rare color, "out of the mold", condition having no high point wear. If you are the winning bidder, you will not be disappointed!

Est.: \$1,200 - \$2,200 • Min. bid: \$700



Lot 20

EAGLE - EAGLE Historical Flask, Louisville Glassworks, Louisville, KY, 1855 - 1860. Medium to deep teal blue, large applied ring collar with lower bevel - blowpipe pontil scar, Qt, near attic mint; (minor, ¼" bit of roughness on the top edge of the lip, otherwise pristine perfect). GII-31. Outstanding color, no high point wear, a "finest possible example" of this large, impressive flask.

Est.: \$5,000 - \$10,000 • Min. bid: \$2,500



Lot 24

"LIBERTY" / EAGLE - "WILLINGTON / GLASS / Co / WEST WILLINGTON / CONN" Historical Flask, Willington Glass Works, 1860 - 1872. Reddish amber, crudely applied double collar - smooth base, ½ Pt, near mint; (just the slightest trace of light exterior wear, otherwise perfect). GII-63. Note; there is a little natural roughness on the inner edge of the lip due to some glass slag and unmixed batch, but obviously occurred during manufacture). A nice, bubbly, crude example with rich color.

Est.: \$250 - \$450 • Min. bid: \$150



Lot 25

EAGLE - EAGLE Historical Flask, a Stoddard, New Hampshire glasshouse, possibly Granite Glass Works, 1846 - 1860. Yellowish olive amber, sheared mouth - blowpipe pontil scar, ½ Pt, attic mint! GII-86. A relatively common flask, but in uncommonly fine condition, virtually no high point wear, bright, clean, plenty of tiny seed bubbles throughout.

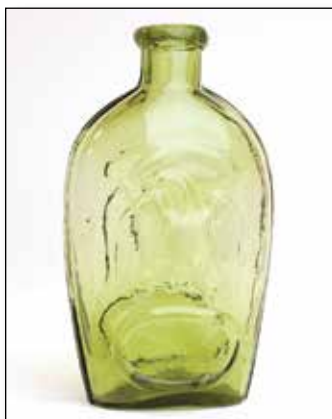
Est.: \$150 - \$250 • Min. bid: \$80



Lot 29

Unlisted, EAGLE - EAGLE Historical Flask, Midwest, possibly Louisville Glass Works, or a Pittsburgh glasshouse, 1860 - 1870. Gorgeous, bright yellowish honey color, applied collar with band - smooth base, Qt; (just a tiny sliver open bubble on one of the pennants, otherwise pristine perfect!) An unlisted mold, similar to GII-104, but no inscription in the oval frame). A very scarce color for any quart double eagle. Beautiful color, heavily whittled, outstanding condition.

Est. \$1,000 - \$2,000 • Min. bid: \$600



Lot 26

EAGLE - EAGLE Historical Flask, a Pittsburgh district glasshouse, 1860 - 1870. Brilliant, medium yellowish citron, applied heavy ring type collar - smooth base, Pt, near attic mint; (just a very slight touch of faint exterior wear, otherwise perfect!) GII-89. A gorgeous, eye-appealing, scarce color for this flask, one that will definitely stand out in a crowd!

Est.: \$800 - \$1,200 • Min. bid: \$400



Lot 30

EAGLE / "PITTSBURGH / PA" - EAGLE Historical Flask, a Pittsburgh district glasshouse, 1860 - 1870. Beautiful golden, shading to lighter honey color near the shoulders, applied mouth with flat band - smooth base, Pt, near mint; (two small, barely pinhead size spots of roughness on the edge of the lip and only the slightest wisp of very faint wear, otherwise perfect). Similar to GII-106, but having no vertical rib at sides. A scarce, attractive color for this flask. Ex. Gail Ross collection.

Est.: \$400 - \$600 • Min. bid: \$200



Lot 27

EAGLE - EAGLE Historical Flask, a Pittsburgh district glasshouse, 1860 - 1870. Light to medium apple green, applied ring type collar - smooth base, ½ Pt, sparkling mint! GII-95. A little sweetheart of a flask, clean, crisp, with virtually no wear and a well defined mold impression. The color is a nice soft, light green that definitely stands out. If you are putting together a run of little ½ pts, this is one you likely don't have.

Est.: \$250 - \$450 • Min. bid: \$150



Lot 31

EAGLE / "PITTSBURGH / PA" - EAGLE Historical Flask, a Pittsburgh district glasshouse, 1860 - 1870. Bubbly forest green, very crude applied mouth with ring - smooth base, Pt; (the crudely formed mouth has a few areas of minor lip roughness from 1/8", to 3/16"; a couple of shallow pinhead open surface bubbles, a trace of typical faint wear). GII-108. The condition issues are all minor, the flask is loaded with tiny seed bubbles, and in a beautiful color. Ex. Gail Ross collection.

Est.: \$300 - \$500 • Min. bid: \$180



Lot 28

EAGLE / "PITTSBURGH / PA" - EAGLE Historical Flask, a Pittsburgh glasshouse, 1860 - 1870. Medium to deep yellowish olive, crudely applied collar with ring - smooth base, Qt; (a minor pinhead size nick to the right of the pennant and just a trace of light high point wear, otherwise very near mint). GII-104. Note, there is a heavy fold of glass through the oval frame on the reverse, not considered damage, but noted for accuracy. A nice example.

Est.: \$400 - \$600 • Min. bid: \$250



Lot 32

EAGLE / "CUNNINGHAM / & Co / PITTSBURGH" - EAGLE / "GLASS / MANUFACTURERS" Historical Flask, 1860 - 1870. Brilliant, deep bluish aquamarine, applied collar with flat band - smooth base, Pt, near mint; (just a wisp of typical, faint high point wear and a tiny area of very minor lip edge roughness, otherwise perfect). GII-112. A bright, clean example of this scarce mold, and also having a strong impression.

Est.: \$100 - \$200 • Min. bid: \$60



Lot 33

EAGLE - EAGLE Historical Flask, Midwest, possibly Kearns, Herdman & Gorsuch, Zanesville, Ohio, or a Pittsburgh district glasshouse, 1865 - 1875. Brilliant olive yellow, applied collar with ring - smooth base, ½ Pt; (professionally cleaned to original luster; a ¼" bruise on the shoulder, and a heavy fold of glass on the interior, but with no associated damage). GII-125. Luckily, the actual damage is confined to the bruise on the shoulder. A stunning little flask, spectacular and rare color.

Est.: \$700 - \$1,000 • Min. bid: \$400



Lot 37

CORNUCOPIA - CORNUCOPIA Pictorial Flask, probably Kensington Glass Works, Philadelphia, PA, 1830 - 1838. Aquamarine, sheared mouth - blowpipe pontil scar, ½ Pt; (a little relatively minor exterior wear and a tiny, barely pinhead spot of roughness on the edge of the sheared mouth, otherwise very near mint). GIII-2. McKearin notes this mold as comparatively scarce, and this is a nice clean example.

Est.: \$175 - \$275 • Min. bid: \$100



Lot 34

EAGLE - EAGLE Historical Flask, Midwest, possibly Kearns, Herdman & Gorsuch, Zanesville, Ohio, or a Pittsburgh district glasshouse, 1865 - 1875. Light golden, almost honey amber, applied collar with ring - smooth base, ½ Pt, near mint; (some light high point wear, otherwise excellent). GII-125. A scarce little flask, excellent overall condition. Ex. Gail Ross collection.

Est.: \$600 - \$900 • Min. bid: \$300



Lot 38

CORNUCOPIA - URN Pictorial Flask, Lancaster Glass Works, Lancaster, NY, 1849 - 1855. Light to medium blue green, sheared mouth - blowpipe pontil scar, Pt; (a slender 5/8" long by 1/8" wide open bubble on the reverse, otherwise perfect). GIII-17. A nice clean example, a little lighter than most.

Est.: \$400 - \$600 • Min. bid: \$250



Lot 35

EAGLE WITH WREATH - (Reverse Same) Historical Flask, Kearns, Herdman & Gorsuch, Zanesville, Ohio, 1869 - 1875. Light golden, almost honey amber, applied collar with ring - smooth base, ½ Pt; (tiny, shallow, pinhead flake on top of collar and only the slightest trace of very faint wear, otherwise perfect). GII-126. You can certainly see the similarities in eagles, lip treatment, and color, between this and the preceding lot. Ex. Gail Ross collection.

Est.: \$500 - \$800 • Min. bid: \$250



Lot 39

MASONIC - EAGLE / "IP" Historical Flask, Keene Marlboro Street Glassworks, Keene, NH, 1815 - 1830. Clear, light to medium blue green, crudely applied thin ring collar - glass tipped pontil scar, Pt, near mint; (a ¾" chip along the edge of the base, possibly in-manufacture, from the pontil scar, and just the slightest trace of light high point wear, otherwise attic mint). GIV-1. Rare, and very unusual with the crudely applied ring type collar, most being simply sheared, or occasionally tooled.

Est.: \$300 - \$500 • Min. bid: \$180



Lot 36

EAGLE WITH BANNER - (Reverse plain) Historical Calabash, America, 1855 - 1865. Bright medium "7-UP" green, applied sloping collar - iron pontil scar, Qt; (some scattered light scratches and minor exterior wear, primarily on the reverse, a couple of minor 1/8", or less, flakes at edge of base). GII-143.

Est.: \$200 - \$300 • Min. bid: \$120



Lot 40

MASONIC - EAGLE / "HS" Historical Flask, Keene Marlboro Street Glassworks, Keene, NH, 1815 - 1830. Yellow olive, crudely applied short tapered collar - sand type pontil scar, Pt, virtually attic mint! GIV-2. An exceptional example, nice light color, lighter than most, virtually no high point wear, and with a good impression. Also, rare with the crudely applied collar. A top example.

Est.: \$4,000 - \$8,000 • Min. bid: \$2,000



Lot 41

MASONIC - EAGLE Historical Flask, probably Keene Marlboro Street Glassworks, Keene, NH, 1820 - 1830. Bright yellowish olive amber, sheared mouth - blowpipe pontil scar, ½ Pt, near mint; (just a small pinhead bit of roughness on the edge of the sheared mouth, and some relatively minor high point wear, primarily on the reverse, otherwise perfect). GIV-24. A beautiful example, bright, clean, almost an olive yellow in the shoulders, and with a better than average impression.

Est.: \$250 - \$450 • Min. bid: \$150



Lot 45

"KEEN" - "P&W" SUNBURST FLASK, Keene Marlboro Street Glassworks, Keene, NH, 1815 - 1830. Medium olive amber, sheared and outward tooled mouth - blowpipe pontil scar, ½ Pt; (some weakening to the embossing as is typical for this mold, some minor wear, and a pinhead flake at base corner). GVIII-10. A good, early New England flask, nice with the slightly flared mouth.

Est.: \$500 - \$800 • Min. bid: \$300



Lot 42

MASONIC - "ZANESVILLE" / EAGLE / "OHIO / J. SHEPARD & CO", Historical Flask, Zanesville Glassworks, Zanesville, Ohio, 1822 - 1832. Golden amber near the shoulders, shading to a deeper reddish orange coloration in the lower half, sheared mouth - blowpipe pontil scar, Pt; (just a little light dullness or exterior "bloom" in the shoulder area, and a little light exterior wear). GIV-32. A good early flask with a highly detailed mold, that is always popular with collectors.

Est.: \$600 - \$900 • Min. bid: \$350



Lot 46

SUNBURST FLASK, New England, probably Coventry Glass Works, Coventry, CT, 1815 - 1830. Medium olive amber shading to a clear light olive amber near the shoulders, sheared mouth - blowpipe pontil scar, ½ Pt, near mint; (just a minor trace of light exterior wear, and a small pinhead flake on the edge of one of the corrugated ribs, otherwise perfect). GVIII-16. Nice clarity and condition.

Est.: \$500 - \$800 • Min. bid: \$300



Lot 43

"UNION" / CLASPED HANDS / SQUARE & COMPASS - EAGLE / "H & S" Historical Flask, Haught & Schwere, Brownsville, PA, 1861 - 1863. Aqua, applied square collar - blowpipe pontil scar, Pt; (small, 1/8" flake at edge of lip, otherwise perfect!) Similar to GIV-40, but noticeable differences in position of eagle's wings and curvature of banner. A bright, clean example with a strong mold impression. Not many "Union" flasks with pontils! Ex. Jim Bender collection.

Est.: \$150 - \$250 • Min. bid: \$80



Lot 47

"LOUISVILLE KY" - "GLASS WORKS" SCROLL FLASK, Louisville Glassworks, 1855 - 1860. Dense tobacco amber, sheared mouth - red iron pontil scar, Pt, virtually attic mint; (just the slightest trace of faint exterior wear, otherwise pristine). GIX-8. A rare flask in any color, the color of this example is unlisted, and possibly unique. Fresh to the market, it was originally found about 30 years ago in an abandoned house in the woods near Lexington, KY, by a geologist performing field work.

Est.: \$4,000 - \$6,000 • Min. bid: \$2,000



Lot 44

SUNBURST FLASK, Keene Marlboro Street Glassworks, Keene, NH, 1815 - 1830. Clear medium green, sheared mouth - glass tipped pontil scar, Pt, near mint; (just a touch of minor exterior wear and a bubble on the interior of the neck that is partially open). GVIII-2. A very nice example, clean, very little wear, good color.

Est.: \$400 - \$600 • Min. bid: \$250



Lot 48

Giant SCROLL FLASK, probably a Midwest glasshouse, 1840 - 1860. Aquamarine, plump pear form with large fleur-de-lis design, sheared mouth - polished pontil scar, 2 ¼ Qts, perfect! GIX-29a. An extremely rare scroll flask, believed to be only a handful of examples known. (See AB&GC article "The Gallon Scrolls", June, 2014.) McKearin theorizes these flasks may have been blown in a glass factory specializing in tableware, such as Bakewells in Pittsburgh.

Est.: \$1,200 - \$2,200 • Min. bid: \$700



Lot 49

TWO MEN ARGUING - GROTESQUE HEAD Pictorial Flask, probably Continental, possibly Norwegian, 1850 - 1870. Greenish aquamarine, sheared mouth - blowpipe pontil scar, ½ Pt, near mint; (a little minor high point wear, otherwise perfect). GX-12. McKearin lists this mold as "Very rare". A bright clean example, and certainly interesting caricatures to depict as the focal point of a whiskey flask.

Est.: \$175 - \$350 • Min. bid: \$100



Lot 53

"UNION" / CLASPED HANDS - EAGLE / "A & CO" (in banner) Historical Flask, Adams & Co, Pittsburgh, 1861 - 1870. Light yellowish apple green, applied collar with flat band - smooth base, Qt, virtually attic mint; (tiny, barely noticeable pinprick spot of roughness at edge of mouth, otherwise pristine!) GXII-1. A nice, clean example, delicate, attractive color, outstanding condition. Ex. Jim Bender collection.

Est.: \$300 - \$500 • Min. bid: \$180



Lot 50

LOG CABIN - FLAG / "HARD CIDER" / CIDER BARREL / PLOW Historical Flask, an early Pittsburgh glasshouse, 1839 - 1842. Deep bluish aquamarine, sheared mouth - blowpipe pontil scar, Pt, pristine perfect; (Note; the flask was recently dug in Ohio and lightly cleaned to virtually attic mint condition with no damage whatsoever). GX-22. An exceptional example having an extremely bold impression, excellent color, outstanding condition. Rare and historical!

Est.: \$8,000 - \$16,000 • Min. bid: \$4,000



Lot 54

"WATERFORD" / CLASPED HANDS - EAGLE Historical Flask, Waterford Glass Works, Waterford, NJ, 1860 - 1865. Aquamarine, applied round double collar - iron pontil scar, Qt., near mint; (some spotty, very faint interior milkiness, some of which may wash out, and a ½" bubble on the shoulder of the reverse has no damage, but can be felt on the surface). GXII-2. A great example with an extremely bold impression. Note, rare with the iron pontil scar. Ex. Jim Bender collection

Est.: \$175 - \$350 • Min. bid: \$100



Lot 51

FLAG - "NEW GRANITE GLASS WORKS / STODDARD / N.H." Historical Flask, 1860 - 1865. Medium to deep olive green, applied short tapered collar - smooth base, Pt, near mint; (1/8" iridescent bruise in the cover glass of a bubble on reverse). GX-28. Rare and desirable, this example has to be among the best in eye-appeal and character, the glass is loaded with seed bubbles and ½ Pts. are considerably more rare than the Pts., and green ones are even better! Ex. Bob Mebane Col.

Est.: \$18,000 - \$36,000 • Min. bid: \$10,000



Lot 55

CLASPED HANDS - EAGLE Historical Flask, probably a Pittsburgh district glasshouse, 1860 - 1870. Light apple green, applied collar with flat band - smooth base, Qt.; (there is a dip in the top of the lip that we suspect is the result of a professional repair to an earlier flake, or chip). GXII-5. McKearin notes this mold as "common". However, we would respectfully disagree and consider it to be at least comparatively scarce. Ex. Jim Bender collection.

Est.: \$150 - \$250 • Min. bid: \$80



Lot 52

PROSPECTOR - EAGLE / "W McC & Co / GLASS WORKS / PITTS. PA" Historical Flask, William McCully & Co, Pittsburgh, 1860 - 1870. Aquamarine, applied collar with band - smooth base, Pt; (just a touch of faint light wear, otherwise attic mint!) GXI-16. A very rare flask, only the 2nd example to be offered at auction in more than 20 years. The 1st example was offered earlier this year (GW, Auction106, Lot 79). A bright, clean example, don't miss this one!

Est.: \$500 - \$1,000 • Min. bid: \$300



Lot 56

"UNION" / CLASPED HANDS - EAGLE Historical Flask, probably a Pittsburgh glasshouse, 1860 - 1870. Light apple green, applied collar with flat band - smooth base, Qt., near mint; (a faint, light ring of interior haze, approx. ½" wide, around the interior of the shoulder and a shallow, 1/8" flake at side of lip, otherwise, perfect). GXII-8. A nice clean example having virtually no high point wear as is often found on these large, quarts. Ex. Jim Bender collection.

Est.: \$175 - \$275 • Min. bid: \$100



Lot 57

"UNION" / CLASPED HANDS - EAGLE / "E. WORMSER & Co / PITTSBURGH / PA." Historical Flask, probably Frankstown Glass Works, 1861 - 1866. Beautiful honey coloration shading to a light honey yellow below the shoulders, applied blob collar - smooth base, Qt; (a little high point wear and a couple of 1/8" flakes, next to one another, on top of the applied mouth, otherwise near attic mint). GXII-15. Beautiful, bright, light color. Ex. Bill Borchert collection.

Est.: \$800 - \$1,400 • Min. bid: \$500



Lot 61

"UNION" / CLASPED HANDS - EAGLE / "A & CO" (in banner) Historical Flask, Adams & Co, Pittsburgh, 1861 - 1870. Medium to deep golden amber, applied collar with band - smooth base, Pt, near mint; (small, pinhead flake off back edge of collar). GXII-21. Strong mold impression, crude glass, nicely whittled. Ex. Jim Bender collection.

Est.: \$300 - \$500 • Min. bid: \$180



Lot 58

"UNION" / CLASPED HANDS - EAGLE Historical Flask, a Pittsburgh district glasshouse, 1860 - 1870. Medium amber, applied collar with ring - smooth base, Pt.; (a 3/16" x 1/2" open surface bubble on the shoulder of the reverse; a touch of faint interior haze in the shoulder, a little minor exterior wear). An unlisted mold! Obverse similar to GXII-17 (but with stars above ends of shield); Reverse generally similar to GXII-18, but with several distinct differences. Ex. Jim Bender collection

Est.: \$500 - \$1,000 • Min. bid: \$300



Lot 62

CLASPED HANDS - EAGLE Historical Flask, a Pittsburgh district glasshouse, 1860 - 1870. Beautiful yellowish honey coloration, applied collar with flat band - smooth base, 1/2 Pt, very near mint; (just a trace of faint wear, otherwise perfect!) GXII-31. Rare, beautiful color, excellent condition.

Est.: \$700 - \$1,200 • Min. bid: \$400



Lot 59

CLASPED HANDS - EAGLE Historical Flask, Lorenz & Wightman Glass Manufacturers, Pittsburgh, 1863 - 1872. Medium to deep golden amber, applied collar with band - "L & W" on smooth base, Pt; (just a little light exterior wear and a 1/8" flake at back edge of lip). GXII-18. This mold is not listed in amber by McKearin, although a handful of amber examples have been sold over the years. Ex. Jim Bender collection.

Est.: \$400 - \$600 • Min. bid: \$200



Lot 63

"UNION" / CLASPED HANDS - "UNION" / CLASPED HANDS Historical Flask, Midwest, probably a Pittsburgh district glasshouse, 1860 - 1865. Aquamarine, sheared mouth with an applied ring - iron pontil scar, Qt.; (a couple of minor pinhead flakes on top of the crudely sheared mouth; some high point wear, primarily on one side only, and a shallow 3/16" flake at edge of base). GXII-37. A scarce mold, but very rare with the iron pontil scar. Ex. Jim Bender collection.

Est.: \$200 - \$400 • Min. bid: \$100



Lot 60

"UNION" / CLASPED HANDS / "LF & CO" - EAGLE / "PITTSBURG. PA" Historical Flask, Lippincott, Fry & Company, Pittsburgh, 1866 - 1867. Golden amber shading to a honey tone in the shoulders, applied collar with band - smooth base, Pt, near attic mint; (a trace of minor, light interior milkiness, otherwise perfect). GXII-19. A very crisp, strong mold impression, nice color, great example. Ex. Jim Bender collection. A scarce mold.

Est.: \$600 - \$900 • Min. bid: \$300



Lot 64

"UNION" / CLASPED HANDS / "FA & Co" - CANNON Historical Flask, Fahnestock, Albree & Company, Pittsburgh, 1865 - 1872. Colorless, tooled sloping collar with ring - smooth base, 1/2 Pt; (a 5/8" area of chipping on top of the mouth, and a 1/4 flake at edge of base). GXII-42. A great rarity in clear, and with the tapered collar, perhaps less than a half-dozen known. Despite the condition issues, this is one that you are not likely to see again for a very long time.

Est.: \$200 - \$400 • Min. bid: \$100



Lot 65

CLASPED HANDS / "UNION" - EAGLE Historical Calabash, America, possibly A.R. Samuels, Philadelphia, PA, 1858 - 1866. Medium to deep amber, applied round double collar - large rectangular iron pontil scar, Qt; (a band of very light interior residue or haze in the lower half of the body, some of which may wash out; some light high point wear and two tiny 1/8" annealing lines located in the fluted sides, as are sometimes found in the calabash molds). GXII-43.

Est.: \$150 - \$250 • Min. bid: \$80



Lot 66

Unlisted - "NOT FOR JOE" / GIRL ON BICYCLE - Reverse Plain, Pictorial Flask, Midwest, probably a Pittsburgh district glasshouse, 1870 - 1875. Aquamarine, applied collar with flat band - smooth base, 1/2 Pt; (a period cork remains in the neck; some light interior residue, otherwise perfect!) An unlisted mold, similar to GXIII-2. Extremely rare, only the 2nd recorded example in the 1/2 pint size. A fresh discovery from an old house renovation in Connecticut.

Est.: \$750 - \$1,250 • Min. bid: \$400



Lot 67

HUNTER - FISHERMAN Pictorial Calabash, probably Whitney Glass Works, Glassboro, NJ, 1857 - 1862. Gorgeous, light to medium peach with a hint of salmon tone, applied sloping collar - iron pontil scar, Qt, near attic mint; (just a trace of minor exterior wear and a small area of very faint, barely visible, interior haze, otherwise pristine). GXIII-4. A beautiful, outstanding example, lighter in tone, and a far better color than typically encountered having no amber in it.

Est.: \$800 - \$1,200 • Min. bid: \$400



Lot 68

"FLORA TEMPLE" / Standing Horse / "HARNESS TROT 2.19 3/4" - Pictorial Flask, Whitney Glass Works, Glassboro, NJ, 1859 - 1865. Deep strawberry puce, applied collar with flat band - smooth base, Pt; (some light scratches and high point wear on the reverse, otherwise virtually attic mint). GXIII-21. No amber is this one, and light enough so that some of the beautiful color can be enjoyed in normal daylight, or backlighting.

Est.: \$500 - \$800 • Min. bid: \$300



Lot 69

"FLORA TEMPLE" / Standing Horse / "HARNESS TROT 2.19 3/4" - Pictorial Flask (with complete original label), Whitney Glass Works, Glassboro, NJ, 1859 - 1865. Medium to deep strawberry puce-amber, applied mouth with band - smooth base, Pt, perfect!. GXIII-21. Label reads in part, "ESTABLISHED 1839. / S.T.SUTTS / KENTUCKY / SALT RIVER BOURBON / WHISKEY". Extremely rare, one of only two examples in this mold with an original label!

Est.: \$2,500 - \$5,000 • Min. bid: \$1,500



Lot 70

SHEAF OF GRAIN - STAR Pictorial Flask, probably Bulltown Glass Works, Bulltown, NJ, 1858 - 1865. Clear medium blue green, almost a teal coloration, applied double collar - blowpipe pontil scar, Pt; (shallow, 1/8" flake at edge of lip, and only a trace of light exterior wear, otherwise perfect). GXIII-39. A scarce mold, beautifully whittled, nice color.

Est.: \$500 - \$800 • Min. bid: \$300



Lot 71

SHEAF OF GRAIN - TREE Pictorial Calabash, probably Sheets & Duffy Glass Manufacturers, Philadelphia, PA, 1850 - 1860. Beautiful, clear light to medium emerald green, applied round collar with bevel - blowpipe pontil scar, Qt, very near mint; (just a wisp of very faint light exterior wear, and a minor 1/4" open bubble at base edge, otherwise pristine). GXIII-47. Beautiful color, scarce in this light to medium emerald coloration, wonderful condition.

Est.: \$600 - \$900 • Min. bid: \$300



Lot 72

"BALTIMORE" / ANCHOR / "GLASS WORKS" - SHEAF OF GRAIN Pictorial Calabash, Baltimore Glass Works, 1850 - 1860. Sapphire blue, applied round double collar - blowpipe pontil scar, Qt; (a couple of very minor open surface bubbles and a 1" hairline fissure on the reverse, otherwise pristine). GXIII-52. A scarce Calabash with exceptional color and great character, loaded with bubbles throughout. Good strong embossing.

Est.: \$2,500 - \$4,500 • Min. bid: \$1,500



Lot 73

"BALTIMORE" / ANCHOR / "GLASS WORKS" - PHOENIX / "RESURGAM" Historical Flask, Baltimore Glass Works, 1850 - 1860. Bright medium yellow green, sheared mouth - blowpipe pontil scar, Pt, near mint; (minor exterior wear, otherwise perfect!) GXIII-53. A very rare color for this mold, even more so with the pontil scarred base. The last example of similar color, with a pontil, was sold in the Bill Pollard collection, March, 1996. A beautiful and rare flask.

Est.: \$2,500 - \$4,500 • Min. bid: \$1,500



Lot 74

"GRANITE / GLASS / CO - STODDARD / N H", 1846 - 1855. Golden yellow with a slight olive tone, sheared mouth - heavy tubular pontil scar, Pt, very near mint; (just a trace of faint minor wear near the base, on the reverse, and a few tiny open surface bubbles, otherwise perfect!) GXV-7. An absolutely top example in both color, and character. The glass is completely filled with small seed bubbles, and impurities throughout. Ex. William Borchert collection.

Est.: \$750 - \$1,500 • Min. bid: \$400



Lot 75

"GRANITE / GLASS / CO - STODDARD / N H", 1855 - 1862. Beautiful golden coloration with some rich reddish tones, applied double round collar - smooth base, Pt, near mint; (some light exterior wear, primarily on the reverses, and a few minor open surface bubbles, otherwise excellent). GXV-7. Another fantastic example, much better than average color, and filled with tiny seed bubbles. Ex. William Borchert collection.

Est.: \$600 - \$900 • Min. bid: \$300



Lot 76

Pattern Molded Globular Bottle, 24 ribs swirled to the left, probably Zanesville Glass Works, Zanesville, OH, 1820 - 1835. Beautiful golden honey coloration, outward rolled mouth - pontil scar, ht. 8", perfect! A nice bright example with very fine tight ribbing through the neck. It is interesting to note that the majority of Midwest Globbs are actually swirled to the right, vs. the left. Globbs swirled left are outnumbered almost 2:1!

Est.: \$500 - \$800 • Min. bid: \$300



Lot 77

Pattern Molded Globular Bottle, 24 ribs swirled to the right, probably Zanesville Glass Works, Zanesville, OH, 1820 - 1835. Medium golden amber, outward rolled mouth - pontil scar, ht. 7 5/8"; (just a touch of typical light exterior wear, otherwise perfect). A classical Midwest Glob with a near perfect spherical body and good tight ribbing through the neck. A great example.

Est.: \$600 - \$900 • Min. bid: \$350



Lot 78

Pattern Molded Pocket Flask, 24 vertical ribs, Midwest, possibly Zanesville Glass Works, Zanesville, OH, 1815 - 1830. Medium honey amber, plump circular body, sheared mouth - pontil scar, ht. 4 5/8"; (a little scattered light exterior wear; a bit of faint "bloom" in the shoulder area, but no other form of damage). A classical Midwest pattern molded flask.

Est.: \$250 - \$450 • Min. bid: \$150



Lot 79

Pattern Molded Pocket Flask, 24 vertical ribs, Midwest, possibly Zanesville Glass Works, Zanesville, OH, 1815 - 1830. Golden amber with an orange, or slightly reddish tone, flattened circular body, sheared mouth - pontil scar, ht. 4 3/4", near mint; (just a little typical light exterior wear, otherwise perfect). A very nice little flask, good form. Ex. William Barrett collection.

Est.: \$250 - \$450 • Min. bid: \$150



Lot 80

Pattern Molded Pocket Flask, 24 ribs swirled to the left, Midwest, possibly Zanesville Glass Works, Zanesville, OH, 1815 - 1830. Golden amber, flattened chestnut form, sheared mouth - pontil scar, ht. 4 7/8"; (some typical light exterior wear, a little scattered faint interior haze, primarily in the lower half of the body, but no other form of damage). Ex. Warren C. Lane, Jr. collection.

Est.: \$200 - \$400 • Min. bid: \$120



Lot 81

Pattern Molded Pocket Flask, 16 wide, melon-type ribs, probably Continental, 1780 - 1820. Beautiful pinkish amethyst, almost a lavender coloration, flattened circular body, sheared mouth - solid glass-tipped puntly scar, ht. 6 1/8"; (just a touch of typical faint exterior wear, otherwise perfect!) Similar to McK, plate 239, #1. If you would like to add some color to your collection, this would do it! Beautiful, scarce, excellent condition.

Est.: \$400 - \$800 • Min. bid: \$250



Lot 85

Poison-Type Hobnail Flask, probably Germany, possibly America, 1830 - 1860. Teal blue, flattened pear form, blown in a 2-pc. mold with an overall hobnail pattern, tooled ring collar - blowpipe pontil scar, 1/2 Pt, ht. 5 1/2", near mint; (a touch of typical, very light exterior wear, otherwise perfect). KU-26. A scarce flask, beautiful color.

Est.: \$400 - \$600 • Min. bid: \$250



Lot 82

Pitkin Type Flask, patterned with 31 vertical ribs over 31 ribs swirled to the right, probably New England, 1790 - 1820. Yellowish olive, plump ovoid body, sheared mouth - blowpipe pontil scar, ht. 4 7/8", near mint; (some scattered light exterior wear). Nice, scarce size.

Est.: \$800 - \$1,200 • Min. bid: \$500



Lot 86

Patterned Pocket Flask, probably Continental, possibly America, 1845 - 1860. Aquamarine, 2-pc. mold, basket design with floral motif, horizontal neck and base rings, sheared mouth - blowpipe pontil scar, 1/2 Pt; (a minor light haze, primarily exterior, that should easily clean with a day or two in the tumbler, if desired, but no other form of damage). A very interesting little flask, scarce, unusual pattern.

Est.: \$125 - \$250 • Min. bid: \$70



Lot 83

Pitkin Type Flask, patterned with 16 wide vertical ribs over 16 ribs swirled to the right, probably Mid-Atlantic region, 1800 - 1830. Bright, yellowish grass green, flattened horseshoe form, sheared mouth - blowpipe pontil scar, ht. 6 1/4"; (professionally cleaned to original luster with a little scattered light exterior wear remaining, but no other form of damage). Similar to McK, plate 233, #10. Beautiful color, scarce, and likely a very early piece.

Est.: \$400 - \$800 • Min. bid: \$250



Lot 87

Large, Freeblown Nailsea-Type Jug, England, 1840 - 1860. Beautiful medium to deep apple green splashed with white enamel flecks, cylindrical body tapering slightly from the shoulders to the base, applied solid ear handle curled at lower attachment, applied sloping double collar - large blowpipe pontil scar - ht. 10 1/4"; (some light exterior usage wear, otherwise near attic mint). See *Nailsea Glass*, Keith Vincent, p.28. A wonderful, scarce Nailsea Jug, especially with the enameling.

Est.: \$400 - \$800 • Min. bid: \$250



Lot 84

Lot of (2), Pattern Molded Pocket Flasks, both are 16 vertical ribs over 16 ribs swirled to the right, Continental, probably Norway, 1810 - 1830. Medium to deep cobalt blue and colorless with a bit of a smoky tint, sheared, outward flared mouths - pontil scarred bases, ht. 4 1/4" & 4 3/8" respectively; (cobalt flask has just a bit of light interior haze near the base; clear example has some minor interior haze and a 1/4" flake at base edge).

Est.: \$300 - \$500 • Min. bid: \$180



Lot 88

Early, Blown Decorated Tumbler, probably Continental, possibly Germany, 1780 - 1820. Colorless non-lead glass with a well executed green, blue, and white enameled motif of a man and woman, bird and floral sprays. Tapered body with a pillar-molded base, sheared rim - blowpipe pontil scar, ht. 2 5/8", perfect. A well executed, very early tumbler, one that incorporates a great deal of workmanship. Nice diminutive size, rare with the pillar-molded base.

Est.: \$100 - \$200 • Min. bid: \$60



Lot 89

Exceptional, Freeblown Creamer, possibly New York State, or New England, 1810 - 1830. Greenish aquamarine, non-lead bottle glass, compressed bulbous body with applied handle curled at lower terminal, wide neck with applied threading, tooled outward flared rim with pinched pour spout - applied funnel-type foot with blowpipe pontil scar, ht. 4 1/2"; (a slight patina, or faint "bloom" to the glass, otherwise perfect). An exceptional example of an early nineteenth century creamer.

Est.: \$750 - \$1,250 • Min. bid: \$400



Lot 90

Early Blown Creamer, probably America, possibly a Pittsburgh district glasshouse, 1840 - 1870. Fiery opalescent milk glass, applied solid handle with tooled rigaree at lower terminal, tooled outward flared rim with pinched pour spout - blowpipe pontil scar, ht. 3 3/8", perfect. A delicate, thin little creamer with wonderful form and nice workmanship. Scarce in the fiery opalescent coloration.

Est.: \$175 - \$275 • Min. bid: \$100



Lot 91

Blown Three Mold Creamer, probably Continental, possibly America, 1825 - 1840. Cobalt, barrel form body blown in a 3-part mold, wide neck flaring to a tooled rim and pinched pour spout, applied solid handle curled at lower terminal, blowpipe pontil scar, ht. 4", perfect. Pattern similar to McK GV-24. McKearin indicates in the text on p.272, that the GV-24 pattern has not been charted but is thought to have been produced at Sandwich. Similar designs were also popular in France.

Est.: \$200 - \$400 • Min. bid: \$120



Lot 92

Lot of (3), Early Blown Creamers, America and England, 1830 - 1860. Cobalt, plum amethyst, and aqua, all with applied, solid handles curled at lower terminal, tooled outward flared rims with pinched pour spouts - blowpipe

and solid glass-tipped pontil scars, ht. 3 3/4", 3 3/4", and 3 1/8" respectively, all three, virtually attic mint! Cobalt and plum examples are likely English; the aqua example is a almost certainly American, and almost a miniature, or toy in size.

Est.: \$300 - \$500 • Min. bid: \$180



Lot 93

Lot of (2), Early Blown Leech Bowls, England, 1860 - 1880. Cranberry and colorless. Cranberry example is freeblown with a tooled, flared rim - polished pontil scarred base, ht. 2", perfect. Colorless example is blown in a 3-part mold with ribbing swirled to the right, sheared, tooled wide flanged rim - rayed base with sand type pontil scar, ht. 2 3/8", near mint; (3/16" flake on edge of flared rim, otherwise sparkling attic mint). Colorless example with nice workmanship and wonderful tooled wide rim.

Est.: \$200 - \$400 • Min. bid: \$120



Lot 94

"BOGARDUS' GLASS BALL PAT'D APR 10 1877." Target Ball, America, 1877 - 1895. Light straw yellow, quilted diamond pattern, rough sheared mouth, dia. 2 5/8"; (some scattered light exterior dullness, primarily below the center band, but no other form of damage). Beautiful color, lighter than most.

Est.: \$200 - \$300 • Min. bid: \$120



Lot 95

Target Ball, probably England, possibly Continental, 1880 - 1895. Topaz color, quilted diamond pattern with plain center band, factory ground mouth, dia. 2 5/8", near mint; (small area, about the size of a quarter, of very light interior residue or faint haze, otherwise perfect). A scarce ball, believed to be the only mold in which the mouth was ground, rather than the traditional rough sheared lip that most balls have. Also, an unusual color that is definitely not the traditional amber tone.

Est.: \$200 - \$300 • Min. bid: \$120



Lot 96

Target Ball, probably America, 1880 - 1895. Beautiful plum purple, almost a grape coloration, blown in a 3-pc. mold, rough sheared mouth, 2 5/8" dia., perfect. A very scarce, desirable, color for this ball. This particular example passes plenty of light and shades from a medium tone through the center, to almost black amethyst near the mouth.

Est.: \$400 - \$600 • Min. bid: \$200



Lot 97

"BOGARDUS GLASS BALLS - STOLBERGER GLASHUTTEN A. G." Target Ball, Germany, 1880 - 1895. Moss-green coloration, blown in a 2-pc. mold with 12 concentric rings, rough sheared mouth, dia. 2 5/8"; (a dug ball in "as-found" condition with some minor, light patchy dullness, a little interior residue, and a few tiny stress lines, 1/8", or less, near the mold seam). An extremely rare and important target ball, one of the rarest of the Bogardus Balls, believed to be one of only three, privately held.

Est.: \$2,000 - \$4,000 • Min. bid: \$1,200



Lot 98

"HAYWARD'S / HAND / FIRE / GRENADE - PATENTED / AUG / 8 / 1871 - S F HAYWARD / 407 / BROADWAY / NY" (with partial contents), America, 1875 - 1895. Lime green, bulbous form with four indented diamond-shaped panels, applied mouth with ring - "2" (on smooth base), ht. 6", perfect. Nice color and condition.

Est.: \$175 - \$350 • Min. bid: \$100



Lot 99

"S.H. DAVIS & CO'S / GILL NET FLOAT. / PATENTED, JAN. 16TH 1877" Fishing Float, America, 1877 - 1880. Aquamarine, "egg form" with medial groove, 2-pc. mold with glass-tipped "button" or knopf to seal off the blowing

hole, length, 5", near mint; (a small pinhead flake at medial groove, some light exterior usage wear, otherwise perfect). Blown for S.H. Davis & Co. of Detroit, Mich. and believed to be the 1st known American glass fishing float. A very rare, historical, glass float.

Est.: \$400 - \$800 • Min. bid: \$250



Lot 100

Rare, Fancy Cologne Bottle, America, 1835 - 1855. Medium to deep sapphire blue, corseted form with scrolled leaves and flowers, tooled thin flanged mouth - blowpipe pontil scar, ht. 5 3/4", near mint; (just a little very light interior residue, or faint haze, and a narrow, 1/4" bubble on the reverse is missing part of it's cover glass). See MW, color plate X, "Rare fancy cognac bottles", also plate 111, #7.

Est.: \$1,200 - \$2,400 • Min. bid: \$700



Lot 101

Early, Flint Glass Fancy Cologne Bottle, probably Mid-Atlantic region, possibly P.C. Dummer & Co, Jersey City, 1835 - 1850. Colorless, rectangular with beveled corners, three sides with floral or fern motif, tooled, flanged ring-type collar, ht. 9", sparkling attic mint! Similar to MW, plate 111, #8. A scarce mold, very rare in this large, mammoth size, brilliant glass. A fresh discovery, found locally in an early Jersey Shore estate.

Est.: \$300 - \$500 • Min. bid: \$180



Lot 102

Lot of (2), Freeblown Seahorse Scent Bottles, probably Eastern United States, 1770 - 1800. Both are colorless with alternating colorful threads of glass swirled through the body; one with opaque white and puce threading, the other with opaque white and light blue canes, both with applied ribbons of glass, one with tooled rigaree, both with sheared mouths, approx. 2 1/4" ht, each; (both have a bit of minor interior haze and light exterior wear, otherwise excellent).

Est.: \$175 - \$350 • Min. bid: \$100



Lot 103

Early, Freeblown Seahorse Scent Bottle, Eastern United States, or England, 1770 - 1800. Medium to deep cobalt, figural "seahorse" form decorated with applied ribbons of glass along the sides, tooled rigaree at the shoulders, sheared mouth, ht. 3"; (some high point wear, a bit of interior residue, and a tiny bit of roughness at base of rigaree, possibly in-manufacture). Seahorse scents were popular both in the Colonies, as well as in England. A lot of workmanship in these little bottles.

Est.: \$175 - \$350 • Min. bid: \$100



Lot 104

Lot of (2), Pattern Molded Scent Bottles, America, or England, 1770 - 1820. Both are cobalt, tall slender ovoid form, patterned with 24 vertical ribs, sheared mouths (one example with interesting metal cap fitted over cork closure) - pontil scarred bases, ht. 2 7/8" & 3"; (some moderate high point wear and a few small flakes to ribbing, primarily on the example with the metal closure). See MW, plate 104.

Est.: \$125 - 225 • Min. bid: \$70



Lot 105

Umbrella Ink, America, 1840 - 1860. Rich, medium to deep sapphire below the neck, shading to a light clear sapphire near the base, 8-sided umbrella form, sheared and tooled mouth - blowpipe pontil scar, 2 5/8" ht. x 2 3/8" wide; (touch of very faint exterior wear, otherwise attic mint). Form similar to C#129. Beautiful color shading from the light to deeper blue. The glass is also filled with minute seed bubbles and a small thread of olive-amber glass down one of the side panels.

Est.: \$1,200 - \$2,200 • Min. bid: \$700



Lot 106

Umbrella Ink, America, 1840 - 1860. Vivid brilliant cobalt, almost "electric" blue, 8-sided umbrella form, sheared and inward rolled mouth - blowpipe pontil scar, 2 3/8" ht. x 2 1/4" wide, virtually attic mint; (tiny, 1/8" surface scratch near base, otherwise "out of the mold" pristine perfect). Form similar to C#129, base similar to Fig. 144. NCH Auction 98, Ex. Gerry Strubel collection. Great clarity and condition, exceptional color.

Est.: \$1,800 - \$2,800 • Min. bid: \$1,000



Lot 107

Umbrella Ink (two dots embossed on side panels), America, 1840 - 1860. Rich, medium to deep blue green, almost a teal coloration, 8-sided umbrella form, sheared and inward rolled mouth - blowpipe pontil scar, 2 1/4" ht. x 2 1/8" wide; (a touch of interior residue that would likely wash out; a bit of very minor dullness or stain near the base, on a couple of the side panels, otherwise excellent). A crude example, nice character, great color, and likely a rare mold with the two "dots."

Est.: \$300 - \$500 • Min. bid: \$180



Lot 108

Umbrella Ink, America, 1840 - 1860. Medium to deep yellowish olive, 8-sided umbrella form, sheared, tooled mouth - blowpipe pontil scar, 2 3/8" ht. x 2 3/8" wide; (a little light exterior wear, otherwise near mint). Similar to C#141. Nice rich color with a bit of a chartreuse tone.

Est.: \$250 - \$450 • Min. bid: \$150



Lot 109

Umbrella Ink, America, 1840 - 1860. Brilliant yellowish honey coloration, 8-sided umbrella form, sheared and inward rolled lip - blowpipe pontil scar, 2 1/8" ht. x 2 1/8" wide, virtually attic mint; (just a wisp of extremely faint interior residue or haze, otherwise pristine perfect). Form similar to C#129. A beautiful, very attractive inkwell with nice color, character and outstanding condition.

Est.: \$250 - \$450 • Min. bid: \$150



Lot 110

Umbrella Ink, New England, possibly one of the Stoddard glasshouses, 1842 - 1860. Medium to deep 'old amber', 8-sided umbrella form, sheared and tooled mouth - blowpipe pontil scar, 2 1/2" ht. x 2 1/4" wide; (just a bit of expected very light exterior wear, otherwise perfect). Similar to C#131. Nice crude glass, a classic little umbrella inkwell.

Est.: \$200 - \$300 • Min. bid: \$120



Lot 111

Umbrella Ink, probably Saratoga Mountain Glassworks, Mt. Pleasant, NY, 1846 - 1860. Medium olive green, 16-sided umbrella form, sheared and tooled mouth - (keyed base with backwards "4"), blowpipe pontil scar, ht. 2 1/4", sparking mint! C#153. A very rare, attractive color for this mold, typically encountered in shades of medium to deep amber. This is the same little ink that we sold back in Auction #9. An absolute sweetheart of an ink.

Est.: \$1,500 - \$2,500 • Min. bid: \$800



Lot 112

Umbrella Ink, a Stoddard, New Hampshire glasshouse, probably Granite Glass Co, 1842 - 1860. Medium olive amber, 16-sided umbrella form, sheared and tooled mouth - blowpipe pontil scar, ht. 2 1/8"; (a few light scratches, primarily on one side, otherwise excellent). C#153. A desirable little inkwell, scarce mold, one of three sizes known in this form.

Est.: \$400 - \$600 • Min. bid: \$250



Lot 113

Small, Teakettle Inkwell, America, or possibly England, 1860 - 1880. Cobalt, teakettle form with eight cut and polished flat panels; polished pontil and top with pen rest, original brass neck ring and hinged cap, ht. 1 1/2", near mint; (tissue-paper-thin 1/8" flake at edge of base, touch of light usage wear). Similar to C#1247, but having additional pen rest. A lot of workmanship in this one. Scarce small size.

Est.: \$300 - \$500 • Min. bid: \$180



Lot 114

Teakettle Inkwell, America, or possibly England, 1860 - 1880. Deep plum amethyst, 8-sided, sheared mouth with original hinged brass cover - smooth base, ht. 2", near attic mint; (the bottle is virtually perfect; the original brass cap is detached, but fits snugly on top of the brass collar). Similar to C#1261. Note; this example is a slightly unusual mold variation having a very short spout (typically they are much more elongated). Nice color, and complete with original cap!

Est.: \$250 - \$450 • Min. bid: \$150



Lot 115

"WOOD'S / BLACK. INK / PORTLAND.", America, 1850 - 1860. Aquamarine, cone form, sheared, tooled, and inward rolled mouth - blowpipe pontil scar, ht. 2 1/2"; (just a small trace of very faint dullness near edge of base, on reverse, otherwise a clean, sparkling example). C#12; Faulkner p.150. An always popular ink, this example has a nice look, and a good impression.

Est.: \$175 - \$350 • Min. bid: \$100



Lot 116

"G. & R's / AMERICAN / WRITING FLUID", America, 1850 - 1860. Aquamarine, cone form, sheared and inward rolled mouth - blowpipe pontil scar, ht. 2 1/2"; (a small patch of minor exterior dullness, primarily on the front, where the bottle may have laid on its side in a damp area, but does not appear to be a dug bottle; a little dried residue on the inside of the rolled lip, but no other form of damage, and otherwise very near mint). C#10; Faulkner p.62. A very scarce little ink, nicely whittled.

Est.: \$200 - \$400 • Min. bid: \$120



Lot 117

Lot of (2) "HARRISON'S / COLUMBIAN / INK" Bottles, America, 1845 - 1860. Aquamarine and greenish aqua, both octagonal, sheared and inward rolled mouth and applied double collar, both with blowpipe pontil scars, ht. 1 7/8" and 2 1/2"

respectively, both virtually attic mint; (just a touch of typical light wear on the rolled lip example; the little flared lip, pale green example is pristine, and a little gem of an ink). C#529, and C#534.

Est.: \$200 - \$400 • Min. bid: \$120



Lot 118

"HARRISON'S / COLUMBIAN / INK" - "PATENT" (on shoulder) **Master Ink**, America, 1845 - 1855. Aquamarine, 12-sided, applied double collar - blowpipe pontil scar, ht. 5 3/4", virtually attic mint; (some minor, in-manufacture crazing lines in the neck, not considered damage, but noted for completeness). C#760, Faulkner p.68 - 70. A nice example, scarce size.

Est.: \$200 - \$400 • Min. bid: \$120



Lot 119

"HARRISON'S / COLUMBIAN / INK" - "PATENT" (on shoulder) **Master Ink**, America, 1845 - 1855. Aquamarine, 12-sided, applied double collar - blowpipe pontil scar, ht. 7 3/8", very near mint; (a bubble at the edge of the base on the reverse, approx. 1" in length, has a tiny disturbance in the cover glass that has allowed a little moisture, or haze, to occur; it is minor, the bottle is otherwise attic mint). C#761. Bold embossing, and a perfect flared lip with no flaws, not easy to find on these larger examples.

Est.: \$300 - \$500 • Min. bid: \$180



Lot 120

"WHITWELLS - SNUFF" Bottle (with cork and partial, likely original, contents). America, 1825 - 1835. Aquamarine, rectangular with a wide neck, sheared and inward rolled lip - blowpipe pontil scar, ht. 2 3/4", sparkling attic mint! A rare little snuff bottle, we sold another example in Auction 13, but prior to that, had not had the opportunity to see another in a very long time. Outstanding "attic" condition!

Est.: \$250 - \$450 • Min. bid: \$150



Lot 121

"E ROOME / TROY / NEW YORK"
Snuff Bottle (with original label and contents), New England, possibly a Stoddard, NH glasshouse, 1845 - 1860. Medium olive with a yellowish tone, rectangular with beveled corners, sheared and outward flared mouth - blowpipe pontil scar, ht. 4 1/4", virtually attic mint; (a pinhead flake at edge of mouth; label is approx. 98% complete but with some fading and discoloration). An outstanding example, strongly embossed, very rare with label and contents.

Est.: \$1,000 - \$1,500 • Min. bid: \$500



Lot 125

"AMERICAN EAGLE / TOBACCO WORKS / DETROIT MICH" Tobacco Jar, America, 1880 - 1895. Brilliant cobalt, barrel form, threaded and factory ground mouth, period zinc lid with wire bail - smooth base, ht. 7 3/8", perfect. A very rare tobacco jar, generally considered the most desirable of all the tobacco jars, and the only known jar to come in cobalt. A piece that certainly stands out on a shelf! Provenance: Ex: Mike Henness, Bill Pollard, Howard Crowe collections.

Est.: \$3,000 - \$5,000 • Min. bid: \$1,500



Lot 122

"F" (debossed on base), **Snuff Jar**, New England, probably a Stoddard New Hampshire glasshouse, 1842 - 1860. Yellowish olive amber, almost an olive yellow near the shoulders, rectangular with beveled corners, sheared, slightly flared mouth - blowpipe pontil scar, large "F" debossed in the base, ht. 4 1/8", near mint; (a touch of typical faint exterior wear, otherwise perfect). A scarce mold, believed to be the product of a Stoddard glasshouse.

Est.: \$175 - \$350 • Min. bid: \$100



Lot 126

"GLOBE / TOBACCO COMPANY / DETROIT / PAT OCT 10TH 1882" Tobacco Jar, America, 1882 - 1895. Clear yellow, almost straw tone, barrel form, threaded and factory ground mouth with original metal closure, wire bail and wooden handle - smooth base, Qt, near attic mint; (original closure is very solid with only very minor surface corrosion or "patina"; jar is perfect with a touch of normal flaking from the factory grinding). This is the scarcer mold without the "WINDSOR" embossing.

Est.: \$100 - \$200 • Min. bid: \$60



Lot 123

Lot of (2), Early Snuff Jars, possibly Saratoga Mountain Glass Works, Mt. Pleasant, NY, 1845 - 1860. Olive green and olive amber, both rectangular with beveled corners, sheared, slightly flared mouths - both with blowpipe pontil scarred bases and debossed "Dots" on the base, ht. 4 1/8" each, both near mint with just typical faint exterior wear. Note; bases of snuff jars with the debossed circles, or dots, have been found during excavations of the Saratoga Mountain Glass Works site.

Est.: \$200 - \$400 • Min. bid: \$120



Lot 127

"SKILTON. FOOTE & CO'S / TRADE MARK" / (Motif of Monument, Trees, and Pickle Barrels) / "BUNKER HILL PICKLES" (with 99% complete, original label), America, 1880 - 1895. Golden honey amber, cylindrical, tooled square collar - smooth base, ht. 8 1/8", bottle is attic mint! Label has some staining, and is faded, but still legible, and reads in part, "MIXED PICKLES / FROM / SKILTON FOOTE & Co. / MANUFACTURERS / of / BUNKER HILL PICKLES".

Est.: \$100 - \$200 • Min. bid: \$60



Lot 124

Early, Dip Mold Utility, Spirits, or Snuff Bottle, America, or possibly Continental, 1780 - 1820. Clear, light olive in the shoulders, shading to a rich olive near the base, square with domed shoulders, short neck with a tooled, thin flanged lip - sand type pontil scar - ht. 7 3/8"; (a few, tissue-paper-thin open surface bubbles, otherwise virtually mint!) See MW, plate 75, #11. A beautiful bottle, filled with bubbles and character. Regardless of origin, a fantastic, eye-appealing piece.

Est.: \$600 - \$1,200 • Min. bid: \$300



Lot 128

"W.D.S. / N.Y." Fancy Pickle Jar, America, 1850 - 1860. Medium blue green, square with narrow columned corners, flared neck with 12 lobed panels, sheared mouth with small ring type collar - iron pontil scar, ht. 7 1/8"; (professionally cleaned to original luster with a little light exterior wear remaining). Z p.386. Very similar in color to the example we sold in Auction #10. A very attractive, scarce mold, with great color, character, and eye-appeal.

Est.: \$500 - \$800 • Min. bid: \$250



Lot 129

“S J G” Cathedral Pickle Jar, America, 1860 - 1870. Aquamarine, square with beveled corners, arched gothic panels, three with quatrefoil design and beaded trefoil motif, applied ring collar - smooth base, ht. 9 1/8”, near mint; (a touch of scattered light residue that would almost certainly clean with a bit of soap and water, to virtually attic mint condition). See Zumwalt, p.162. A very scarce, embossed pickle jar, outstanding condition.

Est.: \$200 - \$400 • Min. bid: \$120



Lot 130

Rare Design, Cathedral Pickle Jar, America, 1850 - 1860. Aquamarine, square, large 5-pointed STAR and Gothic designs on front panel with different Gothic designs on each of the remaining three panels, sheared mouth with an applied ring collar - iron pontil scar, ht. 8 5/8”; (a little relatively minor high point wear, and a 3/16” flake on one of the panel edges, otherwise bright, clean, and virtually attic mint). See Zumwalt, p.455. A rare jar, especially in this near attic condition.

Est.: \$500 - \$1,000 • Min. bid: \$300



Lot 131

Lot of (2) Cathedral Food Bottles, America, 1855 - 1870. Peppersauce bottle is pale aquamarine, 6-sided with arched gothic panels, applied blob collar with bevel - blowpipe pontil scar, ht. 8 3/4”; Pickle jar is deep greenish aqua, square with arched gothic panels, applied ring collar - smooth base, ht. 11 5/8”. Both with a layer of faint haze or soot, otherwise near mint, and in “as found” condition, fresh from a local estate in Western Mass, and need a little bath.

Est.: \$200 - \$400 • Min. bid: \$120



Lot 132

Lot of (2), “D. MITCHELL’S / FLAVORING / EXTRACT / ROCHESTER” Bottles, America, 1855 - 1865. Both are colorless with a slight smoky tint, oval, sheared with inward rolled lips - blowpipe pontil scarred bases, ht. 5” and 5 1/2”, both are near attic mint with just a touch of typical faint exterior wear). Note; the larger example is embossed, “CHEMICAL / WORKS” below, “ROCHESTER”; the smaller example is strongly embossed, attic mint condition.

Est.: \$175 - \$275 • Min. bid: \$100



Lot 133

“ONE QUART / LIQUID / CARRIGAN’S / NIAGARA / DAIRY CO.” / “REED” Milk Bottle, F.E. Reed Glass Company, Rochester, NY, 1928 - 1934. Bright yellowish lime green, cylindrical, rounded ABM collar with seat for paper cap - “A-34” on smooth base, Qt, virtually attic mint; (only the slightest trace of light wear, otherwise perfect!) A very scarce and desirable bottle, outstanding condition.

Est.: \$400 - \$600 • Min. bid: \$250



Lot 134

“ONE QUART / LIQUID / Langs / CREAMERY / INC. / BUFFALO. N.Y.” / “REED” Milk Bottle, F.E. Reed Glass Company, Rochester, NY, 1928 - 1934. Yellowish lime green, cylindrical, rounded ABM collar with seat for paper cap - “L A34” on smooth base, Qt; (a few scattered light scratches, primarily on the reverse, otherwise very near mint).

Est.: \$150 - \$250 • Min. bid: \$80



Lot 135

“MASS. / R / SEAL / ONE QUART LIQUID / ALTA CREST FARMS / SPENCER. MASS.” / “REED” - (Motif of Steer’s Head) / “AHS” Milk Bottle, F.E. Reed Glass Co, Rochester, NY, 1929 - 1934. Yellowish lime green, cylindrical cone form, rounded ABM collar with seat and “ALTA CREST FARM PRODUCTS” paper cap - “PATENTED MAY 28 1929 / No. 78628 / 34” on smooth base, Qt, near mint; (a little very minor case wear). Another scarce example.

Est.: \$500 - \$700 • Min. bid: \$300



Lot 136

Lot of (2) Milk Bottles, “WECKERLE - WECKERLE” / “REED REG. B259 4 1QT” (around heel), and “ONE QUART / LIQUID / BRIGHTON / PLACE DAIRY / ROCHESTER, N.Y.” / “REED”, F.E. Reed Glass Company, Rochester, NY, 1928 - 1934. Both yellowish lime green, cylindrical, ABM collars - “34” (on smooth bases), Qts; (“WECKERLE” is virtually attic mint; “BRIGHTON DAIRY” has some heavy scratches and wear).

Est.: \$175 - \$275 • Min. bid: \$100



Lot 137

"MEREDITH'S / DIAMOND CLUB" / (Logo) / "PURE RYE / WHISKEY", Miniature Jug Watch Fob, probably Knowles, Taylor & Knowles, East Liverpool, OH, 1891 - 1906. White glaze with green lettering, gold bands around neck and lip - unmarked base, ht. 1 1/8", perfect. Scarce little advertising piece designed as a watch fob, likely given as a promotional item with the sale of their larger jugs of whiskey.

Est.: \$75 - \$125 • Min. bid: \$50



Lot 141

"WHARTON'S / WHISKEY / 1850 / CHESTNUT GROVE" (within decorative oval frame), America, 1860 - 1870. Medium cobalt, teardrop form, applied short tapered collar with bevel - smooth base, ht. 5 3/8"; (just a slight trace of very faint interior haze, a bit of typical light exterior wear, and a tiny pinhead spot of roughness on the back edge of the lip, otherwise excellent). A nice example of this popular little flask.

Est.: \$250 - \$350 • Min. bid: \$150



Lot 138

"MEREDITH'S / DIAMOND CLUB" / (Trade mark with Logo) / "PURE RYE / WHISKEY. / EXPRESSLY FOR / MEDICINAL USE / EAST LIVERPOOL, OHIO." China Whiskey Jug, Knowles, Taylor & Knowles, East Liverpool, OH, 1891 - 1906. White china glaze with attractive dark green lettering, gold band around lip - **"K.T.&K / CHINA"** (on base), 1/2 Pt, 4 1/2", virtually attic mint! Scarce 1/2 pint size, outstanding condition.

Est.: \$125 - \$225 • Min. bid: \$70



Lot 142

Freeblown Applied Handle Chestnut Flask, America, probably Mid-Atlantic region, 1850 - 1860. Brilliant, medium sapphire blue, flattened chestnut form with an applied handle, applied double collared mouth - blowpipe pontil scar, ht. 8 5/8"; (a crack under the lower handle attachment extends approximately 3/8" above and below where the handle attaches to the body). An eye-appealing, stunning color, rare for a handled chestnut bottle. Ex. Dr. Daniel Bennett Col.

Est.: \$250 - \$450 • Min. bid: \$150



Lot 139

"TIME TO TAKE A / DRINK" / (clock face) Label Under Glass Canteen Flask, America, 1890 - 1900. Clear with recessed glass label of clock face with roman numerals, threaded ground mouth with likely original, metal closure - **"US"** debossed / **"PATENT APPLIED FOR."** embossed, on reverse, ht. 5"; (two large bruises on side of ground mouth, one is 5/8" x 3/8", 2nd is 1/2" x 1/4"). With cap on, bruises are almost completely concealed, glass label is undamaged which is rare on these.

Est.: \$150 - \$250 • Min. bid: \$100



Lot 143

"WHITNEY GLASS WORKS GLASS-BORO N.J." (on base), Whiskey Cylinder, Whitney Glass Works, 1860 - 1875. Clear medium yellow, almost a lemon yellow, cylindrical, 3-pc. mold, applied sloping collar with ring - smooth base, "fifth", ht. 11 3/8", virtually attic mint; (just a touch of minor wear including a couple of small pinhead flakes near the base, otherwise pristine). Gorgeous color, lettering strongly embossed on the base.

Est.: \$100 - \$175 • Min. bid: \$60



Lot 140

Lot of (2), Barrel Whiskey Bottles, America, 1885 - 1895. **"I. W. HARPER / NELSON, CO. KY. / WHISKEY"**, colorless, tooled sloping collar - smooth base, ht. 4 1/8"; (a few 1/8", likely in-making, annealing lines in the neck, otherwise perfect). **"GREETINGS / THEODORE NETTER / 1232 MARKET ST. / PHILADA, PA."**, cobalt, tooled sloping collar - smooth base, ht. 5 7/8", near mint; (some in-making mouth roughness and a pinhead flake off one of the barrel rings).

Est.: \$200 - \$400 • Min. bid: \$120



Lot 144

"WEEKS GLASS WORKS" (on base), Whiskey Cylinder, South Stoddard Glass Co., Stoddard, New Hampshire, 1860 - 1873. Reddish golden amber, cylindrical, 3-pc. mold, applied sloping collar with ring - smooth base, "fifth", ht. 11 1/8", near mint; (just a trace of faint wear and a little, very minor interior residue, most of which would almost certainly wash out). A very scarce Stoddard whiskey, nicely whittled, good color, excellent condition.

Est.: \$200 - \$400 • Min. bid: \$120

COLORFUL CALABASHES



Lot 71

Lot 72

Lot 9

The “Calabash” form is probably a bit more varied than many collectors realize. Currently, the known Calabash bottles span four different flask groups (Portraits, Eagles, Masonics, and GXIII, the Pictorials). There are more than two dozen different designs, or mold variations, and literally dozens of different color combinations. They were blown at numerous glasshouses, both on the east coast and in the Midwest. The Whitney Glass Works, in Glassboro, New Jersey, and the Ravenna, Glass Works, in Ravenna, Ohio, were two of

the more prolific glasshouses that produced the calabash bottles. Most were blown during the golden age of figured flasks, predominately the 1850s, to early 1860s.

It is unclear when the term, “Calabash” first appeared as a descriptive term for these bottles. Edwin Atlee Barber, in his book, *American Glassware*, copyright 1900, mentions it in his suggested classification of forms, as “Type IV, Calabash, or decanter, shape”. Subsequently, Rhea Mansfield Knittle further discusses the “Calabash”

bottle in her 1927 book, *Early American Glass*. The term of course relates to the resemblance in shape to a calabash, or “bottle gourd”. It is certainly plausible, although purely conjecture, that the general term may have been used by one of the early glasshouses that produced the bottles.

This collection of Choice and Rare Calabash Flasks has been carefully assembled by an “old time” experienced collector having a great eye for the rare, unusual, or especially attractive in color.





Lot 145

"UDOLPHO WOLFE'S - SCHIEDAM - AROMATIC / SCHNAPPS" (with 95% complete original label and packaging), America, 1858 - 1862. Medium olive, square with beveled corners, applied sloping collar - smooth base, ht. 9 3/4"; (the bottle is perfect, wrapper and label 95 - 98% complete). An outstanding piece, exceptional original condition, extremely rare, the only example we have seen in this color with label and packaging.

Est.: \$500 - \$800 • Min. bid: \$300



Lot 149

"UDOLPHO WOLFE'S - SCHIEDAM - AROMATIC / SCHNAPPS", America, 1860 - 1870. Beautiful ginger-ale coloration with some warmer apricot tones, square with beveled corners, applied sloping collar - smooth base, ht. 8", near mint; (a little faint interior residue, or light haze, that is not terribly noticeable and may wash out; a shallow pinhead open bubble at base edge, otherwise perfect). Great color, excellent condition, a terrific example.

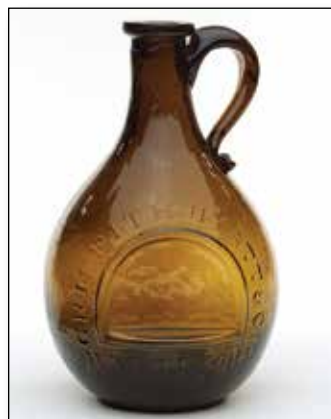
Est.: \$200 - \$400 • Min. bid: \$120



Lot 146

"UDOLPHO WOLFES - SCHIEDAM - AROMATIC / SCHNAPPS", America, 1860 - 1865. Bright yellowish olive, almost an olive yellow, with a slight amber tone, square with beveled corners, applied sloping collar with bevel - smooth base, ht. 10", virtually attic mint; (a handful of tiny, shallow open surface bubbles, otherwise perfect). This example excels in character, — the glass being absolutely filled with tiny seed bubbles. Another special example from an old-time collection.

Est.: \$250 - \$400 • Min. bid: \$140



Lot 150

"GRIFFITH HYATT & Co. / BALTIMORE" Handled Whiskey Jug, America, probably Baltimore Glass Works, 1850 - 1860. Bright golden with a slight apricot tone near the base, shading to light honey through the mid-section, bulbous pear-form body with an applied handle curled at lower attachment, applied square collar - blowpipe pontil scar, ht. 7 1/8", near mint; (a touch of fine exterior wear, primarily on the reverse, otherwise perfect). Another pretty example, nice color, heavily whittled.

Est.: \$600 - \$900 • Min. bid: \$350



Lot 147

"UDOLPHO WOLFE'S - SCHIEDAM - AROMATIC / SCHNAPPS", America, 1855 - 1865. Yellowish olive amber, square with beveled corners, applied sloping collar - iron pontil scar, ht. 9 3/4", virtually attic mint; (an onion-skin-thin, pinhead bit of roughness on the edge of the lip, may be in-making, and a slight trace of faint wear, otherwise perfect!) The majority of these have been dug, but not this one. Clean as a whistle, nice color, much more scarce in the olive amber tone.

Est.: \$125 - \$250 • Min. bid: \$80



Lot 151

"GRIFFITH HYATT & Co. / BALTIMORE" Handled Whiskey Jug, America, probably Baltimore Glass Works, 1850 - 1860. Medium to deep honey coloration with just a slight hint of an olive, bulbous pear-form body with an applied handle curled at lower attachment, applied square collar - blowpipe pontil scar, ht. 7 1/4", near mint; (just a trace of light wear including a 1" faint scratch at the side, near the mold seam). A nice example with good clarity, this example also being heavily whittled!

Est.: \$500 - \$800 • Min. bid: \$300



Lot 148

"UDOLPHO WOLFES - SCHIEDAM - AROMATIC / SCHNAPPS" (backwards "S" in "Schnapps"), America, 1855 - 1865. Medium olive, square with beveled corners, applied sloping collar with bevel - sand type pontil scar, ht. 7 7/8", virtually attic mint; (just the slightest wisp of faint light wear, otherwise perfect). An extremely rare mold variant, - only a handful of the small size "Udolpho's" are known having the backwards "S".

Est.: \$800 - \$1,200 • Min. bid: \$400



Lot 152

"GRIFFITH HYATT & Co. / BALTIMORE" Handled Whiskey Jug, probably Baltimore Glass Works, 1850 - 1860. Deep yellowish olive amber, bulbous pear-form body with an applied handle curled at lower attachment with tooled rigaree, applied ring collar - blowpipe pontil scar, ht. 7 1/8", near mint; (a little minor roughness along the top edge of the lip that you can feel, but is not easy to see, and an 1/8" tissue-paper-thin open bubble on the reverse, otherwise virtually attic mint. Rare color!

Est.: \$800 - \$1,400 • Min. bid: \$500



Lot 153

"A.M. BININGER & CO. / 19 BROAD ST. / N.Y." Figural Cannon Barrel Whiskey, America, 1865 - 1875. Golden amber through the body shading to a light honey coloration in the shoulders, figural cannon, sheared mouth - smooth base, ht. 12 1/4", near mint; (two small, pinhead bits of roughness on the sheared mouth; a couple of minor light scratches on reverse, otherwise perfect). The bottle held "Great Gun Gin". Ex. Sam Greer, Diane Wheaton collections.

Est.: \$1,200 - \$1,800 • Min. bid: \$700



Lot 157

OLD LONDON DOCK - GIN - A.M. BININGER & CO. / No. 19 BROAD ST N.Y., America, 1860 - 1875. Medium to deep olive with a yellowish tone, square with beveled corners, applied sloping collar - smooth base, ht. 8"; (a small, 1/8" area of very minor, possibly in-manufacture, roughness on the edge of the lip, some faint interior residue in the lower half, otherwise virtually attic mint). Note; this is the scarce "small square" size. Ex. Diane Wheaton collection.

Est.: \$300 - \$500 • Min. bid: \$180



Lot 154

Bininger labeled, Freeblown Chestnut Flask, America, 1849 - 1860. Honey amber with a very slight olive tone, almost a butterscotch coloration, flattened chestnut form with an applied handle, applied collar with ring - blow-pipe pontil scar, ht. 8 1/4"; (flask is near mint with light wear; label with faded lettering, darkened from age). Label reads; "OLD KENTUCKY BOURBON / 1849 RESERVE / A.M. BININGER & Co / 338 BROADWAY". Ex. Charles Gardner; Diane Wheaton collections.

Est.: \$250 - \$450 • Min. bid: \$150



Lot 158

OLD LONDON DOCK - GIN - A.M. BININGER & CO. / No. 19 BROAD ST N.Y., America, 1860 - 1875. Bright yellowish olive, square with beveled corners, applied sloping collar - smooth base, ht. 9 3/4", attic mint! Note; a large period after the word, GIN". Ex. Diane Wheaton collection.

Est.: \$250 - \$450 • Min. bid: \$150



Lot 155

"BININGER'S / OLD KENTUCKY BOURBON, - 1849. RESERVE: / DISTILLED IN 1848. - A.M. BININGER & CO, / No. 19, BROAD ST, N.Y.", America, 1860 - 1870. Beautiful bright yellowish golden coloration, square with beveled corners, applied sloping collar - smooth base, ht. 9 3/4", perfect! A very scarce bottle, beautiful example, outstanding pristine condition. Provenance: Ex. Sam Greer; Diane Wheaton collections.

Est.: \$300 - \$500 • Min. bid: \$180



Lot 159

OLD LONDON DOCK - GIN - A.M. BININGER & Co. / No. 19 BROAD ST N.Y., America, 1860 - 1875. Golden honey amber, square with beveled corners, applied sloping collar - smooth base, ht. 9 7/8"; (a 1/4" flake at beveled edge near shoulder and a bit of dried contents in the base, otherwise perfect). A bright, clean example. Note; "338" peened out, replaced by "19". Ex. Diane Wheaton collection.

Est.: \$250 - \$450 • Min. bid: \$150



Lot 156

"OLD LONDON DOCK - GIN - A.M. BININGER & Co, / No, 17 BROAD ST" (with 98% complete original label), America, 1860 - 1875. Yellowish olive green, square with beveled corners, applied sloping collar - smooth base, ht. 9 3/4"; (shallow, 1/8" flake at base corner, otherwise perfect). Label reads in part, "OLD LONDON DOCK / GIN. / DESIGNED ESPECIALLY / AS A SAFE & RELIABLE / Medicine / FOR FAMILY USE". Especially rare with original label. Ex. Diane Wheaton collection.

Est.: \$500 - \$800 • Min. bid: \$300



Lot 160

"OLD LONDON DOCK - GIN - A.M. BININGER & Co. / No. 338 BROADWAY.", America, 1860 - 1875. Medium olive yellow, square with beveled corners, applied sloping collar - smooth base, ht. 9 5/8"; (a tiny potstone on the inside surface of the glass has a 1/8" line through it, and some extremely faint haze of "bloom" on one of the side panels that is barely noticeable, otherwise perfect). Beautiful color, nice character with several large bubbles. Ex. Diane Wheaton collection.

Est.: \$200 - \$400 • Min. bid: \$120



Lot 161

"BININGER'S / OLD DOMINION - WHEAT TONIC - A.M. BININGER & Co / NO. 19 BROAD ST. N.Y.", 1860 - 1875. Brilliant yellowish honey coloration, square with beveled corners, applied sloping collar - smooth base, ht. 9 7/8", attic mint! Plenty of yellowish tone in this one. A beautiful, scarce color for the "WHEAT TONIC", more typically found in shades of green. Ex. Diane Wheaton collection.

Est.: \$400 - \$600 • Min. bid: \$250



Lot 165

"DISTILLED IN 1848. / OLD KENTUCKY / 1849 / RESERVE / BOURBON / A.M. BININGER & Co. / 19 BROAD ST. N.Y.", America, 1850 - 1860. Medium amber, barrel form, applied round double collar - blowpipe pontil scar, ht. 8", near mint; (some light interior residue or very faint haze in the lower half, barely noticeable, and just a trace of exterior wear, otherwise perfect). This is the smaller size barrel with the 19 Broad St. address. Ex. Sam Greer, Diane Wheaton collections.

Est.: \$200 - \$400 • Min. bid: \$120



Lot 162

"BININGER'S / OLD DOMINION - WHEAT TONIC, - A.M. BININGER & Co: / NO. 338 BROADWAY, N.Y.", 1860 - 1875. Medium yellowish olive, square with beveled corners, applied sloping collar - smooth base, ht. 9 3/4"; (a pinhead flake at bottom edge of collar; some very faint haze on the Wheat Tonic panel, otherwise mint). Note; a large interior "bird swing" between two side panels. The Wheat Tonic mold is scarce with the 338 Broadway address. Ex. Diane Wheaton collection.

Est.: \$400 - \$600 • Min. bid: \$250



Lot 166

"DISTILLED IN 1848. / OLD KENTUCKY / 1849 / RESERVE / BOURBON / A.M. BININGER & Co. / 338 BROADWAY, N.Y.", America, 1850 - 1860. Golden amber, barrel form, applied round double collar - blowpipe pontil scar, ht. 7 7/8", sparkling attic mint! A great example, outstanding condition, this one being the smaller size, and with the 338 Broadway address. Ex. Diane Wheaton collection.

Est.: \$300 - \$500 • Min. bid: \$180



Lot 163

"A.M. BININGER & Co / No 375 BROADWAY N.Y.", America, 1863 - 1870. Beautiful yellowish citron, square with beveled corners, applied sloping collar - smooth base, ht. 9 3/4", virtually attic mint; (a shallow, 1/8" sliver flake off side of lip, otherwise pristine perfect). A scarce mold, rare, eye-appealing color, excellent overall condition. Ex. Sam Greer, Diane Wheaton collections.

Est.: \$400 - \$800 • Min. bid: \$250



Lot 167

Figural Pineapple Bitters Bottle, America, 1855 - 1865. Honey coloration, pineapple form, applied round double collar - blowpipe pontil scar, ht. 8 1/2"; (some overall interior haze that could easily be professionally cleaned, if desired, and a touch of light wear including a 1/4", partially open surface bubble, but no other form of damage). R/H #P100. A scarce color for a pontiled pineapple. Also, this is the mold variant with a small oval peened out area in the label panel.

Est.: \$200 - \$400 • Min. bid: \$120



Lot 164

"DISTILLED IN 1848. / OLD KENTUCKY / 1849 / RESERVE / BOURBON / A.M. BININGER & Co. / 19 BROAD ST N.Y.", America, 1850 - 1860. Yellowish honey in the shoulders shading to golden amber near the base, barrel form, applied round double collar - blowpipe pontil scar, ht. 9 1/4", near attic mint; (shallow, 1/8" flake at base edge, otherwise perfect). This is the larger of two available sizes, beautiful color and condition. Ex. Sam Greer, Diane Wheaton collections.

Est.: \$400 - \$600 • Min. bid: \$250



Lot 168

"J.C. & Co" Figural Pineapple Bitters, America, 1855 - 1865. Medium amber in the center, shading to deep amber in the shoulder and base, pineapple form, applied round double collar - heavy blowpipe pontil scar, ht. 8 1/2", very near mint; (a couple of tiny, barely noticeable, pinpoint areas of roughness on the top edge of the lip, and a touch of minor exterior wear, otherwise perfect!) R/H #P100. A very scarce, desirable mold, more difficult to acquire than it's cousin, the "W & Co" example.

Est.: \$1,000 - \$2,000 • Min. bid: \$600



Lot 169

“BROWN’S / CELEBRATED / INDIAN HERB BITTERS - PATENTED / FEB 11. / 1868”, America, 1868 - 1880.

Beautiful light honey, almost a pure yellow from the chest up, shading to a golden honey from the feathers through the knees, Indian maiden, factory ground mouth - smooth base, ht. 12 1/8”; (a few flakes, 3/16” wide, or less, by 5/16” in length, or less, at edge of sheared mouth, some of which likely occurred in-manufacture, otherwise attic mint!) R/H #B226. Gorgeous color!

Est.: \$1,000 - \$1,500 • Min. bid: \$600



Lot 173

“NATIONAL / BITTERS” - “PATENT / 1867” (on base), America, 1867 - 1875.

Apricot amber, figural ear of corn, applied short tapered collar with ring - smooth base, ht. 12 3/8”; (several small chips in the kernels of corn, ranging in size from an 1/8”, to less than a pinhead; and a little scattered exterior wear). R/H #N8. Because of the inherently detailed mold, the chips do not readily stand out; the bottle still displays nicely. Scarce color.

Est.: \$250 - \$450 • Min. bid: \$150



Lot 170

“BROWN’S / CELEBRATED / INDIAN HERB BITTERS - PATENTED / 1868”,

America, 1868 - 1880. Medium golden amber shading to a honey coloration through the arms, figural Indian maiden, sheared and inward rolled lip - smooth base, ht. 12 1/8”, virtually attic mint; (there is a 3/4” surface bubble on the shield that was never fully formed during manufacture, that has a tiny bit of surface roughness, but is superficial, and very minor). R/H #B225. A nice example, and with a perfect rolled lip!

Est.: \$500 - \$800 • Min. bid: \$300



Lot 174

“MORNING” (STAR) “BITTERS” / “INCEPTUM 5869 - PATENTED / 5869”,

America, 1855 - 1865. Bright golden amber, triangular form, applied sloping collar - iron pontil scar, ht. 12 5/8”, pristine perfect! R/H #M135. A bright, clean, beautiful example, and nice with the iron pontil scarred base.

Est.: \$300 - \$500 • Min. bid: \$180



Lot 171

“BROWN’S / CELEBRATED / INDIAN HERB BITTERS - PATENTED / 1867”,

America, 1867 - 1880. Rich, deep amber with a chocolate tone, figural Indian maiden, sheared and fire polished mouth - smooth base, ht. 12”; (a 1/4” wide x 1/4” long chip off back edge of lip; some minor interior residue and light exterior wear). R/H #B223. The noted flake is on the back of the lip; the bottle displays as near mint. A good dark example, deeper than most.

Est.: \$400 - \$600 • Min. bid: \$250



Lot 175

“MORNING” (STAR) “BITTERS” / “INCEPTUM 5869 - PATENTED / 5869”,

America, 1855 - 1865. Medium amber, triangular form, applied sloping collar - iron pontil scar, ht. 12 5/8”, near mint; (just a bit of light, minor wear on the panel with diagonal ribbing, and a trace of interior residue or very faint haze near the base, otherwise attic mint). R/H #M135. Another very clean, beautiful example, this one also having a heavy iron pontil scar.

Est.: \$275 - \$450 • Min. bid: \$150



Lot 172

“NATIONAL / BITTERS” - “PATENT / 1867” (on base), America, 1867 - 1875.

Beautiful light golden, almost a honey coloration, figural ear of corn, applied short tapered collar with ring - smooth base, ht. 12 3/8”, perfect! R/H #N8. A very pretty example, nice and light in color, good clarity, outstanding condition. One of the great classics of the figural bitters.

Est.: \$400 - \$600 • Min. bid: \$250



Lot 176

“THE GREAT TONIC / CALDWELLS / HERB BITTERS”, America, 1855 - 1865.

Golden amber, triangular form, applied sloping collar - iron pontil scar, ht. 12 5/8”; (a little minor exterior wear, otherwise perfect). R/H #C8. A nice example, a little lighter in color than normally found in this mold.

Est.: \$225 - \$375 • Min. bid: \$120



Lot 177

"DR. - XX / LOVEGOOD'S - FAMILY - BITTERS", America, 1865 - 1875. Medium amber, rectangular cabin form, applied sloping collar - smooth base, ht. 9 1/8"; (some patchy interior residue and faint haze; a couple of paper-thin open surface bubbles, but no other form of damage, and otherwise near mint!) R/H #L125. A rare cabin, one that is certainly getting harder to find, especially in this nice condition.

Est.: \$3,000 - \$6,000 • Min. bid: \$1,800



Lot 181

"E. DEXTER. LOVERIDGE / WAHOO BITTERS - (motif of eagle) - E. DEXTER. LOVERIDGE / WAHOO BITTERS - DWD - 1863 - XXX - PATD", America, 1863 - 1875. Golden amber shading to a honey yellow along the corners, semi-cabin, applied sloping collar - smooth base, ht. 9 7/8"; (a pinprick speck of roughness on the edge of the lip, and a manufacturing imperfection, likely a bubble that was not fully formed, on a side panel, mentioned for accuracy, but not considered damage). R/H #L126.

Est.: \$800 - \$1,200 • Min. bid: \$400



Lot 178

"HOLTZERMANN'S - PATENT / STOMACH / BITTERS", America, 1865 - 1875. Light golden honey shading to almost yellow in the roof peaks and along the corners, rectangular cabin form, applied sloping collar - smooth base, ht. 9 1/2", virtually attic mint; (just a touch of light wear and a tiny pinprick spot of roughness on the edge of the lip, otherwise pristine!) R/H #H155. Nice light color. A fresh discovery, and one that looks like it was sitting in a cupboard for the last 140 years.

Est.: \$1,400 - \$1,800 • Min. bid: \$800



Lot 182

"E. DEXTER. LOVERIDGE / WAHOO BITTERS - (motif of eagle) - E. DEXTER. LOVERIDGE / WAHOO BITTERS - DWD - 1863 - XXX - PATD" (with 85% original front and back labels), America, 1863 - 1875. Medium to deep yellowish olive amber, semi-cabin, applied sloping collar with band - smooth base, pristine perfect! R/H #L126. A scarce and desirable color, extremely rare with original labels. Exceptional label graphics, a top-shelf piece!

Est.: \$3,000 - \$5,000 • Min. bid: \$1,800



Lot 179

"HOLTZERMANN'S / PATENT / STOMACH / BITTERS", America, 1885 - 1900. Medium amber with a bit of an orange tone, rectangular cabin form, tooled sloping collar - smooth base, ht. 9 3/4"; (a couple of tiny, pin-head size flakes at the bottom of the roof edge, otherwise "out-of-the-mold" pristine condition). RH #H154. Exceptionally strong, bold embossing on this example, which is often not the case.

Est.: \$200 - \$400 • Min. bid: \$120



Lot 183

"E. DEXTER. LOVERIDGE / WAHOO BITTERS - (motif of eagle) - E. DEXTER. LOVERIDGE / WAHOO BITTERS - DWD - 1863 - XXX - PATD", 1863 - 1875. Yellow olive with a citron tone, semi-cabin, applied sloping collar with band - smooth base, ht. 10 1/4"; (some light interior stain and exterior dullness; a tiny sandgrain on the inside surface of a side panel has a few thin "lines" but they do not refract light). R/H #L126. An extremely rare, possibly unique color for a Loveridge Bitters.

Est.: \$8,000 - \$12,000 • Min. bid: \$4,000



Lot 180

"BERKSHIRE. BITTERS - AMANN & Co / CINCINNATI. O", America, 1873 - 1880. Medium to deep amber, shading to a slightly lighter golden color in the feet, figural pig form, applied square collar - smooth base, length 9 3/4", girth approx.

11 1/4"; (just a bit of minor high point wear, a tiny pinhead flake on the inside edge of the lip, and a couple of small areas of minor, light interior residue that should easily wash out). R/H #B81.2. A nice example, not easy to find, this being the scarce "short - fat" variant.

Est.: \$1,800 - \$2,800 • Min. bid: \$1,000



Lot 184

"OLD / HOMESTEAD / WILD CHERRY / BITTERS - PATENT", America, 1865 - 1875. Medium to deep golden amber, cabin form, applied sloping collar - smooth base, ht. 9 1/2"; (a couple of shallow 1/8" open surface bubbles; a little faint, patchy interior haze, but no other form of damage). R/H #O37. Good strength of embossing; the light patchy interior haze is relatively minor, and could easily be cleaned with a day or two in the tumbler, if desired.

Est.: \$250 - \$450 • Min. bid: \$150



Lot 185

“H.P. HERB / WILD / CHERRY / BITTERS / READING / PA - WILD CHERRY / (motif of cherry tree) / BITTERS - BITTERS - BITTERS - BITTERS - BITTERS”, America, 1875 - 1885. Light golden amber near the base shading to a honey tone near the shoulders, cabin form with roped corners, applied sloping collar with ring - smooth base, ht. 10”; (a shallow 1/8” open bubble near one of the roof corners, and a trace of very light wear). R/H #H93. A bright, light example.

Est.: \$400 - \$600 • Min. bid: \$250



Lot 189

“GREELEY’S BOURBON / BITTERS”, America, 1860 - 1875. Light to medium copper topaz, barrel form, applied square collar - smooth base, ht. 9 1/8”; (an 1/8” flake on side of square collar and just a touch of very minor light wear, otherwise perfect). R/H #G101. Beautifully whittled, scarce color, nice clarity.

Est.: \$600 - \$900 • Min. bid: \$350



Lot 186

“S T / DRAKE’S / 1860 / PLANTATION / X / BITTERS - PATENTED / 1862”, America, 1862 - 1880. Bright yellowish honey coloration with a very slight olive tone, cabin form with 6 logs above the label panel, applied sloping collar - smooth base, ht. 9 5/8”; (professionally cleaned; a shallow dip along the base edge may have been polished to remove a chip). R/H #D108. Attractive color with plenty of yellow tones.

Est.: \$300 - \$600 • Min. bid: \$180



Lot 190

“GREELEY’S BOURBON / BITTERS”, America, 1860 - 1875. Apricot puce, barrel form, applied square collar - smooth base, ht. 9 1/8”, near mint; (a 1/4” area of minor, very fine lip edge roughness and just the slightest trace of light wear, otherwise perfect). R/H #G101. Great color, the bottle passes plenty of light through the upper half, excellent overall condition.

Est.: \$500 - \$800 • Min. bid: \$300



Lot 187

“DRAKES / PLANTATION / BITTERS - PATENTED / 1869.”, America, 1869 - 1875. Beautiful medium golden amber, cabin form with 5 logs above the label panel, applied sloping collar - smooth base, ht. 10”; (a small, pinhead bit of abrasion on one of the roof corners, a trace of faint wear, otherwise very near mint). R/H #D109. Note, there is a bit of glass extrusion at one of the corner mold seams that occurred during manufacture, and mentioned for accuracy, but is not considered damage).

Est.: \$400 - \$600 • Min. bid: \$250



Lot 191

“GREELEY’S - BOURBON WHISKEY / BITTERS. - GREELEY’S”, America, 1860 - 1875. Apricot, barrel form, applied square collar - smooth base, ht. 9 1/4”; (professionally cleaned to original luster and a shallow pinhead flake on the back edge of the square collar). R/H #G102. A nice color having no trace of amber.

Est.: \$400 - \$600 • Min. bid: \$250



Lot 188

Lot of (2), S T / DRAKE’S / 1860 / PLANTATION / X / BITTERS - PATENTED / 1862”, America, 1862 - 1880. Golden amber and medium to deep strawberry puce, both are cabin form with 6 logs above the label panel, applied sloping collar - smooth base, ht. 9 7/8”, both are near mint; (amber example has a minor 1/8” sliver flake at edge of lip; strawberry puce example has just a bit of faint wear along edge of roof, otherwise excellent). Both, R/H #D105. Nice color on the puce example.

Est.: \$250 - \$450 • Min. bid: \$150



Lot 192

“BOURBON WHISKEY / BITTERS.”, America, 1860 - 1875. Pinkish copper, barrel form, applied square collar - smooth base, ht. 9 3/8”; (a 1/4”, shallow open surface bubble on one of the rings, and a touch of typical, light exterior wear, otherwise perfect). R/H #B171. This example is a cut above most. Outstanding color, almost a dusty rose coloration, a flawless square collar which is not easy to find, loaded with bubbles and very heavily whittled!

Est.: \$1,200 - \$1,800 • Min. bid: \$600



Lot 193

"HALL'S / BITTERS - E.E. HALL NEW HAVEN / ESTABLISHED 1842", America, 1865 - 1875. Bright yellowish honey coloration, barrel form, applied square collar - smooth base, ht. 9 1/2"; (a potstone with a little iridescence and a couple of 1/8" legs, located about one inch above the "A" in "HALL'S", and a tiny, pinprick bit of roughness on the edge of the lip, otherwise mint). R/H #H10. Despite the noted condition issue, it is a bright, clean, sparkling, example.

Est.: \$150 - \$250 • Min. bid: \$100



Lot 194

"DR C. W. ROBACKS / STOMACH BITTERS / CINCINNATI. O", America, 1855 - 1865. Medium to deep amber, barrel form, applied sloping collar - iron pontil scar, ht. 9 7/8"; (a couple of chips, approximately 1/4" and 1/8", on the back edge of the lip; a pinhead flake on one of the rings near the base, and a touch of minor exterior wear on the reverse). R/H #R73. An old cork remains in the mouth, a bit of dried contents inside. A nice crude example, heavily whittled.

Est.: \$175 - \$350 • Min. bid: \$100



Lot 195

"SIMON'S CENTENNIAL BITTERS - TRADE MARK", America, 1876 - 1880. Aqua, bust of George Washington, applied round double collar - smooth base, ht. 10 1/8", virtually attic mint; (just a slight trace of typical, very minor wear, otherwise pristine perfect). R/H #S110. A very historical bottle, patented December 14, 1875, by Bernard Simon, of Scranton, Pa, and initially blown the following year to commemorate the nations Centennial. Excellent clarity and condition.

Est.: \$600 - \$900 • Min. bid: \$300



Lot 196

"DR FLINT'S - QUAKER BITTERS" (with complete original labels and contents), America, 1870 - 1880. Aquamarine, rectangular with beveled corners, applied square collar - smooth base, ht. 9 3/8", bottle and all four labels are virtually perfect. R/H #F60. Ex. NCH Auction 83, Lot 70. Exceptional and colorful graphic label showing a full-figure image of a Quaker physician holding a bottle. This is absolutely a "Finest possible example". If you missed it the first time, don't miss it this time!

Est.: \$2,000 - \$4,000 • Min. bid: \$1,000



Lot 197

"UNCLE SAM'S / WILD CHERRY BITTERS - UNCLE SAM'S / WILD CHERRY BITTERS", Yellowish lime green, square, tooled sloping collar - smooth base; (a 1 1/4" crack in the base and a 1/2" bruise at base corner; a minor 1/8" flake in one of the side panels, small, hard to see 1/8" bruise in fluting). R/H #U4. A great rarity, believed to be one of only two, or possibly three, known. The bottle has not been cleaned and displays as virtually attic mint. A great name, - beautiful and rare.

Est.: \$1,000 - \$2,000 • Min. bid: \$500



Lot 198

"DR. LOWE'S / STOMACH BITTERS - THE / H.C. CHRISTY CO. / CLEVELAND, OHIO", America, 1885 - 1895. Rich, medium lime green, square with fluted shoulders, tooled sloping collar with ring - smooth base, ht. 9 1/4", virtually attic mint; (just a trace of very faint exterior wear, otherwise perfect). R/H #L116. Gorgeous color, outstanding condition, a rare bitters believed to be the first offered at auction in more than 10 years.

Est.: \$600 - \$1,200 • Min. bid: \$350



Lot 199

"GEO. BENZ / & / SONS / APPETINE / BITTERS / ST. PAUL, MINN", America, 1897 - 1905. Medium to deep amber with some reddish tones in the lower half, square with an ornate scroll and shell pattern, fluted shoulders, tooled sloping collar - **"PAT./ NOV.23./ 1897"** on smooth base, ht. 7 7/8", near mint; (a touch of minor light wear and some traces of faint milky swirl lines on the exterior, that are not terribly distracting, and would disappear with a very light cleaning). R/H #A78.

Est.: \$250 - \$450 • Min. bid: \$150



Lot 200

"DR. LEIGHTON'S / PEPSIN / STOMACH BITTERS", America, 1880 - 1895. Golden amber with an orange tone, rectangular with concave corners and rounded sides, fluted neck, tooled sloping collar with ring - smooth base, ht. 7 7/8"; (professionally cleaned to original luster with just a touch of light wear remaining and a bit of very faint dullness in the shoulders, otherwise excellent). R/H #L68.7. Listed as "Very rare", and believed to be one of only two, or possibly three, known to exist.

Est.: \$400 - \$800 • Min. bid: \$250



Lot 201

"KIMBALL'S / JAUNDICE - BITTERS - TROY. N.H.", a Stoddard, New Hampshire glasshouse, 1850 - 1860. Bright, light yellowish olive amber, shading to an olive yellow in the shoulders, rectangular with beveled corners - applied sloping collar - iron pontil scar, ht. 6 3/4", near attic mint; (just a trace of very faint wear near the base of the front panel, and a tiny, barely noticeable, pinprick bit of roughness at edge of lip, otherwise perfect) R/H #K42. A bright, clean, pretty example.

Est.: \$800 - \$1,200 • Min. bid: \$500



Lot 205

"CANNON'S - DYSPEPTIC - BITTERS", America, 1850 - 1860. Aquamarine, octagonal, applied square collar - blowpipe pontil scar, ht. 6"; (professionally cleaned to original luster; a 1/2" chip from the edge, and underside, of the square collar). An exciting fresh discovery and previously unknown mold, almost certainly from the W. M. Cannon Medicine Co, Washington, D.C. Believed to be the first intact, pontiled example known from this company.

Est.: \$1,000 - \$2,000 • Min. bid: \$600



Lot 202

"JOHN / MOFFAT - PHOENIX / BITTERS - PRICE \$1,00 - NEW YORK", America, 1840 - 1855. Yellowish olive, rectangular with beveled corners, applied sloping collar - blowpipe pontil scar, ht. 5 5/8", near mint; (a touch of typical, minor light wear and a pinhead bit of roughness at the edge of the applied collar). R/H #M112. A nice example having excellent character, very crude glass, with seed bubbles and impurities.

Est.: \$500 - \$800 • Min. bid: \$300



Lot 206

"DR. BLAKES - AROMATIC / BITTERS - NEW YORK", America, 1845 - 1860. Aquamarine, rectangular with beveled corners, applied sloping collar - blowpipe pontil scar, ht. 7", sparkling attic mint! R/H #B120. Noted as "Scarce" in the Ring / Ham book, this example is about as nice as you could hope to find, brilliant glass and very boldly embossed.

Est.: \$175 - \$275 • Min. bid: \$100



Lot 203

"JOHN MOFFAT - PHOENIX / BITTERS - PRICE 1 DOLLAR - NEW YORK", America, 1840 - 1850. Colorless, rectangular with beveled corners, outward folded mouth - blowpipe pontil scar, ht. 5 1/2", near mint; (just a touch of minor, very light exterior wear, otherwise perfect). R/H #M113. A scarce colorless example that will definitely stand out, and is much more difficult to acquire than the olive and amber toned examples.

Est.: \$800 - \$1,200 • Min. bid: \$500



Lot 207

"G.C. BLAKES. / ANTI. DESPEPTIC / BITTERS", America, 1845 - 1860. Aqua, oval, applied sloping collar - blowpipe pontil scar, ht. 7"; (professionally cleaned to original luster with some scattered light scratches and exterior wear remaining, but no other form of damage). R/H #B119. As noted by Ring / Ham, a very rare bitters, one that is seldom offered for sale. In addition, this example has a blowpipe pontil scar; the R/H book lists an iron pontil, as do the half-dozen recorded sales since 1989.

Est.: \$400 - \$800 • Min. bid: \$250



Lot 204

"DR WOOD'S - SARSAPARILLA / & / WILD CHERRY - BITTERS", America, 1845 - 1855. Aquamarine, rectangular with wide beveled corners, applied sloping collar - blowpipe pontil scar, ht. 8 3/4"; (a touch of very light exterior wear, otherwise virtually attic mint). R/H #W151. A scarce pontiled bitters, nicely whittled, clean, excellent condition. Note; this example has an early collector tag on the neck, likely from the Gardner collection.

Est.: \$200 - \$400 • Min. bid: \$120



Lot 208

"CLARKE'S / COMPOUND MANDRAKE / BITTERS", America, 1875 - 1885. Aquamarine, oval, applied square collar - smooth base, ht. 7 5/8", virtually attic mint; (just a touch of fine high point wear near the shoulder, otherwise perfect). R/H #C151. Listed as "Rare", and apparently the first example to come to market in more than 10 years. The bitters is from Walter Clarke and Son, Minot, Maine, who put out a number of different medicines.

Est.: \$175 - \$350 • Min. bid: \$100



Lot 209

"HART'S / STAR BITTERS" / ("1868" inside motif of STAR with initials "O B L P C" inside concentric circles) / "PHILADELPHIA / PA", America, 1885 - 1895. Colorless with an amethystine tint, stylized fish form, tooled ring collar - smooth base, ht. 9 1/8"; (lightly cleaned to original luster and near mint condition; a potstone in the base with a 3/16" line, otherwise excellent). R/H #H58. A very scarce bitters, attractive with the light amethyst tone.

Est.: \$300 - \$500 • Min. bid: \$180



Lot 213

"CORWITZ - STOMACH BITTERS", America, 1880 - 1890. Aquamarine, square with beveled corners, tooled sloping collar - smooth base, ht. 7 1/2"; (professionally cleaned to original luster with a couple of minor areas having a matte-type finish, or faint light haze, remaining; and a few scattered open surface bubbles, but no other form of damage). R/H #C236. A scarce bitters, the first to be offered at auction in a number of years.

Est.: \$175 - \$350 • Min. bid: \$100



Lot 210

"GOLDEN / BITTERS - GEO. C. HUBBEL & Co - GEO. C. HUBBLE & Co", America, 1865 - 1875. Brilliant aquamarine, rectangular semi-cabin, applied sloping double collar - smooth base, ht. 9 7/8", near mint; (just a trace of minor wear including a couple of onion-skin-thin, open surface bubbles and a tiny sandgrain on the reverse has a barely visible, 1/16" line, otherwise, pristine). R/H #G63. A beautiful example having excellent clarity, and loaded with small seed bubbles.

Est.: \$200 - \$400 • Min. bid: \$120



Lot 214

"DR F. FLESCHHUT'S - CELEBRATED / STOMACH BITTERS - LAPORTE. PA", America, 1870 - 1880. Bright, bluish aquamarine, square with beveled corners, applied sloping collar - smooth base, ht. 8 5/8", sparkling attic mint! R/H #F54. A rare bitters from a very small town in northeastern, Pennsylvania. The bottle has a great "look", bright, clean, and outstanding condition.

Est.: \$600 - \$900 • Min. bid: \$400



Lot 211

"WILLIAM ALLEN'S - CONGRESS BITTERS", America, 1865 - 1875. Aquamarine, rectangular semi-cabin form, applied sloping collar - smooth base, ht. 10 1/4", near attic mint; (a small potstone, on the inside surface of the glass, has a couple of extremely tiny, less than 1/32" lines, barely noticeable without magnification, otherwise, about as clean and perfect as you could hope to find). R/H #A29. A bright, clean, virtually "out-of-the-mold, sparkling example.

Est.: \$175 - \$350 • Min. bid: \$100



Lot 215

"BECK'S - HERB BITTERS - YORK, PA", America, 1875 - 1885. Golden amber with a slight orange tone, rectangular with beveled corners, applied sloping collar - smooth base, ht. 9 3/8", near mint; (a touch of very minor wear). R/H #B-46. A scarce bitters, and a fresh pick from an estate near York, PA.

Est.: \$300 - \$500 • Min. bid: \$180



Lot 212

"MOULTON'S OLOROSO BITTERS / TRADE MARK" / (motif of PINE-APPLE), America, 1870 - 1880. Deep aquamarine, cylindrical with paneled base and fluted shoulders, applied sloping collar with ring - smooth base, ht. 11 1/4", near mint; (a little spotty, very faint interior haze, some of which may wash out, otherwise excellent). R/H #M146. Nice strong embossing, good depth of color.

Est.: \$200 - \$300 • Min. bid: \$120



Lot 216

"DEUTENHOFFS / SWISS BITTERS - G. M. HEIDT / SAVANNAH GA", America, 1865 - 1875. Medium amber with a slight orange tone, square with beveled corners, applied sloping collar - smooth base, ht. 9 1/4"; (professionally cleaned with some light exterior scratches and wear remaining; a bit of patchy very faint dullness, an 1/8" flake at edge of lip, and a 1" chip on the base). R/H #D55. The bottle displays well. Dug in Savannah and one of only two, or three known.

Est.: \$800 - \$1,200 • Min. bid: \$500



Lot 217

"DR LANGLEY'S / ROOT & HERB / BITTERS / 99 UNION St. / BOSTON" (with 85% complete original label), America, 1865 - 1875. Beautiful, light yellowish honey coloration, cylindrical, applied square collar - smooth base, ht. 6 7/8"; (a few tiny, pinprick spots of roughness on the inside edge of the lip, otherwise attic mint!) R/H #L22. Fantastic color, very scarce in amber, and rare with the original label! Additional hand-written label indicates, "Rock & Rye".

Est.: \$700 - \$900 • Min. bid: \$400



Lot 221

"OSWEGO BITTERS / (STAR) 25c (STAR)", America, 1885 - 1895. Medium golden amber, oval, tooled square collar - smooth base, ht. 6 7/8", perfect. R/H #O93. Advertised as the "cheapest and most efficacious medicine in the world". A somewhat scarce bitters, outstanding "attic found" condition. Note; a couple of early collector tags remain on the base.

Est.: \$150 - \$250 • Min. bid: \$80



Lot 218

"GERMAN HOP / BITTERS - DR. C.D. WARNER / READING, MICH. - WARNER - 1880 - WARNER - 1880", America, 1880 - 1890. Golden amber, square with domed shoulders, tooled sloping collar with ring - smooth base, ht. 9 3/4"; (a couple of tiny, pinhead open surface bubbles, otherwise sparkling attic mint). R/H #G25. In fact, this example does look like it came out of an attic, most have been dug. A very rare bitters, outstanding condition!

Est.: \$500 - \$800 • Min. bid: \$300



Lot 222

"BIG / BILL / BEST / BITTERS - BIG / BILL / BEST / BITTERS", America, 1890 - 1905. Golden amber with an orange tone near the base, shading to a light honey in the shoulders, pyramid form, tooled sloping collar with ring - smooth base, ht. 12", near mint; (just a trace of light wear and a bit of minor interior residue or faint haze). R/H #B95. The bitters is believed to be named for President Howard (Big Bill), Taft. See Bob Strickhart's bitters article, *Antique Bottle & Glass Collector*, August, 2013.

Est.: \$150 - \$250 • Min. bid: \$80



Lot 219

"DR J. HOSTETTER'S / STOMACH BITTERS", America, probably a Pittsburgh district glasshouse, 1860 - 1870. Deep olive (black glass), square with beveled corners, applied sloping collar - smooth base, ht. 9 1/2"; near mint; (a touch of faint, very light exterior wear; and a nice crude lip with a bit of natural roughness, but no damage). R/H #H194. This is the larger size mold, in a pure green, with no trace of amber, that does not appear to be a dug example.

Est.: \$300 - \$500 • Min. bid: \$180



Lot 223

"ROHRER'S - EXPECTORAL / WILD / CHERRY / TONIC - LANCASTER PA", America, 1855 - 1865. Bright golden amber with a bit of a honey tone, rectangular pyramid form with roped corners, applied sloping collar with ring - iron pontil scar, ht. 10 1/2"; (a very hard to see, small 3/16" bruise on the back edge of the lip, and just a trace of faint wear on the label panel, otherwise attic mint). A clean, bright example, nice light color.

Est.: \$250 - \$400 • Min. bid: \$140



Lot 220

"CARMELITER / STOMACH BITTERS CO. / NEW YORK - SJ (monogram) / REGISTERED", America, 1880 - 1890. Medium to deep yellow green, with a lime tone, square with beveled corners, applied sloping collar - "WB" on smooth base, ht. 10"; (some light overall faint haze, primarily on the interior, and a bit of minor exterior wear, but no other form of damage). R/H #C54. A scarce bitters, and a big splash of color.

Est.: \$200 - \$400 • Min. bid: \$120



Lot 224

"ABL MYERS AM - ROCK ROSE - NEW_HAVEN", America, probably 1852 - 1856. Medium to deep blue green, rectangular with beveled corners, applied large blob collar - iron pontil scar, ht. 9 3/8", virtually attic mint; (a couple of tiny little 1/4" surface scratches, otherwise pristine). N #465; Odell p.175. A big, beautiful, gutsy pontiled medicine, exceptional example, nice deep color, outstanding condition. Ex. Charles B. Gardner collection, illustrated, plate XVII.

Est.: \$4,000 - \$7,000 • Min. bid: \$2,000



Lot 225

"HYATT'S - INFALLIBLE - LIFE BALSAM / N - Y", America, 1850 - 1860. Medium emerald with a slight yellowish tone, "fat" rectangular form - almost square, applied sloping collar - iron pontil scar, ht. 9 5/8", near mint; (professionally cleaned to original luster and near mint condition, with just a little scattered, minor wear remaining). A very rare variant, almost square in form, with the heavy block letters. A big, beautiful, impressive medicine, with fully intact, heavy iron pontil.

Est.: \$3,000 - \$6,000 • Min. bid: \$1,500



Lot 226

"HYATT'S - INFALLIBLE - LIFE BALSAM / N - Y", America, 1850 - 1860. Yellowish apple green, rectangular with beveled corners, applied sloping collar with ring - iron pontil scar, ht. 10 1/8", sparkling attic mint. N #322. A bright, crisp, example with nice clarity and character with some bubbles swirled through the neck area. A scarce pontiled medicine, not easy to find in this condition.

Est.: \$800 - \$1,400 • Min. bid: \$500



Lot 227

"PIKE & OSGOOD / BOSTON MASS - ALTERATIVE SYRUP", New England, almost certainly an early Stoddard glasshouse, 1845 - 1855. Yellowish olive amber, rectangular with beveled corners, applied sloping collar - sand type pontil scar, ht. 8 5/8"; (some minor exterior wear and a couple of thin, surface annealing lines, 3/4" or less, on one of the label panels). Beautiful color, crude, whittled, another very rare, classic pontiled medicine.

Est.: \$4,000 - \$7,000 • Min. bid: \$2,500



Lot 228

"DR. SWETT'S / PANACEA - EXETER N.H.", New England, probably an early Stoddard glasshouse, 1845 - 1855. Yellowish golden olive amber, rectangular with wide beveled corners, applied sloping double collar - sand type pontil scar, ht. 8"; (a 3/8" iridescent bruise on the side shoulder, a bit of minor exterior wear, otherwise excellent). Very rare. One of the highly desirable, iconic, New England pontiled medicines.

Est.: \$3,000 - \$5,000 • Min. bid: \$1,800



Lot 229

"D.R. / CLARK / N. YORK" (motif of 3 links), America, 1850 - 1860. Rich deep emerald green, almost a forest coloration, square with beveled corners, applied sloping collar - iron pontil scar, ht. 9"; (some light surface scratches, primarily on the two side panels; a small area of very minor lip edge roughness on the back that you can feel, but is not easy to see). An outstanding example, beautiful rich color, excellent character and condition. Provenance: Ex. Dr. Sam Greer collection.

Est.: \$2,500 - \$4,500 • Min. bid: \$1,500



Lot 230

"Be careful to see - THE WORDS / Saml. Solomon, - LIVERPOOL. - Printed in the - STAMP. - Cordial BALM / of GILEAD." - "33s. - Contains 4 - 10s. 6d. Bottles.", England, 1815 - 1830. Yellowish olive green, rectangular with beveled corners, applied ring collar - sand type pontil scar, ht. 6 7/8"; (some light exterior wear; a 1/4" mouth chip). Extremely rare and desirable, likely one of the earliest colored pontiled medicines. Ex. George S. McKearin collection.

Est.: \$3,000 - \$6,000 • Min. bid: \$1800



Lot 231

"SWAIM'S - PANACEA - PHILADA", America, 1845 - 1860. Medium to deep bright yellowish green with an olive tone, cylindrical with 12 indented panels, applied sloping collar with bevel - sand type pontil scar, ht. 7 5/8"; (just the slightest trace of faint wear, otherwise virtually attic mint). A good early pontiled medicine, this one having nice color, character, and condition.

Est.: \$400 - \$600 • Min. bid: \$250



Lot 232

"SWAIM'S / VERMIFUGE" - PATENT - DYSENTERY / CHOLERA MORBUS / DYSPEPSIA & CC", America, 1845 - 1860. Yellowish apple green, oval, applied short tapered collar with bevel - faint sand type pontil as is common on the Swaim's bottles, ht. 5 1/8"; (professionally cleaned to original luster with a bit of light wear remaining; some crazing lines on the inside of the mouth). A scarce bottle, nice color, boldly embossed. Per Odell, ads for this medicine appeared as early as 1835.

Est.: \$250 - \$450 • Min. bid: \$150



Lot 233

"O. NEILLS - CATHOLICON", America, 1845 - 1855. Light to medium grass green, cylindrical with two indented panels, sheared lip with a crudely applied ring type collar - blowpipe pontil scar, ht. 7 1/2"; (some scattered light exterior wear and scratches; a tiny, hard to see, hairline spider crack in shoulder). Extremely rare! This is same example that sold through Glass Works, Nov, 1990, and was unique at that time. Probably an early Ohio medicine. Unique, or possibly one of two.

Est.: \$1,500 - \$3,000 • Min. bid: \$750



Lot 237

"OLD DR / J. TOWNSENDS - Sarsaparilla - NEW YORK.", America, 1850 - 1860. Clear, light-to-medium bluish green with a slight emerald tone, square with beveled corners, applied sloping collar - iron pontil scar, ht. 9 1/2"; (some scattered light high point wear, mostly on the label panel; some very light interior haze near the shoulders, some of which may wash out, otherwise excellent). A little more of a greenish tone than Lot 236. Nice character and whittling.

Est.: \$400 - \$600 • Min. bid: \$250



Lot 234

"DR TOWNSEND'S - Sarsaparilla - ALBANY / N Y", probably a New England glasshouse, 1845 - 1855. Brilliant light yellow olive, almost an olive yellow near the shoulders, square with beveled corners, applied sloping collar - sand type pontil scar, ht. 9 3/4", very near mint; (just a trace of faint exterior wear, otherwise perfect!) A very scarce color for this bottle, most examples are much deeper in color (olive) with less yellow tone.

Est.: \$600 - \$1,200 • Min. bid: \$300



Lot 238

"OLD DR / J. TOWNSENDS - Sarsaparilla - NEW YORK", America, 1850 - 1860. Medium ice blue coloration, square with beveled corners, applied sloping collar - iron pontil scar, ht. 9 1/2"; (lightly cleaned to original luster with just a little scattered light wear remaining; minor pinhead flake on one of the beveled corners, shallow 1/8" sliver flake at base corner). The bottle displays near mint, the noted condition issues are all minor. Beautiful, scarce color.

Est.: \$400 - \$600 • Min. bid: \$250



Lot 235

"DR TOWNSEND'S - Sarsaparilla - ALBANY / N Y", America, 1845 - 1860. Medium blue green, square with beveled corners, applied sloping collar - blowpipe pontil scar, ht. 9 1/2"; (professionally cleaned to original luster with just a bit of minor wear remaining, primarily on the label panel, and a tiny pinhead flake at base corner, otherwise excellent). Note, the "S" in "Townsend" is almost oversized. Nice with the blowpipe pontil scarred base.

Est.: \$400 - \$600 • Min. bid: \$250



Lot 239

"OLD DR / J. TOWNSEND.S - Sarsaparilla - NEW YORK", America, 1860 - 1870. Bright yellowish emerald green, square with beveled corners, applied sloping collar - smooth base, ht. 9 3/4"; (professionally cleaned to original luster and near mint condition; a minor, 3/4" light scratch on the label panel, otherwise very near mint). Beautiful color and clarity, the bottle certainly appears as near mint. Note; there appears to be a small period after the "D" in "Townsend".

Est.: \$175 - \$275 • Min. bid: \$100



Lot 236

"DR TOWNSENDS - Sarsaparilla - NEW YORK.", America, 1850 - 1860. Clear, light-to-medium blue green, square with beveled corners, applied sloping collar - iron pontil scar, ht. 9 3/4", near mint; (just a bit of typical, very light exterior wear). A great example, nice clarity, condition, excellent character, heavily whittled.

Est.: \$400 - \$600 • Min. bid: \$250



Lot 240

"DR. TOWNSENDS - EXPECTORANT / SYRUP", America, 1845 - 1855. Light aquamarine, rectangular with beveled corners, applied sloping collar - blowpipe pontil scar, ht. 5 5/8", virtually attic mint; (just a trace of very faint interior milkiness near the shoulder, otherwise perfect!) See Odell, p.239. A very rare pontiled medicine, the smaller of two sizes, and believed to be one of only a few examples known. Provenance: Ex. Angelo Aiello collection.

Est.: \$400 - \$600 • Min. bid: \$250



Lot 241

"Dr. WOODWORTH'S / SARSAPARILLA - BIRMINGHAM, CT", America, 1850 - 1860. Aquamarine, rectangular with beveled corners, applied sloping collar - blowpipe pontil scar, ht. 10 1/8"; (a tiny, pinhead bit of roughness at base edge, otherwise virtually attic mint). DeG #229. A bright, clean, example, outstanding condition, impressive size!

Est.: \$400 - \$600 • Min. bid: \$250



Lot 245

"LEWIS & FLETCHERS - NEW. VEG-ETABLE / COMPOUND - FRANKLIN IND" (with 75% original label), America, 1850 - 1860. Rich, deep aquamarine, rectangular with beveled corners, applied round collar with bevel - iron pontil scar, ht. 7 3/4", virtually attic mint; (tiny, miniscule bit of roughness at base edge, otherwise perfect). Very rare, perhaps as few as six examples known, and possibly unique with label. A big, brilliant example with nice character. Provenance: Ex. Sam Greer collection.

Est.: \$1,500 - \$2,500 • Min. bid: \$800



Lot 242

"CANTRELL'S / COMPOUND / MEDICATED - SYRUP OF / SARSAPARILLA / OR ANTISCORBUTIC SYRUP - PHILADA", America, 1845 - 1855. Aquamarine, rectangular with beveled corners, applied sloping collar - blowpipe pontil scar, ht. 5 7/8"; (professionally cleaned to original luster with some minor ground lines remaining; shallow 1/8" flake on top of lip, otherwise excellent). Odell, p.46; DeG #37. Extremely rare, believed to be one of only five, or less, examples known.

Est.: \$400 - \$800 • Min. bid: \$250



Lot 246

"E.C. ALLEN / CONCENTRATED / ELECTRIC PAST - OR / ARABIAN PAIN / EXTRACTOR - LANCASTER / PA.", America, 1845 - 1860. Clear, light emerald green, square with beveled corners, sheared and inward rolled mouth - blowpipe pontil scar, ht. 3 1/8", perfect! A very scarce to rare bottle, boldly embossed, with nice color, clarity, and condition.

Est.: \$1,000 - \$1,500 • Min. bid: \$500



Lot 243

"CANTRELL'S / PECTORAL - OR - COUGH / SYRUP - PHILADELPHIA", America, 1850 - 1860. Aquamarine, rectangular with narrow beveled corners, applied sloping collar - blowpipe pontil scar, ht. 6", near attic mint; (a tiny, pinprick bit of roughness at the bottom edge of the applied collar, otherwise pristine!) A beautiful, bright, sparkling example with large lettering that is very boldly embossed. An extremely rare bottle. Ex. Sam Greer collection.

Est.: \$400 - \$600 • Min. bid: \$250



Lot 247

"ELECTRICAL - FEBRIFUGE - A KENDALL & CO - NEW ORLEANS", America, 1845 - 1855. Aquamarine, hexagonal, sheared and inward rolled mouth - blowpipe pontil scar, ht. 3 1/8"; (a little interior residue, and a bit of spotty faint haze, otherwise perfect). Odell, p.138. Very crude embossing, the "S" runs off the end of the panel. Extremely rare, and possibly unique. An example has not been offered at public auction in almost 20 years.

Est.: \$300 - \$600 • Min. bid: \$180



Lot 244

"W. O'CONNOR'S - PURELY VEGETABLE / AGUE & FEVER - NOSTRUM", America, 1845 - 1855. Aquamarine, rectangular with beveled corners, applied sloping collar - blowpipe pontil scar, ht. 6 1/2", near mint; (some light interior content haze, primarily in the beveled corners and one side panel). Few medicines are embossed with the word, "NOSTRUM". Nicely whittled, and extremely rare, one of two known examples. Ex. Sam Greer collection #1336.

Est.: \$600 - \$1,200 • Min. bid: \$350



Lot 248

Label-only, "DR. BARRON'S / MAGNETIC / PAIN DESTROYER / (image of electrical apparatus) / JOHN MOORE, Sole Proprietor, / WARREN, MASS. / Price, 37 1-2 Cents.", **Medicine Bottle**, America, 1850 - 1860. Aqua, 12-sided, applied square collar - blowpipe pontil scar, ht. 5", virtually attic mint; (tiny, pinprick spec of roughness on the square collar and some dried content residue, otherwise perfect). Outstanding condition, wonderful graphics on the label.

Est.: \$100 - \$200 • Min. bid: \$60



Lot 249

"J. STARKWEATHER'S / HEPATIC ELIXIR", America, 1845 - 1855. Aquamarine, hexagonal, applied sloping collar - blowpipe pontil scar, ht. 6 3/8", attic mint. Note, there are some minor cooling lines in the neck that occurred at the time of manufacture, but are not considered damage, and mentioned for completeness. Odell, p.226. A very scarce bottle, bright, crisp, sparkling.

Est.: \$400 - \$800 • Min. bid: \$250



Lot 253

"Dr. HOLMES' - BALSAM. - PROV. R.I.", America, 1850 - 1860. Aquamarine, rectangular with beveled corners, applied ring collar with bevel - blowpipe pontil scar, ht. 8 1/8"; (professionally cleaned to original luster and near mint condition; a minor pontil flake that does not extend to the base edge). A very rare, desirable, pontiled balsam, bright, clean, whittled, excellent overall condition.

Est.: \$600 - \$900 • Min. bid: \$300



Lot 250

"GOODYEAR'S - BALM / of / LIFE - NEW YORK", America, 1850 - 1860. Aquamarine, rectangular with beveled corners, applied round collar with bevel - blowpipe pontil scar, ht. 5 1/2"; near mint; (a very faint rainbow "Benicia" type iridescence on the exterior, and a little residue, or extremely faint haze on the interior, some of which may wash out, otherwise perfect). Very rare, believed to be one of only a few examples known. A fresh find from a Vermont home.

Est.: \$400 - \$800 • Min. bid: \$250



Lot 254

"BARCLAY'S / AMERICAN / BALSAM", America, 1840 - 1855. Aquamarine, rectangular with narrow beveled corners, crudely applied sloping collar with bevel - blowpipe pontil scar, ht. 5 3/4"; (a tiny, hard to see, 1/8" hairline annealing crack in the side of the neck, otherwise perfect). An extremely rare, early balsam. A bright, clean example, overall excellent condition (note, was listed as "mint" in the Greer catalog). Odell, p.15. Ex. Sam Greer collection, #196.

Est.: \$250 - \$450 • Min. bid: \$150



Lot 251

"J.C. WADLEIGH - BEARS OIL.", America, 1845 - 1860. Aquamarine, rectangular, applied sloping collar - blowpipe pontil scar, ht. 4 1/8", near mint; (just a bit of spotty light residue, most of which would likely wash out, otherwise perfect). Extremely rare, believed to be one of only two examples known. The first example sold at auction in March, 2012, in a grouping of rare "Bears Oil" bottles.

Est.: \$500 - \$800 • Min. bid: \$300



Lot 255

"HUNTER'S / PUL. BALSAM / or COUGH SYRUP - J. CURTIS / PROP. TR / BANGOR ME", America, 1845 - 1860. Aquamarine, rectangular with beveled corners, tooled thin flanged lip - blowpipe pontil scar, ht. 6", sparkling attic mint! A crisp, clean, example with strong, bold embossing.

Est.: \$175 - \$350 • Min. bid: \$100



Lot 252

"DR KENNEDY'S - MEDICAL / DISCOVERY - ROXBURY, MASS", America, 1845 - 1860. Rich aquamarine, rectangular with beveled corners, applied sloping collar - blowpipe pontil scar, ht. 8 5/8"; (just a couple of traces of very faint, light haze, otherwise virtually attic mint). Great character, strong embossing. Provenance: Ex. Sam Greer collection, #997.

Est.: \$100 - \$175 • Min. bid: \$50



Lot 256

"DR. J. BLACKMAN'S. - GENUINE - HEALING - BALSAM", America, 1845 - 1860. Colorless with a faint smoky tint, octagonal, sheared and inward rolled mouth - blowpipe pontil scar, ht. 4 1/2", perfect. Scarce size. A great example with crude, whittled, brilliant glass, outstanding condition! The colorless "flint" glass is very eye-appealing, especially with the nice character.

Est.: \$200 - \$400 • Min. bid: \$120



Lot 257

"CLARKE'S / GENESSEE - LINIMENT / N. Y.", America, 1845 - 1860. Rich, deep bluish aqua, almost a light Lockport blue-green, rectangular with beveled corners, sheared and inward rolled mouth - blowpipe pontil scar, ht. 5 3/4"; (some minor exterior scratches and light patchy dullness; a little interior residue and light haze, but no other form of damage). The bottle would likely clean to near mint with just a couple of days in the tumbler. Scarce in this deeper color.

Est.: \$250 - \$450 • Min. bid: \$140



Lot 261

"J.R. ROWAND - PHILADA" (with original advertising wrapper and virtually complete original label), America, 1845 - 1856. Aqua, hexagonal, sheared and inward rolled mouth - blowpipe pontil scar, ht. 4"; (in "as found" condition with a bit of light interior residue; some attic-type soot on the shoulder, otherwise, perfect). Odell, p.207. A scarce little bottle, especially so in this original state, and completeness. Label reads in part, "Dr. ROWAND'S / COMPOUND SYRUP OF / BLACKBERRY ROOT."

Est.: \$200 - \$400 • Min. bid: \$120



Lot 258

"DR. J.M. ROBB'S - HIPPODROME / LINIMENT", America, 1845 - 1860. Aquamarine, rectangular with beveled corners, applied round collar with bevel - blowpipe pontil scar, ht. 5 1/8", perfect. Odell, p.201. A very scarce, to rare, pontiled medicine from Waynesville, Ohio, with nice bold embossing and great eye-appeal. Ex. Angelo Aiello collection.

Est.: \$250 - \$450 • Min. bid: \$150



Lot 262

"LOUDEN & Co'S - CHEROKEE - LINIMENT - PHILAD.A", America, 1845 - 1855. Light aquamarine, 12-sided, thin flanged lip - blowpipe pontil scar, ht. 5 1/4", near mint; (a couple of spots, 1/8 inch or less, of minor roughness on the edge of the paper-thin, flanged lip, otherwise sparkling attic mint). Odell, p.151. Strongly embossed, bright and clean, a great looking early Indian medicine bottle.

Est.: \$200 - \$400 • Min. bid: \$120



Lot 259

"DR D JAYNE' / LINIMENT. OR - COUNTER IRRITANT / PHILAD.A", America, 1840 - 1855. Aquamarine, rectangular with wide beveled corners, sheared and inward rolled lip - blowpipe pontil scar, ht. 5", sparkling mint! N #339, Odell, p.129. A bright, crisp example, beautiful condition. One of numerous products put out by this famous company.

Est.: \$150 - \$250 • Min. bid: \$80



Lot 263

"MRS. M.M. GARDNERS - INDIAN BALSAM / OF LIVERWORT", America, 1840 - 1855. Aquamarine, cylindrical, thin flanged lip - blowpipe pontil scar, ht. 5"; (lightly cleaned to original luster with just a bit of rainbow iridescence or "Benicia" effect on the top of the lip and inside the neck, but no other form of damage). Odell, p.92. A crude bottle and early Indian medicine.

Est.: \$100 - \$200 • Min. bid: \$60



Lot 260

"DR. JACKSON'S / RHEUMATIC / LINIMENT / PHILAD.A", America, 1840 - 1855. Aquamarine, oval, tooled thin flanged lip - blowpipe pontil scar, ht. 5 1/8", virtually attic mint; (a couple traces of very faint residue that would almost certainly wash out, otherwise perfect!) Odell, p.127. A very rare, early medicine, and a "fresh to the market" find. Nice with the perfect, thin flanged lip.

Est.: \$300 - \$600 • Min. bid: \$180



Lot 264

"DR. WADSWORTH'S / VEGETABLE / CROUP SYRUP", America, 1845 - 1855. Light aquamarine, cylindrical, thin flanged lip - blowpipe pontil scar, ht. 6", near mint; (some light interior haze). Note; nice character with a crescent shaped fold of glass, what some refer to as a factory mold repair, being located at the side mold seam. Odell, p.247. A very scarce Rhode Island pontiled medicine.

Est.: \$175 - \$350 • Min. bid: \$100



Lot 265

“**CARTER'S**” / **ERIE**”, America, 1850 - 1860. Aquamarine, oval, sheared and inward rolled mouth - blowpipe pontil scar, ht. 5”, virtually attic mint. A bright, crisp example, with good glass character, and very bold embossing. Note; the oval mold is a very scarce variant with only a handful of known examples. Provenance: Ex. Nick Dizenzo collection.

Est.: \$250 - \$450 • Min. bid: \$150



Lot 269

“**G.E. BRIGGS**.” (with 75% complete, original label), America, 1840 - 1850. Sapphire blue, rectangular with beveled corners, sheared and inward rolled mouth - blowpipe pontil scar, ht. 6”, attic mint! See DF, p.25. Likely an Ohio attribution for this bottle, possibly Chillicothe, or Zanesville. This is one of the original examples from a small cache that were discovered near Cincinnati, in the mid-to-late 1970's. Now, quite rare, and seldom offered for sale! Label indicates to “apply to hair and completely saturate”.

Est.: \$1,400 - \$2,200 • Min. bid: \$800



Lot 266

“**DOCTOR / P. HALLS - COUGH / REMEDY**”, America, 1845 - 1860. Aquamarine, square with beveled corners, sheared and inward rolled mouth - blowpipe pontil scar, ht. 4 7/8”, virtually attic mint! Odell, p. 103. Clean, bright, and sparkling, - a very scarce pontiled “Remedy” from Erie, Pennsylvania. Provenance: Ex. Nick Dizenzo collection.

Est.: \$150 - \$250 • Min. bid: \$80



Lot 270

“**DR. D. JAYNES - LIQUID / HAIR DYE - No 1 - PHILA.**”, America, 1845 - 1855. Aquamarine, “fat” rectangular form, almost square, tooled, thin flanged lip - blowpipe pontil scar, ht. 3”; (a couple of minor areas of faint, light exterior haze, otherwise perfect). A great looking little medicine, certainly one of the most attractive of the early hair dye bottles. Very rare. Provenance: Ex. Sam Greer collection.

Est.: \$250 - \$400 • Min. bid: \$150



Lot 267

“**PORTERS - CURE OF PAIN - BUNDYSBURG. O**”, America, 1850 - 1860. Aquamarine, rectangular with beveled corners, applied round double collar - blowpipe pontil scar, ht. 5”, very near mint; (slight trace of faint light wear, otherwise excellent). Odell, p.193. A terrific example, scarce 5” variant, and with a nice crisp impression!

Est.: \$400 - \$600 • Min. bid: \$200



Lot 271

“**DR. D. JAYNES / LIQUID / HAIR DYE - No 2**”, America, 1845 - 1855. Aquamarine, rectangular, tooled, thin flanged lip - blowpipe pontil scar, ht. 2 7/8”, virtually attic mint; (just a wisp of extremely faint, light haze, barely noticeable; a bit of glass extrusion at the mold seam that, of course, occurred during manufacture, and is not considered damage, otherwise perfect!) Another very rare bottle, equally difficult to acquire as the “Jaynes No. 1”. Ex. Sam Greer collection.

Est.: \$250 - \$400 • Min. bid: \$150



Lot 268

“**CHINESE / LINIMENT - PRICE 30 CTS.**”, America, 1845 - 1855. Colorless, oval, sheared and inward rolled mouth - blowpipe pontil scar, ht. 4 1/8”; (professionally cleaned to original luster with just a touch of light exterior wear remaining near the base). A very scarce bottle, put out by Geo. Coffeen of Blue Ball, Ohio (near Cincinnati).

Est.: \$200 - \$400 • Min. bid: \$120



Lot 272

“**CHEWS - HAIR DYE - No 1**”, America, 1845 - 1860. Aquamarine, rectangular, almost square, sheared and inward rolled mouth - blowpipe pontil scar, ht. 3 1/2”; (the bottle display near mint, although there are some light ground, or etching lines, that swirled through the glass). A crude little bottle, very rare, and possibly from Philadelphia. See DF, p.34; Odell, p. 49. Provenance: Ex. Sam Greer collection, #354.

Est.: \$175 - \$275 • Min. bid: \$100



Lot 273

"D. MITCHELL'S - TONIC FOR - THE HAIR - ROCHESTER N.Y." (with partial original label), America, 1855 - 1865. Colorless, rectangular with beveled corners, applied double round collar - blowpipe pontil scar, ht. 6 1/4", crisp, sparkling, "out of the mold" pristine condition. According to Don Fadely, David Mitchell was a perfumer in Rochester from 1859 - 1865. Also, see Odell, p.169. A very rare bottle with excellent brilliance and clarity.

Est.: \$225 - \$450 • Min. bid: \$140



Lot 277

"MRS S. A. ALLEN'S - WORLDS HAIR / RESTORER - NEW YORK", America, 1865 - 1875. Dense 'old amber' coloration, rectangular with beveled corners, applied round collar with bevel - smooth base, ht. 7 1/8"; (some very faint, light dullness, primarily on the front panel only, but no other form of damage and is otherwise perfect). The light haze could be easily cleaned, if desired. A very scarce color for this bottle, much more so than the amethyst and puce toned examples.

Est.: \$175 - \$350 • Min. bid: \$100



Lot 274

"S.S. SEELY - MORRIS' / OTSEGO COUNTY - NEW YORK" (with 98% original label), America, 1850 - 1860. Aquamarine, rectangular with beveled corners, applied sloping collar - blowpipe pontil scar, ht. 4 7/8", perfect! A scarce pontiled hair bottle from central New York, especially so with the original label. Label is darkened but still legible and reads in part, **"THE / PREMIUM / LIQUID / FOR THE / HAIR & SCALP"**.

Est.: \$175 - \$350 • Min. bid: \$100



Lot 278

"DR TEBBETTS' - PHYSIOLOGICAL / HAIR - REGENERATOR", America, 1865 - 1875. Beautiful, deep amethyst, rectangular with beveled corners, applied double ring collar - smooth base, ht. 7 1/2"; (tiny, pinhead open bubble on reverse panel edge, otherwise virtually attic mint). DF, p.152. A great example in color and condition, just light enough to enjoy some of the outstanding color with normal backlighting or daylight.

Est.: \$250 - \$450 • Min. bid: \$150



Lot 275

"MRS S. A. ALLEN'S - WORLDS HAIR / RESTORER - NEW YORK", America, 1865 - 1875. Brilliant olive yellow, rectangular with beveled corners, applied round collar with bevel - smooth base, ht. 7 1/4", pristine perfect! See DF, pgs. 7-8. A spectacular example in a very rare, eye-appealing color. Examples like this don't come around very often, especially in this fine condition.

Est.: \$800 - \$1,200 • Min. bid: \$400



Lot 279

"SWISS RELIABLE HAIR RESTORER / A.F. GREENIG PROP. / PHILA. PA.", America, 1885 - 1895. Medium lime green, rectangular with beveled corners, tooled square collar - smooth base, ht. 6 3/4"; virtually attic mint; (an 1/8" shallow flake at base edge; a touch of very minor residue near base corner). An unlisted, possibly unique hair bottle that is fresh to the market and looks like it came out of an attic. Beautiful color, eye-appealing, well embossed, and extremely rare.

Est.: \$200 - \$400 • Min. bid: \$120



Lot 276

"MRS S. A. ALLEN'S - WORLD'S HAIR / RESTORER - 355 BROOME ST / NEW YORK.", America, 1865 - 1875. Deep plum amethyst, rectangular with beveled corners, tooled thin flanged lip - smooth base, ht. 7 1/8"; (just a bit of minor roughness, likely open bubbles, on the inside edge of the lip, otherwise sparkling attic mint!) A scarce mold with the street address, and light enough to see some color in normal daylight.

Est.: \$225 - \$450 • Min. bid: \$150



Lot 280

"JOHN & CRAMER / No. 320 RACE ST. / PHILADA." Apothecary Bottle, 1861 - 1866. Deep plum purple, cylindrical, applied square collar - smooth base, ht. 3 5/8"; (the bottle has been lightly cleaned to original luster and display near attic mint). Recently discovered not far from the location of the original apothecary shop! City directories list John & Cramer, as "Apothecaries & Chemists", 320 Race, from 1861 - 1866. Extremely rare, possibly unique.

Est.: \$300 - \$600 • Min. bid: \$180



Lot 281

"L.Q.C. WISHART'S - PINE TREE / TAR CORDIAL / PHILA - PATENT" / (PINE TREE) / "1859", America, 1865 - 1875. Medium to deep bluish green, square with beveled corners, applied sloping collar - smooth base, ht. 9 3/8"; (some scattered faint scratches and light exterior wear, most of which is not terribly noticeable or distracting, otherwise excellent). A comparatively scarce color for this mold, which happens to be virtually identical to the yellowish emerald example.

Est.: \$200 - \$400 • Min. bid: \$120



Lot 285

"TIPPECANOE" / (CANOE) / "H.H. WARNER & Co", America, 1883 - 1890. Light golden, almost a honey tone, highly detailed figural log, large applied "mushroom" type mouth - **"PAT NOV. 20. 83 / ROCHESTER N.Y."** (on smooth base), ht. 9 1/8", perfect! A very pretty example, much nicer than most, crisp, clean, with virtually no exterior wear.

Est.: \$125 - \$175 • Min. bid: \$70



Lot 282

"L.Q.C. WISHART'S - PINE TREE / TAR CORDIAL / PHILA - PATENT" / (PINE TREE) / "1859", America, 1865 - 1875. Yellowish emerald green, square with beveled corners, applied sloping collar - smooth base, ht. 9 5/8", near attic mint; (just a touch of typical, very light exterior wear, otherwise perfect). A very clean example, nice color, excellent condition. A well detailed tree on this mold and a lot of bottle for the money.

Est.: \$200 - \$400 • Min. bid: \$120



Lot 286

"SPARKS / KIDNEY & LIVER / CURE / TRADE MARK / (Bust of Man) / PERFECT HEALTH / CAMDEN, N.J.", America, 1885 - 1895. Bright golden amber shading to virtually yellow along one of the sides, oval, tooled blob collar - smooth base, ht. 9 3/8", virtually attic mint! BA1 #164. An outstanding, top-shelf example of this very rare and desirable, pictorial cure. Bold embossing, good color, excellent condition.

Est.: \$800 - \$1,200 • Min. bid: \$500



Lot 283

"VAUGHN'S - VEGETABLE / LITH-ONTRIPTIC / MIXTURE - BUFFALO", America, 1860 - 1870. Brilliant aquamarine, square with beveled corners and domed shoulders, applied sloping collar - early smooth base, ht. 8"; (just a bit of typical minor exterior wear, and a very slight trace of faint interior milkiness in the shoulders, barely noticeable, otherwise pristine perfect). A bright, sparkling, example with plenty of eye-appeal.

Est.: \$300 - \$500 • Min. bid: \$180



Lot 287

"PRIMLEY'S / IRON & / WAHOO / TONIC - JONES & PRIMLEY Co / ELKHART, IND.", Midwest, possibly Fairmount Glass Co, Fairmount, Indiana, 1889 - 1895. Beautiful yellowish honey coloration with a strong olive tone, square with beveled corners, applied sloping collar with ring - **"FG MFG. Co"** (on smooth base), ht. 8 1/2", "out of the mold", pristine perfect! A relatively common mold in an uncommon, attractive color, and pristine condition.

Est.: \$175 - \$350 • Min. bid: \$100



Lot 284

"G.W. MERCHANT / CHEMIST / LOCKPORT / N. Y.", probably Lockport Glass Works, Lockport, NY, 1860 - 1870. Light to medium blue green, almost a teal tone, cylindrical, applied sloping collar - smooth base, ht. 7"; (a tiny area of lip edge roughness, probably in-manufacture, otherwise perfect). Outstanding character, heavily whittled, and the glass is absolutely filled with tiny seed bubbles. In addition, extremely bold embossing. Note: no period after "Y", in "N.Y".

Est.: \$200 - \$400 • Min. bid: \$120



Lot 288

"THE GREAT INDIAN REMEDY - KA : TON : KA", America, 1885 - 1900. Clear, medium yellow coloration with a honey tone through the base, rectangular with beveled corners, tooled sloping collar - smooth base, ht. 8 5/8", very near mint; (some minor interior residue, or faint light haze, some of which would almost certainly wash out, and a couple of light scratches on the reverse, otherwise perfect!) Put out by the Oregon Indian Medicine Co. A gorgeous, rare color for this bottle.

Est.: \$150 - \$250 • Min. bid: \$80



Lot 289

"INDIAN / SARSAPARILLA - J.J. MACK & CO. - (motif of full standing Indian) - SAN FRANCISCO, CAL.", America, 1885 - 1895. Aquamarine, rectangular with beveled corners - tooled round double collar - smooth base, ht. 9 1/8", virtually attic mint; (just the slightest trace of very faint interior milkiness, barely noticeable, in the shoulders, otherwise perfect!) DeG #110. A very scarce pictorial sarsaparilla, especially in this clean, sparkling condition.

Est.: \$250 - \$400 • Min. bid: \$140



Lot 290

"POISON" / (motif of STAR / SKULL / CROSSBONES / STAR) / "POISON", America, 1890 - 1905. Yellowish honey amber, oval with an overall lattice or diamond pattern, tooled ring type collar - "S & D" (on smooth base), ht. 4 1/2", sparkling attic mint! KO-1. A scarce mold with bold embossing, nice color, outstanding condition.

Est.: \$250 - \$450 • Min. bid: \$140



Lot 291

Motif of Large Wasp / "M P" Poison Bottle, England, 1885 - 1900. Cobalt, flattened ovoid form with an elongated neck, tooled square collar - smooth base, ht. 5 5/8"; (a 3/16" chip on the edge of the lip, at the side, and just a touch of very minor wear, otherwise excellent). A rare and desirable poison, or "bug bottle", that is seldom offered for sale. Here is one that very few collectors have, and would certainly stand out in a crowd.

Est.: \$250 - \$450 • Min. bid: \$140



Lot 292

Lot of (2), "MELVIN & BADGER / APOTHECARIES / BOSTON, MASS." Poison Bottles, Carr-Lowrey Glass Co, Baltimore, MD, 1889 - 1900. Medium, and deep cobalt blue, both are irregular "hex" form with tooled square collars - "C L G CO / PATENT APPLIED FOR", on smooth bases, ht. 4" & 5" respectively, both virtually attic mint! The sizes and shades of cobalt complement one another nicely.

Est.: \$150 - \$250 • Min. bid: \$80



Lot 293

"SARATOGA. N.Y." Wide Mouth Salt Jar, probably a New York State glass-house, possibly Saratoga Mountain Glassworks, Mt. Pleasant, 1855 - 1861. Medium to deep olive green, cylindrical, 3-pc. mold, heavy applied rolled mouth - early smooth base, Qt, ht. 8 1/8", virtually attic mint; (just a trace of very light exterior wear, otherwise perfect!) T# E-1:B. A very rare, desirable, and crude salt jar, full of seed bubbles! Provenance: Ex. Zimmerman collection; Robert Pattridge collection.

Est.: \$3,500 - \$5,500 • Min. bid: \$2,000



Lot 294

"LYNCH & CLARKE / NEW YORK", possibly New England Glass Bottle Company, Cambridge, MA, 1823 - 1833. Rich, deep olive amber, cylindrical, applied sloping collar with bevel - sand type pontil scar, Pt; (some relatively minor exterior wear and a bit of interior residue that would very likely wash out, otherwise perfect). T# C-2:B. Note; the "&" is more similar to type 1; the "W" similar to type 2. A great example, very heavy, thick glass.

Est.: \$300 - \$500 • Min. bid: \$180



Lot 295

"JOHN CLARKE - NEW YORK", probably Mt. Vernon Glass Works, Vernon, New York, 1835 - 1844. Medium yellowish olive in the shoulders shading to a deep olive near the base, cylindrical, 3-pc. mold, applied sloping double collar - sand type pontil scar, Qt, near mint; (just a touch of very minor, light exterior wear, otherwise perfect!) T# C-4:B, type 2. A beautiful example in "un-dug" condition, and a little lighter than some through the shoulders.

Est.: \$200 - \$400 • Min. bid: \$120



Lot 296

Lot of (2), Mineral Water Bottles, probably New York, possibly Saratoga Mountain Glassworks, 1850 - 1866. "CLARKE & WHITE / NEW YORK.", and "CLARKE & WHITE / C / NEW YORK.". Both are shades of deep olive green, cylindrical with applied sloping double collar - smooth base, Pt; (both with just a wisp of faint wear, otherwise perfect!). T# C-10:C, type 1, & C-11:C, type 2. Both with outstanding character, frothy glass, and filled with tiny bubbles.

Est.: \$150 - \$250 • Min. bid: \$80



Lot 297

“GARDNER & LANDON / SHARON / SULPHUR WATER”, probably a New York state glasshouse, 1850 - 1860. Bright, medium to deep yellowish olive, cylindrical, applied sloping collar with bevel - sand type pontil scar, Qt, perfect! T# N-29:A. A great example with nice clarity to the glass, bubbly, crude, whittled, and in pristine, attic-mint condition. Another rare bottle that does not come around often, especially in this nice condition.

Est.: \$1,500 - \$2,500 • Min. bid: \$800



Lot 301

“HIGHROCK CONGRESS SPRING” / (Motif of Rock) / “C&W / SARATOGA NY”, America, 1865 - 1873. Yellowish olive with a bit of a lime tone, cylindrical, applied sloping double collar - smooth base, Pt, near mint; (a tiny, barely noticeable, pinprick bit of roughness at edge of lip and a little light exterior wear). T# S-37:B. Attractive color, nice example. Provenance: Ex. Dr. Burton Spiller collection (#335).

Est.: \$200 - \$300 • Min. bid: \$120



Lot 298

“ALBERGH / A / SPRINGS. VT.”, probably a Stoddard, New Hampshire glasshouse, 1860 - 1873. Beautiful, golden honey coloration, cylindrical, applied sloping collar with bevel - smooth base, Qt, sparking attic mint; (just the slightest trace of light wear, otherwise out-of-the-mold, pristine condition). T# V-2. This is the misspelled variant, and quite a rare bottle. Rich, “syrupy” color, outstanding condition, it will likely be a while before another one this nice comes along.

Est.: \$1,000 - \$2,000 • Min. bid: \$600



Lot 302

“HIGHROCK CONGRESS SPRING” / (Motif of Rock) / “C&W / SARATOGA N.Y.”, America, 1865 - 1873. Beautiful, yellowish “old amber” coloration, cylindrical, applied sloping double collar - smooth base, Pt, virtually attic mint; (just the slightest trace of faint exterior wear, otherwise perfect). T# S-37:B. Bold embossing, nicely whittled, good color.

Est.: \$200 - \$300 • Min. bid: \$120



Lot 299

“CONGRESS & EMPIRE SPRING CO / E / SARATOGA. N.Y.”, America, 1865 - 1875. Deep yellowish honey amber, cylindrical, applied sloping double collar - “2” (on smooth base), Qt; (just the slightest trace of typical faint exterior wear, otherwise attic mint!) T# E-6:A. A great example, outstanding condition, attractive color, scarce mold.

Est.: \$300 - \$500 • Min. bid: \$180



Lot 303

Lot of (2), Mineral Water Bottles, America, 1855 - 1870. “HATHORN SPRING / SARATOGA. N.Y.”, and “G.W. WESTON & Co / SARATOGA / N.Y.”. Medium emerald, and deep yellowish olive, both are cylindrical with applied sloping double collar - smooth base, Qt; (both virtually attic mint, - the “Weston” has some scattered, pinhead open surface bubbles, otherwise perfect). T# S-33:A, type II, & T# E-3:A, type 2. Both great examples, the “Weston” is absolutely loaded with bubbles!

Est.: \$175 - \$350 • Min. bid: \$100



Lot 300

“HIGHROCK CONGRESS SPRING” / (Motif of Rock) / “C&W / SARATOGA N.Y.”, America, 1865 - 1873. Bright yellow green, cylindrical, applied sloping double collar - smooth base, Qt, near mint; (shallow 3/16” flake on the inside edge of the mouth, and just a trace of typical, very light wear, otherwise perfect). T# S-37:A. A nice example, very attractive color.

Est. \$175 - \$350 • Min. bid: \$100



Lot 304

“D. A. KNOWLTON / SARATOGA. / N.Y.”, America, possibly Saratoga Mountain Glass Works, Mt. Pleasant, NY, 1861 - 1863. Deep olive with a strong emerald tone, cylindrical, applied sloping collar with bevel - smooth base, Qt., virtually attic mint; (a few tiny, pinhead open surface bubbles). T# E-5:B. Absolutely filled with tiny seed bubbles. This example also has a bit more of an emerald tone than most. The company was only in business for about 2-3 years.

Est.: \$80 - \$140 • Min. bid: \$50



Lot 305

"MASSENA SPRING" / (monogram) / "WATER", New England, probably Lyndeborough Glass Works, Lyndeborough, NH, 1867 - 1880. Bright teal blue, cylindrical, applied sloping collar with bevel - smooth base, Qt; (professionally cleaned with some minor light scratches remaining on the reverse). T# N-22. Beautiful color.

Est.: \$175 - \$350 • Min. bid: \$100



Lot 309

"BOUGHTON - & CHASE - ROCHESTER. N.Y - BOTTLES - REGISTERED - ACCORDING - TO. LAW", America, 1850 - 1860. Sapphire blue, 10-sided, cone shoulders, applied heavy sloping collar - iron pontil scar, Pt, 8"; (professionally cleaned with some scattered light wear remaining; a minor 1/8" flake at edge of lip and a 1/4" flake at bottom edge of collar). Extremely rare, one of four examples known. A select example of one of the more desirable "Flavored Beers" from Western, NY.

Est.: \$2,000 - \$4,000 • Min. bid: \$1,200



Lot 306

"OAK ORCHARD / ACID SPRINGS - ADDRESS / G.W. MERCHANT / LOCKPORT. N.Y.", America, possibly Lockport Glassworks, 1865 - 1875. Medium to deep, "Lockport" blue-green, cylindrical, 3-piece mold, applied sloping collar with bevel - smooth base, Qt, near mint; (a few minor, very light scratches and a bit of typical light exterior wear, otherwise excellent). T# N-24. Nice rich color, heavily whittled.

Est.: \$100 - \$175 • Min. bid: \$60



Lot 310

"TAYLOR'S - BEST" Soda Water Bottle, America, 1850 - 1855. Sapphire blue, 6-sided tenpin form, applied sloping collar - iron pontil scar, ht. 8"; (professionally cleaned with some typical light ground wear remaining; a 1/2" iridescent bruise from the top, and inside edge of the lip). An extremely rare and desirable soda, believed to have been blown following General Zachery Taylor's successful presidential campaign of 1848.

Est.: \$1,500 - \$3,000 • Min. bid: \$800



Lot 307

"OAK. ORCHARD / ACID SPRINGS - H.W. BOSTWICK / AGT No 574 / BROAD.WAY.NEW.YORK", Lockport Glass Works, 1865 - 1875. Rich golden amber below the shoulders shading to a dense amber through the neck and base, cylindrical, applied sloping collar with ring - **"GLASS. FROM. F. HITCHINS. FACTORY. LOCKPORT. N.Y."** (on smooth base), Qt, perfect!. T# N-25:A (base type 1). Crisp, very strong embossing, including the base!

Est.: \$150 - \$250 • Min. bid: \$80



Lot 311

"SUPERIOR - SODA WATER - CHICAGO", America, 1850 - 1860. Aquamarine, 6-sided tenpin form, applied sloping collar - iron pontil scar, ht. 8 1/4"; (professionally cleaned to original luster; a potstone on one of the unembossed panels with few 1/4" legs, and a 3/8" crack in the side of the sloping collar). Despite the condition notes, the bottle is bright and clean, and still displays nicely. An extremely rare Chicago soda.

Est.: \$300 - \$500 • Min. bid: \$180



Lot 308

"ARTESIAN WATER / LOUISVILLE / KY. - DUPONT", America, 1855 - 1865. Dense amber, virtually black, cylindrical with 12 arched panels around base, applied sloping collar - red iron pontil scar, Pt; (professionally cleaned with a few open bubbles, 1/4" or less, and a couple of scratches remaining). T# M-5. A scarce mold, nice with the red iron pontil scar.

Est.: \$400 - \$800 • Min. bid: \$250



Lot 312

"J. LAKE. / SCHENECTADY. N.Y.", America, 1850 - 1860. Sapphire blue, tenpin form, applied blob collar - iron pontil scar, ht. 7 1/2"; (a little scattered light exterior wear, and a couple of shallow, 1/8" flakes on the lettering, otherwise excellent). Nice clarity and color.

Est.: \$400 - \$600 • Min. bid: \$250



Lot 313

“J.T. BROWN / CHEMIST / BOSTON - DOUBLE / SODA / WATER”, (with period stand), probably New England, possibly Lyndeborough Glass Works, 1865 - 1875. Rich teal blue coloration, torpedo form, applied blob collar - smooth base, ht. 9 1/4”; (lightly cleaned to original luster with a little minor exterior wear remaining; a 5/16” bruise on inside edge of lip). Beautiful color, much nicer than the normally blue-green, or light green examples typically encountered.

Est.: \$200 - \$400 • Min. bid: \$120



Lot 317

“J & A DEARBORN - NEW YORK - MINERAL WATERS - (STAR)”, America, 1845 - 1860. Deep cobalt, 8-sided, applied blob collar - iron pontil scar, ht. 6 3/4”; (professionally cleaned with some scattered scratches, overall fine ground wear remaining). Good deep color.

Est.: \$250 - \$400 • Min. bid: \$150



Lot 314

“JOHN. J. STAFF / 333 / B. WAY. N.Y.”, America, 1850 - 1860. Deep yellowish olive with a slight amber tone, cylindrical, porter-style, applied blob collar - iron pontil scar, ht. 6 3/4”; (a small area of light scratches near the shoulder and some very minor exterior wear, otherwise near mint!) An extremely scarce to rare bottle, - one that is seldom offered for sale. Nice color, excellent condition.

Est.: \$500 - \$1,000 • Min. bid: \$300



Lot 318

“D.T. SWEENEY - PHILADELPHIA / XX / PORTER & ALE”, America, 1860 - 1875. Sapphire blue, cylindrical, applied sloping collar with bevel - smooth base, ht. 6 3/4”; (a couple of small, pinhead bits of roughness along the bottom edge of the collar; a few mostly minor, open surface bubbles, and a little typical, light exterior wear, otherwise near mint). The bottle appears to be an attic-type find, not dug. A very scarce Philadelphia Porter, beautiful color.

Est.: \$500 - \$1,000 • Min. bid: \$300



Lot 315

“DARLING & IRELAND / BOSTON / MINERAL WATER - D”, America, 1845 - 1855. Yellowish emerald green, cylindrical, applied sloping collar - iron pontil scar, ht. 6 5/8”, virtually attic mint; (just a trace of typical, very faint exterior wear and a small area of minor, faint interior residue that should easily wash out). A very rare soda, heavily whittled, and in “attic-found” condition.

Est.: \$600 - \$900 • Min. bid: \$350



Lot 319

“U & I.D. CLINTON / WOODBRIDGE / CONN. - PREMIUM / SODA WATER”, America, 1848 - 1860. Medium to deep blue green, cylindrical, applied blob collar - iron pontil scar, ht. 7 1/4”, pristine, virtually attic mint condition. A great example that has not been dug, and with the full iron pontil scar intact. See Bill Beckett's informative article on Connecticut's Iron Pontiled Sodas: Woodbridge and Canton, *Antique Bottle & Glass Collector*, Oct. 2013.

Est.: \$200 - \$400 • Min. bid: \$120



Lot 316

“R.C. WORTENDYKE - AGENT. - SUPERIOR - MINERAL WATER”, America, 1845 - 1860. Cobalt, 8-sided, applied blob collar - iron pontil scar, ht. 6 7/8”; (a 1/4” flake on the top edge of the lip; a 3/8” area of minor roughness on the edge of the mouth, and a touch of typical light wear, otherwise an attic-type find). A great example with strong embossing that has not been dug and cleaned. This is the variant without the “XX”

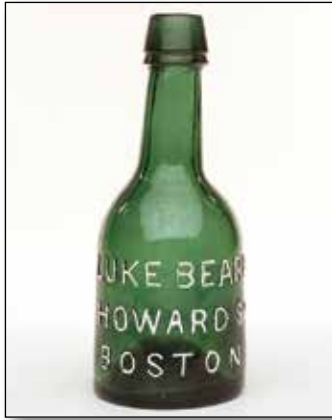
Est.: \$600 - \$900 • Min. bid: \$350



Lot 320

“TARR & SMITH / WORCESTER ST / BOSTON”, America, 1860 - 1870. Medium to deep blue green, cylindrical, applied blob collar - smooth base, ht. 6 3/4”; (a tiny, pinprick spot of roughness on the edge of the collar, and a bit of light wear, primarily on the reverse, otherwise very near mint). A nice clean example of this relatively scarce Boston area soda.

Est.: \$150 - \$250 • Min. bid: \$80



Lot 321

"LUKE BEARD / HOWARD ST / BOSTON" - (Star) / "THIS BOTTLE / IS NEVER SOLD", America, 1854 - 1860. Medium emerald with a slight yellowish tone, cylindrical, porter form, applied sloping collar with bevel - iron pontil scar, ht. 6 7/8", near mint; (just a little scattered, fairly minor exterior wear, and a shallow, thin, 1/8" open bubble, otherwise excellent). A nice example with full iron pontil, that does not appear to have been dug.

Est.: \$125 - \$225 • Min. bid: \$70



Lot 325

"HAYES BROS / TRADE MARK / HB / REGISTERED / CHICAGO. ILL.", William McCully & Co, Pittsburgh, 1885 - 1895. Sapphire blue, cylindrical with mug base ("**McC**" on heel of base on reverse), applied "Hutchinson-style" blob closure - smooth base, Qt; (a 1/2" chip on the inside of the lip and a minor 1/8" flake on outer edge of collar; professionally cleaned to original luster with a shallow open surface bubble and some typical light wear remaining). Beautiful color, scarce.

Est.: \$1,000 - \$1,500 • Min. bid: \$600



Lot 322

"KEELEY & BROTHER / CHICAGO", America, 1860 - 1870. Very deep olive, cylindrical, 3-pc. mold, squat porter form, applied sloping collar with bevel - smooth base, ht. 7"; (a shallow, 1/4" flake at the edge of the base, on the reverse, has been lightly buffed, otherwise very near mint). A very nice example, and a bit lighter in color than the previous example we sold in May. A rare porter from a long-time Chicago collector.

Est.: \$200 - \$400 • Min. bid: \$120



Lot 326

"H. FANNING & CO / DAYTON. O.", a Midwest glasshouse, possibly Hemingray Glass Co, Covington, KY, 1855 - 1865. Rich, deep bluish aqua, cylindrical, 3-pc. mold, large heavy sloping collar with bevel - early smooth base, Qt, ht. 9 1/2"; (several chips 1/4" to 1/2" in size, on lower bevel; a bit of washable residue on interior, otherwise very near mint). Henry Fanning was listed as a brewer in the 1850 business directory. A very scarce, to rare, early beer, great with the oversized "whiskey-type" collar.

Est.: \$600 - \$900 • Min. bid: \$300



Lot 323

"BUFFUM'S - SARSAPARILLA & LEMON - MINERAL WATER - PITTSBURGH", probably a Pittsburgh district glasshouse, 1850 - 1860. Aquamarine, 10-sided, applied sloping collar - iron pontil scar, ht. 7 5/8"; (professionally cleaned to original luster with a little minor ground wear remaining and a bit of rust stain on the base which could easily be removed, if desired, but no other form of damage). A scarce bottle, nice rich aqua coloration.

Est.: \$200 - \$400 • Min. bid: \$120



Lot 327

"H. FANNING & CO / DAYTON. O.", a Midwest glasshouse, possibly Hemingray Glass Co, Covington, KY, 1855 - 1865. Deep greenish aqua, almost a light apple green, cylindrical, 3-pc. mold, applied sloping collar with bevel - early smooth base, Qt, ht. 9 5/8"; (a couple of 1/8", or less, flakes at edge of collar, a hard-to-see, 1/8" surface flake on the shoulder and shallow 1/4" flake on edge of base; a minor patch of interior haze in the shoulder). Another rare early porter-style bottle, great color.

Est.: \$750 - \$1,250 • Min. bid: \$350



Lot 324

"WM. A. KEARNEY / SHAMOKIN / PA. - THIS BOTTLE / NEVER SOLD", America, 1890 - 1900. Medium to deep amber, cylindrical, "Hutchinson-style" blob closure - smooth base, Qt; (some light, spotty interior residue, most of which should wash out, and a 1/4" chip on the side edge of the base has been lightly buffed, otherwise virtually mint). The bottle displays very near mint and does not appear to have been dug.

Est.: \$300 - \$500 • Min. bid: \$180



Lot 328

"HARRIES BREWERY / DAYTON O", Midwest, possibly Hemingray Glass Co, Covington, KY, 1850 - 1860. Very deep tobacco amber, cylindrical, 3-pc. mold, crudely applied sloping collar with bevel - early smooth base, Qt, ht. 9 1/4"; (just a bit of washable residue and faint exterior wear, otherwise perfect!) Found in a barn in Monroeville, Ohio. John W. Harries began brewing operations in Dayton in the early 1830's. Rare, and in outstanding condition.

Est.: \$1,500 - \$2,500 • Min. bid: \$800



Lot 329

"H.FERNEDING / DAYTON, O.", Midwest, possibly Hemingray Glass Co, Covington, KY, 1859 - 1865. Deep bluish aquamarine, almost a teal coloration, cylindrical, 3-pc. mold, applied sloping collar with bevel - early smooth base, Qt, ht. 9 3/8"; (just a trace of faint interior milkiness near the shoulder, otherwise virtually attic mint). Great color and eye-appeal with large, bold, crude embossing. Very rare. Henry Ferneding and his brother opened a malting house & brewery in 1847.

Est.: \$900 - \$1,600 • Min. bid: \$500



Lot 333

"H & K / DAYTON, O.", Midwest, probably a Pittsburgh district glasshouse, 1888 - 1895. Medium amber, cylindrical, applied heavy blob collar - smooth base, Qt, ht. 9"; (just a touch of very minor wear; the bottle may have been lightly cleaned but certainly presents itself as near attic mint). **"H & K"** (Hollencamp & Kramer), is embossed over ghosted initials "T H". Kramer bought Oehlschlager's share in the brewery in 1888. Kramer sold out to Hollencamp around 1895. A scarce Dayton porter.

Est.: \$150 - \$300 • Min. bid: \$80



Lot 330

"H.FERNEDING / DAYTON, O.", Midwest, possibly Hemingray Glass Co, Covington, KY, 1859 - 1865. Dense olive green (black glass), cylindrical, 3-pc. mold, applied sloping collar with bevel - early smooth base, Qt, ht. 9 3/4"; (just a trace of very faint exterior wear, otherwise attic mint!) The embossing is again in very high relief, and very crude. An exceptional, and rare, early porter. It would be hard to imagine a nicer example.

Est.: \$1,500 - \$2,500 • Min. bid: \$800



Lot 334

Lot of (2), "H & O / DAYTON, O." Porter-style Bottles, Cunningham & Co, Pittsburgh, PA, 1885 - 1888. Bright golden amber and deep amber, both are cylindrical with applied blob collars (one with original "Wizard" type wire stopper) - **"C & Co"** (on smooth bases), Qt, hts. 9"; (golden amber example is perfect; deep amber example professionally cleaned with some scattered light ground wear remaining). Hollencamp & Oehlschlager were partners from 1885 - 1888. Exceptional with original closure.

Est.: \$400 - \$700 • Min. bid: \$250



Lot 331

"N. METZ & Co / DAYTON, O.", Midwest, possibly Illinois Glass Co, 1871 - 1877. Medium amber, cylindrical, applied sloping collar with ring - **"I G W Co"** (on smooth base), Qt, ht. 9 1/8"; (professionally cleaned to original luster with just a touch of light wear remaining; a bit of roughness on inside edge of mouth). Dug in Dayton about three blocks from where the brewery was located. Metz was only in business from 1871 - 1877. Heavily whittled, excellent condition, rare.

Est.: \$1,200 - \$2,200 • Min. bid: \$700



Lot 335

"C.O.D. BOTTLING CO / ADLERS / PROPERTY / JACKSON, MICH.", possibly Modes Glass Co, Cicero, Indiana, 1890 - 1900. Beautiful, medium cornflower blue, cylindrical, applied blob collar with original Lightning-style closure - **"M G W"** (on smooth base), Qt; (just a tiny pinhead flake at the edge of the blob collar, otherwise sparkling attic mint). A scarce beer, especially in this outstanding condition, and with the original closure. Beautiful color.

Est.: \$400 - \$600 • Min. bid: \$250



Lot 332

"T. H. / DAYTON, O.", Cunningham & Co, Pittsburgh, PA, 1880 - 1885. Honey amber, cylindrical, applied heavy blob collar - **"C & Co"** (on smooth base), Qt, ht. 9"; (professionally cleaned to original luster with a little spotty light interior haze remaining, but no other form of damage). A very scarce porter, nicely whittled. Theodore Hollencamp moved to Dayton in 1871, from Xenia, Ohio, where he worked as a brewer.

Est.: \$400 - \$700 • Min. bid: \$250



Lot 336

"B. F. C." (on shoulder), Demijohn, America, 1880 - 1890. Beautiful, almost a pure yellow coloration, cylindrical, applied sloping collar - smooth base, ht. 14 3/4", near mint; (a 1" band of light residue or minor haze in the upper shoulder and a couple of shallow open bubbles with light residue on the interior, otherwise perfect). Gorgeous color, heavily whittled. These "B.F.C." Demijohns can be found in a variety of shades of amber. This is the lightest example that we have seen for this mold.

Est.: \$100 - \$200 • Min. bid: \$60

Diverse & Colorful Binger Bottles

The name "Binger" holds a special meaning among bottle collectors. Renowned for their innovative bottles featuring unusual forms, as well as their marketing genius with names such as "Peep-O-Day", "Night Cap", and "Banana Juice", the Binger bottles have become a category in and of themselves.

The Bingers featured in this sale are choice selections from the Diane Wheaton collection. Several of these pieces were originally acquired by Diane from pioneer Binger collector, Dr. Sam Greer.



Lot 153

Lot 156

Lot 166

Lot 161

Lot 163

Lot 148

Exceptional & Colorful Early Medicines

Medicines



Lot 225

Lot 228

Lot 234

Lot 233

Lot 230

\$4.00

ANTIQUE BOTTLE & GLASS COLLECTOR

Dig Into the
Bottle & Glass Hobby's
#1 Periodical

**When you subscribe
to Antique Bottle & Glass
Collector magazine,
you'll be getting:**

- ▶ The premier monthly publication for the antique bottle and glass community
- ▶ Great articles each month on antique bottles, flasks and jars by some of the leading authorities in the hobby
- ▶ Timely and important information about current events in the world of antique bottles
- ▶ Show and auction reports
- ▶ Buy-sell-trade opportunities
- ▶ Up-to-date calendar of trade shows and conventions
- ▶ And much, much more!

**For subscription
information, please call
us at 248.486.0530 or visit
antiquebottlemagazine.com**

*12 great
issues a year
for only \$35
postpaid!*

The Magazine That Keeps You Informed!