

American Glass Gallery™

Auction #14 • Bidding Opens May 13, 2015 • Closes May 27, 2015



Lot #40:
Rare and Important
GLX-43 JR & Son Scroll Flask
in Striated Amethyst



VIEW OF THE CITY OF PITTSBURG, PENNSYLVANIA.

Conditions of Sale

1. Absentee Auction

The items in this sale will be sold via absentee auction, closing date:
May 27, 2015, 11:00 p.m., EST.

2. Our Guarantee Regarding Descriptions

American Glass Gallery has made every attempt to describe correctly the property being sold. Descriptions are guaranteed to be accurate as regards authenticity, age, condition, and measurements to within one-fourth inch, as represented in this catalog. In describing damage, exterior wear or manufacturer's flaws that in our opinion, do not significantly detract visually or monetarily from the value of the item are not listed and will not be considered for refund. The Auctioneers reserve the right to make verbal corrections and provide additional information at any time during the sale.

3. Preview

Items may be viewed by appointment from May 13, 2015 through May 25, 2015.

4. Bidding Procedure

You may submit your bids by mail, phone, FAX, email or through our on-line auction site. If bidding by mail or FAX, please fill out the absentee form and return it to us. Your bid, either written or oral, grants American Glass Gallery the authority to protect you up to the amount of your stated bid. Your bid will not be removed once executed.

Bidding Times: You can submit your bids anytime after receiving your catalog. Bids may be made by phone, daily, until closing day, May 27, 2015, from 9 A.M. - 7 P.M. Eastern Time. Incoming phone bids will be accepted on the closing day (May 27, 2015) until 11 P.M. Eastern Time. Phone calls and Fax bids after this time will not be honored. No exceptions. You may also place your bids through our on-line auction service 24-hours a day once the site has opened for bidding, on or about May 13, 2014, continuing until 11:00 P.M. Eastern Time, May 27, 2014.

Please do not wait until the last day or two of the sale to place your bids! Because many collectors wait until the final few days of the sale to place their bids, we anticipate the telephone and internet bidding to be very busy during that period, so please plan accordingly. In the event of a tie bid, the earliest received bid on the lot will take precedent. We would welcome your bids by phone so that we can answer any questions and assist you in your bidding.

You may also telephone us at any time during the auction, prior to the closing of the sale, to check the status of your bids, to find the current bidding level, to open a bid, or to raise a bid on an auction lot.

Bidding Increments are as follows:

Up to \$250.00.....increments of \$10.00
\$250.00 - \$500.00increments of \$25.00
\$500.00 - \$1,000.00increments of \$50.00
\$1,000.00 - \$2,500.00increments of \$100.00
\$2,500.00 - \$5,000.00increments of \$250.00
\$5,000.00 - \$10,000.00increments of \$500.00
\$10,000 & Up.....increments of \$1,000.00

Bids submitted between the above increments, whether by mail, FAX, email or on-line via the internet, will automatically be lowered to the closest lower increment.

This is a minimum bid auction. Bids below the printed minimum will not be accepted.

An example of how our absentee bidding system works: You bid \$600.00 on a lot which is the highest bid received to date. The second highest bid is \$450.00. The current high bid level would be yours at \$475.00, one bid increment higher than the other collector's bid. Any additional bids submitted by others below \$600.00 will automatically be topped on your behalf by a representative of American Glass Gallery, up to your stipulated high bid amount. If no further bids on this lot are received beyond the \$450.00, and the under bidder has not requested a "Call Back", then you would have won the lot at \$475.00, not the \$600.00 that you were prepared to pay.

American Glass Gallery will at NO TIME disclose bids pledged by others; only the current "High Bid" level of a lot will be stated upon request. The highest bidder as determined by American Glass Gallery shall be the purchaser. It is the sole right of the auctioneer to settle any dispute between bidders and to regulate the bidding procedure. The auctioneer reserves the right to refuse any bid he believes not to have been made in good faith.

5. "Call Back" Process

If requested, the three top bidders of an item at the time of closing will be given a "Call Back" over the next number of days in order to resolve the final sale of an item. You can request this service by "checking" the appropriate box on your absentee bid form or verbal agreement by phone. It is the responsibility of the bidder to insure he has qualified for this service.

Please note: No "Call Backs" will be executed for bids under \$400.00. In the event of tie bids, the earliest bid received will be the winning bid.

An example of how the "Call Back" process works: As an example, you have bid \$600.00 on a particular lot. Another bidder has submitted a bid of \$900.00 on the same lot. Assuming that as of the auction closing date you are among the top three bidders on this lot and you have requested a "Call Back", you would receive a call informing you that you have been "Out Bid" and the current "High Bid" is now at \$650.00. If you choose to continue bidding on this lot, you may now do so. Assuming that you now increase your bid to \$700.00, we would accept your bid but also inform you that we have a higher bid on this lot and must bid \$750.00. At this time, an auction between you and American Glass Gallery, representing the collector who submitted the bid of \$900.00, takes place. This bidding would continue until you drop out, or top the other bidders high bid of \$900.00. If the other bidder has not requested a "Call Back" service, you would be awarded the lot. If however, the other bidder also requested a Call Back, we must now call them. If they elect to increase their bid over your high bid, we would in turn call you back. This back and fourth process would continue until one of the bidders declines to go any farther.

If you have requested a "Call Back", the auctioneers will need to contact you on the days immediately following the auction closing between the hours of 8 A.M. and 9 P.M. Eastern Time. Please supply us with all appropriate contact phone numbers including, home, mobile and work numbers. Bidders must provide the appropriate telephone numbers where they can be contacted. If you will be traveling or otherwise unavailable, bidders with "Call Back" privileges will have the responsibility to contact American Glass Gallery twice daily during the Call Back period.

Please note, every effort will be made to contact you during the "Call Back" period. However, the bidder will forfeit their rights to a "Call Back" if the auctioneers are unable to reach them. American Glass Gallery reserves the right to discontinue Call Backs on any item in the sale (2) two days after the closing date of the sale. At that time, the current "High Bidder" may be awarded the item even if Call Backs are still outstanding.

6. Terms

Successful Bidders, Prompt and full payment is due immediately upon receipt of our invoice. Absolutely no exceptions. Anyone failing to pay for items won will forfeit all rights to bid in any future American Glass Gallery sales. *Any late or delayed payments may result in loss of return privileges for items purchased in the sale.*

No Items Will Be Mailed Before Full Payment Is Received.

Buyer Premium: A 15% buyer's premium will be added to the hammer price (18% if paying by Credit Card or PayPal), to be paid by the buyer as part of the purchase price. For example, if you purchase a lot for \$100.00, you will receive an invoice for \$115.00 if paying by cash, check or money order, plus any applicable sales tax or shipping charges.

Taxes: If you are a Michigan resident, a 6% sales tax will be added to your bill unless you have a valid resale number registered with us.

Shipping: Shipping, handling and insurance are extra. We ship insured via U.S. Mail. These charges will be added to your bill unless the lots are picked up in person. Our charges for shipping (excluding foreign shipments and oversized lots) are \$18.00 for the first item, \$9.00 for each additional item together with extra insurance costs (we use current U.S. Postal Service insurance rates).

Please allow two to three weeks for delivery after receipt of your check.

Payment: American Glass Gallery accepts Cash, Money Orders, Personal Checks, Visa, MasterCard, American Express and PayPal. *If paying by Credit Card or PayPal, an additional 3% will be added to the invoice total.*



7. Refunds

Refunds will be given at the discretion of the Auctioneers. Items purchased must be examined and request for refund made immediately upon receipt of the item or items. Since opinions can differ, particularly in the matter of condition, the Auctioneers will be the sole judge in the consideration of refunds. Refunds requested on the grounds of authenticity must be made within 15 days of the date of the auction, and such refund requests must be accompanied by at least one supporting statement in writing from an authority recognized by the Auctioneers. It is the Auctioneers sincere intention to consider any reasonable request for a refund. *Absolutely no returns for any reason after 30 days following the closing of the sale.*

8. Bidding on any item indicates your acceptance of these terms.



American Glass Gallery™

John R. Pastor
P.O. Box 227
New Hudson, Michigan 48165
Phone: 248.486.0530
Fax: 248.486.0538
www.americanglassgallery.com
email: jpastor@americanglassgallery.com

PLEASE NOTE:

The lots offered in this printed catalog are identical to the lots offered in the on-line catalog. However, due to space constraints of the printed catalog, there may be some further information available regarding some of the lots in the on-line auction descriptions.

Please visit us at

www.americanglassgallery.com

and follow the link to the on-line auction.

The link and on-line auction will be available May 13, 2015.

A post-auction price list will be available on our website, in printable form, by June 8.

We encourage you to contact us by phone or email with any questions, for assistance with bidding, or further details or clarification on any of the lots in this sale. Your complete satisfaction and confidence is our goal!

We look forward to having you participate in our next sale, either as a buyer or a consignor. Our next absentee auction is scheduled for Fall, 2015. We already have some wonderful items consigned to this sale and look forward to discussing with you any quality items you wish to consign!

**THANK YOU AND GOOD LUCK
WITH YOUR BIDS!**

Reference Key

Reference initials and numbers used in the description of this catalog refer to the following publications:

AHG	<i>American Historical Glass</i> , Bessie M. Lindsey, 1967
AM	<i>The Decanter - An Illustrated History of Glass from 1650</i> , Andy McConnell, 2004
AP	<i>Glass in Early America</i> , Arlene Palmer, 1993.
BA1	<i>Collecting The Cures</i> , Bill Agee, 1969
BA2	<i>Collecting All Cures</i> , Bill Agee, 1973.
BB	<i>A Bit About Balsams</i> , Betty Blasi, 1974
BH	<i>Classification and Documentation of Sunburst and Similar Scent Bottles</i> , Bill Ham, AB&GC, 5/87
B/K	<i>The Glass Industry in Sandwich</i> , Raymond Barlow and Joan Kaiser, 1989.
C	<i>Ink Bottles and Inkwells</i> , William Covill, 1971.
DeG	<i>American Sarsaparilla Bottles</i> , John DeGrafft, 1980.
DeGII	<i>Supplement to American Sarsaparilla Bottles</i> , John DeGrafft, 2004.
DF	<i>Hair Raising Stories</i> , Don Fadely, 1992.
DM	<i>Wistarburgh, Window Tiles, Bottles and More</i> , Dale L. Murscell, 2007.
F	<i>Inks, 150 Years of Bottles and Companies</i> , Ed and Lucy Faulkner.
FA	<i>John Frederick Amelung, Early American Glassmaker</i> , Lanmon, Palmer, Hume, Brill, Hanson, 1990.
FB	<i>A.S.C.R. The wine bottles of All Souls College</i> , Oxford, 1750 – 1850, Fay Banks.
G	(Flasks) <i>American Bottles & Flasks and Their Ancestry</i> , McKearin & Wilson, 1978.
G	(Blown Three Mold) <i>American Glass</i> (Chapter VI), George S. and Helen McKearin, 1941.
GBH	<i>English Glass For The Collector, 1660-1860</i> , G. Bernard Hughes, 1958.
H	<i>American Bottles in the Charles B. Gardner Collection</i> , Norman C. Heckler, 1975.
JB	<i>Patent and Proprietary Medicine Bottles</i> , Joseph K. Baldwin, 1973
JEB	<i>Glasshouse Whimsies</i> , Joyce E. Blake, 1984.
JH	<i>Glasshouses & Glass Manufacturers of the Pittsburgh Region, 1795 – 1910</i> , Jay W. Hawkins, 2009.
JS	<i>In glas verpakt – European Bottles, Their history and production</i> , Johan Soetens, 2001.
K	<i>Poison Bottle Workbook</i> , Rudy Kuhn, 1988.
KW	<i>New England Glass & Glassmaking</i> , Kenneth M. Wilson, 1972.
L	<i>The Red Book of Fruit Jars, No. 9</i> , Douglas M Leybourne, Jr., 2001.
LI	<i>Pittsburgh Glass, 1797 – 1891</i> , Lowell Innes, 1976.
Mc	<i>Two Hundred Years of American Blown Glass</i> , Helen and George McKearin, 1950.
McK	<i>American Glass</i> , George S. and Helen McKearin, 1941.
MW	<i>American Bottles & Flasks and Their Ancestry</i> , McKearin & Wilson, 1978.
N	<i>Great American Pontiled Medicines</i> , Frederick Nielson, 1978.
NCH	<i>The Blaske Collection of American Flasks</i> , Norman C. Heckler, 1983.
NCH II	<i>The Blaske Collection: Part II</i> , Norman C. Heckler, 1983.
Odell I	<i>Indian Bottles and Brands</i> , John Odell, 1977
Odell II	<i>Pontiled Medicine Encyclopdia</i> , John Odell, 2000
O&S	<i>Warner's Reference Guide</i> , Ed Ojea and Jack Stecher, 1998.
P	<i>The Glass Gaffers of New Jersey</i> , Adeline Pepper, 1971.
RD	<i>Understanding Antique Wine Bottles</i> , Roger Dumbrell, 1983.
RF	<i>The Bottle Book: A Comprehensive Guide to Historic, Embossed Medicine Bottles</i> , Richard Fike, 1987
RH	<i>Collecting Barber Bottles</i> , Richard Holiner, 1986.
R/H	<i>Bitters Bottles</i> , Carlyn Ring and W. C. Ham, 1998.
RWL	<i>Antique Fakes & Reproductions</i> , Ruth Webb Lee, 1950
T	<i>Collectors Guide to Saratoga Type Mineral Water Bottles</i> , Donald Tucker, 2005.
U	<i>Collectible Character Bottles</i> , Authur Umberger, 1969.
V	<i>Nailsea Glass</i> , Keith Vincent, 1975
VdB	<i>Antique Glass Bottles; Their History and Evolution</i> , Willy Van den Bossche, 2001.
WL	<i>A Wine-Lover's Glasses, The A.C. Hubbard, Jr. Collection</i> , Ward Lloyd, 2000.
Z	<i>Ketchup, Pickles, Sauces</i> , Betty Zumwalt, 1980.
ZW	<i>Color Hutchinsons</i> , Zang Wood, 1999.

- The dash is generally used to indicate that the descriptions are on opposite sides of the bottle or flask.

/ The slash is used to indicate that the descriptions are on different lines or surfaces of the bottle.

Choice Drake's Bitters in Natural Light



Lot 117

Lot 118

Lot 119

Lot 260: Rare Randall & Co. Mineral Water

The Randall & Company Mineral Water Establishment, comprised of Dudley A. Randall and Paris H. Keach, was located in the basement of Barnum's Hotel on Monument Square in Baltimore and listed in there in the city directories from 1840 - 1843.

A native of Rhode Island, Dudley Randall was listed as a grocer in Providence in 1828. As a grocer, this is likely how he cut his teeth experimenting with brewing various concoctions including beer, root beer, various syrups, and mead. Randall eventually moved to Baltimore in the early-to-mid 1830's and

established a mead manufactory at 126 Howard Street. Sometime around 1839, Paris H. Keach, joined Dudley Randall in forming the mineral water establishment at the Barnum Hotel. In addition to the bottling, they also sold their mineral water by subscription.

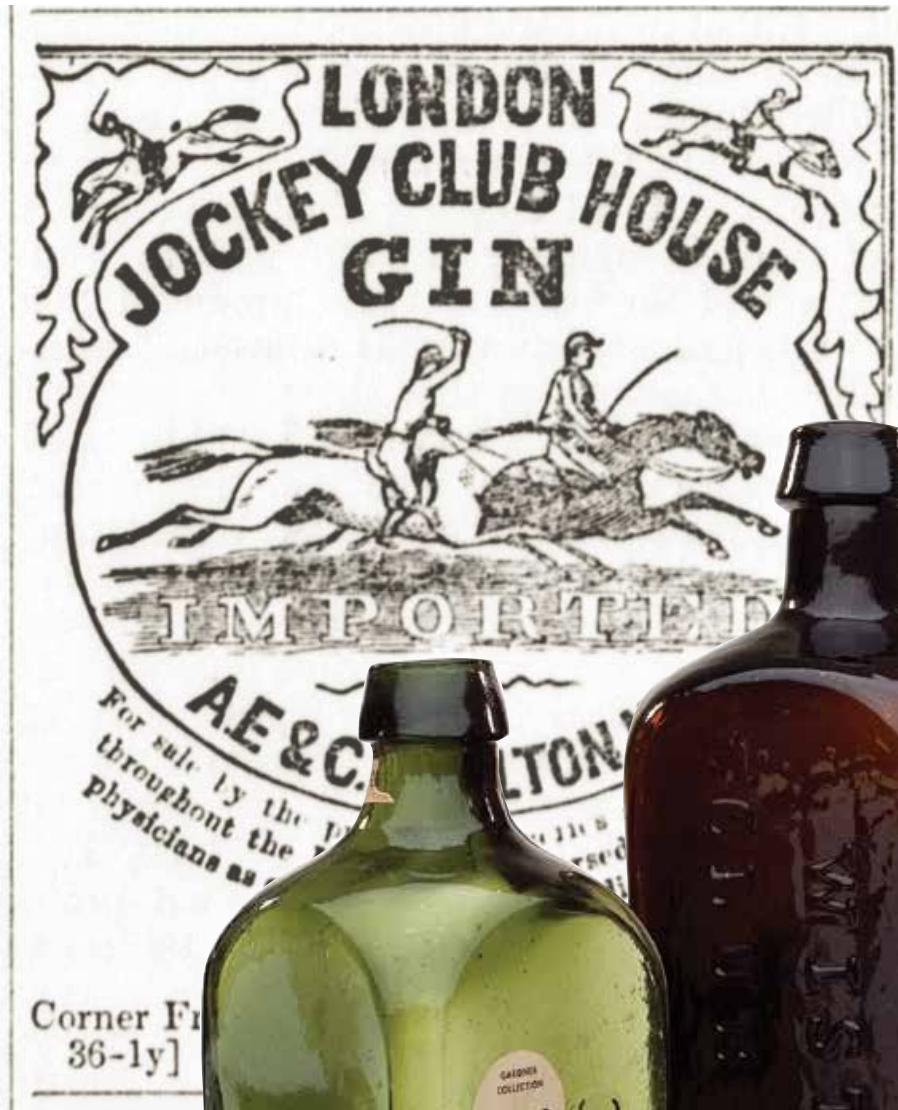
Either the bottling of mineral water was not a terribly successful venture, or perhaps the two partners had differing opinions on which

direction to take the business. Regardless, the partnership of Randall and Co. was dissolved in 1843. Keach went on to bottle mineral waters under his own name. Dudley A. Randall continued to operate the fountain and mineral water saloon at the Barnum Hotel.

An extremely rare and desirable torpedo soda with only two, or possibly three, examples being offered at auction in more than 20 years.



THE CITY OF BALTIMORE, MD. IN 1860. VIEW FROM WASHINGTON MONUMENT LOOKING SOUTH.



Exceptional Club House Gin Bottles



Lot 100



Lot 97



Lot 99

Vermont Mineral Water Bottles



Lot 247

Lot 245

Lot 246



THE MISSISQUOI AT SHIELDEN SPRINGS. — THOMAS MORAN.

Fancy Colognes in Shades of Blue

Offered here are three choice examples of “fancy” cologne bottles in rare blue shades.

Such ornately-embossed glass cologne bottles were in vogue in America from around 1830 up until the Civil War. In addition to the cathedral and fountain motifs represented by two of the examples pictured, they were blown in a vast array of elaborately carved molds including the following examples offered by the Dyottville Glass Works of Philadelphia in an 1835 newspaper advertisement:

Long Gothic; Urn; Lion; Lyre; Castle; and Flower-pot, among others.

These appealing bottles were rarely manufactured for a specific firm, but were used interchangeably by countless perfumeries and apothecaries to dispense various colognes and toilet waters. The contents and manufacturer would have been identified by a paper label affixed to the bottles.

As these lovely bottles were produced by many early American bottle glass houses, and in large quantities, they have become a popular, rewarding, and relatively affordable collecting category.



Lot 79

Lot 80

Lot 78



Lot 1

“GENERAL WASHINGTON.” / BUST OF WASHINGTON - EAGLE Historical Flask, an early Pittsburgh district glasshouse, 1825 - 1835. Greenish aquamarine, sheared mouth - blowpipe pontil scar, Pt, very near mint; (just a faint trace of interior residue that would almost certainly wash out; a tiny, barely pinprick bit of roughness at the edge of the sheared mouth, otherwise pristine!) GI-2. An extremely bold impression, crisp embossing, - a great example.

Est.: \$300 - \$500 • Min. bid: \$180



Lot 2

“WASHINGTON” / BUST OF WASHINGTON - “JACKSON” / BUST OF JACKSON Historical Flask, Keene Marlboro Street Glassworks, Keene, NH, 1825 - 1842. Yellowish olive amber, sheared mouth - blowpipe pontil scar, Pt, virtually attic mint; (just a bit of very faint interior residue that would almost certainly wash out, otherwise pristine!) GI-31. An excellent example, outstanding condition, nice color, and good strong embossing!

Est.: \$200 - \$350 • Min. bid: \$120



Lot 3

“THE FATHER OF HIS COUNTRY” / BUST OF WASHINGTON - “DYOTVILLE GLASS WORKS PHILAD.A / GEN. TAYLOR NEVER SURRENDERS” / BUST OF TAYLOR Historical Flask, Dyottville Glass Works, Philadelphia, 1848 - 1860. Light to medium ice blue, sheared mouth - blowpipe pontil scar, Qt, near mint; (a very minor touch of light exterior wear, otherwise pristine) GI-37. A delicate, scarce and attractive color for this mold.

Est.: \$250 - \$450 • Min. bid: \$150



Lot 4

“THE FATHER OF HIS COUNTRY” / BUST OF WASHINGTON - “DYOTVILLE GLASS WORKS PHILAD.A / GEN. TAYLOR NEVER SURRENDERS” / BUST OF TAYLOR Historical Flask, Dyottville Glass Works, 1848 - 1860. Medium to deep plum amethyst, sheared mouth - smooth base, Qt; (the top of the lip has been lightly polished to remove some minor flakes, some of which are still present) GI-37. A spectacular, gorgeous color!

Est.: \$2,500 - \$4,500 • Min. bid: \$1,500



Lot 5

“THE FATHER OF HIS COUNTRY” / BUST OF WASHINGTON - “GEN. TAYLOR NEVER SURRENDERS” / BUST OF TAYLOR Historical Flask, Dyottville Glass Works, 1848 - 1855. Rich medium blue-green with a slight emerald tone, sheared mouth - blowpipe pontil scar, Pt, virtually attic mint; (just a slight trace of faint high point wear). GI-40c. Very strong embossing, great color, outstanding condition! Provenance: Ex. Tom McCandless collection

Est.: \$1,500 - \$2,500 • Min. bid: \$800



Lot 6

“THE FATHER OF HIS COUNTRY” / BUST OF WASHINGTON - “I HAVE ENDEAVOUR.D TO DO MY DUTY” / BUST OF TAYLOR Historical Flask, Dyottville Glass Works, 1848 - 1855. Brilliant clear yellowish green, sheared mouth - blowpipe pontil scar, Qt, pristine; (a couple of minor open surface bubbles, otherwise perfect). GI-43. Beautiful, scarce color, outstanding eye-appeal and character with seedy glass, a strong impression, and virtually no high point wear.

Est.: \$1,500 - \$2,500 • Min. bid: \$800



Lot 7

“THE FATHER OF HIS COUNTRY” / BUST OF WASHINGTON - (Reverse Plain) Historical Flask, probably Lockport Glass Works, NY, 1850 - 1860. Clear medium green, applied round collared mouth - iron pontil scar, Qt, near mint; (just a touch of typical light wear and a potstone on the surface of the glass has a tiny, pinhead area of iridescence, but no radiations). GI-47. A scarce color for this mold, in addition, very scarce with the iron pontil scar.

Est.: \$600 - \$900 • Min. bid: \$300



Lot 8

WASHINGTON - TAYLOR Portrait Flask, probably Dyottville Glass Works, Philadelphia, 1848 - 1855. Bright medium emerald green shading to a clear light emerald along one of the sides, applied sloping collar - blowpipe pontil scar, Qt.; (just the slightest trace of very minor high point wear on the reverse only, otherwise pristine!) GI-51. Another example having great color, character and condition.

Est.: \$1,800 - \$3,600 • Min. bid: \$1,000



Lot 9

WASHINGTON - TAYLOR Portrait Flask, probably Dyottville Glass Works, Philadelphia, 1848 - 1860. Pale apple green, sheared mouth - blowpipe pontil scar, Pt; (just a slight trace of typical faint exterior wear, otherwise attic mint!) GI-55. A clean little Washington flask, excellent condition. Provenance: Ex. Blaske collection (#156).

Est.: \$100 - \$150 • Min. bid: \$70



Lot 13

BUST OF JENY LIND / LYRE - (Reverse same), Historical Flask, probably McCarty & Torreyson Glass Works, Wellsburg, West Virginia, 1850 - 1855. Aquamarine, sheared mouth - blowpipe pontil scar, Pt; (a few small 1/8" flakes on the edge of the roughly sheared mouth, and a 1/4" chip on the side of the neck, just below the sheared mouth). GI-108. A bright, clean example, and a scarce mold that does not come around often.

Est.: \$500 - \$800 • Min. bid: \$300



Lot 10

WASHINGTON - SHEAF OF RYE Historical Flask, probably Dyottville Glass Works, 1855 - 1865. Deep yellowish green with an emerald tone, applied sloping collar - smooth base, Qt, near mint; (a few scratches near the base on the front, some moderate high point wear on bust of Washington, but no other form of damage). GI-57. A somewhat scarce mold, and very rare in color, the 1st to be offered at auction in more than 20 years. Fresh to market from a Vermont estate sale!

Est.: \$3,000 - \$6,000 • Min. bid: \$1,800



Lot 14

BUST OF BYRON - BUST OF SCOTT Portrait Flask, probably an early Stoddard glasshouse, 1842 - 1850. Yellowish olive amber, almost an olive yellow, sheared mouth - blowpipe pontil scar, 1/2 Pt, near mint; (a trace of interior residue, and some light high point wear). GI-114. Nice glass character, nice light color, very close in color to some of the early New England chestnut flasks.

Est.: \$175 - \$275 • Min. bid: \$100



Lot 11

BUST OF GRANT - EAGLE / "UNION" Historical Flask, a Midwestern glasshouse, possibly Pittsburgh, 1865 - 1875. Aquamarine, crudely applied collar with flat band - smooth base, Pt, very near mint; (a tiny, pinhead flake at bottom of mold seam, at base edge, and just a small patch of very faint interior haze near the shoulder, otherwise mint). GI-79. Nice example with some crudeness and whittling. A very scarce mold, listed as "Rare" by McKearin.

Est.: \$175 - \$350 • Min. bid: \$100



Lot 15

"COLUMBIAN EXPOSITION" / BUST OF COLUMBUS / "1893 / A.E.M BROS & CO. - PENNSYLVANIA / PURE RYE / BAKER / WHISKEY" Historical Flask, America, 1893-1894. Light honey amber, tooled round double collar - smooth base, Pt, near mint; (an open bubble on the interior of the neck with some residue, otherwise perfect!) GI-128. A very scarce flask blown to commemorate the 1893 Columbian Exhibition celebrating the 400th anniversary of Columbus's discovery of America.

Est.: \$800 - \$1,600 • Min. bid: \$500



Lot 12

"LAFAYETTE" / BUST OF LAFAYETTE / "T.S". - "DE WITT CLINTON" / BUST OF CLINTON / "CONVENTRY / C-T", Coventry Glass Works, 1824 - 1830. Clear light to medium olive with a citron tone, almost a forest coloration, sheared mouth - pontil scar, Pt, (just a trace of faint high point wear and a tiny pinprick spot of roughness on the back edge of the lip, otherwise pristine perfect). GI-80. An exceptional example, outstanding color, character, and condition.

Est.: \$2,500 - \$4,500 • Min. bid: \$1,200



Lot 16

EAGLE - TREE Historical Flask, probably Coffin & Hay Glass Works, 1838 - 1847. Aquamarine, sheared mouth - blowpipe pontil scar, Qt, near attic mint; (a pinhead size flake at edge of sheared mouth, otherwise perfect!) GI-47. Listed a "Rare", it is indeed a very difficult mold to acquire. An outstanding example with a crisp, very bold impression and having no high point wear. Ex. Roy Brown collection.

Est.: \$400 - \$600 • Min. bid: \$200



Lot 17

EAGLE - FURLED FLAG / "FOR OUR COUNTRY" Historical Flask, Coffin & Hay Glass Manufactory, Hammonton, New Jersey, 1838 - 1847. Aquamarine, sheared mouth - blowpipe pontil scar, Pt, very near mint; (just a trace of very faint interior haze or residue near the ribbing in the shoulders that may wash out, and a tiny pinhead flake at the edge of the sheared mouth, otherwise sparkling mint). GII-54. A crisp example of this comparatively scarce mold.

Est.: \$175 - \$350 • Min. bid: \$100



Lot 18

EAGLE - "NEW LONDON" / ANCHOR / "GLASS WORKS" Historical Flask, New London Glass Works, 1856 - 1860. Strong medium bluish green, sheared mouth - blowpipe pontil scar, Pt, very near mint; (just a tiny, shallow, barely pinhead size flake at edge of sheared lip and a wisp of typical, very faint light exterior wear, otherwise perfect!) GII-68. An excellent example, beautiful, whittled, and in a little deeper color than most.

Est.: \$2,000 - \$4,000 • Min. bid: \$1,200



Lot 19

EAGLE - CORNUCOPIA Historical Flask, probably Keene Marlboro Street Glassworks, Keene, New Hampshire, 1830 - 1842. Bright yellowish olive amber, sheared mouth - blowpipe pontil scar, Pt; (some high point wear, primarily on the reverse, otherwise perfect). GII-73a. A good, clean example, nice color.

Est.: \$150 - \$250 • Min. bid: \$80



Lot 20

EAGLE - CORNUCOPIA Historical Flask, probably Keene Marlboro Street Glassworks, Keene, New Hampshire, 1830 - 1842. Medium to deep bluish aquamarine, sheared mouth - blowpipe pontil scar, Pt; (a couple of pinhead open surface bubbles; a hard-to-see, 1/8" flake on one of the rocks below the eagle, and a little light high point wear on the shield). GII-74. The noted condition issues are all relatively minor, the flask has nice character and color.

Est.: \$175 - \$275 • Min. bid: \$100



Lot 21

EAGLE - EAGLE Historical Flask, probably a Stoddard New Hampshire glasshouse, Stoddard, NH, 1850 - 1860. Medium to deep olive green, sheared mouth - blowpipe pontil scar, Pt; (a minor 3/8" scratch near the shoulder, some high point wear on the eagle's shield and on the oval frame; a small 1/8" bubble on the side of the neck with a little disturbance on the cover glass). GII-84. Typically found in shades of olive amber, a little more scarce in this pure green coloration.

Est.: \$175 - \$275 • Min. bid: \$100



Lot 22

EAGLE / "X" - EAGLE Historical Flask, a Stoddard New Hampshire glasshouse, possibly Granite Glass Works, 1846 - 1860. Olive amber, sheared mouth - blowpipe pontil scar, 1/2 Pt, virtually attic mint; (only a faint light trace of high point wear, otherwise perfect!) GII-87. A classic little Stoddard flask, a little more scarce having the "X" in the oval frame.

Est.: \$150 - \$250 • Min. bid: \$80



Lot 23

EAGLE - EAGLE Historical Flask, possibly Zanesville, Ohio, 1860 - 1870. Medium citron green, applied collar with ring - smooth base, Pt; (just a slight trace of extremely faint wear, otherwise sparkling mint). GII-118. A comparatively scarce mold, and a rare color for this mold (perhaps six known), much more difficult to obtain than the blue examples. In addition, the flask has good depth of color and excellent character, the glass being filled with tiny seed bubbles.

Est.: \$2,500 - \$4,500 • Min. bid: \$1,400



Lot 24

EAGLE WITH BANNER - (Reverse plain) Historical Calabash, America, 1855 - 1865. Bright medium "7-UP" green, applied sloping collar - iron pontil scar, Qt, very near mint; (just a touch of minor exterior wear, otherwise perfect). GII-143. A nice bright, clean example with a better than average impression.

Est.: \$250 - \$400 • Min. bid: \$150



Lot 25

CORNUCOPIA - URN Pictorial Flask, Lancaster Glass Works, Lancaster, NY, 1849 - 1855. Bright yellow olive, almost an olive yellow along the sides, sheared, tooled lip - blowpipe pontil scar, ½ Pt; (just the faintest wisp of extremely minor high point wear, otherwise sparkling pristine condition!) GIII-14a. A very scarce mold in an extremely rare color, - believed to be one of only two known examples in this olive coloration. Crisp impression, an exceptional little flask.

Est.: \$4,000 - \$6,000 • Min. bid: \$2,000



Lot 26

CORNUCOPIA - "LANCASTER GLASS WORKS, N.Y." / URN Pictorial Flask, Lancaster Glass Works, Lancaster, NY, 1849 - 1860. Clear bluish green with a slight emerald tone, sheared mouth - iron pontil scar, Pt, near mint; (a pinhead flake on the inside edge of the mouth, and a thin faint ring of minor haze about one inch up from the base). GIII-16. A desirable "marked mold", with a bit more greenish tone, excellent condition, with almost no high point wear.

Est.: \$1,000 - \$1,500 • Min. bid: \$600



Lot 27

CORNUCOPIA - URN Pictorial Flask, Lancaster Glass Works, Lancaster, NY, 1849 - 1855. Medium blue green, sheared mouth - blowpipe pontil scar, Pt; (just a slight touch of faint exterior wear, and a trace of very light spotty interior residue that may wash out, otherwise virtually attic mint). GIII-17. Another nice example of a Lancaster Cornucopia.

Est.: \$500 - \$800 • Min. bid: \$300



Lot 28

MASONIC - EAGLE Historical Flask, probably Keene Marlboro Street Glassworks, Keene, NH, 1820 - 1830. Yellowish olive with an amber tone, sheared mouth - blowpipe pontil scar, ½ Pt; (a little high point wear, primarily on the obverse only, some scattered interior residue or light haze, some of which would likely wash out, and a slightly weak impression as is sometimes found on this mold). GIV-24. A crude example with nice pebbly glass.

Est.: \$225 - \$375 • Min. Bid: \$125



Lot 29

CLASPED HANDS / MASONIC EMBLEM / "UNION" - EAGLE / "A.R.S." Historical Calabash, A.R. Samuels, Philadelphia, 1858 - 1866. Light to medium citron green, applied sloping collar - blowpipe pontil scar, Qt, near mint; (a tiny, barely pinprick bit of roughness on the bottom edge of the collar, on the reverse, and a paper-thin 3/16" open bubble on the reverse). GIV-42. Attractive color, overall excellent condition. Provenance: Ex. Jim Bender collection.

Est.: \$300 - \$600 • Min. bid: \$180



Lot 30

"SUCCESS TO THE RAILROAD" / HORSE PULLING CART - (REVERSE SAME) Historical Flask, possibly Mt. Vernon Glass Works, Vernon, NY, 1830 - 1844. Bright medium olive with a yellowish tone, sheared mouth - blowpipe pontil scar, Pt, virtually attic mint; (two, tiny pinhead open surface bubbles, otherwise perfect). GV-5. An outstanding example, found in an attic near Albany, NY, having no high point wear, seedy glass, and nice clarity!

Est.: \$400 - \$800 • Min. bid: \$250



Lot 31

HORSE PULLING CART - EAGLE Historical Flask, probably Coventry Glass Works, Coventry, Connecticut, 1830 - 1845. Medium olive amber, sheared mouth - blowpipe pontil scar, Pt, near mint; (just a slight touch of very light high point wear, and a couple of minor, onion-skin-thin open surface bubbles, otherwise perfect). GV-9. Another nice example having very little of the high point wear that typically plagues these Railroad flasks.

Est.: \$300 - \$500 • Min. bid: \$180



Lot 32

"RAILROAD" / HORSE PULLING CART / "LOWELL" - EAGLE Historical Flask, probably Coventry Glass Works, Coventry, Connecticut, 1830 - 1845. Rich, medium to deep, pure olive green, sheared mouth - blowpipe pontil scar, ½ Pt, near mint; (a touch of minor high point wear, otherwise perfect!) GV-10. A little sweetheart of a flask, and in a very nice pure green coloration. Most are in shades of olive amber, or yellowish olive.

Est.: \$400 - \$600 • Min. bid: \$250



Lot 33

“CORN FOR THE WORLD” / EAR OF CORN - “BALTIMORE” / MONUMENT Historical Flask, Baltimore Glass Works, 1855 - 1865. Medium to deep copper with some warmer apricot tones, applied double collar - smooth base, Qt; (a little moderate high point wear as is common for this mold; some scattered light exterior wear along the sides, a small patch of faint interior milkiness near the base that may wash out). GVI-4. Great color, very strong embossing.

Est.: \$2,500 - \$3,500 • Min. bid: \$1,500



Lot 34

SCROLL FLASK, Midwest America, 1845 - 1860. Medium apple green, almost a grass green, sheared mouth - blowpipe pontil scar, Qt, near mint; (just a minor pinhead flake on top of sheared mouth and one at edge of base, otherwise virtually attic mint). GIX-2. A big, attractive scroll, bright, clean, and in a scarce color.

Est.: \$800 - \$1,200 • Min. bid: \$500



Lot 35

SCROLL FLASK, Midwest America, 1845 - 1860. Brilliant citron, almost a lime green, sheared mouth - blowpipe pontil scar, Pt, mint. Similar to GIX-11 (overblown in shoulders so stars not clearly defined). Beautiful, bright color, nice clarity and condition. Note, a slightly different mold having a short pedestal-type base.

Est.: \$800 - \$1,600 • Min. bid: \$400



Lot 36

SCROLL FLASK, Midwest America, 1850 - 1860. Amber in the shoulders shading to a lighter golden amber through the mid-body, crudely applied heavy ring type collar - red iron pontil scar, Pt; (just a little typical light exterior wear and an 1/8" wide open bubble on the interior with a bit of residue). GIX-11. A nice example, having frothy, bubbly glass through the neck and shoulders.

Est.: \$500 - \$800 • Min. bid: \$300



Lot 37

“C” SCROLL FLASK, probably Cunningham & Co. Glass Manufacturers, Pittsburgh, PA, 1849 - 1860. Rich, deep bluish aquamarine, extended neck with an applied mouth and flat band - blowpipe pontil scar, Pt, sparkling attic mint! GIX-25. A scarce mold, nice color, outstanding condition and eye appeal. Provenance: Ex. Sam Laidacker, Tom McCandless collections.

Est.: \$400 - \$600 • Min. bid: \$250



Lot 38

SCROLL FLASK, Midwest America, 1845 - 1855. Light golden amber, almost a honey tone, sheared mouth - iron pontil scar, 1/2 Pt, near mint; (some typical, light high point wear and a tiny, barely pinprick spot of roughness on the edge of the sheared mouth). GIX-33a. The GIX-33a mold is listed as “Extremely rare” by McKearin, and unlisted in amber. This is believed to be one of only two examples known in amber, the other example we sold in May, 2010.

Est.: \$1,500 - \$2,500 • Min. bid: \$800



Lot 39

SCROLL FLASK, Midwest America, 1845 - 1855. Medium sea green, sheared mouth - blowpipe pontil scar, 1/2 Pt, perfect! GIX-36. A rare little flask, attractive color, and almost eggshell thin, with nice character having a subtle band of tiny little bubbles through the midsection. Provenance: Ex. Judge Edmund Blaske collection.

Est.: \$600 - \$900 • Min. bid: \$300



Lot 40

“J R & Son” SCROLL FLASK, John Robinson & Son Glass Manufacturers, Pittsburgh, PA, 1830 - 1834. Beautiful medium amethyst in the shoulders shading to clear, pale amethyst in the lower scroll and foot area, with profuse striations through the center and lower portion, sheared mouth - blowpipe pontil scar, Pt; (a shallow, approx. 1/4" wide, pontil flake that extends to the edge of the base, and some high point wear). GIX-43. An exceptional flask, exceptional color, and eye-appeal.

Est.: \$40,000 - \$60,000 • Min. bid: \$20,000



Lot 41

"J R & Son" SCROLL FLASK, John Robinson & Son Glass Manufacturers, Pittsburgh, PA, 1830 - 1834. Brilliant aquamarine, corseted scroll form, sheared mouth - blowpipe pontil scar, - Pt; (a 1/4" flake on top edge of mouth that likely occurred when the cork was pressed out and just a minor touch of high point wear, otherwise pristine!) GX-43. A scarce, early marked scroll flask and a great example in a nice deep, brilliant tone.

Est.: \$800 - \$1,200 • Min. bid: \$500



Lot 45

"UNION" / CLASPED HANDS / "WM FRANK & SONS / PITTS" - CANNON Historical Flask, Frankstown Glass Works, Pittsburgh, PA, 1870 - 1876. Medium amber with a slight orange tone, applied mouth with flat band - smooth base, Pt; (an 1/8" flake at edge of mouth, next to a manufacture imperfection; a few shallow flakes 1/8" to 1/4", at edge of base, a little exterior wear). GXII-39. A comparatively scarce mold. Ex. Jim Bender collection.

Est.: \$300 - \$500 • Min. bid: \$180



Lot 42

PROSPECTOR HOLDING A BOTTLE - EAGLE Historical Flask, Midwest, probably Zanesville Glass Works, Zanesville, Ohio, 1860 - 1865. Aquamarine, applied round collar - red iron pontil scar, Pt; (professionally cleaned to original luster with some light scratches and exterior wear remaining). GXI-45. Listed by McKearin in group C, Rare Flasks, the "Tippler" as it is colloquially known, is a very desirable mold. Note; this is the 45, with the smaller frame on reverse.

Est.: \$800 - \$1,200 • Min. bid: \$500



Lot 46

CLASPED HANDS / "UNION" - EAGLE Historical Calabash, America, possibly A.R. Samuels, Philadelphia, PA, 1858 - 1866. Medium shading to deep amber through the shoulders, neck and base, applied round double collar - iron pontil scar, Qt; (just a touch of minor exterior wear and a ring of interior haze about 1 1/2" up from base). GXII-43. Provenance: Ex. Jim Bender collection.

Est.: \$200 - \$400 • Min. bid: \$120



Lot 43

"FOR PIKE'S PEAK" / PROSPECTOR - HUNTER Historical Flask, Ravenna Glass Works, Ravenna, Ohio, 1857 - 1864. Medium golden amber, applied collared mouth with flat band - smooth base, Pt, virtually attic mint; (a tissue-paper thin 1/8" open bubble at edge of base, only the slightest trace of very faint wear, otherwise perfect). GXI-50. Excellent condition, a strong, bold impression, almost no high point wear, - a great example.

Est.: \$1,600 - \$2,800 • Min. bid: \$800



Lot 47

SHEAF OF GRAIN / LAUREL WREATH - STAR Pictorial Calabash, possibly Sheets & Duffy Glass Manufacturers, Philadelphia, PA, 1850 - 1860. Light to medium ice blue, applied sloping collar - blowpipe pontil scar, Qt; (some typical light exterior wear and a 1 1/2" wide band of light interior haze around the center). GXIII-43. Not a strong color, but certainly an attractive color, and definitely not the typical aqua hues.

Est.: \$150 - \$250 • Min. bid: \$80



Lot 44

"UNION" / CLASPED HANDS / "A & D.H.C" - EAGLE / "PITTSBURGH PA" Historical Flask, A. & D. H. Chambers Glassworks, 1860 - 1870. Light apple green, applied collar with flat band - smooth base, Pt; (professionally cleaned to original luster with some overall, very faint interior milkiness remaining, and a small patch of light dullness near the base). GXII-27. A comparatively scarce mold that is only listed in aqua. Provenance: Ex. Jim Bender collection.

Est.: \$175 - \$275 • Min. bid: \$100



Lot 48

"BALTIMORE" / ANCHOR / "GLASS WORKS" - PHOENIX / "RESURGAM" Historical Flask, Baltimore Glass Works, 1860 - 1870. Bright, light honey amber with some yellow tones along the sides and near the shoulders, crudely applied double collared mouth - smooth base, Pt, near mint; (just a touch of typical, minor exterior wear, otherwise perfect). GXIII-54. A bright, light example, heavily whittled, with a strong impression, beautiful.

Est.: \$1,000 - \$1,500 • Min. bid: \$600



Lot 49

Pattern Molded Globular Bottle, 24 vertical ribs, Zanesville Glass Works, Zanesville, Ohio, 1820 - 1835. Brilliant light honey yellow with a topaz tone, globular form, outward rolled mouth - pontil scar, ht. 7 5/8", very near mint; (just a touch of very minor exterior wear, otherwise perfect!) Beautiful and exceptional color, classic spherical form, and rare with the vertical rib pattern. An outstanding example of the highest quality Midwestern pattern molding of the period.

Est.: \$3,000 - \$5,000 • Min. bid: \$1,500



Lot 50

Pattern Molded Club or "Beehive" Bottle, 24 ribs swirled to the left, Ohio or Western PA, 1820 - 1840. Aquamarine, beehive form, applied collar with flat band - blowpipe pontil scar, ht. 8 7/8", near mint; (a very faint interior residue or haze that may wash out and an 1/8" flake on the inner edge of the lip). A little larger in size, but what is particularly interesting is the very rare lip treatment with the applied flat band. We have only seen perhaps one or two similar examples.

Est.: \$175 - \$350 • Min. bid: \$100



Lot 51

Large, Pattern Molded Pocket Flask, 25 ribs swirled to the left, Midwest, 1820 - 1840. Greenish aquamarine, elliptical form, sheared mouth - pontil scar, ht. 7 1/4", near mint; (a pinhead spot of roughness on the edge of the sheared lip, and just a slight trace of typical light wear, otherwise perfect). Ex. Daryl Fifer collection. A great early pattern molded flask in a scarce size, having a rare rib count, and with a good strong pattern from the neck, to the base!

Est.: \$200 - \$400 • Min. bid: \$120



Lot 52

Pattern Molded Pocket Flask, 24 ribs swirled to the right, Midwest, probably Zanesville, OH, 1815 - 1830. Bright, light honey amber, flattened chestnut form, sheared mouth - pontil scar, ht. 5 1/4", near mint; (some typical fine exterior wear, otherwise excellent). A light, delicate example. Ex. Daryl Fifer collection. Early Midwestern flasks make a beautiful grouping with contrasting colors, patterns and sizes; one commonality is the quality of the glass.

Est.: \$250 - \$450 • Min. bid: \$150



Lot 53

Pattern Molded Pocket Flask, 24 vertical ribs, Midwest, probably Zanesville Glass Works, Zanesville, Ohio, 1815 - 1830. Beautiful, rich golden amber, flattened chestnut form, sheared mouth - pontil scar, ht. 5", very near mint; (just a touch of very light wear on the sides, near the base, otherwise perfect). A beautiful, classic example of the early pocket bottles that exemplify the quality of the metal blown at Zanesville, and other Midwestern glasshouses, in the early 1800's.

Est.: \$250 - \$450 • Min. bid: \$150



Lot 54

"RUM" Blown Three Mold Decanter, America, possibly Boston and Sandwich Glass Works, 1825 - 1835. Colorless, barrel form, geometric pattern with diamond diapering and vertical ribbing, tooled, outward flared mouth with pressed wafer stopper - glass tipped pontil scar, Qt, overall height (including stopper), 10 3/4", perfect. Gil-27. The handful of marked or "embossed" BTM decanters are all considered very scarce, to rare. This one is certainly rare! Ex. Dick Watson.

Est.: \$700 - \$1,200 • Min. bid: \$400



Lot 55

Freeblown Covered Sugar Bowl, possibly Redford Glass Works, Plattsburgh, NY, 1831 - 1851. Aquamarine, non-lead glass, bowl with sides tapering slightly toward base, galleried rim - base with blowpipe pontil scar. Period, closely-matched, but not original cover is domed with a flared and inward folded rim, drawn ball finial with pontil scar, overall ht. 6"; (a little light exterior wear, otherwise perfect). See McK, plate 15, #6; also similar to Lot 52, AGG Auction #8. An exquisite covered sugar bowl.

Est.: \$1,500 - \$2,500 • Min. bid: \$800



Lot 56

Early Freeblown Bowl, probably New England, 1810 - 1840. Olive with a slight yellowish tone, cylindrical with gradually flaring sides and an outward folded, tooled hollow rim - glass tipped pontil scar, ht. 2 3/4", rim dia. approx. 6"; (some typical overall light scratches and usage wear,

some very faint dullness or "patina" on the exterior). A classic early bowl with plenty of honest base wear, and a nice "earthy" feel.

Est.: \$600 - \$1,200 • Min. bid: \$350



Lot 57

Freeblown Chestnut Flask, New England, 1785 - 1820. Clear, delicate light yellow olive, chestnut form, crudely applied string lip - delicate blowpipe pontil scar, ht. 5 3/8"; (just a faint trace of exterior wear, otherwise pristine!) Excellent clarity and eye-appeal, a little sweetheart of a flask.

Est.: \$250 - \$450 • Min. bid: \$150



Lot 61

Freeblown Chestnut Flask, New England, 1785 - 1820. Light olive yellow, plump chestnut form, crudely sheared mouth with an applied ring type collar - blowpipe pontil scar, ht. 7 3/8"; (an elongated open bubble on the inside of the neck, and just a trace of typical faint exterior wear, otherwise mint). Nice size, color, and with a slightly plumper body than most. Provenance: Ex. John Moore collection.

Est.: \$300 - \$450 • Min. bid: \$180



Lot 58

Freeblown Chestnut Flask, New England, 1785 - 1820. Medium olive amber, chestnut form, applied string lip - blowpipe pontil scar, ht. 5"; (just the slightest trace of faint wear, otherwise pristine attic mint). Nice color, an excellent little example, attractive with the slightly crooked neck.

Est.: \$250 - \$450 • Min. bid: \$150



Lot 62

Freeblown Miniature Globular Bottle, probably Continental, 1740 - 1790. Aquamarine, teardrop form, sheared mouth with applied string lip - pontil scar, ht. 1 7/8"; (partially open bubble on interior of shoulder, otherwise perfect). See VdB, plate 252. Form also similar to 17th & 18th century utility vials sometimes referred to as "tear bottles". Nice character, crudely applied mouth, wonderful diminutive size.

Est.: \$175 - \$350 • Min. bid: \$100



Lot 59

Freeblown Chestnut Flask, New England, 1785 - 1820. Clear light olive, chestnut form, crudely applied ring type collar - blowpipe pontil scar, ht. 6 3/8", near mint; (typical light exterior usage wear and a shallow, in-manufacture, pontil flake that extends to the wear ring only, and is not visible on display). A classic early chestnut, slightly larger size.

Est.: \$200 - \$400 • Min. bid: \$120



Lot 63

Large, Freeblown Globular Bottle, New England, 1785 - 1820. Light yellow olive, almost an olive yellow, globular body with gracefully tapering shoulders, applied heavy string lip - blowpipe pontil scar, ht. 11 1/4"; (some light scratches around the mid-body, primarily on one side only, a narrow interior open bubble, and a little typical light usage wear). Nice size. Similar to McK, plate 224, #9

Est.: \$600 - \$900 • Min. bid: \$350



Lot 60

Freeblown Chestnut Flask, New England, 1785 - 1820. Clear, light olive yellow with a straw tone, chestnut form, sheared mouth with an applied ring type collar - blowpipe pontil scar, ht. 7 3/4"; (a few light scratches and minor exterior wear, some very faint interior haze through the mid-body). A crude example with some small scattered sandgrains and potstones (none with any radiations), and in a slightly larger size than normal.

Est.: \$200 - \$400 • Min. bid: \$120



Lot 64

Early Freeblown Globular Bottle, America, 1790 - 1820. Bright medium green, almost a grass green, globular form with slightly flattened sides, applied heavy ring type collar - blowpipe pontil scar, ht. 10 1/4", near mint; (just a little minor exterior wear, otherwise perfect!) A very rare bottle, excellent clarity, color and condition, the "cousin" to Lot #61, in our Auction #11, October, 2013 sale.

Est.: \$750 - \$1,250 • Min. bid: \$400



Lot 65

Freeblown Pedestal Vase, Congressville Glass Works, Saratoga, NY, or possibly England, 1865 - 1880. Yellowish olive with an amber tone and opaque white flecks of glass scattered throughout, trumpet form with a wide neck and tooled ring-type collar - blowpipe pontil scar, ht. 7 1/8"; (some fine exterior usage wear, and the glass has a slight dullness or "patina", as is often the case with this type of glass). A scarce vase discovered in New England many years ago

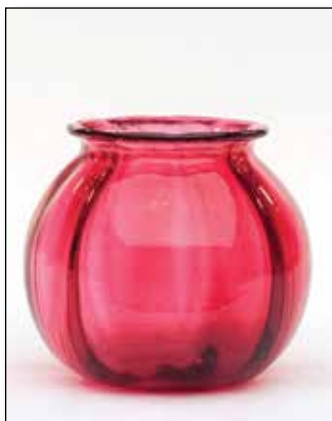
Est.: \$500 - \$1,000 • Min. bid: \$250



Lot 66

Early Patterned Leech Bowl, probably England, 1860 - 1880. Translucent, light robin's egg blue with some fiery opalescent tones, compressed globular form with 16 vertical ribs, sheared, wide, outward flared thin flanged mouth - blowpipe pontil scar, ht. 2 1/8", very near mint; (a touch of very light wear, otherwise perfect). Attractive color, especially with the fiery opalescence.

Est.: \$175 - \$275 • Min. bid: \$100



Lot 67

Early Patterned Leech Bowl, probably England, 1860 - 1880. Beautiful cranberry coloration, globular form with 10 wide melon type vertical ribs, sheared, tooled and outward flared mouth - polished pontil base, ht. 2 3/8", perfect. A fantastic color, not often seen in these little traveling leech jars that were prevalent during the Victorian period.

Est.: \$200 - \$350 • Min. bid: \$120



Lot 68

Nailsea Type Flask, probably England, 1840 - 1870. Beautiful pinkish cranberry coloration with fine opaque white looping combed through the glass, oval or "horseshoe" form, sheared mouth - glass tipped pontil scar, ht. 6 5/8", mint. Nice color, plenty of workmanship with the fine white loopings. Note, an early collector tag remains on the base.

Est.: \$175 - \$350 • Min. bid: \$100



Lot 69

Early, Enameled Presentation Flask, blown in the Alpine Region of Europe, likely Switzerland, c. 1764. Deep amethyst with white enameled lettering in old German, translated, "If your heart grows true Forget me nots will grow out of it, 1764" - (Detailed motif of Forget-me-not flowers), ovoid form, blown in the German half-post method, sheared mouth - pontil scar, ht. 5 5/8"; (some overall fine exterior usage wear, but otherwise perfect). A very rare, early flask, 250 years of age.

Est.: \$1,200 - \$2,400 • Min. bid: \$700



Lot 70

Early, Pattern Molded Pocket Flask, probably Continental, 1780 - 1830. Clear, light to medium sapphire blue, chestnut form patterned with faint horizontal rows of small dots, tooled and outward flared mouth - pushed up base with small glass-tipped punty scar, ht. 5 1/4"; (pattern weakens in the lower half of the flask, otherwise perfect!) An early, delicate little flask, almost eggshell thin glass. Ex. Norman Heckler Jr., John Moore collections.

Est.: \$225 - \$375 • Min. bid: \$140



Lot 71

Pattern Molded Pocket Flask, probably Continental, possibly Austrian, 1820 - 1850. Vivid cobalt blue, flattened chestnut form with an overall hobnail, sheared mouth - blowpipe pontil scar, ht. 5 1/8", near mint; (a light 1" scratch near the side, towards the base, and a little typical minor exterior wear on the sides, near the base, otherwise excellent). Beautiful deep color.

Est.: \$300 - \$500 • Min. bid: \$180



Lot 72

Quilted Diamond Flask, Continental, probably Germany, 1840 - 1860. Bright moss green, blown in a 2-piece mold, applied square collar - light sand type pontil scar, ht. 6 3/8"; (a 3/16" open bubble at base edge; a few scattered, 1/8" or less, minor open surface bubbles, and a narrow band of light interior residue or haze near the base, otherwise excellent). A scarce flask, attractive color, and outstanding character, the glass being filled with tiny seed bubbles!

Est.: \$250 - \$450 • Min. bid: \$140



Lot 73

Early, Engraved Spirits Flask, , probably Bohemian, 1750 - 1780. Colorless with fancy engraved floral and leaf designs, elliptical form with flattened back panel, blown in the German half post method, sheared mouth with an applied pewter closure - solid punty scar, ht. 8 1/2"; (a little spotty light interior haze in the upper third of the flask, and a bit of expected light usage wear, otherwise excellent). A very early flask exhibiting fine engraving and workmanship.

Est.: \$125 - \$250 • Min. bid: \$70



Lot 77

Fancy Scent Bottle, probably South Boston area, possibly Boston and Sandwich Glass Works, 1855 - 1870. Beautiful light amethyst, or lavender, elliptical form, geometric pattern with alternating bands of short vertical ribs and horizontal rings, short neck with factory ground lip - smooth base, ht. 3", perfect. MW, plate 106, #17; McK, plate 241, #25 (text at bottom of plate 241 indicates a Sandwich Glass attribution). Scarce pattern and color. From a Vermont estate sale.

Est.: \$300 - \$500 • Min. bid: \$180



Lot 74

Rare, Pattern Molded Spirits Bottle, Continental, probably Germany or the Alpine Region, 1740 - 1780. Medium to deep cobalt, rectangular, blown in the German half-post method with 19 ribs swirled to the right, tooled, slightly flared mouth - glass-tipped punty scar, ht. 4 3/8"; (a little light exterior wear including a shallow, 3/16" flake on one of the ribs, otherwise excellent). A rare size for a early spirits flask. Also, scarce with the ribbed pattern.

Est.: \$400 - \$600 • Min. bid: \$250



Lot 78

Fancy Cologne Bottle, America, 1835 - 1855. Sapphire blue, corseted body with lattice and palmette designs on front panel, and scrolled Acanthus leaves forming the shoulders, sheared and inward rolled mouth - pedestal type base with blowpipe pontil scar, ht. 5 1/2", very near mint; (some minor roughness on inside edge of rolled lip, likely in-manufacture, otherwise pristine!). An excellent example, clean, bright, crisp, and in outstanding condition. MW, plate 111, #3.

Est.: \$1,000 - \$2,000 • Min. bid: \$600



Lot 75

"VAN CUTSEM - A ST QUENTIN" Target Ball, France, 1880 - 1895. Rich cobalt blue, quilted diamond pattern with center band, rough sheared mouth, dia. 2 5/8", perfect. Note: these balls are often very dense in color, this one is a little lighter in shade

Est.: \$100 - \$175 • Min. bid: \$60



Lot 79

Fancy Figural Cologne Bottle, America, 1835 - 1855. Sapphire blue, rectangular, figural building with a standing Knight embossed on front panel, columned corners, Gothic arches, and latticed sides, sheared, crudely tooled mouth - blowpipe pontil scar, ht. 4", perfect. Another outstanding example with brilliant glass, early and beautiful. MW, plate 109, #10.

Est.: \$1,000 - \$2,000 • Min. bid: \$600



Lot 76

"GLASHUTTEN Dr. A. FRANK - CHARLOTTENBURG" Target Ball, Germany, 1880 - 1895. Yellowish with a slight olive tone, quilted diamond pattern above and below center band, rough sheared mouth, dia. 2 5/8", perfect. Note: "Glashutten" in German is the plural for glasshouse. The ball still retains some remnants of the, likely original, material that would have been hand stuffed into the ball, designed to give more visual effect when the ball was shot.

Est.: \$175 - \$350 • Min. bid: \$100



Lot 80

Figural Fountain Cologne Bottle, America, 1835 - 1855. Vivid deep cobalt with a slight violet tone, classical fountain architecture with columned corners and arched entries, tooled thin flared mouth - pedestal base with pontil scar, ht. 4 3/8", attic mint! A rare and exceptional early cologne. MW indicates it may have been an import from France, and also notes on p. 404, that fountain colognes were blown at two different South Jersey glasshouses. MW, plate 113, #4.

Est.: \$1,500 - \$3,000 • Min. bid: \$800



Lot 81

Urn & Floral Motif, Early Cologne Bottle, Mt. Vernon Glass Works, Vernon, NY, 1825 - 1840. Yellowish olive amber in the shoulders shading to deep olive amber in the lower half, rectangular with beveled corners, sheared mouth with a short tapered collar - blowpipe pontil scar, ht. 6 7/8", near mint; (a little light exterior wear and some glass extrusion from the mold seam along the back edge with a 1/4" flake at the side). Heavy seedy, crude bubbly glass. One of classics in American glass.

Est.: \$4,000 - \$8,000 • Min. bid: \$2,500



Lot 85

Umbrella Ink, New England, probably a Stoddard, NH glasshouse, 1842 - 1860. Medium to deep amber, 8-sided umbrella form, sheared and inward rolled mouth - blowpipe pontil scar, 2 1/4" ht. x 2 1/8" wide, very near mint; (a little dried content stain in the base). Similar to C#131.

Est.: \$200 - \$300 • Min. bid: \$120



Lot 82

Lot of (2), Early Snuff Jars, America, 1840 - 1865. Olive amber and light yellow olive, both are rectangular with beveled corners, sheared, slightly flared mouths - olive amber example with blowpipe pontil scar; olive yellow example has an early smooth base, ht. 4" & 4 1/8" respectively, both are near mint; (the olive example has some minor interior residue near two beveled corners; the yellow example has a couple of 1/8" flakes along lip edge). Scarce color on the olive yellow example.

Est.: \$150 - \$300 • Min. bid: \$80



Lot 86

"J-&-I-E-M - PATD OCT 31ST 1865" Ink Bottle, America, 1865 - 1890. Delicate light citron with some pale apple green tones in the base and a few faint streaks of honey color in the top of the dome, cylindrical with six block panels around the sides, domed shoulders, offset neck with ground mouth - smooth base, ht. 1 5/8"; (some typical flaking around the ground lip, almost certainly in-manufacture, otherwise perfect). C #629. Delicate colors, but a very attractive example.

Est.: \$150 - \$300 • Min. bid: \$80



Lot 83

Lot of (2), Early Blacking Bottles, America, probably New England, 1825 - 1845. Olive green and olive amber, both are square, early 2-pc. molds with sheared mouths - blowpipe pontil scarred bases, ht. 4 3/8" and 4 7/8" respectively; (a couple of very minor open surface bubbles, otherwise both example near mint!) Beautiful early utility bottles, the colors compliment one another nicely, and both with crude, bubbly glass.

Est.: \$125 - \$250 • Min. bid: \$70



Lot 87

"HARRISON'S / COLUMBIAN / INK", America, 1865 - 1877. Aquamarine, octagonal with eight panels forming domed shoulders, "turtle type" with offset neck and rough sheared mouth - smooth base, ht. 1 7/8", very near mint; (just a bit of extremely faint, light residue in the shoulder that would likely wash out, otherwise perfect). C#624, Faulkner p.187. The "igloo" mold Harrison's inks are fairly scarce. Note, two rivet type marks are located on the back panels.

Est.: \$250 - \$350 • Min. bid: \$140



Lot 84

"MAYNARD & NOYES" (label only), Master Ink Bottle, New England, 1836 - 1850. Olive amber, tooled, thin flared mouth - blowpipe pontil scar, ht. 6 1/8"; (the bottle is perfect, the label is approx. 80% complete). Maynard and Noyes was the first American ink manufacturer. Label reads in part, "In consequence of our former label having been imitated, we have adopted a new one....". Nice example having a perfect thin flared lip, heavily whittled.

Est.: \$150 - \$250 • Min. bid: \$80



Lot 88

"HARRISON'S / COLUMBIAN / INK", America, 1847 - 1860. Aquamarine, octagonal with eight panels forming domed shoulders, sheared and inward rolled mouth - blowpipe pontil scar, ht. 2", mint. C#531, MW, plate 76, #12. A good clean example!

Est.: \$100 - \$200 • Min. bid: \$60



Lot 89

“S. I. / COMP.” Figural House Inkwell, America, 1880 - 1890. Aquamarine, figural house with mansard style roof, tooled square collar - smooth base, ht. 2 5/8”; (just a little minor trace of interior residue, otherwise perfect!) C #681, Faulker, p.117. Put up by the Senate Ink Co. of Philadelphia. An attractive little figural ink.

Est.: \$150 - \$250 • Min. bid: \$80



Lot 93

“J.N. KLINE & COS’ / AROMATIC / DIGESTIVE CORDIAL” (within wreath), America, 1865 - 1875. Vivid, medium to deep cobalt blue, teardrop form, applied square collar with bevel - smooth base, ht. 5 3/8”; (lightly cleaned to original luster and near mint condition, with just a couple of light scratches and some minor exterior wear remaining). Nice example in a beautiful, deeper color than most.

Est.: \$300 - \$500 • Min. bid: \$180



Lot 90

“JJ BUTLER / CIN” Ink Bottle, America, 1854 - 1860. Deep aquamarine, square with beveled corners, sheared and inward rolled mouth - blowpipe pontil scar, ht. 2 5/8”; (a minor, shallow open bubble on the inside of the neck, otherwise pristine!) Similar to C #478. Note, there are many different variations of the Butler molds. The embossing on this example is different, having narrower spacing between the two rows of lettering. A crisp, brilliant example.

Est.: \$125 - \$225 • Min. bid: \$70



Lot 94

“LONDON - ROYAL - IMPERIAL GIN”, America, 1870 - 1880. Bright sapphire blue, square with beveled corners, applied sloping collar - smooth base, ht. 9 7/8”, near mint; (just a very slight trace of minor exterior wear, and a little spotty faint interior milkiness, primarily near the shoulders that is not terribly distracting, and would easily clean with just a day or two in the tumbler, if desired). Beautiful color, one of only a small handful of American gin or whiskey bottles that come in sapphire blue.

Est.: \$800 - \$1,200 • Min. bid: \$500



Lot 91

“CA-RT-ER - CA-RT-ER” Cathedral Master Ink Bottle, America, 1910 - 1920. Prussian blue, hexagonal with cathedral panels, machine square collared mouth - “CARTER’S / G-10 2” (on smooth base), ht. 7 3/4”; (a small pinhead flake on the edge of the lip, and one at a corner edge; some light interior haze from the shoulders to the base, that would easily professionally clean, if desired). Scarce middle size, and a very scarce color for this bottle.

Est.: \$150 - \$250 • Min. bid: \$80



Lot 95

“BROWNSIDES OLD TOM / LONDON CORDIAL GIN - GORDON FELLOWS / & / McMILLAN - NOS 14 & 16 BEAVER, ST. / NEW YORK”, America, 1860 - 1870. Bright yellowish olive, square with beveled corners, applied sloping collar - smooth base, ht. 9 1/8”, perfect! A beautiful, extremely rare bottle, originally discovered with contents in a northern Michigan attic.

Est.: \$800 - \$1,200 • Min. bid: \$500



Lot 92

Large, Cathedral Peppersauce Bottle, America, 1850 - 1860. Aquamarine, square with gothic arched panels (two with embossed windows), below trefoil designs on neck, applied round collar with lower bevel - large iron pontil scar, ht. 10 1/4”, near attic mint; (a faint, barely noticeable minor band of milkiness about two inches up from the base, otherwise pristine). Note, the scarce larger size for this mold, also unusual with the iron pontiled base.

Est.: \$150 - \$250 • Min. bid: \$80



Lot 96

“OLD HOLLAND GIN - GREENE & GLADDING - 62 CORTLANDT ST / NEW YORK.”, America, 1870 - 1880. Bright golden amber with some lighter yellowish honey tones, square with beveled corners, applied sloping collar - smooth base, ht. 9 3/8”, virtually attic mint; (a small, tissue-paper-thin, open surface bubble near base, on side panel, otherwise pristine!) A very scarce American gin, especially in this color and condition.

Est.: \$300 - \$600 • Min. bid: \$180



Lot 97

"WISTER'S / CLUB HOUSE.", America, 1855 - 1860. Medium to deep apricot puce with some reddish strawberry tones, tapered gin form, applied sloping collar - iron pontil scar, ht. 9 5/8"; (some scattered minor exterior wear and a few light surface scratches, otherwise excellent). It is believed that these gins were made for a relatively short period, and marketed primarily in the California gold country, mid-to-late 1850's. Fantastic color, nice crude glass, and very scarce.

Est.: \$2,500 - \$4,500 • Min. bid: \$1,500



Lot 98

"VANDERVEER'S / MEDICATED GIN - OR REAL - SCHIEDAM / SCHNAPPS", America, 1845 - 1860. Clear, medium olive in the upper half, shading to a rich, deep olive in the lower portion, tapered gin form, applied sloping collar - sand type pontil scar, ht. 8 7/8", near mint; (just a touch of faint exterior wear and a partially open bubble at the base edge, on a side panel). Rare with the pontiled base. Nice character, rich, bubbly, crude glass.

Est.: \$600 - \$900 • Min. bid: \$350



Lot 99

"LONDON / JOCKEY - CLUB HOUSE / GIN - (Horse and Rider)", America, 1858 - 1865. Rich, medium to deep emerald coloration, square with beveled corners, applied sloping collar - smooth base, ht. 9 3/8", virtually attic mint; (a couple of tiny pinhead size, tissue-paper-thin open surface bubbles, otherwise pristine!) Another outstanding color for this bottle, great condition, and provenance! Ex. Charles B. Gardner collection.

Est.: \$2,500 - \$4,500 • Min. bid: \$1,400



Lot 100

"LONDON / JOCKEY - CLUB HOUSE / GIN - (Horse and Rider)", America, 1858 - 1865. Beautiful, brilliant yellow green with a citron tone, square with beveled corners, applied sloping collar - smooth base, ht. 9", perfect! One of the most popular of the numerous early gins, the Jockey Club bottles were primarily distributed in the West, during the gold rush era. Spectacular color, outstanding condition, great eye appeal. Ex. Charles B. Gardner collection.

Est.: \$2,500 - \$4,500 • Min. bid: \$1,400



Lot 101

"H. PHARAZYN / PHILA / RIGHT SECURED", America, 1865 - 1875. Beautiful golden yellow from the knees up through the shield and arms with some deeper honey amber tones in the chest and head, figural Indian maiden, inward rolled lip (1/3 of the inward roll was not completed when blown) - smooth base, ht. 12 1/4"; (a 5/16" area of chipping on the edge of the lip, on the reverse, and a small bubble on the dress has a 1/8" opening in the cover glass). Nice lighter example having plenty of yellow.

Est.: \$1,400 - \$2,400 • Min. bid: \$800



Lot 102

"A.M. BININGER & CO. / 19 BROADWAY ST. / N. Y.", America, 1865 - 1875. Light golden honey coloration figural cannon, factory ground mouth - smooth base, ht. 12 3/8", very near mint; (a trace of faint dried contents or residue, primarily in the upper portion near the shoulders, that should easily wash out, otherwise virtually attic mint!) A very nice example, and one of the classics of the always-popular Binninger bottles, virtually a category of their own.

Est.: \$1,200 - \$2,400 • Min. bid: \$700



Lot 103

"C.A. RICHARDS & CO / 99 WASHINGTON ST / BOSTON", (backwards "N" in "Washington" and "Boston"), and with 95% complete original labels for **"CONCENTRATED EXTRACT OF RYE"**, America, 1875 - 1885. Deep golden in the shoulder shading to deep amber with a reddish tone near the base, applied sloping collar - smooth base, ht. 9 1/2"; (tiny, pinhead flake at edge of lip, otherwise perfect). Very crude glass, strong embossing, scarce with complete labels!

Est.: \$150 - \$250 • Min. bid: \$80



Lot 104

"UDOLPHO WOLFE'S - SCHIEDAM - AROMATIC / SCHNAPPS" (with 85% complete, original label). America, 1855 - 1865. Yellowish olive, square with beveled corners, applied sloping collar with bevel - iron pontil scar, ht. 8 1/8", perfect. Nice crude glass, scarce with the label. Provenance: Ex. Dr. Burton Spiller collection.

Est.: \$150 - \$250 • Min. bid: \$80



Lot 105

"UDOLPHO WOLFE'S - SCHIEDAM - AROMATIC / SCHNAPPS", America, 1855 - 1865. Medium olive, square with beveled corners, applied sloping collar - iron pontil scar, ht. 9 3/4", perfect! A nice example, clean as a whistle!

Est.: \$100 - \$200 • Min. bid: \$60



Lot 109

"UDOLPHO WOLFE'S - SCHIEDAM - AROMATIC / SCHNAPPS", America, 1865 - 1880. Beautiful honey yellow, square with beveled corners, applied sloping collar, smooth base, ht. 8", sparkling attic mint! Crisp, clean example, very attractive color. It is easy to see why people put color runs of these together, not to mention the variations on embossing.

Est.: \$100 - \$150 • Min. bid: \$60



Lot 106

"UDOLPHO WOLFE'S - SCHIEDAM - AROMATIC / SCHNAPPS", America, 1850 - 1860. Deep greenish aqua, almost a light sea-green, square with beveled corners, applied sloping double collar - iron pontil, ht. 7 3/4", near mint; (just the slightest trace of very faint interior residue or haze near the shoulder, otherwise perfect). Extremely rare, the only aqua example of this mold with uppercase embossing that we have seen (other examples of this color are in lowercase).

Est.: \$400 - \$600 • Min. bid: \$250



Lot 110

"UDOLPHO WOLFE'S - SCHIEDAM - AROMATIC / SCHNAPPS", America, 1865 - 1880. Medium peach coloration with some warmer apricot tones, square with beveled corners, applied sloping collar - smooth base, ht. 8 1/4"; (lightly cleaned to original luster with just a little light wear remaining, primarily on the "Schiedam" panel, and a paper-thin, 1/8" flake on one of the base corners, but no other form of damage). A very scarce, eye-appealing color.

Est.: \$200 - \$400 • Min. bid: \$120



Lot 107

"UDOLPHO WOLFE'S - Schiedam - Schnapps", America, 1850 - 1860. Bright honey amber, square with beveled corners, applied sloping collar - iron pontil scar, ht. 9 3/4"; (a partially open bubble near the shoulder, otherwise attic mint!) Heavily whittled, beautiful color, extremely rare mold, believed to be one of only two, or possibly three examples known, in this color, size, and style of lettering. Discovered years ago in an Indiana estate, and is now being offered at auction.

Est.: \$750 - \$1,250 • Min. bid: \$400



Lot 111

"UDOLPHO WOLFE'S - SCHIEDAM - AROMATIC / SCHNAPPS", America, 1865 - 1880. Beautiful medium apricot with some deeper apricot-puce tones in the shoulder and neck, some subtle striations through the body, rectangular with beveled corners, applied sloping collar - smooth base, ht. 8 1/4"; (lightly cleaned to original luster with just a touch of scattered minor wear remaining, otherwise appears as near mint!) Scarce color, beautiful with the striations.

Est.: \$250 - \$450 • Min. bid: \$140



Lot 108

"UDOLPHO WOLFE'S - Schiedam - Schnapps", America, 1850 - 1860. Golden honey amber, square with beveled corners, applied sloping collar - iron pontil scar, ht. 7 3/4"; virtually attic mint; (just a tiny, barely pinprick spot of roughness on the edge of the lip, otherwise pristine). Another very rare Wolfe's having crude glass, scarce color, and outstanding condition. One of just a few in this combination of color, size, embossing, and lower case lettering.

Est.: \$500 - \$800 • Min. bid: \$250



Lot 112

"SUFFOLK BITTERS - PHIL-BROOK & TUCKER / BOSTON", America, 1865 - 1875. Light golden amber in the head, shading to light honey and golden yellow through the body, figural pig, applied round double collar - smooth base,

length 10 1/8", virtually attic mint; (just a trace of faint interior residue, and a partially open, interior bubble in one of the hind feet, otherwise perfect!) R/H #S217. Beautiful light color with plenty of yellow tones.

Est.: \$1,200 - \$2,400 • Min. bid: \$700



Lot 113

"BROWN'S / CELEBRATED / INDIAN HERB BITTERS - PATENTED / 1867", America, 1867 - 1875. Brilliant, light honey yellow from the knees and lower dress, through the arms, with only slightly deeper honey tones through the rest of the bottle; figural Indian maiden, sheared, inward rolled mouth - smooth base, ht. 12 ¼", virtually attic mint; (a minor, 1/8" open surface bubble on the back side of the dress). R/H #B223. Outstanding color with lots of yellow throughout. A great example!

Est.: \$1,200 - \$1,800 • Min. bid: \$700



Lot 114

"BROWN'S / CELEBRATED / INDIAN HERB BITTERS - PATENTED / 1867", America, 1867 - 1875. Chocolate through the chest and upper dress, shading to deep amber through the lower dress and knees, figural Indian maiden, sheared and inward rolled lip - smooth base, ht. 12 1/8"; (some flaking along 1/3 of the inner portion of the rolled mouth, as is common of these bottles; a 1/8" x 1/2", shallow open surface bubble on the reverse). R/H #B223. Scarce "chocolate" color.

Est.: \$600 - \$900 • Min. bid: \$300



Lot 115

Rare, Unembossed, Cabin Form Bitters, America, 1860 - 1865. Bright golden amber with some yellowish honey tones in the shoulders, square cabin form with two corners having a wide, flat bevel, applied sloping double collar - smooth base, ht. 9 7/8", attic mint. A rare mold with thatching on all (4) roof panels; beveled corners down two of the sides. There is believed to be an example of this mold with a label that reads, "Petroleum Bitters", from Pithole City, Pa (now a ghost town).

Est.: \$400 - \$800 • Min. bid: \$250



Lot 116

Unembossed, pontiled, Cabin Form Bitters, America, 1858 - 1862. Medium to deep golden amber, cabin form with two corners having a wide, flat bevel, applied double collar - iron pontil scar, ht. 10", perfect! These molds are very rare and were obviously made to imitate the success of the early Drake's. It is likely that they were shut down after only a short period of operation, and that is why they are so rare. Adding to the rarity is the large iron pontil scar.

Est.: \$1,000 - \$2,000 • Min. bid: \$600



Lot 117

"S T / DRAKE'S / 1860 / PLANTATION / X / BITTERS - PATENTED / 1862", America, 1862 - 1880. Beautiful light yellowish citron green, cabin form with 6 logs above the label panel, applied sloping collar - smooth base, ht. 9 7/8"; (a small potstone on the inside surface, lower portion of a side panel, has a "fisheye" or "butterfly" type iridescence and small lines, otherwise attic mint!) R/H #D105. Great clarity, gorgeous, outstanding color, nice and light all the way to the base!

Est.: \$3,000 - \$5,000 • Min. bid: \$1,800



Lot 118

"S T / DRAKE'S / 1860 / PLANTATION / X / BITTERS - PATENTED / 1862", America, 1862 - 1880. Brilliant clear lemon yellow above the windows and through the shoulders, and only slightly deeper honey-yellow tones through the mouth and lower body, cabin form with 6 logs above the label panel, applied sloping collar - smooth base, ht. 9 7/8", perfect; (slightly weak impression in the upper shoulders, as is common). R/H #D108. Another outstanding color, lighter and brighter than most.

Est.: \$800 - \$1,600 • Min. bid: \$500



Lot 119

"S T / DRAKE'S / 1860 / PLANTATION / X / BITTERS - PATENTED / 1862", America, 1862 - 1880. Light peach with some clear copper tones along the corners and warm apricot tones in the lower portion, cabin form with 6 logs above the label panel, applied sloping collar - smooth base, ht. 9 7/8", near mint; (a tiny, hard-to-see, ¼" hairline flash in the cover glass of a bubble, on the reverse roof panel, otherwise perfect). R/H #D105. A rare, beautiful color, outstanding clarity, strong mold impression.

Est.: \$800 - \$1,600 • Min. bid: \$500



Lot 120

"S T / DRAKE'S / 1860 / PLANTATION / X / BITTERS - PATENTED / 1862", America, 1862 - 1880. Medium to deep apricot, cabin form with 6 logs above the label panel, applied sloping collar - smooth base, ht. 9 7/8", attic mint! R/H #D105. Nice attractive color that passes plenty of light, excellent condition and character, with a large teardrop bubble spanning from the neck, across the roof, to the front corner of the bottle.

Est.: \$225 - \$450 • Min. bid: \$120



Lot 121

“S T / DRAKE’S / 1860 / PLANTATION / X / BITTERS - PATENTED / 1862”, America, 1862 - 1880. Medium golden amber through the midsection, shading to a deep golden amber near the base, and dense golden, almost black, through the upper shoulders and neck, cabin form with 6 logs above the label panel, applied sloping collar - smooth base, ht. 9 ¾”, virtually attic mint. R/H #D105. A little different with the subtle gradations of color.

Est.: \$125 - \$175 • Min. bid: \$70



Lot 125

“S T / DRAKE’S / 1860 / PLANTATION / X / BITTERS - PATENTED / 1862”, America, 1862 - 1880. Yellow, cabin form with 4 logs above the label panel, applied sloping collar - smooth base, ht. 10 ¼”, virtually attic mint; (just a trace of minor exterior wear, otherwise perfect). R/H #D110. Beautiful yellow coloration with only the slightest hint of honey tones, nice and light all the way to the base.

Est.: \$400 - \$800 • Min. bid: \$250



Lot 122

“S T / DRAKE’S / 1860 / PLANTATION / X / BITTERS - PATENTED / 1862”, America, 1862 - 1880. Dense tobacco amber, virtually black through the label panels and roof, cabin form with 6 logs above the label panel, applied sloping collar - smooth base, ht. 9 7/8”, near attic mint; (just a couple of small, onionskin-thin, open surface bubbles). R/H #D105. Very few Drake’s are this dense of color, unless they are in the puce tones.

Est.: \$175 - \$350 • Min. bid: \$100



Lot 126

“S T / DRAKE’S / 1860 / PLANTATION / X / BITTERS - PATENTED / 1862”, America, 1862 - 1880. Bright yellowish honey coloration with plenty of yellow along the edges, cabin form with 4 logs above the label panel, applied sloping collar - smooth base, ht. 10 1/8”, virtually attic mint; (a touch of faint exterior wear, very minor, and a trace of interior residue, otherwise perfect). R/H #D110. A bright, attractive example with a good strong mold impression.

Est.: \$175 - \$275 • Min. bid: \$100



Lot 123

“S T / DRAKE’S / 1860 / PLANTATION / X / BITTERS - PATENTED / 1862”, America, 1862 - 1880. Deep cherry puce, cabin form with 6 logs above the label panel, applied sloping collar - smooth base, ht. 9 7/8”, near mint; (just a slight trace of high point wear and a minor, light surface scratch on the reverse label panel, otherwise excellent!) R/H #D105. Some nice rich, deep cherry tones in natural sunlight.

Est.: \$250 - \$350 • Min. bid: \$140



Lot 127

“S T / DRAKE’S / 1860 / PLANTATION / X / BITTERS - PATENTED / 1862” (with original front and back labels). America, 1862 - 1880. Golden amber with a slight orange tone, cabin form with 4 logs above the label panel, applied sloping collar - smooth base, ht. 10”, near mint; (a small, onionskin-thin open bubble and a trace of interior residue). R/H #D110. Front label 90% complete, rear label with directions, 99% complete!

Est.: \$200 - \$400 • Min. bid: \$120



Lot 124

“DRAKES / PLANTATION / BITTERS - PATENTED / 1869.”, America, 1869 - 1875. Beautiful honey coloration, cabin form with 5 logs above the label panel, applied sloping collar - smooth base, ht. 9 ¾”; (a tiny, pinhead bit of roughness on the edge of the lip; a couple of spots of roughness, barely a 1/16” each, on the inside edge of the lip that may have resulted from manufacture, and a very faint sheen, or patina, on the back label panel, otherwise excellent). R/H #D109.

Est.: \$400 - \$600 • Min. bid: \$250



Lot 128

“O.H.P. ROSE / E.G.R.I. - O.H.P. ROSE - PAT-D JUNE 21’ 70”, Bitters Bottle, America, 1870 - 1875. Brilliant lemon yellow with just a slightly deeper honey tone through the neck and base, triangular, applied sloping collar with ring - smooth base, ht. 10 3/8”; (a minuscule sandgrain, on the inside surface of the glass, has a tiny, barely noticeable radiation, otherwise perfect!) R/H #R99L. A very rare Rhode Island bitters, nice form, exceptional color.

Est.: \$400 - \$800 • Min. bid: \$250



Lot 129

"BRYANT'S - STOMACH - BITTERS", America, 1859 - 1863. Medium olive, tall "Lady's Leg" form with (8) panels, applied sloping collar with bevel - sand type pontil scar, ht. 12 1/4"; (professionally cleaned to original luster, some scaling and etching remain, - mostly on the back panels, and a 1/4" iridescent potstone on the reverse with a couple of 1/8" legs). R/H #B243. A rare and desirable bitters from the shipwreck "Sea Lark", discovered in 1999, with approx. 18 intact examples.

Est.: \$1,500 - \$2,500 • Min. bid: \$800



Lot 130

"DR WONSER'S / U.S.A. / INDIAN ROOT / BITTERS", America, 1871 - 1873. Golden amber, almost a butterscotch tone, cylindrical with fluted shoulders, applied sloping collar with ring - smooth base, ht. 11"; (a nice example with a little minor exterior wear, and a 3/4" horizontal hairline fissure or annealing line in the shoulder ring, otherwise excellent). R/H #W146. A gorgeous, classic Western Bitters, heavily embossed, whittled, beautiful, and rare!

Est.: \$3,000 - \$5,000 • Min. bid: \$1,800



Lot 131

"BELL'S / COCKTAIL / BITTERS / JAS.M. BELL & Co. / NEW YORK.", America, 1875 - 1885. Bright, light honey amber, almost a honey yellow in the shoulders, "Lady's Leg" form, applied collar with flat band - smooth base, ht. 10 1/2", virtually attic mint; (a little faint, spotty, interior milkiness near the shoulder area, otherwise perfect). R/H #B58. A great example, whittled, nice light color, and excellent condition. A scarce bitters, this one was likely an "attic" type find.

Est.: \$500 - \$800 • Min. bid: \$300



Lot 132

"KELLY'S / OLD CABIN / BITTERS - PATENTED / 1863 - KELLY'S / OLD CABIN / BITTERS - PATENTED / 1863", America, 1863 - 1870. Medium to deep amber, cabin form, applied sloping collar - smooth base, ht. 9 3/8", near mint; (just a touch of typical, light exterior wear, and a small, paper-thin, 1/8" open surface bubble near the base, otherwise excellent!) R/H #K21. A nice example of one of the all-time classics of the figural bitters.

Est.: \$1,800 - \$2,800 • Min. bid: \$1,000



Lot 133

"DR DEGURLEY'S / HERB BITTERS - MANUFACTURED / BALTIMORE. MD" - (Pictorial image of 5-story building), America, 1865 - 1870. Medium amber, semi-cabin with a beaded design along all (4) corners, applied sloping collar - smooth base, ht. 9 7/8"; (a 1/4" x 1/2" hole in one of the bottom corners on the reverse with a 1 1/4" crack extending up the panel edge). R/H #D39. Extremely rare (one of only three examples known). Found in an old farmhouse in West Virginia.

Est.: \$1,000 - \$1,500 • Min. bid: \$600



Lot 134

"H.P HERB / WILD / CHERRY / BITTERS - WILD CHERRY / (motif of cherry tree) - BITTERS - BITTERS - BITTERS - BITTERS", America, 1885 - 1895. Golden amber with a slight orange tone, cabin form with roped corners, tooled sloping collar with ring - smooth base, ht. 8 7/8", virtually attic mint; (trace of interior residue near base). R/H #H94. A rare mold, and very rare in amber, much more so than the green examples!

Est.: \$800 - \$1,200 • Min. bid: \$400



Lot 135

"OLD / HOMESTEAD / WILD CHERRY / BITTERS - PATENT", America, 1865 - 1875. Golden honey coloration, cabin form, applied sloping collar - smooth base, ht. 9 1/4"; (a couple of very minor items including an 1/8", paper-thin, open bubble on one of the corners; a tiny pinprick bit of roughness at the edge of the collar, and slightly weak lettering on the shoulders). R/H #O37. A nice example, certainly a little lighter in color than most.

Est.: \$250 - \$450 • Min. bid: \$150



Lot 136

"ROMAINE'S - CRIMEAN - BITTERS - PATENT 1863 - W. CHILTON & Co", America, 1863 - 1875. Light golden, almost a honey coloration, semi-cabin form, applied sloping collar - smooth base, ht. 10 1/8"; (some fine exterior wear and minor, light dullness, primarily along one corner column, otherwise a nice clean example). R/H #R86. A scarce, attractive mold.

Est.: \$700 - \$900 • Min. bid: \$400



Lot 137

“OLD SACHEM / BITTERS / AND / WIGWAM TONIC”, America, 1860 - 1870. Gorgeous yellow coloration with some slightly richer honey tones, primarily in the neck and base, barrel form, applied square collar - smooth base, ht. 9 1/4”; (less than pinhead size, tiny open bubble, hardly a trace of wear, sparking attic mint!) R/H #O46. The color is outstanding, with nice clarity, a perfect square collar, and outstanding condition; a good one!

Est.: \$1,200 - \$2,200 • Min. bid: \$700



Lot 141

Pineapple Figural Bitters Bottle, America, 1865 - 1875. Medium to deep amber, pineapple form, applied blob collar with lower bevel - smooth base, ht. 9”; (tiny, less-than-pinhead bit of roughness at edge of blob collar, a small pinhead flake at base edge, ever so slight bit of minor interior residue, or dullness, that may wash out). R/H #P100. These are always a popular figural, and one that is still affordable.

Est.: \$175 - \$275 • Min. bid: \$100



Lot 138

“GREELEY’S BOURBON / BITTERS”, America, 1860 - 1875. Light to medium smoky topaz, barrel form, applied square collar - smooth base, ht. 9 1/8”; (just a slight trace of very minor, light exterior wear, otherwise pristine!) R/H #G101. A beautiful color, nice and light through the upper rings, shading to a slightly deeper tone through the center and towards the base. This example is much lighter than most, and with a hard-to-find, virtually flawless lip and outstanding overall condition.

Est.: \$800 - \$1,200 • Min. bid: \$400



Lot 142

“W & Co / N.Y.” Figural Pineapple Bitters, America, 1855 - 1865. Medium to deep yellowish olive, pineapple form, applied round double collar - large, blow-pipe pontil scar, ht. 8 3/8”; (just a trace of light wear on the reverse, other pristine perfect!) R/H #P100. Beautiful, rich color, a little lighter than some, and one that passes light with ease. A fantastic example in color, clarity, and condition.

Est.: \$4,000 - \$6,000 • Min. bid: \$2,000



Lot 139

“GREELEY’S BOURBON / BITTERS”, America, 1860 - 1875. Copper with some apricot and puce tones, barrel form, applied square collar - smooth base, ht. 9 1/8”, near mint; (just a little light exterior wear, primarily on the reverse, and a couple of small tissue-paper-thin, open surface bubbles, also on the reverse, otherwise excellent!) R/H #G101. Another good, clean example that passes plenty of light through the midsection.

Est.: \$500 - \$700 • Min. bid: \$300



Lot 143

“A. M. S. 2. / 1864 - CONSTITUTION / BITTERS - A. M. S. 2. / 1864 - SEWARD & BENTLEY / BUFFALO. N.Y.”, America, 1864 - 1870. Medium to deep golden amber, rectangular, applied sloping collar - smooth base, ht. 9 1/8”, width 2 7/8”, depth 2 1/4”, virtually attic mint; (just a slight trace of extremely faint exterior wear, otherwise pristine perfect!) R/H #C223. A rare mold, these do not come around often!

Est.: \$2,000 - \$4,000 • Min. bid: \$1,200



Lot 140

“DR C. W. ROBACKS / STOMACH BITTERS / CINCINNATI. O” (with period druggist label on reverse), America, 1865 - 1875. Medium amber, barrel form, applied sloping collar - smooth base, ht. 9 1/8”; (1/8” flake at top of lip, otherwise virtually attic mint). R/H #R75. A good clean example found in an Iowa estate. Label, likely late 1800’s, on the reverse reads in part, **“SPIRITS CAMPHOR / ALCOHOL 86% / The Sun Drug Co.”**

Est.: \$175 - \$275 • Min. bid: \$100



Lot 144

“HOLTZERMANN’S / PATENT / STOMACH / BITTERS”, America, 1890 - 1900. Medium amber, cabin form, tooled sloping collar - smooth base, ht. 9 3/4”; (a 1/8” iridescent bruise on one of the shingles on the reverse; a light interior film that may, or may not wash out, but is not very distracting and would easily professionally clean, if desired). R/H #H154. While often plagued by very weak embossing this example is as strong, and crisp, as you could hope to find.

Est.: \$150 - \$250 • Min. bid: \$80

Historical and Pictorial

ACG



Lot 43

Lot 23

Lot 48

Lot 1

Flasks...

Nearly a century ago, the pioneer collectors of early American glass were quick to recognize the intrinsic beauty and historic importance of what would later become known as American historical and pictorial flasks, or simply, figured flasks.

Since then, that history and beauty has been appreciated and admired by generations of collectors and it's likely that these flasks are more popular today than ever before — and with good reason.

With over 700 different molds recorded — and new ones still being discovered* — a vast rainbow of colors, and a cast of interesting historic “characters” and decorative motifs, there's a lifetime of collecting possibilities with these “kings” of the antique bottle collecting hobby.

*For a fascinating story of one such discovery that rocked the flask collecting world, see the March, 2015 issue of *Antique Bottle & Glass Collector* magazine.

Lot 10



Lot 41



Lot 12



Lot 25



Lot 5

Lot 38



Lot 145

"BAKER'S / ORANGE GROVE - BITTERS", America, 1870 - 1880. Honey amber shading to a lighter yellowish honey color along the edges and through the shoulders, square with roped corners, applied sloping collar - smooth base, ht. 9 1/2", near mint; (a minor bit of interior residue along one of the roped corners, otherwise virtually attic mint). R/H #B9. A good clean example of this always popular mold, with nice color and condition.

Est.: \$400 - \$600 • Min. bid: \$250



Lot 149

"PONCE DE LEON / BITTERS - GEO. J. HOWARD - ATLANTA. GA", America, 1870 - 1880. Golden amber, square with beveled corners, applied sloping collar with ring - smooth base, ht. 9 3/8"; (does not appear to be a dug bottle, but has some moderate scratches down one of the beveled edges and minor exterior wear including a 1/4" open surface bubble, but no other form of damage!) R/H #H202.5. Unique, or possibly one of two.

Est.: \$1,200 - \$2,400 • Min. bid: \$700



Lot 146

"E. DEXTER. LOVERIDGE / WAHOO BITTERS - (motif of eagle) - E. DEXTER. LOVERIDGE / WAHOO BITTERS - DWD - 1863 - XXX - PATD", America, 1863 - 1875. Medium to deep yellowish amber, almost black in the neck, semi-cabin, applied sloping collar with ring - smooth base, ht. 10 1/8"; (some spotty light dullness on the lower half of a side panel; a bit of minor interior residue that would likely wash out, otherwise excellent!) R/H #L126.

Est.: \$800 - \$1,200 • Min. bid: \$400



Lot 150

"J. DREYFUS - NEW ORLEANS" - (Crescent Moon and Star) Bitters Bottle, America, 1872 - 1884. Golden honey coloration, square with beveled corners, applied sloping collar - smooth base, ht. 9 5/8"; (1/3 of the lip has a crack and iridescent bruise; some minor exterior wear, faint interior haze). An unlisted bitters, dug in the "Crescent City" more than 30 years ago, and still unique today! We found reference in the 1872 *Times-Picayune* of N.O. for Jos. Dreyfus being awarded for his Lone Star Bitters.

Est.: \$225 - \$450 • Min. bid: \$120



Lot 147

"DR J. HOSTETTER'S / STOMACH BITTERS", probably a Pittsburgh district glasshouse, 1860 - 1870. Deep olive green with an amber tone, square with beveled corners, applied sloping collar - smooth base, ht. 9 1/2", near attic mint; (just the slightest trace of typical, very light exterior wear, otherwise perfect). R/H #H194. A great example, excellent condition, and one of the earlier ones.

Est.: \$300 - \$500 • Min. bid: \$180



Lot 151

"DR L. G. BERTRAM'S / LONG - LIFE / AROMATIC / STOMACH BITTERS", America, 1880 - 1885. Bright golden honey coloration, square with beveled corners, applied sloping collar - smooth base, ht. 9 3/8"; (a 1/4" x 1/2" chip on the base, at the edge of one of the side panels, otherwise attic mint). R/H #B91. Extremely rare, one of only two, or possibly three known examples. Provenance: Ex. Carlyn Ring collection.

Est.: \$300 - \$600 • Min. bid: \$180



Lot 148

"DR J. HOSTETTER'S / STOMACH BITTERS" (with original front and back labels), Pittsburgh, PA, 1860 - 1870. Medium, pure olive green, square with beveled corners, applied sloping collar - smooth base, ht. 9 1/4"; (a minor, pinhead flake at edge of lip, otherwise attic mint!) R/H #H194. A scarce, lighter color, outstanding character with crude, wavy glass, and rare with virtually complete original labels. A fantastic early Hostetter's, this one is a cut above the rest!

Est.: \$800 - \$1,200 • Min. bid: \$400



Lot 152

"DR. LAMOT'S - BOTANIC BITTERS", America, 1875 - 1885. Golden amber, square with beveled corners and three indented panels, applied sloping collar - smooth base, ht. 8 1/2", near mint; (just a trace of very light interior residue and a tiny pinprick speck of roughness at the edge of lip, otherwise perfect). R/H #L9. A very rare bitters. Provenance: Ex. Dan Murphy collection.

Est.: \$200 - \$400 • Min. bid: \$120



Lot 153

“DIAMOND / STOMACH / BITTERS / DETROIT / MICH” - “B” (inside diamond) - “B” (inside diamond), America, 1875 - 1885. Bright honey amber, square with beveled corners, applied sloping double collar - smooth base, ht. 9 5/8”; (a pinhead flake on the back shoulder, a shallow 1/4” flake on edge of base, a barely perceptible bit of roughness on lip, otherwise attic mint). R/H #D69. An extremely rare bitters, this example discovered in a box of junk, at a small auction in Toledo.

Est.: \$400 - \$800 • Min. bid: \$250



Lot 157

“HOPS & MALT / TRADE (sheaf of grain) MARK / BITTERS” - “HOPS / & / MALT / BITTERS” (on all four roof panels), America, 1875 - 1885. Golden amber, semi-cabin form, applied sloping collar - smooth base, ht. 10”, sparkling attic mint! R/H #H186. A bright shiny example, beautiful condition, very scarce mold! If you have been looking for a top-shelf example, this could be it.

Est.: \$175 - \$350 • Min. bid: \$100



Lot 154

“DR S. GRIGGS. DETROIT - AROMATIC BITTERS”, America, 1865 - 1875. Golden amber with lighter honey tones in the shoulders, rectangular with beveled corners, applied tapered collar - smooth base, ht. 10 1/2”, near mint; (a couple of small areas on the back label panel of slight dullness, some spotty interior residue that would likely wash out). R/H #G117. An outstanding example, full of character, crudeness, and bubbles. Extremely rare, found in a house in Dundee, MI.

Est.: \$750 - \$1,250 • Min. bid: \$400



Lot 158

“WEBB'S IMPROVED / STOMACH BITTERS. - C.E. WEBB & BRO_ / JACKSON. MICH_” (with original labels), America, 1870 - 1880. Bright, light golden honey with plenty of yellowish tones in natural daylight, square with beveled corners, applied sloping collar - smooth base, ht. 9”, near mint; (a hard to see, 1/4” iridescent bruise on top edge of lip, otherwise sparkling mint!) R/H #W60. A very scarce bitters, extremely rare with labels, and in a lighter color than normally encountered.

Est.: \$225 - \$450 • Min. bid: \$120



Lot 155

Lot of (2), “DR S. GRIGGS. DETROIT - AROMATIC BITTERS” (one with original front and back labels), America, 1865 - 1875. Bright golden amber, and honey color with a slight butterscotch tone, both rectangular with applied tapered collars - smooth bases, ht. 10 3/8” and 10 3/4” respectively; (labeled ex. is badly cracked in the shoulder area, but with 90% front label, 75% rear label; the honey example is virtually attic mint!) R/H #G117. Note, these were blown in two different molds!

Est.: \$1,000 - \$1,500 • Min. bid: \$500



Lot 159

“GERMAN HOP / BITTERS - DR. C.D. WARNER / COLDWATER, MICH. - WARNER - 1880 - WARNER - 1880”, America, 1880 - 1890. Medium amber, square with domed shoulders, tooled sloping collar with ring - smooth base, ht. 7 7/8”; (just a bit of minor wear and a little light interior milkiness, primarily in the corners and around the shoulder area). R/H #G24. A very scarce mold, this example does not appear to have been dug and could easily be lightly cleaned on the interior, if desired.

Est.: \$300 - \$600 • Min. bid: \$180



Lot 156

“DR OWEN'S / EUROPEAN - LIFE BITTERS / DETROIT”, America, 1850 - 1855. Aqua, rectangular with beveled corners, applied sloping collar - blow-pipe pontil scar, ht. 7”; (a pinhead bit of roughness on the edge of the lip and some very light interior milkiness and residue in the upper half of the bottle, otherwise perfect). R/H #O98. Believed to be the nicest example from the original cache of bottles found under a barn in 1971, in Clarkston, Mich, the property formerly owned by Dr. Owen!

Est.: \$400 - \$800 • Min. bid: \$250



Lot 160

“STEKETEE'S BLOOD / PURIFYING BITTERS”, America, 1885 - 1890. Golden amber, square with beveled corners, tooled sloping collar with ring - smooth base, ht. 6 5/8”, virtually attic mint. R/H #S188. A rare bitters from Grand Rapids, Mich, that is not easy to find, especially in this crisp, undamaged condition. An unusual size for a bitters, too large for a sample, but probably less than a pint in capacity.

Est.: \$200 - \$400 • Min. bid: \$120



Lot 161

"MISHLER'S HERB BITTERS - TABLE SPOON GRADUATION" / (graduation marks) - "DR S. B. HARTMAN & Co" - "STOECKELS GRAD PAT FEB 6' 66 / W McC & Co / No 2" (on base), William McCully & Co, Pittsburgh, 1866 - 1880. Gorgeous yellow with some slight honey tones, square with beveled corners, applied sloping collar with ring - smooth base, ht. 9", pristine! R/H #M99. A hand written label dated 1879, on back panel.

Est.: \$100 - \$200 • Min. bid: \$60



Lot 165

"DR. F. A SABINE'S / HARVEST BITTERS - CHICAGO ILL.", America, 1875 - 1885. Golden honey amber, square with beveled corners, applied sloping collar - smooth base, ht. 9", near attic mint; (just the slightest trace of faint exterior wear, otherwise pristine!) R/H #S6. Another very rare, early square, this one with an interesting name, and in outstanding condition!

Est.: \$250 - \$450 • Min. bid: \$150



Lot 162

"SNYDER'S - CELEBRATED / BITTER CORDIAL - H.G. LEISENRING & CO / PHILADA PA", America, 1870 - 1875. Bright, light golden amber, square with beveled corners, applied sloping collar with bevel - smooth base, ht. 9 5/8", sparkling attic mint! R/H, p.508. A very unusual, and very rare bitters. It is noted in the Ring / Ham book, according to an 1869 ad in the Philadelphia Public Ledger, it "Cures everything". Also, note the usage of several very different font styles.

Est.: \$175 - \$350 • Min. bid: \$100



Lot 166

"C. H. SWAINS - BOURBON / BITTERS", America, 1865 - 1875. Honey amber, square with slightly tapering sides, beveled corners, applied sloping collar - smooth base, ht. 9 1/8" width 2 3/4" (at shoulder), 2 1/2" (at base), near mint; (a little minor exterior wear and some light interior residue, otherwise excellent). R/H #S227. Another rare bitters from Chicago. A very attractive bottle with the slight taper to the body, and really nice character with crude, wavy glass.

Est.: \$250 - \$450 • Min. bid: \$150



Lot 163

"GOLDEN / BITTERS - GEO. C. HUBBEL & Co - GEO. C. HUBBLE & Co", America, 1865 - 1875. Brilliant, rich aqua, rectangular semi-cabin, applied sloping double collar - smooth base, ht. 10"; (professionally cleaned to original luster and near mint condition with a few small spots of surface abrasion remaining, located on the reverse, or side panels). R/H #G63. It is hard to tell that it has been cleaned. A bright, clean example with plenty of eye-appeal, and full of tiny seed bubbles.

Est.: \$300 - \$450 • Min. bid: \$170



Lot 167

"BISSELL'S / TONIC BITTERS / PATENTED. JAN. 21. 1868 - O.P. BISSELL / PEORIA ILL", Lorenz & Wightman Glass Manufacturers, Pittsburgh, 1868 - 1872. Medium orange amber, square with beveled corners, applied sloping collar - "L&W" on smooth base, ht. 9"; (a narrow band of spotty dried interior residue, primarily near the shoulder and along one of the corners; a little light exterior wear). R/H #B109. A nice bottle, crude, listed as "Very rare".

Est.: \$400 - \$600 • Min. bid: \$200



Lot 164

"WARNER'S / SAFE / BITTERS" / (Motif of Safe) / "TRADE / MARK / ROCHESTER. N.Y.", A & D.H. Chambers, Pittsburgh, PA, 1880 - 1883. Golden amber, oval, applied double collar - "A & D H C" (on smooth base), Pt, ht. 9 3/8"; (professionally cleaned to original luster with just a little light exterior wear remaining, primarily on the reverse). A scarce, desirable Warner's Bitters, produced for only about three years, prior to the Tippecanoe line being introduced.

Est.: \$800 - \$1,200 • Min. bid: \$400



Lot 168

"DR MACKENZIE'S / WILD CHERRY / BITTERS / CHICAGO", America, 1890 - 1900. Colorless, rectangular with beveled corners, tooled sloping collar - smooth base, ht. 8 1/4", sparkling mint. R/H #M5. One of several companies that chose to use this general form for their bottle including Augauer, Harter's, and the Dr. Russell Pepsin Calisaya. Arguably, this is one of the scarcer molds to acquire.

Est.: \$150 - \$250 • Min. bid: \$80



Lot 169

“N.W. MED, CO. / BITTERS”, America, 1890 - 1900. Honey amber near the shoulders, shading to a golden orange amber near the base, oval, tooled square collar - smooth base, ht. 7 ¼”; (lightly cleaned to original luster and near mint condition). R/H #N1. Listed as “Extremely rare”, with only one other example being offered at auction in the past 20 years). A bright example that displays near mint.

Est.: \$200 - \$400 • Min. bid: \$120



Lot 173

“JOHN / MOFFAT - NEW YORK - PHOENIX / BITTERS - PRICE \$1.00”, America, 1845 - 1855. Aquamarine, rectangular with beveled corners, applied ring type collar - blowpipe pontil scar, ht. 5 3/8”; (a paper-thin, shallow pontil flake extends to the edge of the base, otherwise near attic mint). R/H #M112. A nice clean example of this popular, early bitters.

Est.: \$100 - \$150 • Min. bid: \$60



Lot 170

“DR VON HOPF'S / CURACO BITTERS - CHAMBERLAIN & CO / DES MOINES IOWA”, America, 1882 - 1892. Golden amber, square with beveled corners, applied sloping collar - smooth base, ht. 9 ¼”, very near mint. R/H #V27. Note, the letters have been painted for display purposes to reflect the embossing, and could be cleaned off, if preferred.

Est.: \$100 - \$200 • Min. bid: \$60



Lot 174

“BIG / BILL / BEST / BITTERS - BIG / BILL / BEST / BITTERS”, America, 1890 - 1905. Golden amber shading to a light honey in the shoulders, tall pyramid form, tooled sloping collar with ring - smooth base, ht. 12”, virtually attic mint; (just a trace of typical light wear). R/H #B95. The name of this bitters is believed to be a moniker for President Howard (Big Bill), Taft. See Bob Strickhart's bitters article, *Antique Bottle & Glass Collector*, August, 2013.

Est.: \$150 - \$250 • Min. bid: \$80



Lot 171

“THE GLOBE / TONIC - BITTERS”, America, 1870 - 1880. Golden honey amber, square with rounded corners, applied sloping collar - smooth base, ht. 9 ¾”; (professionally cleaned on the exterior, the inside has an ever-so-slight, light haze or film that is not terribly distracting, but if desired, could likely benefit from a further light cleaning). R/H #G49.

Est.: \$100 - \$200 • Min. bid: \$60



Lot 175

“HERTRICH'S GESUNDHEITS BITTER / HANS / HERTRICH / HOF / ERFINDER u. ALLEIN / DESTILLEUR - GESETZUCH GESCHUTZT”, German, 1890 - 1910. Medium to deep grass green with an olive tone, barrel form, elongated neck, tooled double ring collar - pedestal (smooth) base, ht. 11 5/8”; (some very fine, thin open surface bubbles on the side of the neck and some faint interior residue). R/H #H104.

Est.: \$125 - \$225 • Min. bid: \$80



Lot 172

“DR J BOVEEDODS - IMPERIAL / WINE BITTERS - NEW YORK”, America, 1865 - 1875. Aquamarine, rectangular with beveled corners, applied round double collar - smooth base, ht. 10”, near mint; (just a touch of minor exterior wear). R/H #D80. Listed as rare, there have only been a couple examples come to market in the last 10 years. A clean, sparkling example, and a big, impressive bottle.

Est.: \$300 - \$600 • Min. bid: \$180



Lot 176

“MYERS' - ROCK ROSE - NEW HAVEN CT”, America, 1850 - 1860. Clear medium emerald, square with beveled corners, applied sloping collar - iron pontil scar, ht. 9 3/8”; (lightly cleaned to original luster with just a little typical exterior wear remaining). Note, this is the rare variant with the “CT”, embossed after “NEW HAVEN”. The square variants are certainly very scarce, but are considerably more rare having the “CT” embossing.

Est.: \$3,000 - \$6,000 • Min. bid: \$1,500



Lot 177

"DR GUYSOTT'S - COMPOUND EXTRACT / OF YELLOW DOCK - & SARSAPARILLA", America, 1855 - 1865. Rich emerald green, square with beveled corners, applied round double collar - early smooth base, ht. 9 1/4", attic mint! Outstanding color, very heavily whittled, and with a touch more green than most. Certainly a choice, top example of this mold, and also one of the most eye-appealing medicines out there.

Est.: \$5,000 - \$8,000 • Min. bid: \$2,500



Lot 181

"C. BRINKERHOFFS - HEALTH RESTORATIVE - PRICE \$1.00 - NEW YORK" (with original label for *SMITH'S GREEN MOUNTAIN RENOVATOR*), a Stoddard, NH glasshouse, 1850 - 1851. Yellowish olive, rectangular with beveled corners, applied sloping collar - sand type pontil, ht. 7", bottle is perfect, label is 99% complete, darkened a bit from age, but completely legible. Extremely rare, one of only a few known. Brinkerhoff went out of business in 1851, with Smith purchasing the existing bottles.

Est.: \$2,000 - \$4,000 • Min. bid: \$1,000



Lot 178

"OLD / DR TOWNSEND'S - SARSAPARILLA - NEW YORK.", America, possibly Mt. Pleasant, Saratoga Mountain Glass Works, 1846 - 1855. Deep golden amber, almost a tobacco coloration, square with beveled corners, applied sloping collar - light, sand type pontil scar, ht. 9 1/2"; (a 1/16" lip flake, otherwise near mint). A very rare and desirable color, pure amber, having no green whatsoever in the metal. Nice crude glass, full of tiny bubbles and impurities. Ex. Sam Greer collection.

\$2,000 - \$4,000 • Min. bid: \$1,200



Lot 182

"CARTER / SPANISH / MIXTURE" (with 98% complete original label), America, 1850 - 1860. Bright yellow olive, cylindrical, applied sloping collar with ring - blowpipe pontil scar, ht. 8 1/8", perfect! The label shows a crown and crest, and reads in part, *"BENNETT & BEERS, DRUGGISTS, GENERAL AGENTS AND PROPRIETORS, No. 125 MAIN STREET, RICHMOND, VA."* Note, rare with the label, but also much more scarce with the open pontil scarred base.

Est.: \$600 - \$900 • Min. bid: \$350



Lot 179

"DR. TOWNSEND'S - SARSAPARILLA - ALBANY / N Y", America, 1850 - 1860. Medium to deep blue green, square with beveled corners, applied sloping collar - iron pontil scar, ht. 9 1/2"; (professionally cleaned to original luster; a pinhead bruise at edge of lip, tiny sandgrain in neck with some iridescence, and a 1/8" wide by 3/4" open bubble on one of the beveled corners). The noted condition issues are not terribly distracting, this example has a rich, deep color, and nice crude glass.

Est.: \$250 - \$450 • Min. bid: \$150



Lot 183

"CARTER / SPANISH / MIXTURE", America, 1855 - 1860. Bright yellow olive, cylindrical, applied sloping collar with ring - iron pontil scar, ht. 8", sparkling mint. Nice clarity, beautiful color, whittled, clean, - an excellent example.

Est.: \$400 - \$600 • Min. bid: \$250



Lot 180

"BEEKMAN'S - PULMONIC - SYRUP - NEW YORK", America, 1840 - 1850. Yellowish olive, octagonal, applied sloping collar with lower bevel, delicate sand type pontil scar, ht. 7 1/8"; (the bottle may have been very lightly cleaned, but certainly appears as attic mint; a couple of tiny, pinhead bits of roughness on a panel edge, near the base, otherwise pristine). N#45, Odell, p. 22. A light, bright example, great eye-appeal, excellent condition.

Est.: \$3,000 - \$6,000 • Min. bid: \$1,800



Lot 184

"SKERRETT'S OIL / B. WHEELER. / W. HENRIETTA / MON. CO. N.Y.", probably Lockport Glass Works, NY, 1843 - 1855. Bluish green with a strong emerald tone, cylindrical, applied sloping collar - blowpipe pontil scar, ht. 6"; very near mint; (a small, hard-to-see, 1/8" bit of iridescence on the inside edge of the lip, otherwise pristine). Crude, whittled glass, rich beautiful color, strong embossing. An attic type find that has not been dug and cleaned as is often the case.

Est.: \$1,400 - \$2,400 • Min. bid: \$800



Lot 185

"DR. DAVIS'S - DEPURATIVE - PHILA.", America, 1850 - 1860. Emerald green, square with beveled corners, applied sloping collar - iron pontil scar, ht. 9 3/8", near mint; (a touch of typical light exterior wear and a couple of minor, pinhead size bits of roughness on the edge of the mouth, otherwise excellent). Only a few examples of this scarce mold have been offered at auction in the past 10 years. A nice, deep, rich color and with nice character to the glass.

Est.: \$1,500 - \$3,000 • Min. bid: \$800



Lot 189

"THE HON.BLE / LADY HILL", America, 1815 - 1830. Colorless with a very faint yellowish cast in the shoulder area, beautiful fine pale straw, and virtually black striations throughout, cylindrical, flared and inward rolled mouth - pontil scar, ht. 3 5/8"; (a 1/8" annealing line in the lip, likely in-manufacture, otherwise perfect!) A very early bottle, likely blown in America for an English medicine. Ext. rare, and unique in clear, with the striations. Ex. Sam Greer collection (#844).

Est.: \$500 - \$1,000 • Min. bid: \$300



Lot 186

"WYNKOOP & Co's / TONIC MIXTURE / NEW YORK. - WARRANTED TO CURE - FEVER & AGUE", America, 1845 - 1855. Beautiful sapphire blue, rectangular with beveled corners, applied sloping collar - blowpipe pontil scar, ht. 6 1/4", pristine perfect! Originally discovered in the attic of an old store in north central Ohio. A gorgeous example.

Est.: \$5,000 - \$8,000 • Min. bid: \$3,000



Lot 190

"L. P. DODGE - RHEUMATIC / LINIMENT - NEWBURG", America, 1850 - 1860. Dense tobacco, virtually black glass, with some deep golden tobacco tones coming through in the shoulders in daylight, rectangular with beveled corners, applied sloping collar - blowpipe pontil scar, ht. 5 3/4"; (professionally cleaned to original luster with just a little scattered minor ground wear remaining). A scarce pontiled medicine, very scarce to rare color! This is one that will stand out in a group.

Est.: \$1,500 - \$2,500 • Min. bid: \$800



Lot 187

"B. DENTON - AUBURN. N.Y." - (embossed fern pattern), America, 1859 - 1864. Beautiful ice blue, rectangular with beveled corners, applied round collar with bevel - blowpipe pontil scar, ht. 6 5/8", near mint; (just a touch of faint, spotty, interior haze near the shoulder, otherwise excellent). This is the same company that produced the "Healing Balm". A very unusual, and ornate, medicine bottle. Believed to be one of only three examples known in color! Ex. Sam Greer collection.

Est.: \$500 - \$1,000 • Min. bid: \$300



Lot 191

"FROM THE / LABORATORY - OF / G.W. MERCHANT / CHEMISTS - LOCKPORT / N.Y.", probably Lockport Glass Works, Lockport, NY, 1845 - 1860. Clear, light to medium blue green, rectangular with beveled corners, applied sloping collar - iron pontil, ht. 5 1/2", near mint; (a shallow, 1/4" flake at edge of base). A nice light example having especially crude glass with some impurities and tiny bubbles scattered throughout.

Est.: \$225 - \$350 • Min. bid: \$120



Lot 188

"T & W. HENRY / AROMATIC / SPIRIT OF / VINEGAR", America, 1830 - 1850. Cobalt blue, oval, sheared mouth - blowpipe pontil scar, ht. 2 3/4"; (a trace of extremely faint exterior wear). Unique in blue, - only one other example known in clear. Provenance: Ex. Sam Greer collection (Greer, p.2 of color illustration).

Est.: \$2,000 - \$4,000 • Min. bid: \$1,200



Lot 192

"FROM THE / LABORATORY - OF / G.W. MERCHANT / CHEMIST - LOCKPORT / N.Y.", probably Lockport Glass Works, 1845 - 1860. Yellowish emerald, rectangular with beveled corners, applied sloping collar - blowpipe pontil scar, ht. 5 1/2"; (a shallow pontil flake extends to the base edge and a tiny potstone on the inside surface of the back panel has a couple of tiny 1/16" legs, otherwise excellent). A great example, beautiful color, scarce blowpipe pontil scar.

Est.: \$300 - \$500 • Min. bid: \$180



Lot 193

"FROM THE / LABORATORY. - OF / G.W. MERCHANT / CHEMIST - LOCKPORT / N.Y.", probably Lockport Glass Works, 1845 - 1860. Medium blue green, rectangular with beveled corners, applied sloping collar - blowpipe pontil scar, ht. 5 1/2"; (just a bit of fine lip edge roughness; some very faint interior milking in the lower portion that is minor, and a tiny pinhead flake at base edge). Very scarce with the blowpipe, or "open" pontil scar.

Est.: \$200 - \$300 • Min. bid: \$120



Lot 194

"FROM THE / LABORATORY - OF / G.W. MERCHANT / CHEMIST - LOCKPORT / N.Y.", probably Lockport Glass Works, 1845 - 1860. Rich, medium to deep "Lockport" blue green, rectangular with beveled corners, applied sloping collar - blowpipe pontil scar, ht. 5 5/8"; (a minor pinhead flake on the back edge of the lip, a shallow pontil flake that extends to the edge of the base). A nice deep color, and with the less-common "open" type pontil scar.

Est.: \$250 - \$375 • Min. bid: \$140



Lot 195

"G.W. MERCHANT / LOCKPORT / N.Y." - (small "+" symbol on reverse), probably Lockport Glass Works, 1845 - 1860. Medium to deep blue green, rectangular, applied sloping collar - blowpipe pontil scar, ht. 5"; (it appears that a couple of small flakes near one of the corners on the back, may have been lightly buffed, otherwise virtually attic mint). Nice deep color, good strong embossing.

Est.: \$125 - \$225 • Min. bid: \$80



Lot 196

"G.W. MERCHANT / CHEMIST / LOCKPORT / N.Y.", probably Lockport Glass Works, Lockport, 1860 - 1870. Rich, medium to deep blue green, slightly more of a greenish tone than many of the other blue-green examples, cylindrical, applied sloping collar - early smooth base, ht. 7 1/4"; (just a little washable interior residue, otherwise virtually attic mint). Beautiful deep color, whittled, outstanding condition like it just came out of a barn.

Est.: \$175 - \$275 • Min. bid: \$100



Lot 197

"SWAIM'S - PANACEA - PHILADA", America, 1845 - 1860. Bright yellowish grass green, cylindrical with 12 indented panels, crudely applied sloping collar with bevel - sand type pontil scar, ht. 7 3/4", perfect. A great example having excellent clarity, nice character, and clean as a whistle! These Swaim's bottles are a lot of bottle for the money. Beautiful, crude, and early.

Est.: \$350 - \$500 • Min. bid: \$200



Lot 198

"SWAIM'S - PANACEA - PHILADA" (with 95% complete original label), America, 1865 - 1875. Light blue green, cylindrical with 9 indented panels, applied sloping collar with bevel - early smooth base, ht. 7 3/4", near mint; (some light, patchy interior stain in the shoulder on one side of the bottle only, but no other form of damage). The label is darkened from age, but still very legible. Rare with the original label.

Est.: \$125 - \$225 • Min. \$70



Lot 199

"LARRABEE'S - PANACEA - BALTIMORE", America, 1845 - 1855. Aquamarine, cylindrical with 8 indented panels, applied sloping collar with bevel - blowpipe pontil scar, ht. 7 3/4"; (lightly cleaned to original luster and near mint condition; a couple of flakes that extend approx. 1/2", mostly on the inner portion of the lip). A unique example, the only one discovered thus far, and likely was a knockoff of the much more successful "SWAIM'S" panacea. Heavily whittled glass, strong embossing.

st.: \$1,000 - \$2,000 • Min. bid: \$600



Lot 200

"PECK FRISBIE & Co. - THE GREAT MAGICAL / ETHERIAL BALM - NEW YORK", America, 1845 - 1855. Aquamarine, rectangular with beveled corners, applied sloping collar - blowpipe pontil scar, ht. 5 1/4", near attic mint; (small patch of faint interior haze that may wash out; a pinhead open bubble at base edge). A great rarity, nicely whittled, believed to be one of only two known examples. A desirable piece for the quack medicine collector, or balsam collector.

Est.: \$600 - \$900 • Min. bid: \$300



Lot 201

"VAUGHN'S - VEGETABLE / LITH-ONTRIPTIC / MIXTURE - BUFFALO", America, probably Lockport or Lancaster Glass Works, 1850 - 1860. Deep bluish aquamarine, square with beveled corners, indented panels, applied sloping collar - iron pontil scar, ht. 7 7/8", very near mint; (the bottle appears to have been lightly cleaned, but certainly presents itself as virtually attic mint). A bright, clean example with heavy, crude glass and plenty of eye appeal.

Est.: \$500 - \$800 • Min. bid: \$300



Lot 202

"TONIC - MIXTURE - OR / VEGETABLE - FEBRIFUGE - PHILADA", America, 1845 - 1855. Bright, greenish aquamarine, 5-sided, applied sloping collar - blowpipe pontil scar, ht. 5 3/4", virtually attic mint! A very scarce mold having a most unusual 5-sided form, extremely bold embossing, and nice character to the glass. A bright, clean, terrific early medicine with great eye-appeal!

Est.: \$600 - \$900 • Min. bid: \$300



Lot 203

"ROWAND'S - TONIC - MIXTURE - OR / VEGETABLE - FEBRIFUGE - PHILADA", America, 1845 - 1855. Aquamarine, hexagonal, applied sloping collar - blowpipe pontil scar, ht. 5 1/2", perfect. N #536. Another clean example with crude glass, nice character and condition.

Est.: \$100 - \$150 • Min. bid: \$60



Lot 204

"HALSEYS / FOREST / WINE - G.W. HALSEY - NEW YORK", America, 1850 - 1860. Aquamarine, rectangular with three indented front panels and narrow beveled corners, applied sloping collar - blowpipe pontil scar, ht. 8 1/8"; (lightly cleaned to original luster and near mint condition with just a couple of small, minor areas of light dullness remaining). The bottle appears as very near mint. A bright, crisp, attractive medicine bottle.

Est.: \$200 - \$400 • Min. bid: \$120



Lot 205

"PELLETIER'S - EXTRACT OF / SARSAPARILLA - HARTFORD, CON.", America, 1850 - 1860. Aquamarine, rectangular with beveled corners, applied round double collar - blowpipe pontil scar, ht. 10 5/8", near mint; (the bottle does not appear to have been dug, but has been lightly cleaned to remove some faint patchy haze, and appears as virtually attic mint). DeG #163. A big, rare sarsaparilla bottle, impressive size, outstanding condition.

Est.: \$1,000 - \$2,000 • Min. bid: \$600



Lot 206

"A. H. BULL - EXTRACT OF / SARSAPARILLA - HARTFORD CONN.", America, 1845 - 1855. Aquamarine, rectangular with beveled corners, applied ring collar with lower bevel - blowpipe pontil scar, ht. 6 7/8", pristine; (note, there is a tissue-paper-thin, in-manufacture pontil flake that extends to the edge of the base, but cannot be seen on display). A bright, clean example, strongly embossed, like the day it was made!

Est.: \$100 - \$150 • Min. bid: \$60



Lot 207

"BRISTOL'S - EXTRACT OF / SARSAPARILLA - BUFFALO", America, 1845 - 1860. Aquamarine, rectangular with beveled corners, applied sloping collar - blowpipe pontil scar, ht. 5 1/2", near mint. The bottle appears in "as found" condition, from an old barn or garage, with period makeshift cork, and partial dried contents. The exterior is perfect, we have not attempted to remove the cork, or contents).

Est.: \$100 - \$200 • Min. bid: \$60



Lot 208

"HOLMAN'S / NATURE'S GRAND / RESTORATIVE - J.B. HOLMAN, PROP. - BOSTON MASS.", America, 1845 - 1855. Aquamarine, rectangular with beveled corners, applied square collar - blowpipe pontil scar, ht. 6 3/4", near mint; (a shallow 1 1/4" wide pontil flake extends to the edge of the base; a touch of very minor, spotty interior milkiness in the shoulder, otherwise sparkling clean). A nice example having crude glass and a perfect square collar.

Est.: \$150 - \$250 • Min. bid: \$80



Lot 209

"DR. OWEN'S / LONDON. HORSE / LINIMENT - CLARKSTON - MICHIGAN", America, 1847 - 1855. Deep aquamarine, rectangular with beveled corners, applied round double collar - blowpipe pontil scar, ht. 5 1/4", near mint; (just a touch of minor exterior wear). N #481. A scarce pontiled medicine, and a good clean example. Found under a barn in Clarkston, Mich. in 1971, the property formerly owned by Dr. Owen!

Est.: \$250 - \$450 • Min. bid: \$150



Lot 213

"DR W.S. LUNT'S - AGUE KILLER / FINDLAY. O", America, 1850 - 1858. Deep aquamarine, rectangular with beveled corners, applied sloping collar - blowpipe pontil scar, ht. 6 7/8", near attic mint; (just a tiny, minute bit of roughness on the inside edge of the lip, otherwise sparkling attic mint). A very scarce pontiled medicine with a nice depth of color.

Est.: \$300 - \$600 • Min. bid: \$180



Lot 210

"EXTRACT / OF - HOPS & - BONESSET - COMPOUND", America, 1850 - 1860. Aquamarine, rectangular, applied square collar - iron pontil, ht. 5 5/8"; (lightly cleaned to original luster and near mint condition with just a small patch of very faint dullness remaining on one of the side panels). N #134 (6-star). A very scarce medicine, believed to be from Hamilton, Ohio. Boneset is a perennial herb that was popular in folk medicine. Crude glass, excellent condition, very scarce.

Est.: \$200 - \$400 • Min. bid: \$120



Lot 214

"IL ST. JOHNS - COUGH SYRUP", America, 1845 - 1860. Aquamarine, octagonal, applied sloping collar - blowpipe pontil scar, ht. 5 1/4"; (professionally cleaned to original luster with just a touch of faint light haze remaining). I.L. St. John was a druggist and patent medicine dealer in Tiffin, Ohio. Whittled, and with a nice depth of color, this is the smaller, and scarcer of two sizes for this medicine.

Est.: \$125 - \$250 • Min. bid: \$70



Lot 211

"JACOBS & BROWN / HAMILTON O", Midwest, probably an Ohio glasshouse, 1850 - 1860. Deep aquamarine, rectangular with narrow beveled corners, applied sloping collar - blowpipe pontil scar, ht. 5 3/4", near attic mint; (a narrow band of faint interior milkiness near the center of the bottle, otherwise sparkling pristine condition). Good deep color, and with nice character to the glass. Jacob's & Brown also produced a "Balsam of Rhubarb".

Est.: \$175 - \$275 • Min. bid: \$100



Lot 215

"MERRICK'S - VERMIFUGE - MILTON. PA.", America, 1845 - 1855. Aquamarine, 12-sided, tooled thin flanged mouth - blowpipe pontil scar, ht. 3 1/2"; (some overall light interior haze, but no other form of damage). N#441. The light interior haze could easily be professionally cleaned, if desired. A scarce, early, pontiled medicine with a perfect thin flanged lip.

Est.: \$200 - \$400 • Min. bid: \$120



Lot 212

"E. W. WILLIAMS - SALEM. C. Co. - OHIO", America, 1845 - 1860. Aquamarine, rectangular with beveled corners, crudely applied sloping collar - blowpipe pontil scar, ht. 7 5/8", beautiful, attic found condition; (faint trace of light interior residue near the shoulders, otherwise pristine). A very scarce bottle that does not come around often. Nice size, nice crude glass, outstanding condition.

Est.: \$300 - \$500 • Min. bid: \$180



Lot 216

Lot of (3), early pontiled Medicines, America, 1845 - 1860. "DR. S.S. FITCH - 707 B.WAY.N.Y.", 2nd example, **"NERVE & BONE / LINAMENT"**, 3rd example; **"C.W. ATWELL / PORTLAND / ME"**. Rectangular, cylindrical, and oval, flared mouth, rolled lip, and sloping collars, all are aqua, and with blowpipe pontil scars; ht. 3 3/4", 3 7/8", and 7 7/8" respectively, all are near mint; ("LINAMENT" has just a bit of light interior haze, "ATWELL" has a minor pontil flake).

Est.: \$150 - \$250 • Min. bid: \$80



Lot 217

“LONDON - MEDICATED - HEALTH RESTORER - S. A. FOUTZ / BALTIMORE MD”, probably Baltimore Glass Works, 1860 - 1870. Gorgeous, yellowish topaz, hexagonal with indented panels, three horizontal rings forming a cone type shoulder, applied sloping collar with bevel - smooth base, ht. 9 1/8”, virtually attic mint. A very distinctive, rare, and eye-appealing medicine. The only bottle of similar appearance is the exceptional “CHICKAHOMINY BITTERS”.

Est.: \$4,000 - \$7,000 • Min. bid: \$2,000



Lot 221

“THE / CRAIG KIDNEY / CURE / COMPANY” (with 95% complete original label), America, 1882 - 1890. Medium amber, strap form with framed label panel on reverse, applied double collar - smooth base, ht. 9 3/8”; (bottle is perfect, some dried contents on the interior). Label has some staining near the base, but is otherwise legible. A great Warner’s related piece, and a very scarce, to rare, bottle having a virtually complete, original label.

Est.: \$400 - \$600 • Min. bid: \$250



Lot 218

“U.S.A / HOSP. DEPT”, America, probably a Pittsburgh district glass-house, 1862 - 1875. Beautiful light yellowish olive amber, almost an olive yellow, cylindrical, 4-piece mold, applied round collar with bevel - smooth base, ht. 9 3/8”, virtually attic mint; (just a trace of faint wear, primarily on the reverse, otherwise pristine). Beautiful example, nice color with some whittling, and plenty of tiny seed bubbles.

Est.: \$500 - \$800 • Min. bid: \$300



Lot 222

“LOG CABIN / SARSAPARILLA / ROCHESTER, N.Y.”, America, 1887 - 1895. Yellowish tobacco amber with a slight olive tone, irregular hex form with three indented panels, applied blob collar - “PAT. SEPT. 6 / 87” (on smooth base), ht. 9”; (an 1/8” flake on one of the panel edges and a trace of light interior residue). Nice, somewhat scarce color, and overall excellent condition.

Est.: \$200 - \$400 • Min. bid: \$120



Lot 219

“U.S.A. / HOSP. DEPT”, America, probably a Pittsburgh district glass-house, 1862 - 1875. Aquamarine, cylindrical, 4-piece mold, applied square collared mouth - smooth base, ht. 6 1/2”; (just a trace of faint residue on the interior that would almost certainly wash out, otherwise virtually attic mint). Many of these have been dug, but this one appears to be an attic-type find. A scarce mold for a hospital bottle, and with good strong embossing.

Est.: \$100 - \$200 • Min. bid: \$60



Lot 223

“WARNER’S / “SAFE” CURE” / (motif of safe) / “FRANKFURT A/M”, Germany, 1886 - 1900. Medium to deep yellow olive, oval, applied blob collar - smooth base, pint; ht. 8 7/8”; (just a little minor exterior wear, and a couple of light scratches on the reverse near one of the sides, otherwise excellent). O&S #67.

Est.: \$175 - \$275 • Min. bid: \$100



Lot 220

“PHINNEY’S / STOMACH COR-DIAL”, America, 1875 - 1885. Medium amber, square with narrow beveled corners, applied sloping collar - smooth base, ht. 8 7/8”, near mint; (just a little scattered, very minor exterior wear). A rare, possibly unique medicine. We have never seen one before or find any reference to it. Excellent condition, not a dug bottle. A very interesting bottle, and one that would bare further research.

Est.: \$100 - \$200 • Min. bid: \$60



Lot 224

“THE IMPERIAL / BLOOD & LIVER TONIC / THE KING / OF ALL TON-ICS - DR R. DRAKE / SOLE PROPRI-ETOR / LA GRANGE. IND”, America, 1880 - 1890. Medium to deep amber, rectangular with rounded side panels, applied sloping collar - smooth base, ht. 8 3/4”, near mint; (just a little typical light exterior wear, otherwise perfect). A very scarce bottle for the tonic, or blood collector, from a small, northern Indiana farming community.

Est.: \$175 - \$350 • Min. bid: \$100



Lot 225

"PARKE. DAVIS & Co / TRADE MARK / MEDICA MENTA" (PD&Co monogram) / "MANUFACTURING / CHEMISTS / DETROIT", America, 1890 - 1900. Beautiful teal green coloration, square with beveled corners, tooled prescription-type square collar - smooth domed base, ht. 7 3/8", sparkling attic mint! A beautiful bottle, well embossed, gorgeous color, and scarce; especially so in this outstanding condition!

Est.: \$300 - \$500 • Min. bid: \$180



Lot 226

"DR DE'CLAT", America, 1885 - 1895. Light cobalt in the upper third, shading to deep cobalt through the neck, with profuse deeper cobalt striations spiraling from the shoulder through the lower half of the body, oval, tooled square collar - smooth base, ht. 7"; (just a trace of faint wear including a tissue-paper thin 1/8" open bubble on the reverse, otherwise attic mint!) A gorgeous bottle, one of the most eye-catching in the sale! Dr. De'Clat was located on Broadway St, in NYC.

Est.: \$175 - \$350 • Min. bid: \$100



Lot 227

Lot of (2), "C. HEIMSTREET & CO / TROY N. Y." Bottles, America, 1850 - 1870. Both are deep sapphire, almost a cobalt coloration, octagonal, applied square collar and double round collars, pontiled, and smooth base, ht. 6 7/8" & 7", they may have been lightly cleaned, but both present as near mint; (the pontiled example has a tiny pinhead flake on the lip, and one on a panel edge; the SB example has a minor flake at one of the base corners). Both are nice examples.

Est.: \$250 - \$400 • Min. bid: \$140



Lot 228

"SANFORD'S - EXTRACT OF - HAMAMELIS / OR WITCH HAZEL", America, 1885 - 1895. Medium to deep sapphire blue, rectangular with beveled corners, tooled square collar - smooth base, ht. 7 3/8"; (a tiny, paper-thin, pinhead bit of roughness on one of the base corners, otherwise pristine perfect!) A bright, clean example, excellent condition. This is the scarce smaller size.

Est.: \$175 - \$350 • Min. bid: \$100



Lot 229

"HANFORD'S Balsam of Myrrh" Drug-gist Display Case and Bottle, 1885 - 1895. Oak case with glass front and two wooden shelves, gold and black lettering, rectangular, ht. 24 1/4", width, 14", depth, 9 1/2"; (small metal frame of locking mechanism missing, as is common). The case, and original black and gold lettering, in excellent, un-restored condition! Aqua bottle with complete, original wrap-around label, tooled double collar - smooth base, ht. 5 7/8". Hanford's was used as a veterinary medicine.

Est.: \$600 - \$1,200 • Min. bid: \$300



Lot 230

"MOTHER'S / WORM SYRUP - EDWARD WILDER & Co / WHOLESALE DRUGGISTS" (with complete original labels and partial contents), America, 1906 - 1910. Clear, semi-cabin form, tooled sloping collar with ring - smooth base, ht. 4 1/2", near mint; (minor, 1/8" flake on edge of lip, otherwise perfect; one label is darkened, but completely legible, the other is near mint). Label indicates, "Contains no Calomel, Mercury, or Blue Mass. Guaranteed under the Pure Food and Drug Act."

Est.: \$75 - \$150 • Min. bid: \$40



Lot 231

"PERRINE'S" / (Apple) / "GINGER" - "PERRINES - APPLE - GINGER - PHILA", America, 1880 - 1895. Golden amber shading to a lighter honey tone in the lower roof area, square cabin form with roped corners and thatched roof panels, tooled sloping collar - smooth base, ht. 9 7/8"; (just the slightest trace of faint wear, otherwise sparkling attic mint!)

Est.: \$175 - \$350 • Min. bid: \$100



Lot 232

"GERM BACTERIA OR / FUNGUS DESTROYER / WM RADAM'S / MICROBE KILLER" / (motif of man beating a skeleton) / "REGISTERED TRADE MARK DEC. 13. 1887 / CURES ALL DISEASES" (with 95% complete label), America, 1913 - 1914. Beautiful light honey amber, square, tooled sheared mouth - smooth base, ht. 10 1/4", perfect! Very scarce with original label, nice light color.

Est.: \$250 - \$400 • Min. bid: \$150



Lot 233

Skull & Crossbones / "POISON / TINCT / IODINE", America, 1890 - 1910. Cobalt, rectangular with beveled corners, tooled double ring collar (with original rubber type stopper and glass applicator) - smooth base, ht. 2 1/8"; (a tiny, pinhead spot of roughness on the edge of the lip, otherwise sparkling attic mint!) KR-3. A nice example, clean and virtually pristine condition.

Est.: \$100 - \$200 • Min. bid: \$60



Lot 237

Lot of (3), Lattice and Diamond Poison Bottles, America, 1880 - 1900. All are medium to deep cobalt, cylindrical with lattice and diamond pattern, tooled square collars - smooth bases, "H.B. CO." (likely Hagerty Bros. Co., Brooklyn, NY), on base of smallest example, ht. 6 1/8", 5 3/8", and 4 1/2" (including stoppers), all are perfect! KC-1.

Est.: \$200 - \$400 • Min. bid: \$120



Lot 234

"JOHN WYETH & BRO / PHILA" Poison Bottle (with original front and back labels), America, 1906 - 1910. Cobalt, oval with raised diamond pattern around shoulder, base, and down sides, tooled square collar - smooth base, ht. 4", mint. KO-45. Beautiful condition, labels are darkened a bit from age, but completely legible. Label reads in part, "POISON / Compressed Antiseptic Tablets." (list of antidotes on back label), Guaranteed under the Food and Drug Act.

Est.: \$75 - \$150 • Min. bid: \$40



Lot 238

Lot of (4), Label Under Glass Poison Bottles, England, 1885 - 1915. All are bright lime green, cylindrical, vertically ribbed with recessed octagonal labels that read, "LIQ: / AMM:FORT: / (POISON)"; 2nd ex: "OL. / CARBOL. / POISON", 3rd ex: "LIN: / ACONITI.M.:", 4th ex: "VIN. / COLCH. / POISON".

All with tooled ring collars, ground necks with original stoppers (3 are stuck) - smooth bases, ht. 10"; 7 3/4", 7 3/4", and 5 3/4" respectively (incl. stoppers). Minor label discoloration on 3rd ex, otherwise near mint. KC-48.

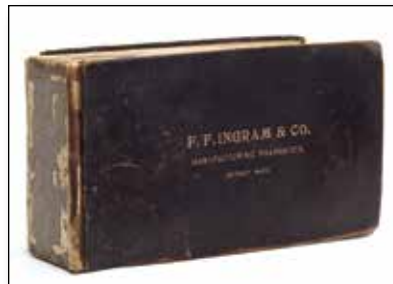
Est.: \$500 - \$800 • Min. bid: \$300



Lot 235

"MELVIN & BADGER / APOTHECARIES / BOSTON, MASS." (with 98% complete original label), Carr-Lowrey Glass Co, Baltimore, MD, 1889 - 1900. Cobalt blue, irregular "hex" form, tooled square collar - "C L G CO / PATENT APPLIED FOR", on smooth base, ht. 5", virtually attic mint. Label reads in part, "WHITE WASH LOTION / A cooling and soothing antiseptic wash for Mosquito Bites..... / (skull and crossbones) FOR EXTERNAL USE ONLY POISON".

Est.: \$175 - \$350 • Min. bid: \$100



Lot 239

"F.F. INGRAM & CO. MANUFACTURING PHARMACISTS, DETROIT MICH.", Advertising Book of Medicinal Products, 1901. 130 -140 double-sided pages holding 250 + sample boxes, labels, etc. of various medicinal products for both man, and beast, 10 1/2" by 6";

(covers are worn, leather spine is missing, book is a little "weathered", but individual pages are intact and virtually complete). A very interesting, historical, and possibly unique go-with for the patent medicine collector.

Est.: \$200 - \$400 • Min. bid: \$100



Lot 236

Lot of (2), "POISON - The Owl Drug Co" - (motif of owl), Poison Bottles, 1892 - 1905. Both are cobalt, triangular, with tooled square collars - smooth bases, ht. 2 3/4" & 3 1/2"; (the small example has a little minor exterior wear and has been lightly cleaned; the large example is near attic mint). KT-1.

Est.: \$175 - \$350 • Min. bid: \$100



Lot 240

"POLAND / WATER - POLAND MINERAL SPRING WATER / H. RICKER & SON'S PROPRIETOR'S", America, 1875 - 1885. Bright golden amber, figure of Moses, applied sloping collar - smooth base, ht. 10 7/8", near mint; (a 1/4" x 3/8" partially open bubble at base edge, and a trace of light interior residue, primarily near the base). A classic figural mineral water, very rare in color, excellent overall condition.

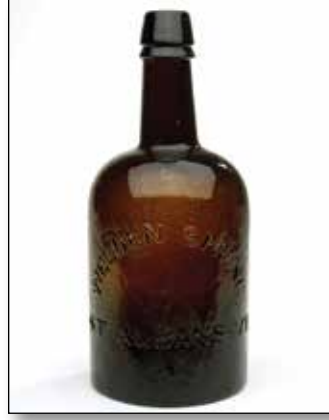
Est.: \$700 - \$1,200 • Min. bid: \$400



Lot 241

“JOHN CLARKE - NEW YORK”, probably Mt. Vernon Glass Works, 1835 - 1844. Medium olive in the shoulders shading to a rich, deep olive near the base, cylindrical, 3-pc. mold, applied sloping double collar - sand type pontil scar, Qt, near mint; (a little minor interior residue, and light exterior wear, otherwise perfect!) T# C-4:B, type 2. A nice example of this early Mineral Water bottle, one that has not been dug and cleaned!

Est.: \$200 - \$400 • Min. bid: \$120



Lot 245

“WELDEN SPRING / ST. ALBANS. VT - ALTERATIVE / CHALYBEATE”, America, 1865 - 1875. Rich, deep golden amber with a reddish tone near the base, cylindrical, applied sloping collar with bevel - smooth base, Qt, sparkling mint! T# V-22:A. A beautiful, crude example, whittled glass, and full of tiny seed bubbles. A very rare mold, extremely rare color, less than three or four known, with only one other example in amber ever offered on the market.

Est.: \$5,000 - \$8,000 • Min. bid: \$3,000



Lot 242

“CLARKE & CO - NEW YORK”, probably a New York glasshouse, possibly Saratoga Mountain Glassworks, Mt. Pleasant, 1846 - 1856. Light to medium blue green, cylindrical, 3-pc. mold, applied sloping double collar - red iron pontil scar, Qt; (lightly cleaned to original luster and near mint condition with a little light exterior wear remaining). T# C-7:C. A heavy, crude, whittled bottle, scarce color, a little lighter shade than typically encountered.

Est.: \$250 - \$450 • Min. bid: \$150



Lot 246

“MIDDLETOWN / HEALING / SPRINGS / GRAYS & CLARK / MIDDLETOWN. VT.”, America, possibly a Stoddard, NH glasshouse, 1860 - 1873. Beautiful, bright honey amber, cylindrical, applied sloping collar with bevel - smooth base, Qt, perfect! T# V-12. A very attractive example, nicely whittled, bright and clean.

Est.: \$175 - \$275 • Min. bid: \$100



Lot 243

“CLARKE & Co / NEW YORK”, probably Saratoga Mountain Glassworks, Mt. Pleasant, 1846 - 1856. Medium green with an emerald tone, cylindrical, applied sloping double collar - large iron pontil scar, Pt; (the bottle appears to have been professionally cleaned, there is a slight frothiness on the interior, some of which is likely the crude glass itself, a couple of 1/8” flakes on the underside of the lower bevel). T# C-9:A, Type III.

Est.: \$175 - \$275 • Min. bid: \$100



Lot 247

“MIDDLETOWN MINERAL SPRING CO / NATURE'S / REMEDY / MIDDLETOWN. VT.”, America, 1860 - 1875. Medium to deep emerald coloration, cylindrical, applied sloping collar with bevel - smooth base, Qt, near mint; (just a trace of some light wear on the reverse, and an 1/8” area of minor roughness on the edge of the lower bevel, otherwise pristine). T# V-15. A scarce mold, rich, beautiful color.

Est.: \$200 - \$400 • Min. bid: \$120



Lot 244

“MASSENA SPRING” / (monogram) / “WATER”, New England, probably Lyndeborough Glass Works, Lyndeborough, NH, 1867 - 1880. Bright teal blue, cylindrical, applied sloping collar with bevel - smooth base, Qt; (another nice example with just a slight trace of wear, otherwise pristine perfect). T# N-22. Provenance: Ex. Robert White collection. Very attractive, beautiful color, whittled, a great example.

Est.: \$200 - \$400 • Min. bid: \$120



Lot 248

“ST. REGIS / WATER / MASSENA SPRINGS”, New England, probably Lyndeborough Glass Works, Lyndeborough, NH, 1867 - 1880. Deep bluish green, cylindrical, applied sloping collar with bevel - smooth base, Qt; (a few scattered light scratches and minor exterior wear). T# N21:A. The quart is listed as scarce and can be found in several different colors, and many different shades.

Est.: \$175 - \$275 • Min. bid: \$100



Lot 249

"D. A. KNOWLTON / SARATOGA. / N.Y.", possibly Saratoga Mountain Glassworks, Mt. Pleasant, 1861 - 1863. Deep olive green, cylindrical, applied sloping double collar - "4" (on smooth base), Qt., near mint; (just a couple of minor light surface scratches and typical faint wear, otherwise attic mint). T# E-5:B. A nice example, one that has not been dug and cleaned.

Est.: \$100 - \$200 • Min. bid: \$60



Lot 253

"HIGHROCK CONGRESS SPRING" / (Motif of Rock) / "C&W / SARATOGA. N.Y.", America, 1865 - 1873. Rich teal blue, cylindrical, applied sloping double collar - smooth base, Pt; (a little minor exterior wear, a 3/8" iridescent bruise on the inside edge of the mouth, and an 1/8" flake on the underside of the beveled collar, on the reverse). T# S-37:B. Although it has the noted minor condition issues, the bottle displays near mint. A gorgeous and scarce color.

Est.: \$175 - \$350 • Min. bid: \$100



Lot 250

"CONGRESS & EMPIRE SPRING CO / HOTCHKISS' SONS, / E / NEW-YORK / SARATOGA. N.Y. - EMPIRE / WATER", America, 1865 - 1875. Medium emerald green, cylindrical, applied sloping double collar - "1" (on smooth base), Qt, attic mint. T# E-8:A. A great example having very seedy glass, a nice rich color, and very crisp, bold embossing.

Est.: \$200 - \$400 • Min. bid: \$120



Lot 254

"ARTESIAN SPRING Co." / "AS" (monogram) / "BALLSTON / N.Y. - BALLSTON SPA / LITHIA / MINERAL / WATER", America, 1876 - 1889. Light blue green, cylindrical, applied sloping double collar - smooth base, Pt; (the bottle may have been lightly cleaned, but appears in overall excellent condition, with a few light scratches on the shoulder of the reverse). T# S-6:Type II.

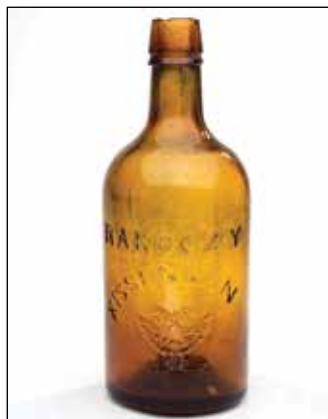
Est.: \$125 - \$225 • Min. bid: \$70



Lot 251

"CONGRESS & EMPIRE SPRING CO / HOTCHKISS' SONS, / E / NEW-YORK / SARATOGA. N.Y. - EMPIRE / WATER", America, 1865 - 1875. Clear, medium emerald with a slight lime tone, cylindrical, applied sloping double collar - smooth base, Pt, very near mint; (a tiny bit of roughness on the lower edge of the drippy glass below the lower bevel, otherwise pristine). T# E8:B. A scarce mold, nice color, beautiful, bubbly glass.

Est.: \$200 - \$400 • Min. bid: \$120



Lot 255

"RAKOCZY / KISSENGEN." (image of double-headed eagle), America, 1870 - 1880. Honey amber, cylindrical, applied sloping double collar - smooth base, Pt, (a 1/2" chip off the top, and inside edge of the lip; a little washable interior residue, otherwise perfect). An unlisted, rare, mineral water bottle in a classic Saratoga form. The bottle was likely blown in New York State, or New England, possibly for an imported water, and may have also been marketed to the immigrants in the NYC.

Est.: \$300 - \$500 • Min. bid: \$150



Lot 252

"CONGRESS & EMPIRE SPRING CO / HOTCHKISS' SONS / C / NEW YORK / SARATOGA. N.Y.", America, possibly Mt. Pleasant, Saratoga Mountain Glassworks, 1866 - 1870. Dense olive green, cylindrical, applied sloping double collar - smooth base, Pt, near mint; (typical, very minor, light exterior wear, otherwise perfect). T# C-15:B, type 1. A different one for your color run, having a deeper color than most, appears almost black in reflected light.

Est.: \$125 - \$225 • Min. bid: \$70



Lot 256

Lot of (2), Star Spring items, America, 1862 - 1920. "STAR SPRING CO" / (Star) / "SARATOGA. N.Y." Bottle, possibly Saratoga Mountain Glass Works, 1862 - 1870. Dense olive green, applied sloping double collar - smooth base, Pt; (a touch of light exterior wear, otherwise near mint). Crude, whittled, a nice example. T# S-54:B. **"SARATOGA STAR SPRING WATER" Tip Tray**, 1910 - 1920. A nice "go with", attractive graphics showing a bottle of Star Water.

Est.: \$150 - \$250 • Min. bid: \$80



VICHY” Tip Tray (image of bottle), near mint; and early **B&W Photo of Vichy Water Building** and trucks; (1 ½” x ¾” piece of corner missing and 1” tear).

Est.: \$100 - \$150 • Min. bid: \$60

Lot 257

Lot of (3), Vichy Water items, America, 1890 - 1915. “SARATOGA / VICHY / WATER / SARATOGA, N.Y. - V” Bottle, honey amber, tooled blob collar - smooth base, Pt; (lightly cleaned to original luster with a touch of minor wear remaining, and a superficial 1/8” bruise at heel of base). **“SARATOGA**



Lot 261

“J. LAKE. / SCHENECTADY. N.Y.”, America, 1850 - 1860. Medium to deep cobalt, tenpin form, applied blob collar - iron pontil scar, ht. 8”; (professionally cleaned with a little scattered light wear remaining; an open bubble, approx. ¼”, located on the side of the collar, has some depth to it, and a minor flake on the inside edge of the lip). Beautiful, deep color, darker than most. In addition, virtually all of the iron pontil is intact.

Est.: \$400 - \$600 • Min. bid: \$200



Lot 258

Lot of (3), Label-only, Saratoga Mineral Water Bottles, America, 1890 - 1920. Amber and clear medium green, cylindrical, applied and tooled blob collars, and machine crown collar - smooth bases, Pts; (bottles are near mint; two labels near 100% complete, 3rd label - “Royal Spring”, approx. 85% complete). Labels for, “SARATOGA VICHY WATER”, “Hide’s-Franklin Mineral Spring”, and “Royal Spring Water”. Certainly scarce with the labels, very nice “go-with.”

Est.: \$75 - \$125 • Min. bid: \$40



Lot 262

Lot 262 “G. LOMAX / CHICAGO”, America, 1855 - 1860. Clear, medium sapphire, cylindrical, squat soda form, applied blob collar - blowpipe pontil scar, ht. 7 5/8”; (professionally cleaned to original luster and near mint condition; a 5/8” iridescent bruise on the inside of the lip, a couple of 1/8” flakes below the outside edge of the lip). Nice clarity and whittling. More importantly, a very scarce soda, believed to be unique as the only known example of this bottle having an “open pontil”.

Est.: \$800 - \$1,200 • Min. bid: \$400



Lot 259

“DR PAOLIS. / SPARKLING PERSIAN / SHERBET - F. W. SIMONDS / CHICAGO / ILL”, America, 1860 - 1870. Sapphire blue, tenpin form, applied blob collar - smooth base, ht. 8”, near mint; (a touch of very light exterior wear, a minor patch of faint, light interior residue or haze, on the back, otherwise perfect). A very rare bottle, perhaps only six examples known in any condition. Great subject matter with a “Dr.” embossed, and “Persian Sherbet”.

Est.: \$3,000 - \$5,000 • Min. bid: \$1,500



Lot 263

“Dr. CRONK GIBBONS & Co / SUPERIOR ALE / BUFFALO / N.Y.”, America, 1850 - 1860. Emerald green, cylindrical, squat porter or ale form, applied blob collar - heavy iron pontil scar, ht. 6 5/8”; (a little scattered, very light exterior wear, otherwise excellent!) A great looking bottle, good rich color, plenty of eye-appeal, and in overall excellent condition.

Est.: \$500 - \$800 • Min. bid: \$300



Lot 260

“RANDALL & Co / MONUMENT SQUARE / BALT. - RANDALL & Co / MONUMENT SQUARE / BALT.”, America, probably Baltimore Glass Works, 1840 - 1843. Bright yellowish grass green, torpedo form, applied sloping collar - blowpipe pontil, ht. 8

¾”, attic mint! Found in the walls of house many years ago. Very bold embossing, whittled, attic condition, this is likely the finest example known of this rare, early, Baltimore torpedo soda.

Est.: \$7,000 - \$12,000 • Min. bid: \$3,500



Lot 264

“S. NICHOLL / 64 & 66 - LEONARD. ST / NY”, America, 1850 - 1860. Rich, medium to deep bluish green with an emerald tone, cylindrical, porter form, applied sloping collar - heavy iron pontil scar, ht. 6 ¾”; (lightly cleaned to original luster with just a bit of minor light wear remaining, but no other form of damage). Extremely rare, one of possibly two or three known, beautiful color, nice condition, and having good eye-appeal.

Est.: \$1,000 - \$2,000 • Min. bid: \$600



Lot 265

"H. L. & J. W. BROWN / HARTFORD CT.", America, 1854 - 1860. Deep olive amber, cylindrical, squat soda or porter form, applied blob collar - light iron pontil, ht. 6 5/8"; (some light, overall, fine exterior wear and light scratches, but no other form of damage). Does not appear to have been cleaned. Henry Lyman, and J.W. Brown, were manufacturers of both soda and porter. See Bill Beckett's article on Connecticut Sodas, Part II, *Antique Bottle & Glass Collector*, Sept. 2012.

Est.: \$175 - \$350 • Min. bid: \$100



Lot 269

"COMSTOCK GOVE & Co / 139 FRIEND ST / BOSTON - C. G. & Co", America, 1870 - 1880. Clear citron with a bit of a lime green tone, cylindrical, squat porter form, applied sloping collar with ring - smooth base, ht. 6 3/4"; (some patchy, light interior haze, otherwise excellent!) The interior haze is relatively minor and should easily clean with a day or two in the tumbler, if desired. An attractive, different color, one that will definitely stand out in run of sodas.

Est.: \$125 - \$250 • Min. bid: \$70



Lot 266

"POMROY & HALL", America, 1860 - 1875. Deep olive in the neck shading to virtually black near the base, cylindrical, porter-style, applied blob collar - smooth base, ht. 6 1/2", virtually attic mint; (typical, minor, very light exterior wear, otherwise perfect). A great example, excellent condition. An early porter, believed to be from Springfield, Mass.

Est.: \$150 - \$250 • Min. bid: \$80



Lot 270

"J.A. BLAFFER & Co / NEW ORLEANS", America, 1865 - 1875. Medium to deep amber, cylindrical, porter-style, applied large ring collar with bevel - smooth base, ht. 6 3/8", very near mint; (the bottle may have been lightly cleaned, but certainly presents itself as virtually attic mint!) A very scarce bottle, outstanding condition, and only one other example being listed at auction in the past 15 years.

Est.: \$200 - \$400 • Min. bid: \$120



Lot 267

"ROBINSON, WILSON & LEGALLEE / 102 / SUDBURY ST / BOSTON", America, 1850 - 1860. Emerald, cylindrical, squat soda form, applied blob collar - very heavy iron pontil scar, ht. 6 3/4", virtually attic mint; (a little typical light exterior wear, otherwise perfect). Not a dug bottle, a beautiful example, nice color, outstanding condition.

Est.: \$175 - \$350 • Min. bid: \$100



Lot 271

"LOUIS WEBER / LOUISVILLE / K.Y.", America, 1860 - 1870. Bright honey amber, cylindrical, squat porter form, applied round blob collar with ring - smooth base, ht. 7"; (a dug bottle that retains most of its original luster; a light scratch and spot of ground wear near the shoulder, a couple of tiny, very minor pinhead bits of roughness at the edge of the lip). A scarce bottle that displays very well; the noted condition issues are relatively minor.

Est.: \$100 - \$200 • Min. bid: \$60



Lot 268

"LUKE BEARD / HOWARD ST / BOSTON" - (Star) / "THIS BOTTLE / IS NEVER SOLD", America, 1854 - 1860. Medium emerald, cylindrical, porter form, applied sloping collar with bevel - iron pontil scar, ht. 6 3/4"; (a little minor roughness with a shallow 1/8" flake on edge of lip; a few 1/8" - 3/16" flakes on the underside of the lower bevel, otherwise appears virtually attic mint). A nice example that does not appear to be dug.

Est.: \$100 - \$200 • Min. bid: \$60



Lot 272

"KEELEY & BROTHER / CHICAGO", America, 1860 - 1870. Dense olive green, virtually black in the lower body, cylindrical, 3-pc. mold, squat porter form, applied sloping collar with bevel - smooth base, ht. 7"; (a 3/8" chip at edge of base with an associated 3/8" iridescent bruise, some fine exterior wear and light scratches). A very scarce, to rare, porter bottle from Chicago.

Est.: \$200 - \$400 • Min. bid: \$100



Lot 273

"J. WISE / ALLENTOWN / PA - THIS BOTTLE / BELONGS TO / JAMES WISE", America, 1860 - 1870. Vivid cobalt, almost a midnight blue, cylindrical, squat porter form, applied sloping collar with bevel - smooth base, ht. 6 7/8"; (professionally cleaned to original luster with a little scattered light wear remaining and a pinhead open bubble or surface bruise on the side of the collar). Outstanding color!

Est.: \$175 - \$275 • Min. bid: \$100



Lot 277

"WATERTOWN BOTTLING / ESTABLISHMENT / N.Y.", America, 1850 - 1860. Aquamarine, cylindrical, pony form, applied blob collar - iron pontil scar, ht. 7 1/4", virtually attic mint; (just a trace of light exterior wear, otherwise perfect). Whittled, excellent condition, a good clean example.

Est.: \$100 - \$150 • Min. bid: \$60



Lot 274

"PHIL A / PORTER & ALE - C&M", America, 1860 - 1870. Emerald, cylindrical, stubby porter form, short, fat neck with an applied sloping collar and ring - smooth base, ht. 6 3/8", virtually attic mint; (just a trace of light exterior wear). This example appears to be an attic type find. A scarce mold having the "C & M" initials. Very heavily whittled, attractive form, outstanding condition.

Est.: \$100 - \$200 • Min. bid: \$60



Lot 278

"THOS MAHER" Soda Bottle, America, 1850 - 1860. Bright medium green, cylindrical, squat soda form with embossing in rectangular slugplate, applied blob collar - iron pontil scar, ht. 7 1/8"; (professionally cleaned to original luster and near mint condition; a shallow, 1/8" open bubble). Thomas Maher was a beer and soda manufacturer from Savannah, Georgia. A nice example having virtually all of the iron pontil still intact.

Est.: \$100 - \$200 • Min. bid: \$60



Lot 275

"T. CAMPBELL / PHILA - DYOTTVILLE GLASS WORKS / PHILADA.", Dyottville Glass Works, 1850 - 1860. Medium to deep emerald, cylindrical, squat porter form with embossing in rectangular slugplate, applied sloping collar with bevel - heavy iron pontil scar, ht. 6 7/8"; (professionally cleaned to original luster with some scattered light ground wear remaining, but no other form of damage). Nice rich color, the bottle also retains virtually all of the iron pontil.

Est.: \$125 - \$250 • Min. bid: \$70



Lot 279

"OWEN CASEY / EAGLE SODA / WORKS - SAC CITY", America, 1865 - 1875. Light sapphire blue, cylindrical, squat soda form, applied blob collar - smooth base, ht. 6 7/8"; (a little scattered, patchy light dullness on the exterior, a bit of minor interior residue or stain, but no other form of damage). A good solid example with very little wear. With just a light cleaning, it would likely display as virtually attic mint.

Est.: \$100 - \$150 • Min. bid: \$60



Lot 276

"PETER SERWAZI / MANAYUNK, PA - P. S. / THIS BOTTLE / NOT TO BE SOLD", America, 1875 - 1885. Bright yellowish lime green, Weiss form, tooled blob collar - smooth base, ht. 7"; (professionally cleaned to near mint with just a bit of minor wear remaining; a 1/8" spot on the side of the collar may have been lightly buffed; a bruise with a 1/4" refraction in the thick part of the base edge that does not go through the glass). Scarce, attractive color.

Est.: \$100 - \$200 • Min. bid: \$60



Lot 280

"OWEN CASEY / EAGLE SODA / WORKS - SAC CITY", America, 1865 - 1875. Medium sapphire blue, cylindrical, squat soda form, applied blob collar - smooth base, ht. 7 1/4", near attic mint; (just a trace of faint interior residue, light exterior wear, otherwise perfect). A top example, one that has not been dug and cleaned, having virtually no high point wear, virtually "out of the mold", pristine clean.

Est.: \$175 - \$350 • Min. bid: \$100



Lot 281

“L. S.” (on shoulder), America, possibly a Pittsburgh district glasshouse, 1865 - 1875. Dense olive green (black glass), cylindrical, porter form, 3-pc. mold, applied sloping collar with bevel - early smooth base, ht. 9 3/4”; (a 1/4” x 3/8” open bubble near the base, on the side of the bottle, otherwise virtually attic mint). Likely a very scarce porter, most of these types of bottles have been dug, this appears to be more of an attic type find.

Est.: \$300 - \$500 • Min. bid: \$180



Lot 285

Black Glass Wine Bottle, England, 1818. “Jos: / Risdon / 1818” (on applied glass seal). Deep yellow olive, squat cylinder form, sheared mouth with applied short tapered double collar - domed base with sand type pontil, ht. 9 3/8”, near mint; (a small, barely 1/8”, flake on back edge of lip; a bit of typical minor usage wear, otherwise perfect!) Risdon was a prominent family from the Devonshire region of England. A rare seal, outstanding condition. Ex. Charles B. Gardner collection.

Est.: \$750 - \$1,500 • Min. bid: \$400



Lot 282

Black Glass Wine Bottle, America, or possibly England, 1790 - 1810. “I F” (on applied seal). Medium, to deep olive amber, double magnum size cylinder, string rim with bevel - sand type pontil, ht. 14”; (light exterior usage wear, otherwise “attic-found” condition). An extremely rare bottle believed to be a previously undiscovered seal. Possibly blown for Isaac Franks, Revolutionary war hero, merchant, and proprietor of a Philadelphia investment firm, 1790 - 1820.

Est.: \$1,500 - \$2,500 • Min. bid: \$800



Lot 286

Black Glass Wine Bottle, England, 1780 - 1790. “I / WATSON / Efq / BILTON PARK” (on applied glass seal). Medium, clear yellow olive, wide-body squat cylinder, string rim with short wide bevel - sand type pontil scar, ht. 10 1/2”; (some exterior wear and light scratches, primarily on the reverse, including a couple of narrow bands of dullness, but no other form of damage). Nice color and character with plenty of scattered impurities to the glass.

Est.: \$400 - \$800 • Min. bid: \$250



Lot 283

Black Glass Wine Bottle, probably England, 1790 - 1810. “Jon a / Mason. / Boston” (on applied glass seal). Yellow olive with an amber tone, large, magnum cylinder, crudely applied string rim - sand type pontil scar, ht. 12”, near mint; (an 1/8” open surface bubble, otherwise perfect!) A desirable, magnum-size, sealed bottle likely blown for Jonathan Mason, attorney, wine merchant, member of the Federalist party, and US senator and representative from MA, 1800 - 1803.

Est.: \$1,200 - \$2,200 • Min. bid: \$700



Lot 287

Early, Wide Mouth Storage Bottle, probably French, 1830 - 1860. Yellowish olive with a slight amber tone, cylindrical with slightly tapering shoulders and elongated neck, sheared mouth with applied heavy string rim - pushed up base with sand type pontil scar, ht. 9 1/2”, near mint; (just a small patch of faint interior residue, or light haze, a trace of typical light exterior wear, otherwise perfect). A nice clean example, excellent condition.

Est.: \$175 - \$275 • Min. bid: \$100



Lot 284

Black Glass Wine Bottle, England, 1790. “H / Carpenter / 1790” (on applied glass seal). Medium to deep olive, squat cylinder form, applied string rim - sand pontil, ht. 9 1/4”; (a 1/4” flake at the edge of the string rim, and a 1/4” body flake on the reverse, otherwise “cellar found” condition). Believed to have been blown for the wedding of Henry Carpenter and Betty Thomas, at West Buckland, Somerset in 1790. An example resides in the Somerset County Museum.

Est.: \$1,000 - \$2,000 • Min. bid: \$500



Lot 288

Rare, Freeblown Nurser-Type Flask, England, or possibly America, 1730 - 1770. Medium olive, teardrop form flattened on one side, applied string rim - blowpipe pontil scar, length 7 3/4”; (some overall moderate, to heavy, usage wear and fine scratches, but no other form

of damage). A fantastic early blown bottle, very rare form, we have not seen another comparable example of this early period. It was likely the predecessor to the “turtle type” nursers, prevalent during the 19th century.

Est.: \$300 - \$600 • Min. bid: \$150



Lot 289

Black Glass Utility or Medicine Bottle, probably England, possibly America, 1820 - 1835. Medium to deep yellowish olive, early 2-pc. mold, rectangular with wide beveled corners, applied short tapered collar with bevel - rectangular sand-type pontil, ht. 7 7/8"; (an overall light haze or patina to the glass, some light interior haze, a little exterior wear, but no other form of damage). See MW, plate 72. These early black glass utilities were staples of many early 19th century glasshouses.

Est.: \$175 - \$275 • Min. bid: \$100



Lot 293

"COSMOPOLITE" / (image of man with cane, holding a bottle) / "SCHIEDAM", probably Netherlands, 1870 - 1890. Yellowish olive, square tapered gin form, applied sloping collar - smooth base, ht. 10 7/8"; (the bottle may have been lightly cleaned, but certainly presents itself as near mint; a paper-thin, 1/8" x 1/2" open bubble on one of the side panels, otherwise excellent). There are at least nine different "COSMOPOLITE" embossed variants.

Est.: \$100 - \$150 • Min. bid: \$60



Lot 290

Early Rectangular Case Bottle, probably Continental, 1750 - 1770. Clear, light yellowish olive, almost a grass green, rectangular with concave sides giving it an unusual "bowtie" form, probably blown with the aid of an early dip mold, short drawn up neck, applied delicate string rim - blowpipe pontil scar, ht. 7 3/4", perfect! See VdB, plate 208. A very early bottle that likely held a brandy or gin. Nice color, exceptional clarity, condition, and eye-appeal!

Est.: \$400 - \$800 • Min. bid: \$250



Lot 294

Demijohn, probably New England, possibly Connecticut, 1845 - 1860. Medium yellowish olive, cylindrical with gracefully sloping shoulders, dip mold, or possibly freeblown, applied sloping collar - blowpipe pontil scar, ht. 12 3/4", near mint; (a small area of patchy light haze on the interior of the shoulder, and just a touch of light exterior wear, otherwise excellent).

Est.: \$100 - \$200 • Min. bid: \$60



Lot 291

Early Rectangular Case Bottle (with applied blank seal), North Germany, or Scandinavia, 1750 - 1770. Medium olive, rectangular with concave sides, early dip mold, applied string rim - blowpipe pontil scar, ht. 7 1/4"; (a 1 1/4" hairline crack below the shoulder near one of the corners; a bit of minor wear, otherwise near mint). VdB, plate 208, #3. Blank seals are fairly scarce. Diamonds were typically used to inscribe the seal with the owner's name, or contents of the bottle.

Est.: \$150 - \$300 • Min. bid: \$80



Lot 295

Demijohn, New England, probably Westford Glass Works, Westford, Connecticut, 1857 - 1873. Medium to deep olive amber, cylindrical, blown in a 3-pc. mold, applied sloping collar - beveled base edge, sand-type pontil scar, ht. 13 3/4", near mint; (just a few small patches of light interior residue, or faint haze, most of which would likely wash out). Nice character having very seedy, crude glass. This mold with the beveled base edge is believed to be a Westford product.

Est.: \$150 - \$250 • Min. bid: \$80



Lot 292

Lot of (2), Early Case Bottles, Continental or America, 1770 - 1810. Olive amber and olive green, both blown in early dip molds, applied string rim and outward flared "funnel" type collars - blowpipe pontil scars, ht. 9 5/8" and 10 1/4", both near mint; (typical light exterior wear, otherwise perfect). Note; both have a crude star embossed in the base, sometimes associated with Wistarburgh (see DM, p.62). Two attractive, early gin bottles.

Est.: \$200 - \$400 • Min. bid: \$120



Lot 296

Freeblown Demijohn, New England, 1850 - 1870. Clear, light to medium olive through the mid-body, shading to a dense olive green through the neck, flattened apple form, applied sloping collar - heavy sand type pontil scar, ht. 18 3/4"; near mint; (some typical light exterior wear and a minor, 1/8" flake on the edge of the lip; some interior content residue, primarily in the shoulders and neck, most of which would likely soak out). An attractive early demijohn.

Est.: \$300 - \$500 • Min. bid: \$180

Fine Soda Bottles...



...and More



Rare & Choice Figural Bitters Bottles



Lot 130

Lot 142

Lot 129

Lot 137

Lot 133

Exceptional & Colorful Early Medicines



Lot 177

Lot 217

Lot 202

Lot 186

Lot 189

Lot 180

Lot 188

\$4.00

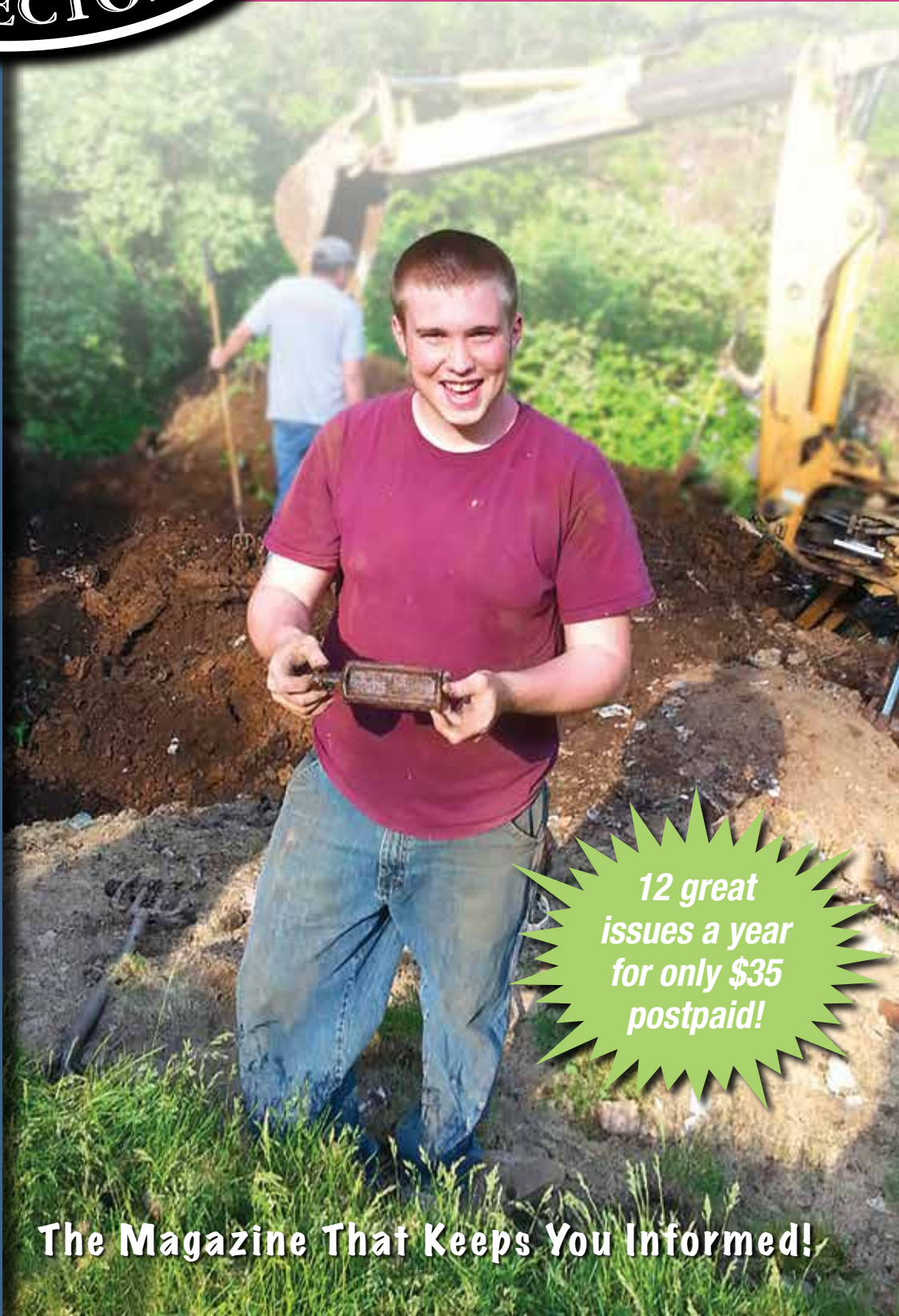
ANTIQUE BOTTLE & GLASS COLLECTOR

Dig Into the
Bottle & Glass Hobby's
#1 Periodical

When you subscribe
to **Antique Bottle & Glass
Collector** magazine,
you'll be getting:

- ▶ The premier monthly publication for the antique bottle and glass community
- ▶ Great articles each month on antique bottles, flasks and jars by some of the leading authorities in the hobby
- ▶ Timely and important information about current events in the world of antique bottles
- ▶ Show and auction reports
- ▶ Buy-sell-trade opportunities
- ▶ Up-to-date calendar of trade shows and conventions
- ▶ And much, much more!

For subscription
information, please call
us at 248.486.0530 or visit
antiquebottlemagazine.com



*12 great
issues a year
for only \$35
postpaid!*

The Magazine That Keeps You Informed!