

# American Glass Gallery<sup>TM</sup>

Auction #24

Opens November 6, 2019

Closes November 19, 2019



Lot 2: Extremely rare and important  
GI-8 Washington - Eagle / "F.L." flask

# Conditions of Sale: Auction #24, including Part VI of The Ralph Finch Collection

## 1. Absentee Auction

The items in this sale will be sold via absentee auction. Closing date:  
**November 19, 2019, 11:00 p.m., EST.**

## 2. Our Guarantee Regarding Descriptions

American Glass Gallery has made every attempt to describe correctly the property being sold. Descriptions are guaranteed to be accurate as regards authenticity, age, condition, and measurements to within one-fourth inch, as represented in this catalog. Items in this catalog are not shown to scale. In describing damage, exterior wear or manufacturer's flaws that in our opinion, do not significantly detract visually or monetarily from the value of the item are not listed and will not be considered for refund. The Auctioneers reserve the right to make verbal corrections and provide additional information at any time during the sale.

## 3. Preview

Items may be viewed by appointment from November 7, 2019 through November 18, 2019.

## 4. Bidding Procedure

You may submit your bids by mail, phone, FAX, email or through our on-line auction site. If bidding by mail or FAX, please fill out the absentee form and return it to us. Your bid, either written or oral, grants American Glass Gallery the authority to protect you up to the amount of your stated bid. Your bid will not be removed once executed.

**Bidding Times:** You can submit your bids anytime after receiving your catalog. Bids may be made by phone, daily, until closing day, November 19, 2019, from 9 A.M. - 6 P.M. Eastern Time. Incoming phone bids will be accepted on the closing day (November 19, 2019) until 11 P.M. Eastern Time. Phone calls and Fax bids after this time will not be honored. No exceptions. You may also place your bids through our on-line auction service 24-hours a day once the site has opened for bidding, on or about November 6, 2019, continuing until 11:00 P.M. Eastern Time, November 19, 2019.

**Please do not wait until the last day or two of the sale to place your bids!** Because many collectors wait until the final few days of the sale to place their bids, we anticipate the telephone and internet bidding to be very busy during that period, so please plan accordingly. In the event of a tie bid, the earliest received bid on the lot will take precedent. We would welcome your bids by phone so that we can answer any questions and assist you in your bidding.

You may also telephone us at any time during the auction, prior to the closing of the sale, to check the status of your bids, to find the current bidding level, to open a bid, or to raise a bid on an auction lot.

### Bidding Increments are as follows:

Up to \$250.00.....	increments of \$10.00
\$250.00 - \$500.00 .....	increments of \$25.00
\$500.00 - \$1,000.00 .....	increments of \$50.00
\$1,000.00 - \$2,500.00 .....	increments of \$100.00
\$2,500.00 - \$5,000.00 .....	increments of \$250.00
\$5,000.00 - \$10,000.00 .....	increments of \$500.00
\$10,000 & Up.....	increments of \$1,000.00

Bids submitted between the above increments, whether by mail, FAX, email or on-line via the internet, will automatically be lowered to the closest lower increment.

This is a minimum bid auction. Bids below the printed minimum will not be accepted.

**An example of how our absentee bidding system works:** You bid \$600.00 on a lot which is the highest bid received to date. The second highest bid is \$450.00. The current high bid level would be yours at \$475.00, one bid increment higher than the other collector's bid. Any additional bids submitted by others below \$600.00 will automatically be topped on your behalf by a representative of American Glass Gallery, up to your stipulated high bid amount. If no further bids on this lot are received beyond the \$450.00, and the under bidder has not requested a "Call Back", then you would have won the lot at \$475.00, not the \$600.00 that you were prepared to pay.

American Glass Gallery will at NO TIME disclose bids pledged by others; only the current "High Bid" level of a lot will be stated upon request. The highest bidder as determined by American Glass Gallery shall be the purchaser. It is the sole right of the auctioneer to settle any dispute between bidders and to regulate the bidding procedure. The auctioneer reserves the right to refuse any bid he believes not to have been made in good faith.

## 5. "Call Back" Process

If requested, the three top bidders of an item at the time of closing will be given a "Call Back" over the next number of days in order to resolve the final sale of an item. You can request this service by "checking" the appropriate box on your absentee bid form or verbal agreement by phone. It is the responsibility of the bidder to insure he has qualified for this service.

**Please note: No "Call Backs" will be executed for bids under \$400.00. In the event of tie bids, the earliest bid received will be the winning bid.**

An example of how the "Call Back" process works: As an example, you have bid \$600.00 on a particular lot. Another bidder has submitted a bid of \$900.00 on the same lot. Assuming that as of the auction closing date you are among the top three bidders on this lot and you have requested a "Call Back", you would receive a call informing you that you have been "Out Bid" and the current "High Bid" is now at \$650.00. If you choose to continue bidding on this lot, you may now do so. Assuming that you now increase your bid to \$700.00, we would accept your bid but also inform you that we have a higher bid on this lot and must bid \$750.00. At this time, an auction between you and American Glass Gallery, representing the collector who submitted the bid of \$900.00, takes place. This bidding would continue until you drop out, or top the other bidders high bid of \$900.00. If the other bidder has not requested a "Call Back" service, you would be awarded the lot. If however, the other bidder also requested a Call Back, we must now call them. If they elect to increase their bid over your high bid, we would in turn call you back. This back and fourth process would continue until one of the bidders declines to go any farther.

If you have requested a "Call Back", the auctioneers will need to contact you on the days immediately following the auction closing between the hours of 8 A.M. and 9 P.M. Eastern Time. Please supply us with all appropriate contact phone numbers including, home, mobile and work numbers. Bidders must provide the appropriate telephone numbers where they can be contacted. If you will be traveling or otherwise unavailable, bidders with "Call Back" privileges will have the responsibility to contact American Glass Gallery twice daily during the Call Back period.

**Please note,** every effort will be made to contact you during the "Call Back" period. However, the bidder will forfeit their rights to a "Call Back" if the auctioneers are unable to reach them. American Glass Gallery reserves the right to discontinue Call Backs on any item in the sale (2) two days after the closing date of the sale. At that time, the current "High Bidder" may be awarded the item even if Call Backs are still outstanding.



# Conditions of Sale: Auction #24, including Part VI of The Ralph Finch Collection

## 6. Terms

**Successful Bidders,** Prompt and full payment is due immediately upon receipt of our invoice. Absolutely no exceptions. Anyone failing to pay for items won will forfeit all rights to bid in any future American Glass Gallery sales. **Any late or delayed payments may result in loss of return privileges for items purchased in the sale.**

**No Items Will Be Mailed Before Full Payment Is Received.**

**Buyer Premium:** Our buyer premium remains unchanged. **It is 15% if paying by cash or check, discounted from 18% if paying by Credit Card or PayPal** (PayPal payment account: jpastor@americanglassgallery.com). This buyer premium will be added to the hammer price as part of the purchase price. For example, if you purchase a lot for \$100.00, you will receive an invoice for \$115.00 if paying by cash, check or money order, plus any applicable sales tax or shipping charges.

**Taxes:** If you are a Michigan resident, a 6% sales tax will be added to your bill unless you have a valid resale number registered with us.

**Shipping:** Shipping, handling and insurance are extra. We ship insured via U.S. Mail. These charges will be added to your bill unless the lots are picked up in person. Oversize packages (boxes with dimensions over 12"), may incur additional shipping charges based on the postal zone of destination. Our charges for shipping (excluding foreign shipments and oversized lots) are \$18.00 for the first item, \$9.00 for each additional item together with extra insurance costs (we use current U.S. Postal Service insurance rates).

*Please allow two to three weeks for delivery after receipt of your check.*

**Payment:** American Glass Gallery accepts Cash, Money Orders, Personal Checks, Visa, MasterCard, American Express and PayPal. **If paying by Credit Card or PayPal, an additional 3% will be added to the invoice total.**



## 7. Refunds

Refunds will be given at the discretion of the Auctioneers. Items purchased must be examined and request for refund made immediately upon receipt of the item or items. Since opinions can differ, particularly in the matter of condition, the Auctioneers will be the sole judge in the consideration of refunds. Refunds requested on the grounds of authenticity must be made within 15 days of the date of the auction, and such refund requests must be accompanied by at least one supporting statement in writing from an authority recognized by the Auctioneers. It is the Auctioneers sincere intention to consider any reasonable request for a refund. **Absolutely no returns for any reason after 30 days following the closing of the sale.**

## 8. Bidding on any item indicates your acceptance of these terms.



American Glass Gallery™

**John R. Pastor**  
**P.O. Box 227**  
**New Hudson, Michigan 48165**  
**Phone: 248.486.0530**  
**Fax: 248.486.0538**  
**www.americanglassgallery.com**  
**email: jpastor@americanglassgallery.com**

## PLEASE NOTE:

*The lots offered in this printed catalog are identical to the lots offered in the on-line catalog. However, due to space constraints of the printed catalog, there may be some further information available regarding some of the lots in the on-line auction descriptions.*

*Please visit us at*

***www.americanglassgallery.com***

*and follow the link to the on-line auction.*

*The link and on-line auction will be available November 6, 2019. A post-auction price list will be available on our website, in printable form, approximately 30 days after the close of the auction.*

*We encourage you to contact us by phone or email with any questions, for assistance with bidding, or further details or clarification on any of the lots in this sale. Your complete satisfaction and confidence is our goal!*

**THANK YOU AND GOOD LUCK  
WITH YOUR BIDS!**

# Reference Key

Reference initials and numbers used in the description of this catalog refer to the following publications:

AHG	<i>American Historical Glass</i> , Bessie M. Lindsey, 1967
AM	<i>The Decanter - An Illustrated History of Glass from 1650</i> , Andy McConnell, 2004
AP	<i>Glass in Early America</i> , Arlene Palmer, 1993.
BA1	<i>Collecting The Cures</i> , Bill Agee, 1969
BA2	<i>Collecting All Cures</i> , Bill Agee, 1973.
BB	<i>A Bit About Balsams</i> , Betty Blasi, 1974
BH	<i>Classification and Documentation of Sunburst and Similar Scent Bottles</i> , Bill Ham, AB&GC, 5/87
B/K	<i>The Glass Industry in Sandwich</i> , Raymond Barlow and Joan Kaiser, 1989.
BPK	<i>A.M. BININGER Bottles</i> , Jim Bender, 2017
C	<i>Ink Bottles and Inkwells</i> , William Covill, 1971.
DB	<i>Antique Sealed Bottles, 1640 - 1900</i> , David Burton, 2015
DeG	<i>American Sarsaparilla Bottles</i> , John DeGrafft, 1980.
DeGII	<i>Supplement to American Sarsaparilla Bottles</i> , John DeGrafft, 2004.
DF	<i>Hair Raising Stories</i> , Don Fadely, 1992.
DM	<i>Wistarburgh, Window Tiles, Bottles and More</i> , Dale L. Murscell, 2007.
F	<i>Inks, 150 Years of Bottles and Companies</i> , Ed and Lucy Faulkner.
FA	<i>John Frederick Amelung, Early American Glassmaker</i> , Lanmon, Palmer, Hume, Brill, Hanson, 1990.
FB	<i>A.S.C.R. The wine bottles of All Souls College</i> , Oxford, 1750 – 1850, Fay Banks.
G	(Flasks) <i>American Bottles &amp; Flasks and Their Ancestry</i> , McKearin & Wilson, 1978.
G	(Blown Three Mold) <i>American Glass</i> (Chapter VI), George S. and Helen McKearin, 1941.
GBH	<i>English Glass For The Collector, 1660-1860</i> , G. Bernard Hughes, 1958.
H	<i>American Bottles in the Charles B. Gardner Collection</i> , Norman C. Heckler, 1975.
JB	<i>Patent and Proprietary Medicine Bottles</i> , Joseph K. Baldwin, 1973
JEB	<i>Glasshouse Whimsies</i> , Joyce E. Blake, 1984.
JH	<i>Glasshouses &amp; Glass Manufacturers of the Pittsburgh Region, 1795 – 1910</i> , Jay W. Hawkins, 2009.
JM	<i>Tea Kettle Ink Price and Reference Guide</i> , Joe L. Mathews Jr., 2016
JS	<i>In glas verpakt – European Bottles, Their history and production</i> , Johan Soetens, 2001.
K	<i>Poison Bottle Workbook</i> , Rudy Kuhn, 1988.
KW	<i>New England Glass &amp; Glassmaking</i> , Kenneth M. Wilson, 1972.
L	<i>The Red Book of Fruit Jars, No. 11</i> , Douglas M Leybourne, Jr., 2014.
LI	<i>Pittsburgh Glass, 1797 – 1891</i> , Lowell Innes, 1976.
Mc	<i>Two Hundred Years of American Blown Glass</i> , Helen and George McKearin, 1950.
McK	<i>American Glass</i> , George S. and Helen McKearin, 1941.
MW	<i>American Bottles &amp; Flasks and Their Ancestry</i> , McKearin & Wilson, 1978.
N	<i>Great American Pontiled Medicines</i> , Frederick Nielson, 1978.
NCH	<i>The Blaske Collection of American Flasks</i> , Norman C. Heckler, 1983.
NCH II	<i>The Blaske Collection: Part II</i> , Norman C. Heckler, 1983.
Odell I	<i>Indian Bottles and Brands</i> , John Odell, 1977
Odell II	<i>Pontiled Medicine Encyclopdia</i> , John Odell, 2007
O&S	<i>Warner's Reference Guide</i> , Ed Ojea and Jack Stecher, 1998.
P	<i>The Glass Gaffers of New Jersey</i> , Adeline Pepper, 1971.
RD	<i>Understanding Antique Wine Bottles</i> , Roger Dumbrell, 1983.
RF	<i>The Bottle Book: A Comprehensive Guide to Historic, Embossed Medicine Bottles</i> , Richard Fike, 1987
RH	<i>Collecting Barber Bottles</i> , Richard Holiner, 1986.
R/H	<i>Bitters Bottles</i> , Carlyn Ring and W. C. Ham, 1998.
RWL	<i>Antique Fakes &amp; Reproductions</i> , Ruth Webb Lee, 1950
T	<i>Collectors Guide to Saratoga Type Mineral Water Bottles</i> , Donald Tucker, 2005.
V	<i>Nailsea Glass</i> , Keith Vincent, 1975
VdB	<i>Antique Glass Bottles; Their History and Evolution</i> , Willy Van den Bossche, 2001.
WL	<i>A Wine-Lover's Glasses, The A.C. Hubbard, Jr. Collection</i> , Ward Lloyd, 2000.
Z	<i>Ketchup, Pickles, Sauces</i> , Betty Zumwalt, 1980.
ZW	<i>Color Hutchinsons</i> , Zang Wood, 1999.

- The dash is generally used to indicate that the descriptions are on opposite sides of the bottle or flask.

/ The slash is used to indicate that the descriptions are on different lines or surfaces of the bottle.

Detail of Lot 133

# BASS BROOK



TRADE

MARK

## BALTIMORE RYE

### SAM'L BASS

BALTIMORE, MD.



After 47 years of bottle collecting, Joe has decided that it is time to pass on his prized Indian Queens to another generation.

Joe joined the Metropolitan Detroit Antique Bottle Club in 1974 and acquired his first Queen in 1976, from the late Don Finch of Washington State. Joe's first glass focus really was on bitters in general, and Fish Bitters in particular. Then, in the 1991 auction of the late Cris Batdorff of Michigan, Joe started giving queens the royal treatment.

Four of Joe's 11 queens came from early GWA auctions, a fifth from the 1992 Harmer Rooke sale of the late Edwin Bitter's collection. Six of his queens came from private deals, including his favorite:

"It's the darkest one I've ever seen — it's black. I got this from Ohio's Elvin Moody" around 2000. "He brought it to a Mansfield (Ohio) show especially for me." And the rarest queen? It's aqua, and probably one of only four known.

For more about the Joe Kray Collection, see the July 2019 issue of *Antique Bottle & Glass Collector*.



Joe Kray

## Choice examples from the Joe Kray Collection of Indian Queens



Lot 175

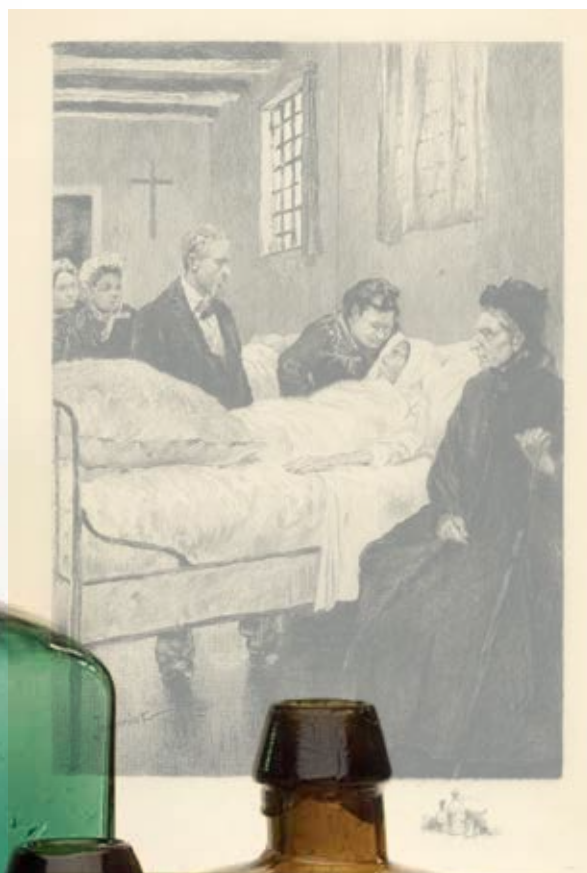
Lot 176

Lot 173

Lot 177

Lot 174

# Rare & Colorful Pontilled Medicine Bottles



Lot 220

Lot 214



Lot 222

Lot 221

Lot 224



# Rare Colored Sandwich-Type Glass





# Rare & Choice Cathedral Pickle Bottles





### Lot 1

**"GENERAL WASHINGTON" / BUST OF WASHINGTON - EAGLE Historical Flask**, an early Pittsburgh district glasshouse, 1825 - 1835. Rich, greenish aquamarine, sheared mouth - blowpipe pontil scar, Pt; (a trace of minor light wear, otherwise very near mint). GI-2. A great early beaded Washington flask having a crisp, very bold impression. A lot of bottle for the money.

*Est.: \$250 - \$500 • Min. bid: \$140*



### Lot 5

**WASHINGTON - EAGLE Historical Flask**, probably Bridgeton Glass Works, Bridgeton, NJ, or possible Baltimore Glass Works, 1836 - 1850. Colorless with an amethystine tint, sheared mouth - blowpipe pontil scar, Qt, perfect! GI-26. A comparatively scarce, big, beautiful, attractive flask, one that does not come around often. In addition, this example is in virtually 'out-of-the-mold' pristine condition.

*Est.: \$800 - \$1,600 • Min. bid: \$400*



### Lot 2

**"G. G. WASHINGTON" / BUST OF WASHINGTON - "PITTSBURGH" / EAGLE / "F.L." Historical Flask**, Frederick R. Lorenz & Co, 1825 - 1835. Greenish aquamarine, sheared mouth - blowpipe pontil scar, Pt, near mint; (some fine high point wear as well as a pinhead flake on the top of the sheared mouth, otherwise perfect). GI-8. A great rarity! Considered the most desirable of the early Washingtons. James Chebalo collection; Ex. Paul Richards, Warren C. Lane, Jr. collections.

*Est.: \$22,000 - \$34,000 • Min. bid: \$11,000*



### Lot 6

**"WASHINGTON" / BUST OF WASHINGTON - "JACKSON" / BUST OF JACKSON Historical Flask**, Keene Marlboro Street Glassworks, Keene, NH, 1825 - 1842. Rich olive amber, almost a tobacco coloration, sheared mouth - blowpipe pontil scar, Pt, virtually perfect; (only a very faint trace of wear, otherwise pristine perfect). GI-31. A top example of this mold with crisp, very bold embossing, good color, outstanding condition. Both this, and the next lot, are fantastic examples!

*Est.: \$300 - \$500 • Min. bid: \$150*



### Lot 3

**"G. WASHINGTON." / BUST OF WASHINGTON - EAGLE Historical Flask**, an early Pittsburgh district glasshouse, 1825 - 1835. Aquamarine, sheared mouth - blowpipe pontil scar, Pt, near mint; (just a slight bit of typical faint wear, barely noticeable, and a paper-thin 1/8" flake on top of the lip, otherwise perfect). GI-10. A bright, clean example of this scarce early beaded Washington flask.

*Est.: \$700 - \$900 • Min. bid: \$350*



### Lot 7

**"WASHINGTON" / BUST OF WASHINGTON - "JACKSON" / BUST OF JACKSON Historical Flask**, Keene Marlboro Street Glassworks, Keene, NH, 1825 - 1842. Medium-to-deep olive coloration with a slight amber tone, sheared mouth - blowpipe pontil scar, Pt, virtually perfect; (just a very slight trace of faint wear, otherwise pristine). GI-31. A scarce color for this flask (most being shades of olive amber) and, in addition, having a bold, very strong impression. Another top example.

*Est.: \$400 - \$600 • Min. bid: \$200*



### Lot 4

**WASHINGTON - EAGLE Historical Flask**, a Pittsburgh district glasshouse, 1825 - 1835. Rich aquamarine, sheared mouth - blowpipe pontil scar, Pt, virtually perfect; (a shallow pontil flake extends to the edge of the narrow base; it is almost certainly in-making and not considered damage, but mentioned for complete accuracy). GI-11. A rare mold nicknamed the "Washington vines" flask. A beauty of an example, bright, clean and sparkling. Ex. James Becker collection.

*Est.: \$800 - \$1,200 • Min. bid: \$400*



### Lot 8

**"THE FATHER OF HIS COUNTRY" / BUST OF WASHINGTON - "DYOTTVILLE GLASS WORKS PHILAD.A / GEN. TAYLOR NEVER SURRENDERS" / BUST OF TAYLOR Historical Flask**, Dyottville Glass Works, 1848 - 1855. Beautiful, medium-to-deep strawberry puce, applied square collar - smooth base, Qt, virtually "out-of-the-mold" pristine perfect; (only the slightest trace of wear). GI-37. Beautiful scarce color, great impression, outstanding condition.

*Est.: \$2,500 - \$4,500 • Min. bid: \$1,300*





### Lot 9

**"THE FATHER OF HIS COUNTRY" / BUST OF WASHINGTON - "DYOTTVILLE GLASS WORKS PHILAD.A / GEN. TAYLOR NEVER SURRENDERS" / BUST OF TAYLOR Historical Flask**, Dyottville Glass Works, 1848 - 1855. Brilliant yellow green with an olive tone, almost an olive-yellow, applied square collar - smooth base, Pt, perfect. GI-38. A spectacular example in a beautiful and rare eye-appealing color. Ex. Jack Whistance, Bob Mebane collections.

*Est.: \$5,000 - \$8,000 • Min. bid: \$2,500*



### Lot 13

**"THE FATHER OF HIS COUNTRY" / BUST OF WASHINGTON - (Reverse plain) Historical Flask**, probably Lockport Glass Works, Lockport, NY, 1848 - 1855. Clear, light-to-medium blue green, applied collar with band - blowpipe pontil scar, Pt; (only the slightest trace of light wear, otherwise sparkling attic mint). GI-48. Crisp, bold embossing, very heavily whittled, attractive and desirable with the applied collar. A great example!

*Est.: \$600 - \$900 • Min. bid: \$300*



### Lot 10

**"THE FATHER OF HIS COUNTRY" / BUST OF WASHINGTON - "DYOTTVILLE GLASS WORKS PHILAD.A / GEN. TAYLOR NEVER SURRENDERS" / BUST OF TAYLOR Historical Flask**, Dyottville Glass Works, 1848 - 1855. Deep yellowish olive, sheared mouth - blowpipe pontil scar, Pt; (some minor wear, primarily on the reverse; a 3/16" chip on the inside edge of the lip, a tiny pinhead flake on outer edge, otherwise excellent). GI-38. A very rare color.

*Est.: \$1,500 - \$2,500 • Min. bid: \$800*



### Lot 14

**BUST OF WASHINGTON / "WASHINGTON" - BUST OF TAYLOR / "G. Z. TAYLOR" Historical Flask**, America, 1850 - 1860. Medium-to-deep emerald coloration, applied sloping collar - blowpipe pontil scar, pt; (some scattered exterior wear, and a couple of open bubbles, one on the shoulder with a 1/4" opening in the cover glass and another paper-thin 1/4" open bubble near the side). GI-50. Beautiful rich color.

*Est.: \$700 - \$1,000 • Min. bid: \$350*



### Lot 11

**"THE FATHER OF HIS COUNTRY" / BUST OF WASHINGTON - "GEN. TAYLOR NEVER SURRENDERS" / BUST OF TAYLOR Historical Flask**, probably Dyottville Glass Works, 1848 - 1855. Medium emerald, sheared mouth - blowpipe pontil scar, Qt; (some exterior wear, a 1/8" open bubble as well a minor pinhead flake on the lip, and also at edge of base, otherwise excellent). GI-39. Excellent character with plenty of bubbles, impurities and frothiness to the glass.

*Est.: \$400 - \$600 • Min. bid: \$200*



### Lot 15

**BUST OF TAYLOR / "ROUGH AND READY" - "MAJOR" / BUST OF RINGGOLD / "RINGGOLD." Historical Flask**, possibly Baltimore Glass Works, Baltimore, MD, 1846 - 1850. Gorgeous, light pinkish-amethyst, sheared mouth - blowpipe pontil scar, Pt, perfect! GI-71. Bright, clean and sparkling, strong mold impression, beautiful color, a very attractive flask.

*Est.: \$1,200 - \$2,400 • Min. bid: \$600*



### Lot 12

**"THE FATHER OF HIS COUNTRY" / BUST OF WASHINGTON - "A LITTLE MORE GRAPE CAPTAIN BRAGG" / BUST OF TAYLOR Historical Flask**, probably Dyottville Glass Works, 1848 - 1855. Cobalt blue, sheared mouth - large blowpipe pontil scar, Qt; (some scattered high point wear and light scratches, a little more so on the reverse, a pinhead flake at edge of base). GI-42. A desirable mold, good impression, great color!

*Est.: \$3,000 - \$6,000 • Min. bid: \$1,500*



### Lot 16

**"GENL TAYLOR" / BUST OF TAYLOR - "FELLS POINT" / MONUMENT / "BALTO" Historical Flask**, Baltimore Glass Works, 1847 - 1855. Medium-to-deep yellowish green, sheared mouth - blowpipe pontil scar, Pt, near mint; (a little typical, scattered, minor exterior wear, otherwise excellent). GI-73. A scarce flask in a beautiful and very rare color! Only a small handful are known to exist in this, or similar color. Bright, clean, attractive and rare.

*Est.: \$4,000 - \$8,000 • Min. bid: \$2,000*

**Lot 17**

**"ROUGH AND READY" / BUST OF TAYLOR - "MASTERSON" / EAGLE Historical Flask**, probably Pittsburgh district, or possibly Kentucky Glass Works, 1848 - 1855. Aquamarine, sheared mouth - blowpipe pontil scar, Qt, near mint; (a little minor high point wear, otherwise perfect). GI-77. List by McKearin as "Very rare", and deservedly so. A desirable, hard-to-find flask, especially in this fine condition. Ex. Roy and Barbara Brown collection (Skinner sale #1030, 6/85).

**Est.: \$1,400 - \$2,400 • Min. bid: \$700**

**Lot 18**

**"GENL LA FAYETTE" / BUST OF LA-FAYETTE - EAGLE Historical Flask**, probably Knox & McKee, Wheeling, WV, 1824 - 1830. Blue green, sheared mouth - blowpipe pontil scar, Pt, very near mint; (small, in-making pontil flake extends to the edge of the narrow base, otherwise pristine). GI-93. A fantastic example, strong mold impression, virtually no high point wear, and nice color! A rare and historical flask blown to commemorate Lafayette's 1824 - 1825 visit to America.

**Est.: \$4,000 - \$6,000 • Min. bid: \$2,000**

**Lot 19**

**"JENY LIND" / BUST OF JENY LIND - STAR / "GLASS FACTORY" / GLASS FACTORY Historical Calabash**, probably Whitney Glass Works, Glassboro, NJ, 1857 - 1862. Aquamarine, applied sloping collar - blowpipe pontil scar, Qt, sparkling attic mint! GI-102. Per McKearin, a "Comparatively scarce" mold, which we would whole-heartedly agree with. A beautiful example from the Whitney Glass Works, bright, clean and sparkling.

**Est.: \$150 - \$250 • Min. bid: \$80**

**Lot 20**

**BUST OF JENY LIND / LYRE - (Reverse same), Historical Flask**, probably McCarty & Torreyson Glass Works, Wellsburg, WV, 1850 - 1855. Rich, deep aquamarine, sheared mouth - blowpipe pontil scar, Pt, virtually attic mint; (only the slightest trace of faint wear, otherwise perfect!) GI-108. Scarce. A fantastic example having deep color, a strong mold impression and outstanding condition. Provenance: John Apple collection.

**Est.: \$800 - \$1,200 • Min. bid: \$400**

**Lot 21**

**"KOSSUTH" / BUST OF KOSSUTH - TREE Historical Calabash**, America, 1852 - 1860. Medium topaz coloration, applied sloping collar with bevel - blowpipe pontil scar, Qt, perfect. GI-113. A very rare and unusual color for this mold, almost a ginger ale or gasoline tone below the shoulders. In addition a crisp, strong, mold impression with some nice whittling and character to the glass.

**Est.: \$500 - \$800 • Min. bid: \$250**

**Lot 22**

**"KOSSUTH" / BUST OF KOSSUTH - TREE Historical Calabash**, America, 1852 - 1860. Brilliant olive yellow, applied sloping collar with bevel - blowpipe pontil scar, Qt, virtually attic mint; (just a trace of very faint wear, otherwise pristine). GI-113. A clean, bright, very attractive example, excellent condition, beautiful color!

**Est.: \$400 - \$600 • Min. bid: \$200**

**Lot 23**

**BUST OF WEBSTER / BUST OF CLAY Historical Flask**, Granite Glass Works, probably 1852 - 1860. Light yellowish olive amber, sheared mouth - blowpipe pontil scar, 1/2 Pt; (slight trace of faint wear on reverse, otherwise pristine perfect!) GI-114. A very light example, outstanding character, bubbly glass. Thanks to a recent discovery by Anthony Picadio, the busts on this flask, previously undocumented, have been conclusively shown to be that of Daniel Webster and Henry Clay.

**Est.: \$200 - \$400 • Min. bid: \$100**

**Lot 24**

**BUST OF WEBSTER / BUST OF CLAY Historical Flask**, Granite Glass Works, probably 1852 - 1860. Delicate, light-to-medium olive green, sheared mouth - blowpipe pontil scar, 1/2 Pt, near mint; (only a touch of very faint wear, and a 3/16" chip at edge of base at medial rib). GI-114. The busts on this mold were previously theorized to be Byron and Scott, but without basis for attribution. A very interesting historical flask in a very scarce color (most are in shades of amber).

**Est.: \$200 - \$400 • Min. bid: \$100**





### Lot 25

**EAGLE - CORNUCOPIA Historical Flask**, an early Pittsburgh district glasshouse, Pittsburgh, PA, 1825 - 1835. Bright aquamarine, sheared mouth - blowpipe pontil scar, ½ Pt, virtually attic mint; (only the slightest trace of faint wear, otherwise perfect). GII-16. A rare mold, great example, bright, clean and sparkling. These don't come around often, especially in this fine condition.

*Est.: \$400 - \$800 • Min. bid: \$200*



### Lot 29

**EAGLE - CLUSTER OF GRAPES Historical Flask**, probably Coffin & Hay Glass Manufacturers, Hammonton, NJ, 1838 - 1847. Aquamarine, sheared mouth - blowpipe pontil scar, ½ Pt, 'out-of-the-mold' pristine perfect! GII-56. A rare little flask, beautifully detailed mold, outstanding condition, bright, clean and sparkling. A top example.

*Est.: \$400 - \$800 • Min. bid: \$200*



### Lot 26

**EAGLE - EAGLE Historical Flask**, probably Kentucky Glass Works, Louisville, KY, 1850 - 1855. Clear, light yellowish-green, sheared mouth - blowpipe pontil scar, Pt; (a 1/8" flake at edge of sheared lip, and a potstone on the surface of the glass near the base with a tiny flake and small area of iridescence around it, otherwise attic mint). GII-24. A beautiful example having a crisp, very bold impression, and virtually no exterior wear. Scarce color.

*Est.: \$300 - \$600 • Min. bid: \$150*



### Lot 30

**"LIBERTY"/ EAGLE - "WILLINGTON / GLASS, Co / WEST WILLINGTON / CONN" Historical Flask**, 1855 - 1865. Rich golden amber with strong reddish orange tones, applied round collar with bevel - smooth base, Qt, near mint; (only the slightest trace of wear including a couple minuscule open surface bubbles and a small potstone on the surface of the base edge with a tiny bit of iridescence around it, otherwise perfect). GII-61. Beautiful color, crude, seedy, bubbly glass, heavily whittled!

*Est.: \$500 - \$800 • Min. bid: \$250*



### Lot 27

**EAGLE - CORNUCOPIA Historical Flask**, probably an early Monongahela or Pittsburgh district glasshouse, 1825 - 1835. Brilliant aquamarine, sheared mouth - blowpipe pontil scar, ½ Pt, sparkling attic mint; (note, an in-manufacture pontil flake extends to the edge of the narrow base, and is not considered damage, but mentioned for complete accuracy). GII-45. A scarce mold, outstanding example, no wear, bright and clean, and with a crisp, very bold impression to boot!

*Est.: \$250 - \$500 • Min. bid: \$140*



### Lot 31

**"LIBERTY"/ EAGLE - "WILLINGTON / GLASS, Co / WEST WILLINGTON / CONN" Historical Flask**, 1855 - 1865. Medium shading to deep olive green, applied sloping collar - smooth base, Qt, very near mint; (a little roughness on the top edge of the lip due primarily to some in-manufacture crazing that occurred when the flask was blown). GII-61. Strong embossing and mold impression, virtually "out-of-the-mold", mint condition with almost no wear.

*Est.: \$800 - \$1,200 • Min. bid: \$400*



### Lot 28

**EAGLE - CLUSTER OF GRAPES Historical Flask**, probably Coffin & Hay Glass Manufacturers, Hammonton, NJ, 1838 - 1847. Aquamarine, sheared mouth - blowpipe pontil scar, Qt, near mint; (just a minor touch of light high point wear, otherwise perfect). GII-55. A big, bright, clean example.

*Est.: \$150 - \$250 • Min. bid: \$80*



### Lot 32

**"LIBERTY"/ EAGLE - "WILLINGTON / GLASS, Co / WEST WILLINGTON / CONN" Historical Flask**, 1850 - 1860. Medium shading to deep olive green, sheared mouth - heavy sand-type pontil scar, Qt; (only the slightest trace of wear and a couple of minor open surface bubbles, otherwise virtually attic mint). GII-61. The Qt is rare and very difficult to find with a pontil scarred base. In addition, excellent condition with very little wear and no issues with the lip.

*Est.: \$1,500 - \$2,500 • Min. bid: \$800*



### Lot 33

**"LIBERTY"/ EAGLE - "WILLINGTON / GLASS / Co / WEST WILLINGTON / CONN" Historical Flask**, 1850 - 1860. Medium to deep olive green, sheared mouth - blowpipe pontil scar, ½ Pt; (a minor pinhead flake on the edge of the sheared lip; a tiny bit of roughness on the inner edge of the sheared lip, and a little scattered light wear). GII-63. Nice having the pontil scarred base.

**Est.: \$400 - \$600 • Min. bid: \$200**



### Lot 37

**EAGLE - EAGLE Historical Flask**, an early Stoddard, NH glasshouse, 1845 - 1860. Medium olive green, sheared mouth - blowpipe pontil scar, Pt; (just a slight trace of minor light wear, otherwise perfect). GII-84. Rare in this pure green coloration, a great example having no trace of amber, bright, clean and in excellent condition. Examples like this don't come around often.

**Est.: \$300 - \$600 • Min. bid: \$150**



### Lot 34

**"LIBERTY"/ EAGLE - "WILLINGTON / GLASS, Co / WEST WILLINGTON / CONN" Historical Flask**, 1850 - 1860. Medium to deep olive green, sheared mouth - blowpipe pontil scar, Pt, virtually perfect; (just a slight trace of faint wear). GII-64. An excellent example, outstanding condition, and with some whittling and character to the glass. Very scarce with the pontil scarred base.

**Est.: \$500 - \$800 • Min. bid: \$250**



### Lot 38

**MASONIC ARCH - EAGLE / "KCCNC" Historical Flask**, Keene Marlboro Street Glassworks, Keene, NH 1820 - 1830. Medium olive amber shading to a deep olive amber near the base, sheared mouth - blowpipe pontil scar, Pt, virtually attic mint; (only the slightest trace of faint wear, otherwise pristine perfect). GIV-18. Above average, strong mold impression, nice color (not 'muddy'), and outstanding condition!

**Est.: \$250 - \$400 • Min. bid: \$140**



### Lot 35

**EAGLE / "GRANITE. / GLASS. CO" - EAGLE / "STODDARD / NH" Historical Flask**, Granite Glass Works, 1846 - 1862. Beautiful yellowish olive amber with some rich golden tones in the shoulders and neck, sheared mouth - blowpipe pontil scar, Pt; (a couple of small, 1/16" flakes on the lip, and a small potstone in the base with a little iridescence and tiny radiations, otherwise attic mint). GII-81. A beautiful, attractive example with pleasing color, clarity and character.

**Est.: \$150 - \$250 • Min. bid: \$80**



### Lot 39

**MASONIC ARCH - EAGLE / "KCCNC" Historical Flask**, Keene Marlboro Street Glassworks, Keene, NH 1820 - 1830. Medium yellowish olive amber, sheared mouth - blowpipe pontil scar, Pt, attic mint! GIV-20a. Note; this is the 20a mold with the faint dots on the shoulder above the curved ribbon. Listed as "Rare" by McKearin, this is almost certainly the most difficult mold of the #17 through #21 Keene Masonics to acquire. A great example having almost no high point wear.

**Est.: \$300 - \$500 • Min. bid: \$150**



### Lot 36

**EAGLE - EAGLE / "STODDARD / N.H." Historical Flask**, Granite Glass Works, 1846 - 1862. Medium olive amber, sheared mouth - blowpipe pontil scar, Pt, very near mint; (just a slight trace of faint wear including a minor pinhead flake on the edge of the lip, otherwise perfect). GII-82. Another very nice example, this one having a bit more of an olive tone.

**Est.: \$200 - \$300 • Min. bid: \$100**



### Lot 40

**MASONIC ARCH - EAGLE Historical Flask**, Keene Marlboro Street Glassworks, Keene, NH, 1820 - 1830. Olive amber with a little more of an olive tone than most, sheared mouth - blowpipe pontil scar, Pt, near mint; (just a slight touch of faint wear, and a ¾" area of minor in-making roughness along the sheared lip due to glass gall or pitting, otherwise perfect). GIV-21. As noted by McKearin, a comparatively scarce mold, overall excellent condition.

**Est.: \$250 - \$400 • Min. bid: \$140**





### Lot 41

**MASONIC - EAGLE Historical Flask**, Keene Marlboro Street Glassworks, Keene, NH, 1820 - 1830. Clear medium olive amber below the shoulders, almost an olive-yellow coloration, shading to a rich, medium-to-deep olive amber through the neck and base, sheared mouth - blowpipe pontil scar, ½ Pt, near mint; (some typical, relatively minor high point wear, otherwise perfect). GIV-24. A beautiful, very attractive, bright, clean example!

*Est.: \$300 - \$500 • Min. bid: \$150*



### Lot 45

**"CORN FOR THE WORLD" / EAR OF CORN - MONUMENT / "BALTIMORE" Historical Flask**, Baltimore Glass Works, 1850 - 1860. Aquamarine, sheared mouth - blowpipe pontil scar, Qt, very near mint; (just a touch of minor exterior wear, otherwise perfect). GVI-5. A very scarce mold, (listed as "Rare" by McKearin). You will likely see 10 or more of the GVI-4 molds before you will find another GVI-5 mold. Bright, clean, and with excellent character having a pebbly texture to the glass.

*Est.: \$250 - \$450 • Min. bid: \$140*



### Lot 42

**ALL SEEING EYE (Inside 6-Pointed Star) / "A D" - RAISED ARM AND 6-POINTED STAR / "G R J A" Historical Flask**, probably an early Stoddard, NH glasshouse, 1842 - 1850. Yellowish olive amber, sheared mouth - blowpipe pontil scar, Pt; (a minor touch of typical light wear, and a little washable interior residue). GIV-43. A nice example, this one being pontiled. Note; an early Harmer Rooke Gallery tag remains on the base.

*Est.: \$300 - \$500 • Min. bid: \$150*



### Lot 46

**"CORN FOR THE WORLD" / EAR OF CORN - MONUMENT / "BALTIMORE" Historical Flask**, Baltimore Glass Works, 1845 - 1855. Delicate, clear light-to-medium olive green, sheared mouth - blowpipe pontil scar, ½ Pt; (an early 'pioneer collector' repair to the neck which has a 1" crack and a small "v" shape missing piece from the lip). GVI-7. A scarce, desirable mold, rare in color! Nice clarity, beautiful and attractive color, despite the damage, a little sweetheart of a flask.

*Est.: \$800 - \$1,600 • Min. bid: \$400*



### Lot 43

**ALL SEEING EYE (Inside 6-Pointed Star) / "A D" - RAISED ARM AND 6-POINTED STAR / "G R J A" Historical Flask**, probably an early Stoddard, NH glasshouse, 1842 - 1850. Bright, yellowish olive amber, applied sloping collar - smooth base, Pt; (some exterior high point wear, as is typical for this mold, otherwise very near mint). GIV-43. This example is a little lighter in tone and attractive having the applied collar.

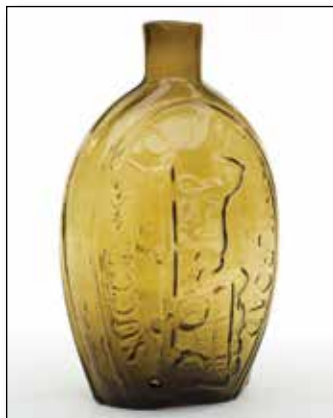
*Est.: \$300 - \$500 • Min. bid: \$150*



### Lot 47

**SUNBURST FLASK**, Baltimore Glass Works, Baltimore, MD, 1820 - 1830. Pale greenish aquamarine, sheared mouth - blowpipe pontil scar, ½ Pt; (just the slightest trace of faint wear, otherwise sparkling, virtually "out-of-the-mold" pristine condition). GVIII-25. A comparatively scarce mold, and very scarce in this outstanding condition. A great looking, beautiful example.

*Est.: \$300 - \$500 • Min. bid: \$150*



### Lot 44

**"SUCCESS TO THE RAILROAD" / HORSE PULLING CART - (Reverse same) Historical Flask**, Keene Marlboro Street Glassworks, Keene, NH 1830 - 1842. Brilliant, light yellowish olive amber, almost an olive yellow, sheared mouth - blowpipe pontil scar, Pt, virtually perfect; (tiny, pinhead open surface bubble, otherwise sparkling atic mint!) GV-3. An absolutely fantastic example, lighter and brighter than most, and with a strong, better than average impression. A great example!

*Est.: \$400 - \$800 • Min. bid: \$200*



### Lot 48

**SCROLL FLASK**, Midwest, 1850 - 1860. Light-to-medium apple green, rough sheared mouth - heavy red iron pontil scar, Qt; (a little light interior residue or faint haze, some of which would likely wash out, and some roughness or flaking around the top of the rough sheared mouth, most of which almost certainly occurred in-manufacture). GIX-1. Provenance: John Apple collection, Ex. David Beadle collection.

*Est.: \$300 - \$600 • Min. bid: \$150*



### Lot 49

**SCROLL FLASK**, Midwest, 1845 - 1860. Medium-to-deep sapphire blue, sheared mouth - blowpipe pontil scar, Qt, perfect! GIX-2a. An absolutely gorgeous example, beautiful scarce color, impressive and eye-appealing, in absolutely attic mint condition! These large Scrolls are certainly scarcer than the pints, and often have some condition issues. This example has the great color, character, and condition. Provenance: John Apple collection, Ex. Tom McCandless collection.

*Est.: \$4,000 - \$8,000 • Min. bid: \$2,000*



### Lot 53

**SCROLL FLASK**, Midwest, 1845 - 1860. Aquamarine, applied collar with ring - light iron pontil scar, Pt, very near mint; (just a touch of typical light high point wear and a small paper-thin flake from the edge of the applied collar, otherwise perfect). GIX-10 variant. An unlisted mold having six rivet or nail-head type rings around the base of the neck.

*Est.: \$120 - \$180 • Min. bid: \$60*



### Lot 50

**SCROLL FLASK**, Midwest, 1850 - 1860. Gorgeous yellow coloration with a slight olive tone and some warmer honey tones, sheared mouth - red iron pontil scar, Qt, virtually attic mint; (slight trace of faint wear, otherwise perfect). GIX-2. A bright, clean example, beautiful scarce color. Provenance: From the estate of an early glass collection assembled by a University of Michigan professor.

*Est.: \$1,800 - \$3,600 • Min. bid: \$900*



### Lot 54

**SCROLL FLASK**, Midwest, 1845 - 1860. Deep blue green coloration, sheared mouth - blowpipe pontil scar, Pt, very near mint; (just the slightest trace of wear, and a small touch of very minor interior residue or milkiness, likely washable, otherwise pristine perfect). GIX-10a. This example was sold through a Glass Works Auction (95), in 2012. A very scarce-to-rare color for a Scroll that does not come around often! Provenance: John Apple collection.

*Est.: \$800 - \$1,600 • Min. bid: \$400*



### Lot 51

**SCROLL FLASK**, Midwest, 1840 - 1860. Golden amber with a root beer tone, sheared, tooled and inward rolled mouth - blowpipe pontil scar, Qt; (a little scattered minor exterior wear including a few pinhead open surface bubbles; a small potstone in a side rib has a couple of tiny, 1/16", cooling radiations, otherwise very near mint). GIX-3. Unusual mouth treatment. The inward rolled lip creates a small ring collar. An attractive Scroll. John Apple collection, Ex. Mike Roberts collection.

*Est.: \$500 - \$1,000 • Min. bid: \$250*



### Lot 55

**SCROLL FLASK**, Midwest, probably Ravenna Glass Works, 1857 - 1860. Deep sapphire blue, sheared mouth - iron pontil scar, Pt, virtually perfect; (only a slight trace of wear, and a band of very faint interior milkiness in the lower half of the flask, otherwise sparkling attic mint). Likely GIX-10e. Plump oval base, 8-pointed lower stars, upper stars are smaller and indistinct, but appear to be 8 and 9 point. A beautiful Scroll, scarce mold, outstanding condition! Provenance: John Apple collection.

*Est.: \$2,500 - \$4,500 • Min. bid: \$1,300*



### Lot 52

**SCROLL FLASK**, Midwest, 1850 - 1860. Rich, medium amber, sheared mouth with an applied ring-type collar - heavy red iron pontil scar, Pt, virtually perfect; (only the slightest trace of minor wear). GIX-10. A very nice example having plenty of bubbles and stretch marks through the neck, outstanding condition, and plenty of eye-appeal with the finished ring-type collar, certainly more difficult to obtain than the sheared lip examples.

*Est.: \$400 - \$600 • Min. bid: \$200*



### Lot 56

**SCROLL FLASK**, Midwest, 1840 - 1860. Bright, medium yellowish apple green, sheared mouth - blowpipe pontil scar, Pt, virtually perfect; (only the slightest trace of minor wear, otherwise sparkling attic mint). GIX-11. A great example, beautiful color, fantastic condition. Note: The base on this example has a broad, concave rib that extends the width of the base, from side-to-side, similar to the base of the GIX-20 mold. Provenance: John Apple collection, Ex. Tom McCandless collection.

*Est.: \$500 - \$800 • Min. bid: \$250*

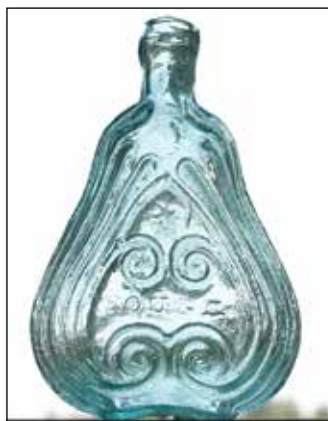




### Lot 57

**SCROLL FLASK**, Midwest, 1840 - 1860. Clear, medium teal green coloration, sheared and tooled lip - blowpipe pontil scar, Pt, attic mint! GIX-11a. A very pretty and scarce-to-rare color. It definitely has a delicate teal greenish tone, and is the only example that we can recall seeing in this color. In addition, some nice whit-ting or waviness to the glass, good impression, (distinct stars), and with outstanding clarity. A great example. Provenance: John Apple collection.

*Est.: \$500 - \$800 • Min. bid: \$250*



### Lot 61

**"ROUGH - & READY" SCROLL FLASK**, Midwest, probably 1848 - 1855. Aquamarine, crudely sheared mouth - blowpipe pontil scar, Pt; (a ½" crack in the side of the neck, some washable interior residue). GIX-28. Noted by McKearin as "Extremely rare", (less than 10 known specimens). An extremely important and historical Scroll Flask. Provenance: John Apple collection; Ex. Edmund and Jayne Blaske collection.

*Est.: \$1,200 - \$2,400 • Min. bid: \$600*



### Lot 58

**SCROLL FLASK**, Midwest, 1840 - 1860. Honey amber, sheared mouth - blowpipe pontil scar, Pt; (a 3/16" chip at the edge, on the side of the sheared lip; some interior haze and a little minor high point wear). GIX-14. As noted by McKearin, the GIX-14 is a comparatively scarce mold. Nice light color. If desired, a light professional interior cleaning would likely brighten it up. Provenance: John Apple collection.

*Est.: \$400 - \$600 • Min. bid: \$200*



### Lot 62

**Lot of (2), SCROLL FLASKS**, Midwest, 1845 - 1860. Both are aquamarine, applied collars with flat band - iron pontil scarred bases, ½ Pts; (1st example is bright, clean, and sparkling perfect; 2nd example has some overall light haze, and a ½" area of minor roughness on the edge of the lip, but no other form of damage). Both GIX-31. Provenance: John Apple collection; 2nd example, John Apple collection; Ex. Blaske collection (Lot 811).

*Est.: \$150 - \$250 • Min. bid: \$80*



### Lot 59

**SCROLL FLASK**, Midwest, 1840 - 1860. Brilliant, deep citron coloration, tooled, sheared mouth - blowpipe pontil scar, Pt, attic mint. GIX-16. A rare mold in a rare, very bright, vibrant, color that definitely stands out! Excellent clarity, color and condition. Provenance: John Apple collection, Ex. Mike Roberts collection.

*Est.: \$800 - \$1,200 • Min. bid: \$400*



### Lot 63

**SCROLL FLASK**, Midwest, 1840 - 1860. Golden amber, sheared mouth - blowpipe pontil scar, ½ Pt, very near mint; (a tiny, barely pinhead size, flake on inside edge of lip, and very slight trace of wear, otherwise perfect). GIX-34. The colored ½ pint Scrolls have always been popular with collectors and it is easy to see why. Nice color, a great little flask, and in a comparatively scarce mold! Provenance: John Apple collection.

*Est.: \$1,200 - \$1,800 • Min. bid: \$600*



### Lot 60

**SCROLL FLASK**, Midwest, 1840 - 1860. Pale greenish aquamarine, virtually colorless above the base, narrow long neck with sheared mouth - slightly depressed oval base with small round iron pontil scar, Pt, virtually perfect; (a couple of tiny, onionskin-thin open surface bubbles, otherwise pristine perfect). GIX-16a. A rare mold, interesting and different base, outstanding condition. Provenance: John Apple collection.

*Est.: \$150 - \$250 • Min. bid: \$80*



### Lot 64

**SCROLL FLASK**, Midwest, 1840 - 1860. Golden amber below the shoulders shading to a deeper amber in the neck and lower half of the flask, sheared mouth - blowpipe pontil scar, ½ Pt, near mint; (a couple of minor pinhead flakes on the edge of the sheared mouth, otherwise virtually perfect). GIX-36. Another scarce mold, and particularly so in amber, as most of the recorded examples in 'color' have been in shades of green. John Apple collection.

*Est.: \$1,200 - \$1,800 • Min. bid: \$600*



### Lot 65

**"FOR PIKE'S PEAK" / PROSPECTOR / "OLD RYE" - EAGLE / "PITTSBURGH / PA" Historical Flask**, (with cork, sealing wax and partial contents), a Pittsburgh district glasshouse, 1860 - 1870. Aquamarine, applied collar with flat band - smooth base, ½ Pt; (a ¼" shallow flake at edge of base, a small bubble on the reverse has a pinhead opening in the cover glass, otherwise near mint). GXI-10. A great little flask, especially so with the well preserved contents.

*Est.: \$250 - \$450 • Min. bid: \$130*



### Lot 66

**CLASPED HANDS / "UNION" - EAGLE / "C.I & SONS" Historical Flask**, C. Ihmsen & Sons Glass Manufacturers, Pittsburgh, PA, 1861 - 1875. Rich, deep aquamarine, applied collar with ring - smooth base, Pt; (only the slightest, faint bit of wear, otherwise absolutely pristine perfect!) GXII-23. A top-shelf, standout example of this comparatively scarce mold. Almost no wear, and with the boldest possible impression, and deep color. A finest possible example.

*Est.: \$120 - \$180 • Min. bid: \$60*



### Lot 67

**SOLDIER / "BALT. MD." - DANCER / "CHAPMAN." Pictorial Flask**, Chapman's Maryland Glass Works, Baltimore, MD, 1849 - 1862. Yellowish olive amber with a bit of a butter-scotch tone, applied mouth with flat band - early smooth base, Pt; (a 1/8" flake at the edge of the base; some minor roughness on the edge of the lip that you can feel, but is not easy to see, and some light washable interior residue, otherwise excellent). GXIII-11. Scarce-to-rare color, heavily whittled.

*Est.: \$800 - \$1,600 • Min. bid: \$400*



### Lot 68

**"FLORA TEMPLE" / STANDING HORSE / "HARNESS TROT 2.19 ¾" Pictorial Flask**, probably Lancaster Glass Works, 1860 - 1865. Rich, deep aqua, applied collar with flat band - smooth base, Pt, near mint; (a small potstone on the back of the flask has a tiny, very hard to see, 1/8" in-manufacture cooling line, mentioned for complete accuracy, otherwise attic mint). GXIII-23. An early tag remains on the front. This light bluish aqua is among the rarest of colors for this flask.

*Est.: \$500 - \$800 • Min. bid: \$250*



### Lot 69

**"FLORA TEMPLE" / STANDING HORSE / "HARNESS TROT 2.19 ¾" Pictorial Flask**, probably Lancaster Glass Works, Lancaster, NY, 1860 - 1865. Medium-to-deep puce with a slight apricot tone, applied collar with ring - smooth base, Pt; (a little minor exterior wear, primarily on the reverse, and a bit of minor roughness as well as a 1/8" flake along the top edge of the mouth). GXIII-23. Ex. Jim Becker collection.

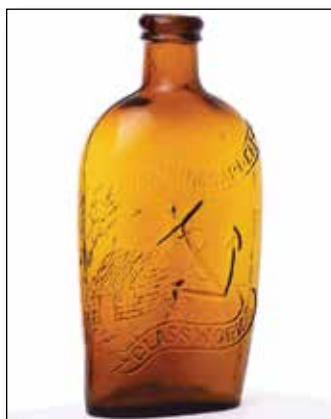
*Est.: \$300 - \$500 • Min. bid: \$150*



### Lot 70

**SHEAF OF GRAIN - TREE Pictorial Calabash**, probably Sheets & Duffy Glass Manufacturers, Philadelphia, PA 1850 - 1860. Deep wine or claret coloration, applied ring collar with lower bevel - blowpipe pontil scar, Qt; (a little minor wear and some light scratches, primarily on the obverse, otherwise very near mint). GXIII-46. Deep, rich color with plenty of reddish tones!

*Est.: \$1,000 - \$1,500 • Min. bid: \$500*



### Lot 71

**"SPRING GARDEN" / ANCHOR / "GLASSWORKS" - LOG CABIN Historical Flask**, Spring Garden Glass Works, Baltimore, MD, 1851 - 1856. Yellowish honey coloration through the center shading to a rich orange amber through the shoulders and base, applied round collar with bevel - smooth base, Pt; (just a trace of light wear and a tiny pinprick bit of roughness on the edge of the collar, otherwise perfect). GXIII-58. A bright, clean example with a strong, crisp mold impression.

*Est.: \$1,000 - \$1,500 • Min. bid: \$500*



### Lot 72

**"TRAVELER'S / COMPANION" - (8 POINTED STAR) Historical Flask**, Ravenna Glass Works, Ravenna, OH, 1857 - 1864. Golden amber, sheared mouth - large rectangular iron pontil scar, ½ Pt, near mint; (only a slight touch of typical, light exterior wear, otherwise perfect). GXIV-7. A nice clean example, good color (a little lighter than most), strong embossing. These can be rather dark in color and 'muddy', and are also prone to wear. A very nice example.

*Est.: \$300 - \$500 • Min. bid: \$150*





### Lot 73

**"GRANITE / GLASS / CO - STODDARD / N H"**, 1846 - 1856. Light-to-medium yellowish olive amber, sheared mouth - blowpipe pontil scar, Pt, near mint; (a little very light, patchy, interior residue or faint haze, most of which would almost certainly wash out, a tiny pinprick speck of roughness on the edge of the sheared mouth, otherwise attic mint). GXV-7. Nice color, excellent character, the glass is absolutely loaded with tiny seed bubbles.

*Est.: \$600 - \$900 • Min. bid: \$300*



### Lot 74

**Lot of (2), Early Ribbed Melon-Type Flasks**, probably Keene Marlboro Street Glassworks, Keene, NH, 1815 - 1830. Deep aquamarine and colorless, aqua example with 16 wide, heavy, melon-type ribs; colorless example with 20 ribs, both with sheared mouths - blowpipe pontil scarred bases, ½ Pt. and Pt, both perfect; (a bit of light washable residue in the colorless example). Attributed to Keene, and likely early production. The colorless pint is scarce.

*Est.: \$300 - \$600 • Min. bid: \$150*



### Lot 75

**Pitkin Type Flask**, New England, 1790 - 1820. Delicate, light yellowish-olive, almost an olive yellow coloration, patterned with 32 fine ribs swirled to the left, ovoid form, sheared mouth - blowpipe pontil scar, ht. 5 1/8", near mint; (some typical scattered fine exterior wear, otherwise perfect). An attractive little sweetheart of a Pitkin blown from a delicate "Chestnut-type" metal, good form, nice small size. Similar in form, size, and color to MW, plate 88, #6.

*Est.: \$800 - \$1,600 • Min. bid: \$400*



### Lot 76

**Pitkin Type Flask**, Mid-Atlantic, or western Pennsylvania, 1800 - 1830. Medium-to-deep yellowish olive with a slight amber tone, patterned with 36 ribs over 36 ribs swirled to the left, flattened horseshoe form, sheared mouth - blowpipe pontil scar, ht. 6 5/8"; (just a touch of light wear, otherwise perfect). Similar to AP, #378. A great Pitkin flask. This form is typically found in shades of grass-green, yellow green, or even amber, but is very rare in this olive coloration.

*Est.: \$800 - \$1,600 • Min. bid: \$400*



### Lot 77

**Pitkin Type Flask**, probably Eastern U.S., Mid-Atlantic region, 1800 - 1830. Bright, medium blue green, patterned with 32 ribs over 32 ribs swirled to the left, flattened ovoid body, sheared mouth - blowpipe pontil scar, ht. 6 5/8", near mint; (just a bit of very faint interior haze that is not terribly noticeable, otherwise excellent). Similar in form and pattern to MW, plate 89, #5. Good strong ribbing through the shoulders, and with some nice scattered bubbles throughout the body.

*Est.: \$400 - \$600 • Min. bid: \$200*



### Lot 78

**Rare, Pitkin Type Flask**, America, probably Mid-Atlantic region, 1800 - 1830. Medium sea-green, patterned with 35 ribs over 18 ribs swirled to the left, flattened ovoid body, sheared mouth blowpipe pontil scar, ht. 6 3/4", virtually perfect; (a potstone near the base on the inside surface of the flask has a couple of tiny legs, almost certainly in-making, and a faint trace of wear, otherwise perfect). A great Pitkin, extremely rare rib count, very desirable "popcorn" effect.

*Est.: \$500 - \$800 • Min. bid: \$250*



### Lot 79

**Early, Pattern Molded Pocket Flask**, Continental, or possibly America, 1780 - 1820. Medium-to-deep grape amethyst, patterned with 20 vertical ribs through the shoulders above rows of 20 oval or pearl-type ornaments through the body, flattened horseshoe form, sheared mouth - delicate blowpipe pontil scar, ht. 6 3/4", near mint; (some age-appropriate light exterior wear, pattern weakens near the base, otherwise excellent). An extremely rare, likely very early, and possibly unique pattern.

*Est.: \$1,000 - \$2,000 • Min. bid: \$500*



### Lot 80

**Rare, Poison-Type Flask**, Germany, or possibly America, 1830 - 1860. Medium cobalt blue, pattern molded with an overall hobnail design, chestnut form, sheared mouth - blowpipe pontil scar, ht. 4 1/4"; (some expected very minor high point wear, otherwise perfect!) KU-26. Scarce pattern, desirable color, and in addition, a very rare size! When found, these are almost always 5 1/2" or higher. Some of the hobnail flasks were blown in 2-pc. molds, this example was patterned in a small dip mold.

*Est.: \$600 - \$900 • Min. bid: \$300*



### Lot 81

**Blown Three Mold Decanter**, Boston and Sandwich Glassworks, Sandwich, MA, 1825 - 1840. Gorgeous, deep sapphire blue, semi-barrel form, shell and rib pattern, tooled wide flanged mouth - glass tipped pontil scar, Pt; (a ¼" hairline fissure from a potstone near one of the mold seams, well hidden and likely in-making, and a minuscule, barely 1/16" line from another stone in the neck, otherwise near perfect). GV-8. A choice decanter in clear, and a rare decanter in color!

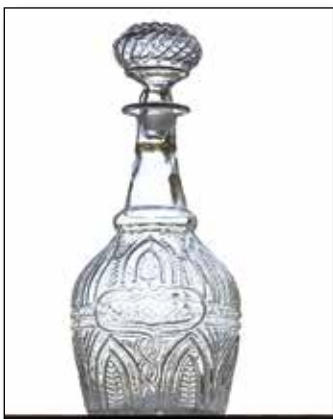
*Est.: \$800 - \$1,200 • Min. bid: \$400*



### Lot 82

**Blown Three Mold Decanter**, Boston and Sandwich Glassworks, Sandwich, MA, 1825 - 1840. Colorless, heart and chain pattern, semi-barrel form, sheared, tooled, and inward folded mouth with period-correct stopper blown in a full-size mold (McK, plate 114, #3) - glass-tipped pontil scar, Qt, perfect. GV-13; BK, #1337. Very scarce.

*Est.: \$175 - \$350 • Min. bid: \$100*



### Lot 83

**Blown Three Mold Decanter**, Boston and Sandwich Glassworks, Sandwich, MA, 1825 - 1840. Colorless, arch and fern pattern with snake medallion, barrel form, sheared, tooled and outward flared mouth with correct blown molded diagonal ribbed stopper - blowpipe pontil scar, Qt, perfect. GIV-7; BK #1330. Scarce. Note, this pattern was originally referred to as "Flute and Pine Tree" in early Sandwich Glassworks documents.

*Est.: \$175 - \$350 • Min. bid: \$100*



### Lot 84

**Lot of (2), Blown Three Mold Decanters**, Boston and Sandwich Glassworks, Sandwich, MA, 1825 - 1840. Both are colorless, geometric diamond and rib pattern, barrel form, each with three applied neck rings, sheared, tooled and outward flared mouths with correct blown molded matching diamond and rib pattern stoppers - blowpipe pontil scarred bases, Qts, both attic mint GII-18; similar to BK #1299. Scarce with the applied neck rings.

*Est.: \$175 - \$350 • Min. bid: \$100*



### Lot 85

**Lot of (2), Blown, Tall Cylinder Decanters** (with period, likely original, brass stoppers), probably England, 1840 - 1860. Beautiful, clear, light plum-amethyst, blown, tall tapered cylinder form, sheared mouths with applied double ring collars and metal, likely brass, ring-type stoppers debossed, "PORT" and "SHERRY" - polished bases, ht. 12 ½" (not including stoppers), both are perfect. A beautiful pair of early decanters, nice with brass ring stoppers.

*Est.: \$300 - \$600 • Min. bid: \$150*



### Lot 86

**Lot of (2), Blown Decanters or Bar Bottles**, probably England, possibly America, 1840 - 1860. Beautiful, medium amethyst, blown, tapered cylinder form, applied round collars with string rim - solid, glass-tipped pontil scarred bases, ht. 10 7/8", both are perfect! Fantastic color, a gorgeous pair of blown decanters.

*Est.: \$300 - \$600 • Min. bid: \$150*



### Lot 87

**Early Blown and Cut, Paneled Decanter** (with original matching stopper), probably England, 1845 - 1860. Alternating panels of lavender cut to clear, straight-sided decanter form, tooled trefoil pour lip - polished base, ht. 13 7/8" including stopper; (faint trace of spotty interior haze, otherwise perfect). The Richardson Glassworks of Wordsley, England, was renowned for high quality decorative glassware including decanters similar to this beautifully executed piece. Ex. Bryan Grapentine collection.

*Est.: \$250 - \$450 • Min. bid: \$140*

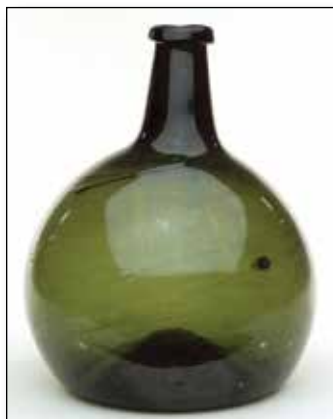


### Lot 88

**Freeblown Witch Ball with Matching Stand**, America, probably a Pittsburgh district glasshouse, 1840 - 1860. Both are colorless with opaque white loopings, vase with compressed bulbous body, solid applied stem with a pontil scarred flat circular foot; trumpet-style neck with a tooled rim and 5 7/8" dia. ball cover, overall ht. 14 ¼", near mint; (stand has a bit of faint interior milkiness, otherwise excellent). An in-making tooling mark exists on the side of the bowl. See *Pittsburgh Glass*, plate 428.

*Est.: \$800 - \$1,200 • Min. bid: \$400*





### Lot 89

**Early, Freeblown Globular Bottle**, New England, 1790 - 1820. Rich, medium olive green through the body shading to a deep, dense olive through the neck, globular form, sheared mouth with a heavy, applied string rim - blowpipe pontil scar, ht. 9 7/8", virtually attic mint; (a little typical light exterior wear, otherwise perfect). A fantastic, above average example, emphasis on outstanding character with profuse swirls of glass through the body. Nice color, fantastic eye-appeal!

*Est.: \$800 - \$1,200 • Min. bid: \$400*



### Lot 93

**Figural Monument Cologne Bottle**, blown at a South Boston glasshouse, probably Boston and Sandwich Glass Works, 1860 - 1888. Opaque milkglass, obelisk form fashioned after the Bunker Hill Monument, tooled ring-type collar - smooth base, ht. 11 3/4", perfect. MW, plate 114, #3. Another nice example. This is the largest size Monument Cologne that they produced. A classic figural, excellent condition.

*Est.: \$150 - \$300 • Min. bid: \$80*



### Lot 90

**Early, Freeblown Covered Sugar Bowl**, America, possibly an early Pittsburgh glasshouse, 1815 - 1830. Colorless flint glass, globular bowl flaring outward to a galleried rim, pontiled disc base with wafered or "baluster-type" applied stem; low domed cover with inward folded rim, pontil scarred button knob finial, overall ht. 7 3/8" (including cover), perfect. Similar to Pittsburgh Glass, Innes, plate 36, #1. Beautiful and well-executed, the cover fits perfectly and is likely original.

*Est.: \$300 - \$600 • Min. bid: \$150*



### Lot 94

**Figural Monument Cologne Bottle** (complete with matching stopper), a South Boston glasshouse, probably Boston and Sandwich Glass Works, 1860 - 1888. Deep, vivid cobalt blue, obelisk form fashioned after the Bunker Hill Monument, tooled ring-type collar - smooth base, ht. 14 1/2" (including stopper), perfect. See MW, plate 114, #3. Very scarce size, color, and rare with original matching stopper. Complete examples in this size and color do not come around often. A beautiful cologne.

*Est.: \$600 - \$1,200 • Min. bid: \$300*



### Lot 91

**Freeblown Loving Cup**, probably England, 1830 - 1860. Deep cobalt blue leaded glass, funnel-type bowl with two applied solid ear-shaped handles crimped and curled at lower terminals, applied solid pedestal stem, applied pontil scarred disc foot with inward folded rim, ht. 6 1/4", near mint; (a little faint haze or "bloom" on the interior of the bowl, otherwise perfect). Deep, vivid color, excellent condition.

*Est.: \$200 - \$400 • Min. bid: \$100*



### Lot 95

**Fancy Cologne Bottle**, America, probably a South Boston glasshouse, 1860 - 1875. Medium-to-deep emerald coloration, cylindrical with alternating vertical rows of plain and beaded flutes, sheared mouth with applied ring-type collar - smooth base, ht. 10 1/4", perfect. MW, plate 114, #4. A very scarce cologne, particularly in this large size, and in a very rare and desirable color! Emerald is one of most difficult colors to acquire in the early "Sandwich-type" cognes. A gorgeous bottle.

*Est.: \$1,000 - \$2,000 • Min. bid: \$500*



### Lot 92

**Rare, Blown Three Mold Hat**, America, 1820 - 1840. Deep cobalt blue, in the form of a miniature "beaver" style hat, sheared and inward folded rim - blowpipe pontil scarred base, ht. 2 3/8", virtually attic mint; (tiny, pinhead bit of roughness on the inner edge of the folded rim, otherwise perfect). McK Gill-23. Blown Three Mold toy hats are very scarce in color. In addition, the Gill-23 mold in the hat form is unlisted in color by McKearin.

*Est.: \$300 - \$600 • Min. bid: \$150*



### Lot 96

**Paneled Cologne Bottle**, probably Boston and Sandwich Glass Works, 1850 - 1870. Medium-to-deep cobalt with some violet tones near the base, straight-sided 12-panel form, sheared lip with an applied inverted collar - smooth base, ht. 11 1/4", near mint; (a trace of minor wear, otherwise virtually attic mint). See BK #5197. It is interesting to note that all of the straight-sided paneled cognes dug at the glassworks site were 12-panel. Scarce size and color. Ex. Bryan Grapentine collection.

*Est.: \$200 - \$400 • Min. bid: \$100*



### Lot 97

**Early Blown Commercial Cologne**, probably a South Boston glasshouse, 1840 - 1855. Medium-to-deep plum amethyst, cylindrical, likely freeblown, sheared mouth, applied ring-type collar - blowpipe pontil scar, ht. 11", virtually perfect; (slight trace of faint wear). A beautiful, early freeblown cologne, fantastic color. Provenance: Ex. Bryan Grapentine collection.

**Est.: \$200 - \$400 • Min. bid: \$100**



### Lot 98

**Blown-Molded Commercial Cologne**, probably a South Boston glasshouse, 1845 - 1860. Medium cobalt with some violet tones, cylindrical, sheared and tooled ring-type collar - glass-tipped pontil scar, ht. 11 1/2"; (slight trace of faint wear, otherwise attic mint). These were produced in various sizes and colors by glasshouses that often sold them directly to perfumeries. See, *Glass Industry in South Boston*. Very similar to plate 188. Beautiful color, scarce large size.

**Est.: \$150 - \$250 • Min. bid: \$80**



### Lot 99

**"GEVELOT - PARIS" Target Ball**, France, 1875 - 1900. Rich, deep cobalt blue, quilted diamond pattern above and below center band, 3-piece mold, rough sheared mouth, dia. 2 5/8", perfect; (note; a 3/8" "U" shaped chip from the neck mentioned for accuracy, but is a common occurrence and very likely occurred at the factory). A serpentine-type curved line is embossed between "GEVELOT" and "PARIS", on both sides of the ball. A rare target ball!

**Est.: \$400 - \$600 • Min. bid: \$200**



### Lot 100

**"WW GREENER ST MARYS WORKS - BIRMM & 68 HAYMARKET LONDON" Target Ball**, England, 1875 - 1900. Cobalt blue, quilted diamond pattern above and below center band, 3-piece mold, rough sheared mouth, dia. 2 5/8", perfect. A great example with crisp, very strong embossing, in a beautiful medium tone that passes plenty of light.

**Est.: \$200 - \$400 • Min. bid: \$100**



### Lot 101

**"VAN CUTSEM - A ST QUENTIN" Target Ball**, France, 1875 - 1900. Deep cobalt with a slight violet tone, quilted diamond pattern above and below center band, 3-piece mold, rough sheared mouth, dia. 2 5/8", perfect. A beautiful example. In 1994, barrels of these balls were reportedly uncovered in the basement of an old estate. They have long since been assimilated into the market and certainly more difficult to find than just a few years ago. Provenance: Ex. Tom McCandless collection.

**Est.: \$100 - \$200 • Min. bid: \$50**



### Lot 102

**"PRICE'S / SOAP / COMPANY / LIMITED" / (Monogram)**, England, 1885 - 1900. Medium-to-deep cobalt blue, rectangular wedge form, tooled sloping collar with bevel, period, likely original stopper - "E B & Co LD" (on smooth base), ht. 7", near mint; (just a slight trace of wear and a shallow pinhead flake on one of the base corners). Scarce! Here is one that you don't see very often, and considerably more rare than the patent candle company mold.

**Est.: \$200 - \$300 • Min. bid: \$100**



### Lot 103

**"C.M. LINA & Co - OIL / BLACKING"**, America, 1845 - 1860. Aquamarine, square with narrow beveled corners, sheared mouth - blowpipe pontil scar, ht. 4 3/4", perfect! A very scarce-to-rare blacking that does not come around often, especially in this outstanding, undug condition. Nice crude wavy glass, excellent clarity, a great example.

**Est.: \$175 - \$350 • Min. bid: \$100**

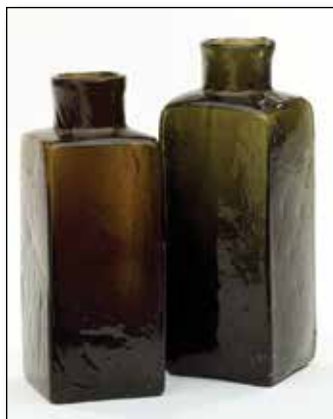


### Lot 104

**Rare, 'Nail-head Mold' Blacking Bottle**, probably an early New Hampshire glasshouse, possibly Keene Marlboro Street Glassworks, or an early Stoddard Glasshouse, 1840 - 1850. Light olive amber, square with a large 'nail-head' impression in the center of each panel (two very distinct, two soft impressions), sheared mouth - blowpipe pontil scar, ht. 5", attic mint! Great eye-appeal, crude 'metal' with lots of impurities and seed bubbles, very rare mold!

**Est.: \$200 - \$400 • Min. bid: \$100**





### Lot 105

**Lot of (2) Early Blacking Bottles**, New England, 1830 - 1850. Medium to deep yellowish 'old' amber, and olive green, both blown in 2-pc. molds, square with flattened shoulders, sheared and fire polished mouths - blowpipe pontil scarred bases, ht. 4 3/8" and 4 7/8" respectively, both near mint; (a little typical, very minor wear; the amber example has a bit light interior residue, otherwise excellent). Both are beautiful examples with seedy crude glass and nice character.

**Est.: \$175 - \$350 • Min. bid: \$100**



### Lot 106

**Labeled Elisha Waters Blacking Bottle**, America, 1855 - 1865. Olive green, original graphic label depicting a horse race with men riding atop bottles of blacking with the "E. Waters" bottle leading the way. Label reads in part, *Liquid Mirror Blacking / Manufactured / Only by / Elisha Waters*, ht. 5 3/4"; (bottle is perfect; wrap-around label approx. 75 - 80% complete). Rare. A handful of these were found in the attic of a hardware store in Hoosick Falls, NY, about 40 years ago.

**Est.: \$400 - \$800 • Min. bid: \$200**



### Lot 107

**Pitkin-Type Inkwell**, an early New England glasshouse, possibly Pitkin Glass Works, Manchester, CT, 1790 - 1820. Deep olive green conical form with 36 ribs swirled to the left, disc-type flat collar - blowpipe pontil scar, ht. 1 7/8"; (a 3/8" chip from the edge of the applied disc mouth, and a trace of typical faint wear, otherwise perfect). Similar to C #1140. Crisp, strong ribbing, a scarce inkwell.

**Est.: \$500 - \$1,000 • Min. bid: \$250**



### Lot 108

**"E. WATERS - A" Ink Bottle**, America, 1845 - 1855. Brilliant aquamarine, rectangular with vertical fluting, sheared and inward rolled mouth - blowpipe pontil scar, ht. 3 1/4", sparkling attic mint! Faulkner, p.146. This example is a "fresh-to-the-market" find. A very attractive early ink, and a rare mold in exceptional, pristine condition.

**Est.: \$400 - \$600 • Min. bid: \$200**



### Lot 109

**"HARRISON'S - COLUMBIAN - INK" - "PATENT"** (on shoulder), **Master Ink Bottle**, America, 1847 - 1860. Aquamarine with a bit of an ice blue tone, 12- sided, large, applied flanged mouth - blowpipe pontil scar, ht. 7"; (a 1/4" chip at edge of base, and a shallow 3/16" flake along top edge of lip; some spotty light haze on the base). C #761. Nice large size, and with good texture to the glass.

**Est.: \$175 - \$350 • Min. bid: \$100**



### Lot 110

**Master Ink Bottle**, America, 1865 - 1875. Gorgeous, medium-to-deep pinkish plum amethyst, cylindrical, applied collar with lower bevel and tooled pour spout - smooth base, ht. 7 3/4"; (the bottle may have been lightly cleaned, but certainly presents itself as virtually attic mint). Needless to say, a very unusual and rare color for a master ink bottle. Beautiful.

**Est.: \$300 - \$500 • Min. bid: \$150**



### Lot 111

**Early Snuff Jar**, New England, 1790 - 1830. Light yellowish olive, dip mold, square with beveled corners, sheared, tooled, and slightly flared mouth - blowpipe pontil scar, ht. 4 1/4"; (some light exterior wear, a couple of minor, paper-thin, open surface bubbles, otherwise excellent). This snuff was blown from the same quality 'metal' as the classic, delicate, little New England Chestnut flasks.

**Est.: \$400 - \$600 • Min. bid: \$200**



### Lot 112

**"J.J. MAPES / No 61 FRONT. ST / N - YORK"**, America, probably a New England glasshouse, 1824 - 1835. Medium through the shoulders shading to a deep olive amber near the base, rectangular with concave corners, sheared, tooled, slightly flared lip - blowpipe pontil scar, ht. 4 1/4"; (a tiny sandgrain with a faint radiation, barely visible without a loop, and just a trace of minor wear including a shallow 3/16" open bubble on the inside of the lip, otherwise excellent). A rare snuff.

**Est.: \$800 - \$1,200 • Min. bid: \$400**



### Lot 113

**Unusual, Early Snuff Jar**, New England, 1790 - 1830. Light, yellowish olive amber, almost an olive yellow, tall rectangular form, dip mold, wide beveled corners, sheared, tooled and slightly flared mouth - blowpipe pontil scar, ht. 6", near mint; (professionally cleaned to original luster and near mint condition with a touch of light wear remaining). A bright, clean example, rarely seen in this size. Very scarce tall form, very pretty color!

*Est.: \$300 - \$600 • Min. bid: \$150*



### Lot 114

**"F" Debossed Early Snuff Jar**, Joseph Foster's South Stoddard Glass Works, or Mill Village, 1842 - 1860. Medium olive, rectangular with beveled corners, sheared, tooled and slightly flared mouth - blowpipe pontil scar, ht. 4 1/8", near mint; (just a touch of faint wear and a tiny bit of interior content residue). A nice example having crude wavy glass filled with tiny seed bubbles.

*Est.: \$100 - \$200 • Min. bid: \$50*



### Lot 115

**Lot of (2), Early Snuff Jars**, debossed **Dots** and **"W"** (on bases), both probably Stoddard, "W" example is likely Weeks & Gilson, 1860 - 1873. Olive amber and deep olive amber, both rectangular with beveled corners, sheared mouths - 1st example with 2 dots and blowpipe pontil scarred base; 2nd example with "W" and smooth base, ht. 4" and 4 1/8"; (1st ex. has a pebbly texture on interior, may have been cleaned; 2nd ex. a little light wear, otherwise perfect). Scarce.

*Est.: \$175 - \$275 • Min. bid: \$100*



### Lot 116

**Lot of (2), Figural Candy Containers**, probably a PA glasshouse, possibly, Victory Glass Co, 1920 - 1930. 1st example, **Crowing Rooster**, tall reeds and grasses, colorless, pressed glass, ht. 5", metal screw-on closure. 2nd example, **Upright Sitting Rabbit** (with original contents), **"CONTENTS 1 3/4 AVD OZ"** (around body), light blue, pressed glass, ht. 5 1/2", metal screw-on closure. Both glass containers are perfect; (some minor corrosion to metal closures).

*Est.: \$100 - \$150 • Min. bid: \$50*



### Lot 117

**Lot of (2), "SUN" (Inside Sun motif) / "TRADE MARK" Fruit Jars**, America, 1894 - 1903. Both aquamarine, cylindrical, ground lip - glass lids with original cast iron yoke clamps - **"J.P. BARSTOW"** (on bases), Pt. & Qt; (pint is near mint with just a bit of very faint haze on the interior and a tiny pinhead flake on top of ground lip; Qt is perfect). RB #2761.

*Est.: \$250 - \$400 • Min. bid: \$130*



### Lot 118

**"MASON'S / (Cross) / PATENT / NOV. 30TH / 1858"**, America, 1885 - 1900. Yellowish honey coloration, cylindrical, threaded neck with ground lip, zinc lid - **"PAT NOV 26 67 / 461"** on base, Qt; (embossing a tiny bit on the weak side, but still very nice, and a little typical minor flaking around edge of ground lip, almost certainly in-manufacture, otherwise perfect). RB #1940. A beautiful, light, very pretty jar.

*Est.: \$200 - \$400 • Min. bid: \$100*



### Lot 119

**"MASON'S / CFJCo / PATENT / NOV. 30TH / 1858"**, America, 1885 - 1900. Golden amber, cylindrical, threaded neck with ground lip, zinc lid with **"CFJ"** - **"D235"** on base, Qt, very near mint; (just a trace of typical faint wear, zinc lid is solid, but has some minor surface corrosion). RB #1920. A nice example, boldly embossed, and with some whittling to the glass.

*Est.: \$300 - \$500 • Min. bid: \$150*

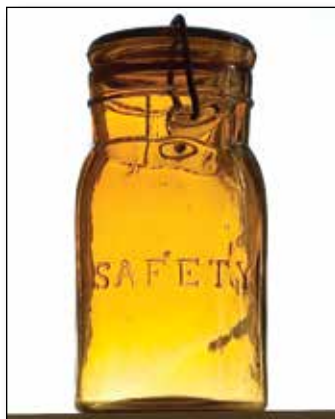


### Lot 120

**"MASON" Fruit Jar**, America, 1900 - 1910. Light straw yellow with a very slight citron tone, cylindrical, threaded neck with smooth lip, zinc lid - smooth plain base with dots, half-gallon, near mint; (small patch of interior residue or very faint haze near side mold seam above base, otherwise perfect). RB #1644. A big, beautiful jar, almost a pure straw color.

*Est.: \$100 - \$200 • Min. bid: \$50*





### Lot 121

**"SAFETY" Fruit Jar**, Nelson Glass Co, Muncie, IN, 1891 - 1896. Bright honey amber, cylindrical, ground lip, **"PATENT APPLIED FOR"** (on glass lid), wire bail - **"2"** on base, Pt, perfect. RB #2534. A great jar, fantastic condition, beautiful light color.

**Est.: \$300 - \$500 • Min. bid: \$150**



### Lot 125

**Star and Gothic Design, Cathedral Pickle Jar**, America, 1850 - 1860. Bluish green, square with beveled corners, large 5-pointed Star and Gothic design on front panel with different Gothic designs on each of the remaining three panels, sheared mouth with applied ring collar - heavy iron pontil scar, ht. 9", sparkling attic mint. A rare mold, especially with the iron pontiled base, (most examples are smooth base), and believed to be a unique example in this color with the pontil scarred base.

**Est.: \$3,000 - \$6,000 • Min. bid: \$1,500**



### Lot 122

**"SAFETY" Fruit Jar**, Nelson Glass Co, Muncie, IN, 1891 - 1896. Beautiful, medium yellow, cylindrical, ground lip, **"PATENT APPLIED FOR"** (on glass lid), wire bail - **"23"** on base, Qt; (touch of faint wear including a couple of minor open surface bubbles, otherwise perfect). RB #2534. A gorgeous jar, scarce, virtually pure yellow coloration.

**Est.: \$250 - \$400 • Min. bid: \$130**



### Lot 126

**(Star design) Cathedral Pickle Jar**, America, probably a mid-Atlantic glass-house, 1860 - 1875. Aquamarine, square with beveled corners, fancy Gothic double arch design, large embossed Star in center of plain panel, lattice pattern on two side panels, applied ring collar - smooth base, ht. 11 3/8", pristine perfect. A very rare pickle jar, strong bold impression, outstanding condition.

**Est.: \$500 - \$800 • Min. bid: \$250**



### Lot 123

**"SAFETY" Fruit Jar**, Nelson Glass Co, Muncie, IN, 1891 - 1896. Deep honey, or light golden amber, cylindrical, ground lip, **"PATENT APPLIED FOR"** (on glass lid), wire bail - **"25"** on base, Qt, near mint; (a minor patch in the back of the jar of very faint interior milkiness, otherwise attic mint). RB #2534.

**Est.: \$150 - \$250 • Min. bid: \$80**



### Lot 127

**Clock-face and Shell Pattern, Cathedral Pickle Jar**, America, 1860 - 1870. Bluish green, square with beveled corners, Gothic panels with fancy ogival arch designs below Shell and Clock-face pattern around shoulders, sheared mouth with an applied ring collar - early smooth base, ht. 10 7/8", perfect! A great example of this scarce and desirable mold, beautiful color, outstanding condition.

**Est.: \$1,000 - \$2,000 • Min. bid: \$500**



### Lot 124

**"ABSOLUTELY / PURE MILK" (Man Milking Cow) / "THE MILK PROTECTOR"** - **"H.D.T&Co / POTSDAM / N.Y."** (with original glass lid and wire bail), Whitall, Tatum & Co, Millville, NJ, 1886 - 1889. Colorless, cylindrical, tooled square collar mouth, **"PATD. APRIL 27-86"** (on original glass lid) - smooth base, Qt, attic mint! This is the earlier of two known molds, and one of the first Thatcher milk jars produced. A great example with a strong impression, outstanding condition!

**Est.: \$800 - \$1,200 • Min. bid: \$400**



### Lot 128

**Cathedral Pickle Jar**, Mid-Atlantic, probably Crowleytown Glass Works, NJ, 1860 - 1866. Deep blue green, almost a teal coloration, square with beveled corners, fancy Gothic double arch design with lattice pattern on inner frame, applied ring collar - early smooth base, ht. 11 1/2"; (a minor open bubble on interior of neck, otherwise sparkling attic mint). MW, plate 73, #6. Fragments of this mold have been found at the site of the Crowleytown Glass Works. A scarce jar, deep vibrant color.

**Est.: \$800 - \$1,200 • Min. bid: \$400**



### Lot 129

**Large, Cathedral Pickle Jar**, Willington Glass Works, West Willington, CT, 1860 - 1872. Rich, greenish aquamarine or light "Willington green", square, beveled corners, arched Gothic panels with grooved columns, sheared mouth with applied ring collar - smooth base, ht. 11 3/4", virtually perfect; (a small interior bubble, 1/4", has a partial opening in the cover glass). Crude, whittled, wavy glass with some long bubbles stretching around the neck and shoulders. A big, beautiful classic pickle jar.

*Est.: \$800 - \$1,200 • Min. bid: \$400*



### Lot 130

**Cathedral Pickle Jar**, America, probably a mid-Atlantic glasshouse, 1860 - 1875. Medium-to-deep blue green, square with beveled corners, arched Gothic panels with quatrefoil design and beaded trefoil motif, applied ring collar - smooth base, ht. 11 1/2", virtually attic mint; (a paper-thin 3/16" open bubble on a beveled corner, otherwise perfect). Scarce mold with all four label panels having a scalloped design around the edges, and one panel with three dots around trefoil design.

*Est.: \$600 - \$900 • Min. bid: \$300*



### Lot 131

**Large, Cathedral Pickle Jar**, probably Mid-Atlantic, 1860 - 1875. Medium blue green, square with beveled corners, Gothic arched panels, three with fancy pendant trefoil design, applied ring collar, ht. 13 3/4", near mint; (a little very faint dullness or 'bloom' in the shoulders, barely noticeable, and also towards the base, otherwise perfect). A very large, impressive jar, and with a bit more of a bluish tone to this one.

*Est.: \$500 - \$800 • Min. bid: \$250*



### Lot 132

**Petal-Type Berry Jar**, probably Willington Glass Works, West Willington, CT, 1860 - 1872. Aquamarine, cylindrical with 10 large petals around shoulders, heavy ring collar with bevel - early smooth base, ht. 11 1/4", virtually attic mint; (tiny pinhead bit of roughness on the edge of the lip, otherwise sparkling pristine perfect). See MW, plate 73, #3. A bright, clean, sparkling, heavily whittled example. Beautiful!

*Est.: \$100 - \$200 • Min. bid: \$50*



### Lot 133

**"BASS BROOK" / Image of a man sitting on a rock, fishing from a brook, "BASS / BROOK / RYE (on rock) / TRADE MARK / BALTIMORE RYE / SAM'L BASS / BALTIMORE, MD."**, 1897 - 1905. Clear, label-under-glass, diamond form with rounded corners, tooled sloping collar - **"E. PACKHAM JR / PATENTED / JULY 13TH 1897 / BALTIMORE, MD."** (on smooth base), ht. 10 5/8"; (some minor paint loss and label separation around edges). Extremely rare, possibly unique.

*Est.: \$1,500 - \$3,000 • Min. bid: \$750*



### Lot 134

**"PINE" (Image of a Pine Knot) "KNOT" / "PURE RYE" Back Bar Bottle**, America, 1890 - 1905. Colorless with white enameled lettering, tan and black pictorial image of a pine knot, cylindrical, tooled sloping collar with bevel - smooth base, Qt, ht. 11 1/4", perfect! Unlisted, and believed to be a unique example. A very interesting and unique colored-enameled back bar bottle. One can only speculate as the significance of the pine knot on the bottle.

*Est.: \$250 - \$450 • Min. bid: \$130*



### Lot 135

**Lot of (2), "EDGEWOOD" Back Bar Bottles**, America, 1900 - 1910. First example, colorless back bar pinch bottle engraved, **"EDGEWOOD / WHISKEY"** / with color-enameled **(Image of large man), "I / DRINK / EDGEWOOD / WHISKEY / EVERYWHERE"** (on shirt), tooled square collar - smooth base, ht. 6 3/4". Second example, opaque white enameling, cylindrical with fluting around shoulders and base, tooled mouth with ring - smooth base, ht. 10 1/2", both examples perfect!

*Est.: \$250 - \$450 • Min. bid: \$130*



### Lot 136

**Lot of (2), "OLENTANGY CLUB RYE" Back Bar Bottles**, America, 1900 - 1910. First example, colorless, ribbed decanter with fluted shoulders, white enameled lettering, flared and ground lip with period-correct stopper - smooth base, ht. 10 3/4" (incl. stopper). 2nd example, colorless with gold painted engraved lettering, cylindrical with fluted shoulders, tooled tapered collar - smooth base, ht. 11 1/4"; (both bottles are perfect; a couple of small bruises as well as a fissure in the ground stopper).

*Est.: \$150 - \$250 • Min. bid: \$80*





### Lot 137

**Lot of (2), Back Bar Bottles, “Burwood” and, “Rocky Fork”, c. 1900 - 1910.** Both colorless with white enameled lettering, tooled collars - smooth bases, ht. 10 ¾” and 11” respectively. “Burwood” straight-side cylinder with fluting around shoulders and base; “Rocky Fork” corseted cylinder form with vertical ribbing twisted to the right through the neck. Both near mint; (Burwood has a faint interior residue and a 1/8” bruise on back shoulder flute; Rocky Fork with minor interior haze).

**Est.: \$120 - \$240 • Min. bid: \$60**



### Lot 138

**“Old / Forest / Hill / Rye” Enameled Back Bar Bottle, America, probably 1904 - 1907.** Colorless with white enameled lettering, cylindrical with wide vertical ribs, tooled sloping collar - polished pontil scarred base, ht. 11 ¼”, attic mint. Scarce. Blown for the Raleigh Distilling Co. of Cincinnati, Ohio. A bright, clean, very attractive back bar bottle.

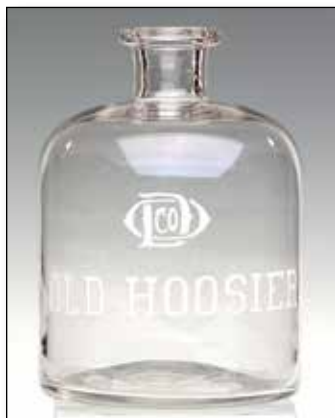
**Est.: \$100 - \$200 • Min. bid: \$50**



### Lot 139

**“THE SL Co” (within shield) / “THE SAML LEHMAN CO. / FINE WHISKIES” Enameled Back Bar Bottle, America, probably 1908 - 1910.** Colorless with white enameled lettering, cylindrical with fine vertical ribbing, molded shoulder flutes, tooled sloping collar - smooth base, ht. 11 ¼”, perfect. The Samuel Lehman Co. was a Cincinnati liquor dealer located at 129 E. Pearl Street from 1908 to 1910. Bright, clean, very scarce and attractive.

**Est.: \$100 - \$200 • Min. bid: \$50**



### Lot 140

**“OD Co” (Monogram) / “OLD HOOSIER” Salesman Sample Enameled Whiskey, America, probably 1914 - 1917.** Colorless with white enameled lettering, squat cylinder, tooled square collar - smooth base, ht. 4 ¾”, attic mint. The “OD Co” monogram represented the Otto Durre Co. of Evansville, IN. It is believed to have contained whiskey from the Owensboro, KY Distilling Co. This small, rather unique, size and form is typically considered a salesman sample. A very scarce bottle.

**Est.: \$100 - \$200 • Min. bid: \$50**



### Lot 141

**“CASPER’S WHISKEY / MADE BY HONEST / NORTH / CAROLINA PEOPLE”, America, 1885 - 1900.**

Rich cobalt blue, cylindrical with fluted shoulders, tooled sloping collar - smooth base, ht. 11 7/8”; (slight trace of typical faint wear, otherwise attic mint!) A big splash of color and one of the great classics of the 19th Century whiskey bottles.

**Est.: \$400 - \$500 • Min. bid: \$200**



### Lot 142

**“WEEKS & POTTER - BOSTON”**

**Whiskey Cylinder, a Stoddard, NH glasshouse, probably Weeks & Gilson, South Stoddard, 1860 - 1873.** Yellowish olive amber in the shoulders shading to a deep olive amber near the base, cylindrical, 3-pc. mold, applied sloping collar - smooth base, ht. 11”, attic mint! A gorgeous example, rare mold, scarce and attractive color, and very heavily whittled! A top example of this rare Stoddard mold.

**Est.: \$600 - \$1,200 • Min. bid: \$300**



### Lot 143

**“F’s” (on base), Whiskey Cylinder, Joseph Foster, South Stoddard Glass Works, 1842 - 1850.** Medium ‘old amber’, 3-pc. mold whiskey cylinder, applied sloping collar with ring - early smooth base, ht. 11 ½”; (a little faint exterior dullness and minor haze; a trace of light wear including two tiny open surface bottles, but otherwise near mint). Extremely rare with only a small handful of these “F’s” molds known! See, *On the Trail of STODDARD GLASS*, Field, pgs. 46 & 58.

**Est.: \$400 - \$800 • Min. bid: \$200**



### Lot 144

**“WEEKS & GILSON. SO. STODDARD N.H.” (on base) Whiskey Cylinder, South Stoddard Glass Co., 1860 - 1873.** Yellowish old amber, 3-pc. mold whiskey cylinder, applied sloping collar with ring - smooth base, ht. 11 3/8”, attic mint. A beautiful example of this glasshouse whiskey cylinder, crude, heavily whittled, excellent condition. See, *On the Trail of STODDARD GLASS*, Field, p. 58. Note; an early collector tag remains on the side, near the base.

**Est.: \$600 - \$900 • Min. bid: \$300**

# Colorful Washington &

Lot 49

Lot 11



Lot 59

Lot 58



# Scroll Flasks...



Lot 8



Lot 12



Lot 57



Lot 55



Lot 63

Lot 9

**Lot 145**

**"W N WALTON"** (embossed on shoulder) / **"WORMWOOD"** (Label-under-glass) / **"PATD SEPTD 23 1862"** (below recessed label), probably New England, 1862 - 1867. Golden amber, champagne-style split, applied mouth with flat band - **"PATD SEPT 23 1862"** (on smooth base), ht. 8"; (an attic type find; the bottle is perfect, some overall crazing lines to the recessed painted label, embossing on side is weak). Extremely rare! This is the only example we can recall seeing.

*Est.: \$300 - \$600 • Min. bid: \$150*

**Lot 146**

**"R. B. CUTTER / LOUISVILLE, KY"** Handled Whiskey Jug, America, 1850 - 1860. Medium amber shading to a deeper amber with a very slight orange tone through the shoulder and base, ovoid form with an applied handle crimped and curled at lower attachment, applied blob collar - large blowpipe pontil scar, ht. 8 5/8", attic mint!

*Est.: \$400 - \$600 • Min. bid: \$200*

**Lot 147**

**"PURE MALT WHISKEY. / BOURBON Co, / KENTUCKY"** Handled Whiskey, America, 1860 - 1870. Medium-to-deep amber, flattened jug form, applied handle with period, likely original gold paint, applied collar with flat band - smooth base, ht. 8 5/8", near mint; (a little minor exterior wear, primarily on the reverse, and a tiny pin-prick bit of roughness on the edge of the lip, some washable interior content residue). Very nice with original paint and no issues with the handle. Scarce.

*Est.: \$700 - \$900 • Min. bid: \$350*

**Lot 148**

**"I X L / VALLEY / WHISKEY - E & B. BEVAN / PITTSTON / PA." - STAR** (on each of 7 flat panels), America, 1852 - 1865. Deep amber with a slight root beer tone, pedestal base flaring outward to an octagonal body, applied disk collar with bevel - sand type pontil scar, ht. 7"; (lightly cleaned to original luster with a little scattered light wear remaining; a tiny pinhead flake on shoulder). A rare figural whiskey from Pittston, PA (believed to be in the form of a circus tent).

*Est.: \$2,000 - \$4,000 • Min. bid: \$1,000*

**Lot 149**

**Figural Cannon Barrel Whiskey**, America, 1865 - 1875. Medium-to-deep "old amber", in the form of a cannon barrel, large applied blob collar - smooth base, ht. 13", virtually attic mint; (only a slight trace of very faint wear, otherwise perfect!) A very scarce figural whiskey, attractive, and heavily whittled! These were likely blown to appeal to the veterans and Civil War soldiers following the close of the Great War.

*Est.: \$600 - \$1,200 • Min. bid: \$300*

**Lot 150**

**"GUIDE / TO / HEALTH / AVERY. & Co"** Figural Spirits Flask, America, 1870 - 1880. Amber, figural book embossed on spine, applied sloping collar - smooth base, ht. 8 7/8"; (a dug bottle with some overall light stain; a 3/16" area of roughness or minor crazing on the top edge of the lip, and a 1/8" flake near the base on the back beveled corner). An extremely rare, unlisted, figural whiskey. We cannot recall seeing another example. With a light cleaning, the bottle would display as near mint.

*Est.: \$300 - \$500 • Min. bid: \$150*

**Lot 151**

**Lot of (2), Figural Whiskey Nips, Old Shoe with Toe, and Clamshell**, America, 1885 - 1900. 1st example is dense plum amethyst, figural lace-up shoe with exposed toe, threaded and ground mouth with original

metal cap, **"PAT APD FOR"** (on smooth base), length 5 5/8", perfect. 2nd example, figural clamshell, golden amber, threaded and ground mouth with original metal cap, length 5 1/4"; (minor 3/16" flake from edge of ground mouth, tiny open bubble, otherwise perfect).

*Est.: \$100 - \$150 • Min. bid: \$50*

**Lot 152**

**"good Old Bourbon / in a hogs"** (line pointing to pig's rear-end), America, 1880 - 1890. Light golden or honey coloration in the body shading to a rich golden amber with an orange tone in the head,

figural pig, tooled ring collar - smooth base, length 6 5/8", near mint; (just a slight trace of faint wear, otherwise perfect). A great figural whiskey nip, one that will put a smile on anyone's face.

*Est.: \$300 - \$500 • Min. bid: \$150*





### Lot 153

**Image of the Battleship Maine / "U.S. WAR-SHIP MAINE / SUNK IN HAVANA HARBOR" / "S. Starks & Brother, / Wholesale Liquor Dealers, / PADUCAH, KY." Label-Under-Glass Flask,**

1898 - 1900. Black & white image of ship with red, white, & blue stripes at each end, threaded ground mouth with original metal cap, ht. 5 7/8", near mint. Extremely rare! Of the many flasks blown to commemorate the Spanish - American War, this particular flask is among the rarest.

**Est.: \$400 - \$800 • Min. bid: \$200**



### Lot 157

**"UDOLPHO WOLFE'S - SCHIEDAM - AROMATIC / SCHNAPPS"** (with 98% complete original label), America, 1855 - 1860. Clear, bright medium olive, square with beveled corners, applied sloping collar - heavy iron pontil scar, ht. 8"; (bottle sparkling attic mint; label darkened a bit from age, but completely legible). Excellent clarity, strongly embossed, and with a good early label that reads in part, *A Superlative Tonic, Diuretic, Anti-Dyspeptic and Invigorating Cordial*.

**Est.: \$300 - \$500 • Min. bid: \$150**



### Lot 154

**"HENRY CHAPMAN & Co / SOLE / AGENTS / MONTREAL"**, probably Whitney Glass Works, Glassboro, NJ, 1865 - 1875. Light honey coloration, teardrop form pocket flask, applied sloping collar internally threaded, flat disc lip with correct, likely original, threaded "PAT" glass stopper - smooth base, ht. 6"; (virtually perfect with just a faint trace of wear on reverse; stopper has two 3/16" chips, otherwise excellent). A great flask, scarce light color. Ex. Fred Weck collection.

**Est.: \$300 - \$500 • Min. bid: \$150**



### Lot 158

**"UDOLPHO WOLFE'S - SCHIEDAM - AROMATIC / SCHNAPPS"** (with 95% complete original label and packaging), America, 1858 - 1862. Medium olive, square with beveled corners, applied sloping collar - smooth base, ht. 9 3/4"; (the bottle is perfect, wrapper and label 95 - 98% complete). Rare with original label, especially in this fine condition, and virtually unheard of having the original wrapper. An exceptional example in a remarkable state of preservation.

**Est.: \$500 - \$800 • Min. bid: \$300**



### Lot 155

**"RELYEA, CARTER & Co's - ROYAL - SCHIEDAM SCHNAPPS."**, America, 1850 - 1860. Medium-to-deep olive, square tapered gin form, crudely applied inverted collar - iron pontil scar, ht. 7 3/8", very near mint; (just a slight trace of wear and a couple of minor base flakes near the pontil, possibly in-manufacture). Relyea, Carter & Co. were importers in New York. Note the unusual and distinctive lip finish similar to the "Egg Nogg" bottles, also out of NY. A very scare-to-rare gin.

**Est.: \$800 - \$1,200 • Min. bid: \$400**



### Lot 159

**"MONKS' / OLD BOURBON / WHISKEY - FOR, / MEDICINAL / PURPOSES - WILSON, FAIRBANK & Co, / SOLE AGENTS."**, America, 1850 - 1860. Bright, yellowish olive amber, almost an olive yellow coloration, square with beveled corners, applied sloping collar - iron pontil scar, ht. 9 3/4", perfect. A bright, clean example, bold embossing, beautiful color. Odell, p.256. A great pontiled whiskey that also appeals to pontiled medicine collectors.

**Est.: \$1,200 - \$2,200 • Min. bid: \$600**



### Lot 156

**"CHARLES' - LONDON - CORDIAL GIN"**, America, 1865 - 1875. Medium-to-deep blue green, square with beveled corners, applied sloping collar - smooth base, ht. 9 7/8", pristine perfect! Many of the known examples have been dug, but not this one! Attractive, clean as a whistle, excellent clarity, color, and condition! Scarce.

**Est.: \$200 - \$400 • Min. bid: \$100**



### Lot 160

**"LONDON / JOCKEY - CLUB HOUSE / GIN" - (Horse and Rider)**, (backwards "N"s in "LONDON"), Crowley's Atlantic Glass Works, 1858 - 1862. Brilliant, rich emerald coloration, square with beveled corners, applied sloping collar with bevel - smooth base, ht. 9 3/4", virtually perfect; (only slight trace of faint wear). Note; bottle was dug in the 1960's in a mining camp near Forest Hill, CA, and cleaned to virtually mint condition with soap and water only. Fantastic color, character, condition!

**Est.: \$1,200 - \$2,400 • Min. bid: \$600**



### Lot 161

**"BININGER'S 'OLD TIMES' / FAMILY RYE. - DISTILLED IN 1848 - A.M. BININGER & CO. / No. 19 BROAD ST, N.Y.",** 1861 - 1863. Light yellowish olive, square with beveled corners, applied sloping collar - smooth base, ht. 9 3/4", near mint; (a 3/16" flake from the side of the lip, and a tiny pinhead flake on the edge of the base, otherwise perfect). BPK-14. Believed to be only the second or third example to be offered at auction in more than 20 years. Clean, bright, beautiful color, and rare!

**Est.: \$1,800 - \$2,800 • Min. bid: \$900**



### Lot 165

**"OLD SACHEM / BITTERS / AND / WIGWAM TONIC",** America, probably 1858 - 1865. Aquamarine, barrel form, applied square collar - large blowpipe pontil scar, ht. 10"; (a couple of 1/8" flakes on the side of the square collar, otherwise attic mint). R/H #O45. A choice, very rare barrel, and much harder to find than the O-46 mold. This example is an exciting "fresh-to-the-market" find from a 200+ year old, home in North Truro, MA. Clean, bright, beautiful, and rare!

**Est.: \$4,000 - \$6,000 • Min. bid: \$2,000**



### Lot 162

**"BININGER'S / TRAVELERS / GUIDE / A.M. BININGER & CO / No 19 BROAD ST N.Y.",** probably 1861 - 1863. Golden amber shading to a honey coloration along the sides, flattened teardrop form, applied round collar with bevel - smooth base, ht. 6 3/4"; (a 1/4 area of roughness along the top edge of the collar, and a 1/4" flake on the inner edge of the lip, otherwise near mint). GXV-30; BPK-35. A popular and scarce Bininger pocket flask.

**Est.: \$250 - \$450 • Min. bid: \$130**



### Lot 166

**"GREELEY'S - BOURBON WHISKEY / BITTERS - GREELEY'S",** America, 1860 - 1875. Deep raspberry coloration, barrel form, applied square collar - smooth base, ht. 9 1/4"; (a minor, 1/8" flake on the back edge of the collar, and just the slightest trace of very light wear, otherwise virtually attic mint!) R/H #G102. A gorgeous color for this vertical Greeley's, and although it is deep, it can still be enjoyed in normal daylight or in a lighted display case. Provenance: Ex. James Becker collection.

**Est.: \$800 - \$1,600 • Min. bid: \$400**



### Lot 163

**"BININGER'S" / CLOCKFACE / "REGULATOR" - "19 BROAD ST - NEW YORK" Figural Clock Whiskey,** America, 1861 - 1863. Yellowish honey amber, figural clock form, applied double round collar - blowpipe pontil scar, ht. 5 3/4", very near mint; (just a trace of light wear, primarily on the reverse, otherwise perfect!) GXIII-87; BPK-38. Scarce. A pretty example, lighter than most, excellent condition. Provenance: Ex. Jim Becker collection.

**Est.: \$500 - \$800 • Min. bid: \$250**



### Lot 167

**"GREELEY'S BOURBON / BITTERS.",** America, 1860 - 1875. Light coppery ginger ale coloration, barrel form, applied square collar - smooth base, ht. 9 1/4"; (just a touch of faint wear including an ever-so-slight bit of lip edge roughness that you can feel, but difficult to see, and a trace of interior residue, likely washable, otherwise perfect). R/H #G101. A light example, lighter-in-tone than the great majority, very scarce color, whittled and beautiful!

**Est.: \$800 - \$1,600 • Min. bid: \$400**



### Lot 164

**"DISTILLED IN 1848. / OLD KENTUCKY / 1849 / RESERVE / BOURBON / A.M. BININGER & Co. 338 BROADWAY, N.Y.",** 1859 - 1861. Golden amber, barrel form, applied round double collar - blowpipe pontil scar, ht. 7 7/8", virtually attic mint; (just a slight trace of very faint wear, otherwise excellent). BPK-42. A good early barrel, these come in both smooth base, and pontiled. Nice with the large open pontil.

**Est.: \$200 - \$400 • Min. bid: \$100**



### Lot 168

**"GREELEY'S BOURBON / BITTERS.",** America, 1860 - 1875. Beautiful variegated color shading from a rosy copper in the shoulders to a rich medium-to-deep coppery apricot in the base, barrel form, applied square collar - smooth base, ht. 9 1/8"; (ever-so-slight trace of faint wear at mid-body, otherwise pristine perfect). R/H #G101. A great example, beautiful and scarce color, nicely whittled, outstanding condition with a perfect square collar, which is getting harder to find these days!

**Est.: \$400 - \$600 • Min. bid: \$200**





### Lot 169

**"BOURBON WHISKEY / BITTERS."**, America, 1860 - 1875. Rich, medium-to-deep reddish puce, almost a cherry coloration below the shoulders, barrel form, applied square collar - smooth base, ht. 9 1/2"; (a little exterior wear and faint dullness around the mid-body, as is fairly common, otherwise excellent). R/H #B171. Great color, plenty of reddish tones, and having a perfect square collar.

*Est.: \$400 - \$600 • Min. bid: \$200*



### Lot 170

**"DR C.W. ROBACKS / STOMACH BITTERS / CINCINNATI. O"**, America, 1855 - 1865. Golden amber, barrel form, applied sloping collar - iron pontil scar, ht. 9 7/8", very near mint; (minor, 1/8" flake on the inside edge of the lip that may have occurred in-manufacture, otherwise pristine perfect). R/H #R73. Lighter than most in this larger size mold, desirable with pontil scar, and outstanding character. A great example with plenty of eye-appeal, bubbly crude glass, heavily whittled.

*Est.: \$500 - \$800 • Min. bid: \$250*



### Lot 171

**"DR C.W. ROBACKS / STOMACH BITTERS / CINCINNATI. O"**, America, 1865 - 1875. Golden amber, barrel form, applied sloping collar - smooth base, ht. 9 1/8", near mint; (just a small trace of light interior residue or faint haze, and a tiny pinhead flake from one of the rings). R/H #R75. A nice example, and a lot of bottle for the money.

*Est.: \$200 - \$300 • Min. bid: \$100*



### Lot 172

**"Mc KEEVER'S ARMY BITTERS"**, America, 1865 - 1875. Amber, in the form of a Civil War drum, stacked cannon ball shoulders, long neck with an applied sloping collar - smooth base, ht. 10 1/2", near mint; (faint traces of interior content residue, otherwise perfect). R/H #M58. A great figural bitters, scarce and desirable. These were never 'common', but they don't come around as often as they once did. Likely marketed to veterans and their families following the Civil War.

*Est.: \$3,000 - \$5,000 • Min. bid: \$1,500*



### Lot 173

**"BROWN'S / CELEBRATED / INDIAN HERB BITTERS - PATENTED / FEB 11. / 1868"**, 1868 - 1880. Aquamarine, figural Indian maiden, ground lip - smooth base, ht. 12 1/8", virtually perfect; (small area of faint haze near base; some tiny flakes at edge of ground mouth, likely in-manufacture). R/H #B226. Believed to be the finest of the three or so known. Excellent color, clarity, condition. A 'holy grail' of figural bitters. Joe Kray collection, Ex. Chris Batdorff, Elvin Moody, Jim Cope collections.

*Est.: \$20,000 - \$30,000 • Min. bid: \$10,000*



### Lot 174

**"BROWN'S / CELEBRATED / INDIAN HERB BITTERS - PATENTED / 1868"**, 1868 - 1880. Bright yellow green, almost a citron coloration, Indian maiden, sheared and inward rolled lip - smooth base, ht. 12 1/8", very near mint; (a 3/16" and a 3/8" area of the inner rolled lip is missing and likely occurred when the cork was pried out, otherwise pristine perfect). R/H #B225. Gorgeous, very rare color! Bright, clean, and certainly one of the prettiest, most eye-appealing examples. Joe Kray collection.

*Est.: \$8,000 - \$12,000 • Min. bid: \$4,000*



### Lot 175

**"BROWN'S / CELEBRATED / INDIAN HERB BITTERS - PATENTED / FEB 11. / 1868"**, America, 1868 - 1880. Colorless with a slight pinkish-amethyst tone, figural Indian maiden, ground lip - smooth base, ht. 12 1/4", virtually attic mint; (some usual lip flaking including a 3/8" flake, likely in-manufacture, at side edge of lip). R/H #B226. Crisp, very strong embossing, exceeding rare color. Provenance: Joe Kray collection, Ex. Chris Batdorff collection, Ex. Elvin Moody, Jim Cope collections.

*Est.: \$15,000 - \$25,000 • Min. bid: \$8,000*



### Lot 176

**"BROWN'S / CELEBRATED / INDIAN HERB BITTERS - PATENTED / 1867"**, America, 1867 - 1880. Deep, dense chocolate, virtually black in reflected light, figural Indian maiden, sheared and inward rolled lip - smooth base, ht. 12 1/8", perfect! R/H #B223. Extremely rare color, believe to be the 'blackest' known example of the all of the various Indian Queens. Provenance: Joe Kray collection, Ex. Elvin Moody collection.

*Est.: \$4,000 - \$8,000 • Min. bid: \$2,000*



### Lot 177

**"BROWN'S / CELEBRATED / INDIAN HERB BITTERS - PATENTED / FEB 11. / 1868"**, America, 1868 - 1880. Beautiful, light honey yellow coloration shading to almost straw-yellow through the arms, figural Indian maiden, sheared and inward rolled lip - smooth base, ht. 12 1/4", perfect. R/H #B226. Another great example, beautiful color, clarity, and condition. Provenance: Joe Kray collection.

**Est.: \$2,000 - \$3,000 • Min. bid: \$1,000**



### Lot 181

**"S T / DRAKE'S / 1860 / PLANTATION / X / BITTERS - PATENTED / 1862"**, America, 1862 - 1880. Gorgeous, deep raspberry-grape coloration, cabin form with 6 logs above the label panel, applied sloping collar - smooth base, ht. 10", perfect! R/H #D105. A beautiful and rare color. And, although it is deep in tone, you can still appreciate some of the outstanding color in normal daylight. An early Harmer Rooke Galleries sticker remains on the base.

**Est.: \$800 - \$1,200 • Min. bid: \$400**



### Lot 178

**"BROWN'S / CELEBRATED / INDIAN HERB BITTERS - PATENTED / FEB 11. / 1868"**, America, 1868 - 1880. Bright golden amber with lighter honey tones through the arms, figural Indian maiden, sheared and inward rolled lip - smooth base, ht. 12 3/8", perfect! R/H #B226. A great example including good impression, color, and condition having absolutely no lip issues at all! One of the great classics of all the figural bitters bottles!

**Est.: \$600 - \$900 • Min. bid: \$300**



### Lot 182

**Lot of (2), "S T / DRAKE'S / 1860 / PLANTATION / X / BITTERS - PATENTED / 1862"**, America, 1862 - 1885. Shades of golden amber, one having a slight orange tone, both are cabin form with 4 logs above the label panel, applied sloping collars - smooth base, ht. 10" and 10 1/4"; (one example sparkling attic mint; 2nd example with some spotty light interior residue or faint haze, but no other form of damage). Both R/H #D110. Both examples with good-to-very-good mold impressions!

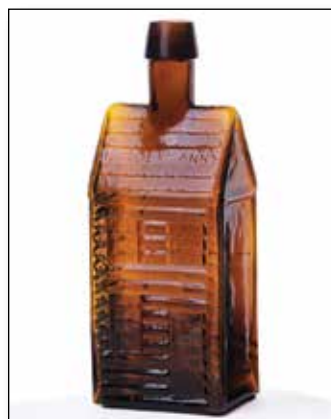
**Est.: \$150 - \$250 • Min. bid: \$80**



### Lot 179

**"S T / DRAKE'S / 1860 / PLANTATION / X / BITTERS - PATENTED / 1862"**, America, 1862 - 1885. Gorgeous yellow coloration with some warmer honey tones in the base and applied lip, cabin form with 6 logs above the label panel, applied sloping collar - smooth base, ht. 10", near mint; (just a slight trace of wear including a bubble on the back roof corner with a 1/4" opening in the cover glass, otherwise perfect). R/H #D105. Beautiful color, clarity, and condition.

**Est.: \$400 - \$800 • Min. bid: \$200**



### Lot 183

**"HOLTZERMANNS - PATENT / STOMACH / BITTERS"**, America, 1865 - 1875. Medium amber shading to light honey coloration in the corners and along the edges, rectangular cabin form, applied sloping collar - smooth base, ht. 9 1/4", virtually attic mint; (faint trace of light wear, otherwise perfect). R/H #H155, MW, plate 85, #3. One of the great classics in cabin bitters.

**Est.: \$1,400 - \$1,800 • Min. bid: \$700**



### Lot 180

**"S T / DRAKE'S / 1860 / PLANTATION / X / BITTERS - PATENTED / 1862"**, America, 1862 - 1880. Clear, medium apricot, cabin form with 6 logs above the label panel, applied sloping collar - smooth base, ht. 9 7/8", sparkling attic mint. R/H #D105. Beautiful color, fantastic condition. Nice light tone having excellent clarity all the way to the base.

**Est.: \$600 - \$900 • Min. bid: \$300**



### Lot 184

**Lot of (2), full-size and sample-size, HOLTZERMANNS PATENT STOMACH BITTERS** (Lg. size with complete, original label), 1890 - 1910. Both examples are golden amber, rectangular cabin form, tooled sloping collars - smooth bases, ht. 9 5/8", and 4"; (full-size example is perfect; sample size has a little faint haze and a 1/4" iridescent bruise at edge of base). R/H #H154 & H153-L. Large size has very bold, crisp embossing, outstanding label, a fantastic example! Festus Russell collection.

**Est.: \$500 - \$800 • Min. bid: \$250**





### Lot 185

**"OLD / HOMESTEAD / WILD CHERRY / BITTERS - PATENT"**, America, 1865 - 1875. Bright, light honey amber, cabin form, applied sloping collar - smooth base, ht. 9 5/8", sparkling attic mint! R/H #O37. A beautiful, bright, light example, lighter than most, with plenty of yellow through the corners, and in virtually 'out-of-the-mold' pristine condition. A great example.

**Est.: \$400 - \$600 • Min. bid: \$200**



### Lot 189

**"O.H.P. ROSE / E.G. R.I. - O.H.P. ROSE - PAT-D JUNE 21' 70"**, Bitters Bottle, America, 1870 - 1875. Brilliant lemon yellow, triangular with beveled corners, applied sloping collar with ring - smooth base, ht. 10 1/4", virtually perfect; (small bubble with a pinhead opening in the surface glass, otherwise 'out-of-the-mold pristine'). R/H #R99L. A very rare bitters from Rhode Island, one of only a few offered at auction in the past 15 years. Unusual form, exceptional color, outstanding condition.

**Est.: \$1,400 - \$2,800 • Min. bid: \$700**



### Lot 186

**"HOPS & MALT / TRADE (Sheaf of Grain) MARK / BITTERS - HOPS / & / MALT / BITTERS - HOPS / & / MALT / BITTERS - HOPS / & / MALT / BITTERS"**, 1880 - 1890. Clear, medium golden amber, square semi-cabin, applied sloping collar - smooth base, ht. 9 7/8"; (minor pinhead flake near a base corner, otherwise pristine perfect!) R/H #H186. An absolutely fantastic example of this scare semi-cabin having virtually no wear!

**Est.: \$250 - \$450 • Min. bid: \$130**



### Lot 190

**"JOHN MOFFAT - NEW YORK - PHOENIX / BITTERS - PRICE 2 DOLLARS"**, a New England glasshouse, 1840 - 1850. Olive amber, rectangular with beveled corners, sheared mouth with crudely applied ring collar - sand type pontil scar, ht. 7"; (just a trace of faint wear, otherwise perfect!) R/H #M109. Noted by R/H as "Extremely rare", and certainly considered by many as one of the "holy grails" of all the Phoenix Bitters. Outstanding character and condition. Provenance: James Chebalo collection.

**Est.: \$5,000 - \$8,000 • Min. bid: \$2,500**



### Lot 187

**Lot of (2), Bitters-Type Cabin Bottles**, 1865 - 1875. 1st example, **"GEO. C. HUBBEL & Co - GEO. C. HUBBEL & Co"**, aqua, rectangular cabin form, applied sloping collar with ring - smooth base, ht. 10"; (two very minor flakes at base, 1/16" and 3/16", otherwise perfect). 2nd example, unembossed, deep amber, rectangular cabin form, applied sloping collar - smooth base, ht. 10"; (a little exterior wear and faint dullness; some oily interior residue). Similar to R/H #G63.

**Est.: \$150 - \$250 • Min. bid: \$80**



### Lot 191

**"JOHN / MOFFAT - NEW YORK - PHOENIX / BITTERS - PRICE \$2.00"**, a New England glasshouse, 1840 - 1850. Bright, light-to-medium yellowish olive with a slight amber tone, rectangular with beveled corners, applied sloping collar - sand type pontil scar, ht. 7", virtually attic mint; (only a slight trace of faint wear, otherwise pristine!) R/H #M108. Likely a "finest possible example" of this very rare, desirable mold. Provenance: James Chebalo collection.

**Est.: \$5,000 - \$8,000 • Min. bid: \$2,500**



### Lot 188

**"BAKER'S / ORANGE GROVE - BITTERS"**, America, 1870 - 1880. Gorgeous yellow coloration with some warmer honey tones in the base and applied lip, square with roped corners applied sloping collar - smooth base, ht. 9 1/2", virtually perfect; (trace of light residue in the shoulder, otherwise, clean, bright, sparkling mint). R/H #B9. Crisp, clean, bold embossing, fantastic color. Light and pretty all the way to the base, having considerably more yellow than most.

**Est.: \$800 - \$1,200 • Min. bid: \$400**



### Lot 192

**"CANNON'S - DYSPEPTIC - BITTERS"**, America, 1850 - 1860. Aqua-marine, octagonal, applied square collar - blowpipe pontil scar, ht. 6"; (professionally cleaned to original luster; a 1/2" chip from the edge, and underside, of the square collar). Unlisted. This is believed to be the only known intact example of this mold! It is almost certainly from the W.M. Cannon Medicine Co, Washington, D.C. It displays as near mint and the chip could easily be repaired, if desired.

**Est.: \$1,000 - \$2,000 • Min. bid: \$500**



### Lot 193

**"DR W. SIMON'S / INDIAN BITTER"**, America, 1885 - 1900. Yellowish grass green, cylindrical, tooled square collar - smooth base, ht. 5 1/8"; virtually perfect; (tiny, pinprick bit of roughness on the edge of the lip). R/H #S111. A extremely rare Indian Bitters! Per Ring / Ham, "One dug in Indiana, two near Chicago". Believed to be the 1st example to be offered at auction in the past 20 years. Fantastic color, condition, and rarity! Festus Russell collection; Ex. Stuart Elmer collection.

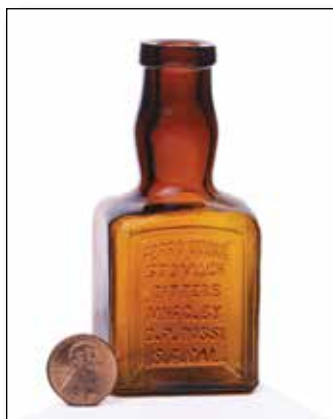
**Est.: \$500 - \$800 • Min. bid: \$250**



### Lot 194

**Sample size, "DIGESTINE" / (Monogram) / "BITTERS"**, America, 1890 - 1900. Bright, light golden amber, almost a honey coloration, rectangular, tooled sloping collar - smooth base, ht. 3 1/2", sparkling mint! R/H #D74. Ring / Ham rates this little sample bitters from St. Paul, MN, as "Extremely rare", and deservedly so. Only a couple of examples have come to auction in the past 20 years! A very attractive mini-bitters, outstanding condition. Provenance: Festus Russell collection.

**Est.: \$400 - \$800 • Min. bid: \$200**



### Lot 195

**Sample size, "FERRO QUINA / STOMACH / BITTERS / MNFG. BY / D.P. ROSSI / S.F. CAL."**, America, 1890 - 1905. Golden amber, square with indented front panel, bulbous lady's-leg neck with tooled square collar - smooth base, ht. 3 5/8"; (trace bit of washable interior residue, otherwise virtually attic mint). R/H #F41. A scarce Western sample bitters (See *The Best of the West / Antique Western / Bitters Bottles*, p.57, by Jeff Wichmann). Festus Russell collection.

**Est.: \$100 - \$200 • Min. bid: \$50**



### Lot 196

**Sample size, "CALIFORNIA / FIG & HERB / BITTERS - CALIFORNIA FIG PRODUCTS CO. / SAN FRANCISCO, CAL."**, America, probably 1900 - 1905. Beautiful light honey yellow coloration shading to a golden honey tone through the neck, square with indented panels, tooled sloping collar - smooth base, ht. 4 1/2", sparkling attic mint; (trace bit of washable interior residue). R/H #C17. A very rare sample, gorgeous color! Festus Russell collection.

**Est.: \$500 - \$800 • Min. bid: \$250**



### Lot 197

**Sample size, "DR. LAWRENCE'S / WILD CHERRY FAMILY BITTERS - NEWARK, N.J. U.S.A"**, America, 1890 - 1900. Golden amber, square with beveled corners, tooled sloping collar - smooth base, ht. 5 1/2", near mint; (some spotty, very faint interior haze, otherwise virtually perfect). R/H #L51. Listed as "Extremely rare" by Ring / Ham, here is one that does not come around often. Provenance: Festus Russell collection.

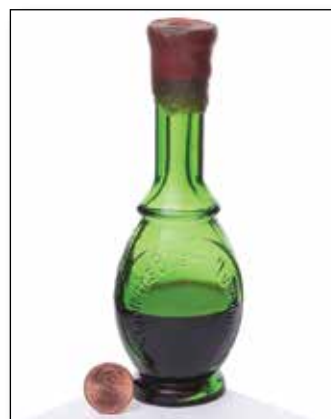
**Est.: \$300 - \$500 • Min. bid: \$150**



### Lot 198

**Sample size, "HARTWIG KANTOROWICZ / POSEN. / GERMANY"**, probably Germany, 1895 - 1905. Milkglass, square tapered gin form, tooled sloping collar - smooth base, ht. 3 3/4"; (shallow pinhead flake at edge of base, otherwise perfect!) R/H #L106L. Very scarce. Here is another sample bitters that you don't see very often, and certainly one of the more difficult molds to acquire of all the various Hartwig Kantorowicz bottles. Provenance: Festus Russell collection.

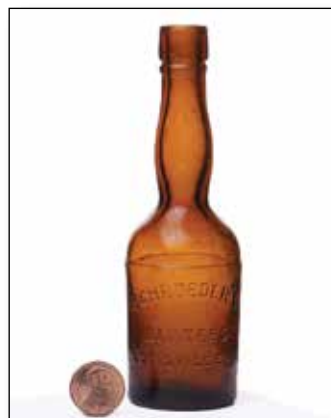
**Est.: \$75 - \$150 • Min. bid: \$40**



### Lot 199

**Sample size, "Hertrichs Bitter hilft-verdauen" Bitters**, (with partial original contents, neck seal), Germany, or possibly America, 1890 - 1910. Bright grass green, or "7-Up" green, BIM, bulbous body with pedestal base, long neck, tooled square collar - smooth base, ht. 5 1/2", perfect! Unlisted, and likely a very rare sample bitters. Similar to R/H #H104.3 in form, color and size. Provenance: Festus Russell collection.

**Est.: \$100 - \$200 • Min. bid: \$50**

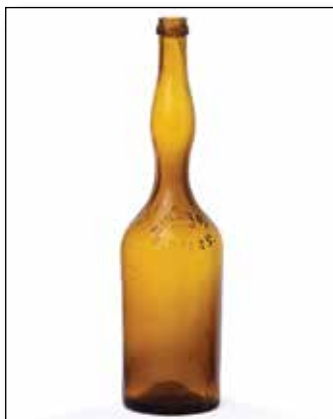


### Lot 200

**Sample size, "SCHROEDER'S / BITTERS / LOUISVILLE, KY."**, 1890 - 1900. Golden amber, cylindrical, lady's leg neck with tooled sloping collar and ring - smooth base, ht. 5 1/4"; (a dug bottle with some minor exterior wear and light scratches, primarily on the reverse; a little interior haze, otherwise excellent). Unlisted. R/H # S65, but 1/2" shorter and no base embossing. With a light professional cleaning, the bottle would present as near mint. Provenance: Festus Russell collection; Ex. Stuart Elmer collection.

**Est.: \$200 - \$400 • Min. bid: \$100**





### Lot 201

**"ZINGARI / BITTERS - F. RATHER."**, America, 1870 - 1880. Light-to-medium honey amber, cylindrical with elongated "lady's-leg" neck, applied collar with flat band - smooth base, ht. 12", near mint; (a little minor exterior wear). R/H #Z4. A bright, light example of this popular and attractive "Lady's leg" bitters from Philadelphia.

**Est.: \$250 - \$400 • Min. bid: \$140**



### Lot 205

**(Rectangular slug plate) / "CLARKE'S / VEGETABLE / SHERRY / WINE / BITTERS / SHARON MASS"**, America, 1860 - 1870. Aquamarine, rectangular with beveled corners, applied sloping collar - early smooth base, ht. 11 5/8"; (just a small touch of faint haze, and a trace of light wear including a pinhead bit of roughness on the inside edge of the lip, other near mint). R/H #C160. Overall, a very nice example, clean, heavily whittled, attractive.

**Est.: \$300 - \$500 • Min. bid: \$150**



### Lot 202

**"NATIONAL / BITTERS" - "PATENT / 1867"** (on base), America, 1867 - 1875. Medium amber, figural ear of corn, applied short tapered collar with ring - smooth base, ht. 12 1/4"; (a shallow, minor pinhead flake on the back edge of the lip, and a thin 1/2" open surface bubble on the side of the neck, otherwise excellent). R/H #N8. One of the great classics of figural bitters.

**Est.: \$250 - \$400 • Min. bid: \$140**



### Lot 206

**"DR S. GRIGGS. DETROIT - AROMATIC BITTERS"**, America, 1865 - 1875. Yellowish 'old amber', almost a tobacco coloration, rectangular with beveled corners, applied sloping collar with bevel - smooth base, ht. 11", virtually perfect; (just a faint trace of wear including a tiny pinhead bit or roughness at one of the base corners, mentioned for complete accuracy, otherwise attic mint!) R/H #G117. An extremely rare bitters, especially in this fine condition.

**Est.: \$800 - \$1,200 • Min. bid: \$400**



### Lot 203

**"MORNING" (STAR) "BITTERS" / "INCEPTUM 5869 - PATENTED / 5869"**, America, 1855 - 1865. Golden amber with a slight orange tone, triangular pyramid form, applied sloping collar - iron pontil scar, ht. 12 5/8", virtually perfect; (only the slightest trace of faint wear, otherwise attic mint). R/H #M135.

**Est.: \$250 - \$400 • Min. bid: \$140**



### Lot 207

**"STAR. ANCHOR BITTERS - PORTSMOUTH OHIO - W. L. B. JACK."**, probably 1871 - 1873. Golden amber, square with beveled corners, applied sloping collar - smooth base, ht. 9"; (a tiny pinprick speck of roughness on the edge of the lip, otherwise out-of-the-mold pristine perfect). R/H #S176. "W.L.B. Jack", aka, 'Captain Jack', had a very interesting history. See Peachridge Glass, 12/5/15 post. A fresh-to-the-market find from a flea market near Altoona, PA. Extremely rare!

**Est.: \$400 - \$800 • Min. bid: \$200**



### Lot 204

**"THE GREAT TONIC / CALDWELLS / HERB BITTERS"**, America, 1855 - 1865. Amber, triangular pyramid form with 24 squares in lattice panel, applied sloping collar - heavy iron pontil scar, ht. 12 5/8"; (a couple of minor, 1/4" or less, open surface bubbles; a pinhead flake on the side of the collar, and a little patchy, light exterior haze). R/H #C8. The condition issues are minor. With just a couple of days in the tumbler, the bottle would present as very near mint. Nice with pontil.

**Est.: \$200 - \$300 • Min. bid: \$100**



### Lot 208

**"DR J. HOSTETTER'S / STOMACH BITTERS"**, probably a Pittsburgh district glasshouse, 1860 - 1870. Medium-to-deep yellowish olive, square with beveled corners, applied sloping collar - smooth base (with dot in center), ht. 9 3/8" x 3" wide, near mint; (a minor 1/8" flake on inner edge of lip and faint trace of typical light wear, otherwise perfect). R/H #H194. Great character, crude glass that is absolutely filled with tiny seed bubbles, and in a lighter tone so the color can be enjoyed.

**Est.: \$300 - \$500 • Min. bid: \$150**



### Lot 209

**"DR J. HOSTETTER'S / STOMACH BITTERS"** (early hand-painted floral decoration on two panels), probably a Pittsburgh district glasshouse, 1860 - 1870. Deep olive with an amber tone, square with beveled corners, applied sloping collar - smooth base, ht. 9 1/2" x 3" wide, attic mint! R/H #H194. Another early mold, interesting that someone chose this bottle to use as a canvas for a folk-art floral painting.

**Est.: \$300 - \$500 • Min. bid: \$150**



### Lot 213

**"OLD DR / J TOWNSENDS - SAR-SAPARILLA - NEW YORK"**, America, 1850 - 1860. Rich, deep emerald, almost a forest green coloration, square with beveled corners, sheared mouth with crudely applied short sloping collar - deep domed base with heavy iron pontil scar, ht. 9 1/4", near mint; (a little scattered minor wear, otherwise perfect). A crude, heavy example in an absolutely gorgeous pure deep emerald color, very rare in this mold. A top-shelf example for the Townsend collector.

**Est.: \$1,000 - \$2,000 • Min. bid: \$500**



### Lot 210

**Figural Pineapple Bitters**, America, 1860 - 1875. Virtually yellow below the shoulders, shading to a medium-to-deep yellowish honey coloration in the neck and base, pineapple form, applied blob collar with lower bevel - smooth base, ht. 8 3/4", very near mint; (just a touch of very minor wear and interior residue, otherwise perfect). R/H #P100. A beautiful example, attractive light color.

**Est.: \$250 - \$400 • Min. bid: \$130**



### Lot 214

**"DR TOWNSEND'S - SARSAPARILLA - ALBANY" / (tilted Cross) "N. Y."**, a New England glasshouse, 1840 - 1860. Yellowish olive amber, square with beveled corners, applied sloping collar - sand type pontil scar, ht. 9 1/4", near mint; (a little minor wear, and a pinprick bit of roughness on the lip, otherwise perfect). A very rare mold! See "Townsend's with Benefits", AB&GC, August, 2018 for a similar rare mold. Excellent character, crude glass, heavy embossing.

**Est.: \$500 - \$1,000 • Min. bid: \$250**



### Lot 211

**Figural Pineapple Bitters**, America, 1860 - 1875. Medium-to-deep amber, pineapple form, applied blob collar with lower bevel - smooth base, ht. 9"; (some light exterior wear, otherwise perfect). R/H #P100. A deeper color than most, and a nice contrast to the previous lot. Most of the figural pineapple bitters are in shades of golden amber. A lot of bottle for the money!

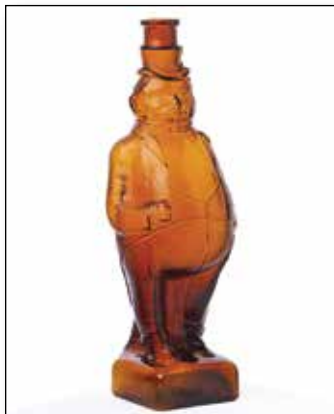
**Est.: \$200 - \$300 • Min. bid: \$100**



### Lot 215

**"DR TOWNSEND'S - SARSAPARILLA - ALBANY / N Y"** (4 "Nailhead" Mold), probably an early Stoddard, NH glasshouse, 1845 - 1855. Yellowish olive with an amber tone, square with beveled corners, applied sloping collar - sand type pontil scar, ht. 9 1/2", near mint; (a little natural roughness on the top of the lip, primarily due to some minor in-manufacture crazing lines; a tiny pinhead open bubble on a panel, otherwise excellent). A scarce mold having four rivet marks on each panel.

**Est.: \$400 - \$600 • Min. bid: \$200**



### Lot 212

**Figural Big Bill (President Taft), Bitters Decanter**, America, possibly Cumberland Glass Works, Bridgeton, NJ, 1908 - 1912. Golden amber, figural of a rotund man with top hat and waistcoat, tooled square collar - smooth base, ht. 11 5/8", attic mint! R/H, p.97. The figure is believed to be that of William Howard Taft, the 27th President who served from 1909 - 1913. See, "Who is Big Bill?", by Bob Strickhart, *Antique Bottle & Glass Collector*, August, 2013.

**Est.: \$175 - \$350 • Min. bid: \$100**



### Lot 216

**"DR TOWNSEND'S - SARSAPARILLA - ALBANY / N Y"**, a New England glasshouse, 1840 - 1860. Bright yellowish olive, square with beveled corners, applied wide sloping collar - sand type pontil scar, ht. 9 1/4", perfect! A great example having nice color and clarity, a little lighter than most, strong embossing for this mold, an attractive broad beveled collar, and outstanding condition.

**Est.: \$400 - \$600 • Min. bid: \$200**





### Lot 217

**"DR TOWNSEND'S - SARSAPARILLA - ALBANY / N Y"**, a New England glasshouse, 1840 - 1860. Yellowish olive with an amber tone, square with beveled corners, applied sloping double collar - sand type pontil scar, ht. 9 1/2"; (a little scattered light wear and a 1/8" flake on the top of the lip). A crude, heavy, example. Almost everything about this mold is different, - from the double collar to the embossing on all 3 panels which stops approx. 1" to 2 1/2" above the base.

**Est.: \$400 - \$600 • Min. bid: \$200**



### Lot 218

**"DR TOWNSEND'S - SARSAPARILLA - ALBANY / N. Y."**, America, 1845 - 1860. Rich, deep yellowish emerald, square with beveled corners, crudely applied sloping collar - deep squared base with a heavy cloverleaf-type iron pontil scar, ht. 9 1/2"; (a little typical light wear, and a 1/8" flake from below the applied collar that may have occurred in manufacture, otherwise very near mint). A heavy, crude, beautiful example, boldly embossed, that does not appear to have been dug and cleaned.

**Est.: \$500 - \$800 • Min. bid: \$250**



### Lot 219

**"DR TOWNSEND'S - SARSAPARILLA - ALBANY / N Y"**, America, 1845 - 1860. Clear, light-to-medium emerald coloration, square with beveled corners, applied sloping collar - large round iron pontil scar, ht. 9 5/8", near mint; (a little minor lip edge roughness including a flat, paper-thin, 3/16" flake on the top, otherwise excellent). A very attractive example, nice color and clarity, very heavily whittled.

**Est.: \$400 - \$600 • Min. bid: \$200**



### Lot 220

**"MYERS' - ROCK ROSE - NEW HAVEN"**, America, 1850 - 1860. Clear, medium emerald coloration, square with beveled corners, applied sloping collar - domed base with heavy iron pontil scar, ht. 9 1/4", virtually perfect; (slight trace of wear and an onionskin-thin open bubble on the interior). Very rare! A choice colored pontiled medicine believed to be one of only a small handful known in this size or mold.

**Est.: \$2,500 - \$4,500 • Min. bid: \$1,400**



### Lot 221

**"SHAKER SYRUP - ENFIELD N.H."**, America, 1845 - 1855. Brilliant, medium-to-deep yellowish green, rectangular with beveled corners, applied sloping collar - large blowpipe pontil scar, ht. 7", attic mint. Odell, p.318. Gorgeous color, outstanding character, bright, clean, and very heavily whittled, fantastic eye-appeal. A rare mold in aqua, this is believed to be a unique example in color! Provenance: James Chebalo collection.

**Est.: \$5,000 - \$8,000 • Min. bid: \$2,500**



### Lot 222

**"CHAPMAN'S / GENUINE. / No.4 SALEM ST. BOSTON"**, a Stoddard glasshouse, probably Granite Glass Co, Mill Village, 1846 - 1860. Yellowish olive amber, rectangular with beveled corners, applied sloping collar - iron pontil scar, ht. 8 1/4", virtually perfect; (only the slightest trace of faint wear and a pinhead flake at edge of base, otherwise attic mint). Beautiful crude glass, virtually no wear, outstanding character, color and condition. A very rare, desirable, top Stoddard medicine.

**Est.: \$8,000 - \$12,000 • Min. bid: \$4,000**



### Lot 223

**"Dr. J. W. POLAND" Medicine Bottle**, an early Stoddard, NH glasshouse, 1855 - 1865. Yellowish "old amber" with an olive tone, oval, crudely applied large disk collar - early smooth base, ht. 7 3/4", near mint; (just a touch of typical light exterior wear and a tiny pinprick bit of roughness on the edge of the lip, otherwise perfect). A rare and very desirable early Stoddard medicine. This example has not seen the light of day in almost 20 years. Great character and crudity, the glass is filled with tiny seed bubbles.

**Est.: \$3,000 - \$5,000 • Min. bid: \$1,500**



### Lot 224

**"BEEKMAN'S - PULMONIC - SYRUP - NEW-YORK"**, an early New England glasshouse, 1840 - 1850. Clear, medium olive, octagonal, applied sloping collar with bevel - sand type pontil scar, ht. 7 1/4"; (a couple of minor 1/8" flakes, one at bottom edge of collar, the other at edge of base; a 1/4" open surface bubble on one of the panels, otherwise sparkling attic mint). A great example of this rare medicine having unusually crisp, sharp embossing, the nicest we have seen, beautiful clarity.

**Est.: \$3,000 - \$5,000 • Min. bid: \$1,500**



### Lot 225

**"GIBB'S / BONE LINIMENT"**, a New England glasshouse, 1845 - 1855. Beautiful clear olive in the upper half, shading to a deep olive green through the lower body, 6-sided, applied sloping collar with lower bevel - blowpipe pontil scar, ht. 6 1/2"; (a 3/8" open bubble on side panel, otherwise virtually attic mint). A pretty example, nice and light through the shoulders, with plenty of bubbles and stretch marks. Also, scarce with the double collared mouth.

*Est.: \$800 - \$1,200 • Min. bid: \$400*



### Lot 229

**"HAMPTON'S / V. TINCTURE / MORTIMER / & MOWBRAY / BALTo."**, probably Baltimore Glass Works, Baltimore, MD, 1845 - 1855. Gorgeous, light-to-medium coppery puce through the shoulders, shading to a rich, deep copper-pace through the base, oval, applied disk collar - blowpipe pontil scar, ht. 6 1/4"; (just a bit of scattered minor wear, otherwise virtually attic mint!) Odell, p.161. Beautiful color, condition, and character having heavily whittled glass.

*Est.: \$800 - \$1,600 • Min. bid: \$400*



### Lot 226

**"SMITH'S - GREEN MOUNTAIN - RENOVATOR - EAST. GEORGIA. VT"**, Granite Glass Company, Stoddard, NH, 1850 - 1860. Yellowish "old amber" with an olive tone, rectangular with wide beveled corners, applied ring collar with bevel - iron pontil scar, ht. 7", very near mint; (trace of faint light wear, otherwise perfect). A beautiful example of this classic Stoddard medicine.

*Est.: \$2,500 - \$4,500 • Min. bid: \$1,300*



### Lot 230

**"G.W. MERCHANT / LOCKPORT. N.Y."** (with 80% complete original label), probably Lockport Glass Works, Lockport, NY, 1850 - 1860. Light-to-medium yellowish apple green, rectangular with narrow beveled corners, applied sloping collar - blowpipe pontil scar, ht. 5 3/8"; (bottle is perfect, label has some staining, a few tears, and darkened a bit from age, but remains legible). A scarce mold and rare color (typically found in aqua, or light blue-green). Provenance: James Chebalo collection, Ex. Sam Greer collection.

*Est.: \$600 - \$900 • Min. bid: \$300*



### Lot 227

**"C. BRINCKERHOFFS - HEALTH RESTORATIVE - PRICE \$1.00 - NEW YORK"**, probably an early Stoddard, NH glasshouse, 1845 - 1851. Olive amber, rectangular with beveled corners, applied sloping collar - sand type pontil scar, ht. 7 1/8", near mint; (just a little typical light exterior wear and a tiny, pinprick speck of roughness on the edge of the lip). A nice example of this early New England pontiled medicine having crude glass and good strength of embossing.



### Lot 231

**Early Medicine or Utility Bottle**, probably America, 1845 - 1860. Light cornflower blue, square with narrow beveled corners, applied square collar - sand type pontil scar, ht. 7", near mint; (just a faint trace of light wear; some in-manufacture crazing lines in the neck and a little extra glass near a beveled corner adhered to the bottle during annealing process, mentioned for accuracy). An extremely rare mold, similar in form to the top half of a large case bottle. Pretty color, nicely whittled, rare.

*Est.: \$175 - \$350 • Min. bid: \$90*



### Lot 228

**Early Medicine or Utility Bottle**, New England, probably one of the Stoddard glasshouses, 1842 - 1860. Olive amber, rectangular, arched tombstone-type label panel, wide beveled corners - applied sloping collar - iron pontil scar, ht. 8"; (slight trace of light wear, otherwise sparkling attic mint; a bit of dried content residue in the base). Excellent character with a large bubble in the shoulder, and crude, whittled, wavy glass. A scarce, eye-appealing mold.

*Est.: \$300 - \$600 • Min. bid: \$150*



### Lot 232

**Early Medicine or Utility Bottle**, America, 1840 - 1850. Medium cobalt, almost a Prussian-blue tone, cylindrical, dip mold, applied sloping collar - sand type pontil scar, ht. 4 1/8"; (a small, onionskin-thin open surface bubble, otherwise perfect!) Extremely rare and unusual, and almost certainly an early medicinal utility bottle. Note, the mold is very similar to the embossed, "Anderson's / Dermador" bottle. This is the only example that we can recall seeing.

*Est.: \$250 - \$450 • Min. bid: \$130*





### Lot 233

**"Dr. ROBERTSON'S - FAMILY / MEDICINE - PREPARED - ONLY BY / T. W. DYOTT"**, Kensington Glass-works, 1809 - 1815. Aquamarine, rectangular with beveled corners, tooled flared mouth - blowpipe pontil scar, ht. 5 3/8", near mint; (a 1" x 1/2" pontil chip extends to the side of the base, otherwise clean, sparkling, virtually attic mint). MW, p.80. A rare, historical, pontiled medicine credited as being one of the earliest of all the embossed American medicine bottles!

**Est.: \$1,500 - \$2,500 • Min. bid: \$800**



### Lot 237

**"DOCTOR - STOUT'S - COUGH - MIXTURE"**, America, probably 1830 - 1840. Colorless, square with beveled corners, sheared and tooled, wide flanged mouth - blowpipe pontil scar, ht. 4", attic mint! A very unusual, likely early, flint glass medicine. Relatively few early medicines have the word, "DOCTOR" spelled out. Unlisted, extremely rare, and possibly unique.

**Est.: \$300 - \$600 • Min. bid: \$150**



### Lot 234

**"H. LAKE'S / INDIAN / SPECIFIC."**, America, 1849 - 1855. Aquamarine, rectangular with concave corners, bulbous neck, applied ring collar - blowpipe pontil scar, ht. 8 1/4", perfect! Odell, p.218. A great example of this scarce, classic pontiled Indian medicine in virtually pristine condition. Many of the known examples tend to have little issues. If you been waiting for a great example, this could be it.

**Est.: \$600 - \$900 • Min. bid: \$300**



### Lot 238

**"BREWSTER'S / PECTORAL MIXTURE / FOR COUGHS"**, America, probably a South Jersey, or Mid-Atlantic glasshouse, 1845 - 1855. Aquamarine, oval, sheared and tooled, thin flanged lip - blowpipe pontil scar, ht. 4 3/8"; (a little light interior haze or milkiness in the upper half of the bottle, otherwise attic mint). N #73 (4 star). Heavily whittled, strong embossing. A very scarce, early, cough bottle believed to be from Bridgeton, NJ.

**Est.: \$175 - \$350 • Min. bid: \$100**



### Lot 235

**"GENUINE - SANDS' / SARSAPARILLA - NEW YORK."**, America, 1850 - 1860. Aquamarine, rectangular with beveled corners, applied double ring collar - blowpipe pontil scar, ht. 10"; (a trace bit of wear including a 3/16" flake along the edge of the beveled corner on the reverse, otherwise near mint). Odell, p.310, DeG #188. A scarce Sarsaparilla, impressive size, having nice character with some waviness and whittling to the glass.

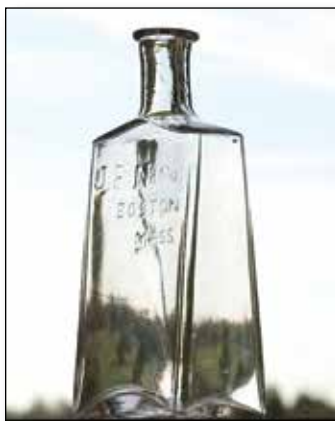
**Est.: \$150 - \$250 • Min. bid: \$80**



### Lot 239

**"LA MOTT'S / COUGH DROPS - PREPARED BY / A. CROSBY"**, probably an early New York State glasshouse, possibly Sandlake Glass Works near Albany, or Mt. Vernon Glass Works, Vernon, NY, 1825 - 1840. Aquamarine, cylindrical, sheared, tooled thin flanged lip - blowpipe pontil scar, ht. 4 3/4", perfect. Unlisted, early, and extremely rare. Only the 2nd example to be offered in more than 30 years. The bottle is believed to have been from the small town of Cambridge, NY, near Glens Falls.

**Est.: \$400 - \$600 • Min. bid: \$200**



### Lot 236

**"J.R. N & Co / BOSTON / MASS"**, America, probably 1830 - 1850. Colorless, rectangular wedge form with narrow beveled corners, sheared, tooled flanged mouth - solid glass tipped pontil scar, ht. 7 5/8", perfect. A very rare and unusual, and likely early, flint glass bottle that is believed to have contained some type of medicine or hair product.

**Est.: \$300 - \$500 • Min. bid: \$150**



### Lot 240

**"CRUMPTON'S - STRAWBERRY - BALSAM - ATTICA IND."**, America, probably 1850 - 1859. Aquamarine, square with indented panels, sheared, tooled and inward rolled mouth - blowpipe pontil scar, ht. 5", perfect! Odell, p.96. Beautiful, sparkling glass, great eye-appeal with the large embossing on all four panels. William Crumpton operated a drugstore in the small town of Attica, (population 3,000), in western Indiana in the mid-1850's. Very scarce.

**Est.: \$300 - \$500 • Min. bid: \$150**



### Lot 241

**"DR. D. JAYNE'S / AMERICAN - HAIR DYE / PHILADA"**, America, 1840 - 1850. Aquamarine, cylindrical, wide mouth with a sheared and outward folded lip - blowpipe pontil scar, ht. 4 3/4", perfect! Odell, p.197; DF, p.82. A very scarce-to-rare pontiled hair bottle, and certainly one of the more difficult to acquire of all the various Dr. Jayne's bottles.

**Est.: \$200 - \$400 • Min. bid: \$100**



### Lot 245

**"JOHNSON'S / AMERICAN - ANO-DYNE / LINIMENT"**, America, 1840 - 1855. Aquamarine, cylindrical, sheared, thin flanged lip - blowpipe pontil scar, ht. 4 5/8"; (lightly cleaned to original luster and near mint condition). Odell, p.203; N #349. Scarce. An early pontiled liniment from Bangor, Maine. Provenance: Gary Enters collection.

**Est.: \$150 - \$250 • Min. bid: \$80**



### Lot 242

**"DR. D. JAYNE'S / LIFE PRESERVATIVE - PHILADA."** (with partial contents), America, 1840 - 1850. Aquamarine, rectangular with beveled corners, applied thin flanged lip - blowpipe pontil scar, ht. 5 1/2"; (a 3/8" piece of the thin flanged lip is missing, otherwise perfect). Odell, p.200; N#338. Nice with partial contents, cork and sealing wax. Certainly one of the rarest and most desirable of all the Dr. Jayne's bottles, believed to be less than 10 known in any condition.

**Est.: \$300 - \$600 • Min. bid: \$150**



### Lot 246

**"POWELL'S - AMERICAN / LINIMENT"**, America, 1850 - 1860. Aquamarine, cylindrical, sheared, tooled and inward rolled lip - blowpipe pontil scar, ht. 3 3/4", very near mint; (slight touch light interior residue or faint haze in one side, otherwise perfect). Odell, p.284. A liniment that advertised for man, and beast, believed to be from Lawrenceville, Illinois. Extremely rare, believed to be one of only two or three known, and the first example at auction in almost 30 years. Gary Enters collection.

**Est.: \$300 - \$600 • Min. bid: \$150**



### Lot 243

**"CHLORIDE / CALCIUM - ST. CATHARINES - CANADA"**, probably a Western NY State glasshouse, 1850 - 1860. Aqua, rectangular with beveled corners, applied round collar with bevel - blowpipe pontil scar, ht. 5 7/8"; (a few small patches of light haze; a bit of roughness along with an 1/8" chip on inner edge of base, possibly in-making, otherwise excellent). Very rare, likely produced by William Sweet of Rochester, NY, for the Canadian market. Gary Enters collection.

**Est.: \$400 - \$800 • Min. bid: \$200**



### Lot 247

**"AMERICAN - LINIMENT - AUBURN. N.Y."**, America, probably 1853 - 1858. Bright aquamarine, rectangular with beveled corners, sheared mouth with a small applied ring collar - blowpipe pontil scar, ht. 5", perfect! Very rare. Odell, p.5. Clean, sparkling, strongly embossed, crude glass, a great example. Provenance: Gary Enters collection, Ex. Dr. Burton Spiller collection.

**Est.: \$600 - \$900 • Min. bid: \$300**



### Lot 244

**"DR. WOOD'S / CANADIAN / LINIMENT"**, America, 1840 - 1860. Aquamarine, cylindrical, sheared, tooled and inward rolled lip - blowpipe pontil scar, ht. 4 5/8", virtually perfect; (very faint haze on interior of shoulder and rolled lip, barely noticeable, otherwise attic mint). Odell, p.379. Extremely rare, possibly unique. This may be the example noted by Odell. Provenance: Gary Enters collection.

**Est.: \$400 - \$800 • Min. bid: \$200**



### Lot 248

**"WESTERN / LINIMENT - MOORE & THURSTON"**, America, 1840 - 1855. Bright aquamarine, narrow rectangular body, almost square, beveled corners, sheared, tooled and inward rolled mouth - blowpipe pontil scar, ht. 4 3/8", virtually "out-of-the-mold" pristine perfect. Odell, p.368. An exceptional and possibly unique pontiled medicine. Crisp, very bold embossing, crude, and sparkling mint. Provenance: Gary Enters collection, Ex. Sam Greer collection #1741.

**Est.: \$500 - \$800 • Min. bid: \$250**





### Lot 249

**"ECLIPS / LINIMENT - Dr. J.L. / DAUGHERTY"**, probably a Midwest glasshouse, 1845 - 1855. Aquamarine, oval, sheared and inward rolled lip - blowpipe pontil scar, ht. 4 1/4", attic mint. Odell, p.101. Exceptional, likely one of possibly two known examples. Believed to be from the same company as the "DAUGHERTY'S CELEBRATED GRAVE ROBBER" bottle. An unusual mold, recessed oval panel, bright, clean and sparkling. Gary Enters collection, Ex. Andy Regrut collection.

*Est.: \$800 - \$1,200 • Min. bid: \$400*



### Lot 253

**"J.B. MOORE'S - ROUGH & READY - LINIMENT"**, America, 1850 - 1860. Aquamarine, rectangular with beveled corners, sheared and inward rolled mouth - blowpipe pontil scar, ht. 5"; (lightly cleaned to original luster with a couple of small patches of light interior haze remaining, otherwise excellent). Odell, p.257. A very rare medicine from Danville, PA, a small town located along the Susquehanna River. Provenance: Gary Enters collection.

*Est.: \$300 - \$600 • Min. bid: \$150*



### Lot 250

**"MITCHELL'S - LINIMENT - PITTSBURGH. PA"**, America, 1845 - 1855. Aquamarine, rectangular with beveled corners, sheared, tooled and inward rolled mouth - blowpipe pontil scar, ht. 4 3/4"; (professionally cleaned to original luster and near mint condition, a trace of light wear on reverse, and a 1/8" flake at corner of base on the reverse). Odell, p.254. The condition notes are minor, the bottle displays as virtually attic mint. Very scarce. Provenance: Gary Enters collection.

*Est.: \$150 - \$250 • Min. bid: \$80*



### Lot 254

**"Dr ATWOOD'S - RHEUMATIC / LINIMENT - CHAS' TOWN, MASS"**, America, 1850 - 1860. Aquamarine, rectangular with beveled corners, applied sloping collar - blowpipe pontil scar, ht. 5 7/8"; (a 3/16" flake on the reverse, at edge of base, otherwise sparkling mint). Odell, p.13. Very rare. A bright, clean, sparkling example, and only the second one offered at auction in more than 20 years. Provenance: Gary Enters collection.

*Est.: \$200 - \$400 • Min. bid: \$100*



### Lot 251

**"CHADWICK'S - COMPOUND / VEGETABLE - LINIMENT"**, America, 1850 - 1860. Aquamarine, rectangular with beveled corners, applied sloping collar with bevel - blowpipe pontil scar, ht. 5 1/4", perfect! Odell, p.71; N #110. Rare. A beautiful example, clean, bright, and sparkling mint. Provenance: Gary Enters collection; Ex. Sam Greer collection #347.

*Est.: \$250 - \$450 • Min. bid: \$130*



### Lot 255

**"Dr KENNEDY'S - RHEUMATIC / LINIMENT - ROXBURY, MASS."**, America, probably 1855 - 1860. Aquamarine, rectangular with beveled corners, applied sloping collar - blowpipe pontil scar, ht. 6 1/4"; (light interior haze through the body, but otherwise no other form of damage and very near mint). Odell, p.209. Scarce. Provenance: Gary Enters collection.

*Est.: \$100 - \$200 • Min. bid: \$50*



### Lot 252

**"PEOPLE'S / MAGNETIC / LINIMENT - A.H. PALMER & Co - NEW YORK"**, America, 1855 - 1860. Aquamarine, rectangular with beveled corners, applied sloping collar - blowpipe pontil scar, ht. 6 3/8", near mint; (a paper-thin in-making pontil flake extends to the edge of the base; a slight bit of faint haze where the cork was inside the lip, and in the shoulder, otherwise perfect). Odell, p.276. Rare. Gary Enters collection, Ex. Sam Greer collection #1382.

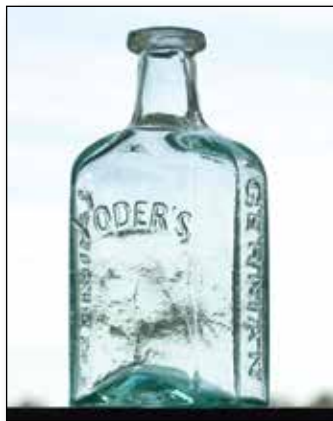
*Est.: \$175 - \$350 • Min. bid: \$90*



### Lot 256

**"MORGANS - RHEUMATIC - LINIMENT"**, America, 1850 - 1860. Aquamarine, rectangular with beveled corners, applied sloping collar - blowpipe pontil scar, ht. 6 5/8"; (a couple of small patches of faint interior milkiness in the beveled corners, otherwise very near mint). Odell, p.257; N #454. A very scarce-to-rare Pittsburgh liniment. Only the second, or possibly third, example to be offered in the past 30 years. Provenance: Gary Enters collection.

*Est.: \$200 - \$400 • Min. bid: \$100*



### Lot 257

**"YODER'S - GERMAN - LINIMENT"**, America, 1845 - 1860. Aquamarine, rectangular with wide beveled corners, applied square collar - blowpipe pontil scar, ht. 5 1/8"; (a pinhead flake and a little minor roughness on the edge of the square collar that you can feel, but is not easy to see, otherwise perfect). Odell, p.384. Very rare. A bright, clean example with strong embossing. Provenance: Gary Enters collection.

*Est.: \$400 - \$600 • Min. bid: \$200*



### Lot 261

**"DR. S. FELLER'S - ELECTIC - LINIMENT"**, a Midwest glasshouse, probably 1855 - 1860. Deep aquamarine, 12-sided, crudely applied short sloping collar - blowpipe pontil scar, ht. 6 1/8"; (a small patch of light interior residue in the shoulder, likely washable, otherwise virtually attic mint). Odell, p.126. A very scarce, to rare, variant. Most of the known examples are only 4 1/4". This example also having "ELECTRIC" mis-spelled. From the small town of Greenfield, Ohio. Gary Enters collection.

*Est.: \$250 - \$450 • Min. bid: \$130*



### Lot 258

**"STEPHEN - SWEET'S - INFALLIBLE - LINIMENT"**, America, probably 1855 - 1860. Aquamarine, rectangular with wide beveled corners, applied sloping collar - blowpipe pontil scar, ht. 5", virtually attic mint; (small patch of residue or faint haze in shoulder, barely noticeable, otherwise pristine perfect). Odell, p.339. A beautiful example of this early liniment from Norwich, CT, similar in form to the Burdsall's and Hunt's Liniment bottles. Provenance: Gary Enters collection.

*Est.: \$100 - \$200 • Min. bid: \$50*



### Lot 262

**"J.R. STAFFORD'S - OLIVE TAR"** (90% complete original labels), America, probably 1858 - 1860. Aquamarine, rectangular with beveled corners, applied ring collar - blowpipe pontil scar, ht. 6 1/8"; (bottle is perfect; front label is illegible, back label is 98% complete, darkened from age, but virtually all legible). Odell, p.330. Rare with original labels. Label is filled with ailments that this medicine will treat including Scarlet Fever, Syphilis, Cancers, and Salt Rheum. Gary Enters collection.

*Est.: \$150 - \$250 • Min. bid: \$80*



### Lot 259

**"J.R. BURDSALL'S - ARNICA / LINIMENT - NEW YORK"**, America, 1850 - 1860. Aquamarine, rectangular with wide beveled corners, applied sloping collar - blowpipe pontil scar, ht. 5 1/4", perfect! Odell, p.60. A clean, sparkling example. The mold is almost identical to the "HUNT'S / LINIMENT" from Sing Sing, NY, and may have been a copycat. Provenance: Gary Enters collection.

*Est.: \$100 - \$200 • Min. bid: \$50*



### Lot 263

**Lot of (2), Pontiled Medicines, "J.J. HUNT'S / MODERN REMEDY" and, "MAGUIRE / DRUGGIST/ ST. LOUIS, Mo."**, America, 1850 - 1860. Both are aquamarine, rectangular, applied sloping collar - "HUNT'S" with blowpipe pontil scar, "MAGUIRE" with iron pontil scar, ht. 6 1/2" and 5 3/4" respectively; (both have been professionally cleaned; the "HUNT'S" has a little minor wear remaining on the reverse, otherwise no other form of damage).

*Est.: \$150 - \$250 • Min. bid: \$80*



### Lot 260

**"DR. JEBBS / LINIMENT"**, America, probably 1825 - 1840. Aquamarine, oval, sheared, tooled thin flanged lip - blowpipe pontil scar, ht. 4 5/8"; (some light patchy stain, mostly on the interior, but no other form of damage). Odell, p.200. An extremely rare, possibly unique early Boston medicine. This is the only recorded example at auction in more than 30 years. Provenance: Gary Enters collection; Ex. Sam Greer collection #948.

*Est.: \$300 - \$600 • Min. bid: \$150*



### Lot 264

**"L.E.K. / THE KEELEY / CURE / TOBACCO HABIT / A / RELIABLE / REMEDY / DISCOVERED BY / DR. L.E. KEELEY / DWIGHT, ILL. - K.C. / Leslie E Keeley M.D. - T"**, America, 1895 - 1905. Colorless with an amethyst tone, rectangular with rounded back panel, tooled prescription-type collar - smooth base, ht. 5 5/8", attic mint. A great example, scarce mold, beautiful light amethyst coloration.

*Est.: \$200 - \$400 • Min. bid: \$100*





### Lot 265

"L.E.K. / THE KEELEY / CURE / DRUNKENNESS / A / RELIABLE / REMEDY / DISCOVERED BY / DR. L.E. KEELEY / DWIGHT, ILL. - K.C. / Leslie E Keeley M.D. - I.T.F. - D", America, 1895 - 1905. Colorless, rectangular with rounded back panel, tooled prescription-type collar - smooth base, ht. 5 3/4"; (just a trace bit of wear on the reverse and some overall light haze, but no other form of damage). Scarce.

Est.: \$150 - \$250 • Min. bid: \$80



### Lot 269

Lot of (2), Warner's Bottles, America, 1883 - 1895. 1st example; "LOG CABIN - SARSAPARILLA - ROCHESTER, N.Y.", honey amber, irregular hex form, applied blob collar - "PAT. SEPT 6 / 87" (on smooth base), ht. 9"; (some minor light wear, otherwise excellent). O&S #31. 2nd example, "TIPPECANOE" / (CANOE) / "H.H. WARNER & Co", golden amber, figural log, applied mushroom type mouth - "ROCHESTER / N.Y." (on smooth base), ht. 9", perfect! O&S #33.

Est.: \$200 - \$300 • Min. bid: \$100



### Lot 266

"DR. / L.E. KEELEY'S / DOUBLE / CHLORIDE / OF / GOLD CURE / FOR / NEURASTHENIA / A / TESTED / AND / INFALLIBLE / REMEDY / DISCOVERED BY / DR. L.E. KEELEY / DWIGHT, ILL. - K.G.C. / Leslie E Keeley M.D. - N", 1890 - 1900. Colorless with an amethyst tone, rectangular with rounded back, tooled prescription-type collar - smooth base, ht. 5 3/4"; (a couple of tiny pinhead flakes at edge of base, otherwise attic mint). A rare mold, beautiful color.

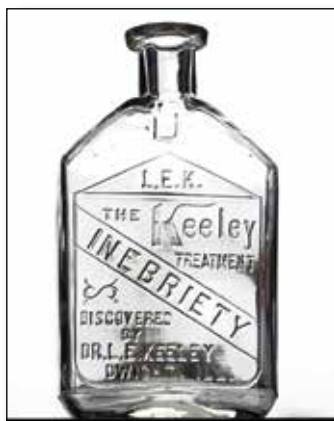
Est.: \$250 - \$450 • Min. bid: \$130



### Lot 270

Lot of (2), Craig's Bottles, America, 1880 - 1890. 1st example, "THE / CRAIG KIDNEY / CURE / COMPANY", golden amber, oval, applied double collar - smooth base, ht. 9 1/4"; (a little minor wear and faint dullness on the exterior; some interior haze). 2nd example, "CRAIG'S KIDNEY / & / LIVER / CURE / COMPANY", deep amber, oval, applied double collar - smooth base, ht. 9 1/2"; (a little wear including a light scuff or fine scratches on one of the rounded corners, a bit of light interior stain).

Est.: \$200 - \$300 • Min. bid: \$100



### Lot 267

"L.E.K. / THE KEELEY / TREATMENT / INEBRIETY / DISCOVERED / BY / DR. L.E. KEELEY / DWIGHT, ILL. - K.C. / Leslie E. Keeley MD - I - D", America, 1900 - 1910. Colorless, rectangular with rounded back panel, tooled prescription-type collar - smooth base, ht. 5 3/4", perfect! Another great example and scarce mold variant.

Est.: \$175 - \$350 • Min. bid: \$100



### Lot 271

"SWIFTS / SYPHILITIC SPECIFIC", America, 1875 - 1885. Cobalt blue, oval with strap sides, applied square collar - smooth base, ht. 8 7/8"; (professionally cleaned to original luster with just a bit of minor light wear remaining, otherwise excellent). The majority of these bottles have been dug in the south, as the company was located in Atlanta, GA. This one is a good solid example with a nice rich color, deeper than most.

Est.: \$800 - \$1,200 • Min. bid: \$400



### Lot 268

"ROHRER'S - EXPECTORAL / WILD / CHERRY / TONIC - LANCASTER PA", America, 1855 - 1865. Golden amber, rectangular pyramid form with roped corners, applied sloping collar with ring - smooth base, ht. 10 5/8", near mint; (slight bit of minor wear, otherwise excellent). A nice example of this classic, early, roped-corner tonic.

Est.: \$175 - \$350 • Min. bid: \$100



### Lot 272

"DR BIRMINGHAM'S / ANTI BILIOUS / BLOOD PURIFIER", America, 1865 - 1875. Rich, medium emerald coloration, cylindrical with eight indented panels, applied square collar - smooth base, ht. 8 1/2", sparkling attic mint; (a little washable content residue in the base). A fantastic example and an "attic-type" bottle that has not been dug and cleaned. Beautiful and scarce, especially in this fine condition.

Est.: \$1,200 - \$1,800 • Min. bid: \$600



### Lot 273

**"DR. MOOREHOUSE'S - SARSAPARILLA" - (EAGLE) / "TRADE MARK"**, New Zealand, 1870 - 1880. Medium olive green, square with beveled corners, applied sloping collar - **"1084"** (on smooth base), ht. 9 1/4"; (appears to have been a dug bottle, but has not been professionally cleaned, and retains the majority of its original luster with just some scattered light exterior wear; and a 3/4" scratch on the base, but no other form of damage). Scarce and attractive, very heavily whittled!

**Est.: \$200 - \$400 • Min. bid: \$100**



### Lot 274

**"DR. DAVIS'S - DEPURATIVE"**, 1865 - 1875. Medium blue green, square with beveled corners, applied sloping collar - smooth base, ht. 9 1/4", attic mint! A rare and desirable colored medicine that can be found both smooth base, as well as pontiled. This is likely the finest, most interesting, smooth base example in terms of condition and character. A long thread of glass travels kitty-corner through the interior from two globs of glass on opposite beveled corners.

**Est.: \$600 - \$1,200 • Min. bid: \$300**



### Lot 275

**"L.Q.C. WISHART'S - PINE TREE / TAR CORDIAL / PHILA" - "TRADE MARK" / (PINE TREE) / "MARK"**, (with original wrapper, virtually complete contents, tax stamp / neck seal), bottle 1895 - 1905, wrapper 1906-07. Deep blue-green, square with beveled corners, tooled sloping collar - smooth base, ht. 10"; (bottle perfect; wrapper incomplete, but mostly legible, darkened a bit from age). Very rare in this state of preservation. Found in the attic of a home in Worthington, Ind.

**Est.: \$500 - \$800 • Min. bid: \$250**



### Lot 276

**"L.Q.C. WISHART'S - PINE TREE / TAR CORDIAL / PHILA" - "PATENT" / (PINE TREE) / "1859"**, America, 1865 - 1875. Clear, light-to-medium blue green, square with beveled corners, applied sloping collar - smooth base, ht. 9 5/8"; (an onionskin-thin minor open surface bubble, otherwise pristine perfect). A beautiful example, lighter than most, and with great clarity all the way to the base.

**Est.: \$175 - \$275 • Min. bid: \$90**



### Lot 277

**Motif of Castle / "TRADE / MARK / EST 1842 / DUFFY'S / TOWER / MINT" Figural Tower**, America, 1875 - 1885. Golden amber, figural pyramid tower with four windows and large door, tooled square collar - smooth base, ht. 9", attic mint! A very scarce and desirable figural medicine, one that does not come around often, beautiful condition, a great example.

**Est.: \$400 - \$600 • Min. bid: \$200**



### Lot 278

**"STANLEY'S / CELERY MALT - P.B. WAIT & CO - LE ROY, N.Y."** (99% complete, original label, some contents), 1870 - 1880. Honey amber, square with beveled corners, indented panels, applied sloping collar - smooth base, ht. 8 1/4", bottle and label virtually attic mint! A rare bottle, especially in this fine condition. Label reads in part; *A Positive Cure for / Falling of the Womb / And All / Female Weaknesses..... Relieves Pain During Labor / For all troubles of the Generative Organs of either sex.*

**Est.: \$200 - \$400 • Min. bid: \$100**



### Lot 279

**"MRS S. A. ALLEN'S - WORLDS HAIR / RESTORER - NEW YORK"**, America, 1865 - 1875. Brilliant olive yellow, rectangular with beveled corners, applied round collar with bevel - smooth base, ht. 7 1/4", pristine perfect! See DF, pgs. 7-8. A spectacular example in a very rare, eye-appealing color. This one has the "Three C's": - outstanding color, clarity, and condition! Examples such as this don't come around often and will definitely stand out in a crowd.

**Est.: \$800 - \$1,200 • Min. bid: \$400**



### Lot 280

**"SKOOKUM ROOT - HAIR GROWER"** (with 98% complete original front and back labels, partial contents), America, 1890 - 1900. Cobalt blue, rectangular with beveled corners, tooled square collar - smooth base, ht. 6 1/2", bottle is perfect; (label darkened a bit from age). DF, p.141. Very attractive label with nice graphics that reads in part, *SKOOKUM ROOT" (image of young woman with long flowing hair down to her hips) / Hair Grower. / A preventive of Baldness, / Falling Hair....*

**Est.: \$150 - \$250 • Min. bid: \$80**





### Lot 281

**"POISON" - "POISON" Figural Coffin Bottle**, America, 1890 - 1900. Cobalt blue, coffin form, tooled ring-type collar - **"NORWICH / 16 A"** (on base), ht. 7 1/2", perfect; (note, an in-manufacture minor spot of roughness, 1/8", on back edge of ring lip caused by impurities or small piece of slag in the glass batch, not considered damage, but mentioned for accuracy). KU-18. These don't come around often. A scarce mold, rare size, great color!

**Est.: \$1,200 - \$1,800 • Min. bid: \$600**



### Lot 285

**"LYNCH & CLARKE / NEW YORK"**, probably New England Glass Bottle Company, Cambridge, MA, 1825 - 1833. Olive amber, cylindrical, applied sloping collar with lower bevel - sand type pontil scar, Qt, virtually perfect; (slight trace of wear, minor interior open bubble and light residue, otherwise attic mint). T# C-1:C. Rare. A beautiful, bubbly crude example that passes plenty of light.

**Est.: \$2,000 - \$3,000 • Min. bid: \$1,000**



### Lot 282

**Lot of (2), "Wm. Radam's Stoneware Jugs, ("No. 1" and, "No. 2"), America, 1890 - 1905.** 1st jug, **"Wm. Radam's / "MICROBE KILLER." / No. 1"**, 2nd example, **"Wm. Radam's / "MICROBE KILLER" / NEW YORK CITY. / No. 2"**. Both are cream glaze with black stenciling, 128 oz / 1 gal, both near mint; (a shallow, minor 3/4" flat flake on base of #2 jug). Note; numbers on the jugs refer to the strength: "1" being mild, "2" being medium, and "3" for strong.

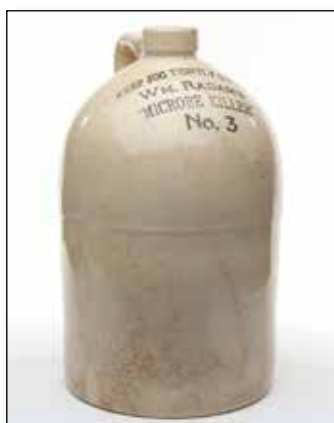
**Est.: \$150 - \$250 • Min. bid: \$80**



### Lot 286

**"MIDDLETOWN / HEALING / SPRINGS / GRAYS & CLARK / MIDDLETOWN. VT."**, America, 1860 - 1875. Rich, medium emerald coloration, cylindrical, applied sloping collar with bevel - smooth base, Qt; (trace of light wear, otherwise sparkling attic mint). T# V-12, variant #3. A fantastic example, bright, clean and sparkling. Very scarce color!

**Est.: \$400 - \$600 • Min. bid: \$200**



### Lot 283

**"KEEP JUG TIGHTLY CORKED. / WM. RADAM'S / "MICROBE KILLER" / No. 3" Stoneware Jug**, America, 1890 - 1905. Cream glaze with black stenciling, 128 oz / 1 gal, near mint; (some minor discoloration to the glaze, otherwise excellent). A very scarce jug. The "No. 3" strength jug is by far the most difficult to find of the numbered varieties.

**Est.: \$150 - \$250 • Min. bid: \$80**



### Lot 287

**"SAINT LEON / SPRING WATER / EARL W. JOHNSON / 27 / CONGRESS ST / BOSTON / MASS"**, probably New England, possibly Lyndeborough Glass Works, 1870 - 1880. Clear, medium emerald coloration, cylindrical, applied sloping collar with bevel - smooth base, Pt, perfect. T# M-41:B. Listed as "Rare", this is a great example, clean and sparkling, outstanding condition.

**Est.: \$300 - \$500 • Min. bid: \$150**



### Lot 284

**"WM. RADAM'S / MICROBE KILLER CO" Salt Glaze Jug**, America, possibly Meyer Pottery, Atascosa, Texas, 1888 - 1895. Salt glaze with debossed lettering in blue, approximately 1-gal, near mint; (a few minor spots of discoloration, otherwise perfect!) A scarce piece believed to be one of the earliest of all the Radam's jugs.

**Est.: \$150 - \$250 • Min. bid: \$80**



### Lot 288

**"FULL HALF GALLON / BOWDEN / LITHIA SPRINGS WATER CO" / (Image of Pavilion) / "LITHIA SPRINGS GA. / TRADE MARK - REGISTERED"**, America, 1888 - 1900. Aquamarine, cylindrical, tooled ring-type collar - smooth base, ht. 10 3/8", attic mint. Judge Bowden of Atlanta, purchased the springs in 1887, and began bottling the water. Clean, bright, and with a crisp impression. A beautiful pictorial Lithia bottle.

**Est.: \$100 - \$200 • Min. bid: \$50**



### Lot 289

**"BIRCH MEAD / JOHN KELSEY & CO" / (Eagle Perched on Shield) / "NEW YORK / & / BROOKLYN. / 'THOU SHALT NOT / STEAL' - (Image of large Tree) "BIRCH MEAD" / (Girl with Bucket tapping Tree) / "REGISTERED / AUG 28TH 1877 / SALE PROHIBITED" (Vines, Berries & Wreath embossed around bottle),** probably Clayton Glass Works, Fislerville, NJ, 1877 - 1878. Aquamarine, applied blob collar - smooth base, Qt, perfect and extremely rare!

*Est.: \$400 - \$800 • Min. bid: \$250*



### Lot 290

**"W" (Debossed), Stubby Ale Bottle,** New England, probably a Stoddard, NH glasshouse, or possibly Westford Glass Works, Westford, CT, 1860 - 1873. Deep olive green, 3-pc. mold squatty ale form, large applied blob collar - smooth base, ht. 6 3/4", attic mint! A rare little New England stubby ale with great eye-appeal.

*Est.: \$400 - \$800 • Min. bid: \$200*



### Lot 291

**"ELMER'S - MEDICATED - SODA.",** 1850 - 1860. Sapphire blue, 8-sided, applied mouth with a double bevel collar - iron pontil scar, ht. 7"; (professionally cleaned to original luster and near mint condition; a touch of light exterior wear, primarily on the back panel, and some in-manufacture crazing lines in the neck mentioned for, but not considered damage). An extremely rare soda having appeal to both soda and pontiled medicine collectors. James Chebalo collection.

*Est.: \$5,000 - \$8,000 • Min. bid: \$2,500*



### Lot 292

**"W.P. - KNICKER - BOCKER - SODA WATER - 164.18th St. N.Y. 1848",** America, 1848 - 1860. Deep sapphire blue, 10-sided, applied blob collar - iron pontil scar, ht. 7"; (professionally cleaned to original luster and near mint condition with a little scattered light wear remaining; a shallow, 3/8" flake on the inner edge of the base, otherwise excellent). Very scarce. Provenance: James Chebalo collection.

*Est.: \$400 - \$600 • Min. bid: \$200*



### Lot 293

**"BOUGHTON & CHASE / ROCH-ESTER. N.Y. - KNICKERBOCKER / MINERAL WATER / BOTTLES REGISTERED / ACCORDING. TO. LAW",** America, probably Lancaster Glassworks, 1849 - 1860. Sapphire blue, cylindrical, large applied blob collar - iron pontil scar, ht. 7 1/4", perfect. A pristine, "attic-type" bottle, and likely finest possible example of this rare soda. Provenance: James Chebalo collection.

*Est.: \$800 - \$1,600 • Min. bid: \$400*



### Lot 294

**"SUPERIOR / MINERAL / & / SODA WATER / PREPARED BY / CLARKE & GREEN / DAYTON. O. - RETURN THIS BOTTLE / C & G / DAYTON",** America, 1850 - 1860. Cobalt blue, 12-sided, applied sloping collar - heavy iron pontil scar, ht. 7 3/8"; (a 5/8" U-shaped crack in the applied lip; a few little pinhead bits of roughness, otherwise sparkling, 'attic-found', pristine condition). A beautiful soda, and very rare! Provenance: Mary Ballentine collection.

*Est.: \$300 - \$600 • Min. bid: \$150*



### Lot 295

**"J. REICHARD (inside rectangular slug-plate) - DYOTTVILLE GLASS WORKS / PHILADA.",** 1850 - 1860. Medium green with an emerald tone, cylindrical, porter form, applied sloping collar with bevel - iron pontil scar, ht. 7"; (a couple of minor flakes, 1/8" or less, on the lower edge of the collar, and just a bit of typical light wear, otherwise very near mint). An early, rare, porter style bottle from Wilkes Barre, PA. Provenance: James Chebalo collection.

*Est.: \$300 - \$600 • Min. bid: \$150*



### Lot 296

**"J. REICHARD & Co / MINERAL WATER",** America, probably Dyottville Glass Works, Philadelphia, 1850 - 1860. Rich, deep bluish green, cylindrical, squat soda form, applied blob collar - heavy iron pontil scar, ht. 7 1/4"; (some scattered light exterior wear, otherwise near mint). Another very scarce-to-rare piece from Wilkes Barre. This example does not appear to have been dug and cleaned. A very heavy iron pontil, fully intact. Provenance: James Chebalo collection.

*Est.: \$300 - \$600 • Min. bid: \$150*





### Lot 297

**Early Torpedo Bottle**, Mid-Atlantic, or possibly a New York State glass-house, 1850 - 1860. Medium emerald coloration, 2-pc. mold torpedo form, applied large square collar mouth - early smooth base, ht. 8 1/4"; (a little scattered minor exterior wear and very faint dullness; some washable interior residue, otherwise near mint). Nice color, heavily whittled, and unusual with the large square collared mouth.

**Est.: \$200 - \$400 • Min. bid: \$100**



### Lot 301

**Lot of (3), Early Black Glass Utility or Wine Bottles**, England and Continental, 1810 - 1840. "PATENT" (on shoulder) - "H. RICKETTS & CO / GLASS-WORKS BRISTOL" (on base), of squat cylinder bottle. All are shades of olive green, cylindrical, dip mold and 3-pc. molds, applied collars - sand type pontil scarred bases, ht. 10 7/8", 9", and 10 7/8" respectively, all are near mint with expected typical minor usage wear, one example with 3/16" flake on base. See VdB, plate 150, #2. Nice group.

**Est.: \$100 - \$200 • Min. bid: \$50**



### Lot 298

**Black Glass Wine Bottle**, England, 1810 - 1820. "R H / Andrew / Tredinick" (on applied seal). Deep olive amber, squat cylinder form, applied short tapered collar with bevel - kick-up base with sand type pontil scar, ht. 9 3/4"; (a little expected minor wear, otherwise perfect). Burton, p.1041. Scarce. A beautiful example, nice crisp impression on the applied seal, full original luster in virtually "cellar found" condition.

**Est.: \$300 - \$600 • Min. bid: \$150**



### Lot 302

"COSMOPOLIET" / (Image of Man holding a Bottle of Gin) / "J.J. MELCHERS WZ / SCHIEDAM", Dutch, 1865 - 1875. Olive green, square tapered gin form, applied sloping collar - smooth base, ht. 10 1/2", near mint; (just a touch of typical faint wear, and a pinhead spot of roughness on the inside edge of the lip). See VdB, p.134, plate 86. There are at least nine different embossing variants for the Cosmopoliet bottles.

**Est.: \$100 - \$200 • Min. bid: \$50**



### Lot 299

**Black Glass Wine Bottle**, probably England, 1790 - 1810. "G-R" (on applied seal). Medium olive, magnum sized cylinder, stubby wide neck, applied wide string rim - disc type pontil scar, ht. 11 1/2"; (trace bit of typical light wear including a 1/4" minor body flake, otherwise perfect!) A rare sealed magnum blown for George Rex, George III (1760 - 1820). Burton, p.1242; Dumbrell, p.304. Excellent condition and character. Found in the Charleston, SC area.

**Est.: \$1,200 - \$2,400 • Min. bid: \$600**



### Lot 303

**Demijohn**, America, 1865 - 1880. Cornflower blue, cylindrical, 2-pc. mold, applied sloping collar - smooth base, ht. 15 3/8", attic mint. Scarce color, subtle, but very attractive, and with nice character to the glass. A very pretty example to add to a color run.

**Est.: \$300 - \$600 • Min. bid: \$150**



### Lot 300

**Black Glass Wine Bottle**, probably England, c. 1810. "LORD / 18 (Crown) 10 / HENNIKER" (on applied seal). Olive green, cylinder, applied collar with short bevel - sand type pontil scar, ht. 10 1/2"; (a 2" hairline crack in the side; a couple minor body flakes, otherwise full luster, and displays as mint). Burton, p.839. One of two known. The town of Henniker, NH was named for Sir John Henniker, 1st Baron. This bottle was blown for John Henniker, 2nd Baron (1752 - 1821).

**Est.: \$400 - \$800 • Min. bid: \$200**



### Lot 304

**Demijohn**, America, 1855 - 1865. Rich, teal blue coloration, cylindrical, free-blown or likely early dip mold, applied sloping collar - blowpipe pontil scar, ht. 15 1/8"; (a little typical light wear, and a 2" x 1/4" narrow open surface bubble, otherwise excellent). A beautiful cylinder demijohn, scarce color, nice with the pontil scarred base.

**Est.: \$250 - \$450 • Min. bid: \$130**



### Lot 305

**Demijohn**, America, 1865 - 1880. Clear, medium emerald coloration, cylindrical, blown in a 2-pc. mold, applied sloping collar - smooth base, ht. 12"; (some scattered open surface bubbles, otherwise attic mint). Beautiful color, but more importantly, incredible character! The glass is profusely filled with bubbles, both large and small, suspended throughout. Fantastic eye-appeal!

**Est.: \$300 - \$500 • Min. bid: \$150**



### Lot 309

**Early, Freeblown Demijohn**, America, 1850 - 1870. Clear, yellowish olive through the body, shading to a rich medium olive green through the neck, flattened apple form, freeblown, or possibly blown in a starter dip mold, applied sloping collar - large blowpipe pontil scar, ht. 18 1/8", near mint; (just a slight trace of typical expected light wear and a couple of very minor open surface bubbles, otherwise perfect). A beautiful early demijohn, excellent condition.

**Est.: \$300 - \$600 • Min. bid: \$150**



### Lot 306

**Lot of (2), Early Stoddard Demijohns**, one of the early Stoddard glasshouses, possibly Joseph Foster, South Stoddard, or Granite Glass Works, 1845 - 1860. Olive amber and yellowish olive amber, cylindrical, small example is 3-pc. mold, larger example freeblown or dip mold, both with applied sloping collar - "petal-type" iron pontil scars, ht. 8 1/2" and 10"; (both near mint with just a little light wear, some interior residue, primarily in the small example). A nice pair.

**Est.: \$200 - \$300 • Min. bid: \$100**



### Lot 310

**Early Demijohn**, America, or possibly Continental, 1830 - 1850. Deep olive amber, kidney form, crude, early 2-pc. mold, sheared mouth with an applied wide band - smooth base, ht. 18"; (some typical scattered usage wear and light scratches, a couple of chips and flaking around the edge of the rough sheared mouth, likely in-manufacture, otherwise excellent). If you like crudeness and syrupy glass loaded with impurities and character, this one may be for you!

**Est.: \$250 - \$450 • Min. bid: \$130**



### Lot 307

**Demijohn**, a New York State or New England glasshouse, possibly Ellenville Glass Works, Ellenville, NY, 1855 - 1865. Honey amber, 2-pc. mold small flattened apple form, applied sloping collar - huge red iron pontil scar, ht. 7 3/4", attic mint. Attractive color, nice texture and character. It is believed that this mold was used at both Ellenville, and Westford, CT, and possibly elsewhere. Found in several colors, as well as with both 'open' pontiled and iron pontiled bases.

**Est.: \$120 - \$240 • Min. bid: \$60**



### Lot 311

**Large, Freeblown Globular Demijohn**, America, possibly New York State, 1840 - 1870. Medium green in the body shading to a rich, deep emerald tone through the neck, similar in color to some of the wares blown at the Congressville Glass Works, globular form, rough sheared mouth with a crudely applied short tapered collar - smooth base, ht. 22"; (some scratches and light wear; a little light haze or "bloom" around the shoulders, an open interior bubble). A big impressive piece of blown glass.

**Est.: \$800 - \$1,600 • Min. bid: \$400**



### Lot 308

**Early, Freeblown Demijohn**, America, 1850 - 1870. Beautiful olive yellow coloration, flattened apple form, freeblown, or possible blown in a starter dip mold, applied sloping collar - large blowpipe pontil scar, ht. 19"; (touch of light wear, minor open surface bubble, otherwise perfect). Gorgeous color, excellent character and condition. This one has plenty of eye-appeal, the glass is loaded with tiny seed bubbles!

**Est.: \$400 - \$800 • Min. bid: \$200**



### Lot 312

**Large, Wicker-Covered Demijohn**, "FULTON / COVINGTON, KY" (stenciled in large black letters over wicker), America, 1855 - 1875. Amber, bulbous form, applied sloping collar - (likely pontiled base, but impossible to tell with wicker covering), ht. 19 3/4"; (bottle appears perfect; wicker darkened a bit from age, but otherwise in remarkable condition). See, MW, p.258, plate 64. An incredible piece! Complete with side handles and a large strap handle on shoulder to aid in pouring.

**Est.: \$600 - \$1,200 • Min. bid: \$300**

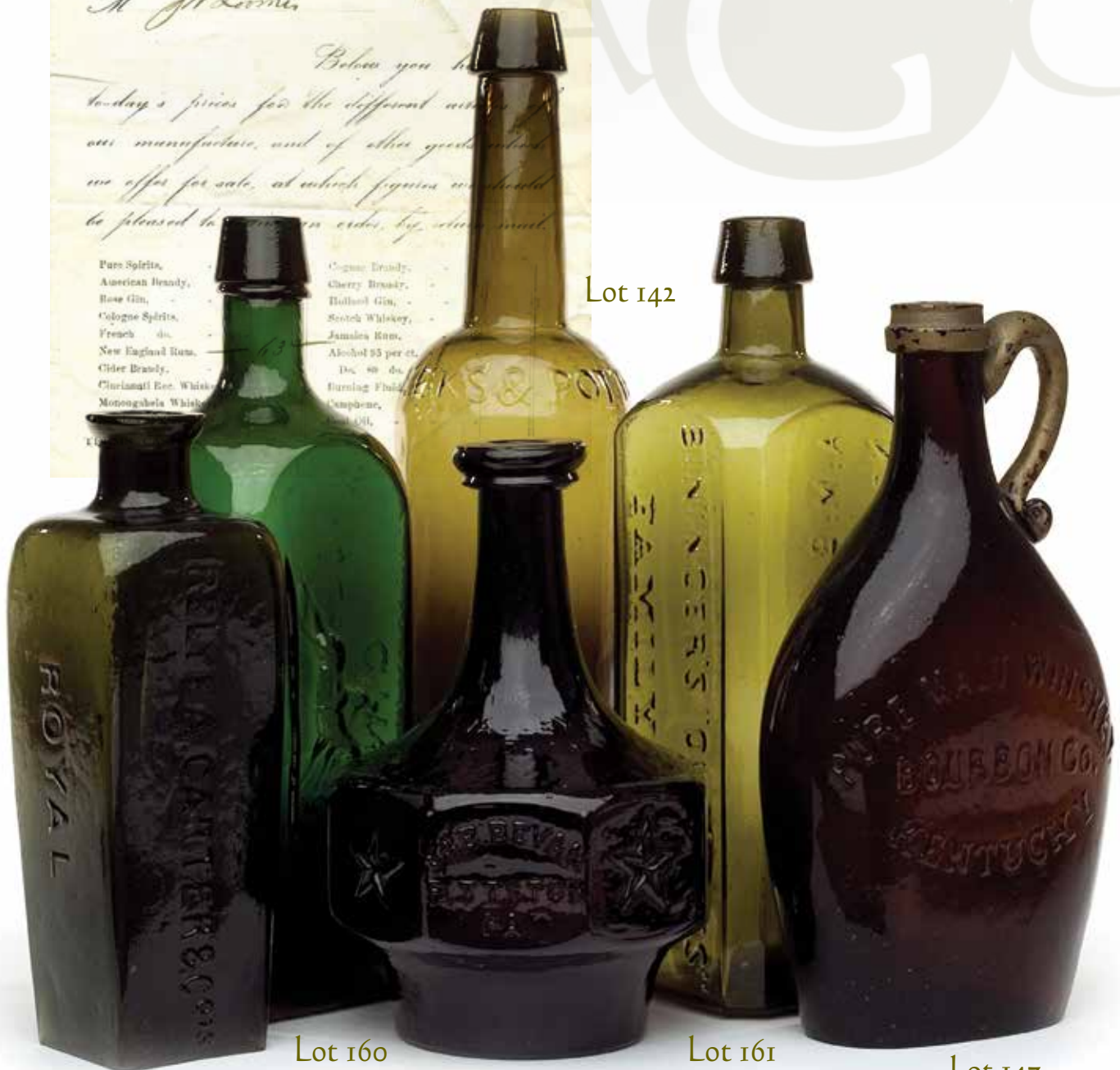




# Rare & Colorful Early American Spirits Bottles



Lot 142



Lot 155

Lot 160

Lot 148

Lot 161

Lot 147