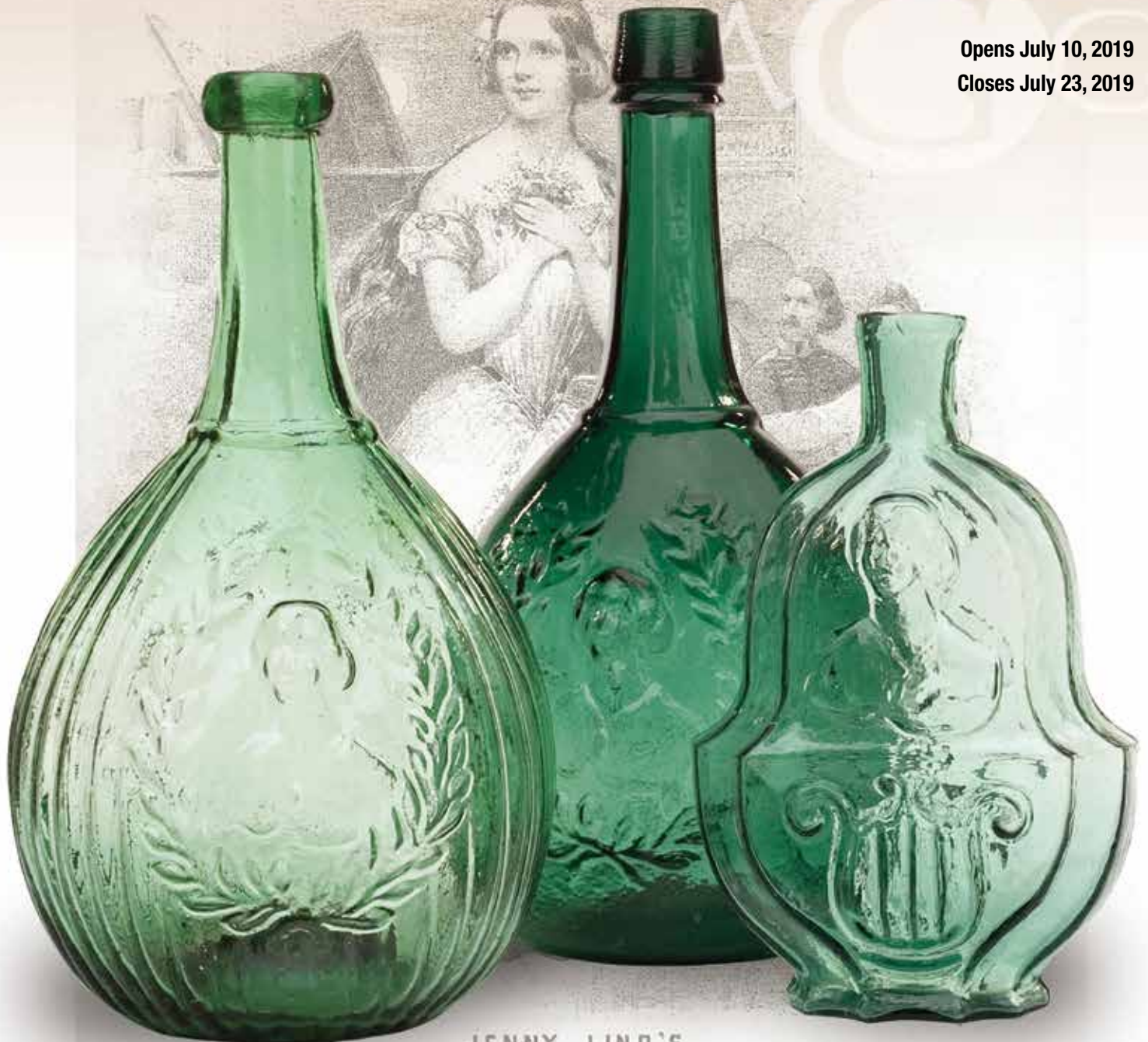


American Glass Gallery™

Auction #23

Opens July 10, 2019

Closes July 23, 2019



JENNY LIND'S OPERATIC SONGS.

174. Ah! don't tempt me (Soprano Solo)	37	175. In a dream (Soprano Solo)	38
175. Oh! what a lovely night (Soprano Solo)	38	176. The twenty-first of October (Soprano Solo)	39
176. Oh! what a lovely night (Soprano Solo)	39	177. The twenty-first of October (Soprano Solo)	39
177. Oh! what a lovely night (Soprano Solo)	39	178. The twenty-first of October (Soprano Solo)	39
178. Oh! what a lovely night (Soprano Solo)	39	179. The twenty-first of October (Soprano Solo)	39
179. Oh! what a lovely night (Soprano Solo)	39	180. The twenty-first of October (Soprano Solo)	39

Fine Jenny Lind Bottles: Lots II, IO, I3

Conditions of Sale: Auction #23, including Part V of The Ralph Finch Collection

1. Absentee Auction

The items in this sale will be sold via absentee auction. Closing date:
July 23, 2019, 11:00 p.m., EST.

2. Our Guarantee Regarding Descriptions

American Glass Gallery has made every attempt to describe correctly the property being sold. Descriptions are guaranteed to be accurate as regards authenticity, age, condition, and measurements to within one-fourth inch, as represented in this catalog. Items in this catalog are not shown to scale. In describing damage, exterior wear or manufacturer's flaws that in our opinion, do not significantly detract visually or monetarily from the value of the item are not listed and will not be considered for refund. The Auctioneers reserve the right to make verbal corrections and provide additional information at any time during the sale.

3. Preview

Items may be viewed by appointment from July 11, 2019 through July 22, 2019.

4. Bidding Procedure

You may submit your bids by mail, phone, FAX, email or through our on-line auction site. If bidding by mail or FAX, please fill out the absentee form and return it to us. Your bid, either written or oral, grants American Glass Gallery the authority to protect you up to the amount of your stated bid. Your bid will not be removed once executed.

Bidding Times: You can submit your bids anytime after receiving your catalog. Bids may be made by phone, daily, until closing day, July 23, 2019, from 9 A.M. - 6 P.M. Eastern Time. Incoming phone bids will be accepted on the closing day (July 23, 2019) until 11 P.M. Eastern Time. Phone calls and Fax bids after this time will not be honored. No exceptions. You may also place your bids through our on-line auction service 24-hours a day once the site has opened for bidding, on or about July 10, 2019, continuing until 11:00 P.M. Eastern Time, July 23, 2019.

Please do not wait until the last day or two of the sale to place your bids! Because many collectors wait until the final few days of the sale to place their bids, we anticipate the telephone and internet bidding to be very busy during that period, so please plan accordingly. In the event of a tie bid, the earliest received bid on the lot will take precedent. We would welcome your bids by phone so that we can answer any questions and assist you in your bidding.

You may also telephone us at any time during the auction, prior to the closing of the sale, to check the status of your bids, to find the current bidding level, to open a bid, or to raise a bid on an auction lot.

Bidding Increments are as follows:

Up to \$250.00.....	increments of \$10.00
\$250.00 - \$500.00	increments of \$25.00
\$500.00 - \$1,000.00	increments of \$50.00
\$1,000.00 - \$2,500.00	increments of \$100.00
\$2,500.00 - \$5,000.00	increments of \$250.00
\$5,000.00 - \$10,000.00	increments of \$500.00
\$10,000 & Up.....	increments of \$1,000.00

Bids submitted between the above increments, whether by mail, FAX, email or on-line via the internet, will automatically be lowered to the closest lower increment.

This is a minimum bid auction. Bids below the printed minimum will not be accepted.

An example of how our absentee bidding system works: You bid \$600.00 on a lot which is the highest bid received to date. The second highest bid is \$450.00. The current high bid level would be yours at \$475.00, one bid increment higher than the other collector's bid. Any additional bids submitted by others below \$600.00 will automatically be topped on your behalf by a representative of American Glass Gallery, up to your stipulated high bid amount. If no further bids on this lot are received beyond the \$450.00, and the under bidder has not requested a "Call Back", then you would have won the lot at \$475.00, not the \$600.00 that you were prepared to pay.

American Glass Gallery will at NO TIME disclose bids pledged by others; only the current "High Bid" level of a lot will be stated upon request. The highest bidder as determined by American Glass Gallery shall be the purchaser. It is the sole right of the auctioneer to settle any dispute between bidders and to regulate the bidding procedure. The auctioneer reserves the right to refuse any bid he believes not to have been made in good faith.

5. "Call Back" Process

If requested, the three top bidders of an item at the time of closing will be given a "Call Back" over the next number of days in order to resolve the final sale of an item. You can request this service by "checking" the appropriate box on your absentee bid form or verbal agreement by phone. It is the responsibility of the bidder to insure he has qualified for this service.

Please note: No "Call Backs" will be executed for bids under \$400.00. In the event of tie bids, the earliest bid received will be the winning bid.

An example of how the "Call Back" process works: As an example, you have bid \$600.00 on a particular lot. Another bidder has submitted a bid of \$900.00 on the same lot. Assuming that as of the auction closing date you are among the top three bidders on this lot and you have requested a "Call Back", you would receive a call informing you that you have been "Out Bid" and the current "High Bid" is now at \$650.00. If you choose to continue bidding on this lot, you may now do so. Assuming that you now increase your bid to \$700.00, we would accept your bid but also inform you that we have a higher bid on this lot and must bid \$750.00. At this time, an auction between you and American Glass Gallery, representing the collector who submitted the bid of \$900.00, takes place. This bidding would continue until you drop out, or top the other bidders high bid of \$900.00. If the other bidder has not requested a "Call Back" service, you would be awarded the lot. If however, the other bidder also requested a Call Back, we must now call them. If they elect to increase their bid over your high bid, we would in turn call you back. This back and fourth process would continue until one of the bidders declines to go any farther.

If you have requested a "Call Back", the auctioneers will need to contact you on the days immediately following the auction closing between the hours of 8 A.M. and 9 P.M. Eastern Time. Please supply us with all appropriate contact phone numbers including, home, mobile and work numbers. Bidders must provide the appropriate telephone numbers where they can be contacted. If you will be traveling or otherwise unavailable, bidders with "Call Back" privileges will have the responsibility to contact American Glass Gallery twice daily during the Call Back period.

Please note, every effort will be made to contact you during the "Call Back" period. However, the bidder will forfeit their rights to a "Call Back" if the auctioneers are unable to reach them. American Glass Gallery reserves the right to discontinue Call Backs on any item in the sale (2) two days after the closing date of the sale. At that time, the current "High Bidder" may be awarded the item even if Call Backs are still outstanding.

Conditions of Sale: Auction #23, including Part V of The Ralph Finch Collection

6. Terms

Successful Bidders, Prompt and full payment is due immediately upon receipt of our invoice. Absolutely no exceptions. Anyone failing to pay for items won will forfeit all rights to bid in any future American Glass Gallery sales. **Any late or delayed payments may result in loss of return privileges for items purchased in the sale.**

No Items Will Be Mailed Before Full Payment Is Received.

Buyer Premium: Our buyer premium remains unchanged. **It is 15% if paying by cash or check, discounted from 18% if paying by Credit Card or PayPal** (PayPal payment account: jpastor@americanglassgallery.com). This buyer premium will be added to the hammer price as part of the purchase price. For example, if you purchase a lot for \$100.00, you will receive an invoice for \$115.00 if paying by cash, check or money order, plus any applicable sales tax or shipping charges.

Taxes: If you are a Michigan resident, a 6% sales tax will be added to your bill unless you have a valid resale number registered with us.

Shipping: Shipping, handling and insurance are extra. We ship insured via U.S. Mail. These charges will be added to your bill unless the lots are picked up in person. Our charges for shipping (excluding foreign shipments and oversized lots) are \$18.00 for the first item, \$9.00 for each additional item together with extra insurance costs (we use current U.S. Postal Service insurance rates).

Please allow two to three weeks for delivery after receipt of your check.

Payment: American Glass Gallery accepts Cash, Money Orders, Personal Checks, Visa, MasterCard, American Express and PayPal. **If paying by Credit Card or PayPal, an additional 3% will be added to the invoice total.**



PayPal™

7. Refunds

Refunds will be given at the discretion of the Auctioneers. Items purchased must be examined and request for refund made immediately upon receipt of the item or items. Since opinions can differ, particularly in the matter of condition, the Auctioneers will be the sole judge in the consideration of refunds. Refunds requested on the grounds of authenticity must be made within 15 days of the date of the auction, and such refund requests must be accompanied by at least one supporting statement in writing from an authority recognized by the Auctioneers. It is the Auctioneers sincere intention to consider any reasonable request for a refund. **Absolutely no returns for any reason after 30 days following the closing of the sale.**

8. Bidding on any item indicates your acceptance of these terms.



American Glass Gallery™

John R. Pastor
P.O. Box 227
New Hudson, Michigan 48165
Phone: 248.486.0530
Fax: 248.486.0538
www.americanglassgallery.com
email: jpastor@americanglassgallery.com

PLEASE NOTE:

The lots offered in this printed catalog are identical to the lots offered in the on-line catalog. However, due to space constraints of the printed catalog, there may be some further information available regarding some of the lots in the on-line auction descriptions.

Please visit us at

www.americanglassgallery.com

and follow the link to the on-line auction.

The link and on-line auction will be available July 10, 2019. A post-auction price list will be available on our website, in printable form, approximately 30 days after the close of the auction.

We encourage you to contact us by phone or email with any questions, for assistance with bidding, or further details or clarification on any of the lots in this sale. Your complete satisfaction and confidence is our goal!

**THANK YOU AND GOOD LUCK
WITH YOUR BIDS!**

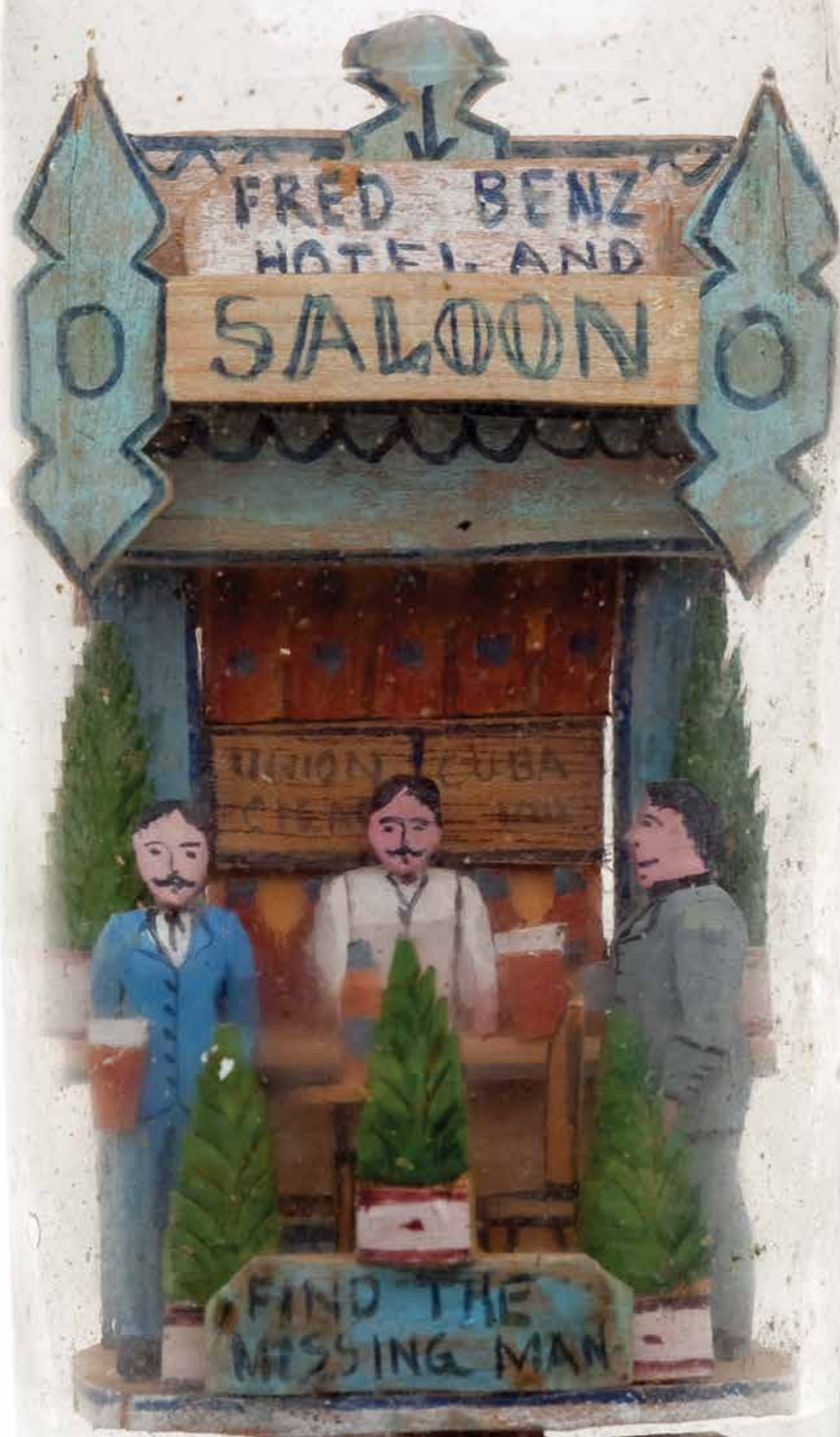
Reference Key

Reference initials and numbers used in the description of this catalog refer to the following publications:

AHG	<i>American Historical Glass</i> , Bessie M. Lindsey, 1967
AM	<i>The Decanter - An Illustrated History of Glass from 1650</i> , Andy McConnell, 2004
AP	<i>Glass in Early America</i> , Arlene Palmer, 1993.
BA1	<i>Collecting The Cures</i> , Bill Agee, 1969
BA2	<i>Collecting All Cures</i> , Bill Agee, 1973.
BB	<i>A Bit About Balsams</i> , Betty Blasi, 1974
BH	<i>Classification and Documentation of Sunburst and Similar Scent Bottles</i> , Bill Ham, AB&GC, 5/87
B/K	<i>The Glass Industry in Sandwich</i> , Raymond Barlow and Joan Kaiser, 1989.
BPK	<i>A.M. BININGER Bottles</i> , Jim Bender, 2017
C	<i>Ink Bottles and Inkwells</i> , William Covill, 1971.
DB	<i>Antique Sealed Bottles, 1640 - 1900</i> , David Burton, 2015
DeG	<i>American Sarsaparilla Bottles</i> , John DeGrafft, 1980.
DeGII	<i>Supplement to American Sarsaparilla Bottles</i> , John DeGrafft, 2004.
DF	<i>Hair Raising Stories</i> , Don Fadely, 1992.
DM	<i>Wistarburgh, Window Tiles, Bottles and More</i> , Dale L. Murscell, 2007.
F	<i>Inks, 150 Years of Bottles and Companies</i> , Ed and Lucy Faulkner.
FA	<i>John Frederick Amelung, Early American Glassmaker</i> , Lanmon, Palmer, Hume, Brill, Hanson, 1990.
FB	<i>A.S.C.R. The wine bottles of All Souls College</i> , Oxford, 1750 – 1850, Fay Banks.
G	(Flasks) <i>American Bottles & Flasks and Their Ancestry</i> , McKearin & Wilson, 1978.
G	(Blown Three Mold) <i>American Glass</i> (Chapter VI), George S. and Helen McKearin, 1941.
GBH	<i>English Glass For The Collector, 1660-1860</i> , G. Bernard Hughes, 1958.
H	<i>American Bottles in the Charles B. Gardner Collection</i> , Norman C. Heckler, 1975.
JB	<i>Patent and Proprietary Medicine Bottles</i> , Joseph K. Baldwin, 1973
JEB	<i>Glasshouse Whimsies</i> , Joyce E. Blake, 1984.
JH	<i>Glasshouses & Glass Manufacturers of the Pittsburgh Region, 1795 – 1910</i> , Jay W. Hawkins, 2009.
JM	<i>Tea Kettle Ink Price and Reference Guide</i> , Joe L. Mathews Jr., 2016
JS	<i>In glas verpakt – European Bottles, Their history and production</i> , Johan Soetens, 2001.
K	<i>Poison Bottle Workbook</i> , Rudy Kuhn, 1988.
KW	<i>New England Glass & Glassmaking</i> , Kenneth M. Wilson, 1972.
L	<i>The Red Book of Fruit Jars, No. 11</i> , Douglas M Leybourne, Jr., 2014.
LI	<i>Pittsburgh Glass, 1797 – 1891</i> , Lowell Innes, 1976.
Mc	<i>Two Hundred Years of American Blown Glass</i> , Helen and George McKearin, 1950.
McK	<i>American Glass</i> , George S. and Helen McKearin, 1941.
MW	<i>American Bottles & Flasks and Their Ancestry</i> , McKearin & Wilson, 1978.
N	<i>Great American Pontiled Medicines</i> , Frederick Nielson, 1978.
NCH	<i>The Blaske Collection of American Flasks</i> , Norman C. Heckler, 1983.
NCH II	<i>The Blaske Collection: Part II</i> , Norman C. Heckler, 1983.
Odell I	<i>Indian Bottles and Brands</i> , John Odell, 1977
Odell II	<i>Pontiled Medicine Encyclopdia</i> , John Odell, 2007
O&S	<i>Warner's Reference Guide</i> , Ed Ojea and Jack Stecher, 1998.
P	<i>The Glass Gaffers of New Jersey</i> , Adeline Pepper, 1971.
RD	<i>Understanding Antique Wine Bottles</i> , Roger Dumbrell, 1983.
RF	<i>The Bottle Book: A Comprehensive Guide to Historic, Embossed Medicine Bottles</i> , Richard Fike, 1987
RH	<i>Collecting Barber Bottles</i> , Richard Holiner, 1986.
R/H	<i>Bitters Bottles</i> , Carlyn Ring and W. C. Ham, 1998.
RWL	<i>Antique Fakes & Reproductions</i> , Ruth Webb Lee, 1950
T	<i>Collectors Guide to Saratoga Type Mineral Water Bottles</i> , Donald Tucker, 2005.
V	<i>Nailsea Glass</i> , Keith Vincent, 1975
VdB	<i>Antique Glass Bottles; Their History and Evolution</i> , Willy Van den Bossche, 2001.
WL	<i>A Wine-Lover's Glasses, The A.C. Hubbard, Jr. Collection</i> , Ward Lloyd, 2000.
Z	<i>Ketchup, Pickles, Sauces</i> , Betty Zumwalt, 1980.
ZW	<i>Color Hutchinsons</i> , Zang Wood, 1999.

- The dash is generally used to indicate that the descriptions are on opposite sides of the bottle or flask.

/ The slash is used to indicate that the descriptions are on different lines or surfaces of the bottle.



Roll Out the (Bitters) Barrels!

One of the earliest and most popular figural bottles to contain bitters was the barrel-shaped bottle. It likely preceded and, due to its popularity, may have precipitated many of the other figural bitters that followed.

The barrel shaped bottle hit the market in the late 1850's, and included some of the first true figural bitters like Old Sachem Bitters and Wigwam Tonic, Original Pocahontas Bitters, Greeley's Bourbon Bitters, and Highland Bitters and Scotch

Tonic. All of those are known to exist with open pontil examples, and all were from businesses listed in their respective city directories during this time. Mostly aqua, amber or olive green in color, these bottles typically have 10 rings above and below the label or embossed panel.

In the early 1860's, a number of barrel bitters can be found in newspaper ads and city directories around the country including Old Sachem Bitters and Wigwam Tonic, Highland Bitters and Scotch Tonic,



Lot 139



Lot 142



Lot 141



Hall's Bitters, Greeley's Bourbon Bitters (and Greeley's Bourbon Whiskey Bitters), Ben Franklin Bitters, Turner Brothers, and Roback's Stomach Bitters. Not only were there new barrel bitters, but the bottles were being produced in a greater variety of colors including shades of greens, yellows, and puce. Additionally, most of the barrels became smooth based after 1860, but they still maintained their same basic shape with 10 (and sometimes 9) rings above and below the label panel.

After 1870, some manufacturers developed new barrel designs for their product including Crowes Tonic Bitters, Dr. Chandler's Jamaica Ginger Root Bitters, Hall's Bitters, and W.C. Bitters. These bottles eliminated most of the rings above and below the label panel, but the basic barrel shape was still there. Barrel shaped bitters bottles were used into the early 1900's.

It is interesting to note the popularity of the barrel form as a container for bitters, as early wooden barrels were typically used as bulk

containers for various whiskey and spirits.

Today, there are about 21 listed barrel bitters. Several more could be added if you note the variations in the embossed lettering on some of the more common barrels. This exciting category can present one with a lifetime challenge to collect not only beautifully colored variants, but extremely rare examples as well.



Rare & Colorful Liniment bottles

These topical preparations were very popular in the 19th century and generally used to treat common skin, scalp, and hair problems. Liniments were liquids that often had a high alcohol content, which suspended oils of mint or pepper. The oils acted as a “counterirritant”—they stimulated mild irritation of the skin with the aim of lessening pain or inflammation.

Some liniments were marketed for use on “man or beast.” This tactic was especially applicable for products that claimed to cure or soothe minor skin irritations such as cuts, scrapes, burns, insect bites, bruises, chafing, and dry cracked skin that are common to humans and their pets and livestock. Although the packaging for these products included separate directions for application to domestic animals versus humans, the healing action described is basically the same.

We are pleased to offer the Gary Enters collection of pontiled Liniment Bottles. The 106 different liniment bottles (embossed or labeled), from the Enters collection represent the largest single pontiled liniment collection offered since the sale of the Sam Greer collection by Harmer-Rooke in 1988 - 1989. Lots 238, 239, 240 & 242 below are from the Enters collection.

Lot 238

Lot 239

Lot 237

Lot 163

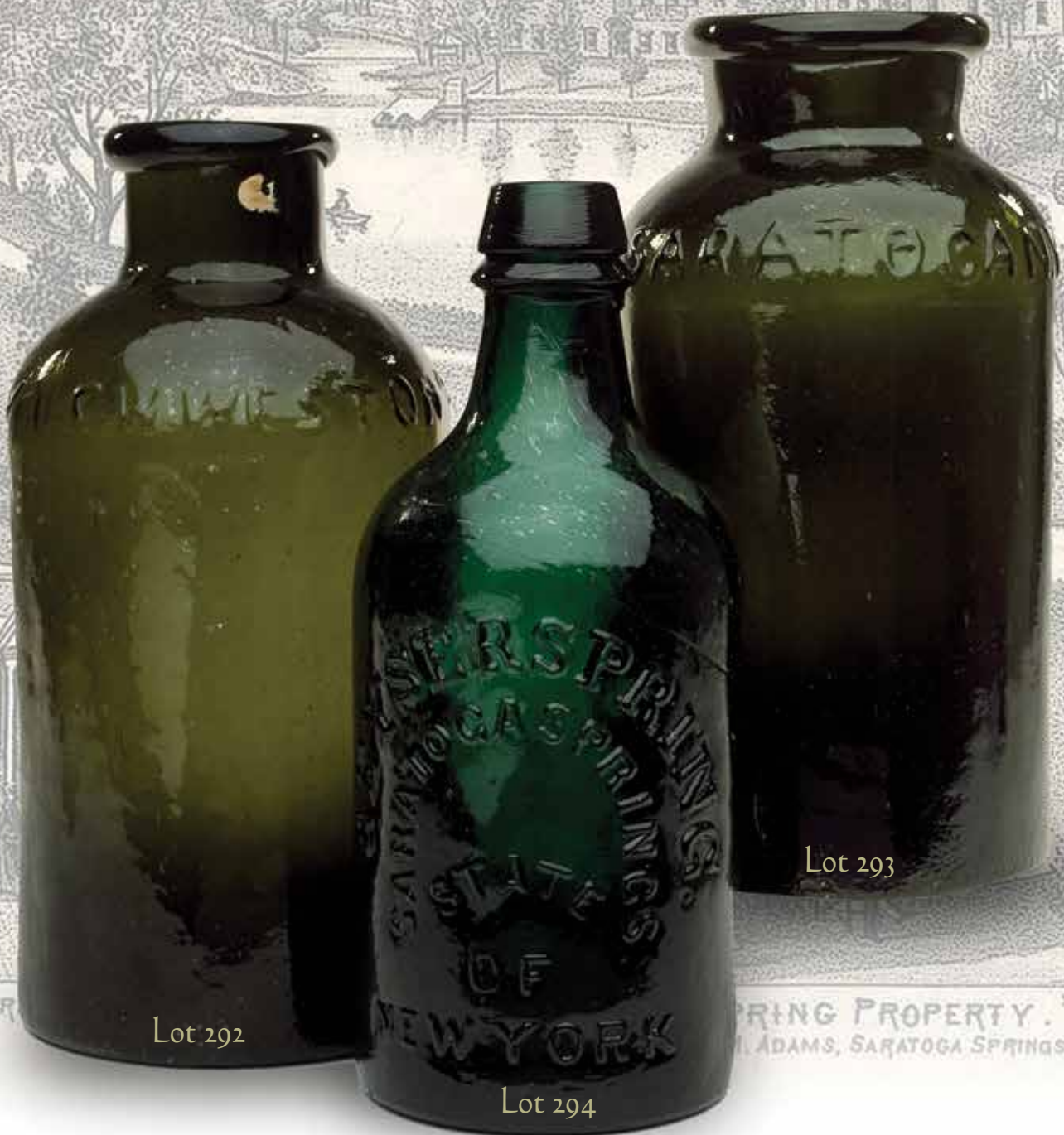
Lot 162

Lot 242

Lot 240



Rare & Choice Saratoga Bottles & Jars



Lot 292

Lot 294

Lot 293

**Lot 1**

"GENERAL WASHINGTON." / BUST OF WASHINGTON - EAGLE Historical Flask, an early Pittsburgh district glasshouse, 1825 - 1835. Greenish aquamarine, sheared mouth - blowpipe pontil scar, Pt, near mint; (just a touch of light high point wear; a paper-thin pontil flake that extends to the edge of the base, and a couple of minor patches of very faint interior milkiness, otherwise perfect). GI-2. Strong mold impression, excellent character.

Est.: \$250 - \$450 • Min. bid: \$140

**Lot 2**

"THE FATHER OF HIS COUNTRY" / BUST OF WASHINGTON - "DYOTTVILLE GLASS WORKS PHILAD.A / GEN. TAYLOR NEVER SURRENDERS" / BUST OF TAYLOR Historical Flask, Dyottville Glass Works, 1848 - 1855. Deep burgundy or wine color, applied sloping collar - blowpipe pontil scar, Pt; (lightly cleaned to original luster with a little scattered minor wear remaining, otherwise excellent). GI-38. Beautiful and scarce color that does not come around often.

Est.: \$3,000 - \$5,000 • Min. bid: \$1,500

**Lot 3**

"THE FATHER OF HIS COUNTRY" / BUST OF WASHINGTON - (Reverse plain) Historical Flask, probably Lockport Glass Works, Lockport, NY, 1848 - 1855. Clear, light-to-medium blue green, sheared mouth - blowpipe pontil scar, Qt, attic mint. GI-47. Although not necessarily earlier, this example has the sheared lip. The majority of others have applied collars. Crisp, strong embossing, outstanding condition, heavily whittled!

Est.: \$400 - \$600 • Min. bid: \$200

**Lot 4**

BUST OF WASHINGTON / "WASHINGTON" - BUST OF TAYLOR / "G. Z. TAYLOR" Historical Flask, America, 1850 - 1860. Rich, medium-to-deep emerald with a slight yellowish tone, applied sloping collar - blowpipe pontil scar, Pt, virtually perfect; (only the faintest trace of wear and a tiny pinhead open bubble, otherwise pristine). GI-50. Beautiful rich color, excellent condition, almost no high point wear as is often an issue with this mold.

Est.: \$800 - \$1,200 • Min. bid: \$400

**Lot 5**

BUST OF TAYLOR / "ROUGH AND READY" - "MAJOR" / BUST OF RINGGOLD / "RINGGOLD." Historical Flask, America, possibly Baltimore Glass Works, 1848 - 1855. Aquamarine, sheared mouth - blowpipe pontil scar, Pt; (just the slightest trace of faint wear, otherwise perfect). GI-72. Certainly a scarcer mold than the GI-71. Outstanding condition, crisp, bold embossing and a very strong impression.

Est.: \$150 - \$250 • Min. bid: \$80

**Lot 6**

"LAFAYETTE" / BUST OF LAFAYETTE / "T.S." - "DE WITT CLINTON" / BUST OF CLINTON / "CONVENTRY / C-T" Historical Flask, Coventry Glass Works, 1824 - 1830. Clear, light yellowish olive amber, almost an olive yellow, sheared mouth - blowpipe pontil scar, Pt, very near mint; (just a slight trace of faint wear, and a slightly weak impression in the shoulder, otherwise perfect). GI-80. Beautiful light color all the way to the base.

Est.: \$800 - \$1,200 • Min. bid: \$400

**Lot 7**

"LAFAYETTE" / BUST OF LAFAYETTE / "T.S." - "DE WITT CLINTON" / BUST OF CLINTON / "CONVENTRY / C-T" Historical Flask, Coventry Glass Works, 1824 - 1830. Bright mossy green coloration, sheared mouth - blowpipe pontil scar, Pt; (just a trace of faint wear, otherwise pristine). GI-80. Rare color, outstanding character, condition. The glass is absolutely filled with seed bubbles. A top example and stand out in color, character, and condition.

Est.: \$6,000 - \$9,000 • Min. bid: \$3,000

**Lot 8**

"LAFAYETTE" / BUST OF LAFAYETTE - MASONIC ARCH Historical Flask, Mt. Vernon Glass Works, Vernon, NY, 1824 - 1830. Yellowish-olive amber in the upper half, shading to a dense olive amber towards the base, sheared mouth blowpipe pontil scar, Pt, near mint; (some high point wear as is typical of this mold, and some light washable interior residue, but no other form of damage). GI-88. Very rare! A great example, nice shading and character.

Est.: \$6,000 - \$9,000 • Min. bid: \$3,000



Lot 9

"LAFAYETTE" / BUST OF LAFAYETTE - MASONIC ARCH Historical Flask, Mt. Vernon Glass Works, Vernon, NY, 1824 - 1830. Yellowish-olive with a very slight amber tone, sheared mouth blowpipe pontil scar, ½ Pt, sparkling mint; (a bit of in-making, minor light roughness on the inside edge of the sheared lip noted for complete accuracy). GI-89. A very rare flask, and finest possible example, no HPW, bold impression, great color, clarity, and condition!

Est.: \$6,000 - \$9,000 • Min. bid: \$3,000



Lot 10

"JENNY LIND" / BUST OF JENNY LIND - "GLASS WORKS" / GLASS FACTORY / "S. HUFFSEY" Historical Calabash, Isabella Glass Works, Brooklyn, NJ, 1850 - 1860. Gorgeous, medium-to-deep emerald coloration, applied sloping collar with bevel - blowpipe pontil scar, Qt, virtually perfect; (only the slightest wisp of faint interior milkiness, possibly washable, otherwise pristine!) GI-99. A fantastic example, great color, outstanding condition. Ex. Paul Richards collection.

Est.: \$1,500 - \$3,000 • Min. bid: \$800



Lot 11

"JENY LIND" / BUST OF JENY LIND - GLASS FACTORY Historical Calabash, Ravenna Glass Works, Ravenna, OH, 1857 - 1860. Medium yellow green, applied round collar - heavy red iron pontil scar, Qt, sparkling attic mint. GI-104. A very rare and beautiful color for this mold. Excellent clarity and eye-appeal, outstanding condition. An example that you are unlikely to see again for many years. Much more difficult to find than the sapphire examples.

Est.: \$3,000 - \$5,000 • Min. bid: \$1,500



Lot 12

"JENY LIND" / BUST OF JENY LIND - GLASS FACTORY Historical Calabash, Ravenna Glass Works, Ravenna, OH, 1857 - 1860. Rich aquamarine, applied round collar - heavy iron pontil scar, Qt, near mint; (a little light exterior wear; some very faint interior residue or haze, otherwise perfect). GI-105. A rare and desirable mold from Ravenna colloquially referred to by collectors as the "Smoke-up" Jeny Lind. Ex. Darl Fifer collection.

Est.: \$800 - \$1,200 • Min. bid: \$400



Lot 13

BUST OF JENY LIND / LYRE - (Reverse same), **Historical Flask**, probably McCarty & Torreyson Glass Works, Wellsburg, WV, 1850 - 1855. Deep greenish aquamarine, almost a light apple green, sheared mouth - blowpipe pontil scar, Pt; (a little scattered minor wear and a faint interior content ring in the shoulders, otherwise excellent). GI-108. A scarce flask in a rare color! This mold is virtually always found in aquamarine. This particular example is without question in a strong greenish tone.

Est.: \$800 - \$1,200 • Min. bid: \$400



Lot 14

BUST OF JENY LIND / LYRE - (Reverse same), **Historical Flask**, probably McCarty & Torreyson Glass Works, Wellsburg, WV, 1850 - 1855. Aquamarine, sheared mouth - blowpipe pontil scar, Qt; (a shallow ¼" iridescent bruise on the inside edge of the sheared lip that likely occurred when the cork was pried out, and a touch of light exterior wear, otherwise very near mint). GI-109. A rare mold, this example is bright, clean and sparkling! Provenance: Ex. Roy and Barbara Brown collection.

Est.: \$800 - \$1,200 • Min. bid: \$400



Lot 15

EAGLE - CORNUCOPIA Historical Flask, an early Pittsburgh or Monongahela district glasshouse, 1825 - 1835. Aquamarine, sheared mouth - blowpipe pontil scar, ½ Pt; (just a very slight trace of faint wear, otherwise attic mint). GI-11. A scarce, desirable, early beaded flask in excellent condition. This example is devoid of the typical high point wear so often encountered on these little flasks.

Est.: \$300 - \$500 • Min. bid: \$180



Lot 16

EAGLE - EAGLE Historical Flask, probably Louisville Glass Works, Louisville, KY, 1855 - 1860. Brilliant medium blue green, sheared mouth - heavy iron pontil scar, Qt, virtually attic mint; (only the slightest wisp of faint wear, otherwise pristine perfect). GI-26 variant (the primary difference is in the tip of the ribbon having two points on one side, the opposite side having a forked end with three prongs). A fantastic example of this popular and very scarce mold, beautiful color.

Est.: \$1,500 - \$3,000 • Min. bid: \$800



Lot 17

EAGLE - TREE Historical Flask, probably Kensington Glass Works, Philadelphia, PA, 1825 - 1835. Aquamarine, sheared mouth - blowpipe pontil scar, Pt, very near mint; (just a slight bit of very faint spotty milkiness on the interior of the reverse, otherwise virtually pristine). GII-41. Although McKearin notes this mold as common, in our opinion it should be considered "Comparatively scarce", to scarce. A clean example, strong mold impression, almost no wear.

Est.: \$250 - \$450 • Min. bid: \$140



Lot 18

EAGLE - CORNUCOPIA Historical Flask, possibly an early Monongahela or Pittsburgh district glasshouse, 1825 - 1835. Aquamarine, sheared mouth - blowpipe pontil scar, ½ Pt, near mint; (a little very minor faint interior milkiness, and only the slightest trace of fine wear, otherwise perfect). GII-45. A scarce little flask, bold impression, very little wear!

Est.: \$300 - \$500 • Min. bid: \$150



Lot 19

EAGLE - CORNUCOPIA Historical Flask, probably Keene Marlboro Street Glassworks, Keene, NH, 1830 - 1842. Light greenish aquamarine, sheared mouth - blowpipe pontil scar, Pt; (just a touch of minor light wear including a couple of pinprick specks of roughness on the inside edge of the sheared lip, otherwise virtually attic mint). GII-72. A bright, clean example in a scarce color for this mold, the vast majority being in shades of olive-amber and olive-green.

Est.: \$200 - \$400 • Min. bid: \$120



Lot 20

EAGLE / "PITTSBURGH / PA" - EAGLE Historical Flask, a Pittsburgh district glasshouse, 1860 - 1870. Medium olive green, applied mouth with flat band - smooth base, Qt, near mint; (a little washable interior residue, and only the slightest trace of faint wear, otherwise perfect). GII-104. A very nice example having good character with plenty of tiny seed bubbles and whittling, and not too dark so the color can be enjoyed.

Est.: \$500 - \$800 • Min. bid: \$250



Lot 21

EAGLE / "PITTSBURGH / PA" - EAGLE Historical Flask, a Pittsburgh district glasshouse, 1860 - 1870. Yellowish olive green, applied mouth with flat band - smooth base, Pt, near mint; (a touch of minor light wear, mainly on the pennant, and a little roughness at the mold seam on the neck due to some in-manufacture glass extrusion). GII-105. Nice crisp impression on the shield and eagle's wings, good character, overall excellent condition.

Est.: \$300 - \$500 • Min. bid: \$180



Lot 22

Lot of (2), CORNUCOPIA - URN Pictorial Flasks, New England, Keene Marlboro Street Glassworks, or possibly Coventry Glass Works, Coventry, CT, 1835 - 1849. Clear, light bluish green, and rich medium olive green, both sheared mouth - blowpipe pontil scarred bases, ½ Pts; (a 1/8" chip at side of lip on blue-green example, and only a slight trace of faint wear on the olive flask, otherwise both near mint). GII-7. The blue-green flask has excellent clarity and is a scarce color. Both great examples.

Est.: \$200 - \$400 • Min. bid: \$100



Lot 23

CORNUCOPIA - URN Pictorial Flask, Lancaster Glass Works, Lancaster, NY, 1849 - 1855. Medium blue green, sheared mouth - blowpipe pontil scar, ½ Pt, sparkling attic mint. GII-14. A comparatively scarce little flask and a sweetheart of an example. Excellent mold impression, outstanding condition.

Est.: \$300 - \$600 • Min. bid: \$150



Lot 24

CORNUCOPIA - URN Pictorial Flask, Lancaster Glass Works, Lancaster, NY, 1849 - 1855. Medium blue green, sheared mouth - blowpipe pontil scar, Pt, virtually attic mint; (only a very slight, minor pinhead flake on the inside edge of the sheared mouth, otherwise pristine perfect). GII-17. Another great example, beautiful, and absolutely devoid of any high point wear that is so often found on these flasks.

Est.: \$300 - \$600 • Min. bid: \$150



Lot 25

MASONIC - EAGLE / "T.W.D." Historical Flask, Kensington Glass Works, Philadelphia, PA, 1825 - 1838. Light aquamarine, sheared mouth - blowpipe pontil scar, Pt, attic mint. GIV-37. A bright, clean example, good strong embossing. A very early flask, and not easy to find in this fine condition, having virtually no exterior wear.

Est.: \$250 - \$450 • Min. bid: \$140



Lot 29

"CORN FOR THE WORLD" / EAR OF CORN - MONUMENT / "BALTIMORE" Historical Flask, Baltimore Glass Works, 1855 - 1865. Golden amber with a slight orange tone shading to a beautiful honey coloration along the sides, applied round collar with bevel - smooth base, Qt; (some high point wear, as is common on this mold, and a tiny trace of minor roughness near the top of the lip, otherwise very near mint). GVI-4. A beautiful example, nice color, shading, and character.

Est.: \$1,000 - \$2,000 • Min. bid: \$500



Lot 26

"SUCCESS TO THE RAILROAD" / HORSE PULLING CART - (Reverse same) Historical Flask, New England, probably Keene Marlboro Street Glassworks, Keene, NH, 1830 - 1842. Clear, light-to-medium olive amber, sheared mouth - blowpipe pontil scar, Pt; (a couple of minor open bubbles, otherwise sparkling, virtually attic mint!) GV-4. An excellent example, strong impression, nice light color and clarity, clean, and having virtually no high point wear.

Est.: \$300 - \$500 • Min. bid: \$150



Lot 30

SUNBURST FLASK, probably Coventry Glass Works, Coventry, CT, 1815 - 1830. Beautiful, light yellowish olive amber, almost an olive yellow coloration, sheared mouth - blowpipe pontil scar, Pt, attic mint. GVIII-3. A fantastic example, bright and clean with excellent clarity, beautiful light color, outstanding condition.

Est.: \$800 - \$1,200 • Min. bid: \$400



Lot 27

MONUMENT - "A / LITTLE / MORE / GRAPE / CAPT BRAG" / Vine and Grapes Historical Flask, Baltimore Glass Works, Baltimore, MD, 1848 - 1855. Aquamarine, sheared mouth - blowpipe pontil scar, ½ Pt, pristine perfect! GVI-1. Scarce. A real 'sparkler' of an example having a great impression (which is often weak on this mold), and devoid of any high point wear which is also a common issue with this mold. Provenance: Ex. Judge Blaske collection.

Est.: \$400 - \$600 • Min. bid: \$200



Lot 31

"KEEN" - "P&W" SUNBURST FLASK, Keene Marlboro Street Glassworks, Keene, NH, 1815 - 1830. Yellowish-olive with a very slight amber tone, shading to a deep olive in the neck and base, sheared mouth - blowpipe pontil scar, Pt, perfect. GVIII-8. A great example of an early Sunburst flask. Many of these flasks often have high point wear on the raised oval. This one is devoid of those issues, and with nice character to the glass.

Est.: \$500 - \$800 • Min. bid: \$300



Lot 28

"CORN FOR THE WORLD" / EAR OF CORN - MONUMENT / "BALTIMORE" Historical Flask, Baltimore Glass Works, 1855 - 1865. Yellowish apricot coloration, crudely applied double collar - smooth base, Qt, virtually attic mint; (just a slight trace of faint wear and washable interior residue). GVI-4. Attractive color, virtually no high point wear as is often an issue with these flasks, a strong impression, and crisp bold embossing. Ex. John & Catherine Moore collection.

Est.: \$1,500 - \$3,000 • Min. bid: \$800



Lot 32

"KEEN" - "P&W" SUNBURST FLASK, Keene Marlboro Street Glassworks, Keene, NH, 1815 - 1830. Rich, yellowish golden coloration with a slight olive tone, sheared mouth - blowpipe pontil scar, ½ Pt, near mint; (a touch of minor high point wear, mainly on the reverse, and a couple of shallow open interior bubbles near the shoulder). GVIII-9. A good mold impression and fantastic eye-appealing color with rich yellowish golden tones.

Est.: \$400 - \$600 • Min. bid: \$200



Lot 33

SUNBURST FLASK, New England, probably an early Connecticut glasshouse, possibly Pitkin Glass Works, East Hartford, CT, 1815 - 1830. Medium shading to deep forest green coloration, sheared mouth - blowpipe pontil scar, ½ Pt, virtually attic mint; (just a slight trace of fine high point wear and a tiny bit of washable interior residue, otherwise perfect). GVIII-16. Another nice example, this one being in a pure green coloration having no trace of amber.

Est.: \$800 - \$1,200 • Min. bid: \$400



Lot 34

SUNBURST FLASK, Baltimore Glass Works, Baltimore, MD, 1820 - 1830. Brilliant aqua, sheared mouth - polished base with blowpipe pontil scar, ½ Pt, near mint; (a shallow ½" chip at edge of base, possibly in-making; the base was finely polished, possibly at the factory, to allow the flask to stand). GVIII-25. It is impossible to determine when this was done, but it is believed this practice was occasionally employed at some of the early glass factories. A bright, clean, early flask.

Est.: \$250 - \$450 • Min. bid: \$140



Lot 35

SUNBURST FLASK, America, probably Baltimore Glass Works, Baltimore, MD, 1820 - 1830. Colorless, sheared mouth - blowpipe pontil scar, ½ Pt, virtually attic mint; (just a slight trace of light wear, otherwise perfect). GVIII-28. Colorless examples are scarce. A very attractive, early Sunburst. Very few figured flasks can be found in colorless glass. They definitely look great and stand out in a group of aquamarine and other colored flasks.

Est.: \$600 - \$900 • Min. bid: \$300



Lot 36

SUNBURST FLASK, America, probably Baltimore Glass Works, Baltimore, MD, 1820 - 1830. Rich, deep aquamarine, sheared mouth - blowpipe pontil scar, ½ Pt, near mint; (a little typical light high point wear, otherwise perfect). GVIII-28. A comparatively scarce flask, rich deep color, fine condition. Ex. Gary James Fitz collection.

Est.: \$300 - \$500 • Min. bid: \$180



Lot 37

SCROLL FLASK, Midwest, 1845 - 1860. Beautiful, light golden honey coloration, almost a golden yellow, sheared mouth - blowpipe pontil scar, Qt, near mint; (a shallow ¼" bruise on the inside edge of the lip, possibly occurred when the cork was pried out, otherwise perfect). GIX-2a. A gorgeous, attractive, eye-appealing color with plenty of yellow tones, one that will definitely stand out in a crowd.

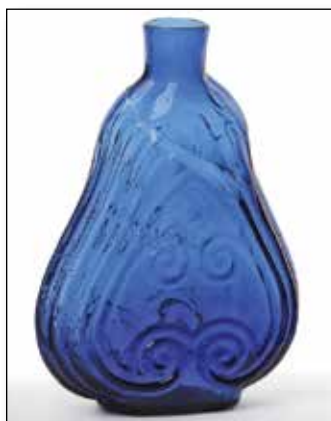
Est.: \$2,000 - \$4,000 • Min. bid: \$1,000



Lot 38

SCROLL FLASK, Midwest, 1850 - 1860. Clear medium yellowish grass green, sheared mouth - large iron pontil scar, Qt, virtually attic mint; (just a slight bit of typical minor high point wear, otherwise perfect). GIX-3. Nice brilliance and clarity, beautiful color, almost a mint green, crisp strong impression, an attractive Scroll Flask.

Est.: \$1,500 - \$2,500 • Min. bid: \$800



Lot 39

SCROLL FLASK, Midwest, 1845 - 1860. Rich, medium-to-deep cobalt blue, sheared mouth - keyed base with blowpipe pontil scar, Pt, virtually perfect; (a tiny pinhead opening in the cover glass of a bubble, otherwise pristine perfect). GIX-10. Examples this nice do not come around every day. Beautiful, eye-appealing rich color, deeper in tone than most, outstanding condition, a great example.

Est.: \$3,000 - \$5,000 • Min. bid: \$1,500



Lot 40

SCROLL FLASK, Midwest, 1845 - 1860. Brilliant, yellowish honey amber, crude sheared and tooled mouth, slightly misshapen - blowpipe pontil scar, Pt; (a couple of tiny pinhead bits of minor roughness on the edge of the sheared lip, otherwise pristine perfect). GIX-10. Another absolutely gorgeous example, brilliant glass, lighter in shade than most, outstanding condition. Provenance: John Apple collection.

Est.: \$800 - \$1,600 • Min. bid: \$400



Lot 41

SCROLL FLASK, Midwest, 1845 - 1860. Light apple green, sheared mouth - heavy iron pontil scar, Pt, very near mint; (a little faint light film or residue on the interior, and a slight trace of typical very minor wear, otherwise perfect). GIX-10b. A comparatively scarce mold, nice color, excellent condition. Provenance: John Apple collection; Ex. Paul & Mary Ballentine, Darl Fifer collections.

Est.: \$300 - \$500 • Min. bid: \$150



Lot 45

SCROLL FLASK, Midwest, 1845 - 1860. Bright, clear medium citron green, sheared mouth - blowpipe pontil scar, Pt; (only the slightest trace of faint wear, otherwise sparkling attic mint). GIX-17. A pretty example having nice texture, character, and clarity to the glass. Also, the neck is a little crooked, adding to the eye-appeal.

Est.: \$700 - \$900 • Min. bid: \$350



Lot 42

SCROLL FLASK, Midwest, 1845 - 1860. Brilliant, medium yellowish-citron, sheared mouth - blowpipe pontil scar, Pt; (a few scattered minor open bubbles, mainly on the interior, otherwise attic mint). GIX-10b. Comparatively scarce. Numerous bubbles suspended throughout the body adding nice character to the flask. A bright, clean, very pretty example with great eye-appeal. Provenance: John Apple collection, Ex. Jim Hall collection.

Est.: \$800 - \$1,600 • Min. bid: \$400



Lot 46

SCROLL FLASK, Midwest, 1845 - 1860. Yellowish-apple green, almost a light citron, sheared mouth - blowpipe pontil scar, Pt; (some roughness around the edge of the lip including a couple of flakes and a 1/4" chip - some of which may be in-making, otherwise excellent). GIX-18. A scarce mold, nice color and character - the glass is filled with tiny seed bubbles. A mold that certainly does not come around often. Provenance: John Apple collection.

Est.: \$300 - \$500 • Min. bid: \$150



Lot 43

SCROLL FLASK, Midwest, 1845 - 1860. Medium blue green, sheared mouth - blowpipe pontil scar, Pt, mint; (slight bit of washable residue). Unlisted mold, similar to GIX-10e, but with an 8-pointed star in upper space and a 9-pointed star in the lower space. Likely a very scarce-to-rare mold. In addition, an attractive color. Provenance: John Apple collection.

Est.: \$500 - \$1,000 • Min. bid: \$250



Lot 47

SCROLL FLASK, Midwest, 1845 - 1860. Clear, medium sapphire blue, sheared mouth - blowpipe pontil scar, Pt, near mint; (a tiny sandgrain on the inside surface of the glass with a few minor 1/16" radiations, otherwise attic mint). GIX-18. A scarce mold, beautiful color! Provenance: John Apple collection, Ex. Mike Roberts collection.

Est.: \$1,500 - \$3,000 • Min. bid: \$800



Lot 44

SCROLL FLASK, Midwest, 1845 - 1860. Deep amber with a root beer tone, sheared mouth - blowpipe pontil scar, Pt, virtually attic mint; (a few, tiny pinhead open surface bubbles). GIX-14. A comparatively scarce mold that does not come around often. Outstanding condition, rich deep color.

Est.: \$400 - \$800 • Min. bid: \$200



Lot 48

SCROLL FLASK, Midwest, 1845 - 1860. Clear, light-to-medium yellowish green, sheared mouth - blowpipe pontil scar, 1/2 Pt, near mint; (just a bit of minor high point wear, otherwise perfect). GIX-33. A pretty little 1/2 pint, scarce, attractive color. Provenance: John Apple collection, Ex. Tom McCandless collection.

Est.: \$1,400 - \$2,800 • Min. bid: \$700



Lot 49

SCROLL FLASK, Midwest, 1845 - 1860. Beautiful light honey shading to a rich golden coloration near the base and in the neck, sheared mouth - heavy blowpipe pontil scar, ½ Pt; (slight trace of washable interior residue, otherwise attic mint). GIX-34a. A scarce mold. Nice character with a horizontal fold of glass in one of the decorative fleur-de-lis, great color, and excellent condition.

Est.: \$800 - \$1,200 • Min. bid: \$400



Lot 53

SCROLL FLASK, Midwest, probably an early Pittsburgh district glasshouse, 1835 - 1845. Brilliant aquamarine, corseted scroll form, sheared mouth - blowpipe pontil scar, Qt, very near mint; (just a slight trace wear including a shallow pinhead flake on the base, otherwise perfect). GIX-46. This mold is noted by McKearin as "Scarce", and in our opinion, could certainly be considered as "Very scarce". A brilliant, clean, sparkling example. Ex. Ed & Kathy Gray collection.

Est.: \$800 - \$1,200 • Min. bid: \$400



Lot 50

Lot of (2), SCROLL FLASKS, Midwest, 1845 - 1860. Both examples are aquamarine, sheared mouth - blowpipe pontil scarred bases, ½ Pts, both near mint; (GIX-37 has an interior open bubble in the neck, otherwise both virtually perfect). GIX-34 and GIX-37. Both are comparatively scarce molds, attractive, clean little flasks. Provenance: John Apple collection.

Est.: \$175 - \$350 • Min. bid: \$90



Lot 54

STAG / "GOOD / GAME" - WILLOW TREE Pictorial Flask, probably Coffin & Hay Glass Manufactory, Hammonton, NJ, 1836 - 1847. Aquamarine, sheared mouth - blowpipe pontil scar, Pt; (a little faint patchy interior haze, and just a slight trace of light wear). GX-1. A comparatively scarce flask that doesn't show up often. Overall very nice condition.

Est.: \$200 - \$400 • Min. bid: \$120



Lot 51

Lot of (2), SCROLL FLASKS, Midwest, 1845 - 1860. Both examples are aqua, sheared mouth with applied flat banded collars - iron pontil scarred bases, ½ Pt. and Pt; (½ Pt. has a 1/8" flake at edge of lip, and a ¼" iridescent bruise on the inner edge of the lip; the Pt. example has a pinhead flake at edge of lip, and a ¼" flake at the side on the medial rib). Half pint GIX-31; Pint example similar to GIX-10e, but with a 9-pointed star in lower space. John Apple collection.

Est.: \$100 - \$200 • Min. bid: \$50



Lot 55

"SUMMER" / SUMMER TREE - "WINTER" / WINTER TREE Pictorial Flask, America, 1860 - 1870. Clear, medium yellow-olive, applied round collar with bevel - smooth base, Pt, near mint; (a shallow 1/8" flake at edge of base, slight trace of typical faint wear). GX-15. Beautiful color, plenty of tiny seed bubbles, almost an olive yellow coloration.

Est.: \$800 - \$1,200 • Min. bid: \$500



Lot 52

SCROLL FLASK, probably John Robinson & Son Glass Manufacturers, Pittsburgh, PA, 1830 - 1834. Aquamarine, corseted scroll form, sheared mouth - blowpipe pontil scar, Pt, attic mint! GIX-44. Noted by McKearin as "Very rare", a fantastic example having virtually no exterior wear, a perfect lip, clean and nice. This mold is obviously similar to the marked, "J R & Son" Scroll, but considered a scarcer mold. Provenance: John Apple collection, Ex. Don Smith collection.

Est.: \$800 - \$1,200 • Min. bid: \$400



Lot 56

SUMMER TREE - WINTER TREE Pictorial Flask, America, 1860 - 1870. Aquamarine, applied round collar with small bevel - smooth base, ½ Pt, near mint; (just a couple of small patches of faint interior milkiness, otherwise perfect!) GX-16. A comparatively scarce little flask, overall excellent condition.

Est.: \$120 - \$240 • Min. bid: \$60



Lot 57

SUMMER TREE - SUMMER TREE Pictorial Flask, America, 1850 - 1860. Aqua, large, applied blob collar - blowpipe pontil scar, Qt; (just a small patch of faint light interior milkiness, non-distracting, otherwise mint). GX-18. This one boasts exceptional character and the glass is absolutely filled with tiny seed bubbles, as well as a number of potstones measuring up to 5/8", with absolutely no associated damage! If you like character, this one may be for you.

Est.: \$200 - \$400 • Min. bid: \$100



Lot 58

SUMMER TREE - SUMMER TREE Pictorial Flask, America, 1850 - 1860. Brilliant light golden honey coloration with plenty of yellowish tones, applied round collar with bevel - blowpipe pontil scar, Qt, attic mint; (just a wisp of very faint interior residue that would almost certainly wash out). GX-18. A gorgeous example with great character and strong yellowish tones. Beautiful!

Est.: \$1,800 - \$3,600 • Min. bid: \$900



Lot 59

"UNION" / CLASPED HANDS - EAGLE Historical Flask, Midwest, probably a Pittsburgh district glasshouse, 1860 - 1875. Brilliant, medium-to-deep yellowish coloration with a very slight hint of an olive tone, applied collar with flat band and a thin outward flared lip at top edge - smooth base, Qt; (a 1/4" chip from the side of the lip, and a trace bit of residue in the base, otherwise attic mint). GXII-3. A stunning, eye-appealing color, virtually no high point wear!

Est.: \$500 - \$1,000 • Min. bid: \$250



Lot 60

CLASPED HANDS / "UNION" - EAGLE Historical Calabash, probably A.R. Samuels, Philadelphia, PA, 1860 - 1865. Medium amber shading to deep amber through the neck and base, applied round collar with bevel - iron pontil scar, Qt, near mint; (some typical minor exterior high point wear, otherwise excellent). GXII-43.

Est.: \$300 - \$500 • Min. bid: \$150



Lot 61

"FLORA TEMPLE" / (Standing Horse) / "HARNESS TROT 2.19 3/4 / OCT. 15. 1859" Pictorial Flask, America, probably Whitney Glass Works, 1860 - 1865. Yellowish apricot amber, applied ear-shaped handle crimped and curled at lower attachment, applied sloping collar with lower bevel - smooth base, Qt, very near mint; (just the slightest touch of very minor high point wear, otherwise perfect). GXIII-19. A very nice example that passes light with ease.

Est.: \$500 - \$800 • Min. bid: \$250



Lot 62

"FLORA TEMPLE" / (Standing Horse) / "HARNESS TROT 2.19 3/4 / OCT. 15. 1859" Pictorial Flask, probably Whitney Glass Works, 1860 - 1865. Rich apricot coloration with some lighter copper tones along the sides, applied ear-shaped handle crimped and curled at lower attachment, sheared and slightly flared mouth with an applied flat band - smooth base, Qt, very near mint; (only a slight trace of very minor wear on the reverse, otherwise perfect). GXIII-19. A beautiful example.

Est.: \$500 - \$800 • Min. bid: \$250



Lot 63

"FLORA TEMPLE" / (Standing Horse) / "HARNESS TROT 2.19 3/4 Pictorial Flask, probably Whitney Glass Works, 1860 - 1865. Yellowish apricot amber, applied handle crimped and curled at lower attachment, sheared mouth with an applied flat band - smooth base, Pt, near mint; (a touch of minor high point wear and a pinhead flake on the edge of the sheared mouth). GXIII-21. Note; mold seam near the plain side as on GXIII-21; lip finish as on GXIII-22.

Est.: \$400 - \$600 • Min. bid: \$250



Lot 64

"FLORA TEMPLE" / (Standing Horse) / "HARNESS TROT 2.19 3/4 Pictorial Flask, probably Whitney Glass Works, 1860 - 1865. Apricot amber, applied handle crimped and curled at lower attachment, sheared mouth with an applied flat band - smooth base, Pt, near mint; (a little scattered light wear, primarily on the back label panel). GXIII-21. Note; there is an interesting 'bird swing', or thread of glass from the top of the handle to the applied ring lip.

Est.: \$400 - \$600 • Min. bid: \$250



Lot 65

"FLORA TEMPLE" / (Standing Horse) / "HARNESS TROT 2.19 3/4 Pictorial Flask, probably Lancaster Glass Works, Lancaster, NY, 1860 - 1865. Rich, deep bluish aquamarine, sheared mouth with an applied flat band - smooth base, Pt; (just the slightest trace of faint wear, otherwise sparkling attic mint). GXIII-23. A choice example, as well as a difficult and very scarce color to acquire in a Flora Temple flask!

Est.: \$800 - \$1,200 • Min. bid: \$400



Lot 69

Freeblown Chestnut Flask, New England, 1785 - 1820. Clear, medium olive, chestnut form, sheared mouth with an applied string lip - blowpipe pontil scar, ht. 5", very near mint; (trace bit of typical light usage wear, just a bit of very faint interior residue, likely washable, otherwise perfect). An attractive little example with nice clarity and crudity having some un-melted clumps of glass frit and silica swirled through the body.

Est.: \$250 - \$350 • Min. bid: \$140



Lot 66

"GRANITE / GLASS / CO - STODDARD / N H", 1855 - 1862. Yellowish olive amber, almost an olive yellow coloration, sheared mouth - heavy blowpipe pontil scar, Pt; (only a slight trace of minor light wear, otherwise perfect). GXV-7. Scarce with the pontil scarred base. Beautiful seedy glass, nice light color, whittled, and overall excellent condition.

Est.: \$600 - \$900 • Min. bid: \$300



Lot 70

Freeblown Chestnut Flask, New England, 1785 - 1820. Medium olive, chestnut form, sheared mouth with an applied string lip - blowpipe pontil scar, ht. 5 1/2", virtually perfect! (just the slightest trace of light wear). Similar in color to the preceding lot, but in a slightly deeper tone and in a more pure olive coloration. Also, a 1/2" taller with an elongated neck. A classic little New England Chestnut Flask!

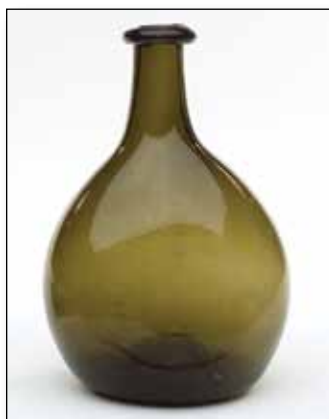
Est.: \$250 - \$350 • Min. bid: \$140



Lot 67

"GRANITE / GLASS / CO - STODDARD / N H", 1855 - 1862. Medium-to-deep amber, almost a tobacco amber, with a slight olive tone, applied blob collar - smooth base, Pt, near mint; (a slight trace of washable residue in the shoulder, and a bit of typical light exterior wear, otherwise perfect). GXV-7. Crisp, bold embossing, and some nice character to the glass.

Est.: \$300 - \$500 • Min. bid: \$150



Lot 71

Freeblown Chestnut Flask, New England, 1785 - 1820. Medium olive amber, chestnut form, sheared mouth with an applied string lip - blowpipe pontil scar, ht. 5"; (a little scattered light usage wear; some faint interior haze or residue in the lower 1" of the body, above the base, some of which may wash out, otherwise excellent). It is amazing as early as these little Chestnut Flasks are, most 200 years old, or more, and as delicate as they are, how many have survived. Another classic example.

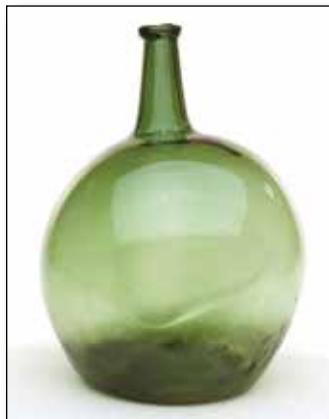
Est.: \$200 - \$300 • Min. bid: \$100



Lot 68

Diminutive, Freeblown Chestnut Flask, New England, 1785 - 1820. Light yellowish olive, chestnut form, sheared mouth with an applied string lip - blowpipe pontil scar, ht. 4 3/4"; (some scattered light scratches and high point wear, otherwise excellent). Anything below 5" in height starts to become quite scarce and difficult to find. A little sweetheart with a plump body, nice color, diminutive small size, and beyond the noted light scratches, in overall very nice condition.

Est.: \$300 - \$500 • Min. bid: \$150



Lot 72

Early Freeblown Globular Bottle, America, possibly Western PA, 1790 - 1820. Clear light to medium green, globular form with slightly flattened sides, crudely applied heavy string rim - blowpipe pontil scar, ht. 11 3/8", near mint; (a very minor 1/8" flake on top of lip; some typical light exterior usage wear, a little residue near the base that would almost certainly wash out). A rare globular bottle, good color, nice size, excellent condition. Originally discovered at a house sale in NE Ohio.

Est.: \$500 - \$1,000 • Min. bid: \$300



Lot 73

Freeblown Utility Jar, probably a New York State glasshouse, 1855 - 1870. Rich, medium emerald with a slight bluish tone, similar in color to some of the Saratoga bottles blown at Congressville, large bulbous pear-form body, short wide neck, large ring-type collar - blowpipe pontil scar, ht. 9 1/4"; (just a bit of minor light wear, otherwise perfect). Beautiful rich color, plenty of good honest base wear. Possibly blown as a whimsey, or for personal use.

Est.: \$300 - \$500 • Min. bid: \$150



Lot 74

Freeblown Globular Bottle, Midwest, probably Western Pennsylvania, or Ohio, 1790 - 1820. Aquamarine, globular body, crudely applied ring-type collar - blowpipe pontil scar, ht. 8 1/8", perfect. Similar to McK, plate 46, #3. A scarce, much better-than-average example of an early freeblown globular bottle blown from a high quality 'metal', with excellent brilliance and clarity to the glass.

Est.: \$125 - \$250 • Min. bid: \$70



Lot 75

Early, Blown Bar Bottle or Decanter, England or possibly America, 1820 - 1850. Beautiful, medium plum amethyst, club form, sheared mouth with an applied flat band - polished pontil scarred base, Qt, ht. 9 1/4", near mint; (slight trace of minor exterior wear, otherwise perfect!) A very attractive bar bottle or decanter, having great color, clarity, and with some nice swirls to the glass.

Est.: \$150 - \$300 • Min. bid: \$80



Lot 76

Early Freeblown Decanter, England, probably a Bristol factory, 1790 - 1820. Rich, deep cobalt blue, club or mallet form body with triple applied neck rings, sheared, tooled and flared mouth with correct bull's-eye type wafer stopper - polished pontil scar, Qt, ht. 10" including stopper, both bottle and stopper near mint; (just a touch of typical light exterior wear, and a 3/16" shallow flake on the edge of stopper). An early decanter, nice with the applied neck rings.

Est.: \$200 - \$400 • Min. bid: \$100



Lot 77

Lot of (2), Blown, Decorative Latticino Glass Spirits Bottles, Eastern Europe, possibly Venetian, 1850 - 1870. Colorful rows of twisted opaque threading alternating with pinkish-red, green or blue ribbons of glass, both rectangular, sheared mouths with original brass collar and decorative stoppers - smooth base, ht. 5 3/4" & 8" (not including stoppers), perfect. Beautiful! This Lot, and the next, were found together in the parlor of a Victorian home in St. Louis.

Est.: \$200 - \$400 • Min. bid: \$100



Lot 78

Lot of (2), Decorative Latticino Glass Spirits Bottles, Eastern Europe, possibly Venetian, 1850 - 1870. Colorful rows of twisted opaque threading alternating with pinkish red ribbons of glass, 6-sided and rectangular with beveled corners, sheared mouths with original brass collar and stoppers - smooth base, ht. 5 3/4" & 7 3/4" not including stoppers; (the 6-sided example is scarce and perfect; rectangular example badly cracked). A tremendous amount of workmanship by the glassblower.

Est.: \$150 - \$250 • Min. bid: \$80



Lot 79

Pattern Molded Club Bottle, Midwest, 1820 - 1840. Aquamarine, high-shouldered club form, 24 vertical ribs over 24 faint ribs swirled to the right, applied inverted tapered collar - blowpipe pontil scar, ht. 8 3/8"; (some scattered light usage wear; a trace of faint interior milkiness, otherwise excellent). Similar in form and pattern to MW, plate 95, #6. A classic early pattern molded Club Bottle.

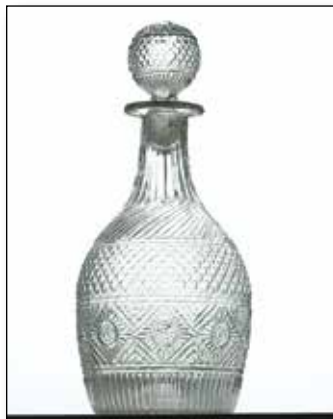
Est.: \$150 - \$250 • Min. bid: \$80



Lot 80

Blown Three Mold Decanter, America, 1820 - 1840. Colorless, cylindrical body tapering from shoulders to base, Gothic or Roman arch pattern, molded collar rib at base of plain neck, tooled wide flared mouth with correct, possibly original, wafer-type stopper with rayed design, Qt, perfect. GIV-5. McKearin notes this as a "Rare" mold, and in our experience, we would concur. A great example, brilliant, excellent clarity, attractive and rare. See McK, plate 115, #3.

Est.: \$150 - \$250 • Min. bid: \$80



Lot 81

Blown Three Mold Decanter, America, 1820 - 1840. Colorless, semi-barrel form, geometric pattern with sunburst motif, diamond pattern and ribbing, tooled wide flared mouth with period correct stopper - pontil scarred base, Qt, virtually perfect; (some minor washable residue). GIII-24. A scarce mold, very detailed and ornate.

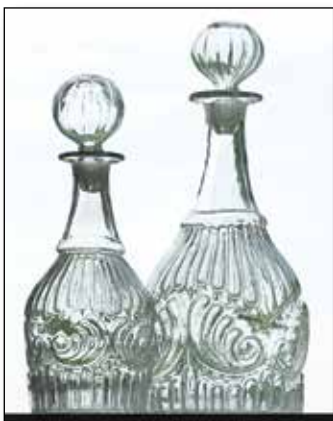
Est.: \$100 - \$200 • Min. bid: \$50



Lot 82

Lot of (2), Blown Three Mold Decanters, probably Mt. Vernon Glass Works, Vernon, NY, 1820 - 1840. Both colorless, semi-barrel form, geometric pattern with sunburst motif and heavy wide ribbing around the shoulders and base, tooled wide flared mouths with correct blown, swirled stoppers - pontil scarred bases, Qts, attic mint! Both, GIII-2, Type 2. Beautiful examples, bright, clean and sparkling. Ex. Paul Richards collection.

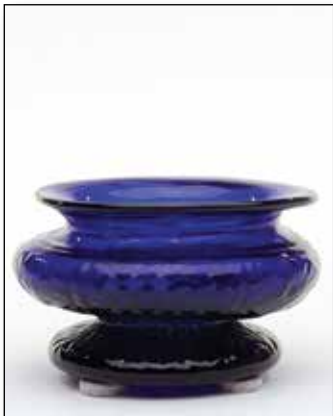
Est.: \$175 - \$350 • Min. bid: \$100



Lot 83

Blown Three Mold Decanters, Boston and Sandwich Glassworks, Sandwich, MA, 1825 - 1840. Both are colorless, cylindrical with shell and ribbing pattern, tooled wide flared mouths with correct blown and ribbed stoppers - pontiled scarred bases, Pt. and Qt, both very near mint; (Pt. example has a 1/4" open bubble on the inside edge of the lip). GV-8. See McK, plate 116, #2; BK #1334. A very nice set of early Sandwich decanters.

Est.: \$175 - \$350 • Min. bid: \$100



Lot 84

Blown Three Mold Salt Cellar, Boston and Sandwich Glassworks, Sandwich, MA, 1825 - 1840. Vivid, deep cobalt blue, geometric pattern with herringbone, diamond, and sunburst motif, compressed wafer bowl with pedestal base drawn from same gather, flaring to a wide sheared rim - ringed base with blowpipe pontil scar, ht. 1 5/8", perfect. GIII-25. See McK plate 110, #11. A scarce mold and rare form having the compressed body and wide flared rim.

Est.: \$500 - \$800 • Min. bid: \$250



Lot 85

Lot of (2), Miniature Blown Three Mold Items, Boston and Sandwich Glassworks, Sandwich, MA, 1825 - 1840. Colorless creamer with bulbous body flaring outward to a sheared, tooled rim, solid loop handle - blowpipe pontil scar, ht. 2 1/8", near mint; (1/2" pontil chip at edge of base). 2nd item, Colorless decanter, ovoid body, long tapered neck with wide flanged mouth - blowpipe pontil scar, ht. 2 3/4", perfect! Both, GIII-12 Sunburst Motif. Both are very scarce-to-rare!

Est.: \$400 - \$600 • Min. bid: \$200



Lot 86

Lot of (3), Scarce Blown Three Mold Hats, America, 1820 - 1840. All are colorless, blown and formed into miniature "beaver" style toy hats, sheared and flared brims, one with outward folded rim, two with inward folded rims - blowpipe pontil scarred bases, ht. 2 1/4", 2 3/8", and 2 1/2", all three are virtually perfect; (just typical slight traces of wear). Molds include: McK GII-18; GIII-3, and GIII-7 (all with rayed base patterns). A wonderful little grouping of toy hats.

Est.: \$250 - \$450 • Min. bid: \$140



Lot 87

Lot of (2), Blown Glass Items, "KENNEDY'S / SALT RHEUM / OINTMENT" Jar, and, Miniature Freeblown Bowl, 1850 - 1860. Small bulbous jar, aquamarine with a wide neck, sheared, inward rolled lip - blowpipe pontil scar, ht. 2". Small bowl, cylindrical with sides flaring to a sheared, outward folded rim - blowpipe pontil scar, ht. 1", rim dia. 3", both sparkling mint! The two were found together and had been in the same family for generations. Bowl likely used to hold salt.

Min. bid: \$200 - \$400 • Min. bid: \$100



Lot 88

Early Freeblown Footed Bowl, America, possibly Lockport or Lancaster Glass Works, NY, 1845 - 1860. Medium sapphire blue, drawn from a single gather of glass, tooled cylindrical disk foot flaring outward to a sheared and inward folded wide rim - blowpipe pontil scar, ht. 2 1/8", rim dia. 5", attic mint. The bowl is very nicely done, in a rare color, and outstanding condition. Fresh-to-the market, discovered at a small estate auction in the Northeast.

Est.: \$400 - \$600 • Min. bid: \$200



Lot 89

Freeblown Covered Sugar Bowl, America, possibly Pittsburgh, 1830 - 1850. Colorless flint glass, globular bowl flaring outward to a shallow gal-leried rim, applied solid pedestal foot with glass tipped pontil scar; bell form cover flaring outward to a delicate, inward folded rim, pontiled scarred knob finial, ht. 6 3/8" (including cover), perfect with only age appropriate base wear. The matching cover, almost certainly original, fits perfectly. A wonderful example of early blown tableware.

Est.: \$250 - \$450 • Min. bid: \$140



Lot 90

Early, Fancy Cologne Bottle, America, 1835 - 1850. Aquamarine, figural Lyre or Scroll form, sheared, tooled thin flanged lip - blowpipe pontil scar, ht. 5 1/2"; (minor, hard-to-see, 1/8" flake at edge of base, otherwise sparkling attic mint!) MW, plate 111, #1. A beautiful example of this ornate early cologne, clean, bright and sparkling, with a perfect flanged lip.

Est.: \$125 - \$250 • Min. bid: \$70



Lot 93

Oversized, Early Blown Cologne (with 90% complete original label), probably a South Boston glasshouse, 1840 - 1860. Opaque robin's egg blue, cylindrical, tooled ring-type collar - solid glass-tipped pontil scar, ht. 13", very near mint; (minor 1/8" flake on edge of lip, otherwise perfect). See plate 189, *The Glass Industry in South Boston*, Kaiser. Label reads in part, *COLOGNE / WATER / Distilled by / W.H. TAYLOR / Druggist and Chemist / PROVIDENCE / R. I.* Rare size, great label!

Est.: \$150 - \$250 • Min. bid: \$80



Lot 94

"PRICES / PATENT / CANDLE / COMPANY / LIMITED" / (Monogram), England, 1880 - 1895. Clear, brilliant, medium sapphire blue, rectangular wedge form with beveled corners, applied sloping collar with bevel - sand-type pontil scar, ht. 7 3/8"; (tiny sliver of base edge roughness on back corner, otherwise attic mint). A beautiful example, clean and sparkling, and nice with the pontil scarred base (most are smooth base).

Est.: \$150 - \$250 • Min. bid: \$80



Lot 91

Lot of (4), Figural Monument Cologne Bottles, possibly Boston and Sandwich Glass Works, 1860 - 1888. Two examples are fiery, almost 'see-through', opalescent milkglass, 3rd example opaque milkglass, 4th example colorless, all are monument form, tooled ring collars - smooth base, ht. 6 3/8", 6 1/2", 8" and 9 1/8", all are virtually perfect; (colorless example has minor in-manufacture neck crazing). MW, plate 114, #3. Provenance: 9" example Ex. Mebane collection.

Est.: \$200 - \$400 • Min. bid: \$100



Lot 95

"SEABURYS / LAUNDRY / BLUEING", America, 1845 - 1860. Light bluish-green with an emerald tone, cylindrical, sheared and inward rolled mouth - blowpipe pontil scar, ht. 3 7/8", virtually attic mint; (a couple of minor light scratches, otherwise perfect). A rare early pontiled bluing bottle, especially rare in this fine condition. Believed to be from Long Island, NY.

Est.: \$300 - \$500 • Min. bid: \$150



Lot 92

Paneled Cologne Bottle, America, probably Boston and Sandwich Glass Works, 1855 - 1870. Beautiful teal green coloration, straight sided 12-panel form, sheared and outward folded mouth - smooth base, ht. 8 1/2", perfect! See BK, plate #5197. Per Barlow / Kaiser, all of the straight-sided commercial cologne fragments dug from the Sandwich Glass site were 12-sided. Green is one of the scarcest colors for Sandwich glass. A beautiful example, larger in size than most.

Est.: \$300 - \$500 • Min. bid: \$150



Lot 96

Lot of (3), Early Utility Bottles, America and probably England, 1820 - 1860. Light yellow green, yellowish-honey, and clear medium emerald, 8-sided and cylindrical, applied sloping collars and inward rolled mouth - sand-type pontil scar and blowpipe pontil scarred bases, ht. 5 7/8", 5", and 6 7/8" respectively; (green examples are virtually perfect with slight wear; amber utility has a 1/4" fine hairline fissure in the body, otherwise perfect). The sided utility is a scarce form and size.

Est.: \$200 - \$300 • Min. bid: \$100



Lot 97

Utility Bottle, possibly Saratoga Mountain Glass Works, Mt. Pleasant, NY, 1855 - 1866. Yellowish olive with a very slight amber tone, cylindrical, 2-pc. mold, applied broad tapered collar with bevel - hinge mold with a very light sand-type pontil scar, ht. 5 3/8", near mint; (slight trace of very minor, typical faint exterior wear, otherwise perfect). A scarce utility having a great "look" and eye-appeal, fantastic collared mouth and no issues with the lip.

Est.: \$150 - \$300 • Min. bid: \$80



Lot 98

Half-size, Early Snuff Jar, America or England, 1780 - 1820. Clear, medium olive, freeblown or dip mold, square with rounded corners, drawn-up shoulders to a sheared, tooled, and outward flared flanged mouth - heavy base wear, faint sand-type pontil scar, ht. 4", perfect! Similar to MW, plate 75, #11, but smaller. Scarce, eye-appealing size, nice light color, outstanding clarity and condition. A great example.

Est.: \$700 - \$900 • Min. bid: \$350



Lot 99

"BERTINGUIOT" Inkwell, probably New England, possibly a Connecticut glasshouse, 1830 - 1850. Clear, light-to-medium yellowish olive, almost an olive yellow, cylindrical, sheared mouth - blowpipe pontil scar, ht. 1 7/8", perfect! C# 575. A very scarce, light and pretty color for this ink. Outstanding condition. Likely one of the choicest examples that you could hope to find.

Est.: \$200 - \$400 • Min. bid: \$120



Lot 100

Rare, Freeblown Inkwell, Midwest, probably Zanesville, OH, 1820 - 1835. Amber, corseted cylindrical body with narrow disk shoulder, short funnel-type neck, sheared lip - pontil scarred base, ht. 1 1/2", dia. 2 1/2", perfect. All aspects point to early Midwest, and very likely Zanesville production. The pontil is textbook for what you would expect on a 24-rib glob or flask including the "monkey tail" swirl of glass coming off the pontil and the color is correct. Rare and exceptional!

Est.: \$1,500 - \$3,000 • Min. bid: \$800



Lot 101

Pattern Molded Inkwell with Matching Cover, America, or possibly Continental, 1820 - 1840. Deep cobalt blue, 12 widely spaced vertical ribs, compressed cylindrical body with short neck, sheared wide mouth - correct matching pattern molded cover with an applied solid knopf finial - both base and cover with glass tipped punty scar, ht. 2" (including cover), very near mint; (a little faint exterior usage wear). Covill #1066.

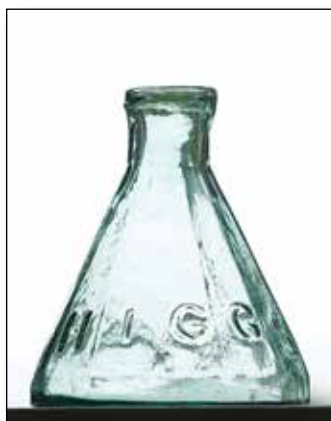
Est.: \$125 - \$250 • Min. bid: \$70



Lot 102

Lot of (2), Rare Figural Cabin Inks, America, 1880 - 1890. Both are colorless, short and elongated rectangular cabin form, tooled square collars - smooth bases, ht. 2 1/4" and 2 3/8" respectively, both with minor repairs; (small cabin has a 3/8" repaired chip from the underside of the square collar; large cabin has a hard-to-see approx. 1/8" repair to one of the base corners, a little very minor faint interior haze). C #679 & C #680. Both examples are rare and display as near mint!

Est.: \$300 - \$600 • Min. bid: \$150



Lot 103

"HIGGS - INK", a Midwest glasshouse, probably 1855 - 1860. Aquamarine, 12-sided umbrella form, sheared and inward rolled mouth - keyed base with blowpipe pontil scar, ht. 2 3/4" ht. x 2 3/8" wide, perfect. An extremely rare, unlisted ink from the Wm. Higgs Ink Manufactory, 120 Market St, St. Louis. Believed to be the earliest of the known HIGGS molds, all being very scarce-to-rare.

Est.: \$400 - \$600 • Min. bid: \$200



Lot 104

"J WALTER THOMPSON / TIMES BUILDING / NEW YORK / THE ROOKERY / CHICAGO. - WE / PLACE MORE / ADVERTISEMENTS / IN MAGAZINES / THAN ALL OTHER / AGENCIES COMBINED. - THE / MAGAZINES / LEAD AS / ADVERTISING / MEDIUMS." Advertising Inkwell, c. 1893. Colorless, 3-part mold, cone form, diamond pattern with fluting at base - square collar, ht. 3 1/4"; (a 1/4" annealing line; a little flaking and two 1/2" bruises at base). A unique inkwell.

Est.: \$100 - \$200 • Min. bid: \$50



Lot 105

"HARRISON'S - COLUMBIAN - INK" - "PATENT" (on shoulder), **Master Ink Bottle**, America, 1847 - 1860. Aquamarine, 12-sided, applied flanged mouth - blowpipe pontil scar, ht. 5 3/4", perfect. C #760. Scarce size. Note, a period darkened label, illegible, remains on the back of the bottle.

Est.: \$250 - \$450 • Min. bid: \$140



Lot 109

Cathedral Pickle Jar, America, 1855 - 1865. Medium emerald coloration, square with beveled corners, arched Gothic panels with quatrefoil design and beaded trefoil motif, sheared mouth with an applied ring collar - domed base with a heavy iron pontil scar, ht. 11 7/8", near mint; (some high point wear below the shoulders on one of the side panels, otherwise sparkling attic mint). A fantastic example, great clarity and beautiful rich emerald color (no bluish tones in this one).

Est.: \$800 - \$1,200 • Min. bid: \$400



Lot 106

"HARRISON'S - COLUMBIAN - INK" - "PATENT" (on shoulder), **Master Ink Bottle**, America, 1847 - 1860. Aquamarine, 12-sided, applied flanged mouth - blowpipe pontil scar, ht. 7 1/4"; (lightly cleaned to original luster and near mint condition). C #761. These multi-sided Harrison's inks can be found in graduated sizes ranging from around an ounce to the mammoth gallon size. They can also be found with and without "PATENT" embossed on the shoulder.

Est.: \$200 - \$400 • Min. bid: \$100



Lot 110

Large, Cathedral Pickle Jar, America, 1860 - 1870. Clear, light-to-medium blue green, square with beveled corners, arched Gothic panels, fancy ogival arch design below shell pattern on shoulders, applied ring collar - early smooth base, ht. 13 1/2", virtually perfect; (3/16" tissue-paper-thin open bubble on shoulder, otherwise sparkling attic mint). Z, p.457. A gorgeous pickle, scarce mold, good color, excellent character with whittled, wavy glass and impressive size.

Est.: \$800 - \$1,600 • Min. bid: \$400



Lot 107

"GAYLORDS / SUPERIOR / RE-CORD / INK - BOSTON" **Master Ink Bottle**, New England, possible Keene Marlboro Street Glassworks, 1830 - 1842. Yellowish olive amber, cylindrical, sheared, tooled thin flared mouth - blowpipe pontil scar, ht. 5 3/4", near mint; (a 1/4" bruise at edge of base, otherwise perfect). A great example of this extremely rare, early, Boston master ink. Nice color, whittled and filled with tiny seed bubbles. Believed to be one of only a few known examples.

Est.: \$1,600 - \$3,200 • Min. bid: \$800



Lot 111

"WELLS MILLER & PROVOST" **Pickle Jar**, America, probably 1850 - 1855. Rich, medium blue green, cylindrical with fluted shoulders, sheared and outward rolled mouth - blowpipe pontil scar, ht. 10 3/8", very near mint; (a little minor roughness or pitting to the glass on the outward rolled collar, likely in-manufacture). See Zumwalt, pgs. 428-432. Gorgeous example, good strong embossing, nice rich color, whittled, and virtually perfect. A very rare jar in a rare color.

Est.: \$2,500 - \$4,500 • Min. \$1,400



Lot 108

"HOHENTHAL / BROTHERS & Co / INDELIBLE / WRITING INK / N Y" **Master Ink Bottle**, a New England glasshouse, 1845 - 1855. Olive amber, cylindrical, applied sloping collar tooled and crimped for pour spout - sand type pontil scar, ht. 9"; (a bubble on the reverse with a 3/8" opening and some residue, otherwise just a slight trace of wear and very near mint). A rare, New England master ink, good strong embossing for this mold, most of the known examples are fairly weak.

Est.: \$1,000 - \$2,000 • Min. bid: \$500



Lot 112

"E H V B / N. Y." Hexagonal Cathedral Pickle Jar, America, 1855 - 1860. Brilliant aqua, 6 large Gothic windows, 5 with embossed crosshatch design, bell-shaped shoulders, heavy applied ring collar - early smooth base, ht. 11 3/4"; (a 1/4" opening in the cover glass of a bubble on a base corner, and a tiny sandgrain with a minuscule cooling radiation, barely visible without a loop, otherwise virtually attic mint). Z, p.411. Clean, bright, and sparkling, a very scarce-to-rare pickle jar.

Est.: \$400 - \$600 • Min. bid: \$200



Lot 113

Hexagonal Cathedral Pickle Jar, America, probably a Mid-Atlantic or New Jersey glasshouse, 1865 - 1875. Yellowish apple green, 6-large Gothic panels with trefoil designs at top, large neck ring above shoulders, sheared mouth with an applied ring collar - smooth base, ht. 13"; (a shallow 1/8" open bubble and slight trace of faint wear, otherwise perfect!) MW, plate 73, #10. An impressive pickle, scarce in this light green coloration.

Est.: \$200 - \$400 • Min. bid: \$100



Lot 117

"MASON'S / PATENT / NOV 30TH / 1858", America, 1880 - 1895. Gorgeous, light-to-medium olive yellow coloration, cylindrical, threaded neck with ground lip, zinc lid - "V" (on smooth base), Qt, very near mint; (there is a shallow 3/4" iridescent bruise along the inner edge of the lip, but the ground lip itself is perfect). RB# 1787. An eye-appealing, absolutely beautiful jar, heavily whittled, boldly embossed 'large lettered' mold.

Est.: \$600 - \$900 • Min. bid: \$300



Lot 114

"John M Moore & Co / Manufacturers / Fislerville N.J. / PATENTED DEC. 3D 1861", Fislerville Glass Works, 1861 - 1863. Aquamarine, cylindrical with applied wide band collar with inner seat for stopper seal, "PATENTED / DEC 3D 1861" on glass lid, original cast iron yoke clamp with thumbscrew - plain, smooth base, Pt, both jar and glass lid are perfect. RB# 2205. Scarce and desirable size, beautiful condition.

Est.: \$1,200 - \$1,800 • Min. bid: \$600



Lot 118

"MASON'S / (Cross) / PATENT / NOV 30TH / 1858", America, 1885 - 1900. Light-to-medium honey amber, cylindrical, threaded neck with ground lip, zinc lid - "PAT NOV 26 67 / 461" (on base), Qt, attic mint. RB #1940. A light, pretty color, good strength of embossing.

Est.: \$200 - \$300 • Min. bid: \$100



Lot 115

"John M Moore & Co / Manufacturers / Fislerville N.J. / PATENTED DEC. 3D 1861", Fislerville Glass Works, 1861 - 1863. Aquamarine, cylindrical with applied wide band collar with inner seat for stopper seal, "PATENTED / DEC 3D 1861" on glass lid, original cast iron yoke clamp with thumbscrew - plain, smooth base, Qt, both jar and glass lid are perfect! A clean, bright, shiny example with crisp, very strong embossing.

Est.: \$400 - \$600 • Min. bid: \$200



Lot 119

"MASON'S / (Cross) / PATENT / NOV 30TH / 1858", America, 1885 - 1900. golden amber, cylindrical, threaded neck with ground lip, zinc lid - "PAT NOV 26 67 / 616" (on base), Qt, near mint; (a shallow 7/8" sliver-type flake along the top outer edged of the ground lip, otherwise perfect). RB #1940. A clean, sparkling example, boldly embossed.

Est.: \$200 - \$300 • Min. bid: \$100



Lot 116

"John M Moore & Co / Manufacturers / Fislerville N.J. / PATENTED DEC. 3D 1861", Fislerville Glass Works, 1861 - 1863. Aqua, cylindrical with applied wide band collar with inner seat for stopper seal, "PATENTED / DEC 3D 1861" on glass lid, original cast iron yoke clamp with thumbscrew - plain, smooth base, 1/2 Gal; (the jar is virtually perfect with just a speck of roughness on the back edge of lip, lid has a tiny bit of roughness and a 3/16" chip from edge of rim). Nice example.

Est.: \$400 - \$600 • Min. bid: \$200



Lot 120

"good Old Bourbon / in a hogs" (line pointing to pigs rear-end), America, 1880 - 1890. Honey coloration in the body shading to a rich golden amber with an orange tone in the head and neck, figural pig, tooled ring collar -

smooth base, length 6 5/8", attic mint! Scarce. A classic figural pig whiskey that will put a smile on almost anyone's face. Who said they did not have a sense of humor back them.

Est.: \$400 - \$600 • Min. bid: \$200



Lot 121

Lot of (2), "PICNIC" Whiskey Flasks, America, 1875 - 1885. Golden amber shading to honey color along the edges, and brilliant yellow with some warmer honey tones, both pumpkin-seed form with tooled double round collars - smooth bases, ht. 5 1/8" & 6 3/4", approximately 1/4 pt. and 3/4 pt., both near mint; (slight trace of wear and a minor pinhead flake on the lip of the 5" example, otherwise perfect). The colors and sizes compliment one another nicely.

Est.: \$100 - \$200 • Min. bid: \$50



Lot 122

Lot of (3), Colorful Whiskey Flasks, Eastern U.S., possibly Baltimore Glass Works, 1865 - 1875. Beautiful, clear medium yellow with a slight olive tone, golden honey coloration, and medium-to-deep strawberry puce, all are seam-sided "Union Oval" form, applied double collar - smooth base, Qts; (amber example has slight trace of wear, otherwise all are sparkling mint). Gorgeous colors, the strawberry puce example passes plenty of light and can be enjoyed in normal daylight.

Est.: \$300 - \$600 • Min. bid: \$150



Lot 123

Lot of (4), Whiskey Flasks, America, 1865 - 1880. Shades of amber ranging from a yellow coloration, to golden amber, honey amber and orange amber, two 'seam-sided' flasks and two 'strap-sided' flasks, all with applied double collars - smooth bases, (1) Qt, (3) Pt. examples, all are virtually perfect; (only slight traces of wear). The Qt. example was found in Copper Harbor, Mich, and is a gorgeous flask with the variegated color shading from near yellow to an orange-amber.

Est.: \$100 - \$200 • Min. bid: \$50



Lot 124

Lot of (2) Whiskey Cylinders, "WEEKS & POTTER - BOSTON." and, "PATENT" (on shoulder), probably Whitney Glass Work and New England, 1860 - 1875. Bright orange amber, and yellowish 'old amber' with a slight olive tone, 3-pc. mold and 2-pc. mold, applied collar internally threaded, original glass stopper "PAT. / JAN. / 1861", and applied double collar - smooth bases, ht. 12" and 11 3/8", both near mint; (some chipping on underside of glass stopper).

Est.: \$150 - \$300 • Min. bid: \$80



Lot 125

Crude, Early Whiskey Cylinder, probably a New England glasshouse, 1855 - 1865. Yellowish olive amber, cylindrical, 2-pc. mold, crudely applied sloping collar - early smooth base, Qt, ht. 11", attic mint! If you like character, this one has it in spades. Exceptional character and crudity, whittled and absolutely filled with impurities and small seed bubbles, the mold leaves were offset and did not line up well, adding to the character. A fantastic whiskey cylinder and window bottle.

Est.: \$125 - \$250 • Min. bid: \$70



Lot 126

Lot of (2), Stubby Ale Bottles, New England, 1855 - 1865. Olive amber and olive green, 2-pc. mold and 3-pc. mold "stubby ale" cylinders, crudely applied sloping collared mouths - iron pontil scar and early smooth base, ht. 6 3/4" and 7" respectively, near mint; (olive amber example has a couple of minor 1/8" flakes from the edge of the collar; the olive green example has a little light exterior wear including a pinhead opening on a surface bubble, otherwise excellent). Olive amber example has excellent character.

Est.: \$100 - \$150 • Min. bid: \$50



Lot 127

"SARGENT / 1830" Porter-type Bottle, America, 1875 - 1885. Dense root beer amber with a slight orange tone, cylindrical 2-pc. mold, applied sloping collar with lower bevel - smooth base, ht. 8 1/4", virtually attic mint; (a light faint exterior usage wear, otherwise perfect). Note; the "3" in the date is reversed and appears as an incomplete "8". The bottle is thought to possibly be for a Chicago concern, but we have not been able to substantiate this. Regardless, a scarce, interesting porter bottle.

Est.: \$100 - \$200 • Min. bid: \$50



Lot 128

"CASPER'S WHISKEY / MADE BY HONEST / NORTH / CAROLINA PEOPLE", 1885 - 1900. Brilliant cobalt blue, cylindrical with fluted shoulders, tooled sloping collar with ring - smooth base, ht. 12", attic mint. A great example and certainly one of the all time classics of Eastern whiskeys. Note; the embossing has been painted for display purposes, but would easily wash off, if desired.

Est.: \$400 - \$500 • Min. bid: \$200



Lot 129

Exceptional, Folk Art in a Bottle, Whiskey, "FRED BENZ / HOTEL AND / SALOON" (Saloon scene) / "FIND THE / MISSING MAN", signed, "K. WOERNER", c. 1890 - 1910. Colorless, cylindrical, 3-pc. mold with colorful hand carved saloon scene including bartender, patrons, cases of cigars and whiskey. Woerner created this folk art piece after the Benz Saloon, located in Medina, NY (along the Erie Canal), ht. 12 1/4", Virtually perfect. An incredible example, likely unique.

Est.: \$1,200 - \$2,400 • Min. bid: \$600



Lot 130

"GEORGE NOAR / LOUISVILLE KY. - BOURBON COY / WHISKEY" Handled Whiskey Jug, America, 1855 - 1860. Medium shading to deep amber through the shoulders and base, ovoid form with an applied handle crimped and curled at lower attachment, applied blob collar with early period pewter stopper - large iron pontil scar, ht. 8 1/2"; (small, shallow 1/8" flake from edge of lip, otherwise pristine!) Bold, crisp embossing, heavily whittled, very rare!

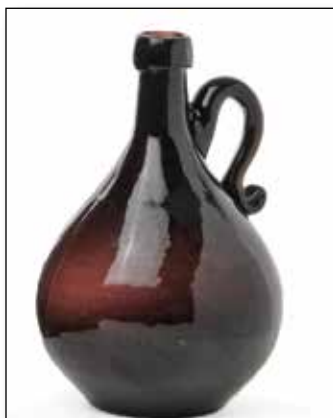
Est.: \$800 - \$1,600 • Min. bid: \$400



Lot 131

"A.M. BININGER & Co. / No. 19 BROAD ST / NEW - YORK" Applied Handled Whiskey, probably 1861 - 1863. Medium-to-deep olive green, cylindrical with conical shoulders, applied handle curled at lower attachment, applied round double collar, smooth base, ht. 7 3/4", perfect. BPK-31. Whittled and beautiful. This one's been in a choice, long-time collection, but here's a chance to pick up a great example in a rare and desirable color.

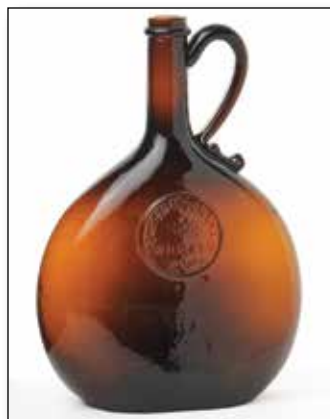
Est.: \$3,000 - \$5,000 • Min. bid: \$1,500



Lot 132

Applied Handle Spirits Jug, America, 1850 - 1860. Medium-to-deep apricot puce with a slight pinkish tone, 2-pc. mold, globular pear-form body with an applied handle crimped and curled at lower attachment, applied blob collar - iron pontil scar, ht. 7 5/8", virtually attic mint; (slight trace of typical faint wear, otherwise perfect). Similar to MW, plate 48, #2. Handled bottles became popular in the mid-19th century for packaging various spirits and can be found in a variety of interesting forms.

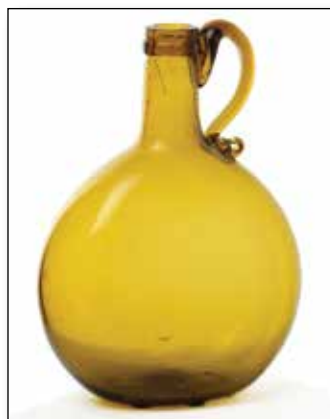
Est.: \$175 - \$350 • Min. bid: \$100



Lot 133

"CHESTNUT GROVE / WHISKEY / C.W." (on molded seal), Whitney Glassworks, 1855 - 1865. Medium-to-deep amber, chestnut form with an applied ear-shaped handle crimped and curled at lower attachment, applied collar with ring - blowpipe pontil scar, ht. 9", attic mint. See MW, plate 56. A nice clean example, good impression on the seal, excellent condition.

Est.: \$175 - \$275 • Min. bid: \$90



Lot 134

Freeblown Handled Chestnut Flask, America, 1850 - 1860. Rich, medium-to-deep yellow coloration, applied ear-shaped handle crimped and curled at lower attachment, applied mouth with flat band - blowpipe pontil scar, ht. 7 1/8", near mint; (a tiny sandgrain near the base has a small 1/8" cooling radiation traveling across it, and a slight trace of faint wear, otherwise perfect). The noted condition issue is minor. A beautiful and scarce color for a handled Chestnut bottle.

Est.: \$125 - \$250 • Min. bid: \$70



Lot 135

Freeblown Handled Chestnut Flask, America, probably a Baltimore, or Mid-Atlantic glasshouse, 1850 - 1860. Clear, medium cobalt blue, applied ear-shaped handle crimped and curled at lower attachment, applied double collar with flat band - blowpipe pontil scar, ht. 8 1/4", attic mint! Rare. A great example, gorgeous color, outstanding condition. These large handled chestnut flasks often have issues with either the handle attachment or wear, this one is an exception.

Est.: \$1,200 - \$2,400 • Min. bid: \$600



Lot 136

Figural Barrel Bitters or Whiskey Bottle, America, 1860 - 1875. Beautiful medium cobalt, barrel form, applied square collar - smooth base, ht. 9 3/4"; (a tiny pinhead speck of roughness on the edge of the lip and a partially open interior bubble in the shoulder, otherwise perfect). A very scarce barrel, fantastic color, nicely whittled. A big splash of color that would stand out in any run of barrels.

Est.: \$1,800 - \$2,800 • Min. bid: \$900



Lot 137

Figural Barrel Bitters or Whiskey Bottle, America, 1860 - 1875. Yellowish mossy green with an olive tone, barrel form, applied square collar - smooth base, ht. 9 1/4", virtually pristine; (a 1/8" open bubble on reverse, otherwise perfect!) A very rare and beautiful color for a barrel and, in addition, a rare mold. This example has a unique 2 1/4" diameter slugplate or embossed circle in the center, presumably for a label space. Great color, character, and condition.

Est.: \$1,000 - \$2,000 • Min. bid: \$500



Lot 138

Figural Barrel Bitters or Whiskey Bottle, America, 1855 - 1865. Medium amber, barrel form, applied square collar - iron pontil scar, ht. 9"; (a tiny 1/8" flake and a couple of pinprick specks of roughness on the edge of the square collar, otherwise attic mint). Rare. Pontiled barrels are few and far between, they do not come around often!

Est.: \$200 - \$400 • Min. bid: \$100



Lot 139

"OLD SACHEM / BITTERS / AND / WIGWAM TONIC", America, 1860 - 1875. Medium yellow through the mid-section shading to a slightly deeper golden yellow near the base, barrel form, applied square collar - smooth base, ht. 9 1/4", perfect! R/H #O46. A great example, beautiful yellow coloration, and with a perfect square collar having no issues!

Est.: \$800 - \$1,600 • Min. bid: \$400



Lot 140

"OLD SACHEM / BITTERS / AND / WIGWAM TONIC", 1860 - 1875. Medium smoky grayish olive, barrel form, applied square collar - smooth base, ht. 9 1/2"; (just the slightest trace of minor roughness on the edge of the lip, mentioned for complete accuracy, otherwise pristine). R/H #O46. An extremely rare, most unusual color for an Old Sachem, or any barrel bitters. Provenance: Ex. Jack Stecher collection #49.

Est.: \$18,000 - \$28,000 • Min. bid: \$9,000



Lot 141

"GREELEY'S BOURBON / BITTERS", 1860 - 1875. Light ginger-ale topaz with strong olive tones (in daylight the olive tones are predominate), barrel form, applied square collar - smooth base, ht. 9 1/4", sparkling attic mint. R/H #G101. A light, beautiful, rare and very unusual color for a Greeley's. This color is truly a chameleon depending on the lighting. Gorgeous in any setting, outstanding clarity and color.

Est.: \$2,000 - \$4,000 • Min. bid: \$1,000



Lot 142

"GREELEY'S BOURBON / BITTERS", 1860 - 1875. Clear, light-to-medium copper with a pinkish-apricot tone, barrel form, applied square collar - smooth base, ht. 9 1/4", virtually perfect; (just a tiny, pinprick speck of roughness on the back edge of the collar that you can feel, but is not easy to see). R/H #G101. Another super example, outstanding condition, attractive lighter color that you can easily see through. Note; an old, period cork remains in the neck.

Est.: \$500 - \$800 • Min. bid: \$250



Lot 143

"GREELEY'S BOURBON / BITTERS", 1860 - 1875. Medium copper-apricot coloration, barrel form, applied square collar - smooth base, ht. 9 1/8", near mint; (a slight bit of very minor wear including a minuscule trace of lip edge roughness; a couple of small spots of washable interior residue, otherwise perfect). R/H #G101. A nice example having no trace of amber.

Est.: \$400 - \$600 • Min. bid: \$200



Lot 144

"GREELEY'S BOURBON / BITTERS", 1860 - 1875. Medium-to-deep apricot amber, barrel form, applied square collar - smooth base, ht. 9 1/8", near mint; (a little light exterior wear including a couple of tiny, pinhead open bubbles, otherwise excellent). R/H #G101. This example excels in character having unusually bubbly, crude, whittled glass.

Est.: \$400 - \$600 • Min. bid: \$200

Rare Bitters in All Colors,



Lot 197

Lot 172

Lot 153

Lot 196

Lot 169

Lot 215

Shapes & Sizes...





Lot 145

"GREELEY'S BOURBON / BITTERS", 1860 - 1875. Medium shading to a deep, rich, reddish-apricot with a puce tone, barrel form, applied square collar - smooth base, ht. 9 1/4", near mint; (a small pinhead flake on one of the rings on the reverse, and only a slight touch of light wear, otherwise perfect). R/H #G101. Here is a color that you don't run into very often in this particular mold. A lot of beautiful reddish tones through the center and lower half of the bottle.

Est.: \$500 - \$800 • Min. bid: \$250



Lot 146

"BOURBON WHISKEY / BITTERS", America, 1860 - 1875. Light-to-medium apricot coloration with some slightly warmer orange tones, barrel form, applied square collar - smooth base, ht. 9 3/8"; (some light exterior wear and a little, very minor, fine lip edge roughness, the type that you can feel, but is not easy to see, otherwise excellent!) R/H #B171. Beautiful, whittled, and in a lighter tone than most, allowing plenty of light to pass through.

Est.: \$500 - \$800 • Min. bid: \$250



Lot 147

"BOURBON WHISKEY / BITTERS.", America, 1860 - 1875. Medium apricot shading to a deeper apricot with beautiful, rich, orange and reddish tones along one side and through the lower half, barrel form, applied square collar - smooth base, ht. 9 1/4"; (a few minor chips, 1/16" to 3/16", along the back edge of the square collar, and a touch of light wear, otherwise excellent). R/H #B171. Beautiful and attractive color, nicely whittled.

Est.: \$400 - \$600 • Min. bid: \$200



Lot 148

"DR C.W. ROBACK'S / STOMACH BITTERS / CINCINNATI. O", America, 1860 - 1870. Beautiful, bright golden yellow coloration, barrel form, applied sloping collar - smooth base, ht. 10", very near mint; (just the slightest trace of light wear on the reverse, and a bit of minor roughness on the inside edge of the lip that you can feel, but is not easy to see). R/H #R73. Brilliant glass, sparkling clean, one of the lightest in color that we have seen, and with virtually no high point wear.

Est.: \$2,000 - \$4,000 • Min. bid: \$1,000



Lot 149

"DR C.W. ROBACK'S / STOMACH BITTERS / CINCINNATI. O", America, 1860 - 1870. Very deep olive amber, almost a dense tobacco coloration, applied sloping collar - smooth base, ht. 9 1/2", perfect! R/H #R73. A heavy example having crude glass and excellent character. Rare color! In looking back through 20 years of auction records, we cannot find another example in this color, or depth of color. One of the deepest in tone that we have seen, virtually black in reflected light.

Est.: \$2,500 - \$4,500 • Min. bid: \$1,400



Lot 150

"DR C.W. ROBACK'S / STOMACH BITTERS / CINCINNATI. O", America, 1865 - 1875. Light golden or honey amber, barrel form, applied sloping collar - smooth base, ht. 9 1/4"; (a couple of tiny in-manufacture crazing lines in the neck noted for complete accuracy, and a paper-thin 1/8" open bubble near the base, otherwise virtually attic mint). R/H #R75. Another very nice example, clean, bright, and with virtually no high point wear.

Est.: \$200 - \$300 • Min. bid: \$100



Lot 151

"HALL'S / BITTERS - E.E. HALL NEW HAVEN / ESTABLISHED 1842", 1865 - 1875. Honey amber, barrel form, applied square collar - smooth base, ht. 9", attic mint. R/H #H10. A nice light example, heavily whittled which is unusual for this mold! Note, the letters have been painted for display purposes and would easily wash off, if desired.

Est.: \$200 - \$300 • Min. bid: \$100



Lot 152

"HALL'S / BITTERS - E.E. HALL NEW HAVEN / ESTABLISHED 1842", 1865 - 1875. Medium-to-deep amber with a very slight orange tone near the base, barrel form, applied square collar - smooth base, ht. 9 1/8", virtually attic mint; (slight trace of faint wear on reverse, otherwise perfect). R/H #H10. Another nice example of this distinctive Connecticut bitters barrel.

Est.: \$175 - \$275 • Min. bid: \$90



Lot 153

"E. LONG'S / INDIAN HERB BITTERS", America, 1870 - 1875. Medium-to-deep golden amber, figural Indian maiden, applied square collar - smooth base, ht. 12 1/4", attic mint. R/H #L119. The "E. Long's" was a short-lived copycat of the famous Brown's Indian Queen. Although it is strikingly similar, there are also numerous subtle differences in the mold. Believed to be one of only three, or possibly four, examples known! A top example of this great rarity!

Est.: \$10,000 - \$20,000 • Min. bid: \$6,000



Lot 157

"BROWN'S / CELEBRATED / INDIAN HERB BITTERS - PATENTED / 1867", America, 1867 - 1880. Rich, medium-to-deep chocolate amber, figural Indian maiden, sheared and inward rolled lip - smooth base, ht. 12 1/8", perfect! R/H #B223. A very scarce color in a "Queen", outstanding condition, perfect rolled lip. This example is also a little lighter in weight, the glass being a bit thinner. Provenance: Joe Kray collection.

Est.: \$1,500 - \$2,500 • Min. bid: \$800



Lot 154

"BROWN'S / CELEBRATED / INDIAN HERB BITTERS - PATENTED / 1867", America, 1867 - 1880. Beautiful medium yellow coloration with a slightly warmer honey tone through the dress feathers, figural Indian maiden, sheared and inward rolled lip - smooth base, ht. 12", perfect! R/H #B223. Fantastic, eye-appealing color, outstanding condition. Provenance: Joe Kray collection, Ex. Ed Bitters collection (Harmer Rooke Auction 46, 1992, Lot 6).

Est.: \$2,000 - \$3,000 • Min. bid: \$1,000



Lot 158

"BROWN'S / CELEBRATED / INDIAN HERB BITTERS - PATENTED / FEB .. / 18..," Solid Glass Whimsey, 1867 - 1880. Colorless with a slight pinkish tone, figural Indian maiden, smooth rounded headdress - applied solid pedestal base, ht. 12 1/4"; (a couple of sizeable chips, each approx. 2", from the pedestal base, possibly used as a door-stop, and a couple of sliver-chips from the back). Blown from the R/H #B226 mold. A great "go-with" or whimsy for the bitters collector. Joe Kray collection.

Est.: \$1,200 - \$2,400 • Min. bid: \$600



Lot 155

"BROWN'S / CELEBRATED / INDIAN HERB BITTERS - PATENTED / FEB 11. / 1868", America, 1868 - 1880. Bright, light yellowish-honey coloration, figural Indian maiden, sheared and inward rolled lip - smooth base, ht. 12 1/8", attic mint. R/H #B226. A great example of one of the all-time classics of figural bitters, wonderful condition, no lip issues. Provenance: Joe Kray collection.

Est.: \$600 - \$900 • Min. bid: \$300



Lot 159

"NATIONAL / BITTERS" - "PATENT / 1867" (on base), America, 1867 - 1875. Gorgeous medium yellow coloration, figural ear of corn, applied short tapered collar with ring - smooth base, ht. 12 3/8"; (only the slightest trace of extremely faint wear, otherwise sparkling attic mint!) R/H #N8. Outstanding color, clarity, and condition. Eye-appealing light color all the way to the base, a top example!

Est.: \$1,500 - \$3,000 • Min. bid: \$800



Lot 156

"BROWN'S / CELEBRATED / INDIAN HERB BITTERS - PATENTED / 1867", America, 1867 - 1880. Medium shading to deep amber with a slight golden tone through the arms, figural Indian maiden, sheared and inward rolled lip - smooth base, ht. 12 1/8", attic mint. R/H #B223. Another great example with a perfectly executed rolled lip. This example also has an extra glob of glass on the interior above the feet, and in the back, with a 'bird swing' in-between. Joe Kray collection.

Est.: \$500 - \$800 • Min. bid: \$250



Lot 160

"NATIONAL / BITTERS" - "PATENT / 1867" (on base), America, 1867 - 1875. Medium amber, figural ear of corn, applied short tapered collar with ring - smooth base, ht. 12 3/8", virtually attic mint; (a couple of small patches of very light interior residue or faint milkiness, non-distracting and may wash out). R/H #N8. A beautiful example, clean and with nice whittling to the oval label panel. One of the great classics of figural bitters.

Est.: \$250 - \$450 • Min. bid: \$140



Lot 161

"THE / FISH BITTERS - W. H. WARE / PATENTED 1866", 1866 - 1875. Golden amber, figural fish, applied ring-type collar - smooth base, ht. 11 5/8", virtually perfect; (a 3/16" paper-thin open bubble on the base). R/H #F45. An outstanding example having bold embossing, much stronger than most, nice character, and virtually no high point wear whatsoever, which is very unusual for this mold. Ex. Roger Sweetland collection #48.

Est.: \$300 - \$500 • Min. bid: \$150



Lot 165

"W & Co / N.Y." Figural Pineapple Bitters, America, 1855 - 1865. Rich medium olive-yellow coloration, pineapple form, applied round double collar - large iron pontil scar, ht. 8 1/2"; (just a touch of minor light high point wear, otherwise perfect). R/H #P100. A gorgeous example in a very rare and eye-appealing color for this mold. The "W & Co. / N.Y." mold is scarce in any color. Outstanding color, clarity, and condition.

Est.: \$3,000 - \$5,000 • Min. bid: \$1,500

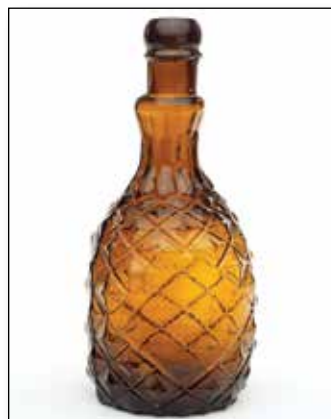


Lot 162

"SUFFOLK BITTERS - PHILBROOK & TUCKER / BOSTON", America, 1870 - 1880. Light lemon yellow with a slight olive tone, shading to a clear, light straw coloration in the hind feet, figural pig, applied

double collar - smooth base, length, 9 3/4", perfect. R/H #S217. One of the lightest examples that we have seen, in a gorgeous, eye-appealing color. No amber in this one, and certainly one of the choicest examples of a Suffolk Bitters that you could hope to find!

Est.: \$4,000 - \$6,000 • Min. bid: \$2,000



Lot 166

Figural Pineapple Bitters, America, 1860 - 1875. Bright, light honey amber through the center shading to a golden amber through the shoulders and neck, pineapple form, applied blob collar with lower bevel - smooth base, ht. 8 3/4", near mint; (a little light exterior wear, otherwise perfect). R/H #P100. A pretty example, nice color and shading, a lot of bottle for the money!

Est.: \$200 - \$300 • Min. bid: \$100

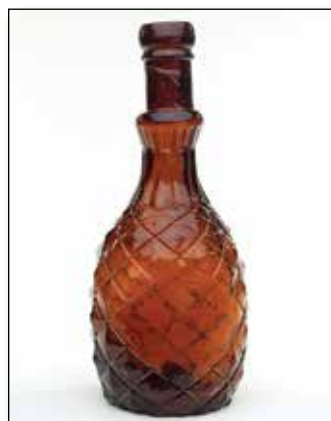


Lot 163

"SUFFOLK BITTERS - PHILBROOK & TUCKER / BOSTON", America, 1870 - 1880. Light-to-medium honey coloration, figural pig, applied double collar - smooth base, length 10", near mint; (a little faint wear

on the sides, and a bit of spotty, washable interior residue, otherwise perfect). R/H #S217. A nice light example, overall excellent condition.

Est.: \$700 - \$900 • Min. bid: \$350



Lot 167

"J. F. L. / CAPITAL / BITTERS" (on base), **Figural Pineapple**, America, 1855 - 1865. Medium amber with a slight orange tone, pineapple form, elongated neck with a crudely applied rounded collar and lower bevel - iron pontil scar, ht. 9 1/4"; (a 1/4" chip at edge of base and a paper-thin 1/8" flake on edge of lip, otherwise excellent). R/H #C40. Very rare! This is the only pineapple mold with the word "BITTERS" embossed, and believed to be the only example offered in more than 10 years!

Est.: \$1,200 - \$1,800 • Min. bid: \$600



Lot 164

"SUFFOLK BITTERS - PHILBROOK & TUCKER / BOSTON", America, 1870 - 1880. Bright golden amber in the head, shading to a light honey coloration in the rear, and almost yellow in the hind feet, figural pig, ap-

plied square collar - smooth base, length 10", virtually attic mint; (just a faint trace of light wear and a thin open surface bubble on the belly, otherwise perfect). R/H #S217. A brilliant, clean example, beautiful shading of color, unusual with square collared mouth.

Est.: \$800 - \$1,200 • Min. bid: \$400



Lot 168

"CAPITAL" / (U.S. CAPITAL BUILDING) / "BITTERS COMPANY / WASHINGTON. D.C.", 1870 - 1880. Amber, cylindrical, barrel-form with a double pedestal base, long neck flaring at shoulder, applied sloping collar with ring - smooth base, ht. 10 1/2"; (2 chips each approx. 1/2" from the top of lip; a minor 1/8" iridescent bruise at the mold seam, some light interior haze). R/H #C39. The chips could be repaired and the interior stain removed. An extremely rare and important bitters, one of three!

Est.: \$4,000 - \$6,000 • Min. bid: \$2,000



Lot 169

"DINGENS / NAPOLEON COCKTAIL BITTERS - DINGENS BROTHERS / BUFFALO, N.Y.", America, 1850 - 1860. Yellowish 'old amber' with a slight olive tone, almost a butterscotch coloration, figural drum or banjo form with a lady's leg neck - pedestal base with heavy iron pontil scar, ht. 10", virtually attic mint; (a few in-manufacture crazing lines in the neck, and the embossing is just a bit weak, otherwise perfect!) R/H #N3. A rare and desirable figural bitters, great color.

Est.: \$6,000 - \$9,000 • Min. bid: \$3000



Lot 170

"PROFESSOR / GEO. J. BYRNE / NEW YORK - THE / GREAT / UNIVERSAL / COMPOUND / STOMACH / BITTERS / PATENTED / 1870 - DC - CC - LX - XM - U.S.A.", 1870 - 1875. Yellowish honey coloration, in the form of a tall building with roped corners, sunburst motif and geometric pattern, applied sloping collar with ring - smooth base, ht. 10 1/2, near mint; (a tiny pinhead flake, lightly polished, on the edge of the lip, otherwise perfect!) R/H #B280. Very scarce!

Est.: \$2,500 - \$4,500 • Min. bid: \$1,400



Lot 171

"PROFESSOR / GEO. J. BYRNE / NEW YORK - THE / GREAT / UNIVERSAL / COMPOUND / STOMACH / BITTERS / PATENTED / 1870 - DC - CC - LX - XM - U.S.A.", 1870 - 1875. Medium amber with an orange tone, in the form of a tall building with roped corners, sunburst motif and geometric pattern, applied sloping collar with ring - smooth base, ht. 10 5/8, perfect. R/H #B280. One of the fanciest and most ornate of all the bitters bottle molds.

Est.: \$2,500 - \$4,500 • Min. bid: \$1,400



Lot 172

"LANDSBERG'S / "CENTURY" / BITTERS - THE / ADLER COMPANY / ST LOUIS" - (Motif of EAGLE - SUNBURST / "1776" - SHIELD - "1876") below shoulder, probably 1882 - 1885. Medium-to-deep orange amber, square with fancy crosshatch corners, figural bell with handle and stars for shoulders, applied sloping collar with ring - smooth base, ht. 11 3/8, (slight trace of faint wear, otherwise perfect). R/H #L13. Beautiful and rare! Ex. Judge MacKenzie collection.

Est.: \$3,000 - \$6,000 • Min. bid: \$1,500



Lot 173

"S T / DRAKE'S / 1860 / PLANTATION / X / BITTERS - PATENTED / 1862", America, 1862 - 1885. Gorgeous, clear light lemon yellow with an olive tone, cabin form with 4 logs above the label panel, applied sloping collar - smooth base, ht. 10, perfect! R/H #D110. An exceptional, outstanding example. One of the prettiest and by far, one of the lightest examples that we have seen in this mold. In addition, some nice bubbles and character. An eye-appealing standout in any run of Drake's.

Est.: \$4,000 - \$8,000 • Min. bid: \$2,000



Lot 174

"S T / DRAKE'S / 1860 / PLANTATION / X / BITTERS - PATENTED / 1862", America, 1862 - 1885. Beautiful light yellowish honey, cabin form with 4 logs above the label panel, applied sloping collar - smooth base, ht. 10 1/8, (some scattered light spotty interior haze, and a shallow paper-thin 1/4 flake and open bubble at edge of base, but no other form of damage). R/H #D110. The light interior haze could be easily professionally cleaned, the bottle would then present as virtually attic mint.

Est.: \$150 - \$250 • Min. bid: \$80



Lot 175

Lot of (2), "S T / DRAKE'S / 1860 / PLANTATION / X / BITTERS - PATENTED / 1862", America, 1862 - 1885. Golden amber, and amber with an orange tone, both are cabin form with 4 logs above the label panel, applied sloping collars - smooth base, ht. 10 1/8 and 10 1/4, sparkling mint, and near mint; (golden amber example has slight haze to the label panel and a bit of washable interior residue, otherwise mint). Both R/H #D110. Both have good-to-excellent mold impressions.

Est.: \$175 - \$350 • Min. bid: \$100



Lot 176

Arabesque motif / "DRAKES" / Arabesque motif / "PLANTATION / BITTERS - PATENTED / 1862", America, 1862 - 1880. Rich, medium apricot puce with some lighter copper tones along the edges, and beautiful reddish tones towards the base, cabin form, applied sloping collar - smooth base, ht. 9 3/4, virtually attic mint; (just a trace of extremely minor wear, otherwise perfect). R/H #D102. Scarce and desirable "Arabesque" mold in a very scarce-to-rare color!

Est.: \$1,800 - \$2,800 • Min. bid: \$900



Lot 177

"S T / DRAKE'S / 1860 / PLANTATION / BITTERS - PATENTED / 1862", America, 1862 - 1885. Golden yellow, cabin form with 6 logs above the label panel, applied sloping collar - smooth base, ht. 10", near mint; (a couple of small, barely noticeable, spots of faint interior milkiness along a corner, and near the base, and a hard-to-see, 1/8" paper-thin open bubble on a corner log on the reverse, otherwise perfect). R/H #D103. Scarce mold (no "X" above "BITTERS").

Est.: \$800 - \$1,200 • Min. bid: \$400



Lot 178

"S T / DRAKE'S / 1860 / PLANTATION / X / BITTERS - PATENTED / 1862", America, 1862 - 1885. Beautiful, light-to-medium apricot with strong peach tones, cabin form with 6 logs above the label panel, applied sloping collar - smooth base, ht. 9 7/8", sparkling attic mint. R/H #D105. A gorgeous color, excellent clarity - nice and light all the way to the base. This example was offered once about seven years ago, and otherwise has been packed away since 1975.

Est.: \$1,800 - \$2,800 • Min. bid: \$900



Lot 179

"S T / DRAKE'S / 1860 / PLANTATION / X / BITTERS - PATENTED / 1862", America, 1862 - 1885. Bright, light golden amber shading to a yellowish-honey coloration in the corners and along the edges, cabin form with 6 logs above the label panel, applied sloping collar - smooth base, ht. 9 3/4", perfect. R/H #D108. Not necessarily a rare color, but a bright, clean, sparkling, very pretty example.

Est.: \$125 - \$225 • Min. bid: \$70



Lot 180

"S T / DRAKE'S / 1860 / PLANTATION / X / BITTERS - PATENTED / 1862", America, 1862 - 1885. Rich, deep strawberry puce, cabin form with 6 logs above the label panel, applied sloping collar - smooth base, ht. 10", perfect! R/H #D105. Beautiful, plenty of reddish tones in natural daylight, good strength of embossing, outstanding condition.

Est.: \$250 - \$450 • Min. bid: \$140



Lot 181

"HOLTZERMANN'S - PATENT / STOMACH / BITTERS", America, 1865 - 1875. Golden amber shading to a lighter honey color along the edges and in the roof corners, rectangular cabin form, applied sloping collar - smooth base, ht. 9 1/4", near mint; (just a trace of minor wear along the lower roof edge on the reverse, and a faint bit of interior residue in the upper roof corners, otherwise perfect). R/H #H155. A classic figural cabin, well blown with a strong impression in the window panes.

Est.: \$1,400 - \$1,800 • Min. bid: \$700



Lot 182

"HOLTZERMANN'S / PATENT / STOMACH / BITTERS", America, 1885 - 1900. Medium amber with a slight orange tone, rectangular cabin form, tooled sloping collar - smooth base, ht. 9 3/4", perfect! R/H #H154. A great example of this classic figural Ohio cabin bitters.

Est.: \$200 - \$350 • Min. bid: \$120



Lot 183

"OLD / HOMESTEAD / WILD CHERRY / BITTERS - PATENT", America, 1865 - 1875. Light golden amber, cabin form, applied sloping collar - smooth base, ht. 9 3/4"; (a 3/16" area of minor roughness on the edge of the applied lip; a little washable light content residue, and a 1/8" shallow open surface bubble that is not easy to locate on the underside of the roof edge, otherwise excellent). R/H #O37. A little lighter than most, and with good strong embossing.

Est.: \$250 - \$350 • Min. bid: \$140



Lot 184

"EDW WILDER'S / STOMACH BITTERS" - (Five Story Building) - "EDW WILDER & Co / WHOLESALE DRUGGISTS / LOUISVILLE, KY" - "PATENTED", America, 1890 - 1900. Colorless, figural 5-story building, tooled sloping collar - smooth base, ht. 10 1/4"; (shallow, pinhead bit of roughness on the edge of the lip, likely in-manufacture, otherwise attic mint). R/H #W116. A great example, one that has not been dug and cleaned.

Est.: \$200 - \$300 • Min. bid: \$100



Lot 185

"OK / PLANTATION / 1840 - PATENT-ED / 1863", America, 1863 - 1875. Medium-to-deep strawberry-apricot with a puce tone, triangular with beveled corners, applied sloping collar - smooth base, ht. 10 7/8", virtually attic mint; (just a slight, very faint dullness to the roof panels, and a tiny bit of typical minor wear, otherwise perfect). R/H p.408. A scarce and desirable mold with strong embossing, great color, excellent condition.

Est.: \$1,500 - \$2,500 • Min. bid: \$800



Lot 189

"REED'S / BITTERS - REED'S / BITTERS" Folk Art Memory or Whimsey Bottle, America, 1870 - 1880. Golden amber, cylindrical with "lady's-leg" neck, applied sloping collar with bevel - smooth base, ht. 12 1/2", bottle appears to be perfect. R/H #R28. Bottle profusely covered with small, c. early 1900, trinkets and mementos including an Indian head penny, miniature pottery jug, buttons, a small bottle, etc. A unique and interesting "whimsey" for the Bitters collector.

Est.: \$300 - \$500 • Min. bid: \$150



Lot 186

"CONSTITUTIONAL / BEVERAGE - W. OLMSTED & CO. - NEW YORK" (with 98% complete original label), America, probably 1869 - 1875. Beautiful light golden honey shading to honey-yellow in the corners, rectangular semi-cabin form, large applied square collar - smooth base, ht. 10, sparkling attic mint! R/H #C224L. A fantastic eye-appealing bottle, beautiful color, outstanding clarity, extremely rare with the original label. Ex. Charles B. Gardner collection.

Est.: \$800 - \$1,200 • Min. bid: \$400



Lot 190

"MILLS' BITTERS / A.M. GILMAN / SOLE PROPRIETOR", America, probably 1874 - 1878. Beautiful golden yellow coloration, cylindrical, elongated "lady's leg" neck, applied collar with flat band - smooth base, ht. 11 1/8"; (professionally cleaned with just a bit of faint haze remaining, primarily in one side of the neck, but no other form of damage and otherwise excellent). R/H #M93. A very rare Lady's Leg made for the Western market. Gilman was located at 308 California St. in San Francisco.

Est.: \$1,800 - \$2,800 • Min. bid: \$1,000



Lot 187

"WILLIAM. ALLEN'S - CONGRESS BITTERS", America, 1865 - 1875. Rich, medium emerald coloration with a slight bluish-green tone, rectangular semi-cabin form, applied sloping collar - smooth base, ht. 10 1/8", near mint; (a minor pinhead speck of roughness at the edge of the base and a couple of tissue-paper-thin open surface bubbles, otherwise perfect). R/H #A29. A good clean example of this desirable and attractive bitters from Fort Edward, NY.

Est.: \$1,800 - \$2,800 • Min. bid: \$900



Lot 191

"SAZERAC AROMATIC BITTERS" (on base) - **"PHD & Co"** Monogram, America, 1870 - 1880. Light yellowish honey, almost a golden yellow coloration, cylindrical, elongated "lady's leg" neck, applied collar with flat band - smooth base, ht. 10"; (lightly cleaned to original luster and near mint condition; a 3/8" sliver chip along the inside edge of the lip, otherwise excellent). R/H #S48. Scarce smaller size, strong crisp embossing, rare and beautiful color for this mold.

Est.: \$300 - \$500 • Min. bid: \$150



Lot 188

"CROOKES'S / STOMACH BITTERS", America, 1856 - 1865. Light yellowish olive through the neck and shoulders shading to a deep olive towards the base, cylindrical, bulbous neck applied sloping collar - smooth base, ht. 10 1/4", attic mint. R/H #C252. Extremely rare! A fantastic example having some swirls and frothiness to the glass, plenty of tiny seed bubbles, beautiful color and shading. Possibly the finest example in terms of color and condition.

Est.: \$2,000 - \$4,000 • Min. bid: \$1,200



Lot 192

"SAZERAC AROMATIC BITTERS" (on base) - **"PHD & Co"** Monogram, America, 1870 - 1880. Opaque milkglass, cylindrical, elongated "lady's leg" neck, applied collar with flat band - smooth base, ht. 10", attic mint. R/H #S48. Another nice example, small size, excellent condition.

Est.: \$300 - \$500 • Min. bid: \$150



Lot 193

"MORNING" (STAR) "BITTERS" / "INCEPTUM 5869 - PATENTED / 5869", America, 1855 - 1865. Light golden or honey coloration, triangular pyramid form, applied sloping collar - heavy iron pontil scar, ht. 12 3/4" virtually perfect; (an onionskin-thin open surface bubble on a beveled corner, otherwise pristine perfect). R/H #M135. A nice example with some lighter yellowish tones along the sides.

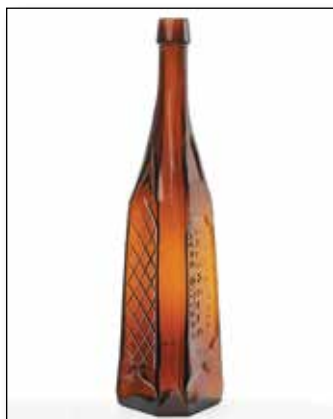
Est.: \$250 - \$450 • Min. bid: \$140



Lot 197

"JOHN MOFFAT - PHOENIX / BITTERS - PRICE 1 DOLLAR - NEW YORK", America, 1840 - 1855. Yellowish tobacco, or 'old amber', rectangular with beveled corners, sheared and outward rolled mouth - blowpipe pontil scar, ht. 5 1/2"; (lightly cleaned to original luster and near mint condition with just a couple of tiny pinprick bits of roughness on the edge of the lip; a little minor wear near base). R/H #M113. Extremely rare in amber, beautiful, and heavily whittled. Ex. Jack Stecher collection.

Est.: \$3,000 - \$5,000 • Min. bid: \$1,500



Lot 194

"THE GREAT TONIC / CALDWELLS / HERB BITTERS", America, 1855 - 1865. Golden amber, triangular pyramid form with 24 squares in lattice design, applied sloping collar - heavy iron pontil scar, ht. 12 5/8", perfect. R/H #C8. Per Ring / Ham, the bitters was manufactured by L.A. Marshall & Co, Goshen, Indiana. Nice with the iron pontil scar, many examples are smooth base.

Est.: \$200 - \$400 • Min. bid: \$120



Lot 198

"JOHN / MOFFAT - PHOENIX / BITTERS - PRICE \$1.00 - NEW YORK", America, 1840 - 1855. Olive green, rectangular with beveled corners, sheared and crudely applied sloping collar - blowpipe pontil scar, ht. 5 3/8", virtually perfect; (a slight touch of faint wear above the base). R/H #M112. Nice character and condition. Believed to be one of the earliest of embossed bitters bottles.

Est.: \$600 - \$900 • Min. bid: \$300



Lot 195

"JOHN MOFFAT - PHOENIX / BITTERS - PRICE 2 DOLLARS - NEW YORK", probably New England, 1840 - 1850. Light-to-medium olive amber, rectangular with beveled corners, applied ring collar - sand type pontil scar, ht. 7"; (some light exterior dullness or haze, and minor interior haze, primarily in the shoulders, a tissue-paper thin 1/4" open bubble on the shoulder, otherwise excellent). R/H #M109. Extremely rare! With a light cleaning, the bottle would be virtually perfect.

Est.: \$3,000 - \$5,000 • Min. bid: \$1,500



Lot 199

"KIMBALL'S / JAUNDICE - BITTERS - TROY. N.H.", a Stoddard, NH glass-house, 1850 - 1860. Medium-to-deep olive amber, rectangular with beveled corners, applied sloping collar - iron pontil scar, ht. 6 3/4", very near mint; (just a slight touch of light wear near the base, otherwise perfect). R/H #K42. A comparatively scarce color for this mold which is usually found in lighter shades, and having more yellowish and amber tones. A classic early Stoddard bottle with nice character.

Est.: \$800 - \$1,200 • Min. bid: \$400



Lot 196

"JOHN MOFFAT - PHOENIX / BITTERS - PRICE 1 DOLLAR - NEW YORK", America, 1840 - 1855. Colorless, rectangular with beveled corners, sheared and outward rolled mouth - solid glass-tipped pontil scar, ht. 5 1/2", virtually attic mint; (a little area of roughness on underside of the outward rolled mouth, otherwise pristine perfect!) R/H #M113. This mold is unlisted in colorless, rare, and with strong, crisp embossing. Provenance: Ex. Jack Stecher collection.

Est.: \$800 - \$1,200 • Min. bid: \$400



Lot 200

"Dr E. P. EASTMAN'S - YELLOW DOCK / BITTERS - LYNN MASS.", America, 1852 - 1860. Aquamarine, rectangular with wide beveled corners, applied sloping collar - oval iron pontil scar, ht. 7 3/4", very near mint; (just a light scratch and small spot of faint wear on reverse, otherwise attic mint). R/H #E14. Extremely rare! Only the second example to offered at auction in more than 15 years. Here is one that does not come around often. Nicely whittled, outstanding condition.

Est.: \$1,200 - \$2,400 • Min. bid: \$600



Lot 201

"S.O. / RICHARDSON'S - BITTERS - SOUTH / READING - MASS.", America, 1855 - 1860. Rich, deep aquamarine, rectangular with wide beveled corners, applied square collar - iron pontil scar, ht. 6 5/8", sparkling attic mint! R/H #R57. Not easy to find with the iron pontil, and in this virtually pristine condition.

Est.: \$175 - \$350 • Min. bid: \$100



Lot 205

"GRAND PRIZE / BITTERS", America, probably 1880 - 1884. Amber, square with beveled corners, applied square collar - smooth base, ht. 9"; (professionally cleaned to original luster and near mint condition; a 1/2" onionskin-thin open surface bubble on a beveled corner on the reverse, otherwise perfect). R/H #G89. A very rare Western bitters from San Francisco. What a great name. Who would not want the Grand Prize Bitters? Apparently it was not much of a success!

Est.: \$400 - \$800 • Min. bid: \$200



Lot 202

"F. BROWN BOSTON / SARSAPARILLA & TOMATO / BITTERS", America, 1850 - 1860. Aquamarine, oval, applied sloping collar with bevel - blowpipe pontil scar, ht. 9 1/4", near mint; (some very faint interior haze or dullness, barely noticeable, and a few faint scratches on the reverse, otherwise perfect). R/H #S36. A very nice example, crisp embossing, excellent character, beautifully whittled. Provenance: Ex. Carlyn Ring collection.

Est.: \$250 - \$450 • Min. bid: \$140



Lot 206

"HIBERNIA / BITTERS", America, probably 1886 - 1890. Light golden or honey coloration, square with beveled corners, applied sloping collar with ring - smooth base, ht. 10", near mint; (slight trace of light wear near edge of base, otherwise excellent). R/H #H112. Another very scarce San Francisco bitters. In addition, a clean sparkling example, nice lighter color and applied top.

Est.: \$300 - \$500 • Min. bid: \$150



Lot 203

"DR. W. PAETZ'S / STOMACH BITTERS", Midwest, probably a Pittsburgh district glasshouse, 1860 - 1865. Deep amber, square with beveled corners, applied sloping collar - red iron pontil scar, ht. 9 1/2", near mint; (a paper-thin flake at base corner on reverse, a little minor light wear, otherwise excellent!) R/H #P4.5. The mold resembles a large, early Hostetter's, and is believed to be from Columbus, Ohio. Extremely rare, believed to be one of only three examples known!

Est.: \$3,000 - \$6,000 • Min. bid: \$1,500



Lot 207

"DR. HERBERT JOHN'S - INDIAN BITTERS - GREAT INDIAN DISCOVERIES", America, 1880 - 1890. Medium amber, square with beveled corners, tooled square collar - smooth base, ht. 8 1/2"; (a tissue-paper-thin 1/4" sliver flake on a beveled corner at edge of base; a little faint dullness, barely noticeable, on one of the indented panels, and a bit of spotty interior residue or light haze). R/H #J43. The noted condition issues are all very minor. A rare Indian Bitters.

Est.: \$400 - \$600 • Min. bid: \$200



Lot 204

"C.H. EBBERT & Co - DEPOT / MEMPHIS TENN - S (Wreath) B" Bitters Bottle, America, probably 1866 - 1868. Honey amber, square with beveled corners, applied sloping collar - smooth base, ht. 9 1/4"; (professionally cleaned to original luster with a little matte type finish and some ground wear and swirl lines remaining but no cracks or other form of damage). An unlisted, extremely rare and important Southern Bitters! See Peachridge Glass post of Jan. 30, 2014.

Est.: \$3,000 - \$5,000 • Min. bid: \$1,500



Lot 208

"BUHRER'S / GENTIAN BITTERS - S. BUHRER / PROPRIETOR", America, 1870 - 1880. Honey amber, square with beveled corners, applied sloping collar - smooth base, ht. 8 7/8", near attic mint; (a couple of open interior bubbles). R/H #B252. A rare bitters that does not come around often. In addition, a very eye-appealing "short-stubby square" having a crude texture and great character to the glass. Fresh-to-the-market find from a old house in Hillsdale, Mich.

Est.: \$250 - \$450 • Min. bid: \$140



Lot 209

"WOOD'S TONIC - WINE BITTER - CINCINNATI OHIO", America, probably a Midwest glasshouse, 1870 - 1880. Bright, greenish aquamarine, square with beveled corners, applied short taper or broad square collared mouth - smooth base, ht. 9 5/8", virtually perfect; (a few minor in-manufacture crazing lines on the inside edge of the lip, mentioned for complete accuracy, otherwise attic mint). R/H #W153. A bright, clean, example, very attractive and very rare.

Est.: \$800 - \$1,200 • Min. bid: \$400



Lot 210

"DR. A. S. HOPKINS / UNION STOMACH BITTERS / HARTFORD CONN", America, 1875 - 1885. Rich golden yellow with a ever-so-slight hint of olive, square with beveled corners, applied sloping collar - smooth base, ht. 9 3/4", near mint; (a faint content ring of haze below the shoulders, and a couple of other minor spots in a side panel and beveled corner, otherwise clean, sparkling mint). R/H #H180. Beautiful color, great condition.

Est.: \$300 - \$500 • Min. bid: \$150



Lot 211

"J. T. HIGBY - TONIC BITTERS - MILFORD CT", America, 1875 - 1885. Beautiful light honey coloration, square with beveled corners, applied sloping collar - smooth base, ht. 9 1/2"; (just a little very faint dullness, barely noticeable, above the base edge on a couple of the panels, and in the shoulder, otherwise clean, sparkling and excellent). R/H #T40. Scarce.

Est.: \$100 - \$200 • Min. bid: \$50



Lot 212

"JOHNSON'S / CALISAYA / BITTERS - BURLINGTON / VT", America, 1875 - 1885. Rich, yellowish olive amber, almost a butterscotch coloration, square with beveled corners, applied sloping collar - smooth base, ht. 10"; (a little minor interior residue or light haze, primarily in one of the side panels, and a shallow 1/8" flake at one of the base corners, otherwise virtually attic mint!) R/H #J45. A very scarce and attractive color for this mold.

Est.: \$400 - \$800 • Min. bid: \$200



Lot 213

"BODEKER'S / CONSTITUTION BITTERS / RICHMOND, VA.", 1885 - 1895. Golden amber, square with beveled corners, tooled sloping collar - smooth base, ht. 6 1/8", virtually attic mint; (just a bit of light interior residue in the shoulders, likely washable, and a tiny pinprick speck of roughness on the edge of the lip, otherwise pristine). Unlisted. Believed to be one of only two, or possibly three, examples known. An outstanding Virginia bitters in every way; eye-appeal, rarity, and condition.

Est.: \$800 - \$1,200 • Min. bid: \$400



Lot 214

"GERMAN HOP / BITTERS - DR. C.D. WARNER / COLDWATER, MICH. - WARNER - 1880 - WARNER - 1880" (with original labels and partial contents), America, 1880 - 1890. Golden amber, square with domed shoulders, tooled sloping collar with ring - smooth base, ht. 7 7/8"; (bottle is perfect; 80% complete original label, 99% complete original back label, approx. 1/2 contents remain). R/H #G24. A very rare bitters, especially in this complete, original condition.

Est.: \$400 - \$600 • Min. bid: \$200



Lot 215

"HOPS & MALT / T (Sheaf of Grain) M / BITTERS - HOPS / & / MALT / BITTERS - HOPS / & / MALT / BITTERS - HOPS / & / MALT / BITTERS", America, 1885 - 1895. Light honey amber, square semi-cabin form, tooled square collar - smooth base, ht. 3 3/4", virtually attic mint; (just a tiny pinhead bit of roughness near a base corner, otherwise perfect!) R/H #H187. This example is an attic-type find, nice light color, crisp embossing. Very rare.

Est.: \$400 - \$600 • Min. bid: \$200



Lot 216

"HOPS & MALT / TRADE (Sheaf of Grain) MARK / BITTERS - HOPS / & / MALT / BITTERS - HOPS / & / MALT / BITTERS - HOPS / & / MALT / BITTERS", America, 1880 - 1890. Honey amber, square semi-cabin form, applied sloping collar - smooth base, ht. 9 3/4"; (a little faint patchy haze, primarily on a side panel and on the interior; a reproduction label has been added to one of the side panels). R/H #H186. Scarce.

Est.: \$175 - \$275 • Min. bid: \$100



Lot 217

"STEKETEE'S BLOOD / PURIFYING BITTERS", America, 1885 - 1895.

Medium golden amber, square with beveled corners, tooled sloping collar with ring - smooth base, ht. 9 1/2"; (the bottle may have been very lightly cleaned, but certainly presents itself as virtually attic mint). R/H #S187.5. Listed by Ring / Ham as "Extremely rare", this Grand Rapids, MI bitters is in outstanding condition and one that does not come around often!

Est.: \$150 - \$250 • Min. bid: \$80



Lot 221

"SNYDER'S - CELEBRATED / BITTER CORDIAL - H.G. LEISENRING & CO / PHILADA PA", America, 1870 - 1875.

Golden amber, square with beveled corners, applied sloping collar with bevel - smooth base, ht. 9 3/4"; (just a slight trace of minor interior residue or faint haze, otherwise virtually attic mint). R/H, p.508. A rare and attractive bitters. The last example that we offered was back in Auction 14. Per an 1869 ad in the Philadelphia Public Ledger, it "Cures everything".

Est.: \$300 - \$600 • Min. bid: \$150



Lot 218

"BISSELL'S / TONIC BITTERS / PATENTED. JANY. 21. 1868 - O.P. BISSELL / PEORIA ILL", probably

Lorenz & Wightman Glass Manufacturers, Pittsburgh, 1868 - 1872. Amber with an orange tone, square with beveled corners, applied sloping collar - "L&W" on smooth base, ht. 8 7/8"; (some light exterior wear including a little rub or grind mark across the letters "ILL" on the reverse; a pinhead flaked at edge of base). R/H #B109. Listed in R/H as "Very rare".

Est.: \$175 - \$275 • Min. bid: \$100



Lot 222

"BAKER'S / ORANGE GROVE - BITTERS", America, 1870 - 1880.

Yellowish honey amber, square with roped corners, applied sloping collar - smooth base, ht. 9 1/2"; (some light interior haze and a trace of minor wear near the shoulders, otherwise excellent). R/H #B9. Attractive color, the noted light haze could be easily cleaned with just a couple of days in the tumbler, if desired.

Est.: \$300 - \$500 • Min. bid: \$180



Lot 219

"GARRY OWEN / STRENGTHENING / BITTERS - I. L. LYONS & CO. / NEW ORLEANS, LA. - SOLE / PROPRIETORS", America, 1885 - 1895.

Medium amber, square with beveled corners, tooled sloping collar - smooth base, ht. 9"; (a nice clean un-dug example, but with a couple of faint scuff marks and a little light wear including a 1/8" flake on the "Y" in "GARRY"). R/H #O97. Listed by Ring / Ham as Rare, and the most difficult to acquire of the three known variants.

Est.: \$250 - \$450 • Min. bid: \$140



Lot 223

"WARNER'S / SAFE / BITTERS" (Motif of Safe) / **"TRADE / MARK"**

(inside safe) / **"ROCHESTER. N.Y."**, A & DH Chambers Glass Manufacturers, Pittsburgh, PA, 1880 - 1883. Medium-to-deep amber, oval, applied ring with bevel - **"A & D H C"** (on smooth base, ht. 9 1/2", Pt; (a little spotty, light interior content residue, most of which would wash out, otherwise very near mint). R/H #W34; O&S #1. A very nice example, strongly embossed.

Est.: \$700 - \$900 • Min. bid: \$400



Lot 220

"IMPERIAL KIDNEY, LIVER, / NERVE, BLOOD / AND STOMACH BITTERS - THE BEST LAXATIVE / AND BLOOD PURIFIER", America,

1890 - 1900. Light yellowish honey coloration, square with rounded corners, tooled sloping collar with ring - smooth base, ht. 9 1/2", virtually attic mint; (tiny, pinprick speck of roughness on the edge of the lip, otherwise pristine perfect!) R/H #I5. Another "rare square", this example in a light eye-appealing color.

Est.: \$175 - \$350 • Min. bid: \$100



Lot 224

"DR. PETZOLD'S / GENUINE / GERMAN / BITTERS / INCPT 1862 / THE / GREAT / ELIXIR / OF LIFE - PAT'D 1884", America, 1884 - 1895.

Brilliant golden yellow coloration, oval, tooled sloping collar with ring - smooth base, ht. 6 3/4"; (professionally cleaned to original luster; embossing is a little weak but legible, some in-manufacture crazing lines near the top of the lip). R/H #P77. A rare mold, scarce and beautiful color!

Est.: \$250 - \$450 • Min. bid: \$140



Lot 225

"DR LOEWS CELEBRATED / STOMACH BITTERS & / NERVE TONIC - THE / LOEW & SONS CO / CLEVELAND, O", America, 1890 - 1900. Celery green with a lime tone, square with fluted shoulders, swirled fluting on the neck, tooled lip - smooth base, ht. 3 3/4"; (a little spotty, faint interior haze; the top of the lip has been lightly polished to minimize a 5/16" area of roughness on the inside edge, otherwise excellent). R/H #112.5. A beautiful, scarce little sample bitters.

Est.: \$175 - \$350 • Min. bid: \$100



Lot 226

"DR. LOEW'S / STOMACH BITTERS - THE / H.C. CHRISTY CO. / CLEVELAND, OHIO", America, 1885 - 1900. Medium lime green, square with swirled fluted neck and shoulders, tooled sloping collar with ring - smooth base, ht. 9 1/8"; (some scattered faint haze, primarily on the interior, but no other form of damage, and otherwise near mint). R/H #L116. If desired, with just a couple of days in the tumbler, the bottle would present as virtually attic mint. A rare mold!

Est.: \$400 - \$600 • Min. bid: \$200



Lot 227

"PEPSIN BITTERS - R. W. DAVIS DRUG Co. / CHICAGO. U.S.A.", America, 1890 - 1900. Clear, bright yellowish green, rectangular with rounded corners, fluted shoulders, tooled sloping collar - smooth base, ht. 8 1/4", virtually perfect; (a very minor wisp of faint interior milkiness primarily along the corner and edge of base, barely noticeable, otherwise mint). R/H #P44. An attic-type bottle, scarce, and outstanding condition.

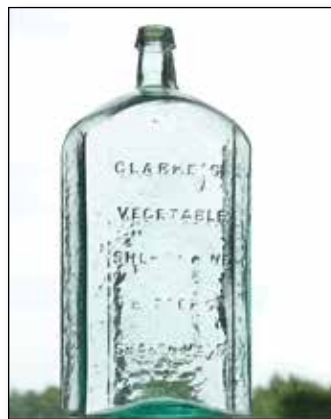
Est.: \$175 - \$350 • Min. bid: \$100



Lot 228

"DR M. C. AYER - RESTORATIVE / BITTERS - BOSTON. MASS", America, 1875 - 1885. Aquamarine, rectangular with beveled corners, applied sloping collar - smooth base, ht. 8 3/4", near mint; (just a trace of minor light wear and a bit of faint, likely washable, interior residue, otherwise perfect). R/H #A144. A scarce bitters that does not come around often.

Est.: \$150 - \$250 • Min. bid: \$80



Lot 229

"CLARKE'S / VEGETABLE / SHERRY WINE / BITTERS / SHARON MASS.", America, 1860 - 1870. Aquamarine, rectangular with beveled corners, applied sloping collar - early smooth base, ht. 14", near mint; (a little faint light dullness in the shoulder area, and a touch of typical minor exterior wear including a shallow, paper-thin, 1/8" flake at the top of the lip). R/H #C155. A heavily whittled, very impressive bottle. This large 1-gallon size is the largest of all the Dr. Clarke's Bitters.

Est.: \$600 - \$900 • Min. bid: \$300



Lot 230

"DR TOWNSEND'S - SARSAPARILLA - ALBANY / N.Y.", America, 1850 - 1860. Clear, light-to-medium emerald coloration, square with beveled corners, applied sloping collar - heavy iron pontil scar, ht. 9 1/2", attic mint. A beautiful example, nice color and clarity, strong, bold embossing, and with excellent character to the glass.

Est.: \$400 - \$800 • Min. bid: \$200



Lot 231

"DR TOWNSEND'S - SARSAPARILLA - ALBANY / NY", America, 1840 - 1860. Medium-to-deep olive with a slight amber tone, square with beveled corners, applied sloping collar - sand type pontil scar, ht. 9 1/2", virtually perfect; (just a touch of typical light exterior wear, otherwise perfect). A nice example with crude, whittled, wavy glass. This one is also very heavy in weight, having extra glass in the lower third of the bottle.

Est.: \$400 - \$600 • Min. bid: \$200



Lot 232

"OLD DR / J. TOWNSENDS - SARSAPARILLA - NEW YORK", America, 1865 - 1875. Rich, medium-to-deep emerald, square with beveled corners, applied sloping collar - smooth base, ht. 9 7/8", near mint; (a little minor exterior wear including a couple of light scratches on the Sarsaparilla panel, otherwise excellent). A rich, beautiful color, excellent clarity, this example does not appear to have been dug and cleaned.

Est.: \$175 - \$350 • Min. bid: \$100



Lot 233

Early, Label-only Medicine, "KIMBALL'S / ANODYNE TOOTHACHE DROPS", Probably a Stoddard, NH glasshouse, 1855 - 1865. Medium olive, cylindrical, 3-pc. mold, applied sloping collar - early smooth base, ht. 9 1/8"; (bottle near mint with trace of light wear; label 90% complete with some staining and wear). Label reads in part, *An Immediate and Perfect Cure for the Toothache / E.P KIMBALL, Druggist, TROY, N. H.* From the same company that put out the bitters.

Est.: \$175 - \$350 • Min. bid: \$100



Lot 237

"LOOMIS'S CREAM / LINAMENT", America, 1850 - 1860. Clear, medium emerald green, rectangular corseted form with wide beveled edges, sheared and inward rolled lip - blowpipe pontil scar, ht. 4 3/4", attic mint! Odell, p.228. Extremely rare, perhaps five-or-less known examples. Provenance: Ex. Sam Greer collection. Note, bottle was pictured on the cover of the Greer catalog. A fantastic, eye-appealing, and unusual pontiled medicine.

Est.: \$2,000 - \$4,000 • Min. bid: \$1,000



Lot 234

"J.L. LEAVITT. - BOSTON.", A Stoddard, NH glasshouse, 1850 - 1860. Yellowish olive amber, cylindrical, 3-pc. mold, applied sloping collar with bevel - light iron pontil scar, ht. 8 3/8", near mint; (a 1/8" area of minor roughness on the inside edge of the lip, otherwise excellent). A scarce Stoddard medicine bottle believed to have held castor oil. This example is much lighter than most, with beautiful color, plenty of whittling, and tiny seed bubbles.

Est.: \$300 - \$500 • Min. bid: \$150



Lot 238

"GIBB'S / BONE LINIMENT", a New England glasshouse, 1845 - 1855. Bright yellowish olive, 6-sided, applied sloping collar - blowpipe pontil scar, ht. 6 1/4", sparkling attic mint! Odell, p.144. A beautiful example in condition, clarity and character with whittling and waviness to the glass. These often have minor issues or may be dark or muddy in color. Not this one! Provenance: Gary Enters collection, Ex. Sam Greer collection.

Est.: \$1,500 - \$2,500 • Min. bid: \$800



Lot 235

"I. COVERT'S - BALM OF LIFE", Mt. Vernon Glass Works, Vernon, NY, probably 1841 - 1846. Yellowish olive with a slight amber tone, rectangular with wide beveled corners, applied sloping collar - blowpipe pontil scar, ht. 5 5/8", virtually attic mint; (a tiny pinprick speck of roughness on the inside edge of the lip, otherwise perfect). N #142; Odell, p.92. A great example, excellent character, full of tiny seed bubbles, and lighter in color than most.

Est.: \$1,600 - \$3,200 • Min. bid: \$800



Lot 239

"SEAEVER'S / JOINT & - NERVE LINIMENT", New England, probably an early Stoddard, NH glasshouse, 1842 - 1860. Yellowish amber with an olive tone, cylindrical, sheared, tooled wide flanged mouth - blowpipe pontil scar, ht. 4", perfect. Odell, p.315. A beautiful nice lighter example with excellent clarity. Many examples of the Seaver's have issues with the flanged lip, or wear. Outstanding condition. Gary Enters collection (an early Harmer Rooke tag remains on the base).

Est.: \$1,200 - \$2,400 • Min. bid: \$600



Lot 236

"DITCHETT'S / REMEDY FOR / THE PILES NY" probably 1850 - 1855. Medium-to-deep yellowish olive green, rectangular with wide beveled corners, applied sloping collar with bevel - early smooth base, ht. 8 7/8", virtually perfect; (small trace of extremely faint interior residue or milkiness). An extremely rare, impressive medicine. Believed to be one of only three examples, (one being damaged, this example being the only smooth-base).

Est.: \$3,000 - \$5,000 • Min. bid: \$1,500



Lot 240

"DR / REYNOLDS - NERVE & - RHEUMATIC - LINIMENT", America, 1840 - 1855. Aquamarine, rectangular oval sides and rounded corners, wide neck with a sheared, tooled and inward rolled mouth - blowpipe pontil scar, ht. 2 1/8", perfect! Odell, p.292. Extremely rare, believed to be unique, or possibly one of only two or three known examples. A very attractive little wide-mouth bottle, boldly embossed, bright, sparkling, and pristine perfect. Gary Enters collection, Ex. Andy Regrut collection.

Est.: \$300 - \$500 • Min. bid: \$150



Lot 241

"DR. HAZLETT - NEW PHILA. O"
(with 90% complete original labels),
America, 1850 - 1860. Aquamarine,
rectangular with beveled corners, ap-
plied round collar with bevel - blow-
pipe pontil scar, ht. 5 1/2"; (bottle is
perfect, original labels slightly faded).
Label reads in part, *DR HAZLETT'S
RHEUMATIC / LINIMENT / For Rheu-
matism, Cholic, Diarrhoea, Colds.*
Very rare. A great little embossed,
labeled, liniment bottle from a small
town in Ohio. Gary Enters collection.

Est.: \$250 - \$450 • Min. bid: \$140



Lot 245

**"DR I. SCOTT'S / WHITE - CIRCAS-
SIAN / LINIMENT"**, America, 1845
- 1855. Aquamarine, rectangular with
beveled corners, sheared and inward
rolled lip - blowpipe pontil scar, ht. 4
3/4", very near mint; (lightly cleaned to
original luster and virtually attic mint
condition). A great looking, and likely
very early, liniment. Crisp embossing,
attractive scallop-cornered indented
panels. An unlisted and possibly unique
example. Provenance: Gary Enters
collection.

Est.: \$300 - \$500 • Min. bid: \$150



Lot 242

**"DR. J. M. ROBB'S - HIPPODROME /
LINIMENT"**, 1850 - 1860. Aqua, rect-
angular with beveled corners, applied
ring collar with bevel - blowpipe pontil
scar, ht. 5 1/4", perfect! A very scarce-
to-rare pontiled medicine from the
tiny town of Waynesville, OH (popula-
tion 2,800 in 2010), located south of
Dayton. Hippodrome was a early term
used to refer to an equestrian arena. In
ancient times, an oval track for horse
or chariot races. Possibly a veterinary
liniment. Gary Enters collection.

Est.: \$250 - \$450 • Min. bid: \$140



Lot 246

**"G.W. GARDNER'S - AMERICAN /
LINIMENT - PITTSBGH"**, America,
1850 - 1860. Aquamarine, rectangular
with beveled corners, applied square
collar - blowpipe pontil scar, ht. 5 3/8",
mint. Odell, p.140. Rare. Outstanding
condition, nice crude embossing, also
interesting how they chose to abbreviate
Pittsburgh. Provenance: Gary Enters col-
lection, Ex. Andy Regrut collection.

Est.: \$250 - \$450 • Min. bid: \$140



Lot 243

"LOREE'S - OHIO / LINIMENT",
America, probably 1849 - 1855.
Aquamarine, oval, sheared and
inward rolled mouth - blowpipe pontil
scar, ht. 4 1/4", mint. Odell, p.229. Per
Odell, Loree and Jones were located
in Cincinnati in 1848. In 1849, Loree
& Co. opened in Lebanon, OH.
Rare. Loree was in competition with
Coffeen who put out the Chinese
Liniment bottles. It is likely no coinci-
dence that the bottles are so similar.
Provenance: Gary Enters collection.

Est.: \$250 - \$450 • Min. bid: \$140



Lot 247

**"Dr C.F. BROWN's - YOUNG - AMERI-
CAN - LINIMENT - PHILADA"**, America,
1850 - 1860. Aquamarine, cylindri-
cal, sheared and inward rolled mouth
- blowpipe pontil scar, ht. 4", perfect.
Odell, p.53. Very scarce. Interesting
that there are a number of liniment
bottles embossed, "American", but very
few, perhaps no others, that are em-
bossed, "YOUNG AMERICAN". Very
bold embossing, clean and sparkling.
Provenance: Gary Enters collection.

Est.: \$150 - \$250 • Min. bid: \$80



Lot 244

"GREAT WESTERN - LINIMENT"
(with 90% complete original label),
America, 1855 - 1859. Aquamarine,
oval, sheared and inward rolled
mouth - blowpipe pontil scar, ht. 4
3/8"; (bottle is perfect; original label
has a couple of tears and darkened
a bit from age). Odell, p.151. A very
scarce bottle, and extremely rare
with original label. One of several
products put out by Dr. W.S. Lunt &
Co., Findlay, Ohio. Provenance: Gary
Enters collection.

Est.: \$250 - \$450 • Min. bid: \$140



Lot 248

**"WINCHESTER'S / KENTUCKY -
LINIMENT"**, probably a Midwest
glasshouse, 1845 - 1855. Aquamarine,
cylindrical, sheared and inward rolled
lip - blowpipe pontil scar, ht. 4 3/4"; (a
couple of small patches of faint interior
haze, otherwise very near mint). Odell,
p.376. Very scarce-to-rare. Prov-
enance: Gary Enters collection.

Est.: \$150 - \$250 • Min. bid: \$80



Lot 249

"J.M. HENRY & SONS - VERMONT / LINIMENT - WATERBURY, VT", America, 1850 - 1860. Aquamarine, rectangular with beveled corners, applied disk-type collar - blowpipe pontil scar, ht. 5 1/4", pristine perfect! Odell, p.358. Very scarce, especially in this pristine condition. Provenance: Gary Enters collection.

Est.: \$150 - \$250 • Min. bid: \$80



Lot 253

"H. GEYER'S - LINIMENT", America, 1850 - 1860. Aquamarine, rectangular with beveled corners, applied square collar - blowpipe pontil scar, ht. 4"; (some light haze, otherwise perfect). Odell, p.144. A rare pontiled medicine, possibly from Gloucester, MA, as there is a Geyer's Cough Balsam from Gloucester. Provenance: Gary Enters collection, Ex. Sam Greer collection (#649).

Est.: \$100 - \$200 • Min. bid: \$50



Lot 250

"GERMAN - MAGNETIC / LINIMENT / MADE BY - A.C. GRANT - ALBANY / NEW YORK", America, 1850 - 1860. Aquamarine, rectangular with beveled corners, sheared and inward rolled mouth - blowpipe pontil scar, ht. 5", perfect. Odell, p.151; N #243. A nice bright, clean, example. Provenance: Gary Enters collection.

Est.: \$100 - \$200 • Min. bid: \$50



Lot 254

"DOCT - L R HERRICK - SCIATIC - LINIMENT", America, probably 1838 - 1845. Aquamarine, rectangular with beveled corners, thin flanged lip - blowpipe pontil scar, ht. 4"; (several chips on the thin flanged lip ranging from 1/8" to a 1/4", otherwise perfect). Odell, p.171. Bright, clean, bubbly, crude, and extremely rare! Great eye-appeal with large lettering, heavily embossed. Likely an early Albany, NY bottle where the Dr. was established in 1835. Provenance: Gary Enters collection.

Est.: \$200 - \$400 • Min. bid: \$100



Lot 251

"GRAY'S / LINIMENT - NEW-YORK", America, 1845 - 1860. Rich, deep aquamarine, rectangular with wide beveled corners, sheared and inward rolled mouth - blowpipe pontil scar, ht. 5"; (lightly cleaned to original luster; a paper-thin 3/16" flake on the edge of the base, otherwise virtually attic mint). Odell, p.151; N #260 (5-star). Rare. Good deep color, large lettering, an attractive mold. Provenance: Gary Enters collection.

Est.: \$200 - \$400 • Min. bid: \$100



Lot 255

"FENIMORE'S - LINIMENT - OR PAIN EXTRACTOR - PRICE 25 CTS", America, probably 1851 - 1855. Aquamarine, square with four indented panels, sheared and inward rolled lip - blowpipe pontil scar, ht. 4 1/2"; (lightly cleaned to original luster and virtually attic mint condition; a tiny pinhead flake on base edge, otherwise perfect). Odell, p.127. Extremely rare! This is likely the same example that sold back in 2003, and the only one to be offered at auction. Gary Enters collection.

Est.: \$400 - \$600 • Min. bid: \$200



Lot 252

"CLAY'S ARNICA - LINIMENT", America, 1850 - 1860. Aquamarine, rectangular with beveled corners, applied sloping collar - blowpipe pontil scar, ht. 6"; (a pinhead bit of roughness on the edge of lip, likely in-manufacture, otherwise virtually attic mint). Odell, p.79; Baldwin, #781. A very scarce-to-rare pontiled liniment, bright, clean and sparkling. Provenance: Gary Enters collection.

Est.: \$100 - \$200 • Min. bid: \$50



Lot 256

"Mc. LEANS - VOLCANIC - OIL - LINIMENT", America, 1852 - 1860. Aquamarine, square with beveled corners, sheared and inward rolled mouth - blowpipe pontil scar, ht. 4", virtually perfect; (slight trace of residue or faint haze in neck and lip). Odell, p.248. A very attractive bottle embossed on all four sides, rich color, outstanding condition. Per Odell, ads touted "thousands of confirmed cripples have been made to walk by use of this invaluable liniment". Gary Enters collection.

Est.: \$100 - \$200 • Min. bid: \$60



Lot 257

"BRAGG'S ARCTIC / LINIMENT", America, probably 1858 - 1860. Aquamarine, cylindrical, sheared and inward rolled mouth - blowpipe pontil scar, ht. 4 1/8", virtually perfect; (slight trace of faint interior residue). Odell, p.43. Very scarce. One of several products put out by this company including two sizes and different molds for the liniment. Provenance: Gary Enters collection.

Est.: \$100 - \$200 • Min. bid: \$60



Lot 261

"DRS. IVANS - & HART. - NEW YORK.", America, 1845 - 1855. Aquamarine, 8-sided, applied sloping collar - blowpipe pontil scar, ht. 7 3/4"; (lightly cleaned to original luster; a potstone on a side panel with two 1/4" cooling lines, and a pinprick spot of roughness on edge of lip, otherwise perfect). Extremely rare, believed to be one of only two or three known, the last example offered back in 2005. Rare, very heavily whittled, bright, clean and sparkling. Gary Enters collection.

Est.: \$300 - \$600 • Min. bid: \$150



Lot 258

Lot of (2), Rare St. Louis Liniment Bottles, America, 1855 - 1860. **"BRAGG'S / ARCTIC / LINIMENT"** and, **"WELLS / GERMAN / LINIMENT - ST. LOUIS MO."**. Both aquamarine, cylindrical, applied square collar and applied sloping collar - iron pontil and blowpipe pontil scarred bases, ht. 7 1/4", and 5 3/4"; ("BRAGG'S" has a 1/2" early repair on back of lip; "WELLS" has a little scattered light haze). Bragg's extremely rare in this large size, and boldly embossed.

Est.: \$200 - \$400 • Min. bid: \$100



Lot 262

"JUDSON'S - CHERRY / & / LUNGWORT - EXTRACT", America, 1850 - 1860. Brilliant aquamarine, rectangular with beveled corners, applied sloping collar - blowpipe pontil scar, ht. 8", perfect. Extremely rare! A very attractive medicine with large, heavy embossing, big, bright, and sparkling clean.

Est.: \$600 - \$900 • Min. bid: \$300



Lot 259

"HUNT'S / LINIMENT - PREPARED BY - G. E. STANTON - SING SING N.Y.", America, 1845 - 1860. Rich, deep aquamarine, rectangular with wide beveled corner, sheared and inward rolled mouth - blowpipe pontil scar, ht. 4 5/8"; (shallow paper-thin 1/8" flake at corner of base, otherwise sparkling attic mint with a perfect rolled lip). Odell, p.184.

Est.: \$100 - \$200 • Min. bid: \$50



Lot 263

"DR M'CANDLESS - SOUTH AMERICAN / FEVER AND AGUE - REMEDY", America, 1850 - 1860. Aquamarine, rectangular with beveled corners, applied sloping collar - blowpipe pontil scar, ht. 7", pristine perfect! Unlisted and possibly a unique example. Pontiled remedy bottles are scarce, this one may be unique! Beautiful glass, clean and sparkling, with nice character (note backwards "N"s in "M'CANDLESS" and, "AND"). Bottle discovered in Midwest.

Est.: \$800 - \$1,200 • Min. bid: \$400



Lot 260

"DOCTOR, / A. ATKINSON - NEW-YORK.", America, 1850 - 1860. Light aquamarine, square with beveled corners, applied sloping collar - square iron pontil scar, ht. 9 3/4"; (professionally cleaned to original luster and near mint condition with just a touch of minor wear remaining including a shallow 3/16" chip on a beveled corner). Extremely rare! A big, impressive pontiled medicine. Provenance: Gary Enters collection.

Est.: \$300 - \$600 • Min. bid: \$150



Lot 264

"THOMSON'S - COMPOUND / SYRUP OF TAR - FOR CONSUMPTION - PHILAD.A", America, 1845 - 1855. Aquamarine, rectangular with beveled corners, applied sloping collar - blowpipe pontil scar, ht. 6 3/4", near mint; (just a slight trace of wear, and faint interior residue). Odell, p.345. Scarce. Nice character having crude, wavy glass.

Est.: \$200 - \$400 • Min. bid: \$100



Lot 265

"SMITH'S - ANODYNE / COUGH DROPS - MONTPELIER.", America, 1850 - 1860. Aquamarine, rectangular with beveled corners, applied sloping collar - blowpipe pontil scar, ht. 5 3/4", near mint; (slight trace of very minor wear; a bit of faint, barely noticeable, milkiness below the shoulders). Odell, p.323-324. It is extremely rare for a bottle to be embossed "COUGH DROPS", most are cough syrup, cough balsams, cough mixture, etc. A rare pontiled medicine from Vermont.

Est.: \$300 - \$600 • Min. bid: \$150



Lot 269

Lot of (2), "LOUDEN & Co'S - CARMINATIVE - BALSAM - PHILADA" Bottles (one with 75% complete, original label), America, probably 1847 - 1855. Both aquamarine, cylindrical, sheared, tooled, thin flanged lips - blowpipe pontil scarred bases, ht. 5 1/4"; (both with some light interior haze or iridescence; one with tiny flake on edge of flanged lip, otherwise perfect). Odell, p.230. Both found in basement of c. 1850 Indiana drugstore.

Est.: \$100 - \$200 • Min. bid: \$50



Lot 266

"DR G.W. PHILLIPS - COUGH / SYRUP - CINCINNATI. O.", a Midwest glasshouse, probably 1855 - 1859. Aquamarine, rectangular with rounded corners, applied round collar with bevel - large iron pontil scar, ht. 7 3/8", attic mint. Odell, p.279. A very rare Cincinnati bottle, especially in this fine condition. Clean and sparkling. Only the second example to come to market in more than 10 years. Note, the embossing reads from the base to the shoulders, which is unusual.

Est.: \$300 - \$600 • Min. bid: \$150



Lot 270

"TRUE / CEPHALIC / SNUFF / BY THE / KINGS / PATENT", America or England, 1840 - 1860. Rich, greenish aquamarine, cylindrical, sheared and tooled wide flared mouth inward rolled - faint sand type pontil scar, ht. 3 1/8", sparkling attic mint. Odell, p.351. A great example of this scarce little snuff. The embossing that is stronger than most, nice character, and with a perfect flared rim.

Est.: \$150 - \$300 • Min. bid: \$80



Lot 267

"DR BAKERS / PAIN PANACEA", Midwest, probably an Ohio or possibly Kentucky glasshouse, 1845 - 1855. Rich, deep bluish aquamarine, rectangular with beveled corners, applied sloping collar - blowpipe pontil scar, ht. 5 3/8", near mint; (a 1/16" chip and some in-making roughness along the top and edge of the lip). Odell, p.16. This is the scarce large size Dr. Baker's. A great looking early Cincinnati medicine, fantastic rich color and eye-appeal.

Est.: \$100 - \$200 • Min. bid: \$60



Lot 271

"TAYLOR'S - OPOCURA" (with original cork, sealing wax and contents), America, probably 1850 - 1855. Aquamarine, square with beveled corners, sheared and inward rolled mouth - blowpipe pontil scar, ht. 3", sparkling attic mint. Odell, p.342, BA2, #250. Bill Agee listed it as "Great", and although a few of them have been found over the years, they don't come around often and it remains a great little pontiled cure bottle.

Est.: \$150 - \$250 • Min. bid: \$70



Lot 268

"FLAGG'S GOOD - SAMARITAN'S - IMMEDIATE - RELIEF - CINCINNATI. O.", Midwest, probably an early Ohio glasshouse, 1850 - 1860. Brilliant, rich aquamarine, 5-sided, sheared and inward rolled mouth - blowpipe pontil scar, ht. 3 3/4"; (lightly cleaned, but the bottle appears as sparkling attic mint). Odell, p.130. A beautiful example, interesting and unusual 5-sided form, nice rich color, scarce.

Est.: \$200 - \$400 • Min. bid: \$100



Lot 272

PROF. H.K. FLAGGS - BALM OF EXCELLENCE - (embossed bottle inside 6-pointed star), America, 1850 - 1860. Aquamarine, rectangular with beveled corners, applied round collar with bevel - blowpipe pontil scar, ht. 4 7/8", very near mint; (slight trace of very faint wear). Odell, p.130. A scarce pictorial medicine from Worcester, MA, and an interesting bottle for the collector of quack medicines. Wouldn't everyone suffering from a malady want the "Balm of Excellence"?

Est.: \$150 - \$300 • Min. bid: \$80



Lot 273

"I. D. BULL'S - EXT. OF / SARSAPARILLA - HARTFORD, CON.", America, probably 1845 - 1851. Aquamarine, rectangular with beveled corners, applied ring-type collar - blowpipe pontil scar, ht. 6 3/4", near mint; (just a bit of faint, spotty interior milkiness in the lower third of the bottle, non-distracting, otherwise excellent). Odell, p.57. A scarce, early Sarsaparilla. Per Odell, Isaac Bull died about 1849, it is believed his widow may have carried on the business until about 1851.

Est.: \$250 - \$450 • Min. bid: \$140



Lot 274

"E. TRULL / DRUGGIST - WOBURN / MASS.", America, 1845 - 1855. Aquamarine, rectangular with wide beveled corners, applied disk or square-collared mouth - blowpipe pontil scar, ht. 6 3/4", perfect. Beautiful with excellent clarity and whittled wavy glass. A very scarce, to rare, early druggist from a small town on the outskirts of Boston. The form is virtually identical to the S.O. Richardson's Bitters.

Est.: \$175 - \$350 • Min. bid: \$100



Lot 275

Lot of (2), Early Shaker Medicines, America, 1845 - 1855. **"D. MILLER & Co - SHAKER SYRUP"**, and **"SHAKER CHERRY / PECTORAL SYRUP - CANTERBURY / N.H. No. 1"**. Both aquamarine, rectangular, applied sloping collars - blowpipe pontil scarred bases - ht. 7 1/2" and 5 1/2" respectively, both attic mint! Odell, p.318. The "D. Miller" example is scarce, bright, sparkling, and very heavily whittled.

Est.: \$200 - \$400 • Min. bid: \$100



Lot 276

"DR. KENNEDY'S - MEDICAL / DISCOVERY - ROXBURY, MASS", America, 1854 - 1860. Aquamarine, rectangular with beveled corners, applied sloping collar - blowpipe pontil scar, ht. 8 5/8", perfect! Odell, p.210. A big, attractive medicine. Per Odell, Dr. Kennedy advertised the Medical Discovery from 1854 - 1859, and billed it as the greatest medical discovery of the age! A big, bright, clean, sparkling example.

Est.: \$100 - \$150 • Min. bid: \$60



Lot 277

"VAUGHN'S - VEGETABLE / LITH-ONTRIPTIC - MIXTURE", America, 1860 - 1870. Blue green, square with beveled corners, applied sloping collar - early smooth base, ht. 6 1/8", virtually perfect; (only the slightest trace of faint wear, otherwise sparkling attic mint). Excellent color, character, and condition! Scarce. This is the smallest size of the Vaughn's Lithontriptic bottles. Not many of these around anymore, especially in "color", which are certainly much harder to find.

Est.: \$1,500 - \$2,500 • Min. bid: \$800



Lot 278

"VAUGHN'S - VEGETABLE / LITH-ONTRIPTIC / MIXTURE - BUFFALO", America, 1860 - 1870. Aquamarine, square with beveled corners and domed shoulders, applied sloping collar - early smooth base, ht. 8", perfect. A bright, clean, beautiful example of this always popular, big, attractive medicine. This large size is certainly impressive, and here is one that has not been dug and cleaned.

Est.: \$250 - \$400 • Min. bid: \$140



Lot 279

"DR. J.L. VAN DOREN'S / DYSPEPSIA ANTIDOTE. / N.Y.", America, 1859 - 1865. Medium blue green, square with beveled corners, domed shoulders, applied square collar - early smooth base, ht. 7 1/2", very near mint; (just a tiny pinprick bit of roughness on the back edge of the collar that you can feel, but is not easy to see, otherwise perfect). A beautiful and extremely rare medicine that just missed the pontil rod, with a distinctive form, nice color, and heavily whittled.

Est.: \$800 - \$1,200 • Min. bid: \$400



Lot 280

"J. W. POLAND'S / HEADACHE KILLER", New England, possibly Lyndeborough Glass Works, Lyndeborough, NH, 1867 - 1875. Greenish aquamarine, oval, large applied square collar - smooth base, ht. 7 1/8"; (a paper-thin 1/4" open bubble near side mold seam, otherwise virtually attic mint). A scarce, great looking medicine. See AB&GC, July, 2011, "Dr. J.W. Poland: The Headache Killer!" The good Doctor, also an evangelist, put out a number of early medicines.

Est.: \$150 - \$300 • Min. bid: \$80



Lot 281

"DR J.F. CHURCHILL'S / SPECIFIC REMEDY / FOR CONSUMPTION - HYPOPHOSPHITES / OF LIME AND SODA - J. WINCHESTER / NEW YORK", America, 1865 - 1875. Blue green, rectangular with beveled corners, applied sloping collar - smooth base, ht. 7 1/4"; (a minor, onionskin-thin open bubble on reverse, otherwise sparkling attic mint). Great eye appeal, nice brilliance and character to the glass, plenty of tiny seed bubbles, rare color for this mold.

Est.: \$300 - \$500 • Min. bid: \$180



Lot 282

"L.Q.C. WISHART'S - PINE TREE / TAR CORDIAL. / PHILA' - 'PATENT' / (PINE TREE) / '1859", America, 1860 - 1870. Bright yellowish olive, almost an olive yellow, square with beveled corners, applied sloping collar - early smooth base, ht. 7 5/8"; (lightly cleaned to original luster and near mint condition). A great example of this very early Wishart's having beautiful color and clarity.

Est.: \$800 - \$1,200 • Min. bid: \$400



Lot 283

"ROHRER'S - EXPECTORAL / WILD / CHERRY / TONIC - LANCASTER PA", America, 1855 - 1865. Light golden near the base shading to a beautiful honey coloration in the shoulders, rectangular pyramid form with roped corners, applied sloping collar with ring - smooth base, ht. 10 3/8", attic mint. A great example, lighter in color than most, attractive, clean and bright.

Est.: \$175 - \$350 • Min. bid: \$100



Lot 284

"U. S. A. / HOSP. DEPT", America, probably a Pittsburgh district glass-house, 1862 - 1870. Bright, light golden yellow with a topaz tone, cylindrical, 4-pc. mold, applied round collar with bevel - **"S D S"** on smooth base, ht. 9 1/4", perfect. A beautiful and very scarce color with some whittling and small seed bubbles, outstanding condition.

Est.: \$1,400 - \$2,800 • Min. bid: \$700



Lot 285

"U. S. A. / HOSP. DEPT", America, probably a Pittsburgh district glass-house, 1862 - 1870. Light yellowish olive with a slight lime tone, cylindrical, 4-pc. mold, applied round collar with bevel - **"S D S"** on smooth base, ht. 9 1/4", virtually mint; (a little faint light residue around the interior just above the base, otherwise perfect). Light and bright, a scarce color, - lighter than most with excellent clarity and lacking any amber or 'muddy' appearance.

Est.: \$800 - \$1,600 • Min. bid: \$400



Lot 286

"POISON" - "PAT APPL'D FOR" FIGURAL SKULL, America, 1894 - 1905. Medium cobalt, figural skull on crossbones, tooled prescription-type lip - **"PAT JUNE 26TH 1894"** on smooth base, ht. 2 3/4"; (a small pinhole repair in the tip of the nose, otherwise pristine perfect). KU-10. This example is clean, bright, and sparkling. It appears to be an attic-type find. Rare and desirable small size.

Est.: \$1,200 - \$2,400 • Min. bid: \$600



Lot 287

"PEARSE & MCGILL / PHARMACISTS / POISON / TAKE CARE / CHEYENNE / WYO.", 1895 - 1905. Cobalt, square with beveled corners, tooled prescription-type lip - smooth base, ht. 2 5/8"; (lightly cleaned to original luster and near mint condition). KS-28. Extremely rare. Note; the Rudy Kuhn Poison Workbook only lists this bottle in a 5 1/2" size, and rates it extremely scarce. Reportedly, most of the small handful known to exist have some form of damage, this example is near mint!

Est.: \$600 - \$1,200 • Min. bid: \$300



Lot 288

"POISON" - "E.R.S.&S." (on glass stopper), America, 1895 - 1905. Medium cobalt, square with vertical ribbing on **"POISON"** panel, as well as below shoulder and above base on remaining three panels, tooled double ring collar, original stopper with serrated edges, glass 'peg' and cork neck insert - smooth base, ht. 5 1/8" (not including stopper); bottle is 'out-of-the-mold' pristine perfect; (stopper near mint with a just a bit of roughness and a 1/4" flake on underside). KS-9. A scarce poison.

Est.: \$300 - \$500 • Min. bid: \$150



Lot 289

Set of (10), "FRANK E. MORGAN & SONS / PHILADELPHIA" Apothecary Bottles, (one with complete original label), America, 1885 - 1895. All are cobalt, oval, tooled prescription-type or square collars - smooth bases, ht. 3" to 10 1/4" not incl. stoppers, overall excellent condition; (stopper on 6" example is amber; 7" example has some light wear and haze; stopper on 8 1/2" example chipped, 10 3/8" example lightly cleaned and has a 1/2" chip from underside of collar).

Est.: \$400 - \$800 • Min. bid: \$200



Lot 290

"W.C. MONTGOMERY'S - HAIR / RESTORER - PHILADA", America, 1875 - 1885. Yellowish golden coloration below the shoulders, shading to a rich orange-amber near the base, rectangular with beveled corners, applied double ring collar - smooth base, ht. 7 5/8", virtually perfect; (a couple of onionskin-thin open surface bubbles, otherwise attic mint). DF, p.111. Scarce. A pretty example, nice bubbly glass, excellent condition.

Est.: \$300 - \$600 • Min. bid: \$150



Lot 291

"PRATT'S / ANTISEPTIC / Tooth Powder" (label-only), **Bottle** (with complete original label, neck label, contents, and cork), America, 1890 - 1900. Colorless, square with concave corners, tooled square collar - smooth base, ht. 3 3/4", perfect! Extremely colorful and ornate label in absolutely remarkable condition. A most eye-appealing, early tooth powder or dental bottle. Neck label reads, **WALTER PRATT & Co., Perfumers**. A Chicago, IL bottle.

Est.: \$100 - \$200 • Min. bid: \$50



Lot 292

"G W WESTON & Co - SARATOGA. N.Y." Wide Mouth Salt Jar, possibly Saratoga Mountain Glassworks, Mt. Pleasant, NY, 1855 - 1861. Medium olive with a slight yellowish tone, cylindrical, 3-pc. mold, short wide neck with an applied heavy ring-type collar - smooth base, Qt., ht. 8"; (slight trace of light wear, otherwise perfect). T# E-1:B. A very rare salt jar having crude seedy glass and beautifully whittled. Ex. George McKearin, Dr. Burton Spiller collections.

Est.: \$3,000 - \$5,000 • Min. bid: \$1,500



Lot 293

"SARATOGA. N.Y." Wide Mouth Salt Jar, probably a NY State glasshouse, possibly Saratoga Mountain Glassworks, Mt. Pleasant, 1855 - 1861. Deep olive green, cylindrical, 3-pc. mold, short neck with a sheared wide mouth and applied heavy ring collar - smooth base, Qt, ht. 7 5/8"; (a couple of superficial light scratches, otherwise sparkling attic mint). T# E-1:B, Variant 2. Rare. A particularly nice example having a wider neck, one that more truly resembles a "jar".

Est.: \$3,000 - \$5,000 • Min. bid: \$1,500



Lot 294

"GEYSER SPRING. / SARATOGA SPRINGS. / STATE / OF / NEW YORK. - 'THE SARATOGA' / SPOUTING SPRING", probably a New York State glasshouse, 1873 - 1889. Emerald green, cylindrical, applied sloping collar with bevel - smooth base, Pt; (a little minor exterior wear and a few small open surface bubbles, otherwise excellent). T# S-29:B. Crude, seedy, bubbly glass, rare color! Note, an early collector tag dated 1958 remains on the base.

Est.: \$2,000 - \$4,000 • Min. bid: \$1,000



Lot 295

"STAR SPRING CO" / (STAR) / "SARATOGA N.Y.", New England, probably a Stoddard glasshouse, Stoddard, NH, 1865 - 1873. Medium-to-deep 'old amber' with a yellowish or tobacco tone, cylindrical, applied sloping collar with bevel - large "X" (on smooth base), Pt, near mint; (slight trace of faint wear and minor interior residue, likely washable). T# S-54:B. Nice shading, heavily whittled!

Est.: \$100 - \$200 • Min. bid: \$60



Lot 296

"USE AT 52* FAR / MAGNETIC / MINERAL WATER / SPRING LAKE / MICH", William Frank & Sons, Pittsburgh, 1870 - 1876. Aquamarine, cylindrical, applied sloping collar with bevel - **"WM F & SONS. PITTS"** (on smooth base), Qt, virtually attic mint; (a trace bit of faint wear including a 1 1/4" scratch on the reverse). T# M-30. A bright, clean, very scarce mineral water in near-attic condition! Because of its numerous early healing springs, Michigan was known as the "Saratoga of the West".

Est.: \$400 - \$600 • Min. bid: \$200



Lot 297

"G.W. MERCHANT'S - CARBONIC - MINERAL WATER - LOCKPORT N.Y.", probably Lockport Glass Works, 1839 - 1844. Rich, medium-to-deep "Lockport" bluish-green, egg form, applied short tapered collar - smooth base, length 6 1/2"; (a crack, approx. 1 1/4", travels from the edge of the lip through the bevel, then curves below the neck; a 3/8" iridescent bruise on the inside edge of the lip, otherwise the bottle is virtually mint). Exceedingly rare, one of only 5 or 6 known.

Est.: \$1,500 - \$3,000 • Min. bid: \$800



Lot 301

"CRYSTAL PALACE / PREMIUM / SODA WATER / W. EAGLE / NEW YORK - (Crystal Palace) / UNION GLASS WORKS / PHILA", Kensington, 1853 - 1858. Rich, medium to deep blue green, cylindrical, applied blob collar - heavy red iron pontil scar, ht. 7 1/8", sparkling attic mint! An absolutely gorgeous example, virtually "out-of-the-mold" pristine condition with nice depth of color and excellent clarity. An historical, pictorial soda, and top-shelf example!

Est.: \$1,500 - \$2,500 • Min. bid: \$800



Lot 298

"GARDNER - & BROWN" Torpedo Mineral Water, probably Baltimore Glass Works, Baltimore, MD, 1845 - 1855. Clear, light-to-medium yellowish green, torpedo form, applied sloping collar - smooth base, ht. 8 5/8", attic mint! Very scarce! A top example, - heavily whittled, clean sparkling glass, crisp bold embossing, and especially difficult to find in this fine condition.

Est.: \$1,600 - \$3,200 • Min. bid: \$800



Lot 302

"S. S. - KNICKER - BOCKER - SODA WATER - 164. 18th St. N.Y. 1848", America, 1848 - 1860. Sapphire blue, 10-sided, applied sloping collar - iron pontil scar, ht. 7 1/2"; (a few small flakes approx. 1/8" or less, along with some minor roughness on the edge of the lip, otherwise very near mint). This example does not appear to have been dug. It was likely an "attic-type" find and has a fully intact iron pontil scar.

Est.: \$500 - \$800 • Min. bid: \$250



Lot 299

"F. GLEASONS / MINERAL / WATER - ROCHESTER / N Y", probably a New York State glasshouse, possibly Lancaster Glass Works, 1850 - 1860. Sapphire blue, tenpin form, applied sloping collar - early smooth base, ht. 8 5/8", near mint; (some spotty light interior residue and content haze, and a tiny pinhead flake, otherwise attic mint). Outstanding character, heavily whittled. A rare and desirable early tenpin soda, especially in this fine, attic-type condition.

Est.: \$800 - \$1,200 • Min. bid: \$400



Lot 303

"SEYMOUR / & CO / BUFFALO / N.Y.", America, 1855 - 1865. Aquamarine, cylindrical, applied blob collar - heavy iron pontil scar, ht. 7 1/8"; (slight trace of light wear, otherwise sparkling attic mint). Note, the letters have been painted for display purposes. Here is one that is not easy to find, especially in this un-dug, attic type condition.

Est.: \$200 - \$300 • Min. bid: \$100



Lot 300

"F. GLEASON / ROCHESTER / N. Y.", possibly Lancaster Glass Works, Lancaster, NY, 1850 - 1860. Sapphire blue, cylindrical, applied blob collar - heavy iron pontil scar, ht. 7 3/8"; (slight trace of faint wear on the reverse, otherwise pristine perfect). This is the variant having the dime-size circular mold depression on the shoulder. Another great example of an attic-type early soda, very scarce.

Est.: \$400 - \$600 • Min. bid: \$200



Lot 304

"W. HEISS JR'S / SUPERIOR / MINERAL WATERS / No. 213 N. 2d. St. / PHILAD.A" - (Eagle, Shield & Crossed Flags), probably Union Glass Works, Philadelphia, 1849 - 1855. Cobalt, cylindrical, applied blob collar - iron pontil scar, ht. 7 1/4"; (a little minor wear; some faint interior haze, and a 3/4" crack at the heel of the base). A very rare and desirable pictorial soda. Beyond the noted base fissure, the interior haze and wear are minor. The bottle otherwise displays as near mint.

Est.: \$300 - \$600 • Est.: \$150

Choice Flasks...



...and More Choice Flasks



Rare & Colorful Canning and Pickle Jars



Rare & Exceptional Soda & Mineral Water Bottles

Lot 299



Lot 298



Lot 297

Lot 301



Lot 302

