

American Glass Gallery™

Auction #22

Opens March 6, 2019

Closes March 19, 2019

Lots 276 & 277 –
Rare & Important
Saratoga Mineral Water
Whimsy Jars



Conditions of Sale: Auction #22, including Part IV of The Ralph Finch Collection

1. Absentee Auction

The items in this sale will be sold via absentee auction. Closing date:
March 19, 2019, 11:00 p.m., EST.

2. Our Guarantee Regarding Descriptions

American Glass Gallery has made every attempt to describe correctly the property being sold. Descriptions are guaranteed to be accurate as regards authenticity, age, condition, and measurements to within one-fourth inch, as represented in this catalog. Items in this catalog are not shown to scale. In describing damage, exterior wear or manufacturer's flaws that in our opinion, do not significantly detract visually or monetarily from the value of the item are not listed and will not be considered for refund. The Auctioneers reserve the right to make verbal corrections and provide additional information at any time during the sale.

3. Preview

Items may be viewed by appointment from March 7, 2019 through March 18, 2019.

4. Bidding Procedure

You may submit your bids by mail, phone, FAX, email or through our on-line auction site. If bidding by mail or FAX, please fill out the absentee form and return it to us. Your bid, either written or oral, grants American Glass Gallery the authority to protect you up to the amount of your stated bid. Your bid will not be removed once executed.

Bidding Times: You can submit your bids anytime after receiving your catalog. Bids may be made by phone, daily, until closing day, March 19, 2019, from 9 A.M. - 6 P.M. Eastern Time. Incoming phone bids will be accepted on the closing day (March 19, 2019) until 11 P.M. Eastern Time. Phone calls and Fax bids after this time will not be honored. No exceptions. You may also place your bids through our on-line auction service 24-hours a day once the site has opened for bidding, on or about March 6, 2019, continuing until 11:00 P.M. Eastern Time, March 19, 2019.

Please do not wait until the last day or two of the sale to place your bids! Because many collectors wait until the final few days of the sale to place their bids, we anticipate the telephone and internet bidding to be very busy during that period, so please plan accordingly. In the event of a tie bid, the earliest received bid on the lot will take precedent. We would welcome your bids by phone so that we can answer any questions and assist you in your bidding.

You may also telephone us at any time during the auction, prior to the closing of the sale, to check the status of your bids, to find the current bidding level, to open a bid, or to raise a bid on an auction lot.

Bidding Increments are as follows:

Up to \$250.00.....	increments of \$10.00
\$250.00 - \$500.00	increments of \$25.00
\$500.00 - \$1,000.00	increments of \$50.00
\$1,000.00 - \$2,500.00	increments of \$100.00
\$2,500.00 - \$5,000.00	increments of \$250.00
\$5,000.00 - \$10,000.00	increments of \$500.00
\$10,000 & Up.....	increments of \$1,000.00

Bids submitted between the above increments, whether by mail, FAX, email or on-line via the internet, will automatically be lowered to the closest lower increment.

This is a minimum bid auction. Bids below the printed minimum will not be accepted.

An example of how our absentee bidding system works: You bid \$600.00 on a lot which is the highest bid received to date. The second highest bid is \$450.00. The current high bid level would be yours at \$475.00, one bid increment higher than the other collector's bid. Any additional bids submitted by others below \$600.00 will automatically be topped on your behalf by a representative of American Glass Gallery, up to your stipulated high bid amount. If no further bids on this lot are received beyond the \$450.00, and the under bidder has not requested a "Call Back", then you would have won the lot at \$475.00, not the \$600.00 that you were prepared to pay.

American Glass Gallery will at NO TIME disclose bids pledged by others; only the current "High Bid" level of a lot will be stated upon request. The highest bidder as determined by American Glass Gallery shall be the purchaser. It is the sole right of the auctioneer to settle any dispute between bidders and to regulate the bidding procedure. The auctioneer reserves the right to refuse any bid he believes not to have been made in good faith.

5. "Call Back" Process

If requested, the three top bidders of an item at the time of closing will be given a "Call Back" over the next number of days in order to resolve the final sale of an item. You can request this service by "checking" the appropriate box on your absentee bid form or verbal agreement by phone. It is the responsibility of the bidder to insure he has qualified for this service.

Please note: No "Call Backs" will be executed for bids under \$400.00. In the event of tie bids, the earliest bid received will be the winning bid.

An example of how the "Call Back" process works: As an example, you have bid \$600.00 on a particular lot. Another bidder has submitted a bid of \$900.00 on the same lot. Assuming that as of the auction closing date you are among the top three bidders on this lot and you have requested a "Call Back", you would receive a call informing you that you have been "Out Bid" and the current "High Bid" is now at \$650.00. If you choose to continue bidding on this lot, you may now do so. Assuming that you now increase your bid to \$700.00, we would accept your bid but also inform you that we have a higher bid on this lot and must bid \$750.00. At this time, an auction between you and American Glass Gallery, representing the collector who submitted the bid of \$900.00, takes place. This bidding would continue until you drop out, or top the other bidders high bid of \$900.00. If the other bidder has not requested a "Call Back" service, you would be awarded the lot. If however, the other bidder also requested a Call Back, we must now call them. If they elect to increase their bid over your high bid, we would in turn call you back. This back and fourth process would continue until one of the bidders declines to go any farther.

If you have requested a "Call Back", the auctioneers will need to contact you on the days immediately following the auction closing between the hours of 8 A.M. and 9 P.M. Eastern Time. Please supply us with all appropriate contact phone numbers including, home, mobile and work numbers. Bidders must provide the appropriate telephone numbers where they can be contacted. If you will be traveling or otherwise unavailable, bidders with "Call Back" privileges will have the responsibility to contact American Glass Gallery twice daily during the Call Back period.

Please note, every effort will be made to contact you during the "Call Back" period. However, the bidder will forfeit their rights to a "Call Back" if the auctioneers are unable to reach them. American Glass Gallery reserves the right to discontinue Call Backs on any item in the sale (2) two days after the closing date of the sale. At that time, the current "High Bidder" may be awarded the item even if Call Backs are still outstanding.

Conditions of Sale: Auction #22, including Part IV of The Ralph Finch Collection

6. Terms

Successful Bidders, Prompt and full payment is due immediately upon receipt of our invoice. Absolutely no exceptions. Anyone failing to pay for items won will forfeit all rights to bid in any future American Glass Gallery sales. **Any late or delayed payments may result in loss of return privileges for items purchased in the sale.**

No Items Will Be Mailed Before Full Payment Is Received.

Buyer Premium: Our buyer premium remains unchanged. **It is 15% if paying by cash or check, discounted from 18% if paying by Credit Card or PayPal** (PayPal payment account: jpastor@americanglassgallery.com). This buyer premium will be added to the hammer price as part of the purchase price. For example, if you purchase a lot for \$100.00, you will receive an invoice for \$115.00 if paying by cash, check or money order, plus any applicable sales tax or shipping charges.

Taxes: If you are a Michigan resident, a 6% sales tax will be added to your bill unless you have a valid resale number registered with us.

Shipping: Shipping, handling and insurance are extra. We ship insured via U.S. Mail. These charges will be added to your bill unless the lots are picked up in person. Our charges for shipping (excluding foreign shipments and oversized lots) are \$18.00 for the first item, \$9.00 for each additional item together with extra insurance costs (we use current U.S. Postal Service insurance rates).

Please allow two to three weeks for delivery after receipt of your check.

Payment: American Glass Gallery accepts Cash, Money Orders, Personal Checks, Visa, MasterCard, American Express and PayPal. **If paying by Credit Card or PayPal, an additional 3% will be added to the invoice total.**



PayPal

7. Refunds

Refunds will be given at the discretion of the Auctioneers. Items purchased must be examined and request for refund made immediately upon receipt of the item or items. Since opinions can differ, particularly in the matter of condition, the Auctioneers will be the sole judge in the consideration of refunds. Refunds requested on the grounds of authenticity must be made within 15 days of the date of the auction, and such refund requests must be accompanied by at least one supporting statement in writing from an authority recognized by the Auctioneers. It is the Auctioneers sincere intention to consider any reasonable request for a refund. **Absolutely no returns for any reason after 30 days following the closing of the sale.**

8. Bidding on any item indicates your acceptance of these terms.



American Glass Gallery™

John R. Pastor
P.O. Box 227
New Hudson, Michigan 48165
Phone: 248.486.0530
Fax: 248.486.0538
www.americanglassgallery.com
email: jpastor@americanglassgallery.com

PLEASE NOTE:

The lots offered in this printed catalog are identical to the lots offered in the on-line catalog. However, due to space constraints of the printed catalog, there may be some further information available regarding some of the lots in the on-line auction descriptions.

Please visit us at

www.americanglassgallery.com

and follow the link to the on-line auction.

The link and on-line auction will be available March 6, 2019. A post-auction price list will be available on our website, in printable form, approximately 30 days after the close of the auction.

We encourage you to contact us by phone or email with any questions, for assistance with bidding, or further details or clarification on any of the lots in this sale. Your complete satisfaction and confidence is our goal!

**THANK YOU AND GOOD LUCK
WITH YOUR BIDS!**

Reference Key

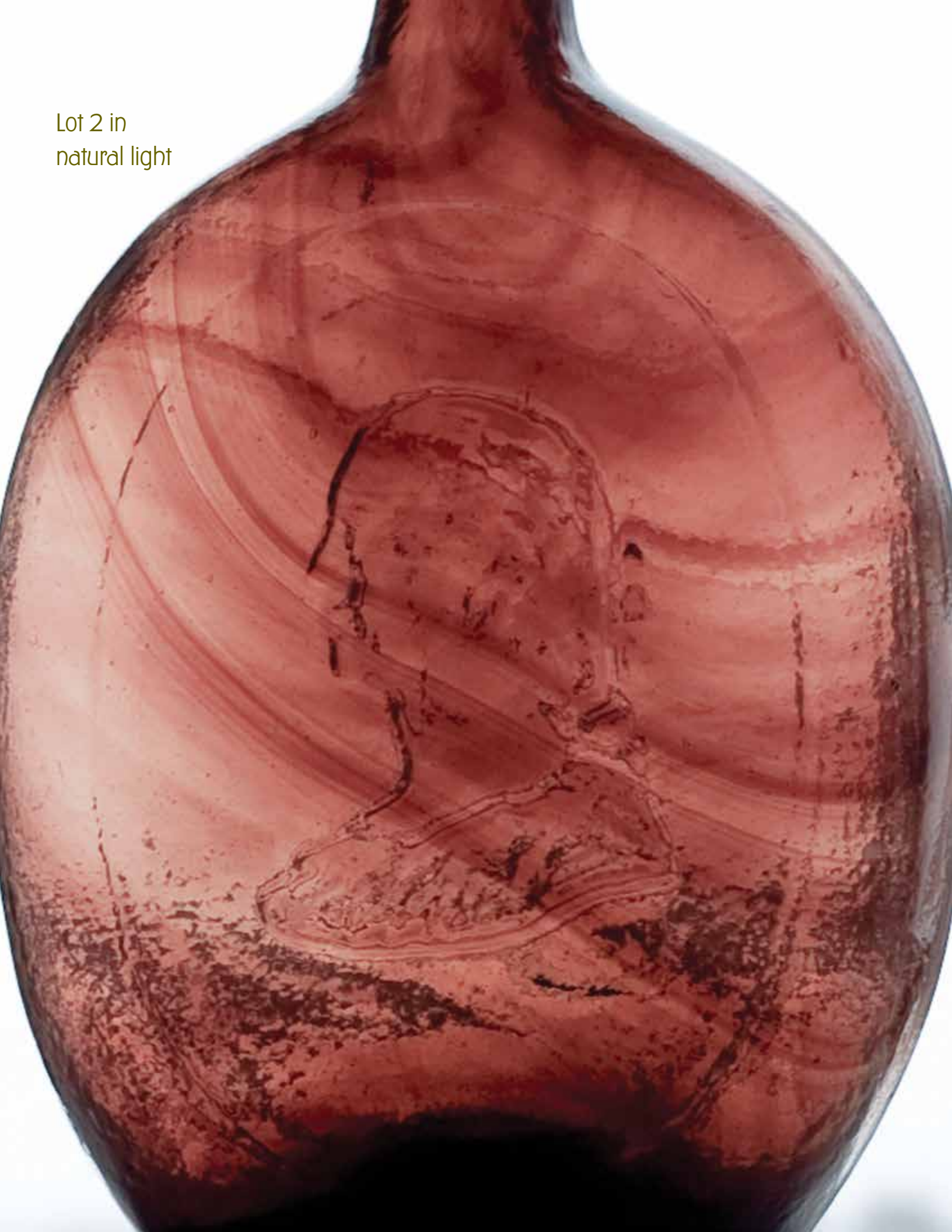
Reference initials and numbers used in the description of this catalog refer to the following publications:

AHG	<i>American Historical Glass</i> , Bessie M. Lindsey, 1967
AM	<i>The Decanter - An Illustrated History of Glass from 1650</i> , Andy McConnell, 2004
AP	<i>Glass in Early America</i> , Arlene Palmer, 1993.
BA1	<i>Collecting The Cures</i> , Bill Agee, 1969
BA2	<i>Collecting All Cures</i> , Bill Agee, 1973.
BB	<i>A Bit About Balsams</i> , Betty Blasi, 1974
BH	<i>Classification and Documentation of Sunburst and Similar Scent Bottles</i> , Bill Ham, AB&GC, 5/87
B/K	<i>The Glass Industry in Sandwich</i> , Raymond Barlow and Joan Kaiser, 1989.
BPK	<i>A.M. BININGER Bottles</i> , Jim Bender, 2017
C	<i>Ink Bottles and Inkwells</i> , William Covill, 1971.
DB	<i>Antique Sealed Bottles, 1640 - 1900</i> , David Burton, 2015
DeG	<i>American Sarsaparilla Bottles</i> , John DeGrafft, 1980.
DeGII	<i>Supplement to American Sarsaparilla Bottles</i> , John DeGrafft, 2004.
DF	<i>Hair Raising Stories</i> , Don Fadely, 1992.
DM	<i>Wistarburgh, Window Tiles, Bottles and More</i> , Dale L. Murscell, 2007.
F	<i>Inks, 150 Years of Bottles and Companies</i> , Ed and Lucy Faulkner.
FA	<i>John Frederick Amelung, Early American Glassmaker</i> , Lanmon, Palmer, Hume, Brill, Hanson, 1990.
FB	<i>A.S.C.R. The wine bottles of All Souls College</i> , Oxford, 1750 – 1850, Fay Banks.
G	(Flasks) <i>American Bottles & Flasks and Their Ancestry</i> , McKearin & Wilson, 1978.
G	(Blown Three Mold) <i>American Glass</i> (Chapter VI), George S. and Helen McKearin, 1941.
GBH	<i>English Glass For The Collector, 1660-1860</i> , G. Bernard Hughes, 1958.
H	<i>American Bottles in the Charles B. Gardner Collection</i> , Norman C. Heckler, 1975.
JB	<i>Patent and Proprietary Medicine Bottles</i> , Joseph K. Baldwin, 1973
JEB	<i>Glasshouse Whimsies</i> , Joyce E. Blake, 1984.
JH	<i>Glasshouses & Glass Manufacturers of the Pittsburgh Region, 1795 – 1910</i> , Jay W. Hawkins, 2009.
JM	<i>Tea Kettle Ink Price and Reference Guide</i> , Joe L. Mathews Jr., 2016
JS	<i>In glas verpakt – European Bottles, Their history and production</i> , Johan Soetens, 2001.
K	<i>Poison Bottle Workbook</i> , Rudy Kuhn, 1988.
KW	<i>New England Glass & Glassmaking</i> , Kenneth M. Wilson, 1972.
L	<i>The Red Book of Fruit Jars, No. 11</i> , Douglas M Leybourne, Jr., 2014.
LI	<i>Pittsburgh Glass, 1797 – 1891</i> , Lowell Innes, 1976.
Mc	<i>Two Hundred Years of American Blown Glass</i> , Helen and George McKearin, 1950.
McK	<i>American Glass</i> , George S. and Helen McKearin, 1941.
MW	<i>American Bottles & Flasks and Their Ancestry</i> , McKearin & Wilson, 1978.
N	<i>Great American Pontiled Medicines</i> , Frederick Nielson, 1978.
NCH	<i>The Blaske Collection of American Flasks</i> , Norman C. Heckler, 1983.
NCH II	<i>The Blaske Collection: Part II</i> , Norman C. Heckler, 1983.
Odell I	<i>Indian Bottles and Brands</i> , John Odell, 1977
Odell II	<i>Pontiled Medicine Encyclopdia</i> , John Odell, 2007
O&S	<i>Warner's Reference Guide</i> , Ed Ojea and Jack Stecher, 1998.
P	<i>The Glass Gaffers of New Jersey</i> , Adeline Pepper, 1971.
RD	<i>Understanding Antique Wine Bottles</i> , Roger Dumbrell, 1983.
RF	<i>The Bottle Book: A Comprehensive Guide to Historic, Embossed Medicine Bottles</i> , Richard Fike, 1987
RH	<i>Collecting Barber Bottles</i> , Richard Holiner, 1986.
R/H	<i>Bitters Bottles</i> , Carlyn Ring and W. C. Ham, 1998.
RWL	<i>Antique Fakes & Reproductions</i> , Ruth Webb Lee, 1950
T	<i>Collectors Guide to Saratoga Type Mineral Water Bottles</i> , Donald Tucker, 2005.
V	<i>Nailsea Glass</i> , Keith Vincent, 1975
VdB	<i>Antique Glass Bottles; Their History and Evolution</i> , Willy Van den Bossche, 2001.
WL	<i>A Wine-Lover's Glasses, The A.C. Hubbard, Jr. Collection</i> , Ward Lloyd, 2000.
Z	<i>Ketchup, Pickles, Sauces</i> , Betty Zumwalt, 1980.
ZW	<i>Color Hutchinsons</i> , Zang Wood, 1999.

- The dash is generally used to indicate that the descriptions are on opposite sides of the bottle or flask.

/ The slash is used to indicate that the descriptions are on different lines or surfaces of the bottle.

Lot 2 in
natural light



Rare Pontilled American Sarsaparilla Bottles



Wild Sarsaparilla (*Aralia nudicaulis*) is an herbaceous woodland plant native to much of North America. Its aromatic roots have long been reputed to have medicinal properties and in 19th century America, it was frequently an ingredient in hundreds of different patent medicines as well as in flavored beverages.

Various compounds of sarsaparilla were touted as curatives for all manner of ailments as advertised in the following by Charles Marshall of Philadelphia:

For the Cure of Obstinate Eruptions of the Skin—Pimples or Pustules on the face—Biles which arise from an impure habit of body—Scaly Eruptions—Pains in the Bones—Chronic Rheumatism—Teeter—Scrofula or King's Evil—White Swelling—Syphilitic Symptoms, and all disorders arising from an impure state of the blood, produced either by a long residence in a hot and unhealthy climate or the injudicious use of mercury &c.

The three sarsaparilla bottles offered here are among the rarest in this popular collecting category.



Lot 221

Lot 219

Lot 220

Very Rare GII-9 Eagle/Serpent Historical Flask

This flask is believed to have been blown at an early Pittsburgh-Monongahela district glasshouse sometime in the mid to late 1830s. This, and two related flasks (GII-7 and GII-8), with similar large beaded sides, are all listed as very rare or rare by the McKearns. All three have been coveted by flask collectors for nearly a century due to their beautiful and unusual designs and broad spectrum of colors.

The GII-9 was first associated with the presidential campaign of William Henry Harrison (right) by the pioneer flask collector and scholar, Stephen Van Rensselaer in 1926. The motif is unique and is the only historical flask depicting an eagle with a serpent in its beak.

For millennia, the serpent has symbolized corruption and in this case, political corruption. The eagle, no doubt, represented William Henry Harrison himself who would "Strangle the Serpent of Corruption" as seen in the broadside shown below.



Lot 12



***The Eagle of Liberty,
Strangling the Serpent
of CORRUPTION.***



True American Ticket.

For President,

WM. HENRY HARRISON.

For Vice-President,

FRANCIS GRANGER,

CHIEF ELECTORS

Of President and Vice-President of the U. States.

BENJAMIN HUGGLES,
GEORGE F. THORNTON,
ELIAS HUNTINGTON,
ALEXANDER CAMPBELL,
WILLIAM KENDALL,
CHRISTIAN KING,
WILLIAM C. KIRKIN,
RABUEL SLIDOFF,
JOHN CHIDWEL,
DANIEL HARRISON,
JONAS COLETT,
ANDREW HULLBARY,
ISAIAH ROBERTS,
ROBERT SAMPSON,
ABEL BENTON,
SAMUEL NEWELL,

Rare Aquamarine Barrel Bitters

Barrel Bitters



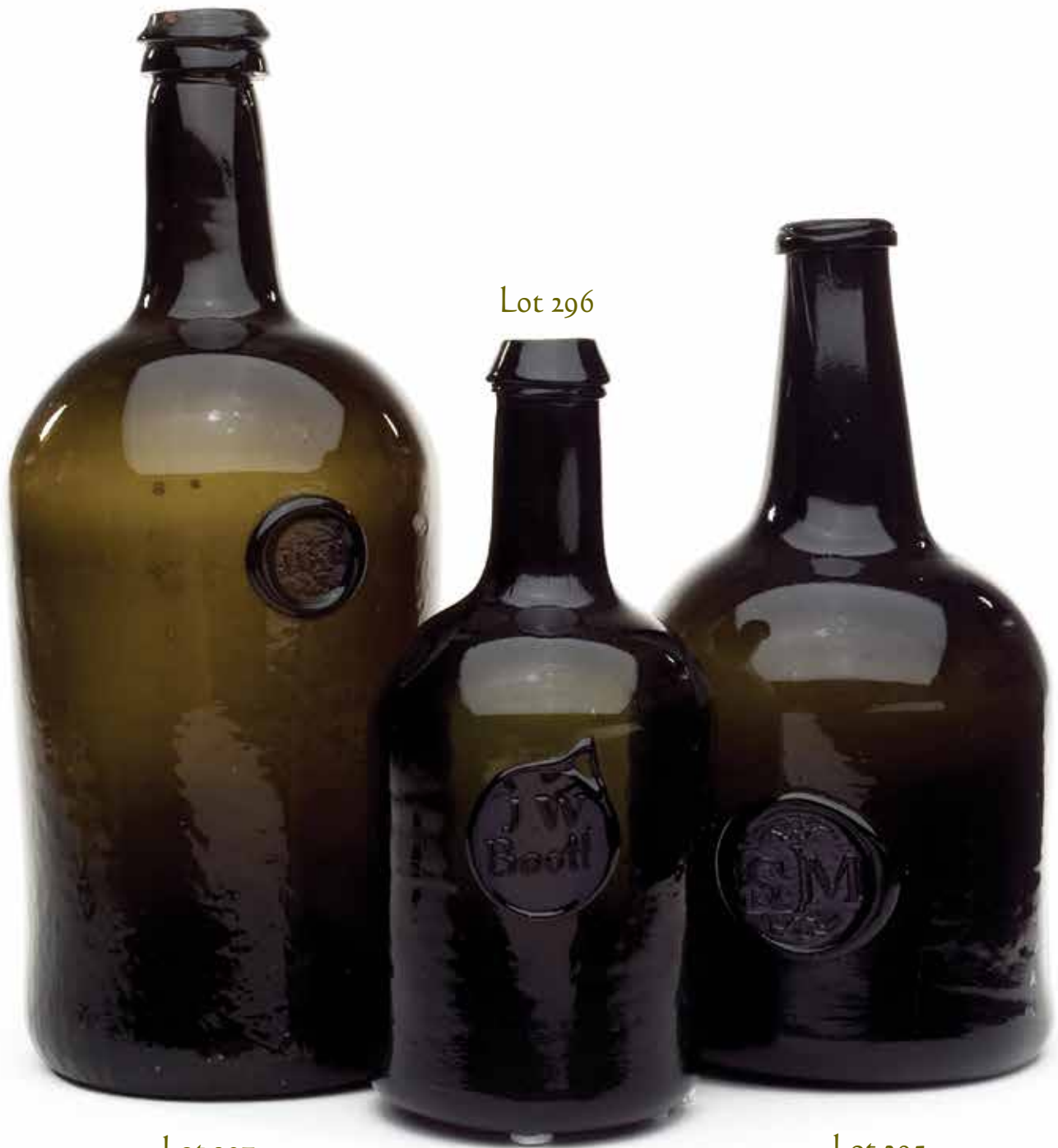
Lot 163

Lot 164

Lot 162

Rare & Choice Black Glass Seal Bottles

Black Glass



Lot 296

Lot 297

Lot 295



Lot 1

WASHINGTON - EAGLE Historical Flask, Pittsburgh district glasshouse, 1825 - 1835. Light yellowish-apple green, sheared mouth - blowpipe pontil scar, Pt, virtually attic mint; (only the slightest trace of faint wear, otherwise pristine perfect). GI-11. A rare mold, nicknamed the "Washington vines" flask. A sparkling example, the glass is filled with tiny seed bubbles, and in a delicate scarce color, the "metal" has a certain luminescence to it. Provenance: James Chebalo collection.

Est.: \$800 - \$1,600 • Min. bid: \$400



Lot 2

WASHINGTON - TAYLOR Portrait Flask, Dyottville Glass Works, 1848 - 1855. Gorgeous, light-to-medium pinkish-puce with profuse striations swirled throughout, sheared mouth - blowpipe pontil scar, Qt, near mint; (a little scattered light exterior wear). GI-51. Unlisted and exceptional color, incredible eye-appeal. A top example! We are privileged to offer this flask at auction, the 1st time on the market in more than 20 years. Provenance: James Chebalo collection.

Est.: \$8,000 - \$16,000 • Min. bid: \$4,000



Lot 3

WASHINGTON - WASHINGTON Portrait Flask, Lockport Glass Works, Lockport, NY, 1850 - 1860. Rich, deep blue green, sheared mouth - blowpipe pontil scar, Qt, virtually attic mint; (just a trace bit of faint wear and a pinprick speck of roughness on the inside edge of the lip, otherwise pristine!) GI-61. A scarce mold, vivid, rare, eye-appealing color, beautifully whittled. Provenance: James Chebalo collection.

Est.: \$4,000 - \$8,000 • Min. bid: \$2,000



Lot 4

"GENL TAYLOR" / BUST OF TAYLOR - "FELLS POINT" / MONUMENT / "BALTo" Historical Flask, Baltimore Glass Works, 1847 - 1855. Aquamarine, sheared mouth - blowpipe pontil scar, Pt, very near mint; (a minor patch of faint interior milkiness near the base, otherwise perfect). GI-73. A very nice example of this scarce flask having virtually no high point wear, and with a bolder impression and stronger embossing than most!

Est.: \$200 - \$400 • Min. bid: \$120



Lot 5

"ROUGH AND READY" / BUST OF TAYLOR - "MASTERSON" / EAGLE Historical Flask, probably a Pittsburgh district, or possibly Kentucky Glass Works, 1848 - 1855. Aquamarine, sheared mouth - blowpipe pontil scar, Qt, virtually attic mint; (a tissue-paper thin 3/16" open bubble near edge of base on reverse, otherwise perfect). GI-77. A very rare and desirable flask with the corrugated sides and crude, almost folk art bust of Taylor. Ex. Charlie Gardner, James Chebalo collections.

Est.: \$1,500 - \$2,500 • Min. bid: \$800



Lot 6

BUST OF TAYLOR - "ROBT RAMSAY / WINE & / LIQUOR MERCHT / 281 8th AVENUE / N.Y." Historical Flask, probably Dyottville Glass Works, 1852 - 1854. Aquamarine, sheared mouth - blowpipe pontil scar, Pt, virtually perfect; (small trace of very faint interior milkiness). GI-78. Extremely rare! This is the only private mold wine & liquor merchant known to have used a figured flask mold. This also is the only example, or possibly one of two, to be offered in more than 20 years!

Est.: \$1,500 - \$2,500 • Min. bid: \$800



Lot 7

"LAFAYETTE" / BUST OF LAFAYETTE / "T.S." - "DE WITT CLINTON" / BUST OF CLINTON / "CONVENTRY / C-T" Historical Flask, Coventry Glass Works, 1824 - 1830. Medium olive amber, sheared mouth - blowpipe pontil scar, Pt, near mint; (just a slight trace of typical faint wear including a 1/8" paper-thin open surface bubble; a 3/4" superficial little scuff or abrasion near the shoulder). GI-80. Nice character and with a bold, stronger than normal impression!

Est.: \$800 - \$1,200 • Min. bid: \$400



Lot 8

"BENJAMIN FRANKLIN" / BUST OF FRANKLIN - "T.W. DYOTT, M.D." / BUST OF DYOTT - "ERIPUIT COELO FULMEN SCEPTRUMQUE TYRANNIS - KENSINGTON GLASS WORKS, PHILADELPHIA" Historical Flask, 1825 - 1835. Aquamarine, sheared mouth - blowpipe pontil scar, Qt, attic mint! GI-96. As noted by McKearin, a comparatively scarce mold. A top-shelf, bright, clean, sparkling, boldly embossed example.

Est.: \$400 - \$600 • Min. bid: \$200



Lot 9

"JENNY LIND" / BUST OF JENNY LIND - "GLASS WORKS" / GLASS FACTORY / "S. HUFFSEY" Historical Calabash, Isabella Glass Works, Brooklyn, NJ, 1850 - 1860. Rich, medium-to-deep emerald with a slight teal tone, applied sloping collar with bevel - blowpipe pontil scar, Qt; (just a trace of minor content haze near the base; a bit of faint wear, and a 5/16" chip from the lower bevel on the back of the lip, otherwise excellent!) GI-99. Gorgeous, rich, scarce color.

Est.: \$800 - \$1,200 • Min. bid: \$400



Lot 10

"LOUIS KOSSUTH" / BUST OF KOSSUTH - STEAM FRIGATE / "U.S. STEAM FRIGATE / MISSISSIPPI / S. HUFFSEY" Historical Calabash, probably Millford Glass Works, Millford, NJ, 1852 - 1860. Medium-to-deep grass green, almost a lime-green coloration, applied sloping collar - **"PH. DOFLEIN / MOULD MAKER / NTH 5! ST 84"** (on base), blowpipe pontil scar, Qt, attic mint. GI-112. Excellent condition, beautiful and rare color for a Kossuth Calabash.

Est.: \$1,200 - \$2,400 • Min. bid: \$600



Lot 11

"LOUIS KOSSUTH" / BUST OF KOSSUTH - STEAM FRIGATE / "U.S. STEAM FRIGATE / MISSISSIPPI / S. HUFFSEY" Historical Calabash, probably Millford Glass Works, Millford, NJ, 1852 - 1860. Brilliant yellowish-olive coloration, applied sloping collar - **"PH. DOFLEIN / MOULD MAKER / NTH 5! ST 84"** (on base), blowpipe pontil scar, Qt, attic mint. GI-112. Exceptional color, bubbly, brilliant, sparkling, a standout top example!

Est.: \$10,000 - \$20,000 • Min. bid: \$5,000



Lot 12

EAGLE - EAGLE WITH SERPENT Historical Flask, Pittsburgh glass-house, 1830 - 1840. Colorless with a slight vaseline tone, sheared mouth - blowpipe pontil scar, Pt; (a minor, 3/16" flake from the edge of the base, a couple of small spots of faint interior haze, barely noticeable, otherwise virtually attic mint). GII-9. A great example, good impression, and with almost no high point wear. Listed as very rare by McKearin. A top, early beaded eagle flask.

Est.: \$4,000 - \$8,000 • Min. bid: \$2,000



Lot 13

EAGLE - "DYOTTVILLE GLASS WORKS / PHILADA" Historical Flask, Dyottville Glass Works, Philadelphia, PA, 1855 - 1865. Aquamarine, sheared mouth - early smooth base, Pt, near mint; (just a trace of faint wear including a bit of minor roughness and a shallow pinhead flake on the back edge of the lip). GII-38. A bright, clean example and, as noted by McKearin, a comparatively scarce mold. These are getting harder to find and this is certainly a nice clean one.

Est.: \$175 - \$350 • Min. bid: \$100



Lot 14

EAGLE - EAGLE Historical Flask, Kensington Glass Works, Philadelphia, 1825 - 1840. Beautiful, medium emerald coloration, sheared mouth - blowpipe pontil scar, Pt, very near mint; (a minor, 5/8" shallow sliver flake near the pontil extends along the edge of the base, otherwise pristine!) GII-40. A beautiful example, good depth of color, excellent clarity, crisp mold impression, bright and clean.

Est.: \$2,000 - \$4,000 • Min. bid: \$1,000



Lot 15

"LIBERTY" / EAGLE - "WILLINGTON / GLASS, Co / WEST WILLINGTON / CONN" Historical Flask, 1855 - 1865. Medium-to-deep golden amber with a slight reddish-orange tone, applied round collar with lower bevel - smooth base, Qt, near mint; (just a slight trace of very minor, faint wear, otherwise perfect). GII-61. A great example, nice character, plenty of tiny seed bubbles, virtually no high point wear, outstanding condition!

Est.: \$600 - \$900 • Min. bid: \$300



Lot 16

Lot 16 "LIBERTY" / EAGLE - "WILLINGTON / GLASS, Co / WEST WILLINGTON / CONN" Historical Flask, 1850 - 1860. Olive green, sheared mouth - blowpipe pontil scar, Pt, near mint; (just a trace of minor wear near the heel on the reverse and a few minor pinhead open surface bubbles). GII-64. Nice character having plenty of tiny seed bubbles and a large potstone (with no associated issues at all). A rare mold with the pontil scarred base.

Est.: \$600 - \$900 • Min. bid: \$300



Lot 17

"LIBERTY" / EAGLE - "WILLINGTON" / GLASS, Co / WEST WILLINGTON / CONN" Historical Flask, 1855 - 1865. Olive green, applied sloping collar - early smooth base, Pt, near mint; (just a slight trace of minor usage wear). GII-64. A fantastic example having a crisp, stronger than average mold impression, very little exterior wear, and good eye-appeal with the sloping collared mouth.

Est.: \$300 - \$500 • Min. bid: \$150



Lot 21

EAGLE - CORNUCOPIA Historical Flask, Keene Marlboro Street Glassworks, Keene, NH 1830 - 1842. Rich, medium-to-deep olive coloration, sheared mouth - blowpipe pontil scar, Pt, near mint; (a few small, paper-thin open surface bubbles, a touch of minor high point wear on the reverse, otherwise perfect). GII-73a. Strong mold impression, nice character with plenty of bubbles throughout. A little more scarce in this pure green coloration.

Est.: \$175 - \$275 • Min. bid: \$100



Lot 18

EAGLE - "NEW LONDON" / ANCHOR / "GLASS WORKS", New London Glass Works, New London, CT, 1856 - 1866. Light yellowish green, applied double round collar - smooth base, ½ Pt, very near mint; (a bit of spotty light interior content residue, otherwise attic mint). GII-67. A comparatively scarce mold, crisp strong impression, no high point wear, very scarce-to-rare in this light yellow-green color!

Est.: \$800 - \$1,200 • Min. bid: \$400



Lot 22

EAGLE - EAGLE Historical Flask, a Pittsburgh district glasshouse, 1860 - 1875. Light-to-medium cornflower, approaching a light sapphire coloration, applied collar with flat band - smooth base, Pt, virtually attic mint; (just a small trace of faint interior milkiness, and a paper-thin tiny pinhead open surface bubble). GII-92. A beautiful flask, and a very attractive rare color for this mold.

Est.: \$800 - \$1,200 • Min. bid: \$400



Lot 19

EAGLE - "NEW LONDON" / ANCHOR / "GLASS WORKS", New London Glass Works, New London, CT, 1856 - 1866. Bright yellowish-honey coloration, applied double round collar - smooth base, Pt, sparkling attic mint! GII-68. Comparatively scarce. A gorgeous example, clean, bright, sparkling, and with plenty of yellowish tones.

Est.: \$1,500 - \$3,000 • Min. bid: \$800



Lot 23

CORNUCOPIA - URN Pictorial Flask, probably Mt. Pleasant Glass Works, Mt. Pleasant, NY, 1846 - 1855. Olive green, applied sloping collar - smooth base, ½ Pt, near mint; (a little light interior residue, likely washable, and a pinhead flake on the side near the medial rib). GIII-11. A scarce mold, especially so having the applied sloping collar. In addition, a particularly crude example having several large folds of glass on the Cornucopia side as well as extra glass on the interior of the neck.

Est.: \$200 - \$400 • Min. bid: \$120



Lot 20

EAGLE - CORNUCOPIA Historical Flask, Keene Marlboro Street Glassworks, Keene, NH 1830 - 1842. Beautiful light-to-medium yellowish olive amber, sheared mouth - blowpipe pontil scar, Pt, perfect! GII-72. Outstanding character and crudity, the glass is filled with tiny seed bubbles and impurities. In addition, a very pretty example, light and bright and with plenty of yellowish tones.

Est.: \$200 - \$400 • Min. bid: \$100



Lot 24

CORNUCOPIA - URN Pictorial Flask, New England, 1835 - 1850. Medium olive amber, sheared mouth - blowpipe pontil scar, ½ Pt; (a little minor high point wear, otherwise excellent). GIII-12. A comparatively scarce cornucopia mold, crude, nice character.

Est.: \$125 - \$225 • Min. bid: \$70



Lot 25

MASONIC - EAGLE Historical Flask, New England, probably Keene Marlboro Street Glassworks, Keene, NH, 1815 - 1830. Clear, light apple green, applied round collar - blowpipe pontil scar, Pt, near mint; (just a trace of minor high point wear, otherwise excellent!) GIV-9. A clean, bright, sparkling example of this heavy, early Masonic Flask. Scarce mold.

Est.: \$800 - \$1,200 • Min. bid: \$400



Lot 29

"UNION" / CLASPED HANDS / SQUARE AND COMPASS - EAGLE Historical Flask, a Pittsburgh glass-house, 1860 - 1870. Light yellowish-honey shading to a bright golden coloration in the shoulders, applied ring collar with small bevel - smooth base, Qt, near attic mint; (a couple of tiny pinhead open surface bubbles; a trace of extremely faint interior milkiness, barely noticeable). GIV-38. Bold, outstanding impression, excellent character, great color!

Est.: \$1,000 - \$1,500 • Min. bid: \$500



Lot 26

MASONIC - EAGLE Historical Flask, Keene Marlboro Street Glassworks, Keene, NH, 1820 - 1830. Medium olive amber below the shoulders shading to a deep olive amber near the base, sheared mouth - blowpipe pontil scar, ½ Pt, very near mint; (just a trace of minor high point wear, otherwise perfect). GIV-24. Nice crude glass, excellent condition.

Est.: \$300 - \$500 • Min. bid: \$150



Lot 30

"SUCCESS TO THE RAILROAD" / LOCOMOTIVE - (Reverse same) Historical Flask, Lancaster Glass Works, Lancaster, NY, 1849 - 1860. Aquamarine, sheared mouth - blowpipe pontil scar, Pt, virtually attic mint; (a tiny pinprick speck of roughness on the edge of the sheared lip, otherwise perfect). GV-1. A clean, bright example of this comparatively scarce and desirable mold.

Est.: \$400 - \$600 • Min. bid: \$200



Lot 27

MASONIC - MASONIC Historical Flask, probably New England, 1820 - 1835. Clear, light-to-medium blue green, sheared mouth - sand type pontil scar, ½ Pt, near mint; (a couple of chips, 1/8" and 3/16", off the top of the sheared mouth, otherwise perfect). GIV-28. Scarce mold. A beautiful example, bright, clean, crisp, with excellent clarity. This example is devoid of the high point wear that so often plagues this mold and many of the other early Masonic flasks.

Est.: \$400 - \$800 • Min. bid: \$200



Lot 31

HORSE PULLING CART - EAGLE Historical Flask, Coventry Glass Works, Coventry, CT, 1830 - 1848. Medium-to-deep olive green, sheared mouth - blowpipe pontil scar, Pt; (just a bit of minor content residue, primarily in the base, otherwise pristine and virtually attic mint). GV-9. A great example of a classic early New England railroad flask. This one is devoid of the so-often-encountered highpoint wear on these high-relief railroad molds.

Est.: \$300 - \$500 • Min. bid: \$180



Lot 28

MASONIC ARCH - FRIGATE / "FRANKLIN." - "FREE TRADE AND SAILORS RIGHTS" - "KENSINGTON GLASS WORKS PHILADELPHIA" Historical Flask, probably 1825 - 1835. Aquamarine, sheared mouth - blowpipe pontil scar, Pt, pristine perfect! GIV-34. A spectacular example, bright, clean, sparkling, crisp, exceptionally bold embossing. The mold impression could not be better!

Est.: \$400 - \$600 • Min. bid: \$200



Lot 32

SUNBURST FLASK, Keene Marlboro Street Glassworks, Keene, NH, 1815 - 1830. Bright, yellowish grass green, sheared mouth - blowpipe pontil scar, Pt; (just the slightest trace of faint wear and a 3/8" by 1/4" chip from the corrugated ring at edge of base, otherwise pristine!) GVIII-2. One of the heavy "2-pounders". Beautiful, rich color, stronger than most, and with a nice brilliance to the glass. Provenance: Ex. Chris Hartz collection.

Est.: \$500 - \$800 • Min. bid: \$250



Lot 33

SCROLL FLASK, Midwest, 1845 - 1860. Pinkish-moonstone coloration, sheared, tooled and inward rolled mouth, solid glass-tipped pontil scar, Qt, near mint; (a band of faint, light interior haze, mainly in the lower half of the body, otherwise perfect). GIX-2. A rare and attractive color for a Scroll Flask (or any flask), and one that will definitely stand out on a shelf. Provenance: John Apple collection.

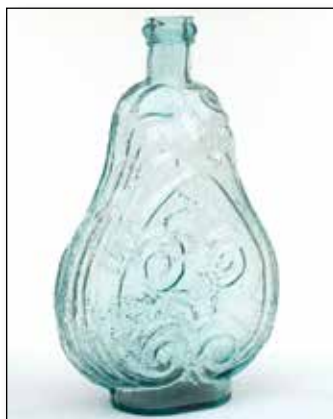
Est.: \$1,200 - \$2,400 • Min. bid: \$600



Lot 37

SCROLL FLASK, Midwest, 1850 - 1860. Medium amber, crudely applied ring-type collar - iron pontil scar, Pt, near mint; (just a trace of minor roughness on the inside edge of the applied collar; a 1/4" in-manufacture flake on the side of the neck from beneath the applied ring collar mentioned for complete accuracy, otherwise excellent). GIX-10. A good solid example with some nice character, bubbles and stretch marks, in the neck and shoulders.

Est.: \$500 - \$800 • Min. bid: \$300



Lot 34

SCROLL FLASK, Midwest, 1845 - 1860. Aquamarine, applied collar with band - large iron pontil scar, Qt, perfect! GIX-2d. As noted by McKearin, a rare mold having the raised round medallion between, and overlapping, the two medial scrolls. Beautiful, attic mint condition, nice character having a crude, pebbly texture to the glass. Provenance: John Apple collection.

Est.: \$200 - \$400 • Min. bid: \$120



Lot 38

SCROLL FLASK, Midwest America, 1845 - 1860. Clear medium apple green, almost a grass green, sheared mouth - blowpipe pontil scar, Pt, near mint; (shallow 1/8" flake and a very minor pinhead bit of roughness on the edge of the sheared mouth). Unlisted, - similar to GIX-11 (with defined space between scrolls at center, but appears to have an ill-defined 9-pointed upper star). Scarce mold, nice color, condition, and clarity.

Est.: \$400 - \$600 • Min. bid: \$200



Lot 35

"LOUISVILLE, KY - GLASS WORKS" SCROLL FLASK, Louisville Glass-works, 1855 - 1860. Greenish aquamarine, sheared mouth - iron pontil scar, Qt., near mint; (a bit of minor roughness including a shallow 3/16" flake on the top of the sheared mouth, otherwise virtually attic mint). GIX-6. Comparatively scarce. A great looking, bright, clean example having good depth of color. Provenance: John Apple collection.

Est.: \$250 - \$450 • Min. bid: \$140



Lot 39

SCROLL FLASK, Midwest America, 1845 - 1860. Bright, medium citron or yellowish green, sheared mouth - blowpipe pontil scar, Pt; (a small 1/8" flake and a 5/8" sliver-type chip along the inside edge of the roughly sheared mouth, otherwise very near mint). GIX-10d. A rare mold, bold impression, beautiful scarce color. Provenance: John Apple collection.

Est.: \$800 - \$1,200 • Min. bid: \$400



Lot 36

"LOUISVILLE, KY - GLASS WORKS" SCROLL FLASK, Louisville Glass-works, 1855 - 1860. Greenish aquamarine, sheared mouth - iron pontil scar, Pt; (a little faint interior dullness and a slight trace of exterior wear including a tiny pinhead bit of roughness on the edge of the sheared lip, otherwise excellent). GIX-8. A scarce marked Louisville mold that if desired, with just a day or two in the tumbler, would likely clean to original luster. John Apple collection.

Est.: \$200 - \$400 • Min. bid: \$100



Lot 40

SCROLL FLASK, Midwest America, 1850 - 1860. Rich, medium-to-deep yellowish honey coloration, rough sheared mouth - iron pontil scar, Pt, virtually attic mint; (just a trace bit of minor wear including a couple of tiny pinprick specks of roughness on the crude, rough sheared mouth). GIX-13. A comparatively scarce mold in a rich, gorgeous, eye-appealing color. Provenance: John Apple collection, Ex. Mike Roberts collection.

Est.: \$1,200 - \$2,400 • Min. bid: \$600



Lot 41

SCROLL FLASK, Midwest America, 1845 - 1860. Light golden with a honey tone, sheared mouth - iron pontil scar, ½ Pt, near mint; (some typical light high point wear and a tiny, barely pinprick spot of roughness on the edge of the sheared mouth). GIX-33a. The GIX-33a mold is listed as "Extremely rare" by McKearin, and unlisted in amber. We sold this example back in May, 2015. It is believed to be one of only two, or possibly three, known in amber. John Apple collection.

Est.: \$1,800 - \$3,600 • Min. bid: \$900



Lot 45

"GENL TAYLOR NEVER SURRENDERS" / CANNON - "A / LITTLE / MORE / GRAPE / CAPT BRAGG" / VINES AND GRAPES Historical Flask, Baltimore Glass Works, 1848 - 1855. Medium copper with some rich apricot tones, sheared mouth - blowpipe pontil scar, Pt, mint! GX-4. A scarce, very desirable mold, outstanding mold impression, fantastic color! The first time this flask has been offered for sale in more than 25 years. Provenance: Ex. Paul Richards, James Chebalo collections.

Est.: \$4,000 - \$8,000 • Min. bid: \$2,000



Lot 42

SCROLL FLASK, Midwest, 1840 - 1860. Virtually colorless with a slight moonstone tone in the base, sheared and partial inward rolled mouth - blowpipe pontil scar, ½ Pt; (a ¾" area of the lip edge may have been buffed, along with a tiny 1/16" flake, otherwise perfect). GIX-36. A scarce mold, very rare in this colorless glass. This is the same example that sold in 2017, and the only colorless example of this mold recorded at auction in more than 25 years. John Apple collection.

Est.: \$800 - \$1,200 • Min. bid: \$400



Lot 46

SLOOP - STAR Pictorial Flask, probably Bridgeton Glass Works, Bridgeton, NJ, 1846 - 1855. Aquamarine, sheared and tooled mouth - blowpipe pontil scar, ½ Pt, virtually attic mint; (a trace of faint interior content residue, otherwise perfect). GX-8a. A comparatively scarce little flask.

Est.: \$150 - \$250 • Min. bid: \$80



Lot 43

"BP & B" SCROLL FLASK, Bakewell, Page & Bakewell, Pittsburgh, PA, 1825 - 1832. Aquamarine, sheared mouth - blowpipe pontil scar, ½ Pt; (a little spotty light haze, primarily on the interior of the shoulders; a touch of minor exterior wear). GIX-38a. A scarce, early glasshouse marked scroll flask. Provenance: John Apple collection.

Est.: \$200 - \$400 • Min. bid: \$120



Lot 47

"FOR PIKE'S PEAK" / PROSPECTOR - EAGLE / "CEREDO" Historical Flask, Ceredo Glass Works, Ceredo, WV, 1861 - 1865. Bright, medium yellowish green, applied mouth with flat band - smooth base, Qt, near mint; (a little faint interior residue that would almost certainly wash out, and a 1/8" chip from the top edge of the lip, otherwise attic mint). GXI-34. A comparatively scarce mold, beautiful, very scarce color that does not wash out, excellent condition.

Est.: \$1,800 - \$3,200 • Min. bid: \$900



Lot 44

SCROLL FLASK, probably an early Pittsburgh district glasshouse, 1835 - 1845. Bright, bluish-aquamarine, corseted scroll form, sheared mouth - blowpipe pontil scar, Pt; (minuscule little pinhead flake on the inside edge of the sheared mouth, otherwise pristine perfect). GIX-45. A beautiful example, scarce mold, and perhaps the most ornate of all the charted scroll flasks. Provenance: John Apple collection.

Est.: \$600 - \$900 • Min. bid: \$300



Lot 48

"FOR PIKE'S PEAK" / PROSPECTOR - HUNTER Historical Flask, Ravenna Glass Works, Ravenna, OH, 1858 - 1864. Light-to-medium yellowish-olive coloration, applied collar with band - smooth base, Pt, virtually attic mint; (a thin faint ring of content haze about an inch from the base, barely noticeable, and a tiny pinprick speck of roughness on the inner edge of the lip, likely in-manufacture, otherwise perfect). GXI-51. A great example, excellent clarity, and in a nice lighter tone.

Est.: \$1,500 - \$3,000 • Min. bid: \$1,500



Lot 49

Lot of (3), Pike's Peak Historical Flasks, 1860 - 1870. "PIKES PEAK" / PROSPECTOR - EAGLE, 2nd example, "FOR PIKE'S PEAK" / PROSPECTOR - EAGLE, 3rd example, PROSPECTOR - EAGLE, all are aquamarine, applied mouth with flat band - smooth base, ½ Pt, Qts; (the ½ Pt. is virtually pristine with crisp, extremely bold embossing; both Qts. are near mint with just a couple of small pinhead flakes). GXI-20, GXI-30, and GXI-40.

Est.: \$300 - \$500 • Min. bid: \$150



Lot 50

"UNION" / CLASPED HANDS / "L.F. & CO" - EAGLE / "PITTSBURG PA" Historical Flask, Lippincott, Fry & Company, Pittsburgh, 1866 - 1867. Beautiful honey coloration along the sides shading to a rich golden with a slight orange tone through the shoulders and base, applied collar with flat band - smooth base, Qt, attic mint. GXII-14. A bright, clean example devoid of any high point wear. In addition, a scarce flask, the company being in business for only two years.

Est.: \$600 - \$900 • Min. bid: \$300



Lot 51

"UNION" / CLASPED HANDS / "F.A. & Co" - CANNON Historical Flask, Fahnestock, Albree & Company, Pittsburgh, 1860 - 1872. Gorgeous lemon yellow with an olive tone, applied mouth with band - smooth base, Pt; (just a trace of light exterior wear on the reverse, otherwise perfect). GXII-40. Unlisted outstanding color, good mold impression, excellent condition, a top example. Provenance: James Chebalo collection.

Est.: \$1,800 - \$3,600 • Min. bid: \$1,000



Lot 52

Lot of (2), Historical Flasks, 1850 - 1860. WASHINGTON - SHEAF OF RYE Flask, and a CLASPED HANDS / "UNION" - EAGLE Calabash. Both aquamarine, applied collars - blowpipe pontil and iron pontil scarred bases, Pt. & Qt, both are virtually attic mint; (just a trace of typical minor wear). GI-58 & GXII-43. The Washington flask is nicely whittled, the Claspeds Hands - Eagle Calabash has a great impression. Both clean, bright examples.

Est.: \$150 - \$250 • Min. bid: \$80



Lot 53

"SPRING GARDEN" / ANCHOR / "GLASSWORKS" - LOG CABIN Historical Flask, Spring Garden Glass Works, Baltimore, MD, 1851 - 1856. Medium-to-deep strawberry puce with an apricot tone, applied square collar - smooth base, Pt, near mint; (a little light exterior wear, primarily on the reverse; a little 1/8" sliver open bubble on the edge of the lip). GXIII-58. A beautiful, rare and unlisted color for this mold. Provenance: James Chebalo collection.

Est.: \$2,000 - \$4,000 • Min. bid: \$1,000



Lot 54

"TRAVELER'S" / (STAR) / "COMPANION" - SHEAF OF GRAIN Pictorial Flask, Westford Glass Works, Westford, CT, 1857 - 1873. Yellowish tobacco amber, applied sloping collar - smooth base, Qt; (a little light exterior dullness and scattered minor wear). GXIV-1. Whittled, crude glass and plenty of tiny seed bubbles.

Est.: \$200 - \$300 • Min. bid: \$100



Lot 55

"TRAVELER's / COMPANION" - (STAR) Historical Flask, Ravenna Glass Works, Ravenna, OH, 1857 - 1864. Medium amber, sheared mouth - oval iron pontil scar, ½ Pt; (some scattered light exterior wear, otherwise excellent). GXIV-7.

Est.: \$300 - \$500 • Min. bid: \$150



Lot 56

"GRANITE / GLASS / CO - STODDARD . N H", 1846 - 1856. Bright, yellowish olive amber, almost an olive yellow, sheared mouth - heavy tubular pontil scar, Pt; (a couple of faint scratches and a bit of typical light exterior wear, otherwise near mint). GXV-7. A beautiful example, light and bright, and with crude whittled glass.

Est.: \$700 - \$1,200 • Min. bid: \$350



Lot 57

"GRANITE / GLASS / CO - STODDARD . N H", 1855 - 1862. Amber with a slight reddish tone, applied, tall double collared mouth - smooth base, Pt; (a little high point wear and a small potstone on the surface of the glass on the reverse has a tiny bit of iridescence around it, otherwise excellent). GXV-7. Crude glass having some nice bubbles and impurities.

Est.: \$300 - \$500 • Min. bid: \$150



Lot 61

Large Freeblown Chestnut Flask, probably New England, 1810 - 1830. Beautiful, light yellowish olive amber, almost an olive-yellow through the mid-body, shading to a deep olive amber through the neck and in the base, chestnut form, applied short tapered collar - delicate blowpipe pontil scar, ht. 10 3/4", virtually perfect; (just a slight bit of expected light exterior wear). A beautiful example, nice color, attractive with tapered collar, very scarce size.

Est.: \$500 - \$800 • Min. bid: \$250



Lot 58

"GRANITE / GLASS / CO - STODDARD . N H", 1855 - 1862. Medium-to-deep olive amber, applied double collar - smooth base, Pt, near mint; (a touch of minor wear and a bit of washable interior content residue, otherwise perfect). GXV-7. Strong, bold embossing, and a bit deeper in color than most. Note; a couple of early collector tags remain on the base.

Est.: \$400 - \$600 • Min. bid: \$200



Lot 62

Large Freeblown Chestnut Flask, New England, 1785 - 1825. Light-to-medium olive coloration with a very slight yellowish tone, plump chestnut form, sheared mouth with tooled ring collar - delicate blowpipe pontil scar, ht. 9 5/8", near mint; (a little typical light exterior wear, a tissue-paper thin partially open bubble on the interior, otherwise perfect). A nice example, scarce size.

Est.: \$400 - \$600 • Min. bid: \$200



Lot 59

"GRANITE / GLASS / CO - STODDARD . N H", 1855 - 1862. Yellowish olive amber, applied sloping collar - smooth base, Pt; (a little scattered minor exterior wear, otherwise near mint). GXV-7. A great looking example, heavily whittled, plenty of tiny seed bubbles throughout, and attractive with the applied tapered collar.

Est.: \$500 - \$800 • Min. bid: \$250



Lot 63

Large Freeblown Chestnut Flask, New England, 1785 - 1825. Delicate, clear light-to-medium olive coloration with a very slight yellowish tone, plump chestnut form, sheared mouth with an applied ring collar - delicate blowpipe pontil scar, ht. 8 3/4"; (just a touch of expected typical light usage wear, otherwise perfect). A great example, excellent clarity, delicate, beautiful, and in a scarce large size.

Est.: \$400 - \$600 • Min. bid: \$200



Lot 60

"GRANITE / GLASS / CO - STODDARD . N H", 1855 - 1862. Golden amber with a slight olive tone, applied blob collar - smooth base, Pt; (a little light interior content haze in the upper half, a 1/8" flake on the top edge of the blob collar, otherwise excellent). GXV-7. Nice bold embossing, a little more scarce with the blob collar.

Est.: \$300 - \$500 • Min. bid: \$150



Lot 64

Freeblown Chestnut Flask, an early South Jersey glasshouse, probably Wistarburgh Glass Works, 1750 - 1780. Medium olive coloration, plump chestnut form, sheared and outward tooled mouth - blowpipe pontil scar with a heavy piece of iron oxide in center of pontil, ht. 8 5/8; (some scattered light scratches and overall moderate to heavy usage wear; the top and edge of the lip appears at some point to have been finely polished, a few shallow flakes on top edge of lip).

Est.: \$200 - \$400 • Min. bid: \$100



Lot 65

Freeblown Chestnut Flask, probably New England, possibly mid-Atlantic, 1785 - 1820. Medium olive, chestnut form, sheared mouth with applied ring collar - blowpipe pontil scar, ht. 8"; (a little typical scattered light wear; a small potstone on the surface of the glass with a tiny cooling radiation and a little iridescent, and a shallow in-manufacture pontil flake, otherwise excellent). Nice character, a very crude example, and likely very early. Also, at 8", a little larger in size than most

Est.: \$200 - \$400 • Min. bid: \$100



Lot 66

Freeblown Chestnut Flask, New England, 1790 - 1820. Delicate, light yellowish olive coloration, plump chestnut form, sheared, tooled string lip - delicate blowpipe pontil scar, ht. 7 1/4", virtually attic mint; (only the slightest trace of light exterior wear, otherwise perfect). A great example, good form, nice color and clarity, outstanding condition.

Est.: \$250 - \$400 • Min. bid: \$140



Lot 67

Freeblown Chestnut Flask, New England, 1785 - 1820. Straw-yellow with an olive tone, plump chestnut form, crudely sheared mouth with an applied ring collar - delicate blowpipe pontil scar, ht. 7 1/8"; (a couple of flakes, 1/8" or less, on the top edge of the crudely sheared lip; a small sand grain at the edge of the base has a tiny bit of iridescence around it, barely noticeable, otherwise very near mint). A beautiful, crudely blown example.

Est.: \$200 - \$400 • Min. bid: \$100



Lot 68

Freeblown Chestnut Flask, New England, 1785 - 1820. Clear, delicate, light straw olive coloration, chestnut form, sheared, tooled string lip - delicate blowpipe pontil scar, ht. 5 1/2", attic mint. A great little example filled with tiny seed bubbles, classical form, nice light color.

Est.: \$250 - \$400 • Min. bid: \$140



Lot 69

Freeblown Pocket Flask, Mid-Atlantic or New England, 1800 - 1830. Medium olive amber, flattened circular body, sheared tooled mouth - heavy blowpipe pontil scar, ht. 5 1/4"; (a little light exterior wear; a bit of patchy light interior content haze, some of which may wash out, otherwise excellent). An early, unusual pocket flask with good character. The weight, color, and pontil are more indicative of Mid-Atlantic than Midwest. Similar flasks were also believed to have been blown at Stoddard. Scarce.

Est.: \$200 - \$400 • Min. bid: \$100



Lot 70

Freeblown Decanter or Table Serving Bottle, probably New England, possibly Mid-Atlantic, 1800 - 1830. Gorgeous honey amber with a slight olive tone, plump chestnut body with nearly straight sides tapering slightly to a cylindrical base, elongated neck with an applied short tapered collar - delicate blowpipe pontil scar, ht. 9 5/8", near mint; (just a trace bit of minor light wear). Similar in form and construction to Lot #50, AGG Auction #6. An outstanding decanter-type bottle, rare color, great eye-appeal.

Est.: \$800 - \$1,600 • Min. bid: \$400



Lot 71

Miniature, Freeblown Globular Bottle, Mid-Atlantic or New England, 1780 - 1820. Rich, deep 'old amber', small globular form, sheared mouth with an applied ring collar - blowpipe pontil scar, ht. 4 3/4"; (just a little light exterior wear including a few small scattered open surface bubbles, otherwise perfect). See MW, plate 47, #7; McK, plate 226. The 'earthy' amber color is almost a chocolate coloration. An absolutely wonderful little glob, crude glass, excellent condition, rare size.

Est.: \$1,000 - \$2,000 • Min. bid: \$500



Lot 72

Large, Freeblown Globular Bottle, New England, 1790 - 1820. Bright yellowish-olive, globular form, sheared mouth with a large applied string rim - blowpipe pontil scar, ht. 9 3/4", very near mint; (a small potstone on the inside surface of the glass, near the base, has a couple of tiny cooling lines, barely visible without a loop, and a trace of minor wear, otherwise perfect). A beautiful example, almost no wear, good form, excellent condition. Provenance: Ex. James Becker collection.

Est.: \$500 - \$800 • Min. bid: \$250



Lot 73

Large Blown Apothecary or Chemical Wares Bottle, America, possibly Whitney Glass Works, Glassboro, NJ, 1850 - 1865. Amber, large, bell-form cylinder with domed shoulders, tooled wide flared mouth, huge, solid glass 'lollypop'-type stopper, cloverleaf pontil scar, ht. 16" (including stopper), near mint; (a little light exterior usage wear). This large bottle was likely covered in wicker or wood at one time. An interesting piece. A fresh find from a Long Island estate.

Est.: \$150 - \$250 • Min. bid: \$80



Lot 74

Early, Blown Utility Jar, New York State, probably Mt. Pleasant (Saratoga Mountain Glass Works), 1846 - 1860. Beautiful, pure olive coloration with a slight forest tone, cylindrical, freeblown or possibly dip mold, short neck, wide mouth with an applied large ring or "donut" collar - heavy blowpipe pontil scar, ht. 8", near mint; (some scattered expected minor usage wear). A beautiful early jar, good color and character (some nice stretch marks in the neck).

Est.: \$400 - \$600 • Min. bid: \$200



Lot 75

Early Freeblown or Dip Mold Snuff Jar, New England, 1785 - 1820. Bubbly, light-to-medium yellowish-olive amber, almost an olive yellow, square with domed shoulders, sheared and slightly flared mouth - blowpipe pontil scar, ht. 6", near mint; (some typical expected light usage wear, otherwise perfect). A fantastic example, absolutely loaded with character having seedy, bubbly glass. The 'metal' is similar to the early New England Chestnut flasks.

Est.: \$800 - \$1,200 • Min. bid: \$400



Lot 76

Large, Oversized Utility or Blacking Bottle, an early New England glasshouse, 1825 - 1845. Medium olive amber, square, sheared mouth - blowpipe pontil scar, ht. 5 3/8", attic mint! Outstanding character, the crude wavy glass is filled with tiny seed bubbles and impurities, nice bright color, and in a very rare, noticeably larger mold size that very few collectors have. If you like blacking bottles and character, this one might be for you!

Est.: \$300 - \$600 • Min. bid: \$150



Lot 77

Pattern Molded Globular Bottle, Midwest, probably Zanesville Glass Works, Zanesville, OH, 1820 - 1835. Rich, bluish aquamarine, globular form with 24 ribs swirled to the left, sheared, tooled and outward folded mouth - blowpipe pontil scar, ht. 8 1/8", near mint; (a minor trace of faint interior haze near the shoulder, a paper-thin open sliver type bubble on the inside edge of the lip). Excellent form, good strong pattern, deep, rich color. John Apple collection.

Est.: \$400 - \$600 • Min. bid: \$200



Lot 78

Pattern Molded Club or Decanter-Type Bottle, Midwest, 1825 - 1840. Aquamarine, transitional club or 'beehive' form with sides curving inward towards base, 25 ribs swirled to the right, applied blob collar - blowpipe pontil scar, ht. 8 1/2", attic mint. The form is a bit unusual, sharing attributes of both the "club" and "globular" bottles. The rib count of 25 is very scarce in this style of bottle. John Apple collection.

Est.: \$175 - \$350 • Min. bid: \$100



Lot 79

Pattern Molded Toilet Water Bottle, Midwest, probably Zanesville Glass Works, 1820 - 1840. Bluish aquamarine, cruet or toilet water bottle form, 24 ribs swirled to the left, sheared, tooled and outward flanged mouth - blowpipe pontil scar, ht. 6 1/4", virtually attic mint; (just a touch of typical light wear; a trace of faint milkiness in the neck). Very rare! As a form, these early Midwest pattern molded cruets are so much more difficult to find than either the globes or clubs. A great example.

Est.: \$400 - \$800 • Min. bid: \$200



Lot 80

Pattern Molded Pocket Flask, Midwest, probably Zanesville Glass Works, Zanesville, OH, 1820 - 1835. Medium citron green with a slight olive tone, 24 vertical ribs, sheared, tooled and slightly flared mouth - pontil scar, ht. 5 1/8"; (some scattered light scratches and usage wear, otherwise excellent). See MW, plate 235, #1. An outstanding and rare color for a Ohio pattern molded flask. In addition, the base appears to have a light terminal ring which is also unusual. A great little flask!

Est.: \$1,000 - \$2,000 • Min. bid: \$500



Lot 81

Early Pitkin-Type Flask, Mid-Atlantic, or possibly an early Pittsburgh-Monongahela glasshouse, 1785 - 1815. Light green with a slight yellowish tone, half post method with 20 heavy vertical ribs over 20 ribs swirled to the right, early plump circular body, sheared mouth - blowpipe pontil scar, ht. 4 1/4"; (a little patchy light interior haze; some moderate exterior wear, otherwise excellent). Very similar to McK, plate 233, #19 (see text p.439). A rare, early Pitkin.

Est.: \$800 - \$1,600 • Min. bid: \$400



Lot 82

Early, Pattern Molded Pinched Spirits Flask, Germany or Alpine region, 1720 - 1750. Medium sapphire with a Prussian-blue tone, corseted form, half-post, with a pinched center and 24 vertical ribs swirled slightly to the right, sheared mouth with original pewter collar and screw-on cap - blowpipe pontil scar, ht. 9", near mint; (some light interior residue in the shoulders that would likely wash out). See McK, plate 239, #5; VdB, plate 230. Rare and beautiful!

Est.: \$500 - \$800 • Min. bid: \$250



Lot 83

Early, Pattern Molded Spirits Flask, Continental, Germany or Alpine region, 1730 - 1760. Rich cobalt blue, ovoid-form flask blown in the German half-post method with 24 vertical ribs, sheared mouth with original pewter collar and screw-on cap - blowpipe pontil scar, ht. 8 3/4"; (slight bit of exterior usage wear, otherwise perfect). See McK, plate 239. A rare, beautiful early flask in a rich vivid cobalt, and outstanding condition. Nice with the intact original pewter top.

Est.: \$400 - \$600 • Min. bid: \$200



Lot 84

Enameled Snuff Flask, South German (Bavarian), 1875 - 1885. Emerald green, flattened circular body with cut faceted shoulders and neck, cut arched designs with gold paint along edges, white and orange enameled floral design and lettering reads in part, "Schnup mein Freund", brass closure - polished base, ht. 5 7/8"; (a flat, paper-thin, 1/4" flake from top of mouth, otherwise perfect). Translated text reads, "A pinch of snuff my friend / is well meant".

Est.: \$100 - \$200 • Min. bid: \$60



Lot 85

Poison Type Flask, Germany or America, 1830 - 1860. Gorgeous, striated amethyst coloration, horseshoe form, 2-piece mold with an overall hobnail or crosshatch pattern, corrugated sides, sheared, tooled and inward rolled mouth - sand type pontil scar, Pt, ht. 6 5/8", attic mint! KU-27. A beautiful flask that passes plenty of light so the gorgeous color may be easily enjoyed with normal backlighting or daylight. This is the scarcer of two sizes and in a fantastic, eye-appealing, color.

Est.: \$1,200 - \$1,800 • Min. bid: \$600



Lot 86

Poison Type Flask, Germany or America, 1830 - 1860. Pale green, virtually colorless, horseshoe form, 2-piece mold with an overall hobnail or crosshatch pattern, corrugated sides, sheared mouth - sand type pontil scar, Pt, ht. 6 7/8"; (a 1" scallop-type chip from the edge of the base, otherwise very near mint). KU-27. Scarce pint size, and also a color that is not often encountered.

Est.: \$200 - \$400 • Min. bid: \$100



Lot 87

Blown Three Mold Creamer, America, possibly Mantua, Ohio, 1822 - 1829. Colorless, globular body with geometric pattern, wide neck flaring outward to a sheared rim with a tooled, crimped pour spout - solid looped handle crimped and curled at lower attachment, blowpipe pontil scar, ht. 4 1/2", attic mint. GII-33. As noted by McKearin, the GII-33 pattern is an extremely rare mold attributed to the Mantua Glass Works, Mantua, Ohio. An early collector tag remains on base. Very rare and attractive.

Est.: \$400 - \$600 • Min. bid: \$200



Lot 88

Blown Three Mold Creamer, America, probably Boston and Sandwich Glass Works, Sandwich, MA, 1825 - 1835. Colorless, globular body with sunburst geometric pattern, wide neck with horizontal tooling rings flaring outward to a sheared rim, tooled and crimped pour spout - solid strap-type handle crimped and curled at lower attachment, blowpipe pontil scar, ht. 4 1/8", perfect. GIII-6. A bright, clean example, scarce mold.

Est.: \$300 - \$500 • Min. bid: \$150



Lot 89

Blown Three Mold Basket, probably America, possibly Boston and Sandwich Glass Works, Sandwich, MA, 1830 - 1840. Colorless, basket form with beaded arch baroque pattern, outward flared rim, applied solid glass handle - blowpipe pontil scar, ht. 3 5/8", perfect. GV-24. McKearin, plate 116, #4. Per McKearin, fragments of this pattern were believed to have been unearthed at Sandwich. Very scarce.

Est.: \$200 - \$400 • Min. bid: \$100



Lot 93

Corseted Cologne Bottle, Boston and Sandwich Glass Works, 1850 - 1865. Deep cobalt blue with some attractive violet tones, octagonal corseted form, elongated neck with a tooled, ring-type collar - blowpipe pontil scar, ht. 6", perfect! See B/K #5199; MW, plate 114, #7. Very attractive color, eye-appealing elongated neck, very scarce with the pontil scarred base (most examples having a smooth base). Per B/K, it is believed that this form in colognes is exclusive to the Sandwich Glass Works.

Est.: \$250 - \$450 • Min. bid: \$140



Lot 90

Blown Three Mold Toilet Water Bottle, America, probably Boston and Sandwich Glass Works, Sandwich, MA, 1825 - 1840. Deep, vivid cobalt blue, ovoid form, geometric pattern with ribbing swirled to the left, tooled, outward flanged mouth with matching patterned "tam-o'shanter" type stopper - ringed base with blowpipe pontil scar, ht. 6 3/8" (including stopper), near mint; (some expected minor exterior wear, otherwise perfect). GI-3, type 2. McK, plate 105, #8; AP, #242.

Est.: \$200 - \$400 • Min. bid: \$100



Lot 94

Corseted Cologne Bottle, Boston and Sandwich Glass Works, Sandwich, MA, 1860 - 1875. Opaque milkglass, octagonal corseted form, tooled, ring-type collar - smooth base, ht. 5 5/8", perfect. B/K #5199; MW, plate 114, #7. Very rare color for an octagonal corseted cologne bottle. It has been 30 years since this example has been offered for sale. Provenance: FOHBC Las Vegas Expo, 1988.

Est.: \$200 - \$400 • Min. bid: \$100



Lot 91

Sunburst Scent Bottle, New England, probably a South Boston area glasshouse, 1815 - 1835. Clear, brilliant sapphire blue, shield form with 12-ray sunburst pattern, center bead at convergence of rays, 11 small beads along each of the panel edges, sheared mouth pontil scar, ht. 2 3/4" sparkling attic mint! MW color plate IX, #2; BH# HIV-2. An extremely rare and desirable early scent bottle, outstanding "out-of-the-mold" pristine condition.

Est.: \$400 - \$600 • Min. bid: \$200



Lot 95

Paneled Cologne Bottle, possibly Boston and Sandwich Glass Works, Sandwich, MA, 1860 - 1880. Medium-to-deep cobalt with a slight violet tone, 12 panel, ovoid form tapering slightly from the shoulders to the base, tooled flanged mouth - smooth base, ht. 7 1/8", attic mint; (a tiny bit in in-making roughness on the edge of the flanged lip). B/K #5198. Termed, "Blown Molded Commercial Colognes", these early paneled bottles came in a variety of attractive sizes and colors.

Est.: \$175 - \$350 • Min. bid: \$100



Lot 92

Lot of (2), Blown Corseted Colognes, probably Boston and Sandwich Glass Works, 1840 - 1860. Both, canary-yellow coloration, hexagonal corseted body, polished lip, necks ground for stoppers, matching polished hexagonal finial stoppers - smooth bases (one example with polished base), ht. 7 1/2" and 7 3/4" including stoppers, near mint; (one stopper has several sliver-type chips from lower ground portion inserted in neck). Rare, beautiful eye-appealing form and color.

Est.: \$300 - \$600 • Min. bid: \$150



Lot 96

Fancy Cologne Bottle, America, probably a South Boston area glasshouse, 1860 - 1875. Vivid cobalt blue, cylindrical with alternating plain and vertical rows of beaded flutes, sheared, tooled and outward flared mouth - smooth base, ht. 10 1/4", near mint; (a minor 1/8" open surface bubble, a bit of dullness and faint wear on the inside edge of the lip, otherwise perfect). MW, plate 114, #4. A very difficult cologne to acquire, especially in this color and rare large size.

Est.: \$800 - \$1,200 • Min. bid: \$400



Lot 97

Fancy Cologne Bottle, America, probably a South Boston area glasshouse, 1860 - 1875. Rich, medium-to-deep emerald coloration, cylindrical with alternating plain and vertical rows of beaded flutes, sheared, tooled and outward flared mouth - smooth base, ht. 10 1/4", virtually attic mint; (a little faint interior residue). MW, plate 114, #4. A scarce mold, particularly in this large, 10 1/4" size, and in a very rare color for this mold. A gorgeous and eye-appealing cologne bottle.

Est.: \$1,000 - \$2,000 • Min. bid: \$500



Lot 98

Early Patterned Wine or Decanter, England, or possibly America, 1840 - 1860. Deep, vivid cobalt blue with a violet tone, cylindrical with 16 pronounced vertical ribs, sheared, tooled, and outward flared mouth - polished pontil scar, ht. 12", attic mint. These types of tall patterned wines were fashionable in England during the mid-19th century. Beautiful rich color, excellent condition, plenty of eye-appeal.

Est.: \$125 - \$250 • Min. bid: \$70



Lot 99

Early Blown Wine or Decanter, America or England, 1840 - 1860. Opaque jade green coloration, cylindrical, tooled flared mouth ground for stopper, applied ring collar, original disk type stopper - polished pontil scarred base, ht. 12 3/8" including stopper; (a 1/4" shallow sliver flake from the edge of the lower lip ring; a 1/4" chip or area of roughness on the edge of the disk stopper, otherwise perfect). An unusual decanter in a very rare color!

Est.: \$200 - \$400 • Min. bid: \$100



Lot 100

Lot of (2), Early Blown Cologne Bottles, probably a South Boston glasshouse, 1840 - 1860. Fiery opalescent robin's egg blue, and opaque striated periwinkle blue, both are cylindrical, sheared and tooled ring-type collars - blowpipe pontil scarred bases (large example also ground, an extra step of finishing the base), ht. 8 3/4" and 12" respectively, both are perfect. The large periwinkle cologne is scarce in size and color, beautiful with the striations swirled through the glass.

Est.: \$175 - \$275 • Min. bid: \$100



Lot 101

Lot of (5) rare Pawnee Bill items, America, 1888 - 1903. (3) **Pawnee Bill, filled Target Balls**, all are golden amber, 3-pc. mold, sheared mouths with original sealing wax stamped, "PB", "X", and 3rd stamp with a faint lattice pattern, 2 5/8" dia. Also included, a Pawnee Bill cigarette card and *Pawnee Bill's True History of the Great West* book. The balls are perfect; card has minor creases, book in poor condition. See AGG *Finch Auction*, Lot 624; also, *On Target!* Issue 57, 2014.

Est.: \$2,000 - \$4,000 • Min. bid: \$1,000



Lot 102

Lot of (2) Annie Oakley items, America, 1890 - 1905. Glass ball, yellowish-honey coloration with deeper splotches of amber swirled throughout, feather-filled, "A" (inside an "O"), stamped on wax seal, freeblown, 3 1/4" dia, near mint. An Annie Oakley cabinet card, not period, also included in the lot. The ball is one of five discovered at a 2014 estate auction in Quarryville, PA. It is theorized that the ball was sold, or given as a prize, at shows where Annie Oakley performed. See, *On Target!*, issue 57, 2014.

Est.: \$200 - \$400 • Min. bid: \$100



Lot 103

"GORDON'S- CHAFALA / FURNITURE / POLISH - PREPARED BY - WILLIAM TILDEN & NEPHEW, / 115 NORFOLK ST N.Y. / AND 45 VINE ST. / CIN-CINNATI O.", America, 1845 - 1860. Aquamarine, rectangular with beveled corners, applied sloping collar - blowpipe pontil scar, ht. 7"; (lightly cleaned to original luster with just a little minor wear, and small partially open bubble). Rare! Only the 2nd example that we have seen.

Est.: \$300 - \$500 • Min. bid: \$150



Lot 104

Small, Fancy Cathedral Bottle, America, 1845 - 1860. Aquamarine, octagonal form, five panels having cathedral windows, domed shoulders, wide mouth with a tooled, thin flanged lip - blowpipe pontil scar, ht. 3 1/8", virtually attic mint; (just a touch of faint interior residue or dullness, otherwise perfect). A very rare little utility, possibly for a mucilage, cosmetic or salve. Unusual, rare and attractive.

Est.: \$300 - \$500 • Min. bid: \$180



Lot 105

"HERRON'S INK / NEWVILLE PA", America, 1850 - 1860. Aquamarine, cylindrical, sheared and inward rolled lip - blowpipe pontil scar, ht. 3 1/8"; (just a touch of washable faint interior residue, otherwise attic mint). An exceedingly rare ink from the tiny historic town of Newville in south-central Pennsylvania. Impressive size, heavily whittled, outstanding condition. It has been more than 15 years since this example has been offered at auction. James Chebalo collection.

Est.: \$1,000 - \$2,000 • Min. bid: \$500



Lot 106

"JJ BUTLER / CIN" Ink Bottle, a Midwest glasshouse, 1854 - 1860. Brilliant citron green, square with beveled corners, sheared and inward rolled mouth - blowpipe pontil scar, ht. 2 3/8", perfect; (an attic type find with a bit of light, washable residue around the shoulders). This little ink is impressive! Outstanding texture and crudity. Aside from the character and condition, the color is believed to be unique for this mold. A very eye-appealing ink bottle.

Est.: \$800 - \$1,600 • Min. bid: \$400



Lot 107

"J.J. BUTLER / CIN=OHIO" Ink Bottle, a Midwest glasshouse, 1854 - 1860. Aquamarine, square with beveled corners and beveled shoulders, sheared and inward rolled mouth - blowpipe pontil scar, ht. 3", perfect; (an attic-type find with a little washable exterior soot or residue around the shoulders). Strong embossing, crude, heavily whittled, attractive! One of the scarcer molds for a Butler ink.

Est.: \$175 - \$350 • Min. bid: \$100



Lot 108

Fancy Teakettle Inkwell, probably America, possibly a South Boston glasshouse, 1860 - 1880. Beautiful fiery opalescent coloration, cylindrical teakettle form with original red and green painted embossed floral design around body, embossed flower on top, sheared mouth with original brass neck ring (missing cap), smooth base, ht. 2 1/4", perfect! See, *Teakettle Inks*, by Joe Matthews, p.14. An extremely rare and desirable mold. Beautiful fiery opalescent color.

Est.: \$400 - \$800 • Min. bid: \$200



Lot 109

Fancy Teakettle Inkwell, England, or possibly America, 1850 - 1870. Cobalt blue with gold painted floral decoration, teakettle form with eight flat tapered body panels, domed flower top, sheared mouth with original brass neck ring and cap - smooth base, ht. 2 1/2", virtually attic mint; (a little interior residue; a bit of expected minor wear to floral design). JM #M266. Rare. A beautiful teakettle ink, excellent condition, nice having the original brass cap.

Est.: \$300 - \$600 • Min. bid: \$150



Lot 110

Umbrella Ink, America, 1840 - 1860. Medium-to-deep blue green, 8-sided umbrella form, sheared and inward rolled mouth - blowpipe pontil scar, 2 1/2" ht. x 2 1/4" wide, near mint; (lightly cleaned to original luster). A pretty example, rich color, a little deeper than most, and with some nice waviness to the glass.

Est.: \$120 - \$240 • Min. bid: \$60



Lot 111

Umbrella Ink, probably New England, possibly one of the Stoddard glasshouses, 1845 - 1860. Medium 'old amber' with a slight golden tone, 8-sided umbrella form, sheared and inward rolled mouth - blowpipe pontil scar, 2 1/2" ht. x 2 1/4" wide, virtually attic mint; (trace bit of faint wear). A good clean example, nice color, excellent condition.

Est.: \$150 - \$250 • Min. bid: \$80



Lot 112

Umbrella Ink, New England, or possibly a New York State glasshouse, 1840 - 1860. Light-to-medium yellowish olive amber, 8-sided umbrella form, sheared, tooled lip - blowpipe pontil scar, 2 1/2" ht. x 2 1/4" wide; (just a very slight trace of wear, otherwise perfect). A beautiful example, attractive lighter 'see-through' color, with plenty of waviness to the glass.

Est.: \$200 - \$400 • Min. bid: \$120



Lot 113

Umbrella Ink, probably an early New England glasshouse, 1840 - 1860. Medium-to-deep olive amber, 8-sided umbrella form, sheared, tooled lip - blowpipe pontil scar, 2 1/8" ht. x 2 1/4" wide; (lightly cleaned to original luster with just a little light exterior wear remaining). Crude glass with plenty of tiny seed bubbles.

Est.: \$150 - \$250 • Min. bid: \$80



Lot 114

Multi-Sided Inkwell, America, 1840 - 1860. Medium emerald coloration, 12-sided, sheared mouth - blowpipe pontil scar, 1 7/8 ht. x 1 7/8" wide, near mint; (a shallow, 1/8" flake or bit of roughness at edge of base, otherwise perfect). Similar to C #550. Attractive, nicely whittled, beautiful color.

Est.: \$150 - \$250 • Min. bid: \$80



Lot 115

"HARRISON'S / COLUMBIAN / INK", American 1845 - 1855. Cobalt blue, cylindrical, sheared and inward rolled mouth - blowpipe pontil scar, ht. 1 7/8"; (lightly cleaned to original luster and near mint condition). C #194. Crisp, strong embossing, whittled, and good depth of color.

Est.: \$400 - \$600 • Min. bid: \$200



Lot 116

"FARLEYS / INK", an early Stoddard glasshouse, Stoddard, NH, 1842 - 1855. Medium olive amber, 8-sided, domed shoulders, sheared mouth - blowpipe pontil scar, ht. 1 3/4", attic mint! C #526, Faulkner, p. 63-64. A classic early Stoddard inkwell, nice character and texture to the glass.

Est.: \$300 - \$500 • Min. bid: \$150



Lot 117

Lot of (2), Blown Three Mold Inkwells, Keene Marlboro Street Glassworks, Keene, NH, 1820 - 1840. Olive and dense olive amber, both cylindrical, geometric pattern, applied disk-type mouths - pontil scarred ringed bases, 1 1/2" ht. x 2 1/4" dia., and 1 7/8 ht. x 2 5/8" dia., both near mint; (the larger example has some typical light exterior wear including a minor pinhead flake on the shoulder). Both GII-18. The olive example is in a nice lighter shade.

Est.: \$200 - \$300 • Min. bid: \$100



Lot 118

"CLARK'S / SUPERIOR / RECORD / INK - BOSTON", New England, possibly Keene Marlboro Street Glassworks, 1825 - 1842. Medium-to-deep yellowish olive amber, cylindrical, sheared, tooled, outward flanged mouth - blowpipe pontil scar, ht. 5 7/8"; (a 3/8" area on the side of the flanged lip has been professionally repaired, otherwise virtually attic mint). C #749. Extremely rare! Of the small handful known to exist, most have some form of damage. This one displays as virtually perfect.

Est.: \$800 - \$1,200 • Min. bid: \$400



Lot 119

"HARRISON'S - COLUMBIAN - INK" Master Ink Bottle, America, 1847 - 1860. Aquamarine, 12-sided, applied flanged mouth - blowpipe pontil scar, ht. 11 3/8" (gallon); (a 1/2" chip from the back edge of the flanged mouth, and some light interior haze or content residue, some of which may wash out). As noted, the chip is on the back edge of the lip and the bottle displays as near mint. A large, impressive bottle, heavily whittled, a standout in any collection!

Est.: \$1,500 - \$2,500 • Min. bid: \$800



Lot 120

Cathedral Pickle Jar, America, probably a mid-Atlantic glasshouse, 1860 - 1875. Light-to-medium emerald coloration, arched Gothic panels with quatrefoil design and beaded trefoil motif, applied ring collar - smooth base, ht. 11 3/8", perfect. Scarce mold variant having all four label panels with a scalloped design around the edges, and one with three beads, or dots, below the trefoil design. Beautiful emerald coloration, most examples being in shades of blue-green.

Est.: \$400 - \$800 • Min. bid: \$200

**Lot 121**

Rare, Labeled Pickle Jar, a mid-Atlantic glasshouse, 1850 - 1860. Original label reads in part, "MIXED PICKLES / W. UNDERWOOD / WAREHOUSE / BROAD 67 STREET / BOSTON". Medium blue-green, cylindrical, 3-pc. mold, sheared and outward folded mouth - sand-type pontil scar, ht. 10 5/8"; (bottle is virtually attic mint with just a little interior residue; 98% complete original label darkened a bit from age). A beautiful jar having crude, whittled, seedy glass.

Est.: \$300 - \$600 • Min. bid: \$150

**Lot 125**

"MASON'S / PATENT / NOV. 30TH / 1858", America, 1900 - 1910. Bright yellow green with an olive tone, cylindrical, threaded neck with smooth lip, zinc lid - base with single dot in center, Qt, perfect! RB# 1787. A very attractive example, beautiful syrupy mix of colors, some hints of amber, and a trace of aquamarine near the very top.

Est.: \$800 - \$1,200 • Min. bid: \$400

**Lot 122**

Cloverleaf Pickle Jar, New England, 1850 - 1860. Light-to-medium blue green, octofoil form, sheared mouth with an applied ring-type collar - blowpipe pontil scar, ht. 7 1/2"; (some overall light cloudiness or haze that appears to be primarily on the interior, but no other form of damage, and otherwise virtually perfect). A scarce color for a "Cloverleaf" jar, and very scarce having the blowpipe pontil scar.

Est.: \$300 - \$600 • Min. bid: \$150

**Lot 126**

"THE / VAN VLIET / JAR / OF 1881", America, possibly East Stroudsburg Glass Co, East Stroudsburg, PA, 1881 - 1895. Aquamarine, cylindrical with ground lip, "PAT MAY 3D 1881" on glass lid, original wire, yoke, and 5-sided thumbscrew - "0" on smooth base, Pt; (jar is perfect; a 3/16" minor flake on bottom edge of glass lid, otherwise perfect). RB# 2878. A great little jar, scarce and desirable size, whittled, outstanding condition!

Est.: \$1,500 - \$2,500 • Min. bid: \$800

**Lot 123**

Cloverleaf Pickle Jar, a Stoddard, NH glasshouse, probably New Granite Glass Works, Mill Village, 1860 - 1871. Golden amber with a reddish-orange tone, octofoil form, sheared mouth with an applied ring-type collar - smooth base, ht. 8 1/8", perfect! A beautiful, fantastic example of this classic, early Stoddard pickle jar.

Est.: \$500 - \$800 • Min. bid: \$250

**Lot 127**

"THE / VAN VLIET / JAR / OF 1881", America, possibly East Stroudsburg Glass Co, East Stroudsburg, PA, 1881 - 1895. Aquamarine, cylindrical with ground lip, "PAT MAY 3D 1881" on glass lid, original wire, yoke, and 5-sided thumbscrew - "4" on smooth base, Qt; (jar is perfect; a couple of tiny flakes, 1/8" or less, along bottom edge of glass lid, otherwise perfect). RB# 2880. A very nice example, crisp strong embossing, excellent condition, all original.

Est.: \$800 - \$1,200 • Min. bid: \$400

**Lot 124**

"MASON'S / PATENT / NOV. 30TH / 1858", America, 1900 - 1910. Gorgeous, rich medium-to-deep yellow coloration with a slight olive tone, cylindrical, threaded neck with smooth lip, zinc lid - smooth base, Qt, perfect! RB# 1787. A beautiful jar, fantastic color, and with some nice bubbles and waviness to the glass. Very attractive!

Est.: \$500 - \$800 • Min. bid: \$250

**Lot 128**

"THE / VAN VLIET / JAR / OF 1881", America, (as above), 1881 - 1895. Aquamarine, cylindrical with ground lip, "PAT MAY 3D 1881" on glass lid, original wire, yoke, and round thumbscrew - "9" on smooth base, 1/2 Gal; (a couple of chips, each approx. 1/2", one from the side, the other along the top of the ground lip; a 1/4" chip on the underside of the glass lid, otherwise excellent). RB #2878. This example has the yoke straight across, rather than curved. Heavily whittled, boldly embossed.

Est.: \$700 - \$900 • Min. bid: \$350



Lot 129

"THE HOWE / JAR / SCRANTON / PA", Scranton Glass Company, Scranton, PA, 1888 - 1895. Aquamarine, cylindrical with ground lip, original wire bail, domed glass lid with center fin **"PAT, FEBY, 28 / 88"** (on underside) - **"2"** on smooth base, Pt; (jar near mint, ground lip has an iridescent 'fisheye' type bruise on the inner edge, approx. 3/8", possibly in-making, otherwise perfect; lid has a little roughness or flaking on one side of the raised center fin, otherwise perfect). RB #1274.

Est.: \$200 - \$400 • Min. bid: \$100



Lot 133

"LE TSAR NICOLAS II / BONBONS / JOHN TAVERNIER" Figural Bust Bon-Bon Jar, France, probably 1907 - 1910. Opaque satin finish milkglass, figural bust on pedestal - factory ground base, ht. 12 1/2", near mint; (a little minor exterior wear). Likely blown following the visit of Russian Czar and Czarina to France and the strengthening of the Franco-Russian alliance.

Est.: \$150 - \$250 • Min. bid: \$80



Lot 130

"THE HOWE / JAR / SCRANTON / PA", Scranton Glass Company, Scranton, PA, 1888 - 1895. Aquamarine, cylindrical with ground lip, original wire bail, domed glass lid with center fin **"PAT, FEBY, 28 / 88"** (on underside) - **"6"** on smooth base, Qt, attic mint! RB #1274. A great example, some whitening to the glass, strongly embossed! Jar, lid and bail are all perfect.

Est.: \$100 - \$200 • Min. bid: \$60



Lot 134

"LA TSARINE / BONBONS / JOHN TAVERNIER" Figural Bust Bon-Bon Jar, France, probably 1907 - 1910. Opaque milkglass, figural bust on pedestal - factory ground base, ht. 12 3/4", perfect. A very attractive, highly detailed figural likely blown to commemorate the visit of Nicolas II and Alexandra, and the Russia's entry into the "Entente Cordiale" in 1907, an agreement initially set up in 1904 between France and England.

Est.: \$150 - \$250 • Min. bid: \$80



Lot 131

"MAGIC / FRUIT JAR / WM McCULLY & Co / PITTSBURGH PA / SOLE PROPRIETORS / No 5 - PATENTED / BY / R.M. DALBEY / JUNE 6TH 1866", Wm. McCully & Co. Glassworks, 1867 - 1875. Aquamarine, cylindrical, ground lip - smooth base with three raised lugs, 1/2 Gal; (jar is near mint with a few light scratches from usage; ground lip is good with just a bit of typical minor flaking at edge, no closure). RB# 1608. A scarce jar.

Est.: \$200 - \$400 • Min. bid: \$100



Lot 135

"VICTOR HUGO 1802 1885" Figural Bust, France, 1885 - 1895. Frosted glass, tooled square collar - smooth base, ht. 11 5/8"; (a small potstone on the heel of the base on the reverse has a 3/8" area of iridescence, otherwise perfect). A scarce figural blown to commemorate poet Victor Hugo, considered to be one of greatest and best known French writers of all time. His credits include, "Les Miserables". He has also been commemorated on French currency.

Est.: \$100 - \$200 • Min. bid: \$50



Lot 132

"POINCARÉ" Figural Bust Bon-Bon Jar, France, probably 1912 - 1920. Opaque milkglass, figural bust on pedestal - factory ground base **"DEPOSE"** (embossed on heel of base), ht. 13 1/4", perfect. Raymond Poincaré was a French statesman who served three terms as Prime Minister, as well as President during World War I. An impressive figural, scarce.

Est.: \$150 - \$250 • Min. bid: \$80



Lot 136

Genie or Man with turban seated on a hassock Figural Bottle, Continental, or possibly America, 1875 - 1885. Beautiful Prussian blue coloration, almost an electric blue through the body, sheared neck (likely post-manufacture), fitted with a brass collar internally threaded - smooth base, ht. 11"; (some spotty interior residue in lower third of bottle). A rare figural in a very rare, eye-appealing, color.

Est.: \$200 - \$400 • Min. bid: \$100



Lot 137

Seated Bear hugging a Pole, France, 1890 - 1910. Frosted glass, tooled square collar - "**DEPOSE**" on smooth base, ht. 11 1/4", near mint; (just a trace of minor exterior wear). Scarce. This mold can also be found in colorless glass, opaque milkglass, and occasionally dense green (black glass). Nice detail to the mold, an unusual figural.

Est.: \$150 - \$250 • Min. bid: \$80



Lot 141

"A.M. BININGER & Co. / No. 19 BROAD ST / NEW - YORK" Applied Handled Whiskey, probably 1861 - 1863. Clear medium olive green, cylindrical with conical shoulders, applied handle curled at lower attachment, applied round double collar, smooth base, ht. 7 7/8", near mint; (two 1/8", tiny, in-manufacture cooling lines from beneath the handle, barely visible without a loop, otherwise sparkling mint!) BPK-31. A choice example in a very rare color.

Est.: \$2,000 - \$4,000 • Min. bid: \$1,000



Lot 138

"I X L / VALLEY / WHISKEY - E & B. BEVAN / PITTSTON / PA." - STAR (on each of 7 flat panels), America, 1852 - 1865. Deep amber with a slight root beer tone, pedestal base flaring outward to an octagonal body, applied disk collar with bevel - sand type pontil scar, ht. 7"; (lightly cleaned to original luster with a little scattered light wear remaining; a tiny pinhead flake on shoulder). A rare figural whiskey (believed to be in the form of a circus tent).

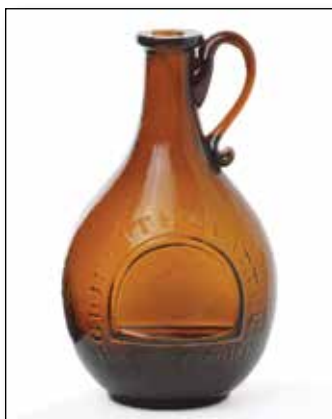
Est.: \$1,500 - \$2,500 • Min. bid: \$800



Lot 142

"A.M. BININGER & Co. / No. 19 BROAD ST / NEW - YORK" Applied Handled Whiskey, America, probably 1861 - 1863. Golden amber, cylindrical with conical shoulders, applied handle curled at lower attachment, applied round double collar, smooth base, ht. 8", attic mint. BPK-31. A fantastic example. This bottle was recently found under the floor boards in the attic of an 1871 house being renovated in Paxton, Illinois.

Est.: \$300 - \$500 • Min. bid: \$180



Lot 139

"GRIFFITH HYATT & Co. / BALTIMORE" Handled Whiskey Jug, America, probably Baltimore Glass Works, 1850 - 1860. Medium golden amber with an apricot tone, bulbous pear-form body, applied right-hand handle curled at lower attachment, applied square collar - heavy blowpipe pontil scar, ht. 7 1/8", attic mint. These Griffith Hyatt jugs often have issues, this one is devoid of problems and beautifully whittled!

Est.: \$400 - \$800 • Min. bid: \$200



Lot 143

"DISTILLED IN 1848. / OLD KENTUCKY / 1849 / RESERVE / BOURBON / A. M. BININGER & Co. / 19 BROAD ST. N.Y.", America, probably 1861 - 1863. Golden amber, barrel form, applied round double collar - large blowpipe pontil scar, ht. 7 7/8", perfect. BPK-40. As noted in the Bininger book by Jim Bender, this small size barrel with the 19 Broad St. address is scarce! In addition, this example has a fantastic, large, 'donut type' pontil scar.

Est.: \$200 - \$400 • Min. bid: \$120



Lot 140

"BININGER'S / KNICKERBOCKER / A.M. BININGER & CO. / NO 19 BROAD ST N.Y." Applied Handle Jug, America, probably 1861 - 1863. Golden amber, bulbous form with an applied handle curled at lower attachment, applied sloping collar - blowpipe pontil scar, ht. 6 3/8", attic mint! BPK-45. A very rare and desirable Bininger bottle. As noted in the book on Bininger bottles, (J. Bender, 2017), many of the known examples have some form of damage. This one is perfect!

Est.: \$3,000 - \$5,000 • Min. bid: \$1,500



Lot 144

"BININGER'S / OLD DOMINION - WHEAT TONIC, - A.M. BININGER & Co. / NO. 338 BROADWAY, N.Y.", America, probably 1859 - 1861. Yellowish olive, square with beveled corners, applied sloping collar - smooth base, ht. 9 1/2"; (a little typical minor exterior wear and a shallow, 1/8" sliver-type flake on bottom edge of the applied lip, otherwise excellent). BPK-16. Note, the Wheat Tonic mold is scarce with the 338 Broadway address (typically seen with the 19 Broad St. address).

Est.: \$300 - \$500 • Min. bid: \$180

Rare Bitters in Amber

ACG

Lot 166

Lot 185

Lot 203

Lot 182

Lot 184



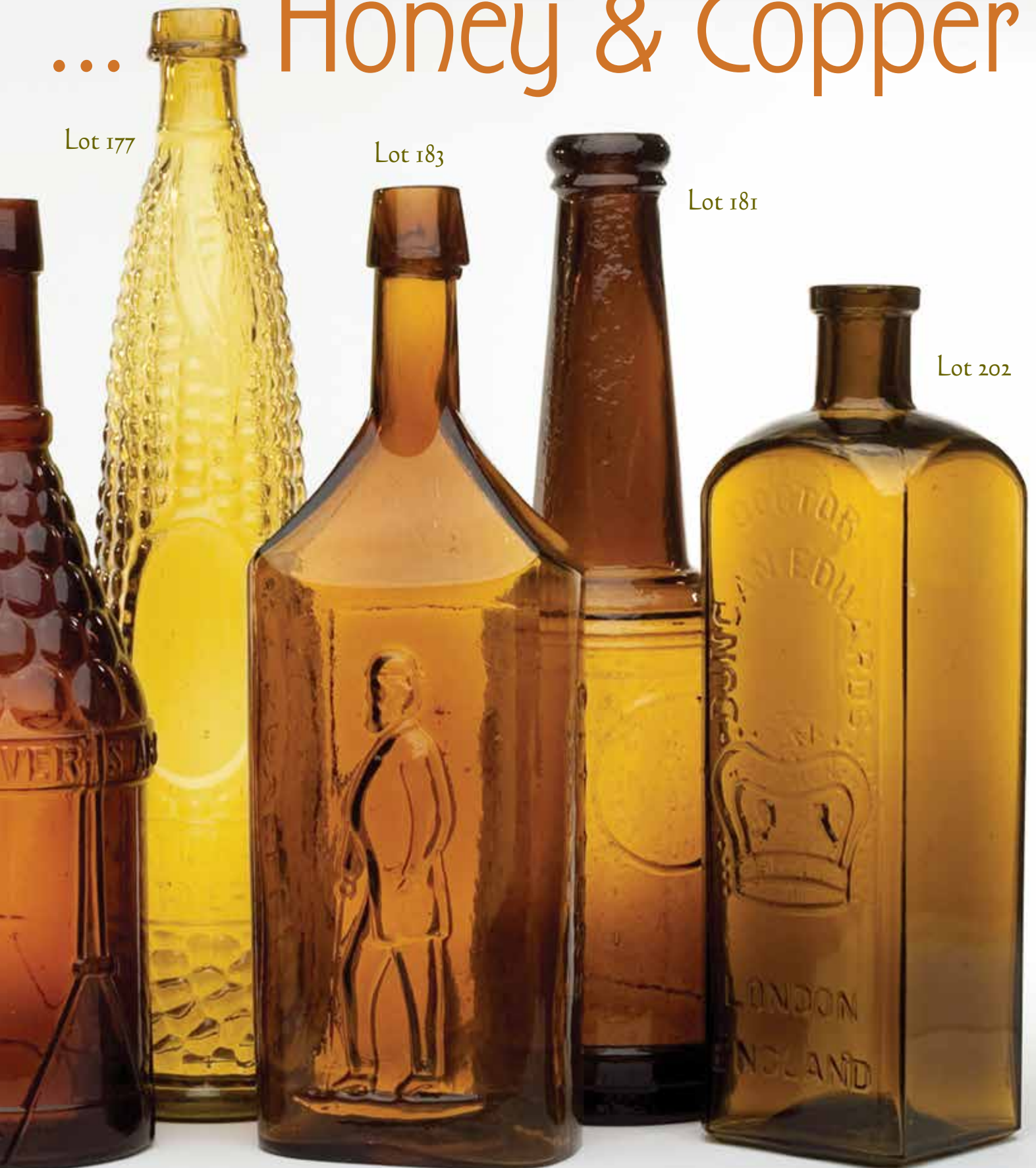
... Honey & Copper

Lot 177

Lot 183

Lot 181

Lot 202





Lot 145

"LONDON / JOCKEY - CLUB HOUSE / GIN" - (Horse and Rider), - with 70% original label, America, 1858 - 1865. Deep olive green, square with beveled corners, applied sloping collar - large, heavy iron pontil scar, ht. 9 3/8", near mint; (just a touch of minor wear including a couple of small shallow open surface bubbles, otherwise perfect). Crude, whittled, and very rare having the original label. A scarce bottle that was distributed in the West during the gold rush era.

Est.: \$5,000 - \$7,000 • Min. bid: \$2,500



Lot 146

"CHARLES' - LONDON - CORDIAL GIN", America, 1865 - 1875. Yellowish olive amber, square with beveled corners, applied sloping collar - smooth base, ht. 8"; (professionally cleaned to original luster with a couple of light scratches and a little fine exterior wear remaining, but no other form of damage). A scarce gin, this is the smaller of two sizes for this mold.

Est.: \$150 - \$250 • Min. bid: \$80



Lot 147

"UDOLPHO WOLFE'S - Schiedam - Schnapps", America, 1865 - 1875. Rich, medium-to-deep bluish green with a teal tone, square with beveled corners, applied sloping collar with bevel - smooth base, ht. 8 1/8"; (professionally cleaned with just a bit of minor exterior wear remaining; a little faint patchy interior haze in one side near the shoulders). A scarce mold, beautiful and scarce color, one that will stand out in a run of "Udolpho Wolfe's".

Est.: \$200 - \$400 • Min. bid: \$100



Lot 148

Unembossed Spirits, Medicine, or Utility Bottle, America, 1850 - 1860. Brilliant lemon yellow with an olive tone, square with beveled corners, crudely applied sloping collar with bevel - iron pontil scar, ht. 10 1/8", virtually attic mint; (a pinhead flake on the top edge of the lip; a trace bit of light interior content residue). A gorgeous, stunning color, outstanding character, heavily whittled, and with a lopsided crudely applied mouth. One of the most eye-appealing bottles in the sale!

Est.: \$250 - \$450 • Min. bid: \$140



Lot 149

"OLD VELVET BRANDY / S M & Co / N.Y." (on applied seal), America, possibly Whitney Glass Works, Glassboro, NJ, 1850 - 1860. Golden amber, inverted conical form patterned with 26 vertical ribs, applied seal and neck ribbon, applied double ring collar - blowpipe pontil scar, ht. 9 7/8", near mint; (a little light exterior wear; some faint interior residue). Strong, crisp impression on the seal. Extremely rare. Only the first, or possibly second example, to be offered in more than 20 years!

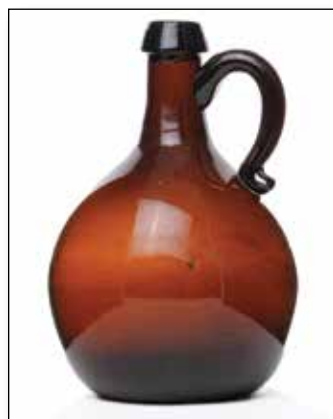
Est.: \$800 - \$1,200 • Min. bid: \$400



Lot 150

Applied Handle Spirits Jug, America, 1845 - 1860. Yellowish honey amber in the body shading to a golden honey coloration through the neck, freeblown ovoid or pear-form body, applied solid ear-shaped handle curled at lower attachment, applied sloping collar - blowpipe pontil scar, ht. 5 3/4"; near mint; (a little washable interior residue; a bit of typical light wear, otherwise perfect). MW, plate 48, #2. These can be found with both 2-pc. and freeblown bodies.

Est.: \$150 - \$250 • Min. bid: \$80



Lot 151

Applied Handle Spirits Jug, America, 1845 - 1860. Medium-to-deep puce with a strawberry tone, freeblown globular, slightly ovoid body, applied solid ear handle curled at lower attachment, applied sloping collar - blowpipe pontil scar, ht. 5 5/8"; (a ribbon of moderate to fairly heavy high point wear, approximately 1/4" wide, loops around one side of the mid-body, otherwise excellent). Despite the wear-ring around a portion of the mid-body, a beautiful color, and very attractive window bottle.

Est.: \$150 - \$250 • Min. bid: \$80



Lot 152

"JAMES DINGLEY & Co / 99 AND 1585 / WASHINGTON ST. / BOSTON" (with 99% complete original label), America, 1875 - 1885. Aquamarine, shoo-fly flask form, applied square collar with original glass stopper - smooth base, Pt; (bottle is virtually perfect, 1/8" flake on edge of lip; original label darkened a bit from age, but otherwise excellent). Scarce, particularly so in this virtually attic condition, and with label.

Est.: \$100 - \$200 • Min. bid: \$50



Lot 153

"CASPER'S WHISKEY / MADE BY HONEST / NORTH / CAROLINA PEOPLE", 1885 – 1900. Brilliant cobalt blue, cylindrical with fluted shoulders, tooled sloping collar with ring – smooth base, ht. 11 7/8", attic mint. A beautiful example that has not been dug and cleaned. One of the most recognizable and iconic of all the eastern whiskey bottles. It is certainly one of the classics and will add a big splash of color to your collection.

Est.: \$400 - \$500 • Min. bid: \$200



Lot 157

Rare, Early Champagne-Form Utility Bottle, Westford Glass Works, Westford, CT, 1857 – 1873. Deep olive amber, champagne form tapered cylinder, applied sloping collar - early smooth base, or possibly a light sand-type pontil scar, ht. 12 1/8", attic mint! Beautifully whittled, a very rare and attractive American champagne-form. A handful of these were discovered together in the cellar of an early Westford, CT home decades ago. Here is one that very few collectors have.

Est.: \$600 - \$900 • Min. bid: \$300



Lot 154

"FAIRBANKS & PIPER / NO 10 / DRUGGISTS / FRONT ST / WORCESTER" Whiskey Fifth, America, 1865 – 1870. Bright golden amber, cylindrical, applied sloping collar with bevel - smooth base, ht. 11 7/8", perfect! A beautiful and extremely rare eastern whiskey fifth. Much more difficult to find than the Geo. Fairbanks, or Wilson, Fairbanks & Co, this example is in pristine condition, with outstanding character, bubbly, whittled, and having great eye-appeal.

Est.: \$400 - \$600 • Min. bid: \$200



Lot 158

"W" (Debossed), Stubby Ale Bottle, probably a Stoddard, NH glasshouse, possibly Westford Glass Works, Westford, CT, 1860 – 1873. Rich, deep olive, almost a forest green, 3-pc. mold squatty ale form, applied blob collar - smooth base, ht. 6 3/4"; (only a trace of light wear including a pinhead bit of roughness on the edge of the collar, otherwise sparkling attic mint). The heavy, debossed "W" is a rare mold! This one has plenty of eye-appeal, excellent condition, beautiful rich color.

Est.: \$400 - \$800 • Min. bid: \$200



Lot 155

"WEEKS & POTTER - BOSTON" Whiskey Fifth, a Stoddard, NH glasshouse, probably Weeks & Gilson, South Stoddard, 1860 – 1873. Beautiful yellowish olive amber, almost an olive yellow in the shoulders, shading to a deep olive amber through the base, cylindrical, applied sloping collar - smooth base, ht. 11", attic mint! (note, a 1/16" bit of roughness, in-making, at edge of lip). A fantastic example, beautiful color, heavily whittled, outstanding condition, rare mold.

Est.: \$800 - \$1,200 • Min. bid: \$400



Lot 159

Lot of (2), Stubby Ale Bottles, a Stoddard, NH glasshouse, 1860 – 1873. Rich golden amber with a slight orange tone, and yellowish olive green, both are 3-pc. mold squatty ale form, applied blob collars - smooth bases, ht. 6 3/8" each, both virtually attic mint; (tiny bit of expected light wear, otherwise perfect). A beautiful pair, the amber example had tremendous character with crude, whittled glass, filled with various size bubbles throughout.

Est.: \$100 - \$150 • Min. bid: \$50



Lot 156

Lot of (2) Early Whiskeys, America, and Whitney Glass Works, Glassboro, NJ, 1865 – 1880. Bright yellowish-honey, and rich orange-amber coloration, flask and cylindrical 5th forms. Flask has an applied sloping collar with lip flange, internal screw threads, **"PAT / JAN 1861"** (on threaded glass stopper) - smooth base, 1/2 Pt. The cylinder is a 3-pc. mold, applied sloping collar with ring - smooth base, ht. 11", both virtually perfect. The cylinder is absolutely loaded with bubbles.

Est.: \$100 - \$200 • Min. bid: \$60



Lot 160

"good Old Bourbon / in a hogs" (line pointing to pigs rear-end), America, 1880 – 1890. Golden amber with an orange tone in the head shading to a beautiful honey coloration near the hind quarters, figural pig, tooled ring collar - smooth

base, length 6 1/2", near mint; (a tiny bit of roughness on the pig's tail, possibly in-making, otherwise attic mint). Scarce. A nice example of this classic figural pig whiskey. Whomever the bottle was blown for certainly had a sense of humor.

Est.: \$300 - \$500 • Min. bid: \$150

**Lot 161**

"BENNETT & CARROL / 120 WOOD ST. / PITTSBURG", probably a Pittsburgh district glasshouse, 1860 - 1870. Golden amber, barrel form, applied square collar - smooth base, ht. 9 1/4"; (a shallow 3/16" chip from the side of the square collar; a couple of minor pinhead flakes on the edge of the collar, otherwise near mint). A scarce barrel, strongly embossed, and in a little lighter shade of amber than many of the examples.

Est.: \$400 - \$800 • Min. bid: \$200

**Lot 165**

"OLD SACHEM / BITTERS / AND / WIGWAM TONIC", America, 1860 - 1875. Bright golden-yellow coloration, barrel form, applied square collar - smooth base, ht. 9 1/4"; (some light scratches or minor surface abrasion near the mold seam on one side; a couple of areas of lip edge roughness, 1/4" or less, on the square collar as is often encountered on these barrels). R/H #O46. A bright, light example, plenty of nice yellow tones.

Est.: \$300 - \$500 • Min. bid: \$150

**Lot 162**

"ORIGINAL / POCHAHONTAS / BITTERS / Y. FERGUSON.", America, 1860 - 1870. Rich aqua, barrel form, applied square collar - smooth base, ht. 9 1/4"; (a couple of light scratches and bit of minor wear around the mid-section; a little faint dullness, primarily in the neck, otherwise very near mint). R/H Supplement #O86.1. This is the earlier misspelled variant, without the "H" in "POCHAHONTAS" peened out. Strong embossing, bright, clean, beautiful and rare! Joe Kray collection.

Est.: \$5,000 - \$8,000 • Min. bid: \$2,500

**Lot 166**

"OLD SACHEM / BITTERS / AND / WIGWAM TONIC", America, 1860 - 1875. Light-to-medium copper coloration with some warm salmon tones, barrel form, applied square collar - smooth base, ht. 9 1/8"; (only the slightest pinprick speck of roughness on the edge of the square collar, otherwise attic mint). R/H #O46. A great barrel, fantastic color and condition. Absolutely no amber in this one. In addition, excellent character having a crude pebbly texture.

Est.: \$1,500 - \$2,500 • Min. bid: \$800

**Lot 163**

"GREELEY'S - BOURBON WHISKEY / BITTERS. - GREELEY'S", America, 1860 - 1875. Aquamarine, barrel form, applied square collar - smooth base, ht. 9 1/4", very near mint; (just a small patch of faint interior milkiness, otherwise, sparkling mint). R/H #G102. Here is another aqua barrel that very seldom comes around, and this is a good one! Perfect square collar, crisp, bright, clean and virtually perfect. Provenance: Joe Kray collection; Ex. Chris Batdorff collection.

Est.: \$4,000 - \$6,000 • Min. bid: \$2,000

**Lot 167**

"BOURBON WHISKEY / BITTERS.", America, 1860 - 1875. Light-to-medium smoky topaz, barrel form, applied square collar - smooth base, ht. 9 1/4", near mint; (light interior content residue, most of which would likely wash out; a little minor exterior wear including a couple of light scratches, 3/8", or less, otherwise excellent). R/H #B171. Beautiful scarce color, lighter than most, heavily whittled. A good internal washing would likely brighten it up. Overall, very nice condition with no lip issues.

Est.: \$500 - \$800 • Min. bid: \$250

**Lot 164**

"OLD SACHEM / BITTERS / AND / WIGWAM TONIC", America, probably 1858 - 1865. Aquamarine, barrel form, applied square collar - large blowpipe pontil scar, ht. 10"; (only the slightest trace of faint wear, otherwise attic mint). R/H #O45. A choice, top example, virtually perfect. This is the larger 10" mold, much harder to find than the O46, 9" mold, especially in this fine condition. Very rare, one that will definitely stand out in a run of barrels. Provenance: Joe Kray collection.

Est.: \$4,000 - \$6,000 • Min. bid: \$2,000

**Lot 168**

"BOURBON WHISKEY / BITTERS.", America, 1860 - 1875. Medium apricot with some rich reddish-salmon and strawberry tones, particularly in the lower half, barrel form, applied square collar - smooth base, ht. 9 3/8", virtually attic mint; (tiny pinprick speck of roughness, barely noticeable, on the edge of the square collar, otherwise perfect). R/H #B171. A great example, whittled, beautiful color, one that changes according to the type of light and time of day. A very attractive barrel.

Est.: \$600 - \$900 • Min. bid: \$300



Lot 169

"GREELEY'S - BOURBON WHISKEY / BITTERS - GREELEY'S", America, 1860 - 1875. Medium-to-deep puce with some salmon and soft pinkish tones, barrel form, applied square collar - smooth base, ht. 9 3/8", sparkling attic mint! R/H #G102. An absolutely fantastic example, virtually pristine, 'out-of-the-mold' condition, nice color, and crisp, bold embossing.

Est.: \$800 - \$1,200 • Min. bid: \$400



Lot 173

"KEYSTONE / BITTERS", America, 1870 - 1880. Rich, deep amber, barrel form, applied sloping collar - smooth base, ht. 9 7/8", virtually perfect; (only a slight trace of faint wear, otherwise pristine). R/H #K36. A scarce barrel, one that is certainly getting harder to find. Excellent condition having virtually no high point wear or other issues.

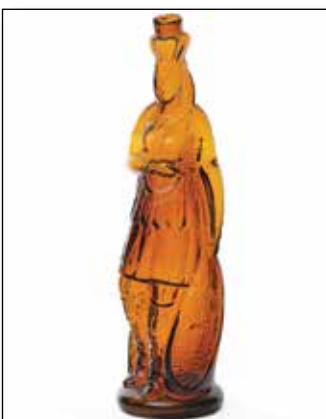
Est.: \$600 - \$900 • Min. bid: \$300



Lot 170

"DR C.W. ROBACKS / STOMACH BITTERS / CINCINNATI. O", America, 1865 - 1875. Medium-to-deep amber, barrel form, applied sloping collar - smooth base, ht. 9"; (a couple of tiny pinhead flakes, very minor, on the edge of the applied collar, possibly in-manufacture, otherwise virtually attic mint). R/H #R75. Rich color, heavily whittled, excellent condition.

Est.: \$175 - \$275 • Min. bid: \$100



Lot 174

"BROWN'S / CELEBRATED / INDIAN HERB BITTERS - PATENTED / 1868", America, 1868 - 1880. Brilliant light golden through the mid-section shading to a beautiful honey amber with plenty of yellow through the arms and upper torso, figural Indian maiden, sheared and inward rolled lip - smooth base, ht. 12 1/4", perfect. R/H #B225. A very attractive example, light and bright with plenty of yellow in this one.

Est.: \$600 - \$900 • Min. bid: \$300



Lot 171

"HALL'S / BITTERS - E.E. HALL NEW HAVEN / ESTABLISHED 1842", 1865 - 1875. Medium amber with an orange tone, barrel form, applied square collar - smooth base, ht. 9", near mint; (a little pinhead speck of roughness on the edge of the collar, and a 1/4" sliver-type bubble that is partially open on the top of the collar, otherwise excellent). R/H #H10. A nice clean example.

Est.: \$175 - \$275 • Min. bid: \$100



Lot 175

"BROWN'S / CELEBRATED / INDIAN HERB BITTERS - PATENTED / FEB 11. / 1868", America, 1868 - 1880. Bright, light yellowish honey coloration, figural Indian maiden, sheared and inward rolled lip - smooth base, ht. 12 1/4"; (a couple of tiny flakes and two chips, 3/16" each, from the inner part of the rolled mouth that likely occurred when the cork was pried out; some light interior residue). R/H #B226. A heavy example, a bit under-blown, the gaffer using a little extra glass in this one!

Est.: \$300 - \$500 • Min. bid: \$180



Lot 172

"HALL'S / BITTERS - E.E. HALL NEW HAVEN / ESTABLISHED 1842", 1865 - 1875. Beautiful, light, bright, yellowish honey coloration, barrel form, applied square collar - smooth base, ht. 9"; (a pinhead flake on the inner edge of the lip, otherwise sparkling attic mint). R/H #H10. Beautiful light color, outstanding, virtually pristine condition.

Est.: \$250 - \$450 • Min. bid: \$140



Lot 176

"BROWN'S / CELEBRATED / INDIAN HERB BITTERS - PATENTED / FEB 11. / 1868" (with traces of original paint), America, 1868 - 1880. Golden amber, figural Indian maiden, sheared and ground mouth - smooth base, ht. 12"; (a 1/4" chip from the side of the factory ground mouth; a little minor, spotty, faint interior haze, otherwise excellent). R/H #B226. Nice with remnants of the original paint remaining. These "Indian Queens" are one of the great classics of figural bitters.

Est.: \$300 - \$500 • Min. bid: \$180

**Lot 177**

"NATIONAL / BITTERS" - "PATENT 1867" (on base), America, 1867 - 1875. Gorgeous, clear medium yellow coloration, figural ear of corn, applied short tapered collar with ring - smooth base, ht. 12 1/2", virtually attic mint; (a 3/16" partially open surface bubble near base, otherwise perfect). R/H #N8. Fantastic, eye-appealing color. One of the great classics in figural bitters, and in an attractive, scarce, desirable color.

Est.: \$1,400 - \$2,200 • Min. bid: \$700

**Lot 181**

"BARTO'S / GREAT GUN BITTERS / READING / PA", 1865 - 1875. Honey amber in the center shading to a rich golden coloration in the neck, figural cannon barrel, applied ring collar with bevel - smooth base, ht. 11"; (professionally cleaned to original luster with an overall matte type finish, primarily on the reverse, and some ground wear remaining). R/H #B32. A rare, choice, figural bitters that is seldom offered for sale!

Est.: \$4,000 - \$8,000 • Min. bid: \$2,000

**Lot 178**

"NATIONAL / BITTERS" - "PATENT 1867" (on base), America, 1867 - 1875. Bright, light, yellowish honey coloration, figural ear of corn, applied short tapered collar with ring - smooth base, ht. 12 1/2", near mint; (a paper-thin 1/4" partially open surface bubble on one of the kernels, otherwise perfect). R/H #N8. A beautiful example, bright, clean, excellent condition, nice light color!

Est.: \$400 - \$800 • Min. bid: \$200

**Lot 182**

"Mc KEEVER'S ARMY BITTERS", America, 1865 - 1875. Medium amber, figural Civil War drum below cluster of stacked cannon balls forming conical shoulders, applied sloping collar - smooth base, ht. 10 1/4", sparkling mint. R/H #M58. One of the great classics in figural bitters. Clean, virtually no wear, and very scarce. A bitters designed to appeal to soldiers, veterans and families following the Great War between the states.

Est.: \$3,000 - \$5,000 • Min. bid: \$1,500

**Lot 179**

"NATIONAL / BITTERS" - "PATENT 1867" (on base), America, 1867 - 1875. Medium golden amber, figural ear of corn, applied short tapered collar with ring - smooth base, ht. 12"; (a tiny, shallow, less-than pinhead size flake on the back edge of the lip, otherwise virtually perfect). R/H #N8. Good strong embossing, this example also has a bit of an unusual, shorter neck.

Est.: \$300 - \$500 • Min. bid: \$150

**Lot 183**

"TRAVELLER'S" - (Standing figure of General Robert E. Lee) - "BITTERS" - 1834 / 1870", America, 1870 - 1875. Bright, yellowish-honey coloration, rectangular with rounded corners, applied sloping collar - smooth base, ht. 10 1/4"; (a tiny little pinhead flake on the back edge of the lip, otherwise sparkling attic mint). R/H #T54. A gorgeous example, probably the lightest in color that we can recall seeing, historical, eye-appealing, and rare! Provenance: Joe Kray collection.

Est.: \$8,000 - \$12,000 • Min. bid: \$4,000

**Lot 180**

"NATIONAL / BITTERS" - "PATENT 1867" (on base), America, 1867 - 1875. Medium amber, figural ear of corn, applied short tapered collar with ring - smooth base, ht. 12 1/4"; (a 1/8" flake or depression on the top edge of the applied mouth that may have occurred in-manufacture, otherwise excellent). R/H #N8. A little deeper in color and nicely whittled.

Est.: \$250 - \$450 • Min. bid: \$140

**Lot 184**

"KIMBALL'S / JAUNDICE - BITTERS - TROY. N.H." (with 99% complete original label), a Stoddard, NH glasshouse, 1850 - 1860. Bright, light-to-medium yellowish olive amber, rectangular with beveled corners, applied sloping collar - sand type pontil, ht. 7", virtually attic mint; (slight trace of faint wear, colorful label 99% complete). R/H #K42. A beautiful example of the bottle, lighter in color, crude seedy glass, and exceedingly rare with the original label (only the 2nd to be offered in more than 30 years).

Est.: \$1,600 - \$2,200 • Min. bid: \$800



Lot 185

"AMERICAN LIFE / BITTERS - P. EILER / MANUFACTURER / TIFFIN, OHIO - AMERICAN LIFE / BITTERS", America, probably 1865 - 1869. Golden amber, rectangular log cabin form with curved shoulders, applied sloping collar - smooth base, ht. 8 7/8"; (a 3/4" thin faint hairline crack in the back of the applied lip, otherwise bright, clean, sparking and virtually attic mint!) R/H #A49. A beautiful example. Provenance: Ex. Dr. Burton Spiller, Jack Stecher collections.

Est.: \$3,000 - \$6,000 • Min. bid: \$1,500



Lot 186

"HOLTZERMANN'S - PATENT / STOMACH / BITTERS", America, 1865 - 1875. Medium amber shading to a light golden, or honey coloration, in the roof corners and along the edges, rectangular cabin form, applied sloping collar - smooth base, ht. 9 1/4", near mint; (just a touch of typical minor wear along the roof edge, primarily on the reverse, otherwise perfect). R/H #H155. Provenance: Joe Kray collection; Ex. Chris Batdorff collection.

Est.: \$1,400 - \$2,200 • Min. bid: \$700



Lot 187

"S T / DRAKE'S / 1860 / PLANTATION / X / BITTERS - PATENTED / 1862", America, 1862 - 1885. Rich, deep strawberry puce, cabin form with 6 logs above the label panel, applied sloping collar with period lightning style wire closure - smooth base, ht. 10", perfect. R/H #D105. Beautiful rich color, plenty of reddish tones, and having strong, very bold embossing. Nice with the period wire closure.

Est.: \$250 - \$450 • Min. bid: \$140



Lot 188

"S T / DRAKE'S / 1860 / PLANTATION / X / BITTERS - PATENTED / 1862", America, 1862 - 1885. Bright, light, yellowish honey coloration, cabin form with 6 logs above the label panel, applied sloping collar - 6 dots on smooth base, ht. 10", near mint; (just a trace of wear including a shallow pinhead flake on the edge of the lip, otherwise excellent!) R/H #D105. A pretty, bright, light example having good strong embossing.

Est.: \$200 - \$400 • Min. bid: \$120



Lot 189

"DRAKES / PLANTATION / BITTERS - PATENTED / 1869", America, 1869 - 1875. Brilliant, light yellowish honey, cabin form with 5 logs above the label panel, applied sloping collar - smooth base, ht. 9 7/8"; (only the faintest trace of wear, otherwise sparkling attic mint). R/H #D109. A great example of a 5-Log Drake's in a light color, nice brilliance to the glass, and virtually pristine condition.

Est.: \$400 - \$600 • Min. bid: \$200



Lot 190

"S T / DRAKE'S / 1860 / PLANTATION / X / BITTERS - PATENTED / 1862", America, 1862 - 1885. Beautiful light yellowish honey, almost a honey yellow coloration, cabin form with 4 logs above the label panel, applied sloping collar - smooth base, ht. 10 1/8", near mint; (a little faint dullness on the label panels, otherwise virtually attic mint). R/H #D110. Beautiful, light and bright, strongly embossed.

Est.: \$200 - \$400 • Min. bid: \$120



Lot 191

"OLD / HOMESTEAD / WILD CHERRY / BITTERS - PATENT", America, 1865 - 1875. Medium amber, cabin form, applied sloping collar - smooth base, ht. 9 1/2", attic mint. R/H #O37. A great example, bright, clean, fantastic condition. One of two mold variants for the Old Homestead, this example having the door go all the way to the base; the other example having a clapboard, or threshold, below the door.

Est.: \$250 - \$450 • Min. bid: \$140



Lot 192

"H.P. HERB / WILD / CHERRY / BITTERS / READING / PA - WILD CHERRY" / (Cherry Tree) / "BITTERS" - "BITTERS - BITTERS - BITTERS", America, 1885 - 1895. Medium amber, cabin form with roped corners, tooled sloping collar with ring - smooth base, ht. 10"; (a couple of spots of surface abrasion, approx. 3/16", and a little minor wear on the roof corners, otherwise excellent). R/H #H93.

Est.: \$200 - \$400 • Min. bid: \$120



Lot 193

"EDW WILDER'S / STOMACH BITTERS" - (Five Story Building) - "EDW WILDER & Co / WHOLESALE DRUGGISTS / LOUISVILLE, KY" - "PATENTED", America, 1890 - 1900. Colorless with a light pink-amethyst tone, figural 5-story building, tooled sloping collar - smooth base, ht. 10 5/8", virtually attic mint; (trace of very faint interior residue). R/H #W116. A beautiful example with a strong impression for this mold, about as nice as you could hope to find.

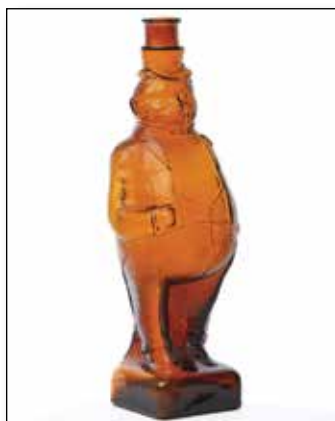
Est.: \$200 - \$400 • Min. bid: \$100



Lot 194

"SIMON'S CENTENNIAL BITTERS - TRADE MARK", America, 1876 - 1880. Aqua, figural bust of George Washington, applied double ring collar - smooth base, ht. 10 1/8"; (a 3/8" hairline crack below the shoulder on the reverse, otherwise pristine perfect!) R/H #S110. An historical bitters patented December 14, 1875, blown to commemorate the nation's Centennial. Bright, clean, and sparkling, the annealing line on the reverse is minor. Provenance: Joe Kray collection.

Est.: \$300 - \$500 • Min. bid: \$150



Lot 195

Figural Big Bill (President Taft), Bitters Decanter, America, possibly Cumberland Glass Works, Bridgeton, NJ, 1908 - 1912. Golden amber, figural of a rotund man with top hat and waistcoat, tooled square collar - smooth base, ht. 11 5/8", attic mint! R/H, p.97. The figure is believed to be that of William Howard Taft, the 27th President who served from 1909 - 1913. See Bob Strickhart's article, *Antique Bottle & Glass Collector*, August, 2013.

Est.: \$175 - \$350 • Min. bid: \$100



Lot 196

"BIG / BILL / BEST / BITTERS - "BIG / BILL / BEST / BITTERS", America, 1890 - 1905. Medium orange amber near the base shading to a pretty light yellowish honey in the shoulders, tall pyramid form, tooled sloping collared mouth with ring - smooth base, ht. 12", perfect. R/H #B95. A beautiful example, historical, believed to have been named for President (Big Bill) Taft. See *Antique Bottle & Glass Collector*, August, 2013 for related article.

Est.: \$125 - \$225 • Min. bid: \$70



Lot 197

"THE / FISH BITTERS - W.H. WARE / PATENTED 1866", America, 1866 - 1875. Golden amber, figural fish, applied ring collar - smooth base, ht. 11 1/2", near mint; (a 1/4" area of minor roughness along the edge of the crudely applied collar, a trace of light interior residue, otherwise perfect). R/H #F45. A very nice example, virtually no high point wear as is common on these molds, and with bold, strong embossing! A lot of bottle for the money.

Est.: \$250 - \$450 • Min. bid: \$140



Lot 198

"THE GREAT TONIC / DR CALDWELL'S / HERB BITTERS", America, 1860 - 1870. Medium amber, triangular form with 16 squares in lattice panel, applied sloping collar with bevel - early smooth base, ht. 12 3/8", sparkling attic mint! Similar to R/H #C9 (with "DR" embossed), but with 16 squares in lattice panel. A beautiful example, bright, clean and sparkling.

Est.: \$200 - \$400 • Min. bid: \$120



Lot 199

"REED'S / BITTERS - REED'S / BITTERS", America, 1870 - 1880. Light golden amber, almost a honey coloration, cylindrical, elongated "lady's-leg" neck, applied sloping collar - smooth base, ht. 12 1/2"; (professionally cleaned to original luster with a couple of scratches and a little minor ground wear remaining, primarily on the reverse). R/H #R28. Noted as "Scarce" in the Ring/Ham book, an attractive "Lady's-Leg" form and a lot of bottle for the money!

Est.: \$150 - \$250 • Min. bid: \$80



Lot 200

"LEDIARDS - MORNING CALL", America, 1865 - 1875. Medium olive coloration, cylindrical, applied sloping collar - smooth base, ht. 9 3/4", virtually attic mint; (a partially open bubble on the interior with a bit of residue, otherwise perfect). R/H #L67.7. A great example, nice rich color, whittled, and with crisp, very bold embossing.

Est.: \$200 - \$400 • Min. bid: \$120



Lot 201

"SUFFOLK BITTERS - PHILBROOK & TUCKER / BOSTON", America, 1870 - 1880. Light-to-medium honey amber shading to virtually yellow through the back feet, figural pig, sheared and factory ground mouth -

smooth base, length 9 3/8"; (a 1/4" chip from the underside of the mouth; a touch of typical light wear, and a bit of interior residue or content stain in the feet, otherwise excellent). R/H #S217. A pretty example, the noted chip is on the underside of the lip.

Est.: \$600 - \$900 • Min. bid: \$300



Lot 205

"O'HARE BITTERS CO. / PITTSBURG, PA.", probably a Pittsburgh district glasshouse, 1896 - 1910. Clear, medium golden amber with a slight orange tone, square with beveled corners, tooled sloping collar - smooth base, ht. 9 1/4", attic mint. R/H #O10. Rare. Per Ring-Ham, Thomas O'Hare had worked for David Hostetter for more than 40 years prior to forming his own company in 1896. It is likely no coincidence that his bottles are a virtual copycat of the Dr. Hostetter's mold.

Est.: \$175 - \$350 • Min. bid: \$100



Lot 202

"DOCTOR / DUNCAN EDWARDS" / (motif of large Crown) / "CROWN / BITTERS" (inside crown) / "LONDON / ENGLAND", America, probably 1877 - 1885. Yellowish honey amber with a very slight olive tone, square with beveled corners, tooled square collar - smooth base, ht. 9 1/4", near mint; (lightly cleaned to original luster). R/H #E24. A great rarity - one of only 2 intact examples, and believed to be from Brockport, NY. See AB&GC, March, 2019; Peachridge Glass, 2013.

Est.: \$1,200 - \$1,800 • Min. bid: \$600



Lot 206

"RISING SUN - BITTERS - JOHN C HURST / PHILADA", America, 1875 - 1885. Beautiful, light honey coloration, square with beveled corners, applied sloping collar - smooth base, ht. 9 3/8", perfect. R/H #R66. Scarce. A beautiful example, plenty of nice yellowish tones, excellent condition.

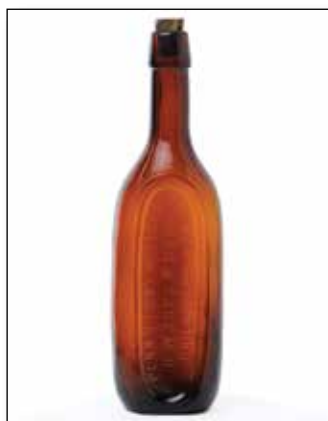
Est.: \$100 - \$200 • Min. bid: \$60



Lot 203

"REED'S OVERLAND / BITTERS - NEBRASKA CITY / NEB", Lorenz & Wightman, Penn Glass Works, Pittsburgh, PA, 1867 - 1872. Medium amber, square with beveled corners, applied sloping collar - **"L&W"** on smooth base, ht. 8 3/4"; (a bit of minor content haze in the base; a little exterior dullness, primarily on a side label panel, otherwise very near mint). R/H #R29. Extremely rare! Possibly the 1st example of this great Nebraska bitters to be offered at public auction.

Est.: \$1,200 - \$1,800 • Min. bid: \$600



Lot 207

"PENN'S PONY BITTERS / H.W. LONG M.D. & Co. / PHILADELPHIA, PA.", America, 1890 - 1900. Medium amber, flattened elliptical or oval shaped body, long neck with tooled sloping collar - smooth base, ht. 9 1/8", virtually attic mint; (tiny pinhead speck of roughness at edge of base; small patch of very faint interior milkiness in the side, otherwise pristine perfect). R/H #P40. Listed as "Extremely rare", here is one that does not come around often.

Est.: \$200 - \$400 • Min. bid: \$100



Lot 204

"BEGG'S / DANDELION BITTERS - SIOUX CITY / IOWA", America, probably 1884 - 1890. Light yellowish honey, almost a honey yellow coloration, square with beveled corners, tooled sloping collar - smooth base, ht. 9", near mint; (just a touch of faint interior milkiness, otherwise perfect). R/H #B53. The mold is noted as "Rare" by Ring-Ham, and not listed in this color. Provenance: Ex. Carlyn Ring collection.

Est.: \$200 - \$400 • Min. bid: \$100



Lot 208

"DR. F. WOODBRIDGE - HEADACHE - BITTERS", America, 1870 - 1880. Orange amber in the shoulders shading to a rich reddish-orange through the lower half, a fancy square with wide beveled corners, narrow indented panels, applied sloping collar - smooth base, ht. 9"; (a trace of minor wear including a little light dullness on the shoulders; some dried interior content stain). R/H #H74. Crude bubbly glass, rich beautiful color, an unusual square that is also exceedingly rare!

Est.: \$3,000 - \$5,000 • Min. bid: \$1,500



Lot 209

"DR J. HOSTETTER'S / STOMACH BITTERS", probably a Pittsburgh district glasshouse, 1860 - 1870. Deep yellowish olive amber, square with beveled corners, applied sloping collar - smooth base, ht. 9 1/2" ht. x 3" wide, near mint; (a trace of minor wear including several shallow pinhead open surface bubbles and a tiny pinprick bit of roughness on the edge of the lip). R/H #H194. Scarce size, likely one of the earliest molds, large lettering - the glass is filled with tiny seed bubbles.

Est.: \$300 - \$500 • Min. bid: \$150



Lot 210

"DR J. HOSTETTER'S / STOMACH BITTERS", probably a Pittsburgh district glasshouse, 1865 - 1875. Dense tobacco amber, square with beveled corners, applied sloping collar - smooth base, 9 1/4" ht. x 2 3/4" wide, near mint; (just a touch of typical light wear including a couple of tiny, pin-head open surface bubbles). Similar to R/H #H194, but a slightly smaller mold that falls between the H194 and H195 sizes. Scarce mold, very scarce pure amber coloration.

Est.: \$300 - \$500 • Min. bid: \$150



Lot 211

"DR J. HOSTETTER'S / STOMACH BITTERS", probably a Pittsburgh district glasshouse, 1865 - 1875. Very deep olive amber, square with beveled corners, applied sloping collar - "x" on smooth base, 8 1/2" ht. x 2 1/2" wide; (only the slightest trace of faint wear, otherwise attic mint). R/H #H195. A great example.

Est.: \$200 - \$400 • Min. bid: \$120



Lot 212

"DR J. HOSTETTER'S / STOMACH BITTERS", possibly Adams & Co. or Agnew & Co, Pittsburgh, PA, 1865 - 1880. Light-to-medium citron green, square with beveled corners, applied sloping collar - "A" (surrounded by four dots), on base, 8 3/4" ht. x 2 3/4"; (professionally cleaned to original luster; the top of the lip has been finely polished, likely to remove some chips or flaking, a 3/8" partially open bubble on the base). R/H #H195. Fantastic, eye-appealing, light color.

Est.: \$200 - \$400 • Min. bid: \$100



Lot 213

"DOCTOR BOHLIN'S - NORMAN BITTERS", America, 1890 - 1905. Colorless, square with beveled corners, tooled sloping collar - smooth base, ht. 9"; (some faint light haze, a tiny pinhead bruise on the edge of the lip, otherwise virtually perfect). R/H #B137. A rare square from Santa Clara, California.

Est.: \$150 - \$250 • Min. bid: \$80



Lot 214

"J. T. WIGGINS / GENTIAN BITTERS", America, 1870 - 1880. Golden amber, semi-cabin with beveled roof edges, 2 sides with 3 vertical columns each, applied sloping collar - smooth base, ht. 9 3/4"; (a little light exterior wear including a few open surface bubbles, approx. 1/8" to 3/8"; a bit of very faint spotty haze, primarily on the back label panel and in the base). R/H #W108.3. Extremely rare, believed to be one of only two known, the other being sold back in 1991.

Est.: \$4,000 - \$6,000 • Min. bid: \$2,000



Lot 215

"CONSTITUTIONAL / BEVERAGE - W. OLMSTED & CO. - NEW YORK.", America, probably 1868 - 1878. Beautiful golden honey coloration with plenty of yellow tones, rectangular semi-cabin form, large applied square collar - smooth base, ht. 10 1/8"; (lightly cleaned to original luster and near mint condition; a little roughness, likely in-making, on the back edge of the lip, otherwise excellent). R/H #C224L. A scarce mold, beautiful color.

Est.: \$300 - \$600 • Min. bid: \$150



Lot 216

"ROTHERY'S BITTERS / THE GREAT ENGLISH TONIC / CHICAGO, U.S.A.", America, probably 1900 - 1910. Golden amber with a slight orange tone, rectangular with rounded corners, tooled square collar with ring - smooth base, ht. 7 7/8", near mint; (a shallow bubble with a 1/8" opening in the cover glass, otherwise attic mint). R/H #R105. A very scarce to rare bitters. The proprietor of this unusual Chicago bitters was also a longtime saloon keeper.

Est.: \$100 - \$200 • Min. bid: \$60



Lot 217

Motif of Lion and Unicorn / "ROYAL PEPSIN / STOMACH BITTERS / L & A. SCHARFF / SOLE AGENTS / ST. LOUIS. U.S & CANADA." (with 98% complete original label), America, 1895 - 1905. Golden amber with a slight orange tone, rectangular with rounded corners, ribbed shoulders, tooled double round collar - smooth base, ht. 7 3/8", attic mint! R/H #R114. Scarce smaller size, especially so having the original label.

Est.: \$125 - \$250 • Min. bid: \$70



Lot 221

DR. C. FLINT'S / BOHEMIAN / SARPAPARILLA", America, 1845 - 1855. Medium emerald coloration, oval, wide neck with a sheared and tooled flanged lip - blowpipe pontil scar, ht. 9 1/4", virtually attic mint; (a touch of light exterior wear, otherwise perfect). Odell, p.131. Extremely rare! One of only two known examples. A big, impressive sarsaparilla, heavily whittled with large lettering, great color and tremendous eye-appeal. Provenance: James Chebalo collection.

Est.: \$8,000 - \$12,000 • Min. bid: \$4,000



Lot 218

"AMERICAN / STOMACH BITTERS / ROCHESTER, N.Y.", America, 1885 - 1895. Amber with a slight orange tone through the center, shading to a light golden or honey amber along the sides, rectangular with strap sides, tooled sloping collar - smooth base, ht. 8", perfect! R/H #A54. Noted as "Scarce" in the Ring / Ham book. An attractive example, clean, bright, outstanding condition.

Est.: \$100 - \$200 • Min. bid: \$60



Lot 222

"DR. WILCOX'S - COMPOUND EXTRACT - OF / SARSAPARILLA", America, 1850 - 1860. Medium blue green, square with beveled corners, applied sloping collar - large iron pontil scar, ht. 9 1/4", perfect! Odell, p.372. A rare and impressive Albany, NY bottle, nice crude glass, excellent color, outstanding condition. Provenance: James Chebalo collection.

Est.: \$3,000 - \$5,000 • Min. bid: \$1,500



Lot 219

"DR. WILCOX / COMPOUND - EXTRACT OF / SARSAPARILLA", probably a New York State glasshouse, 1840 - 1850. Medium-to-deep olive amber, 6-sided, applied sloping collar - blowpipe pontil scar, ht. 9", near mint; (a 3/16" flake from back edge of the lip, and a tiny potstone on the inside surface of the glass in one of the back panels has a couple of 1/16" 'legs'). Odell, p.372. Considered to be one of the top colored pontiled medicines of all time. James Chebalo collection.

Est.: \$20,000 - \$40,000 • Min. bid: \$12,000



Lot 223

"DR TOWNSEND'S - SARSAPARILLA - ALBANY / N. Y.", probably a New England glasshouse, 1840 - 1855. Medium-to-deep olive amber, square with beveled corners, crudely applied sloping collar - sand type pontil scar, ht. 9 1/4", virtually perfect; (just a very slight trace of typical faint wear). A great example, nice color, scarce with a bit more of an amber tone than most, good strong embossing, outstanding condition!

Est.: \$500 - \$800 • Min. bid: \$250



Lot 220

"JOHN BULL - EXTRACT OF / SARSAPARILLA - LOUISVILLE KY", probably Kentucky or Louisville Glass Works, 1850 - 1860. Rich, medium-to-deep blue green, rectangular with beveled corners, applied round collar - heavy blowpipe pontil scar, ht. 8 7/8", near mint; (some faint interior haze, primarily in the back panel; a little scattered light exterior wear, otherwise perfect). A big, impressive bottle with outstanding character. Ex. Sam Greer, James Chebalo collections.

Est.: \$10,000 - \$15,000 • Min. bid: \$5,000



Lot 224

"DR. TOWNSEND'S - EXPECTORANT / SYRUP", America, 1845 - 1855. Rich, deep aquamarine, rectangular with beveled corners, crudely applied sloping collar - blowpipe pontil scar, ht. 6 7/8"; (slight trace of faint wear, otherwise sparkling attic mint). Odell, p.350. Exceptionally rare! A fantastic example, bright, clean and sparkling. Note; a slight size variation from those listed. Likely one of the choicest examples of the small handful known.

Est.: \$1,200 - \$1,800 • Min. bid: \$600



Lot 225

"FOREST PINE / TAR CORDIAL - THE GREAT CURE FOR / CONSUMPTION, BRONCHITIS & c - MANDERSON & CO. / PROPRIETORS-PHILADA", America, probably 1858 - 1862. Rich, medium-to-deep olive coloration, square with beveled corners, applied sloping collar with bevel - iron pontil scar, ht. 10", near mint; (a little scattered light exterior wear). Odell, p.133. Extremely rare! One of the "holy grails" of cure bottles. Provenance: James Chebalo collection.

Est.: \$10,000 - \$20,000 • Min. bid: \$5,000



Lot 226

"A.B.L MYERS AM - ROCK ROSE - NEW HAVEN", America, 1852 - 1856. Rich, very deep blue green, rectangular with beveled corners, applied blob collar - heavy oval iron pontil scar, ht. 9 1/2"; (a 1/2" x 1/4" opening in a bubble on the rear base corner, otherwise sparkling attic mint). Although the open bubble has some depth to it, as noted, it is on a base corner and does not show on display. Fantastic rich color, outstanding character. Provenance: Ex. Sam Greer collection #768.

Est.: \$2,000 - \$4,000 • Min. bid: \$1,200



Lot 227

"THE / INDIANS / PANACEA", America, 1837 - 1849. Bright medium olive, cylindrical, applied sloping collar with bevel - sand type pontil scar, ht. 8 1/2", near mint; (lightly cleaned to original luster, just a trace bit of faint wear including a tissue-paper thin 1/4" open bubble on the reverse, otherwise virtually attic mint). Odell, p.192, N #324. A very rare pontiled Indian medicine, beautiful, clean, overall excellent condition. One that is seldom offered for sale.

Est.: \$4,000 - \$6,000 • Min. bid: \$2,000



Lot 228

"PIKE & OSGOOD / BOSTON MASS - ALTERATIVE SYRUP", New England, probably an early Stoddard glasshouse, 1845 - 1855. Yellowish olive amber, rectangular with beveled corners, applied sloping collar - blowpipe pontil scar, ht. 8 1/2"; (a 7/8" crack extends from the pontil to the edge of the base; a 1 1/2" pontil flake also extends to the edge of the base, possibly in-making). Odell, p.280. A beautiful example, crude and whittled. James Chebalo collection.

Est.: \$800 - \$1,600 • Min. bid: \$400



Lot 229

"RUSHTON & / ASPINWALL / NEW YORK - COMPOUND / CHLORINE / TOOTH WASH", probably an early Stoddard, NH glasshouse, 1842 - 1848. Yellowish olive amber, rectangular with beveled corners, tooled wide flared mouth - blowpipe pontil scar, ht. 6"; (a 3/16" flake on the edge of the lip on the reverse, and a 1/4" chip at corner of base on reverse, otherwise near attic mint). Odell, p.307. A top New England pontiled medicine! Provenance: James Chebalo collection.

Est.: \$8,000 - \$12,000 • Min. bid: \$4,000



Lot 230

"LONGLEY'S - PANACEA", New England, 1848 - 1860. Medium shading to deep olive green, rectangular with beveled corners, crudely applied sloping collar with lower bevel - early smooth base, ht. 6", virtually attic mint; (only the slightest trace of faint wear including a pinprick speck of roughness on the inside edge of the lip; a bit of content residue, otherwise pristine). A great example that has not been dug and cleaned, lighter in color than most, and having nice character. A rare early medicine.

Est.: \$1,000 - \$1,500 • Min. bid: \$600



Lot 231

"HYATT'S - INFALLIBLE - LIFE BAL-SAM / N-Y.", America, 1850 - 1860. Clear, medium green with an emerald tone, rectangular with beveled corners, applied sloping collar with bevel - oval iron pontil scar, ht. 10"; (professionally cleaned to original luster with a bit of faint dullness and some scattered minor wear remaining; a tiny 3/16" annealing or stress line on back panel). Nice depth of color, excellent character with whittled, wavy glass. N#322; Odell, pgs. 189-190.

Est.: \$500 - \$1,000 • Min. bid: \$250



Lot 232

"ROHRER'S - EXPECTORAL / WILD / CHERRY / TONIC - LANCASTER PA", America, 1855 - 1865. Light golden amber, rectangular pyramid form with roped corners, applied sloping collar with ring - iron pontil scar, ht. 10 1/2", near mint; (there is an ever-so-slight interior film or faint haze, possibly from content, that may wash out, otherwise perfect). Odell, p.301. Provenance: James Chebalo collection.

Est.: \$300 - \$500 • Min. bid: \$150



Lot 233

"LINDSEY'S - BLOOD + / SEARCHER - HOLLIDAYSBURG", America, probably 1846 - 1857. Aquamarine, rectangular with beveled corners, applied round double collar - large iron pontil scar, ht. 9", attic mint! Odell, p.227. A fantastic example, crude glass, outstanding condition, and rare with the iron pontil scarred base. Provenance: Ex. Sam Greer collection #1050.

Est.: \$800 - \$1,200 • Min. bid: \$400



Lot 237

"DR GUYSOTTS / YELLOW DOCK & / SARSAPARILLA / JOHN. D. PARK / CINCINNATI. O", America, 1850 - 1860. Rich, deep aquamarine, oval, applied sloping collar - iron pontil scar, ht. 10"; (just a slight trace of faint wear, otherwise perfect). Odell, p.155. Nice rich color, heavily whittled, a big, beautiful sarsaparilla, and a lot of bottle for the money.

Est.: \$250 - \$450 • Min. bid: \$140



Lot 234

"MYERS' - ROCK ROSE - NEW HAVEN", America, 1852 - 1856. Aquamarine, rectangular with narrow beveled corners, applied blob collar - heavy iron pontil scar, ht. 8 7/8", near mint; (a slight trace of spotty faint haze or milkiness, otherwise perfect). Odell, p.262. Scarce. A great looking pontiled medicine with a distinctive mold, nice large size, heavily whittled, and in excellent condition.

Est.: \$500 - \$800 • Min. bid: \$250



Lot 238

"JOHN. J. SMITH / LOUISVILLE KY.", Midwest, probably an Ohio glasshouse, 1850 - 1860. Rich, bluish aquamarine, cylindrical, applied sloping collar - large iron pontil scar, ht. 6"; (a couple of shallow flakes, 1/8" or less, and some minor roughness primarily on the inside edge of the lip, possibly when the cork was pried out, otherwise sparkling attic mint!) Odell, p. 325; listed as "Exceptional" by Holst. A beautiful example, bright and clean, and with a sizeable pontil for a relatively small bottle!

Est.: \$100 - \$200 • Min. bid: \$60



Lot 235

"H. LAKE'S / INDIAN / SPECIFIC", America, 1849 - 1855. Aquamarine, rectangular with concave corners, bulbous neck, applied round collar - blowpipe pontil scar, ht. 8", virtually attic mint; (a couple of tiny pinhead specks of roughness along edge panel edge, otherwise pristine perfect). Odell, p.218. One of the classics of pontiled Indian medicines, scarce, and especially so in this fine, outstanding condition!

Est.: \$600 - \$900 • Min. bid: \$300



Lot 239

"DR. ROBINSON / CINCINNATI / O", Midwest, an Ohio glasshouse, or possibly Hemingray Glass Co, 1845 - 1855. Aquamarine, cylindrical, applied sloping collar - blowpipe pontil scar, ht. 5 3/4", near mint; (a little faint interior content stain, mainly in the shoulders, that may wash out; a tiny pinprick spot of roughness in the edge of the lip that you can feel, but is not easy to see, otherwise perfect). Odell, p.298. Strong, bold embossing, very scarce!

Est.: \$150 - \$250 • Min. bid: \$80



Lot 236

"SCHENCKS - SEAWEED - TONIC" (4th panel with oval indentation for pill box), America, 1855 - 1860. Aquamarine, square with beveled corners, applied sloping collar - base with deep circular indentation and heavy iron pontil scar, ht. 8 3/4", attic mint! Odell, pgs. 312-313. Extremely rare. Believed to be one of less than a half dozen examples having the oval indentation for the pill box. A beautiful example, fresh from a Massachusetts estate with bright, clean, whittled, wavy glass.

Est.: \$600 - \$900 • Min. bid: \$300



Lot 240

"GEO. M. DIXON. / CINCINNATI", a Midwest glasshouse, probably 1856 - 1860. Brilliant aquamarine, rectangular with beveled corners, applied sloping collar - blowpipe pontil scar, ht. 4 7/8", sparkling, "out-of-the-mold" pristine perfect. Odell, p.112. Scarce. Believed to have contained blackberry carminative. Provenance: Ex. Sam Greer collection #496.

Est.: \$150 - \$250 • Min. bid: \$80



Lot 241

"WHITTEMORE'S - VEGETABLE SYRUP / FOR DIARRHOEA - ESSEX, CONN.", America, 1850 - 1860. Aquamarine, rectangular with beveled corners, applied sloping collar - blowpipe pontil scar, ht. 5 1/4", sparkling attic mint! Odell, p.371. Bold, very crisp embossing, bright and clean, a "finest possible example" of this very scarce, to rare, pontiled medicine.

Est.: \$400 - \$600 • Min. bid: \$200



Lot 245

"COFFEENS - CHINESE / LINIMENT / No 3", a Midwest glasshouse, 1845 - 1855. Aquamarine, oval, sheared and inward rolled mouth - blowpipe pontil scar, ht. 4 1/4", sparkling attic mint! Odell, p.83. Scarce, especially in this pristine condition. Put up by Geo. Coffeen of Blue Ball, Ohio, and one of several different molds in which the Chinese Liniment may be found. This example is bright, clean, and with very bold embossing!

Est.: \$125 - \$250 • Min. bid: \$70



Lot 242

"JEWETT'S - LINIMENT - FOR / RHEUMATISM", America, probably an early Ohio glasshouse, 1835 - 1845. Brilliant, rich aquamarine, rectangular with beveled corners, sheared, tooled, and inward rolled mouth - blowpipe pontil scar, ht. 3 1/2", pristine perfect. A fantastic, eye-appealing little medicine, bright and sparkling, attractive embossing, crude and extremely rare! From an old-time collection.

Est.: \$400 - \$600 • Min. bid: \$200



Lot 246

"EVERSON & COS / UNITED STATES - OR RELIANCE / LINIMENT", America, 1845 - 1855. Aquamarine, oval, sheared, tooled, and inward rolled lip - blowpipe pontil scar, ht. 4 1/2", attic mint! Odell, p.122. An extremely rare, early, pontiled liniment with a great name and crude, attractive embossing. This example was first offered on the market in 2016, and is believed to be one of only two, or possibly three examples extant.

Est.: \$600 - \$1,200 • Min. bid: \$300



Lot 243

"JEWETT'S - LINIMENT / FOR - COUCHS & - CONSUMPTIONS", America, probably an early Ohio glasshouse, 1835 - 1845. Rich aquamarine, rectangular with beveled corners, sheared, tooled, and inward rolled mouth - blowpipe pontil scar, ht. 3 1/2", sparkling attic mint. Odell, p.202. Another beautiful, very rare, pontiled medicine. Crisp and boldly embossed. These just don't come around, especially in this fine condition.

Est.: \$400 - \$600 • Min. bid: \$200



Lot 247

"DR. D. JAYNE'S / TONIC VERMIFUGE / 84 CHEST ST. PHILA", America, 1840 - 1850. Aquamarine, oval with indented front panel, sheared, tooled, thin flanged lip - blowpipe pontil scar, ht. 4 7/8", attic mint! Odell, p. 200. A beautiful example, bright, clean, not easy to find in this fine outstanding condition, and with a perfect delicate flanged lip.

Est.: \$100 - \$200 • Min. bid: \$50



Lot 244

"JEWETT'S - STIMULATING - LINIMENT - FOR FEVERS.", probably an early Ohio glasshouse, 1835 - 1845. Rich aqua, rectangular with beveled corners, sheared and outward folded mouth - blowpipe pontil scar, ht. 4 1/8"; (two 1/4" chips along the bottom edge of the outward folded rim; a minor light interior content ring just above the base, otherwise perfect). Odell, p.202. Very rare! One of possibly two offered at auction in more than 20 years.

Est.: \$300 - \$500 • Min. bid: \$150



Lot 248

"Dr. D. JAYNE'S TONIC VERMIFUGE" reverse-glass Advertising Sign (in original frame), 1875 - 1885. Beautiful, reverse glass painted advertisement, *Dr. D. JAYNE'S / TONIC VERMIFUGE / For WEAKLY ADULTS AND CHILDREN. / For DEBILITY WORMS AND DYSPESIA.*, (Large colorful image of Cherub in center). 14 3/8" wide x 12 1/2" high, clean and bright, overall fine condition; (some minor label separation), as found in original frame and backing.

Est.: \$800 - \$1,200 • Min. bid: \$400



Lot 249

"MERRICK'S - VERMIFUGE - MIL-TON. PA.", America, 1845 - 1855. Aquamarine, 12-sided, sheared, tooled, thin flanged lip - blowpipe pontil scar, ht. 3 1/2", perfect! N #441 (5-star); Odell, p.252. A fantastic example of this scarce, desirable, early multi-sided pontiled medicine.

Est.: \$200 - \$400 • Min. bid: \$100



Lot 253

Lot of (2), "DR. J. BLACKMAN'S - GENUINE - HEALING - BALSAM." Bottles, 1850 - 1860. Both are colorless with an amethystine tint, octagonal, sheared and inward rolled mouths - blowpipe pontil scarred bases, ht. 4 1/4" & 5 1/2", both are sparkling attic mint! Odell, p.34. A great set, both are bright and clean with crude whittled glass, and very pretty with the amethystine tint. Provenance: Both Ex. Sam Greer collection (#s 235 & 236).

Est.: \$200 - \$400 • Min. bid: \$100



Lot 250

"BRANTS - INDIAN - BALSAM", America, 1845 - 1855. Brilliant aquamarine, 8-sided with an elongated neck, applied sloping collar - blowpipe pontil scar, ht. 8", virtually attic mint; (just a small touch of light interior residue or faint haze below the shoulder, in the back panel, otherwise pristine). Odell, pgs. 45-46. A fantastic example, about as nice as you could hope to find having an elongated neck, crisp bold embossing, very heavily whittled, brilliant glass.

Est.: \$200 - \$400 • Min. bid: \$120



Lot 254

"LOUDEN & Co'S - CARMINATIVE - BALSAM - PHILAD.A.", America, 1845 - 1855. Aquamarine, cylindrical, sheared, tooled thin flanged lip - blowpipe pontil scar, ht. 5 1/4", perfect! Odell, p.230. One of many early products put out by this company. Beautiful, sparkling mint condition with a perfect thin flanged lip.

Est.: \$100 - \$200 • Min. bid: \$50



Lot 251

"DR WISTAR'S - BALSAM OF - WILD CHERRY - PHILADA." - "S & P" (on shoulder), America, probably 1844 - 1850. Aquamarine, octagonal, sheared, tooled, outward folded lip - blowpipe pontil scar, ht. 6 1/4", perfect! Odell, p.379. A scarce mold variant with the "S & P" (Sanford & Park), on the shoulder. Bright, crisp, sparkling, a great example!

Est.: \$150 - \$250 • Min. bid: \$80



Lot 255

"DR H SWAYNE'S - COMPOUND - SYRUP OF - WILD CHERRY", America, 1840 - 1855. Aquamarine, square with beveled corners, sheared, tooled thin flanged lip - blowpipe pontil scar, ht. 5 7/8", virtually attic mint! (minor, partially open interior bubble, otherwise pristine). Odell, p.338. A very attractive, scarce pontiled medicine from Philadelphia, boldly embossed, outstanding condition.

Est.: \$200 - \$400 • Min. bid: \$120



Lot 252

"Dr M. BOWMAN'S - GENUINE - HEALING - BALSAM.", America, 1850 - 1860. Colorless, octagonal, sheared, slightly flared and inward rolled mouth - blowpipe pontil scar, ht. 5 3/8", perfect! Odell, p.42. Dr. M. Bowman of Poughkeepsie, NY, advertised to be cautious of "Blackman's imitation", likely fierce competitors. Comparatively scarce. Provenance: Ex. Sam Greer collection #261.

Est.: \$100 - \$200 • Min. bid: \$50



Lot 256

"DR. M.G. KERR / & / BERTOLET - COMPOUND / ASIATIC BALSAM - NORRISTOWN PA", America, 1845 - 1855. Aquamarine, rectangular with beveled corners, sheared, tooled, thin flanged lip - blowpipe pontil scar, ht. 4 1/2"; (a 3/8" chip from the thin flanged lip; some dried interior content stain, otherwise perfect). Scarce. Provenance: Ex. Dr. Sam Greer collection #1001.

Est.: \$75 - \$150 • Min. bid: \$40



Lot 257

"OLDRIDGE'S / BALM / OF CO-LUMBIA - FOR RESTORING / HAIR / PHILADELPHIA" (with 95% complete, original label), America, 1830 - 1840. Aquamarine, rectangular with concave corners, sheared, tooled, thin flanged lip - blowpipe pontil scar, ht. 5", attic mint! (label has a little stain and darkened a bit from age). Odell, p.268; DF, p.116. An attractive, very early bottle, scarce having the original label.

Est.: \$400 - \$800 • Min. bid: \$200



Lot 261

"P.T. WRIGHT & Co / PHILADA - AGUE - MIXTURE", America, 1855 - 1860. Aquamarine, rectangular with beveled corners, applied round collar with bevel - blowpipe pontil scar, ht. 6 3/4", perfect. Odell, p.381. Very scarce! A bright, clean, whittled example with nice character to the glass.

Est.: \$200 - \$400 • Min. bid: \$120



Lot 258

"DR. E. MURRAYS. / ANTI SCORBU-TIC - SYRUP - NEW CASTLE PA", America, 1850 - 1860. Rich, deep aquamarine, rectangular with beveled corners, applied round collar with bevel - iron pontil scar, ht. 6 1/2"; (slight trace of very faint interior haze near shoulders; a couple of light scratches on back panel, otherwise sparkling attic mint). Extremely rare, one of only two, or possibly three known. Provenance: Ex. Sam Greer, James Chebalo collections.

Est.: \$500 - \$800 • Min. bid: \$250



Lot 262

Lot of (2), Scarce Philadelphia Drug-gists, America, 1845 - 1860. **"GILBERT & Co / No 177 NORTH 3D ST. PHILA"**, and, **"I. L. RITTER, / PHILA - WHOLE-SALE - DRUGGIST"**. Both are aquamarine, rectangular with beveled corners, sheared, tooled, and inward rolled lips - blowpipe pontil scarred bases, ht. 5" and 4 7/8" respectively, both are pristine perfect! A couple of really nice examples, not easy to find in this 'attic-type' condition.

Est.: \$150 - \$250 • Min. bid: \$80



Lot 259

"PORTER'S - CURE OF PAIN - BUNDYSBURG. O", America, 1850 - 1860. Brilliant aquamarine, rectangular with beveled corners, applied round collar with bevel - iron pontil scar, ht. 6 5/8", attic mint. Odell, p.282. Bright, clean, and sparkling, a great example of this very scarce, pontiled, Ohio cure (the larger of two sizes this bottle comes in). Provenance: Ex. Sam Greer collection, #1414.

Est.: \$400 - \$700 • Min. bid: \$200



Lot 263

"N.Y. COLLEGE / OF MEDICINE / PHARMACY / W. RICHARDSON / AGENT", America, 1845 - 1855.

Aquamarine, oval, applied sloping collar - blowpipe pontil scar, ht. 6", sparkling attic mint. Odell, p.264. A very attractive and unusual form, heavily whittled, extremely rare, believed to be one of only four or five examples known. Per early ads, the "College was purportedly established for the suppression of Quackery by the preparation and sale of genuine medicines".

Est.: \$400 - \$600 • Min. bid: \$200



Lot 260

"OGLESBY S - BOTANIC - REMEDY", America, 1850 - 1860. Aquamarine, rectangular with beveled corners, applied sloping collar - blowpipe pontil scar, ht. 6 5/8", virtually attic mint; (just a very slight trace of faint interior milkiness; some minor in-manufacture crazing lines in the applied lip, otherwise perfect). This example sold in 2016. Unlisted by Odell, extremely rare, and believed to possibly be unique. Pontiled remedy bottles are rare in general.

Est.: \$800 - \$1,200 • Min. bid: \$400



Lot 264

"UNIVERSITY / FREE MEDICINE / PHILADA", America, probably 1853 - 1860. Aquamarine, 6-sided, applied sloping collar - blowpipe pontil scar, ht. 6 1/4", perfect! Odell, p.355. A great example, clean, bright, sparkling, and boldly embossed. Advertising indicates from the University of Free Medicine and Popular Knowledge, Chartered the 29th of April, 1853.

Est.: \$175 - \$350 • Min. bid: \$100



Lot 265

"MRS. E. KIDDER / DYSENTERY / CORDIAL / BOSTON", America, 1845 - 1860. Aquamarine, cylindrical, applied sloping collar - blowpipe pontil scar, ht. 7 5/8", pristine perfect! Odell, p.213. A brilliant, attractive example, excellent character, crude pebbly glass, virtually 'out-of-the-mold' pristine condition.

Est.: \$100 - \$200 • Min. bid: \$60



Lot 269

"PERRINE'S" / (APPLE) / "GINGER" - "PERRINE'S - APPLE - GINGER - PHILA", America, 1880 - 1890. Golden amber, cabin form with roped corners, thatched roof panels, tooled sloping collar - smooth base, ht. 9 7/8", near mint; (just a bit of very faint dullness or 'bloom' on side label panel, barely noticeable, otherwise virtually attic mint). A great cabin-form pictorial medicine, excellent condition, a lot of bottle for the money!

Est.: \$175 - \$350 • Min. bid: \$100



Lot 266

"DR. HAM'S / AROMATIC / INVIGORATING SPIRIT / N.Y.", America, 1850 - 1860. Aquamarine, cylindrical, applied square collar - iron pontil scar, ht. 8 3/8", near mint; (just a touch of very minor lip edge roughness that you can feel, but barely visible without a loop; a faint scratch near mold seam,, otherwise sparkling attic mint). Odell, p.159. One of two different mold variants. Very scarce! Only the 3rd example to come to market in more than 20 years.

Est.: \$200 - \$400 • Min. bid: \$100



Lot 270

"L.Q.C. WISHART'S - PINE TREE / TAR CORDIAL / PHILA" - "PATENT" / (PINE TREE) / "1859", America, 1865 - 1875. Medium yellowish green, square with beveled corners, applied sloping collar - smooth base, ht. 9 1/4"; (a little minor exterior wear including a few light scratches; some faint interior residue or content haze that may wash out, otherwise excellent). This is the mold variant having the two large rivet marks on one of the beveled edges.

Est.: \$175 - 350 • Min. bid: \$100



Lot 267

Early Apothecary Jar, "TR :CINCH :C", England, 1800 - 1830. Light green jar with original black painted lettering on gold painted label background, cylindrical, freeblown or dip mold, large crudely applied ring-type collar - sand type pontil scar, ht. 10 1/4", virtually perfect; (a little light usage wear and some typical darkening of the painted label). Similar in style to VdB, plates 60 & 270. A very early jar, wonderful condition.

Est.: \$200 - \$400 • Min. bid: \$100



Lot 271

Lot of (2), "STRICKLANDS / DIARRHEA & - DYSENTERY - MIXTURE. / CIN. O." Bottles (one with 75% complete, original, labels), America, 1860 - 1870. Both are aquamarine, rectangular with beveled corners, applied sloping collar - early smooth base, ht. 6 1/4"; (minor content stain in one, otherwise both attic mint). Very scarce, crude bottles, that just missed the pontil rod. Both were found together in the basement of an old Indiana drugstore built about 1850.

Est.: \$100 - \$200 • Min. bid: \$50



Lot 268

"Hicks" / (Profile of Man's Head with Cap) / "CAPUDINE / TRADE MARK / LIQUID / FOR / HEADACHES, GRIPP ETC.", Label-under-Glass, America, 1885 - 1895. Medium amber, glass label with white background, cobalt lettering, red and gold border, cylindrical, tooled prescription-type collar, ground neck with stopper - smooth base, ht. 8 3/8", near mint; (a minor, 1/4", paper-thin iridescent bruise on the top edge of the lip). Scarce, desirable, and in beautiful condition.

Est.: \$300 - \$500 • Min. bid: \$150



Lot 272

"GEO. W. LAIRD & Co. / OLEO-CHYLE.", America, 1885 - 1895. Clear, medium sapphire blue, rectangular semi-cabin form, long neck with tooled square collar - smooth base, ht. 9 3/4", 'out-of-the-mold', pristine perfect. A beautiful example. The bottle was thought to have contained a hair dye.

Est.: \$200 - \$400 • Min. bid: \$100



Lot 273

"DR KEYSER'S - BLOOD + / SEARCHER - PITTSBURGH PA", probably a Pittsburgh district glasshouse, 1865 - 1875. Medium green with an emerald tone, rectangular with beveled corners, applied round collar with bevel - smooth base, ht. 9 1/8"; (a little light interior residue and content haze, a 1/8" flake on one of the beveled edges, otherwise excellent). A fresh find from a flea market in SE Ohio! A beautiful, extremely rare, believed to be unique color for this bottle!

Est.: \$400 - \$600 • Min. bid: \$200



Lot 274

"DR TEBBETTS' - PHYSIOLOGICAL / HAIR - REGENERATOR", America, 1865 - 1875. Medium straw-colored amethyst, rectangular with beveled corners, applied ring collar with bevel - smooth base, ht. 7 3/8"; (a touch of light wear, mainly on the back label panel, as well as a couple of minor pin-head specks of roughness, otherwise excellent). DF, p.152. Beautiful color, nice pinkish straw tones.

Est.: \$400 - \$800 • Min. bid: \$200



Lot 275

"MRS S.A. ALLEN'S - WORLD'S HAIR / RESTORER - 355 BROOME ST. / NEW YORK.", America, 1855 - 1865. Rich, medium-to-deep plum purple, rectangular with beveled corners - tooled, likely applied, flanged mouth - smooth base, ht. 7 1/8"; (a little scattered faint exterior wear, otherwise very near mint). DF, pgs. 7-9. Gorgeous purple color shading to deep, dense violet in the lower half of the bottle.

Est.: \$300 - \$500 • Min. bid: \$150



Lot 276

"CONGRESS SPRING Co. / C / SARATOGA, N.Y. - CONGRESS / WATER" Whimsey Jar, probably Congressville Glass Works, 1885 - 1889. Blue green, quart mineral water bottle fashioned into a wide-mouth jar, tooled wide rim - smooth base, ht. 7 3/4"; (minor usage wear, otherwise perfect). T# C-21. A unique example, the only Saratoga jar known fashioned from this mold. Ex. Geo. McKearin, Arthur Barrus, Norman Heckler collections.

Est.: \$15,000 - \$20,000 • Min. bid: \$7,500



Lot 277

"EMPIRE SPRING Co / E / SARATOGA N.Y. - EMPIRE / WATER"

Whimsey Jar, possibly Congressville Glass Works, 1885 - 1889. Blue green, (slightly more of a bluish tone than the preceding lot), quart mineral water bottle fashioned into a wide-mouth jar, tooled wide rim - smooth base, ht. 8"; (trace bit of usage wear, otherwise perfect). T# E-11. A unique example, the only jar fashioned from this mold! An old time private Connecticut collection; Ex. Elvin Moody collection.

Est.: \$15,000 - \$20,000 • Min. bid: \$7,500



Lot 278

"GLACEIER SPOUTING SPRING / SARATOGA / SPRINGS. N.Y." - (Derrick with Spouting Spring), America, possibly Congressville Glass Works, 1871 - 1872. Aquamarine, cylindrical, applied sloping collar with bevel - smooth base, Pt, attic mint! T# S-32. A very rare, desirable mineral water. The company was only in business for about one year before being renamed Champion Spouting Spring in 1872 (see Tucker, p.68). Clean and whittled, a great Saratoga bottle!

Est.: \$4,000 - \$5,000 • Min. bid: \$2,000



Lot 279

"AVON SPRING WATER / C.H. NOWLEN / AVON. N.Y.", probably a New York State glasshouse, possibly Lockport Glass Works, or Saratoga Mountain Glassworks, 1860 - 1870. Rich, deep emerald green, cylindrical, applied sloping collar with bevel - smooth base, Pt; (two sizeable lip chips, each approx. 1/4" x 3/8"; some light exterior dullness, and a little ribbon of fine wear near the base). T# N-4:B. A rare mineral water, heavily whittled, nice deep color.

Est.: \$200 - \$400 • Min. bid: \$100



Lot 280

"CHAMPLAIN SPRING / ALKALINE CHALYBEATE / HIGHGATE, VT", America, probably a New Hampshire or New York State glasshouse, 1865 - 1875. Medium-to-deep emerald green, cylindrical, applied sloping collar with bevel - smooth base, Qt; (a little minor, spotty, faint interior content haze; a trace of light wear including a 1/8" opening in the cover glass of a bubble near the base, otherwise excellent). T# V-5.

Est.: \$300 - \$500 • Min. bid: \$150



Lot 281

"CONGRESS & EMPIRE SPRING CO / HOTCHKISS' SONS / C / NEW YORK / SARATOGA. N.Y.", America, 1866 - 1875. Beautiful, bubbly yellowish-olive, almost an olive-yellow, cylindrical, applied sloping collar with bevel - smooth base, Pt, near mint; (just a bit of very minor roughness on the back edge of the lip). T# C-15:B, Type 1. Beautiful color, outstanding character and crudity, the glass is filled with tiny seed bubbles.

Est.: \$100 - \$200 • Min. bid: \$60



Lot 282

"VICHY WATER / PATTERSON / & BRAZEAU / N.Y.", America, 1865 - 1875. Rich, medium olive coloration with a yellowish tone, cylindrical, applied sloping collar - smooth base, ht. 6 5/8", 1/2 Pt, perfect. T# M-36. A beautiful example, bright, clean, attractive color. Noted as scarce-to-rare by Tucker.

Est.: \$125 - \$250 • Min. bid: \$70



Lot 283

"BLOUNT SPRINGS / NATURAL / SULPHUR WATER - TRADE / (BS Logo) / MARK", America, 1870 - 1880. Clear medium cobalt, cylindrical, applied short blob collar - smooth base, ht. 8 3/4", virtually attic mint; (very faint interior content haze, barely noticeable). A great example, nice color, fantastic condition. In addition, this is the much scarcer large size!

Est.: \$125 - \$250 • Min. bid: \$70



Lot 284

"BOYD - BALT." Torpedo Mineral Water, probably Baltimore Glass Works, 1843 - 1848. Rich, medium-to-deep citron green, torpedo form, applied sloping collar - smooth base, ht. 9"; (professionally cleaned to original luster with a little minor wear remaining; a 1/2" iridescent bruise on the inside edge of the lip possibly occurring when the cork was pried out, a 1/8" chip on the side of the neck, and a small potstone with a 1/4" cooling radiation). Beautiful color.

Est.: \$400 - \$800 • Min. bid: \$200



Lot 285

"BOYD - BALT." Tenpin Mineral Water, probably Baltimore Glass Works, 1843 - 1848. Medium shading to deep olive green in the lower half of the bottle, tenpin form, applied sloping collar - smooth base, ht. 8 5/8"; (some minor flaking and roughness on the inside edge of the lip; a bit of typical minor wear on the front, some moderate-to-heavy fine highpoint wear on the reverse). A nice crude example filled with bubbles and impurities, very scarce color!

Est.: \$800 - \$1,200 • Min. bid: \$400



Lot 286

"WM. RUSSELL - BALT." Torpedo Mineral Water, Baltimore Glass Works, 1848 - 1853. Medium-to-deep apple green, torpedo form, applied sloping collar - smooth base, ht. 8 7/8"; (appears to be a dug bottle, but has not been cleaned; some minor ground imperfections including a couple of flakes, 1/8" or less, and a 3/8" chip from the side of the applied collar). Note, the chip on the collar could be easily repaired and with a light cleaning, would display near mint. Nice whittling and character.

Est.: \$200 - \$400 • Min. bid: \$100



Lot 287

"COUGHLAN - BALT" Torpedo Mineral Water, probably Baltimore Glass Works, 1845 - 1855. Medium yellowish apple green, torpedo form, applied sloping collar - smooth base, ht. 8 5/8"; (lightly cleaned to original luster with just a bit of minor wear remaining; a 3/16" flake from the tip of the "H" in "COUGHLAN", otherwise excellent). A very scarce, early Baltimore soda, beautifully whittled, overall excellent condition.

Est.: \$1,000 - \$1,500 • Min. bid: \$500



Lot 288

"J. LAKE. / SCHENECTADY NY" Soda Water Bottle, America, 1850 - 1860. Deep, vivid cobalt blue, tenpin form, applied blob collar - iron pontil scar, ht. 8", near attic mint; (some expected faint exterior wear, otherwise perfect). A fantastic example, very scarce-to-rare in this un-dug 'attic' condition, with full iron pontil, and in this beautiful deeper-than-normal vivid shade of cobalt.

Est.: \$800 - \$1,200 • Min. bid: \$400



Lot 289

"J.W. HARRIS" - (STAR) SODA - NEW HAVEN - CONN.", America, 1852 - 1860. Sapphire blue, 8-sided, applied blob collar - iron pontil scar, ht. 7 3/8", very near mint; (just a slight trace of typical light exterior wear and a bit of faint interior milkiness, otherwise perfect). A scarce soda known as the neck ring and star mold, in un-dug, virtually attic condition.

Est.: \$400 - \$600 • Min. bid: \$250



Lot 293

"H.W. BUFFUM & Co / PITTSBURGH / PENNA.", A. & D.H. Chambers Glass-works, 1870 - 1880. Beautiful, medium sapphire blue, transitional 'Hutch' form with a short neck and large, applied blob collar - **"A & D.H.C."** (around heel of base on reverse), **"H"** on smooth base, ht. 6 3/8"; (lightly cleaned to original luster; a hard-to-see, thin sliver-type bruise on the edge of the lip, barely noticeable, otherwise very near mint). Certainly a very scarce, to rare, mold for a Buffum soda.

Est.: \$400 - \$600 • Min. bid: \$200



Lot 290

"W. H. BURT / SAN FRANCISCO", America, 1855 - 1860. Rich, medium green with an emerald tone, cylindrical, applied blob collar - iron pontil scar, ht. 7"; (some faint exterior dullness and fine light wear, a ring of light interior content haze where the bottle had laid on it's side, otherwise excellent). Overall, very nice condition as the bottle has not been cleaned, and probably was not dug, the iron pontil is fully intact. A light cleaning and the bottle would present as virtually attic mint.

Est.: \$300 - \$500 • Min. bid: \$150



Lot 294

"J.C. BUFFUM Co. / PIONEER / BOTTLERS / PITTSBURGH, PA. / ESTABLISHED / 1845 / THIS BOTTLE IS REGISTERED / NOT TO BE SOLD", D.O. Cunningham Glass Company, Pittsburgh, 1882 - 1897. Medium amber, cylindrical, blob collar with 'Baltimore loop' seal, **"D.O.C. 226"** (around heel of base on reverse), **"JCB"** logo on smooth base, Qt, ht. 11 5/8", attic mint. A scarce Buffum beer mold that does not come around often.

Est.: \$150 - \$250 • Min. bid: \$80



Lot 291

"BROWNELL & WHEATON / NEW BEDFORD - THIS BOTTLE / NEVER SOLD", America, 1865 - 1875. Clear, medium cobalt blue, cylindrical, applied blob collar - smooth base, ht. 7 1/4", virtually attic mint; (a minor opening in the cover glass of a bubble on the reverse; a bit of faint interior milkiness below the shoulders on the reverse, otherwise pristine). A gorgeous example, bright, clean, rich color.

Est.: \$200 - \$400 • Min. bid: \$120



Lot 295

Black Glass Wine Bottle, America or possibly England, probably 1770 - 1780. **"S M"** (scalloped arch pattern above and below initials), on applied seal. Medium-to-deep olive amber, early wide-bodied squat cylinder, applied string rim - domed base with sand type pontil scar, ht. 9", near perfect; (touch of minor wear, light interior content residue). Unlisted by Burton, believed to be a unique example. A recent find from Peterborough, New Hampshire.

Est.: \$800 - \$1,200 • Min. bid: \$400



Lot 292

"BUFFUM'S / MINERAL WATER / NASHVILLE - B", probably a Pittsburgh glasshouse, 1850 - 1860. Aquamarine, cylindrical, applied sloping collar - iron pontil scar, ht. 7 3/8"; (some light interior content haze, primarily in the shoulder area, and just a trace of minor wear including a shallow 1/8" flake from the lower edge of the applied sloping collar, otherwise near attic mint). A very rare mineral water that is seldom offered for sale. Ex. Rusty Frye collection.

Est.: \$800 - \$1,200 • Min. bid: \$400



Lot 296

Half-Size, Black Glass Wine Bottle, probably America, possibly Coventry Glass Works, 1813 - 1820. **"J.W. / Boott"** (on applied glass seal). Deep yellowish olive with an amber tone, half-size cylinder, applied short tapered collar - flat base with sand type pontil scar, ht. 7 3/4", virtually attic mint; (a trace of faint usage wear). In 1819, a "J.W. Boott, Esq." of Boston was a listed as an importer of wines. Extremely rare, believed to possibly be a unique example.

Est.: \$1,500 - \$2,500 • Min. bid: \$800



Lot 297

Black Glass Wine Bottle, America or possibly England, 1810 - 1825. "J. Bell" (on applied seal). Medium-to-deep olive amber, short-neck magnum cylinder, applied short taper double collar - kick up base with sand type pontil scar, ht. 11 3/8", virtually perfect 'cellar found' condition; (some dried interior content residue). See, Burton, pgs.1049-1050. Extremely rare, one of three extant (all three were discovered in America, two are in the Henry Francis Dupont, Winterthur Museum).

Est.: \$800 - \$1,200 • Min. bid: \$400



Lot 301

Small, Freeblown Demijohn, New England, probably an early Stoddard glasshouse, Stoddard, NH, 1845 - 1860. Beautiful, medium olive amber with some lighter yellowish tones, cylindrical, applied sloping collar - blowpipe pontil scar, ht. 9 1/4", perfect! A scarce, attractive smaller size, almost appearing diminutive as compared to many others, nice character, a little lopsided in the shoulders, outstanding condition!

Est.: \$175 - \$350 • Min. bid: \$100



Lot 298

Black Glass Wine Bottle, England, 1810 - 1820. "A.S. / C.R." (on applied seal). Medium-to-deep olive amber, cylindrical, early 3-pc. mold, applied short tapered string rim - sand type pontil scar, ht. 11 1/4", perfect! A beautiful example, full original surface gloss, crisp impression on the seal, a classic early applied-seal wine bottle from the All Souls College.

Est.: \$100 - \$200 • Min. bid: \$60



Lot 302

Demijohn, New England, probably Westford Glass Works, Westford, CT, 1857 - 1865. Olive amber with a slight golden tone, cylindrical, 3-piece mold, applied sloping collar - beveled edge base with sand-type pontil scar, ht. 13 3/4", near mint; (a little typical minor exterior wear including a 3/16" iridescent flake on the inside edge of the lip, a 1/4" bit of roughness along the bottom edge of the applied sloping collar). Excellent character with plenty of impurities and crude seedy glass.

Est.: \$150 - \$300 • Min. bid: \$80



Lot 299

Early, Black Glass Wine Bottle, probably Netherlands, 1720 - 1730. Medium olive green with an overall silvery-white and rainbow iridescence, early, transitional straight-side onion form, applied string rim - blowpipe pontil scar, ht. 6", width 5 3/4"; (a minor 1/8" flake on the edge of the string rim, dried interior residue and stain, but no other form of damage). A very early wine, interesting and attractive exterior patina, and with a near perfect string rim.

Est.: \$200 - \$400 • Min. bid: \$100



Lot 303

Large, Freeblown Demijohn, New England, possibly an early Stoddard glasshouse, Stoddard, NH 1845 - 1860. Medium-to-deep olive amber, cylindrical, freeblown or possibly dip mold, applied sloping collar - blowpipe pontil scar, ht. 16 1/4", near mint; (some typical light exterior wear, and a partially open interior bubble near the base, otherwise perfect). Nice large size, excellent condition.

Est.: \$100 - \$200 • Min. bid: \$60



Lot 300

Rare, Early Utility or Storage Bottle, probably New England, 1800 - 1830. Deep olive amber, cylindrical, dip mold, inverted funnel-shaped neck, sheared, tooled and outward flared mouth - large blowpipe pontil scar, ht. 11"; (some expected minor usage wear, a couple of partially open interior bubbles, otherwise excellent). A crude, slightly lopsided, heavy early storage bottle or demijohn. Interesting and attractive with the unusual neck and lip treatment.

Est.: \$600 - \$1,200 • Min. bid: \$300



Lot 304

Demijohn, America, 1850 - 1870. Clear, medium olive with a slight yellowish tone, shading to a deep olive green through the neck, flattened apple form, freeblown or possibly blown in a "starter" dip mold, applied sloping collar - large blowpipe pontil scar, ht. 18 3/8", near mint; (a little very light interior residue or faint haze in one side, barely noticeable, otherwise perfect). A great looking example, very desirable form, nice eye-appeal.

Est.: \$250 - \$450 • Min. bid: \$140

Choice Ink Bottles

Lot 106

Lot 107

Lot 105

Lot 109

Lot 108



Rare Sodas

Lot 289

Lot 291

Lot 293

Lot 288



Colognes

Colorful Fancy Cologne Bottles



Rare & Colorful Calabash Bottles

Calabashes



Lot 10

Lot 9

Lot 11