

American Glass Gallery™

Auction #21

Opens October 17, 2018

Closes October 30, 2018



Featuring Rare & Important Pontilled Medicines: Lots 217, 218 & 219

Conditions of Sale: Auction #21, including Part III of The Ralph Finch Collection

1. Absentee Auction

The items in this sale will be sold via absentee auction. Closing date:
October 30, 2018, 11:00 p.m., EST.

2. Our Guarantee Regarding Descriptions

American Glass Gallery has made every attempt to describe correctly the property being sold. Descriptions are guaranteed to be accurate as regards authenticity, age, condition, and measurements to within one-fourth inch, as represented in this catalog. Items in this catalog are not shown to scale. In describing damage, exterior wear or manufacturer's flaws that in our opinion, do not significantly detract visually or monetarily from the value of the item are not listed and will not be considered for refund. The Auctioneers reserve the right to make verbal corrections and provide additional information at any time during the sale.

3. Preview

Items may be viewed by appointment from October 17, 2018 through October 29, 2018.

4. Bidding Procedure

You may submit your bids by mail, phone, FAX, email or through our on-line auction site. If bidding by mail or FAX, please fill out the absentee form and return it to us. Your bid, either written or oral, grants American Glass Gallery the authority to protect you up to the amount of your stated bid. Your bid will not be removed once executed.

Bidding Times: You can submit your bids anytime after receiving your catalog. Bids may be made by phone, daily, until closing day, October 30, 2018, from 9 A.M. - 6 P.M. Eastern Time. Incoming phone bids will be accepted on the closing day (October 30, 2018) until 11 P.M. Eastern Time. Phone calls and Fax bids after this time will not be honored. No exceptions. You may also place your bids through our on-line auction service 24-hours a day once the site has opened for bidding, on or about October 17, 2018, continuing until 11:00 P.M. Eastern Time, October 30, 2018.

Please do not wait until the last day or two of the sale to place your bids! Because many collectors wait until the final few days of the sale to place their bids, we anticipate the telephone and internet bidding to be very busy during that period, so please plan accordingly. In the event of a tie bid, the earliest received bid on the lot will take precedent. We would welcome your bids by phone so that we can answer any questions and assist you in your bidding.

You may also telephone us at any time during the auction, prior to the closing of the sale, to check the status of your bids, to find the current bidding level, to open a bid, or to raise a bid on an auction lot.

Bidding Increments are as follows:

| | |
|--------------------------------|--------------------------|
| Up to \$250.00..... | increments of \$10.00 |
| \$250.00 - \$500.00 | increments of \$25.00 |
| \$500.00 - \$1,000.00 | increments of \$50.00 |
| \$1,000.00 - \$2,500.00 | increments of \$100.00 |
| \$2,500.00 - \$5,000.00 | increments of \$250.00 |
| \$5,000.00 - \$10,000.00 | increments of \$500.00 |
| \$10,000 & Up..... | increments of \$1,000.00 |

Bids submitted between the above increments, whether by mail, FAX, email or on-line via the internet, will automatically be lowered to the closest lower increment.

This is a minimum bid auction. Bids below the printed minimum will not be accepted.

An example of how our absentee bidding system works: You bid \$600.00 on a lot which is the highest bid received to date. The second highest bid is \$450.00. The current high bid level would be yours at \$475.00, one bid increment higher than the other collector's bid. Any additional bids submitted by others below \$600.00 will automatically be topped on your behalf by a representative of American Glass Gallery, up to your stipulated high bid amount. If no further bids on this lot are received beyond the \$450.00, and the under bidder has not requested a "Call Back", then you would have won the lot at \$475.00, not the \$600.00 that you were prepared to pay.

American Glass Gallery will at NO TIME disclose bids pledged by others; only the current "High Bid" level of a lot will be stated upon request. The highest bidder as determined by American Glass Gallery shall be the purchaser. It is the sole right of the auctioneer to settle any dispute between bidders and to regulate the bidding procedure. The auctioneer reserves the right to refuse any bid he believes not to have been made in good faith.

5. "Call Back" Process

If requested, the three top bidders of an item at the time of closing will be given a "Call Back" over the next number of days in order to resolve the final sale of an item. You can request this service by "checking" the appropriate box on your absentee bid form or verbal agreement by phone. It is the responsibility of the bidder to insure he has qualified for this service.

Please note: No "Call Backs" will be executed for bids under \$400.00. In the event of tie bids, the earliest bid received will be the winning bid.

An example of how the "Call Back" process works: As an example, you have bid \$600.00 on a particular lot. Another bidder has submitted a bid of \$900.00 on the same lot. Assuming that as of the auction closing date you are among the top three bidders on this lot and you have requested a "Call Back", you would receive a call informing you that you have been "Out Bid" and the current "High Bid" is now at \$650.00. If you choose to continue bidding on this lot, you may now do so. Assuming that you now increase your bid to \$700.00, we would accept your bid but also inform you that we have a higher bid on this lot and must bid \$750.00. At this time, an auction between you and American Glass Gallery, representing the collector who submitted the bid of \$900.00, takes place. This bidding would continue until you drop out, or top the other bidders high bid of \$900.00. If the other bidder has not requested a "Call Back" service, you would be awarded the lot. If however, the other bidder also requested a Call Back, we must now call them. If they elect to increase their bid over your high bid, we would in turn call you back. This back and fourth process would continue until one of the bidders declines to go any farther.

If you have requested a "Call Back", the auctioneers will need to contact you on the days immediately following the auction closing between the hours of 8 A.M. and 9 P.M. Eastern Time. Please supply us with all appropriate contact phone numbers including, home, mobile and work numbers. Bidders must provide the appropriate telephone numbers where they can be contacted. If you will be traveling or otherwise unavailable, bidders with "Call Back" privileges will have the responsibility to contact American Glass Gallery twice daily during the Call Back period.

Please note, every effort will be made to contact you during the "Call Back" period. However, the bidder will forfeit their rights to a "Call Back" if the auctioneers are unable to reach them. American Glass Gallery reserves the right to discontinue Call Backs on any item in the sale (2) two days after the closing date of the sale. At that time, the current "High Bidder" may be awarded the item even if Call Backs are still outstanding.

Conditions of Sale: Auction #21, including Part III of The Ralph Finch Collection

6. Terms

Successful Bidders, Prompt and full payment is due immediately upon receipt of our invoice. Absolutely no exceptions. Anyone failing to pay for items won will forfeit all rights to bid in any future American Glass Gallery sales. **Any late or delayed payments may result in loss of return privileges for items purchased in the sale.**

No Items Will Be Mailed Before Full Payment Is Received.

Buyer Premium: Our buyer premium remains unchanged. **It is 15% if paying by cash or check, discounted from 18% if paying by Credit Card or PayPal** (PayPal payment account: jpastor@americanglassgallery.com). This buyer premium will be added to the hammer price as part of the purchase price. For example, if you purchase a lot for \$100.00, you will receive an invoice for \$115.00 if paying by cash, check or money order, plus any applicable sales tax or shipping charges.

Taxes: If you are a Michigan resident, a 6% sales tax will be added to your bill unless you have a valid resale number registered with us.

Shipping: Shipping, handling and insurance are extra. We ship insured via U.S. Mail. These charges will be added to your bill unless the lots are picked up in person. Our charges for shipping (excluding foreign shipments and oversized lots) are \$18.00 for the first item, \$9.00 for each additional item together with extra insurance costs (we use current U.S. Postal Service insurance rates).

Please allow two to three weeks for delivery after receipt of your check.

Payment: American Glass Gallery accepts Cash, Money Orders, Personal Checks, Visa, MasterCard, American Express and PayPal. **If paying by Credit Card or PayPal, an additional 3% will be added to the invoice total.**



PayPal™

7. Refunds

Refunds will be given at the discretion of the Auctioneers. Items purchased must be examined and request for refund made immediately upon receipt of the item or items. Since opinions can differ, particularly in the matter of condition, the Auctioneers will be the sole judge in the consideration of refunds. Refunds requested on the grounds of authenticity must be made within 15 days of the date of the auction, and such refund requests must be accompanied by at least one supporting statement in writing from an authority recognized by the Auctioneers. It is the Auctioneers sincere intention to consider any reasonable request for a refund. **Absolutely no returns for any reason after 30 days following the closing of the sale.**

8. Bidding on any item indicates your acceptance of these terms.



American Glass Gallery™

John R. Pastor
P.O. Box 227
New Hudson, Michigan 48165
Phone: 248.486.0530
Fax: 248.486.0538
www.americanglassgallery.com
email: jpastor@americanglassgallery.com

PLEASE NOTE:

The lots offered in this printed catalog are identical to the lots offered in the on-line catalog. However, due to space constraints of the printed catalog, there may be some further information available regarding some of the lots in the on-line auction descriptions.

Please visit us at

www.americanglassgallery.com

and follow the link to the on-line auction.

The link and on-line auction will be available October 17, 2018. A post-auction price list will be available on our website, in printable form, approximately 30 days after the close of the auction.

We encourage you to contact us by phone or email with any questions, for assistance with bidding, or further details or clarification on any of the lots in this sale. Your complete satisfaction and confidence is our goal!

**THANK YOU AND GOOD LUCK
WITH YOUR BIDS!**

Reference Key

Reference initials and numbers used in the description of this catalog refer to the following publications:

| | |
|----------|--|
| AHG | <i>American Historical Glass</i> , Bessie M. Lindsey, 1967 |
| AM | <i>The Decanter - An Illustrated History of Glass from 1650</i> , Andy McConnell, 2004 |
| AP | <i>Glass in Early America</i> , Arlene Palmer, 1993. |
| BA1 | <i>Collecting The Cures</i> , Bill Agee, 1969 |
| BA2 | <i>Collecting All Cures</i> , Bill Agee, 1973. |
| BB | <i>A Bit About Balsams</i> , Betty Blasi, 1974 |
| BH | <i>Classification and Documentation of Sunburst and Similar Scent Bottles</i> , Bill Ham, AB&GC, 5/87 |
| B/K | <i>The Glass Industry in Sandwich</i> , Raymond Barlow and Joan Kaiser, 1989. |
| C | <i>Ink Bottles and Inkwells</i> , William Covill, 1971. |
| DB | <i>Antique Sealed Bottles, 1640 - 1900</i> , David Burton, 2015 |
| DeG | <i>American Sarsaparilla Bottles</i> , John DeGrafft, 1980. |
| DeGII | <i>Supplement to American Sarsaparilla Bottles</i> , John DeGrafft, 2004. |
| DF | <i>Hair Raising Stories</i> , Don Fadely, 1992. |
| DM | <i>Wistarburgh, Window Tiles, Bottles and More</i> , Dale L. Murscell, 2007. |
| F | <i>Inks, 150 Years of Bottles and Companies</i> , Ed and Lucy Faulkner. |
| FA | <i>John Frederick Amelung, Early American Glassmaker</i> , Lanmon, Palmer, Hume, Brill, Hanson, 1990. |
| FB | <i>A.S.C.R. The wine bottles of All Souls College</i> , Oxford, 1750 – 1850, Fay Banks. |
| G | (Flasks) <i>American Bottles & Flasks and Their Ancestry</i> , McKearin & Wilson, 1978. |
| G | (Blown Three Mold) <i>American Glass</i> (Chapter VI), George S. and Helen McKearin, 1941. |
| GBH | <i>English Glass For The Collector, 1660-1860</i> , G. Bernard Hughes, 1958. |
| H | <i>American Bottles in the Charles B. Gardner Collection</i> , Norman C. Heckler, 1975. |
| JB | <i>Patent and Proprietary Medicine Bottles</i> , Joseph K. Baldwin, 1973 |
| JEB | <i>Glasshouse Whimsies</i> , Joyce E. Blake, 1984. |
| JH | <i>Glasshouses & Glass Manufacturers of the Pittsburgh Region, 1795 – 1910</i> , Jay W. Hawkins, 2009. |
| JS | <i>In glas verpakt – European Bottles, Their history and production</i> , Johan Soetens, 2001. |
| K | <i>Poison Bottle Workbook</i> , Rudy Kuhn, 1988. |
| KW | <i>New England Glass & Glassmaking</i> , Kenneth M. Wilson, 1972. |
| L | <i>The Red Book of Fruit Jars, No. 11</i> , Douglas M Leybourne, Jr., 2014. |
| LI | <i>Pittsburgh Glass, 1797 – 1891</i> , Lowell Innes, 1976. |
| Mc | <i>Two Hundred Years of American Blown Glass</i> , Helen and George McKearin, 1950. |
| McK | <i>American Glass</i> , George S. and Helen McKearin, 1941. |
| MW | <i>American Bottles & Flasks and Their Ancestry</i> , McKearin & Wilson, 1978. |
| N | <i>Great American Pontiled Medicines</i> , Frederick Nielson, 1978. |
| NCH | <i>The Blaske Collection of American Flasks</i> , Norman C. Heckler, 1983. |
| NCH II | <i>The Blaske Collection: Part II</i> , Norman C. Heckler, 1983. |
| Odell I | <i>Indian Bottles and Brands</i> , John Odell, 1977 |
| Odell II | <i>Pontiled Medicine Encyclopdia</i> , John Odell, 2007 |
| O&S | <i>Warner's Reference Guide</i> , Ed Ojea and Jack Stecher, 1998. |
| P | <i>The Glass Gaffers of New Jersey</i> , Adeline Pepper, 1971. |
| RD | <i>Understanding Antique Wine Bottles</i> , Roger Dumbrell, 1983. |
| RF | <i>The Bottle Book: A Comprehensive Guide to Historic, Embossed Medicine Bottles</i> , Richard Fike, 1987 |
| RH | <i>Collecting Barber Bottles</i> , Richard Holiner, 1986. |
| R/H | <i>Bitters Bottles</i> , Carlyn Ring and W. C. Ham, 1998. |
| RWL | <i>Antique Fakes & Reproductions</i> , Ruth Webb Lee, 1950 |
| T | <i>Collectors Guide to Saratoga Type Mineral Water Bottles</i> , Donald Tucker, 2005. |
| V | <i>Nailsea Glass</i> , Keith Vincent, 1975 |
| VdB | <i>Antique Glass Bottles; Their History and Evolution</i> , Willy Van den Bossche, 2001. |
| WL | <i>A Wine-Lover's Glasses, The A.C. Hubbard, Jr. Collection</i> , Ward Lloyd, 2000. |
| Z | <i>Ketchup, Pickles, Sauces</i> , Betty Zumwalt, 1980. |
| ZW | <i>Color Hutchinsons</i> , Zang Wood, 1999. |

- The dash is generally used to indicate that the descriptions are on opposite sides of the bottle or flask.

/ The slash is used to indicate that the descriptions are on different lines or surfaces of the bottle.

DRAKE'S
PLANTATION BITTERS
OR OLD
HOMESTEAD TONIC.



S-T-1860-X.

Composed of pure St. Croix Rum,
Calisaya Bark and other Roots and
Herbs. A most effectual Tonic,
beneficial Appetizer and wholesome
Stimulant; imparting tone to the
stomach and strength to the system.
Unequaled for Family, Hotel,
and Medicinal Use.

P. H. Drake & Co.

Rare & Choice Black Glass Bottles — 1680-1835

Black glass appears to have originated in England sometime between 1630 and 1650 and quickly became the glass of choice for bottles holding porter, ale, cider, beer and wine. The reason for this popularity was that black glass was unusually strong and able to withstand the internal pressure of fermenting or effervescent contents as well as holding up to the rigors of shipping and transport by land and sea. In addition,

its extremely dark green or olive (black) color was believed to help prolong freshness by keeping light away from the contents.

The term “black glass” as applied to a category of bottles, seems to have come into popular use about 1740 when it began to appear in American newspaper ads offering such vessels.

Today, antique black glass bottles are a popular and diverse collecting category and due to their durability, many wonderful examples have survived.

SOURCE: *American Bottles & Flasks and Their Ancestry*, McKearin & Wilson.



This rare flask was blown at the Fairview Glass Works which was located in Wheeling, VA. (West Virginia attained statehood on June 20, 1863.) The Fairview Glass Works was run by John Price and Jesse Wheat and was only in operation from July 1833 until January 1834 thus accounting for the rarity of this flask.

The front side of the flask depicts a folksy bust of a gentleman with short hair (possibly John Tyler). Embossed around the bust are the words *Wheat Price and Co. Wheeling, VA*. It is interesting to note that the letter "N" in Wheeling is reversed. Also, the VA abbreviation for Virginia is upside down when the flask is held upright. The reverse side of the flask is embossed with a stylized glass factory and *Fairview Works*. A classic example of American folk art in glass and one of only a handful of molds that depict a glasshouse.

Extremely Rare GI-II5, Fairview Glass Works Historical Flask



Colorful American Soda and Beer Bottles



Fine & Colorful Historical & Pictorial Flasks





Lot 1

WASHINGTON – EAGLE Historical Flask, an early Pittsburgh district glasshouse, 1825 - 1835. Aquamarine, sheared mouth – blowpipe pontil scar, Pt; (some scattered light wear and a slightly weak impression near the shoulders, otherwise near mint with no other form of damage). GI-11. Nick-named the ‘Washington vines’ flask, a rare and desirable mold that does not come around often. See Mark Vuono’s discussion on this, and other rare early Washington’s, AB&GC, May 2013.

Est.: \$800 - \$1,200 • Min. bid: \$400



Lot 5

WASHINGTON – TAYLOR Portrait Flask, probably Dyottville Glass Works, 1850 – 1860. Beautiful, medium emerald coloration, crudely applied sloping collar with ring – smooth base, Qt, very near mint; (just a slight trace of minor wear and a tiny pinhead spot of roughness on the inside edge of the lip). GI-54. Beautiful color, nice depth of color, as well as good character to the glass. A popular mold that can be found in many different colors.

Est.: \$800 - \$1,200 • Min. bid: \$400



Lot 2

“WASHINGTON” / BUST OF WASHINGTON – “JACKSON” / BUST OF JACKSON Historical Flask, Keene Marlboro Street Glassworks, Keene, NH, 1825 – 1842. Beautiful, light yellowish olive amber, almost a light golden coloration with yellow and olive tones, sheared mouth – blowpipe pontil scar, Pt; (just a slight trace of typical faint exterior wear, otherwise perfect). GI-31. A beautiful example, lighter than most, with nice clarity all the way to the base.

Est.: \$300 - \$500 • Min. bid: \$150



Lot 6

“LOCKPORT. GLASS. WORKS” / BUST OF WASHINGTON – BUST OF WASHINGTON Historical Flask, Lockport, NY, 1850 – 1860. Rich, medium aquamarine, heavy applied ring collar – iron pontil scar, Qt; (a little minor exterior wear and a tiny 3/16” annealing line at the base of the neck that likely occurred during the annealing process, otherwise near mint). GI-60. A very scarce and desirable flask, crude pebbly texture, attractive example.

Est.: \$1,500 - \$2,500 • Min. bid: \$800



Lot 3

“THE FATHER OF HIS COUNTRY” / BUST OF WASHINGTON – “GEN. TAYLOR NEVER SURRENDERS” / BUST OF TAYLOR Historical Flask, Dyottville Glass Works, Philadelphia, 1848 – 1855. Bright, bubbly, medium-to-deep blue green, sheared mouth – blowpipe pontil scar, Qt, near mint; (just a slight trace of very minor wear; embossing is a little weak in the shoulders, otherwise perfect). GI-39. An attractive example, the glass is loaded with bubbles.

Est.: \$800 - \$1,200 • Min. bid \$400



Lot 7

“GENERAL JACKSON” / BUST OF JACKSON – EAGLE Historical Flask, an early Pittsburgh district glasshouse, possibly John Robinson’s Stourbridge Flint Glass Works, 1824 – 1830. Aquamarine, tooled, sheared and slightly flared mouth – blowpipe pontil scar, Pt, virtually attic mint; (just a slight trace of very minor wear, otherwise pristine). GI-64. A clean, bright, sparkling example with a great impression! Note; the GI-64 without the “J.T.&Co”, is a rare mold, certainly more so than the marked ‘65’.

Est.: \$1,800 - \$3,200 • Min. bid: \$900



Lot 4

WASHINGTON – TAYLOR Portrait Flask, probably Dyottville Glass Works, Philadelphia, 1848 – 1855. Brilliant, medium blue-green with a slight teal tone, sheared mouth – blowpipe pontil scar, Pt, virtually attic mint; (shallow, 3/16” minor bit of roughness on the inside edge of the mouth that likely occurred when the cork was pried out, otherwise perfect). GI-52. An excellent example, clean, sparkling, and with a good strong mold impression!

Est.: \$400 - \$600 • Min. bid: \$200



Lot 8

“GENL TAYLOR” / BUST OF TAYLOR / “FELLS POINT” / MONUMENT / “BALTo” Historical Flask, Baltimore Glass Works, 1848 – 1855. Beautiful, light pinkish-amethyst, sheared mouth – blowpipe pontil scar, Pt; (just the slightest trace of faint wear, otherwise perfect). GI-73. A crisp, bold, outstanding impression for this flask, much stronger than most, beautiful and scarce color!

Est.: \$1,000 - \$2,000 • Min. bid: \$500



Lot 9

"LAFAYETTE" / BUST OF LAFAYETTE / "T.S". - "DE WITT CLINTON" / BUST OF CLINTON / "CONVENTRY / C-T" Historical Flask, Coventry Glass Works, 1824 - 1830. Clear, medium yellowish olive, sheared mouth - pontil scar, Pt, very near mint; (only a slight trace of minor high point wear, and a touch of interior content residue, otherwise attic mint). GI-80. A very early historical flask, excellent condition, and in a beautiful light color.

Est.: \$1,000 - \$2,000 • Min. bid: \$600



Lot 13

EAGLE - CORNUCOPIA Historical Flask, an early Pittsburgh district glasshouse, 1825 - 1835. Brilliant aquamarine, sheared mouth - blowpipe pontil scar, ½ Pt, sparkling attic mint! GI-16. A rare mold, great impression, clarity, and condition. A little sweetheart of a flask that does not come around often.

Est.: \$500 - \$800 • Min. bid: \$250



Lot 10

"LOUIS KOSSUTH" / BUST OF KOSSUTH - STEAM FRIGATE / "U.S. STEAM FRIGATE / MISSISSIPPI / S. HUFFSEY" Historical Calabash, probably Millford Glass Works, Millford, NJ, 1852 - 1860. Aquamarine, applied sloping collar - **"PH. DOFLEIN / MOULD MAKER / NTH 5! ST 84"** (on base), iron pontil scar, Qt, very near mint; (a little minor interior residue, likely washable, in lower body near base, otherwise perfect). GI-112.

Est.: \$200 - \$400 • Min. bid: \$100



Lot 14

EAGLE - EAGLE Historical Flask, probably Kentucky Glass Works, Louisville, KY, 1850 - 1855. Gorgeous medium sapphire blue coloration, sheared mouth - blowpipe pontil scar, Pt, perfect. GI-24. A choice example, beautiful clarity and nice strong depth of color, a fantastic top-shelf piece. Provenance: Ex. Eric Schmetterling collection.

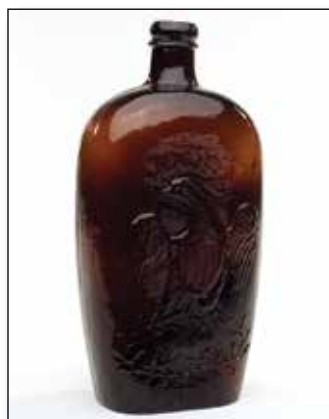
Est.: \$6,000 - \$12,000 • Min. bid: \$3,000



Lot 11

"KOSSUTH" / BUST OF KOSSUTH - TREE Historical Calabash, America, 1852 - 1860. Rich, medium green with a lime tone, applied sloping collar with ring - blowpipe pontil scar, Qt, near mint; (just a bit of minor exterior wear, otherwise perfect). GI-113. A beautiful, very scarce color for this mold, most being in shades of yellow, or sometimes light apple green. A pleasing depth of color, overall excellent condition.

Est.: \$400 - \$800 • Min. bid: \$200



Lot 15

"LIBERTY" / EAGLE - "WILLINGTON / GLASS, Co / WEST WILLINGTON / CONN" Historical Flask, 1850 - 1860. Medium-to-deep reddish amber, applied round collar with lower bevel - smooth base, Qt; (just a faint trace of wear on the reverse, otherwise attic mint). GI-61. A great example, whittled and beautiful with plenty rich reddish tones through the center and lower body.

Est.: \$800 - \$1,600 • Min. bid: \$400



Lot 12

"WHEAT.PRICE & Co . WHEELING, VA" / (SHORT HAIR BUST) - "FAIRVIEW" / (GLASSHOUSE) / "WORKS" Historical Flask, Wheat, Price & Co, East Wheeling (W.) Virginia, 1833 - 1834. Medium blue green, sheared mouth - blowpipe pontil scar, Pt, near mint; (a little scattered high point wear, and a slightly weak impression in the shoulder area). GI-115. A very rare and desirable flask, eye-appealing, great color! Ex. Bud Lane collection.

Est.: \$10,000 - \$20,000 • Min. bid: \$5,000



Lot 16

EAGLE / "PITTSBURGH / PA" - EAGLE Historical Flask, a Pittsburgh district glasshouse, 1860 - 1870. Beautiful, bright, medium-to-deep yellowish olive green, applied collar with flat band - smooth base, Qt, attic mint. GI-104. A big, bright, beautiful example, rich color, outstanding condition.

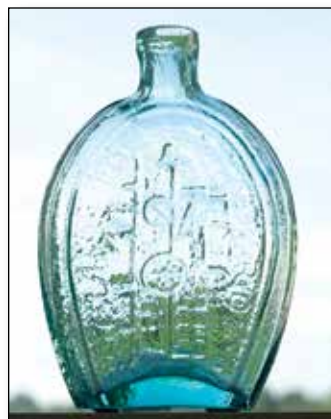
Est.: \$500 - \$800 • Min. bid: \$250



Lot 17

CORNUCOPIA – URN Pictorial Flask, New England, probably Keene Marlboro Street Glass Works, Keene, NH, or Coventry Glass Works, Coventry, CT, 1835 – 1850. Clear, medium emerald coloration, sheared mouth – blowpipe pontil scar, ½ Pt; (just a slight trace of minor high point wear, otherwise attic mint!) GIII-7. A very pretty little flask, beautiful color, stronger in tone than most.

Est.: \$300 - \$500 • Min. bid: \$180



Lot 21

“SUCCESS TO THE RAILROAD” / LOCOMOTIVE – (Reverse same) Historical Flask, Lancaster Glass Works, Lancaster, NY, 1849 – 1860. Medium to deep aquamarine, sheared mouth – blowpipe pontil scar, Pt, near mint; (a couple of in-manufacture surface annealing lines in the neck mentioned for accuracy, but not considered damage, and a weakened impression in the shoulder as is common on this mold). GV-1. A bright, clean, heavy example with nice character.

Est.: \$400 - \$600 • Min. bid: \$200



Lot 18

CORNUCOPIA – “LANCASTER GLASS WORKS, NY” / URN Pictorial Flask, Lancaster Glass Works, 1849 – 1860. Rich, medium blue green, sheared mouth – iron pontil scar, Pt; (just a touch of light wear including a tiny bit of roughness on the edge of the lip that you can feel, but is not easy to see; a little weak in the embossing around the shoulders, otherwise excellent). GIII-16. Nice depth of color and clarity, also nice being the scarcer marked mold.

Est.: \$1,000 - \$1,500 • Min. bid: \$500



Lot 22

“SUCCESS TO THE RAILROAD” / HORSE PULLING CART – (Reverse same) Historical Flask, Coventry Glass Works, Coventry, CT, 1830 - 1848. Yellowish olive amber, sheared mouth – blowpipe pontil scar, Pt, near mint; (only a very slight trace of faint wear, a tiny paper-thin sliver flake at base corner, and a weakened impression in the shoulder area as is common on many railroad flasks). GV-6. A nice example of this classic early New England flask.

Est.: \$300 - \$500 • Min. bid: \$150



Lot 19

MASONIC – EAGLE / “HS” Historical Flask, Keene Marlboro Street Glassworks, Keene, NH, 1815 – 1817. Clear, light-to-medium olive shading to a deep olive green in the neck and base, applied short tapered collar – sand type pontil scar, Pt; (professionally cleaned to original luster with just a bit of minor etching and light wear remaining). GIV-2. Believed to be one of the earliest molds of all the figured flasks. A clean, bright, bubbly example with beautiful color and great eye-appeal.

Est.: \$2,000 - \$4,000 • Min. bid: \$1,200



Lot 23

MONUMENT – “A / LITTLE / MORE / GRAPE / CAPT BRAG” Historical Flask, Baltimore Glass Works, 1848 – 1855. Bright medium green with an emerald tone, sheared mouth – blowpipe pontil scar, ½ Pt, virtually attic mint! GVI-1. A scarce flask, great color, and with a bold impression that is much better than most. The 1st time this little sweetheart of a flask in this, or similar color, has been offered since 2009.

Est.: \$4,000 - \$8,000 • Min. bid: \$2,000



Lot 20

MASONIC ARCH – EAGLE / “KCCNC” Historical Flask, Keene Marlboro Street Glassworks, Keene, NH, 1820 - 1830. Yellowish olive amber, sheared mouth – blowpipe pontil scar, Pt, attic mint! GIV-19. A great example, nice light color, pebbly, seedy glass, outstanding condition.

Est.: \$250 - \$450 • Min. bid: \$150



Lot 24

MONUMENT – “FELLS” / (SLOOP) / “POINT” Historical Flask, Baltimore Glass Works, 1835 – 1845. Medium topaz, almost a ginger-ale coloration, sheared mouth – blowpipe pontil scar, ½ Pt, near mint; (lightly cleaned to original luster and near mint condition with just a slight trace of very faint wear). GVI-2. A rare color for this flask, and with outstanding character having crude seedy glass!

Est.: \$3,000 - \$5,000 • Min. bid: \$1,500



Lot 25

MONUMENT – “FELLS” / (SLOOP) / “POINT” Historical Flask, Baltimore Glass Works, 1835 – 1845. Gorgeous pinkish-ruce with a strawberry tone, sheared mouth – blowpipe pontil scar, ½ Pt, near mint; (lightly cleaned to original luster and near mint condition). GVI-2. Outstanding lighter color and clarity. Originally found in a chest at “Washer Woman’s Lagoon” in San Francisco, many years ago. It was last offered for sale in 2010. Don’t miss your opportunity on this little gem.

Est.: \$5,000 - \$10,000 • Min. bid: \$2,500



Lot 29

SCROLL FLASK, Midwest, 1845 – 1860. Brilliant, medium-to-deep grass green, sheared and slightly flared mouth – delicate blowpipe pontil scar, Pt, very near mint; (just a trace of minor high point wear, otherwise perfect). GIX-10. Rich, gorgeous color! Here is a color that you rarely see in a scroll flask (or any flask!) A stunning color that attracts the eye no matter where it is, or what other flasks are around it. Provenance: John Apple collection.

Est.: \$2,000 - \$4,000 • Min. bid: \$1,000



Lot 26

“CORN FOR THE WORLD” / EAR OF CORN – MONUMENT / “BALTIMORE” Historical Flask, Baltimore Glass Works, 1845 – 1855. Brilliant medium olive green, sheared mouth – blowpipe pontil scar, ½ Pt; (a ½” hairline fissure near base, otherwise attic mint!) GVI-7. A very scarce flask, rare color, outstanding eye-appeal. This example also has a strong, better-than-average mold impression, and with virtually no high point wear. Beautiful. Ex. McCandless collection.

Est.: \$4,000 - \$8,000 • Min. bid: \$2,000



Lot 30

SCROLL FLASK, Midwest, 1845 – 1860. Medium cornflower blue with a slight violet hue, sheared mouth – blowpipe pontil scar, Pt, virtually attic mint; (slight trace of very minor high point wear; a thin ring of faint interior milkiness, otherwise perfect). GIX-10b. A scarce, different color, and as noted by McKearin, a comparatively scarce mold. Provenance: John Apple collection.

Est.: \$1,500 - \$3,000 • Min. bid: \$800



Lot 27

SCROLL FLASK, Midwest, 1845 – 1860. Beautiful golden yellow with an olive tone, sheared mouth – blowpipe pontil scar, Qt; (tiny pinprick bit of roughness, barely noticeable, on the edge of the sheared lip, otherwise pristine perfect!) GX-1. An absolutely gorgeous flask that we featured back in Auction #4, May of 2010, and we are just as impressed with it today. Rare and outstanding color, beautiful condition. Provenance: John Apple collection.

Est.: \$3,000 - \$5,000 • Min. bid: \$1,500



Lot 31

SCROLL FLASK, Midwest, probably Ravenna Glass Works, Ravenna, OH, 1857 – 1864. Aquamarine, sheared mouth – iron pontil scar, Pt, attic mint! GIX-10e. A very scarce mold that has been attributed to the Ravenna Glass Works, based on fragments found at the site. Provenance: John Apple collection, Ex. Darl Fifer collection.

Est.: \$100 - \$200 • Min. bid: \$50



Lot 28

“LOUISVILLE, KY – GLASS WORKS” SCROLL FLASK, Louisville Glassworks, 1855 – 1860. Greenish aquamarine, sheared mouth – iron pontil scar, Pt, near mint; (a crudely sheared mouth with some flaking and roughness along the top edge, mostly in-making, otherwise perfect). GIX-9. A scarce mold, outstanding character, crude pebbly texture.

Est.: \$250 - \$450 • Min. bid: \$150



Lot 32

SCROLL FLASK, Midwest, 1845 – 1860. Medium golden amber along one of the sides shading to a deep, dense amber, almost a chocolate coloration, along the other side and through the neck and base, sheared mouth – blowpipe pontil scar, Pt, virtually attic mint; (just a faint trace of wear and very minor interior residue, otherwise perfect). GIX-14. A comparatively scarce mold, rich deep color.

Est.: \$500 - \$800 • Min. bid: \$250



Lot 33

SCROLL FLASK, Midwest, 1845 – 1860. Clear, medium yellowish green, sheared mouth – blowpipe pontil scar, Pt, perfect! GIX-18. McKearin noted this mold as “Scarce”. An argument could be made that it is actually a rare mold. Only two, or possibly three, other examples have been offered at auction in the past 20 years. No stars in the upper space and a large bead on the neck. A beautiful example, rare mold, excellent condition. Provenance: John Apple collection.

Est.: \$800 - \$1,200 • Min. bid: \$400



Lot 34

SCROLL FLASK, Lancaster Glass Works, Lancaster, NY, 1849 – 1860. Light apple green, sheared mouth – blowpipe pontil scar, Pt, near mint; (a 3/8" pontil flake extends to the edge along the base; a slender, 1 1/4" long interior bubble is partially open with a bit of residue, otherwise excellent). GIX-20. A bright, clean example of this scarce and desirable mold. It is a delicate and attractive color, and definitely not aqua. Provenance: John Apple collection.

Est.: \$400 - \$600 • Min. bid: \$200



Lot 35

“C” SCROLL FLASK, probably Cunningham & Co., Pittsburgh, PA, 1849 – 1860. Rich aquamarine, crudely sheared mouth, blowpipe pontil scar, Pt, mint. GIX-25. A nice example with some character and crudity to the glass. As noted by McKearin, a comparatively scarce mold that does not come around often. Provenance: John Apple collection.

Est.: \$200 - \$400 • Min. bid: \$100



Lot 36

“BP & B” SCROLL FLASK, Bakewell, Page & Bakewell, Pittsburgh, PA, 1825 – 1832. Light green, sheared mouth – blowpipe pontil scar, 1/2 Pt, near mint; (a 1/2" chip along edge of base, otherwise perfect). GIX-39. A beautiful example of this early marked scroll flask, delicate light color, very different from aqua, and with excellent clarity and brilliance to the glass. Provenance: John Apple collection.

Est.: \$300 - \$500 • Min. bid: \$150



Lot 37

“J R & Son” SCROLL FLASK, John Robinson & Son Glass Manufacturers, Pittsburgh, PA, 1830 - 1834. Brilliant aquamarine, corseted scroll form, sheared mouth - blowpipe pontil scar, Pt, virtually perfect; (only the slightest trace of faint wear). GIX-43. A very early, marked, glasshouse flask, duly noted as scarce by McKearin. This example having excellent clarity and condition. John Apple collection, Ex. Don Smith collection, purchased from Charles Gardner.

Est.: \$800 - \$1,600 • Min. bid: \$400



Lot 38

“GENL TAYLOR NEVER SURRENDERS” / CANNON – “A / LITTLE / MORE / GRAPE / CAPT. BRAGG” Historical Flask, probably Baltimore Glass Works, 1848 – 1855. Apricot amber, sheared mouth – blowpipe pontil scar, 1/2 Pt; (a weakened impression as is common on this mold; some high point wear, primarily on the reverse). GX-6. A scarce flask, beautiful color, historical. Provenance: Ex. Bob Mebane collection who acquired the flask from Charles Vuono.

Est.: \$1,500 - \$2,500 • Min. bid: \$800



Lot 39

“UNION” / Clasped Hands – EAGLE Historical Flask, a Pittsburgh district glasshouse, 1860 – 1875. Light-to-medium citron green, applied mouth with flat band – smooth base, Qt, virtually attic mint; (tiny, onionskin-thin open surface bubble, otherwise pristine perfect). GXII-11. A great example having a strong, clean, crisp mold impression, virtually no high point wear, and pleasing color, outstanding condition. Provenance: Ex. Bill Borchert collection.

Est.: \$700 - \$1,200 • Min. bid: \$350



Lot 40

CLASPED HANDS – EAGLE Historical Flask, a Pittsburgh district glasshouse, 1860 – 1870. Golden amber with a slight orange tone, applied collar with flat band – smooth base, 1/2 Pt; (some moderate high point wear, primarily on the obverse). GXII-31. Here is a great little colored flask, that despite the noted high point wear, still displays very nicely, and won't 'break the bank'.

Est.: \$150 - \$250 • Min. bid: \$80



Lot 41

Lot of (2), "UNION" Clasped Hands – Cannon Historical Flasks, Fahnestock, Albree & Co, and Wm. Frank & Sons, Pittsburgh, 1865 – 1875. Both aquamarine, applied collars with flat band – smooth bases. 1st example: **"UNION" / Clasped Hands / "FA & Co"** – Cannon, ½ Pt, perfect! GXII-42. 2nd example: **"UNION" / Clasped Hands / "W. FRANK & SONS PITT."**, Pt; (pinhead flake at base, otherwise attic mint). GXII-39a. Outstanding examples, clean, crisp, boldly embossed!

Est.: \$250 - \$450 • Min. bid: \$140



Lot 45

"WILL YOU TAKE / A DRINK ? / WILL A / (Duck) SWIM ?" Pictorial Flask, probably Lockport Glass Works, Lockport, NY, 1870 – 1880. Aquamarine, tooled mouth with ring – smooth base, ½ Pt; (lightly cleaned to original luster and near mint condition with a shallow 1/8" flake at edge of lip, a slightly weak impression). GXIII-30. A clean example, the mold being listed as "Very rare".

Est.: \$300 - \$500 • Min. bid: \$150



Lot 42

SOLDIER / "BALT. MD." – DANCER / "CHAPMAN." Pictorial Flask, John Chapman, Maryland Glass Works, Baltimore, 1849 – 1862. Deep bluish aquamarine, applied collar with flat band – blowpipe pontil scar, Pt; (lightly cleaned to original luster and a little high point wear on the obverse, otherwise excellent). GXIII-11. An attractive example, good depth of color, whittled, and the glass is filled with small bubbles!

Est.: \$100 - \$200 • Min. bid: \$60



Lot 46

"ISABELLA" / ANCHOR / "GLASS WORKS" – GLASSHOUSE Pictorial Flask, Brooklyn, NJ, 1850 – 1860. Aquamarine, sheared mouth – blowpipe pontil scar, ½ Pt; (the top of the lip has been finely polished, likely to remove some small flakes or roughness, otherwise attic mint). GXIII-57. McKearin noted this mold as "Rare", and rightfully so. A difficult flask to acquire with many of the existing examples having some form of damage. A crisp, bright example filled with tiny seed bubbles.

Est.: \$300 - \$500 • Min. bid: \$150



Lot 43

"FLORA TEMPLE" / (Standing Horse) / "HARNESS TROT 2.19 ¾" Pictorial Flask, Whitney Glass Works, 1860 – 1865. Smokey topaz with some apricot and ginger-ale tones, applied handle, applied ring collar with small bevel – smooth base, Pt; (a ½" chip on lower bevel behind the handle, a hairline and chip from both upper and lower handle attachments; small potstone in body with tiny radiations). GXIII-21. Despite the damage, a great color with a unique, 'medicine bottle' lip.

Est.: \$400 - \$600 • Min. bid: \$200



Lot 47

"TRAVELER'S" / (STAR) / "COMPANION" – SHEAF OF GRAIN Pictorial Flask, Westford Glass Works, Westford, CT, 1857 – 1873. Yellowish tobacco amber, applied sloping collar with lower bevel – smooth base, Qt, near mint; (just a slight trace of typical light exterior wear and a slightly weakened mold impression). GXIV-1. Nice character with crude, seedy glass. In addition, this flask is scarce and seldom found with the double sloping collar.

Est.: \$200 - \$300 • Min. bid: \$120



Lot 44

"FLORA TEMPLE" / (Standing Horse) / "HARNESS TROT 2.19 ¾" Pictorial Flask, probably Whitney Glass Works, Glassboro, NJ, 1860 – 1865. Beautiful medium apricot with some lighter topaz tones, applied solid handle curled at lower attachment, applied mouth with band – smooth base, Pt; (a tiny pinprick spot of roughness on the lip; touch of minor wear on reverse, otherwise perfect!) GXIII-21. Scarce color, outstanding condition, no handle issues, a good one!

Est.: \$800 - \$1,600 • Min. bid: \$400



Lot 48

Freeblown Chestnut Flask, New England, 1785 – 1820. Beautiful, delicate light olive coloration with a slight yellowish tone, plump chestnut form, sheared mouth with an applied ring collar – delicate blowpipe pontil scar, ht. 6 ½", perfect. A great example, nice color, clarity, condition, and with a somewhat shorter neck giving it an attractive 'squatty' look.

Est.: \$300 - \$500 • Min. bid: \$150



Lot 49

Freeblown Chestnut Flask, New England, 1785 – 1820. Rich, medium olive coloration, chestnut form, sheared mouth with an applied ring collar – delicate blowpipe pontil scar, ht. 7 7/8", virtually attic mint; (a very slight touch of expected faint wear, otherwise perfect). Another great example, nice larger size, almost 8", beautiful, very bubbly glass, and in a pure green coloration.

Est.: \$300 - \$500 • Min. bid: \$150



Lot 53

Early, Freeblown Table Serving Bottle, America, 1830 – 1850. Beautiful yellow green or citron coloration, cylindrical, decanter form, sheared, tooled, and outward flared mouth – solid glass-tipped pontil scarred base, ht. 9 1/4", perfect. Likely an early Midwest or possible Philadelphia area glasshouse. However, regardless of origin, this one has great eye-appeal. Beautiful, early, gorgeous color, rare!

Est.: \$800 - \$1,200 • Min. bid: \$400



Lot 50

Scarce, Large Chestnut Flask, New England, 1800 – 1830. Medium olive amber, chestnut form, applied ring-type collar – blowpipe pontil scar, ht. 10 7/8", near mint; (just a little typical minor exterior wear including a shallow 1/8" opening on a surface bubble). Discovered at a Lake County, IL, flea market. For those of you putting together a graduated run of these early Chestnuts, you know how difficult it is to find these 10" and taller sizes! This one is virtually 11"!

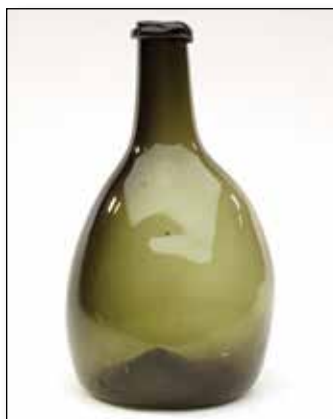
Est.: \$800 - \$1,200 • Min. bid: \$400



Lot 54

Large, Freeblown Globular Bottle, America, probably Midwest, 1815 – 1830. Olive yellow, almost a butterscotch coloration, globular form, sheared and outward rolled mouth – blowpipe pontil scar, ht. 10 1/8"; (some light scratches and wear around the mid-body, just a trace of light interior milkiness). Un-patterned Midwest globs are not easy to come by, especially in this color. This one has excellent character having some bubbles and potstones (with no associated damage), throughout the glass.

Est.: \$500 - \$800 • Min. bid: \$300



Lot 51

Early, Freeblown Chestnut Flask, Mid-Atlantic region, 1770 - 1800. Clear, medium olive coloration, plump, high-shouldered chestnut form widening out to a near cylindrical base, sheared mouth with crudely applied sting rim - delicate blowpipe pontil scar, ht. 8 1/4", virtually attic mint; (slightest trace of faint wear, otherwise perfect). Outstanding clarity to the glass, scarce color. This attractive example certainly takes on almost a decanter-style form.

Est.: \$500 - \$800 • Min. bid: \$250



Lot 55

Large, Pattern Molded Globular Bottle, Midwest, probably Zanesville Glass Works, 1820 – 1840. Brilliant medium amber, globular form with 24 ribs swirled to the right, sheared, tooled and outward folded mouth – blowpipe pontil scar, ht. 9 1/2"; (just a touch of typical expected minor light wear, otherwise perfect). A beautiful example, rare size, near perfect form. These types of bottles are why McKearin termed Midwest pattern molding, "The Apotheosis of American Glassmaking".

Est.: \$1,500 - \$2,500 • Min. bid: \$800



Lot 52

Early, Freeblown Chestnut Flask, Mid-Atlantic, possibly South Jersey, 1770 - 1800. Rich, medium emerald coloration, plump, high-shouldered chestnut form widening out to a near cylindrical base, sheared mouth with a crudely applied sting rim - blowpipe pontil scar, ht. 8", near mint; (some expected light usage wear, otherwise perfect). Nice color, character condition. These plump, early high-shouldered chestnuts have a pleasing look and almost take on a decanter form.

Est.: \$500 - \$800 • Min. bid: \$250



Lot 56

Pattern Molded Globular Bottle, probably Zanesville Glass Works, Zanesville, OH, 1820 – 1840. Aquamarine, globular form with 24 ribs swirled to the right, sheared, tooled and outward folded mouth – blowpipe pontil scar, ht. 8 1/2"; (some scattered light interior content haze and residue, some of which may wash out, a little typical minor exterior wear around the mid-body). A nice example that with just a light interior cleaning, would present itself as very near mint. Good strong ribbing.

Est.: \$300 - \$500 • Min. bid: \$150



Lot 57

Pattern Molded Club or 'Beehive' Bottle, Midwest, 1820 – 1840. Light green, plump club or 'beehive' form with 24 slightly swirled to the right, applied round collar – blowpipe pontil scar, ht. 7 $\frac{3}{4}$ ", near mint; (tiny, approx. 1/16" little flash or hairline from a potstone in the side of the bottle that is barely visible with the naked eye; a touch of typical light wear, otherwise perfect). A delicate and very pleasing color and form for this patterned club or table serving bottle.

Est.: \$200 - \$400 • Min. bid: \$120



Lot 58

Pattern Molded Club or Decanter Bottle, Midwest, possibly a New Geneva or Pittsburgh district glasshouse, 1800 - 1830. Greenish aquamarine, club form with gracefully tapering shoulders, 24 ribs swirled to the left, applied inverted tapered collar - blowpipe pontil scar, ht. 8 $\frac{3}{4}$ ", perfect. A very eye-appealing club bottle. This example is light in weight, has a form more reminiscent of a decanter, and with a distinctive and very scarce lip treatment. A great example!

Est.: \$300 - \$600 • Min. bid: \$150



Lot 59

Pattern Molded Pocket Flask, Zanesville Glass Works, Zanesville, OH, 1820 – 1830. Medium-to-deep golden amber, 10 diamond pattern over flutes, flattened chestnut form, sheared mouth – pontil scar, ht. 5 $\frac{1}{4}$ ", virtually attic mint; (just a slight trace of very faint wear near the base as is typical, otherwise perfect). Similar to MW, plate 97, #4. Good strong pattern through the mid-section and shoulders. A classic early 10 diamond in outstanding condition.

Est.: \$800 - \$1,200 • Min. bid: \$500



Lot 60

Early Patterned Wine or Decanter, England, 1870 - 1890. Cobalt blue, cylindrical with 10 vertical ribs through the body swirled tightly to the right through the neck, sheared and slightly flared ground mouth - original matching ground stopper with 10 vertical ribs - blowpipe pontil scar, ht. 14 $\frac{3}{4}$ " (including stopper), attic mint! A style that is reflective of the American pillar molded wares, these are affectionately called "twisted neck wines" by some of the Brits. Scarce with stopper.

Est.: \$175 - \$350 • Min. bid: \$100



Lot 61

Blown Three Mold Decanter, Boston and Sandwich Glass Works, Sandwich, MA, 1825 – 1840. Colorless, cylindrical, baroque pattern colloquially referred to as 'Cornucopia' or 'Horn of Plenty', molded neck rings, flared and tooled mouth – blowpipe pontil scar, Qt, near mint; (some minor light exterior wear; a little very faint interior haze, barely noticeable, otherwise excellent). GV-17. A scarce and difficult mold to acquire. See BK, plate 1339.

Est.: \$125 - \$250 • Min. bid: \$70



Lot 62

"BRAND/Y" Blown Three Mold Decanter, America, 1820 – 1840. Colorless, barrel form, geometric pattern of vertical ribbing with "BRAND/y" embossed in large letters on front panel, tooled wide flared mouth with correct, possibly original blown stopper – blowpipe pontil scar, Qt; (trace bit of expected faint wear, otherwise both bottle and stopper perfect!) GI-8. As McKearin notes, the GI-8 is a rare pattern, and "those with names of liquors, Very rare". An exceptional decanter that is seldom offered for sale.

Est.: \$500 - \$1,000 • Min. bid: \$250



Lot 63

"RUM" Blown Three Mold Decanter, America, 1820 – 1840. Colorless, barrel form, geometric motif of wide ribbing and sunburst designs, "RUM" embossed within wreath on front panel, tooled wide flared mouth with correct, possibly original blown stopper – blowpipe pontil scar, Qt, near mint; (some light exterior wear, otherwise excellent). GIII-2, Type 2. A very scarce embossed 3-Mold Decanter.

Est.: \$200 - \$400 • Min. bid: \$120



Lot 64

Set of (4), Embossed Blown Three Mold Decanters, "WINE", "GIN", "BRANDY", and "RUM", America, 1820 – 1840. All are colorless, barrel form, geometric motif of wide ribbing and sunburst designs, tooled wide flared mouths, correct, possibly original blown stoppers – blowpipe pontil

scarred bases, Qts; (both decanters and stoppers are all near mint with only some typical expected light wear). All are GIII-2, Type 2. A fantastic set, all are very scarce to rare.

Est.: \$1,000 - \$2,000 • Min. bid: \$500



Lot 65

Blown Three Mold Pitcher, probably Boston and Sandwich Glass Works, 1825 – 1840. Colorless, bulbous body, ornate baroque pattern with beaded arch design, wide neck flaring to a sheared and tooled rim with pour spout – applied hollow handle crimped and curled at lower terminal, molded foot with pontil scar, approx. 1 Qt., ht. 6 7/8"; (a 3/4" annealing line behind lower handle attachment, likely in-making, and a few minor flakes around edge of base). GV-6. Rare.

Est.: \$400 - \$600 • Min. bid: \$200



Lot 66

Blown Three Mold Flip Glass, America, 1820 – 1840. Colorless, cylindrical with sides flaring outward from base to rim, Geometric pattern with waffle, diamond, and sunburst motif, sheared tooled rim – blowpipe pontil scar, ht. 4 3/4", perfect! GIII-22. Another rare pattern, illustrated, McK, plate 106, #2.

Est.: \$200 - \$400 • Min. bid: \$100



Lot 67

Blown Three Mold Pan, America, 1820 – 1840. Colorless, geometric pattern likely formed in the GII-22 mold, cylindrical with sides flaring outward to a sheared and inward folded rim – rayed base with blowpipe pontil scar, 1 1/2" ht. x 5 3/8" dia, perfect. A scarce pattern, smaller, diminutive size, excellent condition.

Est.: \$100 - \$200 • Min. bid: \$60



Lot 68

Blown Three Mold Salt Cellar, Boston and Sandwich Glass Works, Sandwich, MA, 1825 – 1840. Medium-to-deep cobalt blue, geometric pattern with herringbone, diamond, and sunburst motif, circular bowl with sides tapering inward to sheared rim – ringed type III base with blowpipe pontil scar, ht. 2 1/8", greatest dia. 3 1/8", trace bit of expected light wear, otherwise perfect. GIII-25. See MW, plate 110, #11; BK, p.197. Blown in a small glass mold for pattern. Scarce and beautiful.

Est.: \$400 - \$800 • Min. bid: \$200



Lot 69

Freeblown Handled 'Coin' Goblet, America, probably 1852 – 1855. Colorless, straight-sided hemispherical bowl flaring outward to a plain sheared rim, applied solid ear-shaped handle curled at lower attachment, applied hollow bulbous stem with 1852 silver three cent piece, circular disk foot with pontil scar, ht. 7 1/8", perfect. Hollowware, goblets, stemmed glasses, drinking vessels, etc. are rare with coins encapsulated during the blowing process.

Est.: \$200 - \$400 • Min. bid: \$100



Lot 70

Early Freeblown Creamer, possibly New York State, or New England, 1810 - 1830. Greenish aquamarine, non-lead bottle glass, compressed bulbous body with applied solid handle curled at lower attachment, wide neck with applied threading below tooled and outward flared rim, pinched pour spout - applied funnel-type foot with blowpipe pontil scar, ht. 4 1/2"; (a slight patina, or faint "bloom" to the glass, otherwise perfect). An outstanding example of an early nineteenth century creamer.

Est.: \$400 - \$800 • Min. bid: \$200



Lot 71

Whimsey Toy Pitcher, America, 1870 – 1890. Aquamarine, cylindrical, blown from a small 2-piece utility bottle mold, applied solid glass handle, sheared rim with a tooled, extended 'duckbill' type pour spout – smooth base, ht. 3 3/4", perfect. A very interesting toy whimsey, well executed, graceful form, excellent condition. Probably blown as a gift for a family member of the glassblower.

Est.: \$100 - \$200 • Min. bid: \$60



Lot 72

Large, Freeblown Bowl, America, probably New York State, possibly Mid-Atlantic region, 1840 – 1860. Medium-to-deep amber, cylindrical, sides flaring slightly to a sheared and fire polished rim – large blowpipe pontil scar, ht. 6", rim dia. 7 1/4"; (scattered expected usage wear, heavy on the base, as well as some on the interior, a little scattered light haze or 'bloom', but no other form of damage). An early utilitarian bowl, simple in form and construction, and with plenty of honest wear.

Est.: \$250 - \$450 • Min. bid: \$150



Lot 73

Large, Oversized Canteen-Type Flask, probably America, possibly Continental, 1855 – 1870. Deep, bluish aquamarine, almost a blue-green, canteen form, applied sloping collar – blowpipe pontil scar, ht. 10 1/4", perfect. Good rich color, excellent character being heavily whittled, and in beautiful condition. At some point, the flask may very well have had a wicker covering. An interesting and very scarce mold.

Est.: \$100 - \$200 • Min. bid: \$60



Lot 74

Lot of (2), Early Enameled Spirits Flasks, Germany, 1770 – 1790. Both are colorless, blown in the half post method, rectangular with beveled corners, sheared mouths, applied pewter collars – pontil scarred bases, ht. 6", and 6 1/2", both near mint; (some light interior residue). 1st example with colorful red, yellow, blue and white floral designs; 2nd example with image of a man in a coat, "Vivat / meine / Liebe / Eleine" on reverse.

Est.: \$200 - \$400 • Min. bid: \$120



Lot 75

Freeblown Nailsea-Type Flask, probably England, possibly America, 1850 – 1880. Opaque white milkglass with pink and dark blue (cobalt), loopings combed throughout, elongated ovoid form, sheared mouth with a tooled ring-type collar – polished pontil scarred base, ht. 8 5/8"; (some typical minor wear and light scratches on the flattened sides, otherwise near mint). A beautiful flask, the blue and pink on white give it an attractive appearance.

Est.: \$200 - \$400 • Min. bid: \$100



Lot 76

Early Patterned Utility or Cologne Bottle, probably Continental, 1780 – 1820. Medium-to-deep Prussian blue with an embossed conifer tree motif on side panels, ornamental berry and leaf design on front and back panels, rectangular, sheared and tooled mouth, applied string rim – glass tipped pontil scar, ht. 4 1/4"; (a minor 1/8" flake on string rim; some scattered light wear, otherwise excellent). A very interesting, and early utility bottle. Beautiful color.

Est.: \$200 - \$400 • Min. bid: \$100



Lot 77

Paneled Cologne Bottle, America, possibly Boston and Sandwich Glass Works, Sandwich, MA, 1860 – 1888. Medium cobalt with a very slight violet tone, 12-panel, ovoid form tapering slightly from the shoulders to the base, tooled flanged lip – smooth base, ht. 9 1/8", perfect. Similar to BK #5198. Nice color, scarce mold, very scarce size.

Est.: \$175 - \$350 • Min. bid: \$100



Lot 78

Lot of (3), Sandwich-Type Cologne Bottles, possibly Boston and Sandwich Glass Works, 1860 – 1888. Light aquamarine, bright peacock-blue coloration, and colorless, 2 examples are 12-sided, third example is a figural monument form, aqua example with sheared and inward rolled mouth – blowpipe pontil scar, others with tooled mouths – smooth bases, ht. 6", 4 3/4", and 6 1/2", all 3 are very near mint. Aqua example is rare in color as well as being pontiled. BK #5197; MW, plate 114.

Est.: \$300 - \$500 • Min. bid: \$150



Lot 79

Lot of (3), Early Blown Cologne Bottles, probably a South Boston glasshouse, 1840 – 1860. Opaque lavender blue, opalescent robin's egg blue, and medium-to-deep cobalt, all are cylindrical, tooled ring or flange-type collars – blowpipe pontil scarred bases, ht. 11 1/8", 8 7/8", and 9 1/2" respectively, all attic mint! See, MW, plate 114, #8. Also, similar to plate 189, *The Glass Industry in South Boston*, Kaiser. A beautiful group of blown colognes.

Est.: \$175 - \$350 • Min. bid: \$100



Lot 80

Lot of (2), Fancy Christmas Lights, England, 1875 – 1900. 1st example, cobalt blue, square with quilted panels, each with a round cartouche bearing an image of Queen Victoria, roped corners, sheared rim – pontil scar, ht. 3 3/4", (minor flaking on rim). 2nd example, sapphire blue, pattern molded with quilted diamonds, sheared and inward folded rim – pontil scar, ht. 2 5/8", perfect. Colloquially referred to as "Fairy Lamps", these early illumination lamps were popular both in America, and abroad.

Est.: \$300 - \$500 • Min. bid: \$150



Lot 81

"MORESON'S GLASS BALL - PATD JUNE 15 1876", probably England, possibly America, 1876 - 1890. Light sky blue coloration, quilted diamond pattern above and below center band, 3-piece mold, rough sheared mouth, dia. 2 5/8", perfect. A very rare target ball in a light, attractive, pretty color. This, and the following two lots, are the last of a small handful discovered on an early Tuscan, Italy shooting estate years ago.

Est.: \$400 - \$800 • Min. bid: \$200



Lot 82

"MORESON'S GLASS BALL - PATD JUNE 15 1876" (with remnants of original feathers), probably England, possibly America, 1876 - 1890. Light blue with a slight grayish tint, quilted diamond pattern above and below center band, 3-piece mold, rough sheared mouth, dia. 2 5/8"; (the ball is perfect, but has a little dust and silt on the shoulders as well as a film of dust on the interior, likely contributing to the slightly grayish appearance). A very rare, early patented target ball.

Est.: \$400 - \$800 • Min. bid: \$200



Lot 83

Lot of (2), Target Balls (both with original feathers), probably Continental, possibly Italy, 1875 - 1900. An extremely rare pattern molded ball having 20 ribs swirled to the right, and an unpatterned, freeblown ball. Both are shades of light green with rough sheared mouths, 2 1/2" dia, and perfect. Pattern molded target balls are extremely rare with only a handful known to exist. Both of these balls are a virgin find from an early Tuscan, Italy shooting estate.

Est.: \$400 - \$800 • Min. bid: \$200



Lot 84

"HAYWARD'S / HAND FIRE / GRENADE - PATENTED / AUG / 8 / 1871 - S.F. HAYWARD / 407 / BROADWAY / NEW YORK", America, 1875 - 1890. Medium-to-deep cobalt blue, bulbous body with four coin-shaped flat panels, tooled collar with factory ground lip - smooth base, ht. 5 7/8", very near mint; (tiny shallow 1/8" flake at edge of base, otherwise perfect). A beautiful example, great color, condition.

Est.: \$250 - \$350 • Min. bid: \$140



Lot 85

"HNS" - "HSN" (Monogram) Fire Grenade (with partial contents and original neck seal), America, 1880 - 1900. Light yellowish honey coloration, bulbous with raised diamond pattern, sheared and factory ground mouth - smooth base, ht. 7 1/8"; near mint; (a 1/4" shallow flake from edge of rough ground lip, likely occurred in-manufacture, some faint interior haze in the shoulder, otherwise perfect).

Est.: \$125 - \$225 • Min. bid: \$70



Lot 86

"HAZELTON'S / HIGH PRESSURE / CHEMICAL / FIRE KEG" (complete with original metal neck band and heavy ring handle), America, 1885 - 1900. Golden amber, large figural barrel form, tooled mouth with flat band - smooth base, ht. 11", perfect. Great condition, impressive size, and the only known 'fire grenade' using this distinctive figural 'keg' form.

Est.: \$300 - \$500 • Min. bid: \$180



Lot 87

"WOOD'S / BLACK. INK / PORTLAND.", America, possibly Isabella Glass Works, Brooklyn, NJ, 1851 - 1860. Aquamarine, cone form, sheared and inward rolled mouth - blowpipe pontil scar, ht. 2 3/8", attic mint. Faulkner, p.150, C#12. A scarce and popular embossed cone ink believed to have been blown for Nathan Wood, a druggist in Portland. Provenance: Ex. William Covill Jr. collection.

Est.: \$200 - \$300 • Min. bid: \$100



Lot 88

"G. & R's / AMERICAN / WRITING FLUID", America, 1850 - 1860. Aquamarine, cone form, sheared and inward rolled mouth - blowpipe pontil scar, ht. 2 1/2"; (lightly cleaned to original luster; a slightly weakened mold impression). C#10; Faulkner p.62. A very scarce ink bottle from Homer, New York. This particular bottle is a rather unique example as it has a large shard from another bottle embedded into the base. This likely occurred during the annealing process.

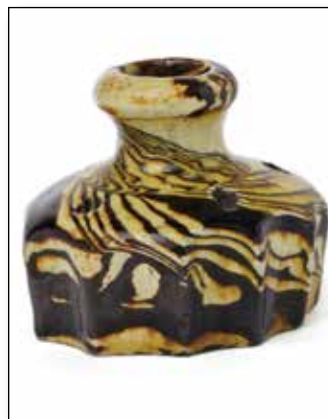
Est.: \$300 - \$500 • Min. bid: \$150



Lot 89

Cone Ink Bottle, America, 1845 – 1860. Clear medium emerald coloration, square shouldered cone form, sheared and inward rolled mouth – blowpipe pontil scar, ht. 2 ¼", near mint; (just a slight trace of very faint wear, otherwise perfect). Beautiful color and condition.

Est.: \$250 - \$450 • Min. bid: \$140



Lot 93

Early Pottery Inkwell, America, 1840 – 1860. Mottled dark brown and yellowish-cream glaze swirled throughout, cylindrical with 10 scalloped panels, short sloping shoulders with 4 quill holes, short neck with ring collar, 2 ½" ht. X 2 7/8" dia; (some tight, fine hairline cracks in the glaze, primarily in the base; a little minor chipping at base corners). A very rare and unusual yellowware-type inkwell.

Est.: \$200 - \$400 • Min. bid: \$100



Lot 90

Cone Ink Bottle, probably New England, 1845 – 1860. Medium 'old amber', square-shouldered cone form, sheared and inward rolled mouth – blowpipe pontil scar, ht. 2 ¼"; (a manufacturer's flaw in the neck, just above the shoulder, with a small ¼" crescent shaped separation of glass that almost certainly occurred during the cooling process; a little minor dullness and faint exterior wear). A scarce color for a pontiled cone ink. Provenance: Ex. Roger Long collection.

Est.: \$250 - \$450 • Min. bid: \$140



Lot 94

"BLAKE & - HERRING - N-Y.", America, 1840 – 1860. Medium emerald coloration, large, 8-sided umbrella form, sheared and inward rolled mouth – blowpipe pontil scar, ht. 2 7/8"; (a ¼" chip or open bubble on the outer edge of the rolled lip; a minor 1/8" flake at edge of base, and a trace of faint interior milkiness in one side). An exceedingly rare and desirable ink believed to be one of only two, or possibly three, in this color and size. Crude whittled glass, great color!

Est.: \$800 - \$1,200 • Min. bid: \$400



Lot 91

Cone Ink Bottle, probably New England, 1845 – 1860. Beautiful yellow coloration with a slight hint of olive, cone form, sheared mouth – blowpipe pontil scar, ht. 2 1/8", mint. Beautiful and rare color for a pontiled cone, excellent condition. Provenance: Ex. Roger Long collection.

Est.: \$300 - \$500 • Min. bid: \$150



Lot 95

"M & P - NEW YORK" Umbrella Ink, America, 1840 – 1860. Beautiful medium emerald coloration, 8-sided umbrella form, sheared and inward rolled mouth – blowpipe pontil scar, ht. 2 3/8", perfect. C#120. A very scarce embossed umbrella, and even more so in this fine condition! Excellent clarity, color and condition.

Est.: \$500 - \$800 • Min. bid: \$250



Lot 92

Cone Ink Bottle, New England, probably a Stoddard, NH glasshouse, 1845 – 1860. Medium-to-deep yellowish olive with an amber tone, cone form, sheared mouth – large "X" on base, blowpipe pontil scar, ht. 2 ¼", attic mint. Nice crude glass with plenty of tiny seed bubbles! See Faulkner, p.174.

Est.: \$250 - \$450 • Min. bid: \$140



Lot 96

"HOVER - PHIL.A" Umbrella Ink, America, 1845 – 1860. Blue green, 8-sided umbrella form, sheared, tooled and inward rolled mouth – blowpipe pontil scar, ht. 2 ¼"; (professionally cleaned to original luster with a little ground wear and etching remaining). Faulkner, p.81; C#118. Bold embossing, attractive color.

Est.: \$300 - \$500 • Min. bid: \$150



Lot 97

Umbrella Ink, probably New England, 1840 – 1860. Deep olive green, 8-sided umbrella form, sheared mouth – blowpipe pontil scar, 2 ¼" ht. x 2 ¼" wide, near mint; (just a touch of typical minor exterior wear, otherwise perfect). A crude example, nice heavy glass, likely fairly early.

Est.: \$250 - \$350 • Min. bid: \$140



Lot 101

"FARLEY'S / INK", an early Stoddard glasshouse, Stoddard, NH, 1842 – 1855. Beautiful Yellowish 'old amber', almost a yellowish tobacco coloration, 8-sided, domed shoulders, sheared mouth – blowpipe pontil scar, ht. 1 ¾"; (a couple of minor flakes, 1/8" to 3/16", along the top and side of the sheared mouth, otherwise excellent). C#526, Faulkner, p.63-64. A nice example with good crisp, bold embossing.

Est.: \$200 - \$400 • Min. bid: \$120



Lot 98

Umbrella Ink, New England, possibly one of the Stoddard glasshouses, 1842 – 1860. Medium-to-deep 'old amber', 8-sided umbrella form, sheared mouth – blowpipe pontil scar, 2 ¼" ht. x 2 ¼" wide; (professionally cleaned with some scattered minor wear and light scratches remaining). Similar to C#145.

Est.: \$175 - \$275 • Min. bid: \$100



Lot 102

"FARLEY'S / INK" Master Ink Bottle, an early Stoddard glasshouse, Stoddard, NH, 1842 – 1855. Yellowish 'old amber' with a slight olive tone, octagonal, tooled thin flanged lip – blowpipe pontil scar, ht. 2 7/8", attic mint! (a bit of washable interior content residue). C#527. Note, a very rare size for this ink, boldly embossed, and with a perfect thin flanged mouth. A good one!

Est.: \$2,000 - \$4,000 • Min. bid: \$1,000



Lot 99

Umbrella Ink, New England, possibly a Stoddard, NH glasshouse, 1845 – 1860. Bright medium amber with a rich, slight orange tone, 8-sided umbrella form, sheared mouth – blowpipe pontil scar, 2 3/8" ht. x 2 ¼" wide, attic mint! A much nicer example than most in a rich attractive color, outstanding character, and crude seedy glass.

Est.: \$250 - \$450 • Min. bid: \$140



Lot 103

"FARLEY'S / INK" Master Ink Bottle, an early Stoddard glasshouse, Stoddard, NH, 1842 – 1855. Light yellowish 'old amber' with a very slight olive tone, octagonal, tooled thin flanged lip – blowpipe pontil scar, ht. 3 ½", pristine perfect. C#528. A gorgeous example, beautiful clarity and nice lighter color, outstanding condition, a 'top shelf' example!

Est.: \$1,400 - \$2,400 • Min. bid: \$700



Lot 100

Umbrella Ink, a Stoddard, NH glasshouse, probably Granite Glass Co., 1842 – 1860. Medium olive amber, 16-sided umbrella form, sheared mouth – blowpipe pontil scar, ht. 2 1/8"; (a little minor exterior wear, and a thin little thread of glass on the exterior that adhered during the annealing process has a little roughness to it, but is mentioned only for accuracy, otherwise excellent). C#153. A scarce mold and one of three sizes found in this form.

Est.: \$300 - \$500 • Min. bid: \$180



Lot 104

"GEO BURRILL" Master Ink Bottle, a Stoddard, NH glasshouse, possibly Granite Glass Co, Mill Village, 1846 – 1862. Medium-to-deep 'old amber', cylindrical, 3-pc. mold, applied sloping collar with bevel – large iron pontil scar, ht. 6 ½", near mint; (just a couple of tiny, pinpricks bits of roughness on the edge of the collar and lower bevel; a faint trace of minor wear, otherwise perfect). A rare mold, beautifully whittled, strongly embossed.

Est.: \$400 - \$600 • Min. bid: \$200



Lot 105

Master Ink Bottle (with 98% complete original label), a New England glass-house, possibly Stoddard, NH, 1850 – 1860. Yellowish olive amber, cylindrical, 3-pc. mold, applied sloping collar with bevel – iron pontil scar, ht. 7 1/2", virtually attic mint; (minor trace of faint exterior wear; label darkened a bit from age, but completely legible). Original label reads, *SUPERIOR / BLUE – INK / MANUFACTURED / BY / GOODWIN & LEONARD / LOWELL / MASS. / WARRANTED PERMANENT.*

Est.: \$175 - \$350 • Min. bid: \$100



Lot 106

Master Ink Bottle (with 98% complete original label), America, 1860 – 1870. Rich, medium-to-deep blue green, cylindrical, 3-pc. mold, applied sloping collar – smooth base, ht. 7 3/8"; (bottle attic mint; label darkened a bit from age, but very legible). Beautifully whittled, gorgeous color. Original label reads, *SUPERIOR / BLUE – INK / MANUFACTURED / BY / GOODWIN & LEONARD / LOWELL / MASS. / WARRANTED PERMANENT.*

Est.: \$100 - \$150 • Min. bid: \$50



Lot 107

Labeled Blacking (Master Ink), Bottle (with virtually complete original label), New England, 1850 – 1860. Olive amber, square, sheared mouth – blowpipe pontil scar, ht. 4 5/8", both bottle and label attic mint! Original label reads, *SUPERIOR / BLUE – INK / MANUFACTURED / BY / GOODWIN & LEONARD / LOWELL / MASS. / WARRANTED PERMANENT.* Here is an example of a 'make-do' or adaptive use of a utility bottle. A very neat piece also having seedy, pebbly, crude glass.

Est.: \$100 - \$150 • Min. bid: \$50



Lot 108

"HOVER / PHILA." Master Ink Bottle, America, 1845 – 1855. Light green, cylindrical, sheared mouth with thin flanged lip – blowpipe pontil scar, ht. 4 3/8"; (a 1/8" flake on the back side of the thin flanged lip; a shallow open bubble on the interior of the shoulder on the reverse). Faulkner, p.82. A scarce little master ink, the condition issues are relatively minor and the bottle displays very near mint.

Est.: \$125 - \$250 • Min. bid: \$70



Lot 109

"JOHN B. DAVIDS & CO / CROWN BRAND" / INKS & MUCILAGE / NEW YORK Master Ink Bottle, America, 1885 – 1895. Golden amber with an orange tone, cylindrical, tooled, flared, funnel-type mouth – smooth base, Pt., ht. 7 1/2"; (professionally cleaned to original luster with a little minor light wear remaining). An extremely rare ink – one of only two known examples! Nice color, whittled, unusual mouth. John B. was the son of Thaddeus Davids. See B&E, July-Aug. 2007.

Est.: \$200 - \$400 • Min. bid: \$120



Lot 110

Lot of (2), "F" Debossed Early Snuff Jars, Joseph Foster's South Stoddard Glass Works, or Mill Village, 1842 – 1860. Medium olive amber and olive green, both are rectangular with beveled corners, sheared, tooled and slightly flared mouths – blowpipe pontil scars, ht. 4 1/4" & 4 1/8" respectively; (both near mint with some typical light exterior wear, the olive green example has a minor 1/8" open bubble). A beautiful pair, both with nice crude glass.

Est.: \$200 - \$400 • Min. bid: \$100



Lot 111

"SKILTON FOOTE & CO'S / BUNKER HILL PICKLES / TRADE MARK" (Motif of Monument, Trees, Fence and Barrels), America, 1885 - 1895. Aquamarine, in the form of the famous Cape May, NJ lighthouse, tooled sloping collar - smooth base, ht. 7 5/8"; (appears to be a dug bottle with a little minor wear and faint etching, but no other form of damage). Z p.376. A very scarce and desirable figural peppersauce. With just a light cleaning, it would likely present as very near mint.

Est.: \$200 - \$400 • Min. bid: \$100



Lot 112

Lot of (3), "SKILTON FOOTE & CO'S / BUNKER HILL PICKLES" Jars, America, 1880 - 1895. Yellow and honey amber, square with beveled corners and cylindrical, yellow example with applied square collar, cylindrical examples with tooled square collars - smooth bases, ht. 6 3/4", 8 1/4", and 6 3/8"; (all three examples are near mint with only minor traces of faint haze or wear). The square jar is very pretty and nice with applied collar; the sizes compliment one another.

Est.: \$100 - \$150 • Min. bid: \$50



Lot 113

Lot of (3), "SKILTON FOOTE & CO'S / BUNKER HILL PICKLES" Jars, America, 1880 - 1895. Yellow with a very slight hint of olive, aquamarine, and honey amber, cylindrical, tooled square collars - smooth bases, ht. 6 1/2", 8 1/4", and 7 1/2"; (yellow jar cleaned with an ever-so-slight interior haziness remaining, other two jars are very near mint). A beautiful trio of pickle jars, the large aqua jar is boldly embossed and scarce.

Est.: \$100 - \$150 • Min. bid: \$50



Lot 117

Petal-Type Preserve Jar (with virtually complete original label), America, 1865 - 1875. Aquamarine, cylindrical with (12) wide flat panels around sloped shoulders, heavy short tapered collar - smooth base, ht. 12 1/8"; (1/8" chip on inner edge of lip, otherwise very near mint). Label: *RASPBERRIES. / S. MOSES, / VERNON CENTRE, N.Y.* RB# 3067-1. A fantastic food bottle with original label likely linked to the Oneida Community of Oneida, NY. Jar found near Cooperstown, NY.

Est.: \$400 - \$600 • Min. bid: \$200



Lot 114

Cloverleaf Pickle Jar, a Stoddard, NH glasshouse, probably New Granite Glass Works, Mill Village, 1860 - 1871. Beautiful medium olive amber, almost a yellowish tobacco coloration, octofoil form, applied ring-type collar - domed smooth base, ht. 8", virtually attic mint; (faint trace of light wear including a minor superficial scratch on one of the shoulders, otherwise perfect). A beautiful example. See MW, plate 73, #2; also, *On the Trail of Stoddard Glass*, Field, p.82.

Est.: \$600 - \$900 • Min. bid: \$300



Lot 118

Petal-Type Preserve Jar, Midwest, probably a Pittsburgh district glasshouse, 1860 - 1875. Aquamarine, cylindrical with 12 large petals around the shoulders, 2-pc. mold, applied mouth - early smooth base, 11 5/8", approx. 1/2 Gal, very near mint; (just a slight trace of typical faint wear, otherwise perfect). RB# 3067. A big, clean, bright jar with nice character, plenty of tiny seed bubbles and eye-appeal.

Est.: \$75 - \$150 • Min. bid: \$40



Lot 115

"HARRISON & WILSON / CINCINNATI, O." Early Mustard Jar, Midwest, 1860 - 1865. Rich, brilliant aquamarine, barrel form with three rings above and below center band, sheared mouth with crudely applied ring-type collar - early smooth base, ht. 4 1/4"; (lightly cleaned to original luster with just a slight trace of very minor wear, otherwise virtually attic mint). Rare and early, not listed by Zumwalt. Possibly one of only 2 or 3 known! Bright, clean, and with good depth of color.

Est.: \$300 - \$500 • Min. bid: \$150



Lot 119

"CLARKE / FRUIT JAR CO. / CLEVELAND, O.", America, 1885 - 1895. Aquamarine, cylindrical, ground lip, original glass lid and metal cam lever with wire bail - smooth base, 1/2 Gal, near mint; (a faint haze or cloudiness to the jar that appears to be primarily on the interior; the cam lever and bail are solid but have some minor corrosion, otherwise perfect). RB# 603. Complete and original, a lucky find from a rural southern Michigan town.

Est.: \$100 - \$175 • Min. bid: \$50



Lot 116

"AIR - TIGHT FRUIT JAR", probably Ravenna Glass Works, Ravenna, OH, 1857 - 1864. Rich, deep aquamarine, barrel form, heavy crudely applied wax seal collar - iron pontil scar, Qt, virtually attic mint; (just a couple of minor spots of roughness on the inner wax seal grove, almost certainly in-making, otherwise perfect). RB# 51-2. A beautiful, scarce early jar, nicely whittled, outstanding condition.

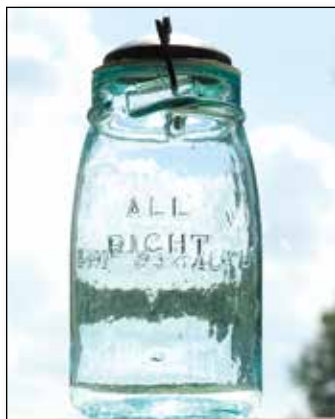
Est.: \$800 - \$1,600 • Min. bid: \$400



Lot 120

"PATD MARCH 26TH 1867 / B.B. WILCOX / 18", America, 1870 - 1880. Aquamarine, cylindrical, ground lip, original wire bail and glass rayed lid with center fin - smooth base, Qt; (ground mouth has a couple of areas approx. 1" with some roughness and chipping, jar is otherwise perfect; glass lid is perfect). RB# 3008. An attractive jar, nicely whittled.

Est.: \$75 - \$150 • Min. bid: \$40



Lot 121

"ALL / RIGHT – PATD JAN 28TH 1868", America, 1868 – 1880. Aquamarine, cylindrical, ground mouth, wire clamp, **"PATENTED NOV. 4 1862 & FEB 11TH 1868"** on original metal domed lid – **"PATD NOV 26 1867 / 24"** on smooth base, Qt, near mint; (some scattered flaking on the inside edge of the lip, some of which is likely in-manufacture, otherwise clean, sparkling, and virtually perfect). Similar to RB #61-1. Hard to find with original metal lid! Provenance: Joe Kray collection.

Est.: \$150 - \$250 • Min. bid: \$80



Lot 125

Wax Seal Fruit Jar, Midwest, possibly Modes Glass Co., Cicero, Ind, 1895 - 1904. Medium amber shading to a golden amber in the shoulders, cylindrical, 4-pc. mold, applied wax seal collar – **"M.G. Co"** (on smooth base), Qt, virtually perfect; (tiny, pinprick speck of roughness on the edge of the outer wax seal groove). A scarce mold, this example has (6) rivet or 'nailhead' marks around the shoulder and a large, 1/2", circular mark on the neck, just below the applied lip.

Est.: \$100 - \$200 • Min. bid: \$50



Lot 122

"GILBERDS" / (Star) / "JAR", America, 1883 – 1890. Aquamarine, cylindrical, ground lip, wire clamp extending from grove in base, vertically around jar, **"JAS GILBERDS, / PATD / JAN 30 1883 / JAMESTOWN. N.Y."**, on colorless glass lid – smooth base, Pt, virtually attic mint; (shallow 3/16" minor flake from along edge of ground lip). RB# 1107. A beautiful, sparkling clean example, strong bold embossing, attractive whittled glass. Provenance: Joe Kray collection.

Est.: \$1,200 - \$1,800 • Min. bid: \$600



Lot 126

"THE / LEADER" Fruit Jar, Midwest, 1893 – 1900. Golden amber, cylindrical, ground mouth, 2-pc. wire clamp, **"PAT. D JUNE 28 1892"** on slightly domed glass lid – **"13"** on smooth base, Qt, perfect. RB# 1466. An attractive example with some bubbles scattered through the jar.

Est.: \$200 - \$300 • Min. bid: \$100



Lot 123

"GILBERDS" / (Star) / "JAR", America, 1883 – 1890. Aquamarine, cylindrical, ground lip, wire clamp extending from grove in base, vertically around jar, **"GILBERDS IMPROVED JAR CAP JAMESTOWN, N.Y. / 3 / PAT JULY. 31.83. – OCT.13. / 1885"**, on glass lid – smooth base, Qt, perfect. RB# 1107. Another nice example of this scarce jar from western NY. Provenance: Joe Kray collection.

Est.: \$300 - \$500 • Min. bid: \$150



Lot 127

Lot of (2), "TRADE MARK / LIGHTNING" Fruit Jars, America, 1885 – 1900. Yellowish honey coloration and medium amber, cylindrical with ground lips and original wire bails, glass lids – **"PUTNAM / 109"** and, **"PUTNAM / 46"** (on bases), Pt, and Qt, both near mint; (some typical minor, likely in-making, flaking to the ground lips; Qt. has a couple of light scratches on reverse). RB# 1489. Beautiful scarce color on the pint which also has an olive tone in the glass lid. Both with strong embossing.

Est.: \$150 - \$300 • Min. bid: \$80



Lot 124

"GILBERDS" / (Star) / "JAR", America, 1883 – 1890. Aquamarine, cylindrical, ground lip, wire clamp extending from grove in base, vertically around jar, **"GILBERDS IMPROVED JAR CAP JAMESTOWN, N.Y. / 3 / PAT JULY. 31.83."**, on glass lid – smooth base, 1/2 Gal, attic mint; (a bit of faint interior washable residue). RB# 1107. A scarce jar, and a nice example, with some whittling and texture to the glass. Provenance: Joe Kray collection.

Est.: \$400 - \$600 • Min. bid: \$150



Lot 128

Lot of (2), Store Counter Licorice Jars (both with original tin closures), America, 1880 - 1910. **"W. G. DEAN & SON / LICORICE / NEW YORK"** and, **"LICORICE" / (S&Y Monogram) / "LOZENGES" – "ADLAM'S / PAT-ENT"** (on base). Both are colorless, square and cylindrical, plain and threaded neck, ground mouths – smooth bases, ht. 9 1/4" and 9 3/8",

both attic mint. Both are scarce jars, and very scarce-to-rare with original lids.

Est.: \$150 - \$300 • Min. bid: \$80



Lot 129

"F H" Bennington-Type Pottery Book Flask, America, 1850 – 1860. Mottled yellow and reddish-brown glaze, figural book with "F H" between two raised bands on the spine, 5 3/4" high x 4 3/8" deep x 2 1/8" wide, approx. Pt, near mint; (a tiny 1/8" flake along bottom edge of cover, otherwise perfect). Attractive coloration, rare with the "F H" initials on the spine.

Est.: \$250 - \$450 • Min. bid: \$150



Lot 133

"C. A. RICHARDS. & CO / 99 WASHINGTON. ST / BOSTON" (with 98% complete original label), America, 1865 – 1875. Rich golden amber, square with beveled corners, applied sloping collar – smooth base, ht. 9 3/8"; (bottle is virtually attic mint; label is darkened a bit and has a small thin spot near the bottom). A great looking piece, some nice character to the glass, great label with graphic depicting sheaves of grain. Label reads in part, *GOLDEN / SHEAF / WHISKY*.

Est.: \$175 - \$350 • Min. bid: \$100



Lot 130

"SACKETT. BELCHER & CO / 26 / PEARL ST / NY" (on applied seal), America, 1845 – 1860. Light golden amber, chestnut form, applied handle curled at lower attachment, applied mouth with ring collar – blowpipe pontil scar, ht. 8 3/4"; (a hard-to-see hairline fissure in the applied handle at lower attachment, along with a 1/4" "V" shaped chip or piece of glass missing from the back side of the handle attachment, otherwise perfect). An extremely rare applied seal.

Est.: \$500 - \$1,000 • Min. bid: \$250



Lot 134

"CARLTON & HOWARD'S – CELEBRATED / LONDON DOCK – CORDIAL GIN", America, 1865 – 1880. Medium-to-deep yellowish olive, square with beveled corners, crudely applied sloping collar with lower bevel – smooth base, ht. 9 7/8", virtually attic mint; (faint trace of light wear, otherwise perfect). An extremely rare American gin, probably from New York. It was likely a short-lived competitor of the more well known "Brownsides Old Tom", or "Charles London", cordial gins.

Est.: \$400 - \$800 • Min. bid: \$200



Lot 131

"BRADY'S – DUTCH / SCHNAPPS – LOUISVILLE. KY", a Midwest glass-house, 1865 – 1875. Golden honey coloration, square with beveled corners, applied sloping collar – smooth base, ht. 9 1/2", perfect; (some washable interior content residue). Put out by D.C. Brady, the same company that produced the rare Brady's Family Bitters. An extremely rare bottle! Found in the basement of an old Indiana drugstore built about 1850.

Est.: \$500 - \$1,000 • Min. bid: \$250



Lot 135

"SIMMONS & SPENCER – SCHNAPPS – 17 WEST WATER ST / PROVIDENCE RI.", America, 1865 – 1880. Medium-to-deep olive green, square with beveled corners, applied sloping collar – smooth base, ht. 9 1/2", virtually attic mint; (only the slightest trace of faint wear, and a small, partially open bubble on the interior of the shoulder, otherwise pristine perfect!) A great example, bubbly crude glass, outstanding condition. An extremely rare American schnapps bottle!

Est.: \$800 - \$1,200 • Min. bid: \$400



Lot 132

"DR GUILMETTE'S / EXTRACT OF JUNIPER / BOSTON", America, 1870 – 1880. Beautiful yellowish-honey, almost a butterscotch coloration, square with beveled corners, applied sloping collar – smooth base, ht. 9 1/2"; (professionally cleaned with just a faint trace of wear remaining). A very rare bottle with only a couple of recorded sales in the past 20 years, both having some form of damage.

Est.: \$300 - \$600 • Min. bid: \$150



Lot 136

"MONKS' / OLD BOURBON / WHISKY. – FOR, / MEDICINAL / PURPOSES – WILSON, FAIRBANK & Co, / SOLE AGENTS.", America, 1850 – 1860. Beautiful yellowish-olive, almost a deep olive yellow, square with beveled corners, applied sloping collar – iron pontil scar, ht. 9 3/4", perfect (minor trace of washable content residue). Crisp, bold embossing, heavy iron pontil scar, outstanding condition, it would be hard to improve on this example.

Est.: \$1,200 - \$2,200 • Min. bid: \$600



Lot 137

"CONSTITUTION" Wine Bottle, America, 1835 – 1845. Deep olive, cylindrical, 3-pc. mold, applied sloping collar with bevel – sand type pontil scar, ht. 11", near mint; (a 1/8" flake on the edge of the lip; a trace of minor wear and some washable interior content residue). See May, 2016 issue of *AB&GC* for an article on the history of related Constitution bottles. A rare and historical bottle blown to contain wine imported to the US, aboard the USS Constitution.

Est.: \$600 - \$900 • Min. bid: \$300



Lot 141

"A.M. BININGER & CO. / 19 BROAD ST. / N.Y." Figural Cannon Barrel, America, 1865 - 1875. Honey amber in the shoulders shading to a medium-to-deep golden amber near the base, figural cannon barrel, sheared mouth – smooth base, ht. 12 1/4", near mint; (two small, pinhead bits of minor roughness on the sheared mouth; a couple of light scratches on the reverse, otherwise excellent. BPK-30. Provenance: Ex. Diane Wheaton, Sam Greer collections.

Est.: \$1,000 - \$1,500 • Min. bid: \$500



Lot 138

"CASPER'S WHISKEY / MADE BY HONEST / NORTH / CAROLINA PEOPLE", 1885 – 1900. Brilliant cobalt blue, cylindrical with fluted shoulders, tooled sloping collar with ring – smooth base, ht. 11 7/8", attic mint. A great example that has not been dug and cleaned. One of the all time classics, and a big splash of color for any collection.

Est.: \$400 - \$500 • Min. bid: \$200



Lot 142

(Smiling Moon) / "MOONSHINE" – "M.F. & CO" Whiskey Bottle, probably 1883 – 1885. Amber, cylindrical, paneled shoulders with embossed 'smiling moon face', applied sloping collar with ring – smooth base, ht. 11 3/4"; (small area on the reverse with some wear and scratches, otherwise very near mint). An extremely rare bottle, and possible unique in amber. The bottle was blown for the Mihalovitch, Fletcher & Co. of Cincinnati, and held the company's "MOONSHINE BOURBON".

Est.: \$400 - \$800 • Min. bid: \$200



Lot 139

"OLD / GRAND-DAD" (image of smiling old man with spectacles holding a shot glass of whiskey) / "WHISKEY", Enameled Back Bar Bottle, America, 1885 -1900. Colorless, cylindrical, tooled sloping collar with ring – smooth base, ht. 11 1/4", perfect! Colorful light green, yellow, brown & white enameled image of "Old Grand-Dad" within oval. Colored picture back bar bottles are rare. This one is considered very rare, especially in this virtually attic condition.

Est.: \$2,000 - \$4,000 • Min. bid: \$1,000



Lot 143

"MIST OF THE MORNING / SOLE AGENTS / BARNETT & LUMLEY", America, 1865 - 1875. Beautiful yellowish 'old amber', barrel form, applied sloping collar with ring – smooth base, ht. 9 7/8", virtually attic mint; (just a slight trace of wear on the reverse as well as an onionskin-thin 1/8" open bubble, otherwise pristine perfect!). A great example, bright, clean, good color and clarity. Note; Barnett & Lumley is the scarcer of the two embossed variants.

Est.: \$500 - \$800 • Min. bid: \$250



Lot 140

"J.H. CUTTER / OLD / BOURBON" / ("J.H.C" on Barrel) / "J.H. CUTTER / OLD / BOURBON" / (Crown) / "TRADE / MARK" / "J.H. CUTTER / PURE / OLD RYE" / (Crown) / "C. P. MOORMAN / MANUFACTURER / LOUISVILLE, KY. – CUTTER / WHISKY", America, 1885 – 1895. Golden amber, cylindrical, tooled sloping collar with ring – smooth base, ht. 11", attic mint! Rare mold variant without the "& CO" after "MOORMAN".

Est.: \$200 - \$400 • Min. bid: \$100



Lot 144

"THAT'S THE STUFF" Figural Barrel Whiskey, America, 1850 – 1860. Golden amber, barrel form, applied square collar – blowpipe pontil scar, ht. 10"; (a couple of shallow 1/8" flakes off the side of the collar on the reverse and a 3/8" shallow iridescent bruise on the top edge of the lip, otherwise very near mint). Extremely rare, believed to be one of only a small handful known! Very few barrels are pontiled, and even more rare to have a catchphrase or slogan embossed on an early bottle.

Est.: \$1,500 - \$2,500 • Min. bid: \$800

A Spectacular Lineup

Lot 161

Lot 189

Lot 173

Lot 171

Lot 183

Lot 173



of Colorful Bitters...





Lot 145

"TURNER BROTHERS / NEW YORK", America, 1860 - 1870. Rich, medium-to-deep honey amber, barrel form with 10 rings above and below center label panel, applied square collar – early smooth base, ht. 9 7/8", attic mint! R/H #T67L. Scarce. These often are plagued by either lip issues, or wear around the center section, or both, but not this one! A fantastic example, boldly embossed, seedy glass, outstanding, virtually pristine condition.

Est.: \$500 - \$800 • Min. bid: \$250



Lot 149

"OLD SACHEM / BITTERS / AND / WIGWAM TONIC", America, probably 1858 - 1865. Medium amber, barrel form, applied square collar – large blowpipe pontil scar with some iron residue, ht. 9 3/8", near mint; (a 1/4" chip on the base ring at the side that is easy to miss, a trace of expected faint wear, otherwise virtually attic mint). R/H #O46. Overall excellent condition, and certainly extremely rare having the pontiled scarred base!

Est.: \$2,000 - \$4,000 • Min. bid: \$1,200



Lot 146

"TURNER BROTHERS. / NEW YORK / BUFFALO. N.Y. / SAN FRANCISCO. CAL.", America, probably 1858 - 1861. Medium-to-deep amber, square with beveled corners, applied sloping collar with ring – iron pontil scar, ht. 9 1/2"; (lightly cleaned to original luster and near mint condition). R/H #T70L. This is the earlier, scarcer mold and is extremely rare with the iron pontiled base. Very crude glass, whittled and wavy, and extremely bold embossing.

Est.: \$1,500 - \$3,000 • Min. bid: \$800



Lot 150

"BOURBON WHISKEY / BITTERS", America, 1860 - 1875. Gorgeous, light-to-medium pinkish apricot with some salmon tones, barrel form, applied square collar – smooth base, ht. 9 1/4", attic mint! R/H #B171. Rare and outstanding color, and character, having heavily whittled, crude glass. This one is one of those 'chameleons' with the color changing according to the type of light, time of day, etc. A very eye-appealing barrel.

Est.: \$800 - \$1,200 • Min. bid: \$400



Lot 147

"DR C.W. ROBACKS / STOMACH BITTERS / CINCINNATI. O", America, 1865 - 1875. Light yellowish honey coloration, barrel form, applied sloping collar with period lightning style wire closure – smooth base, ht. 9 3/8", virtually attic mint; (a couple of tiny, minute onionskin-thin open surface bubbles, otherwise pristine). R/H #R75. A very pretty example, lighter than most with plenty of yellowish tones, and nice having the period wire closure.

Est.: \$250 - \$450 • Min. bid: \$140



Lot 151

"GREELEY'S BOURBON / BITTERS" (with 98% complete original labels), America, 1860 - 1875. Medium-to-deep apricot puce with a slight pinkish tone, barrel form, applied square collar – smooth base, ht. 9 1/4", very near mint; (a 1/8" open bubble on one of the rings; label darkened a bit from age with a couple of light spots, otherwise attic mint!) R/H #G101. Nice color and a very scarce barrel having the original labels!

Est.: \$800 - \$1,200 • Min. bid: \$400



Lot 148

"HIGHLAND BITTERS / AND / SCOTCH TONIC", America, 1865 - 1875. Bright golden with a slight orange tone shading to a reddish-orange in the shoulders and base, barrel form, applied square collar – smooth base, ht. 9 3/4", near mint; (a couple of tiny pinprick specks of roughness on the edge of the lip; a little light wear on the reverse, and a 3/8" shallow flake on the base, otherwise excellent). R/H #H117. A gorgeous example of this rare southern bitters, heavily whittled.

Est.: \$1,200 - \$1,800 • Min. bid: \$600



Lot 152

"GREELEY'S BOURBON / BITTERS", America, 1860 - 1875. Clear, light mossy olive coloration, barrel form, applied square collar – smooth base, ht. 9 1/8", near mint; (a couple of tiny pinprick spots of roughness on the edge of the square collar that you can feel, but are not easy to see; a touch of typical light wear around mid-body including a 1/8" paper-thin open bubble on the reverse). R/H #G101. A rare and beautiful color, lighter in tone than most of the other 'green' Greeley's.

Est.: \$2,500 - \$3,500 • Min. bid: \$1,400



Lot 153

"BROWN'S / CELEBRATED / INDIAN HERB BITTERS – PATENTED / FEB 11 / 1868", America, 1868 - 1880.

Brilliant, light honey yellow coloration, figural Indian maiden, sheared and inward rolled mouth – smooth base, ht. 12 ¼", virtually attic mint; (a tiny, hard-to-see, pinhead flake on the underside of the skirt, otherwise pristine perfect!) R/H #B226. Strong embossing, gorgeous, light eye-appealing color, outstanding condition, a top-shelf example!

Est.: \$1,500 - \$2,500 • Min. bid: \$800



Lot 154

"BROWN'S / CELEBRATED / INDIAN HERB BITTERS – PATENTED / 1867", America, 1867 - 1880.

Golden amber, figural Indian maiden, sheared and inward rolled mouth – smooth base, ht. 12 1/8"; (some spotty light interior haze, primarily in the lower portion of the body, but no other form of damage and otherwise excellent). R/H #B223.

Est.: \$400 - \$600 • Min. bid: \$200



Lot 155

"BROWN'S / CELEBRATED / INDIAN HERB BITTERS – PATENTED / FEB 11 / 1868", America, 1868 - 1880.

Amber, figural Indian maiden, sheared and factory ground mouth – smooth base, ht. 12", near mint; (a 1/8" sliver-type flake off the side of the lip, possibly in-making, and a little faint interior content residue, otherwise perfect). R/H #B222. As noted by Ring / Ham, a rare mold with the misspelled "CELEBRATED" embossing.

Est.: \$800 - \$1,200 • Min. bid: \$400



Lot 156

"NATIONAL / BITTERS" – "PATENT / 1867" (on base), America, 1867 - 1875.

Light yellowish honey coloration, figural ear of corn, applied short tapered collar with ring – smooth base, ht. 12 ½", near attic mint; (just a slight trace of faint wear at the side, on one of the leaves, otherwise perfect!). R/H #N8. A great example, whittled, nice and light with plenty of pleasing yellowish tones.

Est.: \$500 - \$1,000 • Min. bid: \$250



Lot 157

"NATIONAL / BITTERS" – "PATENT / 1867" (on base), with 98% complete original label, America, 1867 – 1875.

Medium golden amber, figural ear of corn, applied short tapered collar with ring – smooth base, ht. 12 ¼", perfect. R/H #N8. Bright maroon label with gold lettering reads in part: *THE / National Bitters / Cures Fever, Ague, Liver / Complaints ... / SCHLICHTER & Zug / PROPRIETORS / 9 North 7th St / PHILAD'A*. Extremely rare with original label.

Est.: \$600 - \$1,200 • Min. bid: \$350



Lot 158

Lot of (2), Figural Pineapple Bitters Bottles, America, 1860 – 1875. Both are shades of light golden, or honey amber, pineapple form, applied blob collars with lower bevel – early smooth bases, ht. 8 5/8" and 8 7/8"; (a little minor exterior wear; one example with a small 3/16" flake at edge of base, otherwise very near mint). R/H #P100. Nice attractive examples, great looking bottles, one is loaded with tiny bubbles.

Est.: \$400 - \$600 • Min. bid: \$200



Lot 159

"SUFFOLK BITTERS – PHIL-BROOK & TUCKER / BOSTON", America, 1870 – 1880.

Gorgeous, light honey yellow coloration, figural pig, applied round double collar – smooth base, length 10", near mint; (just a touch of minor exterior wear

and a patch of light interior milkiness or faint haze behind the head, in one side only, otherwise excellent). R/H #S217. Beautiful color shading from a clear straw-yellow in the feet to a warmer honey yellow in the head. A fantastic, eye-appealing color.

Est.: \$3,000 - \$6,000 • Min. bid: \$1,500



Lot 160

"BERKSHIRE BITTERS – AMANN & Co / CINCINNATI, O", 1873 – 1880.

Medium to deep amber, figural pig, ground mouth – smooth base, length 10 ½", girth 11 3/8", near mint; (a flat chip and a couple of small flakes, ¼" or less, from side of

lip that often occur during the grinding process, a touch of minor wear incl. a shallow open bubble, otherwise excellent!) R/H #B81.4. A scarce and desirable mold, certainly one of the classics in figural bitters. Provenance: Ex. Dr. Burton Spiller collection.

Est.: \$1,500 - \$2,500 • Min. bid: \$800



Lot 161

"S T / DRAKE'S / 1860 / PLANTATION / X / BITTERS - PATENTED / 1862.", America, 1862 - 1885.

Brilliant, medium olive green with excellent clarity all the way to the base, cabin form, applied sloping collar - smooth base, ht. 9 7/8", sparking attic mint! R/H #D105. A 'finest possible example' in every way; wild and fantastic color, great mold impression, absolutely pristine condition! Provenance: Joe Kray collection.

Est.: \$15,000 - \$25,000 • Min. bid: \$8,000



Lot 165

"S T / DRAKE'S / 1860 / PLANTATION / X / BITTERS - PATENTED / 1862.", America, 1862 - 1885.

Beautiful honey-yellow coloration, cabin form with 6 logs above the label panel, applied sloping collar - 2 dots on smooth base, ht. 10"; (a shallow 1/8" minor flake at edge of base, otherwise attic mint). R/H #D105. Beautiful light color, plenty of yellow, and excellent condition!

Est.: \$500 - \$800 • Min. bid: \$250



Lot 162

Arabesque motif / "DRAKES" / Arabesque motif / "PLANTATION" / BITTERS - PATENTED / 1862", America, 1862 - 1880. Beautiful medium-to-deep raspberry-grape coloration, cabin form, applied sloping collar - smooth base, ht. 9 7/8", virtually attic mint; (a trace of very minor wear, otherwise pristine!). R/H #D102. Ex. Judge E.S. MacKenzie, Jeff Burkhardt collections. A fantastic Drake's in the scarce and desirable "Arabesque" mold, gorgeous, outstanding color!

Est.: \$4,000 - \$6,000 • Min. bid: \$2,000



Lot 166

"S T / DRAKE'S / 1860 / PLANTATION / X / BITTERS - PATENTED / 1862.", 1862 - 1885. Medium amber with a slight orange tone, cabin form with 6 logs above all four label panels, applied sloping collar - smooth base, ht. 10 1/8"; (a small pinhead flake on lip and one of the logs on the reverse - not terribly noticeable; a little faint exterior 'bloom' or dullness, light interior content haze). R/H #D104. As noted by Ring / Ham, a rare mold that is seldom offered for sale!

Est.: \$400 - \$600 • Min. bid: \$200



Lot 163

"S T / DRAKE'S / 1860 / PLANTATION / X / BITTERS - PATENTED / 1862.", America, 1862 - 1885. Gorgeous olive yellow coloration, almost a lemon yellow with strong olive tones, cabin form with 6 logs above the label panel, applied sloping collar - 5 dots on smooth base, ht. 10 1/8", perfect. R/H #D105. Beautiful clarity and color, strong olive tone, outstanding condition, this one has not been dug and cleaned, an attic type piece. Provenance: Ex. Tom Lines collection.

Est.: \$3,000 - \$6,000 • Min. bid: \$1,500



Lot 167

"S T / DRAKE'S / 1860 / PLANTATION / X / BITTERS - PATENTED / 1862.", America, 1862 - 1885. Beautiful, bright, light, honey yellow coloration, cabin form with 4 logs above the label panel, applied sloping collar - smooth base, ht. 9 7/8", pristine perfect! R/H #D110.

A fantastic example, crisp, extremely bold embossing, great color having plenty of nice yellow tones. A lot of bottle for the money.

Est.: \$400 - \$600 • Min. bid: \$200



Lot 164

"S T / DRAKE'S / 1860 / PLANTATION / X / BITTERS - PATENTED / 1862." (with 98% complete original labels), America, 1862 - 1885. Clear, medium yellowish olive with a slight amber tone, cabin form with 6 logs above the label panel, applied sloping collar - smooth base, ht. 9 7/8"; (a couple of tiny, pinhead flakes along back roof edge, otherwise attic mint). R/H #D108. A very scarce and desirable color, rare with the original labels. Crisp, very bold embossing.

Est.: \$3,000 - \$6,000 • Min. bid: \$1,500



Lot 168

"S T / DRAKE'S / 1860 / PLANTATION / X / BITTERS - PATENTED / 1862.", America, 1862 - 1885. Medium-to-deep golden amber with an orange tone, cabin form with 4 logs above the label panel, applied sloping collar - smooth base, ht. 10", near mint; (a little faint dullness on the back label panel, and a little light interior content haze and residue). R/H #D110. A rich, deep color, good impression, overall nice condition. Provenance: Joe Kray collection.

Est.: \$100 - \$150 • Min. bid: \$50



Lot 169

"HOLTZERMANN'S – PATENT / STOMACH / BITTERS", America, 1865 – 1875. Light golden shading to a yellowish-honey coloration, rectangular cabin form, applied sloping collar – smooth base, ht. 9 1/2", attic mint. R/H #H155. A great example being lighter in color, outstanding condition, and nice eye-appeal with some crudeness to the glass. One of the great classics in figural bitters.

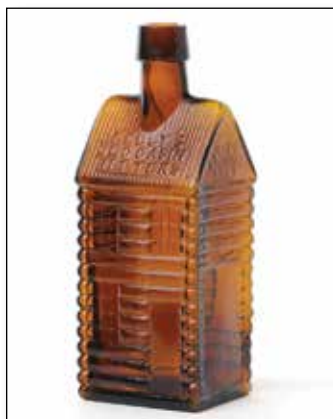
Est.: \$1,500 - \$2,500 • Min. bid: \$800



Lot 173

"H.P. HERB / WILD / CHERRY / BITTERS – WILD CHERRY" / (Cherry Tree) – "BITTERS – BITTERS – BITTERS – BITTERS", America, 1885 – 1895. Brilliant 7-Up or lime green, cabin form with roped corners, tooled sloping collar with ring – smooth base, ht. 8 7/8", sparkling attic mint! R/H #94. Very rare in this beautiful green coloration, and a gorgeous example that would make a statement in any collection. Provenance: Joe Kray collection.

Est.: \$5,000 - \$8,000 • Min. bid: \$2,500



Lot 170

"KELLY'S / OLD CABIN / BITTERS – PATENTED / 1863 – KELLY'S / OLD CABIN / BITTERS – PATENTED / 1863", America, 1863 – 1870. Golden amber with some lighter honey tones, cabin form, applied sloping collar – smooth base, ht. 9 1/8"; (just a touch of typical light wear including a small pinhead bit of abrasion on the roof edge, otherwise virtually attic mint). R/H #K21. A scarce, desirable cabin bitters. Another one of the great classics! Joe Kray collection.

Est.: \$1,800 - \$3,600 • Min. bid: \$900



Lot 174

"H.P. HERB / WILD / CHERRY / BITTERS / READING / PA – WILD CHERRY" / (Cherry Tree) / "BITTERS" – "BITTERS – BITTERS – BITTERS – BITTERS", America, 1885 – 1895. Bright honey amber, cabin form with roped corners, tooled sloping collar with ring – smooth base, ht. 10", sparkling mint. R/H #H93. A beautiful example, nice and light, and excellent condition.

Est.: \$400 - \$600 • Min. bid: \$200



Lot 171

"OLD / HOMESTEAD / WILD CHERRY / BITTERS – PATENT", America, 1865 – 1875. Gorgeous, medium-to-deep strawberry puce, cabin form, applied sloping collar – smooth base, ht. 9 3/8", virtually attic mint; (a couple of tiny pinprick specks of roughness on the edge of the lip, otherwise perfect). R/H #O37. An extremely rare and desirable color, it has been more than 20 years since another example has been offered at auction. Joe Kray collection.

Est.: \$4,000 - \$6,000 • Min. bid: \$2,000



Lot 175

"OLD HOME / BITTERS – LAUGHLIN' / SMITH & CO – WHEELING. W. VA", America, 1865 – 1875. Yellowish 'old amber', almost a butterscotch or tobacco coloration, semi-cabin form, applied sloping collar with ring – early smooth base, ht. 9 3/4"; (a 3/4" hairline crack on one of the base corners and just a trace bit of faint wear, otherwise perfect). R/H #O36. A beautiful bottle, rare mold, nice crude example, this being the earlier variant. The damage is not easy to see.

Est.: \$1,500 - \$2,500 • Min. bid: \$800



Lot 172

"THE BEST BITTERS / IN AMERICA - B. DESENBERG & Co / KALAMAZOO MICH", 1865 - 1870. Amber, cabin form with a three-tiered thatched roof, roped corners, applied sloping collar – smooth base, ht. 9 3/4", near mint; (an extremely minor, tiny 1/8" flash, on the inside corner of one of the roof panels, barely noticeable and does not go through the thickness of the glass; a faint trace of exterior wear, otherwise attic mint). R/H #B92. Very rare and desirable, beautiful overall condition.

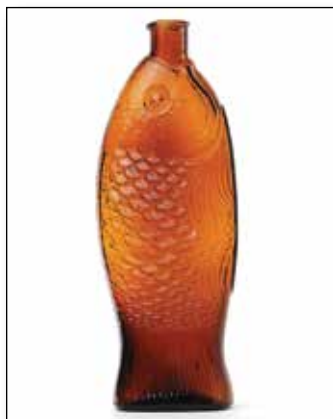
Est.: \$7,000 - \$12,000 • Min. bid: \$3,500



Lot 176

"A M S. 2 / 1864 – CONSTITUTION / BITTERS – A M S. 2 / 1864 – SEWARD & BENTLEY / BUFFALO. N.Y", America, 1864 - 1870. Medium to deep golden amber, rectangular, applied sloping collar – smooth base, ht. 9 3/8"; (just a little faint interior residue and milkiness, otherwise virtually attic mint). R/H #C223. A rare and desirable bitters. This one was a local attic find near Buffalo.

Est.: \$1,800 - \$3,200 • Min. bid: \$1,000



Lot 177

"DOCTOR / FISCHS BITTERS – W. H. WARE / PATENTED 1866", America, 1866 – 1875. Light golden shading to an attractive honey coloration, figural fish form, crudely applied ring collar – smooth base, ht. 11 3/8", virtually attic mint; (trace bit of faint wear at base edge and content residue in base). R/H #F44. A classic figural bitters and a lot of bottle for the money!

Est.: \$250 - \$450 • Min. bid: \$140



Lot 181

"DR. STEPHEN JEWETT'S – CELEBRATED HEALTH / RESTORING BITTERS – RINDGE, N.H.", a Stoddard, NH glasshouse, 1850 – 1860. Bright, light yellowish olive amber, almost an olive yellow, rectangular with beveled corners, applied square collar – iron pontil scar, ht. 7 1/4"; (a couple of areas of roughness around the edge of the collar, approx. 3/4", and 1/4"; a minor 1/2" sliver flake near the pontil). R/H #J37. A gorgeous color, one of the lightest examples that we have seen.

Est.: \$2,000 - \$4,000 • Min. bid: \$1,200



Lot 178

"THE / FISH BITTERS – W. H. WARE / PATENTED 1866", 1866 – 1875. Deep amber shading to a dense chocolate, almost black amber through the neck and base, figural fish, applied ring collar – **"W. H. WARE / PATENT 1866"** (on smooth base), ht. 11 5/8"; (some light exterior wear, the embossing is somewhat weak as is not uncommon on this mold, and some minor interior content residue). R/H #F46. Very scarce in this rich, deep chocolate coloration.

Est.: \$400 - \$800 • Min. bid: \$200



Lot 182

"KIMBALL'S / JAUNDICE – BITTERS – TROY, N.H.", a Stoddard, NH glasshouse, 1850 – 1860. Yellowish olive amber, rectangular with beveled corners, applied sloping collar – iron pontil scar, ht. 7"; (a couple of open bubbles near the shoulder, a narrow sliver-type open bubble, the other approx. 1/4" x 1/8", otherwise excellent). R/H #K42. Nice character with some bubbles and crude pebbly texture through the shoulders.

Est.: \$500 - \$800 • Min. bid: \$300



Lot 179

"BIG / BILL / BEST / BITTERS – BIG / BILL / BEST / BITTERS" (with 99% complete, original front and back labels, neck foil, partial contents), America, 1905 – 1910. Golden amber, pyramid form, tooled sloping collar with ring – smooth base, ht. 12"; (bottle is perfect; labels are very good – slightly darkened from age, and a little minor staining). R/H #B95. The bitters is believed to be named for President Howard (Big Bill) Taft. See AB&GC, August, 2013.

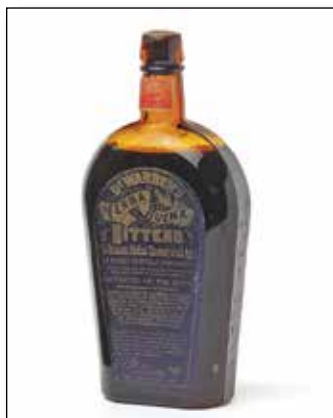
Est.: \$400 - \$600 • Min. bid: \$200



Lot 183

"DR JACOB'S / BITTERS – S. A. SPENCER – NEW HAVEN, CT", America, 1850 – 1860. Deep aquamarine, rectangular with narrow beveled corners, applied sloping collar – blow-pipe pontil scar, ht. 8 3/8", sparkling attic mint! R/H #J11. Gorgeous example, rich color, nice character with whittled wavy glass, pristine perfect.

Est.: \$300 - \$600 • Min. bid: \$150



Lot 180

"YERBA BUENA – BITTERS S.F. CAL." (with complete original front and back labels, revenue stamp, contents), America, 1898 – 1905. Golden amber, strap-sided shoo-fly flask form, tooled sloping collar with ring – smooth base, ht. 9 1/2", both bottle and labels attic mint. R/H #Y3. A classic Western bitters, and one of only a handful of molds that are in the form of a flask. Label reads in part, *DR WARREN'S / YERBA BUENA / BITTERS / The Greatest Medical Discovery of the Age!*

Est.: \$250 - \$450 • Min. bid: \$140



Lot 184

"Dr ZABRISKIE'S – BITTERS – JERSEY CITY / N. J.", probably Jersey City Flint Glass Works, 1850 – 1855. Colorless, rectangular, sheared, tooled, and likely applied thin flanged lip – blowpipe pontil scar, ht. 6"; (professionally cleaned to original luster; a 3/4" x 3/4" repaired hole in the left shoulder). R/H #Z1. Believed to be one of only four or five known examples in any condition. See, AB&GC, April, 2013, *The Mysterious Dr. Zabriskie*, by Bob Strickhart. Gary Enters collection.

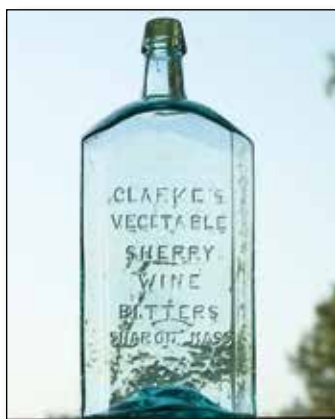
Est.: \$200 - \$400 • Min. bid: \$100



Lot 185

"CLARKE'S / VEGETABLE / SHERRY WINE / BITTERS / SHARON MASS.", America, 1855 – 1865. Aquamarine, rectangular with beveled corners, applied sloping collar – blowpipe pontil scar, ht. 14 1/8"; (a 1/4" x 3/8" sliver-type chip from the side of the sloping collar and a faint, very light haze on the shoulders, otherwise excellent). R/H #C155. A very impressive bottle, this 1-gallon size being the largest of all the Dr. Clarke's. In addition, this mold is rare with the pontil scarred base.

Est.: \$800 - \$1,200 • Min. bid: \$400



Lot 186

(Slug plate) / "CLARKE'S / VEGETABLE / SHERRY / WINE / BITTERS / SHARON MASS", America, 1855 – 1865. Aquamarine, rectangular with beveled corners, applied sloping collar – blowpipe pontil scar, ht. 11 1/2", near mint; (some light scratches on the back label panel; a tiny pinprick bit of roughness on the back edge of the lip and base corner). R/H #C160. Another big, impressive, heavily whittled bottle. This example is also very scarce having the pontil scarred base.

Est.: \$500 - \$800 • Min. bid: \$300



Lot 187

"DR. LANGLEY'S / ROOT & HERB / BITTERS / 99 UNION St. / BOSTON", America, 1855 – 1865. Aquamarine, cylindrical, applied sloping collar – heavy iron pontil scar, ht. 8 3/4", attic mint! R/H #L23. Strong, very bold embossing, outstanding condition. The Ring / Ham book notes that this mold is rare having the long tapered collar and iron pontil mark.

Est.: \$100 - \$200 • Min. bid: \$50



Lot 188

"DR. LANGLEY'S / ROOT & HERB / BITTERS / 99 UNION St. / BOSTON", America, 1860 – 1875. Gorgeous light yellowish-honey coloration, cylindrical, applied square collar – early smooth base, ht. 7", sparkling attic mint! R/H #L22. Beautiful, the glass is absolutely filled with seed bubbles. A top shelf example in terms of color, character, eye-appeal and condition.

Est.: \$500 - \$1,000 • Min. bid: \$250



Lot 189

"SOLOMONS' / STRENGTHENING & / INVIGORATING BITTERS - SAVANNAH / GEORGIA.", America, 1875 – 1885. Rich, vivid, medium to deep cobalt with a slight violet tone, square with beveled corners, applied sloping collar – smooth base, ht. 9 1/2"; (an un-dug, 'attic' type bottle with just trace of faint wear, otherwise perfect). R/H #S140. A choice, top-shelf example. The vast majority of these have all been dug. If you've been waiting for a good one, this might be it!

Est.: \$2,000 - \$3,000 • Min. bid: \$1,000



Lot 190

"LIFE EVERLASTING / BITTERS / ATLANTA, GA.", America, 1880 – 1890. yellowish golden amber, square with beveled corners, tooled sloping collar – smooth base, ht. 9 1/2"; (professionally cleaned with some light etching, swirls and streaks of tiny bubbles on the interior surface of the glass; a couple of hard-to-see 1/4" hairline fissures from a potstone or un-dissolved slag, otherwise excellent). R/H #L91. The condition issues are relatively minor, the bottle displays near mint. Believed to be a unique example!

Est.: \$1,800 - \$3,200 • Min. bid: \$1,000



Lot 191

"ROSENHEIM'S BITTERS - THE GREAT WESTERN / REMEDY", America, 1875 – 1885. Golden amber, square with beveled corners, applies sloping collar with bevel – smooth base, ht. 9 3/4", attic mint! R/H #R96. A rare bitters possibly from Parkersburg, W. VA. Only a handful have been offered for sale over the past 20 years with several having some form of damage. This is a great example, nice character with a crude, slightly lopsided base, and outstanding condition.

Est.: \$600 - \$900 • Min. bid: \$300



Lot 192

Sample size, "CARMELITER / STOMACH BITTERS CO. / NEW YORK" – "SJ" (Monogram) / "REGISTERED", America, 1885 – 1895. Yellow-green, square with beveled corners, tooled sloping collar – **"WB"** (on smooth base), ht. 4 3/4", sparkling, virtually attic mint; (a tiny pinprick speck of roughness on the edge of the lip). R/H #C55. An extremely rare sample bitters and believed to be the only one known in green! A beautiful, and likely unique, example.

Est.: \$500 - \$1,000 • Min. bid: \$300



Lot 193

Sample size, "ESTABLISHED / 1845 / SCHROEDER'S / BITTERS / LOUISVILLE / AND CINCINNATI", America, 1885 - 1895. Golden amber, cylindrical, 'lady's leg' neck with tooled sloping collar and ring - smooth base, ht. 5"; (professionally cleaned to original luster with just a trace bit of faint dullness in the neck area, but no other form of damage). R/H #S67. A rare miniature.

Est.: \$300 - \$500 • Min. bid: \$150



Lot 197

"DR. F. A SABINE'S / HARVEST BITTERS - CHICAGO ILL.", America, 1880 - 1890. Honey amber, square with beveled corners, applied sloping collar - smooth base, ht. 9"; (only a slight trace of typical faint wear, otherwise attic mint). R/H #S6. As noted by Ring / Ham, a very rare mold. A beautiful example of this early hard-to-find bitters. What a great name, and timely for October! One has to wonder if they marketed this to the rural community, and especially during the harvest season!

Est.: \$300 - \$500 • Min. bid: \$150



Lot 194

"DR J. HOSTETTERS / STOMACH BITTERS", probably a Pittsburgh district glasshouse, 1860 - 1870. Clear, medium yellowish olive green, square with beveled corners, applied sloping collar - "X" (on smooth base), ht. 9 1/4", near mint; (a 1/4" iridescent bruise on the inside edge of the lip that likely occurred when the cork was pried out). R/H #H194. A beautiful example, large lettering, nice color - lighter than most in this mold, and with plenty of tiny seed bubbles throughout.

Est.: \$300 - \$500 • Min. bid: \$150



Lot 198

"COCA BITTERS", America, 1880 - 1890. Amber with a slight orange tone, square with beveled corners, applied sloping collar - smooth base, ht. 8 3/8", virtually attic mint; (a minor, paper-thin 1/4" open bubble at edge of base, otherwise perfect). R/H #C178. Extremely rare. Note; there are at least two distinct mold variations of this bottle, as well as colors ranging from this orange-amber to a yellowish tone. All are considered rare and difficult to acquire. Put out by the Quichua Coca Co. of NYC.

Est.: \$250 - \$450 • Min. bid: \$150



Lot 195

"DR J. HOSTETTER'S / STOMACH BITTERS", probably a Pittsburgh district glasshouse, 1860 - 1870. Rich, pure olive coloration, square with beveled corners, applied sloping collar - smooth base, ht. 9 1/4", near attic mint; (trace bit of light interior residue; a couple of light scratches on the reverse, otherwise perfect). R/H #H194. Another great example, very scarce pure green coloration, no amber or yellow, and still passes good light.

Est.: \$300 - \$500 • Min. bid: \$150



Lot 199

"WHITE'S - STOMACH - BITTERS", America, 1880 - 1890. Golden amber, square with beveled corners, applied sloping collar - smooth base, ht. 9 1/2", very near mint; (a tiny, shallow 1/8" sliver flake at edge of lip, and a touch of light interior content near the base, otherwise attic mint). R/H #W101. Rare. A beautiful, attractive example, clean, nice color and condition. Per Ring / Ham, put out by Dr. A.R. White, Druggist, Indianapolis, Indiana.

Est.: \$200 - \$400 • Min. bid: \$100



Lot 196

"DR J. HOSTETTER'S / STOMACH BITTERS", probably a Pittsburgh district glasshouse, 1860 - 1870. Deep olive amber, square with beveled corners, applied sloping collar - smooth base, ht. 9 5/8"; (only a slight touch of faint wear, otherwise perfect). R/H #H194. Great character, large crude lettering, excellent condition!

Est.: \$200 - \$400 • Min. bid: \$120



Lot 200

"SINER'S - CELEBRATED / BITTER CORDIAL - PHILADA", America, 1870 - 1880. Bright aquamarine, square with beveled corners, applied sloping collar with ring - smooth base, ht. 9 5/8", near mint; (lightly cleaned to original luster and virtually 'attic' mint condition). R/H, p.503. A very rare bitters, bright clean and sparkling.

Est.: \$200 - \$400 • Min. bid: \$120



Lot 201

"SMITH'S VEGETABLE / HUNGARIAN BITTERS", America, 1885 - 1895. Light aquamarine, rectangular with beveled corners, tooled square collar - smooth base, ht. 6 3/4", near mint; (a 3/8" flat chip along edge of base; some in-making annealing lines in the neck, some washable residue). R/H Supplement #S130. Extremely rare! This may be the same example that sold in GWA, August, 1990. If so, it is the only example to be offered through recorded auctions.

Est.: \$250 - \$450 • Min. bid: \$140



Lot 202

"DR R. F. HIBBARD'S / WILD CHERRY / BITTERS / C.N. CRITTENTON / PROPRIETOR N.Y.", America, 1875 - 1885. Aquamarine, cylindrical, applied square collar - smooth base, ht. 7"; (professionally cleaned to original luster with a little minor exterior wear remaining, but no other form of damage). R/H #H111. Listed by Ring / Ham as "Extremely rare", this is the first example offered at auction in more than 10 years.

Est.: \$200 - \$400 • Min. bid: \$100



Lot 203

Lot of (2), Scarce Label-Only Bitters, likely Pittsburgh glasshouses, 1900 - 1910. **CLAYTON & RUSSELL'S / CELEBRATED / STOMACH / BITTERS**, and **DR. MURROW'S / TONIC BITTERS / AND / BLOOD PURIFIER. / DR. J.A. MURROW, / SOLE PROPRIETOR, / Pembroke, Georgia**. Amber and colorless, square and rectangular, tooled sloping and prescription type collars - **"A&Co."** and **"H"**, on smooth bases, ht. 8 5/8" and 7"; (bottles perfect; labels 99% complete). R/H #C170L & M161L.

Est.: \$75 - \$150 • Min. bid: \$40



Lot 204

Lot of John Moffat's Almanacs & Life Pills, 1845 - 1860. Includes eight early almanacs for years 1845, 1847, 1848, 1849, 1852, 1853, 1856, and 1860. Also included is an early un-opened box of Moffat's Life Pills, c. 1850. 1845 almanac reads in part, **MOFFAT'S AGRICULTURAL ALMANAC... BY DR. WILLIAM B. MOFFAT**. All in fair to very good condition. A terrific group of Moffat "go-withs". Moffat is one of the earliest of all the bitters!

Est.: \$100 - \$200 • Min. bid: \$50



Lot 205

"DR TOWNSEND'S - SARSAPARILLA - ALBANY / NY" (scarce, 4 'nail-head' mold, and with 95% complete original label), probably an early Stoddard, NH glasshouse, 1845 - 1855. Yellowish olive, square with beveled corners, applied sloping collar - sand type pontil scar, ht. 9 1/4", virtually attic mint; (very minor pinhead bit of roughness on the edge of the collar; some light washable residue). The 'nail-head' mold is scarce; labeled Townsend's are rare, together, a very rare Townsend's!

Est.: \$1,200 - \$2,200 • Min. bid: \$600



Lot 206

"DR TOWNSEND'S - SARSAPARILLA - ALBANY / N.Y. - I I I I", New England or possibly a NY State glasshouse, 1845 - 1855. Medium-to-deep olive green with a very slight amber tone, applied sloping collar - sand type pontil scar, ht. 9 3/8", near mint; (a shallow, 1/4" 'sliver-type' flake on the neck below the applied collar that may have occurred in-making, and just a touch of very minor light wear, otherwise perfect). A heavy, crude example with good character. Scarce 'four-slash' mold.

Est.: \$500 - \$800 • Min. bid: \$250



Lot 207

"DR TOWNSEND'S - SARSAPARILLA - ALBANY / N. Y.", America, 1850 - 1860. Rich, medium-to-deep emerald coloration, square with beveled corners, applied sloping collar - 'cloverleaf type' iron pontil scar, ht. 9 3/8", near mint; (just a bit of minor light wear and a 1/8" flake below applied collar, otherwise excellent). A very attractive example having good color, character, and eye-appeal with plenty of small bubbles and crude wavy glass.

Est.: \$500 - \$800 • Min. bid: \$250



Lot 208

"DR TOWNSEND'S - SARSAPARILLA - ALBANY / N. Y.", America, 1850 - 1860. Medium to deep emerald, square with beveled corners, applied sloping collar - iron pontil scar, ht. 9 1/2"; (professionally cleaned with a little wear and some light scratches remaining, primarily on the "Albany" panel). Note; this is the mold variant with "N Y" centered below "ALBANY", and without periods.

Est.: \$300 - \$500 • Min. bid: \$150



Lot 209

"DR TOWNSEND'S – SARSAPARILLA – ALBANY / N Y", America, 1850 – 1860. Medium bluish-green with an emerald tone, square with beveled corners, applied sloping collar – blowpipe pontil scar, ht. 9 1/2"; (professionally cleaned with a little exterior wear and light scratches remaining, primarily on the label panel). Scarce mold with the 'open pontil' and having "N Y" centered below "ALBANY", and not offset.

Est.: \$400 - \$600 • Min. bid: \$200



Lot 213

"DR GUYSOTT'S – COMPOUND / EXTRACT OF – YELLOW DOCK & / SARSAPARILLA", Midwest, 1850 – 1860. Brilliant aquamarine, square with beveled corners, applied sloping collar – sand pontil scar, ht. 9 1/4", pristine perfect! Note, there is a large fold of glass along with a crescent 'wing' type tooling mark on the label panel. This has a horizontal ridge of glass on the surface that appears to refract light, but is not damage and mentioned for accuracy. Outstanding character and condition!

Est.: \$500 - \$800 • Min. bid: \$250



Lot 210

"DR TOWNSEND'S – SARSAPARILLA – ALBANY / N.Y.", America, 1850 – 1860. Beautiful, clear medium blue green, square with beveled corners, applied sloping collar – blowpipe pontil scar, ht. 9 1/4", virtually attic mint; (slight trace of faint wear, otherwise perfect!). A gorgeous example, nice color and clarity, the glass has that extra brilliance to it. Scarce with the blowpipe pontil scar.

Est.: \$500 - \$800 • Min. bid: \$250



Lot 214

"MYERS' – ROCK ROSE – NEW HAVEN", America, 1850 – 1860. Clear medium emerald, square with beveled corners, applied sloping collar – iron pontil scar, ht. 9 3/8", virtually attic mint; (a trace of typical light exterior wear, otherwise perfect). A very hard to find bottle, especially in this fine condition. We previously sold this example back in 2014. Here is your chance to pick up a choice colored pontiled medicine. Believed to be one of only four or five known examples in this size or mold.

Est.: \$3,000 - \$5,000 • Min. bid: \$1,500



Lot 211

"OLD DR / J. TOWNSENDS – SARSAPARILLA – NEW YORK", America, 1850 - 1860. Medium ice blue coloration, square with beveled corners, applied sloping collar - iron pontil scar, ht. 9 1/2"; (lightly cleaned to original luster with just a little scattered light wear remaining; minor pinhead flake on one of the beveled corners, shallow 1/8" sliver flake at base corner). The bottle displays near mint, the noted condition issues are all minor. Beautiful, scarce color.

Est.: \$400 - \$600 • Min. bid: \$250



Lot 215

"L.Q.C. WISHART'S – PINE TREE / TAR CORDIAL. / PHILA" – (PINE TREE), America, 1855 – 1858. Medium yellow olive, almost an olive yellow, square with beveled corners, applied sloping collar – iron pontil scar, ht. 7 1/2"; (lightly cleaned to original luster and a minor onionskin-thin open surface bubble, otherwise excellent!) Beautiful, filled with tiny seed bubbles. A great rarity and one of the most desirable and sought-after of all the Wishart bottles.

Est.: \$3,000 - \$5,000 • Min. bid: \$1,500



Lot 212

"D.R. / CLARK / N. YORK" / (three oval links), America, possibly Albany Glass Works, 1847 - 1855. Rich aquamarine, square with beveled corners, applied sloping collar – iron pontil scar, ht. 9 1/8", perfect! Odell, p.78. A great looking, impressive, and rare medicine. Ironically, the aquamarine examples are much more rare than the emerald toned examples. Only the 2nd or possibly 3rd example in aqua to be offered in almost 30 years!

Est.: \$800 - \$1,200 • Min. bid: \$400



Lot 216

Label-only pontiled Medicine, "L.F. WOOD'S DIURETIC REMEDY", a New England glasshouse, 1850 – 1860. Olive amber, square with beveled corners, applied sloping collar – heavy iron pontil scar, ht. 8", near mint; (a bit of roughness and minor 1/4" flake along edge of base; 99% complete original label has a minor thin spot). Label reads in part, *L. F. WOOD'S / DIURETIC / REMEDY / FOR / INFLAMMATION / Of The / Kidneys, Bladder, and Urethra...L. F. WOOD, West Townsend, / Mass.*

Est.: \$200 - \$400 • Min. bid: \$100

**Lot 217**

"HOUGH'S - VEGETABLE - LIFE / PRESERVER", probably Mt. Vernon Glass Works, Vernon, NY, 1840 - 1846. Bright, medium olive green, rectangular with wide beveled corners, applied sloping collar - blowpipe pontil scar, ht. 6 1/8", virtually attic mint; (trace bit of faint wear on back label panel, otherwise perfect). Extremely rare, one of only two or three known examples. A great early pontiled medicine, excellent character with crude, whittled glass. Ex. Sam Greer collection.

Est.: \$15,000 - \$30,000 • Min. bid: \$8,000

**Lot 218**

"COOKE'S - SARSAPARILLA", America, 1845 - 1855. Bright yellow green, cylindrical, applied sloping collar - blowpipe pontil scar, ht. 7 1/2", sparkling attic mint! Odell, p.89; DeG #44. Extremely rare with only six known examples in any color or condition, and only two in this brilliant green coloration. This is believed to be the finest example of those known. Fantastic eye-appeal, brilliant, rare color, heavily whittled, outstanding condition. A top pontiled medicine.

Est.: \$4,000 - \$6,000 • Min. bid: \$2,000

**Lot 219**

"J. L. HAMILTON'S / REMEDY - A POSITIVE / CURE", America, possibly Baltimore Glass Works, 1850 - 1860. Medium-to-deep bluish green with a teal tone, cylindrical, applied sloping collar with bevel - heavy iron pontil scar, ht. 7 1/8", mint. A unique example! Unlisted in Nielsen, Agee, or Odell. There are only two smooth base examples, this is the only known pontiled example, and also unique in this color! A top pontiled medicine, and top pontiled cure bottle!

Est.: \$10,000 - \$20,000 • Min. bid: \$5,000

**Lot 220**

"HOUCKS - VEGETABLE / PANACEA - GOODLETTSVILLE / TENN", a Midwest glasshouse, 1850 - 1860. Sapphire blue, rectangular with beveled corners, applied sloping collar with bevel - iron pontil scar, ht. 7 1/4", near attic mint; (a touch of faint light haze or 'bloom', non-distracting, mentioned for complete accuracy). Unlisted. An extremely rare mold, and certainly unique in this gorgeous blue coloration. Sold thru. Harmer Rooke Galleries, July, 1992.

Est.: \$8,000 - \$16,000 • Min. bid: \$4,000

**Lot 221**

"PIKE & OSGOOD / BOSTON MASS - ALTERATIVE SYRUP", New England, probably an early Stoddard, NH glasshouse, 1845 - 1855. Yellowish olive amber, rectangular with beveled corners, applied sloping collar - sand type pontil scar, ht. 8 3/8", near mint; (just a trace of light wear and a little minor roughness on the inside edge of the lip including a 1/8" flake, otherwise excellent). Odell, p.280. Crude, whittled, attractive color! A rare and very desirable early Stoddard medicine.

Est.: \$4,000 - \$8,000 • Min. bid: \$2,000

**Lot 222**

"Dr H. W. JACKSON / DRUGGIST / VEGETABLE / HOME. SYRUP", probably Coventry Glass Works, 1840 - 1849. Medium-to-deep yellowish olive amber, cylindrical, applied sloping collar - blowpipe pontil scar, ht. 5", virtually attic mint; (touch of faint light wear near the base, on the reverse, otherwise perfect). Odell, p.195. Extremely rare, believed to be one of only a handful known, and the 2nd undamaged example to be offered in more than 25 years. Dr. Jackson was in the small town of Columbia, CT.

Est.: \$4,000 - \$8,000 • Min. bid: \$2,000

**Lot 223**

"BEEKMAN'S - PULMONIC - SYRUP - NEW-YORK", America, 1840 - 1850. Clear, medium olive, octagonal, applied sloping collar with bevel - sand type pontil scar, ht. 7 1/8", virtually attic mint; (just a trace bit of faint wear). Odell, p.29. A rare, early, New England medicine, most having some form of damage, few examples are as choice as this one!

Est.: \$4,000 - \$6,000 • Min. bid: \$2,000

**Lot 224**

"PHELPS'S - ARCANUM - WORCESTER - MASS.", a New England glasshouse, 1845 - 1855. Medium shading to deep olive amber, cylindrical with 8 indented panels, applied sloping collar with bevel - sand type pontil scar, ht. 8 1/2"; (a couple of small sliver flakes, 1/4" and 1/8, along with a little fine roughness on the edge of the lip; a couple of tiny, paper-thin open surface bubbles, otherwise excellent). Odell, p.279. One of the great classics in New England pontiled medicines.

Est.: \$3,000 - \$5,000 • Min. bid: \$1,500



Lot 225

J. L. LEAVITT. – BOSTON., a Stoddard, NH glasshouse, 1846 – 1862. Clear, medium olive shading to a deep olive near the base, cylindrical, 3-pc. mold, applied sloping collar with bevel – sand type pontil scar, ht. 8 1/4"; (a 1/8" bit of minor roughness on the inside edge of the lip, otherwise virtually attic mint). A very scarce Stoddard medicine that held cold pressed castor oil. This example is a little lighter in color as most are very deep in color.

Est.: \$400 - \$600 • Min. bid: \$200



Lot 229

"SMITH'S – GREEN MOUNTAIN – RENOVATOR – EAST. GEORGIA. VT", Granite Glass Company, Stoddard, NH, 1850 – 1860. Yellowish olive amber in the shoulders shading to a deeper olive amber near the base, rectangular with beveled corners, applied ring collar with bevel – iron pontil scar, ht. 7", virtually attic mint; (a touch of minor exterior wear, primarily near the edge of the base). A great example, this one having some frothy ribbons of tiny bubbles swirled through the lower half.

Est.: \$3,000 - \$5,000 • Min. bid: \$1,500



Lot 226

"J. K. PALMER / CHEMIST / BOSTON", a New England glasshouse, 1840 – 1855. Deep olive near the shoulders shading to dense, virtually black coloration through the lower half of the body, cylindrical, crudely applied sloping collar – sand type pontil scar, ht. 9"; (a couple of hard-to-see tiny little annealing lines in the body, 1/4" or less, probably occurred in making, otherwise very near mint). Odell, pgs. 272-273. One of several products put out by this early Boston merchant.

Est.: \$300 - \$500 • Min. bid: \$150



Lot 230

"C. BRINCKERHOFFS – HEALTH RESTORATIVE – PRICE \$ 1.00 – NEW YORK", probably an early Stoddard, NH glasshouse, 1845 - 1851. Medium-to-deep olive coloration, rectangular with beveled corners, applied sloping collar – sand type pontil scar, ht. 7 1/8"; (an area approx. 1/2" on the side of the lip has been finely polished, and a little typical faint wear). Odell, p.47. A crude example, nice strong embossing. The polished lip was well executed, the bottle displays very nicely.

Est.: \$500 - \$800 • Min. bid: \$250



Lot 227

Early, label-only pontiled Medicine, "DR. ORDWAY'S", New England, possibly Stoddard, NH, 1845 – 1860. Olive yellow coloration, cylindrical, tooled thin flanged lip – blowpipe pontil scar, ht. 5 3/4", attic mint; (label is darkened a bit from age and has some staining in one corner). 98% complete, original label reads in part, *DR. ORDWAY'S / CELEBRATED / PAIN DESTROYER. / For Rheumatism, Tic Douloureux*. Odell, p.270. Fantastic color, crude seedy glass.

Est.: \$200 - \$400 • Min. bid: \$100



Lot 231

Early Medicinal Utility Bottle, a Stoddard, NH glasshouse, 1846 – 1860. Yellowish 'old amber' with a very slight olive tone, rectangular with wide beveled corners, crude applied sloping collar – iron pontil scar, ht. 7 7/8", perfect! A beautiful example, nice color, great character and condition! A classic early Stoddard medicine, similar in form to several other Stoddard products.

Est.: \$400 - \$600 • Min. bid: \$200



Lot 228

Label-only pontiled Medicine, "KIMBALL'S / ANODYNE TOOTHACHE DROPS", New England, probably Stoddard, NH, 1850 – 1860. Medium olive amber, cylindrical, 3-pc. mold, applied sloping collar with bevel – iron pontil scar, ht. 9 3/8"; (bottle with trace of wear; label has some staining, otherwise perfect). 98% complete original label reads in part, *An Immediate and Perfect Cure for the Toothache / E.P. KIMBALL, Druggist*. Gary Enters collection.

Est.: \$300 - \$500 • Min. bid: \$150



Lot 232

Early Medicinal Utility Bottle, a Stoddard, NH glasshouse, 1846 – 1860. Beautiful, bright yellowish olive amber, rectangular 'tombstone' form with round arched panels, concave corners, applied square collar – sand type pontil scar, ht. 6 3/4", near mint; (some in-manufacture crazing lines in the neck, trace bit of residue on the interior). See, *On the Trail of Stoddard Glass*, p.81. Beautiful color, character, very desirable and scarce form.

Est.: \$500 - \$800 • Min. bid: \$250



Lot 233

Early Medicinal Utility Bottle, a Stoddard, NH glasshouse, 1846 – 1860. Bright yellowish olive amber, rectangular 'tombstone' form with round arched panels, concave corners, applied sloping collar – sand type pontil scar, ht. 7"; (a shallow 1/8" flake on the lower edge of the sloping collar; a little scattered minor wear including a 3/16" partially open bubble on one of the concave corners, otherwise excellent). A scarce Stoddard mold, this one having a different collar.

Est.: \$400 - \$600 • Min. bid: \$200



Lot 234

"HAMPTON'S / V. TINCTURE / MORTIMER / & MOWBRAY / BALTO.", Baltimore Glass Works, Baltimore, MD, 1840 – 1855. Yellowish golden coloration with some apricot tones, oval, applied square collar – blowpipe pontil scar, ht. 6 3/8"; (lightly cleaned to original luster; a touch of minor roughness on the edge of the square collar including a shallow, flat 3/16" chip on the top edge of the lip). Odell, p.161. Beautiful color, and a lot of bottle for the money.

Est.: \$400 - \$800 • Min. bid: \$200



Lot 235

"LOREE'S – OHIO / LINIMENT", America, 1848 - 1855. Rich, medium-to-deep blue green, oval, sheared and inward rolled mouth - blowpipe pontil scar, ht. 4 1/4", attic mint! Odell, p.229. A great little bottle, scarce in aqua, and extremely rare, possibly unique in this rich blue-green coloration! Crisp embossing, outstanding color, excellent condition. A Cincinnati bottle. Per Odell, the liniment was advertised to cure colic, purging, cholera, cramps; internal or external, for horses.

Est.: \$1,000 - \$2,000 • Min. bid: \$500



Lot 236

"MORSE'S / CELEBRATED SYRUP / PROV. R.I.", America, 1850 - 1860. Clear medium emerald green, oval, applied sloping collar - blowpipe pontil scar, ht. 9 1/2"; (a couple of minor flakes; one less-than 1/8" on the back edge of the lip, a paper-thin 3/16" flake on the base, and a 1/4" area along the edge of the base that may have been lightly polished to remove some roughness, otherwise excellent). The noted condition items are minor, the bottle displays as virtually attic mint!

Est.: \$800 - \$1,200 • Min. bid: \$400



Lot 237

"LYONS / POWDER – B&P / N.Y.", America, 1858 - 1865. Medium olive coloration, cylindrical, sheared and inward rolled mouth – blowpipe pontil scar, ht. 4 1/4"; (the bottle may have been lightly cleaned, but presents itself as near mint with just a minor trace of light wear). Scarce color! Sold as a compound to eradicate bed bugs and other insects that plagued many cities during the mid-19th century. The company was located at 424 Broadway in NYC. Jan & Chris Vincent collection.

Est.: \$300 - \$500 • Min. bid: \$150



Lot 238

"LYONS / POWDER – B&P / N.Y.", America, 1858 - 1865. Gorgeous, light-to-medium olive yellow, cylindrical, sheared and inward rolled mouth – blowpipe pontil scar, ht. 4 1/4"; near mint; (lightly cleaned to original luster, and a trace of faint light milkiness in the neck). Odell, p.234. A very scarce-to-rare color. Eye-appealing color, beautiful whittling and texture to the glass. A top shelf example. Provenance: Jan & Chris Vincent collection.

Est.: \$400 - \$600 • Min. bid: \$200



Lot 239

"LYONS / POWDER – B&P / N.Y.", America, 1858 - 1865. Medium pinkish-amethyst, cylindrical, sheared and inward rolled mouth – blowpipe pontil scar, ht. 4 1/4"; (professionally cleaned - just a bit of faint dullness remaining on base, otherwise excellent). A very pretty color. The Lyons Powder bottles come in a great variety of colors and is one of the main reasons they are so popular with collectors. Provenance: Jan & Chris Vincent collection.

Est.: \$200 - \$400 • Min. bid: \$100



Lot 240

"LYONS / POWDER – B&P / N.Y.", America, 1858 - 1865. Deep puce coloration, cylindrical, sheared and inward rolled mouth – blowpipe pontil scar, ht. 4 1/8"; (professionally cleaned to original luster with a little typical light wear remaining). Odell, p.234. Rich, deep color, nicely whittled. Provenance: Jan & Chris Vincent collection.

Est.: \$200 - \$400 • Min. bid: \$100



Lot 241

"LYONS / POWDER – B&P / N.Y.", America, 1858 - 1865. Golden amber, cylindrical, sheared and inward rolled mouth – blowpipe pontil scar, ht. 4 1/4", near mint; (a trace if minor interior residue or faint content haze, and a slightly weak impression in the shoulder). Odell, p.234. A very scarce color for a Lyons Powder bottle. This example is particularly heavy in weight, the added glass likely why it was not crisply blown in the shoulders. Provenance: Jan & Chris Vincent collection.

Est.: \$300 - \$500 • Min. bid: \$150



Lot 242

"LYONS / POWDER – B&P / N.Y.", America, 1858 - 1865. Honey amber, cylindrical, sheared and inward rolled mouth – blowpipe pontil scar, ht. 4 1/4"; (a dug bottle that has not been cleaned exhibiting some light, primarily interior haze, and some light exterior swirl lines and minor etching, but no other form of damage). It would certainly benefit from a light professional cleaning, likely restoring it to near mint condition. Scarce color, strong impression! Jan & Chris Vincent collection.

Est.: \$200 - \$400 • Min. bid: \$100



Lot 243

"SCHENCK'S – PULMONIC – SYR-UP", America, 1850 - 1860. Medium-to-deep blue green, octagonal, applied sloping collar – large blowpipe pontil scar, ht. 7"; (lightly cleaned to original luster; a 1/8" flake on the edge of lip and a 1/4" flake from the side of the lip on the reverse). Odell, p.312-313. An extremely rare and likely unique example in this rich blue-green coloration. It is worlds apart from any other Schenck's that we have seen. Jan & Chris Vincent collection.

Est.: \$1,500 - \$2,500 • Min. bid: \$800



Lot 244

"C. HEIMSTREET & CO. – TROY N.Y.", America, 1845 - 1855. Beautiful, medium-to-deep sapphire blue, octagonal, applied ring collar with bevel – blowpipe pontil scar, ht. 6 7/8", attic mint. Odell, p.169; DF p.75. A clean, crisp example, excellent condition. Contained a hair coloring put up by Charles Heimstreet, a druggist from Troy, NY. A very pretty colored pontiled hair bottle. Provenance: Gary Enters collection.

Est.: \$200 - \$400 • Min. bid: \$120



Lot 245

"S.M. KIER – PETROLEUM – PITTSBURGH. PA", probably a Pittsburgh district glasshouse, 1850 - 1860. Light-to-medium sapphire blue, rectangular with beveled corners, applied sloping collar – blowpipe pontil scar, ht. 6 1/4", virtually attic mint; (a shallow little pin-head flake at one of the base corners, otherwise perfect!) Odell, p.213. A classic colored pontiled medicine, beautiful color, great condition, a lot of bottle for the money!

Est.: \$1,000 - \$1,500 • Min. bid: \$500



Lot 246

"S.M. KIER – PETROLEUM – PITTSBURGH. PA" (with 98% original label and contents), a Pittsburgh glasshouse, 1850 - 1860. Aquamarine, rectangular with beveled corners, applied sloping collar – blowpipe pontil scar, ht. 6 1/4"; (bottle is perfect, label is a little darkened from age, but completely legible). Odell, p.213. Scarce to rare with original label and contents. Early 1850's ads claimed the petroleum was procured from a 400' well in Allegheny County and had mineral water like properties.

Est.: \$200 - \$400 • Min. bid: \$100



Lot 247

"HYATT'S – INFALLIBLE – LIFE BAL-SAM / N.Y.", America, 1850 - 1860. Apple green, rectangular with beveled corners, applied sloping collar with ring – iron pontil scar, ht. 10 1/4"; (professionally cleaned to original luster with a little light matte type finish and minor stain remaining around a couple of the panel edges on the interior only, but no other form of damage). N #322, Odell, pgs. 189-190.

Est.: \$500 - \$1,000 • Min. bid: \$250



Lot 248

"ROHRER'S – EXPECTORAL / WILD / CHERRY / TONIC - LANCASTER PA", America, 1855 - 1865. Medium amber shading to a deep amber with a slight reddish-orange tone near the base, rectangular pyramid form with roped corners, applied sloping collar with ring – iron pontil scar, ht. 10 1/2", pristine perfect! Odell, p.301. A choice example of this classic pontiled medicine with its unique form.

Est.: \$300 - \$500 • Min. bid: \$150



Lot 249

GARLEGANTS – BALSAM / OF HEALTH – PREPARED – ONLY BY / JOHN S. MILLER, possibly Kensington Glassworks, Philadelphia, 1815 – 1835. Aquamarine, rectangular with beveled corners, tooled, thin flanged mouth – blowpipe pontil scar, ht. 5 ½”, mint. Odell, p.141. An extremely rare and early pontiled medicine from Frederick, MD. Crude, whittled, plenty of tiny seed bubbles. The only example offered in almost 15 years.

Est.: \$1,000 - \$2,000 • Min. bid: \$500



Lot 253

“DESCHAMPS REMEDY / FOR / CONSUMPTION – BRODIE & LEVI / DRUGGISTS – SOLE / PROPRIETORS – CINCINNATI O”, a Midwest glasshouse, 1849 – 1855. Very deep aquamarine, rectangular with beveled corners, applied sloping collar – blowpipe pontil scar, ht. 7 3/8”; (just a trace of light wear and faint residue; a 1/8” flake on inside edge of lip, otherwise perfect!) Extremely rare, believed to be one of only two known examples. A fresh find from a central IL farm auction.

Est.: \$1,200 - \$1,800 • Min. bid: \$600



Lot 250

“JONES’ / DROPS – FOR HUMORS – OR – ANTI - / IMPETIGINES”, America, probably 1842 – 1845. Colorless, rectangular, sheared, tooled thin flanged mouth – blowpipe pontil scar, ht. 4 ¾”, near mint; (small pinhead flake on edge of lip; a bit of minor light interior stain, otherwise excellent). Odell, p.204. Very rare in aqua, and believed to possibly be a unique example in this colorless flint glass. An early medicine from Claremont, NH. Provenance: Ex. Sam Greer collection.

Est.: \$400 - \$600 • Min. bid: \$200



Lot 254

“GENUINE – SWAIM’S / PANACEA – PHILADELPHIA”, America, 1824 – 1830. Pale aquamarine, rectangular with concave corners, sheared, tooled, outward rolled mouth – blowpipe pontil scar, ht. 7 ¾”; (a trace of typical faint wear, otherwise very near mint). Odell, p.335. Rare. Nice crude, wavy glass. These were William Swaim's first bottles, replaced by the round bottles in 1830.

Est.: \$500 - \$800 • Min. bid: \$300



Lot 251

“COMPOUND – EXTRACT / OF – HOPS & – BONESET”, a Midwest glasshouse, 1850 – 1860. Aquamarine, rectangular with beveled corners, applied square collar – iron pontil scar, ht. 5 5/8”; (a little faint light haze, not terribly noticeable, otherwise very near mint). Extremely rare, N #134 (6-star). A bright, clean example having crude whittled glass. Over the years, a handful of these have shown up in SE Ohio. Gary Enters collection.

Est.: \$300 - \$600 • Min. bid: \$150



Lot 255

“DR. / GORDAK'S – ICELAND / JELLY”, America, 1840 – 1845. Aquamarine, rectangular with beveled corners, wide neck with sheared and outward folded lip – blowpipe pontil scar, ht. 6 5/8”, mint. Odell, p.148. Rare. A great example of this early Boston medicine bottle with some nice frothiness and whittling to the glass.

Est.: \$400 - \$600 • Min. bid: \$200



Lot 252

“Dr J. CLAWSON KELLEY & SON'S – ANTISEPTIC DETERGENT – NEW-YORK.”, America, 1845 – 1855. Aquamarine, rectangular with narrow beveled corners, applied sloping collar – blowpipe pontil scar, ht. 9 ¼”, virtually attic mint; (just a slight trace of minor wear and faint dullness on the back label panel, otherwise perfect!) Odell, p.209. Very rare, only the 2nd or possibly 3rd example offered at auction in more than 20 years! A large, impressive bottle.

Est.: \$600 - \$900 • Min. bid: \$300



Lot 256

“JELLY OF / POMEGRANATE / PREPARATE – BY / DR. GORDAK / ONLY”, America, 1835 – 1845. Light apple green, rectangular with rounded sides, wide neck with sheared, tooled, wide flanged lip – blowpipe pontil scar, ht. 6 ½”; (a potstone in one of the rounded sides has a little iridescence around it with a couple of 1/8” ‘legs’, otherwise sparkling attic mint). Odell, p.148. Very scarce. A sparkling, ‘attic-type’ bottle, and with a hard-to-find, perfect flanged lip.

Est.: \$200 - \$400 • Min. bid: \$100



Lot 257

"DR. LEATHE / BOTANIC STORE / 502 GRAND ST N.Y.", America, 1848 – 1860. Aquamarine, oval, applied sloping collar – rectangular iron pontil scar, ht. 8 7/8", virtually attic mint; (slight trace of minor wear, otherwise pristine). Odell, p.221. A big, eye-appealing and very impressive pontiled medicine. Extremely rare, possibly the first example to be offered at public auction. Possibly held Yellow Dock Syrup. Provenance: Gary Enters collection.

Est.: \$800 - \$1,200 • Min. bid: \$400



Lot 261

"DR. H. AUSTIN'S – GENUINE / AGUE BALSAM – PLYMOUTH. O", an early Ohio glasshouse, 1850 - 1860. Bluish aquamarine, rectangular with beveled corners, applied sloping collar - iron pontil scar, ht. 7", near attic mint; (a minor pinhead opening in a surface bubble, and a narrow fold of glass on one of the beveled corners, likely an in-making tooling mark, has a thin 'fin' of extruded glass with a 1/4" piece missing). Odell, p.13. A bright, clean, sparkling example. Very rare. Gary Enters collection.

Est.: \$300 - \$600 • Min. bid: \$150



Lot 258

"BURNETT / APOTHECARY / 33 TREMONT ROW / BOSTON", America, probably 1848 – 1854. Aquamarine, oval, sheared, tooled and outward flared mouth – blowpipe pontil scar, ht. 7 1/4", perfect! Odell, p.60. Extremely rare! Possibly the earliest of the various Burnett bottles, and only the second example offered at public auction. Clean, bright, sparkling and whittled. Provenance: Gary Enters collection.

Est.: \$150 - \$300 • Min. bid: \$80



Lot 262

"DR MANN'S – CELEBRATED / AGUE BALSAM – GALION. OHIO", probably an early Ohio glasshouse, 1855 – 1860. Deep bluish aquamarine, rectangular with beveled corners, applied round collar with bevel – iron pontil scar, ht. 6 3/4", perfect! Odell, p.236. A very scarce and desirable Ohio pontiled medicine. This example is gem-sparking mint with plenty of eye-appeal.

Est.: \$300 - \$600 • Min. bid: \$150



Lot 259

"WARD'S / RHEUMATIC / EMBROCATION / NEW YORK", America, 1845 – 1855. Colorless with a slight amethystine tint, oval, applied flanged collar – heavy blowpipe pontil scar, ht. 6 1/4", very near mint; (a tiny pinprick speck of roughness on the edge of the lip, otherwise pristine perfect). Odell, p.363. A bright, clean example with excellent clarity and plenty of eye-appeal with crude, wavy, whittled glass. Very rare.

Est.: \$500 - \$1,000 • Min. bid: \$250



Lot 263

"PROPRIETOR / THOS A. HURLEY / LOUISVILLE. KY.", America, 1850 – 1860. Light-to-medium blue green, cylindrical, applied sloping collar – blowpipe pontil scar, ht. 5 3/4"; (a tiny pinhead flake on the edge of the lip; a trace bit of very faint dullness on the reverse, and a 3/4" iridescent pontil flake). Odell, p.187. A very scarce mold and color. In addition, excellent character having crude, whittled, seedy glass. Gary Enters collection.

Est.: \$200 - \$400 • Min. bid: \$100



Lot 260

"W. W. COMEE'S / SANATIVE BALM", America, 1845 – 1860. Aquamarine, oval, applied sloping collar – blowpipe pontil scar, ht. 7", perfect! Unlisted in Odell; listed as "Extremely rare" by Holst and believed to be unique, or possibly one of two known examples. This is the same example that we sold back in May, 2010, and at that time, believe to be the 1st example to be offered at auction. Clean, bright, and attic mint!

Est.: \$400 - \$800 • Min. bid: \$200



Lot 264

"THOS. A. HURLEY'S – COMPOUND SYRUP / OF SARSAPARILLA – LOUISVILLE KY", America, 1850 - 1860. Aquamarine, rectangular with beveled corners, applied sloping collar - iron pontil scar, ht. 9 1/2", near mint; (a touch of very minor, typical light wear, otherwise excellent!) Odell, p.123; DeG #106. An extremely rare sarsaparilla. In addition, this example has outstanding character with an attractive pebbly texture, and is absolutely filled with tiny seed bubbles.

Est.: \$800 - \$1,200 • Min. bid: \$400



Lot 265

"CANTRELL'S / COMPOUND / MEDICATED - SYRUP OF / SASSAPARILLA / OR ANTISCORBUTIC SYRUP - PHILADA", America, 1845 - 1855. Aquamarine, rectangular with beveled corners, applied sloping collar - blowpipe pontil scar, ht. 5 3/4"; (some light interior residue or faint haze; a couple of chips on top of the crude collar, 1/8" and 1/4", otherwise excellent). Odell, p.66; DeG #37. Extremely rare, believed to be one of only five, or less, examples known.

Est.: \$400 - \$600 • Min. bid: \$200



Lot 266

"J.H. CURRIE / NEW YORK" Sarsaparilla Bottle (with 95% original, complete label), America, 1845 - 1860. Aquamarine, oval, applied ring collar - blowpipe pontil scar, ht. 5 7/8", perfect. An extremely rare, possibly unique example found in the wall of an old house in Walton, New York, during its demolition. Label is darkened a bit, but clearly legible and reads in part, **CURRIE'S / COMPOUND FLUID EXTRACT OF / SASSAPARILLA**.

Est.: \$250 - \$450 • Min. bid: \$140



Lot 267

"AMERICAN / OIL - BURKESVILLE - KENTUCKY.", America, 1845 - 1855. Bluish aquamarine, rectangular with beveled corners, sheared, tooled and outward rolled mouth - blowpipe pontil scar, ht. 6 5/8"; (some scattered light exterior wear; a tiny, minuscule little 'star' crack, 1/8", not easy to see, in a base corner, shallow 1/4" sliver flake at base edge). Odell, p.5. From FOHBC 2003 National Auction. A very scarce-to-rare medicine, crude, and heavily whittled.

Est.: \$400 - \$800 • Min. bid: \$200



Lot 268

"BOERHAVES ELECTRO / CHEMICAL AROMA - LOUIS A. DISRAEL'S / AMSTERDAM - B. PAGE JR. PITTSBURGH", probably a Pittsburgh district glasshouse, 1850 - 1860. Aquamarine, rectangular with beveled corners, applied ring collar with bevel - blowpipe pontil scar, ht. 7 3/4"; (lightly cleaned to original luster and near mint condition with just a touch of minor haze remaining). Odell, p.36. Extremely rare, possibly unique. Gary Enters collection.

Est.: \$800 - \$1,200 • Min. bid: \$400



Lot 269

"F. P. DUCONGE / NEW ORLEANS.", America, 1850 - 1860. Aquamarine, rectangular with beveled corners, applied ring collar with lower flange - rectangular iron pontil scar, ht. 6 3/4"; (the bottle may have been lightly cleaned, but certainly presents itself as virtually attic mint). A very scarce-to-rare N.O. pontiled medicine. Francis P. Duconge began a drug business in 1829, at 95 Chartres St., New Orleans. A clean, bright example. Gary Enters collection.

Est.: \$200 - \$400 • Min. bid: \$100



Lot 270

"J. McKELLIP / TANEYTOWN, MD", America, 1850 - 1860. Aquamarine, rectangular with beveled corners, applied sloping collar - blowpipe pontil scar, ht. 5 3/4", attic mint; (a little washable content residue). Odell, p.247. Extremely rare. We do not recall seeing another example and there is no record of another being offered at auction. J. McKellip was the proprietor of a cholera and diarrhea product, advertised 1858. Provenance: Gary Enters collection.

Est.: \$200 - \$400 • Min. bid: \$100



Lot 271

"HUNT'S / LINIMENT - PREPARED BY - G. E. STANTON - SING SING N.Y.", America, 1845 - 1860. Brilliant greenish aquamarine, rectangular with wide beveled corners, applied sloping collar - blowpipe pontil scar, ht. 5", sparkling attic mint! Odell, p.184. Not the rarest mold, but perhaps one of the choicest examples that you could hope to find with nice crudity, character, and brilliance to the glass.

Est.: \$100 - \$200 • Min. bid: \$50



Lot 272

"I.L. St. JOHNS' - NERVE & BONE / LINIMENT", a Midwest glasshouse, 1845 - 1855. Aquamarine, cylindrical, sheared and inward rolled lip - blowpipe pontil scar, ht. 3 7/8", sparkling mint! Per Odell, p.328, St. John was a druggist and patent medicine dealer from Tiffin, OH. This is one of several different early pontiled medicines put out by St. John. Not a great rarity, but seldom found in this pristine, virtually 'out-of-the-mold' condition. Crisp, and very boldly embossed.

Est.: \$125 - \$250 • Min. bid: \$70



Lot 273

"FEBRIFUGE / WINE / NEW YORK", (with 90% complete original labels, neck foil), America, 1855 - 1860. Aquamarine, cylindrical, cone form, applied collar with flat band - blowpipe pontil scar, ht. 12 7/8"; (bottle is perfect; label darkened a bit from age, some dried interior content residue). Odell, p.126. Label reads in part, *PROFESSOR MOTT'S / FEBRIFUGE / WINE. / a cure for / FEVER AND AGUE*. Rare. Provenance: Gary Enters collection.

Est.: \$600 - \$900 • Min. bid: \$300



Lot 274

Early, Labeled Medicine, "SYR: SCILLAE C:", America, 1850 - 1860. Aquamarine, cylindrical, applied square collar - iron pontil, ht. 11 1/4", near mint; (a minor patch of faint interior content haze in the back, not distracting; 99% complete original label darkened a bit from age). Rare. Scilla is a liliaceous plant of the genus Scilla with small bell shaped flowers. An impressive, large apothecary bottle, heavily whittled. Gary Enters collection, found in TX panhandle, in 1960s!

Est.: \$150 - \$250 • Min. bid: \$80



Lot 275

"Dr. WOODWORTH'S / SARSA-PARILLA - BIRMINGHAM, CT", (with 98% complete original label), America, 1850 - 1860. Aquamarine, rectangular with beveled corners, applied sloping collar - blowpipe pontil scar, ht. 10"; (bottle is perfect; original label is 98% complete, but with significant staining, some dried interior content residue). A big, beautiful, whittled sarsaparilla. DeG #229; Odell, p.381. This example is a fresh find from the Albany, NY area.

Est.: \$600 - \$900 • Min. bid: \$300



Lot 276

"RUSHTON CLARK & Co - CHEMIST'S - NEW YORK", America, 1850 - 1855. Aquamarine, rectangular with beveled corners, applied sloping collar with bevel - blowpipe pontil scar, ht. 10", near mint; (a couple of chips at edge of base on the reverse, 1/8" and 3/8", that do not show on display, otherwise virtually attic mint). Odell, p.307. Scarce. Possibly for Rushton's Cod Liver Oil. Provenance: Gary Enters collection.

Est.: \$100 - \$200 • Min. bid: \$60



Lot 277

"G. W. MERCHANT / CHEMIST / LOCKPORT / N.Y.", probably Lockport Glass Works, Lockport, NY, 1850 - 1860. Rich aquamarine, cylindrical, applied sloping collar - heavy iron pontil scar, ht. 7"; (two, 3/8" fissures from a potstone in the heel of the base; otherwise sparkling mint). A bright, clean example, beautiful, bubbly glass. More importantly, for those of you who collect the "G.W. Merchant" bottles, you know that this mold is almost never found in aquamarine! Rare.

Est.: \$200 - \$400 • Min. bid: \$100



Lot 278

"G. W. MERCHANT / LOCKPORT / N.Y.", probably Lockport Glass Works, Lockport, NY, 1845 - 1860. Aquamarine, rectangular with narrow beveled corners, applied sloping collar - blowpipe pontil scar, ht. 4 7/8"; (a little light exterior wear including a pinprick bit of roughness on the edge of the collar, otherwise excellent). Crude, whittled glass, strong mold impression. This mold is typically found in shades of blue-green and is scarce in aqua.

Est.: \$175 - \$350 • Min. bid: \$100



Lot 279

"Dr CAMPBELLS - HAIR / INVIGORATOR - AURORA - NEW YORK", probably 1858 - 1863. Aquamarine, rectangular with beveled corners, applied double ring collar - blowpipe pontil scar, ht. 6", attic mint; (some minor in-manufacture neck crazing, mentioned for complete accuracy, but not considered damage). Odell, p.66; Fadely, p.29. A great example, bright, sparkling, and with crude, whittled, wavy glass.

Est.: \$200 - \$300 • Min. bid: \$100



Lot 280

"Geo M DIXON / CINCINNATI", a Midwest glasshouse, probably 1856 - 1860. Aquamarine, rectangular with beveled corners, applied sloping collar - blowpipe pontil scar, ht. 5 1/8", virtually attic mint. A good clean example, attractive crude glass. Very scarce. Odell, p.112. Believed to have held blackberry carminative.

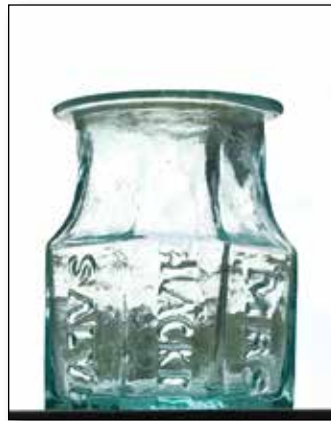
Est.: \$150 - \$250 • Min. bid: \$80



Lot 281

"PREPARED BY / DR. EASTERLY / ST. LOUIS. Mo.", America, 1852 - 1858. Aquamarine, oval, applied short tapered collar - blowpipe pontil scar, ht. 6 1/4"; (professionally cleaned to original luster with some light interior cloudiness or haze remaining, and a trace of light wear, otherwise excellent). Odell, p.118. Very scarce. Provenance: Gary Enters collection.

Est.: \$150 - \$250 • Min. bid: \$80



Lot 285

"MRS - HACKER'S - SALVE", America, 1840 - 1855. Aquamarine, octagonal, wide mouth with sheared, tooled, thin flanged lip - blowpipe pontil scar, ht. 2 1/8"; (a 1/8" flake on the edge of the thin flanged lip has been finely polished, otherwise very near mint). Odell, p.157. Extremely rare. Female medicines in general are very uncommon. The mold maker ran out of room on the "HACKER" panel and put the apostrophe "s" above the "R" in Hacker.

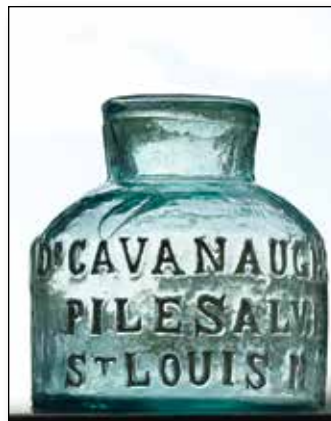
Est.: \$200 - \$400 • Min. bid: \$100



Lot 282

"D. B. WHITE & Co. / SOUTH EASTON. / MASS.", America, 1845 - 1960. Aquamarine, oval, applied square collar - blowpipe pontil scar, ht. 7"; (a little faint interior content haze or residue in the shoulder, otherwise virtually attic mint). Whittled, boldly embossed, and rare. Provenance: Gary Enters collection.

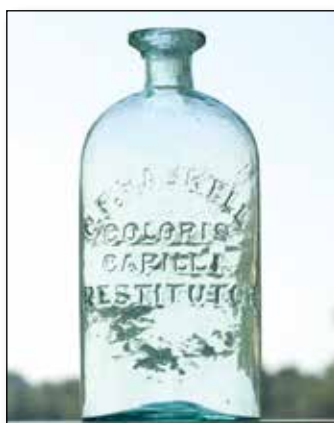
Est.: \$200 - \$400 • Min. bid: \$100



Lot 286

"DR CAVANAUGH'S / PILE SALVE / ST LOUIS MO.", America, 1850 - 1860. Aquamarine, cylindrical, sheared and inward rolled mouth - blowpipe pontil scar, ht. 2 3/8"; (professionally cleaned with a little scattered light wear and etching remaining). Odell, p.48. Scarce. Note, the letters have been painted white to accentuate the embossing. There is also a small "bird swing" or interior string of glass from the body to the base, on the reverse, adding a little character.

Est.: \$150 - \$300 • Min. bid: \$80



Lot 283

"C. F. HASKELL / COLORIS / CAPILLI / RESTITUTOR", America, probably 1855 - 1860. Aquamarine, oval, applied square collar - blowpipe pontil scar, ht. 7 1/8"; (lightly cleaned with a just a touch of minor wear remaining, and a bit of faint haze in neck, but no other form and damage). Odell, p.165; Fadely, p.73. Here is a scarce hair bottle that does not come around often! Provenance: Gary Enters collection.

Est.: \$175 - \$350 • Min. bid: \$100



Lot 287

Lot of (2), Pontiled Medicines, America, 1840 - 1860. **"W.F. LAWRENCE'S / EPPING. N.H. - GENUINE - PREPARATIONS"**, and, an early label-only, **"HOT DROPS. / KNAPP, Druggist and Apothecary, RONDOUT, N.Y."** Both aquamarine, rectangular with beveled corners, and cylindrical, applied double ring collar and sloping collars - blowpipe pontil scarred bases, ht. 5 3/4" and 7 1/4" respectively, both virtually attic mint; (minor pontil flake on the Lawrence's). Scarce. Gary Enters collection.

Est.: \$200 - \$400 • Min. bid: \$100



Lot 284

"SANDERSON'S / BLOOD RENOVATOR / MILTON, VT.", America, 1845 - 1860. Aquamarine, oval with three indented front panels, applied ring type collar - blowpipe pontil scar, ht. 8"; (a 1/4" flash on the inner edge of the lip, probably in-manufacture, and a touch of minor high point wear on the back label panel, otherwise near mint). Odell, p.310. Rare! A great looking bottle, nicely whittled. Ex. Sam Greer collection #1503.

Est.: \$800 - \$1,200 • Min. bid: \$400



Lot 288

Lot of (2), Pontiled Medicines, America, 1845 - 1860. **"J.R. ROWAND - PHILADA"**, and **"DR KEYSER - PITTSBURG PA"**. Both aquamarine, hexagonal and rectangular, sheared and inward rolled lip, and applied sloping collars - blowpipe pontil scar and iron pontiled bases, ht. 3 3/4" and 5 7/8" respectively; (the Rowand's is sparkling attic mint, Keyser's with some light ground lines and a couple of small spots of minor interior milkiness). Gary Enters collection.

Est.: \$150 - \$300 • Min. bid: \$80



Lot 289

Lot of (2), Philadelphia Pontiled Druggists Bottles, America, 1850 - 1860. "GILBERT & Co / No 177 N 3d ST. / PHILAD.A - WHOLESALE - DRUGGIST", and "GILBERT WENTZ & Co / No. 179 N. 3b. ST. / PHILAD.A - WHOLESALE - DRUGGISTS.". Both aquamarine, rectangular with beveled corners, applied sloping collars - blowpipe pontil scars, ht. 5 1/2" & 5 1/4"; (1st Ex. near mint; 2nd Ex. with some light overall haze). Gary Enters collection.

Est.: \$150 - \$250 • Min. bid: \$80



Lot 290

Lot of (2), Pontiled Druggist Bottles, America, 1845 - 1860. "WILSON & / DIERRITT - DRUGGISTS. - PHILADA", and "G. A. NEWMAN / DRUGGIST NY", America, 1845 - 1860. Both aquamarine, rectangular with beveled corners, sheared and inward rolled lips - blowpipe pontil scarred bases, ht. 3 7/8" & 4 3/8"; (1st example with minor haze; 2nd example with light haze and scattered minor wear). Scarce. Gary Enters collection.

Est.: \$150 - \$250 • Min. bid: \$80



Lot 291

Lot of (4), Pontiled Medicines, America, 1840 - 1860. "DR PORTER / NEW YORK.", 2nd Example, "DR. TOBIAS / NEW YORK - VENETIAN / LINIMENT", 3rd Example, "T&M - T&M", 4th Example, "FOLGER'S - OLOSAONIAN - NEW YORK". All are aquamarine, rectangular with beveled corners, sheared and inward rolled and applied sloping collars, blowpipe pontil scarred bases, ht. 4 3/4", 5 5/8", 2 1/2", and 6", all near attic mint. Dewey Heetderks collection.

Est.: \$200 - \$400 • Min. bid: \$100



Lot 292

"C.S. EMERSON'S / AMERICAN. HAIR / RESTORATIVE / CLEVELAND / OHIO. PRICE \$1.50" (with complete original label), America, 1856 - 1860. Colorless, oval, applied thin flanged lip - early smooth base, ht. 6 1/8"; (bottle is perfect; label has just a bit of light stain). DF, p.52. A scarce, early, flint glass hair bottle heavily embossed. Outstanding graphics with colorful dark blue scene of Indians and medicine man, ornate orange boarder.

Est.: \$300 - \$500 • Min. bid: \$150



Lot 293

"C.S. EMERSON'S / AMERICAN. HAIR / RESTORATIVE / CLEVELAND / OHIO. PRICE \$1.50" (with complete original label), America, 1856 - 1860. Colorless, oval, applied thin flanged lip - early smooth base, ht. 6 1/8"; (some light interior content stain in the shoulders, otherwise perfect). Colorful label with excellent graphics, this one having the carmine and blue colors reversed from the previous example.

Est.: \$300 - \$500 • Min. bid: \$150



Lot 294

"DR KEYSER'S - BLOOD + / SEARCHER - PITTSBURGH PA", probably a Pittsburgh district glasshouse, 1865 - 1875. Brilliant, bluish aquamarine, rectangular with beveled corners, applied round collar with bevel - smooth base, ht. 9 1/8", virtually attic mint; (just a touch of very minor high point wear near the shoulder, otherwise "out of the mold" pristine condition). Interesting to note, Dr. Keyser bought out Lindsey's, also from Pittsburgh. A rare, desirable mold.

Est.: \$300 - \$500 • Min. bid: \$150



Lot 295

"STEVENS' SEXUAL VITALIZER / MANUFACTURED BY / J. H. STEVENS / KNOXVILLE, TENN.", America, 1890 - 1900. Aquamarine, rectangular with beveled corners, tooled square collar - smooth base, ht. 8 1/2"; (appears to be a dug bottle with some faint haze and light swirl lines; a tiny pinhead spot of roughness on the shoulder, but no other form of damage. A very rare 'quack medicine' bottle, see: "Merchants of Medicine - Nostrum Peddlers", Heetderks, p.54.

Est.: \$125 - \$250 • Min. bid: \$70



Lot 296

"DR. T.E. DAVIS / SWITCH BACK / COUGH CURE / SUMMIT HILL, PA.", America, 1885 - 1895. Aquamarine, rectangular with beveled corners, tooled square collar - smooth base, ht. 5 3/8", near mint; (some light interior content residue). Unlisted by Agee, very rare! Summit Hill is a small town in the coal region of Pennsylvania and westernmost point of the Mauch Chunk & Summit Hill Switchback Railroad, the 2nd operational railroad in the US. A recent lucky farm sale find.

Est.: \$200 - \$400 • Min. bid: \$100



Lot 297

"L.Q.C. WISHART'S - PINE TREE / TAR CORDIAL. / PHILA." - "PATENT" / (PINE TREE), America, 1858 - 1860. Yellowish olive, square with beveled corners, applied sloping collar - early smooth base, ht. 7 1/2", virtually attic mint; (just a trace bit of faint wear, otherwise perfect). A great example, crude whittled glass, outstanding condition. Rare mold that is believed to be the earliest after the pontiled example.

Est.: \$1,200 - \$2,200 • Min. bid: \$600



Lot 301

"DR. STRICKLAND'S - TONIC / FOR DYSPEPSIA & C - CINCINNATI. O", America, 1860 - 1870. Deep, rich bluish aquamarine, almost a teal coloration, rectangular with beveled corners, applied sloping collar - early smooth base, ht. 9 1/4", virtually pristine perfect. A beautiful bottle that just missed the pontil rod, and in addition, the glass is loaded with tiny seed bubbles. Outstanding character, color, condition, and eye-appeal! An extremely rare bottle believed to be unique in mold and color.

Est.: \$400 - \$600 • Min. bid: \$200



Lot 298

"L.Q.C. WISHART'S - PINE TREE / TAR CORDIAL. / PHILA." - "PATENT" / (PINE TREE) / "1859", America, 1860 - 1870. Bright yellowish olive, almost an olive yellow, square with beveled corners, applied sloping collar - early smooth base, ht. 7 5/8"; (lightly cleaned to original luster and near mint condition). Another very nice example, this one has slightly more of a yellowish tone than the pontiled example. A very early Wishart's with beautiful color and clarity.

Est.: \$700 - \$1,200 • Min. bid: \$400



Lot 302

"DR. TUTT'S - SARSAPARILLA / & / QUEENS DELIGHT - AUGUSTA. GA", America, 1870 - 1880. Medium-to-deep 'old amber', rectangular with beveled corners, double ring collar - smooth base, ht. 7 3/8"; (professionally cleaned with some light wear and scratches remaining, but no other form of damage). DeG #209. An extremely rare southern sarsaparilla, believed to be one of only 2, or possibly 3, known examples. Considered to be among Georgia's top 25 bottles!

Est.: \$2,000 - \$3,000 • Min. bid: \$1,000



Lot 299

"L.Q.C. WISHART'S - PINE TREE / TAR CORDIAL / PHILA." - "TRADE" / (PINE TREE) / "MARK", America, 1875 - 1885. Rich blue green with strong teal tones, square with beveled corners, applied sloping collar - smooth base, ht. 10 1/8"; (a 3/16" flake on one of the beveled corners near the base, otherwise pristine perfect). An absolutely gorgeous example, crisply embossed, and with more of a teal tone than most. Scarce with an applied lip!

Est.: \$200 - \$400 • Min. bid: \$100



Lot 303

"CIRCASSIAN - HAIR / RESTORATIVE - CINCINNATI", America, 1860 - 1870. Yellowish 'old amber', rectangular with beveled corners, applied sloping collar - early smooth base, ht. 7 1/2"; (the bottle has been lightly cleaned, but certainly appears as near mint; a couple of minor pinhead open surface bubbles, otherwise excellent). Fadely, p.35. This one looks like it just missed the pontil rod. Nice rich color.

Est.: \$200 - \$400 • Min. bid: \$100



Lot 300

"CLARK'S / SYRUP", America, 1865 - 1875. Beautiful, clear medium emerald coloration, square with beveled corners, applied round collar with lower 'square' bevel - smooth base, ht. 9 3/4", attic mint! A beautiful large medicine bottle, clean, whittled, attractive color, fantastic condition.

Est.: \$400 - \$600 • Min. bid: \$200



Lot 304

"POISON - POISON", Carr-Lowrey Glass Co., Baltimore, MD, 1889 - 1900. Mossy olive green coloration, irregular hex form, tooled square collar - **"6 / C.L. G CO. / PATENT APPLIED FOR"** on smooth base, ht. 5 1/2", mint. K# KI-1. Scarce color, excellent condition!

Est.: \$100 - \$150 • Min. bid: \$50



Lot 305

"U. S. A. / HOSP. DEPT", America, probably a Pittsburgh district glass-house, 1862 – 1870. Bright, yellowish olive amber, cylindrical, 4-piece mold, crudely applied round collar with bevel – smooth base (with 6-pointed 'star' pattern), ht. 9 3/8", sparkling attic mint. A great example, beautiful olive yellow color below the shoulders, nice character, outstanding condition. A classic early Hospital Dept. bottle.

Est.: \$600 - \$900 • Min. bid: \$300



Lot 309

"MAGNETIC SPRING / HENNIKER. NH", probably a Stoddard, NH glass-house, 1860 – 1873. Golden amber with some beautiful lighter yellow tones near the shoulders, cylindrical, applied sloping collar with bevel – smooth base, Qt, sparkling attic mint! T# V-10. A fantastic example of this very scarce mineral water, beautiful color, whittled, outstanding condition!

Est.: \$1,000 - \$1,500 • Min. bid: \$500



Lot 306

"U. S. A. / HOSP. DEPT", America, 1862 – 1870. Bright yellow green with an emerald tone, cylindrical, applied square collar – smooth base, ht. 6"; (lightly cleaned to original luster and near mint condition; just a touch of minor wear including a tiny pinprick speck of roughness on the back edge of the collar, otherwise excellent). Good color, rare size, overall very nice condition. These don't come around often!

Est.: \$500 - \$800 • Min. bid: \$250



Lot 310

"CLARKE & WHITE / C / NEW YORK. / N II", probably Saratoga Mountain Glass-works, Mt. Pleasant, NY, 1846 – 1856. Rich, deep olive green, cylindrical, applied sloping collar with bevel – smooth base, Pt, very near mint; (a shallow 3/16" iridescent bruise on the inside edge of the lip that likely occurred when the cork was pried out, otherwise perfect). T #C-11:B, type 4 ("TE" not doubled as noted in book). A rare mold, nice character with some frothy streaks of tiny bubbles and slag through the neck and body.

Est.: \$400 - \$600 • Min. bid: \$200



Lot 307

"PERRINE'S" / (APPLE) / "GINGER" – **"DEPOT / No 37, NTH FRONT ST / PHILADA"** – **"PERRINE'S – APPLE – GINGER – PHILA"**, America, 1870 – 1880. Beautiful light honey coloration, cabin form with roped corners, thatched roof, applied sloping collar – smooth base, ht. 9 3/4", virtually attic mint; (just a slight trace of minor wear, otherwise perfect). A great example, this is the variant with the applied lip, in a nice lighter color, excellent condition.

Est.: \$400 - \$600 • Min. bid: \$200



Lot 311

"CONGRESS & EMPIRE SPRING CO / C / SARATOGA N.Y.", America, possibly Saratoga Mountain Glass Works, 1863 – 1870. Deep olive green, cylindrical, applied sloping collar with bevel – smooth base, Pt; (a 1/4" bit of roughness on the back of the lower bevel; some scattered small, shallow open surface bubbles). T #C-14:B. Scarce. This example has great eye-appeal and is absolutely loaded with bubbles throughout! Very crude, frothy, bubbly glass.

Est.: \$150 - \$250 • Min. bid: \$80



Lot 308

"TIPPECANOE" / (CANOE) / "H. H. WARNER & Co", America, 1883 – 1890. Yellowish amber with an olive tone, figural log, large applied "mushroom" type mouth – **"PAT NOV. 20. 83 / ROCHESTER N.Y."** (on smooth base), ht. 8 3/4", perfect. O&S #33. A classic figural medicine, beautiful, very scarce with the olive tone.

Est.: \$400 - \$800 • Min. bid: \$200



Lot 312

"F. H. HECKING'S / MINERAL WATERS / NEW YORK.", America, 1860 – 1870. Medium-to-deep yellowish olive green, cylindrical, applied blob collar – early smooth base, high-shouldered pint; (some minor exterior wear including a 1" scuff on the shoulder with an iron, or metallic, deposit embedded in the surface of the glass which may have occurred in-making; a 1/8" area of light roughness on the lip, otherwise excellent). T #M-15:B (tall pint). Extremely rare!

Est.: \$500 - \$1,000 • Min. bid: \$250



Lot 313

"MAGNETIC SPRING WATER – ST. LOUIS. MICH." (embossed zigzag magnetic line around side near base), America, 1870 – 1875. Aquamarine, cylindrical, bell form with sides curving out at base, applied 3-ring collar – smooth base, Qt; (trace bit of very light wear, otherwise perfect). Very scarce. The well for this spring was sunk in 1869, and is credited with being the state's first magnetic mineral spring. It was discovered by accident in search of brine to manufacture salt.

Est.: \$300 - \$600 • Min. bid: \$180



Lot 314

"TRADE MARK / J. J. ROGERS / CELEBRATED / BIRCH BEER – JARED PRATT / CORNING / N.Y.", 1875 – 1885. Aquamarine, cylindrical champagne style, large applied blob collar with original Putnam-style wire closure – smooth base, Qt, virtually attic mint; (only a very faint bit of light wear, about as nice as you could hope to find!). An extremely rare beer, believed to be one of only 2, or possibly 3, known examples.

Est.: \$200 - \$400 • Min. bid: \$100



Lot 315

"M. KEANE. – XXX. ALE", America, 1855 – 1865. Rich, medium-to-deep cobalt blue, cylindrical, porter form, heavy applied sloping collar with large, almost 'knife-edge' lower bevel – early smooth base, Qt, ht. 9"; (the bottle may have been lightly cleaned, but certainly presents itself as near mint with just a bit of scattered minor wear). A fantastic piece from Louisville, KY, very scarce and desirable, and rare in this outstanding condition.

Est.: \$1,200 - \$2,400 • Min. bid: \$600



Lot 316

"Dr CRONK" – RMCC" Flavored Beer, America, 1850 – 1860. Clear, medium cobalt blue, 12-sided, cone shoulders, large applied sloping collar – iron pontil scar, ht. 10", near mint; (a little minor light exterior wear; the bottle may have been lightly cleaned, but certainly presents itself as very near mint!). A great example, beautifully whittled, outstanding condition, nice medium depth of color. A very scarce 'flavored' beer, especially in this fine condition.

Est.: \$1,500 - \$2,500 • Min. bid: \$800



Lot 317

"NORRIS.S – BEER" Flavored Beer, America, 1850 – 1860. Rich, very deep aquamarine, 12-sided, cone shoulders, heavy applied blob collar – large iron pontil scar, ht. 8 3/4", near mint; (just a touch of very minor wear including a few minor light scratches on the reverse, lightly cleaned to original luster and near attic mint condition). A very rare bottle, it has been 25 years since another has been offered at auction. From Geo. Norris of Cleveland, Ohio, prior to his move to Detroit.

Est.: \$1,500 - \$2,500 • Min. bid: \$800



Lot 318

"J. T. BROWN / CHEMIST / BOSTON – DOUBLE / SODA / WATER" (with correct period metal stand), probably New England, possibly Lyndeborough Glass Works, 1865 – 1875. Rich, medium teal blue coloration, torpedo form, applied blob collar with period, likely original Putnam style wire closure – smooth base, ht. 9 1/8"; (a little faint interior haze, otherwise virtually attic mint). Beautiful color, boldly embossed. Provenance: Ex. Dick and Elma Watson collection.

Est.: \$300 - \$500 • Min. bid: \$150



Lot 319

"ROBINSON, WILSON & LEGALLEE / 102 / SUDBURY ST / BOSTON", America, 1850 – 1860. Medium-to-deep emerald coloration, cylindrical, applied blob collar – large iron pontil scar, ht. 6 3/4", near mint; (a shallow 1/8" flake on the underside of the small bevel below the collar; a little faint interior haze, a narrow band of dullness and wear on the reverse). Appears to be a barn find, not professionally cleaned, and with a fully intact heavy iron pontil scar. Very similar to one we sold in Auction #14.

Est.: \$200 - \$400 • Min. bid: \$100



Lot 320

Eagle Embossed Pictorial Soda, America, 1850 – 1860. Medium green with a slight yellowish tone, cylindrical, embossed motif of **Eagle clutching Branch and Arrows**, applied blob collar – iron pontil scar, ht. 7"; (lightly cleaned with a little minor ground wear and imperfections remaining, otherwise excellent). A classic early Western soda, possibly from the Eagle Soda Works, Sacramento. Numerous examples of this mold were dug in and around Sacramento.

Est.: \$150 - \$250 • Min. bid: \$80



Lot 321

"J. BOARDMAN & Co. / NEW YORK – MINERAL WATERS / B / THIS BOTTLE / IS NEVER SOLD", America, 1850 – 1860. Gorgeous medium pinkish-salmon coloration with some puce tones, cylindrical, applied sloping collar – heavy iron pontil scar, ht. 7 1/2"; (some overall light exterior wear and a few minor scratches, but does not appear to be dug, or professionally cleaned). Outstanding eye-appeal, whittled, and one of the choicest colors you can find in an early soda.

Est.: \$4,000 - \$8,000 • Min. bid: \$2,000



Lot 325

"TWEDLES' / CELEBRATED / SODA OR MINERAL / WATERS – COURT- LAND STREET / 38 / NEW YORK", America, probably 1844 – 1848. Medium bluish green, cylindrical, applied sloping collar – iron pontil scar, ht. 7"; (a 1/8" flake on top edge of lip; some overall light exterior wear and dullness, but no other form of damage). With just a few days in the tumbler, the bottle would likely clean to near mint condition. Note: This is the rare mold variant with "Tweddle's" misspelled.

Est.: \$400 - \$800 • Min. bid: \$200



Lot 322

"B. W. & Co. / NEW YORK – SODA WATER", America, 1850 – 1860. Medium-to-deep cobalt blue, cylindrical, applied blob collar – iron pontil scar, ht. 7 1/4"; (some light exterior wear; a couple of minor 1/8" scuffs on the reverse, otherwise excellent). A great example, nice deep color, and one that has not been dug and cleaned. It was found locally in a window in Kingston, New York!

Est.: \$400 - \$600 • Min. bid: \$200



Lot 326

"GEO. GEMENDEN / PLANTERS HOTEL / SAVANNAH / GEO. – BROWN / STOUT", America, probably 1855 – 1857. Rich, medium-to-deep blue green, cylindrical, porter style, applied sloping collar with bevel – iron pontil scar, ht. 6 7/8"; (professionally cleaned to original luster with a little typical light exterior wear remaining). Extremely rare and historical, nice deep color, and only the 3rd example offered at auction in 15 years.

Est.: \$1,500 - \$2,500 • Min. bid: \$800



Lot 323

"RODGER & / WELLER / SCHE- NECTADY / N.Y.", America, 1850 – 1860. Deep bluish aquamarine, cylindrical, applied blob collar – iron pontil scar, ht. 7 1/2"; very near mint; (a bit of minor interior residue and very faint milkiness, otherwise attic mint!) A very rare soda, rich deep color, very boldly embossed, whittled, and in outstanding condition. A top example that looks like it was just pulled from between the walls of an old house!

Est.: \$300 - \$500 • Min. bid: \$150



Lot 327

"HELLER & Co." / (Small rayed design) / "SAVANNAH / GEO.", America, 1850 – 1860. Light blue green, cylindrical, porter form, applied sloping collar with ring – iron pontil scar, ht. 6 3/8"; (lightly cleaned to original luster with a little minor light wear and faint scratches remaining). An attractive example, overall nice condition, bright and clean.

Est.: \$200 - \$400 • Min. bid: \$100



Lot 324

"TWEDDLE'S / CELEBRATED / SODA OR MINERAL / WATERS – COURTLAND STREET / 38 / NEW YORK.", America, probably 1844 – 1848. Clear, light-to-medium blue green, cylindrical, applied sloping collar – iron pontil scar, ht. 7 1/2"; near mint; (lightly cleaned to original luster and virtually attic mint condition with just a touch of minor wear). A beautiful example, clean, bright, and whittled. Virgin find from a local house sale in Hillsdale, Mich.

Est.: \$200 - \$400 • Min. bid: \$100



Lot 328

"BLOUNT SPRINGS / NATURAL / SULPHUR WATER – TRADE / (BS Logo) / MARK", America, 1870 – 1880. Cobalt blue, cylindrical, applied short blob collar – smooth base, ht. 7 3/8"; (a little minor lip edge roughness including a couple of flakes 1/8" or less, on the reverse; a touch of faint wear on the back shoulder, minor interior residue near the base). A very nice example as this one does not appear to have been dug and cleaned like many of the others.

Est.: \$125 - \$225 • Min. bid: \$70



Lot 329

"G. LOMAX / CHICAGO", America, 1860 – 1870. Cobalt blue, cylindrical, distinctive sunken frame-type slugplate with scalloped corners, applied blob collar – early smooth base, ht. 7 ½"; (lightly cleaned or original luster and near mint condition with just a bit of typical light wear remaining). A beautiful example, excellent overall condition, nicely whittled.

Est.: \$150 - \$250 • Min. bid: \$80



Lot 333

"Wm BETZ – SALEM. OHIO – MINERAL WATER", a Midwest glasshouse, 1850 - 1860. Rich greenish aquamarine, 10-sided, applied blob collar – iron pontil scar, ht. 7 ½", near mint; (lightly cleaned to original luster and near mint condition; a minor 3/16" open bubble, and just a touch of typical minor wear). A good looking, clean, bright example. Very scarce.

Est.: \$200 - \$400 • Min. bid: \$100



Lot 330

"HUTCHINSON & CO / CELEBRATED / MINERAL / WATER / CHICAGO", America, 1850 – 1860. Beautiful light-to-medium sapphire, cylindrical, applied blob collar – iron pontil scar, ht. 7"; (professionally cleaned to original luster with a touch of minor wear remaining; a couple of minor iridescent surface bruises at the edge of the pontil, with very little depth, possibly in-manufacture, and mentioned for complete accuracy). A beautiful example, nice clarity, condition.

Est.: \$250 - \$350 • Min. bid: \$140



Lot 334

Black Glass Wine Bottle, America, 1765. **"Sidney / Breese / 1765"** (on applied glass seal). Deep yellowish olive, magnum-size squat cylinder, applied string rim – sand type pontil scar, ht. 10 5/8", body width 5 ¾", about perfect; (a ¼" flake at edge of lip on reverse, a bit of minor light wear). An extremely rare and important American seal bottle blown for colonist and NYC merchant Sidney Breese, proprietor of New York's first fancy goods store in 1752. Provenance: Ex. Cary Adelman collection.

Est.: \$8,000 - \$12,000 • Min. bid: \$4,000



Lot 331

"E. K. B – AERATED / SODA WATER", America, probably 1856 – 1859. Cobalt blue, cylindrical, applied blob collar – iron pontil scar, ht. 7 ½"; (lightly cleaned to original luster with just a bit of typical minor wear remaining). A clean bright example. The initials "E.K.B" represent Edward K. Bebbington, an early Chicago bottler of soda waters who began as a junior partner with George Lomax and Joseph Entwistle.

Est.: \$150 - \$250 • Min. bid: \$80



Lot 335

Black Glass Wine Bottle, blown in England, likely for an American merchant, 1820 - 1830. **"Joseph / A / Peabody"** (on applied seal). Deep olive amber, squat cylinder, 3-pc. mold, **"PATENT"** (on shoulder), applied sloping collar – **"H. RICKETTS & Co / GLASS WORKS BRISTOL"** (on base), sand pontil scar, ht. 8 5/8"; (deep ½" area of chipping on collar, otherwise mint). Rare! Burton, p.1221. Burton suggests an American attribution and the few known examples have been found in the U.S.

Est.: \$200 - \$400 • Min. bid: \$100



Lot 332

"Geo. H. TOBEY / BOTTLER / CINCINNATI – T", a Midwest glasshouse, 1849 – 1851. Deep, rich aquamarine, cylindrical, applied sloping collar – slightly pushed up base with heavy iron pontil scar, ht. 7 3/8", attic mint. A very scarce soda, especially in this fine condition, and believed to be in business for only a few short years. Note; lettering has been painted to help highlight the embossing.

Est.: \$400 - \$600 • Min. bid: \$200



Lot 336

Black Glass Wine Bottle, blown in England, likely for an American merchant, 1825 - 1835. **"Joseph / Peabody"** (on applied seal). Medium-to-deep olive amber, 3-pc. mold wide-body cylinder, **"PATENT"** (on shoulder), applied sloping collar – **"H. RICKETTS & Co / GLASS WORKS BRISTOL"** (on base), sand pontil scar, ht. 10 ½"; (½" flake on inside of collar, possibly occurred when cork was pried out, otherwise perfect!) Rare. Burton, p.1221. A beautiful example.

Est.: \$300 - \$500 • Min. bid: \$150



Lot 337

Black Glass Wine Bottle, an American seal bottle, likely blown in England, 1822 - 1832. **"Pickering / Dodge"** (on applied seal). Clear medium green with a yellowish-olive tone, 3-pc. mold, **"PATENT"** (on shoulder), applied sloping collar - **"H. RICKETTS & Co / GLASS WORKS BRISTOL"** (on base), sand pontil scar, ht. 10 3/8", perfect. Pickering Dodge was a noted Salem, MA merchant who specialized in foreign commerce. His portrait hangs in the Peabody Essex Museum, Salem.

Est.: \$1,200 - \$2,400 • Min. bid: \$600



Lot 338

Black Glass Wine Bottle, an American seal bottle, blown in England, probably c. 1837. **"D / Sears" / "7"** (within hex), on applied seal. Clear medium green with a yellowish-olive tone, 3-pc. mold, **"PATENT"** (on shoulder), applied sloping collar - **"H. RICKETTS & Co / GLASS WORKS BRISTOL"** (on base), sand pontil scar, ht. 10 5/8", perfect. Blown for the Sears family who settled in Delaware. Rare with the numeral "7". See Burton, p.389. Beautiful threads of amber swirled through the body.

Est.: \$200 - \$400 • Min. bid: \$100



Lot 339

Black Glass Wine Bottle, an American seal bottle, blown in England, probably c. 1834. **"D / Sears" / "4"** (within triangle), on applied seal. Clear medium green with a yellowish-olive tone, 3-pc. mold, **"PATENT"** (on shoulder), applied sloping collar - **"H. RICKETTS & Co / GLASS WORKS BRISTOL"** (on base), sand pontil scar, ht. 10 1/2", perfect. Bottle blown for the Sears family of Delaware who were wealthy planters. See Burton, pgs. 1249 - 1250.

Est.: \$175 - \$350 • Min. bid: \$100



Lot 340

Black Glass Wine Bottle, an American seal bottle, blown in England, probably c. 1838. **"D / Sears" / "8"** (within octagon), on applied seal. Clear medium green with a yellowish-olive tone, 3-pc. mold, **"PATENT"** (on shoulder), applied sloping collar - **"H. RICKETTS & Co / GLASS WORKS BRISTOL"** (on base), sand pontil scar, ht. 10 5/8", perfect! A great looking, attractive sealed wine bottle, scarce and historical.

Est.: \$175 - \$350 • Min. bid: \$100



Lot 341

Half-Size, Black Glass Wine Bottle, England, 1780 - 1800. **Motif of Bagot Crest and a Goat's Head surmounted by a Crown** (on applied seal). Olive green, cylindrical, dip mold, applied tooled lip with string rim - sand pontil scar, ht. 8 7/8", near mint; (tiny potstone on neck with a bit of iridescence, some likely in-making roughness on the inside edge of the lip, otherwise perfect). Burton, p. 1385. A later handwritten label reads, "Rose Water 1868". Scarce.

Est.: \$250 - \$450 • Min. bid: \$150



Lot 342

Black Glass Wine Bottle, England, 1830 - 1835. **"W. Leman / Chard. / 1771."** (on applied seal). Olive green, 3-pc. mold, **"PATENT"** (on shoulder), applied sloping collar with bevel - **"H. RICKETTS & Co / GLASS WORKS BRISTOL"** (on base), sand pontil scar, ht. 11"; (a 1/8" flake and bit of minor roughness on edge of lip; trace bit of light wear, otherwise perfect). Burton, p.182. William Leman was a brewer in Chard, Somerset. Bottles may commemorate the founding of his brewery.

Est.: \$175 - \$350 • Min. bid: \$100



Lot 343

Magnum-size, Black Glass Wine Bottle, England, 1820. **"Olmsted / 1820"** (on applied seal). Olive with an amber tone, 3-pc. mold, **"PATENT"** (on shoulder), applied sloping collar with bevel - **"H. RICKETTS & Co / GLASS WORKS BRISTOL"** (on base), sand pontil, ht. 13", perfect 'cellar-found' condition. Burton, p.852. Rare! Burton indicates there may be an American assoc. with the Olmstead family of New England. A very impressive magnum-sized early sealed bottle.

Est.: \$600 - \$1,200 • Min. bid: \$300



Lot 344

Magnum-size, Black Glass Wine Bottle (with 95% original label). England, 1835 - 1845. **Motif of Comet with five long trails** (on applied seal). Yellowish olive magnum cylinder, 3-pc. mold, applied sloping collar with bevel - smooth base, ht. 12 7/8", near mint; (a little light exterior wear). Burton, p.201; 1080-1081. **"Vieux Cognac / 1811"** on original hand-written label. The seal was blown to celebrate the 1811 vintage year, also the year of Halley's Comet. Very scarce with original label.

Est.: \$200 - \$400 • Min. bid: \$100



Lot 345

Black Glass Wine Bottle, Continental, possibly France, 1850 - 1870. **Motif of two heraldic shields surmounted by coronets** (on applied seal). Olive green, turn-mold cylinder, applied flat banded collar - early smooth base with deep 'kick-up', ht. 11 5/8"; (two 1/8" chips on top edge of lip; a bit of washable interior residue). Burton, p.1640. Per David Burton, the bottle is thought to possibly have a connection to a French wine merchant.

Est.: \$100 - \$200 • Min. bid: \$50



Lot 349

Oversized, Early Case Bottle, probably Continental, possibly Netherlands, 1800 - 1830. Medium olive, square with sides tapering slightly from shoulders to the base, crudely applied heavy string rim - smooth base, ht. 12 3/8"; (some expected typical light exterior wear; a few minor light scratches on one of the side panels approx. 3" to 5", otherwise perfect). VdB, page 132, plate 84. A nice example, impressive scarce size.

Est.: \$300 - \$500 • Min. bid: \$150



Lot 346

Black Glass Wine Bottle (with "I" lightly engraved on shoulder), England, 1680 - 1690. Olive green, transitional form from late shaft and globe style to the earliest of the onion-type wine bottles, sheared mouth with applied string rim - disc type pontil scar, ht. 6 1/2"; (some expected minor exterior wear; light overall interior content stain, otherwise excellent). A fantastic example. See Dumbrell, p.36; VdB plate 39, #2. Ex. Charles B. Gardner collection.

Est.: \$2,000 - \$4,000 • Min. bid: \$1,000



Lot 350

"COSMOPOLIET" / (Motif of a man holding a gin bottle) / "J. J. MELCHERS WZ / SCHIEDAM", Netherlands, 1865 - 1875. Medium olive green, square tapered gin form, applied sloping collar - early smooth base with chamfered corners, ht. 10 3/4"; (a 1/8" iridescent bruise on the inside edge of the lip that likely occurred when the cork was pried out, and a little minor light wear, otherwise excellent with full original gloss). VdB, plate 86. A classic pictorial gin bottle.

Est.: \$100 - \$200 • Min. bid: \$60



Lot 347

Rare, Half-size Black Glass Decanter, probably Alloa Glassworks, Alloa, Scotland, 1810 - 1825. Yellowish olive green, cylindrical club form decanter with (3) applied vertical ribbons of rigaree, sheared and slightly flared mouth - blowpipe pontil scar, ht. 7 1/4", near mint; (a tiny potstone on the inside surface of the neck with a 1/8" refracting line; a little typical light exterior wear). WL, plate 182. A rare decanter, very rare size, decorative and attractive.

Est.: \$800 - \$1,200 • Min. bid: \$400



Lot 351

Large, Early Utility or Storage Bottle, probably England, 1810 - 1830. Olive green, squatty globular form, tooled collar with applied string rim - sand type pontil scar, ht. 10 3/8", body dia. 9"; (a 3/8" chip along the bottom edge of the tooled collar; some typical light usage wear, some overall light interior stain). See VdB, plates 59 and 271. A very early storage bottle, likely used in an early apothecary shop.

Est.: \$200 - \$400 • Min. bid: \$100



Lot 348

Rare, Half-size Black Glass Octagonal Wine Bottle, probably Dutch, possibly Belgium, 1760 - 1780. Medium-to-deep olive, octagonal form, dip mold, long 'spindle' or 'lady's-leg' type neck, sheared mouth with applied broad string rim - smooth base with shallow kick-up, ht. 7 7/8", perfect, virtually 'cellar-found' condition. RD, p.143. Bottles of this type typically held Constantia wine. Sided, or octagonal wines are very scarce, especially in this small half-size.

Est.: \$300 - \$500 • Min. bid: \$150



Lot 352

Large, Blown Apothecary Bottle, "CRET : PRECIP" (painted gold banner), with original painted tin lid, England, 1820 - 1840. Deep olive amber, cylindrical, applied ring collar - smooth base, ht. 13 1/2" (14 1/2" with lid), very near mint; (a little light exterior usage wear, otherwise perfect). VdB, plate 60 & 270. Likely used in an early apothecary shop. A great example, very scarce having the original tin lid, as well as virtually complete original paint!

Est.: \$400 - \$600 • Min. bid: \$200

More Rare & Important Pontilled Medicines

Lot 207

Lot 234



Lot 235



Lot 227



Lot 222



Lot 220

