

American Glass Gallery™

Auction 27

Opens November 9, 2020 • Closes November 17, 2020



ACG

Lot 128: Unique, Gallon-size, Wide-mouth Columbian Ink Whimsey

Conditions of Sale: Auction #27

1. Absentee Auction

The items in this sale will be sold via absentee auction. Closing date:
November 17, 2020, 11:00 p.m., EST.

2. Our Guarantee Regarding Descriptions

American Glass Gallery has made every attempt to describe correctly the property being sold. Descriptions are guaranteed to be accurate as regards authenticity, age, condition, and measurements to within one-fourth inch, as represented in this catalog. Items in this catalog are not shown to scale. In describing damage, exterior wear or manufacturer's flaws that in our opinion, do not significantly detract visually or monetarily from the value of the item are not listed and will not be considered for refund. The Auctioneers reserve the right to make verbal corrections and provide additional information at any time during the sale.

3. Preview

Items may be viewed by appointment from **November 10, 2020** through **November 16, 2020**.

4. Bidding Procedure

You may submit your bids by mail, phone, FAX, email or through our on-line auction site. If bidding by mail or FAX, please fill out the absentee form and return it to us. Your bid, either written or oral, grants American Glass Gallery the authority to protect you up to the amount of your stated bid. Your bid will not be removed once executed.

Bidding Times: You can submit your bids anytime after receiving your catalog. Bids may be made by phone, daily, until closing day, **November 17, 2020**, from 9 A.M. - 6 P.M. Eastern Time. Incoming phone bids will be accepted on the closing day (**November 17, 2020**) until 11 P.M. Eastern Time. Phone calls and Fax bids after this time will not be honored. No exceptions. You may also place your bids through our on-line auction service 24-hours a day once the site has opened for bidding, on or about **November 9, 2020**, continuing until 11:00 P.M. Eastern Time, **November 17, 2020**.

Please do not wait until the last day or two of the sale to place your bids! Because many collectors wait until the final few days of the sale to place their bids, we anticipate the telephone and internet bidding to be very busy during that period, so please plan accordingly. In the event of a tie bid, the earliest received bid on the lot will take precedent. We would welcome your bids by phone so that we can answer any questions and assist you in your bidding.

You may also telephone us at any time during the auction, prior to the closing of the sale, to check the status of your bids, to find the current bidding level, to open a bid, or to raise a bid on an auction lot.

Bidding Increments are as follows:

Up to \$250.00.....	increments of \$10.00
\$250.00 - \$500.00	increments of \$25.00
\$500.00 - \$1,000.00	increments of \$50.00
\$1,000.00 - \$2,500.00	increments of \$100.00
\$2,500.00 - \$5,000.00	increments of \$250.00
\$5,000.00 - \$10,000.00	increments of \$500.00
\$10,000 & Up.....	increments of \$1,000.00

Bids submitted between the above increments, whether by mail, FAX, email or on-line via the internet, will automatically be lowered to the closest lower increment.

This is a minimum bid auction. Bids below the printed minimum will not be accepted.

An example of how our absentee bidding system works: You bid \$600.00 on a lot which is the highest bid received to date. The second highest bid is \$450.00. The current high bid level would be yours at \$475.00, one bid increment higher than the other collector's bid. Any additional bids submitted by others below \$600.00 will automatically be topped on your behalf by a representative of American Glass Gallery, up to your stipulated high bid amount. If no further bids on this lot are received beyond the \$450.00, and the under bidder has not requested a "Call Back", then you would have won the lot at \$475.00, not the \$600.00 that you were prepared to pay.

American Glass Gallery will at NO TIME disclose bids pledged by others; only the current "High Bid" level of a lot will be stated upon request. The highest bidder as determined by American Glass Gallery shall be the purchaser. It is the sole right of the auctioneer to settle any dispute between bidders and to regulate the bidding procedure. The auctioneer reserves the right to refuse any bid he believes not to have been made in good faith.

5. "Call Back" Process

If requested, the three top bidders of an item at the time of closing will be given a "Call Back" over the next number of days in order to resolve the final sale of an item. You can request this service by "checking" the appropriate box on your absentee bid form or verbal agreement by phone. It is the responsibility of the bidder to insure he has qualified for this service.

Please note: No "Call Backs" will be executed for bids under \$400.00. In the event of tie bids, the earliest bid received will be the winning bid.

An example of how the "Call Back" process works: As an example, you have bid \$600.00 on a particular lot. Another bidder has submitted a bid of \$900.00 on the same lot. Assuming that as of the auction closing date you are among the top three bidders on this lot and you have requested a "Call Back", you would receive a call informing you that you have been "Out Bid" and the current "High Bid" is now at \$650.00. If you choose to continue bidding on this lot, you may now do so. Assuming that you now increase your bid to \$700.00, we would accept your bid but also inform you that we have a higher bid on this lot and must bid \$750.00. At this time, an auction between you and American Glass Gallery, representing the collector who submitted the bid of \$900.00, takes place. This bidding would continue until you drop out, or top the other bidders high bid of \$900.00. If the other bidder has not requested a "Call Back" service, you would be awarded the lot. If however, the other bidder also requested a Call Back, we must now call them. If they elect to increase their bid over your high bid, we would in turn call you back. This back and fourth process would continue until one of the bidders declines to go any farther.

If you have requested a "Call Back", the auctioneers will need to contact you on the days immediately following the auction closing between the hours of 8 A.M. and 9 P.M. Eastern Time. Please supply us with all appropriate contact phone numbers including, home, mobile and work numbers. Bidders must provide the appropriate telephone numbers where they can be contacted. If you will be traveling or otherwise unavailable, bidders with "Call Back" privileges will have the responsibility to contact American Glass Gallery twice daily during the Call Back period.

Please note, every effort will be made to contact you during the "Call Back" period. However, the bidder will forfeit their rights to a "Call Back" if the auctioneers are unable to reach them. American Glass Gallery reserves the right to discontinue Call Backs on any item in the sale (2) two days after the closing date of the sale. At that time, the current "High Bidder" may be awarded the item even if Call Backs are still outstanding.

Conditions of Sale: Auction #27

6. Terms

Successful Bidders, Prompt and full payment is due immediately upon receipt of our invoice. Absolutely no exceptions. Anyone failing to pay for items won will forfeit all rights to bid in any future American Glass Gallery sales. **Any late or delayed payments may result in loss of return privileges for items purchased in the sale.**

No Items Will Be Mailed Before Full Payment Is Received.

Buyer Premium: Our buyer premium remains unchanged. **It is 15% if paying by cash or check, discounted from 18% if paying by Credit Card or PayPal** (PayPal payment account: jpastor@americanglassgallery.com). This buyer premium will be added to the hammer price as part of the purchase price. For example, if you purchase a lot for \$100.00, you will receive an invoice for \$115.00 if paying by cash, check or money order, plus any applicable sales tax or shipping charges.

Taxes: If you are a Michigan resident, a 6% sales tax will be added to your bill unless you have a valid resale number registered with us.

Shipping: Shipping, handling and insurance are extra. We ship insured via U.S. Mail. These charges will be added to your bill unless the lots are picked up in person. Oversize packages (boxes with dimensions over 12"), may incur additional shipping charges based on the postal zone of destination. Our charges for shipping (excluding foreign shipments and oversized lots) are \$18.00 for the first item, \$9.00 for each additional item together with extra insurance costs (we use current U.S. Postal Service insurance rates).

Please allow two to three weeks for delivery after receipt of your check.

Payment: American Glass Gallery accepts Cash, Money Orders, Personal Checks, Visa, MasterCard, American Express and PayPal. **If paying by Credit Card or PayPal, an additional 3% will be added to the invoice total.**



7. Refunds

Refunds will be given at the discretion of the Auctioneers. Items purchased must be examined and request for refund made immediately upon receipt of the item or items. Since opinions can differ, particularly in the matter of condition, the Auctioneers will be the sole judge in the consideration of refunds. Refunds requested on the grounds of authenticity must be made within 15 days of the date of the auction, and such refund requests must be accompanied by at least one supporting statement in writing from an authority recognized by the Auctioneers. It is the Auctioneers sincere intention to consider any reasonable request for a refund. **Absolutely no returns for any reason after 30 days following the closing of the sale.**

8. Bidding on any item indicates your acceptance of these terms.



American Glass Gallery™

John R. Pastor
P.O. Box 227
New Hudson, Michigan 48165
Phone: 248.486.0530
Fax: 248.486.0538
www.americanglassgallery.com
email: jpastor@americanglassgallery.com

PLEASE NOTE:

The lots offered in this printed catalog are identical to the lots offered in the on-line catalog. However, due to space constraints of the printed catalog, there may be some further information available regarding some of the lots in the on-line auction descriptions.

Please visit us at

www.americanglassgallery.com

and follow the link to the on-line auction.

The link and on-line auction will be available November 9, 2020. A post-auction price list will be available on our website, in printable form, approximately 30 days after the close of the auction.

We encourage you to contact us by phone or email with any questions, for assistance with bidding, or further details or clarification on any of the lots in this sale. Your complete satisfaction and confidence is our goal!

**THANK YOU AND GOOD LUCK
WITH YOUR BIDS!**

Reference Key

Reference initials and numbers used in the description of this catalog refer to the following publications:

AHG	<i>American Historical Glass</i> , Bessie M. Lindsey, 1967.
AM	<i>The Decanter - An Illustrated History of Glass from 1650</i> , Andy McConnell, 2004.
AP	<i>Glass in Early America</i> , Arlene Palmer, 1993.
BA1	<i>Collecting The Cures</i> , Bill Agee, 1969.
BA2	<i>Collecting All Cures</i> , Bill Agee, 1973.
BB	<i>A Bit About Balsams</i> , Betty Blasi, 1974.
BH	<i>Classification and Documentation of Sunburst and Similar Scent Bottles</i> , Bill Ham, AB&GC, 5/87.
BJ	<i>American Pot Lids</i> , Barbara and Sonny Jackson, 1987.
B/K	<i>The Glass Industry in Sandwich</i> , Raymond Barlow and Joan Kaiser, 1989.
BPK	<i>A.M. BININGER Bottles</i> , Jim Bender, 2017
C	<i>Ink Bottles and Inkwells</i> , William Covill, 1971.
DB	<i>Antique Sealed Bottles, 1640 - 1900</i> , David Burton, 2015
DeG	<i>American Sarsaparilla Bottles</i> , John DeGrafft, 1980.
DeGII	<i>Supplement to American Sarsaparilla Bottles</i> , John DeGrafft, 2004.
DF	<i>Hair Raising Stories</i> , Don Fadely, 1992.
DM	<i>Wistarburgh, Window Tiles, Bottles and More</i> , Dale L. Murscell, 2007.
D/P	<i>Collector's Guide to Candy Containers</i> , Douglas M. Dezso, J. Leon and Rose Poirier, 1998.
F	<i>Inks, 150 Years of Bottles and Companies</i> , Ed and Lucy Faulkner.
FA	<i>John Frederick Amelung, Early American Glassmaker</i> , Lanmon, Palmer, Hume, Brill, Hanson, 1990.
FB	<i>A.S.C.R. The wine bottles of All Souls College</i> , Oxford, 1750 – 1850, Fay Banks.
G	(Flasks) <i>American Bottles & Flasks and Their Ancestry</i> , McKearin & Wilson, 1978.
G	(Blown Three Mold) <i>American Glass</i> (Chapter VI), George S. and Helen McKearin, 1941.
GBH	<i>English Glass For The Collector, 1660-1860</i> , G. Bernard Hughes, 1958.
H	<i>American Bottles in the Charles B. Gardner Collection</i> , Norman C. Heckler, 1975.
JB	<i>Patent and Proprietary Medicine Bottles</i> , Joseph K. Baldwin, 1973
JEB	<i>Glasshouse Whimsies</i> , Joyce E. Blake, 1984.
JH	<i>Glasshouses & Glass Manufacturers of the Pittsburgh Region, 1795 – 1910</i> , Jay W. Hawkins, 2009.
JM	<i>Tea Kettle Ink Price and Reference Guide</i> , Joe L. Mathews Jr., 2016
JS	<i>In glas verpakt – European Bottles, Their history and production</i> , Johan Soetens, 2001.
K	<i>Poison Bottle Workbook</i> , Rudy Kuhn, 1988.
KW	<i>New England Glass & Glassmaking</i> , Kenneth M. Wilson, 1972.
L	<i>The Red Book of Fruit Jars, No. 11</i> , Douglas M Leybourne, Jr., 2014.
LI	<i>Pittsburgh Glass, 1797 – 1891</i> , Lowell Innes, 1976.
Mc	<i>Two Hundred Years of American Blown Glass</i> , Helen and George McKearin, 1950.
McK	<i>American Glass</i> , George S. and Helen McKearin, 1941.
MW	<i>American Bottles & Flasks and Their Ancestry</i> , McKearin & Wilson, 1978.
N	<i>Great American Pontiled Medicines</i> , Frederick Nielson, 1978.
NCH	<i>The Blaske Collection of American Flasks</i> , Norman C. Heckler, 1983.
NCH II	<i>The Blaske Collection: Part II</i> , Norman C. Heckler, 1983.
Odell I	<i>Indian Bottles and Brands</i> , John Odell, 1977
Odell II	<i>Pontiled Medicine Encyclopdia</i> , John Odell, 2007
O&S	<i>Warner's Reference Guide</i> , Ed Ojea and Jack Stecher, 1998.
P	<i>The Glass Gaffers of New Jersey</i> , Adeline Pepper, 1971.
RD	<i>Understanding Antique Wine Bottles</i> , Roger Dumbrell, 1983.
RF	<i>The Bottle Book: A Comprehensive Guide to Historic, Embossed Medicine Bottles</i> , Richard Fike, 1987
RH	<i>Collecting Barber Bottles</i> , Richard Holiner, 1986.
R/H	<i>Bitters Bottles</i> , Carlyn Ring and W. C. Ham, 1998.
RWL	<i>Antique Fakes & Reproductions</i> , Ruth Webb Lee, 1950
T	<i>Collectors Guide to Saratoga Type Mineral Water Bottles</i> , Donald Tucker, 2005.
V	<i>Nailsea Glass</i> , Keith Vincent, 1975
VdB	<i>Antique Glass Bottles; Their History and Evolution</i> , Willy Van den Bossche, 2001.
Z	<i>Ketchup, Pickles, Sauces</i> , Betty Zumwalt, 1980.
ZW	<i>Color Hutchinsons</i> , Zang Wood, 1999.

- The dash is generally used to indicate that the descriptions are on opposite sides of the bottle or flask.

/ The slash is used to indicate that the descriptions are on different lines or surfaces of the bottle.

Cholera Morbus,
ASIATIC
 OR
SPASMODIC CHOLERA.

Instantaneous relief, and a
 perfectly safe remedy for
ASIATIC

OR
SPASMODIC CHOLERA.
Cholera Morbus,
DYSENTERY,
 AND
DIARRHŒA.

Warranted to cure Cholera.
 IT GIVES IMMEDIATE RELIEF
 IN ALL CASES OF PAIN,
 BILLIOUS AND PAIN-
 ERS COLIC, CRAMPS,
 SPASMS, CONVUL-
 SIONS, &c.

DIRECTIONS.

Take in the first place two
 table-spoonfull, with one tea-
 spoonfull loaf sugar once an
 hour for three hours, if not well
 or relieved before that time
 continue two table-spoonfull
 once an hour for two hours.
 Give a child ten years old, one
 half, five years old, one third,
 two years old, one-fourth.
 Proceed in this course and the
 patient will soon recover.
 Cures sudden colic
 fever, &c.

DR. HOPKINS,

CELEBRATED

UNION STOMACH
BITTERS



[Trade Mark.]

Composed of

SARSAPARILLA AND PERUVIAN BARK

Burdock, Wild Cherry, Yellow Dock,
 Dandelion, and other Roots,
 Herbs and Barks.

Compounded so as to act in concert, and assist nature
ERADICATING DISEASE,

Stimulating, Imparting Tone to the Sto-
 mach, and Strength to the System



New England Sunburst flasks are a distinctive and beautiful group for the collector, with plenty of variety and charm. They were among the very first figured flasks to be blown in America.

In architecture, the sunburst has often been used in window designs as well as fanlights, gable vents and other architectural ornamentation. Sometimes, only part of a sunburst — a semicircular or semi-elliptical shape — is used. It was particularly popular

during the Classical and Greek Revival periods in America (approximately 1790 to 1850), a period that would include the design and production of these lovely flasks.

It is likely that the various sunburst designs used to ornament these flasks were merely a fashionable and attractive design statement, however it's also possible they had some sort of symbolic meaning as well.

Smaller sunbursts appear on a number of the early Masonic flasks and, together with stars and a crescent moon, signified God's absolute sway over natural systems. As the early Masonic flasks date from the same time

period, perhaps Sunburst flasks were made to appeal to the Freemasons.

It is also interesting to note that in ancient times the sunburst was a pagan symbol of life everlasting.

New England Sunburst flasks come in some rare molds and colors, but the majority are in shades of olive and olive amber. Many are still relatively common and available to collectors of more modest means.

New England Sunburst Flasks

Lot 40

Lot 42



Lot 43

Lot 45

Lot 46

Historic & Colorful Portrait Flasks



Rare Colored Figural Bitters Bottles

Lot 172

Lot 176



Lot 173

Lot 184

Lot 174

Exceptional Ink Bottles

Lot 119



Lot 117



Lot 98



Lot 113



Lot 105



Lot 106



Lot 107



Lot 108



Lot 109



Lot 110



Lot 111



Lot 112



Lot 121



Lot 116



Lot 120



Lot 115





Lot 1

"GENERAL WASHINGTON" / BUST OF WASHINGTON - "E PLURIBUS UNUM" / EAGLE / "T.W.D - ADAMS & JEFFERSON / JULY 4 A.D. 1776 - KENSINGTON GLASS / WORKS PHILADELPHIA" Historical Flask, Kensington Glass Works, 1826 - 1835. Light-to-medium bluish emerald, sheared mouth - pontil, Pt, near mint; (a 1/2", in-manufacture, pontil flake extends to the base edge, a trace of faint wear, and a slightly weak impression in the shoulder). GI-14.

Est.: \$2,500 - \$4,500 • Min. bid: \$1,300



Lot 5

"THE FATHER OF HIS COUNTRY" / BUST OF WASHINGTON - "DYOTTVILLE GLASS WORKS PHILAD.A / GEN. TAYLOR NEVER SURRENDERS" / BUST OF TAYLOR Historical Flask, 1848 - 1855. Medium-to-deep copper-apricot coloration, sheared mouth - blowpipe pontil scar, Qt, pristine perfect! GI-37. An extremely rare and unusual color for a Washington-Taylor, with a bold impression, and virtually 'out of the mold' condition.

Est.: \$3,000 - \$5,000 • Min. bid: \$1,500



Lot 2

"WASHINGTON" / BUST OF WASHINGTON - "JACKSON" / BUST OF JACKSON Historical Flask, Keene Marlboro Street Glassworks, Keene, NH, 1825 - 1842. Medium amber with some bright golden tones through the shoulders, sheared mouth - blowpipe pontil scar, Pt, virtually attic mint; (just the slightest trace of faint wear, otherwise perfect). GI-31. A good clean example having virtually no wear, and in a pure amber coloration.

Est.: \$250 - \$450 • Min. bid: \$130



Lot 6

"THE FATHER OF HIS COUNTRY" / BUST OF WASHINGTON - "DYOTTVILLE GLASS WORKS PHILAD.A / GEN. TAYLOR NEVER SURRENDERS" / BUST OF TAYLOR Historical Flask, 1848 - 1855. Gorgeous, light peach-topaz along the sides, shading to a rich, deep, tangerine coloration, applied double collar - smooth base, Qt; near perfect; (a 1/4" paper-thin open bubble on the shoulder, another at the side). GI-37. Outstanding color! Ex. Bud Lane collection.

Est.: \$4,000 - \$8,000 • Min. bid: \$2,000



Lot 3

"WASHINGTON" / BUST OF WASHINGTON - "JACKSON" / BUST OF JACKSON Historical Flask, Keene Marlboro Street Glassworks, Keene, NH, 1825 - 1842. Clear, medium olive, sheared mouth - blowpipe pontil scar, Pt; (a little high point wear, as is common on this mold, otherwise perfect). GI-31. Another nice example, this one in a pure green coloration, which is scarce. In addition, this one is lighter in color than most, and with good clarity.

Est.: \$250 - \$450 • Min. bid: \$130



Lot 7

"THE FATHER OF HIS COUNTRY" / BUST OF WASHINGTON - "GEN TAYLOR NEVER SURRENDERS" / BUST OF TAYLOR Historical Flask, Dyottville Glass Works, 1848 - 1855. Bright yellowish olive, sheared mouth - blowpipe pontil scar, Pt; (a 3/16" chip on the edge of the lip; a couple of chips, 5/16" to 3/8" along the edge of the base, a shallow open bubble and small potstone with a couple of tiny 'legs' on the shoulder). GI-40a. Rare mold, beautiful color.

Est.: \$800 - \$1,600 • Min. bid: \$400



Lot 4

"THE FATHER OF HIS COUNTRY" / BUST OF WASHINGTON - "DYOTTVILLE GLASS WORKS PHILAD.A / GEN. TAYLOR NEVER SURRENDERS" / BUST OF TAYLOR Historical Flask, 1848 - 1855. Bright, medium sapphire blue, sheared mouth - blowpipe pontil scar, Qt, near mint; (a small patch of faint interior haze, barely noticeable; a paper-thin pontil flake extends to edge of base). GI-37. Outstanding color, clarity, condition! Ex. Tom McCandless collection.

Est.: \$4,000 - \$6,000 • Min. bid: \$2,000



Lot 8

WASHINGTON - TAYLOR Portrait Flask, Dyottville Glass Works, Philadelphia, 1848 - 1855. Rich, medium-to-deep emerald green, applied sloping collar - blowpipe pontil scar, Qt; (a little high point wear as is common on these early Washington quarts, otherwise virtually perfect). GI-51. A beautiful, rich bright color, attractive pebbly surface, overall very nice condition, plenty of eye-appeal and 'bang for your buck'.

Est.: \$800 - \$1,200 • Min. bid: \$400



Lot 9

WASHINGTON - TAYLOR Portrait Flask, Dyottville Glass Works, Philadelphia, 1848 - 1855. Clear, medium emerald coloration, large applied blob collar - smooth base, Qt, near mint; (some high point wear on the busts, as is typical for this mold, otherwise virtually perfect). GI-54. A very attractive example with some waviness and crudity to the glass. In addition, beautiful color and clarity. Also, a little harder to find with the heavy blob collar (most examples having the 'hat-top').

Est.: \$500 - \$800 • Min. bid: \$250



Lot 10

WASHINGTON - TAYLOR Portrait Flask, probably Dyottville Glass Works, Philadelphia, 1848 - 1855. Yellowish golden amber, sheared mouth - blowpipe pontil scar, Pt; (some minor high point wear, primarily on the reverse, and a 3/8" pontil flake at edge of base, otherwise attic mint). GI-55. A great example, and a scarce flask in color.

Est.: \$800 - \$1,200 • Min. bid: \$400



Lot 13

"LAFAYETTE" / BUST OF LAFAYETTE / "COVENTRY / C-T" - STARS AND LIBERTY CAP / "S & S" Historical Flask, Coventry Glass Works, 1824 - 1830. Yellowish olive amber with strong, rich, amber tones through the neck and near the base, sheared mouth - blowpipe pontil scar, Pt, near mint; (just a very slight trace of faint wear; a tiny sliver of roughness and 3/16" flake at edge of base, otherwise attic mint). GI-85. Beautiful, bubbly, and with a good impression.

Est.: \$800 - \$1,600 • Min. bid: \$400



Lot 14

"GENERAL LA FAYETTE" / BUST OF LAFAYETTE - "REPUBLICAN GRATITUDE - KENSINGTON GLASS WORKS PHILADELPHIA - E. PLURIBUS UNUM" / EAGLE / "T.W.D" Historical Flask, Kensington Glass Works, 1824 - 1830. Aquamarine, sheared mouth - pontil scar, Pt, virtually attic mint; (just a faint, barely noticeable, bit of light wear, otherwise perfect). GI-90. A comparatively scarce flask, clean, bright and sparkling, and with a great impression.

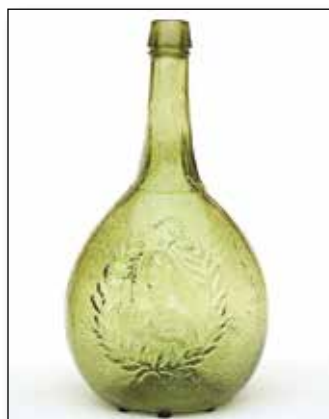
Est.: \$500 - \$800 • Min. bid: \$250



Lot 11

"LOCKPORT. GLASS. WORKS" / BUST OF WASHINGTON - BUST OF WASHINGTON Historical Flask, Lockport, NY, 1850 - 1860. Rich, medium-to-deep aquamarine, applied heavy ring collar - iron pontil scar, Qt; (a little minor exterior wear and a tiny 3/16" annealing line at the base of the neck that almost certainly occurred in manufacture, otherwise near mint). GI-60. A desirable, very scarce-to-rare flask, crude pebbly texture, overall excellent condition.

Est.: \$1,000 - \$2,000 • Min. bid: \$500



Lot 15

"JENNY LIND" / BUST OF JENNY LIND - "GLASS WORKS" / GLASS FACTORY / "S. HUFFSEY" Historical Calabash, Isabella Glass Works, Brooklyn, NJ, 1850 - 1860. Beautiful, bright citron with a slight olive tone, applied sloping collar with bevel - blowpipe pontil scar, Qt; (just a trace of spotty faint interior milkiness, and a small pot-stone on the base with a few minor 1/8" legs, otherwise very near mint). GI-99. A rare and beautiful color. In addition, the glass is filled with tiny bubbles.

Est.: \$1,200 - \$2,400 • Min. bid: \$600



Lot 12

"ZACHARY TAYLOR" / BUST OF TAYLOR / "ROUGH & READY" - "CORN FOR THE WORLD" / CORN-STALK Historical Flask, Baltimore Glass Works, Baltimore, MD, 1848 - 1855. Aquamarine, sheared mouth - blowpipe pontil scar, Pt; virtually pristine perfect; (an interior open bubble in the shoulder on the reverse mentioned for complete accuracy). GI-74. A very rare and desirable mold, crisp bold impression, outstanding condition.

Est.: \$500 - \$800 • Min. bid: \$250



Lot 16

"JENNY LIND" / BUST OF JENNY LIND - "GLASS WORKS" / GLASS FACTORY / "S. HUFFSEY" Historical Calabash, Isabella Glass Works, Brooklyn, NJ, 1850 - 1860. Rich, deep, bluish green, applied sloping collar with bevel - blowpipe pontil scar, Qt; (one light little scratch near the base on the side, otherwise absolutely pristine perfect). GI-99. A top example! Beautiful rich color, deeper than most, crisp bold embossing, and virtually no wear.

Est.: \$1,500 - \$3,000 • Min. bid: \$750



Lot 17

"JENY LIND" / BUST OF JENY LIND - GLASS FACTORY Historical Calabash, Ravenna Glass Works, Ravenna, OH, 1857 - 1865. Medium to deep sapphire blue, applied round collar - iron pontil scar, Qt; (a tiny potstone in the shoulder with a couple of minuscule, barely noticeable, 1/16" 'legs', and a 1/4" iridescent bruise near the base, otherwise excellent!) GI-104. A gorgeous example that displays as virtually perfect and the condition issues are both fairly minor.

Est.: \$2,000 - \$4,000 • Min. bid: \$1,000



Lot 18

"LOUIS KOSSUTH" / BUST OF KOSSUTH - STEAM FRIGATE / "U.S. STEAM FRIGATE / MISSISSIPPI / S. HUFFSEY" Historical Calabash, probably Millford Glass Works, Millford, NJ, 1852 - 1860. Medium-to-deep golden amber, applied sloping collar - **"PH. DOFLEIN / MOULD MAKER / NTH 5! ST 84"** (on base), blowpipe pontil scar, Qt, very near mint; (a couple of minor pinhead bits of roughness on the edge of the lip that you can feel, but are not easy to see). GI-112. Rare.

Est.: \$4,000 - \$8,000 • Min. bid: \$2,000



Lot 19

EAGLE - EAGLE Historical Flask, probably Louisville Glass Works, Louisville, KY, 1855 - 1860. Deep, rich, bluish aquamarine, sheared mouth - red iron pontil scar, Qt, attic mint. GII-26. A great example, good strong color, and having virtually no wear which is often an issue on these large, highly detailed, Louisville quart flasks.

Est.: \$250 - \$450 • Min. bid: \$130



Lot 20

"LIBERTY" / EAGLE - "WILLINGTON / GLASS, Co / WEST WILLINGTON / CONN" Historical Flask, 1855 - 1872. Bright, yellowish olive amber below the shoulders shading to a deep olive amber near the base, applied round collar with bevel - smooth base, Qt, virtually perfect; (a few light scratches on the reverse near the base, otherwise pristine perfect). GII-61. Nice character, beautiful color, and almost no wear, a great example!

Est.: \$800 - \$1,200 • Min. bid: \$400



Lot 21

"LIBERTY" / EAGLE - "WILLINGTON / GLASS, Co / WEST WILLINGTON / CONN" Historical Flask, 1855 - 1872. Rich, reddish orange amber, applied round collar with bevel - smooth base, Pt, perfect; (the flask is absolutely attic mint, but due to a heavy gather, the embossing is quite weak in the lower half, on the reverse). GII-64. A very scarce-to-rare color for this mold - almost all are in shades of green. Very heavy in weight, the gaffer must have pulled a little extra from the pot.

Est.: \$400 - \$800 • Min. bid: \$200



Lot 22

EAGLE - "WESTFORD / GLASS / Co / WESTFORD / CONN" Historical Flask, Westford Glass Work, 1857 - 1873. Medium-to-deep amber with some beautiful golden and light honey tones along one of the sides, applied short collar with bevel - smooth base, 1/2 Pt, mint. GII-65. A much better than average example having excellent character, the glass being filled with tiny seed bubbles, a pebbly surface, crisp, strong embossing, and virtually no wear.

Est.: \$250 - \$450 • Min. bid: \$130



Lot 23

Lot of seven (7), Eagle - Cornucopia Historical Flasks, Keene Marlboro Street Glassworks, 1830 - 1842. Colors include apple green, shades of amber, olive amber, and olive green, all with sheared mouths - pontil scarred bases, Pts; (all are near mint-to-mint). Molds include, GII-72, 72a, & GII-73.

It is the consignor's wish to keep this grouping together, so that is how we are selling them. A beautiful grouping of early eagle flasks that would take a great deal of effort to duplicate. Check online for additional information.

Est.: \$1,200 - \$2,400 • Min. bid: \$600



Lot 24

EAGLE - EAGLE Historical Flask, probably Granite Glass Co., Stoddard, NH, 1855 - 1862. Bright, yellowish olive amber, sheared mouth - blowpipe pontil scar, Qt; (just a very slight trace of wear, and a narrow, 2", ribbon-type bubble, onionskin-thin, is missing some of the cover glass, otherwise excellent). GII-78. These quarts don't come around often. This one has nice color and very little wear.

Est.: \$300 - \$500 • Min. bid: \$150



Lot 25

CORNUCOPIA - URN Pictorial Flask, probably Coventry Glass Works, Coventry, CT, 1835 - 1849. Light-to-medium clear green with an emerald tone, sheared mouth - blowpipe pontil scar, Pt, near mint; (just a little minor light wear, otherwise virtually perfect). GIII-4. A beautiful, attractive, and very scarce color for this mold! Excellent clarity all the way to the base.

Est.: \$400 - \$800 • Min. bid: \$200



Lot 29

MASONIC - EAGLE Historical Flask, Keene Marlboro Street Glassworks, Keene, NH, 1820 - 1830. Yellowish olive amber, sheared mouth - blowpipe pontil scar, ½ Pt, near mint; (just a very slight trace of wear, barely noticeable, and a little washable residue in the base, otherwise perfect). GIV-24. A great example of this early Keene Masonic. These can be found in several different colors, as well as various shades of olive and olive amber. A lot of flask for the money.

Est. \$300 - \$500 • Min. bid: \$150



Lot 26

MASONIC ARCH - EAGLE / "IP" Historical Flask, Keene Marlboro Street Glassworks, Keene, NH, 1815 - 1830. Rich, deep greenish aquamarine, almost a light blue green, sheared mouth - blowpipe pontil scar, Pt, near mint; (only a slight hint of very minor wear, otherwise attic mint). GIV-1. Nice clarity and character having a pebbly glass texture, as well as a strong mold impression.

Est.: \$400 - \$600 • Min. bid: \$200



Lot 30

CLASPED HANDS / SQUARE & COMPASS / "UNION" - EAGLE / "A.R.S." Historical Calabash, A.R. Samuels, Keystone Glass Works, Philadelphia, PA, 1866 - 1874. Bright, light-to-medium citron coloration, applied sloping collar - blowpipe pontil scar, Qt, very near mint; (just a trace of very light interior residue or spotty faint haze, barely noticeable, otherwise perfect). GIV-42. Strong embossing, attractive, pleasing color.

Est.: \$400 - \$600 • Min. bid: \$200



Lot 27

MASONIC ARCH - EAGLE / "J K / B" Historical Flask, Keene Marlboro Street Glassworks, Keene, NH, 1815 - 1830. Deep aquamarine, sheared, tooled, and inward rolled mouth - blowpipe pontil scar, Pt, perfect! GIV-4. A clean, bright example, excellent character and texture to the glass, good impression, outstanding condition. A comparatively scarce flask that is getting harder to find, especially in this fine condition.

Est.: \$600 - \$900 • Min. bid: \$300



Lot 31

"SUCCESS TO THE RAILROAD" / HORSE PULLING CART - (Reverse same) Historical Flask, Keene Marlboro Street Glassworks, Keene, NH, 1830 - 1842. Brilliant, light yellowish olive amber, sheared mouth - blowpipe pontil scar, Pt, near mint; (just a touch of minor light wear, otherwise perfect). GV-3. A very attractive, beautiful example, bright light color, excellent clarity, great condition.

Est.: \$400 - \$600 • Min. bid: \$200



Lot 28

MASONIC ARCH - EAGLE / "KEENE" Historical Flask, Keene Marlboro Street Glassworks, Keene, NH, 1820 - 1830. Yellowish olive with an amber tone, sheared, slightly flared mouth - pontil scar, Pt; (some high-point wear, primarily on the reverse, a ½" chip at the edge of the base, possibly from when the pontil was snapped off, lettering in oval frame a bit weak, as is common on this mold). GIV-17. Note; an early collector tag remains on the base.

Est.: \$200 - \$300 • Min. bid: \$100



Lot 32

"SUCCESS TO THE RAILROAD" / HORSE PULLING CART - (Reverse same) Historical Flask, probably Mt. Vernon Glass Works, Vernon, NY, 1830 - 1846. Medium-to-deep olive green, sheared, tooled, slightly flared mouth - blowpipe pontil scar, Pt; (a little exterior wear including a couple of open bubbles; a 1/8" open bubble on one of the medial ribs, and a 3/8" open bubble on one of the rails beneath the cart wheel). GV-5. Provenance: Ex. Fred Weck collection.

Est.: \$300 - \$500 • Min. bid: \$150



Lot 33

"SUCCESS TO THE RAILROAD" / HORSE PULLING CART - (Reverse same) **Historical Flask**, probably Mt. Vernon Glass Works, Vernon, NY, 1830 - 1846. Rich, medium-to-deep olive amber, almost a tobacco coloration, sheared mouth - blowpipe pontil scar, Pt, near mint; (a little minor light wear and a slightly weak impression in the shoulder as is typical for this mold, otherwise perfect). GV-5. Nice crude glass filled with tiny bubbles, and in a scarce color.

Est.: \$400 - \$600 • Min. bid: \$200



Lot 34

"SUCCESS TO THE RAILROAD" / HORSE PULLING CART - (Reverse same) **Historical Flask**, Coventry Glass Works, Coventry, CT, 1830 - 1848. Yellowish olive amber, sheared mouth - blowpipe pontil scar, Pt; (some high point wear, primarily on the horse and rail, and a slightly weak impression in the shoulders, as is typical for this mold, otherwise excellent). GV-6. One of the early flasks blown to commemorate the new form of rail transportation taking root in New England.

Est.: \$250 - \$400 • Min. bid: \$130



Lot 35

HORSE PULLING CART - EAGLE **Historical Flask**, Coventry Glass Works, Coventry, CT, 1830 - 1848. Medium olive amber, sheared mouth - blowpipe pontil scar, Pt; (some high point wear on the horse, as is common on these early railroad molds, and a 1/2" onionskin-thin open bubble on one of the sides, otherwise near mint). GV-9. The eagle on the GV-9's, as well as the GV-8's, is in very high relief. It is often regarded as one of the most impressive of the various eagles on early flasks.

Est.: \$250 - \$400 • Min. bid: \$130



Lot 36

"CORN FOR THE WORLD" / EAR OF CORN - MONUMENT / "BALTIMORE" **Historical Flask**, 1855 - 1865. Bright yellowish golden amber shading to rich orange amber through the shoulders and neck, applied round collar with bevel - smooth base, Qt; (a couple of paper-thin open bubbles, approximate 3/8" each; a 1/8" open bubble on the inside of the neck with a little residue, and just a trace of minor wear). GVI-4. A bright, attractive example.

Est.: \$600 - \$900 • Min. bid: \$300



Lot 37

SUNBURST FLASK, Keene Marlboro Street Glassworks, Keene, NH, 1815 - 1830. Colorless, sheared and tooled mouth - solid glass-tipped pontil scar, Pt; (a slight trace of faint, barely noticeable, interior haze, and a 1/8" dark line in one of the rays, on the inside surface of the glass, almost certainly in-making, that refracts light, otherwise excellent). GVIII-1. A desirable flask, very scarce in colorless glass, the condition notes mentioned are very minor.

Est.: \$600 - \$1,200 • Min. bid: \$300



Lot 38

SUNBURST FLASK, Keene Marlboro Street Glassworks, Keene, NH, 1815 - 1830. Deep greenish aquamarine, or 'clear-green', sheared and tooled mouth - pontil scar, Pt, near mint; (a little typical light exterior wear, and a small area of the base, near the pontil, has been lightly ground, possibly from the factory, to enable the flask to stand more level, otherwise perfect). GVIII-2. Noted as 'Comparatively scarce' by McKearin, a good solid example of this classic, early, Keene 'two-pounder'.

Est.: \$300 - \$600 • Min. bid: \$150



Lot 39

SUNBURST FLASK, probably Coventry Glass Works, Coventry, CT, 1815 - 1830. Bright yellowish amber with an olive tone shading to a deep, rich, amber near the base, sheared mouth - blowpipe pontil scar, Pt, virtually perfect; (only the slightest trace of faint wear, otherwise sparkling mint). GVIII-3. A great example, nice color, and very attractive having some character and crudity to the glass.

Est.: \$700 - \$1,000 • Min. bid: \$350



Lot 40

SUNBURST FLASK, possibly Pitkin Glassworks, Manchester, CT, 1815 - 1830. Light yellowish olive amber, almost an olive yellow coloration, sheared mouth - blowpipe pontil scar, Pt, virtually perfect; (a paper-thin pinhead open bubble on one of the corrugated edges, otherwise pristine). GVIII-5a. A great example, beautiful light color, excellent clarity, and having virtually no wear. Noted by McKearin as 'Extremely rare', it is not an easy flask to find, especially in this fine condition.

Est.: \$2,000 - \$4,000 • Min. bid: \$1,000



Lot 41

SUNBURST FLASK, possibly Pitkin Glassworks, Manchester, CT, 1815 - 1830. Medium olive amber, sheared mouth - blowpipe pontil scar, Pt; (a tiny 1/8" area of minor roughness along the top edge of the sheared mouth, otherwise perfect). GVIII-7. Another extremely rare, early, Sunburst Flask. Outstanding condition, virtually no wear, one that does not come around often.

Est.: \$2,000 - \$4,000 • Min. bid: \$1,000



Lot 45

SUNBURST FLASK, probably Keene Marlboro Street Glassworks, Keene, NH, 1815 - 1830. Clear, medium sea-green, applied sloping collar with bevel - sand type pontil scar, 1/2 Pt; (several flakes, 1/16" to 1/4", along the lower edge of the beveled lip; a 1/8" flake on the top edge of the lip, some moderate high point wear on the raised oval). GVIII-11. Eye-appealing and crude, a very rare flask! Provenance: Ex. Bob & Beka Mebane collection (#554).

Est.: \$1,500 - \$2,500 • Min. bid: \$750



Lot 42

"KEEN" - "P&W" SUNBURST FLASK, Keene Marlboro Street Glassworks, Keene, NH, 1815 - 1830. Yellowish olive with an amber tone, sheared mouth - blowpipe pontil scar, Pt; (just the slightest trace of faint wear, otherwise attic mint). GVIII-8. The embossing on the "KEENE" side is better than most, the "P&W" is a bit weak as is typical for this flask. A great example of this early Keene Sunburst Flask.

Est.: \$500 - \$800 • Min. bid: \$250



Lot 46

SUNBURST FLASK, probably an early Connecticut glasshouse, possibly Coventry Glass Works, or Pitkin Glass Works, East Hartford, CT, 1815 - 1830. Bright, light-to-medium olive with a very slight yellowish tone, sheared mouth - blowpipe pontil scar, 1/2 Pt; (just the slightest trace of faint wear and a 3/16" paper-thin pontil flake, otherwise pristine perfect). GVIII-16. A beautiful eye-appealing example, excellent clarity and character, having plenty of tiny seed bubbles throughout.

Est.: \$500 - \$1,000 • Min. bid: \$250



Lot 43

"KEEN" - "P&W" SUNBURST FLASK, Keene Marlboro Street Glassworks, Keene, NH, 1815 - 1830. Bright, yellowish amber with a slight olive tone, sheared and tooled mouth - blowpipe pontil scar, 1/2 Pt, virtually perfect; (a tiny onionskin-thin open bubble, otherwise pristine). GVIII-9. A top example, beautiful light color, excellent clarity, crisp, very strong embossing, virtually pristine condition. Hard to find them this nice!

Est.: \$500 - \$800 • Min. bid: \$250



Lot 47

SUNBURST FLASK, probably an early Connecticut glasshouse, possibly Coventry Glass Works, or Pitkin Glass Works, East Hartford, CT, 1815 - 1830. Rich, medium-to-deep olive with a forest green tone, sheared mouth - blowpipe pontil scar, 1/2 Pt, near mint; (a little light high point wear, and the flask is slightly overblown in the shoulders, otherwise excellent). GVIII-16. Nice crude glass filled with tiny bubbles, and in a scarce-to-rare pure green coloration.

Est.: \$600 - \$1,200 • Min. bid: \$300



Lot 44

"KEEN" - "P&W" SUNBURST FLASK, Keene Marlboro Street Glassworks, Keene, NH, 1815 - 1830. Light-to-medium yellowish olive amber, sheared mouth - blowpipe pontil scar, 1/2 Pt; (just a trace of minor light wear, otherwise perfect). GVIII-10. A scarce mold (noted as "Rare" by McKearin), and certainly more difficult to acquire than the #9 mold. This example has a bit more of an olive tone than the preceding example. Very attractive.

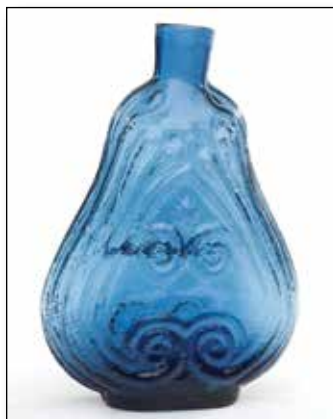
Est.: \$400 - \$600 • Min. bid: \$200



Lot 48

SCROLL FLASK, Midwest, 1850 - 1860. Brilliant citron with a slight lime green tone, applied collar with flat band - iron pontil scar, Qt; (a tiny 1/16" flake at edge of base, otherwise pristine perfect!) GIX-1. A gorgeous Scroll that definitely stands out, bright, clean and sparkling, with an 'eye candy' color. An interesting Scroll; the pontil is offset to one corner, as well as a horizontal fold of glass connecting the medial scrolls. A big, bright, beautiful example.

Est.: \$1,000 - \$2,000 • Min. bid: \$500



Lot 49

SCROLL FLASK, Midwest, 1845 - 1860. Beautiful, medium-to-deep sapphire blue, sheared mouth - blowpipe pontil scar, Pt, very near mint; (just a slight trace of very faint high point wear, and an in-manufacture pontil flake, approx. 1/2", extends to the edge of the base, otherwise perfect). GIX-10. Fantastic color, condition, and clarity. A classic. Note; an interesting fold of glass runs across the lower medial scrolls, and can be seen in the image of the reverse.

Est.: \$2,500 - \$4,000 • Min. bid: \$1,300



Lot 50

SCROLL FLASK, Midwest, 1845 - 1860. Medium amber in the shoulders shading to a rich, deep amber towards the base, sheared mouth - blowpipe pontil scar, Pt, near mint; (some scattered light wear including a little 1/8" spot roughness or abrasion on one of the lower ribs, otherwise excellent). GIX-11. A little crescent shaped glass extrusion along one of the mold seams where the mold did not completely close. It is smooth and fully intact with no flaking or issues!

Est.: \$400 - \$600 • Min. bid: \$200



Lot 51

Oversized SCROLL FLASK, Midwest, 1840 - 1860. Aquamarine, sheared mouth - blowpipe pontil scar, ht. 11 1/8", slightly over 2 Qts; (a narrow ring of light milky content haze below the shoulders, otherwise near mint). GIX-29. Rare! See Mark Vuono's informative article, "The Gallon Scrolls", AB&GC, June, 2014. In the article, Mark concurs with McKearin on the rarity and surmises that because of their large size, and being thinly blown, it likely led to the demise of many.

Est.: \$1,000 - \$2,000 • Min. bid: \$500



Lot 52

SUMMER TREE - SUMMER TREE Pictorial Flask, America, 1850 - 1860. Rich, medium-to-deep blue green, almost a teal coloration, applied round collar with bevel - large blowpipe pontil scar, Qt; (a 1/4" x 3/8" chip at the edge of the base, and only a slight trace of wear including a minor 1/8" paper-thin open bubble, otherwise attic mint). GX-18. A rich, beautiful, scarce color, and fantastic character with crude, pebbly, bubbly glass. A very eye-appealing flask.

Est.: \$800 - \$1,600 • Min. bid: \$400



Lot 53

"PIKES PEAK" / PROSPECTOR - EAGLE Historical Flask, a Pittsburgh district glasshouse, 1860 - 1865. Rich deep aquamarine, almost a blue green coloration, applied collar with flat band - blowpipe pontil scar, 1/2 Pt; (just a slight trace of faint wear, and a small potstone on the inside of the neck with a couple tiny, barely noticeable, 'legs' 1/16" or less, otherwise pristine perfect). GXI-20. About as nice as you could hope to find, having great color, bold, crisp embossing, and virtually no wear.

Est.: \$200 - \$300 • Min. bid: \$100



Lot 54

"FLORA TEMPLE" / STANDING HORSE / "HARNESSTROT 2.19 3/4" Pictorial Flask, probably Lancaster Glass Works, 1860 - 1865. Deep bluish aquamarine, almost a blue green coloration, applied collar with flat band - smooth base, Pt, near mint; (just a slight trace of light wear, primarily on the reverse, otherwise excellent). GXIII-23. Note; there is an interesting fold of glass along, and below, the horse's front leg. Very scarce color. From a pioneer collection assembled in the 1930's.

Est.: \$500 - \$800 • Min. bid: \$250



Lot 55

SHEAF OF GRAIN - "MECHANIC GLASS WORKS / PHILADA" Pictorial Flask, probably 1850 - 1860. Aquamarine, sheared mouth - blowpipe pontil scar, Qt, virtually perfect; (slight trace of faint wear, otherwise mint). GXIII-34. A rare mold. Per text in MW, p.492, McKearin refers to the Mechanic Glass Works, as "the mystery works", as very little is known about this obscure glasshouse. Listed by McKearin in Group C, 'Rare flasks', #13. Provenance: Ex. Blaske collection.

Est.: \$400 - \$600 • Min. bid: \$200



Lot 56

SHEAF OF GRAIN - STAR Pictorial Flask, probably Bulltown Glass Works, Bulltown, NJ, 1858 - 1865. Clear, light-to-medium emerald coloration, applied ring collar with bevel - blowpipe pontil scar, Pt; (two potstones, each with a couple of 1/8" lines, or radiations, that very possibly occurred during manufacture, otherwise sparkling mint). GXIII-39. A very pretty flask, fantastic color, clarity, and character. The glass appears almost stippled with a pebbly surface, and filled with tiny bubbles.

Est.: \$200 - \$400 • Min. bid: \$100



Lot 57

"A Merry Christmas" / (Woman seated on Barrel holding a Wine-glass) / "AND A / Happy New Year" - Rooster, Pictorial Flask, America, 1890 - 1900. Virtually colorless with a pale ice-blue tone in the base, figural half-barrel with staves, tooled round collar with ring - smooth base, Pt, perfect. GXIII-88. McKearin notes this mold as scarce, and deservedly so. Provenance: Mary Ballentine collection.

Est.: \$200 - \$400 • Min. bid: \$100



Lot 61

"GRANITE / GLASS / CO - STODDARD / N H", 1855 - 1862. Medium-to-deep olive amber, applied double round collar - smooth base, Pt, virtually perfect; (only the slightest trace of very faint wear, otherwise pristine). GXV-7. A great example of this classic Stoddard lettered flask having good strong embossing, and almost no wear!

Est.: \$300 - \$500 • Min. bid: \$150



Lot 58

"A Merry Christmas" / (Woman seated on Barrel holding a Wine-glass) / "AND A / Happy New Year" Pictorial Flask, 1890 - 1900. Greenish aquamarine, almost a light apple green, figural half-barrel with staves, tooled round collar with ring - smooth base, 1/2 Pt, perfect! GXIII-88a. Nice color, beautiful condition, scarce mold. Note; McKearin does not list this mold, but it is otherwise identical to the GXIII-88 pint without the Rooster on the reverse. Mary Ballentine collection.

Est.: \$200 - \$400 • Min. bid: \$100



Lot 62

"GOOD / SAMARITAN / BRANDY - GENTRY, SLOTE & Co / NEW YORK." Historical Flask, 1850 - 1860. Deep olive, plump chestnut form, applied mouth with ring - large red iron pontil scar, ht. 6 3/4", near mint; (a little typical light wear, otherwise perfect). GXV-21. Per Mark Vuono's informative article, "Appreciate 'Lettered' Flasks", (AB&GC, Dec. 2014), he rated this flask as, "very rare and possibly extremely rare". A 2017 barn find at the historic Darlington Farm, Delaware County, PA.

Est.: \$1,400 - \$2,800 • Min. \$700



Lot 59

"A Merry Christmas" / (Woman seated on Barrel holding a Wine-glass) / "AND A / Happy New Year" Pictorial Flask, 1890 - 1900. Honey amber, figural half-barrel with staves, tooled round collar with ring - smooth base, 1/2 Pt, near mint; (just a trace of minor wear including a couple of tiny pinhead flakes, one on a stave on the reverse, one at edge of base, otherwise perfect). GXIII-88a. Beautiful color, typically found in a pure amber tone. Mary Ballentine collection.

Est.: \$200 - \$400 • Min. bid: \$100



Lot 63

Lot of (2), Early Decorative Ribbed Flasks, Kensington Glass Works, Philadelphia, and Keene Marlboro Street Glassworks, Keene, NH, 1820 - 1842. Shades of medium-to-deep aqua, Kensington flask with 16 vertical ribs; Keene example with 7 wide melon-type ribs, both with sheared mouths, blowpipe pontil scarred bases, both 1/2 Pt; (the Keene melon-ribbed flask is perfect; Kensington flask has a 3/16" open bubble and a 1/2", paper-thin, flake near the base, otherwise near mint).

Est.: \$200 - \$300 • Min. bid: \$100



Lot 60

"TRAVELER'S" / STAR / "COMPANION" - SHEAF OF GRAIN Historical Flask, Westford Glass Works, Westford, CT, 1857 - 1873. Amber with some beautiful yellowish honey tones, applied sloping collar - smooth base, Qt, near mint; (just a very slight trace of wear including a couple of tiny pinhead open bubbles, otherwise perfect). GXIV-1. A nice example having good color, whittled, and with an attractive offset applied collar.

Est.: \$200 - \$400 • Min. bid: \$100



Lot 64

"JOHN HAY / 152 & 154 / WASHINGTON ST. / COR. LIBERTY ST. / NEW YORK" Lettered Flask, America, 1885 - 1895. Golden amber with a slight orange tone, strap-sided flask, tooled ring collar with bevel - smooth base, Qt, near mint; (just a little light wear including a minor 1/4" open bubble and a couple of light scratches). A scarce private mold flask, and rare in this quart size. Nice character and boldly embossed. Ex. Mark Vuono collection.

Est.: \$100 - \$200 • Min. bid: \$50



Lot 65

Early, South Jersey Type Chestnut Bottle, Mid-Atlantic, or South Jersey glasshouse, 1760 - 1800. Clear medium green with an emerald tone, freeblown, high-shouldered, 'big-bellied' body, rough sheared mouth with a crudely applied ring collar (applied below the sheared neck on one side) - pushed up base with blowpipe pontil scar, ht. 9 1/8"; (a little expected minor wear and some in-manufacture roughness on the inside edge of the lip, otherwise perfect). A great example.

Est.: \$600 - \$1,200 • Min. bid: \$300



Lot 66

Freeblown Chestnut Flask, New England, 1785 - 1820. Medium-to-deep olive amber, chestnut form, sheared mouth with applied ring-type collar - delicate blowpipe pontil scar, ht. 5 1/4"; (a trace bit of light interior residue in the shoulders, likely washable, otherwise sparkling attic mint). This one has a short neck and an attractive, 'plump', squatty form.

Est.: \$225 - \$400 • Min. bid: \$120



Lot 67

Freeblown Chestnut Flask, New England, 1785 - 1820. Deep yellowish 'old' amber with an olive tone, a little more amber in this one, chestnut form, sheared mouth with applied ring-type collar - blowpipe pontil scar, ht. 7"; (some scattered exterior wear including a 3/16" open bubble, otherwise excellent). This example has a somewhat elongated neck in proportion to the body. The gaffer also had a little extra on the gather, as the weight is also heavier than most.

Est.: \$225 - \$400 • Min. bid: \$120



Lot 68

Large, Freeblown Chestnut Flask, New England, 1810 - 1830. Clear, light yellowish olive amber, chestnut form, applied sloping collar - delicate blowpipe pontil scar, ht. 10 3/4", near mint; (a little typical minor wear including a small area of light scratches on one side, otherwise perfect). A beautiful example, excellent form, nice with the tidy applied sloping collar. Impressive size! At almost 11", colloquially as some would say, 'one of the big boys'.

Est.: \$500 - \$800 • Min. bid: \$250



Lot 69

Lot of (2), Freeblown Chestnut Flasks, New England, 1785 - 1820. Medium olive amber, and light yellowish olive amber, both are chestnut form, crudely applied string lips - delicate blowpipe pontil scarred bases, ht. 5 7/8" & 7 3/4" respectively, both virtually perfect; (just a very slight trace of light wear). A very nice pair. Both having excellent character, some impurities and tiny bubbles swirled through the glass.

Est.: \$500 - \$800 • Min. bid: \$250



Lot 70

Lot of (3), Freeblown Chestnut Flasks, New England, 1785 - 1820. Light-to-medium olive amber; clear, light olive green, and delicate light straw coloration, all are chestnut form, applied ring collars - blowpipe pontil scarred bases, ht. 6 3/4", 5 3/8", and 5 1/2" respectively; (all are near mint with just some typical light exterior wear; the straw colored example has a 1/8" open bubble on

the applied ring collar). Beautiful, pleasing light colors, and a great trio with the crooked necks.

Est.: \$700 - \$1,000 • Min. bid: \$350



Lot 71

Lot of (3), Freeblown Chestnut Flasks, New England, 1785 - 1820. Clear, light olive with a slight yellowish tone, straw amber, and light olive coloration, all are chestnut form, sheared, outward rolled and applied ring collars - blowpipe pontil scarred bases, ht. 7 1/2", 6 3/4", and 7 1/2" respectively, all are near mint; (expected light wear, otherwise perfect).

Nice, slightly larger sizes, eye-appealing colors and clarity. The straw colored Chestnut has beautiful frothy glass filled with tiny bubbles.

Est.: \$800 - \$1,200 • Min. bid: \$400



Lot 72

Lot of (3), Freeblown Chestnut Flasks, New England, 1810 - 1830. Shades of light olive amber and honey amber, all are chestnut form, applied sloping collars with bevel - blowpipe pontil scarred bases, ht. 9", 7", and 6 5/8", all are near mint; (some typical light wear; a 1/8" sliver flake on the lip of the small example, and a little content residue in the

middle size example). Unusual with the tapered double collars, the amber example is a scarce color, the larger one is filled with tiny bubbles and impurities.

Est.: \$800 - \$1,200 • Min. bid: \$400



Lot 73

Early, Freeblown Storage Jar, America or possibly Continental, 1800 - 1830. Deep olive green, cylindrical, short wide neck, sheared mouth with a crudely applied wide banded collar - sand type pontil scar, ht. 7 7/8", near mint; (some typical expected light scratches and usage wear, otherwise excellent). A great looking early, gutsy, jar. Very crude with uneven shoulders and heavy, 'earthy' glass. A good one!

Est.: \$300 - \$600 • Min. bid: \$150



Lot 74

Early, Dip Mold Storage or Preserve Jar, probably New York State, or possibly New England, 1830 - 1850. Bright olive with a slight emerald tone, cylindrical, dip mold, sheared and tooled, wide flanged mouth - blowpipe pontil scar, ht. 8", dia. 5 7/8"; (some typical light scratches and expected usage wear; a couple of thin light residue rings on the interior, otherwise excellent). Similar to McK, plate 72A, #4. A beautiful, impressive, early jar.

Est.: \$750 - \$1,500 • Min. bid: \$400



Lot 75

Rare, Dip Mold Storage or Preserve Jar, probably a Mid-Atlantic or South Jersey glasshouse, 1855 - 1865. Medium amber with a slight olive tone, cylindrical, squat body with compressed shoulders forming a grooved ring, sheared and tooled wide mouth - blowpipe pontil scar, ht. 5 3/4"; (a little minor usage wear and a couple of 1/2", in-making, fissures from the pontil mentioned for complete accuracy, but not considered damage, otherwise perfect).

Est.: \$600 - \$1,200 • Min. bid: \$300



Lot 76

Rare, Open Salt Whimsey, a Stoddard, NH glasshouse, 1842 - 1860. Medium amber, blown from a utility bottle mold, sheared and outward flared wide brim - blowpipe pontil scar, ht. 1 5/8" rim dia. 4 1/4", perfect; (slight trace of usage wear). A wonder-

ful offhand piece. Stoddard tableware items are not easy to find, and this is a good one! Provenance: Pictured in "A Rare Collection of Keene & Stoddard Glass", Lane and Pappas, plate 2, row 4, #2.

Est.: \$600 - \$1,200 • Min. bid: \$300



Lot 77

Lot of (2), Blown Glass Items, New England, both likely from a Stoddard, NH glasshouse, 1842 - 1860. **Free-blown Hat**; amber, bowler-form with a wide outward folded brim, pontil scarred base, ht. 2 1/2". **Freeblown Pocket Flask**; medium-to-deep yellowish 'old amber', ovoid form, sheared mouth, blowpipe pontil scar, ht. 6 3/8", both near mint; (some typical usage, or high point wear, primarily on the sides of the flask). Both very nicely done. From an old New England collection.

Est.: \$300 - \$500 • Min. bid: \$150



Lot 78

Rare, Freeblown Looped Sugar Bowl, probably America, possibly England, 1830 - 1850. Colorless with opaque white loopings, hemispherical bowl with sheared and outward folded tidy rim - applied colorless baluster-type stem and circular disk foot with pontil scar, ht. 5", rim dia. 4", perfect. A beautiful and rare piece. With the outward folded, finished rim, it likely never had a cover. Note; numerous specks of black slag are swirled through the bowl and rim.

Est.: \$300 - \$600 • Min. bid: \$150



Lot 79

Blown Three Mold Flip Glass, America, 1825 - 1840. Colorless, cylindrical with sides flaring outward from base to rim, Geometric pattern with waffle, diamond and sunburst motif, sheared rim - blowpipe pontil scar, ht. 4 5/8", virtually perfect; (an in-manufacture pontil flake extends to the edge of the base). GIII-22. A rare pattern illustrated in McK, plate 106, #2. Note; Barlow & Kaiser state that both the GIII-21 & 23 molds were blown at Sandwich. This mold is very similar.

Est.: \$175 - \$350 • Min. bid: \$90



Lot 80

Large, Stiegel-Type Engraved Flip Glass, America or Continental, 1770 - 1800. Colorless, cylindrical with sides tapering outward from base to rim, small engraved floral motif on one side, large floral motif with basket on opposite side, sheared rim - pontil scarred base, ht. 6 3/4", perfect. See McK, plate 22, #2. Nice larger example with wonderful engraving and workmanship.

Est.: \$175 - \$350 • Min. bid: \$90



Lot 81

Lot of (2), Stiegel-Type Engraved Drinking Vessels (small drinking glass and large flip glass), America or Continental, 1770 - 1800. Both are colorless, cylindrical with sides tapering outward from base to rim, molded panels below engraved decorations of a crosshatch pattern within elliptical bands, both with sheared rims - pontil scarred bases, ht. 3 5/8" and 5 7/8", both are perfect. Form, construction and engraving similar to McK, plate 22, #3. A beautiful pair of glasses.

Est.: \$200 - \$400 • Min. bid: \$100



Lot 85

Extremely Rare, Giant, Pattern Molded Globular Bottle, Midwest, probably Zanesville Glass Works, 1820 - 1835. Bright medium amber, 30 ribs swirled to the left, sheared and outward folded mouth - pontil scar, ht. 11 5/8"; (just a trace of faint wear at mid-body, otherwise perfect). See MW, plate 96, #6. A very rare rib count, exceedingly rare large size (approx. 5 1/2 Qts.), outstanding condition. Very few patterned globs in this, or similar size, exist in private collections, or museums.

Est.: \$4,000 - \$8,000 • Min. bid: \$2,000



Lot 82

Pattern Molded Beehive Bottle, Midwest, possibly Zanesville, 1825 - 1840. Rich, medium-to-deep sapphire blue, 24 broken rib pattern swirled to the left, beehive form, applied blob collar - blowpipe pontil, ht. 7 3/4"; (a small patch of faint interior milkiness, otherwise virtually perfect). This example is likely the finest 'blue' beehive bottle outside of a museum. It rivals the example in the collection of the Toledo Museum of Art. Rare and gorgeous. Ballentine collection.

Est.: \$8,000 - \$16,000 • Min. bid: \$4,000



Lot 86

Rare, Pattern Molded Globular Bottle, Midwest, probably Zanesville Glass Works, Zanesville, OH, 1820 - 1840. Brilliant yellowish honey amber, 24 vertical ribs, globular form, sheared, tooled, and outward folded mouth - blowpipe pontil scar, ht. 7 1/2", mint! Great color with plenty of yellowish tones, rare vertical rib pattern, (maybe one in fifty amber globs are vertically ribbed), near perfect form, outstanding condition. Provenance: Mary Ballentine collection.

Est.: \$2,000 - \$4,000 • Min. bid: \$1,000



Lot 83

Pattern Molded Beehive Bottle, Midwest, possibly Zanesville, 1820 - 1840. Light-to-medium yellowish grass green, 24 ribs swirled to the left with 24 faint vertical ribs, high shouldered 'beehive' form, applied round collar - blowpipe pontil scar, ht. 8 1/4", virtually perfect; (trace of faint wear). Rare color, great form, excellent condition. From the original Ballentine collection (Lot #31, noted as 'finest possible example'). Ballentine collection, Ex. Walt Douglas collection.

Est.: \$2,000 - \$4,000 • Min. bid: \$1,000



Lot 87

Pattern Molded Globular Bottle, Midwest, probably Zanesville Glass Works, 1820 - 1840. Bright, light yellowish honey coloration, 24 ribs swirled to the left, globular form, sheared, tooled, and outward folded mouth - domed base with blowpipe pontil scar, ht. 8 1/2", perfect. An unusual glob with the sloped shoulders and a deep, concave, or domed base. This one also has outstanding brilliance to the glass, crisp impression, fantastic color and condition. Mary Ballentine collection.

Est.: \$700 - \$1,400 • Min. bid: \$350



Lot 84

Pattern Molded Beehive Bottle, Midwest, possibly Zanesville, 1825 - 1840. Brilliant golden yellow with a slight olive tone, 24 ribs swirled slightly to the right, beehive form, applied blob collar - blowpipe pontil scar, ht. 8 7/8"; (a little typical light wear, otherwise perfect). Very similar to McK, plate 236, #12. A gorgeous, very rare and eye-appealing color. Amber beehive bottles are equally, if not more rare, than their blue counterparts. Mary Ballentine collection.

Est.: \$4,000 - \$8,000 • Min. bid: \$2,000



Lot 88

Pattern Molded Globular Bottle, Midwest, probably Zanesville Glass Works, Zanesville, OH, 1820 - 1840. Yellowish golden amber, 24 ribs swirled to the right, globular form, sheared, tooled, and outward folded mouth - blowpipe pontil scar, ht. 7"; (only the slightest trace of wear, otherwise pristine). An absolutely fantastic example, slightly smaller size, great color, near perfect form, and with a good impression. A 'sweetheart'. Provenance: Mary Ballentine collection.

Est.: \$600 - \$1,200 • Min. bid: \$300



Lot 89

Pattern Molded Globular Bottle, Midwest, probably Zanesville Glass Works, Zanesville, OH, 1820 - 1840. Bright medium amber, 24 ribs swirled to the left, globular form, sheared, tooled, and outward folded mouth - blowpipe pontil scar, ht. 7 1/4", near mint; (a little typical light wear around the mid-body, otherwise perfect). A good solid example of a classic Midwest 'Swirl', very nice form, color, and condition. Provenance: Mary Ballentine collection.

Est.: \$400 - \$600 • Min. bid: \$200



Lot 93

Pattern Molded Globular Bottle, Midwest, probably Zanesville Glass Works, 1820 - 1840. Rich, bluish aquamarine, 24 ribs swirled to the left, globular form, sheared, tooled, and outward folded mouth - blowpipe pontil scar, ht. 7 5/8", near mint; (a little typical scattered light wear, otherwise excellent). A great example having good depth of color, form, and symmetry. Aquamarine globes are much more scarce than the amber examples. Provenance: Mary Ballentine collection.

Est.: \$400 - \$600 • Min. bid: \$200



Lot 90

Pattern Molded Globular Bottle, Midwest, possibly Zanesville Glass Works, 1815 - 1835. Dense tobacco amber, virtually black, 24 ribs swirled to the left, globular form, sheared, tooled, and outward folded mouth - blowpipe pontil scar, ht. 8 1/4"; (some scattered light scratches and exterior wear, otherwise excellent). An extremely rare color, the deepest that we can recall seeing. Possibly an earlier production piece. Provenance: Mary Ballentine collection.

Est.: \$800 - \$1,200 • Min. bid: \$400



Lot 94

Pattern Molded Cologne or Toilet Water Bottle, Midwest, 1815 - 1840. Colorless, cylindrical with gracefully sloping shoulders and an elongated neck, 21 ribs swirled slightly to the left, sheared, tooled, inward rolled mouth - blowpipe pontil scar, ht. 6 3/8", virtually perfect; (slight trace of faint wear). A rare form, rare color (most are shades of aqua), and pattern (21-rib). Very few collections of Midwest bottles have an example of this form, the period examples are rare. Ballentine collection.

Est.: \$300 - \$600 • Min. bid: \$150



Lot 91

Pattern Molded Globular Bottle, Midwest, 1820 - 1840. Light yellowish apple green, 24 vertical ribs swirled slightly to the right, globular form, tooled heavy outward folded mouth - base with terminal ring and blowpipe pontil scar, ht. 7 5/8", perfect. A rare and unusual glob. The color is very scarce, the vertical rib pattern is scarce, and rare having a terminal ring. High quality 'metal' with excellent clarity and a crisp impression. Mary Ballentine collection.

Est.: \$500 - \$800 • Min. bid: \$250



Lot 95

Pattern Molded Cologne or Toilet Water Bottle, Midwest, possibly Zanesville Glass Works, 1815 - 1840. Aquamarine, cylindrical, high shouldered form creating a squatty appearance, 24 ribs swirled to the right, sheared, tooled and slightly flared mouth - blowpipe pontil scar, ht. 5", near mint; (a slight touch of exterior wear; a little light interior residue that would likely wash out). A very scarce-to-rare size. Wonderful 'squatty' form. Provenance: Mary Ballentine collection.

Est.: \$300 - \$600 • Min. bid: \$150



Lot 92

Pattern Molded Globular Bottle, Midwest, probably Zanesville Glass Works, 1820 - 1840. Medium yellowish grass green, 24 ribs swirled to the right, globular form, sheared, tooled, and outward folded mouth - blowpipe pontil scar, ht. 7 5/8"; (a touch of minor wear and some light internal dullness or haze in the shoulders, otherwise near mint). True green globes are 'scarce as hens teeth', and this is a good one. Great form in a very rare color. Mary Ballentine collection.

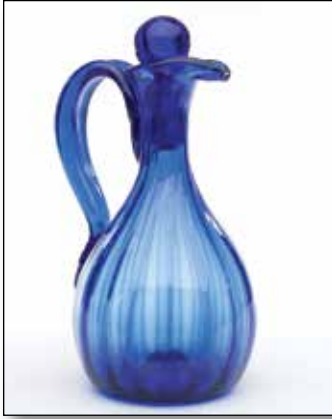
Est.: \$1,800 - \$3,200 • Min. bid: \$900



Lot 96

Pattern Molded Cologne or Toilet Water Bottle, Zanesville, or possibly a Pittsburgh district glasshouse, 1815 - 1840. Clear, medium cobalt blue, cylindrical with gracefully tapering shoulders, 19 ribs swirled slightly to the right, sheared, tooled, inward rolled mouth - blowpipe pontil scar, ht. 5 3/4", near mint; (a faint narrow band of light interior content haze, otherwise perfect). A very scarce-to-rare rib count and color, beautiful overall condition. Provenance: Mary Ballentine collection.

Est.: \$400 - \$800 • Min. bid: \$200



Lot 97

Rare, Pattern Molded Cruet, a Pittsburgh district glasshouse, possibly one of the early Bakewell factories, 1815 - 1845. Rich, medium cobalt, pear-form body patterned with 16 vertical ribs, sheared and flared mouth with tooled pour spout, freeblown ball stopper, applied hollow handle crimped at lower attachment - blowpipe pontil scar, ht. 8 1/4" incl. stopper; (a little typical light wear; curled tip of lower handle attachment missing). Rare. Innes, plate 5, #2; McK, plate 25, #1.

Est.: \$500 - \$1,000 • Min. bid: \$250



Lot 98

Pattern Molded Inkwell, Midwest, probably Zanesville Glass Works, Zanesville, OH, 1820 - 1840. Rich, deep aquamarine, almost a blue green coloration, patterned with 24 heavy vertical ribs, cylindrical, depressed funnel-type shoulders, sheared mouth - blowpipe pontil scar, ht. 1 3/4", near mint; (just a little dullness or haze on the shoulders near the funnel opening, otherwise virtually perfect). Covill #1336; "Zanesville Glass", Barrett, p.63. A rare inkwell, Mary Ballentine collection.

Est.: \$800 - \$1,600 • Min. bid: \$400



Lot 99

Pattern Molded Flask, Zanesville Glass Works, 1820 - 1835. Light golden amber, 10 diamond pattern over flutes, flattened chestnut form, sheared mouth - pontil scar, ht. 4 3/4", near mint; (a little light wear on the sides near the base, a faint trace of interior residue, otherwise perfect). MW, plate 97, #4. A good impression, beautiful, bright color! Ex. Bill Pollard collection; acquired from the 1987 Ballentine sale (catalog #67), acquired by Mary Ballentine from Pollard sale.

Est.: \$1,000 - \$2,000 • Min. bid: \$500



Lot 100

Pattern Molded Flask, Midwest, probably Ohio, possibly Mantua Glass Works, Mantua, OH, 1822 - 1829. Light yellowish honey coloration, elongated chestnut form, patterned with 16 wide vertical ribs, sheared mouth - glass-tipped pontil scar, ht. 5 7/8", near mint; (a little light interior haze or residue, some of which may wash out, and just a trace of minor wear, otherwise perfect). Beautiful color, graceful form, desirable rib count, Provenance: Mary Ballentine collection.

Est.: \$600 - \$900 • Min. bid: \$300



Lot 101

Pattern Molded Flask, probably Zanesville Glass Works, Zanesville, OH, 1820 - 1835. Bright medium amber, flattened chestnut form, patterned with 24 vertical ribs, sheared mouth - pontil scar, ht. 5 7/8"; (some light scratches and scattered minor wear, a couple of 1/4" spots of abrasion or flakes on the base, otherwise excellent). Good form, brilliant glass, a classic Zanesville 24-rib chestnut flask! Provenance: Mary Ballentine collection.

Est.: \$300 - \$500 • Min. bid: \$150



Lot 102

Lot of (2), Pattern Molded Flasks, America and probably England, 1820 - 1840. Aquamarine and colorless, slender ovoid and teardrop forms, 16 vertical rib and 12 diamond patterns, both with sheared mouths - blowpipe pontil scarred bases, ht. 6 1/4" and 6"; (both with a little typical scattered high point wear; colorless example has a little light haze, otherwise excellent). The 16-rib has typically been attributed to Mantua, Ohio, but other glasshouses used it is well. A nice pair.

Est.: \$200 - \$400 • Min. bid: \$100



Lot 103

Pattern Molded Pocket Flask, Continental, Germany or possibly Austria, 1780 - 1820. Dense purple, almost a violet coloration, flattened chestnut form blown in the German half post method, pattern molded with three large daisies surrounded by small circles, sheared, tooled flared mouth - blowpipe pontil scar, ht. 6 1/4"; (some light scratches and fine wear; the top of the lip on one side appears to have been lightly polished, likely to remove some small flakes). Very scarce. Ex. Tom McCandless collection.

Est.: \$200 - \$400 • Min. bid: \$100



Lot 104

Early, Decorative Enameled Spirits Flask, Germany, 1770 - 1800. Medium sapphire with yellow, red and white enameled image of a woman holding a candle - white enameled inscription on reverse, loosely translated, *I WAIT NO LONGER FOR YOU HANSEL: I'VE BEEN HOLDING THE LIGHT TOO LONG*, enameled floral motif on sides, rectangular, sheared mouth, applied pewter collar - pontil scar, ht. 5 5/8"; (a little minor wear, two small 1/8" body flakes, otherwise excellent). Rare.

Est.: \$800 - \$1,600 • Min. bid: \$400



Lot 105

Important, Giant, Umbrella Ink, 1840 - 1860. Deep sapphire blue, large, 8-sided umbrella, sheared, inward rolled mouth - blowpipe pontil scar, ht. 2 7/8", dia. 2 15/16", virtually perfect; (lightly cleaned to original luster and attic mint condition). As noted in the Watt White catalog, "The ultimate umbrella ink". Beautiful color, crude wavy glass, outstanding condition. Believed to be one of only two known examples in this size and color! Ex. Robert Houseman; Watt White collections.

Est.: \$3,000 - \$5,000 • Min. bid: \$1,500



Lot 106

Umbrella Ink, America, 1840 - 1860. Clear, light-to-medium sapphire blue, 8-sided umbrella form, long neck with sheared, tooled, and inward rolled mouth - blowpipe pontil scar, ht. 2 1/2", dia. 2 1/8", attic mint. A rare umbrella in sapphire, or any color, with the long neck. Great eye-appeal, fantastic color, clarity, character and condition.

Est.: \$1,500 - \$2,500 • Min. bid: \$750



Lot 107

Umbrella Ink, 1840 - 1860. Medium sapphire, almost a steel-blue coloration, 8-sided umbrella form, sheared, tooled wide mouth - pushed-up base with heavy blowpipe pontil scar, ht. 2 1/4", dia. 2 1/8", near perfect; (the bottle may have been lightly cleaned, but certainly presents as virtually attic mint). A scarce mold, very unusual with the wide mouth, and extremely rare - possibly unique, in this color and mold. The wide neck gives it a distinctive squatty appearance.

Est.: \$1,500 - \$2,500 • Min. bid: \$750



Lot 108

Umbrella Ink, America, 1840 - 1860. Medium-to-deep sapphire blue, 12-sided umbrella form, sheared, tooled, inward rolled mouth - blowpipe pontil scar, ht. 2", dia. 1 7/8"; (lightly cleaned to original luster and near mint condition with just a touch of minor light wear remaining). A very scarce mold, extremely rare in sapphire, excellent character with whittled, wavy glass, great condition. Provenance: Private purchase by the consignor, from William Covill, Jr.

Est.: \$1,500 - \$2,500 • Min. bid: \$750



Lot 109

Umbrella Ink, America, 1860 - 1870. Beautiful, medium amethyst coloration, 8-sided umbrella form, sheared, tooled mouth - smooth base, ht. 2 1/2", dia. 2 7/16", near mint; (professionally cleaned to original luster, very faint trace of wear, otherwise excellent). A outstanding and rare color for an umbrella, or any ink! It is a true amethyst coloration, not puce, or puce toned. True amethyst umbrellas are very scarce, and harder yet to acquire in this fine condition.

Est.: \$800 - \$1,200 • Min. bid: \$400



Lot 110

Umbrella Ink, America, 1840 - 1860. Medium apricot puce shading to a deep apricot-ponce through the upper shoulders and neck, 8-sided umbrella form, sheared, tooled, inward rolled mouth - blowpipe pontil scar, ht. 2 3/8", dia. 2 3/8", virtually attic mint; (just a tiny pinhead bit of minor roughness on the edge of the lip, otherwise perfect). Fantastic color, heavily whittled, outstanding condition. A great example!

Est.: \$1,200 - \$1,800 • Min. bid: \$600



Lot 111

Umbrella Ink, America, 1840 - 1860. Light-to-medium pinkish rosy puce, almost a 'dusty rose' coloration, 8-sided umbrella form, sheared, tooled, inward rolled mouth - blowpipe pontil scar, ht. 2 3/8", dia. 2 3/16"; (professionally cleaned to original luster and near mint condition, just a slight trace of minor wear). Gorgeous, rare color, very rare in this lighter shade. One that will stand out in any almost any run of colored umbrellas!

Est.: \$1,500 - \$2,500 • Min. bid: \$750



Lot 112

Umbrella Ink, America, 1840 - 1860. Light-to-medium champagne coloration, 8-sided umbrella form, sheared, tooled, inward rolled mouth - blowpipe pontil scar, ht. 2 1/8", dia. 2 1/8", perfect. Absolutely incredible color and character! Not only is 'champagne' an appropriate color description, but also aptly describes the character of the glass which is filled with tiny bubbles. Acquired by the consignor from an early 1980's Harmer Rooke sale. Believed to be a unique example in this color.

Est.: \$2,000 - \$4,000 • Min. bid: \$1,000



Lot 113

Rare size Umbrella Ink, America, 1840 - 1860. Medium emerald coloration, small, 8-sided umbrella form, sheared, tooled, inward rolled mouth - hinge mold base with blowpipe pontil scar, ht. 2 1/8", base dia. 1 5/8", perfect! A scarce mold in an extremely rare, possibly unique, color for this mold. In addition, virtually pristine condition with outstanding clarity and character, being heavily whittled.

Est.: \$500 - \$1,000 • Min. bid: \$250



Lot 117

Cone Ink, America, 1840 - 1860. Rich, medium sapphire blue, cone form with rounded shoulders, sheared, tooled and inward rolled mouth - blowpipe pontil scar, ht. 2 1/2", perfect! Similar to C #23. An 'attic-type' bottle, and a little 'gem' of an ink in a rare and outstanding color for this mold, clean, sparkling, and heavily whittled. Gorgeous, and with plenty of eye-appeal!

Est.: \$800 - \$1,600 • Min. bid: \$400



Lot 114

Umbrella Ink, America, 1840 - 1860. Colorless with a very faint Vaseline tone in the base, 8-sided umbrella form, sheared, tooled, inward rolled mouth - blowpipe pontil scar, ht. 2 3/8", attic mint. A beautiful ink with great character having whittled, wavy glass. It is an attic-type bottle that has not been dug and cleaned. And, rare in this 'flint-type' virtually colorless glass.

Est.: \$400 - \$800 • Min. bid: \$200



Lot 118

"H & T / RED INK", America, probably 1840 - 1852. Aquamarine, small cone form, sheared, tooled, inward rolled mouth - blowpipe pontil scar, ht. 1 3/4", dia. 1 7/8", perfect. A beautiful example of this rare little ink - clean, bright and sparkling! Believed to have been blown for the Hogan and Thompson Co, Philadelphia. See Faulkner, p.108. A tough little ink to find, especially in this fine condition.

Est.: \$300 - \$500 • Min. bid: \$150



Lot 115

Cone Ink, a Stoddard, NH glasshouse, possibly Granite Glass Co., 1842 - 1860. Bright, light golden amber, cone form with squared shoulders, sheared, tooled, inward rolled mouth - blowpipe pontil scar, ht. 2 1/4", dia. 2 3/8", near mint; (the bottle appears to have been lightly cleaned, but presents as virtually perfect!) A great example, clean, bright, pretty, and filled with tiny bubbles.

Est.: \$400 - \$600 • Min. bid: \$200



Lot 119

"BANK / OF / ENGLAND INK" Figural House Ink, America, 1880 - 1890. Aquamarine, rectangular figural house with mansard style roof, tooled square collar - smooth base, ht. 3 1/2", virtually perfect; (just a very slight trace of barely noticeable residue, and a tiny pinhead flake at edge of base, otherwise mint). A large figural ink, exceedingly rare, produced by the Senate Ink Co. of Philadelphia. Believed to be only the second time this rare ink has been offered at auction.

Est.: \$1,200 - \$2,400 • Min. bid: \$600



Lot 116

Cone Ink, a Stoddard, NH glasshouse, possibly Granite Glass Co., 1842 - 1860. Medium olive amber, cone form with squared shoulders, sheared, tooled, inward rolled mouth - blowpipe pontil scar, ht. 2 1/8", dia. 2 3/8", virtually perfect; (a small patch of light interior content residue, almost certainly washable, otherwise pristine). Scarce color, outstanding condition, most examples have been dug.

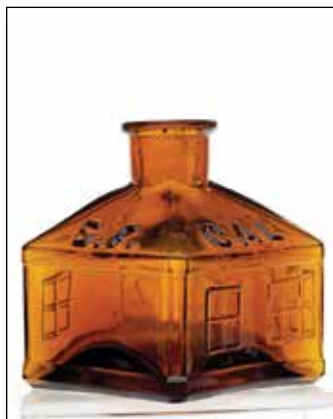
Est.: \$400 - \$600 • Min. bid: \$200



Lot 120

"PAT APL" Rare Figural Cabin Ink, probably America, Midwest, or Western, 1865 - 1880. Golden amber, rectangular cabin form, rough sheared mouth - smooth base, ht. 2 5/8", perfect. Extremely rare - believed to be a unique example! Although the lip treatment is similar to those of English inks, the color, vertical roof lines, windows and clapboards are almost identical to American 'cabin' inks, and dissimilar to that of the English 'cottage' inks. Ex. Watt White collection (Lot 371).

Est.: \$1,200 - \$2,400 • Min. bid: \$600



Lot 121

"S.F. - CAL - INK - CO." Figural House Ink, possibly San Francisco & Pacific Glass Works, 1891 - 1900. Golden amber, square house form with windows on three sides, label panel on reverse, tooled square collar - smooth base, ht. 2 1/4"; near mint; (the bottle may have been lightly cleaned, but certainly presents itself as virtually perfect; a 1/8" onionskin-thin open bubble at edge of base). C# 691; Faulkner, p.147. A very rare Western ink bottle blown for the California Ink Co.

Est.: \$1,500 - \$2,500 • Min. bid: \$750



Lot 122

"J - & - I - E - M" Monitor Ink, America, 1865 - 1890. Medium-to-deep amber, cylindrical with six block panels around the sides, domed shoulder, offset neck with sheared mouth - "a" (on smooth base), ht. 1 3/4"; (just a slight trace of light wear, otherwise very near mint). Put out by the Moore Ink Co. of Warren, Mass., the labels indicate that they held Moore's Excelsior School Writing Ink. The Moore Co. referred to these inks as "Monitors" (info. courtesy of Ron Rainka).

Est.: \$200 - \$400 • Min. bid: \$100



Lot 123

Lot of (2) Ink Bottles, America and England, 1854 - 1880. 1st example: **"JJ BUTLER / CIN"**, aquamarine, square with beveled corners, sheared, inward rolled mouth - blowpipe pontil scar, ht. 2 5/8"; (a little scattered light haze, likely a dug bottle, but no damage). 2nd example: **"SHAW'S - INKS - ARE - THE - BEST"**, deep greenish aquamarine, 8-sided, rough sheared mouth - smooth base, ht. 3", near mint; (lip roughness mostly in-making). Scarce. Ballentine collection.

Est.: \$100 - \$200 • Min. bid: \$50



Lot 124

"HARRISON'S / COLUMBIAN / INK", America, 1845 - 1860. Sapphire blue, octagonal body with 8 flat panels around shoulders, sheared and inward rolled mouth - blowpipe pontil scar, ht. 1 7/8"; (a 1/4" chip on the edge of the collar at the side, just a trace of faint haze or milkiness, the bottle may have been lightly cleaned, but presents as near mint). C #531; MW, plate 76, #12. A scarce mold and certainly rare in sapphire.

Est.: \$1,200 - \$2,400 • Min. bid: \$600



Lot 125

"HARRISON'S / COLUMBIAN / INK" (with 95% complete original label), 1845 - 1860. Light sapphire blue, cylindrical, sheared and inward rolled mouth - blowpipe pontil scar, ht. 2"; (bottle is sparkling, 'attic' mint; label has some minor staining). A fantastic example, very rare with original label, and rare being this light in color. Label reads in part, *HARRISON'S / COLUMBIAN / BLUE BLACK WRITING FLUID / APOLLOS W HARRISON / 10 South 7th Street / PHILADELPHIA*.

Est.: \$1,000 - \$2,000 • Min. bid: \$500



Lot 126

"HARRISON'S / COLUMBIAN / INK", America, 1845 - 1860. Cobalt blue, cylindrical, sheared and inward rolled mouth - blowpipe pontil scar, ht. 2"; (lightly cleaned to original luster and near mint condition). C #194. Nice deep color, strong embossing.

Est.: \$400 - \$600 • Min. bid: \$200



Lot 127

"HARRISON'S / COLUMBIAN / INK" Master Ink, America, 1845 - 1855. Medium sapphire blue, cylindrical, applied wide flanged mouth - blowpipe pontil scar, ht. 4 1/2", near mint; (a small, 1/16" flake on the edge of the lip, and a slight trace of minor spotty interior residue or faint haze, otherwise excellent). Crisp, bold embossing, nicely whittled, a pretty example, scarce size.

Est.: \$700 - \$900 • Min. bid: \$350



Lot 128

"HARRISON'S / COLUMBIAN / INK" **Unique Wide-Mouth Jar**, America, 1850 - 1860. Gorgeous, deep sapphire blue, 12-sided, tooled, sheared, expanded wide mouth - blowpipe pontil scar, ht. 10 3/8" (gallon), pristine perfect. A unique example and among the most iconic, recognizable, and famed pieces of glass in the bottle world. Provenance: Ex. Wm. Covill Jr., Al & Maggie Duffield, Bob & Beka Mebane, Jim & Lynn Mitchell collections, and now resides in a NY physician's collection.

Est.: \$40,000 - \$60,000 • Min. bid: \$20,000



Lot 129

Lot of (2), New England Master Ink Bottles (one with original *FARLEY'S* label), New England, labeled example likely Stoddard, 1845 - 1865. Yellowish 'old amber', and amber with a reddish orange tone near the base, 2-pc. and 3-pc. molds, applied sloping collars, one with crimped pour spout - iron pontil and smooth base, ht. 7" & 7 1/4"; (labeled example has a couple of base chips, 3/8" and 1/2"; just a trace of minor wear on 2nd example). The Farley's is rare in this size with a label.

Est.: \$700 - \$1,400 • Min. bid: \$350



Lot 130

"BY / A.A. COOLEY / HARTFORD / CON" Blacking Bottle, New England, probably Coventry Glass Works, Coventry, CT, 1830 - 1845. Medium olive shading to a deep olive green near the base, oval, sheared and tooled lip - blowpipe pontil scar, ht. 4 3/8", perfect. MW, plate 75, #2. A very nice example of this early New England blacking having crude seedy glass, and virtually no wear.

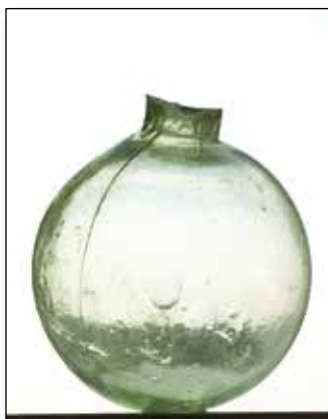
Est.: \$300 - \$500 • Min. bid: \$150



Lot 133

Shooter Ball, (image of a Man Shooting a Gun) within a circle, Target Ball, England, 1875 - 1900. Colorless, 3-pc. mold, quilted diamond pattern, rough sheared mouth, dia. 2 5/8"; (a little minor light 'bloom' or faint haze, otherwise perfect). A very scarce ball. Colorless target balls are rare. This is one of only a few molds that were known to have produced colorless balls. John Apple collection.

Est.: \$250 - \$450 • Min. bid: \$130



Lot 134

"PAT 8TH Mo" (embossed on neck), Target Ball, America, 1876 - 1880. Light green with a Vaseline tone, 2-piece mold, rough sheared mouth, dia. 2 5/8", perfect. Extremely rare. Although the embossing on the neck is small, it is quite legible with a loop and clearly reads as noted above. The few other similar examples known are believed to be embossed, **"PAT 1876"**. Very rare, believed to be one of the earliest target balls produced. John Apple collection.

Est.: \$300 - \$600 • Min. bid: \$150



Lot 131

"PATENT" (vertically) - P - A - T - E - N - T" (horizontally) Early Telegraph-Type Insulator, Willington Glass Works, CT, 1860 - 1872. Deep olive, 8-sided inverted cone form, bulbous ring on neck, threaded shaft - sheared mouth, ht. 5 3/4", near mint; (a trace of typical light wear including a 3/16" open bubble, otherwise perfect). Rare. An interesting and unusual glass item attributed to the Willington Glass Works. See, *New England Glass & Glass Making*, Ken Wilson, p.158.

Est.: \$600 - \$1,200 • Min. bid: \$300



Lot 135

"BOGARDUS' GLASS BALL PAT'D APR. 10. 1877" Target Ball, America, 1877 - 1900. Medium-to-deep amber, quilted diamond pattern above and below center band, 3-piece mold, rough sheared mouth, dia. 2 5/8", perfect. This is the mold variant with heavy, large embossing, and larger diamond pattern. A great example of this scarce ball. This one is also heavier as the glass blower must have had a little extra on the blowpipe. Provenance: Ralph Finch collection.

Est.: \$500 - \$800 • Min. bid: \$250



Lot 132

Shooter Ball, (image of a Man Shooting a Gun) within a circle, Target Ball, England, 1875 - 1900. Medium-to-deep grass green, 3-pc. mold, quilted diamond pattern, rough sheared mouth, dia. 2 5/8", perfect. A rich, gorgeous color with crude pebbly glass. Known as the 'shooter ball' having the pictorial image of the man shooting a gun, this mold is always popular and a favorite among collectors. Scarce. John Apple collection, Ex. Tom McCandless collection.

Est.: \$400 - \$800 • Min. bid: \$200



Lot 136

"F.W. OTTE JUN - CHARLOTTENBURG - GLASHUTTEN" Target Ball, Germany, 1875 - 1900. Beautiful, clear, light olive yellow, diamond pattern with semi-circular ribs creating a curvature to the quilted pattern, 2-piece mold, rough sheared mouth, dia. 2 5/8", perfect. A scarce mold for a "Glashutten" ball (most having the typical overall diamond pattern), in a beautiful, rare, eye-appealing color - almost a clear light olive coloration.

Est.: \$400 - \$800 • Min. bid: \$200



Lot 137

"F.W. OTTE JUN - CHARLOTTENBURG - GLASHUTTEN" Target Ball, Germany, 1875 - 1900. Rich, medium olive green with a slight yellowish tone, quilted diamond pattern above and below center band, 2-piece mold, rough sheared mouth, dia. 2 5/8", perfect. An attractive and scarce color, strong, crisp embossing, perfect condition! The Finch collection had many great German balls including several examples of the F.W. Otte, but not in olive. John Apple collection.

Est.: \$400 - \$800 • Min. bid: \$200



Lot 138

"Dr. A. FRANK - CHARLOTTENBURG - GLASHUTTEN" Target Ball, Germany, 1875 - 1900. Light yellowish olive amber, quilted diamond pattern above and below center band, 2-piece mold, rough sheared mouth, dia. 2 5/8", perfect. An attractive ball with good crisp embossing. Note; the ball still retains remnants of the, likely original, small feathers that were put in the ball so when shot, would disperse as if shooting a bird. John Apple collection.

Est.: \$200 - \$400 • Min. bid: \$100



Lot 139

Quilted Diamond Pattern Target Ball, America or England, 1875 - 1900. Medium topaz with an apricot tone, quilted diamond pattern above and below center band, 3-piece mold, ground mouth, dia. 2 5/8"; (a small patch of faint interior haze, otherwise perfect). An unusual color for a target ball and is the only ball known to have a factory ground mouth (vs. the typical rough sheared mouth). Retains some small feathers on the interior. Scarce. John Apple collection.

Est.: \$200 - \$400 • Min. bid: \$100



Lot 140

Quilted, Diamond Pattern Target Ball, Germany, 1875 - 1900. Medium amber, quilted diamond pattern, 2-piece mold, unusual and distinctive pattern of curved lines within a circle on the base, rough sheared mouth, dia. 2 5/8", perfect. A great example, extremely crisp, bold impression. Similar to Lot #695 in the Finch sale. A very scarce ball.

Est.: \$150 - \$300 • Min. bid: \$80



Lot 141

Quilted, Gablonz Target Ball, Czechoslovakia, 1880 - 1900. Bright yellowish lime green, quilted diamond pattern, 2-piece mold, rough sheared mouth, dia. 2 1/2", perfect. A particularly long neck on this example, bright, almost fluorescent color. These quilted Gablonz balls were blown in some interesting colors, this being one of the brightest. It will definitely stand out on a shelf or a grouping of target balls.

Est.: \$175 - \$350 • Min. bid: \$90



Lot 142

Quilted, Diamond Pattern Target Ball, Australia, or possibly Germany, 1875 - 1900. Medium sapphire blue, quilted diamond pattern, 2-piece mold with base plate, rough sheared mouth, dia. 2 1/2", near mint; (an area of spotty light haze on one side, otherwise perfect). Similar to Lot #780 in the Finch catalog. Another scarce ball that does not come around often.

Est.: \$150 - \$300 • Min. bid: \$80



Lot 143

Embossed Block Pattern Target Ball, France, 1880 - 1900. Medium cobalt blue, block pattern above and below center band, 2-piece mold, flared neck with rough sheared mouth, dia. 2 5/8", perfect. An attractive ball, strong bold pattern, scarce. Provenance: John Apple collection, Ex. Alex Kerr collection.

Est.: \$150 - \$300 • Min. bid: \$80



Lot 144

Lot of (2), Target Balls, America, 1875 - 1900. 1st example is a clear, light-to-medium cobalt; 2nd example is a rich, medium-to-deep cobalt blue, both are 5-piece mold, rough sheared mouths, dia. 2 5/8", both are perfect! A great pair of target balls, beautiful colors that complement one another nicely. Provenance: John Apple collection.

Est.: \$250 - \$450 • Min. bid: \$130

A Spectacular Array of Rare & Colorful Mid-Western Pattern-Molded Bottles



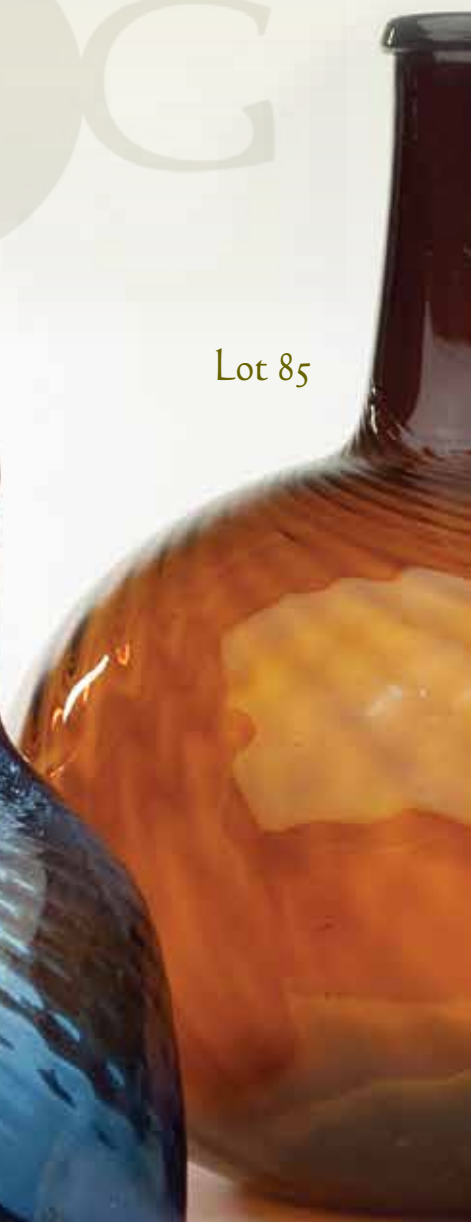
Lot 83



Lot 84



Lot 82



Lot 85

The Merriam-Webster dictionary defines apotheosis as, "elevation to divine status", and George S. McKearin termed Pattern Molding, "The apotheosis of American glassmaking" in his article on "Ohio and Midwestern Glass", *American Collector* 9, November, 1940. The above is a statement that we have quoted before and it certainly bears repeating here.

There is good reason why McKearin made that statement. In Midwest pattern molded wares, the quality of the "metal" and the skill of the glassblower combine to showcase what is, in our view, some of the finest work of our early American glasshouses. The brilliance, colors, quality of the "metal", and workmanship is unrivaled.

Pattern molding as a technique or method of manufacture has been in existence for more than two thousand years. While in America, it flourished during the 2nd half of the eighteenth century and continued well into the first half of the nineteenth century.

American pattern molding is generally stereotyped as a Midwest genre, however, it experienced its birth here in America during Colonial times in South Jersey, (Wistarburgh), and no doubt was practiced to varying degrees in early New England. Pattern molding in New England typically manifested itself in the form of 'Pitkin-type' flasks, but occasionally and in rare cases, in Chestnut type flasks and other objects.

Primary delineations in pattern molding include ribbed, swirled, ribbed and swirled (broken swirl), and the diamond pattern. Colors can vary greatly, but certain regions and even glasshouses can have a certain "look" or color to their "metal".

We as collectors oftentimes feel the need to try and pin an attribution of a piece to a particular region, city, or glasshouse based on rib count, color, form, quality of the glass, or some combination thereof. However, attribution is often argumentative. The inability to specifically identify a factory, or place, or origin should not detract from the worth, value, or enjoyment of a particular piece.

Regardless of the particular glasshouse, or even region of the country, it can certainly be argued that American pattern molded bottles and glass represent the zenith of American blown glass.



Lot 92

Lot 90

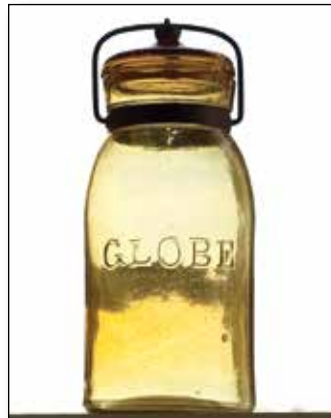
Lot 86



Lot 145

Large, "T" (embossed on base), **Target Ball**, America, 1875 - 1900. Bright, yellowish honey amber, crude 5-piece mold, rough sheared mouth, dia. 2 3/4", perfect; (some minor washable interior residue). A very rare ball. Identical to Lot #793 in the Finch target ball catalog. Very crude, heavy mold seams, beautiful glass. Provenance: John Apple collection.

Est.: \$200 - \$400 • Min. bid: \$100



Lot 149

"GLOBE" Fruit Jar, Hemingray Glass Co, probably Muncie, Indiana, 1888 - 1900. Clear, light-to-medium yellow, almost a straw coloration, cylindrical, ground lip, original metal clamp with cam lever, **"PATENTED MAY 25 1886"** on glass lid - **"61"** on smooth base, Qt; (the jar is perfect; lid color matches very closely, almost perfectly, to color of jar but has a 3/8" chip from the edge of the seat for cam lever, and a couple of tiny pinhead flakes on the rim, otherwise perfect). RB #1123. Beautiful color!

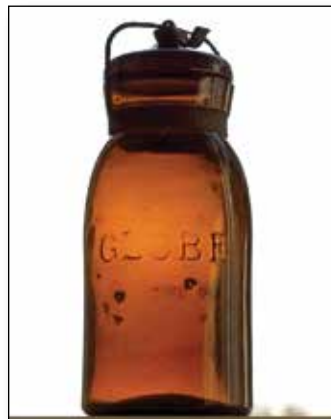
Est.: \$400 - \$800 • Min. bid: \$200



Lot 146

Lot of (2), Target Balls, America, 1875 - 1900. Both are shades of light-to-medium golden amber, 3-piece mold and 5-piece mold, both with rough sheared mouths, dia. 2 5/8", both perfect. Pieces of cloth remain in the 3-pc. mold example. The 5-pc. mold is bright, clean, and scarce. Provenance: John Apple collection.

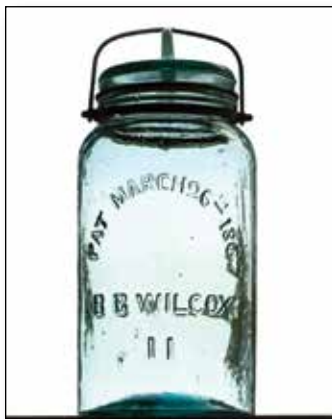
Est.: \$200 - \$400 • Min. bid: \$100



Lot 150

"GLOBE" Fruit Jar, Hemingray Glass Co, Covington, KY, or Muncie, IN, 1886 - 1900. Medium-to-deep amber, cylindrical, ground lip, original metal clamp with cam lever, **"PATENTED MAY 25TH 1886"** on glass lid - **"33"** on smooth base, Qt; (jar displays as near mint, but with a touch of minor light wear and a couple of small patches of dullness or very faint haze, some corrosion to wire bail; color-matching glass lid has some minor dullness, otherwise perfect). RB #1123. Scarce color.

Est.: \$100 - \$200 • Min. bid: \$50



Lot 147

"PATD MARCH 26TH 1867 / B B WILCOX / I I", Ellenville Glass Works, Ellenville, NY, 1870 - 1875. Rich aquamarine, cylindrical, ground lip, original metal band and wire bail, glass lid with center fin - smooth base, Qt, near mint; (a 1/8" flake along top edge of ground mouth, possibly in-making; a small area of faint light scratches on the reverse, and a tiny flake near the base; lid has a bit of faint haze, otherwise perfect). RB #3001. Crisp embossing, bright, clean and whittled.

Est.: \$100 - \$200 • Min. bid: \$50



Lot 151

Lot of (2), "GLOBE" Fruit Jars, Hemingray Glass Co, Covington, KY, or Muncie, IN, 1886 - 1900. Aquamarine and orange amber, both are cylindrical with ground lips, original metal clamps and cam levers, **"PATENTED MAY 25TH 1886"** on glass lids; ("TH" omitted on amber lid) - smooth bases, Pts; (aqua example is perfect; amber jar has a little faint haze or dullness to the glass, not terribly distracting, but mentioned for complete accuracy, otherwise excellent). Both RB #1123.

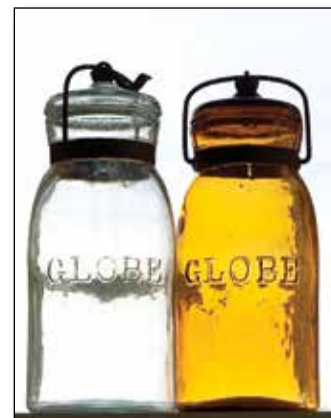
Est.: \$150 - \$250 • Min. bid: \$80



Lot 148

"GLOBE" Fruit Jar, Hemingray Glass Co, Muncie, Indiana, 1905 - 1910. Aquamarine, cylindrical, wide mouth, smooth (machine-made), lip, original metal clamp with cam lever, **"PATENT MAY 25 1886"** on glass lid - smooth base with machine valve mark, Qt, both jar and lid perfect. RB #1124. Scarce.

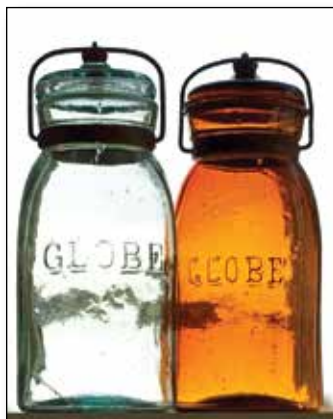
Est.: \$150 - \$300 • Min. bid: \$80



Lot 152

Lot of (2), "GLOBE" Fruit Jars, Hemingray Glass Co, Covington, KY, or Muncie, IN, 1886 - 1900. Pale aquamarine and honey amber, both are cylindrical with ground lips, original metal clamps and cam levers, **"PATENTED MAY 25TH 1886"** on glass lids; ("TH" omitted on aqua lid) - smooth bases, Qts; (both jars near mint; some corrosion to metal closures, a little dullness or faint haze to amber lid, otherwise excellent). Both RB #1123. Honey amber example is boldly embossed.

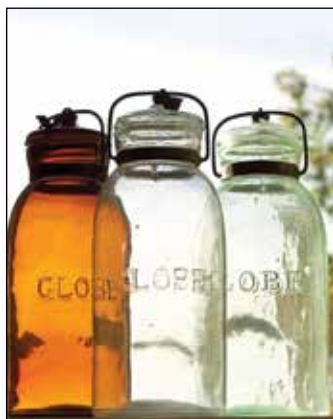
Est.: \$100 - \$200 • Min. bid: \$50



Lot 153

Lot of (2), "GLOBE" Fruit Jars, Hemingray Glass Co, Covington, KY, or Muncie, IN, 1886 - 1900. Aqua and orange amber, both are cylindrical with ground lips, metal clamps and cam levers, **"PATENTED MAY 25TH 1886"** on glass lids; ("TH" omitted on amber lid) - smooth bases, Qts; (aqua example is perfect; amber jar has a few, approx. 3/8" each, chips from the edge of the ground lip, parts of metal closure may have been replaced, or not original). Both RB #1123.

Est.: \$75 - \$125 • Min. bid: \$40



Lot 154

Lot of (3), "GLOBE" Fruit Jars, Hemingray Glass Co, Covington, KY, or Muncie, IN, 1886 - 1900. Colorless, pale green, and orange amber, all are cylindrical with ground lips, original metal clamps and cam levers, **"PATENTED MAY 25TH 1886"** on glass lids, ("TH" of 25TH omitted on amber lid) - smooth bases, Qts; (clear example is perfect; light greenish jar perfect, lid is colorless, amber jar near mint with 5/8" area of chips on edge of ground lip). All RB #1123.

Est.: \$175 - \$350 • Min. bid: \$100



Lot 155

Old Saint Nicholas holding a Tree, Figural Spirits Bottle (with original label and likely original paint), France or possibly America, 1890 - 1915. Colorless, in the form of an early bearded Santa holding a Christmas tree, tooled square collar - smooth base, ht. 7 1/4", perfect. Note; the bottle has been filled with a colored granular material for display purposes. See "Collecting Character Bottles", pgs. 23-24. Rare. Provenance: Mary Ballentine collection.

Est.: \$100 - \$200 • Min. bid: \$50



Lot 156

Santa Claus in Chimney, Figural Whiskey Nip (with partial original paint), America, 1890 - 1905. Colorless, figural of a bearded Santa Claus with head and shoulders rising above a brick chimney, tooled sloping collar - smooth base, ht. 5 5/8", near mint; (a 1/8" flake and a little minor roughness on the edge of the lip that you can feel, but is not easy to see, some paint loss on the face, otherwise perfect). A scarce figural, - extremely rare is clear! Mary Ballentine collection.

Est.: \$400 - \$600 • Min. bid: \$200



Lot 157

Santa Claus in Chimney, Figural Whiskey Nip (with partial original paint), America, 1890 - 1905. Bright golden amber, figural of a bearded Santa Claus with head and shoulders rising above a brick chimney, tooled sloping collar - smooth base, ht. 5 5/8", perfect! (some minor paint loss on the beard). Likely sold, or possibly given as a premium, to favored customers during the Holidays. A scarce figural whiskey, and rare having the original paint. Provenance: Mary Ballentine collection.

Est.: \$400 - \$600 • Min. bid: \$200



Lot 158

Lot of (2), Whiskey Cylinders, Stoddard, NH, and New England, 1860 - 1875. Light yellowish olive amber and medium olive amber, 3-pc. and 2-pc. molds, **"PATENT"** (on shoulder) of 2-pc. mold, applied sloping collar and applied double collar - iron pontil and smooth base, ht. 10 3/4" and 11 1/4", both perfect! Great autumn colors that complement one another beautifully. In addition, fantastic character, both being heavily whittled. Great looking whiskeys.

Est.: \$200 - \$300 • Min. bid: \$100



Lot 159

"J.F.T. & Co. ESTABLISHED 1821 PHILADA" (on applied seal), America, 1865 - 1875. Bright golden amber with some orange tones, cylindrical, applied sloping collar with bevel - smooth base, ht. 9 3/4", near mint; (just a trace of light interior residue or faint haze in the shoulders, barely noticeable, otherwise excellent). Provenance: Ex. Paul Hartz collection. A very scarce-to-rare seal, believed to be only the 2nd example offered at auction in more than 10 years.

Est.: \$200 - \$400 • Min. bid: \$100



Lot 160

"J.F.T. & Co. / PHILAD." Applied Handled Whiskey Jug, America, 1850 - 1860. Brilliant honey amber, bulbous pear form with 26 melon-type vertical ribs, applied handle with rigaree crimped and curled at lower attachment, applied round double collar - blowpipe pontil scar, ht. 7", perfect! A scarce handled whiskey, beautiful light honey color, many are in deeper shades of amber, fantastic workmanship on the rigaree, and absolutely no issues with the applied handle.

Est.: \$500 - \$800 • Min. bid: \$250

**Lot 161**

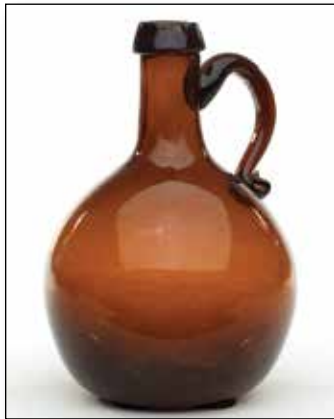
"VIDVARD / & / SHEEHAN" Applied Handle Whiskey, probably 1868 - 1873. Brilliant yellowish green with a slight olive tone, flattened ewer form, applied handle crimped and curled at lower attachment, applied blob collar with tooled pour spout - smooth base, ht. 9 3/4", near mint; (a little roughness including a 1/8" flake along the top inside edge of the pour spout, otherwise attic mint). A beautiful and very desirable handled whiskey from Utica, New York, rare having the handle on the left.

Est.: \$1,800 - \$3,200 • Min. bid: \$900

**Lot 165**

"BININGER'S / KNICKERBOCKER / A.M. BININGER & CO. / No 19 BROAD ST N.Y." Applied Handle Jug, probably 1861 - 1863. Medium amber, bulbous form, applied handle, applied sloping collar - blowpipe pontil scar, ht. 6 3/8"; (curl of lower handle attachment missing, and a tiny pinprick speck of roughness on the edge of the collar, otherwise attic mint). BPK-45. As noted in Jim Bender's 2017 book on Biningers, 'many known examples have some form of damage'. Very rare!

Est.: \$800 - \$1,200 • Min. bid: \$400

**Lot 162**

Freeblown, Applied Handle Spirits Jug, America, possibly Mid-Atlantic or Baltimore, 1840 - 1860. Medium apricot amber, freeblown, globular form, applied handle crimped and curled at lower attachment, applied sloping collar - blowpipe pontil scar, ht. 5 3/4", near mint; (a minor, 1/8" or less, iridescent bruise on the edge of the collar, otherwise attic mint). Similar in form and construction to MW, plate 48, #2. An attractive color that definitely stands apart from a straight amber.

Est.: \$175 - \$350 • Min. bid: \$100

**Lot 166**

"A.M. BININGER & CO. / No. 19 BROAD ST / NEW-YORK" Applied Handle Whiskey, probably 1861 - 1863. Medium-to-deep olive green, cylindrical with conical shoulders, applied handle curled at lower attachment, applied double round collar - smooth base, ht. 7 7/8", virtually attic mint; (just a tiny pinhead bit of roughness at edge of base on the reverse, mentioned for complete accuracy, otherwise perfect!) BPK-31. Rare color, whittled, beautiful, and outstanding condition.

Est.: \$3,000 - \$5,000 • Min. bid: \$1,500

**Lot 163**

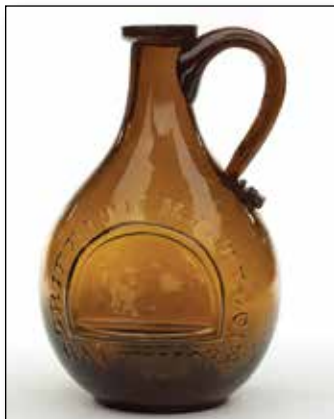
"Cognac / W, & Co." Applied Handle Whiskey, America, 1850 - 1860. Clear, medium golden amber shading to an orange amber through the neck, freeblown, globular form with flattened base, applied handle crimped and curled at lower attachment, applied mouth with ring - blowpipe pontil scar, ht. 5 3/4", virtually perfect; (a tiny, barely noticeable, pinprick speck of roughness on the edge of the collar, some faint interior residue, otherwise attic mint). Very scarce.

Est.: \$500 - \$800 • Min. bid: \$250

**Lot 167**

"BININGER'S 'OLD TIMES' / FAMILY RYE - DISTILLED IN 1848 - A.M. BININGER & CO. / No. 19 BROAD ST, N.Y." (with 80% complete original label), 1861 - 1863. Beautiful, light yellowish olive coloration, square with beveled corners, applied sloping collar - smooth base, ht. 9 3/4", perfect! BPK-14. Outstanding clarity and eye appeal. A rare mold, and exceptional having the original label! Provenance: Ex. Charles B. Gardner; Dick and Elma Watson collections.

Est.: \$3,000 - \$5,000 • Min. bid: \$1,500

**Lot 164**

"GRIFFITH HYATT & Co. / BALTIMORE" Applied Handled Whiskey Jug, America, probably Baltimore Glass Works, Baltimore, MD, 1850 - 1860. Yellowish 'old amber', bulbous pear form, applied handle crimped and curled at lower attachment, applied square collar - large blowpipe pontil scar, ht. 7", virtually attic mint; (just the slightest trace of faint wear, otherwise perfect). These often have issues with the lip, or handle attachment, but not this one. A great example.

Est.: \$600 - \$900 • Min. bid: \$300

**Lot 168**

"BININGER'S / OLD DOMINION - WHEAT TONIC - A.M. BININGER & Co. / NO. 19 BROAD ST. N.Y." 1861 - 1863. Clear, medium yellowish olive, square with beveled corners, applied sloping collar - smooth base, ht. 9 3/4", attic mint! BPK-17. A scarce mold, fantastic condition, attractive color.

Est.: \$300 - \$500 • Min. bid: \$150



Lot 169

"DUNBAR & CO. - WORM WOOD / CORDIAL - BOSTON", America, 1865 - 1875. Bright aquamarine, square with roped corners, fancy arched shoulders, 3 with small pearls or dots, applied sloping collar - smooth base, ht. 9 1/2", near mint; (just a trace of minor wear including a 1/8" chip on the bottom edge of the applied collar). Very rare! Only a small handful of these are known to exist. A beautiful, ornate, and eye-appealing mold considered by many to be a medicinal spirits.

Est.: \$1,200 - \$1,800 • Min. bid: \$600



Lot 170

"BROWN'S / CELEBRATED / INDIAN HERB BITTERS - PATENTED / FEB .. / 18.." Solid Glass Whimsey, 1867 - 1880. Colorless with a slight pinkish tone, figural Indian maiden, smooth rounded headdress - applied solid pedestal base, ht. 12 1/4"; (a couple of large chips approx. 2" each, from the pedestal base, and a couple of sliver-chips from the back). Blown from the R/H #B226 mold. An extremely rare glasshouse whimsey. Provenance: Joe Kray collection.

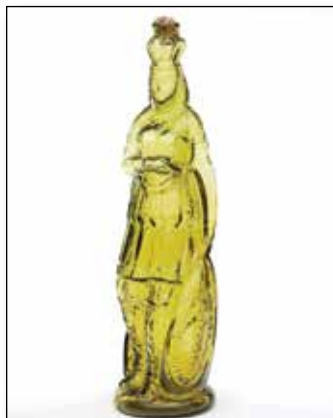
Est.: \$500 - \$800 • Min. bid: \$250



Lot 171

"BROWN'S / CELEBRATED / INDIAN HERB BITTERS - PATENTED / 1867", America, 1867 - 1880. Medium amber, figural Indian maiden, sheared and inward rolled lip - smooth base, ht. 12 1/4"; (a little light patchy haze or faint exterior dullness, and a tiny bit of roughness on the top edge of the lip with a hard-to-see 1/4" iridescent bruise on the inside of the lip that likely occurred when the cork was pried out). R/H #B223. One of the great classics, and the bottle displays very nicely.

Est.: \$400 - \$600 • Min. bid: \$200



Lot 172

"BROWN'S / CELEBRATED / INDIAN HERB BITTERS - PATENTED / 1868", America, 1868 - 1880. Bright yellowish green, almost a citron coloration, figural Indian maiden, sheared, inward rolled lip - smooth base, ht. 12 1/8"; (a 3/16" flake on the edge of the lip, and some roughness along the inner-edge of the front of the lip due to an incomplete roll or the cork being pried out, as is often the case, otherwise perfect). R/H #B225. A very rare color, in a 'see-through' shade.

Est.: \$6,000 - \$9,000 • Min. bid: \$3,000



Lot 173

"THE / FISH BITTERS - W. H. WARE / PATENTED 1866", 1866 - 1875. R/H #F46. Light-to-medium yellowish lime green with an aquamarine lip, figural fish, applied ring lip - **"W.H. WARE / PATENT 1866"** (on smooth base), ht. 11 5/8"; (some heavy fine wear, primarily around the gills, obscures some of the embossing, but no chips or cracks, and otherwise excellent). R/H #F46. Extremely rare color for a "Fish Bitters", believed to be unique with the aquamarine lip.

Est.: \$3,000 - \$6,000 • Min. bid: \$1,500



Lot 174

"DOCTOR / FISCHS BITTERS - W.H. WARE / PATENTED 1866", America, 1866 - 1875. Brilliant yellowish honey shading to an almost pure yellow along the sides, figural fish, applied ring collar - smooth base, ht. 11 3/8"; (just a trace of faint wear, barely noticeable, otherwise sparkling mint). R/H #F44. A bright, beautiful, example, lighter than most with plenty of yellowish tones and outstanding condition.

Est.: \$400 - \$800 • Min. bid: \$200



Lot 175

"THE / FISH BITTERS - W.H. WARE / PATENTED 1866", America, 1866 - 1875. Medium-to-deep amber, figural fish, applied small ring type collar - smooth base, ht. 11 3/8", virtually perfect; (only the slightest trace of minor wear, and a tiny pinprick spot of roughness, barely noticeable, on the edge of the lip). R/H #F45. The color is obviously not unusual, but the takeaway on this one is the unusually bold embossing, which is so often weak, and the absence of wear. A great example.

Est.: \$300 - \$500 • Min. bid: \$150



Lot 176

"NATIONAL / BITTERS" - "PATENT / 1867" (on base), 1867 - 1875. Gorgeous, light-to-medium copper-apricot with some warmer salmon tones, figural ear of corn, applied short tapered collar with ring - smooth base, ht. 12 3/8"; (a 1/4" x 3/8" chip from the side of the collar; a 1" chip along the tip of the husk on the reverse, and a couple of 1/4" open bubbles on the side). R/H #N8. A very rare and outstanding color, crude bubbly glass, fantastic eye-appeal!

Est.: \$500 - \$1,000 • Min. bid: \$250



Lot 177

"NATIONAL / BITTERS" - "PATENT / 1867" (on base), 1867 - 1875. Beautiful light apricot coloration with some salmon tones through the neck and base, figural ear of corn, applied short tapered collar with ring - smooth base, ht. 12 1/2", perfect. R/H #N8. Beautiful, variegated rare color that passed plenty of light with ease, outstanding condition. We sold an 'apricot puce' example in Auction #10. This one is just as attractive, equally rare, but lighter in tone. A great example.

Est.: \$1,500 - \$2,500 • Min. bid: \$800



Lot 178

"HALL'S / BITTERS - E.E. HALL NEW HAVEN / ESTABLISHED 1842", America, 1865 - 1875. Light yellowish honey amber, barrel form, applied square collar - smooth base, ht. 9 1/4", near mint; (a little light wear and a small patch of faint dullness at the mid-body; a trace of minor interior residue, otherwise excellent). R/H #H10. A nice light example, and a lot of bottle for the money.

Est.: \$175 - \$275 • Min. bid: \$90



Lot 179

"HALL'S / BITTERS - E.E. HALL NEW HAVEN / ESTABLISHED 1842", America, 1865 - 1875. Bright medium amber, barrel form, applied square collar - smooth base, ht. 9", near mint; (a little content residue in the shoulder and a tiny, pinprick flake on the edge of the collar, otherwise attic mint). R/H #H10. A good solid example of this classic Connecticut barrel bitters.

Est.: \$175 - \$275 • Min. bid: \$90



Lot 180

"DR C.W. ROBACKS / STOMACH BITTERS / CINCINNATI. O.", America, 1855 - 1865. Golden amber, barrel form, applied sloping collar - iron pontil scar, ht. 9 7/8", very near mint; (a minor, 1/8" flake on the inside edge of the lip that may have occurred in-manufacture, otherwise pristine perfect). R/H #R73. A bright, clean, pretty example, lighter than most in this larger mold with the pontil scarred base. In addition, outstanding character having crude, whittled, bubbly glass.

Est.: \$400 - \$800 • Min. bid: \$200



Lot 181

"GREELEY'S - BOURBON WHISKEY / BITTERS. / GREELEY'S", 1860 - 1875. Medium shading to deep apricot near the base with some beautiful pinkish tones, barrel form, applied square collar - smooth base, ht. 9 1/4"; (an area on the side of the square collar may have been lightly polished, presumably to remove a little roughness, otherwise very near mint). R/H #G102. Very attractive color that changes according to the type of light and time of day, beautifully whittled.

Est.: \$300 - \$500 • Min. bid: \$150



Lot 182

Ben Franklin Bitters, America, 1855 - 1865. Beautiful, medium moss green coloration, tapered barrel form, applied square collar - sand type pontil scar, ht. 9 3/4"; (a 3/8" chip on the edge of the square collar, and a tiny bit of very minor roughness on back edge of the collar, otherwise perfect). R/H #F80 L. A scarce, desirable, bitters that does not come around often, and in a rare color! This is an 'attic-type' bottle that has not been dug and cleaned. The chip could easily be repaired, if desired.

Est.: \$400 - \$800 • Min. bid: \$200



Lot 183

"KELLY'S / OLD CABIN / BITTERS - PATENTED / 1863 - KELLY'S / OLD CABIN / BITTERS - PATENTED / 1863", America, 1863 - 1870. Golden amber with some lighter honey tones, cabin form, applied sloping collar - smooth base, ht. 9 1/8"; (just a touch of light wear including a small pinhead bit of roughness along the lower roof edge, otherwise virtually attic mint). R/H #K21. Note; mold variant having the wide neck and 25 vs. 29 vertical ribs on roof. Ex. Joe Kray collection.

Est.: \$1,800 - \$2,800 • Min. bid: \$900



Lot 184

"KELLY'S / OLD CABIN / BITTERS - PATENTED / 1863 - KELLY'S / OLD CABIN / BITTERS - PATENTED / 1863", America, 1863 - 1870. Medium-to-deep 'old amber', cabin form, applied sloping collar - smooth base, ht. 9", perfect. R/H #K21. A fantastic example, scarce mold, no lip issues, virtually no wear, and bold embossing. One of the great classics, and certainly one that is not getting any easier to find. A good one!

Est.: \$1,800 - \$2,800 • Min. bid: \$900



Lot 185

"S T / DRAKE'S / 1860 / PLANTATION / X / BITTERS - PATENTED / 1862", 1862 - 1880. Medium-to-deep pinkish raspberry, cabin form with 6 logs above the label panel, applied sloping collar - smooth base, ht. 9 7/8", near mint; (just the slightest trace of minor wear, and the embossing is a little weak in the upper shoulders as is not uncommon with this mold, otherwise perfect). R/H #D106. A rare, eye-appealing color that passes plenty of light, and having plenty of pink!

Est.: \$2,000 - \$4,000 • Min. bid: \$1,000



Lot 186

"S T / DRAKE'S / 1860 / PLANTATION / X / BITTERS - PATENTED / 1862", 1862 - 1880. Rich, medium apricot with some beautiful salmon tones through the center and near the base, cabin form with 6 logs above the label panel, applied sloping collar - smooth base, ht. 9 7/8", virtually perfect; (just a couple of tiny, pinhead open bubbles). R/H #D108. A scarce color with excellent character having beautiful, bubbly, glass that passes plenty of light.

Est.: \$400 - \$800 • Min. bid: \$200



Lot 187

Lot of (2), "S T / DRAKE'S / 1860 / PLANTATION / X / BITTERS - PATENTED / 1862", 1862 - 1880. Honey amber and golden amber, 4 log and 6 log, both with applied sloping collars - smooth bases, ht. 10" each; (the 4-log is near mint with some light interior content residue that would likely wash out, and just a trace of wear including a 3/16" onionskin-thin open bubble; the 6-log is perfect). R/H #D110 and D105.

Est.: \$200 - \$300 • Min. bid: \$100



Lot 188

"OLD / HOMESTEAD / WILD CHERRY / BITTERS - PATENT", America, 1865 - 1875. Golden amber, cabin form, applied sloping collar - smooth base, ht. 9 1/2"; (a few flakes, approximately 1/8" to 3/16" each, on one of the side panels, otherwise very near mint). R/H #O37. Beyond the few noted flakes on the side panel, a bright, clean, sparkling example.

Est.: \$200 - \$300 • Min. bid: \$100



Lot 189

"GERMAN - HOP - BITTERS - 1872 - READING MICH" (ghosted hop motif and "DR WARNER'S slugged out), America, 1875 - 1885. Bright, light, yellowish honey coloration, square semi-cabin form, applied sloping collar with ring - smooth base, ht. 9 1/2"; (professionally cleaned with a little very faint haze, barely noticeable, along some of interior the corners, but no other form of damage). R/H #G23. A pretty example - a lot of yellow in this one!

Est.: \$150 - \$250 • Min. bid: \$80



Lot 190

"DR. A.S. HOPKINS / UNION STOM-ACH BITTERS / HARTFORD CONN" (with 99% complete original label on three panels, plus revenue stamp), America, 1882 - 1895. Beautiful olive yellow coloration, square with beveled corners, applied sloping collar - smooth base, ht. 9 3/4", perfect! R/H #H180. Scarce, eye-appealing color, beautiful labels, one with an eagle, exceptional condition, believed to be unique, or possibly one of two, in this mold and state of preservation.

Est.: \$1,500 - \$2,500 • Min. bid: \$800



Lot 191

"TYLER'S / STANDARD / AMERICAN / BITTERS", America, 1870 - 1880. Beautiful, bright honey amber, square with beveled corners, applied sloping collar - smooth base, ht. 9 1/8", sparkling attic mint. R/H #T72. Noted as "Rare" in the Ring - Ham book, and especially so in this beautiful light color and virtually pristine condition. Only the 2nd or 3rd example offered at auction in more than 15 years.

Est.: \$400 - \$800 • Min. bid: \$200



Lot 192

"COCAMOKE - COCAMOKE BITTER CO. / HARTFORD / CONN", America, probably 1883 - 1890. Golden amber with a slight orange tone, square with beveled corners, applied sloping collar - smooth base, ht. 9 1/2"; (a little spotty faint interior haze or residue, and a little minor dullness or haze, primarily on one of the side panels, but otherwise excellent). R/H #C182. Another 'rare square', one of only two to be offered at auction in more than 20 years!

Est.: \$200 - \$400 • Min. bid: \$100



Lot 193

"DR J. HOSTETTER'S / STOMACH BITTERS", a Pittsburgh district glasshouse, 1860 - 1870. Very deep (dense), olive amber, square with beveled corners, applied sloping collar - smooth base, ht. 9 3/4" x 3" wide; (a little light exterior 'bloom' or very faint haze, primarily on one of the side panels, and some typical minor wear, otherwise excellent). R/H #H194. A crude example, this one appears to have a mold repair, slightly less than a dime-size, on one of the beveled corners.

Est.: \$200 - \$400 • Min. bid: \$100



Lot 194

"KIMBALL'S / JAUNDICE - BITTERS - TROY. N.H." (with 99% complete original label), a Stoddard, NH glasshouse, 1850 - 1860. Beautiful, light-to-medium yellowish olive amber, rectangular with beveled corners, applied sloping collar - sand type pontil, ht. 7"; (slight trace of faint wear, otherwise perfect). R/H #K42. A very pretty example, light in color with crude seedy glass, and extremely rare having the virtually complete label. Only the 2nd example in more than 30 years.

Est.: \$1,200 - \$1,800 • Min. bid: \$600



Lot 195

"WARNER'S / SAFE / TONIC BITTERS" ("TRADE / MARK" inside SAFE) / "ROCHESTER, N.Y.", America, 1883 - 1895. Golden amber, oval, tooled round double collar - smooth base, 7 3/8", 1/2 Pt; (lightly cleaned to original luster with just a touch of minor wear remaining on the reverse, and a very slight interior haze, non-distracting, otherwise excellent). R/H #W39; O&S #4. As noted in the Warner's book, a rare mold, this one having good strong embossing.

Est.: \$500 - \$800 • Min. bid: \$250



Lot 196

"BLAKE'S / TONIC AND DIURETIC / BITTER", America, 1885 - 1895. Aquamarine, oval, tooled round double collar - smooth base, ht. 9 3/4", perfect! R/H #B122. Noted by Ring / Ham as "Extremely rare" and deservedly so. This is believed to be only the second example to be offered at public auction in more than 25 years. The other example being damaged was sold in 1995. This example is 'fresh to the market' and virtually pristine condition.

Est.: \$400 - \$800 • Min. bid: \$200



Lot 197

"DANDELION & WILD / CHERRY BITTERS", America, 1865 - 1875.

Aquamarine, cylindrical, applied square collar - smooth base, ht. 8 5/8"; (some light overall interior cloudiness or haze, but no other form of damage, and otherwise near mint). R/H #D14.7. Listed in Ring/Ham as "Extremely rare", a very elusive bottle from the small town of Farmersburgh, Iowa. It is believed to be only the 2nd example offered at auction in more than 20 years.

Est.: \$300 - \$600 • Min. bid: \$150



Lot 198

Lot of (2), Sample Bitters, 1890 - 1900.

1st Ex. **"DR. LOEW'S / CELEBRATED STOMACH BITTERS / AND NERVE TONIC"**. Amber, tooled collar - smooth base, ht. 3 1/2"; (a tiny speck of roughness on lip, otherwise perfect). R/H #L113.
2nd Ex. **"DR. LOEW'S CELEBRATED / STOMACH BITTERS & / NERVE TONIC - THE / LOEW & SONS CO / CLEVELAND, O"**. Bright celery green, tooled collar - smooth base, ht. 3 3/4", near mint (two small open bubbles). R/H #L112.5.

Est.: \$250 - \$450 • Min. bid: \$130



Lot 199

"DR WYNKOOP'S / KATHARISMIC HONDURUS / SARSAPARILLA - NEW-YORK", 1850 - 1860. Medium-to-deep cobalt blue, rectangular with beveled corners, applied sloping collar - heavy blowpipe pontil scar, ht. 10", very near mint; (just a slight trace of light wear, and a little patchy minor content residue or very faint haze in the lower half, otherwise sparkling mint). A top, premier example! This is an attic-type bottle. Outstanding color, condition and strength of embossing.

Est.: \$6,000 - \$12,000 • Min. bid: \$3,000



Lot 200

"DR WYNKOOP'S / KATHARISMIC HONDURUS / SARSAPARILLA - NEW-YORK", 1850 - 1860. Medium-to-deep emerald coloration, rectangular with beveled corners, applied sloping collar - heavy blowpipe pontil scar, ht. 10"; (professionally cleaned; a 3/8" hole in one of the base corners, along with a base-edge chip and associated minor crack, have been professionally repaired to near mint condition). An extraordinary pontiled medicine, great rarity in this color, and top sarsaparilla!

Est.: \$3,000 - \$6,000 • Min. bid: \$1,500



Lot 201

"DR TOWNSEND'S - SARSAPARILLA - ALBANY" / (tilted Cross) "N. Y." - "IIII", 1845 - 1860. Medium-to-deep blue green, square, beveled corners, applied sloping collar (with a square nail embedded during manufacture) - iron pontil scar, ht. 9 1/4"; (a tiny bit of minor roughness on the edge of the lip, and a faint bloom on the shoulders, otherwise perfect). An exceptional Townsend's in a rare mold (four slash + tilted cross), great color, condition, and unique with a nail in the lip!

Est.: \$1,500 - \$2,500 • Min. bid: \$800



Lot 205

"G.W. MERCHANT / CHEMIST / LOCKPORT / N.Y.", probably Lockport Glass Works, Lockport, NY, 1850 - 1860. Rich, medium-to-deep 'Lockport' blue green, cylindrical, applied sloping collar - red iron pontil scar, ht. 7 1/2"; (a tiny, barely pinhead size, bit of roughness on the edge of the lip that you can feel, but is not easy to see, otherwise pristine perfect). A great example that has not been dug and cleaned, and in a rich, deeper color than most.

Est.: \$400 - \$600 • Min. bid: \$200



Lot 202

"DR TOWNSEND'S - SARSAPARILLA - ALBANY / N Y" (4-'Nailhead' Mold), New England, probably an early Stoddard, NH glasshouse, 1845 - 1855. Yellowish olive amber, square with beveled corners, applied sloping collar - sand type pontil scar, ht. 9 1/2", near mint; (a little minor wear, primarily on the label panel, and an interior open bubble in one of the beveled corners). An above average example of this scarce mold, boldly embossed, which is not easy to find.

Est.: \$400 - \$600 • Min. bid: \$200



Lot 206

"FROM THE / LABORATORY - OF / G.W. MERCHANT / CHEMIST - LOCKPORT / N.Y.", probably Lockport Glass Works, Lockport, NY, 1845 - 1860. Medium-to-deep 'Lockport' blue green, rectangular with concave corners, applied sloping collar - blowpipe pontil scar, ht. 5 1/2", virtually perfect; (just a slight trace of very faint wear, otherwise perfect). Another great example in 'attic-type' condition, crisp embossing, scarce with the blowpipe pontil scar.

Est.: \$300 - \$500 • Min. bid: \$150



Lot 203

"DR TOWNSEND'S - SARSAPARILLA - ALBANY / N Y", a New England glasshouse, 1840 - 1860. Medium olive amber, square with beveled corners, applied sloping collar - sand type pontil scar, ht. 9 5/8"; (some scattered light exterior wear including a minor 3/16" open bubble on one of the beveled corners; the embossing is a little light, as is common with this mold, otherwise excellent). A classic, early, New England Townsend's bottle, overall very nice condition.

Est.: \$250 - \$400 • Min. bid: \$130



Lot 207

"S.S. SEELY & Co - MORRIS / OTSEGO. COUNTY - NEW YORK", probably a New York State glasshouse, possibly Lockport or Lancaster, 1850 - 1860. Light sapphire blue, rectangular with beveled corners, applied sloping collar - blowpipe pontil scar, ht. 5 1/8"; (a tiny, paper-thin, 1/8" flake at one of the base corners, otherwise sparkling mint!) An attic-type bottle, fantastic, absolutely beautiful color. Extremely rare in aqua, and believed to be unique in this light sapphire coloration.

Est.: \$1,500 - \$2,500 • Min. bid: \$750



Lot 204

"CARTERS / SPANISH / MIXTURE" (with 90% complete, original, front and back labels), America, 1850 - 1860. Yellowish olive amber, cylindrical, applied sloping collar with bevel - iron pontil scar, ht. 8 5/8", perfect! Odell, pgs. 68 & 69. A great example, and certainly scarce having both original labels. This one is also a bit unusual having a longer neck than most. Label reads in part, *For the removal and permanent cure of all Diseases arising from an Impure state of the Blood...*

Est.: \$600 - \$900 • Min. bid: \$300



Lot 208

"SARGENT & Co - AMERICAN / CANCHALAGOGUE - NEW YORK" (with 95% complete original label), 1850 - 1860. Aquamarine, rectangular with beveled corners, large applied double ring collar - blowpipe pontil scar, ht. 7 1/2", perfect. Odell, p.310. A rare pontiled medicine, and extremely rare, possibly unique, with the label. Believed to be one of only two that have been offered at auction in the past 25 years. Very attractive with the large applied mouth and crude wavy glass.

Est.: \$800 - \$1,200 • Min. bid: \$400



Lot 209

"AMERICAN / OIL - BURKESVILLE - KENTUCKY.", America, 1845 - 1855. Aquamarine, rectangular 'tombstone' form with beveled corners, applied sloping collar - blowpipe pontil scar, ht. 6 3/4", perfect! Odell, p.5. A very scarce-to-rare bottle in any condition, and almost impossible to find in this sparkling, virtually pristine condition. Attractive crude, wavy, pebbly glass. Note; this mold is more difficult to find than the Cumberland River examples.

Est.: \$800 - \$1,200 • Min. bid: \$400



Lot 213

"SHAKER SYRUP - D. MILLER & Co", America, 1845 - 1860. Aquamarine, rectangular with wide beveled corners, applied sloping collar - blowpipe pontil scar, ht. 7 3/8", sparkling attic mint. Odell, p.318. A very scarce Shaker bottle. Bright, clean, sparkling, and heavily whittled, this one is in absolutely pristine condition.

Est.: \$200 - \$400 • Min. bid: \$100



Lot 210

"R.E. WOODWARD'S - VEGETABLE - TINCTURE - SOUTH READING - MASS.", America, 1845 - 1855. Aquamarine, squatty rectangular form with wide beveled corners, applied sloping collar - blowpipe pontil scar, ht. 5 3/4", virtually perfect; (a tiny, onionskin-thin, pinhead flake at base corner, otherwise pristine). Odell, p.263. A scarce pontiled medicine having a great look with it's unusual squatty form, outstanding condition, crude glass, bright, clean and whittled.

Est.: \$400 - \$800 • Min. bid: \$200



Lot 214

"H. HAIGH'S - COMPOUND / SARPAPARILLA - DETROIT", America, probably 1855 - 1860. Rich aquamarine, rectangular with beveled corners, applied double ring collar - iron pontil scar, ht. 9 5/8"; (lightly cleaned to original luster and near mint condition with just a little minor light wear remaining, otherwise perfect). Extremely rare, in fact, believed to be a unique, unlisted, example! Recently discovered by a diver in the St. Clair River, near Harsens Island.

Est.: \$1,000 - \$2,000 • Min. bid: \$500



Lot 211

"DR. Z. PORTER'S / VEGETABLE / MEDICINE.", America, 1845 - 1855. Light aquamarine, rectangular tombstone form, rounded corners, sheared, tooled, thin flanged lip - blowpipe pontil scar, ht. 4", near mint; (a small spot of light haze in corner shoulder; the bottle may have been lightly cleaned, but certainly presents as virtually perfect). Extremely rare, believed to be only the second example offered in more than 20 years! Gary Enters collection.

Est.: \$300 - \$500 • Min. bid: \$150



Lot 215

"GENUINE - SANDS' / SARSAPARILLA - NEW YORK.", America, 1850 - 1860. Aquamarine, rectangular with beveled corners, applied double ring collar - blowpipe pontil scar, ht. 10"; (just a touch of minor wear including a 3/16" flake on the edge of the beveled corner on the reverse, otherwise near mint). Odell, p.310, DeG #188. A scarce Sarsaparilla, impressive size, clean, and with some whittling and waviness to the glass.

Est.: \$200 - \$400 • Min. bid: \$100



Lot 212

"CULLEN'S - ROWAND & WALTON / PHILAD.A - REMEDIES.", America, 1850 - 1860. Aquamarine, rectangular with beveled corners, applied sloping collar - blowpipe pontil scar, ht. 5 3/4"; (professionally cleaned with a little minor light wear remaining, primarily on the reverse; a 1/8" flake on base corner has been lightly buffed, otherwise presents as very near mint). Very scarce. Provenance: Gary Enters collection, Ex. Dr. Sam Greer collection (#440).

Est.: \$200 - \$400 • Min. bid: \$100



Lot 216

"PANKNIN & / PHIN", America, probably 1853 - 1859. Aquamarine, cylindrical, applied round collar with bevel - blowpipe pontil scar, ht. 7", sparkling mint! Charles Panknin & Alexander Finn were druggists in Charleston, South Carolina. The partnership was formed in 1853. This is one of the bottles put out by their firm. A beautiful example, bright, clean, whittled, and with strong embossing. Very scarce in this fine, virtually perfect, condition.

Est.: \$400 - \$700 • Min. bid: \$200



Lot 217

"A & M. LINDSAY'S / LINIMENT," America, probably 1840 - 1845. Aquamarine, cylindrical, sheared, tooled, and inward rolled lip - blowpipe pontil scar, ht. 5 ¾"; (lightly cleaned to original luster and near mint condition; just a very slight touch of wear, otherwise perfect). Odell, p.227. A very scarce-to-rare pontiled medicine from Springfield, Illinois. Bold embossing, clean, bright and sparkling. Gary Enters collection.

Est.: \$200 - \$400 • Min. bid: \$100



Lot 221

"DR G.W. PHILLIPS - RHEUMATIC / LINIMENT - CINCINNATI," America, probably 1855 - 1860. Aquamarine, rectangular with beveled corners, applied double round collar - blowpipe pontil scar, ht. 5 ¼"; (professionally cleaned with a little light internal haze remaining, but no other form of damage). Odell, p.279. Extremely rare! From the same company that put out the Cough Syrup as well as the Diarrhoea Medicine. Provenance: Gary Enters collection.

Est.: \$300 - \$600 • Min. bid: \$150



Lot 218

"L.P. DODGE - RHEUMATIC / LINIMENT - NEWBURG," America, 1850 - 1860. Light bluish green, rectangular with beveled corners, sheared, tooled, and inward rolled lip - blowpipe pontil scar, ht. 5"; (lightly cleaned, a slight bit of light interior residue, and a partially open bubble with a little trapped residue). Odell, p.113. Extremely rare. Believed to be only the first, or possibly second example, offered at auction in more than 25 years. Provenance: Gary Enters collection.

Est.: \$400 - \$600 • Min. bid: \$200



Lot 222

"WYETH'S - EGYPTIAN / LINIMENT," America, 1840 - 1855. Aquamarine, oval, sheared, tooled, inward rolled mouth - blowpipe pontil scar, ht. 5 1/8"; (professionally cleaned to original luster with a little light interior haze or cloudiness remaining, but no other form of damage). This bottle was originally sold back in 2016. At that time, it was believed to be a unique example, and remains so today! The light interior haze could be professionally cleaned, if desired. Gary Enters collection.

Est.: \$300 - \$500 • Min. bid: \$150



Lot 219

"HUNT'S / LINIMENT - PREPARED BY - G.E. STANTON - SING SING N.Y.," America, 1845 - 1860. Rich, deep aquamarine, almost a blue green coloration, rectangular with wide beveled corners, sheared and inward rolled lip - blowpipe pontil scar, ht. 4 ½", beautiful, 'out-of-the-mold' pristine condition. Odell, p.184. A great example having a rich color, crude glass, and crisp, bold embossing.

Est.: \$200 - \$400 • Min. bid: \$100



Lot 223

Lot of (2), "COFFEEN'S" Liniments, Midwest, 1845 - 1855. **"COFFEEN'S - LINIMENT / No 2,"** and, **"COFFEEN'S - CHINESE / LINIMENT / No 3,"** both are aqua, oval, sheared and inward rolled lips - blowpipe pontil scarred bases, 4 ¼" each; (the "No 3" example lightly cleaned, otherwise both are perfect). Scarce to rare. Both are boldly embossed, clean, bright and sparkling. The "No 3" liniments are nice, but available, the "No 2" examples are very hard to find! Gary Enters collection.

Est.: \$300 - \$500 • Min. bid: \$150



Lot 220

"WOODS - ORIENTAL / SANATIVE - LINIMENT," America, 1850 - 1860. Aquamarine, rectangular with beveled corners, sheared, tooled, and inward rolled mouth - blowpipe pontil scar, ht. 4 1/8", near mint; (lightly cleaned to original luster and virtually perfect condition). Odell, p.380. A very rare liniment. Believed to be only the first, or possibly second, example to be offered at auction in more than 20 years. Gary Enters collection.

Est.: \$300 - \$500 • Min. bid: \$150



Lot 224

Lot of (2), "CHINESE / LINIMENT" Bottles, Midwest, 1845 - 1855. **"CHINESE / LINIMENT - PRICE 50 CTS,"** and **"CHINESE / LINIMENT / No 1 - PRICE 50 CTS".** Colorless and aquamarine, flared mouth and inward rolled lip - blowpipe pontil scarred bases, ht. 5" each; (both professionally cleaned; clear example has weak embossing as is sometimes the case; aqua example has some exterior wear and scratches). Clear example is very scarce. Gary Enters collection.

Est.: \$150 - \$300 • Min. bid: \$80



Lot 225

Lot of (2), Pontiled Liniment Bottles, 1850 - 1860. 1st example: **"GERMAN / ARNICA / LINIMENT"**, aquamarine, rectangular, beveled corners, applied round collar with bevel - blowpipe pontil scar, ht. 5 1/8"; (just a trace of light interior haze; a little wear including a 1/4 chip at edge of base). 2nd example: **"A. McECKRON'S / R.B. LINIMENT / N.Y."**, aquamarine, oval, applied sloping collar - blowpipe pontil scar, ht. 5 7/8"; (some light interior haze). Gary Enters collection.

Est.: \$150 - \$250 • Min. bid: \$80



Lot 226

Lot of (2), Pontiled Liniment Bottles, America, 1845 - 1860. 1st example: **"J.T. LANE'S / LINIMENT"**, 2nd example: **"WARD'S / LINIMENT"**. Both are aquamarine, rectangular with beveled corners, sheared, inward rolled lip and applied sloping collars - pontil scarred bases, ht. 4" and 5 1/8" respectively; (1st example professionally cleaned with a little light interior haze remaining; 2nd example lightly cleaned to original luster and near mint condition). Gary Enters collection.

Est.: \$175 - \$350 • Min. bid: \$90



Lot 227

Lot of (2), "MEXICAN / MUSTANG - LINIMENT" Bottles, America, 1850 - 1860. **"MEXICAN / MUSTANG - LINIMENT"**, and **"MEXICAN / MUSTANG - LINIMENT / D.S. BARNES / N.Y."**. Both are aquamarine, cylindrical, sheared and inward rolled lips - blowpipe pontil scarred bases, ht. 3 7/8" & 4"; (1st example with some light interior haze and milkiness, likely dug, but no other damage; 2nd ex. lightly cleaned to virtually perfect condition). Gary Enters collection.

Est.: \$100 - \$200 • Min. bid: \$50



Lot 228

"LYONS / POWDER - B&P / N.Y." (with 99% complete original label), 1870 - 1880. Honey amber, cylindrical, tooled, likely applied, square collar - smooth base, ht. 4 1/8", perfect! KX-1. Scarce with original label which reads in part, **LYON'S / MAGNETIC POWDER, / FOR THE DESTRUCTION OF / INSECTS, ANTS, GARDEN WORMS, & c.** Directions read in part, **"It must be used thoroughly. - Take the flask by the bottom and throw it."**

Est.: \$100 - \$200 • Min. bid: \$50



Lot 229

"LYONS / POWDER - B&P / N.Y.", America, 1855 - 1860. Light champagne coloration with some deeper topaz tones and striations near the base, cylindrical, sheared and inward rolled lip - blowpipe pontil scar, ht. 4 1/4"; (professionally cleaned to original luster with a slight trace of minor wear, and bit of faint spottiness on the interior remaining, otherwise excellent). KX-1; Odell, p.234. An unlisted, extremely rare, possibly unique color. Strong embossing, beautiful and unusual.

Est.: \$400 - \$800 • Min. bid: \$200



Lot 230

"LYONS / POWDER - B&P / N.Y.", America, 1855 - 1865. Light-to-medium pinkish amethyst, cylindrical, sheared, inward rolled lip - blowpipe pontil scar, ht. 4 1/4"; (professionally cleaned to original luster, a little light haze remains on the base, otherwise very near mint). KX-1. This one is amethyst, not puce, and in a light, 'see-through' color. A beautiful example in a scarce color, and lighter in tone than most.

Est.: \$250 - \$450 • Min. bid: \$130



Lot 231

"LYONS / POWDER - B&P / N.Y.", America, 1855 - 1865. Medium-to-deep strawberry puce, cylindrical, sheared, inward rolled lip - blowpipe pontil scar, ht. 4 1/4"; (professionally cleaned to original luster with a little light minor wear remaining; a very slight haze on the interior). KX-1. Sold as a compound to eradicate bed bugs and other insects that plagued many large cities during the mid-19th century. The company was located at 424 Broadway in NYC.

Est.: \$150 - \$250 • Min. bid: \$80



Lot 232

"LYONS / POWDER - B&P / N.Y.", America, 1855 - 1865. Golden amber, cylindrical, sheared, tooled, inward rolled lip - blowpipe pontil scar, ht. 4 1/4"; (lightly cleaned to original luster and near mint condition). KX-1. An attractive, very scarce color, good strength of embossing, excellent condition. The majority of these Lyons Powder bottles are in shades of puce. Pontiled amber examples are few and far between.

Est.: \$200 - \$400 • Min. bid: \$100



Lot 233

"LYONS / POWDER - B&P / N.Y.", America, 1855 - 1865. Deep amber, cylindrical, sheared, tooled, inward rolled lip - blowpipe pontil scar, ht. 4 1/4"; (professionally cleaned to original luster and near mint condition). KX-1. A very scarce-to-rare, hard-to-find color. If you do find an amber example, they are seldom this deep in color. If you are putting together a color grouping, here is a good one to add to the run.

Est.: \$200 - \$400 • Min. bid: \$100



Lot 237

Lot of (2) Bug Bottles, America, 1865 - 1880. 1st example, **"COSTAR'S / N.Y."**, aquamarine, cylindrical, sheared, inward rolled lip - early smooth base, ht. 3 7/8"; (may have been lightly cleaned, but appears as virtually perfect). 2nd example: **"JOHN F. HENRY / N.Y."**, bright honey amber, cylindrical, tooled ring collar - smooth base, ht. 4 1/4"; (lightly cleaned, otherwise very near mint). KX-4 & KX-5. Likely copycats of the much more successful "Lyons Powder" bottles.

Est.: \$175 - \$350 • Min. bid: \$90



Lot 234

"LYONS / POWDER - B&P / N.Y.", 1855 - 1865. Yellowish amber with an olive tone, almost a light olive amber, cylindrical, sheared and inward rolled lip - blowpipe pontil scar, ht. 4 1/4"; (it appears to be a dug bottle, but has not been professionally cleaned, it retains much of its original luster with just a bit of spotty dullness, a minor scratch and light wear; a little light interior stain). The bottle presents very nicely. A light cleaning would bring it to near mint condition. Another rare color.

Est.: \$300 - \$500 • Min. bid: \$150



Lot 238

Lot of (2) Bug Bottles, 1890 - 1900. 1st example: **"THE MAGIC BUG KILLER / PURITAN CHEM. CO" / (IMAGE OF UPSIDE DOWN DEAD BUG) / "PHILA., PA."**, aqua, cylindrical, tooled sloping collar - smooth base, ht. 7 7/8"; (some minor light stain). 2nd example: **"INSEXDOOM / INSECT EXTERMINATOR"** (Reverse same) / **"THE E.R. MARSHALL CO - PHILADELPHIA"**, amber, oval, tooled sloping collar - smooth base, ht. 7 1/2"; (some light stain and wear).

Est.: \$175 - \$350 • Min. bid: \$90



Lot 235

"LYONS / POWDER - B&P / N.Y.", America, 1855 - 1865. Bright, light-to-medium yellowish olive, cylindrical, sheared and inward rolled lip - blowpipe pontil scar, ht. 4 1/4"; (a beautiful example, likely a dug bottle but with original luster, and does not appear to have been cleaned; a little minor light wear, otherwise near mint). Another great example, nice light tone, whittled, and in a beautiful, rare color.

Est.: \$400 - \$600 • Min. bid: \$200



Lot 239

Lot of (2) Bug Bottles, America and France, 1875 - 1910. 1st example: **"DICKS ANT / DESTROYER / FINLAY DICKS & CO. / DISTRIBUTORS / NEW ORLEANS, LA."**, colorless, barrel form, threaded ground mouth with closure, length 5 7/8"; (faint interior haze). 2nd ex: **"INSECTICIDE" / (IMAGE OF BUG) / "VICAT / BREVETE / SGDG"**, aqua, oval, flared and inward rolled mouth - smooth base, ht. 4 1/8"; (some light haze, minor wear). KX-14 & KX-20.

Est.: \$175 - \$350 • Min. bid: \$90



Lot 236

Lot of (3), "LYONS / POWDER - B&P / N.Y.", 1860 - 1875. Lime green, forest green, and clear medium green with a yellowish-mossy tone, cylindrical, narrow square collar and inward rolled lips - all smooth base, ht. 4 1/8", 4 1/4" & 4 1/4"; (lime green example has some light interior stain in one side; forest green example has a little dullness, some scratches and scuffs, primarily on the sides, and the third example has been lightly cleaned to near mint). Scarce-to-rare colors!

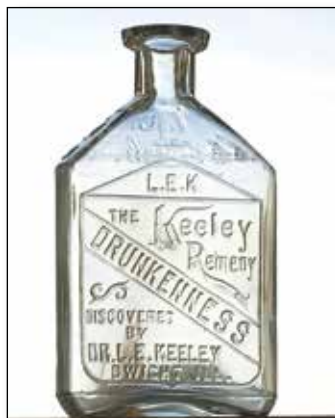
Est.: \$300 - \$500 • Min. bid: \$150



Lot 240

"DR / L.E. KEELEY'S / DOUBLE / CHLORIDE / OF / GOLD CURE / FOR / DRUNKENNESS / A / TESTED / AND / INFALLIBLE / REMEDY / DISCOVERED BY / DR L.E. KEELEY / DWIGHT, ILLS. - K.G.C.", 1890 - 1900. Colorless, rectangular with rounded back, tooled prescription-type collar with pour lip - **"PATENTED / MARCH 18 / 1881"** (on smooth base), ht. 5 1/2"; (a bit of patchy light dullness near base, some very faint interior haze, otherwise excellent). Scarce.

Est.: \$150 - \$250 • Min. bid: \$80



Lot 241

"L.E.K. / THE KEELEY / REMEDY / DRUNKENNESS / DISCOVERED / BY / DR. L.E. KEELEY / DWIGHT, ILL. - K.C. / Leslie E Keeley M.D. - I, T, F, - D", 1895 - 1905. Colorless, rectangular with rounded back, tooled prescription-type collar - smooth base, ht. 5 3/4", very near mint; (the bottle may have been lightly cleaned, but certainly presents as virtually perfect). Another variant of the many Keeley "Drunkenness" molds.

Est.: \$200 - \$300 • Min. bid: \$100



Lot 245

Lot of (2), "SANFORD'S - EXTRACT OF - HAMAMELIS / OR WITCH HAZEL", 1875 - 1885. Deep cobalt and light-to-medium sapphire blue, both rectangular with beveled corners, applied square collar - smooth base, ht. 7 3/8" and 9 1/4" respectively; (cobalt example professionally cleaned to original luster; one of the beveled edges at the base has been lightly buffed, likely to remove a flake; sapphire example has a little light dullness and minor wear; including a touch of interior haze).

Est.: \$200 - \$400 • Min. bid: \$100



Lot 242

"CATARRH / DR KILMER'S / COUGH CURE / CONSUMPTION OIL" (inside debossed lungs) / "SPECIFIC - DR. KILMER & Co. - BINGHAMTON, N.Y.", America, 1890 - 1900. Aquamarine, rectangular with beveled corners, tooled round collar with lower bevel - smooth base, ht. 8 1/2", attic mint! A rare and desirable Kilmer's, 'lung bottle', perhaps the most desirable of all the various Kilmer molds. Many of the existing examples were dug, but not this one!

Est.: \$800 - \$1,200 • Min. bid: \$400



Lot 246

Lot of (2), "HARRISON'S / COLUMBIAN / HAIR DYE" Bottles, America, 1855 - 1865. Aquamarine and colorless, both rectangular 'tombstone' form with beveled corners and arched shoulders, sheared mouths - blowpipe and early smooth base, ht. 3 1/4" and 2 3/8" respectively; (aquamarine example is sparkling mint; small colorless example has a little faint residue or content haze in the shoulder, otherwise perfect). Both very nice examples, scarce in this fine condition.

Est.: \$150 - \$300 • Min. bid: \$80



Lot 243

"TRADE MARK / SPARKS / PERFECT HEALTH" (BUST OF MAN) / "FOR / KIDNEY & LIVER / DISEASES / CAMDEN, N.J.", America, 1885 - 1895. Deep amber, rectangular with wide beveled corners, tooled sloping collar - smooth base, ht. 9 3/8"; (lightly cleaned to original luster and near mint condition, just a bit of very minor wear on reverse, otherwise virtually perfect). A great looking pictorial medicine, excellent condition.

Est.: \$300 - \$500 • Min. bid: \$150



Lot 247

"J. McKENNA" / (Image of Young Girl with Bonnet) / "TONIC" Label-Under-Glass Barber Bottle, 1890 - 1900. Colorless with red, blue and black painted label under glass, gold lettering, detailed image of young girl with long hair and bonnet, cylindrical, threaded and factory ground mouth with original pewter threaded closure - smooth base, ht. 8 5/8", near mint; (a little minor label separation and a couple of small flakes along the edge of the applied glass label). A very rare tonic.

Est.: \$250 - \$450 • Min. bid: \$130



Lot 244

"WARNER'S / SAFE CURE" / (SAFE) / "PRESSBURG.", Germany, 1889 - 1892. Golden amber with an orange tone shading to red near the base, oval, applied blob collar - smooth base, Pt, near mint; (just a minor trace of light wear and a faint, barely noticeable, residue or light haze on the interior of the back panel, otherwise excellent). O&S #72. Rated as "Rare", this one has nice color and character with a pebbly glass appearance along the sides.

Est.: \$200 - \$400 • Min. bid: \$100



Lot 248

"BEARINE / FOR / THE / HAIR" / (BEAR) / "PREPARED FROM THE PURE GREASE OF / THE CANADA BEAR / Hair Beautifier, Preserver & Dressing" Pottery Ashtray, Canada or possibly America, 1890 - 1910. Dark brown transfer pattern over cream glaze, bell form, ht. 6 3/8", dia. 5 1/4"; (some faint, non-distracting crazing lines, otherwise very near mint). A rare, interesting, 'go-with' and advertising piece for the hair bottle collector.

Est.: \$75 - \$150 • Min. bid: \$40



Lot 249

"E.S. REED'S / SONS / APOTHECARY" / (Motif of Jersey Devil) / "ATLANTIC CITY / N.J." (with complete original label), a NJ glasshouse, possibly Whittall-Tatum Co, 1890 - 1900. White milkglass, oval, tooled prescription-type collar, original heart shape stopper - smooth base, ht. 5 3/4" including stopper; (the bottle is mint; label darkened a bit from age). Label reads in part, *REED'S / SUNBURN LOTION / FOR TAN AND SUNBURN*. Scarce with original label and stopper.

Est.: \$75 - \$125 • Min. bid: \$40



Lot 253

"CRYSTAL SPRING CO. / NEW YORK - SARATOGA CRYSTAL / SPRING WATER / N.Y.", America, 1874 - 1880. Aquamarine, cylindrical, applied sloping collar with bevel - smooth base, Pt, virtually attic mint; (a paper-thin 1/8" open bubble on the reverse, otherwise perfect). T# S-18. A very rare Saratoga mineral water that does not come around often. This one is in outstanding condition, bright, clean and sparkling.

Est.: \$800 - \$1,600 • Min. bid: \$400



Lot 250

"GARDNER & LANDON / SHARON / SULPHUR WATER", America, probably a New York State Glasshouse, 1850 - 1860. Medium yellowish olive shading to a deep yellowish olive near the base, cylindrical, applied sloping collar with bevel - sand type pontil scar, Qt, virtually perfect; (slight trace of typical very minor wear, otherwise sparkling mint). T# N-29:A. Note; remnants of an old cork remain in the neck. Very scarce. A great example, strong embossing, beautiful condition.

Est.: \$1,200 - \$1,800 • Min. bid: \$600



Lot 254

"CHAMPION SPOUTING SPRING Co / SARATOGA / SPRINGS N.Y." - "C S S" (monogram), probably Congress & Empire Spring Glass Works, Saratoga, NY, 1876 - 1881. Aquamarine, cylindrical, tooled sloping collar with ring - smooth base, Pt; (a little minor light wear including a tiny, 3/16", paper-thin sliver flake on the edge of the lip; a little light interior milkiness or haze in the shoulder, otherwise excellent). T# S-13:B. Another rare Saratoga mold - seldom offered for sale.

Est.: \$500 - \$1,000 • Min. bid: \$250



Lot 251

"AVON / SPRING WATER", America, probably Saratoga Mountain Glassworks, Mt. Pleasant, NY, 1860 - 1866. Medium-to-deep olive with an emerald tone, cylindrical, applied sloping collar with bevel - smooth base, Qt; near mint; (just a little minor light wear, otherwise, excellent). T# N-3:A. A rare mold in a scarce color, most are in a more pure olive or yellowish-olive tone. In addition, great character as the glass is absolutely filled with tiny seed bubbles.

Est.: \$1,500 - \$2,500 • Min. bid: \$800



Lot 255

"POLAND / WATER - POLAND MINERAL SPRING WATER / H. RICKER & SON'S PROPRIETOR'S", America, 1876 - 1880. Golden amber, figural of Moses, applied sloping collar - smooth base, ht. 10 3/4"; (a little spotty, very light interior milkiness, non-distracting, and some exterior wear, primarily on the reverse). One of the great classics, these figural mineral waters were ordered for the grand opening of the Poland Spring Hotel in 1876.

Est.: \$800 - \$1,200 • Min. bid: \$400



Lot 252

"IODINE SPRING WATER / L / SOUTH HERO. VT.", probably a South Stoddard glasshouse, 1865 - 1873. Medium 'old amber' with a very slight olive tone, cylindrical, applied sloping collar with bevel - smooth base, Qt; (a little light wear on the reverse, and a 1/8", paper-thin, open bubble, otherwise virtually attic mint). T# V-8. Rare! A great example of this hard-to-find mineral water in a scarce color, with bold embossing, and excellent condition!

Est.: \$800 - \$1,600 • Min. bid: \$400



Lot 256

"L.R. CORNELL & Co - SUPERIOR - AERATED - MINERAL - WATER - BROOKLYN", 1850 - 1860. Aquamarine, 8-sided, applied sloping collar - iron pontil scar, ht. 7 1/4"; (some minor exterior wear including a couple of light scratches and a paper-thin 3/16" flake on a panel edge; a little light haze in the neck, otherwise excellent). Extremely rare, believed to be one of only two, or possibly three known examples. Reportedly found in the wall of a house in Wales (UK).

Est.: \$400 - \$800 • Min. bid: \$200



Lot 257

"J. BOARDMAN & Co / NEW YORK - MINERAL WATERS / B / THIS BOTTLE / IS NEVER SOLD", 1850 - 1860. Medium pink with a slight salmon tone, squat soda form, applied sloping collar - iron pontil scar, ht. 7 1/4"; (professionally cleaned with some overall light wear remaining, but no other form of damage). We sold this great bottle in Auction #11, Oct. 2013. Exceptional color, extremely rare, only the 2nd time being offered at auction.

Est.: \$6,000 - \$9,000 • Min. bid: \$3,000



Lot 261

"L.L. BELANT / NEWARK N.J." (in rectangular slug plate), America, 1850 - 1860. Medium cobalt, cylindrical, squat porter form, applied blob collar - iron pontil scar, ht. 6 3/8"; (professionally cleaned with a little minor wear remaining, primarily on the reverse; a little light haze in the neck, some dullness or haze on the base). A very rare New Jersey porter. The "T" of Bellant is believed to be a mold makers error which should have been "D" for Beland, the much more common mold.

Est.: \$800 - \$1,200 • Min. bid: \$400



Lot 258

"W. EAGLE'S / SUPERIOR / SODA & MINERAL / WATERS - W. E. / N. YORK", America, 1850 - 1860. Medium-to-deep blue green with an emerald tone, cylindrical, applied sloping collar - heavy iron pontil scar, ht. 7 1/4"; (some scattered exterior wear, and a narrow 1" open bubble on the interior of the neck, otherwise excellent). The bottle does have some wear as noted, but does not appear to be a dug bottle. Good deep color, very heavy pontil scar.

Est.: \$300 - \$500 • Min. bid: \$150



Lot 262

"COLE & DEAN / NEWARK N.J. - BROWN STOUT" (in rectangular slug plate), America, 1850 - 1860. Bright blue green, cylindrical, squat porter form, applied blob collar - iron pontil scar, ht. 6 3/4"; (lightly cleaned to original luster; a few scratches and a little minor wear, primarily on the reverse, otherwise near mint). Bright and clean, boldly embossed, and extremely rare! Believed to be one of only two, or possibly three, known.

Est.: \$1,000 - \$1,500 • Min. bid: \$500



Lot 259

"BACKUS & PRATT / BINGHAMPTON / N.Y.", America, 1850 - 1860. Rich, deep, bluish aquamarine, almost a teal coloration, cylindrical, applied blob collar - iron pontil scar, ht. 7 1/2"; (professionally cleaned to original luster and near mint condition with a little minor wear and a pin-head body flake remaining). A very scarce-to-rare soda, overall excellent condition, displaying as near mint, and having almost all the original iron remaining in the pontil.

Est.: \$175 - \$350 • Min. bid: \$100



Lot 263

"P. KELLETT / NEWARK / N.J. - K / 1856", America, 1860 - 1870. Clear, medium emerald coloration, cylindrical, porter form, applied blob collar - smooth base, ht. 6 5/8"; (lightly cleaned to origin luster and near mint condition with just some minor light wear remaining). A beautiful example, bright, clean, nice clarity.

Est.: \$150 - \$250 • Min. bid: \$80



Lot 260

"JOHN J. STAFF / 333 / B. WAY. N.Y.", America, 1850 - 1860. Deep yellowish olive amber, cylindrical, squat porter form, large applied blob collar - iron pontil scar, ht. 6 3/4"; (a little scattered light wear, otherwise near mint). A very scarce-to-rare porter bottle that does not come around often. Excellent overall condition, and having nice crude glass filled with tiny bubbles.

Est.: \$500 - \$1,000 • Min. bid: \$250



Lot 264

"A.L. RAPP & Co.S - CELEBRATED - SODA OR - MINERAL WATERS - NEWARK N.J." (reverse "J"), America, 1850 - 1860. Sapphire blue, 10 sided, applied sloping collar - iron pontil scar, ht. 7 1/2", near mint; (a little scattered light wear, otherwise virtually perfect). This one appears to be an 'attic-type' bottle with a fully intact iron pontil. An extremely rare soda, the only "A.L. Rapp" bottle having a NJ address, and in outstanding overall condition.

Est.: \$1,200 - \$1,800 • Min. bid: \$600



Lot 265

"BURGESS' - MINERAL - WATERS - N. O.", America, probably 1846 - 1855. Medium cobalt blue, 8-sided, applied sloping collar - iron pontil scar, ht. 7 1/4"; (professionally cleaned to original luster with a little scattered minor ground wear remaining, but no other form of damage). A scarce, sided, New Orleans soda that is not easy to find. Many of the existing examples have chips, cracks, or other issues. This example displays very nicely.

Est.: \$800 - \$1,200 • Min. bid: \$400



Lot 269

Early Tenpin Soda, America, 1850 - 1865. Medium-to-deep olive coloration, 2-pc. mold 'tenpin' form, sheared mouth with crudely applied ring-type collar - early smooth base, ht. 7 1/2", near mint; (just a slight trace of minor wear, and a tiny, barely noticeable, pinprick bit of roughness on the edge of the lip, otherwise perfect!) A great example, nicely whittled, that appears to be an 'attic-type' find. An elongated, but similar, form to the G.D. Coggeshall bottles.

Est.: \$200 - \$400 • Min. bid: \$100



Lot 266

"SMITH & Co - PREMIUM - SODA WATER - CHARLESTON", America, probably 1851 - 1855. Sapphire blue, 8-sided, applied heavy tapered collar - iron pontil scar, ht. 7 5/8"; (professionally cleaned to original luster with some scattered ground wear and imperfections remaining). The company was believed to have been in business for only a few short years. A scarce soda in green. However, the cobalt examples are considered very scarce-to-rare!

Est.: \$800 - \$1,200 • Min. bid: \$400



Lot 270

Magnum-size, Black Glass Wine Bottle, England, 1820. **"Olmsted / 1820"** (on applied seal). Olive amber, 3-pc. mold, **"PATENT"** (on shoulder), applied sloping collar with bevel - **"H. RICKETTS & Co / GLASS WORKS BRISTOL"** (on base), sand pontil, ht. 13", virtually perfect! Burton, p.852. Rare! Burton indicates there may be an American association with the Olmstead family of New England. A very impressive magnum-sized early seal bottle, outstanding condition.

Est.: \$600 - \$1,200 • Min. bid: \$300



Lot 267

"C. BERRY, / BOSTON. - 1002 / WASHINGTON ST", America, 1860 - 1875. Medium-to-deep blue green, cylindrical, 'pony' or squat soda form, applied blob collar - smooth base, ht. 6 3/4", near mint; (just a slight trace of typical minor wear, and a small patch of dullness, or very faint haze, on one side, otherwise perfect). A great example that has not been dug and cleaned, good rich color, excellent overall condition.

Est.: \$175 - \$350 • Min. bid: \$100



Lot 271

Black Glass Wine Bottle, England or possibly America, 1835 - 1845. **"I. L. M. SMITH / WINE MERCHANT / BALTIMORE"** (on applied oval glass seal). Medium-to-deep olive with an amber tone, dip mold cylinder with lady's-leg neck, applied sloping collar with bevel - kick-up base with sand type pontil scar, ht. 10"; (a little typical minor usage wear and a 3/4" x 1/8" open bubble on the side of the bottle, near the base, otherwise perfect). Burton, p.1252. A scarce, desirable, American seal.

Est.: \$800 - \$1,200 • Min. bid: \$400



Lot 268

"BUFFUM & CO / PITTSBURG - SARSAPARILLA / AND / MINERAL WATER", a Pittsburgh district glasshouse, 1855 - 1865. Medium-to-deep sapphire blue, tenpin form, applied sloping collar - smooth base, ht. 7 3/4"; (an approximately 3/8" iridescent bruise on the inside edge of the lip, and some scattered light wear and minor imperfections including a small bubble with a 1/8" opening in the cover glass). Whittled and beautiful, a very scarce soda!

Est.: \$600 - \$900 • Min. bid: \$300



Lot 272

Black Glass Wine Bottle, England, c. 1810. **"LORD / 18 (Crown) 10 / HENNIKER"** (on applied seal). Bright medium olive, dip mold, applied collar with short bevel - kick-up base with sand type pontil scar, ht. 10 3/8", perfect 'cellar-found' condition. Burton, p. 839. Extremely rare, believed to be one of three, the other two having some form of damage. The town of Henniker, NH was named for Sir John Henniker, 1st Baron. This bottle was blown for John Henniker, 2nd Baron (1752 - 1821).

Est.: \$600 - \$1,200 • Min. bid: \$300



Lot 273

Black Glass Wine Bottle, England, 1809 - 1810. "SIR Wm STRICKLAND BT / 1809" (on applied seal). Yellowish olive below the shoulders shading to a deep olive, virtually black, in the lower half of the body, dip mold cylinder, applied collar and string rim - kick-up base, sand type pontil scar, ht. 10 1/4"; (a little minor wear including a shallow 3/8" chip on the underside of the collar and a couple of open surface bubbles; an iridescent patch of stain near the base). Nice bubbly glass. Scarce.

Est.: \$250 - \$500 • Min bid: \$130



Lot 274

"HdB&C" (on applied seal), half-size Gin Bottle, Dutch, 1860 - 1870. Clear, medium olive green, square case form with sides tapering inward from shoulders to base, applied blob collar - smooth base, ht. 6 3/8", near mint; (just a slight bit of light wear). A great little half-size example, good impression on the seal, and with full original body luster. A scarce little gin from Hoboken de Bie & Co., Rotterdam.

Est.: \$75 - \$125 • Min. bid: \$40



Lot 275

Early, Black Glass Demijohn, America or possibly England, 1870 - 1820. Deep olive amber in the body shading to virtually black through the neck, freeblown, cylindrical with an elongated neck, sheared mouth with crudely applied heavy string ring - sand type pontil scar, ht. 13 3/4", near mint; (some scattered light exterior wear; a little faint 'bloom' to the body, and just a bit of light interior haze in the shoulders, otherwise excellent). A heavy, 'earthy', early demijohn.

Est.: \$500 - \$800 • Min. bid: \$250



Lot 276

Unusual, Rare, Demijohn, New England, possibly a New Hampshire glasshouse, 1840 - 1860. Medium 'old amber' shading to virtually black through the neck, transitional 'bullet-form', cylindrical with six paddled flat sides, applied sloping collar - sand type pontil, ht. 13 1/4", near mint; (some light exterior wear, and a 1/8" chip on the edge of the collar). A most unusual demijohn from two aspects: Scarce form and unique with distinctive soft flattened sides.

Est.: \$800 - \$1,200 • Min. bid: \$400



Lot 277

Demijohn, New England, probably a New Hampshire glasshouse, 1840 - 1860. Medium-to-deep amber with a slight olive tone, shading to virtually black through the neck, transitional 'bullet-form' cylinder with gracefully sloping shoulders, applied sloping collar - sand type pontil scar, ht. 13 1/8", dia. approx. 6 7/8", near mint; (a touch of minor light wear, otherwise perfect). A fantastic example, very scarce-to-rare 'bullet form', nice character and outstanding condition.

Est.: \$800 - \$1,200 • Min. bid: \$400



Lot 278

Demijohn, a Stoddard, NH glasshouse, probably South Stoddard, 1842 - 1860. Bright, yellowish olive coloration, free-blown, cylindrical with sloped shoulders and an elongated neck, applied sloping collar - pushed up base with delicate 'petal' type pontil scar, ht. 12 1/2", attic mint. A beautiful, bright, eye-appealing and unusual color for a Stoddard Demijohn (most being in shades of amber, or olive amber). Note; the base has the classic 'petal-type' pontil associated with Joseph Foster, South Stoddard.

Est.: \$400 - \$800 • Min. bid: \$200



Lot 279

Seedy, Crude, Demijohn, New England, 1845 - 1860. Yellowish golden amber with a slight olive tone, cylindrical, dip mold, applied sloping collar - sand type pontil scar, ht. 14"; (just a slight trace of typical light wear, otherwise perfect). If character is your thing, then this demijohn might deserve to be at the top of your list. The glass is absolutely filled with impurities and potstones (none of which have any issues). Beautiful color, good size, but the take-away is the outstanding character.

Est.: \$300 - \$600 • Min. bid: \$150



Lot 280

Demijohn (in original wooden shipping crate), 1875 - 1885. Golden amber shading to orange amber through the neck, cylindrical, applied sloping collar - smooth base, 5-gal; bottle ht. 23", over-all ht. 26"; (bottle with internal residue, some light wear; box in overall good condition, one of lower handles is missing; some corrosion to existing metal). Stenciling on box: SAFETY DEMIJOHN / 5 GALLS / PATENT APPD FOR / No 227 DOCK ST / PHILAD'A - LIQUOR DEALER / 355 N. St. / PHILADA PA.

Est.: \$200 - \$400 • Min. bid: \$100

A Rainbow of Lyons Powder Bottles



Lot 236 (1 of 3) Lot 230 Lot 229 Lot 234 Lot 235 Lot 231 Lot 236 (1 of 3)

Early Soda & Porter-Type Bottles



Lot 265 Lot 256 Lot 262 Lot 260 Lot 263 Lot 257 Lot 261

Rare & Outstanding Wynkoop's Sarsaparilla Bottles



Lot 200

Lot 199