

American Glass GalleryTM

Auction 26

Opens July 20, 2020

Closes July 28, 2020

Lot 23:
Rare & Important
Lancaster New York
Railroad Flask



Conditions of Sale: Auction #26

1. Absentee Auction

The items in this sale will be sold via absentee auction. Closing date:
July 28, 2020, 11:00 p.m., EST.

2. Our Guarantee Regarding Descriptions

American Glass Gallery has made every attempt to describe correctly the property being sold. Descriptions are guaranteed to be accurate as regards authenticity, age, condition, and measurements to within one-fourth inch, as represented in this catalog. Items in this catalog are not shown to scale. In describing damage, exterior wear or manufacturer's flaws that in our opinion, do not significantly detract visually or monetarily from the value of the item are not listed and will not be considered for refund. The Auctioneers reserve the right to make verbal corrections and provide additional information at any time during the sale.

3. Preview

Items may be viewed by appointment from **July 21, 2020** through **July 27, 2020**.

4. Bidding Procedure

You may submit your bids by mail, phone, FAX, email or through our on-line auction site. If bidding by mail or FAX, please fill out the absentee form and return it to us. Your bid, either written or oral, grants American Glass Gallery the authority to protect you up to the amount of your stated bid. Your bid will not be removed once executed.

Bidding Times: You can submit your bids anytime after receiving your catalog. Bids may be made by phone, daily, until closing day, **July 28, 2020**, from 9 A.M. - 6 P.M. Eastern Time. Incoming phone bids will be accepted on the closing day (**July 28, 2020**) until 11 P.M. Eastern Time. Phone calls and Fax bids after this time will not be honored. No exceptions. You may also place your bids through our on-line auction service 24-hours a day once the site has opened for bidding, on or about **July 20, 2020**, continuing until 11:00 P.M. Eastern Time, **July 28, 2020**.

Please do not wait until the last day or two of the sale to place your bids! Because many collectors wait until the final few days of the sale to place their bids, we anticipate the telephone and internet bidding to be very busy during that period, so please plan accordingly. In the event of a tie bid, the earliest received bid on the lot will take precedent. We would welcome your bids by phone so that we can answer any questions and assist you in your bidding.

You may also telephone us at any time during the auction, prior to the closing of the sale, to check the status of your bids, to find the current bidding level, to open a bid, or to raise a bid on an auction lot.

Bidding Increments are as follows:

Up to \$250.00.....	increments of \$10.00
\$250.00 - \$500.00	increments of \$25.00
\$500.00 - \$1,000.00	increments of \$50.00
\$1,000.00 - \$2,500.00	increments of \$100.00
\$2,500.00 - \$5,000.00	increments of \$250.00
\$5,000.00 - \$10,000.00	increments of \$500.00
\$10,000 & Up.....	increments of \$1,000.00

Bids submitted between the above increments, whether by mail, FAX, email or on-line via the internet, will automatically be lowered to the closest lower increment.

This is a minimum bid auction. Bids below the printed minimum will not be accepted.

An example of how our absentee bidding system works: You bid \$600.00 on a lot which is the highest bid received to date. The second highest bid is \$450.00. The current high bid level would be yours at \$475.00, one bid increment higher than the other collector's bid. Any additional bids submitted by others below \$600.00 will automatically be topped on your behalf by a representative of American Glass Gallery, up to your stipulated high bid amount. If no further bids on this lot are received beyond the \$450.00, and the under bidder has not requested a "Call Back", then you would have won the lot at \$475.00, not the \$600.00 that you were prepared to pay.

American Glass Gallery will at NO TIME disclose bids pledged by others; only the current "High Bid" level of a lot will be stated upon request. The highest bidder as determined by American Glass Gallery shall be the purchaser. It is the sole right of the auctioneer to settle any dispute between bidders and to regulate the bidding procedure. The auctioneer reserves the right to refuse any bid he believes not to have been made in good faith.

5. "Call Back" Process

If requested, the three top bidders of an item at the time of closing will be given a "Call Back" over the next number of days in order to resolve the final sale of an item. You can request this service by "checking" the appropriate box on your absentee bid form or verbal agreement by phone. It is the responsibility of the bidder to insure he has qualified for this service.

Please note: No "Call Backs" will be executed for bids under \$400.00. In the event of tie bids, the earliest bid received will be the winning bid.

An example of how the "Call Back" process works: As an example, you have bid \$600.00 on a particular lot. Another bidder has submitted a bid of \$900.00 on the same lot. Assuming that as of the auction closing date you are among the top three bidders on this lot and you have requested a "Call Back", you would receive a call informing you that you have been "Out Bid" and the current "High Bid" is now at \$650.00. If you choose to continue bidding on this lot, you may now do so. Assuming that you now increase your bid to \$700.00, we would accept your bid but also inform you that we have a higher bid on this lot and must bid \$750.00. At this time, an auction between you and American Glass Gallery, representing the collector who submitted the bid of \$900.00, takes place. This bidding would continue until you drop out, or top the other bidders high bid of \$900.00. If the other bidder has not requested a "Call Back" service, you would be awarded the lot. If however, the other bidder also requested a Call Back, we must now call them. If they elect to increase their bid over your high bid, we would in turn call you back. This back and fourth process would continue until one of the bidders declines to go any farther.

If you have requested a "Call Back", the auctioneers will need to contact you on the days immediately following the auction closing between the hours of 8 A.M. and 9 P.M. Eastern Time. Please supply us with all appropriate contact phone numbers including, home, mobile and work numbers. Bidders must provide the appropriate telephone numbers where they can be contacted. If you will be traveling or otherwise unavailable, bidders with "Call Back" privileges will have the responsibility to contact American Glass Gallery twice daily during the Call Back period.

Please note, every effort will be made to contact you during the "Call Back" period. However, the bidder will forfeit their rights to a "Call Back" if the auctioneers are unable to reach them. American Glass Gallery reserves the right to discontinue Call Backs on any item in the sale (2) two days after the closing date of the sale. At that time, the current "High Bidder" may be awarded the item even if Call Backs are still outstanding.

Conditions of Sale: Auction #26

6. Terms

Successful Bidders, Prompt and full payment is due immediately upon receipt of our invoice. Absolutely no exceptions. Anyone failing to pay for items won will forfeit all rights to bid in any future American Glass Gallery sales. **Any late or delayed payments may result in loss of return privileges for items purchased in the sale.**

No Items Will Be Mailed Before Full Payment Is Received.

Buyer Premium: Our buyer premium remains unchanged. **It is 15% if paying by cash or check, discounted from 18% if paying by Credit Card or PayPal** (PayPal payment account: jpastor@americanglassgallery.com). This buyer premium will be added to the hammer price as part of the purchase price. For example, if you purchase a lot for \$100.00, you will receive an invoice for \$115.00 if paying by cash, check or money order, plus any applicable sales tax or shipping charges.

Taxes: If you are a Michigan resident, a 6% sales tax will be added to your bill unless you have a valid resale number registered with us.

Shipping: Shipping, handling and insurance are extra. We ship insured via U.S. Mail. These charges will be added to your bill unless the lots are picked up in person. Oversize packages (boxes with dimensions over 12"), may incur additional shipping charges based on the postal zone of destination. Our charges for shipping (excluding foreign shipments and oversized lots) are \$18.00 for the first item, \$9.00 for each additional item together with extra insurance costs (we use current U.S. Postal Service insurance rates).

Please allow two to three weeks for delivery after receipt of your check.

Payment: American Glass Gallery accepts Cash, Money Orders, Personal Checks, Visa, MasterCard, American Express and PayPal. **If paying by Credit Card or PayPal, an additional 3% will be added to the invoice total.**



7. Refunds

Refunds will be given at the discretion of the Auctioneers. Items purchased must be examined and request for refund made immediately upon receipt of the item or items. Since opinions can differ, particularly in the matter of condition, the Auctioneers will be the sole judge in the consideration of refunds. Refunds requested on the grounds of authenticity must be made within 15 days of the date of the auction, and such refund requests must be accompanied by at least one supporting statement in writing from an authority recognized by the Auctioneers. It is the Auctioneers sincere intention to consider any reasonable request for a refund. **Absolutely no returns for any reason after 30 days following the closing of the sale.**

8. Bidding on any item indicates your acceptance of these terms.



American Glass Gallery™

John R. Pastor
P.O. Box 227
New Hudson, Michigan 48165
Phone: 248.486.0530
Fax: 248.486.0538
www.americanglassgallery.com
email: jpastor@americanglassgallery.com

PLEASE NOTE:

The lots offered in this printed catalog are identical to the lots offered in the on-line catalog. However, due to space constraints of the printed catalog, there may be some further information available regarding some of the lots in the on-line auction descriptions.

Please visit us at

www.americanglassgallery.com

and follow the link to the on-line auction.

The link and on-line auction will be available July 20, 2020. A post-auction price list will be available on our website, in printable form, approximately 30 days after the close of the auction.

We encourage you to contact us by phone or email with any questions, for assistance with bidding, or further details or clarification on any of the lots in this sale. Your complete satisfaction and confidence is our goal!

**THANK YOU AND GOOD LUCK
WITH YOUR BIDS!**

Reference Key

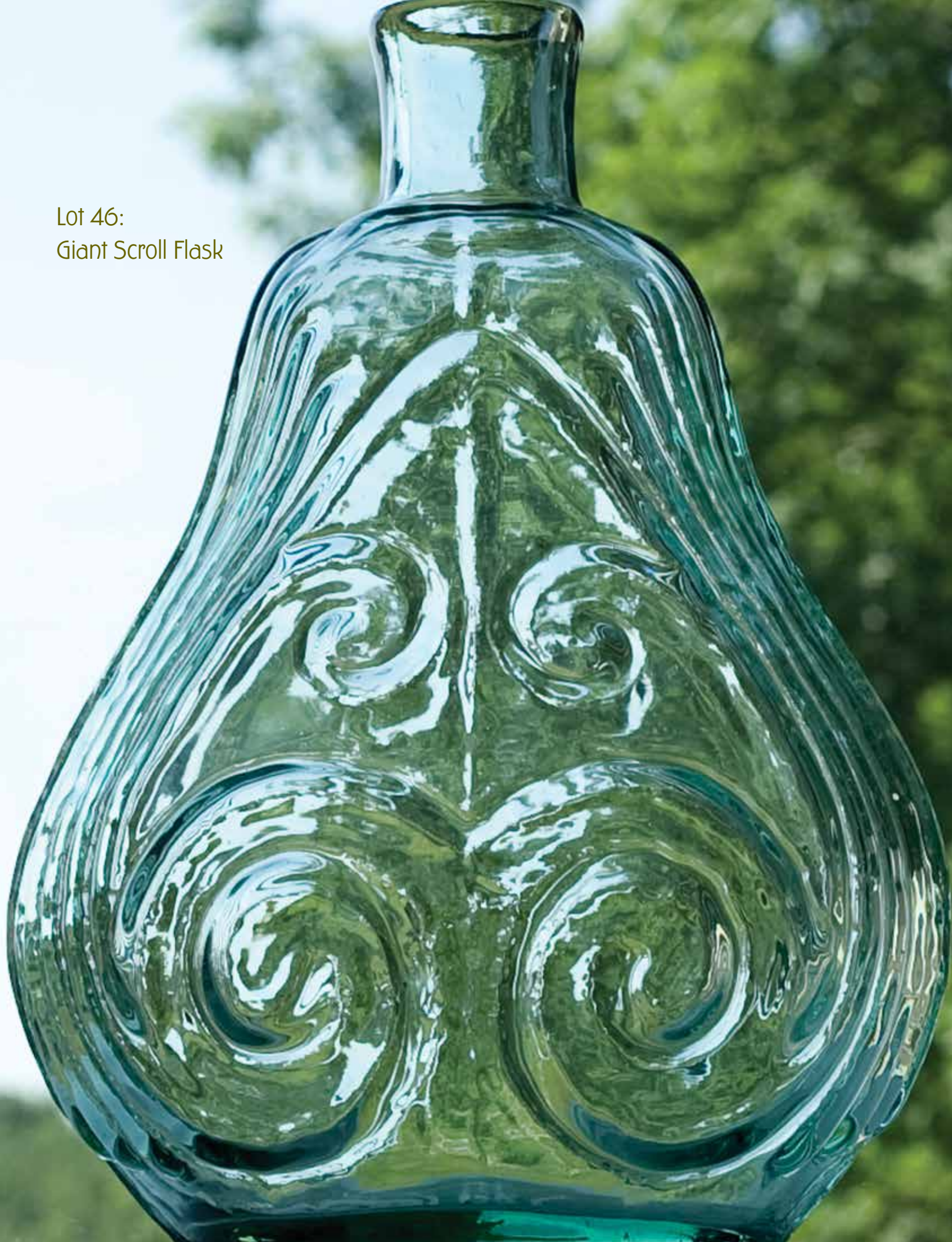
Reference initials and numbers used in the description of this catalog refer to the following publications:

AHG	<i>American Historical Glass</i> , Bessie M. Lindsey, 1967.
AM	<i>The Decanter - An Illustrated History of Glass from 1650</i> , Andy McConnell, 2004.
AP	<i>Glass in Early America</i> , Arlene Palmer, 1993.
BA1	<i>Collecting The Cures</i> , Bill Agee, 1969.
BA2	<i>Collecting All Cures</i> , Bill Agee, 1973.
BB	<i>A Bit About Balsams</i> , Betty Blasi, 1974.
BH	<i>Classification and Documentation of Sunburst and Similar Scent Bottles</i> , Bill Ham, AB&GC, 5/87.
BJ	<i>American Pot Lids</i> , Barbara and Sonny Jackson, 1987.
B/K	<i>The Glass Industry in Sandwich</i> , Raymond Barlow and Joan Kaiser, 1989.
BPK	<i>A.M. BININGER Bottles</i> , Jim Bender, 2017
C	<i>Ink Bottles and Inkwells</i> , William Covill, 1971.
DB	<i>Antique Sealed Bottles, 1640 - 1900</i> , David Burton, 2015
DeG	<i>American Sarsaparilla Bottles</i> , John DeGrafft, 1980.
DeGII	<i>Supplement to American Sarsaparilla Bottles</i> , John DeGrafft, 2004.
DF	<i>Hair Raising Stories</i> , Don Fadely, 1992.
DM	<i>Wistarburgh, Window Tiles, Bottles and More</i> , Dale L. Murscell, 2007.
D/P	<i>Collector's Guide to Candy Containers</i> , Douglas M. Dezso, J. Leon and Rose Poirier, 1998.
F	<i>Inks, 150 Years of Bottles and Companies</i> , Ed and Lucy Faulkner.
FA	<i>John Frederick Amelung, Early American Glassmaker</i> , Lanmon, Palmer, Hume, Brill, Hanson, 1990.
FB	<i>A.S.C.R. The wine bottles of All Souls College</i> , Oxford, 1750 – 1850, Fay Banks.
G	(Flasks) <i>American Bottles & Flasks and Their Ancestry</i> , McKearin & Wilson, 1978.
G	(Blown Three Mold) <i>American Glass</i> (Chapter VI), George S. and Helen McKearin, 1941.
GBH	<i>English Glass For The Collector, 1660-1860</i> , G. Bernard Hughes, 1958.
H	<i>American Bottles in the Charles B. Gardner Collection</i> , Norman C. Heckler, 1975.
JB	<i>Patent and Proprietary Medicine Bottles</i> , Joseph K. Baldwin, 1973
JEB	<i>Glasshouse Whimsies</i> , Joyce E. Blake, 1984.
JH	<i>Glasshouses & Glass Manufacturers of the Pittsburgh Region, 1795 – 1910</i> , Jay W. Hawkins, 2009.
JM	<i>Tea Kettle Ink Price and Reference Guide</i> , Joe L. Mathews Jr., 2016
JS	<i>In glas verpakt – European Bottles, Their history and production</i> , Johan Soetens, 2001.
K	<i>Poison Bottle Workbook</i> , Rudy Kuhn, 1988.
KW	<i>New England Glass & Glassmaking</i> , Kenneth M. Wilson, 1972.
L	<i>The Red Book of Fruit Jars, No. 11</i> , Douglas M Leybourne, Jr., 2014.
LI	<i>Pittsburgh Glass, 1797 – 1891</i> , Lowell Innes, 1976.
Mc	<i>Two Hundred Years of American Blown Glass</i> , Helen and George McKearin, 1950.
McK	<i>American Glass</i> , George S. and Helen McKearin, 1941.
MW	<i>American Bottles & Flasks and Their Ancestry</i> , McKearin & Wilson, 1978.
N	<i>Great American Pontiled Medicines</i> , Frederick Nielson, 1978.
NCH	<i>The Blaske Collection of American Flasks</i> , Norman C. Heckler, 1983.
NCH II	<i>The Blaske Collection: Part II</i> , Norman C. Heckler, 1983.
Odell I	<i>Indian Bottles and Brands</i> , John Odell, 1977
Odell II	<i>Pontiled Medicine Encyclopdia</i> , John Odell, 2007
O&S	<i>Warner's Reference Guide</i> , Ed Ojea and Jack Stecher, 1998.
P	<i>The Glass Gaffers of New Jersey</i> , Adeline Pepper, 1971.
RD	<i>Understanding Antique Wine Bottles</i> , Roger Dumbrell, 1983.
RF	<i>The Bottle Book: A Comprehensive Guide to Historic, Embossed Medicine Bottles</i> , Richard Fike, 1987
RH	<i>Collecting Barber Bottles</i> , Richard Holiner, 1986.
R/H	<i>Bitters Bottles</i> , Carlyn Ring and W. C. Ham, 1998.
RWL	<i>Antique Fakes & Reproductions</i> , Ruth Webb Lee, 1950
T	<i>Collectors Guide to Saratoga Type Mineral Water Bottles</i> , Donald Tucker, 2005.
V	<i>Nailsea Glass</i> , Keith Vincent, 1975
VdB	<i>Antique Glass Bottles; Their History and Evolution</i> , Willy Van den Bossche, 2001.
Z	<i>Ketchup, Pickles, Sauces</i> , Betty Zumwalt, 1980.
ZW	<i>Color Hutchinsons</i> , Zang Wood, 1999.

- The dash is generally used to indicate that the descriptions are on opposite sides of the bottle or flask.

/ The slash is used to indicate that the descriptions are on different lines or surfaces of the bottle.

Lot 46:
Giant Scroll Flask



Beautiful & Rare Fancy Cologne Bottles

Beautiful, ornate, rare — all are appropriate labels for the majority of these fancy cologne bottles.

They exhibit a high level of skill, both on the part of the glassblower, as well as the moldmaker. The molds tend to be rather intricate, highly detailed, and often mimicked popular architectural, cultural and even political themes of the day. Ornate molds often included scrolls, vines, flowers, leaves, animals, sunburst motifs, building and monument features.

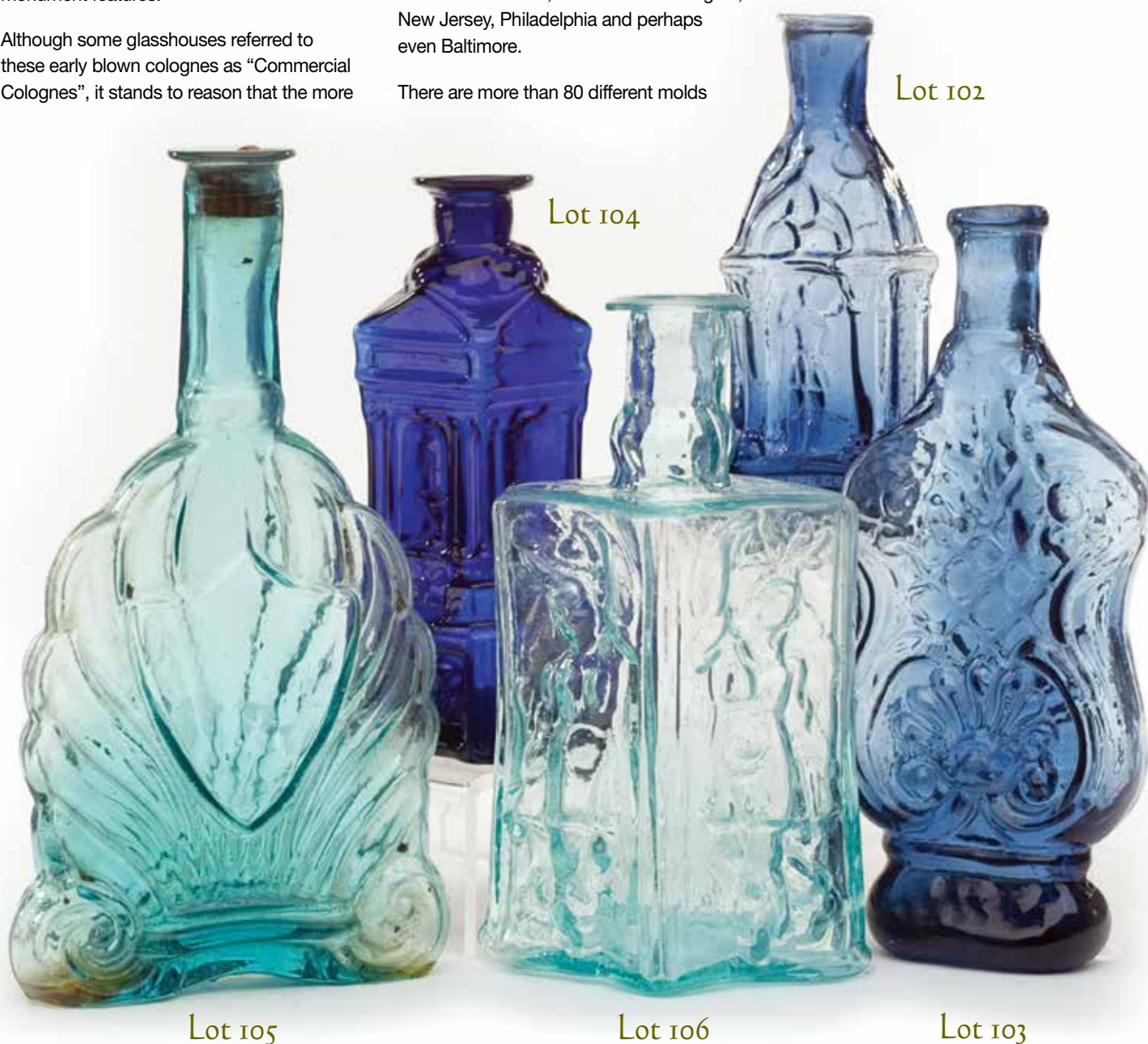
Although some glasshouses referred to these early blown colognes as “Commercial Colognes”, it stands to reason that the more

intricate molds likely held some of the finer, more expensive, perfumes which might be found in the more affluent homes.

Some of the earliest examples were imported from France. However, their popularity soon caught on and American glasshouses stepped in to meet the demand. Per McKearin and Wilson, advertisements date these fancy colognes to as early as the 1830s. Most of these early colognes were likely blown in the South Boston area, the Mid-Atlantic region, New Jersey, Philadelphia and perhaps even Baltimore.

There are more than 80 different molds

pictured in the book, *American Bottles and Flasks*, by McKearin and Wilson. Most of these early cologne molds are very scarce to extremely rare. The great majority were blown in aquamarine, or sometimes colorless glass. Cobalt, milkglass, amethyst, amber and other colors add another degree of scarcity to the mix. Most are still relatively affordable and offer a fun and challenging category for both novice and advanced collectors.



Colorful Midwestern Pillar-Molded Decanters



Rare, Early American Medicine Bottles

Lot 201

Lot 202

Lot 213

Lot 216

Lot 203

Lot 204



Colorful American Bitters Bottles



Lot 180

Lot 171

Lot 173

Lot 182

Lot 186



Lot 1

"WASHINGTON" / BUST OF WASHINGTON - "JACKSON" / BUST OF JACKSON Historical Flask, Keene Marlboro Street Glassworks, Keene, NH, 1825 - 1842. Rich, medium-to-deep olive green with a slight amber tone, sheared mouth - blowpipe pontil scar, Pt; (a little minor light wear and a trace of interior residue in one of the shoulders, otherwise perfect). GI-31. A nice example, scarce in green.

Est.: \$250 - \$450 • Min. bid: \$130



Lot 5

"THE FATHER OF HIS COUNTRY" / BUST OF WASHINGTON - (Reverse plain) Historical Flask, Lockport Glass Works, 1848 - 1855. Beautiful, deep blue green with a teal tone, sheared mouth with a crudely applied large ring-type collar - heavy blowpipe pontil scar, Qt, virtually perfect; (faint trace of wear on reverse; very crude lip and collar with some in-manufacture crazing lines mentioned for complete accuracy). GI-47. Fantastic color, much richer, deeper than most. A top example.

Est.: \$1,200 - \$2,400 • Min. bid: \$600



Lot 2

"WASHINGTON" / BUST OF WASHINGTON - "JACKSON" / BUST OF JACKSON Historical Flask, Keene Marlboro Street Glassworks, Keene, NH, 1825 - 1842. Yellowish golden amber, sheared mouth - blowpipe pontil scar, Pt; (a little light exterior wear, otherwise perfect). GI-31. Another nice example, a bit unusual in this pure amber coloration having no trace of olive. The color contrasts and complements the previous example nicely.

Est.: \$250 - \$450 • Min. bid: \$130



Lot 6

WASHINGTON - TAYLOR Portrait Flask, probably Dyottville Glass Works, Philadelphia, 1848 - 1855. Clear, light-to-medium blue green, sheared mouth - blowpipe pontil scar, ½ Pt, near mint; (a shallow, 3/16" flake from the edge of the sheared mouth, and a tiny 1/8" flake at the edge of the base, otherwise virtually attic mint). GI-56. A comparatively scarce mold, and very scarce-to-rare in color. Only a few examples have been offered in the past 20 years. This is likely the same example that was sold in 2003.

Est.: \$1,000 - \$2,000 • Min. bid: \$500



Lot 3

"THE FATHER OF HIS COUNTRY" / BUST OF WASHINGTON - "DYOTTVILLE GLASS WORKS PHILAD.A / GEN. TAYLOR NEVER SURRENDERS" / BUST OF TAYLOR Historical Flask, Dyottville Glass Works, 1848 - 1855. Rich, medium olive amber, sheared mouth - blowpipe pontil scar, Pt, near mint; (a very slight trace of faint wear and a shallow ¼" open bubble at base edge). GI-38. Scarce, desirable color, beautiful condition.

Est.: \$1,200 - \$2,400 • Min. bid: \$600



Lot 7

"LAFAYETTE" / BUST OF LAFAYETTE / "T.S." - "DE WITT CLINTON" / BUST OF CLINTON / "CONVENTRY / C-T" Historical Flask, Coventry Glass Works, 1824 - 1830. Clear, light yellowish olive, almost an olive yellow coloration, sheared mouth - blowpipe pontil scar, Pt, near mint; (a little high point wear). GI-80. Gorgeous, light 'see-through' color, almost a clear yellow in the shoulders, strong embossing, excellent condition. Provenance: Ex. Tom McCandless collection.

Est.: \$1,000 - \$2,000 • Min. bid: \$500



Lot 4

"THE FATHER OF HIS COUNTRY" / BUST OF WASHINGTON - "DYOTTVILLE GLASS WORKS PHILAD.A / GEN. TAYLOR NEVER SURRENDERS" / BUST OF TAYLOR Historical Flask, 1848 - 1855. Medium-to-deep olive coloration, sheared mouth - blowpipe pontil scar, Pt, virtually perfect; (just an ever-so-slight trace of light wear). GI-38. Another great example, this one having above average, strong embossing (many examples are weak), and almost no wear.

Est.: \$1,200 - \$2,400 • Min. bid: \$600



Lot 8

"LAFAYETTE" / BUST OF LAFAYETTE / "COVENTRY / C-T" - STARS AND LIBERTY CAP / "S & S" Historical Flask, Coventry Glass Works, Coventry, CT, 1824 - 1830. Bright yellowish olive amber below the shoulders shading to a medium olive amber in the base and neck, sheared mouth - blowpipe pontil scar, Pt; (just a slight trace of very minor wear, otherwise perfect!) GI-85. A fantastic example, strongly embossed, good color and clarity. Provenance: Ex. Blaske collection.

Est.: \$600 - \$1,200 • Min. bid: \$300



Lot 9

"LAFAYETTE" / BUST OF LAFAYETTE / "COVENTRY / C-T" - STARS AND LIBERTY CAP / "S & S" Historical Flask, Coventry Glass Works, Coventry, CT, 1824 - 1830. Yellowish olive amber, sheared mouth - blowpipe pontil scar, 1/2 Pt; (a small sandgrain with a couple of tiny 1/8" 'legs', and just a faint trace of wear, otherwise perfect). GI-86. Despite the noted minor issue, it is a beautiful example with crisp, bold embossing, and excellent character having crude seedy glass.

Est.: \$400 - \$600 • Min. bid: \$200



Lot 10

"BENJAMIN FRANKLIN" / BUST OF FRANKLIN - "T.W. DYOTT, M.D." / BUST OF DYOTT - "WHERE LIBERTY DWELLS THERE IS MY COUNTRY - KENSINGTON GLASS WORKS PHILADELPHIA", Historical Flask, 1825 - 1835. Aquamarine, sheared mouth - blowpipe pontil scar, Pt, near mint; (a touch of light wear and a small sandgrain near the medial rib with a tiny, very hard to see, 1/16" cooling line, otherwise perfect). GI-94. A nice example, scarce mold.

Est.: \$400 - \$800 • Min. bid: \$200



Lot 11

"KOSSUTH" / BUST OF KOSSUTH - TREE Historical Calabash, America, 1852 - 1860. Bright, medium yellowish apple-green, applied sloping collar - blowpipe pontil scar, Qt; (a slight trace of faint wear, and a minor 1/4" flake at edge of base of the reverse, otherwise sparkling mint!) GI-113. A beautiful example, scarce color, excellent condition! This one would fit nicely in any run of colored Calabash bottles.

Est.: \$400 - \$600 • Min. bid: \$200



Lot 12

EAGLE - FURLED FLAG / "FOR OUR COUNTRY" Historical Flask, Coffin & Hay Glass Manufactory, Hammonton, NJ, 1838 - 1847. Aquamarine, sheared mouth - blowpipe pontil scar, Pt, attic mint; (note, the flask has a slightly weak impression, but is otherwise perfect and undamaged). GII-54. A clean, bright example of this comparatively scarce mold. Dick and Nancy Patterson collection.

Est.: \$150 - \$300 • Min. bid: \$80



Lot 13

EAGLE - CORNUCOPIA Historical Flask, Keene Marlboro Street Glassworks, Keene, NH, 1830 - 1842. Golden amber with an olive tone, sheared mouth - blowpipe pontil scar, Pt; (some high point wear and a trace of light interior residue, otherwise excellent). GII-73a. A good, early, New England flask noted as "Comparatively scarce" by McKearin. John Apple collection.

Est.: \$150 - \$250 • Min. bid: \$80



Lot 14

EAGLE / "GRANITE. / GLASS CO" - EAGLE / "STODARD / N H" Historical Flask, 1855 - 1862. Bright medium olive amber, sheared mouth - blowpipe pontil scar, Qt, virtually perfect; (a paper-thin, in-making, pontil flake extends to the edge of the base, mentioned for complete accuracy). GII-80. Listed in Group C, "Rare Flasks" (#26), and noted by McKearin as "Very rare". A hard flask to find, especially in this fine condition. Beautiful color, great character, outstanding condition.

Est.: \$1,200 - \$1,800 • Min. bid: \$600



Lot 15

CORNUCOPIA - URN Pictorial Flask, Coventry Glass Works, Coventry, CT, 1835 - 1849. Beautiful, light yellowish olive amber, almost an olive yellow coloration, sheared mouth - blowpipe pontil scar, Pt; (some light high point wear, otherwise perfect). GIII-4. Very attractive light 'see-through' color, excellent clarity, great condition. Not necessarily a rare mold, but here is an example that will stand out in a crowd! Provenance: John Apple collection.

Est.: \$150 - \$250 • Min. bid: \$80



Lot 16

MASONIC ARCH - EAGLE / "IP" Historical Flask, Keene Marlboro Street Glassworks, Keene, NH, 1815 - 1830. Bright, medium-to-deep bluish green, sheared mouth - blowpipe pontil scar with iron residue in center, Pt, near mint; (some light exterior high point wear, primarily on the reverse only, otherwise perfect). GIV-1. A gorgeous example, beautiful rich color, deeper than most, outstanding clarity and brightness. Provenance: John Apple collection, Ex. Robert Weekes collection.

Est.: \$500 - \$800 • Min. bid: \$250



Lot 17

MASONIC - EAGLE Historical Flask, New England, probably Keene Marlboro Street Glassworks, Keene, NH, 1815 - 1830. Greenish aquamarine, sheared and tooled ring-type collar - blowpipe pontil scar, Pt; (a little light high point wear; some overall interior residue and faint haze, but no other form of damage). GIV-5. A comparatively scarce mold. Some of the interior residue may wash out, but otherwise should easily clean with just a light professional cleaning.

Est.: \$400 - \$600 • Min. bid: \$200



Lot 18

MASONIC - EAGLE Historical Flask, New England, probably Keene Marlboro Street Glassworks, Keene, NH, 1815 - 1830. Clear, light-to-medium blue green, sheared and tooled lip - sand-type pontil scar, Pt; (a 3/4" sliver chip from the side edge of the base along the medial rib, just a trace of minor wear, and a minor open interior bubble, otherwise excellent). GIV-10. A scarce flask, clean, nice clarity, and with a good impression.

Est.: \$500 - \$800 • Min. bid: \$250



Lot 19

MASONIC ARCH - EAGLE / "KEENE" Historical Flask, Keene Marlboro Street Glassworks, Keene, NH, 1820 - 1830. Yellowish olive amber, sheared mouth - blowpipe pontil scar, Pt, near mint; (just a trace of faint wear and a tiny pinhead open bubble, otherwise perfect). GIV-17. A very nice example, attractive lighter color, crude pebbly glass texture. John Apple collection, Ex. Robert Weekes collection.

Est.: \$200 - \$400 • Min. bid: \$100



Lot 20

MASONIC ARCH - EAGLE / "KCCNC" Historical Flask, Keene Marlboro Street Glassworks, Keene, NH, 1820 - 1830. Medium shading to deep olive amber, sheared mouth - blowpipe pontil scar, Pt, near mint; (a couple of tiny pinhead open bubbles, and a minor in-manufacture pontil flake that extends to the edge of the base, otherwise virtually attic mint). GIV-19. A nice example having almost no wear. John Apple collection, Ex. Robert Weekes collection.

Est.: \$200 - \$400 • Min. bid: \$100



Lot 21

MASONIC - "ZANESVILLE" / EAGLE / "OHIO / J. SHEPARD & Co" Historical Flask, Zanesville Glassworks, Zanesville, OH, 1822 - 1832. Golden amber with some lighter honey tones below the shoulders, sheared mouth - blowpipe pontil scar, Pt, virtually attic mint; (only the slightest trace of light wear, otherwise perfect). GIV-32. A great example of this early Zanesville Masonic flask having almost no wear, a crisp, bold impression, and good color. Provenance: Mary Ballentine collection.

Est.: \$600 - \$1,200 • Min. bid: \$300



Lot 22

ALL SEEING EYE (Inside 6-Pointed Star) / "A D" - RAISED ARM AND 6-POINTED STAR / "G R J A" Historical Flask, probably an early Stoddard, NH glasshouse, 1842 - 1850. Yellowish olive amber, applied sloping collar - smooth base, Pt; (some high point wear, more so on the reverse, and a 5/16" chip below the applied collar that almost certainly occurred in-making). GIV-43. An attractive example with the applied collar and offset neck.

Est.: \$250 - \$350 • Min. bid: \$130



Lot 23

"SUCCESS TO THE RAILROAD" / LOCOMOTIVE - (Reverse same) Historical Flask, Lancaster Glass Works, Lancaster, NY, 1849 - 1860. Clear, medium green, almost an emerald coloration, sheared mouth - blowpipe pontil scar, Pt, perfect! GV-1. A comparatively scarce mold in a rare and outstanding color. In addition, about as nice as you could hope to find with a crisp impression, and virtually 'out-of-the-mold', pristine condition.

Est.: \$8,000 - \$12,000 • Min. bid: \$4,000



Lot 24

"SUCCESS TO THE RAILROAD" / HORSE PULLING CART - (Reverse same) Historical Flask, Keene Marlboro Street Glassworks, Keene, NH, 1830 - 1842. Medium olive amber, sheared mouth - blowpipe pontil scar, Pt; (just a slight trace of wear, otherwise perfect). GV-3. A gutsy, crude example. This one stands apart from the majority of Railroad Flasks having unusually heavy, bold, embossing and almost no wear.

Est.: \$300 - \$500 • Min. bid: \$150



Lot 25

“SUCCESS TO THE RAILROAD” / HORSE PULLING CART - (Reverse same) **Historical Flask**, Keene Marlboro Street Glassworks, Keene, NH, 1830 - 1842. Clear, medium olive green, sheared mouth - blowpipe pontil scar, Pt, near mint; (a little minor light wear and a bit of faint interior residue that would wash out). GV-3. The olive GV-3 is certainly more scarce and difficult to acquire than the amber toned examples.

Est.: \$300 - \$500 • Min. bid: \$150



Lot 29

“CORN FOR THE WORLD” / EAR OF CORN - MONUMENT / “BALTIMORE” Historical Flask, Baltimore Glass Works, 1855 - 1865. Golden amber with a slight orange tone shading to a honey coloration along the sides, applied round collar with bevel - smooth base, Qt; (a little minor high point wear; a light scratch near one of the sides, and a tiny pinhead flake on the edge of the lip, otherwise perfect). GVI-4. A pretty example, nice color and character.

Est.: \$600 - \$900 • Min. bid: \$300



Lot 26

“SUCCESS TO THE RAILROAD” / HORSE PULLING CART - (Reverse same) **Historical Flask**, Keene Marlboro Street Glassworks, 1830 - 1842. Yellowish olive amber, sheared mouth - blowpipe pontil scar, Pt, near mint; (a trace of minor wear and a little interior content residue). GV-4. A beautiful, light, example with excellent clarity. The GV-4's are charted as “Rare”, and deservedly so. They are considerably harder to find than either the GV-3's or GV-5's. Ex. Fred Weck collection.

Est.: \$400 - \$600 • Min. bid: \$200



Lot 30

SUNBURST FLASK, probably Keene Marlboro Street Glassworks, Keene, NH, 1815 - 1830. Clear, light-to-medium green, sheared and tooled mouth - blowpipe pontil scar, Pt; (some interior residue or minor haze that is not terribly distracting, and a little light wear including a 3/16” chip on the edge of one of the heavy corrugated ribs). GVIII-1. A classic early Keene ‘two pounder’ Masonic.

Est.: \$600 - \$900 • Min. bid: \$300



Lot 27

“SUCCESS TO THE RAILROAD” / HORSE PULLING CART - (Reverse same) **Historical Flask**, probably Mt. Vernon Glass Works, Vernon, NY, 1830 - 1846. Light-to-medium olive having no trace of amber, sheared mouth - blowpipe pontil scar, Pt, virtually attic mint; (slight trace of faint wear, otherwise perfect!) GV-5. A gorgeous example with loads of eye-appeal. Outstanding character having beautiful foamy glass filled with tiny bubbles. Great color as well.

Est.: \$400 - \$600 • Min. bid: \$200



Lot 31

SUNBURST FLASK, probably Coventry Glass Works, Coventry, CT, 1815 - 1830. Yellowish olive with a very slight amber tone, sheared mouth - blowpipe pontil scar, Pt, near mint; (a little minor wear otherwise excellent). GVIII-3. A nice example of this early New England Sunburst. Note, remnants of an old cork remain in the neck.

Est.: \$800 - \$1,200 • Min. bid: \$400



Lot 28

“SUCCESS TO THE RAILROAD” / HORSE PULLING CART - (Reverse same) **Historical Flask**, Coventry Glass Works, Coventry, CT, 1830 - 1848. Yellowish olive amber below the shoulders shading to a rich, deep olive amber near the base, sheared mouth - blowpipe pontil scar, Pt, near mint; (a trace of minor high point wear and a bit of faint interior washable residue, otherwise perfect). GV-6. Nice character and condition.

Est.: \$400 - \$600 • Min. bid: \$200



Lot 32

SUNBURST FLASK, Keene Marlboro Street Glassworks, Keene, NH, 1815 - 1830. Yellowish olive with a slight amber tone, sheared mouth - blowpipe pontil scar, Pt, perfect. GVIII-8. A beautiful example, nice crude glass, and with virtually no high point wear, which is so often an issue on this mold.

Est.: \$500 - \$800 • Min. bid: \$250



Lot 33

SUNBURST FLASK, probably Keene Marlboro Street Glassworks, Keene, NH, 1815 - 1830. Light greenish aquamarine, sheared mouth - blowpipe pontil scar, ½ Pt, virtually perfect; (a minor pinhead bit of roughness on one of the corrugated edges, otherwise pristine). GVIII-15. A great example, bright, clean, sparkling, excellent clarity, and in virtually perfect condition.

Est.: \$800 - \$1,200 • Min. bid: \$400



Lot 37

SUNBURST FLASK, Baltimore Glass Works, Baltimore, MD, 1820 - 1830. Very deep 'rootbeer' amber, almost black in reflected light, sheared mouth - blowpipe pontil scar, ½ Pt; (a little light wear including a minor pinhead flake on the inside edge of the lip; a slightly weak impression, otherwise perfect). GVIII-24. A comparatively scarce flask that does not come around often, especially in color.

Est.: \$1,400 - \$2,400 • Min. bid: \$700



Lot 34

SUNBURST FLASK, probably an early Connecticut glasshouse, possibly Coventry Glass Works, or Pitkin Glass Works, East Hartford, CT, 1815 - 1830. Yellowish olive green, sheared mouth - blowpipe pontil scar, ½ Pt, virtually attic mint; (just the slightest trace of faint wear, and some washable dried content residue, otherwise perfect). GVIII-16. A very nice example, excellent character with plenty of tiny bubbles, great condition!

Est.: \$500 - \$1,000 • Min. bid: \$250



Lot 38

SUNBURST FLASK, Baltimore Glass Works, Baltimore, MD, 1820 - 1830. Light greenish aquamarine, sheared mouth - blowpipe pontil scar, ½ Pt, perfect! GVIII-25. A beautiful little example, desirable and comparatively scarce mold, great eye appeal, and not easy to find in this virtually flawless condition. Provenance: John Apple collection.

Est.: \$300 - \$500 • Min. bid: \$150



Lot 35

SUNBURST FLASK, Coventry Glass Works, Coventry, CT, 1815 - 1830. Light, yellowish olive amber, sheared mouth - blowpipe pontil scar, ½ Pt, virtually perfect; (a tiny pinprick bit of roughness on the edge of the lip, and only the faintest trace of wear, otherwise sparkling attic mint). GVIII-18. A great example in a very pretty, light color, almost a clear olive yellow through the shoulders, outstanding condition.

Est.: \$800 - \$1,200 • Min. bid: \$400



Lot 39

SUNBURST FLASK, Baltimore Glass Works, Baltimore, MD, 1820 - 1830. Light aquamarine, sheared mouth - blowpipe pontil scar, Pt, attic mint; (faint trace of washable interior residue). GVIII-26. A comparatively scarce flask, delicate light glass, wonderful condition. We would make an argument that this mold should be classified as "Scarce", rather than Comparatively Scarce. A mold that does not come around often.

Est.: \$400 - \$600 • Min. bid: \$200



Lot 36

SUNBURST FLASK, probably Baltimore Glass Works, Baltimore, MD, 1820 - 1830. Pale green, almost a Vaseline tone, sheared mouth - blowpipe pontil scar, Pt, very near mint; (just a slight trace of minor wear including a tiny pinhead flake on the side edge of the flask, otherwise perfect). GVIII-22. Scarce. A bright, clean, beautiful example, attractive, delicate color.

Est.: \$400 - \$800 • Min. bid: \$200



Lot 40

SUNBURST FLASK, Baltimore Glass Works, Baltimore, MD, 1820 - 1830. Colorless, sheared mouth - blowpipe pontil scar, ½ Pt, virtually perfect; (a small interior bubble, partially open, with a little minor residue). GVIII-28. Another very nice Sunburst, beautiful condition, comparatively scarce mold, and in a scarce color (most examples are either aquamarine or light blue green).

Est.: \$500 - \$800 • Min. bid: \$250



Lot 41

SUNBURST FLASK, probably a New England glasshouse, 1820 - 1830. Deep aquamarine with a blue green tone, sheared mouth - blowpipe pontil scar, ¾ Pt; (a few small flat flakes, 1/8" or less, along the top inside edge of the lip, and just a slight trace of light wear, otherwise excellent). GVIII-29

Est.: \$175 - \$350 • Min. bid: \$100



Lot 45

Oversized SCROLL FLASK, Midwest, 1840 - 1860. Aquamarine, sheared mouth - blowpipe pontil scar, ht. 11 1/8", slightly over 2 Qts, virtually perfect; (just a very slight trace of faint wear). GIX-29. As noted by McKearin, a rare mold, and deservedly so! A great example, strong color, outstanding condition. These don't come around often. See Mark Vuono's article, "The Gallon Scrolls", AB&GC, June, 2014. Provenance: John Apple collection; Ex. Sam Laidacker, Merritt Vanderbilt collections.

Est.: \$1,000 - \$2,000 • Min. bid: \$500



Lot 42

SCROLL FLASK, Midwest, 1850 - 1860. Brilliant, deep aquamarine, applied ring-type collar - red iron pontil scar, Qt; (just a slight trace of minor light wear, otherwise pristine perfect). GIX-1. A bright, sparkling example, very strong mold impression, rich color, attractive with the ring collar. Not a rare mold, but certainly a choice, top example.

Est.: \$120 - \$180 • Min. bid: \$60



Lot 46

Giant SCROLL FLASK, Midwest, possibly one of the Bakewell glasshouses, Pittsburgh, 1850 - 1860. Greenish aquamarine, sheared mouth - polished pontil scarred base, 12 1/8", 1 gallon, virtually perfect; (a little residue in base). GIX-30. A very rare flask (charted by McKearin as "Extremely rare"), and considered "the granddaddy" of all the giant scrolls. An interesting, very impressive, very rare flask. Provenance: John Apple collection, Ex. Robert Vaughn collection.

Est.: \$1,500 - \$2,500 • Min. bid: \$750



Lot 43

SCROLL FLASK, Midwest, 1845 - 1860. Light golden honey, almost a golden yellow coloration, sheared mouth - blowpipe pontil scar, Qt, near mint; (a shallow ¼" bruise on the inside edge of the lip, possibly occurred when the cork was pried out, otherwise perfect). GIX-2a. Absolutely fantastic color, strong yellowish tones, excellent character, beautiful condition. A very pretty, eye-appealing Scroll Flask.

Est.: \$1,000 - \$2,000 • Min. bid: \$500



Lot 47

HUNTER - FISHERMAN Pictorial Calabash, probably Whitney Glass Works, Glassboro, NJ, 1857 - 1865. Bright golden amber with some lighter honey tones through the center, applied sloping collar - iron pontil scar, Qt, virtually attic mint; (just a slight trace of typical minor wear, otherwise perfect). GXIII-4. A bright, clean, beautiful example.

Est.: \$250 - \$450 • Min. bid: \$130



Lot 44

SCROLL FLASK, Midwest, 1845 - 1860. Medium shading to deep amber, sheared mouth - blowpipe pontil scar, Pt; (just a trace of typical light exterior wear, and a little spotty light interior residue or faint haze, otherwise very near mint). GIX-11. Note; a period metal and cork ring-type stopper remains in the neck.

Est.: \$400 - \$600 • Min. bid: \$200



Lot 48

"WILL YOU TAKE / A DRINK? / WILL A / (Duck) / SWIM? Pictorial Flask, probably Lockport Glass Works, Lockport, NY, 1870 - 1880. Deep bluish aquamarine, tooled sloping collar with ring - smooth base, ½ Pt; (professionally cleaned to original luster with a little minor wear remaining, primarily on the reverse, otherwise perfect). GXIII-29a. A very rare flask, noted as "Extremely rare" by McKearin. This example has a nice rich color, and very strong mold impression.

Est.: \$300 - \$500 • Min. bid: \$150



Lot 49

"GRANITE / GLASS / CO - STODDARD / N H" Lettered Flask, 1855 - 1862. Light, yellowish olive amber sheared mouth - blowpipe pontil scar, tall Pt; (a little minor light wear; a very hard to see, thin, 1 1/4" hairline crack across one end of the pontil that almost certainly occurred in manufacture, otherwise perfect). GXV-8. Beautiful color, bright and clean, heavily whittled. This is the very scarce, taller pint variant, considerably harder to find than the GXV-7 mold!

Est.: \$400 - \$800 • Min. bid: \$200



Lot 53

Pitkin Type Flask, New England, 1790 - 1820. Medium olive through the mid-body, shading to a deep olive through the shoulders and base, patterned with 36 fine ribs swirled to the right, ovoid form, sheared mouth - blowpipe pontil scar, ht. 5 1/4"; (some typical light exterior wear, and a tiny pinprick speck of roughness on the edge of the sheared mouth, otherwise perfect). A classic early New England Pitkin, attractive size.

Est.: \$400 - \$800 • Min. bid: \$200



Lot 50

Early, Decorative Ribbed Flask, possibly Kensington Glass Works, Philadelphia, 1820 - 1838. Aqua, ovoid with 16 vertical ribs - reverse same, sheared mouth - blowpipe pontil scar, 1/2 Pt; (a tiny pinhead flake on the inside edge of the lip, otherwise pristine perfect). MW, plate 123, #9. McKearin notes these may be the type advertised by Dr. Dyott (Kensington Glass Works), in 1824, as "Common Ribbed" pocket bottles. Scarce. A little gem of an example! John Apple collection.

Est.: \$150 - \$300 • Min. bid: \$80



Lot 54

Pitkin Type Flask, Midwest type, probably Pennsylvania or Mid-Atlantic region, 1800 - 1830. Light aquamarine, patterned with 31 vertical ribs over 31 ribs swirled to the right, plump horseshoe form, sheared mouth - blowpipe pontil scar, ht. 6 1/8"; (just the slightest trace of faint light wear, otherwise perfect). Form and pattern similar to MW, plate 89, #9. A scarce and unusual color for this type of flask, almost colorless through the mid-body. Beautiful, bright, clean, and with good tight ribbing.

Est.: \$400 - \$800 • Min. bid: \$200



Lot 51

Early, Decorative Ribbed Flask, possibly Kensington Glass Works, 1820 - 1838. Medium-to-deep forest green, ovoid with 16 vertical ribs - reverse same, sheared mouth - blowpipe pontil scar, 1/2 Pt; (some light to moderate high point wear, several shallow open surface bubbles, a touch of light interior residue). MW, plate 123, #9. A scarce mold, possibly unique color. We sold this beautiful little flask in Auction 11, and still have not seen another in this color. John Apple collection.

Est.: \$1,000 - \$1,500 • Min. bid: \$500



Lot 55

Pitkin Type Flask, America, probably Mid-Atlantic region, 1800 - 1830. Medium sea-green, patterned with 32 vertical ribs over 32 ribs swirled to the right, flattened ovoid body, sheared mouth - blowpipe pontil scar, ht. 6 1/2"; (a little light exterior wear, otherwise very near mint). Similar in form and pattern to MW, plate 89, #5. Some nice bubbles and character to the glass. Note; an early collector tag remains on the base.

Est.: \$300 - \$500 • Min. bid: \$150



Lot 52

Lot of (2), Patterned Flasks, probably Continental, possibly America, 1800 - 1840. 1st example is colorless with a slight smoky amethyst tone in the base, 16 ribs swirled to the right, plump circular body, sheared and flared mouth - blowpipe pontil scar, ht. 4 1/2". 2nd example is colorless with an overall hobnail pattern, chestnut form, sheared mouth - blowpipe pontil, ht. 5 1/8"; (1st ex. with some interior stain, minor wear; 2nd ex. is perfect). Hobnail flask is KU-26. Mary Ballentine collection.

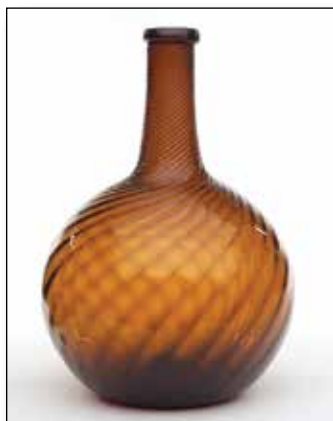
Est.: \$200 - \$400 • Min. bid: \$100



Lot 56

Pitkin-Type Flask, Midwest type, probably Pennsylvania or Mid-Atlantic region, 1810 - 1830. Beautiful golden yellow coloration, patterned with 30 vertical ribs over 30 ribs swirled to the right, flattened ovoid body, sheared mouth - blowpipe pontil scar, ht. 6 1/8", virtually perfect; (just the slightest trace of faint wear, otherwise attic mint). A great example in a very rare and pleasing color. Other than the "clock face" type, Pitkins in this, or any similar color, are extremely rare and difficult to find.

Est.: \$1,200 - \$2,400 • Min. bid: \$600



Lot 57

Pattern Molded Globular Bottle, Midwest, probably Zanesville Glass Works, Zanesville, OH, 1820 - 1840. Medium amber, 24 ribs swirled to the right, globular form, sheared, tooled, and outward folded mouth - blowpipe pontil scar, ht. 6 7/8"; (a little typical faint exterior wear, otherwise perfect). A very nice example of the classic Midwest Zanesville Glob having excellent form, and is also slightly smaller in size than most.

Est.: \$400 - \$600 • Min. bid: \$200



Lot 61

Pattern Molded Beehive Bottle, Midwest, 1835 - 1850. Light-to-medium cornflower blue, 24 ribs slightly swirled to the right, 'beehive' form, applied blob collar - iron pontil scar, ht. 8 1/4"; (a patch of light interior haze in one side, and a little light exterior wear). The ribbing is fairly weak, as is the case with the select few others that exist in a similar color with an iron pontil. Very rare with the iron pontil. Mary Ballentine collection. Almost identical to Lot #33 in the 1987 Ballentine catalog.

Est.: \$400 - \$800 • Min. bid: \$200



Lot 58

Pattern Molded Globular Bottle, Midwest, probably Zanesville Glass Works, Zanesville, OH, 1820 - 1840. Bright golden amber, 24 ribs swirled to the right, globular form, sheared, tooled, and outward folded mouth - blowpipe pontil scar, ht. 7 5/8", near mint; (just a bit of typical light exterior wear, otherwise perfect). A beautiful example, nice light color, bright, clean and sparkling. Provenance: Mary Ballentine collection, Ex. Darl Fifer collection.

Est.: \$400 - \$600 • Min. bid: \$200



Lot 62

Pillar Molded Decanter or Bar Bottle, a Pittsburgh district glasshouse, 1850 - 1865. Soft bluish green, almost a sea-green coloration, bar-bottle or 'porter' form, pillar molded with eight heavy ribs twisted to the left, heavy blob collar with lower ring - blowpipe pontil scar, ht. 10"; (trace bit of faint wear, otherwise perfect). A great piece in a rare and pleasing form, and also a very rare color for a pillar molded bottle. Mary Ballentine collection, Ex. Richard Wood, Crawford Wettlaufer, Wm. Elsholz collections.

Est.: \$1,000 - \$2,000 • Min. bid: \$500



Lot 59

Pattern Molded Globular Bottle, probably Zanesville Glass Works, Zanesville, OH, 1820 - 1840. Brilliant yellowish-honey coloration, 24 ribs swirled to the right, globular form, sheared, tooled, and outward folded mouth - blowpipe pontil scar, ht. 8", near mint; (a little light exterior wear). A very scarce, eye-appealing color with sharp, pronounced ribbing. A lot of yellow in this one, and in certain lighting conditions, there is a slight hint of an olive tone. Mary Ballentine collection.

Est.: \$1,000 - \$2,000 • Min. bid: \$500



Lot 63

Pillar Molded Decanter, a Pittsburgh district glasshouse probably M'Kee & Brothers, 1850 - 1865. Light-to-medium amethyst, decanter form flaring at base, pillar molded with eight heavy ribs twisted to the right through the neck, applied double ring-type collar with period marble stopper - polished pontil scarred base, ht. 11 5/8"; (a little minor usage wear; stopper cage missing a metal prong, otherwise perfect). A beautiful decanter in a rare color. Provenance: Mary Ballentine collection.

Est.: \$800 - \$1,200 • Min. bid: \$400



Lot 60

Pattern Molded Globular Bottle, Midwest, probably an early Pittsburgh district glasshouse, 1810 - 1830. Aquamarine, 18 widely spaced melon-type ribs, globular form, sheared mouth with an applied band - blowpipe pontil scar, ht. 7"; (a faint trace of wear and a bit of interior residue, otherwise perfect). A pleasing example with a bit of a lean, or lopsidedness to the bottle, and strong pronounced ribbing through the shoulders and neck. Provenance: Mary Ballentine collection.

Est.: \$150 - \$250 • Min. bid: \$80



Lot 64

Pillar Molded Decanter, a Pittsburgh district glasshouse probably M'Kee & Brothers, possibly Bakewell or Wm. McCully & Co, 1850 - 1865. Colorless with applied deep cobalt blue ribs, decanter form flaring at base, pillar molded with eight heavy ribs, applied heavy neck collar, applied wide flared mouth with lower ring - polished pontil scarred base, ht. 11 1/2", very near mint; (slight bit of minor wear, otherwise perfect). A classic Pittsburgh pillared decanter. Provenance: Mary Ballentine collection.

Est.: \$300 - \$600 • Min. bid: \$150



Lot 65

Pillar Molded Decanter, a Pittsburgh district glasshouse probably M'Kee & Brothers, 1850 - 1870. Canary yellow, decanter form with sides tapering inward from base to shoulder, pillar molded with eight heavy ribs, applied heavy neck ring, sheared plain lip with period, possibly original pewter cap - polished pontil scarred base, ht. 11 3/4" (with cap), perfect. Another beautiful and hard-to-find color in a pillar molded decanter. Provenance: Mary Ballentine collection.

Est.: \$800 - \$1,200 • Min. bid: \$400



Lot 66

Blown Bar Bottle or Decanter, a Pittsburgh district glasshouse, 1850 - 1870. Medium cobalt blue, cylindrical decanter form with gracefully tapering shoulders, applied heavy neck ring, sheared plain lip with period, likely original pewter cap - blowpipe pontil scar, ht. 12 1/2"; (a couple of light scratches and scattered minor usage wear, otherwise perfect). A heavy, gutsy piece of glass, nice color and condition, especially having the original cap. Mary Ballentine collection.

Est.: \$200 - \$400 • Min. bid: \$100



Lot 67

Early, Freeblown Globular Bottle, America, Midwest or possibly New York State, 1790 - 1820. Clear, medium blue green, globular form, sheared mouth with a crudely applied ring collar - blowpipe pontil scar, ht. 9"; (a trace of typical expected very minor usage wear, otherwise perfect). A very early glob. The applied banded collar is a good 1/8" or more, below the top of the sheared mouth. Beautiful color and clarity, excellent condition. Provenance: Mary Ballentine collection.

Est.: \$175 - \$350 • Min. bid: \$90



Lot 68

Freeblown Beehive Bottle, Midwest, 1820 - 1840. Honey amber, Club or 'Beehive' form, sheared mouth with a crudely applied blob collar - blowpipe pontil scar, ht. 8", near mint; (a little typical minor wear around the mid-body and a thin light ring of interior haze near the base, otherwise perfect). Freeblown beehive bottles in color are rare, and very rare in amber (most being in shades of aqua or light green). A beautiful example, rare and in excellent condition.

Est.: \$400 - \$600 • Min. bid: \$200



Lot 69

Miniature Freeblown Globular Bottle, Midwest, probably Zanesville Glass Works, Zanesville, OH, 1820 - 1840. Medium amber with a slight orange tone, globular form, sheared, tooled, and outward folded collar - blowpipe pontil scar, ht. 3 1/8"; virtually perfect; (just the slightest trace of faint light wear, otherwise pristine). A little sweetheart of a globular bottle, classical Zanesville outward folded collar, very scarce-to-rare size.

Est.: \$400 - \$600 • Min. bid: \$200



Lot 70

Large, Freeblown Globular or Storage Bottle, probably Mid-Atlantic, possibly one of the South Jersey glasshouses, 1845 - 1860. Clear, medium golden amber, globular form, sheared mouth with an applied ring collar - blowpipe pontil scar, ht. 10 3/4"; (some light exterior wear around the mid-body, and some washable light interior residue, otherwise perfect). A very scarce globular bottle, both in terms of color, as well as size.

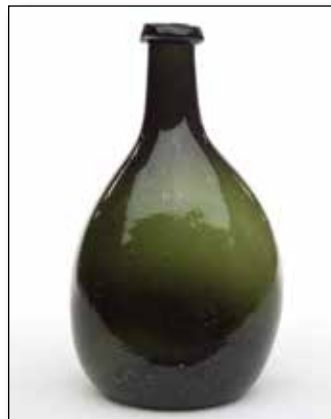
Est.: \$500 - \$1,000 • Min. bid: \$250



Lot 71

Large, Freeblown Chestnut Bottle, South Jersey Type, possibly Wistarburgh, 1760 - 1790. Clear, medium olive with a slight yellowish tone, high-shouldered plump chestnut form, sheared mouth with a heavy rolled, possibly applied, ring collar - blowpipe pontil scar, ht. 11 1/8"; (just a touch of typical minor wear and a slight bit of light interior residue, otherwise perfect). Rare size, good color, excellent condition.

Est.: \$600 - \$1,200 • Min. bid: \$300



Lot 72

Freeblown Chestnut Flask, probably Mid-Atlantic, possibly South Jersey, 1790 - 1820. Rich, medium-to-deep olive coloration, high-shouldered chestnut form, applied string rim - heavy blowpipe pontil scar, ht. 7"; (slight touch of typical light wear, otherwise perfect). Rich color, outstanding character, the glass being exceptionally crude and seedy. This one stands out for its eye-appeal, offset shoulders, rich color and character.

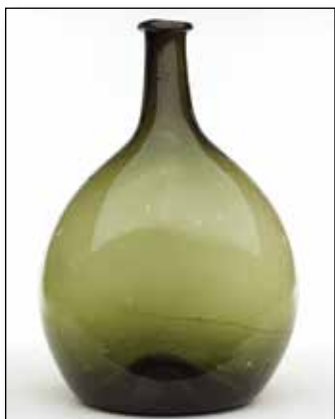
Est.: \$400 - \$800 • Min. bid: \$200



Lot 73

Freeblown Decanter or Table Serving Bottle, Eastern US, Mid-Atlantic or possibly New England, 1815 - 1835. Beautiful honey amber, plump decanter form with slightly flattened sides, applied sloping collar - delicate blowpipe pontil scar, ht. 9 1/8"; (just a trace of very minor wear, otherwise perfect). A beautiful decanter, scarce form and color. The form is indicative of South Jersey, however, the delicate pontil scar and lighter weight are more typical of New England.

Est.: \$600 - \$1,200 • Min. bid: \$300



Lot 74

Large, Freeblown Chestnut Flask, New England, 1785 - 1820. Medium olive, large chestnut form, sheared mouth with an applied ring collar - light blowpipe pontil scar, ht. 10 1/4"; (faint trace of minor wear including an onionskin-thin open bubble, otherwise perfect). A very scarce and desirable size, excellent condition, good form and character with a nice mix of swirls and bubbles throughout the glass.

Est.: \$400 - \$800 • Min. bid: \$200



Lot 75

Freeblown Chestnut Flask, New England, 1785 - 1820. Rich, medium olive amber, chestnut form, sheared mouth with an applied ring-type collar - delicate blowpipe pontil scar, ht. 8"; (slight trace of typical light wear, otherwise perfect). Nice size and form, excellent condition.

Est.: \$250 - \$450 • Min. bid: \$130



Lot 76

Freeblown Chestnut Flask, New England, 1785 - 1820. Delicate, light olive coloration, chestnut form, crudely applied ring-type collar - blowpipe pontil scar, ht. 7 7/8"; (a little typical light exterior wear, otherwise perfect). A very pretty example, nice size (almost 8"), great clarity and character having plenty of tiny bubbles and impurities swirled throughout the glass. John Apple collection.

Est.: \$250 - \$450 • Min. bid: \$130



Lot 77

Freeblown Chestnut Flask, New England, 1785 - 1820. Rich, medium olive with a slight amber tone, chestnut form, sheared mouth with an applied ring-type collar - blowpipe pontil scar, ht. 7", near mint; (a couple of light scratches and typical minor wear). A nice example in a little deeper, pure green coloration, and filled with tiny seed bubbles. John Apple collection.

Est.: \$225 - \$375 • Min. bid: \$120



Lot 78

Freeblown Chestnut Flask, New England, 1785 - 1820. Clear, light yellowish olive amber, almost an olive yellow, chestnut form, sheared mouth with an applied heavy ring-type collar - blowpipe pontil scar, ht. 6 3/4"; (just a trace of expected light wear, otherwise perfect). A very attractive example of a classic New England chestnut flask having nice color and clarity. John Apple collection.

Est.: \$225 - \$375 • Min. bid: \$120



Lot 79

Blown Three Mold Decanter, Keene Marlboro Street Glassworks, Keene, NH, 1820 - 1830. Medium-to-deep olive amber, tapered club form, geometric waffle, sunburst, and diamond pattern, sheared and tooled mouth - blowpipe pontil scar, Qt, perfect. GIII-19. A classic, early, colored 3-mold Keene decanter, excellent condition with no condition issues!

Est.: \$600 - \$1,200 • Min. bid: \$300



Lot 80

Lot of (2), Blown Three Mold Decanters, Keene Marlboro Street Glassworks, Keene, NH, 1820 - 1840. Both are colorless, barrel and club forms, both with geometric waffle-sunburst and diamond patterns, tooled wide flared mouths, one with correct matching GIII-19 pattern stopper, 2nd example with period correct geometric stopper - pontil scarred bases, both Qts; (the barrel form example is perfect; the club form has just a slight trace of interior milkiness), both GIII-19.

Est.: \$200 - \$300 • Min. bid: \$100



Lot 81

Early, Freeblown Wineglass, probably Continental, possibly America, 1780 - 1800. Colorless, nonlead glass, cylindrical funnel-type bowl applied to a hollow trumpet-style knopped baluster stem, unusual high-domed applied foot with pontil scar and inward folded rim, ht. 6 7/8", perfect. A very interesting and early wineglass, crude, yet beautifully executed. It is unusual to find one in such wonderful condition. The rims or foot often succumbed to chipping.

Est.: \$200 - \$400 • Min. bid: \$100



Lot 82

Freeblown Handled 'Coin' Goblet, probably England, 1859 - 1862. Colorless with hemispherical bowl, applied ring of threading at base of neck, sheared and slightly flared rim with fine cranberry threading, applied solid handle curled at lower terminal, applied bulbous hollow stem with 1859 English 3 pence coin, circular disk foot with polished pontil scar, ht. 6 7/8"; (3/4") light scratch on bowl, otherwise perfect). A rare and exquisitely executed early goblet.

Est.: \$300 - \$500 • Min. bid: \$150



Lot 83

Lot of (2), Blown Three Mold Items, America, 1820 - 1840. Both are colorless, cylindrical, deep dish form, wide flaring sides, sheared and outward folded rims - pontil scarred bases. 1st example is 1 3/4" ht. x 4 1/8 diameter, 2nd example is 1 7/8" ht. x 5 7/8" diameter; both virtually perfect; (the 2nd example has a very minor flake on the underside of the folded rim, otherwise perfect). Gill-18 and Gill-24. The Gill-18 example is a scarce form and small size.

7/8" ht. x 5 7/8" diameter; both virtually perfect; (the 2nd example has a very minor flake on the underside of the folded rim, otherwise perfect). Gill-18 and Gill-24. The Gill-18 example is a scarce form and small size.

Est.: \$200 - \$400 • Min. bid: \$100



Lot 84

Lot of (3), Blown Three Mold Items, America, 1820 - 1840. (2), miniature beaver-style hat whimsies, both are colorless, sheared flared brims with upturned sides and inward folded rims, pontil scarred bases, ht. 2" and 2 1/8", both are perfect.

Gill-7 and Gill-23. 3rd item: Salt cellar with pedestal-type base, colorless, tooled and outward flared rim - crimped stem with circular foot, 15-diamond pattern base with pontil scar, ht. 2 1/2", perfect. Gill-18. Scarce.

Est.: \$250 - \$450 • Min. bid: \$130



Lot 85

Early, Freeblown Milk Bowl, America, probably New York State, possibly Midwest, 1820 - 1840. Greenish aquamarine, deep cylindrical bowl with sides flaring slightly to a tooled, outward folded wide rim - solid, glass tipped pontil scar, ht. 6 5/8", rim dia. 8 1/4", base dia. 6 1/4", perfect. A very early, eye-appealing bowl, nice character with some bubbles and impurities swirled through the glass. Excellent condition, nice classic form, large size.

Est.: \$250 - \$450 • Min. bid: \$130



Lot 86

Large, Freeblown Bowl, America, possibly a South Jersey glasshouse, 1840 - 1860. Golden amber, cylindrical with sides tapering slightly to an outward flared wide rim - heavy blowpipe pontil scar, ht. 4 7/8", rim dia. approx. 13", base dia. approx. 6", near mint; (a couple of bubbles, one quite small, that are partially open near the edge of the wide flared rim, otherwise perfect). An impressive bowl and beautiful offhand piece with the wide flared rim.

approx. 6", near mint; (a couple of bubbles, one quite small, that are partially open near the edge of the wide flared rim, otherwise perfect). An impressive bowl and beautiful offhand piece with the wide flared rim.

Est.: \$500 - \$800 • Min. bid: \$250



Lot 87

Freeblown, or likely Dip-Mold, Bowl, America, probably a New York State or possibly Jersey glasshouse, 1850 - 1870. Medium amber, cylindrical, likely dip-mold, straight-sided open bowl, sheared and fire-polished rim - short tooled footed base with blowpipe pontil scar, ht. 3", rim dia. 4 1/2", very near mint; (in-manufacture pontil flake extends to edge of the base, a bit of typical light wear, otherwise perfect). Provenance: Ex. Boo Morcom collection.

Est.: \$200 - \$400 • Min. bid: \$100



Lot 88

Lot of (2), Stemmed Bowls or Goblets, America, Pittsburgh district or possibly Boston, 1830 - 1850. Fiery opalescent milkglass and translucent periwinkle or lavender blue, both with nearly straight-sided bowls, sheared rims - applied pontil scarred baluster stems, footed disk bases with tidy inward folded rims, ht. 4 3/8" and 5" respectively, both are perfect! Both are blown from a high quality 'metal' likely having some degree of lead content. Scarce, beautifully executed bowls.

footed disk bases with tidy inward folded rims, ht. 4 3/8" and 5" respectively, both are perfect! Both are blown from a high quality 'metal' likely having some degree of lead content. Scarce, beautifully executed bowls.

Est.: \$300 - \$500 • Min. bid: \$150



Lot 89

Lot of (2), Freeblown Whimsey items, New England, possibly a Stoddard, NH glasshouse, 1842 - 1860. 1st item, half-size, freeblown rolling pin, deep amber with a reddish-orange tone, length = 10 3/8"; (some moderate-

to-heavy usage wear). 2nd item: Freeblown bowler-form hat with upturned sides, medium-to-deep amber, heavy blowpipe pontil scar, ht. 2 5/8"; (minor wear, otherwise perfect). The pin is a little different form and scarce size. Both from an old NH collection.

Est.: \$250 - \$450 • Min. bid: \$130



Lot 93

Early, Freeblown Storage Jar, England or possibly America, 1810 - 1840. Yellowish olive amber below the shoulders shading to a deep olive amber through the neck and lower half of the body, cylindrical with a wide neck, sheared, tooled flanged lip - sand type pontil scar, ht. 10", very near mint; (a little typical light usage wear, and a narrow band of faint interior haze, barely noticeable, otherwise perfect). Regardless of attribution, a beautiful and very early storage jar, excellent condition.

Est.: \$200 - \$400 • Min. bid: \$100



Lot 90

Freeblown Apothecary Bottle, probably Zanesville Glass Works, 1815 - 1830. Medium-to-deep amber with a slight orange tone, cylindrical, freeblown, sheared, tooled, and outward folded mouth - sand or glass-tipped pontil scar, ht. 6 3/8"; (a little light exterior wear and faint dullness, some interior residue and light stain). See, *Zanesville, Ohio And The Glass Industry*, plate 15. Virtually identical to items excavated at the factory. Dick & Nancy Patterson collection.

Est.: \$150 - \$300 • Min. bid: \$80



Lot 94

Stoddard Food or Storage Jar, a Stoddard NH glasshouse, probably Weeks & Gilson, South Stoddard, 1855 - 1873. Yellowish 'old amber', cylindrical, 3-pc. mold (fashioned from a quart Stoddard whiskey mold), wide neck, sheared mouth with an applied ring lip - smooth base, ht. 8 1/4"; (a little fine light wear along one side, otherwise perfect). A nice example, attractive light color, and excellent character being heavily whittled.

Est.: \$400 - \$600 • Min. bid: \$200



Lot 91

Early Freeblown Utility Bottle, New England, 1800 - 1830. Clear, medium olive green, cylindrical, freeblown or possibly dip-mold, sheared, tooled and outward folded mouth - blowpipe pontil scar, ht. 4 5/8"; (a 1/8" flake on base, possibly in-making, otherwise perfect). A very early and attractive New England utility, and a cut above most, having good color, clarity, and form. Similar to MW, plate 75, #7.

Est.: \$200 - \$300 • Min. bid: \$100



Lot 95

Stoddard Food or Storage Jar, a Stoddard glasshouse, probably Weeks & Gilson, South Stoddard, 1855 - 1873. Beautiful, medium-to-deep reddish amber, cylindrical, 3-pc. mold (fashioned from a qt. Stoddard whiskey mold), wide neck, sheared mouth, crudely applied ring collar - smooth base, ht. 8 1/8"; (some scattered light wear, otherwise perfect). A gorgeous color, heavily whittled, extremely crude lip (some extra glass running down inside the neck). Color and character in spades!

Est.: \$600 - \$900 • Min. bid: \$300



Lot 92

Early Freeblown or Dip-Mold Storage Jar, probably England, possibly America, 1800 - 1830. Bright, medium yellow green, cylindrical, freeblown or possibly dip-mold, sheared, tooled, and outward rolled ring type collar - sand type pontil scar, ht. 7 3/4"; (just a touch of expected light usage wear, otherwise perfect). Regardless of attribution, a great looking jar having crude, syrupy glass, and an attractive squatty appearance.

Est.: \$200 - \$400 • Min. bid: \$100



Lot 96

Petal-Type Preserve Bottle, Willington Glass Works, West Willington, CT, 1860 - 1872. Bright medium amber with some deeper orangey-golden tones through the neck and near the base, cylindrical with fluted shoulders, applied round collar with ring - smooth base, ht. 11 1/4", perfect. MW, plate 73, #3. An excellent example of a classic Willington 'blueberry' bottle having crude, whittled glass, nice color, outstanding condition.

Est.: \$600 - \$900 • Min. bid: \$300



Lot 97

Petal-Type Preserve Bottle, Willington Glass Works, West Willington, CT, 1860 - 1872. Medium-to-deep 'old amber' almost a tobacco tone, cylindrical with fluted shoulders, applied round collar with ring - smooth base, ht. 11 1/4"; (the bottle is perfect, there is a bit of washable interior residue in one side). MW, plate 73, #3. Another nice example, crude whittled glass, virtually perfect condition. Note, the bottle retains several pioneer collector tags on the side and base.

Est.: \$600 - \$900 • Min. bid: \$300



Lot 98

Cathedral Pickle Jar, probably Mid-Atlantic, possibly Crowleytown Glass Works, 1860 - 1870. Rich bluish aqua, square with beveled corners, arched Gothic panels on all four sides, each with palmette at top and small pendant and tulip motif on inner frame, sheared mouth, applied ring collar - smooth base, ht. 11 5/8", perfect! A great example, nice deep color, excellent clarity and sparkling glass. It is interesting to note how many subtle differences there are in the designs of these jars.

Est.: \$250 - \$400 • Min. bid: \$130



Lot 99

Large, Cathedral Pickle Jar, probably Crowleytown Glass Works, 1860 - 1866. Light bluish-green, almost a sea green coloration, square with beveled corners, Gothic panels on all four sides with palmette at top, three panels with fancy pendant and tulip motif on inner frame, sheared mouth, applied ring collar - smooth base, ht. 14", virtually perfect; (a shallow 1/2" open bubble on the inside of the base, mentioned for complete accuracy, otherwise mint). Similar to MW, plate 73, #5. Rare size.

Est.: \$600 - \$1,200 • Min. bid: \$300



Lot 100

(Cross) / "MASON'S / PATENT / NOV. 30TH / 1858", America, 1875 - 1895. Light cornflower blue, cylindrical, threaded neck with ground lip, zinc lid - "PAT NOV 26 67 / 58" on base, Qt, near mint; (a couple of minor, paper-thin, flakes along the top of the ground mouth; the zinc lid has some corrosion and a 1/4" perforation, otherwise perfect). RB# 1938. A great example, attractive and very scarce color, strong embossing, and with some whittling and waviness to the glass.

Est.: \$200 - \$400 • Min. bid: \$100



Lot 101

"THIS TRADE MARK REGISTERED / MAPLE SAP AND BOILED CIDER / VINEGAR / THE C. I. Co. LTD, / EAST RINDGE, N.H.", America, 1885 - 1895. Brilliant cobalt blue, cylindrical with fluted shoulders, tooled sloping collar with ring - smooth base, ht. 11 1/4", attic mint. A beautiful and very impressive bottle. Scarce and desirable, especially in this fine condition. It is interesting that the company chose to use a whiskey mold, as well as the cobalt coloration, to bottle their food product.

Est.: \$500 - \$1,000 • Min. bid: \$250



Lot 102

Fancy Figural Cologne Bottle, America, 1835 - 1855. Sapphire blue, rectangular, in the form of a building or monument with columned corners, standing knight in armor embossed on front panel, Gothic arches, and latticed sides, sheared, crudely tooled mouth - blowpipe pontil scar, ht. 4", perfect. A beautiful cologne, scarce in aquamarine and rare in color. MW, plate 109, #10. Provenance: Ex. James Chebalo collection.

Est.: \$800 - \$1,600 • Min. bid: \$400



Lot 103

Fancy Cologne Bottle, America, 1835 - 1855. Sapphire blue, corseted body with ornate palmette, lattice and scroll pattern, sheared and inward rolled mouth - pedestal-type base with blowpipe pontil scar, ht. 5 1/2", virtually perfect; (a little minor roughness, almost certainly in-manufacture, on the inside edge of the rolled mouth mentioned for complete accuracy). MW, plate 111, #3. Rare. A bright, clean, sparkling example, gorgeous color, virtually pristine condition.

Est.: \$1,000 - \$2,000 • Min. bid: \$500



Lot 104

Figural Fountain Cologne Bottle, 1835 - 1855. Vivid deep cobalt with a slight violet tone, classical fountain architecture with columned corners and arched entries depicting a fountain on all four sides, tooled thin flared mouth - pedestal base with pontil scar, ht. 4 3/8", perfect. MW, plate 113, #4. An exceptional cologne, rare mold, and rare color! MW indicates it may have been an import from France, and also notes on p. 404, that they were blown at two different South Jersey glasshouses.

Est.: \$1,500 - \$3,000 • Min. bid: \$800



Lot 105

Fancy Cologne Bottle, America, 1835 - 1855. Deep aqua, ornate pattern of ribbed flames surrounding a label panel in the form of a shield with scrolls at base corners, sheared, tooled, thin flanged mouth - blowpipe pontil scar, ht. 6"; (a 1/8" flake on the underside and edge of the flared mouth; some washable residue, otherwise perfect). Similar to MW, plate 109, #2, but larger size. A very rare cologne and the first example we can recall seeing in this large size. Ballentine collection.

Est.: \$120 - \$240 • Min. bid: \$60



Lot 106

Fancy Cologne Bottle (motif of dancing Indian), America, 1830 - 1850. Aquamarine, diamond form, two panels with an embossed dancing Indian in high relief - reverse with oval label panels and bow like ornaments, sheared, tooled, thin flanged lip - blowpipe pontil scar, ht. 5"; (just a very slight trace of faint interior haze, otherwise attic mint). MW, plate 108, #10. A very ornate early cologne sometimes referred to as the Pocahontas mold.

Est.: \$120 - \$240 • Min. bid: \$60



Lot 107

"D R" / (Urn and Floral motif) Fancy Cologne Bottle, America or possibly France, 1840 - 1860. Colorless, rectangular with concave corners, applied tooled ring collar - solid glass tipped pontil scar, ht. 5 1/2", perfect; (slight bit of washable content residue). A very rare mold, one that we can find reference to, or have seen before. The "D R" initials are embossed near the base. In addition, an unusual neck and lip treatment for an early cologne bottle.

Est.: \$120 - \$240 • Min. bid: \$60



Lot 108

"PERFUMERS H.P. & W.C. TAYLOR PHILADELPHIA" / (Scene of Washington preparing to cross the Delaware) / "WASHINGTON Crossing The DELAWARE" Pot Lid, 1845 - 1855. Purple transfer pattern on cream glaze, dia. 3 1/2"; (lid has a tiny nick, 1/8" or less, on the edge of the lip with a couple of minor 1/2" hairlines extending from it, and a little, barely noticeable, light wear on the transfer, otherwise excellent; pot has a 5/8" chip on inner edge of the rim). BJ #198.

Est.: \$800 - \$1,600 • Min. bid: \$400



Lot 109

"HOVER - PHILA" Umbrella Ink, America, 1845 - 1860. Light blue green, 8-sided umbrella form, sheared, tooled, and inward rolled mouth - blowpipe pontil scar, ht. 2 1/8", near mint; (lightly cleaned to original luster, a tiny pinhead open bubble on the inside of the neck, otherwise perfect). Faulkner, p.81; C#118. A good clean example, excellent condition.

Est.: \$200 - \$400 • Min. bid: \$100



Lot 110

Teakettle Inkwell, probably America, 1850 - 1870. Medium-to-deep plum amethyst, square teakettle form with tapered sides, four flat side panels and four smaller flat corner panels, beveled around top and base spout with factory ground mouth and original brass neck ring and cap, ht. 1 7/8"; (bottle is perfect; original brass cap is seated on the neck ring, but is detached from the hinge). M#320. Noted as "Very Rare" by Matthews, a beautiful little ink, excellent condition.

Est.: \$300 - \$600 • Min. bid: \$150



Lot 111

"HARRISON'S - COLUMBIAN - INK" - "PATENT" (on shoulder), Master Ink Bottle, America, 1847 - 1860. Aquamarine, 12-sided, large, applied flanged mouth - blowpipe pontil scar, ht. 7 1/8"; (professionally cleaned to original luster, a small, less than 1/2", scratch on a side panel, and 1/8" flake on the edge of the lip, otherwise excellent). C #761. A bright, clean, example with nice whittling and character to the glass.

Est.: \$175 - \$350 • Min. bid: \$90



Lot 112

"FARLEY'S - INK" Master Ink Bottle, An early Stoddard glasshouse, Stoddard, NH, 1842 - 1855. Yellowish olive amber, octagonal, tooled thin flanged lip - blowpipe pontil scar, ht. 3 1/2"; (the thin flanged lip has been replaced, the repair was expertly done, and the bottle displays as attic mint and is otherwise pristine). C#528. Rare size. A pretty, light example, excellent clarity, and crisp, extremely strong embossing. As noted, the repair was professional, the bottle displays as perfect.

Est.: \$300 - \$600 • Min. bid: \$150



Lot 113

"GEO BURRILL" Master Ink Bottle, a Stoddard, NH glasshouse, possibly Granite Glass Co, Mill Village, 1846 - 1862. Medium-to-deep 'old amber', cylindrical, 3-pc. mold, applied sloping collar with bevel - iron pontil scar, ht. 6 7/8", near mint; (a tiny pinhead flake on the edge of the lower bevel, and a hard-to-see, 1/4" rainbow iridescent bruise on the inside edge of the lip, otherwise perfect). A scarce mold, strong embossing, beautifully whittled.

Est.: \$250 - \$450 • Min. bid: \$130



Lot 117

Early Dip Mold Snuff Jar, probably a New England glasshouse, 1830 - 1850. Clear, medium yellowish olive, square with beveled corners, sheared, tooled, and slightly flared mouth - blowpipe pontil scar, ht. 4 1/8", attic mint! A beautiful example, excellent clarity, and slightly smaller in size than most.

Est.: \$300 - \$600 • Min. bid: \$150



Lot 114

"HOENTHAL / BROTHERS & Co / INDELIBLE / WRITING INK / N Y" Master Ink Bottle, a New England glasshouse, 1845 - 1855. Olive amber, cylindrical, applied sloping collar tooled and crimped for pour spout - sand type pontil scar, ht. 9"; (a bubble on the reverse with a 3/8" opening and some residue, otherwise just a slight trace of wear and near mint). A rare and desirable New England master ink with strong embossing, most examples of this mold are fairly weak.

Est.: \$600 - \$1,200 • Min. bid: \$300



Lot 118

Early Freeblown or Dip Mold Snuff Jar, America, 1800 - 1830. Medium lime green coloration, square with narrow corners, rounded domed shoulders, offset neck with sheared, tooled, outward flared mouth - blowpipe pontil scar, ht. 4 3/8"; (some typical minor highpoint wear; two iridescent bruises, both about a 1/4" or less, on one of the base corners). The noted flaw is not readily apparent or terribly distracting. Beyond that, what a great eye-appealing snuff - beautiful and rare color, great character.

Est.: \$300 - \$600 • Min. bid: \$150



Lot 115

Snuff Jar, America, probably a New England glasshouse, 1835 - 1850. Medium olive coloration, rectangular with narrow beveled corners, sheared, tooled, outward flared mouth - blowpipe pontil scar, ht. 5", very near mint; (just a faint trace of wear and some scattered, tiny, onionskin-thin open surface bubbles, otherwise perfect). An outstanding example in terms of character and crudity, the glass is absolutely filled with small seed bubbles and impurities.

Est.: \$500 - \$800 • Min. bid: \$250



Lot 119

"C. BOGARDUS / PATD / APR. 10TH / 1877 / GLASS BALL" Target Ball, America, 1877 - 1900. Yellow with a slight honey tone, quilted diamond pattern, 3-piece mold, rough sheared mouth, dia. 2 5/8", perfect. Very rare! The base-embossed Bogardus mold is considered among the most difficult and challenging of all the various Bogardus molds to acquire. In addition, a very rare color. We do not recall seeing another base-embossed example in yellow.

Est.: \$2,000 - \$4,000 • Min. bid: \$1,000



Lot 116

Early Dip Mold Snuff Jar, New England, 1800 - 1830. Beautiful straw yellow with a slight olive tone, rectangular with concave corners, drawn up neck with sheared, tooled, slightly flared mouth - blowpipe pontil scar, ht. 4 7/8"; (a 1/4" chip on the edge of the sheared lip, otherwise perfect). Beautiful light color, blown from the same type of 'metal' as many of the delicate New England chestnut flasks. This one also having pleasing character and nice crude glass.

Est.: \$200 - \$400 • Min. bid: \$100



Lot 120

"BOGARDUS' GLASS BALL PAT'D APR 10 1877" Target Ball, America, 1877 - 1900. Medium-to-deep golden amber, overall hobnail pattern above and below center band, 3-piece mold, rough sheared mouth, dia. 2 5/8", perfect. An extremely rare target ball. Referred to as the "Hobnail Bogardus", it is one that very few collectors will have, and certainly a key piece for any Bogardus collector. Provenance: Ralph Finch collection.

Est.: \$3,000 - \$5,000 • Min. bid: \$1,500



Lot 121

"BOGARDUS' GLASS BALL PAT'D APR. 10. 1877" Target Ball, America, 1877 - 1900. Medium-to-deep amber, quilted diamond pattern above and below center band, 3-piece mold, rough sheared mouth, dia. 2 5/8", perfect. This is the mold variant with heavy, large embossing, and larger diamond pattern. Scarce. Nice bold impression and embossing. Provenance: Ralph Finch collection.

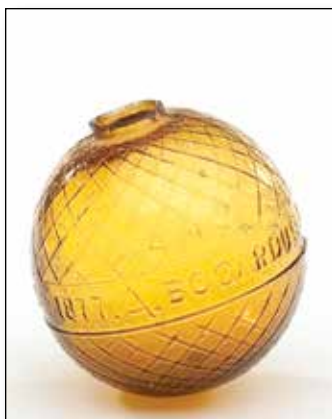
Est.: \$300 - \$500 • Min. bid: \$150



Lot 125

"BOGARDUS' GLASS BALL PATD APRIL 10 1877" Target Ball, America, 1877 - 1900. Medium-to-deep cobalt, quilted diamond pattern above and below center band, 3-piece mold, rough sheared mouth, dia. 2 5/8"; (a few shallow open bubbles, 1/4" or less, and some minor surface roughness near the base; several faint annealing lines near the center band that almost certainly occurred during manufacture, but mentioned for complete accuracy). Crude ball, great color. Ralph Finch collection.

Est.: \$400 - \$600 • Min. bid: \$200



Lot 122

"A. BOGARDUS GLASS BALL PATD APR 10TH 1877." Target Ball, America, 1877 - 1900. Yellowish honey coloration, quilted diamond pattern above and below center band, 3-piece mold, rough sheared mouth, dia. 2 5/8", perfect. Scarce! Note, this is the "A" mold Bogardus ball. Bogardus balls can also be found with "B", "C" and "D" mold initials. Most Bogardus balls however, do not have any letter preceding the name. A beautiful example of a Bogardus ball.

Est.: \$300 - \$500 • Min. bid: \$150



Lot 126

"VAN CUTSEM - A ST QUENTIN" Target Ball, France, 1875 - 1900. Deep, vivid cobalt blue, quilted diamond pattern above and below center band, 3-piece mold, rough sheared mouth, dia. 2 5/8", perfect. A very rich color, deeper than most, having almost a violet tone in the neck and base.

Est.: \$200 - \$400 • Min. bid: \$100



Lot 123

Rare, **"BOGARDUS GLASS BALL PATD APR. 10 1877." - "a"** (within diamond panel) **Target Ball**, probably England, 1877 - 1900. Beautiful, light yellowish honey coloration, quilted diamond pattern above and below center band, 3-piece mold, rough sheared mouth, dia. 2 5/8", perfect. Very rare mold variant with the lower case "a" in the diamond panel. Provenance: Ralph Finch collection.

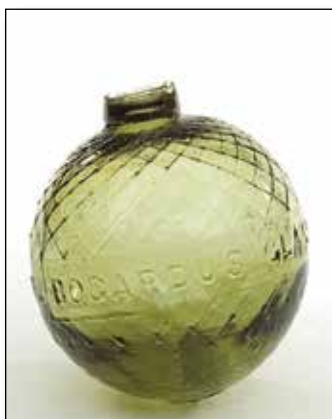
Est.: \$400 - \$600 • Min. bid: \$200



Lot 127

Quilted, Gablonz Target Ball, Czechoslovakia, 1875 - 1900. Dense, black-amethyst, quilted-diamond or crosshatch pattern, 2-piece mold, long neck with rough sheared mouth, dia. 2 3/4", perfect. A rare color for a Gablonz ball, typically found in shades of bright yellow green. It is actually a rare color for any target ball and a color that very few collectors will have. Ex. Ralph Finch collection.

Est.: \$300 - \$500 • Min. bid: \$150



Lot 124

"BOGARDUS' GLASS BALL PATD APRIL 10 1877" - "8" (within diamond panel) **Target Ball**, England, 1877 - 1900. Brilliant yellowish olive, quilted diamond pattern above and below center band, 3-piece mold, rough sheared mouth, dia. 2 5/8", perfect. A gorgeous, very scarce color for a Bogardus Ball, sparkling glass, great eye-appeal. Provenance: Ralph Finch collection.

Est.: \$500 - \$800 • Min. bid: \$250



Lot 128

Concentric Rings Target Ball, America, 1875 - 1900. Bright blue green, patterned with a series of faint, or 'ghosted' concentric rings on both sides of the ball, 2-piece mold, rough sheared mouth, dia. 2 5/8", perfect. A nice example of this scarce target ball having some bubbles and character to the glass. Provenance: Ralph Finch collection.

Est.: \$200 - \$400 • Min. bid: \$100



Lot 129

Target Ball, America, 1875 - 1900. Rich, medium-to-deep plum amethyst, 3-piece mold, crude, rough sheared mouth, dia. 2 5/8" perfect. A beautiful and very scarce color for a target ball, and light enough to be appreciated in normal daylight or a lighted cabinet.

Est.: \$250 - \$450 • Min. bid: \$130



Lot 133

Virtually complete set of On Target! newsletters, 1994 - 2014. 57 issues (only missing issue #2). An immense wealth of information beginning with Ralph's 1st 10 page newsletter, issue #1, and evolving into the 67 page issue #58. Together they represent the most complete body of knowledge on the subject of Target Balls, Traps, and related material ever assembled. Virtually 45 years worth of collecting knowledge packed into these newsletters / magazines.

Est.: \$300 - \$600 • Min. bid: \$150



Lot 130

Lot of (2), Target Balls, America, 1875 - 1900. 1st example is a clear, light-to-medium sapphire blue, 2nd example is a deep vivid cobalt blue, both are 3-piece mold, rough sheared mouths, dia. 2 5/8", and perfect! Both are very attractive colors that compliment one another nicely. The cobalt example is nice rich color with almost a violet tone. Provenance: Ralph Finch collection.

Est.: \$300 - \$500 • Min. bid: \$150



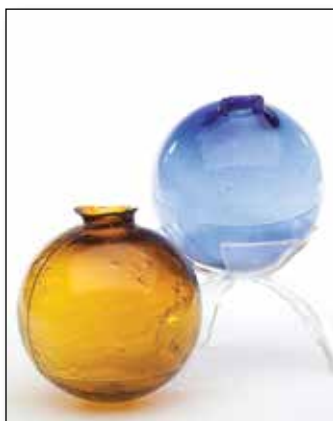
Lot 134

Figural Submarine Candy Container, America, 1915 - 1920. Colorless glass hull with original tin superstructure and flag; lower portion of hull is tin, "GEO. BORGFELDT & CO. / NEW YORK. N.Y. / SERIAL NO. 2862 / NET. WT. 1 1/2 OZ. / PAT APPLIED FOR" embossed in tin

base, length 5 1/2"; (some scratches and wear to base of tin, missing periscope, otherwise excellent). D/P #104. A rare and desirable candy container.

Provenance: Mary Ballentine collection.

Est.: \$200 - \$400 • Min. bid: \$100



Lot 131

Lot of (2), Target Balls, America, 1875 - 1900. 1st example is a bright golden amber, 2nd example is a clear, light cobalt blue, both are 3-piece mold, rough sheared mouths, dia. 2 5/8", both perfect. The amber example is very bubbly and crude with three embossed dots on one shoulder, and an inverted "A" on the opposite shoulder. The light cobalt blue example has excellent clarity and shading of color. Provenance: Ralph Finch collection.

Est.: \$250 - \$450 • Min. bid: \$130



Lot 135

'Bird on Mound' Candy Container, America, 1920 - 1925. Figure of bird standing on stippled mound with flowers and vines, colorless glass with pewter whistle over glass post behind bird, tin closure on base, ht. 2 5/8"; (tip of beak on bird chipped; remnants of original paint remain on bird). D/P #3 (Var. A). Very scarce. Provenance: Mary Ballentine collection.

Est.: \$100 - \$200 • Min. bid: \$50



Lot 132

Black Pitch Target Ball, Greenville, PA, 1880 - 1890. Black pitch, 2-piece mold, "SEPT 9 1879 / CTB / PATENTED / Co / MARCH 9 1880" embossed in circle on base, (some letter and numerals are illegible, as are the majority of the known examples), rough sheared mouth, dia. 2 3/4", near mint. A rare ball, particularly in this better-than-average condition. Very few of these balls survived. Probably made by the Composition Target Ball Co. of Greenville, PA. Ralph Finch collection.

Est.: \$400 - \$800 • Min. bid: \$200



Lot 136

Lot of (2), Bulldog Candy Containers, Victory Glass Co, Jeannette, PA, 1930 - 1935. Both are colorless, figural sitting bulldogs, one example with "U.S.A." embossed between legs; 2nd example with dark brown paint, "3/4 OZ. / AVOR. / U.S.A." embossed between legs, both with original tin screw-on closures, ht. 4"; (both perfect, some paint loss). D/P #18, Var. A; and D/P #18, Var. B. Mary Ballentine collection.

Est.: \$60 - \$120 • Min. bid: \$30



Lot 137

Lot of (2) Candy Containers, 1920 - 1935. 1st Ex: **'Chick in Shell Auto'**, colorless glass with yellow painted chick, white stippled shell, some red paint on wheels, "USA" behind fender, "V" over "G" logo inside hood. 2nd Ex: **'Rabbit pushing Chick in Eggshell**

Cart', colorless with painted yellow chick and gold rabbit, "V.G. CO. / JENET, PA - AVOR 1 OZ" (embossed on cart). Both near perfect, 2nd example missing tin closure). D/P #8 (Var. A), and #61 (Var. B). Mary Ballentine collection.

Est.: \$100 - \$200 • Min. bid: \$50



Lot 141

Car, Flat-Top Hearse, Candy Container, America, 1920 - 1925. Colorless glass with painted green hood, top, fenders and running boards, length 4", ht. 2"; (some paint loss, tin closure missing, otherwise excellent). D/P #166. Very scarce. Mary Ballentine collection.

Est.: \$150 - \$300 • Min. bid: \$75



Lot 138

Lot of (2) Candy Containers, 1910 - 1930. 1st Ex: **'Mule Pulling Water Barrel'**, colorless glass with painted brown mule, red wheels, "JENT, PA. / U.S.A.". 2nd Ex: **'Wheelbarrow'**, colorless with original red tin wheel and snap-on closure, "AVOR. 1 1/8 OZ. /

V.G. CO. / JENET. PA. / U.S.A."; (a couple of minor flakes on wheelbarrow; original closure on water barrel has some relatively minor corrosion; otherwise both excellent). D/P #51 (Var. B), and 531 (Var. A). Mary Ballentine collection.

Est.: \$100 - \$200 • Min. bid: \$50



Lot 142

Lot of (2) Candy Containers, 1913 - 1935. 1st Ex: **Electric Coupe, "PAT / FEB 18 1913"** (embossed between back wheels), colorless, original tin closure, ht. 2 1/2", near mint; (3/16" flake on corner of roof). 2nd Ex: **Reo Car, "OC G.VJ"** (right front wheel well), "AVOR.

/ 4 OZ" (in left front wheel well), and "VG CO. / JNET. PA." (in back left wheel well), original tin closure and wheels, good condition; (a few minor flakes around base). D/P #162, Var. A, and D/P #175, Var. A. Ballentine collection.

Est.: \$150 - \$300 • Min. bid: \$75



Lot 139

Stage Coach Wagon Candy Container, America, 1908 - 1911. Milkglass, figural stage coach with green paint, gold panels, wheels and tires, original tin buckboard seat and slide-on closure, ht. 2 7/8", virtually perfect; (some very minor paint loss). D/P #528.

Beautiful condition, and very scarce with original paint and tin closure. Mary Ballentine collection.

Est.: \$75 - \$125 • Min. bid: \$40



Lot 143

Lot of (2), Candy Containers, 1942 - 1950. 1st Ex: **Streamlined Car**, colorless with original green paint, cardboard closure, ht. 1 3/4"; (a 1" chip from underside of fender and running board behind left front wheel). 2nd Ex: **'Racer' Figural Race Car**, colorless glass with

original silver painted grill and rear fin, ht. 1 1/2"; (some minor paint loss, no closure, otherwise perfect). D/P #179, Var. C, and D/P #476. Mary Ballentine collection.

Est.: \$100 - \$200 • Min. bid: \$50



Lot 140

"JITNEY BUS." Candy Container, West Brothers Glass Co, Grapeville, PA, 1913 - 1918. Colorless glass body with original black tin roof, red seats and tin pierced wheels, "WEST SPEC. CO / GRAPEVILLE PA / SERIAL NO 2862 / NET WT 1/2 OZ / PAT

APLD FOR" (embossed on base), ht. 2 5/8"; (outstanding original condition, just very slight trace of wear). D/P #152, Var. B. A fantastic example, very scarce. Mary Ballentine collection.

Est.: \$200 - \$400 • Min. bid: \$100



Lot 144

Lot of (2), Candy Containers, 1924 - 1930. 1st Ex.: **"GAS / 23¢ / TO- / DAY - GAS / U.S.A." Figural Gas Pump**, colorless, original tin closure, ht. 4 1/8"; (some paint loss, no tube). 2nd Ex: **"DON'T / PARK / HERE" / "U.S.A." (on base) - "DON'T / PARK / HERE", Figural Sign**, colorless, red sign, original tin closure, ht. 4 1/2", near mint; (some paint loss, some corrosion to tin closure). D/P #423, Var. B, and D/P #439, Var. B. Both scarce, very good condition. Mary Ballentine collection.

Est.: \$200 - \$400 • Min. bid: \$100

American Chestnut



Lot 78

Lot 70

Lot 68

and Globular Bottles



Lot 71

Lot 67

Lot 69

Lot 73

Lot 72



Lot 145

Lot of (2), Candy Containers, America, 1909 - 1915. Both are in the form of **Binoculars or Opera Glasses**. 1st example is colorless with gold painted trim and eye pieces, tin screw on closure. 2nd example is milkglass, both are 2 7/8" ht; (colorless example virtually perfect, some minor paint loss; milkglass example missing closure). D/P #97. Mary Ballentine collection.

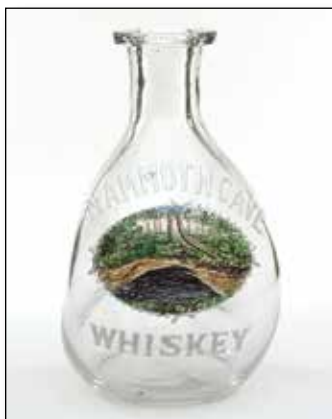
Est.: \$100 - \$200 • Min. bid: \$50



Lot 149

"J.N. KLINE & CO.S' / AROMATIC / DIGESTIVE CORDIAL" (within wreath), America, 1865 - 1875. Light-to-medium sapphire blue, elliptical or teardrop form, applied square collar with bevel - smooth base, ht. 5 1/2"; (lightly cleaned to original luster with a little fine light wear remaining, a tiny pinhead flake on the edge of the collar, otherwise excellent). A scarce little flask, attractive color. These are often found in cobalt and shades of amber.

Est.: \$300 - \$500 • Min. bid: \$150



Lot 146

"MAMMOTH CAVE" / (Multi-colored image of Mammoth Cave) / "WHISKEY" Back Bar Bottle, 1890 - 1910. Colorless pinch bottle with white enameled lettering and color-enameled image of cave entrance, tooled square collar - smooth base, ht. 6 1/2", perfect. A rare and desirable multi-colored back bar. During the mid-19th century, Mammoth Cave became a famed tourist destination. Visitors included Robert Bird, John Muir and Jenny Lind. Dick and Nancy Patterson collection.

Est.: \$400 - \$800 • Min. bid: \$200



Lot 150

Santa Claus in Chimney, Figural Whiskey Nip, America, 1890 - 1905. Bright golden amber, figural of a bearded Santa Claus with head and shoulders rising above a brick chimney, tooled sloping collar - smooth base, ht. 5 1/2", near mint; (a pinprick spot of roughness on the edge of the lip, otherwise perfect). A scarce, desirable figural whiskey nip that was likely sold, or possibly given as a premium, to favored customers during the Holidays. Provenance: Mary Ballentine collection.

Est.: \$200 - \$400 • Min. bid: \$100



Lot 147

Lot of (2), Enameled Back Bar Bottles, 1890 - 1910. 1st example, **"Here's / Prosperity"**; 2nd example, **"J.W. Dant / SOUR MASH / WHISKEY"**. Both are colorless with white enameled lettering, pinch bottle form, tooled square collars, "Prosperity" example with solid mushroom-type glass stopper, likely original; "Dant" example with period metal stopper not original, both smooth base, ht. 6 3/4" & 6 1/2" (not including stoppers), both perfect. Dick and Nancy Patterson collection.

Est.: \$100 - \$200 • Min. bid: \$50



Lot 151

Lot of (2), Colorful Whiskey Flasks, Eastern U.S., possibly Baltimore Glass Works, 1865 - 1875. 1st example is yellow with some slightly deeper honey tones in the collar and base, 2nd example is a beautiful orangey-apricot with some lighter peach tones, both are seam-sided "Union Oval" form, applied double collar - smooth base, Qts.; (1st example has a bit of light wear, and spotty, very minor interior haze; apricot example virtually perfect with just a faint trace of light wear).

Est.: \$175 - \$350 • Min. bid: \$90



Lot 148

"COLUMBUS" / BUST OF COLUMBUS ON A BARREL / "ON A BARREL" - CROWING ROOSTER Whiskey Flask, 1890 - 1900. Aquamarine, figural half barrel, tooled rounded collar with bevel - smooth base, Pt, perfect. An interesting and scarce whiskey nip. It is conjecture as to the meaning of "Columbus on a Barrel". Was it tied to the 1893 Columbian Exposition? Is there a political connotation? The rooster symbol was used by the Democrats during the 19th Century.

Est.: \$200 - \$400 • Min. bid: \$100



Lot 152

"FOREST / LAWN / J.V.H" Whiskey Bottle, 1850 - 1860. Bright olive with a slight yellowish tone, squatty bulbous body, large applied flanged collar - sand type pontil scar, ht. 7 1/4", attic mint. A great pontiled whiskey in a scarce, attractive, color, (often found in shades of olive amber). Excellent clarity and heavily whittled. Similar in form to the bulbous "Nathan Bros." whiskey from Philadelphia, "J.V.H." represents Jacob Van Horn, a wines and spirits distributor out of New York.

Est.: \$400 - \$800 • Min. bid: \$200



Lot 153

"E.P. MIDDLETON / WHEAT / 1825 / WHISKEY / PHILADA" (on applied seal), America, probably a south Jersey glasshouse, 1865 - 1875. Golden amber, cylindrical, applied sloping collar with bevel - smooth base, ht. 9 1/4", near mint; (just a slight trace of faint wear including a light scratch on the body and a tiny pinprick bit of roughness on the edge of applied lip, otherwise perfect). A very nice example, crisp impression on the seal, whittled, and excellent condition.

Est.: \$150 - \$250 • Min. bid: \$80



Lot 154

"BUCKINGHAM - VENABLE & HEYMAN / 152 CHAMBERS, ST. / NEW YORK" Sample Whiskey Cylinder (with partial contents and virtually complete original label), 1880 - 1890. Golden amber, tooled, possibly applied, sloping collar - smooth base, ht. 6 3/8"; (bottle is perfect; label darkened a bit from age). We have not seen this bottle before and is likely very rare! Label reads in part, *BUCKINGHAM DISTILLERY, / MARYLAND / BOURBON WHISKIES, / 1877.*"

Est.: \$200 - \$400 • Min. bid: \$100



Lot 155

"L.H. GATE'S / NEW YORK / ESTABLISHED 1858" Whiskey Cylinder, America, 1865 - 1875. Beautiful yellowish honey with a slight olive tone, almost a butterscotch coloration, cylindrical, applied sloping collar with ring - smooth base, ht. 10 3/4", perfect. An extremely rare, possibly unique early whiskey cylinder. Outstanding color, eye-appeal, and condition. We have not been able to find records of other examples in any of our reference material. A top eastern whiskey cylinder!

Est.: \$1,500 - \$2,500 • Min. bid: \$750



Lot 156

"WEEKS GLASS WORKS" (on base) Whiskey Cylinder, South Stoddard Glass Co., 1850 - 1873. Golden amber, 3-pc. mold whiskey cylinder, applied sloping collar with ring - smooth base, ht. 11 1/4", near mint; (a little minor wear, otherwise excellent). See, "On the Trail of STODDARD Glass", Field, p.58. A nice light color, strong, crisp embossing on the base. From an old time NH collection assembled in the 1960s.

Est.: \$300 - \$600 • Min. bid: \$150



Lot 157

"CONSTITUTION" Wine Bottle, America, 1835 - 1845. Deep olive green, 3-pc. mold, applied sloping collar with bevel - sand type pontil scar, ht. 11", virtually perfect; (just a slight trace of faint wear, otherwise pristine). A very interesting, historical bottle. See *AB&GC* article, May, 2016, for the history of related Constitution bottles. Rare. It is believed these bottles were blown to contain wine imported to the U.S. that was shipped aboard the USS Constitution, nicknamed "Old Ironsides".

Est.: \$800 - \$1,200 • Min. bid: \$400



Lot 158

"OLD LONDON DOCK - GIN - A.M. BININGER & Co / NO. 17 BROAD ST" - Crown (on shoulder), America, probably 1857 - 1858. Rich, medium-to-deep olive coloration, square with beveled corners, applied sloping collar - smooth base, ht. 9 5/8", near mint; (a 1/16" flake on the inside edge of the lip). BPK-8C. A very crude example having whittled, wavy glass. Also, scarce mold having the embossed crown on the shoulder.

Est.: \$400 - \$600 • Min. bid: \$200



Lot 159

"OLD LONDON DOCK - GIN. - A.M. BININGER & CO. / NO. 19 BROAD ST N.Y.", America, 1861 - 1863. Beautiful yellowish olive amber, square with beveled corners, applied sloping collar - smooth base, ht. 9 3/4", attic mint! BPK-9. A beautiful example, very attractive, pleasing color for this mold, outstanding condition.

Est.: \$200 - \$400 • Min. bid: \$100



Lot 160

"OLD LONDON DOCK - GIN. - A.M. BININGER & CO. / NO. 19 BROAD ST N.Y.", America, 1861 - 1863. Rich amber in the shoulders with some lighter yellowish-honey tones through the body, square with beveled corners, applied sloping collar - smooth base, ht. 9 7/8", near mint; (a little minor light wear, otherwise perfect). BPK-9. Another very attractive example, this one having some subtle streaks and swirls through the glass.

Est.: \$200 - \$400 • Min. bid: \$100



Lot 161

"OLD LONDON DOCK - GIN - A.M. BININGER & CO. / No. 19 BROAD ST. N.Y.", America, 1861 - 1863. Honey amber, square with beveled corners, applied sloping collar - smooth base, ht. 8"; (some light interior haze or dullness, but no other form of damage, and otherwise virtually attic mint). BPK-11. As noted in the book, "A.M. BININGER Bottles", Bender, 2017, the smaller size London Dock bottles are much harder to find than the 10" examples.

Est.: \$150 - \$300 • Min. bid: \$80



Lot 165

"BININGER'S / OLD KENTUCKY BOURBON, - 1849. RESERVE: / DISTILLED IN 1848. - A.M. BININGER & Co. / No. 19, BROAD ST, N.Y.", 1861 - 1863. Bright, light-to-medium yellowish olive coloration, square with beveled corners, applied sloping collar - smooth base, ht. 9 3/4", perfect! BPK-20. A fantastic example, strong mold impression, beautiful color, clarity, and condition. Provenance: Ex. Bob Ferraro collection.

Est.: \$400 - \$600 • Min. bid: \$200



Lot 162

"BININGER'S / OLD DOMINION - WHEAT TONIC - A.M. BININGER & Co: / NO. 19 BROAD ST. N.Y.", 1861 - 1863. Medium olive coloration, square with beveled corners, applied sloping collar - smooth base, ht. 9 1/2"; (lightly cleaned to original luster; a few open surface bubbles, 1/2" or less, and a 3/8" "V" shaped chip on the neck below the collar that almost certainly happened in-making when the lip was sheared and the collar applied over it). BPK-17.

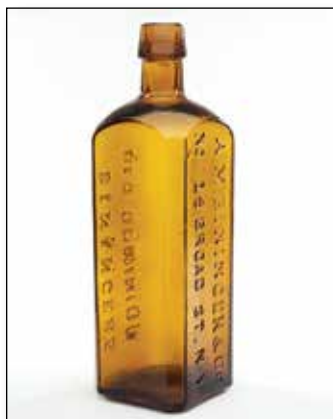
Est.: \$125 - \$250 • Min. bid: \$70



Lot 166

"A.M. BININGER & CO: / NEW YORK.", America, probably 1867 - 1880. Golden amber with a slight orange tone, square with beveled corners, applied sloping collar - smooth base, ht. 10"; (a little light wear and a 1/2" open bubble at edge of base by the "O" in "CO"). BPK-25. Scarce. This mold is believed to perhaps be the last of the square bottles used by A.M. Bininger. The mold was modified from the earlier, "Old London Dock Gin" mold.

Est.: \$150 - \$250 • Min. bid: \$80



Lot 163

"BININGER'S / OLD DOMINION - WHEAT TONIC - A.M. BININGER & Co: / NO. 19 BROAD ST. N.Y.", 1861 - 1863. Bright yellowish honey coloration, square with beveled corners, applied sloping collar - smooth base, ht. 9 7/8", perfect! BPK-17. Plenty of yellowish tone in this one. A beautiful and very scarce color for a "WHEAT TONIC" bottle. This mold is normally found in shades of olive green and olive amber. Provenance: Ex. Diane Wheaton collection.

Est.: \$400 - \$600 • Min. bid: \$250



Lot 167

"C.A. RICHARDS & CO / 99 WASHINGTON ST / BOSTON MASS" (with 90% - 98% complete original labels), 1867 - 1875. Amber with some nice reddish-orange tones, square with beveled corners, applied sloping collar - smooth base, ht. 9 3/8"; (a shallow 1/4" sliver flake on inside edge of lip, otherwise perfect; label on reverse is darkened but legible). Note; this is the mold with the backwards N's in "WASHINGTON" and "BOSTON". Bold, crisp embossing. Extract of Rye label is rare.

Est.: \$200 - \$400 • Min. bid: \$100



Lot 164

"BININGER'S / OLD KENTUCKY BOURBON, - 1849. RESERVE: / DISTILLED IN 1848. - A.M. BININGER & Co. / No. 19, BROAD ST, N.Y.", 1861 - 1863. Golden amber, square with beveled corners, applied sloping collar - smooth base, ht. 9 3/4"; (professionally cleaned to original luster with just a little scattered light wear remaining). BPK-20. Per the Bininger Bottles book, this mold in amber is scarce, and much more difficult to find than the olive examples.

Est.: \$250 - \$450 • Min. bid: \$130



Lot 168

Lot of (2), Figural Cannon Bottles, probably America, possibly Continental, 1870 - 1880. Both are honey amber with some orange tones near the base, figural cannon barrel form, miniature example is a 2-pc. mold, large example 4-pc. mold, tooled ring-type collars - smooth bases, ht. 4 1/8" and 9 5/8"; (both examples with an overall 'satin-type' haze or patina, possibly from being in water, but no chips, cracks, or other form of damage). Scarce molds, especially the miniature example.

Est.: \$200 - \$400 • Min. bid: \$100



Lot 169

Figural Pineapple Bitters, America, 1860 - 1875. Medium-to-deep amber, pineapple form, applied blob collar with bevel - smooth base, ht. 8 ¾"; (some minor exterior wear, otherwise attic mint). R/H #P100. A nice example of this classic figural bitters, and certainly, a lot of 'bang for the buck'. The figural pineapple bottles are always attractive and pleasing.

Est.: \$175 - \$275 • Min. bid: \$90



Lot 173

"GREELEY'S - BOURBON WHISKEY / BITTERS. - GREELEY'S", 1860 - 1875. Deep grape amethyst, barrel form, applied square collar - smooth base, ht. 9 ¼", perfect. R/H #G102. A scarce mold, rare and outstanding color! There are very few, true, amethyst toned vertical Greeley's. This is the first time offered at auction since the Spiller sale in 2000. Provenance: Ex. Dr. Burton Spiller collection (Lot 41), also pictured in book, "A Treasury of American Bottles", Ketchum, page 9.

Est.: \$2,500 - \$4,500 • Min. bid: \$1,300



Lot 170

"SUFFOLK BITTERS - PHIL-BROOK & TUCKER / BOSTON", America, 1870 - 1880. Light honey through the hind quarters, shading to a golden coloration in the mid-section, and almost orange amber in the head, figural pig, applied square collar - smooth base,

length 10", near mint; (a faint trace of light wear including an onionskin-thin open surface bubble on the belly, otherwise perfect). R/H #S217. A clean, bright example, beautiful variegated color. Scarce with the square collar.

Est.: \$800 - \$1,200 • Min. bid: \$400



Lot 174

"GREELEY'S BOURBON / BITTERS.", 1860 - 1875. Medium copper with an apricot tone, barrel form, applied square collar - smooth base, ht. 9 1/8", very near mint; (very slight trace of faint wear, otherwise mint). R/H #G101. Strong embossing, excellent condition with a perfect square collar, beautifully whittled, and one that passes plenty of light.

Est.: \$400 - \$600 • Min. bid: \$200



Lot 171

"NATIONAL / BITTERS" - "PAT-ENT / 1867" (on base), America, 1867 - 1875. Beautiful medium yellow coloration, figural ear of corn, applied short tapered collar with ring - smooth base, ht. 12 ½", perfect! R/H #N8. A fantastic, desirable color, excellent clarity from top to bottom, outstanding condition! A fresh example that has not seen the light of day for decades.

Est.: \$1,500 - \$2,500 • Min. bid: \$750



Lot 175

"GREELEY'S BOURBON / BITTERS", 1860 - 1875. Medium apricot coloration, barrel form, applied square collar - smooth base, ht. 9 ¼"; (a 3/8" area of minor roughness including a small flake, on the back edge of the lip, and a little typical minor wear on the reverse, otherwise excellent). R/H #G101. Attractive color, nicely whittled, the noted flaws are relatively minor and on the reverse, the bottle displays as virtually perfect.

Est.: \$250 - \$400 • Min. bid: \$130



Lot 172

"DOCTOR / FISCH'S BITTERS - W. H. WARE / PATENTED 1866", America, 1866 - 1875. Light golden shading to an attractive honey coloration, figural fish form, crudely applied ring collar - smooth base, ht. 11 3/8", virtually attic mint; (trace bit of faint wear at base edge and content residue in base). R/H #F44. A classic figural bitters, nice color, and a lot of bottle for the money. John Apple collection.

Est.: \$250 - \$450 • Min. bid: \$140



Lot 176

"GREELEY'S BOURBON / BITTERS", 1860 - 1875. Medium shading to a deep, rich, reddish-apricot with a puce tone, barrel form, applied square collar - smooth base, ht. 9 ¼", near mint; (a small pinhead flake on one of the rings on the reverse, and only a slight touch of light wear, otherwise perfect). R/H #G101. Here is a color that you don't run into very often in a Greeley's. An attractive color having some beautiful reddish tones through the center and lower half of the bottle.

Est.: \$500 - \$800 • Min. bid: \$250



Lot 177

"S T / DRAKE'S / 1860 / PLANTATION / X / BITTERS - PATENTED / 1862", America, 1862 - 1885. Yellow with some slightly warmer honey tones through the neck and near the base, cabin form with 4 logs above the label panel, applied sloping collar - smooth base, ht. 10", near mint; (some scattered very minor interior residue or faint haze that may wash out, otherwise with just a couple of days in the tumbler, would likely clean to mint condition). R/H #D110.

Est.: \$400 - \$600 • Min. bid: \$200



Lot 178

"S T / DRAKE'S / 1860 / PLANTATION / X / BITTERS - PATENTED / 1862", America, 1862 - 1880. Beautiful medium apricot coloration with some lighter copper tones through the corners, cabin form with 6 logs above the label panel, applied sloping collar - smooth base, ht. 9 3/4"; near mint; (a 1/8" open bubble at base corner, and some in-manufacture crazing lines in the neck mentioned for complete accuracy, otherwise perfect). R/H #D106. Passes plenty of light throughout.

Est.: \$250 - \$450 • Min. bid: \$130



Lot 179

"BAKER'S / ORANGE GROVE - BITTERS", America, 1870 - 1880. Golden amber with a slight orange tone, square with roped corners, applied sloping collar - smooth base, ht. 9 1/2", attic mint! R/H #B9. A classic, very attractive, eye-appealing bitters, beautiful condition. John Apple collection.

Est.: \$250 - \$450 • Min. bid: \$130



Lot 180

"Dr. SOULE - HOP - BITTERS - 1872" - (HOP FLOWERS AND LEAF), Australia or America, 1872 - 1880. Rich, medium-to-deep yellowish olive, square with rounded corners, applied sloping collar with bevel - smooth base, ht. 9 1/2"; (some scratches on a side panel and along a corner, and a 3/8" crack below collar in the neck, likely in-making, otherwise virtually perfect). R/H #S145. Very rare, exceptional color, outstanding character. Ex. Dr. James Carter collection.

Est.: \$3,000 - \$6,000 • Min. bid: \$1,500



Lot 181

"JOHN MOFFAT - NEW YORK - PHOENIX / BITTERS - PRICE \$1,00", a New England glasshouse, 1840 - 1850. Medium olive amber shading to a deep olive amber near the base, rectangular with beveled corners, crudely applied ring collar - sand type pontil scar, ht. 5 1/4"; (just a slight trace of light wear including a pinprick speck of roughness on the edge of the lip, likely in-making). R/H #M112. Another nice example, this one with a crude ring collar and strong embossing.

Est.: \$600 - \$900 • Min. bid: \$300



Lot 182

"JOHN MOFFAT - NEW YORK - PHOENIX / BITTERS - PRICE \$1,00", a New England glasshouse, 1845 - 1855. Beautiful, bright yellowish olive, rectangular with beveled corners, applied sloping collar - blowpipe pontil scar, ht. 5 3/8", near mint; (a couple of small pinhead spots of roughness on the edge of the base, otherwise perfect). R/H #M112. Beautiful light color, syrupy crude glass, excellent condition!

Est.: \$800 - \$1,200 • Min. bid: \$400



Lot 183

"MORTIMORE / BITTER / CORDIAL / AND / BLOOD / PURIFIER / ST LOUIS / MO", America, 1850 - 1860. Brilliant aquamarine, rectangular with concave corners, applied sloping collar - blowpipe pontil scar, ht. 6 7/8", attic mint; (some in-making crazing lines in the neck). R/H #M138.5. Rare, and particularly so in this virtually pristine condition. Outstanding eye-appeal having a beautiful rich color, crude wavy glass, and an attractive mold. Provenance: Dick and Nancy Patterson collection.

Est.: \$600 - \$1,200 • Min. bid: \$300



Lot 184

"DR OWEN'S / EUROPEAN - LIFE BITTERS / DETROIT", America, 1844 - 1855. Aquamarine, rectangular with wide beveled corners, applied sloping collar - blowpipe pontil scar, ht. 7"; (professionally cleaned to original luster with just a couple of minor spots of light wear remaining; a 3/16" chip along the edge of the base). R/H #O98. Very scarce. A clean, bright, beautiful example of this very scarce bitters with a strong impression and excellent character.

Est.: \$250 - \$450 • Min. bid: \$130

**Lot 185**

"DR JACOB'S / BITTERS. - S.A. SPENCER. - NEW HAVEN, CT.", America, 1860 - 1870. Deep aquamarine, rectangular with beveled corners, applied sloping collar - smooth base, ht. 10 1/8", virtually attic mint; (a minor pinhead flake on the edge of the applied collar; a trace bit of interior residue, otherwise perfect). R/H #J10. Scarce. Note, this is the large size bottle and much more difficult to acquire than the J11 mold. Nice crude glass, beautifully whittled.

Est.: \$300 - \$500 • Min. bid: \$150

**Lot 189**

"SARRACENIA / LIFE BITTERS - (3 Legs joined at center within circle) / TUCKER / MOBILE ALA", probably 1875 - 1880. Golden amber, square with beveled corners, applied sloping collar with bevel - smooth base, ht. 9 1/4"; (professionally cleaned to original luster with a little scattered light exterior wear remaining; a little scattered light interior haze, but no other form of damage). R/H #S34. Sarracenia is the genus of carnivorous plants with most species occurring in the southern U.S.

Est.: \$200 - \$400 • Min. bid: \$100

**Lot 186**

"C.A. RICHARDS & Co / 99 WASHINGTON ST / BOSTON MASS" (with 95% complete original labels), 1867 - 1875. Golden amber, square with beveled corners, applied sloping collar - smooth base, ht. 9 1/2"; (bottle is perfect, label has a little staining and darkening). R/H #R53L. Very rare, believed to be one of only two or three known. Label reads in part; SONOMA / WINE / BITTERS / Made from the rich ripe / GRAPES / THAT GROW ON THE VINE CLAD HILLS / OF / CALIFORNIA.

Est.: \$400 - \$800 • Min. bid: \$200

**Lot 190**

"SARRACENIA / LIFE BITTERS - (3 Legs joined at center within circle) / TUCKER / MOBILE ALA", probably 1873 - 1875. Medium amber, square with beveled corners, applied sloping collar - smooth base, ht. 9"; (a little light exterior dullness; some scattered light scratches and wear, primarily around the shoulders, and a little interior stain). R/H #S35. Very scarce. This example is believed to be the older variant. With a good professional cleaning it would likely display as near mint.

Est.: \$200 - \$400 • Min. bid: \$100

**Lot 187**

"RUSS' / ST. DOMINGO / BITTERS - NEW YORK", America, 1875 - 1885. Amber, square with beveled corners, applied sloping collar - smooth base, ht. 10 1/8", near mint; (a 1/8" chip on the back edge of the lip, and just a trace of interior content residue, otherwise excellent). R/H #R125. Not the rarest bitters, but absolutely a classic, and the new owner will certainly have a piece of history coming from the Gardner collection. Provenance: Ex. Charles B. Gardner collection.

Est.: \$100 - \$200 • Min. bid: \$50

**Lot 191**

Lot of (2), "GEO. GENZ & SONS / APPETINE / BITTERS / ST. PAUL, MINN", 1897 - 1905. Golden amber and deep reddish amber, both are square with fancy scroll pattern, tooled sloping collars - **"PAT NOV. 23. / 1897"** (on smooth bases), ht. 3 3/8" and 8"; (8" size is near mint with a trace of minor wear incl. a pinhead flake on the edge of the lip, some dried contents, likely washable; sm. size has a 3/4" crack at base corner, and a couple of 1/8" flakes on lip). R/H A#78 & A#79. Festus Russell collection.

Est.: \$300 - \$500 • Min. bid: \$150

**Lot 188**

"WALLACE'S TONIC / STOMACH BITTERS - GEO. POWELL & Co / CHICAGO ILL.", America, 1875 - 1885. Bright golden amber, square with beveled corners, applied sloping collar - smooth base, ht. 9", very near mint; (a couple of shallow, minor open surface bubbles, otherwise perfect). R/H #W17. A scarce "square", excellent condition with nice character to the glass.

Est.: \$150 - \$300 • Min. bid: \$80

**Lot 192**

Sample size, **"FERRO QUINA / BITTERS / D.P. ROSSI / DOGLIANI / ITALIA & / S.F. CAL."**, America, 1890 - 1905. Bright, light golden amber, square with indented front panel, lady's-leg neck with tooled square collar - smooth base, ht. 3 3/4"; (professionally cleaned to original luster with a little minor wear and a 1/8" flake at base edge, otherwise excellent). R/H #F33. A scarce Western sample bitters. Festus Russell collection.

Est.: \$75 - \$150 • Min. bid: \$40



Lot 193

Sample size, **"BURTON'S - GINGER - WINE - BITTERS"**, America, 1880 - 1890. Aquamarine, square semi-cabin form, two sides with embossed columns, tooled sloping collar - smooth base, ht. 4"; (professionally cleaned to original luster, minor 1/8" flake at edge of base, and a bit of roughness on the edge of the lip, most of which is likely in-making, otherwise excellent). R/H #B274. A bright, clean little bitters, very attractive mold, and exceedingly rare! Festus Russell collection.

Est.: \$400 - \$800 • Min. bid: \$200



Lot 194

Sample size, **"NORMANDY / HERB & ROOT / STOMACH BITTERS - NORMANDY / MEDICINE M'F'G. CO / LOUISVILLE, KY."**, Falls City Glass Co, Louisville, KY, 1884 - 1892. Honey amber, rectangular, applied square collar - **"F.C.G. CO"** (on smooth base), ht. 3 7/8"; (professionally cleaned to original luster with a little ground wear and some light scratches remaining; a small pinhead flake on the lip and shoulder). R/H #N38.5. Extremely rare! Festus Russell collection.

Est.: \$200 - \$400 • Min. bid: \$100



Lot 195

Sample size, **"LASH'S LIVER BITTERS - NATURE'S / TONIC LAXATIVE"** (with 99% complete original front and back labels, partial contents), America, probably 1912 - 1915. Golden amber, square with rounded corners, tooled sloping collar with ring - smooth base, ht. 4 3/4", perfect! R/H #L-40. A scarce sample, and certainly rare, in this pristine condition with original contents and both labels - also in remarkable, outstanding condition. Provenance: Festus Russell collection.

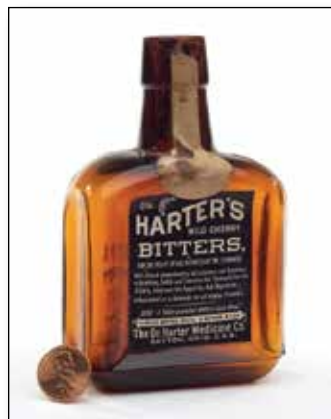
Est.: \$150 - \$300 • Min. bid: \$80



Lot 196

Lot of (3), sample, **LASH'S BITTERS**, 1900 - 1915. 1st Ex., **"SAMPLE / LASH'S BITTERS"**, 2nd Ex., **"LASH'S BITTERS - NATURAL / TONIC LAXATIVE"**, and 3rd Ex., **"LASH'S LIVER BITTERS - NATURE'S / TONIC LAXATIVE"**. Shades of light amber, square, tooled collars - smooth bases, ht. 4 1/8", 4 3/4" and 4 3/4"; (1st ex. near mint - small flake on lip; 2nd ex. near mint - faint trace of interior milkiness, 3rd ex. cleaned with lt. interior haze). R/H #L31, L33, and L40. Russell collection.

Est.: \$120 - \$240 • Min. bid: \$60



Lot 197

Sample size, **"DR HARTER'S / WILD CHERRY / BITTERS / DAYTON, O"** (with complete original label), America, 1890 - 1905. Medium amber, rectangular with rounded corners, tooled sloping collar - **"DESIGN / PATENTED"** (on smooth base), ht. 4 3/4", attic mint! R/H #H48. Listed as "Rare" by Ring / Ham, a fantastic example with the label being in outstanding condition. Festus Russell collection.

Est.: \$120 - \$240 • Min. bid: \$60



Lot 198

Lot of (2), sample, **DR. HARTER'S BITTERS**, 1890 - 1905. 1st Ex., **"DR HARTER'S / WILD CHERRY / BITTERS / DAYTON O"**, amber. 2nd Ex., **"DR HARTER'S / WILD CHERRY / BITTERS / ST LOUIS"**, light straw-yellow. Both rectangular with tooled sloping collars - smooth bases ht. 3 3/4" and 4 1/2" respectively; (1st ex. dug with some light stain and faint wear, but no other damage). 2nd ex. lightly cleaned but otherwise very near mint). R/H #H49 & H-52. Russell collection.

Est.: \$120 - \$240 • Min. bid: \$60



Lot 199

"DR TOWNSEND'S - SARSAPARILLA - ALBANY / N Y", a New England glasshouse, 1840 - 1860. Olive amber, square with beveled corners, applied sloping collar - sand type pontil scar, ht. 9 3/8"; (a pinhead bit of roughness on the edge of the lip, possibly in-manufacture, and a trace of typical minor wear, otherwise perfect). Crude glass, nice color. Note; this example has three faint 'nail head' type circles in the mold surrounding the "Y" in "N Y".

Est.: \$400 - \$600 • Min. bid: \$200



Lot 200

"DR TOWNSENDS - SARSAPARILLA - ALBANY / N. Y.", a NY State, possibly Mt. Pleasant, or New England glasshouse, 1855 - 1865. Deep tobacco-amber, square with beveled corners, applied sloping collar - smooth base, ht. 9 1/8", near mint; (just a touch of faint wear, and a minor trace of light dullness or exterior 'bloom'). A rare, desirable color for a Townsend's. In addition, outstanding character with frothy glass, very heavy, and unusual having the smooth base.

Est.: \$1,000 - \$2,000 • Min. bid: \$500



Lot 201

"DR GUYSOTT'S - COMPOUND EXTRACT / OF YELLOW DOCK - & SARSAPARILLA", a New England glasshouse, 1845 - 1855. Beautiful yellowish olive coloration, square with beveled corners - sand type pontil scar, ht. 9 1/2", virtually perfect; (a small bubble on one of the beveled edges with a pinhead size opening in the cover glass, otherwise pristine!) Extremely rare in this color with only a small handful known to exist. Nice syrupy glass, beautiful shading of color.

Est.: \$4,000 - \$8,000 • Min. bid: \$2,000



Lot 205

"G.E. BRIGGS.", America, 1840 - 1860. Sapphire blue, rectangular with beveled corners, sheared, tooled, and inward rolled mouth, blowpipe pontil scar, ht. 6 1/8"; (just a slight trace of faint wear, otherwise pristine). Odell, p.47; DF, p.25. A beautiful bottle believed to be from Chillicothe, or possibly Zanesville, Ohio. Brigg's was an early proprietor of cosmetic and hair products. This was a hair bottle to 'restore or prevent it from falling out'. Provenance: Mary Ballentine collection.

Est.: \$1,000 - \$1,500 • Min. bid: \$500



Lot 202

DR. HARTSHORN'S / MEDICINE" (with complete original label), a Stoddard New Hampshire glasshouse, 1855 - 1865. Yellowish tobacco amber, oval, wide disk type collar with bevel - smooth base, ht. 6 1/8", attic mint; (label is darkened a bit from age, but virtually 100% complete). A choice example of this scarce and desirable Stoddard medicine bottle, and extremely rare with original label which reads in part, *DR. HARTSHORN'S / AROMATIC / SYRUP OF / RHUBARB.*

Est.: \$1,500 - \$3,000 • Min. bid: \$800



Lot 206

"GENUINE - SWAIM'S / PANACEA - PHILADELPHIA", America, 1824 - 1830. Aquamarine, rectangular with concave corners, sheared mouth with crudely applied beveled collar blowpipe pontil scar, ht. 8"; (a few scattered, paper-thin, minor open surface bubbles, otherwise pristine perfect). Odell, p.335. These were William Swaim's first bottles, replaced by the round bottles in 1830. A top example of this rare early medicine in terms of bubbles, character and condition.

Est.: \$800 - \$1,200 • Min. bid: \$400



Lot 203

"DR S HART's / CROUP SYRUP - HARMER / OHIO", 1845 - 1855. Light bluish green, rectangular with beveled corners, sheared, tooled, thin flanged mouth - blowpipe pontil scar, ht. 4 7/8", perfect; (a small, paper-thin, in-making pontil flake extends to the edge of the base). A great pontiled medicine, pristine and extremely rare. We sold the only other example known in this color from the James Chebalo collection, Auction 17. Dick and Nancy Patterson collection.

Est.: \$1,200 - \$2,400 • Min. bid: \$600



Lot 207

"BUSH'S / SMILAX / SARSAPARILLA", America, 1850 - 1860. Aquamarine, rectangular with beveled corners, applied square collar - blowpipe pontil scar, ht. 9 7/8", attic mint! Odell, p.62. A big, bright, sparkling example, nicely whittled and outstanding condition. A number of large aqua pontiled sarsaparillas were blown in the 1850's. They are impressive, always popular, and make a very nice grouping.

Est.: \$400 - \$800 • Min. bid: \$200



Lot 204

"T. MORRIS PEROT & Co - DRUGGISTS - PHILAD.A", America, 1854 - 1859. Sapphire blue, rectangular, pyramid form with sides tapering inward from base to shoulders, sheared, tooled, and inward rolled lip - blowpipe pontil scar, ht. 5", attic mint! A fantastic example, beautiful color, clarity, and condition with nice character and waviness to the glass. Provenance: Gary Enters collection.

Est.: \$800 - \$1,200 • Min. bid: \$400



Lot 208

"A.L. SCOVILL / CINCINNATI. O", probably a Midwest glasshouse, 1855 - 1860. Rich, deep aqua, rectangular with beveled corners, applied round collar with bevel - blowpipe pontil scar, ht. 9", virtually attic mint; (just a slight trace of faint wear). Odell, p.314. A big, bright, clean example in fantastic condition. Per Odell, Amon Scovill was a druggist who owned the rights to more than 20 patent medicines and was described as an "exemplary and charitable man". Dick & Nancy Patterson collection.

Est.: \$100 - \$200 • Min. bid: \$60



Lot 209

"HALL'S BALSAM / FOR THE LUNGS", America, 1850 - 1860. Deep aquamarine, rectangular with beveled corners, applied sloping collar - blowpipe pontil scar, ht. 6 7/8", attic mint. Odell, p.158. A beautiful example having nice crude glass, bright, clean and sparkling. Attractive with the scalloped-cornered indented panels. Note; A.L. Scovill of Cincinnati was the proprietor for Hall's. A scarce medicine, especially in this fine condition. Dick & Nancy Patterson collection.

Est.: \$250 - \$450 • Min. bid: \$130



Lot 210

Lot of (2), Pontiled Medicines, Midwest, 1845 - 1860. 1st example, **"DR. G.W. DENIG / CHILLICOTHE O"**, 2nd example, **"DR. DENIG'S / COUGH BALSAM"**. Both are aqua, rectangular with beveled corners, applied sloping collar - blowpipe pontil scarred bases, ht. 6" and 6 1/8" respectively; (1st example is crude, loaded with bubbles, and pristine; 2nd example lightly cleaned with just a slight bit of wear and very faint interior milkiness). Dick & Nancy Patterson collection.

Est.: \$150 - \$250 • Min. bid: \$80



Lot 211

"DR STEPH. JEWETT'S - CELEBRATED / PULMONARY ELIXIR - RINDGE, N.H.", America, 1850 - 1860. Deep aquamarine, rectangular with wide beveled corners, applied sloping collar - blowpipe pontil scar, ht. 5 1/2", attic mint! Odell, p.202. A beautiful example, clean, bright and sparkling with good depth of color, pristine condition.

Est.: \$200 - \$400 • Min. bid: \$100



Lot 212

"DR STEPH. JEWETT'S - CELEBRATED / PULMONARY ELIXIR - RINDGE, N.H." (with 99% complete, original, label), 1845 - 1855. Colorless, rectangular with beveled corners, sheared and tooled, thin flange lip - blowpipe pontil scar, ht. 5 1/4"; (bottle is pristine perfect; label darkened just a bit, some dried medicine on the interior). A top example; scarce with the thin flanged lip, very rare in colorless, and extremely rare having the original label.

Est.: \$500 - \$800 • Min. bid: \$250



Lot 213

"JACOB'S - Cholera & - Dysentery - CORDIAL" (with original contents and virtually complete original paper wrapper), 1850 - 1860. Colorless with slight aqua tint in base, square with beveled corners, applied square collar - blowpipe pontil scar, ht. 6 3/4"; (paper wrapper excellent, bottle perfect). A very eye-appealing pontiled medicine with heavy embossing, crude, wavy, pebbly glass, attractive form, pristine condition. Dick and Nancy Patterson collection.

Est.: \$200 - \$400 • Min. bid: \$100



Lot 214

"B. FOSGATE'S / ANODYNE / CORDIAL." (with 98% complete original label; backwards N's in "ANODYNE"), probably Mt. Vernon Glass Works, Vernon, NY, possibly Mt. Pleasant Glass Works, 1840 - 1850. Aquamarine, cylindrical, sheared, tooled, thin flanged lip - blowpipe pontil scar, ht. 4 5/8", pristine perfect! (label darkened a bit from age and with a little stain, but still legible). Beautiful, and very scarce with the thin flanged lip, backwards N's, and original label.

Est.: \$200 - \$400 • Min. bid: \$100



Lot 215

"GOODRICH'S - PECTORAL / SYRUP - MARCELLUS, N.Y.", probably a NY State glasshouse, possibly Lockport or Lancaster, 1850 - 1860. Aquamarine, rectangular with beveled corners, applied round collar with bevel - blowpipe pontil scar, ht. 5 1/2", near mint; (lightly cleaned to original luster and virtually perfect condition). An exceedingly rare, possibly unique, pontiled medicine. It is a recent lucky find and 'fresh-to-the-market'. Marcellus is a small town on the outskirts of Syracuse.

Est.: \$600 - \$900 • Min. bid: \$300



Lot 216

"DR ROSE'S - PROPHYLACTIC / SYRUP - FOR - CONSUMPTION / BRONCHITIS - ABSCESS, S / & SCROFULA. - PHILAD.A", 1845 - 1855. Aquamarine, cylindrical with 8 indented panels, applied sloping collar - blowpipe pontil scar, ht. 7", virtually perfect; (some minor in-manufacture crazing lines in the neck mentioned for complete accuracy). Extremely rare, believed to be one of only a few known, and possibly the choicest. Dick and Nancy Patterson collection.

Est.: \$800 - \$1,200 • Min. bid: \$400

**Lot 217**

"DR. J.S. ROSE'S / MAGIC LINIMENT / PHILA.", America, 1845 - 1855. Aquamarine, oval, applied square collar - blowpipe pontil scar, ht. 5 3/8"; (lightly cleaned to original luster with just a trace of very minor wear remaining; two small 1/8" annealing or 'hairline' cracks in the shoulder). Odell, p.302. Very rare. Dr. Jacob S. Rose, M.D. put out a number of different medicines, this magic liniment being one of them, and not an easy one to find. Gary Enters collection.

Est.: \$150 - \$250 • Min. bid: \$80

**Lot 221**

"GENESSEE - LINIMENT", probably a New York State glasshouse, possibly Lockport or Lancaster, 1845 - 1855. Aquamarine, rectangular with beveled corners, sheared, tooled, and inward rolled mouth - blowpipe pontil scar, ht. 5 3/8", near mint; (a little light haze, primarily in the shoulders, and a little along the corners, likely from dried contents, otherwise perfect). Per Odell, an 1840 advertisement claimed they were first invented and used in the hospitals of New York. Scarce. Gary Enters collection.

Est.: \$150 - \$250 • Min. bid: \$80

**Lot 218**

"DUTCH / LINIMENT - PREPARED BY / E.A. BUCKHOUT / MECHANICVILLE", America, 1845 - 1855. Aquamarine, tombstone form, wide beveled corners, sheared, tooled, and inward rolled mouth - blowpipe pontil scar, ht. 4 1/2", perfect. Rare! These don't come around often, only a few recorded sales in the past 20 years. Either a different product, or possibly the predecessor to the example with the embossed figure. Provenance: Gary Enters collection.

Est.: \$600 - \$900 • Min. bid: \$300

**Lot 222**

"FROST'S - GRATIS - LINIMENT - PRICE / 25 CTS", America, 1850 - 1860. Aquamarine, rectangular with beveled corners, applied ring collar with bevel - blowpipe pontil scar, ht. 5", attic mint. Odell, p.138. Very scarce. A bright, clean, sparkling example. Per Odell, possibly from Indianapolis. Believed to be only the second or third example offered at auction in the past 20 years. An attractive bottle with interesting embossing. Provenance: Gary Enters collection.

Est.: \$200 - \$400 • Min. bid: \$100

**Lot 219**

"E.A. BUCKHOUT'S / DUTCH / LINIMENT" / (Man with pipe and cane) - "PREPARED AT / MECHANICVILLE / SARATOGA CO N.Y.", America, 1850 - 1860. Aquamarine, rectangular with narrow paneled sides, sheared, tooled, and inward rolled mouth - blowpipe pontil scar, ht. 4 3/4", perfect. Odell, p.55. A bright, clean, sparkling example of this scarce pictorial pontiled medicine. Provenance: Gary Enters collection.

Est.: \$300 - \$500 • Min. bid: \$150

**Lot 223**

"R.D. JOHNSON & BROS / ARABIAN - LINIMENT - CUMBERLAND. M.D.", 1850 - 1860. Aquamarine, rectangular with beveled corners, applied sloping collar - blowpipe pontil scar, ht. 5 1/2"; (lightly cleared to near mint condition with a little very minor haze remaining; a 1/8" flake on inside edge of lip). Extremely rare. Believed to be one of two, or possibly three, known (a stained example in the Greer sale, and this example that sold through Harmer Rooke in 1991). Gary Enters collection.

Est.: \$400 - \$600 • Min. bid: \$200

**Lot 220**

"A. C. - HOWELL'S / LINIMENT - N.Y.", America, 1850 - 1860. Aquamarine, rectangular with beveled corners, applied round collar with bevel - blowpipe pontil scar, ht. 5 1/8", mint. An unlisted, extremely rare pontiled medicine. This is the same example that sold back in 2016, and the only record of this bottle that we could find. A bright, clean, sparkling example, strong embossing, perfect condition. Gary Enters collection.

Est.: \$400 - \$800 • Min. bid: \$200

**Lot 224**

"DOCT. SURGEON'S - GERMAN / LINIMENT - NEW YORK", America, 1845 - 1855. Aquamarine, rectangular with beveled corners, applied sloping collar - blowpipe pontil scar, ht. 4 7/8"; (professionally cleaned with a little minor light wear remaining, and a couple of pinhead flakes at edge of base). Extremely rare, believed to be one of two known examples (the other selling in July, 2010). Provenance: Gary Enters collection.

Est.: \$500 - \$800 • Min. bid: \$250



Lot 225

"BUDD'S - WOUND NERVE / AND / BONE LINIMENT - PREPARED BY - JAS DELAMATER / SOLE PROPRIETOR", America, 1846 - 1855. Aquamarine, rectangular with beveled corners, applied sloping collar - blowpipe pontil scar, ht. 5 1/4", near mint; (professionally cleaned to original luster, a little minor dullness or haze remaining on base, otherwise virtually perfect). Odell, p.57. A very scarce variant from Mishawaka, IN. Provenance: Gary Enters collection.

Est.: \$400 - \$600 • Min. bid: \$200



Lot 226

"E.S. GREEN'S - FLESH & BLOOD - LINIMENT", America, 1840 - 1855. Aquamarine, hexagonal, sheared, tooled, thin flanged lip - blowpipe pontil scar, ht. 4 3/8"; (professionally cleaned with a little light wear or etching, and a bit of faint haze remaining). Very rare. This example sold back in 2012, and is believed to be one of only a few known examples. Provenance: Gary Enters collection.

Est.: \$500 - \$800 • Min. bid: \$250



Lot 227

"DR. VAN. VLECK'S / RED LINIMENT / PITTSBURGH PA", America, 1845 - 1860. Aquamarine, cylindrical, sheared, tooled, and inward rolled mouth - blowpipe pontil scar, ht. 4 1/4", near mint; (an in-manufacture pontil flake extends to the edge of the base, and a tiny, shallow, 1/8" flake on the edge of the rolled lip, otherwise bright, clean, and virtually perfect). Provenance: Gary Enters collection; Ex. Andy Regrut collection.

Est.: \$120 - \$240 • Min. bid: \$60



Lot 228

"RAMSDALE'S - LINIMENT.", America, 1845 - 1855. Aquamarine, cylindrical, sheared, tooled, and inward rolled mouth - blowpipe pontil scar, ht. 3 7/8"; (lightly cleaned to original luster and virtually perfect condition). Odell, p.289. An early liniment from Cincinnati used for treatment of horses. Per Odell, an 1842 advertisement touted it to heal, "...every external complaint to which that noble animal the horse is liable". Very scarce. Gary Enters collection.

Est.: \$200 - \$400 • Min. bid: \$100



Lot 229

"TROYER'S / VEGETABLE - RHEUMATIC / LINIMENT", America, 1845 - 1860. Aquamarine, cylindrical, sheared, tooled, and inward rolled mouth - blowpipe pontil scar, ht. 4"; (professionally cleaned to original luster with just a little minor haze remaining on the base, and the interior of the neck, otherwise excellent). A very scarce-to-rare liniment (liniment being misspelled on the bottle). Possibly from Cincinnati. Provenance: Gary Enters collection.

Est.: \$200 - \$400 • Min. bid: \$100



Lot 230

"H.K. HINKLEY / PORTLAND" (complete with 90% original wrapper), 1840 - 1850. Aquamarine, cylindrical, sheared, tooled, thin flanged lip - blowpipe pontil scar, ht. 4 3/8"; (bottle appears perfect; wrapper is brittle and darkened from age, but very legible). Rare, and possibly unique with the original wrapper which reads in part, *PREPARED AND SOLD / WHOLESALE AND RETAIL, BY / HENRY K. HINKLEY, / APOTHECARY, PORTLAND, ME. / ASIATIC / LINIMENT*. Gary Enters collection.

Est.: \$200 - \$400 • Min. bid: \$100



Lot 231

"BREINIG, FRONEFIELD & CO - CATTLE LINIMENT", America, 1850 - 1860. Aquamarine, rectangular with beveled corners, applied square collar - blowpipe pontil scar, ht. 6 3/8"; (some light interior content residue along one of the beveled corners, and some minor lip-edge roughness that you can feel, but is not easy to see, otherwise very near mint). A very scarce-to-rare veterinary bottle believed to be from Philadelphia. Excellent condition with crude wavy glass. Gary Enters collection.

Est.: \$300 - \$500 • Min. bid: \$150



Lot 232

"Dr H. TETER - ALL HEALING - LINIMENT", America, 1840 - 1855. Aquamarine, rectangular with beveled corners, sheared, tooled, inward rolled mouth - blowpipe pontil scar, ht. 4 7/8", very near mint; (a minor 1/8" flake on the edge of the lip, otherwise pristine perfect). An unlisted and extremely rare pottiled medicine. The glass is sparkling and crude. The embossing is also very crude. A great looking bottle, possibly from the Columbus, Ohio area.

Est.: \$250 - \$500 • Min. bid: \$130



Lot 233

"COFFEENS - CHINESE / LINIMENT / No 3", America, probably a Mid-west glasshouse, 1845 - 1855. Bright aquamarine, oval, sheared, tooled, and inward rolled mouth - blowpipe pontil scar, ht. 4 1/4", perfect! Odell, p.83. A great example, bright, clean and sparkling, with crisp bold embossing. One of several products put out by Geo. Coffeen in the small town of Blue Ball, Ohio. A scarce liniment, particularly in this virtually 'out-of-the-mold' pristine condition.

Est.: \$100 - \$200 • Min. bid: \$50



Lot 234

Lot of (2), Pontiled Medicines, 1845 - 1860. 1st example, **"BRAGG'S ARCTIC / LINIMENT"**, 2nd example, **"DR. HAWKS' / UNIVERSAL / STIMULANT"**. Both are aquamarine, cylindrical, sheared and inward rolled mouth, and applied square collar - both with blowpipe pontil scarred bases, ht. 4 1/8" and 5 1/2" respectively, both near mint; (Bragg's has a trace of faint interior haze near the shoulders; Hawk's is virtually perfect). Dick and Nancy Patterson collection.

Est.: \$150 - \$250 • Min. bid: \$80



Lot 235

"BARRELL'S - INDIAN - LINIMENT", probably Zanesville Glass Works, Zanesville, OH, 1840 - 1855. Deep aqua, rectangular with beveled corners, sheared and tooled lip - blowpipe pontil scar, ht. 4 1/2", pristine perfect! Odell, p.23. A great example of this popular, early, Indian medicine. This one being about as nice as you could hope to find. Per Odell, Harrison G. Cary, proprietor of Barrel's Indian Liniment, began operation in Dayton, and eventually moved to Zanesville, Ohio.

Est.: \$175 - \$350 • Min. bid: \$100



Lot 236

"DR. BROWDER'S / COMPOUND SYRUP / of INDIAN TURNIP", America, 1845 - 1860. Aquamarine, rectangular with beveled corners, applied sloping collar - blowpipe pontil scar, ht. 6 7/8", perfect. Odell, p.50. A top example of this popular Indian medicine from Boston, - bright, crisp, whittled, and sparkling mint. Dick and Nancy Patterson collection.

Est.: \$150 - \$250 • Min. bid: \$80



Lot 237

Lot of (2), Rare Medicines, 1870 - 1880. **"DR ROGERS - SCROFULA / AND / CANCER - SYRUP"**, and, **"DR A.J. LAUBACH & CO - GOLDEN SEAL / TONIC - PHILADELPHIA, PA"** (with 99% complete original label). Both are aquamarine, rectangular with beveled corners, applied sloping and applied square collars - smooth base, ht. 9 1/8" and 8 5/8"; ("Rogers" bottle has a small potstone with a tiny radiation, otherwise both are pristine perfect). Dick and Nancy Patterson collection.

Est.: \$200 - \$400 • Min. bid: \$100



Lot 238

"DR. C.W. ROBACK'S / SCANDINAVIAN / BLOOD PURIFIER / PURELY VEGETABLE - DYSPEPSIA - LIVER COMPLAINT" (with 95% complete original label), America, 1875 - 1885. Aquamarine, rectangular with beveled corners, applied round collar with bevel - smooth base, ht. 8 7/8"; (bottle is perfect; label is darkened a bit from age). Label reads in part, ...Dr C.W. ROBACK... / for Sale, Wholesale and Retail / at his Swedish Medicine Store. Dick and Nancy Patterson collection.

Est.: \$175 - \$275 • Min. bid: \$90



Lot 239

"DR. ROGERS' - INDIAN FEVER - CURE", America, 1875 - 1885. Bright aquamarine with some subtle straw colored striations in the shoulder area, rectangular with rounded corners, applied sloping collar - smooth base, ht. 7 1/2", perfect. BA1 #150. A great example of this scarce, attractive medicine, appealing to both collectors of Indian bottles as well as cure collectors. Dick and Nancy Patterson collection.

Est.: \$175 - \$275 • Min. bid: \$90



Lot 240

"RHODES' - ANTIDOTE / TO / MALARIA - FEVER & AGUE CURE", America, 1870 - 1880. Aquamarine, rectangular with beveled corners, applied sloping collar - hinge mold smooth base, ht. 8 1/8", near mint; (a small bubble one of the beveled edges with an 1/8" opening in the cover glass, otherwise perfect). BA1 #145. Dick and Nancy Patterson collection, Ex. Larry Hicks collection.

Est.: \$175 - \$275 • Min. bid: \$90



Lot 241

"DR. T.E. DAVIS / SWITCH BACK / COUGH CURE / SUMMIT HILL, PA.", America, 1885 - 1895. Aquamarine, rectangular with beveled corners, tooled square collar - smooth base, ht. 5 3/8", near mint; (a bit of light interior content residue). An unlisted and very rare cure bottle. Summit Hill is a small town in the coal region of Pennsylvania. It is the western-most point of the Mauch Chunk & Summit Hill Switch-back Railroad, the 2nd operational railroad in the United States.

Est.: \$100 - \$200 • Min. bid: \$50



Lot 245

"DR. / L.E. KEELEY'S / DOUBLE / CHLORIDE / OF / GOLD CURE / FOR / THE TOBACCO HABIT / A / TESTED / AND / INFALLIBLE / REMEDY / DISCOVERED BY / DR. L.E. KEELEY / DWIGHT, ILLS. - K.C.C. / Leslie E. Keeley M.D. - T", America, 1900 - 1910. Colorless, rectangular with rounded back panel, tooled prescription-type collar - smooth base, ht. 5 3/4"; (professionally cleaned to original luster, otherwise virtually attic mint). Scarce!

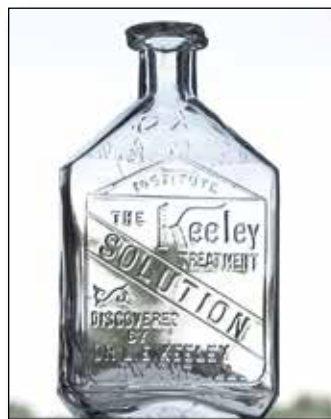
Est.: \$175 - \$350 • Min. bid: \$90



Lot 242

"L.E.K. / THE KEELEY / CURE / DRUNKENNESS / A / RELIABLE / REMEDY / DISCOVERED BY / DR. L.E. KEELEY / DWIGHT, ILL. - K.C. / Leslie E. Keeley M.D. - I.T.F. - D", 1895 - 1905. Light amethyst, rectangular with rounded back, tooled prescription collar - smooth base, ht. 5 3/4"; (professionally cleaned to original luster; a 3/16" chip on the back edge of the lip, and a small iridescent flake on inside edge of lip). Beautiful color, scarce mold, displays as virtually perfect.

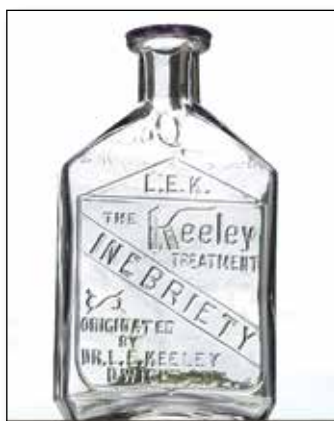
Est.: \$120 - \$240 • Min. bid: \$60



Lot 246

"INSTITUTE / THE KEELEY / TREATMENT / SOLUTION / DISCOVERED / BY / DR. L.E. KEELEY / DWIGHT, ILL. - K.C. / Leslie E. Keeley M.D.", America, 1900 - 1910. Colorless, rectangular with rounded back panel, tooled prescription-type collar - smooth base, ht. 5 3/4"; (professionally cleaned to original luster; a 7/8" area of chipping on the side of the lip, and a 1/4" chip from the other side of the lip). Extremely rare - only a handful of these are known to exist in any condition!

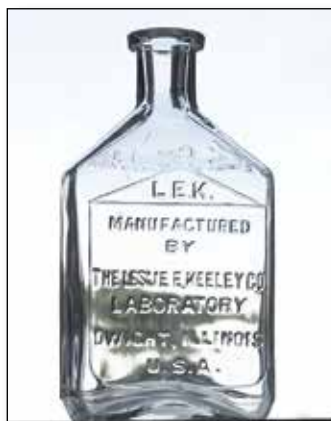
Est.: \$200 - \$300 • Min. bid: \$100



Lot 243

"L.E.K. / THE KEELEY / TREATMENT / INEBRIETY / DISCOVERED / BY / DR. L.E. KEELEY / DWIGHT, ILL. - K.C. / Leslie E. Keeley M.D. - O", America, 1900 - 1910. Colorless, rectangular with rounded back panel, tooled prescription-type collar - smooth base, ht. 5 3/4"; very near mint; (lightly cleaned to original luster and virtually perfect condition). A sparkling example. Note, this is the variant without the embossed initials, "I, T, F," on the side shoulder.

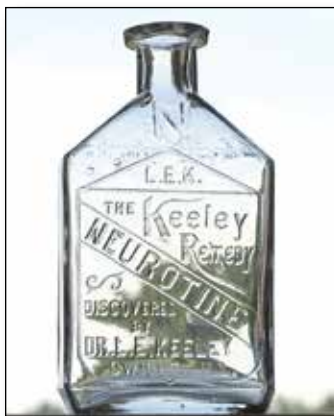
Est.: \$175 - \$350 • Min. bid: \$90



Lot 247

"L.E.K. / MANUFACTURED / BY / THE LESLIE E. KEELEY CO. / LABORATORY / DWIGHT, ILLINOIS / U.S.A. - Leslie E. Keeley M.D.", America, 1905 - 1915. Colorless, rectangular with rounded back panel, tooled prescription-type collar - smooth base, ht. 5 7/8"; (just a slight trace of wear on the reverse, otherwise virtually attic mint). A bright, clean example, scarce mold.

Est.: \$120 - \$180 • Min. bid: \$60



Lot 244

"L.E.K. / THE KEELEY / REMEDY / NEUROTINE / DISCOVERED / BY / DR. L.E. KEELEY / DWIGHT, ILL. - K.C. / Leslie E. Keeley MD. - N", America, 1900 - 1910. Colorless, rectangular with rounded back panel, tooled prescription-type collar - smooth base, ht. 5 3/4"; (lightly cleaned to original luster and virtually perfect condition). The "NEUROTINE" is one of the most difficult of the more than 20 different Keeley molds to acquire. Clean example.

Est.: \$250 - \$450 • Min. bid: \$130



Lot 248

Lot of (3), 'Quack' Medicines, England, 1885 - 1905. 1st Ex., "DR. ROOKE'S / SOLAR ELIXIR", light cornflower, 2nd Ex., **"YOUNG'S / COUGH MIXTURE / 'SALLY-COME-UP'",** pale aqua, 3rd Ex., **"LINDSAY'S LOTION / FOR / INFLAMED NIPPLES",** bluish aqua. Rectangular, tooled and applied collars - smooth bases, ht. 4 7/8"; 5 1/2", and 5" respectively; (1st Ex. has some light overall stain and a couple scratches on reverse; 2nd Ex. has a bit of minor interior stain, 3rd. Ex. perfect).

Est.: \$100 - \$200 • Min. bid: \$50



Lot 249

Lot of (4), 'Quack' Meds., America, 1885 - 1905. 1st Ex: **"PAYNE'S / GOLD DUST LINIMENT / COUVERNEUR, NY"**, aqua, rect; 2nd Ex: **"HOPKINS' / MAGIC GOLD DUST - J.H. HOPKINS"**, clear, cylindrical, 3rd Ex: **"DR. COLWELL'S / MAGIC EGYPTIAN OIL / JACKSON, MICH."**, clear, rect, and 4th Ex: **"MOYER'S / OIL OF GLADNESS / BLOOMSBURG, PA."**, aqua, rect. All tooled lip, smooth base, ht. 6 1/8", 4 5/8", 6 1/4" and 5 3/4"; (#1 & 3 with light haze, small flake on #4).

Est.: \$100 - \$200 • Min. bid: \$50



Lot 250

"L.Q.C. WISHART'S - PINE TREE / TAR CORDIAL / PHILA" - "PATENT" / (PINE TREE) / "1859", America, 1865 - 1875. Clear, light bluish green, square with beveled corners, applied sloping collar - smooth base, ht. 9 1/2"; (lightly cleaned to original luster with a couple of small spots of minor wear or abrasion remaining, and a tiny pinhead flake along the beveled corner, otherwise excellent). A very light example, scarce color, almost a deep greenish aquamarine.

Est.: \$175 - \$275 • Min. bid: \$90



Lot 251

"L.Q.C. WISHART'S - PINE TREE / TAR CORDIAL / PHILA" - "PATENT" / (PINE TREE) / "1859" (98% complete original label), 1865 - 1875. Rich aquamarine, square, beveled corners, applied lip - smooth base, ht. 7 5/8"; (a small radiating stone in the base with a couple of tiny 1/16" lines; a pinprick flake on the inner edge of lip, otherwise pristine). A rare color for a Wishart's, similar in tone to many of the aqua pontiled medicines, and extremely rare with original label!

Est.: \$400 - \$600 • Min. bid: \$200



Lot 252

Original Indenture Note (Deed), for property purchased by L. Q. C. Wishart, August 9, 1867. Original deed on parchment signed by Lucius Q.C. Wishart for the purchase of property on Frankfort and Bristol Turnpike Road, city of Philadelphia. The lot was located near his residence next to railroad tracks. 22" x 18 1/2", excellent condition; (some creases from being folded, and a 1 1/2" separation at one of the folds). An important and unique historical document.

Est.: \$800 - \$1,600 • Min. bid: \$400



Lot 253

"DR BIRMINGHAM'S / ANTI BILIOUS / BLOOD PURIFIER", America, 1865 - 1875. Rich, medium emerald coloration, cylindrical with eight indented panels, applied square collar - smooth base, ht. 8 1/2", sparkling attic mint; (note: a minor, paper-thin, open bubble on the interior of the neck mentioned for complete accuracy, otherwise perfect). An outstanding example, one that has not been dug and cleaned, in a beautiful color, and virtually pristine condition.

Est.: \$800 - \$1,600 • Min. bid: \$400



Lot 254

"PERRINE'S" / (APPLE) / "GINGER" - "PERRINE'S - APPLE - GINGER - PHILA" (with 97% complete original label), 1880 - 1890. Golden amber, cabin form with roped corners, thatched roof panels, tooled sloping collar - smooth base, ht. 9 7/8"; (some light interior content residue; a tiny open bubble on back roof edge, otherwise attic mint). Note, this label is different than the example we sold in the last sale). Also, one roof corner not fully blown during manufacture creating a bit of a lean to the bottle.

Est.: \$300 - \$500 • Min. bid: \$150



Lot 255

"HERBA / BLOOD PURIFIER / AND / STOMACH TONIC / THE HERBA Co. / PHILADELPHIA / PENNA.", America, 1885 - 1895. Beautiful, bright honey amber, square with beveled corners, tooled sloping collar - smooth base, ht. 9 1/2", perfect. Extremely rare, believed to be one of only a few known to exist. Herba = Latin for "herb". A great bottle for collectors who appreciate rare, unusual, medicines, "blood" or "tonic" bottles. Attractive and in pristine condition.

Est.: \$175 - \$350 • Min. bid: \$90



Lot 256

"C.F. GALTON'S / DYSPEPSIA REMEDY - SCHWARTZ & HASLETT - PITTSBURGH. PA.", probably a Pittsburgh district glasshouse, 1870 - 1880. Rich, medium-to-deep amber with a slight orange tone, square with beveled corners, applied sloping collar - smooth base, ht. 7 3/4", attic mint. Extremely rare, believed to be one of two, or possibly three known examples. A very attractive 'half-size' square, bright, clean, and with nice crude glass. Dick and Nancy Patterson collection.

Est.: \$175 - \$350 • Min. bid: \$90



Lot 257

"WAYNE'S / DIURETIC ELIXIR - F.E. SUIRE & Co / CINCINNATI", America, 1875 - 1880. Rich, deep cobalt blue, square with beveled corners, applied sloping collar - smooth base, ht. 7 1/2", virtually attic mint; (only the slightest trace of faint wear, otherwise perfect!) A much better than average example in terms of color and character. A rich color, deeper than most, and having very crude, wavy glass. Provenance: Mary Ballentine collection.

Est.: \$175 - \$350 • Min. bid: \$90



Lot 258

"DR TEBBETTS' - PHYSIOLOGICAL / HAIR - REGENERATOR", America, 1865 - 1875. Beautiful, medium-to-deep strawberry puce, rectangular with beveled corners, applied ring collar with bevel - smooth base, ht. 7 3/8", near mint; (lightly cleaned to original luster, virtually perfect condition). DF, p.152. A very pretty color, lighter in shade than many, and with plenty of strawberry tones, and some beautiful amethyst tones in certain lighting conditions.

Est.: \$300 - \$600 • Min. bid: \$150



Lot 259

"LOG CABIN / SCALPINE / ROCHESTER, N.Y.", America, 1887 - 1890. Medium amber with some lighter honey tones, irregular hex form with three indented panels, applied blob collar - **"PAT. SEPT 6 / 87"** (on smooth base), ht. 9"; (lightly cleaned to original luster with a little scattered light wear remaining and a couple of minor 1/8" flakes at edge of base). O&S #32. Rated as "Rare" in the Warner's book, and certainly one of the most difficult molds to acquire.

Est.: \$800 - \$1,200 • Min. bid: \$400



Lot 260

Irregular Hex-Type Poison Bottle, Carr-Lowrey Glass Co., Baltimore, MD, 1889 - 1910. Bright turquoise blue, irregular hex form, tooled square collar - **"C.L.G. Co. / PATENT APPLIED FOR"** (on smooth base), ht. 4 7/8", mint; (trace bit of light content residue in one side). KI-2. Great condition, beautiful and scarce color.

Est.: \$175 - \$350 • Min. bid: \$90



Lot 261

Lot of (3), Lattice and Diamond Poison Bottles, America, 1877 - 1900. All are shades of cobalt blue, cylindrical with lattice and diamond pattern, tooled prescription-type collar - smooth (plain) bases, ht. 2 1/2", 4 3/4", and 11 1/4" (1/2 oz, 4 oz, and 1/2 Gal.), all are near mint-to-mint; (the 2 1/2" and 4 3/4" each have just a tiny pinprick flake on the edge of the lip; the 1/2 Gal. example is perfect!) The 1/2 Gallon example is rare. All are KC-1.

Est.: \$300 - \$500 • Min. bid: \$150



Lot 262

Graduated set of (11), "NOT TO BE TAKEN" Poison Bottles, England, 1899 - 1915. Shades of yellow green, 2 smallest examples deeper lime green tone, all are irregular hex form, tooled square collars - **"RD No 334871"** (on heel of reverse), bases embossed, **"2 DRM"**, **"1/2 oz"**, **"1 oz"**, **"1 1/2 oz"**, **"2 oz"**, **"3 oz"**, **"4 oz"**, **"6 oz"**, **"10 oz"**, **"16 oz"**, and **"20 oz"**, hts: 2 1/4", 2 1/2", 3 1/4", 3 3/4", 4 1/8", 4 7/8", 5 3/8", 6 3/8", 7 1/4", 8 3/8" and 8 1/2", all are very near mint to perfect! KI-10. Ralph Finch collection.

Est.: \$250 - \$450 • Min. bid: \$130



Lot 263

"BROWNELL & WHEATON / NEW BEDFORD - THIS BOTTLE / NEVER SOLD", America, 1865 - 1875. Clear, medium cobalt blue, cylindrical, applied blob collar - smooth base, ht. 7 1/4"; (just a trace of minor case-type wear, otherwise perfect). A great example that appears to be an attic or barn find. Nice clarity, excellent condition.

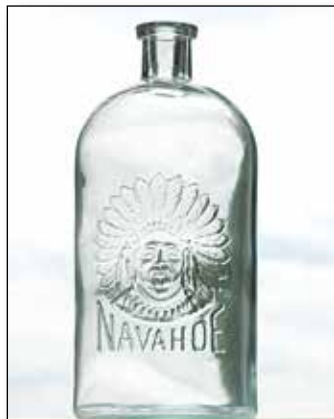
Est.: \$200 - \$400 • Min. bid: \$100



Lot 264

"T.W. GILLET. / NEW-HAVEN." - (5 Pointed Star), America, probably 1850 - 1855. Rich, medium-to-deep blue green, almost a teal coloration, cylindrical, applied blob collar - iron pontil scar, ht. 7", near mint; (just a touch of minor lip edge roughness, a 1/4" iridescent bruise on the inside edge of the lip, and a tiny flake on the "N" in "NEW"). A beautiful example that appears to be an attic bottle. Crude whittled glass, plenty of tiny bubbles, excellent condition.

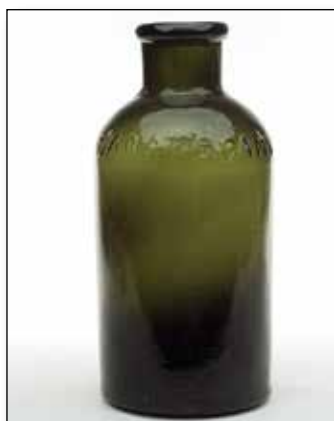
Est.: \$300 - \$500 • Min. bid: \$150



Lot 265

BUST OF INDIAN WITH HEAD-DRESS / "NAVAHOE" Lithia Water Bottle, America, 1890 - 1900. Aquamarine, cylindrical, tooled square collar - smooth base, ht. 10", attic mint! Extremely rare, possibly unique. A fantastic pictorial Lithia water bottle and a 'fresh-to-the market' find in 2019 for one lucky collector. It is interesting that the Navajo Indians were Native American people of the southwest. The majority of Lithia water bottles are from the southeast.

Est.: \$200 - \$400 • Min. bid: \$100



Lot 266

"SARATOGA. N.Y." Wide Mouth Salt Jar, probably a NY State glasshouse, possibly Saratoga Mountain Glassworks, Mt. Pleasant, 1855 - 1861. Medium-to-deep olive green, cylindrical, 3-pc. mold, expanded wide neck with an applied heavy ring collar - smooth base, Qt, ht. 8 1/4", mint. T# E-1:B, variant 2. Rare. A beautiful example, outstanding condition, nice glass texture and character, the glass being filled with tiny seed bubbles. Provenance: Ex. Don Tucker collection.

Est.: \$2,500 - \$4,500 • Min. bid: \$1,300



Lot 267

"CLARKE & WHITE / C / NEW YORK. / N II", probably Saratoga Mountain Glassworks, Mt. Pleasant, NY, 1846 - 1856. Bubbly, deep olive green, cylindrical, applied sloping collar with bevel - smooth base, Pt, very near mint; (just a trace of minor wear and a slightly weak mold impression, otherwise perfect). T# C-11:B, type 4. A rare mold, great character, the glass is filled with tiny seed bubbles.

Est.: \$400 - \$600 • Min. bid: \$200



Lot 268

"HIGHROCK SPRING" / (Motif of Rock) / "SARATOGA. N.Y.", probably a New York State glasshouse, possibly Saratoga Mountain Glass Works, Mt. Pleasant, 1860 - 1865. Rich, deep olive amber, virtually black in reflected light, cylindrical, applied sloping collar with ring - smooth base, Pt; (a little minor wear including a few light scratches; a slightly weak impression in the lettering near the shoulder, otherwise perfect). T# S-35:B. Ex. Dick & Elma Watson collection.

Est.: \$1,200 - \$2,400 • Min. bid: \$600



Lot 269

"MISSISQUOI / A / SPRINGS" - (Indian Maiden with Papoose), probably Lyndeborough Glass Works, Lyndeborough, NH, 1867 - 1875. Deep yellow olive, cylindrical, applied sloping collar with bevel - smooth base, Qt, near mint; (a slight trace of wear and a tiny potstone on the inside surface of the glass with a few minuscule 'legs', 1/16" or less, otherwise perfect). T# V-17:B. A great pictorial mineral water, scarce mold, and in a rare color! Provenance: Ex. Dick & Elma Watson collection.

Est.: \$600 - \$1,200 • Min. bid: \$300



Lot 270

"ALBURGH / A / SPRINGS. VT.", A New Hampshire glasshouse, probably Lyndeborough Glass Works, Lyndeborough, NH, 1867 - 1875. Bright, light yellowish honey coloration, cylindrical, applied sloping collar with bevel - smooth base, Qt; (just trace of faint wear, otherwise perfect). T# V-1:A. A scarce mold, and certainly rare in this beautiful very light color with plenty of yellowish tones (typically found in amber with orange tones).

Est.: \$400 - \$800 • Min. bid: \$200



Lot 271

"ALBERGH / A / SPRINGS. VT.", A New Hampshire glasshouse, probably Stoddard, possibly Lyndeborough, 1860 - 1870. Rich golden amber with a very slight orange tone, cylindrical, applied sloping collar with bevel - smooth base, Qt, perfect! T# V-2. Note; this is the misspelled variant, rare and very difficult to acquire. A gorgeous example in absolutely pristine condition. If you've been waiting for a great example, this may be it!

Est.: \$800 - \$1,600 • Min. bid: \$400



Lot 272

"MAGNETIC SPRING / HENNIKER. NH", probably a Stoddard, NH glasshouse, 1860 - 1873. Bright golden amber, cylindrical, applied sloping collar with bevel - smooth base, Qt; (a little light exterior wear including a 1/8" potstone chip on the surface of the glass at the edge of the base, otherwise very near mint). T# V-10. A scarce mineral water, nicely whittled.

Est.: \$400 - \$600 • Min. bid: \$200



Lot 273

"SARATOGA" / (STAR) / "SPRING", possibly a New York State glasshouse, 1862 - 1865. Deep amber in the midsection shading to virtually black above the shoulders and near the base, cylindrical, applied sloping collar with bevel - smooth base, Qt, attic mint. T# S-53:A. A great example, scarce, very deep color.

Est.: \$150 - \$250 • Min. bid: \$80



Lot 277

Demijohn, New England, probably a Stoddard, NH glasshouse, 1845 - 1860. Light-to-medium olive amber, a little more of an amber tone than Lot 276, freeblown or possibly dip mold, cylindrical, applied sloping collar - blowpipe pontil scar, ht. 13"; (virtually perfect with just a slight hint of typical faint wear, and a trace of light washable content residue). An above average example being larger than most, having nice form, good light color, and filled with plenty of tiny seed bubbles.

Est.: \$200 - \$400 • Min. bid: \$100



Lot 274

Black Glass Wine Bottle, probably America, possibly New England Glass Bottle Co., 1830 - 1840. **"George / Nichols"** (on applied seal), Deep olive amber, 3-pc. mold, applied sloping collar - **"H. RICKETTS & Co / GLASS WORKS BRISTOL"** (on base), sand type pontil, ht. 8 3/4", perfect! Unlisted by Burton, and very rare. This example does not have the characteristic **"PATENT"** on the shoulder. Possibly blown for George Nichols, proprietor of Harvard University Press.

Est.: \$400 - \$800 • Min. bid: \$200



Lot 278

Demijohn, New England, probably Westford Glass Works, Westford, CT, 1857 - 1865. Medium-to-deep olive amber, cylindrical, probably freeblown, possibly dip-mold, applied sloping collar - sand type pontil scar, ht. 15 5/8", very near mint; (slight trace of typical light wear, otherwise perfect). An appealing oversized tall cylinder having crude, seedy, 'earthy' glass. When you do run across one of these tall Westford demi's, they normally have a smooth base. Very scarce with the pontil scarred base.

Est.: \$200 - \$400 • Min. bid: \$100



Lot 275

Black Glass Wine Bottle, England, 1840 - 1850. **"TRELASKE"** encircling a half moon and diamond decoration within a beaded boarder (on applied seal). Deep olive green, 3-pc. mold cylinder, applied sloping collar with bevel - sand type pontil scar, ht. 10 7/8"; (just a faint trace of wear including a 1/8" minor open bubble). Burton, p.1271. Scarce. Attributed to the Trelaske House, near Cornwall, which dates to the 17th century. Dick & Nancy Patterson collection.

Est.: \$200 - \$400 • Min. bid: \$100



Lot 279

Demijohn, America, 1870 - 1880. Brilliant lime, or "7-Up" green, cylindrical, 2-piece hinge mold, applied sloping collar - smooth base, ht. 13 1/4", sparkling attic mint! A beautiful, bright, clean example in a very scarce, unusual color, that will stand out in any run of cylinder 'demi's'. In addition, some nice texture to the glass and plenty of microscopic seed bubbles. A big splash of color and a lot of bottle for the money.

Est.: \$150 - \$300 • Min. bid: \$80



Lot 276

Demijohn, New England, probably a Stoddard, NH glasshouse, 1845 - 1860. Yellowish olive amber, freeblown, cylindrical, applied sloping collar - light 'petal-type' iron pontil scar, ht. 10 5/8", perfect. A beautiful example, great condition, crude, and having nice light color with plenty of pleasing yellowish tones.

Est.: \$250 - \$450 • Min. bid: \$130



Lot 280

Lot of (3), Colorful Demijohns, America, 1865 - 1885. Yellow with slight olive tone, light grass green, and honey amber with a bright orange tone, all are cylindrical, 2-pc. mold, applied sloping collars - smooth base, ht. 13", 15", and 16 5/8" respectively, all near mint-to-mint; (green example has some minor, very light, interior haze or residue in one side; a light ring of interior residue near base in honey-orange example). Beautiful colors that compliment one another nicely, and a lot of 'bang for the buck'.

Est.: \$150 - \$300 • Min. bid: \$80

Colorful Target Balls



Choice Sample-Size Bitters Bottles



American Historical & Pictorial Flasks

