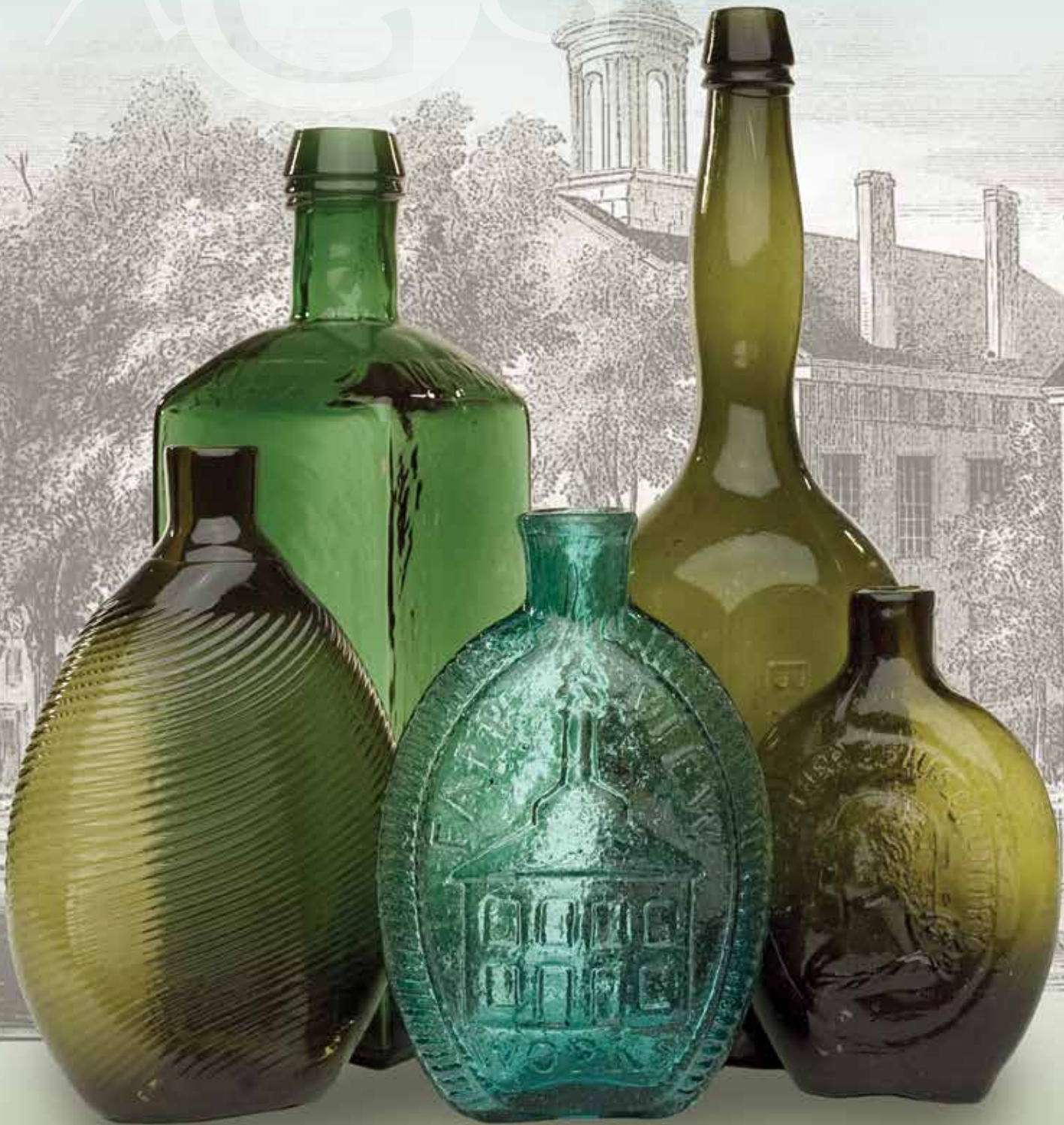


# American Glass Gallery<sup>TM</sup>

Auction #25

Opens March 23, 2020

Closes March 31, 2020



Back row from left: Lot 196, Lot 170. Front row from left: Lot 61, Lot 12, Lot 4.

# Conditions of Sale: Auction #25

## 1. Absentee Auction

The items in this sale will be sold via absentee auction. Closing date:  
**March 31, 2020, 11:00 p.m., EST.**

## 2. Our Guarantee Regarding Descriptions

American Glass Gallery has made every attempt to describe correctly the property being sold. Descriptions are guaranteed to be accurate as regards authenticity, age, condition, and measurements to within one-fourth inch, as represented in this catalog. Items in this catalog are not shown to scale. In describing damage, exterior wear or manufacturer's flaws that in our opinion, do not significantly detract visually or monetarily from the value of the item are not listed and will not be considered for refund. The Auctioneers reserve the right to make verbal corrections and provide additional information at any time during the sale.

## 3. Preview

Items may be viewed by appointment from **March 24, 2020** through **March 30, 2020**.

## 4. Bidding Procedure

You may submit your bids by mail, phone, FAX, email or through our on-line auction site. If bidding by mail or FAX, please fill out the absentee form and return it to us. Your bid, either written or oral, grants American Glass Gallery the authority to protect you up to the amount of your stated bid. Your bid will not be removed once executed.

**Bidding Times:** You can submit your bids anytime after receiving your catalog. Bids may be made by phone, daily, until closing day, **March 31, 2020**, from 9 A.M. - 6 P.M. Eastern Time. Incoming phone bids will be accepted on the closing day (**March 31, 2020**) until 11 P.M. Eastern Time. Phone calls and Fax bids after this time will not be honored. No exceptions. You may also place your bids through our on-line auction service 24-hours a day once the site has opened for bidding, on or about **March 23, 2020**, continuing until 11:00 P.M. Eastern Time, **March 31, 2020**.

**Please do not wait until the last day or two of the sale to place your bids!** Because many collectors wait until the final few days of the sale to place their bids, we anticipate the telephone and internet bidding to be very busy during that period, so please plan accordingly. In the event of a tie bid, the earliest received bid on the lot will take precedent. We would welcome your bids by phone so that we can answer any questions and assist you in your bidding.

You may also telephone us at any time during the auction, prior to the closing of the sale, to check the status of your bids, to find the current bidding level, to open a bid, or to raise a bid on an auction lot.

### Bidding Increments are as follows:

Up to \$250.00.....	increments of \$10.00
\$250.00 - \$500.00 .....	increments of \$25.00
\$500.00 - \$1,000.00 .....	increments of \$50.00
\$1,000.00 - \$2,500.00 .....	increments of \$100.00
\$2,500.00 - \$5,000.00 .....	increments of \$250.00
\$5,000.00 - \$10,000.00 .....	increments of \$500.00
\$10,000 & Up.....	increments of \$1,000.00

Bids submitted between the above increments, whether by mail, FAX, email or on-line via the internet, will automatically be lowered to the closest lower increment.

This is a minimum bid auction. Bids below the printed minimum will not be accepted.

**An example of how our absentee bidding system works:** You bid \$600.00 on a lot which is the highest bid received to date. The second highest bid is \$450.00. The current high bid level would be yours at \$475.00, one bid increment higher than the other collector's bid. Any additional bids submitted by others below \$600.00 will automatically be topped on your behalf by a representative of American Glass Gallery, up to your stipulated high bid amount. If no further bids on this lot are received beyond the \$450.00, and the under bidder has not requested a "Call Back", then you would have won the lot at \$475.00, not the \$600.00 that you were prepared to pay.

American Glass Gallery will at NO TIME disclose bids pledged by others; only the current "High Bid" level of a lot will be stated upon request. The highest bidder as determined by American Glass Gallery shall be the purchaser. It is the sole right of the auctioneer to settle any dispute between bidders and to regulate the bidding procedure. The auctioneer reserves the right to refuse any bid he believes not to have been made in good faith.

## 5. "Call Back" Process

If requested, the three top bidders of an item at the time of closing will be given a "Call Back" over the next number of days in order to resolve the final sale of an item. You can request this service by "checking" the appropriate box on your absentee bid form or verbal agreement by phone. It is the responsibility of the bidder to insure he has qualified for this service.

**Please note: No "Call Backs" will be executed for bids under \$400.00. In the event of tie bids, the earliest bid received will be the winning bid.**

An example of how the "Call Back" process works: As an example, you have bid \$600.00 on a particular lot. Another bidder has submitted a bid of \$900.00 on the same lot. Assuming that as of the auction closing date you are among the top three bidders on this lot and you have requested a "Call Back", you would receive a call informing you that you have been "Out Bid" and the current "High Bid" is now at \$650.00. If you choose to continue bidding on this lot, you may now do so. Assuming that you now increase your bid to \$700.00, we would accept your bid but also inform you that we have a higher bid on this lot and must bid \$750.00. At this time, an auction between you and American Glass Gallery, representing the collector who submitted the bid of \$900.00, takes place. This bidding would continue until you drop out, or top the other bidders high bid of \$900.00. If the other bidder has not requested a "Call Back" service, you would be awarded the lot. If however, the other bidder also requested a Call Back, we must now call them. If they elect to increase their bid over your high bid, we would in turn call you back. This back and fourth process would continue until one of the bidders declines to go any farther.

If you have requested a "Call Back", the auctioneers will need to contact you on the days immediately following the auction closing between the hours of 8 A.M. and 9 P.M. Eastern Time. Please supply us with all appropriate contact phone numbers including, home, mobile and work numbers. Bidders must provide the appropriate telephone numbers where they can be contacted. If you will be traveling or otherwise unavailable, bidders with "Call Back" privileges will have the responsibility to contact American Glass Gallery twice daily during the Call Back period.

**Please note,** every effort will be made to contact you during the "Call Back" period. However, the bidder will forfeit their rights to a "Call Back" if the auctioneers are unable to reach them. American Glass Gallery reserves the right to discontinue Call Backs on any item in the sale (2) two days after the closing date of the sale. At that time, the current "High Bidder" may be awarded the item even if Call Backs are still outstanding.



# Conditions of Sale: Auction #25

## 6. Terms

**Successful Bidders,** Prompt and full payment is due immediately upon receipt of our invoice. Absolutely no exceptions. Anyone failing to pay for items won will forfeit all rights to bid in any future American Glass Gallery sales. **Any late or delayed payments may result in loss of return privileges for items purchased in the sale.**

**No Items Will Be Mailed Before Full Payment Is Received.**

**Buyer Premium:** Our buyer premium remains unchanged. **It is 15% if paying by cash or check, discounted from 18% if paying by Credit Card or PayPal** (PayPal payment account: jpastor@americanglassgallery.com). This buyer premium will be added to the hammer price as part of the purchase price. For example, if you purchase a lot for \$100.00, you will receive an invoice for \$115.00 if paying by cash, check or money order, plus any applicable sales tax or shipping charges.

**Taxes:** If you are a Michigan resident, a 6% sales tax will be added to your bill unless you have a valid resale number registered with us.

**Shipping:** Shipping, handling and insurance are extra. We ship insured via U.S. Mail. These charges will be added to your bill unless the lots are picked up in person. Oversize packages (boxes with dimensions over 12"), may incur additional shipping charges based on the postal zone of destination. Our charges for shipping (excluding foreign shipments and oversized lots) are \$18.00 for the first item, \$9.00 for each additional item together with extra insurance costs (we use current U.S. Postal Service insurance rates).

*Please allow two to three weeks for delivery after receipt of your check.*

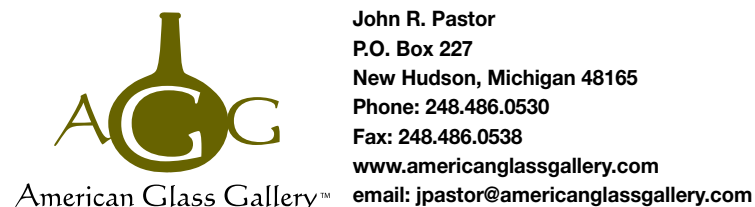
**Payment:** American Glass Gallery accepts Cash, Money Orders, Personal Checks, Visa, MasterCard, American Express and PayPal. **If paying by Credit Card or PayPal, an additional 3% will be added to the invoice total.**



## 7. Refunds

Refunds will be given at the discretion of the Auctioneers. Items purchased must be examined and request for refund made immediately upon receipt of the item or items. Since opinions can differ, particularly in the matter of condition, the Auctioneers will be the sole judge in the consideration of refunds. Refunds requested on the grounds of authenticity must be made within 15 days of the date of the auction, and such refund requests must be accompanied by at least one supporting statement in writing from an authority recognized by the Auctioneers. It is the Auctioneers sincere intention to consider any reasonable request for a refund. **Absolutely no returns for any reason after 30 days following the closing of the sale.**

## 8. Bidding on any item indicates your acceptance of these terms.



**John R. Pastor**  
**P.O. Box 227**  
**New Hudson, Michigan 48165**  
**Phone: 248.486.0530**  
**Fax: 248.486.0538**  
**www.americanglassgallery.com**  
**email: jpastor@americanglassgallery.com**

## PLEASE NOTE:

*The lots offered in this printed catalog are identical to the lots offered in the on-line catalog. However, due to space constraints of the printed catalog, there may be some further information available regarding some of the lots in the on-line auction descriptions.*

*Please visit us at*

***www.americanglassgallery.com***

*and follow the link to the on-line auction.*

*The link and on-line auction will be available March 23, 2020. A post-auction price list will be available on our website, in printable form, approximately 30 days after the close of the auction.*

*We encourage you to contact us by phone or email with any questions, for assistance with bidding, or further details or clarification on any of the lots in this sale. Your complete satisfaction and confidence is our goal!*

**THANK YOU AND GOOD LUCK  
WITH YOUR BIDS!**

# Reference Key

Reference initials and numbers used in the description of this catalog refer to the following publications:

AHG	<i>American Historical Glass</i> , Bessie M. Lindsey, 1967
AM	<i>The Decanter - An Illustrated History of Glass from 1650</i> , Andy McConnell, 2004
AP	<i>Glass in Early America</i> , Arlene Palmer, 1993.
BA1	<i>Collecting The Cures</i> , Bill Agee, 1969
BA2	<i>Collecting All Cures</i> , Bill Agee, 1973.
BB	<i>A Bit About Balsams</i> , Betty Blasi, 1974
BH	<i>Classification and Documentation of Sunburst and Similar Scent Bottles</i> , Bill Ham, AB&GC, 5/87
B/K	<i>The Glass Industry in Sandwich</i> , Raymond Barlow and Joan Kaiser, 1989.
BPK	<i>A.M. BININGER Bottles</i> , Jim Bender, 2017
C	<i>Ink Bottles and Inkwells</i> , William Covill, 1971.
DB	<i>Antique Sealed Bottles, 1640 - 1900</i> , David Burton, 2015
DeG	<i>American Sarsaparilla Bottles</i> , John DeGrafft, 1980.
DeGII	<i>Supplement to American Sarsaparilla Bottles</i> , John DeGrafft, 2004.
DF	<i>Hair Raising Stories</i> , Don Fadely, 1992.
DM	<i>Wistarburgh, Window Tiles, Bottles and More</i> , Dale L. Murscell, 2007.
F	<i>Inks, 150 Years of Bottles and Companies</i> , Ed and Lucy Faulkner.
FA	<i>John Frederick Amelung, Early American Glassmaker</i> , Lanmon, Palmer, Hume, Brill, Hanson, 1990.
FB	<i>A.S.C.R. The wine bottles of All Souls College</i> , Oxford, 1750 – 1850, Fay Banks.
G	(Flasks) <i>American Bottles &amp; Flasks and Their Ancestry</i> , McKearin & Wilson, 1978.
G	(Blown Three Mold) <i>American Glass</i> (Chapter VI), George S. and Helen McKearin, 1941.
GBH	<i>English Glass For The Collector, 1660-1860</i> , G. Bernard Hughes, 1958.
H	<i>American Bottles in the Charles B. Gardner Collection</i> , Norman C. Heckler, 1975.
JB	<i>Patent and Proprietary Medicine Bottles</i> , Joseph K. Baldwin, 1973
JEB	<i>Glasshouse Whimsies</i> , Joyce E. Blake, 1984.
JH	<i>Glasshouses &amp; Glass Manufacturers of the Pittsburgh Region, 1795 – 1910</i> , Jay W. Hawkins, 2009.
JM	<i>Tea Kettle Ink Price and Reference Guide</i> , Joe L. Mathews Jr., 2016
JS	<i>In glas verpakt – European Bottles, Their history and production</i> , Johan Soetens, 2001.
K	<i>Poison Bottle Workbook</i> , Rudy Kuhn, 1988.
KW	<i>New England Glass &amp; Glassmaking</i> , Kenneth M. Wilson, 1972.
L	<i>The Red Book of Fruit Jars, No. 11</i> , Douglas M Leybourne, Jr., 2014.
LI	<i>Pittsburgh Glass, 1797 – 1891</i> , Lowell Innes, 1976.
Mc	<i>Two Hundred Years of American Blown Glass</i> , Helen and George McKearin, 1950.
McK	<i>American Glass</i> , George S. and Helen McKearin, 1941.
MW	<i>American Bottles &amp; Flasks and Their Ancestry</i> , McKearin & Wilson, 1978.
N	<i>Great American Pontiled Medicines</i> , Frederick Nielson, 1978.
NCH	<i>The Blaske Collection of American Flasks</i> , Norman C. Heckler, 1983.
NCH II	<i>The Blaske Collection: Part II</i> , Norman C. Heckler, 1983.
Odell I	<i>Indian Bottles and Brands</i> , John Odell, 1977
Odell II	<i>Pontiled Medicine Encyclopdia</i> , John Odell, 2007
O&S	<i>Warner's Reference Guide</i> , Ed Ojea and Jack Stecher, 1998.
P	<i>The Glass Gaffers of New Jersey</i> , Adeline Pepper, 1971.
RD	<i>Understanding Antique Wine Bottles</i> , Roger Dumbrell, 1983.
RF	<i>The Bottle Book: A Comprehensive Guide to Historic, Embossed Medicine Bottles</i> , Richard Fike, 1987
RH	<i>Collecting Barber Bottles</i> , Richard Holiner, 1986.
R/H	<i>Bitters Bottles</i> , Carlyn Ring and W. C. Ham, 1998.
RWL	<i>Antique Fakes &amp; Reproductions</i> , Ruth Webb Lee, 1950
T	<i>Collectors Guide to Saratoga Type Mineral Water Bottles</i> , Donald Tucker, 2005.
V	<i>Nailsea Glass</i> , Keith Vincent, 1975
VdB	<i>Antique Glass Bottles; Their History and Evolution</i> , Willy Van den Bossche, 2001.
WL	<i>A Wine-Lover's Glasses, The A.C. Hubbard, Jr. Collection</i> , Ward Lloyd, 2000.
Z	<i>Ketchup, Pickles, Sauces</i> , Betty Zumwalt, 1980.
ZW	<i>Color Hutchinsons</i> , Zang Wood, 1999.

- The dash is generally used to indicate that the descriptions are on opposite sides of the bottle or flask.

/ The slash is used to indicate that the descriptions are on different lines or surfaces of the bottle.







# Fine & Colorful Baltimore Sunburst Flasks



Lot 38

Lot 39

Lot 37

## Rare Colored Midwestern Pattern-Molded Bottles



Lot 53

Lot 54

Lot 52



# Fine New England Blown & Pattern-Molded Glass

Lot 83

Lot 61

Lot 85

Lot 63

Lot 82





# Rare & Choice Early Spirits Bottles

Lot 144

Lot 279



Lot 153

Lot 147

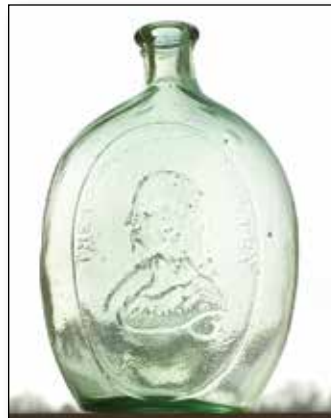
Lot 148



### Lot 1

**“GENERAL WASHINGTON” / BUST OF WASHINGTON - EAGLE Historical Flask**, an early Pittsburgh district glasshouse, 1825 - 1835. Rich, greenish aquamarine, sheared mouth - blowpipe pontil scar, Pt; (just the slightest trace of very faint wear, otherwise pristine perfect). GI-2. A bright, sparkling, example with an exceptionally bold impression.

*Est.: \$250 - \$450 • Min. bid: \$130*



### Lot 5

**“THE FATHER OF HIS COUNTRY” / BUST OF WASHINGTON - BUST OF TAYLOR Historical Flask**, probably Dyottville Glass Works, Philadelphia, 1848 - 1855. Light yellow green, applied ring collar - smooth base, Qt, near mint; (just a touch of very faint spotty haze, barely noticeable and non-distracting, otherwise virtually perfect). GI-45. A mold that is very difficult to obtain and charted by McKearin as “Very rare”.

*Est.: \$500 - \$800 • Min. bid: \$250*



### Lot 2

**“WASHINGTON” / BUST OF WASHINGTON - “JACKSON” / BUST OF JACKSON Historical Flask**, Keene Marlboro Street Glassworks, Keene, NH, 1825 - 1842. Medium shading to a deep olive amber, sheared mouth - blowpipe pontil scar, Pt, virtually perfect; (slight trace of light interior residue that may wash out). GI-31. An excellent example, strong olive tones, bold embossing and virtually no wear, which is often an issue with this mold.

*Est.: \$300 - \$500 • Min. bid: \$150*



### Lot 6

**WASHINGTON - TAYLOR Portrait Flask**, Dyottville Glass Works, Philadelphia, 1848 - 1855. Pale, greenish aquamarine, virtually colorless through the body, sheared mouth - blowpipe pontil scar, Qt; (a tiny, pinhead bit of roughness on the edge of the sheared mouth, otherwise attic mint). GI-51. A very scarce ‘color’ for this mold being nearly colorless, but in addition, excellent character, the glass is absolutely filled with tiny seed bubbles!

*Est.: \$200 - \$300 • Min. bid: \$100*



### Lot 3

**“THE FATHER OF HIS COUNTRY” / BUST OF WASHINGTON - “DYOTTVILLE GLASS WORKS PHILAD.A / GEN. TAYLOR NEVER SURRENDERS” / BUST OF TAYLOR Historical Flask**, Dyottville Glass Works, Philadelphia, 1855 - 1860. Colorless with a slight pale green tone in the base, applied sloping collar - smooth base, Qt, perfect. GI-37. Crisp, very strong mold impression, virtually no high point wear, rare ‘color’, outstanding condition!

*Est.: \$300 - \$500 • Min. bid: \$150*



### Lot 7

**“GENERAL JACKSON.” / BUST OF JACKSON - EAGLE / “J.T & Co” Historical Flask**, John Taylor & Co, Brownsville, PA, 1829 - 1831. Rich, deep aquamarine, sheared mouth - pontil scar, Pt; (just a trace of faint wear, and the top of the lip appears to have been lightly polished, likely to remove some minor flaking or roughness, otherwise excellent). GI-65. Scarce! A much better than average example in terms of color and mold impression. Ex. Blaske, Vuono collections.

*Est.: \$1,200 - \$2,400 • Min. bid: \$600*



### Lot 4

**“THE FATHER OF HIS COUNTRY” / BUST OF WASHINGTON - “GEN. TAYLOR NEVER SURRENDERS” / BUST OF TAYLOR Historical Flask**, Dyottville Glass Works, 1848 - 1855. Yellowish olive coloration, sheared mouth - blowpipe pontil scar, ½ Pt, virtually perfect; (a little washable interior residue, and a paper-thin 1/8” flake on the inside edge of the lip). GI-41. Strong embossing, almost no wear, great color, character, and condition, a top example!

*Est.: \$3,000 - \$6,000 • Min. bid: \$1,500*



### Lot 8

**BUST OF TAYLOR / “ROUGH AND READY” - “MAJOR” / BUST OF RINGGOLD / “RINGGOLD.” Historical Flask**, possibly Baltimore Glass Works, Baltimore, MD, 1846 - 1850. Beautiful light pinkish-amethyst, sheared mouth - blowpipe pontil scar, Pt, virtually attic mint; (only the slightest trace of minor wear, otherwise perfect). GI-71. Attractive, eye-appealing color, and nicely whittled. A flask that will stand out and add some pleasing color to any collection.

*Est.: \$1,000 - \$2,000 • Min. bid: \$500*



**Lot 9**

**"ROUGH AND READY" / BUST OF TAYLOR - "MASTERSON" / EAGLE Historical Flask**, probably an early Pittsburgh district, or possibly Kentucky Glass Works, 1848 - 1855. Aquamarine, sheared mouth - blowpipe pontil scar, Qt; (a slight trace of minor wear, the bottle may have been lightly cleaned, but certainly presents itself as near mint). GI-77. Listed by McKearin, Most Desirable Flasks - Group A, #26.

*Est.: \$1,200 - \$1,800 • Min. bid: \$600*

**Lot 13**

**BUST OF COLUMBIA - EAGLE / "B&W" Historical Flask**, probably Kensington Glass Works, Philadelphia, 1825 - 1835. Aquamarine, sheared mouth - blowpipe pontil scar, Pt, very near mint; (just a slight touch of faint wear, otherwise perfect). GI-121. A comparatively scarce mold, good rich color. This early bust of Columbia is reminiscent of the figure portrayed on many early coins.

*Est.: \$300 - \$500 • Min. bid: \$150*

**Lot 10**

**"LAFAYETTE" / BUST OF LAFAYETTE / "COVENTRY / C-T" - STARS AND LIBERTY CAP / "S & S" Historical Flask**, Coventry Glass Works, Coventry, CT, 1825 - 1835. Bright, yellowish olive amber, sheared mouth - blowpipe pontil scar, 1/2 Pt; (just a slight trace of light wear, otherwise perfect). GI-86. A beautiful, bright, clean example, strong mold impression, and very little wear, which is often an issue on this mold.

*Est.: \$800 - \$1,200 • Min. bid: \$400*

**Lot 14**

**"OUR CHOICE" / BUST OF GROVER CLEVELAND & ADLAI STEVENSON / "CLEVE & STEVE / NOVEMBER 8TH 92 / MARCH 4TH 93" - (Crowing Cock), Historical Flask**, America, 1892 - 1893. Golden amber, elliptical barrel form, tooled round collar with ring - smooth base, Pt, very near mint; (a little faint interior milkiness or residue, possibly washable, otherwise perfect). GI-123a. A scarce political flask blown for the 1892 Presidential election.

*Est.: \$300 - \$600 • Min. bid: \$150*

**Lot 11**

**"LAFAYETTE" / BUST OF LAFAYETTE - MASONIC ARCH Historical Flask**, Mt. Vernon Glass Works, Vernon, NY, 1824 - 1830. Deep olive coloration, sheared mouth - blowpipe pontil scar, 1/2 Pt; (a 1/2" annealing line from a potstone in the neck; another hard-to-see 1/2" hairline fissure along the medial rib, and a potstone at medial rib with a little iridescence and a 1/8" flake). GI-89. A very rare flask that displays as near mint; the noted condition issues are well hidden.

*Est.: \$800 - \$1,600 • Min. bid: \$400*

**Lot 15**

**EAGLE - "COFFIN & HAY." / FURLED FLAG / "HAMMONTON" Historical Flask**, Coffin & Hay Glass Manufactory, Hammonton, NJ, 1838 - 1847. Aquamarine, sheared mouth - blowpipe pontil scar, Qt, perfect! GI-48. A big, bright, sparkling example. In addition, virtually no high point wear as is often found on these high relief molds. Not easy to find in this fine condition. A good one!

*Est.: \$250 - \$450 • Min. bid: \$130*

**Lot 12**

**"WHEAT \* PRICE & Co WHEELING, VA / (LONG HAIR BUST) - "FAIRVIEW" / (GLASSHOUSE) / "WORKS" Historical Flask**, Wheat, Price & Co, East Wheeling (W.) VA, 1833 - 1834. Blue green, sheared mouth - blowpipe pontil scar, Pt, near mint; (a hard-to-see, tiny little 1/4" hairline 'spider' crack, in the hair of the bust, and a slight trace of faint wear, otherwise pristine perfect). GI-116. Rare! Crisp, extremely bold impression, great color, character. James Chebalo collection.

*Est.: \$6,000 - \$12,000 • Min. bid: \$3,000*

**Lot 16**

**"LIBERTY" / EAGLE - "WILLINGTON / GLASS, Co / WEST, WILLINGTON / CONN" Historical Flask**, 1860 - 1872. Willington Glass Works, 1860 - 1872. Rich, medium to deep emerald coloration with a slight olive tone, applied sloping collar - smooth base, Pt; (a little scattered light exterior wear, otherwise near mint). GI-62. Beautiful color, nice character, plenty of tiny bubbles throughout.

*Est.: \$500 - \$1,000 • Min. bid: \$300*



### Lot 17

**EAGLE - EAGLE Historical Flask**, a Pittsburgh district glasshouse, 1860 - 1870. Medium golden amber shading to a deep golden through the shoulders and neck, applied heavy ring-type collar - smooth base, Pt, virtually attic mint; (just a trace of light interior residue or very faint haze, most of which would likely wash out, otherwise perfect). GII-89. Nice character and whittling, good color, excellent condition.

*Est.: \$250 - \$450 • Min. bid: \$140*



### Lot 21

**EAGLE / MONUMENT AND FLAG - INDIAN SHOOTING BIRD Historical Flask**, probably Cunninghams & Co., Pittsburgh, PA, 1875 - 1885. Aquamarine, applied collar with flat band - smooth base, Qt; (just a slight trace of faint wear, otherwise virtually attic mint). GII-141. Listed by McKearin as "Very rare", and included in Group C, Rare flasks (#15). Not an easy flask to find, especially in this fine condition.

*Est.: \$200 - \$300 • Min. bid: \$100*



### Lot 18

**EAGLE / "PITTSBURGH / PA" - EAGLE Historical Flask**, a Pittsburgh district glasshouse, 1860 - 1870. Light golden, almost a honey amber, applied collar with flat band - smooth base, Pt, virtually perfect; (a tiny, barely noticeable, pinprick speck of roughness on the edge of the lip, otherwise pristine). GII-105. Good color, excellent mold impression, and virtually no high point wear as is often found on these flasks, a great example.

*Est.: \$300 - \$500 • Min. bid: \$150*



### Lot 22

**MASONIC - EAGLE / "HS" Historical Flask**, Keene Marlboro Street Glassworks, Keene, NH, 1815 - 1830. Clear, greenish aquamarine, sheared and tooled lip - blowpipe pontil scar, Pt, virtually perfect; (only the slightest trace of faint wear, otherwise sparkling attic mint). GIV-2. A great example of this comparatively scarce, early, Masonic flask. Good impression, excellent clarity, outstanding condition.

*Est.: \$500 - \$800 • Min. bid: \$250*



### Lot 19

**EAGLE / "PITTSBURGH / PA" - EAGLE Historical Flask**, a Pittsburgh district glasshouse, 1860 - 1870. Rich, medium-to-deep emerald, almost a forest green coloration, applied collar with flat band - smooth base, Pt, attic mint! GII-106a (Unlisted - similar to GII-106, but no vertical rib at sides). An exceptional example in terms of color, character - beautifully whittled, condition, and mold impression. Very bold impression, virtually no wear, fantastic color, a standout example.

*Est.: \$600 - \$900 • Min. bid: \$300*



### Lot 23

**MASONIC - EAGLE Historical Flask**, New England, probably Keene Marlboro Street Glassworks, Keene, NH, 1815 - 1830. Clear, medium yellow green, sheared and tooled mouth - blowpipe pontil scar, Pt; (just a little minor exterior wear as is common on these early, heavy Masonics, and a 1/4" open surface bubble, otherwise very near mint). GIV-7. A beautiful, bright, attractive color, good impression, overall excellent condition.

*Est.: \$1,000 - \$1,500 • Min. bid: \$500*



### Lot 20

**EAGLE / WREATH - EAGLE / WREATH Historical Flask**, probably Zanesville Glass Works, Zanesville, OH, 1860 - 1875. Beautiful, bright yellowish honey coloration, applied collar with ring - smooth base, 1/2 Pt, perfect. GII-126. A comparatively scarce little flask in a beautiful and eye-appealing color having plenty of yellowish tones, and outstanding condition. If you are patient, and with a little luck, you can put together a nice little grouping of the GII-126 mold in various colors.

*Est.: \$500 - \$800 • Min. bid: \$250*



### Lot 24

**MASONIC - EAGLE Historical Flask**, Keene Marlboro Street Glassworks, Keene, NH, 1820 - 1830. Yellowish olive amber, sheared mouth - blowpipe pontil scar, 1/2 Pt; (just a trace of light wear, and a little sandgrain potstone on the surface of the glass, near a medial rib, has a tiny 1/16" 'leg' and iridescence around it, otherwise excellent). GIV-24. A classic early Keene Masonic flask, the noted little condition issue is very minor.

*Est.: \$150 - \$250 • Min. bid: \$80*





### Lot 25

**“SUCCESS TO THE RAILROAD” / HORSE PULLING CART** - (Reverse same) **Historical Flask**, Keene Marlboro Street Glassworks, Keene, NH, 1830 - 1842. Light, yellowish olive amber, sheared mouth - blowpipe pontil scar, Pt, virtually perfect; (only the slightest trace of faint wear, otherwise pristine). GV-3. A very pretty, light, example having plenty of yellowish tones, and filled with tiny bubbles.

**Est.: \$400 - \$600 • Min. bid: \$200**



### Lot 29

**HORSE PULLING CART** - (Reverse same), **Historical Flask**, Mt. Pleasant (Saratoga Mountain Glass Works), Mt. Pleasant, NY, 1846 - 1855. Medium-to-deep olive, crudely applied round collar - smooth base, Pt; (a tiny little ¼” ‘flash’, or thin hairline crack, in one of the medial ribs, and a trace bit of minor wear including a pinhead flake at edge of base, otherwise excellent). GV-7. A rare flask, one of the more challenging to acquire in the railroad grouping, that is seldom offered for sale.

**Est.: \$400 - \$800 • Min. bid: \$200**



### Lot 26

**“SUCCESS TO THE RAILROAD” / HORSE PULLING CART** - (Reverse same) **Historical Flask**, Keene Marlboro Street Glassworks, 1830 - 1842. Medium olive amber, sheared mouth - blowpipe pontil scar, Pt, near mint; (just a slight bit of light wear and a tiny, paper-thin, pinhead bit of roughness at base of medial rib, otherwise perfect). GV-4. A very difficult mold to acquire. McKearin notes the GV-4 as “Rare” and much more difficult to acquire than either the GV-3 or GV-5.

**Est.: \$400 - \$600 • Min. bid: \$200**



### Lot 30

**“SUCCESS TO THE RAILROAD” / HORSE PULLING CART - EAGLE** **Historical Flask**, Coventry Glass Works, Coventry, CT, 1830 - 1848. Yellowish olive amber, sheared mouth - blowpipe pontil scar, Pt, perfect; (there is an in-making flake at the side of the lip that occurred as the blowpipe was being whetted from the neck, as it has been fire polished along with the mouth of the bottle). GV-8. A great example, plenty of tiny bubbles, and virtually no exterior wear.

**Est.: \$300 - \$600 • Min. bid: \$150**



### Lot 27

**“SUCCESS TO THE RAILROAD” / HORSE PULLING CART** - (Reverse same) **Historical Flask**, probably Mt. Vernon Glass Works, Vernon, NY, 1830 - 1846. Rich, medium olive coloration, sheared mouth - blowpipe pontil scar, Pt, near mint; (just a little fine wear, primarily on the horse’s hind quarter, and some washable interior content residue, otherwise perfect). GV-5. An outstanding, much better than average example. Bold embossing, excellent color and condition.

**Est.: \$500 - \$800 • Min. bid: \$250**



### Lot 31

**HORSE PULLING CART - EAGLE** **Historical Flask**, Coventry Glass Works, Coventry, CT, 1830 - 1848. Medium olive amber, a touch more of an olive tone than the preceding example, sheared mouth - sand type pontil scar, Pt, near mint; (a few minor open surface bubbles approximate 1/8” each, two on the reverse, and one well hidden on the horse, and only a slight trace of light wear, otherwise perfect). GV-9. A nice example and a lot of flask for the money!

**Est.: \$250 - \$400 • Min. bid: \$130**



### Lot 28

**“SUCCESS TO THE RAILROAD” / HORSE PULLING CART** - (Reverse same) **Historical Flask**, Coventry Glass Works, CT, 1830 - 1848. Clear, light-to-medium yellowish olive coloration, sheared mouth - blowpipe pontil scar, Pt, near mint; (a little typical minor high point wear and a partially open bubble on the inside of the neck). GV-6. Good mold impression, excellent character, fantastic condition, scarce and attractive in this pure green coloration. A great example!

**Est.: \$400 - \$600 • Min. bid: \$200**



### Lot 32

**“RAILROAD” / HORSE PULLING CART / “LOWELL” - EAGLE** **Historical Flask**, Coventry Glass Works, Coventry, CT, 1830 - 1848. Clear, light-to-medium yellowish olive amber, sheared mouth - blowpipe pontil scar, ½ Pt, virtually perfect; (just the slightest trace of light wear, and a little washable residue). GV-10. A pretty little flask, nice clarity and lighter in color than most. These can be dark in tone or even a bit ‘muddy’ at times, but not this one!

**Est.: \$400 - \$600 • Min. bid: \$200**



### Lot 33

**"KEEN" - "P&W" SUNBURST FLASK**, Keene Marlboro Street Glassworks, Keene, NH, 1815 - 1830. Clear, medium yellowish olive amber, sheared mouth - blowpipe pontil scar, Pt, virtually attic mint; (just the slightest trace of minor wear, otherwise perfect). GVIII-8. Among the earliest of the Figured Flasks, the Sunbursts have always been very desirable and popular. A great example having good clarity, condition and character.

*Est.: \$500 - \$800 • Min. bid: \$250*



### Lot 37

**SUNBURST FLASK**, Baltimore Glass Works, Baltimore, MD, 1820 - 1830. Medium amber with a slight orangey-apricot tone, sheared mouth - blowpipe pontil scar, Pt, near mint; (just a slight touch of minor high point wear, and a little interior content residue, otherwise perfect). GVIII-20. A great example of this comparatively scarce mold that is not easy to find in any color, other than aquamarine.

*Est.: \$2,000 - \$4,000 • Min. bid: \$1,000*



### Lot 34

**"KEEN" - "P&W" SUNBURST FLASK**, Keene Marlboro Street Glassworks, Keene, NH, 1815 - 1830. Yellowish olive amber, this one having a bit more of an olive tone than the previous lot, sheared mouth - blowpipe pontil scar, ½ Pt, near mint; (a little light wear in the oval on the reverse, otherwise perfect). GVIII-10. Note; a heavy thread of glass swirls from the lip, down through the shoulder. Another nice example.

*Est.: \$400 - \$600 • Min. bid: \$200*



### Lot 38

**SUNBURST FLASK**, Baltimore Glass Works, Baltimore, MD, 1820 - 1830. Gorgeous, medium apricot puce with some warmer reddish tones, sheared mouth - blowpipe pontil scar, ½ Pt, near mint; (a tiny, paper-thin, pinhead flake on the sheared lip, and a little high point wear, mainly on the rays near the edge of the base, otherwise excellent). GVIII-25. A scarce and desirable mold, especially in this beautiful coloration. It also passes plenty of light, much more so than many of the other puce-toned examples.

*Est.: \$3,000 - \$6,000 • Min. bid: \$1,500*



### Lot 35

**SUNBURST FLASK**, probably Keene Marlboro Street Glassworks, Keene, NH, 1815 - 1830. Medium-to-deep olive with a slight amber tone, crudely applied sloping collar with bevel - sand type pontil scar, ½ Pt; (a shallow, paper-thin, ¼" iridescent flake on the inside edge of the lip, and just the slightest trace of faint wear, otherwise attic mint!) GVIII-11. A great looking flask, bright, clean, and almost no wear. Scarce.

*Est.: \$2,000 - \$4,000 • Min. bid: \$1,000*



### Lot 39

**SUNBURST FLASK**, America, probably Baltimore Glass Works, Baltimore, MD, 1820 - 1830. Deep aquamarine, almost a delicate, light bluish green, sheared mouth - blowpipe pontil scar, ½ Pt, attic mint. GVIII-27. A very nice example, delicate color, scarce and attractive mold with the fine corrugated sides.

*Est.: \$300 - \$500 • Min. bid: \$150*



### Lot 36

**SUNBURST FLASK**, probably Keene Marlboro Street Glassworks, Keene, NH, 1815 - 1830. Clear, medium blue green, sheared and tooled lip with small ring collar - blowpipe pontil scar, ½ Pt; (a little light exterior wear, otherwise virtually attic mint). GVIII-14. Excellent clarity, color and condition. A bright, clean, beautiful example of this very scarce mold.

*Est.: \$2,000 - \$4,000 • Min. bid: \$1,000*



### Lot 40

**"BP & B" SCROLL FLASK**, Bakewell, Page & Bakewell, Pittsburgh, PA, 1825 - 1832. Aquamarine, sheared mouth - blowpipe pontil scar, ½ Pt, virtually attic mint; (slight touch of typical faint wear, otherwise perfect). GIX-38. A beautiful example of this scarce, early, glass-house marked Scroll Flask.

*Est.: \$250 - \$450 • Min. bid: \$130*





### Lot 41

**"GENL TAYLOR NEVER SURRENDERS" / CANNON - "A / LITTLE / MORE / GRAPE / CAPT BRAGG" / VINES AND GRAPES** Historical Flask, Baltimore Glass Works, 1848 - 1855. Beautiful medium yellow coloration with a very slight topaz tone, sheared mouth - blowpipe pontil scar, Pt; (a trace of light exterior wear and a weakened impression as is often the case with this mold). GX-4. A scarce and desirable mold in a gorgeous, and unlisted color.

*Est.: \$3,000 - \$5,000 • Min. bid: \$1,500*



### Lot 42

**"MURDOCK / & / CASSEL - ZANESVILLE / OHIO"** Historical Flask, Muskingum Green Glass Works, 1826 - 1836. Rich, deep greenish aquamarine, sheared mouth - blowpipe pontil scar, Pt, sparkling mint! GX-14. A rare early flask, especially in this virtually pristine condition. Here is a chance to pick up a great example. Most have weak impressions or damage. Good examples are few and far between. From an old-time Midwest collection.

*Est.: \$1,800 - \$2,800 • Min. bid: \$900*



### Lot 43

**PROSPECTOR - EAGLE / "W. McC & Co / GLASS WORKS / PITTS. PA"** Historical Flask, Wm. McCully & Co. Glass Works, Pittsburgh, 1860 - 1870. Aquamarine, applied collar with band - smooth base, Pt; (a tiny pinhead bit of roughness on the edge of the lip, otherwise perfect). GXI-16. A rare and very difficult mold to obtain! Only a small handful have been offered in the past 25 years. A fantastic example, beautiful condition, having virtually no wear. Ex. Blaske collection.

*Est.: \$700 - \$1,200 • Min. bid: \$350*



### Lot 44

**"UNION" / CLASPED HANDS / "No 2" - EAGLE** Historical Flask, a Pittsburgh district glasshouse, 1860 - 1875. Medium citron coloration, applied mouth with wide ring collar - smooth base, Qt, near mint; (just a slight trace of faint wear, otherwise perfect). GXII-7. A bright, clean, example in a beautiful, scarce and eye-appealing color.

*Est.: \$1,200 - \$1,800 • Min. bid: \$600*



### Lot 45

**"UNION" / CLASPED HANDS - EAGLE / "E. WORMSER & Co / PITTSBURGH / PA"** Historical Flask, Frankstown Glass Works, 1861 - 1866. Beautiful, bright yellowish honey coloration, crudely applied ring collar - smooth base, Qt.; (a little exterior wear, including a couple of light scratches on the reverse, otherwise excellent). GXII-15. Beautiful color having plenty of yellow in this one. Provenance: Ex. James Chebalo collection.

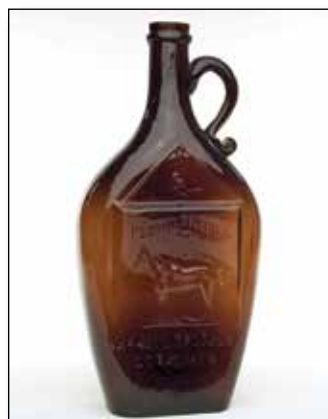
*Est.: \$800 - \$1,600 • Min. bid: \$400*



### Lot 46

**HUNTER - FISHERMAN Pictorial Calabash**, probably Whitney Glass Works, Glassboro, NJ, 1857 - 1865. Beautiful strawberry puce with a slight apricot tone, shading to a deep reddish tone in the upper shoulders, applied sloping collar - iron pontil scar, Qt, virtually attic mint; (slight trace of light interior content residue in the side, almost certainly washable). GXIII-4. Gorgeous and rare color, outstanding condition.

*Est.: \$800 - \$1,200 • Min. bid: \$400*



### Lot 47

**"FLORA TEMPLE" / (STANDING HORSE) / "HARNESS TROT 2.19 3/4 / OCT.15.1859"** Pictorial Flask, probably Whitney Glass Works, 1860 - 1865. Light-to-medium copper color along the sides, shading to a deeper apricot puce though the mid-section and shoulders, applied handle, applied mouth with ring - smooth base, Qt; (a hard-to-see minor cooling line in the neck behind the upper handle attachment, and some highpoint wear, primarily on the reverse, otherwise excellent). GXIII-19.

*Est.: \$300 - \$500 • Min. bid: \$150*



### Lot 48

**"SPRING GARDEN" / ANCHOR / "GLASSWORKS" - LOG CABIN** Historical Flask, Spring Garden Glass Works, Baltimore, MD, 1851 - 1856. Aquamarine, applied collar with narrow flat band - smooth base, 1/2 Pt, perfect! GXIII-60. An outstanding example, crisp, bold impression, bright, clean and sparkling. A pristine example. Provenance: James Chebalo collection.

*Est.: \$175 - \$350 • Min. bid: \$100*



### Lot 49

**"GRANITE / GLASS / CO - STODDARD / N H" Lettered Flask, 1855 - 1862.** Rich, medium-to-deep 'old amber', applied sloping collar - smooth base, Pt, virtually attic mint; (only the slightest trace of faint wear, otherwise perfect!) GXV-7. A great example of this classic Stoddard flask, attractive sloping collar, nice swirl lines through the shoulders, outstanding condition, excellent character. They used a little extra glass in this one, as it is much heavier than most.

**Est.: \$400 - \$600 • Min. bid: \$200**



### Lot 50

**Pattern Molded Globular Bottle, Midwest, probably Zanesville Glass Works, Zanesville, OH, 1820 - 1840.** Golden amber, 24 ribs swirled to the left, globular form, sheared, tooled and outward folded mouth - blowpipe pontil scar, ht. 7 1/2", near mint; (some typical light exterior wear, otherwise perfect). A good solid example of a classical Midwestern Swirl, nice color, good impression, excellent condition. Provenance: Mary Ballentine collection.

**Est.: \$400 - \$600 • Min. bid: \$200**



### Lot 51

**Pattern Molded Globular Bottle, Midwest, probably Zanesville Glass Works, Zanesville, OH, 1820 - 1840.** Brilliant, yellowish honey amber, 24 ribs swirled to the right, globular form, sheared, tooled, outward folded mouth - blowpipe pontil scar, ht. 7 3/4"; (just a slight trace of faint wear, and a bit of light residue near the base, otherwise perfect). An absolutely beautiful example, great light color with plenty of yellow tones, near perfect form, nice uniform tight ribbing through the neck.

**Est.: \$800 - \$1,200 • Min. bid: \$400**



### Lot 52

**Pattern Molded Globular Bottle, probably Zanesville Glass Works, Zanesville, OH, 1820 - 1840.** Brilliant, yellowish citron green, 24 ribs swirled to left, globular form, sheared, tooled outward folded mouth - blowpipe pontil scar, ht. 8 1/2", very near mint; (slight trace of light wear, otherwise perfect). Rare color, crisp, bold impression. One of the choicest green globular bottles that we can recall seeing in terms of color, impression, and brilliance. Mary Ballentine collection.

**Est.: \$3,000 - \$6,000 • Min. bid: \$1,500**



### Lot 53

**Pattern Molded Beehive Bottle, Midwest, 1820 - 1840.** Sapphire blue, 24 ribs swirled to the right with 24 faint vertical ribs creating a broken swirl pattern, club or 'beehive' form, applied ring collar - pontil scar, ht. 8 1/8"; (a little minor exterior wear including some light scratches on one side; some light interior haze in one side, otherwise near mint). Very similar to MW, color plate V, #3. Also see, MW, plate 94, #1. Beautiful and rare color! One of the 'holy grails' of Midwest pattern molded wares.

**Est.: \$6,000 - \$12,000 • Min. bid: \$3,000**



### Lot 54

**Pattern Molded Beehive Bottle, Midwest, 1825 - 1840.** Beautiful golden yellow coloration, 24 ribs swirled to the right with 24 faint vertical ribs creating broken swirl pattern, 'beehive' form, applied blob collar - blowpipe pontil scar, ht. 8 3/4"; (a little typical light exterior wear, and just a very small trace of light interior haze, otherwise perfect). An exceptional example, very rare color, good pattern, great form. Provenance: Mary Ballentine collection.

**Est.: \$4,000 - \$8,000 • Min. bid: \$2,000**



### Lot 55

**Pattern Molded Decanter Type Bottle, Midwest, possibly Zanesville Glass Works, 1840 - 1860.** Bright golden amber, 26 vertical ribs swirled slightly to the right, conical form, applied double ring collar - blowpipe pontil scar, ht. 9 7/8", virtually perfect; (a little faint interior washable residue, otherwise attic mint). A scarce form and rib count, nice color, excellent condition. Provenance: Mary Ballentine collection.

**Est.: \$300 - \$500 • Min. bid: \$150**



### Lot 56

**Pattern Molded Toilet Water Bottle, Midwest, possibly Zanesville Glass Works, 1825 - 1840.** Aquamarine, 24 fine ribs swirled to the left, cruet or toilet water bottle form, tooled, wide flanged lip folded inward - blowpipe pontil scar, ht. 6 1/4", near mint; (a little interior residue or light haze in the shoulders, some of which may wash out, otherwise perfect). Midwest pattern molded toilet water bottles are rare, certainly much more so than either the glob or club forms. Mary Ballentine collection.

**Est.: \$400 - \$600 • Min. bid: \$200**





### Lot 57

**Pattern Molded Calabash Bottle**, probably Ohio or Pittsburgh, 1830 - 1845. Aquamarine, 16 widely spaced ribs swirled to the right converging at terminal ring on base, calabash form, applied ring collar with lower bevel - blowpipe pontil scar, ht. 8 5/8"; (a little light wear on one of the sides, otherwise perfect). A very scarce piece for several reasons: This form is seldom encountered in 16-rib; the terminal ring is unusual, as well as the 'medicine-type' collar. Bright, clean, beautiful.

*Est.: \$250 - \$450 • Min. bid: \$130*



### Lot 58

**Pattern Molded Globular Bottle**, Midwest, 1830 - 1850. Aquamarine, 24 vertical melon-type ribs, spherical, near globular body, short neck, applied ring collar - blowpipe pontil scar, ht. 7 1/4"; (a slightly weak impression which is often the case with the pattern molded melon-type bottles, otherwise, perfect). See, MW, plate 94, #4; also similar to Lot #16 in the 1987 Ballentine catalog. Provenance: Mary Ballentine collection.

*Est.: \$150 - \$250 • Min. bid: \$80*



### Lot 59

**Pattern Molded Pocket Flask**, Zanesville Glass Works, Zanesville, OH, 1820 - 1830. Medium golden amber, 10-diamond pattern, chestnut form, sheared mouth - pontil scar, ht. 4 5/8"; (just a slight trace of minor wear, and a weakened mold impression, otherwise very near mint). Similar to MW, plate 97, #4. The 10-diamond pattern has long been associated with Zanesville, and is certainly far more scarce than most of the pattern molded ribbed examples.

*Est.: \$300 - \$600 • Min. bid: \$150*



### Lot 60

**Pitkin Type Flask**, probably Midwest (Pennsylvania), 1800 - 1830. Medium amber, patterned with 36 ribs over 36 ribs swirled to the left, flattened circular or 'clock-face' form, sheared mouth - blowpipe pontil scar, ht. 6", attic mint. Early pioneer collector Sam Laidacker indicated that over the years he had found perhaps 25-30 of these distinctive 'clock-face' Pitkins, almost all, in the vicinity of Lancaster County, Pa. Scarce. Provenance: Ex. Dick and Elma Watson collection.

*Est.: \$600 - \$900 • Min. bid: \$300*



### Lot 61

**Rare, Pitkin Type Flask**, New England, 1790 - 1820. Clear, yellowish olive coloration, patterned with 31 fine tight ribs swirled to the right, wide ovoid body, large oversized pint, sheared mouth - base with terminal ring and blowpipe pontil scar, ht. 7 1/8", sparkling mint. A great New England Pitkin. Single pattern, large oversized pint, wide body, and an unusual rib count all combine to make this a special one. In addition, virtually 'out of the mold' pristine condition.

*Est.: \$1,500 - \$2,500 • Min. bid: \$750*



### Lot 62

**Pitkin Type Flask**, New England, 1790 - 1820. Bright, rich pure olive coloration, patterned with 36 ribs swirled to the right, ovoid form, sheared mouth - blowpipe pontil scar, ht. 5 3/8", near mint; (a little scattered light exterior wear, otherwise perfect). Another beautiful example, pleasing size and form, very attractive and rich color.

*Est.: \$800 - \$1,200 • Min. bid: \$400*



### Lot 63

**Pitkin Type Flask**, New England, 1790 - 1820. Delicate, light olive coloration with a slight mossy tone, patterned with 36 ribs swirled to the left, ovoid form, sheared mouth - blowpipe pontil scar, ht. 5"; (just a touch of minor light wear near the base, on the sides, otherwise perfect). A great little Pitkin, delicate "Chestnut-type" metal, attractive diminutive size, excellent condition.

*Est.: \$800 - \$1,200 • Min. bid: \$400*



### Lot 64

**Pitkin Type Flask**, Midwest type, probably Pennsylvania or Mid-Atlantic region, 1800 - 1830. Medium-to-deep yellowish grass green, patterned with 16 vertical ribs over 16 ribs swirled to the right, plump horseshoe form, sheared mouth - blowpipe pontil scar, ht. 5 7/8"; (a few small, very minor, open surface bubbles, otherwise perfect). A beautiful example, bright color, fantastic character, the glass is absolutely filled with tiny seed bubbles.

*Est.: \$400 - \$600 • Min. bid: \$200*



### Lot 65

**Early, Ribbed Melon Flask**, Keene Marlboro Street Glassworks, Keene, NH, 1820 - 1835. Bright medium apple green, 20 wide, heavy, melon-type ribs, sheared and tooled mouth - blowpipe pontil scar, Pt, virtually perfect; (a minor 1/8" flake near the base on one of the side ribs, otherwise pristine). Attributed to the Keene Glassworks, and likely one of their earlier products. A bright, sparkling, example with plenty of eye-appeal! Provenance: Ex. Mike George collection.

*Est.: \$300 - \$500 • Min. bid: \$150*



### Lot 66

**Early, Poison-Type Flask**, Germany or possibly America, 1830 - 1860. Pale ice-blue coloration, horseshoe form, blown in a 2-pc. mold with a raised hobnail or crosshatch pattern, corrugated sides, sheared and inward rolled mouth - sand type pontil scar, 1/2 Pt, ht. 5 1/2", sparkling mint. KU-27. A scarce mold in a scarce color, and virtually pristine condition.

*Est.: \$200 - \$400 • Min. bid: \$100*



### Lot 67

**Early, Poison-Type Flask**, Continental, probably Germany, 1830 - 1850. Olive amber, ovoid form, blown in a 2-pc. mold with raised hobnail pattern and corrugated sides, sheared mouth - blowpipe pontil scar, ht. 4 3/4", near mint; (a little minor light wear, and a trace bit of interior content residue, otherwise perfect). Similar to KU-27, but slightly different pattern and corrugated sides. Very scarce mold, rare color and size. This example is smaller than most.

*Est.: \$500 - \$800 • Min. bid: \$250*



### Lot 68

**Rare Pattern Molded Pocket Flask**, Continental, Germany or possibly Austria, 1780 - 1820. Rich cobalt blue, flattened chestnut form blown in the German half post method, pattern molded with daisy, honeycomb and flutes, sheared, tooled flared mouth with an inward folded rim - glass tipped pontil scarred base, ht. 5 1/4", perfect! A great color, very rare and attractive pattern, outstanding condition. Blown in the same vein as the early Stiegel patterned flasks.

*Est.: \$700 - \$1,200 • Min. bid: \$350*



### Lot 69

**Pattern Molded Pocket Flask**, Continental, possibly Norwegian, 1815 - 1830. Medium-to-deep cobalt blue, 24 fine ribs swirled to the right, flattened circular body, sheared, tooled, thin flanged lip - glass-tipped pontil scar, ht. 5 3/8"; (some typical scattered light exterior wear, and a little light interior residue or faint haze along one side that may wash out, otherwise near mint). See McK, plate 239, #4. A good early flask, beautiful color.

*Est.: \$200 - \$400 • Min. bid: \$100*



### Lot 70

**Early, Pattern Molded Pocket Flask**, probably Continental, 1800 - 1830. Deep plum amethyst, patterned with horizontal rows 21 diamond or honeycomb-type designs, flattened circular body, sheared mouth - glass tipped punty scar, ht. 6"; (a little scattered exterior wear, some very faint, barely noticeable, interior milkiness, otherwise excellent). An early flask, beautiful rich color.

*Est.: \$400 - \$800 • Min. bid: \$200*



### Lot 71

**Delicate, Freeblown Creamer**, probably Midwest, possibly a Pittsburgh district glasshouse, 1840 - 1870. Fiery opalescent milkglass, applied solid handle with tooled rigaree at lower terminal, outward flared rim with pinched pour spout - blowpipe pontil scar, ht. 3 3/8", perfect. A delicate little creamer, wonderful form and workmanship, perfect condition! Scarce in the fiery opalescent coloration.

*Est.: \$200 - \$400 • Min. bid: \$100*



### Lot 72

**Pattern Molded Creamer**, America or possibly England, 1830 - 1850. Colorless, corseted body, patterned in a 16 rib mold and swirled to the right, sheared and tooled rim with an applied decorative cobalt ring and tooled pour spout - tooled pedestal-type foot drawn from the same gather, applied solid handle crimped and curled at lower attachment, pontil scarred base, ht. 4 3/4", perfect. See Innes, *Pittsburgh Glass*, plate 199. Unusual and very scarce.

*Est.: \$200 - \$400 • Min. bid: \$100*

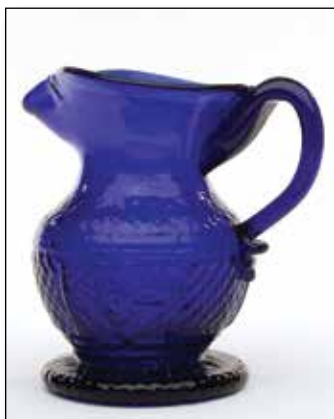




### Lot 73

**Rare, 10-Diamond Creamer**, Zanesville Glass Works, Zanesville, OH, 1820 - 1835. Deep aqua, patterned in small 10-diamond piece mold, tapered body, applied strap handle, wide sheared rim with tooled pour spout - pontil scar, ht. 4"; (a 5/8" fissure behind lower handle attachment; tip of rigaree missing at lower handle attachment). A gorgeous little creamer, rich deep color, very strong mold impression. Items such as this are rarely offered for sale.

*Est.: \$2,500 - \$4,000 • Min. bid: \$1,300*



### Lot 74

**Blown Three Mold Creamer**, Boston and Sandwich Glass Works, 1825 - 1835. Deep cobalt blue, bulbous body, sunburst and diamond geometric pattern, applied handle, sheared, flared rim with tooled pour spout - solid disc foot with ringed base, glass tipped pontil scar, ht. 4", near mint; (touch of faint wear, and a shallow open bubble on the interior, otherwise perfect). GIII-26. A beautiful example, great form, rare mold! Very similar to BK, plate 1325.

*Est.: \$800 - \$1,200 • Min. bid: \$400*



### Lot 75

**Blown Three Mold Pitcher**, possibly America, 1830 - 1845. Colorless, globular body with sloping shoulders, flaring tooled rim, arch pattern, applied solid handle, disc foot with polished pontil scarred base, ht. 6 3/4", virtually perfect; (just a touch of expected light usage wear). Very rare! An unlisted pattern similar to GIV-6. An attractive pitcher, pleasing form, very nicely done, with an unusual and rare pattern.

*Est.: \$400 - \$800 • Min. bid: \$200*



### Lot 76

**Rare, Blown Three Mold Pitcher**, Boston and Sandwich Glass Works, 1825 - 1835. Colorless, exceptional and very rare pitcher fashioned from a quart GV-8 decanter mold with expanded neck, flared rim with pour spout, applied threading, applied strap handle with rigaree - pontil scarred base, ht. 8", perfect. GV-8. A great deal of hand work and manipulation obviously went into creating this exceptional pitcher. McK, plate 5, #1; Similar to BK, plate 1335.

*Est.: \$1,500 - \$3,000 • Min. bid: \$800*



### Lot 77

**Blown Three Mold Decanter**, probably Boston and Sandwich Glass Works, 1825 - 1835. Colorless, semi-barrel form, shell and rib baroque pattern, tooled wide flared mouth with period-correct blown ribbed stopper - pontil scarred base, Qt, both decanter and stopper are perfect! GV-9. A bright, clean example, outstanding condition.

*Est.: \$125 - \$225 • Min. bid: \$70*



### Lot 78

**Lot of (3), Blown Three Mold Tableware Items**, Boston and Sandwich Glass Works, Sandwich, MA, 1825 - 1835. All are colorless, geometric 'diamond diaper' pattern, forms include a wide flared pan with outward folded rim, small tumbler, and flip glass. All with

pontil scarred bases, (base of pan and tumbler with recessed circles; base of flip with recessed diamond pattern), pan dia. 6", tumbler and flip ht. 3 1/4" and 5 3/4" respective, all three are virtually perfect! All are McK GII-18 mold. A fantastic set!

*Est.: \$300 - \$500 • Min. bid: \$150*



### Lot 79

**Blown Three Mold Hat Whimsey**, New England, 1820 - 1830. Deep cobalt blue with a violet tone, blown and fashioned into a miniature beaver-style toy hat, sunburst and diamond geometric motif, sheared and inward folded rim - rayed base with blowpipe pontil scar, ht. 2 1/4", very near mint; (some expected minor light wear, otherwise perfect). GIII-3. A very scarce hat, rare in color.

*Est.: \$300 - \$600 • Min. bid: \$150*



### Lot 80

**Miniature Freeblown Globular Bottle**, Midwest, possibly Zanesville Glass Works, Zanesville, OH, 1820 - 1840. Medium-to-deep amber, globular form, sheared and tooled small ring-type collar - delicate blowpipe pontil scar, ht. 2 1/4"; (a little typical scattered light wear, some interior content haze, otherwise near mint). A very rare size! This one being one of the smallest examples that we can recall seeing. Most miniature globs of this type measure above 3". Mary Ballentine collection.

*Est.: \$400 - \$800 • Min. bid: \$200*



### Lot 81

**Miniature, Freeblown Globular Bottle**, Mid-Atlantic or New England, 1780 - 1820. Rich, deep 'old amber', small globular form, sheared mouth with an applied ring collar - blowpipe pontil scar, ht. 4 3/4"; (just a little light exterior wear including a few small scattered open surface bubbles, otherwise perfect). See MW, plate 47, #7; McK, plate 226. The 'earthy' amber color is almost a chocolate coloration. A fantastic little glob, crude glass, excellent condition, rare and early.

**Est.: \$400 - \$800 • Min. bid: \$200**



### Lot 82

**Early, Freeblown Hat Whimsey**, New England, possibly a Stoddard, NH glasshouse, 1845 - 1860. Yellowish 'old amber', freeblown miniature bowler-form toy hat, wide brim with upturned sides,

blowpipe pontil scar, ht. 1 1/2", perfect! (a little in-manufacture 'al-ligating' around edge of brim). A very nice example of an early New England hat whimsey. For other examples of early freeblown hats, see McK, plate 75. Provenance: Ex. Boo Morcom collection.

**Est.: \$200 - \$400 • Min. bid: \$100**



### Lot 83

**Freeblown Witch Ball with Stand**, probably a Stoddard glasshouse, Stoddard, NH, 1842 - 1860. Both medium-to-deep 'old amber', vase with short flaring trumpet neck above tooled bulbous knopf and short tapered circular foot, tooled rim - ground base, overall ht. 10 1/4"; (ball is perfect; vase with some exterior 'bloom', and several large chips, 1/4" to 1/2" each). A very rare 'offhand' piece. Ex. Lowell Innes collection, sold by Oliver Auctions, 3/08/86.

**Est.: \$800 - \$1,600 • Min. bid: \$400**



### Lot 84

**Early, New England Storage Jar**, a Stoddard NH glasshouse, probably Weeks & Gilson, South Stoddard, 1855 - 1873. Yellowish honey amber, almost an apricot tone, cylindrical, 3-pc. mold (fashioned from a quart Stoddard whiskey mold), wide neck, sheared mouth with a crudely applied ring lip - smooth base, ht. 8 1/4", perfect. Great color, nicely whittled, and absolutely fantastic character having crude, frothy, syrupy glass.

**Est.: \$600 - \$900 • Min. bid: \$300**



### Lot 85

**Early, Stoddard-Type Wide-Mouth Jar**, possibly Weeks & Gilson, South Stoddard, 1855 - 1873. Yellowish olive amber, cylindrical, 3-pc. mold (fashioned from an early, likely Stoddard, whiskey mold), sheared, tooled, wide flanged mouth - smooth base, ht. 5 1/2"; (a touch of typical light exterior wear, and a 1/4" chip on the underside of the wide flared rim, otherwise perfect). A great looking jar, rare form. From an old New Hampshire collection.

**Est.: \$300 - \$600 • Min. bid: \$150**



### Lot 86

**Early, Blown Ringed Storage Jar** (with original cover), a Pittsburgh district glasshouse, 1840 - 1860. Colorless, freeblown with two applied cobalt rings around the body, original matching domed cover with applied cobalt ring forming the rim of the cover, applied hollow knopf with cobalt wafer - jar with pontil scarred base, overall ht. 12", both jar and cover are perfect! A beautiful, classic, blown Pittsburgh jar, this example being a little larger than most.

**Est.: \$300 - \$500 • Min. bid: \$150**



### Lot 87

**Lot of (2), Blown Ringed Storage Jars** (with original covers), Pittsburgh, 1840 - 1860. Both colorless, freeblown with applied cobalt rings, domed covers with applied cobalt ring forming the rim, 1st example with applied handle and cobalt 'button'; 2nd example with an applied baluster-type handle with polished pontil - both with pontil scarred bases, ht. 8 5/8", and 10 3/8" respectively; (a 1" chip on ring of 1st jar; a 1/4" chip on ring of 2nd jar, lid of 2nd jar has 2" area of stress lines below applied ring).

**Est.: \$300 - \$500 • Min. bid: \$150**



### Lot 88

**Early, Wide-Mouth Utility Jar**, probably Continental, 1800 - 1830. Clear yellowish olive coloration, cylindrical, blown in a small dip mold, wide neck, sheared mouth with crudely applied flat band collar - sand type pontil scar with a little iron residue around edges, ht. 5 1/2", perfect! A beautiful little jar with eye-appeal. Regardless of attribution, this little gem has a great 'look'. Squatty form, fantastic character and crudity, excellent clarity and outstanding condition.

**Est.: \$300 - \$600 • Min. bid: \$150**





### Lot 89

**Early Freeblown or Dip Mold Snuff Jar**, probably England, possibly America, 1780 - 1820. Medium-to-deep olive with a slight amber tone, square with domed shoulders, sheared, tooled and outward flared mouth - sand type pontil scar, ht. 6"; (some typical light exterior usage wear, otherwise very near mint). A crude, heavy, 'earthy' jar, having plenty of base wear, and certainly very early.

**Est.: \$400 - \$600 • Min. bid: \$200**



### Lot 93

**"DR. A. SHEETS - DAYTON. O - BLACK INK"**, America, probably a Midwest glasshouse, 1868 - 1875. Aquamarine, square with beveled corners, sheared and inward rolled mouth - blowpipe pontil scar, ht. 2 5/8", perfect! Faulkner, p.91. According to Faulkner, Dr. Andrew Sheets was a dentist who also manufactured and sold ink from 1868 - 1887. This early example with the pontil scarred base is very scarce, especially in this absolutely pristine condition. Mary Ballentine collection.

**Est.: \$200 - \$400 • Min. bid: \$100**



### Lot 90

**Early, Dip Mold Snuff Jar**, probably New England, 1830 - 1850. Yellowish golden amber, square with beveled corners, sheared, tooled, and slightly flared mouth - blowpipe pontil scar, ht. 4 1/2", very near mint; (a few minor open surface bubbles, otherwise perfect). A beautiful example that excels in character with lopsided shoulders and profuse bubbles throughout the glass. The 'metal' in this example is very similar to the amber Phoenix Biters in the current sale.

**Est.: \$400 - \$600 • Min. bid: \$200**



### Lot 94

**"J.W. - SEATON - LOUISV - ILLE, KY"**, America, probably a Midwest glasshouse, 1845 - 1860. Medium blue green, 10-sided umbrella form, sheared and inward rolled mouth - blowpipe pontil scar, ht. 2", virtually perfect; (a paper-thin 1/8" open bubble on the inside of the neck, otherwise attic mint). Unlisted and very rare, especially in this fine condition. A beautiful example, good color, crisp, sharp embossing, outstanding condition, about as nice as you could hope to find.

**Est.: \$1,000 - \$1,500 • Min. bid: \$500**



### Lot 91

**"A. DELPIT / NO 16 / ST LOUIS ST / NEW ORLEANS"**, America, possibly a Pittsburgh district glasshouse, 1845 - 1858. Yellow, with a very slight olive tone, rectangular with wide beveled corners, sheared, tooled and outward flared mouth - iron pontil scar, ht. 4 1/2"; (in 'as-found' condition with some iridescence and overall moderate-to-heavy stain, and a couple of chips, 3/16" to 1/4", from edge of the flared lip). A scarce and desirable snuff jar.

**Est.: \$600 - \$900 • Min. bid: \$300**



### Lot 95

**Umbrella Ink**, America, 1840 - 1860. Medium bluish green with an emerald tone, 8-sided umbrella form, sheared and inward rolled mouth - blowpipe pontil scar, ht. 2 1/2"; (a little faint interior residue remains, otherwise perfect). Not an exceedingly rare umbrella, but a great example! Unlike most Umbrella Inks that have been dug, this is an attic-type find with sparkling, whittled, wavy glass, very attractive. Mary Ballentine collection.

**Est.: \$100 - \$200 • Min. bid: \$50**



### Lot 92

**Lot of (4), Early Utility Bottles**, America, 1845 - 1860. Bluish green, bright olive green, and olive amber, all are cylindrical, 2-pc. mold, applied sloping collars - blowpipe pontil scarred bases, ht. 4 1/4", 4 1/2", 4 3/4", and 5 1/8"; (olive amber example has just a little light wear; other three were likely dug and have a little haze and exterior wear, one blue green example has a small sandgrain with a tiny 1/8" annealing line). With professional cleaning these would present as near mint.

**Est.: \$100 - \$200 • Min. bid: \$50**



### Lot 96

**Umbrella Ink**, America, 1870 - 1880. Gorgeous medium yellow with a slight olive tone, 8-sided umbrella form, tooled square collar - smooth base, ht. 2 1/2"; (a couple of little chips, 1/8" or less, on one side of the square collar; and a 3/16" annealing line across one of the panel edges, some washable content residue). A very scarce-to-rare color that is not easy to find in an umbrella, the noted flaws are all relatively minor. A beautiful ink.

**Est.: \$200 - \$400 • Min. bid: \$100**



### Lot 97

**"J - & - I - E - M" Monitor Ink** (with complete original label), 1865 - 1890. Golden amber, cylindrical with six block panels around sides, domed shoulders, offset neck with sheared and factory ground mouth - "4" (on smooth base), ht. 1 5/8"; (a 3/16" flake from the side of the lip, likely in-manufacture, and some dried interior content residue; label has a bit of staining, but fully legible). Label reads in part, *MOORE'S / Excelsior School WRITING INK*. Rare with original label.

**Est.: \$400 - \$600 • Min. bid: \$200**



### Lot 98

**"PAT. OCT. 17. 1865" Figural Ink Bottle**, 1865 - 1875. Beautiful cornflower blue coloration, barrel form, sheared, tooled flanged mouth - smooth base, ht. 2 1/2"; (a little light haze, and a tiny pinprick bit of roughness on the edge of the collar, but no other form of damage, and otherwise near mint). C# 669. A very scarce mold; unlisted and extremely rare in color! This little ink was dug in Ebensburg, Pa, in the late 1970's, and has remained in that collection until now!

**Est.: \$300 - \$500 • Min. bid: \$150**



### Lot 99

**Fancy Teakettle Inkwell**, possibly Boston and Sandwich Glass Works, 1850 - 1870. Cobalt blue, teakettle form with eight concave panels separated by eight vertical ribs between recessed lines, top with concentric ring pattern, sheared mouth with original brass neck ring and cap - smooth base, ht. 2"; (just a slight trace of wear including a shallow pinhead flake, top of cap dented, otherwise attic mint). Similar to JM, *TeaKettle Ink Price & Reference Guide*, #M128. Rare.

**Est.: \$400 - \$600 • Min. bid: \$200**



### Lot 100

**Pottery Inkwell with Bulldog face**, probably America, 1850 - 1870. Rockingham style glaze, cylindrical base with shoulders and top in the form of a bulldog face, dia. 2", ht. 1 3/4", perfect. Unusual, and likely very rare. Provenance: Mary Ballentine collection.

**Est.: \$100 - \$200 • Min. bid: \$50**



### Lot 101

**"HOHENTHAL / BROTHERS & Co / INDELIBLE / WRITING INK / N.Y." Master Ink Bottle**, a New England glasshouse, 1845 - 1855. Yellowish olive amber, cylindrical, applied sloping collar tooled and crimped for pour spout - sand type pontil scar, ht. 8 7/8", near mint; (a little fine light exterior wear, and a pinhead flake at edge of base, otherwise excellent). A rare, early, New England master ink, good strength of embossing.

**Est.: \$600 - \$1,200 • Min. bid: \$300**



### Lot 102

**"DR. SHEET'S INK" Master Ink Bottle**, Newark Star Glass Works, Newark, OH, probably 1875 - 1880. Beautiful, medium sapphire blue, cylindrical, applied sloping collar with ring and tooled pour lip - "N" (within 5-pointed star), on smooth base, ht. 9 3/4", attic mint. Faulkner, p.91. A gorgeous, eye-appealing master ink, rare and in outstanding condition. Provenance: Mary Ballentine collection.

**Est.: \$400 - \$800 • Min. bid: \$200**



### Lot 103

**Sunburst Scent Bottle**, America, probably New England, possibly South Boston area, 1815 - 1835. Medium cobalt blue, shield form with 12-ray sunburst pattern with center bead, alternating rows of 11 and 12 small beads along each side panel, sheared mouth - pontil scarred base, ht. 2 5/8", virtually perfect; (slight trace of minor roughness on inner edge of lip). MW, plate 105, #5. A very scarce, early, and desirable scent bottle, beautiful condition.

**Est.: \$300 - \$500 • Min. bid: \$150**



### Lot 104

**Pearls and Scroll Scent Bottle**, America, New England or Mid-Atlantic, 1820 - 1840. Sapphire blue, elliptical body patterned with scrolls and large beads, or pearls, corrugated sides, rough sheared mouth - smooth base, ht. 2 1/2", perfect. MW, plate 104, #7. A very rare pattern, and good color as well. An eye-appealing, beautiful, example, the glass is also filled with tiny seed bubbles.

**Est.: \$300 - \$500 • Min. bid: \$150**





### Lot 105

**Diamond and Sunburst Scent Bottle**, Mid-Atlantic or New England, 1820 - 1840. Opalescent blue, elliptical body with high-relief diamond pattern, reverse with sunburst motif in center surrounded by small beads, smooth sides, sheared mouth - pontil scarred base, ht. 2 1/2"; (interior covered with dirt or residue, most of which would likely wash out, and a bit of minor high point wear, but no other form of damage and otherwise perfect). MW, plate 105, #7. Rare pattern, very rare color.

**Est.: \$250 - \$450 • Min. bid: \$130**



### Lot 106

**Daisy or Flower Pattern Scent Bottle**, probably Mid-Atlantic region, 1820 - 1840. Deep cobalt blue, rounded body with alternating large and small petals or lobes, and a large button in center, sheared mouth - pontil scarred base, ht. 2 3/8"; (some high point wear; a flake from one of the bottom lobes, possibly resulting from the pontil, and some interior residue or content stain). Another very rare pattern, not easy to find.

**Est.: \$200 - \$400 • Min. bid: \$100**



### Lot 107

**Figural Clamshell Scent Bottle**, probably America, possibly Continental, 1830 - 1850. Gorgeous light-to-medium yellow with strong topaz tones, clamshell form, sheared mouth - smooth base, ht. 2 1/4", attic mint! A scarce mold, gorgeous and rare color. We sold one very similar many years ago, and do not recall seeing another example since, in this particular color.

**Est.: \$200 - \$400 • Min. bid: \$100**



### Lot 108

**Figural Clamshell Scent Bottle**, probably America, possibly Continental, 1830 - 1850. Medium-to-deep cobalt blue, clamshell form, sheared mouth smooth base, ht. 2 1/4", perfect. Another nice example of this scarce mold, beautiful, deep rich color.

**Est.: \$150 - \$250 • Min. bid: \$80**



### Lot 109

**Lot of (2), Figural Clamshell Scent Bottles**, America or Continental, 1830 - 1850. Medium-to-deep cobalt, and blue green, figural clamshell forms, rough sheared mouth and sheared, tooled mouth - smooth and possibly pontiled bases, ht. 2 1/4" and 2 1/8"; (cobalt example has a 1/4" 'sliver-type' flake from edge of lip; blue green example has some light stain, and a flat spot with a bit of roughness on the base, likely in-making, that may be remnants of a pontil scar). Scarce.

**Est.: \$150 - \$250 • Min. bid: \$80**



### Lot 110

**Freeblown Seahorse Scent Bottle**, probably America, likely a South Boston glasshouse, 1820 - 1850. Rich teal coloration with opaque white threading or 'canes', seahorse form with an ovoid body tapering to a tightly curled tail, two applied quilled ribbons of colorless glass along the sides, sheared mouth, ht. 2 5/8", near mint; (a little highpoint wear, and a little roughness and minor flaking along one of the colorless ribbons at the side). Scarce and attractive color.

**Est.: \$125 - \$250 • Min. bid: \$70**



### Lot 111

**Lot of (2), Freeblown Seahorse Scent Bottles**, probably America, 1820 - 1850. 1st example is colorless with light pink and blue striped canes of glass; 2nd example is colorless with amethyst-puce ribbons swirled through the body. Both examples with quilled ribbons of colorless glass along the sides, sheared mouths, ht. 2 1/2" and 3" respectively; (1st example has some light exterior wear; 2nd example has a 3/8" tip of rigaree missing, and a 1/8" fissure in applied ribbon).

**Est.: \$125 - \$250 • Min. bid: \$70**



### Lot 112

**Lot of (2), Ribbed Geometric Scent Bottles**, Boston and Sandwich Glass Works, 1840 - 1870. Medium teal, and fiery clambroth coloration, elliptical form, geometric pattern with alternating bands of short ribs and rings, factory polished mouths - smooth bases, ht. 3" and 3 1/4"; (teal example has a potstone in the shoulder with a couple of annealing lines, 3/16" or less, and a 1/4" flake on top of the lip; clambroth example virtually perfect, tiny flake on lip). MW, plate 106; BK #5186.

**Est.: \$300 - \$500 • Min. bid: \$150**



### Lot 113

**Lot of (2), Pattern Molded Scent Bottles**, America or England, 1780 - 1830. Deep cobalt, and teal green coloration, flattened ovoid bodies, patterned with 12 and 20 ribs respectively, swirled to the right. Both with sheared lips - pontil scarred bases, ht. 2 1/2" and 2 3/4" respectively; (cobalt example is perfect; teal green example has a 5/8" elliptical crack in the neck). See, MW, plates 103 & 104. Nice colors, an attractive Lot. Note; the 12 rib count on the cobalt example is unusual.

*Est.: \$200 - \$400 • Min. bid: \$100*



### Lot 114

**Lot of (2), Pattern Molded Scent Bottles**, America or England, 1780 - 1830. Peacock and teal blue, flattened ovoid bodies, patterned with 20 and 26 vertical ribs respectively. Both with sheared lips - pontiled scarred bases, ht. 3" and 2 7/8" respectively; (peacock example near perfect with just a trace of minor wear; teal example has some wear including a 3/16" chip from side of base, and a 1/8" flake at edge of lip, and a bit of faint interior haze). See, MW, plates 103 & 104.

*Est.: \$200 - \$400 • Min. bid: \$100*



### Lot 115

**Stars and Stripes pattern Target Ball**, America, 1875 - 1900. Bright golden yellow coloration, known as the 'Stars and Stripes', or 'Stars and Bars' pattern, the ball is covered with tiny embossed stars or dimples, with the sides having horizontal strips or bars, 3-piece mold, rough sheared mouth, dia. 2 5/8", perfect! A beautiful example of this rare and desirable target ball, outstanding condition. Very few of these are known in any color. Ex. Ralph & Jan Finch collection.

*Est.: \$1,000 - \$1,500 • Min. bid: \$500*



### Lot 116

**"G.A. BASTMAN - STOCKHOLM" Target Ball**, Sweden, 1880 - 1900. Golden amber, quilted diamond pattern above and below center band, 2-piece mold, rough sheared mouth, dia. 2 5/8", perfect. A very attractive ball with the large lettering around the center band. In addition, an extremely rare ball, seldom offered for sale, and believed to be less than a half dozen known examples. G.A. Bastman was a gun maker in Stockholm, in the 1880s.

*Est.: \$500 - \$800 • Min. bid: \$250*



### Lot 117

**"SOPHIENHUTTE IN - ILMENAU (THUR)" Target Ball**, Germany, 1875 - 1900. Golden amber with a slight orange tone, quilted diamond pattern above and below center band, 2-piece mold, rough sheared mouth, dia. 2 5/8", virtually perfect; (a trace bit of residue and a minor 3/8" iridescent bruise, almost certainly in-manufacture, on the inside edge of the lip that occurred when the blowpipe was snapped away). A very scarce ball blown at the Sophienhutte Glassworks.

*Est.: \$500 - \$800 • Min. bid: \$250*



### Lot 118

**"F.W. OTTE JUN - CHARLOTTENBURG - GLASHUTTEN" Target Ball**, Germany, 1875 - 1900. Beautiful, olive yellow coloration, diamond pattern with semi-circular ribs creating a curvature to the quilted pattern, 2-piece mold, rough sheared mouth, dia. 2 5/8", perfect. A beautiful, eye-appealing color and in a scarce pattern for a "Glashutten" ball (most having the typical diamond or lattice-type design).

*Est.: \$200 - \$400 • Min. bid: \$100*



### Lot 119

**"T. JONES GUN MAKER BLACKBURN LANCASHIRE" Target Ball**, England, 1875 - 1900. Medium sky-blue, quilted diamond pattern above and below center band, 3-piece mold, large "X" on base, rough sheared mouth, dia. 2 5/8"; (a 1 1/4" fissure, likely in-manufacture, near base of neck, an interior open bubble, otherwise excellent). This example has a crisp, strong mold impression, but the lettering in the center band is difficult to read, as is always the case with this mold). Scarce color.

*Est.: \$100 - \$200 • Min. bid: \$50*



### Lot 120

**Rare Color Target Ball**, America, 1875 - 1900. Delicate, light vaseline coloration, 3-piece mold, unembossed, rough sheared mouth, dia. 2 5/8", perfect. Crude, thin, delicate glass, and in a very rare color. Colorless and very light-tone balls tend to be very scarce-to-rare. Relatively few were produced as they obviously would have been much more difficult to spot or site. Delicate, beautiful and rare.

*Est.: \$175 - \$350 • Min. bid: \$100*





### Lot 121

**Lot of (2), Target Balls**, America, 1875 - 1900. 1st target ball is a bright golden amber, 2nd example is a clear, light cobalt coloration near the base, shading to a rich, deep cobalt through the shoulders. Both balls are 5-pc. mold, rough sheared mouths, dia. 2 5/8", both are pristine perfect! The 5-pc. mold balls are much more scarce than the 3-pc. mold examples. Beautiful colors, outstanding clarity and condition on both, a very nice pair!

**Est.: \$250 - \$450 • Min. bid: \$130**



### Lot 125

**Lot of (3), Framed, Bartlett Family Cabinet Cards**, 1885 - 1895. 1st card depicts family dressed in white posing with guns; 2nd card, "Flurence" (written below image of little "Flo"), holding a Stevens Pocket Rifle, 3rd card shows

the family posing in frontier dress. All three cards by Swords Bro's Photographers, York, Pa, overall frame 22 3/4" x 12 3/4"; (left and center cards in excellent condition, card on right with a bit of damage in the upper left corner). Ex. Ralph & Jan Finch collection.

**Est.: \$300 - \$500 • Min. bid: \$150**



### Lot 122

**Huber's Champion Trap**, Patterson, NJ, 1885 - 1900. Cast iron and wooden trap. Wooden base swivels with a heavy spring coil at end having two center coils that extend out creating the throwing arm. Length 26", ht. 20"; (overall excellent condition with some typical minor pitting to the cast iron; a nice patina to the wood,

original spring mechanism appears free and in working order). Very similar to Lot 755 in AGG Finch Collection catalog. Ralph & Jan Finch collection.

**Est.: \$2,000 - \$4,000 • Min. bid: \$1,000**



### Lot 126

**Wild West And Great Forepaugh Shows Advertising Broadside**, 1889. 2-sided, red and black broadside depicting various events including women "Breaking Glass Balls Thrown in Different Directions", (also shows a boy in the distance throwing glass balls into the air). Excellent graphics. Other scenes depicted include Battle of Little Bighorn, and "The Cowboy Brass Band". 28 3/4" x 10 3/4", excellent overall condition. Very rare! Includes conservation framing. Ex. Ralph & Jan Finch collection.

**Est.: \$400 - \$800 • Min. bid: \$200**

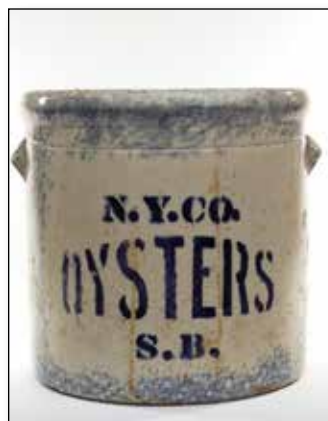


### Lot 123

**"MOLES PATENT / MARCH 12 / 1878"** (on metal sprocket) **Double-Arm Target Ball Thrower**, Batavia, IL, 1878 - 1890. Cast iron double arm thrower with heavy spring coils designed to throw balls in opposite directions, length 24 1/4", ht. 19"; (some moderate pitting to the cast

iron; metal sprocket and base are frozen and do not turn). John G. Mole held several patents for improvements in apparatus for throwing targets. Ralph & Jan Finch collection.

**Est.: \$1,000 - \$2,000 • Min. bid: \$500**



### Lot 127

**"N.Y. CO. / OYSTERS / S.B." Sponge-ware Oyster Crock**, America, 1890 - 1910. Cobalt blue stenciled lettering surrounded by decorative light blue spongeware pattern around entire crock, cylindrical, tooled rim, applied lug-type handles, ht. 9 1/2", approximately 2-gallon, virtually perfect; (a couple of tight surface lines in the glaze on the interior that are superficial and not visible on the outside). A rare, eye-appealing, decorated oyster crock. Provenance: Mary Ballentine collection.

**Est.: \$400 - \$800 • Min. bid: \$200**



### Lot 124

**Stock & Morris Glass Ball Trap**, Peoria, IL, 1879 - 1890. Original trap with hollow metal post with pointed end to mount in ground. A metal swivel shank with curved arm, **"PAT JULY 8 1879"**, secures a long wooden throwing arm with metal cup to hold glass ball, max. ht. 27", exceptional

condition; (much of the green paint remains on the throwing arm, nice patina). Advertised as, "The best and cheapest ball trap made..." A rare trap. Ralph & Jan Finch collection.

**Est.: \$800 - \$1,600 • Min. bid: \$400**



### Lot 128

**"GRIFFEN'S PATENT / OCT 7 1862"** (on glass lid), with original Pearl Tapioca product label from A&P Tea Co., America, 1880 - 1900. Aquamarine, cylindrical, short neck with two large lugs, ground lip - glass lid with original two prong cage-like iron clamp, smooth base, approx. 48 oz.; (jar and lid are perfect; 95% complete original label). RB #1154. Outstanding original A&P product label reads in part, **PEARL TAPIOCA / PACKED BY / THE GREAT / ATLANTIC & PACIFIC / TEA COMPANY.**

**Est.: \$150 - \$250 • Min. bid: \$80**



### Lot 129

**"DICTATOR. / FROM / HOLLWEG & REESE / INDIANAPOLIS IND - PATENTED / D.I. HOLCOMB / DEC 14TH 1869"**, Wm. McCully & Co. glass manufacturers, Pittsburgh, PA, 1870 - 1880. Deep aquamarine, cylindrical, applied heavy rounded ring with flat ledge - **"W. McCULLY & Co. PITTS"** (on smooth base), half gallon, mint. RB #787-1. A beautiful example of this eye-appealing, and very rare jar, nice crude glass, and with an absolutely perfect lip!

**Est.: \$800 - \$1,200 • Min. bid: \$400**



### Lot 130

**"MILLVILLE - HITALL'S PATEN"**, Whitall Tatum Co, Millville, NJ, 1861 - 1865. Aquamarine, cylindrical, square shouldered jar, crudely applied grove ring wax sealer mouth, correct glass lid embossed, **"WHITALL'S PATENT / JUNE 18TH 1861"**, original iron yoke clamp with thumbscrew - smooth base, ½ Pt, perfect! RB #2185. A bright, sparkling, pristine example of this scarce and attractive little jar.

**Est.: \$400 - \$600 • Min. bid: \$200**



### Lot 131

**"MASONS / PATENT / NOV 30th / 58"**, America, possibly Ball Brothers Glass Manufacturing Company, Muncie, IN, 1890 - 1900. Rich aquamarine, cylindrical, threaded neck with ground lip, zinc lid with sun, moon and star design - **"11"** (on base), Pt, perfect. RB #1780. Known as the 'Christmas Mason' because of the fancy Gothic style lettering. Good color, whittled, clean and bright, a beautiful example.

**Est.: \$75 - \$125 • Min. bid: \$40**



### Lot 132

**"MASON'S / (CROSS) / PATENT / NOV. 30TH / 1858"**, America, 1885 - 1900. Bright honey coloration, cylindrical, threaded neck with ground lip, zinc lid - **"PAT NOV 26 67 / 461"** (on base), Qt, perfect. RB #1940. Another nice example having good color, clarity, and embossing.

**Est.: \$200 - \$300 • Min. bid: \$100**



### Lot 133

**Lot of (2), "MASON'S / (CROSS) / PATENT / NOV. 30TH / 1858" Jars**, America, 1885 - 1900. 1st jar is colorless, 2nd jar is a delicate light yellowish green, almost a vaseline coloration, both cylindrical, threaded necks with ground lips, zinc lids (one example with **"HFJ Co"**) - **"PAT NOV 26 67"** (on bases), Qts; (colorless jar is perfect, vaseline toned jar is near mint with a 3/8" chip at side of ground lip, otherwise perfect). RB #1939. Very bold embossing on colorless jar.

**Est.: \$75 - \$150 • Min. bid: \$40**



### Lot 134

**Set of (3), "COHANSEY" Fruit Jars**, Cohansey Glass Mfg. Co, Philadelphia, PA, 1876 - 1888. All are aquamarine, cylindrical, ground mouth, original wire clamps and correct glass lids embossed, **"COHANSEY GLASS MANUF. CO. PHILADA PAT JULY 16 1872 / PATENTED JANUARY 18 1876"** (one lid with **"PATENTED JANUARY 18 / 67"** on inner circle), smooth bases, Pt, Qt. & ½ Gal; (jars are near mint, a scratch and tiny flake on Qt. example, a bit of minor surface rust on clamps). RB #628.

**Est.: \$100 - \$200 • Min. bid: \$50**



### Lot 135

**Set of (3), "WOODBURY" Fruit Jars**, Woodbury Glass Works, Woodbury, NJ, 1885 - 1895. All are aquamarine, cylindrical, ground mouth, original metal clamps with screw caps, correct glass lids embossed, **"PATD NOV 25TH 1884 MAR 3D 85"** on underside of lid - **"WOODBURY GLASS / WORKS / WOODBURY, N.J."** (on bases), Pt, Qt. & ½ Gal; (all are mint / near mint; Qt. has a few minor chips on edge of ground mouth that do not impact the ground lip). RB #3027 & 3028.

**Est.: \$100 - \$200 • Min. bid: \$50**



### Lot 136

**Petal-Type Preserve Bottle**, Willington Glass Works, West Willington, CT, 1860 - 1872. Yellowish 'old amber', cylindrical with fluted shoulders, applied round collar with ring - smooth base, ht. 11 ¼"; (just a faint trace of wear including a hard-to-see, tiny little pinhead flake below one of the flutes, otherwise attic mint!) MW, plate 73, #3. A classic New England preserve bottle colloquially known as a "Willington blueberry bottle". Excellent character, heavily whittled.

**Est.: \$600 - \$900 • Min. bid: \$300**





### Lot 137

**Petal-Type Preserve Jar**, a Pittsburgh district glasshouse, 1850 - 1860. Medium to deep olive, cylindrical 3-pc. mold with fluted shoulders, applied mouth - red iron pontil scar, ½ gallon; (a bit of exterior wear including a small iridescent flake on one of the fluted edges, a ½" shallow open bubble on the shoulder, and a little minor roughness on the edge of the lip). L#3067. A very impressive jar with nice whittling through shoulders.

**Est.: \$1,000 - \$1,500 • Min. bid: \$500**



### Lot 141

**Pickle Jar**, America, probably a Mid-Atlantic glasshouse, 1860 - 1870. Aquamarine, rectangular with beveled corners, Gothic arched panels, each with diamond and pendent motif below scroll pattern on shoulders, sheared mouth with applied ring collar - iron pontil scar, ht. 9", perfect! A bright, clean, sparkling example. Scarce smaller size.

**Est.: \$175 - \$350 • Min. bid: \$100**



### Lot 138

**Pickle Jar**, America, possibly a Midwest glasshouse, 1850 - 1860. Medium blue green, cylindrical with a label panel and seven vertical flutes around the body, short neck with an applied ring-type collar - iron pontil scar, ht. 8 1/8"; (faint trace of interior residue, otherwise perfect). Good color, excellent condition, and in a very scarce-to-rare, eye-appealing mold. If you like pickles and foods, here is one that does not come around often.

**Est.: \$400 - \$600 • Min. bid: \$200**



### Lot 142

**"Casper's Whiskey / Made By Honest / North / Carolina People"**, America, 1885 - 1900. Medium to deep cobalt blue, cylindrical with fluted shoulders, tooled sloping collared mouth with ring - smooth base, ht. 11 7/8", near mint; (just a little typical light exterior wear, otherwise perfect). A classic, colorful, whiskey bottle that always stands out in a crowd! Provenance: Ex. Dr. Daniel Bennett collection.

**Est.: \$400 - \$500 • Min. bid: \$200**



### Lot 139

**"J.M. CLARK & CO. - LOUISVILLE, KY." Pickle Jar**, probably a Midwest glasshouse, 1885 - 1896. Bright yellowish citron coloration, cylindrical, wide mouth with applied square collar - smooth base, ht. 8 ½", very near mint; (a 3/16" flake on the edge of the lip on the reverse, otherwise perfect). See *"Ketchup, Pickles, Sauces"*, Zumwalt, p.83. J.M. Clark was proprietor of the Hyman Pickle Works in Louisville. We do not recall seeing another example in this, or any similar color.

**Est.: \$200 - \$400 • Min. bid: \$100**



### Lot 143

**"CONSTITUTION" Wine Bottle**, America, 1835 - 1845. Deep olive, cylindrical, 3-pc. mold, applied sloping collar with bevel - sand type pontil scar, ht. 11", virtually attic mint; (a slight trace of light wear including a ¼" paper-thin open surface bubble, otherwise perfect). See AB&GC, May, 2016, for an article on the history of related Constitution bottles. A rare, historical bottle blown to contain the wine imported to the U.S. that was shipped aboard the USS Constitution, nicknamed "Old Ironsides".

**Est.: \$800 - \$1,200 • Min. bid: \$400**



### Lot 140

**Small Cathedral Pickle Jar**, America, probably a Mid-Atlantic glasshouse, 1855 - 1865. Aquamarine, square with beveled corners, fancy Gothic double arch design with lattice pattern on three of the four lower panels, sheared mouth with an applied ring collar - iron pontil scar, ht. 7 ¼" (approximately 1 pint), attic mint. A scarce mold, very scarce size, excellent condition.

**Est.: \$175 - \$350 • Min. bid: \$90**



### Lot 144

**"CANTWELL & KEFFER / ONE QUART / PHILADELPHIA" Whiskey Cylinder**, probably 1858 - 1861. Deep olive green, cylindrical, applied sloping collar with bevel - smooth base, ht. 11 ½", perfect; (appears to be an 'attic-type' bottle with just a little washable residue). A great eastern whiskey, boldly embossed, and rare! Cantwell & Keefer were located at Germantown Ave. and Master St. in Phila. The business, listed as hotel and liquors, was dissolved in Nov. 1861.

**Est.: \$600 - \$900 • Min. bid: \$300**

# 'Horse & Cart' Railroad



Lot 25

Lot 26

Lot 27

Lot 28



# Flasks

This beautiful grouping represents a virtually complete set of early 'Horse-and-Cart' Railroad Flasks. The lone standout is the distinctive GV-11 mold. An exceedingly rare flask, which McKearin notes may be an error, with only a singular example known. The only confirmed example of this mold, which also happens to be damaged, resides in the Corning Museum of Glass, Corning, NY.

As a result of their highly detailed molds, affordability, subject matter and historical significance, Railroad Flasks have long been popular with collectors. They were blown at numerous glasshouses, primarily in New England and New York State, over a period of almost 30 years, from the early 1830's through the 1850's.

The flasks were blown to commemorate a new mode of transportation taking root throughout New England. One of the first American railways, a horse-and-cart, was a three mile long stretch. It was built to carry granite from Quincy, Massachusetts, for the Bunker Hill Monument near Boston. It began operation in 1826.

The proliferation and popularity of railroads spread rapidly throughout the 1830's and 1840's. This mirrors the time period of when many of these early railroad flasks were blown. There are twelve different railroad molds charted by McKearin, (fourteen if you include the GV-3a, and GV-7a). The horse-and-cart is depicted on twelve of the fourteen different molds. In addition, the slogan, "Success to the Railroad" is embossed on seven of those molds.

It may be argued that perhaps no other form of transportation had a greater impact on the growth and industrialization of American during the 19th Century than the railroad.



Lot 29

Lot 30

Lot 31

Lot 32



### Lot 145

**WEEKS & GILSON. SO. STODDARD N.H.** (on base) **Whiskey Cylinder**, South Stoddard Glass Co., 1860 - 1873. Golden amber, 3-pc. mold whiskey cylinder, applied sloping collar with ring - smooth base, ht. 11 3/8", attic mint! A great example, pleasing color, beautifully whittled, nice crisp embossing on the base. A classic and very scarce glasshouse whiskey cylinder. See, *On the Trail of STODDARD GLASS*, Field, p. 58.

Est.: \$600 - \$900 • Min. bid: \$300



### Lot 149

**"ROYAL - IMPERIAL GIN - LONDON"**, America, 1870 - 1880. Cobalt blue, square with beveled corners, applied sloping collar - smooth base, ht. 9 3/4", very near mint; (a minor, paper-thin, 3/16" open surface bubble on one of the beveled corners, and only the faintest trace of wear, otherwise sparkling mint). A great example, deeper in color than most, and the glass is filled with tiny bubbles. Provenance: Ex. Jim Cope, Dr. Charles Aprill collections.

Est.: \$800 - \$1,200 • Min. bid: \$400



### Lot 146

**Lot of (2), Labeled Whiskey Cylinders**, 1860 - 1875. Medium amber and olive amber, both 3-pc. mold, applied sloping collars - smooth bases, ht. 11 3/8" and 11 1/4". 1st example: "RYE / WHISKY / S.E. LEWIS, / 1404 14th Street, WASHINGTON, D.C.". 2nd example, "PATENT" (on shoulder), "DYOTTVILLE GLASS WORKS PHILA" (on smooth base), "WELSH'S / OLD RESERVE / MADEIRA WINE / CASPER HEFT / 255 North Third Street / PHILADELPHIA.". Both near mint.

Est.: \$75 - \$150 • Min. bid: \$40



### Lot 150

**Santa Claus in Chimney, Figural Whiskey Nip**, America, 1890 - 1905. Bright golden amber, figural of a bearded Santa Claus with head and shoulders rising above a brick chimney, tooled sloping collar - smooth base, ht. 5 5/8", near mint; (a little patch faint interior haze in the shoulders, otherwise perfect). A scarce and desirable figural whiskey nip that was likely sold, or perhaps given as a premium, to favored customers during the Holidays. Provenance: Mary Ballentine collection.

Est.: \$150 - \$250 • Min. bid: \$80



### Lot 147

**"I X L / VALLEY / WHISKY - E & B. BEVAN / PITTSTON / PA." - STAR** (on each of 7 flat panels), **Figural Whiskey**, 1852 - 1865. Deep amber with a slight root beer tone, pedestal base flaring outward to an octagonal body, applied disk collar with bevel - sand type pontil scar, ht. 7"; (lightly cleaned to original luster with a little scattered light wear remaining; a pin-head flake on shoulder). A rare figural whiskey from Pittston, PA (believed to be in the form of a circus tent).

Est.: \$2,000 - \$4,000 • Min. bid: \$1,000



### Lot 151

**"HENRY CHAPMAN & Co / SOLE / AGENTS / MONTREAL"**, probably Whitney Glass Works, Glassboro, NJ, 1865 - 1875. Medium amber, teardrop form pocket flask, applied sloping collar internally threaded, flat disc lip with correct, almost certainly original, threaded "PAT / 1861" glass stopper - smooth base, ht. 6 1/4"; (bottle near mint with a minor trace of light wear, and some washable interior residue; stopper has a 1/2" flat chip on underside of rim).

Est.: \$200 - \$400 • Min. bid: \$100



### Lot 148

**"H. F. & B. / N.Y." (within shield), Figural Whiskey**, America, 1865 - 1875. Deep cherry puce, figural melon form, bulbous neck, applied sloping collar with bevel - smooth base, ht. 9 1/8"; (lightly cleaned to original luster with a little light exterior wear remaining, and a couple of minor open surface bubbles, 1/4" or less, on the reverse, otherwise excellent). A scarce figural whiskey, pleasing form, deep rich color.

Est.: \$600 - \$1,200 • Min. bid: \$300



### Lot 152

**"BININGER'S / TRAVELERS / GUIDE / A.M. BININGER & CO / No 19 BROAD ST N.Y."**, probably 1861 - 1863. Golden amber shading to a honey coloration along the sides, flattened teardrop form, applied round collar with bevel - smooth base, ht. 6 3/4"; (a 1/4 area of roughness along the top edge of the collar, and a 1/4" flake on the inner edge of the lip, otherwise near mint). GXV-30; BPK-35. As noted in BPK, the Travelers Guide bottles are scarce.

Est.: \$150 - \$300 • Min. bid: \$80





### Lot 153

**Lot 153 "A.M. BININGER & CO. / No. 19 BROAD ST / NEW-YORK"** Applied Handle Whiskey, probably 1861 - 1863. Medium-to-deep olive green, cylindrical with conical shoulders, applied handle curled at lower attachment, applied double round collar - smooth base, ht. 7 7/8", virtually attic mint; (a tiny bit of roughness at edge of base on the reverse, mentioned for complete accuracy, otherwise perfect!) BPK-31. Rare color, whittled, beautiful, and outstanding condition.

*Est.: \$3,000 - \$5,000 • Min. bid: \$1,500*



### Lot 154

**"DISTILLED IN 1848. / OLD KENTUCKY / 1849 / RESERVE / BOURBON / A.M. BININGER & Co. 338 BROADWAY N.Y."**, America, 1859 - 1861. Amber, barrel form, applied square collar - blowpipe pontil scar, ht. 9", virtually perfect; (a slight trace of interior residue). BPK-41. As noted in the landmark Bininger book by Jim Bender, the large size barrels with the 338 Broadway address are scarce! In addition, they are not listed with an open pontiled base.

*Est.: \$400 - \$600 • Min. bid: \$200*



### Lot 155

**"GREELEY'S BOURBON / BITTERS."** (with 98% complete original labels), 1860 - 1875. Light smoky topaz with a strong olive tone, barrel form, applied square collar - smooth base, ht. 9 1/4", virtually perfect; (tiny pinprick speck of roughness on edge of lip, otherwise pristine perfect). An exceptional example in terms of color, condition, and with labels. Note; a piece of glass or cullet adhered to the base during the annealing process. Ex. Bob Ferraro collection.

*Est.: \$2,000 - \$4,000 • Min. bid: \$1,000*



### Lot 156

**"GREELEY'S BOURBON / BITTERS"**, America, 1860 - 1875. Medium copper with a slight pinkish apricot tone, barrel form, applied square collar - smooth base, ht. 9", near mint; (a tiny, barely pinprick flake and a small area of very fine lip-edge roughness, otherwise perfect). R/H #G101. A very pretty color, lighter than many, nicely whittled and with plenty of bubbles through the shoulder area. Ex. Tom McCandless collection.

*Est.: \$600 - \$900 • Min. bid: \$300*



### Lot 157

**"GREELEY'S - BOURBON WHISKEY / BITTERS. - GREELEY'S"**, America, 1860 - 1875. Rich, medium-to-deep apricot with some reddish-orange tones, barrel form, applied square collar - smooth base, ht. 9 1/4"; (a couple of shallow 1/8" flakes from the side of the square collar; a minor pinhead flake and a paper-thin 1/4" flake on the top of the collar, a partially open interior bubble, otherwise excellent). R/H #G102. The G102 'vertical' Greeley's are much scarcer than the G101 mold.

*Est.: \$300 - \$500 • Min. bid: \$150*



### Lot 158

**"BOURBON WHISKEY / BITTERS"**, America, 1860 - 1875. Bright medium apricot coloration with some orangy-salmon tones, barrel form, applied square collar - smooth base, ht. 9"; (a little lip-edge roughness including a 1/8" flake and a shallow 1/4" iridescent bruise, a tiny pinhead bruise on the back edge of the lip, otherwise perfect). R/H #B171. Bright, clean, whittled, and having virtually no wear around the mid-body, a nice example.

*Est.: \$400 - \$600 • Min. bid: \$200*



### Lot 159

**"DR C.W. ROBACKS / STOMACH BITTERS / CINCINNATI. O"**, America, 1855 - 1865. Golden amber, barrel form, applied sloping collar - iron pontil scar, ht. 9 7/8", very near mint; (a minor, 1/8" flake on the inside edge of the lip that may have occurred in-manufacture, otherwise pristine perfect). R/H #R73. Fantastic character, crude, whittled, bubbly glass, and in a lighter tone than most in this desirable, larger size, with the pontil scarred base. A good one!

*Est.: \$500 - \$800 • Min. bid: \$250*



### Lot 160

**"KEYSTONE / BITTERS"**, America, 1870 - 1880. Medium-to-deep amber, barrel form, applied sloping collar - smooth base, ht. 10"; (just a touch of light wear including a couple of minor, 1/8", onionskin-thin open surface bubbles on the reverse, otherwise virtually attic mint). R/H #K36. A nice example of this scarce barrel, whittled and with strong embossing.

*Est.: \$500 - \$800 • Min. bid: \$250*



### Lot 161

**"HALL'S / BITTERS - E.E. HALL NEW HAVEN / ESTABLISHED 1842"**, America, 1865 - 1875. Bright, light, yellowish honey amber, barrel form, applied square collar - smooth base, ht. 9 3/8"; (a little flaking and minor roughness, approximately 1/2", primarily along the back edge of the lip, and a slight trace of very faint interior milkiness, otherwise excellent). R/H #H10. Beautiful color, lighter than most. The noted condition issues are minor and the bottle displays as virtually perfect!

*Est.: \$150 - \$250 • Min. bid: \$80*



### Lot 162

**"BROWN'S / CELEBRATED / INDIAN HERB BITTERS - PATENTED / 1867"**, America, 1867 - 1880. Bright, light golden amber shading to a yellowish-honey coloration through the arms, figural Indian maiden, sheared and inward rolled lip - smooth base, ht. 12 1/4", perfect. R/H #B223. A fantastic example, very pleasing color, outstanding condition, and with a perfect rolled lip.

*Est.: \$600 - \$900 • Min. bid: \$300*



### Lot 163

**"NATIONAL / BITTERS" - "PATENT / 1867"** (on base), America, 1867 - 1875. Golden amber, figural ear of corn, applied short tapered collar with ring - smooth base, ht. 12 1/4", near mint; (a trace of light exterior wear including a couple of pinhead open bubbles along the edge of the leaf on the side, otherwise excellent). R/H #N8. One of the all time classics in figural bitters, and a lot of bottle for the money.

*Est.: \$250 - \$450 • Min. bid: \$140*



### Lot 164

**"S T / DRAKE'S / 1860 / PLANTATION / X / BITTERS - PATENTED / 1862"**, America, 1862 - 1880. Gorgeous, medium raspberry pink coloration, cabin form with 6 logs above the label panel, applied sloping collar - smooth base, ht. 9 7/8", virtually attic mint; (a tiny, less-than pinhead bit of roughness on one of the roof panels; the mold impression is a bit weak, otherwise pristine perfect). R/H #D105. An exceptional example with incredible eye-appeal. Absolutely stunning!

*Est.: \$4,000 - \$8,000 • Min. bid: \$2,000*



### Lot 165

**"S T / DRAKE'S / 1860 / PLANTATION / X / BITTERS - PATENTED / 1862"**, America, 1862 - 1880. Beautiful reddish-puce with some apricot amber tones, cabin form with 6 logs above the label panel, applied sloping collar - smooth base, ht. 10", very near mint; (some dried interior content residue, almost certainly washable, otherwise perfect). R/H #D105. A rich color that changes according to the lighting. It is also a bit lighter than many of the other puce-toned Drake's.

*Est.: \$300 - \$500 • Min. bid: \$150*



### Lot 166

**"HOLTZERMANN'S - PATENT / STOMACH / BITTERS"**, America, 1865 - 1875. Medium amber shading to a light honey coloration along the edges, rectangular cabin form, applied sloping collar - smooth base, ht. 9 1/4", very near mint; (just a slight trace of light wear, otherwise perfect). R/H #H155, MW, plate 85, #3. A great classic 2-roof cabin bitters, originally from Piqua, Ohio.

*Est.: \$1,400 - \$1,800 • Min. bid: \$700*



### Lot 167

**"BAKER'S / ORANGE GROVE - BITTERS"** (with original labels), America, 1870 - 1880. Bright golden, almost a honey coloration, square with roped corners, applied sloping collar - smooth base, ht. 9 1/2"; (the bottle is pristine perfect; colorful front label is 98% complete with a couple of minor thin spots, back label 65% complete). R/H #B9. A beautiful example, and certainly rare with labels. Label indicates it is a "... very pleasant Tonic".

*Est.: \$600 - \$1,200 • Min. bid: \$300*



### Lot 168

**"OK / PLANTATION / 1840 - PATENTED / 1863"**, America, 1863 - 1875. Beautiful, apricot puce with some rich reddish tones, triangular with beveled corners, applied sloping collar - smooth base, ht. 10 7/8", very near mint; (just a slight trace of minor wear and a 1/4" flake from beneath the applied collar, almost certainly in-making, that occurred when the gaffer removed the blowpipe, prior to the collar being applied). R/H p.408. A great color, no amber in this one!

*Est.: \$1,800 - \$2,800 • Min. bid: \$900*





### Lot 169

**"DINGEN'S / NAPOLEON COCKTAIL BITTERS - DINGENS BROTHERS / BUFFALO N.Y."** (with 75% complete original label), America, 1858 - 1865. Colorless with a strong smoky ice-blue tone, figural drum with a lady's leg type neck, applied sloping collar - iron pontil scar, ht. 10"; (the bottle is perfect, label darkened a bit from age). R/H #N3. An outstanding bitters in a very rare color. The color is approaching a smoky ice blue. Pristine condition, extremely rare with original label!

*Est.: \$6,000 - \$9,000 • Min. bid: \$3,000*



### Lot 173

**"KIMBALL'S / JAUNDICE - BITTERS - TROY. N.H."**, a Stoddard, NH glasshouse, 1850 - 1860. Bright, light-to-medium yellowish olive amber, rectangular with beveled corners, applied sloping collar - iron pontil scar, ht. 6 7/8", attic mint! R/H #K42. A beautiful example, attractive light color, good glass texture, excellent condition. A New England classic.

*Est.: \$600 - \$1,200 • Min. bid: \$300*



### Lot 170

**"BRYANT'S - STOMACH - BITTERS"**, 1859 - 1863. Medium olive, 8-sided, tall "lady's leg" form, applied sloping collar with bevel - sand type pontil scar, ht. 12 1/8"; (a 1/4" chip from the side of the lip; a 1/2" by 3/4" chip from the edge of the base, and just a little minor wear including a tiny flake and open bubble on a back panel edge). R/H #B243. A very nice example that displays near-mint with none of the severe etching often encountered with the shipwreck examples.

*Est.: \$1,800 - \$2,800 • Min. bid: \$900*



### Lot 174

**"KIMBALL'S / JAUNDICE - BITTERS - TROY. N.H."**, a Stoddard, NH glasshouse, 1850 - 1860. Medium-to-deep olive amber, rectangular with beveled corners, applied sloping collar - iron pontil scar, ht. 6 3/4", very near mint; (just a slight touch of light wear near the base, otherwise perfect). R/H #K42. A scarce color for this mold which is usually found in lighter shades, and having more yellowish and amber tones. Unusual color, nice character, excellent condition.

*Est.: \$800 - \$1,600 • Min. bid: \$400*



### Lot 171

**"JOHN MOFFAT - NEW YORK - PHOENIX / BITTERS - PRICE \$1.00"**, 1845 - 1855. Yellowish olive amber, rectangular with beveled corners, crudely applied short tapered collar - blowpipe pontil scar, ht. 5 5/8", virtually perfect; (a little in-manufacture crazing in the neck, and a trace of interior residue that would wash out, otherwise attic mint). R/H #M112. Nice color, clarity, and bold embossing for this mold, which can sometimes be weak. James Chebalo collection.

*Est.: \$600 - \$900 • Min. bid: \$300*



### Lot 175

**"DR. STEPHEN JEWETT'S - CELEBRATED HEALTH / RESTORING BITTERS - RINDGE, N.H."**, a Stoddard, NH glasshouse, 1850 - 1860. Brilliant yellow coloration with a slight amber or topaz tone, rectangular with beveled corners, applied square collar - blowpipe pontil scar, ht. 7 1/4"; (a 5/16" and 1/8" area of minor lip edge roughness, and a tiny potstone with a couple of 1/8" 'legs', otherwise excellent). R/H #J37. Absolutely gorgeous color, heavily whittled, beautiful!

*Est.: \$1,000 - \$2,000 • Min. bid: \$500*



### Lot 172

**"JOHN MOFFAT - NEW YORK - PHOENIX / BITTERS - PRICE 1 DOLLAR"**, 1845 - 1855. Brilliant, yellowish golden amber, rectangular with beveled corners, sheared, outward folded mouth - blowpipe pontil scar, ht. 5 1/2", near mint; (slight trace of faint wear including a tiny pinhead open bubble and an in-manufacture pontil flake that extends to the edge of the base, otherwise perfect). R/H #M113. Rare color, heavily whittled. James Chebalo collection; Ex. Greer.

*Est.: \$2,500 - \$5,000 • Min. bid: \$1,300*



### Lot 176

**"G. C. SEGUR'S - GOLDEN SEAL / BITTERS - SPRINGFIELD MASS."**, probably 1850 - 1855. Aquamarine, rectangular with beveled corners, applied sloping collar - blowpipe pontil scar, ht. 8 1/4"; (some interior content haze in the upper half of the bottle, and just a trace of faint exterior wear, but no other form of damage and otherwise perfect). R/H #S-84. Scarce mold! With just a light interior cleaning, the bottle would be virtually attic mint. A crude example having whittled, wavy glass.

*Est.: \$500 - \$800 • Min. bid: \$250*



### Lot 177

(Image of three Gamecock Birds) / **"DR. MICHAEL COX'S BITTERS"**, probably a Pittsburgh glasshouse, 1885 - 1895. Bright golden shading to a yellowish-honey with an orange tone, square with beveled corners, tooled sloping collar - **"H. OBERNAUER & CO. / PITTSBURGH"** (on smooth base), ht. 10"; (only the slightest trace of minor wear, otherwise pristine perfect). R/H #C242. An extremely rare and desirable pictorial bitters.

*Est.: \$1,000 - \$2,000 • Min. bid: \$500*



### Lot 181

**"ARABIAN BITTERS - LAWRENCE & WEICHSELBAUM / SAVANNAH GA"**, America, 1875 - 1885. Golden amber, square with beveled corners, applied sloping collar with ring - smooth base, ht. 9 5/8"; (professionally cleaned with some scattered wear and light scratches remaining, and a partially open bubble on the interior shoulder). R/H #A80. A rare southern bitters! These don't come around often, the noted condition issues are not that severe, and the bottle displays nicely.

*Est.: \$300 - \$600 • Min. bid: \$150*



### Lot 178

**"MORNING CALL - BITTERS"**, America, 1875 - 1885. Golden amber, square with rounded corners, applied sloping collar - smooth base, ht. 9 1/4", near mint; (just a touch of very minor wear including a 1/8" flake at edge of base, a couple of small, very minor patches of faint dullness, otherwise perfect). R/H #M130. A recent fresh discovery from a local auction near Lynnvillle, Ind. Believed to be only the 2nd, or possible 3rd example, to come to market in more than 20 years!

*Est.: \$400 - \$800 • Min. bid: \$200*



### Lot 182

**"DR BELL'S - BLOOD / PURIFYING - BITTERS - THE GREAT / ENGLISH / REMEDY"** (with 98% original label), America, probably 1878 - 1879. Golden amber, rectangular with beveled corners, applied square collar - smooth base, ht. 9 3/4"; (bottle is sparkling mint; virtually complete label is faded and has some light staining, but mostly legible). R/H #B56. Very scarce, especially so with original label. Still retains a revenue stamp (with 1879 inked on it).

*Est.: \$300 - \$600 • Min. bid: \$150*



### Lot 179

**"BEGGS / DANDELION BITTERS - SIOUX CITY / IOWA"**, America, probably 1884 - 1890. Beautiful yellowish honey coloration, square with beveled corners, tooled sloping collar - smooth base, ht. 9 3/8", perfect! R/H #B53. The mold is noted by Ring / Ham as "Rare", and especially so in this fine condition. In addition, it is not listed in this color.

*Est.: \$300 - \$600 • Min. bid: \$150*



### Lot 183

**"DR J. HOSTETTER'S / STOMACH BITTERS"**, probably a Pittsburgh district glasshouse, 1860 - 1870. Deep olive with a slight amber tone, square with beveled corners, applied sloping collar - smooth base, ht. 9 1/4" x 3" wide, perfect. R/H #H194. A great example of this bottle collecting classic, excellent condition.

*Est.: \$250 - \$450 • Min. bid: \$130*



### Lot 180

**"Zu Zu BITTERS - Zu Zu BITTERS - Zu Zu BITTERS"**, America, 1870 - 1880. Light, yellowish honey amber, square with beveled corners, applied sloping collar - smooth base, ht. 8 3/4", virtually attic mint; (a little washable interior residue, and a paper-thin open surface bubble on one of the beveled corners, otherwise perfect!) R/H #Z9. A great example of this scarce bitters in a nice light color having plenty of yellowish tones through the corners.

*Est.: \$200 - \$400 • Min. bid: \$100*



### Lot 184

**"DR J. HOSTETTER'S / STOMACH BITTERS"**, probably a Pittsburgh district glasshouse, 1860 - 1870. Deep olive with a slight amber tone, square with beveled corners, applied sloping collar - smooth base, ht. 9 5/8" x 3" wide, virtually perfect; (a few tiny onionskin-thin open seed bubbles). R/H #H194. Slight mold variation in placement of embossing; the "S" in "STOMACH" is almost touching the shoulder. Nice crude texture to the glass, plenty of tiny seed bubbles.

*Est.: \$250 - \$450 • Min. bid: \$130*





### Lot 185

**"THE / LOEW & SONS CO. / CLEVELAND, OHIO - THE / LOEW & SONS CO. / CLEVELAND, OHIO",** 1890 - 1900. Deep bright emerald with a lime tone, square with fluted shoulders, swirled fluting on the neck, tooled sloping collar with ring - smooth base, ht. 9 1/4", mint. A very scarce color and mold. The majority of these Loew bottles are embossed "Dr Loews", and with "Bitters". This is undoubtedly a scarcer mold, and in a deep color.

*Est.: \$300 - \$600 • Min. bid: \$150*



### Lot 189

Sample size, **"DR. B.L. BULL'S / VEGETABLE / BITTERS - D.B.V.M.C. / RACINE, WIS.",** America, 1890 - 1905. Golden amber, square with beveled corners, tooled sloping collar - smooth base, ht. 4 1/8"; (a little faint interior haze, and a couple of paper-thin flakes, 1/8" or less, along one of the beveled corners, otherwise excellent). Extremely rare! Unlisted in the original Ring / Ham book, it is noted as #B258.5 in the Supplement. Festus Russell collection.

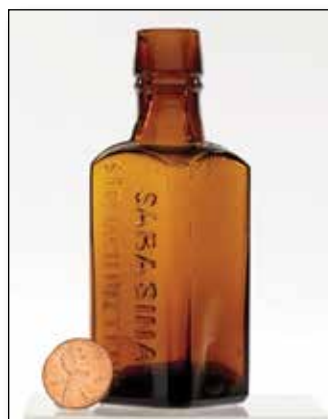
*Est.: \$200 - \$400 • Min. bid: \$100*



### Lot 186

Sample size, **"DR LOEWS CELEBRATED / STOMACH BITTERS & / NERVE TONIC - THE / LOEW & SONS CO / CLEVELAND, O",** 1890 - 1900. Bright, light celery green, square with fluted shoulders, swirled fluting on the neck, tooled sloping collar with ring - smooth base, ht. 3 3/4", perfect! R/H #L112.5. A beautiful, bright example, nice light in color, and sparkling mint. Most of these were dug, but not this one. Provenance: Festus Russell collection.

*Est.: \$250 - \$450 • Min. bid: \$130*



### Lot 190

Sample size, **"SARASINA / STOMACH BITTERS",** America, 1890 - 1905. Golden amber, square with beveled corners, tooled sloping collar with ring - smooth base, ht. 3 7/8", virtually perfect; (pinhead area of roughness on the edge of the lip, likely in-manufacture, otherwise attic mint). R/H #S33. As noted in Ring / Ham, an extremely rare sample bitters. Only the second example to be offered in more than 20 years. Provenance: Festus Russell collection.

*Est.: \$250 - \$450 • Min. bid: \$130*



### Lot 187

Sample size, **"DR LOEWS CELEBRATED / STOMACH BITTERS & / NERVE TONIC - THE / LOEW & SONS CO / CLEVELAND, O",** 1890 - 1900. Medium-to-deep '7-Up' green with a lime tone, square with fluted shoulders, swirled fluting on the neck, tooled sloping collar with ring - smooth base, ht. 3 3/4", perfect. R/H #L112.5. Another great example, rich attractive color, and in attic mint condition, which is not easy to find in these bottles. Festus Russell collection.

*Est.: \$250 - \$450 • Min. bid: \$130*



### Lot 191

Sample size, **"DR. A. S. HOPKINS / UNION STOMACH BITTERS / F. S. AMIDON SOLE PROP. / HARTFORD. CONN. U.S.A.",** 1890 - 1900. Medium amber, square with beveled corners, tooled sloping collar - smooth base, ht. 4 5/8"; (some overall light haze, and a tiny little pinhead bit of roughness on the collar, otherwise excellent). R/H #H183. A rare little sample. With a light cleaning, it would present as virtually mint. Festus Russell collection, Ex. Stuart Elman collection.

*Est.: \$300 - \$500 • Min. bid: \$150*



### Lot 188

Sample size, **"MORNING" (STAR) "BITTERS" / "INCEPTUM 5869 - PATENTED / 5869",** America, 1885 - 1895. Yellow with a slight topaz tone, triangular pyramid form, tooled sloping collar - smooth base, ht. 5"; (a little light interior haze as well as minor exterior dullness, primarily on the reverse, and a little sliver of roughness on the diagonal ribs, otherwise excellent). R/H #M136. Extremely rare! Festus Russell collection. One of the "Holy Grails" of all the mini-bitters.

*Est.: \$1,000 - \$2,000 • Min. bid: \$500*



### Lot 192

Sample size, **"BRAND BROS. CO. / EIGENTHUMER / GESETZLICH GESCHUTZT"** (with 98% complete, original labels), America, 1890 - 1905. Medium amber, triangular with three flat coin-shaped panels, knobs on shoulders, tooled sloping collar with ring - smooth pedestal base, ht. 4 3/4"; (bottle is perfect; labels have a little crazing and some thin spots). R/H #B202L. Neck label reads, *Feinster BITTER*. Very scarce, especially with labels. Festus Russell collection.

*Est.: \$50 - \$100 • Min. bid: \$30*



### Lot 193

Sample size, **"HERKULES BITTER" / (CA monogram) / "4 FL. OZ."**, America, 1885 - 1900. Bright, medium '7-Up' green, globular body with flat-topped front and back panels, tooled collar with flat band - smooth base, ht. 4 1/8"; (a tiny, barely noticeable, sliver flake on the back edge of the lip, and a 1/4" hairline flaw or separation in the glass - likely in-making, on the collar with some trapped residue, otherwise very near mint). R/H #H99. A very rare bitters! Festus Russell collection.

*Est.: \$1,000 - \$2,000 • Min. bid: \$500*



### Lot 194

Sample size, **"PEPSIN BITTERS - R.W. DAVIS DRUG CO / CHICAGO, U.S.A."**, America, 1895 - 1905. Celery green, rectangular with rounded corners, fluted shoulders, tooled sloping collar - smooth base, ht. 4 1/4", attic mint; (slight bit of washable residue). R/H #P45. A very rare little sample bitters, noted as "Extremely rare" by Ring / Ham. Provenance: Festus Russell collection.

*Est.: \$100 - \$150 • Min. bid: \$50*



### Lot 195

Sample size, **"HARTWIG KANTOROWICZ / NACHFOLGER / BERLIN"**, probably Germany, 1890 - 1905. Milkglass, square tapered gin form, tooled ring collar - smooth base, ht. 3 5/8", perfect. Unlisted, and likely extremely rare. Similar to R/H Supplement #L106.5L, but "NACHFOLGER" embossed above "BERLIN", and "HAMBURG" omitted. In addition, this is the only example we can recall seeing with a ring-type collar vs. a tapered collar. Festus Russell collection.

*Est.: \$100 - \$200 • Min. bid: \$50*



### Lot 196

**"U.S.N. - LIQUORS - MED. - DEP."**, America, 1850 - 1860. Gorgeous, medium-to-deep yellowish green with an emerald tone, square with rounded corners, applied sloping collar with bevel, inside ground for stopper - blowpipe pontil scar, ht. 10 3/4", virtually attic mint; (slight trace of minor wear, otherwise perfect). A big, impressive bottle, very heavily whittled, fantastic eye-appeal, and extremely rare. Believed to be one of two, or three, examples. James Chebalo collection.

*Est.: \$6,000 - \$12,000 • Min. bid: \$3,000*



### Lot 197

**"BOYDEN'S / ALTERATIVE"**, America, 1850 - 1860. Beautiful, rich emerald coloration, cylindrical, applied sloping collar with bevel - iron pontil scar, ht. 9", very near mint; (tiny bit of superficial crazing on the neck and a just a trace of faint light wear, otherwise pristine perfect). Odell, p.43. A very rare colored pontiled medicine believed to be from Boston. Only 3 or 4 of these have been offered in the past 30 years. Rich color, outstanding condition, and rare.

*Est.: \$3,000 - \$6,000 • Min. bid: \$1,500*



### Lot 198

**"W. PEETS - SALEM MASS."**, probably an early New England glasshouse, 1845 - 1860. Deep olive amber, cylindrical, 2-pc. mold, applied sloping collar with bevel - hinge mold base with sand type pontil scar, ht. 7", virtually attic mint; (a couple of tiny, pinhead open surface bubbles and a trace bit of light wear, otherwise perfect). Odell, p.276. An extremely rare New England medicine. Believed to be one of only two, or possibly three, examples known.

*Est.: \$1,800 - \$3,600 • Min. bid: \$900*



### Lot 199

**"CARTERS / SPANISH / MIXTURE"**, America, 1850 - 1860. Bright medium olive, cylindrical, applied sloping collar with bevel - iron pontil scar, ht. 8 1/8"; (just a tiny pinhead bit of roughness on the edge of the collar, otherwise virtually perfect). Odell, pgs.68 & 69. A very nice example, whittled, and a bit lighter than most.

*Est.: \$300 - \$500 • Min. bid: \$150*



### Lot 200

**"DR WYNKOOP'S / KATHARISMIC HONDURUS / SARSAPARILLA - NEW-YORK"**, 1850 - 1860. Cobalt blue, rectangular with beveled corners, applied sloping collar - blowpipe pontil scar, ht. 10"; (professionally cleaned to original luster with a couple of scratches and a little abrasion along one of the side panels, and some ground wear - primarily on the reverse, remaining, but no other form of damage). Odell, pgs. 382 & 383. A big impressive bottle, whittled and beautiful.

*Est.: \$3,000 - \$5,000 • Min. bid: \$1,500*





### Lot 201

**"Dr ROBBINS' - TECUMSEH / RHEUMATIC / DROPS - BOSTON MASS"**, America, 1850 - 1860. Sapphire blue, rectangular with beveled corners, sheared, tooled thin flared lip - blowpipe pontil scar, ht. 4 5/8"; (the bottle may have been lightly cleaned, but certainly presents itself as near mint with just a bit of faint, very light haze, but no other form of damage, and otherwise perfect). Odell, p.297. A rare pontiled medicine, great color, strong embossing, perfect flanged lip.

*Est.: \$3,000 - \$6,000 • Min. bid: \$1,500*



### Lot 205

**"C. BRINCKERHOFFS - HEALTH RESTORATIVE - PRICE \$1.00 - NEW\_YORK"**, probably an early Stoddard, NH glasshouse, 1845 - 1851. Medium-to-deep, pure olive coloration, rectangular with beveled corners, applied sloping collar - sand type pontil scar, ht. 7 1/4", perfect. Odell, p.47. A top example of this early New England pontiled medicine in a very scarce, pure olive coloration. No amber whatsoever in this one! In addition, good strength of embossing, and nice crude glass.

*Est.: \$1,200 - \$2,400 • Min. bid: \$600*



### Lot 202

**"I. COVERT'S - BALM OF LIFE"**, Mt. Vernon Glass Works, Vernon, NY, probably 1841 - 1846. Medium-to-deep olive coloration, rectangular with wide beveled corners, applied sloping collar - blowpipe pontil scar, ht. 6", virtually perfect; (note, a tiny pinhead speck of roughness on the inside edge of the lip, almost certainly in-making, otherwise sparkling mint). N#142; Odell, p.92. A very nice example of this rare, early, Mt. Vernon medicine, and in a pure olive coloration.

*Est.: \$1,500 - \$3,000 • Min. bid: \$750*



### Lot 206

**"GIBB'S / BONE LINIMENT"**, a New England glasshouse, 1845 - 1855. Light-to-medium yellowish olive in the upper half, shading to a deep yellowish olive near the base, 6-sided, applied sloping collar with bevel - blowpipe pontil scar, ht. 6 3/8"; (a minor 1/8" flake at one of the base corners, and a wisp of interior residue, otherwise perfect). Odell, p.144. A pretty example, nice and light through the upper half of the bottle.

*Est.: \$1,200 - \$2,400 • Min. bid: \$600*



### Lot 203

**"SMITH'S - GREEN MOUNTAIN - RENOVATOR - EAST. GEORGIA. VT"**, Granite Glass Company, Stoddard, NH, 1850 - 1860. Bright yellowish amber in the shoulders shading to a deeper amber with an olive tone near the base, rectangular with wide beveled corners, applied ring collar with bevel - iron pontil scar, ht. 7", virtually perfect; (only the slightest trace of very light wear, otherwise pristine!) A top example, crisp embossing, great color and character, outstanding condition.

*Est.: \$2,500 - \$4,500 • Min. bid: \$1,300*



### Lot 207

**"D R" Medicine Bottle**, New England, or possibly a Baltimore area glasshouse, 1830 - 1850. Bright yellowish tobacco or "old" amber, rectangular with wide beveled corners, sheared mouth with a crudely applied string lip - glass tipped pontil scar, ht. 6 1/8", virtually pristine perfect; (tiny, pinhead open bubble at base corner). Excellent character, very bubbly, beautiful glass, and extremely rare! Provenance: Ex. Sam Greer collection #62.

*Est.: \$600 - \$1,200 • Min. bid: \$300*



### Lot 204

**"C. BRINCKERHOFFS - HEALTH RESTORATIVE - PRICE \$1.00 - NEW\_YORK"**, probably an early Stoddard, NH glasshouse, 1845 - 1851. Medium-to-deep olive amber, rectangular with beveled corners, applied sloping collar - sand type pontil scar, ht. 7 1/4", perfect! Odell, p.47. An excellent example, strong olive tones, good embossing, nice character, and no condition issues!

*Est.: \$1,000 - \$2,000 • Min. bid: \$500*



### Lot 208

**"BARTINE'S / LOTION"**, America, 1845 - 1855. Yellowish green, almost a moss green coloration, rectangular with narrow beveled corners, applied sloping collar - blowpipe pontil scar, ht. 6"; (professionally cleaned to original luster with a touch of faint wear remaining; a 1/8" bruise on the edge of the shoulder, at the side). Odell, p.24. Scarce. A NYC bottle that advertised 1845 - 1848 as cure for rheumatism.

*Est.: \$500 - \$1,000 • Min. bid: \$250*



### Lot 209

**"FROM THE / LABORATORY - OF / G.W. MERCHANT / CHEM-IST. - LOCKPORT / N.Y."**, probably Lockport Glass Works, Lockport, NY, 1845 - 1855. Clear, medium 'Lockport' blue green, rectangular with concave corners, applied sloping collar - iron pontil scar, ht. 5 3/4", pristine perfect! A beautiful, absolutely fantastic example - excellent clarity and condition! This particular mold is believed to have held sarsaparilla.

**Est.: \$200 - \$400 • Min. bid: \$100**



### Lot 213

**"DR JOHN ROAKES' - IODINE LINIMENT / PREPARED BY / S. INGER-SOLL - NEW YORK."**, America, 1845 - 1855. Aquamarine, rectangular with beveled corners, applied sloping collar - blowpipe pontil scar, ht. 7", pristine perfect. Odell, p. 295. Extremely rare! Provenance: Gary Enters collection, Ex. Sam Greer collection. Bright, crisp, clean, heavily embossed, and rare.

**Est.: \$300 - \$600 • Min. bid: \$150**



### Lot 210

**"E.E. DYER & Co / EXTRACT OF / DANDELION / BOSTON, MASS"**, America, 1850 - 1860. Blue green, cylindrical, applied sloping collar with tooled pour spout and bevel - heavy iron pontil scar, ht. 6"; (a 1 1/4" area of the lip is severely chipped, and some interior dirt and residue in one side that would likely wash out). Odell, p.117. An extremely rare Boston medicine, much more so than the "Dyer & Co./ Extract of / Coffee". A good candidate for a professional repair.

**Est.: \$300 - \$600 • Min. bid: \$150**



### Lot 214

**"E. SKINNER'S - LINIMENT - PREPARED BY / ALLEN & BRO / APOTH'S & DRUGGISTS / PITTSFIELD MASS."**, America, 1850 - 1860. Aquamarine, rectangular with beveled corners, applied sloping collar - blowpipe pontil scar, ht. 6 3/4", perfect. An exceptional pontiled medicine believed to be one of only two known examples. This one has not seen the light of day since it was sold more than 25 years ago, 1994. Sparkling mint and beautiful. Provenance: Gary Enters collection.

**Est.: \$600 - \$1,200 • Min. bid: \$300**



### Lot 211

**"ROHRER'S - EXPECTORAL / WILD / CHERRY / TONIC - LANCASTER PA"**, America, 1855 - 1865. Medium amber, rectangular pyramid form with roped corners, applied sloping collar with ring - heavy iron pontil scar, ht. 10 3/8", virtually attic mint; (just a touch of minor wear on the reverse, otherwise perfect). Odell, p.301. A little deeper in tone than most, outstanding condition.

**Est.: \$250 - \$450 • Min. bid: \$140**



### Lot 215

**"DR BELL'S / BRITISH LINIMENT - S.M. SHAW & Co / ALFRED ME U.S.A."**, America, 1850 - 1860. Aquamarine, square with beveled corners, sheared, tooled, and inward rolled mouth - blowpipe pontil scar, ht. 6", virtually attic mint; (small patch of very faint interior milkiness, non-distracting, otherwise perfect). Odell, p.29. A very rare liniment bottle, believed to be only the second example to be offered in more than 10 years. Provenance: Gary Enters collection.

**Est.: \$300 - \$500 • Min. bid: \$150**



### Lot 212

**"DR. D. Jayne / & Son, / Philadelphia"**, Framed Advertising Print, 1875 - 1885. Winter scene depicting children in a makeshift wooden sled - "DR. D. Jayne & Son, Philadelphia." (on side of sled), skating on a pond, trees and other children playing in the background. Visible area of print 8 1/2" x 11", overall frame 15 1/4" x 17 1/2", print appears to be in excellent condition. Acquired by the consignor in 1971, and subsequently framed with an acid-free backing and linen tape.

**Est.: \$200 - \$400 • Min. bid: \$100**



### Lot 216

**"CLARKE'S / GENESSEE - LINIMENT / N. Y."**, probably a New York state glasshouse, possibly Lockport or Lancaster, 1845 - 1860. Aquamarine, rectangular with beveled corners, sheared, tooled, and inward rolled mouth - blowpipe pontil scar, ht. 5 5/8"; (professionally cleaned with just a bit of light wear and traces of faint milkiness remaining, otherwise excellent). Odell, p.79. Scarce. Provenance: Gary Enters collection.

**Est.: \$100 - \$200 • Min. bid: \$50**



**Lot 217**

**"CROFF'S / LINIMENT - PREPARED BY - H. GREEN - QUEENSBURY NY."**, America, 1845 - 1860. Light aquamarine, rectangular with wide beveled corners, sheared, tooled, and inward rolled lip - blowpipe pontil scar, ht. 4 7/8"; (lightly cleaned to original luster and near mint condition). Odell, p.95; Nielsen, p.28 (5-star). Rare! Here is another one that does not come around often. Queensbury is a small town, North of Albany, NY. Provenance: Gary Enters collection.

*Est.: \$175 - \$350 • Min. bid: \$100*

**Lot 221**

**"EVERSON & COS / UNITED STATES - OR RELIANCE / LINIMENT"**, America, 1845 - 1860. Aquamarine, oval, sheared, tooled, and inward rolled lip - blowpipe pontil scar, ht. 4 1/2"; (lightly cleaned to original luster and near mint condition). Extremely rare! A great looking bottle, crude embossing, bright and clean. Believed to be one of only two or three known examples. We sold the other example about a year ago (Auction 22). Provenance: Gary Enters collection.

*Est.: \$600 - \$900 • Min. bid: \$300*

**Lot 218**

**"J.D. THOMPSON'S - RHEUMATIC & - NEURALGIC / LINIMENT - PITTS PA"**, America, 1845 - 1855. Bright aquamarine, rectangular with beveled corners, sheared, tooled, and inward rolled mouth - blowpipe pontil scar, ht. 4 3/4"; (an open bubble on the interior of the neck; and although the bottle has been lightly cleaned, appears as virtually pristine perfect!) A very rare and attractive pontiled medicine, clean, bright, nicely embossed. Gary Enters collection; Ex. Andy Regrut collection.

*Est.: \$300 - \$600 • Min. bid: \$150*

**Lot 222**

**"R.D. PORTER'S / GENUINE / ORIENTAL LIFE / LINIMENT"**, America, 1850 - 1860. Aquamarine, cylindrical, sheared, tooled, and inward rolled mouth - blowpipe pontil scar, ht. 4", very near mint; (slight trace of faint interior residue, otherwise perfect). Odell, p.283. A rare pontiled medicine from Louisville, KY, and only the second example to be offered at auction in more than 20 years. An attractive mold, R.D. PORTER arched in large letters. Provenance: Gary Enters collection.

*Est.: \$300 - \$500 • Min. bid: \$150*

**Lot 219**

**"DR H. M. / PURINTON'S - 3' MINUTE / LINAMENT"**, America, 1850 - 1860. Aquamarine, rectangular with beveled corners, sheared, tooled, and inward rolled lip - blowpipe pontil scar, ht. 4 5/8", near mint; (lightly cleaned to original luster and virtually perfect condition). An unlisted and extremely rare pontiled medicine from Cleveland, Ohio. There is no auction record of this bottle. A sparkling example, nice crude glass. Gary Enters collection.

*Est.: \$300 - \$600 • Min. bid: \$150*

**Lot 223**

**"SPERRY.S. / RHEUMATIC & NERVE - LINIMENT"**, America, 1845 - 1860. Aquamarine, cylindrical, sheared, tooled, and inward rolled lip - blowpipe pontil scar, ht. 4 5/8", attic mint. Odell, p.328. Very rare. Believed to be only the second, or possibly third, example to be offered at auction in the past 30 years! A clean, bright, sparkling example. Provenance: Gary Enters collection.

*Est.: \$200 - \$400 • Min. bid: \$100*

**Lot 220**

**"JEWETT'S - LINIMENT / FOR - COUCHS & - CONSUMPTIONS"**, America, probably Ohio, 1835 - 1845. Rich aquamarine, rectangular with beveled corners, sheared, tooled, and inward rolled mouth - blowpipe pontil scar, ht. 3 1/2", virtually perfect; (an in-making pontil chip that does not show at the edge, mentioned for complete accuracy, otherwise pristine!) Odell, p.202. Crisp bold embossing, deep rich color, great eye-appeal. Gary Enters collection.

*Est.: \$400 - \$800 • Min. bid: \$200*

**Lot 224**

**Lot of (2), Davis's Liniment Bottles**, America, 1850 - 1860. 1st example, **"JOSEPH DAVIS'S / HORSE LINIMENT"**, 2nd example, **"JOSEPH DAVIS'S / LINIMENT"**. Both are aquamarine, cylindrical, applied sloping collars - blowpipe pontil scarred bases, ht. 6 1/2" and 6 3/4" respectively; (both examples appear to have been lightly cleaned, but present as near mint; trace of light haze and minor wear on 2nd example, otherwise excellent). Very scarce. Gary Enters collection.

*Est.: \$200 - \$400 • Min. bid: \$100*



### Lot 225

**"J.H. FISHER'S - WILDFIRE / RHEUMATIC / LINIMENT - FLEMINGTON, N.J."**, America, 1850 - 1860. Aquamarine, rectangular with beveled corners, applied sloping collar - blowpipe pontil scar, ht. 5 7/8"; (lightly cleaned to original luster and near mint condition; some in-manufacture crazing lines in the neck, otherwise perfect!) Odell, p.128. Extremely rare. Believed to be the 1st, or possibly 2nd, example to be offered at auction in the past 25 years!

**Est.: \$300 - \$500 • Min. bid: \$150**



### Lot 229

**"MACKENZIE'S - TONIC - FEBRIFUGE"**, America, 1850 - 1855. Aquamarine, rectangular with beveled corners, applied sloping collar - iron pontil scar, ht. 6 1/4"; (lightly cleaned to original luster; a potstone on the surface of the glass, near one of the base corners, with a little flaking and iridescence, and a 3/8" shallow flake at corner of base on the reverse). A very rare pontiled tonic from Cleveland, believed to be only the 2nd or 3rd example offered in more than 20 years.

**Est.: \$300 - \$500 • Min. bid: \$150**



### Lot 226

**(Label-only), MILTON CAMPBELL / SOLUTION OF PEPsin. / PHILADELPHIA Medicine Bottle**, 1850 - 1860, Aqua, 8-sided, applied sloping collar - blowpipe pontil scar, ht. 4 3/4", perfect! Rare. Virtually 100% complete original label, as well as partial contents. Label reads in part, *its use is indicated in all cases of Indigestion, Flatulency, Dyspepsia, &c. / Pine Street, Corner of Twenty-first, / PHILADELPHIA*. This one has a pleasing form and great 'look'. Gary Enters collection.

**Est.: \$300 - \$500 • Min. bid: \$150**



### Lot 230

**Early, Label-only Medicine, DR. CLEVELAND'S / COMPOUND EXTRACT / OF POND LILY**, a Midwest glasshouse, 1845 - 1860. Deep aquamarine, rectangular with beveled corners, applied round collar with bevel - blowpipe pontil scar, ht. 6"; (the bottle is perfect, but has some interior content stain; 95% complete original label). Label reads in part, *MANUFACTURED BY / DR. CLEVELAND & CO., / BURTON / Geauga Co., Ohio*. Provenance: James Chebalo; Ex. Sam Greer collections.

**Est.: \$100 - \$200 • Min. bid: \$50**



### Lot 227

**"W. C. SWEET / H. C. B. & L. / ROCHESTER N.Y."**, America, 1845 - 1855. Aquamarine, rectangular with beveled corners, applied sloping collar - blowpipe pontil scar, ht. 6", near mint; (a touch of light wear, and couple of very minor areas of faint haze, otherwise excellent). A very scarce bottle from the same patent medicine co. that put out "Sweet's Black Oil". Crude glass, nice large embossing. Gary Enters collection; Ex. Sam Greer collection.

**Est.: \$175 - \$350 • Min. bid: \$100**



### Lot 231

**"CORBIN'S - SUMMER / COMPLAINT / TINCTURE - LIVERPOOL N.Y."** (with 90% original label), America, 1840 - 1850. Aquamarine, rectangular with beveled corners, sheared, tooled, thin flanged lip - blowpipe pontil scar, ht. 4"; (a tiny pinprick speck of roughness on the edge of the lip, otherwise pristine perfect; original label has some stain and darkened from age). Odell, p.90. Provenance: James Chebalo collection, Ex. Rodger Sweetland collection. Extremely rare!

**Est.: \$300 - \$600 • Min. bid: \$150**



### Lot 228

**"J. D. DOUGHTY / CINCINNATI"**, Midwest, likely an early Ohio glasshouse, 1848 - 1855. Deep aquamarine, rectangular with beveled corners, applied sloping collar - blowpipe pontil scar, ht. 5", near mint; (a minor 3/16" chip at corner edge of base, and a bit of light interior residue, otherwise attic mint). Odell, p.113. Very rare! This is the same Dr. Doughty that put out the famous "Grave Robber" bottle. Gary Enters collection.

**Est.: \$300 - \$500 • Min. bid: \$150**



### Lot 232

**"DR. COOPER'S - ETHEREAL / OIL - FOR / DEAFNESS"**, America, probably 1845 - 1850. Aquamarine, rectangular with beveled corners, sheared, tooled and inward rolled mouth - blowpipe pontil scar, ht. 2 5/8", very near mint; (small trace of faint light haze, barely noticeable, otherwise perfect). Odell, p.89. Very rare. Provenance: James Chebalo collection.

**Est.: \$300 - \$500 • Min. bid: \$150**





### Lot 233

**"BY THE / KINGS / ROYAL / PATENT / GRANTED / TO - ROBT / TURLI / NGTON / FOR HIS / INVENTED / BALSAM / OF LIFE - LONDON - JANY"** (with 98% complete original label), probably America, 1825 - 1840. Aqua, rectangular with stepped sides, tooled thin flanged lip - blowpipe pontil scar, ht. 2 1/2"; (a small, less than 1/8" flake off the edge of the thin flared lip, otherwise perfect). A scarce mold (year omitted), and rare with original label. James Chebalo collection.

*Est.: \$200 - \$400 • Min. bid: \$100*



### Lot 234

**"BY / THE / KINGS / ROYALL / PATENT / GRANTED / TO - ROBT. / TURLI / NGTON / FOR HIS / INVENTED / BALSAM / OF / LIFE - LONDON - JANY. 26 1754"**, England or possibly America, 1815 - 1830. Colorless, rectangular with stepped sides, tooled, possibly applied, thin flared lip - blowpipe pontil scar, ht. 3", perfect. Odell, p.352. Very scarce. These large colorless examples are believed to be the earliest variant. Provenance: James Chebalo collection.

*Est.: \$200 - \$400 • Min. bid: \$100*



### Lot 235

**"DR. J. MOORE'S - ESSENCE LIFE"**, America, 1820 - 1840. Colorless, cylindrical, applied wide flanged collar - pontil scarred base, ht. 3 5/8", near mint; (a 1/16" flake on edge of lip, otherwise perfect). Odell, p.256. Likely a very early pontiled medicine. In addition, extremely rare, one of only 3 or 4 known, and only the second example to be offered for sale in the past 30 years. Provenance: James Chebalo collection; Ex. Sam Greer collection (#1189).

*Est.: \$250 - \$450 • Min. bid: \$130*



### Lot 236

**"MARSHALL'S / SALVE."**, America, 1845 - 1855. Aquamarine, octagonal body with a wide neck flaring outward to a sheared, tooled, and inward folded rim - blowpipe pontil scar, ht. 2", attic mint. An extremely rare little jar. Provenance: James Chebalo collection; Ex. Sam Greer collection (#1114).

*Est.: \$200 - \$400 • Min. bid: \$100*



### Lot 237

**"JAQUES & MARSH'S / HIVE SYRUP / NEW YORK"**, America, 1840 - 1855. Light aquamarine, oval, sheared and inward rolled lip - blowpipe pontil scar, ht. 4 5/8"; (just a slight trace of faint haze, otherwise perfect). Odell, p.197. Boldly embossed, excellent condition, and rare! Provenance: Ex. James Chebalo, Sam Greer collections.

*Est.: \$250 - \$450 • Min. bid: \$130*



### Lot 238

**"SWAIM'S / VERMIFUGE - PATENT - DYSENTERY / CHOLERA MORBUS / DYSPEPSIA & CC"**, America, 1835 - 1845. Greenish aquamarine, oval, short applied tapered collar with bevel - faint sand type pontil scar, ht. 5 1/4"; (lightly cleaned to original luster and near mint condition). Odell, p.337. A very scarce-to-rare mold, bold embossing, excellent condition. Per Odell, ads for this medicine appeared as early as 1835.

*Est.: \$250 - \$450 • Min. bid: \$130*



### Lot 239

**"VAUGHN'S - VEGETABLE / LITH-ONTRIPTIC / MIXTURE - BUFFALO"**, Aquamarine, square with beveled corners, domed shoulders, applied sloping collar - iron pontil scar, ht. 7 7/8"; (professionally cleaned to original luster and near mint condition; a 3/16" chip at edge of beveled corner near base, and a shallow paper-thin 1/8" flake along top edge of lip). A bright, eye-appealing example, the condition issues are minor, and the bottle otherwise displays as virtually perfect.

*Est.: \$400 - \$600 • Min. bid: \$200*



### Lot 240

**"ALLEN'S - DYSPEPTIC / MEDICINE - PHILAD.A"**, America, 1850 - 1860. Aquamarine, rectangular with beveled corners, applied sloping collar - blowpipe pontil scar, ht. 6"; (lightly cleaned to original luster and near mint condition with some light interior haze remaining, but no other form of damage). Odell, p.3. A scarce and desirable Phila. pontiled medicine. These don't come around very often anymore. This particular example was from a recent dig in Wheeling, WV.

*Est.: \$150 - \$300 • Min. bid: \$80*



### Lot 241

**"MRS H.E. WILSON'S / HAIR REGENERATOR - TEWKSBURY & WILSON - MANCHESTER, N.H."**, probably 1858 - 1862. Aquamarine, rectangular with beveled corners, applied square collar - blowpipe pontil scar, ht. 7 1/2"; (an attic-type bottle with just a little washable residue, and a 3/8" chip along the back edge of the base, otherwise perfect). DF, p.164. It is believed that Tewksbury was an African American entrepreneur. Beautiful crude, seedy, bubbly glass.

**Est.: \$200 - \$400 • Min. bid: \$100**



### Lot 242

**"BARKER'S / CHEVEUX TONIQUE / FOR THE HAIR / BD WAY .N.Y"**, America, 1850 - 1860. Aquamarine, oval, applied sloping collar - blowpipe pontil scar, ht. 6"; (just a trace of minor wear, and a patch of faint exterior dullness along one side, otherwise near mint). DF p.14-15. Scarce. Per Fadley, believed to be from William Barker, a wigmaker and hair merchant, that began business at 622 Broadway in 1847. Also, "Cheveux Tonique" is French for Hair Tonic.

**Est.: \$75 - 150 • Min. bid: \$40**



### Lot 243

**"W.C. MONTGOMERY'S - HAIR / RESTORER - PHILADA"**, America, 1875 - 1885. Deep strawberry puce with an amethyst tone, rectangular with beveled corners, applied round collar with bevel - smooth base, ht. 7 3/8", attic mint! DF p.111. A scarce mold, beautiful and attractive color, outstanding condition. Many of these early hair bottles have been dug, this appears to be an 'attic-type' find.

**Est.: \$500 - \$800 • Min. bid: \$250**



### Lot 244

**"A. WANNER & CO'S / SEPIA - SEPIA"**, New England, possibly an early Lyndeborough, NH glasshouse product, 1865 - 1872. Bright golden with a slight orange tone, shading to a light yellowish-honey coloration in the corners, rectangular with beveled corners, applied ring collar with bevel - smooth base, ht. 6 5/8", attic mint. DF, p.140. Very scarce! If you like hair bottles, don't miss this one. The last one we offered was way back in 2011 (Auction #6, Lot 191).

**Est.: \$300 - \$500 • Min. bid: \$150**



### Lot 245

**"GUY'S DIGESTOR - GUY'S LIVER TONIC - THE GUY MED CO / PROPRIETORS / ELMIRA N.Y."**, possibly Lockport Glass Works, Lockport, NY, 1880 - 1890. Medium-to-deep bluish green with a strong teal tone, rectangular with beveled corners, tooled square collar - smooth base, ht. 6 1/2"; (a trace bit of minor interior residue, and a little roughness and 1/4" flake at the side of the lip, otherwise perfect). Extremely rare, unusual and attractive color, excellent condition.

**Est.: \$300 - \$500 • Min. bid: \$150**



### Lot 246

**"LINDSEY'S - BLOOD + / SEARCHER - HOLLIDAYSBURG"**, America, 1860 - 1870. Rich, very deep bluish aquamarine with a blue green or teal tone, rectangular with beveled corners, applied round double collar - smooth base, ht. 9"; (only the slightest trace of faint light wear, otherwise pristine perfect!) An impressive, eye-appealing example, deep rich color, outstanding condition, about as nice as you could hope to find. Provenance: Ex. Andy Regrut collection.

**Est.: \$200 - \$400 • Min. bid: \$100**



### Lot 247

**"DR. - W.N. HANDY - EASTON. N.Y."**, possibly Saratoga Mountain Glassworks, Mt. Pleasant, NY, 1855 - 1866. Deep olive green, 12-sided, applied flanged mouth - early smooth base, ht. 8 5/8"; (a hard-to-see, 1" crack on the back shoulder, and a couple of areas of minor lip edge roughness, a little dried interior content residue). Extremely rare, one of only 3 or 4 examples known. This was not a dug bottle and displays as virtually perfect. Whittled, very crude glass.

**Est.: \$300 - \$600 • Min. bid: \$150**



### Lot 248

**"PERRINE'S" / (APPLE) / "GINGER" - "DEPOT / No 37, NTH FRONT ST / PHILADA" - "PERRINE'S - APPLE - GINGER - PHILA"** (with 95% complete original label), 1871 - 1880. Yellowish honey coloration through the corners, shading to a bright golden amber, cabin form, roped corners, thatched roof, applied sloping collar - smooth base, ht. 9 7/8"; (a 1/4" flake on roped corner at edge of base, tiny trace of wear, otherwise pristine perfect). Beautiful example, very rare with original label!

**Est.: \$400 - \$800 • Min. bid: \$200**





### Lot 249

**"WARNER'S / SAFE CURE" / (SAFE) / "PRESSBURG."**, Germany, 1889 - 1892. Amber with a slight reddish orange tone, oval, applied blob collar - smooth base, Pt; (appears to be a dug bottle with some light haze, primarily in the shoulder area, and just a bit of minor light wear on the reverse, but no other form of damage). O&S #72. Rated as "Rare", this example would respond well to just a light professional cleaning.

**Est.: \$250 - \$350 • Min. bid: \$130**



### Lot 253

**"DR. / L.E. KEELEY'S / DOUBLE / CHLORIDE / OF / GOLD CURE / FOR / DRUNKENNESS / A / TESTED / AND / INFALLIBLE / REMEDY / DISCOVERED BY / DR. L.E. KEELEY / DWIGHT, ILLS. - K.G.C. / Leslie E Keeley MD. - 2 - D"**, 1895 - 1905. Colorless, rectangular, rounded back, tooled prescription-type collar - smooth base, ht. 5 3/4"; (some overall light interior haze; a little wear along a panel edge, otherwise very near mint). Scarce.

**Est.: \$150 - \$250 • Min. bid: \$80**



### Lot 250

**"WARNER'S / SAFE CURE" / (SAFE) / "FRANKFURT a/main"**, Germany, 1886 - 1895. Medium-to-deep amber with reddish orange tones, oval, applied blob collar - smooth base, Pt; (a dug bottle with some overall haze, and a little light wear, primarily on the reverse, but no other form of damage). O&S #67A. A rare mold, good strong mold impression. A good candidate for a light professional cleaning, if desired.

**Est.: \$175 - \$275 • Min. bid: \$100**



### Lot 254

**"L.E.K. / THE KEELEY / CURE / NEUROLINE / A / RELIABLE / REMEDY / DISCOVERED BY / DR. L.E. KEELEY / DWIGHT, ILL. - K.C. / Leslie E Keeley MD. - N"**, 1890 - 1900. Colorless, rectangular, rounded back panel, tooled prescription-type collar - smooth base, ht. 5 3/4"; (a little faint interior haze, and a 1/8" flake and iridescent bruise on the back edge of the lip, otherwise excellent). Very rare! The Neuroline is extremely difficult to find.

**Est.: \$250 - \$450 • Min. bid: \$130**



### Lot 251

**"SWIFT'S / SYPHILITIC SPECIFIC"**, America, 1875 - 1885. Cobalt blue, oval with strap sides, applied square collar - smooth base, ht. 9 1/8"; (professionally cleaned to original luster with a little scattered light wear remaining; a tiny little pinhead bruise on the edge of the strap side as well as a minuscule flake on the edge of the lip, but no other form of damage). A classic medicine from Atlanta, GA, this one having good depth of color.

**Est.: \$400 - \$600 • Min. bid: \$200**



### Lot 255

**Lot of (2), Keeley Bottles, 1890 - 1910.** First example, **"INSTITUTE / THE KEELEY / CURE / SOLUTION / A / RELIABLE / REMEDY / DISCOVERED BY / DR. L.E. KEELEY / DWIGHT, ILL. - K.C. / Leslie E Keeley M.D."**, 2nd example, **"K.G.C."** (on shoulder). Both are light amethyst, rectangular, rounded back panels, tooled lips - smooth bases, ht. 5 3/4" and 5 5/8"; (1st example, lip is severely damaged with 2/3 missing or chipped; 2nd example, a couple of tiny flakes on lip).

**Est.: \$200 - \$300 • Min. bid: \$100**



### Lot 252

**L.E.K. / THE KEELEY / TREATMENT / INEBRIETY / DISCOVERED BY / DR. L.E. KEELEY / DWIGHT, ILL. - K.C. / Leslie E. Keeley MD - I, T, F, - D"**, America, 1900 - 1910. Colorless, rectangular with rounded back panel, tooled prescription-type collar - smooth base, ht. 5 3/4"; near mint; (a shallow 1/4" iridescent bruise on the top of the lip, and just a trace of very faint interior haze near the shoulder, otherwise perfect). A rare mold, not easy to come by!

**Est.: \$175 - \$350 • Min. bid: \$100**



### Lot 256

**"POISON" - "PAT APPL'D FOR" FIGURAL SKULL**, America, 1894 - 1905. Cobalt, figural skull on crossbones, tooled prescription-type lip - **"PAT JUNE 26TH 1894"** on smooth base, ht. 2 3/4"; (a crack travels around the circumference of the shoulder, just below the word, "POISON"; some interior stain and a bit of minor exterior dullness or light haze). KU-10. Very scarce. Yes, the noted crack is sizeable, but also fairly well hidden when displayed on a shelf.

**Est.: \$150 - \$300 • Min. bid: \$80**



### Lot 257

**"POISON" - "PAT. APPL'D. FOR" Figural Skull**, America, 1894 - 1905. Cobalt blue, figural skull on cross-bones, tooled prescription-type collar - **"PAT JUNE 26TH 1894"** (on smooth base), ht. 4 1/8"; (a little faint interior haze or residue, some of which may wash out; a 3/16" paper-thin open surface bubble, and a pinhead bit of roughness on the back edge of the lip, but otherwise excellent). KU-10. Desirable large size, and one of the all time classics.

*Est.: \$1,500 - \$2,500 • Min. bid: \$800*



### Lot 261

**"CONGRESS & EMPIRE SPRING CO / E / SARATOGA NY."**, America, 1865 - 1875. Deep olive green, cylindrical, applied sloping collar with bevel - **"5"** (on smooth base), Pt; (a 1/8" flake on the inside edge of the lip, and a couple of minor interior open bubbles, otherwise very near mint). T# E-6:B. A nice example of this scarce mold, one that is also heavily whittled.

*Est.: \$200 - \$400 • Min. bid: \$100*



### Lot 258

**"LYNCH & CLARKE / NEW YORK"**, possibly New England Glass Bottle Company, Cambridge, MA, 1823 - 1833. Rich, medium-to-deep olive amber, cylindrical, applied sloping collar with bevel - sand type pontil scar, Pt, perfect. T# C-2:B, Type 1. A great example, nice crude glass, whittled, and beautiful. A scarce and desirable mold, and certainly among the earliest of the mineral water bottles.

*Est.: \$500 - \$800 • Min. bid: \$250*



### Lot 262

**"WASHINGTON SPRING" / (BUST OF WASHINGTON) / "BALLSTON SPA / N.Y. - C"**, America, 1868 - 1880. Medium emerald coloration, cylindrical, applied sloping collar with bevel - smooth base, Pt, virtually perfect; (only the slightest trace of minor wear, otherwise sparkling attic mint). T# S-61. A scarce and very desirable mineral water with the pictorial bust of Washington. Beautifully whittled, excellent condition.

*Est.: \$600 - \$1,200 • Min. bid: \$300*



### Lot 259

**"MAGNETIC SPRING / HENNIKER. NH"**, probably a Stoddard, NH glasshouse, 1860 - 1873. Bright golden amber, cylindrical, applied sloping collar with bevel - smooth base, Qt, perfect! T# V-10. A great example of this very scarce mineral water. Bright, clean, some nice yellowish tones through the shoulders, and beautifully whittled.

*Est.: \$600 - \$1,200 • Min. bid: \$300*



### Lot 263

**"STAR SPRING CO" / (STAR) / "SARATOGA N.Y."**, probably a New York State glasshouse, 1865 - 1875. Rich, medium-to-deep emerald coloration, cylindrical, applied sloping collar with bevel - **"1"** (on smooth base), Pt, near mint; (just a touch of light exterior wear, otherwise perfect). T# S-54:B. Rare and beautiful color, nicely whittled, excellent condition.

*Est.: \$400 - \$600 • Min. bid: \$200*



### Lot 260

**"CONGRESS & EMPIRE SPRING CO / E / SARATOGA. N.Y."**, America, 1865 - 1875. Deep yellowish honey amber, cylindrical, applied sloping collar with bevel - **"2"** (on smooth base), Qt; (a slight trace of typical light wear, otherwise perfect). T# E-6:A. A bright, clean example, scarce mold, and in an attractive and pleasing color.

*Est.: \$300 - \$600 • Min. bid: \$150*



### Lot 264

**"HANBURY SMITH / N.Y. / CONGRESS WATER"**, America, 1865 - 1875. Bright yellowish grass green, almost a lime green coloration, cylindrical, applied sloping collar - smooth base, Pt; (a tiny potstone on the reverse with a couple of minor 1/8" 'legs', and a pinhead flake at edge of base, otherwise perfect). T# M-20:A. A rare mineral water, virtually perfect beyond the noted little potstone, beautiful eye-appealing color, and loaded with tiny seed bubbles.

*Est.: \$400 - \$800 • Min. bid: \$200*





### Lot 265

**"SAINT LEON / SPRING WATER / EARL W. JOHNSON / 27 / CONGRESS ST / BOSTON / MASS"**, probably New England, possibly Lyn-  
deborough Glass Works, 1870 - 1880. Clear, medium emerald coloration, cylindrical, applied sloping collar with bevel - smooth base, Pt, perfect. T# M-41:B. A beautiful example that has not been dug and cleaned, listed as "Rare", by Tucker.

**Est.: \$250 - \$450 • Min. bid: \$140**



### Lot 269

**"WM. A. CARPENTER'S - MINERAL WATER - HUDSON - N.Y."**, America, probably a New York State glasshouse, 1850 - 1860. Medium emerald coloration, 8-sided, applied tapered blob collar - heavy iron pontil scar, ht. 6 7/8", near mint; (a 3/16" flake and a little minor roughness on a few of the corner edges at base, a tiny pinprick flake at edge of lip, otherwise perfect). Rare. A fantastic example, definitely an 'attic' or 'between-the-walls' kind of bottle that has never been in the ground.

**Est.: \$700 - \$1,200 • Min. bid: \$350**



### Lot 266

**"AVON SPRING WATER / C.H. NOWLEN / AVON. N.Y."**, probably a New York State glasshouse, 1860 - 1870. Deep aquamarine, cylindrical, applied sloping collar with bevel - smooth base, Pt, attic mint! T# N-4:B. Rare. Here is one that does not come around often. A great example having good strong color, nice whittling, and fantastic condition.

**Est.: \$400 - \$600 • Min. bid: \$200**



### Lot 270

**"DEMOTT'S / CELEBRATED / SODA OR MINERAL / WATERS - HUDSON COUNTY / N. J."**, America, 1850 - 1860. Medium-to-deep sapphire blue, cylindrical, squat soda form, applied sloping collar - iron pontil scar, ht. 7 1/4"; (the bottle appears to have been lightly cleaned, but certainly presents itself as near mint with just a little minor case or exterior wear). A scarce soda from North Bergen, NJ, and especially so in this overall fine condition.

**Est.: \$300 - \$500 • Min. bid: \$150**



### Lot 267

**"POLAND / WATER - POLAND MINERAL SPRING WATER / H. RICKER & SON'S PROPRIETOR'S"**, America, 1875 - 1885. Bright honey amber, figural of Moses, applied sloping collar - smooth base, ht. 10 3/4", near mint; (a little scattered light wear, primarily on the reverse, and a tiny pinhead flake at edge of base on the reverse). A scarce mineral water, and rare in amber! In addition, an attractive light example.

**Est.: \$800 - \$1,600 • Min. bid: \$400**



### Lot 271

**"SUPERIOR / MINERAL / & / SODA WATER / PREPARED BY / CLARKE & GREEN / DAYTON. O. - RETURN THIS BOTTLE / C & G / DAYTON"**, America, 1850 - 1860. Cobalt blue, 12-sided, applied sloping collar - heavy iron pontil scar, ht. 7 3/8"; (some minor exterior case-type wear including a shallow 1/4" flake on a panel edge; a pinhead flake on the inner edge of the lip, and some light interior haze). Provenance: Mary Ballentine collection.

**Est.: \$400 - \$800 • Min. bid: \$200**



### Lot 268

**"G.D. COGGESHALL / NO. 421 PEARL ST. / NEW-YORK / SODA WATER"**, America, 1839 - 1841. Deep olive, virtually black near the base, early tenpin form, applied ring type collar - crude base with a sand type pontil scar, ht. 7"; (professionally cleaned with some areas of fine scratches and ground wear remaining, but no other form of damage). An extremely rare, early soda, this being one of only two that have been offered in more than 20 years!

**Est.: \$4,000 - \$8,000 • Min. bid: \$2,000**



### Lot 272

**"N. SPANGENBERG / SPRINGFIELD. O."**, America, 1855 - 1860. Deep aquamarine, cylindrical, squat soda form, applied blob collar - iron pontil scar, ht. 7 1/8"; (a touch of minor light wear, and a 1/4" scallop-type chip at the edge of the lip, otherwise excellent). A very scarce-to-rare soda that does not appear to have been dug and cleaned. Mary Ballentine collection.

**Est.: \$200 - \$300 • Min. bid: \$100**



### Lot 273

**"R SCHMIDT & Co / DAYTON / OHIO"**, America, 1860 - 1870. Deep blue green, almost a teal coloration, cylindrical, squat soda form, applied blob collar - smooth base, ht. 7"; (the outside appears to have been lightly cleaned, a little minor interior haze, but no other form of damage, and otherwise excellent). An extremely rare, possibly unique soda, the only example known to date. Mary Ballentine collection.

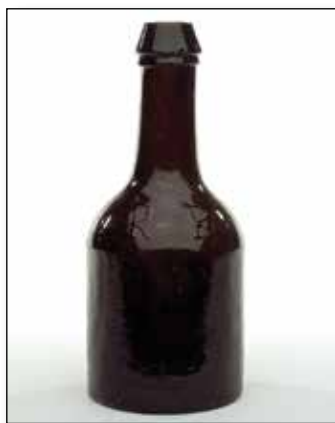
*Est.: \$250 - \$450 • Min. bid: \$140*



### Lot 274

**"HENRY C. HALL / MANCHESTER / N.H. / BOTTLE NOT SOLD"**, America, 1860 - 1870. Clear, medium emerald coloration, cylindrical, squat soda form, applied blob collar - smooth base, ht. 7 1/8", very near mint; (only a very slight trace of wear including a 1/8" partially open bubble near the base, otherwise pristine). An attractive example, the glass is filled with tiny seed bubbles. In addition, a very scarce soda, especially in this fine condition.

*Est.: \$175 - \$350 • Min. bid: \$100*



### Lot 275

**"R R" Stubby Ale Bottle**, probably an early Stoddard, NH glasshouse, 1845 - 1855. Deep 'old amber' coloration, 3-pc. mold, squatty ale form, applied sloping collar with bevel - sand type pontil scar, ht. 6 5/8", near mint; (a little light exterior wear and a tiny 1/8" flake at edge of base, otherwise perfect). Extremely rare. Thought to be a unique example, or possibly one of two. Outstanding character, nice crude glass filled with tiny seed bubbles and impurities.

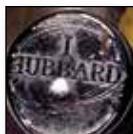
*Est.: \$800 - \$1,200 • Min. bid: \$400*



### Lot 276

**"J. HARVEY & CO / PROVIDENCE. RI" - "JH"** (logo), America, 1860 - 1870. Deep yellowish olive with a slight amber tone, cylindrical, porter form, applied blob collar - smooth base, ht. 6 3/4", sparkling, virtually attic mint; (tiny pinhead bit of roughness on the inside edge of the lip, otherwise perfect). A great example, outstanding condition, not easy to find in this virtually pristine condition.

*Est.: \$200 - \$400 • Min. bid: \$100*



### Lot 277

**Black Glass Wine Bottle**, probably America, possibly England, 1825 - 1835. **"I / HUBBARD"** (on applied seal). Medium to deep olive amber, 3-pc. mold, **"PATENT"** (on shoulder), applied sloping collar with bevel - **"H. RICKETTS & Co / GLASS WORKS BRISTOL"** (on base), sand type pontil scar, ht. 10 1/2", perfect! Burton, pgs. 1150, 1151. A very rare seal bottle blown in a Ricketts mold, likely at the New England Glass Bottle Co., Cambridge, MA. One of only 3 or 4 known.

*Est.: \$600 - \$1,200 • Min. bid: \$300*



### Lot 278

**Black Glass Wine Bottle**, America or possibly England, 1810 - 1825. **"J. Bell"** (on applied seal). Medium-to-deep olive amber, short-neck magnum cylinder, applied short taper double collar - kick up base with sand type pontil scar, ht. 11 3/8", virtually perfect 'cellar found' condition; (some dried interior content residue). See, Burton, pgs. 1049-1050. Extremely rare, one of three extant (all three were discovered in America, two are in the Winterthur Museum).

*Est.: \$800 - \$1,200 • Min. bid: \$400*



### Lot 279

**Black Glass Wine Bottle**, America or Continental, c. 1840. **"PEACH / BRANDY / 1840"** (on applied seal). Yellowish olive, dip mold, magnum sized cylinder, short rounded taper collar with bevel - disc type pontil scar, ht. 12 1/4"; (just a trace of expected light wear, and a bit of minor interior residue, otherwise full original luster and virtually perfect). Unlisted, and extremely rare! This early sealed bottle was originally discovered in Vermont. Rare and impressive, outstanding condition.

*Est.: \$1,000 - \$2,000 • Min. bid: \$500*



### Lot 280

**Large, Early Black Glass Wine or Utility Bottle**, probably France, 1730 - 1760. Medium-to-deep olive, mallet form with sides tapering slightly toward base creating a quasi 'flowerpot' form, applied string lip - kick-up base with blowpipe pontil scar, ht. 12", near mint; (a few paper-thin open surface bubbles, and an in-making cooling line or pontil crack around circumference of pontil scar, otherwise perfect). Similar to VdB, plate 144, #1. Beautiful, frothy, bubbly glass. Original surface luster.

*Est.: \$100 - \$200 • Min. bid: \$50*



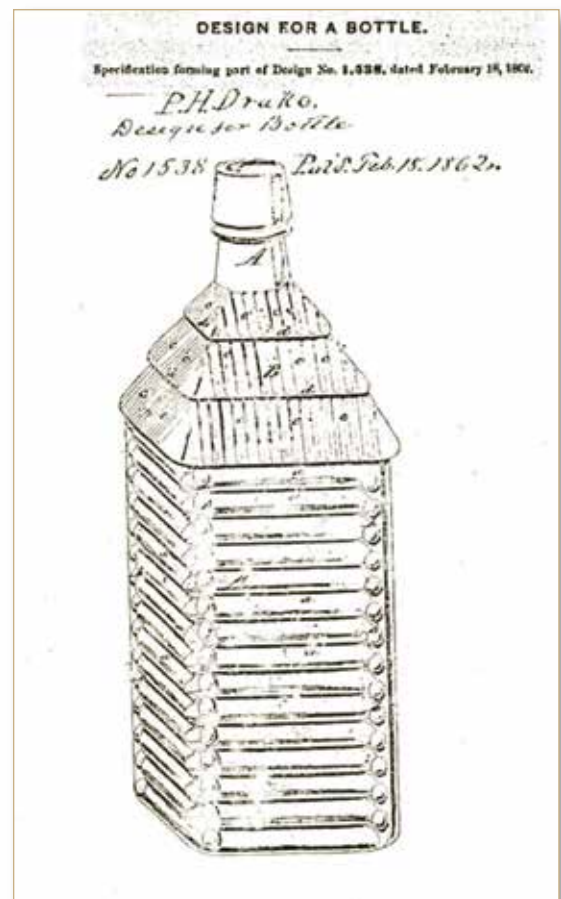
## Choice Pontiled Medicines



## Rare & Colorful Soda Bottles



# Lot 164: Rare & Gorgeous Raspberry Pink Drake's Bitters



Patent Office – P.H. Drake of Binghamton, New York,  
Design for a Bottle – Specialization forming part of a  
design No. 1538, dated February 18, 1862. Courtesy of  
Peachridge Glass: [peachridgeglass.com](http://peachridgeglass.com).