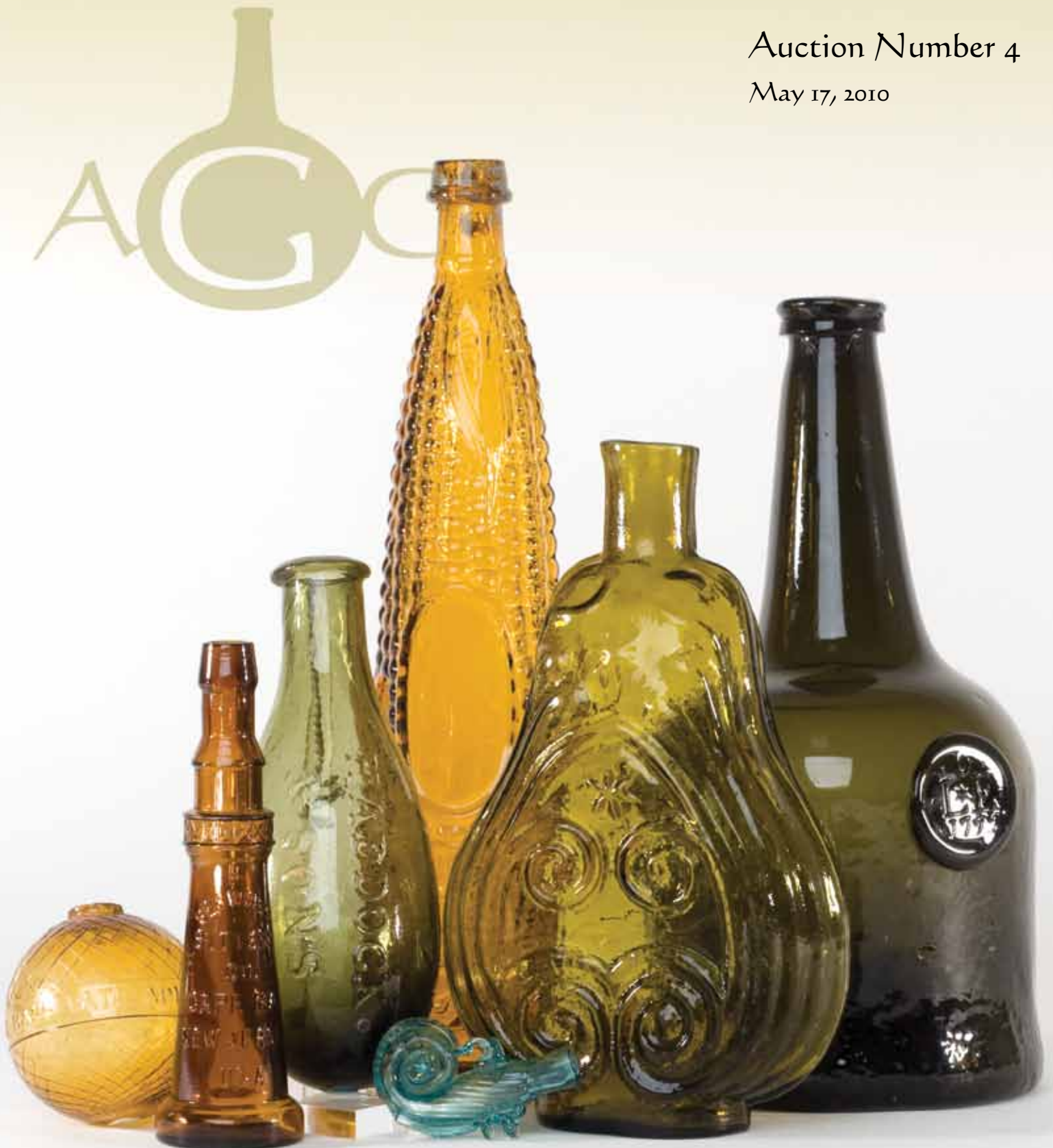


American Glass GalleryTM

Auction Number 4

May 17, 2010



Conditions of Sale

1. Absentee Auction

The items in this sale will be sold via absentee auction, closing date:
May 17, 2010, 11:00 p.m., EST.

2. Our Guarantee Regarding Descriptions

American Glass Gallery has made every attempt to describe correctly the property being sold. Descriptions are guaranteed to be accurate as regards authenticity, age, condition, and measurements to within one-fourth inch, as represented in this catalog. In describing damage, exterior wear or manufacturer's flaws that in our opinion, do not significantly detract visually or monetarily from the value of the item are not listed and will not be considered for refund. The Auctioneers reserve the right to make verbal corrections and provide additional information at any time during the sale.

3. Preview

Items may be viewed by appointment from May 3, 2010 through May 15, 2010.

4. Bidding Procedure

You may submit your bids by mail, phone, FAX, email or through our on-line auction site. If bidding by mail or FAX, please fill out the absentee form and return it to us. Your bid, either written or oral, grants American Glass Gallery the authority to protect you up to the amount of your stated bid. Your bid will not be removed once executed.

Bidding Times: You can submit your bids anytime after receiving your catalog. Bids may be made by phone, daily, until closing day, May 17, 2010, from 9 A.M. - 7 P.M. Eastern Time. Incoming phone bids will be accepted on the closing day (May 17, 2010) until 11 P.M. Eastern Time. Phone calls and Fax bids after this time will not be honored. No exceptions. You may also place your bids through our on-line auction service 24-hours a day once the site has opened for bidding, on or about May 1, 2010, continuing until 11:00 P.M. Eastern Time, May 17, 2010.

Please do not wait until the last day or two of the sale to place your bids! Because many collectors wait until the final few days of the sale to place their bids, we anticipate the telephone and internet bidding to be very busy during that period, so please plan accordingly. In the event of a tie bid, the earliest received bid on the lot will take precedent. We would welcome your bids by phone so that we can answer any questions and assist you in your bidding.

You may also telephone us at any time during the auction, prior to the closing of the sale, to check the status of your bids, to find the current bidding level, to open a bid, or to raise a bid on an auction lot.

Bidding Increments are as follows:

Up to \$250.00.....	increments of \$10.00
\$250.00 - \$500.00.....	increments of \$25.00
\$500.00 - \$1,000.00.....	increments of \$50.00
\$1,000.00 - \$2,500.00.....	increments of \$100.00
\$2,500.00 - \$5,000.00.....	increments of \$250.00
\$5,000.00 - \$10,000.00.....	increments of \$500.00
\$10,000 & Up.....	increments of \$1,000.00

Bids submitted between the above increments, whether by mail, FAX, email or on-line via the internet, will automatically be lowered to the closest lower increment.

This is a minimum bid auction. Bids below the printed minimum will not be accepted.

An example of how our absentee bidding system works: You bid \$600.00 on a lot which is the highest bid received to date. The second highest bid is \$450.00. The current high bid level would be yours at \$475.00, one bid increment higher than the other collector's bid. Any additional bids submitted by others below \$600.00 will automatically be topped on your behalf by a representative of American Glass Gallery, up to your stipulated high bid amount. If no further bids on this lot are received beyond the \$450.00, and the under bidder has not requested a "Call Back", then you would have won the lot at \$475.00, not the \$600.00 that you were prepared to pay.

American Glass Gallery will at NO TIME disclose bids pledged by others; only the current "High Bid" level of a lot will be stated upon request. The highest bidder as determined by American Glass Gallery shall be the purchaser. It is the sole right of the auctioneer to settle any dispute between bidders and to regulate the bidding procedure. The auctioneer reserves the right to refuse any bid he believes not to have been made in good faith.

5. "Call Back" Process

If requested, the three top bidders of an item at the time of closing will be given a "Call Back" over the next number of days in order to resolve the final sale of an item. You can request this service by "checking" the appropriate box on your absentee bid form or verbal agreement by phone. It is the responsibility of the bidder to insure he has qualified for this service.

Please note: No "Call Backs" will be executed for bids under \$400.00. In the event of tie bids, the earliest bid received will be the winning bid.

An example of how the "Call Back" process works: As an example, you have bid \$600.00 on a particular lot. Another bidder has submitted a bid of \$900.00 on the same lot. Assuming that as of the auction closing date you are among the top three bidders on this lot and you have requested a "Call Back", you would receive a call informing you that you have been "Out Bid" and the current "High Bid" is now at \$650.00. If you choose to continue bidding on this lot, you may now do so. Assuming that you now increase your bid to \$700.00, we would accept your bid but also inform you that we have a higher bid on this lot and must bid \$750.00. At this time, an auction between you and American Glass Gallery, representing the collector who submitted the bid of \$900.00, takes place. This bidding would continue until you drop out, or top the other bidders high bid of \$900.00. If the other bidder has not requested a "Call Back" service, you would be awarded the lot. If however, the other bidder also requested a Call Back, we must now call them. If they elect to increase their bid over your high bid, we would in turn call you back. This back and fourth process would continue until one of the bidders declines to go any farther.

If you have requested a "Call Back", the auctioneers will need to contact you on the days immediately following the auction closing between the hours of 8 A.M. and 9 P.M. Eastern Time. Please supply us with all appropriate contact phone numbers including, home, mobile and work numbers. Bidders must provide the appropriate telephone numbers where they can be contacted. If you will be traveling or otherwise unavailable, bidders with "Call Back" privileges will have the responsibility to contact American Glass Gallery twice daily during the Call Back period.

Please note, every effort will be made to contact you during the "Call Back" period. However, the bidder will forfeit their rights to a "Call Back" if the auctioneers are unable to reach them. American Glass Gallery reserves the right to discontinue Call Backs on any item in the sale (2) two days after the closing date of the sale. At that time, the current "High Bidder" may be awarded the item even if Call Backs are still outstanding.

6. Terms

Successful Bidders, Prompt and full payment is due immediately upon receipt of our invoice. Absolutely no exceptions. Anyone failing to pay for items won will forfeit all rights to bid in any future American Glass Gallery sales. Any late or delayed payments may result in loss of return privileges for items purchased in the sale.

No Items Will Be Mailed Before Full Payment Is Received.

Buyer Premium: A 12% buyer's premium will be added to the hammer price (15% if paying by Credit Card or PayPal), to be paid by the buyer as part of the purchase price. For example, if you purchase a lot for \$100.00, you will receive an invoice for \$112.00 if paying by cash, check or money order, plus any applicable sales tax or shipping charges.

Taxes: If you are a Michigan resident, a 6% sales tax will be added to your bill unless you have a valid resale number registered with us.

Shipping: Shipping, handling and insurance are extra. We ship insured via U.S. Mail. These charges will be added to your bill unless the lots are picked up in person. Our charges for shipping (excluding foreign shipments and oversized lots) are \$18.00 for the first item, \$9.00 for each additional item together with extra insurance costs (we use current U.S. Postal Service insurance rates).

Please allow two to four weeks for delivery after receipt of your check.

Payment: American Glass Gallery accepts Cash, Money Orders, Personal Checks, Visa, MasterCard, American Express and PayPal. If paying by Credit Card or PayPal, an additional 3% will be added to the invoice total.



7. Refunds

Refunds will be given at the discretion of the Auctioneers. Items purchased must be examined and request for refund made immediately upon receipt of the item or items. Since opinions can differ, particularly in the matter of condition, the Auctioneers will be the sole judge in the consideration of refunds. Refunds requested on the grounds of authenticity must be made within 15 days of the date of the auction, and such refund requests must be accompanied by at least one supporting statement in writing from an authority recognized by the Auctioneers. It is the Auctioneers sincere intention to consider any reasonable request for a refund. *Absolutely no returns for any reason after 30 days of the closing of the sale.*

8. Bidding on any item indicates your acceptance of these terms.



American Glass Gallery™

John R. Pastor
P.O. Box 227
New Hudson, Michigan 48165
Phone: 248.486.0530
Fax: 248.486.0538
www.americanglassgallery.com
email: jpastor@americanglassgallery.com

PLEASE NOTE:

The lots offered in this printed catalog are identical to the lots offered in the on-line catalog. However, due to space constraints of the printed catalog there may be some further information available regarding some of the lots in the on-line auction descriptions.

Please visit us at

www.americanglassgallery.com

and follow the link to the on-line auction. The link and on-line auction will be available on or about May 1, 2010.

A post-auction price list will be available on our website, in printable form, by June 1.

We encourage you to contact us either by phone or email with any questions that you may have, for assistance with bidding, or for further details or clarification on any of the lots in this sale. Your complete satisfaction and confidence is our goal!

We look forward to having you participate in our next sale, either as a buyer or a consignor. Our next absentee auction is scheduled for Fall, 2010. We already have some wonderful items consigned to this sale and would look forward to discussing with you, any quality items that you may wish to consign!

THANK YOU AND GOOD LUCK WITH YOUR BIDS!

FRONT COVER PHOTO (from left): Lot 72, Lot 125, Lot 181, Lot 75, Lot 121, Lot 21, Lot 187

This auction photographed and cataloged by John R. Pastor • ©2010, American Glass Gallery. All rights reserved. • Catalog design & layout by Owen Neils • Printed by Spartan Printing, Lansing, MI

American Glass Gallery • Auction Number 4, May 17, 2010 • 248.486.0530 • www.americanglassgallery.com

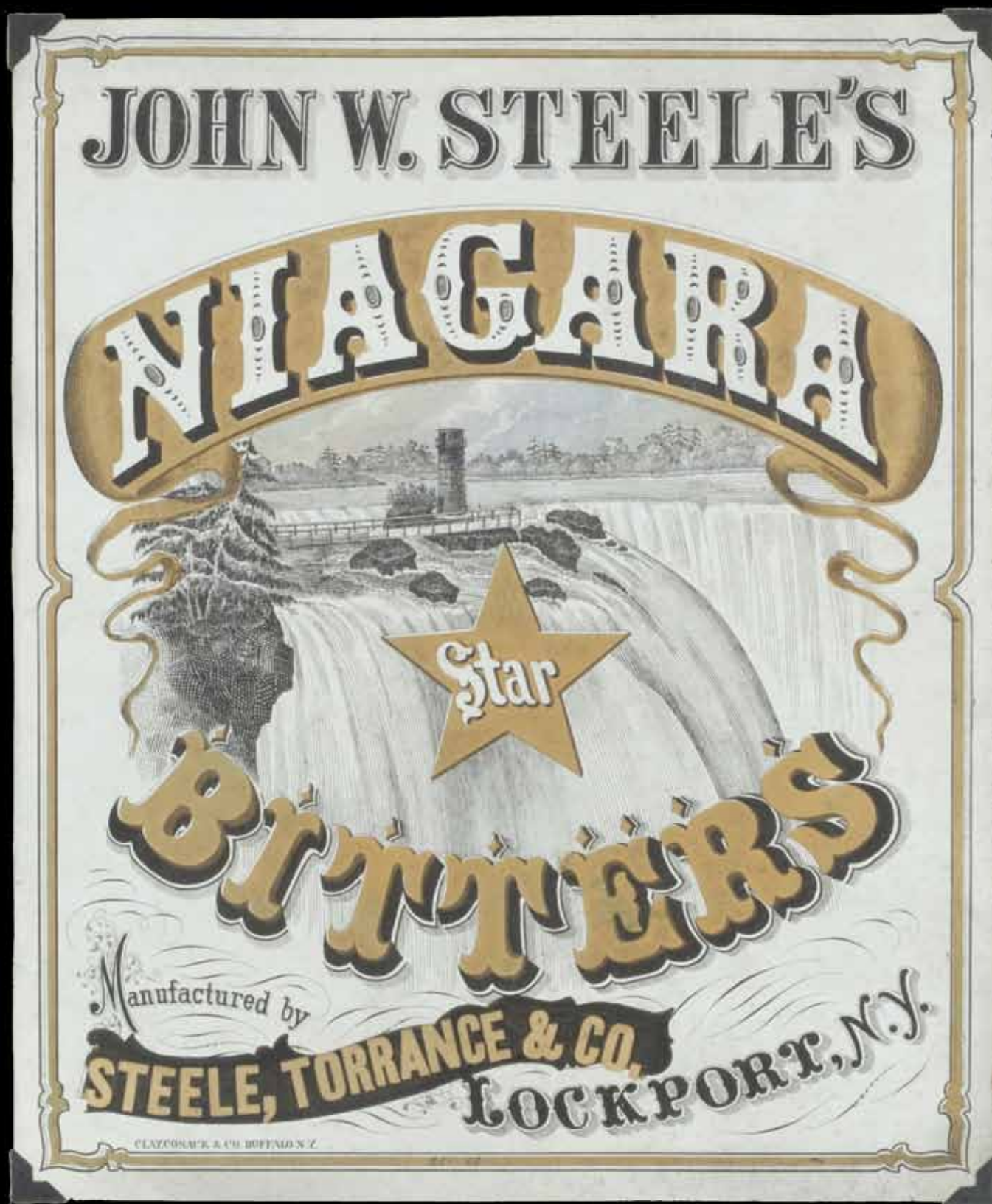
Reference Key

Reference initials and numbers used in the description of this catalog refer to the following publications:

AHG	<i>American Historical Glass</i> , Bessie M. Lindsey, 1967
AM	<i>The Decanter - An Illustrated History of Glass from 1650</i> , Andy McConnell, 2004
AP	<i>Glass in Early America</i> , Arlene Palmer, 1993.
BA1	<i>Collecting The Cures</i> , Bill Agee, 1969
BA2	<i>Collecting All Cures</i> , Bill Agee, 1973.
BB	<i>A Bit About Balsams</i> , Betty Blasi, 1974
BH	<i>Classification and Documentation of Sunburst and Similar Scent Bottles</i> , Bill Ham, AB&GC, 5/87
B/K	<i>The Glass Industry in Sandwich</i> , Raymond Barlow and Joan Kaiser, 1989.
C	<i>Ink Bottles and Inkwell</i> s, William Covill, 1971.
DeG	<i>American Sarsaparilla Bottles</i> , John DeGrafft, 1980.
DF	<i>Raising Hair Stories</i> , Don Fadely, 1992.
DM	<i>Wistarburgh, Window Tiles, Bottles and More</i> , Dale L. Murscell, 2007.
G	(Flasks) <i>American Bottles & Flasks and Their Ancestry</i> , McKearin & Wilson, 1978.
G	(Blown Three Mold) <i>American Glass</i> (Chapter VI), George S. and Helen McKearin, 1941.
GBH	<i>English Glass For The Collector, 1660-1860</i> , G. Bernard Hughes, 1958.
H	<i>American Bottles in the Charles B. Gardner Collection</i> , Norman C. Heckler, 1975.
JB	<i>Patent and Proprietary Medicine Bottles</i> , Joseph K. Baldwin, 1973
JH	<i>Glasshouses & Glass Manufacturers of the Pittsburgh Region, 1795 – 1910</i> , Jay W. Hawkins, 2009.
JS	<i>In glas verpakt – European Bottles, Their history and production</i> , Johan Soetens, 2001.
K	<i>Poison Bottle Workbook</i> , Rudy Kuhn, 1988.
KW	<i>New England Glass & Glassmaking</i> , Kenneth M. Wilson, 1972.
L	<i>The Red Book of Fruit Jars, No. 9</i> , Douglas M Leybourne, Jr., 2001.
LI	<i>Pittsburgh Glass, 1797 – 1891</i> , Lowell Innes, 1976.
Mc	<i>Two Hundred Years of American Blown Glass</i> , Helen and George McKearin, 1950.
McK	<i>American Glass</i> , George S. and Helen McKearin, 1941.
MW	<i>American Bottles & Flasks and Their Ancestry</i> , McKearin & Wilson, 1978.
N	<i>Great American Pontiled Medicines</i> , Frederick Nielson, 1978.
NCH	<i>The Blaske Collection of American Flasks</i> , Norman C. Heckler, 1983.
NCH II	<i>The Blaske Collection: Part II</i> , Norman C. Heckler, 1983.
O&S	<i>Warner's Reference Guide</i> , Ed Ojea and Jack Stecher, 1998.
P	<i>The Glass Gaffers of New Jersey</i> , Adeline Pepper, 1971.
RD	<i>Understanding Antique Wine Bottles</i> , Roger Dumbrell, 1983.
RF	<i>The Bottle Book: A Comprehensive Guide to Historic, Embossed Medicine Bottles</i> , Richard Fike, 1987
RH	<i>Collecting Barber Bottles</i> , Richard Holiner, 1986.
R/H	<i>Bitters Bottles</i> , Carlyn Ring and W. C. Ham, 1998.
RWL	<i>Antique Fakes & Reproductions</i> , Ruth Webb Lee, 1950
T	<i>Collectors Guide to Saratoga Type Mineral Water Bottles</i> , Donald Tucker, 2005.
U	<i>Collectible Character Bottles</i> , Authur Umberger, 1969.
V	<i>Nailsea Glass</i> , Keith Vincent, 1975
VdB	<i>Antique Glass Bottles; Their History and Evolution</i> , Willy Van den Bossche, 2001.
Z	<i>Ketchup, Pickles, Sauces</i> , Betty Zumwalt, 1980.
ZW	<i>Color Hutchinsons</i> , Zang Wood, 1999.

- The dash is generally used to indicate that the descriptions are on opposite sides of the bottle or flask.

/ The slash is used to indicate that the descriptions are on different lines or surfaces of the bottle.



Lot 129: Framed Advertising Sign for Niagara Star Bitters.

American SCROLL FLASKS

When asked to write this article for John about scroll flasks, I could not help but think of my late friend Fred Salisbury. Fred was "THE" true pioneer of scroll flask collecting. Fred resided in Minnetonka, Minnesota and as a youngster delivering newspapers became involved in collecting scroll flasks when he saw a grouping of them in one of his customer's windows. When McKearin/Wilson wrote *American Bottles and Flasks and Their Ancestry*, they called upon Fred to help them catalog the scrolls and update any new mold varieties. Those of you who are scroll aficionados still appreciate his work today. In September of 1990, Fred's collection was auctioned at Garth's Auctions in Delaware, Ohio, where collectors gathered from across the country to have a chance at obtaining examples from the finest scroll collection ever assembled at that time.

Now let's talk about the bottles themselves. The majority of the flasks were blown at Pittsburgh and Louisville Kentucky glass houses and date between 1825 and 1860. They were commonly used to hold whiskey or other spirits and were

blown by the thousands. There is no other grouping in the McKearin's charts that contain such a myriad of sizes and colors as the scroll grouping. They range in size from a mere 2 1/2 inch miniature to a giant gallon size with half pints, pints, quarts and a 2 quart example in between.

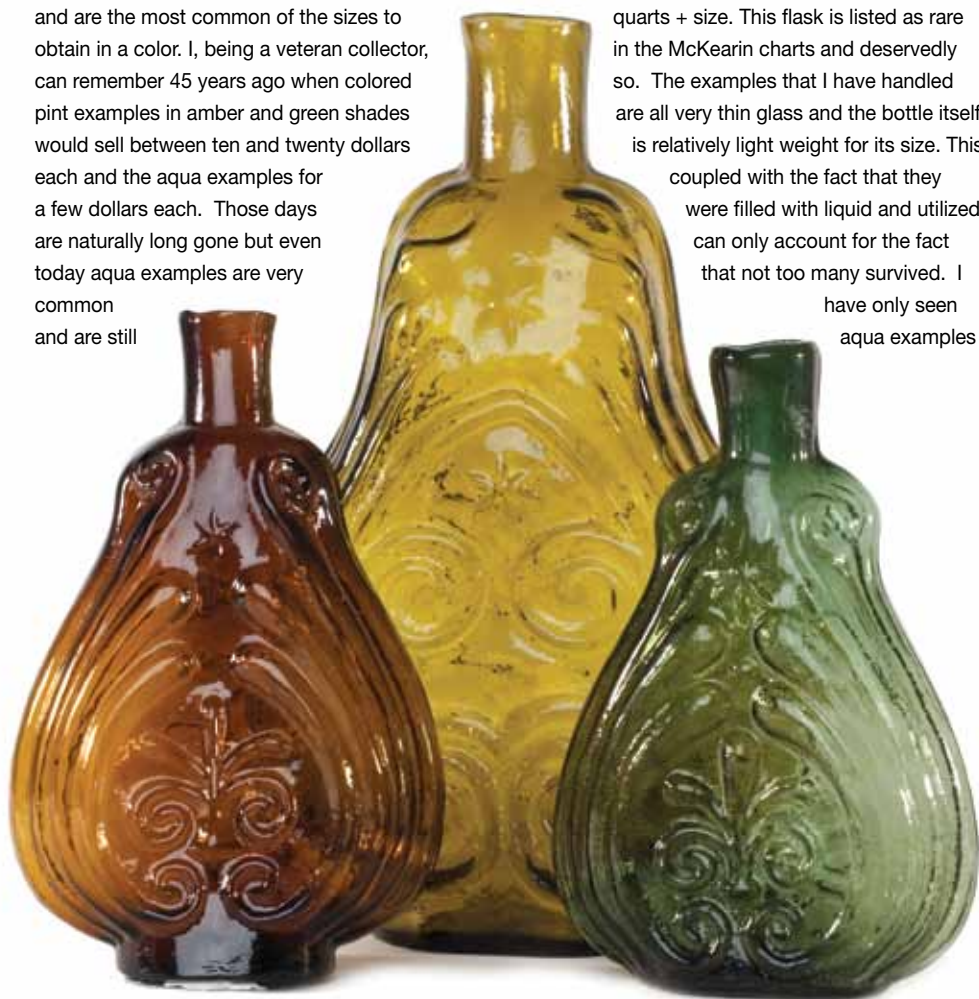
Let's briefly discuss the different sizes, their colors and degrees of rarity. The 2 1/2 inch miniature is listed in McKearin's as a GIX-40 and is an extremely rare flask. I know of but one example each in the following colors: cobalt blue, deep blue green, colorless and a deep amethyst reported to me but not seen by me. Don't get confused if you happen to see a miniature cobalt blue example with a rough sheared off top, as these are English. Many people mistake them for the GIX-40, but they are not the real deal. The next size we can discuss are the half pints. There are sixteen different mold varieties charted by McKearin's in this size. You can collect these in a spectrum of colors and, in my opinion, are the scarcest sizes available that are still somewhat attainable. The amber colored examples are the most common color. Pint sized scrolls come in 35 different mold varieties and are the most common of the sizes to obtain in a color. I, being a veteran collector, can remember 45 years ago when colored pint examples in amber and green shades would sell between ten and twenty dollars each and the aqua examples for a few dollars each. Those days are naturally long gone but even today aqua examples are very common and are still

readily attainable for under \$100.00. Colored pint examples are somewhat available but command strong prices especially if found in exotic colors. If you like the colored pints, try assembling a set of the GIX 10 mold in various colors. Over the years, I have recorded thirty-one different colors in that mold alone. I can think of no other flask mold with so many colors. They would truly make a rainbow of colors. Many collectors today collect by color only and are not too concerned about the mold varieties. Counting the star points can be challenging and almost impossible if the flask is weakly blown. However, if the flask is strongly embossed, those star points will match up perfectly with the McKearin numbers in the book. Once again credit Fred Salisbury for all of his hard work. The quart size scrolls are charted in 16 different mold varieties. They also come in a variety of colors and are somewhat still attainable. They usually command a little more than the pints but they too can make an impressive collection in their own right with all the various colors. As with any scroll flask, those coming in exotic or striated colors will carry the highest price tag. The next

size to discuss is the single GIX-29 two quarts + size. This flask is listed as rare in the McKearin charts and deservedly so. The examples that I have handled are all very thin glass and the bottle itself is relatively light weight for its size. This coupled with the fact that they were filled with liquid and utilized can only account for the fact that not too many survived. I have only seen aqua examples



"Hearts & Flowers" Scroll Flask featured on a 1998 U.S. Postage Stamp.



Pictured: (left to right)
Lots 24, Lot 21, Lot 25.

of these but in the 1970's, the very knowledgeable Dr. George Walker of Sedalia, Missouri reported an amber specimen to my late father Charles. If it does exist, it awaits the lucky finder. The final size to discuss is the "Giants" or gallon sized scrolls. The scrolls are the only grouping of flasks that contains a gallon size. There are four different mold variants in this extravagant size with the GIX 30 being the most common of the four and that one is a very rare bottle. The other three variants should be considered extremely rare. With the exception of one clear colored GIX-30, all of the gallon scrolls come in aquamarine as I have never seen or heard of any colored examples. If you want to collect these, dust off a large space on your shelf as they take up some room. As a group, they are REALLY impressive. It is interesting to note that the gallons have a polished pontil and were most likely used for tableware.

Now, let's not forget the rare molds. As with any grouping, there are always some truly rare molds. Perhaps, the rarest mold of all is the aquamarine GIX-52. There is but one example known and that being in The Corning Museum of Glass. Following the GIX-52, one should consider the GIX-26, GIX-27, GXI-28 and GIX-47 respectively. The GXI-26 is marked S. McKee, the GXI-27 is the example with a slug plate covering S. McKee,

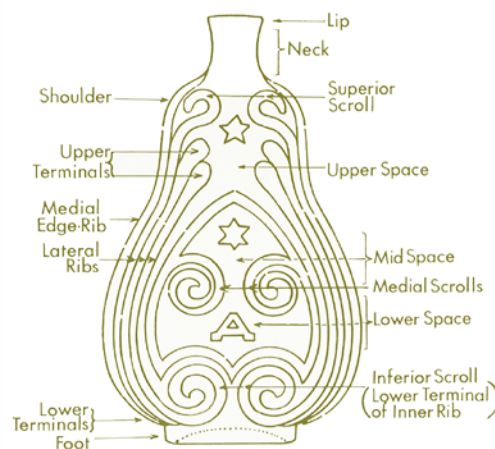
and leaving only the comma after the word McKee, and the GIX 28 having the word ROUGH on one side and & READY on the other side. The GXI-28 is really the only scroll flask that is marked with any historical significance. The GIX 47 is marked R. Knowles & Co., Union Factory, South Wheeling, Va. It is interesting to note that at time of manufacture, South Wheeling was in Virginia as West Virginia was not admitted into the Union until 1863. I have only seen all of the above scrolls in aquamarine with the exception of the GXI-27 with a lone example in smoky amber shading to an aquamarine neck. You will have to have some patience if you want to obtain any of the above molds as they are truly extremely rare examples and it usually takes years to find but one of them available for sale.

Don't worry; I haven't forgotten the collector who cherishes color and rare molds combined. The scroll grouping has a variety of these examples. These scrolls consist of the "marked" glass house examples such as the GIX-6, 7, 8 and 9. These are all marked Louisville Glass Works and come in different colors. The half pints GIX-38 and 39 are marked BP&P signifying Bakewell Page & Bakewell with the 38 coming in several colors and the 39 in a yellow green. Also of note are The GIX -42 and 43. They both come in several colors and

exhibit tremendous eye appeal. One cannot also forget the GIX-48 McCarty & Torreyson in a deep emerald green. Any of the above are true "GEMS" and should be prized by any collector. Some of my favorites would be the GIX-38 in deep cobalt blue, the GIX-43 in amethyst, and the GIX-48 in deep emerald green. Not to get personal but my favorite scroll of all time is not even a marked glass house example. My pick would be the GIX-51 deep emerald green "Hearts & Flowers" scroll. I can't be too far off in my judgment as Dick Sheaf, a fellow glass enthusiast and United States postal stamp designer, chose this flask to be depicted on a US postage stamp in June of 1998.

In finishing, I hope I have instilled some knowledge for the beginning collector and a little more inspiration for the advanced collector. If all those McKearin numbers listed above, have gotten you a little confused, it is time to dust off the book and do a little studying! No matter what, it is still fun collecting flasks and enjoying the camaraderie of other collectors. Enjoy the auction as there are several very nice scrolls for your consideration. Just remember: Knowledge, patience and perseverance will pay off in your flask collecting.

Mark Vuono
Stamford, Connecticut



Scroll Flask nomenclature as conceived by Fred Salisbury, drawing by Frederick H. Smith.

Pictured: (left to right)
Lots 23, Lot 27, Lot 22.



Lot 1

“General Washington” / Bust of Washington – Eagle Historical Flask, a Pittsburgh district glasshouse, Pittsburgh, PA, 1820 – 1830. Greenish aquamarine, sheared mouth – pontil scar, pint; (a pinhead bit of roughness at edge of mouth, some light exterior high point wear). The impression also weakens below the neck as is often the case. GI-2. A scarce and early, “beaded” Washington mold.

Est.: \$300 - \$500 • (Min. bid: \$200.00)



Lot 5

Taylor / “Rough And Ready” – “Major” / Bust of Ringgold / “Ringgold”, Historical Flask, probably Baltimore Glass Works, Baltimore, Maryland, 1846 – 1855. Aquamarine, sheared mouth – pontil scar, pint, near mint; (just a faint touch of high point wear on the Taylor side, otherwise attic mint). GI-72. A crisp, sparkling example with virtually no trace of wear as is often the case.

Est.: \$150 - \$250 • (Min. bid: \$100.00)



Lot 2

“Fells” / Bust of Washington / “Point” – Monument / “Balto”, Historical Flask, Baltimore Glass Works, Baltimore, Maryland, 1830 – 1850. Pale greenish vaseline, sheared mouth – pontil scar, pint, near mint; (somewhat weakened impression at the base as is typical of this mold). GI-20. A comparatively scarce mold in a delicate, scarce color.

Est.: \$300 - \$600 • (Min. bid: \$200.00)



Lot 6

Eagle – Cornucopia Historical Flask, an early Pittsburgh district glasshouse, Pittsburgh, Pennsylvania, 1820 – 1835. Aquamarine, sheared mouth – pontil scar, half pint; (a ¼” cooling line at top of lip and a shallow iridescent bruise on inside edge of mouth). GII-11a. A scarce, early little flask with the noted condition issues really being quite minor.

Est.: \$200 - \$400 • (Min. bid: \$125.00)



Lot 3

“Albany Glass Works” / Bust of Washington / “Albany / NY” – Sailing Ship, Historical Flask, Albany Glass Works, Albany, New York, 1847 – 1850. Aquamarine, sheared mouth – pontil scar, pint; (a ¼” flake off top of mouth, otherwise about mint). GI-28. A sparking example with great character having 100’s of tiny seed bubbles. Note: the sheared mouth adds to the scarcity of this mold as most of the GI-28 examples feature an applied collar.

Est.: \$250 - \$450 • (Min. bid: \$150.00)



Lot 7

Eagle (in circular medallion) – Reverse Same Historical Flask, probably Kentucky Glass Works, Louisville, KY, 1850 – 1855. Deep aqua, sheared mouth – pontil scar, pint; (two shallow iridescent bruises on inside edge of mouth that likely occurred when the cork was pried out, otherwise sparking mint). GII-29. An extremely rare mold with only a few examples trading hands in the past 15 years, most with some form of damage. Ex. Charles Vuono collection.

Est.: \$600 - \$900 • (Min. bid: \$400.00)



Lot 4

“Albany Glass Works” / Bust of Washington / “Albany / NY” – Sailing Ship, Historical Flask, Albany Glass Works, Albany, NY, 1847 – 1850. Dense amber, applied double round collared mouth – pontil scar, pint, near mint; (just a couple of light scratches and very minor exterior wear). GI-28. Scarce mold, scarce color from a glass house in operation for a relatively short time.

Est.: \$2,500 - \$5,000 • (Min. bid: \$1,500.00)



Lot 8

Eagle – “Dyottville Glass Works / Philada” Historical Flask, Dyottville Glass Works, Philadelphia, PA, 1855 – 1865. Rich medium to deep aquamarine, sheared mouth – smooth base, pint +, near mint; (a narrow 1/8” x 3/8” long shallow open bubble is located near the side of the flask, otherwise perfect). GII-38. A scarce mold that is getting harder to find!

Est.: \$200 - \$400 • (Min. bid: \$125.00)



Lot 9

Eagle – Furled Flag / “For Our Country” Historical Flask, Coffin & Hay, Hammonton, New Jersey, 1836 – 1847. Aquamarine, sheared mouth – pontil scar, pint, mint. GII-53. A comparatively scarce mold, bright, clean, crisp, perfect and with bold embossing!

Est.: \$200 - \$400 • (Min. bid: \$150.00)



Lot 13

Eagle above Monument and Flag / “Continental” – Indian Shooting Bird / “Cuningshams & Co / Pittsburgh. PA” Historical Flask, Cuninghams & Co., Pittsburgh, PA, 1865 – 1885. Sapphire blue, applied collared mouth – smooth base, qt, near mint; (a pinprick bit of roughness at edge of base and a ¼” superficial scratch near shoulder on reverse). GII-142. Finest possible example, stunning color, near mint and with the boldest possible impression.

Est.: \$6,000 - \$12,000 • (Min. bid: \$4,000.00)



Lot 10

Double Eagle Historical Flask, Coventry Glass Works, Coventry, Connecticut, 1830 – 1848. Bright yellowish olive amber, sheared mouth – pontil scar, pint; (a shallow 1/8” flake on top of the mouth and just a touch of light high point wear). GII-70. Some nice lighter yellowish tones and plenty of fine seed bubbles and character in this one.

Est.: \$250 - \$400 • (Min. bid: \$150.00)



Lot 14

Cornucopia – Urn Pictorial Flask, New England, 1830 – 1845. Medium to deep clear green, sheared mouth – pontil scar, half pint; (a 1/8” flake off the edge of the mouth on reverse and some light exterior high point wear). GIII-7. A gorgeous little flask, very pretty color, great clarity to the glass. A very eye appealing piece.

Est.: \$250 - \$400 • (Min. bid: \$150.00)



Lot 11

Eagle – Cornucopia Historical Flask, Keene Marlboro Street Glassworks, Keene, New Hampshire, 1830 – 1842. Bright olive yellow, sheared mouth – pontil scar, pint, mint; (a small 1/8” open area on the neck where a bubble never fully formed during manufacture and is not considered damage). GII-72b. A light, bright example with great character, a crude pebbly surface and a long streak of bubbly striations across the eagle side of the flask.

Est.: \$175 - \$350 • (Min. bid: \$100.00)



Lot 15

Masonic – Eagle / “IP” Historical Flask, Keene Marlboro Street Glassworks, Keene, NH, 1815 – 1830. Clear medium blue green, sheared and inward rolled mouth – pontil scar, pint, perfect. GIV- 1. A beautiful example of this classic New England Masonic flask. This example still retains approximately 85% of an early label on the reverse shoulder which reads in part, “JOS.” -. “LEMBERGER, Apothecary / ALCOHOL / New Store, Lebanon, Pa”.

Est.: \$400 - \$600 • (Min. bid: \$300.00)



Lot 12

Eagle / “Pittsburgh / PA” – Eagle Historical Flask, Pittsburgh district, Pittsburgh, Pennsylvania, 1860 – 1870. Yellowish olive amber, applied mouth with flat band – smooth base, pint, near mint; (two tiny pinhead flakes on narrow vertical rib at side and some faint interior residue that may wash out). GII-105. A fine example, a little more scarce than the related GII-106 mold.

Est.: \$200 - \$400 • (Min. bid: \$125.00)



Lot 16

Masonic – Eagle / “KCCNC” Historical Flask, Keene Marlboro Street Glassworks, Keene, NH, 1820 – 1830. Medium olive amber, sheared mouth – pontil scar, pint; (a ¼” flake on top of mouth, some scattered exterior high point wear and a bubble on the surface near the shoulder that did not fully form as it has no depth and is mentioned only for notation and is not considered damage). GIV-18.

Est.: \$150 - \$250 • (Min. bid: \$100.00)



Lot 17

“Success To The Railroad” / Locomotive – (Reverse Same) Historical Flask, Lancaster Glass Works, Lancaster, NY, 1849 – 1860. Deep bluish aquamarine, sheared mouth – pontil scar, pint, near perfect; (a tiny flake on the inside edge of the mouth that likely occurred when the cork was pried out and a small in-manufacture tooling mark on the neck mentioned for notation and is not considered damage). GV-1. Deep color, a brilliant example!

Est.: \$300 - \$600 • (Min. bid: \$200.00)



Lot 21

Scroll Flask, Midwest America, 1845 - 1860. Brilliant golden yellow with an olive tone, sheared mouth – pontil scar, quart; (an extremely minor pinprick area of lip-edge roughness, otherwise pristine perfect). GIX-1. A rare, gorgeous, color and an exceeding bright, pretty example, especially in natural daylight.

Est.: \$2,000 - \$3,000 • (Min. bid: \$1,200.00)



Lot 18

“Success To The Railroad” / Horse Pulling Cart – (Reverse Same), Historical Flask, Keene Marlboro Street Glassworks, Keene, NH, 1830 – 1842. Brilliant golden amber with an olive tone, sheared mouth – pontil scar, pint, near mint; (less than a pinhead sized flake at edge of mouth and a small 1/8” open bubble on the side of the flask). GV-3. A bright, crisp example with a very strong mold impression.

Est.: \$300 - \$500 • (Min. bid: \$200.00)



Lot 22

Scroll Flask, Midwest America, 1845 – 1860. Vibrant medium to deep sapphire blue, sheared mouth – pontil scar (on keyed base), pint, perfect. GIX-10. This is truly a spectacular, eye catching example. The color is not too light, nor too dark, and passes light beautifully. A great example in all regards.

Est.: \$2,500 - \$3,500 • (Min. bid: \$1,500.00)



Lot 19

“Success To The Railroad” / Horse Pulling Cart – (Reverse Same), Historical Flask, probably Mt. Vernon Glass Works, Vernon, NY, 1830 – 1844. Deep yellowish tobacco amber, sheared mouth – pontil scar, pint; (some scattered high point wear and slightly weakened mold impression in the shoulder as is often the case with this mold). GV-5. A crude heavy example in a scarce color with no trace of green!

Est.: \$300 - \$500 • (Min. bid: \$200.00)



Lot 23

Scroll Flask, Midwest America, 1845 – 1860. Medium blue green, almost a teal blue, applied double collared mouth – pontil scar (on keyed base), pint, perfect. Similar to GIX-10, but appears to have 6-pointed upper stars, ill-defined, on both obverse and reverse. Rare with the applied double collared mouth, essentially what you would expect to find on a pontiled medicine of the period. Pretty and rare! Ex. Fred Weck collection.

Est.: \$1,500 - \$2,500 • (Min. bid: \$800.00)



Lot 20

“Keen” – “P&W” Sunburst Flask, Keene Marlboro Street Glassworks, Keene, NH, 1820 – 1830. Bright golden tobacco amber, sheared mouth – pontil scar, half pint, about mint; (some weakening to the letters “P&W” on the reverse). GVIII-10. A vibrant, beautiful and scarce color for this mold. In addition, the flask exhibits a wonderful glass texture with a multitude of tiny seed bubbles throughout.

Est.: \$800 - \$1,200 • (Min. bid: \$500.00)



Lot 24

Scroll Flask, Midwest America, 1845 – 1860. Bright golden amber through the center of the flask shading to a light honey near the sides, sheared mouth – red iron pontil scar, half pint, perfect. GIX-33a. An extremely rare mold that is also unlisted in amber (McKearin only lists this mold in aquamarine). A little sweetheart of a flask, wonderful condition, great pontil.

Est.: \$1,000 - \$2,000 • (Min. bid: \$600.00)



Lot 25

Scroll Flask, Midwest America, 1845 – 1860. Medium emerald with an olive tone and faint yellow striations, sheared mouth – pontil scar, half pint; (under certain lighting conditions there is a crizzled appearance due to some fine lines in the glass that are on the surface and almost certainly occurred during the annealing process, they have little depth and most are very difficult to see). GIX-34. A rare, exceptional color! Ex. NCH Auction #84, Lot 37.

Est.: \$2,250 - \$3,500 • (Min. bid: \$1,200.00)



Lot 26

Scroll Flask, Midwest America, 1845 – 1860. Medium blue green, almost a deep sea green, sheared mouth – tubular pontil scar, half pint, perfect. GIX-36. A rare and desirable color for this mold that is not listed by McKearin. In addition, the extended neck adds to the character of this little gem. Provenance: Ex. Judge Edmund Blaske collection, Lot 826.

Est.: \$1,500 - \$2,500 • (Min. bid: \$800.00)



Lot 27

Scroll Flask, Midwest America, 1845 – 1860. Medium sea green, sheared mouth – pontil scar, half pint, perfect. GIX-36. A very thin delicate little flask in a scarce, pretty color with a swath of tiny bubbles through the body adding additional character and texture to the glass. Provenance: Ex. Judge Edmund Blaske collection, lot 827.

Est.: \$1,000 - \$2,000 • (Min. bid: \$600.00)



Lot 28

“Union” / Clasped Hands / “LF & Co” – Eagle / “Pittsburgh.PA” Historical Flask, Lippincott, Fry & Company, Pittsburgh, PA, 1866 – 1867. Light apple green, applied collared mouth with flat band – smooth base, pt; (minor 1/8” flake at edge of base on reverse, otherwise pristine). GXII-19. A scarce mold not listed by McKearin in apple green with an outstanding impression and wonderful overall condition!

Est.: \$175 - \$350 • (Min. bid: \$100.00)



Lot 29

Clasped Hands – Eagle Historical Flask, probably a Pittsburgh district glass, Pittsburgh, Pennsylvania, 1860 – 1875. Golden amber, applied collared mouth with flat band – smooth base, half pint; (typical faint exterior high point wear, otherwise perfect). GXII-31. A fine example of this classic Civil War era flask.

Est.: \$200 - \$400 • (Min. bid: \$125.00)



Lot 30

Clasped Hands – Clasped Hands Historical Flask, Midwestern, possibly a Pittsburgh district glasshouse, Pittsburgh, Pennsylvania, 1860 – 1870. Aquamarine, applied collared mouth with flat band – smooth base, quart, attic mint. GXII-37. A very scarce mold listed as No. 22 in McKearin's Group C, rare flask listing. In addition, even more difficult to find in this near pristine condition.

Est.: \$150 - \$250 • (Min. bid: \$75.00)



Lot 31

“Union” / Clasped Hands / “Wm Frank & Sons / Pitts” – Cannon Historical Flask, Frankstown Glass Works, Pittsburgh, Pennsylvania, 1870 – 1876. Ice blue coloration, heavy applied collared mouth with flat band – smooth base, pint; (tiny bit of roughness on inside edge of mouth, otherwise about perfect). GXII-39. A bright, clean flask with nice color, almost a light cornflower blue.

Est.: \$150 - \$250 • (Min. bid: \$75.00)



Lot 32

Clasped Hands / “Union” – Eagle Historical Calabash, possibly A.R. Samuels Keystone Glass Works, Philadelphia, Pennsylvania, 1866 – 1874. Deep amber coloration, applied round double collared mouth – red iron pontil scar, quart; (some light high point wear, otherwise perfect). GXII-43

Est.: \$200 - \$400 • (Min. bid: \$125.00)



Lot 33

"Mechanic Glass Works / Philada" – Sheaf of Rye Pictorial Flask, Mechanic Glass Works, Philadelphia, Pennsylvania, 1850 – 1855. Aquamarine, sheared mouth – blowpipe pontil scar, quart; (just a touch of faint exterior wear, otherwise pristine). GXIII-34. Listed by McKearin in Group C, Rare Flasks, No. 13. A big, bubbly, attractive flask with great character. A choice example.

Est.: \$300 - \$500 • (Min. bid: \$200.00)



Lot 37

Pattern Molded Globular Bottle, 31 ribs swirled to the right, Midwest America, probably Monongahela Valley or early Pittsburgh district, 1800 – 1830. Deep greenish aqua, almost blue-green, crudely applied ring type collar – blowpipe pontil scar, ht. 9"; (large 5" by 1/4" open bubble, two faint star cracks from two of the many potstones). Despite the damage, a very interesting, oversized, globular bottle with great character! Ex. Paul Ballentine collection, Lot #12.

Est.: \$225 - \$450 • (Min. bid: \$150.00)



Lot 34

Pattern Molded Transitional Globular Bottle, 24 ribs swirled to the left, Midwest America, possibly Zanesville Glass Works, Zanesville, Ohio, 1820 – 1835. Golden amber, outward tooled mouth with applied band – pontil scar, ht. 8 1/8", near mint; (some light exterior wear). A virtually unique form for a Midwest patterned bottle having a transitional or pear shaped form. This bottle may have been an off-hand piece fashioned into a decanter.

Est.: \$600 - \$1,200 • (Min. bid: \$400.00)



Lot 38

Pattern Molded Globular Bottle, 24 ribs swirled to the left, Midwest America, possibly Zanesville Glass Works, Zanesville, Ohio, 1820 – 1835. Deep bluish aquamarine, outward rolled mouth – pontil scar, ht. 8 1/4"; (a 1/8" shallow open bubble is located on top of the outward rolled mouth and some light interior residue that would likely wash out). Good strong color, the aquamarine globular bottles are actually more difficult to find than their amber counterparts.

Est.: \$200 - \$400 • (Min. bid: \$125.00)



Lot 35

Pattern Molded Globular Bottle, 24 ribs swirled to the left, Midwest America, possibly Zanesville Glass Works, Zanesville, Ohio, 1820 – 1835. Brilliant light golden amber, outward rolled mouth – pontil scar, ht. 8", near mint; (a tiny pinhead flake on one of the ribs, otherwise perfect). Beautiful color, strong impression, good tight ribbing through the neck.

Est.: \$500 - \$800 • (Min. bid: \$300.00)



Lot 39

Pattern Molded Club Bottle, 16 wide vertical ribs, probably Mantua Glass Works, Mantua, Ohio, 1822 – 1829. Aquamarine, club form, applied heavy collared mouth – pontil scar, ht. 7 3/4", perfect. The 16-rib clubs are considered by many to be the most aesthetically pleasing in appearance. This is one of the great examples of this form with sharp pronounced ribs that extend from the shoulder through the pushed-up conical base. Ex. Darl Fifer collection.

Est.: \$250 - \$450 • (Min. bid: \$150.00)



Lot 36

Pattern Molded Globular Bottle, 24 ribs swirled to the left, Midwest America, possibly Zanesville Glass Works, Zanesville, Ohio, 1820 – 1835. Medium to deep golden amber, outward rolled mouth – pontil scar, ht. 7 1/8", near mint; (slightly weakened impression in lower body). A fine example, nicely proportioned with the classic globular form.

Est.: \$400 - \$600 • (Min. bid: \$250.00)



Lot 40

Pattern Molded Bottle, 24 ribs swirled to the left, Midwest America, probably Zanesville Glass Works, Zanesville, Ohio, 1815 – 1830. Strong bluish aquamarine, conical form, likely blown as a toilet water or vinegar bottle, inward rolled mouth – pontil scar, ht. 6 3/4", perfect. Form and lip similar to McK, plate 78, #6. A classic, Midwest pattern molded bottle in a rare form with good strong color. Ex. Darl Fifer collection.

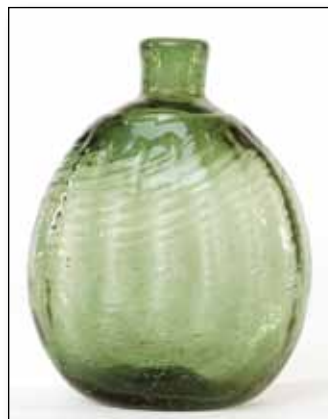
Est.: \$300 - \$600 • (Min. bid: \$200.00)



Lot 41

Pattern Molded Pocket Flask, 24 vertical ribs, Midwest America, probably Zanesville Glass Works, Zanesville, Ohio, 1820 – 1840. Light golden honey with plenty of yellow through the mid-body, flattened circular body, sheared mouth – pontil scar, ht. 4 5/8", perfect. A light, brilliant example blown from a very high quality metal so characteristic of the early Midwestern wares.

Est.: \$300 - \$500 • (Min. bid: \$200.00)



Lot 45

Pitkin Type Flask, Pattern molded with 16 vertical ribs over 16 ribs swirled to the right, America, Midwest-type, 1800 – 1830. Bright grass green, flattened spherical body, sheared mouth – glass tipped pontil scar, ht. 5 7/8", perfect. Similar to McK, plate 233, #8. A choice example, beautiful color, and with plenty of bubbles and good character to the glass.

Est.: \$750 - \$1,250 • (Min. bid: \$400.00)



Lot 42

Pattern Molded Pocket Flask, 24 ribs swirled to the left, Midwest America, 1815-1830. Deep amber, flattened pear form, sheared mouth – pontil scar, ht. 5 1/2 inches; (a couple of minor areas of high point wear as is common on these flasks). A nice flask with deeper color than most and a strong impression through the upper half of the body.

Est.: \$300 - \$600 • (Min. bid: \$250.00)



Lot 46

Pitkin Type Flask, Pattern molded with 16 vertical ribs over 16 ribs swirled to the right, America, Midwest-type, 1800 – 1830. Medium yellowish green with an olive tone, flattened spherical body, sheared mouth – blowpipe pontil scar, ht. 6 1/2", near mint; (some minor exterior high point wear on the sides at base edge, shallow open bubble near base). Similar to McK, plate 233, #10. A good strong impression, especially through the shoulder area.

Est.: \$600 - \$900 • (Min. bid: \$350.00)



Lot 43

Pattern Molded Pocket Flask, 20 vertical ribs, Midwest, possibly Franklin Glassworks, Park, Edmonds, and Park, Kent, Ohio, 1824 – 1830. Medium golden amber, elongated chestnut form, sheared mouth – pontil scar, ht. 6 5/8"; (some faint exterior high point wear, otherwise perfect). An interesting example being a little more ovoid in form and the 20-rib molds are considerably more scarce than their 24-rib counterparts. Ex. Guggenheim collection.

Est.: \$350 - \$700 • (Min. bid: \$250.00)



Lot 47

Pitkin Type Flask, Pattern molded with 16 heavy vertical ribs, America, possibly South Jersey, 1760 – 1780. Soft bluish green or sea green with some faint yellow striations, flattened spherical body with a slight pear form, sheared mouth – pontil scar, ht. 5 5/8"; (cleaned to near perfect condition with a touch of faint exterior wear remaining). A very early Pitkin type flask; rare with the single vertical rib pattern, beautiful rare color.

Est.: \$1,000 - \$2,000 • (Min. bid: \$600.00)



Lot 44

Pattern Molded Pocket Flask, 21 vertical ribs, possibly Midwest America, 1790 – 1820. Medium plum amethyst, flattened pear form, sheared mouth – pontil scar, ht. 6 3/8", near mint; (the very top of the mouth appears as though it may have been finely ground, likely to smooth out minor roughness). The 21-rib pattern is quite possibly American, but remains unattributed. A gorgeous color for any flask!

Est.: \$750 - \$1,500 • (Min. bid: \$400.00)



Lot 48

Pitkin Type Flask, Pattern molded with 24 widely spaced vertical ribs, America, 1800 – 1830. Rich bluish aquamarine, chunky, flattened globular body, sheared mouth – pontil scar, ht. 4 5/8", near mint; (some minor scratches and exterior wear at mid-body, primarily on one side only). A very interesting flask that may have been blown in a tumbler mold. Rare size, rare color, and a good early form!

Est.: \$750 - \$1,250 • (Min. bid: \$400.00)



Lot 49

Pitkin Type Flask, Pattern molded with 38 vertical ribs over 36 ribs swirled to the left, New England, 1785 – 1815. Medium yellowish olive, flattened ovoid form, sheared mouth – pontil scar, ht. 6 ¾"; (tiny iridescent bruise on inside edge of mouth and a touch of high point wear near base, otherwise perfect). Rare rib count being blown in two distinctly different patterned molds of 36 and 38 ribs respectively. A great piece of New England glass.

Est.: \$750 - \$1,400 • (Min. bid: \$500.00)



Lot 50

Pitkin Type Flask, Pattern molded with 38 vertical ribs over 36 ribs swirled to the right, New England, 1785 – 1815. Clear medium olive, flattened ovoid form, sheared mouth – pontil scar, ht. 6 ¾", (just a touch of light wear at the heel on the sides, otherwise sparkling mint). Extremely rare rib count being blown in two distinctly different patterned molds. In addition, a very good color being more of a pure green and with nice clarity to the glass

Est.: \$750 - \$1,400 • (Min. bid: \$500.00)



Lot 51

Pitkin Type Flask, Pattern molded with 36 vertical ribs over 36 ribs swirled to the left, New England, 1785 – 1815. Medium olive green, small flattened ovoid form, sheared mouth – pontil scar, ht. 5", mint. A little sweetheart of a Pitkin flask having a wonderful diminutive size, nice clarity and fine condition!

Est.: \$600 - \$1,200 • (Min. bid: \$400.00)



Lot 52

Pitkin Type Flask, Pattern molded with 36 vertical ribs over 36 ribs swirled to the right, New England, 1785 – 1815. Medium olive green with a slight yellowish tone, flattened pear shaped body, sheared mouth – pontil scar, ht. 6 ½"; (some scattered light high point wear, primarily on one side only, pattern weakens in lower third of body). An interesting, unusual form.

Est.: \$500 - \$1,000 • (Min. bid: \$300.00)



Lot 53

Pattern Molded Spirits Flask, Blown in the German half post method with 16 vertical ribs swirled slightly to the right, probably Continental, possibly Alpine region, 1740 – 1780. Clear medium green, slender ovoid or elliptical body, roughly sheared and ground mouth (originally fitted with a pewter cap) – pontil scar, ht. 6 ¾", perfect. Provenance: Ex. Sam Laidacker collection. Exceptional clarity, light, delicate, bubbly, gorgeous color, beautiful!

Est.: \$800 - \$1,200 • (Min. bid: \$500.00)



Lot 54

Pitkin Type Flask, 20 vertical ribs, probably Continental, 1830 – 1860. Medium grass green, flattened spherical body blown in a small 2-piece, 20 rib mold with the second gather of glass forming the German half post, sheared mouth with applied flat band – blowpipe pontil scar, ht. 4", perfect. A very interesting, unusual little flask.

Est.: \$350 - \$700 • (Min. bid: \$200.00)



Lot 55

Pattern Molded Pocket Flask, 23 ribs swirled to the right, Europe, probably Norway, 1800 – 1830. Vivid medium to deep cobalt blue with a streak of white milkglass, tooled flared and inward rolled mouth – glass tipped pontil scar, ht. 4 ¾", near mint; (a light amount of age-appropriate high point wear). A very beautiful, early patterned flask.

Est.: \$200 - \$300 • (Min. bid: \$125.00)



Lot 56

Pattern Molded Flask, 15 diamond pattern, England, 1800 – 1830. Beautiful medium to deep amethyst, flattened ovoid body, sheared mouth – pontil scar, ht. 6 5/8", near mint; (a flake on the base extending from the pontil and some light high point wear on the sides). Gorgeous color, especially in natural daylight. In addition, an interesting study piece to compare early English vs. American patterned glass. Ex. Stan Hooper collection.

Est.: \$225 - \$450 • (Min. bid: \$150.00)



Lot 57

Nailsea Type Flask, England, probably Nailsea Glassworks, North Somerset, 1830 – 1860. Opaque white with profuse red and blue loopings, slender ovoid form with a short expanded neck and sheared mouth – glass tipped pontil scar, ht. 6 1/8", perfect. Similar to V, plate 79. A very eye-catching flask with the scarce red, white and blue color combination. Ex. Stan Hooper collection.

Est.: \$225 - \$450 • (Min. bid: \$150.00)



Lot 58

Freeblown Apothecary Urn, England or America, 1830 – 1860. Clear blue green, almost a sea-green, cylindrical body with a wide outward folded rim, body tapering gracefully toward a short hollow flared pedestal foot, pontil scarred base, ht. 6 3/4", perfect. See Harmer Rooke catalog, Sept., 1990, lot #479; Alberta Rodgers Patterson sale (Garth's), Sept., 1993, lot 406. Beautiful color and form.

Est.: \$150 - \$300 • (Min. bid: \$100.00)



Lot 59

Freeblown Covered Sugar Bowl, America, probably Boston area, possibly Pittsburgh district, 1825 – 1845. Colorless, hemispherical body with tooled galleried rim, applied solid short pedestal foot with three horizontal rings, glass tipped pontil scar, ht. 7 1/2" (incl. cover). Cover is dome form with pontil scarred knob finial, flared at base to rest on the inside rim of matching sugar bowl. Base and cover are perfect with only age appropriate wear.

Est.: \$200 - \$400 • (Min. bid: \$125.00)



Lot 60

Pattern Molded Open Sugar Bowl, twenty diamond pattern, probably England, possibly America, 1780 – 1820. Medium to deep sapphire blue lead glass, hemispherical bowl, applied circular foot flaring at base, pontil scarred base, ht. 2 7/8", rim diameter, 4 1/8", perfect. See AP, page 196, #154. A beautiful, vibrant color.

Est.: \$200 - \$400 • (Min. bid: \$125.00)

Lot 61

Large Freeblown Compote, America, probably a Pittsburgh district glasshouse, Pittsburgh, PA, 1840 – 1860. Colorless leaded glass, hemispherical body, solid applied baluster stem and foot with large glass tipped pontil scar, ht. 6 1/2", width 11", perfect with only minor age-appropriate wear. An exceptionally large and impressive piece of early tableware blown from a high quality metal having a fantastic resonance!



Est.: \$250 - \$350 • (Min. bid: \$150.00)



Lot 62

Early Blown Bowl, America, possibly a Midwest glasshouse, 1820 – 1840. Light sea green non-lead bottle glass, large circular form with wide flaring sides, outward folded, tooled hollow rim, blowpipe pontil scar, ht. 1 3/4", rim dia. 9 1/2", base dia. 4 3/4", about perfect; (a tiny sandgrain on the inside surface of the base has a 1/16" line through it, very difficult to see and on the surface only). Age-appropriate base wear.

Est.: \$300 - \$400 • (Min. bid: \$175.00)



Lot 63

Freeblown Creamer, America or England, 1830 – 1850. Medium to deep cobalt blue, compressed urn shaped body tapering from shoulders to base, short neck flaring to tooled rim with pinched spout, applied solid round handle with crimped and curled lower terminal – pontil scarred base, ht. 4" (to top of handle), perfect with age appropriate base wear. See AP pages 169 & 175. Form and handle indicative of Eastern United States wares, possibly Boston area.

Est.: \$225 - \$450 • (Min. bid: \$125.00)



Lot 64

Freeblown Creamer, America, probably South Jersey, 1840 – 1860. Light green non-lead glass, compressed bulbous body, tall cylindrical neck with outward flared rim and tooled spout, applied solid strap handle – applied solid foot with pontil scar, ht. 4 3/4"; (two cracks in neck near upper handle, 1 1/2" & 1/2", lower handle attachment repaired). See AP, page 173. Great form, beautiful early creamer. A wonderful study piece.

Est.: \$200 - \$400 • (Min. bid: \$125.00)



Lot 65

Pattern Molded Salt Cellar, 24 vertical ribs, Midwest America, 1815 – 1830. Soft grayish sapphire with a lavender tone, ogee bowl with an applied circular foot – pontil scar, ht. 2"; (a 1/8" flake on base and a "V" form indentation on foot that likely formed during manufacture as there are small tooling marks or lines in the glass that conform to the indentation). Ex. Elvin Moody collection. A beautiful early Midwestern salt blown in the Stiegel tradition.

Est.: \$750 - \$1,250 • (Min. bid: \$400.00)



Lot 66

Pattern Molded Salt Cellar, eleven diamond pattern, probably England, possibly America, 1810 – 1830. Medium sapphire blue lead glass, double ogee bowl with short stem patterned from the same gather, applied circular foot – pontil scarred base, ht. 3", rim diameter, 2 3/8", perfect.

Est.: \$175 - \$350 • (Min. bid: \$100.00)



Lot 67

Large Freeblown Hat Whimsey, probably Whitney Glass Works, Glassboro, NJ, 1855 – 1875. Beautiful golden honey color, "bowler" form with upward turned sides, nicely executed outward folded rim – glass tipped "cloverleaf" pontil scar (often considered a signature of

the Whitney Glass Works), ht. 3 1/4", length 6 7/8", width 5 3/4", near perfect with a soft, overall "bloom"; (a 1/4" in-manufacture fissure extends from the edge of the pontil). Rare size, rare pontil.

Est.: \$250 - \$450 • (Min. bid: \$125.00)



Lot 68

Blown Hat Whimsey, America, probably New Jersey or New York State, 1860 – 1880. Golden amber, initially blown with the assistance of a cylindrical utilitarian bottle mold and fashioned into a tall hat with upturned sides, tooled rim –

pontil scarred base, ht. 2 7/8", length 6 1/4", width 4 3/8", perfect. A fine example of the workmanship of the early glass gaffers.

Est.: \$250 - \$450 • (Min. bid: \$125.00)



Lot 69

Lot of (3) Early Whale Oil Lamps, Boston and Sandwich Glass Co, Sandwich, Massachusetts, and New England Glass Co, Cambridge, Massachusetts, 1835 – 1870. All are colorless; patterns include a pressed lyre font with pressed hex base; a pressed ring and oval font with pressed hex base; and a blown molded two-printie block lamp with pressed circular base (NEG Co). All are near mint; (ring and oval example has a bit of roughness at base edge).

Est.: \$200 - \$400 • (Min. bid: \$125.00)



Lot 70

Lot of (4) "Chicago Lamp Candle Co." Christmas Lights, America, 1890 – 1900. Cobalt, colorless, light golden amber and straw yellow, figural lantern form with hobnail pattern, ground mouths – smooth base, ht. 4 1/8"; (golden amber example has some minor flaking around edge of ground lip, otherwise all are perfect). Cobalt and colorless examples are scarce to rare. Believed to have been used at the Chicago World's Fair of 1893.

Est.: \$150 - \$250 • (Min. bid: \$100.00)



Lot 71

Lot of (4) Charles Kazium Blown Glass Paperweights, America, 1940 – 1992. All are colorless, hand blown with floral motifs and colorful backgrounds of cobalt, turquoise, creamy yellow and light pinkish cranberry. (3) are pedestal style and the 4th example is a bottle & stopper type paperweight. Hts; 1 3/4", 1 7/8", 2 1/8", and 3" respectively (including stopper). All are perfect. Charles Kazium, Jr. is regarded as one of the premier 20th century paperweight artists.

Est.: \$150 - \$300 • (Min. bid: \$75.00)



Lot 72

"A. Bogardus Glass Ball Patd Apr 10th 1877" Target Ball, America, 1877 – 1895. Light golden yellow, quilted diamond pattern, rough sheared mouth, 2 5/8" diameter. The embossed "A" variation is simply a mold identifier, but considerably more rare than the normal Bogardus mold. In addition, a beautiful light color. Note; this lot and Lot 73, were recently discovered in the attic of an old home in St. Joseph, Michigan.

Est.: \$500 - \$800 • (Min. bid: \$300.00)



Lot 73

“A. Bogardus Glass Ball Patd Apr 10th 1877” Target Ball, America, 1877 – 1895. Light golden yellow, quilted diamond pattern, rough sheared mouth, 2 5/8” diameter. As mentioned with the previous example, the embossed “A” variation is simply a mold identifier, but considerably more rare than the normal Bogardus mold. A beautiful light color.

Est.: \$500 - \$800 • (Min. bid: \$300.00)



Lot 77

“R & G.A. Wright / Philada” Figural Cologne Bottle, America, 1830 – 1850. Aquamarine, flattened barrel form with an elongated neck, roughly sheared mouth – blowpipe pontil scar, ht. 3 7/8”; (the mouth appears to have been broken off from the blowpipe). Note; we have only seen two other examples of this extremely rare little cologne, both of which had a similarly fashioned rough sheared or ground mouth treatment.

Est.: \$100 - \$150 • (Min. bid: \$60.00)



Lot 74

Early Telegraph Type Insulator, “PATENT” (vertically) – **“P-A-T-E-N-T”** (horizontally), Willington Glass Works, West Willington, CT, 1860 – 1872. Olive green, hollow octagonal cone form, bulbous neck with threaded shaft, sheared mouth, perfect; (being sold as found with dirt and grunge that should easily clean off). Note; recently found in a cellar of a home in the vicinity of the Willington Glass Works. Rare and unusual! See KW, page 158.

Est.: \$1,000 - \$2,000 • (Min. bid: \$600.00)



Lot 78

Blown Three Mold Toilet Water Bottle, probably Boston and Sandwich Glass Co, Sandwich, Massachusetts, 1825 – 1840. Vivid cobalt blue, tapered ovoid form, geometric pattern with ribbing swirled to the left, tooled flanged collar with correct “tam-o-shanter” type stopper, ringed base with pontil scar, ht. 6 5/8” (including stopper), perfect. GI-3, type 2. See MW, plate 105, #8.

Est.: \$250 - \$450 • (Min. bid: \$150.00)



Lot 75

Pattern Molded Seahorse “Smelling” or Scent Bottle, probably America, 1760 – 1820. Deep bluish aquamarine, figural “seahorse” form with two applied ribbons of glass along the sides with detailed quilling and tooled rigaree, ovoid body patterned in a 24 rib mold tapering to a tightly curled tail, perfect! This intricate little scent bottle is fresh to the market from a home in Fort Dodge, Iowa. Similar to MW, plate 102, #8.

Est.: \$175 - \$350 • (Min. bid: \$100.00)



Lot 79

Blown Three Mold Toilet Water Bottle, probably Boston and Sandwich Glass Co, Sandwich, MA, 1825 – 1840. Dense cobalt blue with some violet tones, tapered ovoid form, geometric pattern with vertical ribbing, tooled flanged collar with “tam-o-shanter” type stopper, rayed base with pontil scar, ht. 6 1/2” (including stopper), near mint; (just a touch of exterior high point wear). Similar to GI-7, type 4, but without ribbing between neck rings.

Est.: \$250 - \$450 • (Min. bid: \$150.00)



Lot 76

Lot of (3) Pattern Molded “Smelling” or Scent Bottles, probably America, 1770 – 1820. Deep cobalt, teal green and violet blue, all are slender flattened ovoid form, patterned in molds of 24, 20 and 22 ribs respectively, sheared mouths – pontil scarred bases, ht. 2 1/2”, 3”, and 2 7/8”, all are perfect. MW, plate 103. These types of bottles were quite popular and made at many different glasshouses.

Est.: \$150 - \$300 • (Min. bid: \$75.00)



Lot 80

“Vegeaderma” / (bust of young woman with long flowing hair), Barber Bottle, America, 1885 – 1915. Plum amethyst with white enameled decorative lettering and Mary Gregory style motif, pear form body with bulbous neck, tooled ring mouth – pontil scarred base, ht. 7 5/8”, perfect. RH, page 55. Beautiful color, outstanding condition, a choice example.

Est.: \$175 - \$350 • (Min. bid: \$100.00)



Lot 81

Early Freeblown Chestnut Bottle, South Jersey type, probably Wistarburgh Glass Works, 1739 – 1780. Clear medium green with a slight yellowish tone, plump high shouldered chestnut form, heavy wide round collared mouth – domed base with pontil scar, ht. 8 ½", body width 4 5/8"; (some expected exterior scratches and wear). See DM, page 50, #DM-22. Note; wood grain paddle marks are clearly visible in the lower portion of the bottle.

Est.: \$750 – \$1,500 • (Min. bid: \$400.00)



Lot 82

Early Freeblown Chestnut Bottle, South Jersey type, probably Wistarburgh Glass Works, 1739 – 1780. Medium emerald green, high shouldered chestnut form with elongated neck, heavy outward rolled mouth – domed base with pontil scar, ht. 9 ½", body width 4 1/8"; (expected exterior wear and scratches). A spectacular example of a Mid-Atlantic chestnut bottle, filled with bubbles, and in the best of colors!

Est.: \$1,500 – \$2,500 • (Min. bid: \$800.00)



Lot 83

Early Freeblown Chestnut Bottle, South Jersey type, probably Wistarburgh Glass Works, 1739 – 1780. Clear yellowish green with an olive tone, plump high shouldered chestnut form, heavy outward rolled mouth – domed base with pontil scar, ht. 8 7/8", body width 4 ½"; (some light exterior wear and a large interior bubble with some residue). See DM, page 51, figure 1. A scarce color, this example also has some visible wood grain paddle marks.

Est.: \$1,000 – \$2,000 • (Min. bid: \$600.00)



Lot 84

Lot of (2) Early Freeblown Chestnut Bottles, Mid-Atlantic, probably South Jersey, 1760 – 1800. Aquamarine, high shouldered chestnut form, heavy outward rolled and tooled mouths – pontil scarred bases, hts. 8 7/8" and 10 3/8", body width, 4 ¼" and 5 ¼" respectively, both near mint; (some faint interior haze, primarily in the lower body of the larger example and some expected light exterior wear).

Est.: \$200 – \$400 • (Min. bid: \$125.00)



Lot 85

Freeblown Miniature Decanter and Drinking Vessel, probably America, 1830 – 1860. Both are medium to deep olive yellow. Decanter is barrel form with applied threading or "snake" decoration on neck, tooled flared mouth – pontil scar, ht. 4 ¾"; (approx. 1" of the applied threading is missing, otherwise perfect). Wine glass with drawn V-shape bowl, baluster stem, applied sloping foot with pontil scar, ht. 3 ¼", perfect. Possibly a child's set or used for cordials.

Est.: \$175 – \$350 • (Min. bid: \$100.00)



Lot 86

Blown Three Mold Decanter, probably Boston and Sandwich Glass Works, Sandwich, Massachusetts, 1825 – 1840. Colorless, club form, geometric pattern with sunburst motif, tooled wide flared mouth with correct period, likely original, blown stopper, pontil scar, quart, attic mint. GIII-5. A scarce form for this mold, this piece is also fresh to the market having recently been discovered in a New Hampshire estate.

Est.: \$200 – \$400 • (Min. bid: \$125.00)



Lot 87

Blown Three Mold Decanter, New England, possibly Keene Marlboro Street Glassworks, Keene, NH, 1815 – 1830. Deep olive green, slender barrel form, applied collared mouth with lower bevel – pontil scar, ht. 8 3/8", near mint; (a couple of pinpoint areas of lip edge roughness likely done in manufacture and a small area of exterior bloom or dullness). GII-7. A great early decanter, extremely rare in this dark olive color which is not listed by McKearin.

Est.: \$2,000 – \$4,000 • (Min. bid: \$1,200.00)



Lot 88

Blown Three Mold Decanter, probably Boston and Sandwich Glass Works, Sandwich, Massachusetts, 1825 – 1840. Colorless, barrel form, sunburst and herringbone geometric pattern, tooled wide flared mouth with period, pressed and ground wheel stopper, pontil scar, quart, perfect. GIII-26. This piece was also recently discovered along with Lot #86, in the same New Hampshire estate.

Est.: \$175 – \$350 • (Min. bid: \$100.00)



Lot 89

Blown Three Mold Caster Set, probably Boston and Sandwich Glass Works, or New England Glass Company, 1820 – 1840. A rare, complete set of five (5) pieces including a mustard pot, a shaker, an oil and vinegar and small cruet. All are colorless, barrel form with sheared tooled mouths, period closures – pontil scarred bases and in virtually perfect condition. GI-21. A very rare pattern, exceptional as a group.

Est.: \$150 - \$300 • (Min. bid: \$100.00)



Lot 90

Blown Three Mold Inkwell, Boston and Sandwich Glass Works, Sandwich, Massachusetts, 1825 – 1845. Emerald green, cylindrical with 22 molded vertical ribs, sheared and ground mouth – smooth base, ht. 1 1/2"; (some light interior residue or dirt and some minor exterior dullness). GI-7. C #1173. Gorgeous color and a great rarity for both collectors of ink bottles and Sandwich Glass. See Covill, page 279 text, mold is unlisted in emerald green.

Est.: \$225 - \$450 • (Min. bid: \$150.00)



Lot 91

Blown Three Mold Inkwell, probably Coventry Glass Works, Coventry, Connecticut, 1820 – 1840. Medium to deep olive amber, cylindrical, large disk type mouth – plain base with blowpipe pontil scar, ht. 1 3/4", diameter 2 5/8", near mint; (two tiny shallow open bubbles on top of disk mouth, otherwise perfect). GII-18. C #1188 with plain base.

Est.: \$150 - \$250 • (Min. bid: \$100.00)



Lot 92

Blown Three Mold Inkwell, Keene Marlboro Street Glassworks, Keene, New Hampshire, 1820 – 1840. Medium to deep yellowish olive, cylindrical, large disk type mouth – plain base with blowpipe pontil scar, ht. 1 1/2", diameter 2 1/8", perfect. GIII-29. C #1221. A fine early New England inkwell.

Est.: \$150 - \$250 • (Min. bid: \$100.00)



Lot 93

"S. Fine / Blk. Ink", America, 1840 – 1860. Medium forest green, cylindrical, tooled inward rolled lip – blowpipe pontil scar, ht. 2 7/8"; (lightly cleaned to near mint condition with some faint scratches remaining on one side near the shoulder). C #193. A scarce bottle, a little different color than most!

Est.: \$250 - \$450 • (Min. bid: \$150.00)



Lot 94

"The World / J. Raynald" / motif of continents / "EUROPE / ASIA / N AME CA / S AME CA / AFRICA / OCECA" Ink Bottle, America, 1875 – 1889. Aquamarine, figural globe with flared base, tooled lip – smooth base, ht. 2 1/4", near mint; (tiny bit of exterior wear and a touch of dullness in the neck). A scarce to rare little ink bottle from Philadelphia that is unlisted in the Covill (Ink) book.

Est.: \$300 - \$600 • (Min. bid: \$200.00)



Lot 95

"Clark's / Superior / Record / Ink – Boston", New England, 1830 – 1850. Yellowish olive green, cylindrical, thin outward flared mouth – blowpipe pontil scar, ht. 5 7/8"; (some light high point wear at edge of base, otherwise perfect). C #749. Note; the embossing is a bit weak as is typical of the small handful of known examples. A great rarity both for ink collectors and collectors of early New England glass.

Est.: \$2,000 - \$4,000 • (Min. bid: \$1,200.00)



Lot 96

Master Ink Bottle (with original label), New England, possibly a Stoddard NH glasshouse, 1850 – 1860. Bright yellowish olive amber, cylindrical, 3-piece mold, applied sloping collared mouth with tooled pour spout – iron pontil scar, ht. 7 3/8", perfect. Original label (98% complete), reads: "Superior / Blue-Ink / Manufactured / By / Goodwin & Leonard / Lowell / Mass. / Warranted Permanent". Highly whittled and beautiful!

Est.: \$200 - \$400 • (Min. bid: \$125.00)



Lot 97

Early Dip Mold Snuff Jar, New England, 1790 – 1825. Clear medium bubbly olive, square octagonal form, sheared, tooled mouth – blowpipe pontil scar, ht. 3 3/4", near perfect; (just a touch of exterior wear on sides near the base and a small pinhead sized open bubble near corner of base). See McK, plate 228, #12. A beautiful little snuff jar, scarce form, rare size!

Est.: \$500 - \$800 • (Min. bid: \$300.00)



Lot 101

Small Fancy Pickle Jar, America, 1845 – 1860. Aquamarine, square with chamfered corners, three panels with cross hatch design, bulbous double ogee neck with eight flat panels, sheared and inward rolled mouth – blowpipe pontil scar, ht. 6 3/8"; (a small open bubble approximately 1/4" on the interior of the neck, otherwise about mint). MW, plate 74, #8, Zumwalt, page 454. A scarce size and a scarce mold for a pickle jar.

Est.: \$200 - \$400 • (Min. bid: \$125.00)



Lot 98

Early Dip Mold Snuff Jar, America, 1820 – 1840. Light golden yellow, square with domed shoulders, sheared mouth – pontil scar, ht. 4 3/4"; (some roughness and several small flakes, 1/16" to 1/8", on edge of lip, otherwise mint). Note; the label is likely not original but was made in the early 70's from an original plate found at the Washington Mills factory site and reads in part, "Washington Mills / Established 1801 / All Kinds of Snuffs & Tobaccos / John Dill & Son, / Old Bridge – New Jersey".

Est.: \$400 - \$600 • (Min. bid: \$250.00)



Lot 102

Cathedral Pickle Bottle, America, 1860 – 1870. Clear medium blue green, square with beveled corners, gothic arched panels, three panels with attractive cross hatch design, shoulders with trefoil ornament above small gothic windows, rolled ring lip – domed smooth base, ht. 11 3/8", attic mint. MW, plate 73, #6; Z page 457. Choice example of this scarce mold in a rich, deeper color than most!

Est.: \$500 - \$800 • (Min. bid: \$300.00)



Lot 99

Early Dip Mold Snuff Jar, New England, 1790 – 1820. Beautiful medium olive, square with soft rounded shoulders and a short drawn up neck, sheared, tooled and outward flared mouth – pontil scarred base with an interesting and unusual pattern of large raised dots, ht. 4 1/4"; (virtually attic mint with just a light wisp of interior dullness or residue in the shoulder area). Similar to MW plate 75, #11. A great early snuff jar

Est.: \$400 - \$600 • (Min. bid: \$250.00)



Lot 103

Lot of (2) Early Labeled Peppersauce Bottles, America, 1860 – 1870. Aquamarine, square cathedral and cylindrical lobed forms, applied double collared mouths – smooth bases, ht. 8 3/8" and 8", both bottles are perfect. Original labels read in part, "W.I. / Pepper / Sauce / For / Family / Use" and, "Superior / Pepper / Sauce / W.K. Lewis & Brs. / 93 / Broad Str. / Boston". Zumwalt, pgs. 277 & 455. Rare with original labels.

Est.: \$150 - \$300 • (Min. bid: \$100.00)



Lot 100

"Well's & Miller / N-Y" Pickle Jar, America, 1841 – 1845. Deep blue green, almost a teal color, square with beveled corners, broad conical shoulders, wide sheared mouth with a heavy applied string lip – light blowpipe pontil scar, ht. 6 1/4"; (lightly cleaned to near mint condition). Zumwalt, p. 428. Note; this jar predates the period when Stephen Provost joined the firm in 1844. A very rare and early pickle jar.

Est.: \$400 - \$600 • (Min. bid: \$250.00)



Lot 104

Large, Labeled Cathedral Peppersauce Bottle, America, 1845 – 1860. Aqua, hexagonal with cathedral arched windows, applied double collared mouth – blowpipe pontil scar, ht. 10 3/4"; (faint ring of haze near base, otherwise mint). Original label is 98% complete and reads in part, "Bird / Pepper / Sauce / For Family Use / By / J. McCollick & Co. / 229 / Washington-St / New-York". Rare size, rare with original label!

Est.: \$200 - \$400 • (Min. bid: \$125.00)



Lot 105

"Distilled In 1848 / Old Kentucky / 1849 / Reserve / Bourbon / A.M. Bininger & Co. 338 Broadway N.Y.", America, 1850 – 1860. Yellowish golden amber with a slight olive tone, barrel form, applied round double collared mouth – large iron pontil scar, ht. 9 1/8"; (less than a pinhead sized flake at edge of base, otherwise attic mint!) A great bottle and very rare with the iron pontil scar.

Est. \$400 - \$800 • (Min. bid: \$250.00)



Lot 109

"Distilled In 1848. / Old Kentucky / 1849 / Reserve / Bourbon / A.M. Bininger & Co. 19 Broad St. N.Y.", America, 1850 – 1860. Bright medium golden amber, barrel form, applied round double collared mouth – blowpipe pontil scar, ht. 7 7/8", near mint; (just a touch of faint high point wear, otherwise perfect). A great example of this bottle, bright, shiny, with a gutsy tubular pontil scar.

Est.: \$250 - \$400 • (Min. bid: \$175.00)



Lot 106

"Bininger's / 'Night Cap' / No. 19 / Broad ST. N.Y.", America, 1850 – 1860. Medium golden amber, oval flask form, applied round double collared mouth – blowpipe pontil scar, ht. 7 3/4"; (just a faint touch of light exterior wear on the reverse, otherwise perfect). A scarce mold, wonderful condition, rare with the pontil scarred base.

Est. \$450 - \$900 • (Min. bid: \$300.00)



Lot 110

"Mist of the Morning / S. M. / Barnett & Comp'ny" Figural Spirits Bottle, America, 1860 – 1875. Medium to deep amber, barrel form, applied sloping collared mouth with ring – smooth base, ht. 10", near mint; (a small spot of interior residue that should easily wash out, and a touch of light exterior wear).

Est.: \$400 - \$600 • (Min. bid: \$225.00)



Lot 107

"Bininger's / Regulator" / (motif of clockface) – "19 Broad St. / New York.", America, 1855 – 1865. Light golden or honey color, figural clock face, applied round double collared mouth – pontil scar, ht. 5 3/4"; (four small flakes, approx. 1/16" each on inside edge of mouth and some scattered high point wear, primarily on the reverse). GXIII-87. Although not perfect, the condition issues are fairly minor and the color is lighter than most.

Est.: \$400 - \$600 • (Min. bid: \$250.00)



Lot 111

"G.B. Lowerre / Wines & Liquors / 84 Front ST. N.Y." Spir-its Bottle, America, 1880 – 1890. Light golden honey amber, cylindrical, tooled sloping collared mouth with ring – smooth base, ht. 11", attic mint! A very beautiful Eastern "whiskey" cylinder, and probably quite a rare one as well.

Est.: \$75 - \$150 • (Min. bid: \$50.00)



Lot 108

"A.M. Bininger & Co. / No, 17 Broad St – Old London Dock – Gin", America, 1860 – 1870. Yellow olive, square with beveled corners, applied sloping collared mouth – smooth base, ht. 9 5/8", near mint; (tiny 1/16" shallow flat flake on inside, top edge of mouth). Great color, crude glass with waviness and whittling, very rare mold with the 17 Broad St. address!

Est.: \$400 - \$600 • (Min. bid: \$250.00)



Lot 112

"Casper's Whiskey / Made By Honest / North / Carolina People", America, 1885-1900. Cobalt blue, cylindrical with fancy fluted shoulders and neck, tooled mouth – smooth base, ht. 12 inches; (a minuscule pinhead sized bit of roughness on one of the flutes on the reverse side of the neck, otherwise, sparkling attic mint). A beautiful big splash of color and a classic Americana whiskey bottle.

Est.: \$400 - \$600 • (Min. bid: \$250.00)

**Lot 113**

Applied Handle Spirits Jug, America, 1840 – 1860. Deep puce with some strawberry tones in bright daylight, ovoid body likely blown in a dip or cup mold for lower body form, applied solid ear shaped handle with a perfectly curled, pinched lower attachment, applied sloping collared mouth – pontil scarred base, ht. 8 1/4"; (some expected light exterior wear, otherwise perfect). See MW, plate 48, #2. Nice form and color, unusual larger size.

Est.: \$300 - \$500 • (Min. bid: \$175.00)

**Lot 114**

Figural Pocket Flask, America, 1901 – 1902. Milkglass, in the form of an octopus with tentacles encircling a 1901 silver dollar, tooled, threaded and ground mouth with closure – smooth base, ht. 4 1/2", perfect. A very historical whiskey nip. In 1901, a famous novel by Frank Norris, titled "The Octopus", chronicled the struggle between wheat growers and the railroad. The octopus represents the railroad having a strangle hold on the wheat growers.

Est.: \$250 - \$500 • (Min. bid: \$150.00)

**Lot 115**

"Old / Homestead / Wild Cherry / Bitters – Patent", America, 1865 – 1875. Medium amber, square cabin form, applied sloping collared mouth – smooth base, ht. 9 1/2", near mint; (a pinhead bit of roughness on the inside edge of the mouth that may have occurred during manufacture). R/H #O37.

Est.: \$250 - \$450 • (Min. bid: \$150.00)

**Lot 116**

"Old / Homestead / Wild Cherry / Bitters – Patent", America, 1865 – 1875. Light honey approaching a golden yellow coloration, square cabin form, applied sloping collared mouth – smooth base, ht. 9 5/8", near mint; (a tiny open bubble or flake, 1/8" or less, located at the base of one of the roof shingles has been lightly buffed). R/H #O37. Great example, the noted tiny flaw is very difficult to spot.

Est.: \$300 - \$600 • (Min. bid: \$200.00)

**Lot 117**

"Brown's / Celebrated / Indian Herb Bitters – Patented / Feb 11. / 1868", America, 1868 – 1875.

Brilliant golden amber shading to yellow through the arms, figural Indian maiden, sheared and ground lip – smooth base, ht. 12 1/8", sparkling mint. R/H #B226. One of the great classics in figural bitters, this is a particularly crisp, bright, clean example.

Est.: \$500 - \$800 • (Min. bid: \$300.00)

**Lot 118**

"The Great Tonic / Caldwell's / Herb Bitters", America, 1855 – 1865.

Medium amber, triangular pyramid form with indented panels, applied sloping collared mouth – iron pontil scar, ht. 12 1/2", near perfect; (a tiny pinhead sized flake on an edge near the base and some light interior residue that should easily wash out). R/H #C8. Fresh to the market, a little warm soapy cleaning on the interior and this one should sparkle!

Est.: \$250 - \$350 • (Min. bid: \$150.00)

**Lot 119**

"Holtzermanns / Patent / Stomach / Bitters", America, 1880 – 1895. Medium to deep golden amber, rectangular cabin form, tooled sloping collared mouth – smooth base, ht. 9 5/8", perfect. R/H #H154. A barn find from the Defiance, Ohio area, this example has one of the strongest mold impressions that you could hope to find.

Est.: \$225 - \$350 • (Min. bid: \$125.00)

**Lot 120**

"Genuine Bull / Wild Cherry / Bitters", America, 1880 – 1890.

Colorless, rectangular with indented panels, wide neck with tooled square collared mouth – smooth base, ht. 8 1/2", near attic mint; (just a couple of light little surface scratches on reverse panel, otherwise pristine perfect). R/H #G15. Listed as rare, this example is also particularly clean, sparking and bright, and one that has not been dug and cleaned.

Est.: \$125 - \$225 • (Min. bid: \$75.00)

**Lot 121**

“National / Bitters” – “Patent / 1867” (on base), America, 1867 – 1875. Bright golden yellow, figural ear of corn, applied short tapered collar with ring – smooth base, ht. 12 3/8”, pristine perfect with remnants of the original neck foil intact. R/H #N8. This piece is fresh to the market having recently been found in a house sale south of the Ohio River near Gallipolis, Ohio.

Est.: \$800 - \$1,600 • (Min. bid: \$500.00)

**Lot 125**

“Seaworth / Bitters / Co. / Cape May / New Jersey / U.S.A.”, probably blown at a South Jersey glasshouse, 1880 – 1900. Golden amber, miniature figural lighthouse in the form of the famous Cape May, New Jersey lighthouse, tooled sloping collared mouth – smooth base, ht. 6 1/4”, pristine perfect. R/H #S82. Extremely rare. A classic figural bitters and one of New Jersey’s most famous bottles. Ex. Bryan Grapentine collection.

Est.: \$5,000 - \$10,000 • (Min. bid: \$3,000.00)

**Lot 122**

“National / Bitters” – “Patent / 1867” (on base), with 98% original label, America, 1867 – 1875. Medium golden amber, figural ear of corn, applied short tapered collar with ring – smooth base, ht. 12 1/4”, perfect. R/H #N8. Extremely rare with original bright maroon label with gold lettering, reading in part, “THE / National Bitters / Cures Fever, Ague, Liver / Complaints ... / SCHLICHTER & Zug / PROPRIETORS / 9 North 7th St / PHILAD’A.” Exceptional!

Est.: \$600 - \$1,200 • (Min. bid: \$400.00)

**Lot 126**

“Royal / Flush / Bitters – Royal / Flush / Bitters” (with 99% original label), America, 1880 – 1900. Medium amber, tall square pyramid form, tooled sloping collar – smooth base, ht. 12 1/2”, perfect. Label reads in part: “Royal / Flush / Kidney & Liver” (royal flush in hearts) / “Bitters / J. Quint-Company / New Haven, Conn.” (some spotting on label which is slightly darkened from age). R/H #R110. Extremely rare, reportedly only one of two known examples!

Est.: \$2,500 - \$3,500 • (Min. bid: \$1,500.00)

**Lot 123**

“National / Bitters” – “Patent / 1867” (on base), America, 1867 – 1875. Gorgeous straw yellow with a hint of topaz, figural ear of corn, applied short tapered collar with ring – smooth base, ht. 12 3/8”, perfect. R/H #N8. A beautiful color, lighter than most, and in excellent condition. A fantastic example in all regards of this popular figural bitters.

Est.: \$1,800 - \$3,600 • (Min. bid: \$1,000.00)

**Lot 127**

“Baker’s / Orange Grove – Bitters” (with 95% front and back labels), America, 1870 – 1880. Ginger-ale topaz with some apricot tones, square with roped corners, sloping collared mouth – smooth base, ht. 9 3/8”; (a 3” vertical hairline crack in one of the roped corners). R/H #B9. Despite this thin crack, it is a stunning piece! Recently found in the wall of a house on Cape Cod with original labels, cork, foil, and revenue stamp.

Est.: \$800 - \$1,200 • (Min. bid: \$500.00)

**Lot 124**

Original Box for “Warner’s / Safe / Tonic / Bitters”, America, 1880 – 1883. Graphic cardboard box with picture of a safe, generally good condition with missing top flaps. Note; the “Safe Tonic Bitters” in the pint size was produced for only a few years. Also included is an inner paper wrapper and additional advertising literature. A very rare, possibly unique piece and a great accompaniment to the R/H #W36 bitters bottle!

Est.: \$50 - \$100 • (Min. bid: \$30.00)

**Lot 128**

“Young America – Stomach / Bitters – P. Rindskopf & Bro”, America, 1865 – 1875. Medium golden amber, large square form with beveled corners, crudely applied sloping collared mouth – smooth base, ht. 9 1/4”, base dia. (side to side), 2 7/8”, near perfect; (tiny bit of surface abrasion and a shallow, pinhead sized flake at mold seam on shoulder, otherwise sparkling mint). R/H # Y7. A very rare mold, fine condition, nice color!

Est.: \$500 - \$800 • (Min. bid: \$300.00)

Natural



Pictured on this page: (from left to right) Lot 22, Lot 21, Lot 35, Lot 146 , Lot 140.

Beauties

One of the great pleasures of old glass is viewing it backlit by natural light in or near a window. Whether it's just a few crude, whittled aquamarine patent medicine bottles, a run of autumn-toned Drake's bitters, a grouping of spring-toned New England chestnuts, an impressive collection of emerald and sapphire soda water bottles, or a little of everything, they all tend to show their "personalities" best when illuminated by natural light.

Those personalities change of course with the weather, the time of day, and even the time of year. Here in the north, nothing brightens a dull winter's day like a window full of colorful bottles with the luminous white snow as a backdrop.

The undisputed "King" of early bottles, Charles B. Gardener, built and entire sun room on his house in Connecticut to display and enjoy his monumental collection in natural daylight.

So whether it's three bottles or 300, be sure to make a place to enjoy some of them in a sunny, or cloudy, or snowy window!



Pictured on this page: (from left to right) Lot 123, Lot 117, Lot 50, Lot 174, Lot 173, Lot 23, Lot 78.



Lot 129

John W. Steele's Niagara Star Bitters Framed Advertising Sign, Claycosack & Co. Buffalo N.Y. Lithographers, 1864 – 1870. Outstanding original advertising print for Niagara Star Bitters with large gold printing and wonderful graphics of Niagara Falls. Actual print measures 9" x 11". Pictured in the Ring book, p.441, with only (4) examples known to exist. A very early advertising piece, rare and with great graphics, outstanding condition.

Est.: \$600 - \$1,200 • (Min. bid: \$400.00)



Lot 133

"John / Moffat – Phoenix / Bitters – Price \$1.00 – New York", America, 1840 – 1860. Aquamarine, rectangular with beveled corners, applied ring type collar - blowpipe pontil scar, ht. 5 3/8", pristine perfect. R/H #M112. A bright, crisp, sparkling example.

Est.: \$100 - \$150 • (Min. bid: \$50.00)



Lot 130

"John / Moffat – Phoenix / Bitters – Price \$1.00 – New York", America, 1840 – 1860. Colorless with a smoky amethystine tint, rectangular with beveled corners, applied ring type collar – blowpipe pontil scar, ht. 5 1/4", attic mint. R/H #M112. An extremely rare bottle, one of only two examples known in this mold and color! Strong embossing, great clarity, an outstanding bottle in all regards, back on the market after 33 years in a prominent collection.

Est.: \$750 - \$1,500 • (Min. bid: \$400.00)



Lot 134

"John / Moffat – Phoenix / Bitters – Price \$1.00 – New York", America, 1840 – 1860. Aquamarine, rectangular with beveled corners, applied ring type collar - blowpipe pontil scar, ht. 5 3/8", mint; (some light spotty residue on the interior that should easily wash out). R/H #M112. Note the uncharacteristically narrow neck on this example.

Est.: \$100 - \$150 • (Min. bid: \$50.00)



Lot 131

"John / Moffat – Phoenix / Bitters – Price \$2.00 – New York", America, 1840 – 1860. Aquamarine, rectangular with beveled corners, applied ring type collar - blowpipe pontil scar, ht. 7 1/8"; (professionally cleaned to near mint condition). R/H #M108. Exceeding rare bottle as only one other example of the \$2.00 size in aqua is believed to exist. Ex. Harmer Rooke Auction #48, 07/1992; Judge E.S. MacKenzie collection, NCH Auction #40.

Est.: \$1,000 - \$2,000 • (Min. bid: \$600.00)



Lot 135

"John / Moffat – Phoenix / Bitters – Price \$1.00 – New York", America, 1860 – 1870. Aquamarine, rectangular with beveled corners, applied ring type collar – early smooth base, ht. 5 3/8", perfect. R/H #M112. Another bright, crisp example, very strong embossing.

Est.: \$40 - \$60 • (Min. bid: \$20.00)



Lot 132

"John / Moffat – Phoenix / Bitters – Price \$1.00 – New York", New England, 1840 – 1860. Yellowish olive green, rectangular with wide beveled corners, applied sloping colored mouth – pontil scar, ht. 5 1/2", near mint; (a bubble near the base on one of the beveled corners has a tiny 1/16" hole in the cover glass). R/H #M112. A classic, early colored pontiled bitters.

Est.: \$700 - \$1,200 • (Min. bid: \$400.00)



Lot 136

"John Moffat & CoS / Phoenix Bitters – Price \$1.00 – New York", America, 1865 – 1875. Aquamarine, rectangular with beveled corners, applied ring type collar – smooth base, ht. 6 1/4"; (professionally cleaned to near mint condition). R/H #M114. In addition to being a rare mold, this example is also highly whittled.

Est.: \$100 - \$150 • (Min. bid: \$50.00)



Lot 137

Lot of (3) "Morning, Noon and Night" colorful Almanacs for Drake's Plantation Bitters, 1870 – 1872. The themes of morning, noon and night are depicted in three layers on colorful covers of each almanac. Scenes include Indians chasing buffalo, a saloon, two farmers resting at 'noon' under a tree, soldiers around a campfire and other interesting graphics. All are generally in excellent condition. Note; any ephemera for Drake's Bitters is rare!

Est.: \$150 - \$250 • (Min. bid: \$100.00)



Lot 138

"S.T. / Drakes / 1860 / Plantation / X / Bitters – Patented / 1862" (with approximately 75% front and back labels), America, 1862 – 1875. Medium golden amber, square log cabin form with 4 logs above the label panel, applied sloping collared mouth – smooth base, ht. 10", attic mint. R/H #D110. In addition to having the majority of it's original labels intact, this example also boasts an exceeding strong mold impression.

Est.: \$125 - \$250 • (Min. bid: \$75.00)



Lot 139

"S.T. / Drakes / 1860 / Plantation / X / Bitters – Patented / 1862", America, 1862 – 1875. Light honey color with a strong topaz tone, square log cabin form with 6 logs above the label panel, applied sloping collared mouth – smooth base, ht. 10", attic mint! R/H #D108. A beautiful color, bright and with nice even clarity throughout.

Est.: \$200 - \$400 • (Min. bid: \$150.00)



Lot 140

"S.T. / Drakes / 1860 / Plantation / X / Bitters – Patented / 1862", America, 1862 – 1875. Brilliant apricot with puce tones, square log cabin form with 6 logs above the label panel, applied sloping collared mouth – smooth base, ht. 9 3/4", perfect. R/H #D105. Another attic mint example, lighter than many, with excellent clarity and brightness.

Est.: \$250 - \$450 • (Min. bid: \$150.00)



Lot 141

Drake's Plantation Bitters Wooden Shipping Box, 1870 – 1875. Original rectangular box with large black stenciled lettering as follows, "Drake's / Plantation / Bitters / Depot / New York" (on each box end), and, "S T 1860 X" (on both sides), ht. 11", length 16", width 11 1/2"; (the wood has

darkened somewhat with age, but virtually all of the stenciling is clearly readable). An exceptional piece, we are not aware of another example.

Est.: \$150 - \$300 • (Min. bid: \$100.00)



Lot 142

"S.T. / Drakes / 1860 / Plantation / X / Bitters – Patented / 1862", America, 1862 – 1875. Medium strawberry puce, square log cabin form with 6 logs above the label panel, applied sloping collared mouth (still retains the original neck foil) – smooth base, ht. 9 7/8"; (a little spotty residue on the interior that would likely wash out, otherwise perfect). R/H #D105. A little more salmon or strawberry color in this one!

Est.: \$250 - \$450 • (Min. bid: \$150.00)



Lot 143

"S.T. / Drakes / 1860 / Plantation / X / Bitters – Patented / 1862", America, 1862 – 1875. Medium strawberry puce with a hint of apricot, square log cabin form with 6 logs above the label panel, applied sloping collared mouth – smooth base, ht. 10", mint. R/H #D105 with smaller letters and "Bitters" slightly off center to the left. If you're collecting molds, this one is just a little different and a nice bright clean example to boot!

Est.: \$250 - \$450 • (Min. bid: \$150.00)



Lot 144

"Hall's / Bitters – E.E. Hall New Haven – Established 1842", America, 1865 – 1875. Bright medium amber, barrel form, applied square collared mouth – smooth base, ht. 9 1/8", near attic mint; (just the slightest touch of light exterior wear, otherwise pristine). R/H #H10. A good clean example.

Est.: \$250 - \$350 • (Min. bid: \$150.00)

**Lot 145**

"Old Sachem / Bitters / And / Wigwam Tonic", America, 1858 – 1860. Bright golden amber, barrel form, applied narrow square collared mouth – very large blowpipe pontil scar, ht. 9 3/8", mint; (there is a 1/4" round bubble on the interior of the reverse that was never fully formed but is not considered damage and is noted only for accuracy). R/H #O46. Extremely rare with the open pontil, exceptional condition.

Est.: \$2,000 - \$4,000 • (Min. bid: \$1,000.00)

**Lot 149**

"Indian Vegetable / And / Sarsaparilla – Bitters – Geo. C. Goodwin - Boston", America, 1845 – 1855. Aquamarine, rectangular with beveled corners, applied sloping collared mouth – blowpipe pontil scar, ht. 8 1/8", perfect. R/H #125. A bright, crisp, highly whittled, sparking mint example.

Est.: \$500 - \$800 • (Min. bid: \$300.00)

**Lot 146**

"Greeley's Bourbon / Bitters", America, 1860 – 1875. Light to medium copper with a peach tone, barrel form, applied square collared mouth – smooth base, ht. 9 1/8", sparkling attic mint. R/H #G101. Lighter than most, a great example in color, clarity and condition!

Est.: \$500 - \$800 • (Min. bid: \$300.00)

**Lot 150**

"Dr Skinner's – Sherry Wine / Bitters – So. Reading, Mass", America, 1850 – 1860. Aquamarine, rectangular with wide beveled corners, applied sloping collared mouth – blowpipe pontil scar, ht. 8 5/8", near attic mint; (a little light scattered soot or residue on the exterior that would likely wipe clean with a little warm soapy water). R/H #S116.

Est.: \$150 - \$250 • (Min. bid: \$100.00)

**Lot 147**

"Greeley's – Bourbon Whiskey / Bitters – Greeley's", America, 1860 – 1870. Deep plum amethyst, barrel form, applied square collared mouth – smooth base, ht. 9 3/8"; (a shallow 1/8" flake from the side of the mouth). R/H #G102. Easily passes light in normal case lighting or daylight. Gorgeous, rare color!

Est.: \$1,000 - \$2,000 • (Min. bid: \$600.00)

**Lot 151**

"Dr Owen's / European – Life Bitters / Detroit", America, 1844 – 1855. Aquamarine, rectangular with wide beveled corners, applied sloping collared mouth – blowpipe pontil scar, ht. 7"; (a couple of small areas of light patchy dullness, some very minor interior haze, both of which would easily respond to a light professional cleaning, if desired). R/H #O98. A great example of this scarce bitters with nice waviness and character to the glass.

Est.: \$250 - \$450 • (Min. bid: \$150.00)

**Lot 148**

"Bourbon Whiskey / Bitters", America, 1860 – 1875. Dense claret red, barrel form, applied square collared mouth – smooth base, ht. 9 1/4", near mint; (some faint scattered high point wear and a small thin 1/8" open bubble on reverse). R/H #B171. A intense color in bright sunlight.

Est.: \$300 - \$600 • (Min. bid: \$200.00)

**Lot 152**

"Dr Shepards / Compound / Wahoo Bitters / Grand Rapids Mich", America, 1865 – 1882. Aquamarine, oval, applied sloping collared mouth – smooth base, ht. 7 3/8", attic mint. R/H #S99. C.N. (Charles) Shepard was a pharmacist in Grand Rapids, Michigan between 1865 and 1882. He packaged many of his own preparations including this scarce "Wahoo" bitters. Strong embossing, exceptional condition.

Est.: \$200 - \$400 • (Min. bid: \$125.00)



Lot 153

"Dr. Lions / Stomach Bitters / Louis Maxa / Cleveland, O."
Dose Glass, America, 1880 – 1900. Colorless etched dose glass with inscribed advertising for Dr. Lion's Bitters, ht. 1 7/8", perfect. Similar to R/H #L95.5. An extremely rare dose glass and a great "go-with" for the bitters collector.

Est.: \$150 - \$250 • (Min. bid: \$75.00)



Lot 157

Sample Size "Dr. Townsend's – Sarsaparilla – Albany / N.Y.", American, 1885 – 1895. Pale apple green, square with beveled corners, tooled sloping collared mouth – smooth base, ht. 4 1/2", near mint; (a tiny pinhead flake at base edge, hard to see). DeG #207. Listed as Extremely Rare, this example is also in great condition. Note; the letters have been painted black to highlight the embossing.

Est.: \$150 - \$300 • (Min. bid: \$100.00)



Lot 154

"Dr. Langley's / Root & Herb / Bitters / 99 Union St. / Boston", America, 1865 – 1875. Bright blue green, almost a deep sea green color, cylindrical, applied large square collared mouth – smooth base, ht. 8 1/2", near mint; (pinhead flake and a tiny bit of roughness on edge of lip). R/H #L21. A colorful, beautiful example that stands out, whittled, clean and with great provenance. Ex. Charles B. Gardner collection.

Est.: \$150 - \$250 • (Min. bid: \$100.00)



Lot 158

"Dr. Townsend's – Sarsaparilla – Albany / N.Y.", New England, 1845 – 1860. Olive green shading from a denser color near the base to a bright medium olive in the shoulder area, square, applied sloping collared mouth – sand chip type pontil scar, ht. 9 1/2", perfect. DeG #206. This is the offset example with "N.Y." beginning below the 2nd "A" in "Albany". A great example, very clean, heavily embossed and with nice character to the glass.

Est.: \$250 - \$450 • (Min. bid: \$150.00)



Lot 155

"Hi – Hi / Bitters – Hi – Hi Bitters Co / Rock Island ILL.", America, 1890 – 1900. Amber, triangular, tooled sloping collared mouth – smooth base, ht. 9 1/2", about mint; (a little bit of matte dullness near base on one panel, otherwise mint). R/H #H118. Note; weak embossing as is the case on virtually all examples. In addition, most examples are found in shades of green and yellow green. A very scarce bottle in amber.

Est.: \$125 - \$225 • (Min. bid: \$75.00)



Lot 159

"Old Dr / J Townsends – Sarsaparilla – New York.", America, 1845 – 1860. Bright bluish green, almost a deep sea green, square with beveled corners, crudely applied sloping collared mouth – blowpipe pontil scar, ht. 9 1/2", near mint; (just a touch of scattered faint interior haze and light exterior high point wear). DeG #206. A crude example with great character, heavily whittled!

Est.: \$300 - \$500 • (Min. bid: \$200.00)



Lot 156

"L.Q.C. Wishart's – Pine Tree / Tar Cordial. / Phila – Patent" / (motif of pine tree) / "1859", America, 1860 – 1870. Emerald with a slight yellowish tone, square with beveled corners, applied sloping collared mouth – smooth base, ht. 9 1/4"; (minor roughness with a 1/8" shallow flake on edge of mouth, otherwise attic mint!). A sparkling example with a label that reads in part: "DR. H. CHASE'S / CATARRH CURE".

Est.: \$200 - \$400 • (Min. bid: \$125.00)



Lot 160

"Dr. Townsend's – Sarsaparilla – Albany / N.Y.", New England, 1845 – 1860. Yellowish olive green, square, applied sloping collared mouth – sand chip pontil scar, ht. 9 1/2", near mint; (some light high point wear and the embossing is a little weak as is typical of this mold variant). DeG #206. A crudely applied mouth and plenty of character with this example.

Est.: \$225 - \$425 • (Min. bid: \$150.00)

**Lot 161**

"Perrine's" / (motif of apple) / "Ginger – Perrine's – Apple – Ginger – Philada" America, 1880 – 1890. Light golden amber with some yellow in the shoulder area, square cabin form with roped corners and thatched roof panels, tooled sloping collared mouth – smooth base, ht. 9 7/8", mint. A very popular mold having both figural and pictorial elements with the large embossed apple.

Est.: \$275 - \$400 • (Min. bid: \$175.00)

**Lot 165**

"Dr. Hartshorns / Medicine" (with full original label), a Stoddard glasshouse, Stoddard, New Hampshire, 1860 – 1870. Olive amber with profuse deep amber (blackish) striations through the neck, crudely applied narrow square collared mouth – smooth base, ht. 6 1/8"; (a hard to see, thin 3/4" fissure in the neck that likely occurred during the cooling process). A rare, classic, Stoddard medicine bottle, even more rare with the original label.

Est.: \$800 - \$1,600 • (Min. bid: \$500.00)

**Lot 162**

"Perrine's" / (motif of apple) / "Ginger" – "Depot / No 37, Nth Front St. / Philada - Perrine's – Apple – Ginger – Philada", America, 1875 – 1885. Brilliant golden yellow, square cabin form with roped corners and thatched roof panels, applied sloping collared mouth – smooth base, ht. 9 7/8", mint. Note; in tracking more than 20 years of auctions, this is perhaps the lightest example to be offered for sale!

Est.: \$400 - \$600 • (Min. bid: \$250.00)

**Lot 166**

"Comstock & Co's – Indian – Vegetable – Elixir" (with full label, partial contents), America, 1838 – 1845. Pale aquamarine, square, tooled thin flared mouth – blowpipe pontil scar, ht. 4 1/4", attic mint! An extremely rare pontiled medicine from a small group of bottles found in an attic in Newton Falls, Ohio. Being sold "as found", the accumulated attic soot and dust can easily be wiped away to reveal the sparking glass surface.

Est.: \$600 - \$900 • (Min. bid: \$400.00)

**Lot 163**

"Perrine's" / (motif of apple) / "Ginger – Perrine's – Apple – Ginger – Philada", 1880 – 1890. Bright medium golden amber, square cabin form with roped corners and thatched roof panels, tooled sloping collared mouth – smooth base, ht. 9 7/8", mint. Note; all three examples of the Perrine's in this sale have been together in the same collection for a great many years and are now back on market.

Est.: \$275 - \$450 • (Min. bid: \$175.00)

**Lot 167**

"Dr. Rose's – Philada" Medicine Bottle, America, 1840 – 1855. Light to medium teal, rectangular with beveled corners, tooled, inward rolled mouth – blowpipe pontil scar, ht. 5 1/8"; (lightly cleaned to near perfect condition with a small open bubble at base edge). Dr. Rose was a prominent Philadelphia merchant that marketed a number of different products. An early, scarce mold in a very attractive color. Greer #1481.

Est.: \$300 - \$600 • (Min. bid: \$175.00)

**Lot 164**

"Swaim's – Panacea – Philada", America, 1840 – 1850. Medium olive with a yellowish tone in the shoulder shading to almost black near the base, cylindrical with 12 indented panels (thought to be the earlier mold), applied sloping double collared mouth – faint disc or sand type pontil scar, ht. 7 3/8", perfect. A gutsy example, rich color, wonderful condition, excellent!

Est.: \$300 - \$500 • (Min. bid: \$200.00)

**Lot 168**

"W. W. Comee's / Sanative Balm" Medicine Bottle, America, 1840 – 1860. Aquamarine, oval, applied sloping collared mouth – blowpipe pontil scar, ht. 6 7/8", attic mint. An unlisted, new discovery in pontiled medicines. We spoke with several knowledgeable collectors in the field and none are familiar with this bottle. Possibly unique. Nice character with some waviness and whittling to the glass.

Est.: \$300 - \$600 • (Min. bid: \$200.00)



Lot 169

"Shaker's / Sarsaparilla. – Prepared By The – United Society / At / Union Village, O. – P. Boyd. Agent.", America, 1860 – 1870. Bluish aqua, rectangular with chamfered corners, crudely applied square collared mouth – early smooth base, ht. 5"; (professionally cleaned to near perfect condition). Extremely rare little bottle with both great character and depth of color, desirable for both Shaker collectors and Sarsaparilla collectors alike.

Est.: \$500 - \$1,000 • (Min. bid: \$300.00)



Lot 170

"Dr. Tebbetts' – Physiological / Hair – Regenerator", America, 1867 – 1875. Medium pinkish plum amethyst, rectangular with indented panels, applied round collared mouth with lower bevel – smooth base, ht. 7 1/2", about perfect; (the bottle may have been lightly cleaned, but presents itself as very near mint). DF p.152. A great example with a crude, whittled texture to the glass in an eye appealing, gorgeous color!

Est.: \$400 - \$600 • (Min. bid: \$250.00)



Lot 171

"Hetherington / 42nd Street, N.Y." Poison Bottle, Carr-Lowrey Glass Co., Baltimore, Maryland, 1889 – 1900. Emerald green, irregular hex form, tooled square collared mouth – ("C.L.G. Co. / Patent Applied For") on smooth base, ht. 5 1/2", near mint; (tiny pinhead sized flake on the corner of a back panel and a bit of roughness on two raised ribs). KI-2. A scarce mold, beautiful color.

Est.: \$200 - \$400 • (Min. bid: \$125.00)



Lot 172

"F. & E. Bailey & Co. / Lowell, Mass." Poison Bottle, Carr-Lowrey Glass Co., Baltimore, Maryland, 1889 – 1900. Cobalt, irregular hex form, tooled square collared mouth – ("C.L.G. Co. / Patent Applied For") on smooth base, ht. 6 1/8"; (displays near mint, however there is a 1/4" iridescent bruise on the underside of collar on the reverse side and a few spots of scattered faint dullness). KI-2.

Est.: \$175 - \$350 • (Min. bid: \$100.00)



Lot 173

"Washington Spring Co / (bust of Washington) / Ballston Spa / N.Y. – C", America, 1868 – 1875. Emerald green, cylindrical, applied sloping collared mouth with lower bevel – smooth base, pint, attic mint. T #S-61. A stronger than average impression for this bottle with the bust of Washington boldly pronounced. A very desirable Saratoga Mineral Water bottle with good color, a strong impression, and wonderful condition.

Est. \$1,000 - \$2,000 • (Min. bid: \$600.00)



Lot 174

"Highrock Congress Spring / (motif of rock) / C&W / Saratoga N.Y.", America, 1860 – 1872. Bright medium teal blue, cylindrical, applied sloping collared mouth with lower bevel – smooth base, quart, perfect. T #S-37:A. A brilliant, beautiful, extremely rare color in the quart size. An outstanding example in all regards, color, condition and eye appeal. Provenance: Ex. Gerry Strubel collection.

Est.: \$1,500 - \$2,000 • (Min. bid: \$750.00)



Lot 175

"Pavilion & United States Spring Co / Saratoga / N.Y. – Pavilion Water / Aperient", America, 1872 – 1885. Emerald green, cylindrical, applied sloping collared mouth with lower bevel – smooth base, quart, perfect. T #S-45:A. Extremely rare in the quart size with only a couple examples having come to auction in the last ten years. A highly whittled, gorgeous example!

Est.: \$1,000 - \$2,000 • (Min. bid: \$600.00)



Lot 176

"Congress & Empire Spring Co. / Columbian / Water / Saratoga, N.Y.", America, 1865 – 1885. Clear medium olive, almost forest green, cylindrical, applied sloping double collared mouth – smooth base, pint, about mint; (a couple of small open surface bubbles and a touch of high point wear). T #S-15:B. Beautiful color, rare mold, and literally filled with tiny seed bubbles. These don't show up often, especially in this condition.

Est.: \$600 - \$900 • (Min. bid: \$350.00)

**Lot 177**

“Glacier Spouting Spring / Saratoga / Springs. N.Y.” – (motif of derrick with spouting spring), America, 1871. Bright aquamarine with an ice blue hue, cylindrical, applied sloping collared mouth with lower bevel – smooth base, pint, mint. T #S-32. A choice example of this rare pictorial mineral water bottle being bright, clean and nicely whittled with a good strong impression. This spring was only in business for less than one year.

Est.: \$2,500 - \$3,500 • (Min. bid: \$1,500.00)

**Lot 181**

“Haddock / & Sons” Soda Water Bottle, New England, possibly Coventry Glass Works, Coventry, Connecticut, 1820 – 1835. Bright yellow olive, squatty “egg” form, crudely applied ring type collared mouth – pontil scar, ht. 6 7/8”, near mint; (minor 1/8” open bubble near base). Extremely rare, believed to be one of the earliest of American soda water bottles. A great example, beautiful color, nicely whittled and with several elongated bubbles stretched through the neck.

Est.: \$2,000 - \$4,000 • (Min. bid: \$1,200.00)

**Lot 178**

“Congress & Empire Spring Co / C / Saratoga. N.Y.”, America, 1865 – 1875. Bright yellow olive, cylindrical, applied sloping collared mouth with lower bevel – smooth base, quart; (just a tiny pinhead sized flake and a couple of even smaller pick marks at side near the base, otherwise perfect). T #C-14:A, variant 3. Very rare in this yellow-olive coloration, a stunning color, wonderful condition.

Est.: \$800 - \$1,200 • (Min. bid: \$400.00)

**Lot 182**

“Goosmann & Verhage / Mineral Water / Cincinnati – G&V”, America, 1850 – 1860. Aquamarine, ten sided with an embossed “teardrop” on each of the paneled shoulders, applied blob collared mouth – iron pontil scar, ht. 7 3/8”; (a 1/4” iridescent bruise on side on blob collar, otherwise a bright, sparkling, clean, example). An extremely rare pontiled soda!

Est.: \$150 - \$300 • (Min. bid: \$100.00)

**Lot 179**

“Clarke & White. / New York. / N I.”, America, 1856 – 1865. Medium to deep yellowish olive with an amber tone, cylindrical, applied sloping collared mouth with lower bevel – sand chip type pontil scar, pint, perfect! T #C-10:C, type 3. An extremely rare mold with only a handful of examples reported to exist. In addition, this example has great character as the glass is filled with impurities and seed bubbles. Rare, desirable, and in perfect condition!

Est.: \$700 - \$1,400 • (Min. bid: \$400.00)

**Lot 183**

“Korts & Wickard / Cumberland / MD” Soda Water Bottle, America, 1850 – 1860. Deep sea green, squat cylinder, applied sloping collared mouth – iron pontil scar, ht. 6 7/8”; (professionally cleaned to near mint condition with some remaining light exterior wear, 1/8” flake on top of mouth with a shallow iridescent bruise on the inside edge of the mouth). A very rare Maryland soda, the relatively minor condition issues are not detracting.

Est.: \$250 - \$450 • (Min. bid: \$150.00)

**Lot 180**

“Congress & Empire Spring Co” / “C” (within shield) / “Saratoga.N.Y. – Congress / Water”, probably Congressville Glass Works, Saratoga, NY, 1870 – 1885. Emerald, or “Congressville” green, cylindrical, applied sloping double collared mouth – smooth base, pint, about mint; (the bottle may have been lightly cleaned, although we are not certain of this). T #C-18:B, type 2. A rare mold, fine condition.

Est.: \$500 - \$1,000 • (Min. bid: \$300.00)

**Lot 184**

“Wm Betz / Salem.Ohio / Mineral Water”, America, 1850 – 1860. Deep aquamarine, ten sided, applied blob collared mouth – iron pontil scar, ht. 7 1/2”, near perfect; (just a touch of scattered high point or case wear). A great example, outstanding condition, scarce mold.

Est.: \$150 - \$300 • (Min. bid: \$100.00)

**Lot 185**

"Penno's / Mineral Water / Providence / R.I.", America, 1855 – 1860. Medium sea green, cylindrical, applied sloping collared mouth – iron pontil scar, 7 1/8", near mint; (professionally cleaned to original luster).

Est.: \$125 - \$250 • (Min. bid: \$75.00)

**Lot 189**

Black Glass Wine Bottle, probably England, 1795 – 1815. **"W. / Edgar Junr"** on applied glass seal. Medium olive green, magnum sized squat cylinder form, dip mold, short applied tapered collar with string rim – disc type pontil scar, ht. 10 3/4", body width 5 1/2"; cellar-found condition with only two paper-thin open surface bubbles. Unlisted in Dumbrell and quite possibly an important new discovery of a sealed wine, blown for an American citizen.

Est.: \$1,500 - \$2,500 • (Min. bid: \$1,000.00)

**Lot 186**

"G P Fey" Soda Water Bottle, America, 1845 – 1855. Deep aqua-marine, ten sided with embossed "tear drop" on each of the paneled shoulders, applied sloping collared mouth – pontil scarred base, ht. 7 3/8"; (excellent overall condition with only some very light interior haze, primarily in the shoulder and neck area, and a pinhead sized flake on one panel near the base). A scarce early soda from Cincinnati, Ohio.

Est.: \$150 - \$300 • (Min. bid: \$100.00)

**Lot 190**

Black Glass Wine Bottle, England, 1780 – 1800. **"W. Fitzhugh"** on applied glass seal. Medium olive green, magnum sized squat cylinder form, blown in a dip mold, applied string rim – domed base with disc type pontil scar, ht. 9 1/2", body width 5 5/8"; (a small "star" type fissure with 1/4" legs is located on the side of the bottle near the shoulder, some expected light high point wear). Scarce and unlisted in Dumbrell with full original gloss.

Est.: \$300 - \$600 • (Min. bid: \$200.00)

**Lot 187**

Black Glass Wine Bottle, probably England, 1772. **(Motif of horseshoe) / "L * E / 1772"** (3 dots to left and right of initials), on applied glass seal. Medium olive, magnum sized mallet form, applied string rim – domed base with sand or disc type pontil scar, ht. 10 5/8", body width, 5 3/8", pristine, cellar-found condition! Unlisted in Dumbrell or any other reference material that we have. An impressive, stunning, dated mallet wine bottle.

Est.: \$2,500 - \$3,500 • (Min. bid: \$1,500.00)

**Lot 191**

Black Glass Wine Bottle, England, 1795 – 1800. **"W- / Jones / 1795"** in fancy script on applied glass seal. Deep olive green, squat cylinder form, dip mold, applied string rim – sand chip pontil scar, ht. 9 1/4", body width 4 1/2"; (a 1/2" area of chipping on the side edge of the mouth and a superficial 1" annealing line on the interior surface of the shoulder that has virtually no depth to it). A very attractive bottle and seal. Ex. Mark David collection.

Est.: \$500 - \$1,000 • (Min. bid: \$300.00)

**Lot 188**

Black Glass Wine Bottle, England, 1761. **"W:A / 1761"** on applied glass seal. Medium olive with a slight amber tone, mallet form, applied string rim – deep domed base with sand chip pontil scar, ht. 8 1/2", body width 4 3/8", near perfect with full surface gloss; (a shallow 1/8" flake on edge of string rim, a bit of in-manufacture roughness on edge of sheared lip, some light interior residue). Unlisted by Dumbrell.

Est.: \$2,000 - \$3,000 • (Min. bid: \$1,200.00)

**Lot 192**

Black Glass Wine Bottle, England, 1821 – 1830. **"John / Andrews"** on applied glass seal. Deep olive green, squat cylinder form, blown in a three piece mold, "Patent" (on shoulder), applied sloping collared mouth – "H. Ricketts & Co Glass Works Bristol" (on base), sand chip type pontil scar, ht. 8 3/4", body width 3 3/4", perfect, "cellar found" condition. A handsome looking bottle, attractive seal. Ex. Richmond "Boo" Morcom collection.

Est.: \$500 - \$1,000 • (Min. bid: \$300.00)

**Lot 193**

Black Glass Wine Bottle, England, 1825 – 1835. “J.W.C.” on applied glass seal. Medium to deep olive green, cylinder form, three piece mold, “Patent” (on shoulder), applied sloping collared mouth with lower bevel – “H. Ricketts & Co Glass Works Bristol” (on base), sand chip pontil scar, ht. 11”, width 3 1/4”, perfect condition with full original body luster. Bottle blown for John Were Clarke (1784 – 1847), Dumbrell, page 246.

Est.: \$200 - \$400 • (Min. bid: \$150.00)

**Lot 197**

Early Long Necked Cooling Decanter, Continental, 1840 – 1870. Olive yellow, square with a narrow elongated neck and sheared funnel type mouth – polished pontil scar, ht. 16”, near mint; (some light interior residue that would likely wash out). An interesting and unusual decanter that reportedly was used as a serving container for wine, being immersed in a cold vat of water to maintain coolness of the contents. Beautiful color! Provenance: Stan Hooper Collection.

Est.: \$100 - \$200 • (Min. bid: \$60.00)

**Lot 194**

Early Black Glass Boot Bottle, probably Germany, 1740 – 1770. Medium to deep olive green, side flattened kidney form, crudely applied wide string rim – blowpipe pontil scar, ht. 6 3/4”, length 7 1/4”, depth 3 1/4”; (some scattered light interior residue and expected exterior surface wear). Dumbrell, p. 146, plate #56, VdB plate 216. A fine example with virtually full original surface gloss. Ex. Stan Hooper collection.

Est.: \$600 - \$800 • (Min. bid: \$400.00)

**Lot 198**

Early Black Glass Storage or Utility Bottle, England, 1810 – 1830. Clear medium olive green, cylindrical, blown in a dip mold, applied short tapered string rim – domed base with sand chip pontil scar, ht. 10 1/8”, body width 5”, near attic mint; (just a touch of light exterior wear). Note; the numerals “2 – 13 1/2” are lightly etched on one side of the neck). An attractive early bottle not easy to find in this well preserved condition.

Est.: \$175 - \$275 • (Min. bid: \$100.00)

**Lot 195**

Miniature Black Glass Onion Form Wine Bottle, probably Dutch, possibly Belgium, 1720 – 1750. Light to medium yellowish olive, squatty onion, almost a “horse-hoof” form, applied string rim – domed base with blowpipe pontil scar, ht. 5 1/2”, body width 4 1/2”; (small patch of light exterior dullness on one side, and a couple of light surface scratches, otherwise near perfect). Similar to VdB, plate 73. Rare size, wonderful condition.

Est.: \$600 - \$1,200 • (Min. bid: \$400.00)

**Lot 199**

Large Black Glass Apothecary or Storage Jar, England, 1830 – 1850. Dense olive amber, virtually black in reflected light, cylindrical, possibly blown in a dip mold, short wide neck with heavy round collared mouth and original cork closure – early smooth base, ht. 12 3/8”, body width 6 1/4”; (a shallow 1/8” x 1/4” open surface bubble and a touch of expected light exterior wear, otherwise perfect). Similar to VdB, plate 270, #2. A large, impressive jar.

Est.: \$125 - \$225 • (Min. bid: \$75.00)

**Lot 196**

Black Glass Wine Bottle, probably Dutch, possibly Belgium, 1770 – 1790. Yellowish olive amber, cylindrical with a long “spindle” type neck, sheared mouth with applied string rim – concave base with blowpipe pontil scar, ht. 10 5/8”; (some light exterior wear and a shallow open bubble near base). See RD, p. 143, figure P; VdB plate 79 #3. Great example with virtually full original gloss. Ex. Stan Hooper collection.

Est.: \$100 - \$200 • (Min. bid: \$60.00)

**Lot 200**

Large Globular Apothecary or Storage Bottle, England or possibly Scotland, 1810 – 1830. Medium olive green with painted black letters, “AQF: AURANT” over a wide painted gold band, globular form, applied double collared mouth – sand chip pontil scar, ht. 13 3/8”, bottle is near perfect and in “as found” condition with some scattered heavy interior residue that would likely wash out and some paint loss on design.

Est.: \$175 - \$350 • (Min. bid: \$100.00)



Lot 201

Demijohn, probably Continental, possibly America, 1780 – 1820. Bright yellowish olive through the mid-body shading to dense olive, virtually black through the neck and near the base, large apple form with elongated neck, rough sheared mouth and heavy applied wide string rim – large domed smooth base, ht. 19 ¼"; (a couple of small open surface bubbles, otherwise perfect). A gorgeous early piece full of swirls, bubbles, and impurities!

Est.: \$300 - \$600 • (Min. bid: \$200.00)



Lot 202

Demijohn, America or Continental, 1800 – 1830. Yellowish olive with an amber tone, oval or "kidney" form, freeblown with a sheared mouth and applied wide flat band – pontil scar, ht. 17"; (some light interior contents residue and a 1/8" open bubble near base, otherwise perfect). MW plate 46, #6; VdB page 340, #3. "1830" painted in white numerals on one side. Note; most demijohns in this form are 2-piece mold and smooth base. A terrific piece.

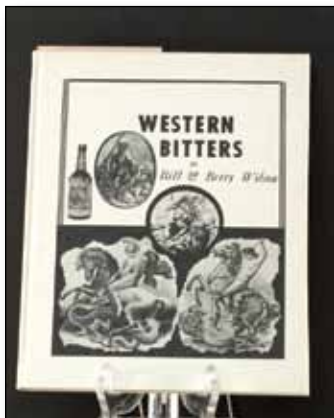
Est.: \$300 - \$600 • (Min. bid: \$200.00)



Lot 203

Lot of (2) Books: *American Glassware*, Edwin A. Barber, copyright 1900, and: *Bitters Bottles*, J. H. Thompson, c. 1947. Both books are hardbound, 112 and 97 pages respectively. Interesting to note that these two books both represent "firsts": Both of these early books on American Glass were the first in their respective fields and both are in excellent condition.

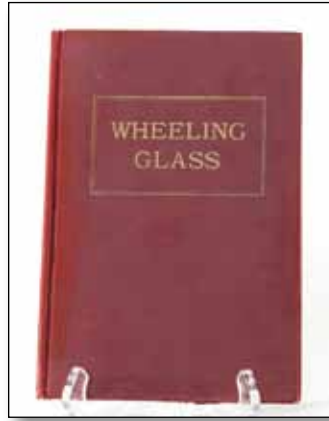
Est.: \$50 - \$100 • (Min. bid: \$25.00)



Lot 204

Book: *Western Bitters*, Bill & Betty Wilson, 1969. Hardcover, 95 pages (including index). An exceptional book dedicated to bitters bottles of the West, with a wealth of historical information on both the bottles as well as the companies that produced the products. A rare book and quite a difficult one to acquire as not many of them have survived. Outstanding, virtually "like new" condition.

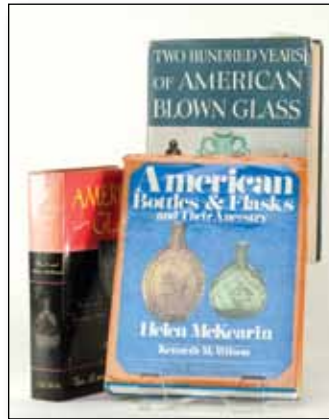
Est.: \$30 - \$60 • (Min. bid: \$20.00)



Lot 205

Book: *Wheeling Glass*, Josephine Jefferson, 1947. 1st edition, hard-cover, 86 pages with black and white illustrations and photographs. The book chronicles the various Wheeling glass factories and proprietors beginning with the Carruthers, (window glass and hollow-ware), factory in 1819-1820. Generally fine condition with some minor age related wear and yellowing of pages. A rare and difficult book to acquire.

Est.: \$50 - \$100 • (Min. bid: \$25.00)



Lot 206

Lot of (3) Bottle & Glass Books, titles include: *American Glass*, George and Helen McKearin, *Two Hundred Years of American Blown Glass*, Helen and George McKearin, *American Bottles & Flasks and Their Ancestry*, Helen McKearin & Ken Wilson. The McKearin 'trilogy' is an indispensable grouping of books for anyone interested in American historical flasks, bottle and early blown glass.

Est.: \$125 - \$200 • (Min. bid: \$75.00)



Lot 207

Lot of (3) Books on American Medicine Bottles, titles include: *Great American Pontiled Medicines*, Nielsen; *Patent and Proprietary Medicine Bottles*, Baldwin; *A Bit About Balsams – A Chapter in the History of 19th Century Medicine*, Blasi. Excellent reference material for the novice or advanced collector of patent and proprietary medicine bottles. All three are clean and in generally very good to excellent condition.

Est.: \$75 - \$125 • (Min. bid: \$40.00)



Lot 208

Lot of (2) Blaske Auction Catalogs, Session I, (hardbound), featuring the landmark 2-day auction of the late Edmund & Jayne Blaske collection of American Historical Flasks, May, 1983, and the session II, September, 1983, featuring the important sale of their other collections including Pickle jars, Figural bottles, Colognes, Three Mold, Bitters, etc. Both are in generally very good condition. Includes prices realized listings.

Est.: \$75.00 - \$150.00 • (Min. bid: \$50.00)

Lot #13: Eagle- "Indian Shooting Bird" Flask



Midwestern Pattern-Molded Bottles

Lot 34

Lot 35

Lot 42



Rare Pitkin-Type Flasks

Lot 49

Lot 50

Lot 47



Lot 48

South Jersey-Type Chestnut Bottles

This exciting group of early South Jersey-type chestnut bottles are from a prominent long-time collector of early South Jersey glass and provide an important glimpse of the forms, colors, and lip treatments found on early Wistarburgh or South Jersey-type chestnut bottles.

The chestnut on the left is a textbook color for Wistarburgh bottles and most typifies the fragments found at the Wistarburgh Glass Works site. This classic example also has wonderful character, with quite an array of bubbles throughout the glass.

Of the fragments found at the Wistarburgh site, those of the emerald green tone are certainly quite rare and represent a desirable and attractive color. The large chestnut bottle in the center is a spectacular example of this emerald tone. Although we would stop short of calling this tone of emerald "unique", it is a color or tone of emerald green not often encountered.

The yellow-olive bottle, on the right, is also an exceptional color for a Wistarburgh type chestnut. It is a warm yellow muted tone and a known color for tableware that has been attributed to Wistarburgh. Examples of

both tableware and bottles in this color that have been attributed to Wistarburgh can be seen in the collections at the Philadelphia Museum of Art. This is another choice and rare color for a South Jersey-type chestnut!

For further information on this most important and historical early Colonial glass works as well as Wistarburgh-type wares and pictures of the shards that have been excavated from the site, see Dale Murschell's book, *Wistarburgh Window Tiles Bottles and More*, also *American Bottles & Flasks and Their Ancestry*, Helen McKearin and Kenneth Wilson.

Lot 81

Lot 82

Lot 83



Lot# 87
G11-7 Keene
Decanter



A.M. Bininger & Co. Bottles

Perhaps one of the most successful and prolific names in the grocer and liquor business during the mid 19th Century, particularly for bottle collectors, is that of A. M. Bininger & Co. of New York City. Their bottles have long been coveted by collectors as they were blown in a wide variety of colors, as well as an interesting array of forms.

Originally established in 1778 by Isaac Bininger, father of Abram (A. M.), Bininger, the family business prospered for more than 100 years though extensive newspaper

advertising. They had a very clever and ingenious product line that included names such as, "Daydream", "Peep-O-Day", "Night Cap", "Travelers Guide", as well as many others. It is interesting to note that the greatest number of embossed Bininger bottles were produced during a fairly brief period of time from about 1858 to 1865.*

Bininger bottles may be found both pontiled and smooth base, embossed and labeled, square, round with applied handles as well as several figural forms including a clock

face, urns and others. Putting together a collection of Bininger bottles can certainly be challenging, but the rewards of seeing a group of these fascinating bottles together is well worth the effort.

"The History and Mystery of the Bininger Family and The Search For Their Tombstones", Don Keating, Antique Bottle & Glass Collector, 9/02.

Lot 105

Lot 106

Lot 108



National Bitters Bottles

Lot 121



Lot 122



Lot 123



Lot 125:
Seaworth
Bitters



Lot 126:
Royal Flush
Bitters



Lot 127: Baker's Orange Grove Bitters



As a pleasant Strengthening Tonic for the weak and debilitated; as a safe and efficacious Remedy for Dyspepsia or foul state of the stomach and bowels; and as an Appetizer, Digestor, and Invigorator of the whole system, has no superior.

DIRECTIONS.

For adults, a wine-glassful before eating, three times a day. For severe attacks of the colic, two wine-glasses full. For children, one-half the above quantity.

Warranted to keep any length of time, 'n any climate.

C. & J. F. BAKER & CO.,

107 Commercial Street,
BOSTON, MASS.

20 State Street, Boston.

Messrs. C. & J. F. BAKER & CO.

Gentlemen,—I have analyzed your "Orange Grove Bitters," and am familiar with the formula by which they are manufactured.

This is an aromatic, medicated preparation fully made from pure ingredients, pleasant bitter, free from deleterious substances, and well adapted for the purpose which it is recommended for.

Respectfully,
J. H. BAKER

**THE
ORANGE
GROVE
BITTERS.**

As a pleasant Strengthening Tonic for the weak and debilitated; as a safe and efficacious Remedy for Dyspepsia or foul state of the stomach and bowels; and as an Appetizer, Digestor, and Invigorator of the whole system, has no superior.

DIRECTIONS.

For adults, a wine-glassful before eating, three times a day. For severe attacks of the colic, two wine-glasses full. For children, one-half the above quantity.

Warranted to keep any length of time, 'n any climate.

C. & J. F. BAKER & CO.,

107 Commercial Street,
BOSTON, MASS.

20 State Street, Boston.

Messrs. C. & J. F. BAKER & CO.

Gentlemen,—I have analyzed your "Orange Grove Bitters," and am familiar with the formula by which they are manufactured.

This is an aromatic, medicated preparation fully made from pure ingredients, pleasant bitter, free from deleterious substances, and well adapted for the purpose which it is recommended for.

Respectfully,
J. H. BAKER

Phoenix Bitters Bottles

Popular as a result of the numerous mold variations, colors and in rare instances, size anomalies, the Phoenix Bitters bottles have long been a collector favorite. A small grouping of these bottles is illustrated in a color plate in the front of the renowned book by Carlyn Ring, *For Bitters Only*, 1980.

A prosperous New York City merchant in the early and mid-1830's, it is believed that John Moffat launched his famous Phoenix Bitters around 1834*. With the help of an

aggressive advertising campaign, Phoenix Bitters became quite a successful product, and is today, considered among the earliest of the known embossed bitters bottles. As a testament to their extensive advertising, if not the efficacy of the medicine, the Phoenix Bitters brand withstood the test of time as well as hundreds of other competitors for close to a half century.

We are pleased to have two great rarities of the Phoenix Bitters in this sale.

**19th Century Medicine in Glass, Wilson.*

Lot 131

Lot 132

Lot 130



American Mineral Water Bottles

Lot 174



Lot 175



Lot 177



Lot 178



Lot 173



Lot 179



Black Glass Seal Bottles

Lot 190

Lot 188

Lot 187



Lot 189 "W. Edgar Junr" Seal Bottle

While this magnum sized black glass wine bottle is quite a handsome piece in it's own right, it appears to be an unrecorded, possibly unique applied seal wine bottle that may have ties to New York City.

From various excerpts of the Minutes of the Common Council of the City of New York, it can be deduced that W. Edgar Junr. was a gentleman of some means and stature in New York City at the beginning of the 19th Century. William Edgar Junior held property near the foot of Delancy Street, which at the turn of the nineteenth century, was on the waterfront.

Several excerpts per the Minutes of the Common Council of the City of New York are included below:

New York, January 13, 1822, Mr. Edgars note to the Council was as follows:

*"Dr Sir I have reflected on the propriety of taking a grant for the water right 60 beyond my property at Delancy St The improvement contemplated I consider too premature particularly so when coupled with the requisition of two thirds of the expence and benefit only arising from the unprofitable Side Whey Under these circumstances my interest induces me to decline applying for a grant I feel myself under obligations to you for your personal attentions to me and beg leave to Subscribe myself Sincerely
Your friend W Edgar"*

Page 408, City of New York, 28 March 1825

"The Committee on Finances respectfully report that they have considered the annexed petition of Campbell P White which was referred to them That the petitioner wishes the Corporation to make the usual Water Grant of the land under Water in front of the property adjoining Delancey Street belonging to the Estate of the late William Edgar Junior..."

Page 490, City of New York, 28 April 1825

"The Counsel presented a Water Grant to William Edgar's Junr Executors The Counsel herewith submits for execution a Water Grant to Duncan P Campbell Campbell P White and Herman Le Roy Junior Executors of the last Will and Testament of 84 William Edgar Junior deceased of a piece of land under water adjoining the Slip at the foot of Delancy Street."

Although it is tantalizing to consider this a "newly discovered" American seal bottle, it remains inconclusive with the hope that additional research will bear out this hypothesis. Regardless of origin or for whom the bottle was made, it is an extremely rare, possibly unique sealed wine bottle.



Become Another Satisfied Consignor!

Seeking quality consignments for our 2010 Auction Schedule.

By consigning with American Glass Gallery, your valued items will receive the highest level of attention and benefit from our extensive advertising, broad customer base and high quality, full-color catalogs containing accurate, informative descriptions.

Our integrity, broad knowledge, history and service within the hobby all combine to provide you with the highest level of customer service and the most favorable results for your valued consignments, whether a single item or an entire collection.

In addition, we offer competitive consignor fees and low buyer premiums. Contact us today and let us go to work on your behalf.

Please give us a call, visit our website or look for us at one of the more than twenty shows that we attend annually across the country.

Phone: 248.486.0530 • website: americanglassgallery.com



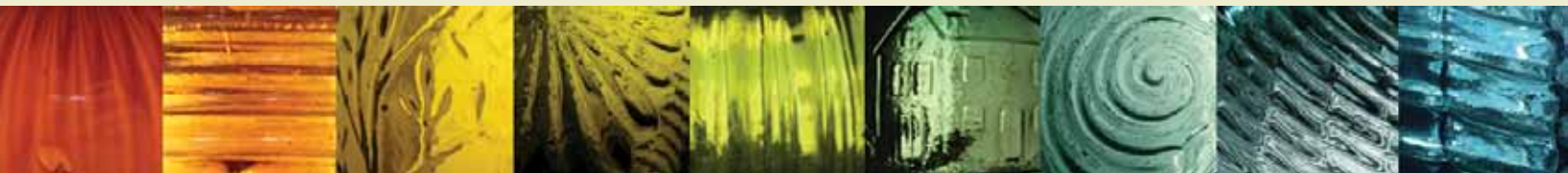
American Glass Gallery™

American
Glass Gallery
sold this
Old Sachem
Bitters in
a private,
direct sale
for a record
price of
\$30,800!

We would be happy to discuss the
possibility of selling any of your items
directly through private sale.



American Glass GalleryTM



Buying and selling fine antique bottles, flasks and blown glass

Our Services:

- ☛ Absentee auctions
- ☛ Web site sales
- ☛ Private direct sales
- ☛ Direct purchase of quality single items or entire collections
- ☛ Fast payment and confidential transactions
- ☛ Appraisal services

Mission Statement:

At American Glass Gallery, our goal is to offer to collectors quality bottles and glass along with the highest level of service and professionalism. Whether you are buying or selling quality antique bottles and glass, American Glass Gallery is here to serve you. Please contact us at any time with your questions or for more information.

P.O. Box 227, New Hudson, Michigan 48165

Phone: 248.486.0530 • Fax: 248.486.0538

email: jpastor@americanglassgallery.com

website: www.americanglassgallery.com



American Glass GalleryTM