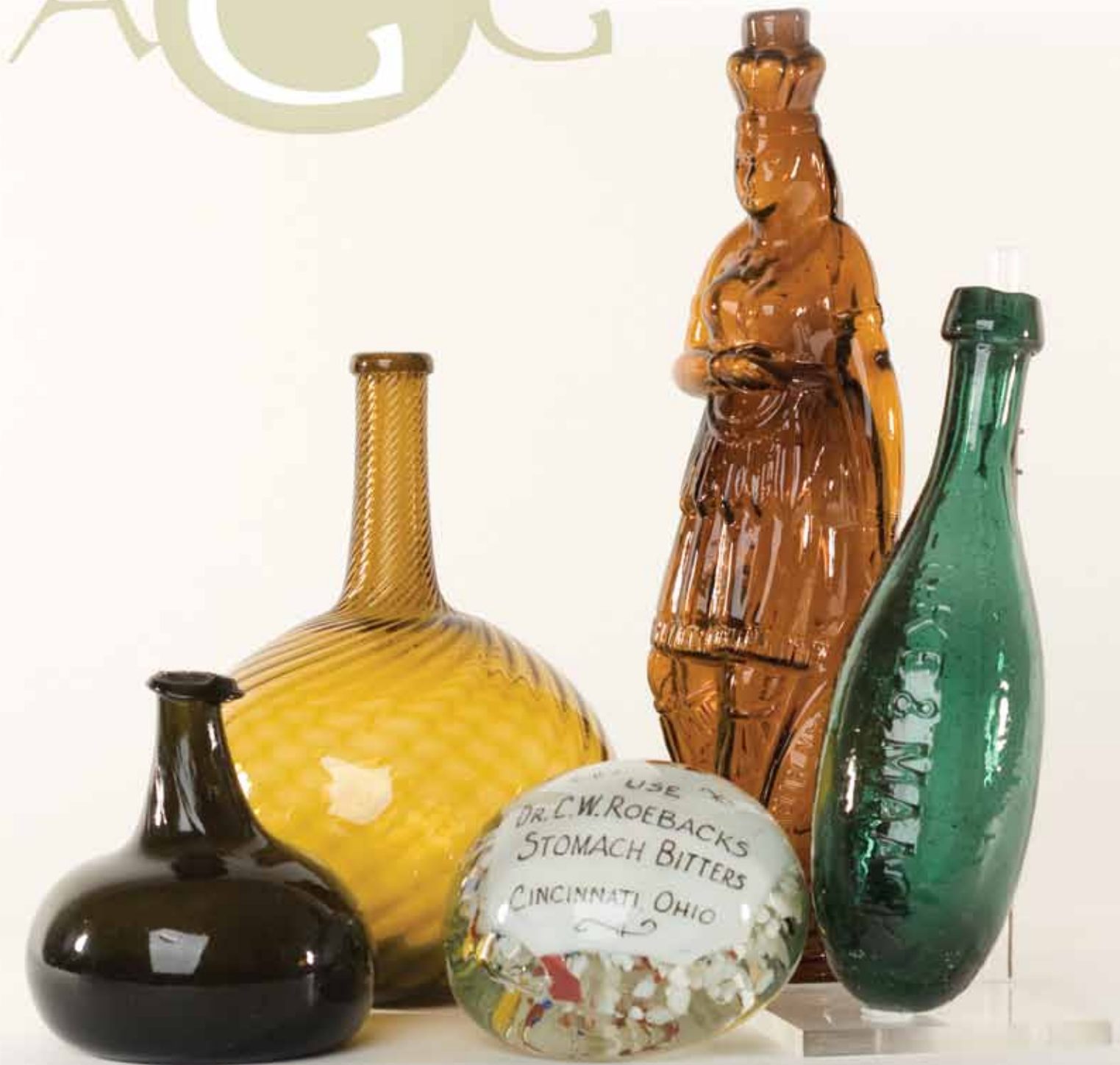


# American Glass Gallery<sup>TM</sup>

Auction Number 3

November 16, 2009



# Conditions of Sale

## 1. Absentee Auction

The items in this sale will be sold via absentee auction, closing date:  
**November 16, 2009, 11:00 p.m., EST.**

## 2. Our Guarantee Regarding Descriptions

American Glass Gallery has made every attempt to describe correctly the property being sold. Descriptions are guaranteed to be accurate as regards authenticity, age, condition, and measurements to within one-fourth inch, as represented in this catalog. In describing damage, exterior wear or manufacturer's flaws that in our opinion, do not significantly detract visually or monetarily from the value of the item are not listed and will not be considered for refund. The Auctioneers reserve the right to make verbal corrections and provide additional information at any time during the sale.

## 3. Preview

Items may be viewed by appointment from November 2, 2009 through November 14, 2009.

## 4. Bidding Procedure

You may submit your bids by mail, phone, FAX, email or through our on-line auction site. If bidding by mail or FAX, please fill out the absentee form and return it to us. Your bid, either written or oral, grants American Glass Gallery the authority to protect you up to the amount of your stated bid. Your bid will not be removed once executed.

**Bidding Times:** You can submit your bids anytime after receiving your catalog. Bids may be made by phone, daily, until closing day, November 16, 2009, from 9 A.M. - 7 P.M. Eastern Time. Incoming phone bids will be accepted on the closing day (November 16, 2009) until 11 P.M. Eastern Time. Phone calls and Fax bids after this time will not be honored. No exceptions. You may also place your bids through our on-line auction service 24-hours a day once the site has opened for bidding, on or about November 1, 2009, continuing until 11:00 P.M. Eastern Time, November 16, 2009.

**Please do not wait until the last day or two of the sale to place your bids!** Because many collectors wait until the final few days of the sale to place their bids, we anticipate the telephone and internet bidding to be very busy during that period, so please plan accordingly. In the event of a tie bid, the earliest received bid on the lot will take precedent. We would welcome your bids by phone so that we can answer any questions and assist you in your bidding.

You may also telephone us at any time during the auction, prior to the closing of the sale, to check the status of your bids, to find the current bidding level, to open a bid, or to raise a bid on an auction lot.

### Bidding Increments are as follows:

Up to \$250.00.....	increments of \$10.00
\$250.00 - \$500.00.....	increments of \$25.00
\$500.00 - \$1,000.00.....	increments of \$50.00
\$1,000.00 - \$2,500.00.....	increments of \$100.00
\$2,500.00 - \$5,000.00.....	increments of \$250.00
\$5,000.00 - \$10,000.00.....	increments of \$500.00
\$10,000 & Up.....	increments of \$1,000.00

Bids submitted between the above increments, whether by mail, FAX, email or on-line via the internet, will automatically be lowered to the closest lower increment.

This is a minimum bid auction. Bids below the printed minimum will not be accepted.

**An example of how our absentee bidding system works:** You bid \$600.00 on a lot which is the highest bid received to date. The second highest bid is \$450.00. The current high bid level would be yours at \$475.00, one bid increment higher than the other collector's bid. Any additional bids submitted by others below \$600.00 will automatically be topped on your behalf by a representative of American Glass Gallery, up to your stipulated high bid amount. If no further bids on this lot are received beyond the \$450.00, and the under bidder has not requested a "Call Back", then you would have won the lot at \$475.00, not the \$600.00 that you were prepared to pay.

American Glass Gallery will at NO TIME disclose bids pledged by others; only the current "High Bid" level of a lot will be stated upon request. The highest bidder as determined by American Glass Gallery shall be the purchaser. It is the sole right of the auctioneer to settle any dispute between bidders and to regulate the bidding procedure. The auctioneer reserves the right to refuse any bid he believes not to have been made in good faith.

## 5. "Call Back" Process

If requested, the three top bidders of an item at the time of closing will be given a "Call Back" over the next number of days in order to resolve the final sale of an item. You can request this service by "checking" the appropriate box on your absentee bid form or verbal agreement by phone. It is the responsibility of the bidder to insure he has qualified for this service.

**Please note: No "Call Backs" will be executed for bids under \$400.00. In the event of tie bids, the earliest bid received will be the winning bid.**

An example of how the "Call Back" process works: As an example, you have bid \$600.00 on a particular lot. Another bidder has submitted a bid of \$900.00 on the same lot. Assuming that as of the auction closing date you are among the top three bidders on this lot and you have requested a "Call Back", you would receive a call informing you that you have been "Out Bid" and the current "High Bid" is now at \$650.00. If you choose to continue bidding on this lot, you may now do so. Assuming that you now increase your bid to \$700.00, we would accept your bid but also inform you that we have a higher bid on this lot and must bid \$750.00. At this time, an auction between you and American Glass Gallery, representing the collector who submitted the bid of \$900.00, takes place. This bidding would continue until you drop out, or top the other bidders high bid of \$900.00. If the other bidder has not requested a "Call Back" service, you would be awarded the lot. If however, the other bidder also requested a Call Back, we must now call them. If they elect to increase their bid over your high bid, we would in turn call you back. This back and fourth process would continue until one of the bidders declines to go any farther.

If you have requested a "Call Back", the auctioneers will need to contact you on the days immediately following the auction closing between the hours of 8 A.M. and 9 P.M. Eastern Time. Please supply us with all appropriate contact phone numbers including, home, mobile and work numbers. Bidders must provide the appropriate telephone numbers where they can be contacted. If you will be traveling or otherwise unavailable, bidders with "Call Back" privileges will have the responsibility to contact American Glass Gallery twice daily during the Call Back period.

**Please note,** every effort will be made to contact you during the "Call Back" period. However, the bidder will forfeit their rights to a "Call Back" if the auctioneers are unable to reach them. American Glass Gallery reserves the right to discontinue Call Backs on any item in the sale (2) two days after the closing date of the sale. At that time, the current "High Bidder" may be awarded the item even if Call Backs are still outstanding.

## 6. Terms

**Successful Bidders,** Prompt and full payment is due immediately upon receipt of our invoice. Absolutely no exceptions. Anyone failing to pay for items won will forfeit all rights to bid in any future American Glass Gallery sales.

**No Items Will Be Mailed Before Full Payment Is Received.**

**Buyer Premium:** A 12% buyer's premium will be added to the hammer price to be paid by the buyer as part of the purchase price. For example, if you purchase a lot for \$100.00, you will receive an invoice for \$112.00, plus any applicable sales tax and shipping charges.

**Taxes:** If you are a Michigan resident, a 6% sales tax will be added to your bill unless you have a valid resale number registered with us.

**Shipping:** Shipping, handling and insurance are extra. We ship insured via U.S. Mail. These charges will be added to your bill unless the lots are picked up in person. Our charges for shipping (excluding foreign shipments and oversized lots) are \$18.00 for the first item, \$9.00 for each additional item together with extra insurance costs (we use current U.S. Postal Service insurance rates).

Please allow two to four weeks for delivery after receipt of your check.

**Payment:** American Glass Gallery presently accepts Cash, Money Orders or Personal Checks. (Please do not send cash through the mail.)

## 7. Refunds

Refunds will be given at the discretion of the Auctioneers. Items purchased must be examined and request for refund made immediately upon receipt of the item or items. Since opinions can differ, particularly in the matter of condition, the Auctioneers will be the sole judge in the consideration of refunds. Refunds requested on the grounds of authenticity must be made within 15 days of the date of the auction, and such refund requests must be accompanied by at least one supporting statement in writing from an authority recognized by the Auctioneers. It is the Auctioneers sincere intention to consider any reasonable request for a refund. *Absolutely no returns for any reason after 30 days of the closing of the sale.*

## 8. Bidding on any item indicates your acceptance of these terms.



American Glass Gallery™

John R. Pastor  
P.O. Box 227  
New Hudson, Michigan 48165  
Phone: 248.486.0530  
Fax: 248.486.0538  
www.americanglassgallery.com  
email: jpastor@americanglassgallery.com

## PLEASE NOTE:

*The lots offered in this printed catalog are identical to the lots offered in the on-line catalog. However, due to space constraints of the printed catalog there may be some further information available regarding some of the lots in the on-line auction descriptions.*

*Please visit us at*

***www.americanglassgallery.com***

*and follow the link to the on-line auction. The link and on-line auction will be available on or about November 1, 2009.*

*A post-auction price list will be available on our website, in printable form, by early December.*

*We encourage you to contact us either by phone or email with any questions that you may have, for assistance with bidding, or for further details or clarification on any of the lots in this sale. Your complete satisfaction and confidence is our goal!*

*We look forward to having you participate in our next sale, either as a buyer or a consignor. Our next absentee auction is scheduled for Spring, 2010. We already have some wonderful items consigned to this sale and would look forward to discussing with you, any quality items that you may wish to consign.*

**THANK YOU AND GOOD LUCK WITH YOUR BIDS!**

FRONT COVER PHOTO (from left): Lot 170, Lot 26, Lot 47, Lot 89, Lot 143.

This auction photographed and cataloged by John R. Pastor • ©2009, American Glass Gallery. All rights reserved. • Catalog design & layout by Owen Neils • Printed by ASAP Printing, Okemos, MI

# Reference Key

Reference initials and numbers used in the description of this catalog refer to the following publications:

<b>AHG</b>	<b><i>American Historical Glass</i></b> , Bessie M. Lindsey, 1967
<b>AM</b>	<b><i>The Decanter - An Illustrated History of Glass from 1650</i></b> , Andy McConnell, 2004
<b>AP</b>	<b><i>Glass in Early America</i></b> , Arlene Palmer, 1993.
<b>BA1</b>	<b><i>Collecting The Cures</i></b> , Bill Agee, 1969
<b>BA2</b>	<b><i>Collecting All Cures</i></b> , Bill Agee, 1973.
<b>BB</b>	<b><i>A Bit About Balsams</i></b> , Betty Blasi, 1974
<b>BH</b>	<b><i>Classification and Documentation of Sunburst and Similar Scent Bottles</i></b> , Bill Ham, AB&GC, 5/87
<b>B/K</b>	<b><i>The Glass Industry in Sandwich</i></b> , Raymond Barlow and Joan Kaiser, 1989.
<b>C</b>	<b><i>Ink Bottles and Ink Wells</i></b> , William Covill, 1971.
<b>DeG</b>	<b><i>American Sarsaparilla Bottles</i></b> , John DeGrafft, 1980.
<b>DF</b>	<b><i>Raising Hair Stories</i></b> , Don Fadely, 1992.
<b>DM</b>	<b><i>Wistarburgh, Window Tiles, Bottles and More</i></b> , Dale L. Murscell, 2007.
<b>G</b>	(Flasks) <b><i>American Bottles &amp; Flasks and Their Ancestry</i></b> , McKearin & Wilson, 1978.
<b>G</b>	(Blown Three Mold) <b><i>American Glass</i></b> (Chapter VI), George S. and Helen McKearin, 1941.
<b>GBH</b>	<b><i>English Glass For The Collector, 1660-1860</i></b> , G. Bernard Hughes, 1958.
<b>H</b>	<b><i>American Bottles in the Charles B. Gardner Collection</i></b> , Norman C. Heckler, 1975.
<b>JB</b>	<b><i>Patent and Proprietary Medicine Bottles</i></b> , Joseph K. Baldwin, 1973
<b>JS</b>	<b><i>In glas verpakt – European Bottles, Their history and production</i></b> , Johan Soetens, 2001.
<b>K</b>	<b><i>Poison Bottle Workbook</i></b> , Rudy Kuhn, 1988.
<b>L</b>	<b><i>The Red Book of Fruit Jars, No. 9</i></b> , Douglas M Leybourne, Jr., 2001.
<b>LI</b>	<b><i>Pittsburgh Glass, 1797 – 1891</i></b> , Lowell Innes, 1976.
<b>Mc</b>	<b><i>Two Hundred Years of American Blown Glass</i></b> , Helen and George McKearin, 1950.
<b>McK</b>	<b><i>American Glass</i></b> , George S. and Helen McKearin, 1941.
<b>MW</b>	<b><i>American Bottles &amp; Flasks and Their Ancestry</i></b> , McKearin & Wilson, 1978.
<b>N</b>	<b><i>Great American Pontiled Medicines</i></b> , Frederick Nielson, 1978.
<b>NCH</b>	<b><i>The Blaske Collection of American Flasks</i></b> , Norman C. Heckler, 1983.
<b>NCH II</b>	<b><i>The Blaske Collection: Part II</i></b> , Norman C. Heckler, 1983.
<b>O&amp;S</b>	<b><i>Warner's Reference Guide</i></b> , Ed Ojea and Jack Stecher, 1998.
<b>P</b>	<b><i>The Glass Gaffers of New Jersey</i></b> , Adeline Pepper, 1971.
<b>RD</b>	<b><i>Understanding Antique Wine Bottles</i></b> , Roger Dumbrell, 1983.
<b>RF</b>	<b><i>The Bottle Book: A Comprehensive Guide to Historic, Embossed Medicine Bottles</i></b> , Richard Fike, 1987
<b>RH</b>	<b><i>Collecting Barber Bottles</i></b> , Richard Holiner, 1986.
<b>R/H</b>	<b><i>Bitters Bottles</i></b> , Carlyn Ring and W. C. Ham, 1998.
<b>RWL</b>	<b><i>Antique Fakes &amp; Reproductions</i></b> , Ruth Webb Lee, 1950
<b>T</b>	<b><i>Collectors Guide to Saratoga Type Mineral Water Bottles</i></b> , Donald Tucker, 2005.
<b>U</b>	<b><i>Collectible Character Bottles</i></b> , Authur Umberger, 1969.
<b>VdB</b>	<b><i>Antique Glass Bottles; Their History and Evolution</i></b> , Willy Van den Bossche, 2001.
<b>Z</b>	<b><i>Ketchup, Pickles, Sauces</i></b> , Betty Zumwalt, 1980.
<b>ZW</b>	<b><i>Color Hutchinsons</i></b> , Zang Wood, 1999.

- The dash is generally used to indicate that the descriptions are on opposite sides of the bottle or flask.

/ The slash is used to indicate that the descriptions are on different lines or surfaces of the bottle.





Lot 164 detail



### Lot 1

**Washington – Taylor Portrait Flask**, probably Dyottville Glass Works, Philadelphia, Pennsylvania, 1845 – 1855. Medium blue green, applied sloping collared mouth with lower bevel – pontil scar, quart; (some high point wear, predominately on the Taylor side and a 5/8" by 1/4" flake at edge of base). GI-54. A nice colored historical flask for the money.

*Est.: \$100 - \$200 • (Min. bid: \$75.00)*



### Lot 5

**"Benjamin Franklin" / Bust of Franklin / "Eripuit Coelo Fulmen. Sceptrumque Tyrannis" – "T.W.Dyott, M.D." / Bust of Dyott / "Kensington Glass Works Philadelphia" Portrait Flask**, 1825 – 1835. Aquamarine, sheared mouth – pontil scar, quart; (a couple of small spots of minor high point wear, otherwise about mint). GI-96. Another clean, nice example of an early Franklin flask.

*Est.: \$250 - \$450 • (Min. bid: \$150.00)*



### Lot 2

**Washington – Taylor Portrait Flask**, probably Dyottville Glass Works, Philadelphia, Pennsylvania, 1845 – 1855. Light to medium clear apple green, applied sloping collared mouth – pontil scar, pint; (very slight amount of exterior wear, otherwise clean, bright and perfect!) GI-55a. Listed by McKearin as "Rare", if you are collecting molds, this is a difficult one to obtain.

*Est.: \$175 - \$350 • (Min. bid: \$125.00)*



### Lot 6

**"Jeny Lind" / Bust of Jeny Lind – Glass Factory Calabash Portrait Flask**, Ravenna Glass Works, Ravenna, Ohio, 1857 – 1864. Deep bluish aqua approaching a subtle ice blue in the base, applied round collared mouth, red iron pontil scar, quart; (about perfect excluding a small 1/8", shallow open surface bubble located on a vertical rib). GI-104. A bright, clean, pretty calabash.

*Est.: \$250 - \$500 • (Min. bid: \$150.00)*



### Lot 3

**"Benjamin Franklin" / Bust of Franklin / "Where Liberty Dwells There Is My Country" – "T.W.Dyott, M.D." / Bust of Dyott / "Kensington Glass Works Philadelphia" Portrait Flask**, 1825 – 1835. Aqua, sheared mouth – pontil scar, pint; (minor high point wear, primarily on the bust of Franklin and a tiny, shallow flake at edge of mouth). GI-94. Bright, crisp, example with strong embossing.

*Est.: \$250 - \$500 • (Min. bid: \$150.00)*



### Lot 7

**Bust of Byron – Bust of Scott Portrait Flask**, New England, 1830 – 1845. Clear yellowish olive green, sheared mouth – blowpipe pontil scar, half pint, perfect. GI-114. A very pretty example, devoid of virtually any high point wear, and in a scarce, pure green coloration.

*Est.: \$300 - \$600 • (Min. bid: \$150.00)*



### Lot 4

**"Benjamin Franklin" / Bust of Franklin – "T.W.Dyott, M.D." / Bust of Dyott Portrait Flask**, Kensington Glass Works, 1825 – 1835. Aquamarine, sheared mouth – pontil scar, pint; (a very faint touch of high point wear on the Franklin side, otherwise pristine perfect). GI-95. It would be difficult to find a nicer example of this scarce, early historical flask.

*Est.: \$300 - \$600 • (Min. bid: \$175.00)*



### Lot 8

**Eagle – Morning Glory Historical Flask**, probably Midwest America, 1845 – 1860. Aquamarine, applied double collared mouth – pontil scar, pint; (some moderate high point wear on the eagle and morning glory). GI-19. Listed by McKearin in Group B, most desirable flasks, #22. A very scarce flask in a rich shade of aqua.

*Est.: \$250 - \$450 • (Min. bid: \$150.00)*



**Lot 9**

**Eagle – Furled Flag / “For Our Country” Historical Flask**, Coffin & Hay, Hammonton, New Jersey, 1836 – 1847. Aquamarine, sheared mouth – pontil scar, pint, mint. GII-53. Great example with a strong impression and sparkling glass. Note: this flask has an interesting bead of glass ¼” in diameter affixed to the medial rib at the shoulder. Whether intentional or accidental, on the part of the gaffer, remains a mystery!

*Est.: \$200 - \$400 • (Min. bid: \$125.00)*

**Lot 13**

**Cornucopia – Urn Pictorial Flask**, New England, 1830 – 1845. Deep apple green approaching a medium green, sheared mouth – pontil scar, half pint, about mint; (a very minor 1/8” shallow open bubble near side of flask). GIII-7. A very attractive little flask seldom offered in this color.

*Est.: \$300 - \$600 • (Min. bid: \$200.00)*

**Lot 10**

**“Liberty” / Eagle – “Wilmington / Glass / Co / West Wilmington / Conn” Historical Flask**, Wilmington Glass Works, 1850 – 1860. Medium to deep yellowish olive, sheared mouth – blowpipe pontil scar, half pint; (some scattered light exterior wear, a 1/8” bubble on the reverse that is partially open). GII-63. A rare Wilmington flask with the pontil scarred base.

*Est.: \$400 - \$800 • (Min. bid: \$250.00)*

**Lot 14**

**Cornucopia – Urn Pictorial Flask**, New England, 1830 – 1845. Yellow olive green shading to olive yellow in the side, sheared mouth – pontil scar, half pint, about mint; (a less-than pinhead sized flake at edge of sheared mouth and a hard to see 1/8” superficial scratch on the reverse). GIII-7. Another pretty example with the variegated color and strong mold impression.

*Est.: \$100 - \$150 • (Min. bid: \$50.00)*

**Lot 11**

**Eagle / “Pittsburgh / PA” – Eagle Historical Flask**, Pittsburgh district, Pittsburgh, Pennsylvania, 1860 – 1870. Medium to deep olive green, applied heavy collar with ring – smooth base, quart; (an elongated bubble to the left of the eagle’s wing has a thin line in the cover glass and a ¼ inch opening at the end of the bubble). GII-104. A nice deep pure olive coloration.

*Est.: \$400- \$600 • (Min. bid: \$250.00)*

**Lot 15**

**Masonic – Eagle Historical Flask**, Keene Marlboro Street Glassworks, Keene, New Hampshire, 1815 – 1830. Medium to deep yellowish apple green, wide tooled collared mouth – pontil scar, pint, about perfect; (extremely minor touch of high point wear on the obverse, otherwise pristine). GIV-5. A great example having a strong mold impression, pretty color, brilliant glass, and wonderful condition!

*Est.: \$600 - \$1,200 • (Min. bid: \$300.00)*

**Lot 12**

**Eagle / “Cunningham / & Co / Pittsburgh” – Eagle / “Glass / Manufacturers” Historical Flask**, 1860 – 1870. Deep bluish aquamarine, applied collared mouth with flat band – smooth base, pint; (a couple of faint areas of expected high point wear and an extremely minor bit of lip edge roughness, otherwise perfect). GII-112, scarce. A wonderful example with a bold impression and good deep color.

*Est.: \$125 - \$200 • (Min. bid: \$75.00)*

**Lot 16**

**Masonic – Eagle Historical Flask**, Keene Marlboro Street Glassworks, Keene, New Hampshire, 1820 – 1830. Golden yellow with a slight olive tone, sheared mouth – pontil scar, pint, about mint; (just a very minor amount of high point wear on the Masonic side). GIV-17. A light, bright example with nice color.

*Est.: \$250 - \$350 • (Min. bid: \$150.00)*



### Lot 17

**Masonic – “Zanesville” / Eagle / “Ohio / J. Shepard & Co.” (backwards “S”), Historical Flask**, Zanesville Glassworks, Zanesville, Ohio, 1825 – 1835. Medium to deep golden amber, sheared mouth – pontil scar, pint; (slightly weakened impression in the shoulder area as is often the case and an onion-skin thin open bubble at side near base). GIV-32. A good solid example of this popular early flask.

*Est.: \$700 - \$1,400 • (Min. bid: \$400.00)*



### Lot 21

**“For Pike’s Peak” / Prospector – Hunter Historical Flask**, Ravenna Glass Works, Ravenna, Ohio, 1857 – 1864. Deep greenish aquamarine approaching a soft bluish green, sheared mouth – smooth base, pint; (professionally cleaned to original luster and a very shallow 1/8” bruise on the inside edge of the mouth that may have occurred in prying out a cork). GXI-50. A most unusual color for this flask.

*Est.: \$200 - \$400 • (Min. bid: \$125.00)*



### Lot 18

**“Keene” / Sunburst – “P&W” / Sunburst Flask**, Keene Marlboro Street Glassworks, Keene, New Hampshire, 1815-1830. Yellowish olive amber, sheared mouth – pontil scar, half pint; (pinhead size bit of roughness on one of the corrugated edges, otherwise perfect!) GVIII-9. A great example with a good mold impression and virtually no high point wear which is often the “Achilles’ heel” of this particular mold.

*Est.: \$600 - \$800 • (Min. bid: \$400.00)*



### Lot 22

**“Union” / Clasped Hands – Eagle Historical Flask**, Midwest America, 1860 – 1870. Aquamarine (has a thin streak of olive down the front), applied mouth with band – smooth base, pint, perfect. Not charted by McKearin but similar to GXII-12, with following exceptions: pint capacity, 23 leaves on left laurel branch, vertical bars above oval frame shorter in length. A bright, clean flask with an exceptionally crisp mold impression.

*Est.: \$150 - \$300 • (Min. bid: \$100.00)*



### Lot 19

**“Murdock / & / Cassel – Zanesville / Ohio” Decorative Flask**, Muskingum Green Glass Works, 1826 – 1836. Light to medium bluish green, sheared mouth – pontil scar, pint; (several large chips off the top of the mouth on the reverse side approximately 1/4” to 3/8” in size). GX-14. A rare and desirable flask that displays well despite the noted damage. Strong mold impression and good color.

*Est.: \$300 - \$600 • (Min. bid: \$150.00)*



### Lot 23

**“Union” / Clasped Hands – Cannon Historical Flask**, Midwest America, probably Pittsburgh district, 1860 – 1870. Golden amber shading to a light golden yellow near the shoulders and along the side, applied mouth with ring – smooth base, pint; (a dug bottle with some light patches of minor exterior dullness, slightly weakened impression). GXII-41. A pretty example that would benefit from just a light professional cleaning.

*Est.: \$400 - \$600 • (Min. bid: \$250.00)*



### Lot 20

**“For Pike’s Peak” / Prospector – Eagle Historical Flask**, probably Pittsburgh, 1860 – 1870. Bright medium citron green, applied double collared mouth – smooth base, 1/2 pt, near mint; (a faint amount of interior haze that may wash out). Similar to GXI-23 except frame of obverse 5/8” x 1 7/16”; 6 vertical bars in shield below eagle. Head of prospector also slightly different. Strong impression, good color, rare mold!

*Est.: \$800 - \$1,600 • (Min. bid: \$500.00)*



### Lot 24

**Sheaf of Grain – Star Pictorial Flask**, probably Bulltown Glass Works, Bulltown, New Jersey, 1858 – 1865. Clear medium blue green, applied double collared mouth – blowpipe pontil scar, pint, perfect. GXIII-39. A scarce flask, pretty color and with good clarity to the glass.

*Est.: \$600 - \$1,200 • (Min. bid: \$400.00)*





### Lot 25

**Pattern Molded Globular Bottle**, 24 ribs swirled to the right, Midwest America, probably Zanesville Glass Works, Zanesville, Ohio, 1820 – 1835. Bright medium golden amber, outward rolled mouth – pontil scar, ht. 8 ½", about mint; (just a bit of faint exterior high point wear near mid body, otherwise perfect). A beautiful example, good form and with pleasing color.

*Est.: \$600 - \$900 • (Min. bid: \$400.00)*



### Lot 29

**Pattern Molded Globular Bottle**, 24 ribs swirled to the right, Midwest America, 1820 – 1840. Aquamarine, crude unevenly applied round collared mouth – pontil scar, ht. 7 ½"; (a touch of faint exterior high point wear, otherwise perfect). An interesting transitional form with a slightly flattened base and gently sloping shoulder. Could have also been the product of a lesser known Midwest glasshouse.

*Est.: \$250 - \$450 • (Min. bid: \$150.00)*



### Lot 26

**Pattern Molded Globular Bottle**, 24 ribs swirled to the right, Midwest America, probably Zanesville Glass Works, Zanesville, Ohio, 1820 – 1835. Brilliant golden yellow coloration, outward rolled mouth – pontil scar, ht. 8", about perfect; (some expected light surface wear at mid-body and an onion-skin thin open bubble at lower body near base). Stunning color, near perfect form and with nice, tight, uniform ribbing through the neck.

*Est.: \$1,000 - \$2,000 • (Min. bid: \$600.00)*



### Lot 30

**Pattern Molded Club Bottle**, 24 pronounced ribs swirled slightly to the right, Midwest America, 1820 – 1840. Deep aquamarine, applied round collared mouth – pontil scar, ht. 7 ¼"; (two open bubbles on the shoulder each approximately 3/8" by 1/2" and some faint exterior wear). Despite the noted condition issues, this is a very attractive example with a strong pattern and also slightly smaller in stature than most other club bottles.

*Est.: \$150 - \$250 • (Min. bid: \$100.00)*



### Lot 27

**Pattern Molded Globular Bottle**, 24 ribs swirled to the right, Midwest America, probably Zanesville Glass Works, Zanesville, Ohio, 1820 – 1835. Rich, deep golden amber, outward rolled mouth – pontil scar, ht. 8 5/8"; (just a very slight amount of exterior wear at mid body, otherwise perfect). A rich deep color with a very strong mold impression continuing through the base to the pontil mark.

*Est.: \$500 - \$800 • (Min. bid: \$350.00)*



### Lot 31

**Lot of Two Pattern Molded Flasks**, 14 diamond and 16 vertical rib patterns, probably Midwest America, 1800 – 1830. Greenish aqua and colorless, sheared mouths – pontil scarred bases, ht. 6 ¼" and 6 ½"; (some slight exterior wear on both and the colorless example has a paper-thin flake off top of mouth and a shallow, no-harm open bubble). Midwest colorless patterned flasks are quite scarce.

*Est.: \$225 - \$450 • (Min. bid: \$150.00)*



### Lot 28

**Pattern Molded Globular Bottle**, 24 ribs swirled to the left, Midwest America, probably Zanesville Glass Works, Zanesville, Ohio, 1820 – 1835. Aquamarine, outward rolled mouth – pontil scar, ht. 8 5/8"; (some faint exterior wear and a thin, 3/8" by 1/4" open bubble at lower body near base that has a light discoloration or coating). A scarce color for a pattern molded globular bottle.

*Est.: \$300 - \$500 • (Min. bid: \$150.00)*



### Lot 32

**Lot of Two Wicker Covered Pocket Flasks**, America, 1800 – 1840. Colorless and apple green, straight sided and ovoid forms, sheared mouths, likely pontil scarred bases, ht. 5 ¼" and 7 ¾"; (two small, 3/8" and 1/4" spots of stain on the wicker near the base of the colorless flask). See MW, plate 86, #1. Good color on the large ovoid flask. Wicker treatment is especially tight and finely woven on the colorless flask.

*Est.: \$150 - \$300 • (Min. bid: \$100.00)*



### Lot 33

**Pattern Molded Pocket Flask,** 24 vertical ribs, Midwest America, probably Zanesville Glass Works, Zanesville, Ohio, 1820 – 1835. Brilliant medium golden amber, flattened circular body, sheared mouth – pontil scar, ht. 4 ½"; (some expected faint exterior wear, otherwise perfect). A pretty example of this classic little Midwest pocket flask.

*Est.: \$200 - \$400 • (Min. bid: \$150.00)*



### Lot 37

**Pitkin Type Flask,** Predominately patterned with 36 ribs swirled to the left, although some faint vertical ribs are discernable, New England, 1785 – 1820. Very light yellowish olive, flattened ovoid form, sheared mouth – solid pontil scar with some traces of iron, ht. 5 3/8", mint. A light, delicate, pretty flask.

*Est.: \$700 - \$900 • (Min. bid: \$400.00)*



### Lot 34

**Pattern Molded Pocket Flask,** 24 ribs swirled to the left, Midwest America, possibly Zanesville, Ohio, 1815 – 1830. Strong medium apple green, flattened chestnut form, sheared mouth – pontil scar, ht. 5"; (wonderful condition with only a few blushes of light exterior high point wear). A rare, pretty color for a Midwest pattern molded flask. Ex. Alberta Rodgers Patterson collection.

*Est.: \$500 - \$1,000 • (Min. bid: \$300.00)*



### Lot 38

**Pitkin Type Flask,** Pattern molded with 36 ribs swirled to the left, New England, 1785 – 1820. Medium to deep olive green, flattened ovoid form through the body with the base circumference approaching a slightly elliptical, almost circular form, sheared mouth – pontil scar, ht. 5 1/8"; (some scattered minor exterior wear). A nice example, a little smaller than most.

*Est.: \$700 - \$900 • (Min. bid: \$400.00)*



### Lot 35

**Pitkin-Type Flask,** Pattern molded with 36 ribs swirled to the left, New England, 1785 – 1820. Clear, yellowish olive with almost a citron tone, squatty horseshoe shape body, sheared mouth – solid pontil scarred base, ht. 4 ¾", about mint; (just the slightest amount of exterior wear at base edge). A beautiful, delicate, less than five-inch gem of a Pitkin flask.

*Est.: \$900 - \$1,200 • (Min. bid: \$500.00)*



### Lot 39

**Freeblown Pocket Flask,** Midwest America, 1810 – 1830. Deep golden amber, chestnut form, sheared mouth – glass tipped pontil scar, ht. 4 5/8"; (some minor exterior wear). A very interesting little flask. Although not quite a miniature, it is smaller than most. In addition, there is ¼" nub protruding from the pontil and, as referenced in the Ballentine Catalog of Midwestern Glass, thought to be a characteristic of 24 rib (typically Zanesville) glass.

*Est.: \$175 - \$350 • (Min. bid: \$125.00)*



### Lot 36

**Pitkin Type Flask,** Pattern molded with 36 vertical ribs over 36 ribs swirled to the right, New England, 1785 – 1820. Medium to deep olive green, flattened ovoid form, sheared mouth – pontil scar, ht. 6 ½"; (some minor exterior high point wear on sides near base). A great example with a good strong impression through the mid-body, almost a "popcorn" effect.

*Est.: \$700 - \$900 • (Min. bid: \$400.00)*



### Lot 40

**Freeblown Pocket Flask,** Midwest America, possibly Mantua Glass Works, Mantua, Ohio, 1822 – 1829. Scarce "butterscotch" coloration, flattened chestnut form, sheared mouth – pontil scar, ht. 5 3/8"; (some faint exterior surface wear and a tiny pinpoint bit of roughness on the edge of the mouth). This color, also found in a couple of early freeblown globular bottles, has been associated by some to the Mantua Glass Works.

*Est.: \$250 - \$500 • (Min. bid: \$150.00)*





### Lot 41

**Early Freeblown Cologne Bottle or Flask**, Spain, 1650 – 1700. Medium sea green, oval form body with applied ribbons of rigaree on both sides of the flask from the base to the shoulder, tooled and stretched to form small handles at the neck below a sheared mouth with an applied wide flat band – glass tipped pontil scar, ht. 3 1/2"; (a few tips of the rigaree have some roughness or are missing). A very early, ornate little flask. See MW, plate 2, #8.

*Est.: \$200 - \$400 • (Min. bid: \$100.00)*



### Lot 42

**Whale Oil Table Lamp**, America, probably Pittsburgh district, 1830 – 1845. Blown from a colorless non-lead glass, pear shaped foot likely blown in a full-size mold of three vertical sections, fifteen wide melon type ribs, applied baluster stem, flat circular foot. Period metal burner rests atop a ground mouth, ht. 8 3/8" including burner; (some chipping off top of ground mouth).

*Est.: \$200 - \$300 • (Min. bid: \$100.00)*



### Lot 43

**Freeblown Covered Storage Jar**, probably a Pittsburgh district glass house, Pittsburgh, Pennsylvania, 1840 – 1860. Colorless with three applied sapphire blue rings around the body and cover, cylindrical with a domed lid, polished pontil scar on top of the applied hollow knopf, rough glass tipped pontil scarred base, overall ht. 12 3/4" (including lid), mint. A beautiful early jar, a bit larger than most.

*Est.: \$400 - \$600 • (Min. bid: \$250.00)*



### Lot 44

**Blown Chalice or Goblet**, America, possibly New England Glass Company, Cambridge, MA, 1830 – 1850. Canary yellow with a greenish cast, non-lead glass, deep cylindrical bowl flaring slightly outward, resting on a solid applied stem and broad sloping circular foot with ring, pontil scar, ht. 7 1/4", about mint; (tiny pin-head area of roughness on edge of mouth). A beautiful piece of blown tableware.

*Est.: \$400 - \$800 • (Min. bid: \$250.00)*



### Lot 45

**Pattern Molded Open Sugar Bowl or Baptismal Bowl**, probably a Pittsburgh district glass house, 1800 – 1830. Vibrant medium cobalt blue, shallow hemispherical bowl patterned with horizontal rows of 12 diamonds, applied circular foot flaring at base, pontil scar, ht. 2 7/8", rim dia. 4 5/8", perfect. Great example with a strong pattern and exceptional clarity to the glass. LI plate 199, #3. Ex. John Fifer collection.

*Est.: \$600 - \$1,200 • (Min. bid: \$350.00)*



### Lot 46

**Early Freeblown Bowl**, America, probably Western New York State, 1820 – 1850. Light aquamarine, nearly straight sided bowl with an outward folded, hollow rim – blowpipe pontil scar, ht. approx. 3 3/4", base dia. 4 3/4", rim dia. 5 7/8" (at widest point); (expected usage wear including some scattered light scratches and spotty minor dullness, 1/4" in-manufacture pontil crack). A good early bowl with an "earthy" feel and plenty of character.

*Est.: \$200 - \$400 • (Min. bid: \$125.00)*



### Lot 47

**"Use / Dr. C.W. Roebucks / Stomach Bitters / Cincinnati, Ohio"** Blown Glass Paperweight, America, 1860 – 1880. Colorless non-lead glass, enclosing a layer of colorful white, red and blue chips blanketed with a thin white layer of glass forming the background for the above lettering in black. Domed body with a concave base - pontil scar, ht. 2 3/4", dia. 4 1/4", perfect! One of only two examples known. Note the misspelling of "Robacks".

*Est.: \$600 - \$1,200 • (Min. bid: \$400.00)*



### Lot 48

**Christmas Salts, Lot of Three**, Boston and Sandwich Glass Works, Sandwich, MA, 1877 – 1887. Cranberry red (flushed), and teal blue, barrel form, threaded ground mouths with correct threaded metal lids (two impressed with "Dana K. Alden, Boston / Pat. Dec.25.1877"), smooth bases with 16 petal rosette, ht. 2 1/2"; (teal example has a 1/4" flake of top of ground mouth; some corrosion of metal agitators). BK vol. 1, page 299.

*Est.: \$800 - \$1,600 • (Min. bid: \$500.00)*





### Lot 49

**Early Freeblown Chestnut Bottle**, South Jersey Type, probably Wistarburgh Glass Works, 1739 – 1780. Deep emerald shading to an almost blackish green in the upper portion of the neck, high shouldered plump chestnut form, outward rolled and tooled mouth – pontil scar, ht. 10 ¾"; (some scratches and expected exterior wear). A magnificent chestnut, classic early South Jersey form and construction, with a vibrant color as good as it gets!

*Est.: \$1,200 - \$2,200 • (Min. bid: \$600.00)*



### Lot 50

**Early Freeblown Chestnut Bottle**, South Jersey Type, probably Wistarburgh Glass Works, 1739 – 1780. Medium yellow green, plump oval body with gracefully tapering shoulders transitioning to a near cylindrical base, heavy outward rolled mouth – pontil scar, ht. 9 7/8"; (some typical expected exterior wear). A scarce form sometimes referred to as a table serving bottle. See DM, page 50, #DM 26.

*Est.: \$750 - \$1,500 • (Min. bid: \$400.00)*



### Lot 51

**Early Freeblown Chestnut Bottle**, South Jersey Type, possibly Wistarburgh Glass Works, 1739 – 1780. Deep golden amber with a slight olive tone shading to a tobacco color through the neck, high shouldered plump chestnut form, heavy outward rolled mouth – pontil scar, ht. 9 5/8", near mint; (some minor exterior wear). There are discernable wood grain paddle marks on both flattened sides of the bottle.

*Est.: \$700 - \$1,400 • (Min. bid: \$400.00)*



### Lot 52

**Early Freeblown Globular Bottle**, America, possibly Western Pennsylvania, 1780 – 1820. Medium to deep "bottle" green or apple green, globular form with a slightly flattened base, applied and tooled rounded collar – pontil scar, ht. 7 ½"; (some scattered light exterior wear). A great early blown globular bottle in an exceptional color.

*Est.: \$400- \$800 • (Min. bid: \$250.00)*



### Lot 53

**Early Freeblown Chestnut Bottle**, America, probably Eastern United States, 1780 – 1820. Bright medium golden amber, bulbous chestnut form with gradually tapering shoulders and a near cylindrical base, applied and tooled ring type mouth – pontil scar, ht. 8 ½"; (expected light exterior wear). Bottles of this form and in a pure amber coloration are quite rare. In addition, this is certainly an attractive example.

*Est.: \$600 - \$1,200 • (Min. bid: \$400.00)*



### Lot 54

**Lot of Two Freeblown Chestnut Flasks**, New England, 1783 – 1820. Clear olive green and olive yellow, applied mouths – pontil scarred bases, ht. 5 ¼" and 10 ½"; (the small example has a couple of thin hairline fissures each approximately ¼" in length near the side of the flask, both have expected light exterior wear). The large example has a particularly crude applied mouth and of course, is a much better than average size.

*Est.: \$500 - \$800 • (Min. bid: \$300.00)*



### Lot 55

**Lot of Three Freeblown Chestnut Flasks**, New England, 1783 – 1820. Shades of light olive green and olive amber, applied and tooled round collared mouths – pontil scarred bases, ht. 5 ¾", 7 ¾", 7 7/8", all are near mint; (some typical scattered light exterior wear and the 7 7/8" example has a thin open bubble on the interior). A nice grouping of classic New England Chestnuts.

*Est.: \$800 - \$1,200 • (Min. bid: \$500.00)*



### Lot 56

**Lot of Three Freeblown Chestnut Flasks**, New England, 1783 – 1820. Shades of light to medium olive green and light yellowish olive, applied and tooled round collared mouths – pontil scarred bases, ht. 4 7/8", 5", 7 3/8", all are near mint with only expected light exterior wear. Another nice grouping with good clarity and character to the glass.

*Est.: \$800 - \$1,200 • (Min. bid: \$500.00)*



### Lot 57

**Large Freeblown Chestnut Bottle**, probably Midwest America, 1830 – 1850. Medium amber with a slight reddish tone, flattened chestnut form, applied sloping collared mouth – pontil scar, ht. 11"; (two very shallow minor flakes, 1/8" and 1/4" in length, off the side of the mouth and some light scattered exterior wear). A scarce, large Midwest chestnut bottle.

*Est.: \$300 - \$500 • (Min. bid: \$150.00)*



### Lot 61

**Blown Three Mold Decanter**, Keene Marlboro Street Glass Works, Keene, New Hampshire, 1820 – 1840. Medium olive amber, geometric sunburst and diamond pattern, tooled and slightly flared mouth – pontil scar, pint, about mint; (just the slightest bit of high point wear on a few of the diamonds near mid-body, otherwise perfect!) GIII-16. Provenance: Ex. Bob Mebane collection.

*Est.: \$600 - \$800 • (Min. bid: \$400.00)*



### Lot 58

**Large Early Freeblown Globular Bottle**, New England, 1783 – 1820. Yellow olive green, generally spherical body with a slightly flattened base, applied heavy collared mouth – pontil scar, ht. 10 1/4"; (fine condition with only light expected exterior wear). An exceptional example of a classic New England globular bottle with nice swirl lines and plenty of character.

*Est.: \$800 - \$1,200 • (Min. bid: \$400.00)*



### Lot 62

**Pair of Blown Three Mold Decanters**, Boston and Sandwich Glass Works, Sandwich, Massachusetts, 1820 – 1840. Both are colorless with shell and ribbing pattern, tooled flared mouths with correct matching stoppers – pontil scarred bases, quarts, overall ht. 10 3/4", both decanters and stoppers about mint; (one example has a shallow pinhead sized flake on the edge of the flared rim). GV-8.

*Est.: \$250 - \$450 • (Min. bid: \$150.00)*



### Lot 59

**Large Early Freeblown Globular Bottle**, New England, 1783 – 1820. Bright olive yellow (a little more yellow than the previous example), spherical body with a slightly flattened base, applied heavy collared mouth – pontil scar, ht. 10 1/2"; (about mint with only a very slight amount of exterior wear). Another great example with good symmetry and some nice swirl lines through the body.

*Est.: \$800 - \$1,200 • (Min. bid: \$400.00)*



### Lot 63

**Blown Three Mold Decanter**, probably Keene Marlboro Street Glassworks, Keene, NH, 1815 – 1830. Medium to deep olive green, barrel form with gracefully tapering shoulders, applied short double collared mouth – pontil scar, 1/2 pint; (a shallow 1/2" flake located on the side at the base, tiny bit of roughness on the underside of the double collar). GII-3. An extreme rarity in American Blown Glass. Ex. Paul Richards collection (see page 30 for details).

*Est.: \$6,000 - \$12,000 • (Min. bid: \$3,000.00)*



### Lot 60

**Freeblown Witch Ball and Stand**, possibly Pittsburgh district, 1840 – 1860. Colorless with profuse white loopings, vase with compressed bulbous body on a solid applied stem and flat circular foot, with body flaring gracefully outward to the rim having a 5 7/8" dia. ball covering. Both ball and vase are pontiled, overall ht, 14 1/4", perfect (tooling mark exists on the side of the bowl done during manufacture).

*Est.: \$750 - \$1,250 • (Min. bid: \$400.00)*



### Lot 64

**"GIN" Blown Three Mold Decanter**, probably Mt. Vernon Glass Works, Vernon, NY, 1820 – 1840. Colorless, geometric pattern with wide ribs above and below a center band with sunburst motif, rounded shoulders with body tapering slightly toward base, tooled wide flared mouth with period pressed and ground wheel stopper – pontil scar, qt. Near mint with just a slight amount of age related wear. GIII-2

*Est.: \$150 - \$250 • (Min. bid: \$100.00)*



### Lot 65

**Early Dip Mold Snuff Jar**, New England, 1790 – 1820. Beautiful light to medium yellowish olive, square with rounded domed shoulders, sheared, tooled and outward flared mouth – blowpipe pontil scar, ht. 5 7/8\";

*Est.: \$400 - \$600 • (Min. bid: \$250.00)*



### Lot 69

**Lot of (2) Snuff Jars** (one labeled), America, 1820 – 1880. Medium golden amber, square dip mold and rectangular 2-pc. molds, sheared and outward flared, tooled mouths – pontiled and smooth bases, ht. 4 3/8\";

*Est.: \$125 - \$200 • (Min. bid: \$75.00)*



### Lot 66

**Early Dip Mold Snuff Jar**, New England, 1790 – 1820. Medium bubbly olive, almost forest green, square with a short drawn up neck, sheared, tooled and outward flared mouth – pontil scar, ht. 4 1/2\";

*Est.: \$400 - \$600 • (Min. bid: \$250.00)*



### Lot 70

**Lot of (3) Snuff Jars**, New England, 1800 – 1830. Bright grass green, olive with an amber tone, and a pure olive green that was blown in full size 2-pc. mold, the others were blown in dip molds. All with sheared, flared mouths – pontil scarred bases, ht. 4 1/4\";

*Est.: \$250 - \$450 • (Min. bid: \$150.00)*



### Lot 67

**Early Dip Mold Snuff Bottle**, probably England or Continental, 1780 – 1820. Medium yellow olive, rectangular with wide beveled corners, sheared mouth with applied wide band collar – light sand type pontil scar, ht. 6 3/8\";

*Est.: \$250 - \$500 • (Min. bid: \$150.00)*



### Lot 71

**Lot of (3) Snuff Bottles**, America and possibly England, 1840 – 1905. “True / Cephalic / Snuff / By The / King’s / Patent”, and (2), “Doct / Marshall’s – Snuff”. Aquamarine, cylindrical and rectangular, thin flared mouth, rolled lip and early machine, pontil scar bases on two, ht. 3 1/4\";

*Est.: \$150 - \$250 • (Min. bid: \$100.00)*



### Lot 68

**“E Roome / Troy / New York” Snuff Bottle** (with label and contents), New England, possibly a Stoddard glasshouse, 1840 – 1860. Medium olive with a yellowish tone, square with beveled corners, sheared and flared mouth – pontil scar, ht. 4 1/4\";

*Est.: \$600 - \$900 • (Min. bid: \$350.00)*



### Lot 72

**“By / A.A.Cooley / Hartford / Con” Blacking Bottle**, probably Coventry Glass Works, Coventry, Connecticut, 1825 – 1845. Olive green with a yellowish tone, elliptical body with conical shoulders, sheared mouth – blowpipe pontil scar, ht. 4 1/2\";

*Est.: \$400 - \$600 • (Min. bid: \$250.00)*





### Lot 73

**Early Utility Bottle**, New England, 1820 – 1840. Rich, medium tobacco amber shading to blackish amber through the neck, cylindrical, tooled thin flanged lip – blowpipe pontil scar, ht. 5 1/2", perfect. Probably an early apothecary or medicine; it is always remarkable that such a thin, delicate lip has survived for close to 175 years.

*Est.: \$125 - \$225 • (Min. bid: \$75.00)*



### Lot 77

**Freeblown Paperweight Inkwell**, probably a New York state glass-house, 1830 – 1860. Aquamarine, heavy compressed spherical body above a slightly tapered, drawn cylindrical foot, tooled mouth – pontil scar, ht. 2 7/8", perfect; (some washable dust and residue on exterior). Similar to C #1045. Provenance: Ex. Paul Richards collection.

*Est.: \$200 - \$400 • (Min. bid: \$150.00)*



### Lot 74

**Lot of (3) Early Freeblown Bottles**, possibly Midwest America, 1815 – 1835. Shades of pale aqua to deep greenish aqua, miniature globular and cylindrical forms, tooled outward folded mouth and applied tapered collars – pontil scarred bases, ht. 3 1/2", 5 1/8", 6 7/8"; (a faint interior haze in the 5 1/8" cylinder example). Blown from a high quality batch of metal; the pale cylindrical examples may also have been the product of a window glass factory.

*Est.: \$200 - \$400 • (Min. bid: \$125.00)*



### Lot 78

**Pitkin Type Inkwell**, Pattern molded with 36 ribs swirled to the right, New England, 1783 – 1830. Dense olive green, inverted conical or "tepee" form, small applied disk mouth – pontil scar, ht. 1 13/16", base dia. 2 1/16"; (slightly weakened impression, primarily on one side of the bottle and some light exterior wear). Form similar to C #1145. A little smaller in size than normal.

*Est.: \$500 - \$1,000 • (Min. bid: \$300.00)*



### Lot 75

**"Farley's / Ink" Master Ink Bottle**, blown at a Stoddard glass-house, Stoddard, New Hampshire, 1842 – 1860. Olive amber with a yellowish tone, octagonal, tooled thin flared mouth – pontil scar, ht. 3 1/2", pristine mint! C#528. A very desirable early Stoddard ink, rare size, wonderful condition.

*Est.: \$1,600 - \$2,800 • (Min. bid: \$1,000.00)*



### Lot 79

**"AM / Bertinguiot" Ink Bottle**, Probably France, possibly America, 1840 – 1860. Black (extremely dense amber), cylindrical with rounded shoulders and a short conical neck, sheared mouth – pontil scar, ht. 2 1/4"; (a tiny, 1/8" shallow flake on reverse shoulder and some light expected exterior wear). C #576. The color is as dense as any we've seen and also with exceptionally strong embossing.

*Est.: \$200 - \$300 • (Min. bid: \$125.00)*



### Lot 76

**Umbrella Ink Bottle**, America, 1840 – 1860. Brilliant sapphire blue, octagonal umbrella form, sheared and inward rolled lip – pontil scar, ht. 2 3/8", dia. 2 3/8"; (lightly cleaned to original luster with just a bit of haze remaining on the inside of neck). Similar to C #143. A pretty example, great color and glass clarity. Historical note: This ink was dug in 1999, at the historic Governor's Mansion, Marshall, Michigan.

*Est.: \$1,200 - \$2,200 • (Min. bid: \$700.00)*



### Lot 80

**Master Ink Bottle**, probably New England, 1830 – 1860. Medium yellowish olive green, cylindrical, 3-piece mold, applied sloping double collared mouth – pontil scar, ht. 9", dia. 3 1/8"; (some minor exterior wear). Similar to C #758.

*Est.: \$100 - \$200 • (Min. bid: \$50.00)*



### Lot 81

**"Bininger's / Travelers / Guide / A.M. Bininger & Co / No 19 Broad St N.Y." Whiskey Flask,** America, 1860 – 1870. Bright golden amber shading to a lighter honey amber near the sides, flattened ovoid form, applied round double collared mouth – smooth base, ht. 6 5/8", perfect. A beautiful example, strong embossing and devoid of the typical exterior wear often encountered on these flasks.

*Est.: \$500 - \$800 • (Min. bid: \$300.00)*



### Lot 85

**"Juniper / Leaf Gin – Ruhl & Co. / Philada." Case Bottle,** America, 1870 – 1885. Bright honey amber with a slight olive tone, square tapered gin form, applied sloping collared mouth – smooth base, ht. 10 5/8", near mint; (an 1/8" open bubble located on a corner near the base and some light exterior wear). Embossed American gin bottles are scarce and this particular one is rare. We are aware of only two other examples known.

*Est.: \$125 - \$250 • (Min. bid: \$75.00)*



### Lot 82

**Fancy Back Bar Bottle,** America, 1875 – 1890. Fiery golden amber shading to yellow in the thinner vertical ribs, cylindrical with ten patterned body panels, tooled sloping collared mouth with ring – smooth base, ht. 11 1/4"; (just a wisp of faint interior haze or residue that would probably wash out, otherwise perfect). A beautiful back bar bottle with a very vibrant, lively color, especially in natural daylight.

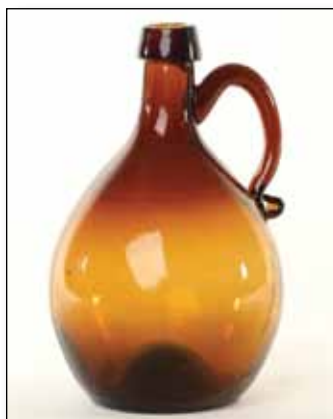
*Est.: \$175 - \$350 • (Min. bid: \$100.00)*



### Lot 86

**Nailsea Type Flask,** probably England, 1880 – 1900. Translucent white with a combed cranberry pattern, flattened spherical body, sheared mouth – pontil scar, ht. 4 3/4", perfect. Although the flask appears opaque in reflected light, the flask does exhibit some translucence in normal daylight. A pretty flask having the appearance of twelve cranberry ribs.

*Est.: \$100 - \$150 • (Min. bid: \$75.00)*



### Lot 83

**Applied Handle Spirits Jug,** America, 1850 – 1860. Variegated yellow to golden amber with some apricot tones through the shoulder area, 2-pc. mold ovoid body with applied solid ear shaped handle, applied sloping collared mouth – iron pontil scar, ht. 6 1/8", near mint; (a 1/4", thin stress line at lower handle attachment that does not appear to go through the glass). Beautiful and nicely executed. See MW, plate 48, #2.

*Est.: \$225 - \$450 • (Min. bid: \$125.00)*



### Lot 87

**Fancy Engraved Pictorial Flask,** England, 1887 – 1888. Colorless, Gemel-type flask with engraved motif of a crown and, **"W. Henderson / Brewer / Oakwellgate / Gateshead / 1887" – Jockey and Horse / "Hilwarlin"**. Flattened ovoid body with applied ribbons of glass along the sides tooled into a leaf pattern at the neck, sheared mouth – polished pontil, ht. 8 1/2", perfect. A great deal of workmanship in this flask!

*Est.: \$150 - \$300 • (Min. bid: \$100.00)*



### Lot 84

**"Jno. K. Hack & Bro." / Elk Head / "Pure Rye" Engraved Back Bar Bottle,** America, probably Pittsburgh district, 1903 – 1910. Colorless, cylindrical with domed shoulders, tooled sloping collared mouth – polished concave base, ht. 9 5/8", perfect. Jno. K. Hack & Bro were liquor merchants at 203 E. Ohio St, Pittsburgh, PA, from 1903 until Prohibition. A rare bar bottle with exceptionally detailed engraving.

*Est.: \$225 - \$450 • (Min. bid: \$125.00)*



### Lot 88

**"W & Co / N.Y." Bitters Type Bottle,** America, 1855 – 1865. Medium amber, pineapple form, applied double collared mouth – blowpipe pontil scar, ht. 8 3/8", near mint; (a 1/8" open bubble is located on the side of the bottle, about two inches above the base). See R/H #P100. A good solid example of this popular figural bottle.

*Est.: \$400 - \$600 • (Min. bid: \$250.00)*





### Lot 89

**"Brown's / Celebrated / Indian Herb Bitters – Patented / 1867"**, America, 1867 – 1885. Medium golden amber shading to a light golden amber through the arms, tooled rolled lip – smooth base, ht. 12 1/8", attic mint. Note, the bottle still retains its 2-cent "U.S. INTE. REV" tax stamp with inked cursive initials and the date 4/7/81 (perhaps a hand cancellation). R/H #B223

*Est.: \$700 - \$900 • (Min. bid: \$450.00)*



### Lot 93

**"S.T. / Drakes / 1860 / Plantation / X / Bitters – Patented / 1862"** (with approximately 80% front and back labels), America, 1862 – 1875. Light golden yellow shading to near lemon yellow in the corners, square log cabin form with 4 logs above the label panel, applied sloping collared mouth – smooth base, ht. 10 1/8"; (a touch of interior residue that would likely wash out, otherwise attic mint). R/H #D110.

*Est.: \$500 - \$800 • (Min. bid: \$300.00)*



### Lot 90

**"Brown's / Celebrated / Indian Herb Bitters – Patented / 1867"**, America, 1867 – 1885. Rich tobacco amber, tooled rolled lip – smooth base, ht. 12 1/8"; (approx. 1/3 of the inside portion of the rolled lip is incomplete. There is some fine roughness on the inside and top of the mouth from this, or perhaps when the cork was pried out). R/H #B223. A scarce color, the condition issue is fairly minor.

*Est.: \$600 - \$1,200 • (Min. bid: \$400.00)*



### Lot 94

**"Imperial / Crown Bitters – Harrison & Starks / Davenport. Iowa"**, America, 1867 – 1872. Bright medium golden amber, oversized square with indented panels, applied sloping collared mouth – smooth base, ht. 9 7/8", dia. (side to side), 2 15/16", perfect. R/H #14 (from newspaper advertisement). A very exciting new discovery of this here-to-fore, unknown bitters bottle. An historically important bottle in virtually attic mint condition (see page 31 for further details).

*Est.: \$1,500 - \$3,000 • (Min. bid: \$750.00)*



### Lot 91

**"S.T. / Drakes / 1860 / Plantation / X / Bitters – Patented / 1862"**, America, 1862 – 1875. Bright golden yellow, square log cabin form with 4 logs above the label panel, applied sloping collared mouth – smooth base, ht. 10 1/8", about mint; (the bottle may have been lightly cleaned). R/H #D110. A light, pretty example with very strong embossing and virtually no high point wear.

*Est.: \$350 - \$700 • (Min. bid: \$200.00)*



### Lot 95

**"Kelly's / Old Cabin / Bitters – Patd / March / 1870 – Kelly's / Old Cabin / Bitters"**, America, 1870 – 1875. Medium to deep golden amber, log cabin form, applied sloping collared mouth – smooth base, ht. 9 1/8", about mint; (some light exterior high point wear at the roof corners). R/H #K22. One of the great classics. Note: this mold is certainly much more difficult to acquire than the 1863 example.

*Est.: \$3,000 - \$4,000 • (Min. bid: \$1,500.00)*



### Lot 92

**"S.T. / Drakes / 1860 / Plantation / X / Bitters – Patented / 1862"**, America, 1862 – 1875. Deep cherry puce, square log cabin form with 6 logs above the label panel, applied sloping collared mouth – smooth base, ht. 9 7/8"; (near mint with a weakened impression in the upper roof area and several thin open surface bubbles). R/H #D105. Ex. Dr. Burton Spiller collection, Lot #22

*Est.: \$200 - \$400 • (Min. bid: \$125.00)*



### Lot 96

**"H.P. Herb / Wild / Cherry / Bitters / Reading / PA – Wild Cherry" / (Cherry Tree) / "Bitters" – "Bitters"** (on each of 4 roof panels), America, 1875 – 1885. Bright golden amber shading to a golden yellow in the corners, square cabin form with roped corners, tooled tapered collar with ring – smooth base, ht. 9 7/8", attic mint. R/H #H93. Very pretty; it would truly be difficult to find a nicer example!

*Est.: \$400 - \$600 • (Min. bid: \$250.00)*





### Lot 97

**"Old /Homestead / Wild Cherry / Bitters – Patent"**, America, 1865 – 1875. Yellowish golden amber, square cabin form, applied sloping collared mouth – smooth base, ht. 9 5/8", perfect; (note, there is a tissue paper thin small ring on the surface of a corner where a bubble never fully formed as there is no depth to the bubble, and is not considered damage). R/H #O37. A crisp, bright, virtually pristine example

*Est.: \$350 - \$600 • (Min. bid: \$250.00)*



### Lot 101

**"Greeley's Bourbon / Bitters"**, America, 1860 – 1875. Pinkish copper puce, barrel form, applied square collared mouth – smooth base, ht. 9 1/8"; perfect. R/H #G101. A pretty color and lighter in density than the typical smoky puce examples.

*Est.: \$600 - \$900 • (Min. bid: \$400.00)*



### Lot 98

**"Hepatic Bitters – Dr. A.S. Russell & Co"**, America, 1865 – 1875. Medium amber, square with indented panels, applied sloping collared mouth – smooth base, ht. 8 1/2"; (the bottle displays near mint, but has been professional cleaned with a very light "sheen" remaining on the panels when viewed in a reflective light). R/H #H90. A very rare bitters with only a couple examples having come to market in the last 20 years.

*Est.: \$400 - \$600 • (Min. bid: \$250.00)*



### Lot 102

**"Kimball's / Jaundice – Bitters – Troy. N.H"**, blown at a Stoddard glasshouse, Stoddard, New Hampshire, 1850 – 1860. Rich olive amber shading to a light golden yellow with an olive tone, rectangular with beveled corners, applied sloping collared mouth – iron pontil scar, ht. 7", perfect. R/H #K42. A beautiful example of this classic New England bitters bottle.

*Est.: \$800 - \$1,200 • (Min. bid: \$500.00)*



### Lot 99

**"Shedds / Spring Bitters – Shedds / Spring Bitters"**, America, 1875 – 1890. Clear golden amber, square with indented panels, tooled sloping collared mouth – smooth base, ht. 9 5/8", perfect. R/H #S97. A very rare bitters bottle from Jamestown, New York, with brilliant glass in sparkling mint condition!

*Est.: \$300 - \$500 • (Min. bid: \$200.00)*



### Lot 103

**Lot of (2) Bitters Bottles**, America, 1872 – 1885. **"German – Hop – Bitters – 1872 – Reading Mich"** and, **"German – Hop – Bitters – 1880 – Dr C.D. Warner's – Reading. Mich"**. Honey amber & medium amber, applied sloping collared mouths – smooth bases, ht. 9 1/2" & 9 3/4", about mint; (both have some minor interior residue, but do not appear to be dug, as is often the case). R/H #s G23 & G25.6 (rare and with partial label).

*Est.: \$200 - \$400 • (Min. bid: \$125.00)*



### Lot 100

**"Dr. Loew's Celebrated / Stomach Bitters & / Nerve Tonic – The / Loew & Sons Co. / Cleveland, O."**, America, 1880 – 1900. Bright yellowish grass green, square with indented panels, swirled fluted neck and shoulder, tooled long sloping collared mouth – smooth base, about mint; (very minor bit of roughness on edge of mouth, otherwise perfect). R/H #L111. A bright, pretty example.

*Est.: \$200 - \$400 • (Min. bid: \$150.00)*



### Lot 104

**"Webb's Improved / Stomach Bitters. – C.E. Webb & Bro\_ / Jackson. Mich\_"**, America, 1875 – 1885. Medium to deep orange amber, square with beveled corners, applied sloping collared mouth – smooth base, ht. 9", about mint; (a couple of patches of faint exterior haze or "bloom", primarily on the side panels). R/H #W60. Very scarce. A crude, nice example that has not been dug, as is typical of this mold.

*Est.: \$150 - \$300 • (Min. bid: \$100.00)*



### Lot 105

**"Dr. Townsend's – Sarsaparilla – Albany / NY"** (with debossed "nail-head" impressions on all four panels), probably a Stoddard glasshouse, Stoddard, NH, 1845 – 1860. Yellowish olive, applied sloping collared mouth – sand chip type pontil scar, ht. 9 1/2", about perfect. DeG #206. Seedy glass and a crude, somewhat pitted mold add lots of character to this example. A scarce variant, wonderful condition.

*Est.: \$400 - \$600 • (Min. bid: \$250.00)*



### Lot 109

**"Turner's / Sarsaparilla / Buffalo N.Y."**, America, 1845 – 1855. Aquamarine, large oval with flattened sides, applied sloping collared mouth – blowpipe pontil scar, ht. 12 1/4"; (just a touch of high point wear at sides near base and a 1/8", shallow open bubble, otherwise attic mint). DeG #208. It is absolutely amazing that this enormous sized early medicine bottle has survived. An extremely impressive, rare pontiled medicine.

*Est.: \$1,600 - \$3,200 • (Min. bid: \$1,000.00)*



### Lot 106

**"Old Dr / J Townsends – Sarsaparilla – New York."**, America, 1845 – 1860. Medium blue-green, almost a teal green, square with beveled corners, applied sloping collared mouth – deep domed base with a heavy iron pontil scar, ht. 9 1/2", near mint; (a shallow 3/4" open bubble on the interior and a 3/8" area of minor roughness on the edge of the mouth). DeG #206. A very pretty bottle, different color, heavily whittled.

*Est.: \$300 - \$500 • (Min. bid: \$200.00)*



### Lot 110

**"Lucina Cordial / or / Elixir of Love"**, America, 1845 – 1855. Aquamarine, rectangular with beveled corners, applied sloping collared mouth – blowpipe pontil scar, ht. 6 1/4", perfect. An extremely rare and unusual pontiled medicine bottle with bold embossing, nicely whittled, and outstanding condition. Note: this medicine was apparently advertised, August 20, 1845, in the North Carolina Standard (see, JB, #2500).

*Est.: \$500 - \$1,000 • (Min. bid: \$300.00)*



### Lot 107

**"Dr Townsend's – Sarsaparilla – Albany / NY"**, America, 1845 – 1860. Bright medium yellowish green, square with beveled corners, applied sloping collared mouth – iron pontil scar, ht. 9 5/8"; (only the faintest touch of high point wear on one panel, otherwise pristine). DeG #206. Wonderful condition, a pretty color, and crude seedy glass.

*Est.: \$300 - \$500 • (Min. bid: \$200.00)*



### Lot 111

**"Clemens / Indian / Tonic" / (Standing Indian) / "Prepared by / Geo. W. House"**, (with 99% original label and partial contents), America, 1845 – 1855. Aquamarine, oval with outward rolled mouth – blowpipe pontil scar, ht. 5 1/2", perfect; (label is somewhat darkened but fully and easily readable). N #127. A popular early "Indian" medicine and rare with original contents.

*Est.: \$600 - \$800 • (Min. bid: \$350.00)*



### Lot 108

**"Dr Townsend's – Sarsaparilla – Albany / N.Y. – III"**, America, 1845 – 1860. Deep blue green with a stronger bluish tone than most, square with beveled corners, applied sloping collared mouth – large iron pontil ring, ht. 9 1/4"; (a small lump of sand with two short 1/8" "legs" on the inside surface, otherwise about mint. DeG #206. Scarce mold, great color, almost a teal blue. Ex. Dr. Sam Greer collection.

*Est.: \$325 - \$650 • (Min. bid: \$225.00)*



### Lot 112

**"Magnetic – Aether By – Halsted & Co"**, (with 98% original labels and partial contents), America, 1840 – 1850. Pale aquamarine, 9-sided, tooled thin flanged lip – blowpipe pontil scar, ht. 4 1/4", perfect; (label slightly discolored but fully legible). Label reads in part: **"Magnetic Aether or Fluid of Restoration"**, "Rochester, N.Y." N #273. Extremely rare. Ex. Dr. Sam Greer collection.

*Est.: \$800 - \$1,200 • (Min. bid: \$500.00)*

# Black Glass

English, Continental & American





Included in this photograph are a variety of early black glass forms spanning nearly 200 years of production and multiple sources of origin. Colloquially referred to as wine bottles, their contents included wine and other potables such as spirits, ales, beers, and cider as well as vinegar, olive oil, medicines and “dry” wares.

The evolution of the forms represented here emerge as early as the mid-1600's with a distinct form known as the shaft-and-globe. From this point, a gradual evolution in form and construction takes place over approximately 150 years, culminating in what we recognize today as the standard tall cylindrical wine bottle, which is suitable for ‘binning’.

As primary forms evolved, different areas developed similar yet distinctive regional

characteristics. *“An English shaft-and-globe bottle for example, had Dutch and German counterparts, and collectors can distinguish between them. There are also distinctively Scottish forms, octagonal forms, varied sizes, and other miscellaneous styles. There are transitional forms throughout these different periods — again with slight differences in the same form from different geographical locations.”\**

These bottles, virtually ubiquitous throughout England, Europe and other areas from the 17th through the mid 19th century, were also blown in numerous early American glasshouses beginning with the first successful glass factory in America — Wistarburgh — in 1738. As we noted in a brief discussion of black glass in auction catalog #1, as late 1837, a reference to a *“black bottle factory, the only one of its kind in the western country”*\*\* near Pittsburgh, was apparently devoted to these types of vessels.

In general, American collectors of black glass bottles will give an American attribution to the

glass if it's identifying seal shows the bottle belonged to a known colonist living in North America (even though the bottle may have been blown elsewhere). If this discussion of black glass bottles and their “American attribution” is of interest to you, please see Dale Murschell's excellent book, *American Applied Glass Seal Bottles*.

While always in favor in England and Europe, the popularity of these early, crude and oftentimes beautiful black glass bottles is without a doubt gaining momentum here in the United States. It is easy to see why they hold a special place in collector's hearts. If you have not already done so, once you begin to read, learn, and handle examples of these interesting and historically important bottles, your interest in them is sure to grow as well!

\* Excerpts from Cary Adelman's notes and writings that he shared with other collectors when he graciously volunteered to display a part of his beautiful collection at a local bottle show.

\*\*Joseph D. Weeks, Report on the Manufacture of Glass, including a History of Glassmaking in the United States, 10th Census





### Lot 113

**"Hyatt's – Infalible – Life Balsam / N-Y."**, America, 1850 – 1860. Medium grass green, rectangular with beveled corners, applied sloping collared mouth with ring – heavy oval iron pontil scar, ht. 9 1/2"; (professionally cleaned to about mint condition with the full iron pontil intact). N #322. A big, attractive pontiled medicine in a great color.

*Est.: \$1,000 - \$2,000 • (Min. bid: \$600.00)*



### Lot 117

**"Pratt's / New Life – A.McBoyle & Co / San Francisco"**, America, 1870 – 1885. Brilliant honey amber, rectangular with indented panels, applied sloping collared mouth – smooth base, ht. 7 1/2"; (a dug bottle that has not been cleaned with some scattered light interior stain or residue). A very pretty color and the noted light interior stain is of the type that should easily clean professionally, if desired.

*Est.: \$500 - \$800 • (Min. bid: \$300.00)*



### Lot 114

**"C. Brinckerhoffs – Health Restorative – Price \$1.00 – New York"**, a New England glasshouse, 1845 – 1855. Medium to deep olive green with a yellowish tone, rectangular with wide beveled corners, applied sloping collared mouth – sand chip type pontil scar, ht. 7 1/8"; (just a slight amount of faint exterior wear, otherwise perfect). N #75. A great example, devoid of the typical exterior wear and with a better than average impression.

*Est.: \$1,500 - \$2,000 • (Min. bid: \$1,000.00)*



### Lot 118

**"Prairie Weed / Balsam" – (motif of a prairie weed) – "Austin Bros & Steere / Boston"**, America, 1875 – 1885. Aquamarine, rectangular with gabled roof-type shoulders, tooled square collared mouth – smooth base, ht. 7", near mint; (a pin-point touch of roughness on the edge of the collar and a faint patch of milkiness on the inside back panel, about the size of a quarter). BB #376. A rare bottle, unusual interesting form.

*Est.: \$175 - \$350 • (Min. bid: \$100.00)*



### Lot 115

**"J.L. Leavitt. – Boston"**, probably a Stoddard glasshouse, Stoddard, NH, 1845 – 1860. Medium to deep olive amber, cylindrical, 3-piece mold, applied sloping collared mouth with lower bevel – iron pontil scar, ht. 8 1/4"; (a minor 1/8" flake on the underside of the beveled collar and some very light exterior wear near the base, otherwise, about mint). A scarce Stoddard medicine bottle believed to have held castor oil.

*Est.: \$400 - \$800 • (Min. bid: \$225.00)*



### Lot 119

**"Coffee.s – Chinese / Liniment / No 3"**, (backwards "s"), America, 1845 – 1855. Medium bluish aquamarine, oval, tooled and inward rolled mouth – pontil scar, ht. 4 1/4"; (the bottle displays as mint but has been lightly cleaned to original luster). A scarce pontiled medicine. Apparently this company was a Cincinnati, Ohio concern and marketed several different products.

*Est.: \$100 - \$200 • (Min. bid: \$50.00)*



### Lot 116

**"Longley's – Panacea"**, a New England glasshouse, 1855 – 1865. Medium to deep olive green, rectangular with beveled corners, applied sloping double collared mouth – smooth base, ht. 5 7/8", about mint; (a bit of very minor, predominately in-manufacture roughness on top of mouth and some very light expected exterior wear). A good rich color and fine condition. Another classic New England medicine bottle.

*Est.: \$1,000 - \$2,000 • (Min. bid: \$700.00)*



### Lot 120

**Lot of (4) Pontiled Medicine Bottles**, America, 1840 – 1860. **"H.G. Farrell – Peoria ILL"**; **"A.Trasks – Magnetic – Ointment"**, **"Genuine / Essence"** and, **"Liquid / Opodeldoc"**. Aquamarine with oval, square, rectangular and cylindrical forms, thin flanged and rolled mouths, pontil scarred bases, hts. 5 7/8", 2 3/8", 4 3/4", and 4 1/2", respectively. All are bright, clean, and in perfect condition.

*Est.: \$100 - \$150 • (Min. bid: \$50.00)*

**Lot 121**

**"Swaim's – Panacea – Philada",** America, 1850 – 1860. Rich medium to deep olive with a yellowish tone, cylindrical with 12 indented panels, applied sloping double collared mouth and short, stubby neck – base appears smooth (although likely faintly pontiled), ht. 7 3/8"; (a light contents ring on the interior that may wash out and some faint exterior high point wear, otherwise perfect). A beautiful example with an attractive, rich color.

*Est.: \$400 - \$600 • (Min. bid: \$250.00)*

**Lot 122**

**"Swaim's – Panacea – Philada",** America, 1845 – 1860. Clear medium green with an olive yellow tone, cylindrical with 12 indented panels, applied sloping double collared mouth – sand chip type pontil scar, ht. 7 7/8"; (some faint exterior wear, otherwise perfect). A pretty example with some nice whittling and pleasing character. Provenance: Ex. Dr. Burton Spiller collection.

*Est.: \$400 - \$600 • (Min. bid: \$250.00)*

**Lot 123**

**"Genuine – Swaim's / Panacea – Philadelphia",** America, 1840 – 1850. Pale aquamarine, rectangular with beveled corners, crudely applied heavy sloping collared mouth – blowpipe pontil scar, ht. 7 3/4", near mint; (some expected light exterior high point wear). One of the earliest of the Swaim's bottles, big and nicely whittled. Ex. NCH Auction 72, lot #34.

*Est.: \$600 - \$900 • (Min. bid: \$350.00)*

**Lot 124**

**"Dandelion & Tomato / Panacea – Ransom & Stevens – Druggists Boston",** America, 1845 – 1855. Aqua, rectangular with wide beveled corners, applied sloping double collared mouth – blowpipe pontil scar, ht. 8 7/8"; (professionally cleaned to original luster with some faint exterior wear remaining, otherwise a bright, clean example). N #512. An attractive, rare pontiled medicine.

*Est.: \$300 - \$600 • (Min. bid: \$200.00)*

**Lot 125**

**"William Brown. – Druggist & Chemist / 481 Washington St. – Boston",** America, 1840 – 1855.

Aquamarine, rectangular with wide beveled corners and arched indented panels on the front and two corner panels, applied sloping collared mouth – pontil scar, ht. 8 5/8"; (some scattered faint exterior wear, the bottle may have been lightly cleaned, although displays as mint). An extremely rare pontiled medicine bottle.

*Est.: \$150 - \$300 • (Min. bid: \$100.00)*

**Lot 126**

**"Vaughn's – Vegetable / Lith-ontriptic / Mixture – Buffalo",** America, 1855 – 1865. Deep bluish aquamarine, square with indented arched panels, domed shoulders, applied sloping collared mouth – smooth base, ht. 8", about mint; (just a touch of exterior high point wear). A large, gutsy bottle with strong color, brilliant glass, and plenty of eye appeal.

*Est.: \$225 - \$350 • (Min. bid: \$150.00)*

**Lot 127**

**"Carter's / Spanish / Mixture",** America, probably 1855 – 1860. Yellowish olive amber, almost a tobacco color, cylindrical, applied sloping collared mouth with lower bevel – domed base with heavy iron pontil, ht. 8 1/8", perfect. N #108. Most examples are predominately green in color. This is a much more difficult color to acquire and it's beautiful to boot! Ex. Roger Sweetland collection.

*Est.: \$600 - \$800 • (Min. bid: \$350.00)*

**Lot 128**

**"Carter's / Spanish / Mixture",** America, probably 1855 – 1860. Brilliant medium yellow olive, cylindrical, applied sloping collared mouth with lower bevel – blowpipe pontil scar, ht. 7 7/8"; (may have been lightly cleaned, but regardless, appears as a virtually pristine mint!). N #108. Quite rare with the open pontil, this example also has plenty of character with swirl lines and bubbles throughout.

*Est.: \$600 - \$800 • (Min. bid: \$350.00)*



**Lot 129**

**"J.M. Curtis' – Cure For / Baldness – Providence. R.I"**, America, 1860 – 1870. Aqua, rectangular with beveled corners, applied square collared mouth – smooth base, ht. 7 5/8"; (professionally cleaned to near mint with a just a light interior dullness or sheen remaining). An important cure, extremely rare with only 3 – 4 examples known. Also, a desirable piece for the hair bottle collector. Note, advertised June 16, 1859 (See DF, p.44).

**Est.: \$800 - \$1,200 • (Min. bid: \$500.00)**

**Lot 133**

**"Faith Whitcomb's / Balsam – Cures Consumption – Cures Coughs and Colds"**, America, 1885 – 1900. Aquamarine, rectangular, applied round collared mouth with lower bevel – smooth base, ht. 9 1/8"; (some very minor light exterior wear, otherwise about mint). BA2, #274. In the 1880's, Faith Whitcomb was the proprietor of a medicine company with numerous products directed toward the Shaker community and perhaps was also a Shaker herself.

**Est.: \$150 - \$250 • (Min. bid: \$100.00)**

**Lot 130**

**"Ayers' – Ague – Cure – Lowell / Mass"**, America, 1850 – 1860. Aquamarine, rectangular with indented panels, applied round collared mouth with lower bevel – pontil scar, ht. 6 7/8", pristine mint. BA1, #9. A great example, difficult to find in this un-dug, "attic" condition.

**Est.: \$175 - \$250 • (Min. bid: \$100.00)**

**Lot 134**

**"Shaker Cherry / Pectoral Syrup – Canterbury / N.H. No.1"**, America, 1840 – 1860. Aquamarine, rectangular with indented side panels, applied sloping collared mouth – pontil scar, ht. 5 3/8"; (professionally cleaned to original luster with a faint interior sheen remaining; in-manufacture extrusion of glass at mold seam with roughness). Formulated by Dr. Thomas Corbett in the 1820's and subsequently given to the Shaker Society (RF, p. 230).

**Est.: \$125 - \$225 • (Min. bid: \$75.00)**

**Lot 131**

**"Dr./ L.E.Keeley's / Double / Chloride / Of / Gold Cure / For / Tobacco Habit / A / Tested / And / Infallible / Remedy / Discovered By / Dr.L.E.Keeley / Dwight, ILLS. – K.G.C. / Leslie E Keeley M.D."**, America, 1885 – 1900. Pale sun-colored amethyst, rectangular with a rounded back, tooled square collared mouth – smooth base, ht. 5 3/4", near mint; (some light scratches and wear on reverse). BA1, #98. Beautiful!

**Est.: \$300 - \$450 • (Min. bid: \$200.00)**

**Lot 135**

**Lot of (3) Bottles with advertised narcotic ingredients**, America, 1885 – 1908. "Dr. F.M. Cheney's – Expectorant – Covington, GA", clear, rectangular with complete label and box (contents "Morphia" on label). "Shiloh's – S.C. Wells & Co. - Leroy, N.Y.", aqua, rect. with box and complete label ("Diacylmorphine" listed on label), and label only, "Williams' / Elixir / Paregoric / Opium 1 4/5 Gr. Per Oz.", (some discoloration of label & missing corner).

**Est.: \$75 - \$150 • (Min. bid: \$50.00)**

**Lot 132**

**"Lightning Kidney And Liver Cure / No Relief, No Pay! – Herb Medicine Co – Weston W. VA"**, America, 1890 – 1900. Aqua, rectangular with indented panels, tooled round collared mouth with lower bevel – smooth base, ht. 9 3/8"; (professionally cleaned to near mint condition). BA2, #166. The large "Lightning" cure is one of the more rare and desirable bottles to acquire from the Herb Medicine Company

**Est.: \$125 - \$225 • (Min. bid: \$75.00)**

**Lot 136**

**Lot of (3) Bottles with advertised narcotic ingredients**, America, 1885 – 1910. "Pure / Laudanum / Poison / J.W. Hamilton / Mfg. Chemists / Elmira, N.Y.", clear, rect. tooled mouth. Godfrey's / Cordial / Mixture of Sassafras and Opium", clear, inverted cone form, machine made. "Gelatin-Coated / Pills / Camphor And / Opium. / Parke Davis & Co. / Detroit, Mich.", amber, rect. tooled square collar. All three bottles are label only.

**Est.: \$75 - \$125 • (Min. bid: \$50.00)**

**Lot 137**

**"Vermont Spring / Saxe & Co. / Sheldon, VT."**, America, 1860 – 1875. Bright medium to deep olive, approaching a forest green coloration, cylindrical high-shouldered quart, applied sloping double collared mouth – smooth base, quart, perfect. T #V-21:A, type 1, variant 3. A great example with heavily whittled glass, in a somewhat different color and excellent condition.

**Est.: \$200 - \$400 • (Min. bid: \$150.00)**

**Lot 141**

**"Washington / Spring / Saratoga / N.Y."**, America, 1870 – 1880. Medium to deep blue-green, cylindrical, applied sloping double collared mouth – smooth base, pint, about mint; (just a tiny pin-point flake on the edge of the lower bevel and some expected faint exterior high point wear, otherwise perfect). T #S-64:B. An absolutely beautiful example that passes light evenly, whittled and with nice swirl lines.

**Est.: \$300 - \$500 • (Min. bid: \$200.00)**

**Lot 138**

**"Congress & Empire Spring Co / Hotchkiss' Sons / E / New York / Saratoga NY"**, America, 1865 – 1880. Rich golden amber with a slight olive tone, cylindrical, applied sloping double collared mouth – smooth base, pint; (lightly cleaned to near perfect condition, a shallow 1/4" flake on the underside of the lower beveled collar). T #E-7:B. A scarce mold in an absolutely vibrant, stunning color.

**Est.: \$350 - \$550 • (Min. bid: \$225.00)**

**Lot 142**

**"J B G" Flavored Beer Bottle**, Lockport or Lancaster Glass Works, New York, 1860 – 1870. Beautiful teal blue coloration, cylindrical with 12 flat panels, cone type shoulders, applied sloping collared mouth – smooth base, ht. 9 3/4", near mint; (relatively light, expected exterior wear). A very rare, possibly unique color for this mold (or any of the other various "flavored beers"). Note: the condition is also remarkable for these types of heavy sided bottles.

**Est.: \$1,500 - \$2,500 • (Min. bid: \$800.00)**

**Lot 139**

**"Congress & Empire Spring Co" / "C" (within shield) / "Saratoga.N.Y. – Congress / Water"**, probably Congressville Glass Works, Saratoga, New York, 1870 – 1885. Emerald, or "Congressville" green, cylindrical, applied sloping double collared mouth – smooth base, pint, about mint; (a thin 1/8" open bubble and a bit of light exterior wear, both on reverse, otherwise perfect). T #C-18:B, type 1. Scarce bottle, wonderful condition.

**Est.: \$400 - \$800 • (Min. bid: \$250.00)**

**Lot 143**

**"Henke & Maack" Torpedo Soda Water Bottle**, America, 1855 – 1865. Medium green approaching a light emerald color, torpedo form, applied sloping collared mouth – smooth base, ht. 8 5/8"; (professionally cleaned with some light remaining ground wear). An extremely rare Washington, D.C. soda with only one or two other examples known. This bottle has been in a collection since the 1970's, when it was dug from a well in Alexandria, VA.

**Est.: \$3,000 - \$6,000 • (Min. bid: \$1,500.00)**

**Lot 140**

**"G.W. Weston & Co / Saratoga / N.Y."**, America, 1848 – 1861. Deep yellowish olive with an amber tone, cylindrical, applied sloping double collared mouth – sand chip type pontil scar, quart, near mint; (a shallow 1/8" flake off lower bevel). T #E-2:A, type II. The quarts in the type II variant, with lettering measuring 5 1/4" across, do not seem to turn up as frequently as the other types.

**Est.: \$125 - \$225 • (Min. bid: \$75.00)**

**Lot 144**

**"J.J. Hottenstine & Bro / Allentown / PennA" (embossed vertically) - "This Bottle Belongs To / J.J. Hottenstine / & Bro." Brewer Bottle**, America, 1875 – 1882. Vivid cobalt blue, cylindrical, applied blob collared mouth with original closure – smooth base, pt; (some very light exterior wear, otherwise pristine). Fresh to the market as found in an old garage in Berks County, PA. Extremely rare and beautiful.

**Est.: \$800 - \$1,600 • (Min. bid: \$500.00)**

## Cary Adelman: In Memoriam

Early in the morning of June 11th, I learned that a dear friend, Cary Adelman, had passed away the previous evening in his sleep. Cary was beloved by his wife Elizabeth of eighteen years, as well as his brothers, his family and friends alike. It is with great sadness and a heavy heart that we dedicate this sale in Cary's memory. Cary was an avid collector and an enthusiastic ambassador to the hobby. He left an indelible smile on the face of anyone who had the pleasure to meet him.

We are honored to have been requested to conduct this important sale of the Cary and Elizabeth Adelman collection. All of the black glass featured in this catalog, in its entirety (as well as the reference material, stoneware and display case), were a part of their impressive collection. In addition, the Adelmans appreciated fine, early New England glass. A number of the items featured throughout the preceding pages were from the Cary and Elizabeth Adelman collection, as well.

Cary and Elizabeth spent many enjoyable hours traveling together and collecting. They always said one of the things they enjoyed the most, however, was getting to know fellow collectors during their travels here and abroad. I believe it would have been Cary's desire, as it is Elizabeth's wish, to have others enjoy these interesting, historical and beautiful early bottles as much as they have and to share in their provenance. After all, we are all only custodians of these treasures for a short time.

Cary will be greatly missed by all who knew him. He was a true friend and fellow collector whose passion for the glass, as well as the countless people in the hobby whom he befriended, is inspirational. I will always hold dear the memories and cherish the times that we shared together.





**Lot 145**

**Black Glass Handled Onion Form Decanter**, England, 1700 – 1710. Deep olive green (black in reflected light), with opaque white and light blue speckles, onion form wine bottle fashioned into a decanter with an applied solid glass handle. Applied string lip – shallow domed base with a sand, or disc type pontil scar, ht. 6 1/8", dia. 6", about perfect! Extremely rare and important (see page 32 for further details). Provenance: Ex. Stan Hooper collection.

*Est.: \$12,000 - \$24,000 • (Min. bid: \$7,500.00)*

**Lot 146**

**Black Glass Shaft and Globe Wine Bottle**, England, 1660 – 1675. Olive green, shaft and globe form, sheared mouth, applied string lip – glass tipped pontil scar, ht. 8", body width 5 3/8"; (some minor exterior stain, predominately on one side on the neck, and some scattered interior residue). Van den Bossche, plate #6. Excellent condition with a perfect string lip and the majority of it's original body luster. Ex. NCH Auction 81, lot #63.

*Est.: \$5,000 - \$10,000 • (Min. bid: \$3,000.00)*

**Lot 147**

**Black Glass Shaft and Globe Wine Bottle**, England, 1660 – 1670. Deep olive green, shaft and globe form, sheared mouth, applied string lip – pontil scar, ht. 7 3/8", body width 5 1/2". Description per Alan Blakeman, "The bottle has an attractive all over body patination. A significant, undamaged, early, and elusive form." Ex. Alan Blakeman collection; 2008 BBR Summer Nat'l. Auction, lot #160. A wonderful, early important bottle.

*Est.: \$4000 - \$8,000 • (Min. bid: \$2,500.00)*

**Lot 148**

**Black Glass Wine Bottle**, England, 1675 – 1685. Olive green, transitional form, late period shaft and globe – early period onion bottle, applied string rim – pontil scar, ht. 5 7/8", body width 4 3/4"; (half of the neck to a 3/4" depth has been broken away and re-glued, 3/4-inch of the string rim is missing, some light exterior stain and wear). An attractive small size, and a good candidate for a professional repair.

*Est.: \$600 - \$900 • (Min. bid: \$300.00)*

**Lot 149**

**Black Glass Wine Bottle**, England, 1680 – 1695. "G.S." above shield with two lions rampant, on applied glass seal. Deep, pure olive green, earliest onion form still having characteristics of shaft and globe, applied string rim – pontil scar, ht. 6 1/2", width 5 1/2"; (3 small flakes, 1/8" – 1/4", on flared mouth, repaired 3/8" chip on underside of string rim). Beautiful, full original gloss, nice glass clarity with plenty of impurities throughout. Prov: Ex. Stan Hooper collection.

*Est.: \$3,000 - \$6,000 • (Min. bid: \$1,500.00)*

**Lot 150**

**Black Glass Wine Bottle**, England or possibly America, 1724. "N / Green / 1724", on applied glass seal. Deep olive green, straight sided onion form, applied string rim – pontil scar, ht. 7", body width 5 3/4"; (some chipping exists on the edge of the applied seal, a faint, 1/2" hairline crack stems from a potstone on the interior). A significant, early, dated seal presumably made for a member of the Rhode Island Green family (See, MW, plate 44, #9).

*Est.: \$4,000 - \$6,000 • (Min. bid: \$2,000.00)*

**Lot 151**

**Black Glass Wine Bottle**, England, 1733. "F.D. / Jones / Burton / 1733", on applied glass seal. Dark olive green, early mallet form, applied string rim – pontil scar, ht. 7 1/2", body width 5 3/4"; (a couple of minor flakes, approx. 1/4" each, on the edge or underside of the string rim, some very minor roughness on edge of the mouth). Wonderful overall condition with a very pleasing form, and beautiful original surface gloss. BBR 2008 Summer Nat'l. Auction, lot #157.

*Est.: \$4,000 - \$6,000 • (Min. bid: \$2,000.00)*

**Lot 152**

**Early Sealed Onion Wine Bottle**, England, 1685 – 1690. Seal description per A. Blakeman, 2006 Summer Nat'l catalog: "Coat: a ?lion rampant, holding a flag charged with a cross ? flanked by 2 mullets and 2 fleurs-de-lis, with a lined border". Olive green, string rim – pontil scar, ht. 5 1/4", width 5 5/8"; (severely degraded glass, missing or chipped string rim, chipped mouth.) The state of glass degradation adds it's own character.

*Est.: \$500 - \$1,000 • (Min. bid: \$300.00)*



### Lot 153

**Black Glass Wine Bottle**, America, possibly Glasshouse Company of New York, 1765 - 1766. **"Sidney / Breeze / 1765"**, on applied glass seal. Deep yellow olive, magnum-sized squat cylinder form, applied wide string rim - pontil scar, ht. 10 5/8", body width 5 3/4", about perfect; (a minor 1/4" flake at lip edge on reverse, and some light exterior high point wear). An extremely rare and important early American seal bottle (see page 33 for further details).

*Est.: \$10,000 - \$20,000 • (Min. bid: \$7,000.00)*



### Lot 157

**Black Glass Wine Bottle**, probably Alloa Glassworks, Alloa, Scotland, 1800 - 1820. **"D.T."** above Masonic square and compass, on applied glass seal. Deep olive with an amber tone, cylindrical with four beautifully executed vertical rigaree ribbons, sheared, flared mouth - pontil scar, ht. 10 7/8", perfect excluding one chip on rigaree at base. Rare and stunning! Ex. Ian Gossling collection. 2007 BBR Summer Nat'l Auction, lot #205.

*Est.: \$4,000 - \$6,000 • (Min. bid: \$2,500.00)*



### Lot 154

**Black Glass Wine Bottle**, England, 1752. **"W.R. / 1752"**, on applied glass seal. Deep yellow olive, mallet form, applied string rim - disc type pontil scar, ht. 7 3/4", body width 4 1/8", about perfect; (flat 3/8" flake on the underside of the string rim). Pictured in "English Bottles & Decanters", 1659-1900, Derek C. Davis, page 28, #7. Beautiful condition, full original gloss and a particularly strong impression on the seal. Ex. Norman C. Heckler collection.

*Est.: \$2,000 - \$3,000 • (Min. bid: \$1,200.00)*



### Lot 158

**Black Glass Wine Bottle**, England, 1789 - 1800. **"C.H.H. / Sillaton / 1789"**, on applied glass seal. Deep olive green, squat cylinder, likely a dip mold, sheared mouth with applied band - smooth, inverted cone base, ht. 8 7/8"; (small flake on underside of applied seal, tiny bit of roughness on edge of mouth on reverse, otherwise perfect!). Dumbrell, p. 275. Ex. Glassworks Auction 72, lot #400. A rare seal, wonderful condition.

*Est.: \$800 - \$1,600 • (Min. bid: \$500.00)*



### Lot 155

**Black Glass Wine Bottle**, England, 1760 - 1775. **"T L"** in fancy script below a wolf or dog, on applied glass seal. Deep amber, squat cylinder form, dip mold, applied wide string rim - sand, or disc type pontil scar, ht. 9", body width 4 1/2", perfect "cellar found" condition. Unlisted by Dumbrell, or in other reference material that we have. In addition, a most uncommon color for this type of bottle. Ex. DeLaforce collection.

*Est.: \$800 - \$1,200 • (Min. bid: \$500.00)*



### Lot 159

**Black Glass Wine Bottle**, America or England, ca. 1820. **"Wine / P.C. Brooks / 1820"**, on applied glass seal. Deep olive amber, cylinder form, dip mold, short applied tapered collar with ring - domed base with sand chip pontil scar, ht. 9 7/8", perfect "cellar found" condition. McKearin-Wilson, plate 45, #7. Ex. Glassworks Auction 73, Lot #439. Possibly of American origin, but regardless, a very desirable, dated wine merchant seal.

*Est.: \$1,200 - \$2,200 • (Min. bid: \$750.00)*



### Lot 156

**Black Glass Wine Bottle**, England, 1795 - 1800. **"W- / Jones / 1795"** in fancy script on applied glass seal. Deep olive green, squat cylinder form, dip mold, applied wide string rim - sand chip type pontil scar, ht. 9 1/4", body width 4 1/2"; (a 1/2" area of chipping on the side edge of the mouth, otherwise about perfect). A very attractive bottle and seal. Ex. Mark David collection.

*Est.: \$1,000 - \$1,500 • (Min. bid: \$600.00)*



### Lot 160

**Black Glass Wine Bottle**, England, ca. 1770. **"1770 / James / Oakes / Bury"**, on applied glass seal. Medium olive green, cylinder form, dip mold, applied string rim - domed base with sand chip pontil scar, ht. 10"; (a faint 3/16" stress line in the shoulder, otherwise about mint). Dumbrell, p.108, figure 171, and plate 33). James Oakes was a wine merchant at Bury, St. Edmunds. Unusual with the date located above the name.

*Est.: \$500 - \$800 • (Min. bid: \$250.00)*



**Lot 161**

**Black Glass Wine Bottle,** England, 1800 – 1820. “PG / & Old / Bristol / Porter Co”, on applied glass seal. Dark amber, early porter form cylinder, dip mold, heavy applied string rim – domed base with sand pontil scar, ht. 9 7/8”; (no cracks or chips, but affected from burial with considerable dirt on the interior and a beautiful patina on the exterior). Dumbrell, p. 161. Ex. Mark David collection.

*Est.: \$200 - \$400 • (Min. bid: \$125.00)*

**Lot 165**

**Black Glass ‘Horse Hoof’ Wine Bottle with Portrait Oil Painting,** Dutch, 1740 – 1770. Deep olive amber, long neck ‘horse hoof’ form, applied string rim – deep conical base with blowpipe pontil scar, ht. 8 3/4”, bottle is perfect and the painting, probably early 19th century, is about 98% complete. Portrait possibly of a prominent merchant or member of the nobility, while the reverse is painted with a family coat of arms. See VdB, plate 95.

*Est.: \$400 - \$800 • (Min. bid: \$250.00)*

**Lot 162**

**Black Glass Wine Bottle,** England, 1780 – 1795. “A.S / C.R”, on applied glass seal. Deep olive green (black through the neck and lower body), cylinder, dip mold, applied string rim – domed base with sand pontil scar, ht. 10 1/2”, perfect! A fine example of this classic All Souls College sealed bottle.

*Est.: \$125 - \$225 • (Min. bid: \$75.00)*

**Lot 166**

**Miniature Black Glass ‘Horse Hoof’ Wine Bottle with Portrait Oil Painting,** Dutch, 1740 – 1780. Deep olive green, miniature ‘horse hoof’ form, applied wide string rim – conical base with blowpipe pontil scar, ht. 5 5/8”, perfect. The painting, late 18th or early 19th century, is 98% complete, the portrait is presumably of an upper class Dutch gentleman and coat of arms on reverse. The painting is relatively detailed with good color.

*Est.: \$600 - \$1,200 • (Min. bid: \$350.00)*

**Lot 163**

**Lot of (2) Black Glass Items,** England, 1724 – 1761. A black glass wine bottle, “Wm. / Wilson / 1761”, on applied glass seal. Deep olive green, squat cylinder form, applied string rim – pontil scar, ht. 8 3/4”; (lip above the string rim is missing as well as the string rim on the reverse of the bottle). Also included in this lot is a separate loose seal, “C. Velly / 1724”. Ex. Glassworks Auction 78, lot 149. Bottle has full original luster.

*Est.: \$800 - \$1,200 • (Min. bid: \$400.00)*

**Lot 167**

**Miniature Black Glass ‘Horse Hoof’ Wine Bottle with Painted Scene,** Dutch, 1740 – 1780. Deep olive green, miniature ‘horse hoof’ form, applied wide string rim – conical base with blowpipe pontil scar, ht. 5 3/4”, perfect. A well detailed, late 18th or early 19th century oil painting of a Dutch landscape with a windmill, house and river in foreground. The paint is nicely executed and about 95% complete. Ex. NCH Auction 75, lot #51.

*Est.: \$750 - \$1,500 • (Min. bid: \$400.00)*

**Lot 164**

**Large Globular Black Glass Bottle with Oil Painting of a Sea Battle,** Dutch, 1750 – 1770. Deep yellow olive, applied string rim – blowpipe pontil scar, ht. 12”; (a hairline scratch extending from an area of batch metal impurity on the reverse, otherwise mint). Beautiful early oil painting believed to be of a naval battle during the 2nd Anglo-Dutch war. Similar to VdB, plate 108. Ex. Stan Hooper collection.

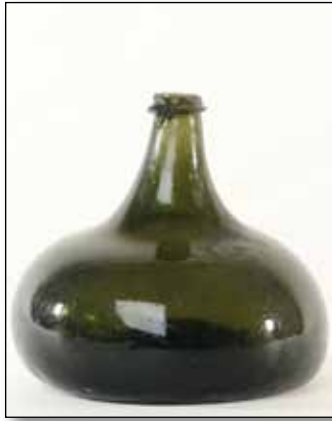
*Est.: \$2,000 - \$3,000 • (Min. bid: \$1,200.00)*

**Lot 168**

**Miniature Black Glass ‘Horse Hoof’ Wine Bottle,** Dutch, 1740 – 1780. Medium to deep olive green, miniature ‘horse hoof’ form, applied wide string rim – conical base with blowpipe pontil scar, ht. 5 5/8”, pristine condition. There is an early Harmer Rooke Galleries tag on the base. Provenance: Ex. Robert Krause collection.

*Est.: \$400 - \$800 • (Min. bid: \$250.00)*



**Lot 169****Black Glass Onion Form Wine Bottle**, England, 1695 – 1710.

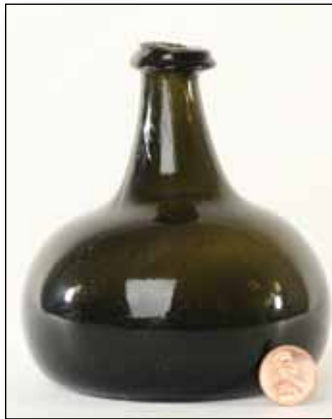
Dark olive green, 'pancake' onion form, applied string rim – domed base with sand pontil scar – ht. 5 3/4", body width 6 3/8"; (tiny 1/8" flake off underside of string rim, some scattered exterior wear, light scratches and stain, also some residue in base of interior). A nice example of an earlier onion form. Ex. David Barker collection.

*Est.: \$500 - \$1,000 • (Min. bid: \$300.00)*

**Lot 173****Magnum Size Black Glass Mallet Wine Bottle**, England, 1735 – 1745.

Dark olive amber, mallet form, applied sting rim – rather deep kick-up base with a disc type pontil scar, ht. 10 1/8", body width 6 5/8", about perfect. Excellent "cellar found" condition with full original surface gloss. Oversized bottles in this form are particularly difficult to find, more so that the half size examples, and especially in this state of preservation.

*Est.: \$600 - \$1,200 • (Min. bid: \$400.00)*

**Lot 170****Miniature Black Glass Onion Form Wine Bottle**, England, 1710 – 1725.

Dark olive green, onion (almost pancake), form, applied string rim – domed base with sand pontil scar, ht. 4 1/4", body width 4"; (a tiny 1/8" flake on underside of string rim and some scattered light interior residue, otherwise perfect!). A superb bottle, very rare size, remarkable condition with full original surface gloss. Ex. Stan Hooper collection.

*Est.: \$1,000 - \$2,000 • (Min. bid: \$500.00)*

**Lot 174****Half Size Transitional Mallet Black Glass Wine Bottle**, England, 1755 – 1765.

Medium to deep yellow olive, late mallet form transitioning into an early squat cylinder form, applied string rim – domed base with sand pontil scar, ht. 6 1/2", body width 3 1/4"; (some light exterior wear; minor interior haze in the lower body). Wonderful size, character and form. Dumbrell, p. 82, plate #26. Ex. Mark David collection.

*Est.: \$250 - \$500 • (Min. bid: \$150.00)*

**Lot 171****Black Glass Mallet Form Wine Bottle**, probably England, 1730 – 1745.

Dense, black amber color, straight sided mallet form, applied string lip – domed base with a wide disc, or sand type pontil scar, ht. 8 1/8", body width 4 3/4"; (a 1/4" flake on the underside of the lip, some scattered light dullness and scratches). Nice overall condition with a perfect string rim and in a somewhat unusual color.

*Est.: \$250 - \$450 • (Min. bid: \$150.00)*

**Lot 175****Black Glass Octagonal Wine Bottle**, England, 1800 – 1815.

Dark yellowish olive green, octagonal form blown in a dip mold, applied mouth with lower band - cone base with sand pontil scar, ht. 9 3/8", body width 4", about perfect! A very attractive bottle in absolutely beautiful condition. Historical note: Originally discovered in an old outbuilding near Nottingham. Provenance: Ex. David Barker collection.

*Est.: \$600 - \$1,200 • (Min. bid: \$400.00)*

**Lot 172****Half Size Black Glass Mallet Wine Bottle**, England, 1725 – 1735.

Olive with an amber tone, early mallet form, applied string rim – deep domed base with sand chip pontil scar, ht. 6 1/2", body width 4 1/2"; (a one-inch area, primarily on the underside of rim, has been professionally repaired). A rare size early mallet with full original surface gloss that displays about mint. Ex. Glass Works Auction 81, Lot #73.

*Est.: \$200 - \$400 • (Min. bid: \$125.00)*

**Lot 176****Half Size Black Glass Octagonal Wine Bottle**, probably Dutch, 1760 – 1780.

Dark olive-amber, octagonal form blown in dip mold, applied string rim, long "spindle" or lady's-leg type neck – blowpipe pontil scar, ht. 8 1/8", body width 2 1/4"; (some scattered light exterior wear, otherwise about mint). Note: bottles of this type were often used for holding Constantia wine. Scarce small size. 2007 BBR Summer Nat'l, Lot #87.

*Est.: \$350 - \$700 • (Min. bid: \$200.00)*

**Lot 177**

**Early Black Glass Boot Bottle**, probably Germany, 1740 – 1770. Medium yellow olive, side-flattened kidney form known as a “boot” or “rugby ball”, applied string rim – blowpipe pontil scar, ht. 6 ¾”, length 7”, depth 3 ¼”; (some moderate scattered exterior surface wear and light interior haze or residue). VdB, plate 216; Dumbrell p. 146, plate #56. Possibly produced for the English market. Ex. Mark David collection.

*Est.: \$500 - \$800 • (Min. bid: \$300.00)*

**Lot 178**

**Black Glass Onion Form Wine Bottle**, probably Germany or Belgium, 1720 – 1750. Dark olive green, approaching a ‘horse-hoof’ onion form, somewhat shorter neck with applied string rim – disc or sand type pontil scar, ht. 7”, body width 6”; (1/8” flake on lip edge and a couple of tiny nicks on rim, some interior stain and an overall sheen or patina on the exterior). Ex. Mark David collection.

*Est.: \$100 - \$150 • (Min. bid: \$50.00)*

**Lot 179**

**Lot of (2) Black Glass Bottles**, England and probably America, 1800 – 1850. Both examples are a very dark olive, cylindrical (forms typical of early ale, beer and porter), dip mold and 3-pc. mold, applied string rim and tapered collared mouths – both with disc or sand type pontil scars, ht. 8 3/8” and 6 ¾”; (both with exterior scratches and wear, ‘porter’ style bottle has a nice overall exterior sheen or patina).

*Est.: \$75 - \$125 • (Min. bid: \$40.00)*

**Lot 180**

**Lot of (2) Black Glass Case Bottles**, probably Dutch, 1780 – 1820. Both examples are olive green with yellowish tones, square tapered gin form, early dip mold, applied tooled flared mouths – blowpipe pontil scarred bases; ht. 9 ¼” and 9 5/8”; (both with some very minor exterior case wear, otherwise perfect). Both are very beautiful examples with plenty of bubbles, impurities, and character.

*Est.: \$175 - \$250 • (Min. bid: \$100.00)*

**Lot 181**

**Lot of (2) Black Glass Case Bottles**, probably Dutch, 1840 – 1880. Both examples are shades of olive green and square, tapered gin form. Dip mold and small 4-pc. mold, applied flared mouth and applied sloping collared mouths – smooth bases, ht. 9” and 6 1/8”; (9” example with moderate exterior wear and a few open surface bubbles, the small gin is near mint excluding a tiny bit of lip-edge roughness and a light scratch).

*Est.: \$35 - \$70 • (Min. bid: \$25.00)*

**Lot 182**

**Black Glass Medicine or Utility Bottle**, probably England, 1790 – 1815. Dark olive green, rectangular with concave corners, applied string rim tooled with a short wide bevel – pontil scar, ht. 7”, about mint; (just a bit of exterior high point wear and a couple of minor patches of interior residue or light stain). Beautiful condition with full original body luster and in a pleasing form with an unusual short stubby neck.

*Est.: \$175 - \$275 • (Min. bid: \$100.00)*

**Lot 183**

**Black Glass Medicine or Utility Bottle**, America or England, 1760 – 1780. Very deep olive amber, rectangular with concave sides and corners, applied, tooled double collared mouth – small glass-tipped punt scar, ht. 6 ½”; (a ¼” by ½” open bubble on a shoulder and some moderate exterior high point wear). See MW, plate 72, #2 & 3. Note on base: “Likely Wistar as similar fragments”. A very early bottle with great character.

*Est.: \$175 - \$275 • (Min. bid: \$100.00)*

**Lot 184**

**Freeblown Snuff or Blacking Bottle**, New England, 1790 – 1820. Medium olive, almost forest green, cylindrical with conical shoulders, a short neck flaring to a sheared, wide tooled mouth – pontil scar, ht. 4”, perfect. Similar to MW, plate 75, #5. A beautiful, early utility bottle, seedy and bubbly with great eye appeal.

*Est.: \$150 - \$300 • (Min. bid: \$100.00)*





### Lot 185

**Lot of (5) Cylindrical Demijohn Bottles**, America, 1830 – 1870. Shades of aquamarine, golden amber and olive amber, 3-pc. mold, dip mold and possibly freeblown, all with applied sloping collared mouths and pontil scarred bases, ht. 9 3/4", 10 7/8", 11 1/4", 13 3/4", 14 3/4", all are about perfect excluding just a touch of expected light wear. A beautiful grouping of Demijohns including two classic New England type examples.

**Est.: \$275 - \$375 • (Min. bid: \$175.00)**



### Lot 186

**Demijohn**, America, 1840 – 1860. Brilliant olive yellow, flattened apple form, likely blown in a dip mold, although possibly freeblown, applied sloping collared mouth – sand chip type pontil scar, ht. 18 1/4", body width (side to side), 16", depth (front to back), 11 1/4", about perfect excluding a couple of minor exterior scratches. A beautiful, striking color.

**Est.: \$400 - \$600 • (Min. bid: \$225.00)**



### Lot 187

**Bellarmine Jug**, Germany, 1650 – 1700. Light brown oxide wash, ovoid form with applied handle, applied grotesque bearded face mask and three impressed "diamond" type marks on shoulder, ht. 15 1/8", body width 9 3/4" (at widest point). Generally excellent overall condition with only a few age-related hairlines noticeable in the glaze in the lower part of the body. Nice size, perfect lip and handle with no chipping.

**Est.: \$400 - \$700 • (Min. bid: \$250.00)**



### Lot 188

**Lot of (3) Stoneware Bottles**, America and probably Germany, 1875 – 1910. "Smith & Clody / Brewed / Ginger Beer / Buffalo, N.Y."; "Keikel / Hs. No.2" and, "Diamond A / English Brewed / Ginger Beer / Syracuse, N.Y.". Cream, tan and mustard glaze, blob, sloping collared and crown-type collared mouths, ht. 7 1/4", 10 7/8", and 7 1/8" respectively; (minor mouth flakes and fine crazing lines, otherwise about mint).

**Est.: \$75 - \$125 • (Min. bid: \$40.00)**



### Lot 189

**Stoneware Snuff Crock**, America, 1910 – 1911. "Rose Scented / Mac-coboy / Snuff / Manufactured By / Scotten, / Dillon / Company / Detroit, Mich.", on front label; factory number with warning not to refill with snuff on rear label, original tax stamp (for five pounds snuff), crimped brown paper covering and neck string, ht. 8 1/2". A great tobacco related item, remarkable with original contents, 98% complete front and back labels.

**Est.: \$150 - \$300 • (Min. bid: \$100.00)**



### Lot 190

**"Stone / Mason Fruit Jar / Union / Stoneware Co. / Red Wing, Minn."** (stenciled in black), America, 1899 – 1906. Light cream or oatmeal color stoneware fruit jar with threaded zinc lid – base de-bossed, "Pat Jan / 24 1899", ht. 6 7/8", quart, perfect. L #2754.

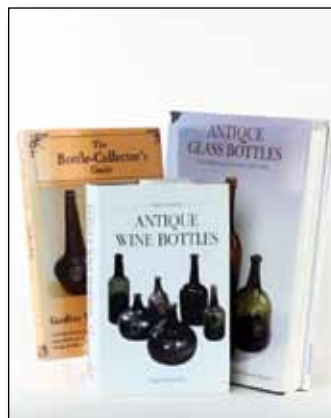
**Est.: \$200 - \$300 • (Min. bid: \$125.00)**



### Lot 191

**Lot of (9) Bottle & Glass Books**, (3 pictured), titles include: *The Decanter*, McConnell, *A Wine-Lover's Glasses*, Lloyd, *International Bottle Collector's Guide*, Fletcher, *Dutch Glass Bottles*, McNulty, *English Glass Bottles for the Collector*, Wills, *English Glass*, Crompton, *English Bottles & Decanters 1650-1900*, Davis, *Bottles, Pipes and Doll Heads*, Fletcher, *Glass and British Pharmacy 1600-1900*, Note: Visit our on-line catalog for more photos and details.

**Est.: \$150 - \$250 • (Min. bid: \$75.00)**



### Lot 192

**Lot of (8) Bottle & Glass Books**, (3 pictured), titles include: *Under-standing Antique Wine Bottles*, Dumbrell, *Antique Glass Bottles*, Van den Bossche, *Sealed Bottles*, Morgan, *Odell's Black Glass Price Guide, 1997*, *The Bottle-Collector's Guide*, Wills, *English Glass*, Thorpe, *English Bottles & Decanters 1650-1900*, Davis, *Antique Bottles Collectors Encyclopedia*, *The Ole Bottlemen*. A fantastic set containing a wealth of information.

**Est.: \$200 - \$300 • (Min. bid: \$100.00)**





### Lot 193

**Lot of (5) Bottle & Glass Books,** titles include: *American Glassware*, Barber (copyright 1900), *Early American Bottles and Flasks*, Van Rensselaer, (1921), *Early American Glass*, Knittle, (1927), *Old Glass European and American*, Moore, 1935, *Grand Old American Bottles*, Freeman, 1964. A great group of some of the earliest of the pioneer books written for the hobby, and all are in very fine condition!

**Est.: \$125 - \$225 • (Min. bid: \$75.00)**



### Lot 197

**Lot of (5) Books on American Medicine Bottles,** (3 pictured), titles include: *Great American Pottled Medicines*, Nielsen, *Patent and Proprietary Medicine Bottles*, Baldwin, *Merchants of Medicine*, Nostrum Peddlers – Yesterday & Today, Heetderks, *The Bottle Book*, *A Comprehensive Guide to Historic, Embossed Medicine Bottles*, Fike, *Medicines 2002*, *Antique Bottle & Glass Collector Price Guide*, Odell. All are in beautiful condition.

**Est.: \$125 - \$225 • (Min. bid: \$75.00)**



### Lot 194

**Lot of (4) Bottle & Glass Books,** titles include: *American Glass*, Geo. and Helen McKearin, *Two Hundred Years of American Blown Glass*, Helen and George McKearin, *American Bottles & Flasks and Their Ancestry*, Helen McKearin & Ken Wilson, *Bottles, Flasks and Dr. Dyott*, Helen McKearin. The McKearin 'trilogy,' (in addition to the Dyott book) is an indispensable grouping of books for anyone interested in American historical flasks, bottle and blown glass.

**Est.: \$125 - \$200 • (Min. bid: \$75.00)**



### Lot 198

**Lot of (5) Miscellaneous Bottle and Related Books,** (3 pictured), titles include: "American" *Applied Glass Seal Bottles*, Murschell, *Ginger Beer & Root Beer Heritage, 1790 to 1930*, Yates, *The Mouth-Blown Bottle*, Kendrick, *Dairying Bygones*, Ingram, *Old Bottles Found Along the Florida Keys*, Monroe. A very interesting assortment including a couple of scarce titles.

**Est.: \$75 - \$150 • (Min. bid: \$40.00)**



### Lot 195

**Lot of (5) Bottle & Glass Books,** (3 pictured), titles include: *Glass in Early America*, Palmer, *New England Glass & Glassmaking*, Wilson, *Yankee Glass*, Yankee Bottle Club, *On the Trail of Stoddard Glass*, Field, *A History of the Pitkin Glass Works*, Buckley. A treasure trove of information on New England and early American glass. All are in fine to excellent condition.

**Est.: \$100 - \$150 • (Min. bid: \$50.00)**



### Lot 199

**Lot of (2) Important Auction Catalogs,** *American Bottles in the Charles B. Gardner Collection*, Heckler, 1975, and, *The Bill and Leah Pollard Collection Premier Baltimore Flask and Fine Bottles*, Heckler, 1996. Two iconic sales, beautiful catalogs. The Pollard sale was perhaps one of the most colorful groupings of flasks auctioned since the renowned Blaske sale in 1983. Both catalogs are in fine condition and include the post-auction price lists.

**Est.: \$100 - \$150 • (Min. bid: \$50.00)**



### Lot 196

**Lot of (5) Bottle & Glass Books,** titles include: *The Glass Gaffers of New Jersey*, Pepper, *Wistarburgh Window Tiles, Bottles and More*, Murschell, *The Wistars and Their Glass*, Museum of American Glass at Wheaton Village, *Glassmaking, America's First Industry*, Spillman (CMOG), *Corning Glass Center*, Corning, N.Y., (about the center, copyright 1958). Great references for lovers of South Jersey glass.

**Est.: \$100 - \$150 • (Min. bid: \$50.00)**

### Lot 200

**"J.P. Privley's / California / Fruit and / Pepsin / Chewing Gum"**, Counter-top advertising display case, 1880 – 1910. Oak case with original curved glass front, silver, copper and gold colored paint, mirrored back, makers tag on front, "J. Riswig / Maker / Chicago, ILL", ht. 9 3/8", length 18 3/8", depth 12 1/4". Outstanding, un-restored condition with all original glass, paint and mirror. Not easy to find in this state of preservation.

**Est.: \$400 - \$600 • (Min. bid: \$200.00)**



## South Jersey-Type Chestnut Bottles

Historically speaking, there is little doubt that the most significant of the early South Jersey glasshouses, and arguably one of the most historically important of all American glasshouses, is that of the Wistarburgh Glass Works, located near Alloway, New Jersey, 1738 – 1782.

The Wistarburgh glassworks, founded by Casper Wistar, a Philadelphia button maker, is credited as being the first successful glass factory in America. The primary purpose of the glassworks was to create utilitarian objects, principally bottles and windowpanes, necessary in the daily lives of the colonists.

Through archeological excavations and historical research, a great deal of information has come to light on the Wistarburgh glassworks and their operations. Chestnut-type bottles and flasks were one of the key products among the utilitarian bottle production at Wistarburgh.

American chestnut bottles in general have long been a staple in bottle and glass collections beginning with some of the earliest pioneer collectors and continuing today with widespread appeal for their inherent beauty and simplicity of form. In recent years, the early South Jersey type chestnut bottles have certainly come into their own. This recognition seems appropriate with their general acceptance as being among the earliest recognizable artifacts of American's 1st industry.



## Lot 63 – Rare, Blown Three-Mold Decanter

Probably Keene Marlboro Street Glassworks, Keene, NH, 1815 – 1830.

We are pleased to have the opportunity to offer this great rarity of New England glass at public auction. This little decanter has a very interesting history and provenance. Originally unearthed by a young, novice bottle collector while digging on Cape Cod, in Norwell, Massachusetts, in the fall of 1989, the bottle was caked in red clay which quite possibly helped to preserve it in its virtually “attic” mint appearance (see Lot 63 for full condition report).

The bottle was subsequently brought to Norman C. Heckler for public auction and was a featured item in their catalog #5, lot 343, March 31, 1990. Renowned collector Paul Richards was the successful buyer in the sale. Upon Mr. Richards passing, his legendary collection of colored blown three mold decanters were sold in their entirety, via a brokered transaction to a Rhode Island collector / investor who wished to keep the transaction private, thus the bottle's whereabouts soon became a mystery. A little more than two years ago, the collection surfaced and was again dispersed by private sales through prominent bottle and antiques dealers, Jeff and Holly Noordsy. The purchaser of this extremely rare little decanter recently contacted us to discuss a public sale of the bottle. We are honored to have the opportunity to bring this important decanter to auction.

The GII-3 decanter is known in two sizes, this almost miniature in stature, half pint size, and also a quart. This small half pint size is extremely rare with only four examples known (only one other example in private hands). Examples of this half pint are held in the collections of the Toledo Museum of Art, Toledo, Ohio, and also at the Henry Francis Du Pont Winterthur Museum, Winterthur, Delaware.

MW, plate 127, #3.

Provenance: Ex. Paul Richards collection.





## Lot 94 – Imperial Crown Bitters

*The Imperial Crown Bitters are getting to be famous abroad as well as at home. Yesterday Messrs. Harrison & Starks shipped twelve cases to a point in Kentucky, and a few days ago a like quantity to Texas, reads a quote from a newspaper article in the Davenport Daily Gazette, October 6, 1869.*

Apparently, the Imperial Crown Bitters put up by Messrs. Harrison and Starks did not enjoy the popularity that the above advertisement claimed as this is an extremely rare and important new bitters bottle discovery.

Only after I contacted a friend and prominent collector / researcher of Iowa bottles, Mike Burggraaf, to get additional information, did I learn the true uniqueness and rarity of this bottle.

Mike was aware of the company and the mention in the Ring/Ham bitters book based on an advertisement, but confirmed that to date, no known specimens have come to light - not even shards! It was presumed that it may have been a label only bottle (thankfully, not so!). Indeed, it is quite an attractive oversized square bitters. The bottle has large indented panels and crude embossing with the "S" in "STARKS" actually running over the panel edge. Note: there is a faded, (not proprietary to the company), handwritten label on the side of the bottle dated July 1870.

Jacob H. Harrison came to Davenport, Iowa in 1867. He had previously been a druggist in Kentucky prior to moving to Iowa. Shortly after arriving in Davenport, he formed a partnership with R.B. Starks under the firm name of Harrison & Starks. They soon began manufacturing and selling their own bitters under the intriguing brand name of "Imperial Crown Bitters". The partnership was relatively short-lived with Mr. Starks selling his share of the business in 1872 to a Mr. R.B. Holman.

Credit for the above information goes to Mike Burggraaf, and will be included in his soon-to-be published, *Update to The Antique Bottles of Iowa*, which will feature nearly 600 Iowa bottles, unknown at the time of the publishing of his 1st Iowa book in 1998. To reserve a copy of this limited printing, Mike may be contacted at: 641.469.6018; email: QRSGLASS@lowatelecom.net

An attractive and extremely important, possibly unique bitters bottle.



**B**lack Glass Handled Onion Form Decanter, England, 1700 – 1710.  
 Deep olive green (black in reflected light), with opaque white and light blue speckles, classic onion form wine bottle fashioned into a decanter with an applied solid glass handle and light sand type pontil scar. Diamond stippling on the shoulder reads, "Omar Stokes Born Nov. 6, 1808, / Susan Stokes Born March 3, 1812".

Provenance: Ex. Stan Hooper collection who purchased the decanter from a Mr. Howard Phillips (a noted London antiques dealer), London, England, March, 1976.

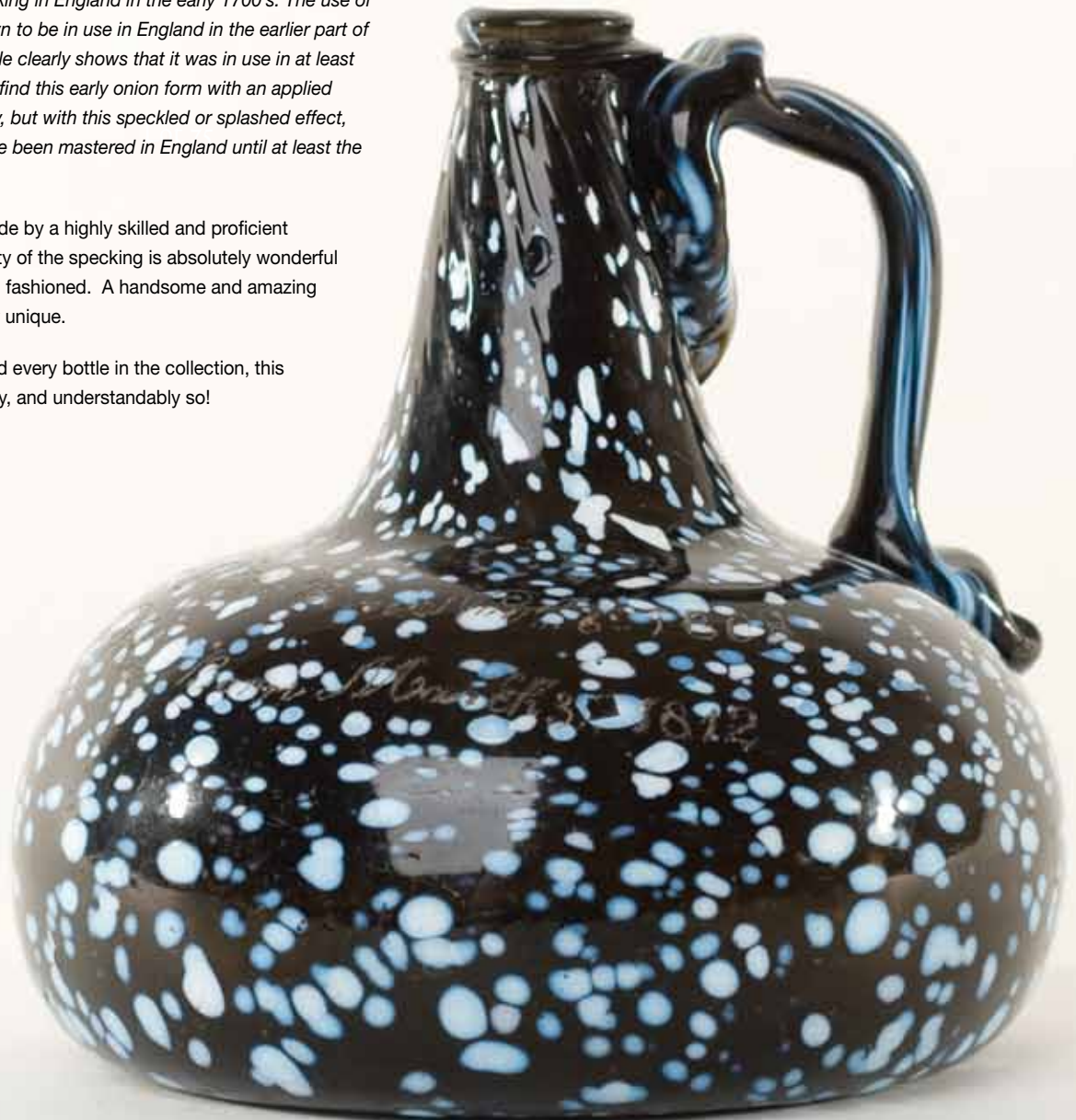
Reference, *The Decanter – An Illustrated History of Glass from 1650*, Andy McConnell, 2004. Illustrated on page 226, plate 324.

This beautiful early black glass bottle is both visually stunning and historically, extremely important. Per written documentation by Cary Adelman, "Mr. McConnell called the bottles' former owner after the book's publication in 2004 to elaborate on the fact that this piece had rewritten the history of glass bottle making in England in the early 1700's. The use of color splashing was not known to be in use in England in the earlier part of the 18th century, yet this bottle clearly shows that it was in use in at least one area during that time. To find this early onion form with an applied handle is rare enough anyway, but with this speckled or splashed effect, not previously thought to have been mastered in England until at least the 1760's, it is unheard of."

Obviously, this piece was made by a highly skilled and proficient glassblower. The actual quality of the specking is absolutely wonderful and the handle is equally well fashioned. A handsome and amazing piece of early glass, probably unique.

Although Cary loved each and every bottle in the collection, this was certainly his pride and joy, and understandably so!

## Lot 145 – Rare Black Glass White-Speckled Onion Form Decanter



It is doubtful that Sidney Breese would have understood or had any inkling of the emotion and stirring of excitement that his bottles have created today among collectors. Nonetheless, his magnum sized black glass dated seal bottle has become perhaps one of the most famous of the early American black glass sealed bottles.

Extensive research has been conducted on Sidney Breese and his bottles. Only a handful of examples are known to exist with most residing in museum collections. The condition of this particular example is also perhaps the finest of those known.

Sidney Breese (1709 – 1767), was born in Wales and immigrated to America about 1730. He eventually became a New York City merchant and proprietor of New York's first fancy goods store in 1752. It seems fitting that he would have ordered some personal bottles blown with his name. An interesting side note is the fact that Sidney Breese is the great grandfather of Samuel Findley Breese Morse, artist and inventor credited with the invention of the Morse code telegraph.

It is generally believed by most that, in addition to being blown for an American 'colonist', the bottles were also blown on American soil. One probable source is the Glasshouse Company of New York. See MW page 36, illustration 6a, which shows a copy of a small advertisement by the company offering to seal bottles for "*all Gentlemen that wants Bottles of any size with their names on them*". In addition, on page 204, paragraph 3, McKearin states, "*Tradition credits the Glass House Company of New York with two now belonging to the Van Cortland Mansion, New York City, 'Sidney Breese / 1765' is impressed on one seal 'FVC' – possibly for Frederick Van Cortland – on the other*".

One other interesting note, regarding attribution, is on page 85 of Dale Murschell's book, *Wistarburgh, Window Tiles, Bottles and More*. Mr. Murschell states that the Breese bottles were analyzed as being consistent with Wistar glass and points to a possible Wistarburgh attribution.

Regardless of the attributions presented here, this handsome, early black glass bottle remains a very rare and important American seal bottle, rich in American history.

## Lot 153 – The Sidney Breese Bottle





# Short or tall, we auction them all!

At American Glass Gallery, we auction all categories of fine early bottles and blown glass. Whether you have a single quality item or an entire collection to sell, call or email us today to discuss how we can put our experience and expertise to work on your behalf.

We are currently accepting quality items for our 2010, auction schedule.

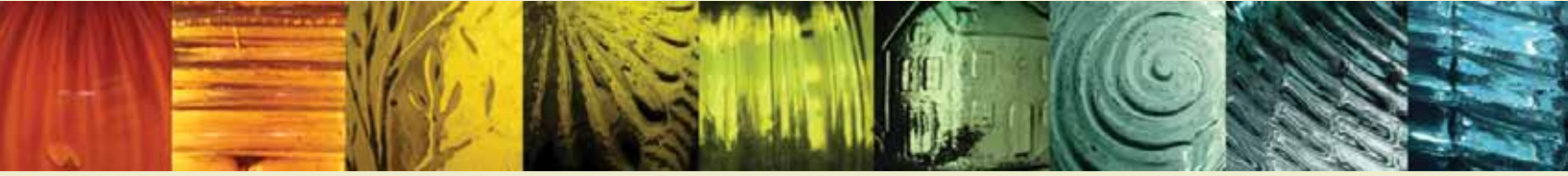
**Phone: 248.486.0530**

**Email: [jpastor@americanglassgallery.com](mailto:jpastor@americanglassgallery.com)**

**[www.americanglassgallery.com](http://www.americanglassgallery.com)**



# American Glass Gallery<sup>TM</sup>



Buying and selling fine antique bottles, flasks and blown glass

## Our Services:

- ☛ Absentee auctions
- ☛ Web site sales
- ☛ Private direct sales
- ☛ Direct purchase of quality single items or entire collections
- ☛ Fast payment and confidential transactions
- ☛ Appraisal services

## Mission Statement:

At American Glass Gallery, our goal is to offer to collectors quality bottles and glass along with the highest level of service and professionalism. Whether you are buying or selling quality antique bottles and glass, American Glass Gallery is here to serve you. Please contact us at any time with your questions or for more information.

**P.O. Box 227, New Hudson, Michigan 48165**

**Phone: 248.486.0530 • Fax: 248.486.0538**

**email: [jpastor@americanglassgallery.com](mailto:jpastor@americanglassgallery.com)**

**website: [americanglassgallery.com](http://americanglassgallery.com)**



American Glass Gallery<sup>TM</sup>