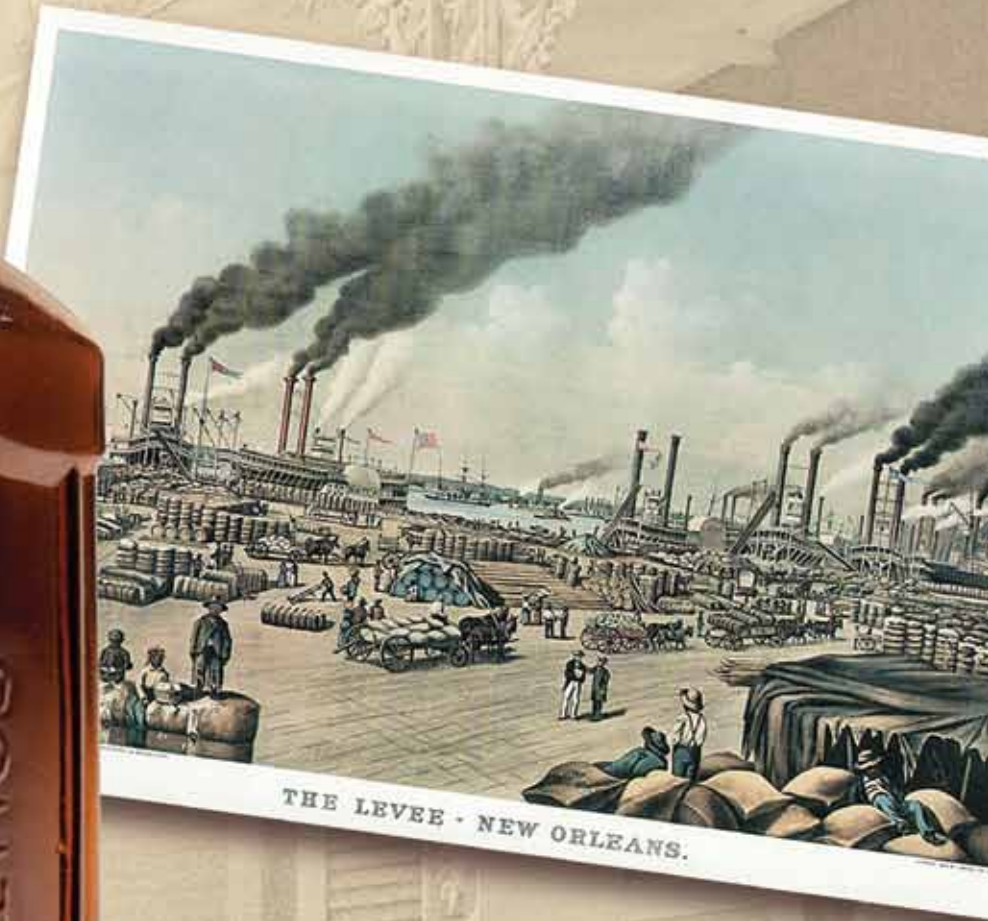


American Glass Gallery™

Auction #8

Bidding Begins May 9, 2012

Bidding Closes May 23, 2012



Lot 95: Extremely Rare
Dr. E.C. Hydes
Southern Stomach Bitters
New Orleans



Conditions of Sale

1. Absentee Auction

The items in this sale will be sold via absentee auction, closing date:
May 23, 2012, 11:00 p.m., EST.

2. Our Guarantee Regarding Descriptions

American Glass Gallery has made every attempt to describe correctly the property being sold. Descriptions are guaranteed to be accurate as regards authenticity, age, condition, and measurements to within one-fourth inch, as represented in this catalog. In describing damage, exterior wear or manufacturer's flaws that in our opinion, do not significantly detract visually or monetarily from the value of the item are not listed and will not be considered for refund. The Auctioneers reserve the right to make verbal corrections and provide additional information at any time during the sale.

3. Preview

Items may be viewed by appointment from May 7, 2012 through May 22, 2012.

4. Bidding Procedure

You may submit your bids by mail, phone, FAX, email or through our on-line auction site. If bidding by mail or FAX, please fill out the absentee form and return it to us. Your bid, either written or oral, grants American Glass Gallery the authority to protect you up to the amount of your stated bid. Your bid will not be removed once executed.

Bidding Times: You can submit your bids anytime after receiving your catalog. Bids may be made by phone, daily, until closing day, May 23, 2012, from 9 A.M. - 7 P.M. Eastern Time. Incoming phone bids will be accepted on the closing day (May 23, 2012) until 11 P.M. Eastern Time. Phone calls and Fax bids after this time will not be honored. No exceptions. You may also place your bids through our on-line auction service 24-hours a day once the site has opened for bidding, on or about May 9, 2012, continuing until 11:00 P.M. Eastern Time, May 23, 2012.

Please do not wait until the last day or two of the sale to place your bids! Because many collectors wait until the final few days of the sale to place their bids, we anticipate the telephone and internet bidding to be very busy during that period, so please plan accordingly. In the event of a tie bid, the earliest received bid on the lot will take precedent. We would welcome your bids by phone so that we can answer any questions and assist you in your bidding.

You may also telephone us at any time during the auction, prior to the closing of the sale, to check the status of your bids, to find the current bidding level, to open a bid, or to raise a bid on an auction lot.

Bidding Increments are as follows:

Up to \$250.00.....	increments of \$10.00
\$250.00 - \$500.00.....	increments of \$25.00
\$500.00 - \$1,000.00.....	increments of \$50.00
\$1,000.00 - \$2,500.00.....	increments of \$100.00
\$2,500.00 - \$5,000.00.....	increments of \$250.00
\$5,000.00 - \$10,000.00.....	increments of \$500.00
\$10,000 & Up.....	increments of \$1,000.00

Bids submitted between the above increments, whether by mail, FAX, email or on-line via the internet, will automatically be lowered to the closest lower increment.

This is a minimum bid auction. Bids below the printed minimum will not be accepted.

An example of how our absentee bidding system works: You bid \$600.00 on a lot which is the highest bid received to date. The second highest bid is \$450.00. The current high bid level would be yours at \$475.00, one bid increment higher than the other collector's bid. Any additional bids submitted by others below \$600.00 will automatically be topped on your behalf by a representative of American Glass Gallery, up to your stipulated high bid amount. If no further bids on this lot are received beyond the \$450.00, and the under bidder has not requested a "Call Back", then you would have won the lot at \$475.00, not the \$600.00 that you were prepared to pay.

American Glass Gallery will at NO TIME disclose bids pledged by others; only the current "High Bid" level of a lot will be stated upon request. The highest bidder as determined by American Glass Gallery shall be the purchaser. It is the sole right of the auctioneer to settle any dispute between bidders and to regulate the bidding procedure. The auctioneer reserves the right to refuse any bid he believes not to have been made in good faith.

5. "Call Back" Process

If requested, the three top bidders of an item at the time of closing will be given a "Call Back" over the next number of days in order to resolve the final sale of an item. You can request this service by "checking" the appropriate box on your absentee bid form or verbal agreement by phone. It is the responsibility of the bidder to insure he has qualified for this service.

Please note: No "Call Backs" will be executed for bids under \$400.00. In the event of tie bids, the earliest bid received will be the winning bid.

An example of how the "Call Back" process works: As an example, you have bid \$600.00 on a particular lot. Another bidder has submitted a bid of \$900.00 on the same lot. Assuming that as of the auction closing date you are among the top three bidders on this lot and you have requested a "Call Back", you would receive a call informing you that you have been "Out Bid" and the current "High Bid" is now at \$650.00. If you choose to continue bidding on this lot, you may now do so. Assuming that you now increase your bid to \$700.00, we would accept your bid but also inform you that we have a higher bid on this lot and must bid \$750.00. At this time, an auction between you and American Glass Gallery, representing the collector who submitted the bid of \$900.00, takes place. This bidding would continue until you drop out, or top the other bidders high bid of \$900.00. If the other bidder has not requested a "Call Back" service, you would be awarded the lot. If however, the other bidder also requested a Call Back, we must now call them. If they elect to increase their bid over your high bid, we would in turn call you back. This back and fourth process would continue until one of the bidders declines to go any farther.

If you have requested a "Call Back", the auctioneers will need to contact you on the days immediately following the auction closing between the hours of 8 A.M. and 9 P.M. Eastern Time. Please supply us with all appropriate contact phone numbers including, home, mobile and work numbers. Bidders must provide the appropriate telephone numbers where they can be contacted. If you will be traveling or otherwise unavailable, bidders with "Call Back" privileges will have the responsibility to contact American Glass Gallery twice daily during the Call Back period.

Please note, every effort will be made to contact you during the "Call Back" period. However, the bidder will forfeit their rights to a "Call Back" if the auctioneers are unable to reach them. American Glass Gallery reserves the right to discontinue Call Backs on any item in the sale (2) two days after the closing date of the sale. At that time, the current "High Bidder" may be awarded the item even if Call Backs are still outstanding.

6. Terms

Successful Bidders, Prompt and full payment is due immediately upon receipt of our invoice. Absolutely no exceptions. Anyone failing to pay for items won will forfeit all rights to bid in any future American Glass Gallery sales. Any late or delayed payments may result in loss of return privileges for items purchased in the sale.

No Items Will Be Mailed Before Full Payment Is Received.

Buyer Premium: A 12% buyer's premium will be added to the hammer price (15% if paying by Credit Card or PayPal), to be paid by the buyer as part of the purchase price. For example, if you purchase a lot for \$100.00, you will receive an invoice for \$112.00 if paying by cash, check or money order, plus any applicable sales tax or shipping charges.

Taxes: If you are a Michigan resident, a 6% sales tax will be added to your bill unless you have a valid resale number registered with us.

Shipping: Shipping, handling and insurance are extra. We ship insured via U.S. Mail. These charges will be added to your bill unless the lots are picked up in person. Our charges for shipping (excluding foreign shipments and oversized lots) are \$18.00 for the first item, \$9.00 for each additional item together with extra insurance costs (we use current U.S. Postal Service insurance rates).

Please allow two to four weeks for delivery after receipt of your check.

Payment: American Glass Gallery accepts Cash, Money Orders, Personal Checks, Visa, MasterCard, American Express and PayPal. If paying by Credit Card or PayPal, an additional 3% will be added to the invoice total.



7. Refunds

Refunds will be given at the discretion of the Auctioneers. Items purchased must be examined and request for refund made immediately upon receipt of the item or items. Since opinions can differ, particularly in the matter of condition, the Auctioneers will be the sole judge in the consideration of refunds. Refunds requested on the grounds of authenticity must be made within 15 days of the date of the auction, and such refund requests must be accompanied by at least one supporting statement in writing from an authority recognized by the Auctioneers. It is the Auctioneers sincere intention to consider any reasonable request for a refund. *Absolutely no returns for any reason after 30 days of the closing of the sale.*

8. Bidding on any item indicates your acceptance of these terms.



John R. Pastor
P.O. Box 227
New Hudson, Michigan 48165
Phone: 248.486.0530
Fax: 248.486.0538
www.americanglassgallery.com
email: jpastor@americanglassgallery.com

PLEASE NOTE:

The lots offered in this printed catalog are identical to the lots offered in the on-line catalog. However, due to space constraints of the printed catalog, there may be some further information available regarding some of the lots in the on-line auction descriptions.

Please visit us at

www.americanglassgallery.com

and follow the link to the on-line auction.

The link and on-line auction will be available May 9, 2012.

A post-auction price list will be available on our website, in printable form, by June 1.

We encourage you to contact us by phone or email with any questions, for assistance with bidding, or further details or clarification on any of the lots in this sale. Your complete satisfaction and confidence is our goal!

We look forward to having you participate in our next sale, either as a buyer or a consignor. Our next absentee auction is scheduled for September 2012. We already have some wonderful items consigned to this sale and look forward to discussing with you any quality items you wish to consign!

THANK YOU AND GOOD LUCK WITH YOUR BIDS!

Reference Key

Reference initials and numbers used in the description of this catalog refer to the following publications:

AHG	<i>American Historical Glass</i> , Bessie M. Lindsey, 1967
AM	<i>The Decanter - An Illustrated History of Glass from 1650</i> , Andy McConnell, 2004
AP	<i>Glass in Early America</i> , Arlene Palmer, 1993.
BA1	<i>Collecting The Cures</i> , Bill Agee, 1969
BA2	<i>Collecting All Cures</i> , Bill Agee, 1973.
BB	<i>A Bit About Balsams</i> , Betty Blasi, 1974
BH	<i>Classification and Documentation of Sunburst and Similar Scent Bottles</i> , Bill Ham, AB&GC, 5/87
B/K	<i>The Glass Industry in Sandwich</i> , Raymond Barlow and Joan Kaiser, 1989.
C	<i>Ink Bottles and Inkwells</i> , William Covill, 1971.
DeG	<i>American Sarsaparilla Bottles</i> , John DeGrafft, 1980.
DeGII	<i>Supplement to American Sarsaparilla Bottles</i> , John DeGrafft, 2004.
DF	<i>Hair Raising Stories</i> , Don Fadely, 1992.
DM	<i>Wistarburgh, Window Tiles, Bottles and More</i> , Dale L. Murscell, 2007.
FB	<i>A.S.C.R. The wine bottles of All Souls College</i> , Oxford, 1750 – 1850, Fay Banks.
G	(Flasks) <i>American Bottles & Flasks and Their Ancestry</i> , McKearin & Wilson, 1978.
G	(Blown Three Mold) <i>American Glass</i> (Chapter VI), George S. and Helen McKearin, 1941.
GBH	<i>English Glass For The Collector, 1660-1860</i> , G. Bernard Hughes, 1958.
H	<i>American Bottles in the Charles B. Gardner Collection</i> , Norman C. Heckler, 1975.
JB	<i>Patent and Proprietary Medicine Bottles</i> , Joseph K. Baldwin, 1973
JEB	<i>Glasshouse Whimsies</i> , Joyce E. Blake, 1984.
JH	<i>Glasshouses & Glass Manufacturers of the Pittsburgh Region, 1795 – 1910</i> , Jay W. Hawkins, 2009.
JS	<i>In glas verpakt – European Bottles, Their history and production</i> , Johan Soetens, 2001.
K	<i>Poison Bottle Workbook</i> , Rudy Kuhn, 1988.
KW	<i>New England Glass & Glassmaking</i> , Kenneth M. Wilson, 1972.
L	<i>The Red Book of Fruit Jars, No. 9</i> , Douglas M Leybourne, Jr., 2001.
LI	<i>Pittsburgh Glass, 1797 – 1891</i> , Lowell Innes, 1976.
Mc	<i>Two Hundred Years of American Blown Glass</i> , Helen and George McKearin, 1950.
McK	<i>American Glass</i> , George S. and Helen McKearin, 1941.
MW	<i>American Bottles & Flasks and Their Ancestry</i> , McKearin & Wilson, 1978.
N	<i>Great American Pontiled Medicines</i> , Frederick Nielson, 1978.
NCH	<i>The Blaske Collection of American Flasks</i> , Norman C. Heckler, 1983.
NCH II	<i>The Blaske Collection: Part II</i> , Norman C. Heckler, 1983.
Odell I	<i>Indian Bottles and Brands</i> , John Odell, 1977
Odell II	<i>Pontiled Medicine Encyclopdia</i> , John Odell, 2000
O&S	<i>Warner's Reference Guide</i> , Ed Ojea and Jack Stecher, 1998.
P	<i>The Glass Gaffers of New Jersey</i> , Adeline Pepper, 1971.
RD	<i>Understanding Antique Wine Bottles</i> , Roger Dumbrell, 1983.
RF	<i>The Bottle Book: A Comprehensive Guide to Historic, Embossed Medicine Bottles</i> , Richard Fike, 1987
RH	<i>Collecting Barber Bottles</i> , Richard Holiner, 1986.
R/H	<i>Bitters Bottles</i> , Carlyn Ring and W. C. Ham, 1998.
RWL	<i>Antique Fakes & Reproductions</i> , Ruth Webb Lee, 1950
T	<i>Collectors Guide to Saratoga Type Mineral Water Bottles</i> , Donald Tucker, 2005.
U	<i>Collectible Character Bottles</i> , Authur Umberger, 1969.
V	<i>Nailsea Glass</i> , Keith Vincent, 1975
VdB	<i>Antique Glass Bottles; Their History and Evolution</i> , Willy Van den Bossche, 2001.
WL	<i>A Wine-Lover's Glasses, The A.C. Hubbard, Jr. Collection</i> , Ward Lloyd, 2000.
Z	<i>Ketchup, Pickles, Sauces</i> , Betty Zumwalt, 1980.
ZW	<i>Color Hutchinsons</i> , Zang Wood, 1999.

- The dash is generally used to indicate that the descriptions are on opposite sides of the bottle or flask.

/ The slash is used to indicate that the descriptions are on different lines or surfaces of the bottle.



Lot 123: Holtzermann's Stomach Bitters with contents and complete label (detail)



Lot 29



ABOVE: The Pittsburgh Glass Manufactory of Bakewell, Page & Bakewell circa 1816.

Extremely Rare Golden-Amber GLX-39 Half-Pint Scroll Flask

This lovely little half-pint scroll flask was blown at the Pittsburgh, Pennsylvania firm of Bakewell Page & Bakewells between 1827 and 1832 and is one of the very few scroll flasks embossed with the maker's name. Glass scholars have suggested that the scroll flasks produced at BP&B during this period may very well represent the "mothers" of the many scroll flasks that were to follow, well into the 1860's.

In any case, the mold created for this flask was of the finest, most artistic craftsmanship and is certainly one of the loveliest of the approximately 75 molds known to have been produced for scroll flasks. Such artistry and craftsmanship is also evident in the expert blowing of this flask.

Adding to all this is the fact that this example was blown from a rare shade of golden amber (one of two or three known in this color), with loads of little seed bubbles, and you have one rare little gem of a scroll flask!

A Sampling of Fine Historical Flasks



The term “Historical Flasks” has become synonymous with what Helen McKearin and Kenneth Wilson, co-authors of 1978’s *American Bottles & Flasks and Their Ancestry*, termed “Figured Flasks.”

Helen McKearin was the daughter of George McKearin, the legendary collector, dealer and scholar of antique bottles and flasks, who is recognized as the founding father of our present day flask mold identification system. In 1941, using the Roman numeral system, George McKearin initially charted nearly 400 distinctly different flask molds, quite a feat for such a pioneering time prior to the development of the Interstate Highway System or, perhaps more importantly, the “virtual highway system” of emails and the Internet. Mr. McKearin categorized the 398 different molds into 10 distinct groups, GI through G10.

In 1978, this grouping was expanded by Helen McKearin and Kenneth Wilson to include groups GXI through GXV, when they

co-authored *American Bottles & Flasks*. This landmark volume remains today the single most indispensable tool for students of early American flasks. In this book, the number of different flask molds grew from 398 to just over 700. This was primarily accomplished by charting the five new groups of GXI – GXV, which included Pike’s Peaks, Clasped Hands, Pictorial, Traveler’s Companion and Lettered (mainly glassworks).

In their book, McKearin and Wilson segregated the 15 groups of “Figured Flasks” into five categories: Historical, Pictorial, Decorative, Lettered and Masonic. In a technical sense, not all flasks that we routinely call “Historical” will fall into the category of Historical Flasks. This is not to diminish their importance or to say that they do not reflect a sense of history. Examples of flasks included in the Historical category are the GI and GII groupings (portraits and eagles). Examples of Pictorials include the popular Flora Temple

flasks and all others in the GXIII grouping. The Decorative category would include such flasks as the Sunbursts and Scrolls (GVIII and GIX respectively).

Bringing us up to date, noted flask collector, scholar and contributing columnist for *Antique Bottle & Glass Collector*, Mark Vuono, has identified an additional 40 or so uncharted and distinctly different mold variations from the more than 700 identified in 1978. Of course this does not include color variations of each mold, which would add hundreds of variations to the almost 750 different molds!

The field of Historical or “Figured” flasks is rich in history, symbolism, colors and character. It was one of the first categories to be studied by the pioneer collectors going back to 1900, with the book, *American Glassware* by Edwin A. Barber. Today, rightly so, it remains one of the most popular and sought-after categories of antique bottles and related glass.

"Saratoga-Type" Mineral Water Bottles

The distinctive and sturdy bottles that today we refer to as "Saratoga-types" first appeared around 1823 when John Clarke and Thomas Lynch contracted with the Mt. Vernon Glass Works in Oneida County, New York, to produce a suitably rugged container for the bottling and shipping of mineral water at Saratoga Springs, New York. This well-known early bottle was appropriately embossed "Lynch and Clarke/New York." (See lots 186 & 187 on page 31 of this catalog.)

The form and size of Saratoga-type bottles varies little with the great majority having proportionally short necks and an applied double-collared mouth and holding approximately one quart or one pint. Other sizes and forms are considered quite scarce.

Fortunately for the collector, there were many more springs discovered, most represented by bottles of multiple embossings and colors. As a result, there is a vast assortment of these Saratoga-type bottles to be had today in a broad range of prices.

Lot 191

Lot 200



Lot 208 (one of 16)

Lot 201



Lot 209

Freeblown Glass of Probable (and Definite) New York State Origin

This charming group represents a cross-section of typical freeblown objects from the mid-nineteenth century bottle and window glass houses of New York State.

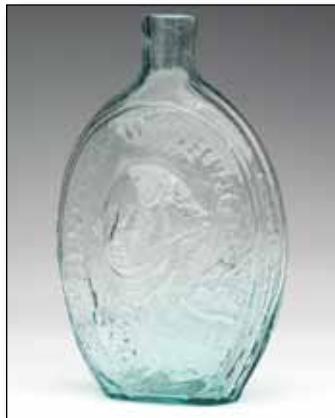
While the South Jersey style is evident in most glass of the New York region, certain aspects of these pieces suggest a New York attribution is more likely. Many of the milk bowls from the region tend to be taller than

wide and of the "hat" or "flower pot" style with relatively straight sides. The lovely plain sugar bowl is classic Redwood or Redford, New York with its bucket-form base and wide galleried rim. The sweet little creamer has a similar form and both are probably made from window glass which was so typical of New York State.

While the hat whimsy is of a style that could

have been made most anywhere in the eastern United States, it is truly remarkable that we have an unequivocal attribution of it being blown on October 1, 1854 at the Saratoga Mountain (Mt. Pleasant) Glass Works in upstate New York. This provenance comes from the historical letters that are included with this unique lot. (For more about this hat, see the March, 2012 issue of *Antique Bottle & Glass Collector*.)





Lot 1

"General Washington" / Bust of Washington – "E Pluribus Unum" / Eagle / "T.W.D. – Adams & Jefferson" / July 4 A.D. 1776 – Kensington Glass / Works Philadelphia" Historical Flask, Kensington Glass Works, 1825 – 1835. Aqua, sheared mouth – pontil scar, pint, very near mint; (a small paper-thin open bubble on the obverse and a weakened impression in the upper shoulder as is common on this flask). GI-14. One of the most historic of all the flask molds.

Est.: \$400 - \$600 • Min. bid: \$250



Lot 2

"Fells" / Bust of Washington / "Point" – Monument / "Balto" Historical Flask, Baltimore Glass Works, Baltimore, MD, 1830 – 1850. Beautiful pinkish amethyst with a slight apricot or copper tone, sheared mouth – pontil scar, pint, near mint; (a shallow, 1/8" open surface bubble on the medial rib near the base and a touch of very light expected wear, otherwise mint). GI-20. Beautiful, extremely rare color and a good strong impression! Ex. Bill Pollard collection.

Est.: \$5,000 - \$10,000 • Min. bid: \$3,000



Lot 3

"The Father Of His Country" / Bust of Washington – "A Little More Grape Captain Bragg" / Bust of Taylor Historical Flask, probably Dyottville Glass Works, Philadelphia, Pennsylvania, 1855 – 1865. Aquamarine, applied round double collared mouth – smooth base, quart, near mint; (just a touch of light exterior wear, otherwise perfect). GI-42. A nice example, good strong embossing.

Est.: \$125 - \$225 • Min. bid: \$70



Lot 4

"Lafayette" / Bust of Lafayette / "S & C" – "Dewitt Clinton" / Bust of DeWitt Clinton / "C – T" Historical Flask, Coventry Glass Works, Coventry, Connecticut, 1825 – 1835. Light, bright yellow olive, sheared mouth – pontil scar, half pint; (some very light expected high point wear, otherwise perfect!). GI-81. A very scarce flask, beautiful light color and with a great impression for this mold.

Est.: \$2,500 - \$5,000 • Min. bid: \$1,500



Lot 5

"Jeny Lind" / Bust of Jeny Lind – Glass Factory Historical Calabash Flask, Ravenna Glass Works, Ravenna, Ohio, 1857 – 1864. Aquamarine, applied large round collared mouth – iron pontil scar, quart, near mint; (a 1/4" open surface bubble on one of the vertical ribs on the reverse, near the base, otherwise perfect). GI-104. A good looking example.

Est.: \$125 - \$225 • Min. bid: \$70



Lot 6

Bust of Byron – Bust of Scott Portrait Flask, probably an early Stoddard glasshouse, Stoddard, NH, 1842 – 1850. Brilliant yellow with olive and honey tones, sheared mouth – blowpipe pontil scar, half pint, very near mint; (tiny pin-head bit of roughness at base edge and a small, tissue-paper thin open surface bubble, otherwise pristine!). GI-114. A bright, light, bubbly, very pretty example with virtually no high point wear as is often the case with this mold

Est.: \$250 - \$450 • Min. bid: \$150



Lot 7

Bust of Columbia / "Kensington" – Eagle / "Union. Co" Historical Flask, Kensington Glass Works, Philadelphia, Pennsylvania, 1825 – 1835. Aquamarine, sheared mouth – blowpipe pontil scar, pint, very near mint; (just a touch of expected faint exterior wear, otherwise perfect). GI-117. A very desirable, scarce mold in wonderful condition.

Est.: \$800 - \$1,200 • Min. bid: \$500



Lot 8

Eagle – Eagle Historical Flask, probably Kensington Glass Works, Philadelphia, PA, 1825 – 1840. Brilliant blue green, almost a teal coloration, sheared mouth – blowpipe pontil scar, pint; (a 1/8" interior bubble has some trapped residue, otherwise pristine perfect). GI-40. An exceptional, eye appealing example, very crisp impression, brilliant rare color, bright and bubbly, and with virtually no high point wear. It would be hard to imagine a nicer example.

Est.: \$1,800 - \$3,600 • Min. bid: \$1,000



Lot 9

Eagle – Cluster of Grapes Historical Flask, Coffin & Hay Glass Manufactory, Hammonton, New Jersey, 1838 – 1847. Aquamarine, sheared mouth – blowpipe pontil scar, quart; (a fair amount of fine high point wear, primarily on the shield below the eagle, otherwise near mint). GII-55. A big, attractive flask.

Est.: \$150 - \$250 • Min. bid: \$100



Lot 13

Eagle – Eagle Historical Flask, Coventry Glass Works, Coventry, Connecticut, 1830 – 1848. Medium olive amber shading to a dense olive amber near the base, sheared mouth – blowpipe pontil scar, half pint; (some light exterior wear and a little scattered residue or film on the interior, most of which would probably wash out). GII-71.

Est.: \$175 - \$325 • Min. bid: \$100



Lot 10

Eagle – “Liberty” / Oak Tree Historical Flask, America, 1825 – 1835. Bright yellow green, sheared mouth – pontil scar, half pint, very near mint; (a small flake or bit of roughness on one of the raised beads near the base, on the reverse, otherwise attic mint). GII-60. A scarce mold in an extremely rare and desirable color with only one other example known to exist in a similar shade. An exceptional little flask with great eye appeal!

Est.: \$6,000 - \$12,000 • Min. bid: \$4,000



Lot 14

Eagle / “Granite. / Glass. Co” – Eagle / “Stoddard / NH” Historical Flask, Granite Glass Company, Stoddard, NH, 1846 – 1862. Yellowish amber with a slight olive tone, sheared mouth – blowpipe pontil scar, pint, virtually attic mint; (just the slightest touch of very fine high point wear on the lower part of the cartouche, otherwise pristine!) GII-81. An absolutely outstanding example of this flask having nice color and clarity, excellent character, a crude pebbly surface, and a very strong impression.

Est.: \$300 - \$600 • Min. bid: \$200



Lot 11

“Liberty” / Eagle – “Willington / Glass, Co / West Willington / Conn” Historical Flask, Willington Glass Works, 1860 – 1872. Rich golden-amber shading to a lighter yellowish-golden near the shoulders, applied round double collared mouth – smooth base, quart; (just the slightest touch of normal faint exterior wear, otherwise perfect!) GII-61. An excellent example of this flask, beautifully whittled, plenty of tiny seed bubbles, and virtually none of the usual high point wear.

Est.: \$750 - \$1,500 • Min. bid: \$500



Lot 15

Eagle – Eagle Historical Flask, probably Granite Glass Company, Stoddard, NH, 1846 – 1862. Bright yellowish-amber with an olive tone, sheared mouth – blowpipe pontil scar, half pint, perfect. GII-86. A bright, clean, pretty example devoid of the typical high point wear often encountered on this flask.

Est.: \$150 - \$250 • Min. bid: \$100



Lot 12

“Liberty” / Eagle – “Willington / Glass / Co / West Willington / Conn” Historical Flask, Willington Glass Works, 1860 – 1872. Emerald green, almost a teal, applied round double collared mouth – smooth base, half pint, mint. GII-63. A great little flask, very rare color, wonderful condition. Provenance: Ex. Judge Blaske collection, Lot 391.

Est.: \$1,500 - \$2,500 • Min. bid: \$800



Lot 16

Eagle – Eagle Historical Flask, probably Granite Glass Company, Stoddard, NH, 1846 – 1862. Yellowish-amber, (slightly deeper than lot 15), with an olive tone, sheared mouth – blowpipe pontil scar, half pint, perfect. GII-88. Another nice example, beautiful condition, a little scarcer mold variant than the “86”.

Est.: \$150 - \$250 • Min. bid: \$100



Lot 17

Eagle with Wreath – (Reverse Same) Historical Flask, Midwest America, probably Kearns, Herdman & Gorsuch, Zanesville, OH, 1869 – 1875. Bright honey amber, very crudely applied mouth with ring – smooth base, half pint, very near mint; (some small jagged pieces of extra glass protrude from below the collared mouth on one side of the flask; this occurred during manufacture and is not considered damage). GII-126. A comparatively scarce mold in a very attractive color!

Est.: \$600 - \$900 • Min. bid: \$400



Lot 18

Cornucopia – Urn Pictorial Flask, Lancaster Glass Works, Lancaster, New York, 1849 – 1855. Aquamarine, sheared mouth with a short thin flange – blowpipe pontil scar, half pint, near mint; (tiny, 1/16" lip edge roughness, a touch of faint high point wear). GIII-15.

Est.: \$150 - \$250 • Min. bid: \$100



Lot 21

Seeing Eye (Inside Star) / "A D" – Flexed Arm (Inside Star) / "GR JA" Historical Flask, probably an early Stoddard glasshouse, Stoddard, New Hampshire, 1842 – 1850. Medium olive amber, sheared mouth – pontil scar, pint; (some fairly minor high point wear as is very common on this flask and some light interior residue in the lower portion of the flask that would very likely wash out with a little soaking, otherwise perfect). GIV-43. A good solid example of this flask.

Est.: \$250 - \$450 • Min. bid: \$150



Lot 22

"Success To The Railroad" / Locomotive – (Reverse Same) Historical Flask, Lancaster Glass Works, Lancaster, New York, 1849 – 1855. Aquamarine, sheared mouth – blowpipe pontil scar, pint, near mint; (a very thin, sliver of a pontil flake extends to the base edge, but is not noticeable on display; a slightly weakened impression in the shoulder as is very common for this mold). GV-1. A good solid example of this popular flask.

Est.: \$300 - \$600 • Min. bid: \$200



Lot 19

Masonic – Eagle / "IP" Historical Flask, Keene Marlboro Street Glassworks, Keene, New Hampshire, 1815 – 1825. Clear medium blue green, sheared, tooled and inward rolled mouth – pontil scar, pint, near mint; (just a touch of light exterior wear, otherwise, an excellent, sparkling example). GIV-1a. A bright, clean example of this very early flask.

Est.: \$400 - \$600 • Min. bid: \$250



Lot 23

"Success To The Railroad" / Horse Pulling Cart – (Reverse Same) Historical Flask, Keene Marlboro Street Glassworks, Keene, NH, 1830 – 1842. Bright yellowish with an olive tone, sheared mouth – blowpipe pontil scar, pint; (just a touch of minimal light high point wear and a weakened impression in the shoulder area, otherwise perfect). GV-3. A particularly bright example in a beautiful color with plenty of yellow!

Est.: \$400 - \$800 • Min. bid: \$250



Lot 20

Masonic – Eagle Historical Flask, probably Keene Marlboro Street Glassworks, Keene, New Hampshire, 1815 – 1830. Bright yellowish olive amber shading to a deeper olive amber through the neck and base, sheared mouth – pontil scar, half pint, very near mint; (some expected very light high point wear and a bit overblown in the shoulder area, otherwise perfect). GIV-24.

Est.: \$300 - \$500 • Min. bid: \$200



Lot 24

"Success To The Railroad" / Horse Pulling Cart – (Reverse Same) Historical Flask, probably Mt. Vernon Glass Works, Vernon, New York, 1830 – 1844. Yellowish olive amber, sheared mouth – blowpipe pontil scar, pint; (some very light high point wear, primarily on one side only, and a slightly weakened impression in the shoulder as is typical for this flask). GV-5. A good clean example having less high point wear than most.

Est.: \$300 - \$600 • Min. bid: \$200



Lot 25

“Success To The Railroad” / Horse Pulling Cart – (Reverse Same) Historical Flask, probably Mt. Vernon Glass Works, NY, 1830 – 1844. Medium to deep olive amber, almost a tobacco amber, sheared mouth – blowpipe pontil scar, pint; (some light exterior wear and a extremely minor pin-prick area of roughness on the edge of the lip; slightly weakened impression in the shoulder as is common on these flasks). GV-5. A classic example in a rich, deep color.

Est.: \$250 - \$450 • Min. bid: \$170



Lot 26

“Railroad” / Horse Pulling Cart / “Lowell” – Eagle with Stars Historical Flask, Coventry Glass Works, Coventry, Connecticut, 1830 – 1848. Medium olive with a slight amber tone, sheared mouth – blowpipe pontil scar, half pint; (some light exterior wear and a couple of areas of minor interior residue that would almost certainly clean out with a little soaking and a brush). GV-10.

Est.: \$175 - \$350 • Min. bid: \$100



Lot 27

“Corn For The World” / Ear of Corn – “Baltimore” / Monument Historical Flask, Baltimore Glass Works, Baltimore, MD, 1830 – 1845. Yellowish olive green, sheared mouth – large blowpipe pontil scar, quart; (a fair amount of fine exterior wear and scratches, but no other form of damage). GVI-4. Ex. Bob Mebane collection, Lot 548. A very rare and desirable color for this mold and even more rare with the pontil scarred base!

Est.: \$2,000 - \$4,000 • Min. bid: \$1,400



Lot 28

Scroll Flask, Midwest America, 1845 – 1860. Brilliant yellowish green, sheared mouth – blowpipe pontil scar, pint; (a few flakes, from 1/8” to 3/8”, on the interior edge of the roughly sheared mouth, otherwise very near mint). Note; an unlisted, likely very rare mold, similar to GIX-11 (defined space between center scrolls), but with clearly defined stars similar to GIX-10e (3-eight pointed stars, one nine pointed star). A beautiful, bright crisp example.

Est.: \$800 - \$1,600 • Min. bid: \$500



Lot 29

“B P & B” Scroll Flask, Bakewell, Page & Bakewells Glass Manufacturers, 1827 – 1832. Medium golden amber, sheared mouth – blowpipe pontil scar, half pint, very near mint; (just a slight touch of fine high point wear, otherwise perfect!) GIX-39. A scarce, desirable mold and an exceptional rarity in color with only two or possibly three examples known to exist in amber. In addition, a beautiful example in character and condition.

Est.: \$12,000 - \$22,000 • Min. bid: \$6,000



Lot 30

Sheaf of Rye – Grapes Pictorial Flask, probably Coffin & Hay Glass Manufactory, Hammonton, New Jersey, 1838 – 1847. Aquamarine, sheared mouth – blowpipe pontil scar, half pint, near mint; (two, probably in-manufacture pinhead size flakes at edge of sheared mouth, otherwise bright, clean, perfect!) GX-3.

Est.: \$100 - \$200 • Min. bid: \$70



Lot 31

“For Pike’s Peak” / Prospector / “Old Rye” – Eagle / “Pittsburgh Pa” Historical Flask, a Pittsburgh glasshouse, 1860 – 1870. Light to medium emerald or teal green, applied mouth with ring – smooth base, pt, near mint; (an extra bit of glass with some iron residue to the right of the cartouche on the reverse occurred when an object touched the flask and a thin annealing line, 1/2”, on the surface at the base edge. Both likely occurred at manufacture.) GXI-9. An unlisted color for this mold

Est.: \$400 - \$800 • Min. bid: \$250



Lot 32

“For Pike’s Peak” / Prospector – Eagle Historical Flask, probably a Pittsburgh district glasshouse, 1860 – 1870. Light to medium cornflower blue, applied mouth with flat band – smooth base, quart, pristine perfect! GXI-30. A big, beautiful flask, and a very attractive, rare, color for this mold. The bottle is a recent discovery and “fresh to the market.”

Est.: \$400 - \$800 • Min. bid: \$250



Lot 33

"For Pike's Peak" / Prospector – Eagle / "Ceredo" Historical Flask, Midwest, probably a Pittsburgh district or possibly Ceredo, West Virginia glassworks, 1860 – 1870. Light to medium apple green, applied mouth with narrow flat band – smooth base, half pint, very near mint; (extremely minor touch of lip edge roughness, otherwise perfect). GXI-36. A scarce mold, delicate, rare color. Ex. John Eatwell collection.

Est.: \$200 - \$400 • Min. bid: \$150



Lot 37

Pattern Molded Pocket Flask, 16 widely spaced, melon-type ribs, probably America, possibly Pittsburgh district, 1800 – 1830. Medium to deep plum amethyst, flattened chestnut form, sheared mouth – blowpipe pontil scar, ht. 6 1/2", near mint; (some very minor exterior wear, a small area of interior residue or haze near the base, otherwise excellent!) Note; the pattern softens in the lower body as is common for this mold. Beautiful color, a great early flask.

Est.: \$600 - \$1,200 • Min. bid: \$400



Lot 34

Horseman – Hound Pictorial Flask, Baltimore Glass Works, Baltimore, Maryland, 1860 – 1870. Bright yellowish honey amber, applied round double collared mouth – smooth base, pint, near mint; (just a touch of very minor light exterior wear). GXIII-17. Beautiful color, particularly in natural daylight.

Est.: \$400 - \$800 • Min. bid: \$250



Lot 38

Pattern Molded Pocket Flask, 24 vertical ribs, Midwest America, possibly Zanesville Glass Works, Zanesville, Ohio, 1815 – 1830. Bright honey or golden yellow with a faint olive tone, flattened circular form, sheared mouth – pontil scar, 4 3/4", near mint; (very minor high point wear, primarily near the base). Beautiful color, nice and light. Note; there is a small pinch or tooling mark on the lip done during manufacture. Ex. John Moore collection.

Est.: \$400 - \$600 • Min. bid: \$250



Lot 35

"Baltimore" / Anchor / "Glassworks" – Phoenix / "Resurgam" Pictorial Flask, Baltimore Glassworks, Baltimore, Maryland, 1855 – 1865. Aquamarine, applied collared mouth with ring – smooth base, pint, very near mint; (a shallow, 1/8" bit of lip edge roughness, and a pinhead size, paper thin open bubble, otherwise pristine). GXIII-53. A bright, bubbly example with a strong mold impression.

Est.: \$125 - \$225 • Min. bid: \$70



Lot 39

Pattern Molded Pocket Flask, 24 ribs swirled to the left, Midwest, probably Zanesville Glass Works, Zanesville, OH, 1820 – 1835. Rich, deep amber, flattened elliptical body, sheared mouth – pontil scar, ht. 5", very near mint; (some light expected high point wear and the pattern fades in the lower portion of the body as is typical for these flasks, otherwise perfect). A rich, deep tone of color, strong pattern through the upper body, very attractive in natural daylight.

Est.: \$250 - \$450 • Min. bid: \$150



Lot 36

Pattern Molded Pocket Flask, "Diamond Daisy" Pattern, Stiegel's American Flint Glass Manufactory, Manheim, PA, 1769 – 1774. Brilliant clear medium amethyst, plump form body, sheared mouth – pontil scar, ht. 5 1/8", near mint; (some expected light exterior wear and a slightly weakened impression, otherwise perfect). See MW, color plate II, #6; *Glass in Early America*, Palmer, #354-356. A very nice example with beautiful color and clarity.

Est.: \$3,000 - \$6,000 • Min. bid: \$2,000



Lot 40

Pattern Molded Pocket Flask, 25 ribs swirled to the right, Midwest America, 1820 – 1840. Medium greenish aquamarine, flattened chestnut form, sheared mouth, delicate blowpipe pontil scar, ht. 6 3/8"; (some exterior high point wear and light scratches, particularly near the base on the sides). Note; a little larger in size than normal and a very scarce rib count, seldom encountered.

Est.: \$150 - \$300 • Min. bid: \$100

**Lot 41**

Mammoth-Size, Pattern Molded Pinched Spirits Bottle, 24 ribs swirled slightly to the right, Germany, likely the Alpine region, 1720 – 1750. Brilliant sapphire blue, ovoid form, blown in the half post method with a pinched indentation through the center, sheared mouth with original pewter closure – glass tipped pontil scar, ht. 10 1/8", perfect. An outstanding example with beautiful color, a strong pattern, very rare size, and wonderful condition! Similar to VdB, plate 230.

Est.: \$750 - \$1,250 • Min. bid: \$400

**Lot 42**

Poison Type Flask, probably Germany, 1830 – 1860. Bright medium green with a lime tone, flattened circular body, 2-piece mold with an overall quilted diamond pattern, applied sloping collared mouth – blowpipe pontil scar, ht. 6 1/8"; (a small, pinhead sized potstone on the surface of one of the raised diamonds has a couple of less-than 1/8" legs, some interior residue that will likely wash out). Scarce with the applied sloping collar, also an interesting mold repair on the base.

Est.: \$200 - \$400 • Min. bid: \$120

**Lot 43**

Pattern Molded Spirits Flask, probably Continental, possibly Germany, 1820 – 1840. Medium to deep olive, flattened circular body blown in a 2-piece mold with what appears to be 28 vertical ribs over 28 ribs swirled to the right, heavy applied string lip – blowpipe pontil scar, ht. 5", near mint; (some light exterior wear, some interior residue that would likely wash out.) A very interesting, early flask!

Est.: \$300 - \$600 • Min. bid: \$200

**Lot 44**

Pattern Molded Club or "Beehive" Bottle, 16 widely spaced faint vertical ribs over 16 ribs swirled to the right, Midwest America, possibly Mantua Glass Works, 1822 – 1829. Aquamarine, beehive form, sheared, likely applied flat collared mouth – blowpipe pontil scar, ht. 7 7/8", very near mint; (a slight amount of expected light high point wear near the mid-body, otherwise perfect!) A good, clean, bright example in outstanding condition.

Est.: \$150 - \$300 • Min. bid: \$100

**Lot 45**

Early Freeblown Decanter or Chestnut Bottle, America, probably Mid-Atlantic region, 1750 – 1800. Clear medium olive with some swirls and deeper olive tones along one side, plump chestnut form rounding out to a near circular base, sheared mouth with a crudely applied ring – slightly pushed up base with a delicate blowpipe pontil scar, ht. 8 1/4", virtually attic mint; (expected very light exterior usage wear). A beautiful, early, interesting and attractive piece!

Est.: \$600 - \$1,200 • Min. bid: \$400

**Lot 46**

Early Freeblown Chestnut Flask, America, probably New England, 1785 – 1820. Light to medium yellowish olive amber, plump chestnut form, sheared mouth with applied flattened string lip – blowpipe pontil scar, ht. 9 1/2"; (some scattered light exterior wear and light scratches, a little interior residue that would probably wash out with a good soaking). A classic New England chestnut in a larger than normal size.

Est.: \$300 - \$600 • Min. bid: \$200

**Lot 47**

Early Freeblown Chestnut Flask, probably Midwest America, 1800 – 1830. Bright medium golden amber, plump chestnut form, sheared mouth with an applied ring type collar – delicate blowpipe pontil scar – ht. 7 1/2"; (a fair amount of light to moderate exterior usage wear and scratches around the mid-body). An interesting, early bottle, scarce color. The bottle was discovered in Northwest, Ohio many years ago where it has remained in a collection until now.

Est.: \$250 - \$450 • Min. bid: \$170

**Lot 48**

Early Utility or Storage Jar, probably England, 1800 – 1830. Clear medium green, cylindrical with domed shoulders and a wide neck, dip mold, sheared mouth with an applied ring type collared mouth – sand type pontil scar, ht. 8 1/2", near attic mint; (a touch of faint exterior wear, otherwise perfect!) An attractive early jar, great character, outstanding condition!

Est.: \$200 - \$400 • Min. bid: \$140



Lot 49

Early Snuff or Utility Jar, probably England, 1820 – 1840. Greenish aquamarine approaching a light apple green, rectangular with concave corners, short neck with a crudely applied ring type collar – sand type pontil scar, ht. 5 7/8"; (a few scattered areas of light patchy dullness on the exterior, some expected light usage wear, a little residue or contents remain on the interior). A scarce color for this form.

Est.: \$175 - \$350 • Min. bid: \$120



Lot 53

Freeblown Creamer, probably a New York State glasshouse, 1830 – 1850. Aquamarine, non-lead glass, straight sided body tapering slightly towards the base, wide cylindrical neck flaring outward to a plain rim and tooled pinched pour spout, applied solid ear-shaped handle with crimped and curled lower terminal, base with delicate blowpipe pontil scar, ht. 4 1/8" (to top of handle), perfect! A wonderful early blown creamer, exceptional condition.

Est.: \$400 - \$800 • Min. bid: \$250



Lot 50

Freeblown "Hat" Form Milk Bowl, probably a New York State glasshouse, 1820 – 1840. Aquamarine, deep cylindrical bowl with nearly straight sides flaring to a sheared, tooled and outward folded rim – blowpipe pontil scar, ht. 5 1/4", base dia. 4 3/8", rim dia. 6 5/8"; (a 1/2" long open bubble on the top edge of the rim and some expected light age-appropriate usage wear). An early bowl in a desirable form and size, bright, clean and in overall excellent condition.

Est.: \$300 - \$500 • Min. bid: \$200



Lot 54

Freeblown Creamer, England, or possibly Eastern United States, 1830 – 1850. Deep vivid cobalt blue, compressed bulbous body with wide cylindrical neck flaring outward to a plain rim and tooled pinched pour spout, applied solid ear handle curled at lower terminal, applied solid foot with glass tipped pontil scarred base, ht. 3, 3/4", near mint; (expected light exterior usage wear).

Est.: \$200 - \$400 • Min. bid: \$120



Lot 51

Freeblown Hat Whimsey (including original family letter and documentation), Saratoga Mountain Glass Works (Mt. Pleasant), Saratoga, NY, October 1, 1854. Aquamarine, cylindrical, fashioned into a tall hat with wide, slightly upturned brim and folded rim – blowpipe pontil scar, ht. 1 5/8", rim dia. 4 1/2", perfect! A remarkable little hat with documentation providing the date that the hat was blown, and for the young girl for whom it was blown (see AB&GC, March, 2012, for the full story).

Est.: \$400 - \$800 • Min. bid: \$250



Lot 55

Blown Three Mold Creamer, probably France, possibly America, 1830 – 1845. Cobalt, barrel form body with wide neck flaring to a tooled rim and pinched pour spout, applied solid handle curled at lower terminal, blowpipe pontil scar, ht. 4", perfect. Similar to McK GV-24. McKearin indicates in the text on p. 272, that the GV-24 pattern has not been charted but is thought to have been produced at Sandwich. Similar designs were also popular in France. Regardless of attribution, a beautiful little creamer!

Est.: \$250 - \$500 • Min. bid: \$150



Lot 52

Freeblown Covered Sugar Bowl, possibly Redford Glass Works, Plattsburgh, NY, 1831 – 1851. Aqua, non-lead glass, nearly straight sided bowl tapering gradually towards base, rounded shoulders with galleried rim, slightly concave base with delicate blowpipe pontil scar, domed cover with flared and inward folded rim, drawn ball finial with pontil scar, overall ht. 5", perfect! An important and well executed bowl. See McK, plate 15, #6.

Est.: \$4,000 - \$8,000 • Min. bid: \$2,500



Lot 56

Pattern Molded Salt Cellar, 12 vertical ribs, probably England, possibly America, 1800 – 1830. Medium cobalt, lead glass, double ogee bowl with a short knopped stem patterned from the same gather, applied circular foot – solid punty scarred base, ht. 3", rim diameter, 2 1/4", perfect. A classic early pattern molded salt indicative of the popular wares produced in both the English, and early American glasshouses, during the 1st quarter of the 19th century.

Est.: \$175 - \$350 • Min. bid: \$100



Lot 57

Pattern Molded Salt Cellar, 11 diamond pattern, probably England, possibly America, 1800 – 1830. Brilliant cobalt, non-lead glass, double ogee bowl with a short knopped stem, applied circular foot – solid-punty scarred base, ht. 3", rim diameter, 2 3/8", perfect.

Est.: \$175 - \$350 • Min. bid: \$100



Lot 61

Target Ball, "Glashutten Dr. A. Frank – Charlottenburg", Germany, 1880 – 1895. Yellowish with a slight olive tone, quilted diamond pattern above and below center embossed band, rough sheared mouth, dia. 2 5/8", mint. Note: "Glashutten" in German is the plural for glasshouse. In addition, this ball has exceptionally strong embossing and also retains some of the original feathers!

Est.: \$175 - \$350 • Min. bid: \$100



Lot 58

Blown Three Mold Salt Cellar, Eastern U.S., probably Boston & Sandwich Glass Works, 1825 – 1840. Cobalt, circular bowl with rounded sides curving inward to a plain sheared rim – drawn stem and circular foot, solid punty-scarred base, ht. 1 3/4", rim diameter, 2 5/8", perfect. Gill-3, form similar to #53, rayed base. See McK, pgs. 253 & 324. Top of the pattern is slightly softened or "diffused" as is typical and noted by McKearin. A rare three-mold salt in outstanding condition!

Est.: \$600 - \$1,200 • Min. bid: \$400



Lot 62

Pattern Molded Scent Bottle, probably America, 1770 – 1830. Medium amethyst, tall slender ovoid form pattern molded with 20 vertical ribs, sheared mouth – pontil scar, ht. 3"; (some light to moderate interior haze and a little light exterior high point wear). Similar to MW, plate 104, #15. A beautiful color, one that does not come around often!

Est.: \$200 - \$400 • Min. bid: \$140



Lot 59

Pattern Molded Salt Cellar, 13 diamond pattern, America or England, 1800 – 1830. Cobalt, circular bowl with rounded sides curving slightly inward to a plain sheared rim – domed base with blowpipe pontil scar, ht. 1 1/8", rim diameter, 1 7/8", perfect. A scarce "footless" salt cellar in wonderful condition. As with preceding lot #s 56 & 57, this beautifully executed salt cellar was blown in a small patterned mold that eventually became synonymous with the "Stiegel tradition."

Est.: \$175 - \$350 • Min. bid: \$100



Lot 63

Fancy Honeycomb Pattern Scent Bottle, America or possibly England, 1815 – 1835. Emerald green, two-piece mold, flattened ovoid form with a concave oval panel and honeycomb design (reverse panel plain for label), beaded edges, sheared mouth – pontil scarred base, ht. 2 3/4", perfect! Similar in form and style to BH# HI-2, but without lettering and with label panel instead of sunburstf. Also see MW, plate 105, #12, but with beaded edges vs. corrugated. An extremely rare, possibly unique mold.

Est.: \$600 - \$900 • Min. bid: \$400



Lot 60

Target Ball, Germany, 1880 – 1900. Brilliant yellowish lime coloration, quilted pattern formed by horizontal rows each with 14 diamonds, spherical, 2 5/8" diameter, long neck with rough jagged sheared lip, perfect. Known as the "Gablonz" ball, it is certainly one of the most unusual and vibrant colors for a target ball, and one that will definitely stand out in a group!

Est.: \$175 - \$350 • Min. bid: \$100



Lot 64

Sunburst Scent Bottle, America, probably New England, 1815 – 1835. Clear, brilliant sapphire blue, 12-ray sunburst pattern with large center bead at convergence of rays, 10 beads along edge panels, sheared mouth – pontil scar, ht. 2 1/2", perfect. Similar to MW color plate IX, #2, BH# HIV-2 (but with 10 beads). A rare mold, great color and clarity!

Est.: \$400 - \$600 • Min. bid: \$250



Lot 65

"R & G.A. Wright / Philada" Figural Cologne Bottle, America, 1830 – 1850. Aquamarine, flattened barrel form with an elongated neck, roughly sheared mouth – blowpipe pontil scar, ht. 3 7/8", near mint; (a small area of very faint milkiness on the interior, otherwise perfect). A neat little barrel cologne, and quite rare as well. The R. & G.A. Wright Company produced a number of interesting bottles including other colognes and figurals, most being very scarce to rare.

Est.: \$100 - \$150 • Min. bid: \$60



Lot 66

"Columbus / 1492 / Chicago / 1893" – Bust of Columbus, America, 1893. Colorless, circular wafer form, tooled round double collared mouth – smooth base, ht. 2 1/8", very near mint; (a small patch of faint haze on the interior of one of the rounded edges, otherwise perfect). Blown for the 1893 Chicago World's Fair and Columbian Exposition. Extremely rare, possibly unique. We checked with Chicago collector, Jim Hall, who reports this being the only example that he has seen.

Est.: \$150 - \$300 • Min. bid: \$100



Lot 67

Freeblown Covered Inkwell, America, probably Eastern U.S., possibly Philadelphia or Kensington Glassworks, 1810 – 1840. Deep cobalt blue, compressed cylindrical body with wide shoulders, short neck with a sheared and fire polished mouth – matching domed cover with an applied, delicate, solid knopf finial – both cover and base of inkwell with glass-tipped punty scar, ht. 1 7/8" (including cover), perfect. C#1064. Matching cover fits perfectly. A scarce, early ink in outstanding condition.

Est.: \$200 - \$400 • Min. bid: \$120



Lot 68

"J - & I - E - M" Turtle Ink, America, 1865 – 1890. Clear medium blue green with a teal tone, cylindrical with domed shoulders and offset neck, sheared mouth – smooth base, ht. 1 5/8", near mint; (two shallow sliver-type flakes at the side of the neck below the fine horizontal rim and a little interior residue that would likely easily wash out, otherwise perfect). Similar to C#627. Outstanding color, beautiful example.

Est.: \$400 - \$600 • Min. bid: \$250



Lot 69

Pattern Molded Inkwell, twenty vertical ribs, probably America, 1825 – 1845. Brilliant clear olive with a bright yellowish almost lime tone, outstanding reddish striations swirling from the neck through the base, square, sheared mouth, blowpipe pontil scar, ht. 1 3/8", near mint; (a tiny pinpoint bit of roughness and a small 1/16" flake on the edge of sheared mouth, otherwise pristine). C#1116. Rare, possibly unique pattern molded ink. Color and striations are exceptional! Ex. William Covill Collection.

Est.: \$1,000 - \$2,000 • Min. bid: \$700



Lot 70

"Estes – N.Y. – Ink", America, 1847 – 1860. Brilliant olive yellow, 8-sided umbrella form, inward rolled mouth, blowpipe pontil scar, ht. 3 1/8", near mint; (a little faint exterior wear, otherwise perfect). Similar to C#117. A very scarce mold, exceptional, absolutely stunning color! In addition, the glass is highly whittled and filled with tiny seed bubbles giving it plenty of character and eye appeal. Ex. Bob Mebane collection (#591), and pictured on the cover of the Mebane catalog.

Est.: \$2,200 - \$3,200 • Min. bid: \$1,200



Lot 71

Umbrella Ink, America, 1840 – 1860. Medium to deep yellowish olive with an amber tone, 8-sided umbrella form, sheared and inward rolled mouth – blowpipe pontil scar, ht. 2 1/8", very near mint; (some very minor faint exterior wear, otherwise perfect; also a little extra glass extruded from the mold seam during manufacture, but is not considered damage). Similar to C#133. A nicely whittled example, good character, great condition!

Est.: \$225 - \$450 • Min. bid: \$150



Lot 72

Umbrella Ink, America, 1840 – 1860. Brilliant medium to deep cobalt blue, 8-sided umbrella form, sheared and inward rolled mouth – delicate blowpipe pontil scar, ht. 2 1/2", near mint; (just a touch of expected light exterior wear). Form similar to C#129. Gorgeous color and clarity, nice whittled glass, a beautiful example! Read more about this great little ink, and the young collector who had the great fortune of finding it, in the May issue of *Antique Bottle & Glass Collector*!

Est.: \$1,500 - \$2,500 • Min. bid: \$800



Lot 73

Pitkin-Type Inkwell, thirty-six ribs swirled to the right, New England, probably an early Connecticut glasshouse, 1790 – 1820. Dense olive green, cylindrical with nearly straight sides sloping slight outward towards the base, tooled flared funnel type mouth – light blowpipe pontil scar, ht. 1 ½"; (a 1/8" x ¼" open bubble with some depth on the shoulder, and some expected light exterior usage wear). Similar to C#1151. A very early inkwell, smaller size than many.

Est.: \$225 - \$450 • Min. bid: \$150



Lot 74

Blown Three Mold Inkwell, New England, possibly Keene Marlboro Street Glassworks, Keene, New Hampshire, 1820 – 1840. Deep olive amber, cylindrical, large disk type mouth – very heavy blowpipe pontil scarred base with 16- diamond pattern, ht. 1 ¾", dia. 1 7/8", near mint; (some expected very light high point wear, otherwise perfect). Gll-18. A great example, note the diminutive, smaller than normal size!

Est.: \$225 - \$450 • Min. bid: \$150



Lot 75

Blown Three Mold Inkwell, New England, probably Coventry Glass Works, Coventry, Connecticut, 1820 – 1840. Dense olive amber, cylindrical, large disk type mouth – blowpipe pontil scarred (un-patterned) base, ht. 1 ½", dia. 2 ¼", near mint; (some typical light exterior high point wear, otherwise perfect). Gll-16. Similar to C#1182.

Est.: \$150 - \$250 • Min. bid: \$100



Lot 76

Early Black Glass Inkwell, probably France, 1830 – 1850. Opaque black, rectangular with concave corners and domed shoulders, applied thin ring type collar – pontil scarred base, ht. 2"; (a pinhead flake on a panel edge; some light exterior dullness and fine swirl lines, the type that is often indicative of bottles that have been found in a water environment). Note; a few of these early inks were dug in New Orleans, most were discovered on a shipwreck.

Est.: \$250 - \$350 • Min. bid: \$150



Lot 77

"S.S. Stafford's Ink's / Made In U.S.A." Master Ink Bottle, America, 1890 – 1900. Light sapphire blue in the lower half of the body shading to completely colorless through the shoulders, neck and lip, cylindrical, tooled square collared mouth with pinched pour spout – smooth base, ht. 6", attic mint! Similar to C#899. Certainly not a rare mold by any means, but in a beautiful, incredibly unusual, and possibly unique coloration, – one that will stand out in any collection!

Est.: \$125 - \$250 • Min. bid: \$80



Lot 78

"Kosmian Safety Ink" Master Ink Bottle, America, 1885 – 1900. Medium blue green, square with beveled corners and indented front panel, tooled square collared mouth – smooth base, ht. 7 1/8", near mint; (a ½" superficial light scratch near the base and a small flake, 1/8", at the base edge, both on the reverse; a wisp of light residue or faint haze on the interior corners, otherwise clean, bright, virtually perfect). C#866. An extremely rare master ink, beautiful color!

Est.: \$150 - \$250 • Min. bid: \$100



Lot 79

Lot of (2), "Dr. Sheets' Ink" Bottles, America, 1868 – 1880. Both aqua, small ink, **"Dr. A. Sheets – Dayton. O – Black Ink"**, square with beveled corners, applied square collar – early smooth base, ht. 2 5/8"; (pinprick roughness at lip edge, otherwise attic mint), C#448. Master ink, **"Dr. Sheets' Ink"**, cylindrical, applied mouth with pinched pour spout – smooth base, ht. 6 ¾"; (a faint interior spotty film that would likely wash, otherwise perfect!), a very rare mold, unlisted by Covill.

Est.: \$75 - \$150 • Min. bid: \$40



Lot 80

"Gordon's – Chafala / Furniture / Polish – Prepared By – William Tilden & Nephew, / 115 Norfolk ST N.Y. / And 45 Vine ST. / Cincinnati O.", America, 1845 – 1860. Aqua, rectangular with narrow beveled corners, applied sloping collared mouth – blowpipe pontil scar, ht. 7"; (a ½" sliver type flake located on a base corner with a thin, hard to see, ½" hairline fissure on the surface that does not extend through the thickness of the glass). A rare bottle that displays as attic mint!

Est.: \$200 - \$400 • Min. bid: \$120



Lot 81

Cathedral Pickle Jar, America, possibly Bulltown or Crowleystown Glass Works, New Jersey, 1860 – 1870. Medium blue green, square with beveled corners, gothic arched panels, sheared mouth with applied ring type collar – early smooth base, ht. 11 3/4", near mint; (a 1/8" x 3/8" shallow open bubble near the base; the jar may have been lightly cleaned, but certainly displays as very near mint). Very similar to MW, plate 73, #5. A big, beautiful jar with great color.

Est.: \$500 - \$800 • Min. bid: \$300



Lot 82

Cathedral Pickle Jar, Willington Glassworks, West Willington, Connecticut, 1845 – 1860. Medium to deep blue green, (a little deeper than the preceding lot), square with beveled corners and ornate arched gothic panels, sheared mouth with an applied ring type collar – iron pontil scar, ht. 7 1/4"; (professionally cleaned to original luster, the jar retains some minor light exterior wear and a 1/4" deep scratch on one of the four panels). The smallest of the Willington Pickle molds and an extremely rare color!

Est.: \$2,000 - \$4,000 • Min. bid: \$1,500



Lot 83

"Mason's / Patent / Nov 30th / 1858" Fruit Jar, America, 1880 – 1900. Medium amber, cylindrical, threaded and factory ground mouth with zinc screw cap – smooth base, Qt.; (the jar is essentially very near mint, but has a weakened impression or light embossing, particularly with the word, "Patent"). L#1787.

Est.: \$100 - \$200 • Min. bid: \$60



Lot 84

Freeblown Applied Handle Chestnut Flask, America, possibly a Mid-Atlantic glasshouse, 1845 – 1860. Beautiful yellowish olive amber, flat-topped chestnut form with an applied solid ear handle pinched and curled at lower terminal, applied mouth with ring – large blowpipe pontil scar, ht. 7 5/8", attic mint. Similar to MW, plate 48, #1. A much better than average example having great color, clarity, and character with plenty of tiny seed bubbles.

Est.: \$100 - \$200 • Min. bid: \$60



Lot 85

Rare size, "Chestnut Grove / Whiskey / C.W." Handled Chestnut Flask, probably Whitney Glassworks, Glassboro, NJ, 1850 – 1860. Bright golden amber shading to almost yellow along the sides, flattened chestnut form, applied solid ear handle curled at lower terminal, applied mouth with flat band – blowpipe pontil scar, ht. 7 7/8"; (a wisp of faint exterior wear, otherwise pristine!). Beautifully whittled, nice light color, an exceedingly rare size with only a handful of examples known.

Est.: \$750 - \$1,250 • Min. bid: \$400



Lot 86

"Chestnut Grove / Whiskey / C.W." Handled Chestnut Flask, probably Whitney Glassworks, Glassboro, NJ, 1850 – 1860. Light to medium golden amber, flattened chestnut form with an applied solid ear handle pinched and curled at lower terminal with the added workmanship of the well executed rigaree, applied mouth with ring – large blowpipe pontil scar, ht. 8 7/8", perfect. Another great example, nicely whittled, great workmanship on the handle attachment, wonderful condition.

Est.: \$150 - \$250 • Min. bid: \$100



Lot 87

"A.M. Bininger & Co / No 19 Broad St New York" Figural Handled Whiskey, America, 1860 – 1865. Bright honey amber shading to a deeper golden through the base and shoulders, figural urn form, applied solid ear shaped handle, sheared and tooled lip – smooth base, ht. 8 3/4". A very attractive and rare form that is certainly susceptible to damage. However, this example is "out of the mold", pristine perfect! In addition, it is strongly embossed and highly whittled. Finest possible example.

Est.: \$3,500 - \$4,500 • Min. bid: \$2,000



Lot 88

"Turner Brothers / New York" Figural Whiskey Bottle, America, 1860 – 1870. Root beer amber with a slight apricot tone shading to a lighter honey amber with a slight apricot tone, barrel form, applied square collared mouth – smooth base, ht. 9 7/8", near mint; (just a touch of very light high point wear and a tiny, hard to see, iridescent pinhead bruise on the edge of the crude collared mouth, otherwise perfect). Note; remnants of the silver foil remain on the neck and lip.

Est.: \$500 - \$700 • Min. bid: \$300



Lot 89

"Campbell & Seaman / New York" Whiskey Bottle, America, 1860 – 1870. Yellowish olive amber, square with beveled corners, applied sloping collared mouth – early smooth base, ht. 8 ½", very near mint; (shallow 1/16" flake at edge of applied collar and a couple of superficial, onion-skin-thin open bubbles). An extremely rare whiskey in an attractive squatty form and great color. In addition, the bottle is profusely whittled. Ex. Woody Douglas collection.

Est.: \$1,000 - \$2,000 • Min. bid: \$600



Lot 93

"Angelo Myers / Philadelphia / Rye Whiskey" Enameled Back Bar Bottle, America, 1880 – 1895. Colorless with fancy white enameled lettering, cylindrical with polished fluting on shoulders and neck, tooled sloping collared mouth with the original cork, metal stopple and attached chain – polished pontil scarred base, Qt., mint. Note; proprietary enameled bar bottles are much more scarce than their maverick counterparts. Probably quite a rare Eastern Whiskey.

Est.: \$125 - \$250 • Min. bid: \$80



Lot 90

"C.A. Richards / 99 Washington St. / Boston." Whiskey Bottle, America, 1865 – 1875. Orangy amber near the shoulders with some richer deeper reddish and puce tones through the center and lower portions, square with beveled corners, applied sloping collared mouth – smooth base, ht. 9 ½", near mint; (a pinprick bit of roughness on the edge of the applied lip and a couple of tiny open surface bubbles). A heavy crude example with great character and color.

Est.: \$150 - \$250 • Min. bid: \$80



Lot 94

"Old Cavern / M & E / Whiskey" Enameled Back Bar Bottle, America, 1885 – 1900. Colorless with white enameled lettering, cylindrical with molded fluting on the shoulders and neck and eighteen narrow vertical panels on the interior of the body, tooled sloping collared mouth – smooth base, Qt., near mint; (a little spotty faint interior film or residue that would likely wash out, otherwise perfect). A very interesting bottle with the vertical panels on the interior surface of the glass.

Est.: \$75 - \$125 • Min. bid: \$50



Lot 91

"Weeks & Gilson. So. Stoddard N.H." (on base) Whiskey Cylinder, 1860 – 1873. Beautiful yellowish olive amber, cylindrical 3-piece mold, applied sloping collared mouth with ring – smooth base, ht. 11", quart, sparkling attic mint. A very rare whiskey cylinder, particularly in this pristine condition, one that has not been offered for sale at auction for some time. This example is about as nice as one could find being highly whittled and having great color and character.

Est.: \$1,000 - \$1,500 • Min. bid: \$700



Lot 95

"Dr E.C. Hydes – Southern / Stomach Bitters – New. Orleans", America, 1860 – 1870. Golden amber, rectangular with domed shoulders and fancy columned corners, applied sloping collared mouth – smooth base, ht. 8 7/8", attic mint. R/H #H222. An extremely rare bitters, possibly the only known example in undamaged condition. The form is similar to a building with columns. Discovered in a box of bottles at a yard sale in Terre Haute, Indiana (with its original cork and corkscrew!)

Est.: \$6,000 - \$9,000 • Min. bid: \$3,500



Lot 92

"Casper's Whiskey / Made By Honest / North / Carolina People" Whiskey Bottle, America, 1885 – 1900. Brilliant medium cobalt blue, cylindrical with fluted shoulders, tooled sloping collared mouth with ring – smooth base, ht. 12", near attic mint; (just a touch of normal very light exterior wear, otherwise perfect). A beautiful, bright, vivid example.

Est.: \$400 - \$600 • Min. bid: \$250



Lot 96

"Dingens' / Napoleon Cocktail Bitters – Dingens Brothers / Buffalo N.Y.", 1858 – 1865. Rich deep amber in the center shading to golden and a lighter honey amber along the sides, figural drum with a "lady's leg" neck, applied square collared mouth – iron pontil scar, ht. 9 ½", near mint; (a pinhead flake at the edge of the applied mouth and just a trace of light exterior wear, otherwise attic mint). R/H #N4. A rare figural bitters, particularly in this mold (without the pedestal base), and with the iron pontil mark.

Est.: \$4,000 - \$6,000 • Min. bid: \$2,500



Lot 97

“National / Bitters” – “Patent / 1867” (on base), America, 1867 – 1875. Beautiful light straw yellow in the shoulders shading to a deeper yellow with a slight topaz tone near the base, figural ear of corn, applied short tapered collar with ring – smooth base, ht. 12 1/2”, perfect. R/H #N8. This bottle along with a handful of the other interesting bitters in this sale are from an old-time collection near Defiance, Ohio.

Est.: \$1,600 - \$2,600 • Min. bid: \$1,000



Lot 101

“Brown’s / Celebrated / Indian Herb Bitters – Patented / Feb 11. / 1868” (with traces of the original gold paint remaining), America, 1868 – 1880. Bright golden amber below the waist shading to a light golden yellow above the waist and through the arms, figural Indian maiden, sheared and inward rolled lip – smooth base, ht. 12 3/8”, virtually attic mint; (a small tissue-paper thin open bubble on one of the arms, otherwise perfect). R/H #B226. A beautiful example with great color!

Est.: \$600 - \$1,200 • Min. bid: \$400



Lot 98

“National / Bitters” – “Patent / 1867” (on base), America, 1867 – 1875. Medium apricot puce, figural ear of corn, applied short tapered collar with ring – smooth base, ht. 12 3/8”, near attic mint; (a couple of small areas of light interior residue, the type that would likely wash out, otherwise perfect). R/H #N8. A good strong impression and a gorgeous rare color that passes plenty of light with ease.

Est.: \$2,000 - \$4,000 • Min. bid: \$1,400



Lot 102

“Schroeder’s / Bitters / Louisville. KY.”, America, 1865 – 1875. Bright, light honey coloration, virtually yellow through the neck and midsection, cylindrical with a long “lady’s leg” type neck, applied collared mouth with flat band – smooth base, ht. 12 3/8”; (just a faint interior film or haze that should easily tumble out with a light cleaning, if desired, a 1/8” wide flake off the side of the lip). Similar to R/H #S62 without the peened out letters, base dia. is 3 1/4”. An extremely rare mold, beautiful light color.

Est.: \$300 - \$600 • Min. bid: \$200



Lot 99

“National / Bitters” – “Patent / 1867” (on base), America, 1867 – 1875. Yellowish honey amber with a slight olive tone, figural ear of corn, applied short tapered collar with ring – smooth base, ht. 12 1/4”, near mint; (a tiny speck of a potstone on the surface of the glass at the side of the neck has a small 1/8” flash, otherwise perfect). R/H #N8. Note; there is clump of un-melted sand also at the side of the neck, but with no associated damage. Scarce color, beautiful example.

Est.: \$300 - \$600 • Min. bid: \$200



Lot 103

“Keystone / Bitters”, America, 1865 – 1875. Medium to deep amber, barrel form, applied sloping collared mouth – smooth base, ht. 10”; (some light exterior wear including a very light scratch, a couple of minor open surface bubbles, one at edge of base, and a tiny pinhead flake on one of the rings). R/H #K36. The noted condition issue are all fairly minor, the bottle displays near mint. Another scarce barrel bitters that does not come around often, this one from Cleveland, Ohio.

Est.: \$400 - \$600 • Min. bid: \$250



Lot 100

“The / Fish Bitters – W.H. Ware / Patented 1866”, America, 1866 – 1875. Medium to deep amber, figural fish, crudely applied ring type collar – “W.H. Ware / Patent 1866” (on smooth base), ht. 11 5/8”, near mint; (a tiny, hard to see, pinhead flake on one of the gills, a little light high point wear and weakened embossing as is often the case with this mold). R/H #F46. A somewhat scarcer mold with base embossing and offset neck than F45.

Est.: \$250 - \$350 • Min. bid: \$150



Lot 104

“W.C. Bitters – Brobst & Rent-schler / Reading, Pa”, America, 1880 – 1890. Medium amber in the lower body shading to a beautiful light honey color near the shoulder, barrel form with three staves each at the shoulders and base, tooled mouth with flat band – smooth base, ht. 10 1/2”, perfect! R/H #W57. A beautiful example shading from light honey to a richer amber. A scarce bitters, one that does not come around often, particularly in this attic condition.

Est.: \$400 - \$600 • Min. bid: \$250



Lot 105

"Old Sachem / Bitters / And / Wigwam Tonic", America, 1860 – 1870. Medium to deep strawberry puce, barrel form, applied square collared mouth – smooth base, ht. 9 1/2", near attic mint; (a couple of minor, superficial open surface bubbles). R/H #O46. An outstanding example, strongly embossed, in a very beautiful color having virtually no trace of amber. In addition, a perfect lip with no flaws which is not easy to find.

Est.: \$800 - \$1,600 • Min. bid: \$500



Lot 106

"Dr C.W. Robacks / Stomach Bitters / Cincinnati. O.", America, 1855 – 1865. Bright golden amber, barrel form, applied sloping collared mouth – iron pontil scar, 9 5/8"; (a bit of roughness and a 1/8" flake on the inside top edge of the lip; a couple of patches of spotty interior residue that would likely wash out, otherwise excellent). R/H #R73. This one had a little soot and grime between some of the rings and may have been an attic or barn find. A highly whittled, beautiful example.

Est.: \$250 - \$450 • Min. bid: \$170



Lot 107

"Hall's / Bitters – E.E. Hall New Haven / Established 1842", America, 1865 – 1875. Brilliant honey amber, barrel form, applied square collared mouth – smooth base, ht. 9 1/4", attic mint! R/H #H10. A light, bright, crisp sparkling example!

Est.: \$250 - \$400 • Min. bid: \$150



Lot 108

"Hall's / Bitters – E.E. Hall New Haven / Established 1842", America, 1865 – 1875. Medium amber, barrel form, applied square collared mouth – smooth base, ht. 9 1/8"; (some light spotty contents residue and faint milkiness covering much of the interior, some, or most of which, would very likely wash out with a little soaking). R/H #H10. A good solid example that has not been dug, but just needs a little "TLC" on the interior.

Est.: \$175 - \$275 • Min. bid: \$100



Lot 109

"Suffolk Bitters – Philbrook & Tucker / Boston", America, 1865 – 1875. Bright lemon yellow through the body shading to a warmer tone with a hint of topaz through

the head and almost a clear yellow through the hind feet, figural pig, applied round double collared mouth – smooth base, length 10", attic mint! R/H #S217. An exceptional, rare and eye-appealing color, probably as light and bright as you could hope to find. In addition, this example is absolutely pristine.

Est.: \$4,000 - \$6,000 • Min. bid: \$2,500



Lot 110

"Suffolk Bitters – Philbrook & Tucker / Boston", America, 1865 – 1875. Golden amber in the head shading to a bright honey color through the body and virtually yellow in the feet, figural pig, applied

double collared mouth – smooth base, length 10"; (an oval crack approximately 1/2" x 5/8" on the corner of one of the rear feet with a 1/2" crack extending from it). R/H #S217. Here is an opportunity to buy a beautiful example that displays near mint at a reasonable price, without breaking the bank!

Est.: \$125 - \$250 • Min. bid: \$80



Lot 111

"Berkshire Bitters – Amann & Co / Cincinnati. O.", America, 1873 – 1880. Medium to deep amber shading to a light golden amber through the rear feet, figural pig, applied square collared

mouth – smooth base, length 9 5/8", girth 10 3/8", near mint; (just a touch of very minor exterior wear and a small in-manufacture fold of glass on the inside edge of the mouth has some lighter residue underneath the fold, otherwise perfect). R/H #B81. Scarce, desirable mold that does not come around often.

Est.: \$1,600 - \$2,400 • Min. bid: \$1,000



Lot 112

"Berkshire. Bitters – Amann & Co / Cincinnati. O.", America, 1873 – 1880. Dense tobacco amber shading to a lighter golden tone in the rear feet, ground mouth – smooth base, length 10 1/2", girth 11

5/8"; (some light to moderate fine high point wear, primarily on one side only, a pinhead size open bubble or flake, some minor flakes around the factory ground mouth, likely occurring during manufacture). R/H #B81.4. A very scarce mold. The noted issues are all fairly minor.

Est.: \$1,800 - \$3,200 • Min. bid: \$1,200

**Lot 113**

"S T / Drake's / 1860 / Plantation / X / Bitters – Patented / 1862", America, 1862 – 1880. Gorgeous light peach with rich salmon tones, cabin form with 6 logs above the label panel, applied sloping collared mouth – smooth base, ht. 10", attic mint! R/H #D105. A rare and exceptional shade, much lighter than most, the bottle also has an incredible number of bubbles, giving it exceptional character. Gorgeous color, superior mold impression, pristine condition, a top-shelf example!

Est.: \$6,000 - \$8,000 • Min. bid: \$3,000

**Lot 114**

"S T / Drake's / 1860 / Plantation / X / Bitters – Patented / 1862", America, 1862 – 1880. Brilliant, almost pure yellow coloration with a slight hint of topaz, cabin form with 6 logs above the label panel, applied sloping collared mouth – smooth base, ht. 9 5/8", attic mint! R/H #D108. This one has it all, absolutely pristine perfect, a very bold impression, and in an almost pure yellow coloration with virtually no trace of amber. A very stunning color in natural daylight!

Est.: \$1,400 - \$2,200 • Min. bid: \$800

**Lot 115**

"S T / Drake's / 1860 / Plantation / X / Bitters – Patented / 1862", America, 1862 – 1880. Medium copper amber with some warmer apricot tones, cabin form with 6 logs above the label panel, applied sloping collared mouth – smooth base, ht. 9 7/8", perfect. R/H #D108. Another bright, clean example in a slightly different and pleasing color.

Est.: \$200 - \$400 • Min. bid: \$150

**Lot 116**

"S T / Drake's / 1860 / Plantation / X / Bitters – Patented / 1862", America, 1862 – 1880. Bright, light honey yellow, cabin form with 6 logs above the label panel, applied sloping collared mouth – smooth base (with 6 raised dots), ht. 10", near mint; (a 1/8" flake on the underside of the applied collared mouth and a weakened impression in the upper tier of the roof, as is often the case). R/H #D105. A very pretty example with plenty of yellow.

Est.: \$300 - \$600 • Min. bid: \$200

**Lot 117**

"S T / Drake's / 1860 / Plantation / X / Bitters – Patented / 1862", America, 1862 – 1880. Amber with some warmer apricot tones, cabin form with 6 logs above the label panel, applied sloping collared mouth – smooth base, ht. 9 7/8", near mint; (some scattered interior dried content residue, the kind that should easily wash or soak out, otherwise perfect). R/H #D105. Strong embossing and the color is definitely better than a normal amber and should shine, once it's cleaned out.

Est.: \$100 - \$200 • Min. bid: \$60

**Lot 118**

"S T / Drake's / 1860 / Plantation / X / Bitters – Patented / 1862", America, 1862 – 1880. Beautiful medium to deep strawberry puce, cabin form with 6 logs above the label panel, applied sloping collared mouth – smooth base, ht. 9 7/8", perfect. R/H #D108. No amber in this one, which is also just a shade lighter than many of the other puce toned examples. A good clean example with nice color!

Est.: \$200 - \$400 • Min. bid: \$150

**Lot 119**

"Old / Homestead / Wild Cherry / Bitters. – Patent", America, 1865 – 1875. Light golden amber, square cabin form, applied sloping collared mouth – smooth base, ht. 9 3/4", near mint; (a 3/16" area of minor roughness on the outer edge of the applied mouth, some light scattered contents residue that would likely wash out, a shallow 1/8" open surface bubble that is not easy to locate on the underside of the roof). R/H #O37. A lighter-than-normal example with good strong embossing.

Est.: \$250 - \$450 • Min. bid: \$150

**Lot 120**

"Old / Homestead / Wild Cherry / Bitters. – Patent", America, 1865 – 1875. Medium amber, square cabin form, applied sloping collared mouth – smooth base, ht. 9 1/2", very near mint; (a couple of tiny, paper-thin open surface bubbles, otherwise perfect). R/H #O37. A pleasing example, clean, attractive and with nice character to the glass.

Est.: \$250 - \$450 • Min. bid: \$150

**Lot 121**

"Kelly's / Old Cabin / Bitters – Patented / 1863 – Kelly's / Old Cabin / Bitters – Patented / 1863", America, 1863 – 1870. Deep, pure olive green, rectangular cabin form, applied sloping collared mouth – smooth base, ht. 9 1/4"; (several small flakes ranging from 1/16" to 3/16" each, on top of the crudely applied mouth). R/H #K21. Beyond the noted lip flakes, the bottle is otherwise perfect! An extremely rare color, strong embossing, a great bottle! Found at a yard sale in Montana.

Est.: \$2,200 - \$4,400 • Min. bid: \$1,500

**Lot 122**

"The Best Bitters / In America – B. Desenberg & Co / Kalamazo Mich" Bitters Bottle, America, 1865 – 1870. Amber, square cabin form with a three tiered thatched roof and roped corners, applied sloping collared mouth – smooth base, ht. 9 1/2"; (an early repair of a 3/4" hole in one of the roped corners with two cracks, 2" and 3", extending along the roped edge). R/H #B92. An iconic figural bitters, and one that would likely sell for \$15,000 or more, if perfect.

Est.: \$800 - \$1,600 • Min. bid: \$500

**Lot 123**

"Holtzermann's / Patent / Stomach / Bitters" (complete with full original label, contents, cork and neck foil), America, 1885 – 1900. Golden amber, rectangular cabin form, tooled sloping collared mouth – smooth base, ht. 9 7/8", perfect! R/H #H154. Extremely rare in this complete, original condition and absolutely a "finest possible example." This one even has very bold embossing that is so often lacking on many of the other examples.

Est.: \$500 - \$800 • Min. bid: \$300

**Lot 124**

Sample Size, Holtzermann's Patent Stomach Bitters, America, 1890 – 1900. Golden amber, rectangular cabin form, tooled sloping collared mouth – smooth base, ht. 4"; (probably a dug bottle with some light interior and exterior haze, but no other form of damage). R/H #H153. A great little sample bitters that should easily clean to original luster and near mint condition with just a day, or so, in the tumbler.

Est.: \$175 - \$350 • Min. bid: \$100

**Lot 125**

"Dr Harter's / Wild Cherry / Bitters / Dayton, O" (with virtually complete front and back labels), America, 1890 – 1900. Golden amber shading to a lighter honey amber near the sides, rectangular with rounded corners and indented panels, tooled sloping collared mouth – **"Design / 43 / Patented"**, on smooth base, ht. 7 7/8", perfect. R/H #H46. Note; the Dayton, Ohio variant is much more scarce than the St. Louis mold and rare with full and complete original labels.

Est.: \$100 - \$200 • Min. bid: \$60

**Lot 126**

Sample Size, "Dr Harter's / Wild Cherry / Bitters / Dayton, O" (complete with full original labels, contents, cork and partial neck seal), America, 1890 – 1900. Bright golden amber, rectangular with rounded corners and indented panels, tooled sloping collared mouth – **"Design / Patented"**, on smooth base, ht. 4 3/4", perfect. R/H #H48. A very scarce size and particularly rare with the complete front and back labels, contents, and neck seal!

Est.: \$125 - \$225 • Min. bid: \$80

**Lot 127**

Lot of (4) "Dr. Harter's" advertising items, including, Dr. Harter's "Dream Book", ca. 1887, an 1891 Almanac, a wooden and metal advertising corkscrew, and an embossed "Dr. Harter's" shotglass. All four items are in very good to excellent condition. The "Dream Book" is quite scarce and interesting. It contains a "Dictionary of Dreams" which matches up words in a dream with a definition of what they denote. A great group of "Go-Withs" for any "Harter's", or general bitters, collector.

Est.: \$100 - \$200 • Min. bid: \$60

**Lot 128**

Sample Size, "Dr. Loew's / Celebrated Stomach Bitters / And Nerve Tonic", America, 1890 – 1900. Yellowish honey amber, square with beveled corners, tooled sloping collared mouth – smooth base, ht. 3 3/8"; (a tiny pinhead size flake and a bit of very fine roughness on the edge of the lip, a little light interior haze and residue some of which would likely wash out). R/H #L113. A scarce little sample bitters.

Est.: \$125 - \$250 • Min. bid: \$80



Lot 129

"Wahoo & / Calisaya / Bitters – Jacob Pinkerton – Jacob Pinkerton – Y!!! – I.M. – O.K – Y!!!", America, 1865 – 1870. Bright golden amber shading to a light honey color in the corners, semi-cabin form with fancy columned corners, applied sloping collared mouth – smooth base, ht. 10 1/4", sparkling attic mint! R/H #W3. A very scarce and attractive bitters from upstate New York, and not an easy one to find in this attic mint condition.

Est.: \$600 - \$900 • Min. bid: \$400



Lot 133

"Mrs. E. Kidder / Dysentery / Cordial / Boston" Medicine Bottle, New England, 1840 – 1855. Yellowish olive amber, cylindrical, applied sloping double collared mouth – blowpipe pontil scar, ht. 7 1/4", perfect. An exceedingly rare bottle and the only known example in this color and size. In addition to the rarity and outstanding condition, this bottle also has great character being filled with tiny seed bubbles and having some deeper frothy swirls of color through the neck and shoulder.

Est.: \$4,000 - \$8,000 • Min. bid: \$2,500



Lot 130

"Constitutional / Beverage – W. Olmsted & Co. – New York.", 1868 – 1875. Brilliant yellow with a slight olive tone in natural daylight, rectangular semi-cabin form, fancy scroll shaped label panel, applied square collared mouth – smooth base, ht. 10 1/8"; (a tiny area of pinprick roughness at the edge of the mouth along with a less-than 1/8" wide, sliver type flake at the side of the mouth, a couple of minor open surface bubbles, otherwise perfect). A rare, exceptional color for this mold. R/H #C224L.

Est.: \$1,200 - \$2,200 • Min. bid: \$700



Lot 134

"ABL Myers AM – Rock Rose – New Haven", America, probably 1852 – 1856. Deep blue green, rectangular with beveled corners, crudely applied large blob collared mouth – iron pontil scar, ht. 9 1/2", very near mint; (a paper-thin, 1/8" open surface bubble on a beveled corner). N #465, O'Dell p.175. Note; during manufacture, the heavy blob collar was very crudely applied to a jagged rough neck with some residual glass extending down inside the neck). A beautiful, deeper color than most.

Est.: \$2,000 - \$4,000 • Min. bid: \$1,400



Lot 131

"Webb's Improved / Stomach Bitters. – C.E. Webb & Bro_ / Jackson. Mich_," (with 80% original label), America, 1865 – 1875. Medium amber, square with beveled corners, applied sloping collared mouth – smooth base, ht. 8 7/8", near mint; (just a touch of light exterior wear and some overall interior dried content residue that a little soaking should easily wash out). R/H #W60. A very scarce mold, particularly nice with the original label.

Est.: \$250 - \$500 • Min. bid: \$150



Lot 135

"John Bull – Extract of / Sarsaparilla – Louisville KY", probably Louisville Glassworks, Louisville, KY, 1855 – 1860. Brilliant yellowish lime green, rectangular with beveled corners, applied sloping collared mouth – iron pontil scar, ht. 9"; (a tiny sandgrain near the base on the reverse has an iridescent bruise and two 1/16" legs; the lip has a small iridescent bruise on the inside edge along with a shallow crease where a small flake may have been polished). An exceedingly rare and beautiful color, sparking clean.

Est.: \$1,500 - \$2,500 • Min. bid: \$800



Lot 132

"Dr Geo. Pierces – Indian / Restorative / Bitters – Lowell Mass.", America, 1845 – 1860. Aquamarine, rectangular with beveled corners and indented panels, applied round double collared mouth – blowpipe pontil scar, ht. 8 7/8", near attic mint; (just a light wisp of faint interior haze, otherwise perfect). R/H #P95. A scarce bitters as the sunken or indented panel variant is more difficult to acquire than the P96 mold.

Est.: \$300 - \$600 • Min. bid: \$180



Lot 136

"Dr. Wilcox's – Compound Extract – Of / Sarsaparilla", America, probably 1851 – 1856. Medium blue green, square with beveled corners, applied sloping collared mouth – iron pontil scar, ht. 9 3/8", very near mint; (a small pea-size, paper-thin surface bubble and a few very light surface scratches, otherwise pristine). O'Dell p. 255. A very rare, eye-appealing bottle from Albany, NY, beautifully whittled and with crude wavy glass. Note; backwards "s" after "Wilcox".

Est.: \$3,500 - \$5,500 • Min. bid: \$2,000

**Lot 137**

"Dr. Guysott's – Compound Extract / Of Yellow Dock - & Sarsaparilla", New England, 1845 – 1855. Yellowish olive green shading to a deeper olive with a slight amber tone near the base, square with beveled corners, applied sloping collared mouth – sand type pontil scar, ht. 9 3/8", near attic mint; (a small, 1/8" open surface bubble on a beveled corner near base, otherwise pristine!). A beautiful, extremely rare color. Believed to be one of only two known examples in this color.

Est.: \$4,000 - \$8,000 • Min. bid: \$2,500

**Lot 138**

"Dr. Guysott's – Compound Extract / Of Yellow Dock - & Sarsaparilla" (with 80% original label), America, 1850 – 1860. Deep aquamarine, square with beveled corners, applied sloping collared mouth – iron pontil scar, ht. 9 3/8", near mint; (a very hard to see, iridescent bruise on the inside edge of the mouth, otherwise pristine). The noted bruise is very easy to miss. The original label is stained and darkened, but mostly legible. An incredibly bubbly, bright example.

Est.: \$300 - \$600 • Min. bid: \$200

**Lot 139**

"Dr. J. A. Kinney's – Compound / Vegetable Syrup – Cooperstown", America, 1850 – 1860. Aquamarine, large rectangular form with beveled corners, applied round double collared mouth – blowpipe pontil scar, ht. 9", virtually attic mint; (a shallow 1/8" area of very minor lip edge roughness, otherwise pristine perfect!) An extremely rare, large, quart size medicine believed to be one of only two known undamaged examples. Ex. Sam Greer, ex. Terry McMurray collections.

Est.: \$1,000 - \$2,000 • Min. bid: \$700

**Lot 140**

"N.Y. College / Of Medicine / Pharmacy / W. Richardson / Agent", America, 1845 – 1855. Aquamarine, oval with a tapered cone type shoulder – applied sloping collared mouth – blowpipe pontil scar – ht. 5 7/8", sparkling attic mint. A very interesting, unusual and attractive form. In addition, this one is absolutely covered with small whittle marks. A very rare bottle, believed to be one of only four examples known to exist.

Est.: \$400 - \$600 • Min. bid: \$250

**Lot 141**

"Bartine's / Lotion" Medicine Bottle, America, 1845 – 1855. Bright yellowish forest green, rectangular with narrow beveled corners, applied sloping collared mouth – blowpipe pontil scar, ht. 5 7/8", virtually attic mint; (just a trace of light exterior wear, otherwise perfect). A New York City bottle and advertised, 1845-1848, as a cure for rheumatism. Beautiful color, nicely whittled, great condition.

Est.: \$1,200 - \$1,800 • Min. bid: \$800

**Lot 142**

Anderson's / Dermador" Medicine Bottle, (with approximately 80% original label), America, possibly Lockport or Lancaster glassworks, New York, 1850 – 1860. Light to medium sapphire blue, cylindrical, applied sloping collared mouth – blowpipe pontil scar, ht. 4", attic mint! N #18. The label indicates that it is for "Inflammation of all kinds." An impressive little bottle from upstate New York and the only colored example known of this mold. Beautiful color, pristine, mint condition.

Est.: \$1,000 - \$2,000 • Min. bid: \$600

**Lot 143**

"Gell's / Dalby's – Carminative" Medicine Bottle, America, 1825 – 1840. Pale blue green, tapered cylinder or conical form, sheared and tooled thin flanged lip – blowpipe pontil scar, ht. 3 3/4", perfect. Extremely rare, believed to be one of only two known examples, and probably a very early medicine!

Est.: \$400 - \$800 • Min. bid: \$250

**Lot 144**

"Dalby's / Carminative – Prepared By / James Dalby", probably America, 1825 – 1840. Colorless, tapered cylinder or conical form, sheared mouth with an applied thin flanged lip – glass tipped pontil scarred base, ht. 3 7/8", perfect. Unlisted by Nielsen, an extremely rare mold. As noted by McKearin, (MW, p.284), it is believed that both Dalby's medicine and the bottles were produced in America. Possibly a product of the Dyottville Glass Works, Philadelphia.

Est.: \$225 - \$450 • Min. bid: \$150

This Little Piggy

Lot 110



Lot 111

Went to Auction

ACG

Lot 112



Lot 109

**Lot 145**

"Balsam / Of / Honey" Medicine Bottle, (with approximately 95% original label), probably America, possibly England, 1835 – 1845. Aquamarine, cylindrical, tooled paper-thin flanged lip – blowpipe pontil scar, ht. 3 5/8", attic mint! N #35, BB #42. Exceptional condition, perfect flanged lip, believed to be one of only two known examples with the original label that reads in part, *"Pectoral Balsam Of / Honey / Invented By / Sir John Hill"*. Ex. John O'Dell collection.

Est.: \$150 - \$250 • Min. bid: \$100

**Lot 146**

"Taylor – Indian – Ointment" Medicine Bottle, America, 1845 – 1855. Pale aquamarine, hexagonal, sheared and inward rolled mouth – delicate blowpipe pontil scar, ht. 3", perfect. N #624. An extremely rare Indian bottle with only a handful of examples known to exist. In addition, this example is in outstanding condition!

Est.: \$300 - \$500 • Min. bid: \$180

**Lot 147**

"Chamberlain's / Immediate / Relief – A.N. Chamberlain / Elkhart / Ind" Medicine Bottle, America, 1850 – 1860. Aquamarine, cylindrical, sheared and tooled rolled collared mouth – blowpipe pontil scar, ht. 4 3/4"; (lightly cleaned to original luster and near mint condition). N #111. A scarce early medicine with good strong embossing.

Est.: \$100 - \$150 • Min. bid: \$70

**Lot 148**

"Hamlin's / Wizard / Oil – Cincinnati / Ohio", probably a Midwest glasshouse, 1855 – 1860. Aqua, oval, sheared and inward rolled mouth – blowpipe pontil scar, ht. 3 7/8"; (lightly cleaned with just a little light interior patchy haze remaining). Very scarce, this is the earlier variant before the company moved to Chicago. Aptly named "Wizard Oil" as, according to O'Dell, the proprietor, John Hamlin, was a magician turned medicine showman.

Est.: \$75 - \$125 • Min. bid: \$50

**Lot 149**

"Hunt's / Liniment – Prepared By – G.E. Stanton – Sing Sing . N.Y." Medicine Bottle, America, 1845 – 1855. Deep aquamarine, rectangular with wide beveled corners, applied sloping collared mouth – blowpipe pontil scar, ht. 4 3/4", virtually attic mint; (a tiny pinprick bit of roughness on the edge of the crude applied mouth). N #317. A beautiful example, nicely whittled, bright, crisp, and strongly embossed.

Est.: \$100 - \$150 • Min. bid: \$70

**Lot 150**

"E.A. Buckhout's / Dutch / Liniment" / (motif of man with pipe holding a cane) – "Prepared At / Mechanicville / Saratoga Co N.Y." (backward "N"s in "Liniment" and "Mechanicville"), America, 1860 – 1870. Pale ice blue, rectangular, sheared and inward rolled mouth – blowpipe pontil scar, ht. 4 5/8", very near mint; (slightly weakened impression in the shoulder area). The pale ice blue hue is slightly different than the typical bluish aqua examples.

Est.: \$300 - \$500 • Min. bid: \$180

**Lot 151**

"J. Henderson / & Bros. – Druggist's – Pittsburgh", probably a Pittsburgh district glasshouse, 1840 – 1855. Aquamarine, rectangular with beveled corners, sheared and inward rolled mouth – blowpipe pontil scar, ht. 4", near mint; (a faint film or very light haze on the interior and a superficial 1/4" scratch on the reverse near the base, otherwise mint). A very rare early Pittsburgh druggist, very strongly embossed.

Est.: \$75 - \$150 • Min. bid: \$50

**Lot 152**

"Dr Parker's / Chemical Hair Tonic And – Medicated Compound / New York", America, 1845 – 1860. Aqua, rectangular with rounded sides and indented front and back panels, applied round double collared mouth – blowpipe pontil scar, ht. 6"; (some light interior residue and haze, primarily in one shoulder area, and a fairly weak impression, but no other form of damage). Extremely rare, unlisted, and possibly unique. In addition, the bottle is heavily whittled!

Est.: \$250 - \$450 • Min. bid: \$150



Lot 153

"Professor Wood's / Hair Restorative. – Depot, / St Louis, Mo – And New York", America, 1855 – 1860. Aqua, rectangular with beveled corners, applied sloping collared mouth – iron pontil scar, ht. 9 1/8", near mint; (a small area of faint interior residue or dullness and a tiny pinhead size surface flake near a corner, otherwise perfect). Extremely rare in this quart size, the largest of the three known sizes (which sold for the princely sum of \$3./bottle). Ex. Don Pickett collection.

Est.: \$600 - \$900 • Min. bid: \$400



Lot 157

"Wilson's – Tonic & Sarsaparillian – Elixir – J.W. Brayley / Proprietor", probably Canada, 1885 – 1895. Aquamarine, rectangular with beveled corners and indented panels, tooled round double collared mouth – smooth base, ht. 8 1/2", attic mint! DeGill #C5. An extremely rare bottle for both the sarsaparilla and tonic collectors. In addition, a bright, sparking, "out of the mold" pristine example! Provenance: Ex. Tom Eccles collection.

Est.: \$125 - \$250 • Min. bid: \$80



Lot 154

"Mrs S. A. Allen's – Worlds Hair / Balsam / 355 Broome St. – New York.", America, 1850 – 1860. Aquamarine, rectangular with beveled corners, applied round collared mouth with lower bevel – blowpipe pontil scar, ht. 6 3/8", perfect! See DF, pages 7-9. A beautiful example, crisp, brilliant glass, absolutely "out of the mold" pristine condition. It would be hard to imagine a nicer example!

Est.: \$75 - \$125 • Min. bid: \$50



Lot 158

"Wetherell's – Sarsaparilla – Exeter. N.H. – A.S.W. – 1881", America, 1881 – 1885. Aquamarine, rectangular or semi-coffin form with beveled corners and indented panels, applied round collared mouth with lower bevel – smooth base, ht. 9", sparking mint! DeG #216. An interesting bottle with the distinctive "coffin shaped" base, and a scarce sarsaparilla in absolutely pristine condition!

Est.: \$125 - \$250 • Min. bid: \$80



Lot 155

"Kitchel's / 'For The Hair' / A Hair Tonic & Dandruff Cure / For The Hair Co., Coldwater, Mich", America, 1885 – 1900. Colorless, rectangular with narrow beveled corners, tooled prescription type lip – smooth base, ht. 3 5/8", very near mint; (lightly cleaned to original luster and virtually attic mint condition). BA2 #153; DF, p.89. A very scarce bottle, sparking example. A bottle for the hair, cure, or tonic collector! From the same company that produced the rare "Wind Puff" cure.

Est.: \$75 - \$125 • Min. bid: \$50



Lot 159

"Nanzetta's / Indian New Discovery / Greenville, S.C.", America, 1885 – 1900. Aquamarine, rectangular with beveled corners and indented panels, tooled square collared mouth – smooth base, ht. 5 5/8", near mint; (just a wisp of faint interior residue or milkiness along a couple of the panel edges, otherwise perfect!). Probably a fairly scarce Indian bottle, one that is not listed by O'Dell in his book, "Indian Bottles And Brands". A strongly embossed, bright, clean example.

Est.: \$150 - \$250 • Min. bid: \$80



Lot 156

"Dodge Brothers – Melanine – Hair Tonic" (with approximately 95% original label), America, 1860 – 1870. Clear medium pink amethyst, rectangular with beveled corners, applied round double collared mouth – smooth base, ht. 7 3/8", perfect! DF, p.48. In addition to the nearly full label, this example is above average. Many of these bottles have been dug and cleaned, but obviously not this one! A choice example, a little lighter than most.

Est.: \$700 - \$900 • Min. bid: \$400



Lot 160

"L.Q.C. Wishart's – Pine Tree / Tar Cordial / Phila. – Patent" / (pine tree) / "1859", America, 1865 – 1875. Medium blue green, square with beveled corners, applied sloping collared mouth – smooth base, ht. 7 5/8"; (a very shallow 1/8" nick at one corner, a small flake under the collar that may have occurred at the time of manufacture and a little exterior wear, primarily along the base edge at the sides). Beautiful, bubbly, with loads of character.

Est.: \$125 - \$225 • Min. bid: \$80

**Lot 161**

"Dr. Jas. C. Kerr's – Great / System Renovator – Cincinnati, O", Midwest, probably Kearns, Herdman & Gorsuch, Zanesville, OH, 1869 – 1875. Light, bright honey amber, rectangular with beveled corners, applied sloping collared mouth – **"K H & G O Z"** on smooth base, ht. 8 1/4", near attic mint; (tiny pinhead flake at base edge, otherwise perfect). A rare and beautiful color for this bottle, filled with tiny seed bubbles. It is believed that this medicine was marketed as a blood purifier.

Est.: \$75 - \$150 • Min. bid: \$50

**Lot 165**

"Richardson & Simrall / Druggists / Lexington Ky.", Whitall-Tatum Co., South Millville, New Jersey, 1890 – 1905. Teal green, oval with a flat slugplate panel, tooled prescription type lip – **"W T & Co"** on smooth base, ht. 3 1/2"; (the bottle displays near mint, but was likely dug, and has virtually all of its original luster with just some light streaks of milkiness or haze on the interior back panel, otherwise, no other form of damage). A rare, hard to find colored druggist from Kentucky.

Est.: \$150 - \$250 • Min. bid: \$100

**Lot 162**

"R. H. Hurd / Apothecary / North Berwick, Me", America, 1885 – 1900. Golden amber, rectangular with beveled corners, tooled prescription type mouth – smooth base, ht. 4 7/8"; (a shallow, horizontal light scratch across the back panel, a pinhead bit of roughness on a back corner, a little light patchy interior residue or dirt, the type that would probably wash out). The bottle has full original luster and, with a little interior scrubbing, should display near mint.

Est.: \$75 - \$125 • Min. bid: \$40

**Lot 166**

Lot of (2) Scarce Druggist Bottles, "Geo. H. Fickardt / Druggist / Circleville, Ohio", and, "J.R. Bennett & Co / Druggists / Muskegon Mich", 1885 – 1905. Brilliant emerald green and blue green, oval and square, tooled prescription type mouths – smooth bases, ht. 4 1/8" & 2 3/4" respectively; (Circleville druggist has been professionally cleaned to original luster and near mint condition; Muskegon druggist has a 3/16" flake at the edge of the lip, otherwise perfect). The Fickardt druggist is extremely rare!

Est.: \$200 - \$400 • Min. bid: \$150

**Lot 163**

"Apothecaries' Hall" / (AH monogram) / "San Francisco" Prescription Type Bottle, America, 1885 – 1905. Light to medium cornflower blue, rectangular with beveled corners, tooled prescription type mouth – smooth base, ht. 5 1/4", mint. Beautiful color, sparkling clean, outstanding condition. An attractive color to add to a grouping of emerald or cobalt druggists, or apothecary bottles.

Est.: \$75 - \$125 • Min. bid: \$40

**Lot 167**

"J.B. Schroeder" / (JBS monogram) / "Druggist / Raton, New Mexico", Whitall-Tatum Co., South Millville, NJ, 1890 – 1905. Beautiful teal blue, rectangular with beveled corners, tooled prescription type mouth – **"W T & CO"** (on smooth base), ht. 4 1/2"; (an onionskin-thin open surface bubble near the base on the side, otherwise sparkling mint). A very rare and desirable bottle from New Mexico, outstanding condition and color, another druggist that is seldom offered for sale!

Est.: \$300 - \$600 • Min. bid: \$200

**Lot 164**

"Dr. N. Wayt & Bro / Druggists / Staunton Va.", America, 1885 – 1905. Light to medium cobalt, rectangular with rounded corners, front slugplate panel, tooled prescription type mouth – smooth base, ht. 3 1/2"; (dug in Staunton, Virginia and washed up to near mint condition!). Beautiful color, extremely rare, a great little bottle that does not come around often, particularly in this clean, undamaged condition!

Est.: \$175 - \$325 • Min. bid: \$125

**Lot 168**

"L. Orynski / Druggist" / (LO monogram) / "San Antonio / Tex", Whitall-Tatum Co., South Millville, NJ, 1890 – 1905. Teal green, rectangular with beveled corners, tooled prescription type mouth – **"W T & CO"** (on smooth base), ht. 3 7/8", very near mint; (a tiny, less than pinhead size flake at the side of the lip, a couple of extremely minor faint light scratches on the reverse, otherwise attic mint). Texas colored druggists are scarce, and this is a good one!

Est.: \$225 - \$450 • Min. bid: \$150

**Lot 169**

"A.L. Ogg / South Yarra / Poison", Whitall-Tatum Co., Millville, NJ, 1885 – 1900. Cobalt blue, square with beveled corners, lattice design on front panel, tooled square collared mouth – **"W.T. Co / U.S.A."** (on smooth base), ht. 4 7/8", (a small patch of very faint interior haze near the shoulder, otherwise perfect). A very rare poison blown by the Whitall-Tatum Co. for an Australian pharmacist. A small group of these were discovered in Australia years ago; this one is a bit lighter in color.

Est.: \$250 - \$450 • Min bid: \$150

**Lot 170**

"Hetherington / 42nd Street, N.Y." Poison Bottle, Carr-Lowrey Glass Co., Baltimore, Maryland, 1889 – 1900. Emerald green, irregular "hex" form, tooled square collared mouth – **"C L G Co / Patent Applied For"** (on smooth base), ht. 5 1/2", perfect! KI-2. A bright clean example, beautiful condition.

Est.: \$150 - \$300 • Min. bid: \$100

**Lot 171**

"J. G. Godding & Co. / Apothecaries / Boston, Mass." Poison Bottle, Carr-Lowrey Glass Co., Baltimore, Maryland, 1889 – 1900. Cobalt blue, irregular "hex" form, tooled square collared mouth – **"C L G Co / Patent Applied For"** (on smooth base), ht. 5 3/8", perfect. KI-2. A scarce mold, nice size, great condition and a fresh find from a Massachusetts estate.

Est.: \$250 - \$400 • Min. bid: \$150

**Lot 172**

Poison Bottle, Carr-Lowrey Glass Co., Baltimore, Maryland, 1889 – 1900. Bright emerald green, irregular "hex" form, tooled square collared mouth – **"C.L.G. Co. / Patent Applied For"** (on smooth base), ht. 6 1/4", very near mint; (a little touch of interior film or residue that would likely wash, otherwise perfect). K# KI-2. A little harder to find in this slightly larger-than-normal size.

Est.: \$75 - \$125 • Min. bid: \$50

**Lot 173**

"Poison – The Owl Drug Co" – (Motif of Owl) / "TODCo" monogram (within mortar and pestle), America, 1892 – 1905. Medium cobalt with some deeper blue striations swirling through the body, triangular, tooled prescription type lip – smooth base, ht. 8"; (professionally cleaned to original luster with some light scattered ground wear remaining). KT-1. Scarce larger size and a very attractive example with the deeper blue striations swirling through the body.

Est.: \$300 - \$500 • Min. bid: \$180

**Lot 174**

Lattice and Diamond Poison Bottle, America, 1890 – 1905. Medium to deep cobalt blue, cylindrical with an overall lattice and diamond pattern, tooled prescription type lip with correct matching glass stopper and "Poison" embossed on both sides and top of stopper – smooth base, half gallon, perfect! KC-1. Impressive and desirable 64-oz size, perfect matching stopper, and a very difficult size to acquire.

Est.: \$450 - \$850 • Min. bid: \$250

**Lot 175**

Lattice and Diamond Poison Bottle, America, 1890 – 1905. Medium to deep cobalt blue, cylindrical with an overall lattice and diamond pattern, tooled prescription type lip with correct matching glass stopper and "Poison" embossed on both sides and top of stopper – smooth base, Qt., attic mint. KC-1. Scarce 32 oz. size, beautiful condition, complete with correct stopper!

Est.: \$250 - \$500 • Min. bid: \$150

**Lot 176**

"Poison" (embossed vertically down center panel), America, 1890 – 1905. Yellowish golden amber, rectangular with narrow beveled corners, tooled ring lip – **"S & D / 6"** (possibly Sharp & Dohme) on smooth base, ht. 4 3/4", near mint; (a couple of minor areas of very faint patchy residue or haze, primarily on the interior, but otherwise displays as mint). K, Workbook II, #KR-50. A very rare poison bottle, seldom offered for sale.

Est.: \$150 - \$250 • Min. bid: \$100

**Lot 177**

Large Size "Poison – Poison"
(with original back label, partial contents and correct matching labeled cork), America, 1890 – 1910. Golden amber, triangular with rounded back, tooled square collared mouth – smooth base, ht. 10 1/8", quart. The bottle is attic mint, the label on the reverse is darkened and faded but complete and reads in part, "Poison / Diamond / Antiseptic / Eli Lilly and Company". KV-1. Scarce in the quart size which is the largest available in this mold.

Est.: \$175 - \$275 • Min. bid: \$100

**Lot 178**

"A. Bauer / Defiance / Brewery / Bottling / Works / Defiance. O." (within slugplate) – **"This Bottle / Not To / Be Sold"** (on reverse), a Midwest glasshouse, 1873 – 1885. Bright honey shading to almost yellow, cylindrical, applied blob collared mouth with the original wire bail "lightning type" closure – smooth base, Qt., near mint; (a minor 1 1/2" surface scratch near the shoulder on the side, the wire bail has some typical surface rust). A very rare bottle, particularly in this condition.

Est.: \$150 - \$250 • Min. bid: \$100

**Lot 179**

"C. Say & Bro / Columbus. O"
Porter Style Bottle, probably a Pittsburgh glasshouse, 1875 – 1877. Black glass (dense olive amber), cylindrical, applied sloping double collared mouth – smooth domed base, Qt., near mint; (a tiny pinprick bit of roughness at mouth edge, a couple of paper thin open surface bubbles). A very rare bottle, particularly in this attic condition. Charles Say was located at 50 E. 3rd Ave., Columbus and apparently only in business for two years!

Est.: \$750 - \$1,250 • Min. bid: \$500

**Lot 180**

"F. Gleasons / Mineral / Water – Rochester / N Y", probably Lancaster Glass Works, Lancaster, NY, 1851 – 1854. Sapphire blue, "tenpin" form, applied sloping collared mouth – smooth base, ht. 8 1/2"; (professionally cleaned to original luster with a little exterior wear remaining; a 1/4" flake on the underside of the collar, a 1/4" bit of roughness on the base which has also been finely polished on one side). A very rare and eye-appealing bottle!

Est.: \$600 - \$900 • Min. bid: \$400

**Lot 181**

Early "Egg Form" Soda Water Bottle, probably America, 1815 – 1830. Bright yellowish olive, squatty "egg" form blown in a 2-piece mold, sheared mouth with an applied wide string rim – glass tipped pontil scarred base, ht. 6", very near mint; (some fine high point wear, about the size of a quarter where it rested on it's side, an open interior bubble). A rare bottle, likely one of the earliest examples from what is considered the "pioneer" period for soda water bottles.

Est.: \$400 - \$800 • Min. bid: \$250

**Lot 182**

"Belper & Denby Potteries, Derbyshire / Vitreous Stone Bottles, & / J. Bourne, / Patentee / Warranted Not To Absorb / EX – Bathgate & Co. / Calcutta." Early Stoneware Soda Bottle, England, 1825 – 1834. Tan salt glazed stoneware, "Hamilton" form with blob style closure, ht. 6 3/4", perfect original condition! Note; this bottle pre-dates the abolition, in 1834, of the excise tax on British stoneware bottles. An extremely rare, early stoneware soda bottle, exceptional condition.

Est.: \$400 - \$800 • Min. bid: \$250

**Lot 183**

"Poland / Water – Poland Mineral Spring Water / H. Ricker & Son's Proprietor's" Mineral Water Bottle, America, 1875 – 1885. Bright yellowish honey amber, figure of Moses, applied sloping collared mouth – smooth base, ht. 10 3/4", perfect! A classic figural mineral water bottle, extremely rare in color. In addition, the condition is outstanding and this example is particularly eye-appealing, having plenty of yellow and being lighter in color than most!

Est.: \$1,500 - \$2,000 • Min. bid: \$1,000

**Lot 184**

"From The / Mosher / Magnetic Mineral / Spring Co / Eaton Rapids / Mich", probably Pittsburgh, PA, 1870 – 1875. Yellowish golden amber with a rich orange tone, cylindrical, applied sloping collared mouth with ring – smooth base, quart; (a 1/4" chip at the back side of the lip, otherwise professionally cleaned to near mint condition). One of only two known examples in this mold. See AB&GC, Feb. 2012, on the discovery of this extremely rare bottle.

Est.: \$1,200 - \$2,200 • Min. bid: \$800

**Lot 185**

"Use At 52* Far / Magentic / Mineral Water / Spring Lake / Mich", William Frank & Sons, Pittsburgh, PA, 1870 – 1876. Aquamarine, cylindrical, applied sloping collared mouth with ring – **"WM F & SONS. PITTS"** (on smooth base), quart, perfect. T# M-30. Quite a rare bottle, interestingly embossed with the "suggested serving temperature", gorgeous condition! This bottle is a virgin discovery and fresh to the market, recently discovered in an antique shop in Ohio.

Est.: \$500 - \$1,000 • Min. bid: \$300

**Lot 189**

"Clarke & White / C / New York", America, 1860 – 1866. Bubbly medium to deep yellow olive, cylindrical, applied sloping double collared mouth – smooth base, pint, perfect. T# C-11:B, type 2. A very seedy, bubbly example, nicely whittled, great condition. Note; this example was found along with the preceding two bottles in the foundation of a home in Plainfield, New Jersey.

Est.: \$60 - \$90 • Min. bid: \$40

**Lot 186**

"Lynch & Clarke / New York", probably Mt. Vernon Glass Works, Vernon, NY, 1823 – 1833. Medium to deep olive with an amber tone, cylindrical with an extended neck, applied double collared mouth – blow-pipe pontil, pint; (a small area of light interior haze, primarily on the reverse; a couple of very small pinhead areas of roughness at edge of the lip, a shallow 3/16" base flake). T# C-2:A. An exceptional example, early and primitive form with a great neck and lip!

Est.: \$800 - \$1,000 • Min. bid: \$500

**Lot 190**

"G.W. Weston & Co. / Saratoga / N.Y.", America, 1855 – 1861. Medium green, almost a yellowish forest green, cylindrical, applied sloping double collared mouth – "x" (on smooth base), pint, near mint; (a couple of scattered faint scratches, one on the front shoulder and another on the reverse). T# E-2:B, type 1. A lighter shade than most that passes light with ease. In addition, the color is distinctly different than the typical olive toned examples. A nice example, highly whittled and with great character.

Est.: \$200 - \$400 • Min. bid: \$140

**Lot 187**

"Lynch & Clarke / New York", probably Mt. Vernon Glass Works, Vernon, NY, 1823 - 1833. Clear medium olive green, cylindrical, applied sloping double collared mouth – sand type pontil scar, pint; (a tiny pinhead area of roughness and a 1/8" flake off the back edge of the mouth; an in-manufacture annealing line extending 1/4" down from the top edge of the lip). T# C-2:B, type 1. The noted lip flaws are minor or in-manufacture. The bottle displays as virtually attic mint!

Est.: \$300 - \$500 • Min. bid: \$200

**Lot 191**

"Washington Spring Co / (bust of Washington) / Ballston Spa / N.Y. - C", America, 1868 – 1875. Emerald green, cylindrical, applied sloping collared mouth with lower bevel – smooth base, pint; (there is a very hard to see horizontal fissure that follows the contour of the applied mouth where the lower bevel attaches to the neck, it is approximately 2" in length and well hidden by the applied collar). T #S-61. A beautiful example of this classic mineral water bottle that displays as perfect!

Est.: \$175 - \$350 • Min. bid: \$100

**Lot 188**

"John Clarke / New York", possibly Mt. Vernon Glass Works, Vernon, NY, 1833 – 1846. Yellowish olive with an amber tone, cylindrical, applied sloping double collared mouth – sand type pontil scar, pint, near attic mint; (a couple of superficial, 3/8" surface scratches near the base, otherwise perfect!). T# C-5:B. An early mineral water in outstanding condition, recently found along with the preceding example in the foundation of a home in Plainfield, New Jersey.

Est.: \$200 - \$400 • Min. bid: \$140

**Lot 192**

"Gardner & Landon / Sharon / Sulphur Water", America, 1850 – 1860. Bright medium yellowish olive, cylindrical, applied sloping collared mouth with lower bevel – large, sand type pontil scar, quart, perfect! T# N-29:A. A very rare and desirable mineral water bottle with excellent character to the glass, plenty of bubbles, some whittling, and even more rare in this attic mint condition.

Est.: \$2,000 - \$3,500 • Min. bid: \$1,400

**Lot 193**

"Pavilion & United States Spring Co / Saratoga / N.Y. – Pavilion Water / Aperient", America, 1872 – 1885. Blue green, cylindrical, applied sloping collared mouth with lower bevel – smooth base, quart; (a small "star" type crack near the shoulder on the reverse with a few 1/8" "legs"; a few open surface bubbles each approximately 1/4", one on the reverse, one on the side, and a small one on the front). T #S-45:A. A very rare bottle, highly whittled that displays near mint.

Est.: \$200 - \$400 • Min .bid: \$150

**Lot 194**

"Adirondack Spring / Westport. N.Y.", America, possibly Congressville Glass Works, Saratoga Springs, New York, 1868 – 1875. Rich medium emerald green, cylindrical, applied sloping collared mouth with lower bevel – smooth base, quart, mint. T# N-1:A. A scarce mold, nice rich color, beautifully whittled, outstanding condition.

Est.: \$400 - \$600 • Min. bid: \$250

**Lot 195**

"Saratoga" / (star) / "Spring", probably a New England glasshouse, 1862 – 1865. Medium to deep bubbly pure olive green, cylindrical, applied sloping collared mouth with lower bevel – smooth base, quart, attic mint. T# S-53:A. Another beautiful example with the glass being completely filled with tiny seed bubbles, strongly embossed, sparkling mint.

Est.: \$125 - \$225 • Min. bid: \$70

**Lot 196**

"Saratoga" / (star) / "Spring", probably a New England glasshouse, 1862 – 1865. Medium to deep bubbly olive green, cylindrical, applied sloping collared mouth with lower bevel – smooth base, pint, near mint; (just a wisp of some very light exterior wear, otherwise perfect). T# S-52:B. A strongly embossed example, great character, excellent condition.

Est.: \$100 - \$175 • Min. bid: \$70

**Lot 197**

"Saratoga" / (star) / "Spring", New England, probably a Stoddard glasshouse, Stoddard, New Hampshire, 1862 – 1865. Yellowish honey amber, cylindrical, applied sloping collared mouth with lower bevel – smooth base, quart, attic mint. T# S-52:A. A rich, bubbly, beautifully whittled example. Great color, character and condition!

Est.: \$150 - \$250 • Min. bid: \$100

**Lot 198**

"Star Spring Co" / (star) / "Saratoga NY", New England, probably a Stoddard glasshouse, Stoddard, New Hampshire, 1865 – 1873. Deep rich golden shading to almost black near the base and through the neck, cylindrical, applied sloping collared mouth with lower bevel – large "X" (on smooth base), pint, mint. T# S-54:B, type I. A scarce, desirable color, nice character, beautiful condition.

Est.: \$150 - \$250 • Min. bid: \$100

**Lot 199**

"Star Spring Co" / (star) / "Saratoga NY", New England, possibly a Stoddard glasshouse, Stoddard, New Hampshire, 1865 – 1873. Yellowish honey amber, cylindrical, applied sloping collared mouth – smooth base, pint, near mint; (a thin open surface bubble on the interior approximately 1 1/2" x 3/8", otherwise perfect). T# S-54:B, type III. The glass is beautifully whittled and full of tiny seed bubbles and impurities providing outstanding character.

Est.: \$125 - \$225 • Min. bid: \$70

**Lot 200**

"Congress & Empire Spring Co / E / Saratoga. N.Y.", probably New England, possibly a Stoddard glasshouse, Stoddard, New Hampshire, 1865 – 1873. Yellowish honey amber, cylindrical, applied sloping collared mouth with lower bevel – "2" (on smooth base), quart, near attic mint; (a miniscule pinprick bit of roughness at the bottom edge of the lower bevel on the reverse, otherwise pristine). T# E6:A. A beautifully whittled example, great color and condition.

Est.: \$300 - \$500 • Min. bid: \$180

**Lot 201**

"Franklin Spring / Mineral Water / Ballston Spa / Saratoga Co / N.Y.", America, 1868 – 1889. Medium green with a yellowish tone, cylindrical, applied sloping collared mouth with lower bevel – smooth base, pint; (a small sandgrain located on the side near the mold seam has a 3/16" refracting line, otherwise perfect). T# S-28. A scarce mold, nice color, the bottle displays as mint.

Est.: \$150 - \$250 • Min. bid: \$100

**Lot 205**

"Excelsior / Spring / Saratoga. N.Y.", probably Congressville Glass Works, Saratoga Springs, NY, 1880 – 1889. Bluish green, cylindrical, applied sloping collared mouth with lower bevel – smooth base, pint; (a tiny pinprick bit of roughness on the outer edge of the applied mouth with a hard to see, iridescent bruise). T# S-26:B. A somewhat scarce color, nicely whittled, attractive clean example that displays as mint.

Est.: \$100 - \$200 • Min. bid: \$60

**Lot 202**

"Missisquoi / A / Springs", probably Lyndeborough Glass Works, Lyndeborough, NH, 1867 – 1875. Emerald green, cylindrical, applied sloping collared mouth with lower bevel – smooth base, quart; (a small, 3/16", shallow iridescent bruise on the back side of the applied lip and a couple of spots of very minor exterior wear). T# V-16:B. A good clean example in a nice rich color. The noted small bruise is on the back side of the mouth so the bottle displays near mint.

Est.: \$75 - \$150 • Min. bid: \$50

**Lot 206**

"Artesian Spring Co." / AS (monogram) / "Ballston / N.Y. – Ballston Spa / Lithia / Mineral / Water", America, possibly Saratoga Mountain Glass Works (Mt. Pleasant), Saratoga, NY, 1876 – 1889. Deep greenish aquamarine approaching a light blue green, cylindrical, applied sloping collared mouth with lower bevel – smooth base, pint, very near mint; (a couple of faint, superficial light scratches, otherwise perfect!). T# S-6: Type II.

Est.: \$100 - \$150 • Min. bid: \$70

**Lot 203**

"Missisquoi / A / Springs" – (Indian woman with papoose), probably New England, possibly Lyndeborough Glass Works, Lyndeborough, NH, 1867 – 1875. Yellow olive, cylindrical, applied sloping collared mouth with lower bevel – smooth base, quart, near mint; (some scattered light exterior wear, otherwise excellent!). T# V-17:A. Another nice mineral water bottle and understandably a very desirable mold with the full-length pictorial image of the Indian maiden and papoose.

Est.: \$400 - \$600 • Min. bid: \$250

**Lot 207**

Lot of (2) Mineral Water Bottles, "G.W. Weston & Co / Saratoga / N.Y.", and **"Middletown / Healing / Springs / Grays & Clark / Middletown. VT."**, America, 1850 – 1870. Medium olive and yellowish golden amber, both with applied double collared mouths – light sand type pontil scar and smooth bases, quarts; (Weston example has a tiny "star" type crack in the shoulder, the Middletown has a 3" body crack). T# E-2:A, type I and V-12. Weston example, Ex. Charles Gardner Collection, lot 333.

Est.: \$100 - \$200 • Min. bid: \$60

**Lot 204**

"GKW" (monogram) – "Whitney Glassworks Glassboro N.J." (on base), Whitney Glassworks, 1865 – 1882. Medium blue green with a slight yellowish hue, cylindrical with conical shoulders, applied sloping collared mouth with ring – smooth base, quart, perfect! T# M-19:A. Note; the bottle has a darkened period label on the reverse. Gettysburg Katalysine Water was bottled in these distinctive bottles. Beautifully whittled and attic mint!

Est.: \$100 - \$200 • Min. bid: \$60

**Lot 208**

Lot of (15) Stereoscopic cards – Various views of Saratoga Mineral Springs. Springs featured on the cards include: Empire Spring, High Rock, Champion Spouting Spring, Star Spring, Geyser, Triton Spring, and Congress. Fascinating views ranging from the pavilions to the interior of the buildings, to the spouting springs, and even a view of the High Rock! An extremely interesting assortment of scarce-to-rare cards, all being in very good to excellent condition.

Est.: \$175 - \$350 • Min. bid: \$100



Lot 209

Lot of (4) Various Mineral Springs Advertising & Analysis Booklets including "Saratoga Geyser Spring", 1884, (testimonials, analysis, directions how to take it to counteract various diseases); "Congress Spring Co.", 1892 (prices, directions for use, etc.); "Congress, Empire, and Columbian Spring Waters", 1871, (their medicinal character and uses in preventing disease), and "The Hathorn Spring", *What its rivals say of it and what it is*. All are in very good to excellent condition!

Est.: \$75 - \$125 • Min. bid: \$50



Lot 210

Lot of (5) Miscellaneous Bottle & Glass related Billhead Receipts including (2) from Congress and Empire Spring Co. dated 1869 & 1881; (2) from E.H. Hathorn dated 1881 & 1883; and one from Whitall, Tatum & Co., *Manufacturers of Druggists' Glass-ware, Bottles, Vials, &c. Also Agents for Excelsior Saratoga Water...* (1875). Receipts indicate orders for pints and quarts by the gross, including prices. A very interesting group of "Go-Withs" for the Saratoga collector.

Est.: \$40 - \$60 • Min. bid: \$25



Lot 211

Half Size Black Glass Transitional Onion Form Wine Bottle, England, 1715 – 1725. Olive green, early straight sided onion, applied string rim – sand type pontil scar, ht. 5 3/8", width 4 3/8"; (interesting patina and etching caused by glass degradation and being buried, likely in the water; a 1/2" sliver flake on the underside of the string rim but does not impact or take away from the edge of the rim). Fresh from a Massachusetts collection assembled in the 1940's.

Est.: \$750 - \$1,500 • Min. bid: \$400



Lot 212

Half Size Black Glass Mallet Wine Bottle, probably England, 1730 – 1740. Medium to deep olive with an amber tone, early mallet form, applied thin string rim – domed base with sand or disc type pontil scar, ht. 6 3/8", width 4 1/8", virtually perfect; (some interior dirt or residue, retains a small area of dried mud on the side of the neck). Outstanding condition, full original body luster, nearly devoid of the typical scratches and wear.

Est.: \$500 - \$1,000 • Min. bid: \$300



Lot 213

Half Size Black Glass Octagonal Wine Bottle, probably England, 1740 – 1760. Medium to deep olive amber, octagonal form, blown in a dip mold, sheared mouth with an applied string rim – sand type pontil scar, ht. 8", base dia. 3"; (a little roughness and a few flakes, approximately 1/8" each, on the edge of the sheared lip, some light exterior wear). Note; scratch engraved on side of bottle, "M Russell". A very scarce form, - and even more rare in the half size! A great early piece with full original body luster!

Est.: \$800 - \$1,200 • Min. bid: \$500



Lot 214

Half Size Black Glass Long Neck Utility Bottle, probably Belgium or Dutch, 1770 – 1790. Medium olive with a slight amber tone, flower pot form with an extended neck, sheared mouth with an applied string rim – blowpipe pontil scar, ht. 9 1/4"; (some scattered light exterior wear and fine scratches, but with virtually full body luster). See VdB, plate 78, #1. A beautiful example, scarce size and form.

Est.: \$250 - \$450 • Min. bid: \$150



Lot 215

Black Glass Wine Bottle, England, c. 1836. "T. Putt / 1836" on applied glass seal. Clear medium green with a slight yellowish tone, cylindrical, 3-pc. mold, applied sloping double collared mouth – sand type pontil scar, ht. 11"; (a 1/2" bruise on the back shoulder with several refracting lines; a 1/4" flake on the underside of the applied collar, a 1/8" flake at the edge of the applied seal). Quite a scarce seal bottle. Interesting to note that Dumbrell on p. 299, notes that one example sold at Sotheby's in 1947.

Est.: \$150 - \$300 • Min. bid: \$100



Lot 216

Black Glass Wine Bottle, probably America, 1835 – 1850. "Tonquin" on applied glass seal. Bright yellowish olive, cylindrical, 3-pc. mold, applied sloping double collared mouth – sand type pontil scar, ht. 11 1/4", perfect! Beautiful, attractive, seedy glass, excellent character. It is interesting to note that there were at least two American merchant ships with the name "Tonquin". The second, c. 1845, was built in Medford, Massachusetts.

Est.: \$200 - \$400 • Min. bid: \$140



Lot 217

Freeblown Nailsea Type Rolling Pin, England, probably Nailsea Glassworks, Somerset, 1830 – 1860. Dense olive green with soft bluish and opaque white spatters swirled throughout, tooled knopf ends, length 14 ½"; (some typical expected usage wear and light scratches, otherwise, mint). See *Nailsea Glass*, Keith Vincent, 1975, plate 2. A great example and somewhat unusual with the more bluish type splotches.

Est.: \$100 - \$200 • Min. bid: \$70



Lot 218

Early Black Glass Storage Jar, probably Continental, 1780 – 1820. Medium to deep olive amber, cylindrical, dip mold, wide neck flaring slightly outward to a sheared, tooled rim – sand type pontil scar, ht. 11 ¼", dia. 5 ¾", near mint; (some expected light exterior usage wear, otherwise mint). A large, early, impressive utility or storage jar.

Est.: \$150 - \$250 • Min. bid: \$100



Lot 219

Large Freeblown Storage Bottle, probably French, 1790 – 1810. Yellowish olive amber shading to a deeper olive amber towards the base, cylindrical long neck "flowerpot" form, extended neck flaring outward to a sheared and tooled rim with an applied string lip – sand type pontil scar, ht. 14 ¾", very near mint; (an extremely minor touch of expected light exterior wear, otherwise pristine!). Similar to VdB, plate 147, #3. Beautiful color and clarity, outstanding condition, impressive size!

Est.: \$250 - \$450 • Min. bid: \$150



Lot 220

Large "Flower pot" form Demi-john, probably Continental, possibly America, 1790 – 1830. Deep olive amber shading to almost black through the neck and near the base, cylindrical "flower pot" form, roughly sheared mouth with an applied flat string collar – smooth domed base, ht. 17 3/8", near attic mint; (some very light expected wear). See VdB plate 269, #3. Mr. Van den Bossche believes demijohns of this style and form were blown in America.

Est.: \$200 - \$400 • Min. bid: \$140



Lot 221

Mammoth "Bullet" Form Demi-john, New England, possibly Keene Marlboro Street Glassworks, 1820 – 1840. Yellowish olive amber, freeblown or possibly dip mold, "bullet" form, applied short tapered collared mouth – disc type pontil scar, ht. 17 ¾"; (a couple of long, narrow surface bubbles that are partially open and a light film of content residue on the interior that would likely soak out, otherwise mint). A rare and desirable form, exceeding rare size! Recently found in an attic in Keene, NH.

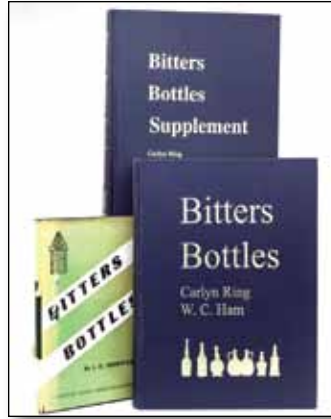
Est.: \$750 - \$1,250 • Min. bid: \$500



Lot 222

Lot of (2) books, "Early American Bottles and Flasks", Van Rensselaer, 1st edition, 1921, and revised edition 1926. Both books are inscribed to George S. McKearin and signed by Stephen Van Rensselaer. 1st edition in overall good condition with some relatively minor wear on the edges and spine; Revised Edition is in poor to fair condition with the front cover and 1st two pages loose, the outer cover of the leather spine is missing. No doubt, a well used and valuable reference book for Mr. McKearin!

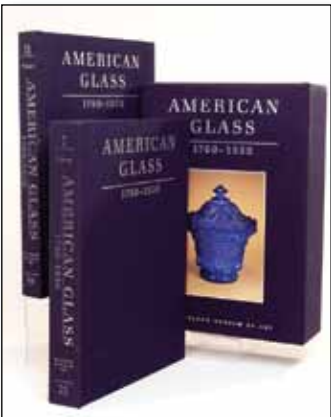
Est.: \$150 - \$300 • Min. bid: \$100



Lot 223

Lot of (3) Bitters Reference Books, "Bitters Bottles", Carlyn Ring & W.C. Ham, 1998; "Bitters Bottles Supplement", Carlyn Ring & W.C. Ham, 2004, and "Bitters Bottles", by J.H. Thompson 1947; (the Ring / Ham books are in outstanding "like new" condition; the Thompson book is in excellent condition with only some minor dust jacket issues with a couple of tears and a small portion missing on spine). The 1st book on bitters and the latest indispensable 2-volume set, all in one lot!

Est.: \$100 - \$200 • Min. bid: \$60



Lot 224

Two Volume Set of Books, "American Glass / 1760 – 1930" from the collections at the Toledo Museum of Art, Kenneth Wilson, 1994. 877 pages covering the outstanding collections at the Toledo Museum of Art, initially formed by Edward Drummond Libby between 1900 - 1925. Chapters include *Bottle Glasshouses and Their Products*, *Flint Glasshouse and Their Products*, *The Beginnings of Glass Manufacture, 1608 – 1800*. A comprehensive and outstanding reference set.

Est.: \$100 - \$200 • Min. bid: \$60

Fine Figural Bitters Bottles



Choice National Bitters

Lot 99

Lot 98

Lot 97



Rare Colored, Pontiled Medicine Bottles

Lot 134

Lot 136

Lot 137

Lot 133





Lot 87: Important Binninger Urn Bottle

"A.M. Bininger & Co / No 19 Broad St New York" Figural Handled Whiskey, America, 1860 – 1865. Bright honey amber shading to a deeper golden through the base and shoulders, figural urn form, applied solid ear shaped handle, sheared and tooled lip – smooth base, ht. 8 ¾". A very attractive and rare form that is certainly susceptible to damage. However, this example is "out of the mold", pristine perfect! In addition, it is strongly embossed and highly whittled. Finest possible example.

Est.: \$3,500 - \$4,500 • Min. bid: \$2,000



Fine Ink Bottles

Rare Colored Druggist Bottles



Lot 2:
Rare Color
Washington/
Monument
Flask



"Fells" / Bust of Washington / "Point" – Monument / "Balto" Historical Flask, Baltimore Glass Works, Baltimore, MD, 1830 – 1850. Beautiful pinkish amethyst with a slight apricot or copper tone, sheared mouth – pontil scar, pint, near mint; (a shallow, 1/8" open surface bubble on the medial rib near the base and a touch of very light expected wear, otherwise mint). GI-20. Beautiful, extremely rare color and a good strong impression! Ex. Bill Pollard collection.

Est.: \$5,000 - \$10,000 • Min. bid: \$3,000

Lot 113: Rare Color Drake's Plantation Bitters



"S T / Drake's / 1860 / Plantation / X / Bitters – Patented / 1862", America, 1862 – 1880. Gorgeous light peach with rich salmon tones, cabin form with 6 logs above the label panel, applied sloping collared mouth – smooth base, ht. 10", attic mint! R/H #D105. A rare and exceptional shade, much lighter than most, the bottle also has an incredible number of bubbles, giving it exceptional character. Gorgeous color, superior mold impression, pristine condition, a top-shelf example!

Est.: \$6,000 - \$8,000 • Min. bid: \$3,000

With AGG, your consignments really **STAND OUT** in the crowd!



American Glass Gallery
is seeking quality consignments for our upcoming auction schedule.

With our broad-based and extensive advertising and colorful, informative auction catalogs, American Glass Gallery is the place where your valued items can really stand out and reach their highest potential. Let us put our knowledge and experience to work for you. For more information, please give us a call at:

248.486.0530 or visit our website at **www.americanglassgallery.com**.

AGG
American Glass Gallery™



Are you receiving America's premier bottle and glass collecting magazine?

A monthly magazine featuring a great line up of columnists including:

Mark Vuono (American historical flasks), Mike George (New England glass), Richard Cannon, M.D. (medicines), Tom Caniff (fruit jars), Donald Tucker (Spouting off on Mineral Waters), Tom Haunton (Jerseyana Corner), "Digger McDirt" (bottle identifier), Ralph Finch, and many others! Every issue includes feature articles on various topics related to antique bottles and their history plus lots of great digging stories throughout the year!

Buy-Sell-Trade

Thousands of dollars in bottles, relics and related items bought, sold and traded each month in our classified pages, plus the most up to date show calendar.

AB&GC also goes where the action is! We attend and report on many bottle shows yearly as well as important bottle and glass auctions.

12 colorful and informative monthly issues are still only \$32.00 postpaid!*

*\$47.00 for U.S. 1st Class and \$54.00 for Canada.



For more information, visit antiquebottleandglasscollector.com or call 248.486.0530