

American Glass Gallery™

Auction #7

Bidding Begins November 1, 2011

Bidding Closes November 15, 2011

"Indian" Bottles

(Left to Right)
Lot 164, Lot 162,
Lot 161, Lot 133,
Lot 160



Conditions of Sale

1. Absentee Auction

The items in this sale will be sold via absentee auction, closing date:
November 15, 2011, 11:00 p.m., EST.

2. Our Guarantee Regarding Descriptions

American Glass Gallery has made every attempt to describe correctly the property being sold. Descriptions are guaranteed to be accurate as regards authenticity, age, condition, and measurements to within one-fourth inch, as represented in this catalog. In describing damage, exterior wear or manufacturer's flaws that in our opinion, do not significantly detract visually or monetarily from the value of the item are not listed and will not be considered for refund. The Auctioneers reserve the right to make verbal corrections and provide additional information at any time during the sale.

3. Preview

Items may be viewed by appointment from November 1, 2011 through November 14, 2011.

4. Bidding Procedure

You may submit your bids by mail, phone, FAX, email or through our on-line auction site. If bidding by mail or FAX, please fill out the absentee form and return it to us. Your bid, either written or oral, grants American Glass Gallery the authority to protect you up to the amount of your stated bid. Your bid will not be removed once executed.

Bidding Times: You can submit your bids anytime after receiving your catalog. Bids may be made by phone, daily, until closing day, November 15, 2011, from 9 A.M. - 7 P.M. Eastern Time. Incoming phone bids will be accepted on the closing day (November 15, 2011) until 11 P.M. Eastern Time. Phone calls and Fax bids after this time will not be honored. No exceptions. You may also place your bids through our on-line auction service 24-hours a day once the site has opened for bidding, on or about November 1, 2011, continuing until 11:00 P.M. Eastern Time, November 15, 2011.

Please do not wait until the last day or two of the sale to place your bids! Because many collectors wait until the final few days of the sale to place their bids, we anticipate the telephone and internet bidding to be very busy during that period, so please plan accordingly. In the event of a tie bid, the earliest received bid on the lot will take precedent. We would welcome your bids by phone so that we can answer any questions and assist you in your bidding.

You may also telephone us at any time during the auction, prior to the closing of the sale, to check the status of your bids, to find the current bidding level, to open a bid, or to raise a bid on an auction lot.

Bidding Increments are as follows:

Up to \$250.00.....	increments of \$10.00
\$250.00 - \$500.00.....	increments of \$25.00
\$500.00 - \$1,000.00.....	increments of \$50.00
\$1,000.00 - \$2,500.00.....	increments of \$100.00
\$2,500.00 - \$5,000.00.....	increments of \$250.00
\$5,000.00 - \$10,000.00.....	increments of \$500.00
\$10,000 & Up.....	increments of \$1,000.00

Bids submitted between the above increments, whether by mail, FAX, email or on-line via the internet, will automatically be lowered to the closest lower increment.

This is a minimum bid auction. Bids below the printed minimum will not be accepted.

An example of how our absentee bidding system works: You bid \$600.00 on a lot which is the highest bid received to date. The second highest bid is \$450.00. The current high bid level would be yours at \$475.00, one bid increment higher than the other collector's bid. Any additional bids submitted by others below \$600.00 will automatically be topped on your behalf by a representative of American Glass Gallery, up to your stipulated high bid amount. If no further bids on this lot are received beyond the \$450.00, and the under bidder has not requested a "Call Back", then you would have won the lot at \$475.00, not the \$600.00 that you were prepared to pay.

American Glass Gallery will at NO TIME disclose bids pledged by others; only the current "High Bid" level of a lot will be stated upon request. The highest bidder as determined by American Glass Gallery shall be the purchaser. It is the sole right of the auctioneer to settle any dispute between bidders and to regulate the bidding procedure. The auctioneer reserves the right to refuse any bid he believes not to have been made in good faith.

5. "Call Back" Process

If requested, the three top bidders of an item at the time of closing will be given a "Call Back" over the next number of days in order to resolve the final sale of an item. You can request this service by "checking" the appropriate box on your absentee bid form or verbal agreement by phone. It is the responsibility of the bidder to insure he has qualified for this service.

Please note: No "Call Backs" will be executed for bids under \$400.00. In the event of tie bids, the earliest bid received will be the winning bid.

An example of how the "Call Back" process works: As an example, you have bid \$600.00 on a particular lot. Another bidder has submitted a bid of \$900.00 on the same lot. Assuming that as of the auction closing date you are among the top three bidders on this lot and you have requested a "Call Back", you would receive a call informing you that you have been "Out Bid" and the current "High Bid" is now at \$650.00. If you choose to continue bidding on this lot, you may now do so. Assuming that you now increase your bid to \$700.00, we would accept your bid but also inform you that we have a higher bid on this lot and must bid \$750.00. At this time, an auction between you and American Glass Gallery, representing the collector who submitted the bid of \$900.00, takes place. This bidding would continue until you drop out, or top the other bidders high bid of \$900.00. If the other bidder has not requested a "Call Back" service, you would be awarded the lot. If however, the other bidder also requested a Call Back, we must now call them. If they elect to increase their bid over your high bid, we would in turn call you back. This back and fourth process would continue until one of the bidders declines to go any farther.

If you have requested a "Call Back", the auctioneers will need to contact you on the days immediately following the auction closing between the hours of 8 A.M. and 9 P.M. Eastern Time. Please supply us with all appropriate contact phone numbers including, home, mobile and work numbers. Bidders must provide the appropriate telephone numbers where they can be contacted. If you will be traveling or otherwise unavailable, bidders with "Call Back" privileges will have the responsibility to contact American Glass Gallery twice daily during the Call Back period.

Please note, every effort will be made to contact you during the "Call Back" period. However, the bidder will forfeit their rights to a "Call Back" if the auctioneers are unable to reach them. American Glass Gallery reserves the right to discontinue Call Backs on any item in the sale (2) two days after the closing date of the sale. At that time, the current "High Bidder" may be awarded the item even if Call Backs are still outstanding.

6. Terms

Successful Bidders, Prompt and full payment is due immediately upon receipt of our invoice. Absolutely no exceptions. Anyone failing to pay for items won will forfeit all rights to bid in any future American Glass Gallery sales. Any late or delayed payments may result in loss of return privileges for items purchased in the sale.

No Items Will Be Mailed Before Full Payment Is Received.

Buyer Premium: A 12% buyer's premium will be added to the hammer price (15% if paying by Credit Card or PayPal), to be paid by the buyer as part of the purchase price. For example, if you purchase a lot for \$100.00, you will receive an invoice for \$112.00 if paying by cash, check or money order, plus any applicable sales tax or shipping charges.

Taxes: If you are a Michigan resident, a 6% sales tax will be added to your bill unless you have a valid resale number registered with us.

Shipping: Shipping, handling and insurance are extra. We ship insured via U.S. Mail. These charges will be added to your bill unless the lots are picked up in person. Our charges for shipping (excluding foreign shipments and oversized lots) are \$18.00 for the first item, \$9.00 for each additional item together with extra insurance costs (we use current U.S. Postal Service insurance rates).

Please allow two to four weeks for delivery after receipt of your check.

Payment: American Glass Gallery accepts Cash, Money Orders, Personal Checks, Visa, MasterCard, American Express and PayPal. If paying by Credit Card or PayPal, an additional 3% will be added to the invoice total.



7. Refunds

Refunds will be given at the discretion of the Auctioneers. Items purchased must be examined and request for refund made immediately upon receipt of the item or items. Since opinions can differ, particularly in the matter of condition, the Auctioneers will be the sole judge in the consideration of refunds. Refunds requested on the grounds of authenticity must be made within 15 days of the date of the auction, and such refund requests must be accompanied by at least one supporting statement in writing from an authority recognized by the Auctioneers. It is the Auctioneers sincere intention to consider any reasonable request for a refund. *Absolutely no returns for any reason after 30 days of the closing of the sale.*

8. Bidding on any item indicates your acceptance of these terms.



John R. Pastor
P.O. Box 227
New Hudson, Michigan 48165
Phone: 248.486.0530
Fax: 248.486.0538
www.americanglassgallery.com
email: jpastor@americanglassgallery.com

PLEASE NOTE:

The lots offered in this printed catalog are identical to the lots offered in the on-line catalog. However, due to space constraints of the printed catalog, there may be some further information available regarding some of the lots in the on-line auction descriptions.

Please visit us at

www.americanglassgallery.com

and follow the link to the on-line auction.

The link and on-line auction will be available November 1, 2011.

A post-auction price list will be available on our website, in printable form, by November 30.

We encourage you to contact us by phone or email with any questions, for assistance with bidding, or further details or clarification on any of the lots in this sale. Your complete satisfaction and confidence is our goal!

We look forward to having you participate in our next sale, either as a buyer or a consignor. Our next absentee auction is scheduled for Spring 2012. We already have some wonderful items consigned to this sale and look forward to discussing with you any quality items you wish to consign!

THANK YOU AND GOOD LUCK WITH YOUR BIDS!

Reference Key

Reference initials and numbers used in the description of this catalog refer to the following publications:

AHG	<i>American Historical Glass</i> , Bessie M. Lindsey, 1967
AM	<i>The Decanter - An Illustrated History of Glass from 1650</i> , Andy McConnell, 2004
AP	<i>Glass in Early America</i> , Arlene Palmer, 1993.
BA1	<i>Collecting The Cures</i> , Bill Agee, 1969
BA2	<i>Collecting All Cures</i> , Bill Agee, 1973.
BB	<i>A Bit About Balsams</i> , Betty Blasi, 1974
BH	<i>Classification and Documentation of Sunburst and Similar Scent Bottles</i> , Bill Ham, AB&GC, 5/87
B/K	<i>The Glass Industry in Sandwich</i> , Raymond Barlow and Joan Kaiser, 1989.
C	<i>Ink Bottles and Inkwells</i> , William Covill, 1971.
DeG	<i>American Sarsaparilla Bottles</i> , John DeGrafft, 1980.
DeGII	<i>Supplement to American Sarsaparilla Bottles</i> , John DeGrafft, 2004.
DF	<i>Hair Raising Stories</i> , Don Fadely, 1992.
DM	<i>Wistarburgh, Window Tiles, Bottles and More</i> , Dale L. Murscell, 2007.
FB	<i>A.S.C.R. The wine bottles of All Souls College</i> , Oxford, 1750 – 1850, Fay Banks.
G	(Flasks) <i>American Bottles & Flasks and Their Ancestry</i> , McKearin & Wilson, 1978.
G	(Blown Three Mold) <i>American Glass</i> (Chapter VI), George S. and Helen McKearin, 1941.
GBH	<i>English Glass For The Collector, 1660-1860</i> , G. Bernard Hughes, 1958.
H	<i>American Bottles in the Charles B. Gardner Collection</i> , Norman C. Heckler, 1975.
JB	<i>Patent and Proprietary Medicine Bottles</i> , Joseph K. Baldwin, 1973
JEB	<i>Glasshouse Whimsies</i> , Joyce E. Blake, 1984.
JH	<i>Glasshouses & Glass Manufacturers of the Pittsburgh Region, 1795 – 1910</i> , Jay W. Hawkins, 2009.
JS	<i>In glas verpakt – European Bottles, Their history and production</i> , Johan Soetens, 2001.
K	<i>Poison Bottle Workbook</i> , Rudy Kuhn, 1988.
KW	<i>New England Glass & Glassmaking</i> , Kenneth M. Wilson, 1972.
L	<i>The Red Book of Fruit Jars, No. 9</i> , Douglas M Leybourne, Jr., 2001.
LI	<i>Pittsburgh Glass, 1797 – 1891</i> , Lowell Innes, 1976.
Mc	<i>Two Hundred Years of American Blown Glass</i> , Helen and George McKearin, 1950.
McK	<i>American Glass</i> , George S. and Helen McKearin, 1941.
MW	<i>American Bottles & Flasks and Their Ancestry</i> , McKearin & Wilson, 1978.
N	<i>Great American Pontiled Medicines</i> , Frederick Nielson, 1978.
NCH	<i>The Blaske Collection of American Flasks</i> , Norman C. Heckler, 1983.
NCH II	<i>The Blaske Collection: Part II</i> , Norman C. Heckler, 1983.
Odell I	<i>Indian Bottles and Brands</i> , John Odell, 1977
Odell II	<i>Pontiled Medicine Encyclopdia</i> , John Odell, 2000
O&S	<i>Warner's Reference Guide</i> , Ed Ojea and Jack Stecher, 1998.
P	<i>The Glass Gaffers of New Jersey</i> , Adeline Pepper, 1971.
RD	<i>Understanding Antique Wine Bottles</i> , Roger Dumbrell, 1983.
RF	<i>The Bottle Book: A Comprehensive Guide to Historic, Embossed Medicine Bottles</i> , Richard Fike, 1987
RH	<i>Collecting Barber Bottles</i> , Richard Holiner, 1986.
R/H	<i>Bitters Bottles</i> , Carlyn Ring and W. C. Ham, 1998.
RWL	<i>Antique Fakes & Reproductions</i> , Ruth Webb Lee, 1950
T	<i>Collectors Guide to Saratoga Type Mineral Water Bottles</i> , Donald Tucker, 2005.
U	<i>Collectible Character Bottles</i> , Authur Umberger, 1969.
V	<i>Nailsea Glass</i> , Keith Vincent, 1975
VdB	<i>Antique Glass Bottles; Their History and Evolution</i> , Willy Van den Bossche, 2001.
WL	<i>A Wine-Lover's Glasses, The A.C. Hubbard, Jr. Collection</i> , Ward Lloyd, 2000.
Z	<i>Ketchup, Pickles, Sauces</i> , Betty Zumwalt, 1980.
ZW	<i>Color Hutchinsons</i> , Zang Wood, 1999.

- The dash is generally used to indicate that the descriptions are on opposite sides of the bottle or flask.

/ The slash is used to indicate that the descriptions are on different lines or surfaces of the bottle.



Lot 10: Detail of Jenny Lind/Glasshouse Calabash Flask

Pitkins—Where Were They All Made?

One of the great debates among current glass scholars is where the classic “clockface” form Pitkin flasks originated (lots 47 and 48 in the current sale). Traditional thinking has generally viewed them as “Midwest.” However, there is little evidence to support this theory and growing evidence to suggest they were blown at glasshouses further east.

Amateur archeology excavations have taken place over the years at several locations of early Ohio glass factories including Portage County (home of the Kent and Mantua glasshouses), beginning as early as the 1920s with pioneer researcher Harry Hall White. To this point, they have failed to produce any evidence that this rather distinctive form of

Pitkin flask has been blown at any of these glasshouses. Zanesville cannot be ruled out, but it has not been a “source” of local finds for these flasks as one would suspect if they had indeed been blown there.

In addition, by the time the first fires were being drawn at Zanesville and many of the other Ohio glasshouses, Pitkin-type flasks were well on their way to extinction, being phased out by other types of flasks requiring less labor and being blown in full-size two piece molds.

Several earlier glasshouses residing east of Ohio seem, perhaps, to be a better fit for many of these flasks. A very interesting conversation took place in the late 1980s between noted glass collector James Megura (who at the

time was working as a glass consultant for Skinner Galleries) and renowned pioneer bottle collector and dealer, Sam Laidacker, that may hold a clue, at least as regards the classic “clockface” form Pitkin-type flasks.

In that phone conversation to Mr. Megura at the Skinner Galleries in Bolton, Massachusetts, Mr. Laidacker indicated that through the years he had collected perhaps 25 to 30 of these circular clockface Pitkin-type flasks, all being found in Pennsylvania. And, more specifically, virtually all had been found in the vicinity of Lancaster County, Pennsylvania. Mr. Laidacker had been actively collecting in the 1940s, ‘50s and ‘60s, locating bottles in small shops, homes and barns. It is notable from the

New England-Type Pitkin Flasks



standpoint that this was a time when very few people were collecting these types of things and prior to their being shuffled around the country.

Given the fact that Lancaster County is "Stiegel country," home of the famous Manheim glassworks (1765-1774), and if the old adage "the apple does not fall far from the tree" holds true, that would lend one to surmise that at least some of these flattened circular, or "clockface"-form Pitkin flasks may have actually been Stiegel products. While this is not evidence or proof, it is certainly an interesting theory. Stiegel was of Germanic origin, where the half-post production techniques were commonplace. It is also interesting to note these flasks were blown from a high-quality metal and exhibit characteristics

that parallel some of the fine glassware that Stiegel is known to have produced.

Regardless of origin, it is easy to see why these have always been, and continue to be, popular today with bottle collectors and aficionados of good early glass. For more information on Pitkin type flasks, see the informative article by Mike George, "Pickin' Pitkins!" in *Antique Bottle & Glass Collector*, April 2011.

Original
Gather

Second
"Half-Post"
Gather

Ribs
Swirled
Right &
Vertical



"Clockface" and
Midwestern-Type
Pitkin Flasks

Lot 48



Lot 47



Lot 50



Medicine and Bottle Related Paper Advertising

(Lots 228, 229 & 230)



WINDOW GLASS.

Gentlemen—
Our 3 Window Glass Factories are now at work
and we are turning out Glass. We should be glad to have
your orders and inquiries, which will have our prompt
attention and lowest rates.

Eckmaney Glass Mfg Co.
32 North 24th St.
Philadelphia, Feb. 28th, 1883.



The group shown here represents just a small sampling of the treasure trove of medicinal quackery, bitters, and bottle-related paper advertising included in Lots 228, 229 and 230. Many are very colorful with wonderful graphics and make interesting “go-withs” for any bottle collector. Please call or email for further information regarding what’s included in each of these three lots.





Lot 1

"General Washington" / Bust of Washington – Eagle Historical Flask, an early Pittsburgh district glasshouse, 1825 – 1830. Greenish aquamarine, sheared mouth – pontil scar, pint, virtually attic mint; (a tiny pinprick bit of roughness at edge of sheared mouth and only a slight wisp of high point wear, otherwise pristine perfect). GI-2. An exceptional example, crisp, bright, clean and with a very strong mold impression.

Est.: \$400 - \$600 • Min. bid: \$250



Lot 5

The Father of His Country" / Bust of Washington – "Gen. Taylor Never Surrenders" / Bust of Taylor Historical Flask, probably Dyottville Glass Works, Philadelphia, PA, 1845 – 1855. Clear medium green with a bit of teal, sheared mouth – blowpipe pontil scar, quart; (a tiny area of lip edge roughness and a 1/4" flake off the side of the mouth that may have occurred at manufacture and some very mild interior haze). GI-39. Nice color and a lot of bottle for the money!

Est.: \$225 - \$450 • Min. bid: \$150



Lot 2

"General Washington" / Bust of Washington – "E Pluribus Unum" / Eagle / "T.W.D. – Adams & Jefferson / July 4 A.D. 1776 – Kensington Glass / Works Philadelphia" Historical Flask, Kensington Glass Works, 1825 – 1835. Aqua, sheared mouth – pontil scar, pint, very near mint; (only a faint trace of wear and a slightly weakened impression in the upper shoulder as is often the case with this mold). GI-14. One of the most historic of the figured flask molds.

Est.: \$500 - \$800 • Min. bid: \$300



Lot 6

Washington – Taylor Historical Flask, probably Dyottville Glass Works, Philadelphia, PA, 1850 – 1860. Deep tobacco amber shading to black through the shoulders and lower portion of the body, applied round double collared mouth – iron pontil scar, pint, near mint; (some high point wear on the cheek of Taylor, otherwise perfect). GI-52. Provenance: Ex. Charles Vuono collection who purchased the flask from Peter Tillou in 1971 when he dispersed the Wettlaufer collection.

Est.: \$2,000 - \$4,000 • Min. bid: \$1,200



Lot 3

"Washington" / Bust of Washington – "Bridgeton" (star) "New Jersey" / Bust of Taylor Historical Flask, Bridgeton Glass Works, Bridgeton, New Jersey, 1836 – 1850. Greenish aquamarine, sheared mouth – pontil scar, pint, perfect. GI-24. A great example, clean, and with almost no high point wear and a good strong impression!

Est.: \$175 - \$350 • Min. bid: \$125



Lot 7

Washington – Taylor Historical Flask, probably Dyottville Glass Works, Philadelphia, PA, 1855 – 1860. Medium to deep emerald green, applied collared mouth with ring – smooth base, quart; (some moderate high point wear on busts of Washington and Taylor and a small, pinhead size bruise on the inside edge of the lip). GI-54. Deep, rich, gorgeous color that is stunning in daylight.

Est.: \$750 - \$1,500 • Min. bid: \$500



Lot 4

"Washington" / Bust of Washington – "Jackson" / Bust of Jackson Historical Flask, probably Keene Marlboro Street Glassworks, Keene, New Hampshire, 1825 – 1842. Yellowish golden amber, sheared mouth – pontil scar, pint; (two 1/8" flakes and a small bruise on top of the sheared mouth, some minor high point wear on the reverse). GI-31. A good early flask with a decent impression and nice color.

Est.: \$175 - \$275 • Min. bid: \$100



Lot 8

Washington – Taylor Historical Flask, Dyottville Glass Works, Philadelphia, PA, 1845 – 1855. Light to medium clear green, sheared mouth – blowpipe pontil scar, quart; (some light exterior wear, primarily on the Taylor side and an area of fine scratches, approx. 1 1/2" in length, to the left of the bust of Taylor). GI-54a. A rare, unlisted mold variant with only 3 buttons on Taylor's coat and no tie at collar. Nice color, also scarce with the pontil scarred base.

Est.: \$400 - \$800 • Min. bid: \$250



Lot 9

"Lafayette" / Bust of Lafayette / "Coventry / C-T" – Stars and Liberty Cap / "S & S" Historical Flask, Coventry Glass Works, Coventry, CT, 1825 – 1835. Yellowish olive amber, sheared mouth – pontil scar, half pint, very near mint; (a tiny sliver of roughness at the edge of the crudely sheared mouth, possibly occurred during manufacture and a slight touch of high point wear, otherwise perfect). GI-86. A bright, crude, seedy, bubbly example with a good impression.

Est.: \$800 - \$1,600 • Min. bid: \$500



Lot 10

"Jenny Lind" / Bust of Jenny Lind within Wreath – "Glass Works" / Glasshouse / "S. Huffsey" Historical Calabash Flask, probably Isabella Glass Works, Brooklyn, New Jersey, 1850 – 1860. Beautiful medium to deep blue green, applied sloping collared mouth with lower bevel – blowpipe pontil scar, quart, near attic mint; (just a slight touch of light high point wear, otherwise perfect). GI-99. Strong color, beautiful example, wonderful condition!

Est.: \$2,000 - \$4,000 • Min. bid: \$1,200



Lot 11

"Louis Kossuth" / Bust of Kossuth – Steam Frigate / "U.S. Steam Frigate / Mississippi / S. Huffsey" Historical Calabash Flask, probably a South Jersey glasshouse, 1850 – 1860. Aquamarine, applied sloping collared mouth – "PH. Doflein / Mould Maker / NTH 5! St 84" (on base), blowpipe pontil scar, quart, mint. GI-112. A scarce mold and certainly one of the most detailed and boldly embossed. Ex. FOHBC National Auction, August 7th, 1999.

Est.: \$225 - \$450 • Min. bid: \$125



Lot 12

Bust of Byron – Bust of Scott Portrait Flask, probably a Stoddard glasshouse, Stoddard, New Hampshire, 1842 – 1850. Light to medium olive amber, sheared mouth – pontil scar, half pint, near attic mint; (just a faint touch of very light high point wear, otherwise perfect). GI-114. A great example that passes plenty of light with ease.

Est.: \$200 - \$400 • Min. bid: \$125



Lot 13

Eagle – Cornucopia Historical Flask, an early Monongahela or Pittsburgh district glasshouse, 1825 – 1835. Aquamarine, sheared mouth – blowpipe pontil scar, half pint, near mint; (a couple of very small flakes or areas of roughness at edge of crudely sheared mouth, a 1/4" chip at base edge and just a touch of expected light high point wear). GI-16. A rare, early mold and a very bright, clean, crisp example with a strong impression!

Est.: \$250 - \$450 • Min. bid: \$150



Lot 14

Eagle – Eagle Historical Flask, probably Kentucky Glass Works, Louisville, Kentucky, 1850 – 1855. Strong bluish aquamarine, almost a blue green, sheared mouth – pontil scar, quart, virtually attic mint; (tiny, pin-prick nick at medial rib, otherwise pristine). GI-26. A big, gutsy flask, outstanding condition, strong color.

Est.: \$250 - \$500 • Min. bid: \$150



Lot 15

Eagle (in circular medallion) – Reverse Same Historical Flask, probably Kentucky Glass Works, 1850 – 1855. Light apple green, sheared mouth – pontil scar, half pint, perfect. GI-30. A bright, crisp little flask in a very rare mold and a very rare color to match! Note; for additional information, see Mark Vuono's article, "Louisville Sluggers", *Antique Bottle & Glass Collector*, 11/11. Mark aptly coined the GI-29 through GI-36 molds, "Pin-stripes". Ex. George Austin collection.

Est.: \$750 - \$1,500 • Min. bid: \$400



Lot 16

Eagle / "Louisville Ky / Glass Works" Historical Flask, Louisville Glassworks, Louisville, Kentucky, 1855 – 1865. Aquamarine, applied mouth with flat band – smooth base, pint, mint. GI-36. A fine example of this attractive, popular mold.

Est.: \$150 - \$250 • Min. bid: \$100

**Lot 17**

Eagle / "T.W.D" – Cornucopia – "E Pluribus Unum / One Of Many. – Kensington Glass / Works Philadelphia" Historical Flask, Kensington Glass Work, 1825 – 1838. Aquamarine, sheared mouth – blowpipe pontil scar, half pint, mint; (a slightly weakened impression, particularly in the shoulder area as is often the case with this mold, but no form of damage). GII-43. A scarce, early flask.

Est.: \$200 - \$400 • Min. bid: \$125

**Lot 21**

"Liberty" / Eagle – "Willington / Glass / Co / West Willington / Conn" Historical Flask, Willington Glass Works, 1860 – 1872. Medium yellowish olive, sheared mouth – smooth base, half pint, near mint; (some expected light exterior wear). GII-63. A nice example, a little lighter and more of a yellowish olive tone.

Est.: \$250 - \$450 • Min. bid: \$150

**Lot 18**

Eagle – Cluster of Grapes Historical Flask, Coffin & Hay Glass Manufactory, Hammonton, New Jersey, 1838 – 1847. Aquamarine, sheared mouth – blowpipe pontil scar, half pint, mint. GII-56. A rare mold and a very attractive little flask.

Est.: \$175 - \$350 • Min. bid: \$100

**Lot 22**

Eagle – Eagle Historical Flask, a Pittsburgh district glasshouse, Pittsburgh, Pennsylvania, 1855 – 1865. Brilliant yellowish citron coloration, crudely applied ring type collared mouth – smooth base, pint, virtually pristine; (just the slightest touch of high point wear, otherwise attic mint). GII-89. A beautiful, vibrant, striking color.

Est.: \$600 - \$1,200 • Min. bid: \$400

**Lot 19**

"Liberty" / Eagle – "Willington / Glass, Co / West Willington / Conn" Historical Flask, Willington Glass Works, 1860 – 1872. Clear medium olive, applied sloping collared mouth – smooth base, quart, near perfect; (some very faint high point wear, otherwise pristine). GII-61. Big, beautiful, bubbly, and with some attractive threads of glass swirling around the interior of the shoulder and side of the flask. Scarce with the tapered collared mouth.

Est.: \$800 - \$1,200 • Min. bid: \$500

**Lot 23**

Eagle / "Cunningham / & Co / Pittsburgh" – Eagle / "Glass / Manufacturers" Historical Flask, Cunningham & Company, Pittsburgh, 1860 – 1870. Aquamarine, applied collared mouth with flat band – smooth base, pint, perfect. GII-112. A comparatively scarce mold and a good example with plenty of bubbles and nice seedy glass.

Est.: \$100 - \$200 • Min. bid: \$70

**Lot 20**

"Liberty" / Eagle – "Willington / Glass / Co / West Willington / Conn" Historical Flask, Willington Glass Works, 1855 – 1860. Medium olive green, sheared mouth – blowpipe pontil scarred base, half pint, near mint; (two shallow open surface bubbles approximately 1/4" each, on reverse, one at base edge the other to the left of "C" in "Conn"). GII-63. A great example, very difficult to find with the pontil scarred base.

Est.: \$400 - \$600 • Min. bid: \$250

**Lot 24**

Eagle (in large circular slugplate) – Reverse Plain Historical Flask, America, 1875 – 1885. Pale greenish aquamarine, tooled round double collared mouth – smooth base, quart, attic mint. GII-135. A clean, sparkling example. Note; a very scarce flask included by McKearin in group "C" Rare Flasks (#25).

Est.: \$75 - \$150 • Min. bid: \$50



Lot 25

Cornucopia – Urn Pictorial Flask, New England, 1830 -1845. Bright medium blue green, sheared mouth – pontil scar, half pint, near attic mint; (a tiny, thin 1/8" open bubble near the side of the flask, otherwise pristine). Gill-7. A pretty little flask, good color, fine condition.

Est.: \$300 - \$500 • Min. bid: \$200



Lot 29

Cornucopia – Urn Pictorial Flask, Lancaster Glass Works, Lancaster, NY, 1849 – 1855. Aquamarine, sheared mouth – pontil scar, half pint; (just a wisp of very light residue or faint milkiness on the interior near the base, otherwise sparking mint). Gill-14a. A very scarce to rare mold. In addition, this flask would likely qualify as a "finest possible example", bright, clean, no high point wear and with a strong impression.

Est.: \$200 - \$400 • Min. bid: \$150



Lot 26

Cornucopia – Urn Pictorial Flask, a New England glasshouse, 1830 – 1845. Medium to deep olive green, sheared mouth – pontil scar, half pint; (some moderate scattered high point wear). Gill-8a. A somewhat scarce mold and a heavy, crude example with a pebbly surface.

Est.: \$100 - \$200 • Min. bid: \$60



Lot 30

Masonic Arch – Eagle / "KCCNC" Historical Flask, Keene Marlboro Street Glassworks, Keene, New Hampshire, 1820 – 1830. Bright yellowish olive amber, sheared mouth – pontil scar, pint, near mint; (a very minor 1/16" bruise on the inside edge of the mouth that may have occurred as the cork was pried out). GIV-18. Plenty of yellow tone in this one. In addition, great character as the glass is filled with tiny seed bubbles.

Est.: \$250 - \$450 • Min. bid: \$150



Lot 27

Cornucopia – Urn Pictorial Flask, an early Stoddard glasshouse, Stoddard, NH, 1842 – 1850. Bright yellowish olive amber, almost an olive yellow, sheared mouth – pontil scar, half pint; (just a touch of very minor high point wear, otherwise perfect). Gill-12. As indicated by McKearin, a comparatively scarce mold and in a lighter yellowish tone than most. Note; believed to be a Stoddard mold as numerous shards of this flask have been found at the site of the glassworks

Est.: \$200 - \$400 • Min. bid: \$125



Lot 31

Horse Pulling Cart – Eagle Historical Flask, Coventry Glass Works, Coventry, Connecticut, 1830 – 1849. Medium to deep yellowish olive, sheared mouth – pontil scar, pint, near mint; (some very minor expected high point wear). GV-9. A very nice clean example. These often have distracting exterior wear, this one is much better than most.

Est.: \$300 - \$500 • Min. bid: \$200



Lot 28

Cornucopia – Urn Pictorial Flask, Lancaster Glass Works, Lancaster, New York, 1849 – 1855. Medium to deep emerald green, sheared mouth – blowpipe pontil scar, half pint, near mint; (a small, 1/8" flake at the side of the mouth, otherwise excellent). Gill-14. Note; these little flasks often have high point wear. This example has just a wisp of what you would normally expect to fine. A beautiful, vibrant color in a deeper tone than most.

Est.: \$600 - \$900 • Min. bid: \$400



Lot 32

“Corn For The World” / Ear of Corn – “Baltimore” / Monument Historical Flask, Baltimore Glass Works, Baltimore, MD, 1855 – 1865. Apricot with a slight topaz tone, applied double collared mouth – smooth base, quart; (some high point wear and scattered light surface dullness and spotty interior stain). GVI-4. Scarce, beautiful color! About a half day in a tumbler would likely clean to near mint. Note; recently discovered in the woods near Bahama, North Carolina.

Est.: \$1,200 - \$1,800 • Min. bid: \$800



Lot 33

Sunburst Flask, probably Baltimore Glass Works, Baltimore, Maryland, 1820 – 1830. Pale greenish aquamarine, sheared mouth – pontil scar, pint, very near mint; (just a touch of expected light high point wear). GVIII-20. An early, scarce and attractive mold that is getting harder to find.

Est.: \$300 - \$500 • Min. bid: \$200



Lot 37

Prospector – Eagle / “Arsenal / Glass Works / Pitts. Pa” Historical Flask, Arsenal Glass Works, Pittsburgh, Pennsylvania, 1865 – 1868. Deep bluish aquamarine, applied collared mouth with band – smooth base, pint, attic mint. GXI-15. Quite a scarce mold in outstanding condition, with good depth of color, a whittled appearance, and crude pebbly glass.

Est.: \$200 - \$400 • Min. bid: \$150



Lot 34

Army Dragoon – Hound Pictorial Flask, probably Baltimore Glass Works, Baltimore, Maryland, 1855 – 1865. Light apple green, applied collared mouth with flat band – smooth base, quart, perfect. GXIII-16. A beautiful example of this scarce mold lacking the usual high point wear so often encountered on these flasks.

Est.: \$200 - \$400 • Min. bid: \$125



Lot 38

“For Pike’s Peak” / Prospector – Eagle / (rectangular block) “& Co” Historical Flask, probably a Pittsburgh district glasshouse, Pittsburgh, PA, 1860 – 1870. Aquamarine, applied collared mouth with flat band – smooth base, half pint, attic mint. GXI-38. McKearin indicates that this is a scarce mold. It has been our experience, and confirmed in discussions with other knowledgeable flask collectors, this is actually quite a rare mold! A clean, sparking example.

Est.: \$125 - \$250 • Min. bid: \$75



Lot 35

Horseman – Hound Pictorial Flask, Baltimore Glass Works, Baltimore, Maryland, 1860 – 1870. Bright golden shading to a light honey amber with a slight apricot tone, applied round double collared mouth – smooth base, pint, near mint; (some scattered light exterior wear). GXIII-17. A comparatively scarce mold, nice color, beautifully whittled.

Est.: \$500 - \$1,000 • Min. bid: \$300



Lot 39

“Union” / Clasped Hands – “Union” / Clasped Hands Historical Flask, probably a Midwest glasshouse, 1860 – 1870. Greenish aquamarine, applied collared mouth with flat band – smooth base, quart, about mint; (there is a small area of very minor roughness on the top edge of the mouth that was likely done in manufacture). GXII-37. A scarce flask included by McKearin in group “C” Rare Flasks (#22). Ex. Blaske collection.

Est.: \$150 - \$250 • Min. bid: \$100



Lot 36

Sheaf of Grain – “Westford Glass Co / Westford / Conn” Pictorial Flask, Westford Glass Works, Westford Connecticut, 1857 – 1873. Medium to deep tobacco amber, applied round double collared mouth – smooth base, half pint, mint. GXIII-37. An excellent example with strong embossing and devoid of the typical high point wear so often encountered on these flasks.

Est.: \$175 - \$275 • Min. bid: \$100



Lot 40

“Baltimore” / Anchor / “Glassworks” – Phoenix / “Resurgam” Pictorial Flask, Baltimore Glassworks, Baltimore, Maryland, 1855 – 1865. Aquamarine, applied collared mouth with ring – smooth base, pint, attic mint. GXIII-53. A crisp, bright sparkling example.

Est.: \$125 - \$250 • Min. bid: \$75

**Lot 41**

"Spring Garden" / Anchor / "Glassworks" – Log Cabin Pictorial Flask, Spring Garden Glassworks, Baltimore, Maryland, 1851 – 1856. Aquamarine, applied square collared mouth – smooth base, pint, very near mint; (a shallow 1/8 flake at base edge on reverse, otherwise perfect). GXIII-58. Another bright, sparkling example with strong embossing.

Est.: \$125 - \$250 • Min. bid: \$75

**Lot 45**

Pattern Molded Pocket Flask, 24 ribs swirled to the left, Midwest America, probably Zanesville Glass Works, Zanesville, Ohio, 1820 – 1835. Honey amber shading to a golden yellow coloration, flattened somewhat elliptical body, sheared mouth – pontil scar, ht. 5", near mint; (a touch of faint high point wear and the pattern fades in the lower portion of the body as is typical for these flasks, otherwise perfect). An attractive, light example

Est.: \$250 - \$400 • Min. bid: \$150

**Lot 42**

Wreath – (Reverse Plain) Pictorial Flask, America, 1875 – 1885. Bright yellow green, tooled, threaded, factory ground mouth – smooth base, pint, near mint; (1/8" paper thin bubble on the shoulder is missing the cover glass and a tiny bit of interior residue). GXIII-81. McKearin indicates this to be a "Comparatively scarce" mold. In addition, the flask is in a gorgeous, unlisted color. Note; faint debossing on threaded cap, "Medford Glass Works N Y / 58 / Murray / ST".

Est.: \$250 - \$500 • Min. bid: \$150

**Lot 46**

Pattern Molded Pocket Flask, 16 widely spaced vertical ribs, probably Continental, 1800 – 1830. Beautiful clear medium amethyst, flattened circular body rounding at base, sheared mouth – glass tipped punty scar, ht. 6 1/8", perfect. Similar to McK, plate 239, #1. A spectacular color, not too light, not too dark, beautiful in any light, early and in wonderful condition.

Est.: \$400 - \$800 • Min. bid: \$250

**Lot 43**

Pattern Molded Globular Bottle, 24 ribs swirled to the right, Midwest, probably Zanesville Glass Works, Zanesville, Ohio, 1820 – 1835. Brilliant golden yellow, classic globular form with near perfect symmetry, small tooled and outward folded mouth – pontil scar, ht. 8 1/4", near attic mint! A beautiful, exceptional example with near perfect form, outstanding color and condition. A good one!

Est.: \$800 - \$1,600 • Min. bid: \$500

**Lot 47**

Pitkin Type Flask, pattern molded with 36 vertical ribs over 36 ribs swirled to the left, possibly Midwest, 1790 – 1820. Brilliant light golden color, flattened circular or "clock-face" form, sheared mouth – blowpipe pontil scar, ht. 5 5/8", very near mint; (a tiny onion skin-thin flake on top of sheared mouth, otherwise perfect). MW, plate 88, #1. Exceptional, light, eye catching color for this mold, strong pattern, great condition.

Est.: \$800 - \$1,600 • Min. bid: \$500

**Lot 44**

Oversized Pattern Molded Globular Bottle, 24 ribs swirled to the right, Midwest, probably Zanesville Glass Works, 1820 – 1835. Brilliant light to medium golden, bulbous body is somewhat larger than normal and with good form, tooled and outward folded mouth – pontil scar, ht. 8 3/4"; (a 3/8" x 1/8" shallow open bubble and some light scratches, predominately in a quarter-size area, otherwise near mint). Nice color and scarce size!

Est.: \$600 - \$1,200 • Min. bid: \$400

**Lot 48**

Pitkin Type Flask, pattern molded with 36 vertical ribs over 36 ribs swirled to the left, possibly Midwest, 1790 – 1820. Rich medium to deep tobacco or "old amber", flattened circular or "clock-face" form, sheared mouth – blowpipe pontil scar, ht. 5 3/4", perfect. MW, color plate IV, #2. A classic example, good rich color, fine condition!

Est.: \$600 - \$1,200 • Min. bid: \$400



Lot 49

Pitkin Type Flask, pattern molded with 32 vertical ribs over 32 ribs swirled to the left, probably Mid-Atlantic, possibly Midwest, 1800 – 1830. Medium to deep sea green, large flattened pear-shaped body, sheared mouth – heavy blowpipe pontil scar, ht. 7 1/2"; (some light expected high point wear, otherwise perfect). A very large Pitkin type flask with great character and in a scarce color.

Est.: \$400 - \$800 • Min. bid: \$250



Lot 53

Pitkin Type Flask, pattern molded with 36 vertical ribs over 36 ribs swirled to the left, New England, 1783 – 1820. Medium olive with a slight amber tone shading to a rich, deep olive through the shoulders, flattened ovoid form, sheared mouth – pontil scar, ht. 6 7/8", perfect. A beautiful example of a classic New England type Pitkin flask. Note; this one is a little different in that the second (vertical) pattern ends only slightly above the mid body of the flask. Good form, condition and pattern.

Est.: \$600 - \$900 • Min. bid: \$400



Lot 50

Pitkin Type Flask, pattern molded with 30 vertical ribs over 30 ribs swirled to the right, probably Midwest, possibly Mid-Atlantic, 1800 – 1830. Brilliant yellowish green, almost a grass green, large flattened, slightly elliptical form body, sheared mouth – delicate blowpipe pontil scar, ht. 7", near mint; (some scattered light high point wear and a couple of thin, open surface bubbles). A beautiful, unusual and rare color.

Est.: \$750 - \$1,500 • Min. bid: \$400



Lot 54

Pitkin Type Flask, pattern molded with 36 ribs swirled to the left, New England, 1783 – 1820. Clear, delicate yellowish olive, almost an olive yellow, flattened ovoid form, sheared mouth – blowpipe pontil scar, ht. 6 3/8", perfect. A very pretty example, particularly stunning in natural daylight with great transparency and a wonderful, delicate color. In addition, the ribs are nice and tight all the way to the pontil.

Est.: \$600 - \$900 • Min. bid: \$400



Lot 51

Pitkin Type Flask, pattern molded with 32 vertical ribs over 32 ribs swirled to the right, probably New England, 1783 – 1820. Yellowish olive, flattened pear form, sheared mouth heavy blowpipe pontil scar, ht. 6 5/8"; (some very light expected usage wear, otherwise perfect). A pretty example with both the form and the color being a little different than typically encountered.

Est.: \$500 - \$800 • Min. bid: \$300



Lot 55

Poison Type Flask, possibly America, probably Germany, 1830 – 1860. Medium blue green, flattened pear form blown in a 2-piece mold with an overall hobnail pattern, sheared and tooled ring type collared mouth – pontil scar, half pint, ht. 5 5/8"; (some high point wear as is common for this mold and a little interior residue that would likely wash out). KU-26. This mold may be found in a nice array of colors and hues.

Est.: \$250 - \$450 • Min. bid: \$150



Lot 52

Diminutive Pitkin Type Flask, patterned with 36 faint vertical ribs over 36 ribs swirled to the left, New England, 1783 – 1820. Clear light to medium olive, squatty flattened ovoid form, sheared mouth – blowpipe pontil scar, ht. 4 3/4", near attic mint; (some faint exterior wear near the base, otherwise perfect). With chestnut-type flasks, less than 5" is considered "something special". This example is truly a little sweetheart!

Est.: \$1,000 - \$2,000 • Min. bid: \$700



Lot 56

Lot of (2) Diminutive Spirits Flasks, England or Continental, 1800 – 1830. Dense (black) and deep reddish amber, both with ribbons of opaque white enamel looped or "combed" through the body, sheared mouths – pontiled scarred bases, ht. both 3 3/4"; (a shallow open bubble and some high point wear on the flattened sides). VdB plate 226, #3; V, page 64. The reddish amber example is lovely in natural daylight and possibly of Hungarian origin.

Est.: \$225 - \$450 • Min. bid: \$150



Lot 57

Fancy Cut Overlay Flask, probably Continental, possibly America, 1840 – 1870. Cranberry cut to clear, flattened ovoid form with a diamond pattern intermixed with punties cut along the sides and around the shoulder, tooled ring type collared mouth – polished base, ht. 7 ¾", near mint; (some scattered minor high point wear). An interesting flask, great color. See BK, The Glass Industry in Sandwich, Vol.5, p.31 for an example of a plate with similar design and color.

Est.: \$200 - \$400 • Min. bid: \$150



Lot 58

Nailsea Type Flask, England, possibly a Stourbridge district glasshouse, 1830 – 1850. Opaque white with colorful red and blue loopings combed through the glass, large flattened ovoid form, sheared and fire polished mouth – ground pontil scarred base, ht. 8 ½", near mint; (some very light, age appropriate exterior wear, otherwise perfect). Similar to V, plate 65, #2. A little larger size than most and with an attractive color combination.

Est.: \$200 - \$400 • Min. bid: \$125



Lot 59

Nailsea Type Gemel Flask, England, 1830 – 1860. Colorless with pink and opaque white combed loopings, elongated ovoid form, sheared and fire polished mouths – pontil scarred base, ht. 10 ½", near mint; (a 1/8" open bubble and a touch of light surface wear). "Gemel" type bottles were popularized in the Nailsea region of England and essentially fused two separate bottles together creating two compartments, often for oil and vinegar. Ex. Blaskie collection, #532.

Est.: \$150 - \$250 • Min. bid: \$100



Lot 60

Freeblown Chestnut Flask, New England, 1783 – 1820. Yellowish olive amber though the body shading to a dense olive amber through the neck, larger chestnut form, applied sloping collared mouth – blowpipe pontil scar, ht. 9 1/8", very near mint; (some expected light usage wear, otherwise perfect). A scarce larger size, fine condition, beautiful example.

Est.: \$300 - \$500 • Min. bid: \$170



Lot 61

Freeblown Chestnut Flask, New England, 1783 – 1820. Beautiful pure olive green coloration, chestnut form, sheared mouth with an applied string lip – delicate blowpipe pontil scar, ht. 6 ¾"; (an extremely minor touch of light exterior wear near the base on the side, otherwise pristine perfect). A particularly delicate, beautiful example with plenty of tiny seed bubbles, great clarity and exceptional condition.

Est.: \$250 - \$450 • Min. bid: \$150



Lot 62

Freeblown Chestnut Flask, New England, 1783 – 1820. Light to medium olive yellow, chestnut form, applied ring type collared mouth – delicate blowpipe pontil scar, ht. 5 5/8"; (a touch of faint high point wear on the sides near the base, otherwise perfect). A classic early New England chestnut bottle. Note; there is an interesting vertical tooling line in the applied string lip.

Est.: \$250 - \$350 • Min. bid: \$150



Lot 63

Freeblown Chestnut Flask, New England, 1783 – 1820. Clear medium olive, chestnut form, sheared mouth with an applied ring type lip – blowpipe pontil scar, ht. 7 ¾", very near mint; (a slight amount of expected light exterior wear, otherwise perfect). Another fine example, bright, crude, and a little larger than average.

Est.: \$250 - \$450 • Min. bid: \$150



Lot 64

Freeblown Decanter or Table Serving Bottle, New England, 1800 – 1830. Bright yellow green with an olive tone shading to an olive yellow through the neck, plump chestnut body with straight sides tapering slightly to a cylindrical base, short applied sloping collar – delicate blowpipe pontil scar, ht. 9 ½", perfect! Very similar in form and size to Lot 50, AGG, Auction #7. A gorgeous bottle with swirls of glass draping around the shoulder and through the body.

Est.: \$1,000 - \$2,000 • Min. bid: \$600



Lot 65

Freeblown Chestnut Flask, probably Continental, possibly Belgium or Germany, 1740 – 1780. Yellowish olive, chestnut form, crudely sheared mouth with applied string (banded) lip – sand type pontil scar, ht. 8 3/8"; (some light exterior wear near the base and a couple of 1/8" flakes off the roughly sheared mouth). An interesting, heavy, early chestnut. Note; when held in reflected light, the bottle exhibits a slight turquoise cast caused by the presence of glass gall in the batch.

Est.: \$250 - \$500 • Min. bid: \$150



Lot 66

Freeblown "Bocksbeutel", Germany, 1830 – 1860. Deep amber, plump circular body with flattened base, sheared and tooled mouth with a crudely applied band – conical base with blowpipe pontil scar, ht. 6 3/8"; (some exterior wear and scratches, particularly on the flattened sides, the interior has an overall stain or residue, some of which would likely wash out). An early German Bocksbeutel probably from the Wurzburg area, likely used for Steinwein. Similar to VdB, plate 218.

Est.: \$100 - \$200 • Min. bid: \$60



Lot 67

Freeblown Transitional Globular Bottle, probably England, possibly America, 1800 – 1830. Medium to deep tobacco amber, squatty globular form transitioning into a mallet or beehive form, crudely applied round collared mouth – light sand type pontil scar, ht. 7 1/2"; (some light to moderate exterior wear and scratches, primarily around the mid-body and some interior residue that would likely wash out). A very interesting and unusual piece, heavy and with an "earthy" feel.

Est.: \$250 - \$500 • Min. bid: \$150



Lot 68

Freeblown Rolling Pin, England, probably Nailsea Glassworks, Somerset, 1830 – 1860. Dense olive amber, virtually black, with spatters of opaque white swirled throughout, splotches, tooled knopf ends, pontil scar, length, 13 1/2"; (some open surface bubbles and overall fine scratches and wear from usage). See Nailsea Glass, Keith Vincent, 1975, plate 62. A classic Nailsea glass pin with a heavy, earthy feel.

Est.: \$100 - \$200 • Min. bid: \$50



Lot 69

Freeblown Rolling Pin, America, probably a Pittsburgh district glasshouse, Pittsburgh, Pennsylvania, 1840 – 1860. Clear medium amber, plump form with tooled knopf ends, pontil scarred, length, 11 5/8", very near mint; (some scattered light exterior wear, otherwise perfect). Provenance, Ex. Dr. E. R. Eller collection, Pittsburgh. Published, Pittsburgh Glass, 1797 – 1891, Innes, p.84, pl. 25. A wonderful, early utilitarian object, likely blown for both decorative and functional purposes.

Est.: \$200 - \$400 • Min. bid: \$125



Lot 70

Miniature Freeblown Rolling Pin, New England, probably a Connecticut glasshouse, 1830 – 1860. Dense amber, virtually black with tooled knopf ends, pontil scarred, length, 5 1/8"; (some overall moderate exterior wear and scratches, two pinhead sized flakes). See: New England Glass & Glassmaking, Wilson, p. 121, Fig. 76. An extremely rare and important piece of early New England glass, probably made as a toy or gift for a member of the glassblower's family.

Est.: \$400 - \$800 • Min. bid: \$250



Lot 71

Miniature Freeblown Hat Whimsy (with period ball cover), probably an early Connecticut glasshouse, possibly Pitkin or Coventry glassworks, 1790 – 1830. Medium olive, likely blown from an unpatterned Pitkin-type inkwell or small utility mold and fashioned into a miniature hat with outward turned sides, tooled rim – blowpipe pontil scar, ht. 2", perfect. Ex. Phil Cortina; ex. Jeff Noordsy collections. Extremely rare. See, McK, plate 47, #8, for a similar example blown from a Pitkin inkwell mold.

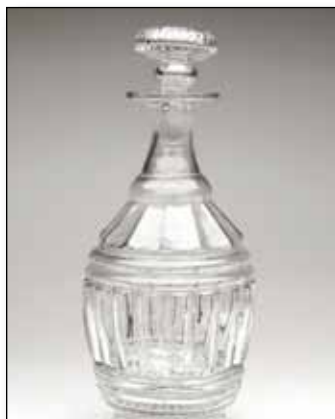
Est.: \$800 - \$1,600 • Min. bid: \$500



Lot 72

Important Handled Lilly-pad Vase, probably New York state, possibly Redford Glass Works, Redford, NY, 1832 – 1852. Deep aqua, bulbous body tapering to a wide cylindrical neck with flaring rim, applied solid ear type handles, body decorated with superimposed type I lilly-pads, applied crimped foot with blowpipe pontil scar, ht. 6 3/4"; (a 5/8" piece of glass is missing from one of the lilly-pad stems, otherwise perfect!) Ex. David L. Good, Ex. William Howe collection.

Est.: \$2,000 - \$4,000 • Min. bid: \$1,200



Lot 73

Blown Three Mold Decanter, probably Mount Vernon Glass Works, Vernon, NY, 1820 – 1840. Colorless, barrel form with wide vertical ribs and fluted shoulders, tooled wide flared mouth with correct period stopper (type 18), blown in a full size stopper mold – rayed base with pontil scar and some residual iron deposit in the center of base, ht. 10 ½" (including stopper), perfect. GI-29. A rare, desirable mold, crisp, bright, and in outstanding condition.

Est.: \$175 - \$350 • Min. bid: \$100



Lot 74

Blown Three Mold Dish, New England, 1820 – 1840. Colorless, geometric pattern with sunburst motif, flaring sides, form similar to McK D3, outward folded rim – rayed base with blowpipe pontil scar, ht. 1 ¾", rim diameter 5 7/8", perfect. Pattern similar to McK GIII-24. A very scarce three mold dish, wonderful condition

Est.: \$100 - \$200 • Min. bid: \$60



Lot 75

Early Blown Bowl, America, probably a Midwest glasshouse, 1820 – 1840. Light green non-lead "bottle glass", large circular form with wide flaring sides, outward folded, tooled hollow rim – blowpipe pontil scar, ht. 1 ¾", rim diameter 9 ½", base dia. 4 ¾", about perfect; (a tiny sandgrain on the inside surface of the base has a 1/16" line through it, very difficult to see and on the surface only). Very nice example of an early Midwest bowl.

Est.: \$300 - \$500 • Min. bid: \$175



Lot 76

Large Blown Bowl, mid-Atlantic or possibly early western PA, 1760 – 1810. Olive yellow non-lead "bottle glass", cylindrical form with flaring sides, outward folded, tooled hollow rim – blowpipe pontil scar, ht. 2 ¾", rim diameter 11 3/8", base dia. 6 ¼"; (several open surface bubbles on the interior and expected scattered usage ware, but no other form of damage). Rare size, great color, with a wonderful "earthy" feel. Ex. Stew Putney collection.

Est.: \$1,000 - \$2,000 • Min. bid: \$700



Lot 77

Early Dip Mold Utility or Blacking Bottle, New England, probably an early Connecticut glasshouse, 1785 – 1820. Clear medium olive green, cylindrical, dip mold with an offset neck, tooled and outward flared, sheared mouth – pontil scar, ht. 3 7/8", perfect. Similar to MW, pl. 75, #5. Nice seedy glass, beautiful. Note: there is an interesting debossed mark (square with angled corners), on the base, likely used as an identification mark by a particular glassblower.

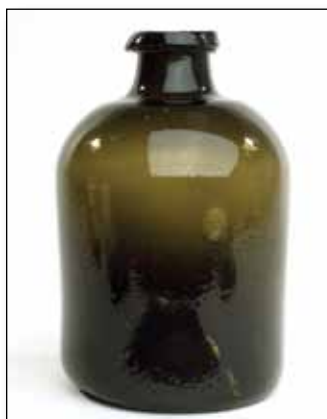
Est.: \$300 - \$500 • Min. bid: \$150



Lot 78

Early Utility or Storage Bottle, possibly America, probably Germany or Belgium, 1760 – 1790. Yellowish olive, cylindrical, freeblown, tooled, sheared and outward flared mouth – blowpipe pontil scar, ht. 7 7/8"; (areas of light exterior "bloom" or faint dullness and scattered light scratches and wear, some light interior residue that would likely wash out). A very early utility jar, nice size with an "earthy" feel that exudes age.

Est.: \$350 - \$700 • Min. bid: \$175



Lot 79

Early Wide Mouth Storage Jar, probably England, possibly America, 1790 – 1820. Bright medium to deep yellowish olive, squatty cylinder form, freeblown or possibly dip mold, sheared mouth with heavy applied rim – domed base with sand type pontil scar, ht. 8 ½", near mint; (several shallow open surface bubbles and some light exterior wear, otherwise perfect). Regardless of origin, an impressive jar with great form and plenty of eye appeal!

Est.: \$400 - \$800 • Min. bid: \$250



Lot 80

Early Snuff Jar (with partial contents and paper stopper), America, 1820 – 1840. Golden amber, square with beveled corners, probably blown in a dip mold, sheared and fire polished mouth – blowpipe pontil scar, ht. 4 ¼"; (some expected very light exterior wear, otherwise perfect). An interesting neat snuff jar. Provenance: Ex. Judge MacKenzie collection, lot 292

Est.: \$150 - \$300 • Min. bid: \$100



Lot 81

Early Dip Mold Snuff Bottle, New England, 1800 – 1830. Medium olive, square with wide beveled corners, rounded shoulders, sheared and slightly flared mouth – blowpipe pontil scar, ht. 4 1/2", near mint; (a few tiny, pin-point areas of roughness on the edge of the sheared mouth and some typical expected high point wear). A very nice example, plenty of tiny seed bubbles throughout. Interesting to note, there is an early Abraham & May sticker on the base.

Est.: \$200 - \$400 • Min. bid: \$125



Lot 82

Early Dip Mold Snuff Bottle, New England, 1785 – 1820. Deep olive with a very slight amber tone, square with rounded domed shoulders, sheared and fire polished wide mouth – blowpipe pontil scar, ht. 5 5/8"; (some light exterior wear and scratches and a very shallow, 1/8" flat flake near one base corner). Similar to MW, plate 75, #13. The neck and shoulders are a little misshapen and the jar has a very early "feel" about it.

Est.: \$400 - \$600 • Min. bid: \$250



Lot 83

Oversized Snuff or Utility Jar, probably Continental, 1820 – 1850. Clear medium yellowish olive, flattened octagonal form blown in a dip mold, shoulders bulging over wide flattened sides, wide neck and sheared mouth with applied ring type collar – crude early smooth base, ht. 9 7/8"; (some scattered light high point wear, otherwise perfect). See MW, plate 72, #1. Great color and impressive size, likely used for storing snuff.

Est.: \$225 - \$450 • Min. bid: \$150



Lot 84

"By / A.A. Cooley / Hartford / Con" Blacking Bottle, New England, probably Coventry Glass Works, Coventry, Connecticut, 1830 – 1845. Medium to deep olive, oval with conical shoulders, sheared mouth – blowpipe pontil scar, ht. 4 1/4", very near mint; (just a touch of light exterior wear). MW, plate 75, #2. A great example with nice character and a crude pebbly texture.

Est.: \$400 - \$600 • Min. bid: \$250



Lot 85

Labeled Elisha Waters Blacking Bottle, America, 1855 – 1865. Medium olive green, original outstanding graphic label depicts a "horse" race with men riding atop bottles of blacking with the "E. Waters" bottle leading the way. Label reads in part, "Liquid Mirror Blacking / Manufactured / only by / Elisha Waters / 271 / River St. Troy N.Y."; (label is 98% complete, and in overall excellent condition). From the same company as the famed E. Waters ink bottles.

Est.: \$1,500 - \$2,500 • Min. bid: \$800



Lot 86

"Farley's / Ink" Master Ink Bottle, blown at a Stoddard glasshouse, Stoddard, NH, 1842 – 1860. Brilliant yellowish golden, octagonal, tooled thin flanged lip – blowpipe pontil scar, ht. 3 1/2", sparking mint; (a tiny bit of faint interior residue near the base and two elongated bubbles on the reverse, one with a small crease or dimple in the cover glass, but no associated damage). C#528. A great example with strong embossing, nice clarity, and with a perfect flanged lip.

Est.: \$1,800 - \$2,800 • Min. bid: \$1,000



Lot 87

Umbrella Ink Bottle, America, 1840 – 1860. Bright light yellowish olive, 8-sided umbrella form, sheared and inward rolled lip – blowpipe pontil scar, 2 1/16" octagonal x 2 3/8" high, perfect. Note; slightly different measurements and base mold than those documented in the Covill book. A sparkling mint, beautiful, clean, attractive example.

Est.: \$250 - \$500 • Min. bid: \$180



Lot 88

"J.W. ELY / Cincinnati" Ink Bottle, America, 1845 – 1855. Medium to deep aquamarine, cylindrical, sheared and inward rolled mouth – blowpipe pontil scar, ht. 2 1/2", diameter 2", near mint; (the bottle has been professionally cleaned to original luster and near perfect condition). An unlisted and extremely rare ink! In addition, a great looking bottle with exceptionally bold embossing and nicely whittled, crude glass.

Est.: \$500 - \$1,000 • Min. bid: \$300



Lot 89

"Harrison's / Columbian / Ink" Bottle, America, 1845 – 1855. Aquamarine, octagonal with domed shoulders, sheared, tooled and inward rolled mouth – blowpipe pontil scar, 1 5/8" octagonal x 1 1/2" high, perfect. C#529. A crisp, clean, sparkling example.

Est.: \$150 - \$250 • Min. bid: \$100



Lot 93

Sunburst Scent Bottle, America, probably New England, 1815 – 1835. Brilliant sapphire blue, shield form with 12-ray sunburst pattern, center bead at convergence of rays and two vertical rows of 11 small beads along each of the side panel edges, sheared mouth – pontil scar, ht. 2 3/4"; (small flake off edge of rough pontil scarred base, otherwise perfect). MW, color plate IX, #2. These don't come around often. A rare little scent bottle, great color and condition.

Est.: \$400 - \$800 • Min. bid: \$250



Lot 90

"Harrison's / Columbian / Ink - Patent" Master Ink Bottle, America, 1845 – 1855. Aquamarine, 12-sided, large applied double collared mouth – delicate blowpipe pontil scar, ht. 7 1/2", virtually attic mint; (just a slight touch or wisp of interior milkiness, otherwise perfect). C#761. A great example, difficult to find in this unblemished, virtually pristine condition. In addition, nicely whittled, great character.

Est.: \$250 - \$450 • Min. bid: \$150



Lot 94

Pattern Molded Scent Bottle, probably America, 1770 – 1820. Scarce delicate pinkish tone, slender ovoid form pattern molded with 20 ribs swirled to the right, sheared mouth – pontil scar, ht. 2 7/8", near mint; (tiny, less than pinhead size bit of roughness on top of the sheared mouth and a touch of faint haze in the shoulder area). See MW, plate 103. An interesting patterned scent, not a strong color, but certainly different.

Est.: \$150 - \$300 • Min. bid: \$100



Lot 91

"Koken's / Radio / Rub / And / Scalp Massage / A Sage Compound / Treatment For / Scalp And Hair" Label Under Glass Commercial Barber Bottle, America, 1910 – 1920. Colorless, square with sides tapering inward to long neck, a spear-shaped recessed glass label with green lettering, yellow background and gold border, machined square collared mouth – **"Koken / St. Louis U.S.A."** (on base), ht. 7 5/8", virtually perfect. Fine, attractive label.

Est.: \$100 - \$150 • Min. bid: \$60



Lot 95

Cologne Bottle, probably blown at a South Boston glassworks, possibly Boston and Sandwich Glass Works, Sandwich, MA, 1855 – 1870. Delicate, fiery opalescent clam broth coloration, flattened octagonal form with corseted sides, tooled flanged mouth – smooth base, ht. 4 5/8", perfect. MW, pl. 113, #6. A beautiful, rare, delicate color that changes dramatically depending on the type of light and whether direct or indirect. Almost a fiery straw coloration under certain lighting conditions.

Est.: \$300 - \$600 • Min. bid: \$180



Lot 92

"Musk / Rose" Label Under Glass Cologne Bottle, (gilded gold letters on rose colored background), Whitall Tatum & Company, Millville, NJ, 1889 – 1900. Milkglass with fancy painted label, square, tooled square collared mouth with correct disc type ground stopper – **"PAT. APR 2 1889 / WT & CO"** (on base), ht. 7" (including stopper), near mint; (minor label separation). **"Lightner's / Perfumes / Musk Rose / Detroit"** on small label.

Est.: \$100 - \$200 • Min. bid: \$60



Lot 96

"Ricksecker / Sweet Clover / Cologne / NY." (gilded gold lettering), America, 1880 – 1900. Cased glass with red, yellow, white and soft blue green toned streaks of glass swirled to create a colorful "end of day" effect, cylindrical with small applied handles, sheared and polished mouth – polished pontil scarred base, ht. 8 1/2", near mint. A very colorful, attractive cologne bottle. This was likely a rather expensive bottle to produce.

Est.: \$100 - \$150 • Min. bid: \$60



Lot 97

Blown Cologne Bottle with Original Label, America, 1840 – 1860.

Medium amethyst with a plum tone, tall tapered cylinder form, tooled and outward flared mouth – pontil scarred base, ht. 11 1/2", perfect. Label is approximately 80% complete and reads, "Eau De Cologne" with image of a rose and vine; (label is somewhat darkened with age and has some staining). A gorgeous color, excellent condition.

Est.: \$225 - \$450 • Min. bid: \$125



Lot 101

Pickle Jar, a Stoddard glasshouse, probably New Granite Glass Works, Stoddard, NH, 1861 - 1871. Bubbly yellowish olive amber, octofoil or "cloverleaf" form, rolled ring type mouth – smooth base, ht. 7 7/8"; (a 3 1/2" vertical crack in one of the lobed corners). MW, plate 73, #2. Ex. George McKearin collection. Despite the damage, a gorgeous, beautiful, bubbly early jar and one of the most attractive examples that we have seen, filled with tiny bubbles.

Est.: \$100 - \$200 • Min. bid: \$50



Lot 98

Petal Jar, America, possibly a Pittsburgh district glasshouse, Pittsburgh, Pennsylvania. 1850 – 1860. Brilliant yellowish olive, cylindrical with 10 wide flutes or "petals" around the shoulder, large applied square collar with inner seat for a cork closure – red iron pontil scar, quart, very near mint; (shallow pinhead size surface bubble is missing the cover glass and some faint expected exterior wear, otherwise perfect). A beautiful example, light and bright.

Est.: \$1,000 - \$2,000 • Min. bid: \$600



Lot 102

Cathedral Pickle Jar, Willington Glassworks, West Willington, Connecticut, 1845 – 1860. Aquamarine, square with beveled corners and ornate arched gothic panels, sheared mouth with applied ring type lip – large sand type pontil scar, ht. 11", perfect. Z, p.456; similar to MW, plate 73, #4. This is the middle size of the three iconic pickle jars attributed to the Willington Glass Works having the characteristic and appealing chunky appearance.

Est.: \$800 - \$1,600 • Min. bid: \$500



Lot 99

Early Packer Jar (with 85% original label), French, 1890 – 1910. Cobalt, hexagonal with wide flat panels tapering outward from the shoulders toward the base, short neck with threaded, ground mouth and original fancy tin stamped lid with motif of fruit – smooth base, ht. 5 5/8", jar is mint; (some label loss and minor surface oxidation of tin lid). Label reads in part, "A. DUFOUR & Cie Bordeaux / France – Prunes". A beautiful, highly whittled jar. The stamped tin lid is wonderful.

Est.: \$100 - \$200 • Min. bid: \$50



Lot 103

Label Under Glass GAR Flask, America, 1890 – 1899. Clear, canteen form with excellent, colorful graphics, "Grand Army of the Republic / 1861 * Veteran * 1866", (within gold star), surrounded by a wreath and two American flags below an eagle perched above two cannon barrels and a third flag. "U.S." debossed and painted red on the reverse, smooth base, threaded and ground mouth with original metal closure. A choice example in outstanding condition.

Est.: \$400 - \$600 • Min. bid: \$250



Lot 100

"The / Leader" Fruit Jar, America, 1892 – 1900. Bubbly bright honey amber, cylindrical, ground lip, "Patd June 28 1892" (on glass lid), 2-pc wire clamp – "17" (on smooth base), quart, perfect. Red Book #1466. Excellent character for this jar, crude with loads of bubbles.

Est.: \$150 - \$250 • Min. bid: \$80



Lot 104

Figural Ceramic Whiskey Flask, America, 1895. Cream toned glaze, in the form of a Civil War drum with original front and back labels, "G*A*R / 29th Encampment / Louisville, Ky / September, 1895" – J. Kunz Jr. / Importer & Dealer In / Wines & Liquors / Old Homestead / Sour Mash" / (motif of Log Cabin) / "Whiskey / Louisville. Ky", (red and black merchant label is virtually perfect, the GAR label is somewhat faded). A scarce and historical flask.

Est.: \$125 - \$250 • Min. bid: \$70

**Lot 105**

"D.H. Goble" / (Standing Elephant) / "Columbia, S.C." Whiskey Flask, America, 1880 – 1890.

Aquamarine, strap-sided flask form, tooled small round double collared mouth – **"A C Co"** (on smooth base), pint, near attic mint; (some very faint light spotting or milkiness near the shoulder on the interior of the reverse, otherwise perfect!). An extremely rare South Carolina flask, strongly embossed, outstanding "picture", excellent condition!

Est.: \$800 - \$1,200 • Min. bid: \$500

**Lot 106**

"The / Rock Island Route / Great / Chicago & Omaha / Short Line" Whiskey Flask, America, 1890 – 1900.

Colorless, "Shoo Fly" form, tooled sloping collared mouth with lower bevel – smooth base, half pint; (lightly cleaned to original luster and near mint condition with a couple of light scratches remaining and a couple of very minor flakes at edge of base on reverse). Probably an advertising piece offered to passengers on the railroad. A very rare little flask.

Est.: \$300 - \$600 • Min. bid: \$200

**Lot 107**

"Brownsides Old Tom / London Cordial Gin – Gordon Fellows / & / McMillan – Nos 14 & 16 Beaver, St. / New York", America, 1860 – 1870. Brilliant yellowish olive, square with beveled corners, applied sloping collared mouth – smooth base, ht. 9 1/8", sparkling attic mint. A beautiful and extremely rare bottle and one of numerous medicinal gins (also schnapps and cordials), that blurred the lines between liquor and medicine.

Est.: \$750 - \$1,250 • Min. bid: \$500

**Lot 108**

"J. & R. Dunster / London" (with 85% original label), possibly Lindeborough glassworks, NH, 1865 – 1875. Deep golden with a slight reddish tone, square with beveled corners, applied sloping collared mouth – smooth base, ht. 9 5/8", near mint; (pin-prick flake at edge of mouth). A great example. Label is faded but mostly legible and reads in part, *"London Dock / Gin / Exported from London / Docks in the Wood and / bottled in America by /... C.A. Richards"*

Est.: \$150 - \$250 • Min. bid: \$80

**Lot 109**

"I X L / Valley / Whiskey – E & B. Bevan / Pittston / Pa." – (large star on each of 7 panels), America, 1850 – 1860.

Dense golden amber with a slight reddish tone, cylindrical pedestal type base flaring out to octagonal sides, applied double collared mouth – large iron pontil scar, ht. 7"; (tiny, less than a pinhead bit of roughness on the edge of the lip, otherwise pristine perfect!) A very unusual, rare and attractive whiskey. It would be hard to imagine a nicer example!

Est.: \$2,500 - \$4,500 • Min. bid: \$1,500

**Lot 110**

"Casper's Whiskey / Made By Honest / North / Carolina People", America, 1885 – 1900.

Brilliant medium cobalt blue, cylindrical with fluted shoulders, tooled sloping collared mouth with ring – smooth base, ht. 12 1/8", mint. Bright, clean and sparkling, a great example of this classic Americana whiskey bottle.

Est.: \$400 - \$600 • Min. bid: \$250

**Lot 111**

"Christ Jensln / Chicago" (on applied glass seal), Whiskey or Spirits Bottle, America, 1885 – 1895. Medium amber shading to deep amber near the base, cylindrical, turn mold construction, tooled sloping collared mouth with ring – smooth base, ht. 11 3/4", perfect. Note; some subtle, deeper toned striations swirl through the body. Unlisted in *"American Applied Glass Seal Bottles"*, Murschell, 1997. A very interesting bottle, likely quite rare as well.

Est.: \$75 - \$150 • Min. bid: \$50

**Lot 112**

Lady's Leg Whiskey or Bitters type Bottle, America, 1850 – 1860.

Bright yellowish olive, almost an olive yellow through the neck, cylindrical with a long "lady's leg" type neck, sheared, tooled mouth with an applied flat band – large iron pontil scar, ht. 11 7/8", near attic mint; (just a touch of expected light exterior wear and a tiny pin-point bit of roughness on the edge of the mouth, otherwise pristine). An attractive bottle, very pretty color, nice large iron pontil.

Est.: \$250 - \$450 • Min. bid: \$150

**Lot 113**

"Professor / Geo. J. Byrne / New York – The / Great / Universal / Compound / Stomach / Bitters / Patented / 1870 – DC / CC / LX / XM – U.S.A.", America, 1870 – 1875. Lemon yellow with a slight olive tone, square with roped corners and arched panels with sunburst motif, applied sloping collared mouth with ring – smooth base, ht. 10 3/4"; (2" crack starts at base and angles across the bottom corner of a side panel). R/H #B280. Stunning, exceptional color!

Est.: \$1,200 - \$2,400 • Min. bid: \$750

**Lot 117**

"S T / Drake's / 1860 / Plantation / X / Bitters – Patented / 1862", America, 1862 – 1875. Brilliant light golden or honey color, cabin form with 6 logs above the label panel, applied sloping collared mouth – smooth base, ht. 9 3/4", attic mint. R/H #D108. A very crisp, bright example, particularly crude with pebbly glass and with very strong embossing. A good one!

Est.: \$125 - \$225 • Min. bid: \$75

**Lot 114**

"S T / Drake's / 1860 / Plantation / X / Bitters – Patented / 1862", America, 1862 – 1875. Brilliant light golden with some yellow along the corners and a slight hint of olive in natural daylight, cabin form with 6 logs above label panel, applied sloping collared mouth – smooth base, ht. 9 3/4", sparkling mint. R/H #D108. A light, bright, crisp example that, in addition, has unusually strong embossing!

Est.: \$150 - \$250 • Min. bid: \$100

**Lot 118**

"S T / Drake's / 1860 / Plantation / X / Bitters – Patented / 1862", America, 1862 – 1875. Brilliant yellow coloration with a honey tone and slight hints of olive in natural daylight, cabin form with 6 logs above the label panel, applied sloping collared mouth – smooth base, ht. 9 7/8", perfect. R/H #D105. Outstanding condition, strongly embossed, beautiful color.

Est.: \$600 - \$1,200 • Min. bid: \$400

**Lot 115**

"S T / Drake's / 1860 / Plantation / X / Bitters – Patented / 1862", America, 1862 – 1875. Medium apricot amber, cabin form with 6 logs above the label panel, applied sloping collared mouth – smooth base, ht. 9 3/4"; (a little high point wear on the roof panels and a small dime-size area of fine scratches on one of the label panels, shallow pinhead flake on the lip edge). R/H #D105. Despite the noted wear, it is a great color and would be a beautiful addition to a color run.

Est.: \$200 - \$400 • Min. bid: \$125

**Lot 119**

Holtzermann's Stomach Bitters Sample Bottle, (with original label, partial contents), America, 1890 – 1900. Golden amber, rectangular cabin form, tooled sloping collared mouth – smooth base, ht. 4", perfect. R/H #H153 L. Label is approx. 80% complete and darkened from age. A scarce, attractive little cabin bitters, especially in this condition and with label. Label reads in part, *"The Greatest Appetizer In The World And a Sure Cure for Fever, Ague and Dyspepsia"*.

Est.: \$300 - \$500 • Min. bid: \$200

**Lot 116**

"S T / Drake's / 1860 / Plantation / X / Bitters – Patented / 1862", America, 1862 – 1875. Deep strawberry puce, cabin form with 6 logs above the label panel, applied sloping collared mouth – smooth base, ht. 9 7/8", near mint; (a shallow 3/16" flake at the lower edge of the applied collared mouth, otherwise pristine). R/H #D105. A bright, crisp, shiny example, nice color, and strong embossing.

Est.: \$150 - \$250 • Min. bid: \$100

**Lot 120**

"Buhrer's / Gentian Bitters – S. Buhrer / Proprietor", America, 1870 – 1880. Bright yellowish golden, square with indented panels and beveled corners, applied sloping collared mouth – smooth base, ht. 8 3/4", perfect. R/H #B252. Note; retains 75% of its original label that has darkened with age and has been covered with a shellac. Listed as "Rare", a very difficult mold to acquire and a great looking bottle, light, bright, and in outstanding condition.

Est.: \$150 - \$300 • Min. bid: \$100

**Lot 121**

"Dr. A. W. Coleman's – Anti Dyspeptic / And / Tonic Bitters", America, 1845 – 1855. Medium emerald, large rectangular "tombstone" form, beveled corners, applied sloping collared mouth – iron pontil scar, ht. 8 7/8"; (the bottle has been professionally cleaned but retains its fully-intact reddish iron pontil scar). R/H #C194. Note; in addition, there is a large "wing" type fold of glass on a side panel. A large, impressive pontiled bitters with great color!

Est.: \$2,000 - \$4,000 • Min. bid: \$1,200

**Lot 122**

"Dr. Ball's – Vegetable / Stomachic / Bitters – Northboro Mass.", America, 1845 – 1855. Aquamarine, rectangular with wide beveled corners – applied square collared mouth – blowpipe pontil scar, ht. 6 5/8", perfect. R/H #B14. A scarce pontiled bitters and a nice clean example with strong embossing. Ex. Judge MacKenzie collection.

Est.: \$225 - \$450 • Min. bid: \$125

**Lot 123**

"Dr. Stephen Jewett's – Celebrated Health / Restoring Bitters – Rindge, N.H.", America, 1845 – 1855. Aquamarine, rectangular with wide beveled corners, crudely applied square collared mouth – large iron pontil scar, ht. 7 1/8", near attic mint; (a couple of minuscule pin-prick areas of roughness on the edge of the mouth that you can feel, but are difficult to see). R/H #J37. A crisp, much better than average example, beautifully whittled, bright and sparkling.

Est.: \$250 - \$450 • Min. bid: \$150

**Lot 124**

"Indian Vegetable / And / Sarsaparilla – Bitters – Geo. C. Goodwin", America, 1845 – 1855. Aquamarine, rectangular with beveled corners, applied sloping collared mouth with lower bevel – blowpipe pontil scar, ht. 8 1/4", attic mint. R/H #I-25. Ex. Bill Agee collection. Bright, heavily whittled, sparkling glass, pristine. It would be hard to imagine a nicer example.

Est.: \$400 - \$800 • Min. bid: \$250

**Lot 125**

"C.H. Swain's – Bourbon – Bitters", America, 1865 – 1870. Beautiful olive yellow, square with slightly tapering sides and beveled corners, applied sloping collared mouth – smooth base, ht. 9 1/4" width 2 3/4" (at shoulder) x 2 1/2" (at base), virtually attic mint; (a little disturbance on the cover glass of a 1/8" narrow bubble on the shoulder, otherwise pristine). R/H #S227. Gorgeous color and a very rare bitters from Chicago. Ex. Chris Batdorff collection.

Est.: \$750 - \$1,250 • Min. bid: \$400

**Lot 126**

"Dr. Birmingham's / Anti Billious / Blood Purifying / Bitters", America, 1852 – 1860. Blue green approaching an emerald coloration, cylindrical with twelve indented panels, applied square collared mouth – iron pontil scar, 8 3/4"; (an oval crack, 1 1/2" x 3/4", on the reverse shoulder with two 1 1/2" cracks extending from it, a 3/8" shallow open bubble near the base). R/H #B101. Extremely rare with the iron pontil. The noted crack is on the reverse and the bottle displays near mint!

Est.: \$300 - \$600 • Min. bid: \$175

**Lot 127**

"Dr. J. Hostetter's / Stomach Bitters", William McCully & Co., Pittsburgh, Pennsylvania, 1865 – 1875. Brilliant citron with plenty of yellow, square with beveled corners, crudely applied sloping collared mouth – "W. Mc C & Co / G", on smooth base, ht. 9 1/8" x 2 1/2" wide; (professionally cleaned). R/H #H195. Unusual base marking with the "G" in the center. Yes, it's been cleaned, as most examples have, but what a color!

Est.: \$200 - \$400 • Min. bid: \$125

**Lot 128**

"Hibernia / Bitters", America, 1885 – 1890. Medium golden amber, square with beveled corners, applied sloping collared mouth with ring – smooth base, ht. 9 3/4", sparking attic mint. R/H #112. A very scarce bitters from San Francisco, outstanding condition, very nice with the applied top.

Est.: \$200 - \$400 • Min. bid: \$125



Lot 129

"Dr C.W. Robacks / Stomach Bitters / Cincinnati, O", America, 1865 – 1875. Medium golden amber, barrel form, applied sloping collared mouth – smooth base, ht. 9 1/4", very near mint; (just a minor touch of expected exterior wear and a barely pinhead size area of abrasion on a lower ring on the reverse). R/H #R74. A good, bright, clean example.

Est.: \$175 - \$350 • Min. bid: \$100



Lot 133

"Brown's / Celebrated / Indian Herb Bitters – Patented / 1867", America, 1867 – 1880. Medium golden shading in areas to a lighter honey amber, figural Indian maiden, sheared, inward rolled lip – smooth base, ht. 12 1/8"; (a small paper-thin open bubble on the shoulder and a couple of small flakes and some roughness along the top and inner edge of the mouth. Retains a period cork and the rolled lip may have been incomplete or missing from the factory). R/H #B223.

Est.: \$500 - \$700 • Min. bid: \$350



Lot 130

"Greeley's Bourbon / Bitters", America, 1860 – 1875. Medium to deep copper with a slight pinkish tone in natural daylight, barrel form, applied square collared mouth – smooth base, ht. 9 1/8"; (a couple of very small paper-thin open surface bubbles on one ring on the reverse and some expected light exterior wear, otherwise mint). R/H #G101. A good clean, sparkling example, great color, beautiful in natural daylight.

Est.: \$400 - \$800 • Min. bid: \$250



Lot 134

"Reed's / Bitters – Reed's / Bitters", America, 1865 – 1875. Bright yellowish golden with an orange tone through the shoulders, cylindrical with an elongated "lady's-leg" neck, applied sloping collared mouth with ring – smooth base, ht. 12 5/8", mint. R/H #R28. A great example of this scarce bitters, bright, clean and in excellent condition.

Est.: \$225 - \$450 • Min. bid: \$150



Lot 131

"Greeley's Bourbon / Bitters", America, 1860 – 1875. Medium copper with an apricot tone, barrel form, applied square collared mouth – smooth base, ht. 9 1/4", near attic mint; (tiny 1/8" area of very minor roughness on the edge of the square collar, otherwise perfect). R/H #G101. An attractive color in a lighter tone that passes light with ease.

Est.: \$400 - \$800 • Min. bid: \$250



Lot 135

"Webbs / Old Rye Bitters – Jackson. Mich.", America, 1865 – 1875. Deep golden amber, square with beveled corners, applied sloping collared mouth – smooth base, ht. 8 7/8", very near mint; (a very minor pinhead sized nick or surface abrasion on the lower portion of a side panel, otherwise about perfect). R/H #W61. A very rare bitters, particularly so in this un-dug, clean, virtually attic mint condition.

Est.: \$400 - \$800 • Min. bid: \$250



Lot 132

"Old Sachem / Bitters / And / Wigwam Tonic", America, 1860 – 1870. Medium golden amber, barrel form, applied square collared mouth – smooth base, ht. 9 5/8"; (a couple of small pinhead areas of abrasion on the lower rings on the reverse and a tiny bit of faint dullness or exterior wear). R/H #O46. A nice example of this classic barrel, every collector should have one!

Est.: \$300 - \$500 • Min. bid: \$200



Lot 136

"Colburg / Stomach Bitters / For / Liver Stomach & Bowles – Genuine German / Style Cathartic / And Blood Purifier", America, 1885 – 1895. Bright orange amber, square slightly tapered gin form, tooled sloping collared mouth with lower bevel – smooth base, ht. 10"; (professionally cleaned with a couple of areas of light abrasion remaining and some light scratches and stain on interior of shoulder). R/H #C188. A very rare bitters from Pittsburgh.

Est.: \$175 - \$350 • Min. bid: \$100



Lot 137

"Warner's / Safe / Tonic" / (motif of safe) / "Rochester N.Y." (all within slugplate), America, 1883 – 1886. Golden amber, oval, applied double collared mouth – smooth base, pint, ht. 9 5/8"; (a little scattered minor light wear and a tiny, shallow pinhead nick on the back label panel). O&S #5. A scarce mold, fine condition, bright and clean!

Est.: \$500 - \$700 • Min. bid: \$300



Lot 141

"Dr Townsend's – Sarsaparilla – Albany / N Y", America, 1845 – 1855. Medium yellow olive, square with beveled corners, applied sloping collared mouth – sand type pontil scar, ht. 9 5/8"; (just a touch of expected very light high point wear, otherwise absolutely perfect). DeG #206. A much better than average example of this mold and color. A little lighter than normal, pretty color, crude glass, a good one!

Est.: \$225 - \$450 • Min. bid: \$150



Lot 138

"Dr Townsend's – Aromatic – Holland / Tonic", America, 1865 – 1875. Medium amber, square with beveled corners, applied sloping collared mouth – smooth base, 9"; (some light expected exterior wear and a little interior dirt or residue, some of which would likely wash out, otherwise bright, clean and near mint). A very rare Townsend's mold and one that should appeal to the "tonic" collectors as well.

Est.: \$250 - \$450 • Min. bid: \$150



Lot 142

"Dr Townsend's – Sarsaparilla – Albany / N Y", America, 1850 – 1860. Medium to deep blue green, square with beveled corners, applied sloping collared mouth – heavy iron pontil scar, ht. 9 1/2", near attic mint. DeG #206. An exceptional example, the highly whittled glass creates a shimmering appearance, in addition, outstanding color and clarity. This one does stand out in a crowd! If you have been waiting for a "special" example, this one might be it.

Est.: \$600 - \$900 • Min. bid: \$350



Lot 139

"Old Dr / J. Townsends – Sarsaparilla – New York", America, 1880 – 1890. Brilliant yellowish lime green, square with beveled corners – tooled sloping collared mouth – smooth base, ht. 10 1/4", pristine perfect. DeG #206. Remnants of an early hard written label remain on the side of bottle. A beautiful, splashy color and one that is not easy to find anymore in this "out of the mold", pristine condition.

Est.: \$175 - \$350 • Min. bid: \$100



Lot 143

"Dr. Stocker,s – Sarsaparilla", America, 1845 – 1855. Very pale greenish vaseline tone, almost colorless, square with beveled corners, applied sloping collared mouth – blowpipe pontil scar, ht. 9 5/8", virtually attic mint; (a small 1/4" x 3/8", "U" shaped annealing line on the surface of the base, it is superficial and not of consequence). DeGill, p49. Ex. James Hagenbuch, ex. Tom Eccles collections. Extremely rare, - one of only two known examples

Est.: \$1,400 - \$2,400 • Min. bid: \$800



Lot 140

"Dr Townsend's – Sarsaparilla – Albany / N.Y.", America, 1875 – 1885. Bright yellowish lime green, square with narrow beveled corners, applied sloping collared mouth – smooth base, ht. 9 5/8", near attic mint; (tiny pinhead size nick at panel edge and some faint exterior high point wear, otherwise, perfect). DeG #206. Beautiful example and big splash of color, this one having a "chunky" form and with the earlier applied mouth.

Est.: \$200 - \$400 • Min. bid: \$125



Lot 144

"Scott & Stewart – United States / Syrup – New York", America, 1850 – 1860. Ice blue, large rectangular form with beveled corners, applied sloping collared mouth – large oval iron pontil scar, ht. 9 3/8", attic mint! N #557; Odell, page 243. A great pontiled medicine with an impressive size, great name, and reportedly only one of two examples known in the ice blue tone.

Est.: \$2,500 - \$4,500 • Min. bid: \$1,500

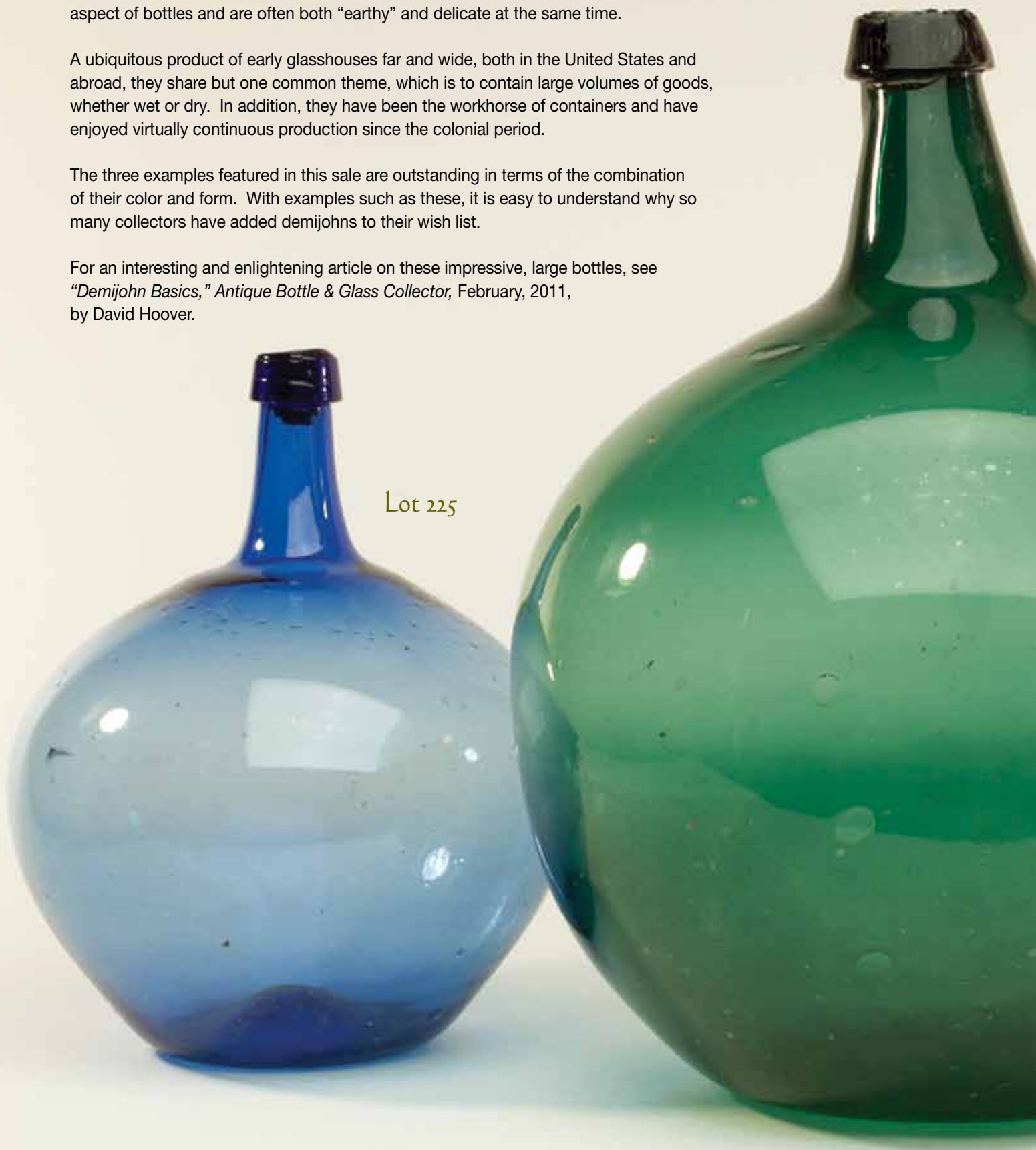
Demijohns, the “giants” of the hobby, are as impressive for their vast array of colors and forms as they are for their great size and stature. It is little wonder why they are so coveted by today’s collectors. They exemplify the utilitarian aspect of bottles and are often both “earthy” and delicate at the same time.

A ubiquitous product of early glasshouses far and wide, both in the United States and abroad, they share but one common theme, which is to contain large volumes of goods, whether wet or dry. In addition, they have been the workhorse of containers and have enjoyed virtually continuous production since the colonial period.

The three examples featured in this sale are outstanding in terms of the combination of their color and form. With examples such as these, it is easy to understand why so many collectors have added demijohns to their wish list.

For an interesting and enlightening article on these impressive, large bottles, see “Demijohn Basics,” *Antique Bottle & Glass Collector*, February, 2011, by David Hoover.

Lot 225



Rare & Choice . . .

Demijohns

Lot 227



Lot 226



**Lot 145**

"Le Doyen's / Disinfecting Fluid – By / T. Ripley Hawley / Boston – Patented Dec / 1847", America, 1847 – 1855. Aquamarine, square with beveled corners, applied sloping double collared mouth – blowpipe pontil scar, ht. 9 1/2", perfect. Extremely rare / unlisted. To our knowledge, there is only one other example, believed to be in a different size. This example is similar in size and appearance to a Dr. Townsend's. A great pontiled medicine, nicely whittled, possibly unique.

Est.: \$1,200 - \$2,200 • Min. bid: \$800

**Lot 146**

"Morse's / Celebrated Syrup / Prov. R.I.", America, 1850 – 1860. Medium green approaching an emerald coloration, oval, applied sloping collared mouth – blowpipe pontil scar, ht. 9 3/8"; (professionally cleaned to original luster with a couple of small spots of exterior wear, otherwise near mint). N #459. A big, beautiful, impressive pontiled medicine, nicely whittled and very rare in this pleasing color.

Est.: \$2,000 - \$4,000 • Min. bid: \$1,200

**Lot 147**

"Skerrett's Oil / B. Wheeler. / W. Henrietta / Mon. Co. N.Y.", America, probably Lockport Glass Works, Lockport, NY, 1843 – 1855. Deep Lockport blue green, cylindrical, applied sloping collared mouth – heavy blowpipe pontil scar, ht. 6"; (some minor exterior wear and light scratches, most of which are not terribly noticeable). N #586, Odell, p.220. A rare pontiled medicine, attractive, with strong embossing and in a deeper more vibrant color than most.

Est.: \$1,400 - \$2,200 • Min. bid: \$1,000

**Lot 148**

"Sweet's Blk Oil – Rochester, N.Y.", America, possibly Lockport Glass Works, Lockport, NY, 1845 – 1860. Deep blue green with an emerald tone, rectangular with beveled corners, applied sloping collared mouth – blowpipe pontil scar, ht. 5 7/8", near attic mint; (minor area of very fine lip edge roughness, otherwise sparkling mint). Odell, p.233. A very rare bottle, unusual to find in this nice condition. Advertised for horses and cattle.

Est.: \$1,600 - \$2,400 • Min. bid: \$1,200

**Lot 149**

"D R" (near base on front panel), America, possibly a Mid-Atlantic or Baltimore area glasshouse, 1830 – 1845. Bright yellowish tobacco or "old" amber, rectangular with wide beveled corners, sheared mouth with applied, tooled string lip – solid glass tipped pontil scar, ht. 6 1/8", virtually pristine perfect; (tiny, paper-thin open bubble at base corner). Bubbly, beautiful, extremely rare, possibly unique. Ex. Sam Greer collection #62.

Est.: \$750 - \$1,250 • Min. bid: \$400

**Lot 150**

Lot of (2) Embossed Measurement Medicine Bottles, "1-2-3-4-5-6" and, "I-II-III-III-V-VI", England, 1840 – 1855. Light yellowish olive and apple green, both octagonal with applied sloping double collared mouths – light sand type pontil scars, ht. 6 1/8"; (example with roman numerals has a tiny bit of light haze near shoulder, otherwise both are perfect!) Numbered example is Ex. Greer collection #1333. Certainly one of the most interesting Lots in the sale. Both are extremely rare!

Est.: \$250 - \$500 • Min. bid: \$150

**Lot 151**

"S.M. Kier – Petroleum – Pittsburgh Pa" (with 90% original label), probably a Pittsburgh District glasshouse, 1850 – 1860. Deep cornflower blue, almost a light sapphire, rectangular with beveled corners and indented panels, applied sloping collared mouth – blowpipe pontil scar, ht. 6 1/4", the bottle is attic mint! (label is darkened and has a couple of tears). N #365, Odell, p.139. This bottle has "real color", and what a beautiful color it is! Extremely rare.

Est.: \$1,600 - \$2,600 • Min. bid: \$1,000

**Lot 152**

"S.M. Kier – Petroleum – Pittsburgh Pa", probably a Pittsburgh District glasshouse, 1850 – 1860. Aquamarine, rectangular with beveled corners and indented panels, applied sloping collared mouth – blowpipe pontil scar, ht. 6 5/8", sparkling mint. N #365, Odell, p.139. Purported to cure blindness and "procured from a well in Allegheny County, PA." A beautiful example, whittled, crude, bright, perfect. It would be hard to imagine a nicer one!

Est.: \$125 - \$225 • Min. bid: \$75

**Lot 153**

"Doct. Curtis' – Inhaling / Hygean Vapor – New York", America, 1850 – 1860. Nearly colorless with a pale straw tint, rectangular with beveled corners and three indented panels, applied round double collared mouth – blowpipe pontil scar, ht. 7 1/4"; (the bottle may have been lightly cleaned but certainly presents itself as virtually attic mint). N #147; Odell, page 63. The nearly colorless tint is quite attractive, a great looking bottle, strongly embossed.

Est.: \$150 - \$250 • Min. bid: \$90

**Lot 154**

"Doct. Curtis' - Cherry Syrup – New York", America, 1850 – 1860. Nearly colorless with a faint amethyst tint, rectangular with beveled corners and three indented panels, applied round double collared mouth – blowpipe pontil scar, ht. 7 3/8", near mint; (just the slightest cast of haze or film, primarily in the shoulder area, the bottle displays as virtually perfect). N #149; Odell, page 63. A beautiful example, nice character, very attractive with the pale amethyst tint.

Est.: \$150 - \$250 • Min. bid: \$90

**Lot 155**

"German – Magnetic / Liniment / Made By – A.C.Grant – Albany / New York", America, 1845 – 1855. Aquamarine, rectangular with beveled corners, sheared and inward rolled lip – blowpipe pontil scar, ht. 4 7/8", perfect. N #243; Odell, page 99. A scarce pontiled medicine, strongly embossed, wonderful condition.

Est.: \$175 - \$350 • Min. bid: \$100

**Lot 156**

"Dr. Owen's / London. Horse / Linament – Clarkston – Michigan", America, 1847 – 1855. Brilliant deep aqua, rectangular with beveled corners, applied round double collared mouth – blowpipe pontil scar, ht. 5 1/4", pristine perfect. N #481, Greer #1358. A crisp, bright example with whittled wavy glass. Although scarce, this is the third example we have had the privilege of selling. It may be a while before another example becomes available, especially this nice.

Est.: \$300 - \$500 • Min. bid: \$200

**Lot 157**

"Clum's – German / Cholagogue – Troy N. Y.", America, 1845 – 1855. Aquamarine, rectangular with beveled corners, applied sloping collared mouth – blowpipe pontil scar, ht. 7 3/8"; (some very light exterior wear and a little spotty faint haze or dullness as the bottle appears that it may have been dug). N #130; Odell, p.54. Ex. Sam Green collection, #392. An exceeding rare pontiled medicine with only one or two examples known.

Est.: \$175 - \$350 • Min. bid: \$100

**Lot 158**

"G.W. Merchant ' Lockport / N.Y.", probably Lockport Glassworks, Lockport, New York, 1845 – 1855. Aquamarine, rectangular with narrow beveled corners, applied sloping collared mouth – blowpipe pontil scar, ht. 4 7/8", very near mint; (a touch of faint haze or residue on the interior that would likely wash out and a tiny nick on the underside of the applied collar on the reverse). A better than average example of this popular early medicine.

Est.: \$150 - \$300 • Min. bid: \$100

**Lot 159**

"Beekman's – Pulmonic – Syrup – New York", New England, 1840 – 1850. Medium yellowish olive, octagonal, applied sloping collared mouth with lower bevel – sand type pontil scar, ht. 7 1/8"; (a 3/16" flake at panel edge, a minuscule pinhead nick on underside of collar and a light superficial scratch and exterior wear). N #45, Odell, p. 22. A very rare bottle, nice "see through" color, and the noted condition issues are fairly minor as the bottle displays near mint!

Est.: \$3,000 - \$6,000 • Min. bid: \$2,000

**Lot 160**

"The / Indians / Panacea", America, 1837 – 1849. Clear medium olive, cylindrical, applied sloping collared mouth with lower bevel – light sand type pontil scar, ht. 8 1/4", sparkling attic mint. N #324, Odell, p.125. An absolutely gorgeous example, pristine, with great character and having a thin amber striation from the back of the neck down through the shoulder. It would be hard to imagine a nicer one! Extremely rare. Ex. Roger Long collection.

Est.: \$6,000 - \$12,000 • Min. bid: \$3,500

**Lot 161**

"Barrell's – INDIAN – Liniment", America, 1840 – 1855. Aquamarine, rectangular with indented panels and beveled corners, tooled thin flanged lip – blowpipe pontil scar, ht. 4 ½", pristine perfect. A very rare mold and a spectacular example having a perfect, almost paper-thin flanged lip, bright, clean, nice. N #39, Odell, p.17. Possibly a Zanesville, Ohio bottle. Provenance: Ex. Sam Green collection, #201.

Est.: \$225 - \$450 • Min. bid: \$125

**Lot 165**

"Kickapoo – Indian Sagwa" (with 85% original label), America, 1885 – 1895. Aqua, rectangular with beveled corners, tooled square collared mouth – smooth base, ht. 8 ½"; (a small pinhead bit of roughness on edge of mouth, otherwise bottle is perfect; label has some tears and has been partially reattached and coated with a clear sealer). A very colorful label with a large standing Indian on the front and a list of ailments cured along with directions on the back. Outstanding graphics.

Est.: \$75 - \$125 • Min. bid: \$40

**Lot 162**

"Dr Browder's / Compound Syrup / of Indian Turnip", America, 1845 – 1851. Aquamarine, rectangular with beveled corners, applied sloping collared mouth – blowpipe pontil scar, ht. 7", attic mint. Odell I, page 8; Odell II, page 34. A scarce, good looking bottle from Louisville, Kentucky, bright, clean and highly whittled.

Est.: \$300 - \$600 • Min. bid: \$175

**Lot 166**

Lot of (2) Indian Bottles, America, 1890 – 1900. **"The Indian Hair Grower / And Dandruff Destroyer / Manufactured & Guaranteed By / Dr. Algokeechee & Davis Co.",** and **"Hiawatha / Medicinal Blackberry Cordial / Garrett & Co / St. Louis. Mo. Norfolk. Va.",** both are colorless, rectangular with tooled collared mouths – smooth bases, ht. 7" and 4 3/8"; (both were likely dug and have a little light scattered dullness, but no other form of damage). Both unlisted and likely quite scarce.

Est.: \$100 - \$200 • Min. bid: \$60

**Lot 163**

"Indian Turnip / Pectoral / Balm – B. Laplace / Chemist. – N.Orleans", America, 1865 – 1875. Deep aquamarine, rectangular with beveled corners and indented panels, applied round collared mouth with lower bevel – smooth base, ht. 7 ¼", near mint; (lightly cleaned to original luster and near mint condition). Odell II, page 52. A great looking, scarce, Indian bottle that didn't miss the pontil rod by much!

Est.: \$125 - \$225 • Min. bid: \$70

**Lot 167**

Lot of (2) Indian Medicine Bottles, America, 1890 – 1900. **"Pawnee Indian / Too-Re"** and, **"Pawnee / Indian Balm",** aquamarine and colorless, both rectangular with beveled corners, tooled square collared mouths – smooth bases, ht. 7 ¾" and 4 ½"; (both appear to have been dug with some scattered light haze or dullness, but no form of damage). Odell II, pages 74-75. The Pawnee company was organized in San Francisco, in 1891.

Est.: \$75 - \$125 • Min. bid: \$50

**Lot 164**

"Dr. Larookah's – Indian / Vegetable – Pulmonic Syrup", America, 1860 – 1870. Deep greenish aqua, rectangular with beveled corners and three indented panels, applied sloping collared mouth – early smooth base, ht. 8 ½", virtually attic mint; (a couple of tiny, paper-thin open surface bubbles, otherwise perfect). JB #2356; Odell II, page 52. Another great looking Indian bottle, big, strongly embossed, and with good depth of color.

Est.: \$125 - \$225 • Min. bid: \$70

**Lot 168**

Motif of a Wren perched on a branch / "Wren / Cough / Balsam – Chas.D.Keep Sole Agent – 49 Exchange Place N.Y.", America, 1885 – 1900. Greenish aqua, rectangular with three indented panels, tooled square collared mouth – smooth base, ht. 7 ½", perfect! This is the first example that we have seen. Unlisted in Betty Blasi's balsam book and must be considered very scarce to rare. A great looking "pictorial" medicine bottle".

Est.: \$100 - \$200 • Min. bid: \$60

**Lot 169**

**"Vaughn's – Vegetable / Lithon-
triptic / Mixture – Buffalo"**, Amer-
ica, probably Lockport or Lancaster
Glassworks, New York, 1860 – 1870.
Very deep bluish aqua approaching
a blue green, square with indented
arched panels, applied sloping collared
mouth – early smooth base, ht. 8",
attic mint! Fresh to the market having
recently been discovered in a farm-
house in Millington, Michigan. A large,
heavy, impressive bottle in a deeper
tone and depth of color than most.

Est.: \$750 - \$1,250 • Min. bid: \$400

**Lot 170**

**"Vaughn's – Vegetable / Lithon-
triptic – Mixture"**, America, probably
Lockport or Lancaster Glassworks,
New York, 1860 – 1870. Aquamarine,
square with indented arched panels,
large applied sloping collared mouth
– early smooth base, ht. 6 1/8", very
near mint; (some spotty, very faint haze
that is barely noticeable on the interior,
otherwise mint). Baldwin #4054. A
nice example of this popular early
medicine.

Est.: \$75 - \$150 • Min. bid: \$50

**Lot 171**

**"Dr. L.B. Wright's – Scrofulous /
Antidote – New-York"**, America,
1860 – 1870. Aquamarine, rectangular
with beveled corners, applied sloping
collared mouth – early smooth base,
ht. 8 5/8", attic mint. Not a great
deal is known about this early patent
medicine. Dr. L.B. Wright produced a
few other early products as well. See,
Patent & Proprietary Medicine Bottles,
Baldwin, #4352. A nice larger, attrac-
tive bottle, rare and in outstanding
condition.

Est.: \$100 - \$200 • Min. bid: \$60

**Lot 172**

**"Dr Rogers – Scrofula / And /
Cancer – Syrup"**, America, 1865 –
1875. Bright aquamarine, rectangular
with indented panels and beveled cor-
ners, applied sloping collared mouth –
smooth base, ht. 9 1/4", pristine perfect!
A big, bright, crisp bottle having great
character with wavy glass and plenty
of tiny seed bubbles. And, apparently
quite a rare bottle, reportedly from the
Boston area.

Est.: \$150 - \$250 • Min. bid: \$100

**Lot 173**

**"Dr. Greene's / Improved / Sarsa-
parilla"**, America, 1880 – 1890. Color-
less, rectangular with indented panels
and beveled corners, tooled sloping
collared mouth – smooth base, ht. 8
3/4"; (lightly cleaned to original luster
and near perfect condition). Note; an
extremely rare, unlisted variant. It is
similar to DeG #89, but this is the 1st
example known having the embossing
on the front panel rather than on the
side panels, only

Est.: \$125 - \$250 • Min. bid: \$80

**Lot 174**

**"Dr. Ray's / Yellow Parilla / Com-
pound"**, America, 1880 – 1890. Aqua-
marine, rectangular with beveled corners
and three indented panels, applied round
double collared mouth – smooth base,
ht. 9", attic mint! DeGII #64. Quite likely
a very scarce bottle, listed as #64 in
John DeGrafft's Sarsaparilla Supplement
book. A big, clean, bright, attractive
bottle.

Est.: \$100 - \$200 • Min. bid: \$60

**Lot 175**

**"None Genuine / Without This" /
(Motif of Horse & Rider) / "Trade
Mark"**, America, 1880 – 1890. Bright
honey amber with plenty of yellowish
tone, rectangular with beveled corners
and indented panels, tooled double
round collared mouth – smooth base,
ht. 9 3/8"; (some spotty faint dullness or
stain, primarily on the reverse, otherwise
excellent). Believed to be a Western
bottle and likely held a sarsaparilla,
tonic or other medicinal product. A rare
mold and a gorgeous color.

Est.: \$200 - \$400 • Min. bid: \$125

**Lot 176**

"Frog Pond / Chill & Fever Cure",
America, 1880 – 1890. Bright golden
amber shading to light honey amber
in the shoulders, tooled square col-
lared mouth – smooth base, ht. 6 7/8";
(professionally cleaned to original luster
and near mint condition). BA1 #64. A
scarce cure with a great name!

Est.: \$200 - \$400 • Min. bid: \$125

**Lot 177**

"Dr. Peretts – Hair Restorer / S.C. Hall & Co – Sole Proprietors", America, 1865 – 1875. Golden shading to light honey amber, rectangular with beveled corners, crudely applied round collared mouth – smooth base, ht. 7 1/8"; (professionally cleaned to original luster and near mint condition, a small sandgrain on the surface of the glass near a base corner has a bit of iridescence). Beautiful color and character. Unlisted in DF, the bottle is extremely rare and possibly unique.

Est.: \$1,000 - \$2,000 • Min. bid: \$700

**Lot 178**

"Electra / Hair Restorer / Charles L. Lietz / 39 W. 28th St., N.Y.", Whitall-Tatum Co., South Millville, NJ, 1885 – 1900. Bright golden amber, rectangular with beveled corners, tooled square collared mouth – "W. T. & Co / U S A" on smooth base, ht. 4 1/8"; (the bottle displays as near mint but has been professionally cleaned to original luster). Likely extremely rare, unlisted by Don Fadely, "Hair Raising Stories", and the first example that we have seen.

Est.: \$100 - \$200 • Min. bid: \$60

**Lot 179**

"Electra / Hair Restorer / Charles L. Lietz / 39 W. 28th St., N.Y.", Whitall-Tatum Co., South Millville, NJ, 1885 – 1900. Cobalt, rectangular with beveled corners, tooled square collared mouth – "W. T. & Co / U S A" on smooth base, ht. 4"; (displays as near mint but has been professionally cleaned to original luster and a tiny, barely pinhead size bruise on a base corner). Extremely rare, unlisted in "Hair Raising Stories".

Est.: \$125 - \$250 • Min. bid: \$70

**Lot 180**

"Lyon's – Kathairon – For / The / Hair – New York", America, 1850 – 1860. Light vaseline coloration, rectangular with narrow beveled corners and indented panels, applied double round collared mouth – blowpipe pontil scar, ht. 6"; (professionally cleaned to original luster and near mint condition). Odell, p. 153; DF, p.99. Common in aqua, scarce in clear, and very rare in this unusual coloration.

Est.: \$250 - \$450 • Min. bid: \$150

**Lot 181**

"W.C. Montgomery's – Hair / Restorer – Philada", America, 1865 – 1875. Deep pinkish strawberry puce, rectangular with beveled corners and indented panels, applied round collared mouth with lower bevel – smooth base, ht. 7 3/4", near mint; (professionally cleaned to original luster and about mint condition). DF page 111. A scarce mold and a great example in color and character having an early, whittled appearance.

Est.: \$400 - \$800 • Min. bid: \$250

**Lot 182**

"Dodge Brothers – Melanine – Hair Tonic", America, 1860 – 1870. Medium pink amethyst, rectangular with beveled corners and indented panels, applied round collared mouth with lower bevel – smooth base, ht. 7 1/4", very near mint; (a small area of faint dullness on the back panel, perhaps where a label had been). DF, page 48. A very beautiful color with nice clarity, and a little lighter in tone than most!

Est.: \$500 - \$800 • Min. bid: \$300

**Lot 183**

"W.E. Hagan & Co. / Troy, N.Y.", America, 1865 – 1875. Deep vivid cobalt in the shoulder shading to violet and then virtually black through the lower body, octagonal, large applied square collared mouth – smooth base, ht. 6 3/4"; (professionally cleaned with some remaining light exterior wear). A scarce bottle, great color! One must wonder if the proprietor intended to emulate the much more successful company from Troy, NY, "C. Heimstreet & Co.".

Est.: \$200 - \$400 • Min. bid: \$125

**Lot 184**

"Friedenwald's / Buchu-Gin – Buchu-Gin / For All / Kidney & Liver Troubles / J.H. Friedenwald & Co. / Baltimore, MD. – Friedenwald's / Buchu-Gin", America, 1880 – 1890. Brilliant lime green, rectangular with wide beveled corners, tooled sloping collared mouth with ring – smooth base, ht. 10", perfect. A rare medicinal gin with exceptional color and condition. See, "Merchants of Medicine, Nostrum Peddlers – Yesterday & Today", Dewey R. Heetderks, 2002.

Est.: \$400 - \$800 • Min. bid: \$250



Lot 185

"Strong Cobb & Co / Wholesale / Druggists / Cleveland.O", America, 1870 – 1880. Vivid cobalt blue, cylindrical, applied square collared mouth – smooth base, ht. 8", sparkling mint. An "out of the mold" pristine example and perhaps the prettiest, most attractive, and deepest tone of blue that we have seen in this bottle.

Est.: \$150 - \$300 • Min. bid: \$100



Lot 189

"Gleason – & Cole – Pittsburg. – Mineral Water", America, probably a Pittsburgh district glasshouse, 1850 – 1860. Sapphire blue, 10-sided, applied sloping collared mouth – iron pontil scar, ht. 7 ¾", virtually attic mint; (just a touch of light exterior usage wear, otherwise sparkling attic mint). A spectacular example and about as nice as one could hope to find, fresh to the market from a recent house sale near Pittsburgh.

Est.: \$400 - \$600 • Min. bid: \$250



Lot 186

Lot of (2) Large Apothecary Style Bottles, America, 1850 – 1860. Bluish aqua and blue green, cylindrical, with applied square collared mouths – large iron pontil scars, ht. 11 ½" & 12 3/8"; (some expected light exterior wear, otherwise both are mint). Both are nicely whittled, interesting, large, impressive bottles. One example is the scarce "bullet" form; the second example has a rectangular slug plate and is very similar to the rare Henshaw & Edmonds mold.

Est.: \$200 - \$400 • Min. bid: \$125



Lot 190

"U & I.D. Clinton / Woodbridge / Conn: – Premium / Soda Water", America, 1850 – 1860. Medium to deep blue green, cylindrical, applied blob collared mouth – iron pontil scar, ht. 7 ¼", virtually attic mint with barely any case wear! Not an easy bottle to find in this condition.

Est.: \$200 - \$400 • Min. bid: \$125



Lot 187

Lot of (2) Slugplates for 19th Century Medicine Bottles, 1885 – 1910. Iron slugplates debossed with the following inscriptions, **"Dr. Longshore's / Rheumatic Remedy / Rx No.50749 / F.A. Bongartz, Jersey City, N.J.",** and, **"Hugo Brecklein's / Rialto Pharmacy / Kansas City, MO.",** 4" and 6 ¾" respectively. Slugplates and early iron molds are very difficult to find. Interesting and very rare, they would make great "go-withs" and unique paperweights!

Est.: \$75 - \$150 • Min. bid: \$50



Lot 191

"M.T. Crawford / Springfield. – Superior / Mineral-Water / Union Glass Works Phila.", 1850 – 1860. Medium to deep cobalt, cylindrical, ten-sided "mug base", applied blob collared mouth – iron pontil scar, ht. 7 1/8", very near mint; (just the slightest touch of expected light wear). This example does not appear to be professionally cleaned. A scarce soda bottle, virtually pristine condition!

Est.: \$500 - \$800 • Min. bid: \$300



Lot 188

"Carpenter - & Cobb – Knickerbocker – Soda Water – Saratoga – Springs", America, 1850 – 1860. Light to medium bluish green with a strong teal tone, 10-sided, large applied blob collared mouth – iron pontil scar, ht. 7 ¼", virtually attic mint; (just a touch of very light exterior wear). A very scarce soda with most of the existing examples having been professionally cleaned. This example appears to be an attic find.

Est.: \$700 - \$900 • Min. bid: \$400



Lot 192

"Boughton & Chase / Rochester. N.Y. – Knickerbocker / Mineral Water / Bottles Registered / According To Law", probably Lancaster Glassworks, 1849 – 1860. Sapphire blue, cylindrical, applied blob collared mouth – iron pontil scar, ht. 7 5/8"; (does not appear to be a dug bottle but was lightly cleaned on the interior to remove content haze, an iridescent bruise on the inside edge of lip, a 1/8" bruise or open bubble near the base). A bright, clean example.

Est.: \$200 - \$400 • Min. bid: \$150



Lot 193

"G.A. Kohl / Lamb.T / N.J. – Improved / K / Patent" Soda Water Bottle, America, 1850 – 1860. Medium blue green, cylindrical, applied blob collared mouth – iron pontil scar, ht. 7 ½"; (a small sand grain or potstone located on the base of the bottle has a couple of tiny 1/16" legs, otherwise, a nice, bright, clean example).

Est.: \$150 - \$300 • Min. bid: \$100



Lot 197

"Congress & Empire Spring Co / Hotchkiss' Sons / C / New York / Saratoga. N.Y." (reverse plain), Mineral Water Bottle, America, 1866 – 1870. Light honey with yellow and topaz tones, cylindrical, applied sloping collared mouth with lower bevel – smooth base, pint, near mint; (a small raised ridge of glass approx. 5/8" in length on the reverse, with a corresponding crevasse below, that occurred during manufacture). T #C-15:B, Type 1. Gorgeous color with plenty of yellow.

Est.: \$300 - \$500 • Min. bid: \$200



Lot 194

"Genuine / Soda Water / Manufactured By – Dr. Cotton & Co / Ice Establishment / Barbados", probably England, 1870 – 1890. Light to medium apple green, torpedo form, applied sloping collared mouth – smooth base, ht. 8 ½"; (professionally cleaned to original luster, a 3/8" chip on the underside of applied collar). A great looking bottle, probably quite scarce, interesting embossing, nice light color.

Est.: \$200 - \$400 • Min. bid: \$125



Lot 198

"Congress & Empire Spring Co / Hotchkiss' Sons / C / New York / Saratoga. N.Y." (reverse plain), Mineral Water Bottle, America, 1866 – 1870. Yellowish citron with an olive tone, cylindrical, applied sloping collared mouth with lower bevel – smooth base, pint, very near mint; (a shallow, less than pea-size open surface bubble on reverse, otherwise perfect). T #C-15:B, Type 1. Scarce, beautiful color!

Est.: \$300 - \$500 • Min. bid: \$200



Lot 195

Sapphire Soda Water Bottle, America, 1875 – 1885. Medium sapphire blue, cylindrical transitional 'round bottom' form with a narrow, domed base, tooled blob style collared mouth – smooth base, ht. 8 5/8"; (professionally cleaned to original luster with some minor case or ground wear remaining). A beautiful color and one that you do not see every day in this form.

Est.: \$50 - \$100 • Min. bid: \$30



Lot 199

"Congress & Empire Spring Co / Hotchkiss' Sons / C / New York / Saratoga. N.Y." (reverse plain), Mineral Water Bottle, America, 1866 – 1870. Deep golden with orange and reddish tones and puce striations swirling through the body, cylindrical, applied sloping collared mouth with lower bevel – smooth base, pint, near mint; (some very light expected wear). T #C-15:B, Type 1. Rare color, great character and crude glass that is absolutely filled with bubbles.

Est.: \$400 - \$600 • Min. bid: \$250



Lot 196

"Gambrinus Stock Co" / (motif of a king raising a glass of beer) / "Bottled Beer / Cincinnati, O", America, 1876 – 1885. Medium golden amber, cylindrical, applied blob collared mouth with original "lightning style" wire bail – smooth base, quart, near mint; (a shallow pea-size open bubble on the reverse). A scarce, pictorial beer with the majority of known examples having been dug. Virtually perfect and with the original bail!

Est.: \$150 - \$300 • Min. bid: \$80



Lot 200

"Congress & Empire Spring Co" / "C" (within shield) / "Saratoga.N.Y. – Congress / Water", probably Congressville Glass Works, 1870 – 1885. Emerald or "Congressville" green, cylindrical, applied sloping double collared mouth – smooth base, pint, near mint; (a narrow oval bubble, approximately ¼" on the reverse is missing the cover glass, otherwise virtually perfect). T #C-18:B, type 2. Scarce mold, great condition and color.

Est.: \$300 - \$600 • Min. bid: \$200



Lot 201

"Gettysburg Katalysine / Water" Mineral Water Bottle, America, 1865 – 1880. Brilliant medium bluish or teal, cylindrical, applied sloping double collared mouth – smooth base, quart, sparkling attic mint! T #M-18:A. A rare and exceptionally beautiful color, very bold embossing, a "finest possible example" with plenty of eye appeal.

Est.: \$600 - \$900 • Min. bid: \$400



Lot 205

Early Black Glass Bottle (with period labels), European, 1825 – 1845. Olive green, freeblown, applied short double tapered collar – deep kick-up base with blowpipe pontil scar, ht. 10 1/2", near mint; (narrow, partially open bubble below collar). Identical labels on front and back read in part, "Superior / Carbonated Syrup" (below motif of eagle with shield and arrows) / "for making / Soda, / R. P. Morse, — Front street, / Bath... Me.". Labels are slightly darkened but appear to be period to the bottle.

Est.: \$200 - \$400 • Min. bid: \$125



Lot 202

"G. W. Weston & Co. / Saratoga / N.Y." Mineral Water Bottle, America, 1855 – 1861. Deep bubbly olive green, cylindrical, applied sloping double collared mouth – smooth base, pint; virtually perfect; (a fine superficial scratch approx. 3/4" under the "A" in "Saratoga", otherwise excellent). T #E-2:B, type1. The noted scratch is very minor. A crude, attractive example, the glass is absolutely filled with tiny seed bubbles!

Est.: \$250 - \$450 • Min. bid: \$150



Lot 206

Black Glass Wine Bottle, England or possibly America, 1780 – 1800. "T Bailey" on applied glass seal. Medium to deep yellowish olive with an amber tone shading to almost black through the neck and base, magnum sized squat cylinder, dip mold, short beveled collar with applied string lip – domed base with a sand type pontil scar and evidence of a split rod imparting a "cloverleaf" mark at center, ht. 11 1/2", dia. 5 3/4", near mint; (a 1/8" flake on underside of collar). A very rare seal, unlisted in Dumbrell.

Est.: \$1,000 - \$2,000 • Min. bid: \$600



Lot 203

"Saratoga" / (star) / "Spring" Mineral Water Bottle, America, 1862 – 1875. Deep yellowish olive green, cylindrical, applied sloping double collared mouth – smooth base, quart; (a slightly weakened impression, otherwise mint). T #S-53:A, type II. A good clean example, nicely whittled.

Est.: \$125 - \$250 • Min. bid: \$70



Lot 207

Black Glass Wine Bottle, blown in England for an American merchant, 1822 – 1832. "Pickering / Dodge" on applied glass seal. Unusual clear green with a yellowish olive tone, 3-pc. mold cylinder, "Patent" (on shoulder), applied sloping collared mouth – sand type pontil scar, "H. Ricketts & Co Glassworks Bristol" (on base), perfect. Pickering Dodge was a distinguished merchant from Salem, Mass, with success in foreign trade. His portrait hangs in the Peabody Essex Museum, Salem.

Est.: \$1,200 - \$2,400 • Min. bid: \$700



Lot 204

Lot of (2) Mineral Water Bottles (one with original contents, cork and wire closure), America, 1860 – 1875. "Clarke & White / C / New York.", and "Congress & Empire Spring Co / C / Saratoga. N.Y. – Congress / Water". Medium to deep olive and emerald green, both with applied double collared mouths – smooth bases, quarts, both perfect! T# C-11:C and C-19:A. Clean examples, nice with the original contents and closure.

Est.: \$150 - \$250 • Min. bid: \$80



Lot 208

Half Size Black Glass Wine Bottle, England, 1790 – 1815. "A.S. / C.R." on applied glass seal. Olive green, cylindrical, dip mold, sheared mouth with a very crudely applied string rim – shallow concave base with sand type pontil scar, ht. 8 1/2", diameter 2 3/4"; (several 1/4" flat shallow flakes on the base, near the rim, otherwise perfect). A scarce size with the added character of the very crude string rim.

Est.: \$200 - \$400 • Min. bid: \$125

**Lot 209**

Black Glass Onion Form Wine Bottle, (with blank seal), Netherlands, Belgium or Germany, 1720 – 1750. Yellowish olive green, straight sided onion form with a one-inch diameter blank seal applied at mid-body, applied string rim – blowpipe pontil scar, ht. 6 3/8", body width 5 5/8"; (some light dullness and exterior wear). VdB, plate 258. Note; blank seals are unusual and difficult to acquire. Diamonds were sometimes used to inscribe the owners name or contents on the seal.

Est.: \$500 - \$1,000 • Min. bid: \$300

**Lot 210**

Miniature Black Glass 'Horse Hoof' Wine Bottle, Dutch, 1780 – 1820. Medium to deep olive green, miniature 'horse hoof' form, applied wide string rim – conical base with blowpipe pontil scar, ht. 5 5/8", pristine condition. A beautiful example with nice clarity and plenty of small bubbles. Ex. Robert Krause, ex. Cary Adelman collections.

Est.: \$225 - \$450 • Min. bid: \$150

**Lot 211**

Black Glass Wide Mouth Onion Bottle, Dutch or Belgium, 1780 – 1820. Deep yellowish olive amber, bulbous onion form with an expanded neck, sheared and slightly flared mouth, applied string lip – blowpipe pontil scar, ht. 9", virtually perfect; (just a touch of very light wear). VdB, plate 285, #1. As noted by Mr. Van den Bossche, these early wide neck vessels were used for decanting wine and for storing a variety of liquids as well as dry goods or "powder" wares.

Est.: \$750 - \$1,250 • Min. bid: \$400

**Lot 212**

Black Glass Wide Mouth Onion Bottle, Dutch or Belgium, 1780 – 1820. Medium to deep olive amber, bulbous onion form body with an expanded neck, sheared flared mouth, applied string lip – blowpipe pontil scar, ht. 8 1/4", very near mint; (some very light, age-appropriate exterior wear, otherwise perfect). A great example, a little more amber tone in this one, and with a shorter neck.

Est.: \$750 - \$1,250 • Min. bid: \$400

**Lot 213**

Black Glass Wide Mouth Onion Bottle (with darkened period label), Dutch or Belgium, 1780 – 1820. Deep yellowish olive with an amber tone, bulbous onion form body with an expanded neck, crudely sheared mouth, applied string lip – blowpipe pontil scar, ht. 7 3/4"; (a 1/8" flake and some in-manufacture roughness on top of sheared mouth and a 3/4" piece of the thin applied string lip is missing, otherwise excellent). A beautiful example with crude, bubbly glass, and rare with the period label.

Est.: \$600 - \$1,200 • Min. bid: \$350

**Lot 214**

Black Glass Octagonal Wine Bottle, England, 1800 – 1815. Deep yellowish olive, octagonal, blown in a dip mold, applied mouth with lower band – cone base with sand type pontil scar, ht. 9 3/8", body width 4", about perfect. A very attractive bottle, scarce form, outstanding condition. Historical note; originally discovered in an old outbuilding near Nottingham. Ex. David Barker, ex. Cary Adelman collections.

Est.: \$600 - \$1,200 • Min. bid: \$400

**Lot 215**

Black Glass Octagonal Utility or Wine Bottle, America or possibly Europe, 1780 – 1800. Yellowish olive amber, octagonal, dip mold construction, sheared mouth with applied string rim – nearly flat base with blowpipe pontil scar, ht. 7 3/8", body width 3", near mint; (a couple of paper-thin open surface bubbles, otherwise perfect). Similar to MW, plate 72, #7. A rare form, beautiful color, scarce size. Regardless of origin, a great early utility!

Est.: \$700 - \$1,200 • Min. bid: \$500

**Lot 216**

Early Patterned Octagonal Decanter Bottle, Mediterranean region, probably Persia, 1770 – 1810. Medium tobacco amber, diamond lattice pattern from base to shoulders, probably blown in a crude hinged mold for body form and pattern, sheared mouth with applied string lip – pushed up base with blowpipe pontil scar, ht. 7 3/8", body width 3 3/8", perfect. See, MW, plate 75, #16; also, "Keene & Stoddard Glass", Lane & Pappas, plate 4, #1.

Est.: \$250 - \$500 • Min. bid: \$150

**Lot 217**

Black Glass Flattened Octagonal Wine Bottle, England, 1740 – 1750. Medium to deep olive, blown in a dip mold for body form, elongated neck with a sheared mouth and applied string rim – sand type pontil scar, ht. 9 ¾"; (some overall interior and exterior stain and a shallow open bubble on the narrow side panel, but no other form of damage and with a perfect string lip). See RD, p.88; VdB plate 35. A heavy bottle and a very rare, desirable form.

Est.: \$750 - \$1,250 • Min. bid: \$500

**Lot 218**

Black Glass Medicine or Utility Bottle, America or England, 1750 – 1780. Deep olive with an amber tone, rectangular with concave sides and corners, sheared and inward rolled mouth with applied string lip – glass tipped pontil scar, ht. 6 ½"; (a ¼" x ½", somewhat deep open bubble on the shoulder and some moderate to heavy high point wear). See MW, plate 72, # 2 & 3. Ex. Cary Adelman collection. Note on base reads, "*Likely Wister as similar fragments*". A very early utility.

Est.: \$300 - \$600 • Min. bid: \$175

**Lot 219**

Lot of (2) Freeblown Flasks, probably Scotland, possibly Continental, 1790 – 1825. Olive green and colorless, both are ovoid form with applied decorative quilling or rigaree along the sides, sheared and tooled mouths – glass tipped pontil scarred bases, ht. 6 3/8" and 7 5/8", respectively; (both with some scattered light wear and fine scratches, lower end tip of one ribbon of rigaree missing, otherwise excellent condition). Two fine early flasks.

Est.: \$200 - \$400 • Min. bid: \$125

**Lot 220**

Large Freeblown Storage Bottle, French, 1790 – 1810. Olive green, cylindrical long neck "flowerpot" form with pewter threaded closure and cap and original plug type cork fitted with metal ring – pushed up base with disc pontil scar, ht. 15 7/8"; (a crack encircles the base and across the pontil and some expected light wear). VdB, plate 146. A scarce, early utility that displays as mint. Used to store many products including snuff tobacco.

Est.: \$250 - \$450 • Min. bid: \$125

**Lot 221**

Early Blown Storage Jar, French, 1780 – 1820. Olive amber, dip mold, cylindrical wide mouth jar with a pewter threaded closure, cap, and internal disc type stopple – domed base with a disc type pontil scar, ht. 10 ¼"; (some very light exterior wear, otherwise perfect). A very scarce to rare jar with the original fitted pewter closure. Beautiful, complete and in exceptional condition.

Est.: \$500 - \$1,000 • Min. bid: \$300

**Lot 222**

Early Black Glass Case Bottle, probably Netherlands, possibly Belgium or Germany, 1760 – 1780. Clear medium olive with a slight yellowish tone, dip mold, square with sides tapering slightly from shoulder to the base, sheared mouth with applied string rim – small blowpipe pontil scar, ht. 11 1/8", near mint; (some expected light exterior wear and a bit of interior residue and very faint haze). A good early example, a little lighter in color and also a size up from those typically encountered.

Est.: \$100 - \$200 • Min. bid: \$60

**Lot 223**

Early Black Glass Case Bottle, probably Netherlands, possibly Belgium or Germany, 1750 – 1770. Clear medium olive with yellowish tone, freeblown or early dip mold, square with nearly straight vertical sides, sheared mouth with an applied string rim – blowpipe pontil scar, ht. 9 7/8", near mint; (some high point wear, primarily along the shoulders). A very early case bottle in a nice lighter color with wavy glass and an attractive "square-ish" form.

Est.: \$100 - \$200 • Min. bid: \$60

**Lot 224**

Early Freeblown Globular Bottle, probably European, 1800 – 1830. Deep olive amber in the neck shading to a lighter olive yellow near the base, freeblown, globular form, sheared mouth with an applied ring type collar – blowpipe pontil scar, ht. 13 ¾", near mint; (a couple of exterior scratches and expected wear, otherwise perfect). Note; the bottle may have been used in an apothecary and also retains an interesting painted decoration or insignia, likely not original to the bottle.

Est.: \$300 - \$600 • Min. bid: \$200



Lot 225

Demijohn, America or possibly Continental, 1860 – 1890. Stunning sapphire blue, freeblown, globular form, heavy applied sloping collared mouth – blowpipe pontil scar, ht. 14 ½", dia. approx. 11 ½", virtually attic mint; (a small sandgrain on the surface near the base has a tiny, 1/16" cooling line, otherwise pristine). Exceptional color and in addition, nice character with glass gall and tiny seed bubbles throughout. An outstanding demijohn recently discovered in Lititz, PA.

Est.: \$1,500 - \$3,000 • Min. bid: \$800



Lot 226

Demijohn, America, 1845 – 1875. Gorgeous medium olive yellow, flattened apple form, freeblown or possibly blown in a "starter" dip mold (there is no evidence of mold seams), applied sloping collared mouth – large, crude disc type pontil scar, ht. 18", width (side to side), 15 ¾", depth (front to back), 11 1/8"; (a couple of superficial faint scratches, otherwise attic mint!) Similar to MW, p.258, plate 64. Outstanding color, beautiful, excellent condition!

Est.: \$600 - \$900 • Min. bid: \$400



Lot 227

Demijohn, America, 1840 – 1875. Beautiful medium green with an emerald tone, similar to a Congress & Empire, or "Congressville" green, large globular form, freeblown with a very roughly sheared neck and applied sloping collared mouth – smooth base, ht. 21", dia. approx. 17", generally excellent; (several light scratches, 2-3" in length, several shallow open surface bubbles, a bubble with a line in the cover glass). An extremely rare color for this size and form. An outstanding piece!

Est.: \$1,000 - \$2,000 • Min. bid: \$700



Lot 228

Lot of (73) Medicinal, Bitters, and Bottle Related Paper Advertising Items. Includes approximate (60) trade cards, several early, graphic whiskey labels, almanacs, two stereoscopic cards, and other miscellaneous items. Products represented include, Malt Bitters, Ayers, Hires Root Beer, Wistar's Balsam, New England Cough Remedy, and many others. Condition varies but most are generally good to excellent. Call or email for further descriptions.

Est. \$150 - \$250 • Min. bid: \$100



Lot 229

Lot of (72) Medicinal, Bitters, and Bottle Related Paper Advertising Items. The grouping includes more than (60) trade cards, old stock labels, Plantation Bitters scrip, and (7) early advertising postcards and envelopes including, Cohansey Glass Mfg. Co., Fidelity Glass Co., Gargling Oil and the "Appleberg Sterilized Hygienic Milk Co.". Condition varies with most being in very good to excellent condition. Please call or email for further descriptions.

Est.: \$150 - 250 • Min. bid: \$100



Lot 230

Lot of (73) Medicinal, Bitters, and Bottle Related Paper Advertising Items. A very interesting group including trade cards (including one for Congress Bitters), letterhead & receipts, advertising circulars, song-books, boxes (new old stock), "Warner's Artist's Album", almanacs, booklets, colorful revolving calendar for Brown's Iron Bitters, advertising envelopes, and much more. Condition varies, most are excellent. Please call or email for further descriptions.

Est.: \$175 - \$350 • Min. bid: \$125



Lot 231

Lot of (5) McKearin Reference Books, titles include: "American Bottles & Flasks and Their Ancestry", (2) copies of "American Glass" (one with 5 pages of clippings of McKearin ads from the 30's & 40's taped in the front; 2nd copy is a 1st edition, 1941), also, "Two Hundred Years of American Blown Glass", and "Bottles, Flasks and Dr. Dyott"; (later copy of "American Glass" has some damage to the tail of the spine and dust jacket, otherwise, all are generally in very good condition.

Est.: \$100 - \$200 • Min. bid: \$60



Lot 232

Lot of (10) Important Auction Catalogs, including: *The Alfred B. Maclay Sale, 1945*; *Dr. Charles Osgood Collection, 1956*; *Charles Gardner Catalog, 1975*; *The Blaske Collection (both catalogs), 1983*; *NCH Auction #1, Doy L. McCall, 1988*; *The Cris Batdorff Collection, 1990-1991*; *The Bill and Leah Pollard Collection, 1996*; *Dr. Burton Spiller Collection, 2000*; and *The Bob Mebane Collection, 2002-2003*; (some bottle doodling on the cover of the Gardner catalog.)

Est.: \$200 - \$300 • Min. bid: \$125

If Aqua Were King!

If color is king in the world of flask collecting, then why do so many beautiful aqua-colored flasks remain undervalued? After all, aquamarine is a color too, and a lovely one at that! Imagine if 99% of all historical and pictorial flasks were cobalt blue, violet, puce and citron, and only 1% were aqua. Then the “big boys” of the flask-collecting world would get into bidding wars over them and we would see them sell for six figures!

In reality, a good aqua flask should be just as desirable as any other color, but it's value today is based solely on its general abundance rather than any lack of beauty or historical significance. Aquamarine flasks remain a great value, so get them while you can!



Early American Off-Hand Blown Glass

Here are three fine examples of early American off-hand blown glass. Whimsical items such as hats and witch balls, as well as useful or decorative items such as pitchers, vases and rolling pins, were typically made by glassblowers from leftover glass at the end of a day's work. These items were most often given away to family, friends, or visitors or possibly sold for a modest sum at a company store or at events such as sledding parties. In any case, they were rarely a part of regular production and are consequently scarce and treasured items today.

The "off-hand" tradition dates back many centuries in England and Europe and techniques and styles often reflect the glassblowers native tradition but also his own unique interpretation of those styles. Off-hand pieces were blown in bottle glass houses as well as in houses specializing in window glass.

One technique that is uniquely American is the so-called lily pad decoration formed by pulling strands from a second gather of molten glass up and over an existing form. There is a wide variation in the resulting "lily pads" on surviving examples. George and Helen McKearin devised three general classifications or types to help collectors determine the region or tradition that a lily pad piece may have originated.



Lot 72



Lot 70

Lot 71

Rare Whiskey & Spirits Bottles



Art Meets Advertising Meets Early Glass!

Lot 85

This Elisha Waters Liquid Mirror Blacking bottle is perhaps one of the finest surviving examples of its kind. Its superb graphics characterize the fanciful advertising of the mid-nineteenth century.

The label depicts a "horserace," with men riding atop bottles of blacking with the "E. Waters" bottle leading the way and two large circus tents in the background. It is reflective of the festive events and folk art that were employed in advertising in an attempt to appeal to the common people.

The bottle retains its original cork and partially dried contents. It was originally found between the walls of a house in Addison County, Vermont. There is some minor label loss at the bottom, but is otherwise in outstanding condition. From the same company as the famed E. Waters ink bottles, this is an exceptional early utility bottle with a folksy, artful, superb label.



Early, Multi-Sided Utility Bottles

As a rule, octagonal utility or wine bottles are quite scarce and much sought after by today's collectors. They are a pleasing form and, as a group, are generally fairly early. The three examples offered in this sale provide a very interesting contrast in terms of size, origin and color.

As Helen McKearin points out in *American Bottles & Flasks and Their Ancestry* (plate 72, p. 270), these types of early bottles (forms / styles) were blown on a virtually international scale. Lot 215 in the current sale is very similar to Plate 72, #7, with the domed shoulders and relatively short neck. McKearin indicates the bottle pictured in plate 72 was found in New England and possibly made at the East Hartford (Pitkin) or Germantown, Massachusetts, glassworks.

Regarding Lot #215, arguments can certainly

be made both pro and con in terms of an American attribution. The color, base and pontil could certainly pass muster for a New England attribution. However, regardless of origin, it remains an interesting, beautiful and scarce early utility bottle.

In contrast, Lot 214, the deep yellowish olive bottle, there is little argument that this impressive early multi-sided bottle was blown "across the pond" and was born of English roots. It was originally discovered in an old outbuilding near Nottingham, England. The color, lip treatment, base and pontil all seem to confirm this attribution. In addition, this

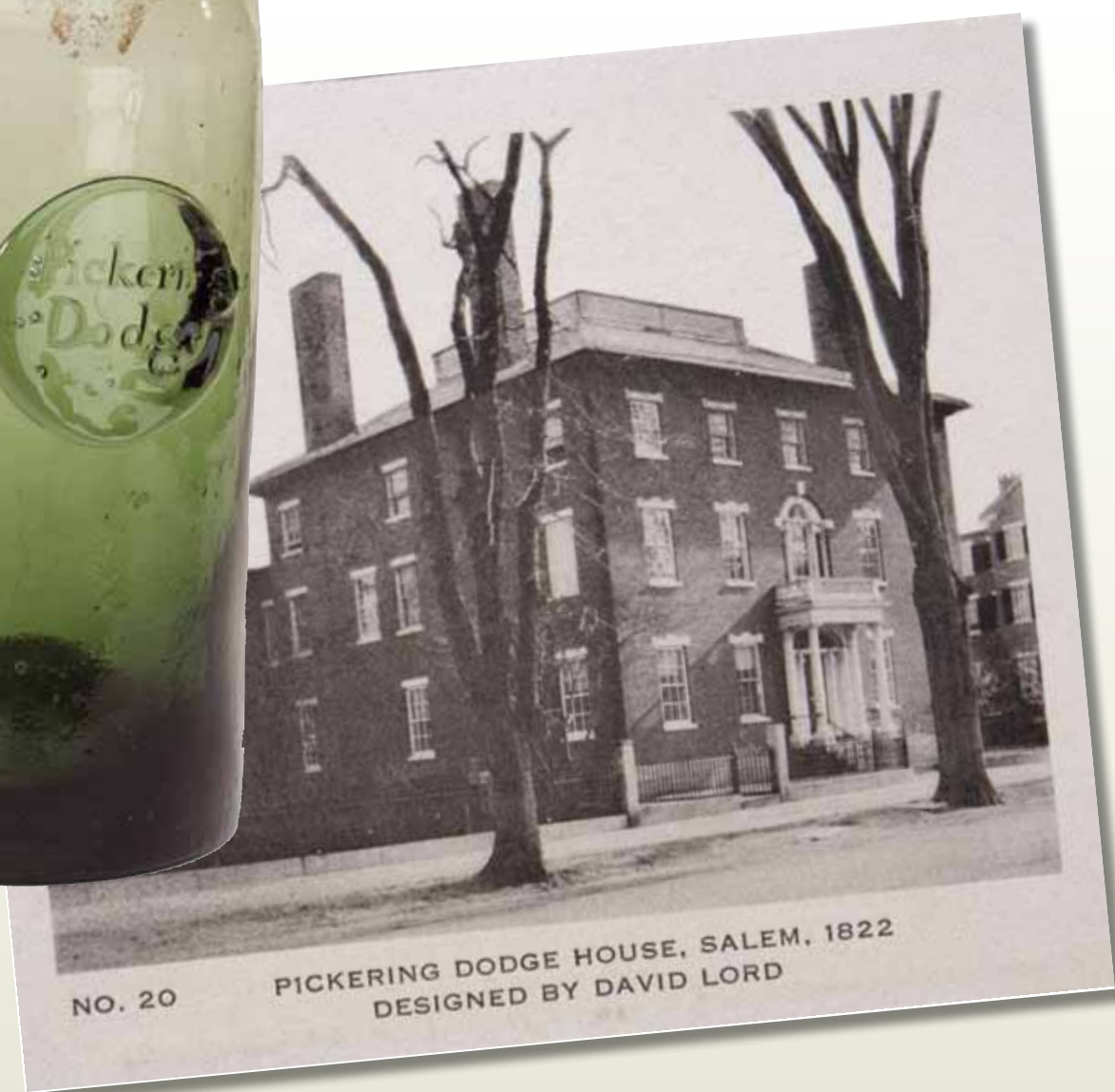
bottle has wonderful provenance, as it was previously Ex. David Barker, ex. Cary Adelman collections.

The third bottle included in this grouping is quite interesting in its own right. Most likely from the Mediterranean region, it is extremely crude. In addition, it has a lattice pattern from the base to the shoulders. It provides yet another contrast in terms of origin, color, character and pattern.

As has been well documented, many of our early bottles, flasks and decanters have characteristics that may be traced to our European ancestors, as well as influences from early Middle Eastern glassmaking centers. This decanter-type bottle is a prime example. It is a most interesting piece and an unusual, attractive patterned decanter.



Lot 207: Rare Pickering-Dodge Seal Bottle



American Glass Gallery is seeking quality consignments for our upcoming auction schedule.

As a consignor, please consider the following benefits to help ensure your valued items reach their highest potential:

- ▶ Competitive consignor rates
- ▶ Low buyer premiums
- ▶ Broad based and extensive advertising for your valued items
- ▶ Experience, knowledge, honesty and integrity
- ▶ Attention to detail and customer service

For more information, please give us a call at:

248.486.0530 or visit our website at

www.americanglassgallery.com





Are you receiving America's premier bottle and glass collecting magazine?

A monthly magazine featuring a great line up of columnists including:

Mark Vuono (American historical flasks), Mike George (New England glass), Richard Cannon, M.D. (medicines), Tom Caniff (fruit jars), Donald Tucker (Spouting off on Mineral Waters), Tom Haunton (Jerseyana Corner), "Digger McDirt" (bottle identifier), Ralph Finch, and many others! Every issue includes feature articles on various topics related to antique bottles and their history plus lots of great digging stories throughout the year!

Buy-Sell-Trade

Thousands of dollars in bottles, relics and related items bought, sold and traded each month in our classified pages, plus the most up to date show calendar.

AB&GC also goes where the action is! We attend and report on many bottle shows yearly as well as important bottle and glass auctions.

12 colorful and informative monthly issues are still only \$32.00 postpaid!*

*\$47.00 for U.S. 1st Class and \$54.00 for Canada.



For more information, visit antiquebottleandglasscollector.com or call 248.486.0530