

American Glass GalleryTM

Auction Number 6 • June 15, 2011



Lot #3, Washington/Taylor Flask (obverse)

Conditions of Sale

1. Absentee Auction

The items in this sale will be sold via absentee auction, closing date:
June 15, 2011, 11:00 p.m., EST.

2. Our Guarantee Regarding Descriptions

American Glass Gallery has made every attempt to describe correctly the property being sold. Descriptions are guaranteed to be accurate as regards authenticity, age, condition, and measurements to within one-fourth inch, as represented in this catalog. In describing damage, exterior wear or manufacturer's flaws that in our opinion, do not significantly detract visually or monetarily from the value of the item are not listed and will not be considered for refund. The Auctioneers reserve the right to make verbal corrections and provide additional information at any time during the sale.

3. Preview

Items may be viewed by appointment from June 1, 2011 through June 13, 2011.

4. Bidding Procedure

You may submit your bids by mail, phone, FAX, email or through our on-line auction site. If bidding by mail or FAX, please fill out the absentee form and return it to us. Your bid, either written or oral, grants American Glass Gallery the authority to protect you up to the amount of your stated bid. Your bid will not be removed once executed.

Bidding Times: You can submit your bids anytime after receiving your catalog. Bids may be made by phone, daily, until closing day, June 15, 2011, from 9 A.M. - 7 P.M. Eastern Time. Incoming phone bids will be accepted on the closing day (June 15, 2011) until 11 P.M. Eastern Time. Phone calls and Fax bids after this time will not be honored. No exceptions. You may also place your bids through our on-line auction service 24-hours a day once the site has opened for bidding, on or about June 1, 2011, continuing until 11:00 P.M. Eastern Time, June 15, 2011.

Please do not wait until the last day or two of the sale to place your bids! Because many collectors wait until the final few days of the sale to place their bids, we anticipate the telephone and internet bidding to be very busy during that period, so please plan accordingly. In the event of a tie bid, the earliest received bid on the lot will take precedent. We would welcome your bids by phone so that we can answer any questions and assist you in your bidding.

You may also telephone us at any time during the auction, prior to the closing of the sale, to check the status of your bids, to find the current bidding level, to open a bid, or to raise a bid on an auction lot.

Bidding Increments are as follows:

Up to \$250.00.....	increments of \$10.00
\$250.00 - \$500.00.....	increments of \$25.00
\$500.00 - \$1,000.00.....	increments of \$50.00
\$1,000.00 - \$2,500.00.....	increments of \$100.00
\$2,500.00 - \$5,000.00.....	increments of \$250.00
\$5,000.00 - \$10,000.00.....	increments of \$500.00
\$10,000 & Up.....	increments of \$1,000.00

Bids submitted between the above increments, whether by mail, FAX, email or on-line via the internet, will automatically be lowered to the closest lower increment.

This is a minimum bid auction. Bids below the printed minimum will not be accepted.

An example of how our absentee bidding system works: You bid \$600.00 on a lot which is the highest bid received to date. The second highest bid is \$450.00. The current high bid level would be yours at \$475.00, one bid increment higher than the other collector's bid. Any additional bids submitted by others below \$600.00 will automatically be topped on your behalf by a representative of American Glass Gallery, up to your stipulated high bid amount. If no further bids on this lot are received beyond the \$450.00, and the under bidder has not requested a "Call Back", then you would have won the lot at \$475.00, not the \$600.00 that you were prepared to pay.

American Glass Gallery will at NO TIME disclose bids pledged by others; only the current "High Bid" level of a lot will be stated upon request. The highest bidder as determined by American Glass Gallery shall be the purchaser. It is the sole right of the auctioneer to settle any dispute between bidders and to regulate the bidding procedure. The auctioneer reserves the right to refuse any bid he believes not to have been made in good faith.

5. "Call Back" Process

If requested, the three top bidders of an item at the time of closing will be given a "Call Back" over the next number of days in order to resolve the final sale of an item. You can request this service by "checking" the appropriate box on your absentee bid form or verbal agreement by phone. It is the responsibility of the bidder to insure he has qualified for this service.

Please note: No "Call Backs" will be executed for bids under \$400.00. In the event of tie bids, the earliest bid received will be the winning bid.

An example of how the "Call Back" process works: As an example, you have bid \$600.00 on a particular lot. Another bidder has submitted a bid of \$900.00 on the same lot. Assuming that as of the auction closing date you are among the top three bidders on this lot and you have requested a "Call Back", you would receive a call informing you that you have been "Out Bid" and the current "High Bid" is now at \$650.00. If you choose to continue bidding on this lot, you may now do so. Assuming that you now increase your bid to \$700.00, we would accept your bid but also inform you that we have a higher bid on this lot and must bid \$750.00. At this time, an auction between you and American Glass Gallery, representing the collector who submitted the bid of \$900.00, takes place. This bidding would continue until you drop out, or top the other bidders high bid of \$900.00. If the other bidder has not requested a "Call Back" service, you would be awarded the lot. If however, the other bidder also requested a Call Back, we must now call them. If they elect to increase their bid over your high bid, we would in turn call you back. This back and fourth process would continue until one of the bidders declines to go any farther.

If you have requested a "Call Back", the auctioneers will need to contact you on the days immediately following the auction closing between the hours of 8 A.M. and 9 P.M. Eastern Time. Please supply us with all appropriate contact phone numbers including, home, mobile and work numbers. Bidders must provide the appropriate telephone numbers where they can be contacted. If you will be traveling or otherwise unavailable, bidders with "Call Back" privileges will have the responsibility to contact American Glass Gallery twice daily during the Call Back period.

Please note, every effort will be made to contact you during the "Call Back" period. However, the bidder will forfeit their rights to a "Call Back" if the auctioneers are unable to reach them. American Glass Gallery reserves the right to discontinue Call Backs on any item in the sale (2) two days after the closing date of the sale. At that time, the current "High Bidder" may be awarded the item even if Call Backs are still outstanding.

6. Terms

Successful Bidders, Prompt and full payment is due immediately upon receipt of our invoice. Absolutely no exceptions. Anyone failing to pay for items won will forfeit all rights to bid in any future American Glass Gallery sales. Any late or delayed payments may result in loss of return privileges for items purchased in the sale.

No Items Will Be Mailed Before Full Payment Is Received.

Buyer Premium: A 12% buyer's premium will be added to the hammer price (15% if paying by Credit Card or PayPal), to be paid by the buyer as part of the purchase price. For example, if you purchase a lot for \$100.00, you will receive an invoice for \$112.00 if paying by cash, check or money order, plus any applicable sales tax or shipping charges.

Taxes: If you are a Michigan resident, a 6% sales tax will be added to your bill unless you have a valid resale number registered with us.

Shipping: Shipping, handling and insurance are extra. We ship insured via U.S. Mail. These charges will be added to your bill unless the lots are picked up in person. Our charges for shipping (excluding foreign shipments and oversized lots) are \$18.00 for the first item, \$9.00 for each additional item together with extra insurance costs (we use current U.S. Postal Service insurance rates).

Please allow two to four weeks for delivery after receipt of your check.

Payment: American Glass Gallery accepts Cash, Money Orders, Personal Checks, Visa, MasterCard, American Express and PayPal. If paying by Credit Card or PayPal, an additional 3% will be added to the invoice total.



7. Refunds

Refunds will be given at the discretion of the Auctioneers. Items purchased must be examined and request for refund made immediately upon receipt of the item or items. Since opinions can differ, particularly in the matter of condition, the Auctioneers will be the sole judge in the consideration of refunds. Refunds requested on the grounds of authenticity must be made within 15 days of the date of the auction, and such refund requests must be accompanied by at least one supporting statement in writing from an authority recognized by the Auctioneers. It is the Auctioneers sincere intention to consider any reasonable request for a refund. *Absolutely no returns for any reason after 30 days of the closing of the sale.*

8. Bidding on any item indicates your acceptance of these terms.



John R. Pastor
P.O. Box 227
New Hudson, Michigan 48165
Phone: 248.486.0530
Fax: 248.486.0538
www.americanglassgallery.com
email: jpastor@americanglassgallery.com

PLEASE NOTE:

The lots offered in this printed catalog are identical to the lots offered in the on-line catalog. However, due to space constraints of the printed catalog there may be some further information available regarding some of the lots in the on-line auction descriptions.

Please visit us at

www.americanglassgallery.com

and follow the link to the on-line auction. The link and on-line auction will be available on or about June 1, 2011.

A post-auction price list will be available on our website, in printable form, by July 11.

We encourage you to contact us either by phone or email with any questions that you may have, for assistance with bidding, or for further details or clarification on any of the lots in this sale. Your complete satisfaction and confidence is our goal!

We look forward to having you participate in our next sale, either as a buyer or a consignor. Our next absentee auction is scheduled for Fall, 2011. We already have some wonderful items consigned to this sale and would look forward to discussing with you, any quality items that you may wish to consign!

THANK YOU AND GOOD LUCK WITH YOUR BIDS!

Reference Key

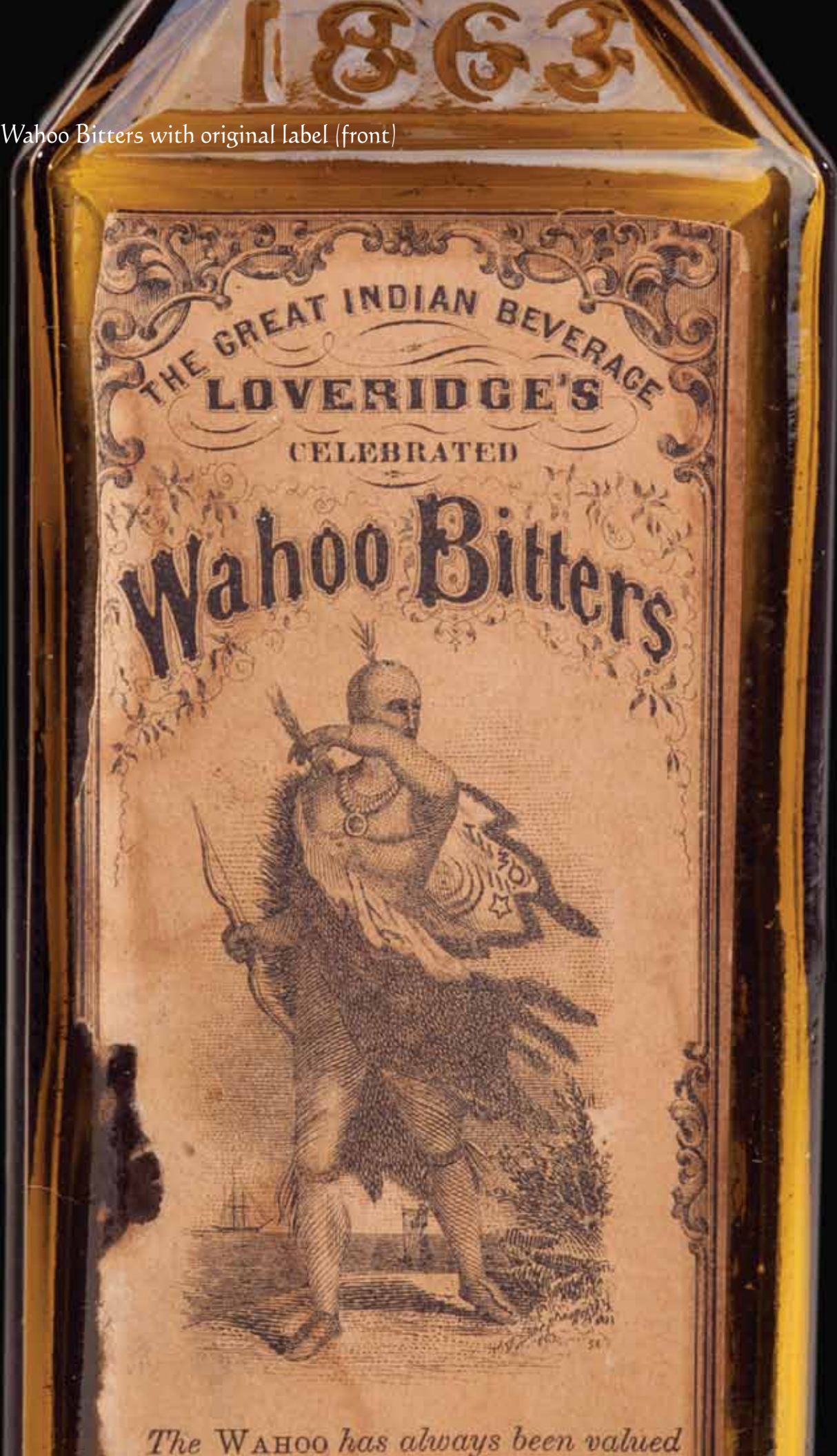
Reference initials and numbers used in the description of this catalog refer to the following publications:

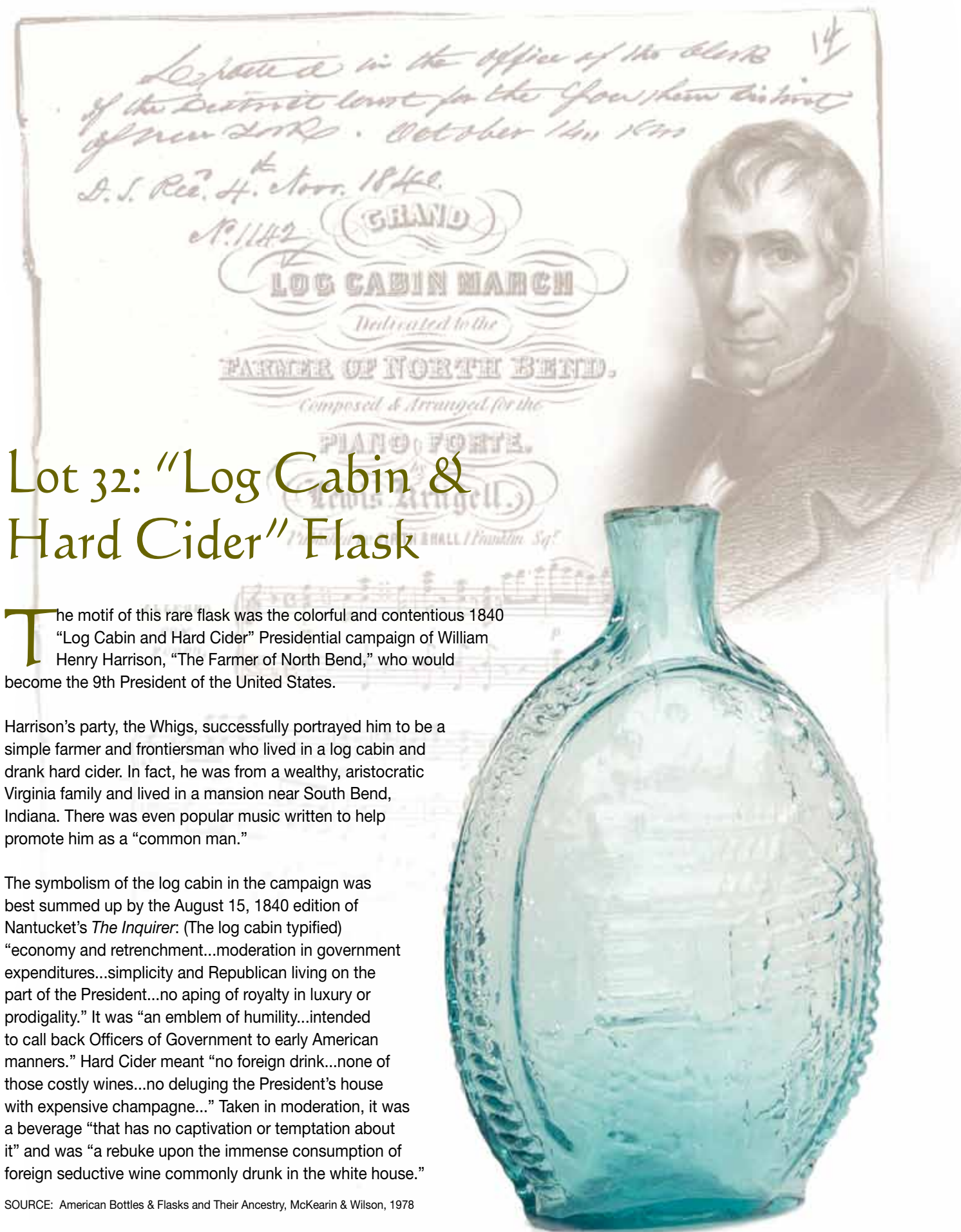
AHG	<i>American Historical Glass</i> , Bessie M. Lindsey, 1967
AM	<i>The Decanter - An Illustrated History of Glass from 1650</i> , Andy McConnell, 2004
AP	<i>Glass in Early America</i> , Arlene Palmer, 1993.
BA1	<i>Collecting The Cures</i> , Bill Agee, 1969
BA2	<i>Collecting All Cures</i> , Bill Agee, 1973.
BB	<i>A Bit About Balsams</i> , Betty Blasi, 1974
BH	<i>Classification and Documentation of Sunburst and Similar Scent Bottles</i> , Bill Ham, AB&GC, 5/87
B/K	<i>The Glass Industry in Sandwich</i> , Raymond Barlow and Joan Kaiser, 1989.
C	<i>Ink Bottles and Inkwells</i> , William Covill, 1971.
DeG	<i>American Sarsaparilla Bottles</i> , John DeGrafft, 1980.
DeGII	<i>Supplement to American Sarsaparilla Bottles</i> , John DeGrafft, 2004.
DF	<i>Raising Hair Stories</i> , Don Fadely, 1992.
DM	<i>Wistarburgh, Window Tiles, Bottles and More</i> , Dale L. Murscell, 2007.
FB	<i>A.S.C.R. The wine bottles of All Souls College</i> , Oxford, 1750 – 1850, Fay Banks.
G	(Flasks) <i>American Bottles & Flasks and Their Ancestry</i> , McKearin & Wilson, 1978.
G	(Blown Three Mold) <i>American Glass</i> (Chapter VI), George S. and Helen McKearin, 1941.
GBH	<i>English Glass For The Collector, 1660-1860</i> , G. Bernard Hughes, 1958.
H	<i>American Bottles in the Charles B. Gardner Collection</i> , Norman C. Heckler, 1975.
JB	<i>Patent and Proprietary Medicine Bottles</i> , Joseph K. Baldwin, 1973
JEB	<i>Glasshouse Whimsies</i> , Joyce E. Blake, 1984.
JH	<i>Glasshouses & Glass Manufacturers of the Pittsburgh Region, 1795 – 1910</i> , Jay W. Hawkins, 2009.
JS	<i>In glas verpakt – European Bottles, Their history and production</i> , Johan Soetens, 2001.
K	<i>Poison Bottle Workbook</i> , Rudy Kuhn, 1988.
KW	<i>New England Glass & Glassmaking</i> , Kenneth M. Wilson, 1972.
L	<i>The Red Book of Fruit Jars, No. 9</i> , Douglas M Leybourne, Jr., 2001.
LI	<i>Pittsburgh Glass, 1797 – 1891</i> , Lowell Innes, 1976.
Mc	<i>Two Hundred Years of American Blown Glass</i> , Helen and George McKearin, 1950.
McK	<i>American Glass</i> , George S. and Helen McKearin, 1941.
MW	<i>American Bottles & Flasks and Their Ancestry</i> , McKearin & Wilson, 1978.
N	<i>Great American Pontiled Medicines</i> , Frederick Nielson, 1978.
NCH	<i>The Blaske Collection of American Flasks</i> , Norman C. Heckler, 1983.
NCH II	<i>The Blaske Collection: Part II</i> , Norman C. Heckler, 1983.
O&S	<i>Warner's Reference Guide</i> , Ed Ojea and Jack Stecher, 1998.
P	<i>The Glass Gaffers of New Jersey</i> , Adeline Pepper, 1971.
RD	<i>Understanding Antique Wine Bottles</i> , Roger Dumbrell, 1983.
RF	<i>The Bottle Book: A Comprehensive Guide to Historic, Embossed Medicine Bottles</i> , Richard Fike, 1987
RH	<i>Collecting Barber Bottles</i> , Richard Holiner, 1986.
R/H	<i>Bitters Bottles</i> , Carlyn Ring and W. C. Ham, 1998.
RWL	<i>Antique Fakes & Reproductions</i> , Ruth Webb Lee, 1950
T	<i>Collectors Guide to Saratoga Type Mineral Water Bottles</i> , Donald Tucker, 2005.
U	<i>Collectible Character Bottles</i> , Authur Umberger, 1969.
V	<i>Nailsea Glass</i> , Keith Vincent, 1975
VdB	<i>Antique Glass Bottles; Their History and Evolution</i> , Willy Van den Bossche, 2001.
WL	<i>A Wine-Lover's Glasses, The A.C. Hubbard, Jr. Collection</i> , Ward Lloyd, 2000.
Z	<i>Ketchup, Pickles, Sauces</i> , Betty Zumwalt, 1980.
ZW	<i>Color Hutchinsons</i> , Zang Wood, 1999.

- The dash is generally used to indicate that the descriptions are on opposite sides of the bottle or flask.

/ The slash is used to indicate that the descriptions are on different lines or surfaces of the bottle.

Lot 110: Wahoo Bitters with original label (front)





Lot 32: "Log Cabin & Hard Cider" Flask

The motif of this rare flask was the colorful and contentious 1840 "Log Cabin and Hard Cider" Presidential campaign of William Henry Harrison, "The Farmer of North Bend," who would become the 9th President of the United States.

Harrison's party, the Whigs, successfully portrayed him to be a simple farmer and frontiersman who lived in a log cabin and drank hard cider. In fact, he was from a wealthy, aristocratic Virginia family and lived in a mansion near South Bend, Indiana. There was even popular music written to help promote him as a "common man."

The symbolism of the log cabin in the campaign was best summed up by the August 15, 1840 edition of Nantucket's *The Inquirer*: (The log cabin typified) "economy and retrenchment...moderation in government expenditures...simplicity and Republican living on the part of the President...no aping of royalty in luxury or prodigality." It was "an emblem of humility...intended to call back Officers of Government to early American manners." Hard Cider meant "no foreign drink...none of those costly wines...no deluging the President's house with expensive champagne..." Taken in moderation, it was a beverage "that has no captivation or temptation about it" and was "a rebuke upon the immense consumption of foreign seductive wine commonly drunk in the white house."

SOURCE: American Bottles & Flasks and Their Ancestry, McKearin & Wilson, 1978

Lot 70: Rare Bogardus Target Ball

The Bogardus "SHOOTING GALLERY" target ball, "158 / SOUTH CLARK / ST / CHICAGO" is considered by many to be among the most desirable and iconic of the numerous and varied "glass balls" blown for perhaps the biggest name in target ball history, Captain Adam Henry Bogardus.

It is an extremely desirable ball for many reasons including the Bogardus name, having an address, the embossing ("SHOOTING GALLERY"), eye appeal (being profusely embossed in addition to the quilted pattern) and of course, the

great rarity of this particular mold. Conjecture regarding these unique balls includes the theory that they may have been used as promotional items for the shooting gallery. Why else would the gallery go to so much trouble (and expense), to have its address and other information included on the ball?

Regarding the rarity of this particular ball, it is one of only a handful of examples known. It is the same example that was discovered at a small auction in Laura, Ohio (near Dayton), this past year in a box that contained gun items including

cartridges, a small spittoon, and pictures relating to Camp Douglas (a Civil War prison once located in Chicago).

We are pleased to have the opportunity to offer this rare and important target ball in our current sale. Prior to this discovery, the last example to be offered at public auction was sold through American Bottle Auctions in July, 2006 for \$17,050 (including buyer's premium). In addition, it would be hard to find a better example as this one is in perfect condition with nice crisp embossing!



USE THE BOGARDUS PATENT Rough Glass Ball

AND HIS PATENT GLASS BALL TRAP

For Wing practice. They can be had from all gun dealers. Headquarters for Glass Balls, HART & BRO'S., No. 10 Platt street, N. Y., or A. H. BOGARDUS, No. 158, South Clark street, Chicago. For Traps—HART & SLOAN Newark, N. J., or at Bogardus' Headquarters, 158 South Clark st., Chicago. "Field, Cover and Trap Shooting," the only

published by a market hunter, can be had at the above address. Price, \$2.

For Trap Shooting with Glass Balls,

USE THE
HUBER TRAP,

Lot 210: Extremely Rare A.C. Evans Mineral Water Bottle

This extremely rare and attractive mineral water bottle was recently discovered in a historic dig in downtown Wilmington, North Carolina (see *Antique Bottle & Glass Collector*, "The Bottle Find of the Century", March, 2011).

Prior to this discovery, only one example of this rare bottle was known to exist. This bottle is undamaged and has been professionally cleaned to original luster and near mint condition by one of the best bottle cleaners in the business! The bottle turned out amazingly beautiful, in a pleasing color and highly whittled. We are honored to have the opportunity to offer this important, historical and rare early soda water bottle at auction.

Note; although information is sketchy on this rare early soda bottle which must have been the result of a relatively short-lived venture, it is believed that the bottle was blown for Augustus Coutanch Evans MD (1819 – 1863), a prominent local citizen of the day.



See inside pages for Map of SARATOGA SPRINGS, EXCELSIOR PARK, &c.

Congress & Empire Springs Mineral Water Bottles



View of EXCELSIOR SPRING, on of EXCELSIOR PARK.

Lot 198



Lot 199



Lot 197





Lot 1

“Washington” / Bust of Washington – “Baltimore Glass Works” / Monument Historical Flask, Baltimore Glass Works, 1830 – 1845. Copper with strong apricot tones, sheared mouth – pontil scar, pint; (some exterior high point wear and a somewhat weakened impression in the shoulder area as is typical for this flask). GI-19. A scarce mold with exceptional color! Only two to three examples are believed to exist in this color. Ex. Bill Pollard collection.

Est.: \$6,000 - \$12,000 • (Min. bid: \$4,000)



Lot 2

“Washington” / Bust of Washington – “Bridgeton” (star) “New Jersey” / Bust of Taylor Historical Flask, Bridgeton Glass Works, 1836 – 1850. Deep bluish aquamarine, sheared mouth – pontil scar, near mint; (just a bit of light exterior high point wear that is not terribly noticeable). GI-24. A particularly strong mold impression and good deep color combine to make this a much better than average example!

Est.: \$200 - \$300 • (Min. bid: \$150)



Lot 3

“The Father of His Country” / Bust of Washington – “Gen. Taylor Never Surrenders” / Bust of Taylor Historical Flask, Dyottville Glass Works, Philadelphia, PA, 1845 – 1855. Gorgeous medium pink lilac, sheared mouth – pontil scar, pt; (professionally cleaned to original luster with some remaining exterior wear and a pontil chip that extends to the edge of the base). GI-40c (rare mold). Incredible, stunning color! The only other example noted in this color was from the George Austin sale.

Est.: \$10,000 - \$20,000 • Min. bid: \$5,000



Lot 4

“The Father of His Country” / Bust of Washington – (Reverse plain) Historical Flask, probably Dyottville Glass Works, Philadelphia, Pennsylvania, 1845 – 1855. Medium blue green, applied round collared mouth – pontil scar, quart, virtually attic mint! GI-47. A very nice example, crisp, clean, sparkling with good depth of color.

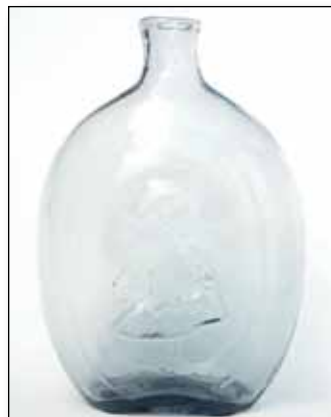
Est.: \$400 - \$600 • (Min. bid: \$250)



Lot 5

“The Father of His Country” / Bust of Washington – (Reverse plain) Historical Flask, probably Dyottville Glass Works, Philadelphia, 1845 – 1855. Clear medium green, almost a pine green, applied round collared mouth – pontil scar, quart, very near mint; (some faint exterior high point wear, otherwise perfect). GI-47. Very uncommon color for this mold as most examples tend to be more bluish-green. In addition, this example has a strong color and nice bubbly glass.

Est.: \$600 - \$900 • (Min. bid: \$400)



Lot 6

Washington – Taylor Portrait Flask, probably Dyottville Glass Works, Philadelphia, 1845 – 1855. Pale cornflower blue, almost colorless through the body, with an attractive, deeper cornflower coloration through the base, sheared mouth – pontil scar, quart, near attic mint. GI-51. A subtle but very attractive and unusual coloration that will definitely stand out in a color run!

Est.: \$400 - \$800 • (Min. bid: \$250)



Lot 7

Lot of (2) Washington – Taylor Historical Flasks; “The Father of His Country” (on quart example), probably Dyottville Glass Works, Philadelphia, PA, 1845 – 1860. Both are aquamarine, quart example with applied round collar and smooth base; pint example with sheared mouth – pontil scar, both are virtually perfect; (pint example has a small 1/8” open bubble). GI-45 & GI-55. Quart example is listed by McKearin as “very rare”. Pint example is loaded with bubbles and character.

Est.: \$200 - \$400 • (Min. bid: \$150)



Lot 8

“Liberty” / Eagle – “Willington” / “GenL Taylor” / Bust of Taylor – “Fells Point” / Monument / “Balto” Historical Flask, Baltimore Glass Works, 1830 – 1845. Pale greenish aquamarine, sheared mouth – pontil scar, pint, near mint; (slightly weakened impression as is typical for this mold and some light exterior high point wear). GI-73. Nice character to the glass with tiny seed bubbles and some frothy streaks and swirls through neck area.

Est.: \$200 - \$400 • (Min. bid: \$125)

**Lot 9**

"Benjamin Franklin" / Bust of Franklin / "Where Liberty Dwells There Is My Country" – "T.W. Dyott, M.D." / Bust of Dyott / "Kensington Glass Works Philadelphia" Historical Flask, 1825 – 1835. Deep aquamarine, sheared mouth – pontil scar, pint; (some fine light high point wear on the bust of Franklin, otherwise attic mint). GI-94. A scarce mold and a particularly bright, crisp, clean example.

Est.: \$300 - \$500 • (Min. bid: \$200)

**Lot 10**

"Jeny Lind" / Bust of Jeny Lind – Glass Factory Historical Calabash Flask, probably Whitney Glass Works, Glassboro, New Jersey, 1857 – 1860. Greenish aquamarine, applied sloping collared mouth – heavy blowpipe pontil scar, quart, near mint; (expected faint exterior high point wear). GI-103. Note; some light olive yellow striations exist through the base area.

Est.: \$125 - \$225 • (Min. bid: \$70.00)

**Lot 11**

Bust of Byron – Bust of Scott Portrait Flask, probably a Stoddard glasshouse, Stoddard, New Hampshire, 1842 – 1850. Medium to deep yellowish olive amber, sheared mouth – pontil scar, half pint; (some exterior high point wear as is common with the high relief busts and a paper-thin open bubble on the base). GI-114. A classic early New England flask.

Est.: \$175 - \$275 • (Min. bid: \$100)

**Lot 12**

Bust of Columbia – Eagle / "B&W" Historical Flask, America, probably a Kensington or early Philadelphia area glassworks, 1825 – 1835. Brilliant aquamarine, sheared mouth – pontil scar, pint, near perfect; (a little minor exterior high point wear, primarily along the medial rib near the base, otherwise perfect). GI-121. A scarce flask with a very strong, crisp mold impression, brilliant glass, clean and in excellent condition.

Est.: \$400 - \$600 • Min. bid: \$250

**Lot 13**

Eagle – Eagle Historical Flask, probably Kentucky Glass Works, Louisville, KY, 1849 – 1855. Rich bluish aquamarine, sheared mouth – pontil scar, pint; (a shallow 1/8" flat flake off the top of the roughly sheared mouth, otherwise about mint). GII-24. This example has a particularly strong bluish tone and a little added character with the crooked neck.

Est.: \$150 - \$250 • Min. bid: \$100

**Lot 14**

Eagle – Eagle Historical Flask, probably Kentucky Glass Works, Louisville, Kentucky, 1849 – 1855. Medium to deep aquamarine, sheared mouth – pontil scar, quart, perfect. GII-26. A good clean, bright, example in outstanding condition devoid of the usual high point wear so often encountered with this mold.

Est.: \$250 - \$450 • Min. bid: \$150

**Lot 15**

Eagle – Cornucopia Historical Flask, America, 1845 – 1855. Aquamarine, sheared and tooled rolled lip – blowpipe pontil scar, half pint; (some faint dullness in the shoulder of the interior that is very minor and if desired, should easily come out with a light professional cleaning). GII-46. A fairly scarce little flask is not easily obtainable.

Est.: \$200 - \$400 • Min. bid: \$125

**Lot 16**

Eagle – "Liberty" / Oak Tree Historical Flask, America, 1825 – 1835. Deep tobacco amber, sheared mouth – pontil scar, half pint, near mint; (some very light exterior high point wear as is typical of this mold, otherwise perfect). GII-60. A scarce, early and desirable mold. This example with its rich depth of color would contrast nicely with the lighter examples that are often encountered.

Est.: \$2,500 - \$4,000 • Min. bid: \$2,500



Lot 17

"Liberty" / Eagle – "Willington / Glass / Co / West Willington / Conn" Historical Flask, Willington Glass Works, West Willington, CT, 1860 – 1872. Golden amber with a lighter yellowish tone near the shoulder, applied double collared mouth – smooth base, half pt; (a couple of small, pin-head sized flakes and minor in-manufacture roughness on top of crudely applied mouth, otherwise about mint). GII-63. A rich, attractive, color for this flask and with a great impression.

Est.: \$250 - \$450 • Min. bid: \$150



Lot 18

Eagle – Cornucopia Historical Flask, Keene Marlboro Street Glassworks, Keene, New Hampshire, 1830 – 1842. Bright yellowish olive amber, sheared mouth – pontil scar, pint, near perfect with virtually no high point wear as is often encountered. GII-72. A much better than average example with a good strong mold impression, nice color density, light and bright!

Est.: \$175 - \$350 • Min. bid: \$100



Lot 19

Eagle – Cornucopia Historical Flask, Keene Marlboro Street Glassworks, Keene, New Hampshire, 1830 – 1842. Clear medium olive green, sheared mouth – pontil scar, pint, perfect. GII-72a. Another fine example with good color, crude pebbly glass, and great character.

Est.: \$175 - \$350 • Min. bid: \$100



Lot 20

Eagle – Cornucopia Historical Flask, Keene Marlboro Street Glassworks, Keene, New Hampshire, 1830 – 1842. Olive amber, sheared mouth – pontil scar, pint, near mint; (some light exterior high point wear as is often encountered with this mold). GII-72. A little deeper color, good solid example.

Est.: \$150 - \$250 • Min. bid: \$100



Lot 21

Eagle – Eagle Historical Flask, probably Granite Glass Works, Stoddard, New Hampshire, 1846 – 1860. Bright yellowish amber with an olive tone, sheared mouth – pontil scar, half pint; (tiny pin-point lip edge flake and a light 1/4" scratch below oval frame near base, otherwise pristine perfect). GII-86. Not the rarest mold, but a very pretty, light example of this classic Stoddard flask and certainly much nicer than typically encountered.

Est.: \$150 - \$250 • Min. bid: \$100



Lot 22

Eagle – Eagle Historical Flask, probably a Pittsburgh district glasshouse, Pittsburgh, PA, 1860 – 1870. Clear medium green, almost a grass green, crudely applied round collared mouth – smooth base, half pint, about mint; (lightly cleaned to original luster and near perfect condition). Probably GII-97 (only three distinct ribs in Eagle's left wing). An extremely rare and desirable color for this mold with only one example (in a lighter shade), having been recorded at auction in the past 20 years.

Est.: \$1,500 - \$2,500 • Min. bid: \$800



Lot 23

Eagle with Banner – (reverse plain) Historical Calabash Flask, America, 1855 – 1865. Deep grass or "7-UP" green, applied sloping collared mouth – iron pontil scar, quart, near mint; (small 1/8 flake at one of the vertical side flutes and a bubble on the interior of the flask has a refracting line around the thin cover glass). GII-143. A big splash of color!

Est.: \$175 - \$250 • Min. bid: \$100



Lot 24

Cornucopia – Urn Pictorial Flask, Lancaster Glass Works, Lancaster, New York, 1849 – 1855. Aquamarine, sheared and tooled mouth – pontil scar, half pint, perfect. GIII-15. A nice little flask with some tiny seed bubbles and character to the glass.

Est.: \$150 - \$300 • Min. bid: \$100



Lot 25

Masonic – “Zanesville” / Eagle / “Ohio / J. Shepard & Co.” (backwards “S”), Historical Flask,

Zanesville Glassworks, OH, 1822 – 1832. Golden amber with an orange tone, sheared mouth – pontil scar, pint; (some exterior high point wear and a weakened impression though the shoulder area, but no other form of damage). GIV-32. A popular mold that can be obtained in a wide array of amber tones, bluish aqua hues, and on rare occasions, in shades of green.

Est.: \$500 - \$1,000 • Min. bid: \$350



Lot 26

Masonic – Eagle / “T.W.D” Historical Flask,

Kensington Glass Works, Philadelphia, Pennsylvania, 1825 – 1838. Aquamarine, sheared mouth – pontil scar, pint, near mint; (a very faint interior haze exists that is not terribly noticeable and if desired, could easily be removed with a light professional cleaning). GIV-37.

Est.: \$200 - \$400 • Min. bid: \$125



Lot 29

“Louisville – Glassworks” Scroll Flask, Louisville Glass Works, Louisville, Kentucky, 1855 – 1860. Aquamarine, sheared mouth – iron pontil scar, quart, perfect! GIX-7. A scarce mold, wonderful attic mint condition and great character with crude, pebbly, whittled glass.

Est.: \$250 - \$500 • Min. bid: \$150



Lot 30

Scroll Flask, Midwest America, 1845 – 1860. Brilliant citron, almost a clear lime green, sheared mouth – pontil scar, pint, mint. Probably GIX-11 (upper star points not clearly defined). Gorgeous color and clarity, wonderful condition, one that will stand out in a group!

Est.: \$1,200 - \$1,800 • Min. bid: \$700



Lot 27

“Success To The Railroad” / Horse Pulling Cart – Eagle with Stars, Historical Flask,

Coventry Glass Works, Coventry, Connecticut, 1830 – 1849. Medium olive with an amber tone, sheared mouth – pontil scar, pint, near perfect; (just a slight touch of light high point wear, otherwise attic mint). GV-8. A crisp, above average example of this popular, early flask.

Est.: \$400 - \$600 • Min. bid: \$250



Lot 31

Lot of (2) Scroll Flasks, Midwest America, 1845 – 1860. Shades of aquamarine, both examples with sheared mouths and pontil scarred bases, quart and pint; (the quart example has a 1/4" flake off the side of the roughly sheared mouth, the pint example is perfect). GIX-1 & GIX-11a.

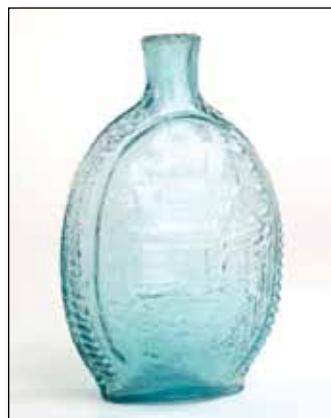
Est.: \$125 - \$225 • Min. bid: \$70



Lot 28

Scroll Flask, Midwest America, 1845 – 1855. Deep root beer amber, almost black through the neck and lower third of the body, sheared mouth – pontil scar, quart, near mint; (some scattered light exterior wear, otherwise perfect). GIX-3. A scarce color, deeper than most, and one that will stand out in a color run.

Est.: \$1,000 - \$1,500 • Min. bid: \$600



Lot 32

Log Cabin – Flag / “Hard Cider” / Cider Barrel and Plow Historical Flask, probably Pittsburgh PA, 1839 – 1841. Aqua, sheared mouth – pontil scar, pint; (lightly cleaned on the exterior only, some light exterior wear and an area of roughness with several small flakes on the inside edge of the mouth that may have occurred when the cork was pried out). GX-22. An extremely rare, historically important mold!

Est.: \$4,000 - \$8,000 • Min. bid: \$2,500



Lot 33

Sheaf of Grain – “Westford Glass Co / Westford / Conn” Pictorial Flask, Westford Glass Works, 1857 – 1873. Deep tobacco amber, crude applied round double collared mouth – smooth base, half pint, virtually attic mint; (a touch of faint exterior wear, otherwise pristine). GXIII-37. Strong embossing, fine condition.

Est.: \$175 - \$275 • Min. bid: \$100



Lot 37

Pattern Molded Globular Bottle, 24 ribs swirled to the right, Midwest America, probably Zanesville Glass Works, Zanesville, Ohio, 1820 – 1835. Bright, light golden almost honey amber, small outward folded mouth – pontil scar, ht. 8 ½”, near mint; (expected faint exterior wear, otherwise perfect!) A beautiful example, slightly larger than Lot #35 with a little more of a gentle curvature to the shoulders. Another bright, crisp, clean example.

Est.: \$600 - \$900 • Min. bid: \$400



Lot 34

“Granite / Glass / Co – Stoddard / N H” Lettered Flask, Granite Glass Works, Stoddard, NH, 1850 – 1860. Medium to deep yellowish golden amber, almost a tobacco amber, applied round double collared mouth – smooth base, pint, near attic mint; (some expected, very faint exterior wear otherwise perfect). GXV-7. A great example of this classic Stoddard Glass Works flask.

Est.: \$500 - \$800 • Min. bid: \$300



Lot 38

Pattern Molded Club Bottle, 16 widely spaced vertical melon type ribs, Midwest America, possibly Mantua Glass Works, Mantua, OH, 1822 – 1829. Aqua, club form, sheared mouth with a crudely applied ring type collar – blowpipe pontil scar, ht. 7 7/8”; (a bubble on the interior of the bottle has a refracting line around the thin cover glass, approx. ¼”, otherwise about perfect). A fine example. Note; the 16-rib club bottles are much less common than their twenty-four rib counterparts.

Est.: \$175 - \$275 • Min. bid: \$100



Lot 35

Pattern Molded Globular Bottle, 24 ribs swirled to the right, Midwest America, probably Zanesville Glass Works, Zanesville, Ohio, 1820 – 1835. Brilliant golden shading to light honey amber through the mid-body, small outward folded mouth – pontil scar, ht. 7 ¾”, near mint; (some typical fine exterior wear around the mid-body, otherwise perfect). “Classic” symmetrical form with a near spherical body, and in a pleasing color.

Est.: \$600 - \$900 • Min. bid: \$400



Lot 39

Pattern Molded Club Bottle, 24 ribs swirled to the left, Midwest America, possibly Zanesville Glass Works, Zanesville, Ohio, 1825 – 1840. Aquamarine, club form, applied round collared mouth – blowpipe pontil scar, ht. 7 ½”, perfect. Nice form and impression, slightly smaller in stature than most, a good clean example! Provenance: Ex. Bryan Grapentine collection.

Est.: \$150 - \$250 • Min. bid: \$80



Lot 36

Pattern Molded Globular Bottle, 24 ribs patterned vertically, Midwest America, possibly early Pittsburgh district, 1800 – 1830. Medium to deep bluish aquamarine, sheared mouth with applied, flat collared band – blowpipe pontil scar, ht. 7 5/8”, near mint; (some light exterior wear around the mid-body). An interesting, somewhat unusual patterned globular bottle with the vertical ribs and slightly different lip treatment.

Est.: \$150 - \$250 • Min. bid: \$100



Lot 40

Pattern Molded Pocket Flask, 24 vertical ribs, Midwest America, probably Zanesville Glass Works, Zanesville, Ohio, 1820 – 1840. Bright golden amber with a slight orange tone, flattened circular body, sheared mouth – pontil scar, ht. 4 ½”, perfect. A classic little Midwest patterned flask with nice color, brilliance, clarity, and condition.

Est.: \$225 - \$450 • Min. bid: \$125



Lot 41

Pattern Molded Pocket Flask, 24 vertical ribs, Midwest America, probably Zanesville, Ohio, 1820 – 1840. Medium to deep amber, flattened chestnut form, sheared mouth – pontil scar, ht. 5 1/8", near mint; (some faint exterior high point wear, the pattern fades in the lower portion of the body as is typical for these flasks, otherwise perfect). A fine little patterned flask with the color being a little deeper than the more typical golden toned examples.

Est.: \$225 - \$450 • Min. bid: \$125



Lot 42

Pattern Molded Pocket Flask, 10 diamond pattern, probably Zanesville, Ohio, 1815 – 1835. Olive yellow, almost a butterscotch coloration, flattened chestnut form, sheared mouth – solid glass tipped pontil scar, ht. 5", near mint; (a weakened impression in the lower portion of the body, a touch of high point wear on the heel near the base and a miniscule pinpoint bit of roughness at the sheared mouth). Exceptional, eye appealing color!

Est.: \$600 - \$1,200 • Min. bid: \$400



Lot 43

Pitkin Type Flask, pattern molded with 22 widely spaced melon type ribs, probably Germany, 1770 – 1800. Medium yellowish green, flattened circular body, sheared mouth – glass tipped pontil scar, ht. 4 1/2", perfect. A very interesting and unusual little flask. The single vertical rib pattern is scarce (whether Europe or America), as is the relatively diminutive size and flattened spherical or "coin" form.

Est.: \$400 - \$600 • Min. bid: \$250



Lot 44

Pattern Molded Pinched Spirits Bottle, 20 vertical ribs, Germany, likely the Alpine region, 1720 – 1750. Vivid cobalt or midnight blue shading to near violet in shoulder area, ovoid form, blown in the half post method with a classic pinched indentation through the center, sheared and outward flared mouth – blowpipe pontil scar, ht. 7 7/8", perfect. Beautiful, early, scarce and in wonderful condition. See VdB, plate 230.

Est.: \$600 - \$1,200 • Min. bid: \$400



Lot 45

Pattern Molded Pocket Flask, "Diamond Daisy Pattern", Henry William Stiegel's American Flint Glass Manufactory, Manheim, PA 1769 – 1774. Brilliant medium amethyst, plump horseshoe form body, sheared mouth – pontil scar, ht. 5"; (a shallow sliver-type flake approx. 1/8" wide extending down from the edge of the lip along with a series of very small, pinhead sized or smaller, tiny flakes adjacent to it, otherwise perfect). An outstanding example with exceptional color and pattern.

Est.: \$3,000 - \$5,000 • Min. bid: \$2,000



Lot 46

Pattern Molded Pocket Flask, 28 ogival diamonds or "honeycomb pattern" over flutes, probably Stiegel's American Flint Glass Manufactory, Manheim, PA, 1769 – 1774. Grape amethyst, plump horseshoe form body, sheared mouth – pontil scar, ht. 5 1/8", near mint; (somewhat weakened impression in lower portion of body and some scattered light exterior high point wear). A gorgeous color, classic form and pattern (See, Glass in Early America, Arlene Palmer, #353).

Est.: \$2,000 - \$4,000 • Min. bid: \$1,500



Lot 47

Pattern Molded Pocket Flask, 20 small oval or pearl-type ornaments in horizontal rows below 20 rounded vertical ribs through the shoulder area, probably England or Continental, possibly America, 1770 – 1820. Medium to deep grape amethyst, elongated horseshoe form, sheared mouth – pontil scar, ht. 6 3/4"; (pattern weakens in lower third of body and some light, age-appropriate exterior wear, otherwise excellent condition). An interesting and rare pattern, unique in our experience.

Est.: \$1,000 - \$2,000 • Min. bid: \$700



Lot 48

Pattern Molded Pocket Flask, 16 widely spaced vertical ribs, probably Continental, 1800 – 1830. Pinkish dusty rose coloration, flattened circular body, sheared mouth – solid glass tipped punty scar, ht. 5 1/2", near mint; (some faint expected exterior high point wear, otherwise perfect). A most unusual, exceptional and extremely rare color. This example is certainly different and would stand out in any grouping of early patterned flasks.

Est.: \$750 - \$1,250 • Min. bid: \$400



Lot 49

Pattern Molded Flask, 18 pronounced ribs slightly swirled to the right, probably Emil Larson, Vineland, New Jersey, 1932 – 1942. Plum amethyst, plump ovoid body, sheared mouth – glass tipped punt scar, ht. 6", about mint; (some scattered faint exterior high point wear, otherwise perfect). See MW, plate 90, #7. When these flasks were first introduced in the 1930's they fooled many a collector but were ultimately deemed "spurious fakes".

Est.: \$100 - \$200 • Min. bid: \$60



Lot 50

Freeblown Decanter or Table Serving Bottle, New England, 1800 – 1830. Olive yellow shading to a yellowish olive amber through the neck with striations swirling downward through the body, flattened chestnut body with straight sides tapering slightly to a cylindrical base, applied sloping collared mouth – blowpipe pontil scar, ht. 9", perfect. Faint paddle marks are evident on the sides near base. An exceptional decanter-type chestnut bottle with great color!

Est.: \$1,000 - \$2,000 • Min. bid: \$600



Lot 51

Freeblown Chestnut Bottle, New England, 1783 – 1820. Delicate straw yellow with a slight olive tone, chestnut form, sheared mouth with a crudely applied ring type lip – delicate blowpipe pontil scar, ht. 5 3/8", perfect. A great little flask that exudes character with clumps of un-melted sand and glass gall suspended in the shoulder (with no lines or damage!), in a beautiful, delicate "read a newspaper through", clear yellow with a slight olive coloration.

Est.: \$250 - \$450 • Min. bid: \$150



Lot 52

Early Freeblown Chestnut Bottle, South Jersey Type, probably Wistarburgh, 1750 – 1780. Emerald green with a slight yellowish tone, plump chestnut form with gracefully tapering shoulders, sheared mouth with applied heavy string rim – glass tipped pontil scar, ht. 9 1/4", near attic mint; (small 1/8" open bubble at base edge). Outstanding color and condition and is absolutely filled with small bubbles adding great character.

Est.: \$1,250 - \$2,500 • Min. bid: \$800



Lot 53

Early Freeblown Chestnut Bottle, South Jersey Type, possibly Wistarburgh, 1750 – 1780. Medium green, chestnut form, sheared mouth with applied heavy rolled collar – blowpipe pontil scar, ht. 7 1/8", near mint; (a 1/4" fissure extends from the heavy pontil scar and likely occurred at the time of manufacture and an elongated bubble in the neck has a 1/8" opening in the cover glass). Classic soft "Wistar" green color and the heavy rolled lip are tell-tale signs of Wistarburgh production.

Est.: \$250 - \$450 • Min. bid: \$150



Lot 54

Early Freeblown Chestnut Bottle, America, probably New England, 1785 – 1820. Bright medium olive amber shading to a deeper olive amber through the neck, chestnut form, sheared mouth with applied flattened string lip – blowpipe pontil scar, ht. 8 1/4", near attic mint; (very light expected exterior wear, otherwise perfect). Nice larger size, fine condition.

Est.: \$250 - \$450 • Min. bid: \$150



Lot 55

Early Freeblown Chestnut Bottle, America, probably New England, 1785 – 1820. Medium olive green, chestnut form, tidy applied ring type lip – blowpipe pontil scar, ht. 7", near mint; (some light interior residue below the shoulder that would likely wash out and a couple of light exterior scratches and expected age-appropriate wear). A slightly different coloration in a pure green with no trace of amber.

Est.: \$200 - \$400 • Min. bid: \$125



Lot 56

Early Spa Mineral Water Bottle, probably Belgium, 1700 – 1750. Medium to deep olive yellow, chestnut form, crudely sheared mouth with applied and tooled crimped ring collar – smooth base, ht. 7 7/8", virtually perfect; (a paper-thin 1/8" open bubble and just a touch of faint exterior wear, otherwise pristine). A fine example, lighter in color than most and filled with tiny seed bubbles. Note; an old collector's tag remains on the neck of the bottle.

Est.: \$400 - \$600 • Min. bid: \$250



Lot 57

Freeblown Globular Bottle, Probably Eastern United States, possibly Continental, 1750 – 1800. Emerald green, “chunky” globular body, sheared mouth with an applied, inverted tapered collar – blowpipe pontil scar, ht. 7 ½”; (a ¼” “star” type crack on the inner surface of the shoulder and a fair amount of fine to moderate exterior wear around center of bottle). An extremely interesting, unusual bottle with exceptional color having a very “earthy” feel.

Est.: \$400 - \$800 • Min. bid: \$250



Lot 58

Large Freeblown Globular Bottle, New England, 1790 – 1820. Bright yellowish olive amber, spherical or “globular” body with a slightly flattened base, applied heavy ring type collar – blowpipe pontil scar, ht. 10 ¼”, near mint; (some normal, expected light exterior wear around the mid-body, otherwise perfect). A nice early globular bottle with good form, color and condition.

Est.: \$600 - \$800 • Min. bid: \$400



Lot 59

Oversized Freeblown Globular Bottle, America, probably Midwest, 1795 – 1820. Greenish aquamarine, bulbous form with profuse swirl lines throughout the body, sheared mouth with an applied ring type collar – domed base with a blowpipe pontil scar, ht. 10 ½”, near mint; (some light exterior wear and an elongated bubble with an 1/8” opening on the cover glass). Scarce larger size, and has a very early “feel” and exudes character with a pronounced swirled effect to the glass.

Est.: \$200 - \$400 • Min. bid: \$125



Lot 60

Lot of (2) Freeblown Globular Bottles, America, probably Midwest, 1800 – 1830. Both are aqua with semi-bulbous bodies (smaller example is similar to a beehive form), applied and tooled heavy round collared mouths – blowpipe pontil scarred bases, ht. 8 ¼” & 9 1/8”, both are in virtually attic mint condition. Smaller example was possibly the product of a window glass factory. The 2nd example is somewhat larger than normal.

Est.: \$150 - \$250 • Min. bid: \$80



Lot 61

Large Pillar Molded Pitcher, America or England, 1850 – 1870. Colorless, pear shaped body corseted through the mid-section and patterned with 8 pronounced vertical (pillar) type ribs, outward flaring rim with tooled and pinched spout, applied hollow handle folded and crimped at lower attachment, rough, glass tipped pontil scar, ht. 9”, perfect. See LI, plate 180, #4. A large, handsome mid-nineteenth century pitcher, nicely proportioned, excellent condition.

Est.: \$250 - \$450 • Min. bid: \$150



Lot 62

Pattern Molded Open Compote, America, probably a Pittsburgh district glasshouse, 1825 – 1845. Colorless straight sided bowl blown in a one-piece dip mold patterned with 12 vertical ribs with outward folded rim. Patterned bowl is connected to a heavy, solid glass, baluster stem on a very slightly flaring circular foot with horizontal ring – solid glass tipped pontil scar, ht. 4 ¾”, width of bowl 5 3/8”, perfect with only minor, age-appropriate wear. A scarce, nicely executed patterned compote.

Est.: \$175 - \$350 • Min. bid: \$100



Lot 63

Large Freeblown Pitcher, America, probably Eastern United States, 1815 – 1835. Colorless, compressed spherical body, wide neck flaring outward to a tooled rim with pour spout and fine threading encircling the rim, applied hollow handle with perfectly curled and crimped lower attachment – applied circular foot with a rough glass tipped pontil scar, ht. 8 1/8” (to top of handle), near perfect; (some very light exterior wear around the mid-body). An attractive, early freeblown pitcher.

Est.: \$300 - \$500 • Min. bid: \$200



Lot 64

Lot of (2) Early Paneled and Engraved Stiegel-Type Flips, probably America, possibly Continental, 1770 – 1800. Both are colorless soda-lime glass with molded panels (18 & 12), with sides flaring slightly outward to a sheared rim – pontil scarred bases, ht. 4 ¼” & 5 ¾” respectively, both are perfect! Very similar to McK, plate 22, #3. Both are similarly engraved with shallow wavy lines intersecting to create an elliptical motif.

Est.: \$250 - \$500 • Min. bid: \$150



Lot 65

Early Freeblown Candlestick, New England, probably Westford Glass Works, Westford, Connecticut, 1857 – 1865. Medium to deep 'old' amber, cylindrical 'saucer' form base with a hollow short tapered body and tooled pinched candle socket, all formed from a single gather of glass – pontil scarred base, ht. 3 5/8", base dia. 4 1/4", perfect. A rare and important piece of New England tableware. See McK, plate 71. Ex. Paul Richards, Ex. Norman C. Heckler collections.

Est.: \$5,000 - \$10,000 • Min. bid: \$3,000



Lot 66

Rare Blown Three Mold Decanter, New England, probably Keene Marlboro Street Glassworks, Keene, NH, 1815 – 1830. Medium yellowish green, bulbous barrel form body colloquially referred to as a pineapple, applied sloping collared mouth with lower bevel – pontil scar, ht. 8 3/8", near mint; (some expected light exterior high point wear, otherwise perfect). GII-43. See McK, plate 127, #1. Listed as extremely rare, and in a beautiful color to boot!

Est.: \$4,000 - \$6,000 • Min. bid: \$2,500



Lot 67

Freeblown Bulbous Jar or Vase, America, probably South Jersey, 1840 – 1870. Medium golden amber, pear form bulbous body with gently sloping shoulders, a short wide neck, sheared mouth, large applied ring type lip – blowpipe pontil scar, ht. 7 5/8", perfect. An unusual form likely blown as an offhand piece that may well have been a later product of the Whitney Glass Works. Note; a fine thread of glass extends from the ring lip around a third of the neck.

Est.: \$400 - \$800 • Min. bid: \$250



Lot 68

Freeblown Storage Jar, probably European, possibly America, 1790 – 1830. Yellow olive, dip mold with a wide neck and an outward tooled, sheared and flared mouth – large sand or disc type pontil scar, ht. 9 1/4", near attic mint; (expected light exterior wear, otherwise perfect). Note; these early storage jars were blown in both New England and Europe. Regardless of origin, they remain beautiful examples of early blown utilitarian wares.

Est.: \$150 - \$300 • Min. bid: \$100



Lot 69

"Ira Paine's Filled Ball Pat. Oct 23 1877" Target Ball, America, 1877 – 1885. Brilliant light golden yellow, spherical, three piece mold, rough sheared lip, 2 5/8" diameter, perfect. Gorgeous, bright color, plenty of yellow tones in this one!

Est.: \$275 - \$375 • Min. bid: \$150



Lot 70

"From Bogardus & Co / Shooting Gallery / 158 / South Clark / ST / Chicago – Bogardus Glass Ball Patd Apr. 10 77" Target Ball, America, 1877 – 1885. Rich deep amber, three piece mold, quilted diamond pattern, rough sheared lip, 2 5/8" dia., perfect! An extremely rare and important target ball and perhaps the most coveted of all the Bogardus balls. A great rarity with plenty of embossing and eye appeal having a street address and being blown for a "Shooting Gallery."

Est.: \$10,000 - \$15,000 • Min. bid: \$5,000



Lot 71

Miniature Freeblown Bellows Bottle, probably England, possibly America, 1810 – 1840. Vivid cobalt or midnight blue pear form body with (4) applied, tooled pale pink amethyst ribbons along sides, a pale pink button in the center of the body and (2) applied flattened rectangular feet – sheared mouth with an applied string rim, ht. 4 3/4", near perfect; (a 1/8" flake at top of sheared mouth). Engraved with a fern design and the initials "G W" above a floral motif. A rarity in size and color!

Est.: \$1,000 - \$2,000 • Min. bid: \$700



Lot 72

Queen Victoria 'Illumination' Lamp, England, 1880 – 1900. Aqua, square with roped corners and quilted panels, each with a round cartouche bearing the image of Queen Victoria, sheared and ground mouth – "RD No / 288786" (anchor) / 798 / 97" on smooth base, ht. 3 1/2", near mint; (light exterior dullness near the bulged ring and collar on one side). A very desirable mold in a scarce color. These lamps are colloquially referred to as "Christmas lights."

Est.: \$250 - \$350 • Min. bid: \$150



Lot 73

Cathedral Pickle Jar, America, 1860 – 1875. Deep greenish aquamarine approaching a light blue green, square with beveled corners, gothic arched panels (three with a fancy quatrefoil design above a beaded trefoil motif), outward rolled ring type collar – smooth base, ht. 11 ½", perfect. Similar in design to MW, plate 74, #12. A bright, clean, crisp example with very good depth of color.

Est.: \$175 - \$350 • Min. bid: \$100



Lot 77

Umbrella Ink, America, 1870 – 1880. Light to medium sapphire blue with some attractive violet tones, 8-sided umbrella form, tooled ring lip – smooth base, ht. 2 ½", near mint; (some very faint exterior "bloom" or dullness that is not distracting, but mentioned for complete accuracy, and a touch of pinpoint roughness at the base edge). Similar to C #181. A very scarce and unusual color, one that will stand out in a group!

Est.: \$300 - \$600 • Min. bid: \$170



Lot 74

Cathedral Pickle Jar, America, 1860 – 1875. Deep greenish aquamarine, square with beveled corners, gothic arched panels (three with a fancy quatrefoil design above a beaded trefoil motif), outward rolled ring type collar – smooth base, ht. 11 ½", perfect. Similar in design to MW, plate 74, #12. Another bright, clean, crisp example, this one fitted with a wooden stopple closure (not period), fashioned in the form of an early example used on other types of jars.

Est.: \$150 - \$300 • Min. bid: \$80



Lot 78

C "M & P - New York" Umbrella Ink, America, 1840 – 1855. Light to medium blue green, 8-sided umbrella form, sheared and inward rolled mouth – pontil scar, ht. 2 3/8", excellent, near perfect condition; (the bottle may have been lightly cleaned as there is a faint bit of dullness on the inside of the neck, but it generally presents itself as near attic mint). C #120. An extremely rare, important, umbrella ink bottle with nice character good and color.

Est.: \$800 - \$1,200 • Min. bid: \$500



Lot 75

"Shriver's / Oyster / Ketchup / Baltimore", America, 1860 – 1870. Vibrant emerald green, cylindrical, applied sloping collared mouth – smooth base, ht. 7 3/8"; (a 1/16" flake off the top edge of the mouth on the back side extending inside the lip to 1/8" wide, and a 1/8" bit of roughness on the base edge, otherwise clean, sparking near attic mint). A gorgeous, vibrant color. Most examples of this bottle were dug and have varying degrees of stain. Not this one!

Est.: \$600 - \$1,200 • Min. bid: \$400



Lot 79

Umbrella Ink, America, 1840 – 1860. Bright yellow olive, 8-sided umbrella form, sheared and inward rolled lip – blowpipe pontil scar, ht. 2 ¼"; (a couple of tiny pinpoint flakes at base edge, otherwise about perfect). Similar to C #133. Beautiful, very attractive lighter color, fine condition, a great example.

Est.: \$250 - \$500 • Min. bid: \$180



Lot 76

"Skilton Foote & Co's / Trade Mark" / (motif of monument, trees, fence and barrels) / **"Bunker Hill Pickles"**, America, 1880 – 1895. Aqua, in the form of the famous Cape May, New Jersey lighthouse, tooled sloping collared mouth – smooth base, ht. 7 7/8", near mint; (a less than pinhead sized, flake at edge of mouth, otherwise perfect). Z p.376. A classic, and certainly one of the more difficult Skilton Foote bottles to acquire.

Est.: \$400 - \$600 • Min. bid: \$250



Lot 80

Umbrella Ink, Probably Saratoga Mountain Glassworks (Mt. Pleasant), Saratoga, NY, 1845 – 1860. Medium to deep olive amber, 8-sided umbrella form, sheared and inward rolled mouth – (backwards "4 X 4" embossed on base), blowpipe pontil scar, ht. 2 ¼", about mint; (just the faintest touch of exterior wear, otherwise perfect). Similar to C #133. Shards of ink bases have been excavated at the Mountain Glassworks with the above indicated base markings.

Est.: \$250 - \$500 • Min. bid: \$180

**Lot 81**

Umbrella Ink, America, 1840 – 1860. Yellowish olive with an amber tone, 8-sided umbrella form, sheared mouth – blowpipe pontil scar, ht. 2 ½”; near mint; (very small pinhead sized flake at base edge and just a slight bit of light exterior wear, otherwise perfect). Similar to C #141. A good looking example with crude, wavy glass and an elongated neck.

Est.: \$250 - \$500 • Min. bid: \$180

**Lot 85**

“F / Kidder – Im / Provdt – Indel / Ible – Ink”, America, 1840 – 1850. Aquamarine, rectangular, sheared and inward rolled mouth – blowpipe pontil scar, ht. 2 ¾”, excellent, near mint; (a couple of faint interior spots of residue or haze). Unlisted by Covill, similar to C #481. A very rare, early embossed ink bottle, one that is seldom offered for sale.

Est.: \$250 - \$450 • Min. bid: \$150

**Lot 82**

Umbrella Ink, probably a Stoddard glasshouse, Stoddard, New Hampshire, 1842 – 1855. Yellowish olive amber, 16-sided umbrella form, sheared mouth – pontil scar, ht. 1 7/8”, near mint; (some scattered light exterior wear). C #153. A rare little Stoddard inkwell, the smallest of three sizes that are known to exist. This example is also slightly lighter in color than many.

Est.: \$400 - \$800 • Min. bid: \$250

**Lot 86**

“J - & - I - E - M” Turtle Ink, America, 1865 – 1890. Clear medium blue green, almost a teal coloration, cylindrical with domed shoulders and offset neck, plain sheared lip – smooth base (“4” embossed on base), ht. 1 5/8”, pristine perfect. Similar to C #628. A beautiful example, outstanding color and condition!

Est.: \$500 - \$800 • Min. bid: \$300

**Lot 83**

Umbrella Ink, probably a Stoddard glasshouse, Stoddard, New Hampshire, 1842 – 1855. Medium to deep olive amber, 16-sided umbrella form, sheared mouth – pontil scar, ht. 2”, near mint; (some scattered light exterior wear). C#153. A desirable Stoddard inkwell, this is the middle of the three available sizes, slightly large in both height and girth than the preceding example.

Est.: \$400 - \$800 • Min. bid: \$250

**Lot 87**

“Harrison’s / Columbian / Ink”, America, 1845 – 1855. Medium sapphire blue, cylindrical, sheared and inward rolled mouth – blowpipe pontil scar, ht. 1 7/8”, mint. C #194. An outstanding example, bright, crisp, nicely whittled and perfect!

Est.: \$500 - \$800 • Min. bid: \$300

**Lot 84**

“Waters – Ink – Troy, N.Y.”, America, 1845 – 1855. Aqua, 6-sided modified umbrella form, sheared and inward rolled mouth – blowpipe pontil scar, ht. 2 5/8”, perfect; (note; there is a horizontal annealing line near the base of neck similar to what is often seen vertically on the inside edge of the necks, that occurred during manufacture, and is not considered damage). C #171. A scarce ink in fine condition. MW, plate 76, #3.

Est.: \$400 - \$600 • Min. bid: \$250

**Lot 88**

“Hover – Phila” Master Ink Bottle, America, 1845 – 1860. Bright yellowish green, cylindrical, sheared and tooled small ring type mouth – blowpipe pontil scar, ht. 5 ¾”, perfect. Similar to C #767. Very pretty color and the body of the bottle is completely covered with a whittled appearance adding great character.

Est.: \$175 - \$325 • Min. bid: \$100



Lot 89

“Davids & Black, - New York.” Master Ink Bottle, America, 1850 – 1860. Medium blue green, cylindrical three-piece mold, applied sloping collared mouth – blowpipe pontil scar, ht. 6”, excellent, near attic mint. Similar to C #753. Another nice example with good color and a highly whittled appearance.

Est.: \$200 - \$400 • Min. bid: \$125



Lot 93

“Willington Glass Works” (on base), Whiskey Fifth, Willington Glass Works, West Willington, Connecticut, 1860 – 1872. Yellowish tobacco amber, cylindrical, 3-piece mold, applied sloping collared mouth with ring – smooth base, ht. 11 ½”, near mint; (some very light expected exterior wear, otherwise perfect). A scarce glasshouse embossed whiskey. In addition, this example does not appear to have been dug as is often the case.

Est.: \$300 - \$600 • Min. bid: \$200



Lot 90

“Leonard Appleby / Rail Road / Mills Snuff”, America, 1830 – 1850. Yellowish golden amber, rectangular, sheared and outward flared mouth – blowpipe pontil scar, ht. 4 3/8”; (professionally cleaned with some remaining light exterior wear and interior dullness and the neck has been replaced, at the shoulder). An extremely rare snuff bottle that has sold in excess of \$8,000 at auction. This one has been expertly repaired and the damage is not noticeable on display!

Est.: \$200 - \$400 • Min. bid: \$150



Lot 94

“Brooklyn Glass Bottle Works” (on base), **“Patent”** (on shoulder), Whiskey Fifth, Brooklyn Glass Works, Brooklyn, New Jersey, 1860 – 1868. Bright yellowish golden coloration, cylindrical, 3-piece mold, applied sloping collared mouth with ring – smooth base; (professionally cleaned to near mint condition with a couple of spots of light ground wear remaining). A scarce mold, beautiful light color.

Est.: \$150 - \$300 • Min. bid: \$100



Lot 91

Lot of (5) “Seam-Sided” Whiskey Flasks, America, 1865 – 1880. Brilliant yellow (qt.), citron with an olive tone (qt.), golden amber (pt.), golden yellow and deep amber (1/2 pints), all are “Union Oval” form with applied double collared mouths – smooth bases, “L G /

CO”, (Lyndeborough Glass Works, Lyndeborough, NH), on base of yellow quart, all are very near mint to perfect! The two yellow examples covered with whittle marks. A colorful grouping of whiskey flasks.

Est.: \$200 - \$400 • Min. bid: \$150



Lot 95

“Willington Glass Works” (backwards “N”s in Willington and “S”s in Glass), base embossed Whiskey, Willington Glass Works, 1860 – 1872. Rich golden amber, cylindrical, 3-pc. mold, applied sloping collared mouth with ring – smooth base, ht. 11”, near mint; (a couple of faint exterior scratches and the glass is filled with small seed bubbles of which a couple have disturbances in the cover glass, otherwise perfect). A beautiful, bubbly example.

Est.: \$250 - \$450 • Min. bid: \$150



Lot 92

Lot of (5) “Seam-Sided” Whiskey Flasks, 1865 – 1880. Tobacco amber (qt.), bright yellow green (pt.), golden amber (pt.), medium forest green (1/2 pt.), yellowish amber (1/2 pt.), all are “Union Oval” form with applied collared mouths – smooth bases, **“Whitney / Glass**

Works” on base of amber pt, all are very good to mint; (the green ½ pt. has a thin ¼” fissure stemming from an imperfection, this and the amber pt. have been professionally cleaned).

Est.: \$250 - \$500 • Min. bid: \$150



Lot 96

“Brooklyn Glass Bottle Works” (on base), **“Patent”** (on shoulder), Whiskey Fifth, Brooklyn Glass Works, Brooklyn, New Jersey, 1860 – 1868. Light aquamarine, cylindrical, 3-piece mold, applied sloping collared mouth with ring – smooth base, ht. 11 ½”, attic mint! A scarce mold, scarce color, outstanding condition.

Est.: \$200 - \$400 • Min. bid: \$125

**Lot 97**

“C.A. Richards & Co / 99 Washington St / Boston Mass.” Whiskey Bottle, America, 1865 – 1875. Medium amber with a slight orange tone, square with beveled corners, applied sloping collared mouth – smooth base, ht. 9 5/8”, near attic mint; (expected faint exterior age-appropriate wear, otherwise perfect). Many examples that exist have been dug; this one was not!

Est.: \$100 - \$150 • Min. bid: \$60

**Lot 101**

Figural Cannon-Barrel Whiskey, America, 1860 – 1870. Yellowish olive amber, in the form of a cannon-barrel, applied rounded beveled collar – smooth base, ht. 13”, virtually attic mint; (a slight bit of light exterior high point wear, otherwise perfect). A very rare figural whiskey, likely blown to appeal to the Civil War soldiers and veterans. In addition, great color and condition!

Est.: \$500 - \$1,000 • Min. bid: \$300

**Lot 98**

“C.A. Richards & Co / 99 Washington St / Boston Mass.” Whiskey Bottle, America, 1865 – 1875. Yellowish golden amber, square with beveled corners, applied sloping collared mouth – smooth base, ht. 9 5/8”, perfect. A great example with pleasing color, nice character and excellent “attic” condition.

Est.: \$125 - \$225 • Min. bid: \$80

**Lot 102**

“Chestnut Grove / Whiskey / C.W.” (on applied seal), Handled Chestnut Flask, America, 1850 – 1860. Beautiful golden honey color, large flattened chestnut form with an applied solid ear-shaped handle, applied mouth with flat band – blowpipe pontil scar, ht. 8 3/4”, near attic mint; (a couple of faint exterior scratches, otherwise perfect!). A light, bright example in great condition. Note; some examples have a molded seal and smooth base. This is the earlier example with applied seal and pontiled base.

Est.: \$250 - \$350 • Min. bid: \$150

**Lot 99**

“C.A. Richards / 99 Washington St. / Boston.” (with period label), Whiskey Bottle, America, 1860 – 1870. Yellowish tobacco amber with slight olive tone, square with beveled corners, applied sloping collared mouth – smooth base, ht. 9 1/2”; (tiny pinhead flake at edge of mouth, otherwise pristine perfect). Label reads in part: “Golden / Sheaf / Whiskey / This Brand / Pure Bourbon”. Note; this early variant is full of bubbles and is in outstanding condition.

Est.: \$250 - \$450 • Min. bid: \$150

**Lot 103**

“Griffith Hyatt & Co. / Baltimore” Handled Whiskey Bottle, America, 1850 – 1860. Medium golden amber, pear-form body with an applied ear-shaped handle to the right, applied square collared mouth – blowpipe pontil scar, ht. 7 1/4”, near attic mint; (just a few light exterior scratches otherwise perfect). These often have issues with cooling lines at the handle attachment or nicks on the square collar, this one is virtually perfect. In addition, nicely whittled and very clean!

Est.: \$600 - \$900 • Min. bid: \$400

**Lot 100**

“A.M. Bininger & Co. / No. 338 Broadway. – Old London Dock – Gin”, America, 1860 – 1870. Clear medium olive green, square with beveled corners, applied sloping collared mouth – smooth base, ht. 9 1/2”, near mint; (a couple of light scratches, otherwise pristine perfect!). This variant can be found in a variety of colors and lends itself well to creating a nice color run with this particular mold.

Est.: \$300 - \$500 • Min. bid: \$200

**Lot 104**

“Henry Chapman & Co / Sole / Agents / Montreal” Spirits Flask, America, probably Whitney Glass Works, Glassboro, NJ, 1861 – 1875. Golden amber shading to a lighter honey color along the sides, flattened teardrop form, applied sloping collared mouth with internal screw threads and flange for stopper, correct threaded glass stopper “PAT / 1861” (on stopper) – smooth base, ht. 6 1/8” (with stopper), near mint; (some light exterior high point wear). A fine example.

Est.: \$150 - \$250 • Min. bid: \$100

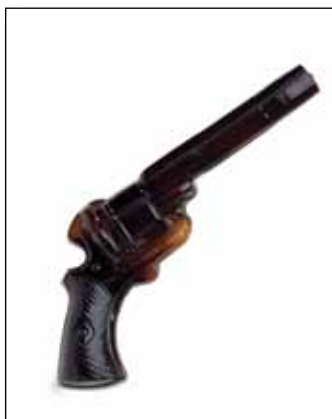


Lot 105

“Casper’s Whiskey / Made By Honest / North / Carolina People”, America, 1885 – 1900.

Vivid cobalt blue, cylindrical with fluted shoulders, tooled sloping collared mouth with ring – smooth base, ht. 12”, near mint; (a small area of dullness on the one side of the bottle has been lightly cleaned to restore original luster; also a surface bubble near the base). Note; the partially formed surface bubble is minor and the bottle otherwise displays as attic mint.

Est.: \$350 - \$450 • Min. bid: \$200



Lot 106

“Standard Perf Wk’s – Patented Nov. 6th 1888” Figural Bottle, America, 1888 – 1895. Deep root-beer amber, in the form of a long barrel revolver, barrel is 12-sided becoming round in the last 1.5 inches, tooled, sheared mouth, overall length, 10”, attic mint. Likely one of the earliest of the figural pistols (most having threaded and ground mouths and being of a later style). A scarce mold, nicely detailed and in outstanding condition.

Est.: \$150 - \$250 • Min. bid: \$80



Lot 107

Whiskey Flask with embossed motif of Indian Chief with Full Headdress, America, 1885 – 1900. Colorless, pumpkinseed form with a detailed Indian head embossed within a circle of dots, threaded and ground mouth with original metal closure – smooth base, ht. 4”, near mint; (the flask is perfect, the metal closure has a few small spots of discoloration and a thin split in the side of the cap). A rare little flask, perhaps blown to commemorate an important event or treaty.

Est.: \$100 - \$200 • Min. bid: \$60



Lot 108

“Dr Bull’s Superior / Stomach Bitters – W.H. Bull & Co / Saint Louis”, America, 1865 – 1875. Medium amber with orange tone, square with beveled corners, applied sloping collared mouth – smooth base, ht. 9”, very near mint; (a small, pencil-head size bubble on a side panel has a little cloudiness, otherwise perfect). Note; a very scarce bottle, similar to R/H #B258 (St. Louis is spelled out “Saint Louis”). Nicely whittled glass.

Est.: \$100 - \$200 • Min. bid: \$60



Lot 109

“John W. Steele’s / Niagara” (motif of star) “Bitters” – (motif of eagle) – “John W. Steele’s / Niagara Star Bitters” – “1864” – (star) – (star) – (star), America, 1864 – 1875. Medium amber, square, applied sloping collared mouth with band – smooth base, near mint; (a minor 1/8” flat flake is off the edge of the applied mouth, otherwise, sparkling attic mint!). R/H #S184. Ex. Charles B. Gardner collection (lot 791). A great example, bright, clean and with great provenance!

Est.: \$600 - \$900 • Min. bid: \$400



Lot 110

“E. Dexter Loveridge / Wahoo Bitters – (eagle) – “E. Dexter Loveridge / Wahoo Bitters – XXX – Patd – DWD – 1863” (with 85% original front and back labels), America, 1863 – 1875. Bright yellowish amber with an olive tone, square, applied sloping collared mouth with band – smooth base, pristine perfect! R/H #L126. An exceptional example in a rarecolor and exceedingly rare with the original labels! A special bottle that has not been offered for sale in more than 26 years!

Est.: \$2,500 - \$4,500 • Min. bid: \$1,500



Lot 111

“Aromatic Orange – Stomach Bitters – Berry . Demoville & Co / Nashville”, America, 1865 – 1875. Bright golden amber shading to a light honey amber along the sides, square semi-cabin form, applied sloping collared mouth – smooth base, ht. 10”, sparkling attic mint! R/H #A90. Note; a very rare bottle with only one other example being recorded at public auction in the past 13 years. This one is absolutely pristine. It would be hard to imagine a nicer one!

Est.: \$1,500 - \$2,500 • Min. bid: \$1,000



Lot 112

“William Allen’s – Congress Bitters”, America, 1865 – 1875. Deep blue green approaching an emerald tone, rectangular semi-cabin form, applied sloping collared mouth – smooth base, ht. 10 1/4”, perfect. R/H #A29. In addition, lots of tiny seed bubbles though the shoulder and neck area. A beautiful example with great color and one that is getting harder to find, especially in this outstanding condition!

Est.: \$2,500 - \$3,500 • Min. bid: \$1,500

**Lot 113**

“Brown’s / Celebrated / Indian Herb Bitters – Patented / Feb 11 / 1868”, America, 1868 – 1880. Light honey shading to an almost pure yellow color through the arms and upper torso, figural Indian maiden, sheared and inward rolled lip – smooth base, ht. 12 ¼”, near attic mint; (some wisps of faint interior haze in the lower body). R/H #B226. Outstanding color, much lighter than normal, perfect, fully intact rolled lip.

Est.: \$1,500 - \$2,500 • Min. bid: \$1,000

**Lot 117**

“The Great Tonic / Dr Caldwell’s / Herb Bitters”, America, 1860 – 1870. Bright, light honey amber approaching yellow through the shoulder area, triangular pyramid form, applied sloping collared mouth – smooth base, ht. 12 5/8”, attic mint! R/H #C9. A beautiful bright sparkling example that is lighter in color than most.

Est.: \$250 - \$400 • Min. bid: \$150

**Lot 114**

“Brown’s / Celebrated / Indian Herb Bitters – Patented / Feb 11 / 1868”, America, 1868 – 1880. Brilliant light golden shading a honey color through the arms, figural Indian maiden, sheared and ground mouth – smooth base, ht. 12 1/8”, near attic mint; (a paper-thin 1/8” flake on top of the factory ground mouth and a couple of shallow flakes off the edge of the lip that likely occurred at the time of manufacture). R/H #B226. A great example, with traces of original paint!

Est.: \$600 - \$900 • Min. bid: \$400

**Lot 118**

“Morning” (star) “Bitters / Inceptum 5869 – Patented / 5869”, America, 1860 – 1865. R/H #M135. Medium amber, triangular pyramid form, applied sloping collared mouth – iron pontil scar, ht. 12 ¾”, perfect; (note; some light content residue on the interior that would likely wash out with warm soap and water). R/H #M135. A great example, attic mint with a heavy iron pontil scar and complete with the original neck foil.

Est.: \$300 - \$500 • Min. bid: \$200

**Lot 115**

“National / Bitters” – “Patent / 1867” (on base), America, 1867 – 1875. Medium amber shading to a lighter golden amber below the neck, figural ear of corn, applied short tapered collar with ring – smooth base, ht. 12 ½”, near mint; (some light exterior wear, primarily along the side and on the reverse). R/H #N8. Plenty of personality resembling the Leaning Tower of Pisa, with its decided arch to the right, probably the result of the annealing process.

Est.: \$300 - \$500 • Min. bid: \$200

**Lot 119**

“Brown’s Castilian” Bitters Bottle, America, 1870 – 1880. Light honey amber, approaching a golden yellow, figural bell form, applied square collared mouth with flange – smooth base, 10 5/8”, near mint; (some light exterior wear). R/H p.120. An interesting figural in a great color, lighter than most of the other examples that we have seen.

Est.: \$300 - \$600 • Min. bid: \$200

**Lot 116**

“National / Bitters” – “Patent / 1867” (on base), America, 1867 – 1875. Bright golden yellow, figural ear of corn, applied short tapered collar with ring – smooth base, ht. 12 ½”, excellent, virtually perfect condition. R/H #N8. Great color, wonderful condition, much brighter and lighter than normal!

Est.: \$800 - \$1,200 • Min. bid: \$500

**Lot 120**

“Brown’s Catalina” Bitters Bottle, America, 1870 – 1880. Medium golden amber, figural bell form, applied square collared mouth with lower flange – smooth base, ht. 10 7/8”, near mint; (a tiny pin-prick flake at the edge of the square collared mouth – otherwise about perfect). R/H p.120. A scarce bottle, nicely whittled, great condition! An interesting figural considered a bell form by some and a cannon barrel by others.

Est.: \$250 - \$500 • Min. bid: \$150

**Lot 121**

"Baker's / Orange Grove – Bitters", America, 1870 – 1880. Bright light golden amber shading to a lighter honey color in the shoulders, square with roped corners, sloping collared mouth – smooth base, ht. 9 1/2", near attic mint; (a couple of onion-skin thin open surface bubbles, otherwise perfect). R/H #B9. A clean, pretty example with outstanding character being absolutely loaded with bubbles. This one stands out from the rest!

Est.: \$500 - \$800 • Min. bid: \$300

**Lot 122**

"Baker's / Orange Grove – Bitters", America, 1870 – 1880. Light to medium apricot topaz, square with roped corners, sloping collared mouth – smooth base, ht. 9 1/2", near mint; (a very hard to see, small 1/8" "fisheye" type bruise on the surface of one of the roped corners, otherwise perfect!). R/H #B9. A scarce, beautiful, eye-appealing color. The noted flaw is quite minor!

Est.: \$1,000 - \$1,500 • Min. bid: \$700

**Lot 123**

"Baker's / Orange Grove – Bitters", America, 1870 – 1880. Medium apricot puce with some strawberry tones in natural daylight, square with roped corners, sloping collared mouth – smooth base, ht. 9 3/8", mint! R/H #B9. Another scarce, beautiful color that can be enjoyed in normal lighting conditions. Note; with a little patience, this mold can be obtained in quite an array of stunning colors. Ex. Chris Batdorff collection.

Est.: \$1,000 - \$1,500 • Min. bid: \$700

**Lot 124**

"Romaine's – Crimean – Bitters – Patent 1863" (around base) – "W. Chilton & Co", America, 1863 – 1875. Light to medium golden amber, semi cabin form with column-like corners, applied sloping collared mouth – smooth base, ht. 10", virtually attic mint; (a tiny pinhead size pit on inner edge of lip that probably occurred in manufacture, mentioned only for complete accuracy). R #86. A bright, clean, sparking example.

Est.: \$700 - \$1,000 • Min. bid: \$400

**Lot 125**

"H.P. Herb / Wild / Cherry / Bitters / Reading / PA – Wild Cherry" / (motif of tree) / **"Bitters"** – **"Bitters"** (on each of 4 roof panels), America, 1875 – 1885. Light honey amber with plenty of yellow through the lower roof area, square cabin form with roped corners, tooled tapered collar with ring – smooth base, ht. 9 7/8"; (some light exterior wear along the roof lines, otherwise about mint). R/H #H93. A nice light example.

Est.: \$300 - \$600 • Min. bid: \$200

**Lot 126**

Figural Pineapple Bitters Bottle, America, 1860 – 1875. Bright medium golden amber, figural pineapple, applied large round collared mouth with lower bevel – smooth base, ht. 8 7/8", perfect. R/H #P100. A nice bright clean example and virtually pristine perfect!

Est.: \$200 - \$300 • Min. bid: \$150

**Lot 127**

"J. C & Co" Figural Pineapple Bitters Bottle, America, 1855 – 1865. Deep amber, figural pineapple, applied double collared mouth – large blow-pipe pontil scar, ht. 8 3/8", near attic mint; (some typical faint exterior high point wear, otherwise perfect). R/H #P100. One of the more scarce mold variations with the "J. C & Co" lettering. Nice deep color, almost black in reflected light, fine condition, great pontil!

Est.: \$600 - \$900 • Min. bid: \$400

**Lot 128**

Figural Pineapple Bitters Bottle, America, 1860 – 1875. Medium amber, figural pineapple, unusual applied sloping collared mouth with flat band – smooth base, ht. 9", near mint; (some spotty light interior residue or haze that might wash out and a tiny pinhead size flake at edge of the applied mouth). R/H #P100. Note; a most unusual and rare mouth application for this mold, sometimes referred to as a "hat-top."

Est.: \$250 - \$350 • Min. bid: \$170



Lot 129

"S.T. / Drake's / 1860 / Plantation / X / Bitters – Patented / 1862", America, 1862 – 1875.

Medium to deep olive yellow shading to yellowish chartreuse green in sunlight – cabin form with 6 logs above label panel, applied sloping collared mouth – smooth base, ht. 10"; (a 3/8" hole in a bottom corner log has been restored, otherwise an absolutely pristine perfect example). R/H #D105. Displays as mint and the color has a real chameleon effect depending on the lighting.

Est.: \$300 - \$600 • Min. bid: \$200



Lot 130

"S.T. / Drake's / 1860 / Plantation / X / Bitters – Patented / 1862", America, 1862 – 1875.

Vibrant golden yellow with slight olive tone in natural daylight, cabin form with 6 logs above label panel, applied sloping collared mouth – smooth base, ht. 10 1/4", perfect. R/H #D105. Not your normal light golden or honey color. It has that added brilliance and a little extra "zing" that excites the interest. In addition, nice bold embossing that is often lacking on this mold.

Est.: \$500 - \$800 • Min. bid: \$300



Lot 131

"S.T. / Drake's / 1860 / Plantation / X / Bitters – Patented / 1862", America, 1862 – 1875.

Bright golden yellow with a very slight apricot tone, cabin form with 6 logs above label panel, applied sloping collared mouth – smooth base, ht. 9 3/4", perfect. R/H #D105. Note, this variant has the slightly smaller lettering. Another nice, clean, light example. In natural sunlight the roof corners become almost a clear yellow.

Est.: \$400 - \$600 • Min. bid: \$250



Lot 132

"S.T. / Drake's / 1860 / Plantation / X / Bitters – Patented / 1862", America, 1862 – 1875.

Deep burgundy or cherry puce, cabin form with 6 logs above label panel, applied sloping collared mouth – smooth base, ht. 10", attic mint. R/H #D105. A great example, rich deep color, good strong embossing, excellent condition!

Est.: \$225 - \$375 • Min. bid: \$150



Lot 133

Letterhead and paper receipt, "Bought of John F. Henry, Successor to Demas Barnes & Co.", dated July 12, 1869.

Letterhead depicts large warehouse with advertisement, "Medicine / Warehouse / Plantation Bitters" (emblazoned between the floors of the building). Hand written receipt lists various sundries including, Blackmans Bals., with corresponding quantities and prices. Generally good condition with some creases and being slightly yellowed from age.

Est.: \$50 - \$100 • Min. bid: \$30



Lot 134

Hi-Hi Bitters Co., Rock Island, Illinois, paper letterhead and receipt, dated JUN 4 - 1901.

Colorful yellow, red and black letterhead advertising "HI-HI BITTERS, THE WORLDS GREATEST TONIC". Typed letter to "Messer Bateman Switzer Co., Great Falls, Mont." Acknowledging receipt of their order for 15 cases Bitters and a promise to send "the goods the first part of next week as we are short on bottles and are waiting for a shipment". Outstanding condition!

Est.: \$75 - \$100 • Min. bid: \$50



Lot 135

East India Bitters 2-sided paper letterhead and receipt, dated July 20th, 1897.

Colorful, graphic letterhead advertising "A PURELY VEGETABLE TONIC AND BEVERAGE OF STANDARD THERAPEUTIC VALUE." Receipt to Messrs Bateman & Switzer, Great Falls, Mont. acknowledging a credit for invoice in the amount of Two Hundred Thirty Seven 49/100 Dollars. The reverse side of the letterhead touts the efficacy and many uses for the Bitters. Excellent, near mint condition.

Est.: \$75 - \$100 • Min. bid: \$50



Lot 136

Lot of (3) Bitters related paper items including: 1) A receipt for Ben Franklin Bitters "at \$4.00 per dozen, to be paid for when Sold..."

dated 1860. 2) A colorful advertising postcard for Hostetter's Stomach Bitters depicting a map of the Panama Canal with images of a Hostetter's bitters bottle and logo. 3) A colorful triangular insignia, "USE WALKER'S / CALIFORNIA / VINEGAR BITTERS". All are in very good, to excellent condition.

Est.: \$75 - \$100 • Min. bid: \$50



Lot 137

Lot of (5) Hostetter's Almanacs including 1863, 1865, 1878, 1880 and 1892. A great group of almanacs, particularly noteworthy are the two earliest examples which are very difficult to obtain. Three of the four later almanacs have the Hostetter logo and the 1863 example has a motif of an eagle, shield and stars with the inscription, "E PLURIBUS UNUM". Very good to excellent condition with some expected normal wear and minor discoloration.

Est.: \$75 - \$125 • Min. bid: \$40



Lot 138

Lot of (2) paper items; a One Dollar Vermont Glass Factory Scrip dated 1813 (with engraved image of glass factory), and an advertisement for Dr. I. Newton's Anti-Bilious Bitters, Norwich, Vt., 1846. The advertisement touts the efficacy and plethora of disorders that it treats along with directions for use. Both are in very good to excellent condition. The I. Newton's advertisement is virtually perfect, the glasshouse scrip is a little darkened from age, but no creases or tears.

Est.: \$125 - \$175 • Min. bid: \$75



Lot 139

"Zingari / Bitters – F. Rahter", America, 1865 – 1875. Light apricot with gasoline and ginger-ale tones, cylindrical with a "lady's-leg" type bulbous neck, applied mouth with flat band – smooth base, ht. 11 7/8"; (an early repair exists on the back side of the neck with two chips below the ring that have been filled with resin, the largest being approx. 1/2" x 1/2", and an overall light sheen or coating exists on the exterior of the bottle). R/H #Z4. Rare and beautiful color.

Est.: \$500 - \$1,000 • Min. bid: \$300



Lot 140

"Bell's / Cocktail / Bitters / Jas. M. Bell & Co./ New York", America, 1870 – 1880. Light copper through the neck shading to a deeper copper puce with apricot tones and profuse reddish striations through the body, cylindrical with a 'lady's-leg' neck, applied mouth with band – smooth base, ht. 10 5/8"; (the bottle displays as mint, however a professional repair has been made to the applied collar above the band). R/H #B58. Spectacular color!

Est.: \$500 - \$800 • Min. bid: \$300



Lot 141

"Dr C. W. Robacks / Stomach Bitters / Cincinnati.O.", America, 1855 – 1865. Medium amber, barrel form, applied sloping collared mouth – red iron pontil scar, ht. 9 3/4", near mint; (a touch of exterior wear, primarily on the reverse and a difficult to see, iridescent bruise on the inside edge of the lip). R/H #R73. An early, crude, sparking example, nicely whittled and with a great pontil!

Est.: \$300 - \$500 • Min. bid: \$200



Lot 142

"Greeley's Bourbon / Bitters", America, 1860 – 1875. Medium smoky copper puce, barrel form, applied square collared mouth – smooth base, ht. 9 1/4", excellent condition; (some very minor exterior high point wear and a tiny area of roughness on the edge of the square collar that you can feel but is difficult to see). R/H #G101. Nicely whittled and in a medium depth of color that easily passes plenty of light.

Est.: \$400 - \$600 • Min. bid: \$250



Lot 143

"Bourbon Whiskey / Bitters.", America, 1860 – 1875. Medium to deep strawberry puce, barrel form, applied square collared mouth – smooth base, ht. 9 1/4", excellent; (a tiny pin-head flake and bit of roughness on the edge of the square collared mouth and some normal light exterior high point wear). R/H #B171. Nicely whittled and a very pretty color with excellent strawberry tones, especially with a little sunlight!

Est.: \$500 - \$800 • Min. bid: \$300



Lot 144

"Bourbon Whiskey / Bitters.", America, 1860 – 1875. Light to medium apricot with some copper tones, barrel form, applied square collared mouth – smooth base, ht. 9 1/4"; (two 1/8" cooling lines stem from a potstone located in the neck on the reverse side of the bottle and a couple of tiny pinpoint specs of roughness on the lip). R/H #B171. The noted condition issues are quite minor. The lighter "see-through" color is gorgeous!

Est.: \$400 - \$700 • Min. bid: \$250

Black Glass Bottle From Both Sides



Lot 225



Lot 222



Lot
215

es les of the Atlantic



Lot 223

Lot 226

**Lot 145**

"Dr A.S. Hopkins / Union Stomach / Bitters", America, 1870 – 1880. Medium to deep olive yellow, square with beveled corners, applied sloping collared mouth – smooth base, ht. 9 5/8", near mint; (the bottle appears to have been lightly cleaned but presents itself as near mint with a little light exterior wear). R/H #H179. This is the earlier of the two embossed variants in a very beautiful color!

Est.: \$250 - \$450 • Min. bid: \$150

**Lot 149**

"Geo. Benz / & / Sons / Appetitive / Bitters / St. Paul Min" – "Pat. / Nov.23 / 1897" (on base), America, 1897 – 1900. Medium amber, square with fancy scrolls framing the indented panels, tooled sloping collared mouth – smooth base, ht. 3 1/2", perfect! R/H #A79. Complete with 95% original labels on three indented panels. Front label reads in part, "Appetitive / Bitters / A Tonic Appetizer / A Cocktail Bitters". A rare and very attractive, ornate miniature bitters.

Est.: \$300 - \$600 • Min. bid: \$200

**Lot 146**

"Lediards – Morning Call" Bitters Bottle, America, 1865 – 1875. Forest green, cylindrical, applied sloping collared mouth – smooth base, ht. 9 5/8", attic mint. R/H #L61.7. Beautiful color, something a little different than your normal olive, great condition, a lot of bottle for the money!

Est.: \$250 - \$400 • Min. bid: \$150

**Lot 150**

"Dr. Petzold's / Genuine / German / Bitters. / Incpt.1862 - The / Great / Elixir / Of Life – Pat'd 1884", America, 1885 – 1890. Bright golden amber shading to a lighter golden yellow near the sides, oval, tooled sloping collared mouth with ring – smooth base, ht. 6 3/4"; (professionally cleaned to original luster and near mint condition with a 1" scratch on the reverse near the base). R/H #P77. Note; this mold is listed as rare and is much more difficult to obtain than the other Petzold variants.

Est.: \$150 - \$250 • Min. bid: \$100

**Lot 147**

"Dr Bishop's / Wa-Hoo / Bitters – Wa-Hoo Bitter Co – New Haven Conn.", America, 1875 – 1885. Beautiful, near lemon yellow, semi-cabin form, tooled square collared mouth – smooth base, ht. 10 1/8"; (an unearthed bottle with a little scattered light dullness, some exterior wear along the panel edges and a very hard to see, 1/4" flash on the reverse). R/H #B103. The actual damage is minor. A scarce bitters in a rare color.

Est.: \$500 - \$1,000 • Min. bid: \$300

**Lot 151**

"Dr Jas. C. Kerr's – Great / System Renovator – Cincinnati. O", America, 1865 – 1875. Deep golden amber, square with beveled corners, applied sloping collared mouth – smooth base, ht. 8 1/4", near perfect; (just a touch of light exterior wear, but basically in attic found condition). According to one example known with the original label, the medicine was used as a blood purifier. Not a rare mold, but uncommon in this condition. A great looking "stubby square" medicine.

Est.: \$75 - \$125 • Min. bid: \$40

**Lot 148**

"The / Fish Bitters – W.H. Ware / Patented 1866", America, 1866 – 1875. Medium to deep amber, figural fish form, applied ring type collar – smooth base, ht. 11 5/8", very near mint; (a tiny pinhead sized bit of roughness at edge of the applied collar). R/H #F45. These are prone to have weak embossing and high point wear. This example is boldly embossed and with almost no high point wear!

Est.: \$275 - \$400 • Min. bid: \$200

**Lot 152**

"Rohrer's – Expectoral / Wild / Cherry / Tonic – Lancaster Pa", America, 1860 – 1870. Light golden or honey amber, rectangular pyramid form with roped corners, applied sloping collared mouth with ring – smooth base, ht. 10 1/2", near mint; (a tiny, hard-to-see flake on one of the roped corners, otherwise pristine!). These molds are always attractive with their unusual form, roped corners, arched windows and being nicely embossed.

Est.: \$200 - \$400 • Min. bid: \$150



Lot 153

"U. S. A. / Hosp. Dept" Medicine Bottle, America, 1862 – 1870. Yellowish olive amber, cylindrical 4-piece mold, applied double collared mouth – "X" on smooth base, ht. 9 1/4", perfect! A crude textured surface, loaded with tiny seed bubbles, and with plenty of the desirable olive tones.

Est.: \$500 - \$800 • Min. bid: \$300



Lot 157

"L.Q.C. Wishart's – Pine Tree / Tar Cordial / Phila – Patent" / (pine tree) / **"1859"**, America, 1870 – 1880. Clear, bright yellowish green, square with beveled corners, applied sloping collared mouth – smooth base, ht. 9 1/2", pristine perfect! A great example in a rare color and filled with tiny seed bubbles. This example and the next several, are from a discriminating collector and are above and beyond the everyday examples typically encountered.

Est.: \$300 - \$500 • Min. bid: \$170



Lot 154

"U. S. A. / Hosp. Dept" Medicine Bottle, America, 1862 – 1870. Bright golden yellow, cylindrical 4-piece mold, applied double collared mouth – smooth (plain) base, ht. 9 3/8", perfect. A beautiful light, bright example with great character being nicely whittled through the upper body and domed shoulders.

Est.: \$500 - \$800 • Min. bid: \$300



Lot 158

"L.Q.C. Wishart's – Pine Tree / Tar Cordial / Phila – Patent" / (pine tree) / **"1859"**, America, 1870 – 1880. Bright light yellow olive, square with beveled corners, applied sloping collared mouth – smooth base, ht. 9 3/8", near attic mint; (a bubble on the interior of the shoulder appears to have an opening in the cover glass and a light scratch on the back panel, otherwise perfect). A beautiful and rare color for a "Wishart's" and a great impression. A real standout!

Est.: \$500 - \$1,000 • Min. bid: \$300



Lot 155

"U. S. A. / Hosp. Dept" (within oval), Medicine Bottle, America, 1862 – 1875. Forest green, cylindrical, applied square collared mouth – smooth base, ht. 5 3/4"; (a small buffed area on the side of the lip and a 3/8" section of the applied square collared mouth has been professionally repaired, and a small dime-sized area of light interior haze). The noted repair is very well done. Displays as mint! A scarce mold in a rare, desirable color.

Est.: \$200 - \$400 • Min. bid: \$125



Lot 159

"L.Q.C. Wishart's – Pine Tree / Tar Cordial / Phila – Patent" / (pine tree) / **"1859"** (with 99% original label), America, 1870 – 1880. Medium bluish green, almost a pine green, has more of a green tone than the typical blue-green examples, square with beveled corners, applied sloping collared mouth – smooth base, ht. 9 1/2", attic mint. Another outstanding example with seed bubbles and nice character. Extremely rare with the original label and pristine perfect!

Est.: \$500 - \$1,000 • Min. bid: \$300



Lot 156

"Marine Hospital Service" / (motif of medical insignia and anchor) / **"1798"** (star) **"U.S."** (star) **"1871"** / **1000 C.C.**, America, 1875 – 1890. Deep aquamarine, cylindrical, tooled square collared mouth – smooth base, ht. 9", sparkling mint! The Marine Hospital Fund, later reorganized as the Marine Hospital Service, was an organization of marine hospitals constructed at key seaports to provide care for merchant marine sailors.

Est.: \$300 - \$600 • Min. bid: \$150



Lot 160

"L.Q.C. Wishart's – Pine Tree / Tar Cordial / Phila – Patent" / (pine tree) / **"1859"**, America, 1870 – 1880. Medium emerald green, square with beveled corners, applied sloping collared mouth – smooth base, ht. 7 7/8", perfect. A very boldly embossed example with rich color, excellent clarity, and in attic mint condition

Est.: \$175 - \$325 • Min. bid: \$100

**Lot 161**

"Dr. Davis's – Depurative – Phila." Medicine Bottle, America, 1850 – 1860. Medium to deep blue green, square with beveled corners, applied sloping collared mouth – iron pontil scar, ht. 9 3/4", virtually attic mint; (a little area of roughness along the mold seam that occurred during manufacture, mentioned only for complete accuracy, and a little milky residue along an interior panel edge, otherwise pristine perfect). N #65 (five star). A great bottle.

Est.: \$1,800 - \$2,600 • Min. bid: \$1,000

**Lot 162**

"Follansbee's – Elixir – Of Health" Medicine Bottle, America, 1850 – 1860. Deep bluish aqua, square with beveled corners, applied sloping collared mouth – large iron pontil scar, ht. 8 3/4", perfect! Un-listed in Nielsen, Greer #604. A very rare, impressive looking bottle with a strong depth of color, bold embossing, large iron pontil and in attic mint condition!

Est.: \$1,000 - \$2,000 • Min. bid: \$700

**Lot 163**

"Dr Townsend's – Sarsaparilla – Albany / N. Y.", America, 1848 – 1855. Medium blue green, square with beveled corners, applied sloping collared mouth – blowpipe pontil scar, ht. 9 1/4"; (a small 1/4" by 1/8" open bubble on one of the beveled corners and a thin "U" shaped stress line on the surface of the base that does not appear to extend through the the base). A beautiful example with whittled, wavy glass and extremely rare with the open pontil.

Est.: \$400 - \$700 • Min. bid: \$250

**Lot 164**

"Dr Myers Vegetable / Extract – Sarsaparilla / Wild Cherry / Dandelion" Medicine Bottle, America, 1850 – 1860. Deep aqua, rectangular with beveled corners, applied round collared mouth – blowpipe pontil scar, ht. 8 3/8", attic mint! DeG #158, variant #1. It would be almost impossible to find a better example. In addition, this one is nicely whittled and with wavy glass, in a good depth of color.

Est.: \$1,000 - \$2,000 • Min. bid: \$700

**Lot 165**

"G.W. Merchant / Lockport / N.Y." Medicine Bottle, America, 1845 – 1855. Deep blue green, rectangular, applied sloping collared mouth – blowpipe pontil scar, ht. 5", attic mint. An excellent example with bold embossing (which can sometimes be a little weak on this mold), nice character and pristine condition. Note; this is the variant of this mold without the "+" mark on the back panel. One of the earlier molds of the various Merchant bottles.

Est.: \$200 - \$400 • Min. bid: \$125

**Lot 166**

"G. Marsh. S.W. / Pain / Reliever" Medicine Bottle, America, 1845 – 1855. Cornflower blue, rectangular with beveled corners, sheared and inward rolled mouth – blowpipe pontil scar, ht. 3 7/8", attic mint! N #418 (5-star). Note; this bottle is fresh to the market having recently been found in a house remodeling project in central New Jersey. It retains its original cork and was just washed clean. A rare pontiled medicine in an exceptionally rare, possibly unique color.

Est.: \$1,000 - \$2,000 • Min. bid: \$600

**Lot 167**

"Dr S. A. Weaver's / Canker & / Salt Rheum / Syrup" Medicine Bottle, America, 1850 – 1860. Aquamarine, large oval, applied square collared mouth – iron pontil scar, ht. 9 1/2", virtually attic mint; (an insignificant 1/8" shallow flake on the base and a couple of faint scratches, otherwise pristine perfect!) N #673, Odell, p. 250. A big, bright, shiny, very nicely whittled and boldly embossed pontiled medicine. A lot of bottle for the money!

Est.: \$150 - \$250 • Min. bid: \$100

**Lot 168**

"Genuine – Swaim's / Panacea – Philadelphia" Medicine Bottle, America, 1840 – 1850. Aquamarine, rectangular with beveled corners – applied sloping collared mouth – blowpipe pontil scar, ht. 7 3/4"; (no form of damage but appears to have been lightly cleaned to original luster and a little residue or film around the base in the corners). N #610. One of the earliest of the various Swaim's bottles and a large, nicely whittled example.

Est.: \$500 - \$800 • Min. bid: \$300



Lot 169

“C. Brinckerhoff’s – Health Restorative – Price \$1.00 – New_York”, New England, 845 – 1855. Yellowish olive, rectangular with beveled corners, applied sloping collared mouth – sand chip type pontil scar, ht. 7 1/8”, near mint; (some minor exterior high point wear as is common for this mold). N #75. A very nice example in a slightly lighter tone that is not “muddy” as are many. In addition, a nice crude example with great character.

Est.: \$1,000 - \$1,500 • Min. bid: \$700



Lot 170

“N. Wood / Portland / ME”, Stoddard, NH, 1845 – 1855. Golden tobacco amber near the base shading to a lighter golden and then virtually yellow below the shoulders, rectangular with beveled corners, applied sloping collared mouth – blowpipe pontil scar, ht. 7 1/8”; (a shallow 1/8” flake on the inside edge of the mouth and a 1/2” wide in-manufacture pontil flake that extends to base edge on reverse, otherwise excellent). A classic early Stoddard medicine with great color.

Est.: \$1,400 - \$2,400 • Min. bid: \$800



Lot 171

“Dr. Hartshorn’s / Medicine”, Stoddard, New Hampshire, 1855 – 1865. Brilliant yellowish “old amber” with a slight olive tone, oval, applied square collared mouth – early smooth base, ht. 6 1/8”, near perfect; (tiny, tissue-paper thin flake or roughness at edge of mouth, otherwise sparking attic mint). An outstanding example, beautiful color and great character with some syrupy deeper striations of the glass batch mixed in. Retains a Harmer Rooke Galleries sticker on base.

Est.: \$1,000 - \$1,500 • Min. bid: \$700



Lot 172

“J. L. Leavitt. – Boston.” Medicine Bottle, believed to be the product of a Stoddard. Medium olive green, cylindrical, applied sloping collared mouth with lower bevel – domed base with large iron pontil scar, ht. 8 1/8”, perfect! A terrific example with bold embossing and a crude base with a great iron pontil scar. In addition, there is a large fold of glass in the neck and another in the body as well as whittle marks.

Est.: \$200 - \$400 • Min. bid: \$125



Lot 173

“Clemens / Indian / Tonic” / (standing Indian) / “Prepared By / Geo. W. House”, (with 90% original label), America, 1845 – 1855. Aqua, oval with an outward rolled mouth – blowpipe pontil scar, ht. 5 1/2”, near perfect; (a very small, barely 1/16”, “V”-shaped indentation on the top of the crudely formed mouth that likely occurred at the time of manufacture as there is still remnants of the red sealing wax in the crevasse). A clean, bright, nicely whittled example. N #127

Est.: \$400 - \$600 • Min. bid: \$250



Lot 174

“Houses / Indian / Tonic” / (standing Indian) / “Prepared By / Geo. W. House”, America, 1845 – 1850. Aqua, oval, outward rolled mouth – blowpipe pontil scar, ht. 5 1/4”; (a shallow 1/8” wide open bubble on top of mouth, some very light exterior wear and a streak of interior dirt or residue along the sides and in the neck, but no other form of damage). An extremely rare pontiled Indian medicine. A light professional cleaning would likely restore it back to near perfect condition. N #309 (7-star).

Est.: \$700 - \$1,200 • Min. bid: \$400



Lot 175

“E.A. Buckhout’s / Dutch / Liniment”/ (motif of man with pipe holding a cane) – “Prepared At / Mechanicville / Saratoga Co N.Y.” (backward “N”s in “Liniment” and “Mechanicville”, America, 1860 – 1870. Aquamarine, rectangular, sheared and inward rolled mouth – smooth base, ht. 4 5/8”, perfect! Strong embossing, attic mint, this one just missed the pontil rod!

Est.: \$300 - \$400 • Min. bid: \$175



Lot 176

“Dr. Rogers’ – Indian Fever – Cure” Medicine Bottle, America, 1865 – 1875. Aquamarine, rectangular with indented panels, applied sloping collared mouth – smooth base, ht. 7 1/2”; (a paper-thin 1/8” flat flake on top of the applied mouth, otherwise a bright, clear near mint example). BA1 #150. A scarce, attractive Indian cure bottle

Est.: \$150 - \$300 • Min. bid: \$100



Lot 177

"Tippecanoe" / (motif of canoe) / **"H.H. Warner & Co."** Figural Log Medicine Bottle, America, 1883 – 1890. Medium yellowish olive green, figural log, large applied "mushroom" type mouth – "Pat Nov 20. 83 / Rochester N.Y. / 2" (on smooth base), ht. 9", perfect. Fresh to the market, being a recent find from a shop in Indiana. An extraordinary, beautiful color, with no trace of amber that passes light with ease! Perhaps the finest known example of green "Tippecanoe" bottle.

Est.: \$2,500 - \$5,000 • Min. bid: \$1,500



Lot 178

"Log Cabin / Extract / Rochester, N.Y." (with original label, pamphlet and box), America, 1887 – 1895. Medium golden amber, rectangular with two wide angled panels and a narrow front panel, tooled round collared mouth – "PATD SEP 6 / 1887" (on base), ht. 8 1/8"; (the bottle is perfect with 99% original label, the box is missing the top flap and a small portion near the top, the pamphlet is a little tattered but mostly complete and gives instructions in different languages).

Est.: \$250 - \$450 • Min. bid: \$150



Lot 179

"Log Cabin / Extract / Rochester, N.Y." (with original label, pamphlet and box), America, 1887 – 1895. Medium amber, rectangular with two wide angled panels and a narrow front panel, tooled round collared mouth – "PATD SEP 6 / 1887" (on smooth base), ht. 6 3/8"; (95% original label, somewhat darkened, the box has a couple of tears along the sides, is missing the uppermost portion and top flap, the bottle is perfect!). A very popular bottle.

Est.: \$250 - \$450 • Min. bid: \$150



Lot 180

"Log Cabin / Cough and Consumption / Remedy", America, 1887 – 1895. Light to medium golden amber shading to near yellow along the sides, rectangular with two wide angled panels and a narrow front panel, tooled round collared mouth – **"PAT. SEPT-6.87."** (on smooth base), ht. 6 7/8", near attic mint; (a small, shallow, "scallop" type flake at base edge, otherwise pristine perfect). A crisp, sparking example a little lighter than most.

Est.: \$175 - \$275 • Min. bid: \$100



Lot 181

"Warner's / Safe Cure" / (motif of safe) / **"Pressburg."**, Germany, 1888 – 1891. Medium amber with a slight reddish tone, oval, applied blob collared mouth – smooth base, pint; (some light exterior wear, otherwise near mint). O&S #72. A good clean example of this rare Warner's bottle that was manufactured for a foreign office / market that was only in operation for a few very short years.

Est.: \$300 - \$500 • Min. bid: \$20



Lot 182

"Warner's / 'Safe' / Cure" / (motif of safe) / **"Melbourne Aus / London Eng / Toronto Can / Rochester. N.Y. U.S.A"**, 4 Cities (New Zealand), 1890 – 1900. Beautiful light straw yellow, oval, applied blob collared mouth – smooth base, pint; (a small shallow open bubble, 1/8" by 1/4", on the reverse and a tiny bit of roughness on one of the mold seams, otherwise very near mint). O&S #79. A very light, appealing color that will really stand out in a group.

Est.: \$100 - \$175 • Min. bid: \$60



Lot 183

Lot of (2) London "Warner's" Safe Cure Bottles, 1890 – 1900. Medium amber and clear medium green, both are oval with applied blob collars – smooth bases, 1/2 pints; (the amber example has a hard to see iridescent bruise on the base corner, the green example has a small open bubble with flake at the edge of the base, on the reverse, otherwise both display anear mint). O&S #'s 38 & 40. Note; the amber example is the variant with both "Cure" and "London" in a slugplate.

Est.: \$150 - \$250 • Min. bid: \$100



Lot 184

Warner's Wooden Dominoes Box and Tiles, 1890 – 1910. Set of (28) wooden advertising dominoes imprinted in black with the names of various Warner Co. products ("Hops & Buchu Remedy", "Log Cabin Sarsaparilla", etc.), complete with the original box. Box top reads in part, "Compliments of your Grocer./Warner's Safe Yeast / Always Kept in Stock". The box is somewhat darkened, two of the original tiles were missing and replaced with facsimiles.

Est.: \$50 - \$100 • Min. bid: \$30



Lot 185

Irregular Hex-Type Poison Bottle, Carr-Lowrey Glass Co., Baltimore, MD, 1890 – 1910. Bright turquoise blue, irregular “hex” form, tooled square collared mouth – “C.L.G. Co. / Patent Applied For” (on smooth base), ht. 4 7/8”; (some light interior haze, primarily one side only, otherwise perfect). KI-2. The noted light haze may partially wash or soak out, but is certainly the type that would easily clean professionally. A scarce and attractive color.

Est.: \$250 - \$450 • Min. bid: \$150



Lot 186

Set of (7) Irregular Hex – Type Poison Bottles in graduated sizes, Carr-Lowrey Glass Co., Baltimore, MD, 1890 – 1910. All are cobalt blue, irregular “hex” form with tooled square collared mouths – “C.L.G. Co. / Patent Applied For” (on smooth bases), ht. 2 3/4” to 7 1/2”; (1/2 oz. to 16 oz.), all are about mint; (some scattered light interior residue). All are KI-2’s except the 1/2 oz, which is KI-1, with “POISON” embossed on the side panels. This is a complete set for this mold.

Est.: \$400 - \$600 • Min. bid: \$250



Lot 187

Set of (4) Cylindrical Diamond – Pattern Poison Bottles in graduated sizes, America, 1880 – 1910. All are cobalt blue, cylindrical with an overall diamond pattern, tooled square collared mouths with correct matching glass stoppers – smooth bases, “H.B.CO.” (Hagerty Bros. Company, Brooklyn, NY), on 2 oz. example, ht. 3 3/4” to 7”; (2, 4, 8 & 16 oz. sizes), all are perfect! A good, clean set of these always-popular classic American “Poison” bottles.

Est.: \$200 - \$400 • Min. bid: \$125



Lot 188

“Kickapoo / Sage / Hair Tonic” Bottle, America, 1890 – 1900. Cobalt blue, short squat cylinder form, small tooled ring type collar – smooth base, ht. 4 1/4”, perfect. DF, page 88. One of a number of different products marketed by this company using various Indian names. A somewhat scarce bottle, great name, fine condition.

Est.: \$150 - \$250 • Min. bid: \$100



Lot 189

“C. Heimstreet & Co, / Troy N.Y.” Hair Coloring Bottle, America, 1850 – 1860. Brilliant medium sapphire blue, cylindrical with eight flattened panels, applied round double collared mouth – blowpipe pontil scar, ht. 7”, sparkling attic mint. DF, page 75. Contained a hair coloring put up by Charles Heimstreet, a druggist from Troy, New York. Where else can you find a colored pontiled medicine or hair bottle for this kind of money?

Est.: \$200 - \$400 • Min. bid: \$140



Lot 190

“C.A.P. Mason – Alpine / Hair Balm – Providence, R.I.”, America, 1858 – 1862. Bright medium to deep yellow olive, rectangular with beveled corners, applied double collared mouth – smooth base, ht. 6 5/8”, near mint; (a bubble in the base corner on the interior of the bottle has a little disturbance of the cover glass, otherwise perfect). DF, page 103. A scarce hair bottle with “eye catching” color! As noted in Don Fadely’s book, this product was likely marketed for just a few short years.

Est.: \$2,000 - \$4,000 • Min. bid: \$1,500



Lot 191

“A. Wanner & Co’s / Sepia – Sepia” Hair Dye Bottle, possibly a late Stoddard or early Lyndeborough, NH glasshouse, 1865 – 1872. Deep amber with a reddish orange tone shading to a lighter golden amber in the shoulders, rectangular, applied double collared mouth – smooth base, ht. 6 3/4”; (appears to have been professionally cleaned to near original luster with a little spotty light interior haze remaining). DF, p.140. If you collect hair bottles, don’t miss out on this one!

Est.: \$300 - \$500 • Min. bid: \$200



Lot 192

“Dodge Brothers – Melanine – Hair Tonic”, America, 1860 – 1870. Pinkish plum amethyst, rectangular with beveled corners, applied round collared mouth with lower bevel – smooth base, ht. 7 1/2”; (a minor 1/8” flake on a panel edge, a little faint exterior wear and some residue on the interior of the bottle that would likely soak or wash out). DF, page 48. A gorgeous color that lightens up along the edges and near the shoulder.

Est.: \$400 - \$800 • Min. bid: \$250



Lot 193

"Smith's / Green Mountain / Renovator – East Georgia / Vt" Medicine Bottle, America, 1870 – 1880. Light cornflower blue, oval, applied small round collared mouth with lower bevel – smooth base, ht. 7 1/4", pristine perfect. A rare mold variant of the various Green Mountain Renovator bottles, and in a very pretty color. These don't come around often and this one is a great example!

Est.: \$200 - \$400 • Min. bid: \$125



Lot 194

Embossed Owl motif / "TODCo" monogram (within mortar and pestle) / "Trade Mark", Owl Drug Company wide mouth 'Salts' Bottle, Whitall-Tatum Co., South Millville, NJ, 1890 – 1900. Medium to deep cobalt, square with beveled corners, small tooled ring type collar – **"W T Co. / U.S.A."** (on smooth base), ht. 9 1/4"; (a few scattered scratches and some light exterior wear, light interior haze along one panel edge). The condition issues are fairly minor.

Est.: \$300 - \$500 • Min. bid: \$200



Lot 195

Large Apothecary or Drug-gist Bottle, America, 1845 – 1860. Bright bluish green, almost a teal green, cylindrical, applied tooled mouth – blowpipe pontil scar, ht. 11 3/8", near mint; (a couple of shallow open surface bubbles, otherwise about perfect). A big impressive pontiled druggist, with a highly whittled appearance, and in a beautiful, attractive color!

Est.: \$175 - \$350 • Min. bid: \$100



Lot 196

"Wm. Radam's / 'Microbe Killer' / No. 3" Stoneware Jug, America, 1887 – 1900. Oatmeal glaze with black stenciled lettering, dome-shoulders, applied handle – plain (un-glazed) base, one gallon, perfect. For those of you who collect Radam's, you will likely recognize how rare the "No.3" marked jugs are. The jugs were marked No.1, No.2 & No.3, to denote the particular strength of the medicine.

Est.: \$150 - \$300 • Min. bid: \$100



Lot 197

"Congress & Empire Spring Co / Hotchkiss' Sons / C / New York / Saratoga. N.Y." (reverse plain), Mineral Water Bottle, America, 1866 – 1870. Stunning lemon yellow with a citron tone, cylindrical, applied sloping collared mouth with lower bevel – (a single large dot) on smooth base, pint, about perfect; (some age-appropriate faint exterior wear). T #C-15:B, Type 1. An exceptional color, great character with hundreds of tiny seed bubbles.

Est.: \$500 - \$800 • Min. bid: \$300



Lot 198

"Congress & Empire Spring Co / Hotchkiss' Sons / C / New York / Saratoga. N.Y." (reverse plain), Mineral Water Bottle, America, 1866 – 1870. Yellowish, almost lime green, cylindrical, applied sloping collared mouth with lower bevel – (a single large dot) on smooth base, pint, perfect. T #C-15:B, Type 1. An outstanding example and a lot of bottle for your money in an attractive, desirable color that is not easy to find.

Est.: \$300 - \$500 • Min. bid: \$200



Lot 199

"Congress & Empire Spring Co / Hotchkiss' Sons / C / New York / Saratoga. N.Y." (reverse plain), Mineral Water Bottle, America, 1866 – 1870. Rich golden amber, cylindrical, applied sloping collared mouth with lower bevel – (two large dots) on smooth base, pint, very near mint; (a couple of light scratches on the reverse, otherwise perfect). T #C-15:B, Type 1. A great example, beautiful rich color and character.

Est.: \$300 - \$500 • Min. bid: \$200



Lot 200

"Congress & Empire Spring Co / Hotchkiss' Sons, / E / New-York / Saratoga. N. Y. – Empire / Water" (reverse plain) Mineral Water Bottle, America, 1865 – 1875. Beautiful emerald green with a slight mossy tone, cylindrical, applied sloping collared mouth with lower bevel – "5" (on smooth base), pint, pristine perfect. T #E-8:B. A great example with bold embossing, outstanding condition, and in a beautiful, rich color.

Est.: \$300 - \$500 • Min. bid: \$200



Lot 201

"Congress & Empire Spring Co / Hotchkiss' Sons, / E / New-York / Saratoga. N. Y. – Empire / Water" (reverse plain) **Mineral Water Bottle**, America, 1865 – 1875. Beautiful emerald green with a slight mossy tone, cylindrical, applied sloping collared mouth with lower bevel – "5" (on smooth base), pint, pristine perfect. T #E-8:B. A great example with particularly bold embossing, outstanding condition, and in a beautiful, rich color.

Est.: \$400 - \$600 • Min. bid: \$250



Lot 202

"Congress & Empire Spring Co / Hotchkiss' Sons / E / New York / Saratoga N Y" (reverse plain), **Mineral Water Bottle**, America, 1865 – 1875. Bright yellowish golden amber, cylindrical, crudely applied sloping collared mouth with lower bevel – smooth base, pint, near mint; (a couple of small areas of very faint exterior dullness). T #E-7:B. A bright, clean example with great character and a crude collar and a slightly offset neck.

Est.: \$200 - \$400 • Min. bid: \$150



Lot 203

"Highrock Congress Spring / 1767" / (motif of rock) / **"C&W / Saratoga. N.Y."** **Mineral Water Bottle**, probably blown at a Stoddard glasshouse, 1865 – 1872. Yellowish 'old' amber, cylindrical, applied sloping collared mouth with lower bevel – (three large dots) on smooth base, pint; (some light exterior wear to include a shallow pinhead size flake and a partially open bubble, both located on the side, near the base). T #S-36:C. Crude and with great character.

Est.: \$600 - \$800 • Min. bid: \$400



Lot 204

"Stirling's / Magnetic / Mineral Spring / Eaton Rapids Mich", 1873 – 1880. Orange amber, applied sloping collared mouth with ring – smooth base, quart, near mint; (a tiny, pinhead flake on the lower ring and just a touch of exterior wear!). T #M-49:B. About as nice of an example as you can find. David Stirling constructed the 4th and most successful well in Eaton Rapids. By the 1870's Michigan had developed a reputation as "The Saratoga of the West".

Est.: \$175 - \$350 • Min. bid: \$100



Lot 205

Lot of (2) "High Rock Spring" / (scene with Indians, teepee, papoose, earthen mound and trees) / **"Saratoga Springs, N.Y."** metal watch fobs, America, 1890 – 1900. One is silver and the other bronze toned in color, both are stamped metal and approximately 1 1/2" dia. with a rectangular loop to accompany the leather watch strap. The bronze-toned example is stamped on the reverse, "Bastian Bros. Co. / Rochester, N.Y.". An interesting, wonderful "go-with".

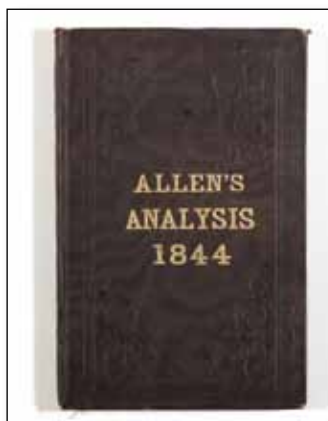
Est.: \$50 - \$100 8 Min. bid: \$30



Lot 206

"Congress Spring" Book. Hard-bound, approximately 4" by 6" with 35 pages detailing "An Analysis of the Congress Spring, with Practical Remarks on its Medicinal Properties," by John H. Steel, M.D., Revised and Corrected by John L. Perry, M.D., copyright 1856. The book provides a description of the Spring; medicinal properties of the waters, remarks and "Practical Observations." Overall very good condition with some minor spotting and discoloration on a handful of pages. A scarce book.

Est.: \$75 - \$125 • Min. bid: \$40



Lot 207

"Allen's / Analysis / 1844" Book. Hardbound, approximately 4" by 6" with 71 pages detailing "A Historical, Chemical and Therapeutical Analysis of the Principal Mineral Fountains at Saratoga Springs; Together with General Directions for their use." A partial contents listing includes: High Rock, High Rock Spring, Congress Spring, Hamilton Spring, Columbia Spring, Putnam's Congress, Iodine Spring among others. Very good condition with only some minor spotting of the pages.

Est.: \$75 - \$125 • Min. bid: \$40



Lot 208

"Excelsior Spring / Saratoga Springs, N.Y. / A. R. Lawrence & Co. / Proprietors" 1875 pamphlet and map. Advertising pamphlet that unfolds to reveal 8 individual panels on one side (some with excellent graphics including a view of the Excelsior Spring and portion of Excelsior Park), others panels advertise the water in bottles and on draught. The opposite side unfolds into a map of the village of Saratoga Springs and Excelsior Park.

Est.: \$50 - \$75 • Min. bid: \$30



Lot 209

Lot of (5) Various Mineral Springs Advertising and Analysis Booklets including, "Columbian Spring Water", "Favorite Spring", "Congress Spring", "Saratoga Kissingen Spring", and "Saratoga Vichy Spring". All are in excellent condition. The Congress Spring book is approximately 20 pgs. and provides directions for use, prices of the waters at Saratoga Springs and prices for re-filling. Interesting group of booklets, many with wonderful graphics!

Est.: \$100 - \$150 • Min. bid: \$50



Lot 210

"A.C. Evans / Supr / Mineral Water / Wilmington, NC", America, 1850 – 1860. Medium green with a slight yellowish tone, cylindrical, applied sloping collared mouth – iron pontil scar, ht. 7 5/8"; (professionally cleaned to original luster and near mint condition). Prior to this recent find, only one example of this bottle was known to exist. A very eye appealing early soda with outstanding character and whittled glass. A top southern soda in all regards.

Est.: \$3,000 - \$6,000 • Min. bid: \$1,500



Lot 211

"S.S. – Knicker – Bocker – Soda – Water.", America, 1850 – 1860. Medium bluish green, 10-sided, applied sloping collared mouth – faint iron pontil scar, ht. 7 1/8"; (some scattered minor exterior wear and a couple of streaks of light residue on the interior that might wash out, otherwise about mint). An unusual, rare, unlisted color for this mold!

Est.: \$700 - \$1,000 • Min. bid: \$400



Lot 212

"J. Boardman & Co. – New York – Mineral Waters – This Bottle / Is Never Sold.", America, 1850 – 1860. Cobalt blue, 8-sided, applied sloping collared mouth – iron pontil scar, ht. 7 5/8", near attic mint; (some expected light exterior wear). A great example in a deep vivid color and one that is not easy to find in this nice of condition.

Est.: \$600 - \$800 • Min. bid: \$400



Lot 213

"Southwick - & - Tupper – New York" Mineral Water Bottle, America, 1850 – 1860. Light to medium blue green, 10-sided, applied sloping collared mouth – iron pontil scar, 7 5/8", near perfect; (a small, pinhead size disturbance in the cover glass of a bubble). Another exceptional example, virtually attic mint, and with a whittled appearance and some waviness to the glass.

Est.: \$400 - \$600 • Min. bid: \$250



Lot 214

"Pure Ginger Beer / L. Werrbach / Milwaukee – This Bottle / Not To Be Sold", America, 1890 – 1900. Bright golden amber, 'mug-base' Hutchinson form, tooled blob style collar with Hutchinson internal spring – "L.W." (on smooth base), ht. 7 1/8"; (professionally cleaned to original luster with some scattered light ground wear remaining). ZW, page 390. A rare colored "Hutch" and one of only a handful embossed "Ginger Beer".

Est.: \$300 - \$500 • Min. bid: \$200



Lot 215

Black Glass Wine Bottle, England, 1724. **"DVO / 1724"** on applied glass seal. Deep olive green with a beautiful overall rainbow iridescence, transitional late period onion – early mallet form, applied string rim, disc type pontil scar, ht. 6 3/4"; (approximately 1/3 of the mouth and applied rim is missing). RD, p.72, fig. 87. Note; a second example resides in the Victoria & Albert Museum, London. An extreme rarity that would make a good candidate for a professional restoration.

Est.: \$2,500 - \$5,000 • Min. bid: \$1,250



Lot 216

Black Glass Wine Bottle, England or possibly America, ca. 1817. **"G.N. / 1817"** on applied glass seal. Olive green with a yellowish tone, magnum sized squat cylinder form, dip mold, double collared mouth – sand chip type pontil scar, ht. 11 1/4", perfect "cellar found" condition! Unlisted in Dumbrell and likely an extremely rare sealed wine bottle. Note; this unusual sealed wine bottle was recently discovered in the attic of an old home near Keene, NH.

Est.: \$750 - \$1,500 • Min. bid: \$500



Lot 217

Black Glass Wine Bottle, England, 1770 – 1780. “WCG” (monogram) / “Zeals” on applied glass seal. Dense olive amber, early cylinder form, applied wide string rim – sand type pontil scar, ht. 10 3/8”; (miniscule flake at edge of applied seal, otherwise perfect “cellar found” condition). RD, p.267. Blown for William Chafyn Grove of Zeal House, Wiltshire. A great example having a crisp impression on the seal and being the earlier long-neck cylinder variant.

Est.: \$300 - \$500 • Min. bid: \$200



Lot 218

Lot of (2) Black Glass Wine Bottles, England, 1810 – 1830. Motif of the Holy Lamb with flag (Middle Temple crest) / “Temple” on applied glass seal (on half sized bottle), and “Middle” / (Middle Temple crest) / “Temple” on full-sized bottle. Medium olive green and dense olive amber, dip mold and 3-pc mold respectively, both with applied double collared mouths – light sand type pontil scars, ht. 8 1/2” and 11 3/4” respectively, both are in perfect condition. RD, p.311.

Est.: \$200 - \$400 • Min. bid: \$125

Lot 219

Black Glass Wide Mouth Onion Bottle (with original painted decoration depicting a coat of arms and a portrait of a Spaniard), Dutch, 1780 – 1820. Deep olive, bulbous form with an expanded and sheared wide mouth – blowpipe pontil scar, ht. 9 5/8”, the bottle is perfect. The painting of Castile (the castle), and Leon (the lion), is in exceptional condition; the portrait (unidentified), has some paint loss to the head). An outstanding painted black glass bottle.

Est.: \$750 - \$1,500 • Min. bid: \$400

Lot 220

Black Glass Mallet Form Wine Bottle, America or England, 1735 – 1745. Clear olive green, early mallet form, applied string rim – deep domed base formed by use of a split rod imparting a “cloverleaf” type mark at center. Remnants of a disc type pontil scar, ht. 7 1/2”; (a 1/4” chip on the underside of the string rim, two shallow 1/4” flakes at edge of lip, some scattered exterior wear and light interior haze). See DM, pgs. 56-58.

Est.: \$250 - \$450 • Min. bid: \$150



Lot 221

Early Black Glass Medicine or Utility Bottle, America or England, 1790 – 1820. Bright clear olive green, rectangular with beveled corners, concave sides and arched “tombstone” type shoulders, applied short double collared mouth – large disc type pontil scar, ht. 5 5/8”, near mint; (some very light exterior high point wear, otherwise perfect). A good bright example that passes light easily, and in addition, is in uncommonly clean condition.

Est.: \$175 - \$350 • Min. bid: \$100



Lot 222

Mammoth Size Case Bottle, probably European, possibly Germany, 1730 – 1760. Bright medium green with an olive tone, freeblown or possibly an early dip mold, square with nearly straight vertical sides, sheared mouth with applied string rim – nearly flat base with blowpipe pontil scar, ht. 16”, near mint; (scattered, age-appropriate exterior wear, otherwise perfect). VdB, plate 84, #2. An impressive looking gin in a great color! From an “old time” 1970s black glass collection.

Est.: \$1,500 - \$2,500 • Min. bid: \$800



Lot 223

Large, Oversized Case Bottle, probably European, Netherlands or possibly Belgium, 1780 – 1820. Medium to deep olive amber, blown in an early dip mold, square slightly tapered gin form, crudely applied tooled and flared mouth, domed base with a blowpipe pontil scar, ht. 13 1/2”, near mint; (some typical very light exterior wear, otherwise perfect!). It is amazing that these large, rather delicate, thin walled case bottles have survived approximately two-hundred years!

Est.: \$800 - \$1,200 • Min. bid: \$500



Lot 224

Miniature or Sample Size Demijohn, America, 1860 – 1880. Bright golden amber, miniature “heart form,” applied sloping collared mouth – pontil scar, ht. 3”, perfect. A great example in a scarce color with plenty of seed bubbles and character to the glass. Fairly scarce, and when found, are typically in shades of light green. It would be interesting to know their original purpose. Regardless, they are very interesting bottles.

Est.: \$125 - \$250 • Min. bid: \$70



Lot 225

Demijohn, probably Continental, possibly America, 1800 – 1840. Deep tobacco amber shading to near black through the neck and towards the base, freeblown, cylindrical “flowerpot” form with sides tapering slightly toward the base, crudely sheared mouth with applied banded collar – domed smooth base, ht. 17 ½”, near mint; (a 3/16” flat flake off the side of the roughly sheared mouth and some expected light exterior wear, otherwise perfect). Scarce form. See VdB plate 269, #3.

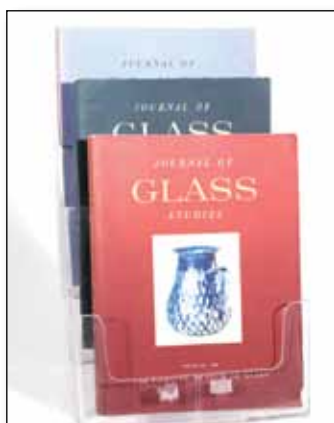
Est.: \$200 - \$400 • Min. bid: \$125



Lot 226

Demijohn, Probably New England, 1780 – 1830. Brilliant yellowish olive amber shading to almost black through the neck area. Globular form, freeblown with a rough sheared mouth and applied ring type collar – smooth, slightly concave base, ht. 19 5/8”. (There is a chip off the outer edge of the very roughly sheared mouth that we believe was done at the time of manufacture). Recently discovered from an estate in upstate NY. Beautiful, big, impressive and perfect!

Est.: \$800 - \$1,600 • Min. bid: \$500



Lot 227

Lot of (6) Volumes, “Journal of Glass Studies”, from the Corning Museum of Glass including: Volume I – 1959, Volume II – 1960, Volume III – 1961, Volume VII – 1965, Volume VIII – 1966, and Volume X – 1968. All are in generally excellent condition. Volume II contains an interesting article titled, Zanesville Glass. Volume III contains in-depth articles on Seventeenth Century Glass Wine Bottles and Seals Excavated at Jamestown, and The Glass Wine Bottle in Colonial Virginia.

Est.: \$100 - \$200 • Min. bid: \$60



Lot 228

Lot of (3) Bottle & Glass Reference Books, titles include: *The Glass Industry In Sandwich, Volume 4*, Barlow & Kaiser, 1983; *New England Glass & Glassmaking*, Kenneth M. Wilson, 1972, and *Early American Glass*, Rhea Mansfield Knittle, 1927; (the dust jacket on *Early American Glass* is in poor condition, otherwise all three books are in good to excellent condition).

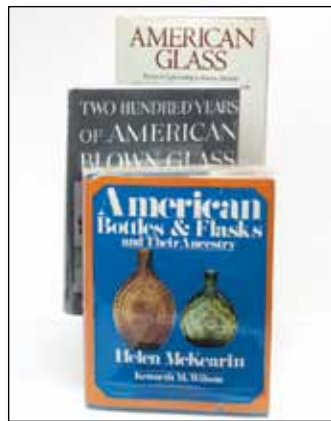
Est.: \$100 - \$200 • Min. bid: \$60



Lot 229

Lot of (3) Bottle & Glass Reference Books, titles include: *British Glass, 1800-1914*, Charles R. Hajdamach, 1991, *American Glass*, George S. and Helen McKearin, 1946, *The Complete Book of McKee Glass*, Sandra McPhee Stout, 1972; (the cover of the McKee book has a one-inch tear at the spine, otherwise all three books are in good to excellent condition). The McKee book is scarce and depicts copies of the early McKee Glass Company catalog pages from the 19th century.

Est.: \$75 - \$150 • Min. bid: \$40



Lot 230

Lot of (3) Bottle & Glass Reference Books, titles include: *American Glass*, George S. and Helen McKearin, 1946, *Two Hundred Years of American Blown Glass*, George S. and Helen McKearin, 1946, *American Bottles & Flasks and Their Ancestry*, Helen McKearin and Kenneth Wilson. All are in very good to excellent condition. The McKearin ‘trilogy’ is an indispensable set of books for any serious student of American bottles, flasks and blown glass.

Est.: \$100 - \$200 • Min. bid: \$75



Lot 231

Lot of (3) Important Auction Catalogs, *William J. Elsholz Collection, Volumes I & II*, Richard A. Bourne Co., Inc., December 1986 & May, 1987; *The Edmund & Jayne Blaske Collection, Part II*, Norman C. Heckler, September, 1983. The Elsholz Collection catalogs are hardbound, all three catalogs are in excellent, “like new” condition. All three catalogs represent important landmark auctions of early American Glass and bottles.

Est.: \$75 - \$150 • Min. bid: \$40



Lot 232

Lot of (6) Pioneer Bottle & Glass Books, titles include: *Early American Bottles and Flasks*, Stephen Van Rensselaer (two copies, original and revised editions); *Antique Fakes & Reproductions*, Ruth Webb Lee, 1950, *Grand Old American Bottles*, Larry Freeman, 1964, *Bitters Bottles and Supplement to Bitters Bottles*, by Richard Watson, 1965 & 1968. All are in generally good to very good condition. Several of these are not easy to find. Some great reading!

Est.: \$75 - \$150 • Min. bid: \$40



Lot 177: Olive Green Warner's Tippecanoe Bottle

warner's Famous Tippecanoe-The Great Stomach Tonic

When we think of branding today, companies such as Coca-Cola, General Motors, Microsoft, Starbucks and McDonalds probably come to mind. Branding was equally important during the 19th century. To the early medicine companies as well as to bottle collectors today, one of the all time classics and most recognizable bottles of the 19th century is the famous "TIPPECANOE" bottle of the H.H. Warner Co.

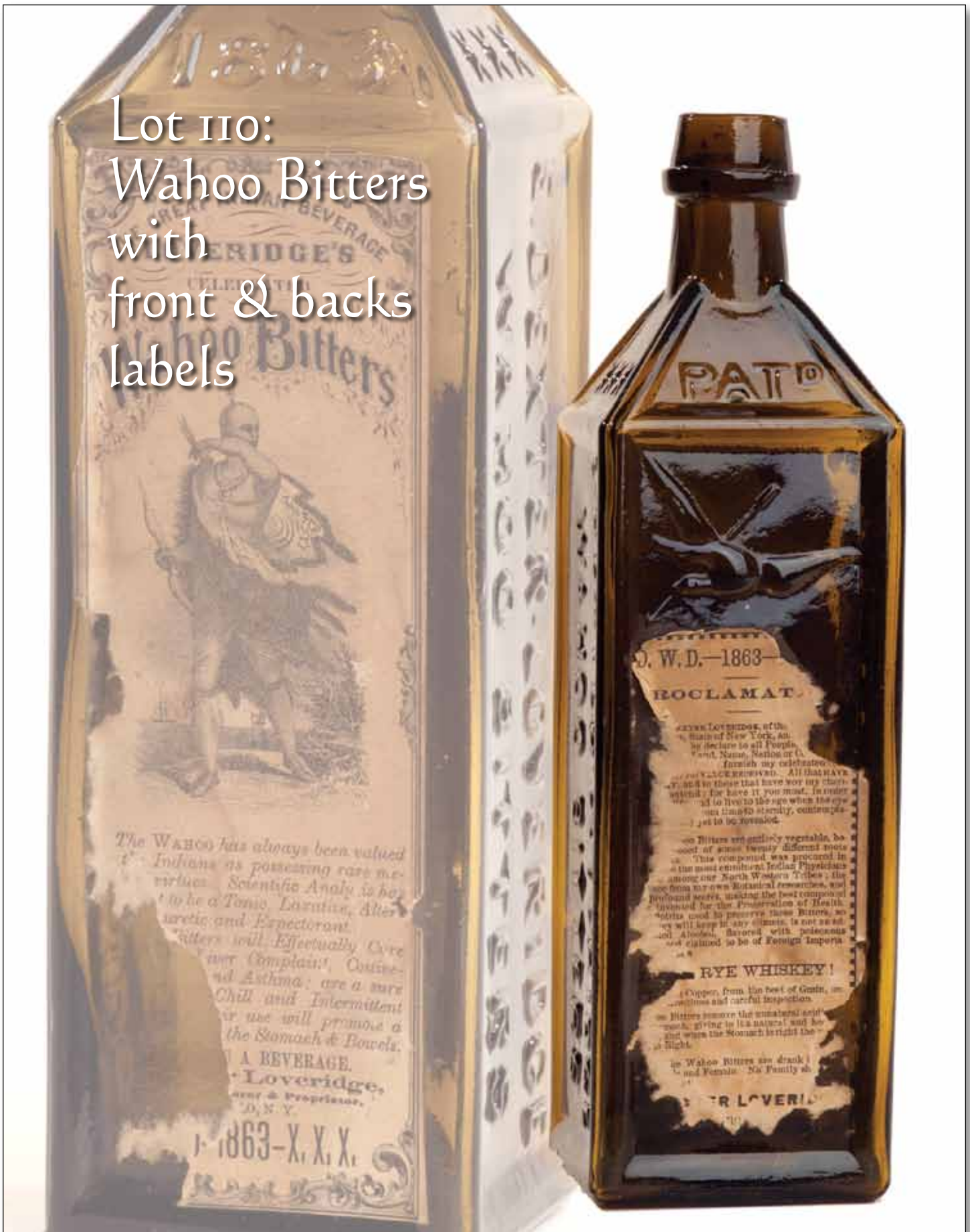
The information provided below is courtesy of Jack Stecher of Rochester, co-author of the Warner's Reference Guide.

By 1883, Warner's "bitters," "tonic" and "tonic bitters" were replaced by TIPPECANOE, available in two grades: "XXX" and "THE BEST". This unique design bottle, with a "mushroom" style top, was registered with the US Patent Office in 1883. A bottle of nearly a quart size, it was designed to imitate a "log of wood," bearing a "canoe," "H.H. Warner Co." and "Tippecanoe" blown in the glass.

The earliest label (XXX) was intended to convey to the buyer a bitters-type patent medicine, as the words, unmistakably large on the label state: "Tippecanoe-Bitters-The Best Stomach Tonic", with the Warner's trademark "safe" also depicted in the center of the label. The original label was soon changed to an "imitation birch bark", and the words "Bitters" replaced by "Dyspepsia" and the iron safe logo deleted. Tippecanoe proclaimed it was no longer a curative bitters, but now "better than a bitters". The contents were fashionably reminiscent of the sweet taste of brandy.

Tippecanoe was not boxed and had no outside wrapper. Tippecanoe remained part of the business well after Warner's demise and into the early 1900s, evident by the Pure Food and Drug Act stamping on later labels. The design of the bottle never changed. Warner insisted all his bottles were to be blown in an amber glass coloration. Occasionally, bottles are seen in shades of olive-amber, but rarely olive-green, obviously due to impurities in the glass manufacturing process – who wants a green log? The Tippecanoe bottle still stands as one of the most widely collected bottles in the hobby today, and not only in America, but in England and Australia as well.

Lot 110:
Wahoo Bitters
with
front & backs
labels

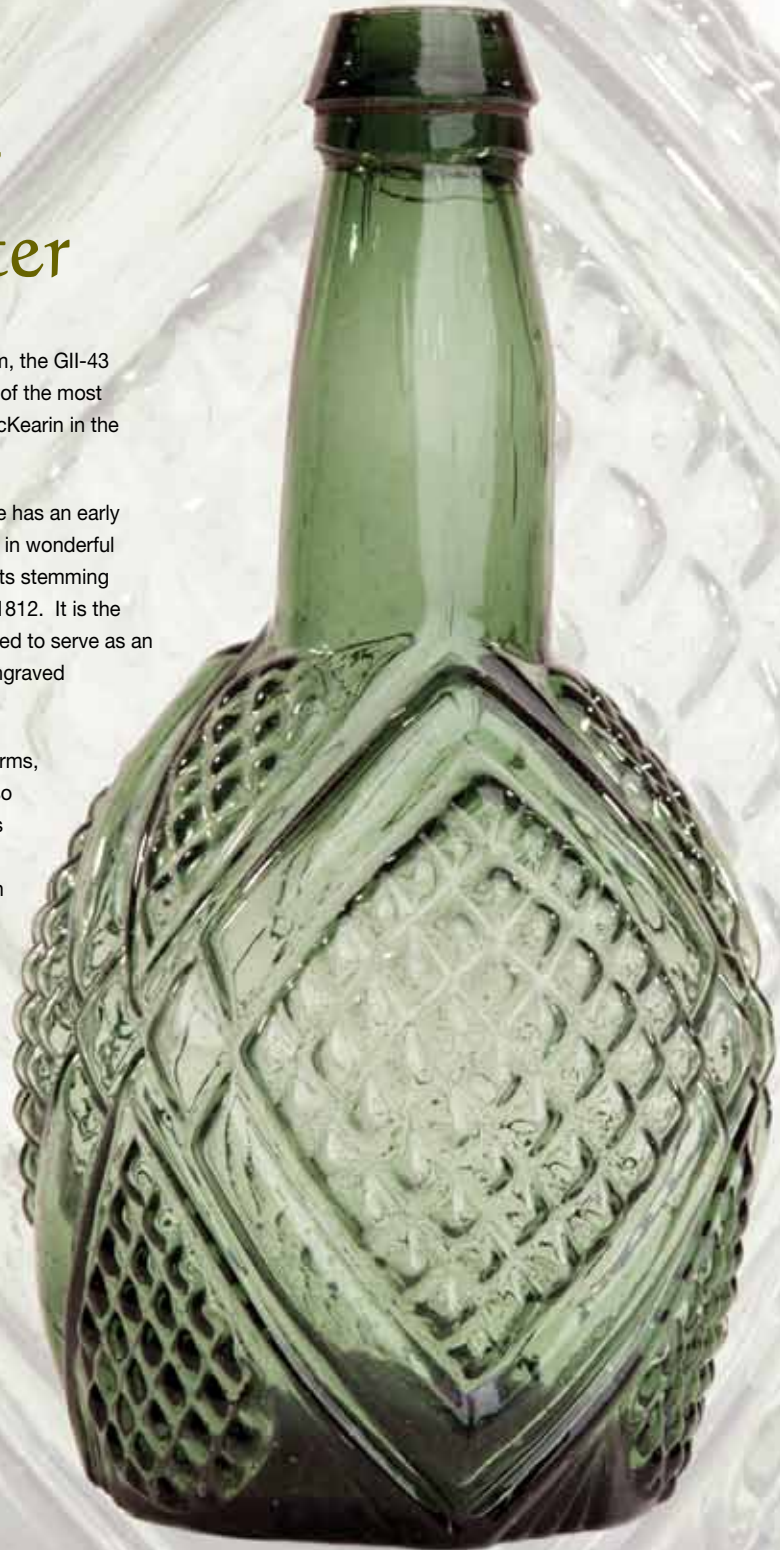


Lot 66: Rare G11-43 Blown Three- Mold Decanter

A very desirable, distinctive and pleasing form, the G11-43 Decanter is arguably considered to be one of the most attractive decanters of those charted by McKearin in the Blown Three-Mold Groupings.

Listed by McKearin as "Extremely rare," this example has an early collectors tag on the base, is in a beautiful color and in wonderful condition. Early Blown Three Mold Glass has its roots stemming back to the period following the close of the War of 1812. It is the unique product of American ingenuity that was created to serve as an inexpensive alternative to the more costly cut and engraved wares being imported from England and Ireland.

Collected and appreciated for its attractiveness in forms, colors and molds, it is not only beautiful, but was also functional in its day. It is no surprise then, why it has long been coveted by collectors going back for most of the past century. Examples of this glass can be found in many of the early pioneer collections as well as current museum collections today.



American Chestnut Bottles

Perhaps the quintessential “utility” bottle, beloved by collectors everywhere, they were a likely staple of many early American homes, businesses and taverns, from colonial times through the 1st quarter of the 19th century. Conversely, there is no doubt that production of these simple vessels helped to keep the fires burning at many a fledgling glasshouse from New England, to the Mid-Atlantic as well as the Midwest.

Ranging in size from a diminutive few inches to more than 12 inches (less than five or more than nine inches can be considered scarce), they are most often quite delicate in nature

being remarkably thin walled, even with many of the larger examples. The fact that so many have survived (many of them now more than 200 years old), is certainly a testament to the great numbers that must have been produced.

Like many other categories of early bottles and glass, there are regional nuances or characteristics that manifest themselves through color, form, lip treatments and even bases and types of pontil scars that help to distinguish these ubiquitous, but ever so appealing, early utilitarian objects.

Many collectors specialize in collecting chestnut flasks from a particular region, while others will strive to make a “run” of graduated sizes, and still others simply enjoy collecting them for their character and color variations.

And, as much as any other category of early bottles, it is easy to become attached to their beauty, their simplicity of form, the delicate subtle expressions of character and the fact that many of them were blown within a few decades of our nations independence. It is also true of these alluring early flasks that, “the whole is greater than the sum of its parts.” It is hard to “collect” just one!



American & Continental Pattern-Molded Pocket Flasks



Lot 46

Lot 45

Lot 47

Wishart's Pine Tree Cordial Bottles



Lot 160

Lot 159

Lot 158

Lot 157

American Glass Gallery is seeking quality consignments for our upcoming auction schedule.

As a consignor, please consider the following benefits that will help to ensure your valued items reach their highest potential:

- ▶ Competitive consignor rates
- ▶ Low buyer premiums
- ▶ Broad based and extensive advertising for your valued items
- ▶ Experience, knowledge, honesty and integrity
- ▶ Attention to detail and customer service

For more information, please give us a call at:

248.486.0530 or visit our website at

www.americanglassgallery.com



Lot #3: Extremely rare and
important pink-lilac
Washington/Taylor Flask
(reverse)



American Glass Gallery™