

American Glass Gallery™

Auction Number 5 • November 15, 2010



ESTABLISHED 1857.

Conditions of Sale

1. Absentee Auction

The items in this sale will be sold via absentee auction, closing date:
November 15, 2010, 11:00 p.m., EST.

2. Our Guarantee Regarding Descriptions

American Glass Gallery has made every attempt to describe correctly the property being sold. Descriptions are guaranteed to be accurate as regards authenticity, age, condition, and measurements to within one-fourth inch, as represented in this catalog. In describing damage, exterior wear or manufacturer's flaws that in our opinion, do not significantly detract visually or monetarily from the value of the item are not listed and will not be considered for refund. The Auctioneers reserve the right to make verbal corrections and provide additional information at any time during the sale.

3. Preview

Items may be viewed by appointment from November 1, 2010 through November 13, 2010.

4. Bidding Procedure

You may submit your bids by mail, phone, FAX, email or through our on-line auction site. If bidding by mail or FAX, please fill out the absentee form and return it to us. Your bid, either written or oral, grants American Glass Gallery the authority to protect you up to the amount of your stated bid. Your bid will not be removed once executed.

Bidding Times: You can submit your bids anytime after receiving your catalog. Bids may be made by phone, daily, until closing day, November 15, 2010, from 9 A.M. - 7 P.M. Eastern Time. Incoming phone bids will be accepted on the closing day (November 15, 2010) until 11 P.M. Eastern Time. Phone calls and Fax bids after this time will not be honored. No exceptions. You may also place your bids through our on-line auction service 24-hours a day once the site has opened for bidding, on or about November 1, 2010, continuing until 11:00 P.M. Eastern Time, November 15, 2010.

Please do not wait until the last day or two of the sale to place your bids! Because many collectors wait until the final few days of the sale to place their bids, we anticipate the telephone and internet bidding to be very busy during that period, so please plan accordingly. In the event of a tie bid, the earliest received bid on the lot will take precedent. We would welcome your bids by phone so that we can answer any questions and assist you in your bidding.

You may also telephone us at any time during the auction, prior to the closing of the sale, to check the status of your bids, to find the current bidding level, to open a bid, or to raise a bid on an auction lot.

Bidding Increments are as follows:

Up to \$250.00.....	increments of \$10.00
\$250.00 - \$500.00.....	increments of \$25.00
\$500.00 - \$1,000.00.....	increments of \$50.00
\$1,000.00 - \$2,500.00.....	increments of \$100.00
\$2,500.00 - \$5,000.00.....	increments of \$250.00
\$5,000.00 - \$10,000.00.....	increments of \$500.00
\$10,000 & Up.....	increments of \$1,000.00

Bids submitted between the above increments, whether by mail, FAX, email or on-line via the internet, will automatically be lowered to the closest lower increment.

This is a minimum bid auction. Bids below the printed minimum will not be accepted.

An example of how our absentee bidding system works: You bid \$600.00 on a lot which is the highest bid received to date. The second highest bid is \$450.00. The current high bid level would be yours at \$475.00, one bid increment higher than the other collector's bid. Any additional bids submitted by others below \$600.00 will automatically be topped on your behalf by a representative of American Glass Gallery, up to your stipulated high bid amount. If no further bids on this lot are received beyond the \$450.00, and the under bidder has not requested a "Call Back", then you would have won the lot at \$475.00, not the \$600.00 that you were prepared to pay.

American Glass Gallery will at NO TIME disclose bids pledged by others; only the current "High Bid" level of a lot will be stated upon request. The highest bidder as determined by American Glass Gallery shall be the purchaser. It is the sole right of the auctioneer to settle any dispute between bidders and to regulate the bidding procedure. The auctioneer reserves the right to refuse any bid he believes not to have been made in good faith.

5. "Call Back" Process

If requested, the three top bidders of an item at the time of closing will be given a "Call Back" over the next number of days in order to resolve the final sale of an item. You can request this service by "checking" the appropriate box on your absentee bid form or verbal agreement by phone. It is the responsibility of the bidder to insure he has qualified for this service.

Please note: No "Call Backs" will be executed for bids under \$400.00. In the event of tie bids, the earliest bid received will be the winning bid.

An example of how the "Call Back" process works: As an example, you have bid \$600.00 on a particular lot. Another bidder has submitted a bid of \$900.00 on the same lot. Assuming that as of the auction closing date you are among the top three bidders on this lot and you have requested a "Call Back", you would receive a call informing you that you have been "Out Bid" and the current "High Bid" is now at \$650.00. If you choose to continue bidding on this lot, you may now do so. Assuming that you now increase your bid to \$700.00, we would accept your bid but also inform you that we have a higher bid on this lot and must bid \$750.00. At this time, an auction between you and American Glass Gallery, representing the collector who submitted the bid of \$900.00, takes place. This bidding would continue until you drop out, or top the other bidders high bid of \$900.00. If the other bidder has not requested a "Call Back" service, you would be awarded the lot. If however, the other bidder also requested a Call Back, we must now call them. If they elect to increase their bid over your high bid, we would in turn call you back. This back and fourth process would continue until one of the bidders declines to go any farther.

If you have requested a "Call Back", the auctioneers will need to contact you on the days immediately following the auction closing between the hours of 8 A.M. and 9 P.M. Eastern Time. Please supply us with all appropriate contact phone numbers including, home, mobile and work numbers. Bidders must provide the appropriate telephone numbers where they can be contacted. If you will be traveling or otherwise unavailable, bidders with "Call Back" privileges will have the responsibility to contact American Glass Gallery twice daily during the Call Back period.

Please note, every effort will be made to contact you during the "Call Back" period. However, the bidder will forfeit their rights to a "Call Back" if the auctioneers are unable to reach them. American Glass Gallery reserves the right to discontinue Call Backs on any item in the sale (2) two days after the closing date of the sale. At that time, the current "High Bidder" may be awarded the item even if Call Backs are still outstanding.

6. Terms

Successful Bidders, Prompt and full payment is due immediately upon receipt of our invoice. Absolutely no exceptions. Anyone failing to pay for items won will forfeit all rights to bid in any future American Glass Gallery sales. Any late or delayed payments may result in loss of return privileges for items purchased in the sale.

No Items Will Be Mailed Before Full Payment Is Received.

Buyer Premium: A 12% buyer's premium will be added to the hammer price (15% if paying by Credit Card or PayPal), to be paid by the buyer as part of the purchase price. For example, if you purchase a lot for \$100.00, you will receive an invoice for \$112.00 if paying by cash, check or money order, plus any applicable sales tax or shipping charges.

Taxes: If you are a Michigan resident, a 6% sales tax will be added to your bill unless you have a valid resale number registered with us.

Shipping: Shipping, handling and insurance are extra. We ship insured via U.S. Mail. These charges will be added to your bill unless the lots are picked up in person. Our charges for shipping (excluding foreign shipments and oversized lots) are \$18.00 for the first item, \$9.00 for each additional item together with extra insurance costs (we use current U.S. Postal Service insurance rates).

Please allow two to four weeks for delivery after receipt of your check.

Payment: American Glass Gallery accepts Cash, Money Orders, Personal Checks, Visa, MasterCard, American Express and PayPal. If paying by Credit Card or PayPal, an additional 3% will be added to the invoice total.



7. Refunds

Refunds will be given at the discretion of the Auctioneers. Items purchased must be examined and request for refund made immediately upon receipt of the item or items. Since opinions can differ, particularly in the matter of condition, the Auctioneers will be the sole judge in the consideration of refunds. Refunds requested on the grounds of authenticity must be made within 15 days of the date of the auction, and such refund requests must be accompanied by at least one supporting statement in writing from an authority recognized by the Auctioneers. It is the Auctioneers sincere intention to consider any reasonable request for a refund. *Absolutely no returns for any reason after 30 days of the closing of the sale.*

8. Bidding on any item indicates your acceptance of these terms.



John R. Pastor
P.O. Box 227
New Hudson, Michigan 48165
Phone: 248.486.0530
Fax: 248.486.0538
www.americanglassgallery.com
email: jpastor@americanglassgallery.com

PLEASE NOTE:

The lots offered in this printed catalog are identical to the lots offered in the on-line catalog. However, due to space constraints of the printed catalog there may be some further information available regarding some of the lots in the on-line auction descriptions.

Please visit us at

www.americanglassgallery.com

and follow the link to the on-line auction. The link and on-line auction will be available on or about November 1, 2010.

A post-auction price list will be available on our website, in printable form, by December 1.

We encourage you to contact us either by phone or email with any questions that you may have, for assistance with bidding, or for further details or clarification on any of the lots in this sale. Your complete satisfaction and confidence is our goal!

We look forward to having you participate in our next sale, either as a buyer or a consignor. Our next absentee auction is scheduled for Spring, 2011. We already have some wonderful items consigned to this sale and would look forward to discussing with you, any quality items that you may wish to consign!

THANK YOU AND GOOD LUCK WITH YOUR BIDS!

FRONT COVER PHOTO: Lot 125, Best Bitters in America bottle (and ephemera). Copies of historical documents courtesy of Joe Widman, Kalamazoo, Michigan.

This auction photographed and cataloged by John R. Pastor • ©2010, American Glass Gallery. All rights reserved. • Catalog design & layout by Owen Neils • Printed by Spartan Printing, Lansing, MI

American Glass Gallery • Auction Number 5, November 15, 2010 • 248.486.0530 • www.americanglassgallery.com

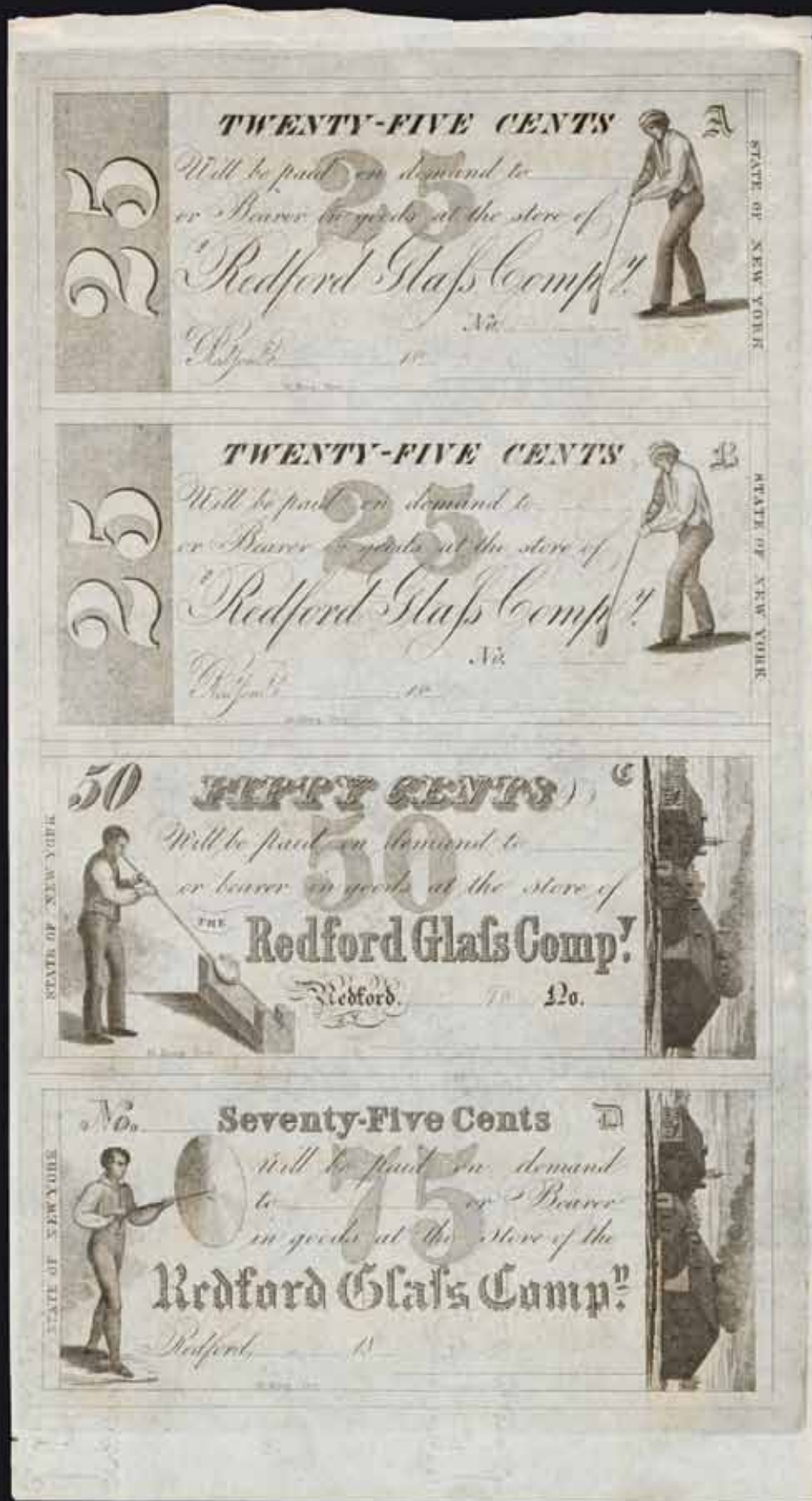
Reference Key

Reference initials and numbers used in the description of this catalog refer to the following publications:

AHG	<i>American Historical Glass</i> , Bessie M. Lindsey, 1967
AM	<i>The Decanter - An Illustrated History of Glass from 1650</i> , Andy McConnell, 2004
AP	<i>Glass in Early America</i> , Arlene Palmer, 1993.
BA1	<i>Collecting The Cures</i> , Bill Agee, 1969
BA2	<i>Collecting All Cures</i> , Bill Agee, 1973.
BB	<i>A Bit About Balsams</i> , Betty Blasi, 1974
BH	<i>Classification and Documentation of Sunburst and Similar Scent Bottles</i> , Bill Ham, AB&GC, 5/87
B/K	<i>The Glass Industry in Sandwich</i> , Raymond Barlow and Joan Kaiser, 1989.
C	<i>Ink Bottles and Inkwells</i> , William Covill, 1971.
DeG	<i>American Sarsaparilla Bottles</i> , John DeGrafft, 1980.
DeGII	<i>Supplement to American Sarsaparilla Bottles</i> , John DeGrafft, 2004.
DF	<i>Raising Hair Stories</i> , Don Fadely, 1992.
DM	<i>Wistarburgh, Window Tiles, Bottles and More</i> , Dale L. Murscell, 2007.
FB	<i>A.S.C.R. The wine bottles of All Souls College</i> , Oxford, 1750 – 1850, Fay Banks.
G	(Flasks) <i>American Bottles & Flasks and Their Ancestry</i> , McKearin & Wilson, 1978.
G	(Blown Three Mold) <i>American Glass</i> (Chapter VI), George S. and Helen McKearin, 1941.
GBH	<i>English Glass For The Collector, 1660-1860</i> , G. Bernard Hughes, 1958.
H	<i>American Bottles in the Charles B. Gardner Collection</i> , Norman C. Heckler, 1975.
JB	<i>Patent and Proprietary Medicine Bottles</i> , Joseph K. Baldwin, 1973
JEB	<i>Glasshouse Whimsies</i> , Joyce E. Blake, 1984.
JH	<i>Glasshouses & Glass Manufacturers of the Pittsburgh Region, 1795 – 1910</i> , Jay W. Hawkins, 2009.
JS	<i>In glas verpakt – European Bottles, Their history and production</i> , Johan Soetens, 2001.
K	<i>Poison Bottle Workbook</i> , Rudy Kuhn, 1988.
KW	<i>New England Glass & Glassmaking</i> , Kenneth M. Wilson, 1972.
L	<i>The Red Book of Fruit Jars, No. 9</i> , Douglas M Leybourne, Jr., 2001.
LI	<i>Pittsburgh Glass, 1797 – 1891</i> , Lowell Innes, 1976.
Mc	<i>Two Hundred Years of American Blown Glass</i> , Helen and George McKearin, 1950.
McK	<i>American Glass</i> , George S. and Helen McKearin, 1941.
MW	<i>American Bottles & Flasks and Their Ancestry</i> , McKearin & Wilson, 1978.
N	<i>Great American Pontiled Medicines</i> , Frederick Nielson, 1978.
NCH	<i>The Blaske Collection of American Flasks</i> , Norman C. Heckler, 1983.
NCH II	<i>The Blaske Collection: Part II</i> , Norman C. Heckler, 1983.
O&S	<i>Warner's Reference Guide</i> , Ed Ojea and Jack Stecher, 1998.
P	<i>The Glass Gaffers of New Jersey</i> , Adeline Pepper, 1971.
RD	<i>Understanding Antique Wine Bottles</i> , Roger Dumbrell, 1983.
RF	<i>The Bottle Book: A Comprehensive Guide to Historic, Embossed Medicine Bottles</i> , Richard Fike, 1987
RH	<i>Collecting Barber Bottles</i> , Richard Holiner, 1986.
R/H	<i>Bitters Bottles</i> , Carlyn Ring and W. C. Ham, 1998.
RWL	<i>Antique Fakes & Reproductions</i> , Ruth Webb Lee, 1950
T	<i>Collectors Guide to Saratoga Type Mineral Water Bottles</i> , Donald Tucker, 2005.
U	<i>Collectible Character Bottles</i> , Authur Umberger, 1969.
V	<i>Nailsea Glass</i> , Keith Vincent, 1975
VdB	<i>Antique Glass Bottles; Their History and Evolution</i> , Willy Van den Bossche, 2001.
WL	<i>A Wine-Lover's Glasses, The A.C. Hubbard, Jr. Collection</i> , Ward Lloyd, 2000.
Z	<i>Ketchup, Pickles, Sauces</i> , Betty Zumwalt, 1980.
ZW	<i>Color Hutchinsons</i> , Zang Wood, 1999.

- The dash is generally used to indicate that the descriptions are on opposite sides of the bottle or flask.

/ The slash is used to indicate that the descriptions are on different lines or surfaces of the bottle.



Lot 144: Uncut Sheet of Redford Glass Company Scrip.



Making Sense of SCENTS

Pictured above:
(clockwise from upper left)
Lot 87, Lot 86, Lot 88,
Lot 89, Lot 90.

Fancy, colorful Scent or “Smelling” bottles, as they were referred to by the glasshouses of the day, were a staple in Colonial America and remained popular well into the first half of the nineteenth century. As the name implies, they typically contained pungent smelling salts and, perhaps also, fragrant scents.

As stated by George and Helen McKearin, *American Glass*, p. 448, “One of the most fascinating fields of collecting in the realm of American glass is offered by the little smelling or scent bottles which were produced from the days of Stiegel’s Manheim glass house and through the period of the Boston and Sandwich Glass Company.”

It is almost certain that these little gems were also produced at the first successful glasshouse in America, that of Casper Wistar and the Wistarburgh Glass Works near Alloway, New Jersey, (1738 – 1782). In fact, as indicated in the book *Wistarburgh, Window Tiles, Bottles and More*, Dale L. Murschell, 2007, the Wistar estate will lists “bosom bottles”, a lesser used early slang term for the scent bottle.

Smelling bottles came in a variety of forms, colors and decorative motifs. As with numerous other categories of early American bottles and hollowware, many early glass factories copied the styles that were in fashion abroad. Thus certain forms and decorative techniques such as the “Stiegel type” ribbed pattern molded ovoid examples were also blown in England during the eighteenth and early nineteenth centuries. The account books of Stiegel during the time period of 1769 – 1770, itemized the glassware that was on hand at their store, sold, or on consignment with agents to include, “Smelling Bottles”.

Other popular early forms include the Seahorse or Dolphin tail; the Sunburst or shield form and corset waisted. A multitude of other forms also existed including the pinwheel, violin, heart, oval, as well as individual offhand blown pieces.

The common thread of the vast majority of the early scent bottles is their attractiveness, often in colorful and fanciful shapes. Applied decorative quilling or rigaree, sometimes in contrasting colors to the body of the bottle, pattern molding and the use of striping or colored canes of glass, most often encountered in the “Seahorse” forms, were all popular.

The bottles were blown with the use of small dip molds, piece molds and, oftentimes, freeblown. The workmanship on these fancy little scent bottles necessitated they be blown by only the most skilled gaffers. As mentioned above, these bottles were staples in many of

Pictured left:

(clockwise from upper left)
Lot 83, Lot 94, Lot 85,
Lot 97, Lot 84, Lot 98,
Lot 82, Lot 96.



the earliest glasshouses beginning in colonial times. They were blown at numerous eastern United States glasshouses with the epicenters generally being in South Jersey and also South Boston.

The Boston and Sandwich Glass Company, Sandwich, Massachusetts, was a prolific manufacturer of the freeblown “Dolphin” or Seahorse scent bottles. Barlow and Kaiser in their monumental five volume set of books on the Glass Industry in Sandwich illustrate several examples of the smelling bottles believed to have been made at Sandwich. It is noted in the accompanying text for photo #5183, of Volume 5, “The Boston and Sandwich Glass Company sloar (sic) book recorded the making of 310 Dolphin tail pungents by John Doyle’s shop on September 23, 1826. Thousands were made by Edward Haines in 1832 and 1833” (B&SGC blower, 1828 – 1849). In addition, McKearin and Wilson document a variety of pungents produced by greater Boston glasshouses that were established after the War of 1812.

Other glass factories in and around the Boston area involved in the production of the early scent bottles include the New England Glass Company, Thomas Cain’s Phoenix Glass Works, the South Boston Flint Glass House, the American Glass Company (of South Boston). And, still other significant glass factories beyond the Boston and South Jersey areas instrumental in the production of early scent bottles include; Dyottville, Philadelphia, Pennsylvania, Keene Marlboro Street Glass Works, Keene, New Hampshire, and even the Pitkin Glass Works, Manchester, Connecticut.

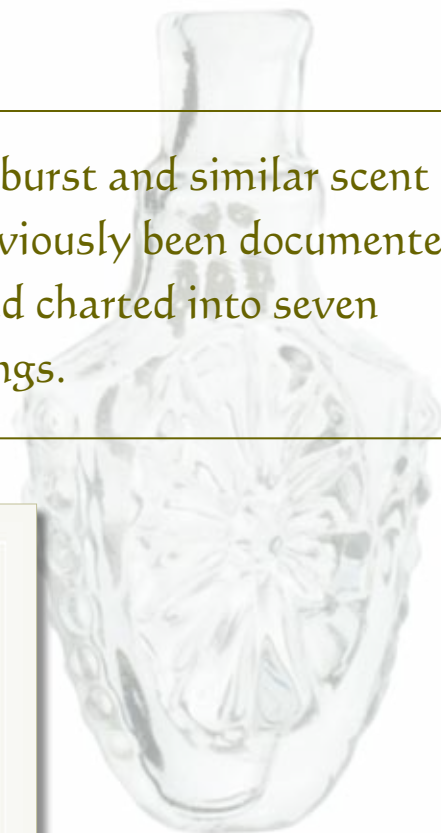
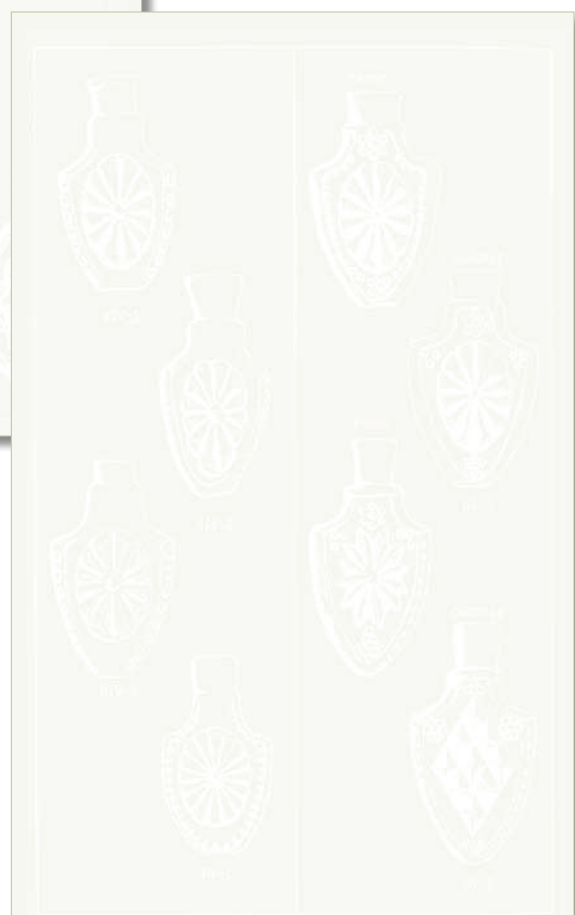
One of the more popular molded designs on early scent bottles is that of the Sunburst motif. It is also credited as being one of the earliest designs to be embossed on the figured flasks. It is likely that these little sunburst scent bottles were blown contemporaneously with the sunburst flasks as this was a very popular motif during the 1st quarter of the 19th century. The various sunburst and similar scent bottles have previously been documented by Bill Ham, and charted into seven different groupings. Included herewith, are some examples from these charts.

Whether you are a specialized collector of early Scent or “Smelling Bottles”, or a more general collector of pretty bottles, the history and beauty of these small but important little bottles cannot be disputed. They are certainly among the most colorful, interesting and decorative of early American Bottles.

The Boston and Sandwich Glass Company, Sandwich, Massachusetts, was a prolific manufacturer of the freeblown “Dolphin” or Seahorse scent bottles.

The various sunburst and similar scent bottles have previously been documented by Bill Ham, and charted into seven different groupings.

Three of the sunburst scent bottle identification charts organized and illustrated by Bill Ham.



**Lot 1**

“General Washington” / Bust of Washington – Eagle Historical Flask, an early Pittsburgh district glasshouse, 1825 – 1830. Greenish aquamarine, sheared mouth – pontil scar, pint, virtually attic mint; (a small, paper-thin open bubble at bottom of medial rib, at base corner). GI-2. About as good as it gets with a very strong mold impression, great glass character, none of the usual high point wear, and “out of the mold”, pristine glass!

Est.: \$500 - \$800 • (Min. bid: \$300)

**Lot 2**

“G. Geo. Washington” / Bust of Washington – “F.L.” / Eagle Historical Flask, Frederick R. Lorenz & Company, Pittsburgh, PA, 1825 – 1830. Greenish aquamarine, sheared mouth – pontil scar, pint; (some light exterior wear, primarily on the bust of Washington only). GI-7. An early mold and an extremely rare mold, one that is not easy to obtain!

Est.: \$2,000 - \$4,000 • (Min. bid: \$1,200)

**Lot 3**

“Albany Glass Works” / Bust of Washington / “Albany / NY” – Sailing Ship, Historical Flask, Albany Glass Works, Albany, NY 1847 – 1850. Aquamarine, sheared mouth – pontil scar, pint, near mint; (some minor exterior high point wear, otherwise perfect). GI-28. A bright, clean example. Note; these flasks are often fairly heavy, and with applied collared mouths. This example, however, is rather light and delicate, and with a sheared mouth.

Est.: \$250 - \$450 • (Min. bid: \$150)

**Lot 4**

“The Father of His Country” / Bust of Washington – “Gen Taylor Never Surrenders” / Bust of Taylor Historical Flask, Dyottville Glass Works, Philadelphia, PA, 1845 – 1855. Opalescent aquamarine, sheared mouth – pontil scar, pint; (a ¼” flake on edge of mouth and a hard to see, 1/8” iridescent bruise on inside edge of mouth that may have occurred when the cork was pried out). GI-40a. The scarce “moonstone” hue is very attractive!

Est.: \$350 - \$700 • (Min. bid: \$200)

**Lot 5**

Bust of Columbia / “Kensington” – Eagle / “Union. Co” Historical Flask, Kensington Union Glass Works, Philadelphia, PA, 1825 – 1835. Aquamarine, sheared mouth – pontil scar, pint, perfect. GI-117. A very historical mold with the bust of Columbia representing the American identity surrounded by 13 stars, and with the Eagle on the reverse. Many examples have some form of damage. This one is virtually pristine and with a bold impression.

Est.: \$800 - \$1,200 • (Min. bid: \$500)

**Lot 6**

6. Eagle – Cornucopia Historical Flask, probably an early Pittsburgh district glasshouse, Pittsburgh, Pennsylvania, 1825 – 1840. Brilliant, deep aquamarine, almost a blue green, elongated neck with sheared mouth – pontil scar, ½ pt, near attic mint; (just a tiny pin-point bit of roughness on edge of mouth and only a faint amount of high point wear, otherwise pristine). GI-15a. An extremely rare mold that is not listed in color, this example is about as good as you can get!

Est.: \$1,000 - \$2,000 • (Min. bid: \$700)

**Lot 7**

Eagle – Cluster of Grapes Historical Flask, Coffin & Hay Glass Manufactory, 1838 – 1847. Deep tobacco amber, sheared mouth – pontil scar, ½ pint; (approximately 1/3 of the neck on the side of the flask has been repaired). GI-56. Despite the noted repair, the flask displays as mint. Rare in mold and color, here is an opportunity to own a dandy that would be well over five figures if mint. An appealing example with plenty of bubbles and character to glass.

Est.: \$600 - \$1,200 • (Min. bid: \$400)

**Lot 8**

“Liberty” / Eagle – “Willington / Glass / Co / West Willington / Conn” Historical Flask, Willington Glass Works, West Willington, Connecticut, 1855 – 1865. Medium olive green, sheared mouth – smooth base, ½ pint; (a little light exterior wear, a pinhead size opening on the cover glass of a small bubble located near the bottom of the shield). GI-63. A bright, clean example.

Est.: \$250 - \$350 • (Min. bid: \$150)



Lot 9

"Liberty" / Eagle – "Westford / Glass / Co / Westford / Conn" Historical Flask, Westford Glass Works, Westford, Connecticut, 1857 – 1873. Medium to deep olive amber, crudely applied double collared mouth – smooth base, ½ pint, near mint; (a miniscule spot of roughness on edge of lip and some expected faint exterior high point wear, otherwise perfect). GII-65. A good example, nice rich color.

Est.: \$175 - \$350 • (Min. bid: \$100)



Lot 13

Cornucopia – Urn Pictorial Flask, New England, probably Keene Marlboro Street Glassworks, Keene, New Hampshire, 1830 – 1845. Clear medium blue-green, sheared mouth – pontil scar, ½ pint, perfect. GIII-7. A very pretty little flask, scarce color, wonderful condition, a lot of bang for your buck!

Est.: \$250 - \$500 • (Min. bid: \$150)



Lot 10

Eagle – "New London" / Anchor / "Glass Works" Historical Flask, New London Glass Works, 1856 – 1865. Aquamarine, applied round double collared mouth – pontil scar, ½ pint; (some spotty faint interior haze that would easily clean professionally if desired, and an interior bubble in the shoulder that is partially open with some whitish residue). GII-67.

Est.: \$300 - \$500 • (Min. bid: \$200)



Lot 14

Lot of (2) Cornucopia – Urn Pictorial Flasks, Keene Marlboro Street Glassworks, Keene, NH, 1830 – 1845. Olive amber and olive green, both with sheared mouths – pontil scarred bases, ½ pts; (some high point wear on the olive green example, the olive amber example is near mint except for a couple of surface bubbles with a disturbance on the cover glass). Both examples, GIII-7. A very strong impression on the olive amber flask which is filled with tiny seed bubbles.

Est.: \$200 - \$300 • (Min. bid: \$125)



Lot 11

Eagle – Cornucopia Historical Flask, Keene Marlboro Street Glassworks, Keene, New Hampshire, 1830 – 1842. Brilliant forest green with a slight yellowish tone, sheared mouth – pontil scar, pint; (some high point wear, primarily on the cornucopia side, otherwise perfect!). GII-73. A bright example, great color, crude pebbly glass. If you like character, you will love this flask.

Est.: \$150 - \$300 • (Min. bid: \$100)



Lot 15

Cornucopia – Urn Pictorial Flask, New England, 1830 – 1845. Medium olive amber, sheared mouth – pontil scar, ½ pint; (tiny pinhead size flake on side edge of mouth, some light exterior high point wear, otherwise perfect). GIII-12. In addition to being a nice crude example, as noted by McKearin, the GIII-12, is a fairly scarce mold variant.

Est.: \$100 - \$200 • (Min. bid: \$60)



Lot 12

Unlisted Eagle – Eagle Historical Flask, probably Louisville Glass Works, Louisville, KY, or possibly Pittsburgh, PA 1855 – 1865. Yellow green with citron tone, applied blob collar – heavy red iron pontil, Qt, near mint; (a light band of interior haze approx. 1" wide below the eagle, otherwise perfect). Unlisted by McKearin, similar to GII-114, no ribs in eagle's wings; no inscription in oval. A rare mold and a big splash of color!

Est.: \$750 - \$1,500 • (Min. bid: \$400)



Lot 16

Clasped Hands / Square & Compass / "Union" – Eagle / "A.R.S." Calabash Historical Flask, A.R. Samuels, Keystone Glass Works, Philadelphia, Pennsylvania, 1866 – 1874. Light apple green, applied sloping collared mouth – pontil scar, Qt, near attic mint; (tiny pinhead sized flake at side edge of mouth, otherwise pristine). GIV-42. A good, clean example, nice delicate color.

Est.: \$125 - \$225 • (Min. bid: \$75)



Lot 17

“Success To The Railroad” / Locomotive – (Reverse Same) Historical Flask, Lancaster Glass Works, Lancaster, New York, 1849 – 1860. Medium to deep aquamarine, sheared mouth – pontil scar, pint, about mint; (just a very faint band of interior residue or milkiness near the base that is not detracting, otherwise perfect). GV-1. A nice example with a crude, pebbly glass texture.

Est.: \$300 - \$600 • (Min. bid: \$200)



Lot 21

“Success To The Railroad” / Horse Pulling Cart – (Reverse Same) Historical Flask, probably Mt. Vernon Glass Works, Vernon, NY, 1830 – 1844. Dense olive amber, almost black through the shoulder and lower third of the body, sheared mouth – pontil scar, pint; (a little high point wear, primarily on the hind quarter of the horse, and a slightly weakened mold impression in the shoulder as is often the case). GV-5. A scarce, particularly deep color.

Est.: \$300 - \$500 • (Min. bid: \$200)



Lot 18

“Success To The Railroad” / Horse Pulling Cart – (Reverse Same) Historical Flask, Keene Marlboro Street Glassworks, Keene, NH, 1830 – 1842. Olive yellow, sheared mouth – pontil scar, pint, perfect. (Note; there is an in-making shallow flake at side of mouth that occurred when the lip was sheared. It was fire polished along with the lip and is not considered damage). GV-3. Very bold impression, light and bright, an outstanding example!

Est.: \$350 - \$700 • (Min. bid: \$250)



Lot 22

“Success To The Railroad” / Horse Pulling Cart – Eagle with Stars, Historical Flask, Coventry Glass Works, Coventry, Conn, 1830 – 1849. Yellowish olive amber, sheared mouth – pontil scar, pt, perfect; (there is an in-making flake at the side of the lip that occurred as the blowpipe was whetted from the neck, as it has been fire polished along with the mouth of the bottle). GV-8. A great example, good impression, virtually no high point wear!

Est.: \$300 - \$450 • (Min. bid: \$200)



Lot 19

“Success To The Railroad” / Horse Pulling Cart – (Reverse Same) Historical Flask, Keene Marlboro Street Glassworks, Keene, NH, 1830 – 1842. Yellowish olive amber (a bit deeper in color than the preceding example), sheared mouth – pontil scar, pt; (a shallow 1/8” flake off the side of the mouth and a little high point wear, particularly on the hind quarter of the horse, as is often the case). GV-4. Listed by McKearin as Rare.

Est.: \$300 - \$450 • (Min. bid: \$200)



Lot 23

“Railroad” / Horse Pulling Cart / “Lowell” – Eagle with Stars Historical Flask, Coventry Glass Works, Coventry, Connecticut, 1830 – 1848. Golden amber, sheared mouth – pontil scar, ½ pint; (a somewhat weakened impression and just a touch of high point wear, otherwise mint). GV-10. A nice, bright example.

Est.: \$250 - \$350 • (Min. bid: \$150)



Lot 20

“Success To The Railroad” / Horse Pulling Cart – (Reverse Same) Historical Flask, probably Mt. Vernon Glass Works, Vernon, NY, 1830 – 1844. Rich pure olive, almost forest green, sheared mouth – heavy blowpipe pontil scar, pint; (tiny, less than a pin-head sized open bubble at medial rib, otherwise perfect!). GV-5. A great example, beautiful color, crude seedy glass, good impression, and virtually no high point wear!

Est.: \$350 - \$700 • (Min. bid: \$200)



Lot 24

Sunburst Flask, Coventry Glass Works, Coventry, Connecticut, 1815 – 1830. Clear yellowish olive, sheared mouth – pontil scar, pint; (a tiny, 3/16” iridescent bruise exists at the edge of the base on the side and just a touch of high point wear at the convergence of the sunburst rays, otherwise perfect) GVIII-3. Despite the minor condition notation, it remains a very nice example with good clarity and in a nice lighter shade of color.

Est.: \$600 - \$900 • (Min. bid: \$400)



Lot 25

Scroll Flask, Midwest America, 1845 – 1860. Deep blue green, sheared mouth – pontil scar, pint; (professionally cleaned to near perfect condition with just a small pinhead sized nick on the inside edge of the mouth that may have occurred when the cork was pried out). Likely a GIX-11 (upper shoulder area overblown resulting in indistinct upper stars). A beautiful color with nice even density and clarity to the glass.

Est.: \$600 - \$900 • (Min. bid: \$400)



Lot 26

Scroll Flask, Midwest America, probably an early Pittsburgh district glasshouse, 1835 – 1845. Medium to deep aquamarine, fancy corseted body with ornate scroll decoration, sheared mouth – pontil scar, pint, perfect; (there is no form of damage although the bottle is overblown through the upper shoulders). GIX-45. A classic early scroll flask and perhaps the most ornate of the entire scroll grouping!

Est.: \$800 - \$1,200 • (Min. bid: \$500)



Lot 27

Lot of (3) "For Pike's Peak" / Prospector Historical Flasks, probably Pittsburgh district, Ravenna, OH, and possibly Ceredo, WV, 1860 – 1870. Aqua and deep bluish aqua, all with applied collared mouths – smooth bases, Qt, Pt, & ½ Pt. (3) exceptionally clean, virtually attic mint flasks, including a couple of scarce molds. GXI-30, 35 & 52. The GXI-35 "Ceredo" flask is Ex. Blaske collection, deep bluish aqua and very pretty.

Est.: \$300 - \$500 • (Min. bid: \$200)



Lot 28

Lot of (3) Hunter – Fisherman Pictorial Calabash Flasks, America, 1850 – 1860. All are shades of aquamarine with applied collared mouths – pontil scars, quarts, all near attic mint. GXIII-4, 5 & 6. A nice set of the Hunter – Fisherman Calabash flasks, all in fantastic condition. As noted by McKearin, the molds are listed as common, scarce and rare! The rare GXIII-6 example is exceptional with a very bold impression.

Est.: \$200 - \$400 • (Min. bid: \$125)



Lot 29

Hunter – Fisherman Pictorial Calabash Flask, America, probably Whitney Glass Works, Glassboro, NJ, 1857 – 1865. Medium golden amber, applied sloping collared mouth – iron pontil scar, quart; (a shallow ½" long, narrow sliver-type flake extends downward from beneath the applied collar, otherwise about mint). GXIII-4. The shallow flake is well hidden and quite possibly occurred in manufacture. Good strong embossing.

Est.: \$250 - \$350 • (Min. bid: \$150)



Lot 30

Sheaf of Grain - "Westford Glass Co / Westford / Conn" Pictorial Flask, Westford Glass Works, 1857 – 1873. Deep tobacco amber shading to yellowish tobacco through the mid-body, crudely applied double collared mouth – smooth base, pint; (a little light exterior high point wear, otherwise about mint). GXIII-35.

Est.: \$175 - \$275 • (Min. bid: \$100)



Lot 31

Sheaf of Grain – Tree Pictorial Calabash Flask, America, probably a Philadelphia or Baltimore area glasshouse, 1855 – 1865. Medium blue green approaching a teal green hue, applied double collared mouth – blowpipe pontil scar, quart, near mint; (a few scattered light scratches, primarily on the obverse). GXIII-47. A scarce color, fine condition.

Est.: \$400 - \$700 • Min. bid: \$250)



Lot 32

"Traveler's" / Star / "Companion" – "Ravenna" / Star / "Glass Co." Historical Flask, Ravenna, Ohio, 1857 – 1866. Bright golden amber, applied collared mouth with ring – iron pontil scar, pint, mint. GXIV-3. A clean, bright, bubbly example with good strong embossing, and virtually "attic" mint condition.

Est.: \$500 - \$1,000 • (Min. bid: \$300)



Lot 33

"Traveler's" / Star / "Companion" – "Ravenna" / Star / "Glass Co." Historical Flask, Ravenna, Ohio, 1857 – 1866. Beautiful lime green, applied collar with ring – smooth base, pint, perfect; (note, there is a ½" reddish brown streak on the surface of the shoulder that looks like a short "scuff" mark, but with a loop, appears to be a streak of impurities in the glass). GXIV-3. Exceptional color, the 1st offered in 20+ years of auctions!

Est.: \$2,000 - \$4,000 • (Min. bid: \$1,200)



Lot 34

Pattern Molded Globular Bottle, 24 ribs swirled to the left, Midwest America, possibly Zanesville Glass Works, Zanesville, Ohio, 1820 – 1835. Rich dark amber, tooled outward folded mouth – pontil scar, ht. 7 ½"; (some light exterior wear at mid-body, otherwise perfect). A rich, deeper color than most, almost a chocolate amber.

Est.: \$500 - \$800 • (Min. bid: \$300)



Lot 35

Pattern Molded Globular Bottle, 24 ribs swirled to the right, Midwest America, probably Zanesville Glass Works, Zanesville, Ohio, 1820 – 1835. Brilliant light golden or honey amber, small outward rolled mouth – pontil scar, ht. 7 7/8"; (some scattered exterior wear and light scratches around the mid-body, otherwise about mint). A nice bright example and with good form.

Est.: \$600 - \$900 • (Min. bid: \$400)



Lot 36

Pattern Molded Pocket Flask, 24 vertical ribs, Midwest America, probably Zanesville Glass Works, Zanesville, Ohio, 1820 – 1840. Bright golden orange amber, flattened circular body, sheared mouth – pontil scar, ht. 4 ¾"; (some exterior high point wear at mid-body, as is common on these flasks). A classic little Midwest patterned flask.

Est.: \$250 - \$450 • (Min. bid: \$150)



Lot 37

Pattern Molded Pocket Flask, 24 ribs swirled to the left, Midwest America, probably Zanesville Glass Works, Zanesville, Ohio, 1820 – 1840. Bright golden yellow coloration, flattened circular body, sheared mouth – pontil scar, ht. 4 ¾"; (some light exterior high point wear, otherwise perfect). Note; both the lighter color and swirled pattern (vs. vertical ribbing), are more scarce in this flattened circular form. A very pretty little flask with plenty of yellow.

Est.: \$300 - \$500 • (Min. bid: \$200)



Lot 38

Pattern Molded Pocket Flask, 16 vertical ribs, Midwest, probably Mantua Glass Works, Mantua, Ohio, 1822 – 1829. Delicate yellow green with a citron tone, ovoid slender chestnut form, sheared mouth – pontil scar, ht. 5 5/8", near mint; (just a bit of interior residue or dirt that would likely wash out). The Mantua Glass Works was generally known for their subtle hues and of course, the 16 rib mold. An attractive, scarce little pocket flask.

Est.: \$350 - \$700 • (Min. bid: \$250)



Lot 39

Pattern Molded Pocket Flask, 16 vertical widely spaced melon type ribs, probably America, possibly an early Pittsburgh district glasshouse, 1800 – 1830. Medium to deep plum amethyst, elongated flattened chestnut form, sheared mouth – pontil scar, ht. 7 ½", near mint; (a few small flakes that appear to be tooling marks on the side of the neck and one pinhead flake on rib at shoulder, otherwise perfect). A very beautiful, early patterned flask.

Est.: \$800 - \$1,600 • (Min. bid: \$500)



Lot 40

Pattern Molded Flask, 18 vertical ribs, probably Midwest America, possibly early Pittsburgh district, 1815 – 1830. Colorless, flattened chestnut form, tooled and outward folded mouth – pontil scar, ht. 6 ¼", near mint; (a slight bit on high point wear, primarily on one side only). Early colorless pattern molded flasks, while not as flashy as the brightly colored counterparts, are quite rare. An interesting and scarce patterned flask.

Est.: \$150 - \$250 • (Min. bid: \$100)

**Lot 41**

Pitkin Type Flask, Pattern molded with 32 vertical ribs over 32 ribs swirled to the right, America, Midwest type, 1800 – 1830. Beautiful sea mist green, flattened oval form, sheared mouth – blowpipe pontil scar, ht. 6 ¾"; (the pattern weakens a bit in the lower 1/3 of the flask and a faint interior film that is not terribly noticeable and would likely wash out, otherwise about mint). A scarce color, interesting slightly offset neck.

Est.: \$400 - \$600 • (Min. bid: \$250)

**Lot 42**

Pitkin Type Flask, Pattern molded with 31 vertical ribs over 31 ribs swirled to the right, New England, 1785 – 1820. Clear medium olive, compressed ovoid form, sheared mouth – blowpipe pontil scar, ht. 5", near mint; (the pattern weakens in the lower 1/3 of the body as is typical for these flasks, and just a touch of very light exterior high point wear). Note; an unusual rib count for a New England type Pitkin flask, also a bit smaller in size than most.

Est.: \$400 - \$800 • (Min. bid: \$250)

**Lot 43**

Freeblown Pocket Flask, Midwest America, 1810 – 1830. Medium amber, flattened chestnut form, sheared mouth – pontil scar, ht. 4 7/8", perfect. Note; unpatterned Midwest pocket flasks are much more scarce than their patterned counterparts.

Est.: \$150 - \$250 • (Min. bid: \$100)

**Lot 44**

Freeblown Chestnut Flask, New England, 1783 – 1820. Clear light to medium olive, chestnut form, applied ring type collar – delicate light blowpipe pontil scar, ht. 5 ½"; (a touch of faint exterior wear, otherwise attic mint).

Est.: \$200 - \$400 • (Min. bid: \$125)

**Lot 45**

Freeblown Chestnut Flask, New England, 1783 – 1820. Bright yellowish olive amber, chestnut form, applied sloping collared mouth – delicate light blowpipe pontil scar, ht. 7 ½" about mint; (just a very faint touch of expected high point wear, otherwise pristine). A nice example with the elongated neck and applied collared mouth.

Est.: \$225 - \$400 • (Min. bid: \$125)

**Lot 46**

Poison Type Flask, probably Germany, 1820 – 1850. A soft bluish green or sea-green, flattened circular body blown in the Germany half post method with the final gather of glass blown in a 2-piece mold with an overall quilted diamond pattern, applied string lip – pontil scar, ht. 4", about perfect. Similar in form and style to VdB, plate 307, #1. An early flask in a delicate, pretty color.

Est.: \$200 - \$400 • (Min. bid: \$125)

**Lot 47**

Poison Type Flask, America or Germany, 1830 – 1860. Yellowish mossy green, flattened pear form blown in a 2-piece mold with an overall hobnail pattern, small tooled ring collar – pontil scar, half pint, ht. 5 3/8", near mint; (some minor exterior high point wear). KU-26. A scarce mold, very rare color

Est.: \$300 - \$500 • (Min. bid: \$200)

**Lot 48**

Poison Type Flask, America or Germany, 1830 – 1860. Teal blue, flattened pear form blown in a 2-piece mold with an overall hobnail pattern, tooled ring mouth – pontil scar, half pint, ht. 5 ½", about perfect. KU-26. A beautiful color, wonderful condition.

Est.: \$400 - \$600 • (Min. bid: \$250)



Lot 49

Nailsea Type Flask, England, probably an early Stourbridge district glasshouse, 1830 – 1850. Opaque white with profuse combed red and blue loopings, flattened circular body, outward folded, tooled sloping collared mouth – ground pontil scar, ht. 6 ¾"; (some faint exterior high point wear, otherwise perfect). Similar to V, plate 65, #3. A striking flask, great color combination for the loopings.

Est.: \$200 - \$400 • (Min. bid: \$125)



Lot 53

Large Freeblown Compote, America, probably a Pittsburgh district glasshouse, Pittsburgh, Pennsylvania, 1840 – 1860. Colorless leaded glass, hemispherical body with a narrow tooled rim, solid applied baluster stem and foot, polished pontil scar, ht. 7 ¼", width 10 7/8", near mint; (age-appropriate wear and some light

scratches within the bowl). Nice workmanship, high quality metal, and a wonderful resonance to the bowl.

Est.: \$225 - \$350 • (Min. bid: \$125)



Lot 50

Pattern Molded Sweetmeat Stand, 14 vertical ribs, probably England, 1840 – 1870. Blown from a brilliant cobalt blue non-lead glass, cylindrical bowl with wide outward flaring sides and tooled, inward folded rim; baluster type stem with solid cylindrical disc type foot – pontil scarred base, ht. 3 1/8", rim dia. 3 ¾", perfect. Early sweetmeat bowls were used to hold a variety of confections, custards, caraway, cinnamon and other comfits.

Est.: \$200 - \$400 • (Min. bid: \$125)



Lot 54

Small Freeblown Ladies Cuspidor with Matching Ball Cover, probably South Jersey, possibly Whitney or South Millville Glass Works, 1860 – 1880. Medium amber, compressed hemispherical body with narrow neck flaring outward to a wide sheared mouth – slightly domed, pontil scarred base, ht. 1 ½". Matching freeblown ball cover with pontil scar, dia. 2 ½". Overall ht. including cover, 3 ½"; both are perfect. A great piece, likely blown as a whimsey.

Est.: \$300 - \$600 • (Min. bid: \$175)



Lot 51

Oversized Freeblown Chalice, probably England, 1874. Large cranberry bowl profusely engraved with a fancy fern and leaf design and, "J.DUTTON / 1874". Three part, colorless, blown solid baluster stem with a bulbous hollow knopf containing an 1873 British 3-Pense coin, solid circular foot with a polished pontil scar, ht. 12 ½", bowl diameter 6", perfect! A colorful, and exceptional early presentation piece.

Est.: \$750 - \$1,250 • (Min. bid: \$400)



Lot 55

Freeblown Storage or Utility Jar with Matching Ball Cover, America, probably South Jersey, 1850 – 1870. Golden amber, slightly compressed, flattened globular body with a short, outward flaring neck and wide sheared rim – pontil scarred base, ht. 5 ¼". Matching freeblown ball cover with pontil scar, dia. 5". Overall ht. incl. cover, 9 ½", both are near perfect with age-appropriate exterior wear. Provenance: de-accessioned from the Corning Museum of Glass.

Est.: \$300 - \$600 • (Min. bid: \$175)



Lot 52

Freeblown Covered Storage Jar, probably a Pittsburgh district glasshouse, Pittsburgh, PA, 1830 – 1860. Colorless with two applied sapphire blue rings around the body and another forming the rim of the cover. Domed lid with an applied hollow knopf, base of jar with solid pontil scar, ht. 9 ¼" (including cover), perfect. Note; the cover fits well but has a little "play". It is correct for the jar, but may or may not be original.

Est.: \$300 - \$500 • (Min. bid: \$200)



Lot 56

Freeblown Lily Pad Vase with Ball Cover, Probably New Jersey, 1840 – 1860. Bright golden amber, compressed globular body with an added gather pulled up into eight, type II lily-pads. Tall cylindrical neck with flared, tooled rim – applied, crimped disc foot with pontil scar, ht. 8 ¼". Ball cover with pontil scar, dia. 5"; (bowl of vase is severely cracked). Form similar to AP, #256. Despite the damage, a rare, important vase.

Est.: \$250 - \$500 • (Min. bid: \$150)



Lot 57

Freeblown Footed Bowl, America, probably Millville Glass Works, Millville, NJ, 1860 – 1880. Deep aquamarine with bi-colored drag loopings of cranberry and opaque white, circular with wide flaring sides, applied solid disk foot, pontil scarred base, ht, 2 7/8", dia, 9 1/4", perfect with only age appropriate base wear. An important example of the second period, or renaissance period of South Jersey blown glass. A rare bowl, beautifully executed.

Est.: \$750 - \$1,500 • (Min. bid: \$500)



Lot 58

Lot of (2) Blown Three Mold Tableware Items, America, 1820 – 1840. A small Cream Jug, GIII-21 pattern, barrel form body, solid applied handle crimped at lower terminal, flared rim and pour spout; A Salt Cellar with galleried rim and circular bowl tapering to a solid applied baluster stem and foot, similar to Gill-27 pattern with alternating vertical ribs and diamond diapering. Both are colorless with pontiled bases, ht., 2 7/8" & 3 3/8" respectively.

Est.: \$200 - \$400 • (Min. bid: \$125)



Lot 59

Lot of (3) Pressed Glass Lighting Devices, America, 1840 – 1860. All (3) are colorless including a pair of hexagonal candlesticks, probably Boston and Sandwich Glass Co. and a corseted loop lamp, probably New England Glass Co. Candlesticks with thin wafer at center joining the socket and bases; Lamp font is molded as one piece with a hexagonal base. Candlesticks with minor base / socket roughness, otherwise all are mint.

Est.: \$150 - \$250 • (Min. bid: \$75)



Lot 60

Lot of (2) Freeblown Smoke Bells, Boston and Sandwich Glass Works, Sandwich, MA, 1870 – 1888. Both are milk glass, bell form, with ruffled rims. First example with applied glass ring and decorative cobalt rim; second example with metal ring and applied cranberry rim, ht, 5 1/2" & 4 3/8" respectively, both are perfect. Similar to B/K #2452 & 2457. Designed to capture soot, they were hung above early lighting devices.

Est.: \$125 - \$250 • (Min. bid: \$75)



Lot 61

Freeblown Turtle Whimsy, America, probably Mid-Atlantic or New England, 1880 - 1930. Deep amber, figural turtle with drawn, pinched feet, crimped mouth, domed body with a crude, pebbly surface, 6 3/4", near mint. Turtle whimsies have been an interesting byproduct of numerous glasshouses beginning as early as the mid 1800's. They were not believed to be production items, but rather offhand pieces utilized as doorstops or paperweights.

Est.: \$150 - \$300 • (Min. bid: \$75)



Lot 62

Blown Three Mold Toilet Water Bottle, probably Boston and Sandwich Glass Co., Sandwich, Massachusetts, 1825 – 1840. Medium sapphire blue, tapered ovoid form, geometric pattern with ribbing swirled to the left, tooled flanged collar with matching sapphire "tam-o'shanter" type stopper (may not be original to the bottle), plain base with pontil scar, ht. 6 7/8" (including stopper), about perfect. GI-3, type 2. McK, plate 105, #8; AP, #242.

\$250 - \$450 • (Min. bid: \$150)



Lot 63

Blown Three Mold Toilet Water Bottle, probably Boston and Sandwich Glass Co., Sandwich, Massachusetts, 1825 – 1840. Medium to deep blue with some lavender tones, tapered ovoid form, geometric pattern with vertical ribbing, tooled flanged collar with "tam-o'shanter" type stopper, rayed base with pontil scar, ht. 6 5/8" (including stopper), near mint; (stopper has some roughness on edge of brim, otherwise perfect). GI-7, type 4. Attractive color.

\$250 - \$450 • (Min. bid: \$150)



Lot 64

Cologne Bottle, America, probably Boston and Sandwich Glass Works, Sandwich, MA, 1860 – 1888. Deep grape amethyst, 12-panel, straight sided form with domed shoulders, a short neck and tooled flanged collar – smooth base, ht. 4 3/8", perfect. A rare form blown from the same metal as the slender sloped shoulder colognes. Ex. Sandwich Glass Museum collection, de-accessioned to benefit the acquisition fund.

Est.: \$125 - \$250 • (Min. bid: \$75)



Lot 65

Lot of (6) Charley Ross Bottles including (5) mold variations, America, 1876 – 1880. All with bust of Charley Ross, (5) examples embossed, "Charley Ross", (4) are fancy scroll form, small clock-face example with mirror on reverse. All are colorless with square collared mouths – smooth bases, ht. 4 1/8" to 5 7/8"; (pin-prick lip roughness on one example, otherwise all mint!) Also included are (2) Charley Ross books incl. 1876 copy. (2) examples. Ex. Blaske Collection.

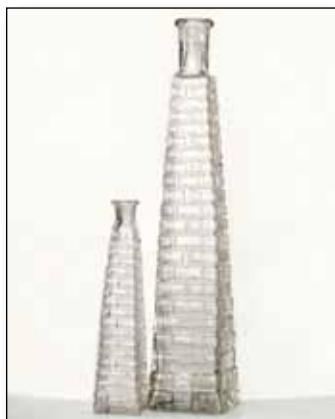
Est.: \$300 - \$500 • (Min. bid: \$200)



Lot 66

Large Blown Cologne Bottle, America, 1840 – 1860. Fiery opalescent moonstone or clam broth, tall tapered cylinder, outward rolled and tooled mouth – pontil scar, ht. 12 1/2", near mint; (a thin film of interior residue that would likely wash out, otherwise perfect). Note; partial, likely original, label near base reads, "TRIPLE / Superieure". With backlighting the clam broth appearance is accentuated by streaks and waviness within the glass.

Est.: \$75 - \$150 • (Min. bid: \$50)



Lot 67

Lot of (2) Figural Monument Cologne Bottles, America, possibly Boston and Sandwich Glass Works, Sandwich, MA, 1860 – 1888. Both are colorless, obelisk form, tooled mouths – smooth bases, ht. 6 1/4" and 11 7/8", both are perfect; (Note; inside neck of large example is ground for stopper). MW, plate 114, #3. These monument colognes come in many sizes, colors, and mold variations with the 11 7/8" example being the largest size known.

Est.: \$60 - \$120 • (Min. bid: \$40)



Lot 68

Lot of (3) Figural Monument Cologne Bottles, America, possibly Boston and Sandwich Glass Works, 1860 – 1888. All are opaque white milk glass, obelisk form with tooled flanged collars – smooth bases, ht. 8", 9", and 11 7/8", all are perfect. MW, plate 114, #3. Note the subtleties of mold differences; bricks simulated by fine lines vs. high relief; recessed vs. protruding door and variations of the narrow windows down front panels.

Est.: \$200 - \$400 • (Min. bid: \$150)



Lot 69

Unlisted Fancy Cologne Bottle, America, possibly Boston and Sandwich Glass Works, Sandwich, MA, 1860 – 1888. Medium cobalt blue, obelisk form with narrow cathedral center panels, fancy corners with alternating bands of horizontal ribs and stylized diamond motif, tooled flanged lip – smooth base, ht. 5 1/2", perfect. Note; a One Cent U.S. Int. Rev. stamp on base. Provenance: Ex. Tom McCandless collection, ex. Sam Laidacker collection. Extremely rare.

Est.: \$600 - \$1,200 • (Min. bid: \$400)



Lot 70

Fancy Cologne Bottle, America, 1840 – 1855. Brilliant sapphire blue, corseted body with palmette and scrolled acanthus, sheared and inward rolled mouth – sloping pedestal type base with blowpipe pontil scar, ht. 5 1/2", near perfect; (some very minor roughness on inside edge of rolled lip, otherwise attic mint). MW, plate 111, #3. A much better than average example and one of only a handful of fancy early colognes available in this vibrant sapphire color.

Est.: \$1,000 - \$2,000 • (Min. bid: \$600)



Lot 71

Cologne Bottle, America, Boston and Sandwich Glass Works, Sandwich, Massachusetts, 1860 – 1888. Medium to deep plum amethyst, octagonal waisted or hourglass form, tooled flanged lip – smooth base, ht. 4 1/2", perfect. See B/K, photo #5199; MW, plate 114, #7. A classic, beautiful, example. Note: this form is believed to be unique to the Sandwich Glass Works.

Est.: \$250 - \$450 • (Min. bid: \$150)



Lot 72

Cologne Bottle, America, Boston and Sandwich Glass Works, Sandwich, MA, 1860 – 1888. Bright peacock blue, octagonal waisted or hourglass form, tooled small flanged lip – smooth base, ht. 4 5/8", perfect. Pictured, B/K, photo #5199, MW, plate 114, #7. An exquisite color! Note; this particular form is believed to be unique to the Sandwich Glass Works. Ex. Sandwich Glass Museum collection, de-accessioned to benefit the acquisition fund.

Est.: \$300 - \$600 • (Min. bid: \$200)



Lot 73

Cologne Bottle, America, probably Boston and Sandwich Glass Works, Sandwich, Massachusetts, 1860 – 1888. Clear medium teal green, 12-panel, straight sided form, tooled flanged lip – smooth base, ht. 4 7/8", perfect. See B/K, photo #5197, MW, plate 114. A beautiful and desirable color.

Est.: \$125 - \$250 • (Min. bid: \$75)



Lot 77

Lot of (2) Cologne Bottles, America, probably Boston and Sandwich Glass Works, Sandwich, Massachusetts, 1860 – 1888. Deep cobalt blue and colorless, 12-panel, straight sided form, tooled flanged lips – smooth bases, ht. 4 3/4" and 4 5/8" respectively; (cobalt example is about mint, the colorless example has a 1/2" sliver type flake extending downward from the tooled lip that likely occurred in making). See B/K, photo #5197, MW, plate 114.

Est.: \$125 - \$225 • (Min. bid: \$75)



Lot 74

Cologne Bottle, America, probably Boston and Sandwich Glass Works, Sandwich, Massachusetts, 1860 – 1888. Bright sapphire blue, 12-panel, straight sided form, tooled flanged lip – smooth base, ht. 6 3/8", perfect. See B/K, photo #5197, MW, plate 114. Some waviness and texture to the glass.

Est.: \$125 - \$250 • (Min. bid: \$75)



Lot 78

Cologne Bottle, America, probably Boston and Sandwich Glass Works, Sandwich, Massachusetts, 1860 – 1888. Medium blue green, 12-panel, ovoid form tapering gently from the shoulders to the base, tooled, outward rolled mouth – smooth base, ht. 6", near mint; (tiny, 1/16" flake near shoulder and a couple of faint surface scratches). Similar to B/K, photo #5198, MW plate 114, #1. A very pretty color, great clarity to the glass.

Est.: \$200 - \$400 • (Min. bid: \$125)



Lot 75

Cologne Bottle, America, probably Boston and Sandwich Glass Works, Sandwich, Massachusetts, 1860 – 1888. Medium plum amethyst, 12-panel, straight sided form, probably applied, flanged lip – smooth base, ht. 7 3/8", perfect. See B/K, photo #5197, MW, plate 114. Pretty color, nice clarity.

Est.: \$125 - \$250 • (Min. bid: \$75)



Lot 79

Cologne Bottle, America, probably Boston and Sandwich Glass Works, Sandwich, Massachusetts, 1860 – 1888. Bright teal green (a little more green and a little deeper color than the previous lot), 12-panel, ovoid form tapering gently from the shoulders to the base, tooled, outward rolled mouth – smooth base, ht. 6", perfect. Similar to B/K, photo #5198, MW plate 114, #1. Note; a distinctly different mold with panels ending at horizontal line on neck.

Est.: \$200 - \$400 • (Min. bid: \$125)



Lot 76

Cologne Bottle, America, probably Boston and Sandwich Glass Works, Sandwich, Massachusetts, 1860 – 1888. Rich cobalt, almost a violet hue near the base, 12-panel, straight sided form, tooled flanged lip – smooth base, ht. 8 5/8", near mint; (a tiny pin-prick bit of roughness on edge of lip, otherwise about perfect). See B/K, photo #5197, MW, plate 114. A nice size, good deep color.

Est.: \$125 - \$250 • (Min. bid: \$75)



Lot 80

Cologne Bottle, America, probably Boston and Sandwich Glass Works, 1855 – 1865. Medium sapphire blue, 12-panel form tapering gently from the shoulders to the base, an elongated neck with a sheared and inward rolled lip – blowpipe pontil scar, ht. 4 1/4", perfect. Similar to B/K, photo #5198, MW plate 114, #1. Quite scarce with the pontil scarred base and likely one of the earlier Sandwich commercial paneled cologne bottles.

Est.: \$225 - \$450 • (Min. bid: \$150)



Lot 81

Cologne Bottle, America, probably Boston and Sandwich Glass Works, Sandwich, Massachusetts, 1855 – 1865. Medium to deep puce amethyst, 12-panel form tapering gently from the shoulders to the base, tooled flared and inward rolled mouth – pontil scar, ht. 4", near mint; (a little light exterior high point wear and a tiny, pin-prick flake on top edge of mouth). Similar to B/K, photo #5198, MW plate 114, #1. Scarce with the pontil scarred base!

Est.: \$175 - \$275 • (Min. bid: \$100)



Lot 82

Pattern Molded Scent Bottle, probably America, 1770 – 1830. Yellow with a citron tone, tall slender ovoid form pattern molded with 20 vertical ribs, sheared mouth – pontil scar, ht. 2 3/4", perfect. Similar to MW, plate 104, #15. These little pattern molded scent bottles are generally considered rare in almost any color other than cobalt or sapphire. This particular example is in an exceptionally rare and beautiful color.

Est.: \$175 - \$350 • (Min. bid: \$100)



Lot 83

Pattern Molded Scent Bottle, probably America, 1770 – 1830. Brilliant lime green, tall slender ovoid form pattern molded with 20 vertical ribs, sheared mouth – pontil scar, ht. 2 7/8"; (just a pin-point spot of roughness on the inside edge of the lip, otherwise attic mint!). See MW, plate 104. Another rare and exceptional color, one that you are not likely to see again anytime soon!

Est.: \$175 - \$350 • (Min. bid: \$100)



Lot 84

Pattern Molded Scent Bottle, probably America, 1770 – 1830. Bright teal green, tall slender ovoid form with 26 vertical ribs, sheared mouth – pontil scar, ht. 2 7/8", near mint; (a 1/8" line on the interior surface of the bottle from a small sand grain, otherwise pristine). Similar in form and pattern to MW, plate 104, #15. The condition issue is extremely minor. A bright, clean example with strong ribbing in a rare, beautiful, color.

Est.: \$150 - \$250 • (Min. bid: \$75)



Lot 85

Pattern Molded Scent Bottle, probably America, 1770 – 1830. Brilliant peacock blue with a couple of deep amber striations marbled through the body, tall slender ovoid form pattern molded with 26 vertical ribs, sheared mouth – pontil scar, ht. 3", perfect. Similar in form and pattern to MW, plate 104, #15. An exquisite color.

Est.: \$175 - \$350 • (Min. bid: \$100)



Lot 86

Sunburst Scent Bottle, America, probably New England, 1815 – 1835. Brilliant sapphire blue, shield form with 12-ray sunburst pattern, center bead at convergence of rays and 11 small beads along two panel edges, 12 small beads on other two panel edges, sheared mouth – pontil scar, ht. 2 3/4", perfect. MW color plate IX, #2; BH# HIV-2. Extremely rare mold, beautiful color!

Est.: \$600 - \$1,200 • (Min. bid: \$400)



Lot 87

Sunburst Scent Bottle, America, probably New England, 1815 – 1835. Clear medium amethyst, shield form with 12-ray sunburst pattern, center bead at convergence of rays and nine beads along each panel edge, sheared mouth – pontil scar, ht. 2 3/4", near mint; (some minor roughness on edge of sheared mouth, otherwise perfect). MW, plate 105, #4; BH# HIV-3. An extremely rare mold and one that is unlisted in amethyst.

Est.: \$600 - \$1,200 • (Min. bid: \$400)



Lot 88

Sunburst Scent Bottle, America, probably New England, 1815 – 1835. Emerald green, shield form with 12-ray sunburst pattern, side panels with 18, 16, 17 and 16 beads respectively, sheared mouth – pontil scar, ht. 2 7/8", near mint; (some exterior high point wear). BH# HIII-5. Rare mold, extremely rare color! Emerald has generally been regarded as the most desirable color for early scent bottles.

Est.: \$600 - \$1,200 • (Min. bid: \$400)



Lot 89

Sunburst Scent Bottle, America, probably New England, 1815 – 1835. Medium cobalt blue, shield form with 12-ray sunburst pattern, center bead at convergence of rays and nine beads along each of the side panel edges, sheared mouth – pontil scar, ht. 2 3/4", near mint; (some light exterior high point wear). MW, plate 105, #4; BH# HIV-3. An extremely rare mold, rare color!

Est.: \$600 - \$1,200 • (Min. bid: \$400)



Lot 90

Sunburst Scent Bottle, America, probably New England, 1815 – 1835. Colorless, shield form with 12-ray sunburst pattern, center bead at convergence of rays, seven beads along two side panel edges, eight beads along remaining two side panel edges, sheared mouth – pontil scar, ht. 2 3/4", perfect. Similar to BH# HIV-1. A great little gem as colorless sunburst scent bottles are considered rare in any mold!

Est.: \$400 - \$800 • (Min. bid: \$250)



Lot 91

Figural Clamshell Scent Bottle, probably Continental, possibly America, 1825 – 1845. Golden yellow with a topaz tone, blown in a full-size two piece mold in the form of a clam shell with a short straight neck, rough (in manufacture), "blow-over" type lip finish – smooth base, ht. 2 1/4", about mint; (some light interior residue in one corner that would likely wash out). An extremely rare figural scent bottle in a stunning, attractive color.

Est.: \$200 - \$400 • (Min. bid: \$125)



Lot 92

Figural Pinwheel Scent Bottle, America, possibly an early Boston area glassworks or Dyottville Glass Works, Philadelphia, PA, 1815 – 1830. Aqua, flattened circular or wafer form body blown in a full-size two piece mold with a large center bead and pinwheel design on flattened sides, corrugated edges, tooled and inward rolled mouth – pontil scar, ht. 2", perfect. McK, plate 241, #18; MW, plate 104, #3. A classic.

Est.: \$125 - \$250 • (Min. bid: \$75)



Lot 93

Freeblown Fancy Scent or Pungent Bottle, probably America, possibly Boston and Sandwich Glass Works, Sandwich, MA, 1825 – 1835. Colorless, waisted or "hourglass" form body with four applied and quilled ribbons of rigaree, sheared mouth – pontil scar, ht. 2 3/8", perfect. Very similar to B/K, vol. 5, photo #5182. It is noted in the accompanying text that "Best pungents" with "four pinches", or trails of rigaree, were credited to Benjamin Haines, (SGW).

Est.: \$150 - \$300 • (Min. bid: \$100)

Lot 94

Freeblown Dolphin or Seahorse Scent Bottle, probably Eastern United States, 1770 - 1830. Colorless with twisted alternating white and dark puce canes, figural "seahorse" form with applied quilled ribbons of glass along the sides, ovoid body tapering to a tightly curled tail – sheared mouth, ht. 2 1/4"; (a 1/8" flake on top of mouth and a 3/8" loss of rigaree at base). Unusual and interesting with the bi-colored canes. See MW, plate 102; B/K, photo #5184.

Est.: \$125 - \$250 • (Min. bid: \$75)

Lot 95

Unusual Freeblown Seahorse Scent Bottle, probably America, 1770 – 1830. Colorless with alternating opaque-white and light puce threads or canes, slender ovoid body with two applied, quilled ribbons of rigaree, sheared mouth, ht. 2 3/8"; (a 1/4" fissure in the body below attachment of upper quilling that likely occurred in manufacture, otherwise perfect). This example has a most unique form with the "tail" curled wide and high on the body of the scent.

Est.: \$125 - \$250 • (Min. bid: \$75)

Lot 96

Freeblown Dolphin or Seahorse Scent Bottle, probably America, 1770 – 1830. Sapphire blue with twisted opaque-white canes, slender ovoid body with two applied quilled colorless ribbons of rigaree, sheared mouth, ht. 2 3/4", near perfect; (some in-making roughness at lower end of applied rigaree). Similar to McK, plate 240, #19. A beautiful early Seahorse scent bottle in very rare color.

Est.: \$250 - \$500 • (Min. bid: \$150)





Lot 97

Miniature Freeblown Seahorse Scent Bottle, probably Eastern United States, 1770 - 1830. Colorless with twisted opaque-white canes, short ovoid body with two applied quilled ribbons of colorless glass with rigaree, sheared mouth, ht. 1 5/8"; (a 3/8" chip on one of the applied ribbons near base). See MW, plate 102, #11; McK, plate 240, #17. As noted by McKearin, an extremely rare size, one of the smallest documented for a Seahorse scent bottle.

Est.: \$125 - \$250 • (Min. bid: \$75)



Lot 98

Freeblown Dolphin or Seahorse Scent Bottle, probably Boston area, possibly Sandwich Glass Works, 1820 - 1835. Colorless with twisted opaque-white canes, ovoid body with two applied, finely quilled, ribbons of colorless glass with rigaree, sheared mouth, ht. 2 1/2", near perfect; (a shallow sliver-type flake at edge of applied ribbon that may have occurred in manufacture). See B/K, vol. 5, picture #5183. An excellent example.

Est.: \$150 - \$250 • (Min. bid: \$100)



Lot 99

Early Cologne or Utility Bottle, probably Germany or France, possibly America, 1780 - 1820. Medium amber with an embossed design of round dots, a pendant and fern or leaf motif on front and back panels, a tree motif with berries on the side panels, rectangular with soft rounded shoulders, sheared mouth with applied string lip - pontil scarred base, ht. 3 3/4", near mint; (a faint amount of scattered exterior high point wear). A very early, interesting bottle.

Est.: \$175 - \$350 • (Min. bid: \$100)



Lot 100

Early Dip Mold Snuff Jar, New England, 1790 - 1820. Clear medium green with an olive tone, almost a forest green, square with narrow beveled corners, soft rounded shoulders and a short drawn up neck with a sheared, tooled and outward flared mouth - blowpipe pontil scar, ht. 5", virtually attic mint; (just the slightest touch of high point wear, otherwise pristine!). Similar to MW, plate 75, #11. An early snuff jar, good form, great color.

Est.: \$400 - \$600 • (Min. bid: \$250)



Lot 101

Lot of (2) Blown Three Mold Geometric Inkwells, Coventry Glass Works, Coventry, Connecticut, 1820 - 1840. Dense olive amber and olive yellow, cylindrical, large disk type mouths - plain and ringed (type III), pontil scarred bases, ht. 1 1/2" and 1 3/8"; (some exterior wear on disk mouth of olive amber example; a small flake at outer edge and some moderate to heavy, fine wear on top of disk mouth of olive yellow example). GII-16 & GII-18, respectively.

Est.: \$200 - \$300 • (Min. bid: \$120)



Lot 102

"Clark's / Superior / Record / Ink - Boston", New England, 1830 - 1850. Yellowish olive green, cylindrical, tooled outward flared mouth - blowpipe pontil scar, ht. 5 7/8", perfect. C #749. Note; the embossing is weak which is normal for this extremely rare, early New England ink bottle. This particular example has some nice character with plenty of small seed bubbles and retains a Glass Works Auction sticker from the Denver, CO. EXPO, 8/19/2000.

Est.: \$2,000 - \$4,000 • (Min. bid: \$1,200)



Lot 103

Early Master Ink or Utility Bottle, New England, 1830 - 1850. Yellowish olive amber, cylindrical, tooled thin flanged mouth - blowpipe pontil scar, ht. 5 7/8", perfect. A beautiful example, so typical in color and character of the classic early New England glass.

Est.: \$150 - \$250 • (Min. bid: \$100)



Lot 104

Unusual Utility Bottle or Whimsy, probably England, 1840 - 1860. Medium olive shading to a dense olive toward the base, dip mold, cylindrical with a funnel shaped neck pushed downward to create an inverted shoulder or reservoir around the base of the neck, sheared, wide flared mouth - early smooth base, ht. 5 7/8", near mint; (some light exterior wear and interior haze). An interesting bottle that may have been used as a master ink.

Est.: \$150 - \$300 • (Min. bid: \$100)



Lot 105

Freeblown Apothecary or Utility Jar, Midwest, possibly Zanesville Glass Works, Zanesville, Ohio, 1820 – 1840. Golden orange amber, cylindrical with conical shoulders, a short neck, tooled and outward rolled lip – pontil scar, ht. 8 ½"; (some scattered minor interior residue or dullness and some age-appropriate, exterior light "bloom", or wear). A good early jar, larger in size than most.

Est.: \$225 - \$450 • (Min. bid: \$150)



Lot 109

"Fort Trumbull Glass Co" (on base), Whiskey Bottle, New London, CT, 1865 – 1869. Light honey, almost a golden yellow, cylindrical, 3-pc. mold, applied sloping collared mouth with ring – smooth base, fifth, ht. 11 ¼"; (some light exterior wear and scratches and a small 1/8" iridescent bruise on the side of the neck). A highly whittled example that despite the relatively minor condition issues, displays near mint. A rare bottle from a short-lived glasshouse.

Est.: \$300 - \$600 • (Min. bid: \$200)



Lot 106

Cathedral Pickle Jar, America, 1860 – 1870. Deep greenish aquamarine, square with beveled corners, gothic arched panels, three with an ornamental quatrefoil design above a beaded trefoil motif, rolled ring type lip – smooth domed base, ht. 11 ½", near mint; (a very light interior haze or residue that may wash out, otherwise perfect). Design similar to MW, plate 74, #12.

Est.: \$150 - \$300 • (Min. bid: \$100)



Lot 110

Freeblown Applied Handle Chestnut Flask, America, 1825 – 1845. Medium golden amber, flattened chestnut form with applied solid ear shaped handle, applied mouth with ring – blowpipe pontil scar, ht. 8"; (some exterior high point wear on flattened sides). Similar to MW, plate 48, #4.

Est.: \$75 - \$125 • (Min. bid: \$40)



Lot 107

"Skilton Foote & Co's / Trade Mark" / (motif of monument) / "Bunker Hill Pickles", America, 1880 – 1895. Beautiful citron green, blown in the form of the famous Cape May, New Jersey lighthouse, tooled sloping collared mouth – smooth base, ht. 11 1/8", pristine perfect! Z p.376. Rare mold, extremely rare color, exceptional condition! Blown in the identical mold to the very rare "Seaworth Bitters" bottle. A great pickle bottle.

Est.: \$1,500 - \$2,500 • (Min. bid: \$1,000)



Lot 111

"Parole / Pure" (motif of horse) "Rye / Whiskey", America, 1878 – 1885. Bright light golden or honey amber, cylindrical, applied sloping collared mouth with ring – smooth base, ht. 10"; (the bottle displays as mint, but has been professionally cleaned). An extremely rare and attractive pictorial whiskey that was blown to commemorate one of the most celebrated thoroughbred race horses of the 19th century (inducted into the hall of fame in 1984).

Est.: \$300 - \$500 • (Min. bid: \$200)



Lot 108

Large Cathedral Type Pickle Jar, America, 1865 – 1880. Deep greenish aquamarine, hexagonal body with six indented Gothic type panels each having an embossed trefoil design, tooled outward rolled mouth – smooth base, ht. 13", near mint; (some interior residue and exterior grime that would likely clean with a little soap and water to sparking mint). MW, plate 73, #10. Nicely whittled and in a deeper tone than most examples in this mold.

Est.: \$100 - \$200 • (Min. bid: \$75)



Lot 112

Miniature Freeblown Bottle Decanter, Midwest America, possibly Zanesville Glass Manufactory, Zanesville, Ohio, 1815 – 1835. Medium to deep amber, bulbous freeblown body with sloping shoulders and a thin, delicate flared mouth – pontil scar, ht. 4 ¼", perfect. Note; a similar color along with the thin flared mouth has, on rare occasions, been encountered on the 10-diamond flasks generally attributed to Zanesville.

Est.: \$400 - \$600 • (Min. bid: \$250)



Lot 113

"Monk's / Old Bourbon / Whiskey. – For, / Medicinal / Purposes. – Wilson, Fairbank & Co / Sole Agents." Bottle (with 95% original label), America, 1850 – 1865. Olive yellow, square with beveled corners, applied sloping collared mouth – iron pontil scar, ht. 8", sparkling mint. A rare pontiled "medicine" (and whiskey) bottle, and certainly extremely rare with the original label! Pictured in, *A Treasury of American Bottles*, by Ketchum.

Est.: \$1,500 - \$2,500 • Min. bid: \$800)



Lot 114

"Chestnut / Grove / C. Wharton" (within oval medallion), America, possibly Whitney Glass Works, Glassboro, New Jersey, 1860 – 1870. Bright medium golden amber, cylindrical with 32 molded vertical ribs, applied round double collared mouth – smooth base, ht. 9 1/2", about mint; (some faint scattered exterior high point wear, otherwise perfect!). An excellent example, lighter and brighter than most.

Est.: \$300 - \$600 • (Min. bid: \$200)



Lot 115

"Dr J. Hostetter's / Stomach Bitters" – "L&W" (on base), **Bottle**, Lorenz & Wightman, Penn Glass Works, 1863 – 1872. Brilliant lemon yellow with a hint of citron, square with beveled corners, applied sloping collared mouth – smooth base, ht. 8 5/8", width, 2 5/8"; (professionally cleaned to original luster with just a little scattered ground wear and fine scratches remaining, primarily on one side panel). Exceptional color, and with crude, bubbly, wavy glass.

Est.: \$225 - \$450 • (Min. bid: \$150)



Lot 116

Hostetter's fancy paper letterhead and receipt dated May 30th, 1863. Exceptional black and white graphics of a large bottle of Hostetter's Celebrated Stomach Bitters with ornate lettering, "Hostetter & Smith, / Sole Proprietors & Manufacturers / 58 Water and – 58 Front Street, – Pittsburgh, Pa". Receipt is for "1

Dozen Hostetter's Stomach Bitters @ \$8.50." Virtually perfect, original condition. A rare, early piece, possibly unique.

Est.: \$75 - \$125 • (Min. bid: \$50)



Lot 117

"Old / Homestead / Wild Cherry / Bitters – Patent" Bottle, America, 1865 – 1875. Medium golden amber shading to a light honey amber along the corners, square cabin form, applied sloping collared mouth – smooth base, ht. 9 1/2", mint. R/H #O37. A great example, clean, bright and perfect.

Est.: \$250 - \$450 • (Min. bid: \$150)



Lot 118

Lot of (2) receipts for T.B. Slingerland & Co., "Manufacturer And Proprietor Of / T.B. Slingerland & Co.'s Old Homestead Wild Cherry / Bitters", dated September 22nd, 1864 and Jan. 20, 1868. Printing reads in part: "Bought of T. B. Slingerland & Co.," One receipt for, "4 Doz. Old Homestead Wild Cherry Bitters, 8.50 | 34.00". Receipts from two different locations, No. 69 Beekman Street, N.Y., and Rome, N.Y. Both are very good to excellent condition.

Est.: \$50 - \$75 • (Min. bid: \$30)



Lot 119

Dr. C.W. Robacks / Stomach Bitters / Cincinnati. O" Bottle, America, 1865 – 1875. Medium to deep golden amber, barrel form, applied sloping collared mouth – smooth base, about perfect; (a few small, tissue-paper thin, open surface bubbles, otherwise attic mint). R/H #R75. This example is clean as a whistle and with a string of small bubbles across the side and scattered through the glass.

Est.: \$250 - \$450 • (Min. bid: \$175)



Lot 120

C.W. Roback Company paper letterhead and receipt (signed by Charles W. Roback), dated April 4, 1865. Nice graphics on letterhead depicting building with heading to the right, "Office of / C.W. Roback / Distiller / Rectifier / And / Manufacturer / Domestic Wines & Liquors, / Catawba Brandy, / Roback's Stomach Bitters, &c. &c.". Receipt measures 8" x 9 3/4", near mint. An great go-with, signed by Roback, ready for framing!

Est.: \$50 - \$75 • (Min. bid: \$30)

**Lot 121**

"Old Sachem / Bitters / And / Wigwam Tonic" Bottle, America, 1860 – 1870. Deep wine or cherry red, barrel form, applied square collared mouth – smooth base, ht. 9 1/8", about perfect; (the bottle has been lightly cleaned as it had a little minor dullness, primarily on one side. It was given to one of the best cleaners in the business, and it now appears as attic mint, except for just a touch of exterior high point wear). R/H #O46. Stunning color in sunlight!

Est.: \$750 - \$1,250 • (Min. bid: \$400)

**Lot 125**

"The Best Bitters / In America – B. Desenberg & Co / Kalamazoo Mich" Bitters Bottle, America, 1865 – 1870. Amber, square cabin form with a three tiered thatched roof and roped corners, applied sloping collared mouth – smooth base, ht. 9 3/4", near mint; (a 1/8" flash, or line in one of the roof corners that refracts light, otherwise in "as found" attic condition). R/H #B92. A very rare bitters being offered to collectors for the 1st time since it's discovery in 1960!

Est.: \$5,000 - \$10,000 • (Min. bid: \$2,500)

**Lot 122**

"Hall's / Bitters – E.E. Hall New Haven / Established 1842" Bottle, America, 1865 – 1875. Bright, light golden yellow, barrel form, applied crude square collared mouth – smooth base, ht. 9 3/8", near mint; (some very fine, pinprick bits of roughness on the edge of the square collar, some of which were likely in-making, resulting from the character and stretch lines on top of the mouth). R/H #H10. A good example, attractive light color.

Est.: \$300 - \$500 • (Min. bid: \$200)

**Lot 126**

"OK / Plantation / 1840 - Patented / 1863" Bitters Bottle, America, 1863 – 1870. Medium apricot with amber and puce tones, triangular with arched roof panels, applied sloping collared mouth – smooth base, ht. 11", near mint; (a gorgeous example that has been lightly cleaned and presents itself as virtually attic mint other than a shallow 1/8" flake at edge of mouth on reverse, and a tiny pinhead sized open bubble). R/H page 408. Rare and beautiful!

Est.: \$3,500 - \$7,000 • (Min. bid: \$2,000)

**Lot 123**

Lot of (2) "S.T. / Drake's / 1860 / Plantation / Bitters" Bottles, America, 1862 – 1880. A light honey amber "6-log" and rich deep golden amber 4-log, both are square log cabin form with applied sloping collared mouths – smooth bases, and 9 7/8" tall, both bottles are perfect! R/H #D103 & D110. Note, the embossing is very weak on the 6-log, and very strong on the 4-log. These two cabin bitters, while not rare, certainly compliment one another nicely.

Est.: \$150 - \$300 • (Min. bid: \$100)

**Lot 127**

"McKeever's Army Bitters" Bottle, America, 1865 – 1875. Medium amber, figural Civil War era drum with motif of stacked cannon balls forming the conical shoulders, applied sloping collared mouth – smooth base, ht. 10 3/8", perfect. R/H #M58. A great figural bitters, outstanding condition. Note; originally found in the basement of an old house in Georgia. The mold was likely made to appeal to the veterans of the Civil War, and touted to heal their ailments.

Est.: \$2,500 - \$4,500 • (Min. bid: \$1,500)

**Lot 124**

Plantation Bitters Stereoscopic Card, America, 1865 – 1875. Black and white photographic image of the Flume Gorge at Franconia, New Hampshire with "Plantation / Bitters" painted in big letters on a large boulder in the foreground; background depicts a covered wooden structure resting on a narrow log passage across the

gorge; (card darkened slightly from age). A very rare stereoscopic card and a great go-with for the Drake's collector.

Est.: \$75 - \$125 • (Min. bid: \$50)

**Lot 128**

Lot of (2) "National / Bitters" Figural Ear of Corn Table Lamps, America, 1867 – 1875. Both are a nice bright light golden color, applied short tapered collared mouths – bottoms of both bottles have been drilled to accommodate the light fixture and wooden circular base, overall ht. 22 3/4". R/H #N8. The lamps are nicely done, the colors a little lighter than normal, and a great conversation piece for the bitters bottle collector.

Est.: \$250 - \$500 • (Min. bid: \$150)

**Lot 129**

"Brown's / Celebrated / Indian Herb Bitters – Patented / 1867", America, 1867 – 1885.

Medium golden amber shading to a light golden amber through the arms, figural Indian queen, sheared and inward rolled lip – smooth base, ht. 12 ¼", mint. R/H #B223. A good solid example of this classic figural bitters bottle.

Est.: \$500 - \$800 • (Min. bid: \$300)

**Lot 133**

"Carpathian Herb Bitters / Hollander Bros. Drug Co. / Braddock, Pa.", America, 1885 – 1895.

Light golden amber, square with beveled corners, tooled sloping collared mouth – smooth base, ht. 8", near mint; (a few little areas of light dullness, together, about the equivalent area of a penny on one of the side panels and some faint exterior high point wear, otherwise sparkling mint). R/H #C61.5. An extremely rare bottle Ex. Chris Batdorff collection.

Est.: \$200 - \$400 • (Min. bid: \$125)

**Lot 130**

"Brown's / Celebrated / Indian Herb Bitters – Patented / 1868", America, 1868 – 1885.

Brilliant light honey amber with plenty of yellow through the arms and upper torso, figural Indian queen, sheared and inward rolled lip – smooth base, ht. 12 ¼", perfect. R/H #B225. Light and bright with plenty of yellow in this one.

Est.: \$700 - \$1,200 • (Min. bid: \$400)

**Lot 134**

"Atwood's – Vegetable / Dyspeptic – Bitters.", America, 1850 – 1860.

Aquamarine, rectangular with beveled corners and indented panels, applied sloping collared mouth – blowpipe pontil scar, ht. 6 ½", perfect. R/H #A130. Listed as "Rare", this example is in absolutely sparkling condition, bright, clean, and exudes character with plenty of waviness and whittling to the glass. One of the finest possible examples.

Est.: \$250 - \$500 • (Min. bid: \$150)

**Lot 131**

"Brown's / Celebrated / Indian Herb Bitters – Patented / Feb 11 / 1868", America, 1868 – 1885.

Amber with reddish orange tone, figural Indian queen, sheared, ground mouth – smooth base, ht. 12"; (several scalloped flat flakes, 1/8" to ¼" each, on the side and back of the mouth, a ¼" bruise on the right knee). R/H #B222. As noted in the R/H Bitters book, this variant with "Celebrated" misspelled is extremely rare. Despite the noted damage, displays as mint!

Est.: \$250 - \$450 • (Min. bid: \$150)

**Lot 135**

"Royal Pepsin / Stomach Bitters / L & A. Scharff / Sole Agents / St Louis. U.S. & Canada.", America,

1885 – 1900. Orange amber shading to light honey amber in the corners, rectangular, tooled round double collared mouth – smooth base, ht. 7 3/8"; (a ¼" chip on one of the square blocks near the base on the reverse, otherwise a clean, bright, sparkling mint example). R/H #114. Listed as "Rare", a very scarce example in this smaller size.

Est.: \$125 - \$250 • (Min. bid: \$75)

**Lot 132**

"Alpine / Herb Bitters." – "TT & Co" monogram (within shield), America, 1888.

Bright, light golden amber, square with beveled corners, tooled sloping collared mouth – smooth base, ht. 9 5/8"; (a couple of small flakes at edge of beveled corner and some faint light scattered scratches, primarily on one of the side panels, otherwise a bright, clean, example! R/H #A37. Rare. Retains Carlyn Ring collection sticker on base.

Est.: \$250 - \$500 • (Min. bid: \$150)

**Lot 136**

"Dr Wheeler's / Sherry Wine / Bitters", America, 1860 – 1870.

Deep aquamarine, oval, large applied round double collared mouth – smooth base, ht. 7 7/8"; (lightly cleaned to near mint condition). R/H #W86. A bright, clean example with strong embossing, listed as "Rare" in the Ring / Ham book.

Est.: \$100 - \$150 • (Min. bid: \$50)



Lot 137

"Holtzmann's / Patent / Stomach / Bitters", America, 1880 – 1895. Medium amber, rectangular cabin form, tooled sloping collared mouth – smooth base, ht. 9 3/4"; (a light scattered film or residue on the interior, most of which would likely wash out; a shallow tooling mark on the neck that occurred in manufacture, and a small, 1/8" flake on the bottom edge of one of the roof shingles, otherwise mint). R/H #H154. A good strong mold impression.

Est.: \$175 - \$275 • (Min. bid: \$100)



Lot 138

Label Only Bitters Bottle "Lithauer / Stomach / Bitters / Bottled Under Supervision / Of / S. Loewenthal / Son Of The Sole Inventor / And Former Proprietor / Made in / Cleveland, O., U.S.A.", America, 1900 – 1910. Milkglass, square tapered gin form, applied sloping collared mouth – smooth base, ht. 9 1/2", perfect. Similar to R/H #L106. Exceptional with 98% complete, original colorful labels on three panels, cork and partial contents.

Est.: \$100 - \$200 • (Min. bid: \$60)



Lot 139

Lot of (2) receipts or billheads for B.T. 1865 Smith's Druid Bitters, both dated 1867. One example is a salmon colored paper with black engraving; second example is a cream paper with black engraving of an attractive Smith's Druid Bitters logo and a hand written note as follows, "on o/e all due up to this date except 1 barrel whisky". This is also the exact receipt pictured on p. 506 of "Bitters Bottles" (R/H). Both have a few creases but otherwise, excellent.

Est.: \$75 - \$125 • (Min. bid: \$50)



Lot 140

Lot of (2) receipts and (1) handbill for three different bitters companies. One for "F. Brown, Chemist and Druggist - Agents for F. Brown's Sarsaparilla and Tomato Bitters", 1844; second receipt dated July 25, 1850, for "3 Doz Health Restoring Bitters @ \$4 - \$12.00" – Received Payment, signed, "Stephen Jewett & Co. M. R. Wallace". Also, a handbill with fine graphics for "Langley's Rocky Mountain Bitters" with "Price Current. A. D., 1867." All ex. condition.

Est.: \$75 - \$125 • (Min. bid: \$50)



Lot 141

Rex Bitters Cardboard Die Cut Toy Advertising Clown, America, 1900 – 1910. Colorful red, gray and oatmeal colored cardboard toy in the form of a clown's head with a life preserver type ring. Printed in part; "Everybody's / doing it - Drink Rex Kidney and Liver Bitters". The purpose of the toy is to hook the clown's nose with the ring, attached by a red string, by jerking your hand up. Overall length, 8", near mint. A really neat, obviously rare advertising piece.

Est.: \$75 - \$125 • (Min. bid: \$50)



Lot 142

Lot of (4) receipts or billheads for various Medicine and Bitters companies. "The C.D. Warner Co. / Proprietors of Warner's Home Medicines / White Wine of Tar Syrup, / And German Hop Bitters", 1888; "H.E. Bucklen & Co., Dr. King's New Discovery", 1889; "EDW. Wilder, / Proprietor of Edw. Wilder's / Stomach Bitters, / Sarsaparilla and Potash", 1870; and "SAM'L W. WALTON & CO - Sole Proprietors of / Walton's Bitters", 1873. All very good to excellent condition.

Est.: \$60 - \$120 • (Min. bid: \$40)



Lot 143

Original uncut sheet of Glass-house Scrip, Redford Glass Works, Clinton County, NY, 1831 – 1839. Important uncut sheet with (6) pieces including a 12-cent, 10-cent, 6-cent, 5-cent and two 3-cent, all engraved, "State of New-York. / On demand" (specific denomination) "will be paid to the bearer, in Goods, at the Store of the Redford Glass Co.". Near mint. Pictured, JEB, plate #9. Issued by the factory to workers as money for use in the company store.

Est.: \$250 - \$500 • (Min. bid: \$150)



Lot 144

Original uncut sheet of Glass-house Scrip, Redford Glass Works, Clinton County, NY, 1840 – 1850. Uncut sheet with (4) pieces including two, 25-cent scripts each depicting a glassblower, a 50-cent script with gaffer shaping a piece of hollowware on a marver, and a 75-cent script depicting a gaffer spinning a sheet of crown glass (50 & 75-cent denominations also with engraved scene of factory). All in excellent condition, rare and historical!

Est.: \$250 - \$500 • (Min. bid: \$150)



Lot 145

"Redford Glass Company's / Prices Current Of / Crown Window Glass." advertising price sheet, Oct. 1850. Light blue paper with pricing for various sizes and grades of crown glass, including a testimonial to the quality of the glass with endorsements from architects in Philadelphia, Washington, Boston and New York. A statement proclaims that the glass possesses a beautiful "fire polish", more durable and brilliant than any Foreign Crown Glass yet produced!

Est.: \$200 - \$400 • (Min. bid: \$125)



Lot 149

"Bartine's / Lotion" Medicine Bottle, America, possibly a New York state glasshouse, 1845 – 1855. Bright medium, almost a forest green with a slight yellowish tone, square with narrow beveled corners, applied sloping collared mouth – blowpipe pontil scar, ht. 6 1/8; near mint; (the bottle appears as near attic mint, but was lightly cleaned with just a little light exterior wear, primarily on the reverse). Great color, condition, and nicely whittled. Greer #7.

Est.: \$1,600 - \$2,800 • (Min. bid: \$1,000)



Lot 146

"Smith's – Green Mountain – Renovator – East Georgia VT" Medicine Bottle, a Stoddard glasshouse, Stoddard, New Hampshire, 1850 – 1860. Bright yellowish olive amber, rectangular with wide beveled corners, applied round double collared mouth – iron pontil scar, ht. 6 7/8", attic mint. N #591. Originally found in an attic in Northern Massachusetts, an exceptional example in mold, color and condition of this classic Stoddard medicine bottle.

Est.: \$4,000 - \$8,000 • (Min. bid: \$2,500)



Lot 150

"G.W. Merchant / Chemist / Lockport / N.Y." Medicine Bottle, America, 1850 – 1860. Very pale, unusually light bluish-green, cylindrical, applied sloping collared mouth – iron pontil scar, ht. 7 3/8", perfect! An absolutely great example, nice texture and crudeness, clean and mint. For those of you who collect the cylinder Merchant bottles, you know that finding this mold in this light of a tone is not an easy thing to do!

Est.: \$300 - \$500 • (Min. bid: \$200)



Lot 147

"Longleys – Panacea" Medicine Bottle, a New England glasshouse, 1855 – 1865. Bright pure olive (no yellow or amber), almost a forest green, rectangular with beveled corners, applied sloping collared mouth with lower bevel – early smooth base, ht. 5 7/8"; (just a tiny, hard-to-see, pinpoint flake on the inside edge of the mouth and a couple of small areas of light bloom or matt dullness, otherwise attic mint). A crude, great example, good color.

Est.: \$1,200 - \$2,000 • (Min. bid: \$750)



Lot 151

"Dr. Woodworth's / Sarsaparilla – Birmingham, CT" Medicine Bottle, America, 1850 – 1860. Aquamarine, rectangular with beveled corners, applied sloping collared mouth – blowpipe pontil scar, ht. 10", pristine perfect. DeG #229. Listed as rare, this particular example is especially clean, bright, and highly whittled! A big, beautiful, attractive pontiled medicine bottle.

Est.: \$700 - \$1,200 • (Min. bid: \$400)



Lot 148

"Gibb's / Bone Liniment" Medicine Bottle, New England, 1840 – 1855. Medium yellowish olive green, hexagonal, applied sloping collared mouth – blowpipe pontil scar, ht. 6 3/8", near mint; (a tiny 1/8" flake at the base corner on the reverse, and a partially open small bubble on base, otherwise perfect!). N #245. A bright, clean example with strong embossing. Also, an attractive swirl of extra glass on the interior gives added character.

Est.: \$1,400 - \$2,200 • (Min. bid: \$750)



Lot 152

"Turner's / Sarsaparilla / Buffalo N.Y." Medicine Bottle, America, 1860 – 1870. Deep aquamarine, large oval with flattened sides, applied sloping collared mouth – smooth base, ht. 12 1/4", perfect! DeG #208. Good depth of color, strong embossing, enormous size, wonderful condition, a great bottle in all regards and one of the largest embossed medicine bottles known.

Est.: \$1,000 - \$1,500 • (Min. bid: \$700)

**Lot 153**

"L.P. Dodge – Rheumatic / Liniment – Newburg" Medicine Bottle, America, 1845 – 1860. Bright golden, almost honey amber, rectangular, applied sloping collared mouth – blowpipe pontil scar, ht. 6 1/8"; (professionally cleaned to near mint condition with just a little light ground wear remaining and a shallow low spot on top of the mouth that may have occurred in-making). N #178. A bright, beautiful example with strong embossing and nice character.

Est.: \$1,600 - \$2,600 • (Min. bid: \$1,000)

**Lot 154**

"Dr. J.W. Poland" Medicine Bottle, a Stoddard glasshouse, Stoddard, New Hampshire, 1855 – 1865. Bright olive amber shading to near yellow in the upper shoulder area, oval, crudely applied square collared mouth – smooth base, ht. 7 5/8"; (some exterior high point wear and a tiny, 1/16" flake on the edge of the square collar). An extremely rare Stoddard medicine with plenty of bubbles and character throughout.

Est.: \$4,000 - \$8,000 • (Min. bid: \$2,500)

**Lot 155**

"Hyatt's – Infallible – Life Balsam / N-Y." Medicine Bottle, America, 1850 – 1860. Clear medium apple green, rectangular with beveled corners, applied sloping collared mouth with ring – large oval iron pontil scar, ht. 10 1/8", attic mint. N #322. An outstanding example in a scarce, appealing color, with nice character and waviness to the glass, and absolutely pristine condition.

Est.: \$1,000 - \$1,500 • (Min. bid: \$600)

**Lot 156**

"Compound – Extract / Of – Hops & - Boneset" Medicine Bottle, America, 1850 – 1860. Aqua, rectangular, applied sloping collared mouth – iron pontil scar, ht. 6"; (professionally cleaned to original luster and near perfect condition). N #134 (6-star). Over the years a handful of examples have shown up in SE Ohio. "Boneset" is a perennial herb that was popular in folk medicine. Crude example, fine condition, rare.

Est.: \$125 - \$250 • (Min. bid: \$75)

**Lot 157**

"Dr. Owens / London. Horse / Liniment – Clarkston – Michigan" Medicine Bottle, America, 1847 – 1855. Deep bluish aquamarine, rectangular with indented panels, applied double collared mouth – blowpipe pontil scar, ht. 5 1/4", perfect. N #481; Greer #1358. Crude glass, strong embossing, deep color. It would be hard to imagine a much nicer example. Recently found at a flea market in New Jersey.

Est.: \$300 - \$600 • (Min. bid: \$200)

**Lot 158**

"Little's / White Oil / Scottsville VA" Medicine Bottle, America, 1845 – 1860. Pale aquamarine, rectangular with indented front and rear panels, applied sloping collared mouth – blowpipe pontil scar, ht. 6 1/2"; (a light interior haze or film exists that may clean with soap and water, but otherwise, would certainly clean with just a light professional tumbling; a tiny bit of roughness on back edge of lip that can be felt, but is difficult to see). N #390. Very scarce.

Est.: \$150 - \$300 • (Min. bid: \$100)

**Lot 159**

"Skookum Root – Hair Grower" Bottle (with complete front and back labels), America, 1890 – 1900. Cobalt blue, rectangular with beveled corners, tooled square collared mouth – smooth base, ht. 6 3/8", perfect; (back label darkened from age). DF, p.141. Nice graphics on front label that read in part; "Skookum Root" / (3/4 length image of woman with long flowing hair down to her hips) / "Hair Grower / A Preventative of Baldness / Falling Hair... / Newburgh, N.Y."

Est.: \$125 - \$250 • (Min. bid: \$75)

**Lot 160**

"Dr. Kilmer & Co." – "Catarrh" – "Dr. Kilmer's / Cough Cure / Consumption Oil" (within lung shaped panel) – "Specific" (with 98% original label on reverse), America, 1885 – 1895. Aqua, rectangular with indented panels, applied double collared mouth – smooth base, ht. 8 5/8", pristine perfect. Label reads in part, "Dr. Kilmer's / Indian / Cough / Cure / Consumption / Oil" (motif of Indian maiden holding bottle). Rare with full label!

Est.: \$750 - \$1,500 • (Min. bid: \$400)

**Lot 161**

"The River Swamp / Chill And" (motif of Alligator) "Fever Cure / Augusta Ga.", America, 1880 – 1890. Bright golden amber, rectangular with beveled corners, tooled square collared mouth – smooth base, ht. 6 1/4", attic mint; (the embossing is a little weak, which is fairly common on this mold). BA1, #146. One of the all-time classic cure bottles, and rare in this un-dug, attic mint condition. If you are looking to upgrade, here is your opportunity.

Est.: \$1,500 - \$2,500 • (Min. bid: \$800)

**Lot 162**

Pot Lid; "Compound Extract / of / Copaiba / Cubebs / And / Iron / A Certain and Speedy / Cure For / Gonorrhoea, Gleet, Stricture, Whites / & c. / Dose / A piece Size of / White Walnut / three times a day / Prepared Only By / C.E. Monell, Chemist / New York.", America, 1870 – 1885. Pottery with an oatmeal glaze and black transfer, 3" dia.; (some minor chipping on bottom of lid, a little crazing and discoloration on the pot). A rare cure pot lid.

Est.: \$300 - \$400 • (Min. bid: \$200)

**Lot 163**

"Germ Bacteria, Or / Fungus Destroyer / 'Wm Radams.' / Microbe Killer" / (motif of man beating a skeleton) / "Registered Trade-Mark Dec. 13 1887" (within shield) / "Cures / All / Diseases", America, 1887 – 1900. Medium orange amber, square, sheared mouth – smooth base, ht. 10 1/8"; (a 1" long, narrow, paper-thin open surface bubble, otherwise near pristine perfect!). An exceptional example with bold embossing.

Est.: \$150 - \$300 • (Min. bid: \$100)

**Lot 164**

"Morley / Bros. / Druggist" / (Mortar & Pestle) / "Austin, / Texas.", (with 75% original label on reverse), America, 1885 – 1900. Golden amber, rectangular with strap sides (sometimes referenced as a Baltimore Oval), tooled sloping collared mouth with ring – smooth base, ht. 10 1/8", perfect. Label on reverse reads in part, "...Whisky / For Medicinal Use". A great colored druggist bottle from the southwest!

Est.: \$300 - \$600 • (Min. bid: \$200)

**Lot 165**

"L.Q.C. Wishart's – Pine Tree / Tar Cordial. / Phila – Patent" / (motif of pine tree) / "1859", America, 1860 – 1875. Rich, deep emerald green, square with beveled corners, applied sloping collared mouth – smooth base, ht. 9 3/8"; (only the slightest touch of faint exterior wear, otherwise an absolutely pristine example). For those of you putting together a color run of these, this one is a little deeper and richer in color than most. Very beautiful.

Est.: \$200 - \$400 • (Min. bid: \$125)

**Lot 166**

"Mrs. Dr. Secor / Boston Mass" Medicine Bottle, probably blown in England for a Boston merchant, 1870 – 1885. Clear medium cobalt, square with beveled corners, tooled tapered collar with square flanged lip and lower ring – smooth base, ht. 9 1/2", attic mint. Note; bottles embossed with female doctor names are rare! A very attractive, interesting bottle. Retains an old Harmer Rooke Galleries sticker on the neck.

Est.: \$125 - \$225 • (Min. bid: \$75)

**Lot 167**

"J.G. Godding & Co. / Apothecaries / Boston, Mass." Poison Bottle, Carr-Lowrey Glass Co., Baltimore, Maryland, 1889 – 1900. Cobalt, irregular hex form, tooled square collared mouth – ("C.L.G. Co./ Patent Applied For") on smooth base, ht. 6 1/4"; (professionally cleaned to near mint condition with some light scratches or ground wear remaining, primarily on front panel, between "Boston" and "Mass"). KI-2. A scarce mold, scarce size.

Est.: \$250 - \$500 • (Min. bid: \$150)

**Lot 168**

"Old Dr. – Townsend's / United States / Sarsaparilla – New York" Medicine Bottle, England, 1880 – 1895. Greenish aqua, rectangular with beveled corners, crudely applied sloping collared mouth – smooth base, ht. 7 3/8", near mint; (a tiny bit of roughness on edge of lip, very minor, and a couple of light patches of interior residue). DeGill #UK5. A very scarce Townsend's bottle blown in England for the local market.

Est.: \$150 - \$250 • (Min. bid: \$100)



Lot 169

"None Genuine / Without This" / (Motif of Horse & Rider) / "Trade Mark" (with 95% original label on reverse), America, 1875 – 1885. Golden amber shading to near yellow along one side, oval with three indented panels on front, tooled double collared mouth – smooth base, ht. 9 3/4", perfect. An extremely rare mold, this example has a nearly complete label that reads in part, *"Beef / Iron / And / Wine / H.L. Parker, / Druggist, / Fair Haven, Conn."*

Est.: \$300 - \$600 • (Min. bid: \$200)



Lot 173

"Warner's / 'Safe' Cure" / (motif of safe) / "London", England, 1882 – 1895. Brilliant olive yellow with a lemon tone, oval, applied round blob collared mouth – smooth base, pint, ht. 9 1/8", near perfect; (just a faint touch exterior high point wear on the reverse, otherwise attic mint!). O&S #39. An exceptional color, strong embossing, outstanding condition. Perhaps one of the most attractive examples of this mold that you could hope to find.

Est.: \$150 - \$250 • (Min. bid: \$100)



Lot 170

"Warner's / Safe / Tonic" / (motif of safe) / "Rochester N.Y." (within slugplate), America, 1883 – 1886. Medium to deep amber, oval, applied square collared mouth – "A&DHC" (on smooth base), half pint, ht. 7 3/8"; (professionally cleaned to original luster with a narrow, 1/4" long, open surface bubble at edge of slug plate and a shallow 1/8" flake on back side of neck). O&S #6. A rare mold, the noted condition issues are fairly minor.

Est.: \$300 - \$500 • (Min. bid: \$200)



Lot 174

"Warner's / 'Safe' Cure" / (motif of safe) / "Frankfurt A/M", Germany, 1886 – 1900. Bright yellow olive, oval, applied round blob collar – smooth base, pint, ht. 9 3/8"; (a superficial surface scratch, approx. 1" on front, near base, a little interior dirt in the shoulder area). O&S #67. Note; this example appears to be a dug bottle but has not been professionally cleaned and displays near mint with full original surface gloss. Very nice color.

Est.: \$200 - \$300 • (Min. bid: \$125)



Lot 171

"Warner's / Safe / Kidney & Liver / Cure" / (left hinged safe) / "Rochester, N.Y.", America, 1880 – 1890. Medium golden amber, oval, applied double collared mouth – smooth base, pint, ht. 9 3/8", near attic mint; (a tiny pinhead flake or area of roughness on the letter "T" in Rochester, otherwise exceptional). O&S #13C. An excellent example, very clean, one that has not been dug and also boasting a good mold impression.

Est.: \$100 - \$175 • (Min. bid: \$60)



Lot 175

"Oak Orchard / Acid Springs – Address / G.W. Merchant / Lockport. N.Y.", America, probably Lockport Glass Works, Lockport, New York, 1860 – 1875. Medium blue green or "Lockport green", cylindrical 3-piece mold, applied sloping double collared mouth – smooth base, Qt., perfect. T #N-24. A great example, one that has not been dug and cleaned, with good strength of embossing and nicely whittled.

Est.: \$100 - \$175 • (Min. bid: \$70)



Lot 172

"Warner's / Safe / Cure" / (motif of safe) / "London. Eng / Toronto. Canada / Rochester, N.Y. U.S.A." (Animal Cure), America, 1885 – 1895. Medium amber, oval, tooled round blob collared mouth – smooth base, 40 oz, ht. 11"; (some light exterior wear and dullness, primarily on the reverse, light interior haze in the shoulder and front, a tiny, 1/8", stress line near the side). O&S #8. Would benefit from a professional cleaning.

Est.: \$400 - \$600 • (Min. bid: \$250)



Lot 176

"Oak Orchard / Acid Springs – H.W. Bostwick / Agt. No 574 / Broad.Way.New.York", Lockport Glass Works, 1860 – 1866. Yellowish tobacco with an olive tone, cylindrical, 3-pc. mold, applied sloping double collared mouth – **"Glass From F Hitchins Factory / Lockport. N.Y."** (on smooth base), Qt., near mint; (lightly cleaned with just a couple of tiny pin-head spots of surface roughness, a 3/16" flake on base). T #N-25:B. Scarce color.

Est.: \$150 - \$250 • (Min. bid: \$100)



Lot 177

Lot of (2) engraved letter-heads from (2) different Mineral Springs. One on light blue paper with "Clarke & White Congress Spring, Saratoga Springs & Congress Water Depot. New York" printed around a small oval with an engraved pavilion scene, dated April 20, 1858; second on cream paper printed, "Bethesda Mineral Spring / Waukesha, Wisconsin" with engraved view of spring dated Oct. 24th 1875. Fair to very good condition.

Est.: \$50 - \$100 • (Min. bid: \$30)



Lot 178

"Highrock Congress Spring / (motif of rock) / C&W / Saratoga N.Y.," America, 1865 - 1872. Deep, rich teal blue, cylindrical, applied sloping double collared mouth - smooth base, pint, pristine perfect! T #S-37:B. Originally found on historic Mackinaw Island, Michigan. An absolutely beautiful example, scarce mold, rare color, flawless condition. A great example in all regards.

Est.: \$750 - \$1,250 • (Min. bid: \$500)



Lot 179

"Highrock Congress Spring / (motif of rock) / C&W / Saratoga N.Y.," America, 1865 - 1872. Bright medium green, almost a lime green, cylindrical, applied sloping double collared mouth - smooth base, Qt; (a tiny bit, approximately 1/4", of minor lip edge roughness and some light exterior high point wear). T #S-37:A. A bright clean example in a rare, attractive color.

Est.: \$500 - \$800 • (Min. bid: \$300)



Lot 180

"Saratoga High Rock Spring / 1767 / (motif of rock) / C&W / Saratoga N.Y.," America, 1873 - 1880. Blue green, approaching teal green, cylindrical, applied sloping double collared mouth - smooth base, Qt; (a 3/16" flake on the underside of the beveled collar and a small, approximately 1/8" bruise with flake, possibly in-manufacture, at edge of mouth). T #S-38:A. A rare mold in a beautiful, different and unlisted color.

Est.: \$800 - \$1,200 • (Min. bid: \$500)



Lot 181

"Kissingen Water / Hanbury Smith / N.Y." Mineral Water Bottle, America, 1865 - 1875.

Medium to deep citron with an olive tone, cylindrical, applied sloping collared mouth - smooth base, pint; (a partially open bubble with residue follows a line or ridge in the glass on the inside edge of the mouth, otherwise about mint). T #M-21:A. A rare and absolutely stunning color, unlisted in this mold, and one of the prettiest bottles in the sale.

Est.: \$150 - \$300 • (Min. bid: \$100)



Lot 182

"Kissingen Water / Hanbury Smith" Mineral Water Bottle, America, 1865 - 1875. Medium to deep olive yellow, cylindrical, applied sloping collared mouth - smooth base, pint, perfect. T #M-21:B. A very attractive color, pristine condition! Provenance: Ex. Ronnie Landry collection.

Est.: \$100 - \$200 • (Min. bid: \$70)



Lot 183

"Kissingen Water / Hanbury Smith" Mineral Water Bottle, America, 1865 - 1875.

Clear seedy olive green, cylindrical, applied sloping collared mouth - smooth base, pint, virtually attic mint; (a couple of faint surface scratches on the back side of the bottle, otherwise pristine). T #M-21:B. A nice crude example with plenty of tiny seed bubbles throughout. Note; lettering has been painted white to highlight the embossing. Ex. Ronnie Landry collection.

Est.: \$100 - \$200 • (Min. bid: \$70)



Lot 184

"Kissingen Water / Hanbury Smith" Mineral Water Bottle, America, 1865 - 1875.

Dense olive with an amber tone, cylindrical, applied sloping collared mouth - smooth base, pint, near mint; (a shallow scratch, approximately 1", and a little light exterior wear). T #M-21:B. A beautiful example that has not been dug and cleaned, in as deep of color as we have seen for this mold.

Est.: \$75 - \$150 • (Min. bid: \$50)



Lot 185

Lot of (2), "Hanbury Smith's / Mineral Waters" Bottles, America, 1870 – 1880. Medium teal green and deep grass green, both with applied sloping collared mouths – smooth bases, ½ pts; (the teal green example displays near mint but has a 5/8" open bubble on the reverse and a touch of minor wear on the side; the grass green example is near mint excluding just a bit of minor exterior wear). Both, T #M-22:B. The teal green is unlisted for this mold.

Est.: \$100 - \$200 • (Min. bid: \$70)



Lot 186

Lot of (2), "Vichy Water / Hanbury Smith" Mineral Water Bottles, America, 1870 – 1880. Medium olive green and yellowish olive, both with applied sloping collared mouths – smooth bases, pt. & ½ pt. respectively; (pint example is near mint with a just a couple of spots of light exterior wear; ½ pint example has a ¾" by 3/16" open bubble on the reverse that has some depth). T #M-23:B & M-23:D. An attractive set of Vichy Water bottles.

Est.: \$100 - \$200 • (Min. bid: \$70)



Lot 187

Lot of (2), "Vichy Water / Hanbury Smith" Mineral Water Bottles, America, 1870 – 1880. Bright golden yellow with an olive tone and yellowish olive amber, both with applied sloping collared mouths – smooth bases, pt. & ½ pt. respectively; (the ½ pt. is near mint; the pint example has been professionally cleaned to original luster with some residue in an interior bubble and some light exterior wear). T #M-23:B & M-23:D. Ex. Ronnie Landry collection.

Est.: \$150 - \$250 • (Min. bid: \$100)



Lot 188

Lot of (2), "Vichy Water / Hanbury Smith" Mineral Water Bottles, (pint example with "N.Y." on 3rd line), America, 1870 – 1880. Both are clear medium blue green (or "Lockport blue"), with applied sloping collared mouths – smooth bases, pt. & ½ pt.; (the pint example is sparkling mint; the ½ pt. has a small 3/16" open bubble and may have been lightly cleaned, but presents itself as very near mint). T #M-23:A & M-23:D.

Est.: \$100 - \$200 • (Min. bid: \$70)



Lot 189

Lot of (3), "Vichy Water / Hanbury Smith" Mineral Water Bottles, America, 1870 – 1880. Deep yellow olive, yellow with an olive tone, rich medium green with an emerald tone, all with applied sloping collared mouths – smooth bases, ½ pts; (all display near mint with some light scattered exterior wear and scratches; yellow example has been cleaned and retains a ¼" bruise on lower body). T #M-23:D. The yellow example is a rare color and nicely whittled.

Est.: \$150 - \$250 • (Min. bid: \$100)



Lot 190

Lot of (3), "Vichy Water / Hanbury Smith" Mineral Water Bottles, America, 1870 – 1880. Lime green, bright apple green, and medium yellow green with an olive tone, all with applied sloping collared mouths – smooth bases, ½ pts; (lime green example has a light interior film and light exterior wear; apple green example has some light overall surface scratching, yellow green example has a surface scratch on the shoulder, otherwise near mint). T #M-23:D.

Est.: \$150 - \$250 • (Min. bid: \$100)



Lot 191

"G.W. Brown & Co / Ports-mouth" Soda Water Bottle, America, 1850 – 1860. Sapphire blue, 10-sided with an embossed teardrop on each of the paneled shoulders, applied blob collared mouth – red iron pontil scar, ht. 7 3/8"; (does not appear to be a dug bottle, but there is a fair amount of dullness and fine wear, primarily on several of the back panels, perhaps from laying on it's side, but no chips, cracks or other form of damage). A very rare soda bottle.

Est.: \$750 - \$1,250 • (Min. bid: \$400)



Lot 192

"Wm. A. Carpenter's – Mineral Water – Hudson – N.Y.", America, 1850 – 1860. Teal green, 8-sided, applied sloping collared mouth – iron pontil scar, ht. 6 ¾"; (professionally cleared to original luster with a 3/16" bruise on inside edge of mouth and some scattered light exterior wear remaining). A rare early sided soda.

Est.: \$400 - \$600 • (Min. bid: \$250)

**Lot 193**

"Anderson & Co / Home Brewed Ale / Albany N.Y.", America, 1860 – 1870. Lemon yellow with a slight citron tone, cylindrical, applied blob collared mouth – smooth base, ht. 7 1/8"; (lightly cleaned to original luster and a small potstone on the inside surface of the glass, on the back side of the bottle, has several 1/8" "legs"). An extremely rare Albany bottle, beautiful, exceptional color!

Est.: \$400 - \$600 • (Min. bid: \$250)

**Lot 197**

Early Black Glass Wine Bottle, Germany, 1760 – 1790. Yellowish olive green with an attractive translucent turquoise in the shoulder (the result of glassgall in the batch). Flattened compressed body similar to a period shaft-and-globe, blown in the German half-post method and decorated with 21 widely spaced ribs, long neck with sheared mouth, applied string rim – blowpipe pontil scar, ht. 7 3/4", perfect. See McK plate 4, #2. An extremely rare, early wine bottle.

Est.: \$2,000 - \$4,000 • (Min. bid: \$1,500)

**Lot 194**

"S. Smith. / Auburn N.Y." Soda Water Bottle, America, 1860 – 1870. Medium to deep sapphire blue, "tenpin" form, applied blob collared mouth – smooth base, ht. 8 1/8"; (a 3/16" flake on top edge of blob collar and a couple of short scratches with some very minor high point wear, otherwise about mint). A beautiful example, nicely whittled. Does not appear to be a dug bottle and has great clarity and depth of color.

Est.: \$400 - \$600 • (Min. bid: \$250)

**Lot 198**

Black Glass Wine Bottle, England, 1713. "Tho / Constable / 1713" on applied glass seal. Olive green, squat onion form, applied string rim – disc type pontil scar, ht. 6 1/4", body width 6 1/4"; (approx. 30 – 40% of the string rim and lip have been repaired, some light to moderate interior stain, overall fine scratches and sheen on the exterior). Unlisted in Dumbrell. An extremely rare and important early sealed onion bottle.

Est.: \$1,000 - \$1,500 • (Min. bid: \$700)

**Lot 195**

"J & A. Dearborn / N.Y. – Albany Glass Works / D / New-York" Soda Water Bottle, Albany Glass Works, Albany, New York, 1858 – 1863. Deep teal or peacock blue, cylindrical, applied blob collared mouth – iron pontil scar, ht. 7"; (professionally cleaned to original luster, retains some light ground wear). Note, a slightly weakened impression as is almost always the case with this mold. Beautiful rich color.

Est.: \$250 - \$450 • (Min. bid: \$150)

**Lot 199**

Black Glass Wine Bottle, probably Alloa Glassworks, Alloa, Scotland, 1810. **"F.L. / J.W. / 1810"** on applied glass seal. Yellow olive, cylindrical, magnum sized club form decanter with (4) applied vertical ribbons of rigaree, sheared, flared mouth – pontil scar, ht. 11 5/8", near mint; (a couple of small areas of light interior residue, very tip of one rigaree flaked, otherwise perfect). WL, plate 183. Impressive size, condition, and a very early date for this type of decanter.

Est.: \$3,000 - \$6,000 • (Min. bid: \$2,000)

**Lot 196**

"Aerated / Soda Water – E & L" Soda Water Bottle, America, 1855 – 1858. Sapphire blue, cylindrical, applied sloping collared mouth – iron pontil scar, ht. 7 3/8"; (professionally cleaned to near mint condition with some scattered light ground wear remaining). "E & L", represents the firm, Entwistle & Lomax of Chicago, Illinois. A very scarce, difficult mold to acquire.

Est.: \$200 - \$300 • (Min. bid: \$125)

**Lot 200**

Black Glass Wine Bottle, probably Alloa Glassworks, Alloa, Scotland, 1823. **"J.Y. / 1823"** on applied glass seal. Olive green with opaque white speckles, cylindrical, club form decanter with (3) applied ribbons of rigaree, sheared, flared mouth – pontil scar, ht. 10 1/4", excellent; (flake off tip of one rigaree, a couple of shallow body flakes on reverse, minor high point wear, otherwise perfect). VdB, p.102; WL, plate 183. Exceptional!

Est.: \$3,000 - \$6,000 • (Min. bid: \$2,000)

**Lot 201**

Half Size Black Glass Wine Bottle, probably Alloa Glassworks, Alloa, Scotland, 1810 – 1825. Yellow olive, cylindrical, club form decanter with (3) applied vertical ribbons of rigaree, sheared, flared mouth – pontil scar, ht. 7 1/8", near mint; (a tiny potstone on the inside surface of the neck with a 1/8" refracting line, and some minor, light exterior high point wear). WL, plate 182. An extremely rare size, decorative and attractive.

Est.: \$750 - \$1,500 • (Min. bid: \$400)

**Lot 205**

Black Glass Wine Bottle, England, 1765 – 1785. "A.S / C.R" on applied glass seal. Dense olive amber, virtually black, cylindrical, dip mold, sheared mouth with applied flat band – sand type pontil scar, ht. 10 1/2"; (a couple of superficial, light scratches on shoulder, otherwise perfect, cellar found condition). See FB, figure 11. Catalogued as type 4 and considered one of the earlier examples blown from a very heavy, dense metal.

Est.: \$125 - \$250 • (Min. bid: \$75)

**Lot 202**

Black Glass Wine Bottle, probably England, 1795 – 1810. "Jon a / Mason / Boston" on applied glass seal. Yellow olive with an amber tone, magnum sized cylinder, dip mold, crudely applied string rim – disc type pontil scar, ht. 12"; (a 1/8", paper-thin open surface bubble, otherwise perfect, 'cellar-found' condition). Extremely rare, believed to be blown for Jonathan Mason, Boston native, born 1756, who later became a US Senator from Massachusetts, 1800 – 1803.

Est.: \$1,500 - \$3,000 • (Min. bid: \$1,000)

**Lot 206**

Black Glass Wine Bottle, England, 1790 – 1815. "AS / CR" on applied glass seal. Yellowish olive green, cylindrical, dip mold, applied string rim below short beveled collar – sand or disc type pontil scar, ht. 10 1/2"; (a 1/4" flake off lower edge of string rim at side of lip, otherwise perfect). A bright, bubbly, early example with full original surface gloss.

Est.: \$125 - \$225 • (Min. bid: \$75)

**Lot 203**

Black Glass Wine Bottle, England, 1805 – 1815. "H.C." (below motif of hand) on applied glass seal. Olive green, cylindrical, crude 3-piece mold, sheared mouth with applied and tooled string rim – large, heavy glass tipped pontil scar with residual iron oxide deposits, ht. 10 3/4", near mint; (part of a tiny thin trailing string rim missing). RD p. 211. Note: A very interesting mold construction with nearly the entire neck being applied.

Est.: \$250 - \$500 • (Min. bid: \$150)

**Lot 207**

Black Glass Wine Bottle, England, 1820 – 1825. "A.S / C.R" on applied glass seal. Clear olive green in the shoulder area shading to almost black towards the base, cylindrical, 3-piece mold, applied sloping collared mouth with lower bevel – sand or disc type pontil scar, ht. 11 1/2", perfect. Strong impression on the seal, beautiful with swirl lines through glass and the variegated olive green hues.

Est.: \$125 - \$225 • (Min. bid: \$75)

**Lot 204**

Black Glass Wine Bottle, England, 1815. "RHC / 1815" on applied glass seal. Medium to deep olive green, cylindrical, dip mold, applied tooled mouth with string rim – disc or sand type pontil scar, ht. 10 3/8", perfect. RD, p.246. VdB, plate 27, #1. The bottle was blown for Richard Hall Clarke, Justice of the Peace, with commissions at Bidwell, Uffculme, Devon. A good, crisp impression on the applied seal.

Est.: \$300 - \$600 • (Min. bid: \$200)

**Lot 208**

Black Glass Wine Bottle, England, 1820 – 1825. "A.S / C.R" on applied glass seal. Medium to deep olive, cylindrical, 3-piece mold, applied sloping collared mouth with lower bevel – sand or disc type pontil scar, ht. 10 7/8", near mint; (flat, 1/8" flake on base at side edge, otherwise mint). Strong impression on seal, letters slightly larger in size. A fine example of this classic, All Souls College sealed wine bottle.

Est.: \$125 - \$225 • (Min. bid: \$75)



Lot 209

Black Glass Wine Bottle, England, 1821 – 1835. “Doneraile” / (eight pointed star) / “House” on applied glass seal. Medium to deep olive green, cylindrical, three piece mold, “Patent” (on shoulder), applied sloping collared mouth with lower bevel – “H. Ricketts & Co Glass Works Bristol” (on base), sand chip type pontil scar, ht. 10 ¾”, mint. RD p.254. An attractive, nicely executed seal.

Est.: \$125 - \$250 • (Min. bid: \$75)



Lot 210

Half Size Black Glass Wine Bottle, England, 1810 – 1830. “Middle Temple” / (motif of lamb with flag) on applied glass seal. Olive green, cylindrical, dip mold, applied double collared mouth – sand type pontil scar, ht. 8 ¾”, about perfect; (a bit of light residue on the interior that would likely wash out). RD, p. 311. The Holy Lamb and Flag represent the Middle Temple crest. The bottle’s size gives a clue that it may have been used for port wine.

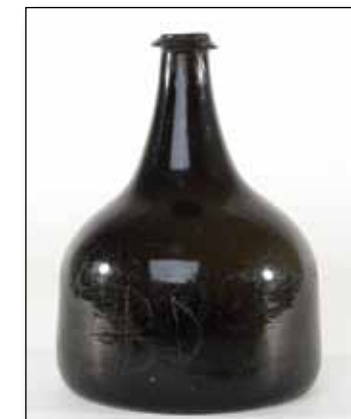
Est.: \$150 - \$250 • (Min. bid: \$100)



Lot 211

Black Glass Wine Bottle, England, 1825 – 1835. “J.W.C.” on applied glass seal. Deep olive green, cylindrical, three piece mold, “Patent” (on shoulder), applied sloping collared mouth with lower bevel – “H. Ricketts & Co Glass Works Bristol” (on base), sand chip type pontil scar, ht. 11”, perfect. RD, p.246. Bottle blown for John Were Clarke (1784 – 1847), his commissions were Bidwell, Uffculme, Devon.

Est.: \$125 - \$225 • (Min. bid: \$75)



Lot 212

Black Glass Mallet Form Wine Bottle, England, 1725 – 1735. Deep olive amber, early mallet form, applied string rim – deep domed base with disc type pontil scar, ht. 7 3/8”, body width 5 ½”; (a 3/8” area of flaking on the edge and underside of the string rim, some moderate exterior wear and scratches, particularly in a 3” area of the body). Form similar to VdB, plate 19. Note; the initials, “BD” also scratched on side of body.

Est.: \$150 - \$250 • (Min. bid: \$100)



Lot 213

Black Glass Wide Mouth Onion Bottle, (with engraved floral design around the mid-body), probably Dutch or Belgium, 1780 – 1820. Medium olive green, bulbous onion form with an expanded neck, sheared and outward flared mouth, applied string lip – disc type pontil scar, ht. 8 5/8”, dia. 6 1/8”, perfect. Similar to VdB, plate 285, #1. A beautiful example, outstanding condition, particularly interesting with the engraved horizontal rings and floral motif.

Est.: \$750 - \$1,250 • (Min. bid: \$400)



Lot 214

Freeblown Rolling Pin, England, probably Nailsea Glassworks, Somerset, 1830 – 1860. Dense olive amber, virtually black, with opaque white speckles flecked and swirled throughout, pontil scar, length, 13 ¾”; (some scattered shallow nicks and expected exterior wear, a pencil-lead sized opening on one knopfed end). Similar to V, plate 62. Many of these early rolling pins served a dual purpose as being both decorative and functional.

Est.: \$100 - \$200 • (Min. bid: \$50)



Lot 215

Lot of (2) Half Size Black Glass Case Bottles, probably Dutch, possibly Belgium, 1840 – 1860. Yellowish olive and deep olive with an amber tone, both are square tapered gin form with crudely applied sloping collared mouths – early smooth bases, ht. 7 ¾” and 7 3/8”, both are virtually perfect; (tiny bit of superficial roughness on edge of lip of one example). Note; case bottles of this size and earlier time period are quite rare. Two wonderful examples!

Est.: \$250 - \$500 • (Min. bid: \$150)



Lot 216

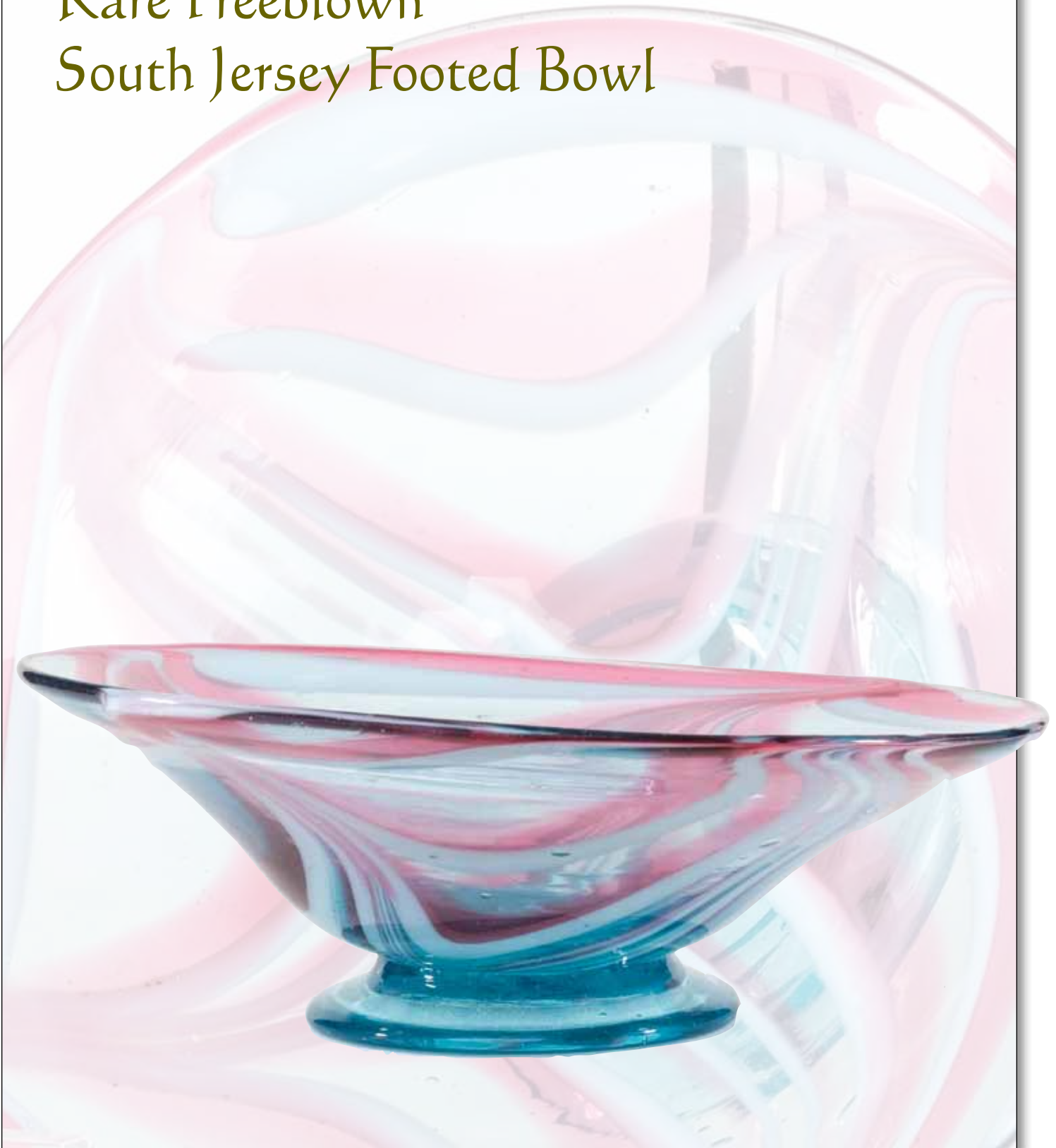
“J.J. Melchers W N” Miniature Labeled Case Bottle, Dutch, 1870 – 1890. Clear, light olive green, tapered gin form, applied sloping collared mouth – smooth base, ht. 5 ¼”, perfect. Ex. George McKearin collection (retains McKearin sticker), pictured, MW plate 47, #12. Multi-colored, graphic label reads, “The Largest / Gin / Distillery / J.J. Melchers Wz / Schiedam / Registered.” / (picture of elephant). Exceptional with label!

Est.: \$100 - \$200 • (Min. bid: \$60)

Lot 51:
Oversized
Freeblown
Chalice



Lot 57:
Rare Freeblown
South Jersey Footed Bowl



Lot #65, Group of Charley Ross Bottles

As we know, glass was often blown to commemorate many different historical people and events. One of the most heartbreaking and touching events is the story and mystery of Charles Brewster Ross.

Four year old Charley Ross was kidnapped on July 1, 1875. This shocking event marked the first kidnapping for ransom the world had known. It would not even be until the 1920's that such a crime occurred again.

The Ross family lived with their seven children in the affluent and somewhat sleepy Germantown section of Philadelphia, Pennsylvania. On that fateful afternoon Charley, and his six year old brother Walter, had been playing outside in their yard.

It was later learned that two men in a wagon stopped and talked with the two lads. They asked if the boys would like to go to the store to get some

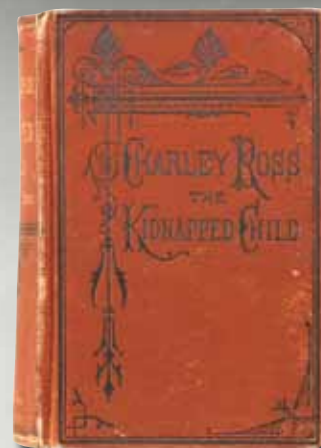
candy. The children replied that they would, so the men lifted them into a wagon and rode away. The men gave Walter money to buy what he'd like in the store and when Walter returned, the wagon – and Charley – were missing.

Days of searching revealed nothing. Then on July 3rd, Mr. Ross received a ransom note. This case was such an unexpected shock, being the first crime of its kind, that police and their detective methods proved to be ineffective against the cunning of the kidnappers.

In the days and years that followed, hope for Charley's return dwindled. Although one man was convicted of the crime, he forever proclaimed his innocence. Despite the fact that hundreds of children were brought forward proclaiming to be the missing boy, Charley was never found.

The jacket of Norman Zierold's book says it best, "Little Charley Ross has become a legend in the United States. His disappearance caused debate and furor which have yet to subside. In the age of thoughtless multiple murders and genocidal wars, it is a wonder to realize that once an entire nation was aroused because one small boy was stolen from his home."

The small grouping of bottles illustrates how history and the important "events of the day" have been memorialized in 19th century glass. An example of one of the five different Charley Ross cologne bottles is pictured in *American Bottles & Flasks and Their Ancestry*, (McKearin & Wilson), plate 110, #9. A very interesting and historically important group of cologne bottles. Provenance: (2) examples Ex. Edmund Blaske collection.



Fancy American Cologne Bottles

Perhaps no other individual glasshouse beyond the Boston and Sandwich Glass Company, Sandwich, Massachusetts (1825 – 1888), contributed more to the category of colorful and fancy cologne bottles blown here in America. They were a prolific manufacturer of not only the traditional tall slender paneled bottles, as well as the numerous corseted forms, but also a multitude of colorful blown and pressed stoppered examples.

Many of the bottles pictured below were generally considered commercial production pieces and a very important part of the company's later output. All of the straight-sided, paneled commercial cologne fragments excavated at the Sandwich Glass Company were blown from two-piece molds that had twelve-panels. In addition, it is interesting to note that the color variations of the blown Boston and Sandwich Glass Company colognes were extensive as Barlow & Kaiser note close to 100 different

colors and hues in the 12-panel, straight sided molds alone! It is easy to see why so many collectors are drawn to the beautiful and ornate cologne bottles of the mid-nineteenth century.

However, the term "Sandwich type" is probably a more appropriate term, in many cases, when discussing commercial cologne bottles. Although the Boston and Sandwich Glass Company was certainly the most famous and likely largest producer of these types of bottles, it is also true that other glass companies, particularly in New England and the South Boston area, imitated the wares that had become so popular (and profitable), at Sandwich.

Joan Kaiser, in her monumental new book, "The Glass Industry in South Boston", (U.P.N.E., 2009), has identified more than two dozen firms that were engaged in glassmaking on nine different sites in South Boston, between 1811 and 1896. These firms produced a multitude of blown and molded objects including, of course, commercial cologne bottles. In fact, Ms. Kaiser points to the fact that fragments of twelve-panel commercial colognes (and others), were excavated at various dig sites.

Regardless of specific factory attribution, these colorful and fancy early cologne bottles are indisputably attractive. They remain as popular today as they have with collectors for decades past.



Lot# 107 Bunker Hill Pickle Bottle

This rare-colored figural bottle is said to have been modeled after the iconic Cape May lighthouse on the New Jersey shore, and blown in the identical mold as the very rare "Seaworth Bitters" bottle.



Lot 126: Monk's Old Bourbon Whiskey with Rare Label



Lot 125: Best Bitters In America

“The Best Bitters in America.” It’s a tall order to live up to! However, the very rare cabin-form bitters bottle from Kalamazoo, Michigan certainly has earned a reputation among collectors as one of the all-time “greats”.

Bernhard Desenberg arrived in the bustling city of Kalamazoo in 1853. And his brother Meyer followed one year later in 1854. Bernhard soon entered the grocery business while his brother, Meyer, eventually traveled west to California where he prospected in Calaveras County, until returning to Kalamazoo, in 1860.

Rumors soon spread that he had “struck it rich” out West. Meyer eventually verified these rumors in an interview with the Kalamazoo Daily Telegraph (January 12, 1860), in which he states that he “had made over \$300.00 a week mining in gold.”

So, it comes as no surprise that in 1860, the Desenberg brothers joined together to form, “B. Desenberg & Company”, wholesale grocers & tobacconists and proprietors of “The Best Bitters in America”. As reported in an article by the Kalamazoo Daily Telegraph Trade Edition, the firm eventually became very successful, “supplying goods to a territory in Michigan and Indiana nearly 300 miles long and more than half as wide, covering many hundred towns and trading posts”. Thankfully, one of these rare cabin bottles found its way to the cellar of an old home on Elm Street, in downtown Kalamazoo.

Now, fast forward 100 years to 1960, when the current owner of the bottle, then a young woman pregnant with her first daughter, purchased the bottle at an estate sale as the contents of the old home on Elm Street were being liquidated. She did not know much about bottles, but had a keen interest in local Kalamazoo history and related artifacts. The bottle has remained in her possession for the past 50 years and is now being offered for the 1st time to the bottle collecting community.

An example of another “Best Bitters” bottle is pictured in a color plate (p.47), of the book, *Bitters Bottles*, by Carlyn Ring and Bill Ham.

An important offering and a wonderful example, especially considering that many of the previous examples discovered have been dug or have moderate to severe damage.

(Photo at right showing the back panel of this rare bitters.)



Lot 197: 17th Century Shaft-and-Globe Bottle/Decanter

Decanters of this era and decorative technique are quite rare. This is certainly a wonderful example and a great rarity. Utilizing a very early technique known as the German half-post method, after forming the initial thin walled parison, the gather was then re-inserted into the pot to form a second layer, or coating, of glass. If the second gather did not extend the full length, it was called a "half-post". This second gather is evidenced by a resulting horizontal ridge around the shoulder of the bottle.

The half post method was a technique most often employed when a pattern was to be imparted in the glass. With this particular bottle, after the second gather of glass was secured, the bottle was inserted into a small open dip mold, in this case, having 21 widely spaced vertical ribs. This pattern provided a desired decorative aspect to the object. It is interesting to note that the small dip molds were typically only one-third, to one-half, the size of the finished object.

After removal from the small dip mold, the objects were then further inflated, and also worked, by the gaffer to provide the desired size and form. In addition, other finishing necessities were then completed to include lip finishes, perhaps neck rings or other applied glass features.

This example is in exceptional condition having only minor exterior high point wear, and in reflected daylight, exhibits a beautiful translucent turquoise color through the shoulder. Early, rare, decorative and beautiful!



Rare Alloa Glassworks Bottles, Alloa, Scotland

Lot 199

Lot 200

Lot 201



Lot 202: “Jon a / Mason / Boston” Sealed Wine Bottle

During the 18th century, particularly in England, it became fashionable for people of nobility or stature to have wine bottles blown with a personalized applied glass seal bearing their initials, name, or perhaps a family crest. This tradition was transferred to America and became popular during the Colonial Period and for several decades thereafter.

The “Jon a / Mason / Boston” bottle is a wonderful example of this tradition, and certainly very significant in terms of its historical aspect and relevance to early American history.

Jonathan Mason, a Boston native, born in 1756, attended the College of New Jersey (now Princeton University), graduating in 1774 and after studying law was later admitted to the bar in 1779. In 1780, Mason delivered the annual address marking the Boston Massacre. He later became a member of the Massachusetts House of Representatives from 1786 – 1796. From 1797 to 1798, Mason served on the Massachusetts Governor’s Council and during the following two years, 1799 – 1800, served in the Massachusetts Senate.

Jonathon Mason served as a United States Senator from November 14, 1800 to March 3, 1803, when he was succeeded by John Quincy Adams, who later went on to become the sixth President of the United States.

While it is generally accepted that black glass bottles were blown at a number of early glasshouses here in America, many more were also blown in England to fill special orders from colonists or citizens of the fledgling democracy following cessation of the hostilities of the Revolutionary War. However, as a rule, American collectors of black glass bottles will give an American attribution to the glass if its identifying seal shows the bottle belonged to a known colonist or citizen living in North America (even though the bottle may have been blown elsewhere).

This bottle is an important recent discovery that is fresh to the market from a home in eastern Massachusetts.



Become Another Satisfied Consignor!

Seeking quality consignments for our 2011 Auction Schedule.

By consigning with American Glass Gallery, your valued items will receive the highest level of attention and benefit from our extensive advertising, broad customer base and high quality, full-color catalogs containing accurate, informative descriptions.

Our integrity, broad knowledge, history and service within the hobby all combine to provide you with the highest level of customer service and the most favorable results for your valued consignments, whether a single item or an entire collection.

In addition, we offer competitive consignor fees and low buyer premiums. Contact us today and let us go to work on your behalf.

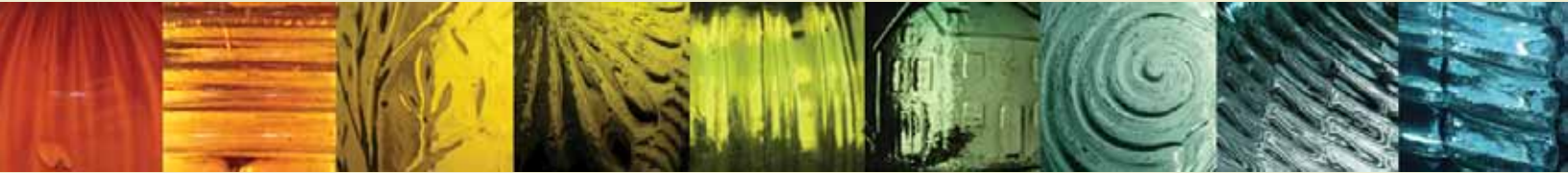
Please give us a call, visit our website or look for us at one of the more than twenty shows that we attend annually across the country.

Phone: 248.486.0530 • website: americanglassgallery.com



American Glass Gallery™

American Glass Gallery™



Buying and selling fine antique bottles, flasks and blown glass

Our Services:

- ☛ Absentee auctions
- ☛ Web site sales
- ☛ Private direct sales
- ☛ Direct purchase of quality single items or entire collections
- ☛ Fast payment and confidential transactions
- ☛ Appraisal services

Mission Statement:

At American Glass Gallery, our goal is to offer to collectors quality bottles and glass along with the highest level of service and professionalism. Whether you are buying or selling quality antique bottles and glass, American Glass Gallery is here to serve you. Please contact us at any time with your questions or for more information.

P.O. Box 227, New Hudson, Michigan 48165

Phone: 248.486.0530 • Fax: 248.486.0538

email: jpastor@americanglassgallery.com

website: www.americanglassgallery.com



American Glass Gallery™