

NOTE: This is a timed-closing auction. See details on first page.

American Glass GalleryTM

Auction #40

Opens March 17, 2025 • Closes March 25, 2025



Lot I22: Outstanding
Lacour's Bitters in a Rare
and Spectacular Color

Found in an Arizona ghost town in the late 1950s!

Conditions of Sale: Auction #40 – Timed Closing Auction - No Call Backs

1. Absentee Auction

The items in this sale will be sold via absentee auction.
Closing date: **Tuesday, March 25, 2025, 10:00 p.m., EDT.**

2. Our Guarantee Regarding Descriptions

American Glass Gallery has made every attempt to describe correctly the property being sold. Descriptions are guaranteed to be accurate as regards to authenticity, age, condition, and measurements to within one-fourth inch, as represented in this catalog. Items in this catalog are not shown to scale. In describing damage, exterior wear or manufacturer's flaws that in our opinion, do not significantly detract visually or monetarily from the value of the item are not listed and will not be considered for refund. The Auctioneers reserve the right to make verbal corrections and provide additional information at any time during the sale.

3. Preview

Items may be viewed by appointment from **March 18, 2025**, through **March 24, 2025**.

4. Bidding Procedure

You may submit your bids by mail, phone, FAX, email or through our on-line auction site. If bidding by mail or FAX, please fill out the absentee form and return it to us. Your bid, either written or oral, grants American Glass Gallery the authority to protect you up to the amount of your stated bid. Your bid will not be removed once executed.

Bidding Times: You can submit your bids anytime after receiving your catalog. Bids may be made by phone, daily, until closing day, **March 25, 2025**, from 9 A.M. - 6 P.M. Eastern Time. Incoming phone bids will be accepted on the closing day (**March 25, 2025**) until 10 P.M. Eastern Time. No exceptions. You may also place your bids through our on-line auction service 24-hours a day once the site has opened for bidding, on or about **March 17, 2025**, continuing until 10:00 P.M. Eastern Time, **March 25, 2025**.

Please do not wait until the last day or two of the sale to place your bids!

Because many collectors wait until the final few days of the sale to place their bids, we anticipate the telephone and internet bidding to be very busy during that period, so please plan accordingly. In the event of a tie bid, the earliest received bid on the lot will take precedent. We would welcome your bids by phone so that we can answer any questions and assist you in your bidding.

You may also telephone us at any time during the auction, prior to the closing of the sale, to check the status of your bids, to find the current bidding level, to open a bid, or to raise a bid on an auction lot.

Bidding Increments are as follows:

Up to \$250.00.....	increments of \$10.00
\$250.00 - \$500.00	increments of \$25.00
\$500.00 - \$1,000.00	increments of \$50.00
\$1,000.00 - \$2,500.00	increments of \$100.00
\$2,500.00 - \$5,000.00	increments of \$250.00
\$5,000.00 - \$10,000.00	increments of \$500.00
\$10,000 & Up.....	increments of \$1,000.00

Bids submitted between the above increments, whether by mail, FAX, email or on-line via the internet, will automatically be lowered to the closest lower increment.

This is a minimum bid auction. Bids below the printed minimum will not be accepted.

An example of how our absentee bidding system works: You bid \$1000.00 on a lot which is the highest bid received to date. The second highest bid is \$800.00. The current high bid level would be yours at \$850.00, one bid increment higher than the other collector's bid. Any additional bids submitted by others below \$1000.00 will automatically be topped on your behalf by a representative of American Glass Gallery, up to your stipulated high bid amount. If no further bids on this lot are received beyond the \$800.00, then you would have won the lot at \$850.00, not the \$1000.00 that you were prepared to pay.

American Glass Gallery will at NO TIME disclose bids pledged by others; only the current "High Bid" level of a lot will be stated upon request. The highest bidder as determined by American Glass Gallery shall be the purchaser. It is the sole right of the auctioneer to settle any dispute between bidders and to regulate the bidding procedure. The auctioneer reserves the right to refuse any bid he believes not to have been made in good faith.

5. Closing the Auction

Timed Closing. No Call Backs for This Sale!

Auction closes 10 PM Eastern, Tuesday, March 25, 2025.

How it works: If any Lot receives a bid within the last 10 minutes before the 10 PM closing time, an additional 10 minutes will be added on to the bidding time for that Lot - at the time the bid is entered. For example, if a bid is entered on Lot #95 at 9:58 PM, an additional 10 minutes will be added to the closing time for that Lot, i.e. the Lot will close 10:08 PM, unless another acceptable bid is received prior to 10:08 PM. If the same Lot receives another bid 5 minutes later, i.e., 10:03 PM, the 10 minute timer will be restarted. Thus, an item will not close until it has received no bids for 10 minutes. At the end of that time, the Lot will automatically close and the highest bidder will be the winner.

No phone bids will be accepted after 10 PM, or during the timed closing portion of the sale.

IMPORTANT: When the auction is in the last 10 minutes, (after 9:50 PM EDT, **Tuesday, March 25**), **you must refresh your screen to see any updated bids and remaining time on the Lots.** You may refresh your bid page by hitting "Enter Bids". A time left column will appear on the right. The time will go down every time you refresh unless an acceptable bid has been placed, then the timer will be reset to 10 minutes.

When a Lot closes, your bid sheet will show either (parentheses only when there is a left bid):

Example:

You **WIN** for **\$400** (Left Bid \$500)

or:

Won by another for **\$600**

Note: Normal email notifications will still be sent during the Timed Closing. However, we recommend that you actively refresh your screen for the latest updates, or changes, as the email notifications may not always get through (i.e., may sometimes be intercepted by email blockers or spam filters).

If you are unable to watch, or be actively involved during the closing time, you may always submit an Absentee, or "Left Bid" which will be executed competitively up to your stipulated high bid should any bids come in during the Timed Closing Period.

Conditions of Sale: Auction #40 – Timed Closing Auction - No Call Backs

6. Terms

Successful Bidders, Prompt and full payment is due immediately upon receipt of our invoice. Absolutely no exceptions. Anyone failing to pay for items won will forfeit all rights to bid in any future American Glass Gallery sales. *Any late or delayed payments may result in loss of return privileges for items purchased in the sale.*

No Items Will Be Mailed Before Full Payment Is Received.

Buyer Premium: Our buyer premium is **17% if paying by cash or check, discounted from 20% if paying by Credit Card or PayPal** (PayPal payment account: jpastor@americanglassgallery.com). This buyer premium will be added to the hammer price as part of the purchase price. For example, if you purchase a lot for \$100.00, you will receive an invoice for \$117.00 if paying by cash, check or money order, plus any applicable sales tax or shipping charges.

Taxes: If you are a Michigan resident, a 6% sales tax will be added to your bill unless you have a valid resale number registered with us.

Shipping: Shipping, handling and insurance are extra. We ship insured via U.S. Mail or UPS. These charges will be added to your bill unless the lots are picked up in person. Oversize packages (boxes with dimensions over 12"), may incur additional shipping charges based on the postal zone of destination. Our charges for shipping (excluding foreign shipments and oversized lots) are \$18.00 for the first item, \$9.00 for each additional item together with extra insurance costs (we use current U.S. Postal Service insurance rates).

Please allow two to three weeks for delivery after receipt of your check.

Payment: American Glass Gallery accepts Cash, Money Orders, Personal Checks, Visa, MasterCard, American Express and PayPal. *If paying by Credit Card or PayPal, an additional 3% will be added to the invoice total.*



7. Refunds

Refunds will be given at the discretion of the Auctioneers. Items purchased must be examined and request for refund made immediately upon receipt of the item or items. Since opinions can differ, particularly in the matter of condition, the Auctioneers will be the sole judge in the consideration of refunds. Refunds requested on the grounds of authenticity must be made within 15 days of the date of the auction, and such refund requests must be accompanied by at least one supporting statement in writing from an authority recognized by the Auctioneers. It is the Auctioneers sincere intention to consider any reasonable request for a refund. *Absolutely no returns for any reason after 30 days following the closing of the sale.*

8. Bidding on any item indicates your acceptance of these terms.



American Glass Gallery™

John R. Pastor
P.O. Box 227
New Hudson, Michigan 48165
Phone: 248.486.0530
Fax: 248.486.0538
www.americanglassgallery.com
email: jpastor@americanglassgallery.com

PLEASE NOTE:

The lots offered in this printed catalog are identical to the lots offered in the on-line catalog. However, due to space constraints of the printed catalog, there may be some further information available regarding some of the lots in the on-line auction descriptions.

Please visit us at

www.americanglassgallery.com

and follow the link to the on-line auction.

The link and on-line auction will be available March 17, 2025. A post-auction price list will be available on our website, in printable form, approximately 30 days after the close of the auction.

We encourage you to contact us by phone or email with any questions, for assistance with bidding, or further details or clarification on any of the lots in this sale. Your complete satisfaction and confidence is our goal!

**THANK YOU AND GOOD LUCK
WITH YOUR BIDS!**

Reference Key

Reference initials and numbers used in the description of this catalog refer to the following publications:

AHG	<i>American Historical Glass</i> , Bessie M. Lindsey, 1967.
AM	<i>The Decanter - An Illustrated History of Glass from 1650</i> , Andy McConnell, 2004.
AP	<i>Glass in Early America</i> , Arlene Palmer, 1993.
BA1	<i>Collecting The Cures</i> , Bill Agee, 1969.
BA2	<i>Collecting All Cures</i> , Bill Agee, 1973.
BB	<i>A Bit About Balsams</i> , Betty Blasi, 1974.
BH	<i>Classification and Documentation of Sunburst and Similar Scent Bottles</i> , Bill Ham, AB&GC, 5/87.
BJ	<i>American Pot Lids</i> , Barbara and Sonny Jackson, 1987.
B/K	<i>The Glass Industry in Sandwich</i> , Raymond Barlow and Joan Kaiser, 1989.
BPK	<i>A.M. BININGER Bottles</i> , Jim Bender, 2017
C	<i>Ink Bottles and Inkwells</i> , William Covill, 1971.
DB	<i>Antique Sealed Bottles, 1640 - 1900</i> , David Burton, 2015
DeG	<i>American Sarsaparilla Bottles</i> , John DeGrafft, 1980.
DeGII	<i>Supplement to American Sarsaparilla Bottles</i> , John DeGrafft, 2004.
DF	<i>Hair Raising Stories</i> , Don Fadely, 1992.
DM	<i>Wistarburgh, Window Tiles, Bottles and More</i> , Dale L. Murscell, 2007.
D/P	<i>Collector's Guide to Candy Containers</i> , Douglas M. Dezso, J. Leon and Rose Poirier, 1998.
F	<i>Inks, 150 Years of Bottles and Companies</i> , Ed and Lucy Faulkner.
FA	<i>John Frederick Amelung, Early American Glassmaker</i> , Lanmon, Palmer, Hume, Brill, Hanson, 1990.
FB	<i>A.S.C.R. The wine bottles of All Souls College</i> , Oxford, 1750 – 1850, Fay Banks.
G	(Flasks) <i>American Bottles & Flasks and Their Ancestry</i> , McKearin & Wilson, 1978.
G	(Blown Three Mold) <i>American Glass</i> (Chapter VI), George S. and Helen McKearin, 1941.
GB	<i>Ink, Glue, Polish & Blacking Bottles, 1750 – 1950, A Collector's Dictionary</i> , Guy Burch, 2023
GBH	<i>English Glass For The Collector, 1660-1860</i> , G. Bernard Hughes, 1958.
H	<i>American Bottles in the Charles B. Gardner Collection</i> , Norman C. Heckler, 1975.
JB	<i>Patent and Proprietary Medicine Bottles</i> , Joseph K. Baldwin, 1973
JEB	<i>Glasshouse Whimsies</i> , Joyce E. Blake, 1984.
JH	<i>Glasshouses & Glass Manufacturers of the Pittsburgh Region, 1795 – 1910</i> , Jay W. Hawkins, 2009.
JM	<i>Tea Kettle Ink Price and Reference Guide</i> , Joe L. Mathews Jr., 2016
JS	<i>In glas verpakt – European Bottles, Their history and production</i> , Johan Soetens, 2001.
K	<i>Poison Bottle Workbook</i> , Rudy Kuhn, 1988.
KW	<i>New England Glass & Glassmaking</i> , Kenneth M. Wilson, 1972.
LI	<i>Pittsburgh Glass, 1797 – 1891</i> , Lowell Innes, 1976.
Mc	<i>Two Hundred Years of American Blown Glass</i> , Helen and George McKearin, 1950.
McK	<i>American Glass</i> , George S. and Helen McKearin, 1941.
MW	<i>American Bottles & Flasks and Their Ancestry</i> , McKearin & Wilson, 1978.
N	<i>Great American Pontiled Medicines</i> , Frederick Nielson, 1978.
NCH	<i>The Blaske Collection of American Flasks</i> , Norman C. Heckler, 1983.
NCH II	<i>The Blaske Collection: Part II</i> , Norman C. Heckler, 1983.
Odell I	<i>Indian Bottles and Brands</i> , John Odell, 1977
Odell II	<i>Pontiled Medicine Encyclopdia</i> , John Odell, 2007
O&S	<i>Warner's Reference Guide</i> , Ed Ojea and Jack Stecher, 1998.
P	<i>The Glass Gaffers of New Jersey</i> , Adeline Pepper, 1971.
RB	<i>Red Book No. 13; The Collector's Guide to Old Fruit Jars</i> , David C. Eifler.
RD	<i>Understanding Antique Wine Bottles</i> , Roger Dumbrell, 1983.
RH	<i>Collecting Barber Bottles</i> , Richard Holiner, 1986.
R/H	<i>Bitters Bottles</i> , Carlyn Ring and W. C. Ham, 1998.
RWL	<i>Antique Fakes & Reproductions</i> , Ruth Webb Lee, 1950
T	<i>Collectors Guide to Saratoga Type Mineral Water Bottles</i> , Donald Tucker, 2005.
V	<i>Nailsea Glass</i> , Keith Vincent, 1975
VdB	<i>Antique Glass Bottles; Their History and Evolution</i> , Willy Van den Bossche, 2001.
Z	<i>Ketchup, Pickles, Sauces</i> , Betty Zumwalt, 1980.
ZW	<i>Color Hutchinsons</i> , Zang Wood, 1999.

- The dash is generally used to indicate that the descriptions are on opposite sides of the bottle or flask.

/ The slash is used to indicate that the descriptions are on different lines or surfaces of the bottle.

Beautiful Historical & Figured Flasks



Colorful, Rare, & Exceptional Bitters Bottles

Lot 120



Lot 127

Lot 112

Lot 131

Lot 123



Lot 114

Lot 111

Lot 129

Lot 146



Lot 1

"G. WASHINGTON." / BUST OF WASHINGTON – EAGLE Historical Flask, an early Pittsburgh district glasshouse, 1825 – 1835. Bright aquamarine, sheared mouth – blowpipe pontil scar, Pt, near mint; (a little high point wear and a tiny pinhead flake on the inside edge of the sheared mouth, otherwise perfect). GI-10. A bright, clean, very nice example with a strong mold impression. A scarce, early beaded Washington mold that is not easy to find.

Est.: \$400 - \$600 • Min. bid: \$200



Lot 2

"WASHINGTON" / BUST OF WASHINGTON – "BRIDGETON" (STAR) "NEW JERSEY" / BUST OF TAYLOR Historical Flask, Bridge Glass Works, 1848 – 1855. Rich, medium-to-deep tobacco amber, sheared mouth – blowpipe pontil scar, Pt; (a tiny pinhead speck of roughness on the edge of the lip and a small potstone, well-hidden on Taylor's collar, with a couple of tiny 'legs', 1/16" to 1/8", otherwise very near mint). GI-24. A rare color, strong impression, virtually no wear!

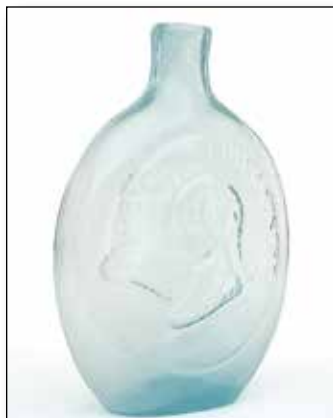
Est.: \$800 - \$1,200 • Min. bid: \$400



Lot 3

"THE FATHER OF HIS COUNTRY" / BUST OF WASHINGTON – "GEN. TAYLOR NEVER SURRENDERS" / BUST OF TAYLOR / "DYOTTVILLE GLASS WORKS PHILAD.A" Historical Flask, 1848 – 1855. Brilliant yellow-topaz coloration, applied ring collar with bevel – smooth base, Qt, attic mint. GI-37. A very rare, eye-appealing color, gorgeous variegated shading, very scarce 'medicine-type' collar, almost no wear. An exceptional example, eye candy for the shelf.

Est.: \$3,000 - \$5,000 • Min. bid: \$1,500



Lot 4

"THE FATHER OF HIS COUNTRY" / BUST OF WASHINGTON – "GEN TAYLOR NEVER SURRENDERS" / BUST OF TAYLOR Historical Flask, probably Dyottville Glass Works, Philadelphia, 1848 – 1855. Milky aquamarine moonstone, sheared mouth – blowpipe pontil scar, Pt, perfect. GI-40a. An unlisted and extremely rare color for this mold. Believed to be one of only two known, the other example resides in a renowned Connecticut collection. Ex. Mike Rogers collection.

Est.: \$1,500 - \$2,500 • Min. bid: \$750



Lot 5

"THE FATHER OF HIS COUNTRY" / BUST OF WASHINGTON – BUST OF TAYLOR Historical Flask, probably Dyottville Glass Works, Philadelphia, 1848 – 1855. Medium-to-deep amber, applied ring collar – smooth base, Qt; (some minor wear and a couple of light scratches; some faint dullness or exterior 'bloom', primarily on the reverse, and some patchy content residue that would likely wash out). GI-45. A rare mold, extremely rare, unlisted color! Provenance: Ex. Fred Swiechowicz collection.

Est.: \$2,000 - \$4,000 • Min. bid: \$1,000



Lot 6

"THE FATHER OF HIS COUNTRY" / BUST OF WASHINGTON – "GEN. Z. TAYLOR" / BUST OF TAYLOR Historical Flask, probably Dyottville Glass Works, Philadelphia, 1848 – 1855. Colorless with a slight smokey tone in the base, sheared mouth – blowpipe pontil scar, Qt, perfect. GI-46. A great example in an extremely rare 'color', bright, clean, crisp embossing, outstanding condition and character being very heavily whittled. Provenance: Ex. Barry Hogan collection.

Est.: \$1,400 - \$2,400 • Min. bid: \$700



Lot 7

WASHINGTON – TAYLOR Portrait Flask, Dyottville Glass Works, Philadelphia, 1848 – 1855. Bright, light-to-medium blue green, applied tapered collar with ring – blowpipe pontil scar, Qt, near mint; (just a touch of minor wear including a tiny pinhead flake on the inside edge of the lip, otherwise perfect). GI-54. A bright, bubbly, very pretty example! Provenance: Ex. Charles B. Gardner collection.

Est.: \$200 - \$400 • Min. bid: \$100



Lot 8

WASHINGTON – TAYLOR Portrait Flask, Dyottville Glass Works, Philadelphia, 1848 – 1855. Greenish aquamarine, sheared mouth – blowpipe pontil scar, Qt, near mint; (a little typical light exterior wear, otherwise perfect). GI-54a. A very scarce mold, unlisted by McKearin. The flask is noticeably wider from front-to-back and sometimes referred to as the 'fat boy' mold. In addition, there are only 3 buttons on Taylor's coat vs. 4. A bright clean example of this very scarce mold variant.

Est.: \$200 - \$400 • Min. bid: \$100



Lot 9

WASHINGTON – TAYLOR Portrait Flask, probably Dyottville Glass Works, Philadelphia, 1848 – 1855. Clear, light-to-medium blue green, sheared mouth – blowpipe pontil scar, ½ Pt; (a shallow 3/16" flake from the edge of the sheared lip, and a tiny 1/8" flake at the edge of the base, otherwise virtually perfect). GI-56. As noted by McKearin, a comparatively scarce mold, and a very scarce-to-rare color for this mold. One of only a few that have been offered in the past 20 years.

Est.: \$1,000 - \$1,500 • Min. bid: \$500



Lot 13

EAGLE – EAGLE Historical Flask, an early Pittsburgh or Monongahela glasshouse, 1825 – 1835. Greenish aquamarine, sheared mouth – blowpipe pontil scar, Pt, virtually perfect; (just a slight trace of very faint interior milkiness, light wear, otherwise pristine). GII-4b. An unlisted, extremely rare mold. Similar to GII-4a, but in addition to the eighth star from left on the reverse being 6-pointed, the second and tenth stars on the reverse are also clearly 6-pointed. An extremely rare, attractive early flask.

Est.: \$1,000 - \$2,000 • Min. bid: \$500



Lot 10

"LAFAYETTE" / BUST OF LAFAYETTE / "COVETRY / C-T" – STARS AND LIBERTY CAP / "S & S" Historical Flask, Coventry Glass Works, 1824 – 1830. Clear, light yellow with a slight olive tone below the shoulders, shading to a rich, deeper, yellowish olive amber towards the base, sheared mouth – blowpipe pontil scar, Pt; (a couple of patches of light, washable, interior residue, otherwise attic mint). GI-85. A top example, outstanding color, clarity and condition.

Est.: \$600 - \$900 • Min. bid: \$300



Lot 14

EAGLE – CORNUCOPIA Historical Flask, an early Pittsburgh or Monongahela glasshouse, 1825 – 1835. Aquamarine, sheared mouth – blowpipe pontil scar, ½ Pt; (some light high point wear as is often the case, otherwise virtually attic mint). GII-11. A scarce, very early little beaded eagle flask.

Est.: \$250 - \$450 • Min. bid: \$130



Lot 11

"KOSSUTH" / BUST OF KOSSUTH – TREE Historical Calabash, America, 1852 – 1860. Beautiful, medium-to-deep bluish green with an emerald tone, almost a bluish emerald coloration, applied sloping collar with bevel – large blowpipe pontil scar, Qt; (only the slightest trace of light wear, otherwise perfect). GI-113. A great example, strong color, and a scarce color for this mold, almost no wear, and excellent character having whittled wavy glass.

Est.: \$600 - \$900 • Min. bid: \$300



Lot 15

EAGLE / "W.C" – CORNUCOPIA Historical Flask, an early Pittsburgh district glasshouse, possibly William Campbell, E. Campbell & Co., 1832 – 1834. Aquamarine, sheared mouth – blowpipe pontil scar, ½ Pt; (some fine high point wear, and a small spot of faint interior residue or haziness below the neck that may wash out, otherwise attic mint). GII-12. The mold is noted by McKearin as "Very rare", and aptly so. These do not come around often. A clean, very attractive example.

Est.: \$300 - \$500 • Min. bid: \$150



Lot 12

"OUR CHOICE" / BUST OF GROVER CLEVELAND & ADLAI STEVENSON / "CLEVE & STEVE / NOVEMBER 8TH 92 / MARCH 4TH 93" – (Crowing Cock), Historical Flask, America, 1892 - 1893. Beautiful light yellow with some warmer honey tones through the neck and base, elliptical barrel form, tooled tapered collar with ring – smooth base, ½ Pt, attic mint. GI-124. A scarce political flask blown for the 1892 Presidential election.

Est.: \$300 - \$500 • Min. bid: \$150



Lot 16

EAGLE / "T.W.D" – CORNUCOPIA – "E PLURIBUS UNUM / ONE OF MANY. – KENSINGTON GLASS / WORKS PHILADELPHIA" Historical Flask, 1825 – 1838. Light aquamarine, sheared mouth – blowpipe pontil scar, ½ Pt, near mint; (some high point wear on the reverse, otherwise virtually perfect). GII-43. Scarce. A bright, clean, very attractive little Kensington flask, heavily embossed.

Est.: \$250 - \$450 • Min. bid: \$130



Lot 17

EAGLE – CORNUCOPIA Historical Flask, possibly Kensington Glass Works, Philadelphia, PA, 1825 – 1838. Light aquamarine, sheared mouth – blowpipe pontil scar, ½ Pt, perfect. GII-46. This one has outstanding clarity, a very strong mold impression, and virtually no wear. An absolutely fantastic example of this scarce mold, and a little sweetheart of a flask.

Est.: \$175 - \$350 • Min. bid: \$90



Lot 21

EAGLE – “NEW LONDON” / ANCHOR / “GLASS WORKS” Historical Flask, 1860 – 1866. Strong, deep aquamarine, applied collar with flat band – smooth base, ½ Pt, near mint; (a couple of spots of minor roughness and tiny flakes on the edge of the collar approximately ¼” and 1/8”, and just the slightest trace of very light wear, otherwise excellent). GII-67. Strong color and crisp, very strong mold impression. Provenance: Fred Swiechowicz collection.

Est.: \$300 - \$500 • Min. bid: \$150



Lot 18

Lot of (2) Historical and Pictorial Flasks, 1857 – 1873. 1st Ex: “LIBERTY” / EAGLE – “WILLINGTON / GLASS Co / WEST WILLINGTON / CONN”, medium ‘old amber’ with some honey tones. 2nd Ex: **SHEAF OF GRAIN – “WESTFORD GLASS Co / WESTFORD / CONN”**, medium-to-deep olive amber. Both applied round collar with lower bevel – smooth base, ½ Pt. & Pt; (both are very nice examples with just a trace of typical minor wear). GII-63 & GXIII-35.

Est.: \$300 - \$500 • Min. bid: \$150



Lot 22

EAGLE – “NEW LONDON” / ANCHOR / “GLASS WORKS” Historical Flask, 1860 – 1866. Beautiful, rich honey amber, applied round double collar – smooth base, ½ Pt, near mint; (just a slight trace of light wear including a couple of small, onionskin-thin open bubbles, and the embossing is a little weak as is sometimes the case with this mold, otherwise perfect). GII-67. Beautiful crude bubbly glass, very scarce-to-rare color for this mold. Fred Swiechowicz collection.

Est.: \$800 - \$1,200 • Min. bid: \$400



Lot 19

“LIBERTY” / EAGLE – “WILLINGTON / GLASS, Co / WEST WILLINGTON / CONN” Historical Flask, 1855 - 1865. Medium bluish green, sheared mouth – blowpipe pontil scar, Pt; (a 3/16” chip on the top edge of the mouth; a shallow ¼” iridescent bruise on the inside edge of the lip, and just a touch of minor wear including a tiny pinprick flake at edge of base, otherwise excellent). GII-64. Beautiful, heavily whittled, strong impression. Very scarce in this color with the pontil scarred base.

Est.: \$1,500 - \$2,500 • Min. bid: \$800



Lot 23

EAGLE – EAGLE Historical Flask, probably Granite Glass Co., Stoddard, NH, 1855 – 1862. Rich medium olive through the midsection shading to a deep olive with a slight amber tone through the shoulders and towards the base, sheared mouth – blowpipe pontil scar, Qt, virtually attic mint; (only the slightest trace of very light wear, otherwise perfect). GII-78. A great example, very little wear, and filled with tiny seed bubbles. These don't come around often, especially in this fine condition.

Est.: \$400 - \$600 • Min. bid: \$200



Lot 20

“LIBERTY” / EAGLE – “WILLINGTON / GLASS, Co / WEST WILLINGTON / CONN” Historical Flask, 1855 - 1872. Medium emerald below the shoulders, shading to a deep emerald green towards the base, applied sloping collar – smooth base, Pt, near mint; (a little typical light wear, and a weak impression on the reverse which is not uncommon for this mold; “West Willington” is not easy to read, otherwise perfect). GII-64. Rare color, nice character, excellent condition.

Est.: \$1,200 - \$1,800 • Min. bid: \$600



Lot 24

EAGLE – EAGLE Historical Flask, a Pittsburgh district glasshouse, 1860 – 1875. Clear, medium blue green coloration, applied ring type collar – smooth base, ½ Pt, attic mint. Probably GII-96 (virtually identical to GII-95, but eagle appears to have only 3 distinct ribs in it's left wing on one side). A bright, clean, pretty little flask, very scarce color, virtually ‘out-of-the-mold’ pristine condition.

Est.: \$250 - \$450 • Min. bid: \$130



Lot 25

EAGLE / "PITTSBURGH / PA" – EAGLE Historical Flask, a Pittsburgh district glasshouse, 1860 – 1870. Bright, yellowish olive amber below the shoulders shading to a deep olive amber towards the base, crudely applied collar with flat band – smooth base, Pt, perfect. GII-106. A fantastic example, very pretty color, strong impression, virtually no wear.

Est.: \$200 - \$400 • Min. bid: \$100



Lot 29

MASONIC – "ZANESVILLE" / EAGLE / "OHIO / J. SHEPARD & CO" Historical Flask, Zanesville Glassworks, Zanesville, OH, 1822 – 1832. Medium-to-deep amber with a reddish orange tone, sheared mouth – pontil scar, Pt; (some moderate overall interior stain or haziness, and a touch of minor light wear). GIV-32. Outstanding, crisp, exceptional impression, about as strong as you could hope to find! With a good professional interior cleaning, the flask would display as near mint.

Est.: \$800 - \$1,200 • Min. bid: \$400



Lot 26

CORNUCOPIA – URN Pictorial Flask, Coventry Glass Works, Coventry, CT, 1835 – 1849. Light aquamarine, sheared mouth – blowpipe pontil scar, Pt, near mint; (a ¼" iridescent flake or shallow bruise on the inside edge of the sheared mouth, otherwise perfect). GIII-4. A very nice example, almost no wear, and certainly very rare in aquamarine!

Est.: \$300 - \$500 • Min. bid: \$150



Lot 30

ALL SEEING EYE (Inside 6-Pointed Star) / "A D" – RAISED ARM AND 6-POINTED STAR / "GRJA" Historical Flask, probably an early Stoddard, NH glasshouse, 1842 – 1850. Yellowish olive amber, applied short tapered collar – smooth base, Pt, near mint; (a little typical light wear; a few onionskin-thin open surface bubbles, and a 3/16" bit of minor roughness on the edge of the collar). GIV-43. A pretty, eye-appealing example, absolutely outstanding character – the glass being filled with tiny bubbles.

Est.: \$250 - \$450 • Min. bid: \$130



Lot 27

CORNUCOPIA – URN Pictorial Flask, Lancaster Glass Works, Lancaster, NY, 1849 – 1860. Brilliant aquamarine, applied double ring collar – blowpipe pontil scar, Pt, perfect. GIII-17. A particularly nice example. Bright, clean, sparkling, virtually 'out-of-the mold' pristine condition with that little extra eye-appeal.

Est.: \$175 - \$275 • Min. bid: \$90



Lot 31

"SUCCESS TO THE RAILROAD" / LOCOMOTIVE – (Reverse same) Historical Flask, Lancaster Glass Works, Lancaster, NY 1849 – 1860. Beautiful ice-blue coloration, sheared, tooled, inward rolled lip – blowpipe pontil scar, Pt, virtually perfect; (just the slightest trace of very light wear, and a slightly weak impression in the shoulder as is typical of this mold). GV-1. Comparatively scarce. A very crude example with excellent character, scarce and attractive 'icy-blue' coloration.

Est.: \$500 - \$800 • Min. bid: \$250



Lot 28

MASONIC ARCH – EAGLE / "IP" Historical Flask, Keene Marlboro Street Glassworks, Keene, NH, 1815 – 1830. Clear, medium blue green, sheared mouth – blowpipe pontil scar, Pt, near mint; (some high point wear, primarily on the reverse, and a tiny little pinhead flake on one of the side ribs, otherwise excellent). GIV-1. A bright, clean, sparkling example with excellent clarity, strong impression.

Est.: \$300 - \$500 • Min. bid: \$150



Lot 32

"SUCCESS TO THE RAILROAD" / HORSE PULLING CART – (Reverse same) Historical Flask, Keene Marlboro Street Glassworks, Keene, NH, 1830 – 1842. Medium-to-deep olive green, sheared mouth – heavy blowpipe pontil scar, Pt, near mint; (just a little pinhead bit of roughness on the inner edge of the lip, and a trace of typical light high point wear, otherwise virtually perfect). GV-3. A really nice example, rich color, good strength of embossing, excellent condition.

Est.: \$300 - \$500 • Min. bid: \$150



Lot 33

“SUCCESS TO THE RAILROAD” / HORSE PULLING CART – (Reverse same) **Historical Flask**, probably Mt. Vernon Glass Works, Vernon, NY, 1830 – 1846. Medium-to-deep yellowish olive, sheared, tooled, slightly flared mouth – blowpipe pontil scar, Pt; (a little exterior wear including a couple of open bubbles; a 1/8” open bubble on one of the medial ribs, and a 3/8” open bubble on one of the rails beneath the cart wheel). GV-5. Provenance: Ex. Fred Weck collection.

Est.: \$300 - \$500 • Min. bid: \$150



Lot 37

SUNBURST FLASK, probably Baltimore Glass Works, Baltimore, MD, 1820 – 1830. Yellowish olive shading to a rich, very deep olive in the lower half, sheared mouth – pontil scar, Pt; (a 3/4” thin hairline crack near the mold seam on one of the corrugated sides, and just a slight trace of typical light wear, otherwise virtually perfect). GVIII-26. A comparatively scarce and desirable mold in a very rare color. The noted little hairline fissure is well hidden and not easy to find.

Est.: \$800 - \$1,200 • Min. bid: \$400



Lot 34

HORSE PULLING CART – EAGLE Historical Flask, Coventry Glass Works, Coventry, CT, 1830 – 1848. Medium olive amber shading to a deep olive amber towards the base, sheared mouth – blowpipe pontil scar, Pt; (just a touch of minor light wear including a couple of 1/8” flakes on the sheared mouth, otherwise excellent). GV-9. A classic early New England railroad flask, very attractive with the high-relief eagle, and a lot of flask for the money!

Est.: \$250 - \$400 • Min. bid: \$130



Lot 38

SCROLL FLASK, Midwest, 1845 – 1860. Light-to-medium moonstone with a lavender tone, sheared mouth – blowpipe pontil scar, Qt, perfect. GIX-2. An attractive, desirable and very rare color for a Scroll (or any flask), one that will certainly stand out on a shelf. In addition, nice pebbly glass, fantastic condition!

Est.: \$1,000 - \$1,500 • Min. bid: \$500



Lot 35

“KEEN” – “P&W” SUNBURST FLASK, Keene Marlboro Street Glassworks, Keene, NH, 1815 – 1830. Clear, bright olive green, sheared mouth – blowpipe pontil scar, 1/2 Pt; (a little high point wear, primarily on the KEEN oval, as is often the case, otherwise virtually perfect). GVIII-9. A very attractive example, nice ‘seedy’ glass, excellent clarity through the midsection. Provenance: Ex. Charles B. Gardner collection.

Est.: \$500 - \$800 • Min. bid: \$250



Lot 39

SCROLL FLASK, Midwest, 1845 – 1860. Light-to-medium yellowish olive amber, sheared mouth – blowpipe pontil scar, Pt; (a long bubble, approximately 3”, wraps around the shoulder with a 1” opening in the cover glass; a 1/8” flake at edge of base, and some interior haziness and residue, likely washable). GIX-11. A very scarce color. With a sudsy bath and a little TLC, the flask would likely brighten up and present very nicely. Provenance: Ex. Earl Dambach collection.

Est.: \$500 - \$800 • Min. bid: \$250



Lot 36

SUNBURST FLASK, probably Baltimore Glass Works, Baltimore, MD, 1820 – 1830. Greenish aquamarine, sheared and outward rolled mouth – pontil scar, Pt, near mint; (a couple of small areas – not terribly noticeable, of light exterior wear along the outer edges of the rays, otherwise perfect). GVIII-26. A bright, clean example, scarce and attractive with the outward rolled mouth.

Est.: \$500 - \$800 • Min. bid: \$250



Lot 40

SCROLL FLASK, Midwest, 1845 – 1860. Rich, medium-to-deep amber, sheared mouth with an applied ring collar – heavy red iron pontil scar, Pt, near mint; (just a trace of light high point wear and a couple of small, onionskin-thin open surface bubbles, otherwise perfect). GIX-11. Nice with the applied ring collar and heavy red iron pontil scar.

st.: \$400 - \$600 • Min. bid: \$200



Lot 41

SCROLL FLASK, probably John Robinson & Son Glass Manufacturers, Pittsburgh, PA, 1830 – 1834. Beautiful ice blue coloration, sheared mouth – blowpipe pontil scar, ½ Pt; (a ½" hard-to-see faint hairline fissure in the shoulder, otherwise virtually perfect). GIX-41. A scarce early scroll, and very pretty little flask. Provenance: Ex. Jay and Maxine Jacobs collection, Maxine's flask (See NCH Auction 210, Lot 17); Ex. Herman Nevil, Charles B. Gardner collections.

Est.: \$2,000 - \$4,000 • Min. bid: \$1,000



Lot 42

SCROLL FLASK, Midwest, probably an early Pittsburgh district glasshouse, 1835 – 1845. Aquamarine, corseted scroll form, sheared mouth – blowpipe pontil scar, Qt, attic mint! GIX-46. A very eye-appealing and ornate early scroll flask. The mold is rated as "Scarce", but in our opinion, should probably be rated as "Very scarce". This Qt. 46 mold is certainly a bit tougher to find than the Pt. 45 mold which is also rated as "Scarce". A clean example, fantastic condition.

Est.: \$500 - \$800 • Min. bid: \$250



Lot 43

Lot of (2) Pike's Peak Historical Flasks, probably Pittsburgh glasshouses, 1859 – 1865. 1st Ex: **PROSPECTOR – EAGLE**, aquamarine, applied collar with flat band – smooth base, Pt. 2nd Ex: **"FOR PIKE'S PEAK" / PROSPECTOR – EAGLE**, aquamarine, sheared mouth – iron pontil scar, ½ Pt; (both examples virtually attic mint with only the slightest trace of faint wear). GXI-17 & GXI-33 respectively. The GXI-17 is noted as "Scarce". Gary Enters collection.

Est.: \$250 - \$400 • Min. bid: \$130



Lot 44

"SPRING GARDEN" / ANCHOR / "GLASSWORKS" – LOG CABIN Historical Flask, Spring Garden Glass Works, Baltimore, MD, 1851 – 1856. Bright yellowish golden amber, almost a yellowish honey below the shoulders, applied round collar with bevel – smooth base, ½ Pt, very near mint; (just a touch of very faint interior residue or light haze near the shoulder that may wash out, and a slightly weak impression near shoulder). GXIII-61. Ex. James Chebalo collection.

Est.: \$1,200 - \$1,800 • Min. bid: \$600



Lot 45

"SPRING GARDEN" / ANCHOR / "GLASSWORKS" – LOG CABIN Historical Flask, Baltimore, MD, 1851 – 1856. Light-to-medium citron green, applied round collar with bevel – smooth base, ½ Pt, virtually perfect; (tiny area of very minor roughness on the inside edge of the lip, almost certainly in-manufacture, and a tiny pinprick speck of roughness at edge of base). GXIII-61. Beautiful, very rare and unlisted color for this mold, finest possible mold impression. Ex. James Chebalo collection.

Est.: \$1,800 - \$3,600 • Min. bid: \$900



Lot 46

"TRAVELER'S" / (STAR) / "COMPANION" – "LANCASTER" / (STAR) / "ERIE. CO., N.Y." Historical Flask, Lancaster Glass Works, Lancaster, NY, 1860 – 1870. Light-to-medium blue green with a teal tone, applied round collar with bevel – smooth base, Pt, virtually perfect; (a tiny pinhead bit of minor roughness on the edge of the collar, otherwise attic mint). GXIV-5. A very attractive, eye-appealing and rare flask. Ex. Barry Hogan; Dr. Burton Spiller, Paul Richards collections.

Est.: \$800 - \$1,200 • Min. bid: \$400



Lot 47

Early Freeblown Chestnut Bottle, probably Eastern US, Mid-Atlantic region, 1760 – 1790. Yellowish olive, possibly with an amber tone, high-shouldered chestnut form, sheared mouth with a crudely applied string rim – blowpipe pontil scar, ht. 8 ½"; (some scattered light wear and minor scratches; a number of shallow open surface bubbles, and heavy dried interior content residue). A very crude, 'ungainly' to the point of attractiveness, bubbly, 'earthy' chestnut bottle.

Est.: \$600 - \$900 • Min. bid: \$300



Lot 48

Lot of (2), Freeblown Chestnut Flasks, New England, 1785 – 1820. Clear, light yellowish olive amber, almost a straw-amber with an olive tone, and light yellowish olive, both are chestnut form with applied ring collars – blowpipe pontil scarred bases, ht. 5 ½" each, both near perfect; (faint interior residue in 1st example, and just a slight trace of light wear on the 2nd example including a pinhead opening in the cover glass of a bubble). A very nice pair that complement one another nicely.

Est.: \$400 - \$600 • Min. bid: \$200



Lot 49

Blown Three Mold Decanter, Keene Marlboro Street Glassworks, Keene, NH, 1820 – 1835. Medium olive amber, geometric sunburst and diamond pattern, sheared and tooled mouth – blowpipe pontil scar, Pt; (some light washable interior residue, a tiny pinhead flake on one of the diamond points, and a 5/8" partially open bubble in the neck with some residue, otherwise excellent). GIII-16. A classic early colored 3-Mold Decanter, and a lot of bottle for the money.

Est.: \$400 - \$600 • Min. bid: \$200



Lot 50

Miniature Blown Three Mold Decanter, Boston and Sandwich Glass Works, 1825 – 1840. Colorless, geometric sunburst and diamond pattern, globular body with long neck and tooled flanged collar – ringed base with glass-tipped pontil scar, ht. 2 5/8", virtually perfect; (just a tiny pinprick bit of roughness on the edge of the collar noted for completeness, difficult to see). GIII-12. Scarce. Per McKearin, fragments of toy decanters from same mold were found at Sandwich.

Est.: \$200 - \$400 • Min. bid: \$100



Lot 51

Blown Three Mold Toilet Water Bottle, probably Boston and Sandwich Glass Works, Sandwich, MA, 1825 – 1840. Medium-to-deep amethyst coloration, geometric pattern with vertical ribbing below large molded neck ring, sheared, tooled, inward rolled mouth – rayed base with glass tipped pontil scar, ht. 6", near mint; (just a bit of typical light wear and an onionskin-thin 1/4" open bubble on one of the ribs, otherwise perfect). GI-7, Type 2. A scarce, very pretty color for this mold.

Est.: \$300 - \$500 • Min. bid: \$150



Lot 52

Early Pinwheel Scent Bottle, America, probably South Boston, or possibly Dyottville Glass Works, Philadelphia, 1820 – 1835. Aquamarine, flattened circular form with corrugated edges, pinwheel design with large center bead, sheared, tooled, and inward rolled mouth – blowpipe pontil scar, ht. 2 1/8", near mint; (tiny bit of minor roughness on inside edge of lip). McK, plate 241, #18; MW, plate 104, #3. A very attractive, scarce little scent bottle.

Est.: \$175 - \$350 • Min. bid: \$90



Lot 53

Paneled Cologne-Type Bottle (with virtually complete, original label), a South Boston glasshouse, possibly Boston and Sandwich Glass Works, 1850 – 1860. Aquamarine, 8-panel corseted rectangular form, tooled and inward rolled mouth – blowpipe pontil scar, ht. 4"; (the bottle is perfect; original fancy label 99% complete and near perfect). See, *The Glass Industry in South Boston*, Kaiser, #168; also: B/K #5200. Label reads, "PEKIN / HAIR / OIL". Provenance: Ralph Finch collection.

Est.: \$250 - \$450 • Min. bid: \$130



Lot 54

Figural Monument Cologne (with more than 95% complete, original label), probably Boston and Sandwich Glass Works, Sandwich, MA, 1860 – 1880. Deep plum amethyst, in the form of the Bunker Hill Monument, sheared, tooled ring collar – smooth base, ht. 6 1/2"; (bottle is perfect, original label darkened a bit but completely legible). Similar to MW, plate 114, #3. Label reads, "Cologne / Water" / (Roses) / "by / D. MITCHELL, / NEW YORK". Scarce color, rare with original label.

Est.: \$400 - \$600 • Min. bid: \$200



Lot 55

Large, Figural Monument Cologne, probably Boston and Sandwich Glass Works, Sandwich, MA, 1860 – 1880. Deep plum amethyst, in the form of the Bunker Hill Monument, sheared, tooled ring collar – smooth base, ht. 9 3/4"; (two, likely in-manufacture, sliver-type chips approximately 7/8", from below the collar on the neck, otherwise attic mint). A rare and desirable size for an amethyst monument cologne. Provenance: Ex. Dr. Gary and Arlette Johnson collection.

Est.: \$400 - \$600 • Min. bid: \$200



Lot 56

Fancy, Freeblown Figural Bellows Whimsey Bottle, England or possibly America, 1820 – 1850. Medium-to-deep emerald green with opaque white threads combed throughout the body, colorless applied ribbons along each corner, colorless threading on the neck, applied button on one side, applied leaf decoration on reverse, sheared mouth with applied string rim – applied rectangular feet, ht. 7 5/8"; (a bit of missing threading on neck, otherwise virtually perfect). See MW, plate 50, #1.

Est.: \$250 - \$450 • Min. bid: \$130



Lot 57

Lot of (2), Freeblown Bowls, probably Continental, possibly America, 1840 – 1870.

1st Ex: Medium grass green, cylindrical with sides flaring outward to a sheared and outward folded rim – blowpipe pontil scar, ht. 2 7/8", rim dia.

7 1/8". **2nd Ex:** Medium cobalt blue, cylindrical with slightly flared sides, sheared and outward folded rim – sand type pontil scar, ht. 2 1/2", rim dia. 6 5/8"; (1st Ex. is perfect; 2nd Ex. has a little usage wear and a few shallow chips, 3/8" or less, on the folded rim).

Est.: \$300 - \$500 • Min. bid: \$150



Lot 61

"FARLEYS / INK", an early Stoddard, NH glasshouse, 1842 – 1855. Medium olive amber, octagonal with domed shoulders, sheared mouth – blowpipe pontil scar, ht. 1 3/4", attic mint! C #526; Faulkner, pgs. 63-64. A beautiful example of this classic early Stoddard inkwell, good color, nice texture to the glass, virtually no wear.

Est.: \$400 - \$600 • Min. bid: \$200



Lot 58

Pair of Early Oil Lamps, probably Boston and Sandwich Glass Works, 1828 – 1840. Both are colorless with blown globular fonts and brass collars. Fonts attached to fancy pressed glass monument bases with large ringed, or wafer-type knops. Pressed monument bases with a basket of fruit on each flat panel, and a lion's head on each corner, ht. 7 1/2"; (some chipping and roughness on both bases, also some chipping to several corners below lion's heads). See AP, pg. 336.

Est.: \$250 - \$450 • Min. bid: \$130



Lot 62

Lot of (2) Early Ink Bottles, America, 1835 – 1865. **1st Ex:** "PATTERSON'S / EXCELSIOR / INK", aquamarine, octagonal, applied ring-type collar – early hinge mold smooth base, ht. 2 3/8", perfect. **2nd Ex:** Label-only, "SUPERIOR / BLACK INK, / SOLD BY / A. F. Adie, Druggist, / 23 MARKET-STREET, PROVIDENCE", aquamarine, freeblown, cylindrical, sheared, tooled, thin flanged lip – blowpipe pontil scar, ht. 3 1/4", perfect. Both inks are rare. Fred Swiechowicz collection.

Est.: \$300 - \$500 • Min. bid: \$150



Lot 59

Blown Three Mold Inkwell, probably Keene Marlboro Street Glassworks, Keene, NH, 1820 – 1840. Colorless, cylindrical, vertical ribbed and diamond geometric pattern, disk-type mouth – petal-type base with blowpipe pontil scar, ht. 1 5/8", virtually attic mint; (just some very faint interior residue or haziness, barely noticeable, otherwise perfect). GII-18. A very rare and desirable 'color' for a blown three mold ink. There are 50, or more, olive examples for every colorless example.

Est.: \$400 - \$600 • Min. bid: \$200



Lot 63

WILLIAM E. COVILL JR. Mechanical Pencil & Umbrella Ink Lot. Twist-type mechanical pencil used by the author while drafting the manuscript for his landmark book, Ink bottles and inkwells, c. 1971. Pencil is engraved in gold on the barrel: **WILLIAM E. COVILL JR.** Also included in the lot: Umbrella Ink, 1840 - 1860, clear light green, 8-sided, sheared and inward rolled mouth – blowpipe pontil scar, ht. 2 3/8", attic mint. A nice little ink and a great piece of history to accompany it.

Est.: \$120 - \$240 • Min. bid: \$60



Lot 60

Lot of (2), Blown Three Mold Geometric Inkwells, probably Kensington Glass Works, Philadelphia, and Keene Marlboro Street Glassworks, Keene, NH, 1820 – 1842. Medium-to-deep amber, and olive amber, both are cylindrical with disk-type mouths – plain bases with blowpipe pontil scars, ht. 1 5/8" and 1 1/2", both are attic mint! GII-15 and GIII-29. A great pair of early geometric inks. Both are fantastic examples, the GII-15 Kensington example is a scarce mold.

Est.: \$300 - \$500 • Min. bid: \$150



Lot 64

"HARRISON'S / COLUMBIAN / INK", America, 1847 – 1860. Rich cobalt blue, cylindrical, sheared and inward rolled mouth – blowpipe pontil scar, ht. 2"; (professionally cleaned to original luster and near mint condition). C #194. Nice deep color, strong embossing.

Est.: \$400 - \$600 • Min. bid: \$200



Lot 65

"HARRISON'S / COLUMBIAN / INK"
Master Ink, 1847 – 1860. Light-to-medium bluish green with a teal tone, almost a teal green coloration, cylindrical, applied wide flanged mouth – blowpipe pontil scar, ht. 4 5/8"; (professionally cleaned to original luster with just a touch of minor light wear remaining; the embossing is a bit weak but still very legible, and some in-manufacture crazing lines in the neck as is common with many of the Harrison master inks). A beautiful and very scarce color.

Est.: \$400 - \$600 • Min. bid: \$200



Lot 69

Early, Dip-Mold Snuff Jar, Continental, probably Dutch or German, 1820 – 1840. Yellowish olive coloration, rectangular with beveled corners, dip mold, slightly flared neck with sheared mouth – blowpipe pontil scar, ht. 6 3/4", near mint; (just a very slight trace of typical minor wear). Excellent overall condition, and a little larger size than typically encountered.

Est.: \$250 - \$450 • Min. bid: \$130



Lot 66

"HARRISON'S / COLUMBIAN / INK"
– **"PATENT"** (on shoulder) **Master Ink**, 1847 – 1860. Aquamarine, 12-sided, applied wide flanged mouth – blowpipe pontil scar, ht. 4 3/4", virtually attic mint; (just a trace of very faint haziness below the shoulders, otherwise perfect). Faulkner, p.70; Covill #538. Strong embossing, nice character, scarce middle size master.

Est.: \$175 - \$275 • Min. bid: \$90



Lot 70

Large size, "APPLEBY & HELME'S / RAILROAD / MILLS SNUFF – 133 WATER ST / NEW YORK", 1880 – 1890. Medium amber, square with beveled corners, sheared, tooled and flared mouth – smooth base, ht. 5 7/8", near perfect; (just a slight trace of very minor wear including a couple of onionskin-thin open surface bubbles, otherwise virtually attic mint). A scarce snuff in the small size, but extremely rare in this large, almost 6" size.

Est.: \$200 - \$400 • Min. bid: \$100



Lot 67

"HARRISON'S / COLUMBIAN / INK" **Master Ink**, 1847 – 1860. Aqua, 12-sided, applied wide flanged mouth – blowpipe pontil scar, ht. 9", 1/2 Gal.; (professionally cleaned to original luster and otherwise near mint condition; some in-manufacture crazing lines in the neck mentioned for completeness which are typical on these Harrison's masters). Very rare size, one of the most difficult of all the Harrison's masters to acquire. Heavily whittled wavy glass, overall excellent condition.

Est.: \$1,200 - \$2,400 • Min. bid: \$600



Lot 71

"IRA PAINE'S FILLED BALL PAT. OCT. 23, 1877." **Target Ball**, America, 1877 – 1900. Honey amber shading to a deeper amber in the neck and base, 3-piece mold, rough sheared mouth, dia. 2 5/8", perfect; (note; an old cork remains in the neck, and there is some light washable interior residue). Ira Paine was known as the "Great Chevalier of Shooting". Paine's ads advertised the balls as "the only substitute ever invented for a living bird". A great example, nice color, strong embossing!

Est.: \$300 - \$500 • Min. bid: \$150



Lot 68

"HARRISON'S / COLUMBIAN / INK" **Master Ink**, 1847 – 1860. Aqua, 12-sided, crudely applied wide flanged mouth – solid glass tipped pontil scar, ht. 11 1/2", 1 Gal.; (lightly cleaned to original luster; just a trace of very faint interior milkiness below the shoulders, barely noticeable, otherwise excellent). Covill, #762; Faulkner, pgs. 68-70. A rare and very desirable master ink with crude, whittled, glass. The largest known size of all the Harrison's inks. This one will stand out on any shelf!

Est.: \$1,000 - \$1,500 • Min. bid: \$500



Lot 72

"G. A. BASTMAN – STOCKHOLM" **Target Ball**, Sweden, 1880 – 1900. Rich, vibrant yellow coloration, quilted diamond pattern above and below wide center band, 2-piece mold, rough sheared mouth, dia. 2 5/8", perfect. Extremely rare, believed to be one of only a half-dozen, or so, examples known. Note; the example in the Finch Collection (Lot 578), was much deeper in color. A very pretty example! G.A. Bastman was a gun maker in Stockholm, in the 1880s.

Est.: \$500 - \$800 • Min. bid: \$250



Lot 73

“HERM. HEDSTROM – HELSING-BORG” Target Ball, Sweden, 1875 – 1900. Light yellowish honey, quilted diamond pattern above and below wide center band, 2-piece mold, rough sheared mouth, dia. 2 5/8”, perfect. Another exceedingly rare target ball that is rarely offered for sale. This is a ball that eluded Ralph Finch as he was never able to acquire one for his comprehensive collection. Helsingborg is one of the oldest cities in Sweden. A beautiful target ball with large lettering.

Est.: \$600 - \$900 • Min. bid: \$300



Lot 74

“MAURITZ – WIDFORS” Target Ball, Sweden, 1875 – 1900. Bright honey amber, 2-piece mold, rough sheared mouth, dia. 2 5/8”, perfect. A very rare target ball. The last example that we sold was more than five years ago in the Ralph Finch collection, Part 6, Lot 788. There are believed to be only a dozen or so examples known. In addition to the nice light color, a number of small bubbles are swirled through the glass.

Est.: \$400 - \$600 • Min. bid: \$200



Lot 75

“MAURITZ – WIDFORS” Target Ball, Sweden, 1875 – 1900. Lemon yellow with an ever-so-slight hint of an olive tone, 2-piece mold, rough sheared mouth, dia. 2 5/8”, perfect. A gorgeous target ball, rare mold, extremely rare color. The Finch collection did not have one in this color. It is ‘eye-candy’ for the collector and one that will stand out on any shelf.

Est.: \$500 - \$800 • Min. bid: \$250



Lot 76

“N.B. GLASS WORKS PERTH – N.B. GLASS WORKS PERTH” Target Ball, England, 1875 – 1900. Beautiful, medium sapphire blue coloration, quilted diamond pattern above and below center band, 3-piece mold, rough sheared mouth, dia. 2 5/8”, perfect. Scarce. Another great example having excellent clarity, color, and condition with crisp, strong embossing (which tends to be quite weak on these balls). Note; an old wire hanger and wooden peg remain inside the ball.

Est.: \$200 - \$400 • Min. bid: \$100



Lot 77

“SOPHIENHUTTE IN – ILMENAU (THUR)” Target Ball, Germany, 1875 – 1900. Deep, vivid cobalt blue, quilted diamond pattern above and below center band, 2-piece mold, rough sheared mouth, dia. 2 5/8”, perfect. We sold an amber example in Auction #25, March, 2020. A very scarce-to-rare target ball, especially in this deep cobalt coloration. Blown at the Sophienhutte Glassworks, in the town of Limenau, in the district of Thuringian, an area famous for glass, porcelain, and gun making.

Est.: \$500 - \$800 • Min. bid: \$250



Lot 78

“HAYWARD’S / HAND / FIRE / GRENADE – PATENTED / AUG / 8 / 1871 – S.F. HAYWARD / 407 / BROADWAY / N.Y.”, America, 1875 – 1895. Rich medium-to-deep pink amethyst coloration, bulbous body with four indented diamond-shaped panels, tooled ring collar – “2” (on smooth base), ht. 6”, perfect! Gorgeous, very rare color, one that will stand out on any shelf. In addition, outstanding character with plenty of tiny bubbles swirled through the glass. A top example.

Est.: \$1,000 - \$1,500 • Min. bid: \$500



Lot 79

Lot of (2) Early Milk Jugs, 1898 – 1905. 1st Ex: **“A.G.S. & CO. / 4 / PATENTED / APRIL 5, 1898”** (on base). 2nd Ex: **“A.G. SMALLEY & CO / PATENT / APRIL 5, 1898 / BOSTON, MASS.”** (on base). Both are colorless, cylindrical with original metal strap handles banded at collar and shoulder, tooled round collar – smooth base, Qt. and 1 Gal. respectively, both are virtually perfect; (just a bit of minor surface corrosion to the metal). Provenance: Fred Swiechowicz collection.

st.: \$200 - \$400 • Min. bid: \$100



Lot 80

Rare Size “A.G. SMALLEY & CO. / PATENTED APRIL 5, 1898. / 1 / BOSTON & / NEW YORK” (on base) **Early Milk Jug**, 1898 – 1905. Colorless, cylindrical with original metal strap handle banded at collar and shoulder, tooled round collar – smooth base, ht. 13”, 2 Gal., near mint; (just a trace of very light wear, and a bit of minor surface corrosion to the metal, otherwise perfect). A seldom seen, very rare 2-Gal. size. Provenance: Fred Swiechowicz collection.

Est.: \$400 - \$600 • Min. bid: \$200



Lot 81

"4. LB / MASON'S / IMPROVED / BUTTER / JAR", 1870 – 1880. Aqua, threaded neck, ground lip, **"MASON'S IMPROVED / MAY 10 1870"** (on original glass lid), zinc screw band – smooth base, ht. 9", near mint; (a tiny 3/16" cooling line from a potstone on the inner surface of the straddle lip; a tiny potstone in the body with a 1/16" line, barely visible without a loop, a partially open interior bubble, and a narrow band of faint wear on reverse). RB #1686. A scarce jar.

Est.: \$400 - \$600 • Min. bid: \$200



Lot 82

"MASON'S / CFJCo / IMPROVED / BUTTER JAR", 1870 – 1880. Aquamarine, threaded neck with ground lip, **"MASON'S IMPROVED / MAY 10 1870"** (on original glass lid), zinc screw band – **"H273"** (on smooth base), tall 3 Qt. size, ht. 12 5/8", near perfect; (zinc band is a little pitted, and a 3/16" flake, almost certainly in-manufacture, on the inner edge of the ground lip). RB #1688. A great looking, very scarce jar!

Est.: \$400 - \$600 • Min. bid: \$200



Lot 83

"THE ARISTOCRATIC / CIGAR / A 10¢ CIGAR / FOR 5¢ / MANUFACTURED BY / FACTORY No 3492 / 9TH DISTRICT OF PA / 25", 1890 – 1910. Beautiful, light honey yellow coloration, cylindrical, threaded neck with factory ground mouth, original threaded metal closure – smooth base, ht. 5 1/4"; (the jar is attic mint; original closure has a little minor discoloration and some light scratches, otherwise excellent). A scarce jar, great name, heavily embossed.

Est.: \$250 - \$450 • Min. bid: \$130



Lot 84

"THE GEM" Fruit Jar, possibly Hero Glass Works, Philadelphia, PA, 1868 – 1880. Beautiful, light honey coloration, cylindrical, ground lip, threaded neck, original glass insert and metal screw band – **"PAT DEC 17 61 REIS SEP 1 68. / PATD NOV 26 1867 / 225"** (on smooth base), 1/2 Gal., both the jar and insert are perfect. RB #1068. Gorgeous color, very rare in amber, outstanding condition. Provenance: Fred Swiechowicz collection.

Est.: \$5,000 - \$8,000 • Min. bid: \$2,500



Lot 85

"GILBERTS / IMPROVED / (STAR) / JAR", 1883 – 1890. Aquamarine, cylindrical, ground lip, wire clamp extending from groove in base, vertically around jar, **"GILBERTS IMPROVED JAR CAP JAMESTOWN, N.Y. / 4 / PAT JULY 31. 83 / OCT. 13. / 1885"** (on glass lid) – smooth base, Qt; (a little faint exterior haziness, not terribly noticeable or distracting, and a bit on the interior near the base, but no other form of damage and otherwise excellent). RB #1108.

Est.: \$150 - \$250 • Min. bid: \$80



Lot 86

"BALTIMORE / GLASS WORKS" Fruit Jar, Baltimore, MD, 1860 – 1870. Aquamarine, cylindrical, large applied stopple seal type mouth – smooth base, Qt, ht. 7 5/8"; (a shallow, 3/16", paper-thin flake on the outside edge of the collar, and a little very light, patchy interior haziness, otherwise excellent). RB #399. A very scarce glassworks embossed jar, nicely whittled.

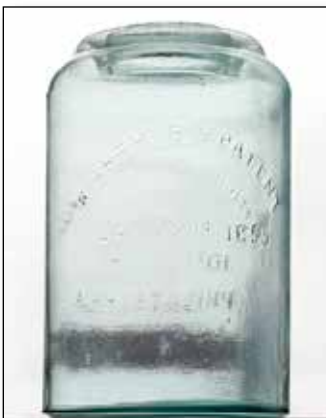
Est.: \$400 - \$600 • Min. bid: \$200



Lot 87

"THE / PENN" Fruit Jar, Beck, Phillips & Company, Pittsburgh, PA, 1866 – 1871. Bright aquamarine, cylindrical, applied groove ring wax seal mouth – **"BECK PHILLIPS & Co / PITTS PA / C"** (on smooth base), Qt, near mint; (a 1/8" flake on outer ring of wax seal collar, otherwise perfect). RB #2327. Scarce. A bright, clean example.

Est.: \$120 - \$240 • Min. bid: \$60



Lot 88

"ARTHUR BURNHAM & GILROY / 10th & GEO. Sts. / PHILADELPHIA – R. ARTHUR'S PATENT / JAN. 2nd 1855", 1856 – 1861. Aquamarine, ground mouth with depressed wax seal groove – smooth base, 1/2 Gal.; (some light haziness, primarily on the interior with a bit on the outside as well; a little minor flaking on rim, mostly in-manufacture, and the embossing of "Burnham & Gilroy" and "Geo. Sts" is softened and not easy to read). RB #96. Very rare. Fred Swiechowicz collection.

Est.: \$1,500 - \$2,500 • Min. bid: \$800



Lot 89

"POTTER & / BODINE'S / AIR - TIGHT / FRUIT JAR. / PHILADA - PATENTED / APRIL 13th 1858", probably Bridgeton Glass Works, Bridgeton, NJ, 1858 – 1863. Aquamarine, cylindrical, applied groove ring wax seal mouth – smooth base, ht. 7", Qt; (a 1/8" flake and a 3/8" chip on the inside groove ring of the mouth, and a 3/4" narrow band of very faint interior milkiness, barely noticeable, otherwise perfect). A beautiful example, very strong embossing! Fred Swiechowicz collection.

Est.: \$800 - \$1,200 • Min. bid: \$400



Lot 90

"THE BEST / JAR / PAT PEND" (on glass stopper) **Fruit Jar**, 1870 – 1880. Aquamarine, cylindrical 2-pc. mold with sides tapering slightly inward from shoulders to the base, applied ring collar – smooth base, ht. 8 1/2", Qt, virtually perfect; (a couple of small open interior bubbles). RB #463. Note: a thin black thread of glass, or striation, is swirled through the stopper. Also, an old wax string remains in the groove of the stopper. Provenance: Fred Swiechowicz collection.

Est.: \$400 - \$800 • Min. bid: \$200



Lot 91

Petal-Type Preserve Jar, Willington Glass Works, CT, 1860 – 1872. Medium emerald coloration, cylindrical with 'petal-type' shoulders, applied large double ring collar – smooth base, ht. 11 1/8", near mint; (an almost certainly in-manufacture cooling line, approximately 5/8", across a small 'dollop' of extra glass in the shoulder, otherwise attic mint). A beautiful and very rare color for a 'Willington blueberry jar'. In addition, great eye-appeal with crude, whittled, wavy glass.

Est.: \$800 - \$1,200 • Min. bid: \$400



Lot 92

"SKILTON FOOTE & CO'S / BUNKER HILL PICKLES / TRADE MARK" (Motif of Monument, Fence & Barrels) **Figural Lighthouse**, 1885 – 1895. Aquamarine, in the form of the Cape May, NJ lighthouse – and virtually identical to the Seaworth Bitters mold from Cape May, tooled sloping collar – smooth base, ht. 11 1/8"; (professionally cleaned with a couple of small spots of minor wear remaining, otherwise excellent). Zumwalt, p.376. A very scarce figural peppersauce.

Est.: \$400 - \$600 • Min. bid: \$200



Lot 93

Figural Cannon Whiskey, America, 1865 – 1875. Medium-to-deep yellowish olive amber, in the form of a cannon barrel, applied blob collar – smooth base, ht. 13 1/4", near mint; (a little scattered minor light wear, otherwise perfect). Beautiful color, whittled, overall excellent condition. Very similar in form to the "J.T. Gayen / Altona" figural cannon, and almost certainly marketed following the Civil War to appeal to soldiers and their families. A very scarce whiskey.

Est.: \$300 - \$500 • Min. bid: \$150



Lot 94

"DURKIN" / WHOLESALE AND RETAIL / WINES AND LIQUORS / MILL AND SPRAGUE ST. / SPOKANE, WASH." **Giant Wine Bottle**, America, 1898 – 1907. Rich medium amber with an orange tone, large cone or 'mega-phone' form with eight flat panels around base, tooled collar with flat band – smooth base, ht. 13 1/8"; (a little minor exterior wear, and a little light interior haziness in the base, otherwise excellent). A big, impressive bottle. Gary and Betty Beatty collection.

Est.: \$300 - \$500 • Min. bid: \$150



Lot 95

Figural Octopus and Gold Dollar Whiskey Nip, America, 1901 – 1903. Milkglass with original red and gold paint, figural octopus with tentacles encircling a circa 1900 gold dollar, threaded and factory ground mouth with original pewter cap – smooth base, ht. 4 1/2"; (the bottle is perfect, a bit of paint loss on the octopus, original gold paint on the coin is virtually complete). A very scarce and historical whiskey nip, certainly very rare with original paint. Fred Swiechowicz collection.

Est.: \$500 - \$800 • Min. bid: \$250



Lot 96

Seated Bear Figural Spirits Bottle, probably Continental, 1885 – 1900. Rich, yellowish olive amber, figural bear with shield seated on octagonal pedestal, tooled square collar – smooth base, ht. 9 5/8", near perfect; (some minor roughness along back edge of lip, almost certainly in-manufacture, and some light interior washable residue). A very attractive figural, good detail, nice color. Very rare. This is the first example of this mold that we have seen. Gary and Betty Beatty collection.

Est.: \$200 - \$400 • Min. bid: \$100



Lot 97

"Old Rye" Incised Figural Stoneware Pig, 1870 – 1885. Dark brown Albany-type slip glaze, nicely detailed ears, snout and tail, overall length 7 $\frac{3}{4}$ ", near mint; (a small pockmark, or shallow flake in the glaze, approximately 1" above the right front leg,

possibly in-manufacture, otherwise perfect). Very scarce, especially in this fine condition. Provenance: Fred Swiechowicz collection.

Est.: \$400 - \$800 • Min. bid: \$200



Lot 101

"EYE OPENER" (on applied ribbon seal) Spirits Bottle, Continental or possibly America, 1840 – 1860. Rich, deep reddish amber with some puce tones, particularly through the neck, dip mold, applied double ring collar – base appears to have a very light sand type pontil scar, ht. 9 $\frac{1}{2}$ "; (a bit of scattered minor wear and light scratches, otherwise near perfect). A very scarce-to-rare applied seal whiskey. This one appears to be an undug example.

Est.: \$400 - \$600 • Min. bid: \$200



Lot 98

"B G W" Black Glass Bottle, probably Baltimore Glass Works, 1800 – 1810. Medium-to-deep yellowish olive with a slight amber tone, squatty porter-style cylinder, dip-mold, applied heavy string rim – sand type pontil scar, ht. 9", near mint; (an attic-type bottle with a couple of light scratches and expected minor usage wear). Rare. Believed to be one of the earliest marked bottles blown at the Baltimore Glass Works at Federal Hill. Provenance: Fred Swiechowicz collection.

Est.: \$400 - \$600 • Min. bid: \$200



Lot 102

"WHITNEY'S GLASS WORKS" (on base) – "PATENT" (on shoulder), Whiskey Cylinder, Glassboro, NJ, 1875 – 1885. Beautiful sky blue, almost a turquoise coloration, 2-pc. mold whiskey cylinder, applied sloping collar with ring – smooth base, ht. 11"; (professionally cleaned with a little scattered light wear remaining; a shallow $\frac{1}{2}$ " sliver flake on edge of base). This is likely a very rare mold (embossed "WHITNEY'S" vs. WHITNEY), and in an extremely rare, possibly unique color!

Est.: \$400 - \$800 • Min. bid: \$200



Lot 99

"NEW ENG. GLASS BOTTLE CO" (on base), Black Glass Bottle, New England Glass Bottle Co, 1827 – 1845. Deep olive with a slight amber tone, squatty porter-style cylinder, 3-pc. mold, applied sloping collar with bevel – sand type pontil scar, ht. 8 $\frac{3}{4}$ ", near perfect; (just a slight trace of typical light wear, and a narrow band of light interior milkiness or residue below the shoulder). MW plate 45, #8; KW Fig. 147. A great 'attic-type' example. Fred Swiechowicz collection.

Est.: \$250 - \$450 • Min. bid: \$130



Lot 103

"CASPER'S WHISKEY / MADE BY HONEST / NORTH / CAROLINA PEOPLE", America, 1885 – 1900. Medium-to-deep cobalt blue, cylindrical with fluted shoulders, tooled sloping collar with ring – smooth base, ht. 11 $\frac{3}{4}$ ", near mint; (just a slight trace of minor wear including a little $\frac{1}{16}$ " flake on the back edge of the collar, and a touch of very light interior residue or haziness, otherwise excellent). Good deep color, strong embossing. A bottle collecting classic. Fred Swiechowicz collection.

Est.: \$400 - \$600 • Min. bid: \$200



Lot 100

"CONSTITUTION" Wine Bottle, America, 1835 – 1845. Medium-to-deep olive coloration, cylindrical, 3-pc. mold, applied sloping collar with bevel – sand type pontil scar, ht. 10 $\frac{7}{8}$ ", perfect. See AB&GC, May, 2016, for an article on the history of related Constitution bottles. A rare and historical bottle blown to contain wine imported to the U.S. that was shipped aboard the USS Constitution, nicknamed "Old Ironsides".

Est.: \$500 - \$800 • Min. bid: \$250



Lot 104

"A.M. BININGER & CO. / No.19 BROAD ST N.Y. – OLD LONDON DOCK – GIN", probably 1857 – 1863. Golden honey amber, square with beveled corners, applied sloping collar – smooth base, ht. 8", virtually perfect; (just the slightest trace of very faint wear, otherwise mint). BPK-11. A bright, clean, sparkling example with outstanding character. As noted in the Bininger book, the smaller size Old London Dock Gin bottles are much harder to find. Fred Swiechowicz collection.

Est.: \$200 - \$400 • Min. bid: \$100



Lot 105

"HEIDELBERG / BRANNTWEIN – A.M. BININGER & Co. – No. 338 BROADWAY, N.Y.", probably 1859 – 1861. Yellowish olive green, square with beveled corners, applied sloping collar – smooth base, ht. 9 3/4"; (a little overall light exterior 'bloom' or haziness, and a bit of scattered minor wear, otherwise excellent and no other form of damage). BPK-13. As noted in the Bininger book, the Branntwein bottles are very rare! Provenance: Fred Swiechowicz collection.

Est.: \$800 - \$1,200 • Min. bid: \$400



Lot 109

"A.M. BININGER & CO. / No. 19 BROAD ST / NEW - YORK" Applied Handle Whiskey, probably 1857 – 1863. Bright yellow olive green, cylindrical with conical shoulders, applied double ring collar – smooth base, ht. 7 7/8", perfect! BPK-31. A rare and very desirable color for a handled Bininger, excellent clarity, beautifully whittled, outstanding condition. Note; the handle is also attached on the reverse, which is scarce. A top-shelf example! Fred Swiechowicz collection.

Est.: \$3,000 - \$5,000 • Min. bid: \$1,500



Lot 106

"BININGER'S / OLD MONONGAHELA. – 1850 RESERVE. / DISTILLED IN 1848. – A.M. BININGER & CO. / 19 BROAD ST. N.Y.", probably 1857 – 1863. Medium olive, square with beveled corners, applied sloping collar – smooth base, ht. 9 5/8"; (some dried interior content residue that will likely wash out, and some roughness along the top of the lip including a couple of chips, approx. 3/16 and 1/8", otherwise attic mint). BPK-22. Fred Swiechowicz collection.

Est.: \$5,000 - \$8,000 • Min. bid: \$2,500



Lot 110

"OLD KENTUCKY / BOURBON / 1849 / RESERVE / DISTILLED IN 1848. / A.M. BININGER & Co. 338 BROADWAY, N.Y.", probably 1859 – 1861. Medium amber, barrel form, applied square collar – blowpipe pontil scar, ht. 8", attic mint. BPK-42. A great example of this classic Bininger barrel having almost no wear, and with a scarce square collar – most examples of this smaller size barrel have a ring-type collar. In addition, nice with the pontiled base (this mold also comes smooth base).

Est.: \$300 - \$500 • Min. bid: \$150



Lot 107

"A.M. BININGER & CO. / No. 19 BROAD ST / NEW - YORK" Applied Handle Whiskey, probably 1857 – 1863. Medium amber, cylindrical with conical shoulders, applied double ring collar – smooth base, ht. 7 3/4", attic mint. BPK-31. Note; an old cork remains in the neck and there is just a slight trace of light interior content residue. A very nice, solid example of a classic handled Bininger cylinder. Fred Swiechowicz collection.

Est.: \$300 - \$500 • Min. bid: \$150



Lot 111

"OLD SACHEM / BITTERS / AND / WIGWAM TONIC", 1860 – 1875. Bright, light yellowish honey coloration, barrel form, applied square collar – smooth base, ht. 9 1/4", attic mint! R/H #O46. A terrific example, beautiful light color, fantastic condition, one of the great classics in figural bitters. Provenance: Ex. Fran Mikalonis collection.

Est.: \$500 - \$800 • Min. bid: \$250



Lot 108

"A.M. BININGER & CO. / No. 19 BROAD ST / NEW - YORK" Applied Handle Whiskey, probably 1857 – 1863. Beautiful, yellowish honey amber, cylindrical with conical shoulders, applied double ring collar – smooth base, ht. 7 3/4", near perfect; (just the slightest trace of light wear, and a little very faint interior residue or haziness that may wash out). BPK-31. A nicely whittled, pretty example, in a lighter color than most. Provenance: Fred Swiechowicz collection.

Est.: \$400 - \$600 • Min. bid: \$200



Lot 112

"DR C.W. ROBACKS / STOMACH BITTERS / CINCINNATI. O", a Midwest glasshouse, 1870 – 1880. Gorgeous, light-to-medium yellow with some warmer honey tones towards the base and in the neck, barrel form, applied sloping collar – smooth base, ht. 9 1/4", near perfect; (just a slight trace of faint wear and interior residue including a tiny 3/16" scratch above the "A" in Stomach). R/H #R75. Absolutely beautiful color, one of the prettiest examples we've seen in a very long time.

Est.: \$400 - \$600 • Min. bid: \$200



Lot 113

"KEYSTONE / BITTERS", 1875 – 1885. Medium amber shading to a deep amber towards the base, barrel form, applied sloping collar – smooth base, ht. 10", near attic mint; (only the slightest trace of very light wear including a 3/16" flake on one of the rings, otherwise perfect). R/H #K36. A very scarce barrel bitters from Cleveland, Ohio. Provenance: Gary and Betty Beatty collection.

Est.: \$300 - \$500 • Min. bid: \$150



Lot 117

"BOURBON WHISKEY / BITTERS.", 1860 – 1880. Medium-to-deep straw-berry puce, barrel form, applied square collar – smooth base, ht. 9 1/8", near mint; (a very slight trace of typical light wear, otherwise perfect). R/H #B171. Beautiful rich color, nicely whittled, fantastic condition.

Est.: \$500 - \$800 • Min. bid: \$250



Lot 114

"GREELEY'S BOURBON / BITTERS", 1860 – 1875. Clear, medium olive-topaz coloration, barrel form, applied square collar – smooth base, ht. 9", virtually perfect; (just the slightest trace of faint wear including an onionskin-thin 1/4" open bubble on one of the rings, and a pinhead spot of roughness on the inside edge of the collar, almost certainly in-making). R/H #G101. A great example, scarce-to-rare color, nice bubbly glass, strong embossing, outstanding condition!

Est.: \$800 - \$1,200 • Min. bid: \$400



Lot 118

"BROWN'S / CELEBRATED / INDIAN HERB BITTERS - PATENTED / FEB 11. / 1868", 1868 – 1880. Medium-to-deep amber below the shoulders, shading to a lighter amber with a honey tone in the lower half, figural Indian maiden, sheared and inward rolled mouth – smooth base, ht. 12 1/4"; (a 3/8" area of roughness or flaking on inner edge of mouth, otherwise perfect). R/H #B226. A nice example, strong mold impression. Provenance: Gary and Betty Beatty collection.

Est.: \$500 - \$700 • Min. bid: \$250



Lot 115

"GREELEY'S BOURBON / BITTERS", 1860 – 1875. Medium copper with an apricot tone, barrel form, applied square collar – smooth base, ht. 9 1/8"; (just the slightest trace of very light wear including a tiny 1/8" area of very minor roughness on the edge of the square collar, otherwise attic mint). R/H #G101. Nicely whittled, good color, excellent overall condition.

Est.: \$400 - \$600 • Min. bid: \$200



Lot 119

"NATIONAL / BITTERS" – "PATENT / 1867" (on base), 1867 – 1875. Bright medium amber with a slight orange tone, figural ear of corn, applied short tapered collar with ring – smooth base, ht. 12 1/2"; (a tiny pinprick bit of roughness on edge of lip, and a little 1/16" flake on underside of ring collar, otherwise virtually attic mint). R/H #N8. A nice example, overall excellent condition. Provenance: Gary and Betty Beatty collection.

Est.: \$300 - \$500 • Min. bid: \$150



Lot 116

"GREELEY'S - BOURBON WHISKEY / BITTERS - GREELEY'S", 1860 – 1875. Beautiful medium pinkish straw-berry puce shading to a deep straw-berry puce towards the shoulders and base, barrel form, applied square collar – smooth base, ht. 9 1/4", near mint; (a little pinhead flake on the edge of the square collar, otherwise virtually perfect). R/H #G102. A very pretty lighter color, one that changes according to the type of lighting and time of day. Fred Swiechowicz collection.

Est.: \$600 - \$900 • Min. bid: \$300



Lot 120

"THE / FISH BITTERS - W.H. WARE / PATENTED 1866", America, 1866 – 1875. Medium-to-deep yellowish 'old amber', almost a butterscotch tone, figural fish, applied small ring type collar – smooth base, ht. 11 1/2", attic mint. R/H #F45. A nice example of this classic figural fish bitters, almost no wear, and a lot of bottle for the money! Provenance: Fred Swiechowicz collection.

Est.: \$300 - \$500 • Min. bid: \$150



Lot 121

"SUFFOLK BITTERS – PHILBROOK & TUCKER / BOSTON", 1870 – 1880.

Yellowish honey amber, figural pig, sheared and factory ground mouth – smooth base, length 9 5/8"; (just a bit of typical light wear, and a little

washable interior residue, otherwise excellent). R/H #S217. Although listed in the R/H book with both a double collar and ground mouth, it is much scarcer with the ground mouth. Fred Swiechowicz collection.

Est.: \$500 - \$800 • Min. bid: \$250



Lot 125

"S T / DRAKE'S / 1860 / PLANTATION / X / BITTERS – PATENTED / 1862",

1862 – 1880. Medium-to-deep reddish apricot amber, cabin form with six logs above the label panel, applied sloping collar – smooth base, ht. 9 7/8", near mint; (just a slight trace of minor wear along the roof edge on the reverse, otherwise perfect). R/H #D105. Nice color, strong embossing, excellent overall condition.

Est.: \$250 - \$450 • Min. bid: \$130



Lot 122

"LACOUR'S BITTERS – SARSA-PARIPHERE" Figural Bitters,

San Francisco Glass Works, 1866 – 1875. Beautiful, bright yellowish green coloration, figural lighthouse, applied square collar with ring – smooth base, ht. 9 1/2", near mint; (just a bit of very faint, patchy, exterior 'bloom' or dullness mentioned for completeness, but not terribly noticeable or distracting; a trace of interior milkiness or residue in the shoulder, and a smidgeon of light wear, otherwise perfect). R/H #L3.

Est.: \$15,000 - \$25,000 • Min. bid: \$7,500



Lot 126

Lot of (2), "S T / DRAKE'S / 1860 / PLANTATION / X / BITTERS – PAT-

ENTED / 1862", 1862 – 1880. 1st Ex. is a golden honey amber, six logs above the label panel; **2nd Ex.** is a bright medium amber with a slight orange tone, four logs above the label panel, both are cabin form, applied sloping collar – smooth base, ht. 9 3/4" and 10" respectively; (1st Ex. is near mint with a 1/8" flake on back edge of lip; 2nd Ex. is perfect). R/H #D108, and D110. Nice clean examples, strong embossing.

Est.: \$175 - \$275 • Min. bid: \$90



Lot 123

"S T / DRAKE'S / 1860 / PLANTATION / X / BITTERS – PATENTED / 1862",

1862 – 1880. Brilliant, light lemon-yellow, cabin form, 4 logs above the label panel, applied sloping collar – smooth base, ht. 10"; (a slightly weak impression in the upper shoulder, and a tiny pinprick speck of roughness on the edge of the collar, otherwise pristine, 'out-of-the-mold' perfect). R/H #D110. Exceptional color and eye-appeal, perhaps the lightest that we can recall seeing. A top example!

Est.: \$2,000 - \$4,000 • Min. bid: \$1,000



Lot 127

"DR – XX / LOVEGOOD'S – FAMILY – BITTERS",

1865 – 1875. Bright medium amber, rectangular cabin form, applied sloping collar – smooth base, ht. 9 3/8"; (some scattered exterior wear, mainly along the roof edge; a few minor flakes including a tiny pinhead flake on the edge of the lip, a 1/8" flake on the edge of the back label panel and on a side roof panel, and a shallow 1/4" chip on a back base corner, otherwise excellent). R/H #L125. A rare and difficult cabin to acquire, possibly from Anderson, Ind.

Est.: \$1,000 - \$1,500 • Min. bid: \$500



Lot 124

"S T / DRAKE'S / 1860 / PLANTATION / X / BITTERS – PATENTED / 1862",

1862 – 1880. Beautiful medium apricot amber shading to a lighter peach coloration through the corners with some rich orangey-red tones towards the base, cabin form with six logs above the label panel, applied sloping collar – smooth base, ht. 9 3/4", virtually perfect; (a couple of tiny, 1/8", sliver open bubbles). R/H #D105. A pretty example that can change in tone, depending on the lighting.

Est.: \$300 - \$500 • Min. bid: \$150



Lot 128

"WILLIAM ALLEN'S – CONGRESS BITTERS",

1865 – 1875. Golden amber through the center, shading to a beautiful yellowish honey through the corners, rectangular semi-cabin form, applied sloping collar – smooth base, ht. 10 1/8"; (some high point wear along the panel edges; a few onionskin-thin pinhead open bubbles, and a shallow 1/4" flake near a back base corner, otherwise near mint). R/H #A29. Rare in amber, outstanding character, nice crude glass filled with tiny seed bubbles.

Est.: \$2,500 - \$4,500 • Min. bid: \$1,300

Rare & Colorful Pontiled Medicines in



Lot 167

Lot 166

Lot 168

Lot 163

All Shapes and Sizes!



Lot 157



Lot 220

Lot 169

Lot 158

Lot 176



Lot 129

"MEXICAN / BITTERS – A.S.F.5. / 1866 – HENRY C. WEAVER / LANCASTER. O – A.S.F.5. / 1866", probably 1866 – 1868. Medium amber, rectangular with beveled corners, applied sloping collar – smooth base, ht. 9 ¼"; (professionally cleaned to original luster with a little minor light wear remaining, otherwise excellent). R/H #M77.7. Extremely rare! Believed to be one of only three, or possibly four intact examples. Provenance: Gary and Betty Beatty collection.

Est.: \$5,000 - \$7,000 • Min. bid: \$2,500



Lot 133

"CONGRESS – BITTERS", America, probably 1880 – 1890. Amber with an orange tone near the center, shading to an attractive honey amber through the corners, rectangular with beveled corners, applied sloping collar – smooth base, ht. 9 ¼"; (the bottle displays as very near mint, but has been lightly cleaned). R/H #C216. A nice example, noted as scarce in Ring/Ham. Provenance: Gary and Betty Beatty collection.

Est.: \$175 - \$275 • Min. bid: \$90



Lot 130

"E. DEXTER. LOVERIDGE / WAHOO BITTERS – (EAGLE) – E. DEXTER. LOVERIDGE / WAHOO BITTERS – DWD – 1863 – XXX – PATD", 1863 – 1875. Rich, medium-to-deep amber, semi-cabin, applied sloping collar with band – smooth base, ht. 9 ¾"; (just the slightest trace of very light wear, otherwise virtually attic mint). R/H #L126. A very nice example of this attractive, desirable, Western New York State bitters. Provenance: Gary and Betty Beatty collection

Est.: \$800 - \$1,200 • Min. bid: \$400



Lot 134

"DOYLES" (backwards) – "HOP – BITTERS – 1872" – (Hop Berries and Leaves), America, 1872 – 1885. Bright honey amber, square semi-cabin form, applied sloping collar with bevel – smooth base, ht. 9 ½"; (professionally cleaned with just a bit of minor wear remaining including a 1/8" open bubble or minor flake at base corner, otherwise excellent). R/H #D94.5. Extremely rare.

Est.: \$250 - \$450 • Min. bid: \$130



Lot 131

"E. DEXTER. LOVERIDGE / WAHOO BITTERS – (EAGLE) – E. DEXTER. LOVERIDGE / WAHOO BITTERS – DWD – 1863 – XXX – PATD", 1863 – 1875. Gorgeous, medium-to-deep yellowish emerald green, semi-cabin, applied sloping collar with band – smooth base, ht. 9 ¾"; (a crack travels along the edge of the base, up both corners, and across roof of the eagle panel, some faint haze in lower half of eagle panel). R/H #L126. Gary and Betty Beatty; Ex. Dave Kyle collections.

Est.: \$1,200 - \$2,400 • Min. bid: \$600



Lot 135

"CANTEN BITTERS / FOR ALL DISORDERS OF THE STOMACH" – (Reverse same) – "JOHN HART & CO / LANCASTER PA", 1875 – 1885. Teal green with an emerald tone, square, beveled corners, applied sloping collar with ring – smooth base, ht. 9 ¾"; (a 3/8" opening in the cover glass of an exterior bubble about an inch below the shoulder; a partially open 1 ¼" bubble on the interior of the shoulder, and a bit of faint interior residue in the shoulder, otherwise excellent). R/H #C34.

Est.: \$1,200 - \$2,200 • Min. bid: \$600



Lot 132

"JOHN ROOTS BITTERS / 1834 – BUFFALO, N.Y. / 1834", 1880 – 1890. Colorless, rectangular semi-cabin, tooled sloping collar with ring – smooth base, ht. 10 ¼"; (a ¼" iridescent bruise on one of the beveled corners, otherwise near attic mint). R/H #R90.4. Very scarce in colorless glass. Believed to be the only colorless example, or possibly one of only two, to be offered in more than 15 years. It is the same example that sold through GW, in 2017. Gary and Betty Beatty collection.

Est.: \$200 - \$400 • Min. bid: \$100



Lot 136

"DR. LOEW'S / STOMACH BITTERS – THE / H. C. CHRISTY CO. / CLEVELAND, OHIO", 1885 – 1900. Bright, medium lime green coloration, square with rounded corners, swirled neck with fluted shoulders, tooled sloping collar with ring – smooth base, ht. 9 ¼", perfect. R/H #L116. A great example, very attractive color that will stand out on any shelf, fantastic condition. As noted by Ring / Ham, a rare mold! Provenance: Gary and Betty Beatty collection.

Est.: \$400 - \$600 • Min. bid: \$200



Lot 137

"BAKER'S / ORANGE GROVE - BITTERS", 1870 – 1880. Orange amber with lighter honey tones through the roped corners, applied sloping collar – smooth base, ht. 9 5/8"; (just a touch of light wear; a small bubble on the shoulder with a 1/8" opening in the cover glass, and a large bubble approximately 1/2" x 1 3/4" on the interior of the shoulder that is partially open with some residue, otherwise excellent). R/H #B9. A nice example. Gary and Betty Beatty collection.

Est.: \$175 - \$350 • Min. bid: \$90



Lot 138

"LIPPMAN'S / GREAT / GERMAN BITTERS - SAVANNAH / GEORGIA", 1870 – 1875. Beautiful, bright yellowish honey coloration, square with beveled corners, applied sloping collar with ring – smooth base, ht. 9 3/4"; (a 1/4" x 1/2" open bubble on the beveled corner to the left of "E" in Bitters, and may have been lightly cleaned, but otherwise presents as very near mint). R/H #L99. A very pretty example of this rare southern bitters. Gary and Betty Beatty collection.

Est.: \$300 - \$500 • Min. bid: \$150



Lot 139

Lot of (2), Rare Cincinnati Bitters, 1862 -1870. 1st Ex: **"M. NATHAN & CO. - 31 VINE ST. / CINCINNATI."** 2nd Ex: **"MORITZ NATHAN / CINCINNATI O."**. Bright yellow, and honey amber, both applied collar – smooth base, ht. 9 7/8" and 9 3/4" respectively; (1st Ex. professionally cleaned, original collar broke at neck and re-attached; 2nd Ex: near perfect, a tiny in-making 1/4" annealing line in body). R/H BB Supplement 2, #N4.6-A & N4.6-B. Gary and Betty Beatty collection.

Est.: \$200 - \$400 • Min. bid: \$100



Lot 140

"GRIFFITH'S / OPERA BITTERS - A.R. GRIFFITH.", Lorenz & Wightman Glass Manufacturers, Pittsburgh, PA, 1863 – 1872. Medium amber, square with beveled corners, applied sloping collar – **"L & W / 13"** (on smooth base), ht. 8 7/8"; (professionally cleaned with a little minor wear remaining; a little sheen, or light matte-type finish in a couple of spots, but not terribly distracting, a 3/8" open bubble below the shoulder, and a 1" open bubble on the interior). R/H #G116, very rare!

Est.: \$600 - \$900 • Min. bid: \$300



Lot 141

"PENN'S PONY BITTERS / H. W. LONG M.D. & Co. / PHILADELPHIA, PA.", 1890 – 1900. Bright medium amber shading to a rich orange amber through the shoulders and neck, oval, tooled sloping collar – smooth base, ht. 9", perfect! R/H #P40. A great example, virtually pristine condition, of this very scarce and distinctive bitters (noted as "Extremely rare" by Ring / Ham). Provenance: Gary and Betty Beatty collection.

Est.: \$200 - \$400 • Min. bid: \$100



Lot 142

"WARNER'S / SAFE / TONIC BITTERS" / ("TRADE / MARK" inside SAFE) / "ROCHESTER N.Y.", America, 1883 – 1895. Medium amber, oval, applied ring collar with bevel – smooth base, ht. 9 1/2", Pt; (lightly cleaned to original luster with just a touch of minor wear on reverse, and a potstone in the base with several 3/16" 'legs', otherwise excellent). R/H #W37; O&S #3. Rare. A nice looking example that displays as near mint. Provenance: Gary and Betty Beatty collection.

Est.: \$200 - \$400 • Min. bid: \$100



Lot 143

Lot of (2), "PERUVIAN / BITTERS" – "W&K" monogram (within shield), 1871 – 1891. Bright honey amber and medium amber, both are square with beveled corners, applied square collar – smooth base, ht. 9 1/8" and 9 1/4" respectively, both are virtually attic mint; (the medium amber example has just a bit of very light residue, or faint interior haziness in the shoulder, otherwise perfect). R/H #P66; Wichmann, p.93. A beautiful pair that complement one another nicely

Est.: \$100 - \$200 • Min. bid: \$60



Lot 144

"DR J. HOSTETTER'S / STOMACH BITTERS", probably an early Pittsburgh district glasshouse, 1860 – 1870. Medium-to-deep yellowish olive with a very slight amber tone, square with beveled corners, applied sloping collar – smooth base, ht. 9 3/8", dia. 3", near mint; (lightly cleaned to original luster, and just a trace of typical light wear including a few small, 1/8", onion-skin-thin open surface bubbles, otherwise excellent). R/H H194.

Est.: \$400 - \$600 • Min. bid: \$200



Lot 145

"THE GREAT TONIC / CALDWELLS / HERB BITTERS", America, 1855 – 1865. Bright medium amber, triangular pyramid form, applied sloping collar – iron pontil scar, ht. 12 3/8"; (a little minor light wear including a tiny pinprick of roughness on the edge of the collar that you can feel, but not easy to see, and some spotty light interior residue or haze that may wash out, otherwise very near mint). R/H #C8. Scarce. Nice with the pontiled scarred base, many examples are smooth base.

Est.: \$250 - \$400 • Min. bid: \$130



Lot 146

"KIMBALL'S / JAUNDICE – BITTERS – TROY. N.H." (with 99% complete, original label), a Stoddard, NH glass-house, 1850 – 1860. Light-to-medium yellowish olive amber, rectangular with beveled corners, applied sloping collar – sand type pontil scar, ht. 7", virtually perfect; (just a very slight trace of faint wear). R/H #K42. A very pretty example, lighter in tone than most, excellent character. Extremely rare with virtually complete original label. Provenance: Ex. Mike George collection.

Est.: \$1,500 - \$2,500 • Min. bid: \$800



Lot 147

Label-only, **"HAVEN'S / TONIC BITTERS / WARRANTED A SURE CURE / ONE DOLLAR PER BOTTLE / WARD FIVE DRUG STORE / H. L. HAVEN. / Corner Willie and Cross Streets"**, 1860 – 1875. Medium grass green, cylindrical, applied sloping collar – blowpipe pontil scar, ht. 9 1/8"; (bottle is perfect; label is period and believed to be original to the bottle, darkened from age, but legible). See R/H BB2, H71.5. This is the example pictured in R/H. Gary and Betty Beatty collection.

Est.: \$175 - \$350 • Min. bid: \$90



Lot 148

"E. BAKER'S / PREMIUM / BITTERS / RICHMOND. VA.", 1850 – 1860. Aquamarine, oval, applied square collar – blowpipe pontil scar, ht. 6 1/4", virtually attic mint; (just the slightest trace of very light wear, otherwise perfect). R/H #B10.2. Noted as "Rare", an 'attic-type' example, nicely whittled, and with some impurities and a couple of very light olive striations through the neck.

Est.: \$200 - \$400 • Min. bid: \$100



Lot 149

"DR. / MANLY HARDY'S – GENUINE – JAUNDICE / BITTERS – BANGOR ME.", America, 1845 – 1855. Aquamarine, rectangular with wide beveled corners, applied square collar – blowpipe pontil scar with remnants of iron, ht. 6 3/4", perfect. R/H #H35. A bright, clean, sparkling, whittled example. A great early pontiled bitters in the form of the S.O. Richardson's from South Reading, Mass, but certainly much harder to find, especially in this fine condition.

Est.: \$300 - \$500 • Min. bid: \$150



Lot 150

"Dr E. P. EASTMAN'S – YELLOW DOCK / BITTERS – LYNN MASS.", probably 1852 – 1855. Aquamarine, rectangular with wide beveled corners, applied sloping collar – heavy iron pontil scar, ht. 7 3/4", near mint; (a little spotty, light, minor interior residue, much of which would likely wash out, otherwise virtually perfect). R/H #E14. Extremely rare. Only a few of these have come to market over the past 20 years. A top example, nice character, fantastic condition.

Est.: \$800 - \$1,200 • Min. bid: \$400



Lot 151

"E. R. CLARKE'S – SARSAPARILLA / BITTERS – SHARON MASS.", America, 1850 – 1860. Rich, deep aquamarine, rectangular with wide beveled corners, applied sloping collar – blowpipe pontil scar, ht. 7 1/4", attic mint. R/H #C154. Another scarce, early pontiled bitters, this one having strong embossing, good color, excellent character and condition with crude, wavy glass.

Est.: \$400 - \$600 • Min. bid: \$200



Lot 152

"CLARKE'S / VEGETABLE / SHERRY WINE / BITTERS / SHARON MASS.", 1860 – 1870. Aquamarine, rectangular with beveled corners, applied sloping collar – smooth base, ht. 14", near mint; (some light haziness on the base, and just a bit above the base on the sides; a narrow band of faint interior milkiness below the shoulder, otherwise excellent). R/H #C155. This mammoth 14" gallon-size is the largest of all the Clarke's. A very nice example, heavily whittled.

Est.: \$600 - \$900 • Min. bid: \$300



Lot 153

"DR. MARCUS' - UNIVERSAL / BITTERS - PHILADA", 1850 - 1860. Aquamarine, rectangular with beveled corners, applied sloping collar - blow-pipe pontil scar, ht. 8 1/8"; (some faint interior haziness and very light residue, some of which would likely wash out, not terribly distracting, otherwise perfect). R/H #M35. Noted in R/H as 'Extremely rare', and only the 2nd or possibly 3rd example to be offered at auction in more than 15 years!

Est.: \$500 - \$800 • Min. bid: \$250



Lot 154

"CANNON'S - DYSPEPTIC - BITTERS", America, 1850 - 1860. Aquamarine, octagonal, applied square collar - blowpipe pontil scar, ht. 6"; (professionally cleaned to original luster; a 1/2" chip from edge and underside of square collar). R/H Supplement 2, #33.3. An exceedingly rare bitters. This is the only known intact example of this mold, and the example used for the book, BB Supplement 2. Believed to be from the W.M. Cannon Medicine Co, Washington, D.C.

Est.: \$1,000 - \$2,000 • Min. bid: \$500



Lot 155

"DR R. F. HIBBARD'S / WILD CHERRY / BITTERS / C.N. CRITTENTON / PROPRIETOR N.Y.", 1875 - 1885. Aquamarine, cylindrical, tooled, likely applied, large square collar - smooth base, ht. 8 1/8", virtually perfect; (some faint interior residue that would almost certainly wash out). R/H #H111. A great example. Only the second in this 8" size to be offered at auction in more than 15 years. Noted in Ring / Ham as "Extremely rare". Gary and Betty Beatty collection.

Est.: \$175 - \$350 • Min. bid: \$90



Lot 156

"DR TOWNSENDS - SARSAPARILLA - ALBANY / N. Y." ("X" on plain panel), 1845 - 1860. Rich, yellowish 'old amber', square with beveled corners, applied sloping collar - domed base with heavy iron pontil scar, ht. 9 3/8"; (a little light wear and a 3/16" flake on the edge of the lip, otherwise attic mint). Note; an old strip of cloth embroidered 'Currant Wine' is attached with a string around the neck). Rare color, outstanding character! Fred Swiechowicz collection.

Est.: \$1,000 - \$2,000 • Min. bid: \$500



Lot 157

"DR TOWNSEND'S - SARSAPARILLA - ALBANY / N. Y." (with approximately 90% complete, original label), probably Willington Glass Works, CT, 1845 - 1860. Bright yellowish olive with an amber tone, square with beveled corners, applied sloping collar - sand type pontil scar, ht. 9 5/8", near perfect; (a little light washable interior residue; original label has some staining and is darkened a bit from age). Good color, strong embossing, nice crude glass, very scarce-to-rare with label.

Est.: \$800 - \$1,200 • Min. bid: \$400



Lot 158

"DR TOWNSEND'S - SARSAPARILLA - ALBANY / N. Y." (5 large dots on beveled corner), 1845 - 1860. Rich, deep bluish green with an emerald tone, rectangular with beveled corners, applied sloping collar - cloverleaf iron pontil scar, ht. 9 1/8", near perfect; (an 'attic-type' bottle with just a touch of minor light wear). An outstanding example and an exceedingly rare mold, the first that we can recall seeing. In addition, fantastic color, condition and character with crude wavy glass.

Est.: \$2,000 - \$4,000 • Min. bid: \$1,000



Lot 159

"DR TOWNSEND'S - SARSAPARILLA - ALBANY / N. Y. No1", New England, 1845 - 1855. Bright, medium-to-deep olive, square with beveled corners, applied sloping collar - sand type pontil scar, ht. 10"; (a little minor wear including a light scratch on one of the panels; a 1/4" paper-thin open bubble, and a tiny pinhead flake on the edge of the lip, otherwise near mint). Scarce "No1" mold, and unusual with the elongated neck. Provenance: Fred Swiechowicz collection.

Est.: \$400 - \$600 • Min. bid: \$200



Lot 160

"DR TOWNSEND'S - SARSAPARILLA - ALBANY / N. Y." - "I I I I" (variant with four slash marks on label panel), New England, 1845 - 1860. Medium-to-deep olive with an amber tone, square with beveled corners, applied sloping collar - sand type pontil scar, ht. 9 1/4", near mint; (some typical minor exterior wear, otherwise perfect). A nice crude example, very scarce with the four slash marks on the label panel. Provenance: Fred Swiechowicz collection.

Est.: \$500 - \$800 • Min. bid: \$250

**Lot 161**

"DR TOWNSEND'S - SARSAPARILLA - ALBANY / N.Y.", 1845 - 1860. Medium-to-deep yellowish green with an emerald tone, square with beveled corners, domed shoulders, applied sloping collar - heavy iron pontil scar, ht. 9 3/8", near perfect; (the bottle may have been very lightly cleaned, but certainly presents as virtually pristine). A great example, rich color, excellent clarity, fantastic eye-appeal and character with crude, wavy glass. Ex. Fred Swiechowicz collection.

Est.: \$800 - \$1,200 • Min. bid: \$400

**Lot 162**

"DR TOWNSEND'S - SARSAPARILLA - ALBANY / N.Y.", 1845 - 1860. Clear medium emerald green, square with beveled corners, applied sloping collar - heavy red iron pontil scar, ht. 9 1/2", near mint; (a few light scratches and some minor exterior wear; a bit of very faint haziness in the shoulder mentioned for completeness). A very attractive example, crude glass, good color, great pontil. Note; this is the variant with the more 'squared' shoulders and "NY" centered under Albany.

Est.: \$500 - \$800 • Min. bid: \$250

**Lot 163**

"DR TOWNSEND'S - SARSAPARILLA - ALBANY / N.Y.", 1845 - 1860. Medium-to-deep blue green, square, beveled corners, applied sloping collar - very heavy, jagged, blowpipe pontil scar with remnants of iron, ht. 9 1/2"; (some scattered wear and light scratches, primarily on the blank label panel, and some of the sarsaparilla panel, otherwise very near mint). A beautiful example, strong color, crude wavy glass, the pontil alone should sell this one! Fred Swiechowicz collection.

Est.: \$400 - \$600 • Min. bid: \$200

**Lot 164**

"DR TOWNSEND'S - SARSAPARILLA - ALBANY / NY", 1845 - 1860. Deep bluish aquamarine, almost a light blue green coloration, square with beveled corners, applied sloping collar - blowpipe pontil scar, ht. 9 3/8"; (a bit of light wear, and some in-manufacture annealing lines in the neck including two horizontal lines, approx. 3/8" and 5/8", on the surface of the neck created during the cooling process, otherwise excellent). Fred Swiechowicz collection.

Est.: \$250 - \$450 • Min. bid: \$130

**Lot 165**

"DR TOWNSEND'S - SARSAPARILLA - NEW YORK.", (with period pewter dose glass over broken neck), 1845 - 1855. Emerald with a slight bluish green tone, rectangular with beveled corners, applied sloping collar - iron pontil scar, ht. 9 5/8"; (half of the neck and most of the applied collar are missing; some light interior residue and haziness in the sarsaparilla panel and a bit in the side panels, no cracks or other damage of consequence). Provenance: Fred Swiechowicz collection.

Est.: \$400 - \$600 • Min. bid: \$200

**Lot 166**

"DR GUYSOTT'S - COMPOUND EXTRACT / OF YELLOW DOCK - & SARSAPARILLA", a New England glasshouse, 1845 - 1855. Yellowish olive coloration, square with beveled corners, applied sloping collar - sand type pontil scar, ht. 9 1/2", virtually perfect; (a small bubble on one of the beveled corners with a pinhead opening in the cover glass, otherwise pristine). Extremely rare in this color with only a small handful extant. Beautiful syrupy glass. Ex. Mike George collection.

Est.: \$4,000 - \$8,000 • Min. bid: \$2,000

**Lot 167**

"I. NEWTON'S - PANACEA - PURIFIER - OF THE - BLOOD - NORWICH, VT.", a Stoddard, NH glasshouse, 1842 - 1850. Beautiful, light-to-medium yellowish 'old amber', cylindrical six indented panels, applied short tapered collar with bevel - blowpipe pontil scar, ht. 7 1/4"; (a tiny hairline 'spider' crack on the inside surface of the shoulder with a couple of 'legs' 1/8" or less, and a small potstone in the shoulder with a couple of 1/16" 'legs', otherwise attic mint). Fred Swiechowicz collection.

Est.: \$1,600 - \$2,800 • Min. bid: \$800

**Lot 168**

"BEEKMAN'S - PULMONIC - SYRUP - NEW - YORK", New England, 1840 - 1850. Clear medium olive, octagonal, applied sloping collar with bevel - sand type pontil scar, ht. 7 1/4"; (a couple of minor 1/8" flakes, one at bottom edge of the collar, the other at edge of base; a 1/4" open surface bubble on one of the side panels, otherwise sparkling mint). A great looking, above average example of this rare pontiled medicine with excellent clarity and crisp bold embossing. Provenance: Ex. David Ellis collection.

Est.: \$2,000 - \$4,000 • Min. bid: \$1,000



Lot 169

"GIBB'S / BONE LINIMENT", probably Mt. Vernon Glass Works, Vernon, NY, or possibly New England, 1840 – 1855. Medium yellowish olive shading to a deep olive near the base, 6-sided, short applied tapered collar – blowpipe pontil scar, ht. 6 3/8", perfect. Odell, p.144. A great example, a little lighter in tone than most, and with excellent character. Not easy to find in this fantastic condition.

Est.: \$1,500 - \$2,500 • Min. bid: \$800



Lot 170

"I. COVERT'S – BALM OF LIFE", Mt. Vernon Glass Works, Vernon, NY, probably 1841 – 1846. Medium yellowish olive below the shoulders shading to a deep yellowish olive towards the base, rectangular with beveled corners, applied short tapered collar – blowpipe pontil scar, ht. 5 1/2", virtually perfect; (a little content residue in the shoulders that should easily wash out). N #142; Odell, p.92. An attic-type example with virtually no wear. Provenance: Fred Swiechowicz collection.

Est.: \$1,500 - \$2,500 • Min. bid: \$800



Lot 171

"C. BRINCKERHOFF'S – HEALTH RESTORATIVE – PRICE \$1.00 – NEW YORK", probably an early Stoddard, NH glasshouse, 1845 – 1851. Olive amber, rectangular with beveled corners, applied sloping collar – sand type pontil scar, ht. 7 1/8", near mint; (just a little typical light wear and a tiny, pinprick speck of roughness on the edge of the lip, otherwise perfect). A very nice example, good strength of embossing, excellent character with nice crude glass.

Est.: \$1,000 - \$1,500 • Min. bid: \$500



Lot 173

Rare, Early Medicine or Utility, probably Granite Glass Co, Stoddard, NH, 1855 – 1857. Medium 'old amber' with some lighter yellowish tones through the corners, rectangular, beveled corners, applied round collar with bevel – smooth base, ht. 9 3/8", near perfect; (just a slight trace of faint wear, and an almost certainly in-manufacture, approx. 1/4" x 1/2" chip from below the crudely applied collar). An exceedingly rare, impressive utility believed to be one of only two known examples.

Est.: \$1,500 - \$2,500 • Min. bid: \$800



Lot 174

Early Medicine or Utility Bottle, New England, a Stoddard, NH glasshouse, 1842 – 1860. Bright, medium-to-deep yellowish 'old amber', rectangular tombstone form with chamfered corners, applied sloping collar – sand type pontil scar, ht. 7 1/8", perfect. See, *On the Trail of STODDARD GLASS*, Anne Field, p.81. A rare early utility, pleasing 'tombstone' form, outstanding condition. Provenance: Fred Swiechowicz collection.

Est.: \$800 - \$1,200 • Min. bid: \$400



Lot 175

"SEAVER'S / JOINT & - NERVE / LINIMENT", an early Stoddard, NH glasshouse, 1842 – 1860. Beautiful, light yellowish olive amber, almost an olive yellow coloration, cylindrical, tooled thin flanged lip – blowpipe pontil scar, ht. 3 7/8"; (professionally cleaned to original luster; a tiny flake, 1/8" or less, on the underside of the flanged lip, and a 3/4" light surface scratch near the "N" in "Nerve"). A great color for this mold, fantastic clarity, one of the lightest examples that you are likely to find.

Est.: \$1,000 - \$1,500 • Min. bid: \$600



Lot 172

"SMITH'S – GREEN MOUNTAIN – RENOVATOR – EAST. GEORGIA. VT", probably Granite Glass Co, Stoddard, NH, 1850 – 1860. Yellowish 'old amber' with a slight olive tone, rectangular with wide beveled corners, applied ring collar with bevel – iron pontil scar, ht. 7", virtually attic mint; (some faint light wear, otherwise perfect). A great example of this very scarce and desirable early Stoddard medicine. Provenance: Ex. David Ellis collection.

Est.: \$1,600 - \$2,800 • Min. bid: \$800



Lot 176

"P. WILLIAMSON & SON / PHILAD.A", probably 1846 – 1856. Beautiful yellowish emerald coloration, cylindrical, applied sloping collar with bevel – large iron pontil scar, ht. 8 1/4", attic mint! An outstanding example of this very scarce-to-rare, colored, pontiled Philadelphia medicine, and likely the choicest as the scant few other examples that have been auctioned over the past 20 years were all less-than perfect. Provenance: Fred Swiechowicz collection.

Est.: \$600 - \$900 • Min. bid: \$300



Lot 177

"CARTER'S / SPANISH / MIXTURE", 1850 – 1860. Rich, medium-to-deep yellowish green, cylindrical, applied sloping collar with bevel – iron pontil scar, ht. 7 3/4", perfect. A beautiful example having strong color, outstanding clarity, crisp embossing, virtually pristine condition. Put out by Bennett & Beers Druggist, Richmond, VA.

Est.: \$400 - \$600 • Min. bid: \$200



Lot 181

"LINDSEY'S – BLOOD + / SEARCHER – HOLLIDAYSBURG", a Pittsburgh glasshouse, 1860 – 1870. Very deep olive coloration, rectangular, beveled corners, applied sloping collar – smooth base, ht. 9 1/8"; (some scattered light wear including an onionskin-thin 1" slender open bubble on one of the back beveled corners; a bit of faint exterior haziness or 'bloom' mentioned for completeness, otherwise excellent). A big, gutsy, impressive medicine, rare color! Fred Swiechowicz collection.

Est.: \$1,500 - \$2,500 • Min. bid: \$800



Lot 178

"CARTER'S / SPANISH / MIXTURE" (with 80% complete, original label), 1850 – 1860. Medium 'old amber', cylindrical, applied sloping collar with bevel – iron pontil scar, ht. 8 3/8", in 'as-found', virtually perfect condition; (some exterior soot and residue; a fair amount of dried interior sediment or residue). Odell, pgs. 68 & 69. A scarce color for this mold (the majority being in shades of olive green), and rare in this color with a label.

Est.: \$500 - \$800 • Min. bid: \$250



Lot 182

"FROM THE / LABORATORY – OF / G.W. MERCHANT / CHEMIST – LOCKPORT / N.Y.", Lockport Glass Works, 1845 – 1855. Bright, medium blue green, rectangular with concave corners, applied sloping collar – blowpipe pontil scar, ht. 5 5/8", near mint; (some high point wear on the back label panel, and just the slightest wisp of faint interior milkiness near the shoulders). Strong embossing, nice crude glass, overall excellent condition, very scarce with the blowpipe pontil scarred base.

Est.: \$300 - \$500 • Min. bid: \$150



Lot 179

"SWAIM'S – PANACEA – PHILADA", 1845 – 1855. Bright yellowish green, cylindrical with 12 indented panels, heavy applied sloping collar with bevel – sand type pontil scar, ht. 7 3/4", attic mint! Odell, p.335. An 'attic-type' example, attractive, very nice color, excellent clarity, character, and condition. The really nice examples are getting harder to find, but you can still put together a nice run of these early Swaim's that won't break the bank. A lot of bottle for the money.

st.: \$400 - \$600 • Min. bid: \$200



Lot 183

"FROM THE / LABORATORY – OF / G.W. MERCHANT / CHEMIST – LOCKPORT / N.Y.", Lockport Glass Works, 1855 – 1865. Rich, deep, 'Lockport' blue green, rectangular with concave corners, applied sloping collar – smooth base, ht. 5 3/4", virtually attic mint; (just the slightest trace of faint wear, otherwise perfect). An 'attic-type' example, strong color, nice seedy glass. This mold was believed to have been a sarsaparilla. Provenance: Gary and Betty Beatty collection.

Est.: \$200 - \$400 • Min. bid: \$100



Lot 180

"SWAIM'S – PANACEA – PHILADA", 1855 – 1865. Brilliant medium yellowish olive, cylindrical with nine indented panels, applied sloping collar with bevel – early smooth base, ht. 7 5/8", attic mint. Odell, p.335. A beautiful example, rich pleasing color, heavy embossing, fantastic condition. This is one that absolutely appears as though it should be pontiled.

Est.: \$175 - \$350 • Min. bid: \$90



Lot 184

"G.W. MERCHANT / CHEMIST / LOCKPORT / N.Y.", Lockport Glass Works, 1855 – 1865. Rich, deep bluish green, a little more of a greenish tone than normal, cylindrical, applied sloping collar – smooth base, ht. 7 1/8", near perfect; (small spot of roughness, or very minor abrasion, above "L" in Lockport on the shoulder, otherwise pristine). A great example, strong embossing, deep color, outstanding character – heavily whittled, excellent condition. Provenance: Gary and Betty Beatty collection.

Est.: \$250 - \$450 • Min. bid: \$130

**Lot 185**

"J & C. MAGUIRE / CHEMISTS AND / DRUGGISTS / ST LOUIS. MO.", 1852 – 1860. Light-to-medium sapphire blue, oval, large applied round collar with bevel – iron pontil scar, ht. 7 7/8"; (likely a dug bottle, but does not appear to have been cleaned; it presents quite nicely 'as-is' with a small area of light dullness on the front panel, and a bit of minor wear). Odell, p.236. A very pretty example, scarce with the pontil scarred base.

Est.: \$600 - \$900 • Min. bid: \$300

**Lot 189**

"THOS. A. HURLEY'S – COMPOUND SYRUP / OF SARSAPARILLA – LOUISVILLE KY", 1850 – 1860. Aquamarine, rectangular, beveled corners, applied sloping collar – iron pontil scar, ht. 9 1/2"; (lightly cleaned to original luster and near mint condition; a trace of light wear including a shallow, less-than 1/8" flake on the edge of the lip, otherwise excellent). Odell, p.123; DeG #106. A rare, attractive sarsaparilla. Excellent character, the glass being filled with tiny bubbles. Ex. Gary Enters collection.

Est.: \$500 - \$800 • Min. bid: \$250

**Lot 186**

"J & C. MAGUIRE / CHEMISTS AND / DRUGGISTS / ST LOUIS. MO.", 1855 – 1865. Clear, medium cobalt blue, oval, applied round collar with bevel – smooth base, ht. 7 3/4"; (professionally cleaned to original luster with just a little very light wear on the back panel, otherwise near mint). A bright, clean, very attractive example that just missed the pontil rod.

Est.: \$200 - \$400 • Min. bid: \$100

**Lot 190**

"BUSH'S / SMILAX / SARSAPARILLA", America, 1850 – 1860. Bright aquamarine, rectangular with beveled corners, applied square collar – blowpipe pontil scar, ht. 9 7/8", attic mint! Odell, p.62; DeG #33, listed as "EX RARE". A big, impressive sarsaparilla, and a great looking example – nicely whittled, bright, clean and sparkling. A number of large, aqua pontiled sarsaparillas were blown in the 1850's. This is one of the nicer ones and a lot of bang for the buck.

Est.: \$500 - \$800 • Min. bid: \$250

**Lot 187**

"GEORGES / SARSAPARILLA – COMSTOCK & BR. – N Y.", 1850 – 1860. Aquamarine, rectangular with beveled corners, applied sloping collar – iron pontil scar, ht. 9 1/4"; (a little light dullness, or very faint spotty haze, not terribly distracting, and a trace of minor light wear, otherwise perfect). Odell, p.142; DeG #78. A very rare pontiled sarsaparilla, nice crude glass, overall excellent condition. Provenance: Ex. Gary Enters, Tom Eccles collections.

Est.: \$1,500 - \$2,500 • Min. bid: \$800

**Lot 191**

"DR GUYSOTT'S – COMPOUND EXTRACT / OF YELLOW DOCK – SARSAPARILLA", 1860 – 1870. Aquamarine, square with beveled corners, applied sloping collar – smooth base, ht. 9 1/2"; (lightly cleaned to original luster and otherwise near mint condition; just a slight trace of very light wear and a 1/2" interior open bubble near the base mentioned for completeness). Odell, pgs. 155-156. A terrific example of this scarce Guysott's mold, outstanding character, heavily whittled.

Est.: \$400 - \$600 • Min. bid: \$200

**Lot 188**

"DR BLACKWELL'S – SARSAPARILLA / & VERSICOLA – LOUISVILLE KY", 1850 - 1860. Bright aquamarine, rectangular with beveled corners, applied sloping collar - iron pontil scar, ht. 9 1/2", attic mint! Odell, p.35. A gorgeous, extremely rare sarsaparilla, boldly embossed, fantastic character, bright, clean and sparkling. One of only two examples to be offered in more than 20 years, and about as nice as you could hope to find. Provenance: Ex. Gary Enters collection.

Est.: \$1,800 - \$3,200 • Min. bid: \$900

**Lot 192**

"DR HOUGH'S / ANTI SCROFULA / SYRUP", 1850 – 1860. Aquamarine, rectangular with beveled corners, applied square collar – blowpipe pontil scar, ht. 9 1/2", virtually attic mint; (a little pinhead flake on the edge of the lip, otherwise perfect). Odell, p.179. Extremely rare! A big, impressive pontiled medicine, crude wavy glass, strong, bold embossing. Believed to be the only example, or possibly one of two, that have been offered at auction in more than 25 years.

Est.: \$500 - \$800 • Min. bid: \$250



Lot 193

"DR. LARBOR'S EXTRACT / OF LUNGWORT - C.J. ROOSEVELT & Co. / NEW YORK.", probably 1842 – 1847. Aquamarine, rectangular with beveled corners, applied sloping collar – blowpipe pontil scar, ht. 7", near mint; (an attic-type bottle with just a slight trace of very light wear including a shallow 3/16" chip on the edge of the lip, otherwise perfect). Odell, p.219; Knapp, p.276. A very scarce-to-rare medicine believed to be from Albany, New York. Gary Enters collection.

Est.: \$300 - \$500 • Min. bid: \$150



Lot 194

"JUDSON'S - CHERRY / & / LUNGWORT - EXTRACT", America, 1850 – 1860. Brilliant aquamarine, rectangular with beveled corners, applied sloping collar – blowpipe pontil scar, ht. 8", perfect! A bright, clean, sparkling, extremely rare pontiled medicine. Great eye-appeal with nice crude glass, large lettered, strong embossing. We sold this same example back in 2019, and are pleased to have the opportunity to offer it again.

Est.: \$800 - \$1,200 • Min. bid: \$400



Lot 195

"SANDERSON'S / BLOOD RENOVATOR / MILTON, VT.", 1850 – 1860. Aquamarine, oval, applied ring collar – blowpipe pontil scar, ht. 8", near mint; (just a couple of small spots of very faint haziness, barely noticeable, otherwise perfect). Odell, p.310. A very rare and attractive pontiled medicine, nicely whittled, fantastic condition. Note; this is the same example that sold through GW, March, 2015, and one of only two to be offered in more than 10 years. Gary Enters collection.

Est.: \$800 - \$1,200 • Min. bid: \$400



Lot 196

"PRESTON'S / VEG PURIFYING / CATHOLICON / PORTSM. NH.", 1850 – 1860. Aquamarine, oval, crudely applied sloping collar – blowpipe pontil scar with iron residue, ht. 9 5/8", virtually perfect; (just the slightest trace of light wear including a tiny pinhead bit of roughness on the edge of the lip, and some very faint interior milkiness in the shoulder, otherwise mint). N #504; Odell, p.285. A very scarce, big impressive pontiled medicine, beautifully whittled, excellent condition.

Est.: \$300 - \$500 • Min. bid: \$150



Lot 197

"DR J. CHEEVER'S / LIFE ROOT MUCILAGE / CHARLESTOWN MASS.", probably 1856 – 1860. Aquamarine, rectangular with wide beveled corners, applied sloping collar – blowpipe pontil scar, ht. 8 3/8", very near mint; (just a slight trace of light wear including a tiny pinprick bit of roughness on the edge of the lip, and a small little spot of dullness, or haziness, on the shoulder mentioned for completeness, otherwise perfect). Odell, p. 73. Very rare!

Est.: \$400 - \$600 • Min. bid: \$200



Lot 198

"E. TRULL / DRUGGIST - WOBURN / MASS.", 1845 – 1855. Aquamarine, rectangular with wide beveled corners, applied sloping collar – blowpipe pontil scar, ht. 7 1/4"; (some moderate high point wear on the reverse, and a 1/8" flake on one of the beveled edges on the side, otherwise excellent). A rare early druggist from a small town on the outskirts of Boston. Beyond the high point wear on the reverse, a bright, clean, sparkling, heavily whittled example. Provenance: Gary Enters collection.

Est.: \$400 - \$600 • Min. bid: \$200



Lot 199

"SARGENT & CO - AMERICAN / CANCHALAGOGUE - NEW YORK", 1845 – 1860. Bright aquamarine, rectangular with beveled corners, large, applied double ring collar – blowpipe pontil scar, ht. 7 5/8"; (a pinhead flake on the edge of the collar, otherwise virtually pristine perfect). Odell, p.310. A very rare pontiled medicine, bright, clean, sparkling, great eye-appeal. Provenance: Gary Enters collection.

Est.: \$400 - \$600 • Min. bid: \$200



Lot 200

"AMERICAN - COMPOUND - COVENTRY / AUBURN. N.Y.", probably 1851 – 1856. Aquamarine, rectangular with beveled corners, applied round collar with bevel – blowpipe pontil scar, ht. 7 1/8", attic mint. Odell, p.15. A very scarce pontiled medicine from the finger lakes region of central NY. Peter Coventry advertised 1851 – 1856, and by 1859, was listed as a tobacconist. Nice character with whittled, wavy glass, excellent condition.

Est.: \$175 - \$350 • Min. bid: \$90

**Lot 201**

"M'LEAN'S / STRENGTHENING / CORDIAL", a Midwest glasshouse, probably 1855 – 1862. Aquamarine, oval, applied ring collar with bevel – red iron pontil scar, ht. 9 1/8", near perfect; (a tiny, paper-thin, 1/8" flake at edge of base, otherwise virtually pristine condition). Odell, p.248. A bright, clean, sparkling example of this large, very attractive pontiled medicine. Provenance: Gary Enters collection.

Est.: \$175 - \$275 • Min. bid: \$90

**Lot 205**

"SANFORD'S – GREAT SPANISH – REMEDY.", probably 1856 – 1860. Aquamarine, rectangular with beveled corners, applied round collar with bevel – blowpipe pontil scar, ht. 8 3/4", near perfect; (the bottle appears to have been very lightly cleaned, but certainly presents as virtually attic mint). Odell, p.310. A scarce bottle in the smaller 5" size, but exceedingly rare in this much larger, almost 9" size. Bright, clean, and sparkling – a great example, believed to be from Springfield, Mass.

Est.: \$400 - \$600 • Min. bid: \$200

**Lot 202**

"DR MANN'S – CELEBRATED / AGUE. BALSAM – GALION. OHIO", 1855 – 1860. Aquamarine, rectangular with beveled corners, applied ring collar with bevel – iron pontil scar, ht. 6 7/8", near mint; (just a trace of light wear and a slight bit of interior residue). Odell, p.236. Scarce. A great looking early pontiled balsam from a small town in north-central Ohio. Per Odell, the balsam was advertised for two years, 1857 – 1859.

Est.: \$400 - \$600 • Min. bid: \$200

**Lot 206**

"WOMAN'S FRIEND – STEWART / WIL-LIS & Co – NEW. YORK", probably 1855 – 1862. Aquamarine, rectangular with narrow beveled corners, applied double ring collar – blowpipe pontil scar, ht. 6 7/8", attic mint! Odell, p.332. Scarce. A bright, clean, sparkling example. 19th Century medicines either specifically tailored for women (female ailments), or put out by a woman proprietor, are generally very scarce-to-rare. A great looking example. Provenance: Gary Enters collection.

Est.: \$175 - \$350 • Min. bid: \$90

**Lot 203**

"DR W.S. LUNT'S – AGUE KILLER / FINDLAY. O", 1850 – 1858. Bright bluish aqua, rectangular with narrow beveled corners, applied sloping collar – blowpipe pontil scar, ht. 6 3/4", virtually perfect; (a tiny pinhead flake on the inner edge of the lip). A rare pontiled medicine, strong color, outstanding condition. Odell, p.232; Knapp, p.295. Per Knapp, William Lunt started as a preacher in Maumee, OH in the late 1840s, partnered with John Stanford, and sold medicines until the mid-1850s.

Est.: \$500 - \$800 • Min. bid: \$250

**Lot 207**

"CIRCASSIAN / LYMPH" Medicine Bottle, 1845 – 1855. Brilliant aquamarine, 10-panel 'footed' pedestal base, octagonal mid-body, paneled shoulders and sides, bulbous ring neck, sheared mouth – glass tipped pontil scar, ht. 6 3/4", very near mint; (small spot of faint interior milkiness in the shoulder, and a small potstone on the inside surface of the neck with a tiny line across it, barely visible without a loop, otherwise pristine). Odell, p.76. Provenance: Fred Swiechowicz collection.

Est.: \$400 - \$600 • Min. bid: \$200

**Lot 204**

"PORTER'S – CURE OF PAIN – BUNDYSBURG. O", 1850 – 1860. Aquamarine, rectangular with beveled corners, applied round collar with bevel – iron pontil scar, ht. 6 5/8"; (lightly cleaned to original luster and near mint condition with a bit of minor light wear remaining on one of the side panels, otherwise excellent). Odell, p.282. Scarce. A clean, bright, attractive example.

Est.: \$200 - \$400 • Min. bid: \$100

**Lot 208**

"H. LAKE'S / INDIAN / SPECIFIC.", 1849 – 1855. Aquamarine, rectangular with concave corners, bulbous neck, large applied ring collar – blowpipe pontil scar, ht. 8 1/4"; (professionally cleaned to original luster with a little minor wear remaining, and a hard-to-see 1/8" chip on one of the shoulder corners, otherwise excellent). Odell, p.218. Scarce. A classic, great looking, pontiled Indian medicine.

Est.: \$500 - \$800 • Min. bid: \$250



Lot 209

"INDIAN / CLEMENS" (Standing Full-length Indian) "TONIC / PREPARED BY / GEO. W. HOUSE" (with more than 95% complete, original label), 1845 – 1855. Bright aquamarine, sheared, tooled, outward folded mouth – blowpipe pontil scar, ht. 5 1/2"; (the bottle is perfect; original label is darkened a bit from age and has a little faint staining, otherwise excellent). A bright, clean, sparkling example of this early pictorial Indian medicine, and a lot of bottle for the money.

Est.: \$400 - \$600 • Min. bid: \$200



Lot 210

"INDIAN / SPECIFIC - FOR COUGHS - PREPARED BY - DR C FREEMAN", probably 1825 – 1835. Aquamarine, square with rounded corners, sheared, tooled, thin flanged lip – blowpipe pontil scar, ht. 5"; (the bottle may have been lightly cleaned, but certainly presents as very near mint). Odell, p.137; Knapp, p.162. A very early, rare, pontiled Indian medicine. Per Knapp, the medicine was put out by Dr. Clarkson Freeman of Lancaster, PA, 1820s to 1830s.

Est.: \$400 - \$600 • Min. bid: \$200



Lot 211

"NUTTALL'S - SYRIACUM - CONFIRMED - CONSUMPTION", 1852 – 1858. Aquamarine, square, beveled corners, applied square collar – blowpipe pontil scar, ht. 6 1/8"; (professionally cleaned with some light swirl lines and minor ground wear remaining; some light haziness in the neck and along a couple of the corners). Odell, p.266. Extremely rare! The last recorded example at auction was June, 2013 (GW, Ex. Greer collection with a 1" crack). Gary Enters collection.

Est.: \$400 - \$600 • Min. bid: \$200



Lot 212

"HOWLANDS / READY REMEDY - COLUMBA / + ROADS. P.A.", 1850 – 1860. Aquamarine, square, beveled corners, applied sloping collar – blowpipe pontil scar, ht. 5", near mint; (some light interior content residue, almost certainly washable, and a tiny bit of roughness on the edge of the lip that you can feel, but is not easy to see, otherwise perfect). A very scarce pontiled medicine from the borough of Cross Roads, in York County, PA. Provenance: Ex. Fred Swiechowicz collection.

Est.: \$200 - \$400 • Min. bid: \$100



Lot 213

"DOCT. FOWLER'S - ANTI / EPICHO-LIC - CANTON N.Y.", 1850 – 1860.

Aquamarine, rectangular with beveled corners, applied sloping collar – blowpipe pontil scar, ht. 5 3/4"; (professionally cleaned to original luster with just a bit of minor wear remaining including a wisp of faint milkiness, and some light swirl lines in one of the side panels, otherwise excellent). Odell, p.135. Rare. One of only two, or possibly three, sold at auction in more than 15 years.

Est.: \$200 - \$400 • Min. bid: \$100



Lot 214

"J.T. BROWN. 292 / WASHINGTON St / BOSTON - SELECT - PREPARATION", 1845 – 1855. Aquamarine, rectangular with beveled corners, applied ring collar with bevel – blowpipe pontil scar, ht. 6 1/4"; (lightly cleaned to original luster and otherwise near mint condition). Odell, p.52. Joseph T. Brown had an apothecary shop at 292 Washington, St. in Boston. He advertised as early as 1839, 75 cents per bottle. Very scarce. Provenance: Gary Enters collection.

Est.: \$200 - \$400 • Min. bid: \$100



Lot 215

"G.K. SMITH & Co, / DRUGGIST / PHILA", probably 1851 – 1858. Light aquamarine, oval, long neck with applied sloping collar – blowpipe pontil scar, ht. 7 3/8", attic mint! During this period, George K. Smith & Co. was located at 294 & 296 N. 2d St. We've included a lithographic view of his drugstore at 243 N. 3d St which was another location that he sold his products. The information and image are courtesy of Bob Daly. A scarce Philly pontiled druggist, especially in this fine condition.

Est.: \$200 - \$400 • Min. bid: \$100



Lot 216

"CANTRELL'S / AGUE / MIXTURE - PHILADELPHIA", 1845 – 1855. Aquamarine, rectangular with beveled corners, applied sloping collar – blowpipe pontil scar, ht. 5 7/8"; (professionally cleaned to original luster with a little minor wear remaining, primarily on the reverse, and a small spot of surface abrasion on the side of the neck, otherwise excellent). Odell, p.66. A bright clean example of this very scarce-to-rare Philadelphia bottle, one of several different medicines put out by Cantrell.

Est.: \$300 - \$500 • Min. bid: \$150

**Lot 217**

"DR. ROSE'S - COUGH SYRUP - FOR ALL LUNG / & / THROAT DISEASES - PHILADA", 1845 - 1855. Aquamarine, rectangular with beveled corners, applied sloping collar - blowpipe pontil scar, ht. 5 1/2", attic mint. Very scarce, especially in this fine condition. One of many different embossed medicines put out by Dr. Jacob S. Rose. Per Odell, Dr. J.S. Rose was listed as early as the 1830's on Mulberry St. in Philadelphia.

Est.: \$150 - \$250 • Min. bid: \$80

**Lot 221**

"LOUDEN & Co'S - CARMINATIVE - BALSAM - PHILADA" (with virtually complete, original label, partial dried contents), America, 1847 - 1855. Aquamarine, cylindrical, sheared, tooled, thin flanged lip - blowpipe pontil scar, ht. 5 1/4"; (bottle is perfect, original label darkened a bit, but otherwise excellent). Odell, p.230. Label gives directions for adults and infants. Very scarce-to-rare with virtually complete original label.

Est.: \$200 - \$400 • Min. bid: \$100

**Lot 218**

"BRISTOL'S - EXTRACT OF / SARSAPARILLA - BUFFALO" (with virtually complete, original label, partial contents, remnants of neck label), 1845 - 1860. Aquamarine, rectangular with beveled corners, applied sloping collar - blowpipe pontil scar, ht. 5 3/4"; (bottle is perfect, label darkened from age but still legible). Label reads in part, *"This medicine may be administered with perfect safety to the most tender infant"*. A top example, nice crude glass, very scarce with label and contents.

Est.: \$300 - \$500 • Min. bid: \$150

**Lot 222**

"DR. CARTER'S / COMPOUND - PULMONARY / BALSAM" (with original wrapper, contents), 1845 - 1855. Aquamarine, cylindrical, sheared, tooled, thin flanged lip - blowpipe pontil scar, ht. 5 1/8"; (bottle is perfect; original wrapper is darkened a bit and has a small area of minor staining, otherwise excellent). Note: although it is faded, the original wrapper appears to be signed by Dr. Carter. Label: *"Kept constantly for sale at wholesale and retail, by F. & H. Keyes, Newbury, Vt."*

Est.: \$250 - \$450 • Min. bid: \$130

**Lot 219**

"DR. M.G. KERR / & / BERTOLET - COMPOUND / ASIATIC BALSAM - NORRISTOWN PA" (with virtually complete, original wrapper), 1845 - 1855. Aquamarine, rectangular, beveled corners, sheared, tooled, thin flanged lip - blowpipe pontil scar, ht. 4 3/4"; (bottle is perfect; original wrapper is darkened a bit from age and has a tiny bit of staining, otherwise excellent). Very attractive graphic wrapper depicts a young woman holding a bottle next to a bedridden invalid.

Est.: \$250 - \$450 • Min. bid: \$130

**Lot 223**

"HUNTER'S / GON. / MIXTURE", 1848 - 1857. Light aquamarine, cylindrical, sheared, tooled, thin flanged lip - blowpipe pontil scar, ht. 5 1/4"; (professionally cleaned to original luster, and just a trace of very minor wear, otherwise excellent). Odell, p.186; Knapp, p.235. Hunter's Gonorrhea Mixture is believed to have been put out by Dr. John Hunter of Philadelphia. However, per Bob Daly, Philadelphia Historian, the Gonorrhea Mixture may have been a knockoff by someone using Hunter's name.

Est.: \$300 - \$500 • Min. bid: \$150

**Lot 220**

"UNIVERSITY / FREE MEDICINE / PHILADA" (with 95% complete, original label), 1853 - 1858. Aqua, hexagonal, applied square collar - blowpipe pontil scar, ht. 5 3/4"; (bottle has a tiny pinpoint spot of roughness at edge of collar, otherwise pristine; label darkened a bit from age, but completely legible). Label reads in part, *"University of Free Medicine / And / Popular Knowledge / Chartered / The 29th of April / 1853"*. Provenance: Ex. Sam Greer collection #1688.

Est.: \$500 - \$800 • Min. bid: \$250

**Lot 224**

"TROYER'S / VEGETABLE - RHEUMATIC / LINEMENT", 1845 - 1860. Aquamarine, cylindrical, sheared, tooled, and inward rolled mouth - blowpipe pontil scar, ht. 4"; (professionally cleaned to original luster with just a little minor haze remaining on the base, and the interior of the neck, otherwise excellent). A very scarce-to-rare pontiled medicine (liniment being misspelled on the bottle). Possibly from Cincinnati, OH. Provenance: Ex. Gary Enters collection.

Est.: \$200 - \$400 • Min. bid: \$100



Lot 225

"HOUGHIN'S / CORN / SOLENT", probably 1856 – 1860. Aquamarine, oval with six flat panels around reverse, sheared, tooled, and inward rolled mouth – blowpipe pontil scar, ht. 2 3/8", perfect; (note, remnants of original neck foil remain on the neck). Odell, p.179; Knapp, p.224. A very scarce pontiled medicine believed to be from Worcester, Mass.

Est.: \$150 - \$250 • Min. bid: \$80



Lot 229

"PROFESSOR MOTT'S - MAGIC / HAIR INVIGORATOR - PRICE 25 CENTS - A.J. GREEN / HIGHGATE VT", 1855 – 1865. Aquamarine, rectangular with beveled corners, applied ring collar with bevel – blowpipe pontil scar, ht. 6 1/4", attic mint. Odell, p.260; Fadely, p.112. Per Fadely, the preparation was invented by Mott, possibly Dr. Valentine Mott in NYC, and marketed by A.J. Green. A bright, clean, sparkling, very scarce-to-rare pontiled hair bottle.

Est.: \$200 - \$400 • Min. bid: \$100



Lot 226

"T. JONES' / CORAL - HAIR / RE-STORATIVE", probably 1845 – 1855. Aquamarine, rectangular with narrow beveled corners, applied sloping collar – blowpipe pontil scar, ht. 5 1/8", near mint; (the bottle may have been lightly cleaned, but certainly presents as virtually perfect). Fadely, p.85; Odell, p.204. Very scarce. Thomas Jones was a NYC perfumer and advertised the Coral Hair Restorative as early as 1843. Provenance: Ralph Finch collection.

Est.: \$200 - \$400 • Min. bid: \$100



Lot 230

"L. S. BLISS / HATFIELD MASSTS - UN-RIVALED - HAIR TONIC", 1855 – 1860. Aquamarine, rectangular with beveled corners, applied sloping collar – blowpipe pontil scar, ht. 6 7/8", perfect. Odell, p.36; Fadely, p.23. A very rare pontiled hair tonic from the small town of Hatfield, near Springfield, Mass. Not an easy bottle to find, especially in this fine condition.

Est.: \$200 - \$400 • Min. bid: \$100



Lot 227

"W. WHITE / CHEMIST / PHILA" (with virtually complete, original label), probably 1856 – 1859. Aquamarine, rectangular with concave panels and narrow beveled corners, tooled thin flanged lip – blowpipe pontil scar, ht. 5 3/8", (both bottle and original colorful label are virtually perfect). Rare, especially with original label. Label reads, **"WHITE'S / HAIR / REGENERATOR / or / AMBER GLOSS / prepared only by WILLIAM WHITE / CHEMIST / No. 152 So 9th St. / PHILA."** Ralph Finch collection.

Est.: \$250 - \$450 • Min. bid: \$130



Lot 231

"A. LIDDON" Hair Bottle, 1855 – 1865. Clear, light-to-medium cobalt blue, oval with fluted vertical front and back panels, bulbous ring neck, applied square collar – blowpipe pontil scar, ht. 7 5/8"; (some minor light wear including a tiny pinprick bit of roughness on the edge of the collar, and some small in-manufacture crazing lines in the neck mentioned for completeness, otherwise near mint). A rare, eye-appealing, pontiled hair bottle from Philadelphia. Fred Swiechowicz collection.

Est.: \$800 - \$1,200 • Min. bid: \$400



Lot 228

Lot of (12), **"Dr CAMP-BELL'S - HAIR / INVIGORATOR - AURORA - NEW YORK"** Pontiled Hair Bottles (10 with original wrappers), and original Shipping Box, probably 1858 – 1863. Bottles are aquamarine, rectangular with

beveled corners, applied double ring collars – blowpipe pontil scarred bases, ht. approx. 6 1/4" each; (bottles and wrappers are all near-mint to mint, original cardboard shipping box is excellent with some minor staining). Fred Swiechowicz collection.

Est.: \$1,000 - \$1,500 • Min. bid: \$500



Lot 232

"CHURCH'S - CIRCASSIAN / HAIR - RESTORER", America, probably 1865 – 1875. Beautiful, yellowish honey coloration, rectangular with beveled corners, applied double ring collar – smooth base, ht. 7 5/8", near mint; (the bottle appears as though it may have been lightly cleaned, but certainly presents as virtually perfect). DF, p.35. A gorgeous, eye-appealing color. Noted as "extremely rare" by Fadely. There are two different mold variations for this bottle, as well as color variations. All are rare.

Est.: \$500 - \$800 • Min. bid: \$250



Lot 233

"LOG CABIN / SCALPINE / ROCHESTER, N.Y." (with 80% complete, original label), America, 1887 – 1890. Medium amber with some lighter honey tones along the sides, irregular hex form with three indented panels, applied blob collar – **"PAT. SEPT 6. / 87"** (on smooth base), ht. 9"; (bottle is perfect; original label darkened from age but legible). O&S #32. Rare, and exceedingly rare in this fine condition and with original label. Provenance: Fred Swiechowicz collection.

Est.: \$800 - \$1,200 • Min. bid: \$400



Lot 237

Lot of (2), "HYATT'S – INFALLIBLE – LIFE BALSAM / N.Y." Medicine Bottles, 1875 – 1885. Bright yellow green, and light blue green, both rectangular with beveled corners, applied sloping double collar – smooth base, ht. 9 3/4" and 9 3/8" respectively; (the yellow green example is perfect; blue green example has a little wear at the panel edge below the shoulder, and on a couple of the beveled corner edges, a trace of interior residue or faint haziness, otherwise excellent).

Est.: \$300 – \$500 • Min. bid: \$150



Lot 234

"REV. W. HARRISON / ROME N.Y. – PULMONIC – MIXTURE", 1875 – 1885. Aquamarine, rectangular with beveled corners, applied square collar – smooth base, ht. 9 3/8", near mint; (an 'attic-type' bottle with just a little light high point wear on the panel edges, and a slender open bubble on the interior of the neck, otherwise perfect). A big, impressive, rare Upstate NY medicine from the small town of Rome, near Utica, NY. Medicines embossed "Rev." are rare in general.

Est.: \$200 - \$400 • Min. bid: \$100



Lot 238

Lattice and Diamond Poison Bottle, America, 1877 – 1900. Medium-to-deep cobalt blue, cylindrical with lattice and diamond pattern, tooled prescription-type collar – smooth base, ht. 11 1/4"; (some light, washable, interior content residue, otherwise perfect). KC-1. Note; this is the large 1/2 gallon size noted as rare. A big impressive poison!

Est.: \$300 - \$500 • Min. bid: \$150



Lot 235

"Dr. L. B. WRIGHT'S – SCROFULOUS / ANTIDOTE – NEW-YORK", 1860 – 1870. Rich aquamarine, rectangular with beveled corners, applied sloping collar – early smooth base, ht. 8 3/4", virtually attic mint; (a tiny little 1/8" sliver flake on the edge of the collar, otherwise perfect). Knapp, p.525. A bright, clean, very attractive and rare early medicine that just missed the pontil rod. From the same company that put out the more common, "Liquid Cathartic / or Family Physic".

Est.: \$200 - \$400 • Min. bid: \$100



Lot 239

"LYNCH & CLARKE / NEW YORK", probably New England Glass Bottle Company, Cambridge, MA, 1823 – 1833. Very deep olive amber, cylindrical with wide neck and sloped shoulders, applied sloping collar with bevel – sand type pontil scar, Pt; (some scattered exterior usage wear and light scratches, a bit of minor interior residue, otherwise excellent). T# C-2:B. A very heavy, crude example. Attractive sloped shoulders and broad neck.

Est.: \$300 - \$500 • Min. bid: \$150



Lot 236

Lot of (2), "HYATT'S – INFALLIBLE – LIFE BALSAM / N - Y" Medicine Bottles, 1865 – 1875. Deep yellowish apple green, and medium blue green, both rectangular with beveled corners, applied sloping double collar – smooth base, ht. 9 3/4" and 9 5/8" respectively; (the apple green Hyatt's has a trace of wear and some light patchy dullness, primarily on the shoulder and side panel, otherwise excellent; the blue green example has a couple of tiny, 3/16", in-making cooling lines in the side).

Est.: \$300 - \$500 • Min. bid: \$150



Lot 240

"ADIRONDACK SPRING / WHITEHALL / N.Y.", probably 1871 – 1873. Rich, medium-to-deep emerald green, cylindrical, applied sloping collar with bevel – smooth base, Pt, virtually perfect; (a few onionskin-thin open surface bubbles, otherwise mint). N-2:B. A scarce mold, beautiful color, nicely whittled and full of bubbles. A very attractive example and a lot of bottle for the money!

Est.: \$200 - \$300 • Min. bid: \$100



Lot 241

"VERMONT SPRING / SAXE & CO. / SHELDON. VT.", 1865 – 1875. Rich, medium emerald coloration, cylindrical, applied sloping collar with bevel – smooth base, Qt, attic mint; (note; some moderate-to-heavy, dried yellowish interior content residue that would wash or soak out). T# V-21:A; Type I, Variant 1. ("G" in SPRING appears as a "Q"). Scarce. Provenance: Fred Swiechowicz collection.

Est.: \$150 - \$250 • Min. bid: \$80



Lot 245

"C. FREEMAN / BOTTLER / BUFFALO. N.Y. / THIS BOTTLE / TO BE RE-TURNED", 1850 – 1860. Deep 'old amber' or chocolate coloration, squat porter form, applied sloping double collar – iron pontil scar, ht. 6 5/8"; (some moderate exterior wear and light scratches, a little more so on the reverse, 1/8" open bubble on back shoulder, and a hard-to-see 3/8" bruise on the shoulder, a 1 1/4" area of the lip with some chips and flaking, some light dullness, interior residue). Extremely rare!

Est.: \$300 - \$500 • Min. bid: \$150



Lot 242

"STEINKE & / KORNAHRENS – SODA WATER – RETURN THIS BOTTLE – CHARLESTON SC.", 1845 – 1860. Medium-to-deep vivid cobalt blue, 8-sided, applied sloping collar – iron pontil scar, ht. 8 3/8"; (professionally cleaned to original luster with some typical minor ground wear remaining, and a 3/16" flake on the edge of the lip, otherwise excellent). Scarce. A nice example, rich, deep color.

Est.: \$400 - \$600 • Min. bid: \$200



Lot 246

"H. W. LINCOLN – DOUBLE SODA" (with period metal stand), America, c.1860. Sapphire blue, torpedo form, applied sloping collar – smooth base, ht. 9"; (in 'as-found' condition, it appears to be a dug bottle with some overall light exterior haziness, a few minor scratches and typical light wear; a shallow 1/4" bruise near the base, and a 1/2" iridescent bruise on the inside edge of the collar). An exceedingly rare soda from Boston, MA. Provenance: Fred Swiechowicz collection.

Est.: \$600 - \$1,200 • Min. bid: \$300



Lot 243

"W. RYER – R / UNION GLASS WORKS / PHILAD.A", 1848 – 1860. Deep cobalt blue, cylindrical, squat soda form, applied blob collar – iron pontil scar, ht. 7 1/4"; (professionally cleaned to original luster, and just a trace of very minor wear including a partially open interior bubble, otherwise very near mint). One of many different bottles put out by William Ryer of Newark, New Jersey. A beautiful example, strong color, overall excellent condition.

Est.: \$300 - \$500 • Min. bid: \$150



Lot 247

"C. CLEMINSHAW / SODA & / MINERAL WATER / TROY. N.Y.", 1865 – 1875. Clear, medium sapphire blue, cylindrical, pony form squat soda, applied blob collar – smooth base, ht. 6 7/8", perfect. An 'attic-type' example, beautiful color, bright, clean, sparkling, virtually pristine condition.

Est.: \$175 - \$275 • Min. bid: \$90



Lot 244

"GEO. SCHOCH" (STAR) / "PHILAD.A", probably 1847 – 1855. Rich, deep blue green, almost a teal coloration, cylindrical, squat 'porter' form, crudely applied sloping collar with bevel – iron pontil scar, ht. 6 3/4"; (professionally cleaned to original luster with a little scattered minor wear remaining, otherwise excellent). A very scarce-to-rare Philly soda, attractive form and embossing with the large embossed star, very strong color.

Est.: \$400 - \$600 • Min. bid: \$200



Lot 248

"PENTUCKET SPRING / MINERAL WATER – G.S. CUSHING / LOWELL / PATENT", 1865 – 1875. Bluish green with an emerald tone, cylindrical, squat soda form, applied blob collar – smooth base, ht. 7", near mint; (an 'attic-type' soda with a little light exterior wear). A scarce soda, especially in this fine condition.

Est.: \$200 - \$400 • Min. bid: \$100



Lot 249

"DAVISON & WELCH / PROPRIETORS" / (PISTOL) / "WORKS / MINONK / ILL.", 1895 – 1905. Aquamarine, cylindrical, tooled 'Hutchinson-style' closure – "15" (on smooth base, ht. 6 3/8"; (professionally cleaned to original luster with just a bit of very minor haziness remaining, primarily a small patch on the interior of the shoulder on the reverse, and a bit of relative minor wear, otherwise excellent). A very rare and desirable pictorial 'Hutch', most unusual with early revolver motif.

Est.: \$200 - \$400 • Min. bid: \$100



Lot 253

"PHOENIX / BOTTLING WORKS / PHOENIX A.T.", 1890 – 1900. Aquamarine, cylindrical, applied 'Hutchinson-style' closure – smooth base, ht. 6 1/2"; (a 5/8", hard-to-see, iridescent bruise on the collar, otherwise very near mint). A great looking example of this very scarce Arizona Territory hutch – bright, clean, whittled, and with good depth of color, the noted condition issue is well hidden and not easy to see.

Est.: \$200 - \$400 • Min. bid: \$100



Lot 250

Lot of (2), Scarce Colorado Hutchinson Sodas, 1895 – 1900. 1st Ex: **"J. McDONALD / LEADVILLE"**. 2nd Ex: **"THE STANDARD BOTTLING & MFG. CO. / CRIPPLE CREEK / COLO."**. Colorless and aquamarine, both with tooled 'Hutchinson-style' closures – smooth base, ht. 6 3/8" & 6 1/2" respectively; (the Leadville example has been professionally cleaned, otherwise excellent; the Cripple Creek hutch may have been lightly cleaned, but certainly presents as virtually perfect).

Est.: \$175 - \$350 • Min. bid: \$90



Lot 254

"OKMULGEE / BOTTLING / WORKS / OKMULGEE, I.T.", possibly Renton Glass Co, Renton, WA, 1905 – 1907. Aquamarine, cylindrical, tooled 'Hutchinson-style' closure – **"R G CO"** lightly embossed on the heel of smooth base, ht. 6 3/4"; (professionally cleaned to original luster with just a little minor wear remaining; a 1/2" scallop-type chip at heel of base on the reverse, and a 1/8" shallow bruise, or 'potstone ding', on the reverse). A very scarce-to-rare Indian Territory 'Hutch'.

Est.: \$250 - \$450 • Min. bid: \$130



Lot 251

Lot of (2), Early Montana Sodas, Illinois Glass Co, Alton, IL, 1875 – 1885. 1st Ex: **"SPECKART & Co / BUTTE CITY / MON."**. 2nd Ex: **"MERRITT & Co. / HELENA / MONTANA"**. Both are aquamarine, pony-style tapered cylinders, applied blob collars – **"I G Co"** on heel of smooth bases, ht. 6 3/8" & 7 1/8" respectively; (both professionally cleaned with just a bit of typical minor wear remaining, otherwise excellent). Both are bright, clean examples.

Est.: \$200 - \$400 • Min. bid: \$100



Lot 255

"HUGO / BOTTLING CO. / HUGO, I.T.", Illinois Glass Co, Alton, IL, probably 1895 – 1900. Clear with a slight sun-colored amethyst tone, cylindrical, mug-base, **"I.G. Co 77"** on heel of smooth base, ht. 7 1/4"; (professionally cleaned with a little scattered minor ground wear remaining, primarily on the reverse, otherwise excellent). A rare Indian Territory hutch that does not come around often.

Est.: \$300 - \$500 • Min. bid: \$150



Lot 252

"PIONEER SODA WORKS / SMITH & BRIAN CO. / RENO, NEV.", 1900 – 1910. Aquamarine, cylindrical, 4-piece mold, tooled 'Hutchinson-style' closure – smooth base, ht. 6 3/4", near mint; (just a slight trace of light wear including a tiny pinhead bit of roughness on the edge of the collar, some washable light interior residue, otherwise perfect). A great looking soda, overall excellent condition.

Est.: \$175 - \$275 • Min. bid: \$90



Lot 256

"ANCHOR STEAM / (ANCHOR) / BOTTLING WORKS / SHAWNEE. O.T.", Interstate Glass Co, Kansas City, MO, 1902 – 1903. Colorless, cylindrical, tooled 'Hutchinson-style' closure, **"I S G Co"** on heel of smooth base, ht. 6 5/8"; (professionally cleaned with just a bit of minor light wear remaining, and a slight touch of faint milkiness in the shoulder, otherwise excellent). A scarce pictorial Oklahoma Territory hutch.

Est.: \$250 - \$450 • Min. bid: \$130



Lot 257

"EL. RENO / BOTTLING WORKS / EL. RENO, / O.T.", 1895 – 1907. Light aquamarine, cylindrical, tooled 'Hutchinson-style' closure – smooth base, ht. 6 5/8"; (professionally cleaned to original luster, and a small 3/16" iridescent bruise on the back edge of the collar has been lightly polished, not easy to see, otherwise excellent). A rare territorial hutch, one that does not come around often.

Est.: \$200 - \$400 • Min. bid: \$100



Lot 261

Lot of (2), Onion-form Wine Bottles, Belgium, Germany, or possibly Dutch, 1730 – 1750. Light yellowish olive, and rich, medium-to-deep olive with a slight emerald tone, both are onion-form, applied string rims – blowpipe pontil scarred bases, ht. 6 3/8" and 7 1/4" respectively; (1st Ex. has some light overall interior and

exterior haziness, minor usage wear; 2nd Ex. has some light scratches and moderate usage wear, a 3/8" chip on the edge of the rim). See VdB, plate 72.

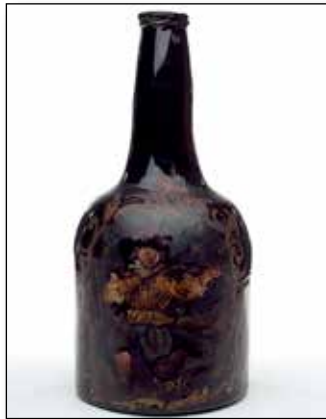
Est.: \$250 - \$450 • Min. bid: \$130



Lot 258

"T. & S. / PORT TOWNSEND / SODA WORKS / P.T., W.T.", probably 1885 – 1889. Aquamarine, cylindrical, tooled 'Hutchinson-style' closure – smooth base, ht. 6 1/2"; (professionally cleaned to original luster with just a bit of typical minor wear remaining, otherwise excellent). A bright, clean, attractive example of this scarce Washington Territory 'Hutch', overall very nice condition.

Est.: \$250 - \$450 • Min. bid: \$130



Lot 262

Black Glass Wine Bottle (with early painted scene of Musician and Heart-shaped Laurel Wreath), Continental, probably Dutch, 1770 – 1790. Deep olive amber, dip mold, late mallet or early squat cylinder form, applied string lip – base appears to have a light sand-type pontil scar, ht. 9". Early painted scene of a kneeling musician playing a violin or stringed instrument – on reverse, an inscription within a heart-shaped laurel wreath; (the bottle is perfect; some minor paint loss).

Est.: \$400 - \$600 • Min. bid: \$200



Lot 259

Lot of (2), Hawaiian Sodas, 1900 – 1910. 1st Ex: **"EWA BOTTLING WORKS / H.T."** 2nd Ex: **"OAHU SODA WORKS / AIEA, / OAHU. – BOTTLE NOT SOLD"**. Both are cylindrical, tooled 'Hutchinson-style' closure – smooth base, ht. 7 3/4" and 7 1/2" respectively; (the 1st Ex. has a shallow 3/16" chip on the edge of the collar; both with only slight traces of minor wear, otherwise near mint). Both are nice clean examples, overall excellent condition.

Est.: \$200 - \$400 • Min. bid: \$100



Lot 263

Rare, Black Glass Wine Bottle, probably England, 1815 – 1825. **"ISAAC DAWE"** (on applied glass seal). Deep olive coloration, cylindrical, dip mold, applied sloping collar with bevel – sand type pontil scar, ht. 11 1/8", near mint; (a little expected light exterior usage wear, otherwise perfect with full original body luster and a crisp seal impression). A very rare seal, unlisted in Burton. Originally purchased from Harmer Rooke Galleries more than 25 years ago. Provenance: Gary Enters collection.

Est.: \$400 - \$600 • Min. bid: \$200



Lot 260

"DIAMOND 'A' GINGER BEER CO. / A / SYRACUSE / N.Y." Stoneware Bottle and Giant Advertising Bottle, probably 1902 – 1910. Both are oatmeal color with dark blue stenciling and mustard or brown toned shoulders, cone shoulders, blob collars, ht. 6 1/2" and 18 1/4" respectively, both are near perfect; (display example has a shallow 3/8" pockmark in the glaze on the reverse, and a 3/4" chip at edge of base). The giant bottle is extremely rare. Fred Swiechowicz collection.

Est.: \$400 - \$600 • Min. bid: \$200



Lot 264

Rare, Black Glass Wine Bottle, Continental, Northern Germany, 1790 – 1820. **"HR"** (on applied seal). Beautiful, medium grass green coloration, dip mold 'hock wine' form, applied string rim – kickup base with blowpipe pontil scar, ht. 12 1/2"; (near perfect, light usage wear). VdB, plate 265. A very rare seal with only a small handful known, and virtually impossible to find in this condition! Provenance: Ex. Rainer Kosler collection (author of *Flasche, Bottle und Bouteille*).

Est.: \$300 - \$500 • Min. bid: \$150



Lot 265

Lot of (2), Early Freeblown Wine Bottles (one with applied seal), Continental, 1760 – 1800. Beautiful teal blue and sea-green coloration, both are cylindrical with gracefully sloping shoulders, sheared mouths with applied string rims – blowpipe pontil scarred bases, ht. 10 ¾" & 11 ½" respectively. "P&Z" (on applied seal) of sea-green ex; (1st Ex. is perfect; 2nd Ex. has minor interior residue, and a 5/16" area of roughness or flaking on the edge of the lip). Beautiful wines, the sealed example is rare.

Est.: \$300 - \$500 • Min. bid: \$150



Lot 269

Lot of (3), 'Truffle' Storage or Preserve Bottles, France, 1840 – 1860. Small example is deep olive green; medium and large sizes are shades of deep amber with an olive tone, all are freeblown, tapered cylinder form, sheared mouths with heavy applied string rims – deep conical bases with iron pontil scars, ht. 4 7/8", 7 5/8" and 11 ½", all are near-mint; (small ex. has a bit of light wear; medium ex. has some moderate light wear, and the large ex. is near perfect with just very light wear).

Est.: \$200 - \$400 • Min. bid: \$100



Lot 266

Lot of (2), Early Wine or Utility Bottles, Continental, probably France or Belgium, 1780 – 1810. Yellowish olive and honey amber with a very slight olive tone, both freeblown or possibly dip mold, sheared lip with applied string rims – pushed up bases with blowpipe pontil scars, ht. 9 5/8" and 11 ¼" respectively; (olive example has some expected minor usage; a bit of very light spotty dullness, and some light interior haziness; 2nd Ex. near perfect with a bit of minor lip roughness).

Est.: \$250 - \$450 • Min. bid: \$130



Lot 270

Lot of (2), Early Storage or Utility Jars, Continental, France, Belgium, Germany, 1800 – 1830. Light yellowish apple green and medium-to-deep blue green, both are dip mold, cylindrical, with sheared, tooled, and outward flared rims – sand-type and blowpipe pontiled bases, ht. 9 3/8" and 6 7/8" respectively, both are perfect! A very attractive pair of early jars, not easy to find in this fine condition and with undamaged rims.

Est.: \$200 - \$400 • Min. bid: \$100



Lot 267

Lot of (2), Early Miniature Wine Bottles, Continental, probably France or Germany, 1780 – 1810. Clear, yellowish olive amber, and bubbly light honey coloration, both are cylindrical with gracefully sloping shoulders; 1st Ex. with sheared and outward folded mouth, 2nd Ex. with delicate small applied string rim – both with blowpipe pontil scarred bases, ht. 3 ¾" & 4" respectively, both are perfect! Miniature freeblown wines of this period are very scarce. A great pair of early wines.

Est.: \$175 - \$275 • Min. bid: \$90



Lot 271

Freeblown Demijohn, Continental, probably Germany, Black Forest Region, 1830 – 1850. Medium-to-deep olive amber, almost a yellowish 'old amber', cylindrical, funnel-type neck, sheared mouth with crudely applied string rim – blowpipe pontil scar, ht. 14 7/8", virtually perfect; (some light, non-distracting, and almost certainly washable content residue). A very attractive and interesting demijohn, very similar to an example we sold in Auction #35. Fantastic condition, pleasing form and color.

Est.: \$300 - \$500 • Min. bid: \$150



Lot 268

Early Black Glass Decanter Bottle ("BRANDY" painted within banner and shield), probably Scotland, 1810 – 1830. Medium yellowish olive, dip mold, decanter form with elongated neck, sheared mouth with tooled ring collar – sand or disc-type pontil scar, ht. 10 ¼". "BRANDY" in black paint within rectangular banner or frame, gold background with reddish-brown trim; (the bottle is perfect, some scattered minor paint loss). A very attractive, pleasing form, scarce.

Est.: \$300 - \$500 • Min. bid: \$150



Lot 272

Demijohn, New England, probably Westford Glass Works, Westford, CT, 1857 – 1873. Frothy, translucent, yellowish olive, cylindrical, 3-pc. mold, applied sloping collar – smooth base, ht. 11 3/8", virtually perfect; (just a trace bit of light wear and some tiny, pinhead size or smaller, onionskin-thin open bubbles). Exceptional character, the glass is absolutely filled with tiny bubbles swirled through the entire bottle creating a frothy, translucent appearance.

Est.: \$500 - \$800 • Min. bid: \$250

Additional Selections from the Fred Swiechowicz Collection

Fred was a 'collector's collector'. He loved his bottles, virtually all bottles. His collection was as diverse and interesting as there are categories and collectors.



Lot 84



Lot 105

Lot 21

Lot 95

Lot 165