

NOTE: This is a timed-closing auction. See details on first page.

American Glass Gallery™

Auction #39

Opens November 25, 2024 • Closes December 4, 2024



Extremely Rare
G.W. Stone Medicine
Bottles—Lots 207, 205 & 206

G.W. Stone portrait and period advertisement,
courtesy of FOHBC Virtual Museum.

Conditions of Sale: Auction #39 – Timed Closing Auction - No Call Backs

1. Absentee Auction

The items in this sale will be sold via absentee auction.

Closing date: **Wednesday, December 4, 2024, 10:00 p.m., EST.**

2. Our Guarantee Regarding Descriptions

American Glass Gallery has made every attempt to describe correctly the property being sold. Descriptions are guaranteed to be accurate as regards to authenticity, age, condition, and measurements to within one-fourth inch, as represented in this catalog. Items in this catalog are not shown to scale. In describing damage, exterior wear or manufacturer's flaws that in our opinion, do not significantly detract visually or monetarily from the value of the item are not listed and will not be considered for refund. The Auctioneers reserve the right to make verbal corrections and provide additional information at any time during the sale.

3. Preview

Items may be viewed by appointment from **November 26, 2024**, through **December 3, 2024**.

4. Bidding Procedure

You may submit your bids by mail, phone, FAX, email or through our on-line auction site. If bidding by mail or FAX, please fill out the absentee form and return it to us. Your bid, either written or oral, grants American Glass Gallery the authority to protect you up to the amount of your stated bid. Your bid will not be removed once executed.

Bidding Times: You can submit your bids anytime after receiving your catalog. Bids may be made by phone, daily, until closing day, **December 4, 2024**, from 9 A.M. - 6 P.M. Eastern Time. Incoming phone bids will be accepted on the closing day (**December 4, 2024**) until 10 P.M. Eastern Time. No exceptions. You may also place your bids through our on-line auction service 24-hours a day once the site has opened for bidding, on or about **November 25, 2024**, continuing until 10:00 P.M. Eastern Time, **December 4, 2024**.

Please do not wait until the last day or two of the sale to place your bids!

Because many collectors wait until the final few days of the sale to place their bids, we anticipate the telephone and internet bidding to be very busy during that period, so please plan accordingly. In the event of a tie bid, the earliest received bid on the lot will take precedent. We would welcome your bids by phone so that we can answer any questions and assist you in your bidding.

You may also telephone us at any time during the auction, prior to the closing of the sale, to check the status of your bids, to find the current bidding level, to open a bid, or to raise a bid on an auction lot.

Bidding Increments are as follows:

Up to \$250.00..... increments of \$10.00
\$250.00 - \$500.00 increments of \$25.00
\$500.00 - \$1,000.00 increments of \$50.00
\$1,000.00 - \$2,500.00 increments of \$100.00
\$2,500.00 - \$5,000.00 increments of \$250.00
\$5,000.00 - \$10,000.00 increments of \$500.00
\$10,000 & Up..... increments of \$1,000.00

Bids submitted between the above increments, whether by mail, FAX, email or on-line via the internet, will automatically be lowered to the closest lower increment.

This is a minimum bid auction. Bids below the printed minimum will not be accepted.

An example of how our absentee bidding system works: You bid \$1000.00 on a lot which is the highest bid received to date. The second highest bid is \$800.00. The current high bid level would be yours at \$850.00, one bid increment higher than the other collector's bid. Any additional bids submitted by others below \$1000.00 will automatically be topped on your behalf by a representative of American Glass Gallery, up to your stipulated high bid amount. If no further bids on this lot are received beyond the \$800.00, then you would have won the lot at \$850.00, not the \$1000.00 that you were prepared to pay.

American Glass Gallery will at NO TIME disclose bids pledged by others; only the current "High Bid" level of a lot will be stated upon request. The highest bidder as determined by American Glass Gallery shall be the purchaser. It is the sole right of the auctioneer to settle any dispute between bidders and to regulate the bidding procedure. The auctioneer reserves the right to refuse any bid he believes not to have been made in good faith.

5. Closing the Auction

Timed Closing. No Call Backs for This Sale!

Auction closes 10 PM Eastern, Wednesday, December 4, 2024.

How it works: If any Lot receives a bid within the last 10 minutes before the 10 PM closing time, an additional 10 minutes will be added on to the bidding time for that Lot - at the time the bid is entered. For example, if a bid is entered on Lot #95 at 9:58 PM, an additional 10 minutes will be added to the closing time for that Lot, i.e. the Lot will close 10:08 PM, unless another acceptable bid is received prior to 10:08 PM. If the same Lot receives another bid 5 minutes later, i.e., 10:03 PM, the 10 minute timer will be restarted. Thus, an item will not close until it has received no bids for 10 minutes. At the end of that time, the Lot will automatically close and the highest bidder will be the winner.

No phone bids will be accepted after 10 PM, or during the timed closing portion of the sale.

IMPORTANT: When the auction is in the last 10 minutes, (after 9:50 PM EST, Wednesday, December 4), **you must refresh your screen to see any updated bids and remaining time on the Lots.** You may refresh your bid page by hitting "Enter Bids". A time left column will appear on the right. The time will go down every time you refresh unless an acceptable bid has been placed, then the timer will be reset to 10 minutes.

When a Lot closes, your bid sheet will show either (parentheses only when there is a left bid):

Example:

You WIN for \$400 (Left Bid \$500)

or:

Won by another for \$600

Note: Normal email notifications will still be sent during the Timed Closing. However, we recommend that you actively refresh your screen for the latest updates, or changes, as the email notifications may not always get through (i.e., may sometimes be intercepted by email blockers or spam filters).

If you are unable to watch, or be actively involved during the closing time, you may always submit an Absentee, or "Left Bid" which will be executed competitively up to your stipulated high bid should any bids come in during the Timed Closing Period.

Conditions of Sale: Auction #39 – Timed Closing Auction - No Call Backs

6. Terms

Successful Bidders, Prompt and full payment is due immediately upon receipt of our invoice. Absolutely no exceptions. Anyone failing to pay for items won will forfeit all rights to bid in any future American Glass Gallery sales. **Any late or delayed payments may result in loss of return privileges for items purchased in the sale.**

No Items Will Be Mailed Before Full Payment Is Received.

Buyer Premium: Our buyer premium is **17% if paying by cash or check, discounted from 20% if paying by Credit Card or PayPal** (PayPal payment account: jpastor@americanglassgallery.com). This buyer premium will be added to the hammer price as part of the purchase price. For example, if you purchase a lot for \$100.00, you will receive an invoice for \$117.00 if paying by cash, check or money order, plus any applicable sales tax or shipping charges.

Taxes: If you are a Michigan resident, a 6% sales tax will be added to your bill unless you have a valid resale number registered with us.

Shipping: Shipping, handling and insurance are extra. We ship insured via U.S. Mail or UPS. These charges will be added to your bill unless the lots are picked up in person. Oversize packages (boxes with dimensions over 12"), may incur additional shipping charges based on the postal zone of destination. Our charges for shipping (excluding foreign shipments and oversized lots) are \$18.00 for the first item, \$9.00 for each additional item together with extra insurance costs (we use current U.S. Postal Service insurance rates).

Please allow two to three weeks for delivery after receipt of your check.

Payment: American Glass Gallery accepts Cash, Money Orders, Personal Checks, Visa, MasterCard, American Express and PayPal. **If paying by Credit Card or PayPal, an additional 3% will be added to the invoice total.**



7. Refunds

Refunds will be given at the discretion of the Auctioneers. Items purchased must be examined and request for refund made immediately upon receipt of the item or items. Since opinions can differ, particularly in the matter of condition, the Auctioneers will be the sole judge in the consideration of refunds. Refunds requested on the grounds of authenticity must be made within 15 days of the date of the auction, and such refund requests must be accompanied by at least one supporting statement in writing from an authority recognized by the Auctioneers. It is the Auctioneers sincere intention to consider any reasonable request for a refund. **Absolutely no returns for any reason after 30 days following the closing of the sale.**

8. Bidding on any item indicates your acceptance of these terms.



American Glass Gallery™

John R. Pastor
P.O. Box 227
New Hudson, Michigan 48165
Phone: 248.486.0530
Fax: 248.486.0538
www.americanglassgallery.com
email: jpastor@americanglassgallery.com

PLEASE NOTE:

The lots offered in this printed catalog are identical to the lots offered in the on-line catalog. However, due to space constraints of the printed catalog, there may be some further information available regarding some of the lots in the on-line auction descriptions.

Please visit us at

www.americanglassgallery.com

and follow the link to the on-line auction.

The link and on-line auction will be available November 25, 2024. A post-auction price list will be available on our website, in printable form, approximately 30 days after the close of the auction.

We encourage you to contact us by phone or email with any questions, for assistance with bidding, or further details or clarification on any of the lots in this sale. Your complete satisfaction and confidence is our goal!

**THANK YOU AND GOOD LUCK
WITH YOUR BIDS!**

Reference Key

Reference initials and numbers used in the description of this catalog refer to the following publications:

AHG	<i>American Historical Glass</i> , Bessie M. Lindsey, 1967.
AM	<i>The Decanter - An Illustrated History of Glass from 1650</i> , Andy McConnell, 2004.
AP	<i>Glass in Early America</i> , Arlene Palmer, 1993.
BA1	<i>Collecting The Cures</i> , Bill Agee, 1969.
BA2	<i>Collecting All Cures</i> , Bill Agee, 1973.
BB	<i>A Bit About Balsams</i> , Betty Blasi, 1974.
BH	<i>Classification and Documentation of Sunburst and Similar Scent Bottles</i> , Bill Ham, AB&GC, 5/87.
BJ	<i>American Pot Lids</i> , Barbara and Sonny Jackson, 1987.
B/K	<i>The Glass Industry in Sandwich</i> , Raymond Barlow and Joan Kaiser, 1989.
BPK	<i>A.M. BININGER Bottles</i> , Jim Bender, 2017
C	<i>Ink Bottles and Inkwells</i> , William Covill, 1971.
DB	<i>Antique Sealed Bottles, 1640 - 1900</i> , David Burton, 2015
DeG	<i>American Sarsaparilla Bottles</i> , John DeGrafft, 1980.
DeGII	<i>Supplement to American Sarsaparilla Bottles</i> , John DeGrafft, 2004.
DF	<i>Hair Raising Stories</i> , Don Fadely, 1992.
DM	<i>Wistarburgh, Window Tiles, Bottles and More</i> , Dale L. Murscell, 2007.
D/P	<i>Collector's Guide to Candy Containers</i> , Douglas M. Dezso, J. Leon and Rose Poirier, 1998.
F	<i>Inks, 150 Years of Bottles and Companies</i> , Ed and Lucy Faulkner.
FA	<i>John Frederick Amelung, Early American Glassmaker</i> , Lanmon, Palmer, Hume, Brill, Hanson, 1990.
FB	<i>A.S.C.R. The wine bottles of All Souls College</i> , Oxford, 1750 – 1850, Fay Banks.
G	(Flasks) <i>American Bottles & Flasks and Their Ancestry</i> , McKearin & Wilson, 1978.
G	(Blown Three Mold) <i>American Glass</i> (Chapter VI), George S. and Helen McKearin, 1941.
GB	<i>Ink, Glue, Polish & Blacking Bottles, 1750 – 1950, A Collector's Dictionary</i> , Guy Burch, 2023
GBH	<i>English Glass For The Collector, 1660-1860</i> , G. Bernard Hughes, 1958.
H	<i>American Bottles in the Charles B. Gardner Collection</i> , Norman C. Heckler, 1975.
JB	<i>Patent and Proprietary Medicine Bottles</i> , Joseph K. Baldwin, 1973
JEB	<i>Glasshouse Whimsies</i> , Joyce E. Blake, 1984.
JH	<i>Glasshouses & Glass Manufacturers of the Pittsburgh Region, 1795 – 1910</i> , Jay W. Hawkins, 2009.
JM	<i>Tea Kettle Ink Price and Reference Guide</i> , Joe L. Mathews Jr., 2016
JS	<i>In glas verpakt – European Bottles, Their history and production</i> , Johan Soetens, 2001.
K	<i>Poison Bottle Workbook</i> , Rudy Kuhn, 1988.
KW	<i>New England Glass & Glassmaking</i> , Kenneth M. Wilson, 1972.
LI	<i>Pittsburgh Glass, 1797 – 1891</i> , Lowell Innes, 1976.
Mc	<i>Two Hundred Years of American Blown Glass</i> , Helen and George McKearin, 1950.
McK	<i>American Glass</i> , George S. and Helen McKearin, 1941.
MW	<i>American Bottles & Flasks and Their Ancestry</i> , McKearin & Wilson, 1978.
N	<i>Great American Pontiled Medicines</i> , Frederick Nielson, 1978.
NCH	<i>The Blaske Collection of American Flasks</i> , Norman C. Heckler, 1983.
NCH II	<i>The Blaske Collection: Part II</i> , Norman C. Heckler, 1983.
Odell I	<i>Indian Bottles and Brands</i> , John Odell, 1977
Odell II	<i>Pontiled Medicine Encyclopdia</i> , John Odell, 2007
O&S	<i>Warner's Reference Guide</i> , Ed Ojea and Jack Stecher, 1998.
P	<i>The Glass Gaffers of New Jersey</i> , Adeline Pepper, 1971.
RB	<i>Red Book No. 13; The Collector's Guide to Old Fruit Jars</i> , David C. Eifler.
RD	<i>Understanding Antique Wine Bottles</i> , Roger Dumbrell, 1983.
RH	<i>Collecting Barber Bottles</i> , Richard Holiner, 1986.
R/H	<i>Bitters Bottles</i> , Carlyn Ring and W. C. Ham, 1998.
RWL	<i>Antique Fakes & Reproductions</i> , Ruth Webb Lee, 1950
T	<i>Collectors Guide to Saratoga Type Mineral Water Bottles</i> , Donald Tucker, 2005.
V	<i>Nailsea Glass</i> , Keith Vincent, 1975
VdB	<i>Antique Glass Bottles; Their History and Evolution</i> , Willy Van den Bossche, 2001.
Z	<i>Ketchup, Pickles, Sauces</i> , Betty Zumwalt, 1980.
ZW	<i>Color Hutchinsons</i> , Zang Wood, 1999.

- The dash is generally used to indicate that the descriptions are on opposite sides of the bottle or flask.

/ The slash is used to indicate that the descriptions are on different lines or surfaces of the bottle.

A Brief Biography of George Warren Stone

And see that his name and Cough Elixir, with the words, "Boston, Mass.," are blown upon the bottle,—without which none will be genuine.



Lot 206

By Laura Bonner (Daughter of Fred Swiechowicz)

George Warren Stone was born on October 4, 1821, in Lynn, MA. His parents were Caleb and Isney J. Stone. He married Mary Homan Atkins, and they had two daughters, Ann Mary Jane, and Eda Augusta. In the mid 1800s, Stone and his family appear to have lived in both Boston, and Lowell, MA, but the sequence of residency is unknown. In any case, Stone marketed a line of patent medicines in both of those locations, and was listed in the 1860 United States Federal Census as a physician in Lowell, MA.

On December 12, 1855, George W. Stone would start an advertising campaign in New England newspapers for G. W. Stones Cough Elixir and Liquid Cathartics & Family Physic. His advertisements always started off with a larger type saying, "Try it! Try it!! Try it!!! – G. W. Stones Liquid Cathartic and Family Physic, the most important discovery ever made in Medical Science, being a compound of Barks, Roots, and Seeds, which forms the most powerful, safe, and agreeable physic ever offered to the public." He was selling Liquid Cathartic and Family Physic bottles for \$1.00. He said you could buy one bottle, two bottles, three bottles, or six bottles for use against the various afflictions. This advertising campaign lasted until the first quarter of 1857.

Stone said that his physic "had advantages over cathartics given in the form of Pills or Powders. Being a liquid, it operates more immediately and effectually upon the system, it is easier to administer, and is agreeable to the taste". Stone added, it "completely removed habitual Costiveness, leaving the bowels perfectly free. It expels all humors from the blood. It is a certain cure for the Piles, Regulates the Liver, frees the stomach from Bile, invigorates the whole Nervous System ... and removes the cause of all local pains. It may also be relied upon for all diseases of the Bowels – Dysentery, Diarrhea, and Cholera Morbus."

G. W. Stone died on April 19, 1899, at the age of 77 in Nahant, MA.



Drawn by J. W. Barber—Engraved by E. L. Barber, New Haven, Conn.

EAST VIEW OF LOWELL, MASS.

BITTERS

Lot 154



Lot 176



Lot 146



Lot 160



Lot 178



Rare, Exceptional, and Colorful Bitters Bottles



Lot 156

Lot 179

Lot 177

Lot 173



Lot 1

“GENERAL WASHINGTON” / BUST OF WASHINGTON – EAGLE Historical Flask, an early Pittsburgh glasshouse, 1825 – 1835. Greenish aqua, sheared mouth – blowpipe pontil scar, Pt; (a little faint iridescence or very light haze in the shoulders, barely noticeable, and a little minor high point wear, otherwise virtually perfect). GI-2. Scarce. A very nice example of this historic, early, ‘beaded’ Washington flask. Very strong mold impression and a lot of flask for the money.

Est.: \$250 - \$450 • Min. bid: \$130



Lot 2

WASHINGTON – EAGLE Historical Flask, probably Bridgeton Glass Works, Bridgeton, NJ, or possibly Baltimore Glass Works, 1836 – 1850. Colorless with an amethystine tint, sheared mouth – blowpipe pontil scar, Qt, perfect! GI-26. A big, bold, beautiful, very attractive, comparatively scarce flask that does not come around often, and certainly rare in this colorless with amethystine tone. In addition, this one is virtually ‘out-of-the-mold’ pristine perfect.

Est.: \$1,200 - \$1,600 • Min. bid: \$600



Lot 3

“ALBANY GLASS WORKS” / BUST OF WASHINGTON / “ALBANY / N Y” – SAILING SHIP Historical Flask, 1847 – 1850. Rich honey amber with some beautiful yellowish-honey tones along the sides, applied double ring collar – light sand type pontil scar, Pt, attic mint! GI-28, Comparatively scarce. An absolutely fantastic example having crisp, very bold embossing, beautiful color, excellent character, virtually pristine, ‘out-of-the-mold’ condition. Provenance: Ex. Don Fritschel collection.

Est.: \$2,500 - \$4,500 • Min. bid: \$1,300



Lot 4

“WASHINGTON” / BUST OF WASHINGTON – “JACKSON” / BUST OF JACKSON Historical Flask, Keene Marlboro Street Glassworks, 1825 – 1842. Light, bright, yellowish amber, sheared mouth – blowpipe pontil scar, Pt, virtually perfect; (only the slightest trace of light wear including a paper-thin 1/8” flake on the edge of the collar). GI-31. Very strong impression, beautiful color, fantastic character, a good one! Richard Tucker collection, Ex. Seagram Museum glass collection.

Est.: \$250 - \$450 • Min. bid: \$130



Lot 5

“THE FATHER OF HIS COUNTRY” / BUST OF WASHINGTON – “DYOTVILLE GLASS WORKS PHILAD.A / GEN. TAYLOR NEVER SURRENDERS” / BUST OF TAYLOR Historical Flask, 1848 - 1855. Medium-to-deep olive coloration, sheared mouth - blowpipe pontil scar, Pt; (some scattered light exterior wear, and a small patch of light interior residue in one of the sides, otherwise excellent). GI-38. Scarce, rich deep olive coloration.

Est.: \$800 - \$1,200 • Min. bid: \$400



Lot 6

WASHINGTON – TAYLOR Portrait Flask, Dyottville Glass Works, Philadelphia, 1848 – 1855. Beautiful, medium-to-deep wine, or claret coloration with some pinkish strawberry tones along the sides, sheared mouth – blowpipe pontil scar, Qt; (a little typical exterior wear, as well as some high point wear on Taylor’s bust, otherwise excellent). GI-54. Gorgeous color, heavily whittled, beautiful! Provenance: Richard Tucker collection; Ex. Joe Wood collection.

Est.: \$4,000 - \$6,000 • Min. bid: \$2,000



Lot 7

“ROUGH AND READY” / BUST OF TAYLOR – “MASTERSON” / EAGLE Historical Flask, a Pittsburgh district glasshouse, or possibly Kentucky Glass Works, 1848 – 1855. Rich, very deep aquamarine, sheared mouth – pontil scar, Qt; (a little scattered wear, and a bit of very faint dullness, barely noticeable, otherwise excellent). GI-77. A very rare flask (as noted by McKearin), especially with this depth of color and strong impression. Richard Tucker collection; Ex. Calvin Smith collection.

Est.: \$1,000 - \$1,500 • Min. bid: \$500



Lot 8

“GENL LA FAYETTE” / BUST OF LA-FAYETTE – EAGLE / “KNOX & MCKEE / WHEELING” Historical Flask, Knox & McKee Virginia Green Glass Works, Wheeling, 1824 – 1826. Greenish aquamarine, sheared mouth – blowpipe pontil scar, Pt, virtually attic mint; (just the slightest trace of very faint wear, otherwise perfect). GI-92. A fantastic example of this rare and desirable early Lafayette flask. Good color, very strong mold impression, almost no wear. A very historic and important flask.

Est.: \$4,000 - \$8,000 • Min. bid: \$2,000



Lot 9

FRANKLIN – FRANKLIN Historical Flask, probably Kensington Glass Works, Philadelphia, PA, 1825 – 1835. Greenish aquamarine, almost a light apple green coloration, sheared mouth – blowpipe pontil scar, Qt, near mint; (just a touch of minor light wear including a shallow 1/8" flake at edge of base). GI-97. A scarce flask, nice color, excellent overall condition). A fresh-to-the market find from an estate sale in southern Michigan.

Est.: \$300 - \$500 • Min. bid: \$150



Lot 10

"JENNY LIND" / BUST OF JENNY LIND – "GLASS WORKS" / GLASS FACTORY / "S. HUFFSEY" Historical Calabash, Isabella Glass Works, Brooklyn, NJ, 1850 – 1860. Medium blue green coloration, applied sloping collar with bevel – blowpipe pontil scar, Qt, perfect. GI-99. Good color, very strong embossing, virtually no wear, a great example!

Est.: \$800 - \$1,200 • Min. bid: \$400



Lot 11

BUST OF COLUMBIA – EAGLE / "B&W" Historical Flask, probably Kensington Glass Works, Philadelphia, 1825 – 1835. Aquamarine, sheared mouth – blowpipe pontil scar, Pt, near mint; (just a slight trace of light wear including a partially open bubble on the inside of the neck with a bit of residue, and some faint interior haziness, barely noticeable, otherwise perfect). GI-121. A comparatively scarce, great looking early flask. Provenance: Richard Tucker collection

Est.: \$300 - \$500 • Min. bid: \$150



Lot 12

EAGLE – CORNUCOPIA Historical Flask, an early Pittsburgh or Monongahela district glasshouse, 1825 – 1835. Aquamarine, sheared mouth – blowpipe pontil scar, 1/2 Pt, attic mint! GI-11. A great example of this early little Pittsburgh beaded eagle flask, fantastic condition, strong impression, almost no wear. Scarce, especially in this fine condition. Provenance: Richard Tucker collection.

Est.: \$250 - \$450 • Min. bid: \$130



Lot 13

EAGLE – FURLED FLAG / "FOR OUR COUNTRY." Historical Flask, Coffin & Hay Glass Manufactory, Hammonton, NJ, 1838 – 1847. Aquamarine, sheared mouth – blowpipe pontil scar, Pt, virtually attic mint; (there's just a faint band of milkiness through the mid-section, not terribly noticeable or distracting, but mentioned for completeness, otherwise perfect). GI-53. A terrific example of this comparatively scarce mold, strong, crisp impression, almost no wear. Provenance: Richard Tucker collection.

Est.: \$175 - \$350 • Min. bid: \$90



Lot 14

EAGLE – CLUSTER OF GRAPES Historical Flask, probably Coffin & Hay Glass Manufacturers, Hammonton, NJ, 1838 – 1847. Yellowish olive amber below the shoulders, shading to a rich, deep olive amber, almost a tobacco coloration in the lower half and through the neck, sheared mouth – blowpipe pontil scar, Qt; (some high point wear, primarily on the eagle's shield, otherwise very near mint). GI-55. Extremely rare color. Ex. Jay Jacobs, Bob Mebane, Jack Whistance collections.

Est.: \$8,000 - \$12,000 • Min. bid: \$4,000



Lot 15

EAGLE – "LIBERTY" / OAK TREE Historical Flask, possibly an early Pittsburgh district glasshouse, 1825 – 1835. Rich, brilliant aquamarine, sheared mouth – blowpipe pontil scar, 1/2 Pt, perfect! GI-60. An outstanding example, about as nice as you could hope to find with strong color, a great mold impression, and virtually no wear. The brilliance and quality of the 'metal' sets this one apart from the rest. Provenance: Richard Tucker collection, Ex. Seagram Museum NYC glass collection.

Est.: \$600 - \$900 • Min. bid: \$300



Lot 16

EAGLE – "NEW LONDON" / ANCHOR / "GLASS WORKS" Historical Flask, 1856 – 1860. Medium blue green coloration, sheared mouth – blowpipe pontil scar, Pt; (a pinhead flake on the edge of the sheared lip, and a tiny potstone with a few 'legs', 3/16" or less, in the neck of the eagle, otherwise virtually perfect). GI-68. A comparatively scarce mold, and beyond the little potstone and flake, a great example, nicely whittled, and with crisp, bold embossing. Provenance: Ex. Robert Irons collection

Est.: \$500 - \$800 • Min. bid: \$250



Lot 17

EAGLE – EAGLE Historical Flask, Coventry Glass Works, Coventry, CT, 1835 – 1845. Yellowish olive amber, sheared mouth – blowpipe pontil scar, ½ Pt, attic mint! GII-71. A very attractive and popular flask with the large, embossed, high-relief eagle (which is often prone to high point wear). This is a great example, excellent impression, nice character, virtually no wear. Provenance: Richard Tucker collection.

Est.: \$200 - \$400 • Min. bid: \$100



Lot 21

EAGLE – (Reverse plain) Historical Flask, a Midwest glasshouse, 1860 – 1870. Aquamarine, applied mouth with flat band – smooth base, Pt, attic mint! GII-132. An exceedingly rare mold, believed to be one of only four examples extant: Two amber examples, one of which we sold in Auction #34, the whereabouts of the second amber example is unknown; this recently discovered example, and one other known in aqua which resides in a Connecticut flask collection

Est.: \$300 - \$500 • Min. bid: \$150



Lot 18

EAGLE / “GRANITE. / GLASS CO” – EAGLE / “STODARD / N H” Historical Flask, 1855 - 1862. Bright medium olive amber, sheared mouth – blowpipe pontil scar, Qt, virtually perfect; (a paper-thin, in-making, pontil flake extends to the edge of the base, mentioned for completeness). GII-80. Listed in Group C, “Rare Flasks” (#26), and noted by McKearin as “Very rare”. A hard flask to find, especially in this outstanding condition. Beautiful color, excellent character, virtually no wear.

Est.: \$1,200 - \$1,800 • Min. bid: \$600



Lot 22

CORNUCOPIA – “LANCASTER GLASS WORKS N.Y.” / URN Pictorial Flask, Lancaster Glass Works, Lancaster, NY, 1849 – 1855. Bright aquamarine, sheared mouth – blowpipe pontil scar, Pt, virtually attic mint; (some very light, washable, interior residue, and just the slightest trace of wear, otherwise perfect). GIII-16. These glasshouse-embossed Lancaster cornucopias are getting harder to find, and this is a nice clean example having almost no wear.

Est.: \$400 - \$600 • Min. bid: \$200



Lot 19

EAGLE / “PITTSBURGH / PA” – EAGLE Historical Flask, a Pittsburgh district glasshouse, 1860 – 1870. Beautiful cornflower blue, almost a light sapphire coloration, large applied ring collar – smooth base, Qt; (just a bit of minor high point wear, primarily on the pennant above the eagle, and a partially open bubble on the shoulder; the flask has been lightly cleaned but certainly appears as near attic mint). GII-102. A bright, clean, pretty example.

Est.: \$600 - \$900 • Min. bid: \$300



Lot 23

CORNUCOPIA – URN Pictorial Flask, Lancaster Glass Works, Lancaster, NY, 1849 – 1855. Rich, medium-to-deep bluish emerald, almost a teal or forest coloration, sheared mouth – blowpipe pontil scar, Pt; (some typical light-to-moderate high point wear, and a tiny, barely pinhead size flake on the inside edge of the lip, otherwise excellent). GIII-17. A strong color, and certainly a scarcer color than the medium blue-green toned examples normally encountered.

Est.: \$600 - \$900 • Min. bid: \$300



Lot 20

EAGLE / “PITTSBURGH / PA” – EAGLE Historical Flask, 1860 – 1870. Bright, light-to-medium sapphire blue, applied collar with band – smooth base, Qt, attic mint. GII-103. An outstanding example, bright, clean, sparkling, almost no wear, with a good impression, and in a rare color for this mold. Note; we sold this flask 10 years ago (Auction #12) when it was found in an estate sale in Michigan’s Upper Peninsula still having partial contents. Richard Tucker collection.

Est.: \$2,500 - \$4,500 • Min. bid: \$1,300



Lot 24

MASONIC ARCH – EAGLE / “IP” Historical Flask, Keene Marlboro Street Glassworks, Keene, NH, 1815 – 1830. Bright, light-to-medium blue green coloration, sheared, tooled ring collar – blowpipe pontil scar, Pt; (some scattered high point wear on the obverse; a little heavier wear on the shield of the eagle and a 1/8” bubble with a pinhead opening on the reverse, otherwise excellent). GIV-1. A pretty example, strong impression, excellent clarity.

Est.: \$300 - \$500 • Min. bid: \$150



Lot 25

MASONIC ARCH – EAGLE Historical Flask, Keene Marlboro Street Glassworks, 1820 – 1830. Medium olive amber shading to a rich, deep olive amber through the shoulders and base, sheared, slightly flared mouth – blowpipe pontil scar, ½ Pt; (some high point wear and just a bit of interior content residue, otherwise excellent). GIV-24. A good early Keene Masonic, and a lot of flask for the money. Richard Tucker collection, Ex. Seagram Museum NYC glass collection.

Est.: \$250 - \$450 • Min. bid: \$130



Lot 29

“SUCCESS TO THE RAILROAD” / HORSE PULLING CART – (Reverse same) Historical Flask, New England, probably Keene Marlboro Street Glassworks, Keene, NH, 1830 – 1842. Aquamarine, sheared mouth – blowpipe pontil scar, Pt, near mint; (just a trace of typical minor light wear, and the slightest bit of faint interior haziness, barely noticeable, otherwise perfect). GV-4. A very nice example, excellent condition, good impression, nice bubbly glass. Very scarce-to-rare in aqua.

Est.: \$500 - \$800 • Min. bid: \$250



Lot 26

MASONIC – “ZANESVILLE” / EAGLE / “OHIO / J. SHEPARD & CO” Historical Flask, Zanesville Glass Works, 1822 - 1832. Bright, bluish aquamarine, sheared mouth – blowpipe pontil scar, Pt, virtually attic mint; (just a slight trace of very light wear near one of the side mold seams, and a slightly weak impression in the shoulder, otherwise perfect). GIV-32. A bright clean example, strong color.

Est.: \$600 - \$900 • Min. bid: \$300



Lot 30

“SUCCESS TO THE RAILROAD” / HORSE PULLING CART – (Reverse same) Historical Flask, probably Saratoga Mountain Glass Works, Mt. Pleasant, NY, 1846 – 1855. Beautiful forest green coloration, sheared mouth – blowpipe pontil scar, Pt, near mint; (a ¼” flake on the medial rib at edge of base; a trace of typical minor high point wear, and some tiny pinhead open surface bubbles). GV-5. A beautiful example, very scarce color, outstanding character, absolutely filled with tiny bubbles.

Est.: \$500 - \$800 • Min. bid: \$250



Lot 27

MASONIC – “ZANESVILLE” / EAGLE / “OHIO / J. SHEPARD & CO” Historical Flask, Zanesville Glass Works, 1822 - 1832. Medium shading to very deep amber with some orangy-reddish tones through the lower half of the flask, sheared mouth - pontil scar, Pt; (a bit of minor wear including a couple of onionskin-thin open surface bubbles; a little in-manufacture dullness or exterior ‘bloom’ on the upper shoulders and neck). GIV-32. Great variegated color, almost two-toned.

Est.: \$800 - \$1,200 • Min. bid: \$400



Lot 31

“SUCCESS TO THE RAILROAD” / HORSE PULLING CART – (Reverse same) Historical Flask, probably Mt. Vernon Glass Works, Vernon, NY, 1830 – 1846. Rich, deep olive green, sheared mouth – blowpipe pontil scar, Pt; (some high point wear, primarily on the horse, and a weak impression through the shoulder area, as is almost always the case with this mold, otherwise excellent). GV-5. A very crude, heavy, ‘earthy’ example absolutely filled with tiny bubbles. Fred Swiechowicz collection.

Est.: \$300 - \$500 • Min. bid: \$150



Lot 28

“UNION” / CLASPED HANDS / SQUARE & COMPASS – EAGLE / “H & S” Historical Flask, Haught & Schwere, Brownsville, PA, 1861 – 1863. Medium olive yellow with a citron tone, applied square collar – smooth base, Qt; (a 3/16” sliver flake on edge of collar, and a ¼” x 3/16” flake and open bubble at corner of base, otherwise excellent). GIV-39. A beautiful and very rare color for this mold. Gary Enters collection; Ex. Dr. Stanley Sarnacki collection.

Est.: \$800 - \$1,200 • Min. bid: \$400



Lot 32

SUNBURST FLASK, probably an early Connecticut glasshouse, possibly Coventry Glass Works, or Pitkin Glass Works, East Hartford, CT, 1815 - 1830. Clear, light-to-medium olive coloration, sheared mouth – blowpipe pontil scar, ½ Pt; (some light high point wear, otherwise perfect). GVIII-16. Nice character, the glass being filled with tiny bubbles. Provenance: Richard Tucker collection, Ex. Seagram Museum NYC glass collection.

Est.: \$500 - \$800 • Min. bid: \$250



Lot 33

SUNBURST FLASK, Coventry Glass Works, Coventry, CT, 1815 – 1830. Beautiful, rich yellowish 'old amber', sheared mouth – blowpipe pontil scar, ½ Pt, virtually attic mint; (just a slight trace of very light wear, barely noticeable, otherwise perfect). GVIII-18. A pretty example, rich attractive color, scarce in this pure amber coloration. Note; there is an extra little 'dollop' of glass on the inner surface of a couple of the sunburst rays. Provenance: Richard Tucker collection.

Est.: \$700 - \$900 • Min. bid: \$350



Lot 34

SUNBURST FLASK, Baltimore Glass Works, Baltimore, MD, 1820 – 1830. Light smoky greenish Vaseline coloration, sheared and tooled mouth – blowpipe pontil scar, ½ Pt; (just a slight touch of minor high point wear, and a little faint interior haziness in the upper third, barely noticeable, mentioned for completeness, otherwise attic mint). GVIII-24. A comparatively scarce flask in a very scarce-to-rare color.

Est.: \$400 - \$600 • Min. bid: \$200



Lot 35

SUNBURST FLASK, probably Baltimore Glass Works, Baltimore, MD, 1820 – 1830. Bright aquamarine, sheared mouth – blowpipe pontil scar, ½ Pt, virtually attic mint; (just a trace of faint interior milkiness, barely noticeable, otherwise perfect). GVIII-27. A bright, clean, sparkling example of this comparatively scarce, early Baltimore Sunburst Flask. The large elliptical sunburst pattern and finely ribbed, corrugated sides are very eye-appealing. A lot of flask for the money.

Est.: \$400 - \$600 • Min. bid: \$200



Lot 36

SUNBURST FLASK, probably Baltimore Glass Works, 1820 – 1830. Bright medium citron, sheared mouth – blowpipe pontil scar, ½ Pt; (a small potstone with a couple of tiny 1/8" 'legs' near one of the corrugated sides, and the top of the sheared mouth may have been very lightly polished, possibly to remove a tiny flake, otherwise perfect). GVIII-27. A gorgeous standout color, excellent character, very strong impression, almost no wear. Ex. Tom McCandless collection.

Est.: \$800 - \$1,200 • Min. bid: \$400



Lot 37

SUNBURST FLASK, probably Baltimore Glass Works, 1820 – 1830. Medium yellow olive below the shoulders shading to a rich, deep yellowish olive with a slight amber tone in the lower half, sheared and tooled, slightly flared mouth – blowpipe pontil scar, ½ Pt, virtually attic mint; (just a slight trace of very minor wear, otherwise perfect). GVIII-27. A comparatively scarce flask in a very scarce-to-rare color!

Est.: \$1,600 - \$2,800 • Min. bid: \$800



Lot 38

"LOUISVILLE, KY – GLASS WORKS" SCROLL FLASK, Louisville Glassworks, 1855 - 1860. Aquamarine, sheared mouth - iron pontil scar, Qt; (just a touch of interior milkiness in the shoulder, barely noticeable, and the slightest trace of light wear, otherwise perfect). Note; obverse similar to GIX-7 ("E" of "Louisville" not flowing into scroll above it); formation of lettering on reverse more closely resembles GIX-6 mold. A great example, nice crude glass, outstanding character, excellent condition.

Est.: \$400 - \$600 • Min. bid: \$200



Lot 39

"LOUISVILLE, KY – GLASS WORKS" SCROLL FLASK, Louisville Glassworks, 1855 - 1860. Greenish aquamarine, sheared mouth – oval red iron pontil scar, Pt; (a 1/8" flake on the edge of the sheared mouth, and just the slightest trace of faint wear, otherwise perfect). GIX-9 (lettering curved on both sides). A comparatively scarce flask, nice character with a crude pebbly texture, overall excellent condition.

Est.: \$250 - \$450 • Min. bid: \$130



Lot 40

SCROLL FLASK, Midwest, 1845 – 1860. Medium amber, sheared mouth – blowpipe pontil scar, Pt, virtually perfect; (just a slight trace of very faint wear). Unlisted. Similar to GIX-10b (number of star points and size of stars), but with characteristics of GIX-11 (having a well-defined space between scrolls at center and ill-defined upper stars). Very scarce. Note; several early collector tags remain on the base, (one with a \$12 price). Provenance: Fred Swiechowicz collection.

Est.: \$400 - \$600 • Min. bid: \$200



Lot 41

SCROLL FLASK, Midwest, 1845 – 1860. Beautiful, medium-to-deep yellowish olive with a slight amber tone, applied collar with flat band – iron pontil scar, Pt, virtually attic mint; (just the slightest trace of very faint wear, and a touch of light, washable, interior residue otherwise perfect). Unlisted. Similar to GIX-11 having a well-defined space between center scrolls, and smaller, ill-defined upper star, but one upper star appears to have 7 points. Very scarce color, almost no wear.

Est.: \$800 - \$1,200 • Min. bid: \$400



Lot 45

HUNTER – FISHERMAN Pictorial Calabash, probably Whitney Glass Works, Glassboro, NJ, 1857 – 1865. Beautiful peachy apricot coloration with some deeper reddish tones through the shoulders and in the base, applied sloping collar – iron pontil scar, Qt, perfect. GXIII-4. A great example, beautiful eye-appealing color, no amber in this one, strong impression, fantastic condition. Provenance: Fred Swiechowicz collection.

Est.: \$300 - \$500 • Min. bid: \$150



Lot 42

“FOR PIKE’S PEAK” / PROSPECTOR – EAGLE Historical Flask, a Pittsburgh district glasshouse, 1859 – 1864. Beautiful light-to-medium sapphire blue, applied mouth with flat band – smooth base, Qt, attic mint! GXI-24. A great example, outstanding condition, strong mold impression, virtually no wear. A comparatively scarce mold in a very pretty, unlisted, eye-appealing color. Provenance: Richard Tucker collection.

Est.: \$4,000 - \$6,000 • Min. bid: \$2,000



Lot 46

U.S. ARMY OFFICER – LARGE DAISY Pictorial Calabash, America, 1855 – 1865. Light blue green coloration, applied sloping collar – iron pontil scar, Qt, perfect. GXIII-15. A great looking, comparatively scarce calabash. Provenance: Ex. Charles B. Gardner collection.

Est.: \$250 - \$450 • Min. bid: \$130



Lot 43

Lot of (2) PIKE’S PEAK – EAGLE Historical Flasks, a Pittsburgh district glasshouse, 1859 – 1864. 1st Ex: **“FOR PIKE’S PEAK” / PROSPECTOR – EAGLE**, aquamarine, applied mouth with flat band – smooth base, Pt. 2nd Ex: **“FOR PIKE’S PEAK” / PROSPECTOR / “OLD RYE” – EAGLE / “PITTSBURGH PA”**, bright bluish aqua, applied mouth with flat band – smooth base, Pt, both are virtually attic mint! GXI-9 and GXI-41. The GXI-9 is scarce, the GXI-9 has strong color.

Est.: \$175 - \$275 • Min. bid: \$90



Lot 47

Early Freeblown Globular Bottle, Midwest, Pittsburgh or possibly Moscow or Cincinnati, OH Glass Works, 1800 – 1830. Rich, deep bluish aquamarine, globular form with drawn up shoulders, sheared mouth with an applied wide band collar – blowpipe pontil scar, ht. 7 7/8”, near mint; (just a bit of typical expected light wear around the mid-body, and a minor 3/8” in-manufacture pontil crack mentioned for completeness, otherwise perfect). A beautiful early glob, good form, strong color.

Est.: \$200 - \$400 • Min. bid: \$100



Lot 44

“FOR PIKE’S PEAK” / PROSPECTOR – HUNTER Historical Flask, Ravenna Glass Works, 1859 – 1864. Aquamarine, applied collar with flat band – smooth base, Qt, virtually attic mint; (just the slightest trace of very faint, barely noticeable, interior milkiness, otherwise perfect). GXI-48. A comparatively scarce flask, these large quart Ravenna molds are always popular and not easy to find.

Est.: \$175 - \$275 • Min. bid: \$90



Lot 48

Rare, Miniature Freeblown Globular Bottle, New England, 1785 – 1820. Beautiful, light-to-medium olive amber, globular form, sheared mouth with applied ring collar – delicate blowpipe pontil scar, ht. 4 1/4”, perfect! A very attractive example with threads of tiny bubbles swirled through the body giving it a pleasing ‘syrupy’ look. Outstanding condition, eye-appeal, and a very rare size for a ‘mini-glob’. From an old-time New England collection focused on mini’s – 25 years in the making.

Est.: \$2,000 - \$4,000 • Min. bid: \$1,000



Lot 49

Large, Freeblown Globular Bottle, New England, 1790 – 1820. Yellowish olive amber through the body with some rich, deeper olive tones through the neck, globular form, sheared mouth with a crudely applied string rim – blowpipe pontil scar, ht. 11"; (a little typical light exterior wear, otherwise attic mint). Fantastic character having several chunks of glass gall either adhered to the body, or mixed through the batch. A very crude example! Fred Swiechowicz collection.

Est.: \$500 - \$800 • Min. bid: \$250



Lot 50

Large, Freeblown Globular Bottle, New England, 1790 – 1820. Bright olive with an emerald tone, globular form, sheared mouth with a crudely applied large ring collar – blowpipe pontil scar, ht. 11 ¼", near mint; (a little typical minor exterior wear, and a few open interior bubbles). This one has a little something extra in terms of color, it's not your typical 'muddy' olive green. In addition, outstanding character with syrupy strings of extra glass swirled through the body.

Est.: \$500 - \$800 • Min. bid: \$250



Lot 51

Oversized, Early Freeblown Chestnut Flask, probably Wistarburgh Glass Works, Alloway, NJ, or possibly Hilltown, Bucks County, PA, 1750 – 1780. Beautiful medium emerald coloration, high-shouldered chestnut form, tooled, likely applied, large round collar – glass tipped pontil scar, ht. 10 ¾", near perfect; (just a little minor exterior wear and a few tiny open surface bubbles, otherwise pristine). An outstanding example in terms of color, character, symmetry, condition and eye-appeal!

Est.: \$1,200 - \$1,800 • Min. bid: \$600



Lot 52

Plump, Freeblown Chestnut Flask, New England, 1785 – 1820. Medium olive green coloration, 'chubby' chestnut form, almost a globular with flattened sides, sheared mouth with applied ring collar – blowpipe pontil scar, ht. 5 1/8", virtually attic mint; (just the slightest trace of very light wear, otherwise pristine perfect). Wonderful symmetry and gutsy form, the 'plumpness' of the body approaching a little glob. In addition, some nice lines and swirls to the glass. Unusual.

Est.: \$600 - \$900 • Min. bid: \$300



Lot 53

Freeblown Chestnut Flask, New England, 1785 – 1820. Medium olive green, chestnut form, sheared mouth with applied ring collar – delicate blowpipe pontil scar, ht. 6 ½", virtually perfect; (just the slightest trace of light wear). Another nice early chestnut in a more pure green coloration. Provenance: Fred Swiechowicz collection.

Est.: \$250 - \$450 • Min. bid: \$130



Lot 54

Freeblown Chestnut Flask, New England, 1785 – 1820. Rich, yellowish honey amber with a slight hint of an olive tone, chestnut form, sheared mouth with applied ring collar – delicate blowpipe pontil scar, ht. 6 ¾", very near mint; (trace of typical light exterior wear, a bit of faint washable interior residue). A nice example, good character with plenty of tiny seed bubbles, classical early 'chestnut glass'. Provenance: Fred Swiechowicz collection.

Est.: \$250 - \$450 • Min. bid: \$130



Lot 55

Large, Freeblown Chestnut Flask, New England, 1785 – 1820. Light-to-medium yellowish amber with a very slight olive tone, chestnut form, sheared mouth with an applied crude string rim – delicate blowpipe pontil scar, ht. 9 ¾", near mint; (slight trace of typical light wear, an open bubble on the inside of the mouth, and some faint interior washable residue). A scarce larger size, pleasing symmetry, nice light color. Provenance: Fred Swiechowicz collection.

Est.: \$400 - \$600 • Min. bid: \$200



Lot 56

Pitkin-Type Flask, New England, probably an early Connecticut glasshouse, 1785 – 1820. Clear, light yellowish olive, 36 broken rib pattern swirled to the left, ovoid form, almost cylindrical at base, sheared mouth – blowpipe pontil scar, ht. 5 1/8", perfect; (note, pattern weakens a bit towards the base as is typical). A very attractive, classic little New England Pitkin flask, diminutive size, excellent clarity and condition.

Est.: \$800 - \$1,200 • Min. bid: \$400



Lot 57

Pitkin-Type Flask, Mid-Atlantic region, probably Hilltown Glass Works, Bucks County, Pennsylvania, 1760 – 1780. Rich, bright emerald with a bit of a yellowish, or grassy green tone, 16 broken rib pattern swirled to the right, flattened elliptical or ovoid form, sheared mouth – blowpipe pontil scar, ht. 6 1/4", virtually perfect; (slight trace of typical, very light wear). A beautiful, bubbly example, strong color, fantastic condition.

Est.: \$800 - \$1,200 • Min. bid: \$400



Lot 61

Early, Freeblown Enameled Spirits Flask, Germany, 1800 – 1830. Colorless with red, white and blue enameled decoration of a circle with spokes and possibly brushes – inscription on reverse, "Vivat / Der Gifftigen / Weis Ungen / Toll Leben". Chestnut form, sheared mouth – blowpipe pontil scar, ht. 5 1/8"; (a shallow 1/8" flake on edge of lip, and a little typical expected light wear including just a bit of minor loss to the enamel, otherwise excellent).

Est.: \$120 - \$240 • Min. bid: \$60



Lot 58

Miniature, Side-Flattened Globular Bottle, Continental, probably Germany or Alpine region, 1720 – 1750. Delicate 'clear green' coloration, globular form with slightly flattened sides, sheared mouth with an applied ring collar – glass tipped pontil scar, ht. 3 7/8", perfect. A great little miniature glob with slightly flattened sides, delicate thin-walled glass, virtually pristine condition.

Est.: \$300 - \$500 • Min. bid: \$150



Lot 62

Lot of (2) Figural Bottles, America and possibly France, 1850 – 1890. **1st Ex: Figural of Napoleon's hat and floral spray resting on tomb** with an eagle on front, "N" embossed on each side, colorless, rectangular, sheared mouth with applied ring collar – glass tipped pontil scar, ht. 4 3/8"; (1/8" flake at base, otherwise mint). **2nd Ex: "GRANGER"**, Bust of James Granger, colorless, tooled square collar – "T.P.S & Co N.Y" (on smooth base), ht. 6 3/8", perfect. Fred Swiechowicz collection.

Est.: \$200 - \$400 • Min. bid: \$100



Lot 59

Diminutive, Side-Flattened Onion Bottle, Continental, probably Germany, 1720 – 1740. Clear, bright green, almost a forest coloration, miniature side flattened onion form, sheared mouth with an applied string rim – blowpipe pontil scar, ht. 4 1/4", length 3 1/8", near mint; (a 1/4" chip on the top of the sheared rim, and just the slightest trace of light wear, otherwise perfect). Great color and clarity, outstanding condition, very scarce-to-rare size, a good one!

Est.: \$400 - \$600 • Min. bid: \$200



Lot 63

Lot of (2) Circus Related Figural Bottles, America or possibly France, 1875 – 1890. **1st Ex: Figural of girl riding a bicycle**, colorless, tooled square collar – smooth base, ht. 4 1/8", near mint; (a tiny 1/8" sliver flake on edge of wheel, and a 1/4" open bubble at edge of base). **2nd Ex: Figural of standing clown in fancy suit with ruffled collar**, colorless, tooled square collar – smooth base, ht. 6 3/4", perfect. Figural clown is very scarce, girl on bicycle is rare. Provenance: Fred Swiechowicz collection.

Est.: \$150 - \$250 • Min. bid: \$80



Lot 60

Small, Side-Flattened Onion Bottle, Continental, 1720 – 1740. Olive amber with strong olive tones, miniature side flattened onion form, sheared mouth with a crudely applied string rim – blowpipe pontil scar, ht. 5 1/2", length 4 1/8"; (some typical minor usage wear, and a 3/4" pontil chip that extends to the edge of the base – not visible on display, otherwise excellent). See VdB, plates 274A & 275A. A rare size for a flattened onion or 'boot' bottle, and with full original body luster.

Est.: \$400 - \$600 • Min. bid: \$200



Lot 64

Miniature, Engraved Figural Bellows Whimsey Bottle, England, or possibly America, 1810 – 1840. Engraved ferns, initials "G W", and floral motif. Deep cobalt, almost a midnight blue, figural bellows with four applied tooled pale pink-amethyst ribbons along sides, applied button in center of body, and applied pink-amethyst rectangular feet, sheared mouth with applied string rim, ht. 4 3/4", near perfect; (a touch of roughness and 1/8" flake on top of sheared mouth). A rarity in size and color.

Est.: \$800 - \$1,200 • Min. bid: \$400



Lot 65

Figural Monument Cologne, a South Boston glasshouse, possibly Boston and Sandwich, 1860 – 1880. Medium-to-deep cobalt blue, in the form of the Bunker Hill Monument, tooled, likely applied ring collar – smooth base, ht. 5 ¼"; (a little light interior haziness in the lower half of the body, and just the slightest trace of wear including a pin-prick speck of roughness on the edge of the collar, otherwise near mint). A very rare, seldom seen size for a monument cologne.

Est.: \$400 - \$600 • Min. bid: \$200



Lot 66

Figural Monument Cologne, a South Boston glasshouse, probably Boston and Sandwich Glass Works, 1860 – 1880. Bright emerald green, obelisk form fashioned after the Bunker Hill Monument, sheared, tooled ring collar – smooth base, ht. 6 3/8", perfect. A beautiful, bright, clean sparkling example. In addition, a very scarce color for a monument cologne.

Est.: \$300 - \$500 • Min. bid: \$150



Lot 67

Figural Monument Cologne (with more than 90% complete original label), South Boston, probably Boston and Sandwich Glass Works, 1860 – 1880. Medium shading to deep plum amethyst, in the form of the Bunker Hill Monument, tooled ring collar – smooth base, ht. 6 3/8"; (bottle is perfect, original colorful label darkened slightly, but in overall excellent condition). Label reads, "Cologne Water for the Toilet." Scarce color, rare with original label.

Est.: \$300 - \$500 • Min. bid: \$150



Lot 68

Figural Monument Cologne (with approximately 90% complete original label), South Boston, probably Boston and Sandwich Glass Works, 1860 – 1880. Deep vivid cobalt blue with a slight violet tone, in the form of the Bunker Hill Monument, tooled ring collar – smooth base, ht. 6 3/8"; (bottle is perfect; original colorful label is faded a bit, but still very legible and attractive). Label reads, "COLOGNE / WATER / for the / TOILET". Rich, deep color, very scarce with original label.

Est.: \$250 - \$450 • Min. bid: \$130



Lot 69

Figural Monument Cologne, probably a South Boston glasshouse, 1860 – 1880. Clear, medium grass green coloration, almost a lime green, obelisk form fashioned after the Bunker Hill Monument, sheared, tooled ring collar – smooth base, ht. 9", perfect. An exceedingly rare color for a monument cologne, believed to be one of only three, or perhaps four extant (of this color in any of the various size figural monuments). Fantastic color, clarity, and condition.

Est.: \$500 - \$800 • Min. bid: \$250



Lot 70

Figural Monument Cologne, a South Boston glasshouse, probably Boston and Sandwich Glass Works, Sandwich, MA, 1860 – 1880. Deep, vivid cobalt blue, almost a midnight blue coloration, obelisk form fashioned after the Bunker Hill Monument, sheared mouth with tooled ring collar – smooth base, ht. 9", perfect! MW, plate 114, #3. A beautiful example, nice larger size, strong color, fantastic condition.

Est.: \$400 - \$600 • Min. bid: \$200



Lot 71

Large, Figural Monument Cologne (with 98% complete, original label), probably Boston and Sandwich Glass Works, 1860 – 1880. Medium-to-deep plum amethyst, in the form of the Bunker Hill Monument, sheared, tooled ring collar – smooth base, ht. 9 ¾"; (bottle is perfect, original label is darkened from age and not easy to read, but virtually 98% complete). Label reads, "COLOGNE WATER / NEW YORK" (within scrolled banner). Great color, scarce size.

Est.: \$400 - \$600 • Min. bid: \$200



Lot 72

Unembossed Commercial Cologne or Toilet Water Bottle, probably a South Boston glasshouse, 1860 – 1880. Beautiful medium purple, almost a lilac coloration, rectangular with beveled corners, squared shoulders, tooled thin flanged lip – smooth base, ht. 7 ½", near mint; (just a slight trace of light wear, and some very faint interior haziness below the shoulders, otherwise perfect). A very scarce, distinctive mold (squared shoulders and flat base), that also can be found in canary yellow.

Est.: \$300 - \$500 • Min. bid: \$150



Lot 73

Lot of 2: "HARRISON / COLUMBIAN / INK" Bottles, 1847 – 1860. **1st Ex:** Aquamarine, octagonal with rounded shoulders, sheared and inward rolled mouth – blowpipe pontil scar, ht. 1 1/2", base dia. 1 5/8", perfect! **2nd Ex:** Aquamarine,

octagonal body with 8 flat shoulder panels, sheared and inward rolled mouth – blowpipe pontil scar, ht. 1 7/8", base dia. 2 1/8"; (a slight trace of minor wear near the edge of the shoulder, and some light haze on three back panels, otherwise excellent).

Est.: \$200 - \$300 • Min. bid: \$100



Lot 77

"H & T / RED INK", America, probably 1840 – 1852. Aquamarine, small cone form, sheared, tooled, and inward rolled mouth – delicate blowpipe pontil scar, ht. 1 3/4", dia. 1 7/8", perfect! See Faulkner, p.108. A clean, bright, sparkling example of this very rare little ink. Believed to have been blown for Hogan and Thompson Co, 108 Chestnut St, Philadelphia. Rare, especially in this fine condition.

Est.: \$600 - \$900 • Min. bid: \$300



Lot 74

"HARRISON'S / COLUMBIAN / INK", 1847 – 1860. Light green, octagonal body with rounded shoulders, sheared and inward rolled mouth – blowpipe pontil scar, ht. 1 3/8", base dia. 1 5/8"; (professionally cleaned to original luster and otherwise near mint; tiny bit of a light matte-type finish on two back panels and a bit of residue under the rolled collar mentioned for completeness). C #529. Scarce, smallest-size octagonal mold, rare color.

Est.: \$300 - \$500 • Min. bid: \$150



Lot 78

"WOOD'S / BLACK INK / PORTLAND.", a Stoddard, NH glasshouse, possibly Weeks and Gilson, 1855 – 1865. Deep olive amber, cone form, sheared mouth – blowpipe pontil scar, ht. 2 3/8"; (just a bit of scattered light wear, and a couple of spots of light exterior dullness, otherwise near mint). Faulkner, p.150. A very rare and very desirable Stoddard ink. We sold this example a while back, if you missed it then, here is another opportunity. Ex. Fred Swiechowicz collection.

Est.: \$2,000 - \$4,000 • Min. bid: \$1,000



Lot 75

"HARRISON'S / COLUMBIAN / INK", 1847 – 1860. Medium blue green coloration, octagonal body with 8 flat shoulder panels, sheared, tooled, inward rolled mouth – blowpipe pontil scar, ht. 1 5/8", base dia. 1 3/4"; (lightly cleaned to original luster, and just a slight trace of very minor wear, otherwise perfect). C #530; MW, plate 76, #12. Very scarce-to-rare color for this mold, strong embossing, fantastic overall condition.

Est.: \$500 - \$800 • Min. bid: \$250



Lot 79

Cone Ink, a Stoddard, NH glasshouse, possibly Granite Glass Co., 1842 – 1860. Yellowish amber, square-shouldered cone form, sheared and inward rolled mouth – blowpipe pontil scar, ht. 2 1/8", base dia. 2 3/8", attic mint. A great example, very pretty color, scarce mold, fantastic condition. Provenance: Fred Swiechowicz collection.

Est.: \$500 - \$800 • Min. bid: \$250



Lot 76

Rare, Pattern Molded Inkwell, Midwest, Ohio or Pennsylvania, 1800 – 1830. Greenish aqua, almost sea green, cylindrical, 24 vertical ribs, sheared, tooled, and outward folded rim - blowpipe pontil scar, ht. 1 3/4", base dia. 1 3/4", virtually perfect; (a little spotty dried interior content residue, and a partially open interior bubble in the neck). An extremely rare, early, pattern molded inkwell - possibly earlier than indicated above. Ex. Lee Richardson collection.

Est.: \$800 - \$1,200 • Min. bid: \$400



Lot 80

Umbrella Ink, a Stoddard, NH glasshouse, probably Granite Glass Co., 1842 – 1860. Medium-to-deep 'old amber', 16-sided umbrella form, sheared mouth – blowpipe pontil scar, ht. 2", base dia. 2 1/4", near mint; (just a trace of faint spotty dullness on four panels on one side, not terribly noticeable, otherwise virtually perfect). Note: the panel edges are somewhat 'softened', and not terribly distinct, as is typically the case with this mold. A scarce Stoddard inkwell. Fred Swiechowicz collection.

Est.: \$200 - \$400 • Min. bid: \$100



Lot 81

"JAMES.S – MASON & co" Umbrella Ink, America, 1840 – 1860. Aquamarine, 8-sided umbrella form, sheared and inward rolled mouth – blowpipe pontil scar, ht. 2 3/8", base dia. 2 1/8"; (lightly cleaned to original luster and near mint condition). Faulkner, pgs. 86-87. The James Mason Co. was located at 108 N. Front St. in Philadelphia, and manufactured both ink as well as blacking. A scarce early mold. Provenance: Ex. Bill Dyer collection.

Est.: \$250 - \$400 • Min. bid: \$130



Lot 85

Umbrella Ink, America, 1840 – 1860. Medium amber, 8-sided umbrella form, sheared and inward rolled mouth – hinge mold base with a deep, off-center blowpipe pontil scar, ht. 2 3/8", base dia. 2 1/4"; (just a bit of very faint haziness on a couple of the panels, and a small pinhead flake on the edge of the base, otherwise excellent). It appears to have been blown in the same distinctive mold as the preceding example. In addition, with a pushed-up, off-center, heavy blowpipe pontil scar.

Est.: \$250 - \$450 • Min. bid: \$130



Lot 82

Umbrella Ink, America, 1840 – 1860. Gorgeous, brilliant yellow, almost a lemon-yellow with a slight hint of an olive tone, 8-sided umbrella form, sheared and inward rolled mouth – blowpipe pontil scar, ht. 2 3/8", base dia. 2 1/4", near mint; (professionally cleaned to original luster and near mint condition with just a touch of minor light wear remaining, otherwise excellent). A beautiful, very scarce, eye-appealing, color!

Est.: \$400 - \$600 • Min. bid: \$200



Lot 86

Umbrella Ink, America, 1840 – 1860. Rich, bright yellowish olive, almost an olive yellow coloration, 8-sided umbrella form, sheared and inward rolled mouth – blowpipe pontil scar, ht. 2 3/8", base dia. 2 1/4", perfect! A bright, clean, sparkling example, nicely whittled, beautiful color. This one has that 'little something extra' in terms of eye-appeal.

Est.: \$400 - \$600 • Min. bid: \$200



Lot 83

Umbrella Ink, America, 1840 – 1860. Bright honey yellow coloration, 8-sided umbrella form, sheared and inward rolled mouth – blowpipe pontil scar, ht. 2 3/8", base dia. 2 3/8", sparkling attic mint! Another beautiful example, this one has outstanding character – the glass is filled with tiny bubbles. Fabulous color, character, and condition!

Est.: \$400 - \$600 • Min. bid: \$200



Lot 87

Umbrella Ink, America, 1840 – 1860. Medium yellowish olive with an amber tone, 8-sided umbrella form, sheared and inward rolled mouth – blowpipe pontil scar, ht. 2 1/2", base dia. 2 3/8"; (professionally cleaned to original luster and otherwise near mint condition, and just a slight trace of very light wear, otherwise excellent). Another nice example, this one is just a shade deeper, and with a touch more of an amber tone than the preceding example.

Est.: \$250 - \$450 • Min. bid: \$130



Lot 84

Umbrella Ink, America, 1840 – 1860. Golden honey coloration, 8-sided umbrella form, sheared and inward rolled mouth – hinge mold base with heavy blowpipe pontil scar, ht. 2 1/2", base dia. 2 1/4", perfect. A very pretty example, nice 'see-through' color, crude 'wavy' glass, excellent condition. Because of the long, extended 'tubular' pontil scar, the ink does not rest flat on it's base.

Est.: \$300 - \$500 • Min. bid: \$150



Lot 88

Umbrella Ink, America, 1840 – 1860. Bright medium mossy green, 8-sided umbrella form with an elongated neck, sheared and inward rolled mouth – blowpipe pontil scar, ht. 2 3/4", base dia. 2 1/8", near attic mint; (a couple of small, onionskin-thin open surface bubbles). Great color, outstanding character having crude wavy glass filled with tiny bubbles and a frothy, orange peel texture around the base.

Est.: \$400 - \$600 • Min. bid: \$200



Lot 89

Umbrella Ink, America, 1840 – 1860. Beautiful, medium-to-deep yellowish green, almost a rich avocado green, 8-sided umbrella form, sheared and inward rolled mouth – blowpipe pontil scar, ht. 2 ¼”, base dia. 2 1/8”, perfect. A great example, beautiful, very scarce-to-rare color, one that does not come around often, outstanding condition.

Est.: \$500 - \$800 • Min. bid: \$250



Lot 93

Umbrella Ink, America, 1840 – 1860. Beautiful medium apricot puce shading to a rich, deep apricot puce through the upper shoulders and neck, 8-sided umbrella form, sheared and inward rolled mouth – blowpipe pontil scar, ht. 2 3/8”, base dia. 2 3/8”; (just a little minor light wear including a pinhead flake on one of the panel edges, otherwise excellent). Fantastic, very scarce-to-rare color, excellent character and condition. A beautiful color that is not easy to find!

Est.: \$800 - \$1,200 • Min. bid: \$400



Lot 90

Umbrella Ink, America, 1840 – 1860. Rich bluish green with an emerald tone, almost a teal green coloration, 8-sided umbrella form, sheared and inward rolled mouth – delicate blowpipe pontil scar, ht. 2 1/8”, base dia. 2 ¼”, perfect! Strong color, beautiful condition, outstanding character with a thick, syrupy interior string of glass that loops around virtually the entire body. A great looking umbrella.

Est.: \$400 - \$600 • Min. bid: \$200



Lot 94

Umbrella Ink, 1845 – 1860. Bright, medium citron green, tall, 8-sided umbrella form, sheared and inward rolled mouth – blowpipe pontil scar, ht. 2 ¾”, base dia. 2 ½”, near mint; (just a trace of light wear and some very faint, light exterior bloom or rainbow iridescence, barely noticeable, otherwise perfect). A great looking early umbrella, fantastic color, character and eye-appeal, overall excellent condition. Note; the size is also larger than most. Fred Swiechowicz collection.

Est.: \$400 - \$600 • Min. bid: \$200



Lot 91

Umbrella Ink, America, 1840 – 1860. Medium emerald, 8-sided umbrella form, sheared and inward rolled mouth – delicate blowpipe pontil scar, ht. 2 ½”, base dia. 2 ¼”, perfect. Another great example, nice character with crude wavy glass, excellent color, clarity, and condition.

Est.: \$400 - \$600 • Min. bid: \$200



Lot 95

Umbrella Ink (with 95% complete original label), 1845 – 1860. Medium yellowish olive, 8-sided umbrella form, inward rolled mouth – blowpipe pontil scar, ht. 2 ½”, base dia. 2 ¼”; (bottle is perfect, original label has a little staining and a couple of thin spots but is mostly legible). Nice color, beautifully whittled. Label reads in part, “FRENCH'S / NON-CORROSIVE AND INDESTRUCTIBLE / Writing Fluid. / Prepared by / D. G. FRENCH / NO. AUBURN ME.” Fred Swiechowicz collection.

Est.: \$400 - \$600 • Min. bid: \$200



Lot 92

Umbrella Ink, America, 1840 – 1860. Medium-to-deep cobalt blue, almost a Prussian-blue, 8-sided umbrella form, sheared and inward rolled mouth – blowpipe pontil scar, ht. 2 3/8”, base dia. 2 ¼”, near mint; (a 1/8” flake on the edge of the lip, and a 3/16” ‘divot’ on a panel edge – almost certainly in-manufacture, with a corresponding extra piece of glass adhered to the same panel where it touched another object during annealing). Great color, crude wavy glass.

Est.: \$1,000 - \$1,500 • Min. bid: \$500



Lot 96

Umbrella Ink (with 98% complete original label), 1855 – 1865. Yellowish grass green, 8-sided umbrella form, sheared, inward rolled mouth – early smooth base, ht. 2 3/8”, base dia. 2 ½”; (a ¼ sliver of the inward rolled lip is missing, otherwise bottle is perfect; label has a little staining and is darkened from age, but still legible). Label reads in part, “First Premium / STEEL PEN / INK / PREPARED BY / THADDEUS DAVIDS & CO.” Rare color, very rare with label. Fred Swiechowicz collection.

Est.: \$300 - \$500 • Min. bid: \$150



Lot 97

Umbrella Ink, America, 1870 – 1880. Cobalt blue, 8-sided umbrella form, tooled square collar – smooth base, ht. 2", base dia. 2 1/16"; (a little light interior haziness and a couple of panels with some faint exterior dullness; a bit of minor light wear including a little 1/8" flake at edge of base). The ink still displays quite nicely, however, with just a light professional cleaning, it would likely present as near perfect. Beautiful color, scarce diminutive smaller size. Fred Swiechowicz collection.

Est.: \$400 - \$600 • Min. bid: \$200



Lot 98

"GEO BURRILL" Master Ink, a Stoddard, NH glasshouse, possibly Granite Glass Co, 1846 – 1862. Medium-to-deep 'old amber', cylindrical, 'stubby' 3-pc. mold, applied sloping collar with bevel – iron pontil scar, ht. 6 3/4", near perfect; (a little pinhead speck of roughness on the back shoulder and at base, otherwise virtually pristine). A top example with crisp embossing, heavily whittled, outstanding 'attic-type' condition. Scarce ink, and certainly rare in this fine condition.

Est.: \$300 - \$500 • Min. bid: \$150



Lot 99

Lot of (3), Early Blacking Bottles (one with partial label), New England, 1840 – 1860. Golden amber; light yellowish olive amber, and medium-to-deep olive green. All are square with sheared mouths – blow-pipe pontil scarred bases, ht. 4 1/2", 4 7/8", and 4 3/8" respectively, all are virtually perfect

with just very slight wear and some content residue. In addition, all have excellent character, label on yellow example reads in part, "AMERICAN LEATHER VARNISH."

Est.: \$300 - \$500 • Min. bid: \$150



Lot 100

Target Ball, Embossed **Large Cross Motif** (on base), America, 1875 – 1900. Bright golden honey color coloration, large embossed cross, or "X" motif, on base, 3-piece mold, wide neck with rough sheared mouth, dia. 2 5/8", perfect. A bright, clean, sparkling, very pretty target ball.

Est.: \$150 - \$250 • Min. bid: \$80



Lot 101

"GURD & SON 185 DUNDAS – STREET LONDON ONT" Target Ball, Canada, 1880 – 1900. Light yellowish honey through the midsection shading to a rich, deep honey amber through the shoulders and base, 2-piece mold, crudely sheared mouth, dia. 2 5/8", perfect. A very scarce and attractive target ball. Very few target balls originated from Canada. Note; there is also a little 'bird swing' of extra glass in one of the sides near the base. Provenance: Ralph and Jan Finch collection.

Est.: \$400 - \$600 • Min. bid: \$200



Lot 102

Embossed Block Pattern Target Ball, France, 1880 – 1900. Bright yellowish green, almost a lime green coloration, block pattern above and below plain center band, 2-piece mold, flared neck with rough sheared mouth, dia. 2 5/8", perfect. A scarce ball in a very scarce-to-rare color! We do not recall seeing another example in this lime coloration. Provenance: Ralph and Jan Finch collection.

Est.: \$200 - \$400 • Min. bid: \$100



Lot 103

"BOSSEMAGER H. LARSENS – VAA-BENUDSALG KRISTIANIA" Target Ball, Norway, 1880 – 1900. Medium shading to a deep cobalt blue, quilted diamond pattern above and below center band, 2-piece mold, rough sheared mouth, dia. 2 5/8", perfect. An exceedingly rare ball and the first example that we are aware of to be offered at auction in more than 10 years. Note; Hans Larsons was a renowned Norwegian gun maker. Provenance: Ralph and Jan Finch collection.

Est.: \$800 - \$1,200 • Min. bid: \$400



Lot 104

"HAZELTON'S / HIGH PRESSURE / CHEMICAL / FIRE KEG" (complete with original metal collar and mounting ring), America, 1885 – 1900. Bright medium amber, large figural barrel form, tooled mouth with flat band – smooth base, ht. 10 7/8", attic mint. A great example, especially nice having the original metal hardware. Note; this is the only known fire grenade that used the distinctive 'keg' form.

Est.: \$250 - \$450 • Min. bid: \$130



Lot 105

“GLOBE / TOBACCO COMPANY / DETROIT / MICHIGAN / PATENTED OCT 10TH 1882” (with period, likely original threaded tin lid and wooden handle), 1882 – 1900. Bright, light honey coloration, barrel form, threaded neck, ground lip, tin lid with wire bail and wooden handle – smooth base, ht. 7 1/8”, attic mint. Beautiful color, very strong, crisp embossing, rare mold! The “MICHIGAN” embossed example is the most difficult to acquire of all the various “GLOBE” jars.

Est.: \$250 - \$450 • Min. bid: \$130



Lot 106

Lot of (2), “GLOBE / TOBACCO COMPANY / DETROIT / PAT. OCT 10TH 1882” JARS (both with period tin lid, wire bail and wooden handle), 1882 – 1900. Light straw yellow, and golden amber, both are barrel form, threaded neck, ground lip – smooth base, ht. 7”, both are near mint-to-mint; (the embossing is a little weak on the yellow example; the amber example has a very light scratch on the front panel, lids fit but may not be original). Great color on the 1st example!

Est.: \$300 - \$500 • Min. bid: \$150



Lot 107

“SMOKINE – SMOKINE – IMPORTED AND BOTTLED / BY / ALFRED ANDRESEN & CO / THE WESTERN IMPORTERS / MINNEAPOLIS, MINN. / AND / WINNIPEG, MAN.”, America, 1895 – 1905. Light golden amber, cabin form, tooled square collar – smooth base, ht. 5”, perfect. Scarce smaller size, attractive figural cabin or smokehouse, outstanding condition. Provenance: Gary and Betty Beatty collection; Ex. Joe Kray, Charles B. Gardner collections.

Est.: \$250 - \$450 • Min. bid: \$130



Lot 108

“SMOKINE – SMOKINE – IMPORTED AND BOTTLED / BY / ALFRED ANDRESEN & CO / THE WESTERN IMPORTERS. / MINNEAPOLIS, MINN. / AND / WINNIPEG, MAN.”, 1895 – 1905. Golden amber, cabin form, tooled square collar – smooth base, ht. 6 5/8”, virtually perfect; (a couple of tiny, pinprick flakes, otherwise pristine). A great figural cabin bottle that held a liquid extract for the preservation of meat. Provenance: Gary and Betty Beatty collection; Ex. Joe Kray collection.

Est.: \$200 - \$400 • Min. bid: \$100



Lot 109

“ABSOLUTELY / PURE MILK” (Man Milking Cow) / “THE MILK PROTECTOR – TO BE USED ONLY AS DESIGNATED / MILK / & / CREAM / JAR” (with original glass lid and 2-pc. metal clamp), Thatcher Mfg. Co., Potsdam, N.Y., 1886 – 1892. Colorless, tooled square collar with original glass lid and clamp – “THATCHER MFG. CO / POTSDAM, N.Y.” (on smooth base), Qt; (a little light wear including a couple of tiny, paper-thin, 1/8” flakes on edge of collar, otherwise attic mint).

Est.: \$800 - \$1,200 • Min. bid: \$400



Lot 110

“W.D. SMITH / N.Y.” Fancy Pickle Jar, probably 1850 – 1858. Gorgeous, very deep blue green, virtually teal-blue coloration, cylindrical with large beaded pattern below the shoulders and above the base, fluted shoulders, tooled, likely applied ring collar – heavy iron pontil scar, ht. 11 3/8”, near mint; (a little minor high point wear, and a 1/4” chip on the edge of the base ring). Zumwalt, p.386, MW, plate 73, #8. Extremely rare, beautifully whittled, outstanding color and eye-appeal.

Est.: \$3,000 - \$5,000 • Min. bid: \$1,500



Lot 111

Cathedral Pickle Jar, 1850 – 1860. Light-to-medium emerald coloration, square with beveled corners, all four sides having distinctly different cathedral panels; embossed cross on two shoulders, large trefoil on third, large arch on fourth shoulder, sheared mouth with applied ring collar – iron pontil scar, ht. 8 3/4”, near mint; (just a slight trace of light wear, otherwise perfect). A fantastic pickle jar, excellent character, very scarce-to-rare mold, very rare color!

Est.: \$2,500 - \$4,500 • Min. bid: \$1,300



Lot 112

Scarce size Cathedral Pickle Jar, probably a Mid-Atlantic glasshouse, 1860 – 1870. Medium-to-deep bluish emerald coloration, square with beveled corners, arched Gothic panels on all four sides; three sides with cross and pendant motif on inner frame, fourth side plain for label panel, scroll motif above frame on all shoulders, applied ring collar – smooth base, ht. 7 1/4”, virtually perfect; (a little pinhead flake on inner edge of lip). Scarce size, and rare in this depth of color.

Est.: \$500 - \$800 • Min. bid: \$250



Lot 113

Giant, Shell-Pattern, Cathedral Pickle Jar, 1860 – 1870. Beautiful, strong medium emerald coloration, square, beveled corners, Cathedral panels with fancy ogival arches around shoulders, large clamshell pattern above arches on two panels, sheared mouth with tooled, likely applied ring collar – smooth base, ht. 13 ¼”, attic mint! Zumwalt, p.457. This is the largest size in the shell pattern, and the deepest green-toned clamshell example that we can recall seeing in this size.

Est.: \$2,000 - \$4,000 • Min. bid: \$1,000



Lot 114

Cathedral Pickle Jar, Willington Glass Works, 1850 – 1860. Beautiful yellowish green, square, beveled corners, Gothic panels with grooved columns, applied ring collar – iron pontil scar, ht. 8 3/8”, near mint; (a 1/8” flake on a panel edge, and a less-than pinhead size potstone with a little iridescence and tiny line, barely visible without a loop, otherwise perfect). MW, plate 73, #4. An outstanding pickle jar, rare color, bubbly, heavily whittled, pontil scarred base, excellent condition.

Est.: \$3,000 - \$5,000 • Min. bid: \$1,500



Lot 115

Cathedral Pickle Jar, Willington Glass Works, 1850 – 1860. Deep bluish green coloration, square, beveled corners, Gothic panels with grooved columns, crudely applied banded collar – heavy red iron pontil scar, ht. 14 1/8”, near mint; (a few light scratches on one of the side panels, and a bit of faint interior residue, almost certainly washable, otherwise perfect). Another outstanding example, very strong color, impressive size, fantastic character and condition!

Est.: \$4,000 - \$6,000 • Min. bid: \$2,000



Lot 116

“UDOLPHO WOLFE’S – SCHIEDAM – AROMATIC / SCHNAPPS”, America, 1865 – 1880. Clear medium yellow with a slight topaz tone, almost a lemon yellow, square with beveled corners, applied sloping collar – smooth base, ht. 9 ¾”, perfect. A bright, clean, sparkling example with beautiful color, excellent clarity, crisp, very strong embossing, fantastic condition.

Est.: \$200 - \$400 • Min. bid: \$100



Lot 117

“DUNBAR & Co’S – WORMWOOD / CORDIAL – BOSTON”, 1860 – 1870. Bright bluish aquamarine, almost a blue green coloration, square with beveled corners, applied sloping collar – smooth base, ht. 9 5/8”, near mint; (professionally cleaned to original luster, and just a slight trace of very minor wear, otherwise perfect). A brilliant example of this scarce and desirable mold, fantastic eye-appeal, this one displays as virtually attic mint. Provenance: Fred Swiechowicz collection.

Est.: \$300 - \$500 • Min. bid: \$150



Lot 118

“C.A. RICHARDS / 99 WASHINGTON ST. / BOSTON.”, probably a New England glasshouse, 1865 – 1875. Deep yellowish ‘old amber’, almost a tobacco coloration, square with beveled corners, applied sloping collar – smooth base, ht. 9 5/8”, near mint; (just a bit of typical minor light wear). A very nice example, crude glass, scarce color for this mold.

Est.: \$125 - \$250 • Min. bid: \$70



Lot 119

Lot of (2) “C.A. RICHARDS” Bottles, 1865 – 1875. 1st Ex: **“C.A. RICHARDS & Co / 99 WASHINGTON St / BOSTON MASS.”**, golden amber below the shoulders shading to an orange amber above the base. 2nd Ex: **“C.A. RICHARDS / 99 WASHINGTON ST. / BOSTON.”**, amber shading to deep reddish amber. Both square, beveled corners, applied sloping collar – smooth base, ht. 9 ½”; (1st Ex. ‘as-found’ with partial label, some washable ‘soot’; 2nd Ex. ¼” area of tiny flakes on lip).

Est.: \$200 - \$300 • Min. bid: \$100



Lot 120

“RELYEA, CARTER & Co’s – ROYAL – SCHIEDAM SCHNAPPS.”, America, 1850 – 1860. Medium-to-deep olive, square tapered gin form, applied rounded square collar – iron pontil scar, ht. 7 3/8”; (quite a bit of fine wear on the side label panel, and some light interior haziness in the upper half of the bottle, otherwise excellent). A very scarce pontiled gin. Relyea, Carter & Co. were importers in New York. Provenance: Fred Swiechowicz collection.

Est.: \$250 - \$450 • Min. bid: \$130

**Lot 121**

“CASPER’S WHISKEY / MADE BY HONEST / NORTH / CAROLINA PEOPLE”, America, 1885 – 1900. Rich, medium-to-deep cobalt blue, cylindrical with fluted shoulders, tooled sloping collar with ring – smooth base, ht. 12”, perfect! A great example, beautiful rich color with some slight violet tones through the neck and base. One of the all-time bottle collecting classics, and one that will stand out on any shelf. Provenance: Gary and Betty Beatty collection.

Est.: \$400 - \$600 • Min. bid: \$200

**Lot 125**

“FOREST / LAWN / J.V.H” Whiskey Bottle, America, 1850 – 1860. Bright yellowish olive green, compressed bulbous body, applied wide flanged collar with lower bevel – iron pontil scar, ht. 7 3/8”, attic mint! A great example with just a bit more of a yellowish green tone than the example we sold in Auction 38. In addition, excellent character having beautiful seedy, whittled, glass. Provenance: Fred Swiechowicz collection.

Est.: \$300 - \$500 • Min. bid: \$150

**Lot 122**

“RED STORK” (Embossed Stork with Whiskey Bottle in it’s beak) “PURE MALT / WHISKEY”, probably 1890 – 1905. Light, sun-colored amethyst, cylindrical whiskey fifth, tooled sloping collar with ring – smooth base, ht. 11 7/8”; (a couple of little pinhead specks of roughness on the edge of the collar, and a small patch of minor dullness on the shoulder near the side mold seam, otherwise excellent). A rare pictorial Western whiskey with crisp, very strong embossing.

Est.: \$500 - \$800 • Min. bid: \$250

**Lot 126**

“STAR WHISKEY / NEW YORK / W.B. CROWELL JR” Applied Handle Whiskey (with partial original label), probably Whitney Glass Works, Glassboro, NJ, 1850 – 1860. Light golden or honey amber, conical form, 31 molded vertical ribs, applied handle with rigaree, applied double ring collar with tooled pour spout – blowpipe pontil scar, ht. 8”; (bottle is virtually pristine perfect; the embossing is a bit weak, approximately 60% complete original label). Fred Swiechowicz collection.

Est.: \$400 - \$600 • Min. bid: \$200

**Lot 123**

“MILTON J. HARDY / OLD / BOURBON / TRADE MARK” / (EAGLE AND SHIELD) / “MILTON J. HARDY & CO / MANUFACTURERS / LOUISVILLE, KY.”, probably 1873 – 1879. Bright yellowish honey amber, applied sloping collar – smooth base, ht. 11 3/4” (professionally cleaned to original luster and near mint condition; a little minor wear – primarily on the reverse, and a tiny 1/8” flake near the base, otherwise excellent). A very pretty example similar to Thomas #33. Rare!

Est.: \$400 - \$600 • Min. bid: \$200

**Lot 127**

“CHESTNUT / GROVE / C. WHARTON” Whiskey (Oval medallion with molded ribbon around shoulders), Whitney Glass Works, Glassboro, NJ, 1860 – 1870. Golden amber through the shoulders shading to a rich deep amber with a slight orange tone near the base, cylindrical with 32 molded vertical ribs, applied ring collar with bevel – smooth base, ht. 9 1/4”, virtually perfect; (a tiny pinhead flake on edge of collar, otherwise perfect). A very scarce whiskey. Fred Swiechowicz collection.

Est.: \$400 - \$600 • Min. bid: \$200

**Lot 124**

“MEDICATED / BLACKBERRY / BRANDY – DR McCABE / ST. LOUIS. MO”, probably a Midwest glasshouse, 1872 – 1880. Bright golden amber, cylindrical, 4-pc. mold, slightly bulbous ‘lady’s-leg’ type neck, applied sloping collar with bevel – smooth base, ht. 10 3/4”; (just a couple of tiny, paper-thin, pinhead open bubbles, otherwise virtually ‘out-of-the-mold’ pristine perfect). Very scarce-to-rare. A very pretty example, nice character, outstanding condition.

Est.: \$400 - \$600 • Min. bid: \$200

**Lot 128**

“WHARTON’S / WHISKEY / 1850. / CHESTNUT GROVE” Applied Handle Whiskey, Whitney Glass Works, Glassboro, NJ, probably 1857 – 1865. Medium amber, ewer form, applied handle crimped and curled at lower attachment, sheared and tooled mouth with crimped pour spout – **“WHITNEY GLASS WORKS / GLASSBORO NJ”** (on smooth base), ht. 10”, attic mint. MW plate 48, #6. A very scarce handled whiskey with a pleasing, eye-appealing form. Fred Swiechowicz collection.

Est.: \$500 - \$700 • Min. bid: \$250



Lot III



Lot II3

Lot II5

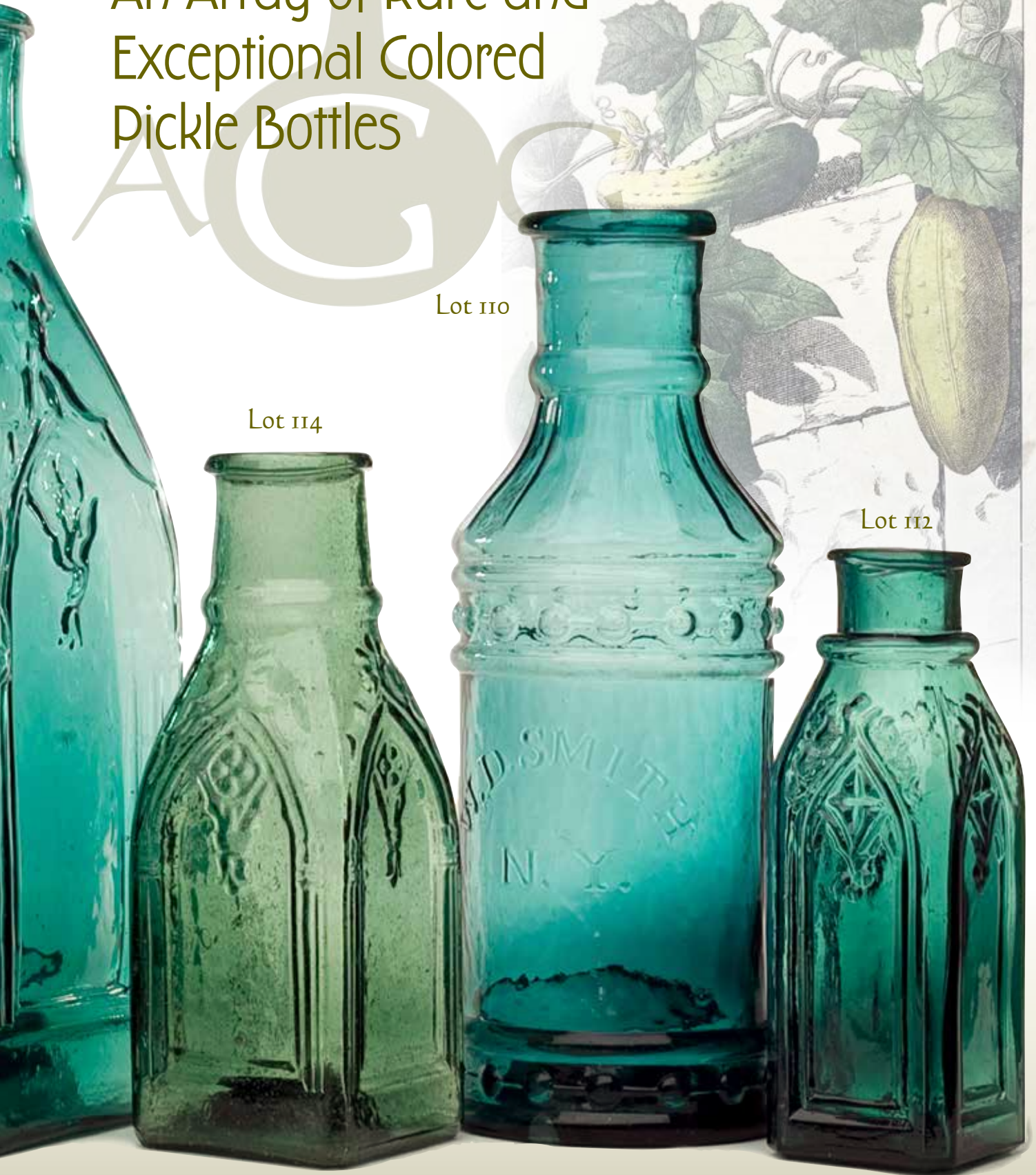


An Array of Rare and Exceptional Colored Pickle Bottles

Lot 110

Lot 114

Lot 112





Lot 129

“CHESTNUT GROVE” / (Ornament) / “WHISKEY / C.W.” Applied Handle Whiskey (with 98% complete front and back labels), Whitney Glass Works, Glassboro, NJ, probably 1859 – 1864. Medium amber, chestnut form, applied handle, applied collar with ring – blowpipe pontil scar, ht. 8 ¾”; (a 3/16” chip on the top of the lip, otherwise perfect; labels darkened from age, but still legible). Extremely rare with both original labels). Provenance: Fred Swiechowicz collection.

Est.: \$400 - \$600 • Min. bid: \$200



Lot 130

“R.B. CUTTER / LOUISVILLE, KY” Handed Whiskey, 1850 – 1860. Medium-to-deep ‘old amber’, ovoid form, applied handle crimped and curled at lower attachment, applied blob collar – large blowpipe pontil scar, ht. 8 ½”; (some light interior haziness or residue, some of which may wash out, otherwise perfect). A nice example, strong embossing, almost no wear.

Est.: \$200 - \$300 • Min. bid: \$100



Lot 131

Lot of (2), Scarce New York Stone-ware Bottles, 1855 – 1875. 1st Ex: **“HOLLENBECK BROS – CATSKILL NY”** (on sides). Reddish brown glaze, ovoid flask form, blob collar – smooth base, ht. 7 ½”. 2nd Ex: **“SPARKLING CIDER, / I.S. KETCHAM, / JERICHO, L.I.”**. Mustard yellow glaze, early cider form with slope shoulders, double ring collar, ht. 9 3/8”, both near mint; (1st Ex. has an in-making kiln mark on side; 2nd Ex. has a shallow 1 ¼” chip on base). Fred Swiechowicz collection.

Est.: \$200 - \$400 • Min. bid: \$100



Lot 132

Lot of (2), Bennington-type Figural Pottery Book Flasks, probably Lyman, Fenton & Co., Bennington, VT, 1849 – 1858. 1st Ex: **“DEPARTED / SPIRITS”** (impressed on spine), mottled tan and reddish-brown Rockingham glaze, ht. 5 ½”; (perfect condition although impression on spine is weak). 2nd Ex: **“BENNINGTON / BATTLE”** (impressed on spine), mottled tan and reddish brown with green accents, ht. 7 ¾”, near perfect; (2 shallow ¼” flakes on base).

Est.: \$500 - \$800 • Min. bid: \$250



Lot 133

“BIG STICK” Figural Tree Stick Whiskey Nip, 1907 – 1908. Medium amber, in the form of a big tree stick, or club, with embossed bark and nubs to resemble where branches were broken off, sheared mouth – **“PATENTED / MARCH 19 / 1907”** (on smooth base), ht. 6 7/8”, perfect. Extremely rare. Theodore Roosevelt, 26th President from 1901 – 1909, coined the term, “speak softly and carry a big stick”. It was generally used to describe his foreign policy positions. Fred Swiechowicz collection.

Est.: \$300 - \$500 • Min. bid: \$150



Lot 134

Figural Klondike Whiskey Nip (with original label and multi-color paint), a Midwest glasshouse, probably A.H. Heisey Co, Newark, OH, 1897 – 1900. Opaque milkglass, highly detailed mold in the form of a mountain peak, threaded ground mouth with **“KLONDYKE”** stamped on original threaded cap – smooth base, ht. 5 7/8”, perfect. Original label reads, **“Merry / CHRISTMAS / AND / HAPPY NEW YEAR.”** A very scarce flask, rare with original label and paint. Fred Swiechowicz collection.

Est.: \$300 - \$500 • Min. bid: \$150



Lot 135

Lot of (2) Figural Santa-in-Chimney Whiskey Nips, 1890 – 1905. Colorless and golden amber, both in the form of a bearded Santa in a brick chimney, tooled sloping collar – smooth base, ht. 5 ¾” and 5 5/8” respectively; (the amber example is perfect; the colorless example has a tiny pinprick speck of roughness on the edge of the collar, otherwise mint). The colorless example is very rare; the amber example is very scarce, and rare with original paint. Amber is Ex. Mary Ballentine collection.

Est.: \$400 - \$600 • Min. bid: \$200



Lot 136

Figural Clamshell Whiskey Nip, America, 1890 – 1900. Rich, medium-to-deep cobalt blue, in the form of a clamshell, threaded neck with ground mouth, original threaded metal closure – smooth base, length 5 1/8”, virtually perfect; (a couple of 1/8” flakes, possibly in-manufacture, from the top of the factory ground mouth, otherwise mint). A great looking figural whiskey, occasionally found in clear, but very rare in this cobalt blue coloration. Fred Swiechowicz collection.

Est.: \$400 - \$600 • Min. bid: \$200



Lot 137

“DRINK WHILE IT LASTS / FROM THIS HOGS” Figural Whiskey, 1885 – 1895. Colorless with a faint amethystine tone, figural pig, sheared mouth – smooth base, length 6 ¾”, near perfect; (tiny bit of very minor roughness on the

edge of the sheared mouth). A bright, sparkling example of this rare figural pig whiskey. The last example that we can recall seeing, or that sold at auction, was in the Bob Ferraro collection (Sept. 2016). Gary and Betty Beatty collection.

Est.: \$120 - \$240 • Min. bid: \$60



Lot 141

“OLD SACHEM / BITTERS / AND / WIGWAM TONIC”, 1860 – 1875. Medium golden amber, barrel form, applied square collar – smooth base, ht. 9 3/8”, virtually perfect; (only the slightest trace of faint wear including a tiny pinprick speck of roughness on the edge of the collar, barely noticeable, otherwise pristine). R/H #O46. A bright, clean, sparkling example. Provenance: Fred Swiechowicz collection.

Est.: \$400 - \$600 • Min. bid: \$200



Lot 138

Lot of (2), “good Old Bourbon / in a hogs” (line pointing to pig’s rear-end), Figural Whiskey Bottles, 1880 - 1890. **1st Example:** Light honey in the body shading to a deeper golden amber in the head, tooled ring collar.

2nd Example: Colorless with a sheared mouth. Both are smooth base, length 6 5/8”, near mint; (amber ex. is near perfect with just a trace of light wear; colorless ex. has a hard-to-see ¼” iridescent bruise on underside of mouth, otherwise excellent). Gary and Betty Beatty collection.

Est.: \$250 - \$450 • Min. bid: \$130



Lot 142

“GREELEY’S BOURBON / BITTERS”, 1860 – 1875. Beautiful, medium copper coloration with some attractive pinkish tones, depending on the lighting, barrel form, applied square collar – smooth base, ht. 9 ¼”, attic mint. R/H #G101. A very pretty example, nice ‘see-through’ color, lighter than most, and with a perfect square collar. Provenance: Gary and Betty Beatty collection.

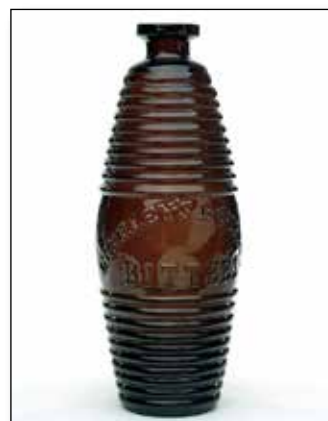
Est.: \$600 - \$900 • Min. bid: \$300



Lot 139

“LANCASTER / GLASS WORKS / LANCASTER, N.Y.” (on base), **Figural Barrel**, 1865 – 1875. Bright yellow olive, barrel form with embossed wooden staves and bung hole around the midsection, applied square collar – smooth base, ht. 9 ½”; (a little very fine roughness on the edge of the collar that you can feel, but not easily seen, and a 3/8” and 1/8” spot on the lip of minor flaking, otherwise excellent). Very scarce-to-rare color for a Lancaster barrel. Fred Swiechowicz collection.

Est.: \$400 - \$600 • Min. bid: \$200



Lot 143

“GREELEY’S BOURBON / BITTERS”, 1860 – 1875. Rich, deep apricot, barrel form, applied square collar – smooth base, ht. 9 1/8”; (some fine light exterior wear, primarily around the midbody, and a couple 1/8” spots of minor roughness on the edge of collar, one at edge of base, otherwise excellent). R/H #G101. This example was found in an old cottage on Spofford Lake, Spofford, NH.

Est.: \$300 - \$500 • Min. bid: \$150



Lot 140

“DISTILLED IN 1848. / OLD KENTUCKY BOURBON / 1849 RESERVE / A.M. BININGER & Co. 19 BROAD ST. N.Y.”, probably 1861 – 1863. Medium amber, barrel form, applied double ring collar – blowpipe pontil scarred base, ht. 8”, near mint; (just a trace of minor light wear and a 3/16” flake on one of the lower rings, otherwise perfect). BPK-40. Nice with the pontil scarred base, as well as the scarcer 19 Broad St. address which is much harder to find on the 8” barrels.

Est.: \$250 - \$400 • Min. bid: \$130



Lot 144

“BOURBON WHISKEY / BITTERS”, 1860 – 1875. Medium pinkish peach coloration, barrel form, applied square collar – smooth base, ht. 9 1/8”; (a 3/16” chip on the edge of the square collar on the reverse, otherwise virtually attic mint). R/H #B171. A beautiful, eye-appealing, scarce color, very heavily whittled. Depending on the lighting, a lot of pinkish tones in this one. It is a true ‘chameleon’ that changes color according to the type of lighting and time of day. Fred Swiechowicz collection.

Est.: \$300 - \$500 • Min. bid: \$150



Lot 145

"GREELEY'S - BOURBON WHISKEY / BITTERS. - GREELEY'S", 1860 - 1875. Rich, deep apricot, barrel form, applied square collar - smooth base, ht. 9 1/4", near mint; (a 1/8" flake on the edge of the square collar, and a bit of washable interior residue in the lower half, otherwise virtually perfect). R/H #G102. A solid example of this scarce 'vertical' Greeley's mold. Almost no wear around the mid-body, and depending on the light, some subtle pinkish apricot tones come through.

Est.: \$300 - \$500 • Min. bid: \$150



Lot 146

"GREELEY'S - BOURBON WHISKEY / BITTERS. - GREELEY'S", 1860 - 1875. Light aqua, barrel form, applied square collar - smooth base, ht. 9 1/4", perfect! R/H #G102. An extremely rare mold in aqua, and especially so in this outstanding 'attic-type' condition. Almost no wear, a perfect square collar, crisp, very strong embossing. The last example that we had an opportunity to offer was way back in Auction #22 from the famed Joe Kray collection. Fred Swiechowicz collection.

Est.: \$4,000 - \$6,000 • Min. bid: \$2,000



Lot 147

"ORIGINAL / POCAHONTAS / BITTERS / Y. FERGUSON.", probably 1856 - 1862. Aqua, barrel form, applied square collar - smooth base, ht. 9 1/4", near mint; (just a tiny bit of very minor roughness on the edge of the collar that you can feel, but is not easy to see, and some light interior residue, almost certainly washable, otherwise perfect). R/H #O86, Rare! Recently discovered in a group of bottles in a barn in Point Pleasant, NJ. Nicely whittled, strong embossing, excellent condition.

Est.: \$3,000 - \$5,000 • Min. bid: \$1,500



Lot 148

"DR C.W. ROBACKS / STOMACH BITTERS / CINCINNATI. O.", 1855 - 1865. Bright golden amber, almost a honey coloration, barrel form, applied sloping collar - iron pontil scar, ht. 9 7/8", near mint; (a 1/8" flake on the inside edge of the lip that may have occurred in-manufacture, otherwise virtually pristine perfect). R/H #R73. A bright, very pretty example, lighter than most in this larger, more desirable size. In addition, outstanding character having bubbly, very whittled glass.

Est.: \$400 - \$600 • Min. bid: \$200



Lot 149

"W.C. BITTERS - BROBST & RENTSCHLER / READING, PA.", 1880 - 1890. Yellowish golden amber, barrel form with three staves below shoulders and above the base, tooled collar with flat band - smooth base, ht. 10 3/8", near mint; (just a trace of faint wear including a shallow 1/8" chip on the back edge of the lip, otherwise perfect). R/H #W57. A very scarce barrel! Provenance: Gary and Betty Beatty collection; Ex. Bob Ferraro, Jim Mayfield collections.

Est.: \$400 - \$600 • Min. bid: \$200



Lot 150

"HALL'S / BITTERS - E.E. HALL NEW HAVEN / ESTABLISHED 1842", America, 1865 - 1875. Bright amber with some slight orange tones, barrel form, applied square collar - smooth base, ht. 9 1/8", near mint; (just a touch of typical very minor wear, and a tiny bit of roughness on the edge of the collar that you can feel, but is not easy to see, otherwise excellent). R/H #H10. A very nice example, beautifully whittled. Provenance: Gary and Betty Beatty collection.

Est.: \$175 - \$275 • Min. bid: \$90



Lot 151

Figural Pineapple Bitters, America, 1860 - 1875. Rich, yellowish honey amber, pineapple form, applied blob collar with bevel - smooth base, ht. 9 1/8"; (a little light wear including a couple of minor open surface bubbles, 1/4", or less, otherwise excellent). R/H #P100. A very pretty example, and a lot of bottle for the money! Provenance: Gary and Betty Beatty collection.

Est.: \$175 - \$275 • Min. bid: \$90



Lot 152

"NATIONAL / BITTERS" - "PATENT / 1867" (on base), 1867 - 1875. Bright golden amber, figural ear of corn, applied short tapered collar with ring - smooth base, ht. 12 1/2", virtually attic mint; (just the slightest trace of very light wear, otherwise perfect). R/H #N8. A very nice example, pretty color, excellent condition, one of the great classics in figural bitters. Provenance: Gary and Betty Beatty collection.

Est.: \$300 - \$500 • Min. bid: \$150



Lot 153

"BROWN'S / CELEBRATED / INDIAN HERB BITTERS – PATENTED / FEB 11. / 1868" (with remnants of original paint), 1868 – 1880. Beautiful yellowish honey coloration above the waist, shading to a bright golden amber in the lower half, figural Indian maiden, sheared and inward rolled mouth – smooth base, ht. 12 ¼", attic mint! R/H #B226. A great example, beautiful variegated color, fantastic condition, and with a perfect rolled lip. Provenance: Fred Swiechowicz collection.

Est.: \$800 - \$1,200 • Min. bid: \$400



Lot 154

"BROWN'S / CELEBRATED / INDIAN HERB BITTERS – PATENTED / 1867", 1867 – 1880. Very deep chocolate, virtually black in reflected light, figural Indian maiden, sheared and inward rolled mouth – smooth base, ht. 12 1/8", perfect! R/H #B223. Very rare in this deep, dense chocolate, virtually black coloration. In addition, a great example having strong, crisp embossing, outstanding condition. Provenance: Fred Swiechowicz collection.

Est.: \$1,200 - \$2,400 • Min. bid: \$600



Lot 155

THE / FISH BITTERS – W. H. WARE / PATENTED 1866", 1866 – 1875. Virtually colorless with a faint smokey amethystine tint through the base, figural fish, applied narrow square collar – **"W.H. WARE / PATENT 1866"** (on smooth base), ht. 11 3/8", virtually attic mint; (some in-manufacture bits of glass slag and impurities are embedded in the top and around the edge of the collar, mentioned for completeness). R/H #F46. Very rare and desirable 'color', excellent condition.

Est.: \$4,000 - \$6,000 • Min. bid: \$2,000



Lot 156

"McKEEVER'S ARMY BITTERS", America, 1865 – 1875. Medium amber, figural Civil War drum, stacked cannonballs forming conical shoulders, applied sloping collar – smooth base, ht. 10 ½", near mint; (just a very slight trace of faint wear including a surface bubble at the heel of the base with a ¼" opening in the cover glass, otherwise perfect). R/H #M58. One of the all-time great classics in figural bitters. Provenance: Gary and Betty Beatty collection; Ex. George McConnell collection.

Est.: \$2,500 - \$4,500 • Min. bid: \$1,300



Lot 157

"BERKSHIRE. BITTERS – AMANN & Co / CINCINNATI. O", 1873 – 1880. Medium amber through the body shading to a deep amber in the head, figural pig, applied square collar – smooth base, length 9 ½",

girth 11 ¼", perfect! R/H #B81.2. A great example of this scarce, 'short-fat' variant. These figural pigs are getting harder to find, especially in this fine condition, and this is a good one (and with great provenance to boot). Gary and Betty Beatty collection; Ex. Charles B. Gardner collection.

Est.: \$1,500 - \$2,500 • Min. bid: \$800



Lot 158

"M.G. LANDSBERG / CHICAGO" – (Motif of Eagle – Sunburst / "1776" – Shield – "1876"), probably 1885 – 1890. Golden amber with a slight orange tone, square with crosshatch corners, shoulders in the form of a bell with 13 stars, applied sloping collar – smooth base, ht. 11", near mint; (a couple of small spots of faint interior milky in the shoulders, and a 1/8" paper-thin flake on the edge of the lip). A beautiful example. Provenance: Gary and Betty Beatty collection.

Est.: \$1,000 - \$1,500 • Min. bid: \$500



Lot 159

"S T / DRAKE'S / 1860 / PLANTATION / X / BITTERS – PATENTED / 1862", 1862 – 1880. Bright, light yellowish honey coloration shading to near yellow below the roofline and in the corners, cabin form with 6 logs above the label panel, applied sloping collar – smooth base, ht. 9 ¾", perfect. R/H #D105. A bright, clean, sparkling example, strong embossing, beautiful light color. Provenance: Fred Swiechowicz collection.

Est.: \$300 - \$500 • Min. bid: \$150



Lot 160

"S T / DRAKE'S / 1860 / PLANTATION / X / BITTERS – PATENTED / 1862", 1862 – 1880. Gorgeous, light-to-medium yellow with a hint of topaz, cabin form, 6-log, applied sloping collar – smooth base, ht. 10", very near mint; (a small 3/16" annealing line, almost certainly in-manufacture, on the inner surface of the neck from a large gather of un-melted sand or frit, otherwise pristine!) R/H #D108. Strong embossing, outstanding color and condition. Ex. Kim Kokles, Jeff Burkhardt collections.

Est.: \$1,200 - \$1,800 • Min. bid: \$600



Lot 161

“S T / DRAKE’S / 1860 / PLANTATION / X / BITTERS – PATENTED / 1862”, 1862 – 1880. Medium apricot coloration with some deeper reddish apricot tones towards the base, cabin form with 6 logs above the label panel, applied sloping collar – smooth base, ht. 9 ¾”, perfect. R/H #D106. A very attractive example, good color, nice character, fantastic condition.

Est.: \$300 - \$500 • Min. bid: \$150



Lot 165

“OLD HOME / BITTERS – LAUGHLIN’ / SMITH & CO – WHEELING. W. VA”, America, 1865 – 1875. Yellowish ‘old amber’, almost a butterscotch coloration, semi-cabin form, applied sloping collar with ring – smooth base, ht. 9 ¾”; (a ¼” hairline crack on one of the base corners, and just a trace bit of faint wear, otherwise perfect). R/H #O36. A beautiful, ‘attic-type’ example of this rare mold, believed to be the earlier variant, the damage is not easy to see. Gary and Betty Beatty collection.

Est.: \$1,200 - \$2,400 • Min. bid: \$600



Lot 162

“DRAKES / PLANTATION / BITTERS – PATENTED / 1869”, 1869 – 1880. Medium amber with a slight orange tone towards the base, cabin form with 5 logs above the label panel, applied sloping collar – smooth base, ht. 9 7/8”; (some interior content haziness, primarily in the roof panels, as well as the interior of a few logs below the roof of the front panel, otherwise perfect). R/H #D109. Provenance: Fred Swiechowicz collection.

Est.: \$300 - \$500 • Min. bid: \$150



Lot 166

“WAHOO / & / CALISAYA / BITTERS – JACOB PINKERTON – JACOB PINKERTON – I. M. – O.K – Y !! – Y !!!”, 1870 – 1880. Bright golden amber with some lighter honey tones along the corners, semi-cabin form with columned corners, tooled sloping collar with band – smooth base, ht. 9 7/8”, attic mint! R/H #W3. A bright, clean, sparkling, very pretty example of this scarce semi-cabin from Syracuse, NY. Provenance: Gary and Betty Beatty collection.

Est.: \$700 - \$900 • Min. bid: \$350



Lot 163

“DRAKES / PLANTATION / BITTERS – PATENTED / 1869”, 1869 – 1880. Clear light yellow with a topaz tone, cabin form with 5 logs above the label panel, applied sloping collar – smooth base, ht. 9 ¾”; (the bottle is perfect, there is a bit of faint content haze down one of the corners that may wash out, and a slightly weak impression noted for completeness). R/H #D109. A rare and outstanding color for a 5-Log, the lightest in tone that we can recall seeing!

Est.: \$1,200 - \$1,800 • Min. bid: \$600



Lot 167

“ROMAINE’S – CRIMEAN – BITTERS – PATENT 1863 – CRIMEAN BITTERS”, 1863 – 1870. Deep ‘old amber’, semi-cabin form, large, applied sloping collar – smooth base, ht. 10”, virtually perfect; (just the slightest trace of faint wear, otherwise pristine). R/H #R87. A great example that is noted in Ring – Ham as ‘Very rare’, and certainly more so than the R86 mold. The mold alteration on the side panel with “W. Chilton & Co.” removed is very evident. An ‘attic-type’ example with strong embossing.

Est.: \$1,000 - \$2,000 • Min. bid: \$500



Lot 164

“OLD / HOMESTEAD / WILD / CHERRY / BITTERS – PATENT”, possibly a Pittsburgh district glass-house, 1865 – 1875. Medium amber, cabin form, applied sloping collar – smooth base, ht. 9 5/8”; (slight trace of very light wear along the roof edge, otherwise near perfect). R/H #O37. Note; this is the variant without the clapboard at the bottom of the door. Provenance: Gary and Betty Beatty collection.

Est.: \$300 - \$500 • Min. bid: \$150



Lot 168

“JOHN. W. STEELE’S / NIAGARA (STAR) BITTERS – JOHN. W. STEELE’S / NIAGARA. STAR. BITTERS – (EAGLE) – (STAR) – (STAR) – 1864 – (STAR)”, 1864 – 1875. Beautiful golden honey coloration, semi-cabin form, applied sloping collar with band – smooth base, ht. 10”, pristine perfect! R/H #S182. An absolutely fantastic example of this scarce Western New York semi-cabin, beautiful color, outstanding condition. Provenance: Gary and Betty Beatty collection.

Est.: \$800 - \$1,200 • Min. bid: \$400



Lot 169

“EDW WILDER’S / STOMACH BITTERS – (FIVE STORY BUILDING) – EDW WILDER & Co / WHOLESALE DRUGGISTS / LOUISVILLE. K.Y – PATENTED”, 1890 – 1900. Colorless, semi-cabin form with beaded corners, tooled sloping collar – smooth base, ht. 10 ¼”, near mint; (some very faint scratches on one of the side panels, and a partially open 3/8” bubble on one of the beaded corners on the reverse). Gary and Betty Beatty collection; Ex. Howard Crowe collection.

Est.: \$200 - \$400 • Min. bid: \$100



Lot 173

“ANDRUS & PALMER / SOLE PROPRIETORS & / MANUFACTURERS – PALMER’S TONIC – (Motif of EAGLE) – BITTERS”, probably 1869 – 1872. Gorgeous emerald green coloration, rectangular semi-cabin, applied sloping collar – smooth base, ht. 10 ¼”; (a sizeable crack travels from the corner of the back shoulder, down the back panel, and along the side edge of the base). R/H #P12. An exceptional bottle, outstanding color and eye-appeal. Gary and Betty Beatty collection.

Est.: \$1,000 - \$1,500 • Min. bid: \$500



Lot 170

“BAKER’S / ORANGE GROVE – BITTERS”, America, 1870 – 1880. Bright yellowish honey coloration, square with roped corners, applied sloping collar – smooth base, ht. 9 ½”, perfect. R/H #B9. A very pretty example, nice and light, strong embossing, virtually pristine condition. The Baker’s Orange Grove Bitters with their roped corners, arched or ‘tombstone’ shoulder panels, and beautiful colors have always been popular with collectors, and it’s easy to see why. This is a nice one.

Est.: \$400 - \$600 • Min. bid: \$200



Lot 174

“JACKSON’S – AROMATIC / LIFE – BITTERS”, 1860 – 1870. Rich yellowish olive coloration, rectangular with beveled corners, applied crude sloping collar – early smooth base, ht. 8 7/8”; (a bit of minor roughness and a 1/8” chip on the back edge of the crude collar; a couple of minor paper-thin open surface bubbles from the very seedy glass, otherwise perfect). R/H #J4. Noted in Ring / Ham as “Very rare”, and aptly so. Provenance: Ex. John Feldmann, Jeff Burkhardt collections.

Est.: \$2,500 - \$4,500 • Min. bid: \$1,300



Lot 171

“SWISS / STOMACH BITTERS – ARNOLD KOCH / BIRMINGHAM. PA”, 1865 – 1872. Beautiful, light yellowish honey coloration, rectangular with ‘accordion’ or “V” shaped side panels, tooled sloping collar – smooth base, ht. 9 1/8”, near mint; (a slight ‘bloom’ or very faint haziness on one of the label panels, barely noticeable, otherwise excellent). R/H #S242. A pretty example, and in a very scarce-to-rare color. Gary and Betty Beatty collection; Ex. Howard Crowe collection.

Est.: \$400 - \$600 • Min. bid: \$200



Lot 175

(Label-only), Early Medicinal Bitters, probably Mt. Pleasant (Saratoga Mountain Glass Works), possibly New England, 1860 – 1870. Medium-to-deep olive, square, beveled corners, applied double collar – early smooth base, ht. 9 ¾”; (a little scattered wear and a couple of patches of light dullness on the shoulders, some light interior residue, otherwise excellent). Label reads in part, **“INDIAN / Tonic and Cathartic / BITTERS. / DAVID W. SMALL, Proprietor, / GREENWICH, WASHINGTON Co., NY.”**

Est.: \$400 - \$600 • Min. bid: \$200



Lot 172

“J.V. MATTISON – EXCELSIOR / HERB BITTERS – WASHINGTON. N.J.” (with 95% complete, original label), 1870 – 1880. Medium amber, rectangular semi-cabin form, applied square collar – smooth base, ht. 10”; (a 1/8” paper-thin flake on one of the base corners, otherwise the bottle is virtually perfect; label has a bit of minor staining, otherwise excellent). R/H #E65. A rare bitters, and extremely rare with virtually complete, original label. Gary and Betty Beatty collection.

Est.: \$600 - \$900 • Min. bid: \$300



Lot 176

“DR. A. W. COLEMAN’S – ANTI DYSPEPTIC / AND / TONIC BITTERS”, 1850 – 1860. Clear, yellowish emerald coloration, ‘tombstone form’ with beveled corners, applied sloping collar – heavy iron pontil scar, ht. 9 ¼”, near perfect; (just a little scattered minor wear on the sides, primarily near the base). R/H #C194. Beautifully whittled, strong embossing, outstanding condition. Appears to be an ‘attic-type’ example, about as nice as you could hope to find. Ex. Mike George collection.

Est.: \$4,000 - \$8,000 • Min. bid: \$2,000



Lot 177

"DR. STEPHEN JEWETT'S - CELEBRATED HEALTH / RESTORING BITTERS - RINDGE, N.H.", a Stoddard, NH glasshouse, 1850 - 1860. Brilliant yellow with a slight amber or topaz tone, rectangular with beveled corners, applied square collar - blow-pipe pontil scar, ht. 7 1/4"; (a 5/16" and 1/8" area of minor lip edge roughness, and a tiny potstone with a couple of 1/8" 'legs', otherwise excellent). R/H #J37. Absolutely gorgeous color, heavily whittled, a beautiful example!

Est.: \$1,000 - \$2,000 • Min. bid: \$500



Lot 178

"DOCTOR / DUNCAN EDWARDS" / (motif of large crown) / "CROWN / BITTERS" (inside crown) / "LONDON / ENGLAND", America, probably 1877 - 1885. Olive yellow coloration, almost a lemon yellow with an olive tone, square with beveled corners, applied square collar - smooth base, ht. 9", near perfect; (some light spotty interior residue, and a partially open bubble in the neck). R/H #E24. Extremely rare, one of only 3 or 4 extant, believed to be from Brockport, NY.

Est.: \$1,800 - \$3,600 • Min. bid: \$900



Lot 179

"RUSS' / ST. DOMINGO / BITTERS - NEW YORK", 1875 - 1885. Clear medium peach coloration with some slightly warmer apricot or salmon tones through the neck and base, square, beveled corners, applied sloping collar - smooth base, ht. 10", virtually perfect; (may have been very lightly cleaned, but certainly presents as virtually pristine). R/H #R125. A gorgeous, extremely rare color for this mold. Gary and Betty Beatty collection; Ex. Howard Crowe collection.

Est.: \$1,000 - \$2,000 • Min. bid: \$500



Lot 180

"MORNING CALL - BITTERS", 1875 - 1885. Deep amber, square with beveled corners, applied sloping collar - smooth base, ht. 9 1/8"; (a couple of small spots of light haziness, primarily on the neck and one of the side panels; just a trace of very minor wear, and some interior haziness below the shoulders, otherwise excellent). R/H #M130. An extremely rare bitters, one of only three, or perhaps four, to come to market in more than 20 years. Gary and Betty Beatty collection.

Est.: \$250 - \$450 • Min. bid: \$130



Lot 181

"MOUNTAIN HERB AND / ROOT BITTERS - DR J. HENRY SALISBURY / HINSDALE. N.Y. - I.S.P - I.N. - 1869", 1869 - 1875. Medium amber, square with beveled corners, applied sloping collar - smooth base, ht. 9 1/4"; (virtually attic mint with just a couple of spots of light wear, but still retains some heavy, syrupy, content residue, possibly from the original medicine, otherwise perfect). R/H #M150. A rare bitters and recent lucky find from a Pennsylvania estate!

Est.: \$400 - \$600 • Min. bid: \$200



Lot 182

"C. METZGER'S - BITTERS - CLEVELAND. O.", a Midwest glasshouse, 1870 - 1880. Medium amber, square with beveled corners, applied sloping - smooth base, ht. 8 3/4"; (some fine light scratches and minor wear, not terribly distracting, and a 1/4" chip along the top of the lip). R/H #M77.1. An extremely rare bitters, the only other example noted in the auction records was sold in August, 2012. Excellent character with crude, wavy glass. Provenance: Gary and Betty Beatty collection.

Est.: \$200 - \$400 • Min. bid: \$100



Lot 183

"BISELL'S / TONIC BITTERS / PATENTED. JAN. 21. 1868 - O.P. BISELL / PEORIA ILL", probably Lorenz & Wightman Glass Manufacturers, Pittsburgh, 1868 - 1872. Bright amber with a slight orange tone, square with beveled corners, tooled sloping collar - "L & W" (on smooth base), ht. 9"; (professionally cleaned to original luster and otherwise near mint condition with just the slightest touch of light wear remaining). R/H #B109. A pretty example of this very scarce bitters.

Est.: \$175 - \$350 • Min. bid: \$90



Lot 184

"STEKETEE'S BLOOD / PURIFYING BITTERS", 1885 - 1895. Golden amber, square with beveled corners, tooled sloping collar with ring - smooth base, ht. 6 5/8"; (a tiny, shallow, 1/8" iridescent flake on a panel edge, otherwise virtually 'out-of-the-mold' pristine condition). R/H #S188. Rare smaller size, and certainly very rare in this un-dug, attic-type condition. Put out by a Grand Rapids, Mich. druggist, it is an unusual size for a bitters. Too large for a sample, but probably less than a pint in capacity.

Est.: \$120 - \$240 • Min. bid: \$60



Lot 185

"DR BELL'S – BLOOD / PURIFYING – BITTERS – THE GREAT / ENGLISH / REMEDY", America, 1875 – 1885. Bright yellowish honey amber with some orange tones, rectangular with beveled corners, applied square collar – smooth base, ht. 9 1/2", near mint; (a light, very minor 1" scratch on a side panel, and a trace of light, almost certainly washable, interior content residue in the shoulders, otherwise perfect). R/H #B56. Noted as "Rare" in the R/H book, a very pretty example.

Est.: \$200 - \$300 • Min. bid: \$100



Lot 189

"INDIAN VEGETABLE / AND / SANSAPARILLA – BITTERS – GEO. C. GOODWIN – BOSTON", 1845 – 1860. Aquamarine, rectangular with beveled corners, applied sloping collar with bevel – blowpipe pontil scar, ht. 8 1/8"; (a little light exterior wear, and the bottle may have been very lightly cleaned, but certainly presents as near mint). R/H #125. A scarce, pontiled Indian bitters, nice character.

Est.: \$400 - \$600 • Min. bid: \$200



Lot 186

"KOEHLER & HINRICH'S / RED STAR / STOMACH BITTERS / ST. PAUL, MINN.", 1900 – 1910. Medium-to-deep amber, cylindrical with fluted shoulders, tooled sloping collar with ring – smooth base, ht. 11 3/8"; (a little scattered light wear, and some faint dullness and swirl lines, but no other form of damage, otherwise excellent). R/H #R25. Scarce. The bottle may have been dug, but displays quite nicely with much of its original luster. Gary and Betty Beatty collection.

Est.: \$250 - \$450 • Min. bid: \$130



Lot 190

"G. C. SEGUR'S – GOLDEN SEAL / BITTERS – SPRINGFIELD MASS.", probably 1850 – 1855. Aquamarine, rectangular with wide beveled corners, applied sloping collar – blowpipe pontil scar, ht. 8 1/4"; (some faint interior haziness that may wash out, and just a slight trace of light exterior wear, otherwise virtually perfect). R/H #S84. A nice example having crude, whittled, wavy glass. Noted by Ring / Ham as scarce. Provenance: Gary and Betty Beatty collection.

Est. \$200 - \$400 • Min. bid: \$100



Lot 187

"DR OWEN'S / EUROPEAN – LIFE BITTERS / DETROIT", 1844 – 1855. Aquamarine, rectangular with wide beveled corners, applied sloping collar – blowpipe pontil scar, ht. 7"; (professionally cleaned to original luster with just a couple of minor spots of light wear remaining; a 3/16" chip on the edge of the base). R/H #O98. Very scarce. A clean, bright, very attractive example with bold embossing and nice character to the glass.

Est.: \$250 - \$450 • Min. bid: \$130



Lot 191

"ONLY 25¢ / CLARKE'S / SHERRY / WINE / BITTERS", 1845 – 1860. Aquamarine, rectangular with beveled corners, applied sloping collar – blowpipe pontil scar, ht. 7 7/8", virtually mint; (only the slightest trace of very faint wear, otherwise pristine perfect). R/H #C164. A beautiful example, bright, clean and sparkling. One of the more obtainable mold variants of the numerous Clarke's variants, but not necessarily in this fine condition.

Est.: \$175 - \$350 • Min. bid: \$90



Lot 188

"JOHNSON'S – INDIAN – DYSPEPTIC – BITTERS", 1845 – 1855. Light aquamarine, rectangular with wide beveled corners, applied sloping collar – blowpipe pontil scar, ht. 6 1/2", attic mint! R/H #J46. Per Peachridge Glass, the proprietor is believed to be A. Johnson & Son, Brewer, Maine. A very scarce pontiled Indian bitters, noted in Ring / Ham as "Rare".

Est.: \$400 - \$600 • Min. bid: \$200



Lot 192

"ONLY 70 CTS / CLARKE'S / VEG-ETABLE / SHERRY / WINE / BITTERS / SHARON MASS", America, 1855 – 1865. Aquamarine, rectangular with beveled corners, applied sloping collar with bevel – sand type pontil scar, ht. 11 3/4", virtually attic mint; (just a bit of very faint interior haziness, primarily near the base, barely noticeable, otherwise perfect). R/H #C157. A big, impressive example referred to as the half-gallon size, beautifully whittled, overall excellent condition.

Est.: \$800 - \$1,200 • Min. bid: \$400



Lot 193

“CLARKE’S / VEGETABLE / SHERRY WINE / BITTERS / SHARON MASS.”, 1860 – 1870. Aqua, rectangular, beveled corners, applied sloping collar – smooth base, ht. 12 ¼” x 5 7/8” x 3 7/8”, near perfect; (a few faint light scratches on the reverse, and a bit of very light, washable interior residue, barely noticeable). R/H #C156. Extremely rare, 3-quart size. Noted in Ring / Ham as “Extremely rare”, the only example recorded at auction in more than 25 years was sold in 2015.

Est.: \$800 - \$1,200 • Min. bid: \$400



Lot 197

“DR TOWNSEND’S – SARSAPARILLA – ALBANY / NY” (Embossed 4 rivet marks on each panel), a Stoddard, NH glasshouse, 1845 – 1855. Yellowish olive amber, square with beveled corners, applied sloping collar – sand type pontil scar, ht. 9 3/8”, near mint; (a little wear along one of the lower panel edges, and a shallow open interior bubble in one of the beveled corners, otherwise excellent). A scarce mold in a scarce color (normally found in shades of olive green).

Est.: \$400 - \$600 • Min. bid: \$200



Lot 194

“DR TOWNSEND’S – SARSAPARILLA – ALBANY / N Y” (with more than 80% complete, original label), 1845 – 1860. Brilliant yellowish green coloration, square with beveled corners, applied sloping collar – cloverleaf iron pontil scar, ht. 9 ¼”, attic mint. This one is special! Fantastic color and eye-appeal, nice crude glass filled with tiny bubbles and impurities, outstanding condition, a great looking Dr. Townsend’s.

Est.: \$800 - \$1,200 • Min. bid: \$400



Lot 198

“DR TOWNSEND’S – SARSAPARILLA – ALBANY / N Y”, 1845 – 1860. Clear, medium emerald, square with beveled corners, applied sloping collar – deep squared base with chamfered corners and iron pontil scar, ht. 9 ½”, near attic mint; (trace of minor light wear, primarily on the label panel and near the base, otherwise perfect). Beautiful color, excellent character, strong embossing. Note; this is the mold variant with no periods in “N Y” which is also centered under “ALBANY”.

Est.: \$400 - \$600 • Min. bid: \$200



Lot 195

“DR TOWNSEND’S – SARSAPARILLA – ALBANY / N.Y.”, 1845 – 1860. Medium-to-deep bright yellowish olive, square with beveled corners, applied sloping collar – iron pontil scar, ht. 9 1/8”, near perfect; (an ‘attic-type’ example with just a trace of light wear including a little 1/8” flake, or spot of minor roughness, on one of the beveled corners, otherwise perfect). A rich, deep, very scarce and attractive color, strong yellowish tones.

Est.: \$600 - \$900 • Min. bid: \$300



Lot 199

“DR TOWNSEND’S – SARSAPARILLA – ALBANY / N Y”, 1845 – 1860. Rich, medium-to-deep emerald coloration, square with beveled corners, applied sloping collar – iron pontil scar, ht. 9 5/8”, virtually perfect; (just a slight trace of very faint wear). A great example, strong color, outstanding condition. This is the same mold variant as the preceding lot with “N Y” centered under “ALBANY” and no periods in “N Y”. Scarce, especially with this depth of color and fine condition.

Est.: \$500 - \$800 • Min. bid: \$250



Lot 196

“DR TOWNSEND’S – SARSAPARILLA – ALBANY / N.Y. No1”, New England, 1845 – 1855. Medium-to-deep olive green, square with beveled corners, applied sloping collar – sand type pontil scar, ht. 9 ½”; (some scattered exterior usage wear and light scratches, and a little light ‘bloom’ or dullness towards the base, not terribly distracting, but mentioned for completeness). Despite the fairly typical usage wear, the bottle still displays quite nicely. Scarce “No1” mold.

Est.: \$250 - \$450 • Min. bid: \$130



Lot 200

“DR TOWNSEND’S – SARSAPARILLA – ALBANY / N.Y.”, 1845 – 1860. Clear, medium-to-deep bluish green, almost a teal coloration through the shoulders and neck, square with beveled corners, applied sloping collar – deep squared base with heavy iron pontil scar, ht. 9 5/8”, perfect. Fantastic eye-appeal having excellent clarity, beautiful shading of color, bold embossing, and outstanding character with very crude, whittled, dimpled glass.

Est.: \$800 - \$1,200 • Min. bid: \$400



Lot 201

"DR TOWNSEND'S – SARSAPARILLA – NEW. YORK.", 1850 – 1860. Light-to-medium bluish green, square, beveled corners, applied sloping collar – domed base, iron pontil scar, ht. 9 3/4", near mint; (slight trace of typical light wear, and some faint dullness, or 'bloom', on the shoulders, otherwise perfect). An 'attic-type' example, nice even color from the shoulders to the base, heavily whittled! Note; this is the "NEW. YORK." variant without the "OLD" preceding "DR", or the initial "J".

Est.: \$300 - \$500 • Min. bid: \$150



Lot 205

"G.W. STONE'S – COUGH / ELIXIR – BOSTON / MASS.", probably 1855 – 1857. Aquamarine, rectangular with beveled corners, applied ring collar with bevel – blowpipe pontil scar, ht. 6", perfect. Odell, p.332. An exceedingly rare pontiled medicine. Believed to be one of perhaps only three or possibly four extant, and only the second example to be offered at auction in more than 25 years! Bright, clean, sparkling, virtually pristine condition. Provenance: Fred Swiechowicz collection.

Est.: \$500 - \$800 • Min. bid: \$250



Lot 202

"LE DOYEN'S / DISINFECTING FLUID – BY / POULIN, ROGERS & KEENEY / N.Y. – PATENTED, OCT. 8th / 1844", 1845 – 1855. Ice blue coloration, square with beveled corners, applied sloping collar – iron pontil scar, ht. 9 3/8"; (professionally cleaned, some ground wear and etching remain – primarily near the base, and some faint interior haziness in the beveled corners). Knapp, p.280. Extremely rare, particularly in this beautiful ice-blue coloration. Ex. Gary Enters collection.

Est.: \$1,200 • \$1,800 • Min. bid: \$600



Lot 206

"G. W. STONE'S – LIQUID / CATHARTIC & / FAMILY PHYSIC – LOWELL MASS." (with more than 90% complete, original label), probably Granite Glass Co, Stoddard, NH, 1855 – 1857. Bright yellowish 'old amber', rectangular with beveled corners, applied large ring collar with bevel – smooth base, ht. 8 7/8", near attic mint; (a little light interior content residue and just the slightest trace of very faint wear near the base). Beautiful crude 'syrupy' glass. Provenance: Fred Swiechowicz collection.

Est.: \$15,000 - \$25,000 • Min. bid: \$7,500



Lot 203

"MYERS' – ROCK ROSE – NEW HAVEN", 1850 – 1860. Clear, medium emerald coloration, square with beveled corners, applied sloping collar – heavy iron pontil scar, ht. 9 1/4", virtually perfect; (just the slightest trace of faint wear, and an onionskin-thin small open bubble in one of the beveled corners). A great example of this very scarce-to-rare colored pontiled medicine. There are not many of these out there, and this is an 'attic-type' example with good strong color, excellent clarity.

Est.: \$2,000 - \$4,000 • Min. bid: \$1,000



Lot 207

"G. W. STONE' – VEGETABLE – LIQUID / CATHARTIC – LOWELL MASS", Granite Glass Co, Stoddard, 1855 – 1857. Yellowish 'old amber', rectangular, rounded corners, applied beveled collar – iron pontil scar, ht. 6 7/8", virtually perfect; (just the slightest trace of faint wear, and a couple of small pontil flakes, 1/8" and 3/16", likely in-manufacture, otherwise pristine). An exceedingly rare and important Stoddard medicine, one of only 2, or possibly 3 known. Fred Swiechowicz collection.

Est.: \$40,000 - \$60,000 • Min. bid: \$20,000



Lot 204

"HYATT'S – INFALLIBLE – LIFE BALSAM / N – Y.", 1852 – 1860. Rich, medium-to-deep yellowish green, rectangular with beveled corners, applied sloping collar with bevel – heavy oval iron pontil scar, ht. 9 7/8", virtually perfect; (tiny bit of minor roughness on a beveled edge). Odell, p.189. A beautiful example with heavy, crude, wavy glass, strong color, and a rare color for this mold (most are in shades of blue green). Originally discovered in an old house approximately 10 years ago.

Est. \$3,000 - \$5,000 • Min. bid: \$1,500



Lot 208

"SEAVER'S / JOINT & – NERVE / LINIMENT", an early Stoddard, NH glasshouse, 1842 – 1860. Medium-to-deep olive amber, cylindrical, tooled, likely applied, thin flanged lip – blowpipe pontil scar, ht. 3 7/8", virtually perfect; (slight trace of faint interior residue). Odell, p.315. A top example, scarce olive amber coloration (most being in shades of yellowish amber), crisp, very strong embossing, fantastic condition with a perfect thin flanged lip. Provenance: Ex. Jerry Phelps collection.

Est.: \$1,800 - \$3,200 • Min. bid: \$900



Lot 209

“I. COVERT’S – BALM OF LIFE”, Mt. Vernon Glass Works, Vernon, NY, probably 1841 - 1846. Medium-to-deep olive, rectangular, beveled corners, applied sloping collar - blowpipe pontil scar, ht. 5 3/4”; (professionally cleaned to original luster with just a touch of minor light wear remaining, some in-manufacture annealing lines and a bit of roughness on the inside edge of the lip). N #142; Odell, p.92. The proprietor, Isaac Covert, was from Auburn, NY. Ex. Gary Enters collection.

Est.: \$1,200 - \$1,800 • Min. bid: \$600



Lot 210

“GIBB’S / BONE LINIMENT”, probably Mt. Vernon Glass Works, or possibly New England, 1840 – 1855. Medium yellowish olive below the shoulders shading to a deep olive near the base, 6-sided, short applied tapered collar – blowpipe pontil scar, ht. 6 1/4”, virtually perfect; (just the slightest trace of very faint wear, and a bit of washable interior residue). Odell, p.144. An ‘attic-type’ example that passes plenty of light through the upper half, and nice character.

Est.: \$1,000 - \$1,500 • Min. bid: \$600



Lot 211

“THE / INDIANS / PANACEA”, probably New England, 1837 – 1849. Medium olive green, cylindrical, applied sloping collar with bevel – sand type pontil scar, ht. 8 3/8”, near mint; (a little minor light wear, otherwise perfect). Odell, p.192; N #324 (6 star). An ‘attic-type’ example of this very rare pontiled Indian medicine with some nice swirls and character to the glass.

Est.: \$5,000 - \$8,000 • Min. bid: \$2,500



Lot 212

“BOYDEN’S / ALTERATIVE”, 1850 – 1860. Deep emerald coloration, cylindrical, applied sloping collar with bevel – heavy iron pontil scar, ht. 9 1/4”; (a little minor wear and a bit of very slight, spotty dullness, not terribly noticeable or distracting; some washable interior content residue, otherwise excellent). Odell, p.43. A very rare colored pontiled medicine believed to be from Boston. Provenance: Ex. Fred Swiechowicz collection.

Est.: \$1,800 - \$3,200 • Min. bid: \$900



Lot 213

“CARTERS / SPANISH / MIXTURE” (with approximately 95% complete, original label), 1850 – 1860. Bright olive green, cylindrical, applied sloping collar with bevel – blowpipe pontil scar, ht. 8”; (the bottle is perfect, label has some staining, but mostly legible). A beautiful example, pretty color, crisp embossing, excellent character. Also, not easy to find with the blowpipe (‘open pontil’) scarred base. Most are iron pontiled. Put out by Bennett & Beers Druggists, 125 Main Street, Richmond, Virginia.

Est.: \$500 - \$800 • Min. bid: \$250



Lot 214

“CARTERS / SPANISH / MIXTURE” (with more than 85% complete, original labels), 1850 – 1860. Yellowish olive amber, cylindrical, applied sloping collar with bevel – iron pontil scar, ht. 8 3/8”; (the bottle is perfect; the label has some staining and is darkened from age, but mostly complete and still legible). Odell, pgs. 68 & 69. Nice color, outstanding condition. A very attractive Southern colored pontiled medicine that you can find in several different colors.

Est.: \$500 - \$800 • Min. bid: \$250



Lot 215

“CARTERS / SPANISH / MIXTURE”, 1850 – 1860. Deep reddish amber in the shoulders shading to a very deep, almost blood-red coloration in the lower third, cylindrical, applied sloping collar with bevel – heavy iron pontil scar, ht. 8 1/8”; (some overall exterior dullness; a few scratches and some scattered light wear, but no other form of damage). An extremely rare color, a lot of red in this one! If desired, a light professional cleaning would likely restore this to near mint condition.

Est.: \$800 - \$1,200 • Min. bid: \$400



Lot 216

“G. W. MERCHANT / CHEMIST / LOCKPORT / N.Y.”, probably Lockport Glass Works, Lockport, NY, 1850 – 1860. Bright, medium ‘Lockport’ blue green, cylindrical, applied sloping collar – iron pontil scar, ht. 7 1/4”; (a bit of faint light wear, barely noticeable, and a few light scratches below the shoulders, otherwise near perfect). A nice looking example and a lot of bottle for the money. Excellent character with some scattered bubbles and crude pebbly glass.

Est.: \$250 - \$450 • Min. bid: \$130

**Lot 217**

Rare size, **"SWAIM'S / VERMIFUGE – PATENT – DYSENTERY / CHOLERA MORBUS / DYSPEPSIA & cc"**, 1835 - 1845. Light apple green, oval, applied tapered collar with bevel – base appears smooth, but is almost certainly a very faint sand-type pontil, ht. 7 3/8", virtually attic mint; (a touch of minor light wear, and a tiny pinprick bit of roughness on the edge of the collar, otherwise perfect). Rare mold in this size, and about as nice as you can find! Ex. Joe Widman collection.

Est.: \$1,000 - \$2,000 • Min. bid: \$500

**Lot 221**

"DR B.W. HAIR s – SARSAPARILLA", 1850 – 1860. Aquamarine, square with beveled corners, applied sloping collar – domed base with heavy blowpipe pontil scar, ht. 9 1/2", perfect. Odell, p.157; DeG #91. A great looking, very rare sarsaparilla from Cincinnati (per Odell, later moving to Hamilton, Ohio). We sold this same example back in July, 2021, and it remains one of only two, or perhaps three, to be offered at auction in more than 20 years (and likely the choicest example).

Est.: \$2,000 - \$4,000 • Min. bid: \$1,000

**Lot 218**

"HAMPTON'S / V. TINCTURE / MORTIMER / & MOWBRAY / BALTo.", probably Baltimore Glass Works, Baltimore, MD, 1845 – 1855. Light-to-medium copper below the shoulders, shading to a warm coppery-apricot towards the base, oval, applied square collar – blowpipe pontil scar, ht. 6 1/8"; (a little minor lip edge roughness including a 1/8" flake on the back edge of the collar; and a bit of light wear near the base, otherwise very near mint). Fred Swiechowicz collection.

Est.: \$500 - \$800 • Min. bid: \$250

**Lot 222**

"McCONNELL.s – SARSAPARILLA / CINCINNATI – OHIO", probably 1859. Aquamarine, rectangular with beveled corners, applied large rounded collar – iron pontil scar, ht. 9 7/8", perfect! Odell, p.245. An exceedingly rare sarsaparilla. One of a very small handful known with only two, or possibly three, confirmed examples. It is the same example that sold in NCH Auction 189, and also GW, Sept. 2006, and only the second example to come to market in more than 25 years.

Est.: \$2,000 - \$4,000 • Min. bid: \$1,000

**Lot 219**

"BARTINE'S / LOTION", America, 1845 – 1855. Yellowish green, almost a moss green coloration, rectangular with narrow beveled corners, applied sloping collar – blowpipe pontil scar, ht. 6"; (professionally cleaned to original luster with a touch of faint wear remaining; a 1/8" bruise on the edge of the shoulder at the side). Odell, p.24. Good depth of color, strong embossing, scarce in this 'mossy-green' coloration. A NYC bottle that advertised 1845 – 1848 as a cure for rheumatism.

Est.: \$600 - \$900 • Min. bid: \$300

**Lot 223**

"DR GUYSOTTS – YELLOW DOCK & / SARSAPARILLA / JOHN. D. PARK – CINCINNATI. O", probably a Pittsburgh district glasshouse, 1855 – 1865. Bright bluish aquamarine, large rectangular form, applied inverted tapered collar – early smooth base, ht. 10", attic mint. A big, impressive, large lettered, heavily embossed sarsaparilla. Note; this is a very rare mold, seldom offered for sale. Excellent eye-appeal, strong color, outstanding character with crude wavy glass.

Est.: \$400 - \$600 • Min. bid: \$200

**Lot 220**

"SCOTT & STEWART – UNITED STATES / SYRUP – NEW YORK", America, probably 1849 - 1854. Aquamarine with an ice-blue tone, rectangular with narrow beveled corners, applied sloping collar – blowpipe pontil scar, ht. 9 3/8", attic mint. N #557; Odell, p.354. A big, impressive, rare and desirable pontiled medicine. This example has crude wavy glass, outstanding condition, and great eye-appeal. Ex. Joe Widman, Sidney Genius collections.

Est.: \$3,000 - \$5,000 • Min. bid: \$1,500

**Lot 224**

"DR GUYSOTT'S – YELLOW DOCK / & / SARSAPARILLA – B. & P. NEW YORK", 1845 – 1855. Aquamarine, rectangular with beveled corners, applied sloping collar – blowpipe pontil scar, ht. 8 7/8, perfect! Odell, p.155. A bright, clean, sparkling, beautifully whittled example.

Est.: \$200 - \$400 • Min. bid: \$100



Lot 225

“DR CUMMINGS’ / COMPOUND EXTRACT / SARSAPARILLA AND DOCK / PORTLAND ME.”, 1845 - 1855.

Aquamarine, rectangular with beveled corners, thin flared mouth - blowpipe pontil scar, ht. 7”; (a hard-to-see, hair-line-thin, ½” spider crack on the back corner above the base, and a couple of in-making cooling lines, ¼” or less, in the base, otherwise pristine perfect). Extremely rare! Ex. Gary Enters, James Hagenbuch, Roger Sweetland, and Tom Eccles collections.

Est.: \$1,800 - \$3,200 • Min. bid: \$900



Lot 229

“MYERS’ - ROCK ROSE - NEW HAVEN”, 1850 - 1860. Aquamarine, rectangular with narrow beveled corners, applied sloping collar - heavy iron pontil scar, ht. 9 5/8”, attic mint! Odell, p.262. Scarce. A big, beautiful, sparkling, whittled example - about as nice as you could hope to find! Provenance: Ex. Sam Greer collection, #1214.

Est.: \$600 - \$900 • Min. bid: \$300



Lot 226

“DR. C. POPE’S . / SARSAPARILLA.”, 1850 - 1860. Aquamarine, rectangular with beveled corners, applied large square collar - blowpipe pontil scar, ht. 6 ½”, attic mint. Odell, p.282; DeG #168. Another great looking, very rare sarsaparilla - clean, bright and sparkling. In addition, good strong embossing, nice character. Believed to be one of only two, or possibly three examples to be offered at auction in more than 15 years. Provenance: Ex. Gary Enters, Tom Eccles collections.

Est.: \$800 - \$1,200 • Min. bid: \$400



Lot 230

“SYRUP OF / GINSENG & MALVA - WILSON FAIRBANK & Co / SOLE AGENTS - 45 HANOVER ST / BOSTON”, probably 1855 - 1858. Aquamarine, rectangular with beveled corners, applied sloping collar - heavy blowpipe pontil scar, ht. 10”; (professionally cleaned to original luster, and just a very faint interior haziness mentioned for completeness, otherwise excellent). Odell, p.374. A big, impressive, very rare pontiled medicine. Provenance: Gary Enters collection.

Est.: \$800 - \$1,200 • Min. bid: \$400



Lot 227

“No 1 / SHAKER SYRUP - CANTERBURY N.H.” (with 98% complete, original label), 1845 - 1855. Aqua, rectangular with beveled corners, applied sloping collar - blowpipe pontil scar, ht. 7 ¾”; (the bottle is perfect; the label has a little minor spotting and is faded a bit from age but still legible). Label reads in part; **“CORBETT’S / SHAKERS’ / COMPOUND CONCENTRATED / Syrup of Sarsaparilla”**. Very scarce with the original label. Gary Enters collection; Ex. Sheldon Baugh collection.

Est.: \$250 - \$450 • Min. bid: \$130



Lot 231

“DANDELION & TOMATO / PANACEA - RANSOM & STEVENS - DRUGGISTS BOSTON”, 1843 - 1850. Aquamarine, rectangular with wide beveled corners, applied sloping collar - blowpipe pontil scar, ht. 9”, near mint; (just a touch of minor light wear, otherwise virtually perfect). N#512; Odell, p.289. A rare early Boston panacea, bright, clean and beautifully whittled, a top example! Provenance: Ex. Joe Widman collection.

Est.: \$800 - \$1,200 • Min. bid: \$400



Lot 228

“Dr J. CLAWSON KELLEY’S - ANTISEPTIC DETERGENT - NEW-YORK.”, 1845 - 1855. Rich, deep aqua, rectangular, beveled corners, applied sloping collar - blowpipe pontil scar, ht. 9 1/8”, virtually perfect; (just a trace of very light wear, as well as faint interior residue). Odell, p.209. A great looking, rare pontiled medicine and one of a very few that are embossed with either, **“ANTISEPTIC”** or **“DETERGENT”**. Ex. Gary Enters collection; FOHBC 2013 Auction.

Est.: \$500 - \$800 • Min. bid: \$250



Lot 232

“R.E. WOODWARD’S - VEGETABLE TINCTURE - SOUTH READING - MASS.”, 1845 - 1855. Aquamarine, squatty rectangular body with wide beveled corners, applied sloping collar - blowpipe pontil scar, ht. 5 ¾”, virtually perfect; (a tiny, onionskin-thin, pinhead flake at edge of base, otherwise virtually pristine perfect). Odell, p.263. A scarce pontiled medicine with a pleasing, distinctive squatty form, crisp embossing, beautifully whittled, outstanding condition.

Est.: \$500 - \$800 • Min. bid: \$250



Lot 233

"MARSHALL / PHILAD – ORIGINAL – PREPARATIONS", 1840 – 1850. Aqua, rectangular, beveled corners, long neck with applied sloping collar – blowpipe pontil scar, ht. 6 ¼"; (professionally cleaned to original luster and otherwise near mint condition, and a minor area of light haziness in the neck, otherwise excellent). A very rare pontiled medicine, one of only two examples at auction in more than 20 years. A great looking bottle with the unusually long neck. Gary Enters collection.

Est.: \$300 - \$500 • Min. bid: \$150



Lot 237

"DOCT. FOWLER'S – ANTI / EPICHO-LIC – CANTON N.Y.", 1845 – 1860. Aquamarine, rectangular with beveled corners, applied sloping collar – blowpipe pontil scar, ht. 5 ¾"; (professionally cleaned to original luster with just a bit of very faint haziness remaining, primarily in the base, otherwise excellent). Odell, p.135. A very scarce pontiled medicine from the small town of Canton, northern upstate NY. It is one of only three, or possibly four, to be offered at auction in more than 15 years.

Est.: \$175 - \$350 • Min. bid: \$90



Lot 234

"DR ROSE'S – ANTIDISEPTIC / VERMIFUGE – PHILAD.A" (with partial original label), 1850 – 1860. Aquamarine, rectangular with beveled corners, applied sloping collar – blowpipe pontil scar, ht. 5 ½", attic mint. Odell, p.302. Approximately 60% original label reads in part, "DR. ROSE'S / VEGETABLE VERMIFUGE / DIRECTIONS." A bright, clean, sparkling example. Very scarce.

Est.: \$250 - \$400 • Min. bid: \$130



Lot 238

"COMPOUND / BALSAM OF / HOARHOUND – COLDS COUGHS / AND / CONSUMPTION – JOHN M. WINSLOW / ROCHESTER. N.Y", 1845 – 1860. Aquamarine, rectangular with narrow beveled corners, sheared, tooled, and inward rolled mouth – blowpipe pontil scar, ht. 5 1/8", perfect! A very rare Western New York pontiled medicine, crisp embossing, nice crude glass, outstanding condition. Provenance: Ex. Sam Greer collection.

Est.: \$1,000 - \$2,000 • Min. bid: \$500



Lot 235

"A. EATON'S / VEGATABLE – UNIVERSAL – RESTORATIVE / MEDICINE - PHILA", 1855 – 1860. Aquamarine, rectangular with beveled corners, applied sloping collar – blowpipe pontil scar, ht. 7 ½"; (professionally cleaned to original luster and otherwise near mint condition). Odell, p.119; Knapp, p.140. Very scarce-to-rare. Per Knapp, Ananias Eaton started as a shoemaker in the 1840s, and later listed as a botanic druggist. Provenance: Gary Enters collection.

Est.: \$250 - \$400 • Min. bid: \$130



Lot 239

"PECK FRISBIE & Co. – THE GREAT MAGICAL / ETHERIAL BALM. – NEW YORK.", 1845 – 1855. Aquamarine, rectangular with beveled corners, applied sloping collar – blowpipe pontil scar, ht. 5 3/8", virtually attic mint; (just the slightest trace of light wear on the reverse, and a tiny spot of interior milkiness in a back beveled corner, otherwise perfect). Extremely rare! Believed to be one of only three known. We sold the only other known undamaged example in Auction 14, May, 2015.

Est.: \$600 - \$900 • Min. bid: \$300



Lot 236

"REAKIRT'S / MEDICATED – BREAST / JULAP", 1850 – 1860. Aquamarine, rectangular with beveled corners, applied short tapered collar – blowpipe pontil scar, ht. 4 ¾"; (professionally cleaned to original luster and near mint condition with just a touch of light wear remaining, otherwise excellent). Odell, p.290; Knapp, p.385. A very rare pontiled medicine from Philadelphia, believed to be the first, or possibly one of only two, to be offered at auction in more than 20 years!

Est.: \$300 - \$500 • Min. bid: \$150



Lot 240

"B.M. KEENEY & Co – HONEY BALM – BROOKLYN, N.Y", probably 1858 – 1860. Aquamarine, rectangular with beveled corners, applied square collar – blowpipe pontil scar, ht. 5 3/8"; (professionally cleaned to original luster with a very faint haziness remaining, not distracting but mentioned for completeness, otherwise excellent). Odell, p.177; Knapp, p.258. Very scarce. Note; an early Harmer Rooke tag remains on the base. Gary Enters collection.

Est.: \$200 - \$400 • Min. bid: \$100



Lot 241

“DR IRA WARREN’S – PULMONIC, - CHERRY CORDIAL”, probably 1850 – 1855. Aquamarine, rectangular with beveled corners, applied sloping collar – blowpipe pontil scar, ht. 7 1/2”, near mint; (a little faint rainbow iridescence, barely noticeable, and some light interior residue that would likely wash out, otherwise excellent). Odell, p.364. Very rare. Per Odell, Dr. Ira Warren was from Boston, Mass. (1850 – 1852), and also produced a blood purifier and inhaling balm.

Est.: \$400 - \$600 • Min. bid: \$200



Lot 245

“MRS. E. KIDDER / DYSENTERY / CORDIAL / BOSTON”, 1845 – 1860. Aquamarine, cylindrical, applied sloping collar – blowpipe pontil scar, ht. 7 5/8”, pristine perfect! Odell, p.213. A bright, clean, very attractive example with crisp embossing, excellent character, crude pebbly glass, and virtually ‘out-of-the-mold’ pristine condition. Provenance: Gary Enters collection.

Est.: \$175 - \$350 • Min. bid: \$90



Lot 242

“DR JOHN BULL’S – COMPOUND / PECTORAL – WILD CHERRY – LOUISVILLE KY / & NEW YORK”, Midwest, possibly Kentucky or Louisville Glass Works, 1850 – 1860. Bright aquamarine, rectangular with beveled corners, applied round collar with bevel – heavy iron pontil scar, ht. 7 3/8”, virtually ‘out-of-the-mold’ pristine condition. A clean, bright, sparkling, very scarce-to-rare mold – about as nice as you could hope to find. Ex. Dr. Sam Greer, Gary Enters collections.

Est.: \$400 - \$600 • Min. bid: \$200



Lot 246

“LOUDEN & Co’S – CHEROKEE – LINIMENT – PHILAD.A”, 1845 – 1855. Aquamarine, 12-sided, sheared, tooled, thin flanged lip – blowpipe pontil scar, ht. 5 3/8”, attic mint! Odell, p.230. A scarce pontiled Indian medicine, and certainly very scarce-to-rare in this virtually ‘out-of-the-mold’ pristine condition. In addition, a bright, clean, sparkling example with crisp, very bold embossing. It would be hard to find a nicer one.

Est.: \$150 - \$250 • Min. bid: \$80



Lot 243

“DR JAMES YOUUMAN’S / AMERICAN – AGUE KILLER”, 1860 – 1865. Bright bluish aquamarine, rectangular with beveled corners, applied sloping collar – large blowpipe pontil scar, ht. 6 3/8”; (professionally cleaned with just a touch of minor wear remaining near the edge of the base). A rare pontiled medicine from Davenport, Iowa. See, *Antique Bottles of Iowa*, Burggraaf & Southard, p.217. We sold the last example at auction in May, 2017 (Auction #18).

Est.: \$250 - \$450 • Min. bid: \$130



Lot 247

“AIKINS – TONIC – SYRUP”, 1850 – 1860. Aquamarine, octagonal, sheared, tooled, and inward rolled mouth – blowpipe pontil scar, ht. 4 1/4”; (professionally cleaned with a little faint haziness remaining, and a bit of rainbow iridescence – primarily on the base). Knapp, p.11. A very scarce-to-rare pontiled medicine believed to be from Louisville, KY. Attractive with the octagonal body and very large, crude embossing. Provenance: Gary Enters collection.

Est.: \$200 - \$400 • Min. bid: \$100



Lot 244

“DR ARMSTRONG’S / PURE HERB / MEDICINE.”, 1835 – 1845. Aquamarine, cylindrical, applied sloping collar – blowpipe pontil scar, ht. 6 5/8”, attic mint! Odell, p.10; Knapp, p.20. A very rare pontiled medicine. Per Odell, probably Dr. William Armstrong, Market St., and also 88 South Fifth St, Philadelphia. Bright, clean, nicely whittled. Provenance: Gary Enters collection.

Est.: \$400 - \$600 • Min. bid: \$200



Lot 248

“HART’S – CARMINATIVE – PHILAD.A”, probably 1848 – 1858. Aquamarine, 6-sided tapered cone form, sheared, tooled, inward rolled mouth – iron pontil scar, ht. 3 5/8”, virtually attic mint; (slight trace of light interior, likely washable residue, otherwise perfect). Odell, p.164. Very scarce. A great looking pontiled medicine, unusual form, strong embossing, especially nice with the heavy iron pontil scar.

Est.: \$150 - \$250 • Min. bid: \$80



Lot 249

"BEARS / OIL" (with approximately 97% complete original label), America, 1845 – 1855. Aquamarine, rectangular with beveled corners, sheared, tooled, and inward rolled mouth – blowpipe pontil scar, ht. 2 3/4"; (the bottle is attic mint; original graphic label is also in excellent condition, slightly darkened from age). Odell, pgs. 27-28. A great example, wonderful label which reads, *"GENUINE / BEAR'S OIL / (Large Bear) / For promoting the / GROWTH & BEAUTY / of the / HAIR."*

Est.: \$400 - \$600 • Min. bid: \$200



Lot 250

"ROBINSON'S / AMERICAN / HORSE LOTION", 1850 – 1860. Aqua, rectangular, beveled corners, applied sloping collar – blowpipe pontil scar, ht. 5 7/8"; (professionally cleaned to original luster with a little faint, barely noticeable, haziness remaining, and a little very minor wear including a shallow 1/4" sliver flake on the corner of the base, otherwise excellent). Odell, p.298. A very rare veterinary medicine believed to be 1 of only 2 examples to be offered at auction in more than 20 years.

Est.: \$400 - \$600 • Min. bid: \$200



Lot 251

Lot of (2), Label-only Pontiled Medicines, 1830 – 1850. **1st Ex:** *"PATTERSON'S / Compound Extract of Bitter Apple / H. PATTERSON, Sole Proprietor / Darien, Conn"*. Aqua, oval, sheared and rolled mouth – blowpipe pontil scar, ht. 3 3/4". **2nd Ex:** *"IRELAND'S / SUPERIOR EYE WASH, / For weak or Inflamed Eyes"*. Aqua, cylindrical, tooled, thin flared mouth – blowpipe pontil scar, ht. 5"; (both are perfect; labels with minor staining and darkening). Gary Enters collection.

Est.: \$120 - \$240 • Min. bid: \$60



Lot 252

"U. S. A / HOSP. DEPT" Wide Mouth Jar, probably a Pittsburgh glasshouse, 1862 – 1865. Aquamarine, cylindrical 4-pc. mold, large applied ring collar – reddish iron pontil scar, Qt, ht. 9", attic mint! A very rare U.S.A Hosp. Jar, and exceedingly rare with the iron pontil scarred base. A pontil scar on a U.S.A Hosp. bottle is virtually a unicorn. This example was found in a small east coast antique auction with partial original powdered contents, and a faded illegible label (since removed).

Est.: \$1,000 - \$1,500 • Min. bid: \$500



Lot 253

"DR. HILL'S – PAIN KLLER, - FARMER. N.Y.", probably 1865 – 1875. Aquamarine, rectangular with beveled corners, applied sloping collar – smooth base, ht. 5 3/8", near mint; (just a slight trace of light wear, and a little faint haziness in the back panel, otherwise excellent). An extremely rare Western New York medicine, strong embossing, fantastic condition. From the same company that put out the Restorative Strengthening Bitters.

Est.: \$200 - \$400 • Min. bid: \$100



Lot 254

Lot of (2), "HYATT'S – AB / DOUBLE STRENGTH – LIFE BALSAM / N - Y" Medicine Bottles, 1870 – 1880. Rich, bright blue green coloration and medium-to-deep apple green, both rectangular with beveled corners, applied sloping double collar – smooth base, ht. 9 3/4" and 9 1/2" respectively; (blue green ex. is virtually perfect, an onionskin-thin open bubble on a panel edge; apple green ex. has a little minor wear along one of the beveled corners, and a 1/8" sliver flake on edge of collar).

Est.: \$300 - \$500 • Min. bid: \$150



Lot 255

"RHEUMATIC" / (Large Tree with Fruit) / "SYRUP / 1882 – R.S. Co / ROCHESTER. N.Y." (with original front and back labels), 1882 – 1890. Bright golden amber, square with beveled corners, applied sloping collar with bevel – smooth base, ht. 9 5/8"; (the bottle is attic mint; virtually complete original front label is darkened from age but still legible; 90% complete reverse label has directions and list of ailments it 'cures'). A very attractive pictorial medicine, scarce with original labels.

Est.: \$175 - \$275 • Min. bid: \$90



Lot 256

"TIPPECANOE" / (CANOE) / "H.H. WARNER & Co" Figural Log (with virtually complete original label and contents), probably 1906 – 1910. Golden amber, figural log, applied 'mushroom' collar – **"PAT NOV 20. 83 / ROCHESTER / N.Y."** (on smooth base), ht. 8 7/8", perfect; (label is faded a bit from age, but completely legible). Label reads in part; *"TIPPECANOE / FOR / DYSPEPSIA, / MAL=ASSIMILATION OF / FOOD / STOMACH DISORDERS"*. Very scarce with label and contents.

Est.: \$400 - \$600 • Min. bid: \$200



Lot 257

Lot of (2) Pontiled Hair Tonic Bottles, 1853 – 1865. 1st Ex: **“D. MITCHELL’S – TONIC FOR – THE HAIR – ROCHESTER N.Y.”**. Colorless with a slight straw tone through the base, ht. 6 ¼”. 2nd Ex: **“LOMBARD & CUNDALL / SPRINGFIELD / MASS – EXCELSIOR – HAIR TONIC”**. Aqua, ht. 6 5/8”. Both are rectangular, applied ring collar with bevel – blowpipe pontil scarred bases, both are near mint; (2nd Ex. has just a touch of very light interior milkiness). Ralph Finch collection.

Est.: \$250 - \$450 • Min. bid: \$130



Lot 261

“W.C. MONTGOMERY’S – HAIR / RESTORER – PHILADA”, America, 1875 – 1885. Clear, light-to-medium peach puce, rectangular with beveled corners, applied round collar with bevel – smooth base, ht. 7 ½”, perfect! DF, p.111. An extremely rare and unusual, possibly unique color for this mold. This one checks all the boxes – outstanding color, clarity and condition. Provenance: Fred Swiechowicz collection.

Est.: \$800 - \$1,200 • Min. bid: \$400



Lot 258

“MRS. S. A. ALLEN’S – WORLD’S HAIR / RESTORER – NEW YORK.”, America, 1865 – 1880. Light-to-medium pinkish amethyst below the shoulders, shading to a deeper plum amethyst near the base, rectangular with beveled corners, tooled, likely applied ring collar – smooth base, ht. 7”; (just a bit of very light exterior wear, and a couple of small spots of minor interior residue, otherwise near mint). Very pretty color, attractive pinkish tones. Fred Swiechowicz collection.

Est.: \$200 - \$400 • Min. bid: \$100



Lot 262

“W.C. MONTGOMERY’S – HAIR / RESTORER – PHILADA”, America, 1875 – 1885. Brilliant, medium-to-deep yellow with a slight olive tone, rectangular with beveled corners, applied round collar with bevel – smooth base, ht. 7 ¾”, perfect. DF, p.111. An outstanding example, gorgeous, extremely rare eye-appealing color, virtually pristine condition. We do not recall seeing another example in this color.

Est.: \$600 - \$900 • Min. bid: \$300



Lot 259

“DR TEBBETTS’ – PHYSIOLOGICAL / HAIR – REGENERATOR”, America, 1865 – 1875. Medium-to-deep pinkish strawberry puce, rectangular with beveled corners, applied double ring collar – smooth base, ht. 7 3/8”, perfect. DF, p.152. A great example, beautiful color, fantastic condition. Depending on the lighting, some subtle amethyst tones are present. Provenance: Fred Swiechowicz collection.

Est.: \$400 - \$600 • Min. bid: \$200



Lot 263

Lot of (2) Colorful Hair Bottles, America, 1890 – 1905. 1st Ex: **“LORRIMER’S / EXCELSIOR / HAIR FORCER / BALTIMORE, MD.”**. Golden amber, rectangular, tooled prescription-type collar – smooth base, ht. 6 3/8”. 2nd Ex: **“P&R / THE / KING / HAIR / RESTORER / MFG. BY / S. PARENT & CO / 621 MULBERRY ST / MILLVILLE / N.J.”**. Bright emerald, oval, tooled ring collar – smooth base, ht. 7 ½”. Both virtually perfect; (slight internal haziness in the 2nd Ex.). Ralph Finch collection.

Est.: \$100 - \$200 • Min. bid: \$50



Lot 260

“DODGE BROTHERS – MELANINE – HAIR TONIC”, America, 1865 – 1875. Medium-to-deep pinkish strawberry puce, rectangular with beveled corners, domed shoulders, applied round collar with bevel – smooth base, ht. 7 ¼”, near mint; (some light interior content residue, primarily in the shoulders and back panel, and a little in-manufacture glass extrusion at the mold seam near the base mentioned for completeness, otherwise perfect!) DF, p.48. Fred Swiechowicz collection.

Est.: \$600 - \$900 • Min. bid: \$300



Lot 264

Lot of (2), Label-Under-Glass Barber Bottles, America, 1900 – 1920. 1st Ex: **“HYKI TONIC / THE WORLD’S / GREATEST / DANDRUFF / REMEDY / (Image of Balding Man) / PREPARED BY / THE HYKI CO. / CLEVELAND, OHIO.”**, black and white with gold border. 2nd Ex: **“ACME / Hair / Vigor / PHIL. EISEMANN.”**, red, white and dark blue with gold border. Both are cylindrical with fluted necks, tooled ring collars, 8 1/8”, virtually perfect. Ralph Finch collection.

Est.: \$175 - \$350 • Min. bid: \$90



Lot 265

“KELLOGG AND Co. / FAMILY CHEMISTS / 1031 & 1033 SIXTH AVE. NEW YORK” Pharmacy Bottle, Whitall-Tatum & Co, Millville, NJ, 1895 – 1905. Rich, medium cobalt blue, rectangular with rounded corners, tooled prescription-type collar – “W T & CO. / U S A / PAT DEC 11 1894” (on smooth base), ht. 6 ¾”; (professionally cleaned to original luster, and just a trace of very faint wear, otherwise virtually perfect). A very scarce colored druggist, and the largest size known for this mold.

Est.: \$200 - \$300 • Min. bid: \$100



Lot 269

“CLARKE & CO – NEW YORK” (early period gold paint on the shoulders and body), probably a New York State glasshouse, possibly Saratoga Mountain Glassworks, Mt. Pleasant, 1846 – 1856. Light green, cylindrical, 3-pc. mold, large applied sloping collar with bevel – iron pontil scar, Qt, attic mint. T# C-7:C. A beautiful example, scarce color, heavily whittled. The period gold paint is interesting, but may also be removed, if desired. Fred Swiechowicz collection.

Est.: \$200 - \$400 • Min. bid: \$100



Lot 266

Lot of (5), Colored Western Druggist Bottles, Carr-Lowrey Glass Co., Baltimore, MD, 1890 – 1910. Set of (3), “MUEGGE / THE DRUGGIST / BAKER / ORE.”, are all shades of bright yellow green, ht. 5 1/8”, 6 3/8” and 8 1/8”. A “POWERS & ESTES” / “P / E” (within diamond) / “PORTLAND, OREGON.”, cobalt blue, ht. 7 7/8”, and: “HAMILTON DRUG CO. / THE

REXALL STORE / COLFAX, WASH.”, bright yellow green, ht. 6 1/4”. All five are virtually perfect.

Est.: \$400 - \$600 • Min. bid: \$200



Lot 270

“SARATOGA” / (STAR) / “SPRING”, probably a New York State glasshouse, 1862 – 1865. Deep yellowish olive green, cylindrical, applied sloping collar with bevel – smooth base, Qt, near mint; (just a trace of minor wear including some tiny, pinhead size or less, open bubbles). T# S-53:A. Type II. A great looking example, outstanding character, the glass is absolutely filled with tiny bubbles, and in a scarce pure green coloration. Provenance: Fred Swiechowicz collection.

Est.: \$150 - \$250 • Min. bid: \$80



Lot 267

Dr. Pierce's Anuric Tablets Bottles & Advertising Lot, 1900 – 1920.

1st Ex: Colorful red, yellow and blue framed advertisement showing a man with an aching back and a bottle of Pierce's Anuric Tablets (in wrapper); 10 ¾” high x 25” long.

2nd Ex: “Just Received / from Dr Pierce / New / Supply / Anuric / Double Strength” black & white framed advertisement, 12 ¼” high

x 18 ¼” long. Also: (3) “DR. PIERCE'S” / “ANURIC” (Inside Kidney) / “TABLETS” Bottles (one with original label).

Est.: \$250 - \$450 • Min. bid: \$130



Lot 271

“HASKINS' SPRING / H / SHUTESBURY. / MASS. – H.S. CO.”, America, 1865 – 1880. Rich, medium-to-deep emerald green, cylindrical, applied sloping collar with bevel – “3” (on smooth base), Qt; (a little typical minor wear including a few light scratches, otherwise very near mint). T# M-24:A. A very attractive, scarce mineral water, nicely whittled, pleasing ‘squatty’ form. Provenance: Fred Swiechowicz collection.

Est.: \$400 - \$600 • Min. bid: \$200



Lot 268

Early, 3-pc. mold Mineral Water or Utility, New England, 1835 – 1855. Medium-to-deep olive amber, cylindrical, 3-pc. mold, applied sloping collar with bevel – sand type pontil scar, ht. 9”, near mint; (some washable interior residue, and just a trace of very minor wear including a tiny pinhead flake on the edge of the collar, otherwise perfect). A very rare early utility or mineral water, impressive size, pleasing stubby neck and collar, overall excellent condition. Ex. Mike George collection.

Est.: \$400 - \$600 • Min. bid: \$200



Lot 272

“MISSISQUOI / A / SPRINGS – (Indian Maiden with Papoose), possibly Lyndeborough Glass Works, Lyndeborough, NH, 1867 – 1875. Very dense tobacco amber, virtually black, cylindrical, applied sloping collar with bevel – smooth base, Qt; (a few open bubbles near one of the side mold seams, the largest being approx. ¼” x 5/8”, and another tissue-paper-thin one on the reverse, otherwise very near mint). T# V-17:B. A scarce mold, exceedingly rare color. Fred Swiechowicz collection.

Est.: \$800 - \$1,200 • Min. bid: \$400



Lot 273

“WASHINGTON / SPRING / SARATOGA / N.Y.”, probably Congress & Empire Spring Glass Works, 1859 – 1873. Bluish green with a strong emerald tone, cylindrical, applied sloping collar with bevel – smooth base, Pt, perfect. T# S-64. A bubbly, heavily whittled, gorgeous example. One of the prettiest examples that you could hope for in terms of color, character, and eye-appeal! Provenance: Ex. Neil Moore collection.

Est.: \$300 - \$500 • Min. bid: \$150



Lot 274

“CONGRESS & EMPIRE SPRING, CO. / COLUMBIAN / WATER / SARATOGA, N.Y.”, Congress & Empire Glass Works, 1865 – 1885. Bright yellowish emerald, cylindrical, applied sloping collar with bevel – smooth base, Pt, virtually attic mint; (just the slightest trace of very minor wear, otherwise perfect). T# S-15:B. Noted by Don Tucker as “Rare”, this is a beautiful example, rich color, outstanding condition. Provenance: Ex. Neil Moore collection.

Est.: \$800 - \$1,200 • Min. bid: \$400



Lot 275

“CONGRESS & EMPIRE SPRING CO” / “C” (within frame) / “SARATOGA, N.Y.” – “CONGRESS / WATER”, probably Congressville Glass Works, Saratoga, NY, 1870 – 1885. Rich deep emerald, or ‘Congressville’ green, cylindrical, applied sloping collar with bevel – smooth base, Pt, attic mint. T# C-18:B, Type 2. Rare. Provenance: Ex. Neil Moore collection.

Est.: \$400 - \$600 • Min. bid: \$200



Lot 276

“DR. WIEBER’S / EUROPEAN / MINERAL WATER”, America, 1865 – 1875. Rich, deep blue green, cylindrical, applied sloping collar with bevel – smooth base, Pt; (a slight bit of minor light wear, otherwise attic mint). T# M-73:A. An extremely rare mineral water believed to be one of only three, or possibly four, extant. From a small Upstate New York collection that hasn’t seen the light of day in more than 60 years. Note the different lip application than the example pictured in the book.

Est.: \$800 - \$1,200 • Min. bid: \$400



Lot 277

“ELMER’S – MEDICATED – SODA.”, 1850 - 1860. Sapphire blue, 8-sided, applied mouth with double bevel collar – iron pontil scar, ht. 7”; (professionally cleaned to original luster and near mint condition, a little minor wear remaining, primarily on the back panel, and some in-manufacture crazing lines in the neck mentioned for completeness, but not considered damage). An extremely rare, desirable, soda having appeal to both soda and pontiled medicine collectors. Ex. James Chebalo collection.

Est.: \$5,000 - \$8,000 • Min. bid: \$2,500



Lot 278

“C. C – KNICKER – BOCKER – SODA – WATER”, 1845 – 1855. Cobalt blue, 10-sided, applied blob collar – iron pontil scar, ht. 7”; (professionally cleaned to original luster with a little scattered exterior ground wear remaining, and a partially open interior bubble in the shoulder). An extremely rare soda believed to be only the second example offered at auction in more than 10 years. A rectangular mold alteration can be seen that changed the embossing that was originally “C&M” to “C. C”.

Est.: \$400 - \$600 • Min. bid: \$200



Lot 279

“J. & A. DEARBORN – NEW YORK – MINERAL WATERS” – (STAR), 1850 – 1860. Medium-to-deep cobalt blue, 8-sided, applied blob collar – iron pontil scar, ht. 7 3/8”; (professionally cleaned with some typical scattered light ground wear remaining, but no chips, cracks, or other form of damage). Nice deep color.

Est.: \$225 - \$350 • Min. bid: \$120



Lot 280

“WM D. ENGLISH.”, 1850 - 1860. Sapphire with a teal, or peacock-blue tone, cylindrical, squat soda form, applied blob collar – heavy iron pontil scar, ht. 7 1/4”; (a partially open bubble on the interior of the neck, otherwise virtually pristine perfect). A very scarce-to-rare Pittsburgh soda, especially in this ‘attic-type’ condition. Beautiful eye-appealing color, strong embossing, outstanding condition. Note; two existing ads from this soda manufacturer are dated 1855.

Est.: \$500 - \$800 • Min. bid: \$250

**Lot 281**

“M.T. CRAWFORD / SPRINGFIELD. – UNION GLASS WORKS PHILA / SUPERIOR / MINERAL-WATER”, Union Glass Works, Philadelphia, PA, probably 1850 – 1857. Deep, vivid cobalt blue, cylindrical, ‘mug-base’ applied blob collar – iron pontil scar, ht. 7 ½”, near mint; (just a touch of minor light wear including a tiny pinhead open bubble, otherwise virtually perfect). Scarce. An ‘attic-type’ example with deep, vivid color.

Est.: \$400 - \$600 • Min. bid: \$200

**Lot 285**

“TWEDDLE’S / CELEBRATED / SODA OR MINERAL / WATERS – COURTLAND STREET / 38 / NEW YORK”, probably 1844 – 1848. Rich, deep blue green, almost a teal coloration, squat soda form, applied blob collar – iron pontil scar, ht. 7 ½”; (just the slightest trace of faint wear, otherwise sparkling, virtually pristine condition). A fantastic example, rich, strong color, strong embossing, outstanding condition, heavy iron pontil scar. Ex. Brain Wade collection.

Est.: \$400 - \$600 • Min. bid: \$200

**Lot 282**

“SUPERIOR / SODA WATER” – (Standing Eagle above American Flag & Shield), America, 1850 – 1860. Rich, deep yellowish olive, cylindrical, applied blob collar – heavy iron pontil scar, ht. 7 ¾”; (professionally cleaned to original luster with some typical scattered light exterior wear remaining, otherwise excellent). A very nice example of this beautifully embossed, very desirable pictorial soda.

Est.: \$800 - \$1,200 • Min. bid: \$400

**Lot 286**

“F. BROWN / BOSTON – FRENCH / MINERAL WATER”, probably 1846 – 1850. Medium grass green coloration, almost a yellowish emerald, cylindrical, squat soda form, applied sloping collar – iron pontil scar, ht. 6 ¾”; (a little scattered light wear including a paper-thin 1/8” flake on the edge of the collar, otherwise very near mint). An extremely rare Boston soda that appears to be an ‘attic-type’ example. Beautifully whittled, and with some nice swirls to the glass.

Est.: \$600 - \$900 • Min. bid: \$300

**Lot 283**

“Geo EAGLE” Soda Water Bottle, 1850 – 1860. Aquamarine, cylindrical, squat soda form with horizontal rings below shoulder and diagonal ribbing around body, applied sloping collar – iron pontil scar, ht. 6 ¾”, virtually perfect; (just the slightest trace of very light wear including a tiny pinhead flake on the back edge of the lip, otherwise pristine). An ‘attic-type’ example in a rare color, excellent clarity, almost no wear.

Est.: \$600 - \$900 • Min. bid: \$300

**Lot 287**

“A. NICHOLSON / PITTSBURGH – NOSLOHCIN .A / HGRUBSTTIP”, a Pittsburgh district glasshouse, 1850 - 1860. Bright aquamarine, cylindrical, ‘porter form’ with an applied inverted tapered collar – iron pontil scar, ht. 8 5/8”; (just a touch of light wear, otherwise perfect). A very rare early porter bottle, one of perhaps 4 or 5 known. It is a mold error with the embossing reversed, or backwards, on one of the mold halves. An ‘attic-type’ example, excellent character, heavy iron pontil scar.

Est.: \$600 - \$900 • Min. bid: \$300

**Lot 284**

“J. HARRIS / ALBANY” Soda Water Bottle, probably Albany Glass Works, 1847 – 1850. Medium bluish green, cylindrical, squat soda or ‘pony’ form, applied short tapered collar – heavy iron pontil scar, ht. 7 ¼”; (some light-to-moderate exterior wear, similar to fine case wear, and some faint interior milkiness, otherwise excellent). Extremely rare. We could not find an auction record of this bottle, nor is it listed in the book, *Old Albany Bottles*. An ‘attic-type’ bottle, heavily whittled.

Est.: \$400 - \$600 • Min. bid: \$200

**Lot 288**

“L. BLOCK & Co / FRL – LEAVENWORTH / CITY / K.T.”, probably Frederick R. Lorenz, Pittsburgh, PA, 1855 – 1861. Aquamarine, cylindrical, pony style squat soda, applied blob collar – iron pontil scar, ht. 7 3/8”; (professionally cleaned to original luster with some very faint interior haziness remaining; a little scattered minor ground wear, and a 3/8” open bubble near edge of base). An extremely rare and important Kansas Territory soda (#1365 in Johnnie Fletcher’s *Kansas Bottles* book).

Est.: \$800 - \$1,200 • Min. bid: \$400



Lot 289

“SPECKART & Co. / BUTTE CITY / MON.”, Illinois Glass Co, Alton, Illinois, 1875 – 1885. Aquamarine, pony-style tapered cylinder, applied blob collar “I.G. Co.” (on heel of smooth base), ht. 6 ¼”, near mint; (just a slight trace of faint wear, otherwise virtually perfect). Another very scarce-to-rare Western soda.

Est.: \$250 - \$450 • Min. bid: \$130



Lot 293

“DISTILLED / SODA WATER CO. / VALDEZ, ALASKA.”, William Franzen & Son Glass Works, Milwaukee, 1900 – 1905. Aquamarine, cylindrical with ‘mug-style’ base, “Hutchinson-style” closure – “W F & S / MIL” (on smooth base), ht. 6 ½”; (a little light exterior haziness, not terribly distracting, but mentioned for completeness, and a touch of minor wear including a 1/8” x 3/8” open bubble with some depth below the “L” in “Valdez”, otherwise excellent). A very scarce-to-rare soda.

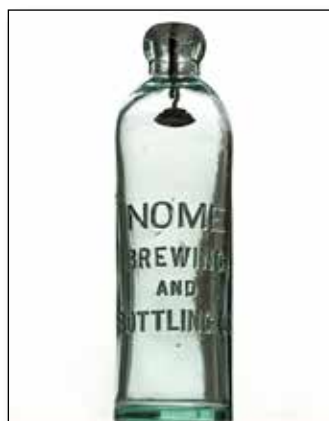
Est.: \$300 - \$500 • Min. bid: \$150



Lot 290

“PACIFIC & / PUGET SOUND SODA WORKS / SEATTLE / W.T.”, probably 1885 – 1889. Aquamarine, cylindrical with sloping shoulders, applied blob closure – “A” (within diamond), on smooth base, ht. 6 ¾”; (professionally cleaned to original luster and otherwise near mint condition, and a slight trace of typical very light wear, otherwise excellent). A nice example, strong embossing.

Est.: \$200 - \$400 • Min. bid: \$100



Lot 294

“NOME / BREWING / AND / BOTTLING CO.”, 1905 – 1910. Aquamarine, cylindrical, tooled “Hutchinson-style” closure – smooth base, ht. 7 ¾”, perfect! A very rare Alaska ‘Hutch’, especially in this outstanding, virtually pristine condition.

Est.: \$800 - \$1,200 • Min. bid: \$400



Lot 291

“T. & S. / PORT TOWNSEND / SODA WORKS / P.T., W.T.”, probably 1885 – 1889. Aquamarine, cylindrical, tooled “Hutchinson-style” closure – smooth base, ht. 6 ¼”, attic mint. A great looking, scarce, Washington Territory ‘Hutch’, excellent condition.

Est.: \$300 - \$500 • Min. bid: \$150



Lot 295

“C.O.D. BOTTLING WORKS” / “FGA” (monogram) / “JACKSON, MICH.”, 1890 – 1900. Deep, vivid cobalt blue, tooled, likely applied “Hutchinson-style” closure – smooth base, Pt; (a little light wear including a shallow 1/8” flake on the edge of the base, and a couple of minor, paper-thin, 1/8” or less, flakes near the side mold seam and base, otherwise excellent). A great example that appears to be an ‘attic-type’ bottle with some normal usage wear. A rare colored hutch, especially in this fine condition.

Est.: \$600 - \$900 • Min. bid: \$300



Lot 292

Lot of (2), Washington ‘Hutchinson-style’ Sodas, 1885 – 1900. 1st Ex: “C. VON THRON / WALLA WALLA / WASH.”. 2nd Ex: “T. J. TANNER / PORT TOWNSEND / W.T.”. Both are aquamarine, cylindrical, ‘Hutchinson-style’ closures – smooth base, ht. 6 ¾” and 6 7/8” respectively; (1st example is an attic-type bottle, virtually perfect; 2nd example has a little interior residue, likely washable, and a small scrape on the back shoulder, otherwise very near mint).

Est.: \$250 - \$450 • Min. bid: \$130



Lot 296

“DALY & DAY.” / (Motif of Neptune – God of the Sea) / “TRADE MARK / CAPE TOWN.” Stoneware Ginger Beer, South Africa, 1890 – 1910. Oatmeal glaze with black stenciling and mustard toned shoulders, cylindrical, cone shoulders, blob collar, ht. 6 ½”, perfect. The bottle was likely made in England for the South African market. An extremely rare and desirable pictorial ginger beer, especially in this fine condition. Provenance: Ex. J. L. Prehm collection.

Est.: \$100 - \$150 • Min. bid: \$50



Lot 297

Black Glass Wine Bottle, England, 1742. “Jno / Watson / 1742” (on applied seal). Clear medium olive coloration, early mallet form, sheared mouth with applied string rim – kickup base with sand type pontil scar, ht. 8 5/8”, near perfect; (some minor interior content haze, a bit of roughness and a few small chips or flakes on the edge of the rough sheared rim, possibly in-manufacture, otherwise excellent). Burton, p.681. Extremely rare! Outstanding condition, full original body luster.

Est.: \$2,500 - \$4,000 • Min. bid: \$1,300



Lot 301

Black Glass Wine Bottle, England, c. 1809. “W / MAJOR / 1809” (on applied glass seal). Very deep olive with a slight amber tone, wide-body squat cylinder, applied short tapered string rim – kickup base, sand type pontil scar, ht. 8 7/8”; (just a bit of expected light wear, and a 3/8” chip on the underside of the string rim). Burton, p.836. Very crisp seal impression, full original body luster. Another rare seal, believed to be the first, or possibly one of two, to be offered at auction in more than 20 years.

Est.: \$400 - \$800 • Min. bid: \$200



Lot 298

Black Glass Wine Bottle, England, c. 1769. “H / Norman / 1769” (on applied seal). Deep olive with an amber tone, wide-body squat cylinder, applied square string rim – kickup base with sand type pontil scar, ht. 9 1/2”, virtually perfect ‘cellar-found’ condition. Burton, p.738. A very rare early dated seal, beautiful condition, crisp, strong seal impression. This example came to market in June, 2020, and the only example recorded per the auction records in more than 30 years.

Est.: \$1,600 - \$2,800 • Min. bid: \$800



Lot 302

Black Glass Wine Bottle, believed to be an American seal, likely blown in England, c. 1822. “John / Andrew / 1822” (on applied seal). Clear, yellowish olive green, cylindrical, dip mold, applied sloping collar with bevel – sand type pontil scar, ht. 10 1/2”, attic mint; (trace of light, washable interior content residue). Rare. Burton, p.858. A beautiful example, strong, crisp seal impression, outstanding condition. Discovered at a local church benefit auction in Seabrook, New Hampshire.

Est.: \$500 - \$800 • Min. bid: \$250



Lot 299

Black Glass Wine Bottle, probably England, c. 1806. “Joseph / Templeman / 1806.” (on applied seal). Medium olive below the shoulders, shading to deep olive towards the base, high shouldered squat cylinder, applied short tapered string rim – kickup base with sand type pontil scar, ht. 9 1/2”, virtually perfect; (very slight trace of expected light wear). Extremely rare, unlisted in Burton, outstanding condition!

Est.: \$1,000 - \$2,000 • Min. bid: \$500



Lot 303

Early Applied Seal French Medicine Bottle, France, 1830 – 1850. “PHARMACIE / SIROP / PECTORAL / PARIS / LAMOUREUX” (on applied seal). Clear medium olive, squat cylinder, long neck with sheared mouth, applied flat band – kickup base, iron pontil scar, ht. 7 1/4”; (a tiny pinhead flake on the edge of the seal, and some roughness including three 1/4” areas of flaking, or chipping, around the edge of the sheared mouth, some of which may be in-manufacture, otherwise excellent). Scarce.

Est.: \$175 - \$350 • Min. bid: \$90



Lot 300

Black Glass Wine Bottle, England, c. 1809. “R.A. / COX / Kington / 1809.” (on applied seal). Deep olive with a slight amber tone, wide-body squat cylinder form, applied short tapered string rim – kickup base with sand type pontil scar, ht. 9 3/8”, near mint; (some light interior content haziness, and a minor 3/8” partially open bubble on the side, otherwise perfect ‘cellar found’ condition). Burton, p.836. Very rare. A great looking example with a large seal and crisp impression.

Est.: \$800 - \$1,200 • Min. bid: \$400



Lot 304

Early, Double-Applied Seal Wine Bottle, France, 1810 – 1830. “MARGAUX / BEL - AIR / MARQUIS / D'ALIGRE” (on applied seal), and: “DEFENDU DEN LAISSER” (on applied ribbon seal). Yellowish olive, sheared mouth with applied flat band – kickup base with likely, light sand-type pontil scar, ht. 11 3/4”; (a little roughness including a 3/16” flake on the collar, and an in-manufacture 1/4” chip from beneath the applied flat band, otherwise excellent). A rare, early, double-seal Margaux wine.

Est.: \$150 - \$250 • Min. bid: \$80



Lot 305

Lot of (2) Applied Seal Wine Bottles, France, 1810 – 1830. 1st Ex: (**Vine with Grape Clusters**) / “MARGAUX / MEDOC”, 2ND Ex: “VR” (on applied seals). Both are shades of clear yellowish olive green, cylindrical, sheared mouth with applied flat banded collars – kickup bases with blowpipe and sand type pontil scars, ht. 12 1/8” and 12 1/4” respectively; (both are virtually perfect with just a trace of light wear). See VdB, plate 149. A beautiful pair of early French wines.

Est.: \$150 - \$250 • Min. bid: \$80



Lot 309

Lot of (3) ‘Truffle’ Storage or Preserve Bottles, France, 1830 – 1850. Deep ‘old amber’, and shades of olive with an amber tone, all are freeblown, tapered cylinder form, sheared mouth with applied string rim – deep conical bases with iron pontil scars, ht. 6”, 8”, and 9 3/4”, all are near mint; (the 8” example has a shallow 1/4” flake on the edge of the sheared mouth and a trace of light wear; the 9 3/4” example has a couple of areas of faint ‘bloom’ or haziness, otherwise excellent).

Est.: \$200 - \$400 • Min. bid: \$100



Lot 306

Lot of (2), Early Stiegel-Type Enameled Spirits Flasks, Germany, 1770 – 1800. 1st Ex. depicts a woman holding a heart, floral motif on sides, inscription on reverse. 2nd Ex. depicts a man holding a chalice, floral motif on sides, inscription on reverse. Both are colorless with blue, red, yellow and white enameled, rectangular, 1/2 post, pewter collars (one with original cap) – pontil scarred bases, ht. 4 7/8” and 5 1/4”; (a little minor loss of enameling; 2nd Ex. has a couple of 1/8” flakes).

Est.: \$175 - \$275 • Min. bid: \$90



Lot 310

Lot of (3), Early Wide-Mouth Storage Jars, France, 1800 – 1830. Olive with an amber tone, light yellowish olive, and deep olive. All are dip mold or possibly freeblown, cylindrical, sheared and outward flared rims – sand type pontil scarred bases, ht. 6 1/8”, 8 1/4” and 10 7/8”; (the 6 1/8” example and 10 7/8” yellow olive example are both near mint with just a little minor usage wear; the 8 1/4” example has a bit more exterior wear, but is otherwise damage free.)

Est.: \$300 - \$500 • Min. bid: \$150



Lot 307

Early Stiegel-Type Enameled Spirits Flask, Continental, probably Switzerland, Alpine Region, 1770 – 1790. Medium teal green with colorful red, yellow, blue and white enameled decoration of a woman in long dress, leaves and flower motif on sides and inscription on reverse, rectangular, 1/2 post, sheared mouth with original pewter collar and threaded closure – glass-tipped pontil, ht. 7 1/8”; (both bottle and enameling are near perfect with just slight wear). Very scarce color!

Est.: \$400 - \$600 • Min. bid: \$200



Lot 311

Lot of (2), Flowerpot-form Storage Bottles, France, 1780 – 1810. Clear, light yellowish olive, and medium-to-deep olive with a slight amber tone near the base, both are flowerpot form, sheared mouth, applied ring collar and applied string rim – blowpipe pontil scarred bases, ht. 11 3/8” and 13 5/8” respectively, both near mint; (1st Ex. has a 1” open bubble near the base; 2nd Ex. has a 2 3/4” slender open bubble on the interior of the neck). The colors and sizes complement one another nicely.

Est.: \$200 - \$400 • Min. bid: \$100



Lot 308

Early Case Bottle (with more than 90% complete, original label), Poland, 1850 – 1865. “A (Shield) P” (on applied seal). Gorgeous, medium-to-deep teal blue coloration, rectangular case form, German 1/2 post production method, dip mold with paddle marks on sides, applied square collar – smooth base, ht. 8 3/8”, perfect. An extremely rare, beautiful, applied seal case bottle discovered in the wall of a centuries-old building that was being renovated in Krakow, Poland.

Est.: \$300 - \$500 • Min. bid: \$150



Lot 312

Rare, Long-neck Utility or Storage Bottle, Continental, probably France or Germany, 1830 – 1850. Bright medium grass green, almost an emerald coloration, square with wide beveled corners, the body is approaching octagonal form, drawn-up shoulders, long neck with an outward flared sheared mouth – blowpipe pontil scar, ht. 17 1/4”, virtually perfect; (a bit of light interior residue, partially open narrow bubble in neck). A rare form, nice color, impressive size, fantastic condition.

Est.: \$300 - \$500 • Min. bid: \$150



Lot 313

Large, Onion-Form, Globular Storage Bottle, Probably Dutch, 1740 – 1770. Medium-to-deep olive green, onion form, wide neck with sheared mouth, applied string rim – blowpipe pontil scar, ht. 11 7/8"; (a little typical exterior wear including a couple of inches at the mid-body, on one side, with some fine scratches; some moderate interior residue or haziness, some of which may wash out, otherwise excellent). An early globular onion with full original body luster.

Est.: \$300 - \$500 • Min. bid: \$150



Lot 317

Apothecary Storage Bottle, "TR : SENN : C" (gold painted label with red trim and black lettering), England, 1800 – 1820. Medium-to-deep yellowish olive, cylindrical, sheared mouth with applied ring collar – disc-type pontil scar, ht. 13 5/8"; (light interior content residue or haziness; a little minor wear including a shallow 1/4" flake on the top of the lip; and a little typical minor paint loss and discoloration to the painted label, otherwise excellent). Provenance: Ex. Mark Nightingale collection.

Est.: \$200 - \$400 • Min. bid: \$100



Lot 314

Early, Side-Flattened Onion Storage Bottle or Demijohn, Continental, Sweden or possibly Norway, 1760 – 1780. Clear medium emerald with a slight bluish tone, plump side-flattened onion form, sheared mouth with applied large string rim – blowpipe pontil scar, ht. 12 3/8"; (a little light interior content residue, and a just a trace of minor wear including a 1/8" bit of roughness on the edge of the collar, and a couple of light scratches, otherwise perfect). See VdB, plate 280. A beautiful example.

Est.: \$200 - \$400 • Min. bid: \$100



Lot 318

Apothecary Storage Bottle (with original stopper, remnants of painted label), England, 1810 – 1830. Beautiful, medium-to-deep purple amethyst, cylindrical, sheared mouth with applied ring collar – blowpipe pontil scar, ht. 13 3/4" including stopper; (both bottle and stopper are virtually perfect with just a trace of very light wear; the label is darkened from age and mostly illegible). Although the label may not be legible, the gorgeous color can still be enjoyed. A beautiful, impressive apothecary bottle.

Est.: \$175 - \$275 • Min. bid: \$90



Lot 315

Early, Freeblown Storage Bottle or Demijohn, England, 1800 – 1820. Dense 'old amber', globular form, sheared mouth with applied heavy string collar – large sand or disc-type pontil scar, ht. 12"; (some typical scattered exterior wear and light scratches, otherwise excellent). These types of early globs were often used in apothecaries, but were also utilitarian and may have held a variety of beverages. A heavy, 'earthy', handsome example with an attractive lopsided body.

Est.: \$300 - \$500 • Min. bid: \$150



Lot 319

Giant, Storage Barrel or Dispenser (with period, possibly original ground stopper), France, 1880 – 1920. Aqua and ruby-red cased glass, large figural barrel with bung hole at base, factory ground mouth with period, possibly original solid 'mushroom-type' stopper – "VERRERIES" (on smooth base), ht. 18 1/2" (including stopper), near mint; (just a bit of minor light wear and residue, otherwise perfect). VdB, plate 158. An impressive storage barrel, rare in this gorgeous cased ruby-red color.

Est.: \$600 - \$900 • Min. bid: \$300



Lot 316

Lot of (2), Early Freeblown Utility or Storage Bottles, Continental and possibly England, 1780 – 1820. Deep 'old amber' and medium olive green, both are cylindrical, freeblown or possibly dip mold, domed shoulders, applied inverted collar and tooled flared mouth – blowpipe and glass-tipped pontil scarred bases, ht. 12 5/8" and 14 1/4"; (1st Ex. has some scattered wear and minor exterior 'bloom' or dullness, interior residue; 2nd Ex. near mint with faint interior milkiness, light wear).

Est.: \$300 - \$500 • Min. bid: \$150



Lot 320

Demijohn, Continental, probably North Germany, 1830 – 1850. Yellowish olive body shading to a very deep olive through the neck, crude 2-piece mold, kidney form, sheared mouth with an applied wide banded collar – pushed-up smooth base, ht. 18 3/8"; (a little light wear including a paper-thin 3/16" body flake, and another shallow 1/8" flake on the edge of the collar; some interior content residue, likely washable, otherwise excellent). Nice crude glass, a wonderful early kidney-form demijohn.

Est.: \$200 - \$400 • Min. bid: \$100



Colorful & Rare Pontiled Medicine Bottles



Rare & Exceptional Historical & Decorative Flasks



Lot 42



Lot 30

Lot 36

Lot 14

Lot 3