

NOTE: This is a timed-closing auction. See details on first page.

American Glass Gallery™

Auction #38

Opens July 23, 2024 • Closes July 31, 2024



A Rare and Colorful Array of the Glassblower's Art! (Lot numbers on inside cover)

Conditions of Sale: Auction #38 – Timed Closing Auction - No Call Backs

1. Absentee Auction

The items in this sale will be sold via absentee auction.
Closing date: **Wednesday, July 31, 2024, 10:00 p.m., EST.**

2. Our Guarantee Regarding Descriptions

American Glass Gallery has made every attempt to describe correctly the property being sold. Descriptions are guaranteed to be accurate as regards to authenticity, age, condition, and measurements to within one-fourth inch, as represented in this catalog. Items in this catalog are not shown to scale. In describing damage, exterior wear or manufacturer's flaws that in our opinion, do not significantly detract visually or monetarily from the value of the item are not listed and will not be considered for refund. The Auctioneers reserve the right to make verbal corrections and provide additional information at any time during the sale.

3. Preview

Items may be viewed by appointment from **July 24, 2024**, through **July 30, 2024**.

4. Bidding Procedure

You may submit your bids by mail, phone, FAX, email or through our on-line auction site. If bidding by mail or FAX, please fill out the absentee form and return it to us. Your bid, either written or oral, grants American Glass Gallery the authority to protect you up to the amount of your stated bid. Your bid will not be removed once executed.

Bidding Times: You can submit your bids anytime after receiving your catalog. Bids may be made by phone, daily, until closing day, **July 31, 2024**, from 9 A.M. - 6 P.M. Eastern Time. Incoming phone bids will be accepted on the closing day (**July 31, 2024**) until 10 P.M. Eastern Time. No exceptions. You may also place your bids through our on-line auction service 24-hours a day once the site has opened for bidding, on or about **July 23, 2024**, continuing until 10:00 P.M. Eastern Time, **July 31, 2024**.

Please do not wait until the last day or two of the sale to place your bids!

Because many collectors wait until the final few days of the sale to place their bids, we anticipate the telephone and internet bidding to be very busy during that period, so please plan accordingly. In the event of a tie bid, the earliest received bid on the lot will take precedent. We would welcome your bids by phone so that we can answer any questions and assist you in your bidding.

You may also telephone us at any time during the auction, prior to the closing of the sale, to check the status of your bids, to find the current bidding level, to open a bid, or to raise a bid on an auction lot.

Bidding Increments are as follows:

Up to \$250.00..... increments of \$10.00
\$250.00 - \$500.00 increments of \$25.00
\$500.00 - \$1,000.00 increments of \$50.00
\$1,000.00 - \$2,500.00 increments of \$100.00
\$2,500.00 - \$5,000.00 increments of \$250.00
\$5,000.00 - \$10,000.00 increments of \$500.00
\$10,000 & Up..... increments of \$1,000.00

Bids submitted between the above increments, whether by mail, FAX, email or on-line via the internet, will automatically be lowered to the closest lower increment.

This is a minimum bid auction. Bids below the printed minimum will not be accepted.

An example of how our absentee bidding system works: You bid \$1000.00 on a lot which is the highest bid received to date. The second highest bid is \$800.00. The current high bid level would be yours at \$850.00, one bid increment higher than the other collector's bid. Any additional bids submitted by others below \$1000.00 will automatically be topped on your behalf by a representative of American Glass Gallery, up to your stipulated high bid amount. If no further bids on this lot are received beyond the \$800.00, then you would have won the lot at \$850.00, not the \$1000.00 that you were prepared to pay.

American Glass Gallery will at NO TIME disclose bids pledged by others; only the current "High Bid" level of a lot will be stated upon request. The highest bidder as determined by American Glass Gallery shall be the purchaser. It is the sole right of the auctioneer to settle any dispute between bidders and to regulate the bidding procedure. The auctioneer reserves the right to refuse any bid he believes not to have been made in good faith.

5. Closing the Auction

Timed Closing. No Call Backs for This Sale!

Auction closes 10 PM Eastern, Wednesday, July 31, 2024.

How it works: If any Lot receives a bid within the last 10 minutes before the 10 PM closing time, an additional 10 minutes will be added on to the bidding time for that Lot - at the time the bid is entered. For example, if a bid is entered on Lot #95 at 9:58 PM, an additional 10 minutes will be added to the closing time for that Lot, i.e. the Lot will close 10:08 PM, unless another acceptable bid is received prior to 10:08 PM. If the same Lot receives another bid 5 minutes later, i.e., 10:03 PM, the 10 minute timer will be restarted. Thus, an item will not close until it has received no bids for 10 minutes. At the end of that time, the Lot will automatically close and the highest bidder will be the winner.

No phone bids will be accepted after 10 PM, or during the timed closing portion of the sale.

IMPORTANT: When the auction is in the last 10 minutes, (after 9:50 PM EST, Wednesday, November 15), **you must refresh your screen to see any updated bids and remaining time on the Lots.** You may refresh your bid page by hitting "Enter Bids". A time left column will appear on the right. The time will go down every time you refresh unless an acceptable bid has been placed, then the timer will be reset to 10 minutes.

When a Lot closes, your bid sheet will show either (parentheses only when there is a left bid):

Example:

You WIN for \$400 (Left Bid \$500)

or:

Won by another for \$600

Note: Normal email notifications will still be sent during the Timed Closing. However, we recommend that you actively refresh your screen for the latest updates, or changes, as the email notifications may not always get through (i.e., may sometimes be intercepted by email blockers or spam filters).

If you are unable to watch, or be actively involved during the closing time, you may always submit an Absentee, or "Left Bid" which will be executed competitively up to your stipulated high bid should any bids come in during the Timed Closing Period.

Lot numbers for bottles on front cover:

Clockwise from bottom center (inkwell); Lot 95, Lot 5, Lot 81, Lot 180, Lot 137, Lot 79, Lot 211

Conditions of Sale: Auction #38 – Timed Closing Auction - No Call Backs

6. Terms

Successful Bidders, Prompt and full payment is due immediately upon receipt of our invoice. Absolutely no exceptions. Anyone failing to pay for items won will forfeit all rights to bid in any future American Glass Gallery sales. **Any late or delayed payments may result in loss of return privileges for items purchased in the sale.**

No Items Will Be Mailed Before Full Payment Is Received.

Buyer Premium: Our buyer premium is **17% if paying by cash or check, discounted from 20% if paying by Credit Card or PayPal** (PayPal payment account: jpastor@americanglassgallery.com). This buyer premium will be added to the hammer price as part of the purchase price. For example, if you purchase a lot for \$100.00, you will receive an invoice for \$117.00 if paying by cash, check or money order, plus any applicable sales tax or shipping charges.

Taxes: If you are a Michigan resident, a 6% sales tax will be added to your bill unless you have a valid resale number registered with us.

Shipping: Shipping, handling and insurance are extra. We ship insured via U.S. Mail or UPS. These charges will be added to your bill unless the lots are picked up in person. Oversize packages (boxes with dimensions over 12"), may incur additional shipping charges based on the postal zone of destination. Our charges for shipping (excluding foreign shipments and oversized lots) are \$18.00 for the first item, \$9.00 for each additional item together with extra insurance costs (we use current U.S. Postal Service insurance rates).

Please allow two to three weeks for delivery after receipt of your check.

Payment: American Glass Gallery accepts Cash, Money Orders, Personal Checks, Visa, MasterCard, American Express and PayPal. **If paying by Credit Card or PayPal, an additional 3% will be added to the invoice total.**



7. Refunds

Refunds will be given at the discretion of the Auctioneers. Items purchased must be examined and request for refund made immediately upon receipt of the item or items. Since opinions can differ, particularly in the matter of condition, the Auctioneers will be the sole judge in the consideration of refunds. Refunds requested on the grounds of authenticity must be made within 15 days of the date of the auction, and such refund requests must be accompanied by at least one supporting statement in writing from an authority recognized by the Auctioneers. It is the Auctioneers sincere intention to consider any reasonable request for a refund. **Absolutely no returns for any reason after 30 days following the closing of the sale.**

8. Bidding on any item indicates your acceptance of these terms.



American Glass Gallery™

John R. Pastor
P.O. Box 227
New Hudson, Michigan 48165
Phone: 248.486.0530
Fax: 248.486.0538
www.americanglassgallery.com
email: jpastor@americanglassgallery.com

PLEASE NOTE:

The lots offered in this printed catalog are identical to the lots offered in the on-line catalog. However, due to space constraints of the printed catalog, there may be some further information available regarding some of the lots in the on-line auction descriptions.

Please visit us at

www.americanglassgallery.com

and follow the link to the on-line auction.

The link and on-line auction will be available July 23, 2024. A post-auction price list will be available on our website, in printable form, approximately 30 days after the close of the auction.

We encourage you to contact us by phone or email with any questions, for assistance with bidding, or further details or clarification on any of the lots in this sale. Your complete satisfaction and confidence is our goal!

**THANK YOU AND GOOD LUCK
WITH YOUR BIDS!**

Reference Key

Reference initials and numbers used in the description of this catalog refer to the following publications:

AHG	<i>American Historical Glass</i> , Bessie M. Lindsey, 1967.
AM	<i>The Decanter - An Illustrated History of Glass from 1650</i> , Andy McConnell, 2004.
AP	<i>Glass in Early America</i> , Arlene Palmer, 1993.
BA1	<i>Collecting The Cures</i> , Bill Agee, 1969.
BA2	<i>Collecting All Cures</i> , Bill Agee, 1973.
BB	<i>A Bit About Balsams</i> , Betty Blasi, 1974.
BH	<i>Classification and Documentation of Sunburst and Similar Scent Bottles</i> , Bill Ham, AB&GC, 5/87.
BJ	<i>American Pot Lids</i> , Barbara and Sonny Jackson, 1987.
B/K	<i>The Glass Industry in Sandwich</i> , Raymond Barlow and Joan Kaiser, 1989.
BPK	<i>A.M. BININGER Bottles</i> , Jim Bender, 2017
C	<i>Ink Bottles and Inkwells</i> , William Covill, 1971.
DB	<i>Antique Sealed Bottles, 1640 - 1900</i> , David Burton, 2015
DeG	<i>American Sarsaparilla Bottles</i> , John DeGrafft, 1980.
DeGII	<i>Supplement to American Sarsaparilla Bottles</i> , John DeGrafft, 2004.
DF	<i>Hair Raising Stories</i> , Don Fadely, 1992.
DM	<i>Wistarburgh, Window Tiles, Bottles and More</i> , Dale L. Murscell, 2007.
D/P	<i>Collector's Guide to Candy Containers</i> , Douglas M. Dezso, J. Leon and Rose Poirier, 1998.
F	<i>Inks, 150 Years of Bottles and Companies</i> , Ed and Lucy Faulkner.
FA	<i>John Frederick Amelung, Early American Glassmaker</i> , Lanmon, Palmer, Hume, Brill, Hanson, 1990.
FB	<i>A.S.C.R. The wine bottles of All Souls College</i> , Oxford, 1750 – 1850, Fay Banks.
G	(Flasks) <i>American Bottles & Flasks and Their Ancestry</i> , McKearin & Wilson, 1978.
G	(Blown Three Mold) <i>American Glass</i> (Chapter VI), George S. and Helen McKearin, 1941.
GB	<i>Ink, Glue, Polish & Blacking Bottles, 1750 – 1950, A Collector's Dictionary</i> , Guy Burch, 2023
GBH	<i>English Glass For The Collector, 1660-1860</i> , G. Bernard Hughes, 1958.
H	<i>American Bottles in the Charles B. Gardner Collection</i> , Norman C. Heckler, 1975.
JB	<i>Patent and Proprietary Medicine Bottles</i> , Joseph K. Baldwin, 1973
JEB	<i>Glasshouse Whimsies</i> , Joyce E. Blake, 1984.
JH	<i>Glasshouses & Glass Manufacturers of the Pittsburgh Region, 1795 – 1910</i> , Jay W. Hawkins, 2009.
JM	<i>Tea Kettle Ink Price and Reference Guide</i> , Joe L. Mathews Jr., 2016
JS	<i>In glas verpakt – European Bottles, Their history and production</i> , Johan Soetens, 2001.
K	<i>Poison Bottle Workbook</i> , Rudy Kuhn, 1988.
KW	<i>New England Glass & Glassmaking</i> , Kenneth M. Wilson, 1972.
LI	<i>Pittsburgh Glass, 1797 – 1891</i> , Lowell Innes, 1976.
Mc	<i>Two Hundred Years of American Blown Glass</i> , Helen and George McKearin, 1950.
McK	<i>American Glass</i> , George S. and Helen McKearin, 1941.
MW	<i>American Bottles & Flasks and Their Ancestry</i> , McKearin & Wilson, 1978.
N	<i>Great American Pontiled Medicines</i> , Frederick Nielson, 1978.
NCH	<i>The Blaske Collection of American Flasks</i> , Norman C. Heckler, 1983.
NCH II	<i>The Blaske Collection: Part II</i> , Norman C. Heckler, 1983.
Odell I	<i>Indian Bottles and Brands</i> , John Odell, 1977
Odell II	<i>Pontiled Medicine Encyclopdia</i> , John Odell, 2007
O&S	<i>Warner's Reference Guide</i> , Ed Ojea and Jack Stecher, 1998.
P	<i>The Glass Gaffers of New Jersey</i> , Adeline Pepper, 1971.
RB	<i>Red Book No. 13; The Collector's Guide to Old Fruit Jars</i> , David C. Eifler.
RD	<i>Understanding Antique Wine Bottles</i> , Roger Dumbrell, 1983.
RH	<i>Collecting Barber Bottles</i> , Richard Holiner, 1986.
R/H	<i>Bitters Bottles</i> , Carlyn Ring and W. C. Ham, 1998.
RWL	<i>Antique Fakes & Reproductions</i> , Ruth Webb Lee, 1950
T	<i>Collectors Guide to Saratoga Type Mineral Water Bottles</i> , Donald Tucker, 2005.
V	<i>Nailsea Glass</i> , Keith Vincent, 1975
VdB	<i>Antique Glass Bottles; Their History and Evolution</i> , Willy Van den Bossche, 2001.
Z	<i>Ketchup, Pickles, Sauces</i> , Betty Zumwalt, 1980.
ZW	<i>Color Hutchinsons</i> , Zang Wood, 1999.

- The dash is generally used to indicate that the descriptions are on opposite sides of the bottle or flask.

/ The slash is used to indicate that the descriptions are on different lines or surfaces of the bottle.

Lot 13: Very Scarce
Columbian Exposition
Historical Flask

Detail of a period illustration of The Grand Arch of the Peristyle, 1893 World's Fair (Columbian Exposition), Chicago.





Detail of embossing.

Lot 158:
Extremely Rare,
Callahan's Old
Cabin Whiskey

Rare & Colorful Medicine & Cure Bottles



Lot 246



Lot 247



Lot 250



Lot 1

“GENERAL WASHINGTON” / BUST OF WASHINGTON – EAGLE Historical Flask, a Pittsburgh district glasshouse, 1825 – 1835. Deep aquamarine, sheared mouth – blowpipe pontil scar, Pt; (a bit of high point wear as is typical on these flasks, and a couple of small patches of faint interior haziness in the sides, mentioned for completeness, but barely noticeable, otherwise excellent). GI-1. A scarce flask that does not come around often, strong color, overall excellent condition.

Est.: \$600 - \$900 • Min. bid: \$300



Lot 2

“FELLS” / BUST OF WASHINGTON / “POINT” – MONUMENT / “BALTo” Historical Flask, Baltimore Glass Works, Baltimore, MD, 1825 - 1835. Light pinkish amethyst, sheared mouth – blowpipe pontil scar, Qt; (some scattered high point wear and a few light scratches, as is often the case with this mold, otherwise excellent). GI-21. A comparatively scarce flask in a very scarce, pretty color. A lot of pink in this one!

Est.: \$1,500 - \$2,500 • Min. bid: \$800



Lot 3

“WASHINGTON” / BUST OF WASHINGTON – “BRIDGETON” (STAR) “NEW JERSEY” / BUST OF TAYLOR Historical Flask, Bridgeton Glass Works, 1845 - 1855. Clear, pale bluish green, sheared mouth – blowpipe pontil scar, Pt, attic mint. GI-24. Although the color is subtle, it's a very attractive flask and definitely not aqua. A great example, virtually no wear, strong mold impression, sparkling mint.

Est.: \$300 - \$500 • Min. bid: \$150



Lot 4

“WASHINGTON” / BUST OF WASHINGTON – “JACKSON” / BUST OF JACKSON Historical Flask, Keene Marlboro Street Glassworks, Keene, NH, 1825 - 1842. Yellowish olive amber, sheared mouth – blowpipe pontil scar, Pt, virtually attic mint; (just a slight trace of very light wear, otherwise perfect). GI-31. A pretty example, nice ‘see-through’ color, excellent character, fantastic condition.

Est.: \$300 - \$500 • Min. bid: \$150



Lot 5

“THE FATHER OF HIS COUNTRY” / BUST OF WASHINGTON – “GEN. TAYLOR NEVER SURRENDERS” / BUST OF TAYLOR / “DYOTTVILLE GLASS WORKS PHILAD.A” Historical Flask, 1848 – 1855. Gorgeous, rich, medium-to-deep yellow with strong olive tones, almost an olive yellow, applied rounded collar with bevel – smooth base, Qt, perfect! GI-37. An exceedingly rare, spectacular color for this mold.

Est.: \$4,000 – \$6,000 • Min. bid: \$2,000



Lot 6

“THE FATHER OF HIS COUNTRY” / BUST OF WASHINGTON – “GEN. TAYLOR NEVER SURRENDERS” / BUST OF TAYLOR / “DYOTTVILLE GLASS WORKS PHILAD.A” Historical Flask, 1848 – 1855. Beautiful, pinkish strawberry coloration, sheared mouth – blowpipe pontil scar, Qt, near mint; (some high point wear on Washington's cheek, and just a touch on the reverse, as is typical for this mold). GI-37. Another great example, outstanding color, very strong mold impression.

Est.: \$4,000 - \$6,000 • Min. bid: \$2,000



Lot 7

WASHINGTON – TAYLOR Portrait Flask, Dyottville Glass Works, Philadelphia, PA, 1848 – 1855. Strong, medium emerald coloration, applied sloping collar – blowpipe pontil scar, Qt, near mint; (some high point wear, relatively minor, again as is typical on this mold, otherwise virtually perfect). GI-51. Outstanding character having a crude pebbly texture, bubbles, and in a very pretty color with a nice even ‘see-through’ tone from the neck to the base. Provenance: Fred Swiechowicz collection.

Est.: \$800 - \$1,200 • Min. bid: \$400



Lot 8

“BENJAMIN FRANKLIN” / BUST OF FRANKLIN – “T.W. DYOTT, M.D.” / BUST OF DYOTT – “ERIPUIT COELO FULMEN SCEPTRUMQUE TYRANNIS – KENSINGTON GLASS WORKS, PHILADELPHIA” Historical Flask, 1825 - 1835. Colorless with an amethystine tint, sheared mouth – pontil scar, Qt; (just the slightest trace of faint wear, and a 3/8” iridescent bruise on the medial rib at the shoulder, otherwise mint). GI-96. Attractive amethystine tone, very strong, bold impression!

Est.: \$400 - \$600 • Min. bid: \$200



Lot 9

“JENY LIND” / BUST OF JENY LIND – GLASS FACTORY Historical Calabash, Ravenna Glass Works, Ravenna, OH, 1857 – 1862. Beautiful clear medium sapphire blue, applied blob collar – large red iron pontil scar, Qt, attic mint! GI-104. A pretty example, very scarce and attractive color, almost no wear, fantastic condition. We sold another example in our last sale (March, 2024). This is in a somewhat lighter tone, but very pretty.

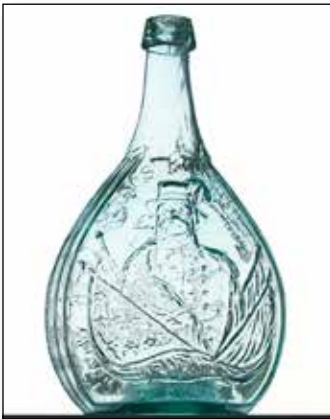
Est.: \$1,800 - \$3,600 • Min. bid: \$1,000



Lot 13

“COLUMBIAN EXPOSITION” / BUST OF COLUMBUS / “1893 / A.E.M. BROS & CO. – PENNSYLVANIA / PURE RYE / BAKER / WHISKEY” Historical Flask, America, 1893 – 1894. Bright honey amber shading to almost yellow along the sides, pumpkinseed form, tooled ring collar with bevel – smooth base, Pt, perfect! GI-128. A very scarce, historical flask, beautiful color, exceptionally strong embossing, outstanding condition.

Est.: \$800 - \$1,600 • Min. bid: \$400



Lot 10

“LOUIS KOSSUTH” / BUST OF KOSSUTH – STEAM FRIGATE / “U.S. STEAM FRIGATE / MISSISSIPPI / S. HUFFSEY” Historical Calabash, probably Millford Glass Works, Millford, NJ, 1852 – 1860. Aquamarine, applied sloping collar – **“PH. DOFLEIN / MOULD MAKER / NTH 5! St 84”** (on base), blowpipe pontil scar, Qt, near mint; (just the slightest trace of faint wear including a 1/16” flake on the edge of the lip, otherwise perfect). GI-112. Bruce Purdy collection.

Est.: \$200 - \$400 • Min. bid: \$100



Lot 14

EAGLE / “ZANES / VILLE” – CORNUCOPIA Historical Flask, probably J. Shepard & Co, Zanesville Glass Works, OH, 1822 – 1835. Bright yellowish amber, almost a butterscotch coloration, sheared mouth – blowpipe pontil scar, ½ Pt; (just a trace of minor high point wear, and a paper-thin 3/16” open bubble near the base, otherwise excellent). Note; the “Zanes / Ville” embossing is not legible, as is often the case with this mold). GI-18. Rare. See Zanesville Glass, J. William Barrett, II, p.62.

Est.: \$1,000 - \$2,000 • Min. bid: \$500



Lot 11

BUST OF WEBSTER – BUST OF CLAY Historical Flask, probably Granite Glass Works, Stoddard, NH, 1852 – 1860. Bright, light, yellowish olive amber, sheared mouth – blowpipe pontil scar, ½ Pt, virtually perfect; (only the slightest trace of very light wear, otherwise sparkling attic mint). GI-114. A very pretty, light example. Outstanding character, fantastic condition. Provenance: Fred Swiechowicz collection.

Est.: \$250 - \$450 • Min. bid: \$130



Lot 15

Lot of (2) Louisville Glass Works Flasks, 1855 – 1865. 1st Ex: EAGLE / “LOUISVILLE KY / GLASS WORKS” – (Reverse plain) Historical Flask. Aqua, applied collar with flat band – smooth base, Pt. 2nd Ex: EAGLE – EAGLE Historical Flask, aqua, applied double ring collar – blowpipe pontil scar, Qt; (the Pt. is virtually attic mint; Qt. near mint with just a trace of light wear; a 3/8” open bubble, and some in-making crazing lines in the neck). GI-31 & GI-36. Bruce Purdy collection.

Est.: \$175 - \$350 • Min. bid: \$90



Lot 12

BUST OF COLUMBIA – EAGLE / “B&W” Historical Flask, probably Kensington Glass Works, Philadelphia, 1825 – 1835. Aquamarine, sheared mouth – blowpipe pontil scar, Pt, attic mint! GI-121. A bright, clean, sparkling example with a crisp, strong mold impression, virtually pristine perfect. A great example of this comparatively scarce flask. The early bust of Columbia is reminiscent of the figure portrayed on many early coins.

Est.: \$300 - \$500 • Min. bid: \$150



Lot 16

“LIBERTY” / EAGLE – “WILLINGTON / GLASS, Co / WEST, WILLINGTON / CONN” Historical Flask, Willington Glass Works, 1860 – 1872. Bright, medium-to-deep olive, applied sloping collar – smooth base, Pt; (a little scattered exterior high point wear, and a 1/8” open bubble to the right of the eagle’s head, otherwise excellent). GI-62. Provenance: Bruce Purdy collection.

Est.: \$250 - \$400 Min. bid: \$130



Lot 17

"LIBERTY" / EAGLE – "WILLINGTON / GLASS / Co / WEST WILLINGTON / CONN" Historical Flask, 1860 – 1872. Medium yellowish olive amber, applied ring collar with bevel – smooth base, ½ Pt, near mint; (just a slight trace of minor light wear, otherwise perfect). GII-63. Pleasing color and excellent character with plenty of tiny bubbles throughout. Provenance: Bruce Purdy collection.

Est.: \$175 - \$350 • Min. bid: \$90



Lot 21

EAGLE – EAGLE Historical Flask, a Pittsburgh district glasshouse, 1855 – 1865. Light apple green, sheared mouth – blowpipe pontil scar, Qt, near mint; (just a touch of light wear, and some in-manufacture impurities and glass slag along the top of the lip, otherwise perfect). Unlisted, similar to GII-91 (different rib count in wings as well as very different bars in shield). A very scarce-to-rare mold, as well as having the pontil scarred base. Bruce Purdy collection.

Est.: \$200 - \$400 • Min. bid: \$100



Lot 18

"LIBERTY" / EAGLE – "WILLINGTON / GLASS Co / WEST WILLINGTON / CONN" Historical Flask, 1860 – 1872. Yellowish 'old amber' with a slight orange tone in the neck and towards the base, crudely applied ring collar with bevel – smooth base, Pt, near perfect; (just the slightest trace of faint wear including a tiny pinhead bit of roughness on the inside edge of the lip). GII-64. A very scarce-to-rare color for this mold, fantastic character and condition. Bruce Purdy collection.

Est.: \$400 - \$600 • Min. bid: \$200



Lot 22

Lot of (2) EAGLE – EAGLE Historical Flasks, both likely blown at a Pittsburgh glasshouse, 1855 – 1865. 1st Ex: Aquamarine, applied mouth with ring – iron pontil scar, Pt, near mint; (trace of light wear including a shallow 1/8" flake on lip). Unlisted, similar to GII-93. 2nd Ex: Deep aquamarine, applied round collar – iron pontil scar, Pt; (some high point wear; a little patchy light haziness on one of the shoulders, and a pinhead flake on the lip). GII-89. Bruce Purdy collection.

Est.: \$150 - \$250 • Min. bid: \$80



Lot 19

"LIBERTY" / EAGLE – "WESTFORD / GLASS / Co / WESTFORD / CONN" Historical Flask, 1857 – 1873. Rich, medium-to-deep amber, crudely applied ring collar with bevel – smooth base, ½ Pt, attic mint. GII-65. A great example, almost no wear, nice crude glass, strong mold impression. Provenance: Bruce Purdy collection.

Est.: \$175 - \$350 • Min. bid: \$90



Lot 23

Lot of (2), EAGLE / "GEO. A. / BERRY & CO." – EAGLE Historical Flasks, George A. Berry & Co. Glass Manufacturers, Pittsburgh, 1859 – 1863. Both are aquamarine, applied collar with flat band – smooth base, Pt. & Qt, both are attic mint! GII-98 and GII-98a. A great pair of comparatively scarce molds that are not easy to find. And both are bright, clean, sparkling examples!

Est.: \$175 - \$350 • Min. bid: \$90



Lot 20

Lot of (2), EAGLE – EAGLE Historical Flasks, probably Granite Glass Company, Mill Village, 1846 – 1862. 1st example: **EAGLE / "X" – EAGLE**; 2nd example: **EAGLE – EAGLE**. Yellowish amber and medium olive amber, both with sheared mouth – blowpipe pontil scarred base, ½ Pt; (a little high point wear on the 1st example, otherwise both are virtually attic mint). GII-87 and GII-86 respectively. Provenance: Bruce Purdy collection.

Est.: \$200 - \$400 • Min. bid: \$100



Lot 24

EAGLE / "PITTSBURGH / PA" – EAGLE Historical Flask, a Pittsburgh district glasshouse, 1860 – 1875. Beautiful clear citron coloration, applied ring collar – smooth base, ½ Pt, virtually pristine perfect! GII-109. A little sweetheart of a flask in a delicate, but very pretty color, excellent clarity. Note; this mold is very rare in color, especially in this virtually 'out-of-the-mold' attic-type condition.

Est.: \$400 - \$600 • Min. bid: \$200



Lot 25

EAGLE – EAGLE Historical Flask, a Midwest glasshouse, 1860 – 1875. Aquamarine, applied collar with flat band – smooth base, ½ Pt, perfect! An unlisted rare mold similar to GIL-128. A great looking little ½ pint flask. The ‘folksy’ looking eagle and nicely detailed shield are reminiscent of other molds that have been attributed to Zanesville. Regardless, undoubtedly a very scarce-to-rare little flask. Provenance: Bruce Purdy collection.

Est.: \$100 - \$200 • Min. bid: \$50



Lot 29

MASONIC ARCH – “ZANESVILLE” / EAGLE / “OHIO / J. SHEPARD & CO” Historical Flask, Zanesville Glass Works, Zanesville, OH, 1822 – 1832. Bright yellow below the shoulders shading to a warmer honey coloration in the neck and towards the base, sheared mouth – blowpipe pontil scar, Pt, very near mint; (just the slightest trace of faint wear including a tiny pinhead flake along the top of the lip, and the embossing is a bit weak in the shoulder, as is often the case with this mold). GIV-32.

Est.: \$1,500 - \$2,500 • Min. bid: \$800



Lot 26

EAGLE / MONUMENT / “CONTINENTAL” – INDIAN SHOOTING BIRD / “CUNINGHAMS & Co / PITTSBURGH PA” Historical Flask, Cuninghams & Co., Pittsburgh, 1865 – 1875. Aquamarine, applied collar with band – smooth base, Qt, near perfect; (just the slightest trace of very faint wear, otherwise mint). GIL-142. A scarce and desirable mold, good strength of impression which is often quite weak, fantastic condition.

Est.: \$120 - \$240 • Min. bid: \$60



Lot 30

“SUCCESS TO THE RAILROAD” / HORSE PULLING CART – (Reverse same) Historical Flask, Keene Marlboro Street Glassworks, Keene, NH, 1830 – 1842. Medium-to-deep olive with a slight amber tone, sheared mouth – blowpipe pontil scar, Pt; (a little typical high point wear, primarily on the reverse, and a tiny flake at the corner of the base, otherwise very near mint). GV-3. A very nice example of this classic early railroad flask with an above average impression.

Est.: \$300 - \$500 • Min. bid: \$150



Lot 27

EAGLE / MONUMENT / “CONTINENTAL” – INDIAN SHOOTING BIRD / “CUNINGHAMS & Co / PITTSBURGH PA” Historical Flask, Cuninghams & Co., Pittsburgh, 1865 – 1875. Beautiful olive yellow coloration, applied collar with band – smooth base, Qt; (some faint interior residue or haziness, some of which would likely wash out, not terribly distracting, but mentioned for completeness, otherwise virtually attic mint). GIL-142. A beautiful and rare color for this mold.

Est.: \$800 - \$1,200 • Min. bid: \$400



Lot 31

“SUCCESS TO THE RAILROAD” / HORSE PULLING CART – EAGLE AND STARS Historical Flask, Coventry Glass Works, Coventry, CT, 1830 – 1848. Medium-to-deep olive with an amber tone, sheared mouth – heavy blowpipe pontil scar, Pt, near mint; (just a bit of typical minor high point wear, otherwise perfect). GV-8. Another very nice example, overall excellent condition and a lot of ‘flask for the money’ with the impressive high-relief eagle on the reverse.

Est.: \$300 - \$500 • Min. bid: \$150



Lot 28

MASONIC – MASONIC Historical Flask, probably a New England glasshouse, 1820 – 1835. Light blue green coloration, sheared and inward rolled mouth – sand type pontil scar, ½ Pt; (a tiny pinhead flake on one of the columns; some light-to-moderate high point wear, and a slightly weak impression, but no other form of damage and otherwise excellent). GIV-28. An attractive early Masonic, scarce mold.

Est.: \$400 - \$600 • Min. bid: \$200



Lot 32

SUNBURST FLASK, Keene Marlboro Street Glassworks, Keene, NH, 1815 – 1830. Medium clear green, sheared mouth – glass tipped pontil scar, Pt, perfect! GVIII-2. A great example, good depth of color, bright, clean, and with virtually no wear. These heavy ‘two-pounders’, are prone to having wear. A comparatively scarce flask, especially in this fine condition. Provenance: Ex. Tom McCandless collection.

Est.: \$800 - \$1,200 • Min. bid: \$400



Lot 33

SUNBURST FLASK, Coventry Glass Works, Coventry, CT, 1815 - 1830. Light olive amber below the shoulders, shading to a medium-to-deep olive amber through the neck and towards the base, sheared mouth – blowpipe pontil scar, ½ Pt; (a little typical, relatively minor high point wear, otherwise attic mint). GVIII-18. A nice example, excellent character with crude seedy glass.

Est.: \$700 - \$900 • Min. bid: \$350



Lot 37

SCROLL FLASK, Midwest, 1845 – 1860. Medium amber, sheared mouth with a crudely applied ring type collar – heavy red iron pontil scar, Pt; (some typical scattered light exterior wear, and a little patchy minor interior haziness mentioned for completeness, but not terribly noticeable or distracting, otherwise excellent). GIX-10. A classic Midwest Scroll that displays quite nicely, attractive with an applied collar mouth. Provenance: Bruce Purdy collection.

Est.: \$400 - \$600 • Min. bid: \$200



Lot 34

SUNBURST FLASK, probably a New England glasshouse, 1820 – 1830. Medium blue green coloration, sheared and tooled lip – blowpipe pontil scar, ¾ Pt; (a touch of minor light high point wear, otherwise excellent). GVIII-29. A classic early Sunburst, distinctive with it's vertical ribbing, and an attractive and colorful flask for the money.

Est.: \$250 - \$400 • Min. bid: \$130



Lot 38

SCROLL FLASK, Midwest, 1845 – 1860. Rich medium citron with a slight lime tone, rough sheared mouth – blowpipe pontil scar, Pt; (a shallow 1/8" chip on the top of the lip, and a few little pinhead flakes along the outer edge of the lip, otherwise excellent). GIX-14. As noted by McKearin, a comparatively scarce mold, and in a very scarce color. Provenance: Bruce Purdy collection.

Est.: \$400 - \$600 • Min. bid: \$200



Lot 35

Lot of (2) SCROLL FLASKS, Midwest, 1845 – 1860. 1st Ex: Aquamarine, applied ring collar – heavy iron pontil scar, Qt. 2nd Ex: Deep bluish aquamarine, applied collar with flat band – heavy iron pontil scar, Qt; both near mint; (1st example has just a slight trace of light wear and a couple of 1/8" shallow open bubbles; 2nd example has a little pinhead flake on the edge of the lip, and a ½" partially open bubble on the medial rib). GIX-1 and GIX-3. Bruce Purdy collection.

Est.: \$150 - \$250 • Min. bid: \$80



Lot 39

SCROLL FLASK, Midwest, 1845 – 1860. Bright, medium yellowish apple green, almost a citron coloration, sheared mouth – blowpipe pontil scar, Pt, perfect! GIX-18. McKearin noted this mold as 'Scarce'. We believe that it is actually rare, and this example is in a rare color for this mold. Only two, or possibly three, have been offered at auction in the past 20 years. No stars in the upper space and a large bead on the neck. We sold this same example in Auction 21 (Oct. 2018). Ex. John Apple collection.

Est.: \$600 - \$900 • Min. bid: \$300



Lot 36

SCROLL FLASK, Midwest, 1845 – 1860. Brilliant medium yellow, almost a lemon-yellow coloration, sheared mouth iron pontil scar, Pt, attic mint! GIX-10. A gorgeous example, outstanding color and eye-appeal. Yellow is one of the most difficult and rare colors to find in a historical flask. This one sings. A special example that will stand out on any shelf. Provenance: Ex. Jay and Maxine Jacobs collection.

Est.: \$3,000 - \$5,000 • Min. bid: \$1,500



Lot 40

Lot of (3) SCROLL FLASKS, all probably blown at a Pittsburgh glasshouse, 1845 – 1860. 1st Ex: Light apple green, sheared mouth – iron pontil scar, ½ Pt, near perfect; (slight roughness on lip). GIX-37. 2nd Ex: Aquamarine, sheared mouth – blowpipe pontil scar, ½ Pt; (tiny flake on lip, otherwise attic mint). GIX-36. 3rd Ex: Deep, bright bluish

aquamarine, applied collar with band – iron pontil scar, ½ Pt, near perfect; (faint trace of wear). GIX-31. Bruce Purdy collection.

Est.: \$200 - \$400 • Min. bid: \$100



Lot 41

“GENL TAYLOR NEVER SURRENDERS” / CANNON – “A / LITTLE / MORE / GRAPE / CAPT BRAGG” / VINES AND GRAPES Historical Flask, Baltimore Glass Works, 1848 - 1855. Gorgeous, rich, yellowish olive amber, rough sheared mouth – blowpipe pontil scar, Pt; (a 2 3/4” crack down one of the sides, across the mold seam, and 1/4” chip and in-manufacture roughness on the edge of the lip). GX-5. An incredible example in both color and mold impression.

Est.: \$600 - \$900 • Min. bid: \$300



Lot 45

“FOR PIKE’S PEAK” / PROSPECTOR – HUNTER Historical Flask, Ravenna Glass Works, 1859 – 1864. Beautiful, light-to-medium yellowish apple green, almost a citron coloration, applied collar with flat band – smooth base, Qt; (lightly cleaned to original luster and near mint condition, and a couple of in-manufacture, superficial, surface annealing lines having virtually no depth at edge of base, otherwise attic mint). GXI-48. A scarce mold in a very pretty, extremely rare, unlisted color.

Est.: \$4,000 - \$6,000 • Min. bid: \$2,000



Lot 42

Lot of (2) PIKE’S PEAK – EAGLE Historical Flasks, a Pittsburgh district glasshouse, 1859 – 1864. 1st Ex: **“FOR PIKE’S PEAK” / PROSPECTOR – EAGLE**, aquamarine, applied mouth with ring – smooth base, Pt. 2nd Ex: **“FOR PIKE’S PEAK” / PROSPECTOR / “OLD RYE” – EAGLE / “PITTSBURGH PA”**, rich aquamarine, applied mouth with flat band – smooth base, Pt, both near mint; (slight traces of very light wear). GXI-9 and GXI-22. Bruce Purdy collection.

Est.: \$200 - \$400 • Min. bid: \$100



Lot 46

Unlisted, “UNION” / CLASPED HANDS – EAGLE Historical Flask, probably a Pittsburgh district glasshouse, 1860 - 1870. Bright golden amber with some rich orange tones, shading to a yellowish honey coloration along one of the sides, applied ring collar – smooth base, Pt, attic mint. An unlisted mold, similar to GXII-28, but with marked differences including 22 leaves on each of the laurel branches. Beautiful color, excellent character and condition. Bruce Purdy collection.

Est.: \$400 - \$600 • Min. bid: \$200



Lot 43

Lot of (2), “FOR PIKE’S PEAK” / PROSPECTOR – EAGLE / “CEREDO” Historical Flasks, Ceredo Glass Works, Ceredo, West Virginia, 1861 - 1865. Aquamarine and medium apple green, both with applied mouth and flat band – smooth base, Qt; (the aqua example is near mint with a little high point wear; apple green example has a 1/8” flake on the lip; a little light wear on the reverse, and a 1 3/4” by 1/2” open bubble on the interior of the reverse). Both GXI-34. Bruce Purdy collection.

Est.: \$500 - \$800 • Min. bid: \$250



Lot 47

CLASPED HANDS / “UNION” – EAGLE Historical Calabash, probably A.R. Samuels, Philadelphia, PA, 1860 - 1865. Rich, medium-to-deep amber with a slight orangey-red tone through the upper shoulders and neck, applied round double collar – red iron pontil scar, Qt, near mint; (just a trace of minor light wear including a shallow 1/8” flake on the edge of one of the fluted sides, otherwise perfect). GXII-43. A very nice example, excellent condition, a lot of bottle for the money.

Est.: \$275 - \$450 • Min. bid: \$130



Lot 44

Lot of (2) PIKE’S PEAK Historical Flasks, 1859 – 1864. 1st Ex: **“FOR PIKE’S PEAK” / PROSPECTOR – HUNTER**, Ravenna Glass Works, Ravenna, OH. 2nd Ex: **PROSPECTOR – EAGLE**, a Pittsburgh district glasshouse. Both are aquamarine, applied collar with flat band – smooth base, Pt. & Qt; (the Qt. is virtually perfect; the pint has just a touch of minor light wear). GXI-40 and GXI-50. The quart is comparatively scarce and beautifully whittled. Bruce Purdy collection.

Est.: \$250 - \$400 • Min. bid: \$130



Lot 48

ARMY OFFICER – DAISY Pictorial Calabash, America, 1855 - 1865. Bright bluish aquamarine, almost a light blue-green coloration, applied sloping collar – iron pontil scar, Qt, virtually mint; (just a couple of very minor paper-thin open surface bubbles, otherwise perfect). GXIII-15. A comparatively scarce Calabash, and very eye-appealing with the full-length standing soldier on the obverse and large embossed flower on the reverse.

Est.: \$150 - \$250 • Min. bid: \$80



Lot 49

Lot of (2), Pictorial Calabash Flasks, 1850 – 1860. 1st Ex: **HUNTER – FISHERMAN**, possibly Whitney Glass Works, NJ. Aquamarine, applied double ring collar – sand type pontil scar, Qt. 2nd Ex: **SHEAF OF GRAIN – 8 POINTED STAR**, probably Sheets & Duffy Glass Manufacturers, Philadelphia. Light ice blue coloration, applied

sloping collar – blowpipe pontil scar, Qt; both virtually perfect; (some slight milkiness in neck of 1st example). GXIII-6 and GXIII-43. Bruce Purdy collection.

Est.: \$175 - \$350 • Min. bid: \$90



Lot 50

Lot of (2), SHEAF OF GRAIN – “WESTFORD GLASS Co / WESTFORD / CONN” Pictorial Flasks, Westford Glass Works, 1857 – 1873. Medium amber with some orange tones, and deep amber with some reddish tones, both with applied ring collar and bevel – smooth base, ½ Pt, both near mint; (both with just a bit of typical light wear, otherwise perfect). Both GXIII-37. The reddish amber example has a particularly strong, bold impression. Bruce Purdy collection.

Est.: \$250 - \$400 • Min. bid: \$130



Lot 51

SHEAF OF GRAIN – TREE Pictorial Calabash, probably Sheets & Duffy Glass Manufacturers, Philadelphia, PA, 1850 - 1860. Rich, medium-to-deep blue green, almost a teal coloration, applied round collar with bevel – iron pontil scar, Qt, near perfect; (an open bubble on the interior of the neck, otherwise attic mint). GXIII-47. A great example, almost no wear, nice rich color.

Est.: \$400 - \$600 • Min. bid: \$200



Lot 52

Lot of (2), “PATENT” Lettered Flasks, Stoddard, NH, 1860 – 1873. Bright yellowish olive and reddish amber, both with applied double ring collar – smooth base, ½ Pt; (the olive example is near mint with just a touch of light wear; reddish amber ex. has a hard-to-see ¼” cooling line, or fissure, in the back panel and some scattered light wear; embossing is also a bit weak). Similar to GXV-16, but ½ Pts. The olive example is a rare color with crisp embossing. Bruce Purdy collection.

Est.: \$200 - \$400 • Min. bid: \$100



Lot 53

Early, Freeblown Chestnut Bottle, Mid-Atlantic region, probably Wistarburgh Glass Works, Alloway, NJ, or possibly Hilltown, Bucks County, PA, 1750 – 1780. Rich, medium emerald coloration, high-shouldered chestnut form, heavy outward rolled collar – blowpipe pontil scar, ht. 9 5/8”; (several shallow open surface bubbles, and a moderate amount of light scratches and exterior usage wear as is often the case, otherwise excellent). Great color, good form, excellent character.

Est.: \$800 - \$1,200 • Min. bid: \$400



Lot 54

Freeblown Chestnut Flask, New England, 1785 – 1820. Clear light olive with an amber tone, chestnut form, sheared mouth with an applied ring-type collar – delicate blowpipe pontil scar, ht. 5”, near mint; (a ¼” x ¾” open bubble on the interior of the neck, and just the slightest trace of faint wear near the base, otherwise perfect). A very attractive little chestnut, nice symmetry, overall excellent condition. Provenance: Tony Panepucci collection.

Est.: \$250 - \$450 • Min. bid: \$130



Lot 55

Freeblown Chestnut Flask, New England, 1785 – 1820. Bright medium green, almost a sage green coloration, chestnut form, sheared mouth with an applied ring-type collar – blowpipe pontil scar, ht. 5 3/8”, very near mint; (slight trace of typical light wear, otherwise perfect). A great example, nice color, and the ‘metal’ is filled with tiny bubbles and impurities.

Est.: \$300 - \$500 • Min. bid: \$150



Lot 56

Freeblown Chestnut Flask, New England, 1785 – 1820. Rich, yellowish straw amber, chestnut form, sheared mouth with a crudely applied ring-type collar – blowpipe pontil scar, ht. 5 ½”, perfect. A very attractive little New England chestnut, filled with tiny bubbles, nice ‘lean’ to the body with an offset neck.

Est.: \$250 - \$450 • Min. bid: \$130



Lot 57

Lot of (2), Freeblown Chestnut Flasks, New England, 1785 – 1820.

1st Ex: Clear, light yellowish olive amber, chestnut form, crudely applied ring collar – blowpipe pontil scar, ht. 5 3/8".
2nd Ex: Deep honey amber, chestnut form, sheared mouth with applied short tapered collar – blowpipe pontil scar, ht. 5 3/8"; (both are very near mint with just a bit of typical light exterior wear). The 2nd example is a scarce color, and unusual having the short-tapered color. Bruce Purdy collection.

Est.: \$400 - \$600 • Min. bid: \$200



Lot 61

Freeblown Chestnut Flask, New England, 1785 – 1820. Clear, light straw amber with a slight olive tone, chestnut form, sheared mouth with a crudely applied small ring-type collar – delicate blowpipe pontil scar, ht. 7", very near mint; (an open bubble on the inside of the neck, and an onionskin-thin 1/4" open bubble on the side, otherwise perfect). A pretty example, nice, slightly larger size than typically encountered.

Est.: \$250 - \$450 • Min. bid: \$130



Lot 58

Freeblown Chestnut Flask, New England, 1785 – 1820. Light-to-medium yellowish olive with an amber tone, chestnut form, applied sloping collar with bevel – delicate blowpipe pontil scar, ht. 6 1/8", virtually perfect; (just a slight trace of typical faint wear). A very nice example, attractive 'squatty' form, nice olive tones, scarce with the applied sloping collar. Provenance: Tony Panepucci collection.

Est.: \$250 - \$450 • Min. bid: \$130



Lot 62

Freeblown Chestnut Flask, New England, 1785 – 1820. Clear, light-to-medium yellowish olive amber, chestnut form, sheared mouth with an applied string rim – blowpipe pontil scar, ht. 8 3/8", virtually perfect; (just a slight trace of typical light wear). A very nice example, great 'see-through' color, nice larger size and symmetry, fantastic condition.

Est.: \$300 - \$500 • Min. bid: \$150



Lot 59

Freeblown Chestnut Flask, New England, 1785 – 1820. Light yellowish olive amber, chestnut form, sheared mouth with a crudely applied string rim – delicate blowpipe pontil scar, ht. 6 1/2", virtually attic mint; (just a slight trace of very minor wear, otherwise perfect). A very attractive example, light 'see-through' color, nice character, excellent condition. Provenance: Tony Panepucci collection.

Est.: \$300 - \$500 • Min. bid: \$150



Lot 63

Freeblown Chestnut Flask, New England, 1785 – 1820. Rich yellowish amber with a slight olive tone, chestnut form, sheared and outward rolled mouth – pontil scar, ht. 8 1/2"; (a little light wear including a paper-thin, 1/8" flake on the top of the lip; a 1/4" open bubble near the side above the base, and a small potstone on the surface of the base with a little iridescence and tiny 1/16" 'legs', otherwise excellent). A pretty example, scarce larger size, filled with tiny seed bubbles.

Est.: \$200 - \$400 • Min. bid: \$100



Lot 60

Freeblown Chestnut Flask, New England, 1785 – 1820. Medium-to-deep olive with an amber tone, chestnut form, sheared mouth with a crudely applied ring-type collar – blowpipe pontil scar, ht. 6 3/4", near mint; (a little typical light exterior wear including a handful of tiny, onionskin-thin, open surface bubbles and a little light content residue in the neck and shoulders, otherwise perfect). A nice bubbly, seedy, example. Provenance: Tony Panepucci collection.

Est.: \$250 - \$450 • Min. bid: \$130



Lot 64

Blown Three Mold Decanter, Keene Marlboro Street Glassworks, Keene, NH, 1820 – 1835. Medium olive amber, ovoid form, geometric sunburst and diamond pattern, sheared and tooled mouth – blowpipe pontil scar, Pt, attic mint! Gill-16. A lot of bottle for the money, and a very nice example of this classic, early, colored three-mold Keene decanter.

Est.: \$400 - \$600 • Min. bid: \$200



Lot 65

Pitkin-Type Flask, New England, probably an early Connecticut glasshouse, 1785 – 1820. Light yellowish olive amber, almost a straw yellow with an olive tone, 36 broken rib pattern swirled to the left, ovoid form, sheared mouth – blowpipe pontil scar, ht. 5 1/8", near perfect; (just the slightest trace of faint wear, and the pattern weakens a bit toward the base as is typical, otherwise mint). A very pretty little Pitkin, beautiful light 'see-through' color, diminutive smaller size, fantastic condition.

Est.: \$800 - \$1,200 • Min. bid: \$400



Lot 66

Pitkin-Type Flask, Mid-Atlantic region, possibly Hilltown Glass Works, Bucks County, PA, 1770 – 1790. Bright grass green coloration, 24 broken rib pattern swirled to the right, flattened elliptical or ovoid form, sheared mouth – blowpipe pontil scar, ht. 6 1/2"; (some scattered minor wear and light scratches on the flattened sides, otherwise excellent). A very early Pitkin, nice color and character with some impurities swirled through the shoulders.

Est.: \$600 - \$900 • Min. bid: \$300



Lot 67

Lot of (2), Early Preserve or Utility Jars, America or possibly Continental, 1830 – 1850. **1st Ex:** Light, 'see-through' olive yellow, freeblown or possibly dip-mold, sheared mouth with rolled, likely applied ring collar – blowpipe pontil scar, ht. 6 1/2"; (a paper-thin 1/4" flake on inside edge of lip, otherwise mint). **2nd Ex:** Olive amber, dip mold, sheared mouth with a crude, likely applied ring collar – appears to have a faint sand type pontil scar, ht. 6 1/4", (minor wear, light interior residue).

Est.: \$400 - \$600 • Min. bid: \$200



Lot 68

Midwestern Freeblown Tumbler, America, probably Ohio or Western PA, 1820 – 1840. Brilliant honey amber with some swirls and seed bubbles, classic tumbler form with heavy base, tubular pontil scar – ht. 3 1/4". Virtually perfect with only a few light scratches and a heavy band of wear to the base. This one was probably made for tavern use as it is heavier than most. A scarce item of Midwestern glass in a gorgeous color.

Est.: \$300 - \$600 • Min. bid: \$150



Lot 69

Rare, Freeblown Oil Lamp, America, probably southern NJ or possibly Pittsburgh, PA, 1840-1860. Rich reddish amber, pear-shaped font with crudely attached stem and wide, flaring foot – pontil scar, height is just under 10", width of foot, 5 1/8". Attached threaded brass collar. Overall mint condition with expected wear to outer edge of foot. A similar pair is illustrated in the auction catalog of the renowned collection of George McKearin; 1932, Part Two, Lot 336, page 85. A very rare and beautiful lamp.

Est.: \$600 - \$900 • Min. bid: \$300

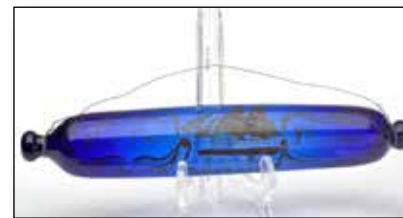


Lot 70

Large Freeblown Bowl, a New York State glasshouse, probably Congressville, possibly Lockport, 1860 – 1880. Medium-to-deep bluish green, large cylindrical bowl, ogee sides with eight molded indentations or 'dimples' created by the gaffer's tool, sheared rim – polished pontil

scarred base, ht. 3 7/8", rim dia. approx. 11 1/4"; (just a touch of minor exterior wear, fairly heavy base wear). A very heavy bowl and interesting offhand piece, likely blown as a whimsey. Ex. Alan Spear, Ken Cornell collections.

Est.: \$300 - \$500 • Min. bid: \$150



Lot 71

Freeblown, Gold-Painted, Presentation Rolling Pin Whimsey, England, probably 1852 – 1853. Painted in gold, *Peter Brown / (Image of Sailing Ship) / Sarah Bell / Shoreham / 1853*. Rich

cobalt blue, freeblown with tooled knopf ends (one end is open where the pontil rod was attached and whetted from the pin), length 12 5/8"; (the pin is perfect, there is some minor paint loss, otherwise excellent). A recent find from a Georgia estate sale. Likely a presentation piece to commemorate a wedding.

Est.: \$200 - \$400 • Min. bid: \$100



Lot 72

Rare, Fancy Cologne Bottle, America or possibly France, 1835 – 1855. Colorless, figural urn, hexagonal with 6 dolphins forming a pedestal stem above circular base, sheared mouth with tooled ring collar – glass-tipped pontil scarred base, ht. 5 1/4", perfect. MW, plate 110, #3. A highly detailed, very rare mold.

Est.: \$200 - \$400 • Min. bid: \$100



Lot 73

Rare, Figural Elephant Cologne Bottle, America or France, 1840 – 1860. Colorless, figural elephant with embossed fancy blanket and harness, trunk curled over basket of flowers, sheared mouth with tooled flanged collar – “D” – “379” – “R” on rectangular base with vertical ribbing, solid glass-tipped pontil scar, ht. 4 3/4”, near perfect; (a paper-thin 1/8” flake at corner of base, otherwise mint). MW, plate 110, #8. An extremely rare, ornate mold, the first we can recall seeing.

Est.: \$250 - \$450 • Min. bidd: \$130



Lot 74

Rare, Clock and Fireplace Figural Cologne Bottle, America or possibly France, 1840 – 1860. Colorless, in the form of a fancy fireplace (with logs and fire), columnar corners, with a large round clock seated above a mantel, sheared and tooled flanged mouth – solid glass tipped pontil scar, ht. 5 3/4”, perfect. Likely an extremely rare cologne, one that we have not seen before, and not listed by McKearin. Provenance: Ex. Tom McCandless collection.

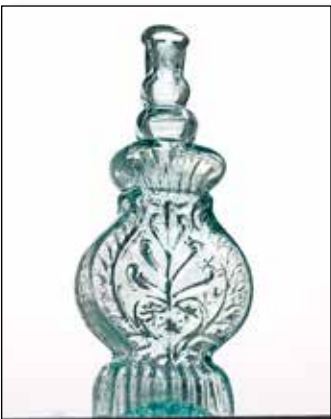
Est.: \$250 - \$450 • Min. bid: \$130



Lot 75

Rare, Fancy Cologne Bottle, probably France, possibly America, 1835 – 1855. Colorless, rectangular with corseted midsection, two large scrolls forming shoulders, basket with large veined leaf above base, two smaller scrolls below shoulders, sheared, tooled, thin flanged lip – solid glass tipped pontil scar, ht. 5 7/8”, near mint; (a tiny bit of roughness on the back edge of the lip, otherwise perfect). Another very rare cologne, unusual and pleasing form.

Est.: \$150 - \$250 • Min. bid: \$80



Lot 76

Rare, Fancy Cologne Bottle, probably America, 1835 – 1855. Aqua, bellows form, center section above ribbed pedestal base with small heart, palmette with long spindly leaves above heart, vines and leaves around edges, two large bulbous rings on neck, sheared mouth with tooled ring collar – blowpipe pontil scarred base, ht. 6 1/4”, very near mint; (small wisps of faint interior milkiness, some minor in-manufacture crazing lines in the neck). MW, plate 108, #7. Very rare.

Est.: \$200 - \$400 • Min. bid: \$100



Lot 77

Lot of (2), Fancy Cologne Bottles, probably America, 1835 – 1855. 1st Ex: Figural Lyre with leaves and vines around edges, aquamarine, sheared, tooled, and inward rolled lip – blowpipe pontil scar, ht. 5 3/8”, attic mint. 2nd Ex: Scrolled Leaves and Flowers, large 5-petal flower below shoulders, smaller button-type flower and leaves in lower frame, sheared and outward rolled lip – blowpipe pontil scar, ht. 5 7/8”, near mint; (just a little faint interior haziness). MW, plate 111, #1, and plate 111, #7.

Est.: \$250 - \$450 • Min. bid: \$130



Lot 78

Scarce, Thumbprint Pattern Cologne (with virtually complete original label), a South Boston glasshouse, 1860 – 1880. Clear, medium pinkish plum amethyst, obelisk form with sawtooth ribbed corners, thumbprint pattern on sides, sheared and tooled collar – smooth base, ht. 5 3/4”; (bottle is perfect, label darkened a bit from age, but completely legible). Label reads, EAU / DE / (floral spray) / COLOGNE. Beautiful color, scarce pattern, very scarce with original label.

Est.: \$400 - \$600 • Min. bid: \$200



Lot 79

Paneled Cologne Bottle (with 99% complete, original label) probably Boston and Sandwich Glass Works, MA, 1860 – 1880. Gorgeous medium canary yellow coloration, 12-panel form, sheared, tooled, and outward rolled mouth – smooth base, ht. 7 1/2”, perfect! Colorful red, green and blue label reads, COLOGNE WATER for the TOILET. An absolutely fantastic, eye-appealing, very rare color. Yellow is one of the most difficult colors to find in any category of bottles, including colognes.

Est.: \$800 - \$1,200 • Min. bid: \$400



Lot 80

Large, Figural Monument Cologne Bottle, a South Boston glasshouse, probably Boston and Sandwich Glass Works, Sandwich, MA, 1860 – 1880. Rich, medium-to-deep teal green coloration, obelisk form fashioned after the Bunker Hill Monument, sheared, likely applied ring collar – smooth base, ht. 11 7/8”, attic mint. MW, plate 114, #3. A gorgeous cologne, scarce size, very rare color, fantastic condition.

Est.: \$800 - \$1,200 • Min. bid: \$400



Lot 81

Large, Figural Monument Cologne Bottle, a South Boston glasshouse, probably Boston and Sandwich Glass Works, Sandwich, MA, 1860 – 1880. Deep, vivid cobalt blue, almost a mid-night blue, obelisk form fashioned after the Bunker Hill Monument, sheared mouth with tooled ring collar – smooth base, ht. 11 ¾", perfect. MW, plate 114, #3. Scarce size. A great example, deep vivid color, and largest of the half-dozen or so sizes known in this mold.

Est.: \$400 - \$600 • Min. bid: \$200



Lot 82

Figural Goblin Head, or Jack-O'-Lantern, Candy Container, 1920 – 1922. Figural goblin with orange head, green leaves, red nose and mouth, white eyes and teeth flared at base with original metal closure, ht. 3 ½", virtually perfect with nearly complete original paint. D/P #263. Rare Halloween candy container termed "Goblin Head" in the Dezso book. The one pictured in the book has wear and paint issues. This example is very rare in this fine condition. Fred Swiechowicz collection.

Est.: \$400 - \$600 • Min. bid: \$200



Lot 83

Figural Barney Google Cartoon Character Candy Container, 1924 – 1928. Yellow head, black hat and coat, teal pants, "BARNEY GOOGLE – COPYRIGHT 1923 / KING FEATURE SYNDICATE INC." (embossed around perimeter of pedestal base), original threaded metal closure and candy, ht. 3 5/8", near mint; (a minor 1/8" flaked on edge of pedestal, some scattered paint loss on jacket, pants and hat). D/P #189. Very scarce. Provenance: Fred Swiechowicz collection.

Est.: \$200 - \$400 • Min. bid: \$100



Lot 84

Figural Jackie Coogan Hollywood Child Actor Candy Container, 1925 – 1928. Figure of child actor Jackie Coogan in character trousers, suspenders and hat, "JACKIE COOGAN" (embossed on front of pedestal base), "COPYRIGHT / 1925 / JACKIE COOGAN / PRODUCTIONS / INC." (stamped on base of tin metal closure), ht. 4 7/8"; (the container is perfect, some scattered paint loss). D/P #202. A very rare candy container. Fred Swiechowicz collection.

Est.: \$600 - \$900 • Min. bid: \$300



Lot 85

Early, Dip Mold Snuff Jar, New England, 1820 – 1840. Medium olive shading to a deep olive near the base, dip mold, square with beveled corners, sheared, tooled, outward flared mouth – blowpipe pontil scar, ht. 4 7/8"; (just a trace of light wear; a few open surface bubbles, ½" or less, and some light interior haziness in the shoulders mentioned for completeness, but barely noticeable on display). Provenance: Bruce Purdy collection.

Est.: \$300 - \$500 • Min. bid: \$150



Lot 86

"OSBORN'S / LIQUID POLISH.", an early New England glasshouse, 1845 – 1855. Rich yellowish amber with an olive tone, cylindrical, sheared, tooled, and inward rolled mouth – blowpipe pontil scar, ht. 3 ½"; (a little scattered light wear, otherwise very near mint). A very pretty example, strong embossing, beautifully whittled. Provenance: Ex. Bob & Beka Mebane collection; Ed & Sherry Losacano collection.

Est.: \$400 - \$600 • Min. bid: \$200



Lot 87

(Label-only), SUPERIOR EDGE BLACKING, Blacking or Utility Bottle, New England, 1858 – 1860. Light-to-medium yellowish amber, cylindrical, 3-pc. mold, applied sloping collar with bevel – light sand type pontil scar, ht. 7 ½"; (some dried content residue, and a tiny potstone on the shoulder with a couple of minuscule, 1/32" cooling lines, barely visible without a loop; 97% complete original label has some staining, but mostly legible, otherwise excellent). Fred Swiechowicz collection.

Est.: \$120 - \$240 • Min. bid: \$60



Lot 88

Lot of (3), Early Utility Bottles, 1840 -1860. Bright yellow green with a slight olive tone, bright honey amber, and olive amber, all are cylindrical, 2-pc. mold, sheared, tooled, thin flared lip – blowpipe pontil scarred bases, ht. 4 5/8", 4 ½", and 4 3/8" respectively, all three are attic mint! A beautiful trio of colorful early utilities, fantastic condition with perfect thin flared lips. Provenance: Fred Swiechowicz collection.

Est.: \$400 - \$600 • Min. bid: \$200



Lot 89

"DE HALSEY - PATENTE" Inkwell, New England, probably Coventry, CT, or possibly France, 1840 - 1849. Yellowish olive amber, cylindrical, domed shoulders, sheared mouth - blowpipe pontil scar, ht. 2 3/4"; (a shallow 3/16" sliver flake along the top edge of the sheared lip, and the embossing is light - as is normal for this mold, otherwise virtually attic mint). C #577. Attractive 'see-through' color, whittled, and filled with tiny bubbles. Provenance: John Wilson collection.

Est.: \$200 - \$400 • Min. bid: \$100



Lot 93

Umbrella Ink, 1845 - 1860. Rich, medium cobalt coloration, 8-sided umbrella form, sheared, tooled, and inward rolled mouth - blowpipe pontil scar, ht. 2 1/8", base dia. 2 1/8", perfect! A great example, excellent color, clarity, and virtually pristine condition. Very attractive having that 'sweet-spot' of density - not too light, rich strong color, but not too dark. In addition, the glass is filled with tiny bubbles.

Est.: \$1,000 - \$2,000 • Min. bid: \$500



Lot 90

"FARLEYS / INK", an early Stoddard, NH glasshouse, 1842 - 1855. Yellowish 'old amber', octagonal with domed shoulders, sheared mouth - blowpipe pontil scar, ht. 1 7/8", attic mint! C #526; Faulkner, pgs. 63-64. An absolutely top example of this classic, early Stoddard ink. Crisp, very strong embossing, virtually 'out-of-the-mold' pristine condition. Provenance: Fred Swiechowicz collection.

Est.: \$400 - \$600 • Min. bid: \$200



Lot 94

Rare Cone Ink, America, probably Eastern U.S., 1845 - 1860. Very deep emerald, almost a teal coloration, and black in reflected light, cone form, sheared, tooled, and inward rolled lip - heavy blowpipe pontil scar, ht. 2 1/8", base dia. 2/8"; (a couple of light scratches and some minor usage wear, otherwise excellent). A rare and likely very early ink. Interesting and different in many aspects including its crude form, heavy weight, unusual color and pontil scar. Provenance: Fred Swiechowicz collection.

Est.: \$400 - \$600 • Min. bid: \$200



Lot 91

Umbrella Ink (with virtually complete, original label), New England, probably a Keene, or possibly Stoddard, NH glasshouse, 1840 - 1860. Medium olive amber, 8-sided umbrella form, sheared mouth - blowpipe pontil scar, ht. 2 1/4", base dia. 2", perfect! Original label reads in part, *BRADFORD'S / Fine Blue Black / Writing Fluid! / SUPERIOR TO ANY IN USE / RINDGE, N.H.* A great 'attic-type' example, rare label, outstanding condition! Provenance: Tim Buda collection.

Est.: \$400 - \$600 • Min. bid: \$200



Lot 95

Rare, Large-size, Drape Pattern Inkwell, probably Baltimore Glass Works, Baltimore, MD, 1845 - 1860. Cobalt blue, cone form with large drape pattern, applied round collar with bevel - blowpipe pontil scar, ht. 3 3/4", perfect. Faulkner, p.174. A top example, nice long neck, attractive large double collar. This is the very rare larger size that does not come around often, and certainly exceedingly rare in this un-dug, 'attic-type' condition. Provenance: Ex. Mike George collection.

Est.: \$4,000 - \$6,000 • Min. bid: \$2,000



Lot 92

Lot of (2), Umbrella Inks, 1850 - 1870. **"S.O. DUNBAR - TAUNTON."** (with 90% complete original label). Aquamarine, 8-sided umbrella, sheared, inward rolled mouth - blowpipe pontil scar, ht. 2 3/8"; (bottle is perfect, label darkened a bit,

otherwise mostly legible). **2nd. Ex.:** Beautiful, light sapphire blue, un-embossed, 8-sided umbrella form, applied square collar - hinge mold smooth base, ht. 2 5/8", attic mint. A very pretty example. Provenance: John Wilson collection.

Est.: \$400 - \$600 • Min. bid: \$200



Lot 96

Lot of (2), Ohio Cone Ink Bottles, 1855 - 1885. 1st Ex: **"J.J. BUTLER / CINCT. / OHIO"**, aquamarine, sheared and inward rolled mouth - blowpipe pontil scar, ht. 2 3/8"; (professionally cleaned with a little light haziness remaining, primarily in the neck). 2nd Ex.: **"VITREOUS BOTTLES" / (SHIELD) / "Manufactured only by / BOSS BROTHERS / MIDDLEBURY. O."** tan vitreous stoneware, ht. 2 1/2"; (a 1/8" flake on side of lip, otherwise perfect). John Wilson collection.

Est.: \$175 - \$350 • Min. bid: \$90



Lot 97

Lot of (2) Cone Ink Bottles (with virtually complete original labels), 1890 – 1910. **1st Ex:** Aquamarine, label reads in part: *EARLE'S 5C. / BLACK INK / MADE BY / MANCHESTER NOVELTY CO., / 143 Hanover Street, / MANCHESTER, N.H.* **2nd Ex:** Rich bluish green with a teal tone, label reads: *AMERICAN / JET BLACK / WRITING INK / AMERICAN BLUING CO., BUFFALO, N.Y.* Both with tooled ring collars – smooth base, ht. 2 1/2". Both virtually attic mint! Fred Swiechowicz collection.

Est.: \$75 - \$150 • Min. bid: \$40



Lot 98

"OHIO VALLEY INK CoS / SUPERIOR SCHOOL INK / POMEROY OHIO", possibly Lorenz & Wightman, Pittsburgh, 1863 – 1872. Aquamarine, cylindrical, turtle form, domed shoulders with offset neck, sheared and factory ground mouth – **"L & W"** (lightly embossed on base), ht. 1 3/4", near perfect; (a small flake on edge of ground mouth, possibly in-manufacture, and a faint trace of interior milky near base). An exceedingly rare, unlisted inkwell. Provenance: Tim Buda collection.

Est.: \$400 - \$600 • Min. bid: \$200



Lot 99

"P&H" (on shield) Pictorial Hand Turtle-Type Inkwell, England, 1875 – 1895. Aquamarine, oval turtle-form, pictorial hand embossed over domed top grasping neck of bottle, factory 'burst-type' lip lightly ground on one side – smooth base, ht. 1 3/4", virtually perfect; (some minor flaking around top of lip). An exceedingly rare pictorial ink. See GB, pgs. 378-379. Believed to be one of only two known examples (the other being in the John Ault collection). Provenance: Tim Buda collection.

Est.: \$400 - \$600 • Min. bid: \$200



Lot 100

Lot of (3), "W.E. BONNEY" Ink Bottles, 1890 – 1910. Colorless, cobalt blue, and aquamarine, all are cylindrical, tooled ring collar – smooth base, ht. 1 3/4", 1 3/4" and 2" respectively; (just a bit of very light, minor haziness on each, not distracting but mentioned for completeness; the aqua example has some light wear, primarily

on the side, otherwise all are clean and near mint). See Faulkner, pgs. 15-16. The cobalt blue example is extremely rare! Provenance: Fred Swiechowicz collection.

Est.: \$100 - \$200 • Min. bid: \$50



Lot 101

Lot of (2), "W.E. BONNEY" Figural Barrel Ink Bottles (one with complete original label), 1865 – 1880. Both are aqua. **1st Ex:** Oval blank on reverse, sheared and inward rolled mouth – blowpipe pontil scar, ht. 2 5/8", perfect. **2nd Ex:** Round inset on reverse with original label: *BONNEY'S / NON-CORROSIVE / INK / W.A. WILDE & CO. / BOSTON.* Tooled ring collar – smooth base, ht. 2 3/4"; (minor area of fading along right edge of label; some washable residue). Faulkner, pgs. 15-16. A great pair. Fred Swiechowicz collection.

Est.: \$250 - \$450 • Min. bid: \$130



Lot 102

"TIPPECANOE / EXTRACT - HARD / CIDER" Figural Barrel Ink, probably 1840 – 1842. Colorless, barrel form, sheared, tooled, and inward rolled mouth – polished pontil scarred base, ht. 2", near mint; (just a bit of light high point wear on the sides, otherwise perfect). C #667; Faulkner, p.173.

A very rare, historical ink. Believed to be the earliest of all the barrel inks. Blown for the 1840 William Henry Harrison presidential campaign. Provenance: Tim Buda collection.

Est.: \$600 - \$900 • Min. bid: \$300



Lot 103

Figural Diamond-Pattern Barrel Ink, England, 1870 – 1890. Light-to-medium sapphire blue, barrel form with heavy diamond quilted midsection, stepped rings on ends, manufacturer's 'burst-type' lip – smooth base, ht. 1 7/8", near mint; (trace bit of very light wear, and a slender partially open

bubble on the interior of the shoulder with trapped, likely ink, residue). See GB, pg. 50. Very scarce. Referred to as "Diamond Barrel" and attributed to George Bell & Co. Tim Buda collection.

Est.: \$400 - \$600 • Min. bid: \$200



Lot 104

"S. I. / COMP" Figural Barrel Ink, America, 1880 – 1890. Opaque white milkglass, figural barrel form with embossed hoops, tooled square collar – smooth base, ht. 2 1/4", attic mint. Covill, #666; Faulkner, p.117. A very scarce ink (much more difficult to find than the "S. I. COMP" cottage

inks), especially in this fine condition. Blown for the Senate Ink Co. of Philadelphia. Provenance: Tim Buda collection.

Est.: \$300 - \$500 • Min. bid: \$150



Lot 105

Rare, Figural Cabin Ink, America, 1880 – 1890. Colorless, small rectangular log cabin form, steep pitched roof with embossed vertical boards, tooled square collar – smooth base, ht. 2 ¼”, perfect! C #679. A very scarce-to-rare figural cabin ink, virtually pristine condition. Provenance: Tim Buda collection.

Est.: \$300 - \$500 • Min. bid: \$150



Lot 109

“S. I. COMP.” Figural House Ink, 1880 – 1890. Opaque white milkglass, figural house with a ‘mansard style’ roof, tooled square collar – smooth base, ht. 2 ½”, perfect. C #683, Faulkner, p.117. Scarce. Another great ‘attic-type’ example of this classic, figural house inkwell. Provenance: Tim Buda collection.

Est.: \$250 - \$450 • Min. bid: \$130



Lot 106

Rare, Figural Cabin Ink, America, 1880 – 1890. Colorless, elongated log cabin form, plain, low-pitched roof, tooled square collar – smooth base, ht. 2 3/8”, virtually attic mint; (just a tiny pinprick bit of roughness on the edge of the square collar, otherwise perfect). C #680; Faulkner, p.180. Another very scarce-to-rare cabin ink, fantastic condition. Provenance: Tim Buda collection.

Est.: \$300 - \$500 • Min. bid: \$150



Lot 110

Figural Rustic Cottage Ink, England, 1880 – 1900. Light-to-medium bluish green, rectangular ‘cottage’ form with pebbled roof tiles, triangular-pointed door and window tops, quarter-pane windows, manufacturer’s ‘burst-type’ lip – smooth base, ht. 2 3/8”, near mint; (trace of minor wear including a pinhead flake on one of the corners, and on edge of base). See Guy Bruch’s new book, *Ink, Glue, Polish & Blacking Bottles, 1750 – 1950, A Collector’s Dictionary*, 2023, p.91. Scarce. Tim Buda collection.

Est.: \$400 – \$600 • Min. bid: \$200



Lot 107

Rare, Figural Cabin Ink, America, 1865 – 1875. Colorless, rectangular log cabin form, steep pitched roof with small rectangular panels, factory ground mouth above molded neck ring – smooth base, ht. 3 1/8”, virtually perfect; (an onionskin-thin flake on ground mouth). C #677; Faulkner, p.180, MW, plate 76, #14. A very rare cabin inkwell, beautiful condition. The bottle is likely flint (leaded glass) as it is heavier in weight, with extra brilliance, and clarity. Provenance: Tim Buda collection.

Est.: \$400 - \$600 • Min. bid: \$200



Lot 111

Figural Gothic-style Cottage Ink, England, 1880 – 1900. Clear medium green with a teal tone, rectangular ‘cottage’ form with diamond-pattern roof, triangular-pointed door and window tops, lattice-pattern window panes, manufacturer’s ‘burst-type’ lip – smooth base, ht. 2 ¼”, virtually perfect; (just the slightest trace of faint wear including a 1/8” shallow sliver flake at edge of base). See GB, pgs. 81-82. Gothic cottage type III (bow window on end wall). Provenance: Tim Buda collection.

Est.: \$600 - \$900 • Min. bid: \$300



Lot 108

“S. I. COMP.” Figural House Ink (with virtually complete original label), 1880 – 1890. Aquamarine, figural house with a ‘mansard style’ roof, tooled square collar – smooth base, ht. 2 ½”; (the bottle is pristine; the label is near perfect with just a light stain along the left edge). C #682, Faulkner, p.117, MW, plate 76, #8. Scarce. Blown for the Senate Ink Co. of Philadelphia. Sparkling mint. About as nice of an example as you could hope to find. Tim Buda collection.

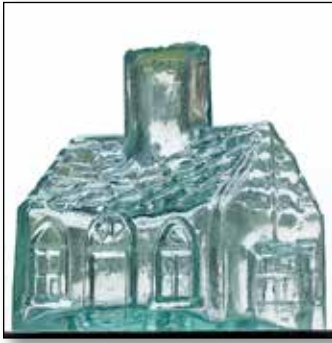
Est.: \$200 - \$400 • Min. bid: \$100



Lot 112

Figural Gothic-style Cottage Ink, England, 1880 – 1900. Light-to-medium sapphire, ‘cottage’ form with diamond-pattern roof, triangular-pointed door and window tops, lattice-pattern window panes, manufacturer’s ‘burst-type’ lip – “CCHANDLER / & Co” (on smooth base), ht. 2 3/8”, near perfect; (a ¼” iridescent flake on inside of the lip, possibly in-manufacture, and a potstone in the chimney with a tiny cooling line). GB, pgs. 81-82. Gothic cottage type I. Rare mold and color. Tim Buda collection.

Est.: \$800 - \$1,200 • Min. bid: \$400



Lot 113

Figural Georgian Cottage Ink, England, 1869 – 1880. Aqua rectangular 'cottage' form with rectangular-pattern roof, rounded arch door and window tops, quarter pane windows, manufacturer's 'burst-type' lip – **"REDG / APRIL 5 / 69"** (on smooth base), ht. 2 1/8", near mint; (a little pinhead flake on the edge of the base, and the bottle may have been very lightly cleaned, but presents as virtually perfect). See GB, pgs.91 & 312. Rare and in excellent condition. Tim Buda collection.

Est.: \$400 - \$600 • Min. bid: \$200



Lot 114

Lot of (2), Rare, 'Schoolhouse' Inks, 1875 – 1895. **"JAMES P. SCOTTS / INK"**, aqua, schoolhouse form, applied square collar – smooth base, ht. 2 5/8"; (some light interior haziness, otherwise very near mint). 2nd Ex.: **"STUARTS / INK – MADE ONLY BY / STUART / & / HARRISON – TOLEDO / IOWA"**, bright aqua, schoolhouse form, applied square collar – smooth base, ht. 3"; (professionally cleaned to original luster; with light, matte-type dullness in a couple spots). John Wilson collection.

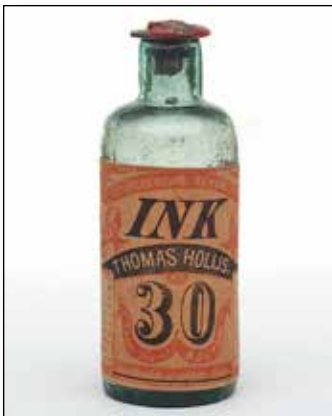
Est.: \$175 - \$350 • Min. bid: \$90



Lot 115

(Label-only), E.S. CURTIS' / INK, Master Ink, 1845 -1855. Lt. sea green, sheared, tooled, thin flanged lip – blowpipe pontil scar, ht. 4 3/8"; (bottle is perfect; virtually complete original label has a bit of light stain, otherwise excellent). Faulkner, p.36. The green and white, very attractive graphic label appears original to the bottle (cork and sealing wax in neck), depicts a spread-wing eagle and reads, **E.S. CURTIS' / INK / WATTANTED SUPERIOR / BLUE BLACK**. Fred Swiechowicz collection.

Est.: \$200 - \$400 • Min. bid: \$100



Lot 116

(Label-only), THOMAS HOLLIS, Master Ink, 1845 – 1855. Lt. sea green, sheared, tooled, thin flanged lip – blowpipe pontil scar, ht. 4 3/8"; (bottle is perfect; virtually complete original label in excellent condition). Faulkner, p.80. Attractive red and black label that appears original to the bottle (with cork and remnants of sealing wax in neck), reads in part, **SUPERIOR BLACK / INK / THOMAS HOLLIS. / 30 / Union Street BOSTON**. Provenance: Fred Swiechowicz collection.

Est.: \$200 - \$400 • Min. bid: \$100



Lot 117

(Label-only), GEORGE P. KINNE. / ASHFORD, CONN. Master Ink, probably Willington, or possibly Westford Glass Works, 1850 – 1860. Medium olive amber, cylindrical, applied sloping collar – blowpipe pontil scar, ht. 4 7/8"; (bottle is perfect; 95% complete original label darkened a bit from age, but completely legible). Label reads, **SUPERIOR / GOLD AND STEEL PEN / INK. / BLACK. / MANUFACTURED BY / GEORGE P. KINNE. / ASHFORD, CONN.** Fred Swiechowicz collection.

Est.: \$250 - \$450 • Min. bid: \$130



Lot 118

(Label-only), GOODWIN & LEONARD, Master Ink, New England, possibly a Stoddard, NH glasshouse, 1845 – 1860. Medium 'old amber' with some attractive yellowish tones, cylindrical, 3-pc. mold, applied short tapered collar with tooled pour spout – sand type pontil scar, ht. 9 1/8"; (bottle is virtually perfect with minor interior content residue; 98% complete original label in overall excellent condition). Beautifully whittled, excellent character and condition. Provenance: Fred Swiechowicz collection.

Est.: \$150 - \$250 • Min. bid: \$80



Lot 119

"GAYLORDS / SUPERIOR / RECORD / INK – BOSTON", New England, possibly Keene Marlboro Street glassworks, 1830 - 1842. Clear, light yellowish olive below the shoulders, shading to a deep olive near the base, cylindrical, large crude, ring-type collar - pontil scar, ht. 5 3/4", perfect; (note; the embossing is a bit weak, as is typical for the small handful of examples extant). A top example in an unusually light color, and rare with the large, almost 'donut style' collar. Ex. Fred Swiechowicz collection.

Est.: \$3,000 - \$6,000 • Min. bid: \$1,500



Lot 120

Lot of (2), "HARRISON'S / COLUMBIAN / INK" – "PATENT" (on shoulder) **Master Ink Bottles**, 1847 – 1860. Both are aquamarine, 12-sided, applied wide flanged mouth – blowpipe pontil scarred base, ht. 4 5/8" and 5 1/2", both near perfect; (4 5/8" example has some very faint haziness on the interior that may wash out, barely noticeable; the 5 1/2" size has just the slightest trace of light wear and some in-manufacture crazing lines in the neck). A very attractive pair. John Wilson collection.

Est.: \$250 - \$450 • Min. bid: \$130

**Lot 121**

“JONES’ – EMPIRE – INK – N. Y.”
Master Ink, 1845 – 1860. Bright, medium-to-deep yellowish olive green, 12-sided, applied square collar – sand type pontil scar, ht. 5 ¾”; (professionally cleaned to original luster with some moderate scratches and surface wear remaining, more-so on the back panels; a sizeable chip, approx. ½”, is off the side of the lip as well as a few small flakes on the back edge). C #769. John Wilson collection.

Est.: \$400 - \$800 • Min. bid: \$200

**Lot 125**

“BOGARDUS’ GLASS BALL PATD APRIL 10 1877” - “8” (within diamond panel) Target Ball, England, 1877 - 1900. Yellowish olive amber, quilted diamond pattern above and below center band, 3-piece mold, rough sheared mouth, dia. 2 5/8”, near mint; (some very light interior residue or faint haziness in the base, barely noticeable, and a couple of tiny pinhead open bubbles, otherwise perfect). A scarce and attractive color for a Bogardus ball. Provenance: John Wilson collection.

Est.: \$400 - \$600 • Min. bid: \$200

**Lot 122**

“JONES’ – EMPIRE – INK – N. Y.”
Master Ink, 1845 – 1860. Deep yellowish olive with amber tone, 12-sided, applied collar with bevel – iron pontil scar, ht. 7 1/8”; (a 3/16” bit of minor roughness on the edge of the collar; an iridescent potstone on the side of the neck with two small 1/16” radiations, and a ¼” chip at the edge of the base on the reverse, otherwise excellent). A beautiful example. The noted issues are relatively minor and do not show on display. Fred Swiechowicz collection.

Est.: \$2,500 - \$4,500 • Min. bid: \$1,300

**Lot 126**

Lot 126 “BOGARDUS’ GLASS BALL PATD APRIL 10 1877” - “8” (within diamond panel) Target Ball, England, 1877 - 1900. Bright yellowish moss green coloration, quilted diamond pattern above and below center band, 3-piece mold, rough sheared mouth, dia. 2 5/8”, virtually perfect; (a couple of minor onionskin-thin open surface bubbles, otherwise mint). A beautiful ball, great color, strong embossing! Provenance: John Wilson collection.

Est.: \$500 - \$800 • Min. bid: \$250

**Lot 123**

“BOGARDUS’ GLASS BALL PATD APRIL 10 1877” - “2” (backward “2” within diamond panel) Target Ball, England or possibly America, 1877 - 1900. Gorgeous yellow through the mid-section shading to a warmer honey coloration in the shoulders and base, quilted diamond pattern above and below center band, 3-piece mold, rough sheared mouth, dia. 2 5/8”, perfect! A very pretty ball, eye-appealing ‘see-through’ color, scarce mold. Provenance: John Wilson collection.

Est.: \$400 - \$600 • Min. bid: \$200

**Lot 127**

“T. JONES GUN MAKER BLACKBURN LANCASHIRE” Target Ball, England, 1875 – 1900. Light-to-medium sky-blue coloration, quilted diamond pattern above and below center band, 3-piece mold, large “X” on base, rough sheared mouth, dia. 2 5/8”; (some light interior residue or haziness, barely noticeable, otherwise near mint). Strong mold impression but the lettering in the center band is not easy to read, as is always the case with this mold. Provenance: John Wilson collection.

Est.: \$200 - \$400 • Min. bid: \$100

**Lot 124**

“BOGARDUS’ GLASS BALL PATD APR 10 1877.” Target Ball, America, 1877 – 1900. Bright medium golden amber, quilted diamond pattern above and below center band, 3-piece mold, rough sheared mouth, dia. 2 5/8”, perfect. This example has an early period metal chain fastened to the collar by an old string, possibly to be hung or adapted as a Christmas ornament. Another great example, strong embossing. Provenance: John Wilson collection.

Est.: \$300 - \$500 • Min. bid: \$150

**Lot 128**

Embossed Block Pattern Target Ball, England, 1885 – 1900. Medium sapphire blue, embossed block or ‘globe’ pattern above and below plain center band, 2-piece mold with base plate, rough sheared mouth, dia. 2 5/8”, perfect! A very scarce ball with the distinctive block pattern and flat base, outstanding condition. This is the first example we’ve had the opportunity to offer since the famed Ralph Finch collection in 2019. Provenance: John Wilson collection.

Est.: \$250 - \$450 • Min. bid: \$130

BITTERS

A Diverse and Colorful Array of Rare and



Lot 186

Lot 177

Lot 179

Lot 170

Exceptional Bitters Bottles

For generations, American bottle collectors have sought out, and cherished, the unique and often colorful bottles that once held “medical” concoctions that were once known as bitters. Some would argue that bitters bottles are the pinnacle of the antique bottle collection hobby, surpassing even historical flasks. It would probably be more accurate to say that it’s a toss-up, with both categories having their ups and downs in popularity every few years.

The vast majority of bitters bottles were produced from the 1840s, into the early 1900s, and the variety of molds, colors, and forms is truly remarkable. The rarest and most beautiful of them are definitely something to treasure, such as those shown on these two pages.

Another welcome aspect of collecting bitters is that there is a price level for nearly every pocketbook. This is largely due to the fact that a great variety of bitters bottles were produced, some examples probably by the hundreds of thousands. And new examples, both common and rare, are still showing up in flea markets, dug out of privy pits, or even discovered in someone’s basement or attic!



Lot 178

Lot 163

Lot 185

Lot 183

Lot 184



Lot 129

Unembossed 3-Piece Mold Target Ball, America, 1875 – 1900. Beautiful, deep plum amethyst, 3-piece mold, rough sheared mouth, dia. 2 5/8", perfect. A rare and desirable color for a target ball and although the color is deep, it still passes light with studio and case lighting, or daylight. Provenance: John Wilson collection.

Est.: \$300 - \$500 • Min. bid: \$150



Lot 130

A.H. Bogardus Style Target Ball Thrower, America, 1877 – 1900. Cast iron and wood, heavy metal spring arm mounted on wooden platform base, metal cup to seat target ball at end of leaf spring. A serrated metal arm at the end of the wooden

base has adjustments for varying the degree of tension. Overall length 30 3/4", ht. 11"; (some typical light surface rust and pitting, expected wear to wooden base). Found near Baltimore in an old house; first time being offered at auction.

Est.: \$2,000 - \$3,000 • Min. bid: \$1,000



Lot 131

"HAYWARD'S / HAND / FIRE / GRENADE – PATENTED / AUG / 8 / 1871 – S.F. HAYWARD / 407 / BROADWAY / N.Y.", America, 1875 - 1895. Brilliant turquoise blue, melon-form bulbous body with four indented diamond-shaped panels, tooled ring type collar – smooth base, ht. 6 1/4", perfect. A beautiful, very scarce color for this mold, excellent clarity and condition.

Est.: \$400 - \$600 • Min. bid: \$200



Lot 132

Fire Grenade (Large embossed Crescent Motif), America, 1875 – 1890. Golden amber in the body, shading to a rich orange amber through the neck and shoulders, bulbous body with embossed large crescent motif on one side and an outline of a square on the opposite side, tooled collar with neck ring – smooth base, ht. 6 1/8"; (a 5/8" chip along the top and inside edge of the lip, otherwise very near mint). An extremely rare grenade, possibly W.D. Allen Co, NY.

Est.: \$800 - \$1,200 • Min. bid: \$400



Lot 133

Lot of (2) Tobacco Jars, 1890 – 1910. 1st Ex: **"TEMPLE, HUMMEL, ELLIS, CO. / MANUFACTURERS / OF / HIGH GRADE HAVANA CIGARS, / SOUTH BEND, IND."**, light yellowish honey coloration. 2nd Ex: **"MERCANTILE / (AIR – TIGHT) / HAVANA / CIGARS – PATENTED / NOV. 13 – 94 / JAN. 15 – 95 – PATENTED / DEC. 11 – 94 / JUNE 24-02"**, medium amber. Both with period, possible original tin lids; (jars are near mint with only minor wear). John Wilson collection.

Est.: \$175 - \$275 • Min. bid: \$90



Lot 134

Lot of (3), "Wm S Kimball & Co / Rochester NY" Tobacco Jars, 1885 – 1905. Two are cylindrical with eight flat panels, 3rd Ex. is square with beveled corners. Shades of yellow and light honey amber, all are ground mouth with likely original tin lids, ht. 5 3/4"; 6 3/4" and 5 5/8";

(5 5/8" round Ex. has a bit of very faint interior milkiness; 6 3/4" Ex. has a slight trace of interior milkiness and a 1/4" shallow chip on ground mouth, square Ex. has two 3/8" chips from top of ground mouth). John Wilson collection.

Est.: \$300 - \$500 • Min. bid: \$150



Lot 135

"AIR-TIGHT FRUIT JAR", probably Ravenna Glass Works, Ravenna, OH, 1857 – 1864. Deep aquamarine, barrel form, large crudely applied wax seal collar – heavy iron pontil scar, Qt, virtually attic mint; (small area of minor roughness on the inner edge of the neck, otherwise pristine). R/B# 51. Scarce. A great example, rich color, whittled, heavy iron pontil, fantastic condition. Provenance: Ex. Al Vignon collection.

Est.: \$600 - \$900 • Min. bid: \$300



Lot 136

"EUREKA MF'G CO" / (STEER'S HEAD) / "BALTIMORE, MD" Oyster Catsup Bottle, 1880 – 1890. Medium amber with a slight orange tone through the neck, cylindrical, tooled sloping collar – smooth base, ht. 8 5/8"; (professionally cleaned with a little light wear and some minor scratches remaining, a tiny pinhead flake on the edge of the lip). The condition issues are relatively minor and the bottle displays nicely. Listed as "Rare" in the Baltimore book (only 5-10 examples known).

Est.: \$400 - \$600 • Min. bid: \$200



Lot 137

“SKILTON FOOTE & CO’S / BUNKER HILL PICKLES / TRADE MARK” (Motif of Monument, Fence & Barrels) Figural Lighthouse, 1885 - 1895. Light honey, in the form of the Cape May, NJ lighthouse - and virtually identical to the Seaworth Bitters mold from Cape May, NJ, tooled sloping collar - smooth base, ht. 11 1/8”, attic mint; (note, some minor in-manufacture crazing lines in the neck mentioned for accuracy). Gorgeous! Fred Swiechowicz collection.

Est.: \$1,500 - \$2,500 • Min. bid: \$800



Lot 138

Lot of (2), Rare Peppersauce Bottles, 1850 - 1860. **“L & B” Cathedral Peppersauce**, aqua, cylindrical with tall Gothic panels, applied double ring collar - blowpipe pontil scar, ht. 8 3/4”; (cleaned with a little spotty interior haze remaining; light wear). 2nd Ex: **“HUGHES & GLENN - CINCINNATI”**, aqua, cylindrical with 8 rounded lobes, applied ring collar - blowpipe pontil scar, ht. 9 1/4”; (cleaned with a fair amount of light wear and fine scratches remaining). John Wilson collection.

Est.: \$400 - \$600 • Min. bid: \$200



Lot 139

Lot of (2) Fancy Pickle Jars, 1855 - 1875. 1st Ex: Aquamarine, cylindrical with 6 lobed body panels, large horizontal rings at base of neck and shoulders, applied ring collar - blowpipe pontil scarred base, ht. 7 1/2”. 2nd Ex: Aquamarine, square with beveled corners, embossed leaf sprays framing top and bottom of sunken oval panels, applied ring collar - smooth base, ht. 10 7/8”. Both are scarce molds, attic mint. Bruce Purdy collection.

Est.: \$250 - \$450 • Min. bid: \$130



Lot 140

Lot of (2) Cathedral Pickle Jars, probably Mid-Atlantic region, 1860 - 1870. **1st Ex:** Light green, Gothic arches on 3 sides (label panel on 4th), cross and diamond motif with three beads below inner frames, scroll motif around outer frames. **2nd Ex:** Aqua, Gothic arches on all 4 sides, pendant with tulip designs below inner frames, scallop design around outer frames with large palmette at top. Both with applied ring collar - smooth base, ht. 8 3/4” & 11 3/4”, both attic mint. Bruce Purdy collection.

Est.: \$300 - \$500 • Min. bid: \$150



Lot 141

Lot of (2) Cathedral Pickle Jars, probably Mid-Atlantic region, 1860 - 1870. Both are aquamarine, square with beveled corners, arched Gothic panels with scalloped designs around inner frame, cross and pendant motif below top of inner frames, ornamental palmette above frames on shoulders, applied ring collar - smooth base, ht. 11 1/8” and 13 7/8”, both virtually perfect; (the 11 1/8” example has a tiny pinhead flake on edge of lip). A great looking lot of Cathedral Jars. Bruce Purdy collection.

Est.: \$300 - \$500 • Min. bid: \$150



Lot 142

Cathedral Pickle Jar, a Mid-Atlantic glasshouse, 1855 - 1865. Strong medium emerald coloration, square with beveled corners, arched Gothic panels with cross and pendant motif below top of inner frame, ornamental scroll motif above each frame on shoulders, sheared mouth with tooled, likely applied ring collar - heavy iron pontil scar, ht. 11 3/4”; (the bottle had a little faint dullness, or ‘bloom’, and was very lightly cleaned to original luster and virtually pristine condition). Fred Swiechowicz collection.

Est.: \$1,500 - \$2,500 • Min. bid: \$800



Lot 143

“FROM / THE CASPER CO. INC / WINSTON-SALEM, N.C. / NEW YORK, CHICAGO, ST. LOUIS.” (with partial original front and back labels), 1890 - 1900. Medium cobalt blue, cylindrical with fluted shoulders, tooled sloping collar with ring - smooth base, ht. 11 3/4”; virtually perfect; (just a trace of faint wear and a little washable residue; 90% complete front label, approximately 75% back label). A great example, crisp embossing, scarce ‘four-cities’ variant, and original labels.

Est.: \$500 - \$800 • Min. bid: \$250



Lot 144

“WHARTON’S / WHISKEY / 1850 / CHESTNUT GROVE” (within decorative ‘chain-link’ oval), 1860 - 1870. Light-to-medium cobalt blue with some subtle deeper striations through the body, teardrop form, applied square collar with bevel, **“CHESTNUT / GROVE”** (original cobalt glass stopper) - smooth base, ht. 5 5/8” including stopper, near mint; (some faint, likely washable, interior residue and a bit of minor roughness, possibly in-making, around edge of stopper). John Wilson collection.

Est.: \$300 - \$500 • Min. bid: \$150



Lot 145

Lot of (2) Applied Handle Whiskey Bottles, America, 1850 – 1860. 1st Ex: Unembossed, medium amber with a slight orange tone, freeblown ovoid body, applied sloping collar – blowpipe pontil scar, ht. 6 ½". 2nd Ex. **"CHESTNUT GROVE / WHISKEY / C.W."** (on molded seal), medium-to-deep amber with slight reddish tone, chestnut form body, applied mouth with ring – blowpipe pontil scar, ht. 8 7/8"; (pinhead open bubble on 2nd Ex. otherwise both are attic mint). Bruce Purdy collection.

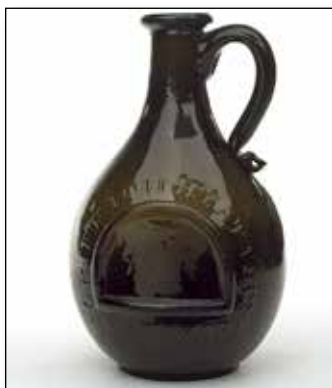
Est.: \$250 - \$400 • Min. bid: \$130



Lot 149

Early Redware Pottery Flask, America, 1830 – 1850. Dark brown 'Albany slip' glaze to approximately an inch above the base, flattened ovoid form, small ring collar, ht. 6 ¾", near mint; (some expected light scratches and minor usage wear, a few 1/8", paper-thin, loss of glaze spots on lip, otherwise overall excellent condition). A very attractive, early redware flask. Provenance: Fred Swiechowicz collection.

Est.: \$100 - \$200 • Min. bid: \$60



Lot 146

"GRIFFITH HYATT & Co. / BALTIMORE" Applied Handle Whiskey Jug, probably Baltimore Glass Works, Baltimore, MD, 1850 - 1860. Medium-to-deep olive with an amber tone, applied handle crimped and curled at lower attachment, applied ring-type collar – blowpipe pontil scar, ht. 7 1/8"; (some fine exterior wear around the mid-body, otherwise perfect). An excellent example, absolutely no issues with the collar or handle attachment, and in a rare and desirable color for this mold.

Est.: \$700 - \$900 • Min. bid: \$350



Lot 150

Lot of (2), Early Pottery Flasks, 1830 – 1860. 1st Ex: Dark brown glaze with an offhand decoration formed by squiggly brush strokes, reverse has five 'fingertype' vertical marks in glaze, flattened elliptical form, small rounded collar, ht. 5 ½". 2nd Ex: Grayish tan glaze, flattened ovoid form, small ring collar, ht. 7 ½", both are virtually perfect. The first example is a very interesting piece, scarce form with an unusual free-form, or offhand decoration. Provenance: Fred Swiechowicz collection.

Est.: \$200 - \$400 • Min. bid: \$100



Lot 147

"FOREST / LAWN / J.V.H" Whiskey Bottle, America, 1850 – 1860. Yellowish olive, almost a yellowish mossy-green coloration, compressed bulbous body, large applied sloping collar – iron pontil scar, ht. 7 ½"; (just a little pinprick speck of roughness on the edge of the collar, and a small potstone in the body on the reverse with a couple of minuscule, barely visible without a loop, tiny cooling radiations, otherwise perfect). Strong embossing, excellent character. Bruce Purdy collection.

Est.: \$200 - \$400 • Min. bid: \$100



Lot 151

Lot of (2), LION RAMPANT (within shield) – CLUSTER OF GRAPES Pictorial Flasks, Norway, 1850 – 1870. Cobalt blue and bright sapphire, both are ovoid form with fine ribbing, sheared mouth – blowpipe pontil scarred bases, ht. 5 5/8" and 6 3/8" respectively, both are perfect. See VdB, plate 306. Beautiful colors, fantastic condition. Per Van den Bossche, these flasks were very popular during the mid-1800s, and were called a hunting flask, a pocket flask, or a lion flask.

Est.: \$200 - \$400 • Min. bid: \$100



Lot 148

"OLD / L&T / KENTUCKY" (within molded concentric rings) Whiskey Bottle, 1870 – 1880. Bright yellowish honey coloration, flattened chestnut form, 'lady's leg' neck, applied collar with flat band – smooth base, ht. 8 3/8"; (a touch of minor light wear, and some spotty interior haziness in the back label panel, otherwise excellent). A very scarce whiskey, attractive light color with some nice yellow tones along the sides. Provenance: John Wilson collection.

Est.: \$175 - \$350 • Min. bid: \$90



Lot 152

"VANDERVEER'S / MEDICATED GIN – OR REAL – SCHIEDAM / SCHNAPPS", America, 1845 – 1860. Clear medium olive below the shoulders shading to a deep olive towards the base, tapered gin form, applied sloping collar – sand type pontil scar, ht. 8 ¾", near mint; (just a touch of minor light wear, and a 3/8" flake with a partially open bubble at edge of base on one of the side panels, otherwise perfect). A pretty example with crude bubbly glass. Scarce large size, rare with the pontil scarred base.

Est.: \$400 - \$600 • Min. bid: \$200



Lot 153

“**LEDIARD’S – KNICKERBOCKER – SCHIEDAM / SCHNAPPS**”, 1870 – 1880. Bright aquamarine, square with beveled corners, applied sloping collar with bevel – smooth base, ht. 9 5/8”; (professionally cleaned to original luster; the back label panel has some etching or matte-type finish, and just a bit of very faint dullness or matte finish, not terribly noticeable, is on the “Knickerbocker” panel, otherwise bright, clean and near mint). A very rare schnapps!

Est.: \$200 - \$400 • Min. bid: \$100



Lot 157

“**NEW ENG. GLASS BOTTLE CO**” (on base), **Black Glass Bottle**, New England Glass Bottle Company, Cambridge, MA, 1827 - 1845. Dense ‘old amber’, squatly porter-type cylinder, 3-piece mold, applied sloping collar with bevel – sand type pontil scar, ht. 8 1/4”, near mint; (slight trace of minor light wear, otherwise perfect). MW, plate 45, #8; KW, Fig. 147. Note; the embossing is not easy to read, as is typically the case with this mold. A great example that does not appear to have been dug.

Est.: \$400 - \$600 • Min. bid: \$200



Lot 154

“**DUNBAR & Co’S – WORMWOOD / CORDIAL – BOSTON**”, 1860 – 1870. Rich, deep bluish aquamarine, almost a clear bright blue green coloration, square with beveled corners, applied sloping collar – smooth base, ht. 9 5/8”, near mint; (professionally cleaned to original luster with just a bit of minor wear remaining along a couple of the panel edges; a few small 1/8” open surface bubbles, otherwise excellent). Scarce. A bright, clean, attractive example.

Est.: \$200 - \$400 • Min. bid: \$100



Lot 158

“**CALLAHAN’S / OLD CABIN / WHISKEY** (on both front and back panels) – **PATENTED / 1865 / PITTSBURGH PA** (on both side panels), 1865 – 1870. Medium-to-deep amber, rectangular cabin form with rounded shoulders, applied sloping collar – smooth base, ht. 8 7/8”; (the bottle may have been lightly cleaned, but certainly presents as virtually attic mint). An extremely rare and desirable figural cabin whiskey, good mold impression, beautiful condition.

Est.: \$8,000 - \$12,000 • Min. bid: \$4,000



Lot 155

“**CHARLES’ – LONDON – CORDIAL GIN**”, 1850 – 1860. Clear, medium yellowish olive with a slight amber tone, shading to a deep yellowish olive towards the base, square with beveled corners, applied sloping collar – sand type pontil scar, ht. 7 3/4”, attic mint. A great example. Many of these have been dug and cleaned. This is an ‘attic-type’ bottle, likely one of the earlier examples, and with good strong embossing. Provenance: Fred Swiechowicz collection.

Est.: \$400 - \$600 • Min. bid: \$200



Lot 159

“**BININGER’S / TRAVELERS / GUIDE / A.M. BININGER & CO / No 19 BROAD ST N.Y.**” **Pocket Flask**, probably 1861 – 1863. Golden amber shading to a light honey coloration along the sides, flattened teardrop form, applied round collar with bevel – smooth base, ht. 6 5/8”; (a little light exterior wear, a little more so on the reverse where it rested on it’s back, and some light interior content residue, likely washable, otherwise near mint). GXV-30; BPK-35. Scarce.

Est.: \$250 - \$450 • Min. bid: \$130



Lot 156

“**TURKISH WINE – GOODWIN & EDGERLY – NEW YORK.**”, 1860 – 1870. Bright yellowish olive amber, square with beveled corners, applied sloping collar with bevel – smooth base, ht. 10”; (some patchy light exterior dullness, not terribly distracting, mentioned for completeness, and a little faint interior residue in the shoulders, otherwise very near mint). An extremely rare American gin or spirits-type bottle, believed to be one of only four known examples.

Est.: \$800 - \$1,200 • Min. bid: \$400



Lot 160

“**BININGER’S / CLOCKFACE / “REGULATOR” – “19 BROAD ST – NEW YORK”** **Figural Clock Whiskey**, 1861 – 1863. Very deep ‘old amber’, almost a deep chocolate coloration, crudely applied double ring collar – blowpipe pontil scar, ht. 5 3/4”, perfect. GXIII-87; BPK-38. A rare color for this mold, the deepest that we can recall seeing. In addition, excellent character, and with a crisp strong impression. A great early Bininger ‘timepiece’.

Est.: \$800 - \$1,200 • Min. bid: \$400



Lot 161

"DISTILLED IN 1848. / OLD KENTUCKY BOURBON / 1849 RESERVE / A.M. BININGER & Co. 19 BROAD ST. N.Y.", probably 1861 – 1863. Golden amber, barrel form, applied double ring collar – blowpipe pontil scarred base, ht. 8 1/8"; (a small spot with a couple of minor scratches on the center panel, otherwise attic mint). BPK-40. A nice example of this early pontiled barrel, and as noted in the book, the 19 Broad St. address is much harder to find on the smaller barrels!

Est.: \$250 - \$400 • Min. bid: \$130



Lot 165

"KEYSTONE / BITTERS", American, 1875 – 1885. Golden amber, barrel form, applied sloping collar – smooth base, ht. 10", virtually perfect; (only the slightest trace of faint wear including a 1/8" paper-thin open bubble on one of the rings on the reverse, otherwise pristine). R/H #K36. A very scarce barrel from Cleveland, Ohio, especially in this fine condition. Note; this example is also a little lighter than most, as they are typically found in deeper shades of amber.

Est.: \$400 - \$600 • Min. bid: \$200



Lot 162

"OLD SACHEM / BITTERS / AND / WIGWAM TONIC", 1860 – 1875. Bright, light golden, shading to a honey coloration through the mid-section, barrel form, applied square collar – smooth base, ht. 9 1/8", attic mint. R/H #O46. A terrific example of this bottle collecting classic – attractive color, strong crisp embossing, almost no wear, fantastic condition.

Est.: \$600 - \$900 • Min. bid: \$300



Lot 166

"SIMON'S CENTENNIAL BITTERS - TRADE MARK", 1876 - 1880. Aquamarine, figural bust of George Washington, applied double ring collar - smooth base, ht. 9 3/4", near perfect; (a small potstone in the side of the bottle has a couple of tiny, minuscule, 1/32" radiations, barely visible without a loop, otherwise attic mint). R/H #S110. Scarce. A very historical figural biters patented December 14, 1875, blown to commemorate the nation's Centennial. Provenance: Gary and Betty Beatty collection.

Est.: \$400 - \$600 • Min. bid: \$200



Lot 163

"GREELEY'S BOURBON / BITTERS", 1860 – 1875. Clear, light-to-medium ginger ale coloration in the upper half, shading to a rich, deep ginger ale near the base and along one side, barrel form, applied square collar – smooth base, ht. 9", attic mint! R/H #G101. This is not your run-of-mill Greeley's. A great example, nice character, beautiful light 'see-through' color – lighter in tone than most, almost no wear, virtually pristine condition.

Est.: \$600 - \$900 • Min. bid: \$300



Lot 167

"BROWN'S / CELEBRATED / INDIAN HERB BITTERS - PATENTED / FEB 11. / 1868", 1868 - 1880. Beautiful bright golden amber with some lighter yellowish-honey tones through the arms and lower dress, sheared and inward rolled lip – smooth base, ht. 12 1/4"; (a bit of minor light wear on the reverse, otherwise attic mint). R/H #B226. A very pretty example, excellent condition. One of the great classics in figural biters.

Est.: \$700 - \$900 • Min. bid: \$350



Lot 164

"GREELEY'S - BOURBON WHISKEY / BITTERS. - GREELEY'S", 1860 – 1875. Medium-to-deep coppery apricot coloration with some strong pinkish tones, depending on the lighting, barrel form, applied square collar – smooth base, ht. 9 1/4", attic mint! R/H #G102. Scarce 'vertical Greeley's' mold, beautiful color and shading, nicely whittled, and fantastic condition with a perfect square collar.

Est.: \$400 - \$600 • Min. bid: \$200



Lot 168

"NATIONAL / BITTERS" – "PATENT / 1867" (on base), 1867 – 1875. Golden amber in the shoulders shading to a rich medium amber in the lower half, figural ear of corn, applied short tapered collar with ring – smooth base, ht. 12 1/8", perfect. R/H #N8. A nice example, and one of the all-time classics in figural biters. Provenance: Fred Swiechowicz collection.

Est.: \$300 - \$500 • Min. bid: \$150



Lot 169

“THE / FISH BITTERS – W.H. WARE / PATENTED 1866”, 1866 – 1875. Medium amber in the head, shading to a deep amber through the lower half, figural fish, applied ring collar – smooth base, ht. 11 3/8”, virtually attic mint; (only the slightest trace of very light wear, otherwise perfect). R/H #F45. A very nice example, good strength of embossing which is oftentimes weak, excellent condition! Another great figural bitters classic.

Est.: \$300 - \$500 • Min. bid: \$150



Lot 173

“DRAKES / PLANTATION / BITTERS – PATENTED / 1869.”, 1869 – 1880. Beautiful, bright honey yellow coloration, pure yellow through the roof panels, cabin form with 5-logs above the label panel, applied sloping collar – smooth base, ht. 9 7/8”, virtually mint; (a tiny little pinhead bit of roughness on the edge of the lip, otherwise pristine perfect). R/H #D109. A beautiful example of a 5-log Drake’s in a gorgeous, eye-appealing color, outstanding condition.

Est.: \$700 - \$900 • Min. bid: \$350



Lot 170

“TRAVELLER’S” – (Bearded Man with Coat and Walking Stick) – “BITTERS” – “1834 / 1870”, 1870 – 1875. Bright, light yellowish honey coloration, rectangular with rounded corners, applied sloping collar – smooth base, ht. 10 3/8”; (a tiny little pinhead flake on the back edge of the lip, barely noticeable, otherwise sparkling attic mint). R/H #T54. A beautiful example, nice and light in color, fantastic condition. A top historical and pictorial bitters.

Est.: \$8,000 - \$12,000 • Min. bid: \$4,000



Lot 174

Drake’s Plantation Bitters Wooden Shipping Box, 1870 – 1880. Rectangular wooden box with large black stenciled lettering as follows, “Drake’s / Plantation / Bitters / Depot / New York” (on each box end) and, “S T 1860 X” (on both sides), ht. 11 1/2”; length 17 3/4”, width 12 3/4”; (the

wood has darkened a bit from age and some of the stenciling is a little faded, but still mostly legible). Very rare. We sold another example way back in Auction #4, May, 2010. A great advertising piece for the bitters collector.

Est.: \$200 - \$400 • Min. bid: \$100



Lot 171

Lot 171 “S T / DRAKE’S / 1860 / PLANTATION / X / BITTERS – PATENTED / 1862”, 1862 – 1880. Clear, medium apricot amber in the upper half, shading to a rich apricot with some reddish tones through the lower half of the label panel, cabin form with 6-logs above the label panel, applied sloping collar – smooth base, ht. 10”, perfect. R/H #D105. Nice color, good strong embossing, excellent condition!

Est.: \$300 - \$500 • Min. bid: \$150



Lot 175

“KELLY’S / OLD CABIN / BITTERS – PATENTED / 1863 – KELLY’S / OLD CABIN / BITTERS – PATENTED / 1863”, 1863 – 1870. Rich, medium-to-deep amber, cabin form, applied sloping collar – smooth base, ht. 9 3/8”; (two potstones, both well hidden, one next to a door, the other in the base, with minor, 1/8” or less, radiations, and a very hard-to-see, 1/4” bruise at edge of base, otherwise pristine perfect). R/H #K21. A very attractive example. Gary and Betty Beatty collection.

Est.: \$800 - \$1,200 • Min. bid: \$400



Lot 172

“S T / DRAKE’S / 1860 / PLANTATION / X / BITTERS – PATENTED / 1862”, 1862 – 1880. Medium-to-deep pinkish raspberry-puce, cabin form with 6-logs above the label panel, applied sloping collar – smooth base, ht. 10”, virtually attic mint; (note; there are two 1/8” flakes on the neck extending from beneath the applied collar, almost certainly in-manufacture, mentioned for completeness). R/H #D106. A rich, attractive color with some beautiful pinkish tones through the corners.

Est.: \$800 - \$1,200 • Min. bid: \$400



Lot 176

“STEINFELD’S / FRENCH COGNAC / BITTERS – FIRST PRIZE / PARIS / EXHIBITION” / (motif of Man’s Head above Coat of Arm) / “1867” / (Clusters of Grapes and Vines along beveled corners), 1867 – 1875. Amber, semi-cabin, applied collar with ring – smooth base, ht. 9 5/8”; (cleaned with a little scattered ground wear and some faint dullness remaining; a 3/4” chip from one of the base corners, and a 2” sliver chip along one base edge). R/H #S186. Gary and Betty Beatty collection.

Est.: \$2,200 - \$3,600 • Min. bid: \$1,200



Lot 177

"CATAWBA / WINE" – (CLUSTER OF GRAPES) – "BITTERS", probably 1858 – 1863. Beautiful, rich emerald coloration, applied sloping collar with bevel – iron pontil scar, ht. 9 1/2", near mint; (a bit of very light interior residue or faint haziness, barely noticeable in two of the panels, and some in-manufacture annealing lines in the lip approx. 1/4" to 3/8" each, mentioned for completeness, otherwise virtually perfect). R/H #C85. A fantastic example, great color and crudity!

Est.: \$6,000 - \$9,000 • Min. bid: \$3,000



Lot 178

"HOME BITTERS – Jas A JACKSON & Co / PROPRIETORS – SAINT LOUIS Mo", probably 1870 – 1874. Brilliant, medium olive yellow, square with beveled corners, applied sloping collar – smooth base, ht. 9"; (lightly cleaned to original luster and near mint condition, and just a trace of minor wear on a couple of the panel edges, otherwise perfect). R/H #H157. A common mold in an extremely rare, unlisted color! Spectacular, eye-appealing color, excellent clarity and condition.

Est.: \$600 - \$900 • Min. bid: \$300



Lot 179

"DR. GILBERT'S / ROCK AND RYE / STOMACH BITTERS", 1875 – 1885. Beautiful, rich teal blue, square, beveled corners, tooled sloping collar – smooth base, ht. 9 1/4", near perfect; (a paper-thin 1/4" open bubble on one of the beveled corners, and a tiny pinhead open bubble on the reverse, otherwise pristine). R/H #G40. Extremely rare. The only known example in this larger size. Provenance: Gary and Betty Beatty collection; Ex. George Austin, Carlyn Ring, Howard Crowe collections.

Est.: \$2,500 - \$4,500 • Min. bid: \$1,300



Lot 180

RUSS' / ST. DOMINGO / BITTERS – NEW YORK", 1875 – 1885. Rich, brilliant yellow green with a slight olive tone, almost a lime green, square with beveled corners, applied sloping collar – smooth base, ht. 10", virtually perfect; (an open interior bubble in the shoulder, otherwise pristine). R/H #R125. An extremely rare, and possibly unique, color for this mold. Provenance: Gary and Betty Beatty collection; Ex. Carlyn Ring, Elvin Moody, Chris Batdorff, Howard Crowe collections.

st.: \$4,000 - \$6,000 • Min. bid: \$2,000



Lot 181

"CANTEN BITTERS / FOR ALL DISORDERS OF THE STOMACH" – (Reverse same) – "JOHN HART & CO / LANCASTER PA", 1875 – 1885. Beautiful teal green with an emerald tone, square with beveled corners, applied sloping collar with bevel, ht. 9 7/8", virtually attic mint; (a 1/8" scratch on the collar, very slight 'bloom', barely noticeable, on a couple of the panels, otherwise perfect). R/H #C34. Rare. Fantastic color, condition, and eye-appeal! Gary and Betty Beatty collection.

Est.: \$2,000 - \$4,000 • Min. bid: \$1,000



Lot 182

"SOLOMONS' / STRENGTHENING & INVIGORATING BITTERS – SAVANNAH / GEORGIA.", 1875 – 1885. Rich, vivid cobalt blue, square with beveled corners, applied sloping collar – smooth base, ht. 9 3/4"; (professionally cleaned with some scattered light scratches and a little wear remaining, primarily on one of the side panels and near the base; some minor etching on the interior of the shoulders and in one of the beveled corners). R/H #S140. Provenance: Gary and Betty Beatty collection.

Est.: \$800 - \$1,400 • Min. bid: \$500



Lot 183

"JOHN MOFFAT – PHOENIX / BITTERS – PRICE 1 DOLLAR – NEW YORK", 1840 – 1850. Colorless, rectangular with beveled corners, sheared and outward folded mouth – blowpipe pontil scar, ht. 5 1/2", virtually perfect; (just a slight trace of minor light wear). R/H #M113. Extremely rare! The M113 mold is unlisted in colorless. A great example with strong embossing, fantastic condition, and in a 'color' that very few Phoenix Bitters collectors will have.

Est.: \$1,600 - \$2,800 • Min. bid: \$800



Lot 184

"JOHN MOFFAT – PHOENIX / BITTERS – PRICE 1 DOLLAR – NEW YORK", 1840 – 1850. Rich, deep tobacco amber, rectangular with beveled corners, sheared and outward folded mouth – blowpipe pontil scar, ht. 5 3/8", virtually perfect; (just the slightest trace of faint wear including a tiny, paper-thin, open surface bubble, otherwise sparkling attic mint). R/H #M113. Another great example, extremely rare in amber, this one having outstanding character being filled with tiny seed bubbles.

Est.: \$2,000 - \$4,000 • Min. bid: \$1,000



Lot 185

“JOHN / MOFFATT – NEW_YORK – PHOENIX / BITTERS – PRICE \$2,00”, a New England glasshouse, 1840 – 1850. Bright, light-to-medium yellowish olive with a slight amber tone, rectangular with beveled corners, applied short tapered collar – sand type pontil scar, ht. 7”, virtually attic mint; (just a trace of faint light wear, otherwise pristine perfect). R/H #M108. An outstanding ‘top shelf’ example of this very rare, large ‘\$2,00 size’ Phoenix Bitters. Ex. James Chebalo collection.

Est.: \$3,000 - \$5,000 • Min. bid: \$1,500



Lot 186

“MORTIMORE / BITTER / CORDIAL / AND / BLOOD / PURIFIER / ST LOUIS / MO”, 1850 - 1860. Brilliant aquamarine, rectangular with concave corners, applied sloping collar - blow-pipe pontil scar, ht. 6 7/8”, virtually perfect; (some in-manufacture crazing lines in the neck mentioned for completeness). R/H #M138.5. An exceedingly rare pontiled bitters with outstanding character and eye-appeal. Bright, clean, sparkling, heavily embossed, with crude wavy glass. Ex. Patterson collection.

Est.: \$3,000 - \$5,000 • Min. bid: \$1,500



Lot 187

“F. BROWN BOSTON / SARSAPARILLA / & TOMATO / BITTERS.”, America, 1850 - 1860. Aquamarine, oval, applied sloping collar with bevel - blowpipe pontil scar, ht. 9 1/4”, sparkling attic mint. R/H #S36. A fantastic example having strong, crisp embossing, nicely whittled, outstanding condition. Certainly, a popular early pontiled medicine that appeals to both the bitters, as well as the sarsaparilla collector.

Est.: \$175 - \$350 • Min. bid: \$90



Lot 188

“DR LANGLEY'S / ROOT & HERB / BITTERS / 99 UNION St / BOSTON”, 1865 – 1875. Brilliant yellow green with an olive tone, cylindrical, large applied square collar – smooth base, ht. 8 3/8”; (some very light, minor scratches to the right of the embossing, and a little lip edge roughness on the side of the collar that you can feel, but is not easy to see, otherwise perfect). R/H #L21. An exceedingly rare, gorgeous color, ‘eye-candy’ for the collector! Provenance: Fred Swiechowicz collection

Est.: \$800 - \$1,200 • Min. bid: \$400



Lot 189

“C. GAUTIER'S / NATIVE / WINE BITTERS” (on molded seal), 1875 – 1885. Rich honey amber with a slight olive tone, cylindrical, 3-pc. mold, ‘flower-pot’ form, applied sloping collar with bevel – **“PATENTED 1867 / WASHINGTON D.C.”** (on smooth base), ht. 9 3/4”; (a minor 3/16” chip on the inside edge of the lip, and the bottle appears to have been lightly cleaned but certainly presents as very near mint). R/H #G8. Noted by Ring / Ham as “Rare”, an unusual form for a bitters, nicely whittled, attractive color.

Est.: \$400 - \$600 • Min. bid: \$200



Lot 190

“LEDIARDS – MORNING CALL”, 1859 – 1864. Medium olive shading to a deep olive near the base, cylindrical, applied sloping collar – sand type pontil scar, ht. 9 1/2”, near mint; (just a bit of scattered minor wear and a couple of small spots of light stain; a tiny 1/8” iridescent flake on the side of the neck near the shoulder, otherwise excellent). R/H #61.7; Odell, p.222. A nice, bubbly, crude example, very rare with the pontil scarred base. Provenance: Gary Enters collection; Ex. Sam Greer collection.

Est.: \$800 - \$1,200 • Min. bid: \$400



Lot 191

“HERZBERG'S / BITTERS”, probably 1866 – 1875. Beautiful golden honey, almost a yellow coloration below the shoulders, cylindrical, applied sloping collar with bevel – smooth base, ht. 11 3/8”; (a touch of minor light wear including a 1/8” flake on the inside edge of the lip, and some very faint interior milkiness that may wash out, otherwise excellent). R/H #H104.7. Very rare! Per Peachridge Glass, Herzberg Brothers were NYC wholesale and retail liquor dealers listed as selling bitters in 1866.

Est.: \$400 - \$600 • Min. bid: \$200



Lot 192

“NATIONAL STOMACH BITTERS – KURTZ MEDICAL CO / PITTSBURGH, PA.”, probably a Pittsburgh district glasshouse, 1885 – 1895. Bright golden amber with some nice light honey tones along the edges, square with beveled corners, tooled sloping collar – smooth base, ht. 9”; (lightly cleaned to original luster and a couple of minor onion-skin-thin open bubbles, otherwise perfect). R/H #N11. Extremely rare. Believed to be only the 2nd, or possibly 3rd example, offered in more than 10 years.

Est.: \$400 - \$600 • Min. bid: \$200



Lot 193

“JONATHAN HEISLER / SCHUYLKILL HAVEN / PA / PRICE \$1.00 – TONIC OR BITTERS – PATENTED MARCH 3RD 1868”, 1868 – 1875. Aquamarine, rectangular with beveled corners, applied square collar – smooth base, ht. 7 7/8”; (professionally cleaned to original luster with just a little faint interior haziness in the shoulders remaining; a bit of minor wear near the bottom panel edges and a small pot-stone with a couple of tiny, 1/16” legs). R/H Supplement #H77.7, Very rare!

Est.: \$300 - \$600 • Min. bid: \$150



Lot 194

“A.R. THAYER'S – IRON BITTERS / THE GREAT TONIC – LANSING MICH.”, 1875 – 1885. Aquamarine, rectangular with beveled corners, applied square collar – smooth base, ht. 7”; (a touch of light wear including a 3/16” open bubble on a beveled corner near the base, and some very light dullness, or haziness, not terribly distracting, mentioned for completeness, otherwise excellent). R/H #T15. Another extremely rare bitters that is seldom offered for sale.

Est.: \$400 - \$600 • Min. bid: \$200



Lot 195

“GERMAN HOP / BITTERS – DR. C.D. WARNER / READING, MICH. – WARNER – 1880 – WARNER – 1880”, probably 1880 – 1885. Honey amber with some lighter yellow tones through the corners, square semi-cabin form with rounded shoulders, applied sloping collar with ring – smooth base, ht. 9 3/4”, attic mint; (note; the embossing is a little weak, which is often the case with this mold). R/H #G25. This is the rare, larger variant from Reading, Mich. Beautiful example, fantastic condition.

Est.: \$400 - \$600 • Min. bid: \$200



Lot 196

“DR. F.F. W. HOGGUERS / BITTERS / DETROIT MICH”, probably 1869 – 1872. Bright amber with a slight orange tone, applied sloping collar – smooth base, ht. 9 1/4”, virtually perfect; (tiny 1/4” spot of roughness on one of the back beveled edges, otherwise attic mint). R/H #H141. Rated as “Extremely rare”, and deservedly so. This is the first, or possibly only the second example to be offered at auction in more than 25 years! Provenance: Ex. Chris Batdorff collection.

Est.: \$500 - \$800 • Min. bid: \$250



Lot 197

“WEBB'S IMPROVED / STOMACH BITTERS. – C.E. WEBB & BRO_ / JACKSON. MICH_”, 1870 – 1880. Medium-to-deep amber, square with beveled corners, applied sloping collar – smooth base, ht. 9”, near perfect; (a couple of minor pinhead spots of roughness on the inside edge of the lip, and some light interior residue, likely washable). R/H #W60. A very scarce-to-rare Michigan bitters, excellent condition, and with great provenance! Ex. Carlyn Ring collection.

Est.: \$100 - \$200 • Min. bid: \$50



Lot 198

“THE DR. H.F. WEIS MEDICINE CO. / GUARD ON THE RHINE / STOMACH BITTERS / DAYTON, OHIO”, Whitall, Tatum & Co, Millville, NJ, 1890 - 1900. Golden amber, square with beveled corners, tooled prescription-type collar – “W.T. CO. / C / U.S.A.” (on smooth base), ht. 9”, perfect! R/H #W69.5. A beautiful example, noted by Ring / Ham as “Extremely rare” and deservedly so. This is the first example, or possibly one of only two, to be offered at auction in more than 25 years.

Est.: \$300 - \$500 • Min. bid: \$150



Lot 199

“DR GEO. W. BICKNELL'S / TONIC / STOMACH BITTERS”, probably 1870 – 1875. Golden amber with a slight orange tone in the neck and base, square with beveled corners, applied sloping collar – smooth base, ht. 9 1/2”; (professionally cleaned on the exterior; some light milky haze on the interior of the shoulder and side panel, and a ‘fisheye’ type bruise near a beveled corner above the base with a few 1/4” ‘legs’). R/H #B94. An extremely rare bitters from Kendallville, Ind. John Wilson collection.

Est.: \$200 - \$400 • Min. bid: \$100



Lot 200

“ARABIAN BITTERS – LAWRENCE & WEICHELBAUM / SAVANNAH GA”, probably 1874 – 1875. Bright medium amber, square with beveled corners, applied sloping collar – smooth base, ht. 9 3/4”, attic mint! R/H #A80. A great southern bitters noted as “Rare” in Ring-Ham, and deservedly so, especially in this fine condition. Per Peachridge Glass, April 2013 “The Savannah Arabian Bitters”, Lawrence & Weichselbaum were only in business for two years.

Est.: \$400 - \$600 • Min. bid: \$200



Lot 201

“DR TOWNSENDS - SARSAPARILLA - ALBANY / N. Y.”, probably a NY State glasshouse, 1846 - 1855. Rich, yellowish tobacco amber shading to a dense tobacco color near the base, rectangular with beveled corners, applied sloping collar - domed base with sand type pontil scar, ht. 9 ½”; (just a slight trace of minor wear, otherwise perfect). Rare color, bold embossing, and outstanding character with crude, seedy, glass. A top example! Provenance: Ex. Joe Widman collection

Est.: \$1,500 - \$2,500 • Min. bid: \$800



Lot 205

“DEXTER'S / SYRUP.”, probably Albany Glass Works, 1847 - 1855. Rich, medium-to-deep bluish green, square with beveled corners, applied sloping collar - iron pontil scar, ht. 9 3/8”, near perfect; (a little light wear on one of the side panels). Per Odell, possibly blown for C. (Chauncey) Dexter, State St, Albany. Very bold embossing, fantastic character having crude, whittled, wavy glass. Extremely rare, only a few examples known, this being the only virtually perfect one. Ex. Jerry Phelps collection.

Est.: \$4,000 - \$6,000 • Min. bid: \$2,000



Lot 202

“DR TOWNSEND'S - SARSAPARILLA - ALBANY / N.Y. No1”, probably a New England glasshouse, 1845 - 1855. Yellowish olive amber, square with beveled corners, applied sloping collar - sand type pontil scar, ht. 9 ¼”, attic mint! Another top example, outstanding condition - virtually no wear, bold embossing, excellent character. Scarce “No1” molds this nice don't come around.

Est.: \$800 - \$1,200 • Min. bid: \$400



Lot 206

“LE DOYEN'S / DISINFECTING FLUID - BY / POULIN, ROGERS & KEENEY / N.Y. - PATENTED , OCT. 8th / 1844”, 1845 - 1855. Ice blue coloration, square with beveled corners, applied sloping collar - iron pontil scar, ht. 9 3/8”; (professionally cleaned, some ground wear and etching remain - primarily near the base, and some faint interior haziness in the beveled corners). Knapp, p.280. Extremely rare, and even more so in this ice blue coloration. Provenance: Gary Enters collection.

Est.: \$1,200 - \$1,800 • Min. bid: \$600



Lot 203

“DR TOWNSEND'S - SARSAPARILLA - ALBANY / N.Y.”, 1845 - 1860. Rich, medium-to-deep yellowish green with an emerald tone, square with beveled corners, domed shoulders, applied sloping collar - heavy iron pontil scar, ht. 9 3/8”, near perfect; (the bottle may have been very lightly cleaned, but certainly presents as virtually pristine condition). A great example, rich color, excellent clarity, fantastic character having very crude, wavy glass. Provenance: Fred Swiechowicz collection.

Est.: \$500 - \$800 • Min. bid: \$250



Lot 207

“DR WYNKOOP'S / KATHARISMIC HONDURAS / SARSAPARILLA - NEW-YORK”, 1850 - 1860. Clear, bright cobalt, almost an electric blue, rectangular with beveled corners, applied sloping collar - blowpipe pontil scar, ht. 10 1/8”; (lightly cleaned to original luster and virtually perfect condition). A particularly nice, outstanding example. Beautiful ‘see-through’ color, excellent clarity, character and condition. A top pontiled medicine, and certainly rare in this fine condition. Ex. David Ellis collection.

Est.: \$8,000 - \$12,000 • Min. bid: \$4,000



Lot 204

“DR. TOWNSEND'S - SARSAPARILLA - ALBANY / N Y”, 1845 - 1860. Clear medium emerald green, square with beveled corners, applied sloping collar - heavy red iron pontil scar, ht. 9 ½”, near mint; (a few light scratches and some minor exterior wear; a bit of very faint haziness in the shoulder mentioned for completeness). A very attractive example, crude glass, good color, great pontil. Note; this is the variant with the more ‘squared’ shoulders and “NY” centered under Albany.

Est.: \$500 - \$800 • Min. bid: \$250



Lot 208

“BOYDEN'S / ALTERATIVE”, 1850 - 1860. Rich, deep emerald coloration, cylindrical, applied sloping collar with bevel - heavy iron pontil scar, ht. 9 ¼”; (a little minor exterior wear and a bit of very slight, patchy dullness, not terribly noticeable or distracting; some washable interior content residue, otherwise excellent). Odell, p.43. A very rare colored pontiled medicine believed to be from Boston. Only a small handful extant - in any condition. Provenance: Fred Swiechowicz collection.

Est.: \$1,500 - \$2,500 • Min. bid: \$800



Lot 209

"I. NEWTON'S - PANACEA - PURIFIER - OF THE - BLOOD - NORWICH, VT.", New England, probably an early Stoddard, NH glasshouse, 1842 - 1850. Bright, light, yellowish 'old amber' with a slight olive tone, cylindrical with six indented body panels, applied sloping collar with bevel - blowpipe pontil scar, ht. 7 3/8"; (a bit of light washable content residue near the base, otherwise perfect). Very rare. A beautiful, whittled, bubbly example lighter in tone than most, outstanding condition!

Est.: \$6,000 - \$9,000 • Min. bid: \$3,000



Lot 213

"I. COVERT'S - BALM OF LIFE", Mt. Vernon Glass Works, Vernon, NY, probably 1841 - 1846. Medium-to-deep olive, rectangular, beveled corners, applied sloping collar - blowpipe pontil scar, ht. 5 3/4"; (professionally cleaned to original luster with just a touch of minor light wear remaining, some in-manufacture annealing lines and a bit of roughness on the inside edge of the lip). N #142; Odell, p.92. The proprietor, Rev. Isaac Covert, was from Auburn, NY. Gary Enters collection.

Est.: \$1,000 - \$1,500 • Min. bid: \$500



Lot 210

"HOWARDS / VEGETABLE - CANCER AND / CANKER. SYRUP", New England, a Stoddard, NH glasshouse, 1855 - 1865. Bright yellowish 'old amber', rectangular with wide beveled corners, applied square collar - blowpipe pontil scar, ht. 7 3/8", virtually mint; (only the slightest trace of very light wear, otherwise pristine). A top example. Very few are pontiled, and in addition, this is one of the lightest, and prettiest, examples that we can recall seeing. Fred Swiechowicz collection.

Est.: \$6,000 - \$9,000 • Min. bid: \$3,000



Lot 214

"C. BRINCKERHOFF'S - HEALTH RESTORATIVE - PRICE \$1.00 - NEW YORK", probably an early Stoddard, NH glasshouse, 1845 - 1851. Bright yellowish olive below the shoulders, shading to a deep olive near the base, rectangular with beveled corners, applied sloping collar - light sand type pontil scar, ht. 7 1/4"; (lightly cleaned to original luster; just a bit of minor wear and a few light scratches, primarily near the base and on one of the beveled corners, otherwise near mint).

Est.: \$800 - \$1,200 • Min. bid: \$400



Lot 211

"TOMS. - RUSSIAN - LINIMENT", Mt. Vernon Glass Works, Vernon, NY, or possibly Saratoga Mountain Glass Works, Mt. Pleasant, 1845 - 1855. Clear medium olive, square with beveled corners, applied sloping collar - blowpipe pontil scar, ht. 4 3/8", perfect; (some light washable interior residue). An exceedingly rare colored pontiled medicine, one of only three extant (without damage), in this color. Provenance: Fred Swiechowicz collection.

Est.: \$4,000 - \$6,000 • Min. bid: \$2,000



Lot 215

"B. STAFFORD'S - CELEBRATED - INDIAN HAIR TONIC" (with 97% complete, original label), New England, probably a Stoddard, NH glasshouse, 1860 - 1873. Medium olive amber, rectangular with beveled corners, applied sloping collar - smooth base, ht. 8 3/8"; (a crack travels from the upper left shoulder of the reverse, down the right side of the label panel, to the base, and along one side edge, otherwise perfect). A very impressive early Indian medicine with outstanding eye-appeal.

Est.: \$800 - \$1,200 • Min. bid: \$400



Lot 212

"Dr H. W. JACKSON / DRUGGIST / VEGETABLE / HOME. SYRUP", probably Coventry Glass Works, Coventry, CT, 1840 - 1849. Medium yellowish olive amber, cylindrical, applied sloping collar - blowpipe pontil scar, ht. 4 7/8", attic mint! Odell, p.195. Very rare. A great example, excellent character, beautifully whittled, fantastic condition.

Est.: \$3,000 - \$5,000 • Min. bid: \$1,500



Lot 216

"LONGLEY'S - PANACEA", a New England or possibly New York State glasshouse, 1848 - 1860. Bright yellowish olive shading to a rich, deep olive near the base, rectangular, beveled corners, applied sloping collar with bevel - smooth base, ht. 5 3/4"; (a little typical minor light wear and some fine high point wear below the shoulders and near the base, primarily on one side only, otherwise near mint). A very nice example that has not been dug, lighter in tone than most, with crisp embossing.

Est.: \$600 - \$900 • Min. bid: \$300

**Lot 217**

"S.S. SEELY & Co - MORRIS / OTSEGO. COUNTY - NEW YORK", probably a New York State glasshouse, possibly Lockport or Lancaster, 1850 - 1860. Light sapphire blue, rectangular with beveled corners, applied sloping collar - blowpipe pontil scar, ht. 5 1/8"; (a tiny, paper-thin, 1/8" flake at one of the base corners, otherwise sparkling mint). An attic-type bottle, beautiful, eye-appealing color, fantastic condition. Extremely rare in aqua, and believed to be unique in this sapphire coloration.

Est.: \$1,200 - \$2,400 • Min. bid: \$600

**Lot 218**

"T. MORRIS PEROT & Co - DRUGGISTS - PHILAD.A", 1854 - 1859. Sapphire blue, rectangular, pyramid form with sides tapering inward from base to shoulders, sheared, tooled, and inward rolled lip - blowpipe pontil scar, ht. 5 1/8", perfect; (note; a 1/4" in-manufacture pontil flake extends to the edge of the narrow base, but does not show on display, mentioned for completeness, and not considered damage). A great example with beautiful color, character, and condition.

Est.: \$1,000 - \$1,500 • Min. bid: \$500

**Lot 219**

"T & M" - "T & M" (on side panels), 1845 - 1855. Bright blue green, 'fat' rectangular form with narrow beveled corners, sheared, tooled, and inward rolled mouth - blowpipe pontil scar, ht. 2 1/2", attic mint! Odell, p.341. A crude little medicine, scarce in aqua, but certainly rare in this bright blue green coloration. In addition, excellent character having beautifully whittled, wavy glass. Per Odell, Alfred Taylor and James Moore sold drugs and medicines at 59 Liberty St, NYC, 1841 - 1857.

Est.: \$250 - \$450 • Min. bid: \$130

**Lot 220**

"FROM THE / LABORATORY. - OF / G.W. MERCHANT / CHEMIST - LOCKPORT / N.Y.", Lockport Glass Works, Lockport, NY, 1845 - 1860. Medium blue green, rectangular with beveled corners, applied sloping collar - blowpipe pontil scar, ht. 5 1/2"; (just a bit of fine lip edge roughness; some very faint interior milkiness in the lower portion that is minor, and a small pinhead flake at edge of base). Nice crude glass and scarce with the blowpipe, or 'open pontil' scarred base.

Est.: \$250 - \$400 • Min. bid: \$130

**Lot 221**

"Dr. ROBERTSONS - FAMILY / MEDICINE - PREPARED - ONLY BY / T.W. DYOTT", Kensington Glass Works, 1809 - 1815. Aquamarine, rectangular with beveled corners, tooled flared mouth - heavy blowpipe pontil scar, ht. 5 1/4", virtually perfect; (faint trace of interior residue). MW, p.80. A rare, historical, pontiled medicine credited as being one of the earliest embossed American medicine bottles. Fantastic condition, crisp embossing - a great example. Ex. Joe Widman collection.

Est.: \$1,800 - \$2,800 • Min. bid: \$900

**Lot 222**

"EDWARDS - PAIN / EXTRACTING - LOTION", probably 1835 - 1845. Aquamarine, rectangular with beveled corners, wide neck, sheared, tooled, thin flanged lip - blowpipe pontil scar, ht. 5 5/8"; (lightly cleaned to original luster and virtually perfect condition). Odell, p.119. A very rare, early, Baltimore pontiled medicine. Only the 2nd example to be offered in more than 25 years, and believed to be the first example at auction in more than 12 years. Provenance: Fred Swiechowicz collection.

Est.: \$400 - \$600 • Min. bid: \$200

**Lot 223**

"JELLY OF / POMEGRANATE / PREPARATE - BY / DR. GORDAK / ONLY", 1835 - 1845. Aqua, rectangular with rounded sides, wide neck with a sheared mouth and crudely applied ring collar - blowpipe pontil scar, ht. 6 5/8", virtually perfect; (just a trace of very light interior residue or faint haze near the shoulders, and minor roughness on the inside edge of lip, likely in-manufacture). A great example, fantastic condition, with crisp, very strong embossing (which is often weak). Gary Enters collection.

Est.: \$300 - \$500 • Min. bid: \$150

**Lot 224**

"WILD CHERRY - SARSAPARILLA / & VEGETABLE - BALSAM - G.C. GOODWIN / BOSTON", 1850 - 1860. Aquamarine, rectangular, sheared, tooled, thin flanged lip - blowpipe pontil scar, ht. 6 3/4"; (lightly cleaned to original luster and near mint condition, and a tiny pinhead bit of roughness on the edge of the thin flanged lip, otherwise perfect). A very rare Boston pontiled medicine, unlisted in Betty Blasi's balsam book. Provenance: Fred Swiechowicz collection.

Est.: \$300 - \$500 • Min. bid: \$150



Lot 225

**"MAGNETIC – AETHER BY – HAL-
STED & Co"** (with original labels), 1840 – 1850. Aquamarine, 9-sided, sheared, tooled, thin flared lip – blowpipe pontil scar, ht. 4 1/8"; (bottle is perfect; 98% complete original label darkened some, primarily in the upper left corner area, otherwise excellent). Odell, p.158; N #273. A rare early pontiled medicine from Rochester, NY, and certainly with one of the choicest labels that we've seen on the bottle.

Est.: \$600 - \$900 • Min. bid: \$300



Lot 229

"DR. A.L. ADAMS – LIVER / BALSAM" (with original contents, cork and seal), a Midwest glasshouse, probably 1850 – 1855. Aquamarine, rectangular with beveled corners, applied short tapered collar – blowpipe pontil scar, ht. 7 1/2", perfect! Odell, p.1, rare! A very attractive pontiled medicine with heavy embossing, crude wavy glass, and a crudely applied collar. Originally discovered in the early 1970s in the attic of an abandoned Indiana gas station previously converted from an old drugstore.

Est.: \$400 - \$600 • Min. bid: \$200



Lot 226

(Label-only), **GALENS RESTORATIVE / ELIXIR. / THIS ELIXIR WILL CURE THE JAUNDICE / IN ITS WORST STAGES**, America, probably 1825 – 1840. Aqua, dip mold, rectangular with wide beveled corners, sheared, tooled, heavy outward rolled mouth – blowpipe pontil scar, ht. 5 1/2"; (the bottle is perfect; the label is darkened a bit from age and has a couple of thin spots along the beveled edges near the top, but mostly legible). Very early and with an unusual short, 'squatty' form.

Est.: \$200 - \$400 • Min. bid: \$100



Lot 230

"J.B. WHEATLEYS / COMPOUND SYRUP / DALLASBURGH. KY." (with partial dried contents, sealing wax around neck & lip, and original wrapper), probably a Midwest glasshouse, possibly Kentucky Glass Works, 1850 – 1860. Aquamarine, cylindrical, applied ring collar with bevel – heavy iron pontil scar, ht. 6", attic mint! Very scarce with original wrapper which reads in part, *The Great Vegetable Remedy for the / cure of / CHILLS & FEVER / AGUE AND FEVER, or / BILIOUS FEVER.*

Est.: \$250 - \$450 • Min. bid: \$130



Lot 227

"AMERICAN – MEDICINAL / OIL – BURKESVILLE KY" (with 75% complete original label, partial contents, remnants of wrapper), 1845 – 1855. Aqua, rectangular with beveled corners, applied sloping collar – blowpipe pontil scar, ht. 6 1/2", attic mint; (label darkened from age but still mostly legible). Odell, p.5. Originally found in the early 70s in the attic of an abandoned Indiana gas station previously converted from an old drugstore. Likely a 'finest possible example' of this very rare medicine.

Est.: \$500 - \$800 • Min. bid: \$250



Lot 231

"DR ROSE'S – PROPHYLACTIC / SYRUP – FOR – CONSUMPTION / BRONCHITIS – ABSCESS,S / & SCROFULA. – PHILAD.A", 1845 – 1855. Aquamarine, cylindrical with 8 indented panels, applied sloping collar – blowpipe pontil scar, ht. 7", virtually perfect; (some minor in-manufacture crazing lines in the neck mentioned for completeness). Extremely rare – believed to be one of only a few known examples. Clean, bright, and sparkling, a great example!

Est.: \$1,200 - \$1,800 • Min. bid: \$600



Lot 228

"JONES' / AMERICAN – CHOLAGOGUE – BARNES & PARK / 304 BROADWAY N.Y." (with remnants of original label, partial dried contents and wax seal), probably 1854 – 1856. Aqua, rectangular with beveled corners, applied double ring collar – blowpipe pontil scar, ht. 6 7/8", perfect. Odell, p.204. A very rare pontiled medicine. Originally discovered in the early 70s in the attic of an abandoned Indiana gas station that had previously been converted from an old drugstore.

Est.: \$500 - \$800 • Min. bid: \$250



Lot 232

"HALL'S – PALINGENESIA – OR / REGENERATOR – BOSTON", 1850 – 1860. Aquamarine, octagonal, applied sloping collar – iron pontil scar, ht. 9", near mint; (a 1/8" flake on the side of the lip, otherwise virtually perfect). Odell, p.157. A large, very impressive, extremely rare pontiled medicine. Believed to be one of only a few, or perhaps a small handful known. And, it may well be the choicest example being an un-dug, 'attic-type' bottle with excellent character. Fred Swiechowicz collection.

Est.: \$1,500 - \$2,500 • Min. bid: \$800



Lot 233

"Dr MYER'S – VEGETABLE EXTRACT / SARSAPARILLA / WILD CHERRY / DANDELION – BUFFALO. N.Y.", 1850 – 1860. Bright aquamarine, rectangular with beveled corners, applied sloping collar – iron pontil scar, ht. 9 3/4", pristine perfect! Odell, p.262; DeG #158. Rare. An absolutely outstanding example, about as nice as you could hope to find. A big, impressive, eye-appealing bottle. Bright, clean, sparkling, with bold embossing and crude wavy glass.

Est.: \$1,500 - \$2,500 • Min. bid: \$800



Lot 237

"DR. OWENS / LONDON HORSE / LINIMENT – CLARKSTON – MICHIGAN", 1847 – 1855. Rich, deep aquamarine, rectangular, applied sloping collar – iron pontil scar, ht. 7 1/2"; (a hole in one of the base corners, approx. 1/4", has been professionally repaired, a well-hidden 1/2" crack extends from it, and a little scattered wear and a bit of patchy faint haziness). An exceeding rare mold, one of only three extant. It is also the deepest in color, and the only example known with an iron pontil.

Est.: \$600 - \$900 • Min. bid: \$300



Lot 234

"VAUGHN'S – VEGETABLE / LITHON-TRIPTIC – MIXTURE", 1850 – 1860. Light aquamarine, square with beveled corners, applied sloping collar – blowpipe pontil scar, ht. 6 1/8", near mint; (an 'attic-type' bottle, the cork is stuck in the lip and there is a little light interior residue or faint haziness, otherwise perfect). Odell, p.357. Note; this is the scarce small size, and extremely rare with the open pontil base (believed to be one of only a few in this size having an open pontil).

Est.: \$500 - \$800 • Min. bid: \$250



Lot 238

"DR DEAN'S / THALGETRON", 1850 – 1860. Aquamarine, rectangular with beveled corners, applied sloping collar – blowpipe pontil scar, ht. 5 3/8", near perfect; (just a slight trace of very light interior milkiness, barely noticeable, and a tiny pinhead flake on the corner of one of the beveled edges, otherwise mint). Very rare, unlisted by Odell, or Knapp. On p. 124 in Knapp, there is a listing for a Dr. Dean's Panacea, Albany, NY. Possibly an unlisted variant from the same Doctor. Gary Enters collection.

Est.: \$250 - \$450 • Min. bid: \$130



Lot 235

"DR. GORDON'S – COMPOUND / VEGETABLE / CATHARTIC – ROCHESTER / N.Y.", 1845 – 1855. Aquamarine, wide 'fat' rectangular body with concave corners, applied inverted mouth – blowpipe pontil scar, ht. 6 3/8"; (a hard-to-see, thin annealing line, approx. 1/2", in one of the base corners; a little very faint iridescence, barely noticeable, and a 1/8" sliver flake at the shoulder, otherwise excellent). Odell, p.148. Extremely rare! Provenance: Gary Enters collection.

Est.: \$300 - \$500 • Min. bid: \$150



Lot 239

"JAS. HITE'S – MIXTURE FOR / FLUX. DIARRHEA – & CHOLERA", 1845 – 1860. Bright aquamarine, rectangular with beveled corners, applied sloping collar – blowpipe pontil scar, ht. 6 1/2"; (a small impact bruise with an onionskin-thin 3/8" area of iridescence on the back shoulder corner, otherwise sparkling attic mint). Unlisted by Odell, and extremely rare. Believed to be the first, or possibly one of only two, to be offered at auction in more than 30 years! Gary Enters collection.

Est.: \$200 - \$400 • Min. bid: \$100



Lot 236

"H.B. SMITH'S – MAGNETIC BALM – SARATOGA SPRINGS / N.Y.", 1850 – 1860. Aquamarine, rectangular with beveled corners, applied square collar – blowpipe pontil scar, ht. 4 7/8"; (lightly cleaned to original luster and near mint condition, and a 3/16" fissure, or small crack, in one of the beveled corners, otherwise excellent). An unlisted, extremely rare, possibly unique pontiled medicine. We could find no other records for this bottle, or "Smith's Magnetic Balm", in Saratoga Springs.

Est.: \$200 - \$400 • Min. bid: \$100



Lot 240

"LITTLE'S / WHITE OIL / SCOTTSVILLE VA.", 1850 – 1860. Aquamarine, rectangular with rounded corners, applied sloping collar – blowpipe pontil scar, ht. 6 5/8", virtually perfect; (a couple of tiny spots of light residue or milkiness in the neck, and only the slightest trace of faint wear). A very scarce-to-rare pontiled medicine. Odell, p.228; Nielsen #390 (7-star). A bright, clean, sparkling example with strong embossing. Note; an early Harmer Rooke tag remains on the base. Gary Enters collection.

Est.: \$250 - \$450 • Min. bid: \$130



Lot 241

“J.A. TARRANT / DRUGGIST / NEW YORK” (with approximately 80% complete, original label), 1850 – 1860. Aquamarine, oval, applied sloping collar – blowpipe pontil scar, ht. 7 ¾”; (some faint interior residue or haziness that may wash out, otherwise perfect). A rare New York pontiled medicine, and likely unique with the original label. The label indicates it was a sarsaparilla, and reads in part, TARRANT’S / IMPROVED / COMPOUND FLUID EXTRACT / SARSAPARILLA.

Est.: \$200 - \$400 • Min. bid: \$100



Lot 245

“S.F. BROWN’S – MAGIC / PAIN CURE – EMBROCCATION”, 1850 – 1860. Aquamarine, rectangular with beveled corners, rectangular recessed label panel on reverse, sloped shoulders, small applied square collar – blowpipe pontil scar, ht. 5 ½”, virtually perfect; (a tiny pinprick speck of roughness on the edge of the collar, otherwise pristine perfect). Odell, p.52. An exceedingly rare, great looking pontiled cure. One of only three extant! Provenance: Fred Swiechowicz collection.

Est.: \$600 - \$900 • Min. bid: \$300



Lot 242

“BEARS / OIL” (with 98% complete original label), America, 1845 – 1855. Aquamarine, rectangular with beveled corners, delicate thin flared mouth – blowpipe pontil scar, ht. 2 5/8”; (the bottle is pristine perfect, original graphic label darkened a bit from age). Odell, pgs. 27-28. Note; this is the example pictured in Odell’s book (p.28). Very rare with the thin flared mouth (most having the inward rolled mouth). It’s amazing the bottle survived, the glass is almost eggshell thin!

Est.: \$400 - \$600 • Min. bid: \$200



Lot 246

“TAMALON / CATARRH / AND / LUNG CURE” / (EMBOSSSED LEAVES) / TRADE MARK / BLOOD PURIFIER / AND / TONIC”, probably 1902 – 1905. Rich medium amber, rectangular with rounded corners, tooled ring collar with bevel – smooth base, ht. 10 ½”, perfect! Very strong embossing, virtually pristine condition, a top example! A very rare and impressive bottle and without a doubt, one of the all-time greats in the cure world. There aren’t many of these out there, and this is a good one.

Est.: \$3,000- \$5,000 • Min. bid: \$1,500



Lot 243

“D. MITCHELL’S – TONIC FOR – THE HAIR – ROCHESTER N.Y.” (with partial original label), 1855 – 1865. Colorless, rectangular with beveled corners, applied round collar with bevel – blowpipe pontil scar, ht. 6 ¼”, sparkling, virtually “out of the mold” pristine condition. DF, p.110; Odell, p.169. According to Don Fadely, David Mitchell was a perfumer in Rochester from 1859 – 1865. A very rare Western NY flint glass pontiled medicine, outstanding condition and eye-appeal!

Est.: \$300 - \$500 • Min. bid: \$150



Lot 247

“LONDON – MEDICATED – HEALTH RESTORER – S.A. FOUTZ / BALTIMORE MD.”, probably Baltimore Glass Works, 1865 – 1875. Gorgeous, medium topaz coloration, hexagonal with indented panels, three horizontal rings forming a cone-type shoulder, applied sloping collar with bevel – smooth base, ht. 9”, near perfect; (two tiny pinhead flakes on the edge of the collar, otherwise sparkling attic mint). A distinctive, eye-appealing, scarce medicine in a fantastic color!

Est.: \$4,000 - \$6,000 • Min. bid: \$2,000



Lot 244

“MRS. SARAH LOHR’S – DIPH- THERIA CURE”, 1850 – 1860. Aqua, rectangular, beveled corners, applied ring collar with lower bevel – blowpipe pontil scar, ht. 5 3/8”; (professionally cleaned to original luster with just a couple of small spots of very light haziness remaining, otherwise excellent). A very rare, unlisted, pontiled cure, one of only three known. The embossing is quite primitive. “CURE” is embossed in smaller lettering than the rest. Early ads indicate it is from London, Ohio.

Est.: \$300 - \$500 • Min. bid: \$150



Lot 248

“LINDSEY’S – BLOOD + /SEARCHER – HOLIDAYSBURG”, 1855 – 1865. Beautiful, clear medium grass green coloration, rectangular with beveled corners, applied sloping collar – hinge mold smooth base, ht. 9”, near mint; (just a trace bit of minor light wear, and a ½” partially open bubble on one of the back beveled edges with a little residue). A beautiful and rare color, slightly lighter in tone, but very similar in color to the Joe Widman example that we sold in Auction #31 (Lot 209).

Est.: \$2,500 - \$3,500 • Min. bid: \$1,300



Lot 249

“DR. H. J. MILLER’S / CONSTITUTION / SEARCHER / LATROBE, PA.”, 1880 – 1890. Aquamarine, rectangular with beveled corners, tooled ring collar with bevel – smooth base, ht. 10 ½”; (professionally cleaned to original luster and near mint condition). A very rare and impressive medicine from the small town of Latrobe in Southwestern Pa. Believed to be one of only five, or possibly six, known in any condition (including damaged examples).

Est.: \$250 - \$400 • Min. bid: \$130



Lot 253

“TIPPECANOE” / (CANOE) / “H.H. WARNER & Co” Figural Log, 1883 – 1890. Medium ‘old amber’ with a hint of an olive tone, figural log, applied ‘mushroom’ collar – “PAT NOV 20. 83 / ROCHESTER / N.Y.” (on smooth base), ht. 8 ¾”, near perfect; (very slight trace of wear on the back label panel including a 3/16” partially open bubble, otherwise excellent). Another really nice example, slightly deeper in color, with a hint of an olive tone.

Est.: \$400 - \$600 • Min. bid: \$200



Lot 250

“DR BIRMINGHAM’S – ANTI BILLIOUS – BLOOD PURIFIER”, 1865 – 1875. Bright, vivid, yellowish emerald coloration, cylindrical with eight indented vertical panels and a back label panel, applied double ring collar – smooth base, ht. 8 7/8”, near perfect; (a tiny pinhead flake and trace of wear on one of the back panel edges just above the base, otherwise virtually pristine condition). A great looking scarce medicine, fantastic condition. Provenance: Fred Swiechowicz collection.

Est.: \$600 - \$900 • Min. bid: \$300



Lot 254

“ALLENS / ORIENTAL BALM / G.L. BURNSIDE / BOSTON, MASS.”, America, 1890 – 1900. Opaque milkglass, rectangular with beveled corners, tooled square collar – smooth base, ht. 5 ½”, virtually attic mint; (just a tiny pinprick bit of roughness on the edge of the square collar). An extremely rare Boston medicine, believed to be one of only two, or possibly three extant, without damage. If you like rare Boston bottles, milkglass bottles, balms or balsam bottles, this may be for you!

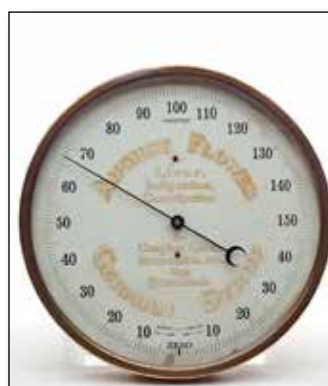
Est.: \$200 - \$400 • Min. bid: \$100



Lot 251

“TIPPECANOE” / (CANOE) / “H.H. WARNER & Co” Figural Log, 1883 – 1890. Bright golden amber with a slight orange tone through the shoulders and neck, figural log, applied ‘mushroom’ collar – “ROCHESTER / N.Y.” (on smooth base), ht. 9”, perfect. Not an exotic color, but just a pretty, really nice example of this classic figural Warner’s Tippecanoe bottle.

Est.: \$100 - \$200 • Min. bid: \$50



Lot 255

“AUGUST FLOWER / Liver, / Indigestion, / Constipation / For / Coughs, Colds, / Bronchitis, etc. / Use / Boschee’s / German Syrup” Medicinal Advertising Thermometer, 1900 – 1915. Brass framed dial-type advertising thermometer for Boschee’s German Syrup, original pegs with wire hanger on reverse, dia. 9 1/8”, depth 1 5/8” (not including pegs), near perfect; (a ¼” x 3/8” light stain at base of face; some light surface corrosion on metal backing plate). Beautiful condition, very scarce.

Est.: \$120 - \$240 • Min. bid: \$60



Lot 252

“TIPPECANOE” / (CANOE) / “H.H. WARNER & Co” Figural Log, 1883 – 1890. Beautiful yellowish amber with a hint of an olive tone, figural log, applied ‘mushroom’ collar – “PAT NOV 20. 83 / ROCHESTER / N.Y.” (on smooth base), ht. 8 ¾”, perfect. A very pretty example, scarce color, almost a butter-scotch coloration, excellent condition.

Est.: \$400 - \$600 • Min. bid: \$200



Lot 256

Lot of (2), Poison Bottles, Carr-Lowrey Glass Co., Baltimore, MD, 1889 – 1910. 1st Ex: **“POISON - BOWMAN’S / DRUG STORES – POISON”**. 2nd Ex: **“F. & E. BAILEY & CO. / LOWELL, MASS.”**. Medium cobalt and deep cobalt, both are irregular hex form, tooled prescription-type collars – “4 / C.L.G. CO / PATENT APPLIED FOR” (on smooth bases), ht. 5” each; (Bowman’s is a dug bottle with some haze and exterior wear; Bailey is near mint with just a bit of light wear). Fred Swiechowicz collection.

Est.: \$250 - \$450 • Min. bid: \$130



Lot 257

"MELVIN & BADGER / APOTHECARIES / BOSTON, MASS." Poison Bottles (all with virtually complete, original labels), Carr-Lowrey Glass Co., Baltimore, MD, 1889 – 1910. All are cobalt blue, irregular hex form, tooled prescription-type collars – **"C.L.G. CO / PATENT APPLIED FOR"** (on smooth bases), ht. 4", 4 ½" and 5", all are attic mint! KI-2. A great little trio of poisons, especially with the original labels (and all are different). Provenance: Fred Swiechowicz collection.

Est.: \$250 - \$450 • Min. bid: \$130



Lot 258

"FRED HOWARD / DRUGGIST / LOWELL, MASS." Poison Bottle, Carr-Lowrey Glass Co., Baltimore, MD, 1889 – 1910. Cobalt blue, irregular hex form, tooled prescription-type collar – **"6 / C.L.G. CO / PATENT APPLIED FOR"** (on smooth base, ht. 5 ½"; (it appears to be dug with some overall exterior haziness, and just a bit of minor wear on the reverse, but no other form of damage and otherwise excellent). KI-2. A very rare Lowell poison bottle. Fred Swiechowicz collection.

Est.: \$400 - \$600 • Min. bid: \$200



Lot 259

"CHESTER A. BAKER / BOSTON" Poison Bottle, Carr-Lowrey Glass Co., Baltimore, MD, 1889 – 1910. Cobalt blue, irregular hex form, tooled prescription-type collar – **"16 / C.L.G. CO / PATENT APPLIED FOR"** (on smooth base, ht. 7 ½", attic mint. KI-2. A very scarce Boston poison in a very rare, unlisted size (the 16 oz. size is not noted in the Kuhn Poison Bottle Workbook). Provenance: Fred Swiechowicz collection.

Est.: \$500 - \$800 • Min. bid: \$250



Lot 260

Lattice and Diamond Poison Bottle (with painted folk-art scene), America, 1877 – 1900. Medium-to-deep cobalt blue, cylindrical with lattice and diamond pattern, tooled prescription-type collar – smooth base, ht. 11 ¼" (1/2 Gal.), perfect. A red, tan, green and white painted folk-art image of a boy and girl dancing. KC-1. The large ½ gallon size is noted as rare. Provenance: Fred Swiechowicz collection.

Est.: \$200 - \$400 • Min. bid: \$100



Lot 261

"LYNCH & CLARKE / NEW YORK", possibly New England Glass Bottle Company, Cambridge, MA, 1823 – 1833. Medium-to-deep olive green, cylindrical, applied sloping collar with bevel – sand type pontil scar, Pt; (some scattered relatively minor exterior wear and light scratches; a ¼" paper-thin open bubble at edge of base, and a couple of small spots of faint interior residue or haziness). T# C-2:B, Type 1. Scarce, and among the earliest of the mineral water bottles. Bruce Purdy collection.

Est.: \$250 - \$400 • Min. bid: \$130



Lot 262

"JOHN CLARKE / NEW YORK", probably a New York state glasshouse, possibly Mt. Pleasant, 1833 – 1846. Medium olive amber with strong olive tones, depending on the lighting, cylindrical, applied sloping collar with bevel – sand type pontil scar, Pt; (just a little scattered minor wear including a bit of very faint scuffing or dullness between "YORK" and the side mold seam, otherwise near mint). T# C-5:B. Rare. A nice example. Bruce Purdy collection.

Est.: \$200 - \$400 • Min. bid: \$100



Lot 263

Lot of (2), "CLARKE & Co. / NEW YORK" Mineral Water Bottles, probably Saratoga Mountain Glass Works, Mt. Pleasant, NY, 1846 – 1856. Medium olive amber and olive green, both with applied sloping collar and lower bevel – sand type pontil scarred bases, Pts; (olive amber example is virtually perfect, just a trace bit of wear; olive green ex. has a small 1/8" chip on outer edge of lip, and a bit of minor roughness on inner edge of lip, otherwise excellent). T# C-9:B, Type II. Bruce Purdy collection.

Est.: \$200 - \$400 • Min. bid: \$100



Lot 264

Lot of (2), "CLARKE & Co. / NEW YORK" Mineral Water Bottles, probably Saratoga Mountain Glass Works, Mt. Pleasant, NY, 1846 – 1856. Both are shades of medium-to-deep olive green, applied sloping collar with bevel – smooth base, Pt. & Qt; (the pint is virtually perfect; the quart has some typical scattered light wear and a ¼" area of minor roughness on the edge of the collar). T# C-6, and T# C-9:B, Type V. Bruce Purdy collection.

Est.: \$175 - \$350 • Min. bid: \$90



Lot 265

CLARKE & WHITE / C / NEW YORK., probably a New York State glasshouse, 1856 – 1866. Medium-to-deep bubbly olive green, cylindrical, applied sloping collar with bevel – “5” (on smooth base), Pt, attic mint! T# C-11:B, Type 2. Scarce. A beautiful example, outstanding character, the glass being absolutely filled with tiny bubbles. Provenance: Bruce Purdy collection.

Est.: \$100 - \$200 • Min. bid: \$50



Lot 269

“LITHIA MINERAL SPRING CO / GLOVERSVILLE”, 1872 – 1880. Aquamarine, cylindrical, applied sloping collar with bevel – smooth base, Pt; (the bottle presents as near mint but may have been lightly cleaned, some faint interior haziness, not terribly distracting, and a tiny pinhead flake on the body, otherwise excellent). T #N-19:B. A very rare mineral water from the tiny town of Gloversville in the Mohawk Valley region of NY. Likely exceedingly rare in this overall excellent condition.

Est.: \$1,500 - \$2,500 • Min. bid: \$800



Lot of (2), “G. W. WESTON & Co / SARATOGA / N.Y.” Mineral Water Bottles, probably a New York State glasshouse, possibly Saratoga Mountain Glassworks, Mt. Pleasant, 1855 – 1861. Bright yellowish olive and deep olive green, both applied sloping collar with bevel – smooth base, Pt. & Qt, both are near mint; (both with some tiny pinhead open surface bubbles, otherwise perfect). T# E-2:B, Type 2, and E-3:A, Type 2. An attractive pair, excellent character. Bruce Purdy collection.

Est.: \$100 - \$200 • Min. bid: \$50



Lot 270

“HIGHROCK CONGRESS SPRING / 1767” / (Motif of Rock) / “C&W / SARATOGA N.Y.”, probably a Stoddard, NH glasshouse, 1865 - 1873. Rich, yellowish ‘old amber’, cylindrical, applied sloping collar with bevel - two dots (on smooth base), Pt, near mint; (several tiny little pinhead open bubbles, otherwise perfect). T# S-36:C, Type 1. Attractive color, nicely whittled, excellent character – the glass being filled with tiny bubbles. Provenance: Bruce Purdy collection.

Est.: \$200 - \$400 • Min. bid: \$100



Lot 267

“CONGRESS & EMPIRE SPRING CO / HOTCHKISS’ SONS / CW / NEW YORK / SARATOGA. N.Y.”, 1866 – 1875. Rich, medium-to-deep yellowish emerald coloration, cylindrical, applied sloping collar with bevel – smooth base, ½ Pt; (a ¼” area of roughness on the edge of the collar that appears to be from a bubble missing its cover glass, otherwise virtually perfect). T# S-14:C. A scarce mold, rare in the emerald, and with unusually crisp, bold embossing. Bruce Purdy collection.

Est.: \$200 - \$400 • Min. bid: \$100



Lot 271

“SARATOGA” / (STAR) / “SPRING”, probably a New England, or possibly NY State glasshouse, 1862 – 1889. Rich, beautiful honey amber, almost a butterscotch coloration, cylindrical, applied sloping collar with bevel – smooth base, Qt; (a tiny pinprick speck of roughness on the inner edge of the lip, otherwise virtually pristine perfect). T# S-53:A. Normally found in a deeper, more reddish amber. This is a very pretty example, nice character, the glass being filled with tiny bubbles.

Est.: \$120 - \$240 • Min. bid: \$60



Lot 268

“WASHINGTON SPRING” / (BUST OF WASHINGTON) / “BALLSTON SPA / N.Y.” – “C”, 1868 – 1889. Rich, medium emerald green coloration, cylindrical, applied sloping collar with bevel – smooth base, Pt, virtually perfect; (just the slightest trace of faint wear, otherwise pristine). T# S-61. Scarce. A great example, bubbly, whittled, nice rich color, fantastic condition. These Washington Spring pictorial mineral water bottles are always popular, and this is a good one!

Est.: \$600 - \$900 • Min. bid: \$300



Lot 272

Lot of (2) Mineral Water Bottles, 1862 – 1889. 1st Ex: **“STAR SPRING CO” / (STAR) / “SARATOGA. N.Y.”**, rich amber with a slight reddish tone, Pt. 2nd Ex.: **“SARATOGA” / (STAR) / “SPRING”**, olive green, Qt. Both with applied double collars – smooth base, near mint; (1st Ex. has a couple of sliver-thin bubbles on the top of the lip with in-making crazing lines; 2nd Ex. has a faint scratch and an onionskin-thin ½” open bubble at mold seam). S-54:B, and S-53:A. Bruce Purdy collection.

Est.: \$150 - \$300 • Min. bid: \$80



Lot 273

Lot of (3) Mineral Water Bottles, 1864 – 1889. 1st Ex.: **“SYRACUSE SPRINGS / EXCELSIOR”**; 2nd Ex.: **“HATHORN SPRING / SARATOGA. N.Y.”** 3rd Ex.: **“MIDDLETON / HEALING / SPRINGS / GRAYS & CLARK / MIDDLETOWN VT”**. Two are bright golden amber with a slight orange tone; Hathorn Spring is a deep ‘old amber’ with a slight olive tone. Applied double collars – smooth base, Pt. and Qt; (all are near perfect with just slight wear). N-33:B; S-33:A, and V-12. Bruce Purdy collection.

Est.: \$250 - \$450 • Min. bid: \$130



Lot 274

“ROCK BRIDGE / VIRGINIA / ALUM WATER” (with early hand-written label), probably 1865 – 1866. Bright yellowish green, almost a citron coloration, cylindrical, applied square collar – smooth base, ht. 9 1/2”, virtually perfect; (some minor dried content residue). Early hand written label reads, **MADE BY CHARLES R. GALLAGHER / 1866. USED AT MY WEDDING / SEPT. 1ST 1869 AND AT SISTER / FANNY JAN 25, 1870. SEAL NOT / BEEN OPEN SINCE MY WEDDING.** Very rare color.

Est.: \$1,600 - \$2,800 • Min. bid: \$800



Lot 275

“ROCK BRIDGE / VIRGINIA / ALUM WATER” (with early hand-written label), probably 1865 – 1866. Rich medium emerald, applied square collar – smooth base, ht. 9 1/2”, near mint; (a couple of light scratches above the base, and a 3/8” paper-thin open bubble at mold seam; some dried content residue, otherwise perfect). Label reads, **THIS HAS BEEN SEALED / UP 20 YEARS. DON'T / KNOW WHAT KIND IT IS / BUT THINK IT _ / BLACK GRAPE.** Beautiful color, whittled, fantastic condition.

Est.: \$1,200 - \$1,800 • Min. bid: \$600



Lot 276

“JOHN CLARK / F. P. / BALTo” – “C”, 1850 – 1860. Medium green with an emerald tone, cylindrical, porter form, applied sloping collar – iron pontil scar, ht. 6 3/4”; (professionally cleaned to original luster; some typical light ground wear and a fair amount of fine light scratches remain, a 1/8” bit of minor roughness on the edge of the collar). Although it's been cleaned and has the noted remaining fine wear, it still displays quite nicely. A scarce Baltimore porter.

Est.: \$250 - \$450 • Min. bid: \$130



Lot 277

“G. W. B. / PHILADA” (within rectangular slugplate), probably 1850 – 1855. Medium-to-deep emerald with a slight yellowish tone, squat porter form, applied sloping collar with bevel – large iron pontil scar, ht. 7”, virtually perfect, ‘attic-found’ condition. An unlisted, exceedingly rare, possibly unique Philly porter. In addition, excellent character having beautifully whittled, wavy glass. Very heavy in weight, the gaffer drew a little extra for this one. Provenance: Fred Swiechowicz collection.

Est.: \$400 - \$600 • Min. bid: \$200



Lot 278

“J. H. MAGEE / 52 DILLWYN ST” (52 Dillwyn St. in rectangular block), 1855 – 1860. Medium cobalt blue, cylindrical, ‘stubby’ beer or lager form, applied sloping collar with bevel – iron pontil scar, ht. 6 7/8”; (professionally cleaned to original luster with a little scattered ground wear and minor imperfections remaining; a 3/16” chip on the side of the applied lip). A very rare Philadelphia porter or beer, believed to be the first example at auction in more than 10 years. Fred Swiechowicz collection.

Est.: \$300 - \$500 • Min. bid: \$150



Lot 279

“H. L. & J. W. BROWN / HARTFORD CT.”, New England, possibly Willington Glass Works, West Willington, CT, 1854 - 1860. Deep yellowish olive, cylindrical, squat porter form, applied blob collar – smooth base, ht. 6 7/8”; (a couple of small spots of minor scratches, and some scattered light exterior wear, otherwise excellent). Scarce. Per William Beckett's book on Connecticut sodas, Henry Lyman, and J.W. Brown were manufacturers of both soda and porter.

Est.: \$250 - \$450 • Min. bid: \$130



Lot 280

“S. & J. MARLOR / PROV. R.I.”, probably 1855 – 1860. Medium-to-deep blue green, cylindrical, squat porter form, applied sloping collar with bevel – heavy iron pontil scar, ht. 6 7/8”, perfect. A very scarce-to-rare Rhode Island porter, particularly in this ‘attic-type’, virtually pristine condition. Believed to be only the second, or possibly third example to be offered at auction in more than 20 years.

Est.: \$300 - \$500 • Min. bid: \$150



Lot 281

“W.P. KNICKERBOCKER / 1848 / 164 W. 18th St N.Y.”, 1848 – 1860. Rich, medium-to-deep green with an emerald tone, cylindrical, squat porter form, applied sloping collar with bevel – iron pontil scar, ht. 6 ¾”, virtually attic mint; (a tiny, pinpoint speck of roughness on the edge of the collar, barely noticeable, otherwise pristine perfect). A very scarce-to-rare mold, nice rich color, outstanding condition. Hard to find them this nice!

Est.: \$400 - \$600 • Min. bid: \$200



Lot 285

“BOYD & BEARD / MINERAL WATER / B – PATENT”, probably 1841 – 1846. Medium yellowish green coloration, squat soda form, applied sloping collar – iron pontil scar, ht. 6 ½”, virtually perfect; (only the slightest trace of faint wear, otherwise pristine). A fantastic example, crisp embossing, beautifully whittled, outstanding condition. This is an ‘attic-type’ bottle, about as nice as you could hope to find. A scarce Boston mineral water.

Est.: \$250 - \$450 • Min. bid: \$130



Lot 282

“W.P. – KNICKER – BOCKER – SODA WATER – 164. 18th St. N.Y. 1848”, 1848 – 1860. Medium cobalt blue, 10-sided, squat soda form, applied blob collar – iron pontil scar, ht. 7 3/8”, perfect. A beautiful example of this very scarce 10-sided soda, about as nice as you could hope to find, virtually pristine attic-found condition.

Est.: \$500 - \$800 • Min. bid: \$250



Lot 286

“M.T. CRAWFORD / SPRINGFIELD. – UNION GLASS WORKS PHILA / SUPERIOR / MINERAL-WATER”, Union Glass Works, Philadelphia, PA, probably 1850 – 1857. Medium-to-deep cobalt blue, cylindrical, ‘mug-base’, applied blob collar – iron pontil scar, ht. 7 ¼”; (just a touch of minor wear including a pinhead flake at edge of base, otherwise perfect). An un-dug, ‘attic-type’ example with nice deep color. Provenance: Fred Swiechowicz collection.

Est.: \$400 - \$600 • Min. bid: \$200



Lot 283

“A. DEARBORN & Co / NEW YORK – MINERAL WATERS / D / THIS BOTTLE / IS NEVER SOLD”, probably 1846 - 1848. Clear medium cobalt blue, cylindrical, applied blob collar – iron pontil scar, ht. 7”, virtually attic mint; (just a trace of faint wear, otherwise pristine perfect). A very scarce soda, and certainly very rare - almost impossible to find in this exceptional condition. This beautiful example was originally found at a local yard sale in Western, New York.

Est.: \$500 - \$800 • Min. bid: \$250



Lot 287

“S. SMITH. (in large block letters) / AUBURN N.Y” 10-Pin Soda, 1860 – 1870. Rich, medium cobalt blue, 10-pin form, large applied blob collar – smooth base, ht. 8 ¼”, near mint; (lightly cleaned to original luster and virtually perfect condition, just the slightest trace of faint wear, otherwise perfect). A very nice example, good depth of color, beautifully whittled, excellent condition.

Est.: \$300 - \$500 • Min. bid: \$150



Lot 284

“JOHN MOON’S / SUPERIOR / MINERAL WATER / PHILAD.A” – “B”, probably 1850 – 1852. Rich, medium bluish green, cylindrical, squat soda or ‘pony’ form, applied blob collar – iron pontil scar, ht. 7 3/8”, near mint; (a ¼” partially open bubble on the side of the blob collar; a partially open bubble on the interior of the shoulder, and some minor in-manufacturer crazing lines in the neck mentioned for completeness). Another ‘attic-type’ soda, very scarce-to-rare mold, excellent example.

Est.: \$200 - \$400 • Min. bid: \$100



Lot 288

“WALSH & Co / 124 / BERKELEY St” Soda Bottle (with period metal holder), Canada, 1865 – 1875. Aquamarine, squatty round bottom soda form, applied blob collar with original Putnam style wire closure – smooth base, ht. (without stand), 7 5/8”; (some light interior haziness, some of which may wash out, and a 3/16” chip below the “L” in BERKELEY, otherwise excellent). A very scarce-to-rare round bottom soda that has not been dug and cleaned. Provenance: Fred Swiechowicz collection.

Est.: \$200 - \$400 • Min. bid: \$100



Lot 289

“ALBERT SCHWILL & COMPANY / THE MALT SUPREME / CHICAGO, ILL.” Advertising Thermometer, 1915 – 1925. Attractive brass framed dial-type advertising thermometer for the Albert Schwill Malting Company, Chicago, original pegs with wall-hanger eyelet on reverse, dia. 9 1/8”, depth 1 1/8” (not including pegs or ‘feet’ on reverse), virtually perfect condition and in working order. A scarce piece, and very scarce-to-rare in this fine condition.

Est.: \$120 - \$240 • Min. bid: \$60



Lot 293

“J. DEVINE” Stoneware Bottle, probably 1848 – 1855. Cobalt blue shoulders and collar, oatmeal toned body, salt glaze, cylindrical with cone type shoulders, rounded blob collar, ht. 9 3/4”, virtually perfect; (just a slight trace of light wear). Graci, p.31; also see: “J. Devine” in Graci supplement, (*More*) *American Stoneware Bottles*. A great looking early ginger beer. Provenance: Fred Swiechowicz collection.

Est.: \$175 - \$350 • Min. bid: \$90



Lot 290

“I. SUTTON & Co. – COVINGTON – KY.” Flavored Beer, 1855 – 1865. Cobalt blue, 12-sided, applied blob collar – iron pontil scar, ht. 8 1/4”; (professionally cleaned to original luster with some scattered minor ground wear remaining; a small area at the base of one of the panels may have been lightly polished to mitigate some minor scratches, but no chips, cracks, or other form of damage). Very scarce. A large, impressive flavored beer that displays very nicely. Ex. Dr. Charles Aprill collection.

Est.: \$800 - \$1,200 • Min. bid: \$400



Lot 294

Black Glass Wine Bottle, England, 1780 – 1800. “T.W.” (on applied seal). Deep olive green, dip mold, wide-body squat cylinder, almost a late mallet form, sheared mouth with an applied wide short tapered collar – sand type pontil scar, ht. 9 1/8”; (a hard-to-see thin hairline spider crack with three 1/4” ‘legs’ on the shoulder of the reverse, and some scattered light exterior wear, otherwise excellent). A very rare seal unlisted by Burton. Provenance: Gary Enters collection, Ex. Don Spangler collection.

Est.: \$500 - \$800 • Min. bid: \$250



Lot 291

“VINCENT & HATHAWAY / WHITE ROOT BEER” Stoneware Bottle, 1864 – 1871. Mottled tan and brown glaze, cylindrical with cone type shoulders, sloping collar, ht. 10 1/8”, near mint; (a 3/16” pockmark or chip on the edge of the lip, otherwise perfect). Graci, *American Stoneware Bottles*, p.77. A very scarce Boston stoneware beer, overall excellent condition. Provenance: Fred Swiechowicz collection.

Est.: \$175 - \$350 • Min. bid: \$90



Lot 295

Black Glass Wine Bottle, England, 1790 – 1810. “W*RAWLINGS” (on applied seal). Deep olive green, dip mold, wide-body squat cylinder, sheared mouth with applied short tapered collar – sand type pontil scar, ht. 9 1/4”, near mint; (just a little typical light exterior wear, otherwise perfect). Burton, p.1233. A very rare seal that is yet unattributed. Full original body luster, strong impression on the seal. Provenance: Gary Enters collection.

Est.: \$600 - \$900 • Min. bid: \$300



Lot 292

“D.W. TARR & CO / 1854” Stoneware Bottle, 1854 – 1858. Reddish brown salt glaze, cylindrical with cone type shoulders, large blob collar, ht. 9 5/8”, near perfect; (a shallow 3/16” chip on the edge of the lip at the side, otherwise excellent). Graci, p.75. Another scarce Boston stoneware ‘beer’. The company became Tarr & Smith in 1858. Provenance: Fred Swiechowicz collection.

Est.: \$175 - \$350 • Min. bid: \$90



Lot 296

Black Glass Wine Bottle, Scotland, 1820 – 1830. (Stag couchant under a Holly Bush) / “M” (on applied seal). Deep olive amber, dip mold, slightly bulbous neck, applied short tapered collar with bevel – kick up base with sand type pontil scar, ht. 10”; (a tiny spider crack in the shoulder with a couple of ‘legs’, 3/16” or less, otherwise virtually perfect). Burton, p.1429. Very scarce. Per Burton, blown for the Maxwell family, the Earls of Nithsdale and Morton, an ancient Scottish family.

Est.: \$150 - \$250 • Min. bid: \$80



Lot 297

Black Glass Wine Bottle, England or possibly America, 1835 - 1845. "I. L. M. SMITH / WINE MERCHT / BALTI-MORE." (on applied oval glass seal). Medium-to-deep olive, cylindrical, dip mold, applied sloping collar with bevel - kick-up base with sand type pontil scar, ht. 9 5/8"; (a little typical light exterior wear; a 1/8" open bubble on the edge of the oval seal, and a 3/16" open bubble at the edge of the base, otherwise excellent). Burton, p.1252. A scarce American seal bottle.

Est.: \$700 - \$900 • Min. bid: \$350



Lot 301

Black Glass Wide Mouth Onion Bottle, Continental, probably Dutch, 1790 - 1810. Medium-to-deep olive green, bulbous onion form body, wide elongated neck, sheared rim with applied wide band collar - domed base with blowpipe pontil scar, ht. 9 1/4", near mint; (a little typical minor exterior usage wear, otherwise excellent). VdB, plate 110. A great example, full original body luster, pleasing symmetry, excellent condition.

Est.: \$500 - \$800 • Min. bid: \$250



Lot 298

Lot of (2), Early Long-Neck Utility Bottles, Continental, 1760 - 1780. **1st Ex:** Olive amber, 1/2 size, elongated neck, applied string rim - blowpipe pontil scar, ht. 8 1/4"; (a 1/4" to 3/4" wide area of fine scratches on one side down the neck and body; overall patina or haze, tiny flake of rim). **2nd Ex:** Olive green, 'flowerpot form', elongated neck, applied string rim - blowpipe pontil scar, ht. 9 7/8"; (some scattered minor wear and light haziness). See VdB, plates 78 & 79.

Est.: \$200 - \$300 • Min. bid: \$100



Lot 302

Lot of (3), Storage or Preserve 'Truffle' Bottles (one with partial original label), Continental, probably France, 1860 - 1870. Shades of deep yellowish 'old amber', one with slight olive tone, all are freeblown, tapered cylinder form, sheared mouth with applied ring collars - deep conical bases with sand, or iron pontil scars, ht. 6 1/8", 7 7/8", and 9 7/8", all near mint; (minor light wear and interior residue; 6 1/8" Ex. has a 1/8" chip on the edge of the sheared mouth). A great trio of jars.

Est.: \$300 - \$500 • Min. bid: \$150



Lot 299

Unique, Freeblown Nailsea "Horse hoof" Jug, England, probably Wrockwardine, circa 1800. Blown from heavy, bubbly, greenish aqua glass and decorated with bits of opaque white, blue and amber glass in the so-called "Nailsea" style. Unusual squat form, slightly indented sides, sheared and fire-polished lip, applied solid handle - blowpipe pontil scar, ht. 3 3/4"; (some usage wear, and a crack, well hidden, approx. 2 1/4", around the base of the neck). Extremely rare!

Est.: \$300 - \$500 • Min. bid: \$150



Lot 303

Lot of (2), Flowerpot-form Storage Bottles, France, 1780 - 1800. Medium olive and deep, 'old amber', almost a tobacco coloration, both are flowerpot form, wide neck, sheared mouth with applied string rims - iron pontil and blowpipe pontil scarred bases, ht. 10" and 12 1/2"; (the olive example has some interior residue and haziness, a bit of typical light wear; the amber example has a 7/8" open bubble and a little scattered exterior wear, otherwise excellent). An attractive pair of early storage bottles.

Est.: \$200 - \$400 • Min. bid: \$100



Lot 300

Early, Scarce-size, Black Glass Boot Bottle, probably Germany, 1740 - 1770. Medium-to-deep olive coloration, small flattened kidney form, sheared and tooled mouth with applied string rim - blowpipe pontil scar, ht. 6", length 5 1/4"; (some typical exterior usage wear, and a 1/4" chip at the side of the lip, otherwise excellent). VdB, plate 216; Dumbrell, p.146. A very pleasing, scarce-to-rare smaller size, overall nice condition with original body luster.

Est.: \$600 - \$900 • Min. bid: \$300



Lot 304

Mammoth-size, Flowerpot-form Storage Bottle, France, 1780 - 1800. Medium-to-deep olive amber, flowerpot form, wide neck flaring outward to a sheared mouth with a narrow applied sting rim - disc type pontil scar, ht. 21", near mint; (some typical minor usage wear including a 1/8" flake on edge of the collar, otherwise virtually perfect). See Vdb, plate 146 & 147. A very impressive bottle, and extremely rare size. At 21", this humongous example eclipses virtually all others.

Est.: \$500 - \$800 • Min. bid: \$250



Lot 305

Lot of (2), Early Blown Preserve Jars, Continental, probably France, 1810-1840. Both are shades of medium-to-deep olive amber, cylindrical with a wide neck flaring outward to a sheared, tooled rim – blowpipe pontil scarred bases, ht. 8 1/2" and 11 1/8", both are in overall very nice condition; (just a bit of light wear; the 8 1/2" jar has a small patch of light dullness on one side and an interior open bubble in the shoulder; the 11" jar has a faint ring on milkiness in the shoulder). VdB, plate 291.

Est.: \$200 - \$400 • Min. bid: \$100



Lot 309

Early, Pattern Molded Spirits Bottle, Continental, Alpine Region, probably Austria, 1770 – 1800. Bright, greenish aquamarine, almost a sea-green coloration, 18 vertical rib, large rectangular body, sheared mouth with applied short taper collar – blowpipe pontil scar, ht. 9 3/8", virtually perfect; (some light interior content residue, non-distracting and almost certainly washable). An unusual and very scarce-to-rare pattern molded bottle, both in terms of form, as well as size.

Est.: \$250 - \$450 • Min. bid: \$130



Lot 306

Lot of (2), Early Storage Jars, Continental, probably France and Germany, 1850 – 1870. 1st Ex: Clear medium green with a slight bluish tone, dip mold, sheared, tooled, and outward flared mouth – blowpipe pontil scar, ht. 8 3/8". 2nd Ex: Medium yellowish green, dip mold, wide neck, sheared mouth with a tooled, small ring type collar – domed base with blowpipe pontil scar, ht. 9 1/8". Both jars are near perfect with just a bit of minor usage wear.

Est.: \$200 - \$400 • Min. bid: \$100



Lot 310

Lot of (2), Early Case-Form Storage Jars, Continental, 1770 – 1820. 1st Ex: Pale green with a Vaseline tone, dip mold, square case form, sheared, tooled, and outward flared thin flanged lip – blowpipe pontil scar, ht. 7 7/8". 2nd Ex: Medium clear green, dip mold, square case form with tapered sides, sheared mouth with tooled ring collar – large blowpipe pontil scar, ht. 9 1/2"; 2nd Ex. has a touch of light wear, otherwise both are perfect). A great pair of scarce-to-rare, early wide-mouth case bottles!

Est.: \$500 - \$800 • Min. bid: \$250



Lot 307

Enormous, Early Freeblown Storage Jar, Continental, 1800 – 1830. Rich, deep aquamarine, cylindrical, short wide neck, sheared mouth with a tooled, likely applied, heavy double collar – pushed up base with blowpipe pontil scar, ht. 21 3/4", virtually perfect; (a little light washable interior residue). An impressive, huge, early freeblown jar, the largest that we can recall seeing. Good color, beautiful condition, wonderful eye-appeal with its uneven, lopsided body.

Est.: \$400 - \$600 • Min. bid: \$200



Lot 311

Giant, Early Case Bottle, Continental, probably Germany or Dutch, 1780 – 1800. Yellowish olive through the mid-section, shading to a deep olive in the shoulders and base, dip mold, straight-sided case form, sheared mouth with applied string rim – blowpipe pontil scar, ht. 17 5/8"; (some scattered typical usage wear and light scratches, and some faint exterior 'bloom' or iridescence, again, very typical on these giant case bottles, otherwise excellent). Impressive, eye-appealing size

Est.: \$1,000 - \$1,500 • Min. bid: \$500



Lot 308

Lot of (2), Early half-post Spirits Bottles, Continental, probably Austria, Tyrol region, 1730 – 1780. 1st Ex: Light clear green with an olive tone, likely freeblown, deep kick-up base, pontil scar, ht. 6 7/8". 2nd Ex: Gorgeous light yellow amber coloration, dip-mold, domed base with faint pontil scar, ht. 7 1/2"; (both have a bit of light interior residue, otherwise perfect). See VdB, plate 183. The 1st example is very pretty, bubbly, and feather light.

Est.: \$300 - \$500 • Min. bid: \$150



Lot 312

Rare, Freeblown, 'Half-Cylindrical' Storage Bottle, Germany, Thuringia Forest Region, 1720 – 1760. Olive green, half-cylinder form, sheared, tooled, outward flared mouth – blowpipe pontil scar, ht. 17", near mint; (some minor scratches and expected usage wear, primarily on the reverse, some interior content residue, otherwise excellent). See VdB, pgs. 142 – 146. Very rare! Note; this example still maintains remnants of a folk-art painting with a gold border of scrolled leaves with cherubs

Est.: \$1,200 - \$2,400 • Min. bid: \$600



Lot 313

Early, Painted Label Apothecary Bottle, England, 1810 – 1830. “ES:MENTH.PIP.” original black lettering, gold background, red and gray borders. Deep purple amethyst, onion or carboy-form bulbous body, sheared mouth with an outward rolled collar, blown glass matching stopper – ground large pontil scarred base, ht. 14 ½” (including stopper), near mint; (original stopper appears undamaged, but is stuck; just a bit of light wear and very minor paint loss, otherwise perfect).

Est.: \$400 - \$600 • Min. bid: \$200



Lot 317

Lot of (2), Early Freeblown Demijohns, Continental, Germany or Alpine Region, and France, 1730 – 1780. 1st Ex: Light yellowish green with an olive tone, almost an olive yellow, cylindrical, sheared and flared mouth with string rim – blowpipe pontil scar, ht. 12”. 2nd Ex: Bluish green, cylindrical, sheared mouth with applied beveled ring – blowpipe pontil scar, ht. 16 ¼”; (1st Ex. virtually perfect; 2nd Ex. has some light wear, a little haziness on the shoulders and interior near base)

Est.: \$300 - \$500 • Min. bid: \$150



Lot 314

Early, Wide-Mouth Storage Bottle, probably England, 1790 – 1820. Medium-to-deep olive amber, cylindrical with drawn up shoulders, short wide neck, sheared mouth with crudely applied heavy ring collar – disc type pontil scar, ht. 16”, near mint; (just a slight trace of minor light wear, and a small potstone on the surface of the glass with a little iridescence and a couple of tiny, 1/16” radiations, barely visible without a loop, otherwise perfect). A very impressive, crude, early storage bottle.

Est.: \$200 - \$400 • Min. bid: \$100



Lot 318

Early, Freeblown Demijohn or Storage Bottle, Continental, probably Germany, 1820 – 1850. Light honey yellow below the shoulders, shading to a rich reddish-orange through the upper shoulders and neck, wide-bodied cylinder with drawn up shoulders, sheared, tooled, and outward flared mouth – pushed up base with blowpipe pontil scar, ht. 13 ½”; (some interior content residue and very faint haziness, most of which would likely wash out, otherwise virtually perfect). A scarce, beautiful, storage bottle.

Est.: \$250 - \$450 • Min. bid: \$130



Lot 315

Early, Side-Flattened Onion Storage Bottle, Continental, probably North Germany, 1750 – 1770. Medium to deep amber, plump side-flattened onion form, sheared mouth with a crudely applied ring collar – blowpipe pontil scar, ht. 9 5/8”; (a little typical minor exterior wear, and a fair amount of dried interior content residue, otherwise perfect). A very crude, bubbly example. Much of the noted interior residue would almost certainly wash out. Provenance: Ex. Mark Nightingale collection.

Est.: \$200 - \$400 • Min. bid: \$100



Lot 319

Early, Freeblown Demijohn or Storage Bottle, Continental, probably France, (Alsace), across the Rhine from the Black Forest, 1720 – 1750. Bright honey yellow shading to a deep honey amber with an orange tone through the neck, globular form, sheared, tooled, outward flared mouth – pushed up base with blowpipe pontil scar, ht. 13”, near mint; (some interior content residue that would likely wash out, and a minor 1/8” chip on the edge of the flared mouth). A gorgeous early demijohn!

Est.: \$300 - \$500 • Min. bid: \$150



Lot 316

Early, Side-Flattened Onion Storage Bottle, Continental, probably North Germany, 1760 – 1780. Clear, bright yellowish green with a slight olive tone, plump side-fattened onion form, sheared mouth with applied ring collar – blowpipe pontil scar, ht. 9 5/8”, near mint; (a touch of minor light wear, and a bit of spotty light interior residue or faint haze, barely noticeable, otherwise perfect). Similar to VdB, plate 280A & 280B. Scarce. A bright, clean, pretty example.

Est.: \$200 - \$400 • Min. bid: \$100



Lot 320

Early, Freeblown Demijohn or Storage Bottle, Continental, probably France, Alsace Region, 1720 – 1750. Clear, light-to-medium yellowish olive amber through the mid-section, shading to a dense olive amber through the neck, globular form, sheared and outward flared mouth – blowpipe pontil scar, ht. 11”, attic mint! A beautiful example, fantastic condition, outstanding character – the glass being filled with tiny bubbles. In addition, the demijohn is virtually ‘feather light’ in weight.

Est.: \$300 - \$500 • Min. bid: \$150

Rare Inkwells...



...and Master Ink Bottles



Fine Historical and Figured Flasks in Rare Colors



Lot 8



Lot 45



Lot 36

Exceptional Bottles from the Fred Swiechowicz Collection!

From Pontiled Medicines to Pickles, and Pumpkins to Porters, the Fred Swiechowicz Collection has it all. There is something for almost every budget and taste. Throughout the collection, one thing remains certain; Fred had a good eye and a keen sense for great glass!

Lot 142



Lot 188



Lot 115



Lot 90



Lot 210



Lot 82



Lot 277