

**NOTE:**

*This is a timed closing auction. See details on first page.*

# American Glass Gallery™

Auction #37

Opens March 19, 2024

Closes March 27, 2024



Background advertisement image courtesy of Peachridge Glass.

Lot 189: Extremely Rare Chandler's Jamaican Ginger Root Bitters in Yellow Green

# Conditions of Sale: Auction #37 – Timed Closing Auction - No Call Backs

## 1. Absentee Auction

The items in this sale will be sold via absentee auction.

Closing date: **Wednesday, March 27, 2024, 10:00 p.m., EST.**

## 2. Our Guarantee Regarding Descriptions

American Glass Gallery has made every attempt to describe correctly the property being sold. Descriptions are guaranteed to be accurate as regards to authenticity, age, condition, and measurements to within one-fourth inch, as represented in this catalog. Items in this catalog are not shown to scale. In describing damage, exterior wear or manufacturer's flaws that in our opinion, do not significantly detract visually or monetarily from the value of the item are not listed and will not be considered for refund. The Auctioneers reserve the right to make verbal corrections and provide additional information at any time during the sale.

## 3. Preview

Items may be viewed by appointment from **March 20, 2024**, through **March 26, 2024**.

## 4. Bidding Procedure

You may submit your bids by mail, phone, FAX, email or through our on-line auction site. If bidding by mail or FAX, please fill out the absentee form and return it to us. Your bid, either written or oral, grants American Glass Gallery the authority to protect you up to the amount of your stated bid. Your bid will not be removed once executed.

**Bidding Times:** You can submit your bids anytime after receiving your catalog. Bids may be made by phone, daily, until closing day, **March 27, 2024**, from 9 A.M. - 6 P.M. Eastern Time. Incoming phone bids will be accepted on the closing day (**March 27, 2024**) until 10 P.M. Eastern Time. No exceptions. You may also place your bids through our on-line auction service 24-hours a day once the site has opened for bidding, on or about **March 19, 2024**, continuing until 10:00 P.M. Eastern Time, **March 27, 2024**.

### **Please do not wait until the last day or two of the sale to place your bids!**

Because many collectors wait until the final few days of the sale to place their bids, we anticipate the telephone and internet bidding to be very busy during that period, so please plan accordingly. In the event of a tie bid, the earliest received bid on the lot will take precedent. We would welcome your bids by phone so that we can answer any questions and assist you in your bidding.

You may also telephone us at any time during the auction, prior to the closing of the sale, to check the status of your bids, to find the current bidding level, to open a bid, or to raise a bid on an auction lot.

### **Bidding Increments are as follows:**

Up to \$250.00..... increments of \$10.00  
\$250.00 - \$500.00 ..... increments of \$25.00  
\$500.00 - \$1,000.00 ..... increments of \$50.00  
\$1,000.00 - \$2,500.00 ..... increments of \$100.00  
\$2,500.00 - \$5,000.00 ..... increments of \$250.00  
\$5,000.00 - \$10,000.00 ..... increments of \$500.00  
\$10,000 & Up..... increments of \$1,000.00

Bids submitted between the above increments, whether by mail, FAX, email or on-line via the internet, will automatically be lowered to the closest lower increment.

This is a minimum bid auction. Bids below the printed minimum will not be accepted.

**An example of how our absentee bidding system works:** You bid \$1000.00 on a lot which is the highest bid received to date. The second highest bid is \$800.00. The current high bid level would be yours at \$850.00, one bid increment higher than the other collector's bid. Any additional bids submitted by others below \$1000.00 will automatically be topped on your behalf by a representative of American Glass Gallery, up to your stipulated high bid amount. If no further bids on this lot are received beyond the \$800.00, then you would have won the lot at \$850.00, not the \$1000.00 that you were prepared to pay.

American Glass Gallery will at NO TIME disclose bids pledged by others; only the current "High Bid" level of a lot will be stated upon request. The highest bidder as determined by American Glass Gallery shall be the purchaser. It is the sole right of the auctioneer to settle any dispute between bidders and to regulate the bidding procedure. The auctioneer reserves the right to refuse any bid he believes not to have been made in good faith.

## 5. Closing the Auction

### **Timed Closing. No Call Backs for This Sale!**

**Auction closes 10 PM Eastern, Wednesday, March 27, 2024.**

**How it works:** If any Lot receives a bid within the last 10 minutes before the 10 PM closing time, an additional 10 minutes will be added on to the bidding time for that Lot - at the time the bid is entered. For example, if a bid is entered on Lot #95 at 9:58 PM, an additional 10 minutes will be added to the closing time for that Lot, i.e. the Lot will close 10:08 PM, unless another acceptable bid is received prior to 10:08 PM. If the same Lot receives another bid 5 minutes later, i.e., 10:03 PM, the 10 minute timer will be restarted. Thus, an item will not close until it has received no bids for 10 minutes. At the end of that time, the Lot will automatically close and the highest bidder will be the winner.

No phone bids will be accepted after 10 PM, or during the timed closing portion of the sale.

**IMPORTANT:** When the auction is in the last 10 minutes, (after 9:50 PM EST, Wednesday, November 15), **you must refresh your screen to see any updated bids and remaining time on the Lots.** You may refresh your bid page by hitting "Enter Bids". A time left column will appear on the right. The time will go down every time you refresh unless an acceptable bid has been placed, then the timer will be reset to 10 minutes.

**When a Lot closes**, your bid sheet will show either (parentheses only when there is a left bid):

### **Example:**

You **WIN** for \$400 (Left Bid \$500)

or:

Won by another for \$600

**Note:** Normal email notifications will still be sent during the Timed Closing. However, we recommend that you actively refresh your screen for the latest updates, or changes, as the email notifications may not always get through (i.e., may sometimes be intercepted by email blockers or spam filters).

**If you are unable to watch, or be actively involved during the closing time**, you may always submit an Absentee, or "Left Bid" which will be executed competitively up to your stipulated high bid should any bids come in during the Timed Closing Period.

# Conditions of Sale: Auction #37 – Timed Closing Auction - No Call Backs

## 6. Terms

**Successful Bidders,** Prompt and full payment is due immediately upon receipt of our invoice. Absolutely no exceptions. Anyone failing to pay for items won will forfeit all rights to bid in any future American Glass Gallery sales. **Any late or delayed payments may result in loss of return privileges for items purchased in the sale.**

**No Items Will Be Mailed Before Full Payment Is Received.**

**Buyer Premium:** Our buyer premium is **17% if paying by cash or check, discounted from 20% if paying by Credit Card or PayPal** (PayPal payment account: jpastor@americanglassgallery.com). This buyer premium will be added to the hammer price as part of the purchase price. For example, if you purchase a lot for \$100.00, you will receive an invoice for \$117.00 if paying by cash, check or money order, plus any applicable sales tax or shipping charges.

**Taxes:** If you are a Michigan resident, a 6% sales tax will be added to your bill unless you have a valid resale number registered with us.

**Shipping:** Shipping, handling and insurance are extra. We ship insured via U.S. Mail or UPS. These charges will be added to your bill unless the lots are picked up in person. Oversize packages (boxes with dimensions over 12"), may incur additional shipping charges based on the postal zone of destination. Our charges for shipping (excluding foreign shipments and oversized lots) are \$18.00 for the first item, \$9.00 for each additional item together with extra insurance costs (we use current U.S. Postal Service insurance rates).

*Please allow two to three weeks for delivery after receipt of your check.*

**Payment:** American Glass Gallery accepts Cash, Money Orders, Personal Checks, Visa, MasterCard, American Express and PayPal. **If paying by Credit Card or PayPal, an additional 3% will be added to the invoice total.**



## 7. Refunds

Refunds will be given at the discretion of the Auctioneers. Items purchased must be examined and request for refund made immediately upon receipt of the item or items. Since opinions can differ, particularly in the matter of condition, the Auctioneers will be the sole judge in the consideration of refunds. Refunds requested on the grounds of authenticity must be made within 15 days of the date of the auction, and such refund requests must be accompanied by at least one supporting statement in writing from an authority recognized by the Auctioneers. It is the Auctioneers sincere intention to consider any reasonable request for a refund. **Absolutely no returns for any reason after 30 days following the closing of the sale.**

## 8. Bidding on any item indicates your acceptance of these terms.



American Glass Gallery™

**John R. Pastor**  
P.O. Box 227  
New Hudson, Michigan 48165  
Phone: 248.486.0530  
Fax: 248.486.0538  
[www.americanglassgallery.com](http://www.americanglassgallery.com)  
email: [jpastor@americanglassgallery.com](mailto:jpastor@americanglassgallery.com)

### PLEASE NOTE:

*The lots offered in this printed catalog are identical to the lots offered in the on-line catalog. However, due to space constraints of the printed catalog, there may be some further information available regarding some of the lots in the on-line auction descriptions.*

*Please visit us at*

**[www.americanglassgallery.com](http://www.americanglassgallery.com)**

*and follow the link to the on-line auction.*

*The link and on-line auction will be available March 19, 2024. A post-auction price list will be available on our website, in printable form, approximately 30 days after the close of the auction.*

*We encourage you to contact us by phone or email with any questions, for assistance with bidding, or further details or clarification on any of the lots in this sale. Your complete satisfaction and confidence is our goal!*

**THANK YOU AND GOOD LUCK  
WITH YOUR BIDS!**

# Reference Key

Reference initials and numbers used in the description of this catalog refer to the following publications:

AHG	<i>American Historical Glass</i> , Bessie M. Lindsey, 1967.
AM	<i>The Decanter - An Illustrated History of Glass from 1650</i> , Andy McConnell, 2004.
AP	<i>Glass in Early America</i> , Arlene Palmer, 1993.
BA1	<i>Collecting The Cures</i> , Bill Agee, 1969.
BA2	<i>Collecting All Cures</i> , Bill Agee, 1973.
BB	<i>A Bit About Balsams</i> , Betty Blasi, 1974.
BH	<i>Classification and Documentation of Sunburst and Similar Scent Bottles</i> , Bill Ham, AB&GC, 5/87.
BJ	<i>American Pot Lids</i> , Barbara and Sonny Jackson, 1987.
B/K	<i>The Glass Industry in Sandwich</i> , Raymond Barlow and Joan Kaiser, 1989.
BPK	<i>A.M. BININGER Bottles</i> , Jim Bender, 2017
C	<i>Ink Bottles and Inkwells</i> , William Covill, 1971.
DB	<i>Antique Sealed Bottles, 1640 - 1900</i> , David Burton, 2015
DeG	<i>American Sarsaparilla Bottles</i> , John DeGrafft, 1980.
DeGII	<i>Supplement to American Sarsaparilla Bottles</i> , John DeGrafft, 2004.
DF	<i>Hair Raising Stories</i> , Don Fadely, 1992.
DM	<i>Wistarburgh, Window Tiles, Bottles and More</i> , Dale L. Murscell, 2007.
D/P	<i>Collector's Guide to Candy Containers</i> , Douglas M. Dezso, J. Leon and Rose Poirier, 1998.
F	<i>Inks, 150 Years of Bottles and Companies</i> , Ed and Lucy Faulkner.
FA	<i>John Frederick Amelung, Early American Glassmaker</i> , Lanmon, Palmer, Hume, Brill, Hanson, 1990.
FB	<i>A.S.C.R. The wine bottles of All Souls College</i> , Oxford, 1750 – 1850, Fay Banks.
G	(Flasks) <i>American Bottles &amp; Flasks and Their Ancestry</i> , McKearin & Wilson, 1978.
G	(Blown Three Mold) <i>American Glass</i> (Chapter VI), George S. and Helen McKearin, 1941.
GBH	<i>English Glass For The Collector, 1660-1860</i> , G. Bernard Hughes, 1958.
H	<i>American Bottles in the Charles B. Gardner Collection</i> , Norman C. Heckler, 1975.
JB	<i>Patent and Proprietary Medicine Bottles</i> , Joseph K. Baldwin, 1973
JEB	<i>Glasshouse Whimsies</i> , Joyce E. Blake, 1984.
JH	<i>Glasshouses &amp; Glass Manufacturers of the Pittsburgh Region, 1795 – 1910</i> , Jay W. Hawkins, 2009.
JM	<i>Tea Kettle Ink Price and Reference Guide</i> , Joe L. Mathews Jr., 2016
JS	<i>In glas verpakt – European Bottles, Their history and production</i> , Johan Soetens, 2001.
K	<i>Poison Bottle Workbook</i> , Rudy Kuhn, 1988.
KW	<i>New England Glass &amp; Glassmaking</i> , Kenneth M. Wilson, 1972.
LI	<i>Pittsburgh Glass, 1797 – 1891</i> , Lowell Innes, 1976.
Mc	<i>Two Hundred Years of American Blown Glass</i> , Helen and George McKearin, 1950.
McK	<i>American Glass</i> , George S. and Helen McKearin, 1941.
MW	<i>American Bottles &amp; Flasks and Their Ancestry</i> , McKearin & Wilson, 1978.
N	<i>Great American Pontiled Medicines</i> , Frederick Nielson, 1978.
NCH	<i>The Blaske Collection of American Flasks</i> , Norman C. Heckler, 1983.
NCH II	<i>The Blaske Collection: Part II</i> , Norman C. Heckler, 1983.
Odell I	<i>Indian Bottles and Brands</i> , John Odell, 1977
Odell II	<i>Pontiled Medicine Encyclopdia</i> , John Odell, 2007
O&S	<i>Warner's Reference Guide</i> , Ed Ojea and Jack Stecher, 1998.
P	<i>The Glass Gaffers of New Jersey</i> , Adeline Pepper, 1971.
RB	<i>Red Book No. 13; The Collector's Guide to Old Fruit Jars</i> , David C. Eifler.
RD	<i>Understanding Antique Wine Bottles</i> , Roger Dumbrell, 1983.
RF	<i>The Bottle Book: A Comprehensive Guide to Historic, Embossed Medicine Bottles</i> , Richard Fike, 1987
RH	<i>Collecting Barber Bottles</i> , Richard Holiner, 1986.
R/H	<i>Bitters Bottles</i> , Carlyn Ring and W. C. Ham, 1998.
RWL	<i>Antique Fakes &amp; Reproductions</i> , Ruth Webb Lee, 1950
T	<i>Collectors Guide to Saratoga Type Mineral Water Bottles</i> , Donald Tucker, 2005.
V	<i>Nailsea Glass</i> , Keith Vincent, 1975
VdB	<i>Antique Glass Bottles; Their History and Evolution</i> , Willy Van den Bossche, 2001.
Z	<i>Ketchup, Pickles, Sauces</i> , Betty Zumwalt, 1980.
ZW	<i>Color Hutchinsons</i> , Zang Wood, 1999.

- The dash is generally used to indicate that the descriptions are on opposite sides of the bottle or flask.

/ The slash is used to indicate that the descriptions are on different lines or surfaces of the bottle.

# Another fine selection of great bottles from the Fred Swiechowicz collection!



*Fred preparing his table at one of the many shows he attended throughout the Northeast.*

Lot 181

Lot 231



Lot 22

Lot 26

Lot 216

DR. WOOLF'S  
Sarsaparilla and Wild Cherry  
**BITTERS.**

the best and certain rem-dy for the cure of  
 ALL AFFECTIONS OF THE HEART,  
 OF THE BLOOD,  
 CHRONIC DISEASES,  
 PUNTULES, &c.

SICK-HEAD ACHE,  
 HABITUAL CONSTIVENESS,  
 LOSS OF APPETITE,  
 DYSPEPSIA,  
 CHRONIC RHEUMATISM,  
 SYPHILOID DISEASES,  
 DEBILITATED STOMACH,  
 DEPRESSION OF SPIRITS,  
 &c.

Prepared and Sold by  
**THORNTON, J.B.**  
 Apothecary and Druggist,  
 121 Water Street, New Bedford, Mass.

Directions.  
 Two table spoonfuls may be taken three times a day,  
 in a wine glass of water. For a child six years old,  
 1 1/2 table spoonfuls for one twelve years old, a full  
 table spoonful, according to the peculiar circum-  
 stances and other interesting particulars, see Pam-  
 phlet has the signature of the Proprietor,  
*Thornton J.B.*

See the words "Dr. Woolf's Sarsaparilla and Wild  
 Cherry" on the glass.

# Rare & Colorful Bitters Bottles



Lot 199

Lot 207



Lot 206 (1 of 2)

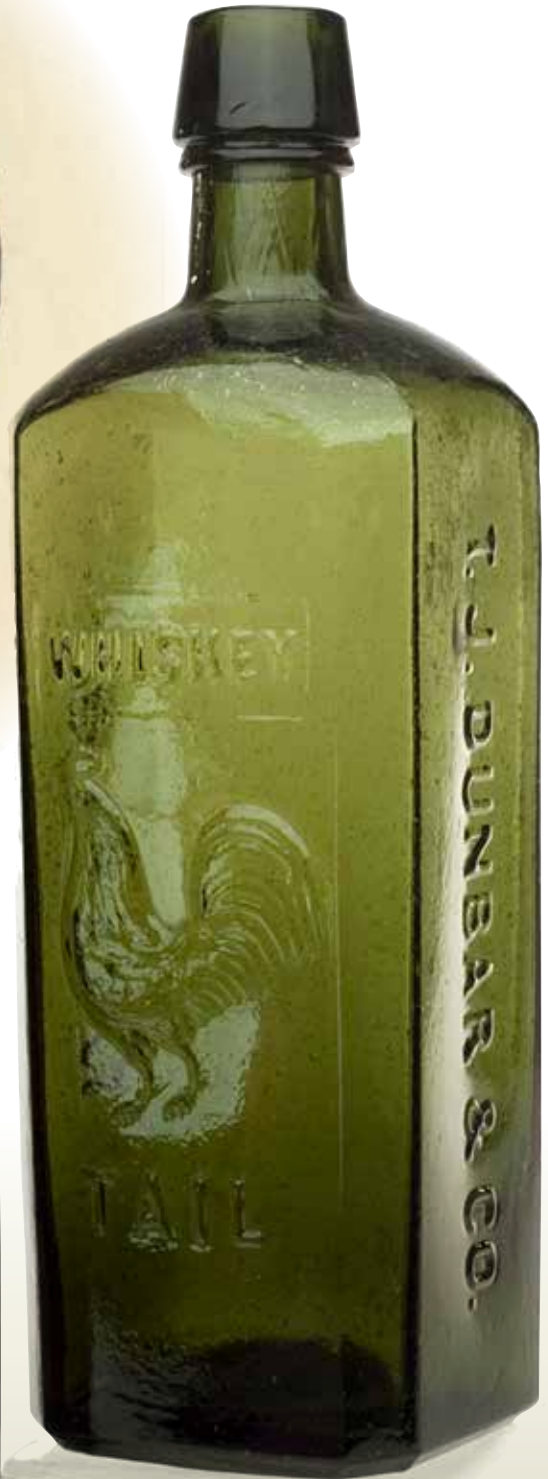
Lot 213

Lot 190

# Rare & Unique J. D. Dunbar Cock Tail Bottles



Lot 182



Lot 183

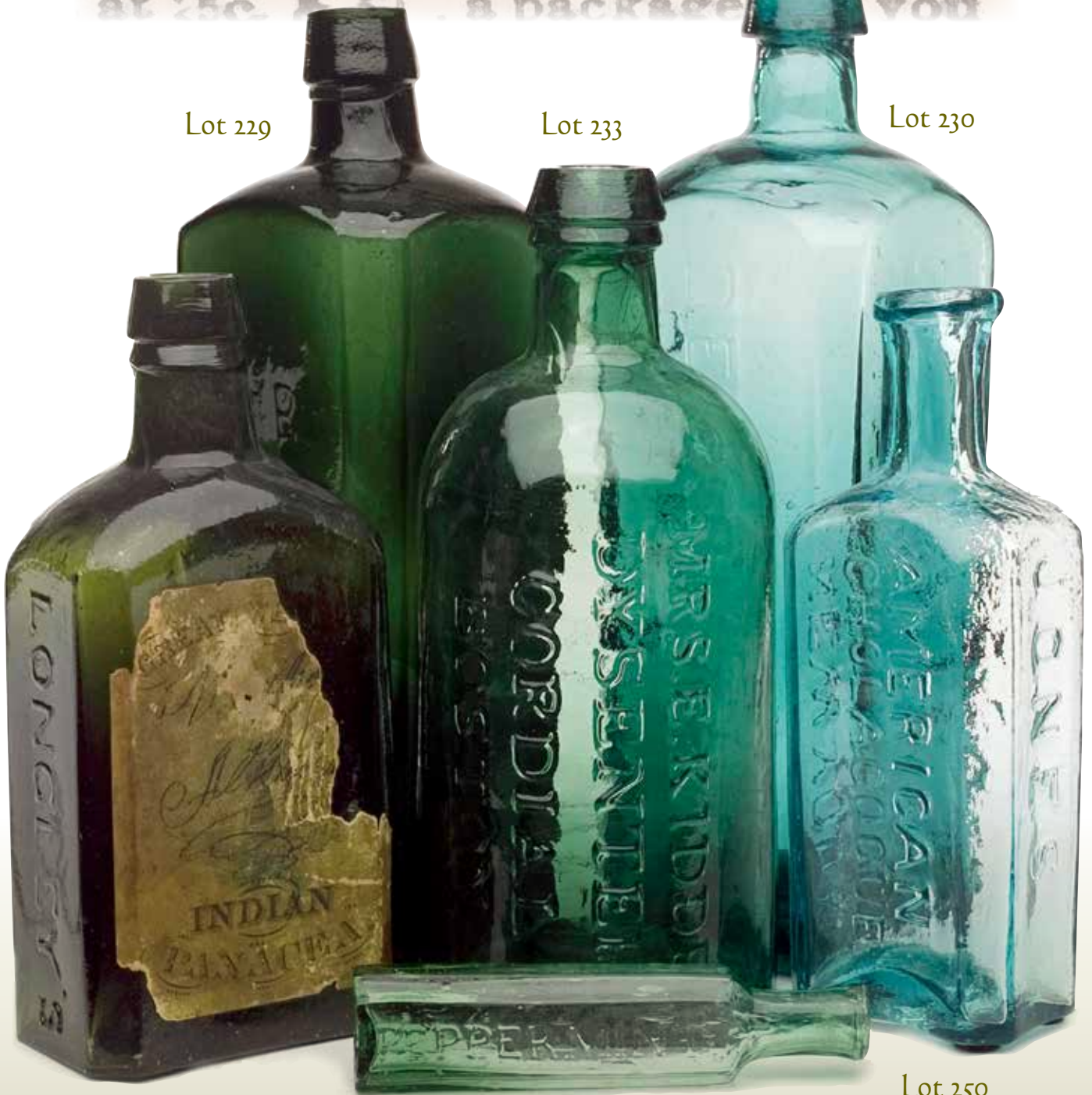
# Rare Pontilled Medicine Bottles

**MEDICINE**  
at 25c. A 50c. a package. you

Lot 229

Lot 233

Lot 230



Lot 232

Lot 238

Lot 250



# Rare & Fine Examples of American Blown Glass

Lot 62



Lot 65



Lot 74



Lot 45



Lot 40



Lot 73

Lot 72



### Lot 1

**"Washington" / Bust of Washington – "Baltimore Glass Works" / Monument Historical Flask**, Baltimore Glass Works, Baltimore, MD, 1830 – 1845. Pale aquamarine, sheared mouth – blowpipe pontil scar, Pt, perfect. GI-19. Scarce. A clean, bright, sparkling, virtually pristine example with very bold embossing. This mold typically has a weak impression. The impression on this example is about as strong, and as nice, as you could hope to find! Fred Swiechowicz collection.

*Est.: \$300 - \$600 • Min. bid: \$150*



### Lot 2

**"THE FATHER OF HIS COUNTRY" / BUST OF WASHINGTON – "GEN. TAYLOR NEVER SURRENDERS" / BUST OF TAYLOR Historical Flask**, probably Dyottville Glass Works, 1848 - 1855. Medium-to-deep blue green, sheared mouth – blowpipe pontil scar, Qt; (some moderate high point wear on the busts; a couple of small pinhead flakes at edge of base, and a few patches of light interior content residue, likely washable). GI-39. A heavy example, very strong color.

*Est.: \$250 - \$450 • Min. bid: \$130*



### Lot 3

**"GENERAL LA FAYETTE" / BUST OF LAFAYETTE – "REPUBLICAN GRATITUDE – KENSINGTON GLASS WORKS PHILADELPHIA – E. PLURIBUS UNUM" / EAGLE / "T.W.D" Historical Flask**, Kensington Glass Works, 1824 - 1830. Aquamarine, sheared mouth – blowpipe pontil scar, Pt; (a little high point wear on Lafayette's cheek, and a bit of light haziness in the shoulder area, otherwise excellent). GI-90. Comparatively scarce.

*Est.: \$250 - \$400 • Min. bid: \$130*



### Lot 4

**"JENY LIND" / BUST OF JENY LIND – GLASS FACTORY Historical Calabash**, Ravenna Glass Works, Ravenna, OH, 1857 – 1862. Clear, medium cobalt blue, applied blob collar – heavy iron pontil scar, Qt, near mint; (just a touch of light wear and some very faint interior haze, or residue, that may wash out, otherwise perfect). GI-104. A beautiful example, rare and desirable color, excellent condition.

*Est.: \$1,800 - \$3,600 • Min. bid: \$900*



### Lot 5

**Lot of (2), Louisville EAGLE – EAGLE Historical Flasks**, probably Louisville Glass Works, KY, 1850 - 1860. **1st Ex.:** Light aquamarine, sheared mouth – blowpipe pontil scar, Pt. **2nd Ex.:** Rich aquamarine, crudely applied collar with flat band – smooth base, Qt; (1st Ex. has a pontil chip, 1/4" wide, 1/16" deep at edge of base, otherwise perfect; 2nd Ex. has a little exterior wear, and some light interior haziness, but no other form of damage). GI-24 & GI-26 respectively. Bruce Purdy collection.

*Est.: \$400 - \$600 • Min. bid: \$200*



### Lot 6

**EAGLE / "T.W.D" – CORNUCOPIA – "E PLURIBUS UNUM / ONE OF MANY. – KENSINGTON GLASS / WORKS PHILADELPHIA" Historical Flask**, 1825 – 1838. Very pale aquamarine, sheared mouth – blowpipe pontil scar, 1/2 Pt, near mint; (a bit of minor high point wear, primarily on the reverse, and a slightly weak impression in the shoulder area, as is often the case with this mold, otherwise virtually attic mint). GI-43. A scarce, early little Kensington flask.

*Est.: \$250 - \$450 • Min. bid: \$130*



### Lot 7

**"LIBERTY" / EAGLE – "WILLINGTON / GLASS, Co / WEST WILLINGTON / CONN" Historical Flask**, 1855 – 1872. Beautiful medium olive with a slight yellowish tone below the shoulders, shading to a deep olive near the base, applied sloping collar – smooth base, Qt, attic mint. GI-61. A fantastic example! Strong mold impression, bright, clean, sparkling, virtually no wear and 'out-of-the-mold' pristine condition. This one is about as nice as you could hope to find.

*Est.: \$400 - \$800 • Min. bid: \$200*



### Lot 8

**"LIBERTY" / EAGLE – "WILLINGTON / GLASS, Co / WEST WILLINGTON / CONN" Historical Flask**, 1850 - 1860. Medium olive shading to a rich, deep olive near the base, sheared mouth – deep blowpipe pontil scar, Pt, near mint; (a bit of typical minor high point wear, and a slightly weak impression which is common for this mold). GI-64. A nice crude, bubbly example. The deep jagged pontil protrudes from the base a good 1/8" creating a little lean to the flask. Fred Swiechowicz collection.

*Est.: \$400 - \$800 • Min. bid: \$200*



### Lot 9

**EAGLE – CORNUCOPIA Historical Flask**, Keene Marlboro Street Glassworks, Keene, NH, 1830 – 1842. Yellowish amber with an olive tone, sheared mouth – blowpipe pontil scar, Pt, near mint; (only the slightest touch of very light wear, and a faint ring of light interior residue or haze, some of which may wash out, approx. 1 ½” above the base, otherwise perfect). GIII-73. A good clean example of this classic, early, Keene, NH flask, nice color.

*Est.: \$150 - \$250 • Min. bid: \$80*



### Lot 10

**Lot of (2), Stoddard Double Eagle Flasks**, both Granite Glass Works, Stoddard, NH, 1846 – 1862. 1st Ex.: **EAGLE / “GRANITE. / GLASS. CO.” – EAGLE / “STODDARD / N H”**, medium-to-deep olive with an amber tone. 2nd Ex.: **EAGLE – EAGLE / “STODDARD / N H”**, yellowish ‘old amber’ with some golden tones. Sheared mouths – blowpipe pontil scarred bases, Pt; (both virtually perfect with just minor light wear). GII-81 & GII-82 respectively. Bruce Purdy collection.

*Est.: \$250 - \$450 • Min. bid: \$130*



### Lot 11

**Lot of (2), EAGLE / “PITTSBURGH / PA” – EAGLE Historical Flasks**, a Pittsburgh glasshouse, 1860 - 1870. 1st Ex.: Rich, yellowish olive amber, almost an olive yellow. 2nd Ex.: Medium-to-deep bright olive, a nice pure green coloration. Both applied mouths with flat band – smooth base, Pt; (both with a bit of relatively minor high point wear, otherwise near mint; the olive example has some in-manufacture glass extrusion at the mold seam). Both GII-105. Bruce Purdy collection.

*Est.: \$400 - \$600 • Min. bid: \$200*



### Lot 12

**CORNUCOPIA – URN Pictorial Flask**, probably Coventry Glass Works, Coventry, CT, 1835 – 1849. Clear, medium emerald coloration, sheared mouth – blowpipe pontil scar, Pt, virtually perfect; (just the slightest trace of very faint wear). GIII-5. A very scarce mold variant in an unlisted color. The GIII-5 with the distinct circular depression in the Urn is only listed in olive amber and olive green. No auction records exist for this color in a GIII-5. Fred Swiechowicz collection.

*Est.: \$500 - \$1,000 • Min. bid: \$250*



### Lot 13

**Lot of (2), CORNUCOPIA – URN Pictorial Flasks**, Keene Marlboro Street Glassworks, Keene, NH, or possibly Coventry Glass Works, CT, 1835 – 1849. Both are shades of olive green, sheared mouth – blowpipe pontil scarred bases, ½ Pt; (one example has just a little relatively light wear, the second example has some moderate high point wear, but otherwise excellent). Both GIII-7. A nice little pair of early Cornucopia – Urn flasks.

*Est.: \$150 - \$250 • Min. Bid: \$80*



### Lot 14

**Lot of (2), CORNUCOPIA – URN Pictorial Flasks**, New England, 1835 – 1850. Bright yellowish amber, and medium olive amber, both are sheared mouth – blowpipe pontil scarred bases, ½ Pt; (both near mint with just some light exterior high point wear). GIII-8 & GIII-12 respectively. The GIII-12 is a comparatively scarce mold; the GIII-8 with the large pearl to the left of the cornucopia is also somewhat scarce, and in a very pretty, scarce color. Bruce Purdy collection.

*Est.: \$300 - \$500 • Min. bid: \$150*



### Lot 15

**MASONIC ARCH - FRIGATE / “FRANKLIN.” – “FREE TRADE AND SAILORS RIGHTS” – “KENSINGTON GLASS WORKS PHILADELPHIA” Historical Flask**, probably 1825 - 1838. Light aquamarine, sheared mouth – blowpipe pontil scar, Pt; (a little light high point wear, and some very faint haziness, not terribly distracting, but mentioned for completeness, otherwise perfect). GIV-34. A very historical, early glasshouse embossed flask, strong impression.

*Est.: \$250 - \$400 • Min. bid: \$130*



### Lot 16

**Lot of (2), CLASPED HANDS / SQUARE & COMPASS / “UNION” – EAGLE / “A.R.S.” Historical Calabash Bottles**, A.R. Samuels, Keystone Glass Works, Philadelphia, PA, 1866 – 1874. Both are aquamarine, applied sloping collar – one example with blowpipe pontil scar, 2nd example smooth base, Qts., both near mint; (just minor traces of light wear). Both GIV-42. A very nice pair of historical calabash flasks, excellent condition.

*Est.: \$175 - \$275 • Min. bid: \$90*



### Lot 17

**“SUCCESS TO THE RAILROAD” / HORSE PULLING CART** – (Reverse same) **Historical Flask**, Keene Marlboro Street Glassworks, 1830 - 1842. Medium-to-deep olive amber, sheared mouth – blowpipe pontil scar, Pt; (just a slight trace of light wear, and a small potstone on the inside surface of the glass with a couple of tiny, very hard-to-see, 1/16” cooling lines, otherwise virtually attic mint). GV-3. A very nice example, good impression, stronger than most through the shoulders.

*Est.: \$300 - \$500 • Min. bid: \$150*



### Lot 18

**“SUCCESS TO THE RAILROAD” / HORSE PULLING CART** – (Reverse same) **Historical Flask**, probably Mt. Vernon Glass Works, Vernon, NY, 1830 - 1846. Very deep olive amber, almost a tobacco coloration, sheared mouth – blowpipe pontil scar, Pt; (the shoulders are a little overblown, not uncommon with this mold; some light exterior wear including a small patch of faint dullness below the shoulder, and a ¼”, partially open bubble near the base). GV-5. A nice crude example.

*Est.: \$300 - \$500 • Min. bid: \$150*



### Lot 19

**“SUCCESS TO THE RAILROAD” / HORSE PULLING CART** – (Reverse same) **Historical Flask**, Coventry Glass Works, Coventry, CT, 1830 - 1848. Rich, medium olive amber, sheared mouth – blowpipe pontil scar, Pt; (a touch of typical, relatively minor exterior wear, and a slightly weak impression in the shoulder area as is common for this mold, otherwise near mint). GV-6. A classic early railroad flask, excellent character with plenty of tiny bubbles throughout.

*Est.: \$275 - \$450 • Min. bid: \$140*



### Lot 20

**“E.G. BOOZ'S / OLD CABIN / WHISKEY – (1840) – E.G. BOOZ'S / OLD CABIN / WHISKEY. – 120 WALNUT ST. / PHILADELPHIA”**, Whitney Glass Works, NJ, 1860 - 1870. Medium amber shading to a lighter honey tone along the edges, applied sloping collar – smooth base, ht. 7 5/8”; (some light interior residue, some of which would likely wash out, and a touch of wear including a pinhead flake on one of the base corners). GVII-4. From an early West Hartford, CT collection.

*Est.: \$3,000 - \$4,000 • Min. bid: \$1,500*



### Lot 21

**SUNBURST FLASK**, Coventry Glass Works, Coventry, CT, 1815 - 1830. Light-to-medium yellowish olive shading to a deep yellowish olive with a slight amber tone near the base, sheared mouth – blowpipe pontil scar, ½ Pt, virtually perfect; (some washable interior content residue, and a bit on the shoulders, otherwise attic mint). GVIII-18. A very attractive example, excellent character with several small threads of glass swirled around the shoulders. Provenance: Fred Swiechowicz collection.

*Est.: \$700 - \$900 • Min. bid: \$350*



### Lot 22

**SUNBURST FLASK**, Baltimore Glass Works, 1820 - 1830. Gorgeous, medium copper-apricot coloration through the mid-body, shading to a rich, deeper apricot towards the base, sheared mouth – blowpipe pontil scar, ½ Pt, near mint; (just a bit of light exterior high point wear, and a trace of washable content residue, otherwise perfect). GXIII-25. A comparatively scarce mold, very scarce and beautiful color that passes plenty of light, fantastic condition. Provenance: Fred Swiechowicz collection.

*Est.: \$2,500 - \$4,000 • Min. bid: \$1,300*



### Lot 23

**“LOUISVILLE, KY – GLASS WORKS” SCROLL FLASK**, Louisville Glassworks, 1855 - 1860. Aquamarine, sheared mouth – iron pontil scar, Pt, attic mint. GIX-9. A comparatively scarce glass-house lettered scroll flask. Excellent character with nice crude pebbly glass, a strong impression, outstanding condition. Note; this ‘arched lettered’ GIX-9 variant is believed to be a scarcer mold than the GIX-8 ‘straight lettered’ variant.

*Est.: \$250 - \$450 • Min. bid: \$130*



### Lot 24

**“LOUISVILLE, KY – GLASS WORKS” SCROLL FLASK**, Louisville Glassworks, 1855 - 1860. Light-to-medium yellowish apple green, sheared mouth – large oval iron pontil scar, Pt, near mint; (just a little minor high point wear, otherwise perfect). GIX-9. A comparatively scarce flask, and very scarce-to-rare in this pretty apple green coloration. Another great example with excellent character, a strong impression, fantastic condition. Tony Panepucci collection.

*Est.: \$800 - \$1,200 • Min. bid: \$400*



### Lot 25

**SCROLL FLASK**, Midwest, 1845 – 1860. Bright medium amber, sheared mouth with an applied ring type collar – iron pontil scar, Pt, near mint; (just a trace of minor high point wear; some in-manufacture glass extrusion and roughness at the mold seam in the lower third above the base, and an in-making fold of glass on the inside surface of the flask above the base, mentioned for completeness, otherwise perfect). GIX-10. A nice example, attractive applied collar.

*Est.: \$400 - \$600 • Min. bid: \$200*



### Lot 26

**SCROLL FLASK**, Midwest, 1845 – 1860. Brilliant, medium-to-deep grass green, almost a kelly green coloration, sheared mouth – blowpipe pontil scar, Pt; (a ¼" chip along the top edge of the collar, otherwise attic mint!) GIX-10. A gorgeous, eye-appealing, very scarce-to-rare color – one that will stand out in any collection. Excellent depth of color, excellent overall condition. Provenance: Fred Swiechowicz collection.

*Est.: \$1,200 - \$2,400 • Min. bid: \$600*



### Lot 27

**SCROLL FLASK**, Midwest, 1840 – 1860. Virtually colorless above the base, very pale greenish aquamarine in the base, sheared mouth – blowpipe pontil scar, Pt; (a bit of very faint interior milkiness in the upper body, barely noticeable under normal lighting; a pontil chip extends near the edge of the base but does not show on display, and slightly weak impression in the shoulders, otherwise excellent). GIX-16a. A rare mold, very scarce-to-rare 'color'. Bruce Purdy collection.

*Est.: \$200 - \$400 • Min. bid: \$100*



### Lot 28

**Oversized SCROLL FLASK**, Midwest, 1840 – 1860. Aquamarine, sheared mouth – blowpipe pontil scar, ht. 11", slightly over 2 Qts, virtually perfect; (a partially open bubble, and a 1/8" bit of minor roughness on the inside edge of the sheared lip, otherwise mint). GIX-29. As noted by McKearin, a rare mold, especially in this outstanding condition. See Mark Vuono's article, "The Gallon Scrolls", *AB&GC*, June, 2014. A fresh 'pick' from a thrift shop, Beaver County, PA.

*Est.: \$700 - \$900 • Min. bid: \$350*



### Lot 29

**SUMMER TREE – SUMMER TREE Pictorial Flask**, America, 1850 – 1860. Aquamarine, large blob collar – blowpipe pontil scar, Qt, perfect. GX-18. A bright, clean, sparkling example, excellent character with nice pebbly glass, filled with tiny seed bubbles. A great looking example and a lot of bottle for the money.

*Est.: \$175 - \$275 • Min. bid: \$90*



### Lot 30

**SUMMER TREE – WINTER TREE Pictorial Flask**, America, 1860 – 1870. Light cornflower blue, applied round collar with bevel – smooth base, Qt, virtually attic mint; (just a touch of minor light wear, otherwise perfect). GX-19. A very scarce, very pretty color for this mold! For those of you that are putting together a color run of these great looking Summer – Winter molds, you know this is not an easy one to find!

*Est.: \$400 - \$600 • Min. bid: \$200*



### Lot 31

**SUMMER TREE – SUMMER TREE Pictorial Flask**, America, 1850 – 1860. Beautiful light golden honey coloration, applied round collar with bevel – heavy blowpipe pontil scar, Qt; (a bit of minor wear including a 1 ½" light scratch near the base and a ½" shallow open bubble at side mold seam; some very light haziness, primarily on one side only, and a ¼" pontil flake at edge of base that does not show on display, otherwise excellent). GX-18. A beautiful example, fantastic character.

*Est.: \$800 - \$1,600 • Min. bid: \$400*



### Lot 32

**SUMMER TREE – WINTER TREE Pictorial Flask**, America, 1860 – 1870. Dense amber, virtually black in reflected light, applied round collar with bevel – smooth base, Qt, virtually perfect; (just the slightest trace of very faint wear). GX-19. A great example, fantastic condition, rare and unusual color for this mold, and one that will stand out on a shelf. We sold a similar example about seven years ago (Auction #18), this one is every bit as nice.

*Est.: \$1,200 - \$2,200 • Min. bid: \$600*



### Lot 33

**PROSPECTOR – EAGLE Historical Flask**, Zanesville Glass Works, Zanesville, OH, 1859 – 1864. Aquamarine, applied ring collar – smooth base, Pt, virtually attic mint; (just a slight trace of very faint wear on the reverse, otherwise perfect). GXI-45. McKearin Group C, Rare Flasks, #5. A great example, one that has not been dug and cleaned, strong impression. Colloquially referred to as the “Tippler flask”, as the prospector is tipping a long neck bottle to his lips.

*Est.: \$1,500 - \$2,500 • Min. bid: \$800*



### Lot 34

**CLASPED HANDS – EAGLE Historical Flask**, a Pittsburgh district glasshouse, 1860 – 1870. Bright, light yellowish honey coloration, applied collar with flat band – smooth base, ½ pint, virtually attic mint; (just a trace of minor light wear, otherwise perfect). GXII-31. A very pretty little flask, excellent condition, much lighter in color than most, and with plenty of yellow throughout. A lot of flask for the money.

*Est.: \$175 - \$350 • Min. bid: \$90*



### Lot 35

**Lot of (2), CLASPED HANDS – EAGLE Historical Flasks**, Pittsburgh PA, 1860 – 1875. **1st Ex.:** Golden amber with an orange tone in the neck and near the base, applied collar with flat band – smooth base, ½ Pt. **2nd Ex.:** Medium-to-deep amber, applied ring collar – smooth base, ½ Pt; (1st Ex. just a trace of light wear on the reverse, otherwise perfect; 2nd Ex.: Minor light wear, primarily on the reverse, otherwise perfect). GXII-31 & GXII-33 respectively. Bruce Purdy collection.

*Est.: \$200 - \$400 • Min. bid: \$100*



### Lot 36

**“FLORA TEMPLE” / STANDING HORSE / “HARNESS TROT 2.19 ¾” Pictorial Flask**, Lancaster Glass Works, Lancaster, NY, 1860 -1865. Bright, medium blue green coloration, applied collar with flat band – smooth base, Pt, virtually perfect; (just a slight trace of very light wear on the reverse, otherwise sparkling attic mint). GXIII-23. A recent find from an old home in the tiny town of North Rose, NY. Beautiful color and condition.

*Est.: \$400 - \$600 • Min. bid: \$200*



### Lot 37

**SHEAF OF GRAIN – “WESTFORD GLASS Co / WESTFORD / CONN” Pictorial Flask** (with early period label), Westford Glass Works, 1857 – 1873. Medium-to-deep yellowish olive amber, applied ring collar with bevel – smooth base, ½ Pt, virtually perfect; (minor, partially open ¼” bubble near side mold seam). GXIII-37. Label reads in part, *SPIRITS OF CAMPHOR / J.S. RAYMOND, M.D., / City Drug Store, OGDENSBURG, N.Y.* Provenance: Ex. Tom McCandless collection.

*Est.: \$200 - \$400 • Min. bid: \$100*



### Lot 38

**“BALTIMORE” / ANCHOR / “GLASS WORKS” – PHOENIX / “RESURGAM” Historical Flask**, Baltimore Glass Works, 1860 - 1870. Medium amber with a slight orange tone, applied double ring collar – smooth base, Pt; (just a slight trace of faint wear, and a small potstone in the base with some iridescence and a couple of ¼” ‘legs’, otherwise excellent). GXIII-54. A nice example with a crisp, very strong mold impression. Tony Panepucci, Ex. Strong Museum collections.

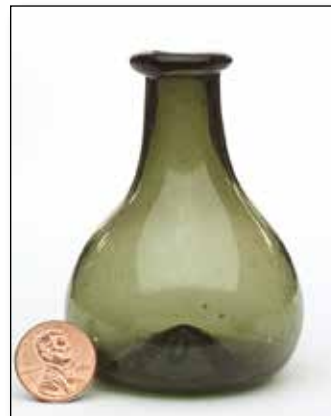
*Est.: \$300 - \$500 • Min. bid: \$150*



### Lot 39

**“ISABELLA” / ANCHOR / “GLASS WORKS” – GLASSHOUSE Pictorial Flask**, Isabella Glass Works, New Brooklyn, NJ, 1855 – 1865. Aquamarine, applied ring collar – smooth base, ½ Pt, sparkling attic mint. GXIII-57. A great looking little flask, the mold is noted by McKearin as “Rare”, and aptly so. This one has crisp, very strong embossing, an unusually long neck, and virtually pristine condition.

*Est.: \$300 - \$500 • Min. bid: \$150*



### Lot 40

**Rare, Miniature Freeblown Globular Bottle**, New England, 1785 – 1820. Medium olive coloration, diminutive globular body with slightly drawn-up shoulders, sheared mouth with an applied ring type collar – delicate blowpipe pontil scar, ht. 3”, perfect. This is a little sweetheart of an example, pleasing form, at exactly 3” – a very rare and desirable size, outstanding condition. From an old-time West Hartford, CT collection assembled in the 1940s and 50s.

*Est.: \$2,000 - \$3,000 • Min. bid: \$1,000*



### Lot 41

**Large, Freeblown Globular Bottle**, New England, 1790 – 1820. Light-to-medium yellowish olive amber, globular form, sheared mouth with an applied very crude ring type collar – blowpipe pontil scar, ht. 10 5/8", near mint; (just a touch of typical light wear around the mid-body, and a large thin bubble on the interior of the shoulder, partially open, otherwise perfect). A light, pretty example with some beautiful swirls and frothiness to the glass.

*Est.: \$500 - \$800 • Min. bid: \$250*



### Lot 42

**Early Freeblown Globular Bottle**, Eastern US, or New England, 1780 – 1810. Very deep 'old amber', almost a chocolate coloration, globular body with gracefully tapering shoulders, sheared mouth with a crudely applied ring type collar (below the shear on one side) – blowpipe pontil scar, ht. 8 7/8"; (some light-to-moderate exterior usage wear, and a partially open interior bubble, approximately 1", otherwise excellent). A very rare, unusual, early glob. Tony Panepucci collection.

*Est.: \$600 - \$1,200 • Min. bid: \$300*



### Lot 43

**Early Freeblown Chestnut Bottle** South Jersey type, probably Wistarburgh Glass Works, 1739 – 1780. Clear medium green with a slight yellowish tone, plump high shouldered chestnut form, heavy applied collar with short taper – blowpipe pontil scar, ht. 8"; (some light-to-moderate usage wear and typical minor scratches around the mid-body; some spotty light interior haze, not terribly distracting, otherwise excellent). A classic, early, Wistarburgh-type chestnut bottle.

*Est.: \$300 - \$500 • Min. bid: \$150*



### Lot 44

**Rare, Miniature Freeblown Chestnut Flask**, New England, 1785 – 1820. Light yellowish olive, plump chestnut form, sheared mouth with a crudely applied ring collar – delicate blowpipe pontil scar, ht. 4 1/4"; (a hairline spider crack with a few 1/8" to 1/4" 'legs' just above the base at the side of the flask, and a trace of light wear, otherwise excellent). A very rare little chestnut with great form and eye-appeal. From a West Hartford, CT collection assembled in the 40s and 50s.

*Est.: \$500 - \$1,000 • Min. bid: \$250*



### Lot 45

**Rare, Miniature Freeblown Chestnut Flask**, New England, 1785 – 1820. Light-to-medium olive coloration, miniature chestnut form, sheared mouth with an applied ring collar – delicate blowpipe pontil scar, ht. 4 3/8", virtually perfect; (just the slightest trace of very light wear). A little 'gem' of a chestnut, very rare size, excellent clarity, form and condition. As most folks know, these little chestnuts are few and far between. From an early West Hartford, CT collection assembled in the 40s and 50s.

*Est.: \$1,200 - \$2,400 • Min. bid: \$600*



### Lot 46

**Freeblown Chestnut Flask**, probably New England, 1790 – 1825. Aquamarine, chestnut form, sheared mouth with a crudely applied ring collar – delicate blowpipe pontil scar, ht. 4 3/4", near mint; (a little typical minor wear and some patchy faint interior haziness, primarily near the base and a bit through the shoulders, not terribly distracting, but mentioned for completeness, otherwise excellent). A scarce small size (under 5"), very scarce color. Provenance: Tony Panepucci collection.

*Est.: \$300 - \$500 • Min. bid: \$150*



### Lot 47

**Freeblown Chestnut Flask**, probably Mt. Vernon Glass Works, Vernon, NY, 1810 – 1825. Pale, light green, chestnut form, sheared mouth with applied ring collar – blowpipe pontil scar, ht. 5 3/8", near mint; (just a trace of minor wear, and some very faint interior haziness, barely noticeable, that may wash out, otherwise perfect). These pale green MVG chestnuts are scarce! You'll see dozens of New England examples before you find another Mt. Vernon piece. Tony Panepucci collection.

*Est.: \$300 - \$500 • Min. bid: \$150*



### Lot 48

**Lot of (2), Freeblown Chestnut Flasks**, New England, 1785 – 1820. **1st Ex:** Medium olive; **2nd Ex:** light-to-medium yellowish olive, both are chestnut form, sheared mouth with tooled, likely applied ring collars – blowpipe pontil scarred bases, ht. 4 7/8" and 5 5/8" respectively; (both near mint with some typical light exterior wear). Note; the yellowish olive example has some attractive threads of glass swirled through one of the sides.

*Est.: \$400 - \$600 • Min. bid: \$200*



### Lot 49

**Lot of (2), Freeblown Chestnut Flasks**, New England, 1785 – 1820. Both are shades of olive green, chestnut form, sheared mouth with applied ring type collars – blowpipe pontil scarred bases, ht. 5 3/8" and 6 1/4"; (1st example has a 1 1/8" partially open bubble on the side of the neck with some trapped residue, both have just a touch of typical light wear, otherwise near mint). The 1st example has very crude, seedy, bubbly glass, the 2nd example has nice color and clarity.

*Est.: \$400 - \$600 • Min. bid: \$200*



### Lot 50

**Freeblown Chestnut Flask**, New England, 1785 – 1820. Light yellowish olive amber, almost a straw color with an olive tone, chestnut form, sheared mouth with a tooled, likely applied string rim – delicate blowpipe pontil scar, ht. 6 1/2", virtually attic mint; (just a trace of typical light wear, otherwise perfect). A very attractive example, light 'see-through' color, excellent condition.

*Est.: \$250 - \$400 • Min. bid: \$130*



### Lot 51

**Freeblown Chestnut Flask**, New England, 1785 – 1820. Clear, light yellowish olive amber, chestnut form, sheared mouth with an applied ring type collar – delicate blowpipe pontil scar, ht. 8 1/8", near mint; (just a slight trace of minor light wear, otherwise perfect). A great looking example, nice size, excellent clarity and character, the glass being filled with tiny seed bubbles. In addition, a syrupy string of amber glass loops around the neck.

*Est.: \$300 - \$500 • Min. bid: \$150*



### Lot 52

**Freeblown Chestnut Flask**, New England, 1785 – 1820. Medium yellowish olive amber, plump chestnut form, sheared mouth with a crude, likely applied, ring type collar – delicate blowpipe pontil scar, ht. 8 3/8"; (a little typical exterior usage wear as well as some scattered scratches, primarily towards the base on the sides, otherwise excellent). Nice symmetry and slightly larger size than most.

*Est.: \$300 - \$500 • Min. bid: \$150*



### Lot 53

**Freeblown Chestnut Flask**, New England, 1815 – 1830. Beautiful, yellowish honey amber, chestnut form, applied sloping collar with bevel – blowpipe pontil scar, ht. 8 1/2", virtually attic mint; (just a slight trace of very minor wear). A scarce color for a New England type chestnut, also scarce with the applied sloping collar. In addition, outstanding character, the glass is absolutely loaded with impurities and seed bubbles – 'eye candy' for the collector. Provenance: Tony Panepucci collection.

*Est.: \$400 - \$600 • Min. bid: \$200*



### Lot 54

**Freeblown Chestnut Flask**, New England, 1810 – 1830. Beautiful yellowish amber with a slight olive tone, chestnut form, short applied tapered collar – delicate blowpipe pontil scar, ht. 8 3/4", near mint; (slight trace of minor light wear, otherwise virtually perfect). A very pretty chestnut, beautiful color, excellent character, and scarce with the short-tapered collar.

*Est.: \$300 - \$500 • Min. bid: \$150*



### Lot 55

**Large, Freeblown Chestnut Flask**, New England, 1785 – 1820. Beautiful light olive coloration, chestnut form, sheared mouth with a crudely applied ring type collar – delicate blowpipe pontil scar, ht. 10", virtually perfect; (just a slight trace of very light wear). A great example, very attractive, beautiful olive tone, nice 'see-through' color, excellent condition. A 'much-better-than most' example.

*Est.: \$400 - \$600 • Min. bid: \$200*



### Lot 56

**Large, Freeblown Chestnut Flask**, New England, 1785 – 1820. Bright, medium yellowish olive amber, chestnut form, sheared mouth with a crudely applied ring type collar – delicate blowpipe pontil scar, ht. 10 1/8"; (a few light scratches and some typical minor exterior wear, otherwise perfect). A beautiful example, nice symmetry and character with some attractive swirls and potstones scattered through the body, scarce and desirable large size.

*Est.: \$400 - \$600 • Min. bid: \$200*





### Lot 57

**Large, Freeblown Chestnut Flask**, New England, 1785 – 1820. Medium-to-deep olive amber, chestnut form, sheared mouth with an applied ring type collar – blowpipe pontil scar, ht. 10", near mint; (a slight trace of typical light wear, and a bit of very faint residue, otherwise perfect). An aesthetically pleasing early blown chestnut flask, larger than most, and with a decided lean to the body.

*Est.: \$400 - \$600 • Min. bid: \$200*



### Lot 61

**Large, Early Freeblown Bowl**, New England, probably Stoddard, NH possibly New Granite Glass Co, 1850 – 1870. Honey amber, deep cylindrical bowl with sides flaring outward to a sheared, tooled, outward rolled rim – pontil scarred base, ht. 5", rim dia. 8 1/4", perfect. A very large, impressive bowl with a unique 3/4" potstone embedded in the rim (with no issues!). Provenance: Tony Panepucci collection; Ex. Mike George, Boo Morcom, Herbert Delavan Mason collections.

*Est.: \$750 - \$1,500 • Min. bid: \$400*



### Lot 58

**Early, Dip Mold Wide-Mouth Storage Bottle**, probably New England, 1820 – 1840. Bright medium olive with a slight yellowish tone, cylindrical with a short, wide neck, dip mold, sheared mouth with an applied band collar – heavy blowpipe pontil scar, ht. 7 7/8", attic mint. A great looking early jar. Outstanding character with some 'syrupy' black-olive threads of glass swirled through the lower half, a number of sizeable bubbles, and nicely whittled. Tony Panepucci collection.

*Est.: \$300 - \$500 • Min. bid: \$150*



### Lot 62

**Large, Early Freeblown Jar with Matching Ball Cover**, New England, probably a Stoddard, NH glasshouse, 1850 – 1870. Yellowish honey amber, cylindrical, sheared, outward flared rim – pontil scarred base, jar ht. 8 5/8", overall ht. 13"; (a couple of minor scratches, light usage wear, otherwise perfect). A sizeable, much larger than most, impressive early jar with a perfect flared rim – not easy to find, and period matching ball cover. Tony Panepucci collection, Ex. Mike George collection.

*Est.: \$1,200 - \$2,200 • Min. bid: \$600*



### Lot 59

**Early, Freeblown Preserve or Storage Jar**, probably America, possibly New York State, 1830 – 1860. Deep bluish green, cylindrical, sheared, tooled, wide flanged mouth – heavy blowpipe pontil scar, ht. 5 3/8", near mint; (a little scattered minor usage wear, good honest base wear, and a little roughness – in-manufacture, on the rim of the flared mouth from some slag or glass gall mentioned for completeness). Beautiful, rich, eye-appealing color. Tony Panepucci collection.

*Est.: \$300 - \$500 • Min. bid: \$150*



### Lot 63

**Blown Three Mold Decanter**, probably Keene Marlboro Street Glassworks, Keene, NH, 1820 - 1835. Light sea green, square, geometric pattern with diamond quilting and fluted shoulders, sheared, tooled flared mouth – blowpipe pontil scar, ht. 6 3/4", Pt, near mint; (a touch of typical minor wear, and some slight interior haziness below the shoulders, otherwise excellent). Gil-28. McK plate 102, #3. A very scarce and desirable early Keene decanter.

*Est.: \$1,000 - \$2,000 • Min. bid: \$500*



### Lot 60

**Freeblown Spittoon with Ball Cover**, America, probably a South Jersey glasshouse, possibly Midwest, 1850 – 1870. Clear, medium amber, cylindrical, compressed bulbous body with a wide outward flared neck, sheared and inward rolled rim – large blowpipe pontil scar, ht. 4 3/4", perfect. Accompanying the spittoon is a blown, period ball cover, medium amber, dia. 4", perfect. A very nice example, excellent condition, and with plenty of good honest base wear. Tony Panepucci collection.

*Est.: \$300 - \$500 • Min. bid: \$150*



### Lot 64

**Blown Three Mold Decanter**, Keene Marlboro Street Glassworks, Keene, NH, 1820 – 1835. Medium olive amber, ovoid form, geometric sunburst and diamond diapering pattern, sheared and tooled mouth – blowpipe pontil scar, Pt; (a 5/8" partially open bubble in the neck with some residue; a bit of light interior washable residue, and a hard-to-see little pinhead flake on one of the diamond points, otherwise excellent). Gill-16. A classic, early, three-mold Keene decanter.

*Est.: \$400 - \$600 • Min. bid: \$200*



### Lot 65

**Blown Three Mold Decanter**, Keene Marlboro Street Glassworks, Keene, NH, 1820 - 1830. Medium-to-deep yellowish amber with an olive tone, a bit more of an amber tone than most, tapered club form, geometric waffle, sunburst, and diamond pattern, sheared and tooled mouth – blowpipe pontil scar, Qt, attic mint. Gill-19. A great example of this very pretty, classic, early, Keene 3-mold decanter, fantastic condition, almost no wear. Fred Swiechowicz collection.

*Est.: \$800 - \$1,200 • Min. bid: \$400*



### Lot 69

**Pattern Molded Pocket Flask**, probably Continental, 1800 – 1830. Medium pinkish dusty rose coloration, 16 widely spaced melon-type ribs, flattened circular body, sheared mouth – glass tipped pontil scar, ht. 5 ½”, near mint; (a little scattered light exterior wear, otherwise perfect). Similar to McK, plate 239, #1. A very rare and unusual color, one that will stand out in any collection of early pattern molded flasks. Provenance: Tony Panepucci collection.

*Est.: \$400 - \$600 • Min. bid: \$200*



### Lot 66

**Pitkin-Type Flask**, New England, 1790 – 1820. Bright medium olive shading to a rich, deep olive in the shoulders and base, 31 broken rib pattern swirled to the left, plump squatty ovoid form, sheared mouth – blowpipe pontil scar, ht. 5 1/8”, near mint; (just a trace of very minor wear and a slightly weak impression, otherwise perfect). A very attractive little Pitkin flask with a pleasing squatty form, scarce rib count, overall excellent condition. Provenance: Tony Panepucci collection.

*Est.: \$600 - \$900 • Min. bid: \$300*



### Lot 70

**Early, Pattern Molded Creamer**, probably America, possibly a Pittsburgh district glasshouse, 1820 – 1840. Cobalt blue, bulbous body patterned with 12 widely spaced vertical ribs, wide neck, sheared rim with a ‘ewer’ type tooled pour spout, applied solid loop handle curled at lower attachment – applied solid pedestal foot with glass tipped pontil scar, ht. 4 1/8”, perfect. A very attractive early creamer, scarce with the 12 vertical rib pattern. Tony Panepucci collection.

*Est.: \$250 - \$450 • Min. bid: \$130*



### Lot 67

**Pitkin-Type Flask**, Mid-Atlantic region, probably Hilltown Glass Works, Bucks County, PA, 1760 – 1780. Yellowish green with an olive tone, 16 broken rib pattern swirled to the right, flattened elliptical or ovoid form, sheared mouth – glass tipped pontil scar, ht. 5 ¾”; (some moderate high point wear, primarily at the shoulder and near the base; pattern weakens in the lower half of the body, otherwise excellent). A very early, Colonial period Pitkin, good color, scarce mold.

*Est.: \$600 - \$900 • Min. bid: \$300*



### Lot 71

**Blown Three Mold Salt Cellar**, probably Boston and Sandwich Glass Works, 1825 – 1840. Deep cobalt blue with a violet tone, geometric pattern with diamond and sunburst motif, bulbous bowl flaring outward to a galleried rim – ribbed pedestal base with blowpipe pontil scar, ht. 2 ¼”; (some light exterior wear, and a potstone on the surface of the bowl with a bit of roughness, but no radiations, otherwise excellent). Gill-6. A scarce salt, unlisted in this pattern. Tony Panepucci collection.

*Est.: \$400 - \$600 • Min. bid: \$200*



### Lot 68

**Rare, Ribbed Pocket Flask or Utility**, probably Dutch or German, 1740 – 1760. Bright yellowish olive, half cylinder, rounded front with fine vertical ribbing, flattened (plain) back panel, sheared, tooled flared mouth – blowpipe pontil scar, ht. 5 1/8”; (a little high point wear, and a number of small open surface bubbles, a small area near base on reverse lightly polished with initials “A M” etched in glass). A very rare early flask, outstanding character, and filled with small bubbles.

*Est.: \$400 - \$600 • Min. bid: \$200*



### Lot 72

**Rare, Miniature Blown Paneled Vase Whimsey, or Salt Cellar**, probably Eastern U.S, possibly South Boston, 1830 – 1860. Deep cobalt blue, compressed globular bowl with 12 flutes, wide neck flaring slightly to an outward folded rim – applied disc foot with glass tipped pontil scarred base, ht. 2 ½”, perfect. Extremely rare! See McK, plate 34. This is the first miniature paneled vase that we can recall seeing. Likely blown as a whimsey, possibly for use as a salt cellar. Tony Panepucci collection.

*Est.: \$800 - \$1,200 • Min. bid: \$400*



### Lot 73

**Rare, Miniature Freeblown Creamer**, Eastern US, probably a South Boston glasshouse, 1825 – 1840. Fiery opalescent milkglass, bulbous body, wide neck flaring outward to a sheared rim with tooled pour spout, applied handle crimped at lower attachment – circular foot drawn from same gather with blowpipe pontil scar, ht. 2 1/8", perfect. A very rare, exceptional little creamer. Tony Panepucci collection; Ex. William Elsholz collection (1986, Lot 90).

**Est.: \$800 - \$1,200 • Min. bid: \$400**



### Lot 77

**Rare, Early Scent Bottle**, probably Mid-Atlantic region, 1815 – 1830. Sapphire blue, circular wafer body with corrugated edges, large, 8-petal Flower with button center – Floral design with five button-type flowers on reverse, sheared, tooled, inward rolled lip – pontil scarred base, ht. 2 3/8"; (some light exterior wear including a 1/8" open bubble on one of the corrugated edges; a little faint interior haze, primarily in the neck, otherwise excellent). MW, plate 104, #2; McK plate 241, #14. Very rare.

**Est.: \$300 - \$500 • Min. bid: \$150**



### Lot 74

**Rare, Blown Three Mold Creamer**, Boston and Sandwich Glass Works, 1825 - 1835. Deep cobalt blue, geometric sunburst and diamond pattern, bucket form body, wide neck flaring outward to a sheared rim with tooled pour spout, applied handle curled at lower attachment – ringed base with glass tipped pontil scar, ht. 4 1/2", perfect. GIII-26; BK plate 1326. A very rare creamer, outstanding condition, crisp, strong impression. Tony Panepucci collection.

**Est.: \$1,200 - \$2,400 • Min. bid: \$600**



### Lot 78

**Paneled Cologne Bottle**, probably Boston and Sandwich Glass Works, Sandwich, MA, 1860 – 1875. Medium-to-deep teal coloration, 8-panel corseted rectangular form, tooled ring collar – smooth base, ht. 3 7/8"; (a little minor high point wear, and some faint interior residue, otherwise perfect). B/K #5200; MW plate 113, #6, also: *The Glass Industry in South Boston*, Kaiser, #168. Beautiful, rich, strong color. Provenance: Tony Panepucci collection; Ex. Bob Mebane collection.

**Est.: \$250 - \$350 • Min. bid: \$130**



### Lot 75

**Early, Freeblown Covered Sugar Bowl**, England, or possibly America, 1810 – 1830. Deep cobalt blue, lead-glass, bulbous bowl flaring outward to a shallow galleried rim, applied solid pedestal foot with pontil scarred base; high domed bell form cover with pontil scarred solid ball finial, ht. 6" (including cover), both bowl and lid are perfect. A beautiful early sugar bowl, well executed, the cover fits perfectly and is almost certainly original to the bowl. Tony Panepucci collection.

**Est.: \$400 - \$800 • Min. bid: \$200**



### Lot 79

**Corseted Cologne Bottle**, Boston and Sandwich Glass Works, Sandwich, MA, 1860 – 1875. Medium-to-deep plum amethyst, octagonal corseted form, tooled ring collar – smooth base, ht. 4 3/8", near mint; (slight trace of very light wear, otherwise perfect). B/K #5199; MW, plate 114. Beautiful color. Per Barlow – Kaiser, it is believed that this octagonal corseted, or 'hourglass' form, is exclusive to the Sandwich Glass Works. Tony Panepucci collection.

**Est.: \$250 - \$350 • Min. bid: \$130**



### Lot 76

**Blown Three Mold Toilet Water Bottle**, Boston and Sandwich Glass Works, Sandwich, MA, 1825 – 1840. Sapphire blue, ovoid form, geometric pattern with ribbing swirled to the left, tooled flanged mouth with correct, period blown stopper – plain base with glass tipped pontil scar, ht. 6 7/8" (including stopper), near mint; (a little spotty faint interior milkiness in the lower half, otherwise excellent). GI-3 type 2. McK, plate 105, #8; BK #1276. Tony Panepucci collection.

**Est.: \$200 - \$300 • Min. bid: \$100**



### Lot 80

**Lot of (3), Paneled Cologne Bottles**, a South Boston glasshouse, probably Boston and Sandwich Glass Works, 1860 – 1875. Light-to-medium sapphire blue, colorless, and medium teal green coloration, all are 12-panel form, tooled ring or flared collar – smooth base, ht. 4", 2 1/2", and 4 7/8" respectively, all three are virtually attic mint! B/K #5197 & 5198; MW plate 114. A beautiful trio of cologne bottles that compliment one another nicely. Tony Panepucci collection.

**Est.: \$250 - \$450 • Min. bid: \$130**



### Lot 81

**Paneled Cologne Bottle**, a South Boston glasshouse, possibly Boston and Sandwich Glass Works, Sandwich, MA, 1855 – 1865. Medium-to-deep sapphire blue, 12-panel, ovoid form with sides tapering inward towards base, sheared, tooled, outward rolled mouth – glass tipped pontil scar, ht. 5 7/8", perfect. A rare mold with the 12 panels terminating at the base of the neck, as well as having the pontiled scarred base. Nice swirls to the glass. Tony Panepucci collection.

*Est.: \$400 - \$600 • Min. bid: \$200*



### Lot 85

**Early, Label-Only Blacking Bottle**, New England, 1845 – 1860. Aquamarine, square, sheared and inward rolled mouth – blowpipe pontil scar, ht. 4 5/8". Approximately 80% complete original label reads in part, *Something new and no / H U M B U G ! / TRY IT AND YOU WILL BE / SATISFIED. / G.W. LAYTON'S / OIL BLACKING, / G.W. LAYTON, Haycock, Bucks County, Pa. / PRICE 37 1-2 CENTS PER BOTTLE.* Bottle is perfect; label has some staining and is darkened a bit from age.

*Est.: \$250 - \$450 • Min. bid: \$130*



### Lot 82

**Paneled Cologne Bottle**, probably Boston and Sandwich Glass Works, Sandwich, MA, 1855 – 1865. Fiery opalescent robin's egg blue, 12-panel, cylindrical form, sheared, tooled, inward rolled mouth – glass tipped pontil scar, ht. 7 3/8", virtually attic mint; (a tiny pinhead flake on one of the panel edges, otherwise perfect). A very scarce and attractive color for a paneled cologne, also scarce with the pontil scarred base. Tony Panepucci collection.

*Est.: \$200 - \$400 • Min. bid: \$100*



### Lot 86

**Diminutive, Early Snuff Jar**, New England, 1790 – 1820. Bright medium olive, dip mold, square with beveled corners, sheared, tooled wide mouth – blowpipe pontil scar, ht. 3 7/8", attic mint. A great looking diminutive little snuff jar – scarce mold, rare size. Bright, clean, excellent clarity and condition, 'a little sweetheart'. Provenance: Tony Panepucci collection.

*Est.: \$400 - \$600 • Min. bid: \$200*



### Lot 83

**Lot of (2), Fancy Cologne Bottles** (one with original label), probably a South Boston glasshouse, 1860 – 1875. **1st Ex.:** Fiery opalescent milkglass, obelisk form with sawtooth ribbed corners, thumbprint pattern on side panels, tooled flanged lip – smooth base, ht. 5 3/4". **2nd Ex.:** Opaque milkglass, square with roped corners, embossed floral rose on 3 panels, 4th panel with label, tooled ring collar – smooth base, ht. 7 5/8". Both are perfect. Tony Panepucci collection.

*Est.: \$250 - \$450 • Min. bid: \$130*



### Lot 87

**Early, Dip Mold Snuff Jar**, Eastern US, probably New England, 1810 – 1840. Deep 'old amber', almost a chocolate amber coloration, dip mold, tall rectangular form, sheared, tooled, outward flared mouth – blowpipe pontil scar, ht. 6 1/8"; (some scattered exterior wear, mainly below the shoulders along the beveled edges, and some light interior haze in the lower half of the body, otherwise excellent). Crude, uneven shoulders, scarce size and color. Provenance: Bruce Purdy collection.

*Est.: \$300 - \$500 • Min. bid: \$150*



### Lot 84

**Rare, Star and Roped Corner Pictorial Cologne Bottle**, America, 1850 – 1860. Bright aquamarine, square with roped corners, five 5-pointed Stars embossed on each of three side panels, fourth panel blank for label space, applied square collar – blowpipe pontil scar, ht. 11 1/8", attic mint. MW, plate 74, #5; Zumwalt p.456. A bright, clean, sparkling example, rare mold, extremely rare size!

*Est.: \$400 - \$600 • Min. bid: \$200*



### Lot 88

**Lot of (3) Early Utilities**, New England, or possibly New York State, 1840 – 1860. Bubbly yellowish olive, yellowish honey amber, and bright green, almost a forest green coloration, all are cylindrical, 2-pc. mold, sheared, tooled, and outward flared lips and short tapered collar – all with blowpipe pontil scarred bases, ht. 6", 6 1/4", and 5 7/8" respectively, all are attic mint! A beautiful trio of utilities, fantastic colors and condition. Provenance: Fred Swiechowicz collection.

*Est.: \$400 - \$600 • Min. bid: \$200*



### Lot 89

**Pitkin-Type Inkwell**, New England, possibly Pitkin Glassworks, Manchester, CT, 1783 – 1820. Medium olive amber, 28 ribs swirled to the left, melon form, sheared mouth – blowpipe pontil scar, ht. 1 3/4", near mint; (just a bit of scattered light wear, and a 1/8" potstone on the surface of the glass mentioned for completeness, but with no associated radiations or issues, otherwise perfect). A very rare and desirable inkwell from an early West Hartford, CT collection.

*Est.: \$1,500 - \$2,500 • Min. bid: \$750*



### Lot 90

**Lot of (2), Blown Three Mold Inkwells**, Coventry Glass Works, Coventry, CT, and Keene Glassworks, Keene, NH, 1820 - 1840. Deep 'old amber' with an olive tone, and deep yellowish olive amber, cylindrical with disk type mouths – plain and diamond bases with pontil scars, ht. 1 1/2" and 2", both near mint; (1st Ex. has a bit of typical light wear; 2nd Ex. has a little faint exterior haziness, barely noticeable, and a touch of light wear). GII-16 & GII-18 respectively. Bruce Purdy collection.

*Est.: \$175 - \$275 • Min. bid: \$90*



### Lot 91

**"SNOW & / QUIRK – ST LOUIS"**, a Midwest glasshouse, 1845 – 1855. Aquamarine, 12-sided, long neck with a sheared, tooled, and inward rolled lip – blowpipe pontil scar, ht. 3"; (lightly cleaned to original luster, and a little residue inside the rolled lip otherwise virtually perfect). An extremely rare early ink with great eye-appeal. Large embossed lettering, almost a 'folk art' look. Only the second, or possibly third example offered at auction in more than 20 years. John Wilson collection.

*Est.: \$400 - \$600 • Min. bid: \$200*



### Lot 92

**"J S DUNHAH & Co / ST LOUIS"**, a Midwest glasshouse, 1845 – 1855. Aqua, 12-sided, sheared, tooled, inward rolled lip – blowpipe pontil scar, ht. 2 3/4"; (lightly cleaned to original luster and virtually perfect condition). Faulkner, p.91. A very scarce-to-rare St. Louis ink, and certainly more difficult to find than the Dunham ink in the umbrella form. A great looking ink, large bold embossing, and note the misspelled DUNHAM as "DUNHAH". John Wilson collection.

*Est.: \$300 - \$500 • Min. bid: \$150*



### Lot 93

**"WRITING FLUID / J.J. BUTLER / CINCINNATI"**, a Midwest glasshouse, probably 1854 – 1860. Aquamarine, cylindrical, sheared, tooled, inward rolled lip – blowpipe pontil scar, ht. 2 3/4"; (lightly cleaned to original luster and near mint condition; a bit of minor light haze in the neck, otherwise excellent). There are many different molds for the Butler Ink Co, this is definitely one of the rarer examples to acquire. A great looking early ink, strong embossing. Faulkner, p.17. John Wilson collection.

*Est.: \$250 - \$400 • Min. bid: \$130*



### Lot 94

**"DAVIDS"** Ink, 1870 – 1885. Rich, medium bluish green, cylindrical, turtle form, domed shoulders with offset neck, sheared mouth – smooth base, ht. 1 3/4", virtually attic mint; (only the slightest trace of faint wear, otherwise perfect). Faulkner, pgs. 42-45. A great example, crisp embossing, excellent condition. The "Davids" turtle inks are very scarce in color. Provenance: John Wilson collection.

*Est.: \$200 - \$400 • Min. bid: \$100*



### Lot 95

**Umbrella Ink**, America, 1845 – 1860. Medium emerald coloration, 8-sided umbrella form, sheared, tooled, and inward rolled mouth – blowpipe pontil scar, ht. 2 3/8", base dia. 2 1/4"; (some light interior content residue or faint haze, likely washable, otherwise perfect). An attic-type bottle that does not appear to have been dug and cleaned, excellent condition and with nice character to the glass

*Est.: \$200 - \$400 • Min. bid: \$100*



### Lot 96

**"HARRISON'S / COLUMBIAN / INK"**, 1847 – 1860. Aquamarine, octagonal body with 8 flat panels around shoulders, sheared and inward rolled mouth – blowpipe pontil scar, ht. 2"; (lightly cleaned to original luster and near mint condition; slight trace of very light wear and a little trapped residue in the rolled lip, otherwise perfect). C #531; MW, plate 76, #12. A nice clean example with crisp, very strong embossing.

*Est.: \$100 - \$200 • Min. bid: \$50*



### Lot 97

**"HARRISON'S / COLUMBIAN / INK" – "PATENT"** (on shoulder) **Small Master Ink**, 1847 – 1860. Aquamarine, octagonal, applied wide flanged mouth – blowpipe pontil scar, ht. 2 7/8", perfect! C #535; MW, plate 76, #7. A great example, scarce size.

*Est.: \$150 - \$250 • Min. bid: \$80*



### Lot 101

**"HARRISON'S / COLUMBIAN / INK" Master Ink**, 1847 – 1860. Clear, light-to-medium cobalt, cylindrical, applied flanged mouth – blowpipe pontil scar, ht. 4 1/2", very near mint; (a couple of 1/8" in-manufacture annealing lines in the flanged lip, otherwise perfect). Another great 'attic-type' example, excellent clarity, nice 'see-through' color, whittled, scarce size. Note; an old cork remains in the bottle.

*Est.: \$400 - \$600 • Min. bid: \$200*



### Lot 98

**"HARRISON'S / COLUMBIAN / INK" – "PATENT"** (on shoulder) **Master Ink** (with 85% complete, original label), 1847 – 1860. Aquamarine, octagonal, applied wide flanged mouth – blowpipe pontil scar, ht. 3 3/4", perfect. 85% complete original label reads in part: *HARRISON'S / COLUMBIAN INK. / BLACK / MANUFACTURED BY / APOLLOS W. HARRISON, / No. 10 South 7th Street, / PHILADELPHIA.* Sparkling mint, strong embossing, very scarce with label.

*Est.: \$400 - \$600 • Min. bid: \$200*



### Lot 102

**"HARRISON'S / COLUMBIAN / INK" Master Ink**, 1847 – 1860. Deep cobalt blue, cylindrical, applied flanged mouth – blowpipe pontil scar, ht. 7"; (a 3/4" area on the back edge of the lip with some small flakes and roughness; a thin hairline spider crack near a side mold seam with a few 1/4" 'legs', and some interior haziness below the shoulders). C #765. Very rare size, strong embossing, deep color. Although it isn't perfect, it is one of the most difficult sizes to acquire and still displays very nicely.

*Est.: \$400 - \$600 • Min. bid: \$200*



### Lot 99

**"HARRISON'S / COLUMBIAN / INK" – "PATENT"** (on shoulder), **Master Ink**, 1847 – 1860. Bright aquamarine, 12-sided, applied wide flanged mouth – blowpipe pontil scar, ht. 6", virtually pristine perfect! C #760. A bright, clean, sparkling example – strong color, strong embossing, scarce size. This one's about as nice as you could hope to find.

*Est.: \$400 - \$600 • Min. bid: \$200*



### Lot 103

**"FAHNESTOCK'S – NEUTRAL – INK" Master Ink**, probably an Early Pittsburgh district glasshouse, 1840 – 1850. Colorless, 'star' form, or hex with concave panels, sheared, tooled, inward rolled mouth – blowpipe pontil scar, ht. 4 1/8", very near mint; (the bottle may have been lightly cleaned, but certainly presents as virtually perfect). A very rare Pittsburgh ink, extremely rare in colorless glass. Fahnestock was a druggist, most of his products were medicines. Provenance: John Wilson collection.

*Est.: \$400 - \$600 • Min. bid: \$200*



### Lot 100

**"HARRISON'S / COLUMBIAN / INK" Master Ink**, 1847 – 1860. Bright medium cobalt, cylindrical, applied flanged mouth – blowpipe pontil scar, ht. 3 7/8", perfect. C #195. A beautiful example, crisp, strong embossing, fantastic character having nicely whittled, pebbly glass, outstanding 'attic-type' condition.

*Est.: \$500 - \$800 • Min. bid: \$250*



### Lot 104

**"ESTES – N.Y. – INK" Master Ink**, 1847 – 1860. Aquamarine, octagonal, domed shoulders, long neck, applied sloping collar – blowpipe pontil scar, ht. 5 3/8", perfect. Faulkner, p.62. A bright, clean, sparkling example of this very scarce-to-rare master ink. Note; and early Harmer Rooke Galleries tag remains on the reverse. Provenance: John Wilson collection.

*Est.: \$300 - \$500 • Min. bid: \$150*



**Lot 105**

“ESTES – N.Y. – INK” Master Ink, 1847 – 1860. Beautiful yellowish honey amber, octagonal, domed shoulders, long neck, applied sloping collar – blowpipe pontil scar, ht. 5 3/8”; (a little minor light haze or dullness on the base, and a few of the panels near the base; a little minor wear on one of the back panels, otherwise very near mint). A very scarce mold, overall excellent condition, and exceedingly rare in this beautiful honey amber coloration. John Wilson collection.

*Est.: \$1,000 - \$2,000 • Min. bid: \$500*



**Lot 106**

Lot of (2), “DAVIDS & BLACK, NEW YORK” Master Inks, 1845 – 1860. 1st Ex.: Clear, medium blue green, 2nd Ex.: Medium-to-deep bluish emerald, both are cylindrical, applied sloping collar – blowpipe pontil scarred bases, ht. 4 1/2” and 6 1/4” respectively; (the 1st Ex. is perfect; 2nd Ex. has a little faint dullness and minor wear, some dried ink residue on the interior, otherwise excellent). Faulkner, p.38. 1st Ex. is heavily whittled, and with crisp embossing. John Wilson collection.

*Est.: \$250 - \$450 • Min. bid: \$130*



**Lot 107**

“J. & I. E. M.” Igloo Ink, probably 1865 – 1870. Strong, medium bluish green, ‘igloo form’, ground mouth – smooth base, ht. 1 3/4”; (lightly cleaned to original luster, and a 3/8” bruise along the inside edge of the lip, otherwise excellent). An extremely rare, possibly unique early Moore ink. This is the only known example of a colored (other than aqua), J. & I. E. M. Igloo Ink. A great rarity in color, and likely one of John and Isaac Moore’s earliest ink molds. Ron Rainka collection.

*Est.: \$1,500 - \$2,500 • Min. bid: \$800*



**Lot 108**

Lot of (2) Moore Igloo Inks (with 95 – 98% of original labels), probably 1865 – 1870. 1st Ex: “J.M. & S.” (John Moore & Son), 2nd Ex: “J. & I.E.M.” (John & Isaac E. Moore). Both are aquamarine, igloo form with high domed shoulders, ground mouths – smooth base, ht. 1 3/4” and 1 7/8” respectively; (both attic mint with just interior content residue; labels darkened a bit, and some minor stains, but mostly legible). Scarce molds, rare with original labels. Ron Rainka collection.

*Est.: \$175 - \$350 • Min. bid: \$90*



**Lot 109**

Lot of (2), “J – & – I – E – M” Monitor Ink Bottles (both with virtually complete original labels), 1865 – 1880. 1st Ex.: Light aquamarine, “PATD OCT 31ST 1865” around the shoulder. 2nd Ex.: Deep aquamarine,

both are cylindrical with six block panels around the sides, domed shoulders, offset neck with factory ground mouths – smooth bases, ht. 1 1/2” & 1 5/8” respectively; (both bottles are perfect; 2nd example has some interior ink residue, and some staining on label). Ron Rainka collection.

*Est.: \$100 - \$200 • Min. bid: \$50*



**Lot 110**

Lot of (2), “J – & – I – E – M” Monitor Ink Bottles, 1865 – 1900. 1st Ex.: Oval, tooled mouth. 2nd Ex.: Cylindrical, ground mouth, “PATD OCT 31ST 1865” around shoulder. Both are aquamarine with six block

panels around the sides, domed shoulders, offset neck – smooth base, ht. 1 7/8” & 1 1/2” respectively, both near mint; (1st Ex. has a bit of very faint interior haziness; 2nd Ex. has a 1/4” flake from side of ground lip). Ron Rainka collection; 2nd example Ex. William Covill collection.

*Est.: \$100 - \$200 • Min. bid: \$50*



**Lot 111**

“J – & – I – E – M” Monitor Ink, 1875 – 1900. Medium apple green, cylindrical with six block panels around the sides, domed shoulders, offset neck with tooled mouth – “2” (on smooth base), ht. 1 5/8”; (lightly cleaned to original luster with just a bit of very faint haziness remaining, and a 1/8” shallow open bubble, otherwise excellent). A very nice example, mold variant with large-lettered embossing, scarce color. Provenance: Ron Rainka collection.

*Est.: \$140 - \$280 • Min. bid: \$70*



**Lot 112**

“J – & – I – E – M” Monitor Ink, 1875 – 1900. Light-to-medium yellowish apple green, cylindrical with six block panels around the sides, domed shoulders, offset neck with tooled mouth – smooth base, ht. 1 5/8”, perfect. A bright, clean, sparkling, attic-type example with crisp, strong embossing, and added character with a glass ‘bird-swing’ that spans from the shoulders to the base between the “I” and the “E”. Provenance: Ron Rainka collection.

*Est.: \$175 - \$350 • Min. bid: \$90*



### Lot 113

**“J - & - I - E - M” Monitor Ink** (with approximately 80% complete original label), 1865 - 1880. Clear, light-to-medium bluish green (a bit more of a greenish tone than most), cylindrical with six block panels around the sides, domed shoulders, offset neck with factory ground mouth - smooth base, ht. 1 5/8", attic mint; (original label for *Moore's School Writing Ink* has some staining). A beautiful example, scarce color, fantastic condition. Provenance: Ron Rainka collection.

**Est.: \$600 - \$900 • Min. bid: \$300**



### Lot 114

**“J - & - I - E - M” Monitor Ink**, 1865 - 1880. Rich, medium blue green, cylindrical with six block panels around the sides, domed shoulders, offset neck with factory ground mouth - smooth base, ht. 1 5/8", near mint; (some light interior content residue; a 1/8" flake on the edge of the ground mouth, possibly in-manufacture, and a tiny pinprick bit of roughness at edge of base). Nice strong depth of color and excellent character, cruder than most. Ron Rainka collection.

**Est.: \$600 - \$900 • Min. bid: \$300**



### Lot 115

**“J - & - I - E - M” Monitor Ink**, 1875 - 1900. Deep blue green, cylindrical with six block panels around the sides, domed shoulders, offset neck with tooled mouth - “L” (on smooth base), ht. 1 5/8"; (a little light wear and some very faint, barely noticeable haziness, the bottle may have been lightly cleaned, but presents as near mint). An exceptional example in terms of depth of color, the deepest example that Ron had in bluish-green. Very scarce. Ron Rainka collection.

**Est.: \$1,000 - \$2,000 • Min. bid: \$500**



### Lot 116

**“J - & - I - E - M” Monitor Ink**, 1865 - 1880. Light-to-medium yellowish sage green, cylindrical with six block panels around the sides, domed shoulders, offset neck with factory ground mouth - smooth base, ht. 1 5/8", virtually perfect; (a little spotty faint interior content residue). A unique color for a Monitor Ink in Ron's collection. Distinctly different from the various apple green and blue green examples. An 'attic-type' bottle, outstanding condition, rare color. Ron Rainka collection.

**Est.: \$800 - \$1,200 • Min. bid: \$400**



### Lot 117

**“J - & - I - E - M” Monitor Ink**, 1875 - 1900. Gorgeous, clear medium yellow with some warmer honey tones through the neck, cylindrical with six block panels around the sides, domed shoulders, offset neck with tooled mouth - (two large dots) on smooth base, ht. 1 5/8", perfect! An outstanding example in terms of color, eye-appeal, and condition. Provenance: Ron Rainka collection.

**Est.: \$500 - \$800 • Min. bid: \$250**



### Lot 118

**“J - & - I - E - M” Monitor Ink**, 1865 - 1880. Bright honey amber, cylindrical with six block panels around the sides, domed shoulders, offset neck with factory ground mouth - smooth base, ht. 1 5/8", perfect. Another great attic-type example, pretty color, and with a syrupy glass 'bird-swing' between the "I" and the "E" for added character. Provenance: Ron Rainka collection.

**Est.: \$200 - \$400 • Min. bid: \$100**



### Lot 119

**“J - & - I - E - M” Monitor Ink**, 1865 - 1880. Medium amber, cylindrical with six block panels around the sides, domed shoulders, offset neck with factory ground mouth - smooth base, ht. 1 1/2"; (a little minor light wear; a 1/8" x 3/8" 'sliver flake' from the side of the factory ground mouth, and a bit of light interior residue or faint haze, some of which may wash out). The condition issues are relatively minor, the ink displays very nicely and still maintains much of its original luster. Ron Rainka collection.

**Est.: \$150 - \$250 • Min. bid: \$80**



### Lot 120

**“J - & - I - E - M” Monitor Ink**, 1875 - 1900. Very deep chocolate amber, cylindrical with six block panels around the sides, domed shoulders, offset neck with tooled mouth - “2” (or large lowercase “a”) on smooth base, ht. 1 5/8"; (professionally cleaned to original luster, otherwise virtually perfect). A very unusual, very rare color for a Monitor Ink. This is one that very few collectors are likely to have. Provenance: Ron Rainka collection.

**Est.: \$300 - \$500 • Min. bid: \$150**





### Lot 121

**“J - & - I - E - M” Monitor Ink** (with 98% complete original label), 1875 - 1900. Bright medium citron coloration, cylindrical with six block panels around the sides, domed shoulders, offset neck with tooled mouth - smooth base, ht. 1 5/8”; (bottle is perfect with just a bit of light interior content residue; original label has some staining and is darkened a bit from age, but still completely legible). A very pretty color, scarce, and certainly rare in this color with an original label. Ron Rainka collection.

**Est.: \$600 - \$900 • Min. bid: \$300**



### Lot 125

**“J - & - I - E - M” Monitor Ink**, 1875 - 1900. Beautiful, medium-to-deep cornflower blue, cylindrical with six block panels around the sides, domed shoulders, offset neck with tooled mouth - smooth base, ht. 1 3/4”; (a tiny pinhead flake at edge of base, otherwise virtually perfect). Very rare color. When we visited Ron and looked at his very impressive collection, Ron noted that this example was his favorite of all the blues! Ron Rainka collection.

**Est.: \$1,200 - \$1,800 • Min. bid: \$600**



### Lot 122

**“J - & - I - E - M” Monitor Ink**, 1875 - 1900. Medium yellow with a slight olive tone, cylindrical with six block panels around the sides, domed shoulders, offset neck with tooled mouth - smooth base, ht. 1 5/8”; (lightly cleaned to original luster and near mint condition with just a touch of light wear remaining; a less-than 1/8” small stress line in the shoulder, otherwise excellent). A really nice example, very rare color. Note; an old cork remains in the bottle. Ron Rainka collection.

**Est.: \$500 - \$800 • Min. bid: \$250**



### Lot 126

**“J - & - I - E - M” Monitor Ink**, 1865 - 1880. Deep, vivid cobalt blue, cylindrical with six block panels around the sides, domed shoulders, offset neck with factory ground mouth - “6” (on smooth base), ht. 1 5/8”; (lightly cleaned to original luster and virtually perfect condition). An outstanding example, very rich, deep color, excellent condition, a top example that will stand out on any shelf. Provenance: Ron Rainka collection.

**Est.: \$1,500 - \$2,500 • Min. bid: \$800**



### Lot 123

**“J - & - I - E - M” Monitor Ink** (with 95% of original label), 1865 - 1880. Bright yellowish olive green, cylindrical with six block panels around the sides, domed shoulders, offset neck with factory ground mouth - smooth base, ht. 1 5/8”; (bottle has a tiny 1/8” flake on the edge of the lip, otherwise virtually pristine; label has some staining and has been coated for protection). A top example in an outstanding color. The most olive-toned example in Ron's collection. Ron Rainka collection.

**Est.: \$1,500 - \$2,500 • Min. bid: \$800**



### Lot 127

**“J - & - I - E - M” Monitor Ink**, 1865 - 1880. Gorgeous, pinkish amethyst coloration, cylindrical with six block panels around the sides, domed shoulders, offset neck with factory ground mouth - smooth base, ht. 1 5/8”, perfect; (note; remnants of dried ink residue remain in the bottle). Simply outstanding color, eye-appeal, and condition. Exceptional! A unique example and the ‘Crown Jewel’ of Ron's John Moore ink collection. Ron Rainka collection; Ex. Roger Long collection.

**Est.: \$5,000 - \$8,000 • Min. bid: \$2,500**



### Lot 124

**“J - & - I - E - M” Monitor Ink**, 1875 - 1900. Colorless, cylindrical with six block panels around the sides, domed shoulders, offset neck with tooled mouth - smooth base, ht. 1 5/8”, perfect, virtually pristine condition. In Ron's more than 60-year pursuit of John Moore bottles, this is the finest colorless example that he has seen. Most claiming to be ‘colorless’ are light aquamarine. Exceptional ‘color’ (or lack thereof), and condition! Ron Rainka collection.

**Est.: \$800 - \$1,600 • Min. bid: \$400**



### Lot 128

**(Label-only) Moore Ink Bottle, ZULU / BLACK WRITING / INK / J. & I. E. MOORE / WARREN, MASS. U.S.A., 1890 - 1900.** Blue green, cone form, tooled ring collar - smooth base, ht. 2 1/4”; (in ‘as-found’ condition with some light exterior and interior residue, or faint haziness, some of which may clean off; the label is darkened a bit from age, but completely legible). Ron stated that this was the only Zulu Ink that he has seen in 65 years of collecting. Ron Rainka collection; Ex. Dave Waris collection.

**Est.: \$400 - \$600 • Min. bid: \$200**



### Lot 129

**(Label-only), Pen-rest Inkwell, VIOLET WRITING INK / MANUFACTURED BY J. & I. E. MOORE, / Warren, Mass. 1885 – 1895.** Rectangular with rounded corners, grooved shoulders for pen-rest, sheared mouth with fitted metal collar and hinged cap – smooth base, ht. 2 ½"; (bottle is perfect; original front label approx. 90% complete; back label 98%, darkened from age, but legible). Extremely rare – the only example Ron has seen in his 60+ years of collecting. Ron Rainka collection.

Est.: \$100 - \$200 • Min. bid: \$50



### Lot 130

**Lot of (2), (Label-only), Scarce Moore Ink Bottles, 1875 – 1895. 1st Ex.:** Aqua, small rectangular form, square collar – smooth base, ht. 1 1/8", label reads in part; *MOORE'S / Merchants and Bankers / Writing and Copying Ink.* **2nd Ex:** Aqua, square 'house ink' form, tooled

square collar – smooth base, ht. 2 1/8", label reads, *SAMPLE OF / MOORE'S HYPERION / Writing and Copying Ink.*; (a 1/8" flake on lip of 1st Ex.; labels darkened, otherwise excellent). Ron Rainka collection.

Est.: \$100 - \$200 • Min. bid: \$50



### Lot 131

**Lot of (3), (Label-only), J. & I. E. MOORE House Inks, probably 1890 – 1905.** Original labels read, *BLACK / INK;* "*RED / OFFICE / INK,* and "*GREEN / INK. J. & I. E. MOORE, / Warren, Mass.* (also on each label). All are light aqua – one example is

nearly colorless, square with beveled shoulders, tooled square collar – smooth base, ht. 2 ¼"; (bottles are perfect; red ink label is quite faded, but legible, other two are excellent). Very rare with original labels. Ron Rainka collection.

Est.: \$150 - \$250 • Min. bid: \$80



### Lot 132

**Lot of (2), (Label-only), Moore Inks, EBONY BLACK WRITING INK / J. & I. E. MOORE, / WARREN / MASS. – NOT INJURED / BY FREEZING – PUT UP IN / ALL SIZES". 1885 – 1890.** Bottles are aquamarine, cylindrical, tooled ring collars – smooth base, ht. 2 ¼" and 2 ½" (1oz & 2oz); (bottles are perfect; colorful, original, red, yellow and green labels are in overall excellent condition – much better than most). Ron Rainka collection.

Est.: \$100 - \$200 • Min. bid: \$50



### Lot 133

**Lot of (3) Moore Ink items: Original Wooden Patent Model, and (2) Matching Moore Inkwells, 1885 – 1890.** Full-scale wooden patent model for 1oz. cylindrical Moore's inkwell. Two inkwells, (1oz. & 2oz.), with period labels for *MOORE'S / EXCELSIOR / MUSIC WRITING*

*INK.*, tooled ring collars – "*MOORE'S / 1885*" (on smooth bases), ht. 2 ¼" and 2 ½"; (1oz Ex. has some light haze; 2oz Ex. has 3/16" open bubble). Patent model found in Moore residence. Ron Rainka collection.

Est.: \$150 - \$250 • Min. bid: \$80



### Lot 134

**Lot of (2), (Label-only), MOORE'S CROWN / BLUEING." (Motif of CROWN / "PERFECTLY / SOLUBLE. Bottles, 1880 – 1890.** Both are aquamarine, rectangular, 'fancy' cologne molds (embossed Lyre and Plume motifs), sheared and inward rolled mouths – blowpipe pontil scarred bases, ht. 4 7/8" and 5 ¾", both near mint; (1st Ex. has a ¼" pontil flake; 2nd Ex. has some washable exterior residue). Both were acquired from Mrs. Walter E. Moore. Ron Rainka collection.

Est.: \$300 - \$500 • Min. bid: \$150



### Lot 135

**J. & I. E. MOORE" Master Ink, 1875 – 1885.** Light-to-medium bluish green, cylindrical, applied inverted tapered collar with pour spout on inner rim of lip – "*PATENTED APRIL 13TH 1875*" (on smooth base), ht. 7 3/8", near mint; (a well-hidden, hard to see 3/16" iridescent bruise on the edge of the applied collar, otherwise perfect). A bright, clean, sparkling 'attic-type' example. Scarce. Provenance: Ron Rainka collection.

Est.: \$120 - \$240 • Min. bid: \$60



### Lot 136

**Lot of (2), "J. & I. E. MOORE" Master Inks, 1875 – 1885.** Medium-to-deep emerald green, and clear light green, both with applied inverted tapered collar with pour spout on inner rim of lip – "*PATENTED APRIL 13TH 1875*" (on base of small example), both smooth base, ht. 7 ½" & 9 3/8" respectively; (the sm. size has a 1 ¼" hairline crack that follows the contour of the base; lg. size professionally cleaned to original luster; a few scratches and light wear including a tiny lip flake). Ron Rainka collection.

Est.: \$200 - \$400 • Min. bid: \$100



### Lot 137

**“J. & I. E. MOORE” Master Ink** (with 99% of original label), 1875 – 1885. Medium-to-deep blue green, cylindrical, applied inverted tapered collar with pour spout on inner rim of lip – **“PATENTED APRIL 13TH 1875”** (on smooth base), ht. 7 ¼”, near mint; (a 1/8” chip, or bit of roughness, on the outer edge of spout, and a paper-thin 3/8” open bubble at the shoulder on the side of the bottle). Rich color, very rare with virtually complete, original label. Ron Rainka collection.

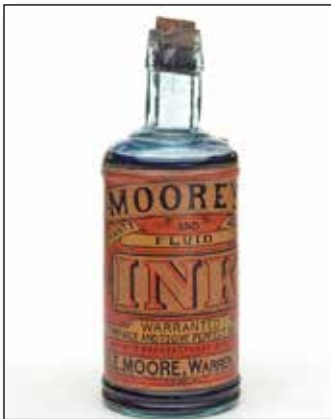
*Est.: \$300 - \$500 • Min. bid: \$150*



### Lot 141

**“J. & I. E. MOORE” Master Ink**, probably 1885 – 1895. Light aquamarine, cylindrical, tooled square collar with pour spout – smooth base, ht. 6 1/8”, near mint; (some dried interior ink residue, and some patchy faint interior haziness below the shoulders, otherwise excellent). A scarce mold, as well as an unusual lip treatment – the majority of examples having a tooled sloping collar. Provenance: Ron Rainka collection.

*Est.: \$200 - \$400 • Min. bid: \$100*



### Lot 138

**“J. & I. E. MOORE” Master Ink** (with virtually complete, original colorful label, cork and contents), 1885 – 1895. Aquamarine, cylindrical, tooled sloping collar with pour spout – smooth base, ht. 6 ¼”; (the bottle is perfect; 99% complete original label in outstanding condition). A top example, absolutely beautiful overall condition, extremely rare to find this nice, and complete. Ron Rainka collection.

*Est.: \$600 - \$900 • Min. bid: \$300*



### Lot 142

**“J. & I. E. MOORE” Master Ink**, probably 1885 – 1895. Aquamarine, cylindrical, tooled sloping collar with pour spout – smooth base, ht. 7 5/8”, virtually perfect; (just a little 1/8” sliver flake along the top edge of the lip). Scarce. A bright, clean, sparkling example, virtually pristine condition. Ron Rainka collection.

*Est.: \$200 - \$400 • Min. bid: \$100*



### Lot 139

**“J. & I. E. MOORE” Master Ink** (with complete original colorful label, cork and contents), 1885 – 1895. Aquamarine, cylindrical, tooled sloping collar with pour spout – smooth base, ht. 7 ½”; (the bottle is perfect; complete original colorful label is darkened just a bit from age, but completely legible and overall excellent condition). Scarce middle size master, fantastic condition, extremely rare to find this complete. Ron Rainka collection.

*Est.: \$500 - \$800 • Min. bid: \$250*



### Lot 143

**“J. & I. E. MOORE, / WARREN, MASS.” Stenciled Storeware Jug**, 1885 – 1905. Black stenciling, oatmeal tone glaze, 1-gallon handled jug with tooled pour spout, ht. 10 ¾”; (a couple of shallow ¼” to ½” flakes on the shoulder rim; a superficial tight hairline crack at base of shoulder, and a little discoloration of the glaze, primarily near the base and on the reverse, otherwise excellent). Extremely rare – the only known stenciled Moore Ink. Co. jug that Ron is aware of. Ron Rainka collection.

*Est.: \$300 - \$600 • Min. bid: \$150*



### Lot 140

**“J. & I. E. MOORE” Master Ink** (with 97% complete, original colorful label, cork and partial contents), 1885 – 1895. Aquamarine, cylindrical, tooled sloping collar with pour spout – smooth base, ht. 9 ¼”; (the bottle is perfect; nearly complete original label is in overall excellent condition, contents do not appear to be the original ink). Note; this is the rare, large size master, seldom encountered, and certainly very rare with a label this nice! Ron Rainka collection.

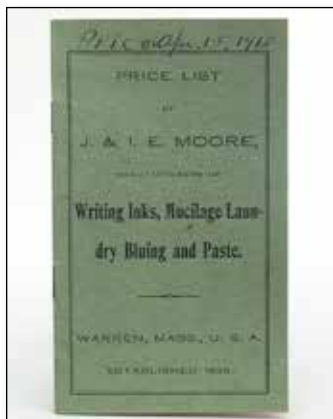
*Est.: \$600 - \$900 • Min. bid: \$300*



### Lot 144

**“J. & I. E. Moore” Advertising Sign**, from the Hotel Ramsdell, Warren, Mass, 1890 – 1900. Hand-painted 2-color early cardboard sign that hung in lobby of the stately Hotel Ramsdell, downtown Warren, advertising the J. & I. E. Moore Ink Company to hotel guests and travelers. The sign reads in part: *Ebony Black Writing Ink, / USED AT THIS HOTEL*. A great early historical item and advertising piece. Provenance: Ron Rainka collection.

*Est.: \$200 - \$400 • Min. bid: \$100*



### Lot 145

**Original J. & I. E. Moore Price List & Advertising Catalog, 1891 – 1895** (updated with prices Apr. 15 1918). 12-page B&W catalog with green covers showing pen and ink drawings of various products including Zulu Black Writing Ink, Monitor Excelsior School Ink and many others. 3 3/8" x 5 3/4"; (catalog in overall excellent condition with 1918 prices hand written next to, or over, the old prices). Extremely rare, found in the Moore residence, one of three known. Ron Rainka collection.

**Est.: \$175 - \$350 • Min. bid: \$90**



### Lot 149

**Original Metal Printing Plate for J. & I. E. M. Monitor Ink Bottles, 1880 – 1900.** Metal printing plate and wooden block for printing (20), MOORE'S / IMPROVED EXCELSIOR / SCHOOL WRITING INK labels for the "J - & - I - E - M Monitor ink bottles. Plate measures 11 1/2" x 2 7/16" and is in overall fine condition. Found in the residence of Isaac and Walter Moore. It is the only plate for John Moore inks known to have survived. Note: photo shows top portion of plate only. Ron Rainka collection.

**Est.: \$200 - \$400 • Min. bid: \$100**

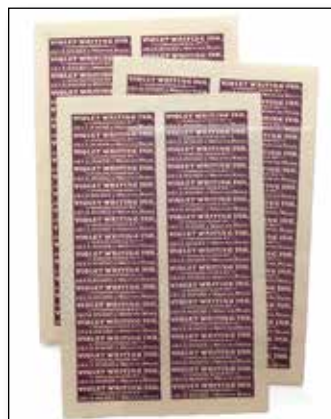


### Lot 146

**J. & I. E. MOORE Ledger of Correspondence, 1912 – 1920.** 513-page hardbound ledger containing translucent tissue-paper or vellum-type pages documenting letters and correspondence of the Moore Ink Co. to various glasshouses, businesses

(banks, box companies, etc.), individuals and family members, 10 3/8" x 12 1/8"; (covers are well worn with some staining; some fraying at bottom corner, legibility of pages varies). An important archive letters. Ron Rainka collection.

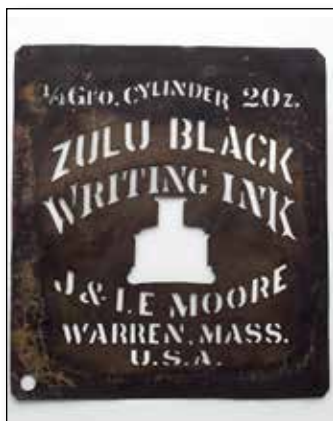
**Est.: \$175 - \$275 • Min. bid: \$90**



### Lot 150

**Lot of (3), Original Uncut Sheets of Labels for Moore's Violet Writing Ink, probably 1885 – 1900.** Each uncut sheet has 34 labels, deep violet color, measures 9 3/8 high x 6" wide, all three are perfect. Labels are for the Monitor Inks and read, VIOLET WRITING INK, / MANUFACTURED BY / J. & I. E. MOORE Warren, Mass. These original uncut sheets were found in the Moore residence more than 30 years ago. Ron Rainka collection.

**Est.: \$200 - \$400 • Min. bid: \$100**



### Lot 147

**Original J. & I. E. MOORE Brass Stencil, probably 1890 – 1900.** Stencil reads, 1/4 Gro. CYLINDER 2.Oz. / ZULU BLACK / WRITING INK / (silhouette of bottle) / J & I. E MOORE / WARREN, MASS. / U.S.A.. Stencil measures 8 5/8" x 9 1/4"; (stencil appears well-used, but is in overall excellent condition). The stencil was likely used to mark wooden crates. Extremely rare, and especially nice as it relates to the rare Zulu Writing Ink. Ron Rainka collection.

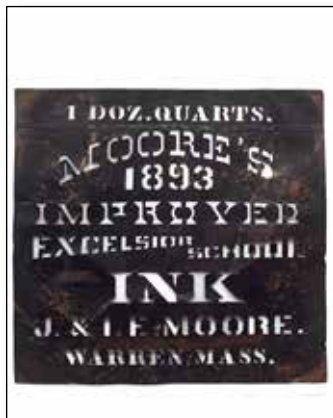
**Est.: \$400 - \$600 • Min. bid: \$200**



### Lot 151

**Lot of (3), Original Uncut Sheets of Labels for Moore's Black Ink, probably 1890 – 1905.** Each uncut sheet has 10 labels, black in color, and measure 5 3/4" in length x 3" high, all three are perfect. Labels are for the scarce Moore 'house' inks and read, BLACK / INK / J. & I. E. MOORE, / WARREN, MASS.. As with the previous lot, these original uncut sheets were found in the Moore residence more than 30 years ago. Ron Rainka collection.

**Est.: \$200 - \$400 • Min. bid: \$100**



### Lot 148

**Original J. & I. E. MOORE Brass Stencil, probably 1893 – 1898.** Stencil reads, 1 DOZ. QUARTS. / MOORE'S / 1893 / IMPROVED / EXCELSIOR / SCHOOL / INK / J. & I. E. MOORE. / WARREN, MASS.. Note; stamped on the stencil in small print to the left of "INK" is the stencil maker, C.W. WILSON / WORCESTER, MASS. Stencil measures 10 1/8" x 11"; (stencil is well used but complete, and in overall very good condition). Very rare. Ron Rainka collection.

**Est.: \$400 - \$600 • Min. bid: \$200**



### Lot 152

**Framed Grouping of Original Moore Ink Company Labels, 1875 – 1910.** More than 2-dozen colorful original labels representing a wide variety of J. & I. E. Moore company products including many rare ink products, as well as bluing and mucilage. Several rare labels include: Moore's / Railroad Copying / Ink; EBONY BLACK / WRITING INK, and Bay State / Mucilage. Frame measures 12 1/4" wide x 16 1/4" high; (overall excellent condition). Provenance: Ron Rainka collection.

**Est.: \$200 - \$400 • Min. bid: \$100**



### Lot 153

**Lot of (9), Old Farmer's Almanacs with (9) different J. & I. E. Moore Ink ads.** Almanacs range in date from 1876 – 1904. An interesting assortment of advertisements for the J. & I. E. Moore Ink Company including ads for Merchants' and Bankers' Writing and Copying Ink (with image of a Monitor Ink bottle); an 1891 ad for *Our New Ebony and Zulu Black Inks*, and ads for Moore's Inks, Mucilage and Laundry Bluing. Condition ranges from fair to very good. Ron Rainka collection.

**Est.: \$150 - \$250 • Min. bid: \$80**



### Lot 157

**Lot of (4) Important Moore Co. Items** including, Original U.S. Government Patent Papers for Monitor Ink Bottle; Original wooden Patent Model submitted to the Patent Office, and Monitor Ink Bottle, all c. 1865. Also included in the lot is a December, 1977 copy of "Antique Bottle World" magazine with an article on patent models including a picture of the Monitor Ink patent model. An extremely rare and historically important lot. Provenance: Ron Rainka collection.

**Est.: \$1,500 - \$2,500 • Min. bid: \$800**



### Lot 154

**Original Wooden Patent Model, or Pattern, from the J. & I. E. Moore Ink Company**, probably 1890 – 1900. Original wooden patent model for small cylindrical inkwell with a large shoulder ring – possibly intended for use in a school desk (the shoulder ring would act as a 'seat' to rest in a cylindrical hole in the desk). Model was acquired from the I. Walter Moore house in Warren, Mass. on 12/3/69, and is accompanied by a signed affidavit from Mrs. I. Walter Moore. Ron Rainka collection.

**Est.: \$200 - \$400 • Min. bid: \$100**



### Lot 158

**Lot of (4) Important Moore Co. Items**, c. 1884. Original U.S. Government Patent Papers for a unique Moore Inkwell, **2nd:** Original wooden Patent Model submitted to the Patent Office; **3rd:** "MOORE'S PATENT AUG 12TH 1884" (on base) Inkwell (believed to be

a unique example). **4th:** Original Iron Mold for this inkwell. An incredible and historically important group of J. & I. E. Moore Co. items. Provenance: Ron Rainka collection.

**Est.: \$2,000 - \$4,000 • Min. bid: \$1,000**



### Lot 155

**Original Wooden Patent Model, or Pattern, from the J. & I. E. Moore Ink Company**, probably 1885 – 1900. Original wooden patent model for a rather uniquely designed pen-rest inkwell. It is unlikely this model was ever entered into production (note; see lot #129 for a rare labeled J. & I. E. Moore pen-rest inkwell). This model was acquired from the I. Walter Moore house in Warren, Mass. on 12/3/69, and is accompanied by a signed affidavit from Mrs. I. Walter Moore. Ron Rainka collection.

**Est.: \$200 - \$400 • Min. bid: \$100**



### Lot 159

**Shooter Ball (Image of a Man Shooting a Gun within circle)**, England, 1875 – 1900. Colorless, quilted diamond pattern, 3-piece mold, rough sheared mouth, dia. 2 5/8", perfect. A very scarce ball that will stand out in any collection. Colorless target balls are rare. This is one of only a few molds known in colorless glass. Provenance: John Wilson collection.

**Est.: \$400 - \$600 • Min. bid: \$200**



### Lot 156

**Original Wooden Patent Mode, and accompanying inkwell, from the J. & I. E. Moore Ink Company**, probably 1875 – 1885. Original full-scale wooden patent model for small rectangular inkwell. Accompanying inkwell (likely based on this model), is aqua, rectangular with beveled shoulders, tooled square collar. This model was acquired from the I. Walter Moore house in Warren, Mass. on 12/3/69. A signed affidavit from Mrs. I. Walter Moore is included in the lot. Ron Rainka collection.

**Est.: \$200 - \$400 • Min. bid: \$100**



### Lot 160

**"FOR HOCKEY'S PATENT TRAP" Target Ball**, England, 1875 - 1900. Light sage green coloration, embossed pinwheel design on both sides with a crosshatch pattern around perimeter, 2-piece mold, rough sheared mouth, dia. 2 1/2", perfect. The "Hockey Patent Trap" balls are very scarce. They have a great 'look' with the large embossed pinwheel on both sides, and are always popular with collectors.

**Est.: \$400 - \$600 • Min. bid: \$200**



### Lot 161

**"BOGARDUS' GLASS BALL PATD APRIL 10 1877" - "8" (within diamond panel) Target Ball**, England, 1877 - 1900. Yellowish olive, quilted diamond pattern above and below center band, 3-piece mold, rough sheared mouth, dia. 2 5/8", near mint; (the ball is essentially perfect other than a tiny pinhead open bubble, and a weak impression). A very scarce color for a Bogardus ball, and this one is also very crude with potstones, tiny bubbles and syrupy glass!

*Est.: \$400 - \$600 • Min. bid: \$200*



### Lot 162

**"N.B. GLASS WORKS PERTH - N.B. GLASS WORKS PERTH" Target Ball**, England, 1875 - 1900. Bright, medium sapphire blue, quilted diamond pattern above and below center band, 3-piece mold, rough sheared mouth, dia. 2 5/8", perfect. A bright, clean, sparkling example with a good depth of color. The embossing on these balls tends to be very weak, but this one is as good, or better than, most! Provenance: John Wilson collection.

*Est.: \$200 - \$400 • Min. bid: \$100*



### Lot 163

**"WW GREENER ST MARYS WORKS - BIRRM & 68 HAYMARKET LONDON" Target Ball**, England, 1875 - 1900. Medium-to-deep, vivid cobalt blue, quilted diamond pattern above and below center band, 3-piece mold, rough sheared mouth, dia. 2 5/8", perfect. A great example, beautiful color, very strong, crisp embossing, fantastic condition. Provenance: John Wilson collection.

*Est.: \$300 - \$500 • Min. bid: \$150*



### Lot 164

**Unembossed 3-Piece Mold Target Ball**, America, 1875 - 1900. Rich, medium-to-deep yellowish olive green, 3-piece mold, rough sheared mouth, dia. 2 5/8", virtually perfect; (a shallow 1/4" open surface bubble, otherwise mint). A very scarce-to-rare color for an unembossed ball, the vast majority of examples are in shades of amber. In addition, this one has outstanding character with plenty of frothy black slag in the glass swirled through the shoulders. John Wilson collection.

*Est.: \$250 - \$450 • Min. bid: \$130*



### Lot 165

**Unembossed 3-Piece Mold Target Ball**, America, 1875 - 1900. Beautiful, medium-to-deep plum amethyst, 3-piece mold, rough sheared mouth, dia. 2 5/8", perfect. Another beautiful and rare color for a target ball. These don't come around often. Another one that will stand out in any collection. Provenance: John Wilson collection.

*Est.: \$250 - \$450 • Min. bid: \$130*



### Lot 166

**"IRA PAINE'S FILLED BALL PAT. OCT. 23, 1877" / "A" Target Ball**, America, 1877 - 1900. Beautiful light honey amber through the center, shading to a deeper orangey golden color near the mouth and base, 3-piece mold, rough sheared mouth, dia. 2 5/8", perfect. A very pretty example! Note; this is the scarce mold variant with the embossed "A" above the "E" in "PAINE'S". Provenance: Ex. Peter Frobouck, Alex Kerr collections.

*Est.: \$300 - \$500 • Min. bid: \$150*



### Lot 167

**Lot of (2), Target Balls**, America, 1875 - 1900. **1st Ex.:** Unembossed, gorgeous straw yellow coloration shading to a warmer honey tone in the shoulders. **2nd Ex.:** Embossed "K" (above horizontal mold line), honey amber. Both are 3-piece mold, rough sheared mouth, 2 5/8" dia., and perfect! 1st example is a very attractive 'see-through' color with a large, crudely sheared mouth. 2nd example is rare. It is the only example we've seen with the embossed "K". John Wilson collection.

*Est.: \$300 - \$500 • Min. bid: \$150*



### Lot 168

**Annie Oakley Glass Ball**, America, 1890 - 1905. Honey amber, 'crackle glass', filled with colorful red and white feathers and other crepe-type material, "A" (inside an "O"), stamped on wax seal, dia. 3 1/4", perfect. As noted in our previous listings of similar balls sold in Auction 36, it is theorized that the balls were sold, or given as a prize, at shows where Annie Oakley performed. The balls were reportedly from the estate of "Rodeo Earl Smith" who performed as a trick rider in the Wild West Shows.

*Est.: \$400 - \$600 • Min. bid: \$200*



### Lot 169

**Lot of (2), Annie Oakley Glass Balls,** 1890 – 1905. **1st Ex.:** Light honey mottled with splotches of deeper amber glass swirled throughout, filled with red and white feathers and crepe. **2nd Ex.:** Light honey mottled with deep amber splotches. Filled with feathers, crepe material, and a dark grayish substance in the lower half. Both with “A” inside an “O”, stamped on wax seal, dia. 3 ¼”; (1st Ex. has a hard-to-see, 2 ½” hairline crack from lip, possibly in-making; 2nd Ex. is perfect).

*Est.: \$400 - \$600 • Min. bid: \$200*



### Lot 170

“COHANSEY” – (STAR) “ECHO / FARM” (STAR), Cohansy Glass Manufacturing Co, Philadelphia, 1875 – 1880. Aqua, cylindrical, top seal straddle lip with ground mouth, (STAR) “ECHO / FARM” (STAR) – “COHANSEY GLASS MANUF. CO PHILADA PA – PAT. JULY 16. 1872” (on glass lid), original wire clamp – smooth base, ½ Pt; (jar professionally cleaned with a little minor wear remaining; ¼” chip at edge of ground lip; ¼” chip along top edge of lid). RB #627. Very rare.

*Est.: \$1,500 - \$2,500 • Min. bid: \$800*



### Lot 171

“GLASSBORO / TRADE / MARK / IMPROVED” (with color matching glass lid for a GEM jar), Whitney Glass Works, Glassboro, NJ, 1884 – 1900. Beautiful, bright cornflower blue, straddle lip with ground mouth, “PATD FEB 12T 56 DEC 17T 61 NOV 4TH 62 DEC 6TH 64 JUNE 9TH 1868” (on glass lid) – “PATENT SEPT 1886” (stamped around edge of zinc band), Pt; (jar is perfect; a ¾” chip on underside of lid). RB #1114. Excellent character and color! Ex. J.E. Pfeiffer collection.

*Est.: \$400 - \$600 • Min. bid: \$200*



### Lot 172

“W.K. LEWIS & Co. – BOSTON.” Pickle Jar, 1850 – 1860. Aquamarine, almost a clear pale blue green, cylindrical with five lobed body panels, large horizontal rings below the shoulders and at base of neck, sheared mouth with tooled ring-type collar – heavy iron pontil scar, ht. 10 5/8”, virtually attic mint; (just a very slight trace of minor wear, otherwise perfect). Zumwalt, p.277. A very scarce-to-rare pickle jar with a distinctive, eye-appealing form. Fred Swiechowicz collection.

*Est.: \$400 - \$600 • Min. bid: \$200*



### Lot 173

**Cathedral Peppersauce Bottle** (with virtually complete original foil label), 1850 – 1860. Light blue green, square, beveled corners, arched Gothic panels on four sides, embossed window panes in two of the panels, ornamental trefoil and tulip designs on shoulders, applied ring collar with bevel – blowpipe pontil scarred base, ht. 8 ¾”; (bottle is perfect; label a bit difficult to read). Label reads in part; STICKNEY / & POOR / BEST / QUALITY / PEPPERSAUSE / BOSTON. Bruce Purdy collection.

*Est.: \$400 - \$600 • Min. bid: \$200*



### Lot 174

**Rare mold, Cathedral Pickle Jar,** 1845 – 1855. Aquamarine, square with beveled corners, all four sides with different fancy cathedral panels, embossed cross on two shoulders, large trefoil on third, large arch on fourth shoulder, sheared mouth with applied band collar – blowpipe pontil scar, ht. 8 ¾”, near mint; (a shallow ½” sliver flake along the inside edge of the lip, otherwise perfect). A great looking pickle jar, very rare mold, excellent overall condition. Fred Swiechowicz collection.

*Est.: \$400 - \$600 • Min. bid: \$200*



### Lot 175

**Cathedral Pickle Jar,** a Mid Atlantic glasshouse, 1860 – 1870. Clear, light-to-medium emerald coloration, square with beveled corners, arched Gothic panels with fancy scallop designs around inner frame, cross and pendant motif below top of inner frame, ornamental palmette above each frame on shoulders, sheared mouth with applied ring type collar – smooth base, ht. 11 ¾”, perfect! A great example, beautiful color, nice even tone from the shoulders to the base. John Wilson collection.

*Est.: \$400 - \$600 • Min. bid: \$200*



### Lot 176

**Cloverleaf Pickle Jar,** a Stoddard, NH glasshouse, probably New Granite Glass Works, Mill Village, 1860 – 1871. Beautiful, medium-to-deep yellowish ‘old amber’, octofoil form, sheared mouth with an applied large ring collar – smooth base, ht. 7 7/8”, attic mint. A great example of this classic Stoddard pickle jar. MW, plate 73, #2; also, *On the Trail of Stoddard Glass*, Field, p.82. Provenance: Tony Panepucci collection.

*Est.: \$600 - \$900 • Min. bid: \$300*



### Lot 177

**EAR OF CORN Figural Whiskey**, 1875 – 1885. Bright amber in the center shading to rich, deep amber through the shoulders and lower third of the body, figural ear of corn with label panel, applied square collar – smooth base, ht. 9 ¾”, virtually attic mint; (just a slight trace of very light wear including a couple of tiny pinhead open bubbles; a little light content residue, primarily in the shoulders and almost certainly washable, otherwise perfect). A scarce figural whiskey.

*Est.: \$200 - \$400 • Min. bid: \$100*



### Lot 178

**Lot of (2), Applied Handle Chestnut Flasks** (one with 85% original label), America, 1850 – 1865. Both are shades of golden amber, chestnut form, applied handle, applied collar with flat band – blowpipe pontil scarred bases, ht. 7 ¼” and 9 1/8”; (7 ¼” example has some moderate interior content residue, and a few onionskin-thin open surface bubbles; 9” example has a bit of interior content residue and a 1/8” flake on inside edge of collar, otherwise both excellent).

*Est.: \$175 - \$275 • Min. bid: \$90*



### Lot 179

**“BININGER’S / TRAVELERS / GUIDE / A.M. BININGER & CO / No 19 BROAD ST N.Y.” Pocket Flask**, probably 1861 - 1863. Golden amber shading to a lighter honey color along the sides, flattened teardrop form, applied round collar with bevel – smooth base, ht. 6 ¾”; (a little scattered light wear, primarily on the reverse, and the bottle may have been lightly cleaned, but presents as near mint). GXV-30; BPK-35. Scarce. See *A.M. Bininger Bottles*, by Jim Bender.

*Est.: \$275 - \$450 • Min. bid: \$140*



### Lot 180

**“BININGER’S” / CLOCKFACE / “REGULATOR” – “19 BROAD ST - NEW YORK” Figural Clock Whiskey**, 1861 – 1863. Golden amber, figural clock form, applied round collar with bevel – blowpipe pontil scar, ht. 5 7/8”, near mint; (some light interior residue or haziness, some of which may wash out, and just the slightest touch of faint wear on the reverse, otherwise perfect). GXIII-87; BPK-38. A very nice example, almost no wear. Fred Swiechowicz collection.

*Est.: \$500 - \$800 • Min. bid: \$250*



### Lot 181

**“A.M. BININGER & Co. / No. 19 BROAD ST / NEW YORK” Applied Handle Whiskey**, 1861 – 1863. Bright, medium-to-deep yellowish green with a slight olive tone, cylindrical with conical shoulders, applied handle curled at lower attachment, applied double ring collar – smooth base, ht. 7 7/8”, perfect! BPK-31. This mold is rare in green, and even more so with the handle applied on the reverse (most are applied on the front). An absolutely fantastic example. Fred Swiechowicz collection.

*Est.: \$2,500 - \$4,500 • Min. bid: \$1,300*



### Lot 182

**“GIN” / (COCK) / “TAIL” – “T.J. DUNBAR & CO. – BOSTON.”**, 1865 – 1875. Bright yellowish olive, square, beveled corners, applied sloping collar with bevel – smooth base, ht. 9 ½”; (just a slight trace of very light wear on one of the side panels, otherwise sparkling attic mint). A fantastic example of this very rare and desirable pictorial (COCK) “Tail” bottle, beautiful bubbly glass, outstanding condition. This is certainly one of those bottles that don’t come around, and are getting harder to find.

*Est.: \$2,000 - \$4,000 • Min. bid: \$1,000*



### Lot 183

**“WHISKEY” / (COCK) / “TAIL” – “T.J. DUNBAR & CO. – BOSTON.”**, 1865 – 1875. Bright yellowish green, square, beveled corners, applied sloping collar with bevel – smooth base, ht. 9 ½”; (just a slight trace of light wear, otherwise virtually pristine perfect). An exceedingly rare, possibly unique mold. While the “GIN” / (COCK) “TAIL” is very rare, this is the only known example of the “WHISKEY” / (COCK) / “TAIL”. Beautiful, bright, bubbly, and virtually perfect. Fred Swiechowicz collection.

*Est.: \$3,000 - \$5,000 • Min. bid: \$1,500*



### Lot 184

**“WISTER’S / CLUB HOUSE.”**, America, 1855 - 1860. Rich, medium-to-deep reddish apricot coloration, tapered gin form, applied sloping collar – iron pontil scar, ht. 9 ½”, perfect! An absolutely gorgeous example that appears to be an attic-type bottle, large iron pontil scar, beautifully whittled, wavy glass. These scarce, desirable gins were blown during a relatively short period and marketed in the California gold country, mid-to-late 1850’s. Provenance: Ex. Mel Hammer collection.

*Est.: \$4,000 - \$6,000 • Min. bid: \$2,000*





### Lot 185

**“J & D. DUNCAN – OLD BOURBON”** (“WORMWOOD” peened out on a third panel), America, 1865 – 1875. Medium-to-deep olive green, tapered gin form, applied sloping collar – smooth base, ht. 10”, very near mint; (just a slight trace of minor wear including a light 1” scratch on one of the side panels). An extremely rare, possibly unique American gin originally discovered near Denver, CO. This is the same example we sold in Auction #30, and the only example of record.

*Est.: \$1,200 - \$2,400 • Min. bid: \$600*



### Lot 189

**“DR. CHANDLER’S / JAMAICA GINGER / ROOT / BITTERS – CHAS. NICHOLS JR & Co. PROPS. / LOW-ELL MASS.” Figural Barrel**, 1875 – 1885. Bright citron green with a lime tone, figural oval barrel with wooden staves and hoops, applied sloping collar with ring – smooth base, ht. 10 1/8”, attic mint. R/H #C127. Extremely rare! A unique mold, one of the rarest of all the barrels, and only the third example in green to be offered in more than 25 years. Fred Swiechowicz collection.

*Est.: \$10,000 - \$15,000 • Min. bid: \$5,000*



### Lot 186

**“VOLDNER’S – AROMATIC / SCHNAPPS – SCHIEDAM”**, 1870 – 1880. Gorgeous, medium olive yellow, square with beveled corners applied sloping collar with bevel – smooth base, ht. 10”; (a minor, paper-thin, 1/4” sliver flake on one of the beveled corners, and an onionskin-thin 1/4” open bubble on the back label panel, otherwise virtually attic mint). A scarce, very pretty color for a Voldner’s Schnapps, and excellent clarity with a nice even tone from the shoulders to the base.

*Est.: \$250 - \$450 • Min. bid: \$130*



### Lot 190

**“OLD SACHEM / BITTERS / AND / WIGWAM TONIC”**, 1860 – 1875. Beautiful, light-to-medium topaz coloration, barrel form, applied square collar – smooth base, ht. 9 1/4”, near mint; (just a tiny pinhead flake and minuscule bit of roughness on the edge of the square collar; a 1/8” onionskin thin open bubble on one of the rings, and some very light interior residue that would likely wash out, otherwise perfect). R/H #O46. Gorgeous, eye-appealing color, strong embossing, fantastic condition.

*Est.: \$2,000 - \$4,000 • Min. bid: \$1,000*



### Lot 187

**“J J MELCHERS wz – SCHIEDAM – AROMATIC / SCHNAPPS”** (with 98% complete, original label), Australia, 1880 – 1890. Yellowish olive green, square, beveled corners applied sloping collar – smooth base, ht. 9 3/8”, near mint; (a 3/16” partially open bubble on the top of the lip, and just a bit of interior content residue, otherwise perfect). A great looking gin, very scarce with the nearly complete original label depicting a seated woman holding a sickle and shock of grain.

*Est.: \$300 - \$500 • Min. bid: \$150*



### Lot 191

**“OLD SACHEM / BITTERS / AND / WIGWAM TONIC”**, 1858 – 1865. Medium amber, barrel form, applied square collar – large blowpipe pontil scar with iron residue, ht. 9 3/8”; (a little light exterior wear; a 1/4” chip at the base ring on the reverse, and a trace of patchy faint interior milkiness, otherwise excellent). R/H #O46. Note; there are some in-manufacture annealing lines in the neck mentioned for completeness, but not considered damage. A nice example, rare with the pontil scarred base!

*Est.: \$600 - \$900 • Min. bid: \$300*



### Lot 188

**“M.J. BROCKWAY / COR. CANAL & CAUSEWAY STS. / BOSTON” Stoneware Flask**, possibly Edmands and Hooper Pottery Works, Charlestown, MA, 1850 – 1860. Mustard toned tan glaze, flattened ovoid body, double ring collar, ht. 9 1/4”; (an in-manufacture kiln ‘spur’, or firing mark, on the shoulder, otherwise virtually perfect). A very scarce-to-rare Boston stoneware ‘spirits’ flask.

*Est.: \$250 - \$450 • Min. bid: \$130*



### Lot 192

**“GREELEY’S BOURBON / BITTERS”**, 1860 – 1875. Beautiful, light ‘see-through’ copper coloration in the upper third, shading to a medium-to-deep copper with some warmer ginger-ale and peach tones in the lower half, barrel form, applied square collar – smooth base, ht. 9”, near perfect; (just a slight trace of very minor wear). R/H #G101. A very pretty, much better than average example, beautiful variegated color, nice character, excellent condition. Provenance: Tony Panepucci collection.

*Est.: \$800 - \$1,200 • Min. bid: \$400*



### Lot 193

**“DR C.W. ROBACKS / STOMACH BITTERS / CINCINNATI. O.”**, 1855 – 1865. Golden amber through the mid-section shading to a deep amber with an orange tone in the shoulders, barrel form, applied sloping collar – iron pontil scar, ht. 9 7/8”; (a little light wear on the back label panel; a 3/16” spot of minor roughness along the top edge of the applied lip, and some minor in-manufacture crazing lines in the neck, otherwise excellent). R/H #R73. A nice-looking example.

*Est.: \$250 - \$400 • Min. bid: \$130*



### Lot 194

**“HALL'S / BITTERS – E.E. HALL NEW HAVEN / ESTABLISHED 1842”**, America, 1865 - 1875. Very deep amber, barrel form, applied square collar – smooth base, ht. 9 1/4”; (a little light exterior wear including a 3/8” paper-thin open bubble on one of the rings on the reverse, otherwise excellent). R/H #H10. A very deep shade of amber, much deeper than most, and certainly not your honey-toned, orangey or medium amber example that is typically encountered.

*Est.: \$150 - \$250 • Min. bid: \$80*



### Lot 195

**“THE / FISH BITTERS – W.H. WARE / PATENTED 1866”**, 1866 – 1875. Medium-to-deep amber, figural fish, applied ring collar – smooth base, ht. 11 1/2”, near mint; (a tiny pinprick spot of roughness on the edge of the lip that you can feel, but is not easy to see, otherwise virtually perfect). R/H #F45. A great example, strong embossing. Note; the bottle was collected by a Doctor in New Canaan, CT in the 1970's, and on display at the New Canaan Historical Society in 1975.

*Est.: \$300 - \$500 • Min. bid: \$150*



### Lot 196

**“SUFFOLK BITTERS – PHILBROOK & TUCKER / BOSTON”**, 1870 – 1880. Beautiful light yellow in the hind legs, shading to a rich, deep honey coloration through the body, figural pig, applied square collar –

smooth base, length 10”; (just a trace of typical minor light wear on the sides, and a partially open interior bubble in the hind quarters, otherwise near perfect). R/H #S217. A bright, clean, very pretty example of this classic figural bitters, scarce with the square collared mouth.

*Est.: \$700 - \$900 • Min. bid: \$350*



### Lot 197

**“AMERICAN LIFE / BITTERS – P.E. ILLER / MANUFACTURER / OMAHA. NEB – AMERICAN LIFE / BITTERS”**, probably 1869 -1871. Rich, medium-to-deep amber with a slight reddish-orange tone, rectangular log cabin form with curved roof, applied sloping collar – smooth base, ht. 9”; (lightly cleaned to original luster and near mint condition; two shallow 1/4” surface flakes on the log corners above the base, otherwise excellent). R/H #A48, Very rare!

*Est.: \$4,000 - \$6,000 • Min. bid: \$2,000*



### Lot 198

**Unembossed, Cabin-Form Drake's Bitters**, probably 1862 – 1863. Deep amber shading to a dense, virtually black amber near the base, cabin form with two corners having a wide flat bevel, applied double collar – smooth base, ht. 10”, attic mint. A very crude, heavy cabin bottle believed to be the prototype for Drake's. The bottle matches the patent drawing for P.H. Drake design No. 1538, Feb., 18, 1862 (see Peachridge Glass, Log Cabin Series). Rare. Fred Swiechowicz collection.

*Est.: \$600 - \$900 • Min. bid: \$300*



### Lot 199

**“S T / DRAKE'S / 1860 / PLANTATION / X / BITTERS – PATENTED / 1862”**, 1862 – 1880. Bright medium yellow with some slightly warmer honey tones near the base and in the applied collar, cabin form with 6-logs above the label panel, applied sloping collar – smooth base, ht. 9 3/4”, perfect! R/H #D108. A very crude, eye-appealing example, strong embossing, beautiful yellow coloration, fantastic condition. Provenance: Fred Swiechowicz collection.

*Est.: \$800 - \$1,200 • Min. bid: \$400*



### Lot 200

**“S T / DRAKE'S / 1860 / PLANTATION / X / BITTERS – PATENTED / 1862”**, 1862 – 1880. Beautiful, light-to-medium 'peachy-apricot' coloration, cabin form with 6-logs above the label panel, applied sloping collar – smooth base, ht. 9 7/8”, perfect. R/H #D105. A great example, beautiful 'see-through' color, lighter and much nicer than the majority of peach-toned Drake's. Provenance: Fred Swiechowicz collection.

*Est.: \$600 - \$900 • Min. bid: \$300*



### Lot 201

"S T / DRAKE'S / 1860 / PLANTATION / X / BITTERS – PATENTED / 1862", 1862 – 1880. Deep yellowish 'old amber' with a hint of an olive tone, cabin form with 6-logs above the label panel, applied sloping collar – smooth base, ht. 9 3/4", near mint; (just a trace of minor wear including a tiny pinhead bit of roughness on the edge of the lip, otherwise perfect). R/H #D105. Not an 'exotic' color, but not your 'run-of-the-mill' amber Drake's.

*Est.: \$250 - \$450 • Min. bid: \$130*



### Lot 205

Lot of (2), "DR SOULE" Bitters, 1875 – 1890. 1st Ex: "DR SOULE'S – HOP – BITTERS – 1872" – (HOP FLOWERS AND LEAF), Australia, bright yellow with a topaz tone. 2nd Ex: "Dr SOULE" (backwards "S") – HOP – BITTERS – 1872" – (HOP FLOWERS AND LEAF) – "B" (on base), probably America, deep amber. Both applied sloping double collar – smooth base, ht. 9 3/4" & 9 1/8" respectively, both near mint; (slight wear, minor open bubbles). R/H #S145 & S146.

*Est.: \$200 - \$400 • Min. bid: \$100*



### Lot 202

"S T / DRAKE'S / 1860 / PLANTATION / X / BITTERS – PATENTED / 1862", 1862 – 1880. Deep strawberry puce, cabin form with 6-logs above the label panel, applied sloping collar – smooth base, ht. 10", attic mint. R/H #D105. This one is deep in color, as most examples are, but depending on the lighting, shows a lot of beautiful reddish tones. A lot of bottle for the money.

*Est.: \$250 - \$450 • Min. bid: \$130*



### Lot 206

Lot of (2), Semi-Cabin Form Bitters, Australia, and possibly America, 1875 – 1895. 1st Ex: **Rare, Sample-size**, golden amber with an orange tone, unembossed, semi-cabin form, tooled square collar – smooth base, ht. 5". 2nd Ex: "Dr SOULE" (backwards "S") – HOP – BITTERS – 1872" – (HOP FLOWERS AND LEAF) – "B" (on smooth base), dense chocolate amber, virtually black, applied sloping collar with bevel, ht. 9 1/8", R/H #S146. Both near mint; (light wear, small open bubble on lg. size).

*Est.: \$250 - \$450 • Min. bid: \$130*



### Lot 203

Lot of (2) Figural Bitters / Medicine Bottles, 1865 – 1890. "TIPPECANOE" / (CANOE) / "H.H. WARNER & Co" (with 85% original label). Amber, figural log, applied 'mushroom' collar – smooth base, ht. 8 7/8". 2nd Ex: "S T / DRAKE'S / 1860 / PLANTATION / X / BITTERS – PATENTED / 1862". Medium-to-deep honey amber, cabin form, 6-logs above label panel, applied sloping collar – smooth base, ht. 10", R/H #D105. Both near mint with interior / exterior residue.

*Est.: \$250 - \$450 • Min. bid: \$130*



### Lot 207

"ROYAL / FLASH / BITTERS – ROYAL / FLASH / BITTERS" (with 90% of original label), 1890 – 1900. Bright golden amber with an orange tone, pyramid form, tooled sloping collar with ring – smooth base, ht. 12 1/8"; (two chips, a 1/2" x 3/4" chip on the side of the mouth, and a 1/2" sliver chip along the top edge of the lip have both been expertly repaired, otherwise perfect; label is darkened, but legible). An unlisted, unique example! (Similar to R/H #R110, but embossed "FLASH", not FLUSH).

*Est.: \$1,000 - \$2,000 • Min. bid: \$500*



### Lot 204

"HOPS & MALT" / "TRADE" (SHEAF of GRAIN) "MARK" / "BITTERS – HOPS / & / MALT / BITTERS – HOPS / & / MALT / BITTERS – HOPS / & / MALT / BITTERS" (with virtually complete original front and back labels), 1880 – 1890. Medium-to-deep honey amber, square semi-cabin, applied sloping collar – smooth base, ht. 9 7/8", virtually perfect; (back label faded a bit from age). R/H #H186. Scarce semi-cabin, very scarce-to-rare with labels.

*Est.: \$400 - \$600 • Min. bid: \$200*



### Lot 208

"CANTON" (Five Pointed Star) – "BITTERS" (Five Pointed Star), 1875 – 1885. Medium-to-deep amber, cylindrical, long 'lady's-leg' neck, applied collar with flat band – smooth base, ht. 12 1/8", near mint; (just a trace of light wear including a 1/8" flake on the edge of the collar, and some very faint interior residue that may wash out, otherwise perfect). R/H #C35. A scarce lady's leg bitters that does not come around often, especially in this fine condition. Bruce Purdy collection.

*Est.: \$300 - \$500 • Min. bid: \$150*



### Lot 209

**“DR. LANGLEY’S / ROOT & HERB / BITTERS / 99 UNION St. / BOSTON”** (with more than 90% complete, original label), 1865 – 1875. Beautiful yellowish honey coloration, cylindrical, applied square collar – smooth base, ht. 6 ¾”, perfect; (label darkened from age but still legible). R/H #L22. Note; an additional rectangular period label was added with *Rock & Rye* hand written). A very pretty, absolute top example of this mold. Provenance: Tony Panepucci collection.

*Est.: \$600 - \$900 • Min. bid: \$300*



### Lot 213

**“LEDIARD’S – CELEBRATED – STOMACH BITTERS”**, 1850 – 1860. Beautiful, clear medium emerald, square with beveled corners, applied sloping collar with bevel – heavy iron pontil scar, ht. 9 7/8”, virtually ‘out-of-the-mold’, pristine condition. R/H #L60. As noted by R/H, rare with the pontil scarred base (most examples having a smooth base). Particularly nice with the crudely applied, ‘drippy’ top, and heavy iron pontil scar. Believed to have been marketed primarily in the West.

*Est.: \$2,500 - \$4,000 • Min. bid: \$1,300*



### Lot 210

**“DR HUNTINGTON’S / GOLDEN TONIC / BITTERS. – PORTLAND / MAINE”** (with 95% complete original front label; 80% back label), probably 1875 – 1880. Golden amber, square, beveled corners, applied sloping collar – smooth base, ht. 9 ¼”, near mint; (a tiny pinhead bruise and 1/8” flake on the edge of the lip; some in-manufacture annealing lines in the neck mentioned for accuracy; rear label with thin spots). R/H #H213. A rare Maine bitters, exceedingly so with labels.

*Est.: \$800 - \$1,200 • Min. bid: \$400*



### Lot 214

**“CLIFFORD / & / FERNALD’S – ORIGINAL – INDIAN / VEGETABLE / BITTERS – BOSTON MASS.”**, 1845 – 1855. Aquamarine, rectangular with beveled corners, applied square collar – blow-pipe pontil scar, ht. 6 ¾”; (the bottle may have been lightly cleaned, but certainly presents as very near mint; a little faint interior haziness in one of the beveled edges, and some minor in-manufacture crazing lines in the neck). R/H #C174. Ex. James Cheballo, Carlyn Ring collections.

*Est.: \$4,000 - \$6,000 • Min. bid: \$2,000*



### Lot 211

**“MANITOU” / (Bust of Indian with headdress) / “BITTERS”**, probably 1890 – 1900. Bright, light golden amber, rectangular with rounded corners, tooled square collar with ring – smooth base, ht. 7 ¾”; (lightly cleaned to original luster and near mint condition with just a touch of minor wear remaining, otherwise excellent). R/H #M28.3. An extremely rare pictorial bitters, nice color, condition, strong embossing.

*Est.: \$800 - \$1,200 • Min. bid: \$400*



### Lot 215

**“DR Geo PIERCE’S – INDIAN / RESTORATIVE / BITTERS – LOWELL MASS”** (with more than 90% complete, original label), 1855 – 1860. Aquamarine, rectangular, applied sloping collar – rectangular iron pontil scar, ht. 7 ¾”; (some light patchy content haziness in the shoulders, possibly washable, otherwise perfect). R/H #P96. The majority of these have either a blowpipe pontil, or are smooth base. Very scarce with the iron pontil and original label. Fred Swiechowicz collection.

*Est.: \$250 - \$450 • Min. bid: \$130*



### Lot 212

**“JOHN ROOT’S BITTERS / 1834 – BUFFALO, N.Y. / 1834”**, 1865 – 1875. Medium blue green coloration, rectangular semi-cabin form, applied sloping collar with flat band – smooth base, ht. 10”; (just a touch of minor wear including a couple of onionskin-thin, partially open surface bubbles and a 1/8” flake at the edge of the base on the reverse; a couple of small spots of faint haze, primarily in the shoulders, otherwise excellent). R/H #R90.4. A nice crude example, good depth of color.

*Est.: \$800 - \$1,200 • Min. bid: \$400*



### Lot 216

**“DR. WOOD’S – SARSAPARILLA / & / WILD CHERRY – BITTERS”** (with 99% complete original label, partial contents), 1845 – 1855. Aquamarine, rectangular, beveled corners, applied sloping collar with bevel – blowpipe pontil scar, ht. 8 ¾”, virtually perfect; (just a trace of light wear on the shoulder the of reverse). R/H #W151. Nice crude wavy glass, very strong embossing, outstanding condition! Very rare with original label, an absolutely top example. Fred Swiechowicz collection.

*Est.: \$400 - \$600 • Min. bid: \$200*



### Lot 217

“DR STEPHEN JEWETT’S – CELEBRATED HEALTH / RESTORING BITTERS – RINDGE, N.H.” (with 95% complete, original label), 1850 – 1860. Aquamarine, rectangular, beveled corners, applied square collar – iron pontil scar, ht. 7 1/8”; (bottle has some minor content residue in the shoulder, otherwise perfect; original “DIRECTIONS.” label on reverse has minor staining and a tear, but otherwise excellent). R/H #J37. Very scarce with label. Fred Swiechowicz collection.

*Est.: \$250 - \$450 • Min. bid: \$130*



### Lot 221

“ENGLISH / FEMALE / BITTERS – MEMPHIS. TENN.”, probably 1865 – 1874. Aquamarine, rectangular with beveled corners, applied sloping collar with bevel – smooth base, ht. 9”, very near mint; (lightly cleaned to original luster and virtually perfect condition, and a shallow 1/4” flake on edge of base, otherwise virtually pristine condition). R/H #E46.5. An extremely rare southern bitters, only the 2nd example to be offered at auction in more than 30 years.

*Est.: \$400 - \$600 • Min. bid: \$200*



### Lot 218

“HUTCHINGS – DYSPEPSIA / BITTERS – NEW YORK”, 1850 – 1860. Aquamarine, rectangular, beveled corners, applied sloping collar – iron pontil scar, ht. 8 5/8”, attic mint. R/H #H218. A fantastic example, clean, bright, strong embossing, excellent condition. If you like iron pontils, this one may be for you. The gaffer attached the pontil rod to the base with enough force to push the base up at an almost 45-degree angle, which left a very heavy iron deposit on the base. A top example.

*Est.: \$250 - \$450 • Min. bid: \$130*



### Lot 222

“DR FLINT’S – QUAKER BITTERS – PROVIDENCE R.I.” (with virtually complete colorful front label; 95% complete side labels, more than 80% complete back label, remnants of original wrapper on shoulder and reverse). 1875 – 1885. Aquamarine, rectangular, beveled corners, applied square collar – smooth base, ht. 9 1/4”, bottle is virtually attic mint; (some light washable interior and exterior residue; label darkened a bit from age). R/H #F58. Very scarce with original labels.

*Est.: \$300 - \$500 • Min. bid: \$150*



### Lot 219

“ROYCE’S / SHERRY / WINE / BITTERS”, 1850 – 1860. Aqua, rectangular with beveled corners, applied sloping collar – blowpipe pontil scar, ht. 8 1/4”; (lightly cleaned to original luster with just a trace of very minor wear remaining, otherwise excellent). R/H #R119. Noted as “Very rare” in the Ring / Ham book with only a couple of smooth-base examples having been offered over the past 10 years. An obvious ‘copycat’ of the much more successful Dr. Clarke’s Bitters.

*Est.: \$300 - \$500 • Min. bid: \$150*



### Lot 223

**Lot of (2), Bitters – Medicine Bottles** (both with more than 95% complete original labels), Canada, 1885 – 1895. 1st Ex.: “C. GATES & Cos – LIFE OF MAN – BITTERS”; 2nd Ex.: “C. GATES & Co – INVIGORATING – SYRUP”. Both are aquamarine, rectangular with beveled corners, tooled round collar with bevel – smooth base, ht. 7 5/8” and 8” respectively, both bottles are attic mint; (label on 2nd Ex. has some staining, but still legible). R/H #G7, Scarce. Fred Swiechowicz collection.

*Est.: \$150 - \$250 • Min. bid: \$80*



### Lot 220

“CLARKE’S / VEGETABLE / SHERRY WINE / BITTERS / SHARON MASS.”, 1860 – 1870. Aquamarine, rectangular with beveled corners, applied sloping – smooth base, ht. 14”, near perfect; (a slight bit of light exterior wear, otherwise mint). R/H #C155. Scarce. A mammoth, very impressive bottle, beautifully whittled. This 1-gallon size is the largest of all the Dr. Clarke’s.

*Est.: \$600 - \$900 • Min. bid: \$300*



### Lot 224

“DR TOWNSEND’S – SARSAPARILLA – ALBANY / N.Y.”, 1855 – 1865. Beautiful, yellowish honey coloration, square, beveled corners, applied sloping collar – early smooth base, ht. 9 1/2”; (a bit of typical minor wear including a small potstone on the surface of the glass with a couple of tiny ‘legs’, barely visible without a loop, and some very faint exterior haziness or iridescence mentioned for completeness, otherwise excellent). A beautiful and exceedingly rare color for a Dr. Townsend’s.

*Est.: \$2,000 - \$4,000 • Min. bid: \$1,000*



### Lot 225

**“DR TOWNSEND’S – SARSAPARILLA – ALBANY / NY”** (four rivet marks on each panel), a Stoddard, NH glasshouse, 1845 – 1855. Bright yellowish olive, square, beveled corners, domed shoulders, applied sloping collar – sand type pontil scar, ht. 9 3/8”, near mint; (just a slight trace of wear including a tiny pinprick of roughness on the edge of the collar, and a 1/4” onionskin-thin open bubble near the base). Scarce ‘nailhead’ mold, fantastic character and condition. Tony Panepucci collection.

*Est.: \$500 - \$800 • Min. bid: \$250*



### Lot 229

**“D.R. / CLARK / N. YORK”** (three oval links), probably Albany Glass Works, 1847 – 1855. Rich, deep emerald, almost a forest green, square with beveled corners, applied sloping collar – iron pontil scar, ht. 9 1/4”, attic mint. A rare and very desirable colored pontiled medicine with most examples having some form of damage, but not this one! Nice crude glass texture, excellent character, gorgeous color, a bit lighter in tone than most. A great example.

*Est.: \$4,000 - \$6,000 • Min. bid: \$2,000*



### Lot 226

**“DR TOWNSEND’S – SARSAPARILLA – ALBANY / N.Y. No1”**, a New England glasshouse, 1845 – 1855. Medium-to-deep yellowish olive with a slight amber tone, square with beveled corners, applied sloping collar – sand type pontil scar, ht. 9 1/2”; (some light exterior iridescence or haziness, and interior residue – some of which may wash out, but no other form of damage, and otherwise excellent). A scarce mold, excellent character having very crude, ‘frothy’ glass.

*Est.: \$400 - \$600 • Min. bid: \$200*



### Lot 230

**“DR DAVIS’S – DEPURATIVE – PHILA.”**, 1850 – 1860. Bright blue green coloration, square with beveled corners, applied sloping collar – large iron pontil scar, ht. 9 3/4”, virtually perfect; (just a slight trace of very light wear, primarily on the back label panel, otherwise pristine). Odell, p.103. A bright, clean, sparkling example, good depth of color, nice character with crude wavy glass. An ‘attic-type’ bottle and certainly top example.

*Est.: \$1,600 - \$3,200 • Min. bid: \$800*



### Lot 227

**“DR TOWNSEND’S – SARSAPARILLA – ALBANY / N Y”**, 1845 – 1860. Clear, medium emerald, square with beveled corners, applied sloping collar – deep base with iron pontil scar, ht. 9 1/2”, near mint; (the bottle appears to be an ‘attic-type’ example with just a little scattered light usage wear, otherwise perfect). Another beautiful example, crude wavy glass, fantastic condition. Note; this is the variant with no periods in “N Y”, and centered under “ALBANY”.

*Est.: \$400 - \$600 • Min. bid: \$200*



### Lot 231

**“HYATT’S – INFALLIBLE – LIFE BAL-SAM / N – Y”**, 1855 – 1860. Strong, medium emerald, ‘fat’ rectangular mold with beveled corners, applied sloping collar – iron pontil scar, ht. 9 1/2”, virtually perfect; (almost no wear, tiny bit of faint milkiness in one beveled edge, otherwise absolutely pristine). A big, crude eye-appealing medicine. Great color, strong embossing, outstanding condition! Almost certainly the choicest example of the scant few known in this mold. Fred Swiechowicz collection.

*Est.: \$4,000 - \$6,000 • Min. bid: \$2,000*



### Lot 228

**“DR TOWNSEND’S – SARSAPARILLA – ALBANY / N.Y.”**, 1845 – 1860. Bright yellowish green with an emerald tone, square with beveled corners, applied sloping collar – deep squared base with a heavy ‘cloverleaf-type’ iron pontil scar, ht. 9 1/4”, near mint; (just a trace of minor wear, and a little light interior residue that would almost certainly wash out, otherwise perfect). An attractive, heavy and crude example with a great ‘cloverleaf’ iron pontil scar.

*Est.: \$500 - \$800 • Min. bid: \$250*



### Lot 232

**“LONGLEY’S – PANACEA”** (with more than 75% complete, original label), a New England glasshouse, 1848 – 1855. Rich, medium-to-deep olive coloration, rectangular with beveled corners, applied sloping collar with bevel – sand type pontil scar, ht. 6 3/4”, perfect. Odell, p.228; Nielsen #391. Outstanding condition, rare large size, and believed to be a unique example with label. This one also has strong embossing and passes plenty of light – a premier pontiled medicine. Ex. James Chebalo collection.

*Est.: \$5,000 - \$8,000 • Min. bid: \$2,500*



### Lot 233

**“MRS. E. KIDDER’ / DYSENTERY / CORDIAL / BOSTON”,** 1845 – 1860. Clear, medium emerald coloration, cylindrical, applied sloping collar with bevel – blowpipe pontil scar, ht. 7 ¾”, attic mint! Odell, p.213. A great looking example, excellent character with some whittling and nice frothiness to the glass, good depth of color, strong embossing, fantastic condition. The emerald green examples are rare, and this is a good one. Provenance: Ex. Jerry Phelps collection.

**Est.: \$3,000 - \$6,000 • Min. bid: \$1,500**



### Lot 237

**“G.W. MERCHANT / LOCKPORT / N.Y.” – “+”** (small cross or plus sign on reverse), probably Lockport Glass Works, Lockport, NY, 1845 – 1860. Rich, medium-to-deep bluish emerald, rectangular with narrow beveled corners, applied sloping collar – blowpipe pontil scar, ht. 5”, near mint; (just a trace of light wear including a tiny bit of roughness on the edge of the collar that you can feel, but is not easy to see). A nice crude example filled with tiny seed bubbles. Tony Panepucci collection.

**Est.: \$200 - \$400 • Min. bid: \$100**



### Lot 234

**“MORSE’S / CELEBRATED SYRUP / PROV. R.I.”,** 1850 – 1860. Clear, medium blue green coloration, oval, applied sloping collar – iron pontil scar, ht. 9”, near mint; (just a touch of light wear, and a 3/8” chip on the neck extending from the underside of the collar, almost certainly in-manufacture when the lip was sheared, otherwise perfect). N #459; Odell, p.259. Good color, strong embossing, nice whittling and character to the glass, excellent condition! Tony Panepucci collection.

**Est.: \$800 - \$1,200 • Min. bid: \$400**



### Lot 238

**“PEPPERMINT – ESSENCE”,** America, 1835 – 1855. Light-to-medium yellowish green, almost a light lime coloration, rectangular with concave corners, sheared, tooled, inward rolled lip – blowpipe pontil scar, ht. 4 3/8”; (lightly cleaned to original luster and near mint condition, and a 3/16” spot of light abrasion at the edge of the side panel, otherwise excellent). A scarce mold, rare in color, and a very pretty example with some nice bubbles and character to the glass. Tony Panepucci collection.

**Est.: \$250 - \$450 • Min. bid: \$130**



### Lot 235

**“G.W. MERCHANT / CHEMIST / LOCKPORT / N.Y.”,** probably Lockport Glass Works, Lockport, NY, 1850 – 1860. Medium ‘Lockport’ blue green, cylindrical, applied sloping collar – heavy iron pontil scar, ht. 7”, near mint; (just a slight trace of very minor wear including a 1/8”, onionskin-thin open bubble, and a small patch of faint interior haze in the reverse, otherwise perfect). An ‘attic-type’ example with a very heavy pontil scar. A great looking bottle with nice color.

**Est.: \$250 - \$450 • Min. bid: \$130**



### Lot 239

**Rare, Early Medicine or Utility Bottle,** Mt. Vernon Glass Works, Vernon, NY, 1840 – 1846. Medium-to-deep olive amber, octagonal with domed shoulders, applied short tapered collar – blowpipe pontil scar, ht. 6 1/8”, virtually attic mint; (just a slight trace of very light wear, otherwise perfect). A very rare early Mt. Vernon utility with a pleasing form and a great ‘look’, only a small handful extant, outstanding condition. Provenance: Tony Panepucci collection.

**Est.: \$1,000 - \$2,000 • Min. bid: \$500**



### Lot 236

**“FROM THE / LABORATORY – OF / G.W. MERCHANT / CHEMIST. – LOCKPORT / N.Y.”,** Lockport Glass Works, 1850 – 1860. Bright, medium blue green, rectangular, concave corners, applied sloping collar – iron pontil scar, ht. 5 3/8”, perfect. This is the mold variant with the peened out “LO” in “LOCKPORT”. A great example, ‘attic-type’ condition, fantastic character with loads of seed bubbles and impurities. Tony Panepucci collection; Ex. Roger Long collection.

**Est.: \$400 - \$600 • Min. bid: \$200**



### Lot 240

**Scarce, 3-Pc. Mold Utility,** a Stoddard, NH glasshouse, possibly Granite Glass Co, Mill Village, 1846 – 1860. Yellowish old amber, 3-piece mold ‘stubby’ cylinder, sheared mouth, crudely applied short tapered collar with bevel – conical base with blowpipe pontil scar, ht. 6 ½”, near mint; (a little typical minor exterior wear, and a small area of light interior residue, probably washable, otherwise perfect). A great looking early Stoddard utility, scarce. Provenance: Fred Swiechowicz collection.

**Est.: \$250 - \$450 • Min. bid: \$130**



### Lot 241

**Early Medicine or Utility Bottle**, New England, 1840 – 1855. Medium-to-deep yellowish olive amber, rectangular with beveled corners, applied short tapered collar with bevel – sand type pontil scar, ht. 5 5/8"; (some light exterior wear, otherwise perfect). Another great looking, very scarce, early utility mold. The short wide neck giving it a pleasing 'stout' appearance. Provenance: Fred Swiechowicz collection, Ex. Charles B. Gardner collection.

**Est.: \$250 - \$450 • Min. bid: \$130**



### Lot 242

**(Label-only), MAGGIE'S / PHYSICAL SYRUP. / NO. 2, / Prepared by / Dr. Abbie O. Whitmarsh, / Bryantville, Mass., New England, 1845 – 1855.** Medium olive amber, rectangular with beveled corners, applied double ring collar – sand type pontil scar, ht. 6 5/8"; (the bottle is virtually attic mint, there is an overall light interior content haziness that may wash out; label – almost certainly original, is darkened from age, but more than 90% complete). Tony Panepucci collection.

**Est.: \$600 - \$900 • Min. bid: \$300**



### Lot 243

**(Label-only), DR. BARRON'S / MAGNETIC / PAIN DESTROYER, / Manufactured from the Original Recipe, by / JOHN MOORE, Sole Proprietor, / WARREN, MASS. / Price, 25 Cents.** (in original wrapper), 1849 – 1855. Aquamarine, 12-sided, thin flanged lip – blowpipe pontil scar, ht. 4 1/4", virtually perfect; (top portion of outer wrapper darkened a bit from age). Extremely rare! The medicine was manufactured and sold by John Moore in his country store, c. 1850. Ron Rainka collection.

**Est.: \$500 - \$800 • Min. bid: \$250**



### Lot 244

**(Label-only), DR. BARRON'S / MAGNETIC / PAIN DESTROYER, / Manufactured from the Original Recipe, by / JOHN MOORE, Sole Proprietor, / WARREN, MASS. / Price, 50 Cents.** (in original wrapper), 1849 – 1855. Aquamarine, 12-sided, thin square collar – blowpipe pontil scar, ht. 5", virtually perfect; (top portion of outer wrapper darkened a bit from age and has a minor tear, or separation around the shoulder). Extremely rare, possibly unique. Ron Rainka collection.

**Est.: \$600 - \$900 • Min. bid: \$300**



### Lot 245

**Original Wooden Box for Magnetic Pain Destroyer Medicine Bottles**, 1849 – 1855. Wooden box with original label for Magnetic Pain Destroyer bottles reads in part: *MAGNETIC / PAIN DESTROYER. / MANUFACTURED BY / JOHN MOORE, / WARREN, MASS. / 6*

*Bottles at 25 cents....\$1.50 / 4 Bottles at 37 1/2 cents....\$1.50 / 2 Bottles at 50 cents....\$1.00.* Box measures 10 3/8" x 5 7/8" x 6 1/2" high; (box and end label darkened from age, otherwise excellent). Ron Rainka collection.

**Est.: \$500 - \$800 • Min. bid: \$250**



### Lot 246

**(Label-only), Dr. Barron's Compound Humor and Strengthening Syrup / MANUFACTURED AND SOLD BY / JOHN MOORE, Sole Proprietor, Warren, Mass., 1849 – 1855.** Aquamarine, dip-mold cylinder, conical shoulders, applied sloping collar – blowpipe pontil scar, ht. 8 1/4"; (the bottle is perfect; 99% complete original label in overall excellent condition). Exceedingly rare, believed to be a unique example. Provenance: Ron Rainka collection.

**Est.: \$600 - \$1,200 • Min. bid: \$300**



### Lot 247

**(Label-only), Early Medicine**, probably 1840 – 1850. Front label: *FAMILY MEDICINE. / PREPARED BY / A.N. CLARK, Druggist, / BEVERLY, Mass..* Back label reads in part: *TESTIMONIALS / TO THE / FAMILY MEDICINE.* Light aquamarine, dip mold, rectangular with beveled corners, applied sloping collar – blowpipe pontil scar, ht. 7 3/4"; (the bottle is perfect; virtually complete front and back labels with some minor staining, but completely legible). Provenance: Ex. Greer collection (#367).

**Est.: \$200 - \$400 • Min. bid: \$100**



### Lot 248

**"INDIAN / CLEMENS" (Standing Indian) "TONIC / PREPARED BY / GEO. W. HOUSE"** (with 99% complete original label, cork and sealing wax), 1845 - 1855. Aquamarine, oval, sheared and outward folded mouth – blowpipe pontil scar, ht. 5 1/2"; (bottle has some dried interior content residue, otherwise perfect; label darkened a bit from age, otherwise excellent). A great looking pictorial pontiled medicine with embossed full-length standing Indian. Fred Swiechowicz collection

**Est.: \$400 - \$600 • Min. bid: \$200**





### Lot 249

**"VEGETABLE / INDIAN OIL – PREPARED – BY / G.W. DAM – PORTLAND"**, probably 1840 – 1845. Colorless, rectangular, sheared, tooled flared mouth – solid glass-tipped pontil scar, ht. 3 5/8", sparkling, virtually pristine perfect! Odell, p.100. An exceedingly rare little 'flint glass' pontiled Indian medicine from Portland, Maine. Crisp, strong embossing, outstanding condition. Provenance: Ex. James Chebalo collection.

*Est.: \$1,800 - \$2,800 • Min. bid: \$900*



### Lot 253

**"DR SLEDGE'S – NERVOUS TONIC / FOR ALL FEVERS – MEMPHIS TENN"**, 1850 – 1860. Aqua, rectangular with beveled corners, applied sloping collar – heavy iron pontil scar, ht. 9 1/2"; (the bottle may have been lightly cleaned, but presents as very near mint, and an open bubble in the back of the neck with some trapped residue, otherwise perfect). Odell, p.322; Knapp, p.433. A great bottle for both pontiled medicine collectors, and tonic collectors. Very rare. Gary Enters collection.

*Est.: \$400 - \$600 • Min. bid: \$200*



### Lot 250

**"JONES – AMERICAN / CHOLAGOGUE – NEW YORK"**, probably 1854 – 1856. Brilliant aquamarine, rectangular with concave front, back, and side panels, beveled edges, sheared, tooled, and inward rolled mouth – blowpipe pontil scar, ht. 6 5/8", virtually 'out-of-the-mold' pristine perfect. Odell, p.204; Nielsen #351 (6-star). An extremely rare, crude, gorgeous pontiled medicine having great eye-appeal. Provenance: Ex. James Chebalo, Frederick Nielsen collections

*Est.: \$1,800 - \$2,800 • Min. bid: \$900*



### Lot 254

**"O.O. WOODMAN – BILLINGS / SYRUP – VICKSBURG"**, 1850 – 1860. Aquamarine, rectangular with beveled corners, applied sloping collar – blowpipe pontil scar, ht. 6 5/8", near mint; (lightly cleaned to original luster and virtually perfect condition). Odell, p.33. A bright, clean, sparkling example of this very scarce Southern pontiled medicine. Provenance: Gary Enters collection.

*Est.: \$300 - \$500 • Min. bid: \$150*



### Lot 251

**"SARGENT & Co – AMERICAN / CANCHALOGUE – NEW YORK"** (with more than 90% complete original label), 1850 – 1860. Aqua, rectangular with beveled corners, large applied double ring collar – blowpipe pontil scar, ht. 7 1/2", virtually attic mint; (slight trace of light interior content residue, otherwise perfect). Odell, p.310. A rare pontiled medicine, very rare with original label! Nice crude wavy glass, strong embossing, fantastic condition. Fred Swiechowicz collection.

*Est.: \$400 - \$600 • Min. bid: \$200*



### Lot 255

**"O. SCHEEFS – BALTIC MIXTURE – MT. VERNON IND."**, 1850 – 1860. Rich aquamarine, rectangular with beveled corners, applied sloping collar – iron pontil scar, ht. 7 1/2", virtually perfect; (just a slight trace of very light wear). Odell, p.312; Knapp, p.413. A great looking pontiled medicine, and exceedingly rare – believed to be one of only two, or possibly three extant and the only example to be offered at auction in more than 20 years. Provenance: Gary Enters collection.

*Est.: \$600 - \$900 • Min. bid: \$300*



### Lot 252

**"LE DOYEN'S / DISINFECTING FLUID – BY / T. RIPLEY HAWLEY / BOSTON – PATENTED DEC. / 1847"**, 1847 – 1855. Aquamarine, square with beveled corners, applied sloping collar with bevel – blowpipe pontil scar, ht. 9 3/8"; (only a trace of very light wear including a shallow 1/8" flake on the edge of the collar, and just a bit of faint milkiness, barely noticeable, below the shoulders, otherwise perfect). A great looking, extremely rare pontiled medicine. Fred Swiechowicz collection.

*Est.: \$600 - \$900 • Min. bid: \$300*



### Lot 256

**"DR. C.F. BASFORD'S – HOME / GUARD – MEDICINE'S – CINCINNATI / OHIO"**, probably 1858 – 1862. Bright aquamarine, rectangular with beveled corners, sheared and inward rolled mouth – blowpipe pontil scar, ht. 4 1/2"; (just a slight trace of faint milkiness in one of the shoulders, otherwise virtually attic mint). An extremely rare pontiled medicine, bright, clean and sparkling. Believed to be only the second example offered at auction in more than 25 years. Gary Enters collection.

*Est.: \$300 - \$500 • Min. bid: \$150*



### Lot 257

**"BRUNET'S / UNIVERSAL / REMEDY. / PHILADA."**, 1845 – 1855. Bright, deep aquamarine, oval, sheared and tooled flanged lip – blowpipe pontil scar, ht. 7 ¾", attic mint. Odell, p.54. Very rare. A great looking pontiled medicine with large, very bold embossing, strong color, bright, clean, whittled, fantastic condition. Provenance: Gary Enters collection.

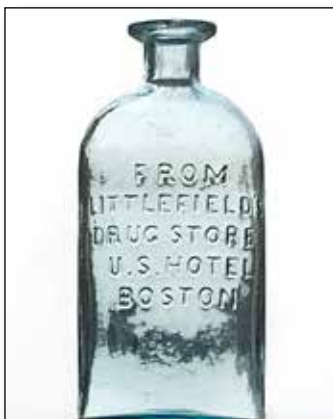
*Est.: \$400 - \$600 • Min. bid: \$200*



### Lot 261

**"Dr. J. HEDGES – FEVER & AGUE / ANNIHILATOR – NEW YORK"**, 1850 – 1860. Aquamarine, rectangular with beveled corners, applied sloping collar – blowpipe pontil scar, ht. 7 ¼", attic mint. Odell, p.169. Extremely rare. In our March, 2021 auction, we sold the only other pontiled example that has come to market in more than 20 years. It was part of the Dick and Nancy Patterson collection. A great looking pontiled medicine that reportedly 'annihilated' fever and ague. Gary Enters collection.

*Est.: \$400 - \$600 • Min. bid: \$200*



### Lot 258

**"FROM / LITTLEFIELD'S / DRUG STORE / U.S. HOTEL / BOSTON"**, 1850 – 1860. Ice blue coloration, oval, sheared mouth with an applied disc, or prescription-type collar – blowpipe pontil scar, ht. 7", very near mint; (a small spot of light wear on the shoulder, otherwise perfect). Another extremely rare medicine from the U.S. Hotel, Boston. Probably unique, or possibly one of only two extant. A delicate, very pretty color, strong embossing. Fred Swiechowicz collection.

*Est.: \$400 - \$600 • Min. bid: \$200*



### Lot 262

**"SANFORD'S – GREAT SPANISH – REMEDY"**, probably 1855 – 1860. Aquamarine, rectangular with beveled corners, applied ring collar with bevel – blowpipe pontil scar, ht. 8 ¾"; (a tiny, barely pinhead size flake on one of the base corners, otherwise virtually pristine perfect). Odell, p.310; Nielsen #545 (4-star). A very rare pontiled medicine, outstanding condition, believed to be from Springfield, Mass. Provenance: Gary Enters collection.

*Est.: \$400 - \$600 • Min. bid: \$200*



### Lot 259

**"J.H. WESTON / 13 U.S. HOTEL / BOSTON"**, probably a South Boston glasshouse, 1840 – 1850. Colorless, rectangular, sheared, tooled, inward rolled mouth – solid glass tipped pontil scar, ht. 3 7/8", virtually perfect; (just a slight trace of very faint wear, and a little in-manufacture glass extrusion at the mold seam, otherwise mint). An extremely rare, early medicine blown for the Weston Pharmacy at the iconic United States Hotel in downtown Boston. Fred Swiechowicz collection.

*Est.: \$300 - \$500 • Min. bid: \$150*



### Lot 263

**"DR. MARKLEY'S – FAMILY / MEDICINES, – LANCASTER, PA."**, 1850 – 1860. Aquamarine, rectangular, beveled corners, applied round collar with bevel – blowpipe pontil scar, ht. 8 ¼"; (just a trace of very faint wear on the reverse, and a light ring of extremely minor interior haze, otherwise virtually perfect). Odell, p.237. A big, attractive bottle with very large, bold embossing. Extremely rare, believed to be a unique example, or possibly one of only two in this large size. Gary Enters collection.

*Est.: \$800 - \$1,200 • Min. bid: \$400*



### Lot 260

**"DANDELION & TOMATO / PANACEA – RANSOM & STEVENS – DRUGGISTS BOSTON"**, probably 1843 - 1850. Aqua, rectangular with wide beveled corners, applied sloping collar - blowpipe pontil scar, ht. 8 ¾", near mint; (a little light exterior wear, primarily near the base, and some in-manufacture crazing lines in the neck mentioned for completeness, but not considered damage, otherwise excellent). N#512; Odell, p.289. A rare pontiled medicine, bright and sparkling.

*Est.: \$400 - \$600 • Min. bid: \$200*



### Lot 264

**"Dr. N. ANGELL'S / RHEUMATIC / GUN"**, 1859 – 1864. Aqua, rectangular, beveled corners, applied square collar – glass tipped pontil scar, ht. 7 ¼"; (a bit of spotty light interior milkiness, primarily in one of the base corners, and very light in one of the sides, otherwise perfect). Odell, p.9; Knapp, p.20. Extremely rare! Believed to be the first example offered at auction in more than 25 years. Per Knapp, Nehemiah Angell was a botanic physician from Onondaga Valley, NY. Gary Enters collection.

*Est.: \$600 - \$900 • Min. bid: \$300*



**Lot 265**

**“COMSTOCK / & BROTHER – TURKISH – BALM”**, 1850 – 1860. Bright aquamarine, rectangular with beveled corners, applied round collar with bevel – blowpipe pontil scar, ht. 7 ¼”, attic mint; (a tiny bit of washable interior residue in the shoulder). Odell, p.87. Scarce. A great looking example of this very attractive pontiled medicine. Per Odell, Comstock & Brother succeeded Comstock & Brother’s in 1850.

*Est.: \$175 - \$275 • Min. bid: \$90*



**Lot 269**

**“DR. SANFORD’S FAMILY / CATHARTIC PILLS. NY / ENTIRELY VEG- ETABLE / DOSE 1 TO 3”**, America, 1850 - 1860. Light aquamarine, oval, sheared, tooled, and inward rolled mouth - blowpipe pontil scar, ht. 2 ¼”; (lightly cleaned to original luster and near mint condition with just a bit of very faint haziness remaining). An extremely rare, unlisted medicine in the form of a pill tin. We sold the only other example recorded in Auction 32, from the James Chebalo collection.

*Est.: \$250 - \$450 • Min. bid: \$130*



**Lot 266**

**“WELLING’S – COMPOUND / AR- NICA – LINIMENT”**, probably 1855 – 1860. Aquamarine, rectangular with beveled corners, applied sloping collar – blowpipe pontil scar, ht. 5 ½”; (professionally cleaned with just a trace of light wear and a bit of faint light haze remaining, otherwise excellent). Odell, p.367. A very scarce-to-rare pontiled medicine from New Rochelle, New York. Believed to be the first example, or perhaps one of only two, to be offered at auction in more than 20 years.

*Est.: \$200 - \$400 • Min. bid: \$100*



**Lot 270**

**“JENKS – VEGETABLE / EXTRACT”**, 1845 – 1855. Aquamarine, rectangular with beveled corners, wide neck with a sheared, tooled, inward rolled mouth – blowpipe pontil scar, ht. 4”, attic mint. Odell, p.201. A very rare pontiled medicine, and the larger of the two known sizes. We sold an example of this bottle with label and wrapper in our July, 2023 sale. The wrapper indicated for Consumption, and Price 50 cents.

*Est.: \$250 - \$450 • Min. bid: \$130*



**Lot 267**

**“DR. W.B. FARRELL’S / ARABIAN. LINIMENT / CHICAGO. ILL’S”**, a Midwest glasshouse, probably 1850 – 1858. Medium-to-deep bluish aquamarine, cylindrical, applied sloping collar – heavy iron pontil scar, ht. 7 ¼”; (a little light, patchy, interior haze, primarily in the shoulders, and a touch of very minor lip edge roughness that you can feel, but is not easy to see, otherwise near mint). Odell, p.126. This is the much rarer large size from Chicago. Strong color, crisp embossing.

*Est.: \$200 - \$400 • Min. bid: \$100*



**Lot 271**

**Lot of (4) Early Pontiled Medi- cines**, America, 1845 – 1860. **“R.R.R / RADWAY & Co. / NEW YORK – ENTD ACORD TO – ACT OF CONGRESS”**; 2nd Ex: **“GENUINE / J. RUSSELL SPALDING / BOSTON MASS.”**, 3rd Ex: **“DR. KENNEDY’S / SALT / RHEUM / OINTMENT”**,

4th Ex: **“MEXICAN / MUSTANG – LINIMENT”**. All are aqua, sheared and inward rolled lip – blowpipe pontil scarred base, ht. 4 ¾”, 5 1/8”, 3 ½”, & 3 7/8” respectively. All are undug, virtually attic mint.

*Est.: \$150 - \$300 • Min. bid: \$80*



**Lot 268**

**“CURTIS & PERKINS / CRAMP & / PAIN KILLER / BANGOR Me”**, 1845 – 1855. Aquamarine, cylindrical, sheared, tooled, inward rolled lip – blowpipe pontil scar, ht. 4 ½”, perfect. Odell, p.97. Scarce. Provenance: Fred Swiechowicz collection.

*Est.: \$100 - \$200 • Min. bid: \$60*



**Lot 272**

**“G. ANDERSON’S – AMBROSIAL / IN- VIGORATOR / FOR THE HAIR – NEW- PORT. R I”**, 1850 – 1860. Aquamarine, rectangular, beveled corners, applied short tapered collar – blowpipe pontil scar, ht. 5 ¾”, virtually perfect; (just a tiny pinhead speck of roughness on the edge of the lip that you can feel, but is not easy to see, otherwise pristine). Very rare. Unlisted by Fadley, and believed to be the only example, or possibly one of two, that have been offered at auction in more than 20 years.

*Est.: \$250 - \$450 • Min. bid: \$130*



### Lot 273

**“WOODWARDS / UNIVERSAL / HAIR TONIC”**, 1845 – 1860. Aquamarine, rectangular with beveled corners, applied narrow square collar – blowpipe pontil scar, ht. 6 ¼”, near perfect; (a little light interior content residue near the shoulders, likely washable, otherwise mint). An extremely rare pontiled medicine, unlisted by Odell, or Fadely. Believed to be one of only two, or perhaps three examples known, and only the second example to be offered at auction in more than 25 years.

*Est.: \$400 - \$600 • Min. bid: \$200*



### Lot 274

**“HART – 173 / BROADWAY – NEW YORK”**, probably 1835 – 1840. Aquamarine, rectangular, sheared, tooled, thin flanged lip – blowpipe pontil scar, ht. 3 3/8”, near mint; (a little very faint interior milkiness, barely noticeable, mentioned for completeness, otherwise excellent). Odell, p.164. Rare. A very early, crude little medicine, strong embossing. Believed to be a hair oil or preparation. Per Odell, advertised 1832-1838 to “strengthen the hair and restore it in bald places”.

*Est.: \$200 - \$400 • Min. bid: \$100*



### Lot 275

**“FOSTER'S / MOUNTAIN COMPOUND”**, 1845 – 1855. Aquamarine, rectangular with wide beveled corners, sheared, tooled flanged lip – blowpipe pontil scar, ht. 6 ¼”; (professionally cleaned to original luster, and just a trace of faint wear, otherwise excellent). Odell, p.134. Very rare. Per Odell, Horatio Foster was listed a barber in 1841, and proprietor of a hair store in Lowell, Mass in the late 1840s. Gary Enters collection.

*Est.: \$300 - \$500 • Min. bid: \$150*



### Lot 276

**“KICKAPOO / SAGE / HAIR TONIC”** (with 95% complete, original labels), probably 1906 – 1910. Cobalt blue, squat cylinder with sides tapering inward from the shoulders to the base, tooled ring collar – smooth base, ht. 4 ¼”; (bottle is perfect, metal stopper is period but not original). DF, p.88. A scarce 'Indian' hair bottle, and certainly very scarce with original label which shows a full-length standing Indian. Provenance: Fred Swiechowicz collection.

*Est.: \$175 - \$350 • Min. bid: \$90*



### Lot 277

**“ASTHMA” / (Starburst motif) / “CONQUEROR / AND / CATARRH” / (Starburst motif) / “CURE” – “BLOOD TONIC” / (Starburst motif) / “ALTERATIVE / AND” / (Starburst motif) / “NERVINE” – “L.A. SMITH & CO. M.C. – NEW YORK, U.S.A.”** (with original box), 1890 – 1905. Colorless, rectangular, beveled corners, tooled ring collar with bevel – smooth base, ht. 8 ¾”, perfect. One of only four examples extant, an exceedingly rare bottle for both tonic and cure collectors.

*Est.: \$200 - \$400 • Min. bid: \$100*



### Lot 278

**“L.Q.C. WISHART'S – PINE TREE / TAR CORDIAL / PHILA” – “TRADE / (PINE TREE) / “MARK”**, 1880 – 1895. Colorless, square with beveled corners, tooled sloping collar – smooth base, ht. 9 ¾”, attic mint! An exceedingly rare Wishart's, believed to be one of only four colorless examples extant. The “TRADE / MARK” Wishart's are collected for their wide array of colors. This is one of the hardest of all the 'colors' (or lack thereof), to acquire, and no run would be complete without it.

*Est.: \$800 - \$1,200 • Min. bid: \$400*



### Lot 279

**“DR GUILMETTE'S / EXTRACT OF JUNIPER / BOSTON”** (with 97% complete, original, wrap-around label on three sides), 1867 – 1880. Beautiful honey amber, square with beveled corners, applied sloping collar – smooth base, ht. 9 ½”; (the bottle has some dried content residue, but otherwise perfect; label has a bit of minor staining, but still very legible and otherwise excellent). A very scarce medicine, and rare with virtually complete, original label. Fred Swiechowicz collection.

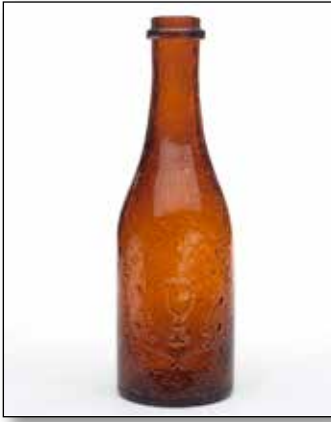
*Est.: \$400 - \$600 • Min. bid: \$200*



### Lot 280

**(Image of Celery Stalk) / “COMPOUND” – “CELERY / COMPOUND”** (with virtually complete front and back labels), 1885 – 1900. Light golden amber, almost a honey coloration, semi-cabin, tooled sloping collar – smooth base, ht. 10”; (the bottle is perfect, label is darkened a bit from age, otherwise excellent). Colorful red and green front label reads in part, *CELERY / COMPOUND / A POWERFUL NERVE TONIC / AND / ALTERATIVE*. A very attractive pictorial medicine, scarce with labels.

*Est.: \$120 - \$240 • Min. bid: \$60*



### Lot 281

**"DR. S.F. STOWE'S / AMBROSIAL NECTAR" / (Embossed Goblet surrounded by Vines) / "PATENTED MAY 22, 1866."**, 1866 – 1875. Reddish 'orangey' amber, 'champagne split form', applied champagne style collar with flat band – smooth base ht. 7 7/8", virtually perfect; (a few onion-skin-thin open surface bubbles). An attractive pictorial medicine with great character. As they say, 'The bubbles are being held together by the glass'. Fred Swiechowicz collection.

*Est.: \$100 - \$200 • Min. bid: \$60*



### Lot 285

**"POISON"** (backwards "N") – **"POISON"** (with 98% complete, original label), possibly Fairmount Glass Works, Fairmount, IN, 1900 – 1920. Bright amber with a slight orange tone towards the base, triangular with rounded back, tooled square collar – **"69 / F"** (on smooth base), ht. 10 1/8"; (bottle is perfect, label faded a bit from age, but completely legible and otherwise excellent). KV-2. Scarce large size, rare mold with the backward "N", and likely very rare also having the original label.

*Est.: \$400 - \$600 • Min. bid: \$200*



### Lot 282

**"U.S.A. / HOSP. DEPT"**, probably a Pittsburgh district glasshouse, 1862 – 1870. Beautiful, medium honey amber, cylindrical, 4-pc. mold, applied round collar with bevel – large **"X"** on smooth base, ht. 9 1/8", attic mint. A beautiful example, fantastic condition, outstanding character – the glass being filled with tiny seed bubbles. Provenance: Tony Panepucci collection; Ex. Howard Crowe collection.

*Est.: \$800 - \$1,200 • Min. bid: \$400*



### Lot 286

**"LYONS / POWDER - B & P / N.Y."**, 1855 – 1865. Medium-to-deep puce coloration, cylindrical, sheared and inward rolled lip – blowpipe pontil scar, ht. 4 1/4"; (professionally cleaned to original luster with just a touch of minor light wear remaining). KX-1. Nice color, heavily whittled, a classic early poison or 'bug' bottle. Tony Panepucci collection.

*Est.: \$150 - \$250 • Min. bid: \$80*



### Lot 283

**"U.S.A. / HOSP. DEPT"**, probably a Pittsburgh district glasshouse, 1862 – 1875. Bright aquamarine, cylindrical, 2-pc. mold, applied square collar – smooth base, ht. 7 3/4", virtually attic mint; (a tiny pinhead flake on the back edge of the collar, otherwise virtually perfect). Very crisp, strong embossing, scarce size. Provenance: Tony Panepucci collection.

*Est.: \$150 - \$250 • Min. bid: \$80*



### Lot 287

**Lot of (2), "E. ANTHONY" Bottles** (both with 95% complete original labels), 1855 – 1875. 1st Ex: **"E. ANTHONY - 308, BROADWAY / NEW YORK"**, blowpipe pontil scar, 7 7/8". 2nd Ex: **"E. ANTHONY - 501, BROADWAY / NEW YORK"**, smooth base, 6 1/2". Both are aqua, square with beveled corners, applied round collar with bevel, both virtually attic mint; (labels darkened a bit from age, but in overall excellent condition). Very scarce – rare with original labels. Fred Swiechowicz collection.

*Est.: \$300 - \$500 • Min. bid: \$150*



### Lot 284

**"The Owl Drug Co." - "Poison" - (OWL) / "TODCo" (monogram within mortar & pestle)**, with virtually complete original labels, cork and corkscrew, 1892 – 1905. Cobalt blue, triangular, tooled prescription-type collar – smooth base, ht. 9 1/2", virtually attic mint; (a 1/4" onion-skin-thin open surface bubble on one of the rounded corners). KT-1. A very scarce size, the largest known for this mold (32 oz), and very rare in this condition with near complete neck and back labels.

*Est.: \$1,000 - \$2,000 • Min. bid: \$500*



### Lot 288

**"POLAND / WATER - POLAND MINERAL SPRING WATER / H. RICKER & SON'S PROPRIETORS" Figural Mineral Water**, 1876 – 1880. Aquamarine, figural of Moses, applied sloping collar – smooth base, ht. 10 7/8", near perfect; (just a slight trace of very minor wear on the reverse, and some light residue or milkiness in the base). A classic and very popular figural. These bottles were reportedly ordered for the grand opening of the Poland Spring Hotel in 1876.

*Est.: \$175 - \$350 • Min. bid: \$90*



### Lot 289

“YUH – HEH / MINERAL / SPRING – YUH – HEH / WATER”, probably 1875 – 1878. Clear, light-to-medium citron coloration, cylindrical, tooled sloping collar with ring – smooth base, Qt; (just a tiny bit of roughness on the edge of the lip; several minor scratches from the base towards the shoulder near the side mold seam, and a partially open bubble on the interior of the shoulder, otherwise excellent). T# M-74. An extremely rare Western NY State mineral water, beautiful color!

*Est.: \$600 - \$900 • Min. bid: \$300*



### Lot 293

“HADDOCK / & SONS” Early Soda Water Bottle, New England, probably Coventry Glass Works, Coventry, CT, 1824 – 1825. Bright yellowish olive, squatty torpedo, or ‘egg’ form, sheared mouth with a crudely applied band collar – blowpipe pontil scar, ht. 6 ¾”, virtually perfect; (a minor spot of dullness or light wear below the “K”, near the base, otherwise attic mint). A beautiful example, strong embossing, good color, almost no wear! Provenance: Tony Panepucci collection.

*Est.: \$2,500 - \$3,500 • Min. bid: \$1,300*



### Lot 290

“BEDFORD / WATER.”, a Stoddard, NH glasshouse, possibly Granite Glass Co, Mill Village, 1850 – 1860. Medium-to-deep yellowish ‘old amber’, cylindrical, applied sloping collar with bevel – iron pontil scar, Pt; (a little scattered light wear, and some dried interior content residue or faint haze, some of which may wash out, otherwise near mint). T# M-6:B. A very rare Stoddard mineral water blown for the Bedford Springs hotel, Bedford, Mass. Fred Swiechowicz collection.

*Est.: \$1,200 - \$2,400 • Min. bid: \$600*



### Lot 294

“DOUBLE SODA / MANUFACTURED BY / L BRUCE BOSTON”, New England, probably 1837 – 1839. Medium-to-deep olive amber, ‘egg’ form, applied heavy ring collar – smooth base, ht. 6 ¾”; (an impact type bruise near the “O” in “SODA” with several cracks, ½” to ¾” in length; a hard-to-see potstone on the reverse with a few radiations, and some minor wear and light exterior haziness). A rare, unlisted, unique early Boston soda! Fred Swiechowicz collection.

*Est.: \$600 - \$1,200 • Min. bid: \$300*



### Lot 291

“CONGRESS & EMPIRE SPRING CO / HOTCHKISS’ SONS / CW / NEW YORK / SARATOGA. N.Y.”, 1866 – 1875. Medium-to-deep olive, cylindrical, applied sloping collar with bevel – smooth base, ½ Pt, near mint; (just a slight trace of typical light wear, and some in-manufacture crazing lines around the top of the lip mentioned for completeness, but not considered damage, otherwise perfect). T# S-14:C. A scarce, attractive little ½ pint, overall excellent condition!

*Est.: \$200 - \$300 • Min. bid: \$100*



### Lot 295

Rare, Early Soda Water Bottle, New England, or possibly NY State, 1840 – 1860. Medium-to-deep yellowish olive amber, cylindrical with gracefully tapering shoulders, applied blob collar – sand type pontil scar, ht. 7 1/8”; (a little minor light wear, otherwise perfect). A great looking soda, extremely rare form, fantastic condition! Whether you collect sodas, New England utilities, or just great bottles in general, this one has ‘the look’. Possibly a CT glasshouse or Saratoga Mountain Glass Works.

*Est.: \$800 - \$1,600 • Min. bid: \$400*



### Lot 292

“ARTESIAN WATER / LOUISVILLE / KY. – DUPONT”, 1855 – 1865. Medium-to-deep amber, cylindrical with 12 scalloped panels around perimeter of base, applied sloping collar – heavy red iron pontil scar, Pt; (a hard-to-see ½” iridescent bruise on the edge of the base that does not show on display, and a little ring of interior content haze, possibly washable, otherwise virtually perfect). T# M-5. Scarce. Most of these are dug, this is an ‘attic-type’ bottle. Fred Swiechowicz collection.

*Est.: \$200 - \$300 • Min. bid: \$100*



### Lot 296

“J. – L – A – Y” Mineral or Soda Water Bottle, 1850 – 1860. Sapphire blue, octagonal, applied sloping collar – iron pontil scar, ht. 7 ½”, near mint; (just a slight trace of light wear including a ¼” spot of minor roughness beneath the applied collar, and a potstone on the inside surface of the base with little iridescence and tiny radiation, otherwise perfect). An extremely rare unlisted soda believed to be one of only two extant, possibly from Kalamazoo, MI. An attic-type bottle with whittled, wavy glass.

*Est.: \$600 - \$1,200 • Min. bid: \$300*



### Lot 297

**“T.W. GILLETT – NEW-HAVEN” – (5 Pointed Star)**, probably 1850 – 1855. Sapphire blue, octagonal, applied blob collar – iron pontil scar, ht. 7 1/2”; (some light patchy exterior haze, as well as some light interior haze, just a bit of minor wear). This bottle, and several others in this sale, were collected by a Doctor in New Canaan, CT in the 1970’s. They were part of a display at the New Canaan Historical Society in 1975. Beyond the noted light haze, the soda is in overall very nice condition.

*Est.: \$200 - \$400 • Min. bid: \$100*



### Lot 301

**“W.M. & DT COX / PORT JERVIS / NY.”**, 1850 – 1860. Bright, medium blue green, cylindrical, squat soda form, applied blob collar – heavy iron pontil scar, ht. 6 7/8”, very near mint; (just a bit of minor, light exterior wear, and a pinhead flake on the “O” in “COX”, otherwise perfect). An ‘attic-type’ bottle with crisp, very strong embossing, beautiful condition. A very scarce soda, especially in this fine condition.

*Est.: \$500 - \$800 • Min. bid: \$250*



### Lot 298

**“BOUGHTON & CHASE / ROCHESTER. N.Y. – KNICKERBOCKER / MINERAL WATER / BOTTLES REGISTERED / ACCORDING TO. LAW”**, Lancaster Glassworks, 1849 – 1860. Deep sapphire blue, cylindrical, applied blob collar – iron pontil scar, ht. 7 5/8”, near mint; (a slight trace of light wear including a tiny pinhead bit of roughness on the inside edge of the lip, and a potstone on the base ring with a 3/16” iridescent flake). An ‘attic-type’ example, excellent overall condition.

*Est.: \$400 - \$600 • in. bid: \$200*



### Lot 302

**“COLE & DEAN / NEWARK. N.J – BROWN STOUT”** (in rectangular slug plate), 1850 – 1860. Medium blue green, slightly more of a greenish tone than the preceding lot, squat porter form, applied blob collar – iron pontil scar, ht. 6 3/4”; (lightly cleaned to original luster; a few scratches and a little minor wear, primarily on the reverse, otherwise excellent). A bright, clean example, bold embossing, extremely rare. Believed to be one of only two, or possibly three known examples!

*Est.: \$400 - \$600 • Min. bid: \$200*



### Lot 299

**“C. CLEMINSHAW / SODA & / MINERAL WATER / TROY. N.Y.”**, 1860 – 1870. Clear, medium sapphire blue, cylindrical, pony form squat soda, applied blob collar with original Putnam style wire closure – smooth base, ht. 6 3/4”, near mint; (just a bit of minor light wear including a 1/8” flake on the inside edge of the lip, otherwise excellent). An ‘attic-type’ bottle, very pretty color, excellent overall condition. Provenance: Fred Swiechowicz collection.

*Est.: \$175 - \$275 • Min. bid: \$90*



### Lot 303

**“BOYD & BEARD / MINERAL WATER / B – PATENT”**, probably 1841 – 1846. Rich medium green coloration, squat soda form, applied sloping collar – large iron pontil scar, ht. 6 3/4”, very near mint; (just a slight trace of light wear, otherwise perfect). An ‘attic-type’ bottle, strong color, beautifully whittled, fantastic condition. A scarce Boston Mineral Water, especially in this fine condition. Provenance: Fred Swiechowicz collection.

*Est.: \$250 - \$450 • Min. bid: \$130*



### Lot 300

**“HUDNUT’S / PHARMACY / AND / SPA / 218 BROADWAY / N.Y.”**, probably 1880 – 1888. Deep cobalt blue, tenpin form, tooled blob collar – smooth base, ht. 8 7/8”; (a 3/16” flake along the top edge of the lip, and a little minor wear including a small 1” area of light scratches on the reverse where it apparently rolled around, or ‘rested’ on it’s back, otherwise very near mint). An unlisted, exceedingly rare, possibly unique, cobalt tenpin soda. Fred Swiechowicz collection.

*Est.: \$600 - \$1,200 • Min. bid: \$300*



### Lot 304

**“BOYD & BEARD / MINERAL WATER – B / THIS BOTTLE / IS NEVER SOLD”**, probably 1841 – 1846. Rich medium green, almost a grass green coloration, squat soda form, applied sloping collar – heavy iron pontil scar, ht. 6 5/8”, attic mint! Another great example and slightly different mold variant. This one is also similar in color, but with a slight bit more of a yellowish tone than the preceding lot. Provenance: Fred Swiechowicz collection.

*Est.: \$250 - \$450 • Min. bid: \$130*



### Lot 305

**“R & J ADAMS / DRUGGIST / ST LOUIS – SUPERIOR / MINERAL / WATERS”**, probably 1845 – 1848. Rich, medium-to-deep blue green, squat soda form, applied sloping collar – iron pontil, ht. 7 1/8”; (professionally cleaned to original luster with a little typical light ground wear remaining, and a couple of stress cracks or cooling radiations within the iron pontil, approx. 1/2” each, otherwise excellent). A very rare St. Louis soda, one that is seldom offered for sale.

**Est.: \$400 - \$600 • Min. bid: \$200**



### Lot 309

**“MARSHALL & Co / 1866 – MINGO”**, probably 1866 – 1867. Aquamarine, cylindrical, pony form squat soda, applied blob collar with original Putnam style wire closure – smooth base ht. 7 1/8”, attic mint; (some washable exterior attic residue and interior content residue). Extremely rare, believed to be the first example offered at auction. A recent discovery from an 1840s house renovation in Kingston, NY. Believed to be a New York City soda manufacturer.

**Est.: \$200 - \$400 • Min. bid: \$100**



### Lot 306

**“G. Mc LEAN / St. LOUIS”**, 1850 – 1860. Medium-to-deep apple green, pony form squat soda, applied blob collar – iron pontil scar, ht. 7 1/4”; (professionally cleaned to original luster with a little typical minor exterior wear remaining, and a shallow open interior bubble in the reverse). A very scarce soda, strong apple green coloration, nicely whittled, and with a pleasing slightly lopsidedness to the body.

**Est.: \$250 - \$450 • Min. bid: \$130**



### Lot 310

**“BEEBE TAFT & Co / WARDNER / IDAHO, TER.”**, 1885 – 1890. Aquamarine, cylindrical, tooled, likely applied “Hutchinson-style” closure – “33” (on smooth base), ht. 6 3/4”; (professionally cleaned to original luster with a little very faint haziness remaining; a tiny pinhead bruise on the top of the lip, and a trace of minor wear, otherwise excellent). An extremely rare and desirable territorial hutch, almost impossible to find, believed to be one of only three, or possibly four, extant!

**Est.: \$2,000 - \$3,000 • Min. bid: \$1,500**



### Lot 307

**“L. BLOCK & Bro / ST. LOUIS – SUPERIOR / MINERAL / WATER”**, 1850 – 1860. Medium-to-deep blue green, cylindrical, squat soda form, applied blob collar – iron pontil scar, ht. 7 1/2”; (professionally cleaned to original luster with just a bit of typical minor ground wear remaining, otherwise excellent). A very scarce soda, good deep color. Note; the embossing has been painted for display.

**Est.: \$200 - \$400 • Min. bid: \$100**



### Lot 311

**“HOLDENVILLE / BOTTLING / WORKS / HOLDENVILLE, I.T.”**, North Baltimore Bottle Glass Co, Albany, Ind, 1890 – 1905. Aquamarine, cylindrical, tooled “Hutchinson-style” closure – “N B B G CO” (embossed around heel of smooth base), ht. 6 1/2”; (professionally cleaned with some very minor haziness remaining; a little ground wear and a few light scratches, otherwise excellent). The bottle presents quite nicely, the letters have been painted for display. A rare Indian Territory hutch soda.

**Est.: \$300 - \$500 • Min. bid: \$150**



### Lot 308

**Lot of (2), “CAIRNS / TIMMERMANN / BLOCK & Co. – ST. LOUIS SODA Co.” Bottles**, Wm. McCully & Co. Pittsburgh, 1850 – 1860. **1st Ex:** Deep, bright bluish aquamarine, “Wm McC & Co PITTS / PA” (on reverse). **2nd Ex:** Medium-to-deep yellowish apple green. Both with applied blob collar – iron pontil scarred bases, ht. 7 1/2” and 7 3/8” respectively; (both professionally cleaned with a little ground wear remaining; green ex. has a 1/8” surface bruise below the “&” near base).

**Est.: \$175 - \$350 • Min. bid: \$90**



### Lot 312

**“A. LANDT / LIVINGSTON / M.T.” Soda Bottle**, Wisconsin Glass Co, 1881 – 1886. Aquamarine, cylindrical, modified ‘hutch’ form, blob collar – “WIS. G. Co / MILW” (on smooth base), ht. 7 1/4”; (a little light wear including a couple of spots of minor abrasion below the shoulders, and some light haziness, primarily on the interior). If desired, with just a light professional cleaning, this very rare Montana Territory soda would likely present as near mint.

**Est.: \$300 - \$500 • Min. bid: \$150**





### Lot 313

**"PACIFIC & / PUGET SOUND SODA WORKS / SEATTLE / W.T."**, probably 1885 – 1889. Rich aquamarine, cylindrical with sloping shoulders, tooled "Hutchinson-style" closure – "A" (within diamond), on smooth base, ht. 7", attic mint. A great example, clean, bright, sparkling, strong embossing, fantastic condition.

*Est.: \$300 - \$500 • Min. bid: \$150*



### Lot 317

**Lot of (2), Early Wine or Utility Bottles**, Continental, probably France, 1780 – 1810. Bright aquamarine, and clear greenish aquamarine, both are dip mold or possibly freeblown, cylindrical, sheared mouth with applied band collars – kick-up bases with blowpipe pontil scars, ht. 9 ½" and 11 ¼" respectively, both are virtually perfect. Scarce. A bright, clean, very attractive pair of early utilities, the second example is almost a bell-form, both are in fantastic condition.

*Est.: \$200 - \$300 • Min bid: \$100*



### Lot 314

**"DISTILLED / SODA WATER CO. / OF / ALASKA"**, possibly American Bottle Co., Chicago, 1905 – 1910. Light greenish aquamarine, cylindrical with 10-panel mug base, tooled "Hutchinson-style" closure – "6 – S ABCo" (on heel of smooth base), ht. 7 ½", near mint; (just a trace of minor wear including some roughness, or 'case wear', on the "KA" of "ALASKA", and a touch of very faint interior milkiness below the shoulder, otherwise perfect). A very scarce Alaska 'hutch'.

*Est.: \$200 - \$400 • Min. bid: \$100*



### Lot 318

**Lot of (2), Early Wine or Utility Bottles**, Continental, probably France or Belgium, 1780 – 1810. Olive green and a yellowish amber with a slight olive tone, both are freeblown or possibly dip mold, sheared lip with applied string rims – deep kick-up pontil scarred bases, ht. 9 7/8" and 10 ½" respectively; (1st Ex. has a little expected light exterior wear and a bit of minor interior haziness, otherwise excellent; 2nd Ex. virtually attic mint). A very nice pair, the yellowish amber example is quite pretty.

*Est.: \$250 - \$450 • Min. bid: \$130*



### Lot 315

**Early, Mallet-form Wine Bottle**, Continental, probably Belgium or Dutch, 1730 – 1750. Medium olive amber, mallet-form, sheared mouth with applied string rim – domed base with blowpipe pontil scar, ht. 7 ½"; (a couple of areas of light exterior dullness and a bit of scattered wear, but still retains most of its original luster, and otherwise excellent). VdB, plate 123. A very nice example, overall fine condition.

*Est.: \$300 - \$500 • Min. bid: \$150*



### Lot 319

**Early Freeblown Storage Jar**, Continental, probably Dutch or Belgium, 1800 – 1830. Deep olive green, cylindrical, rounded shoulders with a wide neck, sheared and tooled mouth with a crudely applied string rim – heavy blowpipe pontil scar, ht. 10 ¾"; (a little scattered usage wear and a few light scratches, otherwise perfect). A big, beautiful, heavy storage jar, full original body luster, nicely proportioned, attractive rounded shoulders and wide neck.

*Est.: \$250 - \$450 • Min. bid: \$130*



### Lot 316

**Early, Long neck 'Flowerpot-form' Wine or Utility Bottle**, probably France, 1730 – 1750. Rich, medium emerald green, long neck 'flowerpot-form', crudely applied band collar – kick-up base with blowpipe pontil scar, ht. 11"; (some typical light usage wear; a 1 ½" sliver-type chip from beneath the collar, likely in-manufacture, and some interior content residue or faint haze, some of which is likely washable). A beautiful example filled with tiny bubbles, very rare form and color!

*Est.: \$200 - \$400 • Min. bid: \$100*



### Lot 320

**Lot of (2), Colorful, Early, Storage or Preserve Jars**, France and probably Germany or Belgium, 1840 – 1860. **1st Ex:** Bright yellowish green, cylindrical, tapered bell-form, sheared and outward rolled mouth – glass tipped pontil scarred base, ht. 10 ¾". **2nd Ex:** Beautiful medium-to-deep teal green, cylindrical, sheared and outward rolled mouth, blowpipe pontil scar, ht. 10 ¾"; (both jars are near mint with just a little minor light usage wear). Beautiful colors, pleasing 'bell-form' preserve jar.

*Est.: \$200 - \$400 • Min. bid: \$100*



### Lot 321

**ALLEN WOGA / 1/2. ST.** (on applied seal), **Early Case Bottle**, probably Continental, possibly blown for a New Orleans merchant; 1770 - 1800. Light yellowish green, rectangular case form, sheared mouth with applied string rim – blowpipe pontil scar, ht. 7 1/4"; (trace bit of faint interior haze, otherwise perfect). Purchased in the 1960s from an elderly woman in Texas, Charlotte Woga. The bottle had been in her family and belonged to one of her ancestors, an early New Orleans merchant.

*Est.: \$800 - \$1,200 • Min. bid: \$400*



### Lot 322

**Giant, Early Snuff or Storage Jar**, Continental, probably Dutch, 1830 – 1850. Medium olive green, dip mold, square with beveled corners, sheared and outward flared mouth – blowpipe pontil scar, ht. 11"; (a little typical exterior usage wear including a 1/8" flake on one of the side panels; some interior content stain in the shoulders and mid-body, some of which would likely wash out, otherwise excellent). When snuff jars of this size are encountered, they are typically rectangular.

*Est.: \$400 - \$600 • Min. bid: \$200*



### Lot 323

**Mammoth size, Early Case Bottle**, Continental, probably Germany or Netherlands, 1780 – 1800. Yellowish olive with a slight amber tone, square case form with virtually straight sides, sheared mouth with applied string rim – blowpipe pontil scar, ht. 18 7/8", near mint; (a little typical minor exterior wear, some light interior content residue, otherwise perfect). A great example, excellent clarity, fantastic overall condition, and at nearly 19", a very rare and desirable size!

*Est.: \$1,000 - \$2,000 • Min. bid: \$500*



### Lot 324

**Apothecary Storage Bottle, "GLYCERINUM."** (Gold painted label with red trim and black lettering), period tin closure, England, 1830 – 1850. Medium-to-deep olive with an amber tone, cylindrical, sheared mouth with heavy applied ring collar – smooth base, ht. of jar 10 3/4", near mint; (just a trace of minor usage wear, otherwise perfect). VdB, plate 60. A scarce size, a little smaller in diameter and girth than typically encountered, overall excellent condition.

*Est.: \$200 - \$400 • Min. bid: \$100*



### Lot 325

**Lot of (2), Apothecary Storage Bottles** (both with period tin lids), England, 1830 – 1860. 1st Ex: **"SYR: RHEI."**, 2nd Ex: **"AQ: AURANT"** (both gold painted label with black lettering). Both are deep olive amber, cylindrical, applied ring collar – smooth base, ht. of jars (not including lids), 14 1/2" and 14" respectively; (both are near mint with just a bit of light wear; 1st Ex. has minor paint loss, primarily above the "Y" in "SYR"; 2nd Ex. has moderate paint loss, particularly around 1st two letters).

*Est.: \$300 - \$500 • Min. bid: \$150*



### Lot 326

**Lot of (2), Early Black Glass Bottles**, America or possibly England, 1815 – 1840. Both are deep olive, dip mold with sand type pontil scarred bases. **1st Ex:** Porter or Ale type cylinder, short tapered collar with bevel, ht. 9 1/8"; (some light scratches and exterior wear, some patchy interior residue or light haze). **2nd Ex:** Demijohn, applied tapered collar with bevel, ht. 11", near mint; (light wear, a few open surface bubbles). Both are from an early West Hartford, CT collection assembled in the 1940s and 50s.

*Est.: \$200 - \$400 • Min. bid: \$100*



### Lot 327

**Demijohn**, New England, a Stoddard, NH glasshouse, 1850 – 1860. Beautiful, yellowish olive amber through the mid-body, shading to a rich, medium-to-deep olive amber through the shoulders and near the base, high-shouldered cylinder form, freeblown, or possibly dip mold, applied sloping collar – sand type pontil scar, ht. 11", attic mint! A great looking, high-shouldered, early Stoddard 'demi', beautiful pleasing color, almost no wear. A great example.

*Est.: \$300 - \$500 • Min. bid: \$150*



### Lot 328

**Early, Globular Storage Bottle or Demijohn**, Continental, probably North Germany, 1780 – 1810. Beautiful yellowish olive in the body, shading to a very deep olive with a slight amber tone through the upper shoulders and neck, freeblown, applied string rim – domed base with blowpipe pontil scar, ht. 13", near perfect; (just a touch of minor wear including a few shallow open surface bubbles, otherwise perfect). A pretty example, nice bubbly glass, fantastic condition.

*Est.: \$300 - \$500 • Min. bid: \$150*

# Colorful Ink Bottles



# The Ron Rainka Collection of Moore's Ink Bottles & Ephemera



To all to whom these presents shall come:

Whereas  
has presented to the Commission  
of the United States for



a description of which  
a copy is herewith  
with the various  
Whereas upon due  
to be justly entitled to  
View therefore that  
for the term of  
the exclusive right to  
United States and the



*Moore's Ink trade sign and period photo are not included in this auction.*



Lot 158 (partial)

American Glass Gallery is pleased to present Part 2 of the Ron Rainka collection of J. & I. E. Moore ink bottles and related items from the J. & I. E. Moore Company. The items in this catalog represent the remainder of Ron's unparalleled, extensive 60-year collection of John Moore & Co. bottles, historical memorabilia, and related artifacts.

Many of the items in Part 2 of Ron's collection represent the heart and soul, or the 'meat' of his collection. It includes numerous one-of-a-kind and exceedingly rare items.

The J. & I. E. Moore Company of Warren, MA was, without question, one of most successful ink manufacturers in the country during the latter half of the nineteenth century, and beyond. Prior to going into the ink business, John Moore was proprietor of a small country store in the late 1840s and early 1850s. During that time, he manufactured and sold his own medicines. See Lots 243 through 246 in this catalog for examples of these extremely rare items.

Don't miss this once-in-a-lifetime opportunity to add a special piece of history to your collection.