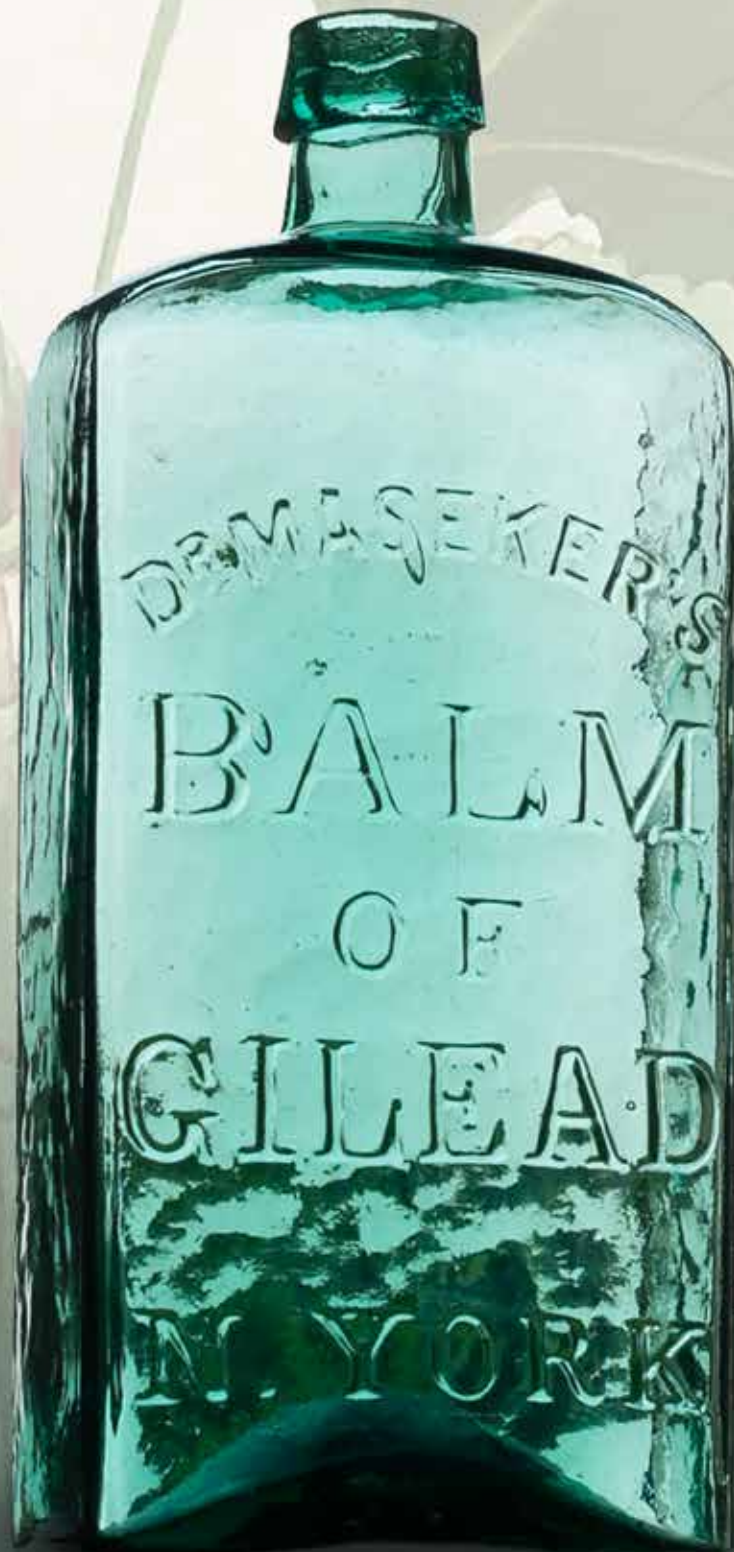


NOTE: This is a timed-closing auction. See details on first page.

American Glass Gallery™

Auction #35

Opens July 18, 2023 • Closes July 26, 2023



Lot 185: Extremely Rare
Dr. Maseker's Balm of Gilead
Pontiled Medicine Bottle

BACKGROUND: Early 19th century botanical illustration of *Populus balsamifera*, commonly known as Balsam Poplar or Balm of Gilead tree.

Conditions of Sale: Auction #35 – Timed Closing Auction - No Call Backs

1. Absentee Auction

The items in this sale will be sold via absentee auction.
Closing date: **Wednesday, July 26, 2023, 10:00 p.m., EST.**

2. Our Guarantee Regarding Descriptions

American Glass Gallery has made every attempt to describe correctly the property being sold. Descriptions are guaranteed to be accurate as regards to authenticity, age, condition, and measurements to within one-fourth inch, as represented in this catalog. Items in this catalog are not shown to scale. In describing damage, exterior wear or manufacturer's flaws that in our opinion, do not significantly detract visually or monetarily from the value of the item are not listed and will not be considered for refund. The Auctioneers reserve the right to make verbal corrections and provide additional information at any time during the sale.

3. Preview

Items may be viewed by appointment from **July 19, 2023**, through **July 25, 2023**.

4. Bidding Procedure

You may submit your bids by mail, phone, FAX, email or through our on-line auction site. If bidding by mail or FAX, please fill out the absentee form and return it to us. Your bid, either written or oral, grants American Glass Gallery the authority to protect you up to the amount of your stated bid. Your bid will not be removed once executed.

Bidding Times: You can submit your bids anytime after receiving your catalog. Bids may be made by phone, daily, until closing day, **July 26, 2023**, from 9 A.M. - 6 P.M. Eastern Time. Incoming phone bids will be accepted on the closing day (**July 26, 2023**) until 10 P.M. Eastern Time. No exceptions. You may also place your bids through our on-line auction service 24-hours a day once the site has opened for bidding, on or about **July 18, 2023**, continuing until 10:00 P.M. Eastern Time, **July 26, 2023**.

Please do not wait until the last day or two of the sale to place your bids!

Because many collectors wait until the final few days of the sale to place their bids, we anticipate the telephone and internet bidding to be very busy during that period, so please plan accordingly. In the event of a tie bid, the earliest received bid on the lot will take precedent. We would welcome your bids by phone so that we can answer any questions and assist you in your bidding.

You may also telephone us at any time during the auction, prior to the closing of the sale, to check the status of your bids, to find the current bidding level, to open a bid, or to raise a bid on an auction lot.

Bidding Increments are as follows:

Up to \$250.00..... increments of \$10.00
\$250.00 - \$500.00 increments of \$25.00
\$500.00 - \$1,000.00 increments of \$50.00
\$1,000.00 - \$2,500.00 increments of \$100.00
\$2,500.00 - \$5,000.00 increments of \$250.00
\$5,000.00 - \$10,000.00 increments of \$500.00
\$10,000 & Up..... increments of \$1,000.00

Bids submitted between the above increments, whether by mail, FAX, email or on-line via the internet, will automatically be lowered to the closest lower increment.

This is a minimum bid auction. Bids below the printed minimum will not be accepted.

An example of how our absentee bidding system works: You bid \$1000.00 on a lot which is the highest bid received to date. The second highest bid is \$800.00. The current high bid level would be yours at \$850.00, one bid increment higher than the other collector's bid. Any additional bids submitted by others below \$1000.00 will automatically be topped on your behalf by a representative of American Glass Gallery, up to your stipulated high bid amount. If no further bids on this lot are received beyond the \$800.00, then you would have won the lot at \$850.00, not the \$1000.00 that you were prepared to pay.

American Glass Gallery will at NO TIME disclose bids pledged by others; only the current "High Bid" level of a lot will be stated upon request. The highest bidder as determined by American Glass Gallery shall be the purchaser. It is the sole right of the auctioneer to settle any dispute between bidders and to regulate the bidding procedure. The auctioneer reserves the right to refuse any bid he believes not to have been made in good faith.

5. Closing the Auction

Timed Closing. No Call Backs for This Sale!

Auction closes 10 PM Eastern, Wednesday, July 26, 2023.

How it works: If any Lot receives a bid within the last 10 minutes before the 10 PM closing time, an additional 10 minutes will be added on to the bidding time for that Lot - at the time the bid is entered. For example, if a bid is entered on Lot #95 at 9:58 PM, an additional 10 minutes will be added to the closing time for that Lot, i.e. the Lot will close 10:08 PM, unless another acceptable bid is received prior to 10:08 PM. If the same Lot receives another bid 5 minutes later, i.e., 10:03 PM, the 10 minute timer will be restarted. Thus, an item will not close until it has received no bids for 10 minutes. At the end of that time, the Lot will automatically close and the highest bidder will be the winner.

No phone bids will be accepted after 10 PM, or during the timed closing portion of the sale.

IMPORTANT: When the auction is in the last 10 minutes, (after 9:50 PM EST, Wednesday, July 26), **you must refresh your screen to see any updated bids and remaining time on the Lots.** You may refresh your bid page by hitting "Enter Bids". A time left column will appear on the right. The time will go down every time you refresh unless an acceptable bid has been placed, then the timer will be reset to 10 minutes.

When a Lot closes, your bid sheet will show either (parentheses only when there is a left bid):

Example:

You WIN for \$400 (Left Bid \$500)

or:

Won by another for \$600

Note: Normal email notifications will still be sent during the Timed Closing. However, we recommend that you actively refresh your screen for the latest updates, or changes, as the email notifications may not always get through (i.e., may sometimes be intercepted by email blockers or spam filters).

If you are unable to watch, or be actively involved during the closing time, you may always submit an Absentee, or "Left Bid" which will be executed competitively up to your stipulated high bid should any bids come in during the Timed Closing Period.

Conditions of Sale: Auction #35 – Timed Closing Auction - No Call Backs

6. Terms

Successful Bidders, Prompt and full payment is due immediately upon receipt of our invoice. Absolutely no exceptions. Anyone failing to pay for items won will forfeit all rights to bid in any future American Glass Gallery sales. *Any late or delayed payments may result in loss of return privileges for items purchased in the sale.*

No Items Will Be Mailed Before Full Payment Is Received.

Buyer Premium: Our buyer premium is **17% if paying by cash or check, discounted from 20% if paying by Credit Card or PayPal** (PayPal payment account: jpastor@americanglassgallery.com). This buyer premium will be added to the hammer price as part of the purchase price. For example, if you purchase a lot for \$100.00, you will receive an invoice for \$117.00 if paying by cash, check or money order, plus any applicable sales tax or shipping charges.

Taxes: If you are a Michigan resident, a 6% sales tax will be added to your bill unless you have a valid resale number registered with us.

Shipping: Shipping, handling and insurance are extra. We ship insured via U.S. Mail or UPS. These charges will be added to your bill unless the lots are picked up in person. Oversize packages (boxes with dimensions over 12"), may incur additional shipping charges based on the postal zone of destination. Our charges for shipping (excluding foreign shipments and oversized lots) are \$18.00 for the first item, \$9.00 for each additional item together with extra insurance costs (we use current U.S. Postal Service insurance rates).

Please allow two to three weeks for delivery after receipt of your check.

Payment: American Glass Gallery accepts Cash, Money Orders, Personal Checks, Visa, MasterCard, American Express and PayPal. *If paying by Credit Card or PayPal, an additional 3% will be added to the invoice total.*



7. Refunds

Refunds will be given at the discretion of the Auctioneers. Items purchased must be examined and a request for refund made immediately upon receipt of the item or items. Since opinions can differ, particularly in the matter of condition, the Auctioneers will be the sole judge in the consideration of refunds. Refunds requested on the grounds of authenticity must be made within 15 days of the date of the auction, and such refund requests must be accompanied by at least one supporting statement in writing from an authority recognized by the Auctioneers. It is the Auctioneers sincere intention to consider any reasonable request for a refund. *Absolutely no returns for any reason after 30 days following the closing of the sale.*

8. Bidding on any item indicates your acceptance of these terms.



American Glass Gallery™

John R. Pastor
P.O. Box 227
New Hudson, Michigan 48165
Phone: 248.486.0530
Fax: 248.486.0538
www.americanglassgallery.com
email: jpastor@americanglassgallery.com

PLEASE NOTE:

The lots offered in this printed catalog are identical to the lots offered in the on-line catalog. However, due to space constraints of the printed catalog, there may be some further information available regarding some of the lots in the on-line auction descriptions.

Please visit us at

www.americanglassgallery.com

and follow the link to the on-line auction.

The link and on-line auction will be available July 18, 2023. A post-auction price list will be available on our website, in printable form, approximately 30 days after the close of the auction.

We encourage you to contact us by phone or email with any questions, for assistance with bidding, or further details or clarification on any of the lots in this sale. Your complete satisfaction and confidence is our goal!

**THANK YOU AND GOOD LUCK
WITH YOUR BIDS!**

Reference Key

Reference initials and numbers used in the description of this catalog refer to the following publications:

AHG	<i>American Historical Glass</i> , Bessie M. Lindsey, 1967.
AM	<i>The Decanter - An Illustrated History of Glass from 1650</i> , Andy McConnell, 2004.
AP	<i>Glass in Early America</i> , Arlene Palmer, 1993.
BA1	<i>Collecting The Cures</i> , Bill Agee, 1969.
BA2	<i>Collecting All Cures</i> , Bill Agee, 1973.
BB	<i>A Bit About Balsams</i> , Betty Blasi, 1974.
BH	<i>Classification and Documentation of Sunburst and Similar Scent Bottles</i> , Bill Ham, AB&GC, 5/87.
BJ	<i>American Pot Lids</i> , Barbara and Sonny Jackson, 1987.
B/K	<i>The Glass Industry in Sandwich</i> , Raymond Barlow and Joan Kaiser, 1989.
BPK	<i>A.M. BININGER Bottles</i> , Jim Bender, 2017
C	<i>Ink Bottles and Inkwells</i> , William Covill, 1971.
DB	<i>Antique Sealed Bottles, 1640 - 1900</i> , David Burton, 2015
DeG	<i>American Sarsaparilla Bottles</i> , John DeGrafft, 1980.
DeGII	<i>Supplement to American Sarsaparilla Bottles</i> , John DeGrafft, 2004.
DF	<i>Hair Raising Stories</i> , Don Fadely, 1992.
DM	<i>Wistarburgh, Window Tiles, Bottles and More</i> , Dale L. Murscell, 2007.
D/P	<i>Collector's Guide to Candy Containers</i> , Douglas M. Dezso, J. Leon and Rose Poirier, 1998.
F	<i>Inks, 150 Years of Bottles and Companies</i> , Ed and Lucy Faulkner.
FA	<i>John Frederick Amelung, Early American Glassmaker</i> , Lanmon, Palmer, Hume, Brill, Hanson, 1990.
FB	<i>A.S.C.R. The wine bottles of All Souls College</i> , Oxford, 1750 – 1850, Fay Banks.
G	(Flasks) <i>American Bottles & Flasks and Their Ancestry</i> , McKearin & Wilson, 1978.
G	(Blown Three Mold) <i>American Glass</i> (Chapter VI), George S. and Helen McKearin, 1941.
GBH	<i>English Glass For The Collector, 1660-1860</i> , G. Bernard Hughes, 1958.
H	<i>American Bottles in the Charles B. Gardner Collection</i> , Norman C. Heckler, 1975.
JB	<i>Patent and Proprietary Medicine Bottles</i> , Joseph K. Baldwin, 1973
JEB	<i>Glasshouse Whimsies</i> , Joyce E. Blake, 1984.
JH	<i>Glasshouses & Glass Manufacturers of the Pittsburgh Region, 1795 – 1910</i> , Jay W. Hawkins, 2009.
JM	<i>Tea Kettle Ink Price and Reference Guide</i> , Joe L. Mathews Jr., 2016
JS	<i>In glas verpakt – European Bottles, Their history and production</i> , Johan Soetens, 2001.
K	<i>Poison Bottle Workbook</i> , Rudy Kuhn, 1988.
KW	<i>New England Glass & Glassmaking</i> , Kenneth M. Wilson, 1972.
L	<i>The Red Book of Fruit Jars, No. 11</i> , Douglas M Leybourne, Jr., 2014.
LI	<i>Pittsburgh Glass, 1797 – 1891</i> , Lowell Innes, 1976.
Mc	<i>Two Hundred Years of American Blown Glass</i> , Helen and George McKearin, 1950.
McK	<i>American Glass</i> , George S. and Helen McKearin, 1941.
MW	<i>American Bottles & Flasks and Their Ancestry</i> , McKearin & Wilson, 1978.
N	<i>Great American Pontiled Medicines</i> , Frederick Nielson, 1978.
NCH	<i>The Blaske Collection of American Flasks</i> , Norman C. Heckler, 1983.
NCH II	<i>The Blaske Collection: Part II</i> , Norman C. Heckler, 1983.
Odell I	<i>Indian Bottles and Brands</i> , John Odell, 1977
Odell II	<i>Pontiled Medicine Encyclopdia</i> , John Odell, 2007
O&S	<i>Warner's Reference Guide</i> , Ed Ojea and Jack Stecher, 1998.
P	<i>The Glass Gaffers of New Jersey</i> , Adeline Pepper, 1971.
RD	<i>Understanding Antique Wine Bottles</i> , Roger Dumbrell, 1983.
RF	<i>The Bottle Book: A Comprehensive Guide to Historic, Embossed Medicine Bottles</i> , Richard Fike, 1987
RH	<i>Collecting Barber Bottles</i> , Richard Holiner, 1986.
R/H	<i>Bitters Bottles</i> , Carlyn Ring and W. C. Ham, 1998.
RWL	<i>Antique Fakes & Reproductions</i> , Ruth Webb Lee, 1950
T	<i>Collectors Guide to Saratoga Type Mineral Water Bottles</i> , Donald Tucker, 2005.
V	<i>Nailsea Glass</i> , Keith Vincent, 1975
VdB	<i>Antique Glass Bottles; Their History and Evolution</i> , Willy Van den Bossche, 2001.
Z	<i>Ketchup, Pickles, Sauces</i> , Betty Zumwalt, 1980.
ZW	<i>Color Hutchinsons</i> , Zang Wood, 1999.

- The dash is generally used to indicate that the descriptions are on opposite sides of the bottle or flask.

/ The slash is used to indicate that the descriptions are on different lines or surfaces of the bottle.



Lot 163



Rare, Dr. Atherton's
Dew Drop Bitters in
Brilliant Honey Yellow

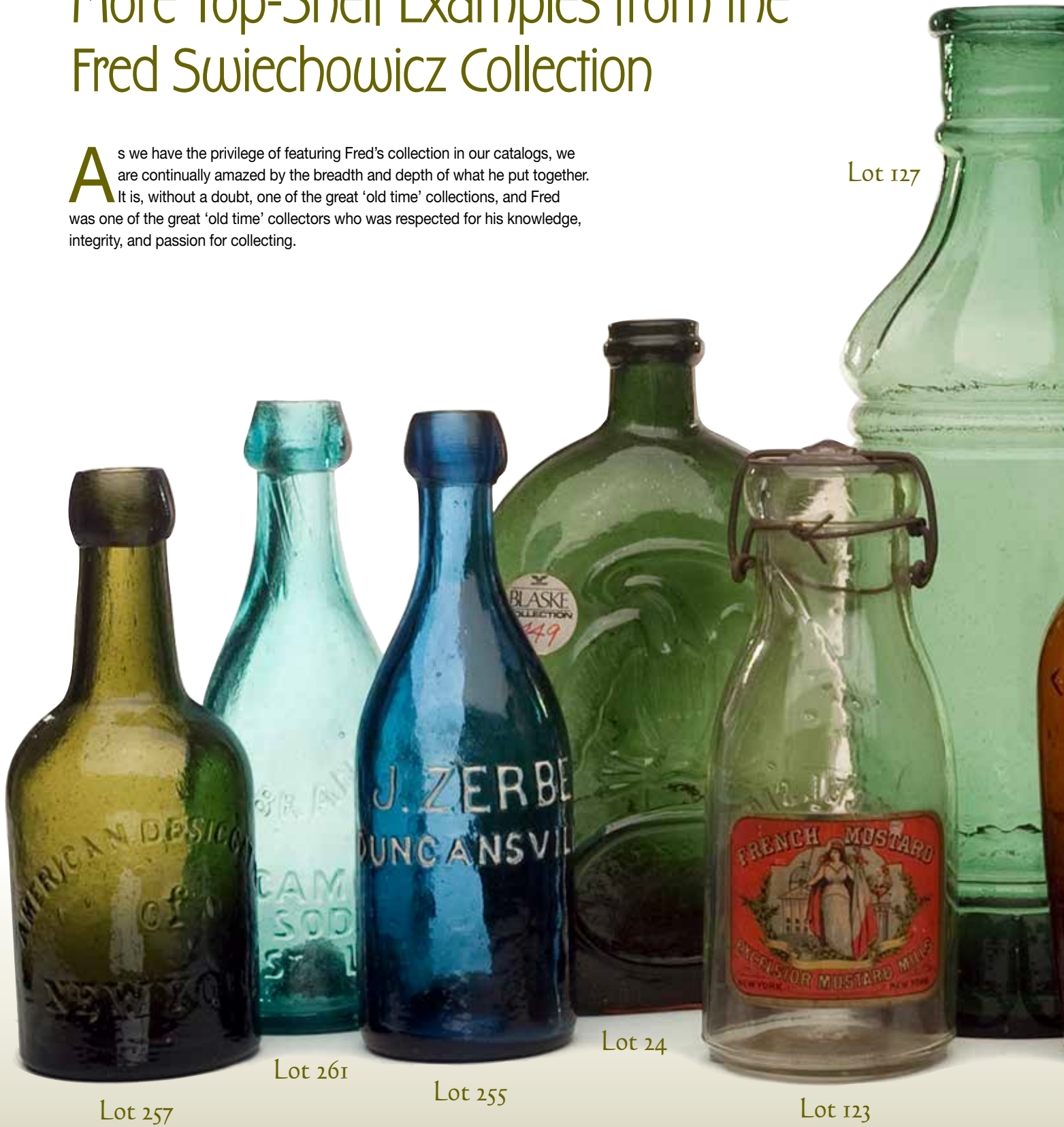
Dr. A. T. Atherton, Chemist

And sold by all Druggists,
and Hotels in the United States

More Top-Shelf Examples from the Fred Swiechowicz Collection

As we have the privilege of featuring Fred's collection in our catalogs, we are continually amazed by the breadth and depth of what he put together. It is, without a doubt, one of the great 'old time' collections, and Fred was one of the great 'old time' collectors who was respected for his knowledge, integrity, and passion for collecting.

Lot 127



Lot 257

Lot 261

Lot 255

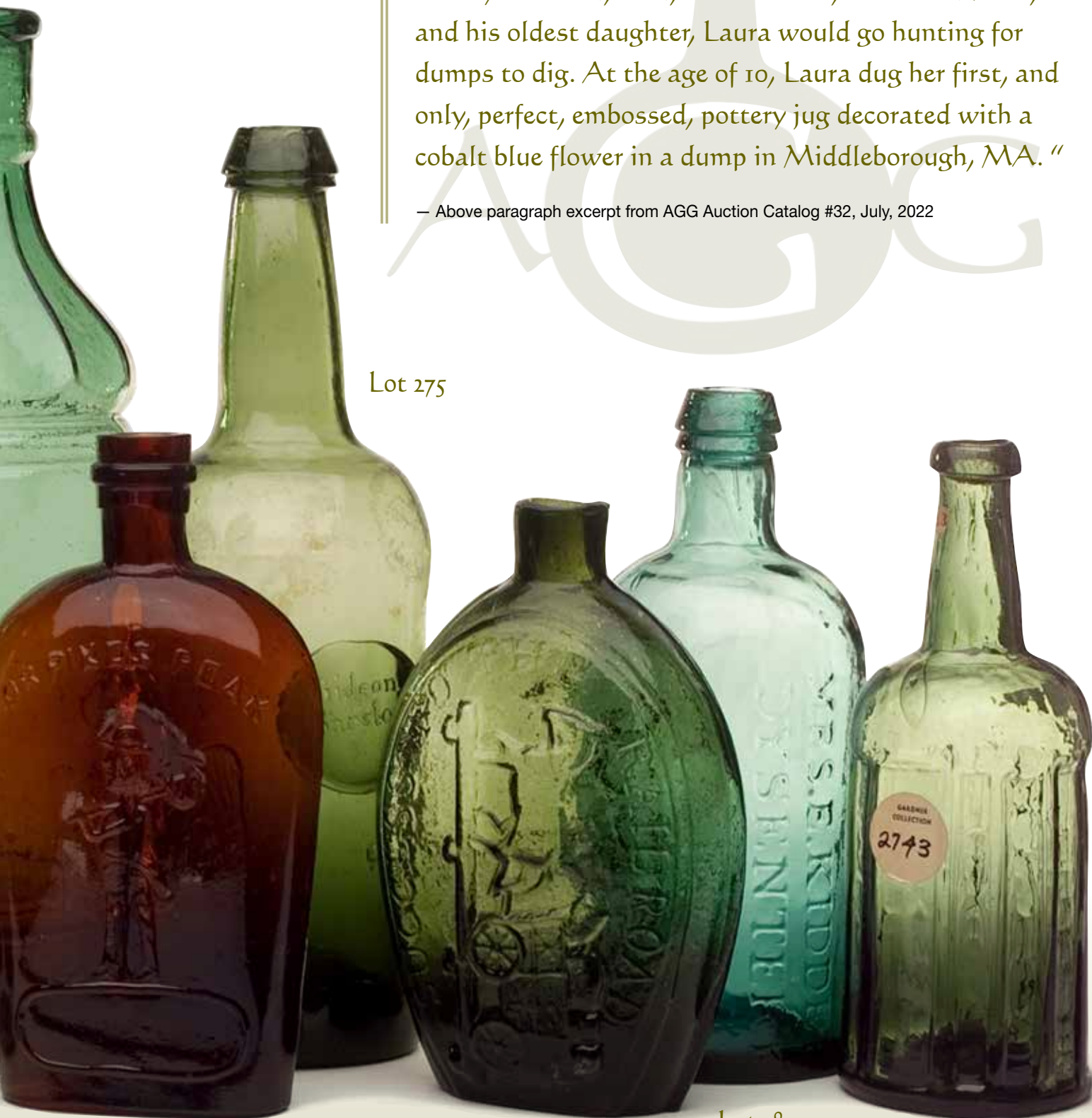
Lot 24

Lot 123

“Every weekend, Fred, his two sons, Steve and Ross, and his oldest daughter, Laura would go hunting for dumps to dig. At the age of 10, Laura dug her first, and only, perfect, embossed, pottery jug decorated with a cobalt blue flower in a dump in Middleborough, MA.”

— Above paragraph excerpt from AGG Auction Catalog #32, July, 2022

Lot 275



Lot 45

Lot 38

Lot 189

Lot 190

Rare & Colorful Pontiled Medicines



Lot 179

Lot 186



Lot 218

Lot 219

Lot 191

Lot 195

Do WISTAR'S

DR. WISTAR'S
BALSAM OF WILD CHERRY
 FOR THE
CONSUMPTION OF THE LUNGS
 COUGHS, COLDS, ASTHMA, BRONCHITIS,
 WHOOPING COUGH, CROUP, INFLUENZA,
 PAIN IN THE THROAT OR SORENESS OF THE
 MOUTH.

DIRECTIONS.
 The dose for adults should be
 three or four times a day; or
 frequently if the cough is trou-
 bling. A child of six or seven
 years of age may take one teaspoon-
 ful when the cough is coming on,
 and repeat it as necessary, or
 necessary to mix it with any
 other liquid.

For particular uses, see
 directions on the wrapper.
 To guard against counterfeits,
 the Principal Agent,
 on the label inside, the signature

Shake well before using.

No. 1.
FOR CONSUMPTION
 Price, \$1.50.

WISTAR'S
 WISTAR'S

FROM
 P. KIMBALL &
 TROY, N. H.
 Dealers in Every
 TOWN AND RE

Rare Food Bottles & Jars



Lot 120



Lot 124



Lot 117



Lot 128



Lot 121





Lot 1

“GENERAL WASHINGTON” / BUST OF WASHINGTON – “E PLURIBUS UNUM” / EAGLE / “T.W.D. – A DAMS & JEFFERSON / JULY 4 A.D. 1776 – KENSINGTON GLASS / WORKS PHILADELPHIA” Historical Flask, 1826 - 1835. Rich emerald coloration, sheared mouth – pontil scar, Pt, virtually perfect; (trace of wear near base, and a slightly weak impression in the shoulder, as is common for this mold). GI-14. Strong color, beautiful condition.

Est.: \$4,000 - \$8,000 • Min. bid: \$2,000



Lot 2

“ALBANY GLASS WORKS” / BUST OF WASHINGTON / “ALBANY / N Y” – SAILING SHIP Historical Flask, 1847 - 1850. Bright, light golden amber, applied round collar with bevel – large iron pontil scar, Pt, near perfect; (a tiny pinhead open bubble near the shoulder, and only the slightest trace of faint wear, otherwise mint). GI-28. Comparatively scarce. A great example – bright, clean, pretty color, nice texture to the glass, strong impression, and almost no wear!

Est.: \$2,000 - \$4,000 • Min. bid: \$1,000



Lot 3

“THE FATHER OF HIS COUNTRY” / BUST OF WASHINGTON – “DYOTVILLE GLASS WORKS PHILAD.A / GEN. TAYLOR NEVER SURRENDERS” / BUST OF TAYLOR Historical Flask, 1848 - 1855. Yellowish olive amber, sheared mouth – blowpipe pontil scar, Pt; (some moderate exterior high point wear including a few light scratches near mold seam; a couple of flakes, 1/8” or less, on the edge of the lip, and some light interior content residue). GI-38.

Est.: \$400 - \$800 • Min. bid: \$200



Lot 4

“THE FATHER OF HIS COUNTRY” / BUST OF WASHINGTON – “A LITTLE MORE GRAPE CAPTAIN BRAGG” / BUST OF TAYLOR Historical Flask, Dyottville Glass Works, 1848 - 1855. Clear bluish green coloration, applied double collar – blowpipe pontil scar, Qt, very near mint; (just a slight trace of minor wear, otherwise perfect). GI-42. Beautiful color, a little more of a greenish tone than most, fantastic clarity, a bright sparkling example with a strong, crisp impression.

Est.: \$400 - \$600 • Min. bid: \$200



Lot 5

WASHINGTON – TAYLOR Portrait Flask, Dyottville Glass Works, Philadelphia, PA, 1848 - 1855. Deep cornflower blue, almost a sapphire coloration, applied sloping collar – blowpipe pontil scar, Qt, near mint; (a 1/8” flake on the back edge of the lip, and just a slight trace of very minor wear, otherwise perfect). GI-51. A very pretty flask, beautiful and scarce color, excellent character with crude pebbly glass. Provenance: Ex. Mike Roberts collection.

Est.: \$1,200 - \$2,200 • Min. bid: \$600



Lot 6

WASHINGTON – TAYLOR Portrait Flask, probably Dyottville Glass Works, Philadelphia, 1848 - 1855. Yellowish grass green, almost a lime coloration, applied collar with flat band – blowpipe pontil scar, Pt, near mint; (some scattered, relatively minor wear, and a little streak of impurities, or tiny bits of slag, on the surface of the glass to the right of Washington’s head, and around the side, otherwise excellent). GI-52. A very pretty example, very rare color.

Est.: \$800 - \$1,200 • Min. bid: \$400



Lot 7

“ZACHARY TAYLOR” / BUST OF TAYLOR / “ROUGH & READY” – “CORN FOR THE WORLD” / CORNSTALK Historical Flask, Baltimore Glass Works, 1848 - 1855. Bright coppery puce along the sides shading to a beautiful apricot puce through the shoulders and base, sheared mouth – pontil scar, Pt, near mint; (a trace of light wear, and a 1/2” pontil chip from the base edge). GI-75. Gorgeous color. James Chebalo collection; Ex. William Pollard, Barry Hogan collections.

Est.: \$16,000 - \$32,000 • Min. bid: \$8,000



Lot 8

“GENL LA FAYETTE” / BUST OF LAFAYETTE – EAGLE Historical Flask, probably Knox & McKee, Wheeling, WV, 1824 - 1830. Light-to-medium blue green, sheared mouth – blowpipe pontil scar, Pt, near perfect; (just a slight trace of minor light wear, otherwise sparkling mint). GI-93. A rare and historical flask blown to commemorate Lafayette’s 1824 - 1825 visit to America. A great example, excellent impression, bright, clean and sparkling.

Est.: \$2,000 - \$4,000 • Min. bid: \$1,000



Lot 9

BUST OF WEBSTER / BUST OF CLAY Historical Flask, probably Granite Glass Works, Stoddard, NH, 1852 - 1860. Bright yellowish amber with some warmer golden amber tones through the neck and shoulders, sheared mouth – blowpipe pontil scar, ½ Pt; (some moderate high point wear on the busts, otherwise virtually perfect). GI-114. A very pretty example, excellent character with crude, pebbly glass.

Est.: \$200 - \$400 • Min. bid: \$100



Lot 13

EAGLE - EAGLE Historical Flask, probably Kentucky Glass Works, Louisville, KY, 1850 - 1855. Rich, bright aquamarine, sheared mouth - blowpipe pontil scar, Pt, attic mint. GI-24. A great example having a crisp impression, brilliant glass, almost no wear, fantastic condition, and plenty of eye-appeal. Provenance: Bruce Purdy collection, Ex. Rodger Sweetland collection.

Est.: \$200 - \$400 • Min. bid: \$100



Lot 10

BUST OF WEBSTER / BUST OF CLAY Historical Flask, probably Granite Glass Works, NH, 1852 - 1860. Bright medium olive, sheared mouth – pontil scar, ½ Pt, near mint; (just a trace of light wear including a pinhead open bubble on the side). GI-114. Another beautiful example, scarce color for this mold. The busts on this flask, previously undocumented, have been conclusively shown to be that of Daniel Webster and Henry Clay, who both died within a few months of one another in 1852.

Est.: \$300 - \$500 • Min. bid: \$150



Lot 14

“EAGLE” / “T.W.D” – CORNUCOPIA – “E PLURIBUS UNUM / ONE OF MANY. – KENSINGTON GLASS / WORKS PHILADELPHIA” Historical Flask, 1825 – 1838. Light aquamarine, sheared mouth – blowpipe pontil scar, ½ Pt; (some light interior haze, and just the slightest trace of faint wear on the reverse, otherwise perfect). GI-43. A scarce mold, and very scarce having an unusually strong, very crisp mold impression! Provenance: Bruce Purdy collection.

Est.: \$200 - \$400 • Min. bid: \$100



Lot 11

BUST OF COLUMBIA - EAGLE / “B&W” Historical Flask, probably Kensington Glass Works, Philadelphia, 1825 - 1835. Aquamarine, sheared mouth - blowpipe pontil scar, Pt, virtually perfect; (just the slightest trace of very faint wear, otherwise pristine perfect). GI-121. Comparatively scarce. A very desirable and historical flask, strong impression, absolutely fantastic condition!

Est.: \$300 - \$500 • Min. bid: \$150



Lot 15

EAGLE - FURLED FLAG / “FOR OUR COUNTRY” Historical Flask, Coffin & Hay Glass Manufactory, Hammonton, NJ, 1838 - 1847. Aquamarine, sheared mouth - blowpipe pontil scar, Pt, near mint; (just the slightest trace of very minor wear; a slender, paper-thin open bubble on the shoulder, and a large bubble on the reverse, in the interior near the base, is open, otherwise perfect). GI-54. A bright, clean, sparkling example, strong impression. Provenance: Bruce Purdy collection.

Est.: \$175 - \$350 • Min. bid: \$90



Lot 12

EAGLE – CORNUCOPIA Historical Flask, probably an early Pittsburgh district or Monongahela glasshouse, 1825 – 1835. Light aquamarine with an ice blue tone through the base, sheared mouth – blowpipe pontil scar, ½ Pt, near mint; (a little light high point wear and a slightly weak impression in the shoulder). GI-14. A very rare mold, and only the third example to be offered at auction in more than 20 years! Provenance: Ex. Bob Mebane collection.

Est.: \$400 - \$800 • Min. bid: \$200



Lot 16

“LIBERTY” / EAGLE - “WILLINGTON / GLASS, Co / WEST WILLINGTON / CONN” Historical Flask, 1855 - 1872. Medium-to-deep yellowish amber, applied round collar with bevel – smooth base, Qt; (just a slight trace of minor light wear, a bit of interior residue, and a tiny potstone in the side with a couple of 1/16” cooling lines, otherwise excellent). GI-61. A very attractive example, beautifully whittled, the condition issues are relatively minor. Provenance: Bruce Purdy collection.

Est.: \$300 - \$500 • Min. bid: \$150



Lot 17

"LIBERTY" / EAGLE - "WILLINGTON / GLASS Co / WEST, WILLINGTON / CONN" Historical Flask, 1855 - 1872. Clear, medium yellowish olive, large, applied ring collar with bevel - smooth base, Pt; (some scattered light-to-moderate exterior wear, particularly on the eagle's neck and shield, and a 1/8" flake at edge of base). GII-62. A bright pretty example, rare with the large ring, or 'donut-type', applied collar. Provenance: Bruce Purdy collection.

Est.: \$800 - \$1,600 • Min. bid: \$400



Lot 18

EAGLE - "NEW LONDON" / ANCHOR / "GLASS WORKS" Historical Flask, 1856 - 1860. Light-to-medium clear green, sheared mouth - pontil scar, 1/2 Pt; (a 1/4" piece of a thin flange at the side of the lip is missing; a 1/4" chip at the edge of the base, and just a slight trace of wear near the base, otherwise excellent). GII-67. A comparatively scarce mold and color; strong, very crisp impression! The condition issues are not terribly distracting. Bruce Purdy collection.

Est.: \$400 - \$600 • Min. bid: \$200



Lot 19

EAGLE - CORNUCOPIA Historical Flask, probably an early Pittsburgh district or Monongahela glasshouse, 1825 - 1835. Aquamarine, sheared mouth - blowpipe pontil scar, 1/2 Pt, perfect. GII-69. Scarce. A great little flask, very detailed, eye-appealing mold, good color, impression - excellent condition! Provenance: Fred Swiechowicz collection.

Est.: \$600 - \$900 • Min. bid: \$300



Lot 20

Lot of (2), EAGLE - EAGLE Historical Flasks, Coventry Glass Works, 1835 - 1845. Olive amber and olive green, both with sheared mouths - pontil scarred bases, 1/2 Pt; (both have a little high point wear - as is common on this mold; the olive amber example also has a couple of light scratches, 5/8" or less, and a slightly weak impression, otherwise both are excellent). GII-71. An attractive pair of early Eagle flasks, the colors complement one another nicely. Bruce Purdy collection.

Est.: \$250 - \$400 • Min. bid: \$130



Lot 21

Lot of (2), EAGLE - CORNUCOPIA Historical Flasks, Keene Marlboro Street Glassworks, 1830 - 1842. Yellowish olive with an amber tone, and rich 'old amber' with some golden tones through the shoulders and neck, both are sheared lip with pontil scarred bases, Pt, both near mint; (olive example has a couple of 1/8" flakes at corner of base; amber example has a pinhead open bubble on shoulder). GII-72a & GII-73. A great pair with strong impressions. Bruce Purdy collection.

Est.: \$250 - \$400 • Min. bid: \$130



Lot 22

Lot of (2), EAGLE - EAGLE Historical Flasks, Granite Glass Co., Stoddard, NH, 1855 - 1862. Light yellowish amber with a very slight olive tone, and medium olive coloration, both sheared mouth - pontil scarred bases, 1/2 Pts; (both near perfect with almost no wear; amber example has a tiny pinhead flake on inner edge of lip, and a bit of in-manufacture roughness on outer edge of lip, otherwise mint). GII-86 & GII-88. A beautiful pair, very pretty, green example is scarce. Bruce Purdy collection.

Est.: \$250 - \$400 • Min. bid: \$130



Lot 23

EAGLE - EAGLE Historical Flask, a Pittsburgh glasshouse, 1855 - 1865. Medium amber, crudely sheared mouth - large iron pontil scar, 1/2 Pt; (some high point wear on the shield and a bit on the eagle's wings; a light scuff and trace of wear near the mold seam, and some light interior residue or haze, some of which would likely wash out, otherwise excellent). GII-96. A comparatively scarce little flask, particularly with the iron pontil scar. Bruce Purdy collection; Ex. Nick Dirienzo collection.

Est.: \$300 - \$500 • Min. bid: \$150



Lot 24

EAGLE / "PITTSBURGH / PA" - EAGLE Historical Flask, a Pittsburgh district glasshouse, 1860 - 1870. Beautiful, medium emerald coloration, applied mouth with band - smooth base, Qt; (a little typical scattered exterior wear, a bit more at the base of the shield on one side, otherwise near mint). GII-103. A very attractive example, beautiful color, heavily whittled. Provenance: Fred Swiechowicz collection, Ex. Judge Blaske collection.

Est.: \$400 - \$600 • Min. bid: \$200



Lot 25

EAGLE / "PITTSBURGH / PA" - EAGLE Historical Flask, a Pittsburgh district glasshouse, 1860 - 1870. Yellowish olive amber, applied mouth with flat band – smooth base, Pt, perfect. Gill-105. A beautiful example, very pretty color, a lot of yellowish tones in this one, and an 'attic-type' example to boot!

Est.: \$250 - \$450 • Min. bid: \$130



Lot 29

EAGLE - EAGLE Historical Flask, Midwest, possibly Kearns, Herdman & Gorsuch, Zanesville, Ohio, or Pittsburgh, 1865 - 1875. Brilliant olive yellow, applied collar with ring – smooth base, ½ Pt; (professionally cleaned to original luster; a ¼" bruise on the shoulder, and a heavy fold of glass on the interior, but with no associated damage). Gill-125. Luckily, the actual damage is confined to the bruise on the shoulder. A stunning little flask, spectacular and rare color.

Est.: \$400 - \$600 • Min. bid: \$200



Lot 26

EAGLE / "PITTSBURGH / PA" - EAGLE Historical Flask, a Pittsburgh district glasshouse, 1860 - 1870. Rich, very deep olive, applied mouth with flat band – smooth base, Pt; (just a little minor light high point wear, and a pinhead speck of roughness on the edge of the applied collar, otherwise excellent). Gill-108. A very crude example filled with tiny bubbles, bold embossing, and in a deeper color than most! Provenance: Fred Swiechowicz collection.

Est.: \$250 - \$450 • Min. bid: \$130



Lot 30

Lot of (2), EAGLE – (Reverse plain) **Historical Flasks**, America, 1865 – 1875. 1st Ex. is bright yellow with a honey tone in the base; 2nd Ex. is golden amber with a slight orange tone, applied double ring collar and single ring collars – both smooth base, ½ Pt; (yellow example near mint with a touch of light wear and a partially open interior bubble; amber example has some minor wear including a small scuff and a few light scratches). Gill-139. A beautiful pair, very scarce in yellow. Bruce Purdy collection.

Est.: \$175 - \$350 • Min. bid: \$90



Lot 27

EAGLE - EAGLE Historical Flask, a Zanesville, Ohio glassworks, probably Kearns, Herdman & Gorsuch, 1869 - 1876. Medium-to-deep amber, applied collar with flat band – smooth base, Pt; (a tiny pinhead flake on the top of the lip; a 1/8" iridescent bruise on the side of the lip, and just a trace of very minor wear, otherwise near mint). Gill-118. A comparatively scarce mold, in a very rare color. Provenance: Bruce Purdy collection.

Est.: \$1,800 - \$2,800 • Min. bid: \$900



Lot 31

CORNUCOPIA – URN Pictorial Flask, New England, probably Coventry Glass Works, Coventry, CT, 1835 – 1849. Clear, medium emerald coloration, sheared mouth – blowpipe pontil scar, ½ Pt, near perfect; (just a slight trace of very light wear, otherwise virtually attic mint). Gill-7. A very pretty little flask, nice even density of color from the shoulders to the base. A lot of 'bottle for the money'.

Est.: \$300 - \$500 • Min. bid: \$150



Lot 28

EAGLE – EAGLE Historical Flask, a Zanesville, Ohio glassworks, probably Kearns, Herdman & Gorsuch, 1869 - 1876. Rich, medium sapphire blue, applied collar with ring – smooth base, Pt, near mint; (some high point wear on the eagle's breast, primarily on one side only, otherwise virtually perfect). Gill-118. A comparatively scarce mold, rare and desirable color, beautifully whittled, a great example! Provenance: Ex. Alan Spear collection.

Est.: \$2,500 - \$4,500 • Min. bid: \$1,300



Lot 32

CORNUCOPIA – URN Pictorial Flask, New England, 1835 - 1850. Yellowish olive amber, sheared mouth – pontil scar, ½ Pt; (a little minor wear including a tiny pinhead iridescent bruise on the inside edge of the lip; otherwise excellent). Gill-12. Note; there is a ¼", in-manufacture, tooling mark on the shoulder where the gaffer's tool, or another bottle, touched – not considered damage, but mentioned for completeness. A beautiful lighter example. Bruce Purdy collection.

Est.: \$150 - \$250 • Min. bid: \$80



Lot 33

CORNUCOPIA - URN Pictorial Flask, Lancaster Glass Works, Lancaster, NY, 1849 - 1855. Bright medium blue green coloration, sheared mouth – blowpipe pontil scar, Pt, near perfect; (only the slightest trace of very light wear, otherwise virtually pristine condition). GIII-17. A beautiful, bright, clean sparkling example. Excellent color, clarity and condition!

Est.: \$400 - \$600 • Min. bid: \$200



Lot 37

“SUCCESS TO THE RAILROAD” / LOCOMOTIVE – (Reverse same) Historical Flask, Lancaster Glass Works, Lancaster, NY, 1849 - 1860. Light-to-medium sapphire blue, sheared mouth – blowpipe pontil scar, Pt, near mint; (a little light exterior high point wear, otherwise virtually perfect). GV-1. Beautiful and rare color, nice pebbly texture to the glass, excellent condition. Provenance: Ex Edgar Hoffman, Charles B. Gardner collections.

Est.: \$8,000 - \$12,000 • Min. bid: \$4,000



Lot 34

MASONIC ARCH - EAGLE / “IP” Historical Flask, Keene Marlboro Street Glassworks, Keene, NH, 1815 - 1830. Clear, light blue green, sheared mouth, tooled ring collar - blowpipe pontil scar, Pt, near mint; (just a slight trace of typical, very light wear, and a 3/16” open bubble on the foot of the beehive near the base, otherwise perfect). GIV-1. A nice example of this classic, early Keene Masonic, very little wear, excellent condition.

Est.: \$300 - \$500 • Min. bid: \$150



Lot 38

“SUCCESS TO THE RAILROAD” / HORSE PULLING CART – (Reverse same) Historical Flask, possibly Mt. Vernon Glass Works, Vernon, NY, 1830 - 1846. Beautiful, clear, brilliant olive with a slight yellowish tone, sheared mouth – blowpipe pontil scar, Pt, perfect! GV-5. An absolutely outstanding example – clean, bright, fantastic clarity, color, character, and condition. Provenance: Fred Swiechowicz collection.

Est.: \$500 - \$800 • Min. bid: \$250



Lot 35

MASONIC ARCH – “ZANESVILLE” / EAGLE / “OHIO / J.SHEPARD & CO” Historical Flask, Zanesville Glassworks, Zanesville, OH, 1822 – 1832. Rich, deep bluish aquamarine, sheared mouth – blowpipe pontil scar, Pt, virtually attic mint; (slight bit of very faint interior residue, otherwise pristine perfect). GIV-32. An absolutely fantastic example, strong color, virtually no wear, and a very bold impression, about as strong as you could hope to find.

Est.: \$500 - \$800 • Min. bid: \$250



Lot 39

“BALTIMORE” / MONUMENT – “LIBERTY / & UNION” Historical Flask, Baltimore Glass Works, 1835 – 1845. Brilliant yellowish olive, almost an olive yellow coloration, sheared mouth – pontil scar, Pt; (a 3/16” chip on the side of the sheared lip, and a couple of 1/8” flakes on the inside edge of the lip, likely occurring when the cork was pried out, otherwise virtually perfect). GVI-3. Noted by McKearin as “Very rare”, and in a very beautiful, rare color! Provenance: Ex. McKearin collection.

Est.: \$4,000 - \$8,000 • Min. bid: \$2,000



Lot 36

“UNION” / CLASPED HANDS / SQUARE AND COMPASS - EAGLE Historical Flask, a Pittsburgh district glasshouse, 1860 - 1870. Bright golden amber, applied ring collar with bevel – smooth base, Qt, near mint; (a partially open bubble on the interior of the neck and just a trace of very minor wear on the reverse, otherwise virtually perfect). GIV-38. A beautiful, very attractive example, crisp, strong embossing, fantastic condition.

Est.: \$600 - \$900 • Min. bid: \$300



Lot 40

SUNBURST FLASK, Keene Marlboro Street Glassworks, Keene, NH, 1815 – 1830. Bright, clear bluish green, sheared mouth – blowpipe pontil scar, Pt, near mint; (just the slightest trace of very faint wear including a small area of minor roughness on the inside edge of the sheared lip, otherwise virtually pristine perfect). GVIII-1. A beautiful example, nice color, excellent clarity and condition. Provenance: Ex. Charles B. Gardner collection.

Est.: \$1,200 - \$1,800 • Min. bid: \$600



Lot 41

“KEEN” - “P&W” SUNBURST FLASK, Keene Marlboro Street, Keene, NH, 1815 - 1830. Medium olive with a very slight amber tone shading to a deep olive through the neck and base, sheared mouth – blowpipe pontil scar, Pt, near mint; (a touch of minor high point wear, otherwise perfect). GVIII-8. A very nice example, crude pebbly glass, excellent condition. The “P&W” embossing is a bit weak - as is typical, the “KEEN” embossing is stronger than most. Bruce Purdy collection.

Est.: \$500 - \$800 • Min. bid: \$250



Lot 42

SUNBURST FLASK, an early Connecticut glasshouse, Coventry Glass Works, or possibly Pitkin Glass Works, East Hartford, CT, 1815 - 1830. Clear, medium yellowish olive amber, sheared mouth – blowpipe pontil scar, ½ Pt; (some high point wear on the rays, as is often the case, otherwise virtually perfect). GVIII-16. A pretty example, nice lighter tone, and in a scarce color for this mold (most examples being in shades of olive green). Ex. Robert White collection.

Est.: \$700 - \$900 • Min. bid: \$350



Lot 43

SUNBURST FLASK, New England, probably Keene Marlboro Street Glassworks, 1815 – 1830. Bright blue green with some yellowish amber striations swirled through the neck, sheared mouth – blowpipe pontil scar, ¾ Pt, virtually perfect; (just the slightest trace of light high point wear and an in-manufacture, onionskin-thin, pontil flake that extends to the edge of the base). GVIII-29. A bright, clean, sparkling example with excellent clarity and strong depth of color.

Est.: \$250 - \$400 • Min. bid: \$130



Lot 44

“SUMMER” / SUMMER TREE - “WINTER” / WINTER TREE Pictorial Flask, America, 1860 - 1870. Clear, light-to-medium yellow green coloration, applied round collar with bevel – smooth base, Pt; (a potstone on the inner surface of the shoulder with a little iridescence and a few 1/16” ‘legs’; a little minor light wear including a ¼” flake at edge of base, otherwise excellent). A pretty, attractive, color. GX-15. Ex. Crawford Wettlaufer and Tom McCandless collections.

Est.: \$300 - \$600 • Min. bid: \$150



Lot 45

“FOR PIKE’S PEAK” / PROSPECTOR – EAGLE Historical Flask, probably a Pittsburgh district glasshouse, 1860 – 1865. Bright amber with a slight orange tone in the shoulders and above the base, applied mouth with flat band – smooth base, Pt, near perfect; (just the slightest trace of faint wear including a tiny, 3/16”, paper-thin open bubble, otherwise perfect). GXI-22. A comparatively scarce mold, very rare in amber! Provenance: Fred Swiechowicz collection.

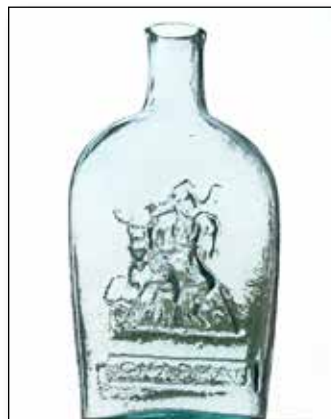
Est.: \$2,000 - \$4,000 • Min. bid: \$1,000



Lot 46

SAYLOR - BANJO PLAYER Pictorial Flask, probably John Chapman, Maryland Glass Works, Baltimore, MD, 1855 - 1862. Medium amber with an orange tone and some lighter golden tones along one of the sides, applied round collar with small bevel – smooth base, ½ Pt; (a little scattered light wear including a 1/8” spot of minor roughness on the edge of the lip, and a tiny pinhead flake at edge of base, otherwise excellent). GXIII-8. Nice color, comparatively scarce mold.

Est.: \$400 - \$600 • Min. bid: \$200



Lot 47

SAYLOR / “CHAPMAN.” – BANJO PLAYER / “BALT. MD.” Pictorial Flask, John Chapman, Maryland Glass Works, Baltimore, MD, 1849 - 1862. Aqua, sheared mouth – blowpipe pontil scar, ½ Pt, virtually perfect; (just the slightest trace of faint wear). Rare. An unlisted mold, similar to GXIII-9, differences include: Rectangular bar is approx. ½” x 2 3/8” (similar to GXIII-8), and is embossed “CHAPMAN.” Flask is similar to GXIII-8 in size (not narrower). A clean, bright, sparkling example.

Est.: \$250 - \$450 • Min. bid: \$130



Lot 48

ARMY DRAGOON - HOUND Pictorial Flask, probably Baltimore Glass Works, Baltimore, MD, 1855 - 1865. Clear, light-to-medium olive yellow, applied collar with ring – blowpipe pontil scar, Qt; (a couple of small chips, approximately 1/8” each, on the edge of the applied collar, and a ¼” chip, very likely in-manufacture, from below the ring where the collar was applied, otherwise attic mint). GXIII-16. A gorgeous flask, fantastic color, and filled with tiny seed bubbles.

Est.: \$400 - \$600 • Min. bid: \$200



Lot 49

HORSEMAN – HOUND Pictorial Flask, Baltimore Glass Works, Baltimore, Maryland, 1860 – 1870. Rich, bright, medium yellow coloration, applied double ring collar – smooth base, Pt; (a 3/16" flake at edge of base; some high point wear and light scratches, and a 5/8" x 1/4" open bubble near the base). GXIII-17. The noted condition issues are relatively minor. A comparatively scarce mold in a beautiful, eye-appealing color!

Est.: \$400 - \$600 • Min. bid: \$200



Lot 53

Lot of (2), Freeblown Chestnut Flasks, New England, 1785 – 1820. 1st example is a light straw olive coloration, 2nd example is a clear medium olive, both are chestnut form, sheared and outward rolled mouth and applied ring collars – both with delicate blowpipe pontil scarred bases, ht. 5 1/4" and 6 3/8" respectively; (both have just a bit of typical scattered light wear; the 5 1/4" example has a 1/4" x 3/4" area of fine high point wear on one side, otherwise both excellent). Bruce Purdy collection.

Est.: \$400 - \$600 • Min. bid: \$200



Lot 50

"FLORA TEMPLE" / (STANDING HORSE) / "HARNESS TROT 2.19 3/4 / OCT.15.1859" Pictorial Flask, probably Whitney Glass Works, 1860 - 1865. Yellowish apricot amber, applied handle curled at lower attachment, sheared mouth, applied flat band – smooth base, Qt; (some high point wear on front; some scattered light scratches and wear on reverse, and a shallow 1/8" flake on back edge of the lip). GXIII-19. A pretty example, lighter than most. Bruce Purdy collection.

Est.: \$250 - \$450 • Min. bid: \$130



Lot 54

Freeblown Chestnut Flask, New England, 1785 – 1820. Yellowish amber with a slight olive tone, chestnut form, sheared and outward rolled mouth – pontil scar, ht. 8 1/2"; (a little light wear including a paper-thin, 1/8" flake on the top of the lip; a 1/4" open bubble near the side above the base, and a small potstone on the surface of the base with a little iridescence and tiny 1/16" 'legs', otherwise excellent). A pretty example, scarce larger size. Provenance: Bruce Purdy collection.

Est.: \$200 - \$400 • Min. bid: \$100



Lot 51

"SPRING GARDEN" / ANCHOR / "GLASSWORKS" - LOG CABIN Historical Flask, Spring Garden Glass Works, Baltimore, MD, 1855 - 1862. Light apple green, sheared mouth with small applied ring collar – smooth base, 1/2 Pt, near mint; (slight trace of light wear including a tiny, pinprick speck of roughness on the edge of the collar, and pinhead bit of roughness at edge of base, otherwise attic mint). GXIII-60. Unlisted in light green, strong, crisp mold impression.

Est.: \$400 - \$600 • Min. bid: \$200



Lot 55

Large, Freeblown Chestnut Flask, New England, 1785 – 1820. Medium olive amber, large chestnut form, sheared lip with crudely applied flat band collar – delicate blowpipe pontil scar, ht. 10 1/8"; (some scattered exterior wear and light scratches, and a narrow, 1/16" or less, partially open bubble on the applied collar, otherwise excellent). Very scarce size, nice form, unusually crude applied lip. Provenance: Bruce Purdy collection.

Est.: \$400 - \$600 • Min. bid: \$200



Lot 52

GRANITE / GLASS / CO - STODDARD / N H", 1855 - 1862. Yellowish olive amber, applied sloping collar – smooth base, Qt; (a little typical scattered exterior wear including some patchy dullness, or faint haze, around the shoulder of the obverse; a tiny potstone near mold seam has a little iridescence and a couple of minuscule 1/16" 'legs'). GXV-6; MW Group C "Rare Flasks", #27. An attractive, crude, eye-appealing example. Fred Swiechowicz collection.

Est.: \$800 - \$1,200 • Min: \$400



Lot 56

Pattern Molded Club Bottle, Midwest, 1820 – 1840. Aquamarine, 24 ribs swirled to the left, sheared mouth with an applied flat band collar – delicate blowpipe pontil scar, ht. 7 3/4"; (just a trace of minor light wear; some roughness, possibly in-manufacture, around the inside edge of the lip, and a 1/4" flat chip and 1/8" flake along the top of the lip, otherwise excellent). A very attractive example, brilliant glass, pleasing form. Provenance: Bruce Purdy collection.

Est.: \$175 - \$350 • Min. bid: \$90



Lot 57

Pattern Molded Globular Bottle, Midwest, probably Zanesville Glass Works, OH, 1820 – 1835. Golden amber, 24 ribs swirled to the right, globular form, sheared and outward folded mouth – pontil scar, ht. 7 7/8"; (a little scattered minor usage wear, and some light interior haze through the body). Note; an old cork remains in the neck. Good form and symmetry, nice lighter color. In 'as-found' condition, the bottle displays nicely.

Est.: \$400 - \$600 • Min. bid: \$200



Lot 61

Pattern Molded Pocket Flask, Midwest, probably Zanesville Glass Works, Zanesville, OH, 1820 – 1840. Medium amber, 24 ribs swirled to the left, chestnut form, sheared mouth – pontil scar, ht. 4 3/4", near mint; (just a little typical light exterior wear, and the pattern weakens in the lower half of the body, otherwise perfect). A classic little pattern molded Zanesville flask. Provenance: Bruce Purdy collection.

Est.: \$200 - \$400 • Min. bid: \$100



Lot 58

Pattern Molded Globular Bottle, Midwest, probably Zanesville Glass Works, OH, 1820 – 1835. Bright medium amber, 24 ribs swirled to the left, globular form, sheared and outward folded mouth – pontil scar, ht. 8 1/2", near mint; (a little light wear including a tiny, pinhead flake, on the underside of the collar, and a bit of patchy light interior haze in one side, some of which may wash out). A nice clean example, strong ribbing. Bruce Purdy collection.

Est.: \$400 - \$600 • Min. bid: \$200



Lot 62

Freeblown Pocket Flask, Midwest, 1820 – 1835. Medium honey amber with a very slight olive tone, chestnut form, sheared mouth – blowpipe pontil scar, ht. 5 1/8"; (some scattered light exterior usage wear, otherwise excellent). Similar to McKearin, plate 237, #12. A beautiful, early, Midwest chestnut – good form, scarce color. The un-patterned Midwest chestnuts are actually much scarcer than their patterned counterparts.

Est.: \$250 - \$450 • Min. bid: \$130



Lot 59

Pattern Molded Pocket Flask, Midwest, 1820 – 1840. Aquamarine, 18 ribs swirled to the right, chestnut form, sheared mouth – blowpipe pontil scar, ht. 6 1/4"; (a little normal minor usage wear on the sides, and the pattern weakens near the base, as is often typical, otherwise perfect). A classic Midwest pattern molded pocket flask, good form, and a little larger in size than most.

Est.: \$150 - \$300 • Min. bid: \$80



Lot 63

Pitkin-Type Flask, Mid-Atlantic region, possibly Clementon Glass Works, Clementon, NJ, 1805 – 1820. Medium-to-deep 'old amber', 36 broken rib pattern swirled to the left, flattened elliptical form, sheared mouth – blowpipe pontil scar, ht. 6 1/2"; (some high point wear, primarily near the shoulders, and a slightly weak impression, otherwise excellent). Similar to MW, color plate IV, #2. Scarce. Provenance: Bruce Purdy collection.

Est.: \$500 - \$800 • Min. bid: \$250



Lot 60

Pattern Molded Pocket Flask, Midwest, probably Zanesville Glass Works, Zanesville, OH, 1820 – 1840. Beautiful yellowish honey coloration, 24 vertical ribs, chestnut form, sheared mouth – pontil scar, ht. 4 3/4", virtually attic mint; (trace of faint, very light wear, and the pattern weakens in the lower half, as is typical on these flasks, otherwise perfect). An eye-appealing example, lighter-than-most.

Est.: \$300 - \$500 • Min. bid: \$150



Lot 64

Pitkin-Type Flask, Mid-Atlantic region, 1780 – 1810. Bright, medium bluish green, almost a sea green coloration, 32 broken rib pattern swirled to the left, flattened ovoid form, sheared mouth – blowpipe pontil scar, ht. 6 5/8", near mint; (just a bit of very faint interior haze, not terribly noticeable, otherwise excellent). Similar to MW, plate 89, #5. Overall, a bright, clean, attractive Pitkin, strong ribbing through the shoulders, excellent condition.

Est.: \$400 - \$600 • Min. bid: \$200



Lot 65

Rare, Pitkin-Type Flask, New England, 1790 – 1820. Medium olive amber, blown in two different molds with 38 vertical ribs over 36 ribs swirled to the left, ovoid form, sheared mouth – blowpipe pontil scar, ht. 6 7/8"; (some scratches and a moderate amount of high point wear on the sides, but no other damage, and otherwise excellent). Beyond the noted usage wear, a very scarce-to-rare, mixed rib count – the gaffer using two different molds to blow this flask.

Est.: \$400 - \$600 • Min. bid: \$200



Lot 66

Lot of (2), Colorful Enameled Spirits Flasks, Continental, Alpine region, 1770 – 1800. Both are colorless with red, yellow, blue and white enameled decorations, rectangular with beveled corners, half post, sheared mouths with applied pewter collars – glass tipped pontil scarred bases, ht. 4" & 6 1/4"; (4" example is near perfect, slight trace of minor paint loss; 6 1/4" example has a 1/4" paper-thin flake and some minor paint loss). VdB, plate 225A. The 4", 'half-size' example is rare.

Est.: \$200 - \$400 • Min. bid: \$100



Lot 67

Early, Decorative Enameled Spirits Flask, Continental, Alpine region, 1770 – 1800. Clear, medium 'soft green' coloration; red, yellow and blue enameled decoration – white enameled inscription on reverse, loosely translated: 'Love me alone or let it be'. Rectangular with beveled corners, half post, sheared mouth with applied pewter collar – pontil scar, ht. 4 7/8", near mint; (trace of light wear; 3/16" in-manufacture annealing line in neck, otherwise perfect). Scarce color.

Est.: \$400 - \$600 • Min. bid: \$200



Lot 68

Rare, Pattern Molded Cruet, Pittsburgh, possibly an early Bakewell factory, 1825 – 1845. Cobalt blue, elongated pear form body patterned with 16 ribs swirled slightly to the left, tooled, flared mouth with pour spout, period, likely original acorn stopper, applied hollow handle crimped and curled at lower attachment – pontil scar, ht. 8 1/4" (including stopper), perfect. A beautiful and rare piece. See "Pittsburgh Glass", Innes, plate 167 (p.187), for similar example.

Est.: \$600 - \$900 • Min. bid: \$300



Lot 69

Fancy Pictorial Cognie Bottle (with virtually complete, original label), America. 1845 – 1860. Aqua, rectangular, embossed lyre or large floral design within frame on front, bulbous neck with 8 flat panels below ring, sheared, inward rolled mouth – pontil scar, ht. 5 5/8", perfect; (label faded a bit from age). MW, plate 107, #4. Label reads in part, *PREPARED BY / GEO. A. KIMBALL / KIMBALL'S COLOGNE / 23 Merrimack St., Haverhill.* Fred Swiechowicz collection.

Est.: \$250 - \$450 • Min. bid: \$130



Lot 70

Motif of Lion Pictorial Cognie Bottle, America, probably a South Jersey glasshouse, 1840 – 1855. Aquamarine, motif of a walking lion in high relief inside large frame, ornamental scrolls above and below frame, rectangular, rounded corners, sheared and inward rolled mouth – blowpipe pontil scar, ht. 4 3/8", near mint; (small trace of light interior miliness in a couple corners, otherwise perfect). Similar to MW, plate 113, #7. Rare. Provenance: James Cheballo collection.

Est.: \$120 - \$240 • Min. bid: \$60



Lot 71

Rare, Fancy Pictorial Cognie Bottle, America or France, 1845 – 1860. Colorless, image of seated Buddha below scalloped archway, scalloped shoulders with ornamental tassels, rectangular with columned corners and crosshatch designs on sides, fancy framed label panel on reverse, sheared and tooled flanged lip – solid glass-tipped pontil scar, ht. 6 1/4", perfect. MW, plate 110, #12. A very rare, early, cognie, one that we have not seen before. James Cheballo collection.

Est.: \$150 - \$300 • Min. bid: \$80



Lot 72

Lot of (2), Fancy Cognie Bottles, America, Mid-Atlantic, or possibly France, 1835 – 1855. 1st Ex.: **Figural Lyre**, colorless, sheared mouth, likely applied flat band collar – glass tipped pontil scar, ht. 5 1/2". 2nd Ex.: **Motif of Sailing Ship**, colorless, flattened acorn form, tooled thin flanged mouth – glass tipped pontil scar, ht. 4 3/4". Both examples are perfect, and rare! 1st Ex. similar to MW, plate 111, #1; 2nd Ex. MW, plate 110, #5. Provenance: James Cheballo collection.

Est.: \$200 - \$400 • Min. bid: \$100



Lot 73

“L. KOSSUTH” Historical Cologne Bottle, America, probably 1851 – 1852. Aqua, scroll form with a large 5-petal flower above bust of Kossuth, **“L KOSSUTH”** below bust, sheared, inward rolled mouth – blowpipe pontil scar, ht. 5 ¾”, near perfect; (a tiny flake on inner edge of lip, small trace of faint interior milkiness). MW, plate 108, #6. Rare. Per McKearin, the cologne was blown to commemorate the Hungarian patriot’s 1851 visit to the U.S. James Chebalo collection.

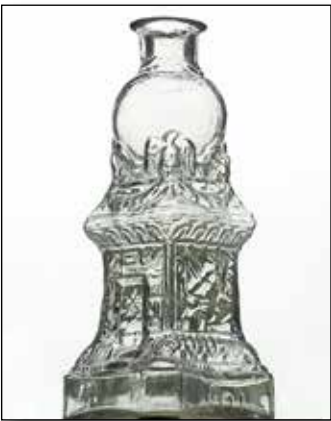
Est.: \$400 - \$800 • Min. bid: \$200



Lot 74

“MORRIS – JOHNSON – N-YORK” Figural Cologne Bottle, France or possibly America, 1840 – 1860. Colorless, in the form of the Paris Pantheon, sheared, tooled flared mouth – blowpipe pontil scar, ht. 6 1/8”, perfect. Similar to MW, plate 111, #2. An extremely rare cologne – believed to be one of perhaps only three, or four, known examples. We sold the only known example in color (with a repair), Auction 28 (Lot 88). James Chebalo collection.

Est.: \$300 - \$600 • Min. bid: \$150



Lot 75

Figural Monument Cologne, America or France, 1835 – 1855. Colorless, ornate figural monument base, small eagle with spread wings on each shoulder corner holding up a large ball forming bulbous neck, tooled thin flanged lip – **“Q T” – “5 O I”** (on heel of base), blowpipe pontil scar, ht. 5”, perfect. MW, plate 110, #7. An exceedingly rare mold, the first example that we can recall seeing. James Chebalo collection.

Est.: \$250 - \$450 • Min. bid: \$130



Lot 76

Figural Monument Cologne, America or France, 1835 – 1855. Deep ‘old amber’ in the shoulders, shading to black amber in the neck and lower body, figural monument base, small eagle with spread wings on each shoulder corner holding up a large ball forming bulbous neck, tooled thin flanged lip – **“M B”** (on heel of base), glass tipped pontil scar, ht. 5”, perfect. Similar to MW, plate 110, #7. A rare mold and color. James Chebalo collection.

Est.: \$1,200 - \$1,800 • Min. bid: \$600



Lot 77

Figural Fountain Building Cologne Bottle, America or France, 1835 – 1855. Aquamarine, classical fountain architecture with columned corners, arched entries on all four sides with embossed fountain at center, sheared, tooled, thin flanged mouth – blowpipe pontil scar, ht. 4 3/8”, perfect. MW, plate 113, #4. A very rare, highly detailed and ornate, figural cologne. This is only the second example that we can recall seeing in aquamarine. Provenance: James Chebalo collection.

Est.: \$300 - \$600 • Min. bid: \$150



Lot 78

Figural Fountain Building Cologne Bottle, America or France, 1835 – 1855. Fiery opalescent milkglass, classical fountain architecture with columned corners, arched entries on all four sides with embossed fountain at center, sheared, tooled, and inward folded mouth – glass tipped pontil scar, ht. 4 3/8”, perfect. MW, plate 113, #4. A very rare mold, extremely rare color. Provenance: James Chebalo collection; Ex. Bob Mebane collection.

Est.: \$1,000 - \$1,500 • Min. bid: \$500



Lot 79

Figural Fountain Building Cologne Bottle, America or France, 1835 – 1855. Gorgeous, deep cobalt blue, classical fountain architecture, columned corners, arched entries on all four sides with embossed fountain at center, sheared, tooled, thin flanged mouth – solid glass tipped pontil scar, ht. 4 3/8”, perfect; (some in-manufacture roughness, or ‘crizzling’, around the edge of the lip on one side). MW, plate 113, #4. Very rare, outstanding color! Provenance: James Chebalo collection.

Est.: \$1,200 - \$1,800 • Min. bid: \$600



Lot 80

“HARRISON’S / COLUMBIAN / INK”, America, 1847 – 1860. Aquamarine, octagonal body with paneled shoulders, sheared, tooled, and inward rolled mouth – blowpipe pontil scar, ht. 1 ¾”, dia. 1 ¾”, near perfect; (a partially open bubble on the interior of the neck, otherwise mint). C #530; MW, plate 76, #12. A clean, sparkling example, the smaller of two sizes – and a scarce mold, especially in this fine, ‘attic-type’ condition. Provenance: John Wilson collection.

Est.: \$120 - \$240 • Min. bid: \$60



Lot 81

"HARRISON'S / COLUMBIAN / INK", America, 1847 – 1860. Clear, medium cobalt blue, cylindrical, sheared, tooled, and inward rolled mouth – blowpipe pontil scar, ht. 1 7/8", virtually attic mint; (just a trace of light interior residue, otherwise perfect). C #194. Another very nice, 'attic-type', example – beautiful color and condition. Provenance: John Wilson collection.

Est.: \$500 - \$800 • Min. bid: \$250



Lot 85

Unembossed Igloo Ink, America, 1865 – 1880. Medium cobalt blue, igloo form with offset neck, sheared and factory ground mouth – smooth base, ht. 1 3/4"; (professionally cleaned to original luster with a little scattered minor wear remaining, otherwise excellent). A scarce and desirable color for an igloo ink. Provenance: John Wilson collection.

Est.: \$200 - \$400 • Min. bid: \$100



Lot 82

"BERTINGUIOT" Inkwell, probably New England, possibly a Connecticut glasshouse, 1830 - 1850. Light-to-medium yellowish olive amber, cylindrical with domed shoulders, sheared mouth – blowpipe pontil scar, ht. 1 7/8", attic mint! C# 575; Faulkner, p.179. A very pretty example in a nice lighter shade. Provenance: John Wilson collection.

Est.: \$200 - \$400 • Min. bid: \$100



Lot 86

Umbrella Ink (with virtually complete, original label), 1845 – 1860. Beautiful, medium teal green coloration, 8-sided umbrella form, sheared, tooled, and inward rolled mouth – blowpipe pontil scar, ht. 2 1/8", base dia. 2 1/8", perfect! Original label reads, *SUPERIOR BLUE INK, Prepared and Sold by ROBERT F. GERRISH, Kittery Point, Me.* A beautiful ink, rich, eye-appealing, very scarce color. Robert Gerrish also sold medicines and blacking. Provenance: Tim Buda collection.

Est.: \$400 - \$600 • Min. bid: \$200



Lot 83

"DAVIDS" Ink Bottle, 1870 – 1885. Light golden amber, almost a honey coloration, cylindrical, turtle-type, offset neck with sheared mouth – smooth base, ht. 1 3/4", pristine perfect! See Faulkner, pgs. 42-45. A beautiful example, outstanding condition, and a bit lighter in tone than typically encountered. The "Davids" turtle inks are very scarce in color. Provenance: Tim Buda collection.

Est.: \$300 - \$500 • Min. bid: \$150



Lot 87

(Label-only), **BRITTON'S / BEST INK / G. E. BRITTON CO. / MASSENA, N.Y.**, America, 1845 – 1855. Gorgeous, medium strawberry puce coloration, cylindrical, sheared, tooled, thin flanged lip – blowpipe pontil scar, ht. 3"; (a 1/4" chip on the thin flanged lip has been professionally repaired, otherwise attic mint). An 'attic-type' bottle with period, likely original label. Outstanding color, excellent character, heavily whittled, extremely rare!

Est.: \$400 - \$600 • Min. bid: \$200



Lot 84

"DAVIDS" Ink Bottle, 1870 – 1885. Rich, medium bluish green coloration, cylindrical, turtle-type, offset neck with sheared mouth – smooth base, ht. 1 3/4", near perfect; (a little faint dullness on the base, otherwise mint condition). Faulkner, pgs. 42-45. Another great example, crisp, bold embossing, attractive color, excellent condition. Provenance: Tim Buda collection.

Est.: \$400 - \$600 • Min. bid: \$200



Lot 88

"FARLEYS / INK", an early Stoddard glasshouse, Stoddard, NH, 1842 - 1855. Medium-to-deep 'old amber', octagonal with domed shoulders, sheared mouth – blowpipe pontil scar, ht. 1 3/4", virtually attic mint; (just the slightest trace of very faint wear, otherwise perfect). C #526; Faulkner, pgs. 63-64. A classic Stoddard ink, excellent condition with strong, crisp embossing – much better than most. Provenance: John Wilson collection.

Est.: \$400 - \$600 • Min. bid: \$200



Lot 89

“FARLEY’S – INK” Master Ink Bottle, an early Stoddard, NH glasshouse, 1842 – 1855. Yellowish olive amber in the shoulders shading to a deep olive amber towards the base, octagonal, sheared, tooled, thin flanged lip – pontil scar, ht. 2 7/8”; (professionally cleaned to original luster with a little scattered light wear remaining; approx. ½ of the flanged lip on the reverse has been professionally repaired). A very rare size, and displays nicely. John Wilson collection.

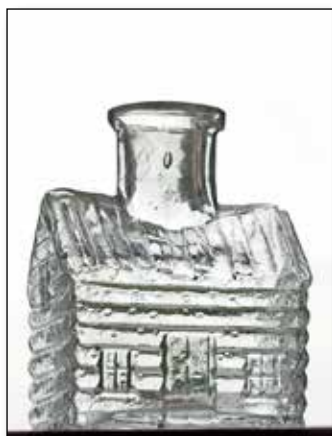
Est.: \$200 - \$400 • Min. bid: \$100



Lot 93

“PAT OCT 17 1865” Figural Barrel Master Ink, America, 1865 – 1875. Aquamarine, barrel form, sheared and factory ground mouth – smooth base, ht. 3 ¼”, length 3 5/8”; (some light interior haze, not terribly distracting, and a shallow 1/8” flake from the factory ground mouth, probably in-manufacture, otherwise excellent). An extremely rare master ink, and unlisted in this size. Note, a light yellowish amber thread of glass is swirled around one side. Provenance: Tim Buda collection.

Est.: \$250 - \$350 • Min. bid: \$130



Lot 90

Rare, Figural Cabin Ink, America, 1880 – 1890. Colorless, rectangular log cabin form, tooled square collar – smooth base, ht. 2 ¼”, attic mint. C #679. A very scarce-to-rare figural ink, especially in this fine condition. Provenance: John Wilson collection.

Est.: \$250 - \$450 • Min. bid: \$130



Lot 94

“PAT OCT 17 1865” Figural Barrel Master Ink, America, 1865 – 1875. Aquamarine, barrel form, threaded neck with factory ground mouth and original metal closure – smooth base, ht. 4 ¼”, length 4 ¼”, very near mint; (a 3/8” area of minor chipping along the top of the factory ground mouth, possibly in-manufacture, otherwise perfect). A beautiful sparkling

example, nice character, outstanding condition. An extremely rare and attractive master ink. Tim Buda collection.

Est.: \$275 - \$450 • Min. bid: \$140



Lot 91

“N E – PLUS – ULTRA – FLUID” Figural Schoolhouse Ink, probably west coast, possibly San Francisco & Pacific Glass Works, 1880 – 1895. Deep aquamarine, square schoolhouse form, rough sheared mouth – smooth base, ht. 2 ½”; (a small ‘fish-eye’ type bruise with a 1/8” radiation on the edge of the roof, and the bottle may have been lightly cleaned, but certainly presents as virtually attic mint). C #689. Scarce. A bright, clean sparkling example. John Wilson collection.

Est.: \$120 - \$240 • Min. bid: \$60



Lot 95

“PAT OCT 17 1865” Figural Barrel Master Ink, America, 1865 – 1875. Aquamarine, barrel form, threaded neck with factory ground mouth and original metal closure – smooth base, ht. 5 1/8”, length 5 ½”, attic mint. A great looking master ink, eye-appealing form, and extremely rare! Possibly unique, or one of only two known examples in this largest size. Provenance: Tim Buda collection.

Est.: \$400 - \$600 • Min. bid: \$200



Lot 92

Lot of (36), label-only, “CARTER’S / HOUSEHOLD INK” Bottles with Original Wooden Shipping Crate, 1905 – 1915. Bottles are colorless, ABM, square with rounded corners, “1 ¼ OZ” (embossed on necks), ring-type collars with original wooden cap and cork closures. Labels are either gold with red (VIOLET Ink),

or gold with blue (BLUE Ink). Wooden shipping crate debossed, GLASS WITH CARE / CARTER / INK / PRODUCTS. Both box and bottles in excellent condition.

Est.: \$100 - \$200 • Min. bid: \$50



Lot 96

Early, Rare, Figural Master Ink, New England, possibly Keene Marlboro Street Glassworks, or one of the early Connecticut glasshouses, 1835 – 1850. Medium olive amber, cylindrical, in the form of the capitol with stepped, domed shoulders, fine vertical ribbing around the shoulders, sheared, tooled, and outward flared mouth – blowpipe pontil scar, ht. 5 5/8”, perfect! A very rare, desirable master ink, excellent character, virtually pristine condition. A local find from central New Hampshire.

Est.: \$1,200 - \$2,400 • Min. bid: \$600



Lot 97

"HOENTHAL / BROTHERS & Co / INDELIBLE / WRITING INK / N.Y." Master Ink, New England, 1845 - 1855. Medium-to-deep olive with an amber tone, cylindrical, applied sloping collar with crimped pour spout - sand type pontil scar, ht. 7 1/8"; (an 'attic-type' bottle with only the slightest trace of faint wear, otherwise perfect). A great example of this scarce New England master ink, outstanding condition. Provenance: John Wilson collection.

Est.: \$500 - \$800 • Min. bid: \$250



Lot 98

"HOENTHAL / BROTHERS & Co / INDELIBLE / WRITING INK / N.Y." Master Ink, New England, 1845 - 1855. Yellowish olive amber through the body, shading to a deep olive amber in the neck and towards the base, cylindrical, applied sloping collar with crimped pour spout - sand type pontil scar, ht. 8 3/4", virtually attic mint; (just a slight trace of very light wear, otherwise perfect). Another beautiful example, strong embossing, whittled, excellent condition. John Wilson collection.

Est.: \$500 - \$800 • Min. bid: \$250



Lot 99

"BOGARDUS' GLASS BALL PATD APRIL 10 1877." - "8" (within diamond panel), **Target Ball**, England, 1877 - 1900. Beautiful, bright yellowish olive, quilted diamond pattern above and below center band, 3-piece mold, rough sheared mouth, dia. 2 5/8", perfect. A bright, clean, very attractive ball - excellent color, clarity, and condition. The Bogardus balls come in a wide spectrum of colors, and this example is one of the rarer, and more difficult colors to acquire. John Wilson collection.

Est.: \$400 - \$800 • Min. bid: \$200



Lot 100

Stars and Stripes pattern Target Ball, America, 1875 - 1900. Beautiful light yellowish honey through the center, shading to a rich golden amber in neck and base, known as the 'Stars and Stripes' or 'Stars and Bars' pattern, the ball is covered with tiny embossed stars or dimples, and the sides having horizontal stripes or bars, 3-pc. mold, rough sheared mouth, dia. 2 5/8", virtually perfect; (a 1/8" paper-thin open bubble). Rare and desirable with beautiful color. John Wilson collection.

Est.: \$800 - \$1,200 • Min. bid: \$400



Lot 101

Quilted Diamond Pattern Target Ball, probably America, possibly England, 1875 - 1900. Brilliant yellowish honey amber, quilted diamond pattern above and below plain center band, 3-piece mold, factory ground mouth, dia. 2 5/8", perfect. Scarce. A clean, bright example, strong impression. It is interesting to note that of all the various target balls, this is one of only two known molds to have a factory ground mouth. Provenance: John Wilson collection.

Est.: \$200 - \$400 • Min. bid: \$100



Lot 102

"GURD & SON 185 DUNDAS - STREET LONDON ONT" Target Ball, Canada, 1875 - 1900. Rich, yellowish 'old amber', almost a tobacco coloration, 3-piece mold with embossing around center band, rough sheared mouth, dia. 2 5/8", perfect. A very scarce target ball, beautiful condition! The Gurd & Son ball is one of just a few known to have originated from Canada. Provenance: John Wilson collection.

Est.: \$400 - \$800 • Min. bid: \$200



Lot 103

Embossed Horizontal Rings Target Ball, America, 1875 - 1900. Deep chocolate amber coloration, embossed with (7), heavy horizontal rings, 3-piece mold, rough sheared mouth, dia. 2 5/8", perfect. A very scarce mold, in a very scarce-to-rare color. Typically found in shades of golden amber as well as cobalt blue, this is the first example that we have seen in this deep 'chocolate' coloration. Provenance: John Wilson collection.

Est.: \$250 - \$450 • Min. bid: \$130



Lot 104

Shooter Ball (Image of a Man Shooting a Gun within circle), England, 1875 - 1900. Gorgeous striated amethyst (colorless ball with profuse amethyst striations swirled throughout), quilted diamond pattern, 3-piece mold, rough sheared mouth, dia. 2 5/8", perfect. The 'shooter balls' have always been popular, but this one is an absolutely stunning example! Excellent impression, great eye-appeal with the amethyst striations. A top example. Provenance: John Wilson collection.

Est.: \$500 - \$800 • Min. bid: \$250



Lot 105

“WW GREENER ST MARYS WORKS – BIRMM & 68 HAYMARKET LONDON” Target Ball, England, 1875 – 1900. Light-to-medium pinkish amethyst, quilted diamond pattern above and below center band, 3-piece mold, rough sheared mouth, dia. 2 5/8”, perfect. Very scarce. A gorgeous ball, beautiful color, clarity, condition. Note; the Greener building still stands on Haymarket, around the corner from the Piccadilly Circus. Provenance: John Wilson collection.

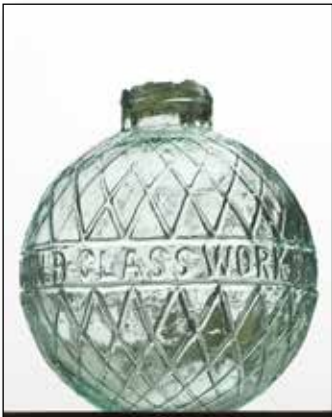
Est.: \$500 - \$800 • Min. bid: \$250



Lot 109

“CARL THE GREAT / A 10¢ CIGAR / FOR 5¢ / MFGD BY / HETTERMANN BROS CO / LOUISVILLE KY / FACTORY No 23 / 5TH DISTRICT OF KY / 25”, 1895 – 1910. Bright honey amber, cylindrical, threaded neck with factory ground mouth, original tin closure – smooth base, ht. 5 1/8”, perfect. A very pretty jar, and not easy to find with the original closure. Note; an early collector tag remains on the front. Provenance: John Wilson collection.

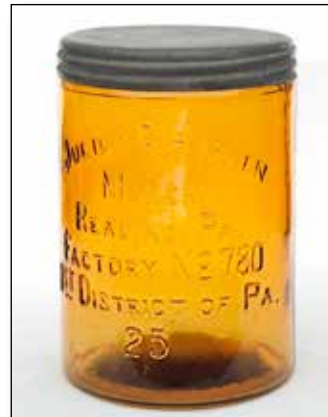
Est.: \$100 - \$200 • Min. bid: \$50



Lot 106

“N B GLASS WORKS PERTH – N B GLASS WORKS PERTH” Target Ball, England, 1875 – 1900. Greenish aquamarine, quilted diamond pattern above and below center band, 3-piece mold, rough sheared mouth, dia. 2 5/8”, perfect. Scarce. A great example, excellent clarity, condition, and with a crisp, very strong mold impression. Provenance: John Wilson collection.

Est.: \$250 - \$450 • Min. bid: \$130



Lot 110

“JULIUS G. HANSEN / MAKER / READING, PA. / FACTORY No 780 / 1ST DISTRICT OF PA. / 25”, 1895 – 1910. Bright honey amber, cylindrical, threaded neck with factory ground mouth, original tin closure – smooth base, ht. 5”, perfect! A scarce jar, beautiful condition, and with original threaded tin closure. Provenance: John Wilson collection.

Est.: \$100 - \$200 • Min. bid: \$50



Lot 107

“T. JONES GUN MAKER BLACKBURN LANCASHIRE” Target Ball, England, 1875 – 1900. Medium sapphire blue, almost a powder-blue, quilted diamond pattern, 3-pc. mold, large “X” (on base), rough sheared mouth, dia. 2 5/8”, virtually perfect; (just a slight trace of very light interior milkiness; lettering in center band is difficult to read, as is always the case with this mold). A crisp impression, beautiful color. A great example of this scarce ball. John Wilson collection.

Est.: \$200 - \$400 • Min. bid: \$100



Lot 111

“HAVANA CIGARS / EST /1857 / M. STACHELBERG & CO / WORLDS FAIR / 1893 / HIGHEST AWARDS – KEEP CIGARS / IN THIS JAR / AND / INSURE / RETENTION OF / PERFECT CONDITION AND AROMA”, 1893 – 1910. Light honey amber, cylindrical, threaded neck with factory ground mouth, original tin closure with embossed crown and shield – smooth base, ht. 6 1/8”, both jar and tin lid virtually perfect; (lid has some minor oxidation). John Wilson collection.

Est.: \$120 - \$240 • Min. bid: \$60



Lot 108

Unembossed 3-Piece Mold Target Ball, America, 1875 – 1900. Deep, vivid cobalt blue with some subtle, almost violet blue, striations swirled through the lower half, 3-piece mold, rough sheared mouth, dia. 2 5/8”, perfect! A classic 3-piece mold target ball in an eye-appealing, rich cobalt blue, deeper in tone than most, and with the added striations. Provenance: John Wilson collection.

Est.: \$175 - \$350 • Min. bid: \$90



Lot 112

Lot of (2), Tobacco Jars, 1890 – 1910. 1st Ex.: “PHOENIX CIGAR FACTORY / ROTHSCHILD BENDING & Co. / CHICAGO.”, 2nd Ex.: “COMMERCIAL / INVINCIBLES / G.A. SCHNAITMAN & BRO. / ST. JOSEPH, MO.”. Light golden amber and amber, both cylindrical with factory ground mouths, original

tin closures – smooth base, ht. 5” and 5 3/4” respectively, both are virtually perfect. Scarce. John Wilson collection.

Est.: \$150 - \$250 • Min. bid: \$80



Lot 113

Lot of (2), Tobacco Jars, 1885
 – 1905 1st Ex.: **“AMERICAN / EAGLE TOBACCO CO / DETROIT / MICH”**, 2nd Ex.: **“GLOBE / TOBACCO COM-PANY / DETROIT & / WINDSOR / PAT OCT. 10TH 1882”**. Rich amber and straw yellow, square and barrel form, both with factory ground mouths, original and period tin closures – smooth bases, ht. 6 5/8” & 7 1/4”

respectively; (1st Ex. has a potstone with 1/4” ‘legs’; 2nd Ex. has some chipping on ground mouth). John Wilson collection.

Est.: \$150 - \$250 • Min. bid: \$80



Lot 117

“POTTER & BODINE’S / AIR-TIGHT FRUIT JAR / PHILADA – PATENTED / APRIL 13th 1858”, a South Jersey glasshouse, probably Potter & Bodine, Bridgeton, NJ, 1858 - 1863. Aquamarine, barrel form, tooled wax seal groove mouth – iron pontil scar, Qt, perfect. RB #2388. A beautiful example, strong embossing, sparkling mint. A very desirable, pontiled, barrel-form jar that appeals to both bottle collectors, as well as fruit jar enthusiasts.

Est.: \$500 - \$800 • Min. bid: \$250



Lot 114

“PATD FEB. 9TH 1864 / W.W. LYMAN / (2 STARS) / REISS JAN. 22D 1867” (with original tin lid), possibly Wm. McCully & Co, Pittsburgh, PA, 1867 – 1875. Aquamarine, cylindrical, ground mouth – smooth base, Qt, near mint; (some shallow flakes along the top and edge of the ground mouth, possibly in-manufacture, some residue in a partially open bubble on inside edge of ground mouth, otherwise perfect). RB #1588-1. Fred Swiechowicz collection.

Est.: \$75 - \$125 • Min. bid: \$40



Lot 118

“A. STONE & Co / PHILA” FRUIT JAR, possibly a Pittsburgh glasshouse, 1865 - 1875. Aquamarine, cylindrical, applied collar with internal threading, **“A.STONE & CO / 3 / PHILADA”** (on lugged threaded stopper) – smooth base, Qt; (professionally cleaned to original luster with some very faint interior milkiness remaining; a 1/4” flake on top of the mouth, and slight bit of roughness on back edge of collar, faint scratch near mold seam). RB #2748. A great looking early jar.

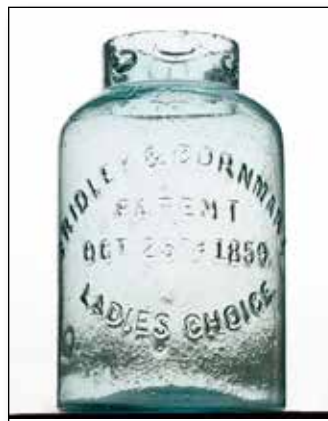
Est.: \$300 - \$500 • Min. bid: \$150



Lot 115

“WORCESTER” Fruit Jar, 1866 – 1875. Aquamarine, cylindrical, large, applied stopper-seal neck with seat, **“PATD. / JAN. 2 D / 1866”** (on original finned glass stopper with notch and rubber gasket) – smooth base, Qt; (the jar is attic mint, original finned stopper has a couple of tiny flakes, otherwise perfect). RB #3034; SFJR #1404. Beautiful condition, bright, clean, and whittled. A lucky virgin find from a local sale in Pike, NH.

Est.: \$200 - \$400 • Min. bid: \$100



Lot 119

“FRIDLEY & CORNMAN’S / PATENT / OCT. 25TH 1859. / LADIES CHOICE.”, probably a Philadelphia or South Jersey glasshouse, 1860 – 1865. Aquamarine, cylindrical, narrow neck with lugs, ground mouth – smooth base, Qt, perfect. RB #1038. A bright, clean, pretty example, excellent character and eye-appeal – the glass being filled with tiny bubbles. Provenance: Fred Swiechowicz collection.

Est.: \$300 - \$600 • Min. bid: \$150



Lot 116

“NATIONAL” / (SHIELD) / “PRESERVE CAN” – “EARLE’S PATENT” / (ANCHOR) / “FEB 2ND 1864”, 1864 – 1870. Aquamarine, cylindrical, ground mouth – smooth base, Qt, near perfect; (some typical minor flaking, possibly in-manufacture, around edge of ground mouth). RB #2237; SFJR #973. A bright, clean example, very rare. Provenance: Fred Swiechowicz collection.

Est.: \$1,000 - \$2,000 • Min. bid: \$500



Lot 120

“SILAS CARLE / & NEPHEW / DRUGGISTS / 199 WATER COR. / FULTON ST. / NEW-YORK” Stoneware Advertising Jar, probably 1827 – 1838. Tan glaze, cylindrical wide mouth jar with ring collar, ht. 5 1/2”; (a couple of tight, hairline cracks on the base; some faint crazing lines to the glaze on the reverse, very minor, otherwise excellent). A very rare jar. Provenance: Fred Swiechowicz collection.

Est.: \$400 - \$600 • Min. bid: \$200



Lot 121

"DANIEL / JOHNSON. AND. Co No24 / LUMBER STREE(T) / N.YORK" Stoneware Oyster Jar, probably Thomas Commeraw, Potter, Manhattan, NY, 1800 – 1810. Tan and reddish brown salt glaze jar, cylindrical with recessed mouth, ht. 6"; (a couple of shallow ½" base flakes, and a ¼" wide "V"- shaped chip at top of jar with a 2" hairline crack stemming from it, otherwise near perfect). An extremely rare, important jar. Provenance: Fred Swiechowicz collection.

Est.: \$1,000 - \$2,000 • Min. bid: \$500



Lot 125

Large, Fancy Pickle Jar, America, 1850 – 1860. Aquamarine, cylindrical with 8 flat panels around the body, and large, petal-type leaves embossed around the shoulders and base, sheared mouth with applied ring collar – iron pontil scar, ht. 10 ¾", virtually attic mint; (a couple of minor open surface bubbles, otherwise pristine perfect). A very rare mold, and quite eye-appealing with the large, embossed leaf pattern. Provenance: Fred Swiechowicz collection.

Est.: \$400 - \$600 • Min. bid: \$200



Lot 122

"ABSOLUTELY / PURE MILK" / (MAN MILKING A COW) / "THE MILK PROTECTOR" – "TO BE USED ONLY AS DESIGNATED / MILK / & / CREAM / JAR", Whitall, Tatum & Co, Millville, NJ, 1886 – 1892. Colorless, cylindrical, tooled square collar, "PAT'D APRIL 27-86" (on original glass lid) - smooth base, Pt, near mint; (slight trace of very minor wear, and small bit of light interior milkiness; 3/8" shallow bruise on inner rim of lid). Fred Swiechowicz collection.

Est.: \$600 - \$900 • Min. bid: \$300



Lot 126

Large, Fancy Pickle Jar, America, 1850 – 1860. Aquamarine, cylindrical with 5 large cathedral-type panels around the body, lobed shoulder panels, sheared mouth with applied flat ring collar – iron pontil scar, ht. 11 ¼", perfect; (note, there is a bit of light washable interior residue). A very rare jar, fantastic condition, outstanding character having crude, very 'seedy' glass, and a small fold of glass between two of the cathedral panels. Provenance: Fred Swiechowicz collection.

Est.: \$400 - \$600 • Min. bid: \$200



Lot 123

"EXCELSIOR / MUSTARD MILLS / NEW YORK" (with 99% complete, original label, wire bail and tin closure), 1895 – 1905. Colorless, cylindrical, tooled round collar with seat for tin closure – smooth base, Pt, perfect. Colorful, graphic label depicts a young woman holding a sword in one hand and a French flag in her other hand. Label reads in part, *FRENCH MUSTARD / EXCELSIOR MUSTARD MILLS*. Very rare with original label and closure. Fred Swiechowicz collection.

Est.: \$120 - \$240 • Min. bid: \$60



Lot 127

Large, Fancy Pickle Jar, America, 1850 – 1860. Beautiful, yellowish emerald coloration, cylindrical with fluted shoulders and scalloped panels around heel of base, applied ring type collar – large, heavy iron pontil scar, ht. 12 ¼", virtually pristine perfect; (only the slightest trace of very faint wear). An outstanding pickle jar in terms of color, character – some large bubbles and nice whittling, condition and eye-appeal! Provenance: Fred Swiechowicz collection.

Est.: \$1,500 - \$2,500 • Min. bid: \$800



Lot 124

Petal Type Preserve Jar, Willington Glass Works, West Willington, CT, 1860 – 1872. Medium-to-deep "old amber", almost a tobacco color, cylindrical with fluted shoulders, applied round collar with ring, smooth base, ht. 11 1/8", near mint; (just a slight trace of typical, very light wear, otherwise perfect). MW, plate 73, #3. A beautiful example, heavily whittled. These bottles, known as "Willington blueberry jars", are attributed by family history to the glass works. Bruce Purdy collection.

Est.: \$500 - \$800 • Min. bid: \$250



Lot 128

Cathedral Pickle Jar, a Mid-Atlantic glasshouse, 1860 – 1870. Clear, medium bluish emerald coloration, square with beveled corners, arched Gothic panels on four sides with fancy scallop designs around inner frame, cross and pendant motif below top of frame, ornamental tulip above each frame on shoulders, sheared mouth with applied ring collar – smooth base, ht. 11 ¾", perfect! A beautiful pickle jar, excellent clarity, strong color.

Est.: \$600 - \$900 • Min. bid: \$300



Lot 129

Lot of (2), "good Old Bourbon / in a hogs" (line pointing to pig's rear-end), **Figural Whiskey Bottles**, 1880 - 1890. 1st Ex.: Light honey coloration shading to a deeper golden amber in the head, tooled ring collar. 2nd Ex.: Colorless with a sheared

mouth. Both are smooth base, length 6 5/8", near mint; (amber example is near perfect with just a trace of light wear; colorless example has a hard-to-see 3/16" iridescent bruise on underside of mouth, otherwise excellent).

Est.: \$250 - \$450 • Min. bid: \$130



Lot 133

"WEEKS & POTTER - BOSTON" Whiskey Cylinder, a Stoddard, NH glasshouse, probably Weeks & Gilson, South Stoddard, 1860 - 1873. Light olive amber in the shoulders shading to a deep olive amber, virtually black, near the base, 3-pc. mold, applied sloping collar - smooth base, ht. 11 3/8", virtually attic mint; (a slight trace of typical wear, and some minor interior content residue). A very attractive example, beautifully whittled, excellent condition. Fred Swiechowicz collection.

Est.: \$400 - \$600 • Min. bid: \$200



Lot 130

"GRIFFITH HYATT & Co. / BALTIMORE" Applied Handle Whiskey Jug, probably Baltimore Glass Works, 1850 - 1860. Yellowish amber shading to a rich medium-to-deep amber with an apricot tone through the shoulders and neck, pear form, applied handle curled at lower attachment, applied square collar - large blowpipe pontil scar, ht. 7 1/4", virtually perfect; (just a very slight trace of wear including a 1/8" flake at edge of base). Bruce Purdy collection.

Est.: \$400 - \$600 • Min. bid: \$200



Lot 134

"CASPER'S WHISKEY / MADE BY HONEST / NORTH / CAROLINA PEOPLE", America, 1885 - 1900. Beautiful, medium-to-deep cobalt blue, cylindrical with fluted shoulders, tooled sloping collar with ring - smooth base, ht. 11 3/4", attic mint. A bright, clean example, fantastic condition. One of the all-time classics of eastern whiskey bottles, and a big splash of color that will stand out in any collection.

Est.: \$400 - \$600 • Min. bid: \$200



Lot 131

"PURE MALT WHISKEY. / BOURBON Co. / KENTUCKY" Applied Handled Whiskey, America, 1860 - 1870. Medium-to-deep amber, flattened ovoid form, applied handle, applied collar with flat band - smooth base, ht. 8 3/4"; (a little scattered light wear and a pinhead open bubble near the side mold seam, otherwise very near mint). A scarce applied handle whiskey. Provenance: Bruce Purdy collection.

Est.: \$300 - \$500 • Min. bid: \$150



Lot 135

"UDOLPHO. WOLFE's - SCHIEDAM. - AROMATIC / SCHNAPPS.", America, 1850-1860. Light-to-medium bluish green, square with beveled corners, applied sloping collar with bevel - iron pontil scar, ht. 7 7/8"; (professionally cleaned to original luster with a bit of scattered light wear remaining, and a 3/16" chip at edge of base). A very rare mold (all upper-case lettering with periods after "Udolpho", "Schiedam" and "Schnapps"), rare color, nice character, and with a pontil scarred base!

Est.: \$600 - \$900 • Min. bid: \$300



Lot 132

"PATENT" (on shoulder) / "BUSHWICK GLASS WORKS" (on base), Whiskey Cylinder, probably Brooklyn, NY, 1870 - 1880. Beautiful, bright yellowish golden amber, 3-pc. mold, applied sloping collar with bevel - smooth base, ht. 11 3/4"; (just a bit of very light wear; a trace of residue in the shoulder, and a small patch of faint haze, lower half of one side, above the base, otherwise excellent). A very rare, embossed, whiskey cylinder. Fred Swiechowicz collection.

Est.: \$300 - \$500 • Min. bid: \$150



Lot 136

"UDOLPHO WOLFE'S - SCHIEDAM - AROMATIC / SCHNAPPS", America, 1865 - 1880. Yellowish lime green, square with beveled corners, applied sloping collar - smooth base, ht. 8 1/4"; (professionally cleaned to original luster with just a bit of very minor wear remaining including a shallow 1/8" flake on one of the base corners; some faint, very light interior haziness). A scarce color for a Udolpho Wolfe's, and one that will certainly stand out in a color run.

Est.: \$200 - \$400 • Min. bid: \$100



Lot 137

"UDOLPHO WOLFE'S – SCHIEDAM – AROMATIC / SCHNAPPS", America, 1865 – 1880. Light-to-medium peach with a topaz tone, square with beveled corners, applied sloping collar – smooth base, ht. 8 1/8", near mint; (just a bit of minor light wear including a few, tiny, onionskin open surface bubbles, and some light residue, possibly washable, in one shoulder, otherwise excellent). Nice light color, clarity, and character with plenty of tiny bubbles.

Est.: \$200 - \$400 • Min. bid: \$100



Lot 138

"UDOLPHO WOLFE'S – SCHIEDAM – AROMATIC / SCHNAPPS", America, 1865 – 1880. Clear, medium apricot coloration, square with beveled corners, applied sloping collar – smooth base, ht. 8 1/8", attic mint. A beautiful example, attractive and scarce color with several nice elongated bubbles scattered through the body.

Est.: \$200 - \$400 • Min. bid: \$100



Lot 139

"UDOLPHO WOLFE'S – SCHIEDAM – AROMATIC / SCHNAPPS", America, 1865 – 1880. Rich, medium-to-deep reddish apricot puce, square with beveled corners, crudely applied sloping collar – smooth base, ht. 8 1/8", near mint; (just a trace of minor light wear and a bubble on the shoulder with a 1/8" opening in the cover glass). Another great example, very scarce, outstanding color – one that does not come around often.

Est.: \$300 - \$600 • Min. bid: \$150



Lot 140

"UDOLPHO WOLFE'S – Schiedam – Schnapps", America, 1850 – 1860. Brilliant yellowish honey shading to a rich golden coloration near the base, square with beveled corners, applied sloping collar – heavy iron pontil scar, ht. 8", near mint; (a little typical scattered minor wear, otherwise perfect). A great example and rare mold. Only a handful are known in this size, color, embossing and lowercase lettering. Outstanding character, very heavily whittled, fully intact iron pontil.

Est.: \$500 - \$800 • Min. bid: \$250



Lot 141

"UDOLPHO WOLFE'S – SCHIEDAM – AROMATIC / SCHNAPPS" (with 95% complete, original label), America, 1870 – 1880. Beautiful, medium honey yellow coloration, square with beveled corners, applied sloping collar with bevel – smooth base, ht. 9 5/8", perfect. A very pretty example, fantastic color, excellent clarity all the way to the base, and scarce with the original label. (Note; an old cork remains in the neck). Provenance: Fred Swiechowicz collection.

Est.: \$200 - \$400 • Min. bid: \$100



Lot 142

Unembossed Figural Barrel, 1865 – 1875. Gorgeous, light 'see-through' olive yellow coloration, barrel form, applied square collar – smooth base, ht. 10 1/8"; (only the slightest hint of faint wear, otherwise pristine perfect). A very pretty, rare color, for an unembossed barrel, and certainly one of the lightest examples that you could hope to find.

Est.: \$600 - \$1,200 • Min. bid: \$300



Lot 143

Unembossed Figural Barrel, 1870 – 1880. Rich, yellowish honey with a strong olive tone, barrel form, applied round blob collar – smooth base, ht. 9 7/8", very near mint; (just a touch of very minor wear including a 1/8", paper-thin, open bubble on one of the rings, otherwise virtually perfect). Another beautiful example, scarce and attractive color with plenty of yellowish tones, and very scarce with the round blob-style collar.

Est.: \$250 - \$450 • Min. bid: \$130



Lot 144

Unembossed Figural Barrel, 1865 – 1875. Beautiful medium cobalt below the shoulders, shading to a deep cobalt in the lower half, barrel form, applied square collar – smooth base, ht. 9 3/4", virtually perfect; (a tiny, paper-thin, 1/8" open bubble on one of the rings, and only the faintest trace of light wear, otherwise pristine perfect). Many of these have issues, but not this one. An outstanding example, great color, whittled, fantastic condition. A bold, eye-appealing, splash of color.

Est.: \$1,800 - \$3,200 • Min. bid: \$900



Lot 145

“LANCASTER / GLASS WORKS / LANCASTER, N.Y.” (on base), **Figural Barrel**, Lancaster Glass Works, 1865 - 1875. Light yellowish olive, almost a smokey olive yellow, barrel form with embossed wooden staves and bung hole around midsection, applied round double collar - smooth base, ht. 9 5/8”, attic mint. Excellent character, beautiful color - it’s also a very scarce and difficult color to acquire for a Lancaster barrel. Provenance: Ex. Jack Stecher collection.

Est.: \$800 - \$1,200 • Min. bid: \$400



Lot 146

“LANCASTER / GLASS WORKS / LANCASTER, N.Y.” (on base), **Figural Barrel**, Lancaster Glass Works, 1865 - 1875. Medium topaz with some warmer honey tones, barrel form with embossed wooden staves and bung hole around midsection, applied round double collar - smooth base, ht. 9 5/8”, near mint; (a spot of minor roughness on the inside edge of the lip, possibly in-making, and a paper-thin, 1/4”, open bubble on the side, otherwise excellent). A scarce mold and color.

Est.: \$500 - \$800 • Min. bid: \$250



Lot 147

“LANCASTER / GLASS WORKS / LANCASTER, N.Y.” (on base), **Figural Barrel**, Lancaster Glass Works, 1865 - 1875. Deep apricot puce, barrel form with embossed wooden staves and bung hole around midsection, applied round double collar - smooth base, ht. 9 1/2”; (a little light exterior wear including a 1/4” open bubble on one of the rings near the base, and a minor 3/8” open bubble on the interior, otherwise excellent). A scarce mold found in a variety of attractive colors.

Est.: \$250 - \$450 • Min. bid: \$130



Lot 148

“TURNER BROTHERS / NEW YORK” **Figural Barrel**, 1865 - 1875. Medium amber shading to a deep amber with an apricot tone in the lower half of the body, barrel form, (10) rings above and below center band, applied square collar - smooth base, ht. 9 7/8”; (some lip roughness including a couple of pinhead flakes on the outer edge, and a 1/8” flake on the inside edge; a 1/4” chip on the heel of the base with a shallow sliver that extends a 1/2” along inner edge of base. R/H #T67L.

Est.: \$200 - \$400 • Min. bid: \$100



Lot 149

“TURNER BROTHERS / NEW YORK” **Figural Barrel**, 1865 - 1875. Yellowish honey amber with a very slight olive tone, barrel form with (10) rings above and below center band, applied square collar - smooth base, ht. 9 7/8”; (just a slight trace of light wear including a 5/8” area of roughness along the back edge of the collar that you can feel, but is not easy to see, otherwise near mint). R/H #T67L. A pretty example. Provenance: Ex. Judge E.S. MacKenzie collection.

Est.: \$400 - \$600 • Min. bid: \$200



Lot 150

“TURNER BROTHERS / NEW YORK” **Figural Barrel**, 1865 - 1875. Medium honey amber, barrel form with (9) rings above and below center band, applied square collar, ht. 9 7/8”, near mint; (just a tiny pinpoint speck of roughness on the collar, and a 1/4” open bubble on one of the rings near a side mold seam, otherwise virtually attic mint). Unlisted, similar to R/H #T67L. Note; a scarce variant and distinctively different mold than the previous two examples.

Est.: \$400 - \$600 • Min. bid: \$200



Lot 151

“OLD SACHEM / BITTERS / AND / WIGWAM TONIC”, 1860 - 1875. Beautiful, deep raspberry puce coloration with some attractive pinkish tones, depending on the lighting, barrel form, applied square collar - smooth base, ht. 9 3/8”, attic mint! R/H #O46. Fantastic, eye-appealing color and shading as it lightens up below the shoulders, and along one of the sides, outstanding condition.

Est.: \$600 - \$900 • Min. bid: \$300



Lot 152

“BOURBON WHISKEY / BITTERS.”, 1860 - 1875. Beautiful, medium pinkish copper, barrel form, applied square collar - smooth base, ht. 9 1/4”, near mint; (just a trace of typical, very light wear around the mid-body). R/H #B171. A very rare and unusual color, outstanding character, very heavily whittled. This gorgeous barrel is a true ‘chameleon’ that changes color according to the type of light, time of day, etc. A lot of pink tones in this one!

Est.: \$1,200 - \$2,200 • Min. bid: \$600



Lot 153

"GREELEY'S BOURBON. / BITTERS", 1860 – 1875. Clear, light mossy olive coloration, barrel form, applied square collar – smooth base, ht. 9 1/8", near mint; (a couple of tiny pinprick specks of roughness on the edge of the square collar that you can feel, but are not easy to see; a touch of typical light wear around mid-body including a 1/8" paper-thin open bubble on the reverse). R/H #G101. A rare color, lighter in tone than most of the other 'green' Greeley's.

Est.: \$2,500 - \$3,500 • Min. bid: \$1,300



Lot 157

"GREELEY'S – BOURBON WHISKEY / BITTERS. – GREELEY'S", 1860 – 1875. Very deep raspberry amethyst coloration, barrel form, applied square collar – smooth base, ht. 9 1/4"; (just a slight trace of very light wear, and the bottle may have been lightly cleaned, but certainly presents as very near mint). R/H #G102. Scarce 'vertical Greeley's' mold, and although the color is dense, it's a very beautiful raspberry amethyst coloration.

Est.: \$400 - \$600 • Min. bid: \$200



Lot 154

"GREELEY'S BOURBON / BITTERS.", 1860 – 1875. Light-to-medium coppery peach coloration, barrel form, applied square collar – smooth base, ht. 9 3/8"; (professionally cleaned to original luster and near mint condition; just a slight trace of light wear including a 3/16" chip on the side of the applied collar). R/H #G101. Beautiful, desirable, 'see-through' color – lighter than most, very nicely whittled, a pretty example!

Est.: \$400 - \$600 • Min. bid: \$200



Lot 158

"DR C.W. ROBACKS / STOMACH BITTERS / CINCINNATI. O", America, 1855 - 1865. Rich, medium amber, barrel form, applied sloping collar – heavy red iron pontil scar, ht. 9 3/4"; (an onionskin-thin, 3/16" flake on the top of the lip, and a little minor roughness, some possibly in-manufacture, on the back edge of the lip, and a bit on the inner edge, otherwise excellent with just a trace of typical faint wear). R/H #R73. A heavily whittled, attractive crude example.

Est.: \$200 - \$400 • Min. bid: \$100



Lot 155

"GREELEY'S BOURBON / BITTERS", 1860 – 1875. Medium-to-deep coppery puce, barrel form, applied square collar – smooth base, ht. 9 3/8"; (a 1/8" chip on the edge, at the side of the applied collar; a couple of light scratches and some minor wear, primarily on the reverse, otherwise excellent). R/H #G101. Heavily whittled, strong embossing, with nice variegated tones shading from medium along one side, to a deep copper-puce along the other side.

Est.: \$300 - \$500 • Min. bid: \$150



Lot 159

"W & Co / N.Y." Figural Pineapple Bitters, America, 1855 - 1865. Golden amber, pineapple form, applied round double collar – blowpipe pontil scar, ht. 8 1/2", virtually perfect; (just a trace of minor light wear, otherwise attic mint). R/H #P100. A great example of this scarce, embossed, figural pineapple bitters!

Est.: \$300 - \$500 • Min. bid: \$150



Lot 156

"GREELEY'S BOURBON / BITTERS.", 1860 – 1875. Deep cherry puce coloration, barrel form, applied square collar – smooth base, ht. 9 1/8"; (professionally cleaned to original luster; some light wear around the mid-body, primarily on the reverse, and a 1/4", paper-thin open bubble at the side). R/H #G101. A deeper color than most, and with a perfect square collar.

Est.: \$250 - \$400 • Min. bid: \$130



Lot 160

"BROWN'S / CELEBRATED / INDIAN HERB BITTERS - PATENTED / FEB 11. / 1868", 1868 - 1880. Gorgeous, light yellowish honey coloration, figural Indian maiden, sheared and inward rolled mouth – smooth base, ht. 12 1/4"; (a 1/2" 'U-shaped' crack below the chin on the neck of the princess, otherwise virtually attic mint). R/H #B226. Despite the noted fissure, it displays beautifully and is much lighter in color than most, and with a perfect rolled lip. Provenance: Bruce Purdy collection.

Est.: \$400 - \$600 • Min. bid: \$200



Lot 161

“NATIONAL / BITTERS” - “PATENT / 1867” (on base), 1867 - 1875. Bright, light golden, almost a honey coloration, figural ear of corn, applied short tapered collar with ring - smooth base, ht. 12 3/8", attic mint! R/H #N8. A beautiful example, nice lighter color with some whittling and character to the glass. One of the great classics in figural bitters. Provenance: Bruce Purdy collection.

Est.: \$400 - \$600 • Min. bid: \$200



Lot 165

Unembossed Cabin-Form Drake's Bitters (with 98% complete, original label and revenue stamp), probably 1862 - 1863. Golden amber, cabin form with two corners having a wide flat bevel, applied double collar - smooth base, ht. 10"; (a 1/8" paper-thin open bubble on beveled corner, otherwise perfect). A very rare mold believed to be the prototype for Drake's. The bottle design matches the patent drawing for P.H. Drake, design No. 1538, Feb., 18, 1862 (see Peachridge Glass, Log Cabin Series).

Est.: \$800 - \$1,200 • Min. bid: \$400



Lot 162

“THE / FISH BITTERS - W.H. WARE / PATENTED 1866”, America, 1866 - 1875. Medium amber through the mid-body shading to an attractive yellowish honey along the side, figural fish, applied ring collar - smooth base, ht. 11 3/8", near mint; (just a slight trace of very minor wear, and a tiny pinhead flake at edge of base, otherwise perfect). R/H #F45. An excellent example of this classic figural bitters, nice strong embossing, fantastic condition.

Est.: \$250 - \$450 • Min. bid: \$130



Lot 166

“S T / DRAKE'S / 1860 / PLANTATION / X / BITTERS - PATENTED / 1862”, 1862 - 1880. Beautiful, bright yellowish honey coloration, cabin form with 6-logs above the label panel, applied sloping collar - smooth base, ht. 10", attic mint. R/H #D105. A very pretty example, nice and light all the way to the base, with plenty of attractive yellowish tones.

Est.: \$300 - \$500 • Min. bid: \$150



Lot 163

“DR ATHERTON'S - DEW DROP - BITTERS - 1866 - LOWELL - MASS”, 1866 - 1870. Brilliant yellow with some warmer honey tones through the neck and shoulders, square, beveled corners, concentric ring shoulders, applied sloping collar - smooth base, ht. 9 7/8", attic mint. R/H #A106. An extremely rare bitters, virtually pristine condition. Believed to be one of only three or four known! Fantastic color and condition. Fred Swiechowicz collection.

Est.: \$8,000 - \$12,000 • Min. bid: \$4,000



Lot 167

“S T / DRAKE'S / 1860 / PLANTATION / X / BITTERS - PATENTED / 1862”, 1862 - 1880. Rich medium peach with some deeper orangey-apricot tones, cabin form with 6-logs above the label panel, applied sloping collar - smooth base, ht. 9 3/4", virtually pristine perfect; (just an onionskin-thin pinhead open bubble on one of the shoulders, otherwise mint). R/H #D105. Another great example, beautiful color, bright, clean, outstanding condition.

Est.: \$400 - \$800 • Min. bid: \$200



Lot 164

“THE BEST BITTERS / IN AMERICA - B. DESENBERG & Co / KALAMAZOO MICH”, 1865 - 1870. Amber, cabin form, three-tiered thatched roof, roped corners, applied sloping collar - smooth base, ht. 9 3/4", near perfect; (a 1/4 x 3/16" open bubble, well hidden on one of the back roped corners, and a tiny 1/8" open bubble at edge of base, otherwise virtually pristine perfect). R/H #B92. A fantastic example of very rare cabin bitters. Ex. Chris Batdorff, Sidney Genius collections.

Est.: \$8,000 - \$12,000 • Min. bid: \$4,000



Lot 168

“SIMON'S CENTENNIAL BITTERS - TRADE MARK”, America, 1876 - 1880. Aquamarine with some faint yellowish amber striations through the neck and hair, figural bust of General George Washington, crudely applied ring collar - smooth base, ht. 9 7/8", very near mint; (some faint light scratches on the reverse, and a little minor roughness, in-manufacture, on the inside edge of the lip, otherwise perfect). R/H #S110. A bright, clean example, excellent condition.

Est.: \$600 - \$900 • Min. bid: \$300



Lot 169

"HOLTZERMANN'S / PATENT / STOMACH / BITTERS" (with complete original label), 1900 – 1910. Medium amber, rectangular cabin form, tooled sloping collar – smooth base, ht. 9 3/4"; (the bottle is virtually pristine perfect; the original label has a little staining along the top and one of the sides, and is faded from age, but is complete, and otherwise excellent). R/H #H154. A great example of this popular cabin with very strong, crisp embossing.

Est.: \$300 - \$500 • Min. bid: \$150



Lot 170

"DOYLES - HOP - BITTERS - 1872" – (Hop berries and leaves), (with more than 90% complete, original, label), America, 1875 – 1885. Bright, light yellowish honey coloration, square, semi-cabin form, applied sloping collar with bevel – smooth base, ht. 9 3/4"; (attic mint with just a bit of spotty light content residue; original label is faded a bit, but overall excellent condition). R/H #D93. This is one of the lightest examples that we have seen, and very scarce with original label.

Est.: \$200 - \$300 • Min. bid: \$100



Lot 171

"WAHOO / & / CALISAYA / BITTERS - JACOB PINKERTON - JACOB PINKERTON - I.M. - O.K - Y !! - Y !!!", 1870 - 1880. Light golden amber, almost a honey coloration through the corners, semi-cabin form with columned corners, applied sloping collar – smooth base, ht. 10 1/8"; (just the slightest trace of faint wear, otherwise virtually pristine perfect). R/H #W3. A very pretty example of this scarce semi-cabin, outstanding condition, nice density of color.

Est.: \$700 - \$900 • Min. bid: \$350



Lot 172

"CURTIS - CORDIAL - CALISAYA - THE GREAT - STOMACH - BITTERS - 1-8-6-6-C-C-C-1-9-0-0", 1875 – 1885. Brilliant light yellowish honey, almost a butterscotch coloration, cylindrical with 12 panels around the shoulders, applied mouth with flat band – smooth base, ht. 11 5/8"; virtually attic mint; (a 1 1/2" superficial, very light scratch near the side mold seam, otherwise pristine perfect). R/H #C261. A scarce, very attractive bitters. Fantastic color and condition!

Est.: \$800 - \$1,200 • Min. bid: \$400



Lot 173

"BAKER'S / ORANGE GROVE - BITTERS", America, 1870 – 1880. Gorgeous, medium pinkish strawberry-putice in the shoulders, shading to a rich, deep strawberry puce towards the base, square with roped corners, applied sloping collar – smooth base, ht. 9 3/8"; virtually perfect; (just the slightest trace of very light wear, otherwise pristine). R/H #B9. Very scarce, absolutely fantastic color and condition! A top example with plenty of eye-appeal!

Est.: \$800 - \$1,200 • Min. bid: \$400



Lot 174

"DR. A.S. HOPKINS / UNION STOMACH BITTERS / HARTFORD CONN" (with 98% complete original labels on three sides, plus partial shoulder labels), 1882 – 1895. Golden amber, square with beveled corners, applied sloping collar – smooth base, ht. 9 1/2"; (the bottle is attic mint; original labels have a little staining and are darkened a bit by age, but otherwise completely legible). R/H #H180. A great example, scarce with nearly complete original labels.

Est.: \$200 - \$400 • Min. bid: \$100



Lot 175

"DR J. HOSTETTER'S / STOMACH BITTERS" (with 80 – 95% complete front and back labels), a Pittsburgh district glasshouse, 1860 – 1870. Medium-to-deep 'old amber', square with beveled corners, crudely applied sloping collar – smooth base, ht. 9 1/4", base dia. 3", attic mint. This one has it all – outstanding character, very crude, seedy glass, a large 'drippy' collar, original early labels, and in a very rare amber coloration. Provenance: Fred Swiechowicz collection.

Est.: \$500 - \$800 • Min. bid: \$250



Lot 176

"DR TOMPKINS' / VEGETABLE BITTERS", 1855 – 1860. Clear green with an emerald tone, almost a teal coloration, rectangular, beveled corners, applied sloping collar – blowpipe pontil scar, ht. 8 5/8"; (an attic-type bottle that had a small piece, 1/4" x 1/2", of the base corner on the reverse professionally repaired; a little scattered high point wear including a tiny flake on one of the panel edges, and a 3/16" flake at edge of base). R/H #T36. A beautiful, extremely rare, colored pontiled bitters.

Est.: \$2,000 - \$4,000 • Min. bid: \$1,000



Lot 177

“Jno. MOFFAT – PHOENIX / BITTERS – PRICE \$ 1 – NEW YORK”, 1840 – 1855. Medium olive amber below the shoulders shading to a deep olive amber near the base, rectangular with beveled corners, applied short tapered collar – sand type pontil scar, ht. 5 3/8”, virtually perfect; (some washable interior content residue). R/H #M110. Very strong embossing, excellent condition. Provenance: Fred Swiechowicz collection.

Est.: \$600 - \$900 • Min. bid: \$300



Lot 181

“OLD DR / J. TOWNSENDS – SARPAPARILLA – NEW YORK”, America, 1860 – 1870. Rich, deep, bluish aquamarine, almost a light blue green, square with beveled corners, applied sloping collar – smooth base, ht. 9 5/8”; (a little scattered light wear including a 1/8” flake on the inside edge of the lip; a narrow 1/2” band of very light haze above the base, otherwise excellent). This, and the next three examples, are from an old-time collection of Dr. Townsend bottles.

Est.: \$100 - \$200 • Min. bid: \$50



Lot 178

“JOHN MOFFAT – PHOENIX / BITTERS – PRICE 1 DOLLAR – NEW YORK”, 1840 – 1850. Bright olive green, rectangular with beveled corners, crudely applied large ring type collar – sand type pontil scar, ht. 5 1/2”, near mint; (just a trace of light wear including a less-than 1/8” bit of roughness on top of the collar, otherwise perfect). R/H #M113. A great example of this rare mold, in a very rare – pure green coloration. Fred Swiechowicz collection.

Est.: \$1,800 - \$3,200 • Min. bid: \$900



Lot 182

“OLD DR / J. TOWNSENDS – SARSAPARILLA – NEW YORK”, 1850 – 1860. Yellowish emerald coloration, square with beveled corners, applied sloping collar – smooth base, ht. 9 5/8”; (just a trace of light wear including a 1/8”, paper-thin flake at the corner of the base, otherwise virtually attic mint). A great example, strong embossing, pretty color, excellent condition.

Est.: \$300 - \$500 • Min. bid: \$150



Lot 179

“DR TOWNSEND’S – SARSAPARILLA – ALBANY / N Y”, probably NY State, possibly Mt. Pleasant, 1846 – 1855. Yellowish tobacco amber below the shoulders, shading a deep tobacco color near the base, square with beveled corners, applied sloping collar – sand type pontil scar, ht. 9 1/8”; (a little light wear on the Townsend’s panel, otherwise near attic mint). A great example, scarce mold variant, and a very rare color for this mold, the vast majority are in shades of green.

Est.: \$1,500 - \$2,500 • Min. bid: \$800



Lot 183

“OLD DR / J. TOWNSENDS – SARSAPARILLA – NEW YORK.”, 1850 – 1860. Rich, medium bluish green, square with beveled corners, applied sloping collar – iron pontil scar, ht. 9 5/8”; (just a trace of light wear including a 1/8” chip on the edge of the collar; a small sandgrain on the inside surface of the glass, on one of the side panels, with a little iridescence and a couple of tiny 1/16” ‘legs’). A very crude, eye-appealing example, excellent character with whittled, wavy glass.

Est.: \$200 - \$400 • Min. bid: \$100



Lot 180

“DR TOWNSENDS – SARSAPARILLA – NEW YORK.”, 1855 – 1865. Rich, deep emerald with a slight bluish tone, square, beveled corners, applied sloping collar – domed smooth base, ht. 9 1/2”, near mint; (a trace of light wear including a couple of small spots of minor roughness, 3/16” or less, on the edge of the collar that you can feel, but are not easy to see, otherwise perfect). Rich, gorgeous color, heavily whittled, crude glass, and a very rare color for this “NEW YORK.” mold.

Est.: \$1,200 - \$2,400 • Min. bid: \$600



Lot 184

“OLD DR / J. TOWNSENDS – SARSAPARILLA – NEW YORK”, 1850 – 1860. Clear green with a teal tone, square with beveled corners, applied sloping collar – light iron pontil scar, ht. 9 1/2”; (some minor exterior wear, and a bubble between “NEW” and “YORK” with a tiny opening and a slight bit of residue; a little light interior haze below the shoulder, not terribly distracting, but mentioned for completeness, otherwise excellent). A beautiful and scarce color for a Townsend’s.

Est.: \$400 - \$600 • Min. bid: \$200



Lot 185

“**DR. MASEKER'S / BALM / OF / GILEAD / N. YORK**”, probably 1844 – 1846. Bright blue green coloration, large rectangular form, applied sloping collar – heavy iron pontil scar, ht. 9 1/8”, perfect! Odell, p.240. Per Odell, John Maseker, known as the “Indian Doctor”, was in business from approximately 1840 – 1846. Law and Boyd became successors to the “late John Maseker” in 1847. Exceedingly rare, one of only two known pontiled examples. Fred Swiechowicz collection.

Est.: \$15,000 - \$25,000 • Min. bid: \$7,500



Lot 189

“**MRS. E. KIDDER / DYSENTERY / CORDIAL / BOSTON**”, 1845 – 1860. Clear medium bluish emerald coloration, cylindrical, applied sloping collar with bevel – blowpipe pontil scar, ht. 7 3/4”, virtually perfect; (an attic-type bottle that had a couple of spots of minor light dullness, but has been very lightly cleaned to original luster and virtually pristine condition). Odell, p.213. A beautiful example in a rare color, outstanding condition. Provenance: Fred Swiechowicz collection.

Est.: \$3,000 - \$6,000 • Min. bid: \$1,500



Lot 186

“**DR. PERKINS' / SYRUP, ALBANY.**”, probably a NY State glasshouse, possibly Albany Glass Works, 1847 – 1855. Rich, medium-to-deep blue green, rectangular with beveled corners, applied sloping collar – heavy iron pontil scar, ht. 9 1/2”, near perfect; (just a trace of faint light wear, otherwise sparkling attic mint). Odell, p.276. Deep color, very crude, seedy glass. A superior example in terms of depth of color, character, and condition. Ex. Sam Greer collection.

Est.: \$5,000 - \$8,000 • Min. bid: \$2,500



Lot 190

Rare, Unusual Medicine or Utility Bottle, New England, 1845 – 1860. Beautiful light olive coloration, cylindrical with 12 vertical panels, sheared, tooled, and outward rolled mouth – blowpipe pontil scar, ht. 7 1/4”, virtually perfect; (a slender 1/4” bubble with a tiny opening and small bit of residue, otherwise pristine perfect). A very rare mold, beautiful color, outstanding clarity, eye-appeal, and condition. Provenance: Fred Swiechowicz collection; Ex. Charles B. Gardner collection.

Est.: \$800 - \$1,200 • Min. bid: \$400



Lot 187

“**HYATT'S - INFALLIBLE - LIFE BALSAM / N - Y**”, 1852 – 1860. Medium emerald, ‘fat’ rectangular mold, applied sloping collar – iron pontil scar, ht. 9 5/8”, near mint; (an ‘attic-type’ bottle with some light, minor interior content haze and a partially open interior bubble; some in-manufacture glass extrusion at the mold seam). Note; this is the ‘squarish’ mold with the large-lettered embossing, the second most difficult of all the Hyatt’s to acquire! Ex. Jerry Phelps collection.

Est.: \$3,000 - \$6,000 • Min. bid: \$1,500



Lot 191

Early Medicine or Utility Bottle (with partial, likely original label), New England, a Stoddard, N.H. glasshouse, 1842 – 1860. Bright, yellowish ‘old amber’, rectangular with wide beveled corners, applied sloping collar – iron pontil scar, ht. 8”; (a tiny pinhead flake at corner of base, otherwise pristine perfect). A rare utility, extremely rare with label which reads in part; *FROM / P. KIMBALL / TROY N. H. / Dealers in Everything*. A beautiful utility, Ex. Rare with label. Fred Swiechowicz collection.

Est.: \$800 - \$1,200 • Min. bid: \$400



Lot 188

“**ARTHURS - RENOVATING - SYRUP. A & A**”, 1850 – 1860. Bright blue green coloration, square with beveled corners, applied sloping collar – iron pontil scar, ht. 9”, virtually pristine perfect; (some minor in-manufacture crazing lines in the applied mouth mentioned for completeness, but not considered damage). Odell, p.11. Note; this is the large size variant with the extended mold at the base. Excellent clarity, character, and virtually pristine condition.

Est.: \$2,500 - \$4,500 • Min. bid: \$1,300



Lot 192

“**SMITH'S - GREEN MOUNTAIN - RENOVATOR - EAST. GEORGIA. VT**”, Granite Glass Company, Stoddard, NH, 1850 - 1860. Beautiful yellowish amber below the shoulders and along one of the sides, shading to a rich, deeper, ‘old amber’ towards the base, rectangular with wide beveled corners, applied round double collar – iron pontil scar, ht. 6 7/8”, attic mint! Strong embossing, fantastic condition, a great example of this classic, Stoddard, colored pontiled medicine.

Est.: \$1,600 - \$2,400 • Min. bid: \$800



Lot 193

“DR. HARTSHORN'S / MEDICINE”, a Stoddard, NH glasshouse, possibly South Stoddard, or Mill Village, 1855 – 1865. Yellowish amber along one side and through the center, shading to a deep 'old amber' through the shoulders and base, oval, applied square collar – smooth base, ht. 6”, near mint; (just a trace of very minor wear including a pinprick speck of roughness on the edge of the collar, some dried interior content residue in the upper half of the bottle). Fred Swiechowicz collection.

Est.: \$800 - \$1,200 • Min. bid: \$400



Lot 197

“DR. RUSSELL'S / BALSAM OF HOREHOUND / AND / SARSAPARILLA”, 1845 - 1860.

Aquamarine, rectangular with beveled corners, applied sloping collar with bevel – blowpipe pontil scar, ht. 9 3/8”; (professionally cleaned to original luster with some scattered minor wear and light scratches remaining). Odell, p.307; DeG #185. A large, impressive, very rare sarsaparilla – bright, clean and heavily whittled.

Est.: \$300 - \$500 • Min. bid: \$150



Lot 194

“T. MORRIS PEROT & Co – DRUGGISTS – PHILAD.A”, America, 1854 - 1859. Clear, light-to-medium sapphire blue, narrow rectangular form with slope shoulders, sheared, tooled, and inward rolled mouth – blowpipe pontil scar, ht. 4 3/4”, attic mint! Odell, p.277. Scarce. A great example, and one of three different molds that this early, colored, pontiled Philadelphia druggist may be found in. A very pretty example.

Est.: \$400 - \$600 • Min. bid: \$200



Lot 198

“Dr. WOODWORTH'S / SARSAPARILLA – BIRMINGHAM, CT.”, America, probably 1851 – 1855. Aquamarine, rectangular with beveled corners, applied sloping collar – blowpipe pontil scar, ht. 10”, virtually attic mint; (a tiny, pinhead open bubble on one of the side panels, otherwise perfect). DeG #229; Odell, p.381. Scarce. A big, attractive, pontiled sarsaparilla.

Est.: \$400 - \$600 • Min. bid: \$200



Lot 195

“T. MORRIS PEROT & Co – DRUGGISTS – PHILAD.A”, America, 1854 - 1859. Sapphire blue, rectangular, pyramid form with sides tapering inward from base to shoulders, sheared, tooled, and inward rolled lip - blowpipe pontil scar, ht. 5”, perfect. A fantastic example, beautiful color, clarity, and condition with nice character and waviness to the glass. The majority of these have been dug and cleaned, but not this one! Ex. Gary Enters collection.

Est.: \$1,000 - \$1,500 • Min. bid: \$500



Lot 199

“Dr MYER'S – VEGETABLE EXTRACT / SARSAPARILLA / WILD CHERRY / DANDELION – BUFFALO. N.Y”, 1850 – 1860. Aquamarine, rectangular, beveled corners, applied sloping collar – iron pontil scar, ht. 9 5/8”; (professionally cleaned to original luster with some faint interior haziness remaining; a 1/8” iridescent bruise on the collar; a 1/4” flake on the side shoulder panel, and a tiny, 1/8”, hard-to-see annealing line in the side panel). Odell, p.262; DeG #158.

Est.: \$300 - \$500 • Min. bid: \$150



Lot 196

“DR GUYSOTT'S – COMPOUND / EXTRACT OF – YELLOW DOCK & / SARSAPARILLA”, 1850 – 1860. Aqua, square with beveled corners, applied sloping collar – sand type pontil scar, ht. 9 1/8”; (professionally cleaned to original luster with just a bit of minor wear remaining, including a 1/8” flake on one of the panel edges, and several small marks of abrasion, or ground wear, at the edge of one of the shoulder panels). Odell, p.155; DeG #90.

Est.: \$250 - \$450 • Min. bid: \$130



Lot 200

“DR. CUMMINGS' / COMPOUND EXTRACT / SARSAPARILLA AND DOCK / PORTLAND ME.”, 1845 – 1855. Aquamarine, rectangular with beveled corners, tooled, thin flanged lip – blowpipe pontil scar, ht. 7”; (professionally cleaned with a little light haziness remaining, and a touch of minor wear including a tiny pinhead flake on a panel edge and 1/8” annealing line in the lip). Odell, p.96; DeG #52. An extremely rare, heavily whittled, eye-appealing sarsaparilla.

Est.: \$400 - \$800 • Min. bid: \$200



Lot 201

“JOHN BULL. – EXTRACT. OF / SARSAPARILLA – LOUISVILLE. KY”, Midwest, possibly Kentucky or Louisville Glass Works, 1850 – 1860. Aqua, rectangular, beveled corners, applied sloping collar – large rectangular iron pontil scar, ht. 9”; (just a touch of minor light wear, otherwise attic mint). Odell, pgs. 58-58. A bright, clean example, nice character to the glass. Note; this is the variant with the embossing “EXTRACT OF”, and “SARSAPARILLA”, nearly touching.

Est.: \$200 - \$300 • Min. bid: \$100



Lot 205

“GOODYEAR’S – BALM / of / LIFE. – NEW YORK”, 1850 – 1860. Aquamarine, rectangular with beveled corners, applied round double collar – blowpipe pontil scar, ht. 7 1/8”; (professionally cleaned to original luster; a couple of spots of minor abrasion or ground wear, as well as a 1/2” scratch on the back label panel, otherwise a bright, clean, sparkling example of this very scarce-to-rare pontiled medicine). Odell, p.148. Provenance: Gary Enters collection.

Est.: \$200 - \$400 • Min. bid: \$100



Lot 202

“DR. S.A. WEAVER’S / CANKER & / SALT RHEUM / SYRUP.”, 1850 – 1860. Aqua, oval, applied disc-type collar – iron pontil scar, ht. 9 3/8”; (a partially open interior bubble with a little residue, otherwise virtually perfect). Odell, p.365. A big, attractive pontiled medicine, crude pebbly glass. Manufactured by Salton A. Weaver & Co, New London, CT. Circa 1850 ad stated 50,000 cases of humors have been treated, “cured with one bottle of the syrup and one box of the cerate”.

Est.: \$100 - \$200 • Min. bid: \$50



Lot 206

“MORGAN’S / MAGIC BALM”, 1850 – 1860. Aquamarine, rectangular with beveled corners, applied sloping collar – blowpipe pontil scar, ht. 6”; (professionally cleaned with just a trace of minor wear remaining; some light interior haze). Odell, p.257. Extremely rare! Believed to be one of only two, or perhaps three, known. Only one recorded example was sold at auction (2007), in more than 30 years. This is believed to be the same example. Provenance: Gary Enters collection.

Est.: \$300 - \$600 • Min. bid: \$150



Lot 203

“Dr. COVERT’S / BLOOD / RENOVATOR.”, 1850 – 1860. Aqua, rectangular with rounded sides, applied sloping collar – blowpipe pontil scar, ht. 7 3/4”; (some light wear, primarily on the back label panel, and some spotty light haze). Extremely rare – the only recorded example to have been offered at auction. In addition, a very unusual mold, attractive large embossing, crude wavy glass filled with tiny bubbles. Gary Enters collection; Ex. Sam Greer collection.

Est.: \$400 - \$600 • Min. bid: \$200



Lot 207

“PREPARED ONLY / BY W.F. GRAY / NASHVILLE TENN”, 1850 – 1860. Greenish aquamarine, rectangular with beveled corners, applied round collar with bevel – iron pontil scar, ht. 7 1/2”; (professionally cleaned with some light interior haze remaining, and a paper-thin 1/8” flake at corner of the base). An extremely rare southern pontiled medicine. The last example (and likely the same example), sold more than 25 years ago, (08/1996). Provenance: Gary Enters collection.

Est.: \$400 - \$800 • Min. bid: \$200



Lot 204

“SKELTON’S – PECTORAL BALSAM / OF LIFE / FOR – LUNG DISEASE”, 1850 – 1860. Aqua, rectangular, beveled corners, applied sloping collar – blowpipe pontil scar, ht. 7 1/4”; (professionally cleaned to original luster with a touch of minor wear remaining, as well as some faint interior cloudiness; a pontil flake extending to the edge of the base may have been lightly polished, otherwise excellent). Odell, p.322; Blasi, p.126. Very rare. Gary Enters collection.

Est.: \$300 - \$500 • Min. bid: \$150



Lot 208

“LAUGHLINS / AND / BUSHFIELD – WHOLESALE / DRUGGISTS – WHEELING / VA”, 1850 – 1860. Bright aquamarine, rectangular with narrow beveled corners, sheared, tooled, and inward rolled mouth – blowpipe pontil scar, ht. 6”, near mint; (lightly cleaned to original luster and virtually perfect condition). Very scarce. A great example, bright, clean, strong crisp embossing, excellent condition. These don’t come around often, especially this nice. Gary Enters collection.

Est.: \$200 - \$400 • Min. bid: \$100



Lot 209

"BLEYS / SUPERIOR – CALCINED – MAGNESIA – PHILADA.", 1845 – 1855. Colorless, nearly square, 'fat' rectangular body with narrow beveled corners, sheared, tooled, and inward rolled mouth – blowpipe pontil scar, ht. 3 7/8", near mint; (trace of interior residue). Odell, p.35. Rare, (noted in Greer as "Very rare"). Per Odell, George Bley was an early Philadelphia druggist located at Third and Poplar. Provenance: Gary Enters collection; Ex. Sam Greer collection (#239).

Est.: \$200 - \$400 • Min. bid: \$100



Lot 213

"CUTTER'S – VEGETABLE – REMEDY", 1858 – 1865. Aquamarine, large rectangular form, applied double round collar – blowpipe pontil scar, ht. 8 3/4", near mint; (in 'as found' condition from an estate sale in NJ, with some light interior content stain, some of which may wash out, otherwise perfect). An unlisted, believed to be unique, pontiled medicine. We could find no record of this bottle in our research. Possibly blown for Ephraim Cutter, Woburn, Mass.

Est.: \$800 - \$1,200 • Min. bid: \$400



Lot 210

"STEPHEN'S RHEUMATIC REMEDY / CLEVELAND O", 1845 – 1860. Aqua, octagonal, domed shoulders with a wide neck, sheared and inward rolled mouth – blowpipe pontil scar, ht. 3"; (professionally cleaned to original luster, some light haze remains around the embossing and on the base, but otherwise excellent with no other form of damage). A rare, possibly unique pontiled medicine with great eye-appeal, strong embossing, very crude. Gary Enters collection.

Est.: \$600 - \$900 • Min. bid: \$300



Lot 214

"LEWIS & FLETCHERS – NEW. VEGETABLE / COMPOUND – FRANKLIN IND" (with 75% original label), 1850 - 1860. Rich, deep aquamarine, rectangular, beveled corners, applied round collar with bevel - iron pontil scar, ht. 7 3/4", virtually attic mint; (tiny, miniscule bit of roughness at base edge, otherwise pristine perfect). Very rare, one of only six known – in any condition, and likely unique with label. A brilliant, sparkling example, excellent character. Ex. Sam Greer collection.

Est.: \$1,200 - \$2,400 • Min. bid: \$600



Lot 211

"JELLY OF / POMEGRANATE / PREPARATE – BY / DR. GORDAK / ONLY", 1835 - 1845. Aquamarine, rectangular with rounded sides, wide neck with applied ring type collar – blowpipe pontil scar, ht. 6 3/4", near mint; (a light ring of faint haze or residue, on the interior, just above the base, and a shallow open interior bubble near the base, otherwise excellent). Odell, p.148. Rare. A great example, strong embossing (many are weak), excellent condition.

Est.: \$250 - \$450 • Min. bid: \$130



Lot 215

"AMERICAN / OIL – D. HAIL & Co – BURKESVILLE / KY", a Midwest glasshouse, probably 1845 – 1850. Aquamarine, rectangular with narrow beveled corners, sheared, tooled, and inward rolled mouth – blowpipe pontil scar, ht. 5 1/4", attic mint! Odell, p.5. A very rare pontiled medicine – especially in this crude, sparkling, virtually pristine perfect condition. This is the early variant, and distinctively different mold with the proprietor, D. Hail, embossed on the side.

Est.: \$600 - \$900 • Min. bid: \$300



Lot 212

"SCOTT & STEWART – UNITED STATES / SYRUP – NEW YORK", 1849 – 1855. Aquamarine, rectangular with beveled corners, applied sloping collar – heavy iron pontil scar, ht. 9 3/8", perfect. Odell, p.354. An absolutely fantastic, very pretty example with crude, whittled, wavy glass, and virtually pristine perfect. The aqua examples are actually equally as rare, if not rarer, than the colored examples. A top example! Ex. Don Keating collection.

Est.: \$3,000 - \$6,000 • Min. bid: \$1,500



Lot 216

"DR. W.S. LUNT'S – FAMILY / MEDICINES – MAUMEE OHIO" (with 98% complete, original label), 1848 – 1855. Aquamarine, rectangular with beveled corners, applied double ring collar – blowpipe pontil scar, ht. 4 7/8"; (bottle is perfect, label darkened a bit from age, some minor staining, otherwise excellent). A great looking example, bright, clean, and with nice character to the glass. Very scarce-to-rare, particularly in this fine condition. Gary Enters collection.

Est.: \$300 - \$500 • Min. bid: \$150

**Lot 217**

“RHODES’ – ANTIDOTE / TO / MALARIA – FEVER & AGUE CURE” (with more than 90% complete, original label, partial contents), 1855 – 1860. Aquamarine, rectangular with beveled corners, applied sloping collar – blowpipe pontil scar, ht. 8”; (bottle is perfect; label excellent with just a bit of minor light stain). Odell, p.292. Bottle was originally discovered in the attic of an abandoned Indiana drugstore being converted to a gas station, late 1960s, early 1970s.

Est.: \$200 - \$400 • Min. bid: \$100

**Lot 221**

“JENKS – VEGETABLE / EXTRACT” (with complete original label, partial original wrapper), 1845 – 1855. Aquamarine, rectangular with beveled corners, sheared, tooled, and inward rolled mouth – blowpipe pontil scar, ht. 4”; (bottle is perfect; complete original label near perfect with minor stain, wrapper 80% complete but with staining as shown). Odell, p.201. Very rare, and believed to be unique with original label. Discovered in the attic of an old house in Rochester, NY.

Est.: \$250 - \$450 • Min. bid: \$130

**Lot 218**

“DR WISTARS – BALSAM OF – WILD CHERRY – SANFORD & PARK / CINCINNATI. O.” (with 98% complete, original label), 1850 – 1860. Deep, rich, bluish aquamarine, octagonal, applied sloping collar – iron pontil scar, ht. 6 1/2”; (bottle is perfect; label is 98% complete and excellent overall condition). Odell, p.379. A beautiful example, exceptionally strong color, great iron pontil. The earlier pontiled molds are rare with the original label.

Est.: \$400 - \$600 • Min. bid: \$200

**Lot 222**

“Dr. D. JAYNE’S / AMERICAN – HAIR DYE / PHILADA” (with original contents, cork and sealing wax), 1845 – 1855. Aquamarine, cylindrical, wide neck with a sheared, tooled, and outward folded mouth – blowpipe pontil scar, ht. 4 3/4”, perfect! Odell, p.197; DF, p.83. Dr. Jayne put out a number of different patent medicines and hair preparations. This is definitely one of the scarcer molds, and certainly very scarce in this undamaged, attic-type condition.

Est.: \$150 - \$250 • Min. bid: \$80

**Lot 219**

“MAGNETIC – AETHER BY – HALSTED & Co” (with original labels, cork, stamped red wax seal, partial contents), 1840 – 1850. Aquamarine, 9-sided, sheared, tooled, thin flanged lip – blowpipe pontil scar, ht. 4 1/8”; (bottle is perfect; 98% complete, original labels have some staining and darkened from age, but still mostly legible). Odell, p.158; N #273. A rare early pontiled medicine, especially with original labels, stamped red wax seal, and contents.

Est.: \$400 - \$600 • Min. bid: \$200

**Lot 223**

“Dr CAMPBELLS – HAIR / INVIGORATOR – AURORA – NEW YORK” (with virtually complete original wrapper), probably 1858 – 1863. Aquamarine, rectangular with beveled corners, applied ring collar with bevel – blowpipe pontil scar, ht. 5 7/8”; (bottle is perfect; original wrapper in overall excellent condition with a tear on the back and some tears at top from opening). Odell, p.66; Fadely, p.29. A nice crude example, rare with original wrapper. Ex. Sam Greer collection.

Est.: \$150 - \$250 • Min. bid: \$80

**Lot 220**

“JENKS – VEGETABLE / EXTRACT” (with 99% complete original label), 1845 – 1855. Aqua, rectangular with beveled corners, sheared, tooled, and inward rolled mouth – blowpipe pontil scar, ht. 2 7/8”; (bottle is perfect; virtually complete original label darkened a bit from age, but overall excellent condition). Odell, p.201. A very rare medicine, and the only one that we are aware of with original label! Discovered in the attic of an old house near Rochester, NY.

Est.: \$250 - \$450 • Min. bid: \$130

**Lot 224**

“PROFESSOR WOODS / HAIR RESTORATIVE – DEPOT. ST. LOUIS Mo. – AND NEW YORK” (with 85% complete, original label), probably 1857 – 1862. Deep aquamarine, rectangular with beveled corners, applied sloping collar – iron pontil scar, ht. 7 7/8”; (bottle is perfect; label has some light staining). Odell, p.380; Fadely, p.166. A big, bright, attractive hair bottle, the 2nd largest of three sizes, outstanding condition. Provenance: Ex. Sam Greer collection.

Est.: \$200 - \$400 • Min. bid: \$100



Lot 225

“A. LIDDON” Hair Bottle (with virtually complete, original label), 1855 – 1865. Medium sapphire blue, oval with deep fluted panels on front and back, applied square collar – blowpipe pontil scar, ht. 7 ½”; (an ‘attic-type’ bottle discovered intact, but with the neck broken away, which has been reattached and professionally repaired, otherwise perfect). A very rare colored, pontiled, hair bottle from Philadelphia, believed to be unique with the original label.

Est.: \$300 - \$600 • Min. bid: \$150



Lot 229

“DR PERETTS – HAIR RESTORER / S.C. HALL & CO – SOLE PROPRIETORS”, 1865 – 1875. Deep honey amber, rectangular with beveled corners, applied round double collar – smooth base, ht. 7 ¼”; (professionally cleaned with a couple of spots of ground wear and imperfections remaining, some light interior haziness). Although not perfect, it remains an extremely rare hair bottle. We sold the last recorded example back in Nov. 2011. John Wilson collection.

Est.: \$300 - \$600 • Min. bid: \$150



Lot 226

“DODGE BROTHERS - MELANINE - HAIR TONIC”, America, 1860 - 1870. Beautiful, deep pinkish strawberry puce, rectangular with beveled corners, applied ring collar with bevel – smooth base, ht. 7 3/8”, virtually attic mint; (just a couple of minor light scratches on the reverse, otherwise perfect). DF, p.48. A great example, fantastic color with plenty of pinkish strawberry tones, excellent condition! Provenance: John Wilson collection.

Est.: \$800 - \$1,200 • Min. bid: \$400



Lot 230

“CHURCH’S – CIRCASSIAN / HAIR – RESTORER”, America, 1865 – 1875. Very deep cherry puce, virtually black in reflected light, rectangular with beveled corners, applied ring collar with bevel – smooth base, ht. 7 ½”; (professionally cleaned to original luster with some relatively minor exterior wear and light scratches remaining; some interior residue and light stain). DF, p.35. A very rare hair bottle! Provenance: John Wilson collection.

Est.: \$300 - \$600 • Min. bid: \$150



Lot 227

“DR LEON’S / ELECTRIC / HAIR RENEWER – ZIEGLER & SMITH – PHILADA”, America, 1865 – 1875. Deep amethyst, rectangular with beveled corners, tooled, likely applied square collar – smooth base, ht. 7 1/8”; (professionally cleaned to original luster with some scattered minor wear and light swirl lines remaining; a bit of spotty light interior haze, not terribly distracting, mentioned for completeness). DF, p.93. A very scarce hair bottle, beautiful color. John Wilson collection.

Est.: \$400 - \$800 • Min. bid: \$200



Lot 231

“TIPPECANOE” / (CANOE) / “H.H. WARNER & Co” Figural Log (with 95% complete, original label), 1883 – 1890. Golden amber, figural log, applied ‘mushroom’ collar – **“PAT NOV 20. 83 / ROCHESTER / N.Y.”** (on smooth base), ht. 8 ¾”, perfect; (label darkened a bit from age, but completely legible). Label reads in part; *TIPPECANOE / THE BEST / FOR / DYSPEPSIA*... *...“CONSTIPATION / MALARIA. / FEMALE DEBILITY.* Provenance: Fred Swiechowicz collection.

Est.: \$400 - \$600 • Min. bid: \$200



Lot 228

“W.C. MONTGOMERY’S - HAIR / RESTORER - PHILADA”, 1875 - 1885. Medium-to-deep apricot puce coloration, rectangular with beveled corners, applied round collar with bevel – smooth base, ht. 7 5/8”, near mint; (just a slight trace of light wear including a tiny pinhead flake at edge of base; some very minor interior stain in one shoulder corner and one side, otherwise excellent). DF, p.111. A rare and unusual color for this mold. John Wilson collection.

Est.: \$400 - \$800 • Min. bid: \$200



Lot 232

“TIPPECANOE” / (CANOE) / “H.H. WARNER & Co” Figural Log (with 98% complete, original label), 1883 – 1890. Amber with a very slight hint of an olive tone, figural log, applied ‘mushroom’ collar – **“PAT NOV 20. 83 / ROCHESTER / N.Y.”** (on smooth base), ht. 8 7/8”, perfect; (label darkened a bit from age, but legible). Label reads in part; *TIPPECANOE / XXX / BITTERS / (SAFE) / STOMACH / TONIC.* The bitters label is very scarce and believed to be the first. Fred Swiechowicz collection.

Est.: \$600 - \$900 • Min. bid: \$300



Lot 233

"PERRINE'S" / (APPLE) / "GINGER"
- **"PERRINE'S - APPLE - GINGER - PHILA"** (with 97% complete, original label), 1880 - 1890. Honey amber, cabin form with roped corners, thatched roof panels, tooled sloping collar - smooth base, ht. 9 7/8"; (some light interior content residue; a tiny open bubble on back roof edge, otherwise attic mint). Note: one roof corner was not fully blown during manufacture, creates a bit of a lean to the bottle. Scarce with original label.

Est.: \$300 - \$500 • Min. bid: \$150



Lot 237

"FFM" (monogram) / **"Mykrantz / COLUMBUS, / O."** (with period, likely original labels on reverse), Carr-Lowrey Glass Co., Baltimore, MD, probably 1905 - 1910. Bright emerald green, rectangular with beveled corners, tooled prescription-type collar - **"C.L.G. CO."** (on smooth base), ht. 11" (32 oz), perfect! A big and impressive colored druggist bottle, rare in this large size, and especially in this fine condition. Label on reverse for Kauffman-Lattimer Co., wholesale druggists.

Est.: \$300 - \$500 • Min. bid: \$150



Lot 234

"TRADE MARK / SPARKS / PERFECT HEALTH" (BUST OF MAN) / "FOR / KIDNEY & LIVER / DISEASES / CAMDEN, N.J." (with small remnants of original label on reverse), America, 1885 - 1895. Medium-to-deep amber, rectangular with wide beveled corners, tooled sloping collar - smooth base, ht. 9 1/4"; virtually attic mint; (some moderate interior residue and haziness, much of which would likely wash out). Most of these have been dug, but not this one!

Est.: \$300 - \$500 • Min. bid: \$150



Lot 238

"POISON - BOWMAN'S / DRUG STORES - POISON", Carr-Lowrey Glass Co., Baltimore, MD, 1889 - 1910. Rich, medium-to-deep cobalt blue, irregular hex form, tooled prescription-type collar - **"16 / C.L.G. CO. / PATENT APPLIED FOR"** (on smooth base), ht. 7 1/2" (16 oz), sparkling mint! KI-1. A big, impressive poison, very scarce, especially in this un-dug, virtually pristine condition!

Est.: \$400 - \$600 • Min. bid: \$200



Lot 235

"L.Q.C. WISHART'S - PINE TREE / TAR CORDIAL / PHILA" - "PATENT" / (PINE TREE) / "1859", probably 1865 - 1870. Bright yellowish green, square, beveled corners, applied sloping collar - smooth base, ht. 7 3/4", perfect! A fantastic example, virtually 'out-of-the-mold', pristine condition, pleasing color, excellent clarity, strong embossing, and believed to be the 2nd earliest mold (square-shoulders, bushy tree, and nearly straight collar). Ex. Howard Crowe collection.

Est.: \$600 - \$900 • Min. bid: \$300



Lot 239

"MELVIN & BADGER / APOTHECARIES / BOSTON, MASS." (with 98% complete, original labels on reverse), Carr-Lowrey Glass Co., Baltimore, MD, 1889 - 1910. Deep, vivid cobalt blue with a violet tone, irregular hex form, tooled prescription-type collar - **"16 / C.L.G. CO. / PATENT APPLIED FOR"** (on smooth base), ht. 7 1/2" (16 oz), perfect! KI-2. Scarce, desirable 16 oz. size, and very scarce having virtually complete, original labels.

Est.: \$400 - \$600 • Min. bid: \$200



Lot 236

Lot of (2), Rare Sarsaparilla Bottles, 1880 - 1895. "WRIGHTS / SAR-SAPARILLA / BUFFALO N.Y.," and: "EARL'S / CASCARILLA / ALBANY. N.Y." Both are aquamarine, rectangular with beveled corners, tooled and applied square collars - smooth base, ht. 7 1/2" and 8 1/8" respectively, both are near mint; (some traces of light interior residue; 2nd example has a couple of onionskin-thin open surface bubbles). DeG #231, Ex. Rare; and DeGII #27, Very Rare.

Est.: \$120 - \$240 • Min. bid: \$60



Lot 240

"CLOUGH & SHACKLEY / BOSTON, MASS.", Carr-Lowrey Glass Co., Baltimore, MD, 1889 - 1910. Deep cobalt blue, irregular hex form, tooled prescription-type collar - **"16 / C.L.G. CO. / PATENT APPLIED FOR"** (on smooth base), ht. 7 1/2" (16 oz), perfect; (some very light interior residue noted for completeness; and an early faded label, possibly a Dr. script, remains on the reverse). KI-2. A very rare and desirable size for a "Clough & Shackley". Fred Swiechowicz collection.

Est.: \$400 - \$600 • Min. bid: \$200



Lot 241

“G W WESTON & Co – SARATOGA, N.Y.” Wide Mouth Salt Jar, possibly Saratoga Mountain Glassworks, Mt. Pleasant, NY, 1855 – 1861. Yellowish olive, cylindrical, 3-pc. mold, high shouldered quart with a wide neck and applied, heavy, ring-type collar – smooth base, Qt. ht. 8”; (slight trace of light wear, otherwise perfect). T #E-1:B. A very rare, eye-appealing salt jar, beautifully whittled, crude seedy glass. Ex. George McKearin; Dr. Burton Spiller collections.

Est.: \$3,000 - \$5,000 • Min. bid: \$1,500



Lot 245

“SUSQUEHANNA / MINERAL SPRINGS / PENNSYLVANIA”, 1865 – 1875. Beautiful, medium-to-deep emerald coloration, cylindrical, applied sloping collar with bevel – smooth base, Qt, near mint; (slight trace of very minor wear including a couple of tiny, pinhead open bubbles; a bit of faint, likely washable, interior residue, otherwise perfect). T #M-51. Rare. A great example, outstanding character with attractive swirl lines throughout the body. Ex. Howard Dean collection.

Est.: \$1,500 - \$2,500 • Min. bid: \$800



Lot 242

“BYRON ACID / SPRING WATER”, 1850 – 1860. Deep blue green, almost teal, cylindrical, applied sloping collar with bevel – iron pontil scar, ht. 8”, ¾ Qt; (a couple of 3/16” flakes, and a 3/8” iridescent bruise along the top, inside edge of the lip, and a less-than 1/8” chip on the outer edge of the lip, otherwise attic mint). T #N-5. Rare. Gorgeous, rich deep color, heavily whittled, heavy iron pontil, a great looking example! Ex. Jack Stecher, Rodger Sweetland collections.

Est.: \$2,500 - \$4,500 • Min. bid: \$1,300



Lot 246

“GARDNER & LANDON / SHARON / SULPHUR WATER”, probably a New York State Glasshouse, 1850 - 1860. Medium yellowish olive shading to a deep yellowish olive near the base, cylindrical, applied sloping collar with bevel - sand type pontil scar, Qt, virtually perfect; (slight trace of typical very minor wear, otherwise mint). T# N-29:A. An ‘attic-type’ bottle; remnants of an old cork remain in the neck. Very scarce. A great example with strong embossing, beautiful condition.

Est.: \$1,000 - \$1,500 • Min. bid: \$500



Lot 243

“POLAND WATER”, probably 1865 – 1875. Rich ‘orangey’ amber below the shoulders shading to a beautiful, deep reddish amber in the lower half of the body, applied sloping collar with bevel – smooth base, ht. 8 3/8”; (a shallow, approx. 3/8” chip along the top, inside edge of the lip, and a small area of minor dullness, approx. 1 ½”, near base on reverse, otherwise attic mint). T# M-38. A rare and desirable mineral water, very heavily whittled, beautiful color! Fred Swiechowicz collection.

Est.: \$3,000 - \$5,000 • Min. bid: \$1,500



Lot 247

“SYRACUSE SPRINGS / EXCELSIOR”, 1865 – 1875. Rich, medium-to-deep amber, cylindrical, applied sloping collar with bevel – smooth base, Qt; (professionally cleaned to original luster with just a little minor light wear remaining, and a partially open interior bubble with some residue). T #N-33:A. See *“Early New York Mineral Water Bottles Are Worth Their Salt”*, Donald Tucker, AB&GC, March, 2014. A bright, clean, example. Scarce.

Est.: \$100 - \$200 • Min. bid: \$50



Lot 244

“ROUND LAKE / MINERAL / WATER / SARATOGA Co / N.Y.”, probably Congress & Empire Spring Glass Works, 1876 - 1885. Bright medium honey coloration, cylindrical, applied sloping collar with bevel - smooth base, Pt, virtually attic mint; (a tiny 1/8” bruise at edge of base, otherwise perfect). T# S-48:B. A beautiful example in both color and condition. Believed to be only 3-4 known examples and considered in the top 10 most desirable mineral waters.

Est.: \$4,000 - \$8,000 • Min. bid: \$2,000



Lot 248

“SYRACUSE SPRINGS / EXCELSIOR”, 1865 – 1875. Black glass (dense amber), cylindrical, applied sloping collar with bevel and lightning style wire closure – smooth base, Qt; (a ½” chip on the lower bevel of the collar, and a 1/8” chip from the top and outside edge of the collar, a little scattered light wear). T #N-33:A. It’s not perfect, but it does display nicely and is rare in this virtually coal-black coloration.

Est.: \$100 - \$200 • Min. bid: \$50



Lot 249

Lot of (2), "HOPKINS' / CHALYBE-ATE / BALTIMORE" Bottles, Baltimore Glass Works, probably 1857 – 1862. Blue green and deep yellow olive, both are cylindrical, applied sloping collar with bevel – smooth base and iron pontil, ht. 7 3/8" & 7 1/2" respectively; (bl-gr. ex. professionally cleaned, some scattered wear and light scratches remain, a 1/4" bruise at heel of base; Olive ex. appears dug with some scattered wear, light haze, and a 1/8" flake on inside edge of lip).

Est.: \$250 - \$450 • Min. bid: \$130



Lot 253

"LOUIS WEBER / & Co / LOUISVILLE / K.Y.", Thomas Wightman & Co, Pittsburgh, 1872 – 1883. Deep amber with a reddish tone, cylindrical, 2-pc. mold, applied sloping collar with bevel – **"TW & Co"** (on smooth base), ht. 8 5/8"; (does not appear to have been dug, but does have a fair amount of usage wear, some scattered light scratches and minor dullness; a pinhead flake on the lip and 3/16" chip on the lower bevel, a 1/4" chip on the base). Very scarce. Bruce Purdy collection.

Est.: \$200 - \$400 • Min. bid: \$100



Lot 250

"T. HEBERER & BROS / BELLEVILLE ILLS" Figural Barrel Beer, probably 1859 – 1860. Deep, bright aqua, barrel form with embossed wooden staves and four horizontal rings around the shoulders and base, applied sloping collar with ring – heavy iron pontil scar, ht. 9 1/2", virtually perfect; (an 'attic' type bottle with just a touch of light wear around the mid-body). An exceedingly rare, pontiled, figural barrel, believed to be one of only three, or possibly four examples extant.

Est.: \$800 - \$1,200 • Min. bid: \$400



Lot 254

"DR PAOLIS. / SPARKLING PERSIAN / SHERBET - F. W. SIMONDS / CHICAGO / ILL", possibly Lancaster Glass Works, NY, 1856 – 1858. Sapphire blue, tenpin form, applied blob collar – smooth base, ht. 8", near mint; (lightly cleaned to original luster and near mint condition; a touch of minor wear including a 1/8" little 'fisheye' type surface bruise near the base, otherwise perfect). An extremely rare soda, believed to be only 5-6 examples known in any condition. A recent virgin find!

Est.: \$2,000 - \$4,000 • Min. bid: \$1,000



Lot 251

"ANDREW LOHR / CAIRO ILL.", a Midwest glasshouse, probably Pittsburgh district, 1865 – 1875. Very deep amber, cylindrical, 2-pc. mold, applied sloping collar with ring – smooth base, ht. 9"; (professionally cleaned to original luster with some light scattered wear remaining, and a couple of paper-thin, 1/4" or less, open bubbles on the reverse). See, *"Bottled in Illinois, 1840 – 1880"*, p.168, figure 127. A very scarce, early, ale or soda water bottle. Bruce Purdy collection.

Est.: \$200 - \$400 • Min. bid: \$100



Lot 255

"J. ZERBE / DUNCANVILLE" Soda Water Bottle, 1850 – 1860. Cobalt blue, cylindrical, squat soda or 'pony' form, applied blob collar – heavy iron pontil scar, ht. 7 1/2", near perfect; (just a trace of light wear including a little pinhead flake on the back edge of the collar, otherwise virtually pristine condition). An extremely rare soda from Central, PA, and only the 3rd example to be offered in more than 30 years! Beautiful, whittled, 'attic-type' condition. Fred Swiechowicz collection.

Est.: \$800 - \$1,200 • Min. bid: \$400



Lot 252

"LOUIS WEBER / LOUISVILLE KY." (on shoulder), Midwest, probably Pittsburgh district, 1865 – 1875. Deep yellowish amber, almost a butterscotch coloration, cylindrical, 2-pc. mold, applied sloping collar with bevel – smooth base, ht. 9 1/8"; (some scattered light scratches and exterior wear, and a small potstone on the side with a little iridescence and a few small radiations, 1/8" or less). Another scarce early ale, nice color and character. Bruce Purdy collection.

Est.: \$200 - \$400 • Min. bid: \$100



Lot 256

"POWELL & - DR. BURR'S - MINERAL WATER - BURLINGTON - N.J.", 1845 – 1860. Medium cobalt blue, 8-sided, applied tapered blob collar – iron pontil scar, ht. 7 3/4"; (professionally cleaned to original luster with just a touch of minor light wear remaining; some in-manufacture crazing lines in the neck, mentioned for completeness, but not considered damage, otherwise excellent). A very rare, top New Jersey soda! Provenance: Ex. John Lawrey collection.

Est.: \$1,000 - \$2,000 • Min. bid: \$500



Lot 257

"AMERICAN / DESICCATING Co / of / NEW YORK", probably 1860 – 1863. Rich, yellowish olive amber, cylindrical, squatty porter form, applied blob collar – smooth base, ht. 7", virtually perfect; (faint trace of very light wear, otherwise 'attic-found' condition). Exceedingly rare, possibly only 2-3 examples extant, and this example may very well be the finest. Believed to have held an extract of coffee for use by Union troops during the Civil War. Fred Swiechowicz collection.

Est.: \$1,800 - \$3,200 • Min. bid: \$900



Lot 261

"BRANDON / & / FEASBY / CAMP SPRING / SODA WATER / ST LOUIS Mo", 1855 – 1865. Rich, deep aquamarine, squat soda form, applied blob collar – iron pontil scar, ht. 7 5/8", near perfect; (a little pinhead flake on the back edge of the collar, and just a slight bit of light interior residue in the reverse, otherwise attic mint). A rare and desirable Missouri soda, especially in this fine condition. See Johnnie Fletcher's book on MO bottles, p.286; fig. 3363. Fred Swiechowicz collection.

Est.: \$300 - \$600 • Min. bid: \$150



Lot 258

"S. SMITH'S / KNICKERBOCKER / MINERAL & SODA / WATERS / NEW YORK", 1850 – 1860. Medium bluish green coloration, cylindrical, applied sloping collar – iron pontil scar, ht. 6 5/8"; (a little typical minor exterior wear, and some light interior content haze, not terribly distracting, the kind that could easily be cleaned with just a few days in the tumbler, if desired, otherwise perfect). Rare. An attic-type bottle, beautifully whittled, with a large, heavy, iron pontil scar.

Est.: \$800 - \$1,200 • Min. bid: \$400



Lot 262

"PACIFIC / & / PUGET SOUND SODA WORKS / SEATTLE / W.T.", probably 1885 – 1889. Greenish aquamarine, cylindrical with sloping shoulders, tooled blob collar – "A" (within a diamond), on smooth base, ht. 7", attic mint. A beautiful example, strong embossing, outstanding condition.

Est.: \$250 - \$450 • Min. bid: \$130



Lot 259

"J. MASON & Co. / UTICA / MINERAL WATERS - J.M.&Co.", probably 1845 – 1848. Medium clear green with a bluish tone, cylindrical, squat soda form, applied sloping collar – iron pontil scar, ht. 7 1/8", virtually attic mint; (just the slightest trace of very light wear including a minuscule little pinhead bit of roughness at the bottom edge of the collar, otherwise sparkling mint). A rare soda, strong embossing, fantastic condition.

Est.: \$800 - \$1,200 • Min. bid: \$400



Lot 263

"A. LANDT / LIVINGSTON / M.T.", Wisconsin Glass Co., Milwaukee, 1881 – 1886. Aquamarine, cylindrical, applied 'Hutchinson-style' closure – **"WIS G. Co. / MIL W."** (on smooth base), ht. 7 1/8", perfect. A rare Montana Territory 'Hutch', and about as nice of an example as you could hope to find! Note, original wire stopper remains in the neck.

Est.: \$400 - \$600 • Min. bid: \$200



Lot 260

"DARLING & / COBB'S / IMPROVED / MINERAL WATER - BOSTON / C", 1850 – 1860. Medium green with an emerald tone, cylindrical, applied sloping collar – heavy iron pontil scar, ht. 6 7/8", near perfect; (a couple of tiny flakes, 1/16" and barely 1/8", on the edge of the applied collar, otherwise mint). Another very rare soda, the 1st example offered in more than 15 years. Bold embossing, very nice color, whittled, and almost no wear. Fred Swiechowicz collection.

Est.: \$800 - \$1,200 • Min. bid: \$400



Lot 264

"CROWN / BOTTLING & MFG. CO." / (CROWN) / "ARDMORE, I.T.", 1890 – 1905. Aquamarine, cylindrical, tooled "Hutchinson-style" closure – **"G"** (on smooth base), ht. 6 5/8"; (lightly cleaned to original luster with a little typical minor case, or ground wear, remaining, a little 1/8" 'fisheye' bruise near heel of base, otherwise excellent). A very scarce-to-rare Indian Territory 'Hutch', the noted wear is really fairly minor.

Est.: \$300 - \$500 • Min. bid: \$150



Lot 265

"Wm AYLMER / FARGO / D.T.", probably 1885 – 1889. Bluish aquamarine, cylindrical, "Hutchinson-style" closure – smooth base, ht. 6 ¼"; (professionally cleaned to original luster, and just the slightest trace of faint wear, otherwise excellent). A rare Dakota Territory "Hutch", nice deep color, and with some whittling and character to the glass.

Est.: \$500 - \$800 • Min. bid: \$250



Lot 266

"JOHN TREBER / DEADWOOD / DAK.", 1890 – 1910. Aquamarine, cylindrical, tooled "Hutchinson-style" closure – smooth base, ht. 6 ½"; attic mint! A beautiful example, crisp embossing, bright, clean, outstanding condition. John Treber owned a wholesale liquor business in Deadwood. In the 1890's, he expanded his business to include a bottling works. A great bottle from a very historical gold rush town.

Est.: \$300 - \$600 • Min. bid: \$150



Lot 267

"DISTILLED / SODA WATER CO. / OF / ALASKA", probably American Bottle Co., Chicago, ILL, 1905 – 1910. Light aquamarine, cylindrical with 'mug-style' base, "ABCo" (on heel of base), "Hutchinson-style" closure – smooth base, ht. 7 ½"; virtually perfect; (a shallow little pinhead flake on the edge of the collar, and tiny bit of roughness on one of the base edge points, otherwise mint). Note; original wire closure remains in neck. A beautiful example. Very scarce.

Est.: \$400 - \$700 • Min. bid: \$200



Lot 268

"HAWAIIAN SODA WORKS – HONOLULU, T.H.", 1907 – 1909. Bright medium amber, cylindrical, tooled Hutchinson-style collar – "H" (on smooth base), ht. 7 7/8"; (a little minor, light exterior wear, and some faint interior residue in the shoulders, otherwise very near mint). A great example of this very scarce, colored, Hawaiian 'Hutch' soda.

Est.: \$500 - \$800 • Min. bid: \$250



Lot 269

Black Glass Wine Bottle, England, c. 1781. "S B / 1781" (on applied glass seal). Medium-to-deep olive green, long neck dip mold cylinder, applied string rim – kick-up base with sand type pontil scar, ht. 10 ¾"; (a 1/8" chip at edge of seal; some interior residue and a large shallow bubble on the interior that is open, but not terribly distracting, otherwise excellent). An extremely rare, unlisted seal. Possibly the first recorded intact example with these initials and complete date.

Est.: \$1,000 - \$1,500 • Min. bid: \$500



Lot 270

Black Glass Wine Bottle, England, c. 1809. "W / MAJOR / 1809" (on applied glass seal). Deep olive with an amber tone, dip mold, wide body squat cylinder with a short neck, applied wide short tapered collar – kick-up base with sand type pontil scar, ht. 8 7/8"; (just a little typical minor wear including a light scratch on the shoulder; a 3/8" chip on the underside of the rim, otherwise excellent). Burton, p.836. Very rare! An unidentified seal, believed to be the example noted by Burton.

Est.: \$1,200 - \$1,800 • Min. bid: \$600



Lot 271

Black Glass Wine Bottle, probably England, 1820 – 1830. "C / Gore" (on applied seal). Deep olive, 3-pc. mold, "PATENT" (on shoulder), applied sloping collar, "H RICKETTS & Co / GLASS WORKS BRISTOL" (on base) – sand type pontil scar, ht. 10 ¼"; (some scattered wear including a couple of light scratches; a 3/8" flake along the bottom edge of the seal – barely visible on display, and some dried content residue). Very rare, unlisted by Burton. Fred Swiechowicz collection.

Est.: \$500 - \$800 • Min. bid: \$250



Lot 272

Black Glass Wine Bottle, England, 1770 – 1780. "WCG" (monogram) / "Zeals" (on applied glass seal). Medium-to-deep olive with an amber tone, dip mold cylinder with long tapered neck, applied string rim – kick-up base with sand type pontil scar, ht. 11"; (a bit of typical exterior wear including a few minor scrapes, and a couple of 1/8" flakes on the edge of the lip, otherwise excellent). Burton, p.1094; RD, p.267. Blown for William Chafyn Grove of Zeal House, Wiltshire.

Est.: \$300 - \$500 • Min. bid: \$150



Lot 273

Black Glass Wine Bottle, England, c.1826. "T.H. / Jones Esc / Newadd / 1826." (on applied seal). Medium-to-deep olive with an amber tone, dip mold, wide body squat cylinder, applied sloping collar with bevel – sand pontil scar, ht. 10 3/8"; (a 1/4" shallow chip on the edge of the collar with an associated 3/8" iridescent bruise on the inside of the collar; a 1/2" flake on the underside of the lower bevel, otherwise near perfect with full original luster). Burton pgs. 318 & 439. A rare seal.

Est.: \$1,000 - \$1,500 • Min. bid: \$500



Lot 274

Black Glass Wine Bottle, America, or possibly England, c.1820. "WINE / P C BROOKS / 1820" (on applied seal). Deep olive with an amber tone, dip mold, squat cylinder, applied sloping collar – sand type pontil scar, ht. 9 5/8", near perfect; (a couple of paper-thin open bubbles). Rare. Burton, p.851; McKearin / Wilson, color plate XVII. Burton suggests that it may be American, associated with wine merchants, or an English firm supplying an American client.

Est.: \$1,000 - \$1,500 • Min. bid: \$500



Lot 275

Rare, Black Glass Wine Bottle, an American seal, blown in England, 1825 – 1835. "Gideon / Barstow" (on applied seal). Clear green with an olive tone, 3-pc. mold, "PATENT" (on shoulder), applied collar – "H RICKETTS & Co / GLASS WORKS BRISTOL" (on base) – sand pontil, ht. 10 7/8"; (a couple of areas of light haze and minor wear, primarily around the shoulder). Extremely rare, blown for Gideon Barstow, a U.S. Rep. from MA. Fred Swiechowicz collection.

Est.: \$1,000 - \$2,000 • Min. bid: \$500



Lot 276

Rare, Black Glass Mallet Form Wine Bottle (with applied blank seal), probably Belgium or Germany, 1770 – 1780. Dense amber, virtually black, mallet form, sheared mouth with applied ring collar – domed base with blowpipe pontil scar, ht. 7 5/8"; (some minor usage wear, otherwise perfect). Scarce smaller size, and rare with the applied blank seal. Blank seals are very unusual and difficult to acquire. The owner would often inscribe their initials, or contents, on the seal.

Est.: \$600 - \$900 • Min. bid: \$300



Lot 277

Motif of Rampant Lion (on applied seal), **Black Glass Utility Bottle**, Germany, 1775 – 1785. Medium yellowish olive, 2-pc. mold, side flattened kidney form, elongated neck, sheared mouth with applied string rim – blowpipe pontil scar, ht. 8 5/8"; (some exterior wear and light scratches on the flattened sides, otherwise excellent). A scarce, very crude, applied seal utility bottle. Per Van den Bossche, these were blown in a 2-part wooden mold. See VdB, plate 217.

Est.: \$400 - \$600 • Min. bid: \$200



Lot 278

Large, Black Glass Wide Mouth Onion Bottle, Continental, probably Netherlands, 1790 – 1810. Medium-to-deep olive coloration, bulbous onion form body, wide, elongated neck, sheared mouth with applied wide string rim – domed base with blowpipe pontil scar, ht. 9 1/4", virtually perfect; (just a trace of light wear). VdB, plate 110. A great example, very little wear, full original body luster, and with an unusually long neck and perfect string rim. Fred Swiechowicz collection.

Est.: \$400 - \$600 • Min. bid: \$200



Lot 279

Large, Flowerpot-form Storage Bottle, France, 1780 – 1800. Clear, light olive coloration, flowerpot form, wide neck, sheared mouth with applied string rim – delicate blowpipe pontil scar, ht. 13 1/2", near mint; (just a touch of typical light usage wear, some minor interior content residue, otherwise perfect). A very attractive, scarce-to-rare color for a wide neck flowerpot bottle, typically found in shades of deep olive, and amber. Beautiful color, clarity, and condition.

Est.: \$300 - \$500 • Min. bid: \$150



Lot 280

Large, Flowerpot-form Storage Bottle, France, 1780 – 1800. Deep 'old amber' with a slight olive tone, flowerpot form, broad, wide neck, sheared mouth with applied string rim – blowpipe pontil scar, ht. 12 3/4"; (a 1/4" x 1 1/2" open bubble below the shoulder, and just a slight trace of very light wear, otherwise perfect). A great looking, 'stout' example with a much broader neck than most. These were used to store a variety of foodstuffs, as well as snuff tobacco.

Est.: \$200 - \$400 • Min. bid: \$100

**Lot 281**

Giant, Flowerpot-form Storage Bottle, France, 1780 – 1800. Medium-to-deep yellowish olive, flowerpot form, wide neck with a sheared, tooled mouth – blowpipe pontil scar, ht. 16 ½"; (some light interior content residue in the shoulders, and a few scattered light scratches on one side, otherwise virtually perfect). VdB, plate 147. Towering more than 16", this example is considerably larger than most. Excellent condition, very scarce size.

Est.: \$300 - \$500 • Min. bid: \$150

**Lot 285**

Lot of (2), Early Ale, Porter, Cider Utility Bottles, Continental, 1815 – 1835. Deep olive, and clear, bright yellow olive, freeblown or possibly dip mold, both with applied sloping collar – sand type pontil scar and blowpipe pontil scarred bases, ht. 9 ¾" and 11 ¼" respectively; (1st example has some light interior residue or haze; both have a couple of minor spots of light exterior dullness, but overall original body luster and excellent condition, just light usage wear). A very attractive pair.

Est.: \$120 - \$240 • Min. bid: \$60

**Lot 282**

Lot of (2), Early Case Bottles, Dutch, Belgium, Germany, 1770 – 1800. Medium olive and bright yellow olive, early, nearly straight-sided, and very slightly tapered case forms, applied crude flanged collars – blowpipe pontil scarred bases, ht. 9 3/8" and 10" respectively, both near mint; (9 3/8" example has a bit of minor roughness, possibly in-manufacture, on the collar; 10" example has a bit of light wear, and trace of interior residue). A beautiful pair of very early gins!

Est.: \$150 - \$250 • Min. bid: \$80

**Lot 286**

Lot of (2), Early 'Hock' Wine Bottles, Germany, 1810 – 1830. Medium-to-deep yellowish 'old amber', and medium-to-deep pinkish puce coloration, both are 'hock wine' form, dip mold, sheared mouth with applied band collars – blowpipe pontil scarred bases, ht. 12 5/8" and 13 ¼" respectively; (both with just a bit of minor exterior wear, light interior residue, otherwise perfect). Note: the amber example has vertical ribbing through the neck, as well as on the applied band collar.

Est.: \$200 - \$400 • Min. bid: \$100

**Lot 283**

Scarce form, Oversized Early Case Bottle, Continental, Dutch or Belgium, 1770 – 1800. Yellow olive coloration, large, square, wide-bodied case form with nearly straight sides, applied heavy string rim – blowpipe pontil scar, ht. 12 5/8", base dia. 6 1/8"; (some scattered exterior usage wear and light scratches; some interior haze and content residue, but no other form of damage and otherwise excellent). Very rare, unusual form. See, VdB Supplement (2022), plate 430, p.69.

Est.: \$1,000 - \$2,000 • Min. bid: \$500

**Lot 287**

Mammoth size, Early Wine Bottle, France, or possibly Belgium, 1780 – 1800. Medium-to-deep yellowish olive amber, dip mold, sheared mouth, applied ring – heavy disc-type pontil scar, ht. 22 1/8", virtually perfect; (a slight trace of wear, bit of roughness on edge of lip, almost certainly in-manufacture). See VdB Supplement, p.81, plate 436, "Wine Bottles of Historical Interest". A very impressive, giant wine bottle. Per Van den Bossche, used for Burgundy, Champagne, and Bordeaux wines.

Est.: \$150 - \$250 • Min. bid: \$80

**Lot 284**

Mammoth size, Early Case Bottle, Continental, probably Germany or Netherlands, 1780 – 1800. Clear, medium yellowish olive, square with nearly straight sides, sheared mouth with applied heavy string rim – blowpipe pontil scar, ht. 17 7/8"; (some typical light exterior wear including a few minor scratches, otherwise near mint). VdB, plate 83. A beautiful example, and at almost 18", an impressive, very scarce-to-rare size, overall excellent condition.

Est.: \$1,200 - \$2,200 • Min. bid: \$600

**Lot 288**

Early, Apothecary Storage Bottle or Carboy, England, 1760 – 1780. Deep olive green, freeblown, compressed globular body with a sheared, tooled, funnel-type neck – heavy disc pontil scar, ht. 11"; (the bottle is virtually attic mint, however there is some dried content residue in the base, and a light oily film of residue on the interior). VdB, plate 59. A great looking early storage bottle, scarce and desirable form, outstanding condition.

Est.: \$250 - \$450 • Min. bid: \$130



Lot 289

Apothecary Storage Bottle, "TR. CALUMB." (Gold painted label with red trim and black lettering), England, 1800 – 1820. Medium-to-deep yellowish olive, cylindrical, sheared mouth with applied ring collar – heavy disc-type pontil scar, ht. 14"; (a couple of areas of faint light dullness, and a little scattered minor wear including a number of shallow open surface bubbles, otherwise excellent). VdB, plate 60. A crude example with nice bubbly glass.

Est.: \$120 - \$240 • Min. bid: \$60



Lot 293

Large, Freeblown Demijohn, Continental, French Alsace region, 1840 – 1850. Bright amber shading to a deep orange-amber in shoulders and neck, globular form, short neck, rough sheared mouth with applied flat band collar with vertical ribbing – smooth domed base, ht. 17 5/8", near mint; (some light-to-moderate interior residue, and a little minor light exterior dullness, not terribly distracting, otherwise perfect). Hard to find in this large size. Virtually identical to VdB, plate 154, #1.

Est.: \$250 - \$450 • Min. bid: \$130



Lot 290

Large Storage Bottle or Demijohn, Continental, probably Austrian, 1820- 1850. Aquamarine, blown in a dip mold for form, octagonal with drawn-up shoulders, conical neck flaring to a sheared and outward flared mouth – blowpipe pontil scar, ht. 13 7/8", perfect. VdB, plate 212, #4. A delicate, thin-walled, eye-appealing, demijohn. Octagonal bottles are generally quite scarce, and at almost 14", this one is impressive and very scarce.

Est.: \$200 - \$400 • Min. bid: \$100



Lot 294

Freeblown Demijohn, Continental, probably Germany, Black Forest Region, 1830 – 1850. Medium-to-deep olive amber, cylindrical, slightly corseted body with funnel-type neck, sheared, tooled, likely applied ring-type collar – concave base with blowpipe pontil scar, ht. 13 3/8", virtually perfect; (just a very slight trace of light wear). Nice rich color, attractive form, and loaded small bubbles throughout the body.

Est.: \$200 - \$400 • Min. bid: \$100



Lot 291

Early, Freeblown Demijohn or Globular Storage Bottle, Continental, probably North Germany, 1770 – 1800. Bright, medium, yellow green, globular form with a short neck, sheared mouth with applied ring collar – sand type pontil scar, ht. 10", virtually perfect; (only the faintest trace of light wear, otherwise pristine). A very pretty 'see-through' color, excellent clarity, nice even tone from the collar to the base, fantastic condition.

Est.: \$200 - \$400 • Min. bid: \$100



Lot 295

Demijohn, probably England, 1790 – 1810. Medium-to-deep yellowish olive with an amber tone, cylindrical, dip mold, applied string rim with short taper – domed base with large sand type pontil scar, ht. 14 7/8"; (some scattered minor usage wear, and a 3/4" x 1/8" open bubble at heel of base, otherwise virtually perfect). A very heavy-in-weight, crude, demijohn, overall excellent condition. Provenance: Ex. Mark Nightingale collection.

Est.: \$150 - \$250 • Min. bid: \$80



Lot 292

Early, Freeblown Demijohn or Globular Storage Bottle, probably Germany, 1770 – 1800. Clear medium olive shading to a deep olive through the shoulders and neck, globular form with a short neck, sheared mouth with applied ring collar – heavy disc type pontil scar, ht. 11"; (some interior content residue or light haze in the shoulders, some of which may wash out; a little minor usage wear including a 1/8" body flake, otherwise excellent). A great looking early globular bottle.

Est.: \$200 - \$400 • Min. bid: \$100



Lot 296

Demijohn, America, 1855 – 1870. Light-to-medium cornflower blue coloration, cylindrical, dip mold, applied sloping collar – large iron pontil scar, ht. 19", near mint; (a little typical, light exterior wear, otherwise attic mint). A delicate, but very pretty color, and at 19", is taller than most. A great example to add to your color run. In addition, fantastic condition, and with a large pontil scarred base!

Est.: \$400 - \$800 • Min. bid: \$200

A Colorful & Varied Array of Fine Ink Bottles

Lot 96

Lot 87

Lot 94

Lot 83

Lot 86



Colorful, Ornate, & Rare Cologne Bottles

Lot 73

Lot 72
(1 of 2)

Lot 76

Lot 78

Lot 79

Lot 69





Rare & Colorful Historical Flasks with
Patriotic Themes