

NOTE: This is a timed-closing auction. See details on first page.

American Glass GalleryTM

Auction #34

Opens March 21, 2023

Closes March 29, 2023



RUINS OF THE PITKIN GLASS WORKS, MANCHESTER

Lot 15: Extremely rare and important Gll-58 Eagle - Cornucopia Flask, Pitkin Glass Works, Manchester, CT.

Conditions of Sale: Auction #34 – Timed Closing Auction - No Call Backs

1. Absentee Auction

The items in this sale will be sold via absentee auction.

Closing date: **Wednesday, March 29, 2023, 10:00 p.m., EST.**

2. Our Guarantee Regarding Descriptions

American Glass Gallery has made every attempt to describe correctly the property being sold. Descriptions are guaranteed to be accurate as regards to authenticity, age, condition, and measurements to within one-fourth inch, as represented in this catalog. Items in this catalog are not shown to scale. In describing damage, exterior wear or manufacturer's flaws that in our opinion, do not significantly detract visually or monetarily from the value of the item are not listed and will not be considered for refund. The Auctioneers reserve the right to make verbal corrections and provide additional information at any time during the sale.

3. Preview

Items may be viewed by appointment from **March 22, 2023**, through **March 28, 2023**.

4. Bidding Procedure

You may submit your bids by mail, phone, FAX, email or through our on-line auction site. If bidding by mail or FAX, please fill out the absentee form and return it to us. Your bid, either written or oral, grants American Glass Gallery the authority to protect you up to the amount of your stated bid. Your bid will not be removed once executed.

Bidding Times: You can submit your bids anytime after receiving your catalog. Bids may be made by phone, daily, until closing day, **March 29, 2023**, from 9 A.M. - 6 P.M. Eastern Time. Incoming phone bids will be accepted on the closing day (**March 29, 2023**) until 10 P.M. Eastern Time. No exceptions. You may also place your bids through our on-line auction service 24-hours a day once the site has opened for bidding, on or about **March 21, 2023**, continuing until 10:00 P.M. Eastern Time, **March 29, 2023**.

Please do not wait until the last day or two of the sale to place your bids!

Because many collectors wait until the final few days of the sale to place their bids, we anticipate the telephone and internet bidding to be very busy during that period, so please plan accordingly. In the event of a tie bid, the earliest received bid on the lot will take precedent. We would welcome your bids by phone so that we can answer any questions and assist you in your bidding.

You may also telephone us at any time during the auction, prior to the closing of the sale, to check the status of your bids, to find the current bidding level, to open a bid, or to raise a bid on an auction lot.

Bidding Increments are as follows:

Up to \$250.00..... increments of \$10.00
\$250.00 - \$500.00 increments of \$25.00
\$500.00 - \$1,000.00 increments of \$50.00
\$1,000.00 - \$2,500.00 increments of \$100.00
\$2,500.00 - \$5,000.00 increments of \$250.00
\$5,000.00 - \$10,000.00 increments of \$500.00
\$10,000 & Up..... increments of \$1,000.00

Bids submitted between the above increments, whether by mail, FAX, email or on-line via the internet, will automatically be lowered to the closest lower increment.

This is a minimum bid auction. Bids below the printed minimum will not be accepted.

An example of how our absentee bidding system works: You bid \$1000.00 on a lot which is the highest bid received to date. The second highest bid is \$800.00. The current high bid level would be yours at \$850.00, one bid increment higher than the other collector's bid. Any additional bids submitted by others below \$1000.00 will automatically be topped on your behalf by a representative of American Glass Gallery, up to your stipulated high bid amount. If no further bids on this lot are received beyond the \$800.00, then you would have won the lot at \$850.00, not the \$1000.00 that you were prepared to pay.

American Glass Gallery will at NO TIME disclose bids pledged by others; only the current "High Bid" level of a lot will be stated upon request. The highest bidder as determined by American Glass Gallery shall be the purchaser. It is the sole right of the auctioneer to settle any dispute between bidders and to regulate the bidding procedure. The auctioneer reserves the right to refuse any bid he believes not to have been made in good faith.

5. Closing the Auction

Timed Closing. No Call Backs for This Sale!

Auction closes 10 PM Eastern, Wednesday, March 29.

How it works: If any Lot receives a bid within the last 10 minutes before the 10 PM closing time, an additional 10 minutes will be added on to the bidding time for that Lot - at the time the bid is entered. For example, if a bid is entered on Lot #95 at 9:58 PM, an additional 10 minutes will be added to the closing time for that Lot, i.e. the Lot will close 10:08 PM, unless another acceptable bid is received prior to 10:08 PM. If the same Lot receives another bid 5 minutes later, i.e., 10:03 PM, the 10 minute timer will be restarted. Thus, an item will not close until it has received no bids for 10 minutes. At the end of that time, the Lot will automatically close and the highest bidder will be the winner.

No phone bids will be accepted after 10 PM, or during the timed closing portion of the sale.

IMPORTANT: When the auction is in the last 10 minutes, (after 9:50 PM EST, Wednesday, March 29), **you must refresh your screen to see any updated bids and remaining time on the Lots.** You may refresh your bid page by hitting "Enter Bids". A time left column will appear on the right. The time will go down every time you refresh unless an acceptable bid has been placed, then the timer will be reset to 10 minutes.

When a Lot closes, your bid sheet will show either (parentheses only when there is a left bid):

Example:

You WIN for \$400 (Left Bid \$500)

or:

Won by another for \$600

Note: Normal email notifications will still be sent during the Timed Closing. However, we recommend that you actively refresh your screen for the latest updates, or changes, as the email notifications may not always get through (i.e., may sometimes be intercepted by email blockers or spam filters).

If you are unable to watch, or be actively involved during the closing time, you may always submit an Absentee, or "Left Bid" which will be executed competitively up to your stipulated high bid should any bids come in during the Timed Closing Period.

Conditions of Sale: Auction #34 – Timed Closing Auction - No Call Backs

6. Terms

Successful Bidders, Prompt and full payment is due immediately upon receipt of our invoice. Absolutely no exceptions. Anyone failing to pay for items won will forfeit all rights to bid in any future American Glass Gallery sales. **Any late or delayed payments may result in loss of return privileges for items purchased in the sale.**

No Items Will Be Mailed Before Full Payment Is Received.

Buyer Premium: Our buyer premium is **17% if paying by cash or check, discounted from 20% if paying by Credit Card or PayPal** (PayPal payment account: jpastor@americanglassgallery.com). This buyer premium will be added to the hammer price as part of the purchase price. For example, if you purchase a lot for \$100.00, you will receive an invoice for \$117.00 if paying by cash, check or money order, plus any applicable sales tax or shipping charges.

Taxes: If you are a Michigan resident, a 6% sales tax will be added to your bill unless you have a valid resale number registered with us.

Shipping: Shipping, handling and insurance are extra. We ship insured via U.S. Mail or UPS. These charges will be added to your bill unless the lots are picked up in person. Oversize packages (boxes with dimensions over 12"), may incur additional shipping charges based on the postal zone of destination. Our charges for shipping (excluding foreign shipments and oversized lots) are \$18.00 for the first item, \$9.00 for each additional item together with extra insurance costs (we use current U.S. Postal Service insurance rates).

Please allow two to three weeks for delivery after receipt of your check.

Payment: American Glass Gallery accepts Cash, Money Orders, Personal Checks, Visa, MasterCard, American Express and PayPal. **If paying by Credit Card or PayPal, an additional 3% will be added to the invoice total.**



7. Refunds

Refunds will be given at the discretion of the Auctioneers. Items purchased must be examined and request for refund made immediately upon receipt of the item or items. Since opinions can differ, particularly in the matter of condition, the Auctioneers will be the sole judge in the consideration of refunds. Refunds requested on the grounds of authenticity must be made within 15 days of the date of the auction, and such refund requests must be accompanied by at least one supporting statement in writing from an authority recognized by the Auctioneers. It is the Auctioneers sincere intention to consider any reasonable request for a refund. **Absolutely no returns for any reason after 30 days following the closing of the sale.**

8. Bidding on any item indicates your acceptance of these terms.



American Glass Gallery™

John R. Pastor
P.O. Box 227
New Hudson, Michigan 48165
Phone: 248.486.0530
Fax: 248.486.0538
www.americanglassgallery.com
email: jpastor@americanglassgallery.com

PLEASE NOTE:

The lots offered in this printed catalog are identical to the lots offered in the on-line catalog. However, due to space constraints of the printed catalog, there may be some further information available regarding some of the lots in the on-line auction descriptions.

Please visit us at

www.americanglassgallery.com

and follow the link to the on-line auction.

The link and on-line auction will be available March 21, 2023. A post-auction price list will be available on our website, in printable form, approximately 30 days after the close of the auction.

We encourage you to contact us by phone or email with any questions, for assistance with bidding, or further details or clarification on any of the lots in this sale. Your complete satisfaction and confidence is our goal!

**THANK YOU AND GOOD LUCK
WITH YOUR BIDS!**

Reference Key

Reference initials and numbers used in the description of this catalog refer to the following publications:

AHG	<i>American Historical Glass</i> , Bessie M. Lindsey, 1967.
AM	<i>The Decanter - An Illustrated History of Glass from 1650</i> , Andy McConnell, 2004.
AP	<i>Glass in Early America</i> , Arlene Palmer, 1993.
BA1	<i>Collecting The Cures</i> , Bill Agee, 1969.
BA2	<i>Collecting All Cures</i> , Bill Agee, 1973.
BB	<i>A Bit About Balsams</i> , Betty Blasi, 1974.
BH	<i>Classification and Documentation of Sunburst and Similar Scent Bottles</i> , Bill Ham, AB&GC, 5/87.
BJ	<i>American Pot Lids</i> , Barbara and Sonny Jackson, 1987.
B/K	<i>The Glass Industry in Sandwich</i> , Raymond Barlow and Joan Kaiser, 1989.
BPK	<i>A.M. BININGER Bottles</i> , Jim Bender, 2017
C	<i>Ink Bottles and Inkwells</i> , William Covill, 1971.
DB	<i>Antique Sealed Bottles, 1640 - 1900</i> , David Burton, 2015
DeG	<i>American Sarsaparilla Bottles</i> , John DeGrafft, 1980.
DeGII	<i>Supplement to American Sarsaparilla Bottles</i> , John DeGrafft, 2004.
DF	<i>Hair Raising Stories</i> , Don Fadely, 1992.
DM	<i>Wistarburgh, Window Tiles, Bottles and More</i> , Dale L. Murscell, 2007.
D/P	<i>Collector's Guide to Candy Containers</i> , Douglas M. Dezso, J. Leon and Rose Poirier, 1998.
F	<i>Inks, 150 Years of Bottles and Companies</i> , Ed and Lucy Faulkner.
FA	<i>John Frederick Amelung, Early American Glassmaker</i> , Lanmon, Palmer, Hume, Brill, Hanson, 1990.
FB	<i>A.S.C.R. The wine bottles of All Souls College</i> , Oxford, 1750 – 1850, Fay Banks.
G	(Flasks) <i>American Bottles & Flasks and Their Ancestry</i> , McKearin & Wilson, 1978.
G	(Blown Three Mold) <i>American Glass</i> (Chapter VI), George S. and Helen McKearin, 1941.
GBH	<i>English Glass For The Collector, 1660-1860</i> , G. Bernard Hughes, 1958.
H	<i>American Bottles in the Charles B. Gardner Collection</i> , Norman C. Heckler, 1975.
JB	<i>Patent and Proprietary Medicine Bottles</i> , Joseph K. Baldwin, 1973
JEB	<i>Glasshouse Whimsies</i> , Joyce E. Blake, 1984.
JH	<i>Glasshouses & Glass Manufacturers of the Pittsburgh Region, 1795 – 1910</i> , Jay W. Hawkins, 2009.
JM	<i>Tea Kettle Ink Price and Reference Guide</i> , Joe L. Mathews Jr., 2016
JS	<i>In glas verpakt – European Bottles, Their history and production</i> , Johan Soetens, 2001.
K	<i>Poison Bottle Workbook</i> , Rudy Kuhn, 1988.
KW	<i>New England Glass & Glassmaking</i> , Kenneth M. Wilson, 1972.
LI	<i>Pittsburgh Glass, 1797 – 1891</i> , Lowell Innes, 1976.
Mc	<i>Two Hundred Years of American Blown Glass</i> , Helen and George McKearin, 1950.
McK	<i>American Glass</i> , George S. and Helen McKearin, 1941.
MW	<i>American Bottles & Flasks and Their Ancestry</i> , McKearin & Wilson, 1978.
N	<i>Great American Pontiled Medicines</i> , Frederick Nielson, 1978.
NCH	<i>The Blaske Collection of American Flasks</i> , Norman C. Heckler, 1983.
NCH II	<i>The Blaske Collection: Part II</i> , Norman C. Heckler, 1983.
Odell I	<i>Indian Bottles and Brands</i> , John Odell, 1977
Odell II	<i>Pontiled Medicine Encyclopdia</i> , John Odell, 2007
O&S	<i>Warner's Reference Guide</i> , Ed Ojea and Jack Stecher, 1998.
P	<i>The Glass Gaffers of New Jersey</i> , Adeline Pepper, 1971.
RB	<i>Red Book No. 13; The Collector's Guide to Old Fruit Jars</i> , David C. Eifler.
RD	<i>Understanding Antique Wine Bottles</i> , Roger Dumbrell, 1983.
RF	<i>The Bottle Book: A Comprehensive Guide to Historic, Embossed Medicine Bottles</i> , Richard Fike, 1987
RH	<i>Collecting Barber Bottles</i> , Richard Holiner, 1986.
R/H	<i>Bitters Bottles</i> , Carlyn Ring and W. C. Ham, 1998.
RWL	<i>Antique Fakes & Reproductions</i> , Ruth Webb Lee, 1950
T	<i>Collectors Guide to Saratoga Type Mineral Water Bottles</i> , Donald Tucker, 2005.
V	<i>Nailsea Glass</i> , Keith Vincent, 1975
VdB	<i>Antique Glass Bottles; Their History and Evolution</i> , Willy Van den Bossche, 2001.
Z	<i>Ketchup, Pickles, Sauces</i> , Betty Zumwalt, 1980.
ZW	<i>Color Hutchinsons</i> , Zang Wood, 1999.

- The dash is generally used to indicate that the descriptions are on opposite sides of the bottle or flask.

/ The slash is used to indicate that the descriptions are on different lines or surfaces of the bottle.

Detail of Lot 182

DR. C. V. GIRARD'S
GINGER BRANDY.
LONDON.

Lith. of Robertson, Seiberl & Shearman, 95 Fulton St., N.Y.



Early & Important Black Glass Seal Bottles 1760 to 1820



Lot 277

Lot 276

Lot 278

Rare & Colorful Historical & Figured Flasks



Lot 10



Lot 6



Lot 37



Lot 5

Rare & Important Dr. Townsend's Sarsaparilla Bottles from the Fred Swiechowicz Collection



Lot 209

Lot 208

Lot 205

Rare & Colorful Pontiled Medicine Bottles



Lot 212



Lot 216

Lot 220

Lot 214

Lot 215

Lot 222



Lot 1

WASHINGTON - EAGLE Historical Flask, probably Bridgeton Glass Works, Bridgeton, NJ, or Baltimore Glass Works, 1836 - 1850. Medium-to-deep blue green, sheared mouth - blowpipe pontil scar, Qt; (some light interior haze; a 5/16" flat chip along the top edge of the collar, and just a touch of wear including a small potstone on the surface, below the eagle, with just a little iridescence, otherwise excellent). GI-27. Comparatively scarce mold, very scarce-to-rare color.

Est.: \$800 - \$1,200 • Min. bid: \$400



Lot 2

"WASHINGTON" / BUST OF WASHINGTON - "JACKSON" / BUST OF JACKSON Historical Flask, Coventry Glass Works, CT, 1830 - 1840. Very deep, rich, pure olive coloration - almost black in reflected light, sheared mouth - blowpipe pontil scar, 1/2 Pt; (a little scattered light wear, and several tiny, paper-thin, open surface bubbles, otherwise near mint). GI-34. Scarce-to-rare color, much deeper than most, outstanding character, the glass being absolutely filled with tiny seed bubbles.

Est.: \$300 - \$500 • Min. bid: \$150



Lot 3

"THE FATHER OF HIS COUNTRY" / BUST OF WASHINGTON - "GEN. TAYLOR NEVER SURRENDERS" / BUST OF TAYLOR Historical Flask, probably Dyottville Glass Works, 1848 - 1855. Deep blue green, sheared mouth - blowpipe pontil scar, Qt; (a moderate amount of high point wear and light scratches on the busts, more so on the Taylor side, and a shallow 1/8" flake on the inside edge of the lip). GI-39. An attractive, deeper color than most.

Est.: \$300 - \$500 • Min. bid: \$150



Lot 4

WASHINGTON - TAYLOR Portrait Flask, Dyottville Glass Works, Philadelphia, PA, 1848 - 1855. Dense amber, virtually black, sheared mouth - heavy blowpipe pontil scar, Qt; (some moderate-to-heavy high point wear, as well as some light scratches, interior content residue, but no chips, cracks, or other damage). GI-51. Extremely rare color. Yes, it has the wear, but believed to be only the second example recorded in this, or similar color, in more than 25 years of auction records.

Est.: \$800 - \$1,200 • Min. bid: \$400



Lot 5

BUST OF TAYLOR / "ROUGH AND READY" - "MAJOR" / BUST OF RINGGOLD / "RINGGOLD." Historical Flask, probably Baltimore Glass Works, Baltimore, MD, 1848 - 1855. Beautiful light pink amethyst coloration, sheared mouth - blowpipe pontil scar, Pt, very near mint; (just a slight trace of very minor wear, otherwise perfect). GI-72. A great example, strong depth of color for this mold, a crisp, very bold impression, excellent clarity, bright, clean and whittled.

Est.: \$1,500 - \$2,500 • Min. bid: \$800



Lot 6

"GENL TAYLOR" / BUST OF TAYLOR - "FELLS POINT" / MONUMENT / "BALTo" Historical Flask, Baltimore Glass Works, 1847 - 1855. Gorgeous, rich medium pink amethyst shading to a deep pinkish claret coloration near the base, sheared mouth - blowpipe pontil scar, Pt; (some scattered light wear and a weak impression in the shoulders, as often occurs with this mold). GI-73. A rare, eye-appealing, absolutely gorgeous color - one that will stand out in any collection!

Est.: \$8,000 - \$12,000 • Min. bid: \$4,000



Lot 7

"JENY LIND" / BUST OF JENY LIND - GLASS FACTORY Historical Calabash, Ravenna Glass Works, Ravenna, OH, 1857 - 1860. Deep aquamarine, applied round collar - large iron pontil scar, Qt, near mint; (a bit of minor high point wear, otherwise perfect). GI-105. A rare and desirable mold often referred to as the "smoke up" Jeny Lind. This example is bright and clean with good depth of color. Provenance: Ex. Darl Fifer collection.

Est.: \$800 - \$1,200 • Min. bid: \$400



Lot 8

EAGLE - EAGLE Historical Flask, probably Louisville Glass Works, Louisville, KY, 1855 - 1860. Clear, medium-to-deep apple green, sheared mouth - blowpipe pontil scar, Qt, virtually perfect; (just the slightest trace of very light wear including a tiny, pinprick speck of roughness on the edge of the sheared lip, barely noticeable, otherwise sparkling mint). GI-26. A big gutsy flask in a very scarce color, fantastic condition, almost no wear which is often an issue with this mold.

Est.: \$1,200 - \$1,800 • Min. bid: \$600



Lot 9

EAGLE (in circular medallion), reverse same – **Historical Flask**, probably Kentucky Glass Works, 1850 – 1855. Light, smoky greenish Vaseline color, sheared mouth – solid, glass tipped pontil scar, Pt, attic mint! GII-29. An extremely rare mold in a delicate, unusual color, outstanding condition! A virgin find from an estate auction in Kentucky. Note; see Mark Vuono's article, "Louisville Sluggers", AB&GC, Nov. 2011. Mark coined the phrase, "pinstripes" for this mold.

Est.: \$600 - \$900 • Min. bid: \$300



Lot 10

EAGLE - "DYOTTVILLE GLASS WORKS / PHILADA" Historical Flask, 1855 - 1865. Beautiful, light-to-medium pinkish puce, sheared mouth – smooth base, Pt; (professionally cleaned to original luster and near mint condition with just a little light wear remaining; there is a bubble on the surface of the glass, on the reverse, that was never fully formed, and likely did not have a cover glass, mentioned for completeness). GII-38. A comparatively scarce mold, extremely rare color.

Est.: \$6,000 - \$9,000 • Min. bid: \$3,000



Lot 11

EAGLE - EAGLE Historical Flask, Kensington Glass Works, Philadelphia, 1825 - 1838. Bright aquamarine, sheared mouth - iron pontil scar, Pt, virtually perfect; (only the slightest wisp of light wear, otherwise pristine). GII-40. Note; much scarcer with the iron pontiled base (most having a blowpipe pontil scar). A great example of this popular, and attractive, early eagle flask that won't break the bank.

Est.: \$175 - \$350 • Min. bid: \$90



Lot 12

EAGLE - EAGLE Historical Flask, Kensington Glass Works, Philadelphia, 1825 - 1838. Rich, deep, bluish aquamarine, sheared mouth – blowpipe pontil scar, Pt, near mint; (a little washable interior and exterior residue, and a tiny sand grain with a 1/32" cooling radiation, barely visible without a loop, otherwise virtually perfect). GII-40. A very attractive example with a rich, deep color.

Est.: \$150 - \$250 • Min. bid: \$80



Lot 13

EAGLE / "T.W.D" – FRIGATE / "FRANKLIN" Historical Flask, Kensington Glass Works, Philadelphia, probably 1825 - 1830. Aquamarine, sheared mouth – blowpipe pontil scar, Pt; (some light-to-moderate high point wear, primarily on the reverse, otherwise excellent). GII-42. A comparatively scarce mold. The USS Franklin was built in 1815 and served as the flagship of the Pacific Squadron from October, 1821 until August, 1824.

Est.: \$250 - \$350 • Min. bid: \$130



Lot 14

EAGLE - "COFFIN & HAY." / FURLED FLAG / "HAMMONTON" Historical Flask, Coffin & Hay Glass Manufactory, Hammonton, NJ, 1838 - 1847. Rich, deep bluish green, sheared mouth - blowpipe pontil scar, Qt; (a little light wear including a shallow 1/8" flake on the edge of the shoulder panel, and a 5/8" fissure extending from the pontil, along the edge of the base, possibly in-manufacture, but does not show on display, otherwise very near mint). GII-48. An impressive flask, very strong color.

Est.: \$2,000 - \$4,000 • Min. bid: \$1,000



Lot 15

EAGLE - CORNUCOPIA Historical Flask, Pitkin Glass Works, Manchester, CT, 1815 - 1830. Beautiful, light yellowish olive coloration, sheared mouth, blowpipe pontil scar, 1/2 Pt, virtually perfect; (a little in-manufacture glass extrusion at the mold seam, mentioned for completeness, not considered damage). GII-58. An extremely rare and important, early New England flask, almost no wear, nice light color. McKearin – Most Desirable Flasks, Group A, #6. Provenance: Fred Swiechowicz collection.

Est.: \$12,000 - \$24,000 • Min. bid: \$6,000



Lot 16

EAGLE - "LIBERTY" / OAK TREE Historical Flask, America, possibly an early Pittsburgh district glasshouse, 1825 - 1835. Brilliant aquamarine, sheared mouth - blowpipe pontil scar, 1/2 Pt, near mint; (just a couple of minor spots of faint interior haze in the reverse, otherwise perfect). GII-60. A great example of this comparatively scarce and desirable mold – clean, bright, sparkling, with good depth of color and a strong mold impression. Provenance: Bruce Purdy collection.

Est.: \$600 - \$900 • Min. bid: \$300



Lot 17

“LIBERTY” / EAGLE - “WILLINGTON / GLASS, Co / WEST WILLINGTON / CONN” Historical Flask, 1850 - 1860. Beautiful, rich yellowish olive, sheared mouth – blowpipe pontil scar, Qt, near mint; (a little light wear, primarily on the reverse, and the impression is a bit weak, as is often the case with this mold, otherwise perfect). GIL-61. The Qt. is difficult to find and rare with the pontil scarred base. Whittled, crude, bubbly, and a lot of yellowish tones. Fred Swiechowicz collection.

Est.: \$800 - \$1,200 • Min. bid: \$400



Lot 18

“LIBERTY”/ EAGLE - “WILLINGTON / GLASS / Co / WEST WILLINGTON / CONN” Historical Flask, 1850 - 1860. Bright olive green, sheared mouth – blowpipe pontil scar, ½ Pt, perfect! GIL-63. A great example, strong impression, nice color, clarity, almost no wear, fantastic condition, and very scarce with the pontil scarred base. Provenance: Fred Swiechowicz collection.

Est.: \$400 - \$600 • Min. bid: \$200



Lot 19

EAGLE - “NEW LONDON” / ANCHOR / “GLASS WORKS” Historical Flask, 1856 - 1860. Medium-to-deep yellowish olive amber, applied round double collar – large iron pontil scar, Pt, virtually attic mint; (just a trace of minor wear; a bit of light content residue in the shoulder, and some in-manufacture crazing lines in the neck mentioned for completeness, otherwise perfect). GIL-68. A comparatively scarce mold, extremely rare color, strong embossing, whittled.

Est.: \$2,500 - \$4,500 • Min. bid: \$1,300



Lot 20

EAGLE / “PITTSBURGH / PA / McC & Co.” - EAGLE Historical Flask, Wm. McCully & Co., Pittsburgh, 1860 - 1870. Bright yellowish citron coloration, applied collar with flat band – smooth base, Pt, virtually attic mint; (a pinhead speck of iridescent roughness on the back shoulder, and a pinprick bit of roughness on the edge of the lip, otherwise perfect). GIL-113. A scarce mold in a very rare color (1 of only 4 known in this, or similar color). Excellent clarity and density of color!

Est.: \$2,000 - \$4,000 • Min. bid: \$1,000



Lot 21

EAGLE / “LOUISVILLE / KY” - EAGLE / “GLASS / WORKS” Historical Flask, Louisville Glass Works, 1860 - 1873. Bright aquamarine, applied ring collar – smooth base, Pt, virtually attic mint; (just the slightest trace of very minor wear, otherwise perfect). GIL-115. Scarce. A bright, clean, sparkling example with a crisp impression, beautifully whittled, excellent character. The flask is noted as “Scarce”. However, in our opinion it is a very scarce-to-rare mold. Bruce Purdy collection.

Est.: \$400 - \$600 • Min. bid: \$200



Lot 22

EAGLE - (Reverse plain) Historical Flask, a Midwest glasshouse, 1860 - 1870. Bright golden amber below the shoulders shading to a rich deep amber in the lower half, applied mouth with flat band – smooth base, Pt, near perfect; (just a slight trace of faint wear including a few, tiny, onionskin-thin open bubbles). GIL-132. An exceedingly rare mold, believed to be one of only three known examples! Beautiful, outstanding condition and character – being filled with tiny bubbles. Bruce Purdy collection.

Est.: \$3,000 - \$6,000 • Min. bid: \$1,500



Lot 23

EAGLE / MONUMENT / “CONTINENTAL” - INDIAN SHOOTING BIRD / “CUNINGHAMS & Co / PITTSBURGH PA” Historical Flask, Cuninghams & Co., Pittsburgh, 1865 - 1875. Aquamarine, applied collar with flat band – smooth base, Qt; (a little scattered light wear including a tiny pinhead flake and some minor roughness on the edge of the lip, otherwise very near mint). GIL-142. Scarce. A strong, much better-than-average mold impression on this example.

Est.: \$150 - \$250 • Min. bid: \$80



Lot 24

EAGLE WITH BANNER (Reverse plain) Historical Calabash, America, 1855 - 1865. Bright “7-Up” green, applied sloping collar - iron pontil scar, Qt; (just a slight bit of very light wear on the reverse, otherwise sparkling attic mint). GIL-143. A clean, bright example, fantastic condition, and a big splash of color! Provenance: Bruce Purdy collection.

Est.: \$150 - \$250 • Min. bid: \$80



Lot 25

CORNUCOPIA - URN Pictorial Flask, probably Coventry Glass Works, Coventry, CT, 1835 - 1849. Medium clear green with an emerald tone, sheared mouth – blowpipe pontil scar, Pt, near mint; (a little light wear and a bit of faint interior milkiness in the reverse, barely noticeable, otherwise perfect). GIII-4. A scarce and attractive color, nice even tone all the way to the base.

Est.: \$300 - \$500 • Min. bid: \$150



Lot 29

MASONIC ARCH - EAGLE / "KCCNE" Historical Flask, Keene Marlboro Street Glassworks, Keene, NH, 1820 - 1830. Yellowish olive amber, sheared mouth – blowpipe pontil scar, Pt; near mint; (just a touch of light interior residue including a narrow, 1/8" to 1/2", ring of content haze, some of which may wash out, otherwise perfect). GIV-17. A very crude example, excellent character having a lopsided sheared mouth as well as the glass being filled with tiny seed bubbles.

Est.: \$175 - \$350 • Min. bid: \$90



Lot 26

CORNUCOPIA - URN Pictorial Flask, Lancaster Glass Works, Lancaster, NY, 1849 - 1855. Rich, medium-to-deep bluish green with an emerald tone, sheared mouth – blowpipe pontil scar, Pt, near mint; (just a bit of light wear including a couple of small, iridescent body flakes near the base, approximately 1/8" or less; some faint, barely noticeable, interior residue that may wash out, otherwise perfect). GIII-17. Strong, deep color, and with more of a greenish tone than most.

Est.: \$500 - \$800 • Min. bid: \$250



Lot 30

MASONIC - MASONIC Historical Flask, probably a New England glasshouse, 1820 - 1835. Rich, bluish aquamarine, almost a blue green coloration, sheared, tooled mouth - glass tipped pontil scar, 1/2 Pt, near mint; (some light interior residue or very faint haze that may wash out, and a slightly weak impression). GIV-28. A scarce mold, excellent condition, the noted light interior residue is really quite minor. A nice example.

Est.: \$250 - \$400 • Min. bid: \$130



Lot 27

MASONIC ARCH - EAGLE / "IP" Historical Flask, Keene Marlboro Street Glassworks, Keene, NH, 1815 - 1830. Deep, bluish aquamarine, almost a blue green coloration, sheared mouth – blowpipe pontil scar, Pt; (a little exterior wear, primarily on the reverse, including some scattered light scratches on the shoulder; a couple of tiny pinhead flakes at the edge of the base, otherwise excellent). GIV-1. A bright, clean example of this early Keene Masonic flask.

Est.: \$250 - \$400 • Min. bid: \$130



Lot 31

"SUCCESS TO THE RAILROAD" / HORSE PULLING CART – (Reverse same) Historical Flask, possibly Mt. Vernon Glass Works, Vernon, NY, 1830 – 1846. Medium-to-deep yellowish olive, sheared mouth – blowpipe pontil scar, Pt, virtually attic mint; (just a slight trace of light wear and a slightly weak impression which is very typical of this mold, otherwise perfect). GV-5. Fantastic character having very crude, syrupy glass filled with tiny bubbles. Provenance: Bruce Purdy collection.

Est.: \$400 - \$600 • Min. bid: \$200



Lot 28

MASONIC ARCH - EAGLE Historical Flask, Keene Marlboro Street Glassworks, 1815 - 1830. Aquamarine shading to a light yellowish green in the lower third of the flask, sheared mouth, applied ring collar – blowpipe pontil scar, Pt, near mint; (just a slight trace of light wear including a shallow, 1/8" flake on the edge of the lip, otherwise perfect). GIV-7a. As noted by McKearin, an extremely rare mold! A great example of this early Masonic, strong impression, almost no wear.

Est.: \$600 - \$900 • Min. bid: \$300



Lot 32

"CORN FOR THE WORLD" / EAR OF CORN - MONUMENT / "BALTIMORE" Historical Flask, 1855 - 1865. Medium-to-deep apricot coloration, applied square collar – smooth base, Qt; (some light scratches and exterior wear, primarily on the monument side, and a fair amount of dried interior content residue, some of which may wash out). GVI-4. From a local upstate NY estate auction, first time being offered on the market. A scarce color, no amber in this one.

Est.: \$1,000 - \$1,500 • Min. bid: \$500



Lot 33

"E.G. BOOZ'S / OLD CABIN / WHISKEY - (1840) - E.G. BOOZ'S / OLD CABIN / WHISKEY. - 120 WALNUT ST. / PHILADELPHIA", Whitney Glass Works, Glassboro, NJ, 1860 - 1870. Beautiful honey amber shading to a light honey yellow coloration through the corners, cabin form, applied sloping collar - smooth base, ht. 7 3/4", near mint; (just a slight trace of light wear, and a bit of patchy, faint interior residue). GVIII-4. A great example, fantastic light color, excellent condition.

Est.: \$3,000 - \$5,000 • Min. bid: \$1,500



Lot 37

SUNBURST FLASK, probably Keene Glassworks, Keene, NH, 1815 - 1830. Colorless, sheared mouth - solid glass tipped punty scar, 1/2 Pt, virtually perfect; (only the slightest trace of faint wear including a tiny, onionskin-thin open bubble on one of the rays, otherwise pristine). GVIII-17. An extremely rare flask, believed to be only the third example offered at auction in 40 years, since the Blaske sale in 1983. Provenance: Ex. Mark Vuono collection, originally found by a picker in Virginia.

Est.: \$4,000 - \$8,000 • Min bid: \$2,000



Lot 34

SUNBURST FLASK, possibly Pitkin Glassworks, Manchester, CT, 1815 - 1830. Bright medium olive amber, sheared mouth - blowpipe pontil scar, Pt; (some scattered light exterior wear; a minor 1/8" flake on the inside edge of the lip, and a small, partially open bubble on the interior of the neck, otherwise very near mint). GVIII-5a. A very nice example of this extremely rare Sunburst Flask, nice clarity, excellent character, excellent overall condition.

Est.: \$2,000 - \$4,000 • Min. bid: \$1,000



Lot 38

SUNBURST FLASK, Baltimore Glass Works, Baltimore, MD, 1820 - 1830. Brilliant aquamarine, sheared mouth - blowpipe pontil scar, Pt, attic mint! GVIII-20. Comparatively scarce. A particularly nice example, strong mold impression, clean, brilliant sparkling glass, outstanding condition.

Est.: \$250 - \$450 • Min. bid: \$130



Lot 35

SUNBURST FLASK, possibly Pitkin Glassworks, Manchester, CT, 1815 - 1830. Beautiful, light yellowish olive amber, almost an olive yellow, sheared mouth - blowpipe pontil scar, Pt, virtually attic mint; (some light high point wear, otherwise virtually perfect). GVIII-7. Extremely rare. This mold does not come around often. A great example, very attractive, nice lighter color, excellent clarity and condition.

Est. \$2,000 - \$4,000 • Min. bid: \$1,000



Lot 39

SUNBURST FLASK, Baltimore Glass Works, Baltimore, MD, 1820 - 1830. Medium-to-deep pinkish raspberry puce, sheared mouth - blowpipe pontil scar, 1/2 Pt; (some scattered light exterior wear, otherwise perfect). GVIII-25. A very attractive, beautiful example of this scarce and desirable Baltimore Sunburst Flask. It is a bit of a chameleon that changes color, depending on the lighting, but is a gorgeous piece and would look great on any shelf!

Est.: \$2,500 - \$4,500 • Min. bid: \$1,300



Lot 36

SUNBURST FLASK, probably Keene Glassworks, Keene, NH, 1815 - 1830. Rich, deep, bluish aquamarine, sheared mouth - pontil scar, 1/2 Pt; (a little lip edge roughness that you can feel, but is not easy to see; a couple of shallow 1/8" flakes on the inside edge of the lip, and tiny flake at edge of base; a little minor roughness from extrusion at the mold seam, in-manufacture). GVIII-15. A comparatively scarce flask, excellent condition, very scarce color.

Est.: \$1,500 - \$2,500 • Min. bid: \$800



Lot 40

SUNBURST FLASK, probably Baltimore Glass Works, Baltimore, MD, 1820 - 1830. Beautiful, clear light blue green coloration, sheared mouth - blowpipe pontil scar, Pt, near mint; (just the slightest trace of light wear, otherwise virtually pristine). GVIII-26. Comparatively scarce. A very eye-appealing, attractive example - bright, clean, fantastic clarity, strong impression, almost no wear, a great example! Provenance: Ex Tom McCandless collection.

Est.: \$500 - \$700 • Min. bid: \$250



Lot 41

SUNBURST FLASK, Baltimore Glass Works, Baltimore, MD, 1820 - 1830. Yellowish olive shading to a deep olive, almost black, in the lower half of the flask, sheared mouth – pontil scar, Pt; (a $\frac{3}{4}$ " thin hairline crack, well hidden near the mold seam on one of the corrugated sides, and just a slight trace of wear, otherwise excellent). GVIII-26. A comparatively scarce mold in a very rare color. Believed to be only the second example in this color to be offered at auction in more than 20 years!

Est.: \$1,500 - \$3,000 • Min. bid: \$800



Lot 42

SUNBURST FLASK, New England, probably Keene Marlboro Street Glassworks, 1815 – 1830. Medium clear green, almost an apple green coloration, sheared mouth – blowpipe pontil scar, $\frac{3}{4}$ Pt, near mint; (a little minor high point wear). GVIII-29. A comparatively scarce flask, rare color! Although McKearin lists a "Clear green" in the charts, this is only the second example of this, or a similar color, to be offered in more than 30 years of auction records.

Est.: \$400 - \$800 • Min. bid: \$200



Lot 43

SCROLL FLASK, Midwest, 1840 – 1860. Medium-to-deep citron coloration, sheared mouth – iron pontil scar, Qt, near mint; (just a trace of minor light wear including a tiny pinhead flake on the edge of the lip, and some faint haziness in the shoulder, barely noticeable, otherwise perfect). GIX-2. A beautiful and scarce color, and a strong depth of color that does not wash out! Provenance: Bruce Purdy collection.

Est.: \$1,400 - \$2,400 • Min. bid: \$700



Lot 44

SCROLL FLASK, Midwest, 1840 – 1860. Beautiful, medium-to-deep yellowish olive amber, applied collar with flat band – sand type pontil scar, Qt, attic mint. GIX-2c variant (medial scrolls encircle teardrops at shoulders, smaller stars, but unlike the 2c, all stars are 6-pointed). A choice example, very scarce mold, rare color. Also unusual with the sand type pontil scar. Provenance: Ex. Hank and Joyce Taylor collection.

Est.: \$1,400 - \$2,400 • Min. bid: \$700



Lot 45

"LOUISVILLE, KY – GLASS WORKS" SCROLL FLASK, Louisville Glassworks, 1855 – 1860. Greenish aquamarine, sheared mouth – iron pontil scar, Pt, near mint; (just a faint trace of light wear, and a bit of minor roughness including a shallow, $\frac{1}{8}$ " flake, on the edge of the sheared lip, otherwise perfect). GIX-8. A very nice example, clean, crisp embossing, and excellent character having crude pebbly glass. Provenance: Bruce Purdy collection.

Est.: \$250 - \$400 • Min. bid: \$130



Lot 46

SCROLL FLASK, Midwest, 1840 – 1860. Colorless, sheared mouth – blowpipe pontil scar, $\frac{1}{2}$ Pt, virtually perfect; (just the slightest trace of wear including a small, onionskin-thin open bubble on one of the ribs, and a faint little band of interior milkiness below the shoulder, barely noticeable, otherwise attic mint). GIX-34. A clean, sparkling little Scroll in a comparatively scarce mold, and very rare 'color'. This one will stand out on a shelf! Provenance: Bruce Purdy collection.

Est.: \$800 - \$1,600 • Min. bid: \$400



Lot 47

SCROLL FLASK, Midwest, 1840 – 1860. Medium golden amber, sheared mouth – blowpipe pontil scar, $\frac{1}{2}$ Pt, near mint; (just a little faint dullness or exterior 'bloom' on one side in the lower half; and a bit of minor interior residue that would likely wash out, otherwise excellent). GIX-34. An attractive little Scroll Flask, comparatively scarce mold. Provenance: Bruce Purdy collection.

Est.: \$600 - \$900 • Min. bid: \$300



Lot 48

"GENL TAYLOR NEVER SURRENDERS" / CANNON – "A / LITTLE / MORE / GRAPE / CAPT. BRAGG" Historical Flask, Baltimore Glass Works, 1848 – 1855. Light-to-medium yellow green, sheared mouth – blowpipe pontil scar, $\frac{1}{2}$ Pt; (a $\frac{1}{4}$ " flat chip on the back of the lip, and a little minor roughness, a portion of which may have been lightly polished, otherwise virtually pristine). GX-6. A crisp, absolutely outstanding mold impression, and clarity. Ex. Warren C. Lane, Jr. collection.

Est.: \$2,000 - \$4,000 • Min. bid: \$1,000



Lot 49

SUMMER TREE - SUMMER TREE Pictorial Flask, America, 1845 - 1860. Medium-to-deep bluish green, applied round collar with bevel - blowpipe pontil scar, Qt, near mint; (just a trace of light wear and a small potstone, well hidden in the tree, with a couple tiny, 1/16" 'legs', barely noticeable, otherwise perfect). GX-18. A beautiful example, strong color - more greenish than most, and with excellent character to the glass. Fred Swiechowicz collection; Ex. Taylor collection.

Est.: \$800 - \$1,200 • Min. bid: \$400



Lot 50

SUMMER TREE - WINTER TREE Pictorial Flask, America, 1845 - 1860. Gorgeous, olive yellow, almost a lemon yellow with an olive tone, applied round collar with band - large blowpipe pontil scar, Qt, perfect. GX-19. A fantastic example in a very beautiful and rare color, outstanding eye-appeal, nice character with plenty of tiny bubbles throughout, crisp - very strong impression, and virtually pristine condition. A great example that will stand out in any collection.

Est.: \$2,000 - \$4,000 • Min. bid: \$1,000



Lot 51

SUMMER TREE - WINTER TREE Pictorial Flask, America, 1855 - 1865. Rich, very deep root beer coloration with a reddish orange tone, virtually black in reflected light, applied round collar with bevel - smooth base, Qt, near mint; (just a little scattered light wear, otherwise perfect). GX-19. A very rare color for this mold with only two, or possibly three examples in this, or similar color, being offered in the past 20 years. Provenance: Fred Swiechowicz collection.

Est.: \$1,200 - \$2,400 • Min. bid: \$600



Lot 52

PROSPECTOR - EAGLE Historical Flask, Zanesville Glass Works, OH, 1859 - 1863. Aqua, applied ring collar - heavy iron pontil scar, Pt, virtually attic mint; (a faint light band of interior milkiness through the mid-body, and a partially open bubble on the inside of the neck, otherwise perfect). GXI-45. McKearin Group C, Rare Flasks, #5. A great example, and even more scarce with the pontil scarred base. Known as the "Tippler flask" as the prospector is tipping a long neck bottle to his lips.

Est.: \$1,500 - \$2,500 • Min. bid: \$800



Lot 53

"FOR PIKE'S PEAK" / PROSPECTOR - HUNTER Historical Flask, Ravenna Glass Works, Ravenna, OH, 1858 - 1864. Aquamarine, applied collar with flat band - smooth base, Qt, virtually perfect; (just a wisp of faint interior milkiness near the base, and only the slightest trace of wear, otherwise sparkling mint). GXI-47. A comparatively scarce, desirable mold, almost no wear.

st.: \$150 - \$250 • Min. bid: \$80



Lot 54

"FOR PIKE'S PEAK" / PROSPECTOR - HUNTER Historical Flask, Ravenna Glass Works, Ravenna, OH, 1858 - 1864. Yellowish olive with a slight amber tone, applied collar with band - smooth base, Pt; (a bit of scattered light wear including some minor scratches; a shallow 1/8" flake on the edge of the lip, and a small spot - approximately 1/2" x 1/4", of minor dullness by the prospector's foot). GXI-51. The flask displays very nicely, the condition issues are not terribly distracting.

Est.: \$1,000 - \$1,500 • Min. bid: \$500



Lot 55

CLASPED HANDS / "UNION" - EAGLE Historical Calabash, probably A.R. Samuels, Philadelphia, PA, 1860 - 1865. Bright medium amber through the mid-body shading to a rich, deep amber with reddish-orange tones through the shoulders and neck, applied round collar with ring - red iron pontil scar, Qt, virtually attic mint; (just the slightest trace of very minor wear, and a little spotty interior residue). GXII-43. Strong mold impression, nice color and condition. Bruce Purdy collection.

Est.: \$300 - \$500 • Min. bid: \$150



Lot 56

SOLDIER / "BALT. MD." - DANCER / "CHAPMAN." Pictorial Flask, Chapman's Maryland Glass Works, Baltimore, MD, 1849 - 1862. Medium-to-deep yellowish olive with a slight amber tone, applied collar with flat band - smooth base with depressed circular disk and nipple at center, virtually perfect; (slight touch of minor light wear on the reverse, otherwise attic mint). GXIII-13. A great example, bright, clean, very little wear, fantastic condition. Provenance: Fred Swiechowicz collection.

Est.: \$800 - \$1,200 • Min. bid: \$400



Lot 57

“FLORA TEMPLE” / STANDING HORSE / “HARNESS TROT 2.19 ¾” Pictorial Flask, Whitney Glass Works, Glassboro, NJ, 1860 – 1865. Amber with some apricot and deeper reddish tones, applied handle curled at lower attachment, applied collar with band – smooth base, Pt, near mint; (just a trace of very minor wear, otherwise perfect). GXIII-22. A very nice example of the classic, handled, Flora Temple Flask, and absolutely no issues with the handle attachment!

Est.: \$300 - \$500 • Min. bid: \$150



Lot 61

SHEAF OF GRAIN / LAUREL WREATH – 8 POINTED STAR Pictorial Calabash, probably Sheets & Duffy Glass Manufacturers, Philadelphia, PA, 1850 – 1860. Yellowish apple green, applied sloping collar – blowpipe pontil scar, Qt, virtually perfect; (just a very slight trace of light wear, otherwise mint). GXIII-43. Attractive, delicate, yellowish green color, almost no wear, a lot of bottle for the money.

Est.: \$150 - \$250 • Min. bid: \$80



Lot 58

“FLORA TEMPLE” / STANDING HORSE / “HARNESS TROT 2.19 ¾” Pictorial Flask, probably Lancaster Glass Works, 1860 – 1865. Very deep bluish aquamarine, almost a blue green coloration, applied collar with flat band – smooth base, Pt, near mint; (just a trace of light wear, primarily on the reverse, otherwise excellent). GXIII-23. Note; an interesting fold of glass along, and below, the horse's front leg. A rich, eye-appealing, very scarce color!

Est.: \$400 - \$600 • Min. bid: \$200



Lot 62

“TRAVELER'S” (STAR) “COMPANION” – “RAVENNA” (STAR) “GLASS Co” Historical Flask, Ravenna Glass Co, 1857 – 1864. Medium amber with some lighter golden tones through the center, applied collar with flat band – iron pontil scar, Pt; (some high point wear, primarily on the reverse near the base, and a little light, patchy, interior haze, not terribly distracting, otherwise excellent). GXIV-3. A nice example of this comparatively scarce mold. Provenance: Bruce Purdy collection.

Est.: \$300 - \$500 • Min. bid: \$150



Lot 59

SHEAF OF GRAIN - “MECHANIC GLASS WORKS / PHILADA” Pictorial Flask, probably 1850 - 1860. Rich, deep aquamarine, sheared mouth - blowpipe pontil scar, Qt; (some high point wear, primarily on the sheaf of grain, and a 1/8” flake on the top of the sheared lip, otherwise excellent). GXIII-34. McKearin refers to the Mechanic Glass Works as “the mystery works”, as very little is known about it. McKearin Group C, ‘Rare flasks’, #13. Provenance: Bruce Purdy collection.

Est.: \$250 - \$400 • Min. bid: \$130



Lot 63

“GRANITE / GLASS / CO - STODDARD / N H” Lettered Flask, 1855 - 1862. Yellowish olive amber, sheared mouth – blowpipe pontil scar, Pt, near mint; (a little light exterior wear, and just a trace of interior residue, otherwise perfect). GXV-7. A very attractive example, nice light color, and excellent character – the glass being filled with tiny bubbles. Provenance: Bruce Purdy collection.

Est.: \$300 - \$500 • Min. bid: \$150



Lot 60

SHEAF OF GRAIN - STAR Pictorial Flask, probably Bulltown Glass Works, Bulltown, NJ, 1858 - 1865. Rich yellowish emerald coloration, applied double ring collar – large iron pontil scar, Qt, near perfect; (just a slight trace of wear including a light scratch on the reverse, otherwise mint). GXIII-38. A scarce, eye-appealing flask in a rare and beautiful color. Only the second example in emerald to be offered at auction in more than 25 years! Bruce Purdy collection.

Est.: \$3,000 - \$6,000 • Min. bid: \$1,500



Lot 64

“PURE / WHITE METAL SPIRITS” / BUST OF BRYAN / “BRYAN” / “FOR / FREE SILVER ONLY / 16 TO 1” - / BUST OF SEWALL / “SEWALL” Political Flask, 1896. Colorless, oval, tooled ring collar – **“TRADE MARK REG'S / PAT AP FOR”** (on smooth base), ¼ Pt, perfect. An extremely rare flask, we cannot recall seeing another example and can find no record of this flask at auction. Provenance: Fred Swiechowicz collection.

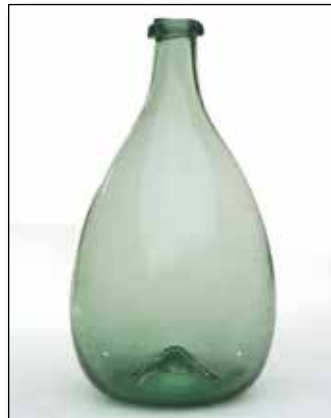
Est.: \$300 - \$600 • Min. bid: \$150



Lot 65

Rare, Miniature Freeblown Globular Bottle, New England, or possibly New York State, 1790 – 1820. Light yellowish mossy green, globular form, sheared mouth with an applied ring collar – blowpipe pontil scar, ht. 3 1/8"; (some scattered light exterior wear, and a hairline 'spider crack' at the mid-body with several 1/8" to 1/4" 'legs'). MW, plate 47. Although not perfect, it is a great looking little glob in a rare size, and a most unusual, rare color!

Est.: \$200 - \$400 • Min. bid: \$100



Lot 69

Early, Freeblown Decanter or Club Bottle, probably Wistarburgh Glass Works, 1760 – 1780. Medium clear green, cylindrical, club-form body with very slightly flattened sides, gracefully sloping shoulders, sheared mouth with applied ring collar – pushed up base with blowpipe pontil scar, ht. 8 3/8"; (some light scratches and moderate exterior usage wear; just a slight trace of light milkiness in the neck, otherwise excellent). DM, p.50. A great Colonial-period bottle, scarce form.

Est.: \$500 - \$800 • Min. bid: \$250



Lot 66

Early, Freeblown Globular Bottle, New England, 1790 – 1820. Yellowish olive amber, large globular form, sheared mouth with a crudely applied ring type collar – delicate blowpipe pontil scar, ht. 11 1/8", virtually mint; (just a slight trace of light wear including a 1/4", minor, onionskin-thin open bubble, otherwise perfect). A great example, beautiful lighter color than most, pleasing clarity, nice even density of color, and very little wear.

Est.: \$700 - \$900 • Min. bid: \$350



Lot 70

Early, Freeblown Chestnut Bottle, probably Wistarburgh Glass Works, 1760 – 1780. Bright, medium-to-deep yellowish green, plump, high-shouldered chestnut form, sheared mouth with a crudely applied ring collar – blowpipe pontil scar, ht. 8 7/8", near mint; (just a touch of minor light wear, otherwise perfect). A fantastic example, at almost 9", a nice size, good color, excellent form, clarity, and condition! Note; some faint paddle marks are discernable on the flattened sides.

Est.: \$600 - \$900 • Min. bid: \$300



Lot 67

Freeblown Globular Bottle, Midwest, Pittsburgh, or possible Moscow or Cincinnati, OH Glass Works, 1800 – 1830. Rich, medium blue green coloration, globular form with drawn up shoulders, sheared mouth with a crudely applied ring type collar – blowpipe pontil scar, ht. 7 1/2"; (some scattered light scratches and minor exterior usage wear, heavy base wear, otherwise excellent). An absolutely beautiful, and likely very early, Midwest glob, good form, strong color!

Est.: \$200 - \$400 • Min. bid: \$100



Lot 71

Early, Freeblown Chestnut Bottle, Mid-Atlantic region, probably Wistarburgh Glass Works, Alloway, NJ, or possibly Hilltown, Bucks County, PA, 1750 – 1770. Medium-to-deep green with an emerald tone, plump chestnut form, sheared mouth with an outward rolled collar – blowpipe pontil scar, ht. 8 5/8"; (some typical light scratches and moderate exterior usage wear, otherwise perfect). Beautiful, deep rich color, great form, nice bubbly glass.

Est.: \$500 - \$800 • Min. bid: \$250



Lot 68

Freeblown Chestnut Flask, New England, 1785 – 1820. Clear, light-to-medium olive coloration, chestnut form, sheared mouth, applied ring collar – delicate blowpipe pontil scar, ht. 7 3/4", near mint; (just a trace of very minor wear, and some light interior content residue in the shoulders, probably washable, otherwise perfect). A very nice example of this larger, mid-size, New England chestnut, excellent character with plenty of tiny bubbles and impurities swirled throughout.

Est.: \$300 - \$500 • Min. bid: \$150



Lot 72

Early, Freeblown Chestnut Bottle, Mid-Atlantic region, probably Hilltown Glass Works, Bucks County, PA, or possibly Wistarburgh Glass Works, 1740 – 1760. Rich, deep green with a yellowish emerald tone, chestnut form, sheared and outward rolled mouth – solid glass tipped pontil scar, ht. 9", near mint; (some light scratches and scattered minor wear, otherwise perfect). A very heavy chestnut, great color, and absolutely outstanding character – the glass being filled with bubbles and impurities.

Est.: \$600 - \$900 • Min. bid: \$300



Lot 73

Giant, Early Freeblown Chestnut Bottle, Wistarburgh Glass Works, Alloway, NJ, 1760 – 1780. Medium-to-deep yellow green, high-shouldered chestnut, sheared, outward rolled mouth – glass tipped pontil scar with remnants of white glass gall, ht. 13 1/8", near mint; (a bit of minor wear and a slender open bubble on the neck, otherwise perfect). One of the choicest Wistarburgh chestnuts that we have had the opportunity to offer. A top example – size, color, form, condition!

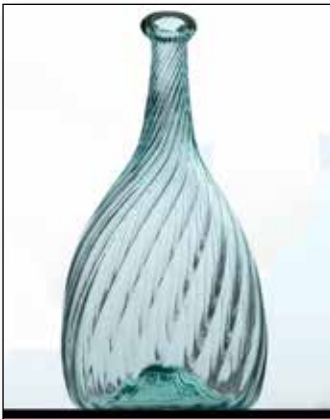
Est.: \$1,500 - \$2,500 • Min. bid: \$800



Lot 77

Rare, Oversize, Pattern Molded Globular Bottle, probably Zanesville Glass Works, Zanesville, OH, 1820 – 1835. Brilliant aquamarine, 24 ribs swirled to the left, globular form, sheared and outward rolled mouth – blowpipe pontil scar, ht. 9 5/8"; (a long bubble at the mid-body with a 1" x 1/4" opening in the cover glass, otherwise brilliant, virtually pristine condition). Scarce color, rare larger size, excellent form, sparkling clean with that extra brilliance and eye-appeal. Ex. Elvin Moody collection.

Est.: \$600 - \$900 • Min. bid: \$300



Lot 74

Pattern Molded Club or Decanter Bottle, Midwest, 1820 – 1835. Aquamarine, 24 ribs swirled slightly to the right, club or decanter form with gracefully sloping shoulders, applied round collar – pushed-up base with blowpipe pontil scar, ht. 9 5/8", attic mint! A very scarce size (most club bottles being in the 7 3/4" to 8 1/2" size), crisp, very strong ribbing, excellent clarity and condition – a much better than average example! Provenance: Bruce Purdy collection.

Est.: \$200 - \$400 • Min. bid: \$100



Lot 78

Pattern Molded Globular Bottle, Midwest, probably Zanesville Glass Works, Zanesville, OH, 1820 – 1835. Golden amber, 24 ribs swirled to the right, globular form, sheared and outward folded mouth – pontil scar, ht. 7 3/4", near mint; (just a bit of typical light exterior wear and a very slight film of interior residue or milkiness that may wash out, otherwise perfect). Good color, excellent form, and with nice tight ribbing through the neck. Provenance: Bruce Purdy collection.

Est.: \$500 - \$700 • Min. bid: \$250



Lot 75

Rare, Oversize, Pattern Molded Club or Decanter Bottle, Midwest, 1835 – 1845. Aqua, 34 ribs swirled slightly to the left, transitional club form, applied sloping collar – blowpipe pontil scar, ht. 11 3/4"; (a couple of spots of minor light wear, otherwise perfect). See MW, plate 94, #8; plate 95, #9. A very rare, large size – one of the largest that we can recall seeing, and an exceedingly rare rib count. 34 ribs is a rare rib count, scant few collections will have one!

Est.: \$300 - \$600 • Min. bid: \$150



Lot 79

Pattern Molded Globular Bottle, Midwest, probably Zanesville Glass Works, Zanesville, OH, 1820 – 1835. Deep amber, 24 ribs swirled to the right, globular form, sheared and outward folded mouth – pontil scar, ht. 7"; (a couple of shallow, partially open surface bubbles; just a bit of very minor wear, and a slightly weak impression). Rich, deep color, unusually short neck. The noted condition issues are relatively minor, and the bottle displays quite nicely. Bruce Purdy collection.

Est.: \$300 - \$500 • Min. bid: \$150



Lot 76

Pattern Molded Globular Bottle, Midwest, probably Zanesville Glass Works, OH, 1820 – 1835. Aquamarine, 24 ribs swirled to the right, globular form, sheared and outward folded mouth – pontil scar, ht. 7", very near mint; (just a trace of light wear, and a bit of very minor interior residue or faint haze, barely noticeable, otherwise perfect). A very nice example, excellent form, fantastic condition, good tight ribbing through the neck. Bruce Purdy collection.

Est.: \$400 - \$800 • Min. bid: \$200



Lot 80

Pattern Molded Wine or Table Decanter, England, probably one of the Bristol glasshouses, 1840 – 1860. Brilliant yellowish honey amber in the body shading to a deep amber with an orange tone through the neck, 16 vertical ribs swirled to the right in the neck, cylindrical, sheared and fire polished mouth – solid, glass tipped pontil scar, ht. 11 1/4", perfect. A beautiful pattern molded English table decanter, brilliant glass, excellent clarity, blown from a very high quality 'metal'.

Est.: \$200 - \$400 • Min. bid: \$100



Lot 81

Pattern Molded Cologne or Toilet Water Bottle, Midwest, 1815 – 1835. Colorless, 21 ribs swirled to the left, cylindrical with gracefully sloping shoulders and an elongated neck, sheared, tooled, and outward flared mouth – blowpipe pontil scar, ht. 6 ¾", near perfect; (a little faint interior residue in the shoulders). A rare form and rib count, and very scarce color (most being in shades of aqua). The last example that we've offered was in the Ballentine collection, Nov., 2020.

Est.: \$400 - \$600 • Min. bid: \$200



Lot 82

Pattern Molded Cologne or Toilet Water Bottle, Midwest, probably Zanesville Glass Works, 1820 – 1840. Rich, deep aqua, 24 ribs swirled to the left, cylindrical with gracefully sloping shoulders, sheared, tooled, and inward rolled mouth – blowpipe pontil scar, ht. 6", virtually attic mint; (some minor in-manufacture crazing lines in the neck, and just a slight trace of wear, otherwise perfect). Very scarce form, these colognes are much more rare than the clubs, or globs.

Est.: \$400 - \$600 • Min. bid: \$200



Lot 83

Pattern Molded Cologne, probably Midwest, Pittsburgh district, 1825 – 1840. Beautiful, medium-to-deep plum amethyst, 16 ribs swirled to the left, cylindrical bulbous body with elongated neck, sheared, tooled, wide flared mouth – blowpipe pontil scar, ht. 5 5/8", perfect. A beautiful, delicate, very scarce-to-rare pattern molded toilet water, fantastic color.

Est.: \$400 - \$800 • Min. bid: \$200



Lot 84

Early, Pattern Molded Pocket Flask, Midwest type, possibly Stiegel's American Flint Glass Manufactory, 1764 – 1774. Colorless, 18 ribs swirled to the right, chestnut form with slightly drawn up shoulders, sheared mouth – blowpipe pontil scar, ht. 4 1/8", virtually perfect; (just a slight trace of minor light wear). A great little pattern molded flask, rare size, fantastic form and symmetry, outstanding condition. A little sweetheart of a flask.

Est.: \$500 - \$800 • Min. bid: \$250



Lot 85

Pattern Molded Pocket Flask, Midwest, possibly Moscow or Cincinnati Glass Works, Cincinnati, OH, 1815 – 1830. Rich greenish aquamarine, 25 ribs swirled to the right, chestnut form, sheared mouth – blowpipe pontil scar, ht. 5 ¼", virtually perfect; (just the slightest trace of very minor wear, otherwise pristine). A great little flask, good form and symmetry, pleasing depth of color, fantastic condition, rare rib count.

Est.: \$250 - \$400 • Min. bid: \$130



Lot 86

Pattern Molded Pocket Flask, Midwest, possibly Moscow or Cincinnati Glass Works, Cincinnati, OH, 1815 – 1830. Rich, very deep aquamarine, 25 vertical ribs, chestnut form, sheared mouth – blowpipe pontil scar, ht. 6 ½", perfect. An absolutely fantastic piece in every way – depth of color, excellent form, strong impression, nice larger size, rare rib count, and outstanding condition. Provenance: Bruce Purdy collection.

Est.: \$400 - \$800 • Min. bid: \$200



Lot 87

Pattern Molded Pocket Flask, Midwest, probably Zanesville Glass Works, Zanesville, OH, 1820 – 1840. Bright honey amber, 24 ribs swirled to the left, chestnut form, sheared mouth – pontil scar, ht. 5"; (some typical light high point wear on the sides, otherwise near mint). An attractive little flask, nice lighter color. Note; an early collector tag remains on the base. Provenance: Bruce Purdy collection.

Est.: \$250 - \$400 • Min. bid: \$130



Lot 88

Pattern Molded Pocket Flask, Midwest, probably Zanesville Glass Works, Zanesville, OH, 1820 – 1840. Medium-to-deep amber, 24 vertical ribs, circular form, sheared mouth – blowpipe pontil scar, ht. 4 5/8"; (some scattered light usage wear and a little exterior 'bloom', or dullness, on the sides, otherwise excellent). Very nice form, strong ribbing through the shoulders. A classic little Zanesville pocket flask. Provenance: Bruce Purdy collection.

Est.: \$250 - \$400 • Min. bid: \$130



Lot 89

Pitkin-Type Flask, New England, 1790 – 1820. Delicate, light olive yellow, almost a straw color with an olive tone, 36 broken rib pattern swirled to the left, ovoid form, sheared mouth – blowpipe pontil scar, ht. 5 ¼”, virtually perfect; (just a faint trace of wear and a little washable residue). A sweetheart, and very attractive little Pitkin, nice light color, fantastic condition. Provenance: A virgin find from a Freehold, NY, estate auction.

Est.: \$800 - \$1,200 • Min. bid: \$400



Lot 93

Pitkin Type Flask, Mid-Atlantic region, possibly Clementon Glass Works, Clementon, NJ, 1805 – 1820. Rich, medium-to-deep tobacco amber, 36 broken rib pattern swirled to the left, plump circular body, sheared mouth – blowpipe pontil scar, ht. 5 ¾”, attic mint! MW, color plate IV, #2. These amber ‘clockface’ type Pitkin flasks are getting harder to find and this one is a great example with crisp, sharp ribbing, great color and condition.

Est.: \$800 - \$1,200 • Min. bid: \$400



Lot 90

Pitkin-Type Flask, New England, 1790 – 1820. Clear, medium olive, 38 vertical ribs over 36 ribs swirled to the right, ovoid form, crudely sheared mouth – blowpipe pontil scar, ht. 6 3/8”; near mint; (a little scattered minor usage wear including a couple of light scratches and a tiny pinhead flake at edge of base). A very unusual Pitkin having a rare rib count (38 over 36), pleasing clarity, and good form.

Est.: \$600 - \$900 • Min. bid: \$300



Lot 94

Pitkin-Type Flask, early Mid-Atlantic type, eastern Pennsylvania, possibly one of the Stiegel glasshouses, 1764 – 1774. Medium clear green, 16 broken rib pattern swirled to the right, flattened elliptical or ovoid form, sheared mouth – blowpipe pontil scar, ht. 5 ½”; (just a little minor usage wear, and couple of spots of light interior milkiness, otherwise very near mint). A very early Pitkin, nice strong pattern through the upper half of the flask, pleasing form and symmetry.

Est.: \$400 - \$600 • Min. bid: \$200



Lot 91

Pitkin Type Flask, Mid-Atlantic region, possibly Philadelphia Glass Works, Kensington, 1775 – 1785. Colorless, 19 broken rib pattern swirled to the left, sheared mouth – blowpipe pontil scar, ht. 5 ¾”; (some scattered light wear, and some light interior milkiness – not terribly distracting, but mentioned for completeness, the pattern weakens in the lower half of the body). A rare Pitkin flask - rare in colorless glass, as well as having a very scarce-to-rare rib count.

Est.: \$400 - \$600 • Min. bid: \$200



Lot 95

Pitkin-Type Flask, Mid-Atlantic region, probably Hilltown Glass Works, Bucks County, PA 1760 – 1780. Bright, medium-to-deep grass green, 16 broken rib pattern swirled to the right, flattened spherical body, sheared mouth – solid, glass tipped punty scar, ht. 4 ¾”; (some moderate-to-heavy exterior wear, but no chips, cracks, or other form of damage). A very early, ‘earthy’ little Pitkin with plenty of honest usage wear. Provenance: Bruce Purdy collection.

Est.: \$400 - \$600 • Min. bid: \$200



Lot 92

Pitkin-Type Flask, Mid-Atlantic region, 1780 – 1800. Bright aquamarine, 30 broken rib pattern swirled to the right, flattened circular body, sheared mouth – blowpipe pontil scar, ht. 4 7/8”, virtually perfect; (a partially open bubble on the interior of the base). A great little flask, and a rare, much smaller-than-average size for a ‘clockface’ type Pitkin, clean, bright, good form, outstanding condition. Provenance: Bruce Purdy collection.

Est.: \$500 - \$800 • Min. bid: \$250



Lot 96

Pitkin-Type Flask, Mid-Atlantic region, probably Hilltown Glass Works, Bucks County, PA 1760 – 1780. Yellow green with an olive tone, 16 broken rib pattern swirled to the right, flattened elliptical or ovoid form, sheared mouth – glass tipped punty scar, ht. 6 ½”, near mint; (a little scattered minor wear, pattern weakens in the lower half of the body). Beautiful color, excellent overall condition. Provenance: Bruce Purdy collection.

Est.: \$600 - \$900 • Min. bid: \$300



Lot 97

Pitkin-Type Flask, Mid-Atlantic region, probably Hilltown Glass Works, Bucks County, PA 1760 – 1780. Bright yellowish olive, almost a rich olive yellow coloration, 32 broken rib pattern swirled to the left, ovoid form, sheared mouth – blowpipe pontil scar, ht. 6 ½”, near mint; (some typical scattered light wear, and a tiny, ¼”, sliver open bubble, otherwise perfect). A beautiful, rare, and very eye-appealing color, excellent overall condition!

Est.: \$800 - \$1,200 • Min. bid: \$400



Lot 98

Pitkin-Type Flask, Mid-Atlantic, possibly Hilltown Glass Works, 1760 – 1780. Brilliant yellowish green with an emerald tone, 24 broken rib pattern swirled to the right, large circular body, sheared mouth – blowpipe pontil scar, ht. 6 5/8”, near perfect; (just a slight trace of wear, and a small potstone with a tiny, 1/16” cooling line, barely visible without a loop, otherwise mint). A great Pitkin flask, gorgeous color, clarity, strong pattern. Ex. Hindman auction deaccessioned from a Midwest museum.

Est.: \$800 - \$1,200 • Min. bid: \$400



Lot 99

Early Patterned Spirits Flask, Continental or possibly America, 1800 – 1830. Colorless, flattened spherical body with an overall hobnail pattern, sheared mouth – blowpipe pontil scar, ht. 4”, virtually perfect; (very slight trace of light wear). Scarce size. A bright clean example, fantastic condition. Although these are sometimes termed “poison flasks” (and listed in the Poison Bottle Workbook, KU-15), they are generally believed to have held spirits. Ex. Gardner collection.

Est.: \$150 - \$250 • Min. bid: \$80



Lot 100

Lot of (2), Motif of CROWN / LION RAMPANT – CLUSTER OF GRAPES Pictorial Flasks, Norway, 1850 – 1870. Light cornflower blue and deep cobalt blue with an amber striation swirled through the shoulders, both are ovoid form with fine ribbing, sheared mouths – pontil scarred bases, ht. 5 ½” and 7 ¼”; (a bit of minor wear on the cobalt example, otherwise both near mint). VdB, plate 306. Beautiful colors. In Norway, they were termed “hunting, pocket or lion flasks”.

Est.: \$200 - \$400 • Min. bid: \$100



Lot 101

Lot of (2), Colorful Enameled Spirits Flasks, Continental, Alpine region, 1770 – 1790. Both are colorless with multicolored red, blue and yellow floral designs, one with large bird perched on stem, both are blown in the half post method, rectangular with wide beveled corners, sheared mouths with applied pewter collars – glass tipped pontil scarred bases, ht. 4 ¾” and 5 5/8”, both near perfect; (slight bit of minor paint loss, otherwise excellent). VdB, plate 225A. A very attractive pair.

Est.: \$200 - \$400 • Min. bid: \$100



Lot 102

Early Spirits Flask, Continental, Alpine region, possibly Switzerland, 1780 – 1810. Light yellowish honey shading to a rich orange coloration through the shoulders and base, decorated with milky white loopings combed through the body, rectangular with wide beveled corners, sheared mouth with applied pewter collar – glass tipped pontil scar, ht. 7 ¾”, near mint; (some minor interior content residue). McK, plate 239, #9; VdB, plate 226, #1. A beautiful and rare flask.

Est.: \$400 - \$800 • Min. bid: \$200



Lot 103

Early Spirits Flask, Continental, Alpine region, possibly Switzerland, 1780 – 1810. Medium cobalt blue with milky white ribbons combed through the body, rectangular with wide beveled corners, sheared mouth with applied pewter collar – glass tipped pontil scar, ht. 7 5/8”, near mint; (a little light exterior usage wear). Another beautiful Alpine region decorated spirits flask, this one with fine threading, or ‘ribbons’, in a very pleasing color.

Est.: \$400 - \$800 • Min. bid: \$200



Lot 104

Early Spirits Flask, Continental, Alpine region, possibly Switzerland, 1780 – 1810. Beautiful medium lavender coloration with milky white ribbons combed through the body, rectangular with wide beveled corners, sheared mouth with applied pewter collar – glass tipped pontil scar, ht. 7 ¼”, virtually perfect; (just a slight trace of faint wear). A very scarce-to-rare color for this type of flask, fantastic eye-appeal, excellent condition.

Est.: \$600 - \$900 • Min. bid: \$300



Lot 105

Freeblown Nailsea-Type Flask, probably England, Nailsea region, 1850 – 1880. Colorless glass cased with cranberry red, and opaque white milkglass loopings combed through-out, flattened oval form, sheared mouth with tooled rounded collar – polished pontil scarred base, ht. 5 1/2”, perfect. A beautiful, very attractive flask with a great deal of workmanship. Note; a period brass and cork stopper remains in the neck. Provenance: Bruce Purdy collection.

Est.: \$175 - \$350 • Min. bid: \$90



Lot 109

Blown Three Mold Decanter, Boston and Sandwich Glassworks, MA, 1825 – 1840. Colorless, cylindrical, 4-part mold, fancy high-relief baroque pattern, molded neck rings, tooled flared mouth with correct, possibly original, blown stopper – solid, glass tipped pontil scar, Qt, near perfect; (some light milkiness in the base, otherwise virtually attic mint). GV-14. MW, plate 83, #4; BK, plate 1338. A very scarce, desirable decanter, and one of the most ornate of all the BTM decanter molds.

Est.: \$250 - \$450 • Min. bid: \$130



Lot 106

Blown, Decorative Latticino Glass Spirits Bottle, Eastern Europe, possibly Venetian, 1850 – 1870. Colorful rows of finely threaded light blue and pink ribbons alternating with rows of opaque pink and red ribbons of glass, some scattered splotches of coppery-gold mixed throughout, 6-sided, sheared mouth with original collar and decorative brass stopper – smooth base, ht. 6 5/8” (including stopper), perfect. Originally discovered in a Victorian home in St. Louis, MO.

Est.: \$200 - \$400 • Min. bid: \$100



Lot 110

“BRAND/Y” Blown Three Mold Decanter, America, 1820 – 1840. Colorless, barrel form, geometric pattern of vertical ribbing with “BRAND/Y” embossed very large on front panel, tooled wide flared mouth with correct, possibly original, vertically ribbed blown stopper – blowpipe pontil scarred base, Qt, virtually perfect; (just a slight trace of wear, otherwise pristine). GI-8. MW, plate 104, #2. McKearin notes that the GI-8 is a rare pattern, and “those with names of liquors, Very rare”.

Est.: \$400 - \$800 • Min. bid: \$200



Lot 107

Lot of (2), Stiegel-Type Paneled and Engraved Flip Glasses, America or possibly Continental, 1770 – 1800. Colorless, cylindrical with tapered sides, large fluted panels below engraved decorations. 1st Ex. engraved with a crosshatch pattern within elliptical bands; 2nd Ex. engraved with a row of alternating triangles with crosshatch pattern, and a scroll, leaf and berry motif. Sheared and fire polished rims – pontil scarred bases, ht. 5 5/8” and 7 1/8” respectively, both are perfect!

Est.: \$175 - \$350 • Min. bid: \$90



Lot 111

Blown Three Mold Decanter, Boston and Sandwich Glassworks, Sandwich, Massachusetts, 1825 - 1840. Deep, vibrant, cobalt blue, semi-barrel form with shell and rib pattern, tooled wide flared mouth with correct blown and ribbed stopper - glass tipped pontil scar, Qt, ht. 10 7/8” (including stopper), near perfect; (some faint interior milkiness in the upper half, otherwise mint). GV-8. McK plate 116, #2; BK #1334. A rare and outstanding colored three mold decanter, very deep color.

Est.: \$2,000 - \$4,000 • Min. bid: \$1,000



Lot 108

Rare, Blown Three Mold Tumbler, Boston and Sandwich Glassworks, Sandwich, MA, 1825 – 1840. Colorless, nearly straight-sided tumbler, Gothic arch and ‘double husks of grain’ pattern, pontil scarred base with eight deep diamond shaped points forming star, ht. 3”, perfect. GIV-3. A very rare three mold pattern identified by tumbler fragments dug at the factory site. See BK, plate 1328.

Est.: \$120 - \$240 • Min. bid: \$60



Lot 112

Blown Three Mold Decanter, New England, probably Keene Marlboro Street Glassworks, NH, 1820 - 1830. Bright yellowish green in the body shading to a smoky, translucent, almost olive amber in the shoulders, neck and lip, geometric quilted diamond pattern, fluted shoulders, sheared, tooled, and inward folded large ring collar – glass tipped pontil scar, Pt, virtually perfect; (faint trace of wear, light interior residue). GII-28. Rare and outstanding. Fred Swiechowicz collection.

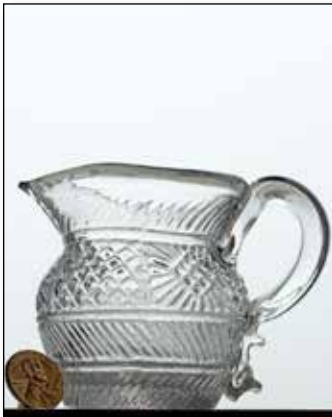
Est.: \$4,000 - \$6,000 • Min. bid: \$2,000



Lot 113

Early, Blown, Engraved, 'Cotton Twist' Wineglass, probably England, 1760 – 1780. Colorless, blown, paneled, ogee form bowl with wheel engraved floral and leaf design, applied solid stem with 'cotton twist' opaque white threading, wide circular foot with solid glass tipped pontil scar, ht. 5 ¼", perfect! See, "Glass in Early America", Palmer, p.64, #8. An elegant and finely crafted early wineglass exhibiting a great deal of workmanship from the hands of a skilled gaffer.

Est.: \$300 - \$600 • Min. bid: \$150



Lot 114

Miniature, Blown Three Mold Creamer, Boston and Sandwich Glassworks, Sandwich, MA, 1825 – 1840. Colorless, compressed barrel form body, geometric pattern with sunburst, diamond, and ribbing, applied handle crimped and curled at lower attachment, sheared, tooled rim with pour spout – solid glass-tipped pontil scarred base, ht. 2 ¾", perfect. GIII-21. A rare pattern, and a little 'gem' with a pleasing squatty appearance, strong impression, fantastic condition.

Est.: \$200 - \$400 • Min. bid: \$100



Lot 115

Early Fluted Creamer, America, possibly a Pittsburgh district glasshouse, 1840 – 1860. Colorless, bucket form body with nine pressed, fluted, body panels, wide neck flaring outward to a sheared rim with tooled pour spout, applied solid glass handle crimped and curled at lower attachment - smooth base, ht. 4 1/8"; (some expected minor usage wear, otherwise perfect). A pleasing little paneled creamer, scarce. Provenance: John Apple collection; Ex. Dr. Charles & Jane Aprill collection.

Est.: \$200 - \$400 • Min. bid: \$100



Lot 116

Pattern Molded Salt Cellar, probably John Frederick Amelung, New Bremen Glass Manufactory, New Bremen, MD, 1785 – 1795. Cobalt blue, expanded checkered diamond pattern, double ogee bowl with short stem drawn from same gather, applied circular foot with solid glass tipped pontil scar, ht. 2 ¾"; (some scattered light usage wear; due to the expanded bowl, the pattern is quite weak, otherwise near mint). MCK, plate 32; "American Glass, The Toledo Museum of Art", p.68. A very rare salt.

Est.: \$300 - \$600 • Min. bid: \$150



Lot 117

Rare, Pattern Molded Salt Cellar, America, probably Midwest, 1815 – 1835. Deep cobalt blue, 26 fine ribs swirled to the left, double ogee bowl with a short stem drawn from the same gather, applied circular foot, solid glass tipped pontil scar, ht. 3 1/8", near mint; (some overall scattered light usage wear, otherwise excellent). A rare pattern molded salt, very scarce with the tight swirled ribbing (most examples having a diamond, or wide vertical rib pattern), and rare 26 rib mold.

Est.: \$800 - \$1,200 • Min. bid: \$400



Lot 118

Early, Pattern Molded Covered Sugar Bowl, probably America, possibly Stiegel's American Flint Glass Manufactory, 1765 - 1774. Medium-to-deep sapphire blue, 12-diamond pattern, circular bowl with applied opalescent rim and applied pedestal foot with pontil scar. Original, matching, 12 diamond cover with flanged rim and applied solid glass button knob, overall ht. 4 ½", both bowl and cover are perfect. See McK, plate 31, #3. A very rare and beautiful sugar bowl.

Est.: \$1,500 - \$2,500 • Min. bid: \$750



Lot 119

Freeblown Bowl, Western, PA, Ohio River Valley, 1830 – 1850. Medium-to-deep cobalt blue, ogee form with sides flaring outward to a sheared, tooled, and outward folded rim – blowpipe pontil scar, ht. 2 ½", base dia. 3 7/8", rim dia. 6 ¾"; (a ¼" flake on the edge of the rim, some scattered usage wear including a couple

of partially open bubbles on the interior of the bowl, otherwise excellent). A great example of early, blown, Midwest tableware in a beautiful and rare color.

Est.: \$300 - \$500 • Min. bid: \$150



Lot 120

Freeblown Milk Bowl, southern New Jersey, possibly Whitney Glassworks, 1830-1850. Rich cobalt blue, upright flaring form with gently curving sides and folded rim, pontil scar, 5 1/4" ht. x 7 7/8" rim dia. Undamaged condition with faint, interior content ring near the top and expected wear

on the base. Great color, character and condition! A nearly identical example is pictured on page 140 of "The Glass Gaffers of New Jersey" by Adeline Pepper. Ex. William (Hank) Flowers collection.

Est.: \$400 - \$600 • Min. bid: \$200

**Lot 121**

Early Freeblown Bowl, Midwest, possibly Zanesville Glass Works, Zanesville, OH, 1815 - 1835. Beautiful, medium honey coloration, cylindrical with sides flaring outward to a sheared, tooled, and outward folded rim - blowpipe pontil scar, ht. 4 5/8", rim dia. 9 1/4", base dia.

approximately 5", perfect. See McK, plate 82. A beautiful bowl, great color, a little larger than most, outstanding condition. Recently deaccessioned from a Midwest museum.

Est.: \$400 - \$600 • Min. bid: \$200

**Lot 122**

Pillar Molded Vase, Midwest, a Pittsburgh district glasshouse, possibly McKee Bros, 1859 - 1868. Rich, medium-to-deep bluish green with an emerald tone, tulip form bowl with eight heavy vertical ribs, sides flaring outward to a sheared and fire polished rim - applied solid pedestal stem and circular foot with glass tipped punty scar, ht. 9 3/4", perfect! See "Pittsburgh Glass", Innes, pgs. 195 - 197. A very handsome vase, rich, deep, eye-appealing color, fantastic condition.

Est.: \$500 - \$800 • Min. bid: \$250

**Lot 123**

Early, Pressed Glass Tulip Vase, probably Boston and Sandwich Glass Works, 1845 - 1865. Bright emerald coloration, eight panel tulip form bowl flaring out to a scalloped rim, attached with wafer to eight panel base, ht. 9 3/4", near perfect; (a little minor usage wear on the inside of bowl, and a tiny pinhead flake at base). A beautiful, scarce color for Sandwich glass. See *American Glass, 1760 - 1930*, Toledo Museum of Art, p.260, color plate 724; also, BK, p.57, plate 3021.

Est.: \$500 - \$800 • Min. bid: \$250

**Lot 124**

Early, Freeblown Looped Chalice, probably America, South Jersey, 1840 - 1860. Colorless with light, opaque, sky-blue loopings combed through the bowl, slightly corseted deep bowl flaring outward to a sheared and fire polished rim, solid baluster stem, applied solid disc foot with glass-tipped pontil scar, ht. 9", perfect. Very heavy, and somewhat crudely blown having a bit of a lean, or lopsided appearance. A lucky New England 'picker find' east of Norwich, Connecticut.

Est.: \$300 - \$500 • Min. bid: \$150

**Lot 125**

Freeblown Footed Vase with Matching Witchball, England or possibly America, 1850 - 1870. Both are colorless with opaque white loopings, vase with ovoid body flaring outward to a sheared, tooled, and outward folded scalloped rim - applied circular foot with glass tipped pontil scar, overall ht. 12 1/4", both are perfect. The vase is scarce and unusual having a scalloped, and outward folded rim. A great deal of workmanship went into blowing these two pieces.

Est.: \$300 - \$500 • Min. bid: \$150

**Lot 126**

Heavy, Freeblown Tumbler, America, probably Congressville Glass Works, Saratoga Springs, NY, 1860 - 1880. Rich, medium-to-deep 'Congressville green', barrel form with sides tapering inward toward base, sheared and fire polished rim - blowpipe pontil scar, ht. 3 1/4", near perfect; (just a little faint 'bloom', or exterior dullness, likely from the blowing process, on the lower half, and a trace of usage wear). A great little tumbler, very scarce, blown from the same 'metal' as the spring water bottles.

Est.: \$300 - \$600 • Min. bid: \$150

**Lot 127**

Freeblown Utility Jar, probably a New York State glasshouse, possibly Congressville, 1855 - 1870. Rich, medium emerald with a slight bluish tone, similar in color to many of the Saratoga bottles blown at Congressville, large bulbous pear-form body, short wide neck, large ring-type collar - blowpipe pontil scar, ht. 9 1/4"; (just a bit of typical minor wear, otherwise perfect). Beautiful rich color, plenty of good honest base wear. Possibly blown as a whimsey.

Est.: \$400 - \$800 • Min. bid: \$200

**Lot 128**

Early Turtle Doorstop Whimsey, probably a South Jersey bottle glass factory, 1860-1900. Poured in a shallow mold for general shape with feet and tail pulled and formed with pucellas, 5 3/4" long x 3 1/4" wide. Deep cobalt blue with lots

of character including air pits and swirls on the topside of the turtle. Excellent condition with expected wear to the high points of the feet. Lots of character, rare in this color and condition.

Est.: \$200 - \$300 • Min. bid: \$120

A Cross-Section of Fine Bottles from the Fred Swiechowicz Collection

In studying Fred's collection, it is clearly evident that Fred not only had a passion for great antique bottles – of all types, but that he also had an eye for them! We are thrilled to have the privilege of offering many of Fred's great bottles in our sales. It was Fred's wish, and our hope, that as you become the new 'caretakers', you will enjoy them as much as he did.



Lot 213

Lot 18

Lot 234

Lot 211

Lot 156

Lot 210

Lot 172

“With great enthusiasm, Fred and his sons would dig a little bit of the dump each day, thinking every Hires Root Beer Extract, Phillips Milk of Magnesia or Hoods Sarsaparilla (the dump was loaded with them) was worth a \$5 bill.”

— Above paragraph excerpt from AGG Auction Catalog #32, July, 2022



Lot 192

Lot 142

Lot 151

Lot 49

Lot 218

Lot 169



Lot 129

Framed Bulls-eye Window Pane, probably New England or New York State, 1820-1850. Brilliant bluish aquamarine with huge, jagged, iron pontil scar. Pane size; 6 3/4" x 6 1/2", frame size; 8" x 7 3/4". Well made shadowbox type frame is constructed from white pine and ready to hang in your window, or display on a wall. Perfect condition. Found at a shop in Catskill, New York.

Est.: \$200 - \$300 • Min. bid: \$120



Lot 133

Lot of (2), Large Blown Apothecary Display Jars, probably England, 1840 – 1870. Both are shades of medium bluish green, tall cylinder form, with sheared, tooled heavy ring collars – applied bell form pedestal bases with inward folded rims and heavy glass-tipped pontil scar. Both with original, blown, hollow 'spire-type' fancy stoppers, overall ht. 23" & 24" (including stoppers), both are perfect! Beautiful and scarce colors (many are colorless), impressive size, and rare with original stoppers.

Est.: \$400 - \$600 • Min. bid: \$200



Lot 130

Historical Reference Lot, c.1927 – 1928. Lot includes: 1927 "Collector's Guide to Flasks and Bottles", by Charles McMurray; original B&W cutout images and typewritten galleys to create the book, and a ledger in which McMurray had recorded each sale of the book, c. 1927-28,

with buyer's names and addresses from across the country, (approx. 100 entries). Also included is a copy of the 1970 compilation of McMurray's book by Charles B Garder & J. Edmund Edwards.

Est.: \$75 - \$150 • Min. bid: \$40



Lot 134

Concentric Rings Target Ball, America, 1875 - 1900. Medium sapphire blue, patterned with a series of faint, or 'ghosted' concentric rings on both sides of the ball, 2-piece mold, rough sheared mouth, dia. 2 5/8", near mint; (just a trace of minor wear, and some light interior residue). A scarce ball. We've sold this mold in shades of blue green, amber, chocolate, yellow, and even an olive toned example. This is the first sapphire example that we can recall seeing.

Est.: \$200 - \$400 • Min. bid: \$100



Lot 131

Early, Patterned Leech Bowl, probably England, 1860 – 1880. Beautiful, pinkish cranberry coloration, globular body with 10 widely spaced, melon type ribs, sheared, tooled, outward flared mouth – solid glass tipped puntly scar, ht. 2 3/8", near mint; (a very slight interior milkiness, barely noticeable, otherwise perfect). These small little traveling leech bowls were prevalent during the Victorian period. A very scarce, eye-appealing color!

Est.: \$200 - \$400 • Min. bid: \$100



Lot 135

"VAN CUTSEM – A ST QUENTIN" Target Ball, France, 1875 – 1900. Deep cobalt blue, quilted diamond pattern above and below center band, 3-pc. mold, rough sheared mouth, dia. 2 5/8", perfect! A beautiful example, deep color, fantastic condition, a great target ball for the money.

Est.: \$175 - \$275 • Min. bid: \$90



Lot 132

Lot of (2), Early Blown Leech Jars, England, 1860 – 1880. Yellowish topaz, almost a straw coloration, and vivid cobalt blue, both with compressed globular bodies, 3-pc. mold, tight fine ribbing swirled to the left, sheared, tooled, and outward flared mouths – bases with sunburst pattern, cobalt example with light sand type pontil scar, ht. 2" each; (topaz example is perfect; cobalt jar has a couple of little pinhead flakes on the ribbing, or usage wear, otherwise perfect). Beautiful colors.

Est. \$200 - \$400 • Min. bid: \$100



Lot 136

"BOGARDUS' GLASS BALL PAT'D APR 10 1877." Target Ball, America, 1877 – 1900. Light golden amber with an orange tone through the shoulders and neck, quilted diamond pattern above and below center band, 3-pc. mold, rough sheared mouth, dia. 2 5/8", near mint; (some light interior haze, otherwise perfect). Capt. Adam H. Bogardus was the father of target balls, as well as patenting the first glass ball and target trap in 1877. A great example of a classic Bogardus ball.

Est.: \$300 - \$500 • Min. bid: \$150



Lot 137

"HAYWARD'S / HAND / FIRE / GRENADE - PATENTED / AUG / 8 / 1871 - S.F. HAYWARD / 407 / BROADWAY / N.Y.", America, 1875 - 1895. Gorgeous clear olive yellow coloration, bulbous body with four indented diamond-shaped panels, tooled ring type collar - "3" on smooth base, ht. 6 1/8", attic mint. A very popular grenade in a very pretty, eye-appealing, color.

Est.: \$150 - \$250 • Min. bid: \$80



Lot 141

Figural Monument Cologne, a South Boston glasshouse, probably Boston and Sandwich Glass Works, 1860 - 1880. Translucent clambroth coloration, obelisk form fashioned after the Bunker Hill Monument, tooled square collar - smooth base, ht. 7 7/8", near mint; (a tiny pinhead flake on the edge of the lip, otherwise perfect). MW, plate 114, #3. This is the mold having the larger block pattern, and is more 'see-through', or translucent, than most. Provenance: Fred Swiechowicz collection.

Est.: \$175 - \$350 • Min. bid: \$90



Lot 138

Lot of (2), Fancy Cologne Bottles, America and possibly France, 1835 - 1855. **1st Ex.:** Colorless, 5-sided figural monument, 4 sides with small basket of flowers and beaded arched panels, corseted shoulder with scallop designs above, tooled flanged mouth - "M 182" (on heel), pontil, ht. 4 3/4". **2nd Ex.:** Aqua, rectangular with embossed 'plume' designs on front and side panels, sheared, inward rolled mouth - pontil scar, ht. 5 7/8", both are perfect! MW, plate 110, #2 and plate 111, #8.

Est.: \$150 - \$300 • Min. bid: \$80



Lot 142

Large, Figural Monument Cologne Bottle, probably Boston and Sandwich Glass Works, Sandwich, MA, 1860 - 1880. Deep, vivid, emerald green, figural Bunker Hill Monument, tooled ring collar - smooth base, ht. 9 3/4", near perfect; (just a trace of light wear including a 1/4", onionskin-thin flake on one of the edges on the reverse, otherwise mint). MW, plate 114, #3. Scarce large size, very scarce-to-rare color! A beautiful, eye-appealing example. Provenance: Fred Swiechowicz collection.

Est.: \$500 - \$800 • Min. bid: \$250



Lot 139

"N.S.P" (on shoulder), **Early Cologne Bottle**, Mid-Atlantic region, possibly Kensington Glass Works, Philadelphia, 1825 - 1838. Aqua, rectangular with fancy 'framed' front and back panels, bulbous neck, sheared and outward rolled mouth - blowpipe pontil scar, ht. 6 1/4", near mint; (just a faint bit of interior milkiness or light residue in the shoulders, otherwise perfect). "N.S.P", initials for Nathan Smith Prentiss, an early New York City perfumery merchant. See MW, p. 386. Very rare.

Est.: \$250 - \$450 • Min. bid: \$130



Lot 143

Blown Molded Baby Thumbprint Cologne, Boston and Sandwich Glass Works, 1840 - 1860. Canary yellow, bulbous body with small round thumbprint pattern, flared mouth with original cut and polished teardrop stopper - footed circular base with polished pontil, ht. 6 7/8" (including stopper), both bottle and stopper virtually perfect; (a couple of tiny pinhead flakes on stopper). Pictured, BK, p.114, plate 3105. A very rare mold, beautiful color, the pattern creates a honeycomb appearance.

Est.: \$250 - \$450 • Min. bid: \$130



Lot 140

Fancy Cologne Bottle, a Mid-Atlantic glasshouse, 1835 - 1855. Medium-to-deep cobalt blue, corseted form with scrolled leaves along sides and large embossed flowers front and reverse, sheared and inward rolled mouth - blowpipe pontil scar, ht. 5 3/4"; (professionally cleaned to original luster; a touch of very light wear and a 1/4" hair-line fissure at edge of base, otherwise excellent and displays as near perfect). MW, color plate X; also plate 111, #7. A beautiful cologne, very rare in color!

Est.: \$200 - \$400 • Min. bid: \$100



Lot 144

Blown Molded Elongated Loop Cologne, Boston and Sandwich Glass Works, 1840 - 1870. Bright green, almost a lime coloration, hexagonal body with elongated loop pattern, fluted neck, fancy pressed star-type stopper with spire, six large petal protrusions around polished, pontil scarred base, fancy gilding on body, petals, neck and stopper, overall ht. 5 5/8" (including stopper), near perfect; (a few tiny flakes on stopper). A rare cologne, outstanding condition. BK, plates 3108 & 3109.

Est.: \$200 - \$400 • Min. bid: \$100



Lot 145

"X. BAZIN - 114 CHESNUT ST - PHILADELPHIA" Product Jar, America, probably South Boston, 1855 - 1870. Beautiful, medium-to-deep amethyst, 8-sided tapered body, smooth, pedestal-type base, ht. 2 ¾", near perfect; (slight trace of light wear). A rare jar that likely held some type of cream or pomade, and could be used as a wine glass when empty. Around 1850, E. Roussel sold his very successful perfumery business to X. Bazin. Note the misspelling of "Chestnut St."

Est.: \$175 - \$350 • Min. bid: \$90



Lot 149

Blown Three Mold Inkwell, Keene Marlboro Street Glassworks, Keene, NH, 1820 - 1840. Deep olive green, cylindrical, disk type mouth - blowpipe pontil scar, ht. 1 ½", near mint; (some light interior content residue; otherwise virtually perfect). Gill-29. A very nice example of this classic, early, Keene 3-mold inkwell.

Est.: \$120 - \$240 • Min. bid: \$60



Lot 146

Set of (2) Mary Gregory type Barber Bottles and matching Waste Bowl, America, 1885 - 1910. Matching pair of bottles with pear form body, bulbous necks, tooled ring collars - pontil scarred bases, ht. 8 1/8". Straight-sided waste bowl with polished rim - smooth base, ht. 7 ¼". All are vivid cobalt blue with white enameled scene of girl and boy playing tennis, all near mint; (slight traces of wear; a 1/4" chip on rim of waste bowl). Holiner, p.15. A beautiful set, rare with waste bowl!

Est.: \$250 - \$450 • Min. bid: \$130



Lot 150

Lot of (2), Blown Three Mold Inkwells, both probably Coventry Glass Works, Coventry, CT, 1820 - 1840. Dense olive amber and olive green, cylindrical with disk type mouths - plain and ringed (Type III) bases with blowpipe pontil scars, ht. 1 ½" each; (a little typical usage wear including a couple of minor body flakes, 1/8" or less, otherwise excellent). Gill-16 & Gill-18 respectively. The Gill-18 has a strong impression and a little lighter tone than normally encountered.

Est.: \$175 - \$350 • Min. bid: \$90



Lot 147

GIANT, "CARTER'S INKS" - "E H MERRILL CO / AKRON O", Stoneware Advertising Master Ink, 1890 - 1900. 'Oatmeal color' salt glaze, cylindrical with cone form shoulders, large flared mouth with pour spout, ht. 27 ¾", perfect condition! A very rare store advertising piece that was likely in a window, or on a counter, of a druggist or apothecary shop. A great 'go-with' for the ink collector, and certainly 'The Master' of master ink bottles! Provenance: Fred Swiechowicz collection.

Est.: \$400 - \$600 • Min. bid: \$200



Lot 151

'Star' Type Umbrella Ink, Baltimore Glass Works, Baltimore, MD, 1840 - 1860. Medium yellowish olive amber, umbrella form with 5 concave panels and a label panel, sheared and inward rolled mouth - blowpipe pontil scar, ht. 2", near perfect; (a couple of tiny pinhead open bubbles and a little dried interior content residue, otherwise virtually attic mint). A nice crude example that does not appear to have been dug and cleaned, very scarce mold and color! Fred Swiechowicz collection.

Est.: \$1,500 - \$2,500 • Min. bid: \$800



Lot 148

GIANT, "SPENCERIAN", Stoneware Advertising Master Ink, America or possibly England, 1885 - 1905. Reddish brown vitreous glaze, (similar to the P & J Arnold ink bottles), cylindrical, cone form shoulders, large flared mouth with pour spout, ht. 26 ¾", perfect. Extremely rare! Spencerian was a script style popular in the U.S. during the latter half of the 1800's. Until this example, we have never seen it embossed on any ink bottle. Provenance: Fred Swiechowicz collection.

Est.: \$400 - \$600 • Min. bid: \$200



Lot 152

"WOOD'S / BLACK INK / PORTLAND.", a Stoddard, NH glasshouse, possibly Weeks and Gilson, 1855 - 1865. Deep olive amber, cone form, sheared mouth - blowpipe pontil scar, ht. 2 3/8"; (a bit of scattered light wear, and a couple of spots of light exterior dullness, but no other form of damage and otherwise near mint). Faulkner, p.150. A rare, very desirable Stoddard ink that does not come around often. Provenance: Fred Swiechowicz collection.

Est.: \$1,200 - \$1,800 • Min. bid: \$600



Lot 153

Teakettle Inkwell, America, probably Boston and Sandwich Glass Works, 1850 – 1875. Deep cobalt blue, teakettle form with eight concave panels separated by eight rounded vertical ribs, flat top – beveled edge smooth base, ht. 2”, near mint; (some small, in-manufacture annealing lines in

a couple of the panels, very hard to see, mentioned for completeness, but not considered damage). JM #128. Per Matthews, shards of this mold were found at Sandwich. Beautiful color, excellent overall condition.

Est.: \$300 - \$500 • Min. bid: \$150



Lot 157

“HARRISON'S / COLUMBIAN / INK”, America, 1847 – 1860. Aquamarine, octagonal body with rounded shoulders, sheared and inward rolled mouth – blowpipe pontil scar, ht. 1 7/8”, virtually attic mint; (slight trace of faint wear; a small piece of glass from another bottle adhered to a panel edge between the “N” and the “K” during the annealing process). A bright clean example, nice character having a crude, offset neck. Provenance: John Apple collection.

Est.: \$100 - \$200 • Min. bid: \$60



Lot 154

Teakettle Inkwell, probably America, 1850 - 1870. Medium-to-deep cobalt blue, square teakettle form with tapered sides, four flat side panels and four flat corner panels, beveled around top and base, spout with factory ground mouth and remnants of original brass collar, flat top –

smooth base, ht. 2 1/8”; (a little faint interior milkiness and content residue, otherwise perfect). JM #320. Noted as “Very Rare” by Matthews, strong color, beautiful condition. Provenance: Fred Swiechowicz collection.

Est.: \$300 - \$500 • Min. bid: \$150



Lot 158

“E. WATERS / TROY, NY” Master Ink Bottle, 1850 - 1860. Rich citron coloration, cylindrical, fluted shoulders, applied flanged mouth - iron pontil scar, ht. 6 3/8”; (a shallow 5/16” iridescent bruise on the top of the lip; two areas of lip edge roughness, 3/16” and 3/8”, otherwise perfect). A gorgeous and rare color, incredible character, heavily whittled and filled with tiny bubbles. An impressive, eye-appealing, top master ink. Ex. Bob Mebane collection, James Cheballo collections.

Est.: \$2,000 - \$4,000 • Min. bid: \$1,000



Lot 155

Teakettle Inkwell, America or possibly England, 1850 – 1870. Medium-to-deep cobalt blue, cylindrical with seven indented flat panels, sides taper inward from the base to the shoulders, beveled around top and base, factory ground mouth on spout, flat, slightly concave top – smooth

base, ht. 1 3/4”, near mint; (a little minor light highpoint, or usage wear, otherwise perfect). Unlisted by Matthews, and likely an extremely rare mold! Fred Swiechowicz collection.

Est.: \$400 - \$600 • Min. bid: \$200



Lot 159

Labeled Elisha Waters Blacking Bottle, probably Saratoga Mountain Glass Works, 1855 - 1866. Medium olive, cylindrical, applied ring collar – smooth base, ht. 5 5/8”. Original graphic label depicting a horse race with men riding atop bottles of blacking with the “E. Waters” bottle leading the way. Label reads in part, *Liquid Mirror Blacking / Manufactured / Only by / Elisha Waters*; (bottle near mint; a small potstone on the back shoulder with a couple tiny “legs”; label 99% complete).

Est.: \$800 - \$1,200 • Min. bid: \$400



Lot 156

Figural Teakettle Inkwell, America, 1850 – 1870. Beautiful, medium raspberry amethyst, figural barrel form with embossed vertical staves and horizontal hoops, concave top – smooth base, ht. 2 1/8”, perfect; (note; there is a small, in-manufacture, ‘tooling mark’ just above the center ring on one side

where the gaffer’s tool touched the bottle creating a little unevenness and protrusion, but is not considered damage). JM #101. A rare figural teakettle, gorgeous color. Fred Swiechowicz collection.

Est.: \$1,200 - \$1,800 • Min. bid: \$600



Lot 160

Early Blacking or Utility Bottle, probably Saratoga Mountain Glass Works, Mt. Pleasant, NY, 1855 - 1866. Rich, deep olive green, cylindrical, crudely applied round collar - early hinge-mold smooth base, ht. 5 5/8”, near mint; (just a bit of typical light exterior wear, and a tiny, paper-thin, sliver flake at the edge of base, otherwise perfect). This mold was used by Elisha Waters for their blacking bottles. A very eye-appealing, crude utility having very bubbly, seedy glass.

Est.: \$200 - \$400 • Min. bid: \$100



Lot 161

Dip Mold Snuff Jar, New England, 1825 – 1840. Medium-to-deep yellowish olive with a slight amber tone, square with beveled corners, sheared, tooled, and outward flared mouth – blowpipe pontil scar, ht. 4 ½”, perfect. A very nice example, one that has not been dug and cleaned, good form, excellent condition, a classic, early New England snuff.

Est.: \$300 - \$500 • Min. bid: \$150



Lot 165

“GARWOOD’S / FRUIT TABLETS / CHICAGO” Product Jar, 1890 – 1900. Aquamarine, cylindrical, ground lip with original press down tin lid and paper insert – smooth base, ½ Gal, perfect! RB #1048-7. Original paper insert reads in part: *GARWOOD’S / COVER / PATENT APPLIED FOR. / DIRECTIONS, / To put COVER on Jar, press down gently and turn to right or left.* An extremely rare jar, and believed to be a unique example having the original cover.

Est.: \$300 - \$500 • Min. bid: \$150



Lot 162

“ARTHUR, BURNHAM & GILROY, / 10th & GEO. STS. / PHILADELPHIA – R. ARTHUR’S PATENT / JANU 2nd 1855”, Fruit Jar, 1856 – 1861. Aquamarine, cylindrical, ground mouth, wax seal type closure – smooth base, Qt, very near mint; (slight trace of faint wear; interior bubble in reverse with small annealing line in cover glass, otherwise perfect). RB #96. A bright, clean example of this very rare jar, fantastic condition. Provenance: Fred Swiechowicz collection.

Est.: \$3,000 - \$4,000 • Min. bid: \$1,500



Lot 166

“SKILTON FOOTE & CO’S / BUNKER HILL PICKLES / TRADE MARK” (Motif of Monument, Fence & Barrels) Figural Lighthouse, America, 1885 - 1895. Light yellowish honey coloration, in the form of the Cape May, NJ lighthouse - and virtually identical to the famous Seaworth Bitters mold from Cape May, NJ, tooled sloping collar - smooth base, ht. 11 ¼”, near mint; (some light interior content haze, otherwise perfect). A recent discovery from an estate auction in Haverhill, NH.

Est.: \$1,500 - \$2,500 • Min. bid: \$800



Lot 163

“POTTER & BODINE’S / AIR-TIGHT / FRUIT JAR / PHILADA – PATENTED / APRIL, 13th, / 1858”, probably Bridgeton Glass Works, Bridgeton, NJ, 1860 – 1863. Aquamarine, barrel form, grove ring wax seal mouth – sand type pontil scar, half gallon, near mint; (a little trace of content residue, primarily in the groove ring, otherwise perfect). RB #2390. A big, beautiful, great looking jar, very bold embossing. Provenance: Fred Swiechowicz collection.

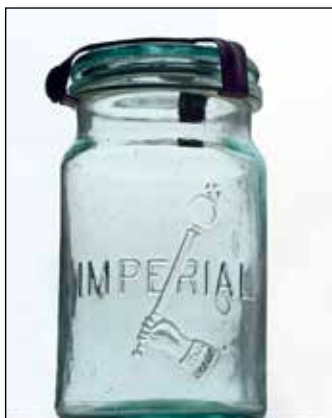
Est.: \$800 - \$1,200 • Min. bid: \$400



Lot 167

Cathedral Pickle Jar, Willington Glass Works, West Willington, CT, 1850 – 1860. Light aquamarine, square with beveled corners, arched Gothic panels with grooved columns, pendant motif at top of inner frame, scalloped design around outer frame with small palmette at top, sheared mouth, applied ring collar – blowpipe pontil scar, ht. 7 5/8”, near perfect; (a couple of tiny patches of faint interior milkiness, barely noticeable, otherwise mint). A beautiful, brilliant little jar. Bruce Purdy collection.

Est.: \$800 - \$1,200 • Min. bid: \$400



Lot 164

“IMPERIAL” / (HAND HOLDING A MACE) / “TRADE / MARK” (on cuff of hand), **Fruit Jar**, possibly Williamstown Glass Works, Williamstown, NJ, 1892 – 1895. Aqua, cylindrical, top seal straddle lip with ground mouth, **“THOMAS PATENT / JULY 12 1892”** (on glass lid), original three arm sheet metal clamp – smooth base, Pt, near mint; (a little faint, spotty, interior milkiness, some rust on original clamp). RB #1291. Rare with original lid and clamp. Fred Swiechowicz collection.

Est.: \$1,200 - \$1,800 • Min. bid: \$600



Lot 168

Cloverleaf Pickle Jar, New England, 1850 – 1860. Rich, medium emerald with a slight bluish tone, octofoil form, sheared, tooled, likely applied ring collar – heavy iron pontil scar, ht. 7 ¾”, near mint; (just a touch of typical light wear, and a little minor exterior ‘bloom’ or dullness, on the shoulders, mentioned for completeness, otherwise perfect). Strong color, excellent clarity and condition. A very rare and beautiful color for a ‘cloverleaf’ pickle. Provenance: Bruce Purdy collection.

Est.: \$800 - \$1,200 • Min. bid: \$400



Lot 169

“ROWE & CO.” (on shoulder), **Cathedral Pickle Jar**, possibly 1852 – 1853. Aqua, square with beveled corners, all four sides with distinctly different cathedral arches and windows, sheared mouth with tooled, likely applied, crude ring collar – blowpipe pontil scar, ht. 8 5/8”; (a slight bit of minor wear including a 3/16” flake at edge of base, a 1/2” partially open interior bubble, otherwise perfect). An extremely rare pickle jar, one of perhaps 3-4 extant. Fred Swiechowicz collection.

Est.: \$800 - \$1,200 • Min. bid: \$400



Lot 170

Cathedral Pickle Jar, America, probably a Mid-Atlantic glasshouse, 1850 – 1860. Greenish aquamarine, square with beveled corners, arched Gothic panels, all four with scalloped designs around inner frame, cross and pendant motif at top of frame, tall palmette above point on all four sides, applied ring collar – iron pontil scar, ht. 11 1/4”; (a light scratch along one of the shoulder corners, and some interior haze in the shoulders and neck, otherwise excellent). A scarce mold.

Est.: \$200 - \$400 • Min. bid: \$100



Lot 171

Cathedral Pickle Jar, probably a Mid-Atlantic glasshouse, possibly Crowleytown Glass Works, NJ, 1855 – 1865. Medium blue green coloration, square with beveled corners, arched gothic panels with ornamental scrolls design around top of frame, sheared mouth with tooled, likely applied ring collar – heavy iron pontil scar, ht. 11 1/2”, near mint; (a little faint interior residue and very minor haze, otherwise perfect). Similar to McK, plate 74, #11. Bruce Purdy collection.

Est.: \$400 - \$600 • Min. bid: \$200



Lot 172

Cathedral Pickle Jar, a Mid-Atlantic glasshouse, 1860 – 1870. Beautiful, medium yellowish green with an emerald tone, square with beveled corners, arched Gothic panels on four sides with fancy scallop designs around inner frame, cross and pendant motif below top of frame, tulip ornament above each frame, sheared mouth with applied ring collar – smooth base, ht. 11 5/8”, attic mint! A beautiful pickle jar, excellent color, clarity, and condition. Fred Swiechowicz collection.

Est.: \$800 - \$1,200 • Min. bid: \$400



Lot 173

Giant, Cathedral Pickle Jar, probably a Mid-Atlantic glasshouse, 1860 - 1870. Deep greenish aquamarine, square with beveled corners, fancy Gothic double arch pattern on all four panels with lattice designs in three lower panels, acorn finial at top of upper and lower arches; sheared mouth with applied ring collar - smooth base, ht. 13 3/4”, perfect. Similar to MW, plate 73, #6. A scarce mold, strong color, very bold impression, brilliant glass. Provenance: Bruce Purdy Collection.

Est.: \$600 - \$900 • Min. bid: \$300



Lot 174

“CASPER’S WHISKEY / MADE BY HONEST / NORTH / CAROLINA PEOPLE”, America, 1885 – 1900. Medium-to-deep cobalt blue, cylindrical with fluted shoulders, tooled sloping collar with ring – smooth base, ht. 12”, attic mint. Beautiful rich color, bright, clean and sparkling, a great example of one of the bottle collecting classics. A big splash of color that will stand out on any shelf.

Est.: \$400 - \$600 • Min. bid: \$200



Lot 175

“N. VAN BEIL / 88 / CHAMBERS / ST / NEW YORK” (on applied seal), **Whiskey Cylinder**, America, 1860 – 1870. Brilliant olive yellow coloration, 3-pc. mold cylinder, applied sloping collar with bevel – smooth base, ht. 11 3/8”, perfect. A scarce applied seal whiskey in yellow amber, rare in this gorgeous, rich olive yellow, and even more rare in this ‘attic found’ condition. A great example that has never been on the market, picked from an antique shop in northeastern Pennsylvania.

Est.: \$400 - \$600 • Min. bid: \$200



Lot 176

3-Piece Mold Whiskey Cylinder, probably a Mid-Atlantic glasshouse, possibly Baltimore, 1865 – 1875. Rich, medium apricot shading to a deep apricot with some reddish salmon tones towards the base, 3-pc. mold cylinder, applied sloping collar with bevel – smooth base, ht. 11 1/2”, perfect. A beautiful 3-pc. whiskey cylinder, wonderful variegated apricot coloration, crude ‘frothy’ glass with some streaks, swirl lines, and small bubbles mixed throughout.

Est.: \$250 - \$450 • Min. bid: \$130



Lot 177

"WEEKS GLASS WORKS" (on base) **Whiskey Cylinder**, South Stoddard Glass Co., 1850 - 1873. Bright golden amber, 3-pc. mold cylinder, applied sloping collar with ring - smooth base, ht. 11 ¼"; (just a bit of typical light wear and a small area of dullness, or 'bloom', approximately ½" x 1 ½" near the base, otherwise excellent). See, *"On the Trail of STODDARD Glass"*, Field, p.58. Attractive light color, strong, crisp base embossing. From an old, 1960s NH collection.

Est.: \$200 - \$400 • Min. bid: \$100



Lot 178

"PASTORIUS SCHULZ & CO / PITTS. PA" (on base), **Whiskey Cylinder**, Iron City Glass Works, Pittsburgh, c. 1864. Medium-to-deep olive green, 3-pc. mold cylinder, applied sloping collar with ring - smooth base, ht. 11 ¼", virtually attic mint; (just the slightest trace of faint wear including a couple of onionskin-thin open surface bubbles, otherwise pristine perfect). A very rare, base-embossed, glass-house whiskey cylinder.

Est.: \$200 - \$400 • Min. bid: \$100



Lot 179

"BININGER'S" / CLOCKFACE / "REGULATOR" - "19 BROAD ST - NEW YORK" **Figural Whiskey**, 1861 - 1863. Medium-to-deep amber, figural clock form, applied double round collar - blowpipe pontil scar, ht. 5 ¾"; (a little faint haze on the shoulders; some light scratches and wear on the reverse, and a bit of interior residue or faint haze). GXIII-87; BPK-38. The bottle displays nicely. However, if desired, with just a light cleaning, it would present as near mint. Bruce Purdy collection.

Est.: \$300 - \$500 • Min. bid: \$150



Lot 180

"H.A. GRAEF'S SON / N.Y. / CANTEN" **Figural Whiskey**, 1880 - 1890. Deep yellowish 'old amber' with an olive tone, figural canteen, applied 'ear' shaped handles, tooled square collar - smooth base, ht. 6 ¾"; (a little light wear including a 1/16" flake on the back edge of the lip; a ring of light dullness, or exterior 'bloom' around the shoulders, and some in-manufacture crazing lines in the neck). A scarce color for this mold. Ex. Charles B. Gardner; Strong Museum collections.

Est.: \$250 - \$450 • Min. bid: \$130



Lot 181

Applied Handle Spirits Jug, probably a Mid-Atlantic glasshouse, possibly Baltimore Glass Works, 1850 - 1860. Medium-to-deep coppery apricot coloration, 2-pc. mold, pear form, applied handle curled at lower attachment, applied sloping collar - domed base with heavy iron pontil scar, ht. 6", virtually perfect; (just the slightest trace of faint wear, otherwise sparkling mint). A very scarce color, lighter in tone than most, outstanding condition.

Est.: \$175 - \$350 • Min. bid: \$90



Lot 182

"DR. GIRARD'S / LONDON / GINGER BRANDY" (on applied seal), **Applied Handle Whiskey** (with 98% complete, original labels), a Mid-Atlantic glasshouse, 1850 - 1860. Beautiful honey amber, cone form, applied handle with rigaree, applied ring collar with bevel - blowpipe pontil scar, ht. 9 ¼"; (bottle is attic mint; 95% complete front label, 99% complete back label). An outstanding whiskey, possibly unique with virtually complete, colorful graphic labels. Provenance: Fred Swiechowicz collection.

Est.: \$1,200 - \$2,400 • Min. bid: \$600



Lot 183

"DURKIN" / WHOLESALE AND RETAIL / WINES AND LIQUORS / SPRAGUE AND WALL / SPOKANE, WASH" **Giant Wine Bottle**, America, probably 1898 - 1907. Bright amber with a slight orange tone, large cone or 'megaphone' form, tooled collar with flat band - smooth base, ht. 13 ¼", attic mint! A very distinctive, impressive, wine or liquor bottle. The distinctive figural megaphone form was likely a sales or advertising gimmick.

Est.: \$300 - \$500 • Min. bid: \$150



Lot 184

"TURNER BROTHERS / NEW YORK" **Figural Barrel**, 1865 - 1875. Beautiful, medium yellowish honey with a slight olive tone, barrel form, applied square collar - smooth base, ht. 9 7/8"; (a little roughness on the edge of the square collar including a ¼" flake on the top of the collar, otherwise virtually attic mint). R/H #T67L. A nice crude example with attractive pebbly glass, strong embossing, in a beautiful, eye-appealing color. Provenance: Ex. Don Denzin collection.

Est.: \$400 - \$800 • Min. bid: \$200



Lot 185

"DR C.W. ROBACKS / STOMACH BITTERS / CINCINNATI. O.", 1860 – 1870. Medium amber, barrel form, applied sloping collar – smooth base, ht. 9 3/4"; (a little washable exterior soot or 'grunge' between the rings; some dried interior content residue or light haze, possibly washable, otherwise very near mint). R/H #R73. This one looks like it was a fresh pick from an attic or cellar. Given a warm sudsy bath, it would likely clean up very nicely!

Est.: \$250 - \$350 • Min. bid: \$130



Lot 189

"OLD SACHEM / BITTERS / AND / WIGWAM TONIC", 1860 – 1875. Beautiful, medium-to-deep pinkish strawberry puce coloration, barrel form, applied square collar – smooth base, ht. 9 1/4", virtually perfect; (just a slight trace of very light wear on the reverse, and a 1/8", paper-thin open bubble on one of the rings on the side, otherwise mint). R/H #O46. Absolutely fabulous color, outstanding condition!

Est.: \$1,200 - \$1,800 • Min. bid: \$600



Lot 186

"GREELEY'S BOURBON / BITTERS", 1860 - 1875. Medium smoky topaz with a copper tone, barrel form, applied square collar – smooth base, ht. 9 1/4"; (a little typical minor wear including a shallow, pinhead flake on the side of the lip, and some light interior residue, likely washable, otherwise excellent). R/H #G101. A scarce color (most examples being in shades of puce or apricot), and in a tone that passes plenty of light.

Est.: \$300 - \$500 • Min. bid: \$150



Lot 190

"BROWN'S / CELEBRATED / INDIAN HERB BITTERS – PATENTED / FEB 11 / 1868", 1868 – 1875. Light golden amber above the waist, shading to a bright amber with an orange tone through the mid-section and lower half of the body, figural Indian maiden, inward rolled mouth – smooth base, ht. 12 1/8"; (some flaking or roughness, about 1/2", where the inner rolled rim is missing, likely occurring when the cork was pried out, otherwise perfect). R/H #B226. A pretty example.

Est.: \$400 - \$600 • Min. bid: \$200



Lot 187

"GREELEY'S BOURBON / BITTERS", 1860 - 1875. Light-to-medium ginger ale – topaz with an olive tone, barrel form, applied square collar – smooth base, ht. 9 1/4", near mint; (a little minor wear including a couple of light scratches on the mid-body, and some roughness on the back edge of the collar that you can feel, but not easy to see). R/H #G101. A nice light example, heavily whittled, rare color, which is a true chameleon, the olive tones are more prevalent in daylight.

Est.: \$800 - \$1,200 • Min. bid: \$400



Lot 191

"THE / FISH BITTERS - W.H. WARE / PATENTED 1866", 1866 - 1875. Golden amber along the side shading to a deep amber through the 'belly' and towards the base, applied ring collar - **"W.H. WARE / PATENT 1866"** (on smooth base), ht. 11 5/8"; (some scattered light wear and a slightly weak impression, not uncommon for this mold; some light interior residue or haze, not terribly distracting, some of which may wash out). R/H #F46. A classic figural bitters and a lot of bottle for the money.

Est.: \$250 - \$400 • Min. bid: \$130



Lot 188

"OLD SACHEM / BITTERS / AND / WIGWAM TONIC", 1860 – 1875. Deep coppery apricot, barrel form, applied square collar – smooth base, ht. 9 1/4"; (some scattered high point wear and a few light scratches around the mid-body; a tiny pinhead flake on one of the rings, on the reverse, otherwise excellent). R/H #O46. A very scarce color for an Old Sachem, no amber in this one! This example has not seen the light of day in 40+ years. From a collection assembled in the 70s.

Est.: \$400 - \$800 • Min. bid: \$200



Lot 192

"THE / FISH BITTERS - W.H. WARE / PATENTED 1866", 1866 - 1875. Colorless with a slight smoky amethystine tint in the base, figural fish form, tooled ring collar - **"W.H. WARE / PATENT 1866"** (on smooth base), ht. 11 1/2", near mint; (just a touch of typical minor high point wear, and a bit of light interior content residue in the base, otherwise perfect). R/H #F46. A beautiful example, very rare 'color', fantastic overall condition. Fred Swiechowicz collection; Ex. Dr. Burton Spiller collection.

Est.: \$2,500 - \$4,500 • Min. bid: \$1,300



Lot 193

“S T / DRAKE’S / 1860 / PLANTATION / X / BITTERS - PATENTED / 1862”, 1862 - 1880. Rich, medium-to-deep olive green with a lime tone, cabin form with 6 logs above the label panel, applied sloping collar – smooth base, ht. 9 ¾”; (some light exterior dullness or ‘bloom’ on a couple of the sides, and just the slightest touch of faint wear, but no other form of damage and otherwise attic mint). R/H #D106. A gorgeous example, rare, outstanding color! Fred Swiechowicz collection.

Est.: \$8,000 - \$16,000 • Min. bid: \$4,000



Lot 197

“E. DEXTER. LOVERIDGE / WAHOO BITTERS - (EAGLE) - E. DEXTER. LOVERIDGE / WAHOO BITTERS - DWD - 1863 - XXX - PATD” (with 85% complete, original front and back labels), 1863 - 1875. Rich yellowish amber with an olive tone, almost a butter-scotch coloration, semi-cabin, applied sloping collar with band – smooth base, ht. 9 7/8”, pristine perfect. R/H #L126. An outstanding example in a rare color, and exceedingly rare with original labels. Ex. Howard Crowe collection.

st.: \$4,000 - \$6,000 • Min. bid: \$2,000



Lot 194

Arabesque motif / “DRAKES” / Arabesque motif / “PLANTATION / BITTERS - PATENTED / 1862”, 1862 - 1880. Bright yellow with some warmer honey tones, cabin form with 6 logs above the label panel, applied sloping collar – smooth base, ht. 9 ¾”, near perfect; (a minor, partially open bubble in the neck, otherwise mint). R/H #D102. Very scarce “Arabesque” mold, fantastic color, outstanding condition.

Est.: \$800 - \$1,200 • Min. bid: \$400



Lot 198

“ROMAINE’S - CRIMEAN - BITTERS - PATEND 1863 - W. CHILTON & Co”, 1863 - 1875. Bright golden amber, semi-cabin form with columned corners, applied sloping collar - smooth base, ht. 10”; (lightly cleaned to original luster and near mint condition; some fine light wear along a couple of the panel edges, not terribly noticeable, otherwise virtually perfect). R/H #R86. Very scarce. A beautiful example, excellent clarity. If we did not mention the light cleaning, it would be hard to discern.

Est.: \$500 - \$800 • Min. bid: \$250



Lot 195

“S T / DRAKE’S / 1860 / PLANTATION / X / BITTERS - PATENTED / 1862”, 1862 - 1880. Beautiful, clear medium topaz with some ginger ale tones, cabin form with 6 logs above the label panel, applied sloping collar – smooth base, ht. 9 ¾”, virtually perfect; (just a very slight trace of wear on the back roof edge). R/H #D105. A great example, beautiful, eye-appealing color – no amber in this one, excellent clarity, strong embossing, almost no wear!

Est.: \$800 - \$1,200 • Min. bid: \$400



Lot 199

“DOYLES - HOP - BITTERS - 1872” – (Hop berries and leaves) with 98% complete, original, labels, America, 1875 – 1885. Golden amber, square, semi-cabin form, applied sloping collar with bevel – smooth base, ht. 9 ½”; (the bottle is virtually perfect – slight trace of faint wear; the label has some minor staining and is faded a bit, but otherwise legible and excellent condition). R/H #D93. A great example, very scarce with virtually complete, original, labels.

Est.: \$100 - \$200 • Min. bid: \$60



Lot 196

“S T / DRAKE’S / 1860 / PLANTATION / X / BITTERS - PATENTED / 1862”, 1862 - 1880. Deep strawberry puce, cabin form with 6 logs above the label panel, applied sloping collar – smooth base, ht. 10”, near perfect; (just a very slight trace of wear along the roof edge, otherwise sparkling mint). R/H #D108. A very nice example, rich, deep color, fantastic condition, and a lot of bottle for the money!

Est.: \$250 - \$400 • Min. bid: \$130



Lot 200

“OLD / HOMESTEAD / WILD / CHERRY / BITTERS - PATENT”, possibly a Pittsburgh district glasshouse, 1865 – 1875. Golden amber with some yellowish honey tones through the corners, square cabin form, applied sloping collar – smooth base, ht. 9 5/8”, near mint; (a little minor roughness along the back edge of the collar that you can feel, but is not easy to see, otherwise excellent). R/H #O37. Note; this is the example without the clapboard at the bottom of the door.

Est.: \$300 - \$500 • Min. bid: \$150



Lot 201

"H.P. HERB / WILD / CHERRY / BITTERS / READING / PA - WILD CHERRY" / (Cherry Tree) / "BITTERS" - "BITTERS - BITTERS - BITTERS - BITTERS", 1885 - 1895. Golden amber, cabin form with roped corners, thatched roof, tooled sloping collar with ring - smooth base, ht. 10", virtually perfect; (just a slight trace of wear including a minor, onionskin-thin, open surface bubble on a side roof panel, otherwise perfect). R/H #H93. A great example, excellent condition.

Est.: \$300 - \$500 • Min. bid: \$150



Lot 202

"MORNING" (STAR) "BITTERS" / "INCEPTUM 5869 - PATENTED / 5869", America, 1855 - 1865. Bright medium amber, triangular pyramid form, applied sloping collar - iron pontil scar, ht. 12 5/8", near mint; (a minor light scratch near one of the base corners, and a bubble on one of the beveled corners with a 1/8" opening in the cover glass, otherwise excellent). R/H #M135. A bright, clean example.

Est.: \$250 - \$350 • Min. bid: \$130



Lot 203

"THE GREAT TONIC / CALDWELLS / HERB BITTERS", America, 1855 - 1865. Medium amber, triangular pyramid form with 24 squares in lattice panel, applied sloping collar - heavy iron pontil scar, ht. 12 1/2"; (some scattered light wear, and a little patchy interior residue, or faint haze, otherwise excellent). R/H #C8. Very heavy pontil scar, and a lot of bottle for the money!

Est.: \$200 - \$300 • Min. bid: \$100



Lot 204

Lot of (2), "HERTRICHS BITTER" Bottles, Germany, 1885 - 1895. 1st Ex.: "HERTRICHS BITTER / Einziger-Fabrikant / HANS HERTRICH HOF / Gesetzlich geschützt", and 2nd Ex.: 'HERTRICH'S GESUNDHEITS BITTER / HANS / HERTRICH / HOF / ERFINDER u ALLEIN / DESTILLAT-FUR". Both are shades of olive, applied double ring collar - smooth base, ht. 9 1/4" and 11 3/4" respectively; (1/4" flake under collar of 2nd ex., otherwise both near mint). R/H #H104. Scarce.

Est.: \$175 - \$350 • Min. bid: \$90



Lot 205

"DR TOWNSEND'S - SARSAPARILLA - ALBANY / NY" (with 60% original label) - (four rivet marks on each panel), an early Stoddard, NH glass-house, 1845 - 1855. Yellowish olive, square with beveled corners, applied sloping collar - sand type pontil scar, ht. 9 1/2", attic mint! A top example of this scarce 'nailhead' mold. Outstanding character and condition with unusually bold, very strong embossing - all of the rivet marks are clearly visible! Fred Swiechowicz collection.

Est.: \$600 - \$900 • Est.: \$300



Lot 206

"DR TOWNSEND'S - SARSAPARILLA - ALBANY / N.Y. No1", New England, or possibly New York State, 1845 - 1855. Clear, medium-to-deep olive, square with beveled corners, applied sloping collar - sand type pontil scar, ht. 9 3/8", sparkling mint! Examples this nice don't come around often - nice character with crude, heavy glass, strong embossing, and virtually pristine perfect! An absolutely fantastic example of this very scarce "No1" mold variant.

Est.: \$800 - \$1,200 • Min. bid: \$400



Lot 207

"DR TOWNSEND'S - SARSAPARILLA - ALBANY / N Y", America, 1850 - 1860. Rich, medium-to-deep emerald coloration, square with beveled corners, crudely applied sloping collar - iron pontil scar (note; mold variant with two rivet marks in the base), ht. 9 1/4"; (just a slight trace of light wear, otherwise perfect). A great example in a rare, eye-appealing color, excellent character having crude, bubbly, frothy glass, and outstanding condition!

Est.: \$1,000 - \$2,000 • Min. bid: \$500



Lot 208

"DR TOWNSEND'S - SARSAPARILLA - ALBANY / N.Y. - IIII", America, 1850 - 1860. Rich, deep blue green, almost a teal coloration, square with beveled corners, applied sloping collar - domed base with heavy iron pontil scar, ht. 9 1/4", near perfect; (just a touch of light wear on a couple of the panels, otherwise sparkling attic mint). A very scarce and desirable mold, fantastic condition, very bold embossing, beautiful eye-appealing color! A great example. Provenance: Fred Swiechowicz collection.

Est.: \$800 - \$1,200 • Min. bid: \$400



Lot 209

“DR. TOWNSEND’S – SARSAPARILLA – ALBANY / N.Y.”, 1845 – 1855. Gorgeous, medium-to-deep apricot coloration with some lighter peach tones, square with beveled corners, applied sloping collar – domed base with blowpipe pontil scar, ht. 9 ¼”, virtually perfect; (slight trace of very faint wear). An outstanding colored pontiled medicine, and an exceptional example in every way – perhaps the pinnacle, or ‘holy grail’, for the Townsend collector. Fred Swiechowicz collection.

Est.: \$10,000 - \$20,000 • Min. bid: \$5,000



Lot 213

“DR. Jno. H. ANDERS / IODINE WATER / NEW YORK / 1855” – (Motif of Sun with Face) / “HAURIEXHAC / FONTI VITALI – J.H. ANDERS – W. FOSDICK”, 1855 – 1860, Rich, medium-to-deep honey yellow with an olive tone, rectangular with beveled corners, applied square collar – blowpipe pontil scar, ht. 7 ¾”, near perfect; (a pinprick speck of roughness on the collar, some dried interior content residue). A rare mold variant, likely unique color! Provenance: Fred Swiechowicz collection.

Est.: \$4,000 - \$8,000 • Min. bid: \$2,000



Lot 210

“CHAPMAN’S / GENUINE. / No.4 SALEM ST. BOSTON”, a Stoddard glasshouse, probably Granite Glass Co, 1850 - 1856. Beautiful yellowish amber coloration, rectangular, beveled corners, applied sloping collar – sand pontil scar, ht. 8 3/8”, virtually perfect; (just the slightest trace of wear, and some minor in-manufacture crazing lines in the neck mentioned for completeness, but not considered damage). A beautiful example, outstanding condition! Fred Swiechowicz collection.

Est.: \$8,000 - \$12,000 • Min. bid: \$4,000



Lot 214

“DR FONDA’S / EYE REMEDIES”, 1845 – 1855. Bright golden amber with a slight orange tone, triangular with narrow beveled corners, sheared and inward rolled mouth – blowpipe pontil scar, ht. 4 ¼”, perfect. Believed to be a unique example! A great pontiled medicine, it is also believed to be the only true colored pontiled medicine of triangular form, as well as the only known colored pontiled medicine embossed with the word, “Eye”. Provenance: Ex. Hal Wagner, Ex. Dr. Jerry Phelps collection.

Est.: \$6,000 - \$9,000 • Min. bid: \$3,000



Lot 211

Rare, Early Medicine or Utility Bottle, probably a New Hampshire glasshouse, 1840 – 1855. Brilliant yellow olive coloration, rectangular with beveled corners, applied disc collar – heavy sand type pontil scar, ht. 8 ¼”, virtually attic mint; (just a trace of light wear, otherwise perfect). An absolutely fantastic utility, great color, extremely rare mold – virtually identical to the “Chapman’s Genuine”, beautifully whittled, outstanding character and condition. Fred Swiechowicz collection.

Est.: \$1,200 - \$1,800 • Min. bid: \$600



Lot 215

“J. FOLEY’S – INDIAN / BOTANIC – BALSAM”, a Midwest glasshouse, probably 1858 – 1862. Medium bluish green coloration, rectangular, beveled corners, applied ring collar with bevel – blowpipe pontil scar, ht. 6 5/8”, virtually perfect; (just a trace of very faint dullness, or haze, in the shoulder area, barely noticeable). Odell, p.131. A rare pontiled Indian medicine from Dayton, OH, and believed to be the only known colored pontiled example of this mold! Ex. Dr. Jerry Phelps collection.

Est.: \$1,800 - \$3,600 • Min. bid: \$900



Lot 212

“FREIOT’S RENOVATOR” (with 85% complete, original label), Albany Glass Works, probably 1848 – 1850. Beautiful, deep emerald, almost a forest green coloration, oval, applied sloping collar – iron pontil scar, ht. 8”, near mint; (a trace of faint wear including a bit of minor lip roughness; a 5/16” lip flake has been professionally repaired, otherwise pristine). An impressive, eye-appealing bottle, very crude glass, great color – the deepest of the 3 known, and the only example with original label.

Est.: \$8,000 - \$12,000 • Min. bid: \$4,000



Lot 216

“I. COVERT’S - BALM OF LIFE”, Mt. Vernon Glass Works, Vernon, NY, probably 1841 - 1846. Yellowish olive with an amber tone, rectangular with wide beveled corners, applied sloping collar - blowpipe pontil scar, ht. 5 3/8”, perfect! N#142; Odell, p.92. A great example of this classic, early, Mt. Vernon pontiled medicine. Fantastic, virtually pristine condition, outstanding character having crude, syrupy, pebbly glass, an unusually short neck giving it a pleasing ‘squatty’ appearance.

Est.: \$1,500 - \$2,500 • Min. bid: \$800

**Lot 217**

"DR. W. BURTON'S / SYRUP / PHILADA.", 1845 – 1855. Bright, medium bluish green, cylindrical, applied sloping collar with bevel – blowpipe pontil scar, ht. 7 ¼"; (lightly cleaned to original luster; a small sandgrain on the inside of the neck has a tiny iridescent line, 1/16" or less, mentioned for completeness, barely visible without a loop, otherwise very near mint). Odell, p.61. Extremely rare, very attractive, heavily whittled! Only the second example offered at auction in more than 25 years.

Est.: \$2,000 - \$4,000 • Min. bid: \$1,000

**Lot 221**

"CARTERS / SPANISH / MIXTURE", America, 1850 – 1860. Rich, medium-to-deep reddish amber, cylindrical, applied sloping collar with bevel – iron pontil scar, ht. 8 ¼", near mint; (a tiny, pinprick, speck of roughness on the edge of the lip; lightly cleaned to original luster and virtually perfect condition). A very scarce-to-rare color for this mold; the vast majority being in shades of yellow-olive, occasionally olive amber, but rare in this reddish amber tone.

Est.: \$600 - \$900 • Min. bid: \$300

**Lot 218**

"G.W. MERCHANT / CHEMIST / LOCKPORT / N.Y.", probably Lockport Glass Works, NY, 1850 – 1860. Beautiful, deep cornflower blue, cylindrical, applied sloping collar – iron pontil, ht. 7", very near mint; (just a trace of light wear and a touch of very light residue, or milkiness, in the shoulder, barely noticeable). A very rare and beautiful color for a 'cylinder Merchant' (or any Merchant bottle). One of just a small handful known in cornflower blue. Fred Swiechowicz collection.

Est.: \$1,500 - \$2,500 • Min. bid: \$800

**Lot 222**

(Label-only), **THE GREAT / EUROPEAN COUGH REMEDY, / PREPARED BY / REV. WALTER CLARKE, / MINOT, MAINE, Utility or Medicine Bottle**, New England, 1845 – 1860. Medium olive amber, cylindrical, 2-pc. mold, crudely applied square collar – crude, likely pontil scarred base (small bit of glass from pontil scar, or possibly adhered during annealing process), ht. 4 5/8"; (a ¾" area of the lip with some fine roughness or minor flaking, period – likely original label, 95% complete).

Est.: \$200 - \$400 • Min. bid: \$100

**Lot 219**

"FROM THE / LABORATORY - OF / G.W. MERCHANT / CHEMIST - LOCKPORT / N.Y.", probably Lockport Glass Works, 1845 - 1855. Rich, medium to deep yellowish green, rectangular with concave corners, applied sloping collar - blowpipe pontil scar, ht. 5 5/8", near mint; (a 1/8" flake on the edge of the lip, and just the slightest trace of faint wear, otherwise pristine). A rare and beautiful color for this mold, strong embossing, scarce with the blowpipe pontil scar.

Est.: \$800 - \$1,200 • Min. bid: \$400

**Lot 223**

"D R" Medicine Bottle, New England, or possibly a Baltimore glasshouse, 1830 – 1850. Bright yellowish tobacco or "old" amber, rectangular with wide beveled corners, sheared mouth with a crudely applied string lip – glass tipped pontil scar, ht. 6 1/8", virtually pristine perfect; (a tiny, pinhead open bubble at base corner). A very eye-appealing, early medicine with the long neck, crude string lip, and beautiful, bubbly glass. Extremely rare. Provenance: Ex. Sam Greer collection #62.

Est.: \$600 - \$1,200 • Min. bid: \$300

**Lot 220**

"BARTINE'S / LOTION", America, 1845 - 1855. Beautiful, light-to-medium cobalt blue, rectangular with narrow beveled corners, applied sloping collar - blowpipe pontil scar, ht. 6 1/8"; (lightly cleaned to original luster and near mint condition; just a touch of very faint milkiness in the neck, and a little in-manufacture glass extrusion at the mold seam). Odell, p.24. A beautiful example, exceedingly rare in cobalt, believed to be 1 of only 2 or 3, known in this, or similar color!

Est.: \$3,000 - \$6,000 • Min. bid: \$1,500

**Lot 224**

"FORSHA'S - ALTERATIVE / BALM", probably a Midwest glasshouse, 1850 – 1860. Clear, sapphire blue, rectangular with beveled corners, ground mouth – blowpipe pontil scar, ht. 4 ¼"; (the original flanged lip has at some point, been ground, post manufacture, otherwise perfect). Odell, p.133. A scarce and desirable medicine from Cincinnati, Ohio, extremely rare in this sapphire blue coloration! Provenance: Ex. Dr. Sam Greer collection.

Est.: \$600 - \$900 • Min. bid: \$300



Lot 225

“**JOHN H. POPE / DRUGGIST / N. ORLEANS**”, 1850 – 1860. Light-to-medium cobalt blue, oval, applied sloping collar – iron pontil scar, ht. 5 5/8”; (professionally cleaned to original luster with a little scattered light wear remaining, but no other form of damage, and otherwise excellent). Odell, p.282. A very scarce, southern, colored pontiled medicine. Of the relatively few known, most were dug locally in New Orleans.

Est.: \$500 - \$800 • Min. bid: \$250



Lot 229

“**GEORGES / SARSAPARILLA – COM-STOCK & BR. – N Y.**”, 1850 – 1860. Aquamarine, rectangular, beveled corners, applied sloping collar – heavy iron pontil scar, ht. 9 3/8”, near perfect; (just the slightest trace of minor wear, and a shallow, barely noticeable, interior open bubble near the back beveled corner, mentioned for completeness, but not distracting, otherwise attic mint). A very rare, desirable, sarsaparilla. Provenance: Ex. Greer collection #646.

Est.: \$1,000 - \$1,500 • Min. bid: \$500



Lot 226

“**E. ANTHONY / NEW YORK**”, 1850 – 1860. Sapphire blue, oval, applied disc collar – blowpipe pontil scar, ht. 6”; (professionally cleaned to original luster with just a touch of very minor, light wear remaining, and a trace of faint interior milkiness near the base, in the reverse, otherwise excellent). Odell, p.9. A scarce bottle, beautiful color! Per Odell, Edward Anthony was located at 308 Broadway, in New York City. It is believed that the bottles actually held photographic chemicals.

Est.: \$250 - \$450 • Min. bid: \$130



Lot 230

“**DR WEBSTER'S / SARSAPARILLA**”, 1845 – 1855. Aquamarine, rectangular, beveled corners, applied sloping collar – blowpipe pontil scar, ht. 5 3/4”; (a tiny, 1/8” annealing line in the back base corner, and some in-manufacture annealing, or crazing lines, in the neck, otherwise attic mint). Odell, p.366. An extremely rare sarsaparilla! The noted 1/8” line in the base corner is not easy to see. Only the 3rd example to be offered in more than 20 years (we sold the last one in Auction #29).

Est.: \$300 - \$500 • Min. bid: \$150



Lot 227

“**DR DENISON'S / SARSAPARILLA**”, probably 1848 – 1853. Medium soft green, almost a sea-green coloration, oval, applied sloping collar – blowpipe pontil scar, ht. 7 3/8”; (professionally cleaned to original luster with some very faint, light interior haze remaining; a little minor wear, primarily on the reverse, and a partially open bubble in the neck, otherwise excellent). Odell, p.107; DeG #59, Rare (Ex. Rare in green). Per Odell, the bottle is believed to be from Cabotville, Massachusetts.

Est.: \$800 - \$1,200 • Min. bid: \$400



Lot 231

“**JOHN BULL – EXTRACT OF / SARSAPARILLA – LOUISVILLE. KY**”, Midwest, possibly Kentucky or Louisville Glass Works, 1850 – 1860. Rich, deep aquamarine, rectangular with beveled corners, applied sloping collar – heavy iron pontil scar, ht. 9”; (a little scattered light wear including a 3/8” scratch on the shoulder, and a pinhead flake on one of the base corners, otherwise very near mint). Odell, pgs. 58-59. A great looking, big sarsaparilla, nice character, overall excellent condition.

Est.: \$250 - \$400 • Min. bid: \$130



Lot 228

“**TURNER'S / SARSAPARILLA / BUFFALO N.Y.**”, probably Lockport or Lancaster Glass Works, NY, 1860 – 1870. Brilliant aqua, large oval with flattened sides, applied sloping collar – smooth base, ht. 12 1/8”, near perfect; (a shallow, 1/8” lip flake on the reverse, and just the slightest trace of light wear, otherwise pristine perfect). DeG #208. A fantastic example, clean, sparkling, whittled, almost no wear. An impressive sarsaparilla, and one of the largest as well.

Est.: \$700 - \$900 • Min. bid: \$350



Lot 232

“**DR JOHN BULL'S – COMPOUND / PECTORAL – WILD CHERRY – LOUISVILLE KY / & NEW YORK**”, Midwest, possibly Kentucky or Louisville Glass Works, 1850 – 1860. Bright aquamarine, rectangular with beveled corners, applied round collar with bevel – heavy iron pontil scar, ht. 7 3/8”, virtually ‘out-of-the-mold, pristine perfect! A very scarce-to-rare mold. About as nice as you could hope to find. Provenance: Gary Enters collection; Ex. Dr. Sam Greer collection.

Est.: \$400 - \$600 • Min. bid: \$200



Lot 233

“GENUINE - SWAIM’S / PANACEA - PHILADELPHIA”, 1824 - 1830. Aqua, rectangular with concave corners, applied sloping collar – blowpipe pontil scar, ht. 7 5/8”; (lightly cleaned to original luster and virtually mint condition, and just a slight trace of faint wear, otherwise perfect). Odell, p.335. These were William Swaim’s first bottles, replaced by the round bottles in 1830. A beautiful, bright, clean example. Note; a thread of glass swirls around the interior of the shoulder.

Est.: \$600 - \$900 • Min. bid: \$300



Lot 237

“JELLY OF / POMEGANATE / PREPARATE – BY / DR. GORDAK / ONLY”, 1835 - 1845. Greenish aqua, rectangular with rounded sides, wide neck, sheared, tooled, wide flanged lip – blowpipe pontil scar, ht. 6 3/4”; (just the slightest trace of faint wear, otherwise attic mint). Note, the embossing on the reverse is weak, as is often the case. Odell, p.148. Very scarce, and with a hard-to-find, perfect flanged lip! Note; “Pomegranate” is misspelled, as “Pomeganate”. Ex. Bill Buker collection.

Est.: \$250 - \$450 • Min. bid: \$130



Lot 234

“HENSHAW EDMANDS / & Co / BOSTON – MEDICATED / VINEGAR / LOTION.”, 1850 – 1860. Aqua, oval, applied sloping collar – blowpipe pontil scar, ht. 9 1/8”, virtually pristine perfect; (a pinhead bit of roughness on inside edge of the lip, possibly in-manufacture). Odell, p.171. An extremely rare pontiled medicine, believed to be the first example offered at auction in more than 30 years! Big, sparkling, heavily whittled and strongly embossed. Fred Swiechowicz collection.

Est.: \$600 - \$900 • Min. bid: \$300



Lot 238

“WOMAN’S FRIEND – STEWART / WILLIS & Co – NEW. YORK.”, 1855 – 1862. Rich aquamarine, rectangular with beveled corners, applied double ring collar – blowpipe pontil scar, ht. 6 7/8”, virtually perfect; (just a slight trace of very light wear, and some in-manufacture crazing lines in the neck, not considered damage, mentioned for completeness, otherwise mint). Odell, p.332. Very scarce. A bright, clean, example with good depth of color.

Est.: \$200 - \$300 • Min. bid: \$100



Lot 235

“DOCTOR – GEO. W. BLOCKSOM – DRUGGIST – ZANESVILLE”, probably Zanesville Glass Works, Zanesville, OH, 1858 – 1862. Rich, deep aquamarine, 12-sided, applied disk collar – large iron pontil scar, ht. 8”, near mint; (a trace bit of minor wear and a 1/4” flake on the side of the collar, otherwise excellent). A very impressive bottle having crude wavy glass, and rich deep color. It is a very scarce mold and the largest of the Blocksom 12-sided cylinders.

Est.: \$400 - \$800 • Min. bid: \$200



Lot 239

“DR. J. M’CLINTOCK’S – FAMILY – MEDICINES” (with 99% complete, original label), 1850 – 1860. Colorless, rectangular with beveled corners, applied ring collar – blowpipe pontil scar, ht. 5 1/2”, sparkling attic mint! A great example. Original label reads in part, *DR. JAS. McCLINTOCK’S / FAMILY / MEDICINES. / RHEUMATIC MIXTURE. / A purely vegetable combination for the cure of Rheumatism.* Note; this is the scarce, smaller size, and likely rare with original label. Gary Enters collection.

Est.: \$250 - \$450 • Min. bid: \$130



Lot 236

“VAUGHN’S - VEGETABLE / LITH-ONTRIPTIC / MIXTURE - BUFFALO”, probably a New York State glasshouse, 1850 - 1860. Aquamarine, square with beveled corners, domed shoulders, applied sloping collar – sand type pontil scar, ht. 8 1/8”, attic mint! Odell, p.357. A bright, clean, sparkling example.

Est.: \$200 - \$300 • Min. bid: \$100



Lot 240

“H & B – PAIN – EXTERMINATOR” (with 90% complete, original front label; 60% back label), 1845 – 1855. Aquamarine, rectangular, beveled corners, sheared and inward rolled mouth – blowpipe pontil scar, ht. 4 3/4”; (there is a great deal of dried interior content residue, but the bottle is otherwise perfect; back label is illegible). Label reads in part, *AYRES / VEGETABLE / PAIN / EXTERMINATOR / Prepared by / HENDERSON & BROS. / PITTSBURGH, PA.* Extremely rare! Gary Enters collection.

Est.: \$400 - \$600 • Min. bid: \$200



Lot 241

"HOWLANDS / READY REMEDY - COLUMBA / + ROADS. P.A.", 1850 - 1860. Aqua, square with beveled corners, applied sloping collar - blowpipe pontil scar, ht. 5", near mint; (some light interior content residue, almost certainly washable, and a tiny bit of roughness on the edge of the lip that you can feel, but is not easy to see, otherwise perfect). Odell, p.182. A very scarce pontiled medicine from Cross Roads, in York County, PA. Fred Swiechowicz collection.

Est.: \$200 - \$400 • Min. bid: \$100



Lot 245

"CHRISTIES - AGUE / BALSAM - NEW YORK", 1850 - 1860. Bright aquamarine, rectangular with beveled corners, applied round collar with bevel - blowpipe pontil scar, ht. 7", attic mint! Odell, p.75; Blasi, p.30. A great example, clean, sparkling, strong embossing, and with crude, whittled, wavy glass. Ex. Bill Buker collection.

Est.: \$100 - \$200 • Min. bid: \$60



Lot 242

"DR. ZEUBLIN'S / SAFE & QUICK / CURE FOR THE / SICK HEADACHE / PHILADA", 1845 - 1855. Aquamarine, cylindrical, sheared, tooled, and inward rolled mouth - blowpipe pontil scar, ht. 3 1/2", perfect. Odell, p.384. A clean, sparkling example of this very scarce pontiled cure, unlisted in Nielsen, or the Agee 'Cure' books.

Est.: \$175 - \$350 • Min. bid: \$90



Lot 246

"J.S. FANCHER - GRECIAN / FAN-CHERONIAN / DROPS - NEW YORK", probably 1851 - 1853. Aquamarine, rectangular with beveled corners, applied sloping collar - blowpipe pontil scar, ht. 7 1/2", attic mint! Odell, p.125. Scarce. Per Odell, Dr. Fancher advertised 1851 - 1852 for sick headache, chills, fever and dyspepsia. A bright, clean, very attractive, sparkling example.

Est.: \$200 - \$400 • Min. bid: \$100



Lot 243

"LOUDEN & Co'S / INDIAN / EXPECTORANT - PHILAD.A", 1845 - 1860. Light aquamarine, oval, applied sloping collar - blowpipe pontil scar, ht. 7 1/4"; (professionally cleaned to original luster and near mint condition with just a little minor light wear remaining, otherwise excellent). Odell, p.230; N#399. A nice clean example of this scarce pontiled Indian medicine.

Est.: \$175 - \$275 • Min. bid: \$90



Lot 247

"LOMBARD & / CUNDALL / SPRING-FIELD MASS - EXCELSIOR - HAIR TONIC" (with 80% complete, original, label), America, probably 1853-1854. Aquamarine, rectangular with beveled corners, applied ring collar with small bevel - blowpipe pontil scar, ht. 6 1/2"; (bottle is perfect; original label on reverse with some stain, and darkened from age, but mostly legible). DF pgs. 95-96. A very scarce pontiled hair bottle, and rare in this condition with original label.

Est.: \$150 - \$250 • Min. bid: \$80



Lot 244

"Dr. H. JAMES / No. 19 GRAND St. / JERSEY CITY / N.J. / ALSO No 14 CECIL St / STRAND / LONDON", America, probably 1855 - 1860. Aquamarine, oval, applied sloping collar - blowpipe pontil scar, ht. 8 1/8", perfect. Odell, p.196. Very scarce. The bottles may have contained an extract of cannabis. A bright, clean, heavily whittled, sparkling example. Provenance: Fred Swiechowicz collection.

Est.: \$175 - \$350 • Min. bid: \$90



Lot 248

"DUTCHERS - DEAD SHOT / FOR / BED BUGS - ST. ALBANS VT." (with 95% complete, original label), 1855 - 1865. Aqua, rectangular with beveled corners, applied square collar - blowpipe pontil scar, ht. 5", near perfect; (a 1/8" bit of roughness on the back edge of the lip). Odell, p.117; KX-21. Very scarce with original label which reads in part, POISON / DEAD SHOT / FOR / BED-BUGS / Apply it thoroughly with a quill to the joints and holes in the bedstead. Fred Swiechowicz collection.

Est.: \$250 - \$450 • Min. bid: \$130



Lot 249

Lot of (2), Sarsaparilla Bottles, 1885 – 1895. “RIKER’S / COMPOUND / SARSAPARILLA”, and: “WORLD’S – COLUMBIAN / SARSAPARILLA – WORCESTER, MASS”. Aquamarine and colorless, both are rectangular with beveled corners, tooled square collar and tooled round collar with bevel – smooth bases, ht. 10 ¼” and 8 5/8” respectively, both very near mint. DeG #180, Scarce; DeG #230, Ex. Rare!

Est.: \$120 - \$240 • Min. bid: \$60



Lot 250

Lot of (2), Rare Sarsaparilla Bottles, 1885 – 1895. “DR. JAMES’ / SARSAPARILLA – J.W. JAMES & Co. – PITTSBURGH, PA.”, and: “SCOTCH / SARSAPARILLA” (with 90% complete, original label). Both are aquamarine, rectangular with beveled corners, tooled round collars with bevels – smooth base, ht. 9 1/8” and 7 5/8” respectively, both are attic mint! DeG #112, Rare; and DeG Supplement #71, Extremely rare. The Scotch Sarsaparilla is from Chillicothe, Ohio.

Est.: \$120 - \$240 • Min. bid: \$60



Lot 251

“L.Q.C. WISHART’S – PINE TREE / TAR CORDIAL, / PHILA” – “PATENT” / (PINE TREE) / “1859”, 1865 – 1870. Bright olive with a slight yellowish tone, square with beveled corners, applied sloping collar – smooth base, ht. 7 ½”; (professionally cleaned to original luster; a few onionskin-thin open surface bubbles, and a 3/16” chip on the edge of the lip). One of the earliest molds, good color, outstanding character – the glass being absolutely filled with tiny bubbles.

Est.: \$600 - \$900 • Min. bid: \$300



Lot 252

“TIPPECANOE” / (CANOE) / “H.H. WARNER & Co” Figural Log, 1883 – 1890. Bright, light yellowish honey coloration, cylindrical, figural log, applied ‘mushroom’ collar – “ROCHESTER / 4 / N.Y.” (on smooth base), ht. 9 ¼”, sparkling mint! Similar to O&S #33A (patent date omitted on base, but “Rochester” is correctly spelled). An absolutely beautiful example, one of the lightest we’ve seen in a very long time. This example also has a longer neck and drawn-up shoulders.

Est.: \$300 - \$500 • Min. bid: \$150



Lot 253

“16 FL. OZ. / WARNER’S / SAFE / KIDNEY & LIVER / REMEDY” / (SAFE) / “ROCHESTER, N.Y.”, probably 1908 – 1912. Beautiful, yellowish olive amber, oval, tooled blob collar – “799” (on smooth base), ht. 9 ½”, perfect. O&S #20A. A very rare, eye-appealing color, outstanding condition.

Est.: \$200 - \$400 • Min. bid: \$100



Lot 254

“WARNER’S / SAFE CURE” / (SAFE) / “PRESSBURG.”, Germany, 1889 - 1892. Amber with an orange tone shading to reddish amber near the base, oval, applied blob collar - smooth base, Pt; (professionally cleaned to original luster with a couple of spots of minor wear remaining, otherwise excellent). O&S #72. Nice rich color, and a very scarce mold rated as “Rare” in the Warner’s guide.

Est.: \$200 - \$400 • Min. bid: \$100



Lot 255

“BLOOD” / (Figural Heart inside Circles) / “LIFE / PUTS LIFE / INTO / YOUR BLOOD” Medicine Bottle and Advertising, Boston Georgia, 1905 – 1910. Amber, rectangular with indented side panels, tooled prescription type collar – smooth base, ht. 8”, perfect. Ephemera includes large, 9” x 15”, period B&W advertising circular and colorful original

unused box wrapper. A very scarce quack medicine from the small town of Boston, Georgia.

Est.: \$100 - \$200 • Min. bid: \$50



Lot 256

“TILDEN & Co, - NEW LEBANON / N.Y.”, 1880 – 1890. Yellow below the shoulders shading to a deeper honey coloration near the base, square with beveled corners, tooled sloping collar – smooth base, ht. 7 ¼”; (just a bit of minor wear, and a little light interior residue in the shoulders, almost certainly washable, otherwise very near mint). A very pretty example, almost a topaz coloration, and one that has not been dug and cleaned. Scarce color.

Est.: \$300 - \$500 • Min. bid: \$150



Lot 257

“TILDEN & Co, - NEW LEBANON / N.Y.”, 1880 – 1890. Rich, deep chocolate amber, square with beveled corners, tooled sloping collar – smooth base, ht. 7””; (professionally cleaned with just a touch of minor wear remaining, including a 1/8” shallow bruise on the edge of the base, otherwise excellent). Although not as eye-catching as the blue toned examples, this deep chocolate coloration is actually another very difficult color to find.

Est.: \$200 - \$400 • Min. bid: \$100



Lot 261

“POISON” Figural Coffin Bottle (with 99% complete, original, label), 1890 – 1905. Cobalt, coffin form, overall diamond pattern on front and side panels, tooled ring collar – smooth plain base, ht. 3 1/2””; (bottle is perfect; label is faded a bit, but legible). Similar to KU-18 (plain back panel – not embossed “POISON”). Label reads in part, 25 TABLETS / COFFIN-SHAPED BLUE / MERCURIC / CHLORIDE / DISTRIBUTED / & GUARANTEED / BY / MORGENSTERN & CO / NEW YORK.

Est.: \$150 - \$250 • Min. bid: \$80



Lot 258

“TILDEN & Co, - NEW LEBANON / N.Y.” (with 95% complete, original label), 1880 – 1890. Bright cornflower blue, square with beveled corners, tooled sloping collar – smooth base, ht. 7 1/2””; (the bottle is perfect, original label darkened from age, but mostly legible). Label reads in part, FER-RATED WINE / OF / WILD CHERRY / (directions for use) / TILDEN & CO. / NEW LEBANON, NY. A beautiful example, very scarce-to-rare color, outstanding condition.

Est.: \$400 - \$600 • Min. bid: \$200



Lot 262

Lot of (2), “U.S.P.H.S” (on base) Poison Bottles, America, 1912 – 1917. Both are cobalt blue, cylindrical with overall lattice and diamond pattern, label panels on reverse, one with narrow neck and tooled prescription type collar, second example with wide neck and tooled ring collar – “U.S.P.H.S” (on smooth bases), ht. 5 1/8” and 5 3/8” respectively, both virtually perfect; (light interior residue in 1st example). KC-1. Very scarce base embossing; 2nd example rare with the wide neck.

Est.: \$200 - \$400 • Min. bid: \$100



Lot 259

“TILDEN & Co, - NEW LEBANON / N.Y.”, 1880 – 1890. Brilliant sapphire, almost an ‘electric’ blue, square with beveled corners, tooled sloping collar – smooth base, ht. 7 1/2””; (lightly cleaned to original luster; just a bit of minor wear, and a little light milkiness in two of the beveled corners, otherwise excellent). A very bright, pretty, and as mentioned – almost electric blue coloration. Very scarce.

Est.: \$300 - \$500 • Min. bid: \$150



Lot 263

Large, Lattice and Diamond Poison Bottle (with original stopper), America, 1877 – 1900. Deep cobalt blue, cylindrical with embossed lattice and diamond pattern, tooled prescription type collar with original “POISON” embossed stopper – smooth base, ht. 11 1/4” not including stopper, virtually attic mint; (some faint, very minor interior residue, otherwise both bottle and stopper are perfect). KC-1. A big, impressive poison, very scarce-to-rare size, outstanding condition.

Est.: \$400 - \$600 • Min. bid: \$200



Lot 260

Lot of (2), Tilden Bottles, 1894 – 1910. 1st Ex: “TILDEN” (on base), with 98% front and 80% rear labels, amber, cylindrical, tooled square collar – smooth base, ht. 7 3/8””; (bottle is perfect; labels have minor discoloration). 2nd Ex.: (label only), ESSENCE / WINTER-GREEN / (Image of Company) / THE / TILDEN COMPANY / PREPARED AT LABORATORY / New Lebanon, N.Y.. Clear, rectangular, tooled square collar – smooth base, ht. 5 1/4””; (label 90% complete, some darkening from age).

Est.: \$100 - \$150 • Min. bid: \$50



Lot 264

“The Owl Drug Co.” – “POISON” – (OWL) / “TODCo” (monogram within mortar & pestle), America, 1892 – 1905. Deep cobalt blue, triangular, tooled prescription-type collar – smooth base, ht. 9 3/8””, near mint; (just a touch of minor light wear and some very faint interior milkiness and residue in the upper half, some of which would almost certainly wash out, otherwise perfect). KT-1. Very scarce size - the largest known for this mold, (32 oz), virtually ‘attic-type’ condition.

Est.: \$800 - \$1,200 • Min. bid: \$400



Lot 265

"GETTYSBURG KATALYSINE WATER", 1870 – 1880. Beautiful, clear medium emerald coloration, cylindrical, applied sloping collar with bevel – smooth base, Qt, near mint; (a trace of typical light wear including a ¼", paper-thin, open bubble, and a small band of faint interior milkiness in the side, otherwise perfect). T# M-18:A. A pretty example, excellent overall condition.

Est.: \$100 - \$200 • Min. bid: \$60



Lot 269

"T.J. SUTTON'S / MINERAL / WATER / BALT", probably Baltimore Glass Works, Baltimore, MD, 1840 – 1845. Light-to-medium ginger ale coloration, cylindrical with domed shoulders, long neck, applied sloping collar – blowpipe pontil scar, ht. 6 7/8"; (professionally cleaned to original luster, a 1 ¼" crack in the side of the neck, the embossing is weak, as it is on the only other known example). One of the top Baltimore sodas, one of only two known, and unique in this coloration!

Est.: \$1,500 - \$2,500 • Min. bid: \$800



Lot 266

"VERMONT SPRING / SAXE & Co / SHELDON. VT", 1875 – 1885. Medium-to-deep emerald with a slight olive tone, cylindrical, applied sloping collar with bevel – smooth base, Qt, near mint; (just a touch of minor wear, otherwise perfect). T# V-21:B. Excellent condition and provenance! Ex. Charles B. Gardner collection.

Est.: \$150 - \$250 • Min. bid: \$80



Lot 270

"S. SMITH – AUBURN N.Y. – 1857", probably a New York State glasshouse, c. 1857. Bright sapphire blue, 10 sided (cylindrical with 5 flat panels, 5 rounded panels), applied blob collar – heavy iron pontil scar, ht. 7 ¾", virtually perfect; (only the slightest trace of wear including a paper-thin 1/8" flake at edge of base). A scarce New York State soda, and likely very scarce-to-rare in this fine condition! An attic-type bottle with full iron pontil, filled with tiny bubbles.

Est.: \$300 - \$500 • Min. bid: \$150



Lot 267

"ARTESIAN SPRING Co" / "AS" (monogram) / "BALLSTON / N.Y. - BALLSTON SPA / LITHIA / MINERAL / WATER", possibly Congress and Empire Spring Glass Works (Congressville), Saratoga, NY, 1876 – 1889. Medium-to-deep yellowish emerald, cylindrical, applied sloping collar with bevel – smooth base, Pt, near perfect; (slight trace of very minor wear, otherwise mint). T# S-6:Type I. A beautiful example. Provenance: Ex. Charles B. Gardner collection.

Est.: \$120 - \$240 • Min. bid: \$60



Lot 271

"NEWTON & CO. / BOTTLERS / NEW YORK - PREMIUM / N", 1850 - 1860. Medium emerald with a slight yellowish tone, cylindrical, applied sloping collar – iron pontil scar, ht. 7 1/8"; (some moderate fine exterior wear; a little roughness, including a tiny pinhead flake, on the back edge of the lip that you can feel, but is not easy to see, and some in-manufacture crazing lines in the neck mentioned for completeness, but not considered damage). A scarce soda, beautiful color, heavily whittled.

Est.: \$250 - \$450 • Min. bid: \$130



Lot 268

"CONGRESS & EMPIRE SPRING CO" / "C" (inside raised arch) / "SARATOGA. N.Y. - CONGRESS / WATER", probably Congressville Glass Works, Saratoga, NY, 1870 – 1885. Deep emerald or 'Congressville green', cylindrical, applied sloping collar with bevel – smooth base, Pt, near mint; (several paper-thin, shallow open surface bubbles, 3/16" or less, and some washable interior content residue). T# C-18:B. A very scarce mold, overall excellent condition!

Est.: \$250 - \$400 • Min. bid: \$130



Lot 272

"UTICA BOTTLING / A.L. EDIC. / ESTABLISHMENT.", America, 1855 – 1865. Clear, bright blue green coloration, squat porter style cylinder, applied blob collar – heavy iron pontil scar, ht. 6 3/8", sparkling attic mint! Amos L. Edic, proprietor of the Utica Bottle Works, manufactured a variety of early sodas and beers. A beautiful example of this scarce porter style bottle, nicely whittled, and likely rare in this virtually 'out of the mold', pristine condition.

Est.: \$250 - \$450 • Min. bid: \$130



Lot 273

“A. HAIN & SON / LEBANON Co.”, 1850 – 1860. Cobalt blue, cylindrical, applied blob collar – iron pontil scar, ht. 7 ¼”; (some exterior wear including a couple of minor scratches and a light ring of wear around the shoulder, some minor interior haze, but no other form of damage and otherwise excellent). The bottle may have been dug, but presents quite nicely and has full iron pontil. If desired, with just a light professional cleaning, it would display as near mint. A scarce Jersey soda.

Est.: \$250 - \$450 • Min. bid: \$130



Lot 274

“C.A. REINERS & Co / 723 / TURK ST / S.F.” – “IMPROVED / TRADE MARK” (CRESCENT MOON and STARS) “MINERAL WATER”, probably San Francisco Glass Works, 1875 – 1882. Bright, bluish aquamarine, cylindrical, squat soda form, applied blob collar – smooth base, ht. 7 1/8”, virtually perfect; (just a slight trace of light interior milkiness, otherwise attic mint). Markota, p.93. A bright, clean, beautiful example of this pictorial S.F. soda, having almost no wear!

Est.: \$150 - \$250 • Min. bid: \$80



Lot 275

“HOLLISTER / & CO. / HONO-LULU”, possibly San Francisco Glass Works, 1870 – 1880. Aqua, cylindrical, squat soda form, applied blob collar – smooth base, ht. 7 1/8”; (some minor interior residue or faint haze, not terribly distracting, and just a bit of light wear, otherwise very near mint). Markota, p.44. Per Markota, by 1868, Hollister had established his soda works, and by 1875, had become a wholesale druggist and tobacconist. A scarce Honolulu soda.

Est.: \$300 - \$600 • Min. bid: \$150



Lot 276

Rare and Important, Black Glass Wine Bottle, America, 1770 – 1780. “Charles / Ludlow” (on applied seal). Deep olive, dip mold, wide-bodied magnum cylinder, applied sting rim – sand type pontil, ht. 10 5/8”, near perfect; (trace of light usage wear). Burton, pgs. 1188-1189. Extremely rare! Per Burton, blown for New York City lawyer, Charles Ludlow. One of only 3 or 4 known; (one example in the Corning Museum; a second example in the Winterthur Museum, DE).

Est.: \$4,000 - \$6,000 • Min. bid: \$2,000



Lot 277

Important, Black Glass Wine Bottle, probably America, c.1760. “Ino. / Leverett / 1760” (on applied glass seal). Deep olive green, freeblown, mallet form, applied string rim – blowpipe pontil scar, ht. 8 5/8”; (a 7/8” area of the string rim is missing on the reverse; some minor wear including a ¼” annealing line in the body, minor interior haze). An unlisted, extremely rare seal likely blown for the Leverett family of Massachusetts. Provenance: Fred Swiechowicz collection.

Est.: \$800 - \$1,200 • Min. bid: \$400



Lot 278

Black Glass Wine Bottle, America, or possibly England, c.1820. “WINE / P C BROOKS / 1820” (on applied seal). Deep olive, dip mold, squat cylinder, applied sloping collar – sand type pontil scar, ht. 9 5/8”, near perfect; (a few paper-thin pinhead open bubbles). Rare. Burton, p.851; McKearin / Wilson, color plate XVII. Burton suggests that it may be American, associated with a firm of wine merchants, or an English firm supplying an American client. Fred Swiechowicz collection.

Est.: \$600 - \$900 • Min. bid: \$300



Lot 279

Black Glass Wine Bottle, probably England, 1820 – 1830. “L / Thorndike” (on applied seal). Olive with an amber tone, 3-pc. mold, squat cylinder form, applied sloping collar, “H. RICKETTS & Co / GLASS WORKS BRISTOL” (on base) – sand type pontil scar, ht. 8 ¾”, perfect! Burton, p.1268. A very scarce-to-rare seal possibly blown for an American merchant. Per Burton, three examples in the U.S., originally discovered in a house in Massachusetts. Fred Swiechowicz collection.

Est.: \$400 - \$800 • Min. bid: \$200



Lot 280

Black Glass Wine Bottle, probably England, 1785 – 1800. Possibly “JB” (in script within lined border), on applied glass seal. Deep olive with an amber tone, dip mold, squat cylinder, applied string rim with bevel – domed base with sand type pontil scar, ht. 9”, near perfect; (slight trace of light usage wear, otherwise mint). Believed to be an unlisted seal, and likely extremely rare. Beautiful overall condition, strong impression on the seal, and with full original body luster.

Est.: \$400 - \$800 • Min. bid: \$200



Lot 281

Black Glass Wine Bottle, England, c.1823. "Jno. / Furse. / 1823" (on applied seal). Deep olive with amber tone, 3-pc. mold "PATENT" (on shoulder), cylinder form, applied sloping collar, "H. RICKETTS & Co / GLASS WORKS BRISTOL" (on base) – sand type pontil scar, ht. 10 ½"; (slight bit of light wear including a 3/16" paper-thin open bubble, otherwise perfect). Burton, p.861. Per Burton, likely blown for Jonathan Furse, Devonshire. Very scarce. Fred Swiechowicz collection.

Est.: \$300 - \$600 • Min. bid: \$150



Lot 285

Black Glass Onion Form Wine Bottle, Continental, Netherlands, Belgium or Germany, 1720 – 1740. Light yellow olive (with an overall heavy silvery, whitish patina), onion form, sheared mouth with applied string rim – pushed up base with blowpipe pontil scar, ht. 6 7/8"; (a 1/8" flake on the sheared mouth; heavy patina as noted). A very interesting, eye-appealing, 'patination' to the glass.

Est.: \$200 - \$400 • Min. bid: \$100



Lot 282

Early, Sealed Black Glass Utility Bottle, Germany, 1740 – 1760. "ER" / (Coat of Arms), on applied seal. Medium yellowish olive, mallet form, applied string rim – blowpipe pontil scar, ht. 10 ¼"; (some exterior usage wear, and light interior haze, otherwise excellent). See VdB, plate 198. Early, and very crudely blown. The seal is misshapen and the impression offset. The bottle held 'Pyrmont Water', and was blown in Germany for the English market. Fred Swiechowicz collection.

Est.: \$600 - \$900 • Min. bid: \$300



Lot 286

Black Glass Wide Mouth Onion Bottle (with darkened period label), Continental, 1780 – 1820. Deep olive amber, bulbous onion form body with an expanded neck, crudely sheared mouth, applied string lip – blowpipe pontil scar, ht. 7 ¾"; (a 1/8" flake and some in-manufacture roughness on top of sheared mouth and a ¾" piece of the thin applied string lip is missing, otherwise excellent). A beautiful example with very crude, bubbly glass, an unusually wide expanded neck, rare with period label.

Est.: \$600 - \$900 • Min. bid: \$300



Lot 283

Rare, Black Glass Onion Form Wine Bottle, (with applied decorative prunt or seal), Continental, Netherlands, Belgium or Germany, 1720 – 1740. Yellowish olive, onion form, sheared mouth with applied string rim – pushed up base with blowpipe pontil scar, ht. 7 1/8"; (some typical, relatively minor wear; a little interior content residue, small patch of faint milkiness, otherwise near mint). VdB, plate 258, #3. Note; applied prunts, as well as blank seals, on onion bottles are rare.

Est.: \$600 - \$900 • Min. bid: \$300



Lot 287

Mammoth size, Flowerpot-form Storage Bottle, France, 1780 – 1800. Medium, shading to deep olive amber, cylindrical, dip mold, elongated 'flowerpot' form sheared mouth with applied string rim – pushed up base with disc-type pontil scar, ht. 19", near mint; (a little typical minor light wear, and interior content residue, some of which would likely wash out). VdB, plate 147. A giant of an example, the second largest that we can recall offering (see AGG Auction 30, Lots 267-268).

Est.: \$400 - \$600 • Min. bid: \$200



Lot 284

Black Glass Onion Form Wine Bottle, Continental, Netherlands, Belgium or Germany, 1720 – 1740. Yellowish olive, onion form, sheared mouth with applied string rim, pushed up base with blowpipe pontil scar, ht. 7 1/8"; (some very light interior haziness, and some minor light wear and a faint 'sheen' on the exterior, mentioned for completeness, but not terribly distracting, otherwise near mint). Another very nice onion form wine, excellent symmetry, excellent overall condition.

Est.: \$175 - \$350 • Min. bid: \$90



Lot 288

Lot of (3), Blown Utility or Preserve Jars, Continental, probably France, 1860 – 1870. Two are medium-to-deep yellowish 'old amber', third example deep olive amber, all are freeblown, tapered cylinder form, sheared mouth with applied ring collars – deep conical bases with iron pontil scars, ht. 8 ¼", 8 ¼", and 9 5/8"; (all have a little, relatively minor, usage wear or light scratches; the 8" examples have a 1/8" flake on the lip). VdB, plate 268, #3. Used for preserving truffles and other foodstuffs.

Est.: \$150 - \$300 • Min. bid: \$80



Lot 289

Early, Wide-Mouth Case Bottle, probably Continental, possibly America, 1800 – 1830. Light-to-medium clear green, dip mold, square tapered case form, sheared, tooled, and outward folded mouth – domed base with heavy blowpipe pontil scar, ht. 9 7/8", virtually perfect; (slight trace of very minor wear). A great looking wide-mouth storage jar, crude and bubbly with an offset neck. Recently acquired from an estate auction, contents from a 1720s home in central NJ.

Est.: \$600 - \$900 • Min. bid: \$300



Lot 293

Scarce, Early Octagonal Utility Bottle, Continental, probably Belgium or Netherlands, 1820 – 1840. Medium yellowish olive with an amber tone, octagonal body with elongated 'lady's leg' neck, applied sloping collar – glass tipped pontil scar, ht. 8 1/2", near perfect; (slight trace of very minor wear, light interior content residue). A very eye-appealing utility bottle, pleasing color, crude – the glass being filled with tiny bubbles, outstanding condition.

Est.: \$250 - \$450 • Min. bid: \$130



Lot 290

Early Case Bottle, Continental, probably North Germany, 1760 – 1780. Clear, light yellowish olive, early straight-sided square case form, sheared mouth with applied string rim – crude heavy blowpipe pontil scar, ht. 10 3/8"; (a moderate amount of exterior usage wear and light scratches, but no other form of damage, and otherwise excellent). A very crude, early, case bottle, pleasing light 'see-through' color.

Est.: \$250 - \$450 • Min. bid: \$130



Lot 294

Rare size, Early Freeblown Utility Bottle, Continental, 1760 – 1780. Olive amber, squat cylinder, crudely sheared mouth with applied ring – pushed up base with blowpipe pontil scar, ht. 4 7/8"; (a small patch of minor light dullness on one side; a little roughness and a few shallow flakes, 1/8" to 3/16", from the edge of the sheared mouth, otherwise near mint). A very scarce-to-rare utility, unusual size and form.

Est.: \$250 - \$450 • Min. bid: \$130



Lot 291

Mammoth size, Early Case Bottle, Continental, probably Swedish, 1780 – 1800. Bright green with an emerald tone, square with virtually straight sides, sheared mouth with applied ring collar – heavy blowpipe pontil scar, ht. 17 1/4"; (a 1 3/4" crescent shaped annealing line, or crack, in the base extending from the pontil, almost certainly in-manufacture, and only the slightest trace of wear, otherwise virtually perfect). Rare and impressive size, beautiful, rare, eye-appealing color.

Est.: \$1,200 - \$2,400 • Min. bid: \$600



Lot 295

Early, 'Bell-form' Utility Bottle, Continental, probably France or Belgium, 1770 – 1800. Beautiful, clear yellowish honey coloration, cylindrical with gracefully sloping shoulders, long neck with a sheared mouth and applied band collar – deep conical pushed up base with blowpipe pontil scar, ht. 11 3/4", virtually perfect; (a bit of minor roughness and a 3/16" flake on the edge of the sheared lip, otherwise mint). A fantastic example, beautiful eye-appealing color and clarity, pleasing 'bell-shape' form.

Est.: \$200 - \$400 • Min. bid: \$100



Lot 292

Rare form, Early Utility or Storage Bottle, Continental, probably Swedish, 1820 – 1840. Rich, medium-to-deep clear green, dip mold, flattened octagonal, or wide rectangular form with beveled corners, applied ring collar – blowpipe pontil scar, ht. 9 1/2", near mint; (slight bit of very minor wear, some light interior residue, otherwise perfect). Nice large size, very pleasing, rare form, fantastic condition. Provenance: Ex. Mark Nightingale collection.

Est.: \$400 - \$800 • Min. bid: \$200



Lot 296

Early, Long neck 'Flowerpot-form' Utility Bottle, France, 1780 – 1800. Olive green, cylindrical 'flowerpot form' with sides tapering inward from shoulders to base, long neck, sheared mouth with an applied heavy ring – deep kick-up base with heavy blowpipe pontil scar, ht. 11 1/2", near mint; (a little typical light usage wear, and a bit of very faint content residue, otherwise excellent). VdB, plate 146, #1. Per Van den Bossche, likely from the Normandy area, and oftentimes used for brandy.

Est.: \$120 - \$240 • Min. bid: \$60



Lot 297

Early Black Glass Utility or Lime Juice Bottle, England, 1800 – 1820. Bright, yellowish olive, dip mold or possibly freeblown, cylindrical with a short neck, crudely applied string rim – domed base with sand type pontil scar, ht. 8”, near perfect; (just a slight trace of very minor wear, otherwise mint). VdB, plate 268. A beautiful example, fantastic condition, excellent ‘see-through’ clarity, full original luster. This form of utility served many purposes, but they often held lime juice.

Est.: \$150 - \$300 • Min. bid: \$80



Lot 301

Early Side Flattened Onion Utility Bottle, Continental, North Germany or Belgium, 1740 – 1760. Dense olive amber, black glass, side flattened onion form, sheared mouth with crudely applied band-type collar – blowpipe pontil scar, ht. 10 ¼”; (a ¼” chip of the side of the sheared mouth, a little expected minor usage wear, otherwise near mint). See VdB, plates 274A & 275A. Per Van den Bossche, these were produced in Belgium and Germany for the Dutch market. Beautiful ‘glossy black’ luster.

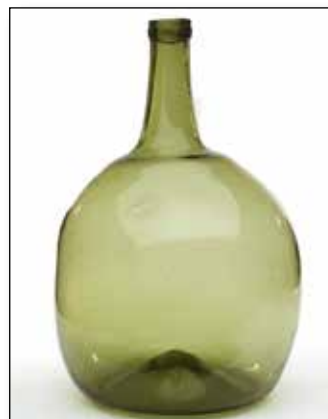
Est.: \$200 - \$400 • Min. bid: \$100



Lot 298

Lot of (2), Early Freeblown Flasks, Belgium, 1730 – 1750. Yellowish olive amber and amber, both are round bottom, elongated chestnut form, crudely sheared mouths with applied crimped string rims – smooth base, ht. 10 3/8” & 9 ¼” respectively; (both have a little light wear and minor interior residue; olive amber example has some light scratches, amber example has a couple of chips, ¼” or less – possibly in-manufacture, from the rough sheared mouth, otherwise both excellent).

Est.: \$300 - \$500 • Min. bid: \$150



Lot 302

Early, Freeblown, Globular Storage Bottle, Continental, probably North Germany, 1760 – 1780. Clear, bright yellowish olive, globular form, sheared mouth with applied flat band – domed base with blowpipe pontil scar, ht. 11 ¼”, near mint; (some minor light wear, otherwise perfect). A beautiful example, excellent clarity, attractive light color (‘forest glass’), overall excellent condition.

Est.: \$200 - \$400 • Min. bid: \$100



Lot 299

Rare, Early Shepherd-Type Flask, France, 1770 – 1800. Rich, deep green, almost a teal coloration, blown by the German half-post method, large chestnut form with sheared and outward flared mouth – blowpipe pontil scar, ht. 10 ¼”, perfect. See VdB, plate 182. Unusually large size, early half post method, deep gorgeous color, virtually pristine condition (almost certainly was originally covered in wicker). Note; some faint paddle marks are discernible on the sides.

Est.: \$300 - \$600 • Min. bid: \$150



Lot 303

Early Freeblown Demijohn or Storage Bottle, Probably North Germany, 1760 – 1780. Bright honey amber shading to a deep honey with a slight orange tone in the neck, side flattened globular form, sheared mouth, applied string rim – blowpipe pontil scar, ht. 13 1/8”; (a small bubble on the shoulder with a 1/8” opening in the cover glass, and a couple of bands of light interior haze, otherwise perfect). Beautiful color, outstanding character, the glass being filled with tiny potstones.

Est.: \$200 - \$400 • Min. bid: \$100



Lot 300

Early, Black Glass Boot Bottle, probably Germany, 1740 – 1770. Medium-to-deep olive coloration, small flattened kidney form, sheared and tooled mouth with applied ring – blowpipe pontil scar, ht. 6 5/8”, length 7 ½”; (a 1/8” flake on the edge of the lip; some moderate usage wear and light scratches, and a bit of little light

interior haze). VdB, plate 216; Dumbrell, p.146, plate 56. These distinctive ‘boot bottles’ were blown in Germany for the English market. Scarce.

Est.: \$700 - \$900 • Min. bid: \$350



Lot 304

Large, Freeblown Demijohn or Storage Bottle, probably England, 1810 – 1830. Deep olive amber, large globular form, sheared mouth with applied short tapered collar – disc type pontil scar, ht. 17”, near mint; (a little minor exterior wear, some dried interior content residue, primarily in the base, otherwise perfect). A great looking, early, globular demijohn, almost a ‘shaft-and-globe’ appearance, very crude and heavy, excellent overall condition.

Est.: \$400 - \$600 • Min. bid: \$200



Lot 305

Freeblown Demijohn or Storage Bottle, Continental, probably Germany, 1800 – 1840. Light sea green coloration ("forest glass"), original heavy wicker covering, cylindrical with drawn-up shoulders, funnel type neck flaring outward to a sheared rim – deep conical pushed up base with blowpipe pontil scar, ht. 14 ¾", both bottle and wicker are virtually perfect! Similar to VdB, plate 273. The well executed heavy wicker covering is virtually complete. Rare in this fine condition.

Est.: \$200 - \$400 • Min. bid: \$100



Lot 309

Demijohn, New England, probably a Stoddard, NH glasshouse, 1842 – 1860. Light olive amber, freeblown, squat cylinder form, applied short tapered collar – sand type pontil scar, ht. 9 5/8", near mint; (a little typical light exterior wear including a ½", onionskin-thin open surface bubble; a bit of very light content residue in the shoulder, otherwise excellent). A very nice example of a classical New England demijohn with a pleasing, squatty appearance.

Est.: \$140 - \$240 • Min. bid: \$70



Lot 306

Demijohn, Continental, probably North Germany, 1830 – 1850. Yellowish olive with an amber tone, crude 2-pc. mold, kidney form, sheared mouth with an applied wide band – pushed up smooth base, ht. 17 ¾"; (some expected light wear and exterior scratches, heavy near the base, and some scattered spots of dullness, primarily on the shoulders and on one of the sides, creating a spattered appearance, but no chips, cracks, or other form of damage). Very crude glass!

Est.: \$200 - \$400 • Min. bid: \$100



Lot 310

Demijohn, New England, 1840 – 1860. Light, bright, yellowish olive amber, freeblown, cylindrical with graceful sloping shoulders, applied sloping collar – large sand type pontil scar, ht. 11 7/8", very near mint; (just a trace of very minor wear including a couple of small, onionskin-thin, open bubbles, otherwise perfect). This example, in addition to being a very pretty color, has outstanding character, the glass is absolutely filled with bubbles and impurities. It's one of those examples of why we collect old bottles!

Est.: \$250 - \$450 • Min. bid: \$130



Lot 307

Demijohn, America, 1850 – 1870. Beautiful yellowish grass green coloration, flattened apple form, freeblown or possibly blown in a 'starter' dip mold, applied sloping collar – large disc, or sand type pontil scar, ht. 17 5/8"; (just a touch of very minor wear including a ¼" bit of roughness on the top edge of the lip, and a ½", shallow, hard-to-see, iridescent bruise on the inside of the lip, otherwise virtually perfect). A beautiful demijohn, attractive form, loaded with tiny bubbles.

Est.: \$400 - \$600 • Min. bid: \$200



Lot 311

Demijohn, A NH glasshouse, probably South Stoddard, 1842 – 1860. Bright yellowish olive coloration, freeblown, cylindrical with sloping shoulders and an elongated neck, applied sloping collar – pushed up base with a delicate 'petal type' pontil scar, ht. 12 ½", perfect. A beautiful, bright color. It is also a scarce color for a Stoddard Demijohn (most being in shades of amber or olive amber). The base has the classic 'petal type' pontil associated with Joseph Foster, South Stoddard.

Est.: \$400 - \$600 • Min. bid: \$200



Lot 308

Large, Freeblown or Dip Mold Storage Jar, New England, 1830 – 1850. Deep yellowish olive with an amber tone, cylindrical with drawn up shoulders, large applied heavy ring collar with a slight bevel – sand type pontil scar with remnants of iron, ht. 13 3/8"; (a touch of typical light wear, and some dried interior content residue, otherwise perfect). A big, heavy, gutsy, early New England storage jar having a great 'earthy' feel, fantastic lip treatment, excellent overall condition.

Est.: \$600 - \$900 • Min. bid: \$300



Lot 312

Giant, Freeblown or Dip Mold Demijohn, probably New England, 1860 – 1870. Yellowish olive amber, almost an olive yellow below the shoulders, tall cylinder form, freeblown or possibly dip mold, applied sloping collar – sand type pontil scar, ht. 20 3/8", near perfect; (just a trace of very minor wear including a ¼", onionskin-thin open bubble, some minor interior content residue). Taller than most, crude with stretch lines around the base, and plenty of attractive yellow and olive tones.

Est.: \$175 - \$350 • Min. bid: \$90

A Gorgeous Array of Fine & Colorful American Tableware



Lot 123

Lot 117

Lot 114

Lot 112

Lot 111

Lot 193: Finest Pure Green Drake's Plantation Bitters



Drake's Plantation Bitters ephemera courtesy of Peachridge Glass archives.