

NOTE: This is a timed-closing auction. See details on first page.

# American Glass Gallery™

Auction #33

Opens Nov. 8, 2022

Closes Nov. 16, 2022



Lot 19: Exceptional,  
Gill-101, Pittsburgh Double Eagle  
in a Very Rare Teal Coloration

# Conditions of Sale: Auction #33 – Timed Closing Auction - No Call Backs

## 1. Absentee Auction

The items in this sale will be sold via absentee auction.

Closing date: **Wednesday, November 16, 2022, 10:00 p.m., EST.**

## 2. Our Guarantee Regarding Descriptions

American Glass Gallery has made every attempt to describe correctly the property being sold. Descriptions are guaranteed to be accurate as regards to authenticity, age, condition, and measurements to within one-fourth inch, as represented in this catalog. Items in this catalog are not shown to scale. In describing damage, exterior wear or manufacturer's flaws that in our opinion, do not significantly detract visually or monetarily from the value of the item are not listed and will not be considered for refund. The Auctioneers reserve the right to make verbal corrections and provide additional information at any time during the sale.

## 3. Preview

Items may be viewed by appointment from **November 9, 2022**, through **November 15, 2022**.

## 4. Bidding Procedure

You may submit your bids by mail, phone, FAX, email or through our on-line auction site. If bidding by mail or FAX, please fill out the absentee form and return it to us. Your bid, either written or oral, grants American Glass Gallery the authority to protect you up to the amount of your stated bid. Your bid will not be removed once executed.

**Bidding Times:** You can submit your bids anytime after receiving your catalog. Bids may be made by phone, daily, until closing day, **November 16, 2022**, from 9 A.M. - 6 P.M. Eastern Time. Incoming phone bids will be accepted on the closing day (**November 16, 2022**) until 10 P.M. Eastern Time. No exceptions. You may also place your bids through our on-line auction service 24-hours a day once the site has opened for bidding, on or about **November 8, 2022**, continuing until 10:00 P.M. Eastern Time, **November 16, 2022**.

### Please do not wait until the last day or two of the sale to place your bids!

Because many collectors wait until the final few days of the sale to place their bids, we anticipate the telephone and internet bidding to be very busy during that period, so please plan accordingly. In the event of a tie bid, the earliest received bid on the lot will take precedent. We would welcome your bids by phone so that we can answer any questions and assist you in your bidding.

You may also telephone us at any time during the auction, prior to the closing of the sale, to check the status of your bids, to find the current bidding level, to open a bid, or to raise a bid on an auction lot.

### Bidding Increments are as follows:

Up to \$250.00.....	increments of \$10.00
\$250.00 - \$500.00 .....	increments of \$25.00
\$500.00 - \$1,000.00 .....	increments of \$50.00
\$1,000.00 - \$2,500.00 .....	increments of \$100.00
\$2,500.00 - \$5,000.00 .....	increments of \$250.00
\$5,000.00 - \$10,000.00 .....	increments of \$500.00
\$10,000 & Up.....	increments of \$1,000.00

Bids submitted between the above increments, whether by mail, FAX, email or on-line via the internet, will automatically be lowered to the closest lower increment.

This is a minimum bid auction. Bids below the printed minimum will not be accepted.

**An example of how our absentee bidding system works:** You bid \$1000.00 on a lot which is the highest bid received to date. The second highest bid is \$800.00. The current high bid level would be yours at \$850.00, one bid increment higher than the other collector's bid. Any additional bids submitted by others below \$1000.00 will automatically be topped on your behalf by a representative of American Glass Gallery, up to your stipulated high bid amount. If no further bids on this lot are received beyond the \$800.00, then you would have won the lot at \$850.00, not the \$1000.00 that you were prepared to pay.

American Glass Gallery will at NO TIME disclose bids pledged by others; only the current "High Bid" level of a lot will be stated upon request. The highest bidder as determined by American Glass Gallery shall be the purchaser. It is the sole right of the auctioneer to settle any dispute between bidders and to regulate the bidding procedure. The auctioneer reserves the right to refuse any bid he believes not to have been made in good faith.

## 5. Closing the Auction

### Timed Closing. No Call Backs for This Sale!

**Auction closes 10 PM Eastern, Wednesday, November 16.**

**How it works:** If any Lot receives a bid within the last 10 minutes before the 10 PM closing time, an additional 10 minutes will be added on to the bidding time for that Lot - at the time the bid is entered. For example, if a bid is entered on Lot #95 at 9:58 PM, an additional 10 minutes will be added to the closing time for that Lot, i.e. the Lot will close 10:08 PM, unless another acceptable bid is received prior to 10:08 PM. If the same Lot receives another bid 5 minutes later, i.e., 10:03 PM, the 10 minute timer will be restarted. Thus, an item will not close until it has received no bids for 10 minutes. At the end of that time, the Lot will automatically close and the highest bidder will be the winner.

No phone bids will be accepted after 10 PM, or during the timed closing portion of the sale.

**IMPORTANT:** When the auction is in the last 10 minutes, (after 9:50 PM EST, Wednesday, November 16), **you must refresh your screen to see any updated bids and remaining time on the Lots.** You may refresh your bid page by hitting "Enter Bids". A time left column will appear on the right. The time will go down every time you refresh unless an acceptable bid has been placed, then the timer will be reset to 10 minutes.

**When a Lot closes**, your bid sheet will show either (parentheses only when there is a left bid):

### Example:

You WIN for \$400 (Left Bid \$500)

or:

Won by another for \$600

**Note:** Normal email notifications will still be sent during the Timed Closing. However, we recommend that you actively refresh your screen for the latest updates, or changes, as the email notifications may not always get through (i.e., may sometimes be intercepted by email blockers or spam filters).

**If you are unable to be watch, or be actively involved during the closing time**, you may always submit an Absentee, or "Left Bid" which will be executed competitively up to your stipulated high bid should any bids come in during the Timed Closing Period.



# Conditions of Sale: Auction #33 – Timed Closing Auction - No Call Backs

## 6. Terms

**Successful Bidders,** Prompt and full payment is due immediately upon receipt of our invoice. Absolutely no exceptions. Anyone failing to pay for items won will forfeit all rights to bid in any future American Glass Gallery sales. **Any late or delayed payments may result in loss of return privileges for items purchased in the sale.**

**No Items Will Be Mailed Before Full Payment Is Received.**

**Buyer Premium:** Our buyer premium is **17% if paying by cash or check, discounted from 20% if paying by Credit Card or PayPal** (PayPal payment account: jpastor@americanglassgallery.com). This buyer premium will be added to the hammer price as part of the purchase price. For example, if you purchase a lot for \$100.00, you will receive an invoice for \$117.00 if paying by cash, check or money order, plus any applicable sales tax or shipping charges.

**Taxes:** If you are a Michigan resident, a 6% sales tax will be added to your bill unless you have a valid resale number registered with us.

**Shipping:** Shipping, handling and insurance are extra. We ship insured via U.S. Mail or UPS. These charges will be added to your bill unless the lots are picked up in person. Oversize packages (boxes with dimensions over 12"), may incur additional shipping charges based on the postal zone of destination. Our charges for shipping (excluding foreign shipments and oversized lots) are \$18.00 for the first item, \$9.00 for each additional item together with extra insurance costs (we use current U.S. Postal Service insurance rates).

*Please allow two to three weeks for delivery after receipt of your check.*

**Payment:** American Glass Gallery accepts Cash, Money Orders, Personal Checks, Visa, MasterCard, American Express and PayPal. **If paying by Credit Card or PayPal, an additional 3% will be added to the invoice total.**



## 7. Refunds

Refunds will be given at the discretion of the Auctioneers. Items purchased must be examined and request for refund made immediately upon receipt of the item or items. Since opinions can differ, particularly in the matter of condition, the Auctioneers will be the sole judge in the consideration of refunds. Refunds requested on the grounds of authenticity must be made within 15 days of the date of the auction, and such refund requests must be accompanied by at least one supporting statement in writing from an authority recognized by the Auctioneers. It is the Auctioneers sincere intention to consider any reasonable request for a refund. **Absolutely no returns for any reason after 30 days following the closing of the sale.**

## 8. Bidding on any item indicates your acceptance of these terms.



American Glass Gallery™

John R. Pastor  
P.O. Box 227  
New Hudson, Michigan 48165  
Phone: 248.486.0530  
Fax: 248.486.0538  
[www.americanglassgallery.com](http://www.americanglassgallery.com)  
email: [jpastor@americanglassgallery.com](mailto:jpastor@americanglassgallery.com)

### PLEASE NOTE:

*The lots offered in this printed catalog are identical to the lots offered in the on-line catalog. However, due to space constraints of the printed catalog, there may be some further information available regarding some of the lots in the on-line auction descriptions.*

*Please visit us at*

**[www.americanglassgallery.com](http://www.americanglassgallery.com)**

*and follow the link to the on-line auction.*

*The link and on-line auction will be available November 8, 2022. A post-auction price list will be available on our website, in printable form, approximately 30 days after the close of the auction.*

*We encourage you to contact us by phone or email with any questions, for assistance with bidding, or further details or clarification on any of the lots in this sale. Your complete satisfaction and confidence is our goal!*

**THANK YOU AND GOOD LUCK  
WITH YOUR BIDS!**

# Reference Key

Reference initials and numbers used in the description of this catalog refer to the following publications:

AHG	<i>American Historical Glass</i> , Bessie M. Lindsey, 1967.
AM	<i>The Decanter - An Illustrated History of Glass from 1650</i> , Andy McConnell, 2004.
AP	<i>Glass in Early America</i> , Arlene Palmer, 1993.
BA1	<i>Collecting The Cures</i> , Bill Agee, 1969.
BA2	<i>Collecting All Cures</i> , Bill Agee, 1973.
BB	<i>A Bit About Balsams</i> , Betty Blasi, 1974.
BH	<i>Classification and Documentation of Sunburst and Similar Scent Bottles</i> , Bill Ham, AB&GC, 5/87.
BJ	<i>American Pot Lids</i> , Barbara and Sonny Jackson, 1987.
B/K	<i>The Glass Industry in Sandwich</i> , Raymond Barlow and Joan Kaiser, 1989.
BPK	<i>A.M. BININGER Bottles</i> , Jim Bender, 2017
C	<i>Ink Bottles and Inkwells</i> , William Covill, 1971.
DB	<i>Antique Sealed Bottles, 1640 - 1900</i> , David Burton, 2015
DeG	<i>American Sarsaparilla Bottles</i> , John DeGrafft, 1980.
DeGII	<i>Supplement to American Sarsaparilla Bottles</i> , John DeGrafft, 2004.
DF	<i>Hair Raising Stories</i> , Don Fadely, 1992.
DM	<i>Wistarburgh, Window Tiles, Bottles and More</i> , Dale L. Murscell, 2007.
D/P	<i>Collector's Guide to Candy Containers</i> , Douglas M. Dezso, J. Leon and Rose Poirier, 1998.
F	<i>Inks, 150 Years of Bottles and Companies</i> , Ed and Lucy Faulkner.
FA	<i>John Frederick Amelung, Early American Glassmaker</i> , Lanmon, Palmer, Hume, Brill, Hanson, 1990.
FB	<i>A.S.C.R. The wine bottles of All Souls College</i> , Oxford, 1750 – 1850, Fay Banks.
G	(Flasks) <i>American Bottles &amp; Flasks and Their Ancestry</i> , McKearin & Wilson, 1978.
G	(Blown Three Mold) <i>American Glass</i> (Chapter VI), George S. and Helen McKearin, 1941.
GBH	<i>English Glass For The Collector, 1660-1860</i> , G. Bernard Hughes, 1958.
H	<i>American Bottles in the Charles B. Gardner Collection</i> , Norman C. Heckler, 1975.
JB	<i>Patent and Proprietary Medicine Bottles</i> , Joseph K. Baldwin, 1973
JEB	<i>Glasshouse Whimsies</i> , Joyce E. Blake, 1984.
JH	<i>Glasshouses &amp; Glass Manufacturers of the Pittsburgh Region, 1795 – 1910</i> , Jay W. Hawkins, 2009.
JM	<i>Tea Kettle Ink Price and Reference Guide</i> , Joe L. Mathews Jr., 2016
JS	<i>In glas verpakt – European Bottles, Their history and production</i> , Johan Soetens, 2001.
K	<i>Poison Bottle Workbook</i> , Rudy Kuhn, 1988.
KW	<i>New England Glass &amp; Glassmaking</i> , Kenneth M. Wilson, 1972.
L	<i>The Red Book of Fruit Jars, No. 11</i> , Douglas M Leybourne, Jr., 2014.
LI	<i>Pittsburgh Glass, 1797 – 1891</i> , Lowell Innes, 1976.
Mc	<i>Two Hundred Years of American Blown Glass</i> , Helen and George McKearin, 1950.
McK	<i>American Glass</i> , George S. and Helen McKearin, 1941.
MW	<i>American Bottles &amp; Flasks and Their Ancestry</i> , McKearin & Wilson, 1978.
N	<i>Great American Pontiled Medicines</i> , Frederick Nielson, 1978.
NCH	<i>The Blaske Collection of American Flasks</i> , Norman C. Heckler, 1983.
NCH II	<i>The Blaske Collection: Part II</i> , Norman C. Heckler, 1983.
Odell I	<i>Indian Bottles and Brands</i> , John Odell, 1977
Odell II	<i>Pontiled Medicine Encyclopdia</i> , John Odell, 2007
O&S	<i>Warner's Reference Guide</i> , Ed Ojea and Jack Stecher, 1998.
P	<i>The Glass Gaffers of New Jersey</i> , Adeline Pepper, 1971.
RD	<i>Understanding Antique Wine Bottles</i> , Roger Dumbrell, 1983.
RF	<i>The Bottle Book: A Comprehensive Guide to Historic, Embossed Medicine Bottles</i> , Richard Fike, 1987
RH	<i>Collecting Barber Bottles</i> , Richard Holiner, 1986.
R/H	<i>Bitters Bottles</i> , Carlyn Ring and W. C. Ham, 1998.
RWL	<i>Antique Fakes &amp; Reproductions</i> , Ruth Webb Lee, 1950
T	<i>Collectors Guide to Saratoga Type Mineral Water Bottles</i> , Donald Tucker, 2005.
V	<i>Nailsea Glass</i> , Keith Vincent, 1975
VdB	<i>Antique Glass Bottles; Their History and Evolution</i> , Willy Van den Bossche, 2001.
Z	<i>Ketchup, Pickles, Sauces</i> , Betty Zumwalt, 1980.
ZW	<i>Color Hutchinsons</i> , Zang Wood, 1999.

- The dash is generally used to indicate that the descriptions are on opposite sides of the bottle or flask.

/ The slash is used to indicate that the descriptions are on different lines or surfaces of the bottle.



# HOLTZERMANN'S PATENT STOMACH BITTERS COMPOUND



ESTABLISHED 1836.

RECOMMENDED AS A GREAT APPETIZER  
AND STOMACH TONIC. 65% PROOF SPIRIT.  
ALCOHOLIC STRENGTH 32½% BY VOLUME

CONTAINING NO POISONOUS DRUGS  
OR OTHER ADDED POISON  
1/5 GALLON

**THE AHRENDT & SONS Co.**  
SOLE MANUFACTURERS  
TOLEDO, OHIO.



# Outstanding Utility Bottles from the Fred Swiechowicz Collection



## Lot 129: Very Rare Travellers Bitters

In the April, 2021 issue of *Antique Bottle & Glass Collector* magazine, a well researched and enlightening article by Chris Bubash made a very strong case that the figure on this coveted and beautiful bitters bottle is none other than the famous 19th century English writer, Charles Dickens. The basis for this attribution includes details of the embossed figure's hat, his clothing and cane, as well as the significance of the dates 1834 and 1870 as they relate to his career and death.

Dickens would become as well-known and beloved by the American people as he was by his fellow Englishmen and multitudes of others around the world. His rising fame in America would be galvanized when he toured parts of the Eastern United States on his celebrated visit in 1842.

While in America, Dickens would hobnob with such well-known figures as John Quincy Adams, Henry Clay, Daniel Webster, Henry Wadsworth Longfellow, Edgar Allen Poe and many others. So popular was Charles Dickens in America that he was seldom left alone. In an excerpt from one of his letters from this period, he would write:

*"The truth is that they give me everything here but time... That I shake hands every day when I'm not travelling, with five or six hundred people... They give me a ball at New York, at which three thousand people were present — and a public dinner besides — and another in Boston — and another in a place called Hartford..."*

So with such affection and admiration from so many Americans, it only seems logical that Charles Dickens would be immortalized on an embossed bottle, and join the ranks of other 19th century celebrities from abroad who were so honored, including Jenny Lind of Sweden, Marquis de Lafayette of France, and Louis Kossuth of Hungary.



Charles Dickens



## Early & Colorful European Storage & Utility Bottles

Lot 286

Lot 273

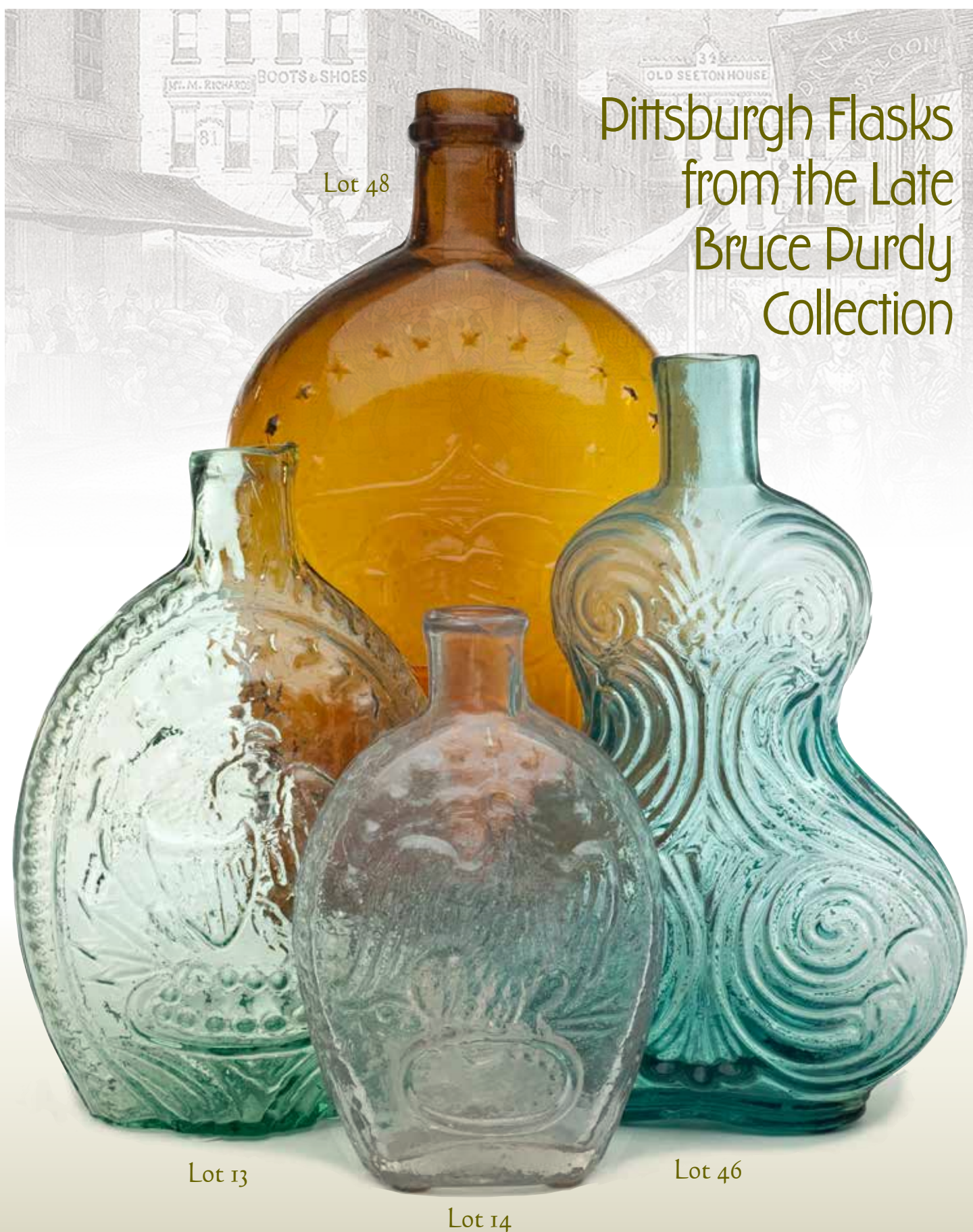
Lot 267

Lot 280

Lot 261











### Lot 1

**"GENERAL WASHINGTON" / BUST OF WASHINGTON - EAGLE Historical Flask**, an early Pittsburgh district glasshouse, 1825 - 1835. Aquamarine, sheared mouth - blowpipe pontil scar, Pt, near mint; (just a trace of light wear including a paper-thin, 3/16", open bubble at edge of base, and a shallow, narrow open bubble on the interior, otherwise perfect). GI-2. Scarce. A great example, bright, clean, and with a bold, very strong mold impression.

*Est.: \$250 - \$450 • Min. bid: \$130*



### Lot 5

**"LAFAYETTE" / BUST OF LAFAYETTE / "T.S." - MASONIC Historical Flask**, Coventry Glass Works, 1824 - 1830. Bright yellowish olive with a slight amber tone, almost an olive yellow through the shoulders, sheared mouth - blowpipe pontil scar, Pt, virtually perfect; (a tiny, onionskin-thin, pinhead open bubble at edge of base). GI-83. A fantastic example of this very rare mold. Listed by McKearin as #2 in Group B, "Most Desirable Flasks".

*Est.: \$5,000 - \$10,000 • Min. bid: \$2,500*



### Lot 2

**"GENERAL WASHINGTON" / BUST OF WASHINGTON - "E PLURIBUS UNUM" / EAGLE / "T.W.D - ADAMS & JEFFERSON" / JULY 4 A.D. 1776 - KENSINGTON GLASS / WORKS PHILADELPHIA" Historical Flask**, Kensington Glass Works, 1826 - 1835. Clear, medium emerald, sheared mouth - pontil scar, Pt; (a bit of light high point wear, and a weak impression in the shoulders, but no other form of damage, and otherwise excellent). GI-14. Scarce color.

*Est.: \$1,800 - \$2,800 • Min. bid: \$900*



### Lot 6

**"LAFAYETTE" / BUST OF LAFAYETTE / "COVENTRY / C-T" - STARS AND LIBERTY CAP / "S & S" Historical Flask**, Coventry Glass Works, Coventry, CT, 1824 - 1830. Bright, light, yellowish olive amber shading to a medium olive amber through the base and neck, sheared mouth - blowpipe pontil scar, Pt; (just a slight trace of very minor wear, otherwise perfect!) GI-85. A fantastic example, strong mold impression, excellent color and clarity. Provenance: Ex. Blaske collection.

*Est.: \$1,000 - \$2,000 • Min. bid: \$500*



### Lot 3

**"WASHINGTON" / BUST OF WASHINGTON - "JACKSON" / BUST OF JACKSON Historical Flask**, Coventry Glass Works, Coventry, CT, 1825 - 1840. Medium olive amber, sheared mouth - blowpipe pontil scar, 1/2 Pt; (the flask is virtually attic mint, it does have a slightly weak impression in the shoulder, as is typical for this mold). GI-34. A great example, almost no wear, nice character and texture to the glass.

*Est.: \$250 - \$350 • Min. bid: \$130*



### Lot 7

**"LAFAYETTE" / BUST OF LAFAYETTE - MASONIC ARCH Historical Flask**, Mt. Vernon Glass Works, Vernon, NY, 1824 - 1830. Medium-to-deep yellowish-olive with a slight amber tone, sheared, tooled, and inward rolled mouth - blowpipe pontil scar, 1/2 Pt, near mint; (a tiny, barely visible without a loop, 3/16" in-manufacture annealing or cooling line in the glass, near the side mold seam; some high point wear, and a shallow 1/4" flake at edge of base). GI-89. Boldly embossed, very rare!

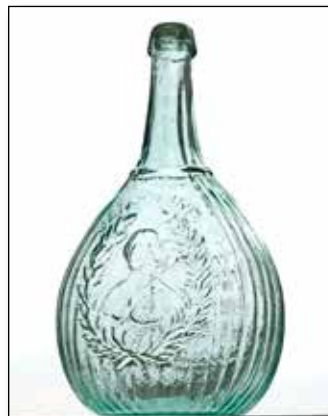
*Est.: \$3,000 - \$6,000 • Min. bid: \$1,500*



### Lot 4

**"THE FATHER OF HIS COUNTRY" / BUST OF WASHINGTON - "A LITTLE MORE GRAPE CAPTAIN BRAGG" / BUST OF TAYLOR Historical Flask**, Dyottville Glass Works, Philadelphia, 1848 - 1855. Medium clear green with a slight bluish tone, applied double ring collar - blowpipe pontil scar, Qt; (a little light wear, primarily on the reverse, including some fine light scratches to the right of Taylor's bust, otherwise excellent). GI-42. Nice color, clarity, very bold impression!

*Est.: \$400 - \$800 • Min. bid: \$200*



### Lot 8

**"JENY LIND" / BUST OF JENY LIND - STAR / "GLASS FACTORY" / GLASS FACTORY Historical Calabash**, probably Whitney Glass Works, Glassboro, NJ, 1857 - 1862. Aquamarine, applied sloping collar - blowpipe pontil scar, Qt, perfect. GI-102. Comparatively scarce. A great example, clean and bright, almost no wear, virtually pristine condition.

*Est.: \$120 - \$240 • Min. bid: \$60*





### Lot 9

**BUST OF WEBSTER - BUST OF CLAY Historical Flask**, probably Granite Glass Works, Stoddard, NH, 1852 - 1860. Bright yellowish olive, sheared mouth - blowpipe pontil scar, ½ Pt, virtually perfect; (just the slightest trace of faint wear). GI-114. A pretty example, and a bit more scarce in this olive green coloration. Per Anthony Picadio, the busts on this flask have been conclusively shown to be Daniel Webster and Henry Clay. Provenance: Bruce Purdy collection.

*Est.: \$250 - \$450 • Min. bid: \$130*



### Lot 13

**EAGLE - EAGLE Historical Flask**, an early Pittsburgh or Monongahela glasshouse, 1825 - 1835. Greenish aquamarine, sheared mouth - blowpipe pontil scar, Pt, attic mint. GII-4a. A very early beaded flask rated as Rare by McKearin, but is likely very rare. This is the first example of this very rare flask that has been offered at auction in more than 25 years! A beautiful example, almost no wear, very strong mold impression. Provenance: Bruce Purdy collection.

*Est.: \$1,000 - \$2,000 • Min. bid: \$500*



### Lot 10

**BUST OF COLUMBIA / "KENSINGTON" - EAGLE / "UNION. Co" Historical Flask**, Kensington Glass Works, Philadelphia, 1825 - 1835. Aquamarine, sheared mouth - blowpipe pontil scar, Pt; (the flask may have been lightly cleaned, but certainly presents as near mint with just a bit of patchy, light interior haziness, primarily in one of the sides, otherwise excellent). GI-117. A very desirable, comparatively scarce mold, one that does not come around often.

*Est.: \$500 - \$800 • Min. bid: \$250*



### Lot 14

**EAGLE - CORNUCOPIA Historical Flask**, an early Pittsburgh district or Monongahela glasshouse, 1825 - 1835. Colorless, sheared, tooled, and inward rolled mouth - solid, glass tipped pontil scar, ½ Pt; (a little 'bloom' or faint dullness to the glass around the shoulders, not distracting but mentioned for completeness; at some point, the base has been polished, likely so the flask would stand, otherwise perfect). GII-11. A scarce mold in a very rare color. Provenance: Bruce Purdy collection.

*Est.: \$400 - \$800 • Min. bid: \$200*



### Lot 11

**BUST OF COLUMBIA - EAGLE / "B&W" Historical Flask**, probably Kensington Glass Works, Philadelphia, 1825 - 1835. Bright aquamarine, sheared mouth - blowpipe pontil scar, Pt, very near mint; (just a slight trace of minor wear, otherwise perfect). GI-121. Comparatively scarce. A bright, clean example of this early, historical flask. Fantastic condition. The bust of Columbia is very similar to that which is portrayed on many early U.S. coins.

*Est.: \$300 - \$500 • Min. bid: \$150*



### Lot 15

**EAGLE - "COFFIN & HAY." / STAG / "HAMMONTON" Historical Flask**, Coffin & Hay Glass Manufactory, Hammonton, NJ, 1836 - 1847. Clear, medium bluish green, sheared mouth - blowpipe pontil scar, ½ Pt, perfect. GII-50. A scarce and desirable mold, excellent impression, and certainly very scarce-to-rare in this blue green coloration. A little sweetheart of a flask having fantastic color, clarity and condition!

*Est.: \$3,000 - \$5,000 • Min. bid: \$1,500*



### Lot 12

**"OUR CHOICE" / (BUST OF GROVER CLEVELAND & ADLIA STEVENSON) / "CLEVE & STEVE / NOVEMBER 8TH 92 / MARCH 4TH 93" - (CROWING ROOSTER) Historical Flask**, 1892 - 1893. Golden amber, figural half-barrel with staves, tooled sloping collar with ring - smooth base, ½ Pt, virtually perfect; (1/8" paper-thin flake at edge of base, slight trace of faint interior residue). GI-124. A scarce political flask, excellent overall condition.

*Est.: \$250 - \$450 • Min. bid: \$130*



### Lot 16

**"LIBERTY" / EAGLE - "WILLINGTON / GLASS, Co / WEST, WILLINGTON / CONN" Historical Flask**, 1860 - 1872. Willington Glass Works, 1860 - 1872. Medium olive below the shoulders shading to a deep olive near the base, sheared mouth - smooth base, Pt; near mint; (slight trace of faint interior haze below the shoulders, otherwise virtually perfect). GII-62. A very nice example, almost no wear, which is often an issue with this mold. Provenance: Bruce Purdy collection.

*Est.: \$200 - \$400 • Min. bid: \$100*



### Lot 17

**EAGLE - EAGLE Historical Flask**, a Stoddard, NH glasshouse, probably Granite Glass Works, 1846 - 1860. Bright, yellowish olive amber, sheared mouth - blowpipe pontil scar, Pt, virtually perfect; (just a tiny, pinprick speck of roughness on the edge of the sheared mouth). GII-84. A pretty example, nice lighter 'see through' color, almost no wear, excellent condition. Note; a period cork remains in the neck.

*Est.: \$150 - \$250 • Min. bid: \$80*



### Lot 18

**EAGLE - EAGLE Historical Flask**, a Pittsburgh district glasshouse, 1860 - 1875. Rich, medium-to-deep amber with a slight orangey tone, large, applied ring collar - smooth base, Pt; (just a slight trace of very minor wear, and some faint, light interior haze, barely noticeable on display, otherwise, near mint). GII-89. Beautiful rich color, this is the variant without the heavy vertical rib. Provenance: Bruce Purdy collection.

*Est.: \$250 - \$400 • Min. bid: \$130*



### Lot 19

**EAGLE / "PITTSBURGH / PA" - EAGLE Historical Flask**, a Pittsburgh district glasshouse, 1860 - 1870. Medium-to-deep teal coloration, applied collar with flat band - smooth base, Qt, virtually perfect; (just the slightest trace of faint wear, otherwise virtually pristine perfect). GII-101. Extremely rare and desirable color - considered by many to be the 'holy grail' of all the Pittsburgh double eagles! Deep color, fantastic character and condition. Provenance: Bruce Purdy collection.

*Est.: \$8,000 - \$12,000 • Min. bid: \$4,000*



### Lot 20

**EAGLE / "PITTSBURGH / PA" - EAGLE Historical Flask**, a Pittsburgh district glasshouse, 1860 - 1870. Deep olive coloration, almost black through the shoulders and near the base, applied collar with flat band - smooth base, Pt, near mint; (slight bit of interior residue; just a trace of faint wear, otherwise perfect). GII-106a (an unlisted mold, similar to GII-106, but without vertical rib at sides). A great example, strong impression, excellent condition.

*Est.: \$300 - \$500 • Min. bid: \$150*



### Lot 21

**EAGLE / "PITTSBURGH / PA" - EAGLE Historical Flask**, Pittsburgh district, 1860 - 1870. Bright golden amber shading to a yellowish honey along the sides, applied collar with flat band - smooth base, Pt, near mint; (a minor, hard-to-see, 1/8" iridescent bruise on the edge of the collar, and just a touch of light wear, otherwise perfect). GII-107a (similar to GII-107, but appears to have 9 ribs in right wing on reverse). Comparatively scarce. A very pretty color, whittled, excellent condition.

*Est.: \$300 - \$500 • Min. bid: \$150*



### Lot 22

**CORNUCOPIA - URN Pictorial Flask**, Coventry Glass Works, Coventry, CT, 1835 - 1849. Medium clear green with an emerald tone, sheared mouth - blowpipe pontil scar, Pt, perfect; (note, the flask is a bit overblown, so it is a little 'soft' in the shoulders, noted for accuracy, but not considered damage). GIII-4. A very pretty example, fantastic character, unusually crude, the glass being filled with tiny flecks of impurities. Provenance: Bruce Purdy collection. Ex. Blaske collection (#489).

*Est.: \$300 - \$500 • Min. bid: \$150*



### Lot 23

**Lot of (3), Cornucopia - Urn Pictorial Flasks**, Coventry Glass Works, CT, and Keene Marlboro Street Glassworks, NH, 1830 - 1842. Two examples are yellowish olive amber, 3rd example (with partial period label), is deep olive amber, all are sheared mouth, blowpipe pontil scarred bases, Pt. and 1/2 Pts, all are near mint; (a little

high point wear on the Pt; the deep olive amber 1/2 Pt. has a pinhead flake on the lip). GIII-4 and GIII-7. Note; all three were found locally at estate / farm sales in north-central Ohio.

*Est.: \$275 - \$450 • Min. bid: \$140*



### Lot 24

**MASONIC ARCH - EAGLE / "KCCNE" Historical Flask**, Keene Marlboro Street Glassworks, Keene, NH, 1820 - 1830. Yellowish olive amber, sheared mouth - blowpipe pontil scar, Pt, near mint; (just a touch of light high point wear and a 1/8" flake on the top of the sheared lip, otherwise perfect). GIV-19. A very pretty example, bright, clean, and with plenty of yellowish tones.

*Est.: \$250 - \$400 • Min. bid: \$130*





### Lot 25

**MASONIC - MASONIC Historical Flask**, probably a New England glasshouse, 1820 - 1835. Light-to-medium blue green coloration, sheared mouth - glass tipped pontil scar, ½ Pt; (a little light exterior wear including a bit of minor roughness along the top edge of the lip, and a slightly weak impression as is typical of this mold, otherwise excellent). GIV-28. A scarce, early mold.

*Est.: \$250 - \$450 • Min. bid: \$130*



### Lot 29

**SUNBURST FLASK**, Keene Marlboro Street Glassworks, Keene, NH, 1815 - 1830. Colorless, sheared mouth - solid, glass tipped pontil scar, Pt, near mint; (very slight trace of light wear, and a shallow, in-making pontil flake extends to edge of base, mentioned for completeness, but does not affect display, otherwise perfect). GVIII-1. Fantastic condition, very little wear, and a very scarce color for this early 'two-pounder' Keene Sunburst Flask.

*Est.: \$1,000 - \$1,500 • Min. bid: \$500*



### Lot 26

**MASONIC - MASONIC Historical Flask**, probably a New England glasshouse, 1820 - 1835. Light, 'clear green' coloration, sheared, tooled mouth - blowpipe pontil scar, ½ Pt; (a little light exterior wear, otherwise virtually attic mint). GIV-28. Nice clarity, overall excellent condition. Although the color is not strong, McKearin lists a 'clear green' for this mold, which seems to an apt description for this flask. A nice example.

*Est.: \$250 - \$450 • Min. bid: \$130*



### Lot 30

**SUNBURST FLASK**, Keene Marlboro Street Glassworks, Keene, NH, 1815 - 1830. Clear, medium grass green, sheared mouth - blowpipe pontil scar, Pt, near mint; (just a slight trace of very light wear, and a tiny bit of roughness on the edge of the sheared mouth that you can feel, but is not easy to see, otherwise perfect!) GVIII-1. A very attractive example, good color, excellent clarity and condition.

*Est.: \$1,200 - \$1,800 • Min. bid: \$600*



### Lot 27

**"SUCCESS TO THE RAILROAD" / HORSE PULLING CART** - (Reverse same) **Historical Flask**, Keene Marlboro Street Glassworks, Keene, NH, 1830 - 1842. Clear, medium-to-deep olive green, sheared mouth - blowpipe pontil scar, Pt; (a touch of typical light high point wear and a couple of small, 1/8" or less, paper-thin open surface bubbles, otherwise perfect). GV-3. A very nice example, and harder to find in this pure green coloration rather than shades of olive amber.

*Est.: \$300 - \$500 • Min. bid: \$150*



### Lot 31

**SUNBURST FLASK**, probably Coventry Glass Works, Coventry, CT, 1815 - 1830. Medium yellowish olive, sheared mouth - blowpipe pontil scar, Pt; (a little typical light wear, otherwise attic mint). GVIII-3. A very nice example of this early Connecticut Sunburst Flask, excellent condition.

*Est.: \$800 - \$1,200 • Min. bid: \$40*



### Lot 28

**"SUCCESS TO THE RAILROAD" / HORSE PULLING CART** - (Reverse same) **Historical Flask**, Keene Marlboro Street Glassworks, Keene, NH, 1830 - 1842. Medium olive amber, sheared mouth - blowpipe pontil scar, Pt, perfect! GV-3. A fantastic example, strong, much better than average impression which is not easy to find, virtually no wear - also not easy to find, and sparkling attic mint.

*Est.: \$400 - \$600 • Min. bid: \$200*



### Lot 32

**SUNBURST FLASK**, Coventry Glass Works, Coventry, CT, 1815 - 1830. Bright, yellowish olive amber, sheared mouth - blowpipe pontil scar, ½ Pt, near mint; (a little light high point wear, and an open bubble on the interior of the neck that likely never had a cover glass, mentioned for accuracy, but not considered damage, otherwise perfect). GVIII-18. A bright, clean example, beautiful eye-appealing light color.

*Est.: \$800 - \$1,200 • Min. bid: \$400*



### Lot 33

**SUNBURST FLASK**, probably Baltimore Glass Works, Baltimore, MD, 1820 - 1830. Bright aquamarine, sheared mouth - blowpipe pontil scar, ½ Pt, virtually perfect; (slight trace of very faint, barely noticeable, interior milkiness, otherwise pristine). GVIII-27. A great example of this scarce and attractive early Baltimore Sunburst Flask, clean, bright and sparkling!

*Est.: \$400 - \$600 • Min. bid: \$200*



### Lot 37

**SUNBURST FLASK**, New England, possibly Keene Marlboro Street Glassworks, Keene, NH, 1815 - 1830. Colorless, sheared mouth - solid, glass tipped pontil scar, ¾ Pt, sparkling mint! GVIII-29. Typically found in shades of blue-green, but very rare in colorless glass. An absolutely brilliant example, outstanding clarity and condition, beautiful! Provenance: Ex. Fred Weck collection.

*Est.: \$800 - \$1,200 • Min. bid: \$400*



### Lot 34

**SUNBURST FLASK**, probably Baltimore Glass Works, Baltimore, MD, 1820 - 1830. Beautiful, clear medium citron coloration, sheared mouth - blowpipe pontil scar, ½ Pt; (a small potstone with a couple of tiny 1/8" legs near the corrugated ribs, and the top of the sheared lip may have been very lightly polished, likely to remove a tiny flake, otherwise perfect). GVIII-27. A comparatively scarce flask, rare color, almost no wear, fantastic eye-appeal! Ex. Tom McCandless collection.

*Est.: \$1,000 - \$1,500 • Min. bid: \$500*



### Lot 38

**SCROLL FLASK**, Midwest, 1840 - 1860. Beautiful light-to-medium honey coloration below the shoulders shading to a deeper honey amber with a very slight olive tone, sheared mouth - blowpipe pontil scar, Qt, near mint; (just a bit of very minor wear, otherwise perfect). GIX-2. A big, attractive scroll, beautiful color. Provenance: Bruce Purdy collection.

*Est.: \$800 - \$1,200 • Min. bid: \$400*



### Lot 35

**SUNBURST FLASK**, probably Baltimore Glass Works, Baltimore, MD, 1820 - 1830. Medium yellowish olive below the shoulders shading to a deep yellowish olive with a slight amber tone near the base, sheared, tooled, slightly flared mouth - blowpipe pontil scar, ½ Pt, virtually perfect; (only the slightest hint of light wear, otherwise mint). GVIII-27. Another great example, very rare color, virtually pristine condition.

*Est.: \$1,600 - \$3,200 • Min. bid: \$800*



### Lot 39

**SCROLL FLASK**, Midwest, 1840 - 1860. Deep 'old amber' or chocolate coloration, virtually black in the lower half and above the shoulders, sheared mouth - blowpipe pontil scar, Pt; (some scattered high point wear, and the flask may have been lightly cleaned, but otherwise presents as near mint). Probably GIX-10 (lower 8-pointed stars, upper stars are ill-defined; keyed base as noted on the GIX-10). Very scarce color. Provenance: Bruce Purdy collection.

*Est.: \$400 - \$600 • Min. bid: \$200*



### Lot 36

**SUNBURST FLASK**, Baltimore Glass Works, Baltimore, MD, 1820 - 1830. Delicate, light smoky aquamarine, sheared mouth - blowpipe pontil scar, ½ Pt, virtually perfect; (only the slightest trace of faint wear and a tiny 1/8" of roughness on the inside edge of lip, very likely in-manufacture, otherwise mint). GVIII-28. A very attractive, early, Sunburst, almost colorless with the faint smoky bluish tint.

*Est.: \$400 - \$600 • Min. bid: \$200*



### Lot 40

**SCROLL FLASK**, Midwest, 1845 - 1860. Rich, medium amber coloration, sheared mouth with a crudely applied ring type collar - large iron pontil scar, Pt; (a bit of scattered minor wear, otherwise very near mint). GIX-10. Nice having the large iron pontil scar and a very attractive, scarce, applied collar.

*Est.: \$400 - \$600 • Min. bid: \$200*



**Lot 41**

**SCROLL FLASK**, Midwest, 1840 - 1860. Brilliant honey amber below the shoulders, shading to a deeper golden amber near the base, sheared mouth - blowpipe pontil scar, Pt; (a little scattered minor wear, otherwise near mint). GIX-10. A bright, attractive example, nice crude wavy glass. The various GIX-10 Scroll molds can be found in a wide ranging array of colors, which is one of the reasons they are so popular with collectors. Provenance: Bruce Purdy collection.

*Est.: \$400 - \$600 • Min. bid: \$20*

**Lot 42**

**SCROLL FLASK**, Midwest, 1840 - 1860. Clear, light-to-medium yellow green, sheared mouth - blowpipe pontil scar, Pt, near perfect; (just a slight touch of light high point wear, and a 3/16" open bubble on the base). GIX-14. A comparatively scarce mold, beautiful color and clarity. Provenance: Bruce Purdy collection.

*Est.: \$500 - \$800 • Min. bid: \$250*

**Lot 43**

**SCROLL FLASK**, Midwest, 1840 - 1860. Beautiful, medium teal coloration, sheared mouth - blowpipe pontil scar, Pt, near perfect; (just a very slight trace of wear and a 1/8", onionskin-thin, open bubble). Probably GIX-10 (stars are ill-defined, but appear to be 8-pointed lower stars, possibly 6-pointed upper stars; keyed base). A rare and unusual color, excellent condition. Provenance: Bruce Purdy collection.

*Est.: \$800 - \$1,200 • Min. bid: \$400*

**Lot 44**

**SCROLL FLASK**, Midwest, 1840 - 1860. Rich, medium yellow olive, sheared mouth - blowpipe pontil scar, Pt, near mint; (a bit of very minor wear including a 1/8" shallow open bubble near the base, and a little roughness below the lip, on the neck, from some in-manufacture surface annealing lines, otherwise excellent). GIX-14. A comparatively scarce mold, great color. Provenance: Bruce Purdy collection.

*Est.: \$1,000 - \$1,500 • Min. bid: \$500*

**Lot 45**

**SCROLL FLASK**, Midwest, 1840 - 1860. Beautiful, citron yellow, sheared mouth - blowpipe pontil scar, 1/2 Pt, attic mint. GIX-36. Bright, clean, sparkling, a little sweetheart of a scroll, scarce mold, very scarce-to-rare color. This example has never been on the market, a local find from an 'old time' collection in north-central Ohio.

*Est.: \$800 - \$1,200 • Min. bid: \$400*

**Lot 46**

**SCROLL FLASK**, probably an early Pittsburgh district glasshouse, 1835 - 1845. Deep aquamarine, corseted scroll form, sheared mouth - blowpipe pontil scar, Pt, near mint; (a bit of light interior haze in the shoulders, not terribly distracting, but mentioned for completeness, and a 1/4", paper-thin, open bubble near the side, otherwise perfect). GIX-45. Scarce. One of the most decorative, and ornate, of all the figured flask molds. Provenance: Bruce Purdy collection.

*Est.: \$400 - \$600 • Min. bid: \$200*

**Lot 47**

**PROSPECTOR - EAGLE Historical Flask**, Zanesville Glass Works, OH, 1860 - 1865. Aquamarine, applied ring collar - smooth base, Pt; (some light interior haze, not terribly distracting, and the type that should easily clean with just a few days in the tumbler, otherwise virtually attic mint). GXI-45, McKearin Group C, Rare Flasks, #5. The mold is colloquially referred to as the "Tippler flask", as the prospector is shown tipping a long neck bottle to his lips. A local find from the Bucyrus, Ohio area.

*Est.: \$1,500 - \$2,500 • Min. bid: \$800*

**Lot 48**

**CLASPED HANDS - EAGLE Historical Flask**, Pittsburgh, 1860 - 1870. Bright golden amber, applied mouth, flat band - smooth base, Qt; (slight trace of minor wear and a bit of very faint interior haze near the base, otherwise perfect). Unlisted, similar to GXII-6. Numerous and distinct differences from the McKearin line drawing and text including, but not limited to: Eagle's body and size of head; curvature of banner, number of leaves on branches, also leaves not veined. Bruce Purdy collection.

*Est.: \$800 - \$1,200 • Min. bid: \$400*



### Lot 49

**"UNION" / CLASPED HANDS / "OLD RYE" - EAGLE / "A&DHC"** (inside banner) / **"PITTSBURGH" Historical Flask**, A. & D.H. Chambers, Pittsburgh, 1860 - 1870. Bright, medium citron coloration, applied collar with square band - smooth base, Qt, virtually pristine perfect; (only the faintest trace of light wear, otherwise 'out-of-the-mold' pristine condition). GXII-9. A fantastic example, great color, crisp, strong mold impression, outstanding clarity, condition, and eye-appeal.

*Est.: \$800 - \$1,200 • Min. bid: \$400*



### Lot 50

**ARMY DRAGOON - HOUND Pictorial Flask**, probably Baltimore Glass Works, Baltimore, MD, 1855 - 1865. Medium-to-deep lemon yellow with an olive tone, applied double ring collar - blowpipe pontil scar, Qt, near mint; (just a trace of very minor wear and a bit of faint, washable, interior content residue, otherwise perfect). GXIII-16. A comparatively scarce mold, gorgeous color, strong impression, outstanding condition. This is one that will stand out on a shelf.

*Est.: \$800 - \$1,200 • Min. bid: \$400*



### Lot 51

**"I GOT MY / FILL AT JAKES / BUT WHERE DID / I EAT THAT DOG" / (Motif of Drunk leaning against Lamppost with Dog sniffing pile of spew on ground), Pictorial Flask**, America, 1890 - 1900. Colorless, pumpkinseed form, tooled double ring collar - smooth base, ht. 6 1/4", virtually perfect; (slight trace of light residue, or very faint interior haze, possibly washable, otherwise attic mint). Very scarce. A fantastic whimsical, pictorial, pumpkinseed flask.

*Est.: \$200 - \$400 • Min. bid: \$100*



### Lot 52

**Rare, Miniature Freeblown Globular Bottle**, New England, 1785 - 1820. Rich, medium olive amber, globular form, sheared mouth with a small, applied ring collar - delicate blowpipe pontil scar, ht. 2 5/8", perfect! An absolutely fantastic little mini glob, smaller than most, with near perfect symmetry, and outstanding condition. Note; this lot, and the next two, are from an old time New England collection focused on mini's - 25+ years in the making.

*Est.: \$2,000 - \$3,000 • Min. bid: \$1,000*



### Lot 53

**Rare, Miniature Freeblown Globular Bottle**, New England, 1785 - 1820. Clear, light yellowish olive coloration, globular form, sheared mouth, applied ring collar - blowpipe pontil scar, ht. 6", near mint; (a bit of minor wear around the mid-body, otherwise perfect). A very rare size! As most folks who collect these know, this is a particularly unusual size for a New England mini-glob, most being 3 1/2" or less. Beautiful, delicate chestnut-type glass, outstanding clarity, form, and condition.

*Est.: \$2,000 - \$3,000 • Min. bid: \$1,000*



### Lot 54

**Early, Freeblown Decanter**, New England, probably a Connecticut glasshouse, 1785 - 1820. Beautiful, light yellowish olive amber, decanter form, sheared, tooled, outward flared mouth - blowpipe pontil scar, ht. 10 3/8", virtually perfect; (just a slight trace of faint wear). Similar to McK, plate 226, #10. An outstanding example, larger in size than most, nice light 'see through' color, clarity, virtually pristine condition. Provenance: Ex. Charles B. Gardner collection (#2638).

*Est.: \$1,000 - \$2,000 • Min. bid: \$500*



### Lot 55

**Freeblown Globular Bottle**, Eastern U.S., probably Hilltown Glass Works, Bucks County, PA, 1750 - 1770. Medium-to-deep emerald, 'chunky' globular body, sheared mouth with an applied, inverted tapered collar - blowpipe pontil scar, ht. 7 1/2"; (a 1/4" 'star' type crack on the inner surface of the shoulder and a fair amount of fine-to-moderate exterior wear around the mid-body). A very rare 'Colonial period' glob in a great color, with a heavy, 'earthy', feel.

*Est.: \$600 - \$1,200 • Min. bid: \$300*



### Lot 56

**Freeblown Globular Bottle**, Midwest, probably New Geneva Glass Works, New Geneva, PA, 1797 - 1815. Light-to-medium sea green coloration, globular form, sheared mouth with a crudely applied heavy ring collar - blowpipe pontil scar, ht. 8 1/4"; (some moderate exterior wear and light scratches around the mid-body - a little more so on one side, and a 1/4" open bubble on the shoulder, otherwise excellent). An early, heavy glob, much scarcer than the traditional bluish aqua Ohio examples.

*Est.: \$175 - \$350 • Min. bid: \$90*

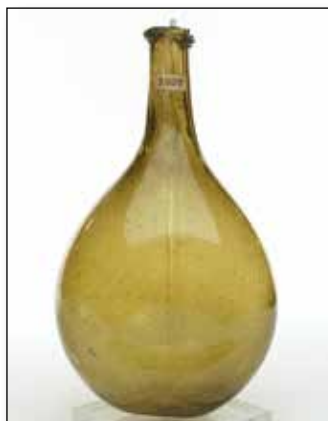




### Lot 57

**Freeblown Chestnut Flask**, New England, 1785 - 1820. Clear, light yellowish olive amber, almost an olive yellow coloration, chestnut form, applied ring lip - delicate blowpipe pontil scar, ht. 5 3/8", virtually attic mint; (slight trace of typical faint wear, otherwise perfect). A beautiful example, fantastic character, the glass being filled with tiny bubbles and potstones (with no associated issues), and in an attractive 'see-through' light color.

*Est.: \$250 - \$450 • Min. bid: \$130*



### Lot 61

**Early Freeblown Flask**, Continental, probably Belgium, 1720 - 1740. Yellowish olive amber, round bottom chestnut or pear form, sheared mouth with a crudely applied, crimped string rim - smooth base, ht. 7 3/4"; (a little minor wear, otherwise near perfect). See VdB, plate 137 & 138. These early flasks typically contained mineral water from the town of Spa, in eastern Belgium. Ex. Charles B. Gardner collection. Note; Gardner's original collection index card accompanies this bottle.

*Est.: \$200 - \$400 • Min. bid: \$100*



### Lot 58

**Freeblown Chestnut Flask**, New England, 1785 - 1820. Clear, light yellowish olive, chestnut form, sheared mouth with an applied ring lip - delicate blowpipe pontil scar, ht. 5 1/2", virtually attic mint; (just a very slight trace of light wear, and a bubble with a tiny pinhead opening in the cover glass, otherwise perfect). Another beautiful example, having slightly more of an olive tone, great form, and with several attractive bubbles through the neck and shoulders. John Apple collection.

*Est.: \$250 - \$450 • Min. bid: \$130*



### Lot 62

**Early, Freeblown Chestnut Bottle**, probably Hilltown Glass Works, Bucks County, PA, 1750 - 1770. Bright yellowish green, plump chestnut form, sheared mouth with a crudely applied heavy ring collar - solid glass tipped punty scar, ht. 8 1/2"; (some moderate exterior usage wear and light scratches, some scattered shallow open surface bubbles, otherwise excellent). A scarce color, excellent character, the glass being filled with small bubbles.

*Est.: \$400 - \$600 • Min. bid: \$200*



### Lot 59

**Freeblown Chestnut Flask**, probably New England, possibly New York State, 1800 - 1830. Beautiful, bubbly, medium emerald with a slight teal tone, chestnut form, sheared mouth with crudely applied banded collar - delicate blowpipe pontil scar, ht. 7 3/4", virtually perfect; (several onionskin-thin open surface bubbles, otherwise pristine). Beautiful and rare color, larger size, exceptional character and eye-appeal, the glass absolutely filled with bubbles, outstanding condition!

*Est.: \$600 - \$900 • Min. bid: \$300*



### Lot 63

**Early, Freeblown Chestnut Bottle**, probably Hilltown Glass Works, Bucks County, PA, 1750 - 1770. Medium-to-deep yellowish olive with an amber tone, plump chestnut form, sheared mouth with a tooled, heavy, likely applied, ring collar - solid glass tipped punty scar, ht. 8 5/8"; (some typical light-to-moderate exterior usage wear, otherwise perfect). A rare color for this type of early Chestnut, excellent character and condition. A great Colonial-period chestnut!

*Est.: \$500 - \$800 • Min. bid: \$250*



### Lot 60

**Miniature, Early Freeblown Flask**, probably Continental, possibly North Germany, 1760 - 1790. Bright, medium grass green coloration, side flattened, small chestnut form, sheared mouth with applied heavy ring or strap collar - solid, glass-tipped pontil scar, ht. 3 5/8"; (some moderate fine high point wear on the flattened sides, otherwise perfect). See VdB, plate 216, #4. A very attractive, early, chestnut flask, originally discovered in New England by an old time dealer.

*Est.: \$300 - \$500 • Min. bid: \$150*



### Lot 64

**Early, Freeblown Chestnut Bottle**, probably Hilltown Glass Works or possibly Wistarburgh, 1750 - 1770. Rich, medium-to-deep emerald coloration, plump chestnut form, sheared mouth with tooled, likely applied, heavy ring collar - blowpipe pontil scar, ht. 8 5/8"; (some typical scattered exterior usage wear and light scratches, and a little faint interior residue, likely washable, otherwise excellent). Beautiful color, outstanding character, the glass being absolutely filled with small bubbles.

*Est.: \$500 - \$800 • Min. bid: \$250*



### Lot 65

**Giant, Early Freeblown Chestnut or Decanter Bottle**, probably Wistarburgh Glass Works, Alloway, NJ, 1750 - 1770. Clear, medium yellow green, elongated chestnut or decanter form, sheared mouth with a tooled, likely applied, heavy ring collar - blowpipe pontil scar, ht. 13 ¾"; (some moderate exterior wear and scratches around the mid-body, a few on the shoulder, but no other form of damage). Classical Wistar 'metal', color, and lip treatment, extremely rare size!

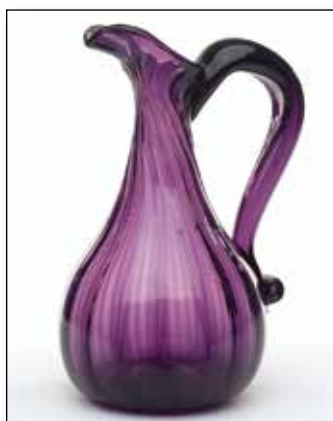
*Est.: \$1,200 - \$2,400 • Min. bid: \$600*



### Lot 66

**Extremely Rare, Early, Freeblown Creamer**, probably Wistarburgh Glass Works, Alloway, NJ, 1760 - 1780. Light yellowish green, bulbous body, wide neck flaring slightly to a sheared rim with tooled pour spout, applied solid handle curled at lower attachment - applied disc base with crimping, blowpipe pontil scar, ht. 3 ¾"; (some scattered usage wear, otherwise perfect). An extremely rare, possibly unique, Colonial period Wistarburgh creamer. Ex. Anthony Picadio collection.

*Est.: \$3,000 - \$6,000 • Min. bid: \$1,500*



### Lot 67

**Rare, Pattern Molded Cruet**, a Pittsburgh glasshouse, possibly an early Bakewell factory, 1815 - 1845. Beautiful, bright medium amethyst, elongated pear form body patterned with 16 vertical ribs, sheared flared mouth with tooled pour spout, applied hollow handle crimped and curled at lower attachment - blowpipe pontil scar, ht. 6 ¾"; (a large crack in the body travels around the perimeter of the lower handle). Innes, plate 5, #2; McK, plate 25, #1. Extremely rare in amethyst.

*Est.: \$150 - \$250 • Min. bid: \$80*



### Lot 68

**Pillar Molded Decanter**, a Pittsburgh glasshouse, possibly M'Kee & Brothers, 1850 - 1865. Light-to-medium pinkish amethyst, conical form, pillar molded with eight vertical ribs, applied neck ring, applied round collar with bevel - blowpipe pontil scar, ht. 10 3/8", virtually perfect; (slight trace of faint, barely noticeable, interior milkiness; very slight wear, otherwise mint). A gorgeous example. Amethyst in this lighter shade is an exceedingly rare color for a pillar molded decanter.

*Est.: \$1,500 - \$3,000 • Min. bid: \$800*



### Lot 69

**Pillar Molded Decanter**, a Pittsburgh district glasshouse, possibly M'Kee & Brothers, 1850 - 1865. Medium sapphire blue, conical form, pillar molded with eight heavy vertical ribs, applied neck ring, applied round collar with lower ring - blowpipe pontil scar, ht. 10 ½", near mint; (a little typical minor usage wear; a bit of faint, minor interior milkiness near the base, otherwise perfect). A wonderful pillar molded decanter, typically found in deep cobalt, but rare in this beautiful sapphire coloration.

*Est.: \$1,000 - \$2,000 • Min. bid: \$500*



### Lot 70

**Fluted Back Bar Decanter**, probably Boston and Sandwich Glassworks, Sandwich, MA, 1840 - 1860. Clear, medium-to-deep sapphire blue, ovoid body with eight large fluted panels, heavy round bar lip with lower bevel - polished pontil scarred base, ht. 10 ½", near mint; (some typical expected usage wear around the mid-body including a tiny pinhead flake on the shoulder, otherwise excellent). See BK, Vol. 1, plate 1256. A beautiful, eye-appealing example, fantastic color and clarity.

*Est.: \$400 - \$600 • Min. bid: \$200*



### Lot 71

**Rare, Cut, Paneled, Opalescent Decanter**, Bohemian, 1840 - 1850. Opalescent milkglass, ovoid body with 12 cut, gilded body panels, 2 faceted neck rings, wide square collar with original matching 7-panel, pyramid-form cut stopper - polished pontil scar, ht. 12 7/8" (including stopper), near mint; (decanter is perfect; some minor paint loss to the gilding). See, The Decanter - An Illustrated History, McConnell, plate 480, #2. Biedermeier style, mid-1840's, very unusual in the 'Alabaster-white'.

*Est.: \$300 - \$500 • Min. bid: \$150*



### Lot 72

**Large, Pillar Molded Pitcher**, a Pittsburgh district glasshouse, 1845 - 1865. Colorless, tall, bucket form body pillar molded with eight heavy vertical ribs, wide neck flaring outward to a sheared rim, horizontal tooling rings, tooled, crimped pour spout, large, applied hollow handle curled at lower attachment - blowpipe pontil scar, ht. 8 ¾"; (a little minor usage wear, otherwise perfect). A big, gutsy, impressive pitcher.

*Est.: \$300 - \$600 • Min. bid: \$150*

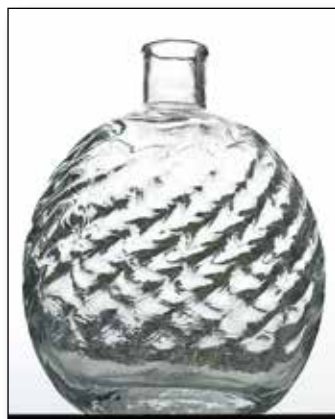




### Lot 73

**Pattern Molded Pitcher**, Midwest, Zanesville Glass Works, or possibly Pittsburgh, 1825 - 1845. Colorless, bucket form body patterned with 24 ribs swirled to the right, wide neck flaring outward to a sheared and tooled rim, tooled pour spout, applied hollow handle crimped at lower attachment - jagged blowpipe pontil scar (similar to those typically found on Zanesville globes), ht. 7 1/2"; (slight trace of wear, otherwise perfect). A beautiful, sparkling example.

*Est.: \$300 - \$600 • Min. bid: \$150*



### Lot 74

**Pitkin-Type Flask**, America, probably Stiegel's American Flint Glass Manufactory, Manheim, PA, 1764 - 1774. Colorless, 16 broken rib pattern swirled to the right, plump circular form, sheared mouth - blowpipe pontil scar, ht. 4 3/4", near mint; (some light high point wear, otherwise excellent). A rare, early Pitkin, scarce diminutive size (less than 5"), and very rare in colorless glass.

*Est.: \$500 - \$800 • Min. bid: \$250*



### Lot 75

**Pitkin-Type Flask**, early Mid-Atlantic region, probably Wistarburgh Glass Works, 1760 - 1780. Clear medium green with a slight yellowish tone, 20 broken rib pattern swirled to the right, plump elliptical body, sheared mouth - blowpipe pontil scar, ht. 5 1/4"; (some light-to-moderate exterior wear; a few scattered open surface bubbles, and a ring of light interior haze in the lower third of the flask). A smaller size than most, nice plump body, and scarce rib count.

*Est.: \$400 - \$600 • Min. bid: \$200*



### Lot 76

**Pitkin-Type Flask**, Eastern U.S., probably Hilltown Glass Works, Bucks County, PA, 1760 - 1780. Rich, medium-to-deep emerald coloration, 30 broken rib pattern swirled to the left, plump 'horseshoe' form, sheared mouth - blowpipe pontil scar, ht. 6 3/8"; (some minor high point wear and a partially open bubble in the base with some trapped residue, otherwise perfect). A very 'hefty', Colonial period Pitkin, strong, bold ribbing, nice form, a great example!

*Est.: \$800 - \$1,200 • Min. bid: \$400*



### Lot 77

**Pitkin-Type Flask**, Eastern U.S., probably Hilltown Glass Works, Bucks County, PA, 1760 - 1780. Brilliant yellowish olive, almost an olive yellow coloration, 24 broken rib pattern swirled to the left, ovoid form, sheared mouth - pontil scar, ht. 7 1/8"; (some light-to-moderate high point wear; a 1" x 1/8", slender open bubble on the side, and a tiny potstone, also at the side of the flask, with a couple of 1/8" 'legs'). A strong pattern through the upper half, almost a 'popcorn' effect, very rare color!

*Est.: \$300 - \$500 • Min. bid: \$150*



### Lot 78

**Early, Freeblown Mottled Cruet**, probably England, Nailsea, or one of the early Bristol factories, 1810 - 1840. Deep olive with large opaque white flecks mottled through the glass, pear form body with elongated neck, applied handle crimped and curled at lower attachment, sheared, tooled mouth - blowpipe pontil scar, ht. 6 1/4"; (top of sheared mouth was likely polished at some point, otherwise perfect). Provenance: Early collector tags on cruet notate Ex. McKearin collection.

*Est.: \$300 - \$600 • Min. bid: \$150*



### Lot 79

**Pattern Molded Cream Jug**, probably England, possibly America, 1815 - 1830. Beautiful, deep plum amethyst, 16 ribs swirled slightly to the right, compressed globular body, applied solid ear-shaped handle crimped and curled at lower attachment, sheared and inward folded rim with tooled pour spout - blowpipe pontil scarred base, ht. 2 7/8", perfect. A beautiful little creamer with a great deal of workmanship. Provenance: John Apple collection; Ex. Dr. Charles and Jan April collection.

*Est.: \$300 - \$600 • Min. bid: \$150*



### Lot 80

**Blown Three Mold Toilet Water Bottle**, Boston and Sandwich Glassworks, Sandwich, MA, 1825 - 1840. Deep, vivid cobalt blue, cylindrical with vertical ribbing below large molded neck ring, sheared, tooled, wide flared mouth with period, likely original, tam-o'-shanter stopper - solid glass tipped pontil scar, ht. 6 1/2" (including stopper), perfect. GL-7, type 2; BK, plate 1279. These bottles were referred to as "ribbed cruets", with numerous fragments being dug at the site of the Sandwich Glass Manufactory.

*Est.: \$175 - \$350 • Min. bid: \$90*



### Lot 81

**Early, Freeblown, Covered Sugar Bowl**, probably America (Pennsylvania), possibly England, 1790 - 1820. Deep, vivid, cobalt blue, bulbous bowl flaring outward to a shallow galled rim, applied solid pedestal foot with pontil scar; pontiled domed cover with flattened, spiral ribbed, acorn finial, ht. 6 3/4" (including cover), both lid and bowl are perfect. A fantastic, early, blown covered sugar bowl, beautifully executed. The lid fits perfectly and is almost certainly original to the bowl.

*Est.: \$600 - \$1,200 • Min. bid: \$300*



### Lot 82

**Early, Blown Ringed Storage Jar** (with original cover), a Pittsburgh district glasshouse, 1840 - 1860. Colorless, freeblown jar with two applied cobalt blue rings around the body, original matching domed cover with an applied cobalt ring forming the rim of the cover, applied hollow knopf - jar with pontil scarred base, overall ht. 8 1/2", dia. of base, 3 3/4", both jar and cover are perfect. A very attractive jar in a somewhat smaller size than normally encountered.

*Est.: \$200 - \$400 • Min. bid: \$100*



### Lot 83

**Early, Blown Ringed Storage Jar** (with original cover), a Pittsburgh district glasshouse, 1840 - 1860. Colorless, freeblown jar with two applied sapphire blue rings around the body, original matching domed cover with an applied sapphire blue ring forming the rim of the cover, applied hollow knopf - jar with pontil scarred base, overall ht. 10 5/8", base dia. 5 1/2", both jar and cover are perfect! A beautiful example of a classic Pittsburgh ring jar.

*Est.: \$200 - \$400 • Min. bid: \$100*



### Lot 84

**"HAYWARD HAND GRENADE FIRE EXTINGUISHER / NEW YORK"** (on shoulder), partial contents, America, 1877 - 1895. Deep cobalt blue, cylindrical with a diamond-shaped label panel and deep 'V'-shaped grooves around the body forming a diamond pattern around shoulders, tooled ring lip - "DESIGN PATD" (on smooth base), ht. 6", perfect.

*Est.: \$200 - \$400 • Min. bid: \$100*



### Lot 85

**Lot of (2), "CHICAGO LAMP CANDLE Co." Christmas Lights**, America, 1885 - 1905. Medium-to-deep cobalt blue, and yellowish honey coloration, both are figural lantern form with hobnail pattern, factory ground mouth - smooth base with three raised 'feet', ht. 4 1/8" each, both virtually perfect; (a bit of faint interior residue in cobalt example). The Chicago lamps are one of only a small handful of Christmas lights that are embossed. Deep cobalt example is scarce.

*Est.: \$200 - \$400 • Min. bid: \$100*



### Lot 86

**Quilted Diamond Pattern Target Ball**, probably America, possibly England, 1875 - 1900. Bright yellowish honey coloration, quilted diamond pattern above and below center band, 3-pc. mold, factory ground mouth, dia. 2 5/8", perfect. Scarce. Note; this is the only target ball mold known to have a factory ground mouth (vs. the typical rough sheared mouth). Provenance: John Apple collection.

*Est.: \$200 - \$400 • Min. bid: \$100*



### Lot 87

**Quilted Diamond Pattern Target Ball**, probably America, possibly England, 1875 - 1900. Golden amber with just a slight apricot tone, quilted diamond pattern above and below center band, 3-pc. mold, factory ground mouth, dia. 2 5/8", perfect. Another nice example of this scarce mold. It is interesting that it is the only known mold to have a ground mouth, which of course added an additional step, as well as more labor, to finishing each ball. Provenance: John Apple collection.

*Est.: \$200 - \$400 • Min. bid: \$100*



### Lot 88

**"BOGARDUS' GLASS BALL PATD APRIL 10 1877."** (within center band) - "8" (within diamond panel), Target Ball, England, or possibly America, 1877 - 1900. Golden amber, quilted diamond pattern above and below center band, 3-pc. mold, sheared mouth, dia. 2 5/8", near mint; (a bit of faint interior haziness, not terribly distracting, and a flake from the side of the neck, almost certainly in-manufacture, otherwise excellent). Note; scarce mold with the numeral "8" embossed in a diamond panel.

*Est.: \$200 - \$400 • Min. bid: \$100*





### Lot 89

#### "VAN CUTSEM - A ST QUENTIN"

Target Ball, France, 1875 - 1900. Deep, vivid cobalt blue, quilted diamond pattern above and below center band, 3-pc. mold, rough sheared mouth, dia. 2 5/8", perfect. A great example, very deep color, almost a violet tone towards the lower third, below the center band.

**Est.: \$175 - \$350 • Min. bid: \$90**



### Lot 90

**Teakettle Inkwell**, probably America, possibly Boston and Sandwich Glass Works, 1850 - 1875. Cobalt blue, teakettle form with eight concave panels, three vertical ribs between each panel, flat top with three concentric rings - beveled edge smooth base, ht. 1 7/8"; (a couple of minor flakes from top of ground spout, possibly in-making, a trace of light interior residue, otherwise perfect). JM #274. Per Matthews, a very rare mold, referred to as the "Target Top".

**Est.: \$500 - \$800 • Min. bid: \$250**



### Lot 91

**Umbrella Ink**, America, 1845 - 1860. Medium-to-deep reddish amber, 8-sided umbrella form, sheared, tooled, and inward rolled mouth - blowpipe pontil scar, ht. 2 1/4", base dia. 2 1/2", attic mint. Nice character, excellent, virtually perfect condition, fantastic color - this one having much stronger reddish tones than most.

**Est.: \$300 - \$500 • Min. bid: \$150**



### Lot 92

**Umbrella Ink**, America, probably New England, 1840 - 1860. Medium-to-deep olive amber, 8-sided umbrella form, sheared mouth - blowpipe pontil scar, ht. 2 1/2", base dia. 2 1/8", near mint; (just a slight trace of wear including a little pinhead open bubble on one of the panels, otherwise perfect). Nice character with crude, wavy glass. Provenance: John Apple collection.

**Est.: \$200 - \$400 • Min. bid: \$100**



### Lot 93

#### Lot of (2), Blown Three Mold

**Inkwells**, Coventry Glass Works, Coventry, CT, and Keene Marlboro Street Glassworks, Keene, NH, 1820 - 1840. Both are shades of deep olive amber, cylindrical with disk type mouths - plain bases with blowpipe pontil scar, ht. 1 3/8" each; (both are near mint with just typical light usage wear). GII-16 and

GIII-29. A nice lot of early New England geometric inks. Provenance: John Apple collection; GIII-29 is Ex. John Lawrey collection.

**Est.: \$250 - \$350 • Min. bid: \$130**



### Lot 94

**"GAYLORDS / SUPERIOR / RECORD / INK - BOSTON"**, New England, possibly Keene Marlboro Street glassworks, 1830 - 1842. Clear, light yellowish olive below the shoulders, shading to a deep olive near the base, cylindrical, large crude, ring-type collar - pontil scar, ht. 5 3/4", perfect; (note; the embossing is a bit weak, as is typical for the small handful of examples extant). A top example in an unusually light color, and rare with the large, almost 'donut' style collar. Fred Swiechowicz collection.

**Est.: \$3,000 - \$5,000 • Min. bid: \$1,500**



### Lot 95

#### "ZIEBER & Co'S - EXCELSIOR -

**INK" Master Ink Bottle**, 1848 - 1860. Medium-to-deep emerald with a slight teal tone, 12-sided, applied sloping collar with bevel - blowpipe pontil scar, ht. 7 1/2", virtually perfect; (just the slightest trace of wear and a bit of light, washable, interior residue). An extremely rare, eye-appealing, master ink. This one is particularly rare with the tapered collar and open pontil base. Fantastic condition, beautifully whittled, a top example! Fred Swiechowicz collection.

**Est.: \$4,000 - \$6,000 • Min. bid: \$2,000**



### Lot 96

#### "E ROOME / TROY / NEW YORK"

**Snuff Jar**, New England, probably a Stoddard, NH glasshouse, 1845 - 1860. Medium olive amber below the shoulders shading to a deep olive amber near the base, rectangular with beveled corners, sheared, tooled, slightly flared mouth - blowpipe pontil scar, ht. 4 1/4", very near mint; (just a slight trace of faint wear and a slightly weak impression - as is typical of this mold, otherwise perfect). Provenance: Jan & Ralph Finch collection.

**Est.: \$300 - \$500 • Min. bid: \$150**



### Lot 97

**Dip Mold Snuff Jar**, New England or possibly Mid-Atlantic, 1825 - 1845. Rich, yellowish amber, almost a butter-scotch coloration, tall rectangular form with beveled corners, sheared, tooled, and outward flared mouth - blowpipe pontil scar, ht. 6"; (professionally cleaned to original luster with a little minor wear, and a few light scratches remaining, primarily on one side only, otherwise excellent). Dug in downtown Philadelphia, a very scarce size, pleasing color.

*Est.: \$300 - \$500 • Min. bid: \$150*



### Lot 98

**Small, Early Dip Mold Snuff Jar**, New England, 1790 - 1820. Medium olive coloration, square with beveled corners, wide neck with a sheared, tooled, and outward flared mouth - light blowpipe pontil scar, ht. 3 3/4", near mint; (a partially open bubble on the interior of the neck, otherwise perfect). A little sweetheart of a snuff, very scarce-to-rare size, outstanding condition. Provenance: Fred Swiechowicz collection.

*Est.: \$400 - \$600 • Min. bid: \$200*



### Lot 99

**Early Dip Mold Snuff Jar**, 1790 - 1820. Medium green with a slight emerald tone, square with rounded corners, sheared, tooled, and outward flared mouth - blowpipe pontil scar, ht. 5 5/8", near mint; (just a bit of typical light wear including a paper-thin 1/4" open bubble). Pure green coloration, outstanding character with impurities and glass gall swirled through the mix, delicate thin glass, fantastic condition. A great looking, very early snuff jar. Fred Swiechowicz collection.

*Est.: \$500 - \$800 • Min. bid: \$250*



### Lot 100

**Rare, Early Dip Mold Snuff Jar**, New England, 1790 - 1820. Clear, medium olive amber, square with beveled corners, domed shoulders, sheared, tooled, and outward flared mouth - unusual base with eight heavy molded ribs forming rays from the center, blowpipe pontil scar, ht. 5 1/4"; (some typical light usage wear, otherwise perfect). Another great looking early snuff jar, unusual proportions with an uncharacteristically 'chunky' or 'fat' body. Fred Swiechowicz collection.

*Est.: \$500 - \$800 • Min. bid: \$250*



### Lot 101

**Rare, Embossed Vine and Leaves Utility Bottle**, probably New England, 1835 - 1855. Deep 'old amber', almost a tobacco coloration, square, wide neck with sheared mouth - blowpipe pontil scar, ht. 4 7/8"; (some faint haze, or a light patina to the glass, and just a bit of minor wear, but no other form of damage). An extremely rare, possibly unique example dug in Western, Massachusetts more than 30 years ago! Provenance: Fred Swiechowicz collection.

*Est.: \$500 - \$800 • Min. bid: \$250*



### Lot 102

**Early, Dip Mold Medicine or Utility**, New England, 1815 - 1840. Medium olive amber, square with beveled corners, drawn up shoulders, sheared mouth with tooled ring collar - blowpipe pontil scar, ht. 6 1/8", near mint; (slight trace of minor light wear, otherwise perfect). A great early utility, rare and unusual form, beautiful glass filled with tiny seed bubbles. Provenance: Fred Swiechowicz collection; Ex. Charles B. Gardner collection.

*Est.: \$400 - \$600 • Min. bid: \$200*



### Lot 103

**Unusual Medicine or Utility Bottle**, New England, probably one of the Standard glasshouses, 1845 - 1855. Yellowish olive amber below the shoulders shading to a deep olive amber near the base, rectangular, wide beveled corners, applied sloping collar - sand type pontil scar, ht. 6", near mint; (a little light wear and a slight trace of minor haze, primarily on one of the beveled corners). A very scarce-to-rare utility. Provenance: Fred Swiechowicz collection; Ex. Charles B. Gardner collection.

*Est.: \$400 - \$600 • Min. bid: \$200*



### Lot 104

**Early, Freeblown or Dip Mold Utility**, New England, probably 1800 - 1830. Light olive amber, cylindrical, freeblown or possibly dip mold, short narrow neck with a crudely applied ring type collar - blowpipe pontil scar, ht. 6 3/8", near perfect; (some light interior content residue). An early, very attractive utility with an offset neck and crude 'seedy' glass. The 'metal' is similar to that of many of the early chestnut flasks. Provenance: Fred Swiechowicz collection.

*Est.: \$300 - \$500 • Min. bid: \$150*





### Lot 105

**"POTTER & BODINE'S / AIR-TIGHT / FRUIT JAR / PHILADA - PATENTED / APRIL 13th 1858"**, probably Bridgeton Glass Works, Bridgeton, NJ, 1860 - 1863. Aquamarine, cylindrical, grove ring wax seal mouth - smooth base, Qt, virtually perfect; (a couple of minor, onionskin-thin, open surface bubbles, otherwise mint). RB #2385. A beautiful jar, pleasing 'squatty' form, excellent condition. Provenance: Fred Swiechowicz collection.

*Est.: \$800 - \$1,200 • Min. bid: \$400*



### Lot 109

**Lot of (2), Rare, "G" - "E" Barrel Mustard Jars**, probably 1853 - 1856. Bright, bluish aqua and sapphire blue, both are barrel form with oval body panels, sheared and outward rolled mouths - sand type pontil scarred bases, ht. 3 3/4"; (aqua example professionally cleaned to original luster, near mint; sapphire example professionally cleaned with a little ground wear and some minor etching remaining). Believed to have been blown for Grieshop & Einhaus, Grocers, Cincinnati.

*Est.: \$300 - \$600 • Min. bid: \$150*



### Lot 106

**"POTTER & BODINE'S / AIR-TIGHT / FRUIT JAR / PHILADA - PATENTED / APRIL, 13th, / 1858"**, probably Bridgeton Glass Works, Bridgeton, NJ, 1860 - 1863. Aquamarine, cylindrical, grove ring wax seal mouth - smooth base, Qt; (a little light spotty interior haze, otherwise near mint). RB #2384. Strong, very bold embossing. Provenance: Fred Swiechowicz collection.

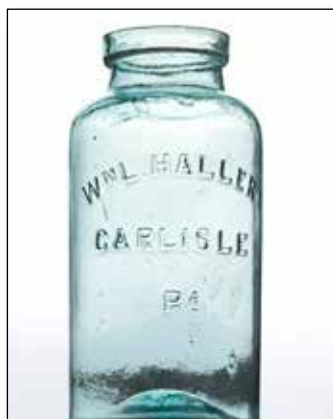
*Est.: \$600 - \$900 • Min. bid: \$300*



### Lot 110

**"WELLS & MILLER / N-Y" Pickle Jar**, probably 1841 - 1844. Rich, medium bluish green coloration, square with beveled corners, applied ring collar - sand type pontil scar, ht. 6 1/8", virtually perfect; (just a slight trace of faint wear; the interior has been lightly cleaned to remove a bit of spotty milkiness). Zumwalt, p.428. A very rare, early pickle jar. Note; this jar predates the period when Stephen Provost joined the firm in 1844. Fantastic condition, good deep color.

*Est.: \$800 - \$1,200 • Min. bid: \$400*



### Lot 107

**"WM L. HALLER. / CARLISLE / PA"**, possibly A.R. Samuel's Keystone Glass Works, Philadelphia, 1865 - 1875. Aquamarine, cylindrical, applied wide square collar with grove, or seat, for Willoughby stopple - smooth base, half gallon, perfect. RB #1179. A beautiful example, excellent condition with some nice large bubbles swirled through the glass.

*Est.: \$500 - \$800 • Min. bid: \$250*



### Lot 111

**"W.D. SMITH / N.Y." Fancy Pickle Jar**, probably 1850 - 1858. Bright blue green coloration, square with beveled corners, fancy diamond motif on two side panels, embossed scrolls below shoulders, fluted shoulders below double neck ring, applied ring collar - blowpipe pontil scar, ht. 8 5/8", near mint; (a little blob of extra glass on the inner surface of a side panel has a tiny annealing line through it, otherwise virtually perfect). A very rare, eye-appealing, pickle jar.

*Est.: \$800 - \$1,200 • Min. bid: \$400*



### Lot 108

**Cathedral Peppersauce Bottle**, America, probably South Jersey or Mid-Atlantic, 1870 - 1880. Medium-to-deep yellowish green coloration, hexagonal with arched Gothic panels and trefoil motifs, applied round collar with bevel - "S" (on smooth base), ht. 8 1/2"; (a 3/8" 'scallop' type chip on one of the panel edges, and just a bit of light interior washable residue, otherwise perfect). MW, plate 74, #2. A gorgeous, and exceedingly rare color for a cathedral peppersauce bottle.

*Est.: \$800 - \$1,200 • Min. bid: \$400*



### Lot 112

**Rare, Cathedral Pickle Jar**, America, 1850 - 1860. Bright aqua, square with rounded corners, all four panels with large arched cathedral windows, two with embossed diamond panes, bell form petal-type neck, sheared mouth with crudely applied ring type collar - heavy iron pontil scar, ht. 8 3/8", virtually attic mint; (just a slight bit of faint wear, trace interior residue, otherwise perfect). A very attractive jar, and an extremely rare mold, one you will not likely see again for a very long time!

*Est.: \$800 - \$1,200 • Min. bid: \$400*



### Lot 113

**Cathedral Pickle Jar**, probably a Mid-Atlantic glasshouse, 1860 - 1870. Medium clear green, square with beveled corners, fancy Gothic double arch pattern on all four panels with lattice designs in three lower panels, acorn finial at top of lower arches; trefoil ornament at top of upper arches, sheared mouth with ring collar - smooth base, ht. 10 5/8", perfect. Similar to MW, plate 73, #6. A very scarce and attractive mold, beautiful color, virtually 'out-of-the-mold' pristine condition.

*Est.: \$600 - \$900 • Min. bid: \$300*



### Lot 114

**Cathedral Pickle Jar**, a Mid-Atlantic glasshouse, 1855 - 1865. Medium-to-deep emerald, square with beveled corners, arched Gothic panels on four sides with fancy scallop designs around inner frame, cross and pendant motif below top of frame, tulip ornament at top of each panel, sheared mouth with applied ring collar - heavy iron pontil scar, ht. 11 1/8", virtually perfect; (a tiny pinhead flake on one panel edge). MW, plate 73, #5. A top example. Strong, gorgeous color!

*Est.: \$2,000 - \$3,000 • Min. bid: \$1,000*



### Lot 115

**Giant, Cathedral Pickle Jar**, Mid-Atlantic, possibly Crowleytown Glass Works, 1860 - 1875. Light-to-medium green with an emerald tone, arched Gothic panels on all four sides with palmette at top, pendant and bell motif on inner frame, sheared mouth with tooled, likely applied, ring collar - smooth base, ht. 14 1/4", near mint; (some very light interior haziness or residue, some of which may wash out, otherwise attic mint). A big, beautiful, mammoth-size pickle jar.

*Est.: \$1,500 - \$2,500 • Min. bid: \$800*



### Lot 116

**"GREENE & GLADDING - OLD HOLLAND GIN. - 62 CORTLANDT ST / NEW YORK."**, America, 1865 - 1875. Rich, deep blue green coloration, square with beveled corners, applied sloping collar - smooth base, ht. 9 1/4", near mint; (a slight trace of minor light wear and a 1/4", likely in-manufacture, imperfection on the shoulder where another piece of glass or object came in contact, otherwise excellent). A very scarce American gin, rich, deep color, crude, wavy glass.

*Est.: \$300 - \$500 • Min. bid: \$150*



### Lot 117

**"CHARLES' - LONDON - CORDIAL GIN"**, America, 1865 - 1875. Bright yellowish emerald coloration, square with beveled corners, applied sloping collar - smooth base, ht. 7 7/8", virtually attic mint; (a trace of typical light wear, otherwise perfect). A great 'attic-type' example that does not appear to have been dug and cleaned with bold embossing, excellent character and clarity, beautiful and scarce color! Provenance: John Apple collection.

*Est.: \$300 - \$500 • Min. bid: \$150*



### Lot 118

**Lot of (2), "CHARLES' - LONDON - CORDIAL GIN" Bottles**, 1865 - 1875. 1st Ex. is a rich, medium-to-deep blue green, 2nd Ex. is a beautiful deep ice blue coloration, both are square with beveled corners, applied sloping collar - smooth base, ht. 8 1/8" and 9 3/8" respectively, both are sparkling, virtually attic mint; (blue green example has a tiny pinhead flake and minor roughness on the edge of the collar, a bit of in-making glass extrusion at mold seam). Both gorgeous, eye-appealing examples!

*Est.: \$400 - \$800 • Min. bid: \$200*



### Lot 119

**"CHARLES' - LONDON - CORDIAL GIN"**, America, 1865 - 1875. Deep reddish puce coloration, square with beveled corners, applied sloping collar - smooth base, ht. 8", near perfect; (just the slightest trace of wear including a 3/16" onionskin-thin open bubble on the shoulder). Another great example, extremely rare color, fantastic condition. Only the 2nd example in more than 20 years to be offered at auction in this rich, dense red-dish puce coloration.

*Est.: \$800 - \$1,200 • Min. bid: \$400*



### Lot 120

**"BOOTH & SEDGWICK'S - LONDON - CORDIAL GIN"**, America, 1855 - 1860. Gorgeous, medium-to-deep yellowish green, square with beveled corners, applied sloping collar with bevel - heavy iron pontil scar, ht. 8", virtually perfect; (just a slight trace of faint, washable, interior residue, and an onionskin-thin, pinhead open bubble on one of the beveled corners, otherwise pristine). An outstanding example, fantastic rich, eye-appealing color, very heavy, full iron pontil scar.

*Est.: \$800 - \$1,200 • Min. bid: \$400*





### Lot 121

**"L. LYONS / PURE OHIO / CATAWBA BRANDY / CINI",** America, 1865 - 1875. Medium-to-deep amber, hock wine form with gentle sloping shoulders, sheared mouth with a crudely applied flat band - deep domed smooth base, ht. 13 1/2", near mint; (just a bit of scattered light wear, and a 7/16" x 1/4" chip at the edge of the base on the reverse, otherwise excellent). A very-scarce-to-rare brandy, strong, bold embossing, and very heavily whittled!

**Est.: \$250 - \$450 • Min. bid: \$130**



### Lot 125

**"GRIFFITH HYATT & Co. / BALTIMORE" Applied Handle Whiskey Jug,** probably Baltimore Glass Works, 1850 - 1860. Rich, medium yellowish olive green, pear form, applied handle curled at lower attachment, applied square collar - heavy blowpipe pontil scar, ht. 7 1/4", near perfect; (just a trace of minor wear including a pinhead bit of roughness on the edge of the collar, otherwise perfect). A great example, rare and desirable color, beautifully whittled.

**Est.: \$1,200 - \$2,200 • Min. bid: \$600**



### Lot 122

**"OLD / VIRGINIA / PEACH / BRANDY",** 1850 - 1860. Medium-to-deep 'old amber', cylindrical, magnum-size, applied sloping collar with bevel - heavy iron pontil scar, ht. 11 3/4"; (Lightly cleaned to original luster and near mint condition; a couple of light scratches on the side, and a 1/2" iridescent bruise on the inside edge of the lip). A big, impressive pontiled brandy, extremely rare - believed to be one of six or so known in any condition! Ex. Ken Schwartz collection.

**Est.: \$3,000 - \$5,000 • Min. bid: \$1,500**



### Lot 126

**Lot 126 "FOREST / LAWN / J.V.H"** (within molded seal), **Whiskey Bottle,** 1850 - 1860. Beautiful, medium green, almost an avocado color, bulbous body, applied sloping collar - iron pontil scar, ht. 7 1/2", near mint; (a tiny, 3/16", likely in-making, annealing line near the base of the neck, and some light content residue). Fantastic color, lighter than most, and beautifully whittled. Also, scarce lip treatment (typically found with a double collar rather than a single taper collar). Fred Swiechowicz collection.

**Est.: \$300 - \$500 • Min. bid: \$150**



### Lot 123

**"S M & Co / N.Y"** (within molded seal), **Applied Handle Whiskey,** a Mid-Atlantic glasshouse, 1850 - 1860. Medium-to-deep amber, chestnut form, applied handle with rigaree, applied mouth with ring - large, solid glass-tipped pontil scar, ht. 9", virtually perfect; (tiny, 1/8" open bubble on back shoulder). A very scarce handled whiskey, especially in this fine condition, heavily whittled. The company put out several different bottles, the chestnut form being very scarce.

**Est.: \$400 - \$800 • Min. bid: \$200**



### Lot 127

**Lot of (2), Figural Pineapple Bitters Bottles,** America, 1860 - 1875. Beautiful, bright golden honey, and medium-to-deep amber, both are pineapple form, applied blob collars with bevel - smooth base, ht. 9" each, both are virtually attic mint; (each with just slight traces of minor interior residue, otherwise both are near perfect). R/H #P100. A beautiful pair of figural pineapple bitters, the colors complementing one another nicely, both in outstanding condition.

**Est.: \$300 - \$500 • Min. bid: \$150**



### Lot 124

**"GRIFFITH HYATT & Co. / BALTIMORE" Applied Handle Whiskey Jug,** probably Baltimore Glass Works, 1850 - 1860. Yellowish honey amber through the center shading to a rich, deep amber, through the shoulders and neck, pear form, applied handle curled at lower attachment, applied square collar - blowpipe pontil scar, ht. 7 1/4", virtually perfect; (a tiny, shallow, pinhead flake on the back edge of the square collar, otherwise attic mint). Pleasing example, beautifully whittled.

**Est.: \$400 - \$600 • Min. bid: \$200**



### Lot 128

**OK / PLANTATION / 1840 - PATENTED / 1863,** 1863 - 1875. Beautiful, lemon yellow with an olive tone, triangular, beveled corners, applied sloping collar - smooth base, ht. 10 7/8"; (professionally cleaned with some fine wear and scattered light scratches remaining; some minor matte-type finish in a couple of areas, and a couple of flakes, 1/8" or less, on the collar). A beautiful, eye-appealing example, rare color! It's not perfect, but still impressive and displays nicely. David Sidelinger collection.

**Est.: \$1,000 - \$2,000 • Min. bid: \$500**



### Lot 129

**TRAVELLER'S** - (Figure of bearded man with coat and walking stick) - **"BITTERS"** - 1834 / 1870", 1870 - 1875. Beautiful yellowish-honey coloration, applied sloping collar - smooth base, ht. 10 1/4", virtually perfect; (just a slight trace of very minor wear). R/H #T54. A very rare pictorial bitters, lighter in color than the small handful of examples extant; strong impression, outstanding condition, an absolute top example. Jeff Burkhardt collection; Ex. John Feldman collection.

*Est.: \$8,000 - \$12,000 • Min. bid: \$4,000*



### Lot 130

**"OLD SACHEM / BITTERS / AND / WIGWAM TONIC"**, 1860 - 1875. Beautiful, light-to-medium topaz coloration with some subtle pinkish apricot striations swirled through the shoulders, barrel form, applied square collar - smooth base, ht. 9 3/8", virtually perfect; (just a touch of very minor wear on the reverse, and a slight trace of faint interior milkiness, barely noticeable, in the reverse, otherwise pristine). R/H #O46. Rare color, strong impression, fantastic 'see-through' clarity!

*Est.: \$2,000 - \$4,000 • Min. bid: \$1,000*



### Lot 131

**"BOURBON WHISKEY / BITTERS."**, America, 1860 - 1875. Beautiful, bright medium apricot in the upper half of the bottle, shading to a rich, deep apricot with some orangey salmon tones towards the base, barrel form, applied square collar - smooth base, ht. 9 1/8", attic mint! R/H #B171. A beautiful example that passes plenty of light, whittled, and in virtually perfect condition.

*Est.: \$300 - \$500 • Min. bid: \$150*



### Lot 132

**"DR C.W. ROBACKS / STOMACH BITTERS / CINCINNATI. O"**, 1860 - 1865. Bright, medium amber with some golden tones, barrel form, applied sloping collar - red iron pontil scar, ht. 9 3/4", virtually perfect; (just a slight trace of faint wear on the reverse and a 1/8" bit of in-manufacture, very minor roughness, on the back edge of the lip, otherwise pristine). R/H #R73. A great example, very heavily whittled, and with strong, crisp embossing.

*Est.: \$400 - \$600 • Min. bid: \$200*



### Lot 133

**"NATIONAL / BITTERS"** - **"PATENT / 1867"** (on base), 1867 - 1875. Golden amber, figural ear of corn, applied short tapered collar with ring - smooth base, ht. 12" (a tiny pinprick bit of roughness on the back edge of the collar, almost certainly in-manufacture, and a 1/4" by 1/2" surface bubble on the reverse that was never fully formed, or had a cover glass, mentioned for completeness, otherwise perfect). R/H #N8. A very nice example, and one of the all-time classic figural bitters.

*Est.: \$300 - \$500 • Min. bid: \$150*



### Lot 134

**"THE / FISH BITTERS - W.H. WARE / PATENTED 1866"**, 1866 - 1875. Medium amber, figural fish form, applied ring collar - "W.H. WARE / PATENT 1866" (on smooth base), ht. 11 5/8"; (some minor interior content haze, not terribly distracting or noticeable on display, otherwise near mint). R/H #F46. A classic figural bitters and a lot of bottle for the money.

*Est.: \$250 - \$400 • Min. bid: \$130*



### Lot 135

**"KELLY'S / OLD CABIN / BITTERS - PATENTED / 1863 - KELLY'S / OLD CABIN / BITTERS - PATENTED / 1863"**, 1863 - 1870. Beautiful, yellowish honey along the sides, shading to a rich deep honey coloration through the neck and near the base, cabin form, applied sloping collar - smooth base, ht. 9", perfect. R/H #K21. Great color, lighter than most, strong embossing, outstanding condition, a fantastic example!

*Est.: \$2,000 - \$4,000 • Min. bid: \$1,000*



### Lot 136

**"HOLTZERMANN'S - PATENT / STOMACH / BITTERS"**, America, 1865 - 1875. Medium amber through the center shading to a lighter honey coloration along the sides and through the corners, rectangular cabin form, applied sloping collar - smooth base, ht. 9 1/4", near mint; (a couple of areas of minor, very light interior haziness, otherwise perfect). R/H #H155; MW, plate 85, #3. Very strong embossing, much better than most - all the window panes are bold! David Sidelinger collection.

*Est.: \$1,400 - \$2,200 • Min. bid: \$700*





### Lot 137

**Holtzermann's Stomach Bitters** (label-only), **Miniature Figural Log Cabin** (with original label and partial contents), 1906 - 1910. Orange amber in the neck, shading to honey amber in the body, and light yellowish honey along one of the sides, rectangular cabin form, tooled sloping collar - smooth base, ht. 4"; (bottle is perfect, colorful label is excellent!) R/H #H153-L. Finest possible example. Rare with complete label, partial contents.

*Est.: \$600 - \$900 • Min. bid: \$300*



### Lot 138

**"HOLTZERMANN'S / PATENT / STOMACH / BITTERS"** (with complete original label), 1900 - 1910. Bright amber with orange tones through the neck and lower body, rectangular cabin form, tooled sloping collar - smooth base, ht. 9 3/4", virtually perfect; (a tiny little 1/8" flake on the lower roof edge on the side, otherwise attic mint). R/H #H154. A top example with embossing about as strong as you could hope to find, and label is in outstanding condition.

*Est.: \$500 - \$800 • Min. bid: \$250*



### Lot 139

**"S T / DRAKE'S / 1860 / PLANTATION / X / BITTERS - PATENTED / 1862"** (with 98% complete, original, front and back labels), 1862 - 1880. Medium amber shading to a honey coloration through the corners, and with an orange tone in the shoulders, cabin form with 4 logs above the label panel, applied sloping collar - smooth base, ht. 10 1/8"; (some interior content residue or light haze, otherwise virtually perfect). R/H #D110. A nice example, scarce with original labels.

*Est.: \$250 - \$400 • Min. bid: \$130*



### Lot 140

**"S T / DRAKE'S / 1860 / PLANTATION / X / BITTERS - PATENTED / 1862"**, 1862 - 1880. Clear medium yellow, almost a lemon yellow coloration, cabin form, 4 logs above the label panel, applied sloping collar - smooth base, ht. 10 3/8"; (a couple of small spots of very minor dullness near the base; some faint interior milkiness in the corners, barely noticeable, and a paper-thin 1/4" flake on a corner near the base, otherwise near mint). R/H #D110. A very pretty example.

*Est.: \$800 - \$1,200 • Min. bid: \$40*



### Lot 141

**"S T / DRAKE'S / 1860 / PLANTATION / X / BITTERS - PATENTED / 1862"**, America, 1862 - 1880. Bright, light, yellowish honey coloration, cabin form with 6-logs above the label panel, applied sloping collar - smooth base, ht. 9 7/8", near mint; (a touch of light wear including a 3/16" partially open bubble on the back roof edge; the embossing is somewhat weak in the shoulders). R/H #D105. A pretty example, plenty of nice yellowish tones. Provenance: David Sidelinger collection.

*Est.: \$400 - \$600 • Min. bid: \$200*



### Lot 142

**"S T / DRAKE'S / 1860 / PLANTATION / X / BITTERS - PATENTED / 1862"**, America, 1862 - 1880. Beautiful light-to-medium apricot with some lighter copper tones through the corners, cabin form with 6-logs above the label panel, applied sloping collar - smooth base, ht. 9 7/8", attic mint. R/H #D105. A very pretty Drake's, absolutely no amber in this one, lighter in tone than most in this coloration, and with excellent 'see through' clarity. A beautiful example!

*Est.: \$500 - \$1,000 • Min. bid: \$250*



### Lot 143

**"H.P. HERB / WILD / CHERRY / BITTERS / READING / PA - WILD CHERRY / (Cherry Tree) / BITTERS - BITTERS - BITTERS - BITTERS"**, 1875 - 1885. Light golden amber, cabin form with roped corners, thatched roof, applied sloping collar - smooth base, ht. 10"; (a little minor wear including a couple of small chips, 3/16" or less, on one of the roped corners, a little faint dullness on the back panel). R/H #H93. Provenance: David Sidelinger collection.

*Est.: \$200 - \$400 • Min. bid: \$100*



### Lot 144

**"JOHN. W. STEELE'S / NIAGARA (STAR) BITTERS"** - **"JOHN. W. STEELE'S / NIAGARA. STAR. BITTERS"** - **(EAGLE) - (STAR) - (STAR) - "1864" - (STAR)**, (with partial label), 1864 - 1875. Medium amber, semi-cabin form, applied sloping collar with band - smooth base, ht. 10", near perfect; (a bit of light interior content residue and just the slightest trace of wear including a 1/4", paper-thin, open bubble on the base, original label is illegible, but intact). R/H #S182. Scarce.

*Est.: \$800 - \$1,200 • Min. bid: \$400*



### Lot 145

**"JOHN. W. STEELE'S / NIAGARA (STAR) BITTERS" - "JOHN. W. STEELE'S / NIAGARA. STAR. BITTERS" - (EAGLE) - (STAR) - (STAR) - "1864" - (STAR), 1864 - 1875.** Medium-to-deep amber with a slight root beer tone through the shoulders, semi-cabin form, applied sloping collar with band - smooth base, ht. 10", virtually perfect; (a tiny, 1/8", paper-thin flake on the edge of the base, otherwise pristine). R/H #S183. Nice crude glass with plenty of tiny bubbles.

*Est.: \$800 - \$1,200 • Min. bid: \$400*



### Lot 146

**"JOHN. W. STEELE'S / NIAGARA (STAR) BITTERS" - "JOHN. W. STEELE'S / NIAGARA STAR BITTERS" - (EAGLE) - (STAR) - (STAR) - "1864" - (STAR), 1864 - 1875.** Medium amber, applied sloping collar with band - smooth base, ht. 10 1/8"; (professionally cleaned to original luster; some faint dullness and matte-type finish, primarily on one panel, a 1/8" flake on one of the beveled corners). R/H #S184. Scarce. Provenance: David Sidelinger collection.

*Est.: \$400 - \$600 • Min. bid: \$200*



### Lot 147

**"JOHN ROOT'S BITTERS - BUFFALO, N.Y. - 1834 - 1834", A. & D. H. Chambers Glassworks, Pittsburgh, PA, 1870 - 1880.** Rich, deep aquamarine, rectangular semi-cabin form, applied sloping collar - "A.&D.H.C" (on smooth base), ht. 10 1/4", attic mint. R/H #R90.4. Very scarce color. Here's one that has not been dug and cleaned, bright, clean and sparkling.

*Est.: \$500 - \$800 • Min. bid: \$250*



### Lot 148

**"GOLDEN / BITTERS - GEO. C. HUBBEL & Co - GEO. C. HUBBEL & Co", America, 1865 - 1875.** Aquamarine, rectangular semi-cabin form, applied sloping collar with bevel - smooth base, ht. 10 1/4", near mint; (a 3/4", onionskin-thin, partially open bubble on the reverse near one of the beveled corners, otherwise attic mint). R/H #G63. Scarce. A bright, clean, sparkling example.

*Est.: \$200 - \$400 • Min. bid: \$100*



### Lot 149

**"DR. SHEPARD'S / COMPOUND / WAHOO BITTERS / GRAND RAPIDS MICH"** (with 90% complete original label), probably 1870 - 1882. Aquamarine, oval, applied round collar with bevel - smooth base, ht. 7 3/8"; (bottle is perfect; label is darkened a bit from age, but mostly legible). R/H #S99. Dr. Charles Shepard was a pharmacist in Grand Rapids from 1865 to 1882. He packaged many of his own preparations including this very scarce "Wahoo" bitters (and rare with original label).

*Est.: \$300 - \$500 • Min. bid: \$150*



### Lot 150

**"KIMBALL'S / JAUNDICE - BITTERS - TROY. N.H.", a Stoddard, NH glass-house, 1850 - 1860.** Light-to-medium yellowish olive amber, rectangular with beveled corners, applied sloping collar - iron pontil scar, ht. 6 7/8", near perfect; (just a bit of light wear at the base of the front panel, and a slight trace of roughness at the edge of the lip, likely in-manufacture, that you can feel, but is not easy to see, otherwise attic mint). R/H #K42. Nice color and character with crude, seedy, glass!

*Est.: \$800 - \$1,200 • Min. bid: \$400*



### Lot 151

**"JNO. MOFFAT - PHOENIX / BITTERS - PRICE \$ 1 - NEW YORK", New England, possibly a Stoddard, NH glass-house, 1842 - 1855.** Light-to-medium yellowish olive amber, rectangular with beveled corners, applied ring type collar - blowpipe pontil scar, ht. 5 1/2", virtually pristine perfect; (slight trace of light content residue). R/H #M110. Fantastic - very scarce color, much lighter in tone, and with more yellow than most, a top example, outstanding character and condition.

*Est.: \$800 - \$1,600 • Min. bid: \$400*



### Lot 152

**"DR. BALL'S - VEGETABLE / STOMACHIC / BITTERS - NORTHBORO MASS.", 1845 - 1855.** Aquamarine, rectangular with wide beveled corners, applied square collar - blowpipe pontil scar, ht. 6 1/2", virtually perfect; (a partially open interior bubble in the back of the neck, otherwise attic mint). R/H #B14. A very scarce pontiled bitters listed as "Rare" in the Ring / Ham book.

*Est.: \$250 - \$450 • Min. bid: \$130*





### Lot 153

**"W.B. WILLIAMS. M.D - STOMACH & LIVER / BITTERS - WATTSBURG PA"**, 1850 - 1860. Aquamarine, rectangular with beveled corners, applied round collar with bevel - iron pontil scar, ht. 7 1/2"; (lightly cleaned to original luster and near mint condition; a trace of very minor wear, and a touch of faint haze in the neck, otherwise perfect). R/H Supplement #120.5. An exceedingly rare pontiled bitters, believed to be unique, or possibly one of two. David Sidelinger collection.

*Est.: \$600 - \$1,200 • Min. bid: \$300*



### Lot 157

**"HOFSTETTER / STOMACH BITTERS / GALION. O.H"**, probably a Pittsburgh glasshouse, 1870 - 1880. Honey amber, square, beveled corners, applied sloping collar - smooth base, ht. 8 3/4"; (professionally cleaned to original luster with some scattered wear, and a few light scratches remaining, primarily on the back label panel, otherwise excellent). R/H #H139. Exceedingly rare! Believed to be the 1st example offered at auction since inception of the auction records more than 35 years ago!

*Est.: \$800 - \$1,600 • Min. bid: \$400*



### Lot 154

**"LEDIARD'S - CELEBRATED - STOMACH BITTERS"**, 1855 - 1865. Brilliant yellowish emerald coloration, square with beveled corners, applied sloping collar with bevel - large iron pontil scar, ht. 9 7/8", virtually perfect; (a couple of very minor, shallow open surface bubbles, otherwise pristine). R/H #L60. Very beautiful color, fantastic 'see-through' clarity all the way to the base, outstanding condition, a top example! A scarce, bitters produced for the west coast market.

*Est.: \$2,000 - \$4,000 • Min. bid: \$1,000*



### Lot 158

**"DR J. HOSTETTER'S / STOMACH BITTERS"**, probably Wm. McCully & Co., Pittsburgh, 1865 - 1875. Bright medium yellow with a slight honey tone through the collar and base, square with beveled corners, applied sloping collar - **"W.McC & C. / 4"** (on smooth base), ht. 9", near mint; (just a little typical light wear including a 1/4" open bubble on one of the side panels, otherwise perfect). R/H #H195. An 'attic-type' example in a very pretty, bright yellow coloration with excellent clarity.

*Est.: \$250 - \$450 • Min. bid: \$130*



### Lot 155

**"DR. W. PAETZ'S / STOMACH BITTERS"**, Midwest, probably a Pittsburgh district glasshouse, 1860 - 1865. Medium-to-deep 'old amber', square with beveled corners, applied sloping collar - red iron pontil scar, ht. 9 1/2", virtually perfect; (just a slight trace of light wear). R/H #P4.5. Exceedingly rare, one of only 3 known, and considered to be the choicest of the three. Dr. Paetz was believed to be from Columbus, OH, and the mold resembles the early pontiled Hostetter's bottle.

*Est.: \$3,000 - \$6,000 • Min. bid: \$1,500*



### Lot 159

**"DR J. HOSTETTER'S / STOMACH BITTERS"**, probably a Pittsburgh district glasshouse, 1860 - 1870. Very deep olive amber, square with beveled corners, applied sloping collar - smooth base, ht. 9 3/8", near mint; (a bit of typical minor light wear, and a little faint dullness or 'bloom' on the back label panel, otherwise excellent). R/H #H194. A good clean example, nice crude glass, overall excellent condition.

*Est.: \$250 - \$400 • Min. bid: \$130*



### Lot 156

**"STAR. ANCHOR BITTERS - PORTSMOUTH OHIO - W.L.B. JACK."**, probably 1871 - 1873. Medium yellow with a slight honey tone, and just a hint of an olive tone, square, beveled corners, applied sloping collar - smooth base, ht. 9", near mint; (a little light, washable, interior content residue; a 1/4" flake on the beveled edge near the base, and a tiny, paper-thin, 1/8" flake at edge of base, otherwise perfect). R/H #S176. A rare mold, and extremely rare in this gorgeous yellow coloration.

*Est.: \$400 - \$800 • Min. bid: \$200*



### Lot 160

**"SWISS / STOMACH BITTERS - ARNOLD KOCH / BIRMINGHAM. PA"**, 1865 - 1872. Rich, deep amber, rectangular with 'accordion' or "V"-shaped side panels, applied sloping collar - smooth base, ht. 9 1/4", near mint; (just a touch of minor light wear, and a bit of faint interior residue, non-distracting and likely washable, otherwise perfect). R/H #S242. In 1872, Birmingham, PA was incorporated into Pittsburgh and ceased to exist. Very scarce. Provenance: John Apple collection.

*Est.: \$250 - \$400 • Min. bid: \$130*

**Lot 161**

**"DAVIS'S KIDNEY AND / LIVER BITTERS - BEST INVIGORATOR / AND CATHARTIC"**, America, 1890 - 1900. Bright golden amber, square with beveled corners, tooled sloping collar - smooth base, ht. 10"; (lightly cleaned to original luster and near mint condition; a little pinhead open surface bubble, otherwise excellent). R/H #D28. Believed to be a Western bitters. Listed by Ring / Ham as "Very rare", and only the second example offered at auction in more than 10 years.

*Est.: \$200 - \$400 • Min. bid: \$100*

**Lot 165**

**"DR TOWNSENDS - SARSAPARILLA - NEW YORK."**, 1850 - 1860. Bright, clear medium emerald, square, beveled corners, applied sloping collar - domed base with iron pontil scar, ht. 9 3/4", near perfect; (just a trace of very light wear including a tiny pinhead flake on one of the panel edges; a faint wisp of milkiness below the shoulder, barely noticeable, otherwise sparkling mint). A top example, pretty color, fantastic clarity, and outstanding character with whittled, very wavy glass!

*Est.: \$800 - \$1,600 • Min. bid: \$400*

**Lot 162**

**"DR TOWNSEND'S - SARSAPARILLA - ALBANY / N.Y. No1"**, New England, or possibly New York State, 1845 - 1855. Deep yellowish olive, square with beveled corners, applied sloping collar - sand type pontil scar, ht. 9 1/4", near mint; (just a slight trace of minor wear, some light, washable, interior content residue, otherwise perfect). A great example with excellent character, crude seedy glass, bold embossing, excellent condition. Very scarce-to-rare "No1" mold variant.

*Est.: \$600 - \$900 • Min. bid: \$300*

**Lot 166**

**"DEXTER'S / SYRUP."**, NY State, probably Albany Glass Works, 1847 - 1851. Medium blue green, square, beveled corners, applied sloping collar - iron pontil scar, ht. 9 1/8"; (professionally cleaned with a little scattered wear remaining including 1 1/4" flat chip, and a couple of spots of ground wear along one of the beveled corners). Odell, p.111. Heavy crude glass, boldly embossed. Extremely rare in aqua, and possibly unique in this blue green coloration. Provenance: Ex. James Chebalo collection.

*Est.: \$1,500 - \$2,500 • Min. bid: \$800*

**Lot 163**

**"DR TOWNSEND'S - SARSAPARILLA - ALBANY / N.Y."**, America, 1850 - 1860. Rich, yellowish emerald coloration, square with beveled corners, crudely applied sloping collar - cloverleaf iron pontil scar, ht. 9 1/2", virtually perfect; (a shallow, partially open interior bubble below the shoulder, otherwise attic mint). A fantastic example, strong, beautiful rich color, bold embossing, excellent character and condition!

*Est.: \$600 - \$900 • Min. bid: \$300*

**Lot 167**

**"A. MOSHER" Medicine Bottle**, probably Albany Glass Works, Albany, NY, 1847 - 1850. Deep bluish green coloration, oval, applied sloping collar - iron pontil scar, ht. 8 5/8", near mint; (a little light wear including a tiny pinhead flake and minor lip edge roughness; an in-manufacture pontil chip that does not extend to the edge, otherwise perfect). Odell, p.260. A great example of this rare Albany sarsaparilla, deeper in color than most, beautifully whittled, excellent condition.

*Est.: \$2,500 - \$4,500 • Min. bid: \$1,300*

**Lot 164**

**"DR TOWNSEND'S - SARSAPARILLA - ALBANY / N Y"**, America, 1850 - 1860. Bright, light-to-medium blue green, square with beveled corners, applied sloping collar - iron pontil scar, ht. 9 5/8", near mint; (just a slight trace of minor light wear, otherwise excellent). Scarce. Note; this is the variant with no periods after "N Y", and "N Y" centered below "ALBANY". Excellent clarity and character with crude, pebbly glass.

*Est.: \$300 - \$500 • Min. bid: \$150*

**Lot 168**

**"DR. PERKINS' / SYRUP, ALBANY."**, probably a NY State glasshouse, 1850 - 1860. Bright, medium blue green coloration, rectangular with beveled corners, crudely applied sloping collar - iron pontil scar, ht. 9 1/4", virtually attic mint; (just the slightest trace of faint wear, otherwise perfect). Odell, p.276. A rare, great looking colored pontiled medicine, excellent character, color, and condition. Provenance: Ex. James Chebalo collection.

*Est.: \$4,000 - \$6,000 • Min. bid: \$2,000*





### Lot 169

**"ABL MYERS AM - ROCK ROSE - NEW\_HAVEN"**, probably 1852 - 1856. Rich, medium-to-deep bluish green with an emerald tone, rectangular with beveled corners, applied blob collar - heavy iron pontil scar, ht. 9 1/4", virtually perfect; (just a trace of faint wear including a couple of tiny, pinhead open surface bubbles, otherwise pristine). A big, gutsy, pontiled medicine. This "ABL Myers" having a stronger color and more of a greenish tone than most. Fred Swiechowicz collection.

*Est.: \$4,000 - \$6,000 • Min. bid: \$2,000*



### Lot 173

**"L.P. DODGE - RHEUMATIC / LINIMENT - NEWBURG"**, America, 1850 - 1860. Rich, medium-to-deep 'old amber', almost a tobacco coloration, rectangular with beveled corners, applied sloping collar - blowpipe pontil scar, ht. 5 7/8"; (professionally cleaned to original luster with a little scattered minor ground wear remaining; a bit of roughness including a 1/8" flake on the inner edge of the lip, otherwise excellent). A very scarce, desirable, pontiled medicine, nice rich color.

*Est.: \$1,200 - \$2,400 • Min. bid: \$600*



### Lot 170

**"N. WOOD / PORTLAND / ME"**, an early Stoddard, NH glasshouse, 1845 - 1855. Beautiful, light-to-medium yellowish amber with a slight olive tone, rectangular with wide beveled corners, applied sloping collar - blowpipe pontil scar, ht. 7", perfect! Odell, p.380. A very pretty, top example, about as nice as you could hope to find. Gorgeous color, lighter than most, outstanding character with crude, 'syrupy' glass, fantastic condition. Provenance: Fred Swiechowicz collection.

*Est.: \$1,600 - \$2,800 • Min. bid: \$800*



### Lot 174

**"LIQUID - OPODELDOC"**, New England, possibly one of the Stoddard, NH glasshouses, 1845 - 1855. Bright yellow with a slight honey tone in the neck and base, cylindrical, sheared, tooled, thin flanged lip - blowpipe pontil scar, ht. 4 1/2", perfect; (the embossing is a little weak, as is often the case with the mold). Odell, p.227. Extremely rare, believed to be a unique example in this light yellow coloration! Provenance: Ex. James Chelalo, Dr. Sam Greer collections.

*Est.: \$1,500 - \$2,500 • Min. bid: \$800*



### Lot 171

**"I. NEWTON'S - PANACEA - PURIFIER - OF THE - BLOOD - NERWICH. VT."** (misspelled variant), New England, probably an early Stoddard, glasshouse, 1842 - 1850. Medium-to-deep yellowish amber with an olive tone, cylindrical with six indented panels, applied sloping collar with bevel - sand type pontil scar, ht. 7 1/4", virtually attic mint; (a couple of small spots of light wear, otherwise perfect). Odell, p.264. Extremely rare, beautiful color and condition. Fred Swiechowicz collection.

*Est.: \$4,000 - \$8,000 • Min. bid: \$2,000*



### Lot 175

**"CARTERS / SPANISH / MIXTURE"**, America, 1850 - 1860. Brilliant, light-to-medium yellowish olive, applied sloping collar - iron pontil scar, ht. 7 7/8", attic mint. Odell, pgs. 68 & 69. A classic colored pontiled medicine, Bennett & Beers, druggists and proprietors of the Spanish Mixture, were located at 125 Main Street in Richmond, Virginia. An absolutely fantastic example, very pretty color, lighter in tone than most, excellent clarity, character, and condition!

*Est.: \$400 - \$600 • Min. bid: \$200*



### Lot 172

**"Dr. J. W. POLAND" Medicine Bottle**, an early Stoddard, NH glasshouse, 1855 - 1865. Medium-to-deep yellowish "old amber" with a slight olive tone, oval, crudely applied large square collar - smooth base, ht. 7 3/4", near mint; (a bit of minor exterior wear including a 1/8" paper-thin open bubble; some light dullness, or 'bloom' to the glass, on the front panel, as is common with this mold, otherwise excellent. A classic, very scarce and desirable, colored Stoddard medicine.

*Est.: \$1,800 - \$3,200 • Min. bid: \$900*



### Lot 176

**"G.W. MERCHANT / CHEMIST / LOCKPORT / N.Y."**, probably Lockport Glass Works, NY, 1850 - 1860. Rich, medium-to-deep 'Lockport' blue green, cylindrical, applied sloping collar - heavy iron pontil scar, ht. 7", near mint; (a little scattered, relatively minor wear, including a tiny, onionskin-thin, pinhead flake on the edge of the lip, and a little minor residue or haziness, primarily in the base, otherwise excellent). A nice example that has not been dug, whittled, and with good depth of color.

*Est.: \$250 - \$450 • Min. bid: \$130*



### Lot 177

**"T. MORRIS PEROT & Co - DRUGGISTS - PHILAD.A", 1854 - 1859.**

Sapphire blue, rectangular, pyramid form with sides tapering inward from base to shoulders, sheared, tooled, and inward rolled lip - blowpipe pontil scar, ht. 5 1/8", perfect; (note; a 1/4" in-manufacture pontil flake extends to the edge of the narrow base, but does not show on display, mentioned for completeness, and not considered damage). A great example with beautiful color, character, and condition.

**Est.: \$1,200 - \$1,800 • Min. bid: \$600**



### Lot 178

**"T. MORRIS PEROT / & CO. - DRUGGISTS - PHILADELPHIA", 1854 - 1859.**

Sapphire blue, rectangular with beveled corners, applied sloping collar - blowpipe pontil scar, ht. 6 1/2", attic mint. Extremely rare! There are several different molds of the sapphire blue, "T. Morris Perot" druggist bottles. This is by far the rarest and most difficult to acquire. A beautiful colored pontiled medicine, and extremely rare, believed to be one of only two, or possibly three, extant.

**Est.: \$2,000 - \$4,000 • Min. bid: \$1,000**



### Lot 179

**"I.L. ST JOHN'S - COUGH SYRUP", a Midwest glasshouse, 1850 - 1860.** Bright, medium yellowish green coloration, eight sided, applied sloping collar - iron pontil scar, ht. 6 1/2", virtually attic mint; (a 1/16" flake on the inside edge of collar, otherwise perfect). Odell, p.329. Extremely rare! This is the larger of two sizes, and believed to be one of only 3, or possibly 4 examples known, (one being cracked), in this beautiful yellow green coloration. A local find from Bucyrus, Ohio.

**Est.: \$1,500 - \$2,500 • Min. bid: \$800**



### Lot 180

**"I.L. ST JOHN'S - COUGH SYRUP", a Midwest glasshouse, 1850 - 1860.** Aquamarine, 8-sided, applied sloping collar - iron pontil scar, ht. 6 3/8", attic mint. Odell, p.329. A great example, fantastic condition. St. John was a druggist and patent medicine dealer from Tiffin, Ohio. Very scarce.

**Est.: \$150 - \$250 • Min. bid: \$80**



### Lot 181

**"DR C.W. ROBACK'S / SCANDINAVIEN / BLOOD PURIFIER. / CINCINNATI. O", probably 1858 - 1862.** Deep aquamarine, oval, applied square collar - red iron pontil scar, ht. 7 1/2"; (a couple of spots of light high point wear, a small area of very minor roughness on the back edge of the collar that you can feel, but is not easy to see, and a tiny pinhead flake at the edge of the base, otherwise excellent). Odell, p.295. Scarce. An attractive example that has not been dug and cleaned.

**Est.: \$250 - \$450 • Min. bid: \$130**



### Lot 182

**"FOLLANSBEE'S - ELIXIR - OF HEALTH", a Midwest glasshouse, 1850 - 1860.** Rich, bright aquamarine, square with beveled corners, applied sloping collar - heavy iron pontil scar, ht. 9", near mint; (a 3/16" chip on the top of the lip, otherwise virtually pristine perfect). Odell, p.131. A clean, sparkling example of this very rare, very attractive, boldly embossed pontiled medicine. An attic-type find from a collection in north-central Ohio, this is the first time being offered for sale.

**Est.: \$400 - \$800 • Min. bid: \$200**



### Lot 183

**"DR H. AUSTIN'S - GENUINE / AGUE BALSAM - PLYMOUTH. O", probably a Midwest glasshouse, 1855 - 1860.** Brilliant aquamarine, rectangular with beveled corners, applied sloping collar - iron pontil scar, ht. 7", virtually 'out of the mold' pristine perfect. Odell, p.13. A beautiful example, outstanding condition, clean and sparkling!

**Est.: \$300 - \$500 • Min. bid: \$150**



### Lot 184

**"DR MANN'S - CELEBRATED / AGUE. BALSAM. - GALION OHIO" (with 95% complete, original label), probably a Midwest glasshouse, 1855 - 1860.** Deep, bluish aquamarine, rectangular with beveled corners, applied ring collar with bevel - iron pontil scar, ht. 6 3/4", virtually attic mint; (a tiny pinhead bit of roughness on the back edge of the lip; otherwise perfect). Odell, p.236. A great looking early pontiled medicine, deep rich color, sparkling condition. Very scarce-to-rare with original label.

**Est.: \$400 - \$600 • Min. bid: \$200**





### Lot 185

**"DR W.S. LUNT'S - FAMILY / MEDICINES - MAUMEE OHIO"** (with 95% of original label), 1848 - 1855. Aquamarine, rectangular, beveled corners, applied double ring collar - blowpipe pontil scar, ht. 4 7/8", virtually attic mint; (a 1/4" pontil flake along the edge of the base on the reverse, and a couple of patches of stain on the label, otherwise perfect). A great looking and rare medicine, nice crude glass, and virtually complete original label!

Est.: \$600 - \$900 • Min. bid: \$300



### Lot 189

**"BAUMGARDNERS - ELECTRIC / OIL - WOOSTER O"** (with likely original contents), a Midwest glasshouse, probably 1855 - 1860. Aquamarine, rectangular, beveled corners, applied round double collar - blowpipe pontil scar, ht. 5 1/8", perfect. Odell, p.26, extremely rare! Believed to be only the second example offered at auction in more than 25 years, it was originally discovered in an abandoned drugstore being converted to a gas station. A sparkling mint, very rare, attractive medicine.

Est.: \$400 - \$600 • Min. bid: \$200



### Lot 186

**"DR W.S. LUNT'S - AQUE KILLER / FINDLAY. O"**, 1850 - 1858. Rich aqua, rectangular with beveled corners, applied sloping collar - blowpipe pontil scar, ht. 6 3/4", perfect. Rare. A bright, sparkling example with good depth of color and outstanding condition. Note, in *Antique American Medicine Bottles*, by Matt Knapp, it is indicated that William Lunt started as a preacher in Maumee, Ohio. In the late 1840's to mid 1850's he partnered with John Stanford selling medicines.

Est.: \$500 - \$800 • Min. bid: \$250



### Lot 190

**"J.S. GREGORY / CHEMIST."** (with 90% complete, original label), probably 1852 - 1858. Aquamarine, rectangular, beveled corners, sheared, tooled, and inward rolled lip - blowpipe pontil scar, ht. 4 5/8", perfect; (bottle has some dried content residue; original label darkened from age, but still partially legible). Odell, p.152. Scarce. A great looking early medicine, crudely embossed, from Maumee City, OH. Originally discovered in a early Indiana drugstore, late 1960's, early 1970's.

Est.: \$250 - \$450 • Min. bid: \$13



### Lot 187

**JACOBS & BROWN / HAMILTON O"**, a Midwest glasshouse, probably 1855 - 1860. Aquamarine, rectangular with beveled corners, applied sloping collar - blowpipe pontil scar, ht. 5 3/4", attic mint! Odell, p.196. Another very rare pontiled medicine, excellent character and condition. Per Odell, Peter Jacob was listed as a druggist, 1856-1859, and John Brown as a dealer in books and stationery, perfumery, drugs and patent medicines, 1858 - 1859.

Est.: \$200 - \$400 • Min. bid: \$100



### Lot 191

**"BEARS / OIL"** (with 98% complete, original label, partial contents), America, 1845 - 1855. Aquamarine, rectangular with narrow beveled corners, sheared, tooled, and inward rolled mouth - blowpipe pontil scar, ht. 2 5/8", perfect. Odell, pgs. 27-28. Attractive dark blue and cream label depicts a walking bear with it's head turned. A scarce mold, and certainly very rare with virtually complete, original label and contents.

Est.: \$500 - \$800 • Min. bid: \$250



### Lot 188

**"C.R. McCULLOCH / FREMONT OHIO - BALSAM OF - HORE-HOUND"**, 1850 - 1860. Aqua, rectangular with beveled corners, applied short tapered collar - blowpipe pontil scar, ht. 5 3/8", attic mint; (note, the bottle is perfect, there are some in-manufacture crazing lines in the neck mentioned for completeness, but not considered damage). Odell, p.245. An extremely rare and attractive little pontiled medicine, only the second example offered in more than 30 years!

Est.: \$500 - \$800 • Min. bid: \$250



### Lot 192

**"BUSH'S / SMILAX / SARSAPARILLA"**, America, 1850 - 1860. Aquamarine, rectangular with beveled corners, applied square collar - blowpipe pontil scar, ht. 9 7/8", virtually perfect; (just the slightest trace of faint wear, otherwise perfect). Odell, p.62; DeG, #33. Rare. A large, very impressive sarsaparilla, bright, clean, and sparkling with nice texture and character to the glass. Provenance: Ex. Dr. Sam Greer collection.

Est.: \$400 - \$600 • Min. bid: \$200



### Lot 193

**"MASURY'S / SARSAPARILLA / COMPOUND"**, probably a NY State glasshouse, possibly Lockport Glass Works, 1850 - 1860. Aquamarine, rectangular with beveled corners, applied square collar - blowpipe pontil scar, ht. 8 3/8", attic mint! DeG #143; Odell, p.241. Excellent character, sparkling clean, a beautiful, eye-appealing example of this early, Buffalo, NY sarsaparilla. Very scarce, especially in this fine condition.

*Est.: \$300 - \$500 • Min. bid: \$150*



### Lot 197

**"HYATT'S - PULMONIC - LIFE BAL-SAM. / N - Y"**, 1850 - 1860. Aquamarine, rectangular with beveled corners, applied sloping collar with bevel - iron pontil scar, ht. 9 5/8"; (some light interior haze; just a trace of minor exterior dullness near the base, and a little scattered light wear, but no other form of damage, and otherwise excellent). Extremely rare "Pulmonic" variant, only the second example to be offered in more than 25 years! Gary Enters collection; Ex. Dr. Sam Greer collection.

*Est.: \$400 - \$600 • Min. bid: \$200*



### Lot 194

**"DR B.W. HAIRs - SARSAPARILLA"**, 1850 - 1860. Aquamarine, square with beveled corners, applied sloping collar - blowpipe pontil scar, ht. 9 1/2", virtually perfect; (slight trace of faint wear, otherwise pristine). DeG #91; Odell, p.157. A very rare sarsaparilla from Cincinnati, OH (per Odell, later moving to Hamilton, OH). Believed to be only the third example to be offered at auction in more than 25 years. Provenance: Ex. Dr. Sam Greer collection # 776.

*Est.: \$800 - \$1,600 • Min. bid: \$400*



### Lot 198

**"VEGETABLE / PULMONARY / BALSAM - REED, CUTLER & Co. / BOSTON MASS - PROPRIETORS"**, 1850 - 1860. Aquamarine, rectangular with beveled corners, applied round collar with bevel - blowpipe pontil scar, ht. 7", perfect. Reed, Cutler put out several druggist bottles. This embossed "Pulmonary / Balsam" bottle is a very-scarce-to rare variant, especially in this fine condition. Provenance: Gary Enter collection.

*Est.: \$200 - \$400 • Min. bid: \$100*



### Lot 195

**"KELLEY \*& Co' - SARSAPARILLA - J.L. KELLEY & Co / CHEMISTS, / PORTLAND ME"**, 1842 - 1850. Aqua, rectangular with rounded front and back panels, applied sloping collar - blowpipe pontil scar, ht. 7 3/4", virtually perfect; (just the slightest trace of faint wear, otherwise pristine). Odell, p.208; DeG #117. A rare sarsaparilla, believed to be only the 2nd example offered at auction in more than 25 years. A highly whittled, bubbly, sparkling example. Ex. Dr. Sam Greer collection.

*Est.: \$400 - \$600 • Min. bid: \$200*



### Lot 199

**"PERSIAN / BALM - S.S. BLOODGETT / OGDENSBURGH NY"**, 1850 - 1860. Aqua, rectangular, beveled corners, applied square collar - blowpipe pontil scar, ht. 4 7/8"; (just a pinhead bit of roughness on the edge of the square collar, otherwise attic mint). Odell, p.36. Note; a very rare mold, being a 'cousin' to the better known, and much more common example embossed, "Bloodgett's / Persian Balm - The Great / Home Luxury". Gary Enters collection; Ex. Dr. Sam Greer collection.

*Est.: \$200 - \$400 • Min. bid: \$100*



### Lot 196

**"CANTRELL'S / COMPOUND / MEDICATED - SYRUP OF / SARSAPARILLA / OR ANTI SCORBUTIC / SYRUP - PHILADA"**, America, 1845 - 1855. Aquamarine, rectangular with beveled corners, applied sloping collar - blowpipe pontil scar, ht. 6"; (professionally cleaned to original luster and near mint condition with a couple of spots of minor wear remaining). Odell, p. 66; DeG #37. A very rare pontiled sarsaparilla, boldly embossed. Provenance: Ex. Dr. Sam Greer collection.

*Est.: \$400 - \$600 • Min. bid: \$200*



### Lot 200

**"BRINGHURST'S / WORM SYRUP - WILMINGTON"**, probably 1845 - 1855. Colorless, rectangular with concave corners, sheared, tooled, and inward rolled lip - blowpipe pontil scar, ht. 4 1/2", virtually attic mint; (just a trace of very light interior residue in the shoulders, otherwise perfect). Odell, p.47. An extremely rare mold, Edward Bringham was a druggist located on Market St, in Wilmington, Delaware. Provenance: Gary Enters collection.

*Est.: \$300 - \$500 • Min. bid: \$150*





### Lot 201

**"R.F. HEMSLEY / PHARMACEUTIST / NEW YORK"** (with virtually complete, original label), probably 1845 - 1848. Aquamarine, oval, sheared, tooled, thin flanged lip - blowpipe pontil scar, ht. 4 3/4", perfect! Odell, p.170. Very scarce, especially in this attic-type condition, and with full original label. Label reads in part, **"HEMSLEY'S / WORM-DESTROYING SYRUP, / PREPARED AND SOLD BY / HEMSLEY & BEERS, NO. 47 ANN-STREET, NEW-YORK."** Provenance: Gary Enters collection.

**Est.: \$150 - \$250 • Min. bid: \$80**



### Lot 205

**Lot of (2), Rare Sarsaparilla Bottles, America, 1880 - 1895. "HUNTER'S - IODINE / SANSAPARILLA - COMPOUND EXT. - PHILADA", and: "HUSTED'S / SANSAPARILLA / WITH CELERY".** Both are aquamarine, rectangular with beveled corners, applied and tooled square collars - smooth base, ht. 8 1/8" and 9 1/2" respectively, both are sparkling attic mint! DeG #104, and DeG #107. Both rated by DeGrafft as "Extremely Rare".

**Est.: \$120 - \$240 • Min. bid: \$60**



### Lot 202

**"MACARTHUR'S - GENUINE YANKEE / LINIMENT - LIVERPOOL N.Y.",** America, 1845 - 1860. Aquamarine, rectangular with beveled corners, applied sloping collar - blowpipe pontil scar, ht. 6 7/8"; (professionally cleaned to original luster, a little light wear, primarily on the back label panel, otherwise near mint). Odell, p.235; N #410 (6 star). A very rare pontiled medicine. Arthur McArthur was an early physician and druggist in Liverpool, a very small town near Syracuse.

**Est.: \$300 - \$600 • Min. bid: \$150**



### Lot 206

**"MRS S. A. ALLEN'S - WORLDS HAIR / RESTORER - NEW YORK.",** America, 1865 - 1880. Rich, deep strawberry amethyst, rectangular with beveled corners, applied round collar with bevel - smooth base, ht. 7 1/4", virtually perfect; (only the slightest trace of faint wear, otherwise pristine). The color is a bit deep, as most examples are, but very, very, pretty!

**Est.: \$150 - \$250 • Min. bid: \$80**



### Lot 203

**"JACOBS - Cholera & - Dysentery - CORDIAL.",** America, 1850 - 1860. Aquamarine, square with beveled corners, applied square collar - blowpipe pontil scar, ht. 6 3/4", perfect! Odell, p.196. A bright, clean, pristine example. Per Odell, pamphlets for the medicine described the use of this remedy for slaves. A very attractive pontiled medicine.

**Est.: \$175 - \$350 • Min. bid: \$90**



### Lot 207

**"ROHRER'S - EXPECTORAL / WILD / CHERRY / TONIC - LANCASTER PA",** America, 1860 - 1870. Bright golden amber below the shoulders shading to a beautiful light honey coloration near the base, rectangular pyramid form with roped corners, applied sloping collar with bevel - smooth base, ht. 10 1/2", virtually attic mint; (a less-than-pinhead size, tiny, paper-thin flake on the edge of the lip, otherwise pristine perfect!) A fantastic example, very pretty, outstanding condition.

**Est.: \$200 - \$400 • Min. bid: \$100**



### Lot 204

**Lot of (2), Shaker Bottles, 1845 - 1860. 1st Ex.: "SHAKER SYRUP - D. MILLER & Co", 2nd Ex.: "SHAKER SYRUP / No. 1 - CANTERBURY N.H.".** Both are aqua, rectangular with beveled corners, applied sloping collar - blowpipe pontil scarred bases, ht. 7 1/8" and 7 1/4" respectively; (1st Ex. has been lightly cleaned to original luster with a little minor light dullness remaining near the shoulders; 2nd Ex. near mint; a pontil flake extends to edge of base, and a little wear on one side).

**Est.: \$200 - \$400 • Min. bid: \$100**



### Lot 208

**"SWIFTS / SYPHILITIC SPECIFIC",** America, 1875 - 1885. Rich, medium-to-deep cobalt blue with a slight violet tone near the base, oval with strap sides, applied square collar - smooth base, ht. 8 3/4", virtually perfect; (just a trace of very faint wear on the reverse, otherwise pristine). A fantastic example, one that has not been dug and cleaned, excellent clarity, beautiful deep color, virtually pristine condition.

**Est.: \$800 - \$1,200 • Min. bid: \$40**



### Lot 209

**"M.D. / U.S.A." Medicine Bottle**, Midwest, probably a Pittsburgh district glasshouse, 1875 - 1885. Aquamarine, cylindrical, 2-pc. mold, tooled square collar - smooth base, ht. 9"; (a 3/16" chip on the back side of the square collar, otherwise very near mint). A very-scarce-to-rare medicine, almost identical in size and form to the "U.S.A. / Hosp. Dept" bottles. They are believed to have been blown for the U.S. Medical Dept. following the Civil War, during the timeline of the Indian Wars.

*Est.: \$200 - \$400 • Min. bid: \$100*



### Lot 210

**"U.S.A. / HOSP. DEPT"**, a Pittsburgh district glasshouse, 1862 - 1870. Bright, medium apricot puce coloration, cylindrical, 4-pc. mold, applied round collar with bevel - "S D S" (on smooth base), ht. 8 7/8"; (professionally cleaned with just a bit of minor wear remaining; two small potstones in the base with minor radiations, 1/8", or less). An absolutely gorgeous, rare, and eye-appealing color, one of the prettiest that we can recall seeing, bubbly glass and heavily whittled.

*Est.: \$1,000 - \$2,000 • Min. bid: \$500*



### Lot 211

**"L.Q.C. WISHART'S - PINE TREE / TAR CORDIAL. / PHILA" - "PATENT" / (PINE TREE) / "1859"**, 1865 - 1870. Brilliant yellow green coloration, square with beveled corners, applied sloping collar - smooth base, ht. 9 1/2"; (a hard-to-see, 3/8" iridescent bruise on the inside edge of the lip, otherwise sparkling attic mint). A beautiful example, great color, fantastic character - the glass being loaded with tiny bubbles throughout. Ex. Bryan Grapentine collection (#717).

*Est.: \$300 - \$500 • Min. bid: \$150*



### Lot 212

**"L.Q.C. WISHART'S - PINE TREE / TAR CORDIAL. / PHILA" - "PATENT" / (PINE TREE) / "1859"**, 1865 - 1870. Rich, medium emerald coloration, square with beveled corners, applied sloping collar - smooth base, ht. 9 1/2", near mint; (slight trace of light, washable, interior content residue, and a 1/4" flat flake on one of the base corners on the reverse, otherwise perfect). Another great example, strong depth of color, and very strong, bold, embossing.

*Est.: \$300 - \$500 • Min. bid: \$150*



### Lot 213

**"L.Q.C. WISHART'S - PINE TREE / TAR CORDIAL / PHILA" - "PATENT" / (PINE TREE) / "1859"**, 1865 - 1870. Clear medium apple green, square, beveled corners, applied sloping collar - smooth base, ht. 8 1/8"; (professionally cleaned to original luster and near mint condition; an 1/8" flake on top of mouth, a surface bubble above the "N" in Patent is missing its paper-thin cover glass). A scarce light color for this mold (most being more bluish-green). Nice character with plenty of small bubbles.

*Est.: \$175 - \$350 • Min. bid: \$90*



### Lot 214

**"L.Q.C. WISHART'S - PINE TREE / TAR CORDIAL / PHILA" - "PATENT" / (PINE TREE) / "1859"** (with remnants of original label), 1865 - 1870. Medium-to-deep bluish green with a slight emerald tone, square with beveled corners, applied sloping collar - smooth base, ht. 7 7/8", sparkling mint, virtually pristine condition. A great example, nice depth of color, outstanding condition. A local find from north-central Ohio.

*Est.: \$200 - \$400 • Min. bid: \$100*



### Lot 215

**"L.Q.C. WISHART'S - PINE TREE / TAR CORDIAL / PHILA" - "TRADE" / (PINE TREE) / "MARK"** (with 90% complete, original label), 1880 - 1895. Golden amber with a slight orange tone, square with beveled corners, tooled sloping collar - smooth base, ht. 9 5/8", attic mint. A very nice example, this one being a little lighter in tone than most of the amber examples, and scarce with the original label. Label reads in part, "This Cordial is a sovereign remedy in all cases of Inflammation of the Lung".

*Est.: \$175 - \$350 • Min. bid: \$90*



### Lot 216

**"LYNCH & CLARKE / NEW YORK"**, probably New England Glass Bottle Co., Cambridge, MA, 1825 - 1833. Medium-to-deep emerald with an olive tone, cylindrical, applied sloping collar with bevel - sand type pontil scar, Pt; (a 1" crack from the applied lip into the neck, a shallow flake on top edge of lip). T# C-2:B, type1. A very scarce color for this mold. This beautiful example does not appear to have been dug and displays as virtually perfect!

*Est.: \$250 - \$450 • Min. bid: \$130*



**Lot 217**

**"JOHN CLARKE - NEW YORK"**  
(around shoulder), possibly Mt. Vernon Glass Works, Vernon, NY, 1835 - 1844. Deep yellowish olive with an amber tone, cylindrical, 3-pc. mold, applied sloping collar with bevel - sand type pontil scar, Qt, perfect. T# C-4:B-2. Scarce. A particularly nice example, pleasing color, character, almost no wear, 'attic-type' condition!

**Est.: \$200 - \$400 • Min. bid: \$100**

**Lot 221**

**"CLARKE & WHITE. / NEW YORK."**, America, 1856 - 1866. Medium olive amber, cylindrical, applied sloping collar with bevel - sand type pontil scar, Pt, near perfect; (just a slight trace of light wear, otherwise attic mint). T# C-10:C Type 2, scarce. A very nice example, attractive crude glass filled with tiny bubbles!

**Est.: \$100 - \$200 • Min. bid: \$50**

**Lot 218**

**"JOHN CLARKE / NEW YORK"**, probably a NY State glasshouse, 1833 - 1846. Very deep yellowish amber, almost a tobacco coloration, cylindrical, applied sloping collar with bevel - very faint sand type pontil scar, Pt; (some light exterior dullness or 'bloom' to the glass, fairly minor and not terribly distracting, but no other form of damage and otherwise near mint). T# C-5:B. Rare. A nice example and a little more scarce in this pure amber coloration.

**Est.: \$200 - \$400 • Min. bid: \$100**

**Lot 222**

**"CONGRESS / WATER"**, probably Mt. Pleasant, Saratoga Mountain Glass Works, 1855 - 1865. Deep yellowish 'old amber', almost a tobacco coloration, cylindrical, 3-pc. mold, applied sloping collar with bevel - smooth base, Qt, near mint; (a little light interior residue, and a bit of minor wear including a 3/16" flake on the underside of the beveled collar, otherwise excellent). T# C-13. Scarce. Nice crude glass, deep 'syrupy' color, and very scarce-to-rare in this pure amber coloration with no trace of green.

**Est.: \$300 - \$500 • Min. bid: \$150**

**Lot 219**

**"CLARKE & Co. / NEW YORK"**, Saratoga Mountain Glass Works, Mt. Pleasant, NY, 1846 - 1856. Rich medium green with an emerald tone, cylindrical, applied sloping collar with bevel - iron pontil scar, Pt; (professionally cleaned to original luster with a touch of minor wear remaining). T# C-9:A, Type III. Noted by Tucker as "Scarce", nice rich color, large iron pontil scar.

**Est.: \$120 - \$240 • Min. bid: \$60**

**Lot 223**

**"MASSENA SPRING" / (Monogram) / "WATER"**, Lyndeborough Glass Works, Lyndeborough, NH, 1868 - 1875. Clear, medium-to-deep blue green with a teal tone, cylindrical, applied sloping collar with ring - smooth base, Qt; (a 3/4" scratch, and 1/8" paper-thin open bubble on the reverse, near the mold seam, otherwise very near mint). T# N-22. Beautiful, attractive color, boldly embossed, excellent condition.

**Est.: \$175 - \$350 • Min. bid: \$90**

**Lot 220**

**"CLARKE & Co. / NEW YORK"**, Saratoga Mountain Glass Works, Mt. Pleasant, NY, or possibly Newburgh Glass Works, 1846 - 1856. Medium olive amber, applied sloping collar with bevel - sand type pontil scar, Pt; (some typical scattered light wear including a tiny, less-than pinhead size flake at edge of lip, otherwise excellent). T# C-9:B (probably Type II as the "N" in NEW YORK appears almost directly below "C" in CLARKE, and mold seam crosses base).

**Est.: \$120 - \$240 • Min. bid: \$60**

**Lot 224**

**"MISSISQUOI / A / SPRINGS" - (Indian woman with papoose)**, probably Lyndeborough Glass Works, Lyndeborough, NH, 1867 - 1875. Bright yellowish olive, almost an olive yellow coloration, cylindrical, applied sloping collar with bevel - smooth base, Qt, virtually attic mint; (just a very slight trace of wear including a minuscule, tiny, paper-thin pinhead flake on the top of the lip, otherwise perfect). T# V-17:B. Beautiful color, nice character with plenty of tiny bubbles throughout.

**Est.: \$800 - \$1,200 • Min. bid: \$400**



### Lot 225

**"ADIRONDACK SPRING / WEST-PORT. N.Y."**, possibly Congressville Glass Works, Saratoga Springs, New York, 1870 - 1880. Clear, bright medium emerald green, cylindrical, applied sloping collar with bevel - smooth base, Qt, virtually attic mint; (a couple of minor, onionskin-thin open bubbles, otherwise perfect). T# N-1:A. Beautiful color, fantastic character - whittled and bubbly, outstanding condition.

**Est.: \$400 - \$800 • Min. bid: \$200**



### Lot 229

**"STRUMATIC MINERAL WATER / N / P S MCo."**, 1865 - 1875. Deep reddish amber, cylindrical, applied sloping collar with bevel - smooth base, Pt; (professionally cleaned to original luster with a few spots of minor ground wear remaining; a 1/2" chip along the inside and top edge of the lip, with a 3/16" flake on the outside edge). T# M-50. A very rare mineral water. Of the small handful known, it is believed they were all dug from the same Pittsburgh privy. Ex. Dick Watson collection.

**Est.: \$175 - \$350 • Min. bid: \$90**



### Lot 226

**"ADIRONDACK SPRING / WHITE-HALL / N.Y."**, possibly Congressville Glass Works, Saratoga Springs, New York, 1871 - 1883. Bright, medium emerald coloration, cylindrical, applied sloping collar with bevel - smooth base, Pt, near mint; (a little light wear including a 3/16" partially open bubble on the back shoulder; trace bit of minor interior residue, otherwise excellent). T# N-2:B. A scarce mold, rich color, very heavily whittled.

**Est.: \$150 - \$300 • Min. bid: \$8**



### Lot 230

**"WHITE SULPHUR / WATER. / GREENBRIER, VA"**, America, probably 1860 - 1863. Medium blue green with a teal tone, cylindrical, applied sloping collar with bevel - smooth base, Qt; (professionally cleaned to original luster with a little scattered minor wear remaining; a couple of small patches of light interior haze). T# M-59. A rare southern mineral water, beautifully whittled, and likely blown prior to 1863 when West Virginia was granted independent statehood.

**Est.: \$400 - \$600 • Min. bid: \$200**



### Lot 227

**"MIDDLETOWN HEALING SPRINGS / A.W. GRAY & SON / MIDDLETOWN. VT."**, probably Lyndeborough Glass Works, Lyndeborough, NH, 1868 - 1875. Rich, deep emerald coloration, cylindrical, applied sloping collar with bevel - smooth base, Qt, virtually attic mint; (just a faint trace of light wear including a 1/8" open bubble, otherwise perfect). T# V-14. A scarce mold, beautiful rich color, excellent condition.

**Est.: \$400 - \$800 • Min. bid: \$200**



### Lot 231

**"ROCK - BRIDGE / VIRGINIA / ALUM - WATER."**, America, 1875 - 1885. Medium-to-deep bright yellow green with a slight olive tone, cylindrical, applied square collar - smooth base, half-gallon, ht. 9 1/2", virtually perfect; (just the slightest trace of faint wear, otherwise pristine). An outstanding example in a very rare, eye-appealing color, strong embossing, 'attic-found' condition. Note: a 'splotch' of reddish glass is mixed in the base. Provenance: Fred Swiechowicz collection.

**Est.: \$800 - \$1,200 • Min. bid: \$400**



### Lot 228

**"EMPIRE SPRING Co / E / SARATOGA, N.Y. - EMPIRE / WATER"**, possibly Congressville Glass Works, 1885 - 1889. Medium-to-deep amber with some warmer reddish tones near the base, cylindrical, slope shoulder, applied sloping collar with bevel - smooth base, Qt, near mint; (just a little minor wear and some faint, light, interior milkiness below the shoulder, otherwise perfect). T# E-11:A, type 1. Overall excellent condition, very scarce color.

**Est.: \$120 - \$240 • Min. bid: \$6**



### Lot 232

**"GEO EAGLE" Soda Water Bottle**, 1850 - 1860. Bright, medium blue green, cylindrical with diagonal ribbing, applied blob collar - iron pontil, ht. 6 7/8", near mint; (just a touch of typical light wear including a little 1/8" flake on one of the diagonal ribs, and some faint interior milkiness below the shoulder, otherwise virtually attic mint). A terrific example of this very scarce, attractive and desirable soda, and one that has not been dug and cleaned. Provenance: Fred Swiechowicz collection.

**Est.: \$600 - \$900 • Min. bid: \$300**



**Lot 233**

**"J.W. HARRIS - (STAR) SODA - NEW HAVEN - CONN."**, America, 1852 - 1860. Cobalt blue, 8-sided, applied blob collar - heavy iron pontil scar, ht. 7 1/2", virtually perfect; (just the slightest trace of light wear and faint interior residue, otherwise attic mint). Very scarce. An absolute top example, referred to by collectors as the 'neck ring and star mold', with crisp, very bold embossing, outstanding - virtually pristine condition. Provenance: Fred Swiechowicz collection.

*Est.: \$600 - \$900 • Min. bid: \$300*

**Lot 237**

**"MURTHA & Co - MINERAL / WATERS"**, probably a NY state glass-house, 1850 - 1860. Rich, deep blue green, almost a teal coloration, cylindrical, applied sloping collar - iron pontil scar, ht. 7 3/8"; (a little scattered minor wear and a bit of very faint exterior dullness, or 'bloom', but no other form of damage, and otherwise near mint). An extremely rare, important, Albany soda, deep color, overall excellent condition.

*Est.: \$600 - \$900 • Min. bid: \$300*

**Lot 234**

**"Wm P. DAVIS & Co - EXCELSIOR - MINERAL WATER - BROOKLYN"**, America, 1850 - 1860. Medium cobalt blue, 8-sided, applied blob collar - iron pontil scar, ht. 7 1/4"; (some scattered minor usage wear including a couple of little pinhead flakes on the panel edges, and a shallow, paper-thin, flat flake at the base, otherwise near mint). A great example of this very scarce soda, and one of a very few that have not been dug and cleaned.

*Est.: \$300 - \$500 • Min. bid: \$150*

**Lot 238**

**"HAND & MURTHA / MINERAL WATERS - H & M"**, probably 1847. Aquamarine, cylindrical, applied sloping collar - heavy iron pontil scar, ht. 7 1/2"; (a little light wear and a couple of small spots of very minor dullness; a 1/2" chip along the inner rim of the domed base, otherwise near mint). An extremely rare Albany soda, beautifully whittled, overall a bright, clean example. The Hand & Murtha partnership apparently lasted for one year, 1847.

*Est.: \$300 - \$600 • Min. bid: \$150*

**Lot 235**

**"J. BOARDMAN & Co - NEW YORK - MINERAL WATERS - (STAR) / THIS BOTTLE / IS NEVER SOLD"**, 1845 - 1860. Cobalt blue, 8-sided, applied sloping collar - iron pontil scar, ht. 7 1/4"; (a bit of light exterior dullness, pretty minor; a little scattered usage wear, and a little light interior haze, otherwise excellent). The noted condition issues are all fairly minor. This one does not appear to have been dug and cleaned. Scarce.

*Est.: \$300 - \$500 • Min. bid: \$150*

**Lot 239**

**"HARRIS S / ALBANY / MINERAL WATERS"**, probably 1846 - 1853. Aquamarine, cylindrical, applied sloping collar - iron pontil scar, ht. 7 1/8"; (professionally cleaned with some fine light wear remaining, but no other form of damage, and otherwise excellent). A very scarce early, Albany pontiled soda. Per the book, Old Albany Bottles, John Harris began his bottling operation in 1845, with his sons joining him in 1847.

*Est.: \$120 - \$240 • Min. bid: \$60*

**Lot 236**

**"F. GLEASONS / MINERAL / WATER - ROCHESTER / NY"**, possibly Lancaster Glass Works, Lancaster, NY, 1860 - 1870. Medium-to-deep cobalt blue, tenpin form, applied sloping collar - smooth base, ht. 8 5/8", near perfect; (a little light exterior wear, otherwise attic mint). A fantastic example! Here is one that does not appear to be dug and cleaned, beautiful color, heavily whittled, wavy glass. Rare, especially in this fine condition. Provenance: Fred Swiechowicz collection.

*Est.: \$1,400 - \$2,400 • Min. bid: \$70*

**Lot 240**

**"H" / HARRIS & SONS / ALBANY / MINERAL WATERS - UNION GLASS WORKS PHILA / REGISTERED / ACCORDING / TO LAW"**, 1846 - 1852. Light aquamarine, cylindrical, applied sloping collar - iron pontil scar, ht. 7 3/8"; (a couple of light scratches and a bit of minor wear, otherwise very near mint). Another rare Albany soda known in shades of blue green, with aquamarine actually being a very difficult 'color' to acquire.

*Est.: \$200 - \$400 • Min. bid: \$100*



### Lot 241

**"G.W. HOXSIE'S / PREMIUM / BEER"**, probably 1860 - 1864. Medium-to-deep emerald coloration, cylindrical, squat form with short neck, applied blob collar - smooth base, ht. 6 1/2"; (a little light exterior wear, and some minor, patchy, interior haze, not terribly distracting, otherwise near mint). This is one of three different mold variations that the Hoxsie bottles may be found, prior to acquiring the business of T.C. Jeffers in 1864. Nice deep color, scarce.

Est.: \$150 - \$250 • Min. bid: \$80



### Lot 242

**"HOXSIE JEFFERS & Co / AL-BANY"**, a New York State glasshouse, 1864 - 1867. Medium blue green, applied sloping collar with ring ("hat-top") - smooth base, ht. 6 7/8"; (lightly cleaned to original luster and near mint condition). Per *The Albany Bottle Book* by Harold Schneidmuller, Jr., George Hoxsie bought out the soda water business of Jeffers and Co. in 1864, and used the Hoxsie Jeffers & Co. name until around 1867. A scarce soda. Good color, nicely whittled.

Est.: \$150 - \$250 • Min. bid: \$80



### Lot 243

**"GEO WELLER / SCHENECTADY"** (with original Putnam style wire closure), America, 1875 - 1885. Clear, medium lime green coloration, cylindrical, 'pony style', tapered blob collar - smooth base, ht. 7 1/8"; (a little scattered light wear including a tiny pinhead flake on the back edge of the lip; a band of light, minor interior haze below the shoulder, otherwise excellent). A scarce soda, very scarce-to-rare in this lime green coloration.

Est.: \$250 - \$450 • Min. bid: \$130



### Lot 244

**"MEHL'S / CELEBRATED / MINERAL WATER / ERIE. PA / THIS BOTTLE - NEVER SOLD"**, 1860 - 1870. Cobalt blue, cylindrical, applied blob collar - smooth base, ht. 7 1/8"; (professionally cleaned to original luster with some scattered minor ground wear and imperfections remaining, and a 3/16" iridescent bruise on the inside edge of the lip). Very scarce. Beautiful color, a bit lighter than the previous example we sold. David Sidelinger collection.

Est.: \$200 - \$400 • Min. bid: \$100



### Lot 245

**"DYOTTVILLE GLASS WORKS / PHILAD.A" Soda Water Bottle**, 1860 - 1870. Light-to-medium sapphire blue, squat soda form, applied blob collar - smooth base, ht. 6 7/8", virtually perfect; (just a small wisp of faint interior milkiness, otherwise attic mint). A beautiful example of this popular glasshouse-embossed squat soda, clean, sparkling, pretty color, fantastic condition! The majority of these having been dug and cleaned, but not this one. In 'as-found' attic condition.

Est.: \$100 - \$200 • Min. bid: \$60



### Lot 246

**"LAUDER & DICKSON / NEWARK N.J."** (with period metal stand), America, 1885 - 1895. Deep aquamarine, cylindrical, round bottom soda form, heavy tooled, possibly applied, blob collar - smooth base, ht. 9"; (some light exterior wear, otherwise excellent). Scarce, and especially nice with the 'finger grip handle' period metal stand.

Est.: \$200 - \$300 • Min. bid: \$100



### Lot 247

**"HUNICKE, SCHULZ & CO. / SAINT LOUIS."** (with period metal stand), America, 1885 - 1895. Aquamarine, cylindrical, round bottle soda form, large, applied blob collar - smooth base, ht. 8 1/4"; (professionally cleaned with a little wear remaining, including a small scrape, and 1/4" area of abrasion near the base on the reverse). Scarce.

Est.: \$200 - \$300 • Min. bid: \$100



### Lot 248

**"Zarembo~" Mineral Water Bottle** (with correct, period metal stand), America, 1890 - 1905. Aqua, torpedo form, tooled blob collar - smooth base, ht. 8 1/4"; (a little exterior wear including a couple scuff marks, or areas of abrasion, approx. 1/4", otherwise excellent). Scarce, early torpedo form. Zarembo Mineral Springs were based in Seattle, WA, with waters bottled from Zarembo Island, Alaska. A trade card advertises, "Sparks of Life - Zarembo - Famous Alaska Mineral Water."

Est.: \$250 - \$400 • Min. bid: \$130





### Lot 249

**"J. ZUBER / PORT HURON, MICH."**, probably Cunningham & Co., Pittsburgh, PA, 1895 - 1907. Medium cobalt blue, cylindrical, applied "Hutchinson" style blob collar - **"C & Co 2"** (around heel of smooth base), Pt, near mint; (some light exterior usage or 'case' wear, otherwise perfect). A great example of this very scarce, colored 'hutch'. These are not easy to come by, especially in this fine condition. Note; a period "hutch" type wire and stopple remain in the neck.

*Est.: \$200 - \$300 • Min. bid: \$100*



### Lot 250

**"BUCKEYE BOTTLING WORKS" / (BUST OF LARGE ELK) / "TOLEDO, O."** (with original wire bail and porcelain stopper), Cunningham & Co., Limited, Pittsburgh, 1886 - 1902. Light honey coloration, cylindrical, applied blob collar - **"C & CO. LIM."** (around heel of smooth base), Pt, virtually perfect; (just a slight trace of faint interior milkiness, and very minor usage wear). Extremely rare! You can count on one hand the known pints of this mold, and this may be the only 'bailed' example!

*Est.: \$200 - \$400 • Min. bid: \$100*



### Lot 251

**"CINCINNATI LAGER / C. KOBE / BOTTLER / FINDLAY. O - THIS BOTTLE / NOT TO / BE SOLD"** (with original lightning-type wire bail), America, 1885 - 1895. Medium amber, cylindrical, applied blob collar with original lightning-style wire bail - smooth base, Pt, near mint; (just a touch of typical light wear, and a 3/16" flake on the inside edge of the lip, otherwise perfect). A rare Ohio beer, particularly so in the pint, with only a handful known in any condition.

*Est.: \$200 - \$400 • Min. bid: \$100*



### Lot 252

**Black Glass Wine Bottle**, England, 1740 - 1745. **"N" beneath a Ducal Coronet** (on applied seal). Medium-to-deep olive with slight amber tone, transitional early mallet / cylinder form, applied string rim - domed base with sand type pontil scar, ht. 9 1/4", virtually perfect condition. Burton pgs. 1214-1215, Rare. Believed to have been blown for the Percy family, the dukes of Northumberland, or the Howard family, the dukes of Norfolk. Strong seal impression, outstanding condition.

*Est.: \$1,400 - \$2,800 • Min. bid: \$700*



### Lot 253

**Black Glass Wine Bottle**, England, probably 1780 - 1790. **"I / WATSON / Efq / BILTON PARK"** (on applied glass seal). Clear, medium olive with a slight yellowish tone, wide body squat cylinder, applied string rim - domed base, sand type pontil scar, ht. 8 3/4", virtually perfect; (only a trace of faint wear, some light content residue in the shoulders). Burton, p.1286. Very scarce. An outstanding example with crude bubbly glass, a crisp, strong seal impression, fantastic, 'cellar found' condition.

*Est.: \$800 - \$1,200 • Min. bid: \$400*



### Lot 254

**Black Glass Wine Bottle**, England or America, 1810 - 1820. **"J. Wren"** (on applied seal). Medium-to-deep olive with a slight amber tone, large magnum cylinder, sheared mouth, applied sloping collar with bevel - domed base with heavy sand type pontil scar, ht. 10 3/8", virtually perfect; (trace of typical, very minor usage wear). Burton, p.1297. Extremely rare, discovered here in the states, and believed to be one of only two examples extant. A large, very impressive, sealed magnum.

*Est.: \$1,400 - \$2,800 • Min. bid: \$700*



### Lot 255

**Black Glass Wine Bottle**, England, 1815. **"RHC / 1815"** (on applied glass seal). Medium-to-deep olive with a slight amber tone, narrow body cylinder, sheared mouth with applied string rim - heavy sand type pontil scar, ht. 10 7/8", virtually perfect; (slight trace of very faint wear). Burton, pgs. 843-844; VdB, plate 27, #1. A very interesting seal. Per David Burton, the bottles were blown for Richard Hall Clarke to commemorate the end of the Napoleonic Wars and his safe return from the Battle of Waterloo.

*Est.: \$300 - \$500 • Min. bid: \$150*



### Lot 256

**Half-size, Black Glass Wine or Utility Bottle** (with original label), France, 1790 - 1820. **"SIROP ANTI \* PHLOGISTIQUE / BRIANT / A PARIS"** (on applied seal). Deep olive amber, freeblown long-neck cylinder, sheared mouth with applied string lip - deep kick-up base with blowpipe pontil scar, ht. 8 1/2", near perfect; (some light wear, a couple of likely in-making flakes from sheared lip). See Van den Bossche, plate 150, #1. Rare. Originally discovered in a house in New Orleans.

*Est.: \$300 - \$500 • Min. bid: \$150*



### Lot 257

**Black Glass Wine Bottle**, probably America, possibly New England, 1790 - 1815. "**Hersten / M.W.**" (small stars above and below inscription). Yellowish olive amber, high-shouldered cylindrical form, sheared mouth, applied string rim - blowpipe pontil scar, ht. 8 3/8", virtually perfect. Unlisted. A very attractive, extremely rare, possibly unique seal. Beautiful color, the glass being filled with tiny bubbles. Color and 'metal' are certainly consistent with early New England wares.

*Est.: \$1,000 - \$2,000 • Min. bid: \$500*



### Lot 261

**Black Glass Onion Form Wine Bottle**, Continental, probably 1710 - 1725. Medium-to-deep teal coloration, early onion, almost a pancake form, sheared, tooled, outward flared mouth - blowpipe pontil scar, ht. 6", dia. 6"; (some typical moderate exterior wear and light scratches around the mid-body; some minor interior residue and haze). Extremely rare color, overall, generally fine condition. Note; initials "R / TL" engraved in side. Provenance: Fred Swiechowicz collection.

*Est.: \$500 - \$800 • Min. bid: \$250*



### Lot 258

**Black Glass Wine Bottle**, America or Continental, c. 1840. "**PEACH / BRANDY / 1840**" (on applied seal). Yellowish olive, dip mold, magnum sized cylinder, short rounded taper collar with bevel - disc type pontil scar, ht. 12 1/4"; (just a trace of expected light wear, and a bit of minor interior residue, otherwise perfect). Unlisted, and extremely rare! This interesting and unusual dated seal "BRANDY" was originally discovered in Vermont. Rare and impressive, outstanding condition.

*Est.: \$1,000 - \$2,000 • Min. bid: \$500*



### Lot 262

**Black Glass Onion Form Wine Bottle**, Continental, probably Germany, 1720 - 1740. Rich, deep olive green, onion form, sheared mouth with applied string rim - pushed up base with blowpipe pontil scar, ht. 7 1/4", near mint; (just a trace of typical expected minor wear, otherwise perfect). An absolutely fantastic example, rich, pure olive coloration, no yellowish or amber tones, excellent form, symmetry, and condition.

*Est.: \$175 - \$350 • Min. bid: \$90*



### Lot 259

**Early Ale Bottle, Motif of Crown, Horse head, and Anchor** (on applied glass seal), Continental, probably France, 1850 - 1870. Rich reddish amber, cylindrical, ale form, dip or possibly turn mold, applied sloping collar - push-up smooth base, ht. 10 5/8"; (likely a dug bottle with some patchy light exterior dullness and interior residue, a little minor wear including a 3/16" flake on the edge of applied seal, and a 1/8" flake below collar). A rare, possibly unknown seal, beautiful color.

*Est.: \$200 - \$400 • Min. bid: \$100*



### Lot 263

**Black Glass Mallet Form Wine Bottle**, Continental, France, Belgium, Germany, 1730 - 1740. Yellowish olive, mallet form, sheared mouth with applied string rim - domed base with blowpipe pontil scar, ht. 7 1/2"; (a hard-to-see, 1/2", thin hairline 'spider' crack in the body, and a couple of open bubbles, otherwise near mint). An attractive example with some very large bubbles, nice color and clarity. The bottle displays beautifully, the noted hairline fissure is not easy to see.

*Est.: \$200 - \$400 • Min. bid: \$100*



### Lot 260

**Black Glass Onion Form Wine Bottle**, Continental, probably Netherlands, possibly Belgium or Germany, 1720 - 1730. Medium olive, onion form, sheared mouth with an applied string rim - blowpipe pontil scar, ht. 7 1/4"; (some overall light-to-moderate interior and exterior stain, an open interior bubble in the base, and some typical light surface wear, but no other form of damage). A nice example with a nice patina. Discovered in northern Ohio near the Maumee River.

*Est.: \$100 - \$200 • Min. bid: \$60*



### Lot 264

**Black Glass Mallet Form Wine Bottle**, Continental, probably North Germany, 1740 - 1750. Clear yellowish olive, bell-shaped mallet form, sheared mouth with applied string rim - domed base with blowpipe pontil scar, ht. 7", near mint; (just a trace of very light wear including a 3/16" chip on the edge of the lip, and a couple of small patches of very minor dullness, otherwise perfect). VdB, plate 260. A fantastic example, pleasing form, excellent clarity with virtually complete original luster.

*Est.: \$300 - \$500 • Min. bid: \$150*





### Lot 265

**Lot of (2), Half-size, 'Flowerpot form' Utility Bottles**, Continental, probably France, 1770 - 1790. Medium yellowish olive, and medium-to-deep olive amber, both are half-size, cylindrical, 'flowerpot form', elongated neck with sheared mouth and applied string rim - kick-up bases with blowpipe pontil scar, ht. 8 5/8" and 8 7/8" respectively; (both have a bit of typical minor wear; 1st Ex. has a little exterior haze on one side, as well as light interior haze, otherwise excellent).

*Est.: \$175 - \$350 • Min. bid: \$90*



### Lot 269

**Lot of (2), Early 'Hock' Wine Bottles**, Germany, 1800 - 1830. Both are shades of medium-to-deep pinkish strawberry puce coloration, 'hock wine' form, dip mold or possibly freeblown, rough sheared mouths with applied flat banded collars - deep kick-up bases with disc type pontil scars, ht. 13" and 13 1/8"; (both with a bit of relatively minor wear, and some flaking and small chips around edge of lips, some of which is likely in-manufacture). VdB, plate 265. Gorgeous colors!

*Est.: \$200 - \$400 • Min. bid: \$100*



### Lot 266

**Lot of (2), 'Long Neck' Early Utility Bottles**, France, Belgium / Dutch, 1770 - 1800. Clear olive and yellowish honey coloration, both are cylindrical with gracefully sloping shoulders, long narrow necks, sheared mouth with applied string rim - deep kick-up pontil scarred bases, ht. 10 1/4" and 10 7/8" respectively; (olive example has a couple of small patches of minor wear, a bit of faint interior haze; amber example near perfect with a bit of light residue). A beautiful pair of early utility bottles.

*Est.: \$150 - \$250 • Min. bid: \$80*



### Lot 270

**Lot of (3), Early Blown Wine Bottles**, Continental, probably Bavarian or Austrian Alps region, 1800 - 1840. Bright teal, light lemon yellow, and clear medium green, 'hock wine' and conical forms, dip mold or possibly freeblown, sheared mouths with applied banded collar - push-up bases with blowpipe or disc pontil scars, ht. 11 3/4", 11", and 10 1/4" respectively, all near mint; (a 1/8" lip flake on teal example). A beautiful trio or early blown wines, the colors complementing one another nicely.

*Est.: \$200 - \$400 • Min. bid: \$100*



### Lot 267

**Rare, Miniature, Early Freeblown Liquor or Utility Bottle**, Continental, probably France, 1770 - 1800. Yellowish 'old amber', almost a butterscotch coloration, bell form body with elongated neck, sheared lip, applied neck ring - pushed up base with delicate blowpipe pontil scar, ht. 7", perfect! A very early, delicate, thin-walled utility bottle, rare size, typically used for liquor.

*Est.: \$200 - \$400 • Min. bid: \$100*



### Lot 271

**Early, Dip Mold Case Bottle** (with applied blank seal), Continental, probably North Germany, 1760 - 1780. Clear, light-to-medium olive coloration, rectangular with concave sides, sheared mouth, crudely applied string rim - blowpipe pontil scar, ht. 8 3/8"; (a little scattered minor wear, otherwise perfect). VdB, plate 208. Scarce! Blank seals were sometimes added to early bottles, the owner would then inscribe it with their name or contents. A beautiful example, excellent color and clarity.

*Est.: \$300 - \$500 • Min. bid: \$150*



### Lot 268

**Lot of (2), Freeblown, 'Champagne-type' Utility Bottles**, Continental, probably France (Alsace region), 1780 - 1800. Rich, medium-to-deep amber with a slight reddish tone, and golden amber, both are cylindrical with slightly tapered sides, sheared mouth - disc type pontil scarred bases, ht. 9 1/4" and 10 7/8" respectively, both are near mint; (just a slight trace of wear, and a little 1/4" sliver flake on the edge of the lip of 2nd example). A wonderful pair of early utilities, scarce form.

*Est.: \$175 - \$350 • Min. bid: \$90*



### Lot 272

**Large, Early Case Bottle**, probably Continental, possibly America, 1780 - 1800. Light-to-medium sea green coloration, dip mold, square with virtually straight sides, sheared mouth with applied string rim - blowpipe pontil scar, ht. 10 5/8", near mint; (a little typical light usage wear, otherwise perfect). A very early, large, case bottle, excellent clarity, attractive and scarce color, excellent overall condition. Provenance: Fred Swiechowicz collection.

*Est.: \$300 - \$500 • Min. bid: \$150*



### Lot 273

**Large, Early Case Bottle**, England or possibly Continental, 1720 - 1750. Deep olive green, vertical, straight-sided body, domed shoulders, rough sheared mouth with a crudely applied heavy string rim - sand type pontil scar, ht. 14 1/4"; (some exterior wear and light scratches; an overall light sheen or 'bloom' to the glass, and some interior residue or light haze). Scarce. A very large, crude, case bottle that predates the tapered body and square-shouldered examples.

*Est.: \$400 - \$800 • Min. bid: \$200*



### Lot 274

**Scarce form, Oversized Early Case Bottle**, Continental, Netherlands or possibly Belgium, 1780 - 1800. Deep yellowish olive, square, wide-body case bottle with nearly straight sides, sheared mouth, applied heavy string rim - blowpipe pontil scar, ht. 15", base dia. 6 7/8"; (some scattered exterior usage wear and light scratches; some interior content residue and minor light haze, otherwise excellent). Unusual form, with a very squatty, pleasing appearance.

*Est.: \$600 - \$900 • Min. bid: \$300*



### Lot 275

**Mammoth size, Early Case Bottle**, Continental, probably Germany or Belgium, 1780 - 1800. Beautiful, clear medium olive, square with virtually straight sides, sheared mouth with applied string rim - blowpipe pontil scar, ht. 16 7/8", near mint; (just a trace of very minor wear, otherwise perfect). VdB, plate 83. An absolutely fantastic example. Impressive size, beautiful color, outstanding clarity and condition!

*Est.: \$1,000 - \$2,000 • Min. bid: \$500*



### Lot 276

**Early, Wide-Mouth Case Bottle**, probably Netherlands or Germany, 1770 - 1800. Clear medium olive with a slight yellowish tone, dip mold, tapered case form with a wide, thin flanged mouth - blowpipe pontil scar, ht. 11", near perfect; (just a trace of typical light wear, and a bit of very faint interior milkiness below the shoulders). VdB, plate 286; MW, plate 47. Scarce. A beautiful example, nice bubbly glass, fantastic condition. Fred Swiechowicz collection.

*Est.: \$800 - \$1,200 • Min. bid: \$400*



### Lot 277

**Lot of (2), Early Blown Preserve Jars**, Continental, probably France, 1800 - 1830. Delicate light olive, and medium-to-deep olive amber, freeblown and dip mold, both with a wide neck flaring outward to a sheared rim - pushed up bases with sand type pontil scar, ht. 7 1/4" and 8 1/4", both near perfect; (slight bit of very minor wear). A great pair of early blown jars. The light olive example is a scarce smaller size, and with nice swirl lines through the glass; nice shading of color on the olive amber jar.

*Est.: \$250 - \$450 • Min. bid: \$130*



### Lot 278

**Black Glass Wide Mouth Onion Bottle**, Continental, probably Dutch, 1780 - 1810. Clear medium olive, onion form body with an expanded neck, sheared and outward flared mouth, applied string rim - deep domed base with blowpipe pontil scar, ht. 7 7/8"; (a bit of typical minor wear, and a little light interior haze in the neck and shoulders, otherwise perfect). Scarce. VdB, plate 285. A beautiful example, full original body luster, nice flared mouth, lighter color than most. Fred Swiechowicz collection.

*Est.: \$250 - \$450 • Min. bid: \$130*



### Lot 279

**Rare, Wide-Mouth Early Storage Bottle**, probably Germany, Black Forest region, 1800 - 1820. Olive green, magnum-size squat cylinder with drawn up shoulders, wide neck, sheared, tooled, and outward flared mouth - disc type pontil scar, ht. 10 7/8", base dia. 7 3/4"; (a little typical minor usage wear, and a light, oily-type, of interior content residue, but no other form of damage, and otherwise very near mint). Pleasing form, and with some attractive swirl lines through the glass.

*Est.: \$400 - \$800 • Min. bid: \$200*



### Lot 280

**Early Dip Mold Storage Bottle**, Continental, probably Germany (Black Forest region), 1840 - 1860. Bright medium olive green, cylindrical with drawn up shoulders, sheared, tooled, wide flared mouth - blowpipe pontil scar, ht. 10 3/4", near mint; (some very minor interior residue, light exterior wear, otherwise perfect). VdB, plate 273. A very attractive, blown, storage bottle with stretch marks in the neck and swirl lines through the body.

*Est.: \$120 - \$240 • Min. bid: \$60*



**Lot 281**

**Early Utility or Storage Bottle,** Continental, probably Germany, 1820 - 1850. Bright green with an olive tone, tall cylinder form, dip mold, short drawn-up neck with a sheared, tooled, and outward flared mouth - blowpipe pontil scar, ht. 12 5/8"; (a touch of minor wear; a small patch of light dullness on the shoulder, and a hard-to-see, 1/4" annealing line in the body, otherwise excellent). A large early utility, attractive color and lip treatment. Ex. Charles B. Gardner collection.

*Est.: \$200 - \$400 • Min. bid: \$10*

**Lot 285**

**Large, Early, Freeblown Demi-john,** Continental, probably southern France, 1730 - 1760. Light-to-medium bluish green, almost a sea green coloration, straight-sided cylinder with slightly drawn-in sides, rough sheared mouth, heavy applied ring approximately 3/4" below lip - pushed up base with disc type pontil scar, ht. 17 1/4", near mint; (a little minor usage wear and a few small chips, 1/8" to 1/4", from the sheared mouth). VdB, plate 181. A very early, attractive demijohn.

*Est.: \$300 - \$600 • Min. bid: \$150*

**Lot 282**

**Early Freeblown Utility or Storage Bottle,** probably England, 1810 - 1830. Medium-to-deep yellow olive, cylindrical, short wide neck, sheared, tooled, flared mouth - domed base, heavy disc type pontil scar, ht. 11 1/2"; (a little minor usage wear; some very faint haze and a light oily film on the interior, as well as a 3" partially open bubble with some trapped residue, otherwise excellent). A heavy, crudely blown utility with lopsided shoulders, a lean to the body, and a misshapen base.

*Est.: \$175 - \$350 • Min. bid: \$90*

**Lot 286**

**Early Demijohn or Storage Bottle,** Continental, probably France, 1800 - 1820. Clear yellowish green with an emerald tone, freeblown or possibly dip mold, flattened oval body with sides tapering inward from shoulders to base, sheared mouth with applied flat banded collar - blowpipe pontil scar, ht. 13", perfect. A beautiful demijohn, scarce form, fantastic color, outstanding character - the glass being absolutely filled with tiny seed bubbles!

*Est.: \$400 - \$800 • Min. bid: \$200*

**Lot 283**

**Large, Flowerpot-form Storage Bottle,** France, 1780 - 1800. Medium-to-deep olive amber, cylindrical, elongated 'flowerpot form', sheared mouth with applied heavy ring collar - pushed up base with blowpipe pontil scar, ht. 13 7/8", near mint; (a band of light interior milkiness in the shoulders, and a bubble on the inside of the neck with some trapped residue, otherwise virtually perfect). VdB, plate 147. An impressive, 'big-bellied', flowerpot utility bottle.

*Est.: \$200 - \$400 • Min. bid: \$100*

**Lot 287**

**Large, Early Freeblown Demijohn or Storage Bottle,** Continental, Germany, (Black Forest region), 1780 - 1800. Beautiful light yellow coloration, freeblown with nearly straight sides, domed shoulders, funnel type neck with sheared, tooled, and outward flared mouth - domed base with blowpipe pontil scar, ht. 16 1/4", virtually perfect; (some light interior residue that would likely wash out). A big, beautiful, impressive demijohn, fantastic color, clarity and condition.

*Est.: \$300 - \$600 • Min. bid: \$150*

**Lot 284**

**Lot of (3), Blown Utility or Preserve Jars,** Continental, probably French, 1860 - 1870. Two are shades of deep yellowish 'old amber' with an olive tone, third example is deep amber, all are freeblown, tapered cylinder form, sheared mouth with applied ring collars - deep kick-up bases with iron pontil scars, ht. 5 7/8", 6", and 7 5/8", all are near mint; (bit of light interior residue, very minor wear, otherwise perfect). VdB, plate 268, #3. Typically used for preserving truffles or other foodstuffs.

*Est.: \$100 - \$200 • Min. bid: \$60*

**Lot 288**

**Early, Freeblown Demijohn or Storage Bottle,** Continental, probably France (Alsace), across the Rhine River from the Black Forest, 1720 - 1740. Beautiful, clear yellow shading to a deep honey amber through the neck, globular form, sheared mouth - pushed up base, delicate blowpipe pontil scar, ht. 12 3/8", virtually perfect; (just the slightest trace of wear including an onionskin-thin, partially open bubble). A gorgeous, very early demijohn, delicate thin-walled body, great symmetry, fantastic color.

*Est.: \$400 - \$800 • Min. bid: \$200*



### Lot 289

**Early, Freeblown Demijohn or Storage Bottle**, Continental, probably France (Alsace region), 1720 - 1740. Medium-to-deep yellowish olive amber, globular form, sheared mouth - pushed up base with blowpipe pontil scar, ht. 12 1/8", near perfect; (a shallow open bubble on the interior, near the base, and just a faint trace of wear). A fantastic example, delicate thin glass, nice color, and outstanding character with streaks of tiny bubbles and impurities throughout the body.

*Est.: \$400 - \$800 • Min. bid: \$200*



### Lot 293

**Early, Freeblown Demijohn**, Continental, probably North Germany, 1830 - 1850. Beautiful, medium yellowish olive with an amber tone, side-flattened plump ovoid form, crudely sheared mouth with applied wide banded collar - blowpipe pontil scar, ht. 13 1/2", near mint; (a little roughness, including a 1/4" chip, possibly in-manufacture, on the edge of the rough sheared, partially ground lip; trace bit of light wear, otherwise perfect). Excellent clarity, nice color and condition.

*Est.: \$250 - \$450 • Min. bid: \$130*



### Lot 290

**Early, Freeblown Storage Bottle or Carboy**, England, 1790 - 1810. Deep olive amber, globular form, sheared mouth with a crudely applied heavy string rim - disc type pontil scar, ht. 14"; (just a bit of minor exterior usage wear; some heavy interior content residue that would likely soak out, otherwise excellent). A big, early, crude storage bottle, the type that was sometimes used in early apothecaries, but also for various beverages.

*Est.: \$300 - \$500 • Min. bid: \$150*



### Lot 294

**Lot of (2), Freeblown or Dip Mold Demijohns**, New England, possibly one of the Stoddard, NH glasshouses, 1845 - 1865. Yellowish amber with a slight olive tone, and medium-to-deep olive amber, both are cylindrical, freeblown or possibly dip mold, applied sloping collars - blowpipe and heavy sand type pontil scarred bases, both 13", near mint; (both with just a bit of typical light wear, yellowish-amber example has a little light interior haze in the upper half of the body).

*Est.: \$300 - \$500 • Min. bid: \$150*



### Lot 291

**Lot of (2), Freeblown Demijohns**, Continental, probably Germany, 1780 - 1810. Sea-green and yellowish olive, both are side-flattened globular form, applied ring collar and tooled ring collar, blowpipe pontil scarred bases, ht. 10 1/4" and 9 3/4" respectively; (both with some interior haze, and a little typical minor wear, but no other form of damage, and otherwise excellent with full original body luster). This form is sometimes termed a 'side-flattened onion'. A very pleasing pair.

*Est.: \$300 - \$500 • Min. bid: \$150*



### Lot 295

**Lot of (2), Freeblown or Dip Mold Demijohns**, probably New England, 1850 - 1865. 1st Ex. is a light yellowish olive shading to a deep yellow-olive through the neck; 2nd Ex. is yellowish olive amber, both are cylindrical, dip mold or possibly freeblown, applied sloping collars - sand type pontil scarred bases, ht. 14 1/2" and 18 1/8" respectively; (both near mint with just a little typical light wear). The large 18" example has nice character as well as a large glob of extra glass on the side.

*Est.: \$250 - \$450 • Min. bid: \$130*



### Lot 292

**Early, Freeblown Demijohn**, Continental, probably North Germany, 1830 - 1850. Rich, medium-to-deep honey amber, side-flattened globular form, sheared mouth with applied wide banded collar - blowpipe pontil scar, ht. 11"; (slight trace of faint wear, otherwise pristine perfect). A great example, beautiful color, pleasing form, excellent character - the glass being filled with tiny bubbles.

*Est.: \$250 - \$450 • Min. bid: \$130*



### Lot 296

**Lot of (2), Freeblown or Dip Mold Demijohns**, New England, possibly Stoddard, NH, 1845 - 1865. Yellowish olive amber and medium-to-deep yellowish 'old amber', both are cylindrical, freeblown or possibly dip mold, applied sloping collars - sand type pontil scarred bases, ht. 11 1/4" and 17 1/8" respectively; (both near mint with just a little typical minor usage wear). A beautiful pair of early demijohns that complement one another nicely.

*Est.: \$300 - \$500 • Min. bid: \$150*



## Rare & Colored Pontiled Medicine Bottles

Lot 168



Lot 171

Lot 179

Lot 178

Lot 170

# Rare & Beautiful Peppersauce Bottle & Pickle Jars

Lot 112

Lot 114



Lot 108

Lot 113

Lot 110