

NOTE: This is a timed-closing auction. See details on first page.

American Glass GalleryTM

Auction #32

Opens July 19, 2022

Closes July 27, 2022



Left to right: Lot 35, Lot 141, Lot 13

Conditions of Sale: Auction #32 – Timed Closing Auction - No Call Backs

1. Absentee Auction

The items in this sale will be sold via absentee auction.
Closing date: **Wednesday, July 27, 2022, 10:00 p.m., EST.**

2. Our Guarantee Regarding Descriptions

American Glass Gallery has made every attempt to describe correctly the property being sold. Descriptions are guaranteed to be accurate as regards to authenticity, age, condition, and measurements to within one-fourth inch, as represented in this catalog. Items in this catalog are not shown to scale. In describing damage, exterior wear or manufacturer's flaws that in our opinion, do not significantly detract visually or monetarily from the value of the item are not listed and will not be considered for refund. The Auctioneers reserve the right to make verbal corrections and provide additional information at any time during the sale.

3. Preview

Items may be viewed by appointment from **July 20, 2022**, through **July 26, 2022**.

4. Bidding Procedure

You may submit your bids by mail, phone, FAX, email or through our on-line auction site. If bidding by mail or FAX, please fill out the absentee form and return it to us. Your bid, either written or oral, grants American Glass Gallery the authority to protect you up to the amount of your stated bid. Your bid will not be removed once executed.

Bidding Times: You can submit your bids anytime after receiving your catalog. Bids may be made by phone, daily, until closing day, **July 27, 2022**, from 9 A.M. - 6 P.M. Eastern Time. Incoming phone bids will be accepted on the closing day (**July 27, 2022**) until 10 P.M. Eastern Time. No exceptions. You may also place your bids through our on-line auction service 24-hours a day once the site has opened for bidding, on or about **July 19, 2022**, continuing until 10:00 P.M. Eastern Time, **July 27, 2022**.

Please do not wait until the last day or two of the sale to place your bids!

Because many collectors wait until the final few days of the sale to place their bids, we anticipate the telephone and internet bidding to be very busy during that period, so please plan accordingly. In the event of a tie bid, the earliest received bid on the lot will take precedent. We would welcome your bids by phone so that we can answer any questions and assist you in your bidding.

You may also telephone us at any time during the auction, prior to the closing of the sale, to check the status of your bids, to find the current bidding level, to open a bid, or to raise a bid on an auction lot.

Bidding Increments are as follows:

Up to \$250.00.....	increments of \$10.00
\$250.00 - \$500.00	increments of \$25.00
\$500.00 - \$1,000.00	increments of \$50.00
\$1,000.00 - \$2,500.00	increments of \$100.00
\$2,500.00 - \$5,000.00	increments of \$250.00
\$5,000.00 - \$10,000.00	increments of \$500.00
\$10,000 & Up.....	increments of \$1,000.00

Bids submitted between the above increments, whether by mail, FAX, email or on-line via the internet, will automatically be lowered to the closest lower increment.

This is a minimum bid auction. Bids below the printed minimum will not be accepted.

An example of how our absentee bidding system works: You bid \$1000.00 on a lot which is the highest bid received to date. The second highest bid is \$800.00. The current high bid level would be yours at \$850.00, one bid increment higher than the other collector's bid. Any additional bids submitted by others below \$1000.00 will automatically be topped on your behalf by a representative of American Glass Gallery, up to your stipulated high bid amount. If no further bids on this lot are received beyond the \$800.00, then you would have won the lot at \$850.00, not the \$1000.00 that you were prepared to pay.

American Glass Gallery will at NO TIME disclose bids pledged by others; only the current "High Bid" level of a lot will be stated upon request. The highest bidder as determined by American Glass Gallery shall be the purchaser. It is the sole right of the auctioneer to settle any dispute between bidders and to regulate the bidding procedure. The auctioneer reserves the right to refuse any bid he believes not to have been made in good faith.

5. Closing the Auction

Timed Closing. No Call Backs for This Sale!

Auction closes 10 PM Eastern, Wednesday, July 27.

How it works: If any Lot receives a bid within the last 10 minutes before the 10 PM closing time, an additional 10 minutes will be added on to the bidding time for that Lot - at the time the bid is entered. For example, if a bid is entered on Lot #95 at 9:58 PM, an additional 10 minutes will be added to the closing time for that Lot, i.e. the Lot will close 10:08 PM, unless another acceptable bid is received prior to 10:08 PM. If the same Lot receives another bid 5 minutes later, i.e., 10:03 PM, the 10 minute timer will be restarted. Thus, an item will not close until it has received no bids for 10 minutes. At the end of that time, the Lot will automatically close and the highest bidder will be the winner.

No phone bids will be accepted after 10 PM, or during the timed closing portion of the sale.

IMPORTANT: When the auction is in the last 10 minutes, (after 9:50 PM EST, Wednesday, July 27), **you must refresh your screen to see any updated bids and remaining time on the Lots.** You may refresh your bid page by hitting "Enter Bids". A time left column will appear on the right. The time will go down every time you refresh unless an acceptable bid has been placed, then the timer will be reset to 10 minutes.

When a Lot closes, your bid sheet will show either (parentheses only when there is a left bid):

Example:

You **WIN** for \$400 (Left Bid \$500)

or:

Won by another for \$600

Note: Normal email notifications will still be sent during the Timed Closing. However, we recommend that you actively refresh your screen for the latest updates, or changes, as the email notifications may not always get through (i.e., may sometimes be intercepted by email blockers or spam filters).

If you are unable to be watch, or be actively involved during the closing time, you may always submit an Absentee, or "Left Bid" which will be executed competitively up to your stipulated high bid should any bids come in during the Timed Closing Period.

Conditions of Sale: Auction #32 – Timed Closing Auction - No Call Backs

6. Terms

Successful Bidders, Prompt and full payment is due immediately upon receipt of our invoice. Absolutely no exceptions. Anyone failing to pay for items won will forfeit all rights to bid in any future American Glass Gallery sales. **Any late or delayed payments may result in loss of return privileges for items purchased in the sale.**

No Items Will Be Mailed Before Full Payment Is Received.

Buyer Premium: Our buyer premium remains unchanged. **It is 15% if paying by cash or check, discounted from 18% if paying by Credit Card or PayPal** (PayPal payment account: jpastor@americanglassgallery.com). This buyer premium will be added to the hammer price as part of the purchase price. For example, if you purchase a lot for \$100.00, you will receive an invoice for \$115.00 if paying by cash, check or money order, plus any applicable sales tax or shipping charges.

Taxes: If you are a Michigan resident, a 6% sales tax will be added to your bill unless you have a valid resale number registered with us.

Shipping: Shipping, handling and insurance are extra. We ship insured via U.S. Mail or UPS. These charges will be added to your bill unless the lots are picked up in person. Oversize packages (boxes with dimensions over 12"), may incur additional shipping charges based on the postal zone of destination. Our charges for shipping (excluding foreign shipments and oversized lots) are \$18.00 for the first item, \$9.00 for each additional item together with extra insurance costs (we use current U.S. Postal Service insurance rates).

Please allow two to three weeks for delivery after receipt of your check.

Payment: American Glass Gallery accepts Cash, Money Orders, Personal Checks, Visa, MasterCard, American Express and PayPal. **If paying by Credit Card or PayPal, an additional 3% will be added to the invoice total.**



7. Refunds

Refunds will be given at the discretion of the Auctioneers. Items purchased must be examined and request for refund made immediately upon receipt of the item or items. Since opinions can differ, particularly in the matter of condition, the Auctioneers will be the sole judge in the consideration of refunds. Refunds requested on the grounds of authenticity must be made within 15 days of the date of the auction, and such refund requests must be accompanied by at least one supporting statement in writing from an authority recognized by the Auctioneers. It is the Auctioneers sincere intention to consider any reasonable request for a refund. **Absolutely no returns for any reason after 30 days following the closing of the sale.**

8. Bidding on any item indicates your acceptance of these terms.



American Glass Gallery™

John R. Pastor
P.O. Box 227
New Hudson, Michigan 48165
Phone: 248.486.0530
Fax: 248.486.0538
www.americanglassgallery.com
email: jpastor@americanglassgallery.com

PLEASE NOTE:

The lots offered in this printed catalog are identical to the lots offered in the on-line catalog. However, due to space constraints of the printed catalog, there may be some further information available regarding some of the lots in the on-line auction descriptions.

Please visit us at

www.americanglassgallery.com

and follow the link to the on-line auction.

The link and on-line auction will be available July 19, 2022. A post-auction price list will be available on our website, in printable form, approximately 30 days after the close of the auction.

We encourage you to contact us by phone or email with any questions, for assistance with bidding, or further details or clarification on any of the lots in this sale. Your complete satisfaction and confidence is our goal!

**THANK YOU AND GOOD LUCK
WITH YOUR BIDS!**

Reference Key

Reference initials and numbers used in the description of this catalog refer to the following publications:

AHG	<i>American Historical Glass</i> , Bessie M. Lindsey, 1967.
AM	<i>The Decanter - An Illustrated History of Glass from 1650</i> , Andy McConnell, 2004.
AP	<i>Glass in Early America</i> , Arlene Palmer, 1993.
BA1	<i>Collecting The Cures</i> , Bill Agee, 1969.
BA2	<i>Collecting All Cures</i> , Bill Agee, 1973.
BB	<i>A Bit About Balsams</i> , Betty Blasi, 1974.
BH	<i>Classification and Documentation of Sunburst and Similar Scent Bottles</i> , Bill Ham, AB&GC, 5/87.
BJ	<i>American Pot Lids</i> , Barbara and Sonny Jackson, 1987.
B/K	<i>The Glass Industry in Sandwich</i> , Raymond Barlow and Joan Kaiser, 1989.
BPK	<i>A.M. BININGER Bottles</i> , Jim Bender, 2017
C	<i>Ink Bottles and Inkwells</i> , William Covill, 1971.
DB	<i>Antique Sealed Bottles, 1640 - 1900</i> , David Burton, 2015
DeG	<i>American Sarsaparilla Bottles</i> , John DeGrafft, 1980.
DeGII	<i>Supplement to American Sarsaparilla Bottles</i> , John DeGrafft, 2004.
DF	<i>Hair Raising Stories</i> , Don Fadely, 1992.
DM	<i>Wistarburgh, Window Tiles, Bottles and More</i> , Dale L. Murscell, 2007.
D/P	<i>Collector's Guide to Candy Containers</i> , Douglas M. Dezso, J. Leon and Rose Poirier, 1998.
F	<i>Inks, 150 Years of Bottles and Companies</i> , Ed and Lucy Faulkner.
FA	<i>John Frederick Amelung, Early American Glassmaker</i> , Lanmon, Palmer, Hume, Brill, Hanson, 1990.
FB	<i>A.S.C.R. The wine bottles of All Souls College</i> , Oxford, 1750 – 1850, Fay Banks.
G	(Flasks) <i>American Bottles & Flasks and Their Ancestry</i> , McKearin & Wilson, 1978.
G	(Blown Three Mold) <i>American Glass</i> (Chapter VI), George S. and Helen McKearin, 1941.
GBH	<i>English Glass For The Collector, 1660-1860</i> , G. Bernard Hughes, 1958.
H	<i>American Bottles in the Charles B. Gardner Collection</i> , Norman C. Heckler, 1975.
JB	<i>Patent and Proprietary Medicine Bottles</i> , Joseph K. Baldwin, 1973
JEB	<i>Glasshouse Whimsies</i> , Joyce E. Blake, 1984.
JH	<i>Glasshouses & Glass Manufacturers of the Pittsburgh Region, 1795 – 1910</i> , Jay W. Hawkins, 2009.
JM	<i>Tea Kettle Ink Price and Reference Guide</i> , Joe L. Mathews Jr., 2016
JS	<i>In glas verpakt – European Bottles, Their history and production</i> , Johan Soetens, 2001.
K	<i>Poison Bottle Workbook</i> , Rudy Kuhn, 1988.
KW	<i>New England Glass & Glassmaking</i> , Kenneth M. Wilson, 1972.
L	<i>The Red Book of Fruit Jars, No. 11</i> , Douglas M Leybourne, Jr., 2014.
LI	<i>Pittsburgh Glass, 1797 – 1891</i> , Lowell Innes, 1976.
Mc	<i>Two Hundred Years of American Blown Glass</i> , Helen and George McKearin, 1950.
McK	<i>American Glass</i> , George S. and Helen McKearin, 1941.
MW	<i>American Bottles & Flasks and Their Ancestry</i> , McKearin & Wilson, 1978.
N	<i>Great American Pontiled Medicines</i> , Frederick Nielson, 1978.
NCH	<i>The Blaske Collection of American Flasks</i> , Norman C. Heckler, 1983.
NCH II	<i>The Blaske Collection: Part II</i> , Norman C. Heckler, 1983.
Odell I	<i>Indian Bottles and Brands</i> , John Odell, 1977
Odell II	<i>Pontiled Medicine Encyclopdia</i> , John Odell, 2007
O&S	<i>Warner's Reference Guide</i> , Ed Ojea and Jack Stecher, 1998.
P	<i>The Glass Gaffers of New Jersey</i> , Adeline Pepper, 1971.
RD	<i>Understanding Antique Wine Bottles</i> , Roger Dumbrell, 1983.
RF	<i>The Bottle Book: A Comprehensive Guide to Historic, Embossed Medicine Bottles</i> , Richard Fike, 1987
RH	<i>Collecting Barber Bottles</i> , Richard Holiner, 1986.
R/H	<i>Bitters Bottles</i> , Carlyn Ring and W. C. Ham, 1998.
RWL	<i>Antique Fakes & Reproductions</i> , Ruth Webb Lee, 1950
T	<i>Collectors Guide to Saratoga Type Mineral Water Bottles</i> , Donald Tucker, 2005.
V	<i>Nailsea Glass</i> , Keith Vincent, 1975
VdB	<i>Antique Glass Bottles; Their History and Evolution</i> , Willy Van den Bossche, 2001.
Z	<i>Ketchup, Pickles, Sauces</i> , Betty Zumwalt, 1980.
ZW	<i>Color Hutchinsons</i> , Zang Wood, 1999.

- The dash is generally used to indicate that the descriptions are on opposite sides of the bottle or flask.

/ The slash is used to indicate that the descriptions are on different lines or surfaces of the bottle.

Lot 9



Lot 249: Rare & Important Bristol Improved Soda Water Bottle

This exceedingly rare and important soda water bottle was recently found at a second hand store in Detroit, Michigan. Believed to be one of only two recorded, this example does not appear to have ever been in the ground. Beyond the obvious rarity, it's a 'looker' with very large, impressive lettering and embossing around the entire bottle.



BRISTOL, FROM THE BATH ROAD.

Engraved by E. Fry

Colorful and Diverse Pitkin-type Flasks

The beautiful flasks shown below were all produced in America from about 1750 to as late as 1825. All were blown by the half-post method, a technique that arose in Europe sometime in the later part of the 1600s. Though 99% of half-post flasks are pattern-molded, rare unpatterned examples are also known.

Pioneer collectors of American glass used the term “Pitkin flask” to categorize this type of bottle based on the fact that many of them were attributed by family and local tradition to Pitkin’s East Hartford glassworks in Manchester, Connecticut, and because they were commonly found thereabouts.

It soon became evident that similar flasks were made in other parts of New England, and of the country, however the term Pitkin flask, or Pitkin-type flask, continued to be used for all such bottles up to the present day.

In *American Bottles and Flasks*, co-author Helen McKearin gave an excellent overview on the

subject of Pitkin-type flasks and bottles. In it, she wrote the following regarding Pitkin-type flasks thought to have been produced in the Midwest:

*The geographical distribution and high incidence of the distinctive types found in the Midwestern areas were accepted as evidence of Midwestern origin. Although Mantua (Ohio) is still the only proven source, it is now generally conceded that Pitkin-type flasks were blown in other and earlier Midwestern glasshouses producing containers—as most of them did. In fact, it seems a safe assumption that probably nine out of ten Pitkin-type flasks found in Midwestern homes were blown in a Midwestern glassworks.**

Since those words were written nearly 45 years ago, we now know that quite the opposite is true, thanks to more recent study by numerous students and collectors of early American glass.

Through archaeological excavations, both in the Midwest, and in the Mid-Atlantic region, there is now definitive evidence that relatively few Pitkin-type flasks were in fact blown in the Midwest, and that a large portion of those once thought to be Midwestern, were in fact produced in southern New Jersey and the eastern regions of Pennsylvania and Maryland.

By the time many of the early Midwestern glassworks had been established, the heyday of the Pitkin-type flask was waning and the less-labor intensive “chestnut” flask was taking its place. Most of the Pitkin-type flasks that have historically shown up in the Midwest, came westward with early settlers and survive in good numbers due to their unusually strong constitution, and “sure grip.”

* *American Bottles & Flasks and Their Ancestry*, Helen McKearin and Kenneth M. Wilson, Crown Publishers, 1978



BOTTLES

A Spectacular Array of Rare and Colorful Bitters Bottles

Lot 138



Lot 142



Lot 156



Lot 175



Lot 139

Lot 134

Lot 128

Lot 145

Lot 133



Lot 1

“GENERAL WASHINGTON” / BUST OF WASHINGTON - EAGLE Historical Flask, an early Pittsburgh district glasshouse, 1825 - 1835. Greenish aquamarine, sheared mouth - blowpipe pontil scar, Pt, perfect. GI-2. Scarce. An absolutely top example having brilliant glass, an incredibly bold impression, and virtually no wear. Without a doubt, one of the choicest examples of this early beaded Washington flask that we have seen!

Est.: \$400 - \$600 • Min. bid: \$200



Lot 5

“THE FATHER OF HIS COUNTRY” / BUST OF WASHINGTON - (Reverse plain), **Historical Flask**, Lockport Glass Works, Lockport, NY, 1848 - 1855. Clear, medium bluish green, applied ring collar - blowpipe pontil scar, Qt, near mint; (a few, minor open surface bubbles, ¼” or less, and just the slightest trace of faint wear, otherwise perfect). GI-47. A beautiful example, excellent character with whittled, bubbly glass. Provenance: James Chebalo collection.

Est.: \$400 - \$600 • Min. bid: \$200



Lot 2

“WASHINGTON” / BUST OF WASHINGTON - EAGLE / “B.K.” Historical Flask, Benedict Kimber, Bridge Glass Works, PA. Rich, medium-to-deep aqua, sheared mouth - blowpipe pontil scar, Pt; (a 1/8” hole at the medial rib with a couple of ¼” fissures extending from the hole). GI-13. Extremely rare! A great looking example, bright, clean, much better than average impression, strong color, and beyond the noted hole in the rib, virtually attic mint. James Chebalo collection.

Est.: \$800 - \$1,200 • Min. bid: \$400



Lot 6

“ZACHARY TAYLOR” / BUST OF TAYLOR / “ROUGH & READY” - “CORN FOR THE WORLD” / CORNSTALK Historical Flask, Baltimore Glass Works, 1848 - 1855. Light aquamarine, sheared mouth - blowpipe pontil scar, Pt, attic mint; (trace of faint, washable, interior residue). GI-74. A very rare flask, good impression, beautiful condition, almost no wear! A lucky discovery from an estate sale in Cumberland County, NJ.

Est.: \$400 - \$600 • Min. bid: \$200



Lot 3

“WASHINGTON” / BUST OF WASHINGTON - “BRIDGETON” (STAR) “NEW JERSEY” / BUST OF TAYLOR Historical Flask, Bridgeton Glass Works, 1848 - 1855. Bright blue green, sheared mouth - blowpipe pontil scar, Pt, virtually attic mint; (only the slightest trace of light wear, and a little very faint, barely visible, light interior milkiness in the reverse, otherwise perfect). GI-24. A beautiful, bright example, very crisp, bold embossing. Provenance: James Chebalo collection.

Est.: \$800 - \$1,200 • Min. bid: \$400



Lot 7

“LAFAYETTE” / BUST OF LAFAYETTE / “COVENTRY / C-T” - STARS AND LIBERTY CAP / “S & S” Historical Flask, Coventry Glass Works, 1824 - 1830. Bright, yellowish olive amber, sheared mouth - blowpipe pontil scar, ½ Pt, near mint; (just a slight trace of light wear, otherwise virtually perfect). GI-86. A bright, clean example filled with tiny bubbles and some impurities including a large potstone in the neck (with no associated issues!). James Chebalo collection.

Est.: \$800 - \$1,200 • Min. bid: \$400



Lot 4

“THE FATHER OF HIS COUNTRY” / BUST OF WASHINGTON - BUST OF TAYLOR Historical Flask, probably Dyottville Glass Works, Philadelphia, 1848 - 1855. Medium-to-deep amber, crudely applied ring collar - smooth base, Qt; (some minor wear and a couple of light scratches, a little faint dullness to the glass, primarily on the reverse, some patchy content residue that would likely wash out). GI-45. A very rare mold, unlisted color! Provenance: Fred Swiechowicz collection.

Est.: \$2,000 - \$4,000 • Min. bid: \$1,000



Lot 8

“BENJAMIN FRANKLIN” / BUST OF FRANKLIN - “T.W. DYOTT, M.D.” / BUST OF DYOTT - “WHERE LIBERTY DWELLS THERE IS MY COUNTRY - KENSINGTON GLASS WORKS PHILADELPHIA” Historical Flask, 1824 - 1830. Deep root beer amber, sheared mouth - pontil scar, Pt; (just a touch of light wear and a 1/16” flake on the lip). GI-94. A scarce, desirable mold, extremely bold impression! James Chebalo, Ex. Paul Richards collections.

Est.: \$6,000 - \$9,000 • Est.: \$3,000



Lot 9

"BENJAMIN FRANKLIN" / BUST OF FRANKLIN - "T.W. DYOTT, M.D." / BUST OF DYOTT - "ERIPUIT COELO FULMEN SCEPTRUMQUE TYRANNIS - KENSINGTON GLASS WORKS, PHILADELPHIA" Historical Flask, 1825 - 1835. Colorless with a pale lilac tint in the base, sheared mouth - pontil scar, Qt, near mint; (some high point wear, primarily on Franklin's nose and cheek, some washable residue). GI-96. Fred Swiechowicz collection.

Est.: \$400 - \$800 • Min. bid: \$200



Lot 13

EAGLE - EAGLE Historical Flask, Kensington Glass Works, Philadelphia, 1825 - 1840. Gorgeous, lemon yellow with a strong citron green tone, sheared mouth - blowpipe pontil scar, Pt, near mint; (some washable residue; several paper-thin open surface bubbles and a slight trace of light wear, otherwise perfect). GII-40. Incredible color and character! Aside from being an exceedingly rare color, this example is 'over-the-top' in terms of bubbles and character! Fred Swiechowicz collection.

Est.: \$4,000 - \$6,000 • Min. bid: \$2,000



Lot 10

BUST OF WEBSTER - BUST OF CLAY Historical Flask, Granite Glass Works, Stoddard, NH, 1852 - 1860. Bright, light yellowish olive amber, almost an olive yellow below the shoulders, sheared mouth - blowpipe pontil scar, ½ Pt, virtually attic mint; (just the slightest trace of faint wear). GI-114. A pretty example, nice and light with excellent character. Per Anthony Picadio, the busts on this flask have been conclusively shown to be Daniel Webster and Henry Clay.

Est.: \$250 - \$450 • Min. bid: \$130



Lot 14

EAGLE - EAGLE Historical Flask, Kensington Glass Works, Philadelphia, 1825 - 1840. Brilliant blue green with strong teal tones, sheared mouth - blowpipe pontil scar, Pt, virtually pristine perfect; (small interior bubble with a bit of residue). GII-40. An exceptional, eye-appealing example with a strong impression. Outstanding in terms of brilliance, color, clarity, and condition.

Est.: \$3,000 - \$5,000 • Min. bid: \$1,500



Lot 11

EAGLE - EAGLE Historical Flask, an early Pittsburgh or Monongahela glasshouse, 1825 - 1835. Aquamarine, sheared mouth - blowpipe pontil scar, Pt, near mint; (just a touch of light wear including a 3/16" bit of roughness on the edge of the lip that you can feel, but is not easy to see, and a narrow band of faint interior milkiness in the lower half of the body, barely noticeable, otherwise excellent). GII-3. A rare flask, bright and clean with a good impression.

Est.: \$500 - \$800 • Min. bid: \$250



Lot 15

EAGLE - FURLED FLAG / "FOR OUR COUNTRY." Historical Flask, Coffin & Hay Glass Manufactory, Hammonton, NJ, 1838 - 1847. Aquamarine, sheared mouth - blowpipe pontil scar, Pt, virtually perfect; (a trace bit of washable residue). GII-54. A beautiful example of this comparatively scarce, and very desirable mold - bright, clean, good depth of color (many examples are very pale in color), bold embossing, and almost no wear!

Est.: \$200 - \$400 • Min. bid: \$100



Lot 12

EAGLE - CORNUCOPIA Historical Flask, an early Pittsburgh or Monongahela glasshouse, 1825 - 1835. Bright aquamarine, sheared mouth - blowpipe pontil scar, ½ Pt, perfect! GII-11. A scarce, very early little flask, bright and clean, fantastic condition with virtually no wear.

Est.: \$300 - \$500 • Min. bid: \$150



Lot 16

"LIBERTY" / EAGLE - "WILLINGTON / GLASS Co / WEST, WILLINGTON / CONN" Historical Flask, 1855 - 1872. Light-to-medium yellowish olive, large, applied ring collar with bevel - smooth base, Pt, virtually perfect; (some light, washable, interior residue, otherwise pristine). GII-62. An absolutely fantastic example with a large eye-appealing 'donut-style' collar, beautiful and scarce color, strong impression, and virtually no wear. Provenance: Fred Swiechowicz collection.

Est.: \$600 - \$1,200 • Min. bid: \$300



Lot 17

EAGLE - "NEW LONDON" / ANCHOR / "GLASS WORKS" Historical Flask, 1860 - 1866. Bright, golden amber, applied round double collar - smooth base, Pt, near mint; (just a slight trace of very minor wear, otherwise perfect). GII-68. A rare color for this mold, believed to be one of only three in this, or similar color, to be offered at auction since the Gardner sale in 1975. A bright, clean, pretty example. Provenance: John Apple collection, Ex. Robert Irons collection.

Est.: \$1,200 - \$1,800 • Min. bid: \$600



Lot 18

EAGLE - EAGLE Historical Flask, a Pittsburgh district glasshouse, 1860 - 1870. Rich, bright yellowish green, applied mouth with flat band - smooth base, Pt, virtually perfect; (just the slightest trace of faint wear, otherwise pristine). GII-92. A scarce mold in an unlisted color! And what a color it is. A very pretty, deep yellowish green, beautifully whittled, fantastic condition. Provenance: Fred Swiechowicz collection, Ex. Judge Blaske collection.

Est.: \$800 - \$1,200 • Min. bid: \$400



Lot 19

EAGLE - EAGLE Historical Flask, Midwest, probably a Pittsburgh glasshouse, 1865 - 1875. Beautiful light honey coloration along the sides, shading to a richer amber with a very slight orange tone through the shoulders and base, applied collar with flat band - smooth base, ½ Pt, near mint; (a little light exterior wear, and a bit of faint interior residue, otherwise perfect). GII-96. A great little flask that does not come around often. Nicely whittled, overall excellent condition.

Est.: \$250 - \$450 • Min. bid: \$130



Lot 20

EAGLE - EAGLE Historical Flask, Kearns, Herdman & Gorsuch, Zanesville, OH, 1869 - 1876. Rich, medium-to-deep amber, applied collar with flat band - smooth base, Pt, virtually perfect; (just a couple of tiny pinhead open bubbles, and a bit of faint washable interior residue). GII-118. A comparatively scarce mold, almost no wear, rare color! As some folks may know, the amber GII-118's are harder to find than the blue examples. Provenance: Fred Swiechowicz collection.

Est.: \$2,000 - \$4,000 • Min. bid: \$1,000



Lot 21

CORNUCOPIA - URN PICTORIAL FLASK, Lancaster Glass Works, Lancaster, NY, 1849 - 1860. Rich, medium emerald coloration, sheared mouth - blowpipe pontil scar, ½ Pt; (some scattered high point wear, otherwise perfect). GIII-14. Comparatively scarce. A pretty, eye-appealing little flask, rich, stronger color than most. Many of these have a bluish tone to them, this example is in a pure green coloration.

Est.: \$400 - \$600 • Min. bid: \$200



Lot 22

CORNUCOPIA - "LANCASTER GLASS WORKS N.Y." / URN Pictorial Flask, Lancaster Glass Works, 1849 - 1860. Clear, medium blue green, sheared mouth - iron pontil scar, Pt; (a bit of scattered light wear including just a trace of minor roughness on the back edge of the lip that you can feel, but is not easy to see; the embossing is a little weak in the shoulders, otherwise excellent). GIII-16. Good clarity and nice, being the more desirable, embossed, glasshouse mold.

Est.: \$600 - \$1,200 • Min. bid: \$300



Lot 23

"MASONIC ARCH - EAGLE / "T.W.D" Historical Flask, Kensington Glass Works, Philadelphia, PA, 1825 - 1838. Light greenish aquamarine, sheared mouth - blowpipe pontil scar, Pt, virtually attic mint; (just a slight trace of faint, very minor haze, barely noticeable, otherwise perfect). GIV-37. Note; there is some in-manufacture 'frothiness' to the glass in the neck and shoulder. A very nice example having a crisp, strong impression, and almost no wear.

Est.: \$250 - \$400 • Min. bid: \$130



Lot 24

"SUCCESS TO THE RAILROAD" / HORSE PULLING CART - (Reverse same) Historical Flask, possibly Mt. Vernon Glass Works, Vernon, NY, 1830 - 1846. Medium-to-deep olive green, sheared mouth - blowpipe pontil scar, Pt; (some exterior high point wear, and a somewhat weak impression in the shoulders, as is very common for this mold, but no other form of damage and otherwise excellent). GV-5. A classic early Railroad Flask, rich deep color.

Est.: \$300 - \$500 • Min. bid: \$150



Lot 25

"RAILROAD" / HORSE PULLING CART / "LOWELL" - EAGLE Historical Flask, Coventry Glass Works, probably 1830 - 1835. Medium olive amber, sheared mouth - blowpipe pontil scar, ½ Pt; (a little minor high point wear, otherwise attic mint). GV-10. A good clean example, and a unique mold in that it is the only railroad flask blown to commemorate a specific rail line.

Est.: \$250 - \$450 • Min. bid: \$130



Lot 29

"KEEN" - "P&W" SUNBURST FLASK, Keene Marlboro Street Glassworks, Keene, NH, 1815 - 1830. Medium olive with an amber tone, sheared mouth - blowpipe pontil scar, ½ Pt, virtually attic mint; (just the slightest trace of faint wear). GVIII-10. An excellent example of this very scarce, early, Keene sunburst (noted by McKearin as "Rare"), having almost no wear, and good strength of impression.

Est.: \$600 - \$900 • Min. bid: \$300



Lot 26

SUNBURST FLASK, Coventry, CT, or possibly Pitkin Glassworks, Manchester, CT, 1815 - 1830. Clear, medium olive, sheared mouth - blowpipe pontil scar, Pt, near mint; (a little high point wear, as is typical, and a slightly weak impression in the shoulder, otherwise perfect). GVIII-5. Not an easy mold to acquire, and a pretty example that passes plenty of light! Provenance: Ex. Taylor collection.

Est.: \$1,200 - \$1,800 • Min. bid: \$600



Lot 30

SUNBURST FLASK, an early Connecticut glasshouse, Coventry, or possibly Pitkin, 1815 - 1830. Bright yellowish olive with a slight amber tone, sheared mouth - blowpipe pontil scar, ½ Pt, near mint; (just a bit of light wear, otherwise perfect). GVIII-16. A very pretty example, lighter than most, having excellent clarity, color, and condition.

Est.: \$800 - \$1,200 • Min. bid: \$400



Lot 27

"KEEN" - "P&W" SUNBURST FLASK, Keene Marlboro Street Glassworks, Keene, NH, 1815 - 1830. Medium olive amber, sheared mouth - blowpipe pontil scar, Pt; (some high point wear as is typical for this mold, but otherwise perfect). GVIII-8. A classic, early, New England sunburst flask, nice character with crude, dimpled glass.

Est.: \$500 - \$800 • Min. bid: \$250



Lot 31

SUNBURST FLASK, Coventry Glass Works, Coventry, CT, 1815 - 1830. Yellowish olive amber, almost an olive yellow below the shoulders, sheared mouth - blowpipe pontil scar, ½ Pt, virtually perfect; (only the slightest trace of faint wear, otherwise sparkling mint). GVIII-18. A bright, clean, very pretty example with excellent clarity, outstanding condition.

Est.: \$800 - \$1,200 • Min. bid: \$400



Lot 28

"KEEN" - "P&W" SUNBURST FLASK, Keene Marlboro Street Glassworks, Keene, NH, 1815 - 1830. Medium olive with an amber tone, sheared mouth - blowpipe pontil scar, ½ Pt, near mint; (a little minor wear, and an open bubble on the interior, otherwise perfect). GVIII-9. Another nice example, and a lot of bottle for the money.

Est.: \$500 - \$800 • Min. bid: \$250



Lot 32

SUNBURST FLASK, probably Baltimore Glass Works, Baltimore, MD, 1820 - 1830. Deep tobacco amber, sheared mouth - blowpipe pontil scar, ½ Pt, virtually attic mint; (just the slightest trace of very light wear, otherwise perfect). GVIII-24. A very scarce and desirable mold, rich deep color, bubbly glass, outstanding condition. Provenance: Ex. Roy Brown collection.

Est.: \$1,800 - \$2,800 • Min. bid: \$900



Lot 33

SUNBURST FLASK, America, probably Baltimore Glass Works, Baltimore, MD, 1820 - 1830. Pale aquamarine, sheared mouth - blowpipe pontil scar, Pt; (some very light haziness to the glass, as well as some fine light scratches in the neck - not terribly distracting, but mentioned for completeness, and a paper-thin pinhead flake on one of the rays). GVIII-27. Comparatively scarce. The noted condition issues are there, but overall, the flask still displays quite nicely.

Est.: \$250 - \$400 • Min. bid: \$130



Lot 34

SUNBURST FLASK, New England, possibly Keene Marlboro Street Glassworks, Keene, NH, 1815 - 1830. Clear, medium blue green with some frothy dark yellowish amber streaks of color swirled through the lip and neck, sheared and tooled mouth - pontil scar, ¾ Pt, near mint; (only the slightest trace of light wear, and a little faint, minor interior haziness below the shoulders on one side, otherwise perfect). GVIII-29. A very nice example, good impression, almost no wear.

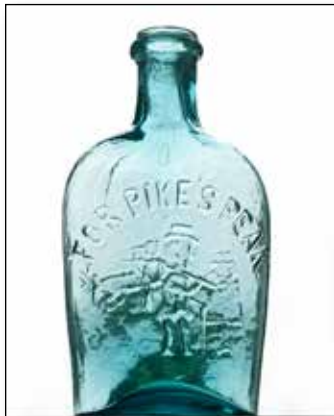
Est.: \$300 - \$500 • Min. bid: \$150



Lot 35

SUMMER TREE - SUMMER TREE Pictorial Flask, America, 1845 - 1860. Rich, medium-to-deep emerald coloration, sheared mouth - blowpipe pontil scar, Qt, virtually attic mint; (just a very slight trace of light wear, otherwise pristine). GX-18. Rare and outstanding color! Rich, vibrant, exceptional eye-appeal. From an 'old time' New England collection 15+ years ago, this one has not seen the light of day in a very long time. An exceedingly rare and beautiful example.

Est.: \$10,000 - \$15,000 • Min. bid: \$5,000



Lot 36

"FOR PIKE'S PEAK" / PROSPECTOR - HUNTER SHOOTING DEER Historical Flask, probably Ravenna Glass Works, OH, 1860 - 1865. Deep, bluish aquamarine with an ice-blue tone, applied mouth with flat band - smooth base, ½ Pt, virtually perfect; (just a slight trace of faint wear, and some in-manufacture crazing lines in the neck mentioned for completeness, but not considered damage). GXI-52. Comparatively scarce. Strong color, bold impression, a great example!

Est.: \$200 - \$400 • Min. bid: \$100



Lot 37

"UNION" / CLASPED HANDS / "WM FRANK & SONS / PITTS" - CANNON Historical Flask, William Frank & Sons Glass Manufacturers, Pittsburgh, 1870 - 1876. Deep amber coloration, applied collar with flat band - smooth base, Pt, virtually perfect; (an open bubble in the neck, and only the slightest trace of faint wear). GXII-39. A great example of this comparatively scarce flask, this example having almost no wear. Provenance: James Chebalo collection.

Est.: \$800 - \$1,200 • Min. bid: \$400



Lot 38

SHEAF OF GRAIN / LAUREL WREATH - "SHEETS & DUFFY" / 8-POINTED STAR Pictorial Calabash, Sheets & Duffy Glass Manufacturers, Philadelphia, PA, 1850 - 1860. Aquamarine, applied sloping collar - blowpipe pontil scar, Qt, virtually perfect; (just the slightest trace of faint wear including a ¼", paper-thin, open surface bubble, otherwise mint). GXIII-41. A great example, and as noted by McKearin, a scarce mold. Note; an early collector tag remains on the neck.

Est.: \$150 - \$250 • Min. bid: \$80



Lot 39

SHEAF OF GRAIN / LAUREL WREATH - 8-POINTED STAR Pictorial Calabash, probably Sheets & Duffy Glass Manufacturers, Philadelphia, PA, 1850 - 1860. Light apple green, applied sloping collar - blowpipe pontil scar, Qt; (just a bit of scattered light wear, otherwise perfect). GXIII-43. Attractive color, excellent condition, a very nice example and a lot of bottle for the money!

Est.: \$250 - \$450 • Min. bid: \$130



Lot 40

SHEAF OF GRAIN / LAUREL WREATH - 8-POINTED STAR Pictorial Calabash, probably Sheets & Duffy Glass Manufacturers, Philadelphia, PA, 1850 - 1860. Light cornflower blue, applied sloping collar - blowpipe pontil scar, Qt; (some scattered light wear; a little faint haze, primarily around the base, and some in-manufacture crazing lines in the applied lip, not considered damage, but mentioned for accuracy, otherwise excellent). GXIII-43. A very scarce-to-rare color for this mold.

Est.: \$400 - \$600 • Min. bid: \$200



Lot 41

"BALTIMORE" / ANCHOR / "GLASS WORKS" - SHEAF OF GRAIN Pictorial Calabash, Baltimore Glass Works, Baltimore, MD, 1850 - 1860. Light aquamarine, small, applied blob collar with bevel - blowpipe pontil scar, Qt.; (a touch of minor light wear, and just a trace of faint interior milkiness below the shoulder in the side and reverse, otherwise very near mint). GXIII-52. A scarce mold, and particularly so with the unusual, small, blob-style collared mouth.

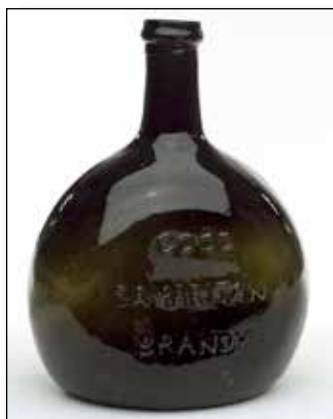
Est.: \$250 - \$450 • Min. bid: \$130



Lot 42

"TRAVELER'S" / STAR / "COMPANION" - SHEAF OF GRAIN Historical Flask, Westford Glass Works, Westford, CT 1857 - 1873. Amber with some attractive golden and rich orangey tones, applied sloping collar - smooth base, Qt., near mint; (a little typical light exterior wear, otherwise perfect). GXIV-1. A pretty example, very nice color, beautifully whittled!

Est.: \$200 - \$400 • Min. bid: \$100



Lot 43

"GOOD / SAMARITAN / BRANDY - GENTRY, SLOTE & Co / NEW YORK." Historical Flask, 1850 - 1860. Deep olive, plump chestnut form, applied mouth with ring - large red iron pontil scar, ht. 6 3/4", near mint; (a little typical light wear, otherwise perfect). GXV-21. See Mark Vuono's article, "Appreciate 'Lettered' Flasks", (AB&GC, Dec. 2014). Mark rated this flask as, "very rare and possibly extremely rare". A barn find at the historic Darlington Farm, Delaware County, PA.

Est.: \$1,800 - \$3,600 • Min. \$900



Lot 44

Small, Freeblown Pocket or Utility Flask, probably Wistarburgh Glass Works, Alloway, NJ, 1750 - 1780. Rich, medium teal coloration, plump spherical body with flattened sides, sheared mouth - blowpipe pontil scar, ht. 3 3/4", near mint; (just a touch of minor wear, and a bit of light interior residue, otherwise perfect). See *Wistarburgh Glass*, Murschell, p.74. A rare little pocket bottle or flask, pleasing diminutive size, eye-appealing color, a little sweetheart of a bottle.

Est.: \$400 - \$600 • Min. bid: \$200



Lot 45

Early, Freeblown Chestnut Bottle, Wistarburgh Glass Works, Alloway, NJ, or possibly Hilltown Glass Works, Bucks County, PA, 1760 - 1780. Rich medium green with a teal tone, chestnut form, sheared mouth with a crudely applied heavy string rim - blowpipe pontil scar, ht. 7 1/2"; (some light-to-moderate usage wear, otherwise excellent). A scarce, smaller size for a 'South Jersey' type chestnut, with nice bubbly glass and an unusually long neck.

Est.: \$400 - \$600 • Min. bid: \$200



Lot 46

Early, Freeblown Chestnut Bottle, Wistarburgh Glass Works, Alloway, NJ, or possibly Hilltown Glass Works, 1750 - 1780. Bright medium green with a yellowish tone, plump chestnut form with graceful sloping shoulders, sheared mouth, applied heavy string rim - blowpipe pontil scar, ht. 8 1/2"; (some typical scattered usage wear and light scratches, otherwise perfect). A beautiful example with excellent clarity and exceptional character - the glass being absolutely filled with tiny bubbles!

Est.: \$500 - \$1,000 • Min. bid: \$250



Lot 47

Early, Freeblown Chestnut Bottle, Wistarburgh Glass Works, or possibly Hilltown Glass Works, 1750 - 1780. Medium-to-deep teal green coloration, plump chestnut body with unusually squared shoulders, sheared mouth with tooled, likely applied, heavy ring collar - nearly spherical base with blowpipe pontil scar, ht. 8 3/4", near mint; (a little typical minor wear and scratches, otherwise perfect). Some paddle marks are discernible on the sides. Good color, unusual form!

Est.: \$500 - \$1,000 • Min. bid: \$250



Lot 48

Early, Freeblown Chestnut Bottle, Wistarburgh Glass Works, or possibly Hilltown, 1750 - 1770. Medium-to-deep yellowish olive coloration, plump chestnut form, sheared mouth with tooled, likely applied, heavy ring collar - glass tipped punty scar, ht. 9"; (some moderate exterior wear and scratches; a few partially open interior bubbles with residue, and a 1/4" flake on the base). A very heavy example, strong color, nice character with very bubbly glass.

Est.: \$400 - \$600 • Min. bid: \$200



Lot 49

Rare, Miniature Freeblown Chestnut Bottle, Eastern U.S., or possibly Continental, 1785 - 1820. Gorgeous, yellowy citron coloration, plump chestnut form, sheared mouth with a crudely applied ring collar - blowpipe pontil scar, ht. 3 1/4", virtually perfect; (slight trace of faint wear). Fantastic 'eye-candy' color, loaded with tiny bubbles, rare size and form, outstanding condition. This one has it all!

Est.: \$1000 - \$2,000 • Min. bid: \$500



Lot 53

Freeblown Pocket Bottle or Chestnut Flask, Midwest, probably Mantua Glass Works, Mantua, OH, 1822 - 1829. Rich, medium citron coloration, flattened chestnut form, sheared mouth - blowpipe pontil scar, ht. 6", virtually attic mint; (a touch of spotty, light milkiness near the base, and only the slightest trace of faint wear, otherwise perfect). A beautiful and rare freeblown Midwest pocket bottle, nice larger size, excellent symmetry, great color.

Est.: \$300 - \$600 • Min. bid: \$150



Lot 50

Rare, Plump Chestnut Bottle, New England, 1790 - 1820. Medium-to-deep olive green, plump chestnut body, elongated neck, sheared mouth with crudely applied ring collar - blowpipe pontil scar, ht. 5 1/8"; (some exterior wear, primarily on one side; a little flake or bit of roughness on the collar, and interior content residue, otherwise excellent). Proportions are visually misleading as the height from the base, to the curvature of the shoulders, is only about 3". Rare.

Est.: \$1,000 - \$2,000 • Min. bid: \$500



Lot 54

Large Chestnut Bottle, America, probably a South Jersey glasshouse, possibly Fislerville Glass Works, Fislerville (Clayton), NJ, 1850 - 1860. Medium amber shading to deep amber through the neck, large chestnut form, applied sloping collar - blowpipe pontil scar, ht. 10 1/2", virtually attic mint; (just a trace of typical minor wear including a light scratch on the neck, otherwise perfect). Scarce. A large, oversized chestnut, nice proportion and symmetry, excellent condition.

Est.: \$200 - \$400 • Min. bid: \$100



Lot 51

Freeblown Chestnut Flask, New England, 1785 - 1820. Delicate, clear light olive amber, almost a straw coloration with an olive tone, chestnut form, applied ring collar - blowpipe pontil scar, ht. 5 5/8", virtually attic mint; (only the faintest trace of light wear, otherwise perfect). A very pretty, delicate, little New England chestnut flask, excellent 'see-through' clarity, and with a pleasing lean to the neck.

Est.: \$250 - \$450 • Min. bid: \$130



Lot 55

Rare, Miniature Freeblown Globular Bottle, New England, 1785 - 1820. Medium olive, globular form, sheared mouth with a crudely applied ring collar - blowpipe pontil scar, ht. 2 1/2"; (approximately 3/8" piece of the ring collar missing, otherwise perfect). MW, plate 47. Extremely rare, diminutive, size, excellent form and symmetry. This Lot, and the following (3), are from an old time New England collection and have not seen the 'light of day' in years!

Est.: \$800 - \$1,200 • Min. bid: \$400



Lot 52

Freeblown Chestnut Flask, New England, 1785 - 1820. Yellowish olive amber, chestnut form, sheared mouth with applied ring collar - blowpipe pontil scar, ht. 6 3/8"; (just a slight trace of typical light wear; one small potstone with a tiny, less-than 1/16" annealing line, barely visible without a loop, and a little washable interior residue in one side and the base, otherwise excellent). Fantastic character, nice crude glass filled with tiny bubbles, potstones and impurities.

Est.: \$200 - \$300 • Min. bid: \$100



Lot 56

Rare, Miniature Freeblown Globular Bottle, New England, 1785 - 1820. Yellowish olive amber, globular form, sheared mouth with applied ring collar - blowpipe pontil scar, ht. 3 1/4", perfect! MW, plate 47. Very rare size, beautiful, seedy glass - similar 'metal' to the early, delicate, New England chestnut flasks, attractive 'see-through' color, fantastic condition. A great example.

Est.: \$2,000 - \$3,000 • Min. bid: \$1,000



Lot 57

Miniature Freeblown Globular Bottle, Midwest, probably Zanesville Glass Works, Zanesville, OH, 1820 - 1840. Medium amber with a slight orange tone, globular form, sheared, tooled, and outward folded collar - blowpipe pontil scar, ht. 3 1/8", virtually perfect; (just the slightest trace of faint light wear, otherwise pristine). Very scarce-to-rare size, classical Zanesville color and lip treatment. A little sweetheart of a glob! Provenance: John Apple collection.

Est.: \$400 - \$600 • Min. bid: \$200



Lot 61

Large, Freeblown Globular Bottle, Midwest, probably New Geneva or early Pittsburgh district, 1797 - 1820. Greenish aquamarine, large globular form, sheared mouth with large, applied ring collar - blowpipe pontil scar, ht. 11 1/2", near mint; (just a touch of typical light wear, a bit of faint interior residue, otherwise perfect). Good form, scarce large size, and with some streaks of yellowish amber color drizzled through the neck and lip.

Est.: \$150 - \$250 • Min. bid: \$80



Lot 58

Large, Freeblown Globular Bottle, Midwest, probably Zanesville Glass Works, 1820 - 1840. Medium amber with some lighter golden tones through the body, shading to a deep orange amber through the neck, globular form, sheared, tooled, and outward folded collar - blowpipe pontil scar, ht. 12", near mint; (a little scattered light wear, and a shallow, minor open bubble on the interior near the base). An impressive, giant glob, beautiful color, condition, and virtually perfect form!

Est.: \$600 - \$900 • Min. bid: \$300



Lot 62

Lot of (2), Freeblown Globular Bottles, Midwest, probably New Geneva or early Pittsburgh district, 1797 - 1820. Both are shades of light greenish aqua, globular form, sheared mouth with applied string lip - blowpipe pontil scarred bases, ht. both 8"; (1st Ex. is near mint with a little typical light wear; 2nd Ex. has a spider crack in

the side with a few 1/4" to 1/2" 'legs', otherwise excellent). A very nice pair of early freeblown globbs that are virtually identical in form and size.

Est.: \$150 - \$250 • Min. bid: \$80



Lot 59

Large, Freeblown Globular Bottle, Midwest, probably Mantua Glass Works, Mantua, OH, 1822 - 1829. Beautiful, medium citron coloration, globular form with slightly drawn up shoulders, sheared mouth, crudely applied wide string rim - blowpipe pontil scar, ht. 11 1/2", near mint; (some roughness, likely in-manufacture, including a 1/4" flake, on the inside edge of the lip, and a ring of faint interior haze in the lower third of the body). Rare size, color, excellent condition.

Est.: \$800 - \$1,200 • Min. bid: \$400



Lot 63

Early, Freeblown Decanter or Club Bottle, an early Midwest glasshouse, probably New Geneva Glass Works, New Geneva, PA, 1810 - 1830. Deep honey amber, slope shoulder 'teardrop' form, cylindrical body, sheared mouth with an applied ring collar, pushed up base with blowpipe pontil scar, ht. 9 1/2", near mint; (some scattered relatively minor usage wear, otherwise perfect). A very scarce 'decanter type' form, nice larger size, pleasing color and clarity.

Est.: \$500 - \$800 • Min. bid: \$250



Lot 60

Freeblown Globular Bottle, Midwest, probably New Geneva, or possibly Pittsburgh Glass Works, 1797 - 1815. Medium clear green with a slight bluish tone, globular form, sheared mouth with a crudely applied string rim - blowpipe pontil scar, ht. 7 5/8"; (some scattered exterior usage wear and light scratches around the mid-body, some very light, patchy, interior haze, barely noticeable, otherwise excellent). A very early, crude, freeblown glob, good form and depth of color.

Est.: \$175 - \$350 • Min. bid: \$90



Lot 64

Pattern Molded Club Bottle, Midwest, possibly New Geneva Glass Works, New Geneva, PA, 1810 - 1830. Greenish aquamarine, early club form with 16 widely spaced vertical ribs, sheared mouth with an applied ring-type collar - pushed up conical base with blowpipe pontil scar, ht. 7 7/8", virtually attic mint; (only a slight trace of faint wear, otherwise perfect). A great example, bright, clean, good strength of impression, and with outstanding clarity.

Est.: \$250 - \$450 • Min. bid: \$130



Lot 65

Pattern Molded Club Bottle, Midwest, possibly New Geneva Glass Works, 1810 - 1830. Aquamarine, early club form, 16 widely spaced ribs swirled to the right, sheared mouth with a crudely applied ring-type collar - pushed up conical base with blowpipe pontil scar, ht. 8"; (a 1/4" and 3/16" chip on the top of the lip, and just a slight trace of very minor wear, otherwise excellent). A scarce pattern with 16 ribs swirled, vs. vertical. In addition, good form, strong ribbing, excellent clarity.

Est.: \$200 - \$400 • Min. bid: \$100



Lot 66

Rare, Pattern Molded Bottle or Decanter, Midwest, possibly New Geneva, 1815 - 1840. Greenish aqua, 16 widely spaced vertical ribs, cylindrical, decanter form, sheared mouth with a tooled ring collar - pushed up base, blowpipe pontil scar, ht. 10", near mint; (a little minor light wear, and a weak impression in the lower half). This decanter style bottle is a very rare form for Midwest pattern molding, and perhaps one of the early seeds for Pittsburgh pillar molded decanters.

Est.: \$300 - \$600 • Min. bid: \$150



Lot 67

Pattern Molded Globular Bottle, Midwest, probably Moscow or Cincinnati, OH Glass Works, 1820 - 1830. Rich, very deep aquamarine, 24 vertical ribs, globular form, sheared mouth, tooled, likely applied, ring collar - blowpipe pontil scar, ht. 7", near mint; (a touch of typical light wear, and some very faint haze, barely noticeable, in the shoulder and base, otherwise perfect). Very strong color and mold impression, scarce vertical rib pattern. This one will stand out on any shelf.

Est.: \$400 - \$800 • Min. bid: \$200



Lot 68

Pattern Molded Globular Bottle, Zanesville Glass Works, Zanesville, OH, 1820 - 1840. Aqua, 24 ribs swirled to the right, globular form, sheared and outward folded mouth - pontil scar, ht. 7 1/2", near mint; (a little light exterior wear around the mid-body and a faint bit of dullness, or 'bloom' to the glass not terribly distracting, but mentioned for complete accuracy). A very nice example, near perfect form, good tight spiral ribbing through the neck, excellent condition!

Est.: \$400 - \$800 • Min. bid: \$200



Lot 69

Pattern Molded Globular Bottle, probably Zanesville Glass Works, Zanesville, OH, 1820 - 1835. Medium amber with a golden tone, 24 ribs swirled to the left, globular form, sheared and outward folded mouth - pontil scar, ht. 8 1/4", near mint; (a little typical minor exterior wear, light interior residue that would likely wash out, otherwise perfect). A good solid example of an early Midwest, Zanesville, patterned glob with nice tight ribbing through the neck.

Est.: \$400 - \$600 • Min. bid: \$200



Lot 70

Pattern Molded Globular Bottle, Midwest, Zanesville Glass Works, or possibly Moscow, OH, 1820 - 1835. Medium-to-deep chocolate amber in the body, shading to virtually black through the neck and lip, 24 ribs swirled to the left, globular form with graceful tapering shoulders, sheared and outward folded mouth - pontil scar, ht. 8 5/8"; (a little typical light wear around the mid-body, and a bit of minor interior residue, otherwise very near mint).

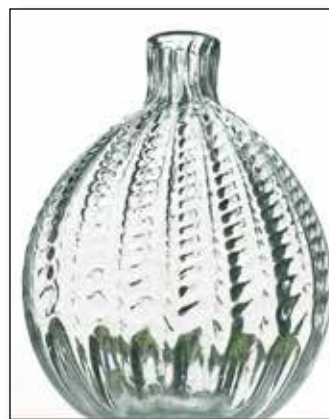
Est.: \$500 - \$800 • Min. bid: \$250



Lot 71

Pattern Molded Pocket Flask, Midwest, probably New Geneva Glass Works, New Geneva, PA, 1810 - 1830. Light greenish aquamarine, almost a pale 'clear green', 16 widely spaced vertical ribs, large, flattened chestnut form, sheared mouth - blowpipe pontil scar, ht. 6 7/8"; (just a trace of typical light wear, otherwise virtually perfect). A very eye-appealing flask with a strong impression that carries through to the base and pontil. Scarce 16 vertical rib mold, and at almost 7", a scarce size.

Est.: \$300 - \$500 • Min. bid: \$150



Lot 72

Early, Pattern Molded Pocket Flask, Midwest type, eastern Pennsylvania, probably Stiegel's American Flint Glass Manufactory, 1764 - 1774. Colorless, 16 broken rib pattern, plump circular form, sheared and tooled mouth - glass tipped punty scar, ht. 6"; (some expected relatively light exterior wear, heavy base wear, otherwise perfect). A very scarce-to-rare flask. Although the pattern weakens towards the base, the upper half features a strong, very desirable, 'popcorn' effect.

Est.: \$400 - \$800 • Min. bid: \$200



Lot 73

Early, Pattern Molded Pocket Flask, America, eastern Pennsylvania, probably one of the Stiegel glasshouses, Manheim, PA, 1764 - 1774. Light, 'clear green', 18-diamond pattern, plump circular form, sheared mouth with tooled ring collar - blowpipe pontil scar, ht. 6"; (some high point wear on the sides, otherwise very near mint). A very early flask, scarce 18-diamond pattern, good strength of impression.

Est.: \$400 - \$800 • Min. bid: \$200



Lot 74

Early, Pattern Molded Pocket Flask, Eastern U.S., possibly one of the Stiegel glasshouses, 1764 - 1774. Two-tone, yellow green shading to black amber through the shoulders and neck, 16 near vertical ribs swirled slightly to the left, sheared and tooled mouth - glass tipped punty scar, ht. 5 1/4", near mint; (a little scattered minor wear, some light haze in the base). A very rare flask, attractive coloration, and the glass is filled with tiny bubbles and impurities.

Est.: \$800 - \$1,200 • Min. bid: \$400



Lot 75

Pitkin-Type Flask, America, early Mid-Atlantic region, probably Wistarburgh or eastern PA, 1760 - 1780. Bright, medium yellow green, 16 broken rib pattern swirled to the right, plump, 'squatty' circular form, sheared mouth - blowpipe pontil scar, ht. 5 1/8"; (some expected light exterior wear, otherwise very near mint). A very early Pitkin, likely Colonial period, heavy ribbing, attractive plump form, excellent condition.

Est.: \$600 - \$900 • Min. bid: \$300



Lot 76

Pitkin-Type Flask, America, probably Mid-Atlantic region, 1770 - 1790. Delicate, pale yellow green, 20 broken rib pattern swirled to the right, flattened chestnut form, sheared mouth - blowpipe pontil scar, ht. 6", near mint; (just a bit of typical light wear on the sides near the base, and a couple of shallow little pinhead flakes on the lip, otherwise excellent). A scarce-to-rare rib count for a Pitkin-type flask, strong, heavy pronounced ribbing.

Est.: \$400 - \$600 • Min. bid: \$200



Lot 77

Pitkin-Type Flask, early Mid-Atlantic type, probably Hilltown Glass Works, Bucks County, PA, 1760 - 1800. Light-to-medium bluish sea-green, 32 vertical rib pattern, ovoid form, sheared mouth - blowpipe pontil scar, ht. 6 5/8", near mint; (just a touch of expected light wear, a trace of faint haze in the base, and a slightly weak impression). A scarce example. Single pattern vertical ribbing is not easy to find in a Pitkin-type flask.

Est.: \$400 - \$600 • Min. bid: \$200



Lot 78

Pitkin-Type Flask, Mid-Atlantic type, probably Hilltown Glass Works, Bucks County, PA, 1770 - 1800. Rich yellowish amber, almost a butterscotch coloration, 32 broken rib pattern swirled to the right, flattened spherical body, or 'little pancake form', sheared mouth - blowpipe pontil scar, ht. 5 1/4"; (a couple of shallow, very minor open bubbles, and some high point wear on the shoulders and near the base, otherwise excellent). A very rare, attractive color for a Pitkin-type flask, diminutive size.

Est.: \$1,000 - \$2,000 • Min. bid: \$500



Lot 79

Pitkin-Type Flask, early Mid-Atlantic type, probably Hilltown Glass Works, Bucks County, PA, 1760 - 1800. Bright, medium sea-green coloration, 16 broken rib pattern swirled to the right, flattened circular form, sheared mouth - blowpipe pontil scar, ht. 5 5/8", near mint; (a few minor open bubbles, just a touch of light wear, otherwise perfect). Nice tight swirled ribbing that becomes almost horizontal. In addition, excellent character with plenty of tiny bubbles swirled throughout.

Est.: \$400 - \$800 • Min. bid: \$200



Lot 80

Pitkin-Type Flask, America, Mid-Atlantic region, possibly Hilltown Glass Works, Bucks County, PA, 1780 - 1800. Deep, yellowish grass green, 24 broken rib pattern swirled to the right, flattened elliptical or ovoid form, sheared mouth - blowpipe pontil scar, ht. 6 1/4"; (some high point wear on the flattened sides, and some light interior residue, likely washable, otherwise excellent). Another nice example, deep, rich color.

Est.: \$600 - \$900 • Min. bid: \$300



Lot 81

Pitkin-Type Flask, Mid-Atlantic region, possibly Hilltown Glass Works, Bucks County, PA, 1780 - 1800. Medium-to-deep teal green coloration, 32 broken rib pattern swirled to the right, flattened circular form, sheared mouth - blowpipe pontil scar, ht. 6 1/4"; (some scattered exterior wear, a few minor open bubbles including one in the base, and a couple of chips from the pontil 3/8" and 5/8", possibly in-manufacture, that do not show on display). Very attractive deep color.

Est.: \$600 - \$900 • Min. bid: \$300



Lot 82

Pitkin-Type Flask, New England, 1790 - 1820. Delicate, clear, light-to-medium yellowish olive coloration, 36 fine ribs swirled to the left, squatty ovoid form, sheared mouth - blowpipe pontil scar, ht. 4 3/4", virtually perfect; (just a touch of faint light wear, otherwise mint). Rare small size, beautiful color and clarity, excellent symmetry, fine tight ribbing, a little sweetheart of a flask. Similar 'metal' to many of the early New England chestnut flasks.

Est.: \$800 - \$1,200 • Min. bid: \$400



Lot 83

Pitkin-Type Flask, New England, 1790 - 1820. Yellowish olive amber shading to a deep olive amber through the shoulders and neck, 36 broken rib pattern swirled to the right, ovoid form, sheared mouth - blowpipe pontil scar, ht. 5 1/2", near mint; (slight trace of very minor wear, and the pattern weakens a bit in the lower third of the body, near the base, as is often the case, otherwise perfect). Another nice example with pleasing color and form.

Est.: \$500 - \$800 • Min. bid: \$250



Lot 84

Pitkin-Type Flask, probably Mid-Atlantic, 1780 - 1820. Bright yellowish olive green shading to a deep olive coloration in the shoulders and base, 24 broken rib pattern swirled to the right, elongated ovoid form, sheared mouth - pontil scar, ht. 7 1/4"; (a bit of typical light wear; a 3/8", hard-to-see, annealing line in the lip, and a pot-stone near the base with a couple of tiny 1/16" 'legs'). Unusual size, color, and sharing attributes of both Mid-Atlantic, and New England Pitkins.

Est.: \$400 - \$600 • Min. bid: \$200



Lot 85

Early, Freeblown Looped Flask, England, or possibly America, 1770 - 1820. Medium olive green with opaque 'combed' white loopings, elliptical form, sheared, tooled and slightly flared mouth - blowpipe pontil scar, ht. 6 3/8"; (some minor exterior wear, otherwise perfect). A very early, attractive, and decorative flask. The color is certainly unusual for a 'Nailsea-type' flask, and similar in tone to some of the early Mid-Atlantic, or South Jersey wares. Regardless, a beautiful, scarce flask.

Est.: \$400 - \$600 • Min. bid: \$200



Lot 86

Blown Three Mold Decanter, England, 1820 - 1840. Gorgeous, vibrant emerald coloration, square decanter form, geometric pattern of diamonds and ribbing, fluted shoulders, tooled flared mouth with pour spout, original matching patterned stopper - polished pontil scarred base, ht. 7 3/4" (including stopper), perfect. MW, GII-28. See McConnell, "The Decanter, An Illustrated History of Glass from 1650". Rare. A gorgeous, eye-appealing decanter. Ex. Peter Tillou collection.

Est.: \$1,000 - \$2,000 • Min. bid: \$500



Lot 87

Blown, Paneled, Back Bar Bottle, probably England, possibly Eastern U.S., 1840 - 1860. Rich, deep emerald coloration, ovoid body with 12 flat panels, large, applied double ring collar - polished pontil scarred base, ht. 10", near mint; (some expected light usage wear including a little pinhead surface bruise on the edge of one of the panels at the shoulder, otherwise perfect). A beautiful, impressive early decanter, heavy in weight, attractive oversized collar. Ex. Peter Tillou collection.

Est.: \$700 - \$1,200 • Min. bid: \$350



Lot 88

Blown, Fluted, Back Bar Bottle, England or possibly Pittsburgh district, 1840 - 1860. Medium-to-deep plum amethyst, ovoid body with 10 heavy concave oval panels, fluted shoulders, large, applied double ring collar - polished pontil scar, ht. 10 3/8", near mint; (some exterior high point wear around the panel edges). A very rare decanter, unlisted pattern. Similar form, construction, to plate 893, *American Glass 1760 - 1930*, The Toledo Museum of Art. Ex. Peter Tillou collection.

Est.: \$1,000 - \$2,000 • Min. bid: \$500



Lot 89

Blown Three Mold Hat Whimsey, America, 1825 - 1840. Deep cobalt blue, in the form of a miniature "beaver" style hat, sheared and inward folded rim - pontil scar, ht. 2 3/8", near mint; (a couple of little spots of very minor roughness along the inner edge of the folded rim, and a tiny pinhead flake on the outer edge of the rim, otherwise perfect). GIII-24. Rare. The GIII-24 mold is unlisted by McKearin in the hat form. Deep color, strong mold impression, excellent condition.

Est.: \$400 - \$600 • Min. bid: \$200



Lot 90

Rare, Pitkin-Type Hat Whimsey, probably an early Connecticut glasshouse, 1815 - 1830. Deep olive green, blown from a 36 rib Pitkin-Type inkwell mold, miniature hat with corseted waist, sheared, tooled, outward folded plain rim - blowpipe pontil scar, ht. 1 7/8"; (a 1 1/8" area of the downturned brim on one side has been broken and polished, an open bubble on the interior of the base, some light wear). Although certainly not perfect, an exceedingly rare little Pitkin whimsey!

Est.: \$200 - \$400 • Min. bid: \$100



Lot 91

Lot of (3), Early Pattern Molded Salt Cellars, America, probably Stiegel, Manheim, PA, or South Boston, 1770 - 1830. **1st Ex:** Colorless, 12 diamond, double ogee form, applied 5-petal foot, pontil scar, ht. 2 5/8", near mint; (slight

wear). **2nd Ex:** Colorless with cobalt rim, 16 broken rib pattern, double ogee form, applied disc foot, ht. 3"; (1/4" hairline crack at rim, otherwise perfect). **3rd Ex:** Colorless, 10 diamond over flutes, applied 8-petal foot, pontil scar, ht. 3"; (bowl has some interior haze).

Est.: \$300 - \$500 • Min. bid: \$150



Lot 92

Lot of (2) Freeblown Stemmed Glasses, 1780 - 1820. **1st Ex:** Pillar molded rummer, probably a Pittsburgh, PA glasshouse. Colorless glass with a gray tone, 4" tall. Bowl was blown in an 8 rib mold, applied button stem and foot. Pontil scar. **2nd Ex:** Colorless wine with teared stem, America or England. 5 1/2" tall, flaring bowl with heavy base enclosing a single tear-shaped bubble, tapering to an elongated baluster, applied foot, folded rim, pontil. Rare examples in perfect condition.

Est.: \$200 - \$400 • Min. bid: \$100



Lot 93

Freeblown Footed Vase, American, 1820 -1835, probably a South Boston area glasshouse, possibly Thomas Cains' Glass Works. 7" tall by 4 3/4" across the top. Beautifully crafted from colorless lead glass with a faint amethyst tint. Classic form with widely flared mouth and bulbous base, separated by a raised single band tooled from the same gather. Applied and tooled knob and thick foot. Pontil scar. Purchased at the Keene, NH Bottle Show in 1998. An elegant and early Boston vase.

Est.: \$200 - \$400 • Min. bid: \$100



Lot 94

Freeblown Ohio Bowl or Pan, probably White Glassworks, Zanesville, OH, 1820-1840. Brilliant light golden amber. 2 1/4" in height by 7 3/8" across the top, wide outward folded rim, slightly pushed up base, pontil scar. A rare size for a Zanesville pan with most being considerably larger or smaller

than this example. Perfect condition other than the expected base wear. Purchased from Ian Simmonds at Heckler's Columbus Day event, 2001.

Est.: \$500 - \$700 • Min. bid: \$300



Lot 95

Lot of (2) Freeblown Pear Whimseys America, 1870 - 1890. **1st Ex:** 4 1/2" long, pear form, light aquamarine. Made at the Clyde Glassworks, Clyde, NY, and purchased from a descendant of a glassblower who had worked there. Rare. **2nd Ex:** 4 3/4" long, semi-opaque milk glass. Pear form with an unusually long curved stem. Possibly Libbey's New Bedford Glass Company, Boston, MA.

Est.: \$150 - \$250 • Min. bid: \$80



Lot 96

BELL / "TESSIER PREVOST / PARIS", probably America, 1850 - 1860. Aquamarine, rectangular with beveled corners, applied ring collar - blowpipe pontil scar, ht. 7"; (a bit of light haze or minor dullness on the upper portion of the front panel; the bottle may have been lightly cleaned, but presents as near mint). Likely one of the earliest examples of this mold, very rare in aqua and with the blowpipe pontil scar, heavily whittled, crude glass, a great looking example!

Est.: \$400 - \$600 • Min. bid: \$200



Lot 97

Early Cologne or Utility Bottle, (Embossed conifer tree, pendant and leaves), probably Continental, 1770 - 1800. Medium-to-deep honey amber, rectangular, crudely sheared mouth, applied string rim - glass tipped punty scar, ht. 4"; (a little typical light wear, and a 7/8" shallow flake along the edge of the base, possibly in-manufacture from the pontil, otherwise excellent). Rare and early, attractive ornamental trees and pendant. See AGG #30, Lot 102 for similar example.

Est.: \$400 - \$600 • Min. bid: \$200



Lot 98

Early, Fancy Cologne Bottle, America, or possibly France, 1845 - 1860. Colorless, cylindrical, club form tapering from base to the shoulders, two tiers with columns and fancy cathedral arches, cross and pendants, tall neck with two bulbous rings, one ring with diamond pattern, sheared neck with applied flanged mouth - glass tipped punty scar, ht. 9", perfect. Extremely rare! This is the first example of this mold that we can recall seeing. Illustrated in MW, plate 112, #10.

Est.: \$150 - \$300 • Min. bid: \$80



Lot 99

Rare, embossed Leaves & Berries Fancy Cologne Bottle, probably France, 1840 - 1860. Deep, vivid cobalt with a violet tone, rectangular with concave sides, bulbous neck, heavily embossed leaves and berries, motif of crown on neck, tall columns on sides, wide flanged mouth - glass tipped punty scar, ht. 9 7/8", perfect! Similar in form to MW, plate 107, #9. A very rare, ornate cologne, extremely rare, impressive size. Ex. Ed & Kathy Gray collection.

Est.: \$600 - \$1,200 • Min. bid: \$300



Lot 100

Teakettle Inkwell, England, or possibly America, 1850 - 1875. Deep cobalt blue with a slight violet tone, teakettle form with eight flat panels sloping inward from base to top, recessed groove between each flat panel, domed 'flower top' - smooth base, ht. 2 1/8", virtually perfect; (just a bit of light interior residue, and a tiny

pinprick speck of roughness at shoulder). Unlisted and extremely rare! (Similar to JM #266, but with groove between panels). Provenance: Lynn Mitchell collection.

Est.: \$400 - \$600 • Min. bid: \$200



Lot 101

Teakettle Inkwell, England or possibly America, 1850 - 1875. Deep cobalt blue, teakettle form with eight flat panels sloping inward from the base to the top, beveled flat top - wide beveled smooth base, ht. 2 1/8"; (a hard-to-see, 1/4", likely in-manufacture annealing line in the spout; a few minor 1/8 areas of roughness, or flakes, at panel edges, otherwise excellent). JM #332, Rare. The noted condition issues are pretty minor, the inkwell displays as near mint. Lynn Mitchell collection.

Est.: \$250 - \$450 • Min. bid: \$130



Lot 102

Teakettle Inkwell (with gold painted floral designs), America, probably Boston and Sandwich Glass Works, Sandwich, MA, 1850 - 1870. Very deep grape amethyst, teakettle form with eight concave panels separated by eight rounded vertical ribs, flat top - beveled edge smooth base, ht. 1 7/8"; (the inkwell is perfect; a little minor paint loss on a couple of the panels). JM #128. Rare. Per Matthews, glass shards of this mold have been found at Sandwich. Lynn Mitchell collection.

Est.: \$250 - \$450 • Min. bid: \$130



Lot 103

Teakettle Inkwell, America, 1850 - 1875. Colorless, teakettle form with eight concave panels sloping inward from the base to the top, flat top - beveled smooth base, ht. 1 7/8", near mint; (a hard-to-see, 3/16" shallow flake at one of the panel edges, otherwise perfect). JM #115, Scarce. A very attractive,

nice clean example, complete with the original brass collar and cap. Provenance: Lynn Mitchell collection.

Est.: \$200 - \$400 • Min. bid: \$100



Lot 104

Teakettle Inkwell, France, 1860 - 1880. Colorless, unusual 'Tipper' form, elliptical body sloping inward from base to the top, unusual chamfered base to enable the inkwell to be angled and rested on it's back, flat top - "BIBASE / DIVISEUR / DEPOSE" (on smooth base), ht. 2 1/4", virtually perfect. JM #408U. Very scarce. Provenance: Lynn Mitchell collection.

Est.: \$200 - \$400 • Min. bid: \$100



Lot 105

Rare Cone Ink, Baltimore Glass Works, Baltimore, MD, 1845 - 1860. Medium-to-deep sapphire blue, cone form with drape pattern, applied ring collar with bevel - blowpipe pontil scar, ht. 2 ½"; (professionally cleaned to original luster with some scattered minor imperfections or ground wear remaining; a little light interior haze near the base). A very rare and desirable ink that does not come around often! Provenance: Lynn Mitchell collection.

Est.: \$1,000 - \$2,000 • Min. bid: \$500



Lot 106

"E. WATERS" - "A" Ink Bottle, America, 1845 - 1855. Bright aquamarine, rectangular with vertical ribbing, sheared and inward rolled mouth - blowpipe pontil scar, ht. 3 ¼", perfect! Faulkner, p.146. A rare little ink from the Elisha Waters company, druggist and ink manufacturer, Troy, NY. Bright, clean and sparkling, a very attractive example.

Est.: \$300 - \$500 • Min. bid: \$150



Lot 109

"INK", America, 1840 - 1860. Aquamarine, hexagonal, sheared, tooled, and inward rolled mouth - blowpipe pontil scar, ht. 2 ½", attic mint! A very rare little ink with a great 'look'. Unlisted in Covill. The large embossing of the single word, "INK", says it all. Note; this example has thin delicate glass, and being blown in a mold with squared shoulders and sharp pointed corners, it is amazing that it survived at all!

Est.: \$250 - \$450 • Min. bid: \$130



Lot 110

"HARRISON'S / COLUMBIAN / INK - PATENT" (on shoulder), **Master Ink**, America, 1847 - 1860. Ice blue, almost a pale cornflower coloration, 8-sided, applied flanged mouth - blowpipe pontil scar, ht. 3 ¾", perfect! A delicate, pretty, and very scarce color. Strong, crisp embossing. Provenance: Lynn Mitchell collection, Ex. Bob Mebane, Warren Haynes collection.

Est.: \$400 - \$800 • Min. bid: \$200



Lot 107

"J - & I - E - M" Monitor Ink, 1865 - 1880. Medium apple green, cylindrical with six block panels around the sides, domed shoulders, offset neck with sheared mouth - smooth base, ht. 1 5/8"; (a pinhead flake on the edge of the lip; professionally cleaned to original luster with a little minor wear and a trace of patchy faint haze remaining, not terribly distracting, otherwise excellent). If you are putting together a color run, here is a scarce color that you just don't see very often!

Est.: \$250 - \$450 • Min. bid: \$130



Lot 111

Rare, Annular Ring Inkwell, New England, probably a Connecticut glasshouse, 1825 - 1835. Deep olive green, cylindrical, 2-pc. mold, five annual rings, blowpipe pontil scar, ht. 1 5/8", dia. 2 ¾", perfect. Gl-2; C #1167. A very rare inkwell, especially in this fine condition. Provenance: Fred Swiechowicz collection.

Est.: \$1,500 - \$3,000 • Min. bid: \$800



Lot 108

"J.B. FONDERSMITHS INK", probably Zanesville, OH, or possibly Pittsburgh, 1850 - 1860. Aquamarine, octagonal with domed shoulders, sheared, tooled, and inward rolled mouth - blowpipe pontil scar, ht. 3"; (lightly cleaned to original luster with just a trace bit of very minor dullness remaining, otherwise excellent). A very rare inkwell from Zanesville, OH, and only the 2nd, or possibly 3rd example offered at auction in more than 20 years!

Est.: \$400 - \$600 • Min. bid: \$200



Lot 112

Umbrella Ink, America, 1840 - 1860. Deep, vivid cobalt blue, 8-sided umbrella form, sheared, tooled, and inward rolled mouth - sand type pontil scar, ht. 2 3/8", base dia. 2 ¼"; (just a trace of faint haze; a bit of trapped residue under the rolled lip, and a little minor exterior wear including a tiny, pinhead size flake at the shoulder, otherwise excellent). Beautiful, unusually deep color, almost a midnight blue, and rare with the sand type pontil scarred base.

Est.: \$1,000 - \$2,000 • Min. bid: \$500

**Lot 113**

Umbrella Ink, America, 1845 - 1860. Medium yellowish green with a mossy tone, 12-sided umbrella form, sheared, tooled, and inward rolled mouth - blowpipe pontil scar, ht. 2 1/8", base dia. 1 7/8"; (professionally cleaned to original luster; a trace of minor wear, and a little patchy light interior haziness, otherwise excellent). A scarce mold, scarce and unusual color. Provenance: Lynn Mitchell collection.

Est.: \$250 - \$450 • Min. bid: \$130

**Lot 117**

Umbrella Ink, America, 1860 - 1870. Beautiful, medium honey coloration, 8-sided umbrella form, sheared, tooled, and inward rolled mouth - smooth base, ht. 2 3/8", base dia. 2 1/2", attic mint. A very pretty, attractive color, nice character and crudeness to the glass. Provenance: Lynn Mitchell collection.

Est.: \$175 - \$350 • Min. bid: \$90

**Lot 114**

Umbrella Ink, America, 1840 - 1860. Medium-to-deep bluish green with a teal tone, 8-sided umbrella form, sheared, tooled, and inward rolled mouth - blowpipe pontil scar, ht. 2 3/8", base dia. 2 1/4"; (some light exterior wear on a couple of the panels, and a little minor interior milkiness, otherwise excellent). A very nice example, deeper color than most, beautiful whittled, wavy glass. Provenance: Lynn Mitchell collection.

Est.: \$200 - \$400 • Min. bid: \$100

**Lot 118**

Umbrella Ink, a Stoddard, NH glasshouse, probably Granite Glass Co., 1842 - 1860. Deep amber, 16-sided umbrella form, sheared mouth, blowpipe pontil scar, ht. 1 7/8", base dia. 2 1/8", near mint; (just a trace of light wear). Note: the panel edges are somewhat 'softened' or not terribly distinct, particularly in the upper half of the body. A scarce mold, and one of three known sizes for this inkwell. Provenance: Lynn Mitchell collection.

Est.: \$200 - \$400 • Min. bid: \$100

**Lot 115**

Umbrella Ink, America, 1840 - 1860. Yellowish olive coloration, 8-sided umbrella form, sheared, tooled, and inward rolled mouth - blowpipe pontil scar, ht. 2 3/8", base dia. 2 3/8"; (lightly cleaned to original luster and near mint condition, just a trace of light wear, otherwise excellent). A pretty, attractive color, nice character with some whittling and waviness to the glass. Provenance: Lynn Mitchell collection.

Est.: \$250 - \$450 • Min. bid: \$130

**Lot 119**

Lot of (2), Umbrella Inks, America, 1850 - 1870. **1st Example:** Aquamarine, 8-sided umbrella form, sheared and inward rolled mouth - heavy iron pontil scar, ht. 2 1/4", near mint; (just a touch of light wear). **2nd Example:** Aquamarine, 12-sided tall umbrella form,

applied square collar - smooth base, ht. 2 5/8", near mint; (just a slight trace of faint interior milkiness). A nice pair of early umbrella inks, the 1st example is scarce with the heavy iron pontil scar. Lynn Mitchell collection.

Est.: \$100 - \$200 • Min. bid: \$50

**Lot 116**

Umbrella Ink, America, 1840 - 1860. Light honey yellow coloration, 8-sided umbrella form, sheared, tooled mouth - blowpipe pontil scar, ht. 2 1/2", base dia. 2 1/8"; (professionally cleaned with some overall light interior haziness remaining; a tiny, less-than-pinhead size flake on the edge of the lip). A scarce, very pretty color with plenty of yellowish tones. Provenance: Lynn Mitchell collection.

Est.: \$300 - \$500 • Min. bid: \$150

**Lot 120****"E ROOME / TROY / NEW YORK"**

Snuff Jar, New England, probably a Stoddard, NH glasshouse, 1845 - 1860. Yellowish olive amber, rectangular with beveled corners, sheared, tooled, slightly flared mouth - blowpipe pontil scar, ht. 4 1/4", near mint; (a little pinhead open bubble on one of the beveled corners, and a slightly weak impression - as is typical of this mold, otherwise excellent). A little lighter in tone than most, a very nice example of this classic New England snuff jar.

Est.: \$300 - \$500 • Min. bid: \$150



Lot 121

Early, Dip Mold Snuff Jar, probably New England, 1800 - 1830. Medium-to-deep olive with an amber tone, square, rounded corners, domed shoulders, sheared, tooled, outward flared mouth - sand type pontil scar, ht. 6"; (a little light usage wear, a partially open bubble on the interior of the shoulder, and a tiny 1/8" paper-thin flake on the inside edge of the lip). Form similar to MW, plate 75, #11 & 13. A crude, 'earthy' snuff with some small flecks of slag in the shoulder.

Est.: \$400 - \$600 • Min. bid: \$200



Lot 122

"E.G. BOOZ'S / OLD CABIN / WHISKEY - (1840) - E.G. BOOZ'S / OLD CABIN / WHISKEY - 120 WALNUT ST. / PHILADELPHIA", Cleverger Brothers Glass Co., Clayton, NJ, 1930 - 1942. Golden amber shading to light honey in the roof corners, cabin form, applied sloping collar - smooth base, ht. 7 7/8", perfect. GVII-8*. This mold is the first reproduction of the original, and will fool a lot of collectors! Provenance: David Sidelinger collection.

Est.: \$150 - \$250 • Min. bid: \$80



Lot 123

"DISTILLED IN 1848. / OLD KENTUCKY / 1849 / RESERVE / BOURBON / A.M. BININGER & Co. 19 BROAD ST", probably 1861 - 1863. Bright honey amber, barrel form, applied double ring collar - smooth base, ht. 9 1/2"; (professionally cleaned to original luster; a little dullness or fine light wear, primarily around the edge of the base and lower base ring, otherwise excellent). BPK-39.

Est.: \$175 - \$275 • Min. bid: \$90



Lot 124

"BININGER'S / OLD KENTUCKY BOURBON, - 1849. RESERVE; / DISTILLED IN 1848. - A.M. BININGER & Co, / No. 19 BROAD ST, N.Y.", 1861 - 1863. Light honey coloration, square with beveled corners, applied sloping collar - smooth base, ht. 9 3/4"; (a little faint haze on the interior near the base, and some haze on the outside of the base, otherwise near mint). BPK-20. A pretty example with some nice yellowish tones. Scarce in amber.

Est.: \$200 - \$400 • Min. bid: \$100



Lot 125

"BININGER'S / OLD DOMINION - WHEAT TONIC, - A.M. BININGER & Co: / No. 19 BROAD ST. N.Y.", 1861 - 1863. Yellowish olive coloration, square, beveled corners, applied sloping collar - smooth base, ht. 9 7/8"; (a 1/2" by 3/16" open bubble on the heel of the base, and just a slight trace of wear including a 1/4" paper-thin open bubble on one of the beveled edges, otherwise perfect). BPK-17. A bright, clean, example. Provenance: Ex. Dr. Burton Spiller; Don Denzin collections.

Est.: \$300 - \$500 • Min. bid: \$150



Lot 126

"A.M. BININGER & Co. - No. 338 BROADWAY, N.Y. - HEIDELBERG / BRANNTWEIN", probably 1859 - 1861. Medium olive green, square with beveled corners, applied sloping collar - smooth base, ht. 9 1/4", near mint; (just a trace of light wear including a little minor roughness, some of which is likely in-manufacture, on the edge of the crudely applied mouth, otherwise perfect). BPK-13. Very rare! Provenance: Ex. Don Denzin collection.

Est.: \$1,000 - \$2,000 • Min. bid: \$500



Lot 127

"MICHAEL B WOLFE - SCHIEDAM - AROMATIC / SCHNAPPS", America, 1860 - 1870. Deep olive amber (black glass), square, beveled corners, applied sloping collar - smooth base, ht. 9 1/2"; (a couple of minor patches of light interior residue or haze; a little faint 'bloom' or exterior dullness, primarily around the shoulders, a bit on the sides, but no other form of damage and otherwise near mint). An exceedingly rare, early, Schnapps, believed to be one of only three known.

Est.: \$800 - \$1,600 • Min. bid: \$400



Lot 128

"W & Co / N.Y." Figural Pineapple Bitters, 1855 - 1865. Beautiful, brilliant yellowish olive coloration, pineapple form, applied ring type collar - iron pontil scar, ht. 8 1/4", virtually attic mint; (a tiny, hard-to-see, little iridescent bruise on the edge of the collar mentioned for complete accuracy, and just a trace of typical light wear, otherwise perfect). R/H #P100. Rare. A fantastic example, lighter, and much nicer than most, great color, clarity, and condition. Lynn Mitchell collection.

Est.: \$4,000 - \$6,000 • Min. bid: \$2,000

**Lot 129**

"GREELEY'S - BOURBON WHISKEY / BITTERS. - GREELEY'S" (with 95% complete original labels), America, 1860 - 1875. Brilliant aquamarine, barrel form, applied square collar - smooth base, ht. 9 1/4", perfect! R/H #G102. A very rare, desirable, aqua barrel - and exceedingly rare having the original labels. Bright, clean, sparkling, and virtually pristine condition, a top example. Provenance: Fred Swiechowicz collection.

Est.: \$5,000 - \$8,000 • Min. bid: \$2,500

**Lot 133**

"OLD SACHEM / BITTERS / AND / WIGWAM TONIC", America, 1860 - 1875. Light-to-medium ginger ale coloration, barrel form, applied square collar - smooth base, ht. 9 1/4"; (professionally cleaned; some very faint, barely noticeable, 'cloudiness' remains on the interior, but otherwise excellent and no other form of damage). R/H #O46. An extremely rare and desirable color, and in a nice light 'see-through' tone! Provenance: David Sidelinger collection.

Est.: \$2,000 - \$4,000 • Min. bid: \$1,000

**Lot 130**

"GREELEY'S - BOURBON WHISKEY / BITTERS. - GREELEY'S", America, 1860 - 1875. Gorgeous medium peach coloration shading to a rich, deep, peach-salmon through the upper half of the bottle, barrel form, applied square collar - smooth base, ht. 9 1/8", virtually perfect; (only the slightest trace of faint wear, otherwise pristine perfect). R/H #G102. Beautiful variegated color - a fantastic example in terms of color, eye-appeal, and condition.

Est.: \$1,200 - \$2,400 • Min. bid: \$600

**Lot 134**

DR C.W. ROBACKS / STOMACH BITTERS / CINCINNATI. O", 1865 - 1875. Gorgeous, light yellowish honey coloration, almost a honey yellow through the mid-body, barrel form, applied sloping collar - smooth base, ht. 9 1/4", virtually perfect; (just the slightest trace of faint wear, otherwise pristine). R/H #R75. A beautiful example, great color with plenty of yellow, much lighter than the majority of examples, outstanding condition.

Est.: \$800 - \$1,200 • Min. bid: \$400

**Lot 131**

"GREELEY'S BOURBON / BITTERS", America, 1860 - 1875. Light-to-medium copper with a slight topaz tone, barrel form, applied square collar - smooth base, ht. 9 1/4", virtually attic mint; (just the slightest trace of light wear, otherwise pristine perfect). R/H #G101. A great example, very pretty color - no amber in this one, lighter than most with plenty of 'see-through' color. In addition, nicely whittled, almost no wear, and with a perfect square collar.

Est.: \$600 - \$900 • Min. bid: \$300

**Lot 135**

"DR C.W. ROBACKS / STOMACH BITTERS / CINCINNATI. O", 1865 - 1875. Deep yellowish 'old amber', barrel form, applied sloping collar - smooth base, ht. 9 1/4", attic mint! R/H #R75. A great example of this classic figural barrel, fantastic condition, nicely whittled, and a slightly different tone than the more typical straight amber, or golden amber, examples.

Est.: \$200 - \$400 • Min. bid: \$100

**Lot 132**

"B.T. 1865 S.C. / SMITHS / DRUID BITTERS", 1865 - 1870. Medium amber with a slight hint of an apricot tone, barrel form, applied square collar - smooth base, ht. 9 1/4", near perfect; (just a trace of very light wear including a tiny pinprick speck of roughness on the back edge of the lip). R/H #S124. A clean, sparkling example of this rare figural barrel from Baltimore, seldom offered for sale. J. Smith and Son were wholesale grocers and merchants. Fred Swiechowicz collection.

Est.: \$2,500 - \$4,500 • Min. bid: \$1,300

**Lot 136**

"DR C.W. ROBACKS / STOMACH BITTERS / CINCINNATI. O", 1865 - 1875. Rich, medium-to-deep amber, barrel form, applied sloping collar - smooth base, ht. 9 1/4", near mint; (a crude lip with some in-manufacturing roughness along the top and inner edge, including a couple of minor pinhead flakes; a trace bit of wear on the reverse, otherwise perfect). R/H #R75. A really nice example, clean and sparkling, in a rich, slightly deeper color than most.

Est.: \$200 - \$400 • Min. bid: \$100

**Lot 137**

"BROWN'S / CELEBRATED / INDIAN HERB BITTERS - PATENTED / FEB 11 / 1868", 1868 - 1875. Medium amber, figural Indian maiden, sheared and factory ground mouth - smooth base, ht. 11 7/8", near mint; (some lip flaking and a few small chips, including a 3/8" flat chip from the side of the factory ground mouth, some of which were likely in-making, otherwise perfect). R/H #B222. Extremely rare! This is the difficult to find, rare mold variant with no "R" in Celebrated.

Est.: \$800 - \$1,200 • Min. bid: \$400

**Lot 138**

"NATIONAL / BITTERS" - "PATENT / 1867" (on base), 1867 - 1875. Golden amber, figural ear of corn, applied short tapered collar with ring - smooth base, ht. 12 1/4", attic mint! R/H #N8. Just a solid, great example of this classic, always popular, figural bitters, good impression and virtually no wear.

Est.: \$400 - \$600 • Min. bid: \$200

**Lot 139**

"THE / FISH BITTERS - W.H. WARE / PATENTED 1866", America, 1866 - 1875. Bright golden amber shading to a light honey color along the sides, figural fish, applied ring collar - smooth base, ht. 11 1/2", virtually attic mint; (just a trace of minor wear, and a little light interior residue or faint haze, possibly washable, primarily in one side, or along the 'belly' of the fish, otherwise perfect). R/H #F45. A great example with unusually strong, very bold embossing.

Est.: \$300 - \$500 • Min. bid: \$150

**Lot 140**

"PEYCHAUD'S / AMERICAN / BITTERS / N.O." (on applied glass seal), America, 1860 - 1870. Deep olive amber, cylindrical, 3-pc. mold, applied sloping collar with bevel - smooth base, ht. 11 1/8", virtually attic mint; (a couple of tiny open surface bubbles; a trace of light interior content residue, otherwise perfect). R/H #P80. A very rare bitters, especially in this un-dug, virtually pristine condition. Nice crude seedy glass, strong impression on seal. Ex. Charles Aprill collection.

Est.: \$1,500 - \$2,500 • Min. bid: \$800

**Lot 141**

"OLD / HOMESTEAD / WILD CHERRY / BITTERS. - PATENT", 1865 - 1875. Clear, light lemon yellow, square cabin form, applied sloping collar - smooth base, ht. 9 1/2", attic mint. R/H #O37.2. An absolutely top example! Outstanding eye-appeal and perhaps the lightest, and certainly one of the prettiest examples that we can recall seeing. Rare color, strong embossing, virtually pristine condition! Provenance: David Sidelinger collection, Ex. Bob Currens collection.

Est.: \$8,000 - \$12,000 • Min. bid: \$4,000

**Lot 142**

"KELLY'S / OLD CABIN / BITTERS - PATENTED / 1863 - KELLY'S / OLD CABIN / BITTERS - PATENTED / 1863", 1863 - 1870. Gorgeous, medium olive yellow coloration, cabin form, applied sloping collar - smooth base, ht. 9", near mint; (some scattered light wear including a small 1/8" bruise, or chip, on one of the base logs; a couple of small spots of minor dullness mentioned for completeness, but not distracting, otherwise excellent). R/H #K21. Provenance: David Sidelinger collection.

Est.: \$8,000 - \$12,000 • Min. bid: \$4,000

**Lot 143**

"HOLTZERMANN'S - PATENT / STOMACH / BITTERS", America, 1865 - 1875. Beautiful golden amber shading to a light honey coloration in the shoulders, rectangular cabin form, applied sloping collar - smooth base, ht. 9 3/8", attic mint! R/H #H155, MW, plate 85, #3. A bright, clean, sparkling, virtually pristine example of this scarce, 2-roof cabin, originally from Piqua, Ohio.

Est.: \$1,400 - \$2,400 • Min. bid: \$700

**Lot 144**

"AMERICAN LIFE / BITTERS - P.E. ILER / MANUFACTURER / OMAHA, NEB - AMERICAN LIFE / BITTERS", 1865 - 1875. Deep amber, rectangular cabin form, applied sloping collar - smooth base, ht. 9"; (a hard-to-see, 1" vertical crack in the back of the applied lip; just a trace of faint dullness, primarily on back label panel, and a patch of interior haze or residue in the upper half of one panel). R/H #A48. Extremely rare! Provenance: David Sidelinger collection.

Est.: \$1,500 - \$3,000 • Min. bid: \$750



Fred Swiechowicz: A 57-Year Love for Antique Bottles

Note; you'll find a number of Fred's bottles throughout this catalog (notated, "Provenance: Fred Swiechowicz collection"). Watch for more choice selections to come in our Fall, 2022, Auction #33!

Lot 132

Lot 5



Lot 16



Lot 250



Lot 189



Lot 18



Lot III (Ink)

In 1965, Fred bought his first home in Randolph, MA. While walking the back part of his property line, he found a Kickapoo Indian Oil bottle, also known as “Kickapoo Joy Juice” sitting on the top of the grass. Curiosity got the best of him, so he got a trowel and started digging his “first” dump. He knew people liked old bottles because he saw them in antique shops while he was out looking for cast iron soldiers that his boss collected. With great enthusiasm, Fred and his sons would dig a little bit of the dump each day, thinking every Hires Root Beer Extract, Phillips Milk of Magnesia and Hoods Sarsaparilla (the dump was loaded with them) was worth a \$5 bill.

Little did Fred know his oldest son, Steve, and friend would go back down after school, pick up bottles and throw them, breaking them against the rock wall just for fun.

One weekend while visiting friends in New Hampshire,

Fred and Steve went to their first bottle show in Laconia, NH. It was at that show he found out his bag of “dug up treasures” weren’t worth nearly what he thought. That day was just the beginning of a “57-year love for antique bottles” and a strong, lasting friendship between Dave Olson, Jimmy Costa, and Fred. Throughout the years, some of Fred’s best friendships developed out of the same love for old bottles.

The “thrill of the hunt” and having so many dealers in one place appealed to Fred and Dave so they decided to put on their own antique bottle show running from the late 1960’s to mid 70’s at the Square Acres Hall in Bridgewater, MA. It was known as the “Eastern Massachusetts Bottle Show” and was a very popular, well attended show drawing many notable New England collectors and dealers of the time.

Every weekend, Fred, his two sons, Steve and Ross, and his oldest daughter, Laura would go hunting for dumps to dig. At the age of 10, Laura dug her first, and only, perfect, embossed, pottery jug decorated with a cobalt blue flower in a dump in Middleborough, MA. Fifty two years later, it still sits on a shelf in her home. The “bottle bug” had been planted within. Soon after, most of Fred’s weekends were dedicated to digging dumps and attending bottle shows, auctions, flea markets and yard sales. Fred would head out, child or two in tow, with a \$20 bill in his pocket and shop until he spent it all. Although Fred was drawn towards Medicines, Bitters and Flasks for their unique color, shape, size and embossing (or label), he enjoyed digging, buying and trading just about any type of antique bottle. Thus, the inception of the “Fred Swiechowicz” collection.

The “bottle” and “antique” bug quickly spread to his four children, who collect to this day. Parts of Fred’s collection will live on for many years with his four children, and several of his grandchildren as well.

At the age of 91, the “thrill of the hunt” is still going strong for Fred.



Lot 190

Lot 129

Lot 223

Lot 217

Lot 255



Lot 145

"S T / DRAKE'S / 1860 / PLANTATION / X / BITTERS - PATENTED / 1862", 1862 - 1880. Gorgeous lemon yellow, cabin form with 6 logs above the label panel, applied sloping collar - smooth base, ht. 9 7/8", attic mint! R/H #D108. An absolutely gorgeous color, nice and light all the way to the base, extremely bold embossing, virtually pristine condition, a top example! Provenance: David Sidelinger collection.

Est.: \$1,600 - \$3,200 • Min. bid: \$800



Lot 149

"S T / DRAKE'S / 1860 / PLANTATION / X / BITTERS - PATENTED / 1862", 1862 - 1880. Brilliant, lemon yellow coloration, cabin form with 4 logs above the label panel, applied sloping collar - smooth base, ht. 10 1/8", virtually attic mint; (a minor, very light, 1/2" scratch on the reverse label panel noted for completeness, and just a trace of interior residue or very faint haze, primarily in the base, otherwise pristine). R/H #D110. Brilliant glass, outstanding 'see-through' clarity, fantastic color!

Est.: \$1,000 - \$1,600 • Min. bid: \$500



Lot 146

"S T / DRAKE'S / 1860 / PLANTATION / X / BITTERS - PATENTED / 1862", 1862 - 1880. Beautiful, medium yellow with some warmer honey tones, primarily through the shoulders and neck, cabin form, applied sloping collar - smooth base, ht. 9 7/8", near mint; (a trace of minor wear along the roof edges, and a 1/4" open bubble at the edge of the roof on one of the side panels, otherwise perfect). R/H #D108. Strong embossing, beautiful color. David Sidelinger collection.

Est.: \$800 - \$1,200 • Min. bid: \$400



Lot 150

"H.P. HERB / WILD / CHERRY / BITTERS / READING / PA - WILD CHERRY / (Cherry Tree) / BITTERS - BITTERS - BITTERS - BITTERS", 1875 - 1885. Bright yellowish honey coloration, cabin form with roped corners, thatched roof, applied sloping collar - smooth base, ht. 10 1/4", perfect! R/H #H93. A fantastic example, beautiful with plenty of yellowish tones, desirable applied collar, strong embossing, virtually pristine condition. David Sidelinger collection.

Est.: \$300 - \$600 • Min. bid: \$150



Lot 147

"S T / DRAKE'S / 1860 / PLANTATION / X / BITTERS - PATENTED / 1862", America, 1862 - 1880. Rich, medium apricot amber, cabin form, applied sloping collar - smooth base, ht. 9 3/4", perfect. R/H #D105. A beautiful example with plenty of attractive apricot tones, nice rich color, excellent clarity and condition. Provenance: David Sidelinger collection.

Est.: \$250 - \$450 • Min. bid: \$130



Lot 151

"BAKER'S / ORANGE GROVE - BITTERS", America, 1870 - 1880. Beautiful, medium apricot coloration with some rich salmon tones, square with roped corners, applied sloping collar - smooth base, ht. 9 1/2"; (a minor 1/8" flake on the edge of the lip, and a large, interior open bubble in the back shoulder corner with a little trapped residue, otherwise excellent). R/H #B9. A very attractive, scarce color, no amber in this one!

Est.: \$600 - \$900 • Min. bid: \$300



Lot 148

"S T / DRAKE'S / 1860 / PLANTATION / X / BITTERS - PATENTED / 1862", America, 1862 - 1880. Medium-to-deep amber with a slight reddish-orange tone near the base, applied sloping collar with bevel - smooth base, ht. 9 7/8", attic mint; (slightly weak impression in the upper shoulder, but otherwise perfect). R/H #D105. Rare with the applied double collar. The color is nice, but it's the applied double collar that sets this one apart! Ex. Carlyn Ring collection.

Est.: \$200 - \$400 • Min. bid: \$100



Lot 152

"M.G. LANDSBERG / CHICAGO" - (Motif of EAGLE - SUNBURST / "1776" - SHIELD - "1876"), probably 1885 - 1890. Golden amber with a slight orange tone, square with crosshatch corners, shoulders in the form of a bell with 13 stars, applied sloping collar - smooth base, ht. 11", near mint; (a couple of small spots of faint interior milkiess in the shoulders, and a 1/8" paper-thin flake on the edge of the lip). R/H page 339. A beautiful example of this ornately embossed bitters.

Est.: \$1,000 - \$1,500 • Min. bid: \$500



Lot 153

"WAHOO / & / CALISAYA / BITTERS - JACOB PINKERTON - JACOB PINKERTON - I.M. - O.K - Y !! - Y !!!", 1870 - 1880. Yellowish golden amber, semi-cabin, columned corners, applied sloping collar - smooth base, ht. 9 7/8"; (a small, in-manufacture, 1/4" "V"-shaped separation of glass, or crevasse fissure, at the top of the lip, otherwise virtually perfect). R/H #W3. Beautiful, bright, and bubbly, excellent character with the applied, lopsided, collar. David Sidelinger collection.

Est.: \$800 - \$1,200 • Min. bid: \$400



Lot 157

"JOHN. W. STEELE'S / NIAGARA (STAR) BITTERS" - "JOHN. W. STEELE'S / NIAGARA. STAR. BITTERS" - (EAGLE) - (STAR) - (STAR) - "1864" - (STAR), 1864 - 1875. Rich medium amber with some lighter golden tones, semi-cabin form, applied sloping collar with band - smooth base, ht. 9 7/8", near mint; (a few small spots of faint, patchy, dullness; a couple of minor areas of interior residue or faint haze). R/H #S183. David Sidelinger collection.

Est.: \$600 - \$900 • Min. bid: \$300



Lot 154

"DOYLES - HOP - BITTERS" (arched) - "1872" - (Hop leaf and hops), America, 1872 - 1880. Medium to deep amber, square, semi-cabin form, applied sloping collar with band - smooth base, ht. 9 3/4"; (a bit of minor light wear including a 1/16" flake on the back edge of the collar, some washable interior content residue, otherwise excellent). R/H #D94. Likely one of the earliest examples, "BITTERS" arched, scarce 'hat-top' collar, David Sidelinger collection.

Est.: \$400 - \$600 • Min. bid: \$200



Lot 158

"JOHN W. STEELE'S / NIAGARA (STAR) BITTERS" - "JOHN W. STEELE'S / NIAGARA. STAR. BITTERS" - (EAGLE) - (STAR) - (STAR) - "1864" - (STAR), 1864 - 1875. Dense root beer amber, semi-cabin form, applied sloping collar with band - smooth base, ht. 10"; (a tiny pinhead flake at base corner; several paper-thin open surface bubbles, and some dried interior residue near base, otherwise perfect). R/H #S184. David Sidelinger collection.

Est.: \$800 - \$1,200 • Min. bid: \$400



Lot 155

"E. DEXTER LOVERIDGE / WAHOO BITTERS - (EAGLE) - E. DEXTER LOVERIDGE / WAHOO BITTERS - DWD - 1863 - XXX - PATD", 1863 - 1875. Amber with some golden tones, semi-cabin, applied sloping collar with band - smooth base, ht. 9 3/4"; (a 1/4" flake on the inside edge of the lip, and a light sheen or dullness to the glass when held in direct light, otherwise near mint). R/H #L126. A scarce mold variant with the standing bird, heavily whittled! David Sidelinger collection.

Est.: \$800 - \$1,200 • Min. bid: \$400



Lot 159

"JOHN ROOTS BITTERS - BUFFALO, N.Y. - 1834 - 1834", America, 1880 - 1890. Colorless, rectangular semi-cabin, tooled sloping collar with ring - smooth base, ht. 10 1/8", near mint; (a small onionskin-thin open surface bubble, and a trace of very faint, light, interior haze in the back label panel, barely noticeable on display, otherwise perfect). R/H #R90.4. A very scarce 'color' for this mold! Provenance: David Sidelinger collection.

Est.: \$600 - \$900 • Min. bid: \$300



Lot 156

"E. DEXTER LOVERIDGE / WAHOO BITTERS - (EAGLE) - E. DEXTER LOVERIDGE / WAHOO BITTERS - DWD - 1863 - XXX - PATD", 1863 - 1875. Deep grass green, almost a lime coloration, semi-cabin, applied collar with band - smooth base, ht. 9 3/4"; (a large crack around the entire perimeter of the Eagle panel; a 3/8" chip, or divot of glass at panel edge from the crack, and a bit of light dullness on a side panel). R/H #L126. Exceptional color! David Sidelinger collection.

Est.: \$500 - \$1,000 • Min. bid: \$250



Lot 160

"JOHN ROOT'S BITTERS - BUFFALO, N.Y. - 1834 - 1834" (with 85% complete, original label), America, 1870 - 1880. Aquamarine, rectangular semi-cabin, applied sloping collar - smooth base, ht. 10 3/8"; near perfect; (a couple of minor open surface bubbles; label has some staining near base). R/H #R90.4. Very scarce in aqua, and certainly rare having the original label and in this fine condition. Provenance: David Sidelinger collection.

Est.: \$800 - \$1,200 • Min. bid: \$400



Lot 161

"JOHN ROOT'S / BITTERS - BUFFALO. N.Y. - 1867 - 1867", 1867 - 1875. Medium-to-deep amber, rectangular semi-cabin, applied sloping collar with band - smooth base, ht. 9 3/4"; (some in-manufacture crazing lines around the top of the lip noted for accuracy; a couple of chips, 1/8" and 3/16", on the edge of the lip, and a pinhead flake on a panel edge near the base, otherwise very near mint). R/H #R90.8. As noted by Ring / Ham, a "Very rare" mold. David Sidelinger collection.

Est.: \$800 - \$1,200 • Min. bid: \$400



Lot 165

"DR. J. HOSTETTER'S / STOMACH BITTERS", America, probably a Pittsburgh district glasshouse, 1870 - 1880. Clear, light-to-medium yellowish 'celery' green, square with beveled corners, applied sloping collar - smooth base, ht. 8 3/4"; (professionally cleaned, and a pinhead flake on one of the beveled corners). R/H #H195. Beautiful, very scarce green coloration, nice and light all the way to the base. Provenance: David Sidelinger collection.

Est.: \$600 - \$900 • Min. bid: \$300



Lot 162

"MOUNTAIN HERB AND / ROOT BITTERS - DR. J. HENRY SALISBURY / HINSDALE. N.Y. - I.S.P. - I.N. - 1869", 1869 - 1875. Golden amber, square with beveled corners, applied sloping collar - smooth base, ht. 9 1/4", near mint; (just a trace of light wear and a small patch of very faint dullness on the side label panel, otherwise attic mint). R/H #M150. A rare bitters, believed to be only the second example offered in more than 20 years! David Sidelinger collection.

Est.: \$600 - \$900 • Min. bid: \$300



Lot 166

"DR. J. HOSTETTER'S / STOMACH BITTERS", Lorenz & Wightman Glass Manufacturers, Pittsburgh, 1863 - 1872. Bright yellow with some honey and olive tones, square with beveled corners, applied sloping collar - **"L & W"** (on smooth base), ht. 9", virtually perfect; (just a slight trace of faint wear, otherwise attic mint). R/H #H195. A very pretty example that has not been dug and cleaned, with a 'fat' neck and pleasing stout appearance.

Est.: \$250 - \$450 • Min. bid: \$130



Lot 163

"SWAN BITTERS - McFARLAND BRO'S / MEADVILLE PA", probably 1869 - 1872. Beautiful yellowish honey with a slight olive tone, square with beveled corners, applied sloping collar - smooth base, ht. 9 5/8", perfect. R/H #S229. An extremely rare bitters, fantastic color, outstanding condition. Believed to be only the second or possibly third example to be offered in more than 25 years (the last example in March, 2014, was amber and had damage). David Sidelinger collection.

Est.: \$600 - \$1,200 • Min. bid: \$300



Lot 167

Lot of (3), Bitters Bottles, 1870 - 1890. (2), "DR. J. HOSTETTER'S / STOMACH BITTERS", honey amber and amber with a slight tobacco tone, applied collars - **"Mc C & Co"** and plain base, ht. 8 7/8" & 8 5/8"; **(1st Ex. near mint, 1/8" flake at base corner; 2nd Ex. has tiny bruise at shoulder and content residue). 3rd Ex: "TIPPECANOE" / (CANOE) / "H.H. WARNER & Co"**, amber, **"PAT.NOV.20.83 / ROCHETER / N.Y."** (on base), ht. 9". R/H #H195 & T 30.8. Sidelinger collection.

Est.: \$150 - \$250 • Min. bid: \$80



Lot 164

"DR. HOFFS / GERMAN / STOMACH BITTERS - A.S. DICKSON / MEADVILLE / PA", 1870 - 1880. Medium amber, square, beveled corners, applied sloping collar - smooth base, ht. 8 3/4"; (a tiny pinhead flake on the edge of the lip; a 1/4" onionskin-thin open bubble on the back shoulder, and some dried interior residue in base and sides, otherwise excellent). R/H #H138. A rare bitters from Meadville. Appears to have been a 'barn-type' find. David Sidelinger collection.

Est.: \$300 - \$600 • Min. bid: \$150



Lot 168

"DR. PETZOLD'S / GENUINE / GERMAN / BITTERS / INCPT 1862 / THE / GREAT / ELIXIR / OF LIFE - PAT'D 1884", 1884 - 1895. Beautiful light honey coloration shading a bright orange amber through the neck, oval, tooled sloping collar with ring - smooth base, ht. 6 7/8"; (professionally cleaned). R/H #P77. This mold is noted by Ring / Ham as "Rare", and certainly one of the scarcer of the numerous Petzold bitters variants.

Est.: \$150 - \$250 • Min. bid: \$80



Lot 169

"CLOTWORTHY'S - ORIENTAL / TONIC BITTERS", America, 1880 - 1890. Medium honey amber, square with beveled corners, tooled sloping collar with ring - smooth base, ht. 9 1/2", near mint; (a 1/4" sliver flake from one of the panel edges, and just the slightest trace of light interior residue, otherwise perfect). R/H #C176. Listed by Ring / Ham as "Very rare", here is one that does not come around often. An attractive example, overall excellent condition.

Est.: \$250 - \$450 • Min. bid: \$130



Lot 170

"J.W. COLTON'S NERVINE / STRENGTHENING BITTERS", Whitall-Tatum & Co., Millville, NJ, 1885 - 1895. Golden amber, square, beveled corners, tooled square collar - **"W T & Co"** (on smooth base), ht. 8 3/8", attic mint. R/H #C197. Scarce! A beautiful example. Although Ring/Ham denotes this mold as scarce, we would argue that it could be considered very scarce. A seldom seen bitters, and one of only three that have been offered at auction in more than 15 years.

Est.: \$250 - \$450 • Min. bid: \$130



Lot 171

"GEO. BENZ & / SONS / APPETINE / BITTERS / ST. PAUL, MINN", America, 1897 - 1905. Medium amber with some beautiful reddish orange tones, square with fancy scroll pattern, ringed, fluted shoulders, tooled sloping collar - **"PAT. / NOV.23. / 1897"** (on smooth base), ht. 8", perfect! R/H #A78. A very scarce, beautiful, and ornate bitters - not easy to find in this un-dug, virtually 'attic' condition. In addition, this one is in an attractive tone that passes plenty of light.

Est.: \$250 - \$450 • Min. bid: \$130



Lot 172

"DR LOEW'S CELEBRATED / STOMACH BITTERS & / NERVE TONIC - THE / LOEW & SONS CO. / CLEVELAND, O.", America, 1890 - 1900. Bright 7-Up green, square with rounded corners, fluted neck, tooled sloping collar with ring - smooth base, ht. 9 1/4", perfect! R/H #L111. A great example of this colorful, very attractive bitters, excellent clarity and condition. Provenance: David Sidelinger collection.

Est.: \$300 - \$600 • Min. bid: \$150



Lot 173

"LEDIARD'S - MORNING CALL" (with period Albany label for **HUMBOLDT EUREKA SILVER STOVE POLISH**), 1875 - 1885. Olive green, cylindrical, applied sloping collar - smooth base, ht. 9 7/8"; (bottle is perfect - just some dried content residue; 90% complete period label has some minor stain and thin spots). R/H #L61.7. A really interesting bottle and fantastic example of one proprietor using another's bottles, or 'make-do', with whatever they had.

Est.: \$200 - \$400 • Min. bid: \$100



Lot 174

"JNO. MOFFAT - PHOENIX / BITTERS - PRICE \$ 1 - NEW YORK", a New England, or possibly New York State glasshouse, 1840 - 1855. Yellowish olive amber, rectangular with beveled corners, applied ring-type collar - blowpipe pontil scar, ht. 5 1/2"; (lightly cleaned to original luster, and a little scattered light wear including a hard to see, shallow, 1/8" sliver flake at one of the base corners, otherwise excellent). R/H #M110. Very bold embossing. One of the earliest of the pontiled bitters.

Est.: \$400 - \$800 • Min. bid: \$200



Lot 175

"JOHN / MOFFAT - NEW YORK - PHOENIX / BITTERS - PRICE \$2.00", 1840 - 1850. Aquamarine, rectangular with beveled corners, applied ring collar, blowpipe pontil scar, ht. 7 1/8"; (professionally cleaned to original luster with a light matte-type finish remaining on the reverse, but otherwise sparkling clean and near mint condition). R/H #M108. A very rare mold, and extremely rare in aquamarine! Believed to be one of only perhaps 3-4 known in aqua, most if not all, have been dug.

Est.: \$1,000 - \$2,000 • Min. bid: \$500



Lot 176

"JOHN / MOFFAT - NEW YORK - PHOENIX / BITTERS - PRICE \$2.00", New England, 1840 - 1850. Yellowish olive amber, rectangular, beveled corners, applied sloping collar - sand type pontil scar, ht. 7", virtually perfect; (slight trace of light, washable, interior content residue, otherwise attic mint). R/H #M108. Very rare! This large \$2.00 size is certainly one of the 'holy grails' of the Moffat's bitters. A beautiful example, outstanding condition. Fred Swiechowicz collection.

Est.: \$2,500 - \$4,500 • Min. bid: \$1,300



Lot 177

"KIMBALL'S / JAUNDICE - BITTERS - TROY. N.H.", a Stoddard, NH glasshouse, 1850 - 1860. Light-to-medium yellowish olive amber, rectangular with beveled corners, applied sloping collar - iron pontil scar, ht. 7"; (a 3/8" x 1/2" chip from the pontil to the edge, but does not show on display, and just the slightest trace of typical light wear, otherwise perfect). R/H #K42. A very pretty example, nice and light through the shoulders with plenty of beautiful yellowish tones.

Est.: \$700 - \$1,200 • Min. bid: \$400



Lot 178

"JOHNSON'S - INDIAN - DYSPEPTIC - BITTERS", America, 1845 - 1855. Aquamarine, rectangular with beveled corners, applied sloping collar - blowpipe pontil scar, ht. 6 1/2"; (lightly cleaned to original luster, and just a trace of light wear, otherwise perfect). R/H #J46. Noted by Ring / Ham as "Rare", and believed to be only the second example offered at auction in more than 10 years. The bitters was put out by A. Johnson of Brewer, Maine.

Est.: \$300 - \$600 • Min. bid: \$150



Lot 179

"G. C. SEGUR'S - GOLDEN SEAL / BITTERS - SPRINGFIELD MASS.", probably 1851 - 1855. Aquamarine, rectangular with beveled corners, applied sloping collar - blowpipe pontil scar, ht. 8 3/8", near mint; (a 1/4" x 3/4" partially open bubble on the interior of the shoulder, and a 1 1/2", in-manufacture, paper-thin pontil flake that does not show on display, otherwise excellent). R/H #S84. A bright, clean example with crude wavy glass.

Est.: \$300 - \$500 • Min. bid: \$150



Lot 180

"DR GEO PIERCE'S - INDIAN / RESTORATIVE / BITTERS - LOW-ELL MASS", 1855 - 1860. Rich, deep aquamarine, rectangular, beveled corners, applied sloping collar - blowpipe pontil scar, ht. 7 3/4", virtually attic mint; (just the slightest trace of very faint milkiness, barely noticeable, in one of the side panels, otherwise perfect). R/H #P96. A great looking example of this pontiled Indian bitters, strong color, outstanding condition. Provenance: James Chebalo collection.

Est.: \$250 - \$450 • Min. bid: \$130



Lot 181

"DR TOWNSEND'S - SARSAPARILLA - ALBANY / N.Y.", probably a New England glasshouse, 1845 - 1855. Bright yellowish olive coloration, square with beveled corners, applied sloping collar - sand type pontil scar, ht. 9 1/4", virtually perfect; (very slight trace of light wear, otherwise attic mint). A great example, strong embossing, nice 'see-through' color, and excellent condition.

Est.: \$400 - \$600 • Min. bid: \$200



Lot 182

"DR TOWNSEND'S - SARSAPARILLA - ALBANY / N.Y. No1", probably a New England glasshouse, 1845 - 1855. Yellowish olive amber, square with beveled corners, applied sloping collar - sand type pontil scar, ht. 9 1/4", attic mint! Another great example, outstanding condition - almost no wear, bold embossing, excellent character, and very scarce, "No1" mold!

Est.: \$600 - \$900 • Min. bid: \$300



Lot 183

"DR TOWNSEND'S - SARSAPARILLA - NEW YORK.", 1850 - 1860. Clear bluish green, almost a deep sea green, square with beveled corners, applied sloping collar - heavy iron pontil scar, ht. 9 7/8", attic mint. A beautiful example. Outstanding character with whittled, wavy glass; fantastic clarity, eye-appeal, and condition. Provenance: Ex. Robert White collection.

Est.: \$300 - \$500 • Min. bid: \$150



Lot 184

"OLD / DR TOWNSEND'S - SARSAPARILLA - NEW YORK.", 1850 - 1860. Clear, light-to-medium emerald coloration, square with beveled corners, applied sloping collar - domed base with heavy iron pontil scar, ht. 9 1/2"; (just the slightest trace of faint wear, light interior residue, otherwise perfect). Another 'attic-type' example, this one with nice shading of color, heavy iron pontil, and crude, wavy glass. Note; also a scarce color for an "OLD / DR TOWNSEND'S", mold.

Est.: \$600 - \$900 • Min. bid: \$300



Lot 185

"OLD DR / J. TOWNSENDs - SAR-SAPARILLA - NEW YORK.", 1850 - 1860. Clear, medium blue green, square with beveled corners, applied sloping collar - deep domed base with heavy iron pontil scar, ht. 9 3/4", virtually perfect; (just a very slight trace of very faint wear). Nice, 'see-through' clarity, crisp embossing, beautifully whittled, fantastic condition!

Est.: \$400 - \$800 • Min. bid: \$200



Lot 189

"HYATT'S - INFALLIBLE - LIFE BAL-SAM / N-Y", 1852 - 1860. Beautiful, medium emerald with a teal tone, 'fat' rectangular mold, applied sloping collar - heavy iron pontil scar, ht. 9 5/8", perfect! Extremely rare. This is the 'fat' rectangle, almost 'suarish' mold, without the indented panels - the most difficult of all the Hyatt's molds to acquire. Beautiful color, excellent clarity, pristine condition, about as nice as you could hope to find. Provenance: Fred Swiechowicz collection.

Est.: \$4,000 - \$6,000 • Min. bid: \$2,000



Lot 186

"OLD DR / J. TOWNSENDs - SAR-SAPARILLA - NEW YORK", 1850 - 1860. Bright, medium-to-deep blue green with a teal tone, square with beveled corners, domed shoulders, rounded tapered collar, almost a blob style collar - domed base with iron pontil scar, ht. 9 3/8", virtually perfect; (faint trace of very minor wear, otherwise attic mint). Another great example, excellent color, character, and condition.

Est.: \$500 - \$1,000 • Min. bid: \$250



Lot 190

"DR. SWETT'S / PANACEA - EXETER N.H.", a New England glasshouse, 1845 - 1855. Yellowish olive amber, rectangular with beveled corners, applied sloping collar - sand type pontil scar, ht. 7 3/4", virtually attic mint; (some dried interior content residue, and a couple of minor, 1/4" or less, paper-thin open surface bubbles, otherwise perfect). Extremely rare! A great example, nice crude glass, fantastic condition. Provenance: Fred Swiechowicz collection.

Est.: \$6,000 - \$9,000 • Min. bid: \$3,000



Lot 187

"OLD DR / J. TOWNSENDs - SAR-SAPARILLA - NEW YORK", 1850 - 1860. Beautiful, medium-to-deep teal green coloration, square with beveled corners, applied sloping collar - domed base with iron pontil scar, ht. 9 1/2", virtually perfect; (a tiny pinhead flake at top of panel edge, and a small spot of light interior milkiness in one beveled corner, otherwise attic mint!) A rich, attractive, eye-appealing example, rare color, outstanding condition.

Est.: \$1,000 - \$2,000 • Min. bid: \$500



Lot 191

"HOLMAN'S / NATURES GRAND / RESTORATIVE - J.B. HOLMAN PROP. - BOSTON MASS.", a Stoddard, NH glasshouse, 1845 - 1855. Bright, yellowish olive amber, rectangular with beveled corners, applied square collar - blowpipe pontil scar, ht. 6 5/8", virtually perfect; (only the slightest trace of faint wear). An absolute top example of one of the rarest, and most desirable, Stoddard medicine bottles. Beautiful color, outstanding character, filled with tiny bubbles.

Est.: \$8,000 - \$12,000 • Min. bid: \$4,000



Lot 188

"DR. WILCOX'S - COMPOUND EXTRACT - OF / SARSAPARILLA", 1850 - 1860. Bright, medium blue green, square, beveled corners, applied sloping collar - very heavy iron pontil scar, ht. 9 1/4", virtually perfect; (just a slight trace of light wear, and a tiny little crevasse, or thread of glass separation, on the top of the lip, likely in-manufacture, mentioned for complete accuracy, otherwise attic mint). A rare, impressive, Albany, NY medicine. Crude, dimpled, wavy glass.

Est.: \$3,000 - \$5,000 • Min. bid: \$1,500



Lot 192

"Dr H.W. JACKSON / DRUGGIST / VEGETABLE / HOWE SYRUP" (with 95% original label), probably Coventry Glass Works, 1840 - 1849. Medium-to-deep olive amber, cylindrical, sheared mouth with applied short tapered collar - blowpipe pontil scar, ht. 4 1/8; near perfect; (tiny pinhead flake on the edge of the lip; some in-manufacture crazing lines in the neck). Extremely rare! Provenance: James Chebalo collection; Ex. Sam Greer, Charles Gardner collections.

Est.: \$4,000 - \$8,000 • Min. bid: \$2,000



Lot 193

"CARTERS / SPANISH / MIXTURE"
(with 85 - 90% complete, original labels), America, 1850 - 1860. Bright, yellowish olive green, cylindrical, applied sloping collar with bevel - iron pontil scar, ht. 8", sparkling mint! Odell, pgs. 68 & 69. A great example, bright, clean, excellent clarity, nicely whittled. A lot of bottle for the money, and very scarce having both front and back labels.

Est.: \$600 - \$900 • Min. bid: \$300



Lot 197

"WILLIAM BROWN. - DRUGGIST & CHEMIST / 481 WASHINGTON ST. - BOSTON.", America, 1850 - 1860. Aquamarine, rectangular with beveled corners, applied sloping collar - blowpipe pontil scar, ht. 8 3/4", near mint; (lightly cleaned to original luster and virtually perfect condition). Very scarce. A great looking pontiled medicine with arched indented panels on the front, as well as the beveled corners.

Est.: \$200 - \$400 • Min. bid: \$100



Lot 194

"DITCHETT'S / REMEDY FOR / THE PILES NY", probably 1850 - 1855. Medium-to-deep yellowish olive coloration, rectangular with wide beveled corners, applied sloping collar with bevel - early smooth base, ht. 8 7/8", virtually perfect; (slight trace of very faint interior residue or milkiness). Extremely rare, believed to be one of only three examples, (one being damaged, this example is the only smooth base). Provenance: Ex. Ed and Kathy Gray collection.

Est.: \$3,000 - \$5,000 • Min. bid: \$1,500



Lot 198

"H. LAKE'S / INDIAN / SPECIFIC", America, 1849 - 1855. Aquamarine, rectangular with concave corners, bulbous neck, applied ring collar - large blowpipe pontil scar, ht. 8 1/8"; (a little light interior cloudiness along one of the corner panels; a couple small spots of minor wear, and a 3/4" paper-thin pontil flake at the edge of the base that does not show on display). Odell, p.218. The noted condition issues are all pretty minor, the bottle displays as near mint. A scarce pontiled Indian medicine.

Est.: \$400 - \$600 • Min. bid: \$200



Lot 195

"C. BRINCKERHOFF'S - HEALTH RESTORATIVE - PRICE \$1.00 - NEW YORK", an early Stoddard, NH glasshouse, 1845 - 1851. Rich, medium-to-deep olive with a slight amber tone, rectangular, beveled corners, applied sloping collar - sand type pontil scar, ht. 7 1/4", near mint; (a little scattered light wear including a 1/8" paper-thin open bubble on a side panel, otherwise excellent). Found at an estate sale in Grand Blanc, MI for \$2! Has not been dug or tumbled.

Est.: \$800 - \$1,200 • Min. bid: \$400



Lot 199

"AMES - CAUCASSIAN / HAIR TONIC - SPRINGFIELD MASS" (with 99% complete, original label), America, 1845 - 1855. Aquamarine, rectangular with wide beveled corners, sheared and inward rolled lip - blowpipe pontil scar, ht. 5 3/8", perfect; (label darkened from age). Fadely, p.9. An extremely rare hair bottle and tonic, believed to be one of only three, or possibly four known - and likely unique with original label. Found under the floorboards of an attic in eastern, N.Y.

Est.: \$300 - \$500 • Min. bid: \$150



Lot 196

"ROHRER'S - EXPECTORAL / WILD / CHERRY / TONIC - LANCASTER PA", 1855 - 1865. Medium-to-deep golden amber, rectangular pyramid form with roped corners, applied sloping collar with bevel - heavy iron pontil scar, ht. 10 1/2", virtually attic mint; (a little scattered light interior content residue, otherwise perfect). Nice color, excellent character, beautifully whittled, and certainly a plus with the heavy iron pontil scar (many examples are smooth base).

Est.: \$300 - \$600 • Min. bid: \$150



Lot 200

"JOHN M. WINSLOW / ROCHESTER N.Y - COMPOUND / BALSAM OF / HOARHOUND - COLDS COUGHS / AND CONSUMPTION", 1840 - 1845. Aquamarine, rectangular with beveled corners, sheared and inward rolled mouth - blowpipe pontil scar, ht. 5 1/8"; (lightly cleaned to original luster; a bit of faint haziness remains in the neck, and a slight bit in the body, but not terribly distracting, and no other form of damage). Odell, p.377. A very scarce, early pontiled medicine.

Est.: \$400 - \$600 • Min. bid: \$200



Lot 201

"PRATT & BUTCHER / MAGIC OIL / BROOKLYN N.Y.", America, probably 1857 - 1860. Aquamarine, oval, sheared, tooled, and inward rolled mouth - blowpipe pontil scar, ht. 3 7/8", virtually attic mint; (only the slightest trace of faint wear, otherwise pristine perfect). Odell, p.285; N #503. Scarce. A bright, sparking example, crisp embossing.

Est.: \$150 - \$250 • Min. bid: \$80



Lot 205

"ANDERSON'S / COUGH DROPS - PREPARED BY / J. MILLER", probably 1830 - 1840. Colorless, cylindrical, sheared, tooled, likely applied, wide flared mouth - glass tipped pontil scar, ht. 3 1/4", perfect. Odell, p.7. A very rare, very early, pontiled medicine. In addition, very few pontiled medicines are embossed "Cough Drops". Believed to be the 1st example offered at auction in more than 30 years. Provenance: James Chebalo collection; Ex. Dr. Sam Greer collection.

Est.: \$250 - \$450 • Min. bid: \$130



Lot 202

"D. Mc CONAHY'S - MAGIC - COMPOUND", America, 1845 - 1855. Aquamarine, triangular with narrow beveled corners, sheared, tooled, and inward rolled mouth - blowpipe pontil scar, ht. 3 5/8"; (professionally cleaned to original luster with a little faint, minor haziness remaining, otherwise very near mint with no other form of damage). Odell, p.245. Another very rare pontiled medicine, unusual triangular form. Provenance: James Chebalo collection.

Est.: \$250 - \$450 • Min. bid: \$130



Lot 206

"LOUDEN & Co'S - FEVER - & AGUE - PILLS", America, 1845 - 1855. Aquamarine, cylindrical, sheared, tooled, and inward rolled lip - blowpipe pontil scar, ht. 2 3/4"; (likely a dug bottle, but does not appear to have been cleaned having a little dullness and patchy light haze, but no other form of dullness). Odell, p.230. Very scarce. Provenance: James Chebalo collection.

Est.: \$100 - \$200 • Min. bid: \$50



Lot 203

"MITCHELL'S - EYE / SALVE", America, 1845 - 1855. Aquamarine, square, short wide neck with sheared, tooled, and inward rolled lip - blowpipe pontil scar, ht. 1 7/8", attic mint! Odell, p.255. Very rare. A seldom offered little pontiled medicine believed to be from the small town of Perry, NY. Provenance: James Chebalo collection.

Est.: \$200 - \$400 • Min. bid: \$100



Lot 207

"DR. SANFORD'S FAMILY / CATHARTIC PILLS. NY / ENTIRELY VEGETABLE / DOSE 1 TO 3", America, 1850 - 1860. Light aquamarine, oval, sheared, tooled, and inward rolled mouth - blowpipe pontil scar, ht. 2 1/4", perfect; (light embossing, but no form of damage). An extremely rare, unlisted, medicine in the form of a little pill tin. Provenance: James Chebalo collection.

Est.: \$200 - \$400 • Min. bid: \$100



Lot 204

"JAMES' - ANODYNE / EXPECTORANT - OR - COUGH / PILLS", America, 1840 - 1850. Aquamarine, rectangular, sheared, tooled, and inward rolled mouth - blowpipe pontil scar, ht. 2 3/8", attic mint. Odell, p.197. Rare! A heavily embossed little bottle, very crude. The mold maker ran out of room with the word, "EXPECTORANT". The "N" is tiny and the "T" barely discernible. Provenance: James Chebalo collection.

Est.: \$200 - \$400 • Min. bid: \$100



Lot 208

"BRISTOL'S / PILLS - NEW / YORK - PIL DORAS / DE / BRISTOL - NEW / YORK", America, 1845 - 1860. Aquamarine, rectangular with beveled corners and domed shoulders, sheared, tooled, and inward rolled mouth - blowpipe pontil scar, ht. 1 5/8", attic mint; (embossing is a little light, or weak, but otherwise perfect). Odell, p.48. Extremely rare! This is the first example that we can recall seeing. Provenance: James Chebalo collection.

Est.: \$200 - \$400 • Min. bid: \$100



Lot 209

"TURLINGTON / BALSAM", probably America, 1825 - 1840. Colorless, rectangular with stepped sides, sheared, tooled, and inward rolled mouth - blowpipe pontil scar, ht. 2 3/8", perfect. A scarce mold. Note; an old cork remains in the neck as well as dried contents on the interior.

Est.: \$200 - \$400 • Min. bid: \$100



Lot 210

"BACH'S - AMERICAN / COMPOUND - AUBURN. N.Y.", America, probably 1851 - 1856. Aquamarine, rectangular with beveled corners, applied round collar with bevel - blowpipe pontil scar, ht. 7 1/2", perfect. Odell, p.15. A great example, sparkling mint, crude wavy glass, particularly bold embossing. Provenance: James Chebalo collection.

Est.: \$100 - \$200 • Min. bid: \$50



Lot 211

"GERMAN - MAGNETIC / LINIMENT / MADE BY - A.C. GRANT - ALBANY / NEW YORK", America, 1850 - 1860. Aquamarine, rectangular with beveled corners, sheared and inward rolled mouth - blowpipe pontil scar, ht. 4 7/8", near mint; (slight trace of very faint wear; the bottle may have been lightly cleaned, but certainly presents as virtually perfect). Odell, p.151; N #243. A nice example, crude glass, crisp embossing.

Est.: \$100 - \$200 • Min. bid: \$50



Lot 212

Lot of (2), Early, label-only, Albany, NY Apothecary Bottles, 1845 - 1860.

1st Ex: Colorless, square with beveled corners, sheared and inward rolled mouth - glass tipped punty scar, ht. 4", label: **"POWD GUM GUAIA / WALKER & GIBSON / ALBANY, N.Y."**.

2nd Ex: Aqua, cylindrical, applied flared mouth - pontil scar, ht. 9 3/8", label: **"FREDERICK W. EBERLE, / 79-81 Franklin Street, / ALBANY, N.Y."**. Both are perfect, and with approx. 95% original labels.

Est.: \$100 - \$200 • Min. bid: \$50



Lot 213

Early, Label-only, Dentist Bottle, probably 1840 - 1845. Aquamarine, freeblown, cylindrical, tooled, thin flanged lip - blowpipe pontil scar, ht. 1 3/8", perfect. Likely original label reads, **TOOTH ACHE DROPS / Prepared by H. G. Farrell / No. 17 Main Street, Peoria. / PRICE 50 CENTS**. Extremely rare. This is both the smallest, and earliest, labeled dentist bottle that we have seen. This, and the following lot, were originally discovered decades ago in a drawer with papers in an old drugstore.

Est.: \$300 - \$500 • Min. bid: \$150



Lot 214

Lot of (2), Early, Label-only Medicine Bottles, America, probably 1830 - 1840. Bottles are both deep greenish aquamarine, freeblown, cylindrical with tooled, wide thin flanged lips - blowpipe pontil scarred bases, ht. approx. 1 3/8" each. Both are perfect (including the thin flanged lips), with likely original labels.

Label on 1st Ex: **"Serpentaria"**.

Label on 2nd Ex: **"Ol. animal. aeth"**. Extremely rare, early, medicines, almost impossible to find in this state of preservation.

Est.: \$150 - \$250 • Min. bid: \$80



Lot 215

"HAMPTON'S / TINCTURE / MORTIMER / & / MOWBRAY / W.B.D. Co. / BALTO." (with 99% complete, original label, partial contents), Baltimore Glass Works, Baltimore, MD, probably 1870 - 1875. Light yellowish honey coloration, oval, tooled square collar - smooth base, ht. 6 1/2"; (bottle is perfect, original label is darkened a bit from age, otherwise perfect). Extremely rare! Believed to be the finest example, and quite possibly unique, having a virtually complete label.

Est.: \$500 - \$1,000 • Min. bid: \$250



Lot 216

"GUY'S LIVER TONIC - GUY'S DIGESTOR - THE GUY MED CO / PROPRIETORS / ELMIRA N.Y.", possibly Lockport Glass Works, Lockport, NY, 1880 - 1890. Medium bluish green, almost a teal coloration, rectangular with beveled corners, tooled, likely applied square collar - smooth base, ht. 6 1/4", near mint; (a 1/8" flake on the top of the lip and some washable residue). A very rare tonic from upstate NY, originally discovered at an estate cleanout near Rochester.

Est.: \$300 - \$500 • in. bid: \$150

**Lot 217**

"PURE PINE TREE TAR / CLARIFIED / FOR MEDICINAL PURPOSES - FOR MAN AND BEAST - DR. L.Q.C. WISHART / PHILADELPHIA PA. U.S.A.", probably 1880 - 1885. Clear, medium blue green, rectangular with beveled corners, tooled sloping collar - smooth base, ht. 9 1/4", perfect. Extremely rare, one of only three, or possibly four examples known, considered one of the 'holy grails' of Wishart bottles. Provenance: Fred Swiechowicz collection.

Est.: \$1,500 - \$2,500 • Min. bid: \$800

**Lot 221**

"U.S.A. / HOSP. DEPT", a Pittsburgh district glasshouse, 1862 - 1870. Light amber below the shoulders shading to a rich, deep, orangey-apricot coloration in the lower half of the body, cylindrical, 4-pc. mold, applied round collar with bevel - smooth base, ht. 9", near mint; (some patchy light interior residue or faint haze, some of which would likely wash out, otherwise perfect). Scarce color, crisp, strong embossing, and almost no wear. Provenance: Fred Swiechowicz collection.

Est.: \$800 - \$1,200 • Min. bid: \$400

**Lot 218**

"L.Q.C. WISHART'S - PINE TREE / TAR CORDIAL. / PHILA' - 'PATENT' / (PINE TREE) / '1859'", 1865 - 1870. Bright, medium emerald with a slight yellowish tone, square with beveled corners, applied sloping collar - smooth base, ht. 9 3/8", attic mint! Outstanding character having crude, wavy glass, filled with bubbles. In addition, excellent color, clarity, and condition. A fantastic example.

Est.: \$300 - \$500 • Min. bid: \$150

**Lot 222**

"U.S.A. / HOSP. DEPT", probably a Pittsburgh district glasshouse, 1862 - 1870. Rich, bright yellowish olive coloration, cylindrical, 4-pc. mold, applied round collar with bevel - smooth base, ht. 9 1/8", perfect! Another great example, beautiful and attractive color that passes plenty of light, whittled, outstanding condition.

Est.: \$800 - \$1,200 • Min. bid: \$400

**Lot 219**

"L.Q.C. WISHART'S - PINE TREE / TAR CORDIAL. / PHILA' - 'PATENT' / (PINE TREE) / '1859'", 1865 - 1870. Brilliant yellowish green, square with beveled corners, applied sloping collar - smooth base, ht. 9 3/8", beautiful, virtually pristine perfect. A great example, scarce color and mold with "PATENT" in smaller letters and placed lower on the panel. In addition, fantastic 'see-through' clarity, and nice even color from the shoulders to the base.

Est.: \$300 - \$500 • Min. bid: \$150

**Lot 223**

"U.S.A. / HOSP. DEPT" (with period, possibly original, label), probably a Pittsburgh glasshouse, 1862 - 1870. Beautiful, medium cobalt, cylindrical, 4-pc. mold, applied square collar - large "X" on smooth base, ht. 9", near mint; (a pinhead flake on the shoulder, and a shallow little 1/8" bruise at the edge of the base, otherwise perfect). Gorgeous, rare color! Not many of these around, especially in this un-dug, near perfect condition, and with label! Fred Swiechowicz collection.

Est.: \$2,000 - \$4,000 • Min. bid: \$1,000

**Lot 220**

"L.Q.C. WISHART'S - PINE TREE / TAR CORDIAL. / PHILA' - 'TRADE' / (PINE TREE) / 'MARK'", 1880 - 1890. Rich, deep blue green with a teal tone, square with beveled corners, tooled sloping collar - smooth base, ht. 10", near mint; (a bit of light interior haze, primarily in the back panel, and just a trace of very minor wear, otherwise perfect). A beautiful, 'attic-type' example that has not been dug and cleaned, with strong color and attractive teal tones.

Est.: \$300 - \$500 • Min. bid: \$150

**Lot 224**

"LOG CABIN / SARSAPARILLA / ROCHESTER, N.Y.", America, 1887 - 1890. Rich, yellowish amber with an olive tone, almost a tobacco coloration, irregular hex form with three indented panels, applied blob collar - **"PAT SEPT. 6 / 87"** (on smooth base), ht. 8 7/8"; (professionally cleaned to original luster, and just a bit of minor wear on one of the side panels, otherwise very near mint). O&S #31. A beautiful example with plenty of olive tones, and with the earlier applied collar.

Est.: \$175 - \$350 • Min. bid: \$90



Lot 225

"TIPPECANOE" / (CANOE) / "H.H. WARNER & Co" Figural Log (with 80% complete, original label), 1883 - 1890. Amber with some reddish orange tones, cylindrical, figural log, applied 'mushroom' collar - **"PAT NOV. 20. 83 / ROCHESTER / N.Y."** (on smooth base), ht. 8 7/8"; (bottle is perfect; label is darkened a bit from age, but still very legible). O&S #33. A bottle collecting classic, and very scarce with the original label. The color also has a bit more of a reddish tone than most.

Est.: \$200 - \$300 • Min. bid: \$100



Lot 226

"GOOD'S PHARMACY / THE Rexall STORE / NEW CUMBERLAND, PA.", America, 1895 - 1905. Bright, yellowish '7-Up' green, cylindrical, tooled blob collar with original lightning-style wire bail and porcelain stopper - smooth base, ht. 8 3/8", virtually attic mint; (only the slightest trace of faint wear, a little corrosion on the wire bail, but still works freely, otherwise pristine perfect). A rare colored citrate bottle, especially in this fine condition.

Est.: \$150 - \$250 • Min. bid: \$80



Lot 227

Elder Flower Bottle (with 98% complete original labels), and **Eyecup Set**, Whitall-Tatum & Co., Millville, NJ, 1906 - 1910. Both are cobalt blue, bottle with large, embossed motif of **EYE & EYEBROW**, rectangular, tooled prescription-type collar - **"WT CO / U.S.A"** (on smooth base), ht. 6 1/2". **"ELDER-FLOWER" / (EYE & EYEBROW) / "LOTION CO"** (on base of eyecup), ht. 2 3/8", both bottle and eyecup are perfect! A scarce pictorial medicine.

Est.: \$100 - \$200 • Min. bid: \$60



Lot 228

LIONS / EAGLE & SHIELD (monogram) / "GATLIN / INSTITUTE / TRADE MARK / TREATMENT FOR / LIQUOR HABIT / DENVER, U.S.A." - **"TONIC"** - **"TONIC"**, 1905 - 1912. Clear, rectangular, tooled square collar - smooth base, ht. 5 1/2", near mint; (a trace of faint interior milkiness, 1/4" open bubble on back corner). An extremely rare tonic and top Colorado bottle. Pictured on cover of the book, *"Rise & Demise of Colorado Drug-stores"*, 1859 - 1915.

Est.: \$500 - \$1,000 • Min. bid: \$250



Lot 229

Lot of (2), "CHAIN LIGHTNING ERASER / NATHAN WOOD & SON / PORTLAND, ME." Quack Medicine Bottles (one with original label), 1890 - 1900. Both are colorless, rectangular, beveled corners, tooled square collars - smooth bases, ht. 5 7/8"; (one example is perfect; labeled example has 3/16" chip on lip). Label reads in part: *Removes All Disrepute, Despair, Dyspepsia, Dysentery, Doubt and Fly Specks from Chiffon Pies.* Fred Swiechowicz collection.

Est.: \$150 - \$250 • Min. bid: \$80



Lot 230

"LYNCH & CLARKE / NEW YORK", probably New England Glass Bottle Company, Cambridge, MA, 1823 - 1833. Medium olive green, cylindrical, applied sloping collar with bevel - sand type pontil scar, Pt; (just a trace of typical light wear, and a couple of 1/4" chips from the underside of the applied collar, otherwise excellent). T# C-2:B, Type 1. A nice clean example, heavily whittled. A scarce mold and one of the earliest mineral water bottles.

Est.: \$400 - \$800 • Min. bid: \$200



Lot 231

"ALBANY GLASS WORKS" (on shoulder), **Mineral Water Bottle**, probably 1847 - 1850. Medium-to-deep blue green, cylindrical, 3-pc. mold, applied sloping collar with ring - iron pontil scar, Qt.; (professionally cleaned to original luster with a little scattered minor wear remaining; a very weak impression as is normal for this mold). T #M-84. Very rare. Rich, deep color, excellent character, whittled, and filled with tiny seed bubbles. Provenance: Ex. James Becker collection.

Est.: \$800 - \$1,200 • Min. bid: \$400



Lot 232

"HOPKINS' / CHALYBEATE / BALTIMORE", Baltimore Glass Works, 1857 - 1862. Deep yellowish olive amber, cylindrical, applied sloping collar with bevel - red iron pontil scar, ht. 7 1/2", near mint; (just a few light scratches and a bit of minor wear on the reverse, otherwise perfect). N#304, T #M-25:A. Scarce. Hopkins' Chalybeate was a naturally carbonated medicinal water purported to treat general debility, dyspepsia, and loss of appetite. A great example, rich deep color.

Est.: \$250 - \$450 • Min. bid: \$130



Lot 233

"ROUND LAKE / MINERAL WATER / SARATOGA Co / N.Y.", probably Congress & Empire Spring Glass Works, 1876 - 1885. Bright amber with an orange tone, cylindrical, applied sloping collar with bevel - smooth base, Qt, near mint; (just a touch of minor wear including a light scratch on the shoulder, otherwise virtually attic mint). T# S-48:A. An extremely rare, top-ten rated mineral water. In addition, a great example, boldly embossed, and in excellent condition!

Est.: \$3,000 - \$6,000 • Min. bid: \$1,500



Lot 234

"EXCELSIOR / ROCK / SPRING / SARATOGA. N.Y. - A.R.L. / & / Co", Congress & Empire Spring Glass Works, 1871 - 1884. Golden amber, cylindrical, long neck with an applied sloping collar - smooth base, Pt; (professionally cleaned to original luster, and a little scattered minor wear, otherwise excellent). T# S-23: (long neck variant). Rare. A very difficult mold to acquire, believed to be only the second example to be offered at auction in more than 20 years.

Est.: \$800 - \$1,200 • Min. bid: \$400



Lot 235

"SARATOGA / (STAR) / SPRING", probably a Stoddard, NH glasshouse, possibly Weeks and Gilson, 1862 - 1865. Medium-to-deep yellowish 'old amber', almost a tobacco coloration, cylindrical, applied sloping collar with bevel - smooth base, Qt, pristine perfect! T# S-52:A. An absolutely fantastic example, attractive rich color, some large bubbles through the shoulder, and virtually 'out-of-the-mold', pristine condition.

Est.: \$200 - \$400 • Min. bid: \$100



Lot 236

"HIGHROCK CONGRESS SPRING" / (ROCK) / "C&W / SARATOGA N.Y.", America, 1865 - 1872. Rich, medium-to-deep teal coloration, cylindrical, applied sloping collar with bevel - smooth base, Pt, virtually perfect; (just the slightest trace of faint wear, otherwise pristine). T# S-37:B (embossed rock similar to 'd'). A scarce and desirable pictorial mineral water, rare, eye-appealing color, nicely whittled!

Est.: \$600 - \$900 • Min. bid: \$300



Lot 237

"MISSISQUOI / A / SPRINGS" - (Indian woman with papoose), probably Lyndeborough Glass Works, Lyndeborough, NH, 1867 - 1875. Bright yellow olive, almost an olive yellow coloration, cylindrical, applied sloping collar with bevel - smooth base, Qt, perfect! T# V-17:A. Scarce. An absolutely fantastic example, very attractive color, almost an olive yellow, beautiful condition.

Est.: \$800 - \$1,200 • Min. bid: \$400



Lot 238

"MISSISQUOI / A / SPRINGS" - (Indian woman with papoose), probably Lyndeborough Glass Works, Lyndeborough, NH, 1867 - 1875. Yellow green with a slight olive tone, cylindrical, applied sloping collar with bevel - smooth base, Qt, virtually perfect; (just the slightest trace of faint wear, otherwise mint). T# V-17:A. Another great example, fantastic condition.

Est.: \$800 - \$1,200 • Min. bid: \$400



Lot 239

"MISSISQUOI / A / SPRINGS" - (Indian woman with papoose), probably Lyndeborough Glass Works, Lyndeborough, NH, 1867 - 1875. Bright medium green with an olive tone, cylindrical, applied sloping collar with bevel - smooth base, Qt, virtually perfect; (very slight trace of faint wear, otherwise mint). T#V-17:A. Note; this example has an early strip label or band of paper, wrapped around the back and side printed, *Aromatic Bitters*. Rich color, boldly embossed.

Est.: \$800 - \$1,200 • Min. bid: \$400



Lot 240

"MISSISQUOI / A / SPRINGS" - (Indian woman with papoose), probably Lyndeborough Glass Works, Lyndeborough, NH, 1867 - 1875. Emerald green coloration, cylindrical, applied sloping collar with bevel - smooth base, Qt, perfect. T# V-17:B. A scarce mold, very scarce-to-rare color. In addition, a beautiful example having outstanding character, the glass being filled with tiny seed bubbles.

Est.: \$800 - \$1,200 • Min. bid: \$400



Lot 241

"SEAL ROCK SPRING / WATER - SILAS GURNEY / BOSTON", 1875 - 1885. Rich, medium teal blue, tooled sloping double collar - smooth base, Qt, near perfect; (the bottle may have been lightly cleaned, but certainly presents as virtually attic mint). T# M-47. Extremely rare! Beautiful color and condition. Several fine threads of glass crisscross on the interior. Note; this is the same example that was sold in 2016, and the only example to be offered at auction in more than 25 years!

Est.: \$800 - \$1,600 • Min. bid: \$400



Lot 245

"OSWEGO DEEP ROCK / MINERAL WATER - THIS BOTTLE / MUST BE RETURNED", 1870 - 1880. Aquamarine, cylindrical, applied sloping collar with bevel - smooth base, Qt, virtually perfect; (just a very slight trace of minor wear including a tiny pinhead flake on the back edge of the collar, otherwise attic mint). T# N-18:A. Rare. A great example, bright, clean, fantastic condition, and certainly a mold that does not come around often. Provenance: Ex. Ronnie Landry collection.

Est.: \$200 - \$400 • Min. bid: \$100



Lot 242

"HASKINS' SPRING CO. / H / SHUTESBURY, / MASS. - H.S. CO.", 1865 - 1880. Medium-to-deep emerald coloration, cylindrical, applied sloping collar with bevel - smooth base, Pt, virtually attic mint; (just a slight trace of light wear, and a little washable light interior residue, otherwise perfect). T# M-24:B. A very scarce, difficult to find mineral water, especially in this fine condition. Provenance: Ex. Don Tucker collection.

Est.: \$800 - \$1,600 • Min. bid: \$400



Lot 246

"EAST CLARION / SPRING / ELK CO. PENNA", America, possibly Whitall Tatum & Co, Millville, NJ, 1875 - 1885. Medium blue green, cylindrical, applied sloping collar with bevel - smooth base, Pt; (a small potstone near the surface of the glass has a tiny, barely visible without a loop, 1/16" line, likely in-making, and a 3/8" chip on the underside of the collar, otherwise near mint). T# M-14:B. Rare! Only the second, or possibly third, example to be sold at auction in more than 25 years.

Est.: \$500 - \$800 • Min. bid: \$250



Lot 243

"DARIEN / MINERAL SPRINGS / TIFFT & PERRY / DARIEN CENTRE / N.Y.", America, 1875 - 1885. Bright, bluish aquamarine, cylindrical, applied sloping collar with ring - smooth base, Pt, virtually attic mint; (a minor pinhead open bubble, otherwise pristine perfect). T# N-11:B. Scarce. An absolutely gorgeous example of this scarce mold - clean, sparkling, heavily whittled, outstanding condition. Provenance: Ex. Robert Patridge, Howard Dean collections.

Est.: \$300 - \$500 • Min. bid: \$150



Lot 247

"BEDFORD / SPRINGS CO.", William McCully & Co, Pittsburgh, PA, probably 1880 - 1885. Light aquamarine, cylindrical, tooled sloping collar with bevel - **"McC"** (on smooth base), tall Qt; (a small patch of light milky haze on the interior, and a paper-thin 1/8" flake on the top of the lip, otherwise very near mint). T# M-7:A. Scarce. A very nice example, and one that has not been dug and cleaned.

Est.: \$120 - \$240 • Min. bid: \$60



Lot 244

"DARIEN / MINERAL SPRINGS / TIFFT & PERRY / DARIEN CENTRE / N.Y.", America, 1875 - 1885. Medium-to-deep bluish green, cylindrical, applied sloping collar with ring - smooth base, Pt, perfect! T# N-11:B. Another top example of this scarce mineral water. Rich, deeper color than most, and also more of a greenish tone. Provenance: Ex. Hank Gesell; Robert White, Don Tucker collections.

Est.: \$400 - \$600 • Min. bid: \$200



Lot 248

Early Ale or Cider Bottle, New England, possibly Mt. Pleasant (Saratoga Mountain Glassworks), or Stoddard, NH, 1850 - 1860. Medium-to-deep olive with a slight amber tone, 3-pc. mold cylinder, applied sloping collar - sand type pontil scar, ht. 6 1/2", near mint; (a small potstone on the inner surface of the body has a couple of tiny, barely visible radiations mentioned for accuracy, otherwise virtually perfect). Very scarce small size, and a great 'look' with the single collar mouth.

Est.: \$200 - \$400 • Min. bid: \$100



Lot 249

"IMPROVED / BRISTOL / SODA WATER - PREPARED BY / FRY, GIBBS & FERRIS / CHEMISTS / UNION STREET / BRISTOL", England, 1820 - 1826. Olive green, "Hamilton" form, applied ring collar - pontil scar, ht. 7 1/2", near mint; (a little minor wear including a couple of body flakes, or chips, approx. 1/4" or 7-8 millimeters each - one on the "R", the other below the "E", in "STREET"; minor interior residue, a bit of 'soot' around the lettering that would easily wash off).

Est.: \$6,000 - \$10,000 • Min. bid: \$3,000



Lot 250

"SUPERIOR / SODA WATER" - (Standing Eagle above American Flags & Shield), America, 1850 - 1860. Beautiful, deep yellowish olive amber shading to virtually black through the base and neck, cylindrical, applied blob collar - heavy iron pontil scar, ht. 7 3/4", attic mint. A fantastic example, rare and desirable color, and certainly very rare having almost no wear, and in virtually perfect condition. Provenance: Fred Swiechowicz collection.

Est.: \$1,500 - \$2,500 • Min. bid: \$800



Lot 251

"C. HEIMSTREET / TROY, NY - SODA / WATER", 1850 - 1860. Medium emerald with a slight bluish tone, cylindrical, applied sloping collar - iron pontil scar, ht. 6 7/8"; (a 1/8" flake on the outside edge of the lip, and a hard-to-see, 1/4" iridescent bruise on the inside edge, otherwise virtually perfect). An extremely rare soda, especially in this fantastic, un-dug, attic condition! Only a handful exist in any condition. Provenance: Fred Swiechowicz collection.

Est.: \$2,000 - \$4,000 • Min. bid: \$1,000



Lot 252

"LEWIS & LAPPEUS - MINERAL - WATER", probably 1855 - 1859. Medium-to-deep teal coloration, 10-sided, applied blob collar - iron pontil scar, ht. 7 1/4", near perfect; (a little minor wear, primarily along the edge of one panel only, and some scattered, tiny open surface bubbles, otherwise virtually attic mint). A very rare mineral water, especially in this un-dug, 'attic-type' condition, beautiful and rare color, the glass is filled with tiny seed bubbles, a great example!

Est.: \$800 - \$1,200 • Min. bid: \$400



Lot 253

"Wm. W. LAPPEUS - PREMIUM - SODA OR - MINERAL - WATERS - ALBANY", 1851 - 1859. Sapphire blue, 10-sided, applied blob collar - iron pontil scar, ht. 7 1/8"; (professionally cleaned to original luster with some moderate ground wear and imperfections remaining, particularly near the base, and a 3/8" chip on the inside edge of the lip). Very scarce.

Est.: \$250 - \$450 • Min. bid: \$130



Lot 254

"W.W. LAPIUS / ALBANY" (on base), probably 1851 - 1855. Medium-to-deep bluish green, cylindrical, 3-pc. mold, squat porter form, applied sloping collar with ring - iron pontil scar, ht. 6 7/8", near mint; (a little very minor exterior wear, some light interior content residue, otherwise perfect). A very scarce-to-rare, early, Albany porter-type bottle especially in this fine condition. Only the second example to be offered at auction in more than 15 years.

Est.: \$400 - \$600 • Min. bid: \$200



Lot 255

"Dr. CRONK GIBBONS & Co / SUPERIOR ALE / BUFFALO / N.Y.", America, 1850 - 1860. Rich, deep bluish green with a slight emerald tone, cylindrical, squat porter or ale form, applied blob collar - pushed up base with heavy iron pontil scar, ht. 6 1/2", attic mint. An outstanding example, bright, clean, shiny, almost no wear, about as nice as you could hope to find! These don't come around often, especially in this nice. Provenance: Fred Swiechowicz collection.

Est.: \$600 - \$900 • Min. bid: \$300



Lot 256

"STEVENS & CO / ERIE PENN / CELEBRATED / MINERAL WATER - LANCASTER / GLASS WORKS / N. Y.", 1850 - 1860. Medium sapphire blue, cylindrical, applied blob collar - heavy iron pontil scar, ht. 7 1/8", near mint; (just a slight touch of minor wear, and a potstone on the inner surface of the base has a couple of tiny, 1/8" cooling lines, otherwise perfect). A very rare, desirable, glasshouse embossed soda, especially in this fine, 'attic-type' condition. David Sidelinger collection.

Est.: \$1,200 - \$2,400 • Min. bid: \$600

**Lot 257**

"MEHL'S / CELEBRATED / MINERAL WATER / ERIE. PA / THIS BOTTLE - NEVER SOLD", 1860 - 1870. Deep cobalt blue, cylindrical, applied blob collar - smooth base, ht. 7 1/8"; (some light exterior wear including a couple of light 'scrapes' approximately 2-3" in length, near the side mold seam, otherwise excellent). A very scarce-to-rare mineral water, rich, strong color! The noted condition issues are relatively minor. Provenance: David Sidelinger collection.

Est.: \$800 - \$1,200 • Min. bid: \$400

**Lot 261**

"JACOB STOTT / ERIE CITY PA", probably a Pittsburgh district glass-house, 1870 - 1880. Aquamarine, cylindrical, applied blob collar - smooth base, ht. 7 1/2", near mint; (just a couple of small, approximately dime-size, patches of very minor interior haze, otherwise near perfect). A very scarce-to-rare soda, bright, clean, and virtually attic mint. Provenance: David Sidelinger collection.

Est.: \$150 - \$250 • Min. bid: \$80

**Lot 258**

"MEHLS / POP & MINERAL WATERS / ERIE. PA", 1865 - 1875. Sapphire blue, cylindrical, applied blob collar - smooth base, ht. 7 1/2"; (professionally cleaned to original luster with a moderate amount of case, or ground wear, remaining - but no other form of damage). A scarce color. Provenance: David Sidelinger collection.

Est.: \$200 - \$400 • Min. bid: \$100

**Lot 262**

Lot of (3), Erie, PA Sodas, 1875 - 1895. 1st Ex: "J. KOLB / ERIE PA"; 2nd Ex.: "J & F. KOLB / ERIE / PA. - K"; 3rd Ex.: "UNION BOTTLING CO / ERIE, PA." All are aquamarine, 1st two are squat soda form, applied blob collars - smooth bases, ht. 6 3/4" & 7". 3rd Ex. is Hutchinson form, pint, 6 7/8". 1st Ex. has light wear on one side; 2nd Ex. has a 3/8" bruise with an 1/8" chip on the lip, and a tiny potstone with 1/8" radiation in the body; 3rd Ex. near mint. Sidelinger collection.

Est.: \$100 - \$200 • Min. bid: \$50

**Lot 259**

"MEHLS / POP & / MINERAL WATERS / ERIE PA." - "W.Mc C & Co" (on heel of reverse), Wm. McCully & Co, Pittsburgh, PA, 1865 - 1875. Ice blue coloration, almost a light cornflower, cylindrical, applied blob collar - smooth base, ht. 7 1/8"; (likely a dug bottle, but retains most of it's original luster; some abrasion below the collar where the wire bail would have been, and a little interior haze, primarily in the shoulders). A very scarce-to-rare soda. David Sidelinger collection.

Est.: \$150 - \$300 • Min. bid: \$80

**Lot 263**

"C. LEWIS - BOTTLER - CLEVELAND - THIS BOTTLE - TO BE / RETURNED", possibly Lancaster Glass Works, Lancaster, NY, 1850 - 1860. Sapphire blue, 10-sided, applied sloping collar - heavy iron pontil scar, ht. 7 1/2"; (professionally cleaned to original luster; some scattered light scratches and imperfections, and a 1/4" flake on the underside of the applied collar). An extremely rare Cleveland soda, only the 2nd example to be offered in more than 25 years.

Est.: \$800 - \$1,200 • Min. bid: \$400

**Lot 260**

"J. SEELINGER & SON / CELEBRATED / MINERAL WATER / ERIE PA" - "A & D.H.C." (on heel of reverse), A. & D. H. Chambers Glassworks, Pittsburgh, PA, 1870 - 1880. Aquamarine, cylindrical, applied blob collar - smooth base, ht. 7"; (a little light patchy haze; some minor interior milkiness, and a little typical light exterior wear). A very scarce soda. If desired, with just a few days in the tumbler, this example would likely present as near mint. David Sidelinger collection.

Est.: \$100 - \$200 • Min. bid: \$50

**Lot 264**

"C. GARFORTH / MINERAL WATER / WHEELING / VA" - "G", America, 1850 - 1860. Aquamarine, cylindrical, large, applied blob collar - iron pontil scar, ht. 7 3/8"; (professionally cleaned to original luster with just a bit of minor wear remaining, and a little faint cloudiness in the neck, otherwise excellent). A great looking example, strong color, bold embossing, very scarce.

Est.: \$400 - \$600 • Min. bid: \$200



Lot 265

"G. VANBENSCHOTEN / PREMIUM SODA WATER / UNION GLASS WORK PHILA", probably 1849 - 1858. Blue green, cylindrical, applied blob collar - iron pontil scar, ht. 7 1/4", virtually attic mint; (just a touch of light haze in the neck, and a slight trace of very minor wear, otherwise perfect). See Bill Beckett's informative book, *"Early Connecticut Soda Proprietors & Their Bottles"*. A rare and attractive soda, especially in this fine condition.

Est.: \$400 - \$600 • Min. bid: \$200



Lot 269

"HEADMAN / EXCELSIOR / PHILAD.A - MINERAL WATER / BOTTLE / NEVER SOLD", probably 1850 - 1852. Medium bluish green, cylindrical, applied rounded taper collar - heavy iron pontil scar, ht. 7 1/2"; (lightly cleaned to original luster, and a little minor light wear, otherwise excellent). Scarce. A very nice example, overall excellent condition, very heavy pontil scarred base.

Est.: \$200 - \$400 • Min. bid: \$100



Lot 266

"Geo SIMONS / HARTFORD. CT." Soda Water Bottle, 1853 - 1854. Yellowish emerald coloration, cylindrical, applied blob collar - iron pontil scar, ht. 7 1/4"; (some scattered relatively minor surface wear and light scratches; a 1/4" open bubble on the "e" in "Geo", and just a bit of light interior stain, otherwise excellent). Likely a dug bottle, but retains much of its original luster and displays very nicely. Another rare Connecticut soda, beautiful color.

Est.: \$400 - \$600 • Min. bid: \$200



Lot 270

"E. ROUSSEL / PHILADA." Soda Water Bottle, 1845 - 1855. Yellowish emerald coloration, cylindrical, applied blob collar - heavy iron pontil scar, ht. 7 3/8", virtually attic mint; (a little minor light wear around the perimeter of the shoulders, otherwise perfect). A fantastic example, beautiful color, outstanding 'attic' type condition!

Est.: \$200 - \$400 • Min. bid: \$100



Lot 267

"T.W. GILLETT / NEW HAVEN" - (STAR), Soda Water Bottle, probably 1850 - 1855. Cobalt blue, 8-sided, applied blob collar - iron pontil scar, ht. 7 3/8"; (professionally cleaned to original luster with some scattered light wear and ground imperfections remaining, but no other form of damage). Scarce! Per William Beckett's book, Thomas Gillett was the first soda maker established in New Haven. A great looking sided, early cobalt soda with bold embossing.

Est.: \$400 - \$600 • Min. bid: \$200



Lot 271

"E. ROUSSEL / PHILADA - DYOTVILLE GLASS WORKS / R / PHILA.A. / THIS BOTTLE / IS NEVER SOLD", 1845 - 1855. Light-to-medium sapphire blue, cylindrical, applied sloping collar - iron pontil scar, ht. 7 3/8"; (some scattered, relatively minor exterior wear including a small pinhead flake on the edge of the collar, some in-manufacture crazing lines in the neck mentioned for accuracy, otherwise excellent). A very scarce mold, attractive lighter color, clarity.

Est.: \$200 - \$400 • Min. bid: \$100



Lot 268

"L.L. BELANT / NEWARK N.J." (in rectangular slug plate), 1850 - 1860. Cobalt blue, cylindrical, squat porter form, applied blob collar - iron pontil scar, ht. 6 3/8"; (professionally cleaned with a little minor wear remaining, primarily on the reverse; a little light haze in the neck, some dullness or haze on the base). A very rare mold and great looking Jersey porter. The "T" of Belant is believed to be a mold makers error which should have been "D" for Beland, the much more common mold.

Est.: \$400 - \$800 • Min. bid: \$200



Lot 272

Black Glass Wine Bottle, England, 1725 - 1735. **"T (small starburst) D"** (on applied seal). Medium-to-deep olive, bladder form, sheared mouth with applied string rim - domed base, disc type pontil scar, ht. 9", near mint; (some expected light wear, primarily on the reverse; a 3/16" flake on the back edge of the lip; and a bit of in-making roughness on the inner edge of the lip). See VdB, plate 31; Dumbrell, pgs. 77-78. Sealed 'bladder bottles' are rare, this example is in virtually 'cellar-found' condition.

Est.: \$2,000 - \$4,000 • Min. bid: \$1,000



Lot 273

Half-size, Black Glass Mallet Form Wine Bottle, probably England, 1730 - 1740. Medium olive with a slight amber tone, early mallet form, sheared mouth with an applied string rim - domed base with disc type pontil scar, ht. 6 1/4"; (slight bit of very minor wear on the body; a little roughness and a couple of 1/4" to 3/8" chips from the edge of the sheared lip, as well as the string rim, otherwise excellent). A very pleasing, squatty form, full original body luster.

Est.: \$300 - \$500 • Min. bid: \$150



Lot 274

Early, Black Glass Boot Bottle (with remnants of early paint), probably Germany, 1740 - 1770. Olive green, small, flattened kidney form, sheared and tooled mouth with applied ring - blowpipe pontil scar, ht. 6 7/8", length 7 3/4", near mint; (some high point wear on the flattened sides, and dried interior content residue, otherwise excellent). Dumbrell,

p.146, plate 56; VdB, plate 216. Remnants of period, black and red paint decoration and "BRANDY", on one side.

Est.: \$700 - \$900 • Min. bid: \$350



Lot 275

Lot of (2), Half-size, 'Long Neck', Flowerpot form, Utility Bottles, Dutch or Belgium, 1770 - 1790. Olive green and olive amber, both are half-size, cylindrical, 'flowerpot form', long neck with sheared mouths and applied string rims - kick-up bases with blowpipe pontil scar, ht. 8" and 8 1/2" respectively, both near mint; (both have some interior content residue, and just a trace of minor wear, otherwise perfect). See VdB, plate 78, #1. A beautiful pair, both scarce half-size.

Est.: \$250 - \$450 • Min. bid: \$130



Lot 276

Lot of (2), 'Long Neck' Early Utility Bottles, German and Dutch / Belgium, 1770 - 1800. **1st Example**, medium olive, mallet or 'bell form' body, long neck, applied flared mouth and string rim - kick-up base with blowpipe pontil scar, ht. 10". **2nd Example**, yellow olive with amber tone, long neck cylinder, sheared mouth with applied string rim - deep kick-up with blowpipe pontil scar, ht. 10 3/4"; (2nd Ex. is perfect, 1st Ex. has a 1" hairline in neck, otherwise perfect).

Est.: \$150 - \$250 • Min. bid: \$80



Lot 277

Lot of (2), Long 'Spindle Neck', Utility Bottles, Continental, Dutch or Belgium, 1770 - 1800. Olive amber and olive green, both are cylindrical with long 'spindle necks', sheared mouth with applied string rims - kick-up bases with blowpipe pontil scar, ht. 10 3/8" and 13", both virtually perfect; (just slight traces of wear). VdB, plate 79. Another great pair, beautiful condition, colors and sizes complimenting one another. The 1st example is almost a half-size, the 2nd example is taller than most!

Est.: \$200 - \$400 • Min. bid: \$100



Lot 278

Half-size, Black Glass Utility or Wine Bottle, France, 1780 - 1800. **"SIROP DE LA MECQUE / DR / DELARUE"** (on applied seal). Deep olive amber, half-size, long neck cylinder, sheared mouth with applied string rim - deep kick-up base with blowpipe pontil scar, ht. 8 3/4", near mint; (a little typical light wear, and a 1/8" pitted area on the inside edge of the seal, possibly in-manufacture), and a little washable interior residue). Believed to have contained a medicine syrup.

Est.: \$200 - \$400 • Min. bid: \$100



Lot 279

Large, Flowerpot-form Storage Bottle, France, 1780 - 1800. Medium-to-deep olive amber, dip mold, flowerpot form, sheared, flared wide mouth with applied string rim - pushed up base with blowpipe pontil scar, ht. 10 3/4"; (some dried interior content residue, and a handful of open surface bubbles, 1/8" to 5/8", otherwise excellent). VdB, plate 147. Excellent character with very crude, 'soupy' glass filled with larger 1/4" to 1/2" bubbles.

Est.: \$200 - \$400 • Min. bid: \$100



Lot 280

Large, Flowerpot-form Storage Bottle, France, 1780 - 1800. Gorgeous, bubbly, light yellowish olive, cylindrical, dip mold, elongated 'flowerpot' form, sheared mouth with an applied string rim - pushed up base with blowpipe pontil scar, ht. 12 7/8", perfect! VdB, plate 147. Scarce, light 'see through' color, attractive seedy, bubbly glass. Although this one may not be as tall as some we've sold, the beautiful color and outstanding character more than make up for any size differential.

Est.: \$300 - \$500 • Min. bid: \$150

**Lot 281**

Early, Painted Label Apothecary Bottle, England, 1810 - 1830. "Tr: **ZINGIB.**" original black lettering on gold painted label, deep grape amethyst, cylindrical, sheared mouth with rolled lip - disc type pontil scar, ht. 12 3/4", virtually perfect; (slight bit of very minor wear). VdB, plate 270. An impressive, early apothecary jar, gorgeous color, and not easy to find having virtually complete, original paint. "ZINGIB" (Zingiba) is the German word for ginger root.

Est.: \$300 - \$500 • Min. bid: \$150

**Lot 285**

Early, Freeblown Demijohn or Storage Bottle, Continental, possibly Austria, 1820 - 1840. Light-to-medium clear green, bulbous or globular form, wide conical neck tapering to a sheared, flared, mouth - pushed up base with blowpipe pontil scar, ht. 11 1/4", perfect. Scarce. A beautiful, bubbly, very attractive globular bottle or demijohn, outstanding character, 'feather light' glass, virtually pristine condition.

Est.: \$300 - \$500 • Min. bid: \$150

**Lot 282**

Mammoth size, early Case Bottle, Continental, probably Netherlands, 1780 - 1800. Medium yellowish olive, square with nearly straight sides, sheared mouth with an applied heavy string rim - blowpipe pontil scar, ht. 18 1/4", near mint; (some expected, typical, usage wear at the high points, and some minor, washable, interior residue, otherwise perfect). VdB, plate 83. A great example. This one is definitely lighter in shade than most, having nice 'see through' color.

Est.: \$1,000 - \$2,000 • Min. bid: \$500

**Lot 286**

Early, Freeblown Demijohn or Storage Bottle, Continental, probably Germany, Black Forest area, 1840 - 1850. Light yellowish honey below the shoulders, shading to a deeper honey amber near the base and through the neck, globular form, rough sheared mouth with applied wide flat band - smooth base, ht. 11"; (some spotty interior haze and residue around the sides near the base, and in the base, otherwise perfect). See VdB, plate 154, #3. Excellent form, beautiful color!

Est.: \$250 - \$450 • Min. bid: \$130

**Lot 283**

Large, Early Case Bottle, Continental, probably France, 1760 - 1780. Beautiful, medium blue green coloration, dip mold, rectangular, nearly square with straight sides, sheared, tooled and flared mouth - blowpipe pontil scar, ht. 12", perfect. Scarce larger size, beautiful and scarce color, excellent clarity, outstanding condition. A great example.

Est.: \$400 - \$800 • Min. bid: \$200

**Lot 287**

Large Freeblown Utility or Storage Bottle, Continental, probably Germany, 1820 - 1850. Medium yellow below the shoulders, shading to a warmer honey-orange coloration near the base, and a deep, rich, 'orangey' apricot through the neck, cylindrical, sheared, tooled, flared mouth - blowpipe pontil scar, ht. 14 7/8"; (a couple of fine hairline 'spider' cracks in the body, approx. 3/4", otherwise perfect). The colors are gorgeous, the tremendous seedy, bubbly glass, puts it over the top!

Est.: \$200 - \$400 • Min. bid: \$100

**Lot 284**

Lot of (3), Early Case Bottles, probably America, Wistarburgh, or possibly Hilltown Glass Works, 1750 - 1780. Teal green, bright olive, and yellow olive with an amber tone. All are square with sharp, 'pointed' corners, applied, flared string rims - blowpipe pontils - **1st Ex.** with a star, or asterisk, on base; **2nd Ex.** with plain base, **3rd Ex.** with "A" on

base; (1st Ex. has a 1/2" chip on underside of lip, base corners may have been polished to help stand; other two have slight traces of wear).

Est.: \$300 - \$500 • Min. bid: \$150

**Lot 288**

Large, Freeblown Utility or Storage Bottle, Continental, probably Germany, 1820 - 1850. Honey amber below the shoulders shading to an orange amber in one side, near the base, and a deep reddish orange coloration through the neck, cylindrical, sheared, tooled, flared mouth - blowpipe pontil scar, ht. 13 5/8", near mint; (a bit of patchy, faint exterior 'bloom' or dullness to the glass, and a little light interior residue). VdB, plate 212. A beautiful, attractive, storage bottle or demijohn.

Est.: \$200 - \$400 • Min. bid: \$100

Early and Colorful Continental Bottles

Lot 282

Lot 283

Lot 285

Lot 272

