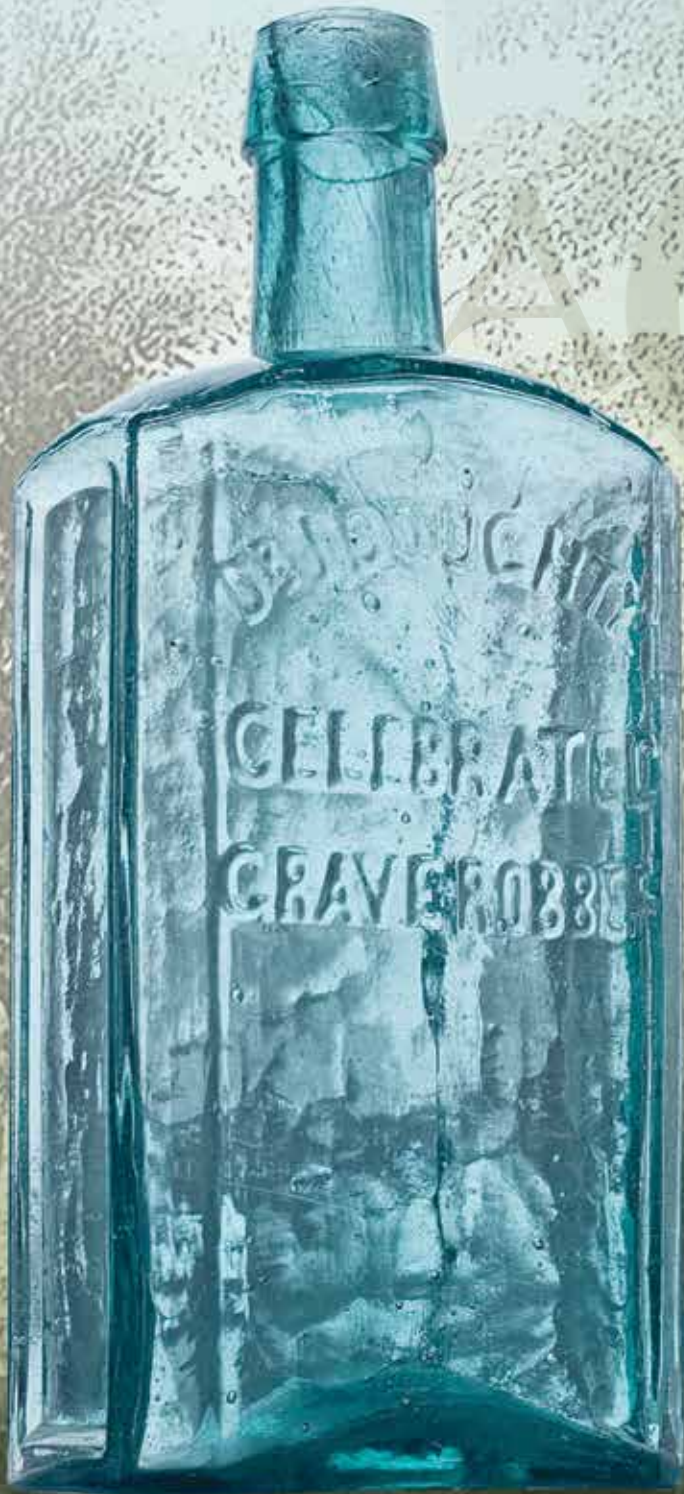


NOTE: This is a timed-closing auction. See details on first page.

American Glass GalleryTM

Auction #31

Opens March 22, 2022 • Closes March 30, 2022



Lot 180: Unique Dr. J. Doughty's Celebrated Grave Robber Pontiled Medicine

Conditions of Sale: Auction #31 – Timed Closing Auction - No Call Backs

1. Absentee Auction

The items in this sale will be sold via absentee auction.

Closing date: **Wednesday, March 30, 2022, 10:00 p.m., EST.**

2. Our Guarantee Regarding Descriptions

American Glass Gallery has made every attempt to describe correctly the property being sold. Descriptions are guaranteed to be accurate as regards to authenticity, age, condition, and measurements to within one-fourth inch, as represented in this catalog. Items in this catalog are not shown to scale. In describing damage, exterior wear or manufacturer's flaws that in our opinion, do not significantly detract visually or monetarily from the value of the item are not listed and will not be considered for refund. The Auctioneers reserve the right to make verbal corrections and provide additional information at any time during the sale.

3. Preview

Items may be viewed by appointment from **March 22, 2022**, through **March 29, 2022**.

4. Bidding Procedure

You may submit your bids by mail, phone, FAX, email or through our on-line auction site. If bidding by mail or FAX, please fill out the absentee form and return it to us. Your bid, either written or oral, grants American Glass Gallery the authority to protect you up to the amount of your stated bid. Your bid will not be removed once executed.

Bidding Times: You can submit your bids anytime after receiving your catalog. Bids may be made by phone, daily, until closing day, **March 30, 2022**, from 9 A.M. - 6 P.M. Eastern Time. Incoming phone bids will be accepted on the closing day (**March 30, 2022**) until 10 P.M. Eastern Time. Phone calls and Fax bids after this time will not be honored. No exceptions. You may also place your bids through our on-line auction service 24-hours a day once the site has opened for bidding, on or about **March 22, 2022**, continuing until 10:00 P.M. Eastern Time, **March 30, 2022**.

Please do not wait until the last day or two of the sale to place your bids! Because many collectors wait until the final few days of the sale to place their bids, we anticipate the telephone and internet bidding to be very busy during that period, so please plan accordingly. In the event of a tie bid, the earliest received bid on the lot will take precedent. We would welcome your bids by phone so that we can answer any questions and assist you in your bidding.

You may also telephone us at any time during the auction, prior to the closing of the sale, to check the status of your bids, to find the current bidding level, to open a bid, or to raise a bid on an auction lot.

Bidding Increments are as follows:

Up to \$250.00.....	increments of \$10.00
\$250.00 - \$500.00	increments of \$25.00
\$500.00 - \$1,000.00	increments of \$50.00
\$1,000.00 - \$2,500.00	increments of \$100.00
\$2,500.00 - \$5,000.00	increments of \$250.00
\$5,000.00 - \$10,000.00	increments of \$500.00
\$10,000 & Up.....	increments of \$1,000.00

Bids submitted between the above increments, whether by mail, FAX, email or on-line via the internet, will automatically be lowered to the closest lower increment.

This is a minimum bid auction. Bids below the printed minimum will not be accepted.

An example of how our absentee bidding system works: You bid \$1000.00 on a lot which is the highest bid received to date. The second highest bid is \$800.00. The current high bid level would be yours at \$850.00, one bid increment higher than the other collector's bid. Any additional bids submitted by others below \$1000.00 will automatically be topped on your behalf by a representative of American Glass Gallery, up to your stipulated high bid amount. If no further bids on this lot are received beyond the \$800.00, then you would have won the lot at \$850.00, not the \$1000.00 that you were prepared to pay.

American Glass Gallery will at NO TIME disclose bids pledged by others; only the current "High Bid" level of a lot will be stated upon request. The highest bidder as determined by American Glass Gallery shall be the purchaser. It is the sole right of the auctioneer to settle any dispute between bidders and to regulate the bidding procedure. The auctioneer reserves the right to refuse any bid he believes not to have been made in good faith.

5. Closing the Auction

Timed Closing. No Call Backs for This Sale!

Auction closes 10 PM Eastern, Wednesday, March 30th.

How it works: If any Lot receives a bid within the last 10 minutes before the 10 PM closing time, an additional 10 minutes will be added on to the bidding time for that Lot - at the time the bid is entered. For example, if a bid is entered on Lot #95 at 9:58 PM, an additional 10 minutes will be added to the closing time for that Lot, i.e. the Lot will close 10:08 PM, unless another acceptable bid is received prior to 10:08 PM. If the same Lot receives another bid 5 minutes later, i.e., 10:03 PM, the 10 minute timer will be restarted. Thus, an item will not close until it has received no bids for 10 minutes. At the end of that time, the Lot will automatically close and the highest bidder will be the winner.

No phone bids will be accepted after 10 PM, or during the timed closing portion of the sale.

IMPORTANT: When the auction is in the last 10 minutes, (after 9:50 PM EST, Wednesday, March 30), **you must refresh your screen to see any updated bids and remaining time on the Lots.** You may refresh your bid page by hitting "Enter Bids". A time left column will appear on the right. The time will go down every time you refresh unless an acceptable bid has been placed, then the timer will be reset to 10 minutes.

When a Lot closes, your bid sheet will show either (parentheses only when there is a left bid):

Example:

You WIN for \$400 (Left Bid \$500)

or:

Won by another for \$600

Note: Normal email notifications will still be sent during the Timed Closing. However, we recommend that you actively refresh your screen for the latest updates, or changes, as the email notifications may not always get through (i.e., may sometimes be intercepted by email blockers or spam filters).

If you are unable to be watch, or be actively involved during the closing time, you may always submit an Absentee, or "Left Bid" which will be executed competitively up to your stipulated high bid should any bids come in during the Timed Closing Period.

Conditions of Sale: Auction #31 – Timed Closing Auction - No Call Backs

6. Terms

Successful Bidders, Prompt and full payment is due immediately upon receipt of our invoice. Absolutely no exceptions. Anyone failing to pay for items won will forfeit all rights to bid in any future American Glass Gallery sales. **Any late or delayed payments may result in loss of return privileges for items purchased in the sale.**

No Items Will Be Mailed Before Full Payment Is Received.

Buyer Premium: Our buyer premium remains unchanged. **It is 15% if paying by cash or check, discounted from 18% if paying by Credit Card or PayPal** (PayPal payment account: jpastor@americanglassgallery.com). This buyer premium will be added to the hammer price as part of the purchase price. For example, if you purchase a lot for \$100.00, you will receive an invoice for \$115.00 if paying by cash, check or money order, plus any applicable sales tax or shipping charges.

Taxes: If you are a Michigan resident, a 6% sales tax will be added to your bill unless you have a valid resale number registered with us.

Shipping: Shipping, handling and insurance are extra. We ship insured via U.S. Mail or UPS. These charges will be added to your bill unless the lots are picked up in person. Oversize packages (boxes with dimensions over 12"), may incur additional shipping charges based on the postal zone of destination. Our charges for shipping (excluding foreign shipments and oversized lots) are \$18.00 for the first item, \$9.00 for each additional item together with extra insurance costs (we use current U.S. Postal Service insurance rates).

Please allow two to three weeks for delivery after receipt of your check.

Payment: American Glass Gallery accepts Cash, Money Orders, Personal Checks, Visa, MasterCard, American Express and PayPal. **If paying by Credit Card or PayPal, an additional 3% will be added to the invoice total.**



7. Refunds

Refunds will be given at the discretion of the Auctioneers. Items purchased must be examined and request for refund made immediately upon receipt of the item or items. Since opinions can differ, particularly in the matter of condition, the Auctioneers will be the sole judge in the consideration of refunds. Refunds requested on the grounds of authenticity must be made within 15 days of the date of the auction, and such refund requests must be accompanied by at least one supporting statement in writing from an authority recognized by the Auctioneers. It is the Auctioneers sincere intention to consider any reasonable request for a refund. **Absolutely no returns for any reason after 30 days following the closing of the sale.**

8. Bidding on any item indicates your acceptance of these terms.



American Glass Gallery™

John R. Pastor
P.O. Box 227
New Hudson, Michigan 48165
Phone: 248.486.0530
Fax: 248.486.0538
www.americanglassgallery.com
email: jpastor@americanglassgallery.com

PLEASE NOTE:

The lots offered in this printed catalog are identical to the lots offered in the on-line catalog. However, due to space constraints of the printed catalog, there may be some further information available regarding some of the lots in the on-line auction descriptions.

Please visit us at

www.americanglassgallery.com

and follow the link to the on-line auction.

The link and on-line auction will be available March 22, 2022. A post-auction price list will be available on our website, in printable form, approximately 30 days after the close of the auction.

We encourage you to contact us by phone or email with any questions, for assistance with bidding, or further details or clarification on any of the lots in this sale. Your complete satisfaction and confidence is our goal!

**THANK YOU AND GOOD LUCK
WITH YOUR BIDS!**

Reference Key

Reference initials and numbers used in the description of this catalog refer to the following publications:

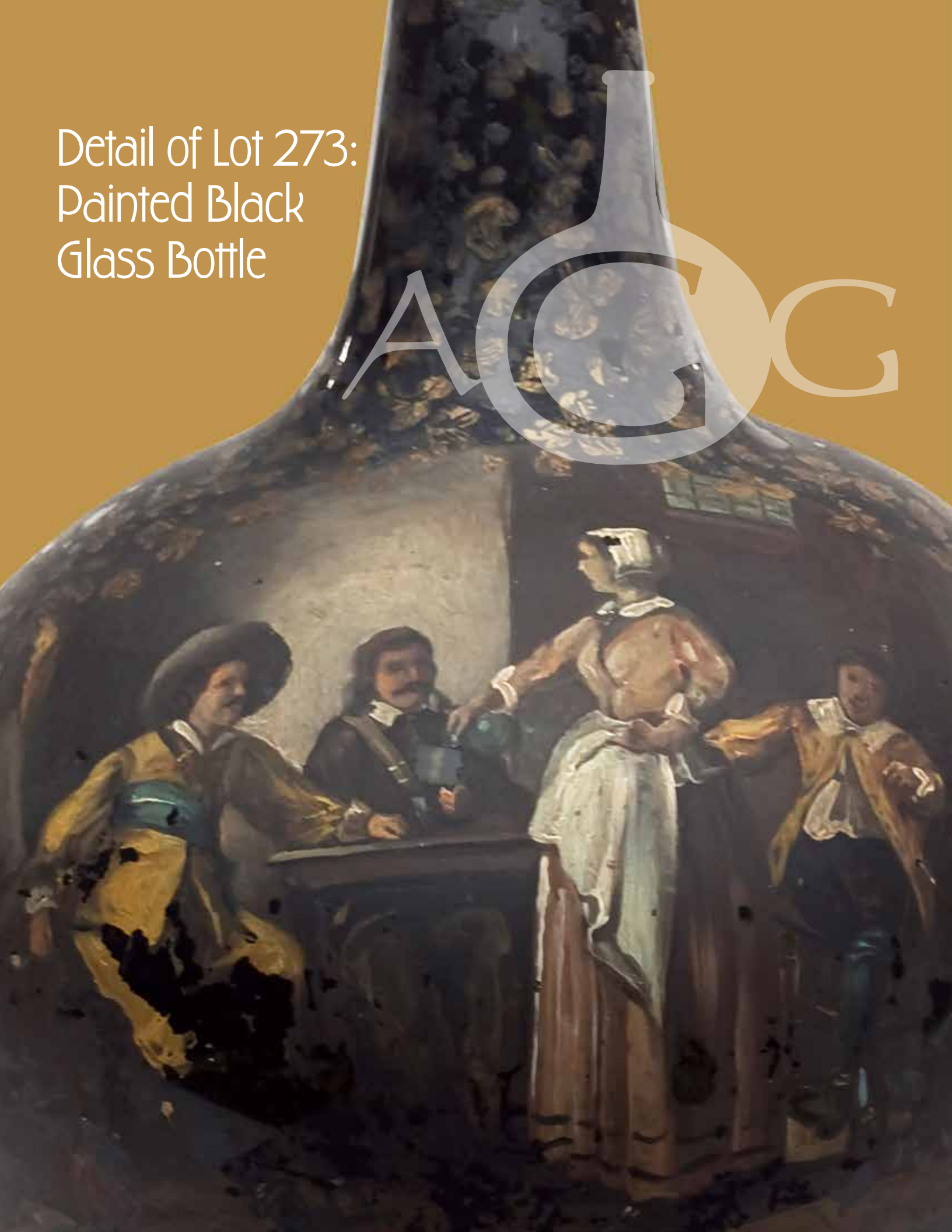
AHG	<i>American Historical Glass</i> , Bessie M. Lindsey, 1967.
AM	<i>The Decanter - An Illustrated History of Glass from 1650</i> , Andy McConnell, 2004.
AP	<i>Glass in Early America</i> , Arlene Palmer, 1993.
BA1	<i>Collecting The Cures</i> , Bill Agee, 1969.
BA2	<i>Collecting All Cures</i> , Bill Agee, 1973.
BB	<i>A Bit About Balsams</i> , Betty Blasi, 1974.
BH	<i>Classification and Documentation of Sunburst and Similar Scent Bottles</i> , Bill Ham, AB&GC, 5/87.
BJ	<i>American Pot Lids</i> , Barbara and Sonny Jackson, 1987.
B/K	<i>The Glass Industry in Sandwich</i> , Raymond Barlow and Joan Kaiser, 1989.
BPK	<i>A.M. BININGER Bottles</i> , Jim Bender, 2017
C	<i>Ink Bottles and Inkwells</i> , William Covill, 1971.
DB	<i>Antique Sealed Bottles, 1640 - 1900</i> , David Burton, 2015
DeG	<i>American Sarsaparilla Bottles</i> , John DeGrafft, 1980.
DeGII	<i>Supplement to American Sarsaparilla Bottles</i> , John DeGrafft, 2004.
DF	<i>Hair Raising Stories</i> , Don Fadely, 1992.
DM	<i>Wistarburgh, Window Tiles, Bottles and More</i> , Dale L. Murscell, 2007.
D/P	<i>Collector's Guide to Candy Containers</i> , Douglas M. Dezso, J. Leon and Rose Poirier, 1998.
F	<i>Inks, 150 Years of Bottles and Companies</i> , Ed and Lucy Faulkner.
FA	<i>John Frederick Amelung, Early American Glassmaker</i> , Lanmon, Palmer, Hume, Brill, Hanson, 1990.
FB	<i>A.S.C.R. The wine bottles of All Souls College</i> , Oxford, 1750 – 1850, Fay Banks.
G	(Flasks) <i>American Bottles & Flasks and Their Ancestry</i> , McKearin & Wilson, 1978.
G	(Blown Three Mold) <i>American Glass</i> (Chapter VI), George S. and Helen McKearin, 1941.
GBH	<i>English Glass For The Collector, 1660-1860</i> , G. Bernard Hughes, 1958.
H	<i>American Bottles in the Charles B. Gardner Collection</i> , Norman C. Heckler, 1975.
JB	<i>Patent and Proprietary Medicine Bottles</i> , Joseph K. Baldwin, 1973
JEB	<i>Glasshouse Whimsies</i> , Joyce E. Blake, 1984.
JH	<i>Glasshouses & Glass Manufacturers of the Pittsburgh Region, 1795 – 1910</i> , Jay W. Hawkins, 2009.
JM	<i>Tea Kettle Ink Price and Reference Guide</i> , Joe L. Mathews Jr., 2016
JS	<i>In glas verpakt – European Bottles, Their history and production</i> , Johan Soetens, 2001.
K	<i>Poison Bottle Workbook</i> , Rudy Kuhn, 1988.
KW	<i>New England Glass & Glassmaking</i> , Kenneth M. Wilson, 1972.
L	<i>The Red Book of Fruit Jars, No. 11</i> , Douglas M Leybourne, Jr., 2014.
LI	<i>Pittsburgh Glass, 1797 – 1891</i> , Lowell Innes, 1976.
Mc	<i>Two Hundred Years of American Blown Glass</i> , Helen and George McKearin, 1950.
McK	<i>American Glass</i> , George S. and Helen McKearin, 1941.
MW	<i>American Bottles & Flasks and Their Ancestry</i> , McKearin & Wilson, 1978.
N	<i>Great American Pontiled Medicines</i> , Frederick Nielson, 1978.
NCH	<i>The Blaske Collection of American Flasks</i> , Norman C. Heckler, 1983.
NCH II	<i>The Blaske Collection: Part II</i> , Norman C. Heckler, 1983.
Odell I	<i>Indian Bottles and Brands</i> , John Odell, 1977
Odell II	<i>Pontiled Medicine Encyclopdia</i> , John Odell, 2007
O&S	<i>Warner's Reference Guide</i> , Ed Ojea and Jack Stecher, 1998.
P	<i>The Glass Gaffers of New Jersey</i> , Adeline Pepper, 1971.
RD	<i>Understanding Antique Wine Bottles</i> , Roger Dumbrell, 1983.
RF	<i>The Bottle Book: A Comprehensive Guide to Historic, Embossed Medicine Bottles</i> , Richard Fike, 1987
RH	<i>Collecting Barber Bottles</i> , Richard Holiner, 1986.
R/H	<i>Bitters Bottles</i> , Carlyn Ring and W. C. Ham, 1998.
RWL	<i>Antique Fakes & Reproductions</i> , Ruth Webb Lee, 1950
T	<i>Collectors Guide to Saratoga Type Mineral Water Bottles</i> , Donald Tucker, 2005.
V	<i>Nailsea Glass</i> , Keith Vincent, 1975
VdB	<i>Antique Glass Bottles; Their History and Evolution</i> , Willy Van den Bossche, 2001.
Z	<i>Ketchup, Pickles, Sauces</i> , Betty Zumwalt, 1980.
ZW	<i>Color Hutchinsons</i> , Zang Wood, 1999.

- The dash is generally used to indicate that the descriptions are on opposite sides of the bottle or flask.

/ The slash is used to indicate that the descriptions are on different lines or surfaces of the bottle.

Detail of Lot 273:
Painted Black
Glass Bottle

ACG





Rare & Unusual Medicines and Bitters from the Collection of the Late Joe Widman



Lot 142

Lot 213

Lot 147

Lot 152

Lot 237

Lot 173

Lot 217

As many folks in the bottle world now know, long-time friend and fellow collector Joe Widman passed away last October following a brief illness. Joe had been an avid collector for more than 40 years, and was a valued co-author of the “Medicine Chest” column in *Antique Bottle and Glass Collector Magazine* from January of 2019 to September of 2021.

When it came to old bottles, Medicines and Bitters were near and dear to Joe’s heart.

He appreciated them for their eye-appeal, wide array of colors, and especially the “rare and unusual” embossing — those interesting and outlandish claims such as “Grave Robber”, “Vegetable & Fever Nostrum”, and “Life Preservative”. Joe valued the rare and unusual smooth base medicines as much as the pontiled examples. That trend now seems to be catching on with other collectors as well.

Joe enjoyed the thrill of the hunt and pursued old bottles through auctions, bottle shows, local antique shops and trading. Joe loved to horse-trade bottles with his friends. It was always a “chess match” when it came to trading with Joe!

Joe had great knowledge for the glass and always collected with an eye toward quality and condition. This will become readily apparent as you peruse the lots in this catalog that belonged to Joe. As the saying goes, “We are all only caretakers of these bottles for a short while”. Now it is time to pass these along to other collectors who will, I am sure, enjoy them as much as Joe did.



Lot 143

Lot 169

Lot 211

Lot 215

Lot 160

Lot 250: Rare, Round Lake Mineral Water Bottle

The Round Lake Mineral Water Bottles are extremely rare. It is believed that there are perhaps only three or four known examples of the pint. They are considered by many collectors to be in the top five or ten most desirable mineral waters.

The rich history of Round Lake Mineral Water can be traced back to Joseph Hillman, a Methodist layman who frequently represented the Troy, New York Conference at Methodist Camp-meetings. The group wanted to find a place for the “*pure worship of God and earnest Christian Endeavor*”. Eventually, Hillman and others formed an association to purchase a site by Round Lake. On September 1, 1868, the first camp-meeting at Round Lake was conducted. Bernhard C. Puckhaber wrote in his book *Saratoga*, “*Within seven years the Round Lake camp site became a summer resort of ‘considerable celebrity’ and in a sense it competed with Saratoga Springs and Ballston Spa for patrons.*” The only thing lacking was its own mineral springs. Thus on July 10, 1875, drilling began, and about three month later, mineral water was discovered at a depth of 1,403 feet. Once analyzed, it was determined the water was similar to the water from Congress Spring. Subsequently, the well was tubed and an attractive spring house was built over the well.

However, the cost of maintaining their camp and lodgings was greater than the income obtained from the cottage rentals. Therefore, it is assumed that the Round Lake trustees agreed to bottle their spring water in order to supplement their income. In spite of the fact the Round Lake bottles do exist, no record has been found to show that bottling was done at Round Lake. It is believed that the bottles were probably manufactured by the Congress and Empire Glass Works in Saratoga during the period of 1876 - 1898.

Source: *Saratoga*, by Bernard C Puckhaber



Choice Pennsylvania & Mid-Atlantic Chestnut Bottles



Lot 46

Lot 50

Lot 48



Lot 1

"GENERAL WASHINGTON" / BUST OF WASHINGTON - EAGLE Historical Flask, an early Pittsburgh glasshouse, 1825 - 1835. Aqua, sheared mouth - blowpipe pontil scar, Pt, virtually perfect; (only the slightest trace of faint wear, otherwise mint). GI-3. Listed by McKearin as "Extremely rare", this is a great example, clean, almost no wear, and with plenty of tiny bubbles swirled through the glass. See Mark Vuono's article, *The Early Washington Group*, AB&GC, Feb., 2013.

Est.: \$2,500 - \$3,500 • Min. bid: \$1,300



Lot 5

"ALBANY GLASS WORKS" / BUST OF WASHINGTON / "ALBANY / N Y" - SAILING SHIP Historical Flask, 1847 - 1850. Blue green coloration, large, applied round double collar - blowpipe pontil scar, Pt, virtually attic mint; (a minor 1/8" open bubble on the medial rib near the base, otherwise perfect). GI-28. A comparatively scarce flask, very scarce-to-rare color, crude lip treatment, and almost no wear!

Est.: \$2,500 - \$4,500 • Min. bid: \$1,300



Lot 2

"WASHINGTON" / BUST OF WASHINGTON - "BALTIMORE GLASS WORKS" / MONUMENT Historical Flask, 1829 - 1835. Medium 'clear green', sheared mouth - blowpipe pontil scar, Pt, near mint; (just a touch of light wear and a somewhat weak, or 'soft', mold impression as is common on this flask). GI-19. A scarce mold and a very pretty example. Good color, excellent clarity and condition.

Est.: \$1,800 - \$3,200 • Min. bid: \$900



Lot 6

WASHINGTON - "ALBANY GLASS WORKS" / N Y" Historical Flask, 1847 - 1850. Aquamarine, crudely applied round collar with bevel - blowpipe pontil scar, 1/2 Pt, virtually attic mint; (slight trace of very light high point wear, otherwise perfect). GI-30. A comparatively scarce little flask, typically found with a sheared mouth. This example is unusual and rare with the applied collar. Ex. Tom McCandless collection (Lot 203); Tom purchased the flask from "Mrs. Stumpf".

Est.: \$500 - \$1,000 • Min. bid: \$250



Lot 3

"WASHINGTON" / BUST OF WASHINGTON - "BRIDGETON" (STAR) "NEW JERSEY" / BUST OF TAYLOR Historical Flask, Bridgeton Glass Works, 1845 - 1855. Rich yellowish amber with a slight olive tone, sheared mouth - blowpipe pontil scar, Pt, near mint; (a little exterior wear, otherwise perfect). GI-24. A scarce flask in any color, but if found in shades of amber, it is typically a straight amber, deep amber, or chocolate. A beautiful color, very rare and attractive.

Est.: \$6,000 - \$12,000 • Min. bid: \$3,000



Lot 7

"WASHINGTON" / BUST OF WASHINGTON - "JACKSON" / BUST OF JACKSON Historical Flask, Keene Marlboro Street Glassworks, Keene, NH, 1825 - 1842. Brilliant yellowish coloration with some rich olive amber tones, sheared mouth - blowpipe pontil scar, Pt, virtually perfect; (just the slightest trace of faint wear, otherwise pristine). GI-31. An exceptional example, gorgeous color with a lot of yellow, crisp, strong embossing, outstanding character. A top example!

Est.: \$400 - \$800 • Min. bid: \$200



Lot 4

"ALBANY GLASS WORKS" / BUST OF WASHINGTON / "ALBANY / N Y" - SAILING SHIP Historical Flask, 1847 - 1850. Aquamarine, extended neck, applied round collar with bevel - blowpipe pontil scar, Pt, virtually pristine perfect! GI-28. A comparatively scarce flask. Strong, crisp embossing, outstanding condition. Ex. Tom McCandless collection. A note by Tom accompanies the flask: *"My first flask. July, 1966 I bought with \$30.00 profits selling dug medicine bottles"*.

Est.: \$400 - \$800 • Min. bid: \$200



Lot 8

"WASHINGTON" / BUST OF WASHINGTON - "JACKSON" / BUST OF JACKSON Historical Flask, Keene Marlboro Street Glassworks, Keene, NH, 1825 - 1842. Medium-to-deep olive, sheared mouth - blowpipe pontil scar, Pt; (a touch of minor light wear including a shallow, pinhead open bubble, and a couple of minor 1/8" flakes at edge of base and medial rib, otherwise near mint). GI-31. A scarce color for this mold which is typically found in shades of olive amber.

Est.: \$200 - \$400 • Min. bid: \$100



Lot 9

"WASHINGTON" / BUST OF WASHINGTON - "JACKSON" / BUST OF JACKSON Historical Flask, New England, possibly Keene Marlboro Street, 1825 - 1842. Yellowish olive with an amber tone, sheared mouth - blowpipe pontil scar, Pt, near mint; (just a trace of minor wear, and a little light interior residue in one side). GI-32. The impression is a bit weak, which is fairly common on the GI-31 to GI-33 Washington - Jackson molds. A comparatively scarce flask.

Est.: \$200 - \$400 • Min. bid: \$100



Lot 10

"WASHINGTON" / BUST OF WASHINGTON - "JACKSON" / BUST OF JACKSON Historical Flask, Coventry Glass Works, 1825 - 1840. Yellowish amber with an olive tone, sheared mouth - blowpipe pontil scar, Pt, near mint; (a faint trace of light wear and a slightly weak impression). GI-33. A comparatively scarce mold - much harder to find than the Keene GI-31 counterpart. Note; a 5/8" piece of glass adhered to the medial rib during manufacture. Ex. Don Vink collection.

Est.: \$300 - \$500 • Min. bid: \$150



Lot 11

"THE FATHER OF HIS COUNTRY" / BUST OF WASHINGTON - "GEN. TAYLOR NEVER SURRENDERS" / BUST OF TAYLOR Historical Flask, Dyottville Glass Works, 1848 - 1855. Beautiful clear green with a teal tone, sheared mouth - blowpipe pontil scar, Pt, virtually perfect; (slight trace of faint milkiess below the neck, barely noticeable, and a 1/4" pontil flake that extends to the edge of the base). GI-40c. A rare mold, beautiful color, excellent condition!

Est.: \$1,200 - \$1,800 • Min. bid: \$600



Lot 12

"LAFAYETTE" / BUST OF LAFAYETTE / "T.S." - "DE WITT CLINTON" / BUST OF CLINTON / "COVENTRY / C-T" Historical Flask, Coventry Glass Works, 1824 - 1830. Clear, light, yellowish olive amber, sheared mouth - pontil scar, Pt, near mint; (just a slight trace of very minor high point wear, otherwise perfect). GI-80. A great example, fantastic condition, good mold impression, and in a very pretty color with plenty of beautiful yellowish tones.

Est.: \$1,000 - \$2,000 • Min. bid: \$500



Lot 13

EAGLE / "ZANES / VILLE" - CORNUCOPIA Historical Flask, Zanesville Glass Works, Zanesville, OH, 1830 - 1840. Bright orangey-amber with some bright golden tones, shading to a deep orangey-red coloration in the lower half of the body, sheared mouth - blowpipe pontil scar, 1/2 Pt; (just a trace of faint wear and the lettered embossing in the oval is illegible which is notorious for this mold, otherwise near mint). GI-18. A rare flask, attractive color.

Est.: \$1,000 - \$2,000 • Min. bid: \$500



Lot 14

EAGLE / "MY COUNTRY" - "FOR PIKES PEAK" / PROSPECTOR Historical Flask, probably a Pittsburgh district glasshouse, 1860 - 1870. Bright, ice-blue aquamarine, crude applied collar with ring - smooth base, Pt, virtually perfect; (just a slight trace of wear). GI-21. Comparatively scarce. A particularly clean, bright, example with outstanding clarity, and an attractive ice-blue tone.

Est.: \$200 - \$400 • Min. bid: \$100



Lot 15

EAGLE - FURLED FLAG / "FOR OUR COUNTRY." Historical Flask, Coffin & Hay Glass Manufactory, Hammonton, NJ, 1838 - 1847. Aquamarine, sheared mouth - blowpipe pontil scar, Pt, near mint; (a little light interior cloudiness, fairly minor, otherwise perfect). GI-54. A nice example of this comparatively scarce, highly detailed and desirable mold.

Est.: \$200 - \$400 • Min. bid: \$100



Lot 16

EAGLE - "LIBERTY" / OAK TREE Historical Flask, possibly an early Pittsburgh district glasshouse, 1825 - 1835. Bright amber through the center shading to an attractive lighter honey coloration along the sides, sheared mouth - blowpipe pontil scar, 1/2 Pt; (some high point wear as is typical on this mold, otherwise near mint). GI-60. A very early, scarce flask. A detailed, early, beaded mold once thought to be of eastern origin, now believed to be from the Pittsburgh district.

Est.: \$2,000 - \$3,000 • Min. bid: \$1,000



Lot 17

"LIBERTY" / EAGLE - "WILLINGTON / GLASS, Co / WEST WILLINGTON / CONN" Historical Flask, 1855 - 1872. Beautiful, rich medium emerald coloration, applied sloping collar - smooth base, Pt, virtually perfect; (only the slightest trace of faint wear and a touch of patchy light interior residue near the base, otherwise pristine). GII-64. A comparatively scarce mold, gorgeous and rare color. An outstanding example in color, character, and condition!

Est.: \$1,800 - \$3,200 • Min. bid: \$900



Lot 18

EAGLE - "NEW LONDON" / ANCHOR / "GLASS WORKS" Historical Flask, 1856 - 1860. Clear, medium green with an emerald tone, sheared mouth - blowpipe pontil scar, ½ Pt; (a bit of roughness including a couple of flakes, approx. 1/8" or less, on the top edge of lip, and a ¼" chip on the side of the lip, and just a touch of typical light wear, otherwise excellent). GII-67. A comparatively scarce little flask, good depth of color, crisp, bold impression, and heavily whittled!

Est.: \$1,000 - \$2,000 • Min. bid: \$500



Lot 19

EAGLE - CORNUCOPIA Historical Flask, Keene Marlboro Street Glassworks, Keene, NH, 1830 - 1842. Yellowish olive amber, sheared mouth - blowpipe pontil scar, Pt, near perfect; (just a very slight trace of light wear, otherwise attic mint). GII-73. A beautiful example, strong mold impression, crude, bubbly, pebbly glass, and nice even, lighter color, from the shoulders to the base.

Est.: \$175 - \$350 • Min. bid: \$90



Lot 20

EAGLE - CORNUCOPIA Historical Flask, Keene Marlboro Street Glassworks, Keene, NH, 1830 - 1842. Yellowish amber with a very slight olive tone, sheared mouth - blowpipe pontil scar, Pt, near perfect; (a slight trace of light wear). GII-73. Another great example, pleasing color, excellent condition. Note; a very crude neck and mouth with glass gall and slag swirled through the glass.

Est.: \$175 - \$350 • Min. bid: \$90



Lot 21

EAGLE - CORNUCOPIA Historical Flask, Keene Marlboro Street Glassworks, Keene, NH, 1830 - 1842. Medium olive coloration with a slight forest green tone, sheared mouth - blowpipe pontil scar, Pt, near mint; (a little light wear and some faint interior residue or very minor haze, possibly washable, otherwise perfect). GII-73. Nice pure green coloration, crude glass with some swirls and streaks through the body.

Est.: \$175 - \$350 • Min. bid: \$90



Lot 22

EAGLE - CORNUCOPIA Historical Flask, New England, probably Keene Marlboro Street Glassworks, Keene, NH 1830 - 1842. Ice-blue aquamarine, sheared mouth - blowpipe pontil scar, Pt, near mint; (a little minor roughness that you can feel, but is not easy to see, on the edge of the crudely sheared mouth, and a shallow pontil flake that extends to the edge of the base, otherwise perfect). GII-74. Bright and clean, excellent clarity, with nice crude, pebbly glass.

Est.: \$200 - \$400 • Min. bid: \$100



Lot 23

EAGLE / "PITTSBURGH / PA" - EAGLE Historical Flask, a Pittsburgh district glasshouse, 1860 - 1870. Rich, medium-to-deep emerald coloration with a slight forest green tone, crudely applied collar with flat band - smooth base, Pt; (some light-to-moderate high point wear and a 1/8" flake on the edge of the lip, otherwise excellent). GII-106a (similar to GII-106, but no vertical rib at sides). A scarce mold, beautiful rich color!

Est.: \$300 - \$500 • Min. bid: \$150



Lot 24

EAGLE - EAGLE Historical Flask, Kearns, Herdman & Gorsuch, Zanesville, OH, 1869 - 1876. Light greenish aquamarine, applied collar with ring - smooth base, ½ Pt, attic mint. GII-119. Scarce! If you are a mold collector, this is a tough one to acquire. And, this example is also about as nice as you could hope to find having a strong, crisp mold impression, and virtually pristine condition. We sold an amber example in Auction #19, for \$5,000. This one won't break the bank.

Est.: \$150 - \$250 • Min. bid: \$80



Lot 25

CORNUCOPIA - CORNUCOPIA Pictorial Flask, probably Kensington Glass Works, Philadelphia, 1825 - 1835. Amber with some lighter golden tones, sheared mouth - blowpipe pontil scar, ½ Pt; (just a slight trace of faint wear, otherwise pristine perfect). GIII-2. A very scarce mold in an extremely rare, possibly unique color. Believed to be the first example in color to be offered at public auction in more than 30 years! A little gem of a flask. Ex. Dr. Gary Johnson collection.

Est.: \$8,000 - \$12,000 • Min. bid: \$4,000



Lot 29

MASONIC - "ZANESVILLE" / EAGLE / "OHIO / J. SHEPARD & CO" Historical Flask, Zanesville Glass Works, 1822 - 1832. Rich, deep bluish aquamarine, sheared mouth - blowpipe pontil scar, Pt, very near mint; (a touch of very light wear near one of the side mold seams, and a slightly weak impression in the shoulders, otherwise virtually perfect). GIV-32. A bright, clean, example having a very deep bluish color!

Est.: \$600 - \$900 • Min. bid: \$300



Lot 26

CORNUCOPIA - URN Pictorial Flask, Lancaster Glass Works, Lancaster, NY, 1849 - 1855. Rich, medium-to-deep blue green coloration, sheared mouth - blowpipe pontil scar, Pt, perfect! GIII-17. A great example, excellent color, character, and condition. This one has good depth of color, a good impression, and virtually no wear.

Est.: \$800 - \$1,200 • Min. bid: \$400



Lot 30

MASONIC ARCH - EAGLE / "T.W.D" Historical Flask, Kensington Glass Works, Philadelphia, PA, 1825 - 1838. Light greenish aquamarine, sheared mouth - blowpipe pontil scar, Pt; (just a bit of faint, very light, interior milkiness in the neck and below the shoulders, barely noticeable, otherwise virtually perfect). GIV-37. A good, bright, clean example of this very early Kensington Masonic flask.

Est.: \$250 - \$400 • Min. bid: \$130



Lot 27

MASONIC ARCH - EAGLE / "KCC-NE" Historical Flask, Keene Marlboro Street Glassworks, Keene, NH, 1820 - 1830. Bright, yellowish olive amber, sheared mouth - blowpipe pontil scar, Pt, near mint; (some typical, relatively light, high point wear, otherwise perfect). GIV-18. A nice light example of this classic, early, Keene Masonic flask.

Est.: \$250 - \$400 • Min. bid: \$130



Lot 31

"SUCCESS TO THE RAILROAD" / HORSE PULLING CART (Reverse same) Historical Flask, Keene Marlboro Street Glassworks, Keene, NH, 1830 - 1842. Medium-to-deep olive with an amber tone, sheared mouth - blowpipe pontil scar, Pt; (some high point wear and light scratches as is common with this mold, as well as some light-to-moderate dried interior content residue that may soak out, but no other form of damage). GV-3.

Est.: \$300 - \$500 • Min. bid: \$150



Lot 28

MASONIC - "ZANESVILLE" / EAGLE / "OHIO / J. SHEPARD & CO" Historical Flask, Zanesville Glass Works, 1822 - 1832. Brilliant yellowish golden with an orange tone, sheared mouth - blowpipe pontil scar, Pt, near mint; (just a trace of typical faint wear, some very light interior residue that would likely wash out, and the mold impression is a little weak as sometimes occurs with this mold). GIV-32. A bright, light, pretty example.

Est.: \$600 - \$900 • Min. bid: \$300



Lot 32

"SUCCESS TO THE RAILROAD" / HORSE PULLING CART (Reverse same) Historical Flask, probably Saratoga Mountain Glass Works, Mt. Pleasant, NY, 1846 - 1855. Yellowish amber with a slight olive tone, sheared mouth - blowpipe pontil scar, Pt, near mint; (a touch of typical light wear, a bit of interior content residue, and a weak impression in the shoulders as is common for the GV-5 mold). GV-5. Nice crude glass and a scarce color, most examples are in shades of olive green.

Est.: \$300 - \$500 • Min. bid: \$150



Lot 33

MONUMENT / "BALTO" - "FELLS" / SLOOP / "POINT" Historical Flask, Baltimore Glass Works, 1829 - 1835. Greenish aquamarine, sheared mouth - blowpipe pontil scar, ½ Pt; (some light exterior wear and a tiny pinhead flake on the top of the lip; the embossing is very light, "BALTO" and "POINT" near the base of the flask are virtually indiscernible). GVI-2. Comparatively scarce. Note; the embossing is often very weak on this mold, the flask is otherwise bright and clean.

Est.: \$150 - \$250 • Min. bid: \$80



Lot 34

"GENL TAYLOR NEVER SURRENDERS" / CANNON / "A / LITTLE / MORE / GRAPE / CAPT BRAGG" / GRAPE CLUSTERS Historical Flask, Baltimore Glass Works, 1848 - 1855. Beautiful apricot puce coloration, sheared mouth - blowpipe pontil scar, ½ Pt, near mint; (a touch of light wear and a slightly weak impression as is typical). GX-6. Although the impression is a little weak, all of the lettering is readable, and certainly better than most. A comparatively scarce flask.

Est.: \$3,000 - \$6,000 • Min. bid: \$1,500



Lot 35

"MURDOCK & / CASSEL - ZANESVILLE / OHIO" Historical Flask, Muskingum Green Glass Works, Zanesville, 1826 - 1836. Deep greenish aquamarine, sheared mouth - blowpipe pontil scar, Pt; (a tiny pinhead flake, and a 1/8" chip on the edge of the sheared lip, otherwise virtually perfect). GX-14. Rare. Strong color, strong impression, the embossing is about as nice as you could hope to find. Great character with crude, pebbly glass, and almost no wear.

Est.: \$1,800 - \$3,200 • Min. bid: \$900



Lot 36

"THE GREAT WESTERN" / TRAPPER WITH RIFLE - BUCK WITH ANTLERS Pictorial Flask, Midwest, possibly Pittsburgh, 1865 - 1875. Aqua, applied collar with ring - "C" on smooth base, Pt; (a little scattered light wear including a 3/16" shallow open bubble on the reverse, otherwise near mint). GX-30. McKearin notes this mold as "Rare", and deservedly so. It was likely blown to appeal to the early adventurers and trappers migrating westward. Ex. Gardner collection.

Est.: \$400 - \$800 • Min. bid: \$200



Lot 37

"UNION" / CLASPED HANDS / "No 2" - EAGLE Historical Flask, a Pittsburgh district glasshouse, 1860 - 1870. Clear, light-to-medium citron coloration, applied collar with large rounded ring below lip - smooth base, Qt; (a 3/8" chip and 3/16" area of iridescence at the edge of the base on the reverse, resulting from a potstone near the surface of the glass, but no radiations or other issues, and the flask is otherwise virtually perfect). GXII-7. A delicate, very pretty color. Ex. Steve Benko collection.

Est.: \$250 - \$450 • Min. bid: \$130



Lot 38

"UNION" / CLASPED HANDS - EAGLE Historical Flask, Adams & Co. Glass Manufacturers, Pittsburgh, PA, probably 1865 - 1870. Medium-to-deep amber, applied collar with flat band - smooth base, Pt; (professionally cleaned with just a couple of spots of very minor wear remaining). GXII-21. The "UNION" flasks have always been popular for their historical aspect, as well as being able to put a nice grouping of colors together without 'breaking the bank'.

Est.: \$250 - \$450 • Min. bid: \$130



Lot 39

"UNION" / CLASPED HANDS - EAGLE Historical Flask, a Pittsburgh glasshouse, 1865 - 1875. Dense amber, almost a chocolate coloration, applied ring type collar - smooth base, ½ Pt; (some scattered high point wear, primarily below the shoulder on the reverse, and a less-than pinhead size potstone on the surface of the glass in the eagle's feathers with a tiny bit of iridescence, otherwise excellent). GXII-33. McKearin lists this mold in 'amber', but we cannot recall seeing another this deep.

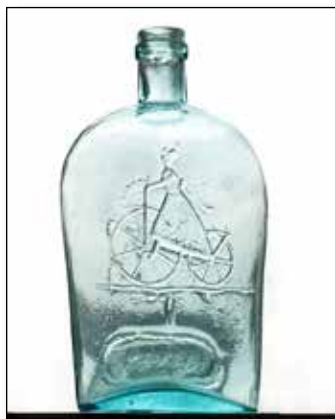
Est.: \$250 - \$450 • Min. bid: \$130



Lot 40

"UNION" / CLASPED HANDS - "UNION / CLASPED HANDS Historical Flask, a Midwest glasshouse, 1860 - 1865. Aquamarine, crudely applied collar with ring - iron pontil scar, Qt, near mint; (some minor high point wear, primarily on one side, otherwise perfect). GXII-37. A scarce mold (listed by McKearin as "Rare" and included in Group C, Rare Flasks). However, it is certainly rare having an iron pontil scarred base! In addition, this example is heavily whittled.

Est.: \$150 - \$250 • Min. bid: \$80



Lot 41

GIRL RIDING BICYCLE - EAGLE / "A&D.H.C" Pictorial Flask, A. & D. H. Chambers Glass Manufacturers, Pittsburgh, PA, 1860 - 1870. Aquamarine, applied mouth with flat band - smooth base, Pt; (only the slightest trace of faint wear, otherwise pristine). GXIII-3. A scarce mold, beautiful condition.

Est.: \$150 - \$250 • Min. bid: \$80



Lot 45

"TRAVELER'S / COMPANION - RAIL-ROAD / GUIDE" Historical Flask, 1845 - 1855. Bright aquamarine with an ice-blue tone, sheared mouth - blowpipe pontil scar, 1/2 Pt; (a little light high point wear, and a tiny pinhead open surface bubble near the side of the flask, otherwise attic mint). GXIV-9. A bright, clean example with crisp embossing, beautifully whittled, good color. A rare mold included by McKearin in Group C, "Rare Flasks", #17.

Est.: \$400 - \$600 • Min. bid: \$200



Lot 42

HUNTER - FISHERMAN Pictorial Calabash, probably Whitney Glass Works, Glassboro, NJ, 1857 - 1865. Clear, medium apricot coloration, applied sloping collar - iron pontil scar, Qt, near mint; (just a slight trace of very minor wear including a minuscule pinprick spot of roughness on the edge of lip, and a small patch of faint interior residue or milkiness, barely noticeable, otherwise perfect). GXIII-4. A very pretty color, nice peachy-apricot tones, excellent condition!

Est.: \$400 - \$600 • Min. bid: \$200



Lot 46

Large, Early Freeblown Chestnut Flask, probably Wistarburg Glass Works, Alloway, NJ, 1750 - 1780. Clear, medium yellow green, high shouldered chestnut form, heavy applied round collar - solid glass tipped pontil scar with glass gall, ht. 10 3/4"; (some typical light-to-moderate usage wear and minor scratches, heavy base wear, otherwise near mint). A great example of a large, 'big-bellied', Wistarburg chestnut with excellent symmetry. Some light paddle marks are discernible on the sides.

Est.: \$800 - \$1,600 • Min. bid: \$400



Lot 43

SHEAF OF GRAIN / STAR - "WESTFORD GLASS Co / WESTFORD / CONN" Pictorial Flask, 1857 - 1873. Yellowish olive amber below the shoulders shading to a dense olive amber near the base, applied blob collar with bevel - smooth base, Pt, attic mint! GXIII-36. Comparatively scarce. A great example, beautiful shading of color, attractive whittled, seedy, glass, and almost no wear! Originally discovered in the late 1960's in the attic of a home in Larchmont, NY.

Est.: \$175 - \$350 • Min. bid: \$90



Lot 47

Large, Early Freeblown Chestnut Flask, probably Wistarburg Glass Works, Alloway, NJ, 1750 - 1780. Deep emerald green with a slight teal tone, high shouldered chestnut form, sheared mouth with an applied heavy string rim - blowpipe pontil scar, ht. 10 7/8"; (some typical scattered light scratches and exterior wear, otherwise near mint). A fantastic and rare color, very scarce size, overall excellent condition. Another great colonial period chestnut that does not come around often.

Est.: \$1,000 - \$2,000 • Min. bid: \$500



Lot 44

SHEAF OF GRAIN / LAUREL WREATH - 8-POINTED STAR Pictorial Calabash, probably Sheets & Duffy Glass Manufacturers, Philadelphia, PA, 1850 - 1860. Light citron coloration, applied sloping collar - heavy blowpipe pontil scar, Qt; (some scattered light scratches and exterior wear, otherwise excellent). GXIII-43. A scarce and attractive color for this mold. Provenance: Ex. Gardner collection (#1018). The Gardner sticker and remnants of his collection tag remain on the base.

Est.: \$250 - \$450 • Min. bid: \$130



Lot 48

Early, Freeblown Chestnut Flask, Wistarburg Glass Works, or possibly Hilltown Glassworks, Bucks County, PA, 1750 - 1780. Medium-to-deep yellowish green with a strong emerald tone, plump chestnut form with a nearly spherical base, crudely applied offset string rim - pontil scar with remnants of iron and glass gall, ht. 7 3/8"; (some light wear, otherwise perfect). Beautiful color, crude bubbly glass, great character with the offset lip. The plump body has a 'sack-of-coins' appearance.

Est.: \$400 - \$800 • Min. bid: \$200



Lot 49

Early, Freeblown Chestnut Flask, probably South Jersey or possibly Germantown, MA, 1750 - 1780. Rich, deep tobacco amber, plump chestnut form, applied heavy ring collar - blowpipe pontil scar, ht. 8 ¾"; (some typical, expected, age-appropriate scattered light scratches and wear, otherwise very near mint). A very early, colonial period, chestnut flask in a scarce, 'earthy', deep amber coloration. From an old-time collection of early bottles and glass.

Est.: \$500 - \$800 • Min. bid: \$250



Lot 53

Early, Dip-Mold Case Bottle, probably America, possibly Wistarburg Glass Works, Alloway, NJ, 1760 - 1780. Clear, medium-to-deep yellowish green, rectangular case form, sheared mouth with rolled, tooled, ring collar - blowpipe pontil scar, ht. 8 ¼"; (a little minor light wear and a partially open interior bubble in the shoulder, otherwise perfect). A very early, colonial period, case bottle - rare form, excellent condition. Provenance: Ex. Charles Gardner collection (#2062).

Est.: \$500 - \$800 • Min. bid: \$250



Lot 50

Freeblown Chestnut Flask, probably an early Midwest glasshouse, possibly New Geneva, 1795 - 1820. Bright yellowish honey amber, high shouldered chestnut form, heavy rolled collar - slightly pushed up base with blowpipe pontil scar, ht. 8 ½"; (some typical scattered light wear including a few paper-thin open surface bubbles, ¼" or less, otherwise very near mint). Beautiful and scarce color, outstanding character, the glass is filled with small bubbles and impurities.

Est.: \$500 - \$800 • Min. bid: \$250



Lot 54

Freeblown Globular Bottle, Midwest, probably New Geneva Glass Works, New Geneva, PA, 1800 - 1820. Aquamarine, globular form with drawn up shoulders, sheared mouth with an applied ring type collar - pushed-up base with blowpipe pontil scar, ht. 9", attic mint! A great early freeblown 'glob', excellent condition, and the look of this example is actually reminiscent of the much earlier 'onion-form' bottles.

Est.: \$175 - \$350 • Min. bid: \$90



Lot 51

Rare size, Freeblown Chestnut Flask, New England, 1785 - 1820. Light olive green, chestnut form, sheared mouth with crudely applied ring collar - blowpipe pontil scar, ht. 4 5/8"; (just a touch of expected typical light wear, otherwise virtually perfect). In addition to being a very scarce-to-rare smaller size, this one has a great 'look' with a 'no-neck' stout appearance, and pleasing symmetry. A little gem of a flask.

Est.: \$500 - \$800 • Min. bid: \$250



Lot 55

Pattern Molded Club Bottle, Midwest, possibility New Geneva Glass Works, New Geneva, PA, 1810 - 1830. Aquamarine, early club form with 16 widely spaced vertical ribs, applied ring collar - pushed-up conical base with blowpipe pontil scar, ht. 8 ¼", near mint; (a minor band of light milkiness in the shoulder, and a little faint haze in the very base, otherwise virtually perfect). Scarce. A bright, clean, very attractive example with graceful sloping shoulders and a strong mold impression.

Est.: \$200 - \$400 • Min. bid: \$100



Lot 52

Freeblown Chestnut Flask, New England, 1785 - 1820. Clear, light yellowish olive coloration, plump chestnut form, crudely applied ring collar - delicate blowpipe pontil scar, ht. 5", virtually perfect; (only the slightest trace of faint wear). A great example, nice color, clarity, and outstanding character! The glass is filled with tiny bubbles, potstones and impurities.

Est.: \$250 - \$400 • Min. bid: \$130



Lot 56

Blown Three Mold Decanter, Keene Marlboro Street Glassworks, Keene, NH, 1820 - 1835. Medium yellowish olive with an amber tone, ovoid form, geometric sunburst and diamond pattern, sheared, tooled flared mouth - blowpipe pontil scar, Pt, attic mint! Gill-16. A terrific example of this classic, early, Keene 3-mold decanter having a good mold impression, great condition.

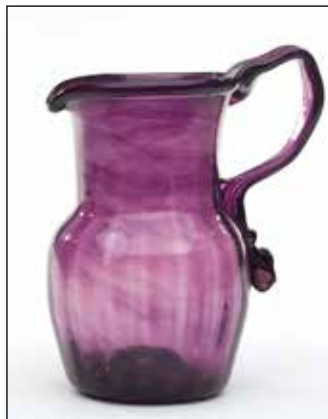
Est.: \$400 - \$800 • Min. bid: \$200



Lot 57

Pitkin Type Flask, early Mid-Atlantic type, Eastern U.S, possibly Hilltown Glass Works, Bucks County, PA, 1760 - 1800. Rich, bright yellow green, 16 broken rib pattern swirled to the right, flattened spherical body, sheared mouth - pontil scar, ht. 5 1/2"; (a little minor high point wear and a 3/16" flake on the shoulder, otherwise excellent). A very early Pitkin type flask, scarce and attractive bright green coloration.

Est.: \$600 - \$900 • Min. bid: \$300



Lot 61

Pattern Molded Cream Jug, America or possibly England, 1820 - 1840. Medium amethyst with some subtle deeper amethyst striations swirled through the neck, 16 vertical ribs, barrel form body with a tall cylindrical neck, sheared and inward folded rim, tooled pour spout, applied handle with rigaree - blowpipe pontil scarred base, ht. 4", perfect. A very pretty, interesting example. It is a bit 'ungainly' in the handle treatment, but with added workmanship in the rigaree and folded rim.

Est.: \$300 - \$600 • Min. bid: \$150



Lot 58

Pitkin Type Flask, America, probably Mid-Atlantic, 1790 - 1820. Clear, medium green shading to deeper grass green coloration through the shoulders, 35 broken rib pattern swirled to right, ovoid form, sheared mouth - blowpipe pontil scar, ht. 6 3/4", attic mint! A rare and unusual rib count, pretty color, attractive shading, great condition! 35 rib examples are actually very rare, the great majority of examples being 30, 32 or 36 ribs. Ex. Jim Courtney collection.

Est.: \$500 - \$800 • Min. bid: \$250



Lot 62

Pattern Molded Cream Jug, America or possibly England, 1810 - 1840. Medium cobalt blue, 18 vertical ribs, pear shaped body, applied solid handle with rigaree, sheared and outward flared rim with tooled pour spout - blowpipe pontil scar, ht. 4 3/8", perfect. A very attractive creamer, nice form, strong ribbing, and great workmanship with the additional tooling of the rigaree.

Est.: \$300 - \$600 • Min. bid: \$150



Lot 59

Pitkin Type Flask, America, probably Mid-Atlantic, 1790 - 1820. Deep greenish aquamarine, almost a sea-green coloration, 32 broken rib pattern swirled to the left, ovoid form, sheared mouth - blowpipe pontil scar, ht. 6 7/8", perfect! Similar in form, construction, to MW, plate 89, #5. A beautiful example, excellent clarity, virtually 'pristine' condition. Note; the 'squiggly' line on the left shoulder is actually a tooled in-making heavy thread of glass.

Est.: \$400 - \$600 • Min. bid: \$200



Lot 63

Freeblown Seahorse Scent Bottle, probably America, likely a South Boston glasshouse, 1830 - 1850. Deep amethyst with opaque white threading or 'canes' cased in clear glass, seahorse form with ovoid body tapering to tightly curled tail, two deep amethyst applied quilled ribbons of glass along the sides, sheared mouth, ht. 2 1/2"; (a 1/4" area of small flakes or roughness along one of the applied quilled ribbons, otherwise perfect). A very scarce color for a 'seahorse' scent bottle.

Est.: \$200 - \$400 • Min. bid: \$100



Lot 60

Early, Pattern Molded Covered Sugar Bowl, probably America, possibly Stiegel's American Flint Glass Manufactory, 1765 - 1774. Medium-to-deep sapphire blue, 12-diamond pattern, circular bowl with applied opalescent rim and applied pedestal foot with pontil scar. Original 12 diamond cover with flanged rim and applied solid glass button knob, overall ht. 4 1/2", both bowl and cover are perfect. See McK, plate 31, #3. Regardless of attribution, a very rare and beautiful sugar bowl.

Est.: \$1,500 - \$2,500 • Min. bid: \$750



Lot 64

Lot of (2), Figural Sunburst Scent Bottles, England or possibly America, 1860 - 1880. 1st Ex: Deep cobalt blue, blown 2-pc. mold, small sunburst or 'clamshell' form, factory ground mouth with original matching stopper, ht. 1 1/2" (including stopper). 2nd Ex: Medium topaz coloration, cut glass, sunburst form, factory polished mouth ground for stopper, ht. 1 7/8". Both examples near mint; (some expected light wear; topaz example has a little very faint haze, missing stopper). Scarce.

Est.: \$200 - \$400 • Min. bid: \$100

Lot 65



Lot 65

Iron Pontil Rod, America, probably 1850 - 1880. Heavy, solid iron pontil rod, some silver paint remaining on the rod, overall length approximately 43", diameter of curved, or rounded tip, 1 3/4", good condition; (some minor light surface corrosion). Given the size of the head of the rod, it was likely used for larger bottles and demijohns. It's the type of rod that would likely have imparted that 'dished' iron pontil scar you often see on the demijohns. A scarce and interesting 'go-with'.

Est.: \$100 - \$200 • Min. bid: \$50

Lot 66

Lot 66

"W. & C. SCOTT & SON BOGARDUS CLUB GUN - MAKERS & PATENTEES. LONDON" (stamped on barrels), Damascus 12 Gauge Shotgun, 1884 - 1886. Side lock action, double triggers, oak leaf engraved side plates are stamped **"W. & C SCOTT & SON"**, walnut stock, excellent overall condition with original browned barrels showing strong pattern with minor bores, frame colors have faded to patina; legends and engraving are sharp, all matching numbers. Finch collection.

Est.: \$3,000 - \$5,000 • Min. bid: \$1,500



Lot 67

"E.E. SAGE / & CO / PAT APPLD - GLASS / MFR'S / CHICAGO / ILL" Target Ball, 1877 - 1885. Deep chocolate amber, 3-pc. mold, short neck with rough sheared mouth, 2 5/8", near perfect; (a 1/8" flake by one of the letters). Exceedingly rare! This is believed to be the only known intact example of this mold! And, it is a very impressive ball with large fancy lettering and designs embossed around the entire ball. Provenance: Ralph and Jan Finch collection.

Est.: \$4,000 - \$8,000 • Min. bid: \$2,000



Lot 68

"BOGARDUS' GLASS BALL PAT'D APR 10 1877" Target Ball, 1877 - 1900. Light golden amber with an orange tone, quilted diamond pattern, 3-pc. mold, long neck with rough sheared mouth, dia. 2 5/8", near mint; (a 1/4" open bubble near base). Ralph indicates that this is only the 2nd example of the hundreds, or thousands, of Bogardus balls that he has seen, with the distinctive long neck (the other example was Lot 555 in the Finch sale). Ralph and Jan Finch collection.

Est.: \$300 - \$600 • Min. bid: \$150



Lot 69

"IRA PAINE'S FILLED BALL PAT. OCT. 23, 1877" Target Ball and Ira Paine's **"Rules for Glass Ball Shooting"** Advertising Card, America, 1877 - 1900. Target ball is amber, 3-pc. mold, rough sheared mouth, dia. 2 5/8"; (some light exterior haze; a little minor interior haze or residue, some of which may wash out). Original Ira Paine advertising card with **"Rules for Glass Ball Shooting"**, measures 3 1/8" x 5 3/4", excellent condition, very scarce. Ralph and Jan Finch collection.

Est.: \$200 - \$400 • Min. bid: \$100



Lot 70

Quilted, Gablonz Target Ball, Czechoslovakia, 1880 - 1900. Brilliant yellowish lime green, quilted diamond pattern, 2-piece mold, rough sheared mouth, dia. 2 1/2", perfect. A bright, vibrant, almost fluorescent color. The quilted 'Gablonz' balls come in a variety of colors, this being one of the most attractive and distinctive. A definitive standout on any shelf. Provenance: Ralph and Jan Finch collection.

Est.: \$175 - \$350 • Min. bid: \$90



Lot 71

Large "T" (embossed on base), **Target Ball**, America, 1875 - 1900. Clear, straw yellow coloration, 3-piece mold, crude, rough sheared mouth, dia. 2 5/8", perfect. A beautiful target ball, very pretty color, and excellent character having crude, bubbly glass. This ball is similar to Lot 793 in the Finch Target Ball collection catalog, except this example being a 3-pc. vs. 5-pc. mold. Provenance: Ralph and Jan Finch collection.

Est.: \$200 - \$400 • Min. bid: \$100



Lot 72

Crude Oval with heavy line, 2 Dots (embossed on base), **Target Ball**, America, 1875 - 1900. Honey amber, 3-piece mold, rough sheared mouth, dia. 2 5/8", perfect. Another scarce mold, pretty color. This may have been a glasshouse mark. It is very distinctive having a crudely embossed oval on the base with a large dot at each end and a heavy line through the oval. Provenance: Ralph and Jan Finch collection.

Est.: \$150 - \$250 • Min. bid: \$80



Lot 73

Unembossed, 3-Piece Mold Target Ball, America, 1875 - 1900. Yellow with a rich honey coloration through the neck, 3-piece mold, rough sheared mouth, dia. 2 5/8", near mint; (some light interior residue or faint haze, possibly washable, otherwise perfect). A very basic, but classic, target ball in an attractive and pleasing color. Ralph and Jan Finch collection.

Est.: \$100 - \$200 • Min. bid: \$50



Lot 77

"J - & - I - E - M" Monitor Ink, America, 1865 - 1880. Light-to-medium citron coloration, cylindrical with six block panels around the sides, domed shoulders, offset neck with sheared and factory ground mouth - smooth base, ht. 1 5/8", near perfect; (just a slight touch of light wear, and the bottle may have been lightly cleaned, but certainly appears as very near mint). Faulkner, pgs. 95-97. A beautiful ink, scarce color, excellent condition.

Est.: \$500 - \$800 • Min. bid: \$250



Lot 74

Lot of (2), 3-Piece Mold Target Balls, America, 1875 - 1900. Golden amber and medium amber, both are 3-piece mold, rough sheared mouths, dia. 2 5/8"; (the light golden amber example is perfect; the amber example has some interior haze in one side, and a couple of onionskin-thin open surface bubbles). The deeper amber example has some nice character to the glass including the large, elongated bubble. Provenance: Ralph and Jan Finch collection.

Est.: \$100 - \$200 • Min. bid: \$50



Lot 78

"J - & - I - E - M" Monitor Ink, 1865 - 1880. Bright golden amber, cylindrical with six block panels around the sides, domed shoulders, offset neck with a sheared and factory ground mouth - smooth base, ht. 1 5/8"; (a few sliver-type chips, 1/8" to 3/8", from the side of the ground lip, possibly in-manufacture, and a pinhead flake from one of the corners on the block panels, otherwise excellent). Faulkner, pgs. 95-97. The Moore Co. referred to these inks in their catalogs as "Monitors".

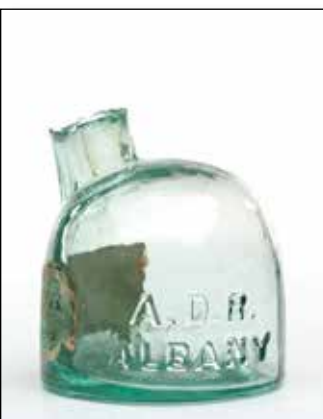
Est.: \$250 - \$450 • Min. bid: \$130



Lot 75

"HARRISON'S / COLUMBIAN / INK", America, 1847 - 1860. Aquamarine, octagonal body with 8 flat shoulder panels, sheared and inward rolled mouth - blowpipe pontil scar, ht. 1 5/8"; (lightly cleaned to original luster with just a minor trace of faint interior haze remaining, barely noticeable, otherwise excellent). C #530. Scarce small size.

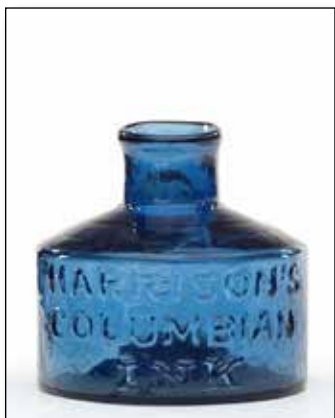
Est.: \$100 - \$200 • Min. bid: \$50



Lot 79

"A.D.R. / ALBANY" Inkwell (with 95% complete, original, label), probably 1860 - 1865. Aqua, igloo form, offset neck with rough sheared mouth - smooth base, ht. 2 1/8", perfect; (label has some wear and a bit of minor staining). An exceedingly rare ink, especially in fine condition. Unlisted in the book, *Old Albany Bottles*, as well as in Covill or Faulkner. Initials "A.D.R." are for Abraham D. Rosekrans, ink and blackening manufacturers, Albany. *Superior / Blackening Ink / George B. Harris* (on label).

Est.: \$500 - \$800 • Min. bid: \$250



Lot 76

"HARRISON'S / COLUMBIAN / INK", America, 1847 - 1860. Medium cobalt, cylindrical, sheared, tooled, and inward rolled mouth - blowpipe pontil scar, ht. 1 7/8"; (lightly cleaned to original luster and near mint condition; a trace of light interior residue, otherwise excellent). C #194. Some nice character and whittling to the glass. And, this example has particularly strong, bold embossing.

Est.: \$400 - \$600 • Min. bid: \$200



Lot 80

Rare, Pattern Molded Inkwell, America, Midwest type, 1800 - 1830. Greenish aquamarine, almost a sea green coloration, cylindrical, 24 vertical ribs, sheared, tooled, and outward folded rim - blowpipe pontil scar, ht. 1 3/4", base dia. 1 3/4", virtually perfect; (a little spotty dried interior content residue, and a partially open interior bubble in the neck). An extremely rare, early, patterned molded inkwell - possibly earlier than indicated date range above, outstanding condition.

Est.: \$800 - \$1,200 • Min. bid: \$400



Lot 81

Cone Ink, America, 1845 - 1855. Light-to-medium blue green coloration, square shouldered cone form, sheared, tooled, and inward rolled mouth - blowpipe pontil scar, ht. 2 1/4", base dia. 2 3/8"; (a slender bubble in the neck has a bit of dried residue or ink, otherwise virtually attic mint). Faulkner, p.174. A scarce mold, nice color, and beautifully whittled.

Est.: \$250 - \$450 • Min. bid: \$130



Lot 82

Umbrella Ink, America, 1840 - 1860. Light-to-medium sea green coloration, 8-sided umbrella form, sheared, tooled, and inward rolled mouth - blowpipe pontil scar, ht. 2 3/8", base dia. 2 3/8", near mint; (a little spotty faint interior haze in one side, barely noticeable, otherwise perfect). Scarce color. Although it is not necessarily a deep color, it is definitely different as compared to the blue green examples.

Est.: \$100 - \$200 • Min. bid: \$50



Lot 83

Umbrella Ink, America, 1840 - 1860. Rich blue green with a slight teal tone, 8-sided umbrella form, sheared, tooled, and inward rolled mouth - blowpipe pontil scar, ht. 2 1/2", base dia. 2 3/8", near mint; (a bit of faint interior residue or light haze, again, barely noticeable, otherwise perfect). A very pretty example, not only the color, but the shading going from light near the base, to a rich, deep color in the shoulders.

Est.: \$200 - \$400 • Min. bid: \$100



Lot 84

Umbrella Ink, America, 1840 - 1860. Beautiful, light yellowish honey coloration, 8-sided umbrella form, sheared, tooled, and inward rolled mouth - blowpipe pontil scar, ht. 2 1/8", base dia. 2 1/8", perfect! A great example, very pretty with plenty of yellowish tones, outstanding condition, and attractive whittled glass.

Est.: \$250 - \$450 • Min. bid: \$130



Lot 85

"A M" Teakettle Inkwell, France, 1850 - 1870. Aquamarine, square teakettle form with beveled corners and tapered sides, flat top with initials "A M" - smooth base, ht. 1 5/8"; (a bit of very light patchy interior haze, and edge of the flat top that is facing the spout has a little fine roughness or grinding along the edge - possibly occurring when

the lip was ground, otherwise excellent). JM #321. Very rare. Matthews does not list this mold in aquamarine.

Est.: \$300 - \$500 • Min. bid: \$150



Lot 86

"DAVIDS & BLACK - NEW YORK" Master Ink Bottle, America, 1850 - 1860. Rich, medium-to-deep emerald coloration, cylindrical, 3-pc. mold, applied sloping collar - heavy iron pontil scar, ht. 7 1/2"; (note, the bottle is virtually attic mint, however, the embossing is a bit weak as is often the case with this mold). Faulkner, p.38. As they say, 'color is king', and this one is in a gorgeous, rich, emerald coloration, and heavily whittled!

Est.: \$300 - \$500 • Min. bid: \$150



Lot 87

"HAYWARD'S / HAND FIRE / GRENADE - PATENTED / AUG / 8 / 1871 - S.F. HAYWARD / 407 / BROADWAY / NEW YORK" (with partial original contents), America, 1875 - 1895. Rich, deep cobalt blue, bulbous body with four flat circular panels, tooled ring collar with ground mouth - smooth base, ht. 6", perfect! The Hayward fire grenades are always popular as they can be found in a number of different colors, as well as mold variations. A great example, nice deep color.

Est.: \$200 - \$400 • Min. bid: \$100



Lot 88

Large size, "STAR" (inside STAR) / "HARDIN HAND GRENADE - FIRE EXTINGUISHER" (with contents), America, 1885 - 1900. Bright turquoise blue, melon form with molded vertical ribs, factory ground mouth - smooth base, ht. 7 7/8", perfect. Scarce larger size, excellent condition. Note; the embossing has been painted for display and would easily wash off if desired.

Est.: \$150 - \$250 • Min. bid: \$80



Lot 89

Lot of (8), Colorful Alcohol Lamps (with original metal collars and stands), America, 1893 - 1910. All, excluding amber example embossed, "PATD SEPT 14TH 1880 - AND MARCH 14TH 1893". Colors include cobalt, bright turquoise blue, ice blue, yellow, golden amber and amber, all are

3-pc. mold, original metal collars and stands, dia. 2 1/4" and 3 1/2", all are perfect! A beautiful grouping that would take many years to replicate. Provenance: Ralph and Jan Finch collection.

Est.: \$300 - \$500 • Min. bid: \$150



Lot 90

Early, Threadless Insulator, America or Canada, 1855 - 1865. Black glass (dense olive green), unembossed, thick smooth base, ht. 3 1/4"; (numerous small flakes and chipping around perimeter of base; two larger chips, one approx. 3/4" x 1", second, approx. 3/4" x 1/2" from side of base). CD 740. Nice shiny surface with original luster.

Est.: \$150 - \$300 • Min. bid: \$80



Lot 91

"HEMINGRAY - 19" - "MADE IN U.S.A." Insulator, Hemingray Glass Co., Muncie, IN, 1919 - 1930. Bright honey amber with an orange tone, near mint; (a flake off the tip of one drip point, and just a bit of minor roughness at edge of skirt, otherwise perfect). CD 162. Beautiful 'whiskey amber' coloration, excellent overall condition.

Est.: \$150 - \$250 • Min. bid: \$80



Lot 92

"GLOBE / TOBACCO COMPANY / DETROIT / MICHIGAN / PATENTED OCT 10TH 1882", 1882 - 1900. Honey yellow, barrel form, threaded neck, ground lip, original tin closure, wire bail, and wooden handle - smooth base, ht. 7", near mint; (factory ground mouth has a couple of little flakes, likely in-making; lid is excellent with minor surface corrosion). Fantastic color, rare mold! The "MICHIGAN" example is the most difficult to acquire of all the various "GLOBE" jars!

Est.: \$300 - \$500 • Min. bid: \$150



Lot 93

Lot of (2), Tobacco Jars, 1885 - 1905. 1st Ex: TEMPLE, HUMMEL, ELLIS, CO. / MANUFACTURERS / OF / HIGH GRADE HAVANA CIGARS, / SOUTH BEND, IND.", 2nd Ex: **"GLOBE / TOBACCO COMPANY / DETROIT / PAT OCT 10TH 1882"**. Yellowish honey and amber, cylindrical and barrel form, both with factory ground mouths, original tin closures - smooth bases,

ht. 5" & 7" respectively, both are perfect. Both are very nice examples!

Est.: \$150 - \$250 • Min. bid: \$75



Lot 94

"ABSOLUTELY / PURE MILK" / (MAN MILKING A COW) / "THE MILK PROTECTOR" - "TO BE USED ONLY AS DESIGNATED / MILK / & / CREAM / JAR", Thatcher Mfg. Co., Potsdam, N.Y., 1889 - 1893. Colorless, cylindrical, tooled square collar, **"PAT'D APRIL 27 - 86"** (on original, correct quart Thatcher glass lid with wire bail - **"THATCHER MF'G. CO. / POTSDAM, N.Y."** (on smooth base), Qt, perfect. Strong embossing, beautiful condition, a top example!

Est.: \$800 - \$1,200 • Min. bid: \$400



Lot 95

Early Preserve Jar, America, 1855 - 1865. Aquamarine, 3-pc. mold, tall cylinder with domed shoulders, heavy applied collar with inset for cork - domed base with heavy red iron pontil scar, ht. 10 5/8", approx. 1/2 Gal, virtually perfect; (a partially open interior bubble near the base, otherwise attic mint). Scarce mold. This jar has fantastic eye-appeal with its domed shoulders and outstanding character - this example is, as they say, 'hammered with whittle'!

Est.: \$175 - \$350 • Min. bid: \$90



Lot 96

Lot of (3), Wax Seal Fruit Jars, 1865 - 1880. Shades yellowish honey and bright golden amber, applied grove-ring wax seal collars - smooth, plain bases, Qt. and half gallon; (the Qt. has a very hard-to-see, 1" cooling fissure, likely in-making, beneath the applied ring; the two half gallon examples are virtually perfect with just a couple of minuscule pinprick specks of roughness on the outer edge of the collars). RB #3045-3. The Qt. is a 2-piece mold; the (2) half gallons are turn mold.

Est.: \$175 - \$350 • Min. bid: \$90



Lot 97

Cathedral Pickle Jar, possibly a Mid-Atlantic glasshouse, 1850 - 1860. Medium-to-deep aquamarine, square, beveled corners, fancy Gothic panels with scalloped designs below large trefoil motif on shoulders, scalloped designs around base on all four sides, sheared mouth with tooled ring collar - large iron pontil scar, ht. 11 5/8"; (some typical minor wear, otherwise attic mint). Zumwalt, pg. 455. A rare mold and a very attractive pickle jar with excellent character and rich color.

Est.: \$400 - \$600 • Min. bid: \$200



Lot 98

Cathedral Pickle Jar, probably a Mid-Atlantic glasshouse, 1855 - 1865. Rich emerald coloration, square with beveled corners, arched Gothic panels with cross and pendant motif below top of frame, sheared mouth with an applied ring collar - domed base with heavy iron pontil scar, ht. 11 7/8", near mint; (some high point wear below the shoulders on one of the side panels, otherwise attic mint). Similar to MW, plate 74, #12, but in a larger size. Fantastic emerald coloration!

Est.: \$1,200 - \$2,200 • Min. bid: \$600



Lot 99

"THIS TRADE MARK REGISTERED / MAPLE SAP AND BOILED CIDER / VINEGAR / THE C. I. Co. LTD, / EAST RINDGE, N.H.", America, 1885 - 1895. Brilliant cobalt blue, cylindrical with fluted shoulders, tooled sloping collar with ring - smooth base, ht. 11 3/8"; (professionally cleaned to original luster with a little scattered ground wear remaining, primarily on the reverse, otherwise excellent). A very scarce, beautiful bottle with great eye-appeal.

Est.: \$600 - \$1,200 • Min. bid: \$300



Lot 100

"CASPER'S WHISKEY / MADE BY HONEST / NORTH / CAROLINA PEOPLE" (with 70% complete original label), 1885 - 1900. Medium-to-deep cobalt blue, cylindrical with fluted shoulders, tooled sloping collar with ring - smooth base, ht. 12", virtually perfect; (just a trace of faint wear). A fantastic example, beautiful rich color, bright, clean and sparkling. Reportedly found upside down in the wall of an old home. A bottle collecting classic that will stand out on any shelf.

Est.: \$500 - \$800 • Min. bid: \$250



Lot 101

"THE CASPER CO., INC. / ROANOKE, VA. / LOWEST PRICED / WHISKEY HOUSE. / SEND FOR CONFIDENTIAL LIST / Our Plant Covers 14 Acres." Handled Stoneware Jug, 1907 - 1910. Cream glaze with black stenciling, cylindrical, wire bail and wooden handle, 1 gal.; (some typical light crazing to the glaze, and a 1/4" flake, possibly in-making, to the glaze below the shoulder, otherwise excellent). A very scarce, desirable jug, overall excellent condition.

Est.: \$200 - \$400 • Min. bid: \$100



Lot 102

"THOS H JACOBS & CO. / PHILADELPHIA" (on base) - **"PATENT"** (on shoulder), **Whiskey Cylinder**, America, 1865 - 1875. Medium-to-deep yellowish olive amber, almost a tobacco coloration, 3-pc. mold whiskey cylinder, applied sloping collar with ring - smooth base, ht. 10 5/8"; (some dried content residue or very faint haze below the shoulders, otherwise virtually perfect). An extremely rare base-embossed whiskey, nice color, strong crisp embossing, and heavily whittled!

Est.: \$300 - \$500 • Min. bid: \$150



Lot 103

McKinley "FULL / DINNER PAIL" - "ALBERT PICK & COMPANY / CHICAGO" (on base), c. 1900. Colorless, in the form of a dinner pail, original wire and wood handle, factory ground mouth with original tin cup inverted for lid - smooth base, ht. 4 1/4", attic mint! Blown for the 1900 presidential campaign of William McKinley, "Full Dinner Pail" was a campaign slogan used to emphasize the prosperity of his 1st term, appeal to the labor vote, and ally himself with the working class.

Est.: \$300 - \$600 • Min. bid: \$150



Lot 104

"DUFFY" / (Rooster Perched on Crescent Moon) / "CRESCENT / SALOON / 204 / JEFFERSON / STREET / LOUISVILLE / KY.", 1865 - 1875. Bright, bluish aquamarine, figural pig, rough sheared mouth, length 7 5/8"; (two chips, 1/4" and 3/8", from the factory ground

mouth; some roughness and a 3/8" chip from the side of the nose on the reverse, otherwise near mint). The aqua is certainly a rare color in a Duffy pig, and this is a bright, clean, sparkling example with strong color.

Est.: \$1,000 - \$2,000 • Min. bid: \$500



Lot 105

"BININGER'S" / CLOCKFACE / "REGULATOR" - "19 BROAD ST - NEW YORK." Figural Clock Whiskey, 1861 - 1863. Medium-to-deep amber, figural clock form, applied round collar with bevel - blowpipe pontil scar, ht. 5 3/4"; (a couple of chips, 1/8" and 1/4", along the edge of the base on the reverse, and a 1" x 1 3/4" interior open bubble with some trapped residue, otherwise excellent). GXIII-87; BPK-38. Scarce. A very attractive Binger whiskey.

Est.: \$400 - \$600 • Min. bid: \$200



Lot 109

"C A RICHARDS / BOSTON" (in molded seal), 1865 - 1875. Deep yellowish olive with an amber tone, cylindrical, short applied sloping collar - smooth base, ht. 9 7/8"; (professionally cleaned to original luster; just a bit of light wear and a couple of shallow open bubbles; there is a small portion of the interior, approx. 3" dia, with a little matte type finish, otherwise near mint). An exceedingly rare Richards bottle, believed to have held cognac.

Est.: \$400 - \$600 • Min. bid: \$200



Lot 106

"BININGER'S / OLD DOMINION - WHEAT TONIC, - A.M. BININGER & Co: / NO. 19 BROAD ST. N.Y.", 1861 - 1863. Beautiful honey amber, square with beveled corners, applied sloping collar - smooth base, ht. 9 3/4", near mint; (a little spotty light interior residue or very faint haze, some of which may wash out). BPK-17. A very attractive example having heavily whittled, wavy glass, and in a scarce color for a "WHEAT TONIC" bottle. Provenance: Joe Widman collection.

Est.: \$400 - \$600 • Min. bid: \$200



Lot 110

"C.A. RICHARDS & Co / 99 WASHINGTON St / BOSTON MASS." (with 95% complete original labels), 1865 - 1875. Medium amber, square with beveled corners, applied sloping collar - smooth base, ht. 9 5/8"; (a 1/8" chip on edge of lip, otherwise perfect; labels have a little staining and darkened a bit from age, otherwise excellent). Note; this is the mold without the backwards N's; a period cork remains in the lip. The Extract of Rye label is very scarce!

Est.: \$200 - \$400 • Min. bid: \$100



Lot 107

"BININGER'S / OLD KENTUCKY BOURBON, - 1849. RESERVE; / DISTILLED IN 1848. - A.M. BININGER & Co, / No. 19 BROAD ST, N.Y.", 1861 - 1863. Bright golden amber, square with beveled corners, applied sloping collar - smooth base, ht. 9 7/8", virtually perfect; (a couple of tiny onion-skin-thin open bubbles). BPK-20. Per the Binger Bottles book, this mold in amber is scarce and much more difficult to find than in olive. Beautiful color, clarity, and condition.

Est.: \$250 - \$450 • Min. bid: \$130



Lot 111

"C.A. RICHARDS / 99 WASHINGTON ST / BOSTON.", 1865 - 1875. Reddish-orange below the shoulders shading to a deep, dense, reddish coloration in the lower two-thirds of the body, square, beveled corners, applied sloping collar - smooth base, ht. 9 1/2"; (a small area of dullness and light wear near the base on one of the side panels, otherwise virtually perfect). An 'attic type' bottle, beautiful reddish tones. Very heavy. It feels like the gaffer used an extra lb. of glass in this one.

Est.: \$200 - \$400 • Min. bid: \$100



Lot 108

"A.M. BININGER & Co. - No. 338 BROADWAY, N.Y. - HEIDELBERG / BRANNTWEIN", probably 1859 - 1861. Medium yellowish olive green, square with beveled corners, applied sloping collar - smooth base, ht. 9 1/2", attic mint. BPK-13. A beautiful example of this very rare and desirable Heidelberg Binger having excellent clarity, color and condition. The Heidelberg bottles come around 'once in a blue moon', don't miss this opportunity. Joe Widman collection.

Est.: \$800 - \$1,600 • Min. bid: \$400



Lot 112

"DUNBAR & Co'S - WORMWOOD / CORDIAL - BOSTON", probably 1855 - 1860. Brilliant aquamarine, square with beveled corners, applied sloping collar - iron pontil scar, ht. 9 1/2", perfect. Odell, p.115. An extremely rare medicine, considered by many to be a medicinal spirits. This example has great eye appeal - bright, clean and sparkling with excellent clarity, and is beautifully whittled. Believed to be only the 2nd example offered in more than 20 years. Joe Widman collection.

Est.: \$1,000 - \$2,000 • Min. bid: \$500



Lot 113

"T.J. DUNBAR & Co - CORDIAL / SCHNAPP'S - SCHIEDAM", America, probably 1865 - 1871. Brilliant yellowish green, square with beveled corners, applied sloping collar - smooth base, ht. 9 3/4", perfect. A gorgeous example, beautiful color, crude wavy glass, outstanding condition! This is the larger of two sizes for this mold. Scarce, especially in this fine condition. The Dunbar Co. of Boston were importers of wines, liquors, schnapps, etc. Joe Widman collection.

Est.: \$400 - \$600 • Min. bid: \$200



Lot 114

"UDOLPHO WOLFE's - SCHIEDAM - AROMATIC / SCHNAPPS" (backwards "S" on "SCHNAPP'S"), America, 1855 - 1865. Rich, medium olive shading to deep olive near the base, square with beveled corners, applied sloping collar with bevel - heavy sand type pontil scar, ht. 7 7/8", near mint; (just a bit of minor wear and a little light interior residue near the base, otherwise perfect). Only a handful of the small size "Wolfe's" are known having the backwards "S".

Est.: \$400 - \$600 • Min. bid: \$200



Lot 115

Blown, Decorative Latticino Glass Spirits Bottle, Eastern Europe, possibly Venetian, 1850 - 1870. Colorful rows of finely threaded blood-red ribbons alternating with rows of opaque blue and pinkish-red ribbons of glass, rectangular with beveled corners, sheared mouth with original brass collar and decorative brass stopper - smooth base ht. 8" (not including stopper), perfect. Originally discovered in the parlor of a Victorian home in St. Louis, MO.

Est.: \$200 - \$400 • Min. bid: \$100



Lot 116

Set of (6) Early half-post Case Bottles in Original Wooden Box, Continental, 1780 - 1820. Bottles are colorless with fancy hand-painted gold designs around the shoulders, square case form, dip mold, tooled thin flared lips with original pressed glass mushroom type stoppers - pontil scarred bases, ht. (incl. stoppers), approx.

8 1/4"; (one bottle has a neck repair; a couple of minor flakes on stoppers, one is frozen in the neck, otherwise bottles are near perfect; box has original key). See VdB, plate 91.

Est.: \$400 - \$800 • Min. bid: \$200



Lot 117

Applied Handle Spirits Jug, America, 1850 - 1860. Beautiful yellowish olive amber, almost an olive yellow below the shoulders, 2-pc. mold, ovoid or 'urn' form, applied handle curled at lower attachment, applied blob collar - large blowpipe pontil scar, ht. 8 3/8", virtually perfect; (just a trace of faint wear and a paper-thin open surface bubble). A great example in a rare and beautiful color for a handled whiskey, heavily whittled!

Est.: \$300 - \$500 • Min. bid: \$150



Lot 118

Lot of (2), Chestnut Bottles, America and possibly Germany, 1845 - 1860. 1st Ex.: Yellowish tobacco amber, 2-pc. mold chestnut form, applied handle, applied collar with flat band - iron pontil scar, ht. 8 3/8", near mint; (some light content residue). 2nd Ex.: Rich, reddish amber, freeblown chestnut form, sheared mouth with applied string rim - blowpipe pontil scar, ht. 5 3/4", near mint; (slight trace of wear including a 1/8" open bubble). Beautiful colors and forms that complement one another.

Est.: \$150 - \$250 • Min. bid: \$80



Lot 119

"OLD SACHEM / BITTERS / AND / WIGWAM TONIC", America, 1860 - 1875. Yellowish honey amber, barrel form, applied square collar - smooth base, ht. 9 1/2", virtually perfect; (a 3/16", onionskin-thin, open bubble on the reverse, otherwise attic mint). R/H #O46. Very pretty, and certainly a little lighter in tone than most.

Est.: \$400 - \$600 • Min. bid: \$200



Lot 120

"OLD SACHEM / BITTERS / AND / WIGWAM TONIC", America, 1860 - 1875. Bright golden amber, barrel form, applied square collar - smooth base, ht. 9 1/4", virtually perfect; (just the slightest trace of very faint wear on the reverse, otherwise pristine perfect). R/H #O46. A great example, bright and clean, and with extremely crisp, bold embossing.

Est.: \$300 - \$500 • Min. bid: \$150

**Lot 121**

"OLD SACHEM / BITTERS / AND / WIGWAM TONIC", America, 1860 - 1875. Medium 'peachy'-apricot coloration, barrel form, applied square collar - smooth base, ht. 9 1/2", near mint; (a shallow 1/8" flake on the top of the lip, and a 1/8" flake or bit of roughness along the back edge of the lip, otherwise perfect). R/H #O46. An attractive and very scarce color for an "Old Sachem" bitters, excellent overall condition.

Est.: \$800 - \$1,200 • Min. bid: \$400

**Lot 125**

"GREELEY'S - BOURBON WHISKEY / BITTERS. - GREELEY'S", 1860 - 1875. Deep apricot puce, barrel form, applied square collar - smooth base, ht. 9 1/4", perfect! R/H #G102. A nice example of this scarce vertical Greeley's' mold having almost no wear, in a rich, very deep, apricot with puce tone coloration.

Est.: \$500 - \$800 • Min. bid: \$250

**Lot 122**

"OLD SACHEM / BITTERS / AND / WIGWAM TONIC", America, 1860 - 1875. Rich, deep cherry puce coloration, barrel form, applied square collar - smooth base, ht. 9 1/4", virtually perfect; (just a slight trace of very light wear on reverse, otherwise pristine). R/H #O46. A great example, beautiful rich reddish coloration, crisp embossing, nicely whittled, fantastic condition! Provenance: Joe Widman collection.

Est.: \$600 - \$900 • Min. bid: \$300

**Lot 126**

"BROWN'S / CELEBRATED / INDIAN HERB BITTERS" - PATENTED / FEB 11. / 1868", 1868 - 1880. Golden amber, figural Indian maiden, sheared and inward rolled lip - smooth base, ht. 12 1/4"; (approximately two-thirds of the inner rolled portion of the lip is missing, otherwise perfect). R/H #B226. As most know, it is very common for the delicate, thin, inner-rolled lip to be missing, or have issues, as it was a weak spot when prying out the cork. A bright, clean example that displays as perfect.

Est.: \$400 - \$600 • Min. bid: \$200

**Lot 123**

"BOURBON WHISKEY / BITTERS.", America, 1860 - 1875. Beautiful medium-to-deep apricot with some rich reddish salmon tones, barrel form, applied square collar - smooth base, ht. 9 1/4"; (a couple of little, shallow, pinhead flakes and very minor roughness on the edge of the collar, and some fine light wear near the side mold seam, otherwise near mint). R/H #B171. A very pretty example that passes plenty of light, beautiful color, and very heavily whittled!

Est.: \$300 - \$500 • Min. bid: \$150

**Lot 127**

NATIONAL / BITTERS" - "PATENT / 1867" (on base), America, 1867 - 1875. Golden amber with some light yellowish-honey tones through the shoulders, figural ear of corn, applied short tapered collar with ring - smooth base, ht. 12 1/2", near mint; (some minor interior content residue, or very faint haze, possibly washable, in the lower half of the body, otherwise perfect). R/H #N8. A very nice example.

Est.: \$300 - \$500 • Min. bid: \$150

**Lot 124**

"GREELEY'S BOURBON / BITTERS", 1860 - 1875. Medium-to-deep copper with some warmer apricot tones, barrel form, applied square collar - smooth base, ht. 9"; (just a touch of minor wear including a tiny, less-than 1/8", spot of roughness on the edge of the collar, otherwise perfect). R/H #G101. A really nice example, strong embossing, heavily whittled, excellent condition.

Est.: \$300 - \$500 • Min. bid: \$150

**Lot 128**

"THE / FISH BITTERS - W.H. WARE / PATENTED 1866", America, 1866 - 1875. Bright golden amber shading to a light honey color along the sides, figural fish, crudely applied ring collar - **"W.H. WARE / PATENT 1866"** (on smooth base), ht. 11 1/2"; (professionally cleaned to original luster and near mint condition; a minor scratch near the eye on one side, and slightly weak embossing as is common on this mold, otherwise excellent). R/H #F46. A bright, clean, pretty example!

Est.: \$250 - \$450 • Min. bid: \$130



Lot 129

"THE GREAT TONIC / DR CALDWELL'S / HERB BITTERS", America, 1865 - 1875. Clear, medium honey amber, triangular pyramid form with 16 squares in lattice panel, applied sloping collar with ring - smooth base, ht. 12 1/2"; (just a slight trace of wear including a shallow 1/4" open bubble on one of the side panels, otherwise very near mint). R/H #C9. A pretty example, nice lighter color, excellent condition.

Est.: \$200 - \$300 • Min. bid: \$100



Lot 133

"S T / DRAKE'S / 1860 / PLANTATION / X / BITTERS - PATENTED / 1862", America, 1862 - 1880. Deep pinkish-strawberry puce, cabin form, applied sloping collar - smooth base, ht. 9 3/4", near mint; (just a trace of very light wear along the edge of the roof, and some minor dried interior content residue, otherwise perfect). R/H #D105. Although deep, the color is very pretty and changes according to the type of lighting and time of day. A beautiful example, and a lot of bottle for the money!

Est.: \$250 - \$450 • Min. bid: \$130



Lot 130

"THE BEST BITTERS / IN AMERICA - B. DESENBERG & Co / KALAMAZOO MICH", 1865 - 1870. Amber, cabin form with a three-tiered thatched roof, roped corners, applied sloping collar - smooth base, ht. 9 5/8", near mint; (some minor, light, interior residue or content haze, not terribly distracting but mentioned for complete accuracy, and an onionskin-thin, 1/8" open bubble on a side panel). R/H #B92. A very nice example! Joe Widman collection.

Est.: \$8,000 - \$12,000 • Min. bid: \$4,000



Lot 134

"S T / DRAKE'S / 1860 / PLANTATION / X / BITTERS - PATENTED / 1862", America, 1862 - 1880. Beautiful yellowish-honey coloration through the body, shading to a deeper golden amber through the shoulders and neck, cabin form, applied sloping collar - smooth base, ht. 10 1/8", virtually perfect; (a couple of small patches of washable, very minor, light interior residue). R/H #D110. An attractive lighter color with plenty of yellowish tones, and nice crude, wavy glass.

Est.: \$200 - \$400 • Min. bid: \$100



Lot 131

"S T / DRAKE'S / 1860 / PLANTATION / X / BITTERS - PATENTED / 1862", America, 1862 - 1880. Beautiful light-to-medium apricot with a topaz tone, cabin form, applied sloping collar - smooth base, ht. 9 3/4", perfect! R/H #D105. There are some rich reddish tones through the lower label panel, and some attractive lighter topaz tones in the roof panels. A beautiful example, lighter than most, excellent color, clarity, and condition!

Est.: \$800 - \$1,200 • Min. bid: \$400



Lot 135

"S T / DRAKE'S / 1860 / PLANTATION / X / BITTERS - PATENTED / 1862", America, 1862 - 1880. Medium golden amber with a rich orange tone, cabin form, applied sloping collar - smooth base (two large raised dots), ht. 10 1/4", attic mint! R/H #D110. A great example, strong, bold embossing, fantastic condition. One of the great classics in figural bitters.

Est.: \$100 - \$200 • Min. bid: \$50



Lot 132

"S T / DRAKE'S / 1860 / PLANTATION / X / BITTERS - PATENTED / 1862", America, 1862 - 1880. Medium-to-deep apricot with rich reddish-salmon tones, particularly through the lower half of the body, cabin form, applied sloping collar - smooth base, ht. 9 3/4", virtually attic mint; (a touch of light interior content residue). R/H #D108. Another very nice example, rich color - no amber in this one, very strong embossing, outstanding condition.

Est.: \$500 - \$800 • Min. bid: \$250



Lot 136

"OLD / HOMESTEAD / WILD / CHERRY / BITTERS - PATENT", America, possibly a Pittsburgh district glasshouse, 1865 - 1875. Golden amber, square cabin form, applied sloping collar - smooth base, ht. 9 1/2", virtually attic mint; (just a slight trace of light wear, otherwise perfect). R/H #O37. A clean, sparkling example. Note; this is the mold without the clapboard at the bottom of the door.

Est.: \$300 - \$500 • Min. bid: \$150



Lot 137

"DR. A.S. HOPKINS / UNION STOMACH BITTERS / HARTFORD CONN.", America, 1885 - 1895. Clear, light citron green, almost a celery coloration, square with beveled corners, applied sloping collar - smooth base, ht. 9 7/8", attic mint! R/H #H180. An absolutely fantastic example, beautiful and rare color, nice even 'see-through' clarity from the neck to the base. Provenance: Ex. Judge E.S. Mackenzie collection; Bryan Grapentine collection.

Est.: \$1,000 - \$2,000 • Min. bid: \$500



Lot 138

"DR. A.S. HOPKINS / UNION STOMACH BITTERS / F.S. AMIDON, SOLE PROP. / HARTFORD, CONN. U.S.A.", America, 1901 - 1905. Brilliant golden amber with a slight orange tone, square with beveled corners, tooled sloping collar - smooth base, ht. 9 1/2", sparkling attic mint. R/H #H182. Not necessarily a rare mold, but an incredible example of this mold in virtually 'out-of-the-mold', pristine condition.

Est.: \$100 - \$200 • Min. bid: \$50



Lot 139

"DR. A.H. SMITHS / OLD STYLE BITTERS - O.S / 2781", America, 1870 - 1880. Honey amber, square with beveled corners, applied sloping collar - smooth base, ht. 8 3/4", virtually perfect; (some traces of faint interior content residue; a pinhead open surface bubble on a side panel, otherwise attic mint). R/H #S127. A scarce mold believed to be from St. Louis, beautiful condition, nice attractive color. Originally discovered in an estate auction in Wisconsin.

Est.: \$250 - \$450 • Min. bid: \$130



Lot 140

"DR. F. FLESCHHUT'S - CELEBRATED / STOMACH BITTERS - LAPORTE. PA", 1870 - 1880. Aqua, rectangular with beveled corners, applied sloping collar - smooth base, ht. 8 3/4", virtually perfect; (slight trace of faint interior residue). R/H #F54. A great example of this rare and very attractive bitters. Rich color, almost an ice blue tone in the base, excellent character and condition. The tiny town of LaPorte, was named for John LaPorte, Surveyor General of PA.

Est.: \$500 - \$800 • Min. bid: \$250



Lot 141

"SOLOMON'S / STRENGTHENING & INVIGORATING BITTERS - SAVANNAH / GEORGIA.", 1875 - 1885. Medium-to-deep cobalt, square with beveled corners, applied sloping collar - smooth base, ht. 9 3/4"; (professionally cleaned to original luster, just a touch of minor wear on a panel edge near the base on the reverse, otherwise very near mint). R/H #S139. A beautiful example, and although it's been cleaned as almost all of them have, this is a pretty example having very little wear.

Est.: \$1,200 - \$1,800 • Min. bid: \$600



Lot 142

"LORIMER'S - JUNIPER TAR - BITTERS / ELMIRA N.Y.", America, 1870 - 1880. Bright, rich, medium blue green, square with beveled corners, applied sloping collar - smooth base, ht. 9 3/8", perfect. R/H #L121. A fantastic example, beautiful color, excellent clarity, outstanding condition and as noted by Ring / Ham, a very rare bitters! Believed to be only the 3rd example offered in the past 25 years (we sold the 2nd in Auction 18). Provenance: Joe Widman collection.

Est.: \$2,000 - \$4,000 • Min. bid: \$1,000



Lot 143

"A.J. DUNNING'S / PURE BITTERS", America, 1870 - 1880. Medium yellowish amber with an olive tone, square with beveled corners, applied sloping collar - smooth base, ht. 9 1/2", attic mint! R/H #D123.5. An exceedingly rare bitters. A couple of specimens were dug in Illinois, this one is virtually pristine (small trace of interior content residue, a tiny pinhead open bubble at base edge). An outstanding example, great rarity, and pleasing color. Provenance: Joe Widman collection.

Est.: \$800 - \$1,600 • Min. bid: \$400



Lot 144

"COCAMOKE - COCAMOKE BITTER CO. / HARTFORD / CONN.", America, probably 1883 - 1890. Golden amber with a slight orange tone, square with beveled corners, applied sloping collar - smooth base, ht. 9 5/8"; (lightly cleaned to original luster and near mint condition; a few light scratches and minor wear on one of the side panels, otherwise excellent). R/H #C182. Noted in the Ring / Ham book as "Rare", these don't come around often. This one presents very nicely.

Est.: \$200 - \$400 • Min. bid: \$100

A Variety of Choice & Rare



Lot 155



Lot 261



Lot 263



Lot 6



Lot 5

Albany, New York Bottles



Lot 79

Lot 262

Lot 264

Lot 265

Lot 174



Lot 145

"DR J. HOSTETTER'S / STOMACH BITTERS", a Pittsburgh district glasshouse, 1860 - 1870. Deep olive with an amber tone, square with beveled corners, applied sloping collar - smooth base, ht. 9 1/4", near mint; (just a tiny pinprick speck of roughness on the edge of the collar, and several tiny paper-thin open surface bubbles, otherwise virtually perfect). R/H #H194. A great early example, fantastic character, the glass being filled with tiny seed bubbles.

Est.: \$250 - \$400 • Min. bid: \$130



Lot 146

"JOHN MOFFAT - NEW YORK - PHOENIX / BITTERS - PRICE \$1,00", a New England glasshouse, 1845 - 1855. Medium olive coloration, rectangular with beveled corners, applied sloping collar - blowpipe pontil scar, ht. 5 1/2", attic mint. R/H #M112. A great example, good strength of embossing (it is sometimes very light on this mold), almost no wear, and nice character to the glass.

Est.: \$600 - \$900 • Min. bid: \$300



Lot 147

"PURELY VEGETABLE / PREPARATION. BECKWITH'S / SARSAPARILLA QUASSIA / & WILD CHERRY BITTERS", 1870 - 1880. Bright aquamarine, rectangular with beveled corners and concave sides, applied double ring collar - smooth base, ht. 9 1/4", near mint; (some very faint, light, interior milkiness, not terribly distracting, otherwise virtually perfect). R/H #B48. An exceedingly rare sarsaparilla - bitters, heavily whittled, fantastic eye-appeal! Joe Widman collection.

Est.: \$1,500 - \$2,500 • Min. bid: \$800



Lot 148

"DR M. C AYER - RESTORATIVE / BITTERS - BOSTON. MASS", America, 1870 - 1880. Colorless with a slight smoky-grayish tone, rectangular with beveled corners, tooled, likely applied, square disc collar - smooth 'hinge-mold' base, ht. 8 1/4", perfect! R/H #A144. Scarce! An absolutely beautiful example, attractive 'color' (or lack thereof), and virtually pristine condition. This example was originally discovered in the wall of a house in New Hampshire.

Est.: \$200 - \$300 • Min. bid: \$100



Lot 149

"DANDELION / AND / WILD CHERRY BITTERS / PRICE 50¢", America, probably 1862 - 1864. Aquamarine, cylindrical, applied round collar with bevel - smooth base, ht. 9", perfect! R/H #D15. An extremely rare bitters from the small town of Farmersburg, Iowa, and one of three mold variants that this bottle may be found in (all three being extremely rare). This one is clean, sparkling, and boldly embossed. Provenance: Joe Widman collection.

Est.: \$300 - \$600 • Min. bid: \$150



Lot 150

"PAWNEE BITTERS / PAWNEE / INDIAN MEDICINE CO. / S.F.", c. 1910. Aquamarine, rectangular with rounded corners, tooled sloping collar with ring - smooth base, ht. 8 3/8", virtually perfect; (a trace of light wear on reverse including a tiny sliver open bubble, and a bit of faint, barely noticeable, milkiness in the shoulder). R/H #P34. Per Jeff Wichmann's informative book on Western Bitters, a very rare bottle, this variant believed to have been produced for about one year. Joe Widman collection.

Est.: \$300 - \$600 • Min. bid: \$150



Lot 151

"PAWNEE LONG LIFE / BITTERS / NET CONTENTS 1 PINT 3 OZ", probably 1911 - 1912. Aquamarine, rectangular with beveled corners, beveled shoulders, tooled sloping collar with bevel - smooth base, ht. 8", perfect! R/H #P35. Noted by Ring / Ham as "Extremely rare", this is one of only a few examples offered at auction in more than 25 years (in any condition). A Western bitters with an interesting history. Provenance: Joe Widman collection.

Est.: \$300 - \$600 • Min. bid: \$150



Lot 152

"U.S.N. - LIQUORS - MED. - DEP.", 1850 - 1860. Medium-to-deep yellowish green with an emerald tone, square with rounded corners, applied sloping collar with bevel, inside ground for stopper - blowpipe pontil scar, ht. 10 3/4", virtually attic mint; (just a slight trace of minor wear). An impressive bottle, very heavily whittled, beautiful color, great eye-appeal, and extremely rare. Believed to be one of only two, or three, examples. Joe Widman collection; Ex. James Chebalo collection.

Est.: \$6,000 - \$12,000 • Min. bid: \$3,000



Lot 153

"DR TOWNSENDS - SARSAPARILLA - ALBANY / N. Y.", probably a NY State glasshouse, 1846 - 1855. Rich, yellowish tobacco amber below the shoulders shading to a dense tobacco color near the base, rectangular with beveled corners, applied sloping collar - domed base with sand type pontil scar, ht. 9 1/2"; (just a slight trace of wear, otherwise perfect). Rare color, bold embossing, and outstanding character with crude, seedy, glass. A top example! Joe Widman collection.

Est.: \$1,000 - \$2,000 • Min. bid: \$500



Lot 157

"DR TOWNSEND'S - SARSAPARILLA - ALBANY / N. Y.", 1845 - 1855. Greenish aquamarine, square, beveled corners, applied sloping collar - blow-pipe pontil scar, ht. 9 1/2"; (some light interior residue or very faint haze in the shoulders mentioned for accuracy, otherwise attic mint). A very scarce-to-rare 'color' for an early Townsend, as well as having the 'open' pontiled base. Outstanding character, heavily whittled. An estate find in New England, and the first time offered at public auction!

Est.: \$1,000 - \$2,000 • Min. bid: \$500



Lot 154

"DR TOWNSEND'S - SARSAPARILLA - ALBANY / N. Y. No 1", probably a New England glasshouse, 1845 - 1855. Bright medium olive with a slight yellowish tone, square with beveled corners, applied sloping collar - sand type pontil scar, ht. 9 3/8"; (just a trace of light wear on one of the side panels, otherwise attic mint). A beautiful example, outstanding character, crude, 'syrupy', glass. A scarce mold, especially in this fine condition - an 'attic-type' bottle.

Est.: \$600 - \$900 • Min. bid: \$300



Lot 158

"DR TOWNSENDS - SARSAPARILLA - NEW YORK.", 1855 - 1865. Rich, deep emerald coloration with a slight bluish tone, square, beveled corners, applied sloping collar - domed smooth base, ht. 9 1/2", near mint; (a little scattered light wear, otherwise perfect). Gorgeous color, heavily whittled, crude glass, another great example with plenty of eye-appeal! Note; this is certainly a rare color for the "NEW YORK." variant, most being in shades of light blue-green. Provenance: Joe Widman collection.

Est.: \$800 - \$1,600 • Min. bid: \$400



Lot 155

"DR TOWNSENDS - SARSAPARILLA - ALBANY / N. Y.", America, 1850 - 1860. Brilliant, deep, yellowish emerald coloration, square with beveled corners, short neck with applied sloping collar - 'cloverleaf' iron pontil scar, ht. 9", virtually attic mint; (just a slight trace of very minor wear, otherwise perfect). An absolutely spectacular example in terms of color, character, and condition! The unusually short neck and very bold embossing add another dimension to this incredible example.

Est.: \$1,000 - \$2,000 • Min. bid: \$500



Lot 159

"PHELPS'S - ARCANUM - WORCESTER - MASS.", New England, 1845 - 1855. Yellowish olive amber below the shoulders shading to a rich, deep, olive amber near the base, cylindrical with 8 indented panels, applied sloping collar with bevel - sand-type pontil scar, ht. 8 3/8", perfect. Odell, p.279. A fantastic example, very nice color, strong embossing, excellent - virtually pristine condition. A great example of one of the great classic pontiled medicines! Joe Widman collection.

Est.: \$3,000 - \$5,000 • Min. bid: \$1,500



Lot 156

"DR TOWNSEND'S - SARSAPARILLA - ALBANY / N. Y.", 1850 - 1860. Rich yellowish green with an emerald tone, square with beveled corners, applied sloping collar - iron pontil scar, ht. 9 3/8"; (lightly cleaned to original luster and near mint condition, just a bit of typical light wear, otherwise excellent). This is the variant with no periods after the "N" or "Y" in "N. Y.", and also the letters "A N. Y." in "ALBANY" being widely spaced. A good impression for this mold (most are weakly embossed).

Est.: \$400 - \$600 • Min. bid: \$200



Lot 160

"SWAIM'S - PANACEA - PHILADA", America, 1840 - 1855. Medium-to-deep yellowish olive amber, cylindrical with 12 indented panels, applied sloping collar - heavy sand or disc-type pontil scar, ht. 7 7/8", virtually perfect; (a small trace of light interior residue, likely washable, and a 1" narrow piece of glass adhered to the edge of the base during the annealing process). A great looking, crude example, scarce color. Also, note the single tapered collar (no bevel). Provenance: Joe Widman collection.

Est.: \$500 - \$800 • Min. bid: \$250

**Lot 161**

"SWAIM'S - PANACEA - PHILADA", America, 1845 - 1855. Bright yellowish olive, cylindrical with 12 indented panels, large applied sloping collar with bevel - sand type pontil scar, ht. 7 3/4", virtually perfect; (a 1/4" onionskin-thin open surface bubble on a side panel, and just a trace of faint, barely noticeable, interior residue or milkiness in the shoulder, otherwise attic mint). A beautiful example, great color - not too light, not too dark, and fantastic condition. Joe Widman collection

Est.: \$400 - \$600 • Min. bid: \$200

**Lot 165**

"GENUINE - SWAIM'S / PANACEA - PHILADELPHIA", America, 1824 - 1830. Light aquamarine, rectangular with concave corners, sheared mouth with a wide beveled collar - blowpipe pontil scar, ht. 7 5/8"; (just a trace of spotty, barely noticeable, light interior haze in the neck and shoulder, otherwise virtually attic mint). Odell, p.335. These were William Swaim's first bottles, replaced by the round bottles in 1830. A great example having crude wavy glass, excellent condition. Joe Widman collection.

Est.: \$800 - \$1,200 • Min. bid: \$400

**Lot 162**

"SWAIM'S - PANACEA - PHILADA", America, 1860 - 1875. Light-to-medium yellowish green, almost a citron coloration, cylindrical with nine indented panels, large applied sloping collar with bevel - smooth base, ht. 7 3/4", very near mint; (just a touch of minor light wear, otherwise perfect). Odell, p.335. Another fantastic 'attic-type' example, very attractive color, excellent condition. Provenance: Joe Widman collection.

Est.: \$250 - \$400 • Min. bid: \$130

**Lot 166**

"SWAIM'S / VERMIFUGE - DYSENTERY / CHOLERA MORBUS / DYSPEPSIA", America, 1835 - 1845. Aquamarine, oval, sheared, tooled, thin flanged lip - blowpipe pontil scar, ht. 3 7/8"; (a little faint rainbow iridescence on the exterior; a couple of small spots of light interior haze near the shoulders, otherwise excellent). A scarce early medicine with crisp, strong embossing, and overall very nice condition. Provenance: Joe Widman collection.

Est.: \$150 - \$250 • Min. bid: \$80

**Lot 163**

"SWAIM'S - PANACEA - PHILADA", America, 1860 - 1875. Rich, deep bluish aquamarine, almost a blue green coloration, cylindrical with nine indented panels, large applied sloping collar with bevel - smooth base, ht. 7 5/8", virtually perfect; (tiny pinhead speck of roughness on the edge of the collar and a 1/8" onionskin-thin open bubble near the base). Odell, p.335. A pretty example, good strong color, excellent clarity and condition. Provenance: Joe Widman collection.

Est.: \$200 - \$300 • Min. bid: \$100

**Lot 167**

"SWAIM'S / VERMIFUGE - PATENT - DYSENTERY / CHOLERA MORBUS / DYSPEPSIA & cc", 1835 - 1845. Light apple green, oval, short applied tapered collar with bevel - faint sand type pontil scar, ht. 5 1/8"; (professionally cleaned to original luster and near mint condition; some minor in-manufacture crazing lines in the lip mentioned for complete accuracy). Very scarce. Per Odell, advertisements for this medicine appeared as early as 1835. Provenance: Joe Widman collection.

Est.: \$200 - \$400 • Min. bid: \$100

**Lot 164**

"SWAIM'S - PANACEA - PHILADA", probably 1830 - 1840. Light aqua, cylindrical with 12 indented panels, applied or possibly outward folded collar - blowpipe pontil scar, ht. 7 3/4"; (a touch of light exterior wear, otherwise attic mint). Odell, p.335. A very rare and early mold. This was likely one of Wm. Swaim's earliest round bottles following production of the quart rectangular bottles. A distinctly different mold than the majority of round Swaim's bottles. Joe Widman collection.

Est.: \$800 - \$1,200 • Min. bid: \$400

**Lot 168**

Rare size, **"SWAIM'S / VERMIFUGE - PATENT - DYSENTERY / CHOLERA MORBUS / DYSPEPSIA & cc"**, 1835 - 1845. Light apple green, oval, short applied tapered collar with bevel - base appears smooth, but is almost certainly a very faint sand-type pontil, ht. 7 3/8", virtually attic mint; (a touch of minor light wear, and a tiny pinprick bit of roughness on the edge of the collar, otherwise perfect). Rare mold in this size, and about as nice as you could hope to find! Joe Widman collection.

Est.: \$300 - \$600 • Min. bid: \$150



Lot 169

"HYATT'S - INFALLIBLE - LIFE BALSAM / N - Y.", America, 1852 - 1860. Rich, medium bluish-emerald coloration, rectangular with beveled corners, applied sloping collar with ring - heavy iron pontil scar, ht. 9 3/4", virtually perfect; (only a trace of light wear including a tiny pinhead flake on the back edge of the lip, otherwise attic mint). Odell, p.189. A fantastic example in terms of color, character, and condition! Provenance: Joe Widman collection.

Est.: \$1,600 - \$3,200 • Min. bid: \$800



Lot 170

"HYATT'S - INFALLIBLE - LIFE BALSAM / N - Y.", America, 1865 - 1875. Medium-to-deep blue green, rectangular with beveled corners, applied sloping collar with bevel - smooth base, ht. 10", sparkling mint! An absolutely fantastic example, beautiful, strong color - deeper than most, excellent clarity, character - the glass being filled with tiny bubbles, and virtually pristine condition. Provenance: Joe Widman collection.

Est.: \$400 - \$800 • Min. bid: \$200



Lot 171

"HYATT'S - INFALLIBLE - LIFE BALSAM / N. Y.", America, 1870 - 1880. Light blue green coloration, rectangular with beveled corners, applied sloping collar with bevel - smooth base, ht. 9 1/2", near mint; (just a very faint trace of wear and a little light milkiness, primarily in the shoulders, barely noticeable, otherwise perfect). Another great example of this big, impressive, balsam bottle. Provenance: Joe Widman collection.

Est.: \$150 - \$250 • Min. bid: \$80



Lot 172

"HYATT'S - AB / DOUBLE STRENGTH - LIFE BALSAM / N-Y", America, 1870 - 1880. Bright, clear greenish aquamarine, rectangular with beveled corners, applied sloping collar with bevel - smooth base, ht. 9 3/4", perfect! An outstanding example of this scarce mold, brilliant glass, sparkling mint - virtually pristine condition. Provenance: Joe Widman collection.

Est.: \$200 - \$400 • Min. bid: \$100



Lot 173

"WYNKOOP & Co's / TONIC MIXTURE / NEW YORK. - WARRANTED TO CURE - FEVER & AGUE", 1850 - 1860. Medium-to-deep sapphire blue, rectangular with beveled corners, applied sloping collar - blowpipe pontil scar, ht. 6 1/2", near mint; (just a trace of light wear, primarily on the back label panel, otherwise virtually perfect). A beautiful example, excellent condition, good strong color. One of the great classics of colored pontiled medicines. Provenance: Joe Widman collection.

Est.: \$4,000 - \$6,000 • Min. bid: \$2,000



Lot 174

"DR. J.S. WOOD'S / ELIXIR / ALBANY / N.Y.", probably 1847 - 1849. Rich, deep bluish green with an emerald tone, rectangular tombstone form with concave corners, applied sloping collar - iron pontil scar, ht. 8 3/4", near mint; (a little light high point wear, and a 1/8" panel edge flake). Odell, p.379. A big, beautiful, eye-appealing example, rich color, whittled wavy glass, excellent condition. The embossing is often very weak on this mold. This is a much better than average example!

Est.: \$4,000 - \$6,000 • Min. bid: \$2,000



Lot 175

"W.W. HUFF'S / LINAMENT" America, possibly Lockport Glass Works, 1845 - 1855. Bluish green with an emerald tone, cylindrical with domed shoulders, applied sloping collar - blowpipe pontil scar, ht. 4 3/8", perfect! Odell, p.183. A beautiful example, strong embossing, heavily whittled, outstanding condition! Note; there is a 1" piece of glass that was impressed into the base during manufacture. Another great medicine, beautiful color, very scarce, especially in this fine condition.

Est.: \$1,000 - \$2,000 • Min. bid: \$500



Lot 176

"SKERRETT'S OIL / B. WHEELER. / W. HENRIETTA / MON. CO. N.Y.", probably Lockport Glass Works, Lockport, NY, 1843 - 1855. Brilliant medium bluish emerald coloration, cylindrical, applied sloping collar - blowpipe pontil scar, ht. 6 1/8", perfect. N #586; Odell, p.322. A very scarce-to-rare medicine that does not come around often. A top example in a rich color with crisp, bold embossing, and loaded with tiny bubbles.

Est.: \$1,800 - \$3,200 • Min. bid: \$900



Lot 177

"W. PEETS - SALEM MASS.", New England, possibly New England Glass Bottle Co, Cambridge, MA, or Coventry, CT, 1840 - 1850. Rich, deep, bubbly olive amber, cylindrical, applied sloping collar with bevel - sand pontil scar, ht. 7"; (a tiny pinhead bit of roughness on the edge of the collar, and an approx. 1/2", well hidden, shallow bruise on the edge of the base). An exceedingly rare New England medicine. Fantastic character, and only the 2nd one to be offered in more than 25 years.

Est.: \$600 - \$900 • Min. bid: \$300



Lot 178

"SMITH'S - GREEN MOUNTAIN - RENOVATOR - EAST. GEORGIA. VT", Granite Glass Company, Stoddard, NH, 1850 - 1860. Beautiful yellowish amber below the shoulders shading to a deeper amber towards the base, rectangular with wide beveled corners, applied double round collar - iron pontil scar, ht. 7", virtually attic mint; (just the slightest trace of light wear including a paper-thin, partially open interior bubble in the shoulder). A great example with nice character.

Est.: \$1,600 - \$2,400 • Min. bid: \$800



Lot 179

"HOWARDS / VEGETABLE - CANCER. AND / CANKER. SYRUP", New England, a Stoddard, NH glasshouse, 1860 - 1865. Medium-to-deep 'old amber', rectangular with wide beveled corners, large applied square collar - smooth base, ht. 7 1/4", attic mint! A fantastic example of this scarce and desirable Stoddard medicine, outstanding condition, nice crude glass, almost no wear, and crisp strong embossing. Provenance: Joe Widman collection.

Est.: \$1,800 - \$3,200 • Min. bid: \$900



Lot 180

"DR J. DOUGHTY'S / CELEBRATED / GRAVE ROBBER", probably 1853 - 1855. Aquamarine, rectangular with beveled corners, applied sloping collar - blowpipe pontil scar, ht. 7 7/8"; (a 3/8" flake from front panel at base, otherwise virtually attic mint). N #179; Odell, p.113. A one-of-a-kind bottle and a historic pontiled medicine considered by many to be the 'holy grail' of aqua pontiled medicines. Joe Widman collection; Ex. Fred Nielsen, Sam Greer, James Chebalo collections.

Est.: \$12,000 - \$24,000 • Min. bid: \$6,000



Lot 181

"Dr. ROBERTSONS - FAMILY / MEDICINE - PREPARED - ONLY BY / T.W. DYOTT", Kensington Glass Works, 1809 - 1815. Aqua, rectangular with beveled corners, tooled flared mouth - heavy blowpipe pontil scar, ht. 5 1/4", virtually perfect; (small trace of interior residue). MW, p.80. A rare, historical, pontiled medicine credited as being one of the earliest embossed American medicine bottles. This one has crisp embossing and is as nice as you could hope to find. Joe Widman collection.

Est.: \$1,500 - \$2,500 • Min. bid: \$800



Lot 182

"SCOTT & STEWART - UNITED STATES / SYRUP - NEW YORK", America, probably 1849 - 1854. Aquamarine with an ice-blue tone, rectangular with narrow beveled corners, applied sloping collar - blowpipe pontil scar, ht. 9 3/8", attic mint. N #557; Odell, p.354. A big, impressive, rare and desirable pontiled medicine. This example has crude wavy glass, outstanding condition, and great eye-appeal. Provenance: Joe Widman collection; Ex. Sidney Genius collection.

Est.: \$2,500 - \$4,500 • Min. bid: \$1,300



Lot 183

"DR GUYSOTT'S - COMPOUND EXTRACT / OF YELLOW DOCK - & SARSAPARILLA", America, 1848 - 1855. Brilliant, deep bluish aquamarine, square with beveled corners, short, inverted tapered collar - blowpipe pontil scar, ht. 9 3/8", very near mint; (just a slight touch of minor light wear, otherwise perfect). Odell, p.155. A very eye-appealing example with rich deep color, and heavily whittled glass. Also, scarce lip treatment. Provenance: Joe Widman collection.

Est.: \$400 - \$800 • Min. bid: \$200



Lot 184

"Graefenberg Co. - SARSAPARILLA / COMPOUND - New York", 1850 - 1860. Aquamarine, rectangular with beveled corners, applied sloping collar - blowpipe pontil scar, ht. 7", virtually pristine perfect; (just the slightest trace of faint light wear on the back label panel). Odell, p.150. Scarce. An 'attic' type, sparkling, example of this unusual sarsaparilla with quirky embossing. The mold maker used three different font styles - a different one on each panel. Ex. Preston collection.

Est.: \$150 - \$250 • Min. bid: \$80



Lot 185

"JOHN BULL - EXTRACT OF / SASSAPARILLA - LOUISVILLE KY", Midwest, possibly Kentucky or Louisville Glass Works, 1850 - 1860. Bright bluish aquamarine, rectangular with beveled corners, applied sloping collar - iron pontil scar, ht. 9", near perfect; (a 1/8" flake or bit of roughness on the edge of the lip, otherwise attic mint). Odell, pgs. 58-59. An impressive bottle with excellent character and crudity. Provenance: Ex. Bryan Grapentine collection.

Est.: \$300 - \$500 • Min. bid: \$150



Lot 186

"DR. D. JAYNE'S / LIFE PRESERVATIVE - PHILADA.", America, 1840 - 1850. Aquamarine, rectangular with wide beveled corners, sheared, thin flanged lip - blowpipe pontil scar, ht. 5 5/8"; (a little faint interior haze, and a touch of very light wear, otherwise near mint). Odell, p.200; N #338. Nice crude glass, and certainly one of the rarest and most desirable of all the Dr. Jayne's bottles - believed to be less than 10 known in any condition. Provenance: Joe Widman collection.

Est.: \$400 - \$800 • Min. bid: \$200



Lot 187

"W. OCONNER'S - PURELY VEGETABLE / AGUE & FEVER - NOSTRUM", America, 1845 - 1855. Aquamarine, rectangular with beveled corners, applied sloping collar - blowpipe pontil scar, ht. 6 1/2", perfect. Odell, p.267. A very rare pontiled medicine, and one of only a small handful that are actually embossed with the word "NOSTRUM". Bright and clean with crude, wavy, glass. Provenance: Joe Widman collection.

Est.: \$800 - \$1,200 • Min. bid: \$400



Lot 188

"EASTMAN'S - ELIXIR - OF HEALTH", Midwest, probably Zanesville Glass Works, OH, 1840 - 1847. Aqua, oval with six indented panels, applied short tapered collar - blowpipe pontil scar, ht. 6 7/8", near perfect; (the bottle may have been lightly cleaned, but certainly presents as virtually attic mint). Odell, p.118. An exceedingly rare, early, medicine from Zanesville, OH with an unusual, eye-appealing mold. Bright, clean, with very crude glass. Joe Widman collection.

Est.: \$1,000 - \$2,000 • Min. bid: \$500



Lot 189

"DR. ROSE'S - PROPHYLACTIC / SYRUP - FOR - CONSUMPTION / BRONCHITIS - ABSCESS, S / & SCROFULA. - PHILADA.", 1845 - 1855. Aquamarine, cylindrical with 8 indented panels, applied sloping collar - blowpipe pontil scar, ht. 7", near perfect; (a 1/4" onion-skin-thin open bubble in the shoulder, otherwise attic mint). A fantastic example of this extremely rare medicine with crisp embossing. Believed to be one of only a few known examples. Joe Widman collection.

Est.: \$1,000 - \$1,500 • Min. bid: \$500



Lot 190

"DR. MANN'S - CELEBRATED / AGUE BALSAM - GALION. OHIO", a Midwest glasshouse, 1855 - 1860. Deep, bluish aquamarine, rectangular with beveled corners, applied ring collar with bevel - iron pontil scar, ht. 6 3/4", perfect! Odell, p.236. Very scarce. A bright, clean, sparkling example with rich deep color. A very eye-appealing example. Provenance: Gary Enters collection.

Est.: \$400 - \$600 • Min. bid: \$200



Lot 191

"Dr. HOLMES' - BALSAM. - PROV. R.I.", America, 1845 - 1855. Aquamarine, rectangular with beveled corners, applied ring collar with bevel - blowpipe pontil scar, ht. 8 1/8"; (professionally cleaned to original luster and near mint condition; a minor pontil flake that does not extend to the edge of the base). Odell, p.176. Another very rare pontiled balsam - bright, clean, whittled, excellent overall condition. Provenance: Gary Enters collection.

Est.: \$400 - \$600 • Min. bid: \$200



Lot 192

"LINDSEY'S / COUGH / BALSAM - HOLLIDAYSBURG / PA", 1850 - 1860. Aquamarine, oval, applied double round collar - blowpipe pontil scar, ht. 5 1/4", attic mint. Odell, p.227. A very rare pontiled balsam, and of course counterpart to the better known and very popular blood searcher put out by the same company. A beautiful, bright, clean, sparkling example with crisp, extremely bold embossing. Only the 2nd example to be offered at auction in more than 20 years. Gary Enter collection.

Est.: \$400 - \$600 • Min. bid: \$200



Lot 193

"Dr W LYONS / COUGHT BALSAM", America, 1845 - 1855. Aquamarine, rectangular with beveled corners, sheared, tooled, and inward rolled mouth - blowpipe pontil scar, ht. 5", perfect. Odell, p.234. Extremely rare! This is the only example listed, or sold, in more than 30 years of auction records. Possibly from Tranquility, OH. Note; COUGH misspelled "COUGHT". Provenance: Gary Enters collection; Ex. Sam Greer collection.

Est.: \$600 - \$900 • Min. bid: \$300



Lot 197

"E.A. BUCKHOUT'S / DUTCH / LINIMENT" / (Man with pipe and cane) - "PREPARED AT / MECHANICVILLE / SARATOGA CO N.Y.", America, 1850 - 1860. Aquamarine, rectangular with narrow paneled sides, sheared, tooled, and inward rolled mouth - blowpipe pontil scar, ht. 4 3/4", perfect. Odell, p.55. A great example of this scarce pictorial pontiled medicine. Bright, clean, and sparkling, the glass is filled with tiny microscopic bubbles.

Est.: \$300 - \$500 • Min. bid: \$150



Lot 194

"HUFF'S - PULMONIC / BALSAM / CINCINNATI", a Midwest glasshouse, 1845 - 1855. Aqua, rectangular with beveled corners, sheared, tooled, outward folded mouth - blowpipe pontil scar, ht. 5 3/4"; (lightly cleaned to original luster and near mint condition; a touch of minor wear and a bit of in-manufacture glass extrusion at the mold seam on the neck). Odell, p.183. Rare. Very attractive, whittled, crude glass. Gary Enters collection.

Est.: \$400 - \$600 • Min. bid: \$200



Lot 198

DANDELION & TOMATO / PANACEA - RANSOM & STEVENS - DRUGGISTS BOSTON", America, 1843 - 1850. Aquamarine, rectangular with wide beveled corners, applied sloping collar - blowpipe pontil scar, ht. 9", near mint; (just a touch of minor light wear, otherwise virtually perfect). N#512; Odell, p.289. A rare early panacea, clean and beautifully whittled. Provenance: Joe Widman collection.

Est.: \$400 - \$800 • Min. bid: \$200



Lot 195

"DR. FORSHA'S - ALTERATIVE / BALM", America, 1850 - 1860. Deep bluish aquamarine, rectangular with wide beveled corners, sheared mouth - blowpipe pontil scar, ht. 5 1/4", perfect. Odell, pgs. 133-134. A beautiful example, bright, clean and sparkling with crisp embossing and rich deep color. Provenance: Gary Enters collection.

Est.: \$200 - \$400 • Min. bid: \$100



Lot 199

"B.O. & G.C. WILSON - BOTANIC DRUGGISTS - BOSTON.", 1850 - 1860. Aquamarine, rectangular, beveled corners, applied square collar - large iron pontil scar, ht. 9 1/4"; (a little scattered light wear including a pinprick speck of roughness on the edge of the lip; a bit of faint dullness on the interior, not terribly offensive, but mentioned for accuracy, otherwise excellent). Odell, p.374. A big, impressive, pontiled druggist (one of several different mold variants from this company). Scarce.

Est.: \$200 - \$400 • Min. bid: \$100



Lot 196

"PECK FRISBIE & Co. - THE GREAT MAGICAL / ETHERIAL BALM - NEW YORK.", 1845 - 1855. Aqua, rectangular, beveled corners, applied sloping collar - blowpipe pontil scar, ht. 5 1/4", virtually attic mint; (a small patch of faint interior haze that may wash out, and a pinhead open bubble at base edge). Extremely rare. Believed to be one of only two or three known examples. Very few bottles are embossed "Magical". Beautifully whittled, excellent condition. Gary Enters collection.

Est.: \$800 - \$1,200 • Min. bid: \$400



Lot 200

"PROFESSOR. WOODS / HAIR RESTORATIVE - DEPOT. ST. LOUIS. Mo. - AND NEW YORK", 1850 - 1860. Rich, deep aquamarine, rectangular with beveled corners, applied sloping collar - iron pontil scar, ht. 8 7/8", attic mint! Odell, p.380. Scarce. Note; this is the variant with the altered mold / extended base, having a horizontal mold line approximately 1" above the base. A big, beautiful, eye-appealing example, deep color, and virtually 'out-of-the-mold' pristine condition.

Est.: \$300 - \$500 • Min. bid: \$150



Lot 201

"Dr. MORSE'S / INVIGORATING / CORDIAL. / C.H. RING / PROPRIETOR. NY.", America, probably 1852 - 1857. Aquamarine, oval, applied sloping collar - blowpipe pontil scar, ht. 7 1/2", near mint; (a shallow open interior bubble in the reverse). Odell, p.259. Scarce. A great looking example, crisp, strong embossing, heavily whittled!

Est.: \$175 - \$350 • Min. bid: \$90



Lot 205

"MOTHER'S / RELIEF / COMSTOCK & Co.", America, 1845 - 1860. Bright aquamarine, cylindrical, applied sloping collar - blowpipe pontil scar ht. 8 3/8"; (a minor 1/2" scratch on the shoulder, otherwise absolutely pristine perfect). Odell, p.260. Very scarce. There are relatively few pontiled medicines that catered to female complaints. A great looking bottle with large, bold embossing, heavily whittled, and sparkling clean.

Est.: \$250 - \$400 • Min. bid: \$130



Lot 202

"Dr. BOWMAN'S - INDIAN - OINTMENT", America, 1850 - 1860. Aqua, eight sided, applied sloping collar - blowpipe pontil scar, ht. 6"; (professionally cleaned to original luster with a little light interior 'haziness' remaining, and a tiny, minuscule, pinprick flake on the edge of the collar, otherwise excellent). Odell, p.42. A very scarce pontiled Indian medicine, only the 2nd, or possible 3rd, example to be offered at auction in more than 20 years. Possibly from Poughkeepsie, NY.

Est.: \$300 - \$600 • Min. bid: \$150



Lot 206

"PAGE'S / VEGETABLE SYRUP / FOR FEMALES", America, 1860 - 1865. Aquamarine, cylindrical, applied sloping collar with bevel - early hinge mold smooth base, ht. 8 5/8"; (there is a very light interior milkiness or haze, not terribly distracting, but mentioned for complete accuracy, otherwise virtually perfect). Female medicines are generally quite scarce, this one is very scarce-to-rare. A great looking bottle, crude glass, heavily whittled. Provenance: Joe Widman collection.

Est.: \$200 - \$400 • Min. bid: \$100



Lot 203

"J.B. WHEATLEYS / COMPOUND SYRUP / DALLASBURGH, KY.", America, 1850 - 1860. Rich, deep aquamarine, cylindrical, applied round collar with bevel - large iron pontil scar, ht. 6", perfect. Rich bluish color, outstanding character - the glass being absolutely filled with bubbles, a top example! Provenance: Ex. Dr. Charles Aprill collection.

Est.: \$175 - \$350 • Min. bid: \$90



Lot 207

Lot of (2), Early Medicines, 1850 - 1880. 1st Ex: "THOMSON'S - COMPOUND / SYRUP OF TAR - FOR CONSUMPTION - PHILADA.", aqua, rectangular, applied sloping collar - open pontil, ht. 5 5/8", perfect! **2nd Ex: (Label-only), "WILBOR'S / PURE COD LIVER OIL / ALEXANDER B. WILBOR, / CHEMIST, / BOSTON, MASS."**, aqua, oval, tooled square collar - smooth base, ht. 8 1/8"; (98% complete original label, contents). Both discovered years ago from a pharmacy in Derby Line, ME.

Est.: \$200 - \$400 • Min. bid: \$100



Lot 204

"HOUCK'S / PATENT / PANACEA / BALTIMORE", America, 1845 - 1855. Aquamarine, cylindrical, applied short tapered collar - blowpipe pontil scar, ht. 6 1/2", virtually perfect; (just a slight trace of very light wear, and a couple of small spots of faint milkiness on the interior). Odell, p.179. A great example of this scarce, early, patent medicine with very attractive embossing, bright, clean, and heavily whittled. Reportedly found in the wall of a house in the Baltimore area.

Est.: \$300 - \$500 • Min. bid: \$150



Lot 208

"PURE / COD LIVER / OIL" / (Motif of a Fish) - "REED, / CARNRICK / & / ANDRUS - CHEMISTS - NEW YORK", America, 1875 - 1885. Deep cobalt blue with a slight violet tone, rectangular with beveled corners, applied sloping collar - smooth base, ht. 10 1/8", very near mint; (a less-than pinhead speck of roughness on the edge of the collar, otherwise virtually perfect). An 'attic type' bottle that has not been dug and cleaned, rich vivid color, a beautiful example.

Est.: \$300 - \$500 • Min. bid: \$150



Lot 209

"LINDSEY'S - BLOOD + / SEARCHER - HOLIDAYSBURG", America, 1855 - 1865. Medium-to-deep yellowish grass green, rectangular with beveled corners, applied sloping collar - hinge mold smooth base, ht. 9 1/8", virtually perfect; (a minor, 3/4" light scratch on back label panel). An absolutely 'top-shelf' example and one of the prettiest examples that we can recall seeing. A rare color, virtually pristine condition! Joe Widman collection; Ex. John Wolf collection.

Est.: \$2,500 - \$3,500 • Min. bid: \$1,300



Lot 213

"THE GREAT / AMERICAN / HERB / TONIC - DR MORGAN - PHILADELPHIA", America, 1865 - 1875. Beautiful, bright, yellowish honey amber, rectangular semi-cabin form, applied sloping collar with ring - smooth base, ht. 10 3/8", perfect. An exceedingly rare semi-cabin that may very well have been a bitters. Believed to be one of only two known examples. Provenance: Joe Widman collection; Ex. Jack Stecher collection (GW, Auction 107).

Est.: \$2,000 - \$4,000 • Min. bid: \$1,000



Lot 210

"DR BIRMINGHAM'S - ANTI BILIOUS - BLOOD PURIFIER", America, 1880 - 1890. Brilliant, rich, deep emerald coloration with a lime tone, cylindrical with nine indented panels, tooled double ring collar - smooth base, ht. 8 3/8", attic mint. A beautiful, very attractive medicine, and a big splash of color that will stand out on any shelf! Provenance: Joe Widman collection.

Est.: \$800 - \$1,200 • Min. bid: \$400



Lot 214

"FRENCH'S / TRADE (CROWN) MARK / KIDNEY & LIVER / & / DROPSY CURE Co / PRICE 1.00", 1880 - 1890. Rich amber, rectangular, applied ring collar with bevel - smooth base, ht. 9 5/8"; (a slight trace of faint wear, otherwise perfect). Exceptionally rare, one of only two known examples and possibly the first product of what is today, the French's Mustard Co. Considered one of the all-time great cure bottles. Provenance: Joe Widman collection; Ex. Dr. Burton Spiller, Terry McMurray, Dann Louis collections.

Est.: \$6,000 - \$9,000 • Min. bid: \$3,000



Lot 211

"LYDIA E. PINKHAM'S / VEGETABLE COMPOUND", probably 1876 - 1880. Medium-to-deep yellowish apple green, oval, applied square collar - smooth base, ht. 8 1/2", virtually pristine; (a pinhead open bubble at edge of base). Of the 100's of thousands of Pinkham bottles produced, this one is at the pinnacle. Great color, character, and condition, the glass being filled with small bubbles. Provenance: Joe Widman collection; Ex. Dr. Burton Spiller collection.

Est.: \$1,500 - \$3,000 • Min. bid: \$800



Lot 215

"THE RIVER SWAMP / CHILL AND (ALLIGATOR) FEVER CURE / AUGUSTA, GA.", America, probably 1884 - 1887. Medium amber, rectangular with beveled corners, tooled square collar - smooth base, ht. 6 1/4"; (the bottle may have been very lightly cleaned, but certainly presents as virtually pristine perfect). A top example, very bold embossing, outstanding condition! One of the all-time classic cure bottles, very scarce, especially in this fine condition! Joe Widman collection.

Est.: \$2,000 - \$3,000 • Min. bid: \$1,000



Lot 212

"TIPPECANOE" / (CANOE) / "H.H. WARNER & Co" Figural Log, 1883 - 1890. Medium-to-deep chocolate amber, cylindrical in the form of a log, applied 'mushroom' collar - **"PAT NOV.20 83 / ROCHESTER / N.Y."** (on smooth base), ht. 9"; (some light interior content haze, otherwise virtually perfect). O&S #33. A very scarce color, strong impression, excellent condition. A classic figural and pictorial medicine bottle. Joe Widman collection.

Est.: \$300 - \$600 • Min. bid: \$150



Lot 216

"GERM BACTERIA OR / FUNGUS DESTROYER / WM RADAMS / MICROBE KILLER / (Image of a Man Clubbing a Skeleton within Shield) / REGISTERED TRADE MARK DEC 13 1887 / CURES / ALL / DISEASES", America, 1890 - 1900. Medium amber, square, tooled sheared mouth - smooth base, ht. 6 5/8"; (some very faint, light interior haze, not terribly distracting, otherwise near mint). A rare size, very scarce and desirable. Provenance: Joe Widman collection.

Est.: \$800 - \$1,200 • Min. bid: \$400

**Lot 217**

"DR J.B. HENION'S - SURE CURE / FOR / MALARIA.", America, probably 1885 - 1886. Bright, medium cobalt blue, square with beveled corners, applied large 'Tippecanoe'-style collar - smooth base, ht. 5 3/4", attic mint! An absolutely gorgeous example of this extremely rare and desirable cure. It is considered by many to be one of the all-time classic "greats" in cure bottles - and medicines in general. Provenance: Joe Widman collection.

Est.: \$5,000 - \$8,000 • Min. bid: \$2,500

**Lot 221**

"L.Q.C. WISHART'S - PINE TREE / TAR CORDIAL. / PHILA." - "PATENT" / (PINE TREE) / "1859", 1860 - 1865. Light yellow olive coloration, almost an olive yellow, square with beveled corners, applied sloping collar - smooth base, ht. 7 1/2"; (lightly cleaned to original luster with a little scattered minor wear remaining, otherwise excellent). Scarce. One of the earliest of the Wishart's molds, and a beautiful example, lighter in tone than most, with nice even color all the way to the base.

Est.: \$500 - \$800 • Min. bid: \$250

**Lot 218**

"CATARRH / DR KILMER'S / COUGH CURE / CONSUMPTION OIL" (inside debossed lungs) / **"SPECIFIC - DR. KILMER & Co. - BINGHAMTON, N.Y."**, 1890 - 1900. Aquamarine, rectangular with beveled corners, tooled round collar with lower bevel - smooth base, ht. 8 5/8", near mint; (a paper-thin 1/4" open bubble on the beveled corner on the reverse, otherwise perfect). A rare mold and one of the most desirable of all the various Dr. Kilmer bottles. Joe Widman collection.

Est.: \$800 - \$1,200 • Min. bid: \$400

**Lot 222**

"L.Q.C. WISHART'S - PINE TREE / TAR CORDIAL. / PHILA." - "PATENT" / (PINE TREE) / "1859", 1865 - 1870. Medium emerald coloration, square with beveled corners, applied sloping collar - smooth base, ht. 7 5/8", attic mint. A fantastic example, strong embossing, beautiful color, virtually pristine condition!

Est.: \$200 - \$400 • Min. bid: \$100

**Lot 219**

"PERFECT / DANDRUFF CURE / AND / HAIR TONIC / NEAT RICHARDSON / DRUG CO. / INC. / LOUISVILLE, KY.", America, 1885 - 1895. Colorless, rectangular, tooled prescription type collar - smooth base, ht. 6 7/8"; (the bottle was likely professionally cleaned, but certainly appears as near mint, and a minor, 1/8", paper-thin flake, otherwise excellent). A very scarce Louisville cure, also a nice item for the hair bottle and tonic collectors.

Est.: \$150 - \$250 • Min. bid: \$80

**Lot 223**

"L.Q.C. WISHART'S - PINE TREE / TAR CORDIAL. / PHILA." - "PATENT" / (PINE TREE) / "1859", 1865 - 1870. Bright yellowish green, square with beveled corners, applied sloping collar - smooth base, ht. 9 1/2", near perfect; (a tiny, pinhead, iridescent bruise on the edge of the collar on the reverse, otherwise virtually attic mint). Scarce color and mold. This is the mold with "PAT-ENT" in smaller letters and placed lower on the panel. Another great example.

Est.: \$200 - \$400 • Min. bid: \$100

**Lot 220**

"SNITEMAN'S X RAY LINIMENT" (with original label, contents, and box), 1890 - 1910. Colorless, rectangular with beveled corners, tooled square collar - smooth base, ht. 11 7/8"; (bottle and label are attic mint; box nearly complete - missing top and small portion at top on reverse). A great example of this scarce, "X-RAY" Liniment. At almost 12", an impressive bottle. The label claims; *The Greatest Household Liniment and Counter-Irritant in the World.*

Est.: \$150 - \$300 • Min. bid: \$80

**Lot 224**

"L.Q.C. WISHART'S - PINE TREE / TAR CORDIAL / PHILA." - "TRADE" / (PINE TREE) / "MARK" (with 95% complete, original, label), 1870 - 1880. Beautiful, clear medium blue green, rectangular with beveled corners, applied sloping collar - smooth base, ht. 10 1/8", pristine perfect; (label darkened a bit from age). A great example, bright and clean! And, very scarce with the original label and in this 'attic-type' condition.

Est.: \$500 - \$800 • Min. bid: \$250



Lot 225

"L.Q.C. WISHART'S - PINE TREE / TAR CORDIAL / PHILA" - "TRADE" / (PINE TREE) / "MARK", 1880 - 1890. Beautiful, '7-Up' green, almost a lime coloration, square with beveled corners, tooled sloping collar - smooth base, ht. 9 5/8"; (professionally cleaned to original luster; two, 1/4", 'fisheye' type bruises on one of the beveled corners, a partially open bubble on the neck and shoulder with some trapped residue). Not perfect, but what a color, and rare!

Est.: \$400 - \$600 • Min. bid: \$200



Lot 226

"L.Q.C. WISHART'S - PINE TREE / TAR CORDIAL / PHILA" - "TRADE" / (PINE TREE) / "MARK", 1880 - 1895. Light honey amber with an orange tone, square with beveled corners, tooled sloping collar - smooth base, ht. 9 3/4", near mint; (a film of light interior content residue that would likely soak or wash out, otherwise attic mint). A scarce color. Most of the amber examples are a 'straight' medium amber. This one is a nice 'orangy-honey' coloration.

Est.: \$150 - \$250 • Min. bid: \$80



Lot 227

"L.Q.C. WISHART'S - PINE TREE / TAR CORDIAL / PHILA" - "TRADE" / (PINE TREE) / "MARK", 1880 - 1895. Medium-to-deep reddish amber, square with beveled corners, tooled sloping collar - smooth base, ht. 9 5/8"; (a few spots of minor light wear, and some light interior stain in the shoulders and down one of the corners, otherwise near mint). Another very scarce color for an 'amber' Wishart's with some beautiful reddish tones.

Est.: \$150 - \$250 • Min. bid: \$80



Lot 228

"MOXIE / NERVE FOOD / LOWELL / MASS. / PATENTED", America, probably 1880 - 1890. Rich, medium yellowish green, cylindrical, heavy tooled sloping collar - smooth base, ht. 10 1/4"; (a couple of small patches of faint interior haze, barely noticeable, and a bit of minor wear, otherwise excellent). A great example of an early "MOXIE" bottle in a rare, eye-appealing color, and wonderful character - the glass being filled with tiny seed bubbles. Joe Widman collection.

Est.: \$300 - \$600 • Min. bid: \$150



Lot 229

"PERRINE'S" / (APPLE) / "GIN-GER" - PERRINE'S - APPLE - GIN-GER - PHILA", America, 1880 - 1890. Medium amber with some golden and orange tones, square cabin form with roped corners, tooled sloping collar - smooth base, ht. 9 7/8", attic mint! A very nice example of this classic cabin-form figural, and pictorial, Philadelphia medicine.

Est.: \$200 - \$300 • Min. bid: \$100



Lot 230

"DR. SYKES / NEW ENGLAND - LIVER / TONIC AND - BILLIOUS / ANNIHILATOR", America, 1875 - 1885. Golden amber, square tapered gin form with beveled corners, applied sloping collar - smooth base, ht. 6 3/4", near mint; (just a couple of small patches of light, minor, interior residue or faint haze below the shoulders, otherwise perfect). A very rare medicine with an unusual form and attractive embossing within 'banner's' on the bottle. Provenance: Joe Widman collection.

Est.: \$500 - \$800 • Min. bid: \$250



Lot 231

"DRS D. FAHRNEY & SON - PREPARATION FOR / CLEANSING THE BLOOD - BOONSBORO, M.D.", 1870 - 1880. Bright, light, golden amber coloration, square, beveled corners, applied sloping collar with bevel - smooth base, ht. 9 1/4", attic mint! A beautiful example, believed to be one of the earliest of all the various Dr. Fahrney bottles. See "House of Fahrney", by John Panella, AB&GC, April, 2021. Very scarce, especially in this sparkling condition. Gary Enters collection.

Est.: \$200 - \$400 • Min. bid: \$100



Lot 232

"MAKES PEOPLE / NEW ALL OVER - CHECKERS MEDICINE CO. / WINSTON-SALEM, N.C.", America, 1890 - 1900. Medium amber, square with rounded corners, tooled sloping collar with ring - smooth base, ht. 11 1/4", near mint; (some very light, possibly washable, interior residue or faint haze, and a 3/8" open bubble near edge of base, otherwise perfect). Very scarce! A great 'quack' medicine with a humorous twist. Provenance: Joe Widman collection.

Est.: \$120 - \$240 • Min. bid: \$60



Lot 233

Lot of (2), 'Quack Medicines', 1885 - 1900. 1st Ex: "MAMMOTH / BLOOD / RENOVATOR / IS THE (KEY) TO HEALTH / U.S.A.". Amber, rectangular, tooled prescription collar - "W.T & CO / U.S.A. / PAT JAN 5 1892" (on smooth base), ht. 7 3/4". 2nd Ex: "REV. NEWMAN'S / MEDICINES / FOR ALL / DISEASES / 1361 W. LAKE ST. / CHICAGO, ILL.". Honey amber, oval, tooled prescription collar - smooth base, ht. 8 1/4". Both near mint! Provenance: Joe Widman collection.

Est.: \$100 - \$200 • Min. bid: \$50



Lot 234

"PHYSICAL / PURITY" / (Image of Woman holding a Bottle) / "TRADE MARK" / "DR. MOORE'S / VENE-REAL / ANTISEPTIC", Whitall-Tatum & Co., Millville, NJ, 1892 - 1895. Bright honey amber, rectangular with rounded corners, tooled prescription-type collar - "W.T & CO. / U.S.A. / PAT. JAN. 5. 1892" (on smooth base), ht. 7 3/4", virtually perfect; (a little faint content residue). A very rare pictorial medicine. Provenance: Joe Widman collection.

Est.: \$250 - \$450 • Min. bid: \$130



Lot 235

"SWIFTS / SYPHILITIC SPECIFIC", America, 1875 - 1885. Rich, medium-to-deep cobalt blue, oval with strap sides, applied square collar - smooth base, ht. 8 7/8", near mint; (just a slight touch of faint wear including a 3/8" paper-thin open bubble on the back shoulder, otherwise perfect). A great example, this one has not been dug and cleaned, good deep color, excellent condition. Provenance: Joe Widman collection.

Est.: \$800 - \$1,200 • Min. bid: \$400



Lot 236

"VAN VLEET-MANSFIELD DRUG CO. / MANUFACTURING CHEMISTS / MEMPHIS, TENN." (with 85% complete, original label), Whitall-Tatum & Co., Millville, NJ, 1895 - 1905. Medium cobalt blue, square with beveled corners, tooled prescription-type collar - "W T & CO. / 7 / U.S.A." (on smooth base), ht. 8", attic mint! A scarce-to-rare colored druggist / chemist bottle - especially in this fine condition. The last one that we can find an auction record of was more than 20 years ago.

Est.: \$250 - \$400 • Min. bid: \$130



Lot 237

"DR TEBBETTS' - PHYSIOLOGICAL / HAIR - REGENERATOR", America, 1875 - 1885. Beautiful, light-to-medium pinkish amethyst, rectangular with beveled corners, tooled double ring collar - smooth base, ht. 7 1/2"; (professionally cleaned to original luster with some scattered minor wear remaining). DF, p.152. An absolutely gorgeous color, and in a very pretty, lighter shade. Provenance: Joe Widman collection.

Est.: \$500 - \$800 • Min. bid: \$250



Lot 238

"DR TEBBETTS' - PHYSIOLOGICAL / HAIR - REGENERATOR", 1875 - 1885. Medium pinkish strawberry amethyst below the shoulders, shading to a deep strawberry amethyst near the base, rectangular with beveled corners, applied double ring collar - smooth base, ht. 7 1/4"; (a little minor light wear and some light dullness or faint haze, primarily around the shoulders, otherwise excellent). Another very pretty example, great eye-appealing color. Provenance: Ex. Charles Gardner collection.

Est.: \$400 - \$600 • Min. bid: \$200



Lot 239

"U.S.A. / HOSP. DEPT", probably a Pittsburgh district glasshouse, 1862 - 1870. Bright golden yellow with a slight topaz tone, cylindrical, 4-pc. mold, applied round collar with bevel - "S D S" (on smooth base), ht. 9 1/4", perfect; (note, some in-manufacture crazing lines in the neck mentioned for complete accuracy, but not considered damage). Great color, strong embossing, beautifully whittled, excellent condition. Joe Widman collection.

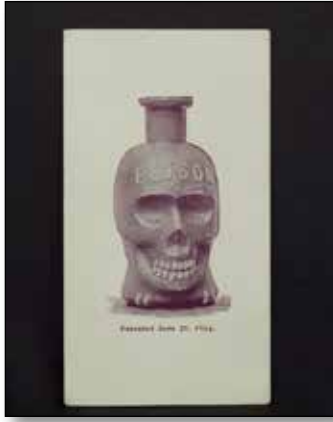
Est.: \$1,000 - \$1,500 • Min. bid: \$500



Lot 240

"The Owl Drug Co." - "POISON" - (OWL) / "TODCo" (monogram within mortar & pestle), America, 1892 - 1905. Deep cobalt blue, triangular, tooled prescription-type collar - smooth base, ht. 9 3/4" (32 oz), virtually perfect; (just trace of light wear, otherwise attic mint). KT-1. Very scarce size (the largest known for this mold), and a great example that has not been dug and cleaned. An impressive poison bottle! Provenance: Joe Widman collection.

Est.: \$600 - \$900 • Min. bid: \$300



Lot 241

(Image of Skull Poison) / "Patented June 26 1894 - C.H. LEE & CO., / MANUFACTURERS OF / SKULL & CROSS BONES / (LEE POISON BOTTLE) / 117 PEARL ST., BOSTON. / ROOM 313, 132 NASSAU St., New York." Original Skull Poison Trade Card, 1894 - 1900. Card measures 4 1/2" x 2 1/2", and is virtually perfect. Originally found in an old apothecary shop in Wales (England), early 1980's. As scarce as the bottles are, the trade card is 10 times more rare!

Est.: \$1,500 - \$3,000 • Min. bid: \$800



Lot 242

"POISON" - "PAT. APPL'D. FOR" Figural Skull, America, 1894 - 1905. Cobalt blue, figural skull on crossbones, tooled prescription-type collar - "PAT JUNE 26TH 1894" (on smooth base), ht. 4 1/8", attic mint! KU-10. This is the largest and most impressive of the three figural skulls. A scarce and very desirable figural poison, especially in this attic mint, virtually pristine condition!

Est.: \$2,500 - \$4,000 • Min. bid: \$1,300



Lot 243

"POISON" - "PAT. APPL'D. FOR" Figural Skull, America, 1894 - 1905. Cobalt blue, figural skull on crossbones, tooled prescription-type collar - "PAT JUNE 26TH 1894" (on smooth base), ht. 3 1/2"; (a 1/2" area of flakes or small chipping along the back edge of the lip, otherwise perfect). KU-10. This is the middle of three sizes. A bright, clean, example. The noted chipping is along the back edge of the lip and the bottle displays as perfect.

Est.: \$1,000 - \$2,000 • Min. bid: \$500



Lot 244

"POISON" - "PAT. APPL'D. FOR" Figural Skull, 1894 - 1905. Cobalt blue, figural skull on crossbones, tooled prescription-type collar - smooth base, ht. 2 3/4"; (a minor pinhead flake on the side of the lip; the top of the lip is a bit uneven and may have been lightly polished; a tiny potstone in the side of the bottle has a faint moonstone iridescence and line, barely visible, otherwise excellent). KU-10. The smallest and most difficult size of the three to obtain.

Est.: \$1,000 - \$2,000 • Min. bid: \$500



Lot 245

"POISON" - (STAR / SKULL / CROSS-BONES / STAR) - "POISON", America, 1905 - 1915. Cobalt blue, "U" shaped body with rounded back, wide front panel and beveled side panels, machine square collar - "S & D / 173" (on base), ht. 2 3/4", near mint; (lightly cleaned to original luster and virtually perfect condition). KU-19. A great example of this desirable, pictorial, poison bottle with skull, crossbones, and stars.

Est.: \$200 - \$300 • Min. bid: \$100



Lot 246

"POISON" Figural Submarine, England, 1899 - 1905. Medium-to-deep cobalt blue, figural submarine with horizontal ribs across top and sides, tooled square collar - "REGISTERED No 336907" (on smooth base), ht. 2 3/8", length 4"; (there is an early repair to approximately

one-third of the lip, also some roughness and a couple of shallow 1/8" flakes on the lip). KU-6. Very rare! These just don't come around. Despite the noted old repair and lip roughness, the bottle displays nicely.

Est.: \$800 - \$1,600 • Min. bid: \$400



Lot 247

"DYKEMA'S" Poison Bottle, Carr-Lowrey Glass Co., Baltimore, MD, 1889 - 1910. Bright yellowish emerald green, irregular hex form, tooled ring prescription collar - "C.L.G. CO / PATENT APPLIED FOR" (on smooth base), ht. 5" (4 oz), attic mint. KI-2. A very scarce-to-rare poison from Grand Rapids, Mich., outstanding condition, and in a rare size (the 4 oz. size being much more difficult to find than the 8 oz.).

Est.: \$800 - \$1,200 • Min. bid: \$400



Lot 248

"COLD INDIAN SPRING WATER CO" / (Indian Bust with Headdress) / "THIS BOTTLE LOANED / NOT SOLD / FIVE PINTS", 1890 - 1910. Aquamarine, cylindrical, tooled blob collar with original lightning-style wire bail and porcelain closure - smooth base, ht. 12 3/4" (including closure), attic mint. A great looking pictorial spring water bottle, crisp, strong and detailed impression of the Indian, fantastic condition. Very scarce. See Odell, *Indian Bottles and Brands*, p.18-19.

Est.: \$120 - \$240 • Min. bid: \$60



Lot 249

Large, Label-only, Quabaug / PURE / Spring / Water (Image of King Philip Indian Chief) Bottle, with original wooden crate to hold bottle and advertising cards, 1900 - 1910. Bottle is colorless, cylindrical with tooled, flared, mouth - smooth base, ht. 13 1/2". Wooden crate with original colorful blue

and white label measures 10 1/4" high x 12 1/2" long x 9" deep. Both bottle and wooden crate are in excellent condition. An advertising card remains with the box. Very scarce with labels and box.

Est.: \$100 - \$200 • Min. bid: \$50



Lot 253

"AVON SPRING WATER / C.H. NOWLEN / AVON. N.Y.", probably a New York State glasshouse, 1860 - 1870. Deep aquamarine, cylindrical, applied sloping collar with bevel - smooth base, Pt, perfect! T# N-4:B. A very scarce mineral water, clean, bright, strong color, whittled, and in fantastic condition - a great example!

Est.: \$400 - \$600 • Min. bid: \$200



Lot 250

"ROUND LAKE / MINERAL / WATER / SARATOGA Co / N.Y.", probably Congress & Empire Spring Glass Works, 1876 - 1885. Bright medium honey coloration, cylindrical, applied sloping collar with bevel - smooth base, Pt, virtually attic mint; (a tiny 1/8" bruise at edge of base, otherwise perfect). T# S-48:B. An extremely rare and beautiful example in both color and condition! Believed to be only 3-4 known examples and considered in the top 10 most desirable mineral waters.

Est.: \$2,000 - \$4,000 • Min. bid: \$1,000



Lot 254

"JOHN. H. GARDNER & SON / SHARON SPRINGS / N.Y. - SHARON / SULPHUR / WATER ", 1870 - 1880. Rich, deep blue green coloration, cylindrical, applied sloping collar with bevel - smooth base, Pt, virtually perfect; (just a slight trace of light wear including a 1/8" paper-thin open bubble at edge of base). T# N-32. Scarce. A beautiful example, excellent condition, nice deep color, almost a teal tone through the shoulders. Provenance: Ex. Jim Bender collection.

Est.: \$400 - \$600 • Min. bid: \$200



Lot 251

"SYRACUSE SPRINGS / EXCELSIOR", 1865 - 1875. Honey amber below the shoulders shading to a rich reddish-orange amber along the side and near the base, cylindrical, applied sloping collar with bevel - smooth base, Pt; (lightly cleaned to original luster and virtually perfect condition). T# N-33:B. A scarce bottle, whittled, and with beautiful rich color and shading.

Est.: \$200 - \$400 • Min. bid: \$100



Lot 255

"EXCELSIOR / SPRING / SARATOGA. N.Y.", probably Congress & Empire Spring Glass Works, 1885 - 1889. Medium-to-deep bluish green coloration, cylindrical, applied sloping collar with bevel - smooth base, Pt, attic mint. T# S-26:B. A very pretty example, deep rich color, beautifully whittled, excellent condition.

Est.: \$150 - \$250 • Min. bid: \$80



Lot 252

"SYRACUSE SPRINGS / D / EXCELSIOR / A.J. DELATOUR / NEW YORK", probably 1863 - 1866. Medium amber with a slight orange tone, applied sloping collar with bevel - smooth base, Pt; (a little light wear including a 3/16" sliver chip along the inside edge of the lip, otherwise near mint). T# N-34:B. A very scarce-to-rare bottle. For history, see "Early New York Mineral Water Bottles Are Worth Their Salt", AB&GC, March, 2014. Ex. Howard Dean collection.

Est.: \$400 - \$600 • Min. bid: \$200



Lot 256

"HASKINS' SPRING CO. / H / SHUTESBURY, / MASS. - H. S. CO.", 1865 - 1880. Medium emerald green, high-shouldered quart, applied sloping collar with bevel - "3" (on smooth base), perfect! T# M-24:A. A top example of this very scarce-to-rare bottle, beautiful color, crisp embossing, excellent character - whittled, and with nice bubbly glass through the shoulders. Don't miss your opportunity, these don't come around often - especially examples this nice. Ex. Robert Pattridge collection.

Est.: \$600 - \$900 • Min. bid: \$300



Lot 257

"D.J. WHELAN / TROY, N.Y." (with remnants of original label), 1875 - 1885. Bright orange amber, cylindrical, applied sloping collar with bevel - smooth base, Qt, near mint; (a little scattered light wear including a slender open bubble on the reverse, and a little pinhead flake on the edge of the lip; a trace of faint interior milkiness). T# M-58:A. A scarce mineral water in as-found - 'attic-type' condition. Rich color, heavily whittled, boldly embossed. Ex. Donald Tucker collection.

Est.: \$400 - \$600 • Min. bid: \$200



Lot 261

"HARRIS S / ALBANY / MINERAL WATERS", possibly a New York State glasshouse, 1846 - 1853. Bright, medium blue green coloration, cylindrical, applied sloping collar - iron pontil scar, ht. 7 1/8"; (professionally cleaned to original luster and near mint condition with just a little light wear remaining, primarily near one of the side mold seams, otherwise excellent). A very nice example, beautifully whittled, crisp embossing, good color.

Est.: \$300 - \$500 • Min. bid: \$150



Lot 258

"D.J. WHELAN / TROY, N.Y." Mineral Water, 1875 - 1885. Aquamarine, cylindrical, applied blob collar - smooth base, Qt, virtually perfect; (a little light, washable, interior content residue). T# M-58:A. A scarce mineral water, beautiful condition, nice with the applied blob collar. Provenance: Ex. Ronnie Landry collection.

Est.: \$200 - \$400 • Min. bid: \$100



Lot 262

"H" / "HARRIS & SONS / ALBANY / MINERAL WATERS - UNION GLASS WORKS PHILA / REGISTERED / ACCORDING / TO LAW", 1846 - 1852. Gorgeous citron coloration, cylindrical, applied blob collar - iron pontil scar, ht. 7 3/8"; (professionally cleaned to original luster with just a touch of light wear remaining; a 1/2" area along the top of the lip had some minor chipping and has been professionally repaired, otherwise excellent). An extremely rare, possibly unique, color for this mold!

Est.: \$800 - \$1,200 • Min. bid: \$400



Lot 259

"I.D. BUTTLES / ROME / N.Y. - MINERAL / WATER", 1875 - 1885. Bluish aquamarine, cylindrical, applied blob collar - smooth base, Qt; (a bit of scattered light wear, otherwise very near mint). T# M-27. Scarce. Another example that does not come around often.

Est.: \$175 - \$350 • Min. bid: \$90



Lot 263

"H" / "HARRIS & SONS / ALBANY / MINERAL WATERS - UNION GLASS WORKS PHILA / REGISTERED / ACCORDING / TO LAW", 1846 - 1852. Cobalt blue, cylindrical, applied blob collar - iron pontil scar, ht. 7 3/8"; (a dug bottle with some scattered light wear that does not appear to have been cleaned, and retains much of it's original luster; a potstone on the shoulder with a little iridescence and a couple of tiny cooling lines). A very scarce mold.

Est.: \$400 - \$600 • Min. bid: \$200



Lot 260

"J. & A. DEARBORN - NEW YORK - MINERAL WATERS" - (STAR), 1850 - 1860. Medium cobalt, 8-sided, large, applied blob collar - iron pontil scar, ht. 7 3/8"; (a 3/16" chip and a little minor roughness on the edge of the lip; some typical light usage wear including a paper-thin, 1/8" flake near one of the panel edges, and a ring of light interior residue in the shoulders). A very nice example, the noted wear is not terribly offensive, and this one does not appear to have been dug and cleaned.

Est.: \$300 - \$500 • Min. bid: \$150



Lot 264

"T.C. JEFFERS / & Co / ALBANY. N.Y.", probably 1862 - 1863. Aquamarine, cylindrical, applied blob collar - iron pontil scar, ht. 7 3/8"; (lightly cleaned to original luster with an area of dullness and wear on the back where it likely rested or laid on the ground; a potstone in the side with a couple of 3/16" radiations). A very rare mold (there is a later Jeffers & Co. bottle that is more prevalent). This example displays very nicely, has crisp, bold embossing, and is heavily whittled.

Est.: \$150 - \$250 • Min. bid: \$80



Lot 265

"C.D. EGERT & Co / ALBANY / N.Y.", probably 1860 - 1861. Bright medium cobalt blue, cylindrical, applied blob collar - smooth base, ht. 7"; (professionally cleaned to original luster with a little scattered ground wear remaining, otherwise excellent). A very scarce-to-rare mold. Charles Egert is believed to have been in business for only two years. They assumed the bottling business of William Lappeus in 1860, prior to selling out to Jeffers and Co. in 1862. Beautiful color and clarity.

Est.: \$400 - \$600 • Min. bid: \$200



Lot 266

"ANDERSON & Co / HOME BREWED ALE / ALBANY N.Y." New Hampshire, Lyndeborough or possibly Stoddard, 1862 - 1872. Rich, brilliant golden amber, almost a 'butterscotch' coloration, squatty ale form, applied sloping collar with ring - smooth base, ht. 7 3/8", perfect! Very rare, especially in this virtually pristine condition. Anderson was in business from 1857 to 1872. All of his bottles are considered very scarce-to-rare. Beautiful color, 'attic-found'. condition.

Est.: \$800 - \$1,200 • Min. bid: \$400



Lot 267

Black Glass Wine Bottle, an American seal blown in England, c. 1837. **"D / Sears" / "7"** (within hex, on applied seal). Clear green with a yellowish tone and black amber threads of glass swirled through the body, 3-pc. mold, **"PATENT"** (on shoulder), applied sloping collar - **"H. RICKETTS & Co GLASS WORKS BRISTOL"** (on base), sand pontil scar, ht. 10 5/8", perfect. Burton, p.1249. A rare seal blown for the wealthy Sears family of Delaware. Gary Enters collection.

Est.: \$300 - \$500 • Min. bid: \$150



Lot 268

Black Glass Wine Bottle, America, possibly New England Glass Bottle Co, Cambridge, MA, 1830 - 1845. **"PARKER BARNE / BOSTON"** (on applied seal). Yellowish olive with an amber tone, 3-pc. mold cylinder, applied sloping collar with bevel - sand type pontil scar, ht. 11", perfect. An extremely rare American seal bottle, unlisted by Burton, and believed to have been blown for Parker Barnes, Groceries, Wines, Cider & Ale, Boston.

Est.: \$1,000 - \$2,000 • Min. bid: \$500



Lot 269

Half-size, Black Glass Wine Bottle, England, 1800 - 1810. **Motif of Antlers / "Lin Coll"** (on applied seal). Olive green, freeblown, squat cylinder, applied collar with short wide bevel - push-up base with sand pontil scar, ht. 8 1/4", virtually perfect; (two pinhead flakes at top of lip, dried interior content residue). Dumbrell, p.282; Burton, p.215. The seal represents the college crest for Lincoln College, Oxford. Eye-appealing, scarce size. Provenance: Ex. Gardner collection, Ex. McKearin collection.

Est.: \$600 - \$900 • Min. bid: \$300



Lot 270

Black Glass Wine Bottle, England, 1780 - 1800. **Motif of Lion holding a Poleaxe** (on applied oval seal). Olive green, freeblown squat cylinder, applied wide string rim - sand type pontil scar, ht. 8 7/8"; (a 1/4" chip from the back edge of the lip, and just a slight trace of light usage wear, otherwise perfect with full original body luster). Unlisted, similar to Burton, p.1467. A great looking, highly detailed seal with an exceptional impression. Scarce size, also unusual with the oval seal.

Est.: \$400 - \$800 • Min. bid: \$200



Lot 271

Black Glass Wine Bottle, England, c. 1780. **"HHC"** (on applied seal). Deep olive amber, freeblown squat cylinder, applied, tooled string rim - sand type pontil scar, ht. 8 3/4", near perfect; (a 3/8" horizontal stress line below the applied collar, possibly in-making). Burton, pgs. 1089-1090. A scarce seal attributed to Henry Hippisley Cox of Ston Easton, Somerset. Full original luster and with crude, bubbly glass.

Est.: \$250 - \$400 • Min. bid: \$130



Lot 272

Black Glass Wine Bottle, England, 1825 - 1835. **"J.W.C."** (on applied seal). Deep olive green, cylinder form, 3 pc. mold. **"PATENT"** (on shoulder), applied sloping collar with bevel - **"H. RICKETTS & Co GLASS WORKS BRISTOL"** (on base), sand type pontil scar, ht. 11"; (just a touch of typical expected light wear, otherwise perfect). Burton, p.1092; Dumbrell, p.246. The bottle was blown for John Were Clarke (1784 - 1847), of Bridwell, Uffculme, Devonshire. Gary Enters collection.

Est.: \$200 - \$400 • Min. bid: \$100



Lot 273

Early, Painted Globular Storage Bottle with Tavern Scene, Dutch, 1740 - 1770. Olive green, globular form, sheared, tooled, slightly flared mouth with applied band - blowpipe pontil scar, ht. 10 3/4". Attractive painted tavern scene of three men seated at a table with a young woman pouring a drink. Cream, tan, dark brown and black paint with gold leaves painted on the sides and neck, painted lettering on reverse, possibly "Kummel"; (bottle is perfect, some relatively minor paint loss).

Est.: \$1,200 - \$2,400 • Min. bid: \$600



Lot 274

Early Freeblown Demijohn, probably Continental, possibly France, 1810 - 1840. Rich, medium-to-deep olive green, kidney or side-flattened apple form, rough sheared mouth with applied flat band - smooth, slightly domed base, ht. 16", near mint; (just a couple of minor scratches and typical light wear; some chipping and large flakes around the crude, rough sheared mouth - possibly in-manufacture). A very early demijohn or storage bottle, excellent condition.

Est.: \$250 - \$450 • Min. bid: \$130



Lot 275

Large, Unusual Demijohn, probably New England, 1845 - 1860. Yellowish olive amber, large ovoid form, heavy 2-pc. mold, crudely applied short sloping collar - slightly pushed-up, smooth base, ht. 19 3/4"; (some scattered wear and light scratches, heavy base wear, otherwise excellent). A very crude, most unusual demijohn having a scarce form and impressive, large size.

Est.: \$400 - \$600 • Min. bid: \$200



Lot 276

Large, Freeblown Demijohn, New England, 1845 - 1860. Yellowish amber below the shoulders shading to a deep amber with a slight orange tone through the neck, cylindrical, applied sloping collar - blowpipe pontil scar, ht. 16 1/4", virtually perfect; (just a little scattered, very minor wear). A great example, scarce larger size, outstanding character - the glass is absolutely filled with small bubbles and impurities, and in excellent condition.

Est.: \$300 - \$500 • Min. bid: \$150



Lot 277

Demijohn, America, probably Eastern U.S., 1845 - 1860. 'Soft green', almost a mint coloration, cylindrical, dip mold or possibly freeblown, applied sloping collar - blowpipe pontil scar, ht. 10 5/8"; (some typical scattered minor wear including a couple of light scratches, otherwise very near mint). A beautiful early cylinder demijohn in a very attractive, and somewhat different, color. Excellent clarity and condition.

Est.: \$200 - \$400 • Min. bid: \$100



Lot 278

Demijohn, America, possibly New York State, 1855 - 1870. Beautiful, medium emerald green coloration with a subtle amber striation swirled through the body, 2-pc. mold, cylindrical 'flowerpot' form, applied sloping collar - concave base with a deep, heavy, blowpipe pontil scar, ht. 15 7/8", virtually attic mint; (a few minor light scratches near one of the mold seams, otherwise perfect). Attractive, beautiful color, nice bubbly glass, scarce form, and with a 'cut-your-finger' deep, heavy pontil scar!

Est.: \$250 - \$450 • Min. bid: \$130



Lot 279

Demijohn, America, 1855 - 1870. Clear, light-to-medium yellowish olive, almost an olive yellow, cylindrical, 4-pc. mold, applied sloping collar - sand-type pontil scar, ht. 18 1/2", near mint; (a ring of light content residue in one side, as well as the base). Another nice color, fantastic eye appeal with crude, whittled glass, excellent condition. From an 'old time' Ohio collection, this example has not seen the light of day in more than 25 years.

Est.: \$150 - \$250 • Min. bid: \$80



Lot 280

Demijohn, America, 1870 - 1880. Medium sapphire blue, cylindrical with small bb-size embossed, or raised, 'dots' scattered around the body, 2-pc. mold, applied sloping collar - smooth base, ht. 15 1/8", perfect. An absolutely gorgeous demijohn, nice character and texture to the glass, and a scarce mold with the embossed raised 'dots'. Provenance: Joe Widman collection.

Est.: \$1,200 - \$1,800 • Min. bid: \$600

Scarce to Rare, Early Sealed Wine Bottles

Lot 267



Lot 270

Lot 271

Lot 269

Lot 268

Scarce and Colorful Historical & Figured Flasks



Lot 17



Lot 3



Lot 25



Lot 12