

# American Glass Gallery™

Auction #30

Opens November 8, 2021 • Closes November 16, 2021



**Bid on  
this incredible  
Drake's Bitters!**

100% of proceeds to  
benefit the FOHBC  
Virtual Museum of  
Historical Bottles  
and Glass!



Lot 180: Exceptionally  
Rare and Brilliant,  
Green Drake's Bitters

# Conditions of Sale: Auction #30

## 1. Absentee Auction

The items in this sale will be sold via absentee auction.

Closing date: **Tuesday, November 16, 2021, 11:00 p.m., EST.**

## 2. Our Guarantee Regarding Descriptions

American Glass Gallery has made every attempt to describe correctly the property being sold. Descriptions are guaranteed to be accurate as regards authenticity, age, condition, and measurements to within one-fourth inch, as represented in this catalog. Items in this catalog are not shown to scale. In describing damage, exterior wear or manufacturer's flaws that in our opinion, do not significantly detract visually or monetarily from the value of the item are not listed and will not be considered for refund. The Auctioneers reserve the right to make verbal corrections and provide additional information at any time during the sale.

## 3. Preview

Items may be viewed by appointment from **November 8, 2021** through **November 15, 2021.**

## 4. Bidding Procedure

You may submit your bids by mail, phone, FAX, email or through our on-line auction site. If bidding by mail or FAX, please fill out the absentee form and return it to us. Your bid, either written or oral, grants American Glass Gallery the authority to protect you up to the amount of your stated bid. Your bid will not be removed once executed.

**Bidding Times:** You can submit your bids anytime after receiving your catalog. Bids may be made by phone, daily, until closing day, **November 16, 2021**, from 9 A.M. - 6 P.M. Eastern Time. Incoming phone bids will be accepted on the closing day (**November 16, 2021**) until 11 P.M. Eastern Time. Phone calls and Fax bids after this time will not be honored. No exceptions. You may also place your bids through our on-line auction service 24-hours a day once the site has opened for bidding, on or about **November 8, 2021**, continuing until 11:00 P.M. Eastern Time, **November 16, 2021.**

**Please do not wait until the last day or two of the sale to place your bids!** Because many collectors wait until the final few days of the sale to place their bids, we anticipate the telephone and internet bidding to be very busy during that period, so please plan accordingly. In the event of a tie bid, the earliest received bid on the lot will take precedent. We would welcome your bids by phone so that we can answer any questions and assist you in your bidding.

You may also telephone us at any time during the auction, prior to the closing of the sale, to check the status of your bids, to find the current bidding level, to open a bid, or to raise a bid on an auction lot.

### Bidding Increments are as follows:

Up to \$250.00.....	increments of \$10.00
\$250.00 - \$500.00 .....	increments of \$25.00
\$500.00 - \$1,000.00 .....	increments of \$50.00
\$1,000.00 - \$2,500.00 .....	increments of \$100.00
\$2,500.00 - \$5,000.00 .....	increments of \$250.00
\$5,000.00 - \$10,000.00 .....	increments of \$500.00
\$10,000 & Up.....	increments of \$1,000.00

Bids submitted between the above increments, whether by mail, FAX, email or on-line via the internet, will automatically be lowered to the closest lower increment.

This is a minimum bid auction. Bids below the printed minimum will not be accepted.

**An example of how our absentee bidding system works:** You bid \$1000.00 on a lot which is the highest bid received to date. The second highest bid is \$800.00. The current high bid level would be yours at \$850.00, one bid increment higher than the other collector's bid. Any additional bids submitted by others below \$1000.00 will automatically be topped on your behalf by a representative of American Glass Gallery, up to your stipulated high bid amount. If no further bids on this lot are received beyond the \$800.00, and the under bidder has not requested a "Call Back", then you would have won the lot at \$850.00, not the \$1000.00 that you were prepared to pay.

American Glass Gallery will at NO TIME disclose bids pledged by others; only the current "High Bid" level of a lot will be stated upon request. The highest bidder as determined by American Glass Gallery shall be the purchaser. It is the sole right of the auctioneer to settle any dispute between bidders and to regulate the bidding procedure. The auctioneer reserves the right to refuse any bid he believes not to have been made in good faith.

## 5. "Call Back" Process

If requested, the three top bidders of an item at the time of closing will be given a "Call Back" over the next number of days in order to resolve the final sale of an item. You can request this service by "checking" the appropriate box on your absentee bid form or verbal agreement by phone. It is the responsibility of the bidder to insure he has qualified for this service.

**Please note: No "Call Backs" will be executed for bids under \$800.00. In the event of tie bids, the earliest bid received will be the winning bid.**

An example of how the "Call Back" process works: As an example, you have bid \$800.00 on a particular lot. Another bidder has submitted a bid of \$1000.00 on the same lot. Assuming that as of the auction closing date you are among the top three bidders on this lot and you have requested a "Call Back", you would receive a call informing you that you have been "Out Bid" and the current "High Bid" is now at \$850.00. If you choose to continue bidding on this lot, you may now do so. Assuming that you now increase your bid to \$900.00, we would accept your bid but also inform you that we have a higher bid on this lot and must bid \$950.00. At this time, an auction between you and American Glass Gallery, representing the collector who submitted the bid of \$1000.00, takes place. This bidding would continue until you drop out, or top the other bidders high bid of \$1000.00. If the other bidder has not requested a "Call Back" service, you would be awarded the lot. If however, the other bidder also requested a Call Back, we must now call them. If they elect to increase their bid over your high bid, we would in turn call you back. This back and fourth process would continue until one of the bidders declines to go any farther.

If you have requested a "Call Back", the auctioneers will need to contact you on the days immediately following the auction closing between the hours of 8 A.M. and 9 P.M. Eastern Time. Please supply us with all appropriate contact phone numbers including, home, mobile and work numbers. Bidders must provide the appropriate telephone numbers where they can be contacted. If you will be traveling or otherwise unavailable, bidders with "Call Back" privileges will have the responsibility to contact American Glass Gallery twice daily during the Call Back period.

**Please note,** every effort will be made to contact you during the "Call Back" period. However, the bidder will forfeit their rights to a "Call Back" if the auctioneers are unable to reach them. American Glass Gallery reserves the right to discontinue Call Backs on any item in the sale (2) two days after the closing date of the sale. At that time, the current "High Bidder" may be awarded the item even if Call Backs are still outstanding.



# Conditions of Sale: Auction #30

## 6. Terms

**Successful Bidders,** Prompt and full payment is due immediately upon receipt of our invoice. Absolutely no exceptions. Anyone failing to pay for items won will forfeit all rights to bid in any future American Glass Gallery sales. *Any late or delayed payments may result in loss of return privileges for items purchased in the sale.*

**No Items Will Be Mailed Before Full Payment Is Received.**

**Buyer Premium:** Our buyer premium remains unchanged. *It is 15% if paying by cash or check, discounted from 18% if paying by Credit Card or PayPal* (PayPal payment account: jpastor@americanglassgallery.com). This buyer premium will be added to the hammer price as part of the purchase price. For example, if you purchase a lot for \$100.00, you will receive an invoice for \$115.00 if paying by cash, check or money order, plus any applicable sales tax or shipping charges.

**Taxes:** If you are a Michigan resident, a 6% sales tax will be added to your bill unless you have a valid resale number registered with us.

**Shipping:** Shipping, handling and insurance are extra. We ship insured via U.S. Mail or UPS. These charges will be added to your bill unless the lots are picked up in person. Oversize packages (boxes with dimensions over 12"), may incur additional shipping charges based on the postal zone of destination. Our charges for shipping (excluding foreign shipments and oversized lots) are \$18.00 for the first item, \$9.00 for each additional item together with extra insurance costs (we use current U.S. Postal Service insurance rates).

*Please allow two to three weeks for delivery after receipt of your check.*

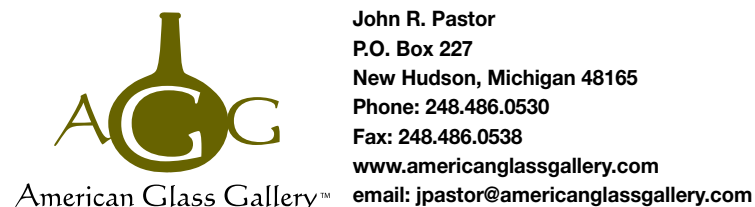
**Payment:** American Glass Gallery accepts Cash, Money Orders, Personal Checks, Visa, MasterCard, American Express and PayPal. *If paying by Credit Card or PayPal, an additional 3% will be added to the invoice total.*



## 7. Refunds

Refunds will be given at the discretion of the Auctioneers. Items purchased must be examined and request for refund made immediately upon receipt of the item or items. Since opinions can differ, particularly in the matter of condition, the Auctioneers will be the sole judge in the consideration of refunds. Refunds requested on the grounds of authenticity must be made within 15 days of the date of the auction, and such refund requests must be accompanied by at least one supporting statement in writing from an authority recognized by the Auctioneers. It is the Auctioneers sincere intention to consider any reasonable request for a refund. *Absolutely no returns for any reason after 30 days following the closing of the sale.*

## 8. Bidding on any item indicates your acceptance of these terms.



John R. Pastor  
P.O. Box 227  
New Hudson, Michigan 48165  
Phone: 248.486.0530  
Fax: 248.486.0538  
www.americanglassgallery.com  
email: jpastor@americanglassgallery.com

## PLEASE NOTE:

*The lots offered in this printed catalog are identical to the lots offered in the on-line catalog. However, due to space constraints of the printed catalog, there may be some further information available regarding some of the lots in the on-line auction descriptions.*

*Please visit us at*

**www.americanglassgallery.com**

*and follow the link to the on-line auction.*

*The link and on-line auction will be available November 8, 2021. A post-auction price list will be available on our website, in printable form, approximately 30 days after the close of the auction.*

*We encourage you to contact us by phone or email with any questions, for assistance with bidding, or further details or clarification on any of the lots in this sale. Your complete satisfaction and confidence is our goal!*

**THANK YOU AND GOOD LUCK  
WITH YOUR BIDS!**

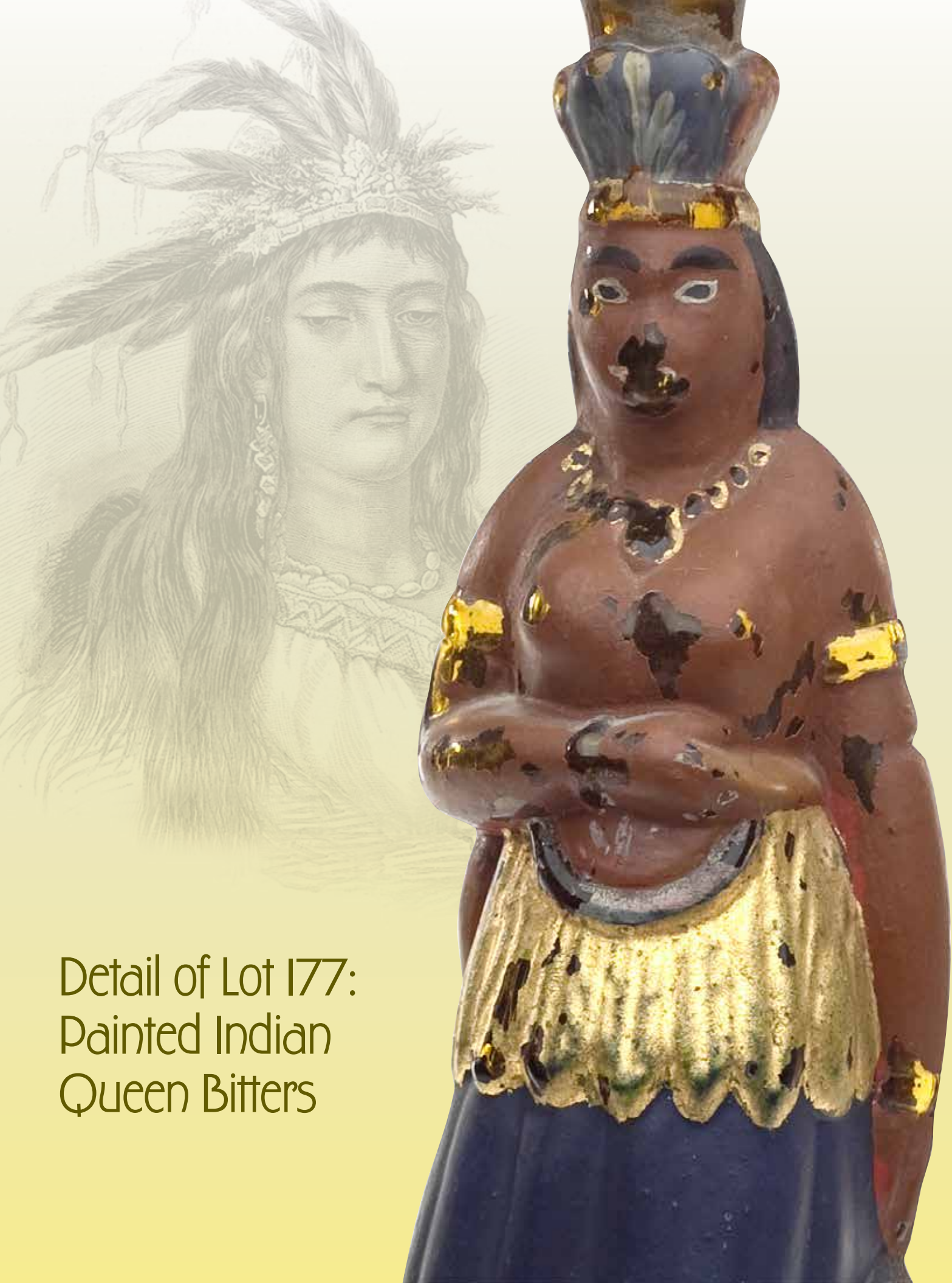
# Reference Key

Reference initials and numbers used in the description of this catalog refer to the following publications:

AHG	<i>American Historical Glass</i> , Bessie M. Lindsey, 1967.
AM	<i>The Decanter - An Illustrated History of Glass from 1650</i> , Andy McConnell, 2004.
AP	<i>Glass in Early America</i> , Arlene Palmer, 1993.
BA1	<i>Collecting The Cures</i> , Bill Agee, 1969.
BA2	<i>Collecting All Cures</i> , Bill Agee, 1973.
BB	<i>A Bit About Balsams</i> , Betty Blasi, 1974.
BH	<i>Classification and Documentation of Sunburst and Similar Scent Bottles</i> , Bill Ham, AB&GC, 5/87.
BJ	<i>American Pot Lids</i> , Barbara and Sonny Jackson, 1987.
B/K	<i>The Glass Industry in Sandwich</i> , Raymond Barlow and Joan Kaiser, 1989.
BPK	<i>A.M. BININGER Bottles</i> , Jim Bender, 2017
C	<i>Ink Bottles and Inkwells</i> , William Covill, 1971.
DB	<i>Antique Sealed Bottles, 1640 - 1900</i> , David Burton, 2015
DeG	<i>American Sarsaparilla Bottles</i> , John DeGrafft, 1980.
DeGII	<i>Supplement to American Sarsaparilla Bottles</i> , John DeGrafft, 2004.
DF	<i>Hair Raising Stories</i> , Don Fadely, 1992.
DM	<i>Wistarburgh, Window Tiles, Bottles and More</i> , Dale L. Murscell, 2007.
D/P	<i>Collector's Guide to Candy Containers</i> , Douglas M. Dezso, J. Leon and Rose Poirier, 1998.
F	<i>Inks, 150 Years of Bottles and Companies</i> , Ed and Lucy Faulkner.
FA	<i>John Frederick Amelung, Early American Glassmaker</i> , Lanmon, Palmer, Hume, Brill, Hanson, 1990.
FB	<i>A.S.C.R. The wine bottles of All Souls College</i> , Oxford, 1750 – 1850, Fay Banks.
G	(Flasks) <i>American Bottles &amp; Flasks and Their Ancestry</i> , McKearin & Wilson, 1978.
G	(Blown Three Mold) <i>American Glass</i> (Chapter VI), George S. and Helen McKearin, 1941.
GBH	<i>English Glass For The Collector, 1660-1860</i> , G. Bernard Hughes, 1958.
H	<i>American Bottles in the Charles B. Gardner Collection</i> , Norman C. Heckler, 1975.
JB	<i>Patent and Proprietary Medicine Bottles</i> , Joseph K. Baldwin, 1973
JEB	<i>Glasshouse Whimsies</i> , Joyce E. Blake, 1984.
JH	<i>Glasshouses &amp; Glass Manufacturers of the Pittsburgh Region, 1795 – 1910</i> , Jay W. Hawkins, 2009.
JM	<i>Tea Kettle Ink Price and Reference Guide</i> , Joe L. Mathews Jr., 2016
JS	<i>In glas verpakt – European Bottles, Their history and production</i> , Johan Soetens, 2001.
K	<i>Poison Bottle Workbook</i> , Rudy Kuhn, 1988.
KW	<i>New England Glass &amp; Glassmaking</i> , Kenneth M. Wilson, 1972.
L	<i>The Red Book of Fruit Jars, No. 11</i> , Douglas M Leybourne, Jr., 2014.
LI	<i>Pittsburgh Glass, 1797 – 1891</i> , Lowell Innes, 1976.
Mc	<i>Two Hundred Years of American Blown Glass</i> , Helen and George McKearin, 1950.
McK	<i>American Glass</i> , George S. and Helen McKearin, 1941.
MW	<i>American Bottles &amp; Flasks and Their Ancestry</i> , McKearin & Wilson, 1978.
N	<i>Great American Pontiled Medicines</i> , Frederick Nielson, 1978.
NCH	<i>The Blaske Collection of American Flasks</i> , Norman C. Heckler, 1983.
NCH II	<i>The Blaske Collection: Part II</i> , Norman C. Heckler, 1983.
Odell I	<i>Indian Bottles and Brands</i> , John Odell, 1977
Odell II	<i>Pontiled Medicine Encyclopdia</i> , John Odell, 2007
O&S	<i>Warner's Reference Guide</i> , Ed Ojea and Jack Stecher, 1998.
P	<i>The Glass Gaffers of New Jersey</i> , Adeline Pepper, 1971.
RD	<i>Understanding Antique Wine Bottles</i> , Roger Dumbrell, 1983.
RF	<i>The Bottle Book: A Comprehensive Guide to Historic, Embossed Medicine Bottles</i> , Richard Fike, 1987
RH	<i>Collecting Barber Bottles</i> , Richard Holiner, 1986.
R/H	<i>Bitters Bottles</i> , Carlyn Ring and W. C. Ham, 1998.
RWL	<i>Antique Fakes &amp; Reproductions</i> , Ruth Webb Lee, 1950
T	<i>Collectors Guide to Saratoga Type Mineral Water Bottles</i> , Donald Tucker, 2005.
V	<i>Nailsea Glass</i> , Keith Vincent, 1975
VdB	<i>Antique Glass Bottles; Their History and Evolution</i> , Willy Van den Bossche, 2001.
Z	<i>Ketchup, Pickles, Sauces</i> , Betty Zumwalt, 1980.
ZW	<i>Color Hutchinsons</i> , Zang Wood, 1999.

- The dash is generally used to indicate that the descriptions are on opposite sides of the bottle or flask.

/ The slash is used to indicate that the descriptions are on different lines or surfaces of the bottle.



Detail of Lot 177:  
Painted Indian  
Queen Bitters



# Lot 259: Very Rare and Important R. Flanagan's Mineral Water Bottle

**R**obert Flanagan was first known to the public as a hotel keeper in Philadelphia between 1833 and 1835.

In 1842, Flanagan also appears to have been operating a bottling works in conjunction with the hotel. There are stoneware bottles marked "R. Flanagan No 114 N 6 St," and the only known example of an embossed glass bottle is offered here.

The glass Flanagan's mineral water bottles probably appeared about 1842-1843 and were likely made at a Philadelphia area glass works. The embossing 'DOUBLE PRESSURE MINERAL WATER,' has a distinctive backwards 'N'. It is believed that the stoneware bottles may have been used to bottle mineral water as well.

An article that appeared in the June 27, 1844 edition of the Philadelphia newspaper *North American*, further proves that Flanagan was producing mineral water during this period:

*EXPLOSION OF A SODA FOUNTAIN. — Yesterday afternoon while Mr. R. Flanagan, manufacturer of Soda Water, in Sixth street below Race, was charging a fountain with gas, it exploded. The force of the gas carried away a portion of the shed in which the process of introducing the gas is conducted, and Mr. Flanagan was struck in the breast by one of the fragments and seriously injured.*

Perhaps these bottles are so very rare because this horrible accident convinced Flanagan to return to the hotel business!





*First Hotel at Zanesville.*

## Exceptional Zanesville Ohio Pattern-molded Globular Bottles

Lot 52

Lot 55



Lot 59



## A Colorful Array of Historical & Figured Flasks

Lot 19



Lot 25

Lot 9

Lot 32

Lot 16



## Large and Mammoth-Size Case Gin Bottles



Lot 269

Lot 271

Lot 273



### Lot 1

**"G.G. WASHINGTON" / BUST OF WASHINGTON - EAGLE Historical Flask**, an early Pittsburgh glasshouse, 1825 - 1835. Aquamarine, sheared mouth - blowpipe pontil scar, Pt; (a pinhead flake and bit of roughness on the inside edge of the lip; a moderate-to-fair amount of scattered fine high point wear, primarily on the bust and lapels, a weak impression in the shoulders, as is often the case, and small patch of interior milkiness). GI-9. A rare, seldom offered flask.

*Est.: \$1,200 - \$2,400 • Min. bid: \$600*



### Lot 2

**"GENERAL WASHINGTON" / BUST OF WASHINGTON - "E PLURIBUS UNUM" / EAGLE / "T.W.D - ADAMS & JEFFERSON / JULY 4 A.D. 1776 - KENSINGTON GLASS / WORKS PHILADELPHIA" Historical Flask**, Kensington Glass Works, 1826 - 1835. Aquamarine, sheared mouth - pontil scar, Pt, virtually perfect; (just a faint touch of light wear, and a slightly weak impression in the shoulders - as is typical for the mold). GI-14. Very nice example, bright and sparkling.

*Est.: \$400 - \$600 • Min. bid: \$200*



### Lot 3

**"WASHINGTON" / BUST OF WASHINGTON - "BRIDGETON" (STAR) "NEW JERSEY" / BUST OF TAYLOR Historical Flask**, Bridgeton Glass Works, 1845 - 1855. Bright, bluish aqua, sheared mouth - blowpipe pontil scar, Pt; (some scattered high point wear and a small flake on the top of the lip, likely occurring when the mouth was sheared, mentioned for complete accuracy). GI-24. A bright clean example of this popular mold that is not easy to find.

*Est.: \$200 - \$400 • Min. bid: \$100*



### Lot 4

**WASHINGTON - "ALBANY GLASS WORKS / N Y" Historical Flask**, Albany Glass Works, probably 1847 - 1850. Aquamarine, sheared, tooled mouth - blowpipe pontil scar, ½ Pt, near mint; (some light high point wear on the reverse, otherwise perfect). GI-30. A comparatively scarce little flask that does not come around often.

*Est.: \$400 - \$600 • Min. bid: \$200*



### Lot 5

**"THE FATHER OF HIS COUNTRY" / BUST OF WASHINGTON - (Reverse plain), Historical Flask**, Lockport Glass Works, Lockport, NY, 1848 - 1855. Medium blue green, applied ring collar with bevel - blowpipe pontil scar, Qt, near mint; (a trace of typical minor wear, and a shallow 1 ¼" in-manufacture pontil flake that extends to the edge of the base, but not visible on display, otherwise perfect). GI-47. A nice example with good depth of color, clarity, and overall excellent condition.

*Est.: \$300 - \$500 • Min. bid: \$150*



### Lot 6

**"LAFAYETTE" / BUST OF LAFAYETTE / "COVETRY / C-T" - STARS AND LIBERTY CAP / "S&S", Coventry Glass Works, 1824 - 1830. Aquamarine, sheared mouth - pontil scar, Pt; (professionally cleaned to original luster and near mint, but retains a bit of light oxidation, or fine graininess, between the ribs and a little on the reverse). GI-85a. Extremely rare, only three known in aqua, and one of the other two being damaged. Variant with two rivet impressions in the shoulder.**

*Est.: \$8,000 - \$12,000 • Min. bid: \$4,000*



### Lot 7

**FRANKLIN - FRANKLIN Historical Flask**, probably Kensington Glass Works, Philadelphia, PA, 1825 - 1835. Aquamarine, sheared mouth - blowpipe pontil scar, Qt; (a little high point wear and a few light scratches, otherwise perfect). GI-97. A scarce flask that does not come around often. The noted little scratches and wear spot are most noticeable on the forehead on one side, and is otherwise a brilliant, sparkling example.

*Est.: \$300 - \$500 • Min. bid: \$150*



### Lot 8

**EAGLE - EAGLE Historical Flask**, Louisville Glass Works, 1855 - 1865. Medium-to-deep yellowish grass green, applied double ring collar - blowpipe pontil scar, Qt; (a tiny 1/8" annealing line in the medial rib; some moderate high point wear, and a 3/8" chip or depression on the lip has been finely polished). GI-31. Ex. Glenn Quimby collection. A comparatively scarce mold in a rare color. Despite the noted condition issues, a great looking and desirable, flask.

*Est.: \$800 - \$1,200 • Min. bid: \$400*





### Lot 9

**EAGLE - "COFFIN & HAY." / STAG / "HAMMONTON" Historical Flask**, Coffin & Hay Glass Manufactory, Hammonton, NJ, 1836 - 1847. Clear, medium bluish green, sheared mouth - blowpipe pontil scar, ½ Pt, perfect. GII-50. A scarce mold in any color, and very scarce-to-rare in this blue green coloration. The last example offered in this, or similar color, was almost 15 years ago. Great color, excellent impression, clarity, and condition. A little sweetheart of a flask.

*Est.: \$3,000 - \$5,000 • Min. bid: \$1,500*



### Lot 10

**EAGLE - FURLED FLAG / "FOR OUR COUNTRY" Historical Flask**, Coffin & Hay Glass Manufactory, Hammonton, NJ, 1838 - 1847. Aquamarine, sheared mouth - blowpipe pontil scar, Pt, near mint; (a few spots of very light, minor interior milkiness, primarily near the base, otherwise perfect). GII-52. A bright, clean, sparkling example, the noted small wisps of faint haze are barely noticeable. Note; an early collector tag remains on the base.

*Est.: \$200 - \$300 • Min. bid: \$100*



### Lot 11

**EAGLE - "NEW LONDON" / ANCHOR / "GLASS WORKS" Historical Flask**, 1856 - 1860. Clear, medium green, sheared mouth - blowpipe pontil scar, ½ Pt; (a tiny potstone on the side of the flask with an 1/8" cooling line, and a couple of small, paper-thin open bubbles, otherwise mint). GII-67. A great little flask, comparatively scarce, having strong color that does not wash out, a crisp, impression, almost no wear, and lots of character - the flask is filled with tiny seed bubbles.

*Est.: \$1,000 - \$2,000 • Min. bid: \$500*



### Lot 12

**EAGLE - CORNUCOPIA Historical Flask**, Keene Marlboro Street Glassworks, 1830 - 1842. Yellowish olive amber below the shoulders shading to a deep olive amber near the base, sheared mouth - blowpipe pontil scar, Pt; (some minor interior, likely washable, residue in the shoulders, a little typical light wear, and a 3/16" chip along the top of the lip that may have occurred in-manufacture). GII-72b. Listed by McKearin as "Rare". A nice example and with crude, pebbly glass.

*Est.: \$175 - \$350 • Min. bid: \$90*



### Lot 13

**EAGLE - EAGLE Historical Flask**, a Pittsburgh district glasshouse, 1855 - 1865. Aquamarine applied heavy ring collar - iron pontil scar, Qt, virtually perfect; (a little spotty light interior residue, primarily in the shoulders, and almost certainly washable, otherwise perfect). Unlisted, similar to GII-104, but without inscription in oval frame. Also, scarce having the iron pontil scarred base.

*Est.: \$120 - \$240 • Min. bid: \$60*



### Lot 14

**CORNUCOPIA - URN Pictorial Flask**, probably Coventry Glass Works, Coventry, CT, 1835 - 1849. Clear medium emerald coloration, sheared mouth - blowpipe pontil scar, ½ Pt, virtually attic mint; (a little light high point wear, otherwise perfect). GIII-7. A very pretty example, nice clarity and color from top to bottom.

*Est.: \$300 - \$500 • Min. bid: \$150*



### Lot 15

**ECORNUCOPIA - "LANCASTER GLASS WORKS N.Y." / URN**

**Pictorial Flask**, Lancaster Glass Works, Lancaster, NY, 1849 - 1855. Aquamarine, sheared mouth - blowpipe pontil scar, Pt, virtually attic mint; (some light washable interior residue, and just the slightest trace of wear, otherwise perfect). GIII-16. A very nice example of this glasshouse embossed, Western, New York, pictorial flask that is not getting any easier to find!

*Est.: \$400 - \$600 • Min. bid: \$200*



### Lot 16

**MASONIC - EAGLE / "NEG" Historical Flask**, New England Glass Company, Cambridge, MA, 1820 - 1830. Clear, yellowish olive with a slight amber tone through the center, shading to a rich, deep olive through the shoulders and base; sheared mouth - blowpipe pontil scar, ½ Pt, virtually perfect; (only a trace of faint wear and light embossing of the oval frame and lettering on the reverse, as is often the case, otherwise mint). GIV-26. A beautiful example of this very rare, early, flask.

*Est.: \$1,500 - \$2,500 • Min. bid: \$800*



### Lot 17

#### MASONIC - "ZANESVILLE" / EAGLE / "OHIO" / J. SHEPARD & CO

**Historical Flask**, Zanesville Glass Works, 1822 - 1832. Light yellowish honey coloration, sheared mouth - pontil scar, Pt; (a 1/8" chip on the inside edge of the lip has been lightly polished, also a 3/16" dip in the lip that appears as natural, but may have been finely polished; some minor exterior wear and faint interior residue). GIV-32. Great color, plenty of yellowish tones, strong mold impression!

*Est.: \$800 - \$1,600 • Min. bid: \$400*



### Lot 18

#### MASONIC ARCH - EAGLE / "T.W.D."

**Historical Flask**, Kensington Glass Works, Philadelphia, PA, 1825 - 1838. Light greenish aquamarine, sheared mouth - blowpipe pontil scar, Pt, near mint; (a trace of very faint interior residue or milkiness, otherwise attic mint). GIV-37. Note; there is some in-manufacturer 'frothiness' and streaks through the neck and shoulders. A good clean example with a crisp, strong mold impression.

*Est.: \$250 - \$400 • Min bid: \$130*



### Lot 19

**"UNION" / CLASPED HANDS / SQUARE AND COMPASS - EAGLE / "H & S"** **Historical Flask**, Haught & Schwerer Glass Co., Brownsville (Pittsburgh), PA, 1861 - 1864. Olive yellow coloration, applied square collar - blowpipe pontil scar, Pt, near mint; (just a bit of minor light wear, and a 1/8" flake at the edge of the lip on the reverse). GIV-39. An extremely rare, unlisted color for this mold. Also very rare having the 'open pontil' scarred base.

*Est.: \$3,000 - \$5,000 • Min. bid: \$1,500*



### Lot 20

#### ALL SEEING EYE (Inside 6-Pointed Star) / "A D" - RAISED ARM AND 6-POINTED STAR / "G R J A"

**Historical Flask**, probably a Stoddard, NH glasshouse, 1842 - 1850. Medium-to-deep yellowish amber, applied short tapered collar - smooth base, Pt; (a little typical minor exterior wear, some light scratches near the shoulder on one side, otherwise excellent). GIV-43. A classic New England masonic flask, attractive with applied collar. Ex. John Apple collection.

*Est. \$250 - \$400 • Min. bid: \$130*



### Lot 21

**"SUCCESS TO THE RAILROAD" / HORSE PULLING CART** - (Reverse same) **Historical Flask**, Keene Marlboro Street Glassworks, Keene, NH, 1830 - 1842. Light-to-medium yellowish olive amber, sheared mouth - blowpipe pontil scar, Pt, near mint; (a little minor high point wear and a small flake, or bit of roughness, at the corner of the medial rib, on the base). GV-3. A very nice example, good color and clarity.

*Est.: \$300 - \$500 • Min. bid: \$150*



### Lot 22

**"SUCCESS TO THE RAILROAD" / HORSE PULLING CART** - (Reverse same) **Historical Flask**, probably Saratoga Mountain Glass Works, Mt. Pleasant, NY, 1846 - 1860. Yellowish amber with a very slight olive tone, sheared mouth - blowpipe pontil scar, Pt; (a little light-to-moderate high point wear, and a somewhat weak impression in the shoulders, as is common on the GV-5 Railroad flasks). GV-5. A scarce color for this mold, most examples being a shade of green.

*Est.: \$275 - \$450 • Min. bid: \$140*



### Lot 23

**"SUCCESS TO THE RAILROAD" / HORSE PULLING CART - EAGLE** **Historical Flask**, Coventry Glass Works, Coventry, CT 1830 - 1848. Medium-to-deep olive amber, almost a tobacco coloration, sheared mouth - blowpipe pontil scar, Pt; (some moderate high point wear as is often the case on these high-relief Railroad molds; a minor open bubble in the neck, and just a bit of washable interior content residue, otherwise excellent). GV-8. A classic, early, New England Railroad flask.

*Est.: \$275 - \$450 • Min. bid: \$140*



### Lot 24

**"RAILROAD" / HORSE PULLING CART / "LOWELL" - EAGLE** **Historical Flask**, Coventry Glass Works, probably 1830 - 1835. Yellowish olive amber, sheared mouth - blowpipe pontil scar, 1/2 Pt, near mint; (just a slight trace of very minor wear including a few onionskin-thin open surface bubbles, 3/16" or less, otherwise perfect). GV-10. A beautiful example, nice light color, the glass being filled with tiny bubbles. Unique in that it was blown to commemorate a specific rail line.

*Est.: \$300 - \$500 • Min. bid: \$150*





### Lot 25

**SCROLL FLASK**, Midwest, 1845 - 1860. Clear medium cobalt through the shoulders shading to a deep, vibrant cobalt blue in the lower third of the body, Sheared mouth - blowpipe pontil scar, Pt, very near mint; (a little typical minor high point wear, otherwise perfect). GIX-11. An absolutely gorgeous example, the shading of color lends extra appeal. In addition, excellent overall condition. This one has been locked up in a collection for a very long time.

**Est.: \$2,500 - \$4,000 • Min. bid: \$1,300**



### Lot 26

**Giant Scroll Flask**, Midwest, 1840 - 1860. Aqua, sheared mouth - iron pontil scar, ht. 11 1/8"; (a trace of minor wear including a 1/8" flake at edge of base; some light interior haze, primarily through the shoulders, and a faint bit in the side, none of it is terribly distracting, otherwise excellent). GIX-29. Listed as "Rare" by McKearin. See Mark Vuono's article, "The Gallon Scrolls", AB&GC, 06 / 2014. The article concurs with McKearin and suggests that few have survived.

**Est.: \$800 - \$1,600 • Min. bid: \$400**



### Lot 27

**SCROLL FLASK**, Midwest, 1840 - 1860. Golden amber below the shoulders shading to a deeper amber through the neck and lower half of the flask, sheared mouth - blowpipe pontil scar, 1/2 Pt, near mint; (a couple of tiny pinhead flakes on the edge of the sheared mouth, otherwise virtually perfect). GIX-36. A scarce mold, especially in amber, as most of the recorded examples in 'color' have been in shades of green. Provenance: Ex. John Apple collection.

**Est.: \$800 - \$1,200 • Min. bid: \$400**



### Lot 28

**"J R & Son" SCROLL FLASK**, John Robinson & Son Glass Manufacturers, Pittsburgh, PA, 1830 - 1834. Brilliant aquamarine, corseted scroll form, sheared mouth - blowpipe pontil scar, Pt; (a 1/4" chip along the top edge of the sheared lip that almost certainly occurred when the cork was pried out, and just the slightest touch of wear, otherwise perfect). GIX-43. A scarce and desirable, glasshouse marked. scroll. In addition, a bright, clean, example, with good rich color.

**Est.: \$600 - \$900 • Min. bid: \$300**



### Lot 29

**SLOOP - STAR Pictorial Flask**, probably Bridgeton Glass Works, Bridgeton, NJ, 1846 - 1855. Bright apple green, sheared, tooled mouth - blowpipe pontil scar, 1/2 Pt, near mint; (just a trace of very light wear, and a sliver of a pontil flake at the edge of the base, otherwise perfect). GX-9. A comparatively scarce little flask, very pretty color, whittled, and in beautiful condition. Hard to find. Only a few examples of this mold have been offered, in any color, over the past 15 years.

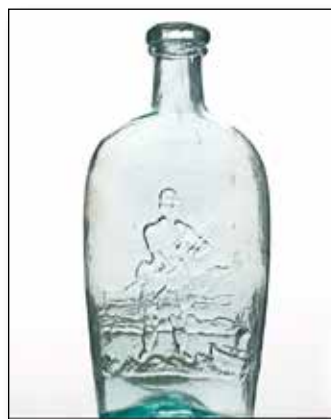
**Est.: \$800 - \$1,200 • Min. bid: \$400**



### Lot 30

**Lot of (2), "UNION" Historical Flasks**, Lippincott, Fry & Co. and possibly Fahnestock, Albree & Co., Pittsburgh. 1st Ex: "UNION" / CLASPED HANDS / "L.F & CO" - EAGLE / "PITTSBURGH". 2nd Ex: "UNION" / CLASPED HANDS - CANNON. Both are aquamarine, applied collar with band - smooth base, Qt. and Pt. respectively; (1st Ex. has a 1/4" x 1" area of milkiness in the shoulder, a tiny flake on collar and band; 2nd Ex. has a pinhead flake on lip, otherwise both near mint). GXII-13 & GXII-41.

**Ext.: \$150 - \$250 • Min. bid: \$80**



### Lot 31

**HUNTER - POINTERS Pictorial Flask**, America, possibly New London Glass Works, New London, CT, 1856 - 1866. Aquamarine, applied double round collar - blowpipe pontil scar, Pt; (just a slight trace of very minor wear, and a little spotty, light, interior residue or milkiness, some of which may wash out, otherwise perfect). GXIII-7. As noted by McKearin, a rare mold, and this one having the pontil scarred base!

**Est.: \$400 - \$600 • Min. bid: \$200**



### Lot 32

**SHEAF OF GRAIN - STAR Pictorial Flask**, probably Bulltown Glass Works, Bulltown, NJ, 1858 - 1865. Rich, deep blue green coloration, sheared mouth - blowpipe pontil scar, 1/2 Pt, virtually perfect; (a few, tiny, superficial, in-manufacture annealing lines in the neck mentioned for complete accuracy, otherwise mint). GXIII-40. Scarce. A great example having a crisp, very bold impression, beautifully whittled, and in a rare color for this mold, unlisted in blue green!

**Est.: \$1,500 - \$2,500 • Min. bid: \$800**



### Lot 33

**Lot of (2), Lettered Flasks**, Clyde, NY and Pittsburgh, PA, 1864 - 1878. 1st Example: "**CLYDE GLASS WORKS / N.Y.**", aquamarine, applied ring collar - smooth base, Pt, perfect. GXV-2. 2nd Example: "**CUNNINGHAMS & IHMSEN / GLASSMAKERS / PITTSBURGH. PA**", aqua, applied collar with flat band - smooth base, Pt, near mint; (lightly cleaned to original luster and virtually perfect condition). GXV-5. Both are beautiful examples, bright, clean, excellent condition.

*Est.: \$100 - \$200 • Min. bid: \$50*



### Lot 34

**"GRANITE / GLASS / CO - STODDARD / N H" Lettered Flask**, 1846 - 1856. Bright, yellowish olive amber, sheared, tooled, slightly flared mouth - blowpipe pontil scar, Pt, virtually perfect; (only the slightest trace of wear including a little pinhead flake on the edge of the sheared mouth, otherwise mint). GXV-7. A beautiful example, nice bright color with plenty of yellowish tones, good character, excellent condition!

*Est.: \$300 - \$500 • Min. bid: \$150*



### Lot 35

**Rare, Miniature Freeblown Globular Bottle**, New England, 1790 - 1820. Medium olive amber, globular form, sheared mouth with a crudely applied ring type collar - delicate blowpipe pontil scar, ht. 2"; near mint; (a 3/16" chip on the edge of the applied string lip; some interior, almost certainly washable, content residue, otherwise perfect). MW, plate 47. At just 2", an incredible little New England glob that would qualify as a 'giant' in any collection of early New England glass.

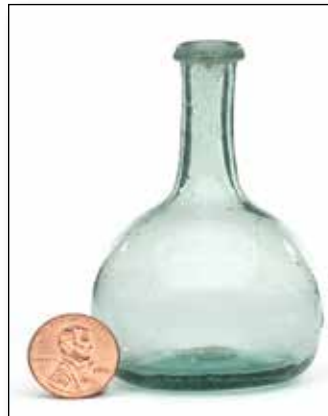
*Est.: \$2,000 - \$3,000 • Min. bid: \$1,000*



### Lot 36

**Rare, Miniature Freeblown Globular Bottle**, America, probably Mid-Atlantic region, possibly New England, 1800 - 1830. Medium-to-deep amber, globular form, sheared mouth with tooled ring collar - blowpipe pontil scar, ht. 3 1/4", perfect. See McK plate 226; MW, plate 46, #2. Rare size, very scarce color for a miniature glob, beautiful overall condition. Provenance: Doug Allinger collection.

*Est.: \$800 - \$1,200 • Min. bid: \$400*



### Lot 37

**Rare, Miniature Freeblown Globular Bottle**, America, probably Midwest, possibly Eastern U.S., 1800 - 1830. Light greenish aquamarine, globular form, sheared and outward rolled mouth - blowpipe pontil scar, ht. 3", very near mint; (trace bit of minor wear, otherwise perfect). A great little mini-glob, nice form, good character, a tidy little rolled lip, excellent condition. Provenance: Doug Allinger collection.

*Est.: \$400 - \$600 • Min. bid: \$200*



### Lot 38

**Rare, Miniature Freeblown Globular Bottle**, Midwest, possibly Mantua Glass Works, Mantua, OH, 1822 - 1829. Aquamarine, globular body with a short, wide neck, sheared and outward folded rim - blowpipe pontil scar, ht. 3 5/8", virtually perfect; (just a slight bit of faint wear, a little residue under the folded collar). A rare example, the short wide neck lending a squatty appearance to the bottle, the tidy folded rim is well executed. Provenance: Doug Allinger collection, Ex. Darl Fifer collection.

*Est.: \$400 - \$600 • Min. bid: \$200*



### Lot 39

**Rare, Freeblown Globular Bottle**, Midwest, probably Kent Glass Works, Portage County, OH, 1824 - 1830. Brilliant yellow with some deeper honey tones, globular form, sheared mouth, applied heavy ring lip - blowpipe pontil scar, ht. 7 1/2"; (a tiny hairline 'spider' crack in the side with several 1/4" to 3/8" 'legs', and some expected light usage wear, otherwise excellent). A fantastic early glob, rare, absolutely gorgeous color. Doug Allinger collection; Ex. Darl Fifer, Paul Ballentine collections.

*Est.: \$400 - \$600 • Min. bid: \$200*



### Lot 40

**Freeblown Globular Bottle**, Midwest, probably Zanesville Glass Works, Zanesville, OH, 1820 - 1835. Bright, light golden amber, almost a honey coloration, globular form, outward folded mouth - pontil scar, ht. 7 3/4"; (a few light scratches and some minor wear around the mid-body, otherwise excellent). Blown in the classical Zanesville high-quality 'metal', color, clarity, and lip treatment. Doug Allinger collection, Ex. Darl Fifer collection.

*Est.: \$300 - \$600 • Min. bid: \$150*





### Lot 41

**Freeblown Globular Bottle**, Midwest, probably Zanesville Glass Works, Zanesville, OH, 1820 - 1835. Light golden, or honey coloration, globular form, sheared, tooled, and outward folded lip - blowpipe pontil scar, ht. 9 1/4", near mint; (a little light interior residue or faint haze that may wash out, primarily in and around the base, and a bubble on the shoulder with a 3/16" opening in the glass). Nice example, this one being in a larger, scarce size. Doug Allinger collection.

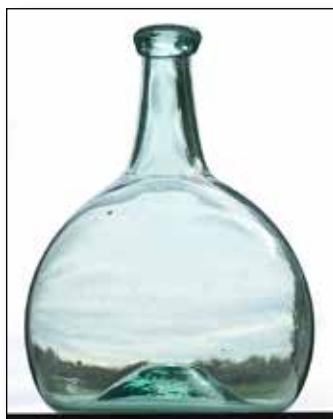
*Est.: \$300 - \$600 • Min. bid: \$150*



### Lot 42

**Freeblown Globular Bottle**, America, probably Midwest, 1790 - 1820. Rich, aquamarine, globular form, sheared mouth with an applied ring collar - base with delicate blowpipe pontil scar, ht. 7 1/4"; (some typical exterior usage wear around the mid-body, otherwise near mint). Some nice swirls to the glass including a light amber striation from the neck to the base. Provenance: Doug Allinger collection; Ex. Courtney collection, Darl Fifer collection.

*Est.: \$150 - \$250 • Min. bid: \$80*



### Lot 43

**Freeblown Globular Bottle**, America, probably Midwest, 1790 - 1820. Clear, greenish aquamarine, globular form, sheared mouth with an applied, inverted, short tapered collar - blowpipe pontil scar, ht. 8 1/4"; (a little minor light wear around the mid-body, otherwise perfect). See McK, plate 46, #3 (similar form, lip treatment, attributed to New Geneva). Doug Allinger acquired the bottle in the Midwest in 2003.

*Est.: \$150 - \$250 • Min. bid: \$80*



### Lot 44

**Large, Freeblown Globular Bottle**, America, probably Midwest, 1800 - 1830. Bright aquamarine, large globular form, sheared mouth with a tooled, likely applied, ring collar - blowpipe pontil scar, ht. 11 5/8", near mint; (just the slightest trace of wear, otherwise perfect). A big, impressive, globular bottle, much larger than normal, excellent clarity, outstanding condition. Provenance: Doug Allinger collection.

*Est.: \$175 - \$275 • Min. bid: \$90*



### Lot 45

**Early, Freeblown Globular Bottle**, New England, 1790 - 1820. Beautiful yellowish olive with an amber tone, large globular form, sheared mouth with a crudely applied, large ring collar - delicate blowpipe pontil scar, ht. 10"; (a small hairline 'spider' crack in the side with 1/4" to 3/8" 'legs', and a slight bit of typical minor wear, otherwise perfect). A beautiful, classical, early, New England glob with a short neck giving it a stout, squatty, look. Doug Allinger collection.

*Est.: \$175 - \$350 • Min. bid: \$90*



### Lot 46

**Early, Freeblown Decanter or Table Serving Bottle**, New England, probably a Connecticut glasshouse, 1790 - 1820. Medium yellowish green, decanter form with an elongated neck and gracefully tapering shoulders, sheared, tooled, and slightly flared collar - blowpipe pontil scar, ht. 11 1/4"; (two annealing lines in the body, each approx. 1/2", and a little typical light wear, otherwise excellent). A very rare, large size, and in a better than average color. From an old time Connecticut collection.

*Est.: \$400 - \$800 • Min. bid: \$200*



### Lot 47

**Lot of (2), Early Chestnut Bottles**, South Jersey, or possibly New England, 1770 - 1810. Both are clear medium olive, elongated chestnut form, applied collars - blowpipe pontil scarred bases, ht. 10 3/4" and 5 3/8", both near perfect; (a little typical, very minor wear). A beautiful pair of early Chestnuts in a pure olive coloration. Although the 'metal' is slightly different, particularly in terms of character, the forms and colors are strikingly similar. The large example is a rare size with outstanding clarity.

*Est.: \$800 - \$1,200 • Min. bid: \$400*



### Lot 48

**Freeblown Chestnut Flask**, New England, 1785 - 1820. Medium, yellowish olive amber, plump large chestnut form, sheared mouth with an applied short tapered collar - delicate blowpipe pontil scar, ht. 8 1/4", near mint; (some typical minor light wear, otherwise perfect). A great example, wonderful form and symmetry, gracefully sloping shoulders, excellent condition, scarce, desirable size!

*Est.: \$300 - \$500 • Min. bid: \$150*



### Lot 49

**Freeblown Chestnut Flask**, New England, 1785 - 1820. Medium, yellowish olive amber, chestnut form, sheared mouth with an applied ring-type collar - blowpipe pontil scar, ht. 5 7/8"; (some scattered exterior wear and minor scratches; a 'dime-size' area near the base on one side with some moderate-to-heavier fine high point wear, and a tiny spot of roughness on the edge of the collar). This little flask saw a bit more use. Doug Allinger collection.

*Est.: \$175 - \$275 • Min. bid: \$100*



### Lot 50

**Lot of (2), Freeblown Chestnut Flasks**, New York State, or New England, 1785 - 1820. Clear medium green, and light sea green, almost an aquamarine. Both are chestnut form, sheared mouth with applied ring collars - blowpipe pontil scarred bases, ht. 5 1/2" & 5 1/4" respectively; (the light sea green example is virtually perfect - typical minor wear; the clear green example has a 5/8" hairline crack in the neck, and minor light wear). Scarce colors. Doug Allinger collection.

*Est.: \$275 - \$450 • Min. bid: \$140*



### Lot 51

**Freeblown Chestnut Flask**, America, probably Midwest, possibly New York State, 1830 - 1850. Clear, medium golden amber, chestnut form, sheared mouth with an applied square collar - blowpipe pontil scar, ht. 5 3/4"; (some typical light exterior wear, otherwise perfect). A very interesting Chestnut, unusual in terms of both color and lip treatment (having a square 'medicine-type' collar). Provenance: Doug Allinger collection.

*Est.: \$200 - \$400 • Min. bid: \$100*



### Lot 52

**Pattern Molded Globular Bottle**, probably Zanesville Glass Works, OH, 1820 - 1835. Gorgeous medium yellow coloration with a hint of an olive tone, 24 ribs swirled to the left, globular form, sheared, tooled, and outward folded mouth - blowpipe pontil scar, ht. 7 3/8", near mint; (some spotty light interior residue, or very faint haze, barely noticeable, and just a touch of faint wear). A rare, very pretty color for a Midwest glob. Doug Allinger collection, Ex. Jack Lyons collection.

*Est.: \$1,000 - \$2,000 • Min. bid: \$500*



### Lot 53

**Pattern Molded Globular Bottle**, probably Zanesville Glass Works, Zanesville, OH, 1820 - 1835. Yellowish honey coloration, 24 ribs swirled to the right, globular form, sheared, tooled, and outward folded mouth - blowpipe pontil scar, ht. 8 7/8"; (some exterior wear around the mid-body, otherwise very near mint). Strong pattern, beautiful color. Provenance: Doug Allinger collection.

*Est.: \$600 - \$1,200 • Min. bid: \$300*



### Lot 54

**Pattern Molded Globular Bottle**, probably Zanesville Glass Works, Zanesville, OH, 1820 - 1835. Bright, yellowish honey amber, 24 ribs swirled to the left, globular form, sheared, tooled, and outward folded mouth - blowpipe pontil scar, ht. 8"; (just a hint of light wear, otherwise virtually perfect). Another beautiful example, great form, and classical high-quality Zanesville 'metal'. Provenance: Doug Allinger collection, Ex. Bryan Grapentine collection.

*Est.: \$600 - \$1,200 • Min. bid: \$300*



### Lot 55

**Pattern Molded Globular Bottle**, probably Zanesville Glass Works, 1820 - 1835. Medium honey amber, 24 nearly vertical ribs swirled slightly to the right, globular form, sheared and outward folded mouth - blowpipe pontil scar, ht. 7"; (some light wear and a few minor scratches around the mid-body, otherwise perfect). Good form and symmetry, slightly smaller body than usual, scarce pattern with the near vertical ribbing. Doug Allinger collection; Ex. Darl Fifer collection.

*Est.: \$600 - \$1,200 • Min. bid: \$300*



### Lot 56

**Pattern Molded Globular Bottle**, probably Zanesville Glass Works, 1820 - 1835. Honey amber, 24 ribs swirled to the right, globular form, sheared and outward folded mouth - blowpipe pontil scar, ht. 7 1/4", near mint; (a little typical light wear around the mid-body, and just the slightest faint interior film or residue, mentioned for complete accuracy, that would likely wash out, otherwise perfect). Nice color and form. Again, a classic Ohio pattern molded glob. Doug Allinger collection.

*Est.: \$500 - \$800 • Min. bid: \$250*





### Lot 57

**Pattern Molded Globular Bottle**, probably Zanesville Glass Works, 1820 - 1835. Amber with some lighter honey tones, 24 ribs swirled to the right, globular form, sheared and outward folded mouth - blowpipe pontil scar, ht. 8"; (some light interior residue and a bit of spotty faint haze, some of which would likely wash out, and a narrow 3/8" bubble on the side, partially open, otherwise excellent). Provenance: Doug Allinger collection.

*Est.: \$400 - \$600 • Min. bid: \$200*



### Lot 61

**Pattern Molded Globular Bottle**, Zanesville Glass Works, Zanesville, OH, 1820 - 1840. Bluish aquamarine, 24 ribs swirled to the left, globular form, sheared, outward folded mouth - pontil scar, ht. 7 3/8", perfect. See MW, color plate V. A beautiful, bright, example with good form, strong tight ribbing, and that high quality metal that is so characteristic of Zanesville production. Aqua 24 ribs globs are actually scarcer than their amber counterparts, and this is a nice one. Doug Allinger collection.

*Est.: \$400 - \$800 • Min. bid: \$200*



### Lot 58

**Pattern Molded Globular Bottle**, probably Zanesville Glass Works, 1820 - 1835. Brilliant amber with a slight honey tone, 24 ribs swirled to the left, globular form, sheared and outward folded mouth - blowpipe pontil scar, ht. 8 1/8", near mint; (just a trace of light wear including a little dullness around the top of the lip, and some dried content residue in the base, otherwise excellent). Rich, brilliant glass, above average, very strong ribbing. Doug Allinger collection.

*Est.: \$400 - \$600 • Min. bid: \$200*



### Lot 62

**Pattern Molded Beehive Bottle**, Midwest, 1825 - 1840. Aquamarine, 25 ribs swirled to the right, beehive form rounding inward at base, applied ring collar - blowpipe pontil scar, ht. 8 1/4"; (slight trace of light wear, otherwise perfect). A very scarce rib count. You're likely to find two dozen (or more), of the 24 ribs examples before you find a 25 rib piece. It is believed that the Moscow Glass Works produced 25 rib bottles. Provenance: Doug Allinger collection; Ex. Darl Fifer, Judge MacKenzie collections.

*Est.: \$300 - \$600 • Min. bid: \$150*



### Lot 59

**Large, Pattern Molded Globular Bottle**, Zanesville Glass Works, Zanesville, OH, 1820 - 1835. Bright, medium amber, 24 ribs swirled to the right, globular form, sheared, tooled, and outward folded mouth - blowpipe pontil scar, ht. 9 5/8", perfect! Similar to MW, plate 96, #4. A fantastic example, rare large size, almost perfect symmetry, strong pattern, outstanding condition. Provenance: Doug Allinger collection.

*Est.: \$1,200 - \$2,400 • Min. bid: \$600*



### Lot 63

**Pattern Molded Globular Bottle**, Midwest, 1820 - 1840. Aquamarine, 24 vertical ribs, globular form, sheared mouth with a crudely applied ring collar - blowpipe pontil scar, ht. 6 3/4", virtually perfect; (a little typical light wear around the mid-body). A bright, clean, very attractive example. Good form, and the short neck gives it a very eye-appealing, squatty appearance. Provenance: Doug Allinger collection.

*Est.: \$200 - \$400 • Min. bid: \$100*



### Lot 60

**Rare size, Pattern Molded Globular Bottle**, Midwest, possibly an early Pittsburgh district glasshouse, 1815 - 1830. Deep aquamarine, 18 ribs swirled to the right, sheared, tooled flared mouth - blowpipe pontil scar, ht. 5 3/4"; (some light wear around the mid-body including two small 'spider' cracks next to one another, otherwise near mint). Very similar to MW, plate 94, #2. A very rare size and unusual lip treatment. Doug Allinger collection; private purchase from N. Heckler.

*Est.: \$200 - \$400 • Min. bid: \$100*



### Lot 64

**Pattern Molded Globular Bottle**, Midwest, 1820 - 1840. Aqua, 24 vertical ribs, globular form, sheared mouth with a tooled, likely applied, ring collar - deep concave base with delicate blowpipe pontil scar, ht. 7 1/2"; (some light interior cloudiness or faint haze, otherwise virtually perfect). Vertically ribbed globs are scarcer than their swirled counterparts, and this example is also a somewhat different form given the curvature of the shoulders to the neck. Doug Allinger collection.

*Est.: \$150 - \$250 • Min. bid: \$80*



### Lot 65

**Fluted Back Bar Decanter**, probably Boston and Sandwich Glass Works, 1840 - 1860. Medium-to-deep amethyst, ovoid body with eight fluted panels, large rounded bar lip with lower ring - polished pontil scarred base, ht. 10 1/8"; (some typical moderate wear including a couple of small 1/16" to 1/8" nicks, or iridescent bruises, near the shoulder; heavy base wear including a deep scratch and a couple of small nicks). See, BK, Vol.1, plate 1256. Gorgeous color!

*Est.: \$400 - \$800 • Min. bid: \$200*



### Lot 66

**Pillar Molded Decanter**, a Pittsburgh district glasshouse, possibly M'Kee & Brothers, 1850 - 1865. Rich, medium-to-deep cobalt blue, conical form, pillar molded with eight heavy ribs, applied heavy neck collar, applied round collared mouth with lower ring - blowpipe pontil scarred base, ht. 10 1/8", near mint; (some normal light-to-moderate usage wear including a couple of tiny little pinhead flakes; a little light interior content residue, otherwise perfect). Scarce.

*Est.: \$400 - \$800 • Min. bid: \$200*



### Lot 67

**Freeblown, Covered Sugar Bowl**, America, an early Pittsburgh District glasshouse, 1820 - 1840. Medium-to-deep cobalt blue, globular bowl flaring outward to a galleried rim - applied tall pedestal foot with inward folded rim and pontil scarred base. Matching bell-shaped domed cover with applied pontil scarred 'button' knopf, overall ht. 7 7/8", perfect. Similar bowl in the Henry Ford Museum. See plate 39, *Pittsburgh Glass*, by Lowell Innes. Ex. David and Jan Anderson collection.

*Est.: \$1,200 - \$2,400 • Min. bid: \$600*



### Lot 68

**Pattern Molded Cream Jug**, Midwest America or possibly England, 1825 - 1840. Medium amethyst, 16 vertical ribs, bucket form, applied solid crimped handle crimped and curled at lower attachment, sheared and outward flared rim with tooled pour spout - pontil scarred base with plenty of honest wear, ht. 3 3/4"; (some minor exterior usage wear, otherwise perfect). A particularly nice example, well executed, good color, clarity, form, and eye-appeal. A real sweetheart.

*Est.: \$400 - \$800 • Min. bid: \$200*



### Lot 69

**Large, Freeblown Pitcher**, Eastern U.S. or possibly Pittsburgh, 1815 - 1835. Colorless, compressed globular body, wide neck flaring outward to a tooled rim with pour spout and fine threading encircling the rim, large applied hollow handle crimped and curled at lower attachment - applied heavy disc foot with glass tipped pontil scar, ht. 8 1/8"; (some minor light wear around the mid-body, otherwise perfect). A handsome, large and gutsy pitcher, beautifully executed.

*Est.: \$300 - \$500 • Min. bid: \$150*



### Lot 70

**Freeblown Pitcher**, probably England, possibly America, 1810 - 1840. Rich, greenish aquamarine, 'bucket form' body with sides tapering inward from shoulders to base, sheared, tooled flared rim, tooled pour spout, solid looped handle crimped and curled at lower attachment - large blowpipe pontil scar, ht. 6 7/8"; (some light 'bloom' as well as light usage wear, otherwise near mint). A very eye-appealing, attractive form. The glass has a certain 'earthiness' to it, and with plenty of honest base wear.

*Est.: \$400 - \$800 • Min. bid: \$200*



### Lot 71

**Early, Freeblown Wineglass**, Continental, or possibly America, 1780 - 1800. Colorless, non-lead soda-lime glass, cylindrical funnel-type bowl, trumpet-style baluster stem, applied domed foot with pontil scar and inward folded rim, ht. 6 3/4", perfect. See McK, plate 40, #4. A wonderful, early, wineglass indicative of the craftsmanship of many late 18th Century glasshouses. Not easy to find in this condition, many have chipping or usage wear.

*Est.: \$150 - \$300 • Min. bid: \$80*



### Lot 72

**Large, Freeblown Chalice**, probably England, possibly America, 1850 - 1870. Deep cobalt blue, large inverted bell-shaped bowl with sides flaring outward to a sheared and fire polished rim, applied solid baluster stem - applied solid disk foot with polished, pontil scarred base, ht. 10 1/8", rim dia. 5 3/4", perfect. A large, impressive piece of early tableware, likely blown as a presentation piece.

*Est.: \$250 - \$450 • Min. bid: \$130*





### Lot 73

**Lot of (2), Early Stiegel-Type Engraved Drinking Vessels**, America or Continental, 1770 - 1810. Both are colorless, cylindrical with tapered sides and copper wheel engraving, one with basket and floral motif; the second, larger example, with floral and leaf designs, sheared and fire polished rims - pontil scarred bases with plenty of age-appropriate wear, ht. 5 7/8", and 8 5/8", both perfect. Both are beautifully engraved. The larger example is a rare size.

*Est.: \$150 - \$300 • Min. bid: \$80*



### Lot 77

**Freeblown Witch Ball and Stand**, America, 1840 - 1870. Stand is aqua, corseted form with wide flaring, outward folder rim, bulbous mid-section flaring outward to a blowpipe pontil scarred base, ht. 6 1/4". Freeblown aqua ball is period, but likely not original to the stand, diameter approximately 4 3/4", overall ht. 9 3/4", both ball and stand are perfect. A nice, early, 'earthy' utilitarian stand or vase, the plain ball is very nice having numerous large bubbles. Doug Allinger collection.

*Est.: \$150 - \$250 • Min. bid: \$80*



### Lot 74

**Early Freeblown Milk Bowl**, America, probably Midwest, 1820 - 1840. Beautiful golden honey coloration, deep cylindrical bowl with nearly straight sides flaring slightly outward to a solid, tooled and outward folded rim - blowpipe pontil scarred base, ht. 5 1/2", rim dia. also 5 1/2", near mint; (some light exterior 'bloom' and wear). A great looking bowl with some subtle streaks of amber swirled through the body and showing plenty of honest base wear.

*Est.: \$500 - \$800 • Min. bid: \$250*



### Lot 78

**Freeblown, Marbrie Type Witch Ball**, probably America, possibly Boston and Sandwich Glass Works, Sandwich, MA, 1860 - 1880. Opaque white with blood red loopings, cased glass, 5 1/4" diameter, perfect. See BK, plate 3228 and 3229. A very beautiful, ornate, ball, with a lot of workmanship. The multi-colored, fancy balls, were intended for use in homes, and to be hung above doorways to stop 'evil spirits' at the threshold. They were sometimes filled with herbs. Doug Allinger collection.

*Est.: \$175 - \$350 • Min. bid: \$90*



### Lot 75

**Freeblown Witch Ball with Stand**, Stoddard, NH, or possibly Westford, CT, 1845 - 1865. The vase is medium-to-deep 'old amber' with a short flaring trumpet neck, tooled bulbous knopf, tapered conical foot, tooled rim - ground base. Ball is amber with a golden tone, overall ht. 10 5/8"; (ball has some light scratches and wear; vase with some exterior 'bloom', a couple of spots along the edge of the base have been lightly polished to smooth a chip).

*Est.: \$1,000 - \$2,000 • Min. bid: \$500*



### Lot 79

**Freeblown Mottled Witch Ball**, America or England, 1860 - 1880. Cased glass, colorless and opaque white with large splotches of red and green glass mixed throughout the ball, approximately 5" diameter, perfect. A rare and beautiful ball, scarce color combination. These mottled colored early balls were blown in both England, as well as America. The cased glass construction seemingly a little more prevalent here in the U.S. Doug Allinger collection.

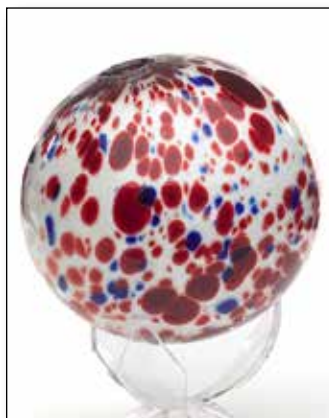
*Est.: \$200 - \$400 • Min. bid: \$100*



### Lot 76

**Freeblown Witch Ball and Stand**, America, possibly a New England glasshouse, 1850 - 1870. Amber with a slight reddish tone, trumpet form stand with flared foot and pontil scarred base. Freeblown matching ball approx. 5 1/4" dia; overall ht. 11 7/8", both are near mint; (the stand has a faint exterior bloom, ball has some light interior residue and a minor 1/2" interior open bubble). Doug Allinger collection, originally discovered in Southern Maine.

*Est.: \$250 - \$450 • Min. bid: \$130*



### Lot 80

**Freeblown Spatter Glass Witch Ball**, America or England, 1860 - 1880. Colorless and opaque white with red and blue glass spattered throughout, approximately 4 1/4" diameter, perfect. See BK, plate 3225. A very pleasing color combination with an opaque white glass cased with colorless glass that while molten, was rolled over fragments of red and blue glass creating this red, white, and blue appearance. Doug Allinger collection.

*Est.: \$175 - \$350 • Min. bid: \$90*



### Lot 81

**Lot of (2), Fancy Witch Balls,** America or England, 1850 - 1870. 1st Example: Freeblown, Marbrie Type, colorless with opaque white four-loop pattern, beautifully executed, well defined, loopings, dia. approx. 3 1/4", perfect. 2nd Example: Pattern Molded with 16 widely spaced melon type ribs, cobalt blue, dia. approx. 3 3/4"; (trace bit of light wear, otherwise perfect). Doug Allinger collection.

**Est.: \$150 - \$250 • Min. bid: \$80**



### Lot 85

**Freeblown Utility Jar,** America, probably Mid-Atlantic, or possibly New York State, 1840 - 1860. Medium amber shading to a rich, deep amber through the neck, large, bulbous pear-form body, sheared mouth with a tooled, likely applied, heavy ring collar - blowpipe pontil scar, ht. 9 1/4", near mint; (a little light exterior 'bloom' around the shoulders, some typical light usage wear, otherwise perfect). A scarce jar with plenty of honest base wear. Doug Allinger collection.

**Est.: \$200 - \$400 • Min. bid: \$100**



### Lot 82

**Lot of (2), Early Freeblown Witch Balls,** probably America, 1860 - 1880. Rich, medium yellowish olive green, and teal green coloration, diameter approximately 5 1/2" and 3" respectively, both are perfect. Beautiful colors, the teal green example has the wire and wooden peg for hanging.

Provenance: Doug Allinger collection; the teal ball was Ex. Norman Heckler collection, direct purchase.

**Est.: \$100 - \$200 • Min. bid: \$50**



### Lot 86

**Oversized, Freeblown Hat Whimsey,** probably Whitney Glass Works, Glassboro, NJ, 1855 - 1875. Rich, deep honey amber, bowler form hat with up-turned sides and outward folded rim - glass tipped 'cloverleaf' pontil scar (often considered a

signature of the Whitney Glass Works), ht. 3 3/8", length 6 7/8"; (minor usage wear and a pleasing overall soft 'bloom' on the exterior; a 1/4" in-making pontil fissure mentioned for complete accuracy, otherwise perfect). A beautiful hat, rare size, rare pontil scar.

**Est.: \$200 - \$400 • Min. bid: \$100**



### Lot 83

**Lot of (2), Early Freeblown Witch Balls,** probably America, 1850 - 1870. Golden amber and clear medium amber with some yellowish tones, diameter approximately 5 1/4" and 5 3/4" respectively, both perfect. Plain witch balls of one color were typically hung in barns and sheds to protect

the animals, particularly cows (see B/K, plate 3230). One of the two examples has a period, possibly original, wire hanger. Ex. Elvin Moody. Doug Allinger collections.

**Est.: \$100 - \$200 • Min. bid: \$50**



### Lot 87

**Rare, Blown Three Mold Hat Whimsey,** America, 1825 - 1840. Vivid, deep cobalt, in the form of a miniature "beaver" style hat, sheared and inward folded rim - pontil scarred base, ht. 2 1/8"; (a couple of spots of minor roughness along the crudely folded, inner edge of the rim, otherwise perfect). Gill-24. Strong impression and color! Colored 3-mold hats are scarce-to-rare, and the Gill-24 mold is unlisted by McKearin in the hat form. This example has a colorless glass-tipped pontil scar.

**Est.: \$300 - \$600 • Min. bid: \$150**

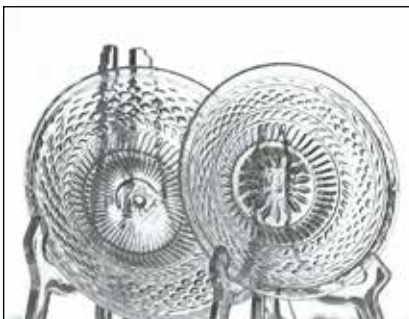


### Lot 84

**Lot of (3), Early Freeblown Witch Balls,** probably America, 1850 - 1870. Light, yellowish honey coloration; medium honey amber, and medium amber, diameter approximately 4 1/4", 4 1/2", and 5 3/4" respectively, all are perfect. A

beautiful grouping of typical 19th century blown glass balls. Note; these sometimes also served as covers for pitchers, or with the smaller balls, covers for creamers. Doug Allinger collection.

**Est.: \$100 - \$200 • Min. bid: \$50**



### Lot 88

**Lot of (2), Blown Three Mold Pans,** America, possibly Boston and Sandwich Glassworks, 1825 - 1840. Both are colorless, shallow pan form with wide flaring sides, geometric patterns with diamond and ribbing, outward folded rims - pontil scarred bases. 1st example, Gill-21, ht. 1", diameter 5". 2nd example,

Gill-22, ht. 1 1/4", diameter 5 7/8", both are perfect. Both scarce patterns, the Gill-22 is believed to have been blown at the Sandwich Glassworks.

**Est.: \$175 - \$350 • Min. bid: \$90**





### Lot 89

**Blown Three Mold Decanter**, Keene Marlboro Street Glassworks, Keene, NH, 1820 - 1835. Yellowish olive with a slight amber tone, ovoid form, geometric sunburst and diamond pattern, sheared and tooled mouth - blowpipe pontil scar, Pt; (an open interior bubble, approx. 1 1/2" x 3/4", with some trapped residue, otherwise perfect). GILL-16. A classic early Keene 3-mold colored decanter, and a lot of bottle for the money.

*Est.: \$300 - \$500 • Min. bid: \$150*



### Lot 93

**Lot of (2), Early Blown Utility Bottles**, Continental, probably Germany, Northern Italy, or France, 1740 - 1820. 1st Ex: Beautiful yellowish amber shading to virtually black though the shoulders, half post, sheared, tooled flared mouth - deep kick-up base with pontil scar, ht. 7". 2nd Ex: Clear medium green, sheared mouth with applied banded collar - deep kick-up base with pontil scar, ht. 8". Both virtually perfect; (just a trace of minor wear). Amber example is very early.

*Est.: \$200 - \$400 • Min. bid: \$100*



### Lot 90

**Pitkin Type Flask**, New England, 1790 - 1820. Medium olive, 36 delicate faint vertical ribs over 36 ribs swirled to the right, elongated ovoid form with narrow, almost 'knife-edge', sides, sheared mouth - blowpipe pontil scar, ht. 7 1/2"; (some light-to-moderate fine high point wear, otherwise excellent). A scarce size and form; in addition, the subtle vertical ribbing creates a beautiful, diamond-like, crosshatch appearance. A rare example and one you're not likely to find again soon.

*Est.: \$1,000 - \$2,000 • Min. bid: \$500*



### Lot 94

**Early, Freeblown Utility Bottle**, America, possibly a Mid-Atlantic glasshouse, or Continental, 1770 - 1800. Clear, medium 'soft' green coloration, cylindrical, barrel form, slightly misshapen lending a lopsided appearance to the body, sheared, tooled, and outward flared mouth - blowpipe pontil scar with some iron residue in the center, ht. 4 1/2", near mint; (a little expected light exterior wear, light interior residue, otherwise perfect). A very early utility, unusual form, pleasing color.

*Est.: \$300 - \$500 • Min. bid: \$150*



### Lot 91

**Rare size, Early, Pattern Molded Flask**, America, possibly eastern Pennsylvania, or Continental, 1770 - 1800. Colorless, plump ovoid form, half post, 15 nip-diamond pattern, sheared mouth - blowpipe pontil scar, ht. 4", virtually perfect; (just a slight trace of light wear). A very rare size for a half post flask, almost miniature in size, having a pleasing, early plump form. Regardless of attribution, it is an impressive little flask blown from a high quality metal.

*Est.: \$750 - \$1,500 • Min. bid: \$400*



### Lot 95

**Freeblown Roman Glass Bottle**, Eastern Mediterranean, 1st to 3rd Century AD. Beautiful and delicate honey amber coloration. Unusual form with flattened body and indented sides, slightly bulbous neck with flaring, folded lip - pontil scarred base, ht. 3 5/8". Fine condition with no damage; (some light, overall oxidation and light interior encrustations as is typical for most ancient glass). A delicate bottle of rare color and form.

*Est.: \$400 - \$600 • Min. bid: \$200*



### Lot 92

**Early, Pattern Molded Pinched Spirits Flask**, probably Germany or the Tyrol region of Austria, 1720 - 1750. Bright, medium shading to deep grass green through the shoulders, ovoid form with a pinched center, half post, patterned with 16 widely spaced vertical ribs, sheared mouth with partial pewter collar - blowpipe pontil scar, ht. 7 3/8"; (some typical light wear, other perfect). McK, plate 239; VdB, plate 231. Strong ribbing, excellent clarity, color, and condition.

*Est.: \$600 - \$900 • Min. bid: \$300*



### Lot 96

**Freeblown Roman Glass Unguentarium**, Eastern Mediterranean, 1st Century AD. Deep aquamarine, almost a medium blue-green coloration. Wide flaring and tapered base with very long neck and widely flaring and folded lip - pontil scarred base, ht. 6 1/4". Fine condition with no damage; (some original exterior luster remains with patchy encrustations, interior oxidation and light soil deposits). Hard to find one this nice.

*Est.: \$300 - \$500 • Min. bid: \$150*



### Lot 97

**Lot of (2) Freeblown Roman Vessels**, Eastern Mediterranean, 1st to 4th Century AD. 1st example: 2" tall. Short unguentarium of yellow green coloration. Heavy, bulbous base with short neck and very widely flaring lip – pontil scar. Light interior / exterior oxidation. 2nd example: squat,

bulbous jar in pale aqua, whetted-off and annealed mouth with applied and crimped band of glass. Heavy encrustations with one side having spectacular, rainbow iridescence – pontil scar. A very nice lot..

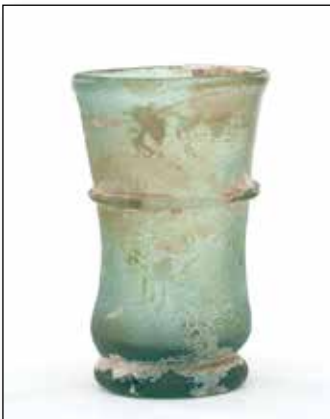
**Est.: \$400 - \$600 • Min. bid: \$200**



### Lot 98

**Lot of (2) Ancient Freeblown Vessels**, Islamic or Byzantine, 8th to 12th Century AD. 1st example: Medium to dark blue green. Heavy gather of glass was blown and paddled into a square sided form with short, flaring neck – pontil scar, ht. 3". Light interior / exterior oxidation. Includes custom stand. 2nd example: Bubbly, medium amber with slight olive tone. Amphora form with flaring mouth and tooled neck ring, ht. 3 5/8". Exterior retains original luster, interior has light residue – pontil scar.

**Est.: \$400 - \$600 • Min. bid: \$200**



### Lot 99

**Freeblown Footed Drinking Glass**, Roman Empire, probably Eastern Mediterranean, 1st Century AD. Fairly heavy aqua glass, cylindrical form with slightly waisted body and gently flaring mouth, applied solid disk foot, applied string of glass around waist – pontil scarred base, ht. 3". No damage but has overall oxidation and light pitting with encrustations on both exterior and interior. Very early and beautiful. This glass, and the two that follow, came from a 1960s Chicago collection.

**Est.: \$500 - \$800 • Min. bid: \$250**



### Lot 100

**Freeblown Footed Drinking Glass**, Roman Empire, probably Eastern Mediterranean, 2nd to 3rd Century AD. Delicate light yellowish green glass, slightly bulging bucket form bowl with inwardly rolled lip, short stem and circular foot that has been drawn and tooled from the same gather – pontil scarred base, ht. 3 1/2". No damage but has considerable interior and exterior dirt and mineral encrustations. With its very thin glass, this vessel is a remarkable survivor. Rare form.

**Est.: \$500 - \$800 • Min. bid: \$250**



### Lot 101

**Freeblown Footed Drinking Glass**, Roman Empire, probably Eastern Mediterranean, 2nd to 3rd Century AD. Greenish aquamarine, slender tapering form with three beautifully tooled bands in the upper portion, short stem and circular, hollow foot, drawn and tooled from the same gather – pontil scarred base, ht. 4 3/8". Fine condition with light interior and exterior dirt and oxidation. An exceptionally beautiful and elegant form that's difficult to acquire.

**Est.: \$500 - \$800 • Min. bid: \$250**



### Lot 102

**Early Cologne or Utility Bottle, (Embossed conifer tree, pendant and leaves)**, probably Continental, 1770 - 1800. Rich Prussian blue, almost a midnight-blue coloration, rectangular, sheared lip with an applied string rim - blowpipe pontil scar, ht. 3 1/2"; (some expected scattered exterior wear and a tiny pinprick bit of roughness on the sheared lip, otherwise perfect). A very early, rare, cologne or utility, crude offset neck, and with a perfect string rim.

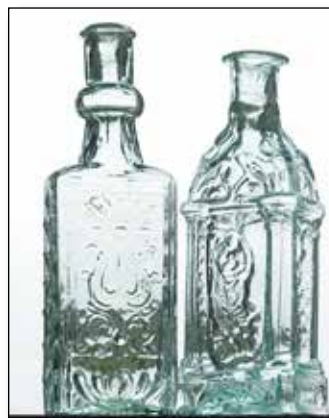
**Est.: \$250 - \$450 • Min. bid: \$130**



### Lot 103

**Lot of (2), Early, Freeblown Scent Bottles**, America, Boston and Sandwich Glass Works, or possibly South Jersey, 1815 - 1830. Both are colorless with corseted bodies and two large neck rings, one example with 3, the other with 4, ribbons of rigaree tooled and crimped at the neck rings, sheared mouths - pontil scarred bases, ht. 2 1/2" and 2 5/8", both are perfect. See, BK, plate 5182; MW, plate 102, #2, also The Glass Gaffers of New Jersey, Fig. 151. Both are very scarce-to-rare.

**Est.: \$200 - \$400 • Min. bid: \$100**



### Lot 104

**Lot of (2), Fancy Cologne Bottles**, probably an early South Boston glass-house, 1835 - 1855. 1st Ex: Embossed Lyre, floral and vine motif, rectangular, sheared, tooled, outward folded mouth - blowpipe pontil scar, ht. 5 3/4". 2nd Ex: Embossed Madonna and Child, rectangular Gothic motif with columned corners, sheared, flared mouth - blowpipe pontil scar, ht. 5 1/2". Both are perfect. McK, plate 107, #4 and #8. Both are very scarce-to-rare molds, clean, bright, sparkling!

**Est.: \$200 - \$400 • Min. bid: \$100**





### Lot 105

**Lot of (3), Fancy Cologne Bottles**, probably South Boston, MA, 1835 - 1855. 1st Ex: Embossed sailing ship, colorless, flattened acorn body, sheared, flared mouth - pontil scar, ht. 4 3/4". 2nd Ex: Embossed Dancing Indians, aqua, diamond shaped body, sheared and inward rolled lip - pontil scar, ht. 4 3/4". 3rd Ex: Scrolled leaves and flowers,

aqua, scroll form, sheared, flared mouth - pontil scar, ht. 5 3/4". All near mint; (some light interior haze; 2nd ex. has open bubble on shoulder).

**Est.: \$200 - \$400 • Min. bid: \$100**



### Lot 106

**(5 Stars) Cologne Bottle**, probably a South Boston glasshouse, 1860 - 1880. Opaque white milkglass, obelisk form with heavy roped corners, 3 panels, each with 5 embossed stars of descending size, 4th panel plain for a label, tooled ring collar - smooth base, ht. 7 3/8", perfect! MW, plate 74, #5; also similar to MW, plate 112, #13. A very scarce-to-rare cologne.

**Est.: \$175 - \$350 • Min. bid: \$90**



### Lot 107

**Paneled Cologne Bottle**, probably Boston and Sandwich Glass Works, Sandwich, MA, 1860 - 1880. Medium plum amethyst through the center shading to a deep amethyst through the neck and lower third of the body, straight-sided 12 panel form, tooled ring collar - smooth base, ht. 7 1/4", perfect. B/K #5197; MW, plate 114. All of the straight-sided paneled colognes dug at the Sandwich Glass Works site were 12 panel. This one is a little taller than most.

**Est.: \$200 - \$400 • Min. bid: \$100**



### Lot 108

**Rare, Sandwich-type Cologne Bottle**, possibly Boston and Sandwich Glass Works, 1850 - 1870. Deep cobalt blue, 6 panels tapering slightly from the shoulders to a corseted base, tooled flanged collar - smooth base, ht. 5 1/2", near mint; (just a trace of typical very minor wear, otherwise perfect). Likely a very rare mold, and one that we have not seen before. The corseted base is reminiscent of the corseted octagonal commercial colognes attributed to Sandwich.

**Est.: \$300 - \$600 • Min. bid: \$150**



### Lot 109

**Lot of 2, Blown Three Mold Toilet Water Bottles**, probably Boston and Sandwich Glass Works, 1825 - 1840. 1st Example is a light sapphire blue with a violet tone; 2nd Example is colorless, both are barrel form, geometric pattern with vertical ribbing, molded neck rings, flanged collars (colorless example with period, possibly original, "tam-o-shanter" stopper), pontil scarred bases, ht. 5 3/4" & 7" (including stopper), respectively, both are perfect. GI-7, type 2; McK, plate 105.

**Est.: \$200 - \$400 • Min. bid: \$100**



### Lot 110

**Lot of (2), Enameled, 'Mary Gregory' Type Barber Bottles**, probably America, 1885 - 1910. 1st Example: Bust of Young Girl with Flowing Hair / "VEGEDERMA". 2nd Example: Image of Young Woman - (Floral and Leaf background). Both are amethyst, pear form body, bulbous neck, tooled ring collar pontil scarred bases, ht. 7 3/4" and 7 5/8" respectively, both are perfect (2nd example includes porcelain stopper). Holiner, p.55. Provenance: Doug Allinger collection.

**Est.: \$150 - \$250 • Min. bid: \$80**



### Lot 111

**Lot of (3), Barber Bottles**, 1885 - 1915. 1st Ex: Painted image, **Cottage & Pine Trees**. Milkglass, pink background, brown & green decoration, threaded ground mouth, original metal closure - smooth base, ht. 10 1/8". 2nd Ex: **"ACME / Hair / Vigor / PHIL. EISEMANN."**, label-under-glass, clear, tooled ring collar, ht. 8". 3rd Ex: Hand painted, multi-colored, **"WM C. ERLER" / "TONIC"** (image of Trees, River, Mountains). Milkglass, threaded ground mouth w/closure. All near mint.

**Est.: \$250 - \$450 • Min. bid: \$130**



### Lot 112

**Lot of (3), Fancy Multi-Colored, Venetian Glass Blown Barber Bottles**, probably Venice, Italy, 1920 - 1945. All are multi-colored with latticino striping, one with blue, green, red and white stripes, 2nd example with blue and white striping, 3rd example with red and white stripes. All with pontil scarred bases, period porcelain stoppers, ht. (not including stoppers), approx. 8 1/2", all are perfect. Scarce, beautiful examples. See Holiner, p.59. Doug Allinger collection.

**Est.: \$200 - \$400 • Min. bid: \$100**



### Lot 113

**"CHICAGO LAMP CANDLE CO."**  
**Christmas Light**, America, 1885 - 1905. Light yellowish honey coloration, figural lantern with hobnail pattern, factory ground mouth - smooth base with three raised 'feet', ht. 4 1/8"; (some typical flaking from the rough, factory ground mouth, otherwise perfect). A popular and desirable American Christmas light, and one of the relatively few that are actually embossed.

*Est.: \$75 - \$150 • Min. bid: \$40*



### Lot 117

**"CHICAGO LAMP CANDLE CO."**  
**Christmas Light**, America, 1885 - 1905. Medium green with a teal tone, figural lantern with hobnail pattern, factory ground mouth - smooth base with three raised 'feet', ht. 4 1/8", perfect, including period, and likely original, wire bail. A very scarce color, and especially nice having the original bail.

*Est.: \$175 - \$275 • Min. bid: \$90*



### Lot 114

**"CHICAGO LAMP CANDLE CO."**  
**Christmas Light**, America, 1885 - 1905. Beautiful light-to-medium cobalt, figural lantern with hobnail pattern, factory ground mouth - smooth base with three raised 'feet', ht. 4 1/4, perfect. Beautiful shading of color, excellent condition.

*Est.: \$175 - \$275 • Min. bid: \$90*



### Lot 118

**Victorian Period Illumination Lamp**, England, 1890 - 1910. Colorless with cranberry red flashing, harlequin pattern, rough sheared and fire polished lip - "RD 291933" (on smooth base), ht. 3 1/2", near perfect; (a 3/16" flake at edge of lip, otherwise mint). Beautiful color. These illumination lamps, or more commonly referred to as "Victorian Christmas Lights", were used in celebrations during the Christmas holiday, as well as to light fences, walkways, buildings and homes.

*Est.: \$100 - \$150 • Min. bid: \$50*



### Lot 115

**"CHICAGO LAMP CANDLE CO."**  
**Christmas Light**, America, 1885 - 1905. Cobalt blue, figural lantern with hobnail pattern, factory ground mouth - smooth base with three raised 'feet', ht. 4 1/8", virtually attic mint; (typical minor flaking at factory ground mouth, wire handle fits almost perfectly, but is not original to the lantern, very few original wire handles have survived). A scarce color, excellent condition. Provenance: Ex. Tom McCandless collection.

*Est.: \$175 - \$275 • Min. bid: \$90*



### Lot 119

**Victorian Period Illumination Lamp**, England, 1890 - 1910. Deep amethyst, harlequin pattern, rough sheared and fire polished lip - "RD 291933" (on smooth base), ht. 3 3/8"; (a few 1/4" to 1/8" shallow chips, as well as some typical minor roughness, around the thin sheared mouth, as is often the case, otherwise perfect). Another beautiful example.

*Est.: \$100 - \$150 • Min. bid: \$50*



### Lot 116

**"CHICAGO LAMP CANDLE CO."**  
**Christmas Light**, America, 1885 - 1905. Clear, light grass green, figural lantern with hobnail pattern, factory ground mouth - smooth base with three raised 'feet', ht. 4 1/8", virtually perfect; (typical minor flaking at factory ground mouth, wire handle not original to the lamp). A very rare and desirable color for this mold! Provenance: Ex. Tom McCandless collection.

*Est.: \$125 - \$250 • Min. bid: \$70*



### Lot 120

**Lot of (2), Victorian Period Illumination Lamps**, probably England, 1880 - 1910. Bright grass green with an amber striation around the body, and opaque milkglass, both are bucket form, patterned with columns of short horizontal ribbing alternating with columns of four hobnails each, factory ground mouths - smooth bases, ht. 3 7/8" each, both virtually perfect; (a paper-thin sliver flake on ground mouth of milkglass example). A scarce pattern, the green is very pretty.

*Est.: \$120 - \$240 • Min. bid: \$60*



**Lot 121**

**Lot of (2), Diamond Pattern, Lamps**, probably England, 1850 - 1890. 1st Ex: Rich emerald green, pattern molded with rows of 17 diamonds, sheared, tooled, inward folded rim - pontil scarred base, ht. 3". 2nd Ex: Bright, medium-to-deep yellowish grass green, 2-pc. mold, diamond pattern, sheared and inward folded rim - smooth base, ht. 3 1/2"; (1st ex. is near mint, a 3/16" chip and a pinhead flake on the underside of the rim; 2nd ex. is perfect). Great colors.

**Est.: \$100 - \$200 • Min. bid: \$50**

**Lot 122**

**Lot of (2), Diamond Pattern, Victorian Lamps**, probably England, 1840 - 1880. 1st Ex: Medium smoky bluish-lavender coloration, pattern molded with rows of 16-diamonds, sheared and inward folded rim - pontil scar, ht. 2 1/2". 2nd Ex: Deep grape amethyst, 4-pc. mold, diamond or lattice pattern, sheared and inward folded rim - pontil scarred base, ht. 3 5/8", Both are perfect. Beautiful colors, the pattern molded

example is a very scarce color, and also quite early.

**Est.: \$150 - \$250 • Min. bid: \$80**

**Lot 123**

**Lot of (3), Victorian Lamps**, England and Australia, 1880 - 1910. 1st Ex: Deep raspberry amethyst, pineapple form, rough sheared mouth - smooth base, ht. 4". 2nd Ex: "VR" (inside shield), pinkish amethyst, diamond pattern, ground mouth - smooth base, ht. 3 3/8". 3rd Ex: Deep grape amethyst, diamond

pattern, sheared and flared mouth - pontil scarred base, ht. 3 3/4". The 1st example has a couple of 1/4" flakes at rim, a bit of minor dullness, others are virtually perfect.

**Est.: \$120 - \$240 • Min. bid: \$60**

**Lot 124**

**Lot of (3), Diamond Pattern, Victorian Period Illumination Lamps**, England, 1880 - 1910. Deep ice blue, ginger ale or topaz coloration, and rich, deep, peacock blue, all are diamond pattern, blown in piece molds, rough sheared or factory ground mouths - smooth bases ("LP" on base of

topaz example), ht. 3 3/4", 3 1/2", and 3 3/4" respectively; (all are near-mint to mint). Scarce and beautiful colors!

**Est.: \$120 - \$240 • Min. bid: \$60**

**Lot 125**

**Lot of (3), Victorian Lamps**, England and Germany, 1860 - 1910. 1st Ex: Striated cobalt blue, pattern molded with rows of 20 diamond, sheared, inward folded rim - pontil scar, ht. 3 1/2". 2nd Ex: Deep cobalt, segmented diamond pattern, ground mouth - factory ground base with original threaded tin closure

stamped, "REGISTERED / D.R.G.M", ht. 3 1/2". 3rd Ex: Bright cobalt, diamond pattern, sheared and inward folded rim - pontil scar, ht. 3 1/4". All are virtually perfect.

**Est.: \$120 - \$240 • Min. bid: \$60**

**Lot 126**

**Rare, Miniature Cut Glass Teakettle Inkwell**, England, 1850 - 1870. Two color - amethyst cased in clear, teakettle form with eight flat panels sloping inward from base to top, flat top with ground ring that originally held a medallion (either Mordon or Riddle) - smooth, ground base, ht. 1 1/2"; (a bit of minor wear, original

brass collar is missing the cap). JM #156. Beautiful color, nice small size.

**Est.: \$300 - \$500 • Min. bid: \$150**

**Lot 127**

**Teakettle Inkwell**, America, probably Boston and Sandwich Glass Works, Sandwich, MA, 1850 - 1875. Deep cobalt blue, teakettle form with eight concave panels, three vertical ribs between each panel, flat top - beveled edge smooth base, ht. 2", virtually perfect; (a tiny pinhead flake at edge of base;

the ink also retains it's original brass collar - no cap). JM #128. A rare mold, rich attractive color. Note; shards of this mold were excavated at the Sandwich Glass Works site.

**Est.: \$400 - \$600 • Min. bid: \$200**

**Lot 128**

**Teakettle Inkwell**, probably America, possibly England, 1860 - 1880. Brilliant yellowish honey coloration with a slight orange tone, corseted body with eight rounded flat panels, plain flat top - smooth base, ht. 2", perfect; (original brass collar and hinged cap). JM #262. A very scarce and attractive teakettle, wonder-

ful condition, beautiful vibrant color, complete with collar and cap!

**Est.: \$500 - \$800 • Min. bid: \$250**



### Lot 129

**Miniature Teakettle Inkwell**, England or America, 1850 - 1875. Greenish aquamarine, teakettle form with eight concave panels, a recessed groove between each panel, flat top - beveled edge smooth base, ht. 1 5/8"; a small bruise or spot of roughness, and two hard-to-see, 1/8" flakes on the

corners of one of the panel edges, otherwise perfect). Believed to be a rare mold, great small size, and appears unlisted in Mathews Teakettle Reference Guide.

**Est.: \$300 - \$500 • Min. bid: \$150**



### Lot 130

**Teakettle Inkwell**, probably America, 1865 - 1880. Colorless, rectangular 'trunk form' with rounded top, large funnel type ground mouth - smooth base, ht. 1 1/2"; (some patchy light interior residue, and a 1/8" flake on the rounded 'hump-back' top). Unlisted and likely very rare. See JM #366 and

#423U for other related examples. Note; an early Harmer Rooke tag remains on the base.

**Est.: \$200 - \$400 • Min. bid: \$100**

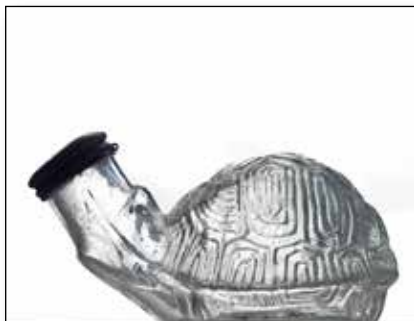


### Lot 131

**Teakettle Inkwell**, America or possibly England, 1860 - 1880. Colorless, teakettle form with eight flat panels rounding to a narrow center band, below eight flat panels rounding to a small plain flat top - smooth base, ht. 2 1/4", the inkwell is perfect; (a 1/2" area of the original brass collar is missing, as

well as the cap). Unlisted by Mathews, and likely an extremely rare mold.

**Est.: \$300 - \$500 • Min. bid: \$150**



### Lot 132

**Figural Turtle Teakettle Inkwell**, America, 1860 - 1880. Colorless, in the form of a rounded tortoise shell, ground mouth - smooth base, ht. 1 3/4", perfect; (a brass cap rests over the top of the ground mouth - no neck ring). JM #288. A great looking, very rare, teakettle ink with a highly detailed body.

**Est.: \$300 - \$500 • Min. bid: \$150**



### Lot 133

**Teakettle Inkwell**, probably America, 1860 - 1880. Fiery opalescent milkglass, conical teakettle form, red, green and blue painted, embossed, floral and leaf pattern, top with embossed round flower, spout with original brass collar and hinged cap - smooth base, ht. 2 1/4", virtually perfect condition.

Extremely rare! Similar to JM #202 (slightly different dimensions and floral pattern). A fantastic, very rare and desirable, teakettle.

**Est.: \$400 - \$600 • Min. bid: \$200**



### Lot 134

**"A M" (on spout), Teakettle Inkwell**, French, 1860 - 1880. Black, (dense puce), pyramid form with rounded corners, 'button top' - **"PARIS / DEPOSE"** (on smooth base), ht. 2 1/4"; (a little patchy faint exterior dullness and light wear, a sliver flake from the factory ground mouth, otherwise excellent). JM #252 ("Eiffel

Tower"). Believed to be unique or possibly one of two known (Mathews refers to the example illustrated in the book as only known specimen). Ex. Bob Mebane collection.

**Est.: \$500 - \$800 • Min. bid: \$250**



### Lot 135

**Umbrella Ink**, America, 1855 - 1865. Medium sapphire blue, 8-sided umbrella form, sheared and inward rolled lip - smooth base, ht. 2 1/2", base dia. 2 1/2"; (lightly cleaned to original luster with just a trace of scattered light wear remaining). A very pretty example that just missed the pontil rod, nice character, good depth of color, but light enough so that it may be appreciated on a shelf or in a window.

**Est.: \$400 - \$600 • Min. bid: \$200**



### Lot 136

**Umbrella Ink**, America, 1840 - 1860. Medium citron coloration with an olive tone, 8-sided umbrella form, sheared, tooled, and inward rolled mouth - blowpipe pontil scar, ht. 2 1/2", base dia. 2 1/8", attic mint. A beautiful and scarce color, nice clarity from top-to-bottom, very heavily whittled, and outstanding condition. This one definitely has that 'little something extra', and plenty of eye-appeal.

**Est.: \$300 - \$500 • Min. bid: \$150**





### Lot 137

**Umbrella Ink**, America, 1840 - 1860. Medium-to-deep, yellowish olive amber, 8-sided umbrella form, sheared mouth - blowpipe pontil scar, ht. 2 1/4", base dia. 2 3/16", perfect. A very good example having nice crude, wavy, glass, excellent condition. Note: an early Harmer Rooke tag remains on the base.

**Est.: \$200 - \$400 • Min. bid: \$100**



### Lot 138

**Umbrella Ink**, America, probably a New England glasshouse, 1840 - 1860. Medium-to-deep 'old amber', 8-sided umbrella form, sheared mouth - blowpipe pontil scar, ht. 2 3/8", base dia. 2 1/4", near mint; (a touch of expected very faint wear, and a little washable light interior content residue, otherwise perfect). A very nice example of this classic New England ink having a slightly elongated neck.

**Est.: \$200 - \$400 • Min. bid: \$100**



### Lot 139

**"DE HALSEY - PATENTE" Inkwell**, New England, probably Coventry, CT, or possibly France, 1840 - 1849. Bright, light yellowish olive amber, almost an olive yellow, cylindrical, domed shoulders, sheared mouth - blowpipe pontil scar, ht. 2 3/4"; (a couple of chips, approximately 1/8" and 1/4", from the edge of the lip, and the embossing is light - as is normal for this mold, otherwise perfect). C #577. Pleasing light color, beautifully whittled.

**Est.: \$200 - \$300 • Min. bid: \$100**



### Lot 140

**"HARRISON'S / COLUMBIAN / INK"**, America, 1847 - 1860. Clear, medium cobalt, cylindrical, sheared, tooled, and inward rolled mouth - blowpipe pontil scar, ht. 1 7/8", perfect! C #194. A bright, clean, crisp example, excellent clarity, character, impression, and condition.

**Est.: \$400 - \$600 • Min. bid: \$200**



### Lot 141

**"HARRISON'S / COLUMBIAN / INK"**, America, 1847 - 1860. Aquamarine, octagonal body with 8 flat panels around shoulders, sheared and inward rolled mouth - blowpipe pontil scar, ht. 2"; (lightly cleaned to original luster and near mint condition, slight trace of typical minor wear; a little trapped residue in the rolled lip, otherwise perfect). C #531; MW, plate 76, #12. A clean example with good strong embossing.

**Est.: \$100 - \$175 • Min. bid: \$50**



### Lot 142

**"HARRISON'S / COLUMBIAN / INK - PATENT" (on shoulder) Small Master Ink**, America, 1847 - 1860. Aquamarine, 8-sided, applied flanged mouth - blowpipe pontil scar, ht. 2 7/8", perfect! MW, plate 76, #7; C #535. A great little example, scarce size.

**Est.: \$150 - \$300 • Min. bid: \$80**



### Lot 143

**"GAYLORD'S / SUPERIOR / RECORD / INK - BOSTON" Master Ink Bottle**, possibly Keene Marlboro Street Glassworks, 1830 - 1842. Medium-to-deep olive green, cylindrical, sheared, tooled, thin flanged lip - blowpipe pontil scar, ht. 5 3/4", perfect; (note: the embossing is weak, as is typical of the small handful of examples extant). An extremely rare, early, master ink. In addition to this one being virtually perfect, the glass is extremely crude, absolutely filled with tiny bubbles.

**Est.: \$2,000 - \$4,000 • Min. bid: \$1,000**



### Lot 144

**"CM. LINA.&C - OIL / BLACKING"**, America, 1855 - 1865. Clear, medium olive yellow coloration, square with beveled corners, sheared mouth - smooth base, ht. 4 3/4"; (lightly cleaned to original luster with just a trace of light wear, and a couple of small areas of minor dullness remaining, otherwise perfect). A very beautiful color. The CM Lina Blacking bottles are rare, and this is an extremely rare, possibly unique color for this mold.

**Est.: \$400 - \$600 • Min. bid: \$200**

# A Fine Grouping of Rare & Colored Pickle Jars



Lot 157

Lot 153

Lot 160

Lot 158

Lot 154





Lot 155

Lot 161

Lot 159

Lot 156



### Lot 145

**"BY / A.A. COOLEY / HARTFORD / CON" Blacking Bottle**, New England, probably Coventry Glass Works, Coventry, CT, 1830 - 1848. Yellowish olive amber, oval, sheared mouth - blowpipe pontil scar, ht. 4 5/8", attic mint. McK, plate 75, #2. A beautiful example, nice character to the glass, and outstanding condition.

**Est.: \$300 - \$500 • Min. bid: \$150**



### Lot 149

**"HAZELTON'S / HIGH PRESSURE / CHEMICAL / FIRE KEG"** (with original metal collar and mounting ring), America, 1885 - 1900. Bright golden amber, large figural barrel form, tooled mouth with flat band - smooth base, ht. 11", virtually attic mint; (trace of minor light wear on reverse). A great example! We sold a nice example in the last sale, this one is just a half shade lighter, and with the original metal hardware. This mold is the only known grenade that used the distinctive keg form.

**Est.: \$275 - \$450 • Min. bid: \$140**



### Lot 146

**"OSBORN'S / LIQUID POLISH" Blacking Bottle**, a New England glasshouse, 1840 - 1855. Yellowish olive amber, cylindrical, sheared, tooled, and inward rolled wide mouth - blowpipe pontil scar, ht. 3 5/8"; (some light scratches and minor wear including a 1/4" shallow open bubble at the edge of the base on the side, a little 'bloom' or faint dullness to the glass in a couple of areas, but no other form of damage). Some nice character and whittling to the glass.

**Est.: \$250 - \$350 • Min. bid: \$130**



### Lot 150

**"MASON'S / (Cross) / PATENT / NOV. 30TH / 1858"**, America, 1885 - 1900. Bright honey amber, cylindrical, threaded neck with ground lip, zinc lid with "HFJ CO" Cross - "PAT NOV 26 67 / 537" on base, Qt, virtually perfect (a very hard-to-see, tiny, 1/8" or less, annealing line on the inside surface of the glass on the reverse, likely in-making, mentioned for complete accuracy, otherwise pristine). RB# 1939. A pretty jar, excellent condition, several nice bubbles scattered through the glass.

**Est.: \$200 - \$400 • Min. bid: \$100**



### Lot 147

**Rare size, Early Blacking or Utility Bottle**, a New England glasshouse, 1835 - 1855. Rich, yellowish amber with a slight olive tone, cylindrical, sheared mouth - blowpipe pontil scar, ht. 4 7/8"; (just a little patchy, minor interior residue near the shoulders, otherwise virtually perfect). A very scarce size, wonderful character, crude glass, excellent condition. Provenance: Ex. Weld collection, Skinner Galleries, 2012.

**Est.: \$300 - \$500 • Min. bid: \$150**



### Lot 151

**Early Preserve Jar**, America, 1855 - 1865. Aquamarine, 2-pc. mold tall cylinder form, narrow neck, heavy applied collar with inset for cork - iron pontil scar, ht. 11", virtually perfect; (slight bit of typical very minor usage wear). Note; an early linen-wrapped cork remains in the mouth. Nicely whittled, this jar has a great 'look', with an unusually narrow neck, heavy applied top, and early linen wrapped cork.

**Est.: \$100 - \$200 • Min. bid: \$60**



### Lot 148

**Lot of (2), Early Utility Bottles**, New England, 1835 - 1855. 1st example is a rich, medium green, almost a forest coloration, 2nd example is a medium-to-deep olive amber, both are cylindrical, 2-pc. mold, sheared mouths - blowpipe pontil scarred bases, ht. approx. 3 7/8" each, both near mint; (slight trace of light wear, the green ex. has a tiny 1/8" open bubble). The green example is a particularly nice color, the two complement one another nicely.

**Est.: \$400 - \$600 • Min. bid: \$200**



### Lot 152

**Lot of (2), Cathedral Peppersauce Bottles**, America, possibly Crowleystown Glassworks, 1850 - 1860. Blue green and aqua, square and hexagonal, both with arched Gothic panels and trefoil motifs, applied round collars - blowpipe pontil scarred bases, ht. 8 3/4" & 8 1/2" respectively, near mint; (both with some light interior residue or faint haze, possible washable, otherwise perfect). McK, plate 74, #1 & 2. A very nice pair, the square blue-green example is certainly scarce.

**Est.: \$300 - \$500 • Min. bid: \$150**





### Lot 153

**"W.K. LEWIS & Co. - BOSTON."**, America, 1850 - 1860. Medium 'clear green' with an emerald tone, cylindrical with 5 large rounded body panels, horizontal rings above and below the shoulders, sheared mouth with tooled ring collar - heavy iron pontil scar, ht. 10 5/8", perfect. Zumwalt, p.277. A rare jar, very rare in this green coloration, and virtually 'out of the mold' pristine condition. A 'standout example', about as nice as you could hope to find.

**Est.: \$1,000 - \$2,000 • Min. bid: \$500**



### Lot 154

**"WM. UNDERWOOD / & CO. - BOSTON" Pickle Jar**, 1850 - 1860. Clear, medium blue green, cylindrical with 8 large rounded panels around body, and 16 lobed flutes around shoulders, sheared mouth with a tooled ring collar - iron pontil scar, ht. 11 1/4", perfect! Zumwalt, p.407. A very rare pickle jar, and more so in this outstanding, virtually pristine condition. In addition, great color, strong embossing, and excellent character having crude, whittled glass.

**Est.: \$1,000 - \$2,000 • Min. bid: \$500**



### Lot 155

**Cathedral Pickle Jar**, America, probably Crowleytown Glass Works, Crowleytown, NJ, 1860 - 1866. Strong, medium emerald coloration, square with beveled corners, arched Gothic panels with ornamental scrolls and palmette, sheared mouth with applied ring - smooth base, ht. 9 1/4", perfect. MW, plate 74, #11. A bright, beautiful and scarce color for this mold and outstanding condition. Per McKearin, J.E. Pfeifer found fragments of this mold during excavations at Crowleytown.

**Est.: \$400 - \$800 • Min. bid: \$200**



### Lot 156

**Clock Face and Shell Pattern, Cathedral Pickle Jar**, 1860 - 1870. Beautiful, light-to-medium green coloration, square with beveled corners, Cathedral panels with fancy ogival arches below clock faces on two sides and a large clam shell on the alternating sides, sheared mouth with applied ring collar - smooth base, ht. 11", near mint; (a 1/8" partially open bubble, a little light interior milkiness near base). Zumwalt, p. 457. A very desirable mold. Ex. Dr. Burton Spiller collection.

**Est.: \$1,200 - \$2,400 • Min. bid: \$600**



### Lot 157

**Clock Face and Shell Pattern, Cathedral Pickle Jar**, 1860 - 1870. Strong, medium green coloration, square with beveled corners, Cathedral panels with fancy ogival arches below circular depression for a clock face on two sides, and a clam shell on the alternating sides, sheared mouth with applied ring - smooth base, ht. 8 5/8", pristine perfect. Rich, strong color, believed to be one of three known in this color and size. This is the much harder-to-find small size.

**Est.: \$1,200 - \$2,400 • Min. bid: \$600**



### Lot 158

**Clock Face and Shell Pattern, Cathedral Pickle Jar**, 1860 - 1870. Beautiful, light-to-medium green coloration, square with beveled corners, Cathedral panels with fancy ogival arches below clock faces on two sides and a large clam shell on the alternating sides, sheared mouth with applied ring collar - smooth base, ht. 11", near mint; (a 1/8" partially open bubble, a little light interior milkiness near base). Zumwalt, p. 457. A very scarce, desirable mold. Ex. Dr. Burton Spiller collection.

**Est.: \$1,200 - \$2,400 • Min. bid: \$600**



### Lot 159

**Cathedral Pickle Jar**, America, probably a Mid-Atlantic glasshouse, 1860 - 1875. Rich, deep blue green, square with beveled corners, arched Gothic panels, all four with scalloped designs around inner frame, cross and pendent motif at top of frame, palmette above point, sheared mouth with applied ring collar - smooth base, ht. 11 5/8", perfect. Similar to MW, plate 73, #5. Nice large size, deep color, beautiful condition.

**Est.: \$400 - \$800 • Min. bid: \$200**



### Lot 160

**Giant, Cathedral Pickle Jar**, probably a Mid-Atlantic glasshouse, 1860 - 1875. Rich, very deep blue green, square with beveled corners, arched Gothic panels, cross and pendent motif below top of frame, large palmette above point, sheared mouth with tooled, likely applied, ring collar - smooth base, ht. 13 3/8", perfect. A large, very impressive pickle jar, rich deeper color than most.

**Est.: \$600 - \$900 • Min. bid: \$300**



### Lot 161

**Giant, Cathedral Pickle Jar**, a Mid-Atlantic glasshouse, 1860 - 1875. Clear, medium green with an emerald tone, square, beveled corners, arched Gothic panels, three with scalloped designs around inner frame, diamond and pendent motif, palmettes above frame, sheared mouth, applied ring collar - smooth base, ht. 13 ¾"; (a little light interior haze in the shoulders; a touch of faint dullness on the shoulder, a partially open bubble, otherwise excellent). Another impressive pickle jar.

*Est.: \$500 - \$800 • Min. bid: \$250*



### Lot 162

**"B.F. & Co / N.Y." / (GAME BAG AND QUARRY) - (DOGS AND STANDING SHOTGUN) Handled Pottery Spirits Flask**, America, 1858 - 1862. Tan mottled Rockingham glaze, handled chestnut form, blob collar - **"BULKLEY, FISKE & CO. / NEW YORK."** (debossed in small letters above base), ht. 7 ¼", perfect. Bulkley, Fiske & Co. were NYC grocers and importers focused heavily in the liquor trade. They were in business for only four years. A rare flask.

*Est.: \$200 - \$400 • Min. bid: \$100*



### Lot 163

**"H.A. GRAEF'S SON / N.Y. / CANTEN"**, America, 1870 - 1880. Medium-to-deep yellowish olive green, figural canteen form, applied solid 'ear' shaped handles curled at lower attachments, tooled square collar - smooth base, ht. 6 ½", attic mint! A very scarce handled whiskey, beautiful color. These don't come around often, especially in this fine condition. A post Civil War flask likely blown to appeal to, or commemorate, veterans of the war.

*Est.: \$500 - \$800 • Min. bid: \$250*



### Lot 164

**Lot of (2), Rare, "GRAEF'S" Spirits Bottles**, 1865 - 1880. 1st Ex.: **"H.A. GRAEF'S SON / N.Y. / CANTEN"**, medium-to-deep amber with a reddish tones, figural canteen form, applied handles, tooled collar - smooth base, ht. 6 5/8", near mint; (trace of light wear). 2nd Ex.: **"H.A. GRAEF'S SON / BROOKLYN N.Y."** (in molded oval seal), honey amber, 3-pc. mold cylinder, applied sloping collar - smooth base, ht. 11 ½"; (a little interior residue or faint haze, otherwise near mint).

*Est.: \$500 - \$800 • Min. bid: \$250*



### Lot 165

**"WHITNEY'S GLASS WORKS"** (on base) - **"PATENT"** (on shoulder), **Whiskey Cylinder**, Glassboro, NJ, 1875 - 1885. Rich sky blue, almost a turquoise coloration, 2-pc. mold whiskey cylinder, applied sloping collar with ring - smooth base, ht. 11"; (professionally cleaned with a little scattered light wear remaining; a shallow ½" sliver flake on edge of base). This is likely a very rare mold (embossed "WHITNEY'S" vs. WHITNEY), and in an extremely rare, possibly unique color!

*Est.: \$300 - \$600 • Min. bid: \$150*



### Lot 166

**Cluster of Grapes, Leaves and Tree, Figural Wine Bottle**, America, 1850 - 1860. Medium amber below the shoulders, shading to a rich, deep amber near the base, cylindrical, in the form of a tree with clusters of grapes and leaves, applied mouth with flat band - iron pontil scar, ht. 9 5/8", virtually perfect; (a little washable interior residue). A very scarce figural bottle from the Hollywood Plantation outside of Natchez, MS. It is certainly one of the most ornately embossed, desirable, wine bottles.

*Est.: \$1,000 - \$1,500 • Min. bid: \$500*



### Lot 167

**Large, Dip Mold, Handled Utility Jug**, a South Jersey glasshouse, possibly Fislerville Glass Works, Fislerville (Clayton), NJ, 1850 - 1860. Medium-to-deep amber, 'jug form' with sides tapering slightly inward towards base, applied handle curled at lower attachment, applied sloping collar - blowpipe pontil scar, ht. 9 ½"; (a little minor interior residue or faint haze; a bit of light wear and exterior 'bloom', the tip of the lower curl attachment is missing, otherwise excellent). A very scarce piece.

*Est.: \$250 - \$450 • Min. bid: \$130*



### Lot 168

**"R.B. CUTTER / LOUISVILLE, KY" Applied Handle Whiskey**, America, 1850 - 1860. Deep amber through the shoulders shading to a dense amber, almost black, through the lower third of the body, ovoid form, applied handle curled at lower attachment, applied blob collar - large blowpipe pontil scar, ht. 8 ½", virtually attic mint; (slight trace of faint wear, otherwise perfect). A very nice example, heavily whittled, strong embossing, and in a rich, deeper color than normally encountered.

*Est.: \$250 - \$400 • Min. bid: \$130*





### Lot 169

**A.M. BININGER & CO. / No. 19 BROAD ST / NEW YORK** Applied Handle Whiskey, probably 1861 - 1863. Medium amber, cylindrical with conical shoulders, applied handle curled at lower attachment, applied double ring collar - smooth base, ht. 7 7/8", near mint; (just a slight trace of minor wear including a 1/8" paper-thin open bubble; a bit of dried light interior content residue, otherwise perfect). BPK-31. A good solid example with no handle attachment or lip issues.

*Est.: \$250 - \$450 • Min. bid: \$130*



### Lot 170

**"DISTILLED IN 1848. / OLD KENTUCKY / 1849 / RESERVE / BOURBON / A.M. BININGER & Co. 338 BROADWAY, N.Y."**, 1859 - 1861. Golden amber, barrel form, applied round double collar - blowpipe pontil scar, ht. 7 7/8"; (just a touch of typical minor wear; a bit of faint interior residue, barely noticeable, and a 5/8" onionskin-thin open bubble on the reverse, otherwise near mint). BPK-42. A nice early pontiled example (this mold also comes smooth base).

*Est.: \$200 - \$400 • Min. bid: \$100*



### Lot 171

**"A.M. BININGER & Co / No 375 BROADWAY N.Y."**, America, 1863 - 1875. Light-to-medium, yellowish topaz, square with beveled corners, applied sloping collar - smooth base, ht. 9 3/4", virtually attic mint; (just the slightest trace of light wear, otherwise perfect). BPK-15. A scarce mold, beautiful, eye-appealing color! As noted in Jim Bender's Bininger book, the 375 Broadway bottles come in a range of attractive colors and are quite desirable.

*Est.: \$600 - \$900 • Min. bid: \$300*



### Lot 172

**"OLD LONDON DOCK - GIN - A.M. BININGER & Co. / No. 19 BROAD ST N.Y."**, America, 1861 - 1863. Golden amber with some very slight orange tones, square with beveled corners, applied sloping collar - smooth base, ht. 9 3/4"; (some light interior content residue, almost certainly washable, and minor light wear including a shallow, 1/4" open bubble on a side panel, otherwise excellent). BPK-9. This example has the peened out 338 address changed to 19.

*Est.: \$200 - \$400 • Min. bid: \$100*



### Lot 173

**"OLD LONDON DOCK - GIN - A.M. BININGER & Co. / No. 338 BROADWAY."**, America, 1860 - 1875. Bright medium olive with a slight yellowish tone, square with beveled corners, applied sloping collar - smooth base, ht. 9 1/2", perfect! BPK-10. A great example, beautiful color, clarity, and condition. The Old London Dock bottles come with three different addresses: No. 17 Broad St; No. 19 Broad St, and No. 338 Broadway.

*Est.: \$250 - \$400 • Min. bid: \$130*



### Lot 174

**"BININGER'S / OLD KENTUCKY BOURBON, - 1849. RESERVE; / DISTILLED IN 1848. - A.M. BININGER & Co. / No. 19, BROAD ST, N.Y."**, 1861 - 1863. Bright medium olive with a slight yellowish tone, square with beveled corners, applied sloping collar - smooth base, ht. 9 3/4", perfect. BPK-20. Another great example having strong embossing, beautiful color, clarity, and condition. We sold the Bob Ferraro example in Auction #26. This one is almost identical.

*Est.: \$400 - \$800 • Min. bid: \$200*



### Lot 175

**"J & D. DUNCAN - OLD BOUBON" ("WORMWOOD")** peened out on a third panel), America, 1865 - 1875. Medium-to-deep olive green, tapered gin form, applied sloping collar - smooth base, ht. 10", very near mint; (just a slight trace of minor wear including a light 1" scratch on one of the side panels). An extremely rare, possibly unique, American gin, originally discovered in the Denver, CO area. Note; see Lot #184 in this sale for a unique "WORMWOOD" Bitters.

*Est.: \$600 - \$1,200 • Min. bid: \$300*



### Lot 176

**"GRANGER. SCHNAPPS - BOYKIN CARMER & Co - BALTIMORE"**, America, probably 1875 - 1880. Golden amber, square with beveled corners, applied sloping collar - smooth base, ht. 8 1/2", near mint; (a 1/8" flake on one of the beveled corners, near the base, some scattered interior content residue, otherwise perfect). A rare schnapps bottle, especially in this fine condition. Note; remnants of the original label on side panel, and a 2¢ proprietary tax stamp is on the neck.

*Est.: \$200 - \$400 • Min. bid: \$100*



### Lot 177

#### **"BROWN'S / CELEBRATED / INDIAN HERB BITTERS - PATENTED / 1867"**

(with original period paint), 1867 - 1880. Yellow with an olive tone, figural Indian maiden, sheared and inward rolled lip - smooth base, ht. 12", virtually perfect; (small piece, 3/16", of the inner rolled lip is missing or incomplete). R/H #B223. An incredible piece, beautiful and rare color for an Indian Queen, and probably one of the finest examples with period paint that we can recall seeing.

*Est.: \$6,000 - \$9,000 • Min. bid: \$3,000*



### Lot 178

#### **"BROWN'S / CELEBRATED / INDIAN HERB BITTERS - PATENTED / 1867"**

1867 - 1880. Rich, medium-to-deep chocolate amber, figural Indian maiden, sheared and inward rolled lip - smooth base, ht. 12 1/8", perfect. R/H # B223. A very scarce color, outstanding condition, and with a perfect 'no excuses' rolled lip. This example is also a little lighter in weight having thinner glass, and thus, lighter in tone, allowing some of the color to come through and be enjoyed. Ex. Joe Kray collection.

*Est.: \$1,200 - \$1,800 • Min. bid: \$600*



### Lot 179

#### **"NATIONAL / BITTERS - "PAT-ENT / 1867"**

(on base), 1867 - 1875. Aquamarine, figural ear of corn, applied short tapered collar with ring - smooth base, ht. 12 3/8"; (a crack travels around the perimeter of the base ring, a bit more than half way, from the front, around one side to the reverse, but no other form of damage). R/H #N8. Extremely rare and desirable color, and despite the noted damage, still displays as virtually mint. Ex. Ed Harold collection.

*Est.: \$1,200 - \$2,400 • Min. bid: \$600*



### Lot 180

#### **"S T / DRAKE'S / 1860 / PLANTATION / X / BITTERS - PATENTED / 1862."**

1862 - 1885. Brilliant, olive green, cabin form, applied sloping collar - smooth base, ht. 9 7/8", virtually pristine perfect! R/H #D105. Wild and fantastic color, outstanding clarity and condition, bold embossing. A 'finest possible example'!. Ex. Joe Kray collection, donated by Jeff Wichmann and an anonymous donor. 100% of the proceeds to benefit the FOHBC Virtual Museum of Historical Bottles and Glass.

*Est.: \$15,000 - \$25,000 • Min. bid: \$8,000*



### Lot 181

**Arabesque motif / "DRAKES" / Arabesque motif / "PLANTATION / BITTERS - PATENTED / 1862"**, America, 1862 - 1880. Rich, medium apricot puce with some lighter copper tones along the edges, and beautiful reddish tones towards the base, cabin form, applied sloping collar - smooth base, ht. 9 3/4", virtually attic mint; (just a slight trace of very minor wear, otherwise perfect). R/H #D102. Scarce "Arabesque" mold in a very scarce color, outstanding condition!

*Est.: \$1,000 - \$2,000 • Min. bid: \$500*



### Lot 182

**Unembossed Cabin-Form Bitters**, probably 1859 - 1860. Deep amber, square cabin form with thatched roof panels, four indented body panels, 2 with scalloped corners, applied sloping collar - smooth base, ht. 10 1/8"; (a shallow 1/8" flake along the top of the lip, otherwise attic mint). An extremely rare, possibly unique example. This is a Memphis, TN cabin. An embossed example exists, "WIGGS BROS & CO - MEMPHIS TENN". Provenance: Ex. Dick and Elma Watson collection.

*Est.: \$1,500 - \$2,500 • Min. bid: \$800*



### Lot 183

**"OLD / HOMESTEAD / WILD CHERRY / BITTERS - PATENT"**, America, possibly a Pittsburgh district glasshouse, 1865 - 1875. Bright, light golden, or honey amber, cabin form, applied sloping collar - smooth base, ht. 9 5/8", perfect. R/H #O37. A great looking example, attractive somewhat lighter color, and with good strength of embossing which can often times be weak.

*Est.: \$300 - \$500 • Min. bid: \$150*



### Lot 184

**"DOCTOR. JOHN. RUSS - WORMWOOD / STOMACH BITTERS"**, 1860 - 1870. Golden amber, semi-cabin form, applied sloping collar - smooth base, ht. 10"; (professionally cleaned to original luster and near mint condition; a tiny pot-stone on the inside surface of the glass with a 1/8" radiation, and a shallow 1/8" flake on a panel edge, otherwise excellent). See R/H, Supplement 2, W162.8. An extremely rare and important bitters, believed to be the only intact specimen, and likely from Iowa.

*Est.: \$5,000 - \$10,000 • Min. bid: \$2,500*





### Lot 185

**"ROMAINE'S - CRIMEAN - BITTERS - PATEND 1863 - CRIMEAN BITTERS"**, 1863 - 1875. Bright medium amber, square, semi-cabin form with columned corners, applied sloping collar - smooth base, ht. 10 1/8"; (lightly cleaned to original luster and near mint condition; a little light wear and a shallow 1/4" flake at edge of base, otherwise virtually perfect). R/H #R87. Listed by Ring / Ham as "Very rare", this is the rarer of the two variants (both hard-to-find). Bright and clean.

*Est.: \$1,000 - \$2,000 • Min. bid: \$500*



### Lot 189

**"HOLTZERMANN'S / PATENT / STOMACH / BITTERS"**, America, 1890 - 1910. Medium amber with a slight orange tone, rectangular cabin form, tooled sloping collar - smooth base, ht. 9 3/4", very near mint; (just a tiny, paper-thin, pinhead flake on the inside edge of the lip, and a slight trace of light interior milkiness along the corners, otherwise perfect). R/H #H154. A great example, bright, clean, good strength of embossing (often very weak on this mold), and having almost no wear.

*Est.: \$150 - \$300 • Min. bid: \$80*



### Lot 186

**"E. DEXTER. LOVERIDGE / WAHOO BITTERS - (EAGLE) - E. DEXTER. LOVERIDGE / WAHOO BITTERS - DWD - 1863 - XXX - PATD"**, America, 1863 - 1875. Rich, deep 'old amber', square semi-cabin form, applied sloping collar with band - smooth base, ht. 9 3/4", attic mint! R/H #L126. A scarce and desirable semi-cabin from Buffalo, NY, and not easy to find in this beautiful condition.

*Est.: \$800 - \$1,200 • Min. bid: \$400*



### Lot 190

**"WEBBS / OLD RYE BITTERS - JACKSON. MICH\_"**, 1870 - 1880. Medium-to-deep amber, square, beveled corners, applied sloping collar - smooth base, ht. 8 7/8", near mint; (a trace of minor wear including a shallow 1/8" flake on one of the beveled corners, and a little dried interior content residue in the shoulders). R/H #W61. An extremely rare bitters, and even more so in this fine condition (most of the scant few examples known have been dug). A fresh find from an estate near Vassar, Mich.

*Est.: \$700 - \$900 • Min. bid: \$350*



### Lot 187

**"M.G. LANDSBERG / CHICAGO" - (Motif of EAGLE - SUNBURST / "1776" - SHIELD - "1876")**, probably 1885 - 1890. Bright golden amber, square with fancy crosshatch corners, shoulders are in the figure of a bell with 13 stars, applied sloping collar - smooth base, ht. 11"; (a tiny, 1/8" onionskin-thin open bubble on a side panel, otherwise sparkling attic mint). R/H page 339. A pristine, beautiful, top example! One of the most beautiful and ornately embossed bitters.

*Est.: \$1,200 - \$1,800 • Min. bid: \$600*



### Lot 191

**"GREELEY'S - BOURBON WHISKEY / BITTERS. - GREELEY'S"**, 1860 - 1875. Aquamarine, barrel form, applied square collar - smooth base, ht. 9 1/4", near mint; (a tiny bit of roughness on the square collar that you can feel, but is not easy to see, and a little pinhead bruise on the cover glass of a bubble on the reverse, otherwise perfect). R/H #G102. Very rare in aquamarine. A beautiful, brilliant example, sparkling clean and with crisp, very bold embossing. Ex. Jack Stecher collection.

*Est.: \$4,000 - \$6,000 • Min. bid: \$2,000*



### Lot 188

**"HOLTZERMANN'S / PATENT / STOMACH / BITTERS"** (with original label, partial contents), America, 1890 - 1910. Medium amber with a very slight orange tone, rectangular cabin form, tooled sloping collar - smooth base, ht. 9 3/4"; (bottle is perfect; 95% complete original label darkened a bit from age and with a little staining, almost full contents). R/H #H154. A very complete example. Note; the label is from Piqua, OH (vs. Toledo), and believed to be the earlier variant.

*Est.: \$250 - \$450 • Min. bid: \$130*



### Lot 192

**"GREELEY'S BOURBON / BITTERS"**, America, 1860 - 1875. Medium smoky topaz, almost a deep ginger ale coloration, barrel form, applied square collar - smooth base, ht. 9 1/8", near mint; (just a touch of typical light wear including a 1/4", paper-thin, open bubble on one of the rings on the reverse, and a small patch of very light content residue or haze, otherwise perfect). R/H #G101. A rare color, overall excellent condition, and with a perfect, undamaged collar.

*Est.: \$1,000 - \$2,000 • Min. bid: \$500*



### Lot 193

**"GREELEY'S BOURBON / BITTERS"**, America, 1860 - 1875. Medium coppery-ponce with some beautiful pinkish tones, depending on the lighting, barrel form, applied square collar - smooth base, ht. 9 1/4"; (a little typical light wear around the mid-body; a 3/16" chip on the side of the lip, and a couple of other spots of minor flaking, 1/8" to 3/16", on the edge of the lip). R/H #G101. A pretty example, and light enough in tone to enjoy the beautiful color.

*Est.: \$200 - \$300 • Min. bid: \$100*



### Lot 194

**"GREELEY'S BOURBON / BITTERS"**, America, 1860 - 1875. Rich, deep apricot coloration, barrel form, applied square collar - smooth base, ht. 9 1/8"; (just a little minor wear including a small pinhead flake on the edge of the square collar, and a 1/8" flake on the 1st ring above the base; a small patch of interior residue, barely noticeable, otherwise excellent). R/H #G101. A good solid example, strong embossing.

*Est.: \$250 - \$350 • Min. bid: \$130*



### Lot 195

**"OLD SACHEM / BITTERS / AND WIGWAM TONIC"**, America, 1860 - 1875. Golden amber, barrel form, applied square collar - smooth base, ht. 9 1/8"; (a few spots of roughness or light flaking around the edge of the square collar including a couple of shallow 1/8" flakes on the back side of the lip). R/H #O46. The Old Sachem barrels are one of the classics in figural bitters, and a lot of bottle for the money.

*Est.: \$250 - \$350 • Min. bid: \$130*



### Lot 196

**"HALL'S / BITTERS - E.E. HALL NEW HAVEN / ESTABLISHED 1842"**, America, 1865 - 1875. Medium amber with a very slight orange tone, barrel form, applied square collar - smooth base, ht. 9", near mint; (just a trace of light wear including an onionskin-thin, small, open bubble on the reverse, and a touch of faint content residue). R/H #H10. A good solid example of this popular Connecticut barrel bitters.

*Est.: \$150 - \$250 • Min. bid: \$80*



### Lot 197

**"KIMBALL'S / JAUNDICE - BITTERS - TROY. N.H."**, a Stoddard, NH glass-house, 1850 - 1860. Light-to-medium yellowish olive amber, rectangular with beveled corners, applied sloping collar - iron pontil scar, ht. 6 7/8", near mint; (a little light wear near the base on the front panel, and a small, partially open, pinhead bubble along the bottom edge of the applied collar on the reverse, otherwise perfect). R/H #K42. A nice example of this classic early Stoddard bitters.

*Est.: \$800 - \$1,200 • Min. bid: \$400*



### Lot 198

**Lot of (2), Pontiled Bitters**, 1845 - 1860. **"DR. / MANLY HARDY'S - GENUINE - JAUNDICE / BITTERS - BANGOR ME"**, and, **"S.O. / RICHARDSON'S - BITTERS - SOUTH / READING - MASS"**. Both are aquamarine, rectangular with beveled corners, applied sloping collar and flared mouths - blowpipe pontil scarred bases, ht. 7" and 6 1/2" respectively; (Hardy's has just a slight trace of very light interior haze, faint wear, otherwise both are perfect). R/H #H35 & #R57.

*Est.: \$250 - \$450 • Min. bid: \$130*



### Lot 199

**Lot of (2), "DR LANGLEY'S BITTERS"**, 1855 - 1870. 1st Ex: **"DR LANGLEY'S / ROOT & HERB / BITTERS / 76 UNION St. / BOSTON"**, aquamarine, applied square collar - blowpipe pontil scar, ht. 6 3/4"; (a 1/8" flake at edge of lip, otherwise near mint). 2nd Ex: **"DR LANGLEY'S / ROOT & HERB / BITTERS / 99 UNION St / BOSTON"**, greenish aqua, applied square collar - smooth base, ht. 8 1/2"; (a little minor wear and small patch of light dullness near base). R/H #L26 & L21.

*Est.: \$150 - \$250 • Min. bid: \$80*



### Lot 200

**"DR TOWNSEND'S - SARSAPARILLA - ALBANY / N.Y."** - (Horizontal slash mark on label panel), 1850 - 1860. Rich, deep blue green, almost a teal coloration, square with beveled corners, applied sloping collar - heavy iron pontil scar, ht. 9 1/2"; (a 1/4" x 3/16" iridescent bruise on the side of the lip, otherwise sparkling attic mint). An outstanding example, scarce mold, deep rich color, heavy crude glass, and an extremely heavy iron pontil scar that protrudes almost an 1/8" from the base!

*Est.: \$400 - \$800 • Min. bid: \$200*



**Lot 201**

**"DR TOWNSEND'S - SARSAPARILLA - ALBANY / N.Y."**, America, 1850 - 1860. Rich, medium-to-deep yellowish green with an emerald tone, square with beveled corners, applied sloping collar - deep squared base with a 'cloverleaf' iron pontil scar, ht. 9 3/8"; (professionally cleaned to original luster and otherwise near mint condition with some scattered minor wear remaining). A big, heavy, beautiful example, rich color, nice crude glass. Provenance: Gary Enters collection.

*Est.: \$500 - \$800 • Min. bid: \$250*

**Lot 202**

**"DR TOWNSEND'S - SARSAPARILLA - ALBANY / NY"** (4-'Nailhead' mold), New England, probably a Stoddard, NH glasshouse, 1845 - 1855. Yellowish olive with an amber tone, square with beveled corners, applied sloping collar - sand type pontil scar, ht. 9 3/8", near mint; (a 1/4" paper-thin open bubble near the base, and a tiny bit of lip edge roughness that you can feel, but is not easy to see). A beautiful example, scarce mold and lighter color through the upper half.

*Est.: \$400 - \$600 • Min. bid: \$200*

**Lot 203**

**"DR TOWNSEND'S - SARSAPARILLA - ALBANY / N.Y. No1"**, probably a New England glasshouse, 1840 - 1855. Medium-to-deep yellowish olive with an amber tone, square with beveled corners, applied sloping collar - sand type pontil scar, ht. 9 1/4", near mint; (only a slight trace of minor wear and a film of dried content residue on the interior that would likely wash out). Fantastic character, crude seedy glass, bold embossing, and a very scarce mold!

*Est.: \$600 - \$900 • Min. bid: \$300*

**Lot 204**

**"OLD DR J. TOWNSENDS - SARSAPARILLA - NEW YORK."**, 1850 - 1860. Bright bluish green, square, beveled corners, applied sloping collar - deep domed base with iron pontil scar, ht. 9 1/2", near mint; (just a touch of minor wear including a 1/8" flake, or spot of roughness, on one of the base corners). Nice color, clarity, crisp embossing, and heavily whittled. Nice with the iron pontil scar, the majority of these "OLD DR J." examples are smooth base. Gary Enters collection.

*Est.: \$300 - \$500 • Min. bid: \$150*

**Lot 205**

**"PIKE & OSGOOD / BOSTON MASS - ALTERATIVE SYRUP"**, probably an early Stoddard, NH glasshouse, 1845 - 1855. Rich, yellowish 'old amber' with an olive tone, rectangular, beveled corners, applied sloping collar - blow-pipe pontil scar, ht. 8 1/2"; (a bruise and 5/16" chip on one of the base corners has had a museum-quality professional restoration, otherwise near perfect). Rich color, whittled, outstanding character, better than average embossing. The bottle displays as perfect!

*Est.: \$2,000 - \$4,000 • Min. bid: \$1,000*

**Lot 206**

**"SMITH'S - GREEN MOUNTAIN - RENOVATOR - EAST. GEORGIA. VT"**, Granite Glass Company, Stoddard, NH, 1850 - 1860. Bright yellowish amber through the shoulders shading to a deeper amber in the lower half with a very slight olive tone, rectangular with wide beveled corners, applied double round collar - iron pontil scar, ht. 6 7/8", perfect; (slight trace of dried content residue). An absolutely fantastic example, nice seedy glass, good color, outstanding condition.

*Est.: \$1,800 - \$3,200 • Min. bid: \$1,000*

**Lot 207**

**"DR. HARTSHORNS / MEDICINE"**, New England, probably a Stoddard, NH glasshouse, 1855 - 1865. Rich yellowish amber with a very slight olive tone, oval, applied narrow square collar - smooth base, ht. 6 1/8"; (some light wear and fine scratches along the side to the right of the front panel, otherwise very near mint). Nice syrupy glass and no issues with the square collar, which is not easy to find on these bottles.

*Est.: \$800 - \$1,200 • Min. bid: \$400*

**Lot 208**

**"HOUCKS - VEGETABLE / PANACEA - GOODLETTSVILLE / TENN"**, America, 1850 - 1860. Clear, medium sapphire blue, rectangular with beveled corners, applied sloping collar with bevel - heavy iron pontil scar, ht. 7 1/4", near mint; (lightly cleaned to original luster and virtually perfect condition). A gorgeous, unique pontiled medicine, the only example of this mold extant in 'color'. Provenance: Ex. James Chebalo collection; pictured on cover of July, 1992 Harmer Rooke catalog.

*Est.: \$6,000 - \$12,000 • Min. bid: \$3,000*



### Lot 209

**"S.M. KIER. - PETROLEUM - PITTSBURGH PA"**, probably a Pittsburgh district glasshouse, 1850 - 1860. Brilliant, medium yellowish green, rectangular with beveled corners, applied sloping collar - blowpipe pontil scar, ht. 6 1/2", sparkling attic mint. A beautiful, exceedingly rare, possibly unique color for this mold. We have not seen another example in this, or similar color. In addition, nice character with plenty of tiny bubbles. Found in an old home in Waldron, Indiana.

*Est.: \$2,000 - \$4,000 • Min. bid: \$1,000*



### Lot 210

**"BARTINE'S / LOTION"**, 1845 - 1855. Yellowish grass green, rectangular with two narrow beveled corners and two rounded corners, applied sloping collar - blowpipe pontil scar, ht. 6 1/8"; (a little patchy, minor interior haze below the shoulders, and just a bit of light wear, otherwise near mint). Odell, p.24. Scarce. A very nice example having crude, wavy, glass. Does not appear to have been professionally cleaned. A NYC bottle advertised 1845 - 1848 as a cure for rheumatism.

*Est.: \$800 - \$1,200 • Min. bid: \$400*



### Lot 211

**"Dr T.G. EVANS / BROWNSVILLE PA / SOVEREIGN TONIC / FOR FEVER & AGUE"**, possibly Brownsville Glass Works, Brownsville, PA, 1840 - 1850. Clear, medium apple green, cylindrical, sheared mouth with a crudely applied ring collar - blowpipe pontil scar, ht. 6"; (a 1/2", thin, 'star'-type crack near the shoulder, some in-manufacture annealing lines in the neck with a 1/2" hairline crack, a narrow band of light interior haze). A very crude and exceedingly rare pontiled medicine.

*Est.: \$400 - \$800 • Min. bid: \$200*



### Lot 212

**"G.W. MERCHANT / CHEMIST / LOCKPORT / N.Y."**, probably Lockport Glass, 1850 - 1860. Rich, bright blue green, cylindrical, applied sloping collar - large, heavy iron pontil scar, ht. 7", attic mint. A clean, sparkling example, very pretty bluish tones, and not a lot of the green to the 'blue-green' color. There are several nuances to the variations of embossing for this mold. This example has the larger style embossing.

*Est.: \$300 - \$500 • Min. bid: \$150*



### Lot 213

**"G.W. MERCHANT / CHEMIST / LOCKPORT / N.Y."**, probably Lockport Glass, 1850 - 1860. 'Lockport' bluish green, cylindrical, applied sloping collar - iron pontil scar, ht. 7 1/4"; (a potstone in the base, partially obscured by the iron pontil, with a couple of little 1/8" 'legs'; and a very slight trace of wear, otherwise perfect). A beautiful example, excellent character with crude, pebbly glass. The cylinder Merchant bottles have always been a favorite of collectors, and it is easy to see why.

*Est.: \$150 - \$250 • Min. bid: \$80*



### Lot 214

**Lot of (2), "FROM THE / LABORATORY - OF / G.W. MERCHANT / CHEMIST - LOCKPORT / N.Y."**, probably Lockport Glass Works, 1845 - 1860. Both are shades of 'Lockport' blue green, rectangular with concave corners, applied sloping collars - blowpipe pontil and smooth bases, ht. 5 1/2" & 5 3/4"; (both are near mint with a little scattered light wear, and a couple of small patches of interior haze; the pontiled example has a 3/8" x 1" pontil chip that extends to the edge of the base).

*Est.: \$300 - \$500 • Min. bid: \$150*



### Lot 215

**Lot of (2), "G.W. MERCHANT / LOCKPORT N.Y." Bottles**, probably Lockport Glass, 1845 - 1860. Aquamarine and medium 'Lockport' blue green, both are rectangular with narrow beveled corners, applied sloping collar - blowpipe pontil scarred bases, ht. 4 7/8" & 5"; (the aqua example has been professionally cleaned to near mint condition with a little faint haze remaining; the blue green example has a little light patchy haze around the shoulders and a 1/8" flake at corner of base).

*Est.: \$200 - \$400 • Min. bid: \$100*



### Lot 216

**"PELLETIER'S - EXTRACT OF / SARSAPARILLA - HARTFORD CON."**, America, 1850 - 1860. Aquamarine, rectangular with beveled corners, applied double ring collar - blowpipe pontil scar, ht. 10 1/2"; (professionally cleaned to original luster with just a bit of scattered minor wear remaining, a couple spots of very faint haze, otherwise excellent). Odell, p.276; DeG. #163. A rare sarsaparilla bottle, impressive size, crude wavy glass. Provenance: Gary Enters collection.

*Est.: \$800 - \$1,600 • Min. bid: \$400*



**Lot 217**

**"DR GUYSOTT'S - YELLOW DOCK / & / SARSAPARILLA - CINCINNATI O"**, a Midwest glasshouse, possibly Pittsburgh, 1850 - 1860. Rich, deep aquamarine, rectangular with beveled corners, applied inverted tapered collar - heavy iron pontil scar, ht. 9 1/2", near perfect; (a slight trace of minor wear, and a few paper-thin, pinhead open surface bubbles). Rich color, bold embossing, fantastic condition. Another top example with great eye-appeal. Ex. Tom Eccles collection.

*Est.: \$300 - \$500 • Min. bid: \$150*

**Lot 218**

**"DR BLACKWELL'S - SARSAPARILLA / & VERSIECOLA - LOUISVILLE KY"**, 1850 - 1860. Bright aquamarine, rectangular with beveled corners, applied sloping collar - iron pontil scar, ht. 9 1/2", attic mint! Odell, p.35. A gorgeous sarsaparilla, boldly embossed, excellent character, bright, clean and sparkling, and extremely rare! Only the second example to be offered in more than 20 years, and about as nice as you could hope to find. Provenance: Gary Enters collection.

*Est.: \$1,500 - \$2,500 • Min. bid: \$800*

**Lot 219**

**"THOS. A. HURLEY'S - COMPOUND SYRUP / OF SARSAPARILLA - LOUISVILLE KY"**, 1850 - 1860. Aquamarine, rectangular with beveled corners, applied sloping collar - iron pontil scar, ht. 9 1/2"; (lightly cleaned to original luster and near mint condition, just a touch of light wear including a shallow, less than 1/8" flake on the edge of the lip). Odell, p.123; DeG #106. A very rare sarsaparilla, excellent condition, great character and filled with tiny seed bubbles. Gary Enters collection.

*Est.: \$500 - \$800 • Min. bid: \$250*

**Lot 220**

**"BRISTOL'S - EXTRACT OF / SARSAPARILLA - BUFFALO"**, America, 1845 - 1855. Bright aquamarine, rectangular with beveled corners, applied short tapered collar - blowpipe pontil scar, ht. 5 1/2", sparkling attic mint. Odell, p.48. Scarce. Note; this is the "Extract Of / Sarsaparilla" vs. the mold that is embossed "Bristol's - Sarsaparilla" (without the "Extract Of"). A great example, virtually out of the mold, pristine condition. Provenance: Gary Enters collection.

*Est.: \$200 - \$400 • Min. bid: \$100*

**Lot 221**

**"DR. J. S. ROSE'S - SARSAPARILLA - PHILADELPHIA"**, America, 1850 - 1860. Aquamarine, square with beveled corners, applied sloping collar - iron pontil scar, ht. 9 1/4"; (a few chips, one very narrow 1/16" by 7/16" sliver, another 1/8" by 3/8", the third, approx. 3/16", near, or along, one of the beveled corners; and a large open interior bubble with a little trapped residue, otherwise excellent). A rare sarsaparilla. Provenance: Gary Enters collection; Ex. Tom Eccles collection.

*Est.: \$300 - \$500 • Min. bid: \$150*

**Lot 222**

**"HADLOCK'S - VEGETABLE - SYRUP"**, America, 1840 - 1850. Brilliant aquamarine, cylindrical with 12 indented panels, applied sloping collar - blowpipe pontil scar, ht. 8 1/2", perfect. Extremely rare, believed to be a unique example! It was likely an early copycat of the more popular Swain's Panacea. A fantastic, eye-appealing, bottle with an unusually long neck, outstanding character, and brilliant sparkling glass. Provenance: Ex. Sam Greer, James Chebalo collections.

*Est.: \$1,500 - \$2,500 • Min. bid: \$800*

**Lot 223**

**"HALL'S - PALINGENESIA - OR / REGENERATOR - BOSTON"**, America, 1850 - 1860. Aquamarine, octagonal, applied sloping collar - iron pontil scar, ht. 9"; (a trace of minor light wear, primarily on a couple of the back label panels, otherwise attic mint). Odell, p. 157. A very rare, impressive medicine, believed to be one of only a few known. We sold one of the other examples back in Auction 20. This one has not been dug and cleaned, and with a fully intact iron pontil! Gary Enters collection.

*Est.: \$1,200 - \$1,800 • Min. bid: \$600*

**Lot 224**

**"Dr J. CLAWSON KELLEY'S - ANTI-SEPTIC DETERGENT - NEW-YORK."**, 1845 - 1855. Rich, deep aquamarine, rectangular, beveled corners, applied sloping collar - blowpipe pontil scar, ht. 9 1/8", virtually perfect; (just a trace of very light wear, as well as faint interior residue). Odell, p.209. A rare pontiled medicine, and one of just a very few that are embossed with either, "ANTI-SEPTIC" or "DETERGENT". Provenance: Gary Enters collection, FOHBC 2013 "Madness in Manchester" Auction.

*Est.: \$400 - \$600 • Min. bid: \$200*



### Lot 225

**"H. LAKE'S / INDIAN / SPECIFIC."**, America, 1849 - 1855. Aquamarine, rectangular with concave corners, bulbous neck, applied heavy ring collar - blowpipe pontil scar, ht. 8 1/4"; (professionally cleaned to original luster with a little scattered minor wear remaining, a hard-to-see, 1/8" chip on one of the shoulder corners at the side, otherwise excellent). Odell, p.218. A scarce, classic, pontiled Indian medicine.

**Est.: \$400 - \$600 • Min. bid: \$200**



### Lot 229

**"DR G.W. PHILLIP'S - DIARRHOEA / SYRUP - CINCINNATI. O."**, probably 1855 - 1860. Aquamarine, rectangular with beveled corners, applied ring collar with bevel - blowpipe pontil scar, ht. 6"; (a little faint exterior dullness or iridescence; a touch of light wear, primarily on the back label panel, and some minor interior haze below the shoulders, otherwise excellent). Odell, p.279. Very scarce. The bottle displays nicely, the noted issues are minor. Provenance: Gary Enters collection.

**Est.: \$200 - \$400 • Min. bid: \$100**



### Lot 226

**"SCHENCK'S" Medicine Lot**, 1850 - 1865. **"SCHENCKS - SEAWEEED - TONIC"** (4th panel with indentation for pill box), aqua, square, applied sloping collar with bevel - deep domed base with heavy iron pontil scar, ht. 8 7/8"; (lightly cleaned to original luster, touch or wear remaining). Rare. 2nd Ex.:

**"SCHENCK'S - PULMONIC -**

**SYRUP - PHILADA"**, aqua, 8-sided, applied sloping collar - blowpipe pontil scar, ht. 7 1/4"; (some light interior haze). 2 Schencks Trade Cards, Tin pill box.

**Est.: \$500 - \$800 • Min.bid: \$250**



### Lot 230

**"J.B. WHEATleys / COMPOUND SYRUP / DALLASBURGH, KY."**, America, 1850 - 1860. Rich, deep aquamarine, cylindrical, applied round collar with bevel - blowpipe pontil scar, ht. 6", virtually perfect; (a partially open bubble on the interior of the neck, otherwise pristine perfect). Not necessarily a rare mold, but one that is always popular with collectors, and for good reason. A great looking pontiled medicine, rich deep color, boldly embossed, outstanding condition.

**Est.: \$100 - \$200 • Min. bid: \$50**



### Lot 227

**Lot of (2), Pontiled Medicines**, 1845 - 1860. 1st Ex: **"BRANT'S INDIAN - PULMONARY BALSAM - M.T. WALLACE / PROPRIETOR"**, 2nd Ex: **"DR. WISTAR'S - BALSAM OF - WILD CHERRY - PHILADA - I B."**. Both are aquamarine, 8-sided, applied sloping collar - blowpipe pontil scarred bases, ht. 7" and 6 1/4" respectively; (1st example is perfect; 2nd example professionally cleaned, otherwise excellent). The Brant's is a rich color, the "I B." Wistar's is scarce.

**Est.: \$200 - \$300 • Min. bid: \$100**



### Lot 231

**"Dr J. MOORE'S - ESSENCE LIFE"**, America, 1835 - 1845. Aquamarine, cylindrical, sheared mouth with a tooled, thin flanged lip - heavy blowpipe pontil scar, ht. 3 3/4", sparkling mint. Odell, p.256. A very early, rare, pontiled medicine believed to be from Glastenbury, Connecticut. Not an easy bottle to find, especially in this beautiful, un-dug, condition. Per Odell, it was advertised 1809 - 1849, for consumption, whooping cough, colds, coughs. Provenance: Gary Enters collection.

**Est.: \$150 - \$300 • Min. bid: \$80**



### Lot 228

**"HUFF'S - PULMONIC / BALSAM / CINCINNATI"**, a Midwest glass-house, 1845 - 1855. Aquamarine, rectangular with wide beveled corners, applied sloping collar - blowpipe pontil scar, ht. 5 3/4", virtually attic mint; (just a very slight trace of light wear, and faint interior residue, otherwise perfect). Odell, p.183. A great example of this scarce pontiled balsam - one that does not come around often.

**Est.: \$200 - \$400 • Min. bid: \$100**



### Lot 232

**"DR DE CHARMS / SAUVEUR."**, America, 1845 - 1855. Bright, greenish aquamarine, rectangular with beveled corners, sheared, tooled, and inward rolled mouth - blowpipe pontil scar, ht. 4 1/2"; (the bottle may have been lightly cleaned, but certainly presents as very near mint; a tiny, less-than pinhead size, flake on back panel edge). Odell, p.104; Nielsen #167 (6-star). A rare pontiled medicine from Cincinnati, OH. Provenance: Gary Enters collection.

**Est.: \$250 - \$450 • Min. bid: \$130**





### Lot 233

**"N. WOOD / PORTLAND / ME",** America, 1850 - 1860. Aquamarine, rectangular with wide beveled corners, applied double ring collar - blowpipe pontil scar, ht. 7 1/4", perfect! Odell, pgs. 379-380. A bright, clean, sparkling example with crude, wavy glass. Per Odell, Nathan Wood marketed bitters and wholesale patent medicines from his store at 10 Market Street in Portland.

**Est.: \$120 - \$240 • Min. bid: \$60**



### Lot 237

**"LEON'S / SARSAPARILLA - BELFAST, ME. - BELFAST, ME"** (with original label), America, 1893 - 1900. Aqua, rectangular with beveled corners, tooled beveled collar with ring - smooth base, ht. 9", perfect (including 98% complete, original label). DeG #128. Noted as "Rare" by DeGrafft, and likely very rare with the original label which reads in part, "Leon's / Sarsaparilla / A Positive Cure For / Rheumatism, / Malaria, Scrofula.". The company opened in 1893 in the Pierce Parlor Theatre.

**Est.: \$200 - \$400 • Min. bid: \$100**



### Lot 234

**"Dr TOBIAS - VENETIAN HORSE / LINIMENT - NEW YORK",** 1850 - 1860. Aquamarine, rectangular with beveled corners, applied sloping collar - blowpipe pontil scar, ht. 8", perfect. Odell, p.347. This large, 8" example is one of several different molds that the Venetian Horse Liniments are found in. While not rare, it is generally considered the more desirable and difficult to find of the variants, especially in this beautiful 'attic-type' condition with nice character and crudity to the glass.

**Est.: \$200 - \$300 • Min. bid: \$100**



### Lot 238

**"LOG CABIN / SARSAPARILLA / ROCHESTER, N.Y.",** America, 1887 - 1890. Medium golden amber, irregular hex form with three indented panels, applied blob collar - "PAT. SEPT. 6. / 87" (on smooth base), ht. 9"; (only the slightest trace of faint wear, otherwise sparkling attic mint). O/S #31. A beautiful example, outstanding condition, a bit lighter in tone than most, and with the earlier applied collar.

**Est.: \$150 - \$300 • Min. bid: \$80**



### Lot 235

**Lot of (2), Shaker Bottles,** 1850 - 1860. 1st Example: **"No 1 / SHAKER SYRUP - CANTERBURY N.H.",** 2nd Example: **"SHAKER CHERRY / PECTORAL SYRUP - CANTERBURY / N.H. No. 1".** Both are aquamarine, rectangular with beveled corners, applied sloping collar - blowpipe pontil scarred bases, ht. 7 1/2" and 5 1/2" respectively; (1st Ex. has a couple of small patches of minor light haze, and a trace of light wear, otherwise excellent; 2nd Ex. is attic mint). Odell, p.318.

**Est.: \$150 - \$250 • Min. bid: \$80**



### Lot 239

**"THOMPSONIAN / APPETIZER" - "TRADE MARK" / (Image of Bearded Rotund Man) - PREPARED BY / JJ VOGT & Co / CLEVELAND O",** probably Beaver Falls Glass Company, Beaver Falls, PA, 1869 - 1879. Beautiful, bright honey amber, square with beveled corners, applied sloping collar - "BFG Co" (on smooth base), ht. 9", sparkling mint. A very rare pictorial medicine, and certainly the finest example that we can recall seeing, virtually pristine condition.

**Est.: \$1,000 - \$2,000 • Min. bid: \$500**



### Lot 236

**"SHAKERS' / AROMATIC ELIXIR OF MALT / PLEASANT HILL, / KY.",** America, 1875 - 1890. Aquamarine, oval with flattened front panel, applied square collar - smooth base, ht. 8 1/2"; (professionally cleaned to original luster with some minor imperfections remaining including a 2" light scratch on one of the rounded corners; a pinhead flake on the edge of the lip). A rare Shaker medicine, believed to be only the 2nd example offered at auction in more than 20 years.

**Est.: \$200 - \$300 • Min. bid: \$100**



### Lot 240

**"L.Q.C. WISHART'S - PINE TREE / TAR CORDIAL / PHIL" - "TRADE" / (PINE TREE) / "MARK",** America, 1880 - 1895. Golden amber below the shoulders shading to a medium amber with a very slight orange tone near the base, square with beveled corners, tooled sloping collar - smooth base, ht. 9 3/4", perfect! A very pretty example, a little lighter in tone than many of the amber examples, and outstanding condition.

**Est.: \$150 - \$250 • Min. bid: \$80**



### Lot 241

**"DUFF / GORDON / SHERRY / MEDICAL / DEPARTMENT / U.S.A."**, America, 1880 - 1890. Deep olive amber, cylindrical, applied sloping collar with bevel - smooth base, ht. 9 3/4", very near mint; (just a trace of minor wear, and a patch of washable interior residue in the shoulder, otherwise perfect). Note; Duff Gordon Sherry was supplied in these bottles to the Medical Dept. of the U.S. Army as well as the Marine hospitals. A rare bottle, boldly embossed, beautiful condition.

**Est.: \$400 - \$800 • Min. bid: \$200**



### Lot 242

**"SWIFTS / SYPHILITIC SPECIFIC"**, America, 1875 - 1885. Deep, vivid cobalt blue, oval with strap sides, applied square collar - smooth base, ht. 8 3/4"; (a little scattered minor wear and some faint light scratches, otherwise "attic" mint). The majority of these bottles were dug in the south, as the company was located in Atlanta. An exceptional example. Very few are in this un-dug, "attic-type" condition, and even fewer in this deep of color! Hard to get in this fine condition.

**Est.: \$800 - \$1,200 • Min. bid: \$400**



### Lot 243

**"TAMALON"** (with virtually complete, original, labels), America, 1885 - 1895. Medium amber with a slight orange tone, rectangular with rounded corners, tooled ring collar with bevel - smooth base, ht. 8", perfect; (98% complete, original, colorful label, reads in part, **"TAMALON / CATARRH AND LUNG / CURE / (LEAVES) / TRADE MARK / BLOOD PURIFIER / AND / TONIC"**). Very rare, believed to be less than a half dozen known with original labels.

**Est.: \$250 - \$450 • Min. bid: \$130**



### Lot 244

**"MIZPAH CURE / FOR WEAK LUNGS AND / CONSUMPTION - HENRY KESSLER, PROP. - ERIE, PA. U.S.A."**, America, 1890 - 1900. Colorless, rectangular with beveled corners, tooled square collar - smooth base, ht. 10", perfect! BA1. A scarce cure, fantastic condition (one that has not been dug and cleaned), and nice impressive size.

**Est.: \$200 - \$300 • Min. bid: \$100**



### Lot 245

**"VCC" monogram** (Vegetable Cancer Cure), **Medicine Bottle** (with original box), 1890 - 1905. Colorless, square with beveled corners, tooled prescription-type collar - smooth base, ht. 10"; (some light interior haze in upper half of bottle, otherwise perfect). Virtually perfect original box reads in part, **VEGETABLE / CANCER CURE / CURES / CANCER / TUMOR / AND ULCER / PRICE PER PACKAGE \$10 / C.H. MASON, M.D. / CHATHAM / COL. CO. NY.** A rare, fantastic quack medicine!

**Est.: \$100 - \$200 • Min. bid: \$50**



### Lot 246

**"JOHN C BAKER & Co / COD LIVER OIL / PHILADELPHIA"** (with 98% complete front and back labels), America, 1880 - 1890. Rich, bright aquamarine, oval, long neck with tooled square collar - smooth base, ht. 9 1/4"; (bottle is perfect; labels have some staining, likely from the oil, and darkened from age, but still mostly legible). A bright, clean, attractive bottle, rare with original labels.

**Est.: \$100 - \$200 • Min. bid: \$50**



### Lot 247

**"C.D. HUNTER'S / PALM OIL LOTION / MARLBORO MASS. - CHAPPED HANDS - SUNBURN, CHAFING & C."**, America, 1885 - 1895. Rich, medium-to-deep teal coloration, rectangular with beveled corners, tooled prescription-type collar - smooth base, ht. 5 1/4", virtually attic mint; (slight trace of very faint wear, and interior content residue, barely noticeable, otherwise perfect). Beautiful color, scarce, especially in this fine condition.

**Est.: \$100 - \$200 • Min. bid: \$50**



### Lot 248

**"SCALP / FOOD / CRANITONIC / HAIR / FOOD / GRANITONIC / HAIR FOOD CO / PARIS / LONDON / NEW YORK"** (with original labels, box, pamphlets for directions and testimonials, wooden shipping box), 1897 - 1900. Colorless, square, tooled sloping collar with metal shaker stopper - smooth base, ht. 8 5/8"; (bottle is perfect; colorful and

graphic labels virtually complete, cardboard box missing top and 1/4" to 1/2" of one side panel, wooden box missing top, otherwise perfect).

**Est.: \$120 - \$240 • Min. bid: \$60**





### Lot 249

**"POISON" - "PAT. APPL'D. FOR" Figural Skull**, America, 1894 - 1905. Cobalt blue, figural skull on cross-bones, tooled prescription-type collar - smooth base, ht. 4"; (a 1/4" area of the lip on the reverse has been professionally repaired, the top of the mouth smoothed with remnants of the resin, otherwise perfect). KU-10. This is the largest and most impressive size of the three figural skull poisons. The noted repair was well executed and the bottle displays as perfect!

*Est.: \$800 - \$1,200 • Min. bid: \$400*



### Lot 250

**"POISON" / "THE SUN (Mortar and Pestle with Wings) DRUG Co" / "POISON"**, Carr-Lowrey Glass Co., Baltimore, MD, 1889 - 1910. Bright emerald green, irregular hex form, tooled prescription-type collar - **"4 / C.L.G. CO. / PATENT APPLIED FOR"** (on smooth base), ht. 5" (4 oz), attic mint. KI-1. A great example, scarce and desirable size, bright, clean, and virtually pristine condition.

*Est.: \$500 - \$800 • Min. bid: \$250*



### Lot 251

**(Large embossed Wasp motif) / "M P" Poison Bottle**, probably French, 1885 - 1900. Medium cobalt blue, flattened ovoid body, tooled ring collar - smooth base, ht. 5 5/8"; (some in-manufacture crazing lines in the neck noted for complete accuracy, otherwise perfect). A very scarce, pictorial, poison or 'bug bottle' having beautiful color, and a strong, crisp impression. The embossed wasp is detailed and impressive.

*Est.: \$250 - \$450 • Min. bid: \$130*



### Lot 252

**"S.B. WINN & SON - SALEM MASS. - 191 WASHINGTON ST. - PAT. PENDING"** (with virtually complete original labels; wooden shipping crate), 1895 - 1905. Cylindrical with 6 panels around top half of bottle, tooled blob collar, Baltimore loop seal - smooth base, ht. 10 3/4", perfect. A rare

bottle, unusual form, label reads in part, **"NON-TOX / AN INVIGORATING TONIC / AMERICAN NON-TOX Co. / BOSTON, MASS."**. Crate has original red paint and black stenciling.

*Est.: \$120 - \$240 • Min. bid: \$60*



### Lot 253

**Lot of (2), "HYGEIA" / (Image of Woman pouring Water)**, Mineral Water Bottles, Edward H. Everett Glass Works, Newark, OH, 1885 - 1895. Yellowish olive and olive green, both are cylindrical, applied blow collars - **"E H E Co"** around heel of smooth bases, Qts. 11 3/4" and 11 1/2" respectively; (1st example is near mint, light wear; 2nd Ex. has some light-to-moderate wear, minor scratches, otherwise excellent). A scarce pictorial bottle. "Hygeia" was the goddess of health in Greek mythology.

*Est.: \$175 - \$350 • Min. bid: \$90*



### Lot 254

**"SARATOGA. N.Y" Wide Mouth Salt Jar**, probably a NY State glasshouse, possibly Saratoga Mountain Glassworks, Mt. Pleasant, 1855 - 1861. Medium-to-deep olive green, cylindrical, 3-pc. mold, expanded wide neck with an applied heavy ring collar - smooth base, Qt, ht. 8 1/4", perfect! T# E-1:B, variant 2. Rare. A beautiful example, outstanding condition, great glass texture and character, the glass being filled with tiny seed bubbles. Provenance: Ex. Don Tucker collection.

*Est.: \$2,000 - \$4,000 • Min. bid: \$1,000*



### Lot 255

**"SHELDON / A / SPRING / SHELDON. VT"**, probably a Stoddard, NH glasshouse, 1865 - 1872. Deep yellowish 'old amber', cylindrical, applied sloping collar with bevel - smooth base, Qt, virtually attic mint; (a couple of tiny, onionskin-thin, pinhead open bubbles, otherwise perfect). T# V-19. A fantastic example of this early, crude, Stoddard mineral water, the glass being filled with tiny seed bubbles. Scarce. Provenance: Ex. Don Tucker collection.

*Est.: \$800 - \$1,400 • Min. bid: \$400*



### Lot 256

**"ALBERGH / A / SPRINGS. VT."**, A New Hampshire glasshouse, probably Stoddard, possibly Lyndeborough, 1860 - 1870. Rich golden amber with a very slight orange tone, cylindrical, applied sloping collar with bevel - smooth base, Qt, perfect. T# V-2. Note; this is the rare misspelled variant. A truly gorgeous example in absolutely pristine condition.

*Est.: \$800 - \$1,600 • Min. bid: \$400*



### Lot 257

**"STAR SPRING CO / (STAR) / SARATOGA. N.Y."**, probably a New York State glasshouse, 1865 - 1875. Medium-to-deep emerald coloration, cylindrical, applied sloping collar with bevel - "1" (on smooth base), Pt, perfect. T# S-54:B. A great example, beautiful color - noted by Tucker as 'rare' in emerald, nicely whittled, fantastic condition.

**Est.: \$300 - \$500 • Min. bid: \$150**



### Lot 261

**"BOYD & BEARD / MINERAL WATER - B / THIS BOTTLE / IS NEVER SOLD."**, America, probably 1844 - 1846. Clear medium green, cylindrical, squat soda form, applied sloping collar - iron pontil scar, ht. 6 5/8"; (a little light wear and some minor scratches, primarily on the reverse, and a shallow, 3/16", silver flake at the edge of the lip on the side, otherwise very near mint). A scarce soda that does not appear to have been dug, nicely whittled, and with a fully intact iron pontil.

**Est.: \$300 - \$500 • Min. bid: \$150**



### Lot 258

**"CONGRESS & EMPIRE SPRING CO / HOTCHKISS' SONS / CW / NEW YORK / SARATOGA. N.Y."**, possibly Saratoga Mountain Glass Works, Saratoga, NY, 1866 - 1870. Medium-to-deep olive coloration, cylindrical, applied sloping collar with bevel - smooth base, ht. 6 5/8", 1/2 Pt; (some scattered light wear, and some in-manufacture crazing around the top edge of lip, otherwise excellent). T# S-14:C. A scarce, desirable, mold, nice frothy glass with plenty of tiny seed bubbles.

**Est.: \$250 - \$350 • Min. bid: \$130**



### Lot 262

**"J. LAKE. / SCHENECTADY. N.Y"** Soda Water Bottle, America, 1850 - 1860. Deep cobalt blue, tenpin form, applied blob collar - iron pontil scar, ht. 8"; (some light scratches and usage wear, but otherwise in overall excellent condition). A very deep, vivid color, and with a fully intact iron pontil.

**Est.: \$500 - \$800 • Min. bid: \$250**



### Lot 259

**"R. FLANAGAN.S / DOUBLE PRESSURE / MINERAL WATER / PHILA."**, probably an early Philadelphia glasshouse, 1842 - 1843. Rich, yellowish emerald coloration, tenpin form, applied short tapered collar - blowpipe pontil scar, ht. 7 1/4", very near mint; (a small potstone near the mold seam with a couple tiny radiations, 1/8" or less, and a little washable interior residue, otherwise virtually perfect). An early and important mineral water with great eye-appeal and probably unique.

**Est.: \$8,000 - \$16,000 • Min. bid: \$4,000**



### Lot 263

**"J. G. WYNHAMER, / BUFFALO, N.Y."**, probably Lockport Glass Works, NY, 1858 - 1866. Medium Lockport green, ale-form, applied double collar - smooth base, ht. 9", near mint; (a 3/8" area of chipping on the inside of the lip that likely occurred when the cork was pried out). A private mold bottle, reverse slugplate, rivet marks, and possible letters "G" over "L", peened out. Believed to be unique. James Wynhamer was a saloon operator from 1858-1866. Rare color and mold!

**Est.: \$500 - \$800 • Min. bid: \$250**



### Lot 260

**"LUKE BEARD" Mineral Water Bottle**, America, probably 1847 - 1853. Medium-to-deep emerald coloration, tenpin form, applied blob collar - iron pontil scar, ht. 7", near mint; (just a little light, washable, interior content residue, and minor exterior wear, otherwise perfect). A very scarce tenpin soda, especially in this un-dug, fine condition!

**Est.: \$400 - \$600 • Min. bid: \$200**



### Lot 264

**"C. BURKHARDT / 435 / THOMPSON / ST / PHILADA - THIS BOTTLE / NOT TO / BE SOLD"**, 1880 - 1890. Rich, deep blue green with a teal tone, cylindrical, applied blob collar with original lightning wire closure - "B" (on smooth base), Pt, near mint; (just a trace of light wear including a 1/8" open bubble at base edge; minor washable interior residue, the bail is quite corroded and currently 'frozen' as pictured, otherwise perfect). A rare beer, absolutely fantastic color!

**Est.: \$300 - \$600 • Min. bid: \$150**





### Lot 265

**Large, Black Glass Onion-Form Wine Bottle**, probably Continental, 1730 - 1750. Medium-to-deep olive coloration, large onion form, sheared mouth with an applied sting rim - push up base with large disc-type pontil scar, ht. 12"; (some interior stain and some typical, relatively minor, usage wear and light scratches around the mid-body). A wonderful, early, over-sized, onion-form wine with full original body luster and a perfect string rim, scarce size!

*Est.: \$400 - \$800 • Min. bid: \$200*



### Lot 269

**Mammoth size, early Case Bottle**, Continental, probably Netherlands, 1770 - 1800. Medium olive with a slight amber tone, square with virtually straight sides, sheared mouth with a heavy, likely applied, string rim - blow-pipe pontil scar, ht. 19 1/4"; (some typical light scratches and usage wear; a little exterior 'bloom', and interior content residue in the shoulders). We sold a giant gin in our last sale, but at 19 1/4", this one takes the prize! A very rare size, the 'granddaddy' of gins.

*Est.: \$1,200 - \$2,200 • Min. bid: \$600*



### Lot 266

**Large, Flowerpot-form Storage Bottle**, France, 1780 - 1800. Medium-to-deep olive with an amber tone, cylindrical, elongated 'flowerpot' form, sheared mouth with applied string rim - pushed up base with disc-type pontil scar, ht. 15 1/4", near mint; (a little patchy, dried, content residue in the shoulders and a shallow, paper-thin, 1/2" open bubble on the side, otherwise virtually perfect). VdB, plate 147. Scarce large size. Used to store many products including snuff tobacco.

*Est.: \$200 - \$400 • Min. bid: \$130*



### Lot 270

**Mammoth size, early Case Bottle**, Continental, probably Netherlands, 1780 - 1800. Medium-to-deep yellowish olive, square with nearly straight sides, sheared mouth, applied heavy string rim - blowpipe pontil scar, ht. 18 7/8"; (some scratches and typical usage wear, and a fair amount of dried content residue, much of which would likely soak out, otherwise excellent). VdB, plate 83. Rare size! Another very impressive, humongous, example weighing in at almost 19".

*Est.: \$1,000 - \$2,000 • Min. bid: \$500*



### Lot 267

**Giant, Flowerpot-form Storage Bottle**, France, 1780 - 1800. Medium-to-deep olive amber, cylindrical, dip-mold, elongated 'flowerpot' form, sheared, tooled, and flared wide rim - pushed up base with disc-type pontil scar, ht. 16 7/8", virtually perfect; (just a slight trace of interior milkiness below the shoulder). At practically 17 inches, this example is considerably larger than most. Beautiful condition, and with some nice swirls of glass through the shoulders.

*Est.: \$300 - \$500 • Min. bid: \$150*



### Lot 271

**Mammoth size, early Case Bottle**, Continental, probably Netherlands, 1780 - 1800. Clear, medium olive, square with nearly straight sides, sheared mouth, applied heavy string rim - blowpipe pontil scar, ht. 17 3/4"; (some typical light scratches and usage wear, as well as some interior content residue and light stain, as is often the case, some of which may wash out, otherwise excellent). VdB, plate 83. A very nice example, these giant gins don't come around often!

*Est.: \$800 - \$1,600 • Min. bid: \$400*



### Lot 268

**Mammoth size, Flowerpot-form Storage Bottle**, France, 1780 - 1800. Deep olive amber, cylindrical, dip-mold, elongated 'flowerpot' form, sheared, tooled and flared mouth, applied neck ring - pushed up base with disc-type pontil scar, ht. 20", near mint; (some minor light scratches and faint wear, otherwise perfect). A humongous size! At 20", it is a very impressive piece, and about as large as they come. Provenance: Ex. Sidney Genius collection.

*Est.: \$500 - \$800 • Min. bid: \$250*



### Lot 272

**Large, Oversize Case Bottle**, Continental, probably Netherlands, 1820 - 1840. Medium olive with a very slight amber tone, square case form with slightly tapered sides, sheared mouth with applied, large, ring-type collar - early smooth base, ht. 12 3/4"; (some typical scattered light wear, as well as some moderate-to-heavy fine high point wear on one of the sides where it likely rested, or was laid down, possibly when full to keep the cork damp, otherwise excellent and no other form of damage).

*Est.: \$250 - \$400 • Min. bid: \$130*



### Lot 273

**Large, Oversize Case Bottle**, Continental, Netherlands or possibly Belgium, 1820 - 1840. Medium-to-deep olive amber, square case form with nearly straight sides, short wide neck, sheared mouth with a crudely applied string rim - early smooth base, ht. 12"; (some typical light wear including a 2" scratch on one of the side panels, and a bit of minor roughness on the edge of the applied string lip, otherwise very near mint). Pleasing 'squatty' appearance, good color, size, and condition.

*Est.: \$300 - \$500 • Min. bid: \$150*



### Lot 274

**Large, Early Storage Bottle or Demijohn**, England or America, 1810 - 1830. Bright yellowish olive shading to a dense olive through the shoulders and neck, dip mold, sheared mouth with a crudely applied ring collar - large, sand-type pontil scar, ht. 17"; (a trace of minor wear; some faint exterior bloom on the shoulders and light interior residue below the shoulders; a hard-to-see, 1/2", 'v-shaped' fissure on the base adjacent to the pontil ring, otherwise near mint). Rare and early.

*Est.: \$300 - \$600 • Min. bid: \$150*



### Lot 275

**Advertising Demijohn, "A.F. PARK & CO. / WHOLESALE / LIQUOR DEALERS / No. 38 WARREN ST. / SYRACUSE. N.Y."** (painted on applied tin label), America, 1870 - 1880. Aquamarine, cylindrical, wicker covered with cutout for applied tin label, blue-green painted background, black lettering, red outline, applied sloping collar - smooth base, ht. 12 3/8"; (some very minor paint loss, otherwise near mint). A very rare and virtually unique advertising piece.

*Est.: \$300 - \$600 • Min. bid: \$150*



### Lot 276

**Demijohn**, America, probably New York State or New England, 1855 - 1865. Beautiful, bright citron green coloration, 2-pc. mold flattened apple form, applied sloping collar - large sand type pontil scar, ht. 8 1/4"; (a tiny 1/8" onionskin-thin open bubble, otherwise sparkling mint). A gorgeous example that will stand out in any grouping of demijohns, bright, clean, heavily whittled, and with a handful of opaque white bubbles scattered throughout the body.

*Est.: \$175 - \$350 • Min. bid: \$90*



### Lot 277

**Demijohn**, America, or possibly Continental, 1870 - 1885. Yellowish amber with a slight orange tone through the neck, 2-pc. mold, horseshoe form, crudely sheared mouth with an applied sloping collar - smooth base, ht. 13 3/8", very near mint; (a tiny sandgrain with a 1/16" cooling line, barely visible without a loop, and a partially open bubble in the neck, otherwise perfect). Another pretty example, very scarce form, fantastic character with a very whittled, or 'dimpled', body.

*Est.: \$200 - \$400 • Min. bid: \$100*



### Lot 278

**Demijohn**, America, or possibly Continental, 1875 - 1890. Medium-to-deep, rich emerald coloration, 2-pc. mold, horseshoe form, tooled sloping collar with ring - smooth base, ht. 12 3/4", virtually perfect; (just a slight trace of wear). A very scarce-to-rare color for a demijohn, absolutely gorgeous in terms of richness and tone. In addition, a form that you don't see very often, and with a heavily whittled, or 'dimpled', body.

*Est.: \$250 - \$450 • Min. bid: \$130*



### Lot 279

**Demijohn**, 1850 - 1880. Light yellowish honey below the shoulders, shading to a deeper honey with a slight olive tone through the neck and a couple of subtle amber striations swirled through the body, 2-part body mold with a dish or 'cup-form' base, applied sloping collar - blowpipe pontil scar, ht. 18", near mint; (a 3/8" chip at the edge of the lip, and a small patch of light bloom, or dullness, on the shoulder). Beautiful color, heavily whittled, 'dimpled', glass texture. Doug Allinger collection.

*Est.: \$200 - \$400 • Min. bid: \$100*



### Lot 280

**Demijohn**, America, possibly Baltimore area, 1855 - 1865. Beautiful yellowish golden coloration through the shoulders, shading to a rich apricot amber through the neck and lower half of the body, 2-pc. mold, high-shouldered flattened apple form, applied sloping collar - large blowpipe pontil scar, ht. 17 1/2", virtually pristine; (a shallow, minor, interior open bubble). A gorgeous demijohn, (the color is indicative of some of the wares produced in the Baltimore area), fantastic condition.

*Est.: \$300 - \$500 • Min. bid: \$150*



# Beautiful Blown Glass from Circa 200 AD to 1860 AD



# Rare & Fine Colored Bitters and Medicines

Lot 178

Lot 184



Lot 208



Lot 222



Lot 209