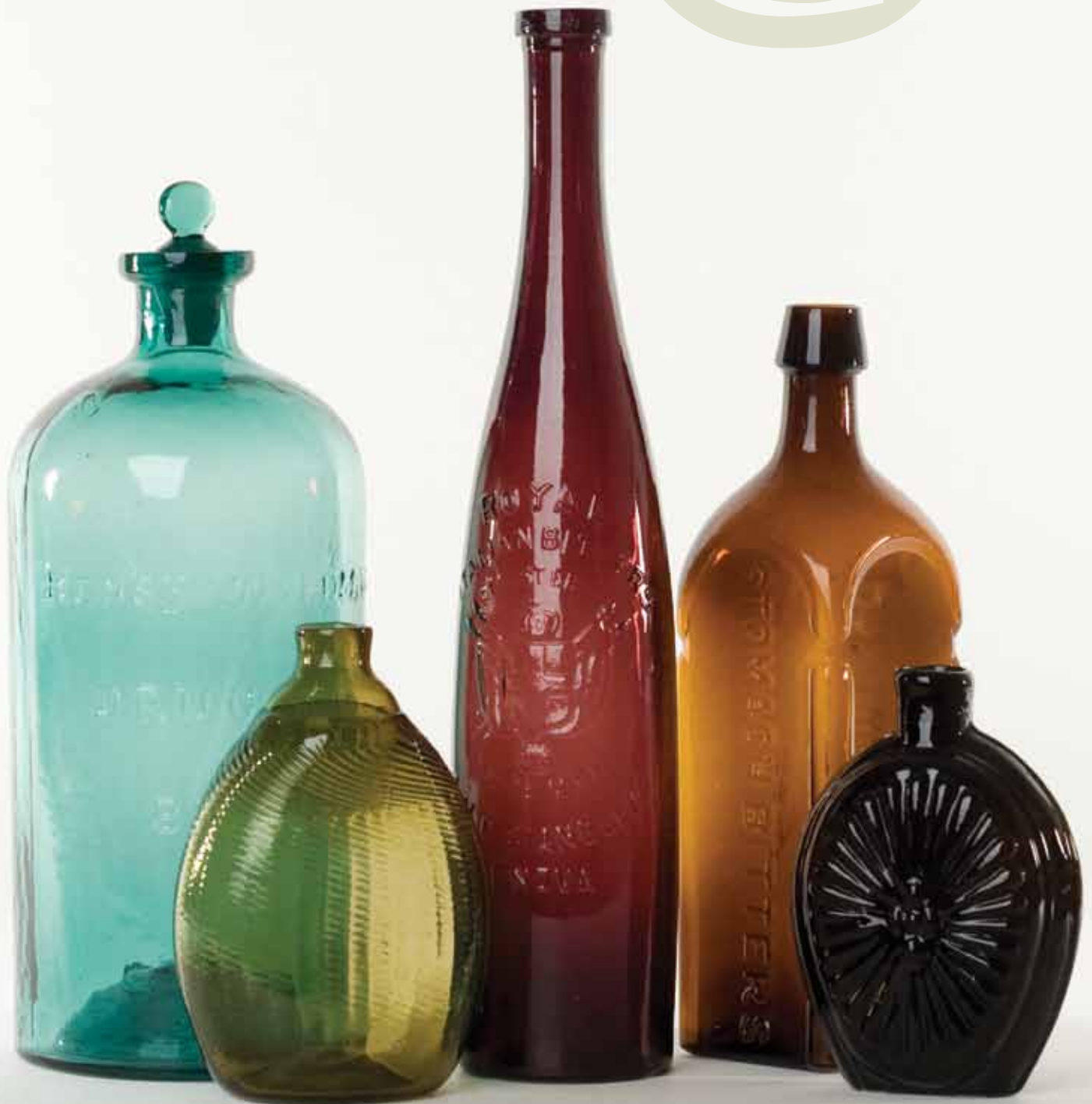


American Glass GalleryTM

Auction Number 2

May 18, 2009

AGG



Conditions of Sale

1. Absentee Auction

The items in this sale will be sold via absentee auction, closing date:
May 18, 2009, 11:00 p.m., EST.

2. Our Guarantee Regarding Descriptions

American Glass Gallery has made every attempt to describe correctly the property being sold. Descriptions are guaranteed to be accurate as regards authenticity, age, condition, and measurements to within one-fourth inch, as represented in this catalog. In describing damage, exterior wear or manufacturer's flaws that in our opinion, do not significantly detract visually or monetarily from the value of the item are not listed and will not be considered for refund. The Auctioneers reserve the right to make verbal corrections and provide additional information at any time during the sale.

3. Preview

Items may be viewed by appointment from May 4, 2009 through May 16, 2009.

4. Bidding Procedure

You may submit your bids by mail, phone, FAX, email or through our on-line auction site. If bidding by mail or FAX, please fill out the absentee form and return it to us. Your bid, either written or oral, grants American Glass Gallery the authority to protect you up to the amount of your stated bid. Your bid will not be removed once executed.

Bidding Times: You can submit your bids anytime after receiving your catalog. Bids may be made by phone, daily, until closing day, May, 18, 2009, from 9 A.M. - 7 P.M. Eastern Time. Incoming phone bids will be accepted on the closing day (May, 18, 2009) until 11 P.M. Eastern Time. Phone calls and Fax bids after this time will not be honored. No exceptions. You may also place your bids through our on-line auction service 24-hours a day once the site has opened for bidding, on or about May 1, 2009, continuing until 11:00 P.M. Eastern Time, May 18, 2009.

Please do not wait until the last day or two of the sale to place your bids! Because many collectors wait until the final few days of the sale to place their bids, we anticipate the telephone and internet bidding to be very busy during that period, so please plan accordingly. In the event of a tie bid, the earliest received bid on the lot will take precedent. We would welcome your bids by phone so that we can answer any questions and assist you in your bidding.

You may also telephone us at any time during the auction, prior to the closing of the sale, to check the status of your bids, to find the current bidding level, to open a bid, or to raise a bid on an auction lot.

Bidding Increments are as follows:

Up to \$250.00.....	increments of \$10.00
\$250.00 - \$500.00.....	increments of \$25.00
\$500.00 - \$1,000.00.....	increments of \$50.00
\$1,000.00 - \$2,500.00.....	increments of \$100.00
\$2,500.00 - \$5,000.00.....	increments of \$250.00
\$5,000.00 - \$10,000.00.....	increments of \$500.00
\$10,000 & Up.....	increments of \$1,000.00

Bids submitted between the above increments, whether by mail, FAX, email or on-line via the internet, will automatically be lowered to the closest lower increment.

This is a minimum bid auction. Bids below the printed minimum will not be accepted.

An example of how our absentee bidding system works: You bid \$600.00 on a lot which is the highest bid received to date. The second highest bid is \$450.00. The current high bid level would be yours at \$475.00, one bid increment higher than the other collector's bid. Any additional bids submitted by others below \$600.00 will automatically be topped on your behalf by a representative of American Glass Gallery, up to your stipulated high bid amount. If no further bids on this lot are received beyond the \$450.00, and the under bidder has not requested a "Call Back", then you would have won the lot at \$475.00, not the \$600.00 that you were prepared to pay.

American Glass Gallery will at NO TIME disclose bids pledged by others; only the current "High Bid" level of a lot will be stated upon request. The highest bidder as determined by American Glass Gallery shall be the purchaser. It is the sole right of the auctioneer to settle any dispute between bidders and to regulate the bidding procedure. The auctioneer reserves the right to refuse any bid he believes not to have been made in good faith.

5. "Call Back" Process

If requested, the three top bidders of an item at the time of closing will be given a "Call Back" over the next number of days in order to resolve the final sale of an item. You can request this service by "checking" the appropriate box on your absentee bid form or verbal agreement by phone. It is the responsibility of the bidder to insure he has qualified for this service.

Please note: No "Call Backs" will be executed for bids under \$400.00. In the event of tie bids, the earliest bid received will be the winning bid.

An example of how the "Call Back" process works: As an example, you have bid \$600.00 on a particular lot. Another bidder has submitted a bid of \$900.00 on the same lot. Assuming that as of the auction closing date you are among the top three bidders on this lot and you have requested a "Call Back", you would receive a call informing you that you have been "Out Bid" and the current "High Bid" is now at \$650.00. If you choose to continue bidding on this lot, you may now do so. Assuming that you now increase your bid to \$700.00, we would accept your bid but also inform you that we have a higher bid on this lot and must bid \$750.00. At this time, an auction between you and American Glass Gallery, representing the collector who submitted the bid of \$900.00, takes place. This bidding would continue until you drop out, or top the other bidders high bid of \$900.00. If the other bidder has not requested a "Call Back" service, you would be awarded the lot. If however, the other bidder also requested a Call Back, we must now call them. If they elect to increase their bid over your high bid, we would in turn call you back. This back and fourth process would continue until one of the bidders declines to go any farther.

If you have requested a "Call Back", the auctioneers will need to contact you on the days immediately following the auction closing between the hours of 8 A.M. and 9 P.M. Eastern Time. Please supply us with all appropriate contact phone numbers including, home, mobile and work numbers. Bidders must provide the appropriate telephone numbers where they can be contacted. If you will be traveling or otherwise unavailable, bidders with "Call Back" privileges will have the responsibility to contact American Glass Gallery twice daily during the Call Back period.

Please note, every effort will be made to contact you during the "Call Back" period. However, the bidder will forfeit their rights to a "Call Back" if the auctioneers are unable to reach them. American Glass Gallery reserves the right to discontinue Call Backs on any item in the sale (2) two days after the closing date of the sale. At that time, the current "High Bidder" may be awarded the item even if Call Backs are still outstanding.

6. Terms

Successful Bidders, Prompt and full payment is due immediately upon receipt of our invoice. Absolutely no exceptions. Anyone failing to pay for items won will forfeit all rights to bid in any future American Glass Gallery sales.

No Items Will Be Mailed Before Full Payment Is Received.

Buyer Premium: A 12% buyer's premium will be added to the hammer price to be paid by the buyer as part of the purchase price. For example, if you purchase a lot for \$100.00, you will receive an invoice for \$112.00, plus any applicable sales tax and shipping charges.

Taxes: If you are a Michigan resident, a 6% sales tax will be added to your bill unless you have a valid resale number registered with us.

Shipping: Shipping, handling and insurance are extra. We ship insured via U.S. Mail or UPS. These charges will be added to your bill unless the lots are picked up in person. Our charges for shipping (excluding foreign shipments) are \$18.00 for the first item, \$9.00 for each additional item together with extra insurance costs (we use current U.S. Postal Service insurance rates).

Please allow four to six weeks for delivery after receipt of your check.

Payment: American Glass Gallery presently accepts Cash, Money Orders or Personal Checks.

7. Refunds

Refunds will be given at the discretion of the Auctioneers. Items purchased must be examined and request for refund made immediately upon receipt of the item or items. Since opinions can differ, particularly in the matter of condition, the Auctioneers will be the sole judge in the consideration of refunds. Refunds requested on the grounds of authenticity must be made within 15 days of the date of the auction, and such refund requests must be accompanied by at least one supporting statement in writing from an authority recognized by the Auctioneers. It is the Auctioneers sincere intention to consider any reasonable request for a refund. *Absolutely no returns for any reason after 30 days of the closing of the sale.*

8. Bidding on any item indicates your acceptance of these terms.



American Glass Gallery™

P.O. Box 227
New Hudson, Michigan 48165
Phone: 248.486.0530
Fax: 248.486.0538
www.americanglassgallery.com
email: jpastor@americanglassgallery.com

PLEASE NOTE:

The lots offered in this printed catalog are identical to the lots offered in the on-line catalog. However, due to space constraints of the printed catalog there may be some further information available regarding some of the lots in the on-line auction descriptions.

Please visit us at

www.americanglassgallery.com

and follow the link to the on-line auction. The link and on-line auction will be available on or about May 1, 2009.

A post-auction price list will be available on our website, in printable form, by early June.

We encourage you to contact us either by phone or email with any questions that you may have, for assistance with bidding, or for further details or clarification on any of the lots in this sale. Your complete satisfaction and confidence is our goal!

We look forward to having you participate in our next sale, either as a buyer or a consignor. Our next absentee auction is scheduled for Fall, 2009. We already have some wonderful items consigned to this sale and would look forward to discussing with you, any quality items that you may wish to consign.

THANK YOU AND GOOD LUCK WITH YOUR BIDS!

FRONT COVER PHOTO (from left): Lot 145, Lot 41, Lot 125, Lot 117, Lot 25.

This auction photographed and cataloged by John R. Pastor • ©2009, American Glass Gallery. All rights reserved. • Catalog design & layout by Owen Neils • Printed by ASAP Printing, Okemos, MI

American Glass Gallery • Auction Number 2, May 18, 2009 • 248.486.0530 • www.americanglassgallery.com

Reference Key

Reference initials and numbers used in the description of this catalog refer to the following publications:

AHG	<i>American Historical Glass</i> , Bessie M. Lindsey, 1967
AP	<i>Glass in Early America</i> , Arlene Palmer, 1993.
BA	<i>Collecting All Cures</i> , Bill Agee, 1973.
BH	<i>Classification and Documentation of Sunburst and Similar Scent Bottles</i> , Bill Ham, AB&GC, 5/87
B/K	<i>The Glass Industry in Sandwich</i> , Raymond Barlow and Joan Kaiser, 1989.
C	<i>Ink Bottles and Inkwells</i> , William Covill, 1971.
DeG	<i>American Sarsaparilla Bottles</i> , John DeGrafft, 1980.
DF	<i>Raising Hair Stories</i> , Don Fadely, 1992.
DM	<i>Wistarburgh, Window Tiles, Bottles and More</i> , Dale L. Murscell, 2007.
G	(Flasks) <i>American Bottles & Flasks and Their Ancestry</i> , McKearin & Wilson, 1978.
G	(Blown Three Mold) <i>American Glass</i> (Chapter VI), George S. and Helen McKearin, 1941.
GBH	<i>English Glass For The Collector, 1660-1860</i> , G. Bernard Hughes, 1958.
H	<i>American Bottles in the Charles B. Gardner Collection</i> , Norman C. Heckler, 1975.
JS	<i>In glas verpakt – European Bottles, Their history and production</i> , Johan Soetens, 2001.
K	<i>Poison Bottle Workbook</i> , Rudy Kuhn, 1988.
L	<i>The Red Book of Fruit Jars, No. 9</i> , Douglas M Leybourne, Jr., 2001.
LI	<i>Pittsburgh Glass, 1797 – 1891</i> , Lowell Innes, 1976.
Mc	<i>Two Hundred Years of American Blown Glass</i> , Helen and George McKearin, 1950.
McK	<i>American Glass</i> , George S. and Helen McKearin, 1941.
MW	<i>American Bottles & Flasks and Their Ancestry</i> , McKearin & Wilson, 1978.
N	<i>Great American Pontiled Medicines</i> , Frederick Nielson, 1978.
NCH	<i>The Blaske Collection of American Flasks</i> , Norman C. Heckler, 1983.
NCH II	<i>The Blaske Collection: Part II</i> , Norman C. Heckler, 1983.
O&S	<i>Warner's Reference Guide</i> , Ed Ojea and Jack Stecher, 1998.
P	<i>The Glass Gaffers of New Jersey</i> , Adeline Pepper, 1971.
RD	<i>Understanding Antique Wine Bottles</i> , Roger Dumbrell, 1983.
RH	<i>Collecting Barber Bottles</i> , Richard Holiner, 1986.
R/H	<i>Bitters Bottles</i> , Carlyn Ring and W. C. Ham, 1998.
RWL	<i>Antique Fakes & Reproductions</i> , Ruth Webb Lee, 1950
T	<i>Collectors Guide to Saratoga Type Mineral Water Bottles</i> , Donald Tucker, 2005.
U	<i>Collectible Character Bottles</i> , Authur Umberger, 1969.
VdB	<i>Antique Glass Bottles; Their History and Evolution</i> , Willy Van den Bossche, 2001.
Z	<i>Ketchup, Pickles, Sauces</i> , Betty Zumwalt, 1980.
ZW	<i>Color Hutchinsons</i> , Zang Wood, 1999.

- The dash is generally used to indicate that the descriptions are on opposite sides of the bottle or flask.

/ The slash is used to indicate that the descriptions are on different lines or surfaces of the bottle.

ESTABLISHED 1839.

J. P. STAP

KENTUCKY

SALT RIVER BOURBON
WHISKY

DISTILLERIES
JEFFERSON, CO. KY.



Estimate: \$125 - \$225
(Minimum bid: \$75.00)

Lot 1

"Fells" / Bust of Washington / "Point" – Monument / "Balto" Portrait Flask, Fells Point Glass Works, Baltimore, Maryland, 1830 – 1835. Pale greenish aquamarine, sheared mouth – pontil scar, quart; (slightly weakened impression in the shoulder and some scattered faint interior residue that would probably wash out). GI-21.



Estimate: \$2,000 - \$4,000
(Minimum bid: \$1,200.00)

Lot 5

"Benjamin Franklin" / Bust of Franklin – "Wheeling Glass Works" / Bust of Thomas Dyott Portrait Flask, Wheeling Glass Works, Wheeling, West Virginia, 1830 – 1840. Medium to deep greenish aquamarine, sheared mouth – pontil scar, pint; (a somewhat weakened impression in the shoulder area). GI-98. An extremely rare mold to acquire and this one having a very pleasing color.



Estimate: \$250 - \$350
(Minimum bid: \$150.00)

Lot 2

"Washington" / Bust of Washington – "Jackson" / Bust of Jackson Portrait Flask, Keene Marlboro Street Glass Works, Keene, New Hampshire, 1825 – 1842. Golden amber, sheared mouth – pontil scar, pint; (slightly weakened impression, an interior open bubble approximately $\frac{3}{4}$ " by $\frac{3}{16}$ " and an in-manufacture pin-head area of roughness on the edge of the mouth). GI-31.



Estimate: \$500 - \$800
(Minimum bid: \$250.00)

Lot 6

Eagle – Cornucopia Historical Flask, an early Pittsburgh district glass house, Pittsburgh, Pennsylvania, 1825 – 1835. Colorless with an ever so slight grayish cast, sheared and inward rolled mouth – pontil scar, half pint; (there is no damage to the flask, however the base has been finely ground, more than likely in an attempt to allow the flask to stand better). GI-11. A scarce flask in a very rare "color".



Estimate: \$250 - \$350
(Minimum bid: \$150.00)

Lot 3

"Washington" / Bust of Washington – "Jackson" / Bust of Jackson Portrait Flask, probably Coventry Glass Works, Coventry, Connecticut, 1830 – 1849. Bright yellowish olive amber, sheared mouth – pontil scar, half pint; (slightly weakened impression in the shoulder area as is typical of this mold and a few scattered areas of minor high point wear). GI-34. A bright, pretty example.



Estimate: \$200 - \$400
(Minimum bid: \$100.00)

Lot 7

Eagle – Floral Medallion Historical Flask, Louisville Glass Works, Louisville, Kentucky, 1835 – 1850. Aquamarine with threads of amber striations in neck area, sheared mouth, pontil scar, pint; (a flake $\frac{1}{8}$ " on top of mouth with a fine hairline extending $\frac{1}{2}$ " downward, a small potstone with two $\frac{1}{16}$ " legs and some light interior haze in lower $\frac{1}{2}$ of the flask). GI-23. A rare, desirable flask despite the noted conditional issues.



Estimate: \$300 - \$600
(Minimum bid: \$150.00)

Lot 4

"The Father Of His Country" / Bust of Washington – (reverse plain), Portrait Flask, probably Dyottville Glass Works, Philadelphia, Pennsylvania, 1845 – 1855. Medium to deep blue green, applied double collared mouth – large tubular pontil scar, quart; (a $\frac{3}{4}$ " pontil chip extends to the base edge on the reverse). GI-47. A somewhat deeper color than the typical blue green examples).



Estimate: \$125 - \$225
(Minimum bid: \$75.00)

Lot 8

Eagle – Cornucopia Historical Flask, Keene Marlboro Street Glassworks, Keene, New Hampshire, 1830 – 1842. Olive amber, sheared mouth, pontil scar, pint; (a shallow $\frac{1}{8}$ " flake on the inside edge of the mouth). GI-73.



Lot 9

Eagle – Cornucopia Historical Flask, Keene Marlboro Street Glassworks, Keene, New Hampshire, 1830 – 1842. Beautiful yellow golden coloration, sheared mouth – pontil scar, pint, mint GII-73. A very pretty example!

Estimate: \$150 - \$250
(Minimum bid: \$100.00)



Lot 13

Eagle on Branch – (reverse plain) Historical Flask, America, 1875 – 1885. Golden amber, applied double collared mouth – smooth base, half pint; (lightly cleaned to it's original luster with some scattered light ground imperfections remaining on the reverse). GII-138. A scarce little flask.

Estimate: \$150 - \$250
(Minimum bid: \$75.00)



Lot 10

Eagle – Eagle Historical Flask, A Midwest glass house, 1850 – 1860. Medium to deep greenish aquamarine, heavy applied round collared mouth – iron pontil scar, pint; (near mint excluding a couple of faint patches of interior haze and a shallow 1/8" open bubble). GII-89. A crude flask with great character and teaming with bubbles. Very scarce with the iron pontil.

Estimate: \$125- \$250
(Minimum bid: \$75.00)



Lot 14

Eagle with Banner – (reverse plain) Historical Calabash Flask, America, 1850 – 1860. Bright green, applied sloping collared mouth – pontil scar, quart. GII-143. A nice example and a big splash of color.

Estimate: \$275 - \$375
(Minimum bid: \$150.00)



Lot 11

Eagle / "Pittsburgh / PA" – Eagle Historical Flask, Pittsburgh district, Pittsburgh, Pennsylvania, 1860 – 1870. Light to medium cornflower blue, applied broad round collar with lower bevel – smooth base, quart; (a bubble above the pennant with a 1/4" opening and some light high point wear). Unlisted, similar to GII-102 except inscription starting at center left of frame. A delicate, pretty color.

Estimate: \$500 - \$1,000
(Minimum bid: \$250.00)



Lot 15

Masonic – Eagle Historical Flask, Keene Marlboro Street Glassworks, Keene, New Hampshire, 1820 – 1830. Medium to deep olive green, sheared mouth – pontil scar, pint; (some light high point wear). GIV-17. Provenance: Ex. Judge E.S. MacKenzie collection.

Estimate: \$250 - \$350
(Minimum bid: \$150.00)



Lot 12

Eagle / "Pittsburgh / PA" – Eagle Historical Flask, Pittsburgh district, Pittsburgh, Pennsylvania, 1860 – 1870. Deep yellowish olive green, crudely applied heavy collar with ring – smooth base, quart; (a minor pin-head sized nick exists to the right of the pennant and a heavy fold of glass also runs through the oval frame on the reverse and is not considered damage, otherwise about perfect). GII-104.

Estimate: \$500 - \$800
(Minimum bid: \$300.00)



Lot 16

Masonic – Eagle Historical Flask, Keene Marlboro Street Glassworks, Keene, New Hampshire, 1820 – 1830. Yellowish olive amber sheared mouth – pontil scar, pint; (a couple of spots of very light high point wear and a couple of pinhead sized areas of roughness at edge of base, otherwise mint). GIV-21. The noted condition remarks are quite minor. A good clean example of this scarce mold!

Estimate: \$275 - \$450
(Minimum bid: \$175.00)



Estimate: \$175 - \$350
(Minimum bid: \$100.00)

Lot 17

Masonic – Eagle Historical Flask, Keene Marlboro Street Glassworks, Keene, New Hampshire, 1820 – 1830. Clear olive yellow shading to a light olive amber, sheared and outward flared mouth – pontil scar, half pint; (a shallow crescent shaped bruise approximate 3/8" by 1/8" on the inside edge of the mouth). GIV-24. Perhaps the prettiest example we recall seeing. The bruise is really quite minor.



Estimate: \$225 - \$250
(Minimum bid: \$150.00)

Lot 21

Seeing Eye inside a Star / "A D" – Flexed Arm inside a Star / "GR JA" Historical Flask, a Stoddard, New Hampshire glass house, 1842 – 1850. Yellowish olive amber, sheared mouth – pontil scar, pint; (just a couple of areas of light high point wear, otherwise about mint). GIV-43. These flasks tend to have a fair amount of wear as they are heavy and the motif is in high relief. This example is far better than normal.



Estimate: \$225 - \$450
(Minimum bid: \$150.00)

Lot 18

Masonic – Eagle Historical Flask, Keene Marlboro Street Glassworks, Keene, New Hampshire, 1820 – 1830. Medium olive amber shading to a dense, almost black coloration in the neck and base, sheared and tooled mouth – pontil scar, half pint; (a little light high point wear mainly on the lower row of bricks). GIV-24. A very heavy example and an interesting contrast to the previous lot.



Estimate: \$275 - \$475
(Minimum bid: \$175.00)

Lot 22

"Success To The Railroad" / Horse Pulling Cart – (reverse same), Historical Flask, Keene Marlboro Street Glassworks, Keene, New Hampshire, 1830 – 1842. Medium olive green, sheared mouth – pontil scar, pint; (a couple of areas of light high point wear). GV-3. A good solid example with nice clarity, color, and a better than average impression.



Estimate: \$1,000 - \$2,000
(Minimum bid: \$600.00)

Lot 19

Masonic – "Zanesville" / Eagle / "Ohio / J. Shepard & Co." (backwards "S"), Historical Flask, Zanesville Glassworks, Zanesville, Ohio, 1825 – 1835. Beautiful golden approaching a vibrant orange amber coloration, sheared mouth – pontil scar, pint; (very minor pinhead area of roughness on the inside edge of the mouth, otherwise perfect). GIV-32. Nice example with a better than average impression, vibrant color and virtually no high point wear!



Estimate: \$300 - \$600
(Minimum bid: \$200.00)

Lot 23

"Success To The Railroad" / Horse Pulling Cart – (reverse same), Historical Flask, probably Mt. Vernon Glass Works, Vernon, New York, 1830 – 1844. Deep pure olive green with no trace of amber, sheared mouth – pontil scar, pint; (slightly weakened impression in the shoulder area as is often the case). GV-5. Notable on this flask is the dense color and absence of virtually any high point wear.



Estimate: \$250 - \$350
(Minimum bid: \$175.00)

Lot 20

Masonic – Eagle / "T.W.D." Historical Flask, Kensington Glass Works, Philadelphia, Pennsylvania, 1825 – 1835. Light greenish aquamarine, sheared mouth – pontil scar, pint; (a shallow, hard to see iridescent bruise on the inside edge of the mouth, otherwise sparkling mint). GIV-37. A delicate, beautiful example of this early and historical flask with excellent clarity to the glass.



Estimate: \$250 - \$350
(Minimum bid: \$150.00)

Lot 24

"Railroad" / Horse Pulling Cart / "Lowell" – Eagle with Thirteen Stars Historical Flask, Coventry, Connecticut, 1830 – 1845. Golden amber with an olive tone, sheared mouth – pontil scar, half pint; (a 1/4" by 1/8" open bubble on the reverse located approximately 1" above the base). GV-10. Very nice impression, a pretty little flask.



Estimate: \$2,000 - \$4,000
(Minimum bid: \$1,200.00)

Lot 25

Sunburst Flask, probably Baltimore Glass Works, Baltimore, Maryland, 1820 – 1830. Deep tobacco amber, sheared mouth – pontil scar, half pint; (only the faintest amount of high point wear, otherwise mint). GVIII-24. An early, attractive and scarce little Sunburst flask with good character and numerous seed bubbles throughout the glass. Provenance: Ex. Roy Brown collection.



Estimate: \$125 - \$225
(Minimum bid: \$75.00)

Lot 29

“Waterford” / Clasped Hands – Eagle with Banner Historical Flask, Waterford Glass Works, Waterford, New Jersey, 1860 – 1870. Aquamarine, applied heavy rounded collared mouth with lower bevel – smooth base, quart; (a band of faint milky interior haze approximately $\frac{3}{4}$ ” up from the base, otherwise about mint). GXII-2.



Estimate: \$125 - \$225
(Minimum bid: \$75.00)

Lot 26

“For Pike’s Peak” / Prospector – Hunter Shooting Deer Historical Flask, probably Ravenna Glass Works, Ravenna, Ohio, 1857 – 1864. Aquamarine, applied mouth with flat band – smooth base, pint; (a couple of small spotty areas of very faint haze on the interior). GXI-50.



Estimate: \$1,200 - \$2,200
(Minimum bid: \$750.00)

Lot 30

“Flora Temple” / Standing Horse / “Harness Trot 2.19 $\frac{3}{4}$ ” – (reverse plain with complete label), Whitney Glass Works, Glassboro, N.J., 1859 – 1865. Medium to deep strawberry puce-amber, applied mouth with band – smooth base, pint. GXIII-21. Label reads in part, “Established 1839 / S.T.Sutts / Kentucky / Salt River Bourbon / Whiskey”. Ex. Glass Works Auction 78, lot 21. A unique and important piece with it’s original label!



Estimate: \$200 - \$400
(Minimum bid: \$125.00)

Lot 27

“For Pike’s Peak” / Prospector – Hunter Shooting Deer Historical Flask, probably Ravenna Glass Works, Ravenna, Ohio, 1857 – 1864. Rich, deep aquamarine approaching a bluish aqua, applied mouth with flat band – smooth base, half pint; (a couple of patches of faint interior haze). A crudely applied mouth with an area of in-manufacture roughness, not considered damage. GXI-52. A scarce mold.



Estimate: \$600 - \$900
(Minimum bid: \$300.00)

Lot 31

“Indianapolis Glass Works” – (reverse plain) **Lettered Glass House Flask**, Indianapolis Glassworks, Indianapolis, Indiana, 1870 – 1877. Very deep aquamarine approaching blue-green, applied collar with ring – smooth base, pint. GXV-10. A rare and very difficult glass house flask to obtain. This example is in absolutely pristine condition as well as a very rich deep bluish aqua hue. The finest example that we have seen!



Estimate: \$200 - \$400
(Minimum bid: \$125.00)

Lot 28

“Union” / Clasped Hands – Eagle with Banner Historical Flask, probably a Pittsburgh district glasshouse, Pittsburgh, Pennsylvania, 1860 – 1870. Clear, light apple green, applied mouth with rounded band – smooth base, quart; (a shallow, $\frac{1}{4}$ ” flat flake off top of mouth, otherwise about mint). GXII-1. A subtle, pretty color for this flask.



Estimate: \$250 - \$450
(Minimum bid: \$150.00)

Lot 32

“Geo. W. Robinson / No.75 / Main ST. / W.VA” Lettered Glass House Flask, Wheeling Glass Works of George W. Robinson, North Wheeling, West Virginia, 1860 – 1869. Aquamarine, applied mouth with flat band – smooth base, qt; (a few shallow open bubbles and two small $\frac{1}{8}$ ” flakes, one on edge of mouth on reverse, the second is located on the edge of the strap band.). GXV-18. A rare flask, crude and bubbly with great character.



Estimate: \$2,500 - \$4,500
(Minimum bid: \$1,500.00)

Lot 33

Pattern Molded Pocket Flask, 20 diamonds over flutes pattern, probably Stiegel's American Flint Glass Manufactory, Manheim, Pennsylvania, 1765 – 1774. Beautiful medium amethyst, plump horse-shoe form body, sheared mouth – pontil scar, ht. 5 3/8"; (some light scattered exterior wear, slightly overblown creating a weakened impression in the lower 1/3 of the body). A classic, early flask from the Colonial Period.



Estimate: \$300 - \$500
(Minimum bid: \$200.00)

Lot 37

Pattern Molded Club Bottle, 16 widely spaced vertical ribs, Midwest America, possibly Mantua, Ohio, 1822 – 1829. Medium greenish aquamarine, club or "beehive" form with a gentle sloping shoulder and short neck, heavy round collared mouth – conical base, pontil scar, ht. 7 3/4". Good impression with pronounced ribs that converge at the center of the base. Scarce form. Ex. Darl Fifer Collection.



Estimate: \$200 - \$400
(Minimum bid: \$150.00)

Lot 34

Pattern Molded Pocket Flask, 24 vertical ribs, Midwest America, probably Zanesville, Ohio, 1815 – 1830. Rich golden amber, flattened circular body, sheared mouth – pontil scar, ht. 4 5/8"; (some very minor exterior wear). Nice example.



Estimate: \$225 - \$450
(Minimum bid: \$150.00)

Lot 38

Pattern Molded Bottle, 16 ribs swirled to the right, Midwest America, 1815 – 1830. Bluish aquamarine, slightly flattened barrel form body, sheared and outward flared mouth – pontil scar, ht. 4 1/2". A very interesting and early little bottle. Similar to MW Plate 91, #4. Rare form.



Estimate: \$350 - \$700
(Minimum bid: \$250.00)

Lot 35

Pattern Molded Pocket Flask, 18 faint widely spaced vertical ribs, probably America, 1815 – 1830. Medium olive yellow, flattened chestnut form, sheared, tooled and outward flared mouth – solid glass tipped pontil scar, ht. 5 7/8"; (some minor exterior wear primarily near base edge). The color and pontil scar would suggest more of an Eastern United States attribution. A rare little patterned flask and a very pretty color.



Estimate: \$400 - \$800
(Minimum bid: \$250.00)

Lot 39

Patterned Spirits Flask, European, probably Tirol, Austria, 1800 – 1830. Deep violet blue, flattened spherical body possibly patterned in a three-piece mold using the German half post method with large circular medallions surrounded by an ornate design of gadrooned oval beads, tooled flared mouth – pontil scar, ht. 6 1/2"; (some light overall exterior wear). A wonderful early, rare flask in an absolutely gorgeous color!



Estimate: \$250 - \$450
(Minimum bid: \$150.00)

Lot 36

Pattern Molded Globular Bottle, 24 vertical ribs, Midwest America, 1815-1830. Aquamarine, bulbous body, sheared mouth with an applied ring lip – pontil scar, ht. 7 1/2"; (some expected minor exterior surface wear). An interesting piece that is reminiscent of the handled Zanesville, Ohio jugs of the period.



Estimate: \$250 - \$500
(Minimum bid: \$150.00)

Lot 40

Pattern Molded Flask, probably Emil Larson, Vineland, New Jersey, 1932 – 1942. Clear medium plum amethyst, diamond-daisy pattern over flutes, plump ovoid form, sheared mouth – solid glass tipped pontil scar, ht. 5 3/4". Beautiful color and pattern.



Estimate: \$800 - \$1,200
(Minimum bid: \$500.00)

41

Pitkin-Type Flask, Pattern molded with 36 vertical ribs over 36 ribs swirled to the left, New England, possibly Pitkin Glass Works, Manchester, Connecticut, 1783 – 1820. Clear olive yellow, flattened ovoid form, sheared mouth – pontil scar, ht. 5 7/8". A light, rather delicate, very pretty example with virtually no high point wear.



Estimate: \$600 - \$800
(Minimum bid: \$400.00)

Lot 45

Pitkin-Type Flask, Pattern molded with 30 vertical ribs over 30 ribs swirled to the right, probably Midwest America, 1815 – 1830. Clear medium green, flattened spherical body, sheared mouth – pontil scar, ht. 6 3/4"; (expected light usage wear and a small patch of faint interior haze). A rather crude example with an offset neck and plenty of small bubbles throughout.



Estimate: \$250 - \$350
(Minimum bid: \$125.00)

Lot 42

Pitkin-Type Flask, Pattern molded with 36 vertical ribs over 36 ribs swirled to the right, New England, 1783 – 1820. Yellowish forest green, sheared mouth with applied pewter threaded closure and cap – pontil scar, ht. 5 3/4"; (a 1/2" crack located at base of collar). Possibly a whimsy or "make-do" piece or a very interesting period example of "Yankee Ingenuity" to fashion a personalized drinking vessel.



Estimate: \$600 - \$1,200
(Minimum bid: \$350.00)

Lot 46

Early Spirits Flask, probably the Alpine region of Northern Europe, 1750 – 1830. Honey amber with white fern-like loopings, rectangular with wide beveled corners, sheared mouth with applied pewter collar – pontil scar, ht. 7 1/2". Sometimes referred to as a "brides bottle", these types of flasks typically held fermented spirits. A very pretty example. (See Mck, plate 239, #9).



Estimate: \$600 - \$800
(Minimum bid: \$400.00)

Lot 43

Pitkin-Type Flask, Pattern molded with 30 vertical ribs over 30 ribs swirled to the right, probably Mid-Atlantic region, possibly a South Jersey glasshouse, 1800 – 1830. Bright, light blue green, approaching a pretty sea-green, squatty ovoid form, sheared mouth – pontil scar, ht. 6 3/4" (expected light usage wear, otherwise mint). A somewhat unusual color for a Pitkin-Type flask.



Estimate: \$250 - \$500
(Minimum bid: \$150.00)

Lot 47

Early Enamelled Spirits Flask, probably Europe, possibly America, 1750 – 1850. Medium to deep sapphire blue with a nicely executed red, yellow, green and white enameled floral and leaf motif, rectangular with chamfered corners, sheared mouth with applied pewter collar – pontil scar, ht. 6". A nice example with virtually all the original enamel intact. (See Mck plate 11, #1)



Estimate: \$600 - \$800
(Minimum bid: \$400.00)

Lot 44

Pitkin-Type Flask, Pattern molded with 24 vertical ribs over 24 ribs swirled to the left, probably Mid-Atlantic region, 1800 – 1830. Bright grass green, slightly elongated ovoid form, sheared mouth – pontil scar, ht. 6". Nice color and good strong ribbing, especially through the upper portion of the body.



Estimate: \$225 - \$450
(Minimum bid: \$175.00)

Lot 48

Target Ball, "Glashutten Dr. A. Frank – Charlottenburg", Germany, 1880 – 1895. Yellow with a slight olive tone, quilted diamond pattern above and below the center embossed band, rough sheared mouth, dia. 2 5/8", mint. A very pretty target ball! Note: "Glashutten" in German is the plural for glasshouse (see AB&GC, January, 2006 for more information on this ball and others from Germany).



Estimate: \$600 - \$1,200
(Minimum bid: \$400.00)

Lot 49

Early Freeblown Bowl, Midwest America, probably Zanesville, Ohio, 1815 – 1830. Beautiful light golden amber with a pleasing honey yellow tone, nicely executed outward folded rim – pontil scar, ht. 1 7/8", rim dia. 5 3/4", base dia. 3 1/2"; (expected light base wear). Classic color and form for an early Midwest bowl. A very pretty example and in wonderful condition.



Estimate: \$1,000 - \$2,000
(Minimum bid: \$500.00)

Lot 53

Freeblown "Cream Jug" or Small Pitcher, America, possibly Mid-Atlantic or early Pittsburgh districts, 1790 – 1820. Clear medium amethyst, barrel form body, tooled rim with pour spout and muted fine threading encircling the rim, applied solid handle with medial rib – applied solid foot with pontil scar, ht. 4 1/2"; (chip from the tip of the rigaree and a 1/4" hairline crack from base of upper handle attachment). A beautiful early creamer.



Estimate: \$1,000 - \$2,000
(Minimum bid: \$600.00)

Lot 50

Early Pattern Molded Bowl, Midwest America, Ohio or possibly a Pittsburgh district glass house, 1815 – 1830. Brilliant deep greenish aquamarine with a very subtle pattern of 24 widely spaced ribs, outward folded rim – pontil scar, ht. 2 5/8", rim dia. 9 3/4", base dia. 4 7/8". A large, exquisite bowl and another fine example of early Ohio River Glass. Provenance: Ex. Darl Fifer Collection.



Estimate: \$150 - \$300
(Minimum bid: \$100.00)

Lot 54

Pattern Molded Pitcher or Cruet, Midwest America, possibly Pittsburgh, Pennsylvania, 1820 – 1840. Colorless, non-lead glass patterned in a 16 rib mold. Ewer form with an applied hollow strap handle, tooled pour spout – pontil scar, ht. 6 1/4". Although it may have had a matching stopper, the neck is not ground for one. (See Pittsburgh Glass, Innes, color plate 5, #2).



Estimate: \$400 - \$800
(Minimum bid: \$200.00)

Lot 51

Freeblown Handled Jug, Midwest America, probably Zanesville, Ohio, 1815 – 1835. Medium to deep golden amber, ovoid body with a nicely applied strap handle and rigaree, short neck with outward folded flat collar – pontil scar, ht. 5 1/2"; (there is an "L" shaped crack on the body wrapping around the lower handle attachment approx. 3/8" by one inch). A rare little item in spite of the condition.



Estimate: \$300 - \$600
(Minimum bid: \$200.00)

Lot 55

Pattern Molded Creamer, probably America, possibly Pittsburgh, 1810 – 1840. Dense cobalt with a violet hue, patterned in a 13 ogival mold, elongated bulbous body with wide neck, tooled rim with pour spout, applied solid handle – applied pedestal foot with pontil scar, ht. 4 1/2"; (a few very minor areas of exterior wear, otherwise mint). A beautiful early blown creamer.



Estimate: \$600 - \$900
(Minimum bid: \$400.00)

Lot 52

Freeblown Miniature Globular Bottle, Midwest America, probably Zanesville Glass Manufactory, Zanesville, Ohio, 1815 – 1835. Orange amber, bulbous form, outward folded flat collar – pontil scar, ht. 3 1/4". A very nice example, diminutive, rare size, classic form. Possibly made as a "toy" or gift for a child or family member of the glassblower.



Estimate: \$300 - \$600
(Minimum bid: \$200.00)

Lot 56

Diminutive Pattern Molded Mug, America, probably Pittsburgh, 1815 – 1835. Plum-amethyst, patterned in a 16 rib mold, applied solid handle with rigaree, sheared, tooled and polished rim – pontil scar, ht. 2 1/2"; (the rim has been finely buffed at some point post-manufacture, presumably to remove some roughness). Strong pattern, a rare little mug. (See Pittsburgh Glass, Innes, plate 166).



Estimate: \$1,500 - \$3,000
(Minimum bid: \$750.00)

Lot 57

Early Freeblown Chestnut Bottle, probably Wistarburgh Glass Works, 1739 – 1780. Medium yellow green, early high shouldered plump chestnut form, heavy rolled lip – pontil scar, ht. 13 5/8"; (a few scattered scratches and expected light exterior wear). Interesting note: There are wood grain paddle marks clearly visible on both sides of the bottle. A very impressive, extremely large, early Wistarburgh chestnut bottle.



Estimate: \$200 - \$400
(Minimum bid: \$150.00)

Lot 61

Freeblown Powder Horn **Whimsey**, America, possibly Pittsburgh or South Jersey, 1850 – 1870. Colorless with a slight grayish cast and profuse white loopings, two applied rings 1 3/4" from opening to secure an attachment or rope, pontiled knopf end, overall length 10 3/8", perfect. A nicely executed, early figural powder horn.



Estimate: \$300 - \$400
(Minimum bid: \$200.00)

Lot 58

Freeblown Chestnut Bottle, New England, 1783 – 1820. Clear light yellow olive, applied rolled collar – pontil scarred base; ht. 5 1/4"; (a couple of very minor areas of light exterior wear, otherwise mint). The glass has nice character with a number of very fine bubbles and specks of impurities.



Estimate: \$500 - \$1,000
(Minimum bid: \$300.00)

Lot 62

Freeblown Vase, America, probably South Jersey, 1845 – 1865. Medium golden amber, cylindrical form tapering inward toward the neck with a slightly flared mouth, hollow circular foot drawn from same gather, ht. 7 1/8", dia. of foot, 3 1/4", dia. of flared mouth, 2 1/4"; (a very faint overall exterior bloom to the glass and a few shallow pecks or roughness on edge of foot. A wonderful offhand piece of early blown glass.



Estimate: \$250 - \$450
(Minimum bid: \$150.00)

Lot 59

Freeblown Pocket Flask, Midwest America, 1800 – 1820. Olive amber with a yellow tone, almost butterscotch coloration, flattened chestnut form, sheared mouth – pontil scar, ht. 5 1/4"; (some very minor exterior wear, primarily near the base). A scarce and appealing color for a Midwest pocket flask.



Estimate: \$225 - \$450
(Minimum bid: \$150.00)

Lot 63

Blown Molded Vase, America, probably Boston and Sandwich Glass Company, Sandwich, Massachusetts, 1840 – 1870. Fiery opalescent robin's egg blue, bulbous body patterned in the unique Sandwich Oval Hobnail pattern, wide flared mouth – pontil scar, ht. 6 3/8". Sandwich made cologne bottles in this mold and this piece was possibly blown using that mold. See B/K, p. 120, #3118; also p.66, #3044 & 3045.



Estimate: \$200 - \$400
(Minimum bid: \$150.00)

Lot 60

Freeblown Hat Whimsey, probably New York State, 1850 – 1870. Light to medium aquamarine, "bowler" form with applied threading starting near the top and working around the circumference of the body to the upturned brim; glass tipped pontil scar, ht. 3 1/8", length 4 7/8", width 3 3/4", perfect. An unusual early hat whimsey with the applied threading. Wonderful condition.



Estimate: \$300 - \$600
(Minimum bid: \$150.00)

Lot 64

Blown Vase, America, probably Boston and Sandwich Glass Company, or a Pittsburgh District Glasshouse, 1840 – 1870. Canary yellow, bulbous midsection below gracefully flaring trumpet form neck, solid baluster form pedestal base with a polished pontil scar, ht. 9 5/8". Note, it was not uncommon for forms, styles and techniques to be copied or imitated between these two glass houses.



Estimate: \$200 - \$400
(Minimum bid: \$125.00)

Lot 65

Blown Vase, America, possibly Boston and Sandwich Glass Company, Sandwich, Massachusetts, 1840 – 1860. Medium to deep cobalt blue, globular midsection rounding to a broad neck flaring slightly to a wide, outward tooled and turned down rim - broad straight pedestal "foot" with pontil scar, ht. 8 ¼". A cousin to the earlier Stiegel-type paneled vases. McK plate 34, #9.



Estimate: \$600 - \$1,200
(Minimum bid: \$400.00)

Lot 69

Freeblown Globular Bottle, probably Midwest America, possibly Pittsburgh District, 1790 – 1820. Deep bluish green, globular form reminiscent of an early "shaft and globe", sheared and outward flared mouth – pontil scar, ht. 9 ¼"; (minor exterior wear). Possibly used as a table serving bottle. Ex. Darl Fifer collection with note on base of Pittsburgh attribution. We are less certain of this attribution, but clear on it's attractiveness and early origins.



Estimate: \$150 - \$250
(Minimum bid: \$100.00)

Lot 66

Pressed Vase, America, possibly New England Glass Company, 1850 1870. Brilliant canary yellow, elongated loop pattern with gauffered rim, hexagonal standard and square marble base, overall height 9 5/8". Interesting note: These early pieces were sometimes referred to at the time of production as "flower stands".



Estimate: \$800 - \$1,200
(Minimum bid: \$400.00)

Lot 70

Blown Three Mold Decanter, Boston and Sandwich Glass Works, Sandwich, Massachusetts, 1820 – 1840. Clear, brilliant sapphire blue, shell and ribbing pattern, tooled flared mouth (missing the original stopper) – pontil scar, quart; (a small, difficult to detect, pinhead sized flake off one of the medial shells). GV-8. A beautiful, classic early colored decanter.



Estimate: \$250 - \$500
(Minimum bid: \$150.00)

Lot 67

Pattern Molded Open Sugar Bowl, possibly America, 1800 – 1830. Vivid cobalt blue, hemispherical body patterned with horizontal rows of 24 diamonds, applied pedestal foot, polished pontil scar, ht. 3 ½", rim dia. 3 7/8", perfect. Sugar was an important commodity in the 18th and 19th centuries. Uses included curing meat, preserving fruits, as well as amending a glass of wine to "temper the roughness".



Estimate: \$550 - \$750
(Minimum bid: \$400.00)

Lot 71

Blown Three Mold Decanter, Keene Marlboro Street Glass Works, Keene, New Hampshire, 1820 – 1840. Golden amber with a slight olive tone, geometric sunburst and diamond pattern, tooled and slightly flared mouth – pontil scar, pint; (a little dullness or faint exterior wear on edge of mouth, otherwise mint). GIII-16. Note, the color is little lighter and somewhat more scarce having almost no trace of green.



Estimate: \$200 - \$400
(Minimum bid: \$125.00)

Lot 68

Blown Victorian Era Witchball, probably America, possibly Hobbs, Brockunier & Co., Wheeling, West Virginia, 1886 – 1895. Cranberry with translucent white tips, spherical form with overall hobnail pattern, dia. 6 ¼"; (one hobnail tip is chipped). A Witchball of the Victorian era in a rare color and pattern, possibly a "whimsey". Note, the "Hobnail" pattern was perfected and produced extensively by the above glasshouse.



Estimate: \$250 - \$500
(Minimum bid: \$150.00)

Lot 72

Early Blown Molded Decanter, probably England or Ireland, 1790 – 1820. Deep blue green shading to a bright yellow green, particularly in an upper corner with some thin amber striations. Square with rounded corners, heavy vertical ribbing, tooled flared mouth - pontil scar, ht. 8 1/8"; (a tiny 1/16" flake on edge of mouth and a little minor exterior wear). A very heavy, unusual, early decanter.



Estimate: \$250 - \$500
(Minimum bid: \$150.00)

Lot 73

Pattern Molded Inkwell, Midwest America, possibly Zanesville, Ohio, 1820 – 1835. Golden amber, squatty bulbous body patterned in a 24 rib mold swirled to the right, sheared mouth – hollow circular foot drawn from the same gather, pontil scar, ht. 1 ½”; (a crack encircles the perimeter of base and mouth has been finely ground, likely at an early period). Despite the damage, an extreme rarity in early American glass.



Estimate: \$750 - \$1,250
(Minimum bid: \$500.00)

Lot 77

“Thompson / & / Crawford” Ink Bottle, America, 1845 – 1860. Deep bluish aquamarine approaching a light blue-green, octagonal umbrella form, inward rolled mouth – pontil scar, ht. 2 ½”; dia. 2 1/8”; (a thin ring of light ink residue on the interior, otherwise perfect). An extremely rare, early pontiled ink unlisted with only a couple of other examples known. Thompson & Crawford was an early Philadelphia Druggist.



Estimate: \$200 - \$400
(Minimum bid: \$150.00)

Lot 74

Blown Three Mold Inkwell, Coventry Glass Works, Coventry, Connecticut, 1820 – 1840. Deep yellow olive green, cylindrical, heavy disk mouth – pontil scar, ht. 1 ¾”, dia. 2 ¼”; (a thin, shallow open bubble on disk mouth, otherwise mint). GII-2. C #1175.



Estimate: \$125 - \$225
(Minimum bid: \$75.00)

Lot 78

Fancy Cologne Bottle, America, 1840 – 1855. Aquamarine, in the form of ornate scrolls encircling two flower heads in upper and lower body – reverse similar except a circular label panel in place of lower flower, sheared and inward rolled mouth – pontil scar, ht. 5 5/8”, perfect. McK plate 244, #11. A very attractive early cologne bottle.



Estimate: \$200 - \$400
(Minimum bid: \$150.00)

Lot 75

Blown Three Mold Inkwell, Keene Marlboro Street Glassworks, Keene, New Hampshire, 1820 – 1840. Medium to deep olive amber, cylindrical, large disk mouth – pontil scar, ht. 1 ½”, dia. 2 1/8”; (a couple of shallow, thin open bubbles on top of disk mouth, otherwise mint). GIII-29. C #1221.



Estimate: \$300 - \$600
(Minimum bid: \$150.00)

Lot 79

Early Scent or “Smelling” Bottle, America, probably Boston and Sandwich Glass Works or Pittsburgh district, 1840 – 1855. Emerald green, in the form of a medallion or rosette with a large center button and 16 rounded lobes, sheared mouth – pontil scar, ht. 2 ½”; (some light high point wear and a minuscule lip edge flake, otherwise mint). A rare and important scent bottle in the most desirable color. BH, HVI-3.



Estimate: \$225 - \$450
(Minimum bid: \$175.00)

Lot 76

Blown Three Mold Inkwell, Keene Marlboro Street Glassworks, Keene, New Hampshire, 1820 – 1840. Medium to deep golden amber, cylindrical, heavy disk mouth – pontil scarred base with diamond or petal-shaped indentations, ht. 2”, dia. 2 5/8”; (a few minute areas of roughness or tiny pecks on the side of the body, otherwise mint). GII-18F. C #1200. Scarce in a more pure amber coloration than most.



Estimate: \$1,400 - \$2,200
(Minimum bid: \$700.00)

Lot 80

Fancy Cologne Bottle, America, 1840 – 1855. Medium sapphire blue, tall corseted form with palm tree and scrolled acanthus, tooled and inward rolled mouth – pontil scar, ht. 5 ½”; (some very minor in-manufacture roughness on the inside edge of the mouth that is not considered damage, the bottle is perfect). A beautiful example, brilliant color. MW plate 111, #3.



Estimate: \$150 - \$300
(Minimum bid: \$100.00)

Lot 81

Pattern Molded Scent or "Smelling" Bottle, probably America, 1800 – 1830. Cobalt blue, plump circular form patterned in a 12 rib mold and slightly swirled to the right, sheared mouth – pontil scar, ht. 1 ½"; (some light dirt or content residue on the interior, otherwise mint). A scarce, early Stiegel type scent bottle. See Mck, plate 241, #22 and text on p. 453.



Estimate: \$400 - \$800
(Minimum bid: \$250.00)

Lot 85

Christmas Salt, Boston and Sandwich Glass Works, Sandwich, Massachusetts, 1877 – 1887. Beautiful clear cranberry red (flushed), barrel form, threaded ground mouth with Britannia-ware lid and agitator impressed, "Dana K. Alden, Boston / Pat. Dec.25.1877", smooth base with embossed 16 petal rosette, ht. 2 ½", perfect! B/K volume 1, page 299. A popular little Christmas Salt in wonderful condition.



Estimate: \$225 - \$350
(Minimum bid: \$150.00)

Lot 82

Pattern Molded Toilet Water Bottle, America, 1820 – 1840. Medium to deep cobalt blue, patterned in a 24 rib mold and swirled to the left, tooled flared and inward rolled mouth with period "tam-o-shanter" stopper – solid glass tipped pontil scar, ht. 6 7/8" including stopper; (some scattered light expected exterior wear). A nice example.



Estimate: \$150 - \$300
(Minimum bid: \$100.00)

Lot 86

Christmas Salts, Lot of 2, Boston and Sandwich Glass Works, Sandwich, Massachusetts, 1877 – 1887. White opal (milkglass) shakers painted in soft yellow and pink backgrounds having orchid and maple leaf designs respectively, both are barrel form with threaded ground mouths, pewter lids (one with agitator for salt, one without for pepper), each lid is impressed as in previous lot, ht. 2 ½". Both shakers are mint.



Estimate: \$100 - \$150
(Minimum bid: \$50.00)

Lot 83

Blown Cologne Bottle, America, 1840 – 1860. Opaque lavender blue, tall tapered cylinder form, tooled small round collared mouth – pontil scar, ht. 8 5/8" inches, perfect. A little different color than is typical.



Estimate: \$250 - \$500
(Minimum bid: \$125.00)

Lot 87

Figural Incised Pottery Pig, America, 1860 – 1880. Incised, "James Walsh / Old Hickory / Bourbon – Cincinnati / Ohio" and an unclear design or possibly the initials, "IL" incised within a diamond below the chin. Glazed in a mustard-tan color with some scattered darker swatches of color, overall length, 4 ¾"; (tip of the left front hoof is missing). A neat little whiskey nip or advertising piece.



Estimate: \$200 - \$300
(Minimum bid: \$150.00)

Lot 84

Oversized Blown Cologne Bottle, America, 1840 – 1860. Fiery opalescent robin's egg blue, tall tapered cylinder form, tooled flared and rolled mouth – pontil scar, ht. 15 ¾"; (a ½" streak of undissolved glass gall or impurities remain on the edge of the mouth from the manufacturing process and a few inconsequential light scratches to the body, otherwise mint). An impressive cologne bottle, very rare size.



Estimate: \$125 - \$225
(Minimum bid: \$75.00)

Lot 88

Diminutive Whiskey Bottle, America, 1875 – 1895. Medium to deep plum amethyst coloration, squat cylindrical form with a threaded neck, ground mouth and original threaded metal closure – smooth base, ht. 5 1/8", perfect. A beautiful and most unusual color for a miniature or sample spirits bottle.



Estimate: \$175 - \$350
(Minimum bid: \$125.00)

Lot 89

"HSN" (embossed monogram)
Fire Grenade, America, 1888 – 1900. Light honey amber, spherical body with 4 alternating rows with 4 diamonds each. Original diamond shaped label (darkened but still legible), reads: *"The Nutting / Fire Grenade / Minneapolis / Minn. / Patented March 1889"*, also retains *"How to Use"* direction label on reverse which is illegible, ht. 7 1/4". Complete with original contents and neck label.



Estimate: \$275 - \$450
(Minimum bid: \$225.00)

Lot 93

"Dr. J. Hostetter's / Stomach Bitters", America, 1865 – 1875. Dense olive amber, square with beveled corners, applied tapered collar – small numeral "4" on smooth base, ht. 9 1/8", width, 2 3/4"; (a couple of light exterior scratches and some in-manufacture surface crazing lines in the neck and shoulder area). R/H #H194. Nice example.



Estimate: \$175 - \$350
(Minimum bid: \$125.00)

Lot 90

"HSN" (embossed monogram)
Fire Grenade, America, 1888 – 1900. Light honey amber with 3 alternating rows of 4 diamonds. Approx. 2/3 of front label is concealed by paint. The directions label is darkened but legible and reads: *"How to Use / in case of Fire throw or / break the / GRENADE / So the contents will be / scattered in the / flame"*. A 1/2" flake at edge of mouth, possibly in-manufacture. Complete with contents and neck label.



Estimate: \$200 - \$400
(Minimum bid: \$150.00)

Lot 94

"Dr. J. Hostetter's / Stomach Bitters", probably Lorenz & Wightman, Pittsburgh, Pennsylvania, 1862 – 1871. Lemon yellow with a hint of citron, square with beveled corners, applied tapered collar – "L&W" on smooth base, ht. 8 7/8", width, 2 5/8"; (cleaned to original luster and a small 1/4" sliver type flake off the beveled edge at the base corner). R/H #H195. A very pretty color.



Estimate: \$275 - \$450
(Minimum bid: \$225.00)

Lot 91

"Dr. J. Hostetter's / Stomach Bitters", America, 1865 – 1875. Medium to deep yellow olive, square with beveled corners, applied tapered collar – smooth base (with large dot in center), ht. 9 1/4", width, 3"; (a few scattered light exterior scratches, otherwise about mint). R/H #H194. A rather crude example filled with small bubbles and impurities.



Estimate: \$300 - \$450
(Minimum bid: \$250.00)

Lot 95

"Dr. J. Hostetter's / Stomach Bitters", America, 1865 – 1875. Deep olive green with a slight yellowish tone, square with beveled corners, applied tapered collar – smooth base (with hinge mold and ring at center), ht. 9 3/4", width, 3"; (some scattered insignificant contents residue, otherwise perfect). R/H #H194. A beautiful example, wonderful condition. Also, the glass is a little lighter in weight than normal.



Estimate: \$300 - \$450
(Minimum bid: \$250.00)

Lot 92

"Dr. J. Hostetter's / Stomach Bitters", America, 1865 – 1875. Dense olive amber, square with beveled corners, applied tapered collar – numeral "1" on smooth base, ht. 8 7/8", width, 2 5/8"; (a small 1/8" long onion-skin thin open bubble on a side panel, otherwise about mint). R/H #H-195. Nice color, a little more amber and less olive than normal and with a nice crude texture to the glass.



Estimate: \$200 - \$400
(Minimum bid: \$150.00)

Lot 96

Dr. J. Hostetter's / Stomach Bitters", Wm. McCully & Co., Pittsburgh, Pennsylvania, 1865 – 1875. Olive yellow, square with beveled corners, applied tapered "stovepipe" type collar – "W.Mc C & Co / D" on smooth base, ht. 8 7/8", width, 2 5/8"; (lightly cleaned to original luster, three shallow cloverleaf-like flakes emanating from a sand grain on the inside surface of the base). R/H #H195.



Estimate: \$275 - \$450
(Minimum bid: \$225.00)

Lot 97

"Dr. J. Hostetter's / Stomach Bitters", America, 1865 – 1875. Shades from a dense, almost black, yellowish-olive in the lower half to a medium yellowish olive in the shoulder area, square with beveled corners, applied tapered collar – smooth (plain) base, ht. 9 1/2", width, 3"; (a large thin bubble on the interior appears to be open, otherwise about mint). R/H #H194. A good crude example.



Estimate: \$600 - \$900
(Minimum bid: \$350.00)

Lot 101

"S.T. / Drakes / 1860 / Plantation / X / Bitters – Patented / 1862", America, 1862 – 1875. Brilliant light golden yellow coloration, almost a lemon yellow in natural daylight, square log cabin form with 4 logs above the label panel, applied sloping collared mouth – smooth base, ht. 10 1/8", perfect. R/H #D110. Nice example, strong mold impression, brilliant glass, nice light color.



Estimate: \$300 - \$450
(Minimum bid: \$250.00)

Lot 98

"Dr. J. Hostetter's / Stomach Bitters", America, 1865 – 1875. Medium to deep pure olive green, square with beveled corners, applied tapered collar – smooth (plain) base, ht. 9 1/8", width, 2 7/8"; (a couple of faint spots of exterior wear and an inconsequential onionskin-thin open bubble on a beveled corner). R/H #H194. Nice in this pure olive coloration and also a little lighter in weight than normal.



Estimate: \$100 - \$200
(Minimum bid: \$75.00)

Lot 102

"S.T. / Drakes / 1860 / Plantation / X / Bitters – Patented / 1862", America, 1862 – 1875. Bright orange amber, square log cabin form with 4 logs above the label panel, applied sloping collared mouth – smooth base, ht. 10 5/8"; (a couple of in-manufacture crazing lines in the mouth, otherwise mint). R/H #D110. Nice clarity to the glass. An interesting example with an elongated neck that towers almost 1/2" above the norm.



Estimate: \$275 - \$450
(Minimum bid: \$225.00)

Lot 99

"Dr. J. Hostetter's / Stomach Bitters", America, 1865 – 1875. Dense yellow olive, square with beveled corners, applied tapered collar – smooth (plain) base, ht. 9 1/2", width, 3"; (a small 1/8" open bubble on a side shoulder and some faint dullness on the upper third of one of the side panels). R/H #H194. A good example, crude with some scattered mold imperfections likely caused by a pitted mold.



Estimate: \$125 - \$225
(Minimum bid: \$75.00)

Lot 103

"S.T. / Drakes / 1860 / Plantation / X / Bitters – Patented / 1862", America, 1862 – 1875. Light to medium golden amber, square log cabin form with 4 logs above the label panel, applied sloping collared mouth – smooth base, ht. 10 1/4". R/H #D110. A good example with very strong embossing, good glass character, and just a bit lighter than normal.



Estimate: \$100 - \$200
(Minimum bid: \$75.00)

Lot 100

"S.T. / Drakes / 1860 / Plantation / X / Bitters – Patented / 1862", America, 1862 – 1875. Light golden amber, square log cabin form with 4 logs above the label panel, applied sloping collared mouth – smooth base, ht. 10 1/4"; (lightly cleaned and a faint dullness or sheen remains on one label panel, slightly weakened embossing in upper shoulder). R/H #D110. Nice example, a little lighter than average.



Estimate: \$200 - \$400
(Minimum bid: \$150.00)

Lot 104

"S.T. / Drakes / 1860 / Plantation / X / Bitters – Patented / 1862", America, 1862 – 1875. Deep cherry puce, square log cabin form with 6 logs above the label panel, applied sloping collared mouth – smooth base, ht. 10"; (a small sandgrain located near the surface of the glass on a side panel, 2nd log up from the base has a shallow 1/8" iridescent bruise, otherwise mint). R/H #D108.



Estimate: \$400 - \$600
(Minimum bid: \$300.00)

Lot 105

"Drakes / Plantation / Bitters – Patented / 1869", America, 1869 – 1875. Bright light golden amber, square log cabin form with 5 logs above the label panel, applied sloping collared mouth – smooth base, ht. 10"; (lightly cleaned to original luster, otherwise about mint). R/H #D109. Lighter than many of the other five log Drake's and with good strong embossing.



Estimate: \$600 - \$1,200
(Minimum bid: \$400.00)

Lot 109

"S.T. / Drakes / 1860 / Plantation / X / Bitters – Patented / 1862", America, 1862 – 1875. Light to medium apricot gingerale, square log cabin form with 6 logs above the label panel, applied sloping collared mouth – smooth base, ht. 10", about mint; (the bottle may have been lightly cleaned, a pinhead sized flake at edge of base). R/H #D105. Absolutely beautiful color!



Estimate: \$250 - \$500
(Minimum bid: \$150.00)

Lot 106

"S.T. / Drakes / 1860 / Plantation / X / Bitters – Patented / 1862", America, 1862 – 1875. Golden amber with a slight olive tone, particularly when compared with a normal amber example, square log cabin form with 6 logs above the label panel, applied sloping collared mouth – smooth base, ht. 9 3/4", about mint; (slightly weak embossing in the upper shoulder). R/H #D108. A pleasing, somewhat different shade.



Estimate: \$300 - \$500
(Minimum bid: \$175.00)

Lot 110

"S.T. / Drakes / 1860 / Plantation / X / Bitters – Patented / 1862", America, 1862 – 1875. Brilliant yellow golden coloration with a slight citron tone, square log cabin form with 6 logs above the label panel, applied sloping collared mouth – smooth base, ht. 9 3/4", about mint. R/H #D108. A very vibrant, lively color with nice clarity to the glass.



Estimate: \$150 - \$250
(Minimum bid: \$75.00)

Lot 107

"S.T. / Drakes / 1860 / Plantation / X / Bitters – Patented / 1862", America, 1862 – 1875. Brilliant yellow golden color, square log cabin form with 6 logs above the label panel, applied sloping collared mouth – smooth base, ht. 9 5/8"; (slightly weakened lettering, otherwise mint). R/H #D108. Nice character with a large lump of the un-dissolved glass batch suspended in one panel). A particularly sparkling, brilliant example.



Estimate: \$250 - \$400
(Minimum bid: \$150.00)

Lot 111

"S.T. / Drakes / 1860 / Plantation / X / Bitters – Patented / 1862", America, 1862 – 1875. Medium apricot amber with puce tones, square log cabin form with 6 logs above the label panel, applied sloping collared mouth – smooth base, ht. 9 7/8", about mint (shallow open bubble on reverse roof edge, otherwise perfect). R/H #D105. Not too dark with good strong embossing, color and clarity.



Estimate: \$225 - \$350
(Minimum bid: \$150.00)

Lot 108

"S.T. / Drakes / 1860 / Plantation / X / Bitters – Patented / 1862", America, 1862 – 1875. Deep strawberry puce, almost black, square log cabin form with 6 logs above the label panel, applied sloping collared mouth – smooth base, ht. 9 7/8"; (may have been lightly cleaned, otherwise about mint). R/H #D105. Darker than most and with no trace of amber.



Estimate: \$100 - \$200
(Minimum bid: \$75.00)

Lot 112

"S.T. / Drakes / 1860 / Plantation / X / Bitters – Patented / 1862", America, 1862 – 1875. Medium to deep golden amber, square log cabin form with 6 logs above label panel, applied sloping collared mouth – smooth base, ht. 9 7/8"; (embossing a bit weak in the upper shoulder as is often the case, otherwise perfect). R/H #D105. Heavy applied mouth, good character to the glass.

What's your favorite color? . . .

The color blue, as used in the fine arts and crafts, has a long and fascinating history. During the Renaissance for example, blue paint pigments were scarce and expensive. It was recorded that Michelangelo couldn't afford to purchase his own supply of ultramarine blue to finish the Virgin Mary's robe on an altar piece he was working on, so it went unfinished for some time.

Blue glass was also rare and coveted in times past. It was most often made by adding cobalt oxide to the glass batch with the hue and intensity of color varying a great deal dependant on many factors. Though it was used occasionally in early roman glass, blue glass was extremely rare until the Middle Ages when it often appeared in the splendid stained glass windows of the great Gothic cathedrals. By the late 17th century, blue glass appears with some regularity in English and Continental tablewares and occasionally in bottles and flasks.

By the mid-18th century, blue glass was being blown in America as well. The Wistarburgh glass works in New Jersey is know to have made some in very limited quantities and blue tablewares, such as creamers, sugar bowls and salts, were blown at Stiegels Manheim, Pennsylvania glass works. By the early 19th century, blue glass was being produced at numerous glasshouse across the eastern U.S. but still not in abundance. It wasn't until the second half of the 19th century that it became more commonplace, showing up in everything from soda and medicine bottles to inkwells, poisons and even historical flasks. Fortunately for the collector, some of these pieces have survived and are coveted today for their brilliant and alluring color.



Lot 55

Lot 47

Lot 39

Lot 139

Lot 82

A clear majority of people will say BLUE.





Estimate: \$200 - \$400
(Minimum bid: \$150.00)

Lot 113

"S.T. / Drakes / 1860 / Plantation / X / Bitters – Patented / 1862", America, 1862 – 1875.

Apricot strawberry puce, square log cabin form with 6 logs above label panel, applied sloping collared mouth – smooth base, ht. 9 7/8"; (an open bubble approximately 3/8" by 1/4" on a side panel log and a couple of spots of faint exterior wear). R/H #D105. Good medium color, not too dense.



Estimate: \$1,000 - \$2,000
(Minimum bid: \$500.00)

Lot 117

"Fowler's – Stomach Bitters", America, 1870 – 1880. Clear golden amber, square with arched panels and columned corners, applied tapered collar – smooth base, ht. 9 7/8"; (a thin, hard to detect fissure 1/2" in length on one of the columned corners that likely occurred in manufacture, some minor exterior high point wear on one arch). R/H #F76. A very rare, attractive bottle with brilliant glass that has not been dug and displays mint.



Estimate: \$125 - \$225
(Minimum bid: \$75.00)

Lot 114

"S.T. / Drakes / 1860 / Plantation / X / Bitters – Patented / 1862", America, 1862 – 1875.

Rich golden coloration shading to a vibrant golden yellow in the lower roof corners, square log cabin form with 6 logs above label panel, applied sloping collared mouth – smooth base, ht. 9 5/8"; (embossing a bit weak in the upper shoulder area, otherwise mint). R/H #D108. Nice bright example, crude glass, plenty of bubbles.



Estimate: \$400 - \$800
(Minimum bid: \$250.00)

Lot 118

"L. N. Kreinbrook's / Bitters / Mt. Pleasant, PA.", America, 1875 – 1885. Golden amber shading to honey amber in the shoulders, in the form of a shoo fly flask, tooled sloping collar with ring – smooth base, half pint; (cleaned but retains some scattered exterior ground wear and a couple of spots of light interior haze). R/H #K78.3. An exceptional, extremely rare flask shaped bitters bottle that does not come around often.



Estimate: \$150 - \$250
(Minimum bid: \$100.00)

Lot 115

"Rising Sun – Bitters – John C Hurst / Philada", America, 1870 – 1880.

Bright yellow amber, square with beveled corners, applied sloping collared mouth – smooth base, ht. 9 3/8"; (some exterior wear, particularly on the corners in the lower third of the bottle, a 3/16" flake at corner of base and a couple of minor spots of interior haze). R/H #R66. Despite the noted condition remarks, a bright, clean example with a good amount of yellow.



Estimate: \$200 - \$400
(Minimum bid: \$150.00)

Lot 119

"L. N. Kreinbrook's / Bitters / Mt. Pleasant, PA.", America, 1875 – 1885. Bright light to medium golden amber shading to yellow near the shoulders, oval, tooled sloping collared mouth – smooth base, ht. 7 1/8"; (lightly cleaned to original luster). R/H #K78. A very rare bottle in a light pretty color.



Estimate: \$300 - \$500
(Minimum bid: \$200.00)

Lot 116

"H.P. Herb / Wild / Cherry / Bitters / Reading / PA – Wild Cherry / (Cherry Tree) / Bitters" – "Bitters" (on each of 4 roof panels), America, 1875 – 1885.

Medium amber, square cabin form with roped corners, applied tapered collar with ring – smooth base, ht. 10"; (a little faint spotty dullness, primarily on the tree panel, otherwise about mint). R/H #H93.



Estimate: \$400 - \$800
(Minimum bid: \$250.00)

Lot 120

"L. N. Kreinbrook's / Bitters / Mt. Pleasant, PA.", Wm. McCully, Pittsburgh, Pennsylvania, 1875 – 1885. Medium golden amber, square with indented front and back panels, tooled sloping collared mouth – "McC" on smooth base, ht. 8 1/4"; (shallow, 1/8" open bubble on one side panel and the bottle may have been lightly cleaned but displays as mint). R/H #K78.5. The square example is extremely rare. Ex. Andy Regrut Collection.



Estimate: \$1,200 - \$1,800
(Minimum bid: \$700.00)

Lot 121

"Brown's / Celebrated / Indian Herb Bitters – Patented / Feb 11. / 1868", America, 1868 – 1875. Bright golden amber shading to a light yellow amber in the arms and upper 1/3 of the body with a good portion of the original paint trim intact (less common on rolled lip examples), tooled rolled lip – smooth base, ht. 12 1/4", perfect. R/H #B226. A great example with a perfect rolled lip, light color, and plenty of original trim paint remaining!



Estimate: \$600 - \$800
(Minimum bid: \$400.00)

Lot 122

"Greeley's Bourbon / Bitters", America, 1860 – 1875. Medium copper puce, barrel form, applied square collared mouth – smooth base, ht. 9 1/8"; (a tiny, less than pinhead sized flake is located on the 4th ring up from the base at the side, otherwise perfect). R/H #G101. A bright shiny example that is not too dense or "muddy" in color.



Estimate: \$600 - \$800
(Minimum bid: \$400.00)

Lot 123

"Greeley's Bourbon / Bitters", America, 1860 – 1875. Medium apricot puce, barrel form, applied square collared mouth – smooth base, ht. 9 1/4"; (a 1/8" very minor bit of lip edge roughness and a couple of minuscule, shallow open bubbles on the body). R/H #G101. Good clean example, nice color and clarity to the glass.



Estimate: \$350 - \$550
(Minimum bid: \$250.00)

Lot 124

"National Bitters" – "Patent / 1867" (on base), America, 1867 – 1875. Bright yellow golden amber, figural ear of corn, applied short tapered collar with ring – smooth base, ht. 12 1/2"; (a tiny 1/8" long onion skin thin open bubble on one of the husks, otherwise sparkling mint). R/H #N8. A nice bright sparkly example a little lighter than most.



Estimate: \$800 - \$1,600
(Minimum bid: \$600.00)

Lot 125

"Royal / Italian Bitters / Registered / (motif of crown, shield, and spears) / Registered / Trade Mark / A.M.F. Gianelli / Genova", Canada, 1880 – 1890. Medium grape amethyst, tall tapered cylinder form, applied square collared mouth – smooth base, ht. 13 5/8", perfect. R/H #R111. A few traces of the neck foil remain on the collar. As nice as the day it was made. A scarce bitters, absolutely stunning color!



Estimate: \$600 - \$900
(Minimum bid: \$400.00)

Lot 126

"Bell's / Cocktail / Bitters / Jas. M. Bell & Co. / New York", America, 1875 – 1885. Bright golden amber, cylindrical with elongated "lady's leg" neck, applied mouth with flat band – smooth base, ht. 10 1/2", about mint; (a couple of small pinhead sized areas of roughness near base). R/H #B58. A light, bright example, great condition.



Estimate: \$250 - \$500
(Minimum bid: \$175.00)

Lot 127

Anchor Bitters (embossed anchor on front and back panels and all four roof panels), America, 1880 – 1885. Light to medium golden amber, semi cabin form, applied tapered collar – smooth base, ht. 10 1/2"; (some very light scattered exterior high point wear, otherwise perfect). R/H #D122. Several examples exist in dug condition, this one is an attic find. This company originated in Grand Rapids, MI, and later relocated to Minnesota.



Estimate: \$400 - \$600
(Minimum bid: \$250.00)

Lot 128

"Maynard's – Star Bitters", America, 1870 – 1880. Rich golden amber, square with three indented panels, applied tapered collar – smooth base, ht. 9"; (cleaned to original luster with some minor exterior wear remaining, a potstone at shoulder with a few "legs", the longest being 1/4", a small lip edge flake). Unlisted and extremely rare (1 of 6 known, only 5 in amber), with this being one of the nicer ones. (See Bottles & Extras, Jul.-Aug., 08).



Estimate: \$1,200 - \$1,600
(Minimum bid: \$600.00)

Lot 129

“Dr. Birmingham’s / Anti Billious / Blood Purifying / Bitters - This Bottle Not Sold”, America, 1860 – 1865. Blue green, cylindrical with 12 indented panels, applied collared mouth – smooth base, ht. 8 ¾”; (lightly cleaned to original luster, ¾” bubble at base edge that is partially open with some residue). R/H #B101. An attractive example, crude glass (very crudely applied collar with extra glass on the inside of the neck).



Estimate: \$500 - \$700
(Minimum bid: \$350.00)

Lot 133

“John Hart & Co – John Hart & Co”, America, 1870 – 1880. Bright medium golden amber, figural heart form, applied double collared mouth – smooth base, ht. 7”; (just a couple of scattered areas of faint high point wear, otherwise perfect). DF, page 73. A much better an average, nicely whittled example of this scarce and unusual hair bottle, reportedly from Lancaster, Pennsylvania.



Estimate: \$500 - \$800
(Minimum bid: \$350.00)

Lot 130

“Rohrer’s – Wild / Cherry / Tonic / Expectorant – Lancaster PA”, America, 1850 – 1860. Light golden amber approaching yellow in the shoulder area, rectangular pyramid form with roped corners, applied sloping collared mouth with ring – iron pontil, ht. 10 5/8”; (only the slightest amount of faint exterior wear, otherwise pristine). Here’s a particularly nice one – light, bright, with a heavy iron pontil and wonderful condition.



Estimate: \$200 - \$400
(Minimum bid: \$125.00)

Lot 134

“James L Bispham / No. 710 / So 2d St / Philada”, America, 1870 – 1880. Deep blue green or teal, cylindrical with rectangular label panel on the reverse, applied sloping collared mouth – smooth base, ht. 8 1/8”, perfect. A beautiful bottle, unusual and scarce, nicely whittled. Thought to be an early druggist or possibly citrate bottle.



Estimate: \$100 - \$200
(Minimum bid: \$75.00)

Lot 131

“Davis’ – Vegetable – Pain Killer”, America, 1845 – 1860. Aquamarine, rectangular with beveled corners and indented panels, applied double collared mouth – tubular pontil scar, ht. 8 ¼”; (lightly cleaned to original luster). N #164, Greer #477. Here’s an extremely rare variant of a very common mold.



Estimate: \$100 - \$200
(Minimum bid: \$50.00)

Lot 135

“Swaim’s / Patent (on shoulder) / Vermifuge – Dysentery / Cholera Morbus / Dyspepsia & CC”, America, 1855 – 1865. Light apple green, oval, applied double collared mouth – smooth base, ht. 5 3/8”; (professionally cleaned with some remaining light scratches; a 1/8” flake under the collar). This example “just missed the pontil rod”. A very attractive and heavily embossed early medicine bottle.



Estimate: \$175 - \$350
(Minimum bid: \$100.00)

Lot 132

Lot of (3), “Poor Man’s” Bottles, America, 1880 – 1895. “Poor Man’s / Family Bitters”, “Anderson’s / Poor Man’s / Cough Cure”, and “Fickardt’s / Poor / Man’s / Tonic / Circleville / Ohio”. Aqua and clear, rectangular, tooled mouths, smooth bases, ht. 6 ¼”, 5 ¾”, and 7 5/8”. The Fickardt’s has been cleaned but is only the 2nd known example without damage. A unique trio to include a bitters, a cure and a tonic.



Estimate: \$300 - \$600
(Minimum bid: \$200.00)

Lot 136

“Dr. Owens / London Horse / Linament – Clarkston – Michigan”, America, 1847 – 1855. Deep aquamarine, rectangular with narrow beveled corners, applied double collared mouth – pontil scar, ht. 5 ¼”, about mint; (just a little faint haze, primarily in the upper third of the bottle). A rare, heavily embossed crude pontiled veterinary bottle.



Estimate: \$3,000 - \$5,000
(Minimum bid: \$2,000.00)

Lot 137

"London - Medicated - Health Restorer - S. A. Foutz / Baltimore MD", America, possibly Baltimore Glass Works, 1860 - 1870. Medium strawberry puce, hexagonal with indented panels and three wide cascading rings creating a cone type shoulder, applied sloping collared mouth with ring - smooth base, ht. 9 3/8", perfect. An extremely rare and desirable bottle, great form, stunning color, wonderful "attic" condition.



Estimate: \$4,000 - \$8,000
(Minimum bid: \$2,500.00)

Lot 141

"Dr J.B. Henion's - Sure Cure / For / Malaria.", America, probably 1885 - 1886. Medium cobalt blue, square with three indented panels, large mushroom "Tippecanoe-type" applied mouth - smooth base, ht. 5 3/4"; (lightly cleaned to original luster). BA #116. Extremely rare and desirable, - one of the all-time classic cure bottles.



Estimate: \$300 - \$600
(Minimum bid: \$200.00)

Lot 138

"Dr. Bloodgood's - Elixir / of / Health", America, 1835 - 1840. Aquamarine, rectangular with beveled corners, applied sloping collared mouth - pontil scar, ht. 6 3/4", mint. Unlisted in Nielsen, Greer #245. Extremely rare. H. Eastman, proprietor of "Bloodgood's", Zanesville, Ohio, advertised 1834-1837, and subsequently changed the name to "H. Eastman's Elixir of Health around 1838 (O'Dell, c. 2000). A great pontiled medicine bottle.



Estimate: \$1,500 - \$2,500
(Minimum bid: \$750.00)

Lot 142

"Johnson & Lilly / Manufacturing Pharmacists / Indianapolis", America, 1874 - 1876. Vibrant cobalt blue, pyramid form with an indented front panel, very narrow beveled corners, tooled square collared mouth - smooth base, ht. 8 1/2"; (a 1/8", thin open bubble on a corner and a handful of inconsequential faint scratches on the reverse panel, otherwise perfect). An extremely rare, unusual and attractive medicine bottle.



Estimate: \$2,000 - \$4,000
(Minimum bid: \$1,200)

Lot 139

"S.M. Kier - Petroleum - Pittsburgh. Pa", probably a Pittsburgh glasshouse, 1845 - 1855. Deep cornflower blue, almost a light sapphire hue, rectangular, applied sloping collared mouth - pontil scar, ht. 6 1/4", sparking mint with approximately 90% of the original label intact (somewhat darkened and with a couple of tears). A rare colored pontiled medicine. Finest possible example.



Estimate: \$200 - \$350
(Minimum bid: \$125.00)

Lot 143

"Lyons / Powder - B & P / N.Y.", America, 1845 - 1860. Medium grape amethyst, cylindrical with a cone shoulder, tooled and inward rolled mouth - blow-pipe pontil scar, ht. 4 1/4"; (lightly cleaned as is typical for this bottle with just a bit interior residue or dullness remaining). KX-1. A pretty color with nice whittling and character to the glass.



Estimate: \$225 - \$350
(Minimum bid: \$150.00)

Lot 140

"C. Heimstreet & Co. / Troy N.Y.", America, 1850 - 1860. Deep sapphire blue, octagonal form, applied double collared mouth - pontil scar, ht. 7 1/8"; (some faint scattered exterior high point wear, otherwise about mint). DF page 75. A bright, sparkling example with nice character to the glass. Advertised as a hair restorative and hair coloring.



Estimate: \$300 - \$500
(Minimum bid: \$200.00)

Lot 144

"PURE / CODLIVER / OIL" (motif of codfish) - "REED, / CARNRICK / & / ANDRUS - CHEMISTS - NEW YORK", America, 1865 - 1875. Deep brilliant cobalt blue, almost violet in the center of the bottle, rectangular with beveled corners and indented panels, tooled sloping collared mouth - smooth base, ht. 10", perfect. A scarce and attractive bottle. Most examples have been dug, this one is "attic mint".



Estimate: \$2,250 - \$4,500
(Minimum bid: \$1,200.00)

Lot 145

"Henshaw & Edmands / Druggists / Boston", America, 1850 – 1860. Medium to deep blue green, cylindrical, applied square collared mouth, ground internally with original matching ground glass stopper – pontil scar, ht. 11 3/8" (including stopper), pristine. A rare, big, beautiful, highly whittled, early pontiled medicine. The only known example having its original stopper intact. Provenance: Ex. Dr. Sam Greer collection.



Estimate: \$400 - \$600
(Minimum bid: \$250.00)

Lot 149

"Dr Townsend's – Sarsaparilla – Albany / N Y", America, 1845 – 1860. Medium to deep yellow "grass" green, square with beveled corners, applied sloping collared mouth – large round iron pontil scar, ht. 9 5/8"; (some scattered light exterior high point wear, otherwise about mint). DeG #206. A nicely whittled example in a different color.



Estimate: \$800 - \$1,200
(Minimum bid: \$600.00)

Lot 146

"Swift's / Syphilitic Specific", America, 1870 – 1880. Bright, medium cobalt blue, oval with strap sides, applied square collared mouth – smooth base, ht. 9"; (a 1/4" bubble located on a strap side at edge of base has a tiny open area with some residue, otherwise pristine perfect). An un-dug attic type example which is a rarity, with a nice pebbly surface and brilliant glass.



Estimate: \$1,200 - \$2,200
(Minimum bid: \$700.00)

Lot 150

"Old / Dr. Townsend's – Sarsaparilla – New. York.", America, 1855 – 1860. Deep yellowish tobacco amber, square with beveled corners, applied tapered collar – smooth base, ht. 9 3/4"; (some scattered light high point wear and a slightly weakened impression as is often the case for this mold). DeG #206, variant #3. Sometimes referred to as "old amber." Extremely rare color, crude glass and full of bubbles.



Estimate: \$2,000 - \$4,000
(Minimum bid: \$1,200.00)

Lot 147

"A. Mosher", America, 1845 – 1860. Deep teal green, oval, crudely applied sloping collared mouth – iron pontil scar, ht. 8 3/4"; (some light exterior high point wear, primarily on the reverse, otherwise perfect). A gutsy colored pontiled medicine bottle with good deep color and nicely whittled, crude glass. Extremely rare. Reportedly an early sarsaparilla bottle from the Albany, New York area.



Estimate: \$200 - \$400
(Minimum bid: \$125.00)

Lot 151

"Dr Townsend's – Sarsaparilla – Albany / N.Y.", America, 1860 – 1870. Brilliant medium, almost a lime green, square with beveled corners, applied sloping collared mouth with lower bevel – smooth base, ht. 9 3/8", perfect. DeG #206. Beautiful, bright example, virtually pristine condition in a color not often encountered.



Estimate: \$600 - \$800
(Minimum bid: \$400.00)

Lot 148

"Carter's / Spanish / Mixture", America, probably 1855 – 1860. Bright yellow olive, cylindrical, applied sloping collared mouth with lower bevel – iron pontil scar, ht. 7 3/4", perfect. N #108. A beautiful example, just a little lighter than normal with good glass texture and hundreds of tiny seed bubbles throughout.



Estimate: \$200 - \$400
(Minimum bid: \$125.00)

Lot 152

"Dr Townsend's – Sarsaparilla – Albany / N.Y.", America, 1855 – 1865. Dense yellow olive amber, virtually black from the midsection down, applied sloping collared mouth – smooth base, ht. 9 1/4"; (a few light scratches and a tiny, pinprick bit of roughness on the mouth). DeG #206. Very heavy glass, deeper color than normal, this also is the variant with "N.Y." starting slightly to the right of the 2nd "A" in Albany.



Lot 153

"C. Norris – City / Bottling Works / Detroit / Mich", America, 1863 – 1872. Medium cobalt blue, cylindrical, applied rounded blob type collar – smooth base, ht. 7 3/8", about mint; (some minor light case wear and a little patch of interior residue or haze). This example has not been dug and the condition is much better than average. George and Charles Norris were prominent soda water manufacturers and bottlers.

Estimate: \$100 - \$200
(Minimum bid: \$75.00)



Lot 157

"Seitz & Bro. – Easton Pa – Premium – Mineral – Waters", America, 1860 – 1870. Medium sapphire blue, octagonal, applied blob collar – smooth base, ht. 7 1/4"; (cleaned to original luster).

Estimate: \$100 - \$150
(Minimum bid: \$75.00)



Lot 154

"Burr & Waters – Bottlers – Buffalo N.Y. – This Bottle / To Be Returned", America, probably Lancaster Glass Works, Lancaster, New York, 1849 – 1859. Clear medium sapphire blue, octagonal form, applied sloping collared mouth – iron pontil, ht. 7 1/4"; (may have been very lightly cleaned but certainly presents itself as near attic mint condition). Very rare. One of the more difficult sodas from Buffalo to acquire.

Estimate: \$600 - \$900
(Minimum bid: \$400.00)



Lot 158

"I. Brownell / New Bedford – This Bottle / Never Sold", America, 1850 – 1860. Medium cobalt blue, cylindrical, applied blob collar – iron pontil scar, ht. 7 1/4"; (some light expected exterior wear, otherwise about mint). A nice example, full body luster, large fully intact iron pontil.

Estimate: \$175 - \$275
(Minimum bid: \$125.00)



Lot 155

"Luke Beard.", America, 1850 – 1860. Medium green with an emerald tone, tenpin form, applied heavy blob collar – iron pontil, ht. 7 1/8"; (a 1/8" flake at edge of base, some very minor exterior high point wear, faint content residue). Wonderful condition, nice color, a bright clean example.

Estimate: \$300 - \$500
(Minimum bid: \$200.00)



Lot 159

"J. Lake. / Schenectady. N.Y", America, 1845 – 1860. Medium to deep sapphire blue, tenpin form, applied blob collar – iron pontil scar, ht. 7 1/2", (some very light exterior high point wear, otherwise about mint). Wonderful condition and nicely whittled, a great example of this scarce and desirable soda water bottle.

Estimate: \$600 - \$800
(Minimum bid: \$400.00)



Lot 156

"James Ray / Savannah / Geo (within slugplate) – Ginger Ale", America, 1875 – 1885. Deep vivid cobalt blue, cylindrical, applied blob collar – smooth base, ht. 7 3/4"; (professionally cleaned as is often the case for this bottle). A very deep, attractive color that definitely stands out.

Estimate: \$200 - \$400
(Minimum bid: \$150.00)



Lot 160

"W. P. / Knicker – Bocker – Soda Water – 164.18th St. N.Y. 1848", America, 1845 – 1860. Brilliant medium sapphire blue, 10-sided, applied blob collar – iron pontil scar, ht. 7 3/8", about mint; (this bottle was more than likely very lightly cleaned, but certainly appears to be near attic mint). A beautiful example, brilliant glass, very appealing with plenty of streaks and bubbles, fully intact nice iron pontil.

Estimate: \$300 - \$600
(Minimum bid: \$200.00)



Lot 161

"Lynch & Clarke / New York", America, 1825 – 1833. Yellow olive, cylindrical, applied sloping collared mouth with lower bevel – "improved" or sand chip pontil scar, pint; (a few scratches and a little scattered light exterior wear). T #C-2:B, type 1. A nice example, perhaps a little lighter than average with good overall body luster.

Estimate: \$300 - \$500
(Minimum bid: \$250.00)



Lot 165

"SHAKER BRAND – E. D. Pettengill & Co / Portland / ME", America, 1873 – 1877. Beautiful golden yellow coloration, barrel form, sheared mouth with a heavy applied flat band – smooth base, ht. 5"; (lightly cleaned to original luster, a 1/8" bit of mouth roughness, pinhead flake on lower barrel ring). Edward Pettengill was listed as a manufacturer & jobber of pickles, 1873 - 1877, and reportedly purchased his products from the Shakers.

Estimate: \$500 - \$800
(Minimum bid: \$300.00)



Lot 162

"Saratoga / (star) / Spring", possibly a Stoddard, New Hampshire glasshouse, 1862 – 1873. Brilliant yellow golden color, applied sloping double collared mouth – smooth base, pint, about mint; (an interior bubble is partially open and a couple of tiny pin-point areas of roughness on top of mouth). T #S-52:B, type 1. A great example with beautiful color, nicely whittled and in wonderful condition.

Estimate: \$150 - \$250
(Minimum bid: \$100.00)



Lot 166

Lot of Three "Globe" Fruit Jars, America, 1886 – 1895. Straw yellow, light golden amber and dark amber, all with original metal bands, perfect color-matching lids embossed, "Patented May 25 1886", bases embossed, 77, 51, and 33 respectively, quarts; (the dark amber example has a shallow 3/8" open bubble on the side of the jar near the base, otherwise all are perfect). L #1123. A great set of Globe jars.

Estimate: \$250 - \$400
(Minimum bid: \$150.00)



Lot 163

Cathedral Pepper Sauce Bottle, America, 1845 – 1860. Aquamarine, square with narrow chamfered corners, Gothic type windows on three panels above gothic type arches on four lower body panels, large applied double collared mouth – blowpipe pontil scar, ht. 9 3/4", perfect. Similar to MW, plate 74, #1. A particularly attractive example with a nicely executed large applied mouth and heavy "tubular" pontil scar.

Estimate: \$100 - \$200
(Minimum bid: \$50.00)



Lot 167

"Swayzee's / Improved / Mason" Fruit Jar, Swayzee Glass Company, Swayzee, Indiana, 1900 – 1906. Citron green with a little more yellow than normal, smooth lip Mason shoulder seal, "23" on smooth base, quart, about mint; (a 1/8" opening on the cover glass of a bubble located on the heel of the reverse). A nice bright color. L #2780-1.

Estimate: \$60 - \$80
(Minimum bid: \$30.00)



Lot 164

"SGJ" Cathedral Pickle Jar, America, 1850 – 1860. Aquamarine, square with chamfered corners, ornately decorated Gothic style arches each with quatrefoil and pendant, tooled and outward rolled mouth – tubular blowpipe pontil scar, ht. 9 1/4"; (a thin open bubble on the inside of the neck, otherwise perfect). Z. page 162. Embossed pontiled pickle jars tend to be quite rare, and this one is certainly no exception.

Estimate: \$250 - \$450
(Minimum bid: \$175.00)



Lot 168

Lot of Two "Mason's / Patent / Nov. 30TH / 1858" Fruit Jars (one with Hero cross), America, 1880 – 1900. Light golden amber and straw yellow, both have ground lips and Mason shoulder seals, bases: "Pat. Nov 26 67 / 616" and "3", quarts; (the golden amber jar has slightly weakened embossing, otherwise mint; the straw yellow jar has a 3" crack around the base). L #'s 1940 & 1787. A good clean amber jar and a stunning yellow example!

Estimate: \$150 - \$250
(Minimum bid: \$100.00)



Estimate: \$200 - \$250
(Minimum bid: \$125.00)

Lot 169

Lot of Three "Trade Mark / Lightning" Fruit Jars, America, 1882 – 1900. All are shades of golden amber, cylindrical with original wire closures, ground lips and correct matching color glass lids, "Putnam" and various mold numbers on the bases, quarts; (one example has a ¼" flake off the top of the seat for the glass lid, otherwise perfect). L #1489.



Estimate: \$200 - \$300
(Minimum bid: \$125.00)

Lot 173

"Mason's / (cross) / Patent / Nov. 30TH / 1858" Fruit Jar, America, 1880 – 1900. Light to medium golden amber, ground lip, Mason shoulder seal, "Pat Nov 26 67 / 479" on smooth base, half gallon; (a couple of shallow flat 1/8" flakes off top of ground mouth and a ¼" flake off outer edge of mouth that does not impact the ground portion of the lip). L #1939. A nice jar with strong embossing.



Estimate: \$75 - \$100
(Minimum bid: \$50.00)

Lot 170

"The Victor / (monogram "M" within diamond) / Patented 1899", America, 1900 – 1905. Aqua with clear glass lid and original compression-type metal band, qt, perfect. The metal band is in excellent condition and the clasp moves freely. However, it may have been bent at some point as it does not want fold beyond center and we have not tried to force it. Clasp is stamped with the patent date of "FEB 20 1900". L #2886.



Estimate: \$175 - \$225
(Minimum bid: \$125.00)

Lot 174

Lot of (4) Fruit Jars, "Beaver" / (embossed beaver), "Cohansey", "The / Leeder", and "Woodbury" / "WGW", 1880 – 1900. America & Canada, Faint amethystine tint and shades of aqua, ground lips, correct original metal band, clamp, or strap & glass lids, Qts; (Beaver jar has a 3/16" flake on top of mouth, 1" bruise on rim of lid; Cohansey & Woodbury have a couple of flakes on mouth edge. Good clean jars. L #s: 424, 628, 1466, 3028.



Estimate: \$150 - \$200
(Minimum bid: \$75.00)

Lot 171

Lot of Two "Globe" Fruit Jars, America, 1886 – 1895. Both orange amber with metal clamps and color-matching lids ("Patented May 25 1886"), bases embossed, "2" & "31", pt. and qt, respectively; (the pint is near mint but has a shallow 3/8" sliver off the outer edge of lip and also several flakes off bottom edge of lid; the qt. has several bruises, ¼" & ½", on top of the mouth and one of the lid). L #1123. Pint jar is strongly embossed.



Estimate: \$100 - \$150
(Minimum bid: \$60.00)

Lot 175

"Trade Mark / Lightning" Fruit Jar, America, 1882 – 1900. Light golden yellow, cylindrical with original wire closure, ground lip and correct matching color glass lid, "Putnam / 250" on base, quart, about mint; (some typical flaking at side of ground mouth, but ground portion is fully intact). L #1489. A very pretty, light color and a nicely whittled jar.



Estimate: \$250 - \$350
(Minimum bid: \$150.00)

Lot 172

"Mason's / Patent / Nov. 30TH / 1858" Fruit Jar, America, 1880 – 1900. Medium golden amber with just the very slightest hint of olive, ground lip, Mason shoulder seal, "34" on smooth base, quart, perfect. L #1787. A pretty jar with good whittling and character to the glass.



Estimate: \$140 - \$180
(Minimum bid: \$100.00)

Lot 176

Lot of (4) "Mason's Fruit Jars, "The Marion Jar", "Mason's / KGBCo" (monogram), "Mason's / G", and "Red" (over a key), all "Patent / Nov. 30TH / 1858", 1880 – 1900. The "KGBCo" jar is colorless and the remainder are shades of aqua, Pt, Qt, Qt, and Hg. respectively, all near mint; (the zinc lid on the Marion jar is correct but damaged, the "G" jar has some flakes and roughness on top of the ground mouth). L #s 1624, 1958, 1999-4, 2476-1.



Estimate: \$400 - \$800
(Minimum bid: \$250.00)

Lot 177

"R.H / Andrew / Tredinick" (on applied glass seal), **Black Glass Wine Bottle**, England, 1815 – 1830. Medium to deep olive green, cylindrical, probably formed in a dip mold, sloping curved shoulders, applied double collared mouth – domed kick-up, sand chip pontil scar, ht. 10 1/4", dia. 4"; (some light scattered interior residue that would probably wash out, otherwise perfect). Beautiful condition, full original luster, great detail to the seal.



Estimate: \$200 - \$400
(Minimum bid: \$150.00)

Lot 181

Black Glass Wine Bottle, (applied glass seal) with motif of a standing boar beneath a well defined crown, England, 1785 – 1800. Olive green, cylindrical, blown in a dip mold, sheared mouth with applied string lip – domed base with sand chip pontil scar, ht. 11 3/8", dia. 3 3/4", perfect, "cellar found condition". RD, page 210. Both the crest and boar are slightly larger than on Lot 180.



Estimate: \$300 - \$500
(Minimum bid: \$200.00)

Lot 178

"T W / 1829" in old style or serif typeface (on applied glass seal), **Black Glass Wine Bottle**, England, 1829 – 1830. Olive green, cylindrical, blown in a three-piece mold, applied double collared mouth – domed base, sand chip pontil scar, ht. 10 7/8", dia. 4"; (a couple of very light exterior scratches, otherwise perfect). Strong impression on seal, full surface gloss.



Estimate: \$400 - \$600
(Minimum bid: \$200.00)

Lot 182

"I" (motif of stag's head) "F" / "1743" (on applied glass seal), **Black Glass Wine Bottle**, England, 1780 – 1800. Medium to deep yellow olive, cylindrical, dip mold, sheared mouth with a nicely applied sloping lower band – domed kick-up with faint sand chip type pontil scar, ht. 10 1/4", dia. 3 3/8", perfect, cellar found condition. RD, page 219. The "I" is actually an old fashion "J", and the seal is presumably the crest of John Fothergill.



Estimate: \$250 - \$400
(Minimum bid: \$150.00)

Lot 179

"Lewis / Hopkins / Gelly" (on applied glass seal), **"Patent"** (on shoulder), **Black Glass Wine Bottle**, England, 1825 – 1835. Olive green, cylindrical, blown in a three piece mold, applied double collared mouth – "H. Ricketts & Co Glass Works Bristol" (on base), sand chip pontil scar, ht. 10 3/4", dia. 4"; (a 1/4" fissure is located on the reverse of the body, otherwise about mint). Unlisted in Dumbrell, and with full body luster.



Estimate: \$300 - \$450
(Minimum bid: \$200.00)

Lot 183

Black Glass Wine Bottle, (applied glass seal) with motif of Griffin, England, 1780 – 1800. Clear medium olive green, cylindrical, applied short beveled lip above flat band – conical kick-up with sand chip pontil scar, ht. 10 1/4", dia. 3 3/8". Small patch of interior residue, otherwise perfect. Ex. Delaforce collection. A old hand written note on the base indicates "Earl of Plymouth" and some additional illegible writing). Nice.



Estimate: \$200 - \$400
(Minimum bid: \$150.00)

Lot 180

Black Glass Wine Bottle, (applied glass seal) with motif of a standing boar beneath a well defined crown, England, 1785 – 1800. Olive green, cylindrical, blown in a dip mold, sheared mouth with applied string lip – domed base with sand chip pontil scar, ht. 11 5/8", dia. 3 3/4", (some light content residue, otherwise about mint). RD, page 210. Good detail on the seal, full body gloss.



Estimate: \$300 - \$450
(Minimum bid: \$200.00)

Lot 184

Black Glass Wine Bottle, (applied glass seal) with motif possibly depicting a rampant lion and ships mast, England, 1795 – 1815. Medium to deep olive green, cylindrical, dip mold, applied double collared mouth – domed kick-up base with sand chip pontil scar, ht. 10 1/4", dia. 3 3/4", perfect, cellar found condition (portions of a gray-blue wax remain on collar). Similar to RD, page 211. Nicely detailed seal.



Estimate: \$200 - \$350
(Minimum bid: \$150.00)

Lot 185

Black Glass Wine Bottle, (applied glass seal) with motif possibly depicting a rampant lion and ships mast, England, 1795 – 1815. Deep olive green, cylindrical, dip mold, applied double collared mouth – domed kick-up base with sand chip pontil scar, ht. 10 1/8", dia. 3 3/4"; (a 1/8" flake on edge of mouth, a shallow 1/4" flake of edge of base). Similar to RD, page 211. A little deeper color than Lot 184.



Estimate: \$400 - \$600
(Minimum bid: \$250.00)

Lot 186

Black Glass Wine Bottle, (applied glass seal) with motif of a bent arm (possibly in armor), holding a sword, England, 1770 – 1785. Medium to deep olive green, magnum sized squat cylinder, applied string lip – pontil scar, ht. 11 1/2", dia. 5 1/4"; (approximately 80-85% original luster with some scattered exterior dullness, a narrow 1/8" x 1" long open bubble at side, some minor interior haze). A handsome, large early cylinder.



Estimate: \$300 - \$600
(Minimum bid: \$200.00)

Lot 187

"I C" large initials, serif typeface (on applied glass seal), **Black Glass Wine Bottle**, England, 1780 – 1800. Medium to deep yellow olive, cylindrical, dip mold, pleasing form with a squatty appearance and slightly bulbous neck, short applied tapered collar with lower flat band – deep domed kick-up base, pontil scar, ht. 8 7/8", dia. 3 1/4"; (some light interior haze, some of which may wash out). Full body luster, nice smaller size.



Estimate: \$250 - \$350
(Minimum bid: \$150.00)

Lot 188

"A.S. / C.R." (on applied glass seal), **Half-Size Black Glass Wine Bottle**, England, 1785 – 1810. Medium to deep olive green, cylindrical, dip mold, short tapered collar with applied lower band – shallow concave base with sand chip pontil scar, ht. 9", dia. 2 5/8", perfect, cellar found condition. A scarce size to find in the classic All Souls College sealed bottles.



Estimate: \$125 - \$225
(Minimum bid: \$100.00)

Lot 189

"A.S. / C.R." (on applied glass seal), **Black Glass Wine Bottle**, England, 1820 – 1830. Medium to deep olive green, cylindrical, three-piece mold, applied sloping double collared mouth – domed base with sand chip pontil scar, ht. 11 1/2", dia. 3 3/8", about mint; (tiny pinhead open bubble at edge of base and a small amount of interior residue that would probably wash out). Beautiful example with strong impression on seal.



Estimate: \$150 - \$250
(Minimum bid: \$100.00)

Lot 190

"Lupton" (on applied glass seal), **Black Glass Wine Bottle**, England, 1820 – 1835. Deep olive green, cylindrical, applied double collared mouth – conical kick up, pontil scar, ht. 11 1/8", dia. 3 1/8"; (a couple of minor 1/8" or smaller flakes off lower bevel and some light interior content stain). Possibly Thomas G. Lupton, 1791 – 1873, engraver and son of a goldsmith (see RD, page 284). Full original luster, strong impression on seal.



Estimate: \$200 - \$350
(Minimum bid: \$150.00)

Lot 191

Black Glass Wine Bottle, (applied glass seal) with a coat of arms motif bearing a well detailed Griffin above the initials, "GL", England, 1825 – 1835. Deep olive green, cylindrical, three piece mold, "Patent" (on shoulder), applied double collared mouth – "H. Ricketts & Co Glass Works Bristol" (on base), sand chip pontil scar, ht. 10 3/4", dia. 3 1/4", perfect. Unlisted in Dumbrell.



Estimate: \$250 - \$500
(Minimum bid: \$150.00)

Lot 192

"B / 1837" / (motif of coronet), (on applied glass seal) **Black Glass Wine Bottle**, England, 1837 – 1839. Medium to deep olive amber, cylindrical, dip mold, applied double collared mouth – pontil scar, ht. 11", dia. 4 5/8", perfect, cellar found condition. RD, page 240. Apparently, these bottles came from the cellars at Stowe and were used by Richard, First Duke of Buckingham to celebrate the coronation of Queen Victoria.



Estimate: \$100 - \$150
(Minimum bid: \$50.00)

Lot 193

Black Glass Wine Bottle, (applied glass seal) with motif of coronet above a coat of arms, probably French, 1850 – 1870. Medium yellowish olive, cylindrical, sheared mouth with applied flat band – smooth base with a deep kick-up, ht. 11 1/2", about mint; (small surface bubble with disturbance of the cover glass). Wonderful condition, still retains a period hand written (illegible), label. Possibly a crest of the vineyard.



Estimate: \$300 - \$450
(Minimum bid: \$200.00)

Lot 194

Lot of (3) Emmanuel College Black Glass Wine Bottles, "EMMANUEL / COLLEGE"; "EMMAN / COLL." and, "EMM / COLL" (on applied seals), England, 1825 – 1865. Olive green and olive amber, cylindrical, dip mold and 3-pc. molds, applied double collared mouths – pontil and smooth bases, ht. 10 7/8" – 11 1/2"; (the bottles themselves are essentially mint with full surface gloss, but with varying degrees of dried interior residue). RD, page 257-258.



Estimate: \$300 - \$450
(Minimum bid: \$200.00)

Lot 195

Lot of (3) Emmanuel College Black Glass Wine Bottles, "EMMANUEL / COLLEGE"; "EMMAN / COLL." and, "EMM / COLL" (on applied seals), England, 1825 – 1865. Shades of olive green, cylindrical, dip mold and 3-pc. molds, applied double collared mouths – pontil and smooth bases, ht. 10 3/4" – 11 3/8"; (the bottles are essentially mint with full surface gloss, but with varying degrees of dried interior residue). RD, page 257-258.



Estimate: \$300 - \$450
(Minimum bid: \$200.00)

Lot 196

Lot of (3) Emmanuel College Black Glass Wine Bottles, "EMMANUEL / COLLEGE"; "EMMAN / COLL." and, "EMM / COLL" (on applied seals), England, 1825 – 1865. Shades of olive green, cylindrical, 2 examples with 3-pc. mold, applied double collared mouths – pontil and smooth bases, ht. 11 1/8" – 11 1/4"; (the bottles are essentially mint with full surface gloss, but with varying degrees of dried interior residue). RD, page 257-258.



Estimate: \$175 - \$275
(Minimum bid: \$100.00)

Lot 197

Lot of (2) "TC / CR" (on applied seals), **Black Glass Wine Bottles**, England, 1850 – 1870. Olive green and yellow olive, both are 3-pc. molds with applied double collared mouths - smooth bases, ht. approximately 10 3/4", (olive example is mint with some remaining dried interior residue; yellow olive example displays mint but has a 1/4" bruise on the reverse shoulder). RD, page 313. From the Trinity College Common Room, Oxford.



Estimate: \$300 - \$600
(Minimum bid: \$200.00)

Lot 198

Lot of (3) Black Glass Bottles (with applied seals): "Charles / Simpson"; "T C" (sinister hand & shield); and "1825" / (Maltese Cross), England, 1770 – 1870. Olive greens, cylinder forms, applied mouths, pontiled & smooth base ("1825" seal is SB), ht. 10 5/8", 11 5/8", 8 7/8"; (Simpson seal has 4" crack in body, 1/4" chip on lip; "T C" seal has 2 impact bruises on body, "1825" seal has 1" crack in lip). All with full original luster.



Estimate: \$400 - \$600
(Minimum bid: \$250.00)

Lot 199

Lot of (2) Black Glass Wine Bottles (with applied glass seals): Motif of coat-of-arms with a chevron, and; "G.B." / (crest of a raised arm grasping a scimitar), England, 1750 – 1790. Both olive green, mallet and squat cylinder forms, applied string lips - large domed bases with pontil scars, ht. 9 1/2" and 8 3/4"; (mallet has a 3/4" crack in the side of the body; cylinder has a 5/8" crack on reverse). Both with full original luster.

Lot 200

Bellarmino Jug, Germany, 1640 – 1680. Brown tiger mottled glaze, ovoid form, applied grotesque bearded face mask and applied central oval medallion with small pinwheel or flower within crest above a heart, ht. 8 1/8", dia. 4 3/4" (at widest point), excellent overall condition; (a little wear or firing imperfections on top of mouth).



Estimate: \$450 - \$750
(Minimum bid: \$300.00)



Estimate: \$150 - \$250
(Minimum bid: \$100.00)

Lot 201

Half Size Black Glass Onion Wine Bottle, England, 1700 – 1720. Medium olive green, onion form, applied string lip – domed base with sand chip pontil scar, ht. 5 1/4", body dia. 4 3/4"; (there is an impact type bruise on the side of the body with a couple of legs, the longest about 3/4", a few light scratches, some patchy faint dullness). A rare size, still retains a majority of it's original surface gloss.



Estimate: \$250 - \$400
(Minimum bid: \$150.00)

Lot 205

Black Glass Wine Bottle, France, 1750 – 1770. Medium to deep yellowish olive, tall flower pot form with gradually tapering sides, sheared mouth with applied string lip – cone base with pontil scar, ht. 14 1/8"; (a little scattered interior residue, otherwise perfect). RD, page 147, figure 229. Beautiful condition. A handsome early bottle with plenty of seed bubbles, impurities and character.



Estimate: \$300 - \$500
(Minimum bid: \$200.00)

Lot 202

Black Glass Onion Form Wine Bottle, England, 1700 – 1720. Medium to deep yellow olive, onion form, applied string lip - domed base with large quatrefoil indentation and sand chip pontil scar, ht. 6 1/4", body dia. 6"; (a 3/8" chip off applied ring collar, an open bubble, 1/4" x 1/8" on the side and some light exterior wear and scratches). Overall a decent example, relatively minor damage and with most of it's original luster.



Estimate: \$150 - \$300
(Minimum bid: \$100.00)

Lot 206

(2) Miscellaneous Bottles, France and England, 1830 – 1860. A French storage bottle for preserving truffles and an English "Flagon" spirits bottle. Deep reddish (black) amber and grape amethyst, cylinder form and bulbous with compressed sides and applied handle, sheared mouth with ring and applied metal closure with stopper, smooth and pontiled bases; (some exterior wear on the truffle bottle, otherwise both about mint).



Estimate: \$250 - \$350
(Minimum bid: \$150.00)

Lot 203

Black Glass Mallet Form Wine Bottle, England, 1725 – 1735. Deep olive green, early mallet form with shoulders slightly narrower than the base, sheared mouth with applied string lip – sand chip pontil scar, ht. 8", dia. 5 1/4"; (a 1/4" flat flake off the top of the string lip, some scuffs and exterior wear, mostly confined to a 4" area on one side, some scattered light interior residue). Approx. 65 – 70% original luster remains.



Estimate: \$150 - \$250
(Minimum bid: \$100.00)

Lot 207

(2) Early Spa Mineral Water Bottles, probably Belgium, 1790 – 1830. Light olive yellow and deep olive amber, both are flattened ovoid form, sheared mouths with applied and tooled crimped banded collars – smooth bases, ht. 6 7/8" and 9 3/4"; (small example has a 1/4" flake and bruise on the side of the mouth; large example has 1/2" of the flat band missing; both with fairly heavy wear on sides). VdB, pgs. 183-189.



Estimate: \$225 - \$325
(Minimum bid: \$125.00)

Lot 204

Black Glass Wine or Utility Bottle, probably France, 1730 – 1760. Medium to deep yellowish olive with and amber tone, long neck flower pot form, applied string lip – tubular pontil scar, ht. 11 1/4"; (some expected scattered exterior wear and light scratches, overall light interior haze, some of which may wash out). VdB, page 197. A scarce bottle. Retains the great majority of it's original surface gloss.



Estimate: \$175 - \$350
(Minimum bid: \$125.00)

Lot 208

(3) Utility or Early Spirits Bottles, possibly Alloa Glass Works, Edinburgh, Scotland, 1820 – 1860. Olive green and dense, black olive, bulbous bodies, applied double collars and ring type mouths - large example is smooth base, others are pontiled, ht. 7 5/8", 8" and 9 3/8", near mint; (some scattered exterior scratches, primarily on the 9" example, a pontil chip on the small example). A handsome trio.



Estimate: \$150 - \$300
(Minimum bid: \$100.00)

Lot 209

"Sandeman's / Port" (on applied glass seal), **Magnum Port Bottle**, England, 1904 – 1907. Medium olive green, cylindrical, blown in a 3-pc. mold, applied double collared mouth – smooth base, ht. 14 1/2"; (some dried interior residue, otherwise perfect). Complete with original label which reads in part, "PORT / Vintage 1904 / Sandeman & Co / Oporto.". An impressive bottle, good detail to the seal, great labels.



Estimate: \$200 - \$400
(Minimum bid: \$125.00)

Lot 213

Demijohn, America, possibly Lockport Glass Works, Lockport, NY, 1843 – 1855. Brilliant deep "Lockport blue-green" or teal, cylindrical, applied sloping collared mouth – pontil scar, ht. 18 1/8", dia. 7 1/4", near mint (a shallow, 1/8" flake off edge of mouth, two interior bubbles with minor residue). Very similar in color to the early pontiled G.W. Merchant bottles, a truly exciting and unusual color for a demijohn.



Estimate: \$150 - \$300
(Minimum bid: \$100.00)

Lot 210

"N" / (large crown), (on applied glass seal), **Jeroboam (double magnum) Black Glass Wine Bottle**, probably England, 1880 – 1910. Medium yellowish olive, cylindrical, sheared tooled mouth with ring collar – smooth base, ht. 20 3/4", perfect, cellar found condition. Although late for a black glass applied seal bottle, the impressive size and wonderful condition certainly help to set this piece apart.



Estimate: \$300 - \$600
(Minimum bid: \$150.00)

Lot 214

Sterling Silver & Wicker Covered Demijohn, America, 1850 – 1870. Amber, flattened apple form, applied sloping collared mouth – undetermined pontil or smooth base, ht. 8 5/8", perfect. Note, marked "STERLING" on tapered collar. A wonderful, probably unique demijohn. This likely was used as a fancy decanter by a prominent family or perhaps was a whimsical piece produced by a silversmith.



Estimate: \$125 - \$250
(Minimum bid: \$75.00)

Lot 211

Large Storage Bottle or Demijohn, probably England, 1795 – 1815. Deep olive green (virtually black in the neck and near the base), cylindrical, dip mold, applied and tooled mouth with applied lower band – pontil scar, ht. 12 5/8", dia. 6"; (some scattered light exterior wear and scratches). A heavy, crude, early cylindrical demijohn with the majority of its original surface gloss.



Estimate: \$200 - \$400
(Minimum bid: \$125.00)

Lot 215

Demijohn, America, 1860 – 1875. Clear, light citron green, flattened apple or heart form blown in a two piece mold, applied tapered collar – smooth base, ht. 18 1/4", perfect. Although similar colors can occasionally be found in the straight sided demijohns, it is most unusual in this particular form. A delicate attractive color, covered with large "dimpled" whittle marks.



Estimate: \$125 - \$250
(Minimum bid: \$75.00)

Lot 212

Demijohn, probably America, 1830 – 1850. Medium yellowish olive, cylindrical, blown in a 2-piece mold, applied large square collared mouth – sand chip pontil scar, ht. 21 3/4", dia. 10 1/2", about mint; (a few light scratches and some very minor exterior wear near the base). Unusual with the early square collared mouth, we cannot recall seeing a similar example quite this large. Wonderful condition.



Estimate: \$300 - \$600
(Minimum bid: \$150.00)

Lot 216

Demijohn, probably America, possibly Continental, 1790 – 1830. Deep yellowish olive amber shading to black in the upper shoulder and neck area, oval or "kidney form", freeblown with a crudely sheared mouth and applied flat band collar – smooth base, ht. 18"; (a few light scratches, otherwise pristine perfect). MW plate 46, #6; VdB page 340, #3. Crude, beautiful, early and particularly hard to fine in this fine condition.

Lot 142 – Johnson & Lilly, Pharmacists

The year 1876 was certainly a milestone, not only in celebration of our nation's Centennial, but also for the birth of the Eli Lilly and Company of Indianapolis, Indiana, global pharmaceutical giant. The company was founded by Colonel Eli Lilly, a 38-year-old pharmaceutical chemist and veteran of the Civil War. Colonel Lilly, according to company history, would be one of the first pioneers to develop only medicines that would be dispensed at the suggestion of physicians rather than by "eloquent sideshow hucksters".

Dr. John F. Johnston was a prominent Indianapolis druggist and physician who also served as Director of the City Hospital from 1860 – 1871. Relevant to this important bottle and to the early history of Eli Lilly and Company, Dr. Johnston and Colonel Eli Lilly enjoyed a brief association together before going on to their independent practices. According to the Indianapolis City Directory, the first listing for Johnston & Lilly was in 1874. The listing stated that they were organic chemists and produced "standard medicinal solid and fluid extracts, sugar-coated pills, wines, syrups, etc." It is not known why, but their association was short-lived and by 1877 they had parted ways.

This historically significant bottle is reportedly one of only two known surviving examples, the other example being severely cracked. In addition to the history and rarity of this particular bottle, the bottle itself is most interesting being blown in an unusual pyramid form and in a vivid cobalt blue color. Very few medicine bottles were produced in this distinctive form; the scarce and popular "Duffy's Tower Mint" bottle is one that comes to mind. An attractive, rare and historically significant early medicine bottle.

Information courtesy of the Indiana Historical Society and the Lilly website.



Lot 141 – Dr. Henion's Sure Cure For Malaria



“When I say CURE, I mean it, and NO HUMBUG”, and so goes the advertisement by Dr. J.B. Henion, M.D. in the 1869 – 1870 Monroe County (Rochester, New York), Business Directory. Thankfully, Dr. Henion’s “Sure Cure for Malaria” must not have lived up to its lofty claims or enjoyed great success as evidenced by the tremendous scarcity of surviving examples.

John B. Henion was listed in the Rochester city directory from 1873 to 1887, and from 1881 through 1885, he was listed as a physician. The key year is 1886 when Dr. Henion listed his name under the Patent Medicine Business. The last entry for Dr. Henion was in 1887, again as a physician with a different address and not under the Patent Medicine business. Based on the above information, one can certainly draw some conclusions as to the probable date of this bottle (1886), as well as the reason why they are so incredibly scarce, perhaps being produced for a single year or less.

The Henion’s Sure Cure For Malaria bottle is unquestionably attractive, colorful and extremely rare. But beyond that, it is one of the most widely recognized patent medicine bottles known and the only other example to share the distinctive, perhaps iconic “Tippecanoe”-type mouth of H. H. Warner’s figural log with canoe bottle (patent date of 1883 on its base).

One additional conclusion that may be drawn is that the similarity of the distinctive “mushroom type” collar was by no means a coincidence. Malaria was one of the many specific ailments that “Tippecanoe” advertised to cure. In addition, J. B. Henion was under the employ of H.H. Warner for a brief period of time. And finally, the patent dates of 1883 on the Tippecanoe and the probable date of 1886 for the production of the “Sure Cure For Malaria” bottle correlate rather well to support this conclusion.

We are pleased to offer this extremely rare, important early patent medicine bottle with the unusual and disproportioned collar mouth, great eye appeal and gorgeous color.

*Historical Information courtesy of Jack Stecher,
Rochester, New York.*

American Patent Medicines 1840 - 1880

In the latter months of 1905, the first of a series of articles by investigative journalist Samuel Hopkins Adams appeared in Collier's, dealing with what was aptly termed, "The Great American Fraud". The fraud pertained to the false claims of medicines and the nostrum evil and quackery. These articles exposed many of the false claims of patent medicines and greatly facilitated the passage of the Federal Pure Food and Drug Act signed into law by President Theodore Roosevelt, June, 1906.

This was the beginning of the end of the Patent Medicine era which flourished during the latter half of the 19th century. During this era, wild and unbridled claims of the purveyors of patent medicines were facilitated by the travelling Medicine Show Man, colorful advertisements and relevant to our interests, equally colorful and appealing bottles which have provided one of the hobby's most interesting and historically important collecting categories.

The wide variety of medicine bottles readily available to collectors is virtually endless and fortunately, there is also a wealth of information available for those interested in patent medicine bottles. Specialty areas include the collecting of tonics, bitters, balsams, sarsaparilla bottles, embossed "cure" bottles, and the list goes on. We hope that you will find some items in this sale of interest, and if so, are able to add a piece or two to your collection.

Lot 137



Lot 130

Lot 138

Lot 149

Lot 141

Among the earliest of American Glass, this genre of glass can trace its roots to pre-Colonial times. It is associated with some of our most famous glass houses including that of Casper Wistar, Henry William Stiegel and John Frederick Amelung.

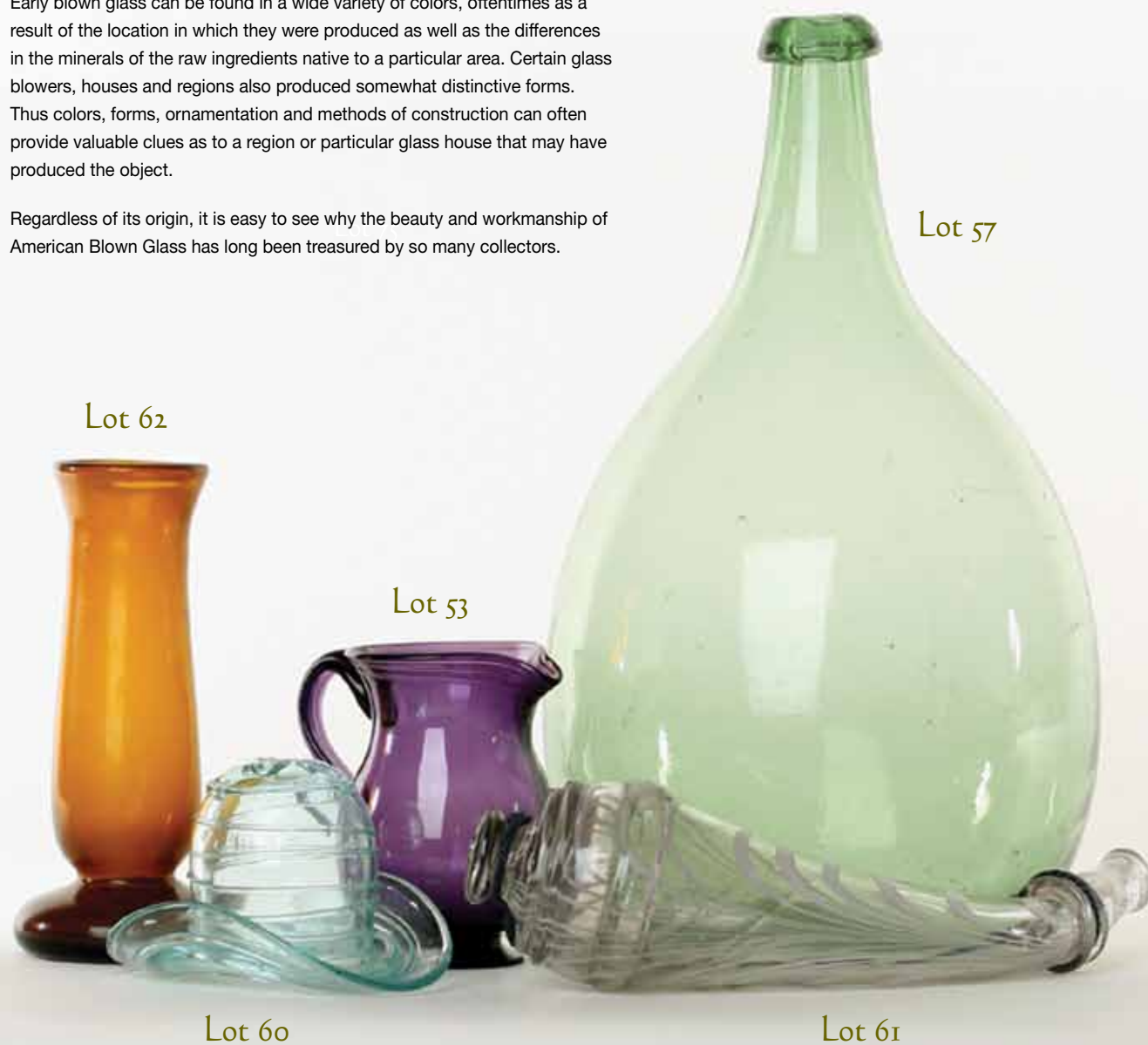
"Blown glass" is a classification for objects blown without the use of a mold and is also referred to as "hand-blown", "free-blown", or "off-hand-blown". Although eventually blown contemporaneously, the origins of blown glass predate those of mold blown and pattern molded glass.

As a result of the absence of a mold, blown glass often required a greater degree of skill on the part of the glass gaffer. Some blown objects, especially those with additional ornamentation such as applied threading, handles, rigaree, and loopings of additional color, are considered by many to be a valued form of early American art.

Early blown glass can be found in a wide variety of colors, oftentimes as a result of the location in which they were produced as well as the differences in the minerals of the raw ingredients native to a particular area. Certain glass blowers, houses and regions also produced somewhat distinctive forms. Thus colors, forms, ornamentation and methods of construction can often provide valuable clues as to a region or particular glass house that may have produced the object.

Regardless of its origin, it is easy to see why the beauty and workmanship of American Blown Glass has long been treasured by so many collectors.

American Freeblown Glass 1740 - 1860



Have Quality Items to Consign?

Become another satisfied consignor

Whether its a single item or an entire collection, call or email us today to discuss how we can put our experience and expertise to work on your behalf!

November 18, 2008

John,

I'm sure that my father has thanked you for all your help and efforts on the auction, however I wanted provide additional thanks on behalf of the family. Working with you on this project certainly had a bright and happy impact on my father and the success of the auction left him speechless.

I put together a spreadsheet that allowed me to quickly enter changes as the auction progressed. Throughout the evening and into last night, I would call Dad with updates and I could see the smile on his face through the phone. When I called at the end of the auction, he was astounded and literally speechless.

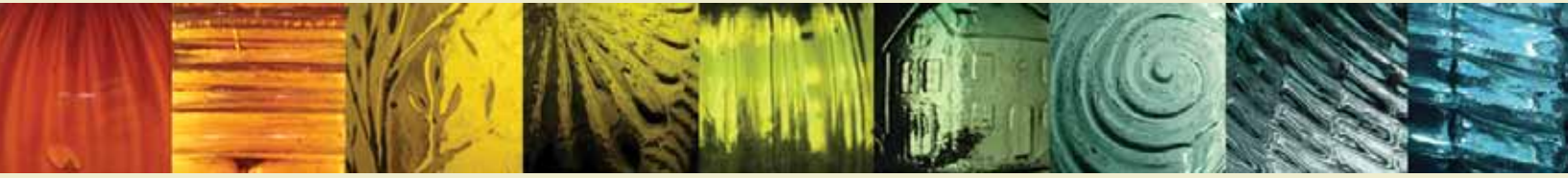
You did a wonderful job of setting this up and conducting what was, I think, a very successful auction. Your efforts made what I thought would be a difficult and perhaps painful parting with his collection, an event of delight and anxious anticipation.

Thank you so much!

Phil Moore
Wichita, KS



American Glass GalleryTM



Buying and selling fine antique bottles, flasks and blown glass

Our Services:

- ☛ Absentee auctions
- ☛ Web site sales
- ☛ Private direct sales
- ☛ Direct purchase of quality single items or entire collections
- ☛ Fast payment and confidential transactions
- ☛ Appraisal services

Mission Statement:

At American Glass Gallery, our goal is to offer to collectors quality bottles and glass along with the highest level of service and professionalism. Whether you are buying or selling quality antique bottles and glass, American Glass Gallery is here to serve you. Please contact us at any time with your questions or for more information.

P.O. Box 227, New Hudson, Michigan 48165

Phone: 248.486.0530 • Fax: 248.486.0538

email: jpastor@americanglassgallery.com

website: americanglassgallery.com



American Glass GalleryTM